

SEED ENTERPRISE MANAGEMENT INSTITUTE (SEMIs)
National Plant Protection Organizations (NPPOs) And
Seed Quality Regulators Course

16th – 21st January 2017

SEED ENTERPRISES MANAGEMENT INSTITUTE
UNIVERSITY OF NAIROBI

Seed Enterprises Management Institute
University of Nairobi

Evolving Trends in Seed Quality Management Systems

Prof. James W. Muthomi
Department of Plant Science and Crop Protection
University of Nairobi

Objectives of internal quality control

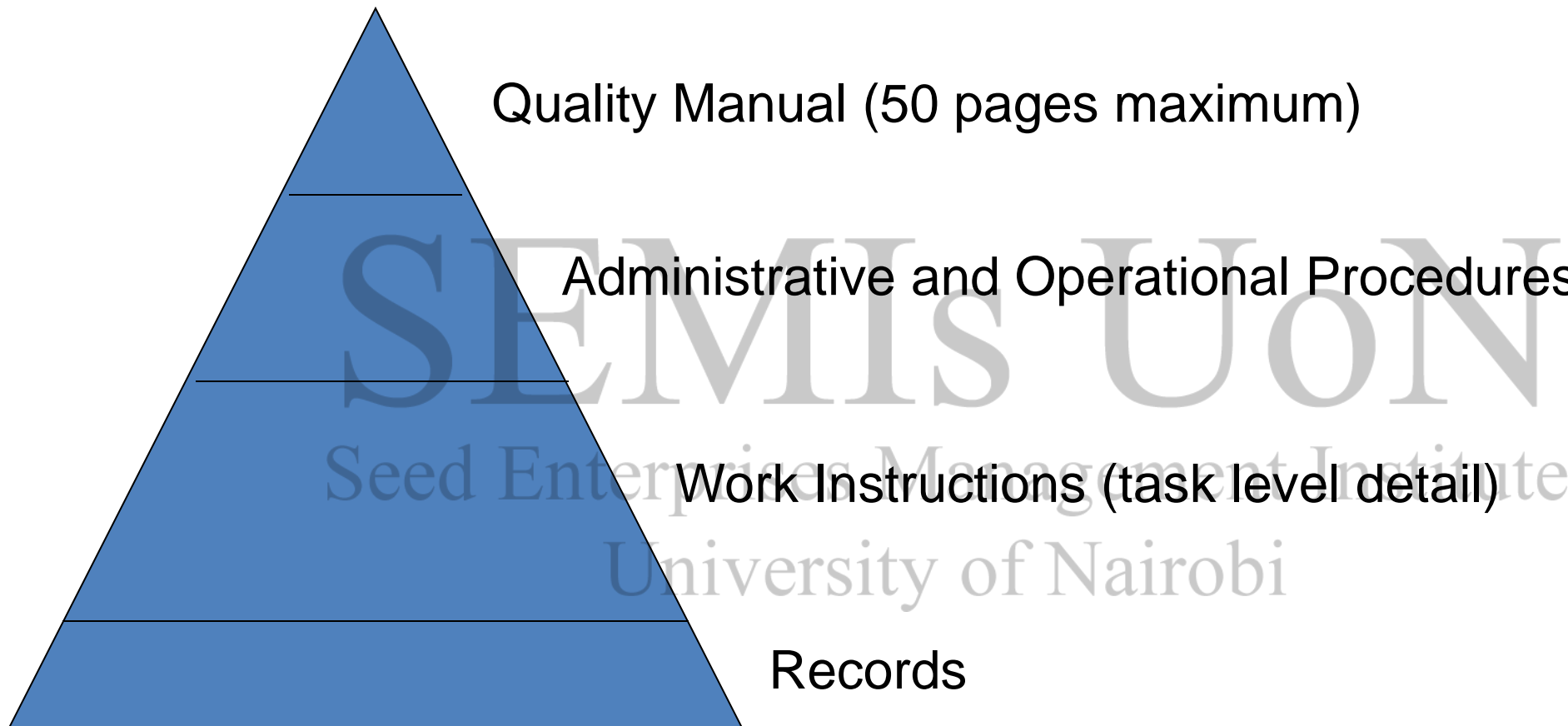
- Confirmation we have alignment with business objectives and customer expectations
- Audit/Measurement/Validation
- Managing cost and productivity
- Identification of process improvement opportunities
- Reduction in employee stress
- Possible leveraging opportunities related to regulatory compliance.

What Is Process Management?

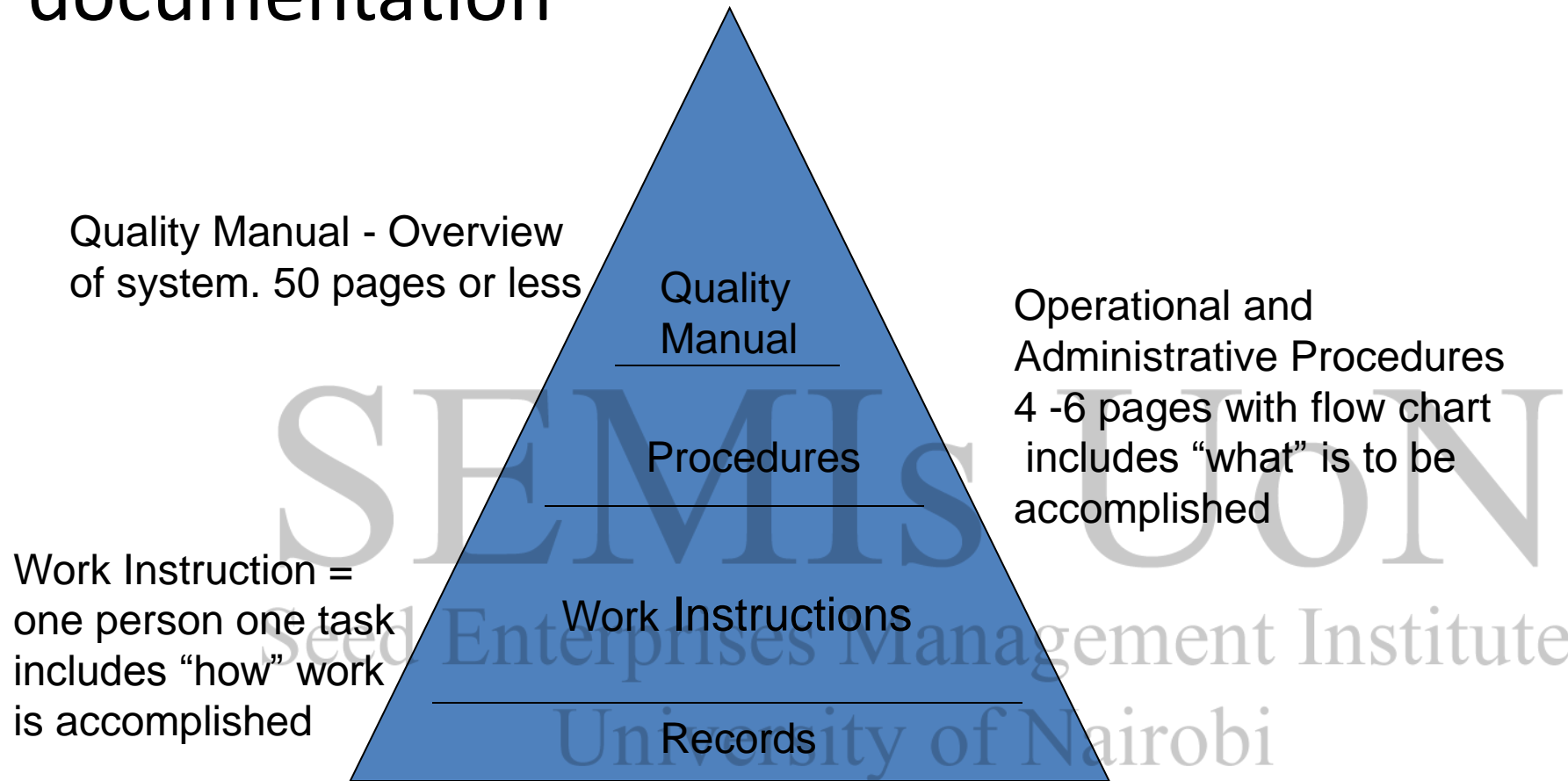
- Identification of critical business areas that must be defined, controlled and maintained.
- Critical business actions must be repeatable and measurable
- System design must allow for changing business needs
- Customer requirements must be identified and incorporated into the system.

SEMIITS UON
Seed Enterprises Management Institute
University of Nairobi

Documentation in internal quality control

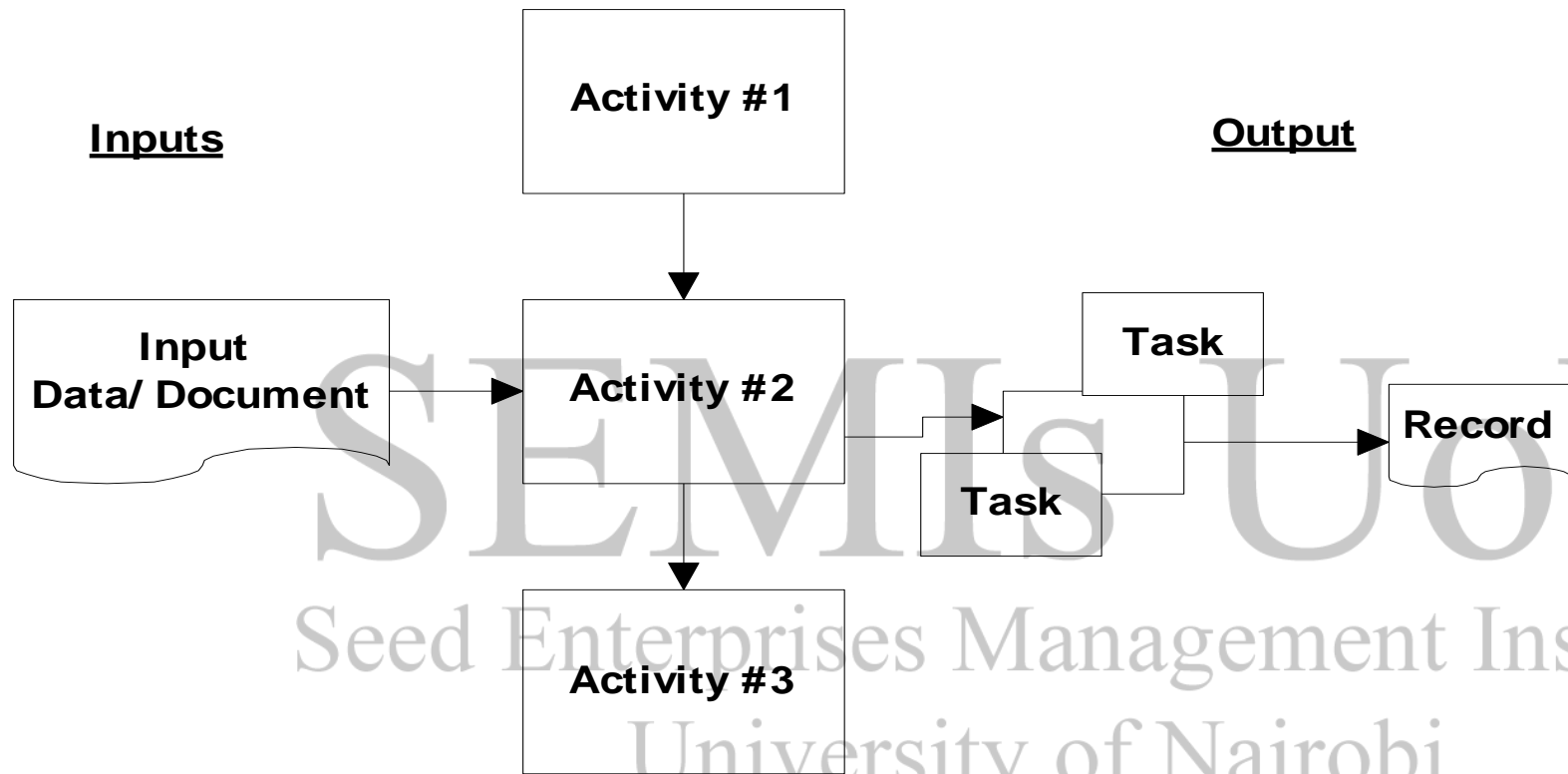


Management system structure - documentation



Business Process

Procedure/ Activity



Inputs

- Specifications
- Data and/or documents
- Manuals
- Regulations/laws
- Policies and guidelines
- Output from a companion process

SEMIS UoN
Seed Enterprises Management Institute
University of Nairobi

Activity

- An action or activity or doing something
- A component of a larger process
- If activity is not initiated, the process will fail
- Typically, made up of several task involving several people

SEMMIS UON
Seed Enterprises Management Institute
University of Nairobi

Work Instruction

- An action or activity
- Doing something
- A subcomponent of a procedure
- Typically, one task that involves one person

SEMIS UoN
Seed Enterprises Management Institute
University of Nairobi

Work Instruction

- An action or activity
- Doing something
- A subcomponent of a procedure
- Typically, one task that involves one person

SEMIS UoN
Seed Enterprises Management Institute
University of Nairobi

Outputs

- Confirmation that an activity has achieved a defined state of completeness
- Includes:
 - Records
 - Documents
 - Forms
 - Data

SEMI's UoN
Seed Enterprises Management Institute
University of Nairobi

Key Points of Process Analysis

- Defined purpose and scope
- What is happening?
- Who is responsible for what?
- Who interfaces with whom?
- Timing and measurements
- Viewed from a customer and supplier relationship

Documentation Structure

System Documentation



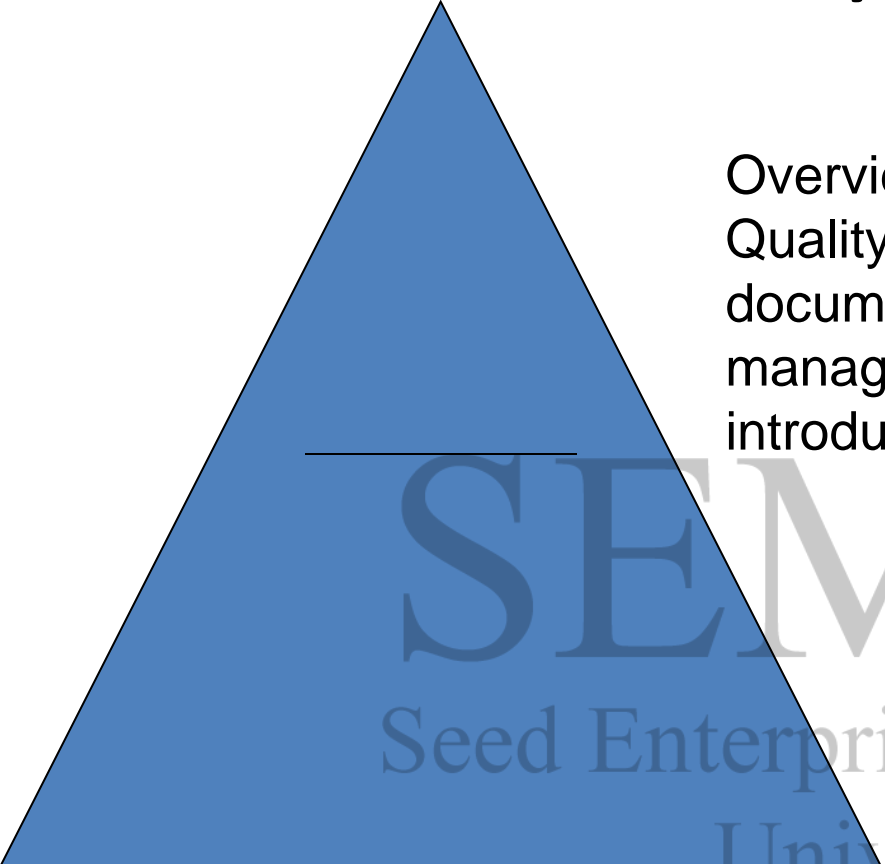
Quality Manual (50 pages maximum)

Administrative and Operational Procedures

Work Instructions (task level detail)

Records

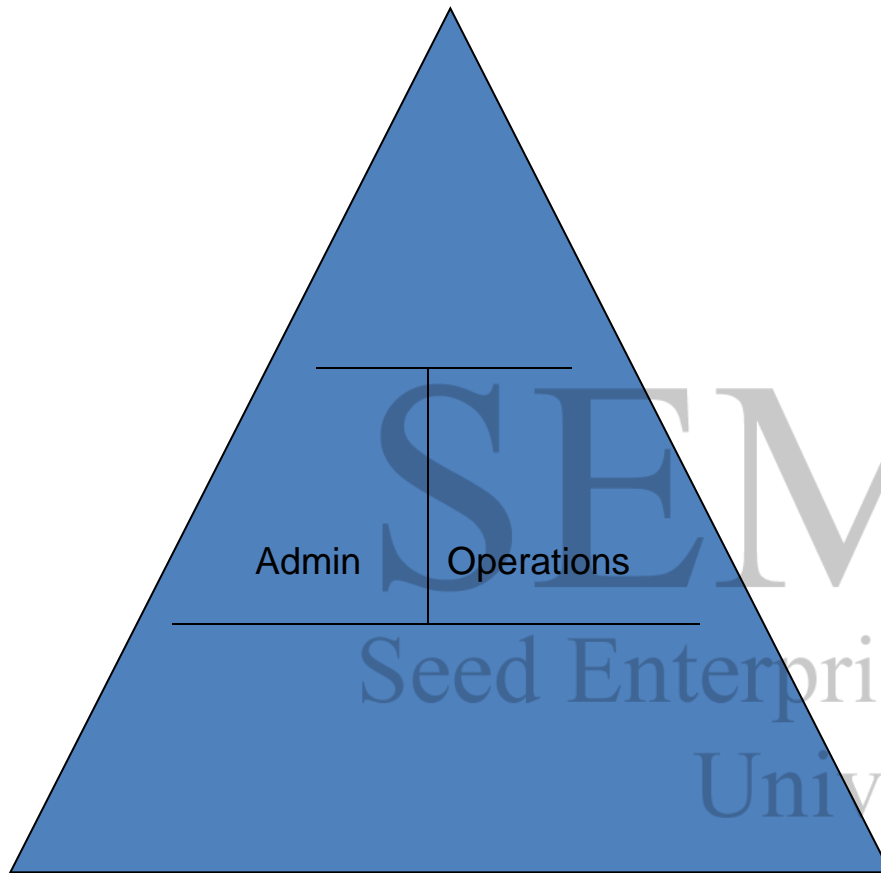
Quality Manual



Overview of business operations including Quality Policy and reference to support documentation. Quality Manual views management system structure from an introductory point of view.

SEMI S UoN
Seed Enterprises Management Institute
University of Nairobi

Procedures



Administrative Procedures

- Document management
- Internal audit
- Corrective action

• Other

Operational Procedures

- What
- When
- Where
- Who

Work Instruction

Work Instruction

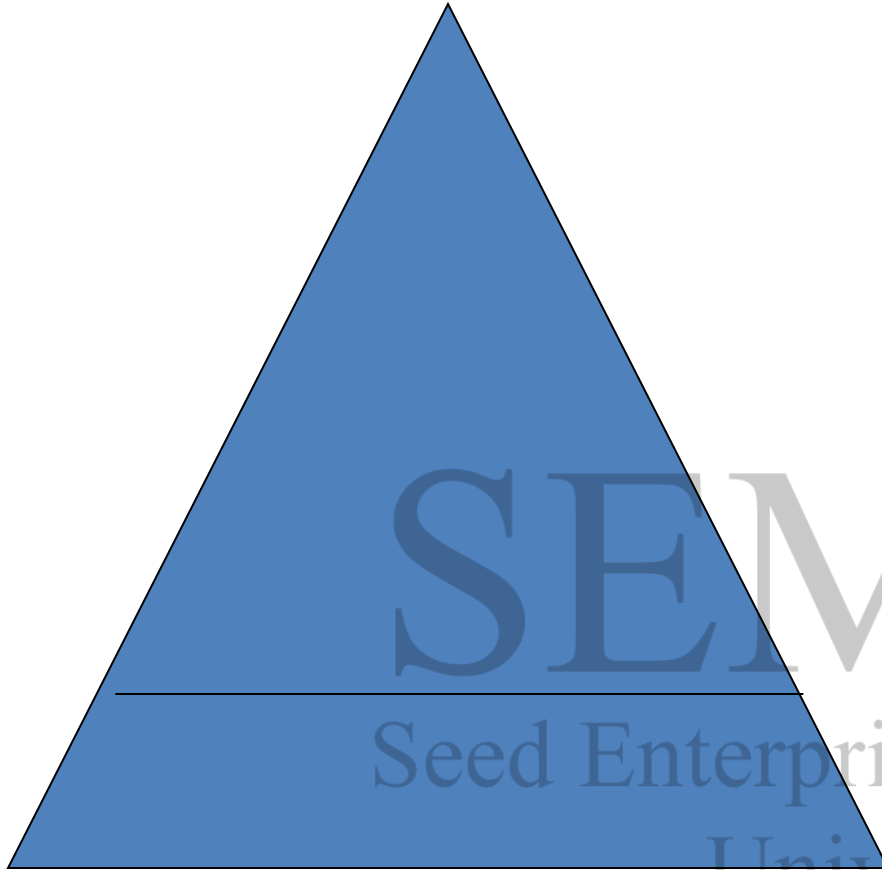
- Task level detail
- Viewed as one person one task
- Describes “how” work is accomplished

SEMI S UoN

Seed Enterprises Management Institute

University of Nairobi

Records



Records

- Provides objective evidence
- Demonstrates compliance

SEMIIS UON
Seed Enterprises Management Institute
University of Nairobi

Development Quality Assurance System Documentation

- Obtain data on the actual state of the quality assurance system
- Plan the documentation system
- Collect and compile existing documentation and require additional documentation where necessary
- Review the documentation to ensure clarity, suitability and proper structure
- Develop a distribution policy
- Incorporate pertinent changes

- Communicating the company's quality policy, procedures and requirements
- Describing the quality system
- Providing documented bases for auditing quality systems
- Providing continuity of the quality system and its requirements during changing circumstances
- Training personnel in the quality system requirements and methods of compliance
- Presenting the quality system for external purposes, such as demonstrating compliance with respective accreditation standards

WHAT TO INCLUDE IN A QUALITY MANUAL

- Scope and field of application
- Table of contents
- Definitions and explanation of abbreviations
- Policy and quality objectives
- Description of the quality system and document control procedures
- Organization and management structure
- Staff and training
- Company premises
- Equipment and calibration
- Process management (work flows)
- Recording and archiving
- Quality control procedures

STANDARD OPERATING PROCEDURES (SOPS) & WORK INSTRUCTIONS

- SOPs serve the staff members as a practical working aid for daily use.
- They should be compiled in such a way that they can be used like a “cooking recipe”.
- SOPs should be kept concise, exact, to the point and represent the reality by using simple wording.
- Where necessary, SOPs may be supplemented by work instructions, describing single aspects even more detailed or giving examples

Why SOPs instead of referring to general regulations/ standards

- General regulations do not always describe the activities to be conducted sequentially.
- General regulations provide different options for a specific activity; in the SOP only the information relevant for the particular activity shall be available.
- A SOP shall clearly indicate which specific procedure/method is to be used

SEMMIS UON
Seed Enterprises Management Institute
University of Nairobi

Types of SOPs

- System SOPs
- Technical SOPs

NOTE:

General policy and procedures already described in the quality manual should not be mentioned again in the SOP to avoid redundancy and inconsistency.

System SOPs

- Document Control Procedure
- Training of new and experienced staff including recognition, training of new and experienced staff, procedure of warning, suspension etc
- Internal Audit Procedure
- Dealing with Customer Complaints
- Non conforming work and Corrective Action Procedure
- Preventive Action Procedure
- Purchasing of Services and Supplies
- Management Review Procedure
- Quality Control Procedure (Monitoring)
- Proficiency Testing Procedure

Technical SOPs

- Maintenance, repair, control or internal calibration for each item or group of equipment
- Storage and disposal of samples
- Control and disposal of chemicals
- Maintenance and description of seed collection(s) and how the verification of species is accomplished including a list of seeds
- Testing procedures (separate SOP for each type of test)

Other Quality Documents

- Include working instructions, forms & reports
- Working instructions give details on the standard procedure concerned.
- Working instructions or specimen forms may be directly attached to the respective SOP if applicable.
- Forms, checklists, reports related to a standard procedure should be provided where appropriate.

SEMIS UoN
Seed Enterprises Management Institute
University of Nairobi

FLOW CHARTING

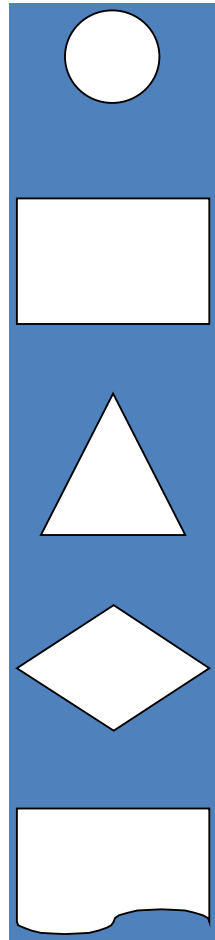
- Flow charts help to visualize a process and to represent the essential elements of a given procedure on a single page.
- A flow may be supplemented by explanatory notes or be itself the summary to a textual description.
- By general consensus a very limited number of symbols is used, which facilitates its generic application and makes it a tool that is easily understood

SEEMIS UON
Seed Enterprises Management Institute
University of Nairobi

- Visual representation of each step in the process
- Graphically displays functional activity and provides a visual understanding of interrelated occurrences
- Provides an understanding of the entire process
- Modifications and disconnects can be identified
- Displays a clear relationship between customer and supplier

SEMI'S UoN
Seed Enterprises Management Institute
University of Nairobi

Flowchart Symbols



Begin/End/Linkage

Activity/Process

Major Review

Decision

Data and/or Document

SEMIS UoN
Seed Enterprises Management Institute
University of Nairobi

Basic Flowcharting Guidelines

- Start at the top of the page and end at the bottom
- As a general rule do not exceed 20 symbols per page
- Describe activities with same level of process complexity
- Too much detail will defeat the purpose of a flowchart
- Do not develop flowcharts without input from everyone involved in the process
- Use active terms - verb/noun
 - Schedule meeting
 - Develop plan
 - Conduct audit

Thank you for the
audience

SEMQMS UoN
Seed Enterprises Management Institute
University of Nairobi