

**UNIVERSITY OF NAIROBI COLLEGE OF HEALTH SCIENCES SCHOOL OF
MEDICINE DEPARTMENT OF PAEDIATRICS AND CHILD HEALTH**

**PREVALANCE AND FACTORS ASSOCIATED IN DEVELOPMENT OF ANAEMIA IN
THE LONGSTAY PRETERM INFANT AT KNH NEWBORN UNIT**

By Dr. MACHARIA JOSEPHINE NJERI MBChB

H58/80891/15

**IN PARTIAL FULFILMENT FOR THE DEGREE OF MASTER OF MEDICINE IN
PAEDIATRICS AND CHILD HEALTH**

2018

DECLARATION

This thesis is my original work and has not been presented for a degree or any other award in any other University.

Sign

date

Dr Josephine Njeri Macharia

APPROVAL

This thesis has been submitted with our approval as University Supervisors.

Prof Githanga Jessie N

MBChB, MMed (Path) (UON)

Associate Professor,

Hematology and Blood Transfusion Unit,

Department of Pathology

University of Nairobi

Sign

date

Prof Wasunna Aggrey

MBChB, MMed (Paeds) (UON) PhD

Professor of Neonatal medicine and Pediatrics

Department of Pediatrics

University of Nairobi

Sign

date

ACKNOWLEDGEMENT

My sincere gratitude goes to the following;

The Almighty God for His provision and strength during the whole course period

My family for their patience and never wavering support and love

My supervisors, Professor Wassuna and Professor Githanga for their guidance

KNH Pediatrics Department for giving me the opportunity to undertake the study at their hospital.

Stephen Nyaga for his statistical support.

.

DEDICATION

To my ever supportive husband, Sammy Kariuki, my son Ryan and my daughter Abigail.

TABLE OF CONTENTS

DECLARATION	i
APPROVAL	iii
ACKNOWLEDGEMENT	iv
DEDICATION	v
LIST OF FIGURES	viii
LIST OF TABLES	ix
LIST OF ABBREVIATIONS.....	x
OPERATIONAL DEFINITIONS.....	xi
ABSTRACT.....	xii
1.0 INTRODUCTION	1
1.1 Background.....	1
2.0 LITERATURE REVIEW	4
Erythropoiesis	4
Anaemia of prematurity.....	4
Epidemiology.....	5
3.0 Study justification and utility.....	12
3.1 Objectives	12
3.1.1 Primary objective.....	12
3.1.2 Secondary objectives	12
4.0 STUDY METHODOLOGY	13
4.1 Sample Size Calculation and Sampling Method	14
4.2 Study Tools.....	15
4.3 Quality Assurance.....	16
4.4 Ethical Considerations	19
4.5 Data Management and Analysis	20
5.0 RESULTS	21
5.1 Background information	21
5.2 Prevalence of anaemia and Haemoglobin levels among infants 14 days and older in the NBU KNH.....	25

5.3 Morphological type of anemia of long stay preterm infants in the KNH NBU	28
5.4 Factors associated in development of anaemia in preterm who have stayed 14 days and more in KNH New-born Unit.....	30
6.0 DISCUSSION	33
7.0 CONCLUSIONS.....	36
8.0 RECOMMENDATIONS	36
9.0 STUDY STRENGTH	36
10.0 STUDY LIMITATION.....	36
References.....	37
APPENDIX I: CONSENT FORM	42
APPENDIX 2; BLOOD SAMPLING AND LAB PROCEDURES.....	51
APPENDIX 3 :MOTHER’S QUESTIONNAIRE	53
APPENDIX 4: INFANTS DATA COLLECTION TEMPLATE.....	58
APPENDIX 5; Lab findings	62
APPENDIX 6; NEONATAL HAEMATOLOGICAL REFERENCE RANGES	63

LIST OF FIGURES

Figure 1 Developmental differential diagnosis of neonatal anemia	3
Figure 2 Study procedure flow chart	18
Figure 3 Neonatal illnesses	24
Figure 4 Prevalence of anaemia in the long stay preterm infants	25
Figure 5 Prevalence of anaemia across different age group strata.....	26
Figure 6 Prevalence of anaemia across different birth weights	27
Figure 7 Prevalence of anaemia across different gestational ages.....	28
Figure 8 Morphological types of anaemia	28
Figure 9 Summary of Haematological indices across different birth weights.....	29
Figure 10 Factors associated with the development of anaemia among different birth sizes.....	30
Figure 11 Factors associated with development of anaemia in preterm infants	32

LIST OF TABLES

Table 1 Morphological classification of neonatal anemia and associated causative factors.	2
Table 2: The effect of gestational age on fetus's in utero and newborn infant's MCV, Hb, reticulocytes and hematocrit.	9
Table 3 Samples in different age brackets	15
Table 4 study variables	15
Table 5 Mothers and infants background information.....	22
Table 6 Circumstances surrounding delivery	23

LIST OF ABBREVIATIONS

2SD	2 Standard Deviation
ANC	Antenatal Clinic
CBC	Complete blood count
G/dL	Grams per Decilitre
ELBW	Extremely Low Birth Weight
EPO	Erythropoietin
Hb	Haemoglobin
HbA	Adult haemoglobin
HbF	Foetal Haemoglobin
KNH	Kenyatta National Hospital
LBW	Low Birth Weight
MCV	Mean Corpuscular Volume
NASCOP	National AIDS and STI Control Program
NBU	New-Born Unit
NR	Not reported
PBF	Peripheral Blood Film
RBCs	Red Blood cells
VLBW	Very Low Birth Weight
WBC	White cell count
WHO	World Health Organization
Ret-He	Reticulocyte Haemoglobin

OPERATIONAL DEFINITIONS

Anaemia: Haemoglobin concentration of less than 13.5g/dl in neonates or below 2SD of the age specific average of haematocrit, RBC mass or haemoglobin concentration

Preterm Infants: Babies born before 37 completed weeks of gestation

Long-stay Preterm infants: Babies born before 37 weeks gestation and have resided in the New-born Unit for more than 14 days

Complete medical records: infant's medical history documents that have all the information from antenatal, birth up to the time of the study

ABSTRACT

Background

About 15% of low birth weight preterms have anaemia at 2 months of age with about 50% of blood transfusions to extreme low birth weight infants occurring within the first 2 weeks when the infants are most sick and blood testing most intense. Several practices such as iron and folate prophylaxis are in place, yet despite this, 55% of blood of transfusions in Kenyatta National Hospital occur in infants aged 2 months and below.

Objectives

This study intended to investigate the prevalence of anaemia in the long stay preterm infants in the KNH NBU and also look at some common factors contributing to the development of this anaemia.

Methods

A cross-sectional study of randomly sampled cohort of infants born before completing 37 weeks of gestation and had stayed more than 14 days in the new-born unit at Kenyatta National Hospital. Clinical details and biographies were collected by a predesigned questionnaire. Aseptic micro-sampling techniques were employed to collect blood in the infants who satisfied the inclusion criteria. The outcome measures studied were: a complete blood count, peripheral blood film and a reticulocyte count. Quantitative data analysis and computation was carried out by use of SPSS Version 20 software

Results

The study found that the prevalence of anemia in long-stay preterm infants was 40% with a majority (85.5%) bearing a normocytic normochromic morphology. Anaemic infants had an average haemoglobin of 8.45 g/dl compared to 13.09g/dl for the non-anaemic babies. All factors investigated were found to increase the odds of developing anaemia in this population. They included cord clamping, type of delivery, birth weight, circumstances of delivery, maternal Hb

levels, blood transfusion, maternal infections, phlebotomy draws, episodes of illnesses and pregnancy type.

Conclusions and recommendations

The burden of anaemia in long stay preterm infants is still great despite the measures put in place. Common factors such as low maternal haemoglobin and cord clamping less than 1 minute contributed to development of anaemia. As such, we recommend prompt treatment of maternal anaemia and advocate for the practice of delayed cord clamping as some of the measures to reduce development of anaemia.

1.0 INTRODUCTION

1.1 Background

Worldwide, about 15 million babies are born annually before completing 37 weeks of gestation. As much as two thirds of premature births occur in Africa and South Asia. In 2015, premature birth complications accounted for 1 million deaths making it a major cause of death for children under 5 (1). Mortality in children is greater in those whose birth size is small or very small during the 1st month of life compared to children whose size is average or larger (41 deaths per 1000 live births vs 17 deaths per 1000 live births) (2).

Anaemia is the most common haematological complication affecting preterm babies. Its severity and onset is inversely proportional to the gestational age of the preterm infant. It is defined as a haemoglobin concentration of less than 13.5g/dl in neonates or below 2SD of the age specific average of haemoglobin concentration, haematocrit or RBC mass or any value less than what is normally seen with physiological anaemia i.e. < 9g/dl or features of haemolysis in neonates (3). It occurs more commonly and is more severe in infants with birth weights of <1.0 kg (extremely low birth weight), hence increased incidences of blood transfusions. Anaemia in preterms has been shown to increase risk of developing intraventricular haemorrhage and reduce overall survival (4).

There are two main classifications of anaemia; morphological and aetiological. The morphological classification of anaemia is based on RBCs size: Microcytic anaemia is defined as a low mean corpuscular volume (MCV) of <2.5th centile for age race and sex, Macrocytic anaemia as, a high MCV > the 97.5th percentile and a Normocytic anaemia as an MCV between the 2.5th percentile and 97.5th percentile (5) .The table below demonstrates linkage of morphology with etiological classifications.

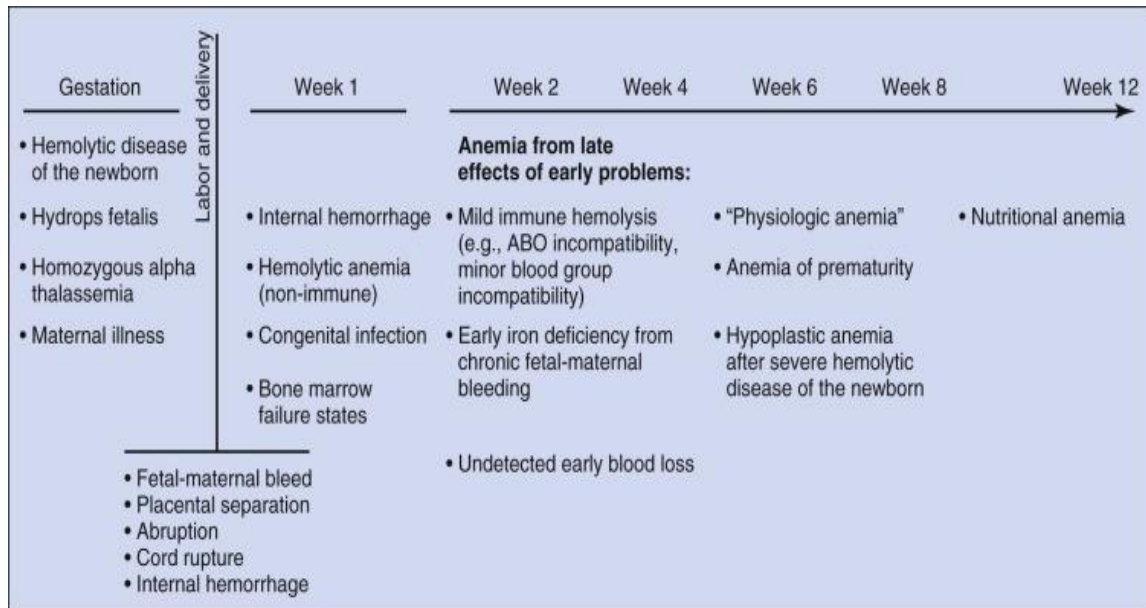
Table 1 Morphological classification of neonatal anemia and associated causative factors.

MICROCYTIC ANAEMIAS	NORMOCYCTIC ANAEMIAS	MACROCYTIC ANAEMIAS
lead toxicity	Congenital	Cobalamin deficiency
Thalassemia	Abnormal	Orotic aciduria type 1
Sideroachrestic anaemias	Haemoglobin	Thiamine-responsive anaemia
Long-term inflammation	RBC enzyme errors	Folate deficiency
Congenital haemolytic anaemias with mutable haemoglobin	RBC Membranopathies	Diamond-Black-fan syndrome
Nutritional deficiency	Acquired	Hepatic disease
Chronic haemorrhage	Autoimmune	Bone marrow intrusion
	Infections	Dyserythropoietic anaemias
	Kidney disease	Thyroid hormone deficiency
	Acute Haemorrhage	Aplastic anaemia
	Splenic sequestration	
	Microangiopathic haemolytic anaemias	

Adapted from Nathan and Oski's hematology and oncology of infancy 8th revised edition 2015 Elsevier Health Sciences (3)

The aetiological classification is based upon 3 pathological mechanisms, namely blood loss, increased red blood cells (RBCs) destruction and impaired RBCs production. Anaemia in infants has different aetiologies based on their developmental stage.

Figure 1 Developmental differential diagnosis of neonatal anemia



Adapted from Nathan and Oski's hematology and oncology of infancy 8th revised edition 2015. Elsevier Health Sciences (3)

2.0 LITERATURE REVIEW

Erythropoiesis

As early as day 14 of gestation, blood formation begins as islands in the yolk sac. From about the 5th week, erythropoiesis transitions to the foetal liver and continues to do so until the 1st week of extra uterine life. The spleen and thymus also begin erythropoiesis from the 12th week of gestation. The bone marrow begins production of red blood cells as early as the 3rd month but becomes important in the last trimester. Haemoglobin synthesis begins by the 37th day of gestation with formation of Hb Gower, Hb Portland and HbF, by 2nd month HbA is detectable in small quantities. At birth, approximately half of the haemoglobin is HbF and production levels decline faster than HbA. During the 2nd week of life, rate of production of both the RBCs and haemoglobin is at its lowest and starts to pick thereafter (3).

Anaemia of prematurity

As the new-born draws its first breath, there is increased tissue oxygenation causing a reduction of erythropoietin (EPO) production from the liver (preterm new-borns) or the kidney (term new-borns). For term infants the haemoglobin levels fall to a nadir of 10g/dl at age of 6-8 weeks, however in preterm the drop occurs much earlier (1-4 weeks earlier) at a level of 7-8g/dl depending on the birthweight and gestational age. For the term infants the drop is well tolerated but for the preterm infants, due to a need to compensate, abnormal signs such as tachycardia, bradycardia, tachypnoea, apnoea, poor weight gain, reduced activity and increased oxygen requirement, appear. In premature infants, the plasma erythropoietin response to anaemia is reduced as the liver has reduced sensitivity in detecting low oxygen states, causing a reduction in bone marrow responsiveness and subsequent low haematocrit levels. In addition, there is increased plasma clearance further reducing the pool of available EPO (6). These infants also have significantly shortened RBC lifespan of between 35-50 days and it is suggested that this could be due to membrane dysfunction and increased mechanical damage (7).

Recombinant human erythropoietin (rEPO) was first used in the 1990s for the prevention of anaemia of prematurity. It causes an increase in reticulocyte count and subsequently increase in haematocrit levels. This translates to reduced number of blood transfusions and volume of blood transfused especially in the very low birth weight (VLBW) (8). Despite this benefit, the practice has not been routine due to the fact that LBW infants require higher EPO doses than what is therapeutically administered and also those on EPO have increased nutritional requirements to obtain maximal benefits of EPO (8). A recent Cochrane review demonstrated that early administration of EPO (within the first 8 days) did not significantly reduce mortality or other common morbidities e.g. intracranial haemorrhage and necrotising enterocolitis, but was in fact associated with a significant increase in development of retinopathy of prematurity hence its routine use is discouraged (9).

Epidemiology

About 15% of low birth weight (LBW) preterm babies have iron deficiency anaemia at 2 months of age (10). About 50% of blood transfusions of extreme low birth weight (ELBW) infants and 40% of very low birth weight infants (VLBW) occur within the first 2 weeks when the infants are most sick and blood testing most intense (11) and the end of the first month of life 70% of the infants will have been transfused. A study by Mbutia of 123 preterm infants weighing between 1kg to 2 kg, showed frequency of iron deficiency anaemia in the group not supplemented with iron to be 71% and that in the treatment group to be 7% at age of 6 months (12) This study was deficient in demonstrating the frequency of anemia during the first month of life which my study investigated. Since then, the introduction of prophylactic iron supplementation has markedly reduced the incidence of iron deficiency anaemia. All preterm infants are required to receive daily prophylactic iron supplementation, and on achieving full feeds, are required to receive weekly folate supplementation and daily multivitamin supplementation (13) Debate exists on when to start the iron prophylactic supplementation. Studies have shown a reduction in the frequency of blood transfusion and risk in iron deficiency, if supplementation began at 2 weeks and at 2-5mg/kg/day of

elemental iron (10). It is therefore recommended to start prophylactic iron supplementation at 2-4 mg elemental iron/kg/day with a maximum dose of 15 mg elemental iron /day (13). Despite the prophylactic supplementation, the frequency of blood transfusions are still high. Locally, up to 55.2% of all blood transfusions in children below 12 years of age, occurred in infants 2 months and below (14).

Iron deficiency anaemia is one of the more prevalent type of anaemia in premature infants. About 15% of LBW preterm infants have iron deficiency anaemia at 2 months of age (10) and 25-80% of premature infants are iron deficient however there's paucity of local data in this population (15). Most of the foetal iron is stored in the liver with the majority (66%) amassed in the 3rd trimester. Maternal conditions such as anaemia, diabetes and other causes of placental insufficiency contribute to reduced iron foetal stores in utero. Postnatally, the demand for iron is high owing to the rapid body growth and erythropoiesis, and in preterm infants the low iron stores are quickly exhausted contributing to the lower Hb nadir and more rapid onset of anaemia of prematurity. The amount of iron in breastmilk is approximately 0.5mg/L (and is unchanged by maternal status or intake (16)) and inadequate to meet the iron requirements in a preterm infant is of about 4-6mg/kg/day. Preterm infants in developing countries are at higher risk of developing iron deficiency anaemia due to low levels of iron in breastmilk and their higher bodily demands. A study done on low birth weight infants showed a prevalence of 86% of iron deficiency anaemia in breast fed infants compared to 33% of iron deficiency iron anaemia in formula fed infants at 6 months of age (17). Anecdotal evidence shows that most of these infants in KNH new-born unit are fed on unfortified expressed breastmilk. There is, however, no data on the prevalence of anaemia in this population.

Common factors associated in development of anaemia.

Delivery Practices

The practice of delayed cord clamping is routine in normal vertex delivery and has been shown to increase blood volume to the infant by 10-28ml/kg (24% increase) (18) however this practice is abandoned when the delivery of the infant requires resuscitation e.g. an emergency caesarean section. Delayed cord clamping (30 to 120 seconds) is a technique employed to increase the circulating total blood volume at birth and it has been shown to reduce incidence of anaemia and frequency of blood transfusions (19) . Blood loss during delivery and labor contributes significantly to development of acute anaemia and iron deficiency. With 37% of deliveries happening at home, risk of complications at birth is markedly increased (2).

Maternal haemoglobin levels

During the last trimester, there's active placental transfer of iron from mother to baby. The amount of iron transferred from the mother to the foetus is directly proportional to gestational age. The foetal iron needs supersede the maternal requirements and are dependent on the maternal iron status (20). Maternal conditions such as iron deficiency anaemia and maternal diabetes impact negatively on transfer of iron in foetuses. Iron deficiency in pregnant women increases risk of preterm deliveries, low birth weight new-borns (especially if deficient in the first trimester of pregnancy) and neurodevelopmental delay. According to WHO, supplementation of iron in pregnant women should be at 60 mg iron together with 400 µg folic acid daily for 6 months during pregnancy and continued to 3 months after delivery (21). In Kenya the prevalence of anaemia in pregnant women is 55.1%. Only 58% of Kenyan women attend ANC according to the stipulated number of 4 or more visits and the median age of first ANC visit is 5.4 months with 69% receiving iron and folate supplementation (2). This demonstrates the unmet need for iron supplementation in the pregnant mothers and subsequently development of complications in the new-borns. The consequences of iron

deficiency in preterm infants includes, but not limited to, anaemia, slow growth, thyroid hormone imbalances, impaired immunity, poor temperature regulation and gastrointestinal derangement (22). It has also been shown to cause brain myelination changes resulting to neurodevelopmental delay (23).

Gestational age and birth size

The severity and onset of anaemia is inversely proportional to the gestational age, seen in over 50% of infants born before 32 weeks (24). This is largely due to the fact that most of the iron transfers and erythropoietic marrow activity occurs in the last trimester. The circulating blood volume of an infant peaks to about 105mls/kg body weight by end of their first month of life from 85mls /kg body weight at birth and thereafter starts to drop, hence the lower the birth weight the lower the total blood volume (25). The circulating erythrocyte count decreases by 33% in the first 4 weeks of life and thereafter increases gradually (26). Most of these low birth weight infants end up requiring blood transfusions. About 50% of blood transfusions of ELBW infants occur within the first 2 weeks when the infants are most sick and blood testing most intense (11). These infants are also lacking in anti-oxidant vitamins that help reduce RBCs membrane damage and maintain integrity of the cells. Deficiency of Vitamin E tends to worsen the resulting anaemia (27).

Table 2: The effect of gestational age on fetus's in utero and newborn infant's MCV, Hb, reticulocytes and hematocrit.

Gestational (weeks)	Age	Hematocrit (%) *	Hemoglobin (g/dL)	MCV (fl)	Reticulocytes (%)
18-20 †		36 ± 3	11.5 ± 0.8	134 ± 9	NR
21-22 †		38 ± 3	12.3 ± 0.9	130 ± 6	NR
22-23 †		38 ± 1	12.4 ± 0.9	125 ± 1	NR
24-25		63 ± 4	19.4 ± 1.5	135 ± 0	6.0 ± 0.5
26-27		62 ± 8	19.0 ± 2.5	132 ± 14	9.6 ± 3.2
28-29		60 ± 7	19.3 ± 1.8	131 ± 14	7.5 ± 2.5
30-31		60 ± 8	19.1 ± 2.2	127 ± 13	5.8 ± 2.0
32-33		60 ± 8	18.5 ± 2.0	123 ± 16	5.0 ± 1.9
34-35		61 ± 7	19.6 ± 2.1	122 ± 10	3.9 ± 1.6
36-37		64 ± 7	19.2 ± 1.7	121 ± 12	4.2 ± 1.8
Term		61 ± 7	19.3 ± 2.2	119 ± 9	3.2 ± 1.4

Adapted from Nathan and Oski's hematology and oncology in infancy 8th revised edition 2015. Elsevier Health Sciences

Infections

Intrauterine inflammation is inversely associated with gestational age. About 30% of all infants born before 34 weeks gestation were affected by intrauterine inflammation and also seen in 83% of ELBW infants (28). Preterm infants are at increased risk of developing various illnesses due to the immaturity of their immune system. The immunodeficiency state is compounded by the antenatal corticosteroids that are given

for lung maturation. The mode of delivery is also important in that most of the infants born via Caesarean section had reduced colonization gut normal flora than the infants born via vertex delivery increasing the risk of developing postnatal illnesses (28). Long stay premature infants are also at increased risk of developing nosocomial infections. These infections cause anaemia through various mechanisms; cytokine-mediated bone marrow suppression, mild idiopathic haemolysis and, inhibition of iron release through the action of hepcidin. The incidence of anaemia is increased in infants with severe infections partly due to the above mechanisms and also due to increased phlebotomy sampling. There is a significant drop in Hb (mean of 13%) during an acute inflammation within a week of illness (29). Some medications that are used in treatment can exacerbate anaemia in the preterm infants. According to the current National AIDS and STI program (NASCO) guidelines of 2016, all infants exposed to Human Immunodeficiency Virus (HIV), despite their haemoglobin count, are put on Zidovudine based regime for the first 2 weeks of life which causes anaemia in 23% of children as an adverse effect (30).

Phlebotomy

Phlebotomy associated blood losses are quite significant in the preterm infants contributing 5% to 15% of the RBC transfusions and more so in the VLBW infants in whom regular testing is required. About 50% of blood transfusions of ELBW infants occur within the first 2 weeks. This is due mainly to the anaemia of prematurity and phlebotomy losses that occurs due to intense monitoring of these infants. The phlebotomy overdraw occurs more in infants in the neonatal intensive care units, with an average of 2.1ml to 4.1ml/kg/week of blood (19%+/- 1.8%) per test. Several factors are associated with this overdraw, the more ill and lower the birth weight the more the loss. Secondly use of syringes prompted drawing of blood in excess of what was required to run tests, as compared to use of collecting tubes with fill lines (31). Strategies to reduce or prevent phlebotomy overdraw include use of marked collection tubes, training of new-born unit staff on ordering unnecessary tests, programmed ordering of tests and use of laboratory methods employing minimal blood volumes.

Although phlebotomy overdraws is not the main factor associated with development of anaemia, it is an important risk factor for blood transfusions especially in the VLBW (32).

Blood transfusion

The chances of receiving more than one transfusion was seen in infants on mechanical ventilation, long stay infants, those suffering from necrotising enterocolitis (NEC) and those undergoing surgery for congenital abnormalities (33). Administration of EPO has been associated with reduction in number of blood transfusion but has also been associated with an increase in incidence of retinopathy of prematurity (9). There is no set Hb at which transfusion is recommended but rather it is tailor made for each infant. The volume of blood transfusion recommended is 20mls/kg of PRBCs, this limits the exposure of more than one donor (34) Iron supplementation has no benefit in terms of reducing the number of blood transfusions in the first month of life but is of benefit in preventing iron deficiency anaemia in the first year of life. Adverse effects of blood transfusions include blood borne infections, ABO incompatibilities, volume and electrolyte derangement and suppression of red blood cells, white blood cells and Platelets occurring 48 hours after a blood transfusion (35).

3.0 Study justification and utility

About 55% of blood transfusions in Kenyatta National Hospital occur in infants aged 2 months and below despite the current preventive measures in place. The study aimed at understanding the burden of anemia in the long stay preterm infants in our setting and the factors associated in its development and in so doing, recommend solutions that will help in ensuring sensible use of blood and blood products, effective management of anemia, prevention of the anemia and eventually help reduce incidence of anaemia. This will in turn help reduce neonatal morbidity and mortality.

Study question

What is the prevalence of anemia in the long stay preterm babies and what are the common factors are associated in its development?

3.1 Objectives

3.1.1 Primary objective

To determine the prevalence of anaemia in preterm babies who have stayed for 14 days and more at Kenyatta National Hospital New-born Unit.

3.1.2 Secondary objectives

1. To establish the morphological type of anaemia in preterm babies who have stayed 14 days and more in Kenyatta National Hospital New-born Unit.
2. To establish the haemoglobin levels of the preterm babies who have stayed 14 days and more in Kenyatta National Hospital New-born Unit.
3. To determine the contribution of the common factors associated with development of anaemia in preterm babies who have stayed 14 days and more in KNH New-born Unit: gestational age, birth history, birth size, episodes of illness, frequency of blood transfusion, phlebotomy overdraws and maternal haemoglobin levels

4.0 STUDY METHODOLOGY

Study Design

This study utilized a cross-sectional descriptive study design to investigate the prevalence and pattern of anaemia in the long stay preterm infant at KNH New-born Unit.

Study area

This study was conducted at Kenyatta National Hospital between December 2017 and January 2018. This is the main referral hospital in Kenya and the largest in East and Central Africa. Kenyatta admits an average of 320 babies per month, out of which, 50% (160) are premature babies who are admitted at New Born Unit (36) making KNH a suitable area to study anemia in the long stay preterm infant.

Study Population

The study population was of infants who were born before 37 completed weeks and had been in the New- born Unit for a minimum of 14 days. The infant's mothers were also interviewed for their antenatal history.

Inclusion Criteria

- Infants born before 37 completed weeks and had stayed for 14 days or more in the KNH-NBU
- Complete clinical record available i.e. had all the infant's medical history from birth to the time of data collection
- Consent obtained from the mother for the study.

Exclusion criteria

- Preterm infants who had stayed for less than 14 days in the KNH-NBU

- Incomplete medical records i.e. missing information relating to birth history, laboratory tests and medical treatments from birth to the time of data collection
- Term infants
- Mothers who declined to give consent

Study Period

The study was performed from December 2017 to January 2018. During this period medical audit was conducted on the records to extract an estimated sample size of 53 infants in KNH-NBU.

4.1 Sample Size Calculation and Sampling Method

It is estimated from the hospital records, that 60 preterm infants at the NBU are more than two weeks old. Since population is known, Slovincs' formula was used to calculate an appropriate sample size. Slovincs' formula is used to calculate the sample size (n) from known population (N) and margin error (e) thus presented as $n = N / (1 + N * E^2)$. As demonstrated, the estimated population in the period of study is 60. Substituting from the formula assuming confidence interval of 95%, the sample size n is:

$$\begin{aligned}
 n &= N / (1 + N * E^2) \\
 &= 60 / (1 + 60 * 0.05^2) \\
 &= 53 \text{ infants}
 \end{aligned}$$

Stratified Sampling Technique

Stratified sampling technique was used to ensure infants are recruited based on their stay in the NBU. Comparisons were made on each stratum to identify prevalence's in each group and their differences. Due to low numbers of infants who met the study threshold as outlined in the inclusion criteria, nearly all infants were sampled until required sample was attained. The table below presents each stratum for infants included in the study.

Table 3 Samples in different age brackets

Number of days stayed in NBU	14-20	21-27	28-34	35-41	>42	Total
Number sampled	11	11	11	10	10	53

Study Variables

As presented in table 4 below, anemia among preterm infants is the dependent variable while exposure variables include gestational age, birth history, birth size, episodes and severity of illness, frequency of blood transfusion and phlebotomy overdraws.

Table 4 study variables

Exposure Variable	Confounding Variable	Outcome Variable
Cord clamping	Length of stay at NBU 14 days and above	Anemia in infants (Present or absent)
Type of delivery		
Birth weight		
Circumstances of delivery		
Maternal antenatal Hb		
Blood transfusion		
Maternal infection		
Phlebotomy overdraws		
Episodes of infants' illness		
Pregnancy type		

4.2 Study Tools

A study template was designed to ensure all infants characteristics needed were extracted and all laboratory tests were recorded within the same template. The infant's medical history and lab tests template were stapled with questionnaire that was used to interview mothers of selected infants to understand pregnancy history, infections, iron supplementation and complications during pregnancy and delivery.

Study Procedures

The researcher with help of NBU nurse in-charge identified preterm infants who had stayed longer than 14 days and fit the inclusion criteria. The researcher there after approached the mothers of these infants, explaining the purpose and method of study that allowed them to provide voluntary informed consent in the NBU classroom. Those who consented were interviewed using pre-tested questionnaire and clinical audit of medical records of the infants was done once the daily ward rounds had been done. Once the infants were identified, the primary doctor was alerted to the purpose of the study and the samples to be collected to prevent multiple sampling. The samples were then taken after the ward round to ensure no service interruption and a copy of the results kept in the file for clinical use. If any of the infants had insufficient sample, a re-sampling was attempted the following day.

The blood sampling and lab procedures are further explained in appendix 2. The study procedure flow chart is demonstrated in figure 2 below.

4.3 Quality Assurance

1. Equipment used for the blood analysis was regularly calibrated according to the manufactures specification
2. The reagents used were not expired.
3. The laboratory's Standard operating procedures were followed when running the tests.
4. The blood draws and laboratory testing were performed by qualified staff.

Pilot Study

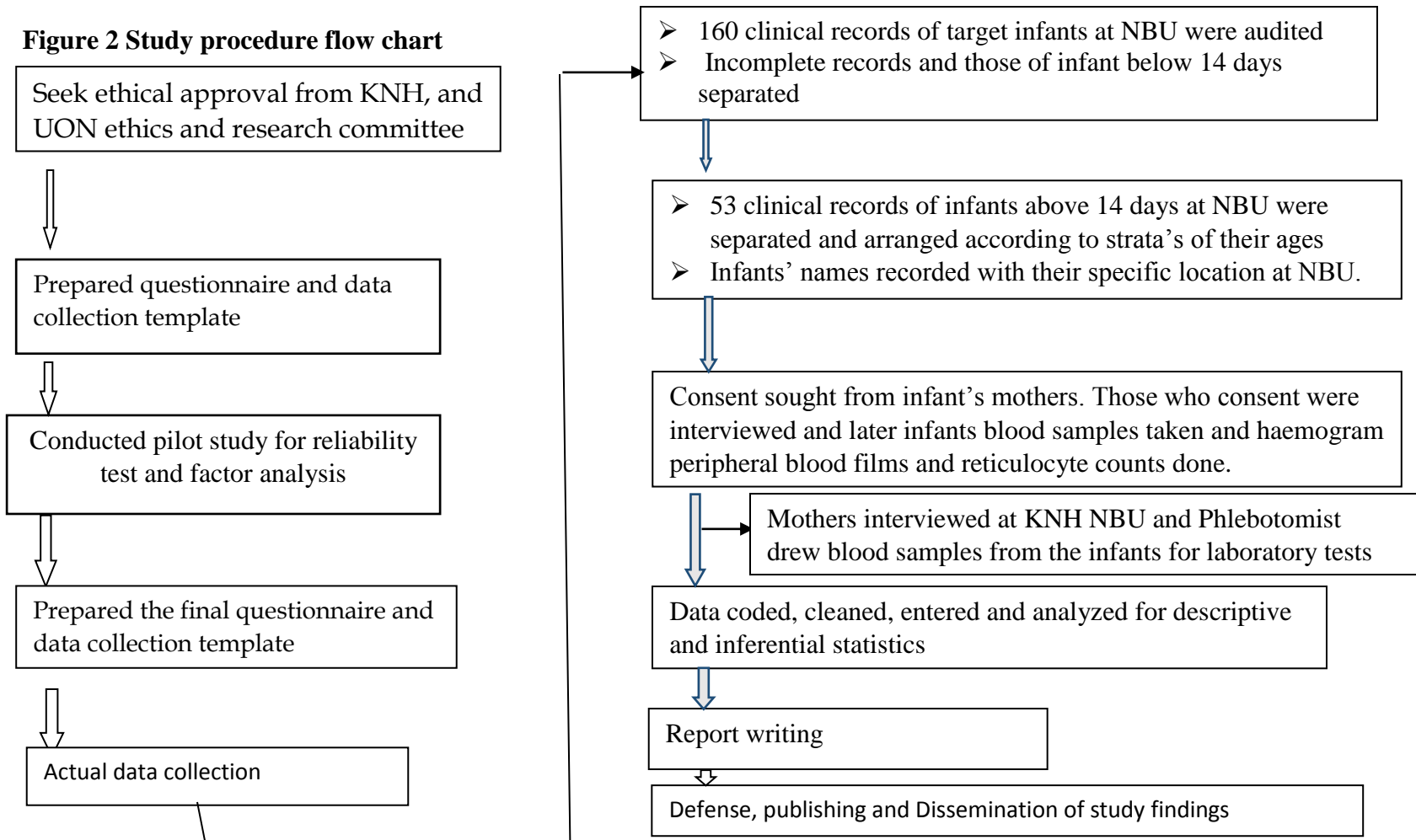
A pilot study is a mini-version of a full-scale study or a trial run done in preparation of the complete study (37). A pilot study was done to determine whether there were enough patients willing to participate, whether there were enough infants who meet the predetermined inclusion criteria, logistics to be involved in the study to avoid interfering

with tests and treatments, ensure the study participants' mothers understood consent form and whether the research assistants understood the study tool (38). During pilot studies appropriate changes were made on the study tool to ensure variable measurement are well understood by the research assistant. Information gathered from non-consenting respondents were used to minimize refusal and non-consenting respondents during main study. All issues raised during pilot study were used to streamline the informed consent form. The pilot study also helped establish logistics that made data collection successful. As such, changes to some items in the questionnaire were made as informed by the results of the pilot study.

Validity tests

Validity is defined as the extent to which an instrument measures what it purports to measure (39). Validity is the extent to which the interpretations of the results of a test are warranted, which depends on the test's intended use. Validity evidence is built over time, with validations occurring in a variety of populations. Comprehensive literature reviews on anemia measurement approaches were therefore critical in guiding the selection of measures of anemia and measurement instruments. In addition, the researcher aimed at using a panel of experts familiar with neonatal anemia to validate research instruments.

Figure 2 Study procedure flow chart



The clinical records of target sample were audited using a data retrieval form daily for 30 days. Once collected, the data was entered on the SPSS version 20 cleaned and analyzed.

4.4 Ethical Considerations

A copy of proposal was submitted to Kenyatta National Hospital/University of Nairobi Research Ethics Committee to ensure a research permit was obtained. All concerns were addressed and permission additionally sought from Kenyatta National Hospital to collect and analyse data from NBU for academic purposes only. All authorization letters were presented to KNH for written approval prior commencing data collection.

The purpose of the study was carefully explained to the preterm mothers with the view of obtaining consent prior to enrolling them in the study. Respondent's confidentiality was strictly observed throughout study period and all participants were assigned codes and no names used. The study questionnaires and infants data collection templates did not have names but rather identification codes to help provide anonymity. All information regarding study findings will be only used for academic purposes and shall not be released to third party unless permission is specifically sought from the Research and Ethics Committee.

Informed consent was sought from infants' mothers. This was elaborated (purpose, procedure, benefits and risks) and then a written consent agreeing to participate in the study, signed. The participation was voluntary, the participants were not forced or coerced to participate and had the right to refuse or discontinue at any time with no negative consequences. No incentives were offered for their participation. Anonymity and confidentiality was ensured and assured to the participants. To ensure the study did not interrupt services in the hospitals, mothers were approached and interviewed during the day after they had attended to their infants from the NBU. After attending infants mothers normally return to the wards and visit their infants after 3 hours. It's between these periods when they were free to be interviewed. Prior to sampling the infant, the

primary doctor was made aware of the purpose of the study and samples taken to avoid multiple sampling. For the infants, blood sampling was done once the ward round was completed as this is usually the time procedures are carried out in the normal day to day running of the ward. A copy of the results was made available in the file as soon as possible for clinical use.

4.5 Data Management and Analysis

Data collected was analysed descriptively to produce means, frequencies and percentages. Quantitative data was summarized as means and standard deviation. Some quantitative data were transformed into categorical variables for hypothesis testing. For instance, data on Haemoglobin levels was transformed to categorize infants that are anaemic while birth weight were categorized to extremely low birth weight, very low birth weight and low birth weight. Binary multivariate regression analysis was used to determine extent to which various factors associated with anaemia in the long stay of infants in the NBU.

5.0 RESULTS

5.1 Background information

The study found that mean age of mothers with infants at the NBU was 27.4 years and the mean parity was two. On average, the gestational age of newborns was 31 weeks. Most mothers started their Antenatal care (ANC) on the fourth month of pregnancy, attended on average four ANC visits and started iron and folate supplements in their fourth month of pregnancy. The mean birth weight of these infants was 1544.47 grams and a mean maternal hemoglobin of 11.07g/dl as shown documented in the birth history medical records. The study also established majority of infants were very preterm, females and had low birth weight. The results are presented in the table below.

Table 5 Mothers and infants background information

		Percentage (n)
Mothers age	18-24 Years	27.3 (15)
	25-34 Years	60 (33)
	35-45	12.7 (7)
Residence	Urban	9.1 (5)
	Peri-Urban	65.5 (36)
	Rural	25.5 (14)
Marital status	Never married	30.9 (17)
	Married	65.5 (36)
	Divorced	1.8 (1)
	Widowed	1.8 (1)
Education level	Primary level	14.5 (8)
	Secondary level	56.4 (31)
	Certificate/Diploma	21.8 (12)
	Undergraduate	7.3 (4)
Parity	One	36.4 (20)
	Two	29.1 (16)
	More than 3	34.5 (19)
ANC initiation	< 4 Months	25 (14)
	4 Months	30.6 (17)
	>4 Months	44.4 (24)
Total ANC Visit	< 4	41.8 (23)
	>=4	58.2 (32)
Maternal Hb	Normal	65.5 (36)
	Anaemic (<10.1)	34.5 (19)
Supplementation	Yes	74.5 (41)
	No	25.5 (14)
Infants gender	Female	56.4 (31)
	Male	43.6 (24)
Birth weight	<1000 Grams	10.9 (6)
	1000-1500 Grams	32.7 (18)
	1500-2500 Grams	52.7 (29)
	>2500 Grams	3.6 (2)
Gestational Age	<27 Weeks	9.1 (5)
	28-33 Weeks	65.5 (36)
	34-37 Weeks	25.5 (14)

Circumstances surrounding delivery

The study found that majority of mothers (63.6%) delivered prematurely due to unknown causes while 36.4% had additional circumstances that related to pre-eclampsia, bleeding, uterine rupture, multiple gestation etc. The results are presented in table 3 below.

Table 6 Circumstances surrounding delivery

	Frequency	Percentage
Unidentified	35	63.6
Pre-eclampsia	6	10.9
Bleeding	3	5.5
Rupture	3	5.5
Multiple gestation	2	3.6
Chorioamnionitis	2	3.6
Polyhydramnios	1	1.8
Cardiac disease	1	1.8
PPROM	1	1.8
PMTCT	1	1.8
Total	55	100.0

Neonatal illnesses

The study found that the most prevalent type of neonatal illnesses are neonatal sepsis (NNS) respiratory distress syndrome (RDS), neonatal jaundice (NNJ), intestinal atresia and Pneumonia these results are presented in figure below.

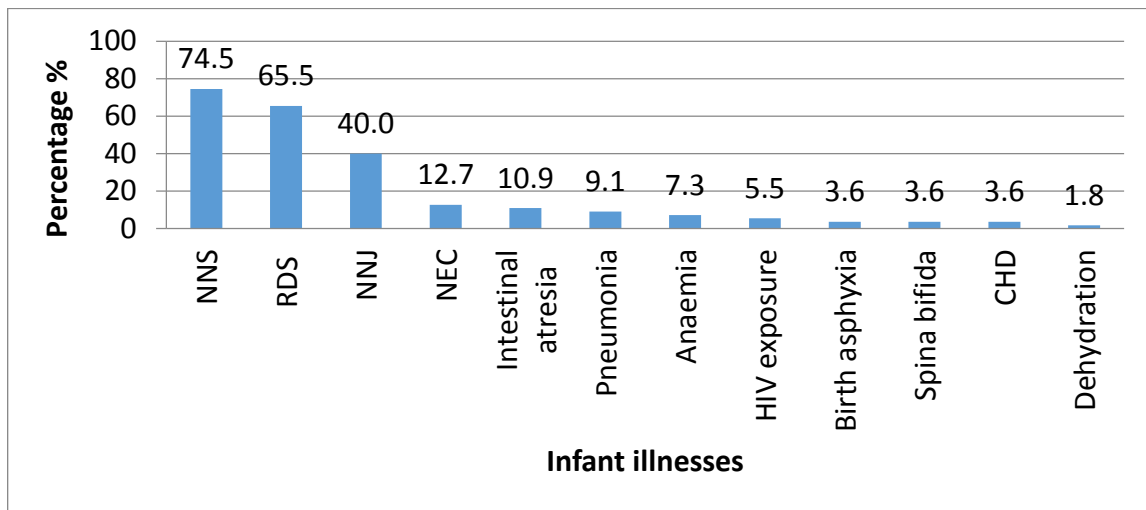


Figure 3 Neonatal illnesses

5.2 Prevalence of anaemia and Haemoglobin levels among infants 14 days and older in the NBU KNH

The prevalence of anaemia and Haemoglobin levels

The study established that the prevalence of anaemia in the long stay preterm infants in KNH new-born Unit is 40% (of 55 infants). Anaemic infants had an average haemoglobin of 8.45 g/dl compared to 13.09g/dl for the non-anaemic babies. The results are presented in the figure 3 below.

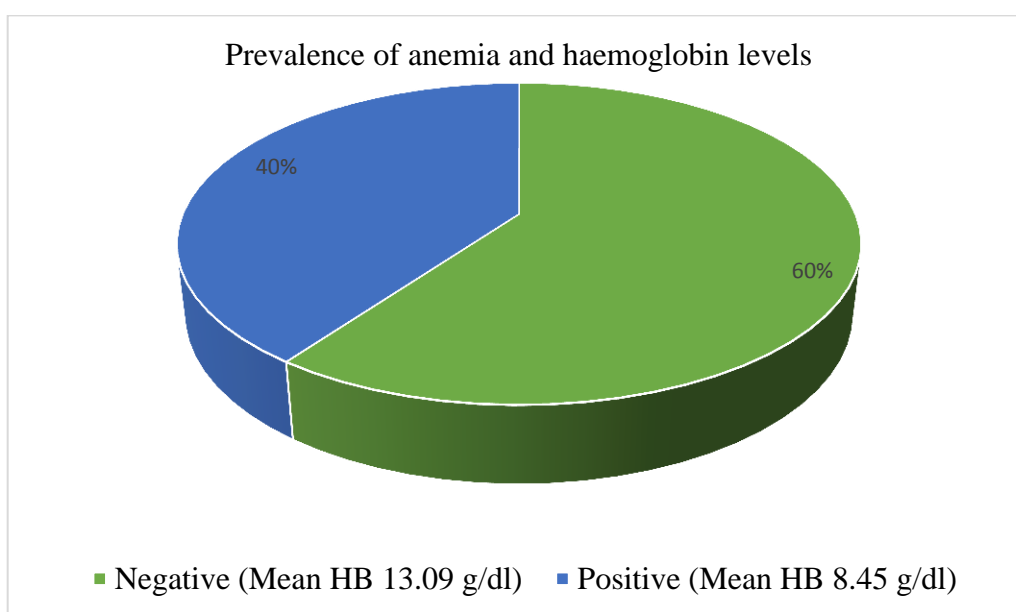


Figure 4 Prevalence of anaemia in the long stay preterm infants

The prevalence of anaemia and haemoglobin levels correlated with the age groups among infants 14 days and older at the NBU

It was also found the prevalence of anaemia increases with the long stay of infants in the NBU. However, the increment is not linear as demonstrated in the chart below. From the chart, it can be observed that between day 14 and 20 only 35.3% of infants are anaemic with a mean Hb of 12.35g/dl. Infants between 22 and 27 days in the NBU had a prevalence of 22.2% with a mean Hb of 12.33g/dl while those between 28 and 34 days

at NBU had the highest prevalence of 77.8% with the lowest mean Hb at 9.44 g/dl. Infants in the NBU for 35 to 41 days, the prevalence of anaemia drops to 22.2% with a mean Hb of 10.89 and infants who have stayed in the unit more than 42 days have a prevalence of 45.5% with a mean Hb of 10.36 g/dl.

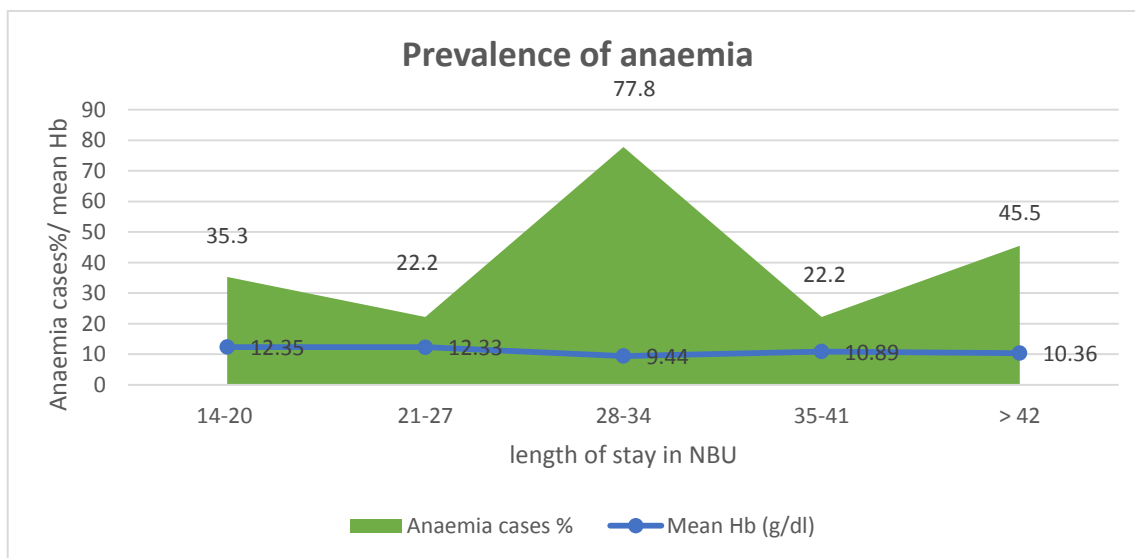


Figure 5 Prevalence of anaemia across different age group strata

Anaemia prevalence and Hb levels among different groups of birth weights

The study found that extremely low birth weight infants had the highest prevalence of anemia (51%), followed by 50% of very low birth weight and 34.5% of low birth weight as seen below. The percentages of anaemia cases and the mean Hb level was calculated from the total infants in each birth weight group. For instance, the 51% Anaemia cases among infants with birth weight less than 1000 grams is calculated from a total infants who fell in such group.

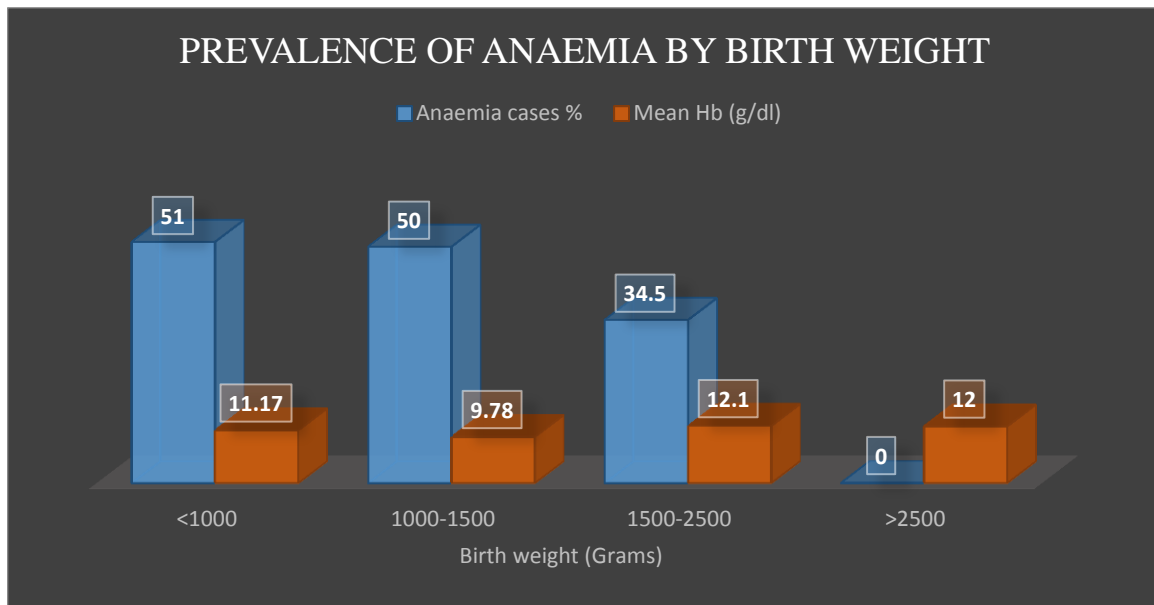


Figure 6 Prevalence of anaemia across different birth weights

Anaemia prevalence and Hb levels among different groups of gestational ages

The study found 40% of infants born below 28 weeks were anaemic 39.3% of infants born between 28 to 33 weeks were anaemic and 33.3% of those born 32-37 weeks were anaemic

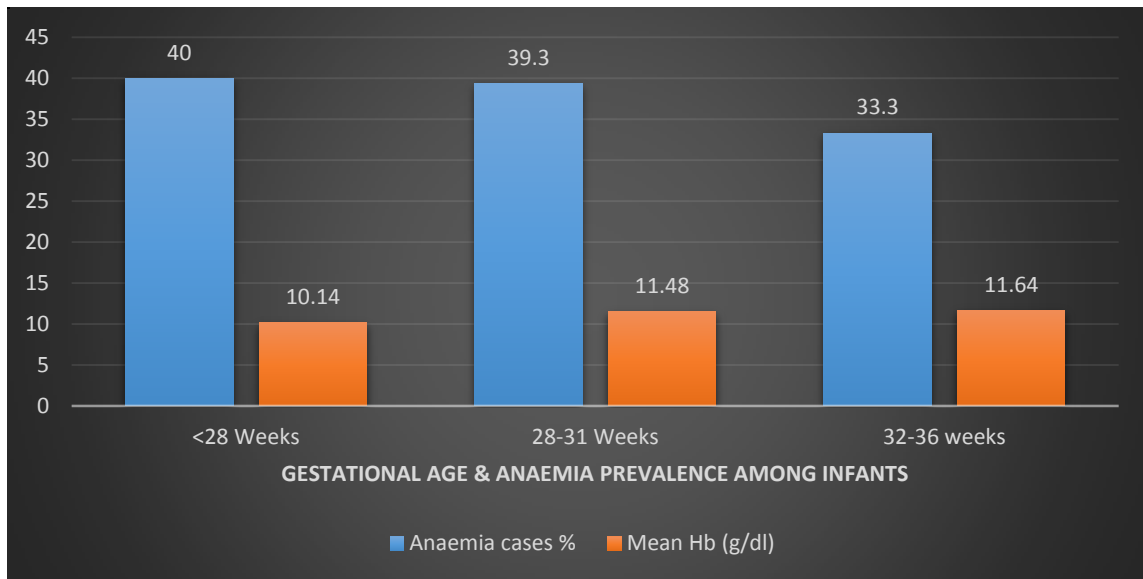


Figure 7 Prevalence of anaemia across different gestational ages

5.3 Morphological type of anemia of long stay preterm infants in the KNH NBU

The study established that a majority (85.5%) of the infants had Normocytic anemia making it the most prevalent type of anaemia among preterm infants who have stayed 14 days and more in Kenyatta National Hospital New-born Unit. The second ranked morphological type of anaemia is microcytic anemia with prevalence is 14.5%. None of the infants sampled had macrocytic anemia. The summary of these findings are presented in figure 7 below.

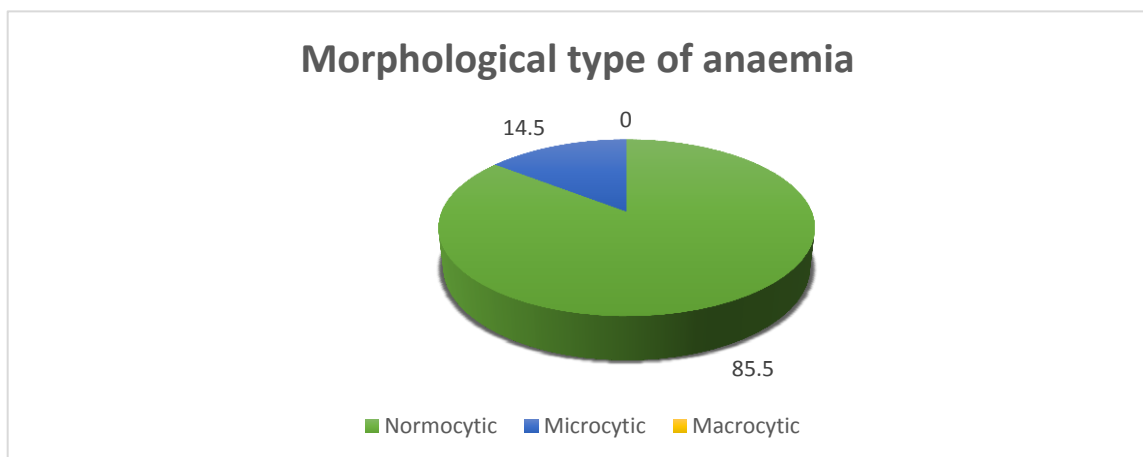


Figure 8 Morphological types of anaemia

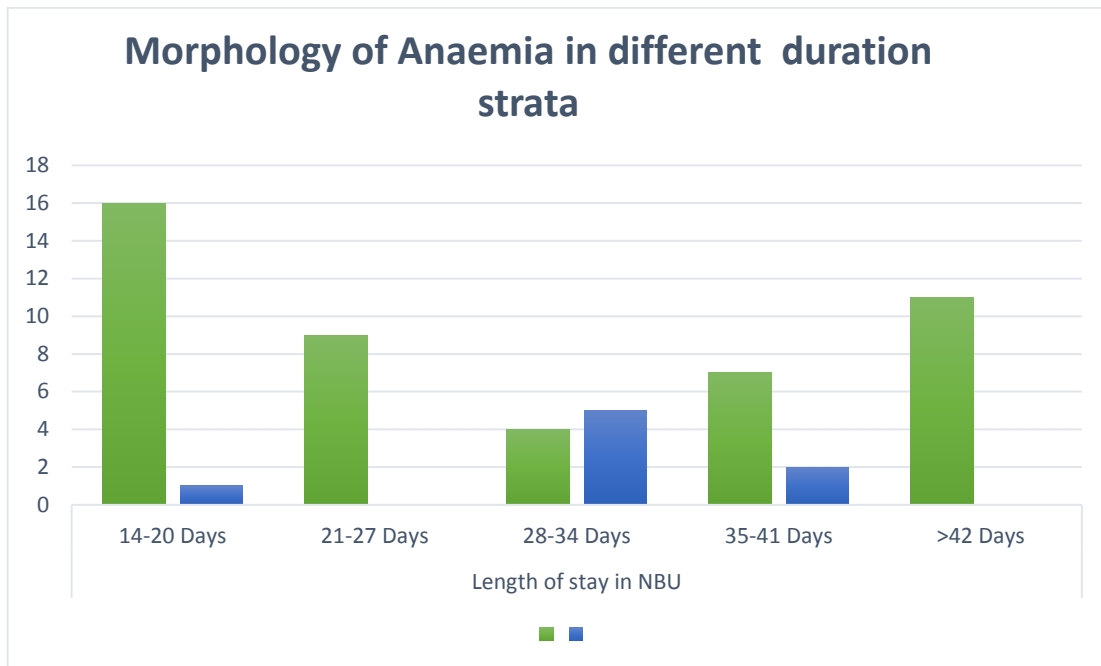


Figure 9 Morphology of anaemia in different duration strata

Hematological indices across different birth weights

The figure 8 below represents a summary of different hematological indices among different birth weights. The hematological indices were classified using a reference range based on an infants' age

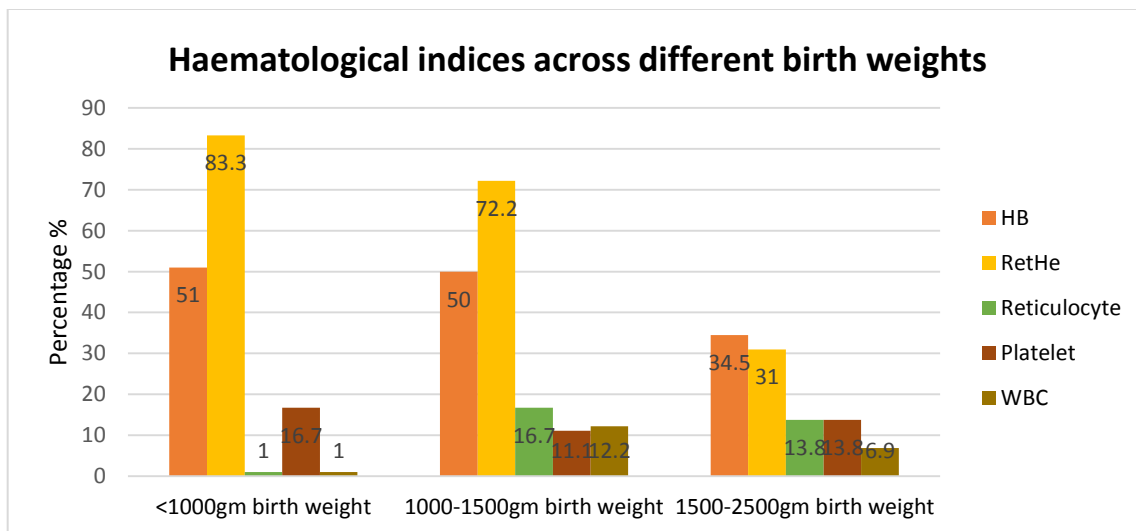


Figure 10 Summary of Haematological indices across different birth weights

5.4 Factors associated in development of anaemia in preterm who have stayed 14 days and more in KNH New-born Unit

Distribution of factors associated with development of anaemia among different birth sizes

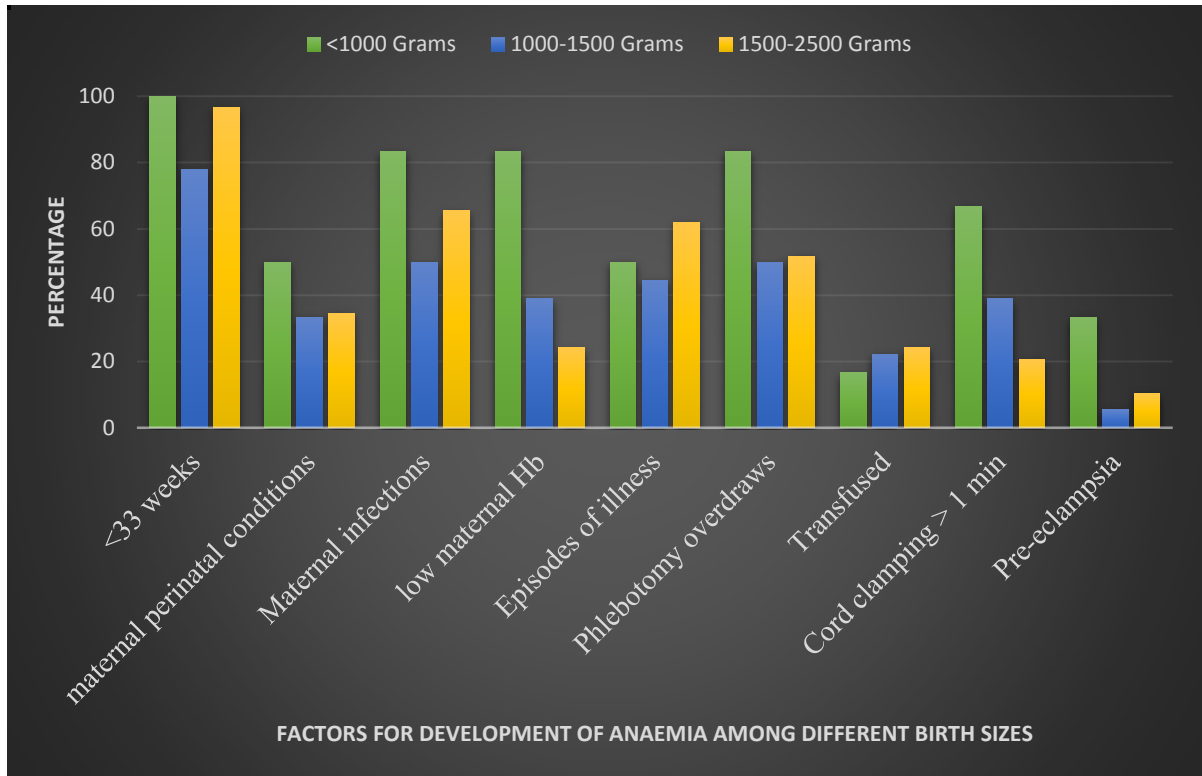


Figure 11 Factors associated with the development of anaemia among different birth sizes

The figure above demonstrates the distribution of different factors among the various birth sizes. These were markedly increased in the ELBW group than in other groups, which is also the group with the highest prevalence of anaemia.

Factors associated in development of anaemia in preterm who have stayed 14 days and more in KNH New-born Unit

The study found the odds of being anaemic is 2.58 times for cord clamping less than one minute compared to more than one minute, 2.2 times for infants delivered via Caesarean section compared to vertex delivery, 2.1 times for infants who have stayed in the NBU more than 28 days compared to those who have stayed less than 28 days and 2.1 times for infants whose birth weight was below 1500 grams compared to those above 1500 grams.

Infants whose circumstance of delivery was due to complications were 1.92 times likely to be anaemic compared to those with unknown circumstances of delivery and maternal HB <10 g/dl increased the odds of being anaemic 1.59 times. Those who have had a previous blood transfusion were 1.58 times more likely to develop anaemia compared to those infants who have never been transfused.

Maternal infections were 1.46 times likely to increase the odds of a child being anaemic in the long stay at NBU compared to those without infections, Phlebotomy overdraws > 10mls is 1.39 likely to increase the odds of being anaemic, frequent episode of illnesses more than 5 were 1.21 times likely to increase the odds of being anaemic and multiple pregnancy was 1.09 times likely to increase the odds of being anaemic compared to single pregnancy. These findings are summarized in the figure 11 below.

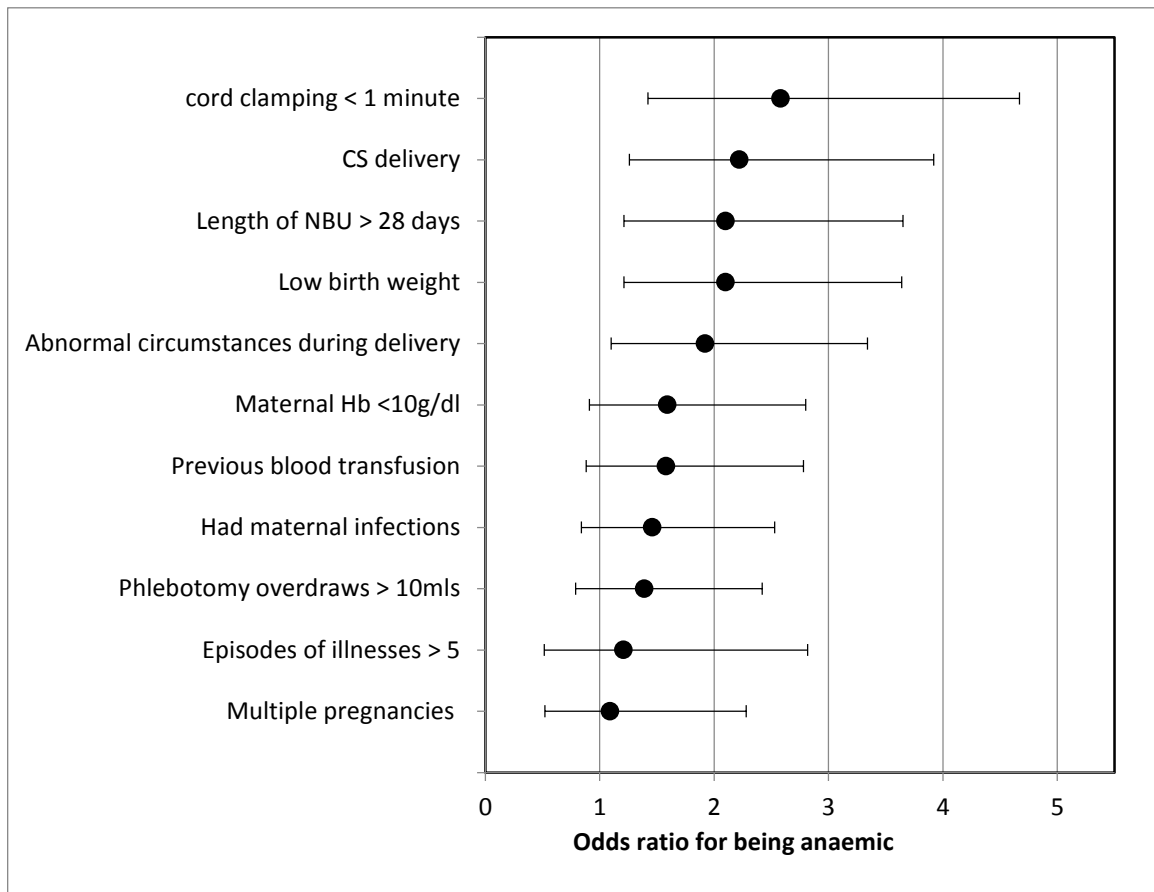


Figure 12 Factors associated with development of anaemia in preterm infants

6.0 DISCUSSION

Premature infants have many complications and among the commonest hematological complication is anaemia. Over half of the blood transfusions carried out in KNH occurred in infants less than 2 months of age (14), and one of the commonest indication for transfusion was anaemia. This cross sectional descriptive study demonstrated that the prevalence of anaemia in long stay infants in the unit was 40% with the majority of infants having a gestational age of less than 28 weeks. Wadrop et al demonstrated prevalence of clinical anaemia to be slightly more than half of the children studied (53%) in infants less than 32 weeks gestational age (40). The prevalence was also increased with increased stay in the unit. This increment is however not linear. There was a reduction in prevalence between 2 strata of infants, those who have stayed in the unit for between 14-21 days and those who stayed for 22-27 days. This is explained by the introduction of iron supplements which for this population began at 2 weeks of age. Despite this 22.2% of infants are still anemic by three to four weeks of age. The prevalence then increases markedly to 77.8% of the infants who have stayed in the unit between 28-34 days. One explanation is that there was an increment of phlebotomy draws from day 28 of stay onwards with only iron supplementation. The consequence of which was more blood transfusions leading to reduction in prevalence in the next subset of infants to 22.2 %. Sisson demonstrated a similar pattern with a reduction of circulating erythrocyte count in the first 4 weeks of life and thereafter a gradual increment (26). There was varied prevalence of anaemia among different birth sizes. The ELBW infants experienced the highest prevalence of anaemia including the highest number of factors associated with the development of anaemia, followed by VLBW infants with the second highest prevalence of anaemia in our setting followed by LBW infants. Widness et al demonstrated that ELBW infants had the highest numbers of blood transfusions done especially during the first two weeks of life when they were most sick and had most blood testing done (41).

The commonest morphological type of anaemia demonstrated by the study is normocytic anaemia with a prevalence of 85.5%. This type of morphology is in keeping with

anaemia of prematurity among many other etiologies. The other morphological types are significant in that they contribute towards the possible etiology of the anemia. Microcytic anaemia contributed 14.5% of the anemic cases. Iron deficiency is identifiable as an etiological cause despite the routine administration of iron supplements based on the high percentage of low levels of RetHe demonstrated in this study across the various strata. This is a marker that is used, with great specificity, to identify iron deficient states (42).

The mean haemoglobin among infants with anemia is 8.45g/dl and a mean haemoglobin content of 13.09 g/dl of those infants without anaemia. The lowest average haemoglobin concentration recorded was of the 28-34 days subset. Overall, there was a notable haemoglobin drop despite the different mechanisms instituted i.e. iron supplementation and blood transfusions indicating a shorter survival period of the red blood cells of these infants or that transfusions might not have achieved target post-transfusion Hb (43). The mean haemoglobin concentration was lowest in the VLBW infants compared to ELBW and LBW infants. These infants were subjected to more phlebotomy draws than their counterparts. When examining the haemoglobin concentration with respect to the infant's maturity at birth, this is inversely proportional to gestational age. The antenatal factors such as the lack of proper intrauterine nutrition in the last trimester are known to influence the extreme preterm infants significantly, as well as the increased demand postnatally (20).

Of all the factors investigated, delayed cord clamping for more than 1 minute was the most significant in preventing development of anaemia in these infants. A Cochrane review concluded that postponing clamping of the cord by more than 30 secs to 120 secs reduced the number of blood transfusions significantly in preterm infants. (44). This is closely linked to the mode of delivery, since in most cases the caesarian sections done were of the emergency nature, delayed cord clamping was not done to facilitate speedy resuscitation of these infants and this leads to a much lower hematocrit level at day 1 of life. The circumstances leading to the preterm delivery was unclear for a majority of the women, with neonatal sepsis as a leading outcome in the infants. The odds of developing

anaemia is increased in infants with more than 5 episodes of illnesses, this translates to more phlebotomy overdraws of this population. The odds of developing anaemia were markedly increased in infants where more than 10mls of blood were drawn. Lin et al demonstrated that the more ill and lower the birth weight, the more the phlebotomy loss (31). In our setting, strategies to reduce such losses are not in place. This includes use of micro-techniques to reduce the amount of blood drawn, programmed ordering of tests and, use of point of care noninvasive tests. The study demonstrated that anaemia was most severe and most prevalent after 28 days of stay in this population. In the general population similar findings are seen, with the anaemia setting in 1-4 weeks earlier than the physiological anaemia seen in term babies (6). In infants with a birth weight of 1500gms and below were more times likely to develop anemia than infants with a birth weight of 1500gms and more. Howie described the circulating blood volume of an infant peaks to about 105mls/kg body weight by end of their first month of life from 85mls /kg body weight at birth and thereafter starts to drop, hence the lower the birth weight the lower the total blood volume to begin with (25). Among the maternal factors investigated was low maternal haemoglobin concentration of < 10g/dl which increased the odds of developing anaemia in preterm infants. This was similar to findings of a study done in Benin where infants born to mothers with low haemoglobin had significantly lower haemoglobin compared to infants born to mothers with haemoglobin within the normal ranges (45). Maternal anaemia diagnosed and treated soon after is vital in preventing neonatal anemia. However a majority of the mothers in our setting had their first ANC visit well within their pregnancy and not all were on iron supplementation despite WHO recommendation (21). Acute management of anaemia in preterms at our setting is blood transfusion. However there is increased odds of developing anaemia in infants that have been transfused as compared to those who haven't been transfused. Schulman et al demonstrated that blood transfusions in infants hampers the recovery of the haematopoietic process. Despite this, it is still prescribed where there is need (43).

7.0 CONCLUSIONS

1. Prevalence of anaemia in long-stay preterm infants at KNH NBU is 40 % which is still high despite the preventive mechanisms put in place
2. A majority of the anaemia (85.5%) was of the normocytic morphology as is seen in other parts of the world
3. The mean haemoglobin concentration is 8.45 g/dl for anaemic infants compared to 13.09g/dl for the non-anaemic infants.
4. Factors found to significantly increase the likelihood of developing anaemia include; cord clamping < 1 minute, length of stay in the NBU> 28 days, CS delivery, low birth weight and abnormal delivery circumstances.

8.0 RECOMMENDATIONS

1. Use of micro-collect techniques and modern equipment to minimize phlebotomy losses due to frequent blood sampling. The study demonstrated that phlebotomy is an important iatrogenic contributor to preterms developing anaemia.
2. Improve on antenatal prevention and treatment of maternal anaemia.
3. There is need to improve on postnatal care practices and institute delayed cord clamping as this was the most significant contributory factor in developing anaemia. Guidelines for this should be developed and implemented.

9.0 STUDY STRENGTH

The study demonstrated clearly the high burden of anaemia in the preterm population at KNH NBU, and also some common factors associated with the development of anaemia.

10.0 STUDY LIMITATION

1. Due to the small amount of blood sample collected, detailed laboratory analysis to establish the cause of anaemia was not possible.
2. The information obtained from the files relied on what the attending clinicians had recorded.

References

1. WHO. preterm birth. *World Health Organization*. [Online] november 2016.
<http://www.who.int/mediacentre/factsheets/fs363/en/>.
2. Statistics, Kenya National Bureau of. *Kenya Demographic Health Survey*. Kenya : s.n., 2014.
3. Samuel, Orkin Stuart. Nathan David. Ginsburg David. Look Thomas. Fisher David. Lux.
Hematology and Oncology of Infancy and Childhood. [ed.] 8th. s.l. : Elsevier, 2015. pp. 52-57.
Vol. 1.
4. *Haemoglobin level at birth is associated with short term outcomes and mortality in preterm infants*. Jayanta Banerjee, Felix Asamoah, Devpriya Singhvi, Angela Kwan, Joan Morris. 16, s.l. :
BMC medicine, January 27, 2015, Vol. 13.
5. Sandoval, Claudio. approach to child with anaemia; Uptodate. *Uptodate*. [Online] June 04,
2015. <https://www.uptodate.com>.
6. *Anaemia of prematurity; pathophysiology and treatment*. strauss, Ronald G. 6, s.l. : Elsevier,
November 2011, Blood Reviews, Vol. 24, pp. 221-225.
7. *Shortened Survival of Fetal Erythrocytes in the rat*. Landaw, Stephen A and Robert L Guancial.
1977, Pediatric Research, Vol. 11, pp. 1155-1158.
8. *Anemia in the preterm infant: Erythropoietin versus erythrocyte transfusion — It's not that simple*. Isabelle Von Kohorn, and Richard A. Ehrenkranz. 1, March 2009, Clinics in perinatology,
Vol. 36, pp. 111-123.
9. *Early erythropoietin for preventing red blood cell transfusion in preterm and/or low birth weight infants*. Aher SM, and Ohlsson A. 10, March 2012, Cochrane Database of Systematic Reviews.
10. *Prospective randomized trial of early versus late enteral iron supplementation in infants with a birth weight of less than 1301 grams*. Axel R. Franz, Walter A. Mihatsch, Silvia Sander, Martina Kron, Frank Pohland. 4, october 2000, Pediatrics, Vol. 106, pp. 700-6.

11. *Reduction in Red Blood Cell Transfusions Among Preterm Infants: Results of a Randomized Trial With an In-Line Blood Gas and Chemistry Monitor.* John A. Widness, Ashima Madan, Ligia A. Grindeanu, M. Bridget Zimmerman, David K. Wong, and David K. Stevenson. 5, May 2005, Pediatrics, Vol. 115, pp. 1299-1306.
12. Mbutia, Joseph. *A study of iron deficiency anaemia in preterm babies and the effects of prophylactic iron.* pediatrics, university of nairobi. Nairobi : s.n., 1985. Thesis.
13. Ministry of Health. *Basic Paediatric protocols.* Nairobi : s.n., 2016. Vol. 4.
14. Rosalind, Wahu Gitakah. *Blood transfusion practices of children admitted at Kenyatta National Hospital Kenya.* Paediatrics, University of Nairobi. Nairobi : s.n., 2006. Thesis.
15. *Early and late Iron supplementation for low birth weight infants: a meta-analysis.* Hong-Xing Jin, Rong-Shan Wang Shu-Jun Chen, Ai-Ping Wang and Xi-Yong Liu. 16, March 14th, 2015, Italian journal of paediatrics, Vol. 41.
16. *B Vitamins in Breast Milk: Relative Importance of Maternal Status and Intake, and Effects on Infant Status and Function.* Hellen, Lindsay. 3, May 2012, Advances in nutrition, Vol. 3, pp. 362-9.
17. *Iron status in low birth weight infants on breast and formula feeding.* Iwai Y, Takanashi T, Nakao Y, Mikawa H. 1-2, s.l. : Springer-Verlag, April 1986, European journal of pediatrics, Vol. 145, pp. 63-5.
18. *Is it possible to promote placental transfusion at preterm delivery?* Narendra A, Beckett CAT. September 1st, 1998, Paediatric Research, Vol. 44, pp. 454-454.
19. *Effect of timing of umbilical cord clamping and other strategies to influence placental transfusion at preterm birth on maternal and infant outcomes.* Rabe H, Diaz-Rossello JL, Duley L, Dowswell T. 8, August 2012, Cochrane Database system review, Vol. 15.
20. *Maternal iron status influences iron transfer to the fetus during the third trimester of pregnancy.* Kimberly O O'Brien, Nelly Zavaleta, Steven A Abrams, Laura E Caulfield. 4, April 2003, American Journal of Clinical Nutrition, Vol. 77, pp. 924-930.

21. International Nutritional Anemia Consultative Group (INACG), World Health Organization (WHO), United Nations Children's Fund (UNICEF). *Guidelines for the use of iron supplements to prevent and treat iron deficiency anemia*. Washington : INACG/WHO/UNICEF, 1998. pp. 1-39.
22. *Iron Therapy for Preterm Infants*. Raghavendra R, Michael K. Georgieff. 1, s.l. : Elsevier, March 2009, Clinics in Perinatology, Vol. 36, pp. 27-42.
23. *Phlebotomy-induced anemia alters hippocampal neurochemistry in neonatal mice*. Diana J. Wallin, Ivan Tkac, Sara Stucker, Kathleen M. Ennis, Martha Sola-Visner, Raghavendra Rao & Michael K. Georgieff. March 3rd, 2015, Pediatric research, Vol. 77, pp. 765-771.
24. Garcia-Prats, Joseph A. Anaemia of prematurity. *Uptodate*. [Online] October 27, 2015. <https://www.uptodate.com>.
25. *Blood sample volumes in child health research: review of safe limits*. Howie, Stephen RC. 1, January 1st, 2011, Bulletin of the World Health Organization, Vol. 89, pp. 46-54.
26. *The blood volume of infants*. Thomas R.C. Sisson, Lorraine E. Whalen, Amalia Telek. 4, October 1959, The journal of Pediatrics, Vol. 55, pp. 430-446.
27. *Risk Factors of Transfusion in Anemia of Very Low Birth Weight Infants*. Ga Won Jeon, Jong Beom. 2, March 1st, 2013, Yonsei Medical Journal, Vol. 54, pp. 366-372.
28. *The immune consequences of preterm birth*. Moss, Jacqueline M. Melville Timothy J. M. 79, May 21st, 2013, Frontiers in neuroscience, Vol. 7.
29. *Anemia of acute inflammation in children*. Thomas C. Abshire, Jerry D. Reeves. 6, December 1983, The journal of paediatrics, Vol. 103, pp. 868–871.
30. NASCOP. *Guidelines on Use of Antiretroviral drugs for treating and preventing HIV*. Nairobi : Ministry Of Health, 2016.
31. *Phlebotomy Overdraw in the Neonatal Intensive Care Nursery*. James C. Lin, Ronald G. Strauss, Jeff C. Kulhavy, Karen J. Johnson, M. Bridget Zimmerman, Gretchen A. Cress, Natalie W. Connolly, John A. Widness. 2, August 2000, Pediatrics, Vol. 106.

32. *Respective effects of phlebotomy losses and erythropoietin treatment on the need for blood transfusion in very premature infants.* Becquet O, Guyot D, Kuo P, Pawlotsky F, Besnard M, Papouin M, Lapillonne A. 176, October 28th, 2013 , BMC paediatrics, Vol. 13.
33. *Predictive factors and practice trends in red blood cell transfusions for very-low-birth-weight infants.* Osayame A, Ekhaguere, Frank H. Morriss, Edward Bell, Nadkarni Prakash, John A Widness. 5, february 2016, pediatric research, Vol. 79, pp. 736-741.
34. *Transfusion volume in infants with very low birth weight: a randomized trial of 10 versus 20 ml/kg.* Paul DA, Leek KH, Locke RG, Stefano JL. 1, January 2002, Journal of paediatric haematology oncology, Vol. 24, pp. 43-6.
35. *Transfusion in premature infants impairs production and/or release of red blood cells, white blood cells and platelets.* B, Frey. 3, June 2002, Journal of paediatrics and Child health, Vol. 38.
36. S, Wanjala. Kenyatta National Hospital records reduction in new-born deaths. *Standard digital newspaper.* March 2016.
37. Baker TL. *Doing Social Research.* New York : McGraw-Hill Inc., 2010.
38. Christensen LB, Johnson BR, & Turner LA. *Research Methods, Design, and Analysis.* Edinburgh : Pearson Press, 2014.
39. Saunders M, Lewis P, & Thornhill A. *Research Methods for Business Students.* 4th. Harlow : Prentice Hall Financial Times , 2014.
40. *Nonphysiological Anaemia of Prematurity.* C A Wardrop, B M Holland, K E Veale, J G Jones, O P Gray. 11, November 1978, Archives of Disease in Childhood, Vol. 53, pp. 855-860.
41. *Changing patterns of red blood cell transfusion in very low birth weight infants.* Widness JA, Seward VJ, Kromer IJ, Burmeister LF, Bell EF, Strauss RG. 5, November 1996, The Journal of Pediatrics, Vol. 129, pp. 680-7.
42. *Reticulocyte hemoglobin equivalent (Ret He) and assessment of iron-deficient states.* BRUGNARA C, SCHILLER B, MORAN J. 5, Oct 2006, Clinical and Laboratory Haematology, Vol. 28, pp. 303-8.

43. *The anaemia of prematurity*. SCHULMAN, IRVING. 5, May 1959, The journal of Paediatrics, Vol. 54, pp. 663-672.
44. *Early versus delayed umbilical cord clamping in preterm infants*. Rabe H1, Reynolds G, Diaz-Rossello J. 4, October 2004, Cochrane Database of Systematic Reviews, Vol. 18.
45. *Anaemia during pregnancy: impact on birth outcome and infant haemoglobin level during the first 18 months of life*. Koura GK, Ouedraogo S, Le Port A, Watier L, Cottrell G, Guerra J, Choudat I, Rachas A, Bouscaillou J, Massougbodji A, Garcia A. 3, March 2012, Tropical Medicine and International Health, Vol. 17, pp. 283-91.
46. *The mechanism of iron uptake in the rat placenta*. McArdle HJ, Douglas AJ, Bowen BJ, Morgan EH. Sep 1985, journal of cellular physiology, pp. 446-50.
47. CDC. Principles of Epidemiology in Public Health Practice, Third Edition. CDC. [Online] May 18, 2012. <https://www.cdc.gov>.
48. *A Primer on the Validity of Assessment Instruments*. GM, Sullivan. 2, 2011, Journal of Graduate Medical Education, Vol. 3, pp. 119–120. <http://doi.org/10.4300/JGME-D-11-00075.1>.

APPENDIX I: CONSENT FORM

Title of Study: Anemia in the long stay preterm infant KNH NBU

Principal Investigator\and institutional affiliation: Macharia Josephine Njeri (H58/80891/15) a student at Nairobi University pursuing Master of Medicine in Paediatrics and Child Health

Introduction:

I would like to tell you about a study being conducted by the above listed researchers. The purpose of this consent form is to give you the information you will need to help you decide whether or not to participate in the study. Feel free to ask any questions about the purpose of the research, what happens if you participate in the study, the possible risks and benefits, your rights as a volunteer, and anything else about the research or in this form that is unclear. When we have answered all your questions to your satisfaction, you may decide to be in the study or not. This process is called 'informed consent'. Once you've understood and agreed to be in the study, I will request you to sign your name on this form. There are general principles which apply to all participants in a medical research:

- i) Your decision to participate is entirely voluntary
- ii) You may withdraw from the study at any time without necessarily giving a reason for your withdrawal
- iii) Refusal to participate in the research will not affect the services you are entitled to in this health facility or other facilities. We will give you a copy of this form for your records.

May I continue?

Yes

No

This study has approval by The Kenyatta National Hospital-University of Nairobi Ethics and Research Committee protocol No. _____

PURPOSE OF THE STUDY

The purpose of this study to understand the proportion and causes of inadequate blood levels in babies born before their due date and have stayed longer than 14 days at Kenyatta National Hospital (KNH) New Born Unit (NBU). You have been approached because your child is here at NBU and requested to participate in this research by giving your information relating to your ANC history and any other related information. Our interaction through interview will take about 15 minutes.

You also have the choice to allow your child undergo test laboratory tests that involves small samples of blood. There will be approximately 53 participants in this study randomly chosen. We are asking for your consent to consider participating in this study.

WHAT WILL HAPPEN IF YOU DECIDE TO BE IN THIS RESEARCH STUDY?

If you agree to participate in this study, the following things will happen:

You will be interviewed by a trained interviewer in a private area where you feel comfortable answering questions. The interview will last approximately 15 minutes. The interview will cover topics such as general demographics, birth history and ANC history. We will also go through your child's medical file to get more information pertaining to the history and current management of your child.

We will ask for a telephone number where we can contact you if necessary. If you agree to provide your contact information, it will be used only by people working for this study and will never be shared with others. The reasons why we may need to contact you include: helping us reach out to you when interview time arrives and for any clarification relating to your responses.

ARE THERE ANY RISKS, HARMS DISCOMFORTS ASSOCIATED WITH THIS STUDY?

Medical research has the potential to introduce psychological, social, emotional and physical risks. Effort will be put in place to minimize the risks. One potential risk of being in the study is loss of privacy. We will keep everything you tell us as confidential as possible. We will use a code number to identify you in a password-protected computer database and will keep all of our paper records in a locked file cabinet. However, no system of protecting your confidentiality can be absolutely secure, so it is still possible that someone could find out you were in this study and could find out information about you but this will not affect you negatively.

Also, answering questions in the interview may be uncomfortable for you. If there are any questions you do not want to answer, we can skip them. You have the right to refuse to the interview or any questions asked during the interview.

We will do everything we can to ensure that this is done in private. Furthermore, all study interviewers are professionals with special training in these examinations/interviews. A blood sample, less than a quarter of a teaspoon in amount, will be extracted from your child by a qualified phlebotomist. This may cause pain, slight bleeding, swelling or bruising. However we endeavor to ensure that this is kept to a minimum. If you notice any of afore mentioned, kindly report to the duty nurse, phlebotomist or call the number given at the end of this form.

BENEFITS

There will be no monetary, individual benefits or compensation for participation. However the study will help in answering the burden of anemia in long stay preterm infants and investigate some common factors in the development of this condition. The document will be published and future reference could be made from it by other researchers or communities. It's also necessary noting that incase the infant is found to

have abnormal parameters after the laboratory tests, the case will be forwarded to the doctor and nurse in charge thus helping for further management of the condition.

PARTICIPANT DECLARATION

I have read and understood the explanation and I agree by consenting to voluntarily participate in the study. I understand that I can withdraw from the study any time and this will not adversely affect me or my child.

Participant Name: Signature Date:

Witness Name: Signature Date:

RESEARCHER'S STATEMENT

I, the undersigned, have fully explained the relevant details of this research study to the participant named above and believe that the participant has understood and has willingly and freely given his/her consent.

Research Assistants Name: _____ Date: _____

Signature _____

Role in the study: _____

For more information contact;

- 1) Dr. Josephine Macharia, Registrar department of pediatrics

Tel 0710924310

Email; josephine.macharia@hotmail.com

- 2) Prof Aggrey Wassuna

Consultant pediatrician department of Child health and Pediatrics

Email address: dept-paediatrics@uonbi.co.ke

3) Prof Jessie Githanga

Consultant pathologist department of human pathology

Email; info-chs@uonbi.ac.ke

4) Ethics and Research Committee, Kenyatta National Hospital

At the Address, Kenyatta National Hospital,

University of Nairobi,

P.O. Box 20723,

Nairobi.

Telephone number 2726300, Extension 44102.

FOMU YA OMBI LA RIDHAA

Kichwa cha Utafiti: Upugufu wa damu katika watoto wachanga waliokaa kwa muda mrefu katika KNH NBU

Mtafiti Mkuu na ushirikiano wa taasisi: Macharia Josephine Njeri (H58 / 80891/15) mwanafunzi katika Chuo Kikuu cha Nairobi akifuatilia mafunzo ya Afya ya Watoto

Utangulizi:

Ningependa kukuambia kuhusu utafiti uliofanywa na watafiti waliotajwa hapo juu. Madhumuni ya fomu hii ya idhini ni kukupa taarifa unayohitaji ili kukusaidia uamuzi

katika utafiti. Jisikie huru kuuliza maswali yoyote kuhusu madhumuni ya utafiti, kinachotokea ikiwa utashiriki katika utafiti, hatari na faida iwezekanavyo, haki zako kama kujitolea, na kitu kingine chochote kuhusu utafiti au kwa fomu hii ambayo haijulikani. Tutakapo jibu maswali yako yote kwa kuridhika kwako, unaweza kuamua kuwa katika utafiti au la. Utaratibu huu unaitwa 'kibali cha habari'. Mara tu umeelewa na umekubali kuwa katika utafiti, nitakuomba tie sahihi jina lako kwenye fomu hii. Kuna kanuni za jumla zinazotumika kwa washiriki wote katika utafiti wa matibabu:

i) Umuzi wako wa kushiriki ni kwa hiari

ii) Unaweza kujiondoa kwenye utafiti huu wakati wowote bila ya kutoa sababu ya uondoaji wako

iii) Kukataa kushiriki katika utafiti hautaathiri huduma unazostahili katika kituo hiki cha afya au vifaa vingine. Tutakupa nakala ya fomu hii kwa rekodi zako.

Naweza kuendelea?

ndiyo

La

Utafiti huu una kibali na Hospitali kuu ya Taifa ya Kenyatta-Chuo Kikuu cha Nairobi
Kamiti cha Maadili na Utafiti: Namba _____

Nia ya utafiti

Kusudi la utafiti huu ni kuelewa uwiano na sababu za upungufu kwa kiwango cha damu katika watoto waliozaliwa kabla ya tarehe yao ya kutolewa na wamekaa zaidi ya siku 14 Hospitali Kuu ya Taifa ya Kenyatta (KNH) wadi ya watoto(NBU). Umefikiwa kwa kuwa mtoto wako yuko hapa NBU na naomba ushiriki katika utafiti huu kwa kutoa maelezo yako yanayohusiana na historia yako ya ANC na habari zingine zinazohusiana. Ushirikiano wetu kupitia mahojiano itachukua muda wa dakika 15.

Pia unaweza kuruhusu mtoto wako apate kutolewa kipimo kidogo cha damu. Kutakuwa na washiriki takriban 53 katika utafiti huu waliochaguliwa kwa nasibu. Tunaomba ridhaa yako kushiriki katika utafiti huu.

NINI KITAKACHOTOKEA UKIAMUA KUHUSIKA NA UTAFITI HUU?

Ikiwa utakubali kushiriki katika utafiti huu, mambo yafuatayo yatatokea:

- Mahojiano ambayo itaendelea kwa dakika 15. Mahojiano yatashughulikia mada kama vile idadi ya jumla ya watu, historia ya kuzaliwa na historia ya mimba. Pia tutapitia faili ya matibabu ya mtoto wako ili kupata maelezo zaidi kuhusu historia na usimamizi wa sasa wa mtoto wako.
- Tutaomba namba ya simu ambapo tunaweza kuwasiliana na wewe ikiwa ni lazima. Ikiwa unakubaliana kutoa maelezo yako ya mawasiliano, itatumiwa tu na watu wanaofanya kazi kwa ajili ya utafiti huu. Sababu ambazo tunaweza kuwasiliana na wewe ni : kutusaidia kufikia wakati wa mahojiano unapofika na kwa ufafanuzi wowote kuhusu majibu yako.

Je, kuna baadhi ya maadili au magonjwa yanayotokana na utafiti huu?

Utafiti wa matibabu una uwezo wa kuanzisha hatari za kisaikolojia, kijamii, kihisia na kimwili. Jitihada zitawekwa ili kupunguza hatari. Hatari moja ya kuwa katika utafiti ni kupoteza faragha. Tutaweka kila kitu unachotuambia kama siri iwezekanavyo.

Tutatumia nambari ili kukutambua kwenye hifadhidata ya kompyuta iliyohifadhiwa na nenosiri na itachukua rekodi zote za karatasi kwenye kabati lililofungwa. Hata hivyo, hakuna mfumo wa kulinda siri yako inaweza kuwa salama kabisa, kwa hivyo bado inawezekana kwamba mtu anaweza kujua wewe ulikuwa katika utafiti huu na anaweza kupata maelezo kuhusu wewe lakini hii haitakuathiri vibaya.

Pia, kujibu maswali katika mahojiano inaweza kuwa na wasiwasi kwako. Ikiwa kuna maswali yoyote unayokataa kujibu, tunaweza kuwayaacha. Una haki ya kukataa mahojiano au maswali yoyote yaliyoulizwa wakati wa mahojiano.

Zaidi ya hayo, wote wanaohojiana kwa utafiti huu ni wataalam wenye mafunzo maalum katika mahojiano. Sampuli ya damu, chini ya robo ya kijiko kwa kiasi, itatolewa kutoka kwa mtoto wako na mtaalamu aliyestahili. Hii inaweza kusababisha maumivu, kutokwa damu kidogo, au uvimbe . Ikiwa unatambua chochote kilichotajwa hapo awali, fanya ripoti kwa muuguzi mtaalamu wa kutoa damu au piga nambari iliyotolewa mwishoni mwa fomu hii.

FAIDA

Hakutakuwa na faida ya fedha binafsi au fidia ya ushiriki. Hata hivyo utafiti utawasaidia kujibu mzigo wa upungufu wa damu kwa watoto wachanga na kuchunguza mambo ya kueneza hali hii. Hati hiyo itachapishwa na marejeo kuweza kufanywa kutoka hapo na watafiti wengine au jamii. Matokeo ya vipimo ya damu itatumwa kwa muuguzi wa mtoto wako ndiposa aweze kumsaidia vilivyo.

TANGAZO ; washiriki wameisoma na kuelewa maelezo na kukubali kushiriki kwa hiari katika utafiti. Ninaelewa kuwa naweza kuondoka kutoka kwa utafiti wakati wowote na hii haitaathiri mimi au mtoto wangu.

Jina la mshiriki: Saini Tarehe:

Jina la shahidi: Sahihi Tarehe:

Kauli ya mtafiti; mimi, aliyechaguliwa, nimeelezea kikamilifu maelezo muhimu ya utafiti huu wa utafiti kwa mshiriki aliyechaguliwa hapo juu na kuamini kwamba mshiriki amelewa na ametoa kwa hiari ridhaa yake.

Wafadhili wa Utafiti Jina: _____ Tarehe: _____ Saini _____

kazi katika utafiti: _____

Kwa habari zaidi wasiliana;

1) Dr. Josephine Macharia, Idara ya Usajili ya watoto

Simu 0710924310

Barua pepe; josephine.macharia@hotmail.com

2) Profesa Aggrey Wassuna Idara ya Usajili ya watoto

Barua pepe: dept-paediatrics@uonbi.co.ke

3) Prof Jessie Githanga Idara ya magonjwa

Barua pepe; info-chs@uonbi.ac.ke

4) Kamati ya Maadili na Utafiti, Hospitali ya Taifa ya Kenyatta

Katika Anwani, Hospitali ya Taifa ya Kenyatta,

Chuo Kikuu cha Nairobi,

Sanduku la posta 20723,

Nairobi.

Nambari ya simu 2726300, Ugani 44102

APPENDIX 2; BLOOD SAMPLING AND LAB PROCEDURES

BLOOD SAMPLING PROCEDURE

- A qualified phlebotomist identified the infants to be sampled from their wrist or foot band, confirmed identification with the parents/ guardians and placed them in a warm clean environment in the procedure room within the NBU.
- The phlebotomist identified a suitable vein in the antecubital fossa. Using aseptic techniques 1 ml of blood was obtained using a gauge 23 winged steel needle with a butterfly and 2 cc syringe. The specimen was placed in a Greiner bio-one mini-collect tubes.
- After the blood draw hemostasis was achieved by mild pressure on the venipuncture site with clean gauze and thereafter adhesive tape applied.
- The mini-collect tubes were labelled at the bedside with the identifying code. The used needle was disposed in the appropriate disposal unit.
- The samples collected were then taken to the lab in a cooler box within two hours of obtaining the samples.
- This was done in tandem with other blood tests the infant might have required.

LAB PROCEDURES

Full blood count and Reticulocyte counts

The samples collected were then analyzed by the Sysmex XT2000i which uses using fluorescent flow cytometry technique. It is a fully automated process requiring no manual intervention hence making the results more reliable. The equipment measures all the blood cells and red cell indices (total white cell counts and differential count, Haemoglobin, red cell count.). The machine also provides reticulocyte counts and reticulocyte parameters including reticulocyte haemoglobin (Ret-He) concurrently.

Peripheral blood films

A well prepared blood film stained using May Grunwald Giemsa stain was examined and reported by a hematologist. The report commented on the cellular morphology and, as appropriate, provided additional comments. A drop of well mixed blood was placed on one edge of a clean slide using a capillary tube. A spreader slide was placed at a 45 degree angle to the front of the drop of blood and pulled back spreading the blood along the base of the slide. It was then air dried and labelled. It was then fixed using ethyl alcohol for 10-20 minutes. The slide was then viewed using a microscope by a hematologist and reported.

APPENDIX 3 QUESTIONNAIRE

MOTHER'S QUESTIONNAIRE

Kindly fill in the questions below to the best of your knowledge. If you have any queries the research assistant will assist you/ tafadhali jaza maswali yaliomo hapa chini kwa bora ya ujuzi wako. Ikiwa una maswali yoyote, msaidizi wa utafiti atakusaidia

TITLE; ANAEMIA IN THE LONG STAY PRETERM INFANTS AT KNH NBU

MADA; UPUNGUFU WA DAMU KWA WATOTO WACHANGA KATIKA WADI YA WATOTO WACHANGA KNH

STUDY ID/ KITAMBULISHO

DATE/TAREHE.....

Bio Data

1. Age in years/ umri kwa miaka _____
2. Primary residence/makao maalum
 - i. Urban/ mjini _____
 - ii. Peri-urban/ kizunguka mji _____
 - iii. Rural/mashambani _____
3. Parity/nambari ya mimba _____
4. Marital status/kufunga ndoa

<input type="checkbox"/> Never married/ mseja	<input type="checkbox"/> Divorced/umetalaki
<input type="checkbox"/> Married/ umeolewa	<input type="checkbox"/> Widow/mjane
5. Nationality/ uraia _____

6. Education Level/kiwango cha masomo

- | | | |
|--|---|---|
| <input type="checkbox"/> No education/
bila elimu | <input type="checkbox"/> Incomplete
secondary /elimu
ya sekondari
isiokamilifu | <input type="checkbox"/> Diploma/diplom
a |
| <input type="checkbox"/> Incomplete
Primary /elimu
ya msingi
isiokamilifu | <input type="checkbox"/> Complete
secondary/ elimu
ya sekondari
kamili | <input type="checkbox"/> Undergraduate
Degree/shahada
la kwanza |
| <input type="checkbox"/> Complete
Primary / elimu
ya msingi kamili | <input type="checkbox"/> Certificate/shaha
da | <input type="checkbox"/> Masters/shahada
la pili |
| | | <input type="checkbox"/> PhD/shahada la
uzamivu |

Others/nyinginezo _____

Gestational Age/ umri wa ujauzito

- i. Infant's age/umri wa mtoto mchanga
- 32-36 weeks 28-31 weeks <28 weeks
- ii. Last menstrual period/kipindi cha mwisho cha hedhi _____
- iii. Date of delivery/tarehe ya kujifungua _____
- iv. Infant's date of birth/ tarehe ya kuzaliwa _____

Birth history/historia ya kuzaliwa

- i. Type of delivery/aina ya utoaji
- Caesarian section/kuzaliwa kwa upasuaji vertex delivery/kuzaliwa kawaida
- ii. Circumstances of delivery/ matatizo wakati wa kujifungua

Bleeding/
kupiga damu

Pre-eclampsia/
shinikizo la damu

Diabetes/
kisukari

Others specify/nyinginezo fafanua.....

iii. Type of pregnancy /aina ya ujauzito

Multiple
pregnancies/mimba nyingi

Single pregnancy/mimba
moja

iv. Was there delayed cord clamping (> 1 minute) Je! Kulikuwa na kuchelewa kwa mbano wa kamba (> dakika 1)?

Yes/ ndiyo

No /la

- v. Infections during pregnancy (Tick if positive during pregnancy)/ Maambukizi wakati wa ujauzito (Weka alama yakuashiria)

STI/ugonjwa za zinaa

- UTI/maambukizi ya njia ya mkojo
- Vaginal discharge/utoko
- HIV/ukimwi

ANC History /historia ya uzazi

1. After being pregnant, after how long did you begin your ANC/ baada ya muda gani ulianza kliniki yako _____
2. Total visits of ANC attended/ ulihudhuria mara ngapi?

3. Were you dewormed during pregnancy?/ ulipata dawa za minyoo?
- Yes/ndiyo No/la
4. Did you take supplements of folic acid and iron? / Je, ulichukua virutubisho vya kuongezea damu?
- Yes No
- i. If yes above. Which month of pregnancy did you start taking supplements / Ikiwa ndiyo hapo juu. Mwezi gani wa ujauzito ulianza kuchukua virutubisho

5. Did you have any complications during pregnancy/ulipata matatizo yoyote wakati wa ujauzito?

Yes/ndio

No/la

If yes, describe/ kama ndio fafanaa _____

6. Was ANC profile done?/vipimo vya damu vilifanyawa?

Yes /ndio

No/la

if yes , from the MCH booklet, what was the; ikiwa ndiyo,kutoka kitabu cha MCH, taja

Hb/hemoglobini_____

VDRL/kaswende_____

HIV/ukimwi_____

Hepatitis B/homa ya manjano_____

Blood group and Rhesus/aina ya damu_____

APPENDIX 4: INFANTS DATA COLLECTION TEMPLATE

Bio Data

Sex Male Female

1. Age when born in weeks _____

2. Current age _____

3. Weight at birth in grams _____

4. Type of birth

Single Twin Triplet

5. HIV status

Positive Negative Not identified

Gestational Age

1. Neonatal Score on gestational age _____

Birth size

< 1,000 grams 1,500 - 2,500gms

1,000 -1,500gms > 2,500gms

Episodes of illness

1. How times has the infant been ill since birth _____
2. Infant illnesses, severity and treatment administered

	Type of illness	Severity(mild, moderate or severe	Treatment type administered and for how long
1			
2			
3			
4			
5			
6			
7			

3. Has the infant being transfused?

Yes

No

If yes, answer below.

Frequency of blood transfusion

Number of transfusions	
Age by days at which was transfused	
Amount of blood transfused	
Type of blood product	
HB at which they were transfused	
Comment:	

Frequency of lab tests

a. No of lab tests since admission at NBU _____

Date of the test	Type of test	Amount of blood collected

Oxygen requirement

1. Did the infant require oxygen supplementation?

Yes NO

2. What means of oxygen delivery was used?

Non rebreather mask
Mechanical ventilation

Symptoms and signs of anemia among infants at NBU

Has the infant had these cases and what was the extent?

Sign/Symptom	Comment
Need for oxygen supplementation	
Apnea	
Bradycardia	
Diminished activity	
Hepatosplenomegaly	
Jaundice (trunk, scleral, soles)	
Pallor	
Feed intolerance	
Poor weight gain	
Tachycardia	
Tachypnea	

APPENDIX 5; Lab findings

AGE	LENGTH OF STAY	TEST	RESULT
		Hemoglobin	
		Hematocrit	
		MCV	
		MCHC	
		MCH	
		Peripheral blood film	
		Reticulocyte count	
		WBC	
		Platelet count	

APPENDIX 6; NEONATAL HAEMATOLOGICAL REFERENCE RANGES

Length of stay	Hb g/dl	Hematocrit %	MCV fl	WBC (10*9/l)	Retic count	MCHC g/dl	MCH pg	Platelet count	Ret He Pg
14-20	11.1-15.7	39-48	86-124	5-20	0.8-2.7	28-38	28-40	150-350	30.2-36.7
21-27	10.9-14.2	32-44	86-124	5-19.5	0.8-2.6	28-38	28-40	150-350	30.2-36.7
28-34	10.9-14.2	31-55	85-123	5-19	0.8-2.6	29-37	28-40	150-350	30.2-36.7
35-41	9.3-12.4	31-55	85-123	5-19	1.0-3.4	29-37	28-40	150-350	30.2-36.7
>42	9.3-12.4	28-38	77-115	5-19	1.0-3.4	29-37	26-34	150-350	30.2-36.7

Adapted from Nathan and Oski's hematology of infancy and childhood 8th revised edition 2015. Elsevier Health Sciences