



*Extract from the Minutes of the 193rd Meeting of the National Advisory Medical and Sanitary Commission*

2. The Committee considered the annual Medical and Bacteriological Reports of Kenya for the year 1922 together with the Governor's covering despatch dated the 30th of August, 1923. They had before them a memorandum on the Reports by the Medical Secretary which met with general concurrence.

With reference to infant welfare, Dr. Paterson said that it had not yet been possible to take any steps towards the training of native women as mid-wives there being no suitable class from which pupils could be recruited. A beginning had however been made with the training of African male nurses. With reference to page 25 of the report Sir James Fowler drew attention to the point that the majority of the cases of invaliding amongst European officials were not due to tropical diseases.

In reply to General Beveridge Dr. Paterson said that there was a great deal of <sup>anaemia</sup> amongst the native population and that this might be regarded as the most serious disease in the country. <sup>A contributory</sup> The established cause of this disease was the poor nourishment of the bulk of the population.

In reply to Dr. Balfour Dr. Paterson said that in connection with plague other small mammals besides rats had been examined but had not been found to be infected. The jerboas which had been found to be a source of infection in South Africa were not found in plague centres in Kenya but in dry sandy country where the population was negligible.

With reference to page 52 Sir William Froust pointed out that statistics of blackwater fever cases made no differentiation between natives and Asiatics and suggested that separate figures should be shown in future. The satisfactory conditions under which the slaughter of cattle was carried out at <sup>Kenya</sup> Nairobi and Mombasa is reported on pages 60 & 61 of the Report was the subject of comment.

The Committee recommended that the attention of the Governor should be called to the matter.

With reference to the adulteration of milk Dr. Paterson said that the new Public Health Ordinance was in force and that extensive milk regulations had been drawn up but had not yet been promulgated.

Sir H. Read drew attention to the successful <sup>results</sup> resolutions achieved by the Government dairy in Hong Kong and suggested that Dr. Paterson might obtain details of this from Dr. Fletcher who was present on leave from Hong Kong.

Discussing the question of Asiatic housing (page 71 of the report) Dr. Paterson said that it was possible for 300 dwellings to be built on one acre. The recently published Density of Building Rules restricted the number of dwellings to 36 to the acre. The Committee recommended that attention should be given to the disgraceful condition of <sup>the quarters of the</sup> Customs Askaries at Kilindini reported on page 80 discussing the Indian <sup>Planning Scheme</sup> ~~Sanitation Scheme~~ for Mombasa Island (page 80 and 81 of the report), Dr. Paterson said that it was essential to obtain the support of the public including Indian land owners for the scheme.

Mr. Bottomley pointed out that though the principles of the segregation <sup>when</sup> was recently abandoned it was made clear that stringent sanitary regulations would be introduced and enforced. He expressed the view that the ~~displeasure~~ <sup>of</sup> Asiatic land owners should be ignored in this matter.

#### Bacteriological Report.

With reference to the association of the Plasmodium tenue type of parasite with malaria discussed on page 165, Dr. Balfour drew attention to the interesting article by Catanei entitled "Essai Critique sur la Morphologie des Parasites du Paludisme" (Archives de l'Institut Pasteur Algerien Volume No. 1 1923.)

With reference to page 162 of the report the  
Committee strongly recommended <sup>that</sup> the water-supply of Nairobi  
should be chlorinated.

The Committee highly commended the reports which  
they regarded as most interesting.

*Dr. B. K. M. M. M.*

*in body [unclear] marked in  
minutes and memoranda in  
dup to Gov. - as representing views  
of the [unclear] ? Something on the lines  
of 'B' in extract from minutes  
should be given as the view  
of the Gov.*

*(One dup to be printed)*

*H. D. M.*

*As to B, we don't want  
to "beat" the Asiatics as  
such or to give them the idea that  
we do. Without referring to the  
abandonment of regulations we can  
say that there should be no hesitation  
in introducing and applying such  
building & sanitary regulations as  
are necessary for the health  
of all members of the town population.*

*See H. Read to Gov. J. P.*

*W. C. S.*

*26.5.24*

*at once*

Notes by Medical Secretary on the  
Annual Medical Report  
1922.

Page 136.

General Review of Policy. The handicap under which  
the Laboratory work was conducted during the year,  
owing to the need for its Medical Staff to assist in  
the general clinical work in Nairobi in addition to  
their Laboratory duties, must necessarily have  
interfered very appreciably with the output of the  
Laboratory.

Page 137.

*the [unclear] to [unclear]*  
Vaccine Lymph Production. It will be observed that  
the efficacy of the lymph has been well maintained  
by the use of only one alternate host the rabbit.  
Over 100,000 doses of lymph were issued for use and  
it is unfortunate that the prevailing conditions  
prevented the percentage of successes being ascertained  
but so far as these were ascertained there can be no  
room for doubt as to the high <sup>efficiency</sup> efficiency of this  
locally produced lymph (see page 145, Table V).

Page 151

*the [unclear]*  
Routine Examinations. As regards the differential  
leucocyte counts and the results varying from hour to  
hour in the same case, it may be observed that the  
average percentage was "derived from a count of 200  
white blood corpuscles". It appears possible that  
less variation might be experienced if the percentage  
were derived from an appreciably larger count - say  
of 500 white corpuscles.

Page 152.

*the [unclear]*  
Malaria. The suggestion of a special type of  
plasmidium (*P. tenue*) associated with the severe  
malaria common in the Thika and Masengoleni districts,  
and its connection with Blackwater fever should be  
further investigated when possible.

Notes by Medical Secretary on the  
Annual Medical Report  
1922.

Page 136.

General Review of Fallor. The handicap under which the Laboratory work was conducted during the year, owing to the need for its Medical Staff to assist in the general clinical work in Nairobi in addition to their Laboratory duties, must necessarily have interfered very appreciably with the output of the Laboratory.

Page 137.

*Chloroform to remove*

Vaccine Lymph Production. It will be observed that the efficacy of the lymph has been well maintained by the use of only one alternate host the rabbit. Over 100,000 doses of lymph were issued for use and it is unfortunate that the prevailing conditions prevented the percentage of successes being ascertained but so far as these were ascertained there can be no room for doubt as to the high <sup>efficiency</sup> efficiency of this locally produced lymph (see page 145, Table V).

Page 151

*Chloroform to remove*

Routine Examinations. As regards the differential leucocyte counts and the results varying from hour to hour in the same case, it may be observed that the average percentage was "derived from a count of 200 white blood corpuscles". It appears possible that less variation might be experienced if the percentage were derived from an appreciably larger count - say of 500 white corpuscles.

Page 152.

*Chloroform to remove*

*helped that would*

Malaria. The suggestion of a special type of plasmodium (*P. tenue*) associated with the severe malaria common in the Thika and Masengoleni districts; and its connection with Blackwater fever should be further investigated when possible.

Page 153.

Typhoid Fever etc. The irregular and sparse occurrence of typhoid infections may possibly be associated with certain "typhoid carriers" and with infection spread locally by means of flies.

Page 155.

Undulant Fever is recognised in Uganda and investigations in the subject are referred to in Bacteriological Report of that Protectorate for 1922.

Page 156.

*See report*  
Helminthic Infection. Ankylostome infection was a marked feature amongst the examinations carried out in the Laboratory and 25% infection was found amongst the boys in the Kabete Reformatory. It is very desirable that these inmates should be systematically examined on admission and treated for this complaint, all sanitary precautions being carried out in the Reformatory.

Page 158.

*Considered*  
Syphilis and Yaws. - See also Appendix III, page 200. The description of the chemical preparation of Sodium Potassium Bismutho-tartrate contained in this Appendix should prove of value in other Colonies interested in this question.

Page 159.

Vaccine Production. In view of this general work and of the difficulty noted in the standardisation of vaccines, the attention of the Medical Department should be drawn to the work of the Government Pasteur and Bacteriological Institutes Ceylon, as described in their Report for 1922, and copies of this Report should be forwarded to Kenya.

Page 163-177

*Copy in Kenia and 5/2*  
*See report with index*  
Anti-Typhoid Group Vaccines. The description of the preparation of the vaccines, the clinical results obtained in certain cases and the discussion of their value will be read with great interest.

Page 177-189.

Rat Poisons and Baits. This work is of practical

utility and the conclusion reached, that maize flour made into a small pill containing one and a half grain of Barium Carbonate is the most attractive rat poison for the common local rat, might be brought to the notice of other Colonies with a view to trial.

(Intd) A.E.H.

9/5/24.

## KENYA

## Notes by Medical Secretary on the Annual Medical Report 1922.

pages 16-18

In the absence of Registration of Births and Deaths among the non-European population little information of value can be obtained from a study of the vital statistics given for Mombasa, Nairobi or Kisumu.

pages 19-25

Similarly, although the information and tables under the Section "General Native Population", are of general interest it is perhaps unwise to attempt any serious deductions from them, owing to the admitted inexactitudes. A point however that attracts some attention is the very high Infantile Mortality (= over 400 per mille) in the Central Kavirondo District; and the very low incidence of Syphilis (= 1.1 %) amongst the adult population.

page 24.

*input from  
A on 11/11/23*

European Officials. Amongst the sixteen invalidings the following will be noted:- "Chronic Occipital Headache 1. General Debility 3. Neurasthenia 2. Insomnia 1. It appears at least possible that all these seven cases are varieties of neurasthenia - which in that case, is an extremely high invaliding cause. Attention was called to the importance of this complaint when the Uganda Medical Report for 1922 was under consideration by this Committee and, in the subsequent despatch to Uganda (No. 701 of 15th December 1923) further information on the subject was requested, "especially as regards the relation of this affection to purely climatic conditions, to mental strain in certain cases, or to its association with other diseases or conditions of ill-health". It is very desirable that further information

information should also be obtained in the present case.

It is of some interest to observe that "Dysentery" and "Hepatitis" are the only "tropical diseases" which caused invaliding.

Major Endemic and Epidemic Diseases.

Yaws. An interesting historical review is given and the use of Bismuth Sodium Potassium Tartrate has been found "equally if not more efficacious" than Novarsenebillion.

Leprosy Treatment by chaulmoogra oil, so far as was carried out, does not appear to have produced such satisfactory results as have been reported from certain other colonies; no details are supplied, but it is very desirable that such treatment should be continued wherever possible, along these lines and those suggested by more recent developments.

Tuberculosis The high mortality from this disease in Mombasa (= 9.4% of all deaths) is striking. In addition to the provision of phthisical wards at this town and Nairobi, action of the Medical Officers of Health should follow all notifications, with a view to cleansing and opening up of infected rooms and houses after removal of the patient, and the restriction of overcrowding as far as possible.

Plague Details are furnished as to occurrence in the different provinces and districts. The destruction of rats by various methods has been systematically carried out; the continuation of the campaign by natives against these rodents, which

Page 25.

Page 32.

Page 33.

Page 33-46.

*See annual  
interest*

*See  
Annual*

was described in the previous Annual Medical Report. It is described and the immediate and possible results are considered on pages 41-46. It is concluded that but little or no effect has been produced on the rat population; that rat infection with plague still persists, and that small outbreaks of human plague still occur.

The review is of considerable interest showing as it does, the result of organised and maintained efforts in a large area for over one year, towards the restriction of one of the important links in the cycle of human plague. It is not to be expected that the total elimination of the rat factor should have been attained and it is perhaps too much to expect that a very appreciable effect should have been obvious in every part of the area as a whole, but it is at least probable that these sustained efforts may have averted some degree of infection in various localities, while the education of the native in the matter is of pronounced value.

Page 47. *The 2nd 65*  
Smallpox Vaccination. It is satisfactory to read of the increased value set on vaccination by the native. It must be observed however that apart from the larger towns, the protection appears to be acquired mainly by the male adult population, and there is some doubt as to its being satisfactorily extended to the women and children. The difficulties in the way of this are fully recognised, and there is no doubt that this aspect of the question will receive the careful attention of the medical department.

Page 50

*Other notes  
with  
Rat. notes*

Malaria. The draining of swamps in the North Kavirondo Native Reserves and its suggested extension in the Fort Hall and Kyambu Districts will be noted with satisfaction; similarly the progressive decline in the number of deaths from Malaria at Kisumu during the last six years is an interesting indication of the value of the previous reclamation work.

Page 53.

*Un-  
inspired  
Hab*

Helminthiasis. Infection with ankylostomes appears to be widely extended, if slight. The debilitating effect of the infection is an appreciable factor in association with other diseases and the well known preventative and curative measures in connection with it should be applied where practicable.

Page 54.

Native Labour.

Uasin Gishu Railway Construction. The somewhat detailed account of the medical difficulties encountered, and the methods of recruiting and carrying out contract work are of general interest. Respiratory diseases and in particular pneumonia, are shown on pages 59 and 60 to have caused a very large proportion of the hospital admissions and the deaths. The possible prophylactic use of a polyvalent vaccine of pneumococci would appear worth considering.

Page 60.

Food Inspection. The remarks as to the need for improved slaughter house accommodation at Kisumu, Nairobi and Mombasa appear to be justified and may be commended to the notice of the respective Municipal authorities.

Page 63.

Sanitation. The difficulties here referred to concerning the general sanitation of the native community as a whole are certainly very generally recognised, but

but the suggestion (page 65) that a small sum of the money obtained by local taxation, should be allocated "to each district to be spent by the people themselves through the activities of a local council presided over by the District Commissioner" is one that could only be adopted experimentally in the first place. Similar experience (with Municipal Councils, Sanitary Boards, etc.) in other Colonies with more advanced native inhabitants, has not altogether proved so successful as is anticipated in this Report and too much can not be expected from their institution in remote "bush" villages. The completion of the town-planning scheme for the large towns such as Mombasa is very desirable, as is the employment of an adequate sanitary staff to ensure the application of the sanitary bye laws. The description of the position as regards "Asiatic Housing" in Nairobi (page 71) calls attention to a state of affairs which should no longer be tolerated. Overcrowding of insanitary tenement dwellings, undeveloped plots side by side with plots overcrowded with buildings and the absence of adequate legislation to prevent such evils together form an unpleasant picture which should be remedied at the earliest opportunity. In the absence of suitable action the present unsatisfactory conditions will certainly become worse.

any  
B  
6

Similarly, as regards "African Housing" in Nairobi (page 72) much of what is written above equally applies and the attention of the Government and Municipality should be called to the urgent need of dealing with the situation.

In Mombasa Island, the description in the 2nd paragraph on page 80 of the accommodation of the Customs askaries at Kilindini calls for serious representation to the Government.

but the suggestion (page 65) that a small sum of the money obtained by local taxation, should be allocated "to each district to be spent by the people themselves through the activities of a local council presided over by the District Commissioner" is one that could only be adopted experimentally in the first place. Similar experience (with Municipal Councils, Sanitary Boards, etc.) in other Colonies with more advanced native inhabitants, has not altogether proved so successful as is anticipated in this Report, and too much can not be expected from their institution in remote "bush" villages. The completion of the town-planning scheme for the large towns such as Mombasa is very desirable, as is the employment of an adequate sanitary staff to ensure the application of the sanitary bye laws. The description of the situation as regards "Asiatic Housing" in Nairobi (page 71) calls attention to a state of affairs which should no longer be tolerated. Overcrowding of insanitary tenement dwellings, undeveloped plots side by side with plots overcrowded with buildings and the absence of adequate legislation to prevent such evils together form an unpleasant picture which should be remedied at the earliest opportunity. In the absence of suitable action the present unsatisfactory conditions will certainly become worse.

Similarly, as regards "African Housing" in Nairobi (page 72) much of what is written above equally applies and the attention of the Government and Municipality should be called to the urgent need of dealing with the situation.

In Mombasa Island, the description in the end paragraph on page 80 of the accommodation of the Customs askaries at Kilindini calls for serious representation to the Government.

page 85.

Maternity and Child Welfare - Mombasa. The very useful work in this connection which was initiated and carried out during the year will be noted with satisfaction.

page 88.

Port Sanitation, Mombasa. The necessity for active precautionary measures against the landing of rats from ships berthed at piers should be insisted upon.

page 94.

Lunatic Asylum. 39 deaths out of 168 patients treated during the year is notably high. It would be of interest to know whether epidemic disease or unfavourable sanitary conditions contributed to this high mortality.

page 101.

Table IV. Routine Sanitary work in Nairobi. It is somewhat surprising to note the decrease in the average number of nightsoil pails removed daily in 1922 (= 11.) as compared with the year 1920 (= 2834). It is possible that such work performed under Municipal Council is not included in this Government Report, in spite of the fact that the Medical Staff are Government officers.

page 115.

Tables of diseases and deaths. It will be observed from Tables VI-VIII that the classification adopted for the incidence of disease does not show any separate figures for the large Indian Communities which are apparently grouped together with the section "General Native Population". This is in some respects regrettable as the relative incidence of sickness amongst such differing communities as European, African and Indian in the same locality is a matter of considerable interest and may afford light in dealing with certain problems.

page 85.

Maternity and Child Welfare - Mombasa. The very useful work in this connection which was initiated and carried out during the year will be noted with satisfaction.

page 88.

Port Sanitation, Mombasa. The necessity for active precautionary measures against the landing of rats from ships berthed at piers should be insisted upon.

page 94.

Lunatic Asylum. 39 deaths out of 168 patients treated during the year is notably high. It would be of interest to know whether epidemic disease or unfavourable sanitary conditions contributed to this high mortality.

page 101.

Table IV. Routine Sanitary work in Nairobi. It is somewhat surprising to note the decrease in the average number of nightsoil pails removed daily in 1922 (= 11.) as compared with the year 1920 (= 2834). It is possible that such work performed under Municipal Council is not included in this Government Report, in spite of the fact that the Medical Staff are Government officers.

page 115.

Tables of diseases and deaths. It will be observed from Tables VI-VIII that the classification adopted for the incidence of disease does not show any separate figures for the large Indian Communities which are apparently grouped together with the section "General Native Population". This is in some respects regrettable as the relative incidence of sickness amongst such differing communities as European, African and Indian in the same locality is a matter of considerable interest and may afford light in dealing with certain problems.

(Intd.) A. E. H.  
5.5.24.

K...

No 485.

CONFIDENTIAL



20th Dec 1924

Handwritten

I am pleased to inform you that the  
... ..  
... ..  
... ..  
... ..  
... ..

Medical work among natives.

It is gratifying that, despite of retrench-  
ment in economy, valuable medical work in the Native  
reservations has been done for several years, the success which has  
attended the experiments to find an inexpensive  
and effective drug Novarsol. Million makes it  
possible to distribute the drug leading to many  
hundreds of natives at present suffering from yaws  
being cured.

3. Epidemics. Sporadic cases and small outbreaks  
of plague have occurred, but again this year it is  
satisfactory to be able to report that no epidemic  
has broken out and that smallpox was entirely absent  
from the country throughout the year. Investigation  
into the range of sleeping sickness infection round  
the Kenya shores of Lake Nyanza is now being pursued  
by Dr. Lake of the Uganda Medical Service, whose

services -

HIS GRACE

THE DUKE OF DEVONSHIRE, K.G., P.C., G.C.M.G., G.C.V.O.,

SECRETARY OF STATE FOR THE COLONIES,

DOWNING STREET, LONDON, S. W.,

46531

642

KENYA

No. 485.

CONFIDENTIAL.



46531

GOVERNMENT HOUSE  
NAIROBI,  
KENYA

REC'D  
RECEIVED

30th August, 1923.



My Lord Duke,

Schedule.

I have the honour to transmit the  
Colonial's Annual Medical and Bacteriological Reports  
for the year 1922, and in accordance with the terms  
of Your Grace's Circular (1) Confidential despatch  
of February 16th last, to express my comments on the  
various aspects of the medical work and on the  
recommendations made in the Report by the Principal  
Medical Officer.

2. Medical work amongst natives.

It is very gratifying that, in spite of retrenchment and economy, valuable medical work in the Native Reserves has been performed, and the success which has attended the experiments to find an inexpensive substitute for the drug Novarsenobillon makes it possible to continue to bring healing to many thousands of natives at present suffering from yaws in this country.

3. Epidemics. Sporadic cases and small outbreaks

of plague have occurred, but again this year it is satisfactory to be able to report that no epidemic has broken out and that smallpox was entirely absent from the country throughout the year. Investigation into the range of sleeping sickness infection round the Kenya shores of Lake Nyanza is now being pursued by Dr. Duke of the Uganda Medical Service, whose

services -

HIS GRACE

THE DUKE OF DEVONSHIRE, K.G., P.C., G.C.M.G., G.C.V.O.,  
SECRETARY OF STATE FOR THE COLONIES,

DOWNING STREET, LONDON, S. W.,

X 710

716531  
KENYA

No. 485.  
CONFIDENTIAL.



40531

642

GOVERNMENT HOUSE  
NAIROBI.  
KENYA

RE. 2. SEP 23



30th August, 1923.

My Lord Duke,

I have the honour to transmit the Colony's Annual Medical and Bacteriological Reports for the year 1922, and in accordance with the terms of Your Grace's Circular (1) Confidential despatch of February 16th last, to express my comments on the various aspects of the medical work and on the recommendations made in the Report by the Principal Medical Officer.

Schedule.

2. Medical work amongst natives.

It is very gratifying that, in spite of retrenchment and economy, valuable medical work in the Native Reserves has been performed, and the success which has attended the experiments to find an inexpensive substitute for the drug Novarsenobillon makes it possible to continue to bring healing to many thousands of natives at present suffering from yaws in this country.

3. Epidemics. Sporadic cases and small outbreaks of plague have occurred, but again this year it is satisfactory to be able to report that no epidemic has broken out and that smallpox was entirely absent from the country throughout the year. Investigation into the range of sleeping sickness infection round the Kenya shores of Lake Nyanza is now being pursued by Dr. Duke of the Uganda Medical Service, whose services -

HIS GRACE

THE DUKE OF DEVONSHIRE, K.G., P.C., G.C.M.G., G.C.V.O.,  
SECRETARY OF STATE FOR THE COLONIES,

DOWNING STREET, LONDON, S. W.,

services at the suggestion of Mr. Churchill in his Confidential despatch of 8th August, 1922, have been sent to this Government for this purpose.

#### 4. Subsidies to Medical Missions.

The withdrawal of subsidies to Missions for medical work has already been reported to Your Grace. Shortly before his departure to England, Sir Robert Coryndon received a deputation from the Alliance of Missionary Societies on this subject and advised the leaders to obtain, when the Colony's Estimates for 1924 were under consideration in Legislative Council, a discussion of the principle of subsidies on the motion of a private member.

#### 5. Training African Assistants.

I regret that it was not possible to advance the scheme for training African Hospital Assistants during 1922. The scheme is of recognized importance in the gradual extension of medical facilities to the natives in their homes, and I am glad to be able to state that at the time of writing this despatch a beginning in a small way has now been made at the Native Hospital at Nairobi, and I trust that considerable development will be possible before the end of the current year.

6. African Housing. The large question of African housing in the towns is engaging close attention. Considerable progress has been made at the Native Location, Nairobi, and the Municipality expects to be in a position to expend some £2,500 on housing its employees this year, while proposals by the General Manager of the Uganda Railway to expend £26,000 on a similar project within the next few months, have been submitted for Your Grace's approval in my despatch No. 739 of May 9th last.\*

At Mombasa a beginning has also been made and, as

funds -

to no.  
# no. 31771

705-  
61771  
Hospital Coyne  
Nairobi

funds permit, this scheme will be extended. Steps have been taken to gather the information necessary for active consideration of plans to improve the housing conditions of African employees of Government. The provision of funds for the employment of an officer, one of whose duties will be to draft the legislation which is considered essential not only in this connection, but also with regard to the promotion of the public health as a whole, has been inserted in the Draft Estimates of the Medical Department for 1924.

7. Native Labour on Railway Construction.

I am glad to be able to report that the improvements in the medical attention for the native labour engaged on Railway Construction are being maintained. The decision in favour of departmental control of the Nyeri Railway Extension conveyed in Your Grace's telegram of 17th May, 1923, will make the more easy of approval the Principal Medical Officer's recommendation that the entire responsibility for the organization of medical attention to the labour employed in future Railway construction should rest with him. This recommendation was endorsed in paragraphs 10 and 11 of Sir Robert Coryndon's Confidential despatch No. 212 of March 6th last, but has not yet been definitely approved by Your Grace.

8. Infant Welfare. I should like to express my appreciation of the importance of the child welfare work which is being inaugurated by the Medical Department in Nairobi and Mombasa. I have no doubt that the attention which the Health sisters are able to give to individual families in these towns is of the greatest value.

A more serious matter is the problem of infant welfare

in -

8/11/1924 N.N. 16505

See 19204

See 16505

RECORD OFFICE, LONDON

in the Native Reserves, where, as the statistics recorded in the early portion of the Report (P.24) show, the infant mortality is over 400 per 1000 live births per annum. In the opinion of the Principal Medical Officer this is not a matter which can adequately be dealt with by means of attention rendered to the individual family. The very size of the populations concerned make any such procedure impossible.

### 9. Sanitation in Native Reserves.

The conditions under which natives live in their Reserves are from an European standpoint deplorable. The task of awakening in Natives the spirit of progress may be facilitated to some degree by the adoption of the suggestion with regard to local control of expenditure made on page 119 of the Report. The Principal Medical Officer's view is shared by others of my advisers, and though I am not prepared to pledge this Government to any commitment of policy, I have authorized an examination of the Colony's Estimates in order to establish as precisely as is possible the relationship between revenue raised from native sources and expenditure incurred on native services; this will furnish a basis for the further exploration of the best means for advancing the welfare of Natives in their Reserves. I am of opinion that as time goes on, Government should endeavour as far as possible to allocate individual Administrative Officers, after the Cadet stage has been passed, finally to Native and Non-Native duties according to their personal bent; the staff at present is interchangeable at any time, with the result that an officer's study of native conditions may be interrupted by a tour in a white area or vice versa. It is to this end that a continued endeavour is being made to abolish mixed districts and to separate Native and Non-Native areas

in the Native Reserves, where, as the statistics recorded in the early portion of the Report (P.24) show, the infant mortality is over 400 per 1000 live births per annum. In the opinion of the Principal Medical Officer this is not a matter which can adequately be dealt with by means of attention rendered to the individual family. The very size of the populations concerned make any such procedure impossible.

### 3. Sanitation in Native Reserves.

The conditions under which natives live in their Reserves are from an European standpoint deplorable. The task of awakening in Natives the spirit of progress may be facilitated to some degree by the adoption of the suggestion with regard to local control of expenditure made on page 119 of the Report. The Principal Medical Officer's view is shared by others of my advisers and, though I am not prepared to pledge this Government to any commitment of policy, I have authorized an examination of the Colony's Estimates in order to establish as precisely as is possible the relationship between revenue raised from native sources and expenditure incurred on native services; this will furnish a basis for the further exploration of the best means for advancing the welfare of Natives in their Reserves. I am of opinion that as time goes on, Government should endeavour as far as possible to allocate individual Administrative Officers, after the Cadet stage has been passed, finally to Native and Non-Native duties according to their personal bent; the staff at present is interchangeable at any time, with the result that an officer's study of native conditions may be interrupted by a tour in a white area or vice versa. It is to this end that a continued endeavour is being made to abolish mixed districts and to separate Native and Non-Native areas

in the Native Reserves, where, as the statistics recorded in the early portion of the Report (P.24) show, the infant mortality is over 400 per 1000 live births per annum. In the opinion of the Principal Medical Officer this is not a matter which can adequately be dealt with by means of attention rendered to the individual family. The very size of the populations concerned make any such procedure impossible.

E. Sanitation in Native Reserves.

The conditions under which natives live in their Reserves are from an European standpoint deplorable. The task of awakening in Natives the spirit of progress may be facilitated to some degree by the adoption of the suggestion with regard to local control of expenditure made on page 119 of the Report. The Principal Medical Officer's view is shared by others of my advisers and though I am not prepared to pledge this Government to any commitment of policy, I have authorized an examination of the Colony's Estimates in order to establish as precisely as is possible the relationship between revenue raised from native sources and expenditure incurred on native services; this will furnish a basis for the further exploration of the best means for advancing the welfare of Natives in their Reserves. I am of opinion that as time goes on, Government should endeavour as far as possible to allocate individual Administrative Officers, after the Cadet stage has been passed, finally to Native and Non-Native duties according to their personal bent; the staff at present is interchangeable at any time, with the result that an officer's study of native conditions may be interrupted by a tour in a white area or vice versa. It is to this end that a continued endeavour is being made to abolish mixed districts and to separate Native and Non-Native areas

PUBLIC RECORDS OFFICE, LONDON

services at the suggestion of Mr. Churchill in his Confidential despatch of 8th August, 1922, have been lent to this Government for this purpose.

4. Subsidies to Medical Missions.

The withdrawal of subsidies to Missions for medical work has already been reported to Your Grace. Shortly before his departure to England, Sir Robert Coryndon received a deputation from the Alliance of Missionary Societies on this subject and advised the leaders to obtain, when the Colony's Estimates for 1924 were under consideration in Legislative Council, a discussion of the principle of subsidies on the motion of a private member.

5. Training African Assistants.

I regret that it was not possible to advance the scheme for training African Hospital Assistants during 1922. The scheme is of recognized importance in the gradual extension of medical facilities to the natives in their homes, and I am glad to be able to state that at the time of writing this despatch a beginning in a small way has now been made at the Native Hospital at Nairobi, and I trust that considerable development will be possible before the end of the current year.

6. African Housing. The large question of African housing in the towns is engaging close attention. Considerable progress has been made at the Native Location, Nairobi, and the Municipality expects to be in a position to expend some £2,500 on housing its employees this year, while proposals by the General Manager of the Uganda Railway to expend £26,000 on a similar project within the next few months, have been submitted for Your Grace's approval in my despatch No. 739 of May 9th last.

At Mombasa a beginning has also been made and, as

funds -

+ No.  
# no 31771

500  
31771  
Capital Expenditure

funds permit, this scheme will be extended. Steps have been taken to gather the information necessary for active consideration of plans to improve the housing conditions of African employees of Government. The provision of funds for the employment of an officer, one of whose duties will be to draft the legislation which is considered essential not only in this connection, but also with regard to the promotion of the public health as a whole, has been inserted in the Draft Estimates of the Medical Department for 1924.

#### 7. Native Labour on Railway Construction.

I am glad to be able to report that the improvements in the medical attention for the native labour engaged on Railway Construction are being maintained. The decision in favour of departmental control of the Nyeri Railway Extension conveyed in Your Grace's telegram of 17th May, 1923, will make the more easy of approval the Principal Medical Officer's recommendation that the entire responsibility for the organization of medical attention to the labour employed in future Railway construction should rest with him. This recommendation was endorsed in paragraphs 10 and 11 of Sir Robert Coryndon's Confidential despatch No. 212 of March 8th last, but has not yet been definitely approved by Your Grace.

8. Infant Welfare. I should like to express my appreciation of the importance of the child welfare work which is being inaugurated by the Medical Department in Nairobi and Mombasa. I have no doubt that the attention which the Health Sisters are able to give to individual families in these towns is of the greatest value.

A more serious matter is the problem of infant welfare

8th 19254 No. 16505

in -

in the Native Reserves, where, as the statistics recorded in the early portion of the Report (P.24) show, the infant mortality is over 400 per 1000 live births per annum. In the opinion of the Principal Medical Officer this is not a matter which can adequately be dealt with by means of attention rendered to the individual family. The very size of the populations concerned make any such procedure impossible.

9. Sanitation in Native Reserves.

The conditions under which natives live in their Reserves are from an European standpoint deplorable. The task of awakening in Natives the spirit of progress may be facilitated to some degree by the adoption of the suggestion with regard to local control of expenditure made on page 119 of the Report. The Principal Medical Officer's view is shared by others of my advisers and though I am not prepared to pledge this Government to any commitment of policy, I have authorized an examination of the Colony's Estimates in order to establish as precisely as is possible the relationship between revenue raised from native sources and expenditure incurred on native services; this will furnish a basis for the further exploration of the best means for advancing the welfare of Natives in their Reserves. I am of opinion that as time goes on, Government should endeavour as far as possible to allocate individual Administrative Officers, after the Cadet stage has been passed, finally to Native and Non-Native duties according to their personal bent; the staff at present is interchangeable at any time, with the result that an officer's study of native conditions may be interrupted by a tour in a white area or vice versa. It is to this end that a continued endeavour is being made to abolish mixed districts and to separate Native and Non-Native areas

of administration, vide Sir Robert Coryndon's Confidential despatch No. 209 of 8th March, 1923.

The question of sanitary improvements is bound up with those of education and economic development. I have no doubt that Your Grace will wish to discuss the general policy of native administration and Sir Robert Coryndon's Report will be submitted on arrival.

10. Town Planning. The Town Planning scheme for Mombasa has now been completed. The final form of consideration of certain matters is being considered by the Council. I am sure that the Council will be able to give the necessary sanction.

11. Central Board of Health.

The Central Board of Health was established in 1912 and since that time has been engaged in the work of public health. The Board's Report for 1922 was published in March; the reports of various boards which were published in January and the 'Red Virus' regulations were published in June. The Milk and Dairies Draft Regulations have been published for information and criticism and I trust that some time I fear that the recommendation for the extension of sanitary facilities at Mombasa (vide page 113) is for financial reasons impossible at present. The Board's recommendations for the establishment of new urban or sub-urban areas in the vicinity of existing townships have been accepted by Government. Only one application has in fact been granted viz Messrs. Kitale Limited who have formed the subject of separate correspondence, and in that case the imposition of a greatly enhanced rental has to a certain extent the effect of reducing the area.

As Your Grace is aware, Sir Robert Coryndon's Report

X 16504

10/11/23

insufficient opportunity before he left for England to indicate his views on the Report of the Land Tenure Commission, and, on the advice of the Executive Council, consideration of further applications for the conversion of agricultural into township leases has been deferred until his return, when it is expected that a settled line of policy towards such applications and the relative recommendation of the Land Tenure Commission will be framed.

12. Report of the Bacteriological Laboratory.

The Report of the Bacteriological Laboratory for the year is a very clear record of a remarkable volume of useful work on which I consider the Senior Bacteriologist may be congratulated. The production of vaccine was continued during the year. Further improvements were effected in the buildings used, the method of manufacture and the storage of the prepared lymph; over 300,000 doses were issued and the results were eminently satisfactory. The production of Plague vaccine has also been undertaken and should be the means of effecting very considerable economy in dealing with future outbreaks of that disease.

13. An Ice plant has been installed and, though not yet working as satisfactorily as could be desired, it represents a very marked improvement on previous conditions.

14. The researches, on which an account was given in last year's Report, with regard to the treatment of various ailments with autogenous *Bacillus Coli* Vaccines have been continued with very promising results.

15. I should particularly desire to bring to Your Grace's notice the very excellent and careful piece of work on Rat baits and Rat poisons, which was carried out by Dr. R. Hunter, a Medical Officer whom it was possible

insufficient opportunity before he left for England to indicate his views on the Report of the Land Tenure Commission, and, on the advice of the Executive Council, consideration of further applications for the conversion of agricultural into township leases has been deferred until his return, when it is expected that a settled line of policy towards such applications and the relative recommendation of the Land Tenure Commission will be framed.

12. Report of the Bacteriological Laboratory.

The Report of the Bacteriological Laboratory for the year is a very clear record of a remarkable volume of useful work on which I consider the Senior Bacteriologist may be congratulated. The production of vaccine was continued during the year. Further improvements were effected in the buildings used, the method of manufacture and the storage of the prepared lymph; over 300,000 doses were issued and the results were eminently satisfactory. The production of Prague vaccine has also been undertaken and should be the means of effecting very considerable economy in dealing with future outbreaks of that disease.

13. An ice plant has been installed and though not yet working as satisfactorily as could be desired, it represents a very marked improvement on previous conditions.

14. The researches on which an account was given in last year's Report, with regard to the treatment of various ailments with autogenous Bacillus Coli Vaccines have been continued with very promising results.

15. I should particularly desire to bring to Your Grace's notice the very excellent and careful piece of work on Rat baits and Rat poisons, which was carried out by Dr. R. Hunter, a Medical Officer whom it was possible

to second to the Laboratory for some months.

16. I am of opinion that the practice of seconding or posting Medical Officers to the Laboratory for short periods is a most valuable one, and I regret that with the reduced staff of Medical Officers now available, it will not be possible to continue it during the present year.

17. In addition to the production of plague and smallpox vaccine and the above researches several other researches have been carried out and a very large amount of routine work performed not only in connection with clinical pathological material, but also in connection with material such as milk and water specimens submitted by Medical Officers of Health. The record of the Differential Leucocyte Counts alone represents an important contribution to the material available for the study of this aspect of clinical pathology.

18. Lastly I have to record that very useful and important work was done in connection with the testing of the salt of Bismuth which was prepared at the Chemical Research Laboratory for the treatment of yaws.

19. In accordance with paragraph 5 of Your Grace's Confidential Circular (1) despatch of February 1921 last, I attach a Schedule showing what action has been taken on the recommendations made by the Principal Medical Officer in his 1921 Report.

20. I should be grateful if the Crown Agents be instructed as regards the printing of these Reports. At 275 copies of the combined Report (i.e. The Medical Report and the Bacteriological Report bound together), 275 copies of the Bacteriological Report as an separate volume required. The Crown Agents are in possession of the names of the Institutions and Savants to whom copies are to be sent.

sent direct from London.

*at*  
I have the honour to be,

My Lord Duke,

Your Grace's most devoted and  
most obedient servant,

*C. Boscawen*  
ACTING GOVERNOR.

SCHEDULE

650

**ACTION TAKEN ON RECOMMENDATIONS MADE IN  
THE ANNUAL MEDICAL REPORT OF THE COLONY &  
PROTECTORATE OF KENYA FOR THE YEAR 1921.**

<u>PAGE.</u>	<u>RECOMMENDATION.</u>	<u>ACTION.</u>
10	Erection of Ice Plant.	Erected.
10	Provision for Senior Grade of Sanitary Inspector inserted in 1922 Estimates.	Provision approved and appointment made.
12	District Surgeons to be appointed.	Appointments made at Eldoret & Lumbwa.
37	Government itself to undertake work in Native Reserves in preference to subsidizing missions.	Done.
40	Entomologist noted as necessary.	No appointment made.
58	Attention of Municipal Council to be directed to African Housing question.	A considerable amount of attention has been given to the matter and some work has been done.
76	Further collections of fleas required.	Numerous collections made.
85	Rodier system of Rat-Destruction to be tried in Mombasa.	It has not so far been possible to make this trial.
89	Pamphlet on Rats stated to be in course of preparation.	Prepared, published and issued.
107	Medical Officer for the Kikuyu District near Nairobi.	Appointment not possible on account of retrenchments.
138	Complete double bucket system of Conservancy to be established in Mombasa.	Done.
143	Production of Town-planning scheme for Mombasa to be proceeded with.	Considerable progress made.
158	New Native Hospital at Nairobi.	This has been supplied and is now in operation.

SCHEDULE.

650

**ACTION TAKEN ON RECOMMENDATIONS MADE IN  
THE ANNUAL MEDICAL REPORT OF THE COLONY &  
PROTECTORATE OF KENYA FOR THE YEAR 1921.**

<u>PAGE.</u>	<u>RECOMMENDATION.</u>	<u>ACTION.</u>
20	Erection of Ice Plant.	Erected.
30	Provision for Senior Grade of Sanitary Inspector inserted in 1922 Estimates.	Provision approved and appointment made.
32	District Surgeons to be appointed.	Appointments made at Eldoret & Jambwa.
37	Government itself to undertake work in Native Reserves in preference to subsidising missions.	Done.
40	Entomologist noted as necessary.	No appointment made.
58	Attention of Municipal Council to be directed to African Housing question.	A considerable amount of attention has been given to the matter and some work has been done.
76	Further collections of fleas required.	Numerous collections made.
85	Rodier system of Rat-Destruction to be tried in Mombasa.	It has not so far been possible to make this trial.
89	Pamphlet on Rats stated to be in course of preparation.	Prepared, published and issued.
107	Medical Officer for the Kikuyu District near Nairobi.	Appointment not possible on account of retrenchments.
138	Complete double bucket system of Conservancy to be established in Mombasa.	Done.
143	Production of Town-planning scheme for Mombasa to be proceeded with.	Considerable progress made.
158	New Native Hospital at Nairobi.	This has been supplied and is now in operation.

Sa. Kenya  
46531/23

651

Hand

C. D.  
R 25 OCT  
D 26

12

27 Oct 1923

DRAFT.

Answer  
29/10

Gentlemen,

our Agents

I am so to thank to you a  
copy of the Annual Medical Report

MINUTE.

on Kenya for the year 1923 - which

- Mr. Jewell 24 50 23
- Mr. ~~Deane~~ 24/10
- Mr. ~~Deane~~
- Mr. Deane
- Sir G. Grindle.
- Sir H. Read.
- Sir J. Macleod Smith
- Mr. Ormsby-Gore.
- Viscount of Devonshire.

is included the Annual Report -  
the Bacteriological Laboratory & 4

same provided to report that  
275  
you will have ~~275~~ copies of the

combined Report printed  
150 copies of the Bacteriological  
Report printed separately

~~As~~ Proof should be submitted  
to the Govt  
before printing as a check off  
2 In connection with the

Recise as to printing  
dup. and such

the contents of which will be sent to

you later.

(Signed) H J READ

5581



46531/23 Kenya

652

O. D.  
R 5-JUN.  
B 6 11

3963-24

7 June 1924

SLH

**DRAFT.**

Amount 49249/-

Kenya

Confidential

Sanitation  
MINUTE.

- Mr. Jewell 2. 6. 24
- Mr. Dwyer 3. 6. 24
- Mr. Robertson 3. 6. 24
- Mr. Davis.
- Sir G. Grindley.
- + Sir H. Reed.
- Sir J. Maderton S.M.S.
- Mr. Wood
- Mrs. Churchill

at once  
S. J. R.

I have the honour to acknowledge the receipt of Sir Charles (Bunny) Campbell's confidential despatch No. 46531 of the 30th July 1923, transmitting the Annual Medical Report of the Annual Report of the Bacteriological Laboratory for the year 1922. As it was further considered by the ~~Sanitation~~ <sup>Sanitation</sup> Committee at a recent meeting. The Committee highly commended the Report, which they regarded as most interesting. Their comments are embodied in the subsequent paragraphs of this despatch.

2. Annual Medical Report

Pages 19-23

Copy  
Report of Sanitation  
in library  
No. 46531

for C.A.M.S. Office

and syphilis (see 400 p. 1000) in the Central (Kampondo) District, <sup>inspite of</sup> ~~and the way~~ <sup>?</sup>  
 low incidence of syphilis (1.1%) among the adult population. <sup>Referring to the subject of</sup> ~~inspite of~~ <sup>explained to the Ctee</sup> ~~inspite of~~ <sup>stated that it was not</sup> ~~inspite of~~ <sup>towards</sup> ~~inspite of~~ <sup>wellfare,</sup>  
 the Ctee would take any steps towards the training of native women as midwives, ~~as there~~ <sup>as there</sup>  
 as no suitable class from which pupils could be recruited. ~~Having had some experience with~~  
 the training of African nurses.

The Ctee asked that among the 24 ~~Among the~~ <sup>Among the</sup> ~~system~~ <sup>system</sup> ~~involving~~ <sup>involving</sup> ~~of~~ <sup>of</sup> ~~European~~ <sup>European ~~officials~~ <sup>officials</sup> ~~the~~ <sup>the</sup> ~~following~~ <sup>following</sup> ~~occur:~~ <sup>occur:</sup>  
 Chronic Occipital Headach 1. <sup>Syphilis</sup> 3.  
 Nerve-sthenia 2. Insomnia 1. <sup>They thought it?</sup> ~~It would be~~ <sup>might have been</sup>  
 It is possible that all these seem ~~cases~~ <sup>cases</sup> ~~of~~ <sup>of</sup> ~~varieties~~ <sup>varieties</sup>  
 of neurasthenia, which in that case, is an extremely ~~common~~ <sup>common</sup> ~~cause~~ <sup>cause</sup> ~~of~~ <sup>of</sup> ~~invalidity~~ <sup>invalidity</sup>. In similar ~~circumstances~~ <sup>circumstances</sup> ~~in~~ <sup>in</sup> ~~Uganda~~ <sup>Uganda</sup> ~~the~~ <sup>the</sup> ~~request~~ <sup>request</sup> ~~for~~ <sup>for</sup> ~~the~~ <sup>the</sup> ~~information~~ <sup>information</sup> "especially as regards the relation of this affection to purely climatic conditions, to mental strain in certain cases, or to its association with other diseases or conditions of ill health" I shall be glad to receive further information in the present case, in similar ~~cases~~ <sup>cases</sup> ~~of~~ <sup>of</sup> ~~the~~ <sup>the</sup> ~~same~~ <sup>same</sup> ~~kind~~ <sup>kind</sup> ~~as~~ <sup>as</sup> ~~above~~ <sup>above</sup> ~~mentioned~~ <sup>mentioned</sup> ~~and~~ <sup>and</sup> ~~to~~ <sup>to</sup> ~~be~~ <sup>to</sup> ~~sent~~ <sup>sent</sup> ~~to~~ <sup>to</sup> ~~you~~ <sup>you</sup> ~~as~~ <sup>as</sup> ~~soon~~ <sup>as</sup> ~~as~~ <sup>as</sup> ~~possible~~ <sup>possible</sup> ~~and~~ <sup>and</sup> ~~to~~ <sup>to</sup> ~~be~~ <sup>to</sup> ~~sent~~ <sup>sent</sup> ~~to~~ <sup>to</sup> ~~you~~ <sup>you</sup> ~~as~~ <sup>as</sup> ~~soon~~ <sup>as</sup> ~~as~~ <sup>as</sup> ~~possible~~ <sup>possible</sup> ~~and~~ <sup>and</sup> ~~to~~ <sup>to</sup> ~~be~~ <sup>to</sup> ~~sent~~ <sup>sent</sup> ~~to~~ <sup>to</sup> ~~you~~ <sup>you</sup> ~~as~~ <sup>as</sup> ~~soon~~ <sup>as</sup> ~~as~~ <sup>as</sup> ~~possible~~ <sup>possible</sup> ~~and~~ <sup>and</sup> ~~to~~ <sup>to</sup> ~~be~~ <sup>to</sup> ~~sent~~ <sup>sent</sup> ~~to~~ <sup>to</sup> ~~you~~ <sup>you</sup> ~~as~~ <sup>as</sup> ~~soon~~ <sup>as</sup> ~~as~~ <sup>as</sup> ~~possible~~ <sup>possible</sup> ~~and~~ <sup>and</sup> ~~to~~ <sup>to</sup> ~~be~~ <sup>to</sup> ~~sent~~ <sup>sent</sup> ~~to~~ <sup>to</sup> ~~you~~ <sup>you</sup> ~~as~~ <sup>as</sup> ~~soon~~ <sup>as</sup> ~~as~~ <sup>as</sup> ~~possible~~ <sup>possible</sup> ~~and~~ <sup>and</sup> ~~to~~ <sup>to</sup> ~~be~~ <sup>to</sup> ~~sent~~ <sup>sent</sup> ~~to~~ <sup>to</sup> ~~you~~ <sup>you</sup> ~~as~~ <sup>as</sup> ~~soon~~ <sup>as</sup> ~~as~~ <sup>as</sup> ~~possible~~ <sup>possible</sup> ~~and~~ <sup>and</sup> ~~to~~ <sup>to</sup> ~~be~~ <sup>to</sup> ~~sent~~ <sup>sent</sup> ~~to~~ <sup>to</sup> ~~you~~ <sup>you</sup> ~~as~~ <sup>as</sup> ~~soon~~ <sup>as</sup> ~~as~~ <sup>as</sup> ~~possible~~ <sup>possible</sup> ~~and~~ <sup>and</sup> ~~to~~ <sup>to</sup> ~~be~~ <sup>to</sup> ~~sent~~ <sup>sent</sup> ~~to~~ <sup>to</sup> ~~you~~ <sup>you</sup> ~~as~~ <sup>as</sup> ~~soon~~ <sup>as</sup> ~~as~~ <sup>as</sup> ~~possible~~ <sup>possible</sup> ~~and~~ <sup>and</sup> ~~to~~ <sup>to</sup> ~~be~~ <sup>to</sup> ~~sent~~ <sup>sent</sup> ~~to~~ <sup>to</sup> ~~you~~ <sup>you</sup> ~~as~~ <sup>as</sup> ~~soon~~ <sup>as</sup> ~~as~~ <sup>as</sup> ~~possible~~ <sup>possible</sup> ~~and~~ <sup>and</sup> ~~to~~ <sup>to</sup> ~~be~~ <sup>to</sup> ~~sent~~ <sup>sent</sup> ~~to~~ <sup>to</sup> ~~you~~ <sup>you</sup> ~~as~~ <sup>as</sup> ~~soon~~ <sup>as</sup> ~~as~~ <sup>as</sup> ~~possible~~ <sup>possible</sup> ~~and~~ <sup>and</sup> ~~to~~ <sup>to</sup> ~~be~~ <sup>to</sup> ~~sent~~ <sup>sent</sup> ~~to~~ <sup>to</sup> ~~you~~ <sup>you</sup> ~~as~~ <sup>as</sup> ~~soon~~ <sup>as</sup> ~~as~~ <sup>as</sup> ~~possible~~ <sup>possible</sup> ~~and~~ <sup>and</sup> ~~to~~ <sup>to</sup> ~~be~~ <sup>to</sup> ~~sent~~ <sup>sent</sup> ~~to~~ <sup>to</sup> ~~you~~ <sup>you</sup> ~~as~~ <sup>as</sup> ~~soon~~ <sup>as</sup> ~~as~~ <sup>as</sup> ~~possible~~ <sup>possible</sup> ~~and~~ <sup>and</sup> ~~to~~ <sup>to</sup> ~~be~~ <sup>to</sup> ~~sent~~ <sup>sent</sup> ~~to~~ <sup>to</sup> ~~you~~ <sup>you</sup> ~~as~~ <sup>as</sup> ~~soon~~ <sup>as</sup> ~~as~~ <sup>as</sup> ~~possible~~ <sup>possible</sup> ~~and~~ <sup>and</sup> ~~to~~ <sup>to</sup> ~~be~~ <sup>to</sup> ~~sent~~ <sup>sent</sup> ~~to~~ <sup>to</sup> ~~you~~ <sup>you</sup> ~~as~~ <sup>as</sup> ~~soon~~ <sup>as</sup> ~~as~~ <sup>as</sup> ~~possible~~ <sup>possible</sup> ~~and~~ <sup>and</sup> ~~to~~ <sup>to</sup> ~~be~~ <sup>to</sup> ~~sent~~ <sup>sent</sup> ~~to~~ <sup>to</sup> ~~you~~ <sup>you</sup> ~~as~~ <sup>as</sup> ~~soon~~ <sup>as</sup> ~~as~~ <sup>as</sup> ~~possible~~ <sup>possible</sup> ~~and~~ <sup>and</sup> ~~to~~ <sup>to</sup> ~~be~~ <sup>to</sup> ~~sent~~ <sup>sent</sup> ~~to~~ <sup>to</sup> ~~you~~ <sup>you</sup> ~~as~~ <sup>as</sup> ~~soon~~ <sup>as</sup> ~~as~~ <sup>as</sup> ~~possible~~ <sup>possible</sup> ~~and~~ <sup>and</sup> ~~to~~ <sup>to</sup> ~~be~~ <sup>to</sup> ~~sent~~ <sup>sent</sup> ~~to~~ <sup>to</sup> ~~you~~ <sup>you</sup> ~~as~~ <sup>as</sup> ~~soon~~ <sup>as</sup> ~~as~~ <sup>as</sup> ~~possible~~ <sup>possible</sup> ~~and~~ <sup>and</sup> ~~to~~ <sup>to</sup> ~~be~~ <sup>to</sup> ~~sent~~ <sup>sent</sup> ~~to~~ <sup>to</sup> ~~you~~ <sup>you</sup> ~~as~~ <sup>as</sup> ~~soon~~ <sup>as</sup> ~~as~~ <sup>as</sup> ~~possible~~ <sup>possible</sup> ~~and~~ <sup>and</sup> ~~to~~ <sup>to</sup> ~~be~~ <sup>to</sup> ~~sent~~ <sup>sent</sup> ~~to~~ <sup>to</sup> ~~you~~ <sup>you</sup> ~~as~~ <sup>as</sup> ~~soon~~ <sup>as</sup> ~~as~~ <sup>as</sup> ~~possible~~ <sup>possible</sup> ~~and~~ <sup>and</sup> ~~to~~ <sup>to</sup> ~~be~~ <sup>to</sup> ~~sent~~ <sup>sent</sup> ~~to~~ <sup>to</sup> ~~you~~ <sup>you</sup> ~~as~~ <sup>as</sup> ~~soon~~ <sup>as</sup> ~~as~~ <sup>as</sup> ~~possible~~ <sup>possible</sup> ~~and~~ <sup>and</sup> ~~to~~ <sup>to</sup> ~~be~~ <sup>to</sup> ~~sent~~ <sup>sent</sup> ~~to~~ <sup>to</sup> ~~you~~ <sup>you</sup> ~~as~~ <sup>as</sup> ~~soon~~ <sup>as</sup> ~~as~~ <sup>as</sup> ~~possible~~ <sup>possible</sup> ~~and~~ <sup>and</sup> ~~to~~ <sup>to</sup> ~~be~~ <sup>to</sup> ~~sent~~ <sup>sent</sup> ~~to~~ <sup>to</sup> ~~you~~ <sup>you</sup> ~~as~~ <sup>as</sup> ~~soon~~ <sup>as</sup> ~~as~~ <sup>as</sup> ~~possible~~ <sup>possible</sup> ~~and~~ <sup>and</sup> ~~to~~ <sup>to</sup> ~~be~~ <sup>to</sup> ~~sent~~ <sup>sent</sup> ~~to~~ <sup>to</sup> ~~you~~ <sup>you</sup> ~~as~~ <sup>as</sup> ~~soon~~ <sup>as</sup> ~~as~~ <sup>as</sup> ~~possible~~ <sup>possible</sup> ~~and~~ <sup>and</sup> ~~to~~ <sup>to</sup> ~~be~~ <sup>to</sup> ~~sent~~ <sup>sent</sup> ~~to~~ <sup>to</sup> ~~you~~ <sup>you</sup> ~~as~~ <sup>as</sup> ~~soon~~ <sup>as</sup> ~~as~~ <sup>as</sup> ~~possible~~ <sup>possible</sup> ~~and~~ <sup>and</sup> ~~to~~ <sup>to</sup> ~~be~~ <sup>to</sup> ~~sent~~ <sup>sent</sup> ~~to~~ <sup>to</sup> ~~you~~ <sup>you</sup> ~~as~~ <sup>as</sup> ~~soon~~ <sup>as</sup> ~~as~~ <sup>as</sup> ~~possible~~ <sup>possible</sup> ~~and~~ <sup>and</sup> ~~to~~ <sup>to</sup> ~~be~~ <sup>to</sup> ~~sent~~ <sup>sent</sup> ~~to~~ <sup>to</sup> ~~you~~ <sup>you</sup> ~~as~~ <sup>as</sup> ~~soon~~ <sup>as</sup> ~~as~~ <sup>as</sup> ~~possible~~ <sup>possible</sup> ~~and~~ <sup>and</sup> ~~to~~ <sup>to</sup> ~~be~~ <sup>to</sup> ~~sent~~ <sup>sent</sup> ~~to~~ <sup>to</sup> ~~you~~ <sup>you</sup> ~~as~~ <sup>as</sup> ~~soon~~ <sup>as</sup> ~~as~~ <sup>as</sup> ~~possible~~ <sup>possible</sup> ~~and~~ <sup>and</sup> ~~to~~ <sup>to</sup> ~~be~~ <sup>to</sup> ~~sent~~ <sup>sent</sup> ~~to~~ <sup>to</sup> ~~you~~ <sup>you</sup> ~~as~~ <sup>as</sup> ~~soon~~ <sup>as</sup> ~~as~~ <sup>as</sup> ~~possible~~ <sup>possible</sup> ~~and~~ <sup>and</sup> ~~to~~ <sup>to</sup> ~~be~~ <sup>to</sup> ~~sent~~ <sup>sent</sup> ~~to~~ <sup>to</sup> ~~you~~ <sup>you</sup> ~~as~~ <sup>as</sup> ~~soon~~ <sup>as</sup> ~~as~~ <sup>as</sup> ~~possible~~ <sup>possible</sup> ~~and~~ <sup>and</sup> ~~to~~ <sup>to</sup> ~~be~~ <sup>to</sup> ~~sent~~ <sup>sent</sup> ~~to~~ <sup>to</sup> ~~you~~ <sup>you</sup> ~~as~~ <sup>as</sup> ~~soon~~ <sup>as</sup> ~~as~~ <sup>as</sup> ~~possible~~ <sup>possible</sup> ~~and~~ <sup>and</sup> ~~to~~ <sup>to</sup> ~~be~~ <sup>to</sup> ~~sent~~ <sup>sent</sup> ~~to~~ <sup>to</sup> ~~you~~ <sup>you</sup> ~~as~~ <sup>as</sup> ~~soon~~ <sup>as</sup> ~~as~~ <sup>as</sup> ~~possible~~ <sup>possible</sup> ~~and~~ <sup>and</sup> ~~to~~ <sup>to</sup> ~~be~~ <sup>to</sup> ~~sent~~ <sup>sent</sup> ~~to~~ <sup>to</sup> ~~you~~ <sup>you</sup> ~~as~~ <sup>as</sup> ~~soon~~ <sup>as</sup> ~~as~~ <sup>as</sup> ~~possible~~ <sup>possible</sup> ~~and~~ <sup>and</sup> ~~to~~ <sup>to</sup> ~~be~~ <sup>to</sup> ~~sent~~ <sup>sent</sup> ~~to~~ <sup>to</sup> ~~you~~ <sup>you</sup> ~~as~~ <sup>as</sup> ~~soon~~ <sup>as</sup> ~~as~~ <sup>as</sup> ~~possible~~ <sup>possible</sup> ~~and~~ <sup>and</sup> ~~to~~ <sup>to</sup> ~~be~~ <sup>to</sup> ~~sent~~ <sup>sent</sup> ~~to~~ <sup>to</sup> ~~you~~ <sup>you</sup> ~~as~~ <sup>as</sup> ~~soon~~ <sup>as</sup> ~~as~~ <sup>as</sup> ~~possible~~ <sup>possible</sup> ~~and~~ <sup>and</sup> ~~to~~ <sup>to</sup> ~~be~~ <sup>to</sup> ~~sent~~ <sup>sent</sup> ~~to~~ <sup>to</sup> ~~you~~ <sup>you</sup> ~~as~~ <sup>as</sup> ~~soon~~ <sup>as</sup> ~~as~~ <sup>as</sup> ~~possible~~ <sup>possible</sup> ~~and~~ <sup>and</sup> ~~to~~ <sup>to</sup> ~~be~~ <sup>to</sup> ~~sent~~ <sup>sent</sup> ~~to~~ <sup>to</sup> ~~you~~ <sup>you</sup> ~~as~~ <sup>as</sup> ~~soon~~ <sup>as</sup> ~~as~~ <sup>as</sup> ~~possible~~ <sup>possible</sup> ~~and~~ <sup>and</sup> ~~to~~ <sup>to</sup> ~~be~~ <sup>to</sup> ~~sent~~ <sup>sent</sup> ~~to~~ <sup>to</sup> ~~you~~ <sup>you</sup> ~~as~~ <sup>as</sup> ~~soon~~ <sup>as</sup> ~~as~~ <sup>as</sup> ~~possible~~ <sup>possible</sup> ~~and~~ <sup>and</sup> ~~to~~ <sup>to</sup> ~~be~~ <sup>to</sup> ~~sent~~ <sup>sent</sup> ~~to~~ <sup>to</sup> ~~you~~ <sup>you</sup> ~~as~~ <sup>as</sup> ~~soon~~ <sup>as</sup> ~~as~~ <sup>as</sup> ~~possible~~ <sup>possible</sup> ~~and~~ <sup>and</sup> ~~to~~ <sup>to</sup> ~~be~~ <sup>to</sup> ~~sent~~ <sup>sent</sup> ~~to~~ <sup>to</sup> ~~you~~ <sup>you</sup> ~~as~~ <sup>as</sup> ~~soon~~ <sup>as</sup> ~~as~~ <sup>as</sup> ~~possible~~ <sup>possible</sup> ~~and~~ <sup>and</sup> ~~to~~ <sup>to</sup> ~~be~~ <sup>to</sup> ~~sent~~ <sup>sent</sup> ~~to~~ <sup>to</sup> ~~you~~ <sup>you</sup> ~~as~~ <sup>as</sup> ~~soon~~ <sup>as</sup> ~~as~~ <sup>as</sup> ~~possible~~ <sup>possible</sup> ~~and~~ <sup>and</sup> ~~to~~ <sup>to</sup> ~~be~~ <sup>to</sup> ~~sent~~ <sup>sent</sup> ~~to~~ <sup>to</sup> ~~you~~ <sup>you</sup> ~~as~~ <sup>as</sup> ~~soon~~ <sup>as</sup> ~~as~~ <sup>as</sup> ~~possible~~ <sup>possible</sup> ~~and~~ <sup>and</sup> ~~to~~ <sup>to</sup> ~~be~~ <sup>to</sup> ~~sent~~ <sup>sent</sup> ~~to~~ <sup>to</sup> ~~you~~ <sup>you</sup> ~~as~~ <sup>as</sup> ~~soon~~ <sup>as</sup> ~~as~~ <sup>as</sup> ~~possible~~ <sup>possible</sup> ~~and~~ <sup>and</sup> ~~to~~ <sup>to</sup> ~~be~~ <sup>to</sup> ~~sent~~ <sup>sent</sup> ~~to~~ <sup>to</sup> ~~you~~ <sup>you</sup> ~~as~~ <sup>as</sup> ~~soon~~ <sup>as</sup> ~~as~~ <sup>as</sup> ~~possible~~ <sup>possible</sup> ~~and~~ <sup>and</sup> ~~to~~ <sup>to</sup> ~~be~~ <sup>to</sup> ~~sent~~ <sup>sent</sup> ~~to~~ <sup>to</sup> ~~you~~ <sup>you</sup> ~~as~~ <sup>as</sup> ~~soon~~ <sup>as</sup> ~~as~~ <sup>as</sup> ~~possible~~ <sup>possible</sup> ~~and~~ <sup>and</sup> ~~to~~ <sup>to</sup> ~~be~~ <sup>to</sup> ~~sent~~ <sup>sent</sup> ~~to~~ <sup>to</sup> ~~you~~ <sup>you</sup> ~~as~~ <sup>as</sup> ~~soon~~ <sup>as</sup> ~~as~~ <sup>as</sup> ~~possible~~ <sup>possible</sup> ~~and~~ <sup>and</sup> ~~to~~ <sup>to</sup> ~~be~~ <sup>to</sup> ~~sent~~ <sup>sent</sup> ~~to~~ <sup>to</sup> ~~you~~ <sup>you</sup> ~~as~~ <sup>as</sup> ~~soon~~ <sup>as</sup> ~~as~~ <sup>as</sup> ~~possible~~ <sup>possible</sup> ~~and~~ <sup>and</sup> ~~to~~ <sup>to</sup> ~~be~~ <sup>to</sup> ~~sent~~ <sup>sent</sup> ~~to~~ <sup>to</sup> ~~you~~ <sup>you</sup> ~~as~~ <sup>as</sup> ~~soon~~ <sup>as</sup> ~~as~~ <sup>as</sup> ~~possible~~ <sup>possible</sup> ~~and~~ <sup>and</sup> ~~to~~ <sup>to</sup> ~~be~~ <sup>to</sup> ~~sent~~ <sup>sent</sup> ~~to~~ <sup>to</sup> ~~you~~ <sup>you</sup> ~~as~~ <sup>as</sup> ~~soon~~ <sup>as</sup> ~~as~~ <sup>as</sup> ~~possible~~ <sup>possible</sup> ~~and~~ <sup>and</sup> ~~to~~ <sup>to</sup> ~~be~~ <sup>to</sup> ~~sent~~ <sup>sent</sup> ~~to~~ <sup>to</sup> ~~you~~ <sup>you</sup> ~~as~~ <sup>as</sup> ~~soon~~ <sup>as</sup> ~~as~~ <sup>as</sup> ~~possible~~ <sup>possible</sup> ~~and~~ <sup>and</sup> ~~to~~ <sup>to</sup> ~~be~~ <sup>to</sup> ~~sent~~ <sup>sent</sup> ~~to~~ <sup>to</sup> ~~you~~ <sup>you</sup> ~~as~~ <sup>as</sup> ~~soon~~ <sup>as</sup> ~~as~~ <sup>as</sup> ~~possible~~ <sup>possible</sup> ~~and~~ <sup>and</sup> ~~to~~ <sup>to</sup> ~~be~~ <sup>to</sup> ~~sent~~ <sup>sent</sup> ~~to~~ <sup>to</sup> ~~you~~ <sup>you</sup> ~~as~~ <sup>as</sup> ~~soon~~ <sup>as</sup> ~~as~~ <sup>as</sup> ~~possible~~ <sup>possible</sup> ~~and~~ <sup>and</sup> ~~to~~ <sup>to</sup> ~~be~~ <sup>to</sup> ~~sent~~ <sup>sent</sup> ~~to~~ <sup>to</sup> ~~you~~ <sup>you</sup> ~~as~~ <sup>as</sup> ~~soon~~ <sup>as</sup> ~~as~~ <sup>as</sup> ~~possible~~ <sup>possible</sup> ~~and~~ <sup>and</sup> ~~to~~ <sup>to</sup> ~~be~~ <sup>to</sup> ~~sent~~ <sup>sent</sup> ~~to~~ <sup>to</sup> ~~you~~ <sup>you</sup> ~~as~~ <sup>as</sup> ~~soon~~ <sup>as</sup> ~~as~~ <sup>as</sup> ~~possible~~ <sup>possible</sup> ~~and~~ <sup>and</sup> ~~to~~ <sup>to</sup> ~~be~~ <sup>to</sup> ~~sent~~ <sup>sent</sup> ~~to~~ <sup>to</sup> ~~you~~ <sup>you</sup> ~~as~~ <sup>as</sup> ~~soon~~ <sup>as</sup> ~~as~~ <sup>as</sup> ~~possible~~ <sup>possible</sup> ~~and~~ <sup>and</sup> ~~to~~ <sup>to</sup> ~~be~~ <sup>to</sup> ~~sent~~ <sup>sent</sup> ~~to~~ <sup>to</sup> ~~you~~ <sup>you</sup> ~~as~~ <sup>as</sup> ~~soon~~ <sup>as</sup> ~~as~~ <sup>as</sup> ~~possible~~ <sup>possible</sup> ~~and~~ <sup>and</sup> ~~to~~ <sup>to</sup> ~~be~~ <sup>to</sup> ~~sent~~ <sup>sent</sup> ~~to~~ <sup>to</sup> ~~you~~ <sup>you</sup> ~~as~~ <sup>as</sup> ~~soon~~ <sup>as</sup> ~~as~~ <sup>as</sup> ~~possible~~ <sup>possible</sup> ~~and~~ <sup>and</sup> ~~to~~ <sup>to</sup> ~~be~~ <sup>to</sup> ~~sent~~ <sup>sent</sup> ~~to~~ <sup>to</sup> ~~you~~ <sup>you</sup> ~~as~~ <sup>as</sup> ~~soon~~ <sup>as</sup> ~~as~~ <sup>as</sup> ~~possible~~ <sup>possible</sup> ~~and~~ <sup>and</sup> ~~to~~ <sup>to</sup> ~~be~~ <sup>to</sup> ~~sent~~ <sup>sent</sup> ~~to~~ <sup>to</sup> ~~you~~ <sup>you</sup> ~~as~~ <sup>as</sup> ~~soon~~ <sup>as</sup> ~~as~~ <sup>as</sup> ~~possible~~ <sup>possible</sup> ~~and~~ <sup>and</sup> ~~to~~ <sup>to</sup> ~~be~~ <sup>to</sup> ~~sent~~ <sup>sent</sup> ~~to~~ <sup>to</sup> ~~you~~ <sup>you</sup> ~~as~~ <sup>as</sup> ~~soon~~ <sup>as</sup> ~~as~~ <sup>as</sup> ~~possible~~ <sup>possible</sup> ~~and~~ <sup>and</sup> ~~to~~ <sup>to</sup> ~~be~~ <sup>to</sup> ~~sent~~ <sup>sent</sup> ~~to~~ <sup>to</sup> ~~you~~ <sup>you</sup> ~~as~~ <sup>as</sup> ~~soon~~ <sup>as</sup> ~~as~~ <sup>as</sup> ~~possible~~ <sup>possible</sup> ~~and~~ <sup>and</sup> ~~to~~ <sup>to</sup> ~~be~~ <sup>to</sup> ~~sent~~ <sup>sent</sup> ~~to~~ <sup>to</sup> ~~you~~ <sup>you</sup> ~~as~~ <sup>as</sup> ~~soon~~ <sup>as</sup> ~~as~~ <sup>as</sup> ~~possible~~ <sup>possible</sup> ~~and~~ <sup>and</sup> ~~to~~ <sup>to</sup> ~~be~~ <sup>to</sup> ~~sent~~ <sup>sent</sup> ~~to~~ <sup>to</sup> ~~you~~ <sup>you</sup> ~~as~~ <sup>as</sup> ~~soon~~ <sup>as</sup> ~~as~~ <sup>as</sup> ~~possible~~ <sup>possible</sup> ~~and~~ <sup>and</sup> ~~to~~ <sup>to</sup> ~~be~~ <sup>to</sup> ~~sent~~ <sup>sent</sup> ~~to~~ <sup>to</sup> ~~you~~ <sup>you</sup> ~~as~~ <sup>as</sup> ~~soon~~ <sup>as</sup> ~~as~~ <sup>as</sup> ~~possible~~ <sup>possible</sup> ~~and~~ <sup>and</sup> ~~to~~ <sup>to</sup> ~~be~~ <sup>to</sup> ~~sent~~ <sup>sent</sup> ~~to~~ <sup>to</sup> ~~you~~ <sup>you</sup> ~~as~~ <sup>as</sup> ~~soon~~ <sup>as</sup> ~~as~~ <sup>as</sup> ~~possible~~ <sup>possible</sup> ~~and~~ <sup>and</sup> ~~to~~ <sup>to</sup> ~~be~~ <sup>to</sup> ~~sent~~ <sup>sent</sup> ~~to~~ <sup>to</sup> ~~you~~ <sup>you</sup> ~~as~~ <sup>as</sup> ~~soon~~ <sup>as</sup> ~~as~~ <sup>as</sup> ~~possible~~ <sup>possible</sup> ~~and~~ <sup>and</sup> ~~to~~ <sup>to</sup> ~~be~~ <sup>to</sup> ~~sent~~ <sup>sent</sup> ~~to~~ <sup>to</sup> ~~you~~ <sup>you</sup> ~~as~~ <sup>as</sup> ~~soon~~ <sup>as</sup> ~~as~~ <sup>as</sup> ~~possible~~ <sup>possible</sup> ~~and~~ <sup>and</sup> ~~to~~ <sup>to</sup> ~~be~~ <sup>to</sup> ~~sent~~ <sup>sent</sup> ~~to~~ <sup>to</sup> ~~you~~ <sup>you</sup> ~~as~~ <sup>as</sup> ~~soon~~ <sup>as</sup> ~~as~~ <sup>as</sup> ~~possible~~ <sup>possible</sup> ~~and~~ <sup>and</sup> ~~to~~ <sup>to</sup> ~~be~~ <sup>to</sup> ~~sent~~ <sup>sent</sup> ~~to~~ <sup>to</sup> ~~you~~ <sup>you</sup> ~~as~~ <sup>as</sup> ~~soon~~ <sup>as</sup> ~~as~~ <sup>as</sup> ~~possible~~ <sup>possible</sup> ~~and~~ <sup>and</sup> ~~to~~ <sup>to</sup> ~~be~~ <sup>to</sup> ~~sent~~ <sup>sent</sup> ~~to~~ <sup>to</sup> ~~you~~ <sup>you</sup> ~~as~~ <sup>as</sup> ~~soon~~ <sup>as</sup> ~~as~~ <sup>as</sup> ~~possible~~ <sup>possible</sup> ~~and~~ <sup>and</sup> ~~to~~ <sup>to</sup> ~~be~~ <sup>to</sup> ~~sent~~ <sup>sent</sup> ~~to~~ <sup>to</sup> ~~you~~ <sup>you</sup> ~~as~~ <sup>as</sup> ~~soon~~ <sup>as</sup> ~~as~~ <sup>as</sup> ~~possible~~ <sup>possible</sup> ~~and~~ <sup>and</sup> ~~to~~ <sup>to</sup> ~~be~~ <sup>to</sup> ~~sent~~ <sup>sent</sup> ~~to~~ <sup>to</sup> ~~you~~ <sup>you</sup> ~~as~~ <sup>as</sup> ~~soon~~ <sup>as</sup> ~~as~~ <sup>as</sup> ~~possible~~ <sup>possible</sup> ~~and~~ <sup>and</sup> ~~to~~ <sup>to</sup> ~~be~~ <sup>to</sup> ~~sent~~ <sup>sent</sup> ~~to~~ <sup>to</sup> ~~you~~ <sup>you</sup> ~~as~~ <sup>as</sup> ~~soon~~ <sup>as</sup> ~~as~~ <sup>as</sup> ~~possible~~ <sup>possible</sup> ~~and~~ <sup>and</sup> ~~to~~ <sup>to</sup> ~~be~~ <sup>to</sup> ~~sent~~ <sup>sent</sup> ~~to~~ <sup>to</sup> ~~you~~ <sup>you</sup> ~~as~~ <sup>as</sup> ~~soon~~ <sup>as</sup> ~~as~~ <sup>as</sup> ~~possible~~ <sup>possible</sup> ~~and~~ <sup>and</sup> ~~to~~ <sup>to</sup> ~~be~~ <sup>to</sup> ~~sent~~ <sup>sent</sup> ~~to~~ <sup>to</sup> ~~you~~ <sup>you</sup> ~~as~~ <sup>as</sup> ~~soon~~ <sup>as</sup> ~~as~~ <sup>as</sup> ~~possible~~ <sup>possible</sup> ~~and~~ <sup>and</sup> ~~to~~ <sup>to</sup> ~~be~~ <sup>to</sup> ~~sent~~ <sup>sent</sup> ~~to~~ <sup>to</sup> ~~you~~ <sup>you</sup> ~~as~~ <sup>as</sup> ~~soon~~ <sup>as</sup> ~~as~~ <sup>as</sup> ~~possible~~ <sup>possible</sup> ~~and~~ <sup>and</sup> ~~to~~ <sup>to</sup> ~~be~~ <sup>to</sup> ~~sent~~ <sup>sent</sup> ~~to~~ <sup>to</sup> ~~you~~ <sup>you</sup> ~~as~~ <sup>as</sup> ~~soon~~ <sup>as</sup> ~~as~~ <sup>as</sup> ~~possible~~ <sup>possible</sup> ~~and~~ <sup>and</sup> ~~to~~ <sup>to</sup> ~~be~~ <sup>to</sup> ~~sent~~ <sup>sent</sup> ~~to~~ <sup>to</sup> ~~you~~ <sup>you</sup> ~~as~~ <sup>as</sup> ~~soon~~ <sup>as</sup> ~~as~~ <sup>as</sup> ~~possible~~ <sup>possible</sup> ~~and~~ <sup>and</sup> ~~to~~ <sup>to</sup> ~~be~~ <sup>to</sup> ~~sent~~ <sup>sent</sup> ~~to~~ <sup>to</sup> ~~you~~ <sup>you</sup> ~~as~~ <sup>as</sup> ~~soon~~ <sup>as</sup> ~~as~~ <sup>as</sup> ~~possible~~ <sup>possible</sup> ~~and~~ <sup>and</sup> ~~to~~ <sup>to</sup> ~~be~~ <sup>to</sup> ~~sent~~ <sup>sent</sup> ~~to~~ <sup>to</sup> ~~you~~ <sup>you</sup> ~~as~~ <sup>as</sup> ~~soon~~ <sup>as</sup> ~~as~~ <sup>as</sup> ~~possible~~ <sup>possible</sup> ~~and~~ <sup>and</sup> ~~to~~ <sup>to</sup> ~~be~~ <sup>to</sup> ~~sent~~ <sup>sent</sup> ~~to~~ <sup>to</sup> ~~you~~ <sup>you</sup> ~~as~~ <sup>as</sup> ~~soon~~ <sup>as</sup> ~~as~~ <sup>as</sup> ~~possible~~ <sup>possible</sup> ~~and~~ <sup>and</sup> ~~to~~ <sup>to</sup> ~~be~~ <sup>to</sup> ~~sent~~ <sup>sent</sup> ~~to~~ <sup>to</sup> ~~you~~ <sup>you</sup> ~~as~~ <sup>as</sup> ~~soon~~ <sup>as</sup> ~~as~~ <sup>as</sup> ~~possible~~ <sup>possible</sup> ~~and~~ <sup>and</sup> ~~to~~ <sup>to</sup> ~~be~~ <sup>to</sup> ~~sent~~ <sup>sent</sup> ~~to~~ <sup>to</sup> ~~you~~ <sup>you</sup> ~~as~~ <sup>as</sup> ~~soon~~ <sup>as</sup> ~~as~~</sup>

to a... of...  
with plots...  
Maurice Island (page 80)  
the absence of adequate legislative...  
which... forms a... state of

the... should be... at the...  
The... pointed out that...  
of... of suitable action is taken

It is... that the present, unsatisfactory  
... will become worse. The...  
...  
apply... to... in...  
I trust that you will give  
as described in page 72, etc. is...  
... that the... of the...  
... your consideration. To these matters you must...  
The... in...  
described in the... paragraph... page 80  
... for serious...  
Page 85 The... were glad to learn of the...  
The... useful work at... carried out at...  
... with... & child  
welfare... with satisfaction  
Page 88 The... urged  
It is... to... upon the  
necessity... precautionary measures  
against the landing of rats from ships  
berthed at the piers at...  
Attention was drawn to the high  
page 84... of 39 deaths at the...  
... out of 68 patients treated...  
... shall be glad to learn whether

the area of conditions of  
with plots overcrowded with buildings  
Mombasa Island (page 80)  
The absence of adequate legislation to prevent  
such evil, together forms a unpleasant state of  
affairs which should be remedied at the earliest possible  
opportunity. The Clerk pointed out that the  
present arrangements of suitable action in taking

It is essential that the present unsatisfactory  
conditions will become worse. These remarks  
apply generally to the Mombasa housing in general  
I trust that you will give  
an immediate consideration in future, and in the  
meantime that the Board of the Municipal

authorities give consideration to these matters of our most careful attention  
The conditions in Mombasa Island in cooperation with  
the Municipal authorities  
described in the second paragraph on page 80  
calls for serious consideration.

The Clerk was glad to hear of the  
Page 85 The very useful work at Mombasa carried out at M.  
in connection with maternity & child  
welfare, carried with satisfaction

Page 88 The Clerk urged  
It is necessary to insist upon the  
necessity for action precautionary measures  
against the landing of rats from ships  
beached at the piers at Mombasa

Page 94 Attention was drawn to the high  
total of 39 deaths at the Lunatic  
Asylum out of 168 patients treated, or actually  
It would be glad to learn whether

epidemic disease is unfavorable  
sanitary conditions contributed to the  
high mortality 656

Page 115  
The tables of deaths & diseases  
I observe from Tables VI to VIII  
that the classification adopted in the  
incidence of disease does not show  
any reliable figures for the  
Indian communities which are  
apparently grouped with the  
Section "General Native Population"  
I hope that it will be found  
possible in future to show general  
figures as the relative incidence of sickness

DRAFT.

MINUTE.

- Mr.
- Mr.
- Mr.
- Mr. Davis
- Sir G. Grindle.
- Sir H. Read.
- Sir J. Masterton Smith.
- Mr. Wood.
- Mr. Churchill.

The health statistics of  
"the Indian" population  
on pages 24 and 26, which  
in Section 100 the term  
"Native" hospitals tend to  
give the impression that  
no hospital accommodation  
for Indians exists.

amongst such differing climates  
as European Africa & India in the  
same locality is a matter  
considerable interest as may be  
ascertained in the solution of  
problems a comparison of statistics  
presented in the above.

Page 137 The Committee were glad

obvious that the efficacy of the vaccine  
lymph had been well maintained by the  
use of only one alternate host, the rabbit.  
They regarded it as unfortunate that the  
prevailing conditions prevented the percentage  
of successes being ascertained, but so far  
as these were ascertained, there appeared to be  
no room for doubt as to the high efficacy  
of the lymph produced in Kenya.

Page 151

In regard to the differential  
leucocyte counts of the results varying from  
count to count in the same case, the Committee  
noted that the average percentage was  
"derived from a count of 200 white  
blood corpuscles". They thought it possible  
that less variation might be experienced if the  
percentages were derived from an appreciably  
larger count - say of 500 white corpuscles.

Page 152

The Committee were interested in  
the suggestion of a special type of plasmodium  
(*P. tenue*) associated with the severe malaria  
common in the Thika <sup>Masungu</sup> district,  
they hoped that its connection with blackwater

observed that the efficacy of the vaccine  
lymph had been well maintained by the  
use of only one alternate host, the rabbit.  
They regarded it as improbable that the  
prevailing conditions prevented the percentage  
of successes being ascertained, but so far  
as these were ascertained, there appeared to be  
no room for doubt as to the high efficacy  
of the lymph produced in Kenya.

Page 151

As regards the differential  
leucocyte counts & the results varying from  
case to case in the same case, the Committee  
noted that the average percentage was  
"derived from a count of 200 white  
blood corpuscles". They thought it possible  
that less variation might be experienced if the  
percentages were derived from an appreciably  
larger count - say of 500 white corpuscles.

Page 152

The Committee were interested in  
the suggestion of a special type of plasmodium  
(*P. tenue*) associated with the severe malaria  
common in the Thika Masungu district,  
they hoped that its connection with blackwater

few would be further investigated also  
to Balfour Craig  
possibly in this connection [attention was drawn  
to the artist by Catania letter "Lionel Critchley"  
657

Sur la morphologie paludéenne  
des Parasites du Paludisme  
(Archives de l'Institut Pasteur  
Algérie Volume I No 1 (1923))

Page 153

It was ~~thought~~ <sup>suggested</sup> that the

irregular ~~and~~ <sup>and</sup> sparse occurrence of  
typhoid infection <sup>might</sup> possibly be  
associated with certain "typhoid  
carrier" & with infection spread locally  
by means of flies

DRAFT.

MINUTE.

- Mr.
- Mr.
- Mr.
- Sir O. Davis
- Sir G. Grindley.
- Sir H. Read
- Sir J. Masterton Smith
- Lord Arnold.
- Mr. Thomas

Page 156

The Committee noticed  
that ankylostome infection was a  
marked <sup>feature</sup> amongst the communitarian  
carried out in the Reformatory and the

25% infection was found amongst the  
boys in the Kabete Reformatory.  
They considered it very desirable that  
• these inmates should be systematically  
examined on admission & treated for  
this complaint, all sanitary precautions  
being carried out in the Reformatory.

Page 159

In view of the general  
L 10

work of vaccine production <sup>as a person</sup> of the difficulty

of ~~the~~ standardization of vaccines, it  
was thought desirable to call the ~~attention~~ <sup>suggested that</sup> the Bacteriologists  
might be interested to read the account of  
the ~~method~~ <sup>work</sup> of the ~~work~~ <sup>work</sup> of the International

Pasteur & Bacteriological Institutes, Ceylon,  
<sup>given</sup> ~~as described~~ in their Report for 1922, <sup>at p. 7</sup> ~~copy~~

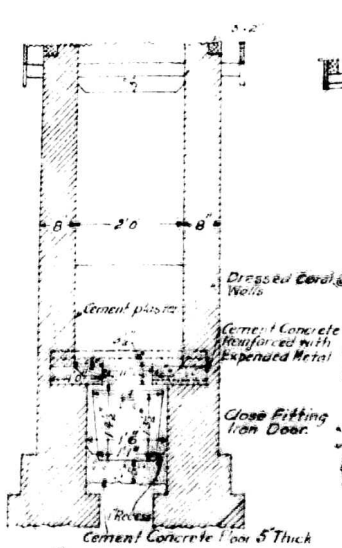
of which <sup>two</sup> are enclosed

Pages (63-77)

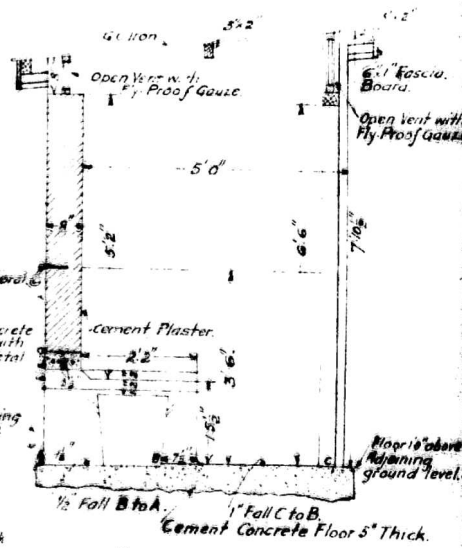
The Committee read with interest  
the description of the preparation of the Coli-  
Typhoid ~~Group~~ <sup>Group</sup> vaccines, the clinical  
results obtained in certain cases & the discussion  
of their value. ~~Their attention~~  
~~was drawn~~

I have, etc.

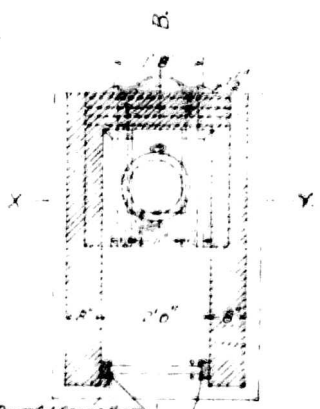
(SIGNED) J. H. THOMAS.



**SECTION X-Y.**



**SECTION ON A-B.**

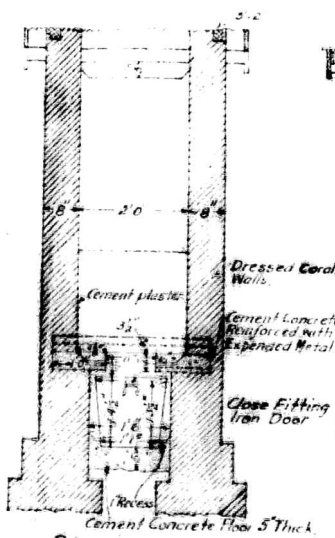


Powerful Spring Hinge

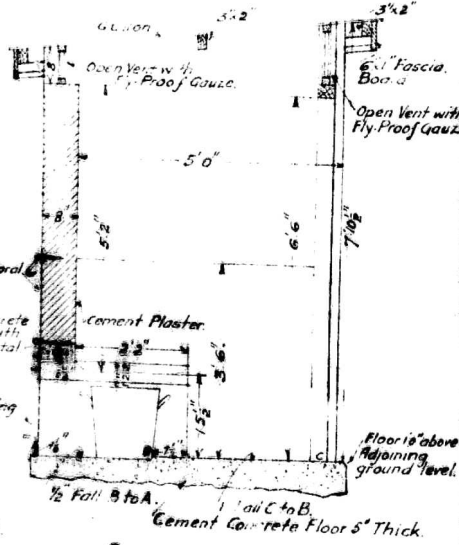
**PLAN.**

**FLY-PROOF  
TYPE NATIVE RAILCLOSET.  
HEALTH OFFICE  
MOMBASA.**

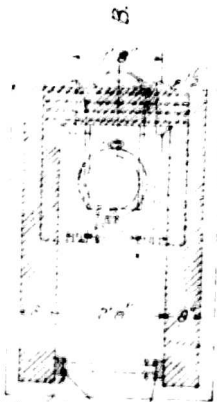
*Sd. F. Strawbridge,  
Sanitary Inspector in  
Approved  
Sd. H. A. Paterson,  
Mg. Medical Officer of Health.  
19. 6. 19.*



SECTION X-Y.



SECTION ON A-B.



FLY-PROOF  
 TYPE NATIVE PAILCLOSET.  
 HEALTH OFFICE  
 MOMBASA.

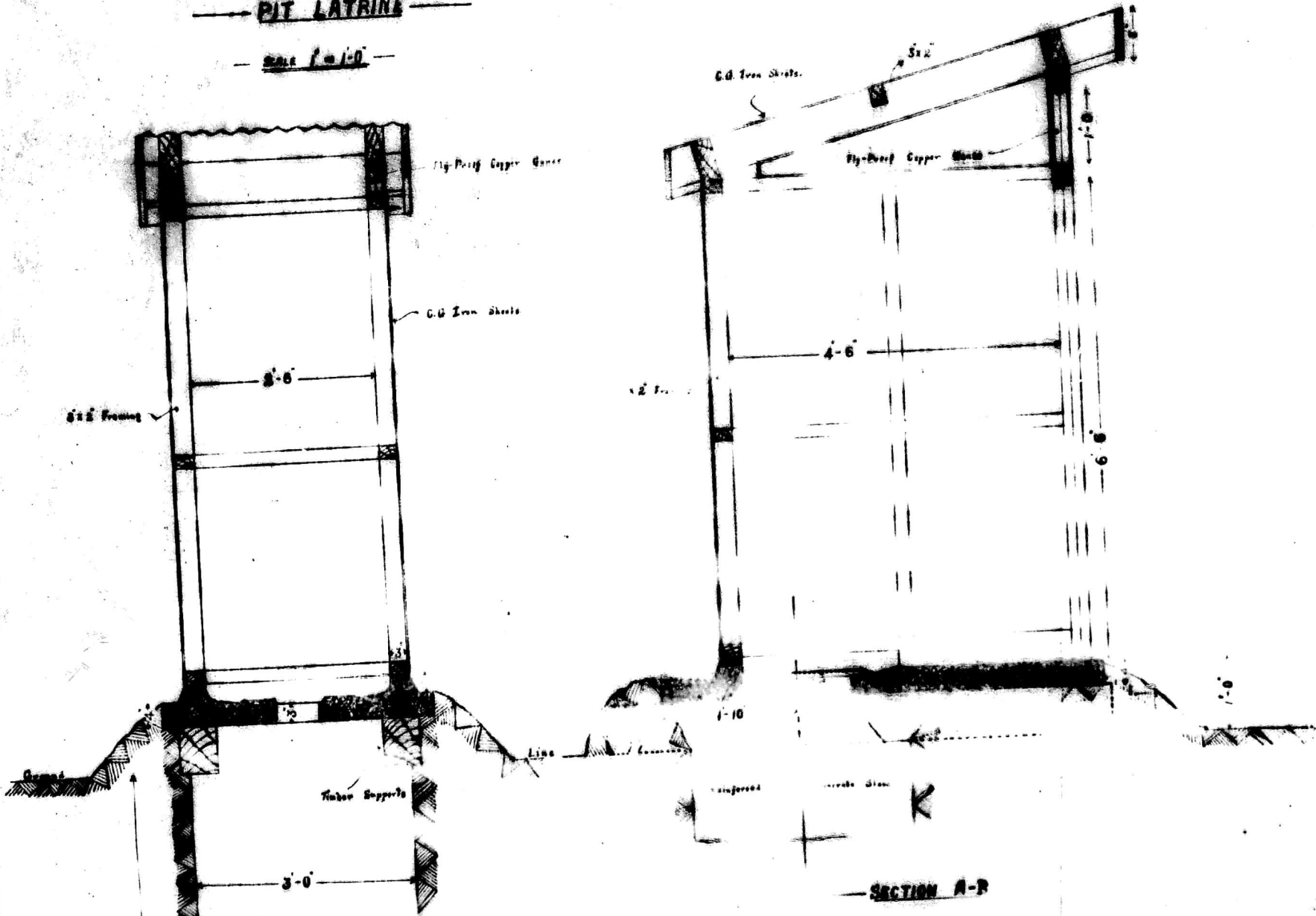
Sd. F. Strawbridge,  
 Sanitary Inspector.  
 Approved.  
 Sd. H. R. Paterson,  
 By Medical Officer of Health.  
 10. 6. 10.

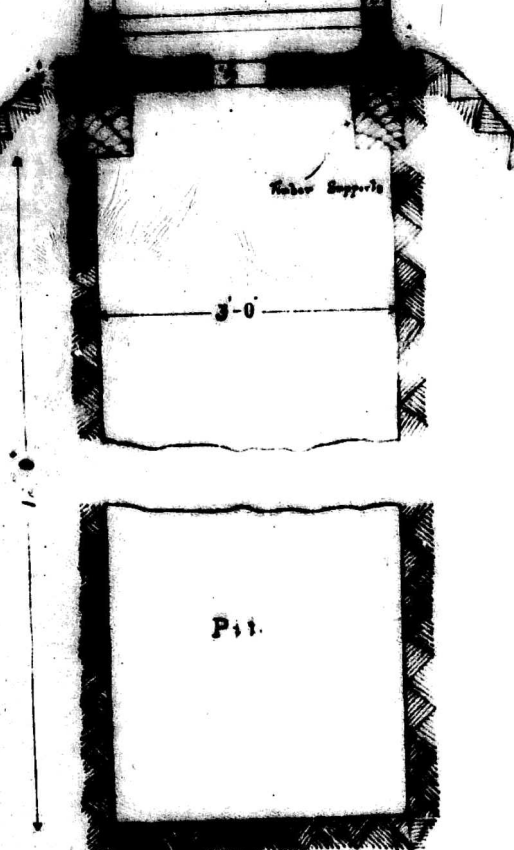
Powerful Springs

7 1/2 x 10 1/2 - 10 1/2 x 10 1/2 - 10 1/2 x 10 1/2

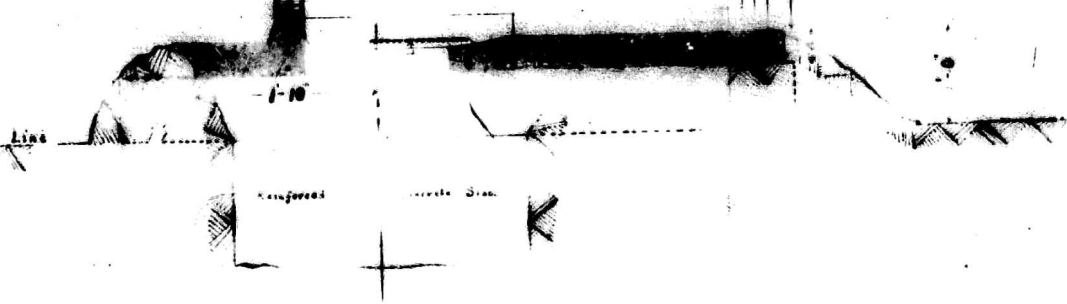
FLY  
 DE AN

TYPE B-1  
 AFRICAN & ARABIA  
 PIT LATRINE  
 SCALE 1"=1'-0"

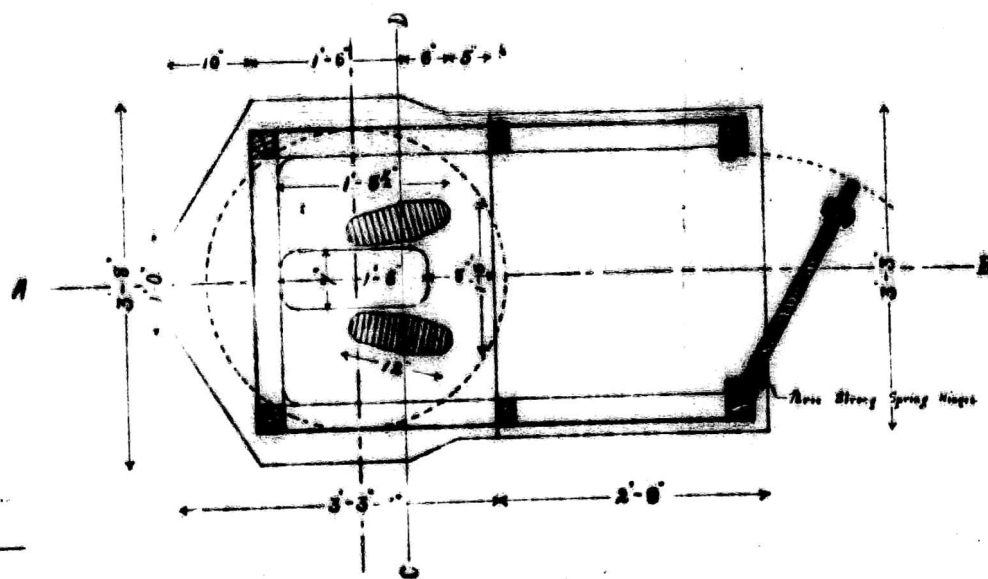




SECTION C-D



SECTION A-B

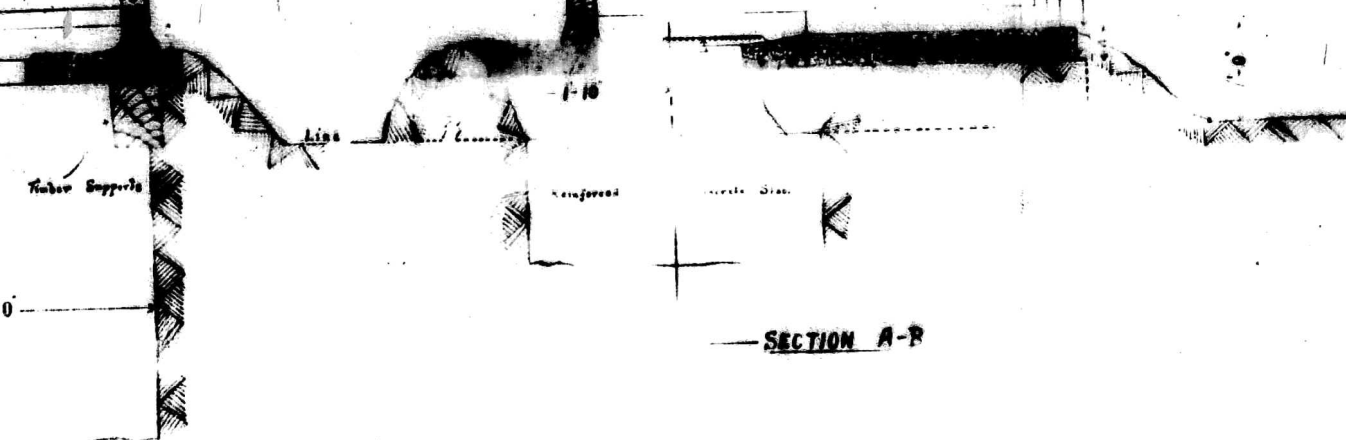


SECTIONAL PLAN

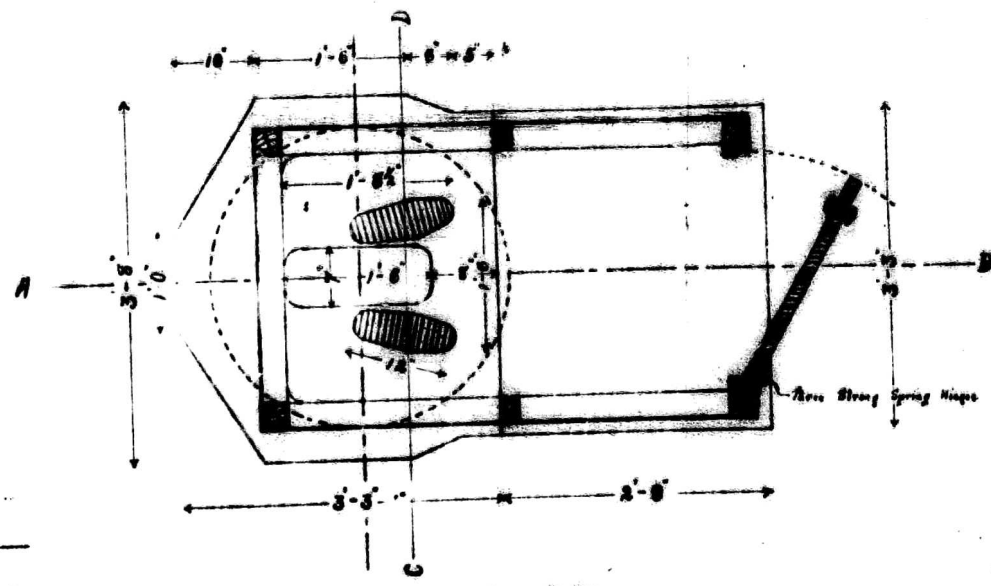
HEALTH OFFICE  
 KARACHI

*Handwritten signature*  
 Chief Health Officer

Specialist  
 20 Gulistan East  
 Medical Officer of Health



SECTION A-B



SECTIONAL PLAN

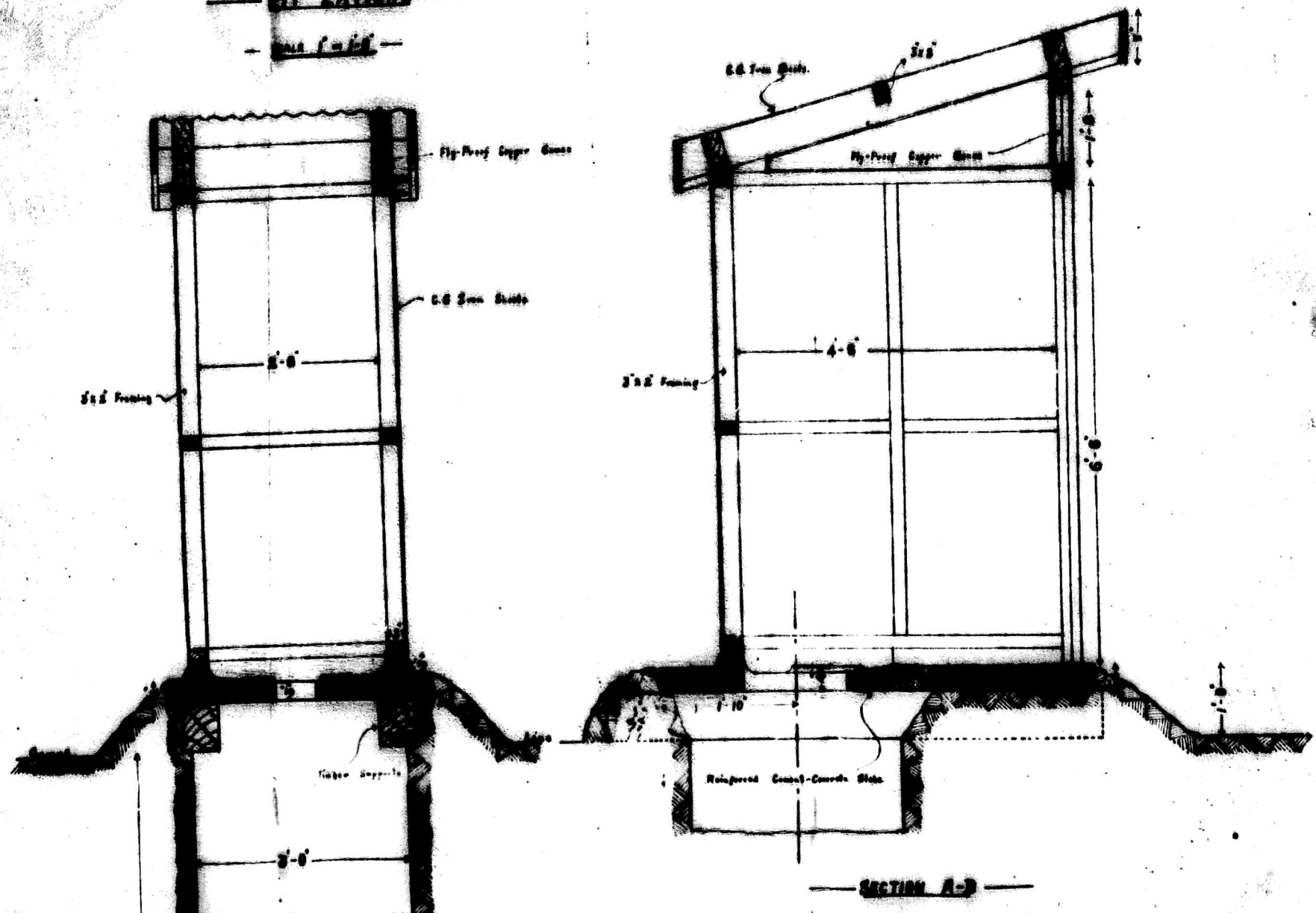
HEALTH OFFICE  
 NAIROBI

*J. H. ...*  
 Senior Building Engineer

Approved:-

*J. O. ...*  
 Medical Officer of Health

— TYPE FLY-PROOF —  
 — GERMAN & DANIELS —  
 — PIT LATRINE —  
 — PAINT 1-10-10 —

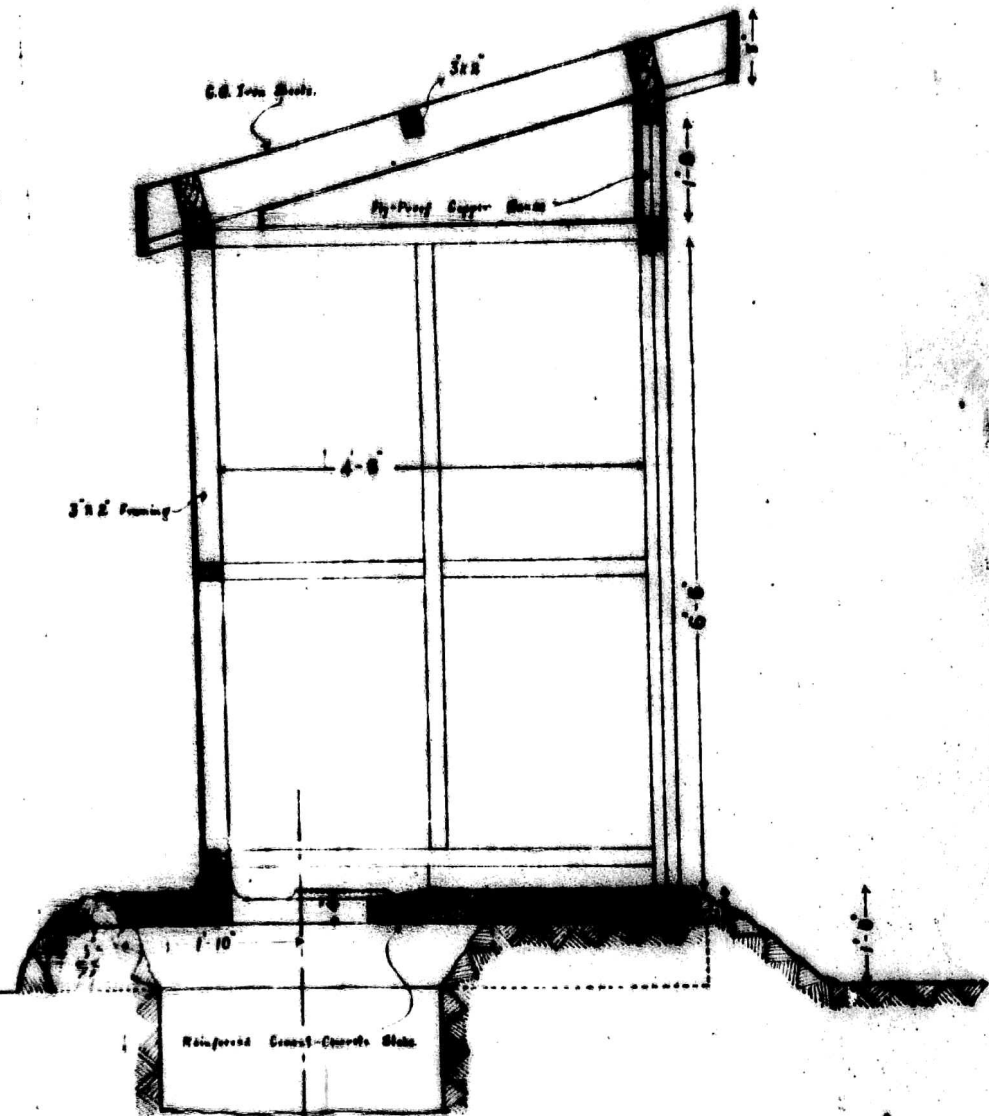
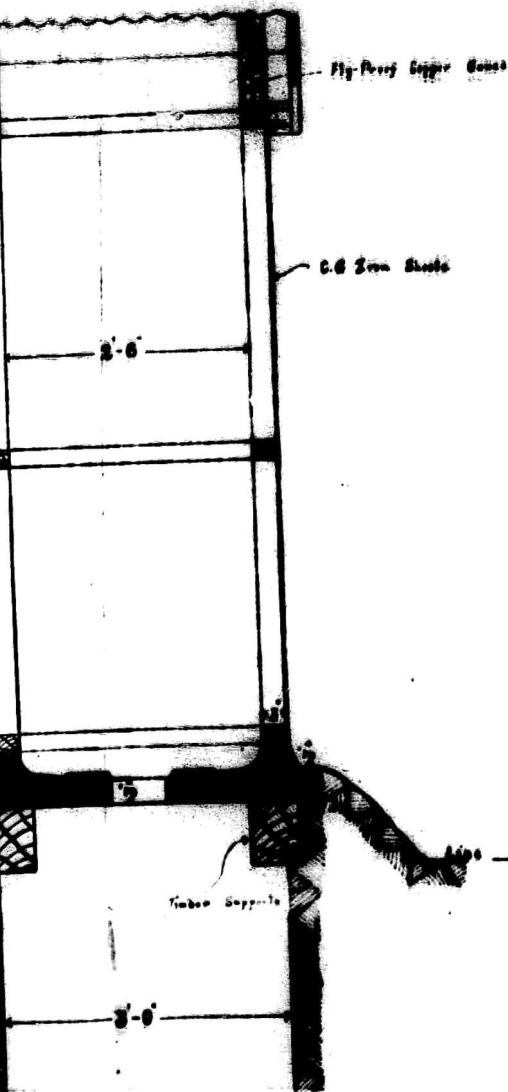


TYPE FLY-POND

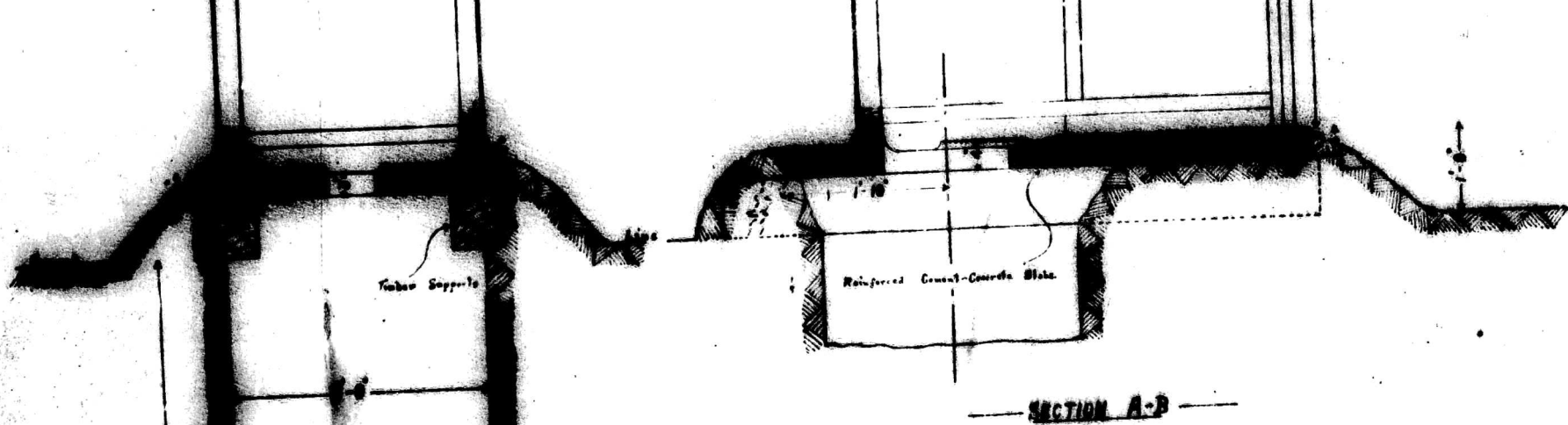
AFRAN & BARKIS

DIT LATOINE

Scale 1/4" = 1'-0"



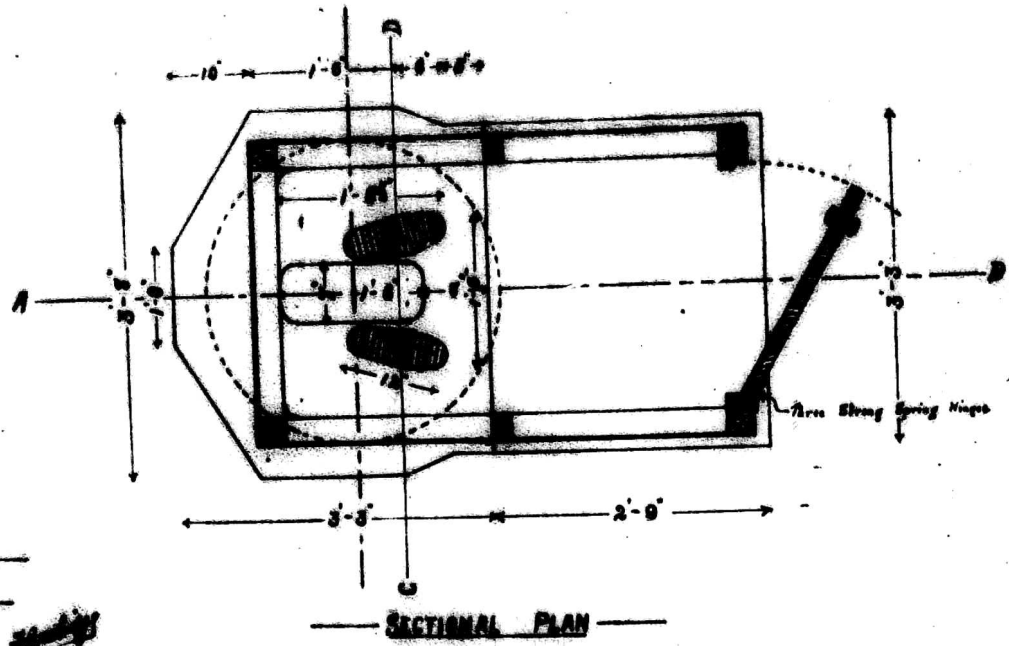
SECTION A-B



12'-0"



SECTION C-D



SECTIONAL PLAN

HEALTH OFFICE

MADISON

*Handwritten signature*  
 Civil Engineer

Approved

*2.0 Copy of plan.*  
 Medical Officer of Health.

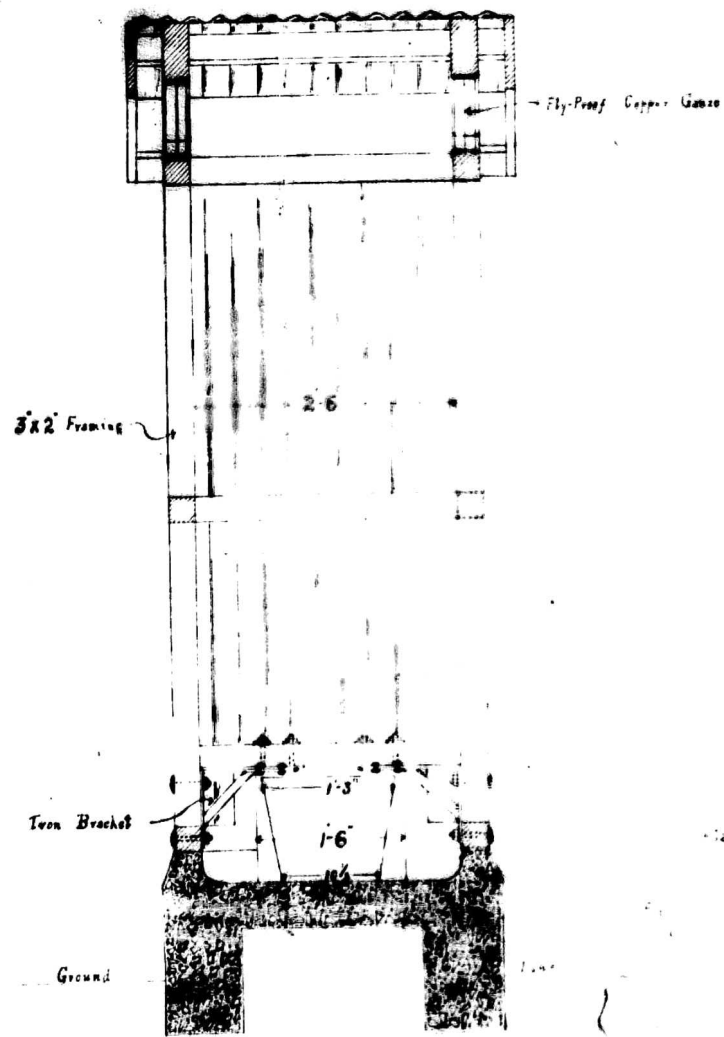
Enclosures of

# TYPE FLY-PROOF NATIVE & ASIATIC LATRINE

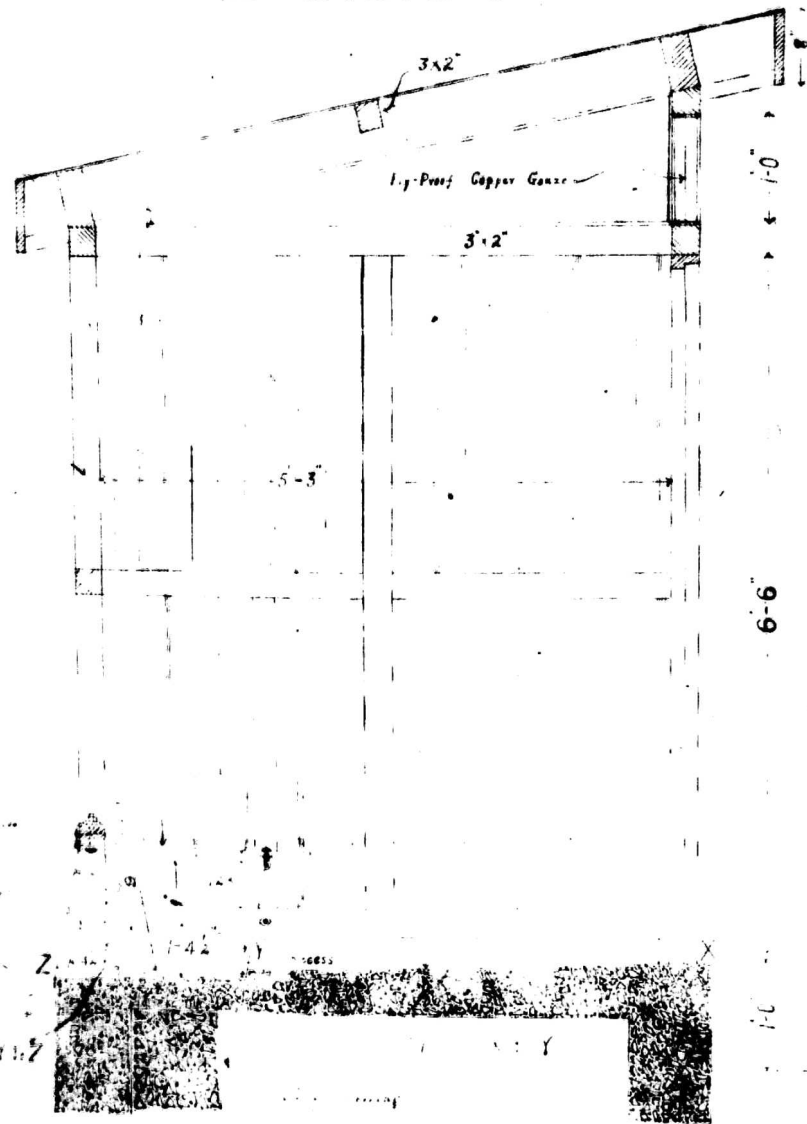
Scale 1" = 1'-0"

NOTE: This Latrine may be constructed of Cement Concrete, Brick or Stone.

NC 12 190/3, 1-



SECTION C-D

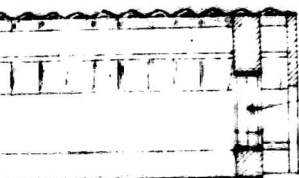


SECTION A-B

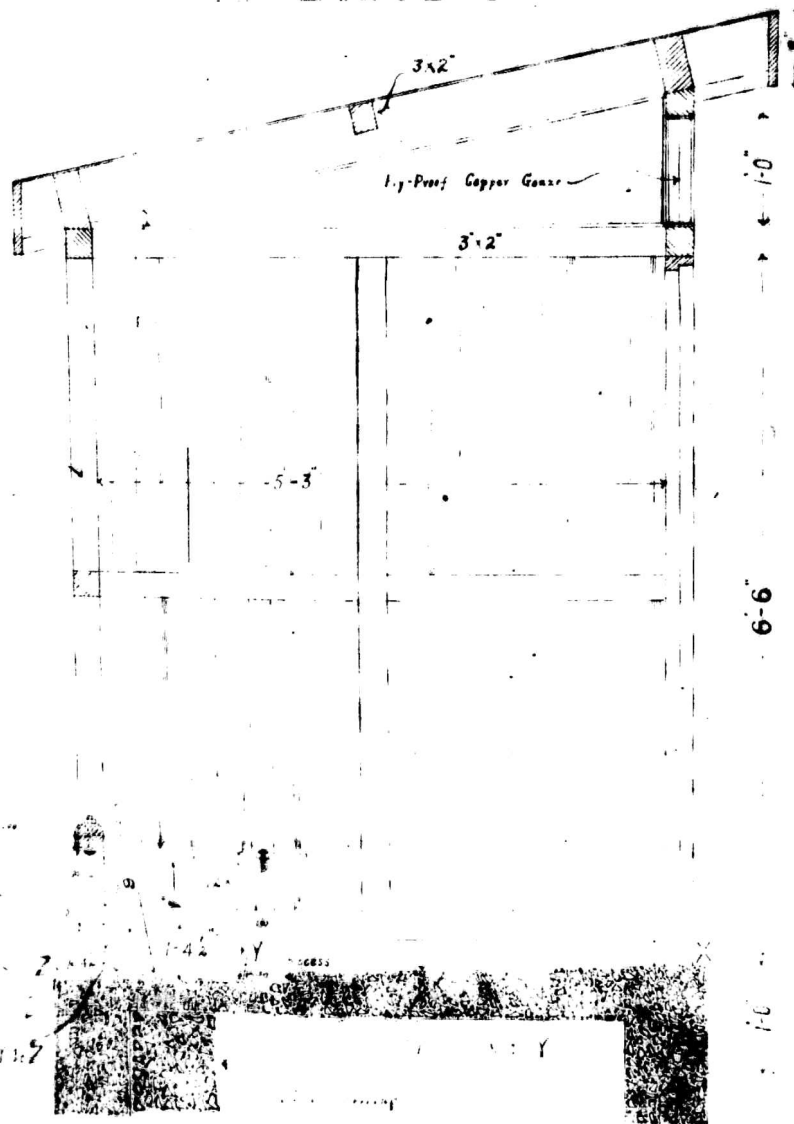
# TYPE FLY-PROOF NATIVE & ASIATIC LATRINE

Scale 1" = 1'-0"

NOTE— This latrine may be constructed of  
Cement concrete, Brick or Stone



Fly-Proof Copper Gause



3x2'

Fly-Proof Copper Gause

3x2'

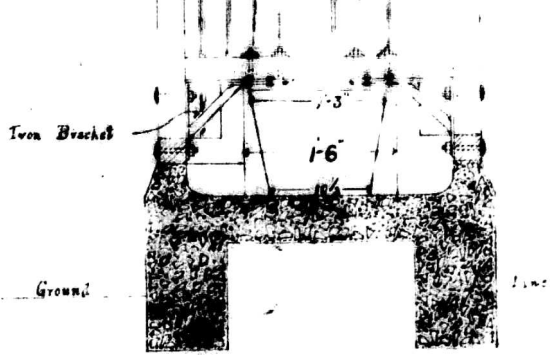
5-3"

1'-0"

6'-6"

SECTION A-B

SECTION C-D



SECTION C-D

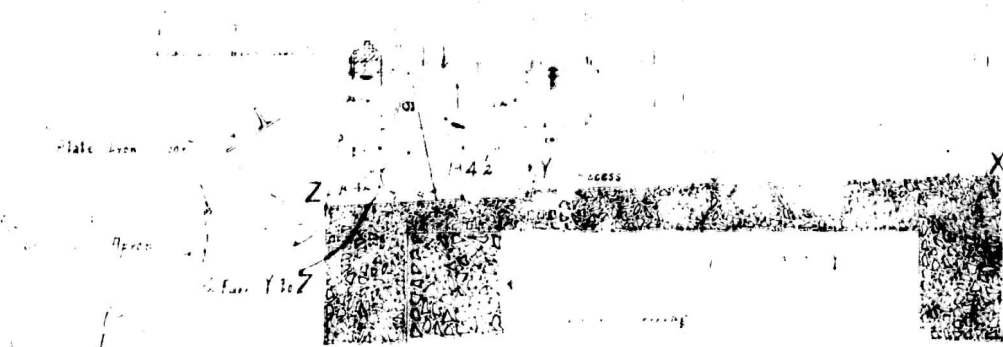


SECTION of CONCRETE

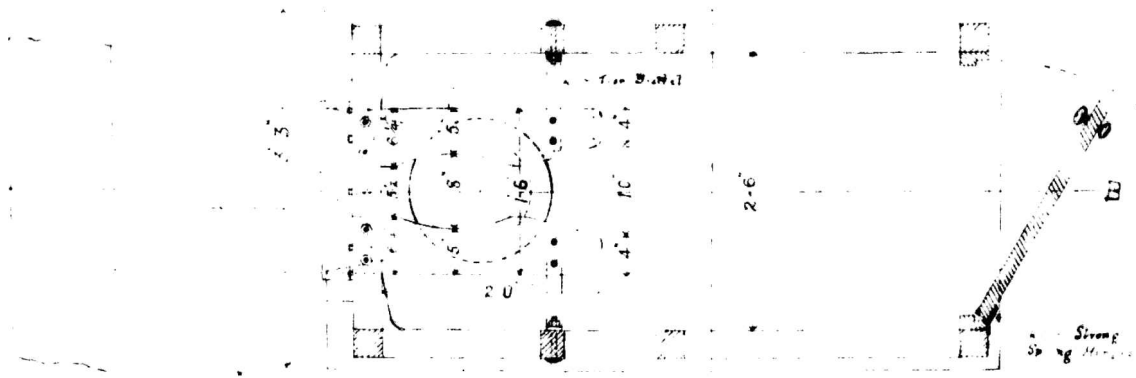
Bolt Holes



DETAIL of FOOT PLATES



SECTION A



SECTIONAL PLAN

HEALTH OFFICE  
NAIROBI.

*Handwritten signature*

Sanitary Inspector  
17-9-21.

Approved

*Handwritten signature*  
Medical Officer of Health

Nairobi 17-9-21.

SECTION C-D

SECTION A-B

of CONCRETE

A

to be used in the ceiling

NOT PLACES

SECTIONAL PLAN

HEALTH OFFICE

NAIROBI.

Approved

*F. H. ...*

Sanitary Inspector

17-9-21.

*Edwin ...*  
Medical Officer of Health

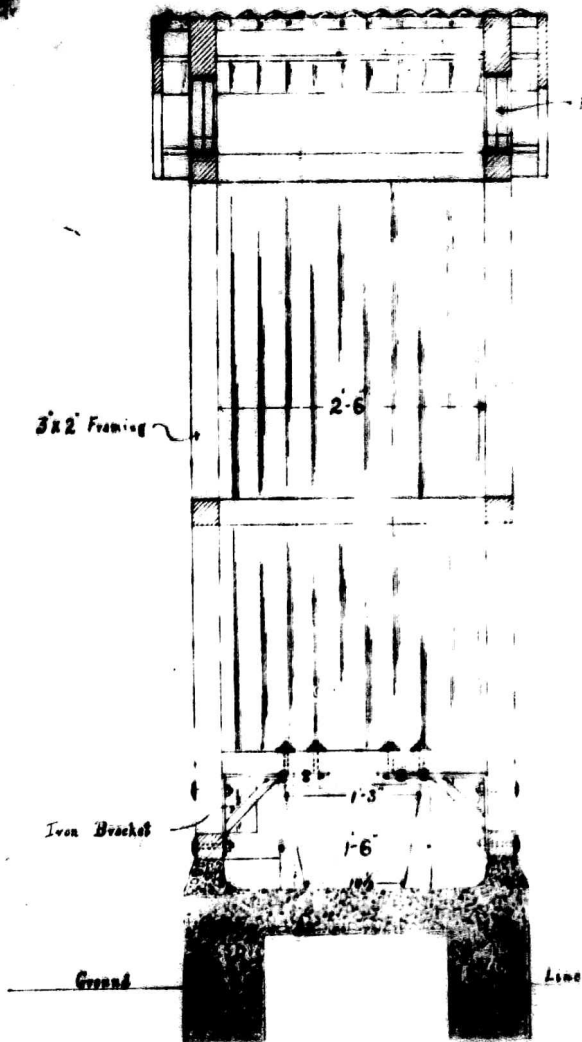
Nairobi. 17-9-21.

# TYPE FLY-PROOF NATIVE & ASIATIC LATRINE

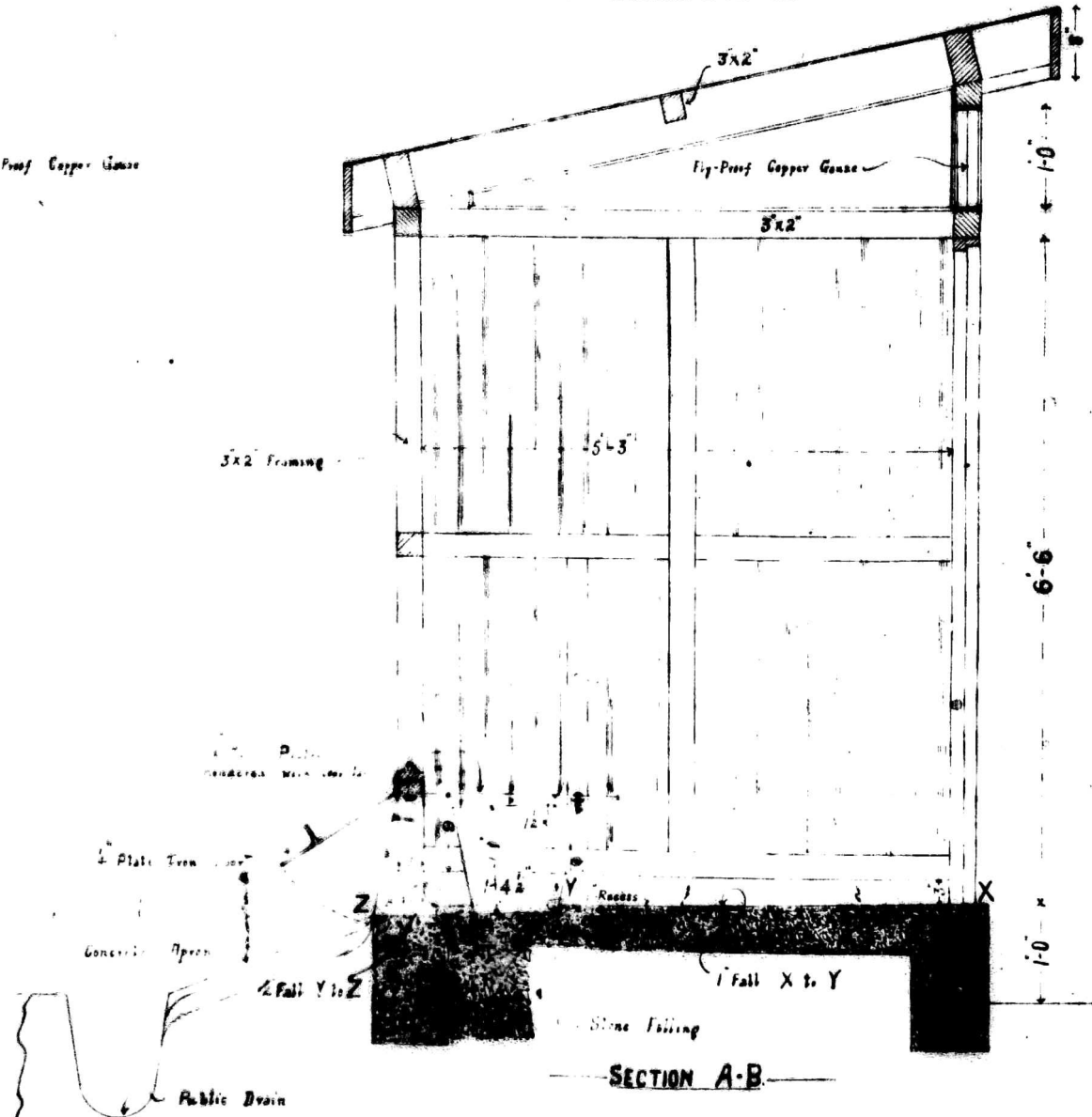
Scale 1" = 1'-0"

NC 12 130 131

NOTE: This Latrine may be constructed of Cement concrete, Brick or Stone.



SECTION C-D



SECTION A-B

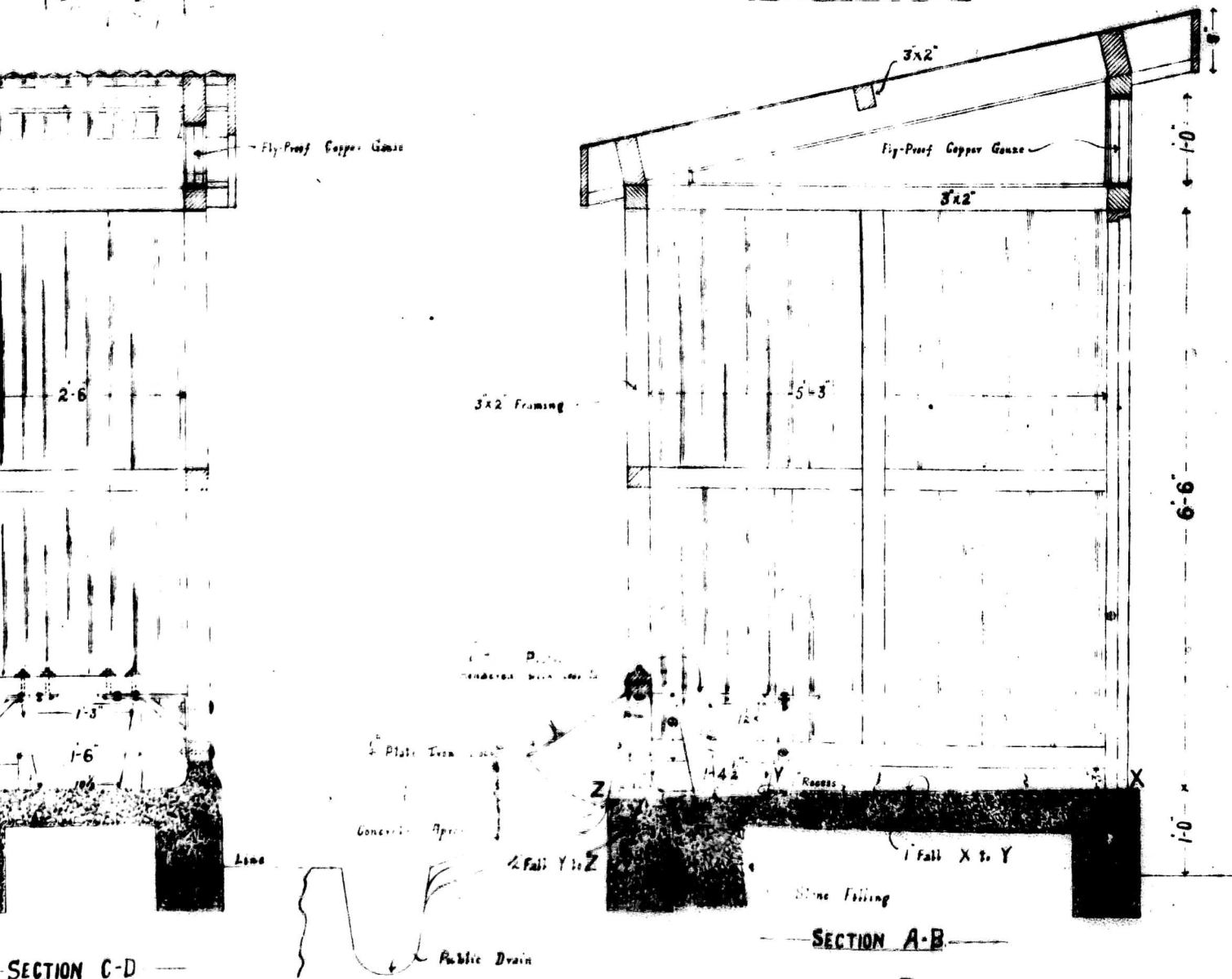
0

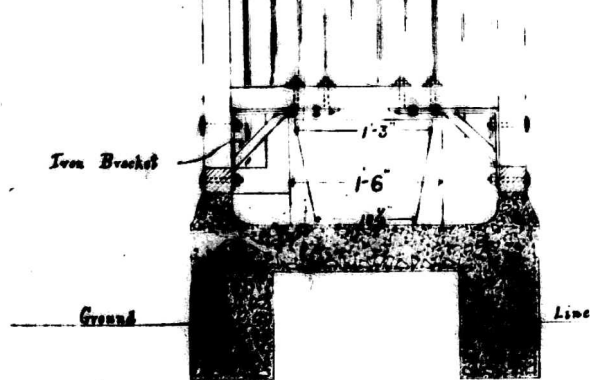
# TYPE FLY-PROOF NATIVE & ASIATIC LATRINE

Scale 1" = 1'-0"

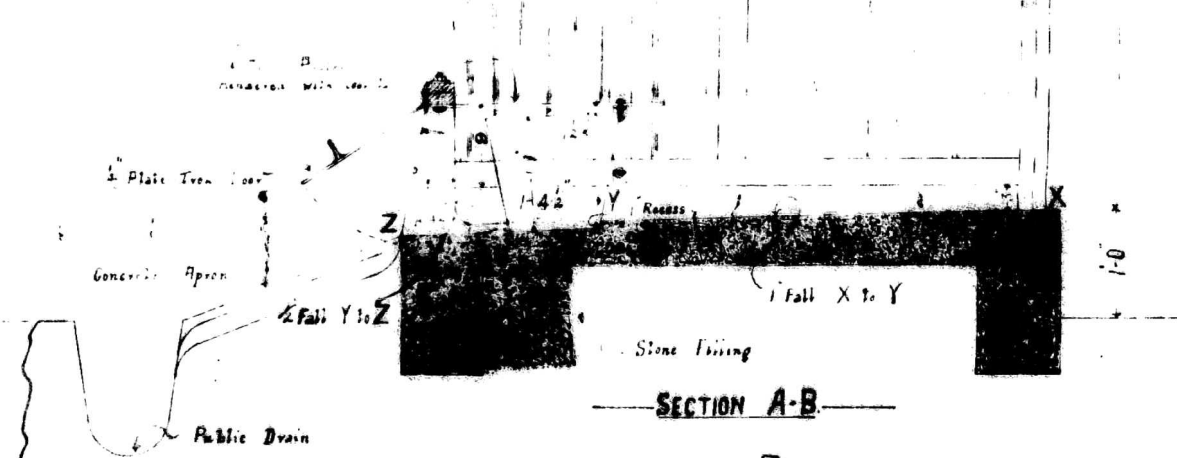
NOTE—

This Latrine may be constructed of  
Cement Concrete, Brick or Stone.





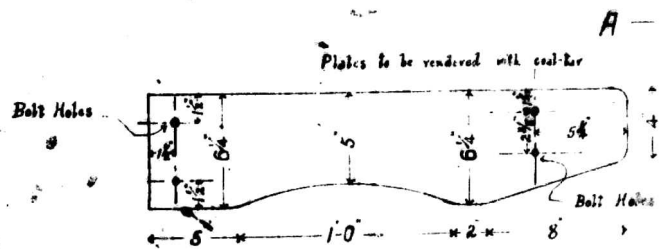
SECTION C-D



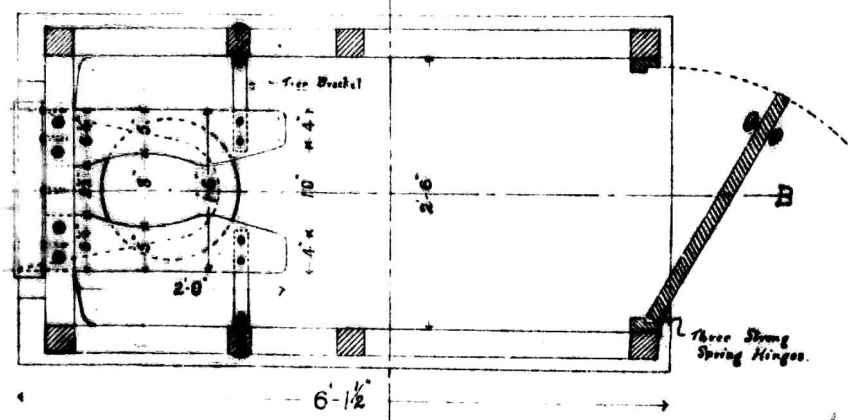
SECTION A-B



SECTION of CONCRETE APRON



DETAIL of FOOT PLATES



SECTIONAL PLAN

HEALTH OFFICE

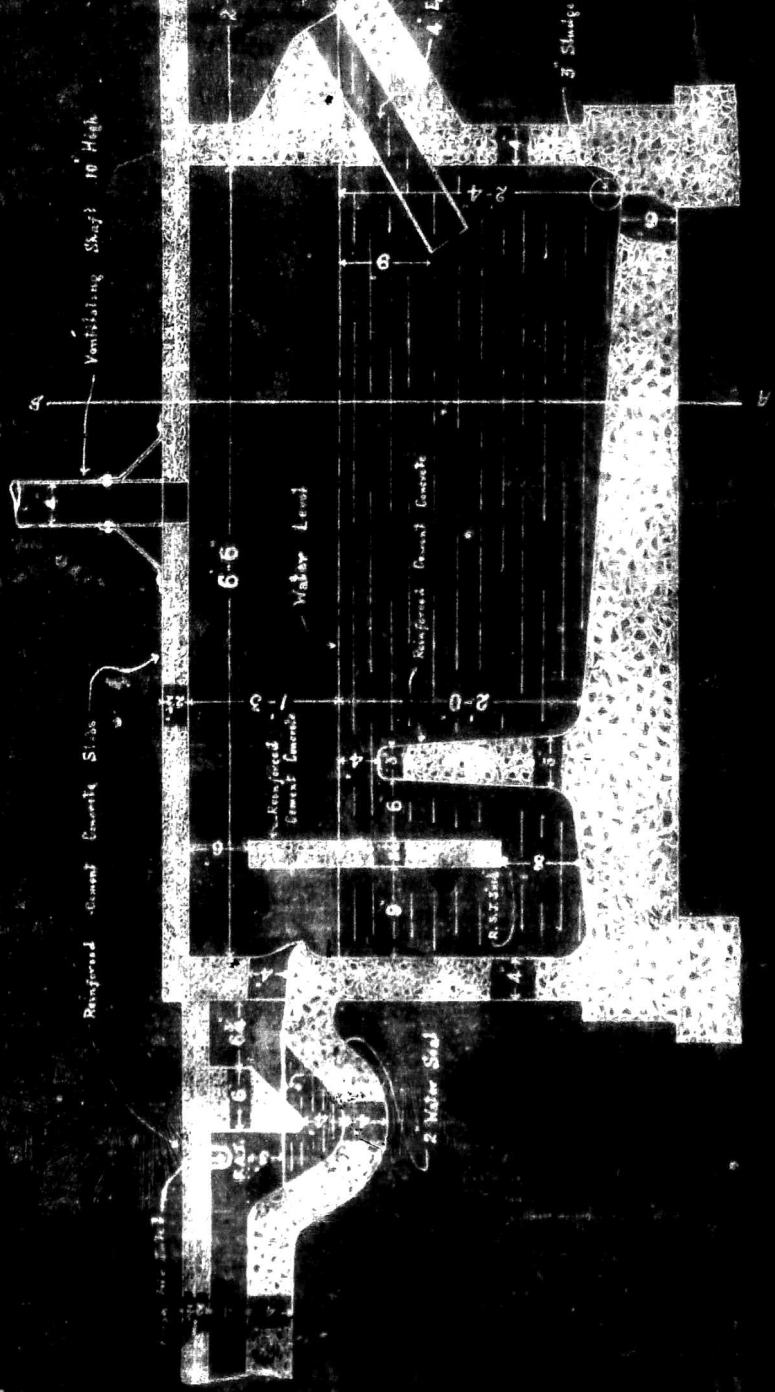
NAIROBI.

*Handwritten signature*

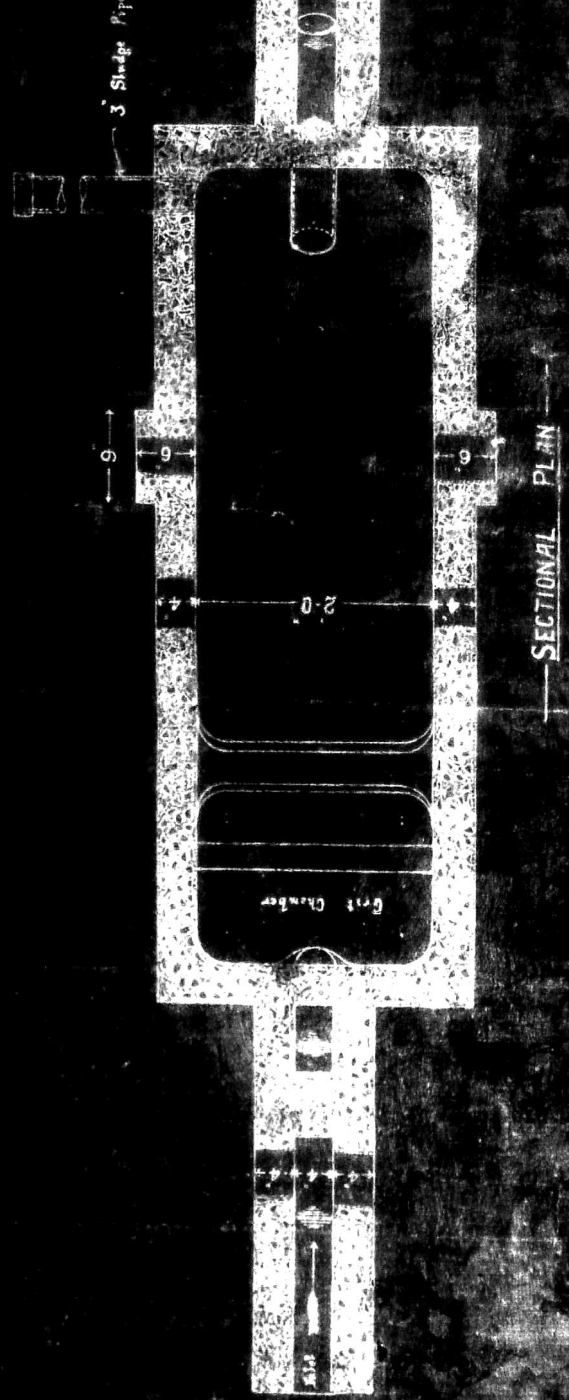
Sanitary Inspector  
17-9-21.

Approved

*Handwritten signature*  
Sanitary Inspector  
17-9-21.



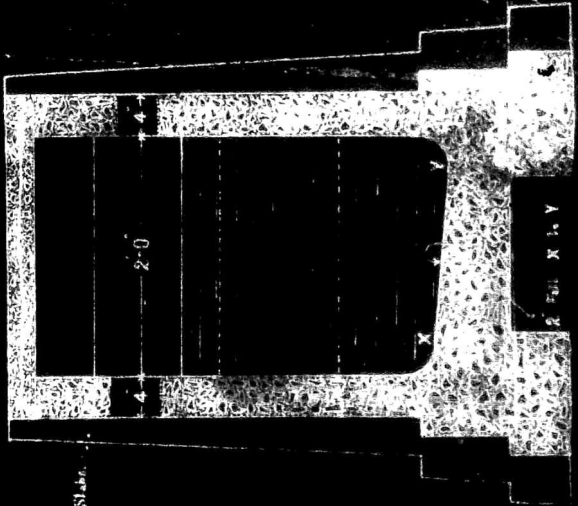
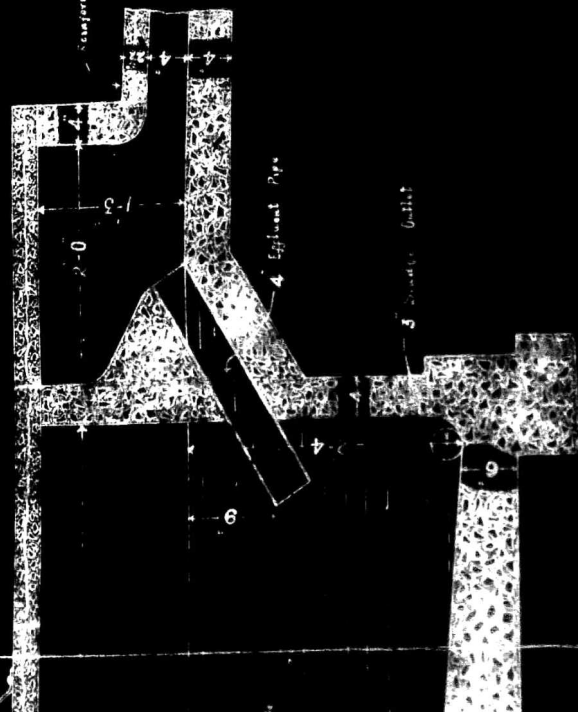
SECTIONAL ELEVATION



SECTIONAL PLAN

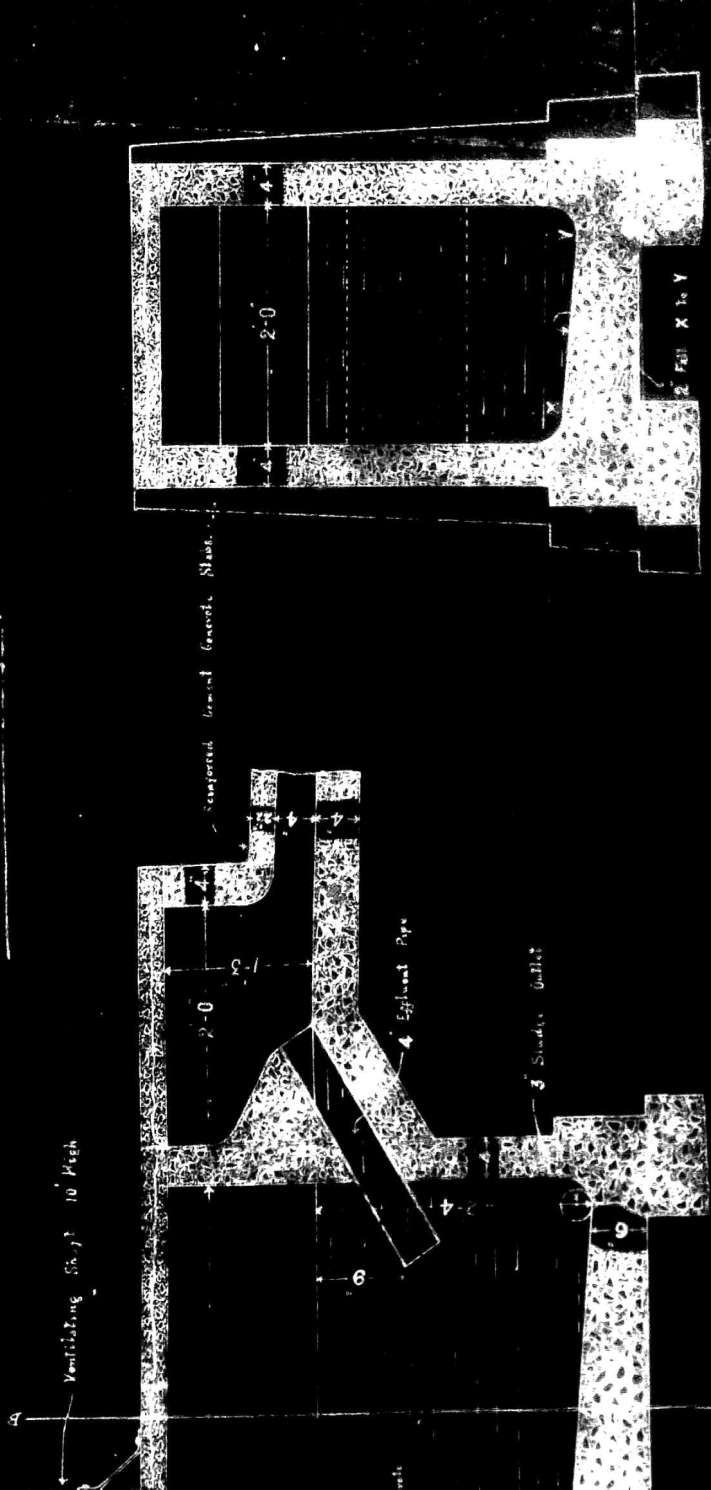
N.C. 209 | 3/17

Monolithic Slab 10 High



SECTION A-A

N.C. 209/3/17



SECTION ON A-B

SEPTIC TANK

SINGLE HOUSE INSTALLATION

TO ACCOMMODATE 8 PERSONS

W. C. WASTE ONLY

To Sewerage Pit

Designed for a 1000 gallon float per day (8 persons daily) with a 3000 gallon storage tank in effluent tank.

HEALTH OFFICE

NAIROBI



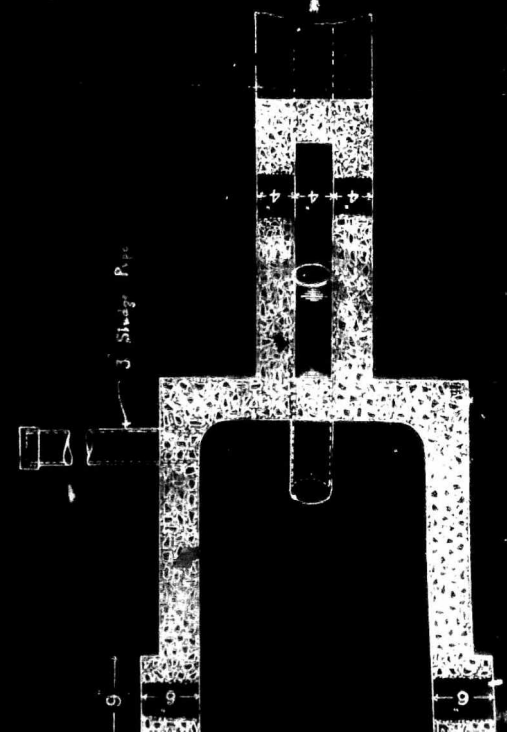


4 Exhaust Pipe

3 Shower Units

SECTION on A-B

2 Fall X Y



3 Storage Pipe

6 Stairway Pit

SEPTIC TANK  
SINGLE HOUSE INSTALLATION  
TO ACCOMMODATE 8 PERSONS  
W. C. WASTE ONLY

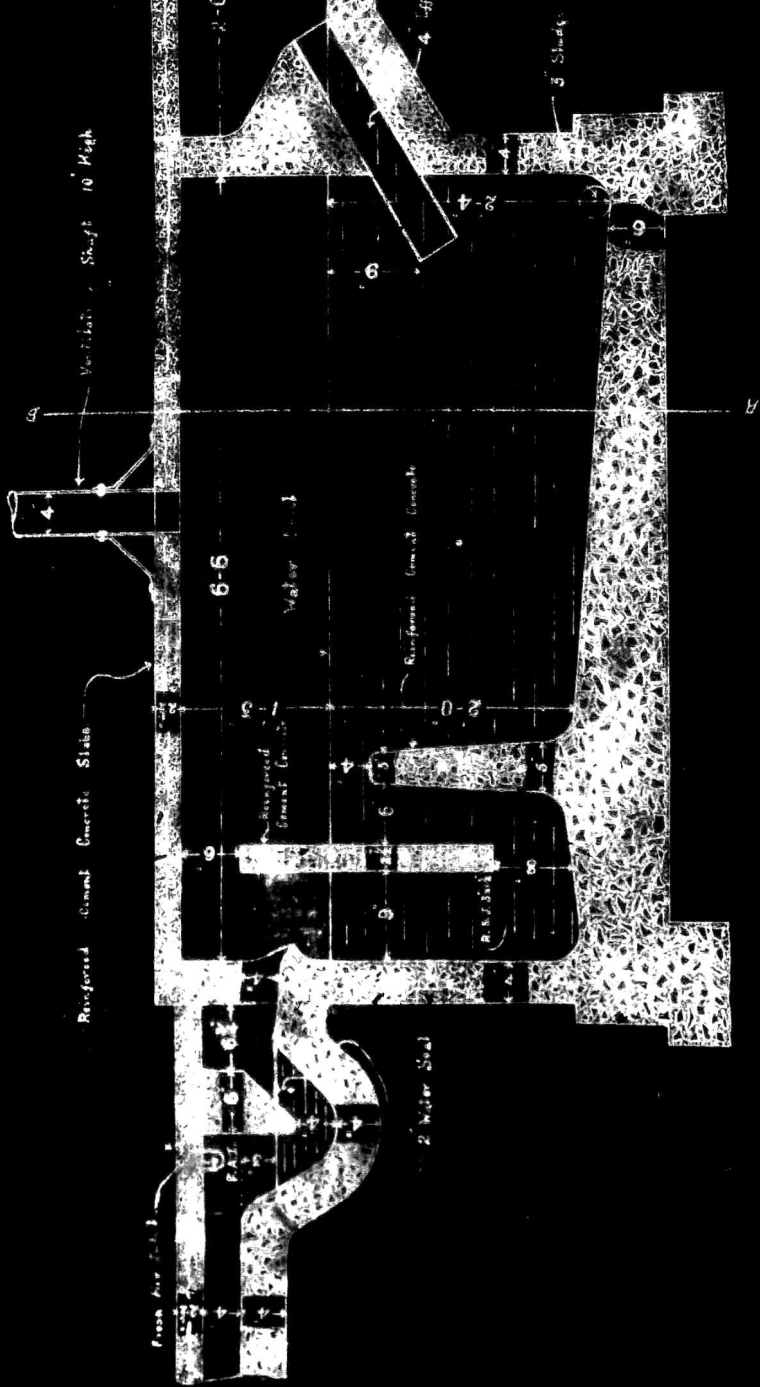
Designed for a 31-watt pattern floor per man (house daily)  
with a 10-watt floor per man in public place

HEALTH OFFICE  
NAIROBI

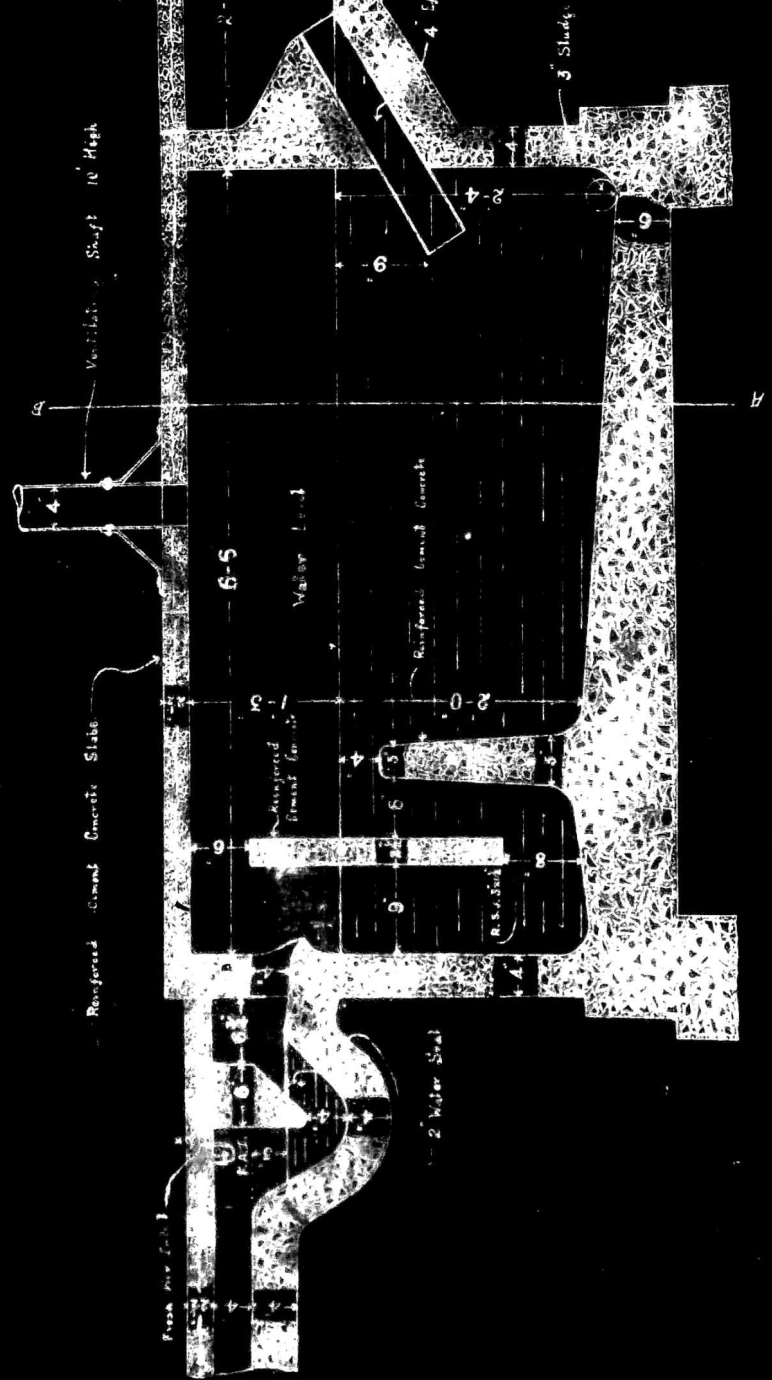
*Handwritten signature*  
S.I.  
(1953)

*Handwritten signature*  
MEDICAL OFFICE OF NAIROBI

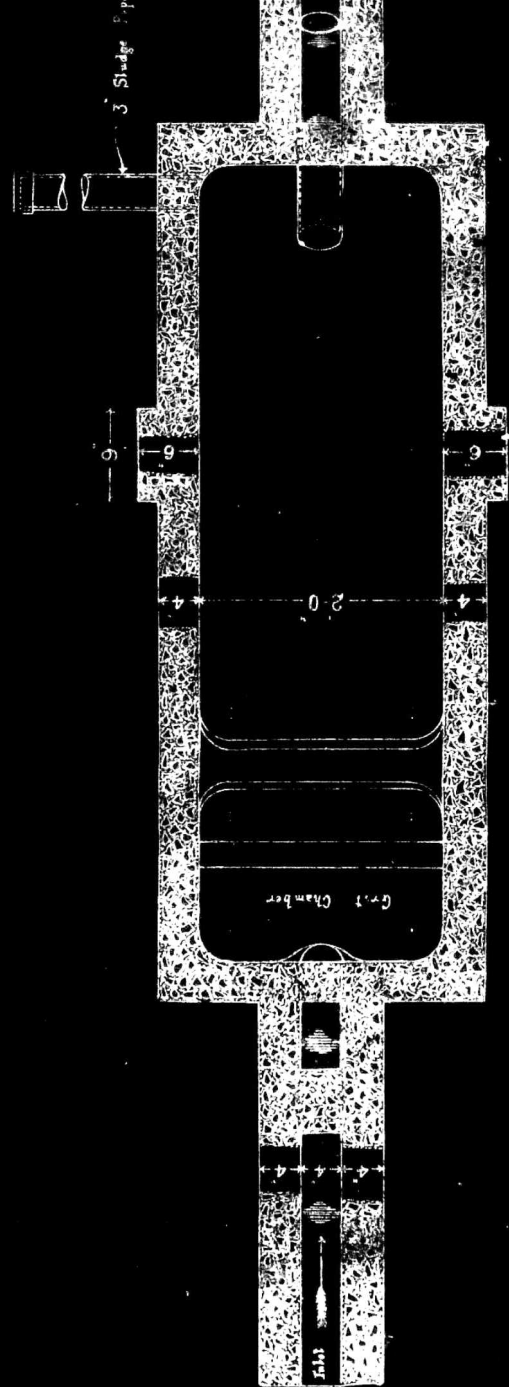
PLAN



SECTIONAL ELEVATION

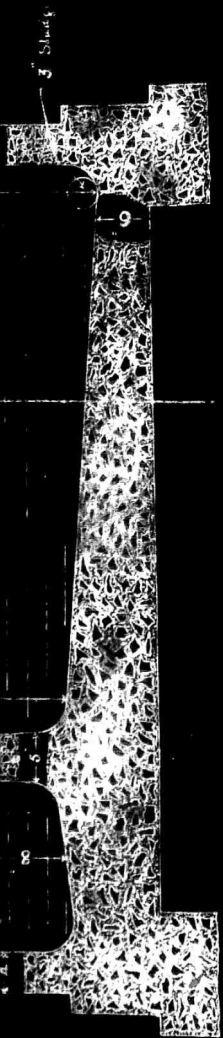


SECTIONAL ELEVATION

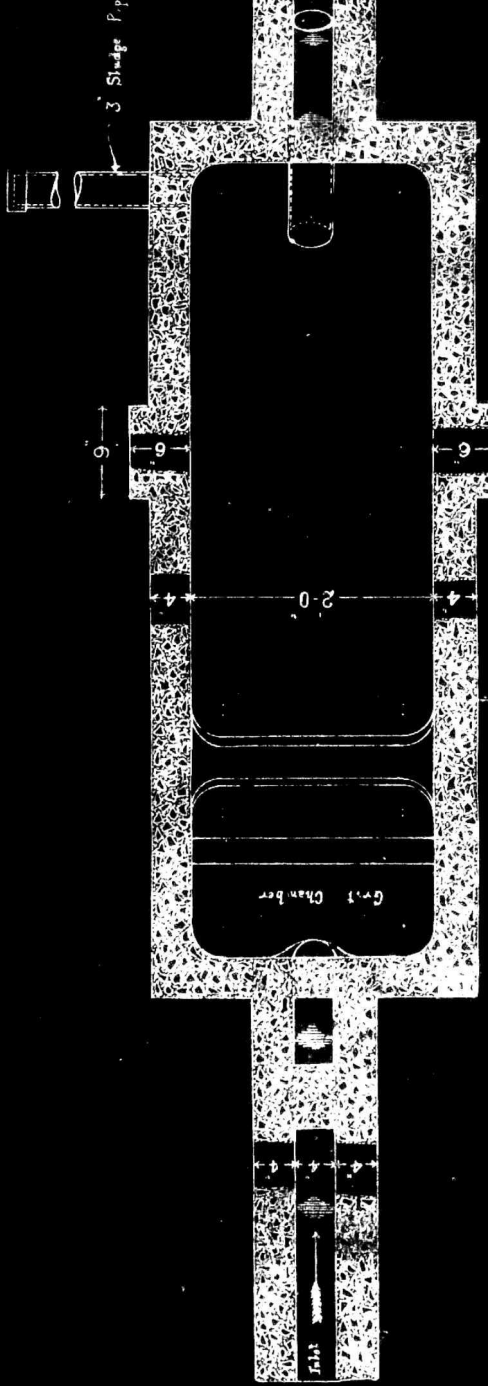


SECTIONAL PLAN





SECTIONAL ELEVATION



SECTIONAL PLAN

Grill Chamber

Grill Chamber