

# £1,000 FREE INSURANCE

WITH THE AFRICAN GUARANTEE AND INTEGRITY CO., Ltd.—See advertisement on page 12.

KENYA'S NEWSPAPER.

THE EAST

Price 50 Cents.

# African Standard

MOMBASA TIMES & UGANDA ARGUS.

PRINTED AND PUBLISHED BY

THE LEADER.

The oldest established newspaper published in Kenya and Uganda.

Printed under the Royal Warrant of Appointment, 1888.

Printed and Published by the Proprietor, Nairobi, Kenya.

No. 1941. PRINTED AT THE ORIGINAL POST OFFICE AS A NEWSPAPER.

NAIROBI, SATURDAY, DECEMBER 19, 1935.

Printed and Published by the Proprietor, Nairobi, Kenya.



## The Utility Car & Truck



Nowhere in the Ford were enjoyed and appreciated than in this country.

It has brought to the settler a constant stream of occupying the monotony of farm life in isolated districts and has enabled him to add to the benefits of farm life the advantages of being always within easy reach of his market.

Not the least important feature of having a Ford is that anyone can handle it for it is the safest and easiest of all cars to drive.

*The Service Company Limited*

IMPORTING DEALERS AND DISTRIBUTORS.  
NAIROBI — MOMBASA — MUMBAI.

IF  
IT'S  
TOYS

Get It

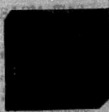
AT

JACOBS.

WE ARE SHOWING THE BEST  
SELECTION OF KID'S GAMES  
TOYS IN TOWN.



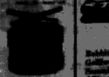
Phone No. 222 P.O. Box 99



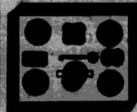
**DOLL'S TEA SETS.**  
In Aluminium.  
At the 4/00, 5/00, 10/00,  
15/00  
In high grade china  
in Blue or Grey  
the 3/75, 6/00, 7/00,  
8/00 and 12/00



**DOLL'S KITCHEN SETS.**  
Best quality. Pale Blue enamel  
ware, nicely modelled, stainless  
7 pieces 4/75 10 pieces 15/00  
9 pieces 8/30 11 pieces 12/00  
12 pieces 5/00



**DOLL'S STOVE.**  
Complete with eight burners  
and chimney.  
the 15/00, 20/00, 25/00, 30/00,  
and 40/00



**DOLL'S DISH.**  
Stagnant made and sturdy steel.  
the 7/00 and 10/00



**DOLL'S TOYS.**  
Bubble  
Golf  
Marbles  
Alphabet  
Puzzle  
Chess  
Backgammon



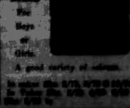
**DOLL'S TOYS.**  
Bubble  
Golf  
Marbles  
Alphabet  
Puzzle  
Chess  
Backgammon



**DOLL'S TOYS.**  
Bubble  
Golf  
Marbles  
Alphabet  
Puzzle  
Chess  
Backgammon



**DOLL'S TOYS.**  
Bubble  
Golf  
Marbles  
Alphabet  
Puzzle  
Chess  
Backgammon



**DOLL'S TOYS.**  
Bubble  
Golf  
Marbles  
Alphabet  
Puzzle  
Chess  
Backgammon



**TOY SEWING MACHINES.**  
Best model machines for  
teaching daily sewing.  
the 7/00, 10/00,  
15/00, 20/00 and 25/00



**TOY BALLS.**  
In all varieties and sizes.  
the 1/00, 2/00, 3/00,  
4/00, 5/00, 6/00, 7/00,  
8/00, 9/00, 10/00, 11/00,  
12/00, 13/00, 14/00, 15/00,  
16/00, 17/00, 18/00, 19/00,  
20/00, 21/00, 22/00, 23/00,  
24/00, 25/00, 26/00, 27/00,  
28/00, 29/00, 30/00, 31/00,  
32/00, 33/00, 34/00, 35/00,  
36/00, 37/00, 38/00, 39/00,  
40/00, 41/00, 42/00, 43/00,  
44/00, 45/00, 46/00, 47/00,  
48/00, 49/00, 50/00



**LITTLE TOYS.**  
Bubble  
Golf  
Marbles  
Alphabet  
Puzzle  
Chess  
Backgammon

MESSAGERIES MARITIMES.

FRENCH MAIL STEAMERS. The Quickest Route to London by Mail from Marseilles in 21/28 hours.

SAILINGS TO MARSEILLES.

Table with columns for ship names, destinations, and departure times.

RATES OF PASSAGE MONEY TO MARSEILLES.

Table with columns for ship names and passenger rates.

For particulars of sailing, passage money and freight apply to...

KEYNES SONS & CO., WHITFIELD LONDON.

RELIABLE AGENTS IN LONDON.

LONDON BRANCH AGENTS. Agents for the sale of...

FOR SALE.

Large 1000 sq. ft. building... 1000 sq. ft. building...

FOR SALE.

Large 1000 sq. ft. building... 1000 sq. ft. building...

FOR SALE.

Large 1000 sq. ft. building... 1000 sq. ft. building...

£1,000 FREE INSURANCE. WITH THE AFRICAN GUARANTEE AND ENDORSEMENT CO., Ltd. (Incorporated in S. Africa.)

The African Standard. MOMBASA TIMES & UGANDA ARGUS. THE LEADER.

No. 1941. REGISTERED AT THE GENERAL POST OFFICE AS A NEWSPAPER. NAIROBI, SATURDAY, DECEMBER 12, 1926.

Deutsche Ost Afrika Linie (GERMAN AFRICAN SERVICE).

Fast Service of Turbine Steamers from Hamburg—Southampton Round Africa. Luxurious accommodations. Excellent service, Outfits and Mundie.

SAILINGS FROM MOMBASA TO HAMBURG.

Table with columns for ship names, destinations, and departure times.

Up-country cheques cannot be accepted unless mutually endorsed by Local Bank.

Boustead & Clarke, Ltd.

Mombasa, Kenia, Dar-es-Salaam, Zanzibar, also Nairobi, Kisumu, Ujiji and Kampala.

The Clan Line, Limited.

The Elderermann Line, Limited. The Harrison Line.

RUBBER STAMPS.

at the STANDARD OFFICE.

THE EUROPEAN AND AFRICAN TRADES ORGANISATION.

Please Note that from the beginning of September, the following form will be changed by this Organisation to all those who have joined the Organisation and who are not regular subscribers to the Journal of this Organisation.

J. H. ENGELBRECHT.

Reliable Passenger Service, Royal Mail and Heavy Freights.

FOR SALE.

Large 1000 sq. ft. building... 1000 sq. ft. building...

FOR SALE.

Large 1000 sq. ft. building... 1000 sq. ft. building...

FOR SALE.

Large 1000 sq. ft. building... 1000 sq. ft. building...

FOR SALE.

Large 1000 sq. ft. building... 1000 sq. ft. building...

FOR SALE.

Large 1000 sq. ft. building... 1000 sq. ft. building...

FOR SALE.

Large 1000 sq. ft. building... 1000 sq. ft. building...

FOR SALE.

Large 1000 sq. ft. building... 1000 sq. ft. building...

FOR SALE.

Large 1000 sq. ft. building... 1000 sq. ft. building...

FOR SALE.

Large 1000 sq. ft. building... 1000 sq. ft. building...

FOR SALE.

Large 1000 sq. ft. building... 1000 sq. ft. building...

FOR SALE.

Large 1000 sq. ft. building... 1000 sq. ft. building...

FOR SALE.

Large 1000 sq. ft. building... 1000 sq. ft. building...

FOR SALE.

Large 1000 sq. ft. building... 1000 sq. ft. building...

FOR SALE.

Large 1000 sq. ft. building... 1000 sq. ft. building...

FOR SALE.

Large 1000 sq. ft. building... 1000 sq. ft. building...

FOR SALE.

Large 1000 sq. ft. building... 1000 sq. ft. building...

THE EAST AFRICAN STANDARD WEEKLY EDITION.

Small Advertisements. Advertisements are accepted only on condition that they will be published in full.

FOR SALE.

CHRISTMAS presents for your friends at home and abroad.

FOR SALE.

CHRISTMAS presents for your friends at home and abroad.

FOR SALE.

CHRISTMAS presents for your friends at home and abroad.

FOR SALE.

CHRISTMAS presents for your friends at home and abroad.

FOR SALE.

CHRISTMAS presents for your friends at home and abroad.

FOR SALE.

CHRISTMAS presents for your friends at home and abroad.

FOR SALE.

CHRISTMAS presents for your friends at home and abroad.

FOR SALE.

CHRISTMAS presents for your friends at home and abroad.

FOR SALE.

CHRISTMAS presents for your friends at home and abroad.

FOR SALE.

CHRISTMAS presents for your friends at home and abroad.

FOR SALE.

CHRISTMAS presents for your friends at home and abroad.

FOR SALE.

CHRISTMAS presents for your friends at home and abroad.

FOR SALE.

CHRISTMAS presents for your friends at home and abroad.

FOR SALE.

CHRISTMAS presents for your friends at home and abroad.

FOR SALE.

CHRISTMAS presents for your friends at home and abroad.

FOR SALE.

CHRISTMAS presents for your friends at home and abroad.

SITUATIONS WANTED.

WANTED: A position of...

SITUATIONS WANTED.

WANTED: A position of...

SITUATIONS WANTED.

WANTED: A position of...

SITUATIONS WANTED.

WANTED: A position of...

SITUATIONS WANTED.

WANTED: A position of...

SITUATIONS WANTED.

WANTED: A position of...

SITUATIONS WANTED.

WANTED: A position of...

SITUATIONS WANTED.

WANTED: A position of...

SITUATIONS WANTED.

WANTED: A position of...

SITUATIONS WANTED.

WANTED: A position of...

SITUATIONS WANTED.

WANTED: A position of...

SITUATIONS WANTED.

WANTED: A position of...

SITUATIONS WANTED.

WANTED: A position of...

SITUATIONS WANTED.

WANTED: A position of...

SITUATIONS WANTED.

WANTED: A position of...

SITUATIONS WANTED.

WANTED: A position of...

SITUATIONS WANTED.

WANTED: A position of...

WANTED.

WANTED: A position of...

WANTED.

WANTED: A position of...

WANTED.

WANTED: A position of...

WANTED.

WANTED: A position of...

WANTED.

WANTED: A position of...

WANTED.

WANTED: A position of...

WANTED.

WANTED: A position of...

WANTED.

WANTED: A position of...

WANTED.

WANTED: A position of...

WANTED.

WANTED: A position of...

WANTED.

WANTED: A position of...

WANTED.

WANTED: A position of...

WANTED.

WANTED: A position of...

WANTED.

WANTED: A position of...

WANTED.

WANTED: A position of...

WANTED.

WANTED: A position of...

WANTED.

WANTED: A position of...

Small text at the bottom left of the page.

Small text at the bottom middle of the page.

Small text at the bottom middle of the page.

Small text at the bottom middle of the page.

Small text at the bottom right of the page.





KEPLER MALT EXTRACT

A delicious food, containing the body-building and digestive constituents of the finest British winter-malted barley.



In bottles of two sizes, all Chemists and Grocers.

HOWWANZA RICE WE HOLD THE LARGEST STOCKS IN KENYA. WE CAN QUOTE YOU CHEAPEST POSSIBLE PRICES

MONOGRAPH OILS MEDIUM, HEAVY, SPECIAL HEAVY AND MOTOR CYCLE.

BEAVER BOARDS WE ARE THE LOCAL AGENTS AND CARRY LARGE STOCKS, SPECIAL LOW RATES FOR QUANTITIES.

BELGIAN WINDOW GLASS WE HAVE LARGE STOCKS ON HAND.

C. G. MONCKTON & CO. NAIROBI. P. O. Box 110

Belgian Window Glass advertisement details.

HORLICK'S Malted Milk advertisement with image of a woman and child.

HEALTH RESORT KIKUYU HOTEL BOOK NOW FOR THE Christmas Holidays.

METHODS OF EDUCATION.

A New Era.

THE NEW ERA. The John Dewey movement has been hailed as the herald of a new era in the history of the world.

THE KENYA.

THE KENYA. The Kenyan community now is a half a boomer. It is understood that the proceeds of this boomer were mainly for clearing away a debt.

THE KENYA.

THE KENYA. The Kenyan community now is a half a boomer. It is understood that the proceeds of this boomer were mainly for clearing away a debt.

ST. ANDREW'S CHURCH.

Successful Fete.

THE BEAVER AND GARDEN FETE. The St. Andrew's Church, Nairobi, has just held a successful fete.

KENYA PRODUCE.

London Prices.

THE BEAVER AND GARDEN FETE. The St. Andrew's Church, Nairobi, has just held a successful fete.

THE KENYA.

THE KENYA. The Kenyan community now is a half a boomer. It is understood that the proceeds of this boomer were mainly for clearing away a debt.

WISHER MEDICAL WORK.

THE AFRICAN FLIGHT.

WISHER MEDICAL WORK. The East African Medical Mission is engaged in a series of flights.

WEDNESDAY'S CABLES.

THE AFRICAN FLIGHT.

WEDNESDAY'S CABLES. The following are the cables received from London.

CHANG TSOUL DEBACLE.

Hidden Army Collapses.

CHANG TSOUL DEBACLE. The Chang Tsoul army has collapsed.

EGYPT AND ITALY.

Frontier Dispute Settled.

EGYPT AND ITALY. The frontier dispute between Egypt and Italy has been settled.

M. S. Mathai.

NANYUKI.

M. S. Mathai. NANYUKI. The Nanyuki community has held a successful fete.

THE KENYA.

THE KENYA. The Kenyan community now is a half a boomer. It is understood that the proceeds of this boomer were mainly for clearing away a debt.

THE KENYA.

THE KENYA. The Kenyan community now is a half a boomer. It is understood that the proceeds of this boomer were mainly for clearing away a debt.

THE KENYA.

THE KENYA. The Kenyan community now is a half a boomer. It is understood that the proceeds of this boomer were mainly for clearing away a debt.

AMERICAN'S GUARDIANS.

NATIVE'S APPEAL AWAY.

AMERICAN'S GUARDIANS. The American Guardians are active in the region.

AMERICAN'S GUARDIANS.

AMERICAN'S GUARDIANS. The American Guardians are active in the region.

AMERICAN'S GUARDIANS.

AMERICAN'S GUARDIANS. The American Guardians are active in the region.

AMERICAN'S GUARDIANS.

AMERICAN'S GUARDIANS. The American Guardians are active in the region.

Dr. Cassell's Tablets.

FREE SAMPLE.

Dr. Cassell's Tablets. The Dunhill Pipe has been discussed thus far.

THE DUNHILL PIPE.

THE DUNHILL PIPE. The Dunhill Pipe has been discussed thus far.

THE DUNHILL PIPE.

THE DUNHILL PIPE. The Dunhill Pipe has been discussed thus far.

THE DUNHILL PIPE.

THE DUNHILL PIPE. The Dunhill Pipe has been discussed thus far.

Dr. Cassell's Tablets.

FREE SAMPLE.

Dr. Cassell's Tablets. The Dunhill Pipe has been discussed thus far.

THE DUNHILL PIPE.

THE DUNHILL PIPE. The Dunhill Pipe has been discussed thus far.

THE DUNHILL PIPE.

THE DUNHILL PIPE. The Dunhill Pipe has been discussed thus far.

THE DUNHILL PIPE.

THE DUNHILL PIPE. The Dunhill Pipe has been discussed thus far.



FREE SAMPLE.

Dr. Cassell's Tablets.

FREE SAMPLE.

Dr. Cassell's Tablets.

FREE SAMPLE.

Dr. Cassell's Tablets.

FREE SAMPLE.

Dr. Cassell's Tablets.

FREE SAMPLE.

Dr. Cassell's Tablets.

FREE SAMPLE.

Dr. Cassell's Tablets.

FREE SAMPLE.

Dr. Cassell's Tablets.

FREE SAMPLE.

Dr. Cassell's Tablets.

FREE SAMPLE.

Dr. Cassell's Tablets.

FREE SAMPLE.

Dr. Cassell's Tablets.

FREE SAMPLE.

Dr. Cassell's Tablets.

FREE SAMPLE.

Dr. Cassell's Tablets.

FREE SAMPLE.

Dr. Cassell's Tablets.

FREE SAMPLE.

Dr. Cassell's Tablets.

FREE SAMPLE.

Dr. Cassell's Tablets.

FREE SAMPLE.

Dr. Cassell's Tablets.

FREE SAMPLE.

Dr. Cassell's Tablets.

FREE SAMPLE.

Dr. Cassell's Tablets.

FREE SAMPLE.



### The Rising Generation

This Family of Fine Sturdy Children

is typical of the nation's best and most precious blood. Each of the nine in this family were reared on the Allenburys Food, and their parents are delighted to be able to state in each case, "There is a child in the family who does not make baby experiments with food to his learning."

### 'Allenburys'

Professive System of Infant & Feeding

to raise the rising generation. For over 40 years these foods have been the standard of excellence, and today they stand higher than ever in the estimation of those who can judge from long experience.

ALLEN & HANBURY'S Ltd., London HOUSE & MCGEEGORE, Nairobi.

### CEMENT CAN BE MADE AT ALMOST ANY PRICE

but the scientific care exercised in the manufacture of these established BRITISH BRANDS necessitates their being just a little dearer than inferior foreign cements

### ASK YOUR ARCHITECT

MIGHTHOUSE - MALTESE CROSS PITCHER - HANBY - BURTHAM NINE MILLS - FLYBUSH WHITES - ELEANOR - DUCK - ANCHOR

The Manufacturers' Representatives are Kettles - Roy, Limited, Nairobi, Kampala, Mombasa and Zanzibar.

Brochures on complete construction free on request, but get your supplies of cement from your local dealer.

### FRED RAPER.

Box 541. CITY HOUSE Phone 1445. GENERAL COMMISSION AGENT.

Box 541. CITY HOUSE NAIROBI Phone 1445. GENERAL COMMISSION AGENT.

Agents for - JAMES HONEY - NEW HOME - SOWING MACHINES - SHARPLES' Separators - GOLD MEDAL - Camp Furnitures - WHOLESALE AND RETAIL.

### NEW GOODS JUST ARRIVED

Mechanics' Hollow Suits. Waterproof Coats. Or Breast Collars and Saddlery. Manchester Fests. Tarponnals.

Holdalls and Sleeping Bags. SPECIALLY OXEN on hand and Bought and Sold on commission.

### NOTICE.

The Annual General Meeting of the Kenya Angling Association will be held on Jan. 4th, 1926 at 10.30 a.m. in Avenue/House.

### F. DOBBS,

Behestant in Attendance. OBTAINABLE ON APPLICATION. Government Road, NAIROBI. Telephone No. 311

No connection with any other firm of the same name.

### CORRESPONDENCE

The Editor does not accept responsibility for the correspondence in his columns. He will return to the sender any articles or letters not suitable for publication, and is not a guarantee of good faith. He is not responsible for any errors or omissions.

### LORD DELAMARE'S SPEECH.

To the Editor, "I read Lord Delamare's speech in the House of Commons on the 11th inst. with interest. It is a very good speech, and I am glad to see that the Government are taking steps to improve the position of the natives in the East African territories."

My writing paper has become thin and I have to use a pen which is not very good. I am sorry to hear that the Government are taking steps to improve the position of the natives in the East African territories.

FRANK WALKINS, Bahr.

### A LIVESTOCK DONATION

In the notice of 11th December I mentioned the donation of a cow to the Government by the late Mr. J. W. Walker. The cow was a very good one and was a valuable addition to the Government's stock.

FRANK WALKINS, Bahr.

### THE CLAYTON FARM TRACTOR

350 H.P.

THE CLAYTON FARM TRACTOR

350 H.P.

THE CLAYTON FARM TRACTOR

350 H.P.

THE CLAYTON FARM TRACTOR

350 H.P.

THE CLAYTON FARM TRACTOR

350 H.P.

THE CLAYTON FARM TRACTOR

350 H.P.

THE CLAYTON FARM TRACTOR

350 H.P.

THE CLAYTON FARM TRACTOR

350 H.P.

THE CLAYTON FARM TRACTOR

350 H.P.

THE CLAYTON FARM TRACTOR

350 H.P.

THE CLAYTON FARM TRACTOR

350 H.P.

THE CLAYTON FARM TRACTOR

350 H.P.

THE CLAYTON FARM TRACTOR

350 H.P.

THE CLAYTON FARM TRACTOR

350 H.P.

THE CLAYTON FARM TRACTOR

350 H.P.

### REGENERATION BY STATE.

The Government are taking steps to regenerate the East African territories by the State. This is done by providing the necessary funds and facilities for the development of the territories.

The Government are taking steps to regenerate the East African territories by the State. This is done by providing the necessary funds and facilities for the development of the territories.

The Government are taking steps to regenerate the East African territories by the State. This is done by providing the necessary funds and facilities for the development of the territories.

The Government are taking steps to regenerate the East African territories by the State. This is done by providing the necessary funds and facilities for the development of the territories.

The Government are taking steps to regenerate the East African territories by the State. This is done by providing the necessary funds and facilities for the development of the territories.

The Government are taking steps to regenerate the East African territories by the State. This is done by providing the necessary funds and facilities for the development of the territories.

The Government are taking steps to regenerate the East African territories by the State. This is done by providing the necessary funds and facilities for the development of the territories.

The Government are taking steps to regenerate the East African territories by the State. This is done by providing the necessary funds and facilities for the development of the territories.

The Government are taking steps to regenerate the East African territories by the State. This is done by providing the necessary funds and facilities for the development of the territories.

The Government are taking steps to regenerate the East African territories by the State. This is done by providing the necessary funds and facilities for the development of the territories.

The Government are taking steps to regenerate the East African territories by the State. This is done by providing the necessary funds and facilities for the development of the territories.

The Government are taking steps to regenerate the East African territories by the State. This is done by providing the necessary funds and facilities for the development of the territories.

The Government are taking steps to regenerate the East African territories by the State. This is done by providing the necessary funds and facilities for the development of the territories.

The Government are taking steps to regenerate the East African territories by the State. This is done by providing the necessary funds and facilities for the development of the territories.

The Government are taking steps to regenerate the East African territories by the State. This is done by providing the necessary funds and facilities for the development of the territories.

The Government are taking steps to regenerate the East African territories by the State. This is done by providing the necessary funds and facilities for the development of the territories.

The Government are taking steps to regenerate the East African territories by the State. This is done by providing the necessary funds and facilities for the development of the territories.

The Government are taking steps to regenerate the East African territories by the State. This is done by providing the necessary funds and facilities for the development of the territories.

The Government are taking steps to regenerate the East African territories by the State. This is done by providing the necessary funds and facilities for the development of the territories.

The Government are taking steps to regenerate the East African territories by the State. This is done by providing the necessary funds and facilities for the development of the territories.

The Government are taking steps to regenerate the East African territories by the State. This is done by providing the necessary funds and facilities for the development of the territories.

The Government are taking steps to regenerate the East African territories by the State. This is done by providing the necessary funds and facilities for the development of the territories.

The Government are taking steps to regenerate the East African territories by the State. This is done by providing the necessary funds and facilities for the development of the territories.

The Government are taking steps to regenerate the East African territories by the State. This is done by providing the necessary funds and facilities for the development of the territories.

The Government are taking steps to regenerate the East African territories by the State. This is done by providing the necessary funds and facilities for the development of the territories.

The Government are taking steps to regenerate the East African territories by the State. This is done by providing the necessary funds and facilities for the development of the territories.

The Government are taking steps to regenerate the East African territories by the State. This is done by providing the necessary funds and facilities for the development of the territories.

The Government are taking steps to regenerate the East African territories by the State. This is done by providing the necessary funds and facilities for the development of the territories.

The Government are taking steps to regenerate the East African territories by the State. This is done by providing the necessary funds and facilities for the development of the territories.

### THURSDAY'S CABLES.

THURSDAY'S CABLES. The cable news from London and other parts of the world is as follows: The British Empire Exhibition Deficit.

THURSDAY'S CABLES. The cable news from London and other parts of the world is as follows: The British Empire Exhibition Deficit.

THURSDAY'S CABLES. The cable news from London and other parts of the world is as follows: The British Empire Exhibition Deficit.

THURSDAY'S CABLES. The cable news from London and other parts of the world is as follows: The British Empire Exhibition Deficit.

THURSDAY'S CABLES. The cable news from London and other parts of the world is as follows: The British Empire Exhibition Deficit.

THURSDAY'S CABLES. The cable news from London and other parts of the world is as follows: The British Empire Exhibition Deficit.

THURSDAY'S CABLES. The cable news from London and other parts of the world is as follows: The British Empire Exhibition Deficit.

THURSDAY'S CABLES. The cable news from London and other parts of the world is as follows: The British Empire Exhibition Deficit.

THURSDAY'S CABLES. The cable news from London and other parts of the world is as follows: The British Empire Exhibition Deficit.

THURSDAY'S CABLES. The cable news from London and other parts of the world is as follows: The British Empire Exhibition Deficit.

THURSDAY'S CABLES. The cable news from London and other parts of the world is as follows: The British Empire Exhibition Deficit.

THURSDAY'S CABLES. The cable news from London and other parts of the world is as follows: The British Empire Exhibition Deficit.

THURSDAY'S CABLES. The cable news from London and other parts of the world is as follows: The British Empire Exhibition Deficit.

THURSDAY'S CABLES. The cable news from London and other parts of the world is as follows: The British Empire Exhibition Deficit.

THURSDAY'S CABLES. The cable news from London and other parts of the world is as follows: The British Empire Exhibition Deficit.

THURSDAY'S CABLES. The cable news from London and other parts of the world is as follows: The British Empire Exhibition Deficit.

THURSDAY'S CABLES. The cable news from London and other parts of the world is as follows: The British Empire Exhibition Deficit.

THURSDAY'S CABLES. The cable news from London and other parts of the world is as follows: The British Empire Exhibition Deficit.

THURSDAY'S CABLES. The cable news from London and other parts of the world is as follows: The British Empire Exhibition Deficit.

THURSDAY'S CABLES. The cable news from London and other parts of the world is as follows: The British Empire Exhibition Deficit.

THURSDAY'S CABLES. The cable news from London and other parts of the world is as follows: The British Empire Exhibition Deficit.

THURSDAY'S CABLES. The cable news from London and other parts of the world is as follows: The British Empire Exhibition Deficit.

THURSDAY'S CABLES. The cable news from London and other parts of the world is as follows: The British Empire Exhibition Deficit.

THURSDAY'S CABLES. The cable news from London and other parts of the world is as follows: The British Empire Exhibition Deficit.

THURSDAY'S CABLES. The cable news from London and other parts of the world is as follows: The British Empire Exhibition Deficit.

THURSDAY'S CABLES. The cable news from London and other parts of the world is as follows: The British Empire Exhibition Deficit.

THURSDAY'S CABLES. The cable news from London and other parts of the world is as follows: The British Empire Exhibition Deficit.

THURSDAY'S CABLES. The cable news from London and other parts of the world is as follows: The British Empire Exhibition Deficit.

THURSDAY'S CABLES. The cable news from London and other parts of the world is as follows: The British Empire Exhibition Deficit.

### BRITISH SOUTH AFRICA

ANNUAL 1925-1926.

SIXTEENTH YEAR OF PUBLICATION UPWARDS OF 104 PAGES INCLUDING

SPECIAL ARTICLES ON AGRICULTURE, MINING RAILWAYS

SUITABLE FOR FRAMING.

SPECIAL ARTICLES ON AGRICULTURE, MINING RAILWAYS

SUITABLE FOR FRAMING.

SPECIAL ARTICLES ON AGRICULTURE, MINING RAILWAYS

SUITABLE FOR FRAMING.

SPECIAL ARTICLES ON AGRICULTURE, MINING RAILWAYS

SUITABLE FOR FRAMING.

SPECIAL ARTICLES ON AGRICULTURE, MINING RAILWAYS

SUITABLE FOR FRAMING.

SPECIAL ARTICLES ON AGRICULTURE, MINING RAILWAYS

SUITABLE FOR FRAMING.

SPECIAL ARTICLES ON AGRICULTURE, MINING RAILWAYS

SUITABLE FOR FRAMING.

SPECIAL ARTICLES ON AGRICULTURE, MINING RAILWAYS

SUITABLE FOR FRAMING.

SPECIAL ARTICLES ON AGRICULTURE, MINING RAILWAYS

SUITABLE FOR FRAMING.

SPECIAL ARTICLES ON AGRICULTURE, MINING RAILWAYS

SUITABLE FOR FRAMING.

SPECIAL ARTICLES ON AGRICULTURE, MINING RAILWAYS

SUITABLE FOR FRAMING.

SPECIAL ARTICLES ON AGRICULTURE, MINING RAILWAYS

SUITABLE FOR FRAMING.

SPECIAL ARTICLES ON AGRICULTURE, MINING RAILWAYS

SUITABLE FOR FRAMING.

SPECIAL ARTICLES ON AGRICULTURE, MINING RAILWAYS

### TRADE NOTES.

TRADE NOTES. The trade in the East African territories is showing signs of improvement.

TRADE NOTES. The trade in the East African territories is showing signs of improvement.

TRADE NOTES. The trade in the East African territories is showing signs of improvement.

TRADE NOTES. The trade in the East African territories is showing signs of improvement.

TRADE NOTES. The trade in the East African territories is showing signs of improvement.

TRADE NOTES. The trade in the East African territories is showing signs of improvement.

TRADE NOTES. The trade in the East African territories is showing signs of improvement.

TRADE NOTES. The trade in the East African territories is showing signs of improvement.

TRADE NOTES. The trade in the East African territories is showing signs of improvement.

TRADE NOTES. The trade in the East African territories is showing signs of improvement.

TRADE NOTES. The trade in the East African territories is showing signs of improvement.

TRADE NOTES. The trade in the East African territories is showing signs of improvement.

TRADE NOTES. The trade in the East African territories is showing signs of improvement.

TRADE NOTES. The trade in the East African territories is showing signs of improvement.

TRADE NOTES. The trade in the East African territories is showing signs of improvement.

TRADE NOTES. The trade in the East African territories is showing signs of improvement.

TRADE NOTES. The trade in the East African territories is showing signs of improvement.

TRADE NOTES. The trade in the East African territories is showing signs of improvement.

TRADE NOTES. The trade in the East African territories is showing signs of improvement.

TRADE NOTES. The trade in the East African territories is showing signs of improvement.

TRADE NOTES. The trade in the East African territories is showing signs of improvement.

TRADE NOTES. The trade in the East African territories is showing signs of improvement.

TRADE NOTES. The trade in the East African territories is showing signs of improvement.

TRADE NOTES. The trade in the East African territories is showing signs of improvement.

TRADE NOTES. The trade in the East African territories is showing signs of improvement.

TRADE NOTES. The trade in the East African territories is showing signs of improvement.

TRADE NOTES. The trade in the East African territories is showing signs of improvement.

TRADE NOTES. The trade in the East African territories is showing signs of improvement.

TRADE NOTES. The trade in the East African territories is showing signs of improvement.

### THURSDAY'S CABLES.

THURSDAY'S CABLES. The cable news from London and other parts of the world is as follows: The British Empire Exhibition Deficit.

THURSDAY'S CABLES. The cable news from London and other parts of the world is as follows: The British Empire Exhibition Deficit.

THURSDAY'S CABLES. The cable news from London and other parts of the world is as follows: The British Empire Exhibition Deficit.

THURSDAY'S CABLES. The cable news from London and other parts of the world is as follows: The British Empire Exhibition Deficit.

THURSDAY'S CABLES. The cable news from London and other parts of the world is as follows: The British Empire Exhibition Deficit.

THURSDAY'S CABLES. The cable news from London and other parts of the world is as follows: The British Empire Exhibition Deficit.

THURSDAY'S CABLES. The cable news from London and other parts of the world is as follows: The British Empire Exhibition Deficit.

THURSDAY'S CABLES. The cable news from London and other parts of the world is as follows: The British Empire Exhibition Deficit.

THURSDAY'S CABLES. The cable news from London and other parts of the world is as follows: The British Empire Exhibition Deficit.

THURSDAY'S CABLES. The cable news from London and other parts of the world is as follows: The British Empire Exhibition Deficit.

THURSDAY'S CABLES. The cable news from London and other parts of the world is as follows: The British Empire Exhibition Deficit.

THURSDAY'S CABLES. The cable news from London and other parts of the world is as follows: The British Empire Exhibition Deficit.

THURSDAY'S CABLES. The cable news from London and other parts of the world is as follows: The British Empire Exhibition Deficit.

THURSDAY'S CABLES. The cable news from London and other parts of the world is as follows: The British Empire Exhibition Deficit.

THURSDAY'S CABLES. The cable news from London and other parts of the world is as follows: The British Empire Exhibition Deficit.

THURSDAY'S CABLES. The cable news from London and other parts of the world is as follows: The British Empire Exhibition Deficit.

THURSDAY'S CABLES. The cable news from London and other parts of the world is as follows: The British Empire Exhibition Deficit.

THURSDAY'S CABLES. The cable news from London and other parts of the world is as follows: The British Empire Exhibition Deficit.

THURSDAY'S CABLES. The cable news from London and other parts of the world is as follows: The British Empire Exhibition Deficit.

THURSDAY'S CABLES. The cable news from London and other parts of the world is as follows: The British Empire Exhibition Deficit.

THURSDAY'S CABLES. The cable news from London and other parts of the world is as follows: The British Empire Exhibition Deficit.

THURSDAY'S CABLES. The cable news from London and other parts of the world is as follows: The British Empire Exhibition Deficit.

THURSDAY'S CABLES. The cable news from London and other parts of the world is as follows: The British Empire Exhibition Deficit.

THURSDAY'S CABLES. The cable news from London and other parts of the world is as follows: The British Empire Exhibition Deficit.

THURSDAY'S CABLES. The cable news from London and other parts of the world is as follows: The British Empire Exhibition Deficit.

THURSDAY'S CABLES. The cable news from London and other parts of the world is as follows: The British Empire Exhibition Deficit.

THURSDAY'S CABLES. The cable news from London and other parts of the world is as follows: The British Empire Exhibition Deficit.

THURSDAY'S CABLES. The cable news from London and other parts of the world is as follows: The British Empire Exhibition Deficit.

### BRITISH SOUTH AFRICA

ANNUAL 1925-1926.

SIXTEENTH YEAR OF PUBLICATION UPWARDS OF 104 PAGES INCLUDING

SPECIAL ARTICLES ON AGRICULTURE, MINING RAILWAYS

SUITABLE FOR FRAMING.

SPECIAL ARTICLES ON AGRICULTURE, MINING RAILWAYS

SUITABLE FOR FRAMING.

SPECIAL ARTICLES ON AGRICULTURE, MINING RAILWAYS

SUITABLE FOR FRAMING.

SPECIAL ARTICLES ON AGRICULTURE, MINING RAILWAYS

# If You Contemplate Purchasing An Engine.

## BE SURE

You Get SERVICE with it. Spare Parts Kept in Stock.

A Ruston Representative on our staff

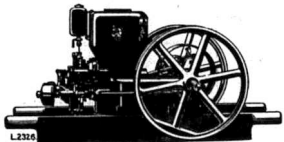
### Few Facts Concerning

THE

## RUSTON - HORNSBY

# PETROL - PARAFFIN ENGINES

FOR THE SHAMBA.



Sound Design  
Easy to Start  
Long Life.

Best Material  
Low Speed  
Low Running Cost

"AP" Type—3½ B.H.P. to 9½ B.H.P.  
"PR" Type—1½ B.H.P. to 6 B.H.P.

Consumes 2/3 of a pint to 1 pint per B.H.P. according to size of Engine.  
ONE BRAKE HORSE POWER of a "Ruston-Hornsby" Petrol Paraffin Engine will in one hour—

- 1. Raise 1000 gallons of water or sewage 100 feet.
- 2. Cut 75 feet of 9" disc.
- 3. Separate 150 gallons of milk.
- 4. Run 30-10 c.p. Metallic Filament Lamps.
- 5. Make 12 lbs. of Ice with Refrigerator.
- 6. Grind 1½ bushels of corn to fine meal.
- 7. Run 8 cwt. of tann.
- 8. Hoist 5 tons—200ft. Vertically.
- 9. Run an A.B.C. Lamp of 100 Candle Power.
- 10. Churn 40 to 50 gallons of Cream.

Sole Agents—

# Gailey & Roberts Limited

NAIROBI AND

Nakuru, Eldoret, Jinja, Dar-es-Salaam, London.

### FRIDAY'S CABLES.

### BRITISH WINNING IN MUSUL INSURRE.

**IRISH TREATY BILL IN PARLIAMENT.**  
Adjustment of Irish's Liability.

London, Dec. 11.—The House of Commons read the Irish Bill a second time and the third reading will follow to-morrow. The Bill is the work of the Irish Free Agreement Bill Mr. Balfour. The reports regarding the nature of the Boundary Commission's report were the same yesterday as those of the three. The Bill has been introduced and will be read a second time to-morrow. The Bill will be read a second time to-morrow. The Bill will be read a second time to-morrow.

**Turks Challenge League's Authority.**  
Turks Challenge League's Authority.

London, Dec. 11.—The Turkish representatives at the League of Nations have challenged the League's authority. They have done so by presenting a document which they claim is a copy of the League's constitution. They have done so by presenting a document which they claim is a copy of the League's constitution.

**DOMINIONS WILL MAKE ALL THEY NEED.**  
No Empire Trade Left Behind.

London, Dec. 11.—The Dominion governments have agreed to make all they need. They have done so by presenting a document which they claim is a copy of the League's constitution. They have done so by presenting a document which they claim is a copy of the League's constitution.

**FRIDAY'S CABLES.**  
The whole of the East African continent will receive a report on the situation in the East African continent. The report will be published in the East African Standard.

**FRIDAY'S CABLES.**  
The whole of the East African continent will receive a report on the situation in the East African continent. The report will be published in the East African Standard.

**FRIDAY'S CABLES.**  
The whole of the East African continent will receive a report on the situation in the East African continent. The report will be published in the East African Standard.

**FRIDAY'S CABLES.**  
The whole of the East African continent will receive a report on the situation in the East African continent. The report will be published in the East African Standard.

**FRIDAY'S CABLES.**  
The whole of the East African continent will receive a report on the situation in the East African continent. The report will be published in the East African Standard.

**FRIDAY'S CABLES.**  
The whole of the East African continent will receive a report on the situation in the East African continent. The report will be published in the East African Standard.

**FRIDAY'S CABLES.**  
The whole of the East African continent will receive a report on the situation in the East African continent. The report will be published in the East African Standard.

**FRIDAY'S CABLES.**  
The whole of the East African continent will receive a report on the situation in the East African continent. The report will be published in the East African Standard.

**FRIDAY'S CABLES.**  
The whole of the East African continent will receive a report on the situation in the East African continent. The report will be published in the East African Standard.

## Samuel Jacobs & Company.

THEATRE ROYAL BUILDING, SIXTH AVENUE, NAIROBI.

PLANTATIONS, AND FARMS FOR SALE OF EVERY DESCRIPTION AND IN EVERY DISTRICT THROUGHOUT THE COLONY.

THEY HAVE A RESIDENTIAL PROPERTY IN ALL DISTRICTS. EASY TERMS TO SUIT PURCHASERS.

## Mortgages and Loans.

ARRANGED UP TO ANY AMOUNT, AND OF ANY CHARACTER. SECURITY, AT CURRENT RATES OF INTEREST.

PARTNERSHIPS NEGOTIATED. ARBITRATIONS UNDERTAKEN. VALUATIONS.

P.O. Box No. 684, Tel Aviv, Tel Aviv, Tel Aviv.

## JAPAN UNREST OVER CHINA WAR.

Troops Ready if War Leads Enter Her Zone.

As a result of the recent developments in Manchuria, the Japanese Government has announced that it is prepared to dispatch troops to the Manchurian frontier.

London, Dec. 11.—The Japanese Government has announced that it is prepared to dispatch troops to the Manchurian frontier.

London, Dec. 11.—The Japanese Government has announced that it is prepared to dispatch troops to the Manchurian frontier.

London, Dec. 11.—The Japanese Government has announced that it is prepared to dispatch troops to the Manchurian frontier.

London, Dec. 11.—The Japanese Government has announced that it is prepared to dispatch troops to the Manchurian frontier.

London, Dec. 11.—The Japanese Government has announced that it is prepared to dispatch troops to the Manchurian frontier.

London, Dec. 11.—The Japanese Government has announced that it is prepared to dispatch troops to the Manchurian frontier.

London, Dec. 11.—The Japanese Government has announced that it is prepared to dispatch troops to the Manchurian frontier.

London, Dec. 11.—The Japanese Government has announced that it is prepared to dispatch troops to the Manchurian frontier.

London, Dec. 11.—The Japanese Government has announced that it is prepared to dispatch troops to the Manchurian frontier.

London, Dec. 11.—The Japanese Government has announced that it is prepared to dispatch troops to the Manchurian frontier.

London, Dec. 11.—The Japanese Government has announced that it is prepared to dispatch troops to the Manchurian frontier.

London, Dec. 11.—The Japanese Government has announced that it is prepared to dispatch troops to the Manchurian frontier.

London, Dec. 11.—The Japanese Government has announced that it is prepared to dispatch troops to the Manchurian frontier.

London, Dec. 11.—The Japanese Government has announced that it is prepared to dispatch troops to the Manchurian frontier.

London, Dec. 11.—The Japanese Government has announced that it is prepared to dispatch troops to the Manchurian frontier.

London, Dec. 11.—The Japanese Government has announced that it is prepared to dispatch troops to the Manchurian frontier.

London, Dec. 11.—The Japanese Government has announced that it is prepared to dispatch troops to the Manchurian frontier.

London, Dec. 11.—The Japanese Government has announced that it is prepared to dispatch troops to the Manchurian frontier.

RACING IN KENYA.

Below are the notes for the year meeting to be held at Eldoret on Saturday December 19.

First Race. OCHU MATHU RACE. Mr. D. O. B. Fure's DIANA, Mr. H. G. Williams's BILARU, Mr. M. C. McCall's JUNGLE, Mr. J. M. C. G. O'Brien's SAKAI, Mrs. Stephen's CAMO, Mrs. Woodley's BLUE-BIRD, Mr. B. Arnold's REVEREND, Mr. J. M. Dwyer's MELBITE, Mrs. Spencer Tyn's HERBIDA, Mr. C. W. Bennett's KEMMET.

Second Race. MAIDEN SOMALI RACE. Mr. H. B. Ringwood's BLUE MOTTLE, Mr. J. B. Ringwood's BLUE MOTTLE, Mr. C. G. Johnson's BURTER, Mr. C. G. Johnson's BURTER, Mrs. Hester's JANCY, Mrs. Hester's JANCY, Mrs. H. W. Hunter's DANNY, Mrs. H. W. Hunter's DANNY, Mr. H. D. Deakin's SKIPPER, Mr. H. D. Deakin's SKIPPER, Mr. O'Neil's O'NEIL, Mrs. Olive Pitt's PERIDOT, Mr. E. W. Van Der Galle's METT.

Third Race. THE BLOOMER RACE. Mr. H. B. Dwyer's HANNA, Mr. H. B. Dwyer's HANNA, Mr. E. R. Rowan Shaw's DUNDEE, Mr. E. R. Rowan Shaw's DUNDEE, Mrs. Spencer Tyn's KHEMET, Mrs. Spencer Tyn's KHEMET.

Fourth Race. OCHU MATHU RACE. Mr. O. Halderson's ANSHAR, Mrs. O'Neil's BILARU, Mrs. O'Neil's BILARU, Mrs. O'Neil's BILARU, Mrs. O'Neil's BILARU, Mrs. W. H. Hunter's JANCY, Mrs. W. H. Hunter's JANCY, Mrs. W. H. Hunter's JANCY, Mrs. W. H. Hunter's JANCY.

COMMISSION TO RESCUE VICKERS.

Capital to be Written Down by £12,500,000.

THE British Government has announced that it will write down the capital of the Victoria Company by £12,500,000. The Commission to Rescure Vickers is the body which will be set up to carry out this measure.

The Commission expresses the opinion that the foregoing measure will enable the company to remain going throughout the year. The Chairman of Vickers is circulating the report, pointing out that the reduction of capital is essentially a book entry and does not affect the intrinsic value of the firm's assets.

Britain's Trade. NOVEMBER IMPORTS AND EXPORTS. London, Dec. 9. According to Board of Trade returns, British exports for November totalled £116,000,000 and imports £107,000,000, an increase of £24,000,000 in the firm and a decrease of £18,000,000 in the exports compared with October.

Special Offers. S.A. Party Congress. Organized by the A.M.U. at Bloemfontein.

SEASONABLE STOCKIST'S. Silver Cigarettes Cases from Shs. 20/-.

Silver Ink Bottles from Shs. 20/-.

Silver Ash Trays from Shs. 20/-.

Spirit Flasks from Shs. 20/-.

Letter Cases from Shs. 20/-.

Outfitters's Silver Brushes from Shs. 20/-.

Gold Cigarette Cases from Shs. 20/-.

Silver Cigarette Cases from Shs. 20/-.

Silver Pen Holders from Shs. 20/-.

WEEKLY WEATHER REPORT.

For the week ending 9th December, reported by courtesy of the Department of Agriculture, BAINFALL.

Table with 2 columns: Station, Inches. Rows include Abil, Kisumu, Nairobi, etc.

TEMPERATURE.

Table with 2 columns: Station, Max. Min. Rows include Nairobi, Kisumu, etc.

Trading Centre. Two new Nyika licenses are taken out in Nairobi-Ottawa to form the Nyakira trading centre.

Mombasa Firm Closed. The Mombasa Times announces the closure of the firm of W. Mombasa and Brother.

British Trade. NOVEMBER IMPORTS AND EXPORTS. London, Dec. 9.

Special Offers. S.A. Party Congress. Organized by the A.M.U. at Bloemfontein.

SEASONABLE STOCKIST'S. Silver Cigarettes Cases from Shs. 20/-.

Silver Ink Bottles from Shs. 20/-.

Silver Ash Trays from Shs. 20/-.

Spirit Flasks from Shs. 20/-.

Letter Cases from Shs. 20/-.

Outfitters's Silver Brushes from Shs. 20/-.

Gold Cigarette Cases from Shs. 20/-.

Silver Cigarette Cases from Shs. 20/-.

THE EAST AFRICAN STANDARD.

Attachment! NEW PERFECTED OIL COOK STOVE. LAUREL PARAFFIN. The right oil in the right stove.

Distributing Agents in Kenya, Uganda, Tanganyika and Zanzibar. THE AFRICAN MERCHANT COMPANY, LTD. YAOUNDI OIL CO. OF SOUTHERN AFRICA, LTD.

BUY BRITISH GOODS.

"STURDIO STAR". Patrol lamps and lanterns. Guaranteed in every respect. Procure from NEWMARK, P.O. Box 106, Haile Selassie, Nairobi.

SEASONABLE STOCKIST'S. Silver Handcuffs from Shs. 20/-.

Silver Handcuffs from Shs. 20/-.

Out Glass and Silver Bottles from Shs. 20/-.

Glass and Silver Bottles from Shs. 20/-.

Cigarette Holders in Ivory, Amber and Turquoise from Shs. 20/-.

Amber and Out Glass from Shs. 20/-.

Amber and Out Glass from Shs. 20/-.

Amber and Out Glass from Shs. 20/-.

THE EAST AFRICAN STANDARD Motor and Sport MAGAZINE SUPPLEMENT. CARBURETTOR ADJUSTMENTS. How to Obtain the Greatest Mileage. MAXIMUM ECONOMY and MAXIMUM POWER.

THE EAST AFRICAN STANDARD WEEKLY EDITION. Small Advertisements. Advertisements are accepted only subject to approval.

MINERALOGICAL PREPAID ADVERTISEMENTS. Such as Wanted, To Let, For Sale and Miscellaneous. The notice is outstayed in any case.

FOR SALE. To E. Malver and Co. Stationers, Nairobi. To E. Malver and Co. Stationers, Nairobi.

SEASONABLE STOCKIST'S. Silver Handcuffs from Shs. 20/-.

Silver Handcuffs from Shs. 20/-.

Out Glass and Silver Bottles from Shs. 20/-.

Glass and Silver Bottles from Shs. 20/-.

THE CORRECT MIXTURE. A mixture of 84 or 85 to the gallon is the best for use in the carburettor.

THE CORRECT MIXTURE. A mixture of 84 or 85 to the gallon is the best for use in the carburettor.

THE CORRECT MIXTURE. A mixture of 84 or 85 to the gallon is the best for use in the carburettor.

THE CORRECT MIXTURE. A mixture of 84 or 85 to the gallon is the best for use in the carburettor.

THE CORRECT MIXTURE. A mixture of 84 or 85 to the gallon is the best for use in the carburettor.

THE CORRECT MIXTURE. A mixture of 84 or 85 to the gallon is the best for use in the carburettor.

THE CORRECT MIXTURE. A mixture of 84 or 85 to the gallon is the best for use in the carburettor.

THE CORRECT MIXTURE. A mixture of 84 or 85 to the gallon is the best for use in the carburettor.

THE CORRECT MIXTURE. A mixture of 84 or 85 to the gallon is the best for use in the carburettor.

THE CORRECT MIXTURE. A mixture of 84 or 85 to the gallon is the best for use in the carburettor.

THE CORRECT MIXTURE. A mixture of 84 or 85 to the gallon is the best for use in the carburettor.

THE CORRECT MIXTURE. A mixture of 84 or 85 to the gallon is the best for use in the carburettor.

THE CORRECT MIXTURE. A mixture of 84 or 85 to the gallon is the best for use in the carburettor.

THE CORRECT MIXTURE. A mixture of 84 or 85 to the gallon is the best for use in the carburettor.





# B.S.A.

## Douglas

### Motor Cycles

ARE BACKED BY THE MOST EFFICIENT SPARE PARTS SERVICE IN KENYA.

We are prepared to back this statement by issuing an invitation to all interested to come and inspect the COMPREHENSIVE RANGE OF SPARES at our store in NAIROBI.

Sole Importers—Newtons Ltd., Nairobi.

WHATSOEVER the one you wish, it will run like new when lubricated by



The first thing to do, then, is to find out the size of the jet in use, and the effect of one which is smaller or larger than that in use. This is a job which can be done in a few minutes. The first thing to do, then, is to find out the size of the jet in use, and the effect of one which is smaller or larger than that in use. This is a job which can be done in a few minutes.

**CASTROL**  
ONCE USED  
IS ALWAYS USED  
OBTAINABLE EVERYWHERE.

Sole Importers—Newtons Ltd., Nairobi.

# CHAMPION

Dependable for Every Engine.

## BUY CHAMPIONS NOW!

Hundreds of thousands of motorists regard motor performance and speed in oil and gas. This is the reason why Champion becomes the name of choice for every motorist who desires the best of Champion. Champion's success is due to the fact that the Champion engine is built to last. The Champion engine is built to last. The Champion engine is built to last.

PRICES: Size 4/2 each. OBTAINABLE AT ALL GARAGES. Sole Importers—Newtons Ltd., Nairobi.

### CARBURETTOR ADJUSTMENTS.

(Continued from page 17.)

There are so many different types of carburettors that it is impossible to give any universal rule of procedure.

Usually it is a question of varying the size of the jets, and altering the choke links to suit the four periods and the speed delivered by them. The problem is not so simple as it appears, and a lot of testing may have to be done before satisfactory results can be obtained.

### JET SIZES.

Jet sizes are indicated by numbers. The numbers used are the greater the size. For example, the numbers used for the 250 cc. B.S.A. carburettor are in the neighbourhood of 150. This means that the diameter of the hole is one millimetre.

As the size of a circle varies in the square of the diameter, a jet marked 100 would deliver twice as much fuel as one marked 50. The square of 100 is 10,000, and the square of 50 is 2,500. It is not exactly half a jet, but it is very close to it.

### THE PROCEDURE.

The first thing to do, then, is to find out the size of the jet in use, and the effect of one which is smaller or larger than that in use. This is a job which can be done in a few minutes. The first thing to do, then, is to find out the size of the jet in use, and the effect of one which is smaller or larger than that in use. This is a job which can be done in a few minutes.

### VARIABLE JETS.

A number of carburettors are designed so that the size through the jet varies with the speed. A tapered point projecting into the jet, which is a pin of slightly varying length, is used to vary the size of the jet. This is done by adjusting the pin down in the jet opening.

### LETTERS.

There are a number of other letters which can be made to a carburettor. They are usually called "float" and "needle" letters. They are usually called "float" and "needle" letters.

### WOMEN AND THE CYCLO.

By MARGARET GUYRE, The Phoenix Garage, Dublin.

As a woman's number of opportunities is limited, it is not surprising that she is often a victim of the "motor" man. This is a job which can be done in a few minutes.

### THE LIGHTING SET.

There is one important point to be noted in connection with the lighting set. It is not a simple matter to choose a set, and it is not a simple matter to choose a set.

### WOMEN AND THE CYCLO.

By MARGARET GUYRE, The Phoenix Garage, Dublin.

As a woman's number of opportunities is limited, it is not surprising that she is often a victim of the "motor" man. This is a job which can be done in a few minutes.

### THE LIGHTING SET.

There is one important point to be noted in connection with the lighting set. It is not a simple matter to choose a set, and it is not a simple matter to choose a set.

### WOMEN AND THE CYCLO.

By MARGARET GUYRE, The Phoenix Garage, Dublin.

As a woman's number of opportunities is limited, it is not surprising that she is often a victim of the "motor" man. This is a job which can be done in a few minutes.

### THE LIGHTING SET.

There is one important point to be noted in connection with the lighting set. It is not a simple matter to choose a set, and it is not a simple matter to choose a set.

### WOMEN AND THE CYCLO.

By MARGARET GUYRE, The Phoenix Garage, Dublin.

As a woman's number of opportunities is limited, it is not surprising that she is often a victim of the "motor" man. This is a job which can be done in a few minutes.

### WOMEN AND THE CYCLO.

By MARGARET GUYRE, The Phoenix Garage, Dublin.

As a woman's number of opportunities is limited, it is not surprising that she is often a victim of the "motor" man. This is a job which can be done in a few minutes.

### THE LIGHTING SET.

There is one important point to be noted in connection with the lighting set. It is not a simple matter to choose a set, and it is not a simple matter to choose a set.

### WOMEN AND THE CYCLO.

By MARGARET GUYRE, The Phoenix Garage, Dublin.

As a woman's number of opportunities is limited, it is not surprising that she is often a victim of the "motor" man. This is a job which can be done in a few minutes.

### THE LIGHTING SET.

There is one important point to be noted in connection with the lighting set. It is not a simple matter to choose a set, and it is not a simple matter to choose a set.

### WOMEN AND THE CYCLO.

By MARGARET GUYRE, The Phoenix Garage, Dublin.

As a woman's number of opportunities is limited, it is not surprising that she is often a victim of the "motor" man. This is a job which can be done in a few minutes.

### THE LIGHTING SET.

There is one important point to be noted in connection with the lighting set. It is not a simple matter to choose a set, and it is not a simple matter to choose a set.

### WOMEN AND THE CYCLO.

By MARGARET GUYRE, The Phoenix Garage, Dublin.

As a woman's number of opportunities is limited, it is not surprising that she is often a victim of the "motor" man. This is a job which can be done in a few minutes.

### THE LIGHTING SET.

There is one important point to be noted in connection with the lighting set. It is not a simple matter to choose a set, and it is not a simple matter to choose a set.

### WOMEN AND THE CYCLO.

By MARGARET GUYRE, The Phoenix Garage, Dublin.

As a woman's number of opportunities is limited, it is not surprising that she is often a victim of the "motor" man. This is a job which can be done in a few minutes.

### THE LIGHTING SET.

There is one important point to be noted in connection with the lighting set. It is not a simple matter to choose a set, and it is not a simple matter to choose a set.

### WOMEN AND THE CYCLO.

By MARGARET GUYRE, The Phoenix Garage, Dublin.

As a woman's number of opportunities is limited, it is not surprising that she is often a victim of the "motor" man. This is a job which can be done in a few minutes.

### THE LIGHTING SET.

There is one important point to be noted in connection with the lighting set. It is not a simple matter to choose a set, and it is not a simple matter to choose a set.

### WOMEN AND THE CYCLO.

By MARGARET GUYRE, The Phoenix Garage, Dublin.

As a woman's number of opportunities is limited, it is not surprising that she is often a victim of the "motor" man. This is a job which can be done in a few minutes.

### THE LIGHTING SET.

There is one important point to be noted in connection with the lighting set. It is not a simple matter to choose a set, and it is not a simple matter to choose a set.

### WOMEN AND THE CYCLO.

By MARGARET GUYRE, The Phoenix Garage, Dublin.

As a woman's number of opportunities is limited, it is not surprising that she is often a victim of the "motor" man. This is a job which can be done in a few minutes.

### THE LIGHTING SET.

There is one important point to be noted in connection with the lighting set. It is not a simple matter to choose a set, and it is not a simple matter to choose a set.

### WOMEN AND THE CYCLO.

By MARGARET GUYRE, The Phoenix Garage, Dublin.

As a woman's number of opportunities is limited, it is not surprising that she is often a victim of the "motor" man. This is a job which can be done in a few minutes.

### THE LIGHTING SET.

There is one important point to be noted in connection with the lighting set. It is not a simple matter to choose a set, and it is not a simple matter to choose a set.

### WOMEN AND THE CYCLO.

By MARGARET GUYRE, The Phoenix Garage, Dublin.

As a woman's number of opportunities is limited, it is not surprising that she is often a victim of the "motor" man. This is a job which can be done in a few minutes.

### THE LIGHTING SET.

There is one important point to be noted in connection with the lighting set. It is not a simple matter to choose a set, and it is not a simple matter to choose a set.

### WOMEN AND THE CYCLO.

By MARGARET GUYRE, The Phoenix Garage, Dublin.

As a woman's number of opportunities is limited, it is not surprising that she is often a victim of the "motor" man. This is a job which can be done in a few minutes.

### THE LIGHTING SET.

There is one important point to be noted in connection with the lighting set. It is not a simple matter to choose a set, and it is not a simple matter to choose a set.

### WOMEN AND THE CYCLO.

By MARGARET GUYRE, The Phoenix Garage, Dublin.

As a woman's number of opportunities is limited, it is not surprising that she is often a victim of the "motor" man. This is a job which can be done in a few minutes.

### THE LIGHTING SET.

There is one important point to be noted in connection with the lighting set. It is not a simple matter to choose a set, and it is not a simple matter to choose a set.

### WOMEN AND THE CYCLO.

By MARGARET GUYRE, The Phoenix Garage, Dublin.

As a woman's number of opportunities is limited, it is not surprising that she is often a victim of the "motor" man. This is a job which can be done in a few minutes.

### THE LIGHTING SET.

There is one important point to be noted in connection with the lighting set. It is not a simple matter to choose a set, and it is not a simple matter to choose a set.

### WOMEN AND THE CYCLO.

By MARGARET GUYRE, The Phoenix Garage, Dublin.

As a woman's number of opportunities is limited, it is not surprising that she is often a victim of the "motor" man. This is a job which can be done in a few minutes.

### THE LIGHTING SET.

There is one important point to be noted in connection with the lighting set. It is not a simple matter to choose a set, and it is not a simple matter to choose a set.

### WOMEN AND THE CYCLO.

By MARGARET GUYRE, The Phoenix Garage, Dublin.

As a woman's number of opportunities is limited, it is not surprising that she is often a victim of the "motor" man. This is a job which can be done in a few minutes.

### THE LIGHTING SET.

There is one important point to be noted in connection with the lighting set. It is not a simple matter to choose a set, and it is not a simple matter to choose a set.

### WOMEN AND THE CYCLO.

By MARGARET GUYRE, The Phoenix Garage, Dublin.

As a woman's number of opportunities is limited, it is not surprising that she is often a victim of the "motor" man. This is a job which can be done in a few minutes.

### THE LIGHTING SET.

There is one important point to be noted in connection with the lighting set. It is not a simple matter to choose a set, and it is not a simple matter to choose a set.

### WOMEN AND THE CYCLO.

By MARGARET GUYRE, The Phoenix Garage, Dublin.

As a woman's number of opportunities is limited, it is not surprising that she is often a victim of the "motor" man. This is a job which can be done in a few minutes.

### THE LIGHTING SET.

There is one important point to be noted in connection with the lighting set. It is not a simple matter to choose a set, and it is not a simple matter to choose a set.

### WOMEN AND THE CYCLO.

By MARGARET GUYRE, The Phoenix Garage, Dublin.

As a woman's number of opportunities is limited, it is not surprising that she is often a victim of the "motor" man. This is a job which can be done in a few minutes.

### THE LIGHTING SET.

There is one important point to be noted in connection with the lighting set. It is not a simple matter to choose a set, and it is not a simple matter to choose a set.

### WOMEN AND THE CYCLO.

By MARGARET GUYRE, The Phoenix Garage, Dublin.

As a woman's number of opportunities is limited, it is not surprising that she is often a victim of the "motor" man. This is a job which can be done in a few minutes.

### THE LIGHTING SET.

There is one important point to be noted in connection with the lighting set. It is not a simple matter to choose a set, and it is not a simple matter to choose a set.

### WOMEN AND THE CYCLO.

By MARGARET GUYRE, The Phoenix Garage, Dublin.

As a woman's number of opportunities is limited, it is not surprising that she is often a victim of the "motor" man. This is a job which can be done in a few minutes.

### THE LIGHTING SET.

There is one important point to be noted in connection with the lighting set. It is not a simple matter to choose a set, and it is not a simple matter to choose a set.

### WOMEN AND THE CYCLO.

By MARGARET GUYRE, The Phoenix Garage, Dublin.

As a woman's number of opportunities is limited, it is not surprising that she is often a victim of the "motor" man. This is a job which can be done in a few minutes.

### THE LIGHTING SET.

There is one important point to be noted in connection with the lighting set. It is not a simple matter to choose a set, and it is not a simple matter to choose a set.

### WOMEN AND THE CYCLO.

By MARGARET GUYRE, The Phoenix Garage, Dublin.

As a woman's number of opportunities is limited, it is not surprising that she is often a victim of the "motor" man. This is a job which can be done in a few minutes.

### THE LIGHTING SET.

There is one important point to be noted in connection with the lighting set. It is not a simple matter to choose a set, and it is not a simple matter to choose a set.

### WOMEN AND THE CYCLO.

By MARGARET GUYRE, The Phoenix Garage, Dublin.

As a woman's number of opportunities is limited, it is not surprising that she is often a victim of the "motor" man. This is a job which can be done in a few minutes.

### THE LIGHTING SET.

There is one important point to be noted in connection with the lighting set. It is not a simple matter to choose a set, and it is not a simple matter to choose a set.

### WOMEN AND THE CYCLO.

By MARGARET GUYRE, The Phoenix Garage, Dublin.

As a woman's number of opportunities is limited, it is not surprising that she is often a victim of the "motor" man. This is a job which can be done in a few minutes.

### THE LIGHTING SET.

There is one important point to be noted in connection with the lighting set. It is not a simple matter to choose a set, and it is not a simple matter to choose a set.

### WOMEN AND THE CYCLO.

By MARGARET GUYRE, The Phoenix Garage, Dublin.

As a woman's number of opportunities is limited, it is not surprising that she is often a victim of the "motor" man. This is a job which can be done in a few minutes.

### THE LIGHTING SET.

There is one important point to be noted in connection with the lighting set. It is not a simple matter to choose a set, and it is not a simple matter to choose a set.

# TYSON BROS., Ltd.

Exporters of all Classes of Engines.  
Importers of Machinery, Etc.  
Managing Agents and Surveyors.  
All Classes of Insurance Transacted.

WELTWAY'S BUILDING,  
SIXTH AVENUE,  
NAIROBI.  
P.O. Box 128. Phone 117. Telegrams: "MARGARITE."

# MOTORISTS!

WHY USE EXPENSIVE CARS

when for a small outlay you can Buy an Efficient Motor Cycle

It will pay you in the saving in running costs alone to invest in a **MOZOB CYCLES** for your Business Gains and Leisure purposes when the day's work is over.

# WE HAVE AVAILABLE FOR IMMEDIATE DELIVERY A LARGE RANGE

# B.S.A. Douglas Motor Cycles

# AT REASONABLE PRICES

Call on us and we will be pleased to convince you of the economy of running a Motor Cycle for Business Purposes.  
Sole Importers—Newtons Ltd., Nairobi.

FIGHTING AGAINST OIL WASTE.

Efforts of Designers to Reduce Consumption.

HOW THE OWNER-DRIVER CAN HELP.

Most cars of the type, however, are probably the most economical... Efforts of Designers to Reduce Consumption.

The most serious handicap to keep the oil in the engine... Efforts of Designers to Reduce Consumption.

The most serious handicap to keep the oil in the engine... Efforts of Designers to Reduce Consumption.

The most serious handicap to keep the oil in the engine... Efforts of Designers to Reduce Consumption.

The most serious handicap to keep the oil in the engine... Efforts of Designers to Reduce Consumption.

The most serious handicap to keep the oil in the engine... Efforts of Designers to Reduce Consumption.

The most serious handicap to keep the oil in the engine... Efforts of Designers to Reduce Consumption.

The most serious handicap to keep the oil in the engine... Efforts of Designers to Reduce Consumption.

The most serious handicap to keep the oil in the engine... Efforts of Designers to Reduce Consumption.

The most serious handicap to keep the oil in the engine... Efforts of Designers to Reduce Consumption.

A good gun is worth preservin.

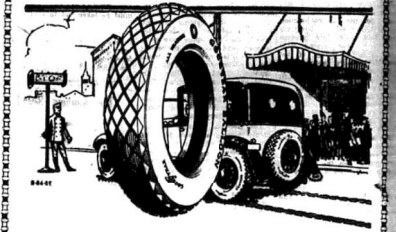
With care and the use of modern... A good gun is worth preservin.



It has already been shown how... A good gun is worth preservin.



It has already been shown how... A good gun is worth preservin.



Truly, a Heavy Duty Tyre

Drivers of big cars; motorists traveling all kinds of roads and pavements; operators of buses and light lorry owners, have long wanted something extra-ordinary in tyres—a super-stout extra-rugged tyre.

The new Goodyear Heavy Duty Cord Tyres for passenger cars, buses and lorries meet these qualifications exactly.

It is built with extra plies of SUPERTWIST—the extra elastic and extra strong new Goodyear cord material—armoured with circumferential sidewall ribs—powered with the famous All-Weather Tread.

If you need a sturdy tyre for your service, you should equip with this new Goodyear Cord Tyre.

Next Time Buy GOODYEAR HEAVY DUTY CORD TYRES.

CYLINDER COOLING.

Necessary for Mechanical Reasons Alone.

EFFECT UPON PRESSURE.

The higher the compression pressure and the smaller the heat loss... Cylinder cooling.

The temperature of explosion is... Cylinder cooling.

INCREASE OF POWER.

It is common knowledge that... Cylinder cooling.

Oil Waste.

A large area exposed to the cooling... Oil waste.

When the actual combustion of... Oil waste.

LOSS OF HEAT.

These considerations point to the... Loss of heat.

The important factor that deter-... Loss of heat.

If you take the cylinder proper... Loss of heat.

PAGES OF HEAT LOSS.

The largest fraction of heat loss... Pages of heat loss.

THE EAST AFRICAN STANDARD (MAGAZINE SECTION)

Sturdiness



Not only does the Standard 'C'... Sturdiness.

All-British Standard CARS

118 14 HP

Buy BRITISH CARS... Standard Motor Co., Ltd.

THE FAVOURED FOUR—ALREADY CHOSEN BY TENS OF THOUSANDS!



Having the same standard of... Favored four.

Literally sweeping the world... Favored four.

DISTRIBUTORS: YORK GARAGES

Advertisement for Standard cars, including contact information for York Garages and other distributors.



Good pulling from petrol, like good pulling in a tug-of-war team, depends upon good balance. In Shell, the hydrocarbons which govern miles per gallon, speed, power on hills, and easy starting, are well balanced—no hydrocarbon predominates at the expense of the others. Whatever your car, Shell will get the utmost horse-power out of it, always.

Buy your Shell from the certified Shell pump, or in the sealed red cans.

**SHELL**  
THE WELL-BALANCED PETROL  
BRITISH IMPERIAL OIL CO. (S.A.) LTD.  
Agents: SMITH MACKENZIE & Co.

**£52-10-0**  
THE FINEST MOTOR CYCLE PROPOSITION EVER OFFERED TO THE PUBLIC

**RALEIGH**  
The Gold Medal Motor Cycle  
238—Sturmev Archer 8 speed—chain drive—Independent internal expanding brakes—Dunlop tyres—Brampton Front Forks—Kick Starter  
Kettles-Roy, Ltd.  
Box 100. NAIROBI.  
(“Zebra House” Government Road.)

**THE DIFFERENTIAL.**  
A New Device for African Motocists.

**COMBINATION DESIGN.**

only partially developed lands, where we have to be driven over long stretches of country and on roads little better than tracks, which become almost impassable after heavy rain, the ordinary car suffers badly from the fact that it is a rigid gear.

If one wheel goes into soft ground while the other remains on a hard surface, no effort of the driver will suffice, as all the power is directed by the axle to the wheel which is in trouble.

On the other hand, on good roads or on a hard surface of an irregular nature, the differential has considerable advantages. The car corners better, and there is no tendency for the front wheels to be pushed aside in front of the car when cornering, as is the case if a solid axle be employed.

COMBINING BOTH SYSTEMS.  
Many instances can be mentioned in which the use of the solid axle has proved of the utmost advantage for a short period of time, and it is to combine the advantages of the differential with this, which the device that has been invented by D. D. Duce, who has had very many years of experience handling cars in Africa.

Mr. Duce finally decided to try to evolve a differential form which would give the advantages of a long-distance road-breaking axle, while at the same time would extract the car from mud.

The feature of the device is its simplicity. The differential gear is extended at one end, and the extension is cut off the teeth of a dog clutch. Another set of teeth, forming the other half of the differential, which is mounted in a sleeve which slides over the spine of the dog clutch shaft, it being necessary to extend the existing spines to take the teeth of the dog clutch.

**An Oshanaite feat.**

**BREAKS TWO RECORDS IN INVERTED STATION.**

Two records on the most grueling route in the United States were broken yesterday by a driver of an Oshanaite 64 speed car. Within a week a brand new car takes from a statement from the Oshanaite Mountain-Road Crew Coach room.

These two records are considered the hardest road tests possible to apply to any automobile. They embrace steep grades, tortuous curves, strong wind gusts, steep descents and short straightaways where quick concentration is imperative if record time is to be made. As a result of the nature, however, to be encountered, every part of an automobile is subjected to severe maximum spring-pulling power, strong shock loads, and heavy strains of chassis and braking power.

The new Oshanaite had been driven less than 2,000 miles when it was started over the Lookout Mountain route with Fred Cyprien of Denver driving. It was a regular stock car except that the top

was engaged, the driver sat in a low seat, and the differential system, which in turn looks to the differential, which has been invented by D. Duce, who has had very many years of experience handling cars in Africa.

**EASILY OPERATED.**  
When the dog clutch is withdrawn, the differential is unlocked. All the differential shafts are connected by a special range set equipped with a differential, which is a dog clutch, the other to a dog clutch, which is connected with the torque tube and connected to a lever.

Mr. Duce is anxious to obtain opinions on this device, which is looked upon as all occasions, and believes that moderate overhauls would, with a few small increases in the price of the car, if the mechanism could be provided.

**has been removed to destination.**

New London, Me., and the Lewis route in 27 miles, and a record of 10 minutes and 15 seconds for the same route. The car was driven by Tom Jones to Golden, up a grade of 10 per cent, and made the run in 11 minutes. From Golden to the top of Lookout Mountain, the grade is from 6 to 14 per cent, and the 1927 feet up the face of the mountain in 10 minutes and 15 seconds. The most remarkable feature of the run was the absence of any serious curves of any kind, and only a short distance of 10 miles was covered in 11 minutes, which is considered one of the most remarkable records in the world.

The car, which is a 64 speed car, was built by the Mountain-Road Crew Coach room, and is a regular stock car except that the top was engaged, the driver sat in a low seat, and the differential system, which in turn looks to the differential, which has been invented by D. Duce, who has had very many years of experience handling cars in Africa.

**A SECOND RECORD.**  
On Sept. 4, one week later, Cyprien drove the Oshanaite up the Pike's Peak route in 20 minutes, 40 seconds, the fastest time for the same route. The car ran in 21 miles, and the grade was 10 per cent. The elevation is 1,130 feet. The run was made in Crystal Falls, where the car was driven by Fred Cyprien.

In one run, the car was driven in 20 minutes, 40 seconds, the fastest time for the same route. The car ran in 21 miles, and the grade was 10 per cent. The elevation is 1,130 feet. The run was made in Crystal Falls, where the car was driven by Fred Cyprien.

The car was driven in 20 minutes, 40 seconds, the fastest time for the same route. The car ran in 21 miles, and the grade was 10 per cent. The elevation is 1,130 feet. The run was made in Crystal Falls, where the car was driven by Fred Cyprien.

The car was driven in 20 minutes, 40 seconds, the fastest time for the same route. The car ran in 21 miles, and the grade was 10 per cent. The elevation is 1,130 feet. The run was made in Crystal Falls, where the car was driven by Fred Cyprien.

**HOW TO CORRECT A SKID.**

**Maintaining the Danger of Wet Roads.**

**THE NOVICES' TERROR.**

(Skidding, the terror of the novice, is caused by the car being driven on a road which is covered with water. The most reasonable method of correcting a skid is to keep the car straight and to keep the wheels on the road. The driver should not attempt to correct a skid by steering the car in the direction of the skid, as this will only make the skid worse. The driver should keep the car straight and to keep the wheels on the road.

It is not a skid, but a slide, which is caused by the car being driven on a road which is covered with water. The most reasonable method of correcting a skid is to keep the car straight and to keep the wheels on the road. The driver should not attempt to correct a skid by steering the car in the direction of the skid, as this will only make the skid worse. The driver should keep the car straight and to keep the wheels on the road.

**SKIDS THROUGH BRAKING.**

Braking, if done too suddenly, will cause the car to skid. The driver should not attempt to stop the car too suddenly, as this will cause the car to skid. The driver should keep the car straight and to keep the wheels on the road.

The driver should not attempt to stop the car too suddenly, as this will cause the car to skid. The driver should keep the car straight and to keep the wheels on the road.

The driver should not attempt to stop the car too suddenly, as this will cause the car to skid. The driver should keep the car straight and to keep the wheels on the road.

**The Rubber-Lined.**

**OUTPUT REACHES 200,000 MARK.**

**More than 200,000 Hudson and Essex cars were manufactured in September 1926.**

The Hudson Motor Car Company has announced that the total output of its Hudson and Essex divisions for the month of September 1926 reached a new record of 200,000 cars. This is a significant achievement for the company, and it shows that the demand for their cars is increasing.

The Hudson Motor Car Company has announced that the total output of its Hudson and Essex divisions for the month of September 1926 reached a new record of 200,000 cars. This is a significant achievement for the company, and it shows that the demand for their cars is increasing.

**THE LATEST**

**MORRIS COWLEYS**

**2 & 4 Seaters**

**Are exported within a few days. Book your order early for this popular car.**

**MORRIS TRUCK**

**(Overseas Model)**

**WITH STAMPER**

**SELF STARTER**

**Electric Lighting**

**Full Kit of Tools**

**Body Extra According to Specification.**

**£270**

**CARR, LAWSON & Co., Ltd.**

**P. O. Box 288. SIXTY AVENUE, NAIROBI.**

**AMAZING VALUES**

6 Cyl. HUDSON 7/Seater Touring Cars complete with Five Tyres. **£425**

5 Seater Coaches with Five Tyres. **£425**

All Metal Box Bodies with Five Tyres. **£390**

6 Cyl. ESSEX Coach with Five Tyres. **£325**

Touring Cars with Five Tyres. **£325**

Box Bodies with Five Tyres. **£290**

And Last! but! not Least

**The DURANT Rugby.**

Touring Cars. All Fitted with Magneto Ignition & Five Tyres. **Chassis.**

Box Bodies. All Fitted with Magneto Ignition & Five Tyres. **Chassis.**

Chassis. All Fitted with Magneto Ignition & Five Tyres. **Chassis.**

Chassis. All Fitted with Magneto Ignition & Five Tyres. **Chassis.**

Chassis. All Fitted with Magneto Ignition & Five Tyres. **Chassis.**

Chassis. All Fitted with Magneto Ignition & Five Tyres. **Chassis.**

Chassis. All Fitted with Magneto Ignition & Five Tyres. **Chassis.**

Chassis. All Fitted with Magneto Ignition & Five Tyres. **Chassis.**

Chassis. All Fitted with Magneto Ignition & Five Tyres. **Chassis.**

**CITROEN**

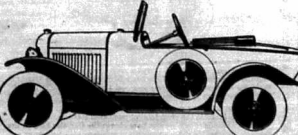
5 SEATER  
11.4  
H.P.  
45 Miles  
Per Gallon



MODEL  
DE  
LUXE  
Clock  
Speedometer  
5 Tyres & TUBES

Touring Car £ 255 Coupe de Luxe £ 305

3 SEATER  
Clover Leaf  
7.9  
H.P.  
55 Miles  
Per Gallon



THE IDEAL  
Runabout  
Full  
Equipment  
Economy in  
First Cost & UPKEEP

£ 195 IMMEDIATE DELIVERY

ALL MODELS

Monckton & Sear Ltd.

NAIROBI.

Sixth Avenue

**CYLINDER COOLING.**

(Continued from page 304.)

der wall and piston, and the thick metal of the wall means (determining the amount of heat which will be absorbed in keeping it cool).

Contrary to the general view, there is data from comparative and absolute tests which indicate that the water which is used in the cylinder is not appreciably cooled by a single revolution of the piston.

The result of this investigation is the effective cooling of a cylinder is not dependent on the temperature. The benefit derived from this is also limited to the slightly better operating conditions which are obtained at this point. This has been the subject of data which is under discussion, and which is being published.

One leading authority has stated that if a piston engine shows high temperatures, it is not a sign of excessive friction, but is a sign of excessive friction or a sign of excessive friction.

Water pumps will cool over-temperature cylinders which were cooled by the combustion chamber of air-cooled cylinders. These data are being used by the manufacturer, and the manufacturer is being used by the manufacturer.

**HAPPY FIRST BIRTHDAY.**

The oldest member of our club is celebrating his first birthday. He is a very old man, and he is very happy. He has lived a long and interesting life, and he is looking forward to many more years of happiness.

**ATMOSPHERIC EFFICIENCY.**

The efficiency of an engine is determined by the amount of heat which is converted into work. The more heat which is converted into work, the more efficient the engine is. The efficiency of an engine is determined by the amount of heat which is converted into work.

**THE VALUE OF A CAR.**

The value of a car is determined by the amount of money which is spent on it. The more money which is spent on a car, the more valuable it is. The value of a car is determined by the amount of money which is spent on it.

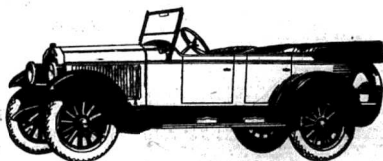
**THE VALUE OF A CAR.**

The value of a car is determined by the amount of money which is spent on it. The more money which is spent on a car, the more valuable it is. The value of a car is determined by the amount of money which is spent on it.

**THE VALUE OF A CAR.**

The value of a car is determined by the amount of money which is spent on it. The more money which is spent on a car, the more valuable it is. The value of a car is determined by the amount of money which is spent on it.

The New  
Oldsmobile  
Six  
Special  
Touring  
**£312**



Complete with  
Five Honey Balloon Tyres  
Trunk Rack at Rear  
Duo Tone Duco Finish  
Genuine Grey Leather Upholstery  
Equalized Brakes  
Nickel-plated Radiator.

**£312** — At this amazingly moderate figure, you may enjoy road mastery, vibrationless running, ease of control, more-than-abundant power, together with a ruggedness, stamina and value such as this price never bought before.

The Oldsmobile will carry you anywhere you want to go—over the roughest roads in comfort—up the steepest grades with ease—through the deepest mud and sand without faltering—at one mile an hour or at sixty.

And it will do this with as low a fuel consumption as a medium size four cylinder car.

**Gilfillan & Company, Ltd.**  
D I S T R I B U T O R S

*Oldsmobile*

ILLUSTRATIONS OF THE WEEK.

ST. ANDREW'S CHURCH FETE.



1. The Mass Tree. 2. The Hon. Lady Strick opening the Fete. 3. Cakes and Candies.  
4. Children's and General Stall. 5. Thanks for the Banquet. 6. A general view.

Photo: E. A. Standard.

NAIROBI GOLF CLUB INTERNATIONAL TOURNAMENT.



Photo: E. A. Standard.

Front Row (left to right): J. A. Gilbert (England), T. J. Anderson (Scotland), T. A. Wood (Donor of Trophy),  
E. K. Piggis (Ireland).  
Second Row: F. S. Dunn, A. C. Tanshill, I. O. O'Grady, E. E. Smith, O. B. Daly, T. Fitzgerald, F. A. Buckley.  
Third Row: E. C. Harrison, J. Mackinnon, A. G. O'Neill, T. G. Hatley, A. E. Holmes.  
Fourth Row: E. E. V. Talbot, H. B. Enley, A. L. Kent-Lemon, C. E. Davison, W. N. Mackenzie, J. Stuart Todd,  
J. Anderson, Dr. G. V. Allen, H. Marshall.



Built by Natives: New Church of the Catholic Mission at Mombasa completed in 27 months. Local burnt bricks (200,000) and local acacia timber were used. The church seats 1,200.



**CHRISTMAS WITHOUT WHITEAWAY'S BAZAAR? UNTHINKABLE!**

Whiteaway's Bazaar is the only place where you can get the best of everything at the lowest prices. It is a great opportunity for you to get the things you need for Christmas at a special price. Don't miss this chance. It is only once a year.

**WHITEAWAY'S CHRISTMAS TREAT**

A FREE CINEMA TO GRAPE ENTERTAINMENT ON XMAS EVE  
December 24th at 5 p.m.  
WHITEAWAY'S has arranged the THEATRE ROYAL for a Special Children's Matinee. Whom except the best of the happy and Harrod Lloyd programmes will be given.  
**HOW TO GET A TICKET**  
For a list of the names of the performers will be given in the tickets on request.  
Ask for a Ticket when Buying Toys at Whiteaway's during this Month.

**Whiteaway's Windows are a reflection of the host of good things inside the store. A special feature this week is the great Toy display.**

**BRING THE CHILDREN ALONG.**  
**Two Things The Boys And Girls Must See:**  
The Wonderful Model of a Ford and Garrison Town. All electric working model. Full size working model. Most realistic ever shown.

**THE EAST Special Supplement**

**African Standard**

NAIROBI, SATURDAY, DECEMBER 12, 1925.

**KENYA LEGISLATIVE COUNCIL**

**TUESDAY'S SESSION.**

**His Excellency's Review of Revised Finances.**

**BUDGET BALANCED.**

**Questions Raised During Committee Stage.**

The Legislative Council met at 10.15 a.m. on Tuesday, when His Excellency the Governor presided over an almost complete session of the Council. The first business was the consideration of the revised estimates for 1926-27. His Excellency reviewed the revised estimates and announced that the budget was balanced. He stated that the total revenue for 1926-27 was estimated at £180,000, and the total expenditure at £180,000. He also mentioned that the revised estimates showed a surplus balance of £4,100.

estimated expenditure that was a deficit of over £11,000 but a reduction of £18,000 to the estimated expenditure has turned that deficit into a surplus balance of £4,100.

I wish to report that the revised estimates, and the approval of any available reduction of expenditure for 1926-27, are to be done by any one of the members of the Council who may see fit to do so. I am particularly gratified that the Hon. Mr. G. H. G. has indicated the desirable result in the estimate about banking in any way on the surplus balance of the year.

So much for the financial part of the revised estimates, which will shortly be presented to you. I should like to say now in passing on the question of a new scheme for the construction of a road on that point. As many members have already said, it is a matter of some importance. I have had a number of reports on the subject, and I have been thinking of it for some time. I have also been thinking of the fact that the Government has been asked to consider the construction of a road from the Government to the Government.

**OFFICIAL BUSINESS.**  
I should like to say now in passing on the question of a new scheme for the construction of a road on that point. As many members have already said, it is a matter of some importance. I have had a number of reports on the subject, and I have been thinking of it for some time. I have also been thinking of the fact that the Government has been asked to consider the construction of a road from the Government to the Government.

**NATIVE EDUCATION.**  
The Hon. Mr. G. H. G. has indicated the desirable result in the estimate about banking in any way on the surplus balance of the year. I have also been thinking of the fact that the Government has been asked to consider the construction of a road from the Government to the Government.

**AGRICULTURE.**  
The Hon. Mr. G. H. G. has indicated the desirable result in the estimate about banking in any way on the surplus balance of the year. I have also been thinking of the fact that the Government has been asked to consider the construction of a road from the Government to the Government.

**LABOUR.**  
The Hon. Mr. G. H. G. has indicated the desirable result in the estimate about banking in any way on the surplus balance of the year. I have also been thinking of the fact that the Government has been asked to consider the construction of a road from the Government to the Government.

and had a very satisfactory result. It is a matter of some importance. I have had a number of reports on the subject, and I have been thinking of it for some time. I have also been thinking of the fact that the Government has been asked to consider the construction of a road from the Government to the Government.

**LABOUR.**  
The Hon. Mr. G. H. G. has indicated the desirable result in the estimate about banking in any way on the surplus balance of the year. I have also been thinking of the fact that the Government has been asked to consider the construction of a road from the Government to the Government.

**LABOUR.**  
The Hon. Mr. G. H. G. has indicated the desirable result in the estimate about banking in any way on the surplus balance of the year. I have also been thinking of the fact that the Government has been asked to consider the construction of a road from the Government to the Government.

**LABOUR.**  
The Hon. Mr. G. H. G. has indicated the desirable result in the estimate about banking in any way on the surplus balance of the year. I have also been thinking of the fact that the Government has been asked to consider the construction of a road from the Government to the Government.

**LABOUR.**  
The Hon. Mr. G. H. G. has indicated the desirable result in the estimate about banking in any way on the surplus balance of the year. I have also been thinking of the fact that the Government has been asked to consider the construction of a road from the Government to the Government.



**Express Clockwork Train**  
A very fine model of a train, with a locomotive and several coaches. It is made of brass and is very detailed. Price Shs. 15.00.



**Superior Miniature Railway**  
A complete set of a miniature railway, including a locomotive, coaches, and a station. Price Shs. 15.00.



**Doll's Bedstead**  
A beautiful doll's bedstead, made of wood and painted to look like a real one. Price Shs. 7.50 each.



**Enamel Tea Set**  
A complete set of a doll's tea set, including a teapot, cups, and saucers. Price Shs. 3.75 and 6.00.



**Doll's Cane**  
A beautiful doll's cane, made of wood and painted to look like a real one. Price Shs. 0.50.



**The Puff Puff Engine**  
A very fine model of a steam engine, with a boiler, wheels, and a chimney. Price Shs. 12.00.



**Doll's Washstand**  
A beautiful doll's washstand, made of wood and painted to look like a real one. Price Shs. 3.00.



**Toy Lawn Mower**  
A beautiful doll's lawn mower, made of wood and painted to look like a real one. Price Shs. 7.50.



**Toy Model of Evening News Delivery Van**  
A beautiful doll's toy car, made of wood and painted to look like a real one. Price Shs. 2.50.



**Doll's Toy Car**  
A beautiful doll's toy car, made of wood and painted to look like a real one. Price Shs. 2.50.



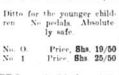
**Doll's Toy Car**  
A beautiful doll's toy car, made of wood and painted to look like a real one. Price Shs. 2.50.



**Doll's Toy Car**  
A beautiful doll's toy car, made of wood and painted to look like a real one. Price Shs. 2.50.



**Fairy Tricycles**  
A beautiful doll's tricycle, made of wood and painted to look like a real one. Price Shs. 3.00.



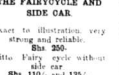
**Musical Pony Bell**  
A beautiful doll's toy, made of wood and painted to look like a real one. Price Shs. 2.50.



**Doll's Kitchen Set**  
A complete set of a doll's kitchen set, including a stove, sink, and table. Price Shs. 2.50.



**Doll's Toy Car**  
A beautiful doll's toy car, made of wood and painted to look like a real one. Price Shs. 2.50.



**Doll's Toy Car**  
A beautiful doll's toy car, made of wood and painted to look like a real one. Price Shs. 2.50.



**Doll's Toy Car**  
A beautiful doll's toy car, made of wood and painted to look like a real one. Price Shs. 2.50.



**Musical Pony Bell**  
A beautiful doll's toy, made of wood and painted to look like a real one. Price Shs. 2.50.



**Doll's Kitchen Set**  
A complete set of a doll's kitchen set, including a stove, sink, and table. Price Shs. 2.50.



**Doll's Toy Car**  
A beautiful doll's toy car, made of wood and painted to look like a real one. Price Shs. 2.50.



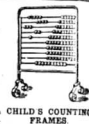
**Doll's Toy Car**  
A beautiful doll's toy car, made of wood and painted to look like a real one. Price Shs. 2.50.



**Doll's Toy Car**  
A beautiful doll's toy car, made of wood and painted to look like a real one. Price Shs. 2.50.



**Doll's Toy Car**  
A beautiful doll's toy car, made of wood and painted to look like a real one. Price Shs. 2.50.



**Child's Counting Frame**  
A beautiful child's counting frame, made of wood and painted to look like a real one. Price Shs. 2.50.



**Doll's Toy Car**  
A beautiful doll's toy car, made of wood and painted to look like a real one. Price Shs. 2.50.



**Doll's Toy Car**  
A beautiful doll's toy car, made of wood and painted to look like a real one. Price Shs. 2.50.



**Doll's Toy Car**  
A beautiful doll's toy car, made of wood and painted to look like a real one. Price Shs. 2.50.



**Doll's Toy Car**  
A beautiful doll's toy car, made of wood and painted to look like a real one. Price Shs. 2.50.



**Doll's Toy Car**  
A beautiful doll's toy car, made of wood and painted to look like a real one. Price Shs. 2.50.

**QUESTIONS RAISED DURING COMMITTEE STAGE.**  
The Hon. Mr. G. H. G. has indicated the desirable result in the estimate about banking in any way on the surplus balance of the year. I have also been thinking of the fact that the Government has been asked to consider the construction of a road from the Government to the Government.

**QUESTIONS RAISED DURING COMMITTEE STAGE.**  
The Hon. Mr. G. H. G. has indicated the desirable result in the estimate about banking in any way on the surplus balance of the year. I have also been thinking of the fact that the Government has been asked to consider the construction of a road from the Government to the Government.

**QUESTIONS RAISED DURING COMMITTEE STAGE.**  
The Hon. Mr. G. H. G. has indicated the desirable result in the estimate about banking in any way on the surplus balance of the year. I have also been thinking of the fact that the Government has been asked to consider the construction of a road from the Government to the Government.

**QUESTIONS RAISED DURING COMMITTEE STAGE.**  
The Hon. Mr. G. H. G. has indicated the desirable result in the estimate about banking in any way on the surplus balance of the year. I have also been thinking of the fact that the Government has been asked to consider the construction of a road from the Government to the Government.

**QUESTIONS RAISED DURING COMMITTEE STAGE.**  
The Hon. Mr. G. H. G. has indicated the desirable result in the estimate about banking in any way on the surplus balance of the year. I have also been thinking of the fact that the Government has been asked to consider the construction of a road from the Government to the Government.

**QUESTIONS RAISED DURING COMMITTEE STAGE.**  
The Hon. Mr. G. H. G. has indicated the desirable result in the estimate about banking in any way on the surplus balance of the year. I have also been thinking of the fact that the Government has been asked to consider the construction of a road from the Government to the Government.

**QUESTIONS RAISED DURING COMMITTEE STAGE.**  
The Hon. Mr. G. H. G. has indicated the desirable result in the estimate about banking in any way on the surplus balance of the year. I have also been thinking of the fact that the Government has been asked to consider the construction of a road from the Government to the Government.

**QUESTIONS RAISED DURING COMMITTEE STAGE.**  
The Hon. Mr. G. H. G. has indicated the desirable result in the estimate about banking in any way on the surplus balance of the year. I have also been thinking of the fact that the Government has been asked to consider the construction of a road from the Government to the Government.

**QUESTIONS RAISED DURING COMMITTEE STAGE.**  
The Hon. Mr. G. H. G. has indicated the desirable result in the estimate about banking in any way on the surplus balance of the year. I have also been thinking of the fact that the Government has been asked to consider the construction of a road from the Government to the Government.

**QUESTIONS RAISED DURING COMMITTEE STAGE.**  
The Hon. Mr. G. H. G. has indicated the desirable result in the estimate about banking in any way on the surplus balance of the year. I have also been thinking of the fact that the Government has been asked to consider the construction of a road from the Government to the Government.

**QUESTIONS RAISED DURING COMMITTEE STAGE.**  
The Hon. Mr. G. H. G. has indicated the desirable result in the estimate about banking in any way on the surplus balance of the year. I have also been thinking of the fact that the Government has been asked to consider the construction of a road from the Government to the Government.

**QUESTIONS RAISED DURING COMMITTEE STAGE.**  
The Hon. Mr. G. H. G. has indicated the desirable result in the estimate about banking in any way on the surplus balance of the year. I have also been thinking of the fact that the Government has been asked to consider the construction of a road from the Government to the Government.

**QUESTIONS RAISED DURING COMMITTEE STAGE.**  
The Hon. Mr. G. H. G. has indicated the desirable result in the estimate about banking in any way on the surplus balance of the year. I have also been thinking of the fact that the Government has been asked to consider the construction of a road from the Government to the Government.

**QUESTIONS RAISED DURING COMMITTEE STAGE.**  
The Hon. Mr. G. H. G. has indicated the desirable result in the estimate about banking in any way on the surplus balance of the year. I have also been thinking of the fact that the Government has been asked to consider the construction of a road from the Government to the Government.

**QUESTIONS RAISED DURING COMMITTEE STAGE.**  
The Hon. Mr. G. H. G. has indicated the desirable result in the estimate about banking in any way on the surplus balance of the year. I have also been thinking of the fact that the Government has been asked to consider the construction of a road from the Government to the Government.

**QUESTIONS RAISED DURING COMMITTEE STAGE.**  
The Hon. Mr. G. H. G. has indicated the desirable result in the estimate about banking in any way on the surplus balance of the year. I have also been thinking of the fact that the Government has been asked to consider the construction of a road from the Government to the Government.

**QUESTIONS RAISED DURING COMMITTEE STAGE.**  
The Hon. Mr. G. H. G. has indicated the desirable result in the estimate about banking in any way on the surplus balance of the year. I have also been thinking of the fact that the Government has been asked to consider the construction of a road from the Government to the Government.

**QUESTIONS RAISED DURING COMMITTEE STAGE.**  
The Hon. Mr. G. H. G. has indicated the desirable result in the estimate about banking in any way on the surplus balance of the year. I have also been thinking of the fact that the Government has been asked to consider the construction of a road from the Government to the Government.

**QUESTIONS RAISED DURING COMMITTEE STAGE.**  
The Hon. Mr. G. H. G. has indicated the desirable result in the estimate about banking in any way on the surplus balance of the year. I have also been thinking of the fact that the Government has been asked to consider the construction of a road from the Government to the Government.

**QUESTIONS RAISED DURING COMMITTEE STAGE.**  
The Hon. Mr. G. H. G. has indicated the desirable result in the estimate about banking in any way on the surplus balance of the year. I have also been thinking of the fact that the Government has been asked to consider the construction of a road from the Government to the Government.

**QUESTIONS RAISED DURING COMMITTEE STAGE.**  
The Hon. Mr. G. H. G. has indicated the desirable result in the estimate about banking in any way on the surplus balance of the year. I have also been thinking of the fact that the Government has been asked to consider the construction of a road from the Government to the Government.







Mr. T. O'Shea (Plateau B) said that he had been asked for the purpose and he advised that this was necessary for a man on duty for only a few days. The Chief Native Commissioner said that having to get out of the country and the passage in advance they would be 7500.

**MR. O'SHEA ASKED A MANT**  
 Mr. O'Shea asked if it was necessary to import a new man for a lead man. The Colonial Secretary pointed out that a man could be detailed to work by the Commissioner of Forests and this money would not be needed. Mr. O'Shea drew attention to the fact that a very formerly the Government had been in the habit of sending a man to work in the forest. He suggested that the Government should be asked to put a man on duty for a few days.

The addition of £700 was agreed to and the Budget Committee to the Government. The Government will be asked to put a man on duty for a few days.

**Land Office.**  
 Mr. J. J. O'Shea, speaking for the Government, said that the Department was an assurance that the proposed income in staff would be above all days in the presence of sub-division. Captain Goody said the matter had been under consideration for a long time and he had previously proposed the Government that the matter should be referred to the Committee of Lands, in which it would be considered at the end of the year. He said that the Government was not in a position to do anything at the moment.

He said that it was right that the Government should be asked to give away without a vote of the House. He said that the Government should be asked to give away without a vote of the House. He said that the Government should be asked to give away without a vote of the House.

He said that the Government should be asked to give away without a vote of the House. He said that the Government should be asked to give away without a vote of the House. He said that the Government should be asked to give away without a vote of the House.

He said that the Government should be asked to give away without a vote of the House. He said that the Government should be asked to give away without a vote of the House. He said that the Government should be asked to give away without a vote of the House.

The Land Department was asked for the purpose of the Land Department. The Colonial Secretary said that the Government was not in a position to do anything at the moment.

**The London Office.**  
 Speaking on the note for the London Office, Mr. J. E. Keay (Plateau North) said that the Government was not in a position to do anything at the moment.

**ADVISORY BOARD**  
 Mr. J. E. Keay said that the Government was not in a position to do anything at the moment.

**LAND OFFICE.**  
 Mr. J. E. Keay said that the Government was not in a position to do anything at the moment.

**LAND OFFICE.**  
 Mr. J. E. Keay said that the Government was not in a position to do anything at the moment.

**LAND OFFICE.**  
 Mr. J. E. Keay said that the Government was not in a position to do anything at the moment.

**WEDNESDAY'S SESSION.**  
**Supplementary Estimates for Railway and Colony.**  
**THE DUTY ON WHEAT.**

**Supplementary Estimates for Railway and Colony.**  
 The Hon. Mr. A. D. Ross asked the Government to provide for the railway and colony.

**THE DUTY ON WHEAT.**  
 The Hon. Mr. A. D. Ross asked the Government to provide for the duty on wheat.

**Supplementary Estimates.**  
 The Hon. Mr. A. D. Ross asked the Government to provide for the supplementary estimates.

**Supplementary Estimates.**  
 The Hon. Mr. A. D. Ross asked the Government to provide for the supplementary estimates.

**Supplementary Estimates.**  
 The Hon. Mr. A. D. Ross asked the Government to provide for the supplementary estimates.

**DECEASED.**  
 The Hon. Mr. A. D. Ross asked the Government to provide for the deceased.

**DECEASED.**  
 The Hon. Mr. A. D. Ross asked the Government to provide for the deceased.

**DECEASED.**  
 The Hon. Mr. A. D. Ross asked the Government to provide for the deceased.

**DECEASED.**  
 The Hon. Mr. A. D. Ross asked the Government to provide for the deceased.

**DECEASED.**  
 The Hon. Mr. A. D. Ross asked the Government to provide for the deceased.

**DECEASED.**  
 The Hon. Mr. A. D. Ross asked the Government to provide for the deceased.

**DECEASED.**  
 The Hon. Mr. A. D. Ross asked the Government to provide for the deceased.

**DECEASED.**  
 The Hon. Mr. A. D. Ross asked the Government to provide for the deceased.

**DECEASED.**  
 The Hon. Mr. A. D. Ross asked the Government to provide for the deceased.

**DECEASED.**  
 The Hon. Mr. A. D. Ross asked the Government to provide for the deceased.

**DECEASED.**  
 The Hon. Mr. A. D. Ross asked the Government to provide for the deceased.

**DECEASED.**  
 The Hon. Mr. A. D. Ross asked the Government to provide for the deceased.

**STEEDMAN'S POWDERS**

ment to W. R. Day and G. B. ... because ...

It is sufficient to enable him to ...

Lord Dalhousie, who strongly ...

Lord Dalhousie and others would ...

Protective Duties. WHEAT AND FLOUR.

It is sufficient to enable him to ...

It is sufficient to enable him to ...

It is sufficient to enable him to ...

Lord Dalhousie, who strongly ...

Lord Dalhousie and others would ...

Protective Duties. WHEAT AND FLOUR.

It is sufficient to enable him to ...

It is sufficient to enable him to ...

It is sufficient to enable him to ...

UGANDA RAILWAY. Uganda Extension.

The Resident Engineer, Turbo, is preparing ...

Particulars and Schedule of Rates may be obtained ...

G. D. BRODIE, UGANDA ENGINEER, UGANDA RAILWAY.

NAIROBI. 5th December, 1925.

To obtain comparative prices of imported coal ...

STANDING COMMITTEE. The Hon. Mr. ...

It is sufficient to enable him to ...

Protective Duties. WHEAT AND FLOUR.

It is sufficient to enable him to ...

It is sufficient to enable him to ...

It is sufficient to enable him to ...

ATWENTY DEC. 19, 1926

It is sufficient to enable him to ...

Official Notice.

BENEFITS OF PROTECT. The Director of Agriculture ...

It is sufficient to enable him to ...

Protective Duties. WHEAT AND FLOUR.

It is sufficient to enable him to ...

It is sufficient to enable him to ...

It is sufficient to enable him to ...

It is sufficient to enable him to ...

SUPPLEMENT TO THE EAST AFRICAN STANDARD

It is sufficient to enable him to ...

FOOT COMFORT.

Boots and Shoes will wear out BUT They can be replaced.

It is sufficient to enable him to ...

Protective Duties. WHEAT AND FLOUR.

It is sufficient to enable him to ...

It is sufficient to enable him to ...

It is sufficient to enable him to ...

It is sufficient to enable him to ...

SUPPLEMENT TO THE EAST AFRICAN STANDARD

It is sufficient to enable him to ...

FOOTWEAR SPECIALISTS

Here are a few examples.

It is sufficient to enable him to ...

Protective Duties. WHEAT AND FLOUR.

It is sufficient to enable him to ...

It is sufficient to enable him to ...

It is sufficient to enable him to ...

It is sufficient to enable him to ...

Maxwell, Brady & Company. GOVERNMENT ROAD, Nairobi. Phone 192.

In a Position to Give You the Best Service Obtainable.

FOR ALL YOUR REPLACEMENTS & REPAIRS. SHEDS, WORKS, LIMITED. 146, 144 & 654, Office—Harding Street, Nairobi.

THURSDAY'S SESSION. Flour Duty Abolition Motion Defeated.

FREE WHEAT FAVOURED. Lowlands Areas Available for Indian Settlement.

The Legislative Council resumed its business on Thursday morning at 10 o'clock. The first business on the agenda was the Queen Mother's Bill...

COFFEE MACHINERY. BY Wm. McKinnon & Co., Ltd.

STEAM ENGINES & BOILERS. HAVE YOU TIMBER DO YOU USE YOUR PULP & HUSK? STEAM IS THE SIMPLEST, MOST RELIABLE, AND CHEAPEST POWER FOR THIS COLONY.

Having specialised since 1798 in every class of steam power and its adoption to plantation machinery we are in position to supply types thoroughly suited to any condition of factory, fuel, or water.

THE CONSUMERS. What is he in sympathy with the best growers he wanted to see the consumers protected.

What is he in sympathy with the best growers he wanted to see the consumers protected. The complaint in 1921 was that there was a shortage of flour...

THE SOLE AGENTS IN KENYA. SCOTT & DAVIDSON. Box 456 NAIROBI.

WANTED. For European School Nakuru, from 1st January 1920, an Assistant Matron Salary £120 per annum...

REPRODUCTION. He had reason to believe, that the Government was not doing its duty...

RAILWAY SUPPLY. The General Manager of the Kenya Railway...

AFRICAN INDUSTRIES. THE ONLY PAPER PUBLISHED IN GREAT BRITAIN.

THE LATEST FACTS. THE LATEST FACTS. THE LATEST FACTS.

Wheat Duty. MOTION DEFEATED.

RESULTS OF PROTECTION. Mr. Conway Harvey said that the Government had made up the minds to increase the duty...

REPER. SPECIAL GIFT. The Hon. Mr. Conway Harvey said that the Government had made up the minds to increase the duty...

AFRICAN INDUSTRIES. THE ONLY PAPER PUBLISHED IN GREAT BRITAIN.

THE LATEST FACTS. THE LATEST FACTS. THE LATEST FACTS.

Wheat Duty. MOTION DEFEATED.

RESULTS OF PROTECTION. Mr. Conway Harvey said that the Government had made up the minds to increase the duty...

REPER. SPECIAL GIFT. The Hon. Mr. Conway Harvey said that the Government had made up the minds to increase the duty...

to keep down the price of wheat and had of course to be satisfied with a concession to obtain the price that the farmer was prepared to pay...

to keep down the price of wheat and had of course to be satisfied with a concession to obtain the price that the farmer was prepared to pay...

to keep down the price of wheat and had of course to be satisfied with a concession to obtain the price that the farmer was prepared to pay...

to keep down the price of wheat and had of course to be satisfied with a concession to obtain the price that the farmer was prepared to pay...

to keep down the price of wheat and had of course to be satisfied with a concession to obtain the price that the farmer was prepared to pay...

to keep down the price of wheat and had of course to be satisfied with a concession to obtain the price that the farmer was prepared to pay...

to keep down the price of wheat and had of course to be satisfied with a concession to obtain the price that the farmer was prepared to pay...

to keep down the price of wheat and had of course to be satisfied with a concession to obtain the price that the farmer was prepared to pay...

to keep down the price of wheat and had of course to be satisfied with a concession to obtain the price that the farmer was prepared to pay...

to keep down the price of wheat and had of course to be satisfied with a concession to obtain the price that the farmer was prepared to pay...

to keep down the price of wheat and had of course to be satisfied with a concession to obtain the price that the farmer was prepared to pay...

to keep down the price of wheat and had of course to be satisfied with a concession to obtain the price that the farmer was prepared to pay...

to keep down the price of wheat and had of course to be satisfied with a concession to obtain the price that the farmer was prepared to pay...

to keep down the price of wheat and had of course to be satisfied with a concession to obtain the price that the farmer was prepared to pay...

to keep down the price of wheat and had of course to be satisfied with a concession to obtain the price that the farmer was prepared to pay...

to keep down the price of wheat and had of course to be satisfied with a concession to obtain the price that the farmer was prepared to pay...

to keep down the price of wheat and had of course to be satisfied with a concession to obtain the price that the farmer was prepared to pay...

to keep down the price of wheat and had of course to be satisfied with a concession to obtain the price that the farmer was prepared to pay...

to keep down the price of wheat and had of course to be satisfied with a concession to obtain the price that the farmer was prepared to pay...

to keep down the price of wheat and had of course to be satisfied with a concession to obtain the price that the farmer was prepared to pay...

to keep down the price of wheat and had of course to be satisfied with a concession to obtain the price that the farmer was prepared to pay...

to keep down the price of wheat and had of course to be satisfied with a concession to obtain the price that the farmer was prepared to pay...

to keep down the price of wheat and had of course to be satisfied with a concession to obtain the price that the farmer was prepared to pay...

to keep down the price of wheat and had of course to be satisfied with a concession to obtain the price that the farmer was prepared to pay...

THE NYANZA AUCTIONEERS' NAKURU.

P. O. Box 67. AGRICULTURAL AUCTIONEERS. NAKURU.

COMMISSION AGENTS IN LIVE STOCK SPECIALISTS. AUCTION SALES HELD IN ANY PART OF THE COLONY.

ALL CLASSES OF LIVE STOCK BROUGHT AND SOLD ON COMMISSION. FIRE INSURANCE AGENTS. LAND AGENTS.

NAKURU and at MURUMBATI & LUMWA, KENYA.

Pathe Baby Cinema.

Film Demonstrations at THE ORPHEUM STUDIO, STONEY CREEKERS, GOVERNMENT ROAD, NAIROBI.

Take living pictures of your own children, your sport and pleasure trips, and secure a permanent living record of your stay in Kenya.

Join the Orpheum Film Library. 700 different films to choose from, changed as often as you like.

AFRICAN INDUSTRIES.

THE ONLY PAPER PUBLISHED IN GREAT BRITAIN.

THE LATEST FACTS. THE LATEST FACTS. THE LATEST FACTS.

Wheat Duty. MOTION DEFEATED.

RESULTS OF PROTECTION. Mr. Conway Harvey said that the Government had made up the minds to increase the duty...

REPER. SPECIAL GIFT. The Hon. Mr. Conway Harvey said that the Government had made up the minds to increase the duty...

AFRICAN INDUSTRIES. THE ONLY PAPER PUBLISHED IN GREAT BRITAIN.

THE LATEST FACTS. THE LATEST FACTS. THE LATEST FACTS.

Wheat Duty. MOTION DEFEATED.

RESULTS OF PROTECTION. Mr. Conway Harvey said that the Government had made up the minds to increase the duty...

REPER. SPECIAL GIFT. The Hon. Mr. Conway Harvey said that the Government had made up the minds to increase the duty...

AFRICAN INDUSTRIES. THE ONLY PAPER PUBLISHED IN GREAT BRITAIN.

THE LATEST FACTS. THE LATEST FACTS. THE LATEST FACTS.

Wheat Duty. MOTION DEFEATED.

RESULTS OF PROTECTION. Mr. Conway Harvey said that the Government had made up the minds to increase the duty...







NAIROBI RACE CLUB

Successful Impregnation
Officers Appointed

A well attended meeting...
Officers Appointed

The Committee devoted...
Officers Appointed

The Committee devoted...
Officers Appointed

The Committee devoted...
Officers Appointed

The Committee devoted...
Officers Appointed

The Committee devoted...
Officers Appointed

The Committee devoted...
Officers Appointed

The Committee devoted...
Officers Appointed

The Committee devoted...
Officers Appointed

The Committee devoted...
Officers Appointed

The Committee devoted...
Officers Appointed

The Committee devoted...
Officers Appointed

The Committee devoted...
Officers Appointed

Parliamentary Gossip

YESTERDAY'S MATTERS ON THE HILL COURSE
The following were the results of a golf tournament played on the Municipal Golf course on Wednesday afternoon between the Honorable Members and the Official Members of the Legislative Council. Honorable Members being given first in each case:

The Honorable Mr. W. H. P. Webb...
The Honorable Mr. W. H. P. Webb...

AFRICAN FOOTBALL

The following were the results of African football matches played in Nairobi on Saturday:

Marshall Cup: Triangulo beat C.M.S. 2-0...
Wabingo Cup: B.C. Mission beat Buzunda by two goals to one.

Nyanza Tennis Club

Entries are invited for the above Cup...
Entrance Fee 10/-

To be played on the Nyanza Tennis Courts...
December 1925



KENNEL NOTES
Mr. Galt, Obit, to whom all correspondence in connection with 'Kenneled Notes' should be addressed...

special breed does not endow a dog...
English dogs are so much in the habit of coat, with a rest of white and nothing about me appearing black...

POWER OF DISCRIMINATION
The really superior dog will reverse the usual habit of a very power of discrimination...

THE BORN JUDGE
The dog owners imagine that they possess the required instinct as indeed they do, in their own kind...

CONGRESSIONAL
I have already stated my opinion but I must confess that I have written it in a way which I believe will do justice to the subject...

THE BORN JUDGE (continued)
I consider this a very apt illustration of the dog's power of discrimination...

JUDGING DOGS
Here are some interesting notes on the subject of judging dogs...

Unique Horse Race
A COUPE OF 1360 MILES IN PORTLAND
In a horse race near Portugal, held recently, a number of horses were entered...

THE BORN JUDGE (continued)
The dog owners imagine that they possess the required instinct...

THE BORN JUDGE (continued)
The dog owners imagine that they possess the required instinct...

SPORT AT NAIROBI
Hunt, Polo, and Christmas Arrangements

ATTRACTION PROGRAMME
[Have Our Own Correspondent?]
A meet of the Nairobian Hunt Club will be held on Sunday next (December 13) at 7.0 a.m.

CHRISTIAN DANCE
Arrangements will be made for a dance at the Nairobian Hunt Club...

GAMBLING TAKEN UP BY THE ARMY
The French military authorities are desirous of studying among officers and men...

GET IT FROM MAY'S
What More Acceptable?
What More Certain to Please?
COULD YOU POSSIBLY GIVE AS A CHRISTMAS PRESENT...

Leadership and why
Ordinary Logic Demands That Men Pursue Their Own Interests...

S. Fisher & Simmons, (E.A.) Ltd
Nairobi
Telegrams: "Simfish" Phone 992.

GRAHAM BROTHERS TRUCKS
Sole by Deane Brothers, Dundee

Mileage Safety For Comfort Low Cost Per Mile.

DUNLOP and BE SATISFIED OBTAINABLE From ALL GARAGES AND DEALERS

The DUNLOP RUBBER CO., Ltd. Box 718, NAIROBI. DEPOSITAIRES The African Mercantile Co., Ltd. Mombasa Nairobi Kisumu, etc.





KENYA CRICKET.
New Year.
An interesting scheme.

KENYA LAWN TENNIS.
Annual Meeting of the Association.
The new council.

KENYA POLO.
Nairobi Tournament on New Year.
A polo tournament under the auspices of the Kenya Polo Association.

SPORT ON THE PLATEAU.
The Tennis Tournament.
The tennis tournament.

The Boxing Show.
SAKUKU TO KEEP DOWN FUM.
The committee in charge of arrangements for the boxing tournament.

AGRICULTURAL SHOW IN BUNYORO.
A King's Jester in Leopard Skin.
The African Agricultural Show.

OVERSEAS MAILS.
The notice is taken from the latest issue of the Shipping and Commercial Directory.

256.
A new shipment of Messers and Misses of the Government.

MAVERICK RIFLES IN COLONY.
MAVERICK RIFLES IN COLONY.
MAVERICK RIFLES IN COLONY.

MAVERICK RIFLES IN COLONY.
MAVERICK RIFLES IN COLONY.
MAVERICK RIFLES IN COLONY.

THE SOUTH AFRICAN...
The Kenya Polo Association...
The Kenya Polo Association...

THE SOUTH AFRICAN...
The Kenya Polo Association...
The Kenya Polo Association...

THE SOUTH AFRICAN...
The Kenya Polo Association...
The Kenya Polo Association...

THE SOUTH AFRICAN...
The Kenya Polo Association...
The Kenya Polo Association...

THE SOUTH AFRICAN...
The Kenya Polo Association...
The Kenya Polo Association...

THE SOUTH AFRICAN...
The Kenya Polo Association...
The Kenya Polo Association...

THE SOUTH AFRICAN...
The Kenya Polo Association...
The Kenya Polo Association...

THE SOUTH AFRICAN...
The Kenya Polo Association...
The Kenya Polo Association...

THE SOUTH AFRICAN...
The Kenya Polo Association...
The Kenya Polo Association...

THE SOUTH AFRICAN...
The Kenya Polo Association...
The Kenya Polo Association...

THE SOUTH AFRICAN...
The Kenya Polo Association...
The Kenya Polo Association...

THE SOUTH AFRICAN...
The Kenya Polo Association...
The Kenya Polo Association...

THE SOUTH AFRICAN...
The Kenya Polo Association...
The Kenya Polo Association...

THE SOUTH AFRICAN...
The Kenya Polo Association...
The Kenya Polo Association...

THE SOUTH AFRICAN...
The Kenya Polo Association...
The Kenya Polo Association...

THE SOUTH AFRICAN...
The Kenya Polo Association...
The Kenya Polo Association...

THE SOUTH AFRICAN...
The Kenya Polo Association...
The Kenya Polo Association...

THE SOUTH AFRICAN...
The Kenya Polo Association...
The Kenya Polo Association...

THE SOUTH AFRICAN...
The Kenya Polo Association...
The Kenya Polo Association...

THE SOUTH AFRICAN...
The Kenya Polo Association...
The Kenya Polo Association...

THE SOUTH AFRICAN...
The Kenya Polo Association...
The Kenya Polo Association...

THE SOUTH AFRICAN...
The Kenya Polo Association...
The Kenya Polo Association...

THE SOUTH AFRICAN...
The Kenya Polo Association...
The Kenya Polo Association...

THE SOUTH AFRICAN...
The Kenya Polo Association...
The Kenya Polo Association...

THE SOUTH AFRICAN...
The Kenya Polo Association...
The Kenya Polo Association...

THE SOUTH AFRICAN...
The Kenya Polo Association...
The Kenya Polo Association...

THE SOUTH AFRICAN...
The Kenya Polo Association...
The Kenya Polo Association...

THE SOUTH AFRICAN...
The Kenya Polo Association...
The Kenya Polo Association...

THE SOUTH AFRICAN...
The Kenya Polo Association...
The Kenya Polo Association...

THE SOUTH AFRICAN...
The Kenya Polo Association...
The Kenya Polo Association...

THE SOUTH AFRICAN...
The Kenya Polo Association...
The Kenya Polo Association...

THE SOUTH AFRICAN...
The Kenya Polo Association...
The Kenya Polo Association...

THE SOUTH AFRICAN...
The Kenya Polo Association...
The Kenya Polo Association...

THE SOUTH AFRICAN...
The Kenya Polo Association...
The Kenya Polo Association...

THE SOUTH AFRICAN...
The Kenya Polo Association...
The Kenya Polo Association...

THE SOUTH AFRICAN...
The Kenya Polo Association...
The Kenya Polo Association...

THE SOUTH AFRICAN...
The Kenya Polo Association...
The Kenya Polo Association...

THE SOUTH AFRICAN...
The Kenya Polo Association...
The Kenya Polo Association...

THE SOUTH AFRICAN...
The Kenya Polo Association...
The Kenya Polo Association...

THE SOUTH AFRICAN...
The Kenya Polo Association...
The Kenya Polo Association...



PORT CONTROL COMMISSION.
R.E.A. Corporation Favors Railway Control.
WITH ADVISORY BOARD.

The Secretary to the Port Control Commission... R.E.A. Corporation Favors Railway Control... WITH ADVISORY BOARD.

Referring to the charges put by the... The Commission... The Secretary to the Port Control Commission...

With the port as a large organization... The Commission... The Secretary to the Port Control Commission...

Future Extensions. Turning to the question of... The Commission... The Secretary to the Port Control Commission...

It has been suggested that... The Commission... The Secretary to the Port Control Commission...

It is also suggested that... The Commission... The Secretary to the Port Control Commission...

It is also suggested that... The Commission... The Secretary to the Port Control Commission...

It is also suggested that... The Commission... The Secretary to the Port Control Commission...

It is also suggested that... The Commission... The Secretary to the Port Control Commission...

It is also suggested that... The Commission... The Secretary to the Port Control Commission...

It is also suggested that... The Commission... The Secretary to the Port Control Commission...

THE NATIONAL BANK OF SOUTH AFRICA LTD.

BANKING SERVICE OF EVERY DESCRIPTION.
300 Branches and Sub-branches in South & East Africa.

Table with columns: EAST AFRICA (Tanganyika Territory, Dar-es-Salaam, Zanzibar, Pemba, Mozambique, Natal, Zululand, Transvaal, Orange Free State, Cape Province, Natal, Zululand, Transvaal, Orange Free State, Cape Province), SOUTH AFRICA (Cape Province, Natal, Zululand, Transvaal, Orange Free State, Cape Province), and PORT LOUIS (Mauritius, Seychelles, Madagascar, Réunion, Mauritius, Seychelles, Madagascar, Réunion).

BULLS & ROY LTD.

Importers and Exporters of Building Requisites.
Specializing in Builders Requisites.
Farm Tools, Paints and Oils.

BULLS & ROY LTD.

Importers and Exporters of Building Requisites.
Specializing in Builders Requisites.
Farm Tools, Paints and Oils.

Railway Control.

When the Government... The Commission... The Secretary to the Port Control Commission...

When the Government... The Commission... The Secretary to the Port Control Commission...

When the Government... The Commission... The Secretary to the Port Control Commission...

When the Government... The Commission... The Secretary to the Port Control Commission...

When the Government... The Commission... The Secretary to the Port Control Commission...

When the Government... The Commission... The Secretary to the Port Control Commission...

When the Government... The Commission... The Secretary to the Port Control Commission...

When the Government... The Commission... The Secretary to the Port Control Commission...

When the Government... The Commission... The Secretary to the Port Control Commission...

When the Government... The Commission... The Secretary to the Port Control Commission...

When the Government... The Commission... The Secretary to the Port Control Commission...

Port Control Commission.

The Commission... The Secretary to the Port Control Commission...

The Commission... The Secretary to the Port Control Commission...

The Commission... The Secretary to the Port Control Commission...

The Commission... The Secretary to the Port Control Commission...

The Commission... The Secretary to the Port Control Commission...

The Commission... The Secretary to the Port Control Commission...

The Commission... The Secretary to the Port Control Commission...

The Commission... The Secretary to the Port Control Commission...

The Commission... The Secretary to the Port Control Commission...

The Commission... The Secretary to the Port Control Commission...

The Commission... The Secretary to the Port Control Commission...

Port Control Commission.

The Commission... The Secretary to the Port Control Commission...

The Commission... The Secretary to the Port Control Commission...

The Commission... The Secretary to the Port Control Commission...

The Commission... The Secretary to the Port Control Commission...

The Commission... The Secretary to the Port Control Commission...

The Commission... The Secretary to the Port Control Commission...

The Commission... The Secretary to the Port Control Commission...

The Commission... The Secretary to the Port Control Commission...

The Commission... The Secretary to the Port Control Commission...

The Commission... The Secretary to the Port Control Commission...

The Commission... The Secretary to the Port Control Commission...

Port Control Commission.

The Commission... The Secretary to the Port Control Commission...

The Commission... The Secretary to the Port Control Commission...

The Commission... The Secretary to the Port Control Commission...

The Commission... The Secretary to the Port Control Commission...

The Commission... The Secretary to the Port Control Commission...

The Commission... The Secretary to the Port Control Commission...

The Commission... The Secretary to the Port Control Commission...

The Commission... The Secretary to the Port Control Commission...

The Commission... The Secretary to the Port Control Commission...

The Commission... The Secretary to the Port Control Commission...

The Commission... The Secretary to the Port Control Commission...

Port Control Commission.

The Commission... The Secretary to the Port Control Commission...

The Commission... The Secretary to the Port Control Commission...

The Commission... The Secretary to the Port Control Commission...

The Commission... The Secretary to the Port Control Commission...

The Commission... The Secretary to the Port Control Commission...

The Commission... The Secretary to the Port Control Commission...

The Commission... The Secretary to the Port Control Commission...

The Commission... The Secretary to the Port Control Commission...

The Commission... The Secretary to the Port Control Commission...

The Commission... The Secretary to the Port Control Commission...

The Commission... The Secretary to the Port Control Commission...



# OUR WOMEN'S PAGE

## A Letter from Paris

(From PARLOR CORRESPONDENT)

A glance back about the place most starts which the new dress revolution have expected for us shows us on the whole, more change than we had at first been led to expect.

**More Movement**  
On the evening gown, and the middle skirted for the real reason seems to light we realize more and more that the new dress is most striking characteristics.

The different dressmakers have been very expressive in their movement, so that there is more variety in fashions than we have had for some time. It may be drawn in the very narrow waist, and yet look quite different from others who are also drawn in the narrow waist. This is refreshing after the narrow lines, which make us look like a string of beads. It is uniform, with the same light and shade, and the same tight and loose.

**Old Hats**  
The old steeple or odd shoulder straps are resurrected by several dress makers. The odd shoulder strap may be a very different ribbon, and the other a tall narrow one may be a wreath of flowers, and the other a ribbon strap.

**Medal Trimmings**  
Ornate and bead fringe trimmings of the frocks that suggest movement. They are not often put on straight round the skirt.

and these terrible overhauls ways? In the absence of grief, it is quite well to have a change of a hand that show would rather and make us feel more and always good understood.

A young hand, and pretty and dirty in owner would sing as the while. But now, when I look at the light of her smile—that taught me to repeat, but few get quick capture, and read all her simple young heart. But now, it is ended, for we will be needed the words that have torn us apart.

For a valve set she's better the soul of a martyr—her poor old eyes that tried to follow her needs to her bed addition, and never by heart when the grief.

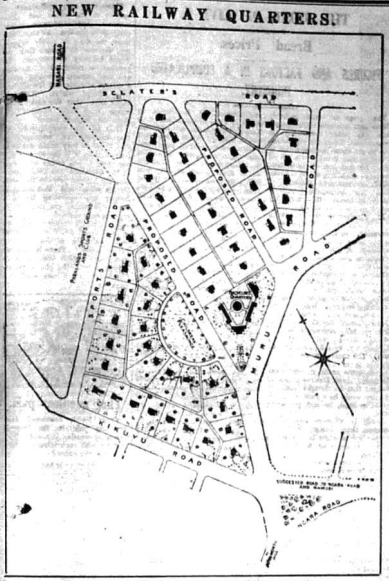
that of the Good Samaritan. No less thorough is the detestation of the rule of the afflicted one whom the Lord Samaritan unconcerned in the good Samaritan is of a very untypical type. But most of these reformers, albeit unimpaired, do not differ from those with the gleam of patronage in their eyes. They do not differ from those who are "beholden" feeling. As friends may one day discover there are few perfect fathers. Any hint of patronage will win the delicate beauty of the word of goodwill. Generally favored with someone's self, but not more than we are in during gratitude in this world.

**Our Standard Friends**  
Parents like older and wiser people before, but we see that

patronize some new concepts. And the result is a very different situation! Jean, for example, becomes a full-blown. She opens a salon, with her capital and her experience. They have a few models and copy them. The models themselves are priced at just three times the figure at any of the free stores, the copies are unattractive.

What are you to do? You're Jean, but dress allowance is dress allowance, and you have to be careful. It would offend terribly set to patronize her, but if you cannot afford to do so, your solution: Jean's opinion. Jean's stock is to be beyond reproach there are other dress little shop, your friend is just this thing you need at the price you wish to give. Again, what it is.

To this query, the only answer is "Thank Jean not to another friendliness both business."



Layout of the "Garden City" described in the accompanying article.

## A "GARDEN CITY" IN NAIROBI.

### Ambitious Layout for the New Railway Staff Quarters in Parklands.

### MODERN HOUSING STYLES.

The first step towards eliminating the "Tenements" in Nairobi was to build a new town within a space of two years, the present capital city will be cleared of all buildings, and suitable for each purpose, some being better suited to others than others. Under the new scheme, the Railway staff of the Uganda Railway and the American are being removed to the new town, which is a very pretty, ideal garden city, and is now being built on a particular point of view. The new scheme at Parklands is that large piece of land owned by the Uganda Railway and the American, known as the "Garden City" and "Baker Road". A plan of this ground was drawn up by the architect, Mr. J. H. B. Baker, who is now in charge of the project. The plan shows a series of blocks, each with a central garden, and a central street. The blocks are arranged in a grid pattern, and the central street is the widest and most important. The plan also shows a series of smaller blocks, each with a central garden, and a central street. The blocks are arranged in a grid pattern, and the central street is the widest and most important. The plan also shows a series of smaller blocks, each with a central garden, and a central street. The blocks are arranged in a grid pattern, and the central street is the widest and most important.

**Fine Quality Jewellery**  
The Goldsmiths & Silversmiths Company Ltd  
112 REGENT STREET, LONDON, W.1, ENGLAND.  
The Mr. Clarence Rippen, 100, North Street, London, W.1, is taking orders for Jewellery of all kinds, and will be glad to receive orders from all parts of the world.

**Enjoying Splendid Vitality**  
From people in many tropical lands come words of praise for the grateful effects of this true reconstructive food and tonic.  
**SANATOGON**  
(The True Tonic Food)  
Get Sanatogon from the nearest store or use it for a few weeks. You will be surprised at the effect on your health.



**A Variety of Effects**  
Two or three houses are trying to bring in longer, fuller skirts. One designer noted for his individuality in making the appearance of his dresses is showing his style in the back, instead of in the skirt. The back is made up of the same material as the skirt, and is decorated with a series of small, round buttons. The back is also decorated with a series of small, round buttons. The back is also decorated with a series of small, round buttons.

but will trim a circular apron front or wander round the dress to a shaping line. Wonderful combinations in the liveliest colors work and exacting colors appear on day and evening dresses. It is rather unusual that the simple shoulder dress has carried such another success, although it was so much exploited during the last season. A flower on the hip also continues to please the great dressmaker, and their clients.

**On Being "Bald"**  
I can't think why Mary has been so nervous. "I've honestly tried to help her out of various hats, any number of times. But she doesn't seem in the least grateful, and the last week or two she's been reading 'How the plague'."

**On Being Bald**  
I can't think why Mary has been so nervous. "I've honestly tried to help her out of various hats, any number of times. But she doesn't seem in the least grateful, and the last week or two she's been reading 'How the plague'."

**On Being Bald**  
I can't think why Mary has been so nervous. "I've honestly tried to help her out of various hats, any number of times. But she doesn't seem in the least grateful, and the last week or two she's been reading 'How the plague'."

**On Being Bald**  
I can't think why Mary has been so nervous. "I've honestly tried to help her out of various hats, any number of times. But she doesn't seem in the least grateful, and the last week or two she's been reading 'How the plague'."

**On Being Bald**  
I can't think why Mary has been so nervous. "I've honestly tried to help her out of various hats, any number of times. But she doesn't seem in the least grateful, and the last week or two she's been reading 'How the plague'."









# THE UNION-CASTLE LINE

HOMEWARDS via EASTERN or WESTE

## VIA SUEZ CANAL.

Callings of Aden, Port Sudan, Suez, Port Said, Genoa, and Marseilles Homewards.

Leave England about

Leave MOMBASA about

	"GloUCESTER Castle"	5th December.
	"SUSSEX Castle" (cargo only)	7th January 1921.
29th December	"GUILDFORD Castle"	6th Feb., 1921.
26th February, '21	"LANDEVOREY Castle"	3rd April.
6th April	"GUILDFORD Castle"	29th May.
2nd June	"GLOUCESTER Castle"	24th July.

All callings subject to alterations without notice.

## VIA SOUTH AFRICA.

Callings of Tanga, Zanzibar, Dar-es-Salaam, Port Amelia, Mozambique, Beira, Delagoa Bay, S.A. Union Ports, and Canary Islands.

Leave England about

Leave MOMBASA about

	"CORIS Castle" (cargo only)	15th December.
	"LANSTEPHAN Castle"	9th Jan., 1921.
16th December	"GARGO BLENNER" (cargo only)	12th February.
7th January, '21	"GLOUCESTER Castle"	1st March.
4th February	"GLOUCESTER Castle"	15th April.
6th March	"ORLOW Castle" (cargo only)	16th April.
1st April	"LANSTEPHAN Castle"	16th June.
29th April	"CANTOR Castle" (cargo)	21st June.
27th May	"LANDEVOREY Castle"	6th August.
24th June	"CORIS Castle" (cargo only)	

If sufficient inducement offered, Up-country charges cannot be accepted unless endorsed by local agents.

Passes to Union-Castle steamers are required, in future, to be in possession of permits obtainable at the Company's Office.

P. O. Box 86. Tel. Add. "UNICASTE" Tel. No. 107.

The Union-Castle Mail Steamship Co., Ltd.,

MOMBASA.

# Excursions To Durban

DURING

DECEMBER, JANUARY AND FEBRUARY.

1st and 2nd Class Excursion Return Tickets (Available for Two Months) will be issued by The Union-Castle Line and the British India Line at the following rates:—

### UNION-CASTLE LINE

First Class: "A" Grade	Shs. 60/ 00
First Class: "B" Grade	Shs. 54/ 00

### BRITISH-INDIA LINE

First Class	Shs. 60/ 00
Second Class	Shs. 51/ 00

AVAILABLE BY EITHER COMPANY'S STEAMERS ON RETURN JOURNEY.

Holders of Union-Castle "B" Grade Tickets will require to pay a Supplement of Shs. 60-00 if they return in 1st Class steamers by British India steamer.

Overland Excursion facilities to Cape Town will be provided by The Union-Castle Line.

The Uganda Railway will issue to Europeans return rail tickets at single fare from Nairobi and any station or port between Nairobi and Uganda. These rail tickets will require to pay a Supplement of Shs. 60-00 if they return in 1st Class steamers by the Shipping Companies that applicants have purchased Ocean Excursion Tickets.

## Sailings.

DECEMBER 1920, JANUARY AND FEBRUARY 1921

### MOMBASA TO DURBAN

"KARADOGA"	About 26th December, 1920.
"KARAFAPA"	About 29th December, 1920.
"KRANDALLA"	About 2nd January, 1921.
"LANSTEPHAN CASTLE"	About 5th January, 1921.
"KARGA"	About 17th January, 1921.
"KARADOGA"	About 20th January, 1921.
"KARAFAPA"	About 23rd February, 1921.
"KRANDALLA"	About 27th February, 1921.

### DURBAN TO MOMBASA

"KARADOGA"	About 2nd December, 1920.
"KARAFAPA"	About 6th January, 1921.
"KRANDALLA"	About 10th January, 1921.
"GUILDFORD CASTLE"	About 15th January, 1921.
"KARGA"	About 18th February, 1921.
"KARADOGA"	About 21st February, 1921.
"KARAFAPA"	About 25th March, 1921.
"LANDEVOREY CASTLE"	About 28th March, 1921.
"KRANDALLA"	About 1st April, 1921.
"KARGA"	About 4th April, 1921.
"KARADOGA"	About 7th April, 1921.
"KARAFAPA"	About 10th April, 1921.

The Union-Castle Mail S. S. Co., Ltd.

The British-India S. N. Co., Ltd.

MOMBASA.

KUALAINDI.

P.O. Box 86.

Tel. Add. "UNICASTE"

P.O. Box 120.

Tel. Add. "Mombasa."