

ONE ADVANTAGE OF HOT WEATHER IS—

You can Drink more



Kenya Beer

BIG SUGAR PROPOSITION.

"Kamiti Ranch" will be developed by Home Company.

10,000 TONS

Neighbouring Farmers may also be benefited.

MOST MODERN MACHINERY.

Messrs. Bannister, Messrs. ...

Mr. A. Flattier Berry, Chairman ...

IN THE BEGINNING.

There is no more interest in ...

Mr. Berry had arranged to ...

Obituary.

Mr. M. V. MILLAR.

It will be regret that the death ...

GUARANTEED THE LARGEST CIRCULATION OF ANY NEWSPAPER IN KENYA, UGANDA, TANGANYIKA AND ZANZIBAR

DAILY EDITION. THE EAST AFRICAN 10 PAGES.



MOMBASA TIMES & UGANDA ARGUS.

THE OLDEST ESTABLISHED NEWSPAPER PUBLISHED IN KENYA AND UGANDA.

NAIROBI, WEDNESDAY, FEBRUARY 17, 1926.

FATE OF FRENCH MONEY MEASURES. ROCKEFELLER OFFER TO CAIRO. SOVIET TROUBLES WITH NEIGHBOURS. TRIAL TROUBLE BETWEEN LUMBWA AND KISIL.

Chamber Throws Out New Duties.

A DIFFICULT OUTLOOK.

[REPRODUCED FROM THE ...]

M. Tardieu Recaptured.

RESULT OF LATEST BRANCH BY ELECTING.

Paris, Feb. 16. A very interesting ...

Mr. Berry, who has experts ...

What also decided him ...

Robert Patterson, the second ...

"Goat Shooting Case"

PATTERSON PAYS RIFES ... TO INSURE MAN.

Inspector Stewart stated ...

The Magistrate: "What are the ..."

Wheat Growers.

TO DISCUSS FORMATION OF A UNION.

[REPRODUCED FROM THE ...]

The American Professor ...

John Rockefeller's ...

Mr. Tardieu recaptured ...

Paris, Feb. 16. A very interesting ...

Mr. Berry, who has experts ...

What also decided him ...

Robert Patterson, the second ...

"Goat Shooting Case"

PATTERSON PAYS RIFES ... TO INSURE MAN.

Inspector Stewart stated ...

The Magistrate: "What are the ..."

Wheat Growers.

[REPRODUCED FROM THE ...]

The following is an account ...

It is of interest to note ...

It is of interest to note ...

It is of interest to note ...

It is of interest to note ...

It is of interest to note ...

It is of interest to note ...

It is of interest to note ...

It is of interest to note ...

It is of interest to note ...

It is of interest to note ...

It is of interest to note ...

[REPRODUCED FROM THE ...]

The following is an account ...

It is of interest to note ...

It is of interest to note ...

It is of interest to note ...

It is of interest to note ...

It is of interest to note ...

It is of interest to note ...

It is of interest to note ...

It is of interest to note ...

It is of interest to note ...

It is of interest to note ...

It is of interest to note ...

THE LOUNGE FOR COCKTAILS AND TEAS THE NEW STANLEY HOTEL THE DINING ROOM FOR BREAK FASTS, LUNCHEONS, and DINNERS.

WHITEWAYS FOR MEN WEAR THAT GIVES YOU EVERY SATISFACTION

TOBACCO BROWN BLAZERS. WHITEWAYS. WHITE TENNIS PLANNERS. GREY PLANNERS. BLAZERS & FISHING JACKETS.

MEN'S LEISURE SUITS. WHITEWAYS. WHITEWAYS. WHITEWAYS. WHITEWAYS.

SAFARI STOCKINGS. WHITEWAYS. WHITEWAYS. WHITEWAYS. WHITEWAYS.

MEN'S SHABRA SUITS—READY FOR WEAR. WHITEWAYS. WHITEWAYS. WHITEWAYS. WHITEWAYS.

WHITEWAYS. WHITEWAYS. WHITEWAYS. WHITEWAYS. WHITEWAYS.

Obituary.

DEATH OF SOCIALIST M.P. FOR BOWTHORPE.

London, Feb. 16. The death of ...

Kenya Co-operation.

SETTLERS' AUTHORITY TO ISSUE "EXPANSION"

It is of interest to note ...

It is of interest to note ...

It is of interest to note ...

It is of interest to note ...

It is of interest to note ...

Obituary.

DEATH OF SOCIALIST M.P. FOR BOWTHORPE.

London, Feb. 16. The death of ...

Kenya Co-operation.

SETTLERS' AUTHORITY TO ISSUE "EXPANSION"

It is of interest to note ...

It is of interest to note ...

It is of interest to note ...

It is of interest to note ...

It is of interest to note ...

Obituary.

DEATH OF SOCIALIST M.P. FOR BOWTHORPE.

London, Feb. 16. The death of ...

Kenya Co-operation.

SETTLERS' AUTHORITY TO ISSUE "EXPANSION"

It is of interest to note ...

It is of interest to note ...

It is of interest to note ...

It is of interest to note ...

It is of interest to note ...

MEN'S LEISURE SUITS. WHITEWAYS. WHITEWAYS. WHITEWAYS. WHITEWAYS.

WHITEWAYS. WHITEWAYS. WHITEWAYS. WHITEWAYS.

SAFARI STOCKINGS. WHITEWAYS. WHITEWAYS. WHITEWAYS. WHITEWAYS.

MEN'S SHABRA SUITS—READY FOR WEAR. WHITEWAYS. WHITEWAYS. WHITEWAYS. WHITEWAYS.

WHITEWAYS. WHITEWAYS. WHITEWAYS. WHITEWAYS.

MEN'S SHABRA SUITS—READY FOR WEAR. WHITEWAYS. WHITEWAYS. WHITEWAYS. WHITEWAYS.

WHITEWAYS. WHITEWAYS. WHITEWAYS. WHITEWAYS. WHITEWAYS.

AUCTION SALES.

Muter and Oswald's Sales

Fire Salvage. Fire Salvage.

Safe, Rifles, Shot Guns, Revolvers, and Accessories.

On behalf of the Parties concerned—

At our Salerooms, Mutos Building, Hardinge Street, Nairobi. **TO-DAY and THURSDAY, 17th and 18th FEBRUARY**, commencing each day at 9.30 a.m. **TO-DAY**—CYRUS FRIEDL'S SAFE, external measurements 2' 6" x 9"; internal measurements, excluding two drawers 18" x 17". **LARGE RANGE OF RIFLES and SHOT GUNS**, including—

456 PORTUGUESE MAUSERS, 356 MANNLICHER SCHONAUERS, 450 WINCHESTERS, 360 LEFFERTS, COLT REPEATING RIFLES, 450 MARTINI, AIO JACKSON'S EXPRESS, 50 EXPRESS WINCHESTERS, 35 WINCHESTER, 38 REPEATER, 22 SAVAGE, 22 BROWNING 22 REMINGTON and WINCHESTER REPEATERS, 9 m/m STEYR, 8 m/m B.S.A., 7.5 mm RIFLE, 350 RIGBY, 375 EXPRESS, 2 NOTRE DAME, 600 EXPRESS, DOUBLE BARRELED 450 WESTLEY-RICHARDS EXPRESS, 46 REMINGTON; DOUBLE BARRELED RIFLE, etc., etc.

One Pair Double Barreled Ejector, 12 Bore Shot Guns by Henry Atkins (from Purdey's) Complete in Leather Covered Oak Case, and Accessories, AN EXCELLENT OPPORTUNITY.

THURSDAY—38 COLT POLICE SPECIAL REVOLVERS, 45 COLT POLICE SPECIALS, 38 COLT MAUSER REVOLVERS, 45 SMITH and WESSON, 465 COLT SERVICE REVOLVER, 38 COLT AUTOMATIC, 22 RAYBURN, 455 WESSON SCOTT REVOLVERS, 32 BROWNING AUTOMATIC, 32 MAUSER AUTOMATIC, 32 REMINGTON AUTOMATIC, 22 CALIBRE RIFLES, ROSS STEYR GUN BRUSHES, TELESCOPIIC SIGHTS, FULL THROUGH, OILS, etc.

Notes: The Auctioneer begs to intimate that they do not under any circumstances make purchases at their own sales for absent buyers.

Fivens cannot be delivered to purchasers until a Gun Tax Permit is produced.

MUTER and OSWALD, Auctioneers, Etc., Nairobi.

Muter and Oswald's Sales.

FIRE SALVAGE FIRE SALVAGE.

STEEL GIRDS

On behalf of the parties concerned—
On the site of Mutos Building, Hardinge Street.

TO-DAY, 17th Feb. at 9.30 a.m.

TWO STEEL GIRDS, size 20" x 9" x 2" x 12".
TWO STEEL GIRDS, size 18" x 9" x 4".

MUTER and OSWALD, Auctioneers, Etc., Nairobi.

Muter and Oswald's Sales.

Valuable Residential Property.

Duly instructed by G. Pickering Esq., who is leaving the colony, we are to sell by PUBLIC AUCTION at our Salerooms, Mutos Building, Hardinge Street, on

Friday, 19th February, at 2.30 p.m.

Precisely, **THAT VALUABLE RESIDENTIAL PROPERTY** situate on Kabete Road, a short distance past the Salisbury Road Railway Crossing, consisting of about FIVE and THREE QUARTERS ACRES of excellent red soil, well laid out, with about 120 FRUIT TREES and about 20,000 PINES (the sales from fruit average £5 per month).

THE HOUSE which was recently erected by Geo. Blowers, Esq., is built in STONE and the accommodation is FOUR ROOMS KITCHEN, PANTRY, BATHROOM, BACK and FRONT VERANDAH; CEDAR FLOORS in all rooms; cement floors in Pantry and Bathroom; ASBESTOS ceiling throughout. The Pantry has large built in cupboards with sliding doors and shelving. Suitable Boys Quarters are erected in Galvanised iron.

THIS PROVIDES AN EXCELLENT OPPORTUNITY to acquire a good property in a desirable and healthy district close to Nairobi.

THE PROPERTY is being offered subject to an upset price well below its value and the Purchaser may, by arrangement, avail himself of TERMS of an advantageous nature, viz. HALF CASH and the BALANCE ON MORTGAGE AT 8 per cent.

For further particulars, apply to—

MUTER and OSWALD, Auctioneers, Nairobi.

Muter and Oswald's Sales

Plots in Sixth Avenue and Hospital Hill District

Duly instructed, we shall offer for sale by Public Auction, at our Salerooms, Mutos Building, Hardinge Street, on

Friday, 19th February
at 2.30 p.m.

TWO MOST DESIRABLE RESIDENTIAL PLOTS THE SITUATION OF HOSPITAL HILL ROAD, within a short distance from town and in secluded surroundings.

ONE plot consisting of .734 of an acre and the other .2317 acres.

BUSINESS PLOT in SIXTH AVENUE, size 50' x 150' in an excellent situation.

TERMS can be arranged on application before the sale.

For further particulars of the above and other properties, apply to

MUTER and OSWALD, Auctioneers, Etc., Nairobi.

Muter and Oswald's Sales

Catalogue Sale of Furniture and Effects.

Duly instructed by Mrs. J. O. Owen, and other parties, we shall sell by Public Auction, without reserve, unless otherwise stated, at our Salerooms, Mutos Building, Hardinge Street, on

Monday, 22nd February
at 9.30 a.m.

BRASS MOTTED DOUBLE IRON BEDSTEAD, with spring and horse hair mattress.

DOUBLE IRON BEDSTEAD with spring mattress.

SINGLE IRON BEDSTEADS, MATTRESSES.

TWO SINGLE BEDSTEADS; wire mattresses.

WARDROBE, solid teak throughout, bevelled mirror, hanging and other compartments.

DRESSING CHEST OF DRAWERS in teak; bevelled mirror.

DRESSING TABLES in teak, with bevelled mirrors.

TEAK CHESTS OF DRAWERS, OCCASIONAL TABLES m/vall.

CHEST OF BEDSIDE SUITE, loose covers.

REVERSIBLE RUGS, INDIAN CARVED TABLE.

MORRIS CHAIRS, BOOKSHELF in camphorwood.

SIDEBOARD in teak; **WRITING TABLE**, bairie top.

BRASS TABLE LAMP.

FIVE ORNATE CYCLES "Perfection" brand—new.

WASHSTANDS in teak. **TABLE MODEL GRAMOPHONE.**

"SEWER" SEWING MACHINE—hand model.

GALVANISED IRON BATE, GOLF CLUBS—six without bag.

PICTURES, KITCHEN TABLE.

BOY'S CYCLE, SUITS OF SIX DINING CHAIRS in teak.

BRASS TRAY on FOLDING STAND.

2 No. 6 "DOVER" STOVES, with piping.

SHOWER BATH FITTING—portable and adjustable for any tap.

etc., etc., etc.

CATALOGUE SALE. **CATALOGUE SALE.**

MUTER and OSWALD, Auctioneers, Etc., Nairobi.

Muter and Oswald's Property List.

Desirable Parkland; Property for SALE.

IN FIFTH PARKLANDS AVENUE; wood and iron residence, 10 minutes from town by car and close to the City Park. House stands on about 1 1/2 acres well laid out as fruit and flower gardens; the whole enclosed by a well established macaranga hedge.

THE RESIDENCE which is built of imported timber contains the following rooms. **LARGE LIVING ROOM** with stone fireplace; **BREAKFAST ROOM**; **TWO BEDROOMS**; etc.

THE BATHROOM is fitted with **LARGE PROCLIAN BATH** and **WASHSTAND**, hot and cold water is laid on.

PANTRY and **KITCHEN** with same roof; electric light.

GARAGE, **BOYS QUARTERS**, and **STORE.**

THIS VERY DESIRABLE PROPERTY is available for £200 of which £500 CASH, and the balance by arrangement. For further particulars apply to—

MUTER and OSWALD, Auctioneers, Nairobi.

A REPUTATION - AS WELL AS A NAME

The Express Transport Coy.

CARTAGE CONTRACTORS TO UGANDA RAILWAY
All Classes of Motor and Mule Transport
All Directions and all Distances
Shipping to any part of the world.
Fuel any quantity.

P. O. Box 483. Government Road. Phones 888
Telegram: "EXPRESS" NAIROBI and 25.

A NEW PRODUCT

SOAP & WAFERS

Cheaper than ordinary soap

CRUDEN BROS. Ltd.,
Nairobi.

BIG "V" TWIN

"RALEIGH"

1936.
Hire Purchase Arranged.

J. C. BUTTON, Hardinge Street.
KETTLES-ROY LTD.
Government Road.

RUBBER STAMPS

AS THE STANDARD STATIONERY STORES.
NAIROBI.

RE-ORGANISATION

SALE

"Jeannette"

Nairobi.
Commencing Monday, February 15th, 1926.

All goods at half marked prices, special heavy reductions in Childrens Department.
Sixth Avenue.
P. O. Box 227.

E. DOBBIE

Ophthalmic Opticians.

Government Road,
NAIROBI.

Our Optical Department

Is in charge of a fully qualified Refractometrist who has a thorough knowledge of the subjects pertaining to ocular optics and who examines the eyes and if necessary prescribes glasses.

Glasses made up to oculists prescriptions.

A GOOD NAME

Whenever the two words—DODGE BROTHERS—come to the mind of anyone who is engaged in the manufacturing and business world of the motor car, they call up a picture of a particular kind of motor car. On to be seen, a particular kind of motor car, which people have come to associate with DODGE BROTHERS.

The name has come to suggest integrity—reliability in the car, and in the manufacturing and business world of the motor car.

DODGE BROTHERS are aware alive to this position. They realize that the first promise of their business lies upon the continuance of that good name.

They realize that such a name is a perpetual promise, which must be perpetually fulfilled by a finer and finer product.

As long as their name is attached to their motor cars, DODGE BROTHERS may be depended upon to safeguard it.

As long as they build motor cars they will be the best motor cars DODGE BROTHERS can build.

Sole Agents for the Eastern African Territories
S. Fisher & Simmons (E.A.) Ltd.
P. O. Box 406.
Victoria Street, Nairobi.
Telegram: "SMALLMAN"

KEEP YOUR HOUSE COOL

Use
"FIBRENT"
Asbestos Sheets
For your ceilings
(British Manufacture)

Sole Agents.
DENOVAN & DIEBEL
CITY HOUSE,
NAIROBI.

SPECIAL VALUES IN CALICOES

ELEPHANT LONGCLOTH 30" Wide	1/50
OSMAN MADAPOLLAM 38" Wide	2/50
HORROCKES MADAPOLLAM do.	3/50
SUPPER QUALITY OSMAN MADAPOLLAM	3/50
HORROCKES SIC MADAPOLLAM	3/50
TARRANTS STANDARD QUALITY	3/50
TARRANTS FINE QUALITY	3/50
TARRANTS SUPERFINE QUALITY	3/50
DORCAS CAMBRIC 40" Wide	3/50

Hutchings, Biemer & Co., Ltd.

Box 408. NAIROBI. Phone 408.
5% DISCOUNT FOR CASH.
Monthly Accounts With Approved Customers.

Geo. BLOWERS,
 BUILDING CONTRACTOR, BATHING STAIRS, BRICK REPORTER,
 CASH WITH ORDER.

NOTE: Windows shown in drawings are of standard sizes and are not to scale. For details of construction and materials, see specifications on page 2.

Office: 11, Market Street, Nairobi.

A Loss to Zanzibar.

PARING AWAY OF MISS THEACKERY AT AGE OF 84.

A notification to the Zanzibar Official Gazette announcing the death of Miss Caroline Mary De Theackery at the age of 84 years. The late Miss Theackery was born in Zanzibar in 1841 and her year would have kept her celebrating the twentieth of her birth on the 11th inst. Miss Theackery was the daughter of a Zanzibari merchant, who was a few miles from the city of Zanzibar. She was educated by her father and was a member of the Zanzibar Mission to Central Africa. Bishop Stansfeld saw in Miss Theackery just what he wanted, one whose education and seal would fit her for understanding the traditions of women and young girls in Zanzibar.

Some after her arrival she was given the charge of a large school for girls of whom there were a few children. She had a large staff of native and European women, and she was committed to her care by the Government. The above and the usual school subjects. Many, however, who showed little intellectual capacity were taught handicraft and domestic work in a large wing of the house, built by the government of Mr. Max Theackery. Thus for some 20 years, until her retirement in 1905, Miss Theackery had supervised and trained a succession of potential wives for Christian life, and today there are to be found not only in Zanzibar but also in many places on the mainland Christian homes, which owe their existence and their life to her efforts.

Since her retirement, Miss Theackery had been living a very quiet life in the most charming Bahari mansion. Miss Theackery, formerly belonged to the John De Theackery of the Devonshire Avenue.

SAM RIFKIN
 WAGON BLACKSMITH,
 BUCKSMITH,
 FARRIER.

P. O. BOX 718, Phone 144, SUVA STREET, NAIROBI.

E. E. DORRIS
 OPTHALMIC OPTICIAN,
 Government Road.

QUALIFIED REFRACTORIAN
 In Attendance Hours: 9 a.m.—4 p.m. Saturdays—12. Telephone No. 60.

Not connected with any other Optical or the same name.

MARTIN'S PILLS
 APIOL & STEEL

Sure and certain for all female complaints. Every lady should keep a box in her medicine chest. Chemists and Druggists sell them throughout the world.

Prepared by: **MARTIN, Chemist, Southampton, England.**

FOR SALE.

Box Porter dog puppie, pedigree, hunting status 9 weeks old. 25 sh.

One smooth dog puppie, pedigree, 2 years old. 25 sh. P.O. Box 478, Nairobi.

KEHLO'S DYE-CLEANING & DYING WORKS

Town Executive Officer: **J. R. STEPHENSON, Ltd.** (Incorporated in Kenya, Ltd.)

TO LET.

Board and lodgings of Nyeri Road, Terms moderate. Apply P.O. Box 226

ATKINSON'S Celebrated Californian

Poppy.

Perfumes, Bath Soap, Toilet Powders, etc. To be obtained from all leading chemists, Grocers, Druggists, etc.

G. DREWYAN, Nairobi, City House.

TO WHEAT GROWERS
 Meeting at **NAKURU HOTEL - 2 p.m.**
 SATURDAY 20th FEB.

As a result of resolutions passed by various associations a meeting will be held at the above place to discuss the formation of a Wheat Association representative of the whole country.

It is hoped that all interested in wheat farming will attend.

REMINOTING
 YOU CAN BUY EUROPEAN SERVICE WITH GUARANTEE

FULL SUPPLY OF PARTS. ALL REPAIRS UNDERTAKEN.

REMINOTING TYPEWRITER ASSOCIATION
 Government Road, Nairobi. Phone 31.

RELIANCE TRANSPORT CO.
 THE LARGEST MOTOR TRANSPORT CO. IN THE COLONY.

We undertake transport to all parts of this Colony with our own Transport.

OUR EXPERIENCED ADVISOR & INTEREST FREE ADVISOR YOUR SERVICE

FUEL MERCHANTS.
 LARGEST STOCKS HELD IN NAIROBI, Embury Road, Phone 251. Offices, Garoga, Fasi Depot, Embury Road.

OAKLEIGH PRIVATE HOTEL
 Comfortable and up-to-date in every way. Up country visitors specially catered for. Under the personal supervision of Mrs. H. JARRETT, NAIROBI. P. O. Box 180.

OVERSEAS MAILS.

The notices are based upon the latest advice from the Agents. It is possible, however, that circumstances may vary and the notices are not intended to be published subject to any alteration.

Mails will be closed at Nairobi Post Office as usual.

ARRIVALS		Day of Month
STEAMER	FROM	
Mackay	Europe	Feb. 18
Marine	Madagascar	21
Kenya	South	24
Kenya	Madagascar	24
Kenya	South	24
Kenya	Madagascar	24
Kenya	South	24
Kenya	Madagascar	24
Kenya	South	24
Kenya	Madagascar	24

DEPARTURES.		Day of Month
STEAMER	FOR	
Mackay	Europe	Feb. 18
Marine	Madagascar	21
Kenya	South	24
Kenya	Madagascar	24
Kenya	South	24
Kenya	Madagascar	24
Kenya	South	24
Kenya	Madagascar	24
Kenya	South	24
Kenya	Madagascar	24

A perfect "SCOTCH" ensures good health.

"LONG JOHN" SCOTCH WHISKY

Wholesale Distributors—
D. KEFFERIN & Co., NAIROBI.

NOTICE

East Africa and Uganda National History Society.

The Annual General Meeting will be held in the MUSEUM on February 17th at 8-45 p.m.

- Minutes of previous meeting.
- Annual Report and Financial Statement.
- Appointment of Officers and Committee, 1926.
- Lecture on "Origin of the Massai."
- Luck Egg.

Non-members will be admitted on payment of Sh. 1/-.

V. G. L. van Someren, Hon. Secy.

ALIBHAI & Co.
 BAZAAR NAIROBI.
 LADIES AND GENTS TAILORS
 TENT AND SAILMAKERS AND SAFARI OUTFITTERS.

Just Received
 Hats, Helms, Velours and Double Terran, Shiras, Patana Suits, Silk Handkerchiefs, and Neckties, Chies, Wool, and Silk, Half Hose in Up-to-date Designs.

SINGERS HAND & TREADLE SEWING MACHINES, TAPPULINS AND WAGON COVERS, HESSIAN, LARD GUNNY BAGS, ALWAYS, IN STOCK.

Box 213. Enquiries cordially invited.

THE EUROPEAN AND AFRICAN TRADES ORGANISATION

Telephone 126. s/o P.O. Box 424, Nairobi.
 "Trade Organisation," Telephone 126, Nairobi.

All Communications to be addressed to THE SECRETARY, REGISTRATION FEES.

Please note that in future the following Fees will be payable in advance by all those who make use of the Organisation and who are not regular subscribers to its Funds.

EUROPEANS SEEKING EMPLOYMENT will be required to pay a Registration Fee of Sh. 5/- before placing his or her name on the Organisation's Register.

EUROPEANS SEEKING EMPLOYERS will be required to pay in advance the following Fees—
 FOR EACH APPLICATION REQUIRED Sh. 6/-
 FOR EACH EMPLOYEE REQUIRED Sh. 10/-
 FOR EACH EUROPEAN EMPLOYEE REQUIRED Sh. 20/-

REGULAR SUBSCRIBERS will continue to receive the full services of the Organisation FREE OF CHARGE.

M. R. de SOUZA & Co.
 (ESTABLISHED 1889)
 GENERAL MERCHANTS
 Ladies' & Gent's Expert Tailors & Outfitters

Direct Importers of
 Best Groceries, Wines, Spirits and all Personal & Household Requisites.

P.O. Box 180. Govt. Road, Phone 78.

AMMUNITION

Owing to the high price of Ammunition, you want a Rifle not only to be accurate, but to be a killing power.

OUR NEW INVENTION of Master and Matchless SHORANER RIFLES with the EXTRA LONG BARREL 22" give naturally not only accuracy, but a nearly 50 per cent. increase striking force and secure your Animal with less cartridges.

Our Master and Matchless Rifles have proved an historic unknown success.

All boxes available. Cal. 65 mm., 7 mm., 8 mm., 9 mm., 9.5 mm., 9.5 mm., 10.75 mm., from 200 to 2000 Yds.

ONLY OBTAINABLE FROM THE SOLE AGENTS FOR THE ORIGINAL MASTER AND MATCHLESS SHORANER RIFLES.

We guarantee accuracy, striking force and quality.

CHAS. A. HEYER & CO.
 Box 867. Nairobi. Telephone Elephant.

NOW IN STOCK

"B" PULPERS SIEVES
 DISC PULPERS SPARES

SCOTT & DAVIDSON.
 Sole Agents in Kenya for Wm. McEwan & Co., Ltd. VICTORIA STREET, NAIROBI. P.O. Box 450.

NOTICE

THE SHOOTERS.

The well-known Ladies and Gents Hairdresser, begs to announce to his many clients he has re-opened business again in Government Road (lastly occupied by Fisher and Simmons).

Permanent Wave, Manicure, Massage, Shingling, Bobbing, etc.

A SPECIALTY

Telephone: 245. NAIROBI. Box No. 854.

CITROEN

THE BEST VALUE FOR MONEY IN THE COLONY.

THE EXTRAORDINARY POWER & ECONOMY OF THE 11.4 H.P. ENGINE WILL ASTONISH YOU.

FULLY EQUIPPED TOURING CAR
 NO EXTRAS

£255

CALL FOR DEMONSTRATION RUN

MONCKTON & SEAR Ltd.,
 NAIROBI.

Don't Forget.

BIO - DANCE
 AT THE LYRIC.

This **FRIDAY,**
 Music - Kenya Jazz Band Trio.

Tickets Shs. 3/-

PORK SAUSAGES

Obtainable from all leading Grocers.

THE SPORTS PAGE

HOPE CRADY GOLF CLUBS MADE FOR GOLFERS WHO KNOW GOLF NAIROBI

FRED RAPER

GENERAL COMMISSION AGENT. P.O. Box 541. CITY HOUSE, Phone 1445

BINOCULARS. BINOCULARS

All Special Built for the Tropics. SHAW & HUNTER

Hupmobile 6



Call for a Demonstration THE MOTOR MAINT & EXCHANGE, LTD NAIROBI.

FIRE ARMS

We Carry Large Stocks of RIFLES SHOTGUNS PISTOLS REVOLVERS

CARTRIDGES

MAY & CO. THE SPORTS HOUSE

J R STEPHENS & Co. Ltd. TAILORS AND OUTFITTERS

M.C.C. IN WEST INDIES

Opening of Third and Last Test Match

CHALLENGER HITS OUT [Previous series's account] The third and last match...

Week-end Cricket.

BOWLING AVERAGES IN HIRE MATCH.

The following were the bowling averages for the second innings...

Swimming Records.

CLAIMS FOR WORLD'S BEST TIMES FROM U.S.A.

Walter Lester (Colonial U.A.) established recently in the United States...

THE HAIVES

Continuing his resume, Mr. Sharp says: "When first we met Scotland after the War we had a splendid half-back line..."

Wisden's Almanack.

APPOINTMENT OF EDITOR TO CRICKET ANNUAL.

Mr. C. Stewart Clark, associated with the production of the Cricket Almanack for the past 20 years...

Australia's Team.

CRICKET SELECTOR AND SELLERS.

Playing for Victoria against New South Wales last week J. E. Fraser...

The Prince as a Colfer.

ACCEPTS CAPTAINCY OF MID-SUBURB CLUB The Prince of Wales has accepted the captaincy of the Mid-Suburban Club...

ENGLISH FOOTBALLERS

A Review of the Season's Soccer Players.

COMPARISONS WITH THE PAST. A designation made recently by Mr. J. C. G.O.M. last year...

THE VELL-TALE CARD.

Given the choice: should a player be allowed to play in the event of a serious illness...

BUSINESS OR PASTIME?

It is no longer any cause for surprise that the number of people who play golf for business purposes...

COLL BACKS

Pulling folk, Mr. Sharp says: "The collar back is the most important position in the game..."

THE STIFF TEST

It is a provocative of innocent eyes how the same people are so often so different...

FORWARDS

"My recollections of the year's forward play bring me back to thoughts of splendid wing displays..."

At any rate, the dance along the wings of Clark and Morton...

THE PRICE AS A COLFER.

ACCEPTS CAPTAINCY OF MID-SUBURB CLUB The Prince of Wales has accepted the captaincy of the Mid-Suburban Club...

AROUND THE LINKS.

The Merits of Match and Medal Play.

It is not a new idea to say that the match play is the more important of the two...

NOT REAL.

As yet entirely from the question which is the better: match or medal play...

EMERALD WATER JUG.

Shape as illustrated, which inside and outside strong body, enamel of blue, green, white, which does not fade...

THE HAIVES

Continuing his resume, Mr. Sharp says: "When first we met Scotland after the War we had a splendid half-back line..."

ON LOING

Some time ago I read that the ordinary hawking man regarded the killing of a bird as a mere sport...

THE STIFF TEST

It is a provocative of innocent eyes how the same people are so often so different...

FORWARDS

"My recollections of the year's forward play bring me back to thoughts of splendid wing displays..."

At any rate, the dance along the wings of Clark and Morton...

THE PRICE AS A COLFER.

ACCEPTS CAPTAINCY OF MID-SUBURB CLUB The Prince of Wales has accepted the captaincy of the Mid-Suburban Club...

It is not a new idea to say that the match play is the more important of the two...

NOT REAL.

As yet entirely from the question which is the better: match or medal play...

EMERALD WATER JUG.

Shape as illustrated, which inside and outside strong body, enamel of blue, green, white, which does not fade...

THE HAIVES

Continuing his resume, Mr. Sharp says: "When first we met Scotland after the War we had a splendid half-back line..."

ON LOING

Some time ago I read that the ordinary hawking man regarded the killing of a bird as a mere sport...

THE STIFF TEST

It is a provocative of innocent eyes how the same people are so often so different...

FORWARDS

"My recollections of the year's forward play bring me back to thoughts of splendid wing displays..."

At any rate, the dance along the wings of Clark and Morton...

THE PRICE AS A COLFER.

ACCEPTS CAPTAINCY OF MID-SUBURB CLUB The Prince of Wales has accepted the captaincy of the Mid-Suburban Club...

Acco (Limited) NAIROBI. Telephone: ADVLORGER.

USEFUL HOUSEHOLD UTENSILS AT ATTRACTIVE PRICES



EMERALD WATER JUG. Shape as illustrated, which inside and outside strong body, enamel of blue, green, white, which does not fade...

THE HAIVES. Continuing his resume, Mr. Sharp says: "When first we met Scotland after the War we had a splendid half-back line..."

ON LOING. Some time ago I read that the ordinary hawking man regarded the killing of a bird as a mere sport...

THE STIFF TEST. It is a provocative of innocent eyes how the same people are so often so different...

FORWARDS. "My recollections of the year's forward play bring me back to thoughts of splendid wing displays..."

At any rate, the dance along the wings of Clark and Morton...

THE PRICE AS A COLFER. ACCEPTS CAPTAINCY OF MID-SUBURB CLUB The Prince of Wales has accepted the captaincy of the Mid-Suburban Club...

ACCEPTS CAPTAINCY OF MID-SUBURB CLUB The Prince of Wales has accepted the captaincy of the Mid-Suburban Club...

ACCEPTS CAPTAINCY OF MID-SUBURB CLUB The Prince of Wales has accepted the captaincy of the Mid-Suburban Club...

ACCEPTS CAPTAINCY OF MID-SUBURB CLUB The Prince of Wales has accepted the captaincy of the Mid-Suburban Club...

ACCEPTS CAPTAINCY OF MID-SUBURB CLUB The Prince of Wales has accepted the captaincy of the Mid-Suburban Club...

ACCEPTS CAPTAINCY OF MID-SUBURB CLUB The Prince of Wales has accepted the captaincy of the Mid-Suburban Club...

ACCEPTS CAPTAINCY OF MID-SUBURB CLUB The Prince of Wales has accepted the captaincy of the Mid-Suburban Club...

ACCEPTS CAPTAINCY OF MID-SUBURB CLUB The Prince of Wales has accepted the captaincy of the Mid-Suburban Club...

ACCEPTS CAPTAINCY OF MID-SUBURB CLUB The Prince of Wales has accepted the captaincy of the Mid-Suburban Club...

ACCEPTS CAPTAINCY OF MID-SUBURB CLUB The Prince of Wales has accepted the captaincy of the Mid-Suburban Club...

ACCEPTS CAPTAINCY OF MID-SUBURB CLUB The Prince of Wales has accepted the captaincy of the Mid-Suburban Club...

CHAIRMAN MOTION TURNED DOWN.

Details by the Town Council.

ANNOYOUS LETTERS.

Mr. Chairman's conduct of the meeting has been turned down. The Council has decided to refer the matter to the Town Council.

THE ASIAN VIEWPOINT.

Mr. Chairman's speech was well received. The Council has decided to refer the matter to the Town Council.

THE PRESENT.

The roads were now worse than ever. The Council has decided to refer the matter to the Town Council.

AND THE FUTURE.

The Government officials were very much interested in the proposals. The Council has decided to refer the matter to the Town Council.

BY PROXY.

Mr. Chairman's speech was well received. The Council has decided to refer the matter to the Town Council.

ALL SILK FUJIS.

The most material for all Lingens Washing Frocks. The Council has decided to refer the matter to the Town Council.

Loss of Cash Discount.

The house for quality. The Council has decided to refer the matter to the Town Council.

The Mayor took the motion as a whole. The Council has decided to refer the matter to the Town Council.

Mr. Chairman's speech was well received. The Council has decided to refer the matter to the Town Council.

THE ASIATIC VIEWPOINT.

Mr. Chairman's speech was well received. The Council has decided to refer the matter to the Town Council.

A RETROGRADE MEASURE.

Mr. Chairman's speech was well received. The Council has decided to refer the matter to the Town Council.

NO SUPER-MEN.

Mr. Chairman's speech was well received. The Council has decided to refer the matter to the Town Council.

BY PROXY.

Mr. Chairman's speech was well received. The Council has decided to refer the matter to the Town Council.

ALL SILK FUJIS.

The most material for all Lingens Washing Frocks. The Council has decided to refer the matter to the Town Council.

Loss of Cash Discount.

The house for quality. The Council has decided to refer the matter to the Town Council.

The Mayor took the motion as a whole. The Council has decided to refer the matter to the Town Council.

Mr. Chairman's speech was well received. The Council has decided to refer the matter to the Town Council.

THE ASIATIC VIEWPOINT.

Mr. Chairman's speech was well received. The Council has decided to refer the matter to the Town Council.

A RETROGRADE MEASURE.

Mr. Chairman's speech was well received. The Council has decided to refer the matter to the Town Council.

NO SUPER-MEN.

Mr. Chairman's speech was well received. The Council has decided to refer the matter to the Town Council.

BY PROXY.

Mr. Chairman's speech was well received. The Council has decided to refer the matter to the Town Council.

ALL SILK FUJIS.

The most material for all Lingens Washing Frocks. The Council has decided to refer the matter to the Town Council.

Loss of Cash Discount.

The house for quality. The Council has decided to refer the matter to the Town Council.

THE CORTYDON FUND.

Response to the Appeal.

In response to the appeal which was forwarded all over the world. The Council has decided to refer the matter to the Town Council.

KEYS CONSTITUTION.

Additional Instructions under the Royal Grant. The Council has decided to refer the matter to the Town Council.

MOTION LOST.

Mr. Chairman's speech was well received. The Council has decided to refer the matter to the Town Council.

COTTON PIECE GOODS.

Mr. Chairman's speech was well received. The Council has decided to refer the matter to the Town Council.

COURT HOUSE SITE.

The following report by the Town Council. The Council has decided to refer the matter to the Town Council.

LAWSUITS.

The report of the Special Committee was considered and approved. The Council has decided to refer the matter to the Town Council.

LAWSUITS.

The report of the Special Committee was considered and approved. The Council has decided to refer the matter to the Town Council.

CORRESPONDENCE.

The Editor does not accept responsibility for the views expressed. The Council has decided to refer the matter to the Town Council.

SIR WORTHUP MACMILLAN.

To the Editor: "E. A. Standards." The Council has decided to refer the matter to the Town Council.

THE LOAN PROPOSAL.

To the Editor: "E. A. Standards." The Council has decided to refer the matter to the Town Council.

LAWSUITS.

The report of the Special Committee was considered and approved. The Council has decided to refer the matter to the Town Council.

LAWSUITS.

The report of the Special Committee was considered and approved. The Council has decided to refer the matter to the Town Council.

LAWSUITS.

The report of the Special Committee was considered and approved. The Council has decided to refer the matter to the Town Council.

LAWSUITS.

The report of the Special Committee was considered and approved. The Council has decided to refer the matter to the Town Council.

LAWSUITS.

The report of the Special Committee was considered and approved. The Council has decided to refer the matter to the Town Council.

THE CORTYDON FUND.

Response to the Appeal.

In response to the appeal which was forwarded all over the world. The Council has decided to refer the matter to the Town Council.

KEYS CONSTITUTION.

Additional Instructions under the Royal Grant. The Council has decided to refer the matter to the Town Council.

MOTION LOST.

Mr. Chairman's speech was well received. The Council has decided to refer the matter to the Town Council.

COTTON PIECE GOODS.

Mr. Chairman's speech was well received. The Council has decided to refer the matter to the Town Council.

COURT HOUSE SITE.

The following report by the Town Council. The Council has decided to refer the matter to the Town Council.

LAWSUITS.

The report of the Special Committee was considered and approved. The Council has decided to refer the matter to the Town Council.

LAWSUITS.

The report of the Special Committee was considered and approved. The Council has decided to refer the matter to the Town Council.

LYRIC HALL.

To-night, 8-45. WHEN LONDON SLEEPS.

HILDA BAYLEY. Topical Budget—Specially augmented. All the latest news, shown for the first time in Nairobi.

BIO-DANCE To-morrow.

PROGRAMME OF PROPOSED MEMBERS TOUR. No. X 11. 723 Tan Call Broques.



Willow Calf Bar. With Leather Soles. 30/-



Willow Calf Bar. Medium Heel. Willow Calf Fancy Bar. Ladies Shoe Store.

To the Secretary to make arrangements. The Council has decided to refer the matter to the Town Council.

THEATRE ROYAL.

TO-NIGHT. THE 7 PART DRAMA "THE MAN WHO HAD EVERYTHING".

FEBRUARY 19th and 20th. THE CECILIAN TRIO. Variety Programs also includes drama film.

Theatre Royal Restaurant. Full Board, Special Luncheons, Teas, and Dinners. Cool Verandah and Lounge. Tees.

Laysan.



"COSTS NO MORE THAN THE ORDINARY KIND" ONE SHOULD NOT THINK OF Laysan STOCKINGS ONLY BUT ALSO OF THE FAMOUS ITALIAN SILK UNDER-CLOTHING.

Waring's. NAIROBI'S FASHION CENTRE. Africa House, Government Rd. NAIROBI.

STOP TO NAIROBI MOTORISTS

1. In view of confusion of signals, the point asked will in future give one signal only will above head. 2. If you get no signal GO ON. When he drops his hand GO ON. R. S. D. SPICER, Commissioner of Police.

UNION-CASTLE LINE

Prospective Sailors

Prospective Sailors... Prospective Sailors... Prospective Sailors...

THE UNION-CASTLE MAIL STEAMSHIP Co. Ltd.

ON THE COMPANY'S SERVICE

HOLLAND AFRIKA LINE

JOHN FRYER'S HOLLAND AFRIKA LINE & HOLLAND OOSTAFRIKA LINE

Passengers will sail on the following dates

Table with columns for ship names, departure dates, and destinations.

Passengers of the Line provide excellent Cabin accommodations for passengers.

For further information apply to the agents:

THE TWENTHS OVERSEAS TRADING Co. LTD.

ROSEBANK, KAMPALA, TEL 149

NAIROBI, H. THACKER, LINDSAY & BATES AGENTS

PLAUM AND TRANS-NIGROIA Ship Management

DOES YOUR FORD CAR LOOK SHABBY?

IS SO, WHAT YOU WANT IS A ROBBIALAC OUTFIT

FOR ENAMELING THE BODY, RENOVATING THE CUSHIONS, ETC., AND MAKE THE CAR LOOK LIKE NEW

PRICE, COMPLETE WITH BRUSHES, etc. IN VARIOUS COLOURS

Large Size ... Shs. 32/50

Small Size ... Shs. 30/00

STOCKED BY: The SERVICE Co. Ltd., NAIROBI, AND BRANCHES.

MANUFACTURERS SOLE REPRESENTATIVES, Smith Mackenzie & Co., P.O. Box 590, NAIROBI, Tel. 368

G. J. LAING

BUILDER & CONTRACTOR, VICTORIA STREET, NAIROBI

All classes of Joinery Work undertaken

Picture Framing and Glazing

JOBBING - ESTIMATES FREE

FERTILISER WITH PHOS.

The following testimonials speak for itself

"I had the best of the experiment with 'Eubos' mixed soil

basely I hardly like to tell you, you might say I was

"The Potatoes are just simply wonderful, I have never

seen such growth, even through the drought, I never have

obtained all my yield and in some cases, but never have I

anything like this but and further it is so easy of using

and because I purchased the soil used in application to

the ground of the above testimonials can be seen in application to

G. ARONSON, P.O. Box 681, Nairobi.



P. GETHIN, P. Box 128, NAIROBI

FUEL OIL DEPOT

HUDSON SUPER SIX CARS FOR HIRE DAY AND NIGHT

Telegrams: "Gethin, Nairobi" Box 128, NAIROBI

HIGH VIEW HOTEL, LIMURU, (Late Nairobi)

17 W. Nairobi, B. M. Lamour

TELE. MISSOURI

TENNIS COURT, etc.

ELECTRIC LIGHT

Car to meet Visitors by arrangement.

For particulars, apply to P. G. GETHIN, NAIROBI

P. STEWART, C.S. RED PAINTER & DECORATOR, EASTERN STREET, NAIROBI

Sign Painting, Graining, Marbling, Filling, etc.

Coach & Motor Painting, Etc.

P. O. Box 214, NAIROBI

JOHN RIFKIN, 814, NAIROBI

WAGON BUILDER, BLACKSMITH, FARRIER

STOCKS OF AXLES, BRAKES, WAGONS, AND ALL WAGON PARTS

All kinds of Wagons made to order.

SUPER SIX HUDSON, Telephone 116, P. O. Box 904, NAIROBI

De Luxe Boot Co., All kinds of Footwear made to order

opposite KANZER MANAGER Government Road.

TO LET, With a large mistnet wall in town in healthy district. Large airy rooms. For terms, etc. apply 777, Telephone No. 3017, "Guardian", Nairobi.

CALEBARIAN RESIDENTIAL HOTEL, THE HILL, Near Club, Accommodates 100, Telephone No. 414, 415, 416, 417, 418, 419, 420, 421, 422, 423, 424, 425, 426, 427, 428, 429, 430, 431, 432, 433, 434, 435, 436, 437, 438, 439, 440, 441, 442, 443, 444, 445, 446, 447, 448, 449, 450, 451, 452, 453, 454, 455, 456, 457, 458, 459, 460, 461, 462, 463, 464, 465, 466, 467, 468, 469, 470, 471, 472, 473, 474, 475, 476, 477, 478, 479, 480, 481, 482, 483, 484, 485, 486, 487, 488, 489, 490, 491, 492, 493, 494, 495, 496, 497, 498, 499, 500, 501, 502, 503, 504, 505, 506, 507, 508, 509, 510, 511, 512, 513, 514, 515, 516, 517, 518, 519, 520, 521, 522, 523, 524, 525, 526, 527, 528, 529, 530, 531, 532, 533, 534, 535, 536, 537, 538, 539, 540, 541, 542, 543, 544, 545, 546, 547, 548, 549, 550, 551, 552, 553, 554, 555, 556, 557, 558, 559, 560, 561, 562, 563, 564, 565, 566, 567, 568, 569, 570, 571, 572, 573, 574, 575, 576, 577, 578, 579, 580, 581, 582, 583, 584, 585, 586, 587, 588, 589, 590, 591, 592, 593, 594, 595, 596, 597, 598, 599, 600, 601, 602, 603, 604, 605, 606, 607, 608, 609, 610, 611, 612, 613, 614, 615, 616, 617, 618, 619, 620, 621, 622, 623, 624, 625, 626, 627, 628, 629, 630, 631, 632, 633, 634, 635, 636, 637, 638, 639, 640, 641, 642, 643, 644, 645, 646, 647, 648, 649, 650, 651, 652, 653, 654, 655, 656, 657, 658, 659, 660, 661, 662, 663, 664, 665, 666, 667, 668, 669, 670, 671, 672, 673, 674, 675, 676, 677, 678, 679, 680, 681, 682, 683, 684, 685, 686, 687, 688, 689, 690, 691, 692, 693, 694, 695, 696, 697, 698, 699, 700, 701, 702, 703, 704, 705, 706, 707, 708, 709, 710, 711, 712, 713, 714, 715, 716, 717, 718, 719, 720, 721, 722, 723, 724, 725, 726, 727, 728, 729, 730, 731, 732, 733, 734, 735, 736, 737, 738, 739, 740, 741, 742, 743, 744, 745, 746, 747, 748, 749, 750, 751, 752, 753, 754, 755, 756, 757, 758, 759, 760, 761, 762, 763, 764, 765, 766, 767, 768, 769, 770, 771, 772, 773, 774, 775, 776, 777, 778, 779, 780, 781, 782, 783, 784, 785, 786, 787, 788, 789, 790, 791, 792, 793, 794, 795, 796, 797, 798, 799, 800, 801, 802, 803, 804, 805, 806, 807, 808, 809, 810, 811, 812, 813, 814, 815, 816, 817, 818, 819, 820, 821, 822, 823, 824, 825, 826, 827, 828, 829, 830, 831, 832, 833, 834, 835, 836, 837, 838, 839, 840, 841, 842, 843, 844, 845, 846, 847, 848, 849, 850, 851, 852, 853, 854, 855, 856, 857, 858, 859, 860, 861, 862, 863, 864, 865, 866, 867, 868, 869, 870, 871, 872, 873, 874, 875, 876, 877, 878, 879, 880, 881, 882, 883, 884, 885, 886, 887, 888, 889, 890, 891, 892, 893, 894, 895, 896, 897, 898, 899, 900, 901, 902, 903, 904, 905, 906, 907, 908, 909, 910, 911, 912, 913, 914, 915, 916, 917, 918, 919, 920, 921, 922, 923, 924, 925, 926, 927, 928, 929, 930, 931, 932, 933, 934, 935, 936, 937, 938, 939, 940, 941, 942, 943, 944, 945, 946, 947, 948, 949, 950, 951, 952, 953, 954, 955, 956, 957, 958, 959, 960, 961, 962, 963, 964, 965, 966, 967, 968, 969, 970, 971, 972, 973, 974, 975, 976, 977, 978, 979, 980, 981, 982, 983, 984, 985, 986, 987, 988, 989, 990, 991, 992, 993, 994, 995, 996, 997, 998, 999, 1000

F. A. HEAD, Phonograph Tuner and Repairer

5 years' experience in "Gramophones"

Apply to P.O. Box 775, Telephone No. 25

TO LET, Five acres situated, One in Ngara Road and the other in Ngara Avenue, Parklands.

Apply to H. H. Cove, Box 54, Telephone No. 444, 445, 446, 447, 448, 449, 450, 451, 452, 453, 454, 455, 456, 457, 458, 459, 460, 461, 462, 463, 464, 465, 466, 467, 468, 469, 470, 471, 472, 473, 474, 475, 476, 477, 478, 479, 480, 481, 482, 483, 484, 485, 486, 487, 488, 489, 490, 491, 492, 493, 494, 495, 496, 497, 498, 499, 500, 501, 502, 503, 504, 505, 506, 507, 508, 509, 510, 511, 512, 513, 514, 515, 516, 517, 518, 519, 520, 521, 522, 523, 524, 525, 526, 527, 528, 529, 530, 531, 532, 533, 534, 535, 536, 537, 538, 539, 540, 541, 542, 543, 544, 545, 546, 547, 548, 549, 550, 551, 552, 553, 554, 555, 556, 557, 558, 559, 560, 561, 562, 563, 564, 565, 566, 567, 568, 569, 570, 571, 572, 573, 574, 575, 576, 577, 578, 579, 580, 581, 582, 583, 584, 585, 586, 587, 588, 589, 590, 591, 592, 593, 594, 595, 596, 597, 598, 599, 600, 601, 602, 603, 604, 605, 606, 607, 608, 609, 610, 611, 612, 613, 614, 615, 616, 617, 618, 619, 620, 621, 622, 623, 624, 625, 626, 627, 628, 629, 630, 631, 632, 633, 634, 635, 636, 637, 638, 639, 640, 641, 642, 643, 644, 645, 646, 647, 648, 649, 650, 651, 652, 653, 654, 655, 656, 657, 658, 659, 660, 661, 662, 663, 664, 665, 666, 667, 668, 669, 670, 671, 672, 673, 674, 675, 676, 677, 678, 679, 680, 681, 682, 683, 684, 685, 686, 687, 688, 689, 690, 691, 692, 693, 694, 695, 696, 697, 698, 699, 700, 701, 702, 703, 704, 705, 706, 707, 708, 709, 710, 711, 712, 713, 714, 715, 716, 717, 718, 719, 720, 721, 722, 723, 724, 725, 726, 727, 728, 729, 730, 731, 732, 733, 734, 735, 736, 737, 738, 739, 740, 741, 742, 743, 744, 745, 746, 747, 748, 749, 750, 751, 752, 753, 754, 755, 756, 757, 758, 759, 760, 761, 762, 763, 764, 765, 766, 767, 768, 769, 770, 771, 772, 773, 774, 775, 776, 777, 778, 779, 780, 781, 782, 783, 784, 785, 786, 787, 788, 789, 790, 791, 792, 793, 794, 795, 796, 797, 798, 799, 800, 801, 802, 803, 804, 805, 806, 807, 808, 809, 810, 811, 812, 813, 814, 815, 816, 817, 818, 819, 820, 821, 822, 823, 824, 825, 826, 827, 828, 829, 830, 831, 832, 833, 834, 835, 836, 837, 838, 839, 840, 841, 842, 843, 844, 845, 846, 847, 848, 849, 850, 851, 852, 853, 854, 855, 856, 857, 858, 859, 860, 861, 862, 863, 864, 865, 866, 867, 868, 869, 870, 871, 872, 873, 874, 875, 876, 877, 878, 879, 880, 881, 882, 883, 884, 885, 886, 887, 888, 889, 890, 891, 892, 893, 894, 895, 896, 897, 898, 899, 900, 901, 902, 903, 904, 905, 906, 907, 908, 909, 910, 911, 912, 913, 914, 915, 916, 917, 918, 919, 920, 921, 922, 923, 924, 925, 926, 927, 928, 929, 930, 931, 932, 933, 934, 935, 936, 937, 938, 939, 940, 941, 942, 943, 944, 945, 946, 947, 948, 949, 950, 951, 952, 953, 954, 955, 956, 957, 958, 959, 960, 961, 962, 963, 964, 965, 966, 967, 968, 969, 970, 971, 972, 973, 974, 975, 976, 977, 978, 979, 980, 981, 982, 983, 984, 985, 986, 987, 988, 989, 990, 991, 992, 993, 994, 995, 996, 997, 998, 999, 1000

TO LET, Five acres situated, One in Ngara Road and the other in Ngara Avenue, Parklands.

Apply to H. H. Cove, Box 54, Telephone No. 444, 445, 446, 447, 448, 449, 450, 451, 452, 453, 454, 455, 456, 457, 458, 459, 460, 461, 462, 463, 464, 465, 466, 467, 468, 469, 470, 471, 472, 473, 474, 475, 476, 477, 478, 479, 480, 481, 482, 483, 484, 485, 486, 487, 488, 489, 490, 491, 492, 493, 494, 495, 496, 497, 498, 499, 500, 501, 502, 503, 504, 505, 506, 507, 508, 509, 510, 511, 512, 513, 514, 515, 516, 517, 518, 519, 520, 521, 522, 523, 524, 525, 526, 527, 528, 529, 530, 531, 532, 533, 534, 535, 536, 537, 538, 539, 540, 541, 542, 543, 544, 545, 546, 547, 548, 549, 550, 551, 552, 553, 554, 555, 556, 557, 558, 559, 560, 561, 562, 563, 564, 565, 566, 567, 568, 569, 570, 571, 572, 573, 574, 575, 576, 577, 578, 579, 580, 581, 582, 583, 584, 585, 586, 587, 588, 589, 590, 591, 592, 593, 594, 595, 596, 597, 598, 599, 600, 601, 602, 603, 604, 605, 606, 607, 608, 609, 610, 611, 612, 613, 614, 615, 616, 617, 618, 619, 620, 621, 622, 623, 624, 625, 626, 627, 628, 629, 630, 631, 632, 633, 634, 635, 636, 637, 638, 639, 640, 641, 642, 643, 644, 645, 646, 647, 648, 649, 650, 651, 652, 653, 654, 655, 656, 657, 658, 659, 660, 661, 662, 663, 664, 665, 666, 667, 668, 669, 670, 671, 672, 673, 674, 675, 676, 677, 678, 679, 680, 681, 682, 683, 684, 685, 686, 687, 688, 689, 690, 691, 692, 693, 694, 695, 696, 697, 698, 699, 700, 701, 702, 703, 704, 705, 706, 707, 708, 709, 710, 711, 712, 713, 714, 715, 716, 717, 718, 719, 720, 721, 722, 723, 724, 725, 726, 727, 728, 729, 730, 731, 732, 733, 734, 735, 736, 737, 738, 739, 740, 741, 742, 743, 744, 745, 746, 747, 748, 749, 750, 751, 752, 753, 754, 755, 756, 757, 758, 759, 760, 761, 762, 763, 764, 765, 766, 767, 768, 769, 770, 771, 772, 773, 774, 775, 776, 777, 778, 779, 780, 781, 782, 783, 784, 785, 786, 787, 788, 789, 790, 791, 792, 793, 794, 795, 796, 797, 798, 799, 800, 801, 802, 803, 804, 805, 806, 807, 808, 809, 810, 811, 812, 813, 814, 815, 816, 817, 818, 819, 820, 821, 822, 823, 824, 825, 826, 827, 828, 829, 830, 831, 832, 833, 834, 835, 836, 837, 838, 839, 840, 841, 842, 843, 844, 845, 846, 847, 848, 849, 850, 851, 852, 853, 854, 855, 856, 857, 858, 859, 860, 861, 862, 863, 864, 865, 866, 867, 868, 869, 870, 871, 872, 873, 874, 875, 876, 877, 878, 879, 880, 881, 882, 883, 884, 885, 886, 887, 888, 889, 890, 891, 892, 893, 894, 895, 896, 897, 898, 899, 900, 901, 902, 903, 904, 905, 906, 907, 908, 909, 910, 911, 912, 913, 914, 915, 916, 917, 918, 919, 920, 921, 922, 923, 924, 925, 926, 927, 928, 929, 930, 931, 932, 933, 934, 935, 936, 937, 938, 939, 940, 941, 942, 943, 944, 945, 946, 947, 948, 949, 950, 951, 952, 953, 954, 955, 956, 957, 958, 959, 960, 961, 962, 963, 964, 965, 966, 967, 968, 969, 970, 971, 972, 973, 974, 975, 976, 977, 978, 979, 980, 981, 982, 983, 984, 985, 986, 987, 988, 989, 990, 991, 992, 993, 994, 995, 996, 997, 998, 999, 1000

Just Received

NEW CREPE DE CHINE & FUR SILK IN ALL COLOURS

B. Chotman, Government Road, NAIROBI

THE SMALL PROBLEMS OF THE TOWN COUNCIL

Meeting Held Charges and Simple Home

GENERAL PURPOSES REPORT

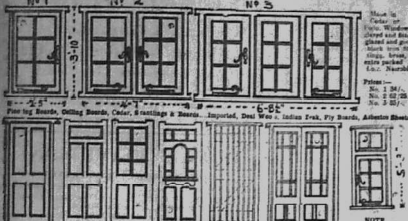
At the Town Council Meeting on Tuesday evening, the following business was transacted:

The General Purposes Committee reported that it had without dissent recommended that the Council should be asked to secure the services of the Band at a reduced price.

COMMITTEE CLERK

Geo. BLOWERS.

BUILDERS, CONTRACTORS, MAINTENANCE, ROBERT INVESTOR. LASH WILL OBEY.



NOTE: Windows shown in the drawings are fitted with glass and good work. ... Prices: 10' x 12' 1/2, 10' x 14' 1/2, 10' x 16' 1/2, 10' x 18' 1/2, 10' x 20' 1/2, 10' x 22' 1/2, 10' x 24' 1/2, 10' x 26' 1/2, 10' x 28' 1/2, 10' x 30' 1/2, 10' x 32' 1/2, 10' x 34' 1/2, 10' x 36' 1/2, 10' x 38' 1/2, 10' x 40' 1/2, 10' x 42' 1/2, 10' x 44' 1/2, 10' x 46' 1/2, 10' x 48' 1/2, 10' x 50' 1/2, 10' x 52' 1/2, 10' x 54' 1/2, 10' x 56' 1/2, 10' x 58' 1/2, 10' x 60' 1/2, 10' x 62' 1/2, 10' x 64' 1/2, 10' x 66' 1/2, 10' x 68' 1/2, 10' x 70' 1/2, 10' x 72' 1/2, 10' x 74' 1/2, 10' x 76' 1/2, 10' x 78' 1/2, 10' x 80' 1/2, 10' x 82' 1/2, 10' x 84' 1/2, 10' x 86' 1/2, 10' x 88' 1/2, 10' x 90' 1/2, 10' x 92' 1/2, 10' x 94' 1/2, 10' x 96' 1/2, 10' x 98' 1/2, 10' x 100' 1/2.



A perfect "SCOTCH" ensures good health.

"LONG JOHN" SCOTCH WHISKY

Wholesale Distributors: D. PFETTER & Co., NAIROBI.

DOMESTIC FINANCE OF THE CAPITAL

Replacing Worn out Motor Cars.

TOWN RENT VALUATION

The following report of the Finance Committee was tabled at the meeting of the Town Council on Tuesday afternoon, and adopted: The Acting Town Engineer reported that the present price of a car was about £200 to £300 to put it in good running order. A new Chevrolet Box body would cost £225-100; there was a chance for depreciation on the old car of £250, and if it will, it by operation was almost probably get £100 for it as it stands. It therefore seems probable that a new car should be disposed of by private sale for about £100-150. The Town Engineer also reported that a new Chevrolet Box body would cost £225-100; there was a chance for depreciation on the old car of £250, and if it will, it by operation was almost probably get £100 for it as it stands. It therefore seems probable that a new car should be disposed of by private sale for about £100-150.

NATIVE BURIAL FUND CAR

The Acting Town Clerk reported that the Native Motor Dead Fund was practically exhausted and was about 9 years old; a new fund scheme would cost £120, so as a suitable body despatchably would be a small 'captive' enterprise; against this expense 'we have a provision of £110; the time had now arrived when the provision on this fund for the convenience of local natives, should be accepted and the whole service by motor transport which would be more economical. The value of the car and the depreciation reserves for the car and the office oil provide funds for the purchase of a new motor was without extra cost to the Corporation. After discussion it was resolved to recommend that the fund be granted for the purchase of a 'Motor Car' at a cost of £120. Funds to be found as set out above.

RENT VALUATION

A notice was published by the Rent Inspector stating that he was unable to inspect a rental value of Nairobi as it could only be done by a house to house and shop to shop enquiry and then he thought it would not be possible to do so per cent of the current figure; this was a whole time official for a lengthy period. After discussion it was resolved to recommend that the matter be taken in abeyance for the present.

TOWN ENGINEER'S SALARY. It is thought that the Mayor brought forward the question of the Town Engineer's salary and that it should be increased. It was decided that when Mr. Denton was appointed Town Engineer at a salary of £300 he was promised an increase at a later date, since his appointment. It was decided that his salary should be increased to £350 per annum. After discussion it was resolved to recommend accordingly.

STROM ROOM.

The Acting Town Clerk stated that at present there was no provision for a strong room for records. It was decided that a strong room be constructed in the Town Engineer's office. The estimated cost of £300, after discussion it was resolved that the Town Engineer should be authorized to submit plans and specifications to the Council.

NOTICE.

New Stocks of the most up-to-date Posters are arriving by every mail for Goldman's Club Book Store (Friday Walkers) Government Buildings.

TO LET.

Board and lodgings of Napers Road, Terms moderate. Apply P.O. Box 229.

FOR SALE.

Two valuable properties: 1. Part of ground in Mudge Road, Terms moderate. 2. 1/2 acre with 4 or 5 trees in Mudge Road, Terms moderate. Apply P.O. Box 229.

H. T. REYNOLDS & CO.

Wholesale and Retail Dealers in Stationery, Printing, and Bookbinding. 11, NAIROBI HOUSE, NAIROBI.

TO WHEAT GROWERS Meeting at NAKURU HOTEL 2 pm. SATURDAY 10.2.23

As a result of resolutions passed by various associations a meeting will be held at the above place to discuss the formation of a Wheat Association representative of the whole country. It is hoped that all interested in wheat farming will attend.

REZIN TAILOR OF QUALITY THE NAME THAT INSPIRES CONFIDENCE GENTLEMEN'S TAILORING IN ALL ITS BRANCHES THE House of Rezin.

FOR SALE. For Terrier dog puppies, weeks old, hunting strain 8, 9, 10, 11, 12, 13, 14, 15, 16, 17, 18, 19, 20 each. One without with the name of Optima of the same name. For Sale. For Terrier dog long pedigree, 3 years old £10. L. GORRINGE, P.O. Box 229, NAIROBI.

JOANES & BROS. LADIES DRESS MAKERS, and GENTS TAILORS & OUTFITTERS.

Opposite to Simpson and Whitlow Ltd. When you start out in Nairobi on your business and if you are in need of tailoring immediately do not forget to visit us. We do not waste your time, but we make our orders with pleasure. Prompt delivery is our watchword. We have just unpacked stock consisting of High Class Cloth and Tonal Hair, Toggles, Shirts, etc. Also in Cape.

CITROEN THE BEST VALUE FOR MONEY IN THE COLONY. THE EXTRAORDINARY POWER & ECONOMY OF THE 11.4 P ENGINE WILL ASTONISH YOU. FULLY EQUIPPED TOURING CAR NO EXTRAS £255 CALL FOR DEMONSTRATION RUN MONCKTON & SEAR Ltd. NAIROBI

ALIBHAI & Co. BAZAAR NAIROBI. LADIES AND GENTS TAILORS, TENT AND SAILMAKERS AND SAFARI OUTFITTERS. Just Received: Hats, Helmets, Velours and Double Terris, Shirts, Tarnish Suits, Silk Handkerchiefs, and Ladies'chiefs, Wool, and Silk, Half Hone in Up-to-date designs. SINGERS HAND & TRADLE SEWING MACHINES, TARPALINS AND WAGON COVERS, RUSSIAN AND QUENY BAGG, ALWAYS, IN STOCK. Phone 213. Enquiries cordially invited.

THE EUROPEAN AND AFRICAN TRADES ORGANISATION Telephone 102. s/o P.O. Box 624. Telegrams: "Trade Organisation" Memorials: Nairobi, Kenya Colony. All Communications to be addressed to The Secretary, REGISTRATION FEES. Please note that in future the following Fees will be payable in advance by all those who make use of the Organisation and who are not regular subscribers to its Funds. EUROPEANS SEEKING EMPLOYMENT will be required to pay a Registration Fee of Sh. 5/- before placing his or her name on the Organisation's Register. EUROPEANS SEEKING EMPLOYEES will be required to pay in advance the following Fees:— FOR EACH AFRICAN REQUIRED Sh. 5/- FOR EACH FEMALE REQUIRED Sh. 10/- FOR EACH EUROPEAN REQUIRED Sh. 20/- REGULAR SUBSCRIBERS will continue to receive the full services of the Organisation FREE OF CHARGE.

AMMUNITION Overgoing to the high price of Ammunition, you will find a Rifle not only to be accurate, but to be having power. OUR NEW INVENTION of Messer and Manlicher Browning Rifle with the EXTRA RANGE BARREL 28" gives naturally not only more accuracy but a nearly 20 per cent higher striking force and accuracy your Animal with less wastage. For Messer and Manlicher Schenauer Rifle has proved an entirely unknown success. All horse available: Cal. 6.5 mm. 7 mm. 8 mm, 9 mm, 12 mm, 15 mm, 17.5 mm. from 200 to 2000 yds. ONLY OBTAINABLE FROM THE SOLE AGENTS FOR THE ORIGINAL MANLICHER AND MESSENGER RIFLES. We guarantee accuracy, striking force and quality. CHAS. A. HEYER & CO. Box 97 NAIROBI. Telephone: NAIROBI.

Dont Forget. THE BIO - DANCE AT THE LYRIC. This FRIDAY. Music: Kenya Jazz Band Trio. Tickets Shs. 3/-

M. R. de SOUZA & Co. (ESTABLISHED 1889) GENERAL MERCHANTS Ladies' & Gent's Expert Tailors & Outfitters Direct Importers of Best Groceries, Wines, Spirits and all Personal & Household Requisites. P.O. Box 100. Govt. Road. Phone 78.

NOW IN STOCK "B" PULPERS SIEVES DISC PULPERS SPARES SCOTT & DAVIDSON'S THEO SHOUTEN. The well-known Ladies and Gents Hairdressers, begs to announce to his many clients he has re-opened business again in Government Road (lately occupied by Fisher and Simmons). Permanent Wave, Manicure, Massage, Shingling, Bobbing, etc. A SPECIALITY NAIROBI. Telephone: 243. Box No. 334.

OVERSEAS MAILS. The notice is based upon the latest advice from the Post Office. It is possible, however, that circumstances may occur of later date unanticipated, and the information printed herein will be closed at NAIROBI Post Office, as noted here. ARRIVALS. STEAMER FROM Date at Mombasa. Mombasa to Europe, 23 Feb. 1923. Mombasa to America, 25 Feb. 1923. Mombasa to Australia, 27 Feb. 1923. Mombasa to India, 29 Feb. 1923. DEPARTURES. STEAMER FOR Date at Mombasa. Mombasa to Europe, 23 Feb. 1923. Mombasa to America, 25 Feb. 1923. Mombasa to Australia, 27 Feb. 1923. Mombasa to India, 29 Feb. 1923. Note:—In the supplementary mails are conveyed by the local connection with the carrying steamer to the other continents. s.s. "Clarion Castle" bringing 470 mail bags and 473 parcels. Obtainable from all the leading firms.

OUR WOMEN'S PAGE

A Letter from Paris

(From *Parsons Columns*.)



less or very short sleeves from one of two-and-a-half or three yards. They are made, so that they are a saving, and unless a very economical woman is not to be made to cry. The successful way of manipulating the material is to make the entire style with an underskirt and the dress gathered into the hip on one side, while the other side hangs straight, or has a wide fold left in it.

Those who happen to be of a more daring disposition may prefer to drape the folds into a real bra effect. This too, gives an unusual look. Those who prefer a simple hem can still get into the fashion with a lace underlay to match the dominant color of the material. All three styles are acceptable in the eyes of the average expert. The first and the last would suit any figure, the second should be worn only by those adopted by the young and slim.

Fashioning Everywhere.

Fashioning is more or less commonly used for frocks of this as well as substantial texture. There is the deep yoke from which they are placed full to the hem, or the long tails to the knees, and then a pleated flounce which may be put on straight or ruffled. Pleated creases, panels, underlays, and sleeves are common. Beige and black is a severe variation, the deep yoke being a large geometric frock comprehended in jet black and beige has a distinction of its own. A large black and white striped frock is as charming as a black and white frock with plain or several shades of beige. A new color—red—is being popular and becoming shade—red green. A red or green pleated crepe de chine skirt is worn with a black silk jumper, colored and ruffled with red or green, and if an overcoat is required to go with it, this should be one of black lank lined with red or green and the hat may be black or colored felt, latter's plaid with that you will.

A Black and White Vogue.

With the opening of the Russian season, quite a number of short-

coated ensembles are making their appearance. They look very pleasant and sporty, but call for much in various ways to be worn with or without one. A fine black and white dress is made of a man's dinner jacket, revers, buttons and all. It is worn with a white pleated crepe de chine skirt and a white lacy shirt with a high collar and a little black tie, white stockings and black patent leather shoes, white suede gloves, and an ebony and ivory stick, and the jauntiest little black felt hat with an ivory comb.

Finds Again.

That hairy perennial, the plaid, is once more with us. Linings of coats that match the frock need no longer be quite plain. For instance, a beige crepe de chine frock, trimmed with touches of black satin, is accompanied by a black hat lined with plaid crepe de chine with beige predominating.

Those stockinette will be worn as much as ever. It is trimmed at all sorts of ways, both simple and luxurious. Among the latest is a Frenchman's a boater of a chess-board design in black and white, and another of a similar design with gold beads. It will be seen that this for it merely is a red thing. It is this happens to be the one of like purple patches? It means that some or distance, are already lurking round the corner.

Chesse and Omelette.

Ma half a pound of medium omelette, a quarter of a pound of

four, two ounces of grated cheese, and seasoning of salt and cayenne. When thoroughly mixed, roll in a quarter of a pound of butter, one beaten egg and a little water. Roll out very thin, wrap up with a little butter and bake in a moderate oven. Keep in a tightly closed tin or container.

THE PURSUIT OF HAPPINESS

Life's Wit-of-the-Day.

The people who are constantly trying to define happiness and occasionally to pursue it, lose sight of one leading but essential truth. Happiness is unself-conscious if it is the real thing. Once you begin to ask yourself "Is this happiness?" or "Is this one of life's purple patches?" it means that some or distance, are already lurking round the corner.

Another perfectly absurd fallacy is to suppose that the only sort of happiness which lights a flame in the heart is spent with four letters that live haplessly all the century and kindle all the glow. It is a great moment when two affections merge under the same star but that is a happiness as immortal as the loving of one's self, not in another human entity, but as work that demands every atom of one's faculties.

Self-forgiveness.

All the time, of course, you are really pouring salt into the work that holds you in the spell, but the fact that you are not conscious of a mistake that you have wrestled from life, for that interval of self-forgiveness, the price of happiness. It is because self, with its analytical attitude, takes a back seat in such golden hours of unself-conscious self-expression that we generate happiness without realising it.

It is only in after years, looking back on memory's golden shelves, that we can begin to estimate the wealth that remains. The poet, the novelist, the dramatist, the painter, all the big creative artists in every sphere, will tell you that success never lit the same spiritual heart glow that was theirs when



This extremely chic black and white ensemble is described in our Paris letter.

genius was burning dimly, but brightly amidst all manner of setbacks. That was forgotten in the fulfillment of some function that demanded a deeper concentration. The self-consciousness, as one may call it, whatever form it may take in the realm of hard work, is happiness. Unhappily, undisciplined as such, while the work is all in all, it is drained of with pleasure and gratitude in after days. Looking back, the heart will know that happiness is the reward of labor that did not seek reward.

Unself-conscious Success.

And if you are no creative artist, but just an honest-to-goodness loyal, all-out assistant, you will find the secret of happiness always the same. Its fruits are planted directly in your own. Happiness and unself-consciousness cannot mingle in different planes. It is the self-forgiveness in work functioning that leads the glorious hunger men and all the quest eternal—the quest of happiness.

Norton 16H

1920 MODELS HAVE NOW ARRIVED

PRICES REDUCED

£87-10-0

BRIMLAW'S GARAGE, NAIROBI.

THE SALISBURY HOTEL

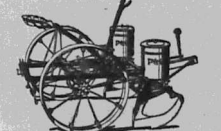
FAMILY & RESIDENTIAL.

Now nearing COMPLETION spacious and airy Stone Bed Rooms each fitted with Hot and Cold Running water, also New Open Air Dining Room, and Dance Hall.

Phone 105 NAIROBI P. O. Box 509.

P & O MAIZE PLANTERS

RUNNER OR DISC OPENERS



SIMPLE and DURABLE

J. W. MILLIGAN & Co. NAIROBI.

P. O. Box 148.

What do you Expect from your Car?

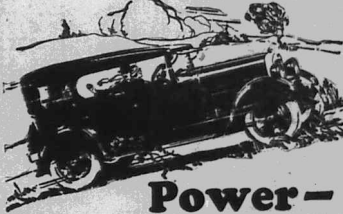
RELIABILITY: On Tuesday, January 19th a Standard Duplex Studebaker left Nairobi at 8 a.m. for Jinja where it arrived at 10 p.m. on the same day. A distance of 428 miles in 17 hours. The return journey was accomplished in 10 hours in spite of adverse weather conditions. During the whole journey the bonnet was not opened nor the tool kit touched.

SPEED: The average running speed of the car including all stops was just under 27 miles per hour though at no time was the car unduly pressed.

ECONOMY: The average petrol consumption was 30 miles per gallon.

CAPACITY: A load of 695 lbs. was carried throughout the trip.

The car used was an absolutely Standard Model taken from stock and unaltered in any way except for the addition of a spot light for night driving.



Power—

As swiftly—as smoothly—as a bird in flight, the powerful new Studebaker car negotiates hills, sand, mud or rough roads with an ease which commands admiration.

That's because they are powered by the famous Studebaker six-cylinder engines, providing an abundance of smooth, flexible and economical power.

To buy a motor car without first seeing the new Studebakers is to buy blindfolded. They offer unprecedented values, embody many exclusive features. Won't you let us show you!



STUDEBAKER Duplex

BUILDERS OF QUALITY VEHICLES FOR 75 YEARS

Sole Importers
K. McIVOR & Co.
NAIROBI.

P. O. Box W.
Telephone 97.

Telegram: "AFFORD."

General History Society of Kenya and Uganda

...of the Society's Museum...
...of the Society's Museum...
...of the Society's Museum...

MEMBER OF THE MARIKI

Mr. Charles Lusk's letter...
...of the Society's Museum...
...of the Society's Museum...

ALL SILK FUJIS

The latest material for an...
...of the Society's Museum...
...of the Society's Museum...

CORRESPONDENCE

The Editor: You are...
...of the Society's Museum...
...of the Society's Museum...

KENYA FINANCE

To the Editor: "E.A. Standard"...
...of the Society's Museum...
...of the Society's Museum...

THE TRAM

February 18, 1928

BUILDINGS & LABOUR

To the Editor: "E.A. Standard"...
...of the Society's Museum...
...of the Society's Museum...

E. A. STANDARD COMPETITION

TO STIMULATE PUBLIC INTEREST IN THE CENSUS WHICH IS TAKING PLACE ON 21st February, 1928. THE E.A. STANDARD OFFERS Shs 100 for the nearest forecast of the official figure of the European population of Kenya. Shs 50 for the nearest forecast of the official figure of the non-European population of Kenya.

COUPON CENSUS FORECAST

EUROPEANS NON-EUROPEANS This coupon can only be used for one of the above, net for both. I agree to accept the Editor's decision. Signature Address

TO NAIROBI MOTORISTS

1. Owing to confusion of signals, the point marker will in future give one signal only with one hand raised well above head.

STOP GO ON GO ON

When he drops his hand— GO ON R. G. B. SPIES, Commissioner of Police.

Twenty Years Ago...
...of the Society's Museum...
...of the Society's Museum...

Our Lady of Tears

It was in the last of a...
...of the Society's Museum...
...of the Society's Museum...

The European Hospital...
...of the Society's Museum...
...of the Society's Museum...

At the Lyce tonight a very...
...of the Society's Museum...
...of the Society's Museum...

River Boat Berthing

The Magistrate's Court has...
...of the Society's Museum...
...of the Society's Museum...

LYRIC HALL

LAST PERFORMANCE TO-NIGHT at 8.45 WHEN LONDON SLEEPS featuring HILDA BAYLEY

Topical Budget—Specially suggested. All the latest news, shown for the first time in Nairobi

BIO-DANCE TO-NIGHT

Tickets: Shs 3/- NO SHIO-TEA TO-DAY

WONDERFUL VALUE

No. X 11. 723 Tan Calf Brogues.



Entertainments

BIO-DANCE At the Lyce tonight a very...

30/-

No. 7 25. X 125.



Willow Calf Bar. With Leather Soles. Willow Calf Bar. Medium Heel. Willow Calf Fancy Bar.

Eadies Shoe Store.

THEATRE ROYAL.

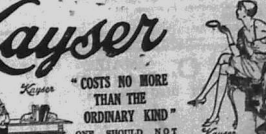
TO-NIGHT & SATURDAY. at 8.45 p.m. THE CECILIAN TRIO

Laura Kendall—Irma Marshall—Marjorie Hawkins in Song & Harmony also Annette Kellerman in "Venus of the South Seas," COMEDY & TOPICAL BUDGET.

Plan Open at the Romington Agency. Theatre Royal Restaurant. Now under new and experienced management. Full Cook Board, Special Luncheons, Teas, and Dinners. Verandah and Lounge. Fees.

Laysan

"COSTS NO MORE THAN THE ORDINARY KIND" ONE SHOULD NOT THINK OF Laysan STOCKINGS ONLY BUT ALSO OF THE FAMOUS ITALIAN BELT UNDER CLOTHING.



Warings

MADE IN ENGLAND. Africa House, Government Rd. NAIROBI.

UNION-CASTLE LINE

ROSEHARBOUR... From ROSHARA... From ROSHARA... From ROSHARA...

ROSEHARBOUR TO SOUTH AFRICA

From ROSHARA... From ROSHARA... From ROSHARA... From ROSHARA...

UNION-CASTLE MAIL STEAMSHIP Co. Ltd.

HOLLAND AFRICA LIJN

JOINT SERVICE... From ROSHARA... From ROSHARA...

ROSEHARBOUR TO SOUTH AFRICA

From ROSHARA... From ROSHARA... From ROSHARA...

UNION-CASTLE MAIL STEAMSHIP Co. Ltd.

HOLLAND AFRICA LIJN

JOINT SERVICE... From ROSHARA... From ROSHARA...

ROSEHARBOUR TO SOUTH AFRICA

From ROSHARA... From ROSHARA... From ROSHARA...

UNION-CASTLE MAIL STEAMSHIP Co. Ltd.

HOLLAND AFRICA LIJN

JOINT SERVICE... From ROSHARA... From ROSHARA...

ROSEHARBOUR TO SOUTH AFRICA

From ROSHARA... From ROSHARA... From ROSHARA...

UNION-CASTLE MAIL STEAMSHIP Co. Ltd.

HOLLAND AFRICA LIJN

JOINT SERVICE... From ROSHARA... From ROSHARA...

ROSEHARBOUR TO SOUTH AFRICA

From ROSHARA... From ROSHARA... From ROSHARA...

UNION-CASTLE MAIL STEAMSHIP Co. Ltd.

HOLLAND AFRICA LIJN

JOINT SERVICE... From ROSHARA... From ROSHARA...

ROSEHARBOUR TO SOUTH AFRICA

From ROSHARA... From ROSHARA... From ROSHARA...

UNION-CASTLE MAIL STEAMSHIP Co. Ltd.

HOLLAND AFRICA LIJN

JOINT SERVICE... From ROSHARA... From ROSHARA...

ROSEHARBOUR TO SOUTH AFRICA

From ROSHARA... From ROSHARA... From ROSHARA...

UNION-CASTLE MAIL STEAMSHIP Co. Ltd.

HOLLAND AFRICA LIJN

JOINT SERVICE... From ROSHARA... From ROSHARA...

ROSEHARBOUR TO SOUTH AFRICA

From ROSHARA... From ROSHARA... From ROSHARA...

UNION-CASTLE MAIL STEAMSHIP Co. Ltd.

HOLLAND AFRICA LIJN

JOINT SERVICE... From ROSHARA... From ROSHARA...

THE EAST AFRICAN STANDARD.

THE PLATEAU MAZE GROUPS LIMITED. Fourth Annual General Meeting.

RESOLUTIONS. P. GETHIN, Chairman. FETROL DEPOT.

HUGHSON SUPER SIX CUBS FOR HIRE DAY AND NIGHT.

HIGH VIEW HOTEL, LIMURU. (Late Nyanja).

TELEGRAMS. P. GETHIN, Chairman. FETROL DEPOT.

High View Hotel, Limuru. (Late Nyanja).

TELEGRAMS. P. GETHIN, Chairman. FETROL DEPOT.

High View Hotel, Limuru. (Late Nyanja).

TELEGRAMS. P. GETHIN, Chairman. FETROL DEPOT.

High View Hotel, Limuru. (Late Nyanja).

TELEGRAMS. P. GETHIN, Chairman. FETROL DEPOT.

High View Hotel, Limuru. (Late Nyanja).

TELEGRAMS. P. GETHIN, Chairman. FETROL DEPOT.

High View Hotel, Limuru. (Late Nyanja).

TELEGRAMS. P. GETHIN, Chairman. FETROL DEPOT.

High View Hotel, Limuru. (Late Nyanja).

TELEGRAMS. P. GETHIN, Chairman. FETROL DEPOT.

High View Hotel, Limuru. (Late Nyanja).

TELEGRAMS. P. GETHIN, Chairman. FETROL DEPOT.

High View Hotel, Limuru. (Late Nyanja).

TELEGRAMS. P. GETHIN, Chairman. FETROL DEPOT.

High View Hotel, Limuru. (Late Nyanja).

TELEGRAMS. P. GETHIN, Chairman. FETROL DEPOT.

High View Hotel, Limuru. (Late Nyanja).

TELEGRAMS. P. GETHIN, Chairman. FETROL DEPOT.

High View Hotel, Limuru. (Late Nyanja).

TELEGRAMS. P. GETHIN, Chairman. FETROL DEPOT.

High View Hotel, Limuru. (Late Nyanja).

TELEGRAMS. P. GETHIN, Chairman. FETROL DEPOT.

High View Hotel, Limuru. (Late Nyanja).

TELEGRAMS. P. GETHIN, Chairman. FETROL DEPOT.

FINANCES SUMMARISED.

The Board has decided to accept the offer for the purchase of the Plateau Maize Groups Limited.

The Board has decided to accept the offer for the purchase of the Plateau Maize Groups Limited.

The Board has decided to accept the offer for the purchase of the Plateau Maize Groups Limited.

The Board has decided to accept the offer for the purchase of the Plateau Maize Groups Limited.

The Board has decided to accept the offer for the purchase of the Plateau Maize Groups Limited.

The Board has decided to accept the offer for the purchase of the Plateau Maize Groups Limited.

The Board has decided to accept the offer for the purchase of the Plateau Maize Groups Limited.

The Board has decided to accept the offer for the purchase of the Plateau Maize Groups Limited.

The Board has decided to accept the offer for the purchase of the Plateau Maize Groups Limited.

The Board has decided to accept the offer for the purchase of the Plateau Maize Groups Limited.

The Board has decided to accept the offer for the purchase of the Plateau Maize Groups Limited.

The Board has decided to accept the offer for the purchase of the Plateau Maize Groups Limited.

The Board has decided to accept the offer for the purchase of the Plateau Maize Groups Limited.

The Board has decided to accept the offer for the purchase of the Plateau Maize Groups Limited.

The Board has decided to accept the offer for the purchase of the Plateau Maize Groups Limited.

The Board has decided to accept the offer for the purchase of the Plateau Maize Groups Limited.

The Board has decided to accept the offer for the purchase of the Plateau Maize Groups Limited.

The Board has decided to accept the offer for the purchase of the Plateau Maize Groups Limited.

The Board has decided to accept the offer for the purchase of the Plateau Maize Groups Limited.

The Board has decided to accept the offer for the purchase of the Plateau Maize Groups Limited.

The Board has decided to accept the offer for the purchase of the Plateau Maize Groups Limited.

The Board has decided to accept the offer for the purchase of the Plateau Maize Groups Limited.

The Board has decided to accept the offer for the purchase of the Plateau Maize Groups Limited.

The Board has decided to accept the offer for the purchase of the Plateau Maize Groups Limited.

The Board has decided to accept the offer for the purchase of the Plateau Maize Groups Limited.

The Board has decided to accept the offer for the purchase of the Plateau Maize Groups Limited.

The Board has decided to accept the offer for the purchase of the Plateau Maize Groups Limited.

The Board has decided to accept the offer for the purchase of the Plateau Maize Groups Limited.

The Board has decided to accept the offer for the purchase of the Plateau Maize Groups Limited.

The Board has decided to accept the offer for the purchase of the Plateau Maize Groups Limited.

The Board has decided to accept the offer for the purchase of the Plateau Maize Groups Limited.

THE ASSOCIATION IS UNABLE TO...

The Association is unable to... The Chairman explained that...

The Association is unable to... The Chairman explained that...

The Association is unable to... The Chairman explained that...

The Association is unable to... The Chairman explained that...

The Association is unable to... The Chairman explained that...

The Association is unable to... The Chairman explained that...

The Association is unable to... The Chairman explained that...

The Association is unable to... The Chairman explained that...

The Association is unable to... The Chairman explained that...

The Association is unable to... The Chairman explained that...

The Association is unable to... The Chairman explained that...

The Association is unable to... The Chairman explained that...

The Association is unable to... The Chairman explained that...

The Association is unable to... The Chairman explained that...

The Association is unable to... The Chairman explained that...

The Association is unable to... The Chairman explained that...

The Association is unable to... The Chairman explained that...

The Association is unable to... The Chairman explained that...

The Association is unable to... The Chairman explained that...

The Association is unable to... The Chairman explained that...

The Association is unable to... The Chairman explained that...

The Association is unable to... The Chairman explained that...

The Association is unable to... The Chairman explained that...

The Association is unable to... The Chairman explained that...

The Association is unable to... The Chairman explained that...

The Association is unable to... The Chairman explained that...

The Association is unable to... The Chairman explained that...

The Association is unable to... The Chairman explained that...

The Association is unable to... The Chairman explained that...

The Association is unable to... The Chairman explained that...

The Association is unable to... The Chairman explained that...

E. DOBBIE, Ophthalmic Optician.

Government Road, NAIROBI.

Our Optical Department

Is in charge of a fully qualified Refractor...

Who has a thorough knowledge of the subjects pertaining to ocular optics...

And who examines the eyes and if necessary prescribes glasses.

Glasses made up to oculist prescriptions.

OAKLEIGH PRIVATE HOTEL.

Comfortable and up-to-date in every way.

Up country visitors especially catered for.

Under the personal supervision of Mrs. H. JARRETT.

Phone 180. NAIROBI. P. O. Box 183.

A GOOD NAME

Wherever the name DODGE BROTHERS is seen...

They call up a picture of a particular kind of motor-car.

Or, to be exact, a particular kind of motor-car workman...

Who people have come to associate with DODGE BROTHERS.

The same has come to happen in respect to the name...

DODGE BROTHERS are being alive to that fact.

They realize that the possession of their business name...

Must be jealously guarded and that the name...

Should be protected by a law of their own making.

As long as their name is attached to the name...

Of the motor-car, they will be satisfied to safeguard and...

As long as they build another they will be the best motor-car...

SOLE AGENTS for the Eastern African Territories S. Fisher & Simmons (S.A.) Ltd.

Telephone 200, Nairobi. Telegrams: "SIFIMARIB".

P. STEWART, CAR, RED PAINTER & DECOORATOR.

Sign Painting, Graining, Marbling, Gliding, etc.

Home Painting and Decorating.

Cosk & Motor Painting, Etc.

P. O. Box 204 NAIROBI.

JOHN RIFKIN, Sixth Avenue, P. O. Box 184, NAIROBI.

WAGON BUILDERS, ALGEMERTS, FARRER.

STOCKS OF AXLES, BRAKES, WAGONS and ALL WAGON PARTS.

All kinds of Wagon made to order.

SUPER SIX HUDSON. Price: Five to Eight. Telephone 120. P. O. Box 64.

De Luxe Boot Co. All kinds of Footwear made to order.

TO LET. Within a few miles of Nairobi...

CALENDAR REPRINTAL HOTEL. First Class Accommodation.

Apply MANAGERS, Box 704.

F. A. HEAD. Pamphlets, Tunes and Repertoire.

Apply to R. H. Cave, Box 204, Nairobi.

TO LET. Two nice houses. One in Ngara Road...

Apply to R. H. Cave, Box 204, Nairobi.

TO LET. CREPE DE CHINE & FULL SILK IN ADO, COLOMBE.

G. Choiram, Government Road, NAIROBI.

CHAIRMAN'S GROUSE. He (the Chairman) had given...

CHAIRMAN'S GROUSE. He (the Chairman) had given...

CHAIRMAN'S GROUSE. He (the Chairman) had given...

CHAIRMAN'S GROUSE. He (the Chairman) had given...

CHAIRMAN'S GROUSE. He (the Chairman) had given...

CHAIRMAN'S GROUSE. He (the Chairman) had given...

CHAIRMAN'S GROUSE. He (the Chairman) had given...

CHAIRMAN'S GROUSE. He (the Chairman) had given...

CHAIRMAN'S GROUSE. He (the Chairman) had given...

CHAIRMAN'S GROUSE. He (the Chairman) had given...

CHAIRMAN'S GROUSE. He (the Chairman) had given...

CHAIRMAN'S GROUSE. He (the Chairman) had given...

CHAIRMAN'S GROUSE. He (the Chairman) had given...

CHAIRMAN'S GROUSE. He (the Chairman) had given...

CHAIRMAN'S GROUSE. He (the Chairman) had given...

CHAIRMAN'S GROUSE. He (the Chairman) had given...

CHAIRMAN'S GROUSE. He (the Chairman) had given...

CHAIRMAN'S GROUSE. He (the Chairman) had given...

CHAIRMAN'S GROUSE. He (the Chairman) had given...

CHAIRMAN'S GROUSE. He (the Chairman) had given...

CHAIRMAN'S GROUSE. He (the Chairman) had given...

CHAIRMAN'S GROUSE. He (the Chairman) had given...

CHAIRMAN'S GROUSE. He (the Chairman) had given...

CHAIRMAN'S GROUSE. He (the Chairman) had given...

THE ASSOCIATION IS UNABLE TO...

The Association is unable to... The Chairman explained that...

The Association is unable to... The Chairman explained that...

The Association is unable to... The Chairman explained that...

The Association is unable to... The Chairman explained that...

The Association is unable to... The Chairman explained that...

The Association is unable to... The Chairman explained that...

The Association is unable to... The Chairman explained that...

The Association is unable to... The Chairman explained that...

The Association is unable to... The Chairman explained that...

The Association is unable to... The Chairman explained that...

The Association is unable to... The Chairman explained that...

The Association is unable to... The Chairman explained that...

The Association is unable to... The Chairman explained that...

The Association is unable to... The Chairman explained that...

The Association is unable to... The Chairman explained that...

The Association is unable to... The Chairman explained that...

The Association is unable to... The Chairman explained that...

The Association is unable to... The Chairman explained that...

The Association is unable to... The Chairman explained that...

The Association is unable to... The Chairman explained that...

The Association is unable to... The Chairman explained that...

The Association is unable to... The Chairman explained that...

The Association is unable to... The Chairman explained that...

The Association is unable to... The Chairman explained that...

The Association is unable to... The Chairman explained that...

The Association is unable to... The Chairman explained that...

The Association is unable to... The Chairman explained that...

The Association is unable to... The Chairman explained that...

The Association is unable to... The Chairman explained that...

The Association is unable to... The Chairman explained that...

The Association is unable to... The Chairman explained that...

THE ASSOCIATION IS UNABLE TO...

The Association is unable to... The Chairman explained that...

The Association is unable to... The Chairman explained that...

The Association is unable to... The Chairman explained that...

The Association is unable to... The Chairman explained that...

The Association is unable to... The Chairman explained that...

The Association is unable to... The Chairman explained that...

The Association is unable to... The Chairman explained that...

The Association is unable to... The Chairman explained that...

The Association is unable to... The Chairman explained that...

The Association is unable to... The Chairman explained that...

The Association is unable to... The Chairman explained that...

The Association is unable to... The Chairman explained that...

The Association is unable to... The Chairman explained that...

The Association is unable to... The Chairman explained that...

The Association is unable to... The Chairman explained that...

The Association is unable to... The Chairman explained that...

The Association is unable to... The Chairman explained that...

The Association is unable to... The Chairman explained that...

The Association is unable to... The Chairman explained that...

The Association is unable to... The Chairman explained that...

The Association is unable to... The Chairman explained that...

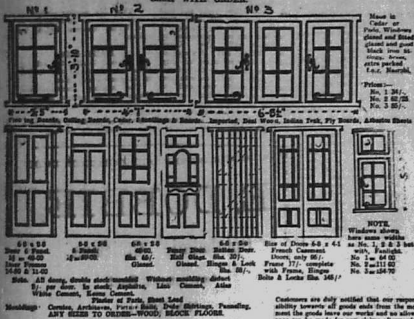
The Association is unable to... The Chairman explained that...

The Association is unable to... The Chairman explained that...

The Association is unable to... The Chairman explained that...

Geo. BLOWERS,

BUILDING CONTRACTOR, MARSHA STREET, DEWEE HOUSE, NAIROBI.



Plans of the new Bank Road Hotel, NAIROBI. Architect, Geo. Blowers, 11, Market Street, NAIROBI.

SOCIAL MEETING OF ST. ANDREW'S CHURCH.

should have been the means of raising £200 in all the church houses had been helped by the efforts of the Women's Guild to the amount of £200.

Treasurer's Appeal to Scotsmen.

A pleasant evening was spent by members of St. Andrew's Church congregation on Tuesday evening last week when they met at the Y.M.C.A. The Rev. J. F. O'Grady, minister of the Parish, presided and some 100 guests were present.

FARMER MINISTER'S REPORT.

Mr. O'Grady's report was a most interesting one, and he pointed out the need for more work in the history of the Mission.

TREASURER'S REPORT.

Mr. McEwain then read the treasurer's report for 1919. It was a most interesting one, and he pointed out the need for more work in the history of the Mission.

THE MINUTE REPORT.

In the course of his annual report the Rev. J. F. O'Grady, Minister of the Parish, said for the first time in his history that St. Andrew's was actually free from debt.

AMMUNITION.

Owing to the high price of Ammunition, you want a rifle not only to be accurate, but to be killing power.

TO WHEAT GROWERS

Meeting at NAKURU HOTEL - 2 p.m. SATURDAY 20th February

As a result of resolutions passed by various associations a meeting will be held at the above place to discuss the formation of a Wheat Growers' Association representative of the whole country.

It is hoped that all interested in wheat farming will attend.

Miss KATHLEEN BATES, ALCOHOL.

GRACE LAMBERT, FIANCÉE. SINGING HARMONY THEORY OF MUSIC AND AURAL CULTURE.

NOTICE.

New Books of the new series of the Book of the Month Club are now on sale for £1.00 per volume.

THE EAST AFRICAN STANDARD.

FRIDAY, FEB. 21, 1920.

TO WHEAT GROWERS

Meeting at NAKURU HOTEL - 2 p.m. SATURDAY 20th February

As a result of resolutions passed by various associations a meeting will be held at the above place to discuss the formation of a Wheat Growers' Association representative of the whole country.

It is hoped that all interested in wheat farming will attend.

Miss KATHLEEN BATES, ALCOHOL.

GRACE LAMBERT, FIANCÉE. SINGING HARMONY THEORY OF MUSIC AND AURAL CULTURE.

NOTICE.

New Books of the new series of the Book of the Month Club are now on sale for £1.00 per volume.



A perfect "SCOTCH" ensures good health.

LONG JOHN

SCOTCH WHISKY

Wholesale Distributors: D. FRYER & Co., NAIROBI.

CITROEN

THE BEST VALUE FOR MONEY IN THE COLONY.

THE EXTRAORDINARY POWER & ECONOMY OF THE 11.4 H.P. ENGINE WILL ASTONISH YOU.

FULLY EQUIPPED TOURING CAR NO EXTRAS

£255

CALL FOR DEMONSTRATION RUN MONCKTON & SEAR Ltd., NAIROBI.

Dont Forget THE BIO - DANCE AT THE LYRIC TO-NIGHT

Music: Kenya Jazz Band Trio. Tickets Shs. 3/-

ALIBHAI & Co. AMMUNITION.

BAZAAR NAIROBI. LADIES AND GENTS TAILORS TENT AND SAILMAKERS AND SAFARI OUTFITTERS.

Just Received Hala, Halmala, Velonis and Double Tennis, Shirts, Patjama Suits, Silk Handkerchiefs, and Neckties, Wool, and Silk, Half Hose in Up-to-date Designs.

THE EUROPEAN AND AFRICAN TRADES ORGANISATION

Telephone 108. Telegrams: "Trade Organisation," 4/10 P.O. Box 241, NAIROBI.

Registration Fees. Please note that in future the following Fees will be payable in advance by all those who make use of the Organisation and who are not regular subscribers to its Funds.

EUROPEANS SEEKING EMPLOYMENT will be required to pay a Registration Fee of Shs. 5/-, before placing his or her name on the Organisation's Register.

EUROPEANS SEEKING EMPLOYMENT will be required to pay in advance the following Fees: FOR EACH AFRICAN REQUIRED Shs. 5/- FOR EACH SEYCHELLES REQUIRED Shs. 10/- FOR EACH EUROPEAN REQUIRED Shs. 20/-

M. R. de SOUZA & Co.

(ESTABLISHED 1889) GENERAL MERCHANTS Ladies' & Gent's Expert Tailors & Outfitters

OVERSEAS MAILS.

The notice is based upon the latest advice from the British Agents in London, and contains information regarding the alteration of the steamer programme, and the various rates of freight and passage money, and the minimum guarantee to be published subject to the restrictions.

ARRIVALS.

STEAMER	FROM	Due Monday	Due Tuesday	Due Wednesday
Mullera	Europe	Feb. 19	Feb. 20	Feb. 21
A. Fiere	Madagascar	" 19	" 20	" 21
South	South	" 19	" 20	" 21
M. S. Africa	Madagascar	" 19	" 20	" 21
Khandaia	Dunbar	" 19	" 20	" 21
Oriental Castle	Madagascar	" 19	" 20	" 21
Gen. Dubouché	Madagascar	" 19	" 20	" 21
Madagascar	Madagascar	" 19	" 20	" 21
Madagascar	Madagascar	" 19	" 20	" 21

DEPARTURES.

STEAMER	FOR	Monday	Tuesday	Wednesday
Mullera	Europe	Feb. 19	Feb. 20	Feb. 21
A. Fiere	Madagascar	" 19	" 20	" 21
South	South	" 19	" 20	" 21
M. S. Africa	Madagascar	" 19	" 20	" 21
Khandaia	Dunbar	" 19	" 20	" 21
Oriental Castle	Madagascar	" 19	" 20	" 21
Gen. Dubouché	Madagascar	" 19	" 20	" 21
Madagascar	Madagascar	" 19	" 20	" 21
Madagascar	Madagascar	" 19	" 20	" 21

Note:—As the supplementary mails are covered by the special contract with the outgoing steamer, it is not quite certain as to "Clarke Castle" bringing 492 mail bags and 212 parcels.

NOW IN STOCK

"B" PULPERS SIEVES DISC PULPERS SPARES

SCOTT & DAVIDSON, Sole Agents in Kenya for Wm. McEwain & Co., Ltd., VICTORIA STREET, NAIROBI. P.O. Box 428.

NOTICE

THEO SCHOUTEN. The well-known Ladies and Gents' Hairdresser, begs to announce to his many clients he has re-opened business again in Government Road (late occupied by Fisher and Simmons).

Permanent Wave, Manicure, Massage, Shingling, Bobbing, etc. A SPECIALITY Telephone: 245. NAIROBI. Box No. 254.

TO WHEAT GROWERS

Meeting at NAKURU HOTEL - 2 p.m. SATURDAY 20th February

As a result of resolutions passed by various associations a meeting will be held at the above place to discuss the formation of a Wheat Growers' Association representative of the whole country.

It is hoped that all interested in wheat farming will attend.

Miss KATHLEEN BATES, ALCOHOL.

GRACE LAMBERT, FIANCÉE. SINGING HARMONY THEORY OF MUSIC AND AURAL CULTURE.

NOTICE.

New Books of the new series of the Book of the Month Club are now on sale for £1.00 per volume.

NOTICE.

During 23 Years of our existence we have been able to supply the public with the most reliable and most up-to-date information regarding the various aspects of the business of the East African Standard.

H. T. REYNOLDS & Co.

Dr. of Medicine, Specialist in Diseases of the Throat, Nose and Larynx, 10, Market Street, NAIROBI.

OVERSEAS MAILS.

The notice is based upon the latest advice from the British Agents in London, and contains information regarding the alteration of the steamer programme, and the various rates of freight and passage money, and the minimum guarantee to be published subject to the restrictions.

ARRIVALS.

STEAMER	FROM	Due Monday	Due Tuesday	Due Wednesday
Mullera	Europe	Feb. 19	Feb. 20	Feb. 21
A. Fiere	Madagascar	" 19	" 20	" 21
South	South	" 19	" 20	" 21
M. S. Africa	Madagascar	" 19	" 20	" 21
Khandaia	Dunbar	" 19	" 20	" 21
Oriental Castle	Madagascar	" 19	" 20	" 21
Gen. Dubouché	Madagascar	" 19	" 20	" 21
Madagascar	Madagascar	" 19	" 20	" 21
Madagascar	Madagascar	" 19	" 20	" 21

DEPARTURES.

STEAMER	FOR	Monday	Tuesday	Wednesday
Mullera	Europe	Feb. 19	Feb. 20	Feb. 21
A. Fiere	Madagascar	" 19	" 20	" 21
South	South	" 19	" 20	" 21
M. S. Africa	Madagascar	" 19	" 20	" 21
Khandaia	Dunbar	" 19	" 20	" 21
Oriental Castle	Madagascar	" 19	" 20	" 21
Gen. Dubouché	Madagascar	" 19	" 20	" 21
Madagascar	Madagascar	" 19	" 20	" 21
Madagascar	Madagascar	" 19	" 20	" 21

Note:—As the supplementary mails are covered by the special contract with the outgoing steamer, it is not quite certain as to "Clarke Castle" bringing 492 mail bags and 212 parcels.



HARLEY-DAVIDSON

"THE MOTORCYCLE MAGNIFICENT"
Combination 218000.
Completely equipped with Hood, Hood and Screen.
Lightly Discharged, easily started.

JOANES & BROS

LADES DRESS MAKERS, and
GENTS TAILORS & OUTFITTERS.
LAVINE BUILDING
Opposite to Simpson and Whitlow Ltd.

When you visit us in Nairobi on your business and if you are
in need of tailoring immediately do not forget to visit us with your
order for we have a large staff of efficient tailors.

J. H. ENGELBRECHT, NYERI.

Invincible Passenger Service, Royal Mail
and Heavy Motor Transport.

LAND LAND LAND

If you want any thing done come to ENGELBRECHT,
and if you want a good Farm apply to ENGELBRECHT.

Charles W are

Books open on the
LINCOLNSHIRE
&
GRAND NATIONAL

"STANDARD" FEATURE PAGE



THE GARDEN
Written under the auspices of the KENYA HORTICULTURAL
SOCIETY. Subscription, Shs. 150/- to be sent to the Hon. Secy.,
Nairobi, P.O. Box 27, Nairobi.

GARNATION.
Dianthus Caryophyllus

These ready flowers are more
valued of general cultivation in
this country. They present a
charming diversity of coloring
and have a salubrious perfume, and
their value as cut flowers is tremendous,
some varieties lasting as long as
a week in water.

For instance they are almost as
dependable and as vigorous as
any of the plants with which they
are found in the open air, and
they are also very easy to grow
and to propagate. I have numerous
plants of this variety in my garden
which over 2,000 plants may have
been raised from them.

Under light was wonderful. Propagated
in a 1/2 way may not be
satisfied by many. Plants are by
no means so easy to grow as they
are in the country and every
one can be contented on
to grow.

I have tried growing in different
positions—shaded, semi-shaded
and in the sun, and I find that
they grow best in a position
where they get plenty of water a larger
percentage of water and they
grow better than under shade. I
have found that the soil should
be rich and the plants should
be well watered and the soil
should be well manured.

Preparation from seed is a very
interesting operation. By this
means you can get a very
large number of plants from
a small quantity of seed.
The seed is sown in a
shallow box and covered
with a thin layer of soil.
The box is then placed
in a warm place and
the seed is allowed to
germinate. When the
seedlings are about
an inch high they are
transplanted into
individual pots.

sects. Sinking of flowers when
propagated by cuttings and a
weak growth of the plants are
the chief objections to their
cultivation in this country.

The characteristics of a good
flower are: The color should be
bright and clear, the petals
should be of good size and
shape, the fragrance should be
quite peculiar, of good size and
depth, being from the center
of the flower, the outline of
petals should be large and
well defined, the texture of
the petals should be heavy and
the color clear to the edge with
no shading.

There are three classes of
ornamentals. Soft, heavy and
dainty. Soft, heavy and dainty
flowers are the most desirable
for general cultivation. They
are variously marked with
one or more colors. Plants
have a clear ground colour with
one or more colors in spots,
stripes or perpendicular markings.
The newer varieties carry
massive flowers and the colors
are wonderful. They vary
greatly in size and shape and
altogether they are a great
improvement on the border
ornamentals.

American tree ornamentals
occasionally sport some of the
most beautiful colors. Pink
flowers are the most desirable
for general cultivation. They
vary greatly in size and shape
and altogether they are a great
improvement on the border
ornamentals.

Annual tree ornamentals
occasionally sport some of the
most beautiful colors. Pink
flowers are the most desirable
for general cultivation. They
vary greatly in size and shape
and altogether they are a great
improvement on the border
ornamentals.

Annual tree ornamentals
occasionally sport some of the
most beautiful colors. Pink
flowers are the most desirable
for general cultivation. They
vary greatly in size and shape
and altogether they are a great
improvement on the border
ornamentals.

Annual tree ornamentals
occasionally sport some of the
most beautiful colors. Pink
flowers are the most desirable
for general cultivation. They
vary greatly in size and shape
and altogether they are a great
improvement on the border
ornamentals.

Annual tree ornamentals
occasionally sport some of the
most beautiful colors. Pink
flowers are the most desirable
for general cultivation. They
vary greatly in size and shape
and altogether they are a great
improvement on the border
ornamentals.

Annual tree ornamentals
occasionally sport some of the
most beautiful colors. Pink
flowers are the most desirable
for general cultivation. They
vary greatly in size and shape
and altogether they are a great
improvement on the border
ornamentals.

UNAPPROACHABLE
Norton 16H

1926 MODELS HAVE NOW ARRIVED
PRICES REDUCED

£87-10-0

BRIMFLEW'S GARAGE,
Nairobi.

THE SALISBURY HOTEL

FAMILY & RESIDENTIAL.
Now nearing COMPLETION spacious and
airy Stone Bed Rooms each fitted with hot
and cold running water, also New Open
Air Dining Room, and Dance Hall.

Phone 108 NAIROBI. P. O. Box 609.

WITH
REMINGTON
YOU GET
EUROPEAN SKILLED
SERVICE
WITH GUARANTEE

FULL SUPPLY OF PARTS. ALL REPAIRS UNDERTAKEN

REMINGTON TYPEWRITER AGENCY.

Government Road,
NAIROBI. Phone 88.

Short Loans Granted

£1 to £1000

CALL OR WRITE TO THE

Kenya Loan & Discount Co. Ltd

Court Chambers, (1st Floor)

Box 244, NAIROBI.

Bills Discounted. Strictly Confidential.

What do you Expect from your Car?

RELIABILITY: On Tuesday, January 19th a Standard Duplex
Studebaker left Nairobi at 5 a.m. for Jinja where it arrived at
10 p.m. on the same day. A distance of 625 miles in 17 hours.
The return journey was accomplished in 19 hours in spite of
adverse weather conditions. During the whole journey the
bonnet was not opened nor the tool kit touched.

SPEED: The average running speed of the car including all
stops was just under 27 miles per hour though at no time was
the car unduly pressed.

ECONOMY: The average petrol consumption was 20 miles per
gallon.

CAPACITY: A load of 625 lbs. was carried throughout the trip.

The car used was an absolutely Standard Model taken from
stock and unaltered in any way except for the addition of a spot
light for night driving.



Power -

Price £445.
For N.R.B.

As swiftly—as smoothly—as a bird in flight, the
powerful new Studebaker cars negotiate hills,
sand, mud or rough roads with an ease which
commands admiration.

That's because they are powered by the famous
Studebaker six-cylinder engines, providing an
abundance of smooth, flexible and economical
power.

To buy a motor car without first seeing the new
Studebaker is to buy blindfolded. They offer
unprecedented values embody many exclusive
features. Won't you let us show you!



STUDEBAKER Duplex
BUILDERS OF QUALITY VEHICLES FOR 75 YEARS

P. O. Box 10.
Telephone 10.

Sole Importers
K. McIVOR & Co.
NAIROBI.

Telegram: "AFFORD."

THE SPORTS PAGE

M.C.C. IN WEST INDIES, NAIROBI RACE WEEK.

Having the Worst of Third Test Match.

Successful Gymkhana Events.

FULL RACE DETAILS

[From Our Own Correspondent]

The M.C.C. in West Indies... The M.C.C. were defeated for the first time...

Successful Gymkhana Events... The M.C.C. were successful in their gymkhana events...

presented by Major the Hon. B. P. Gurnea... A number of a steeplechase was held on January 1925...

Major G. Baines' MIDSHIP... The M.C.C. were defeated for the first time...

Second Year of the NAIROBI STABLES... The Nairobian Stables were successful in their second year...

NAIROBI STABLES... The Nairobian Stables were successful in their second year...

NAIROBI STABLES... The Nairobian Stables were successful in their second year...

NAIROBI STABLES... The Nairobian Stables were successful in their second year...

NAIROBI STABLES... The Nairobian Stables were successful in their second year...

NAIROBI STABLES... The Nairobian Stables were successful in their second year...

NAIROBI STABLES... The Nairobian Stables were successful in their second year...

NAIROBI STABLES... The Nairobian Stables were successful in their second year...

NAIROBI STABLES... The Nairobian Stables were successful in their second year...

NAIROBI STABLES... The Nairobian Stables were successful in their second year...

SMALL HANDICAP STEEPCHASE... The Nairobian Stables were successful in their second year...

Major G. Baines' MIDSHIP... The M.C.C. were defeated for the first time...

Second Year of the NAIROBI STABLES... The Nairobian Stables were successful in their second year...

NAIROBI STABLES... The Nairobian Stables were successful in their second year...

NAIROBI STABLES... The Nairobian Stables were successful in their second year...

NAIROBI STABLES... The Nairobian Stables were successful in their second year...

NAIROBI STABLES... The Nairobian Stables were successful in their second year...

NAIROBI STABLES... The Nairobian Stables were successful in their second year...

NAIROBI STABLES... The Nairobian Stables were successful in their second year...

NAIROBI STABLES... The Nairobian Stables were successful in their second year...

NAIROBI STABLES... The Nairobian Stables were successful in their second year...

NAIROBI STABLES... The Nairobian Stables were successful in their second year...

TENNIS AT CANNES.

Langlen Defeats Helen Wills.

The following are the results of the tennis matches...

Local League Tennis.

TEAMS FOR SATURDAY'S MATCHES.

The following teams will start out for the M.C.C. in the Males and Districts...

The following team will start out for the M.C.C. in the Males and Districts...

The following team will start out for the M.C.C. in the Males and Districts...

The following are the results of the tennis matches...

TEAMS FOR SATURDAY'S MATCHES.

The following teams will start out for the M.C.C. in the Males and Districts...

The following team will start out for the M.C.C. in the Males and Districts...

The following team will start out for the M.C.C. in the Males and Districts...

POSTPONEMENT OF UNION ANNUAL MEETING.

The annual meeting of the Union will be postponed...

African Football.

SEMI-FINAL FOR MAXWELL CUP.

Third Race.

NAIROBI CHALLENGE CUP.

GOAT BILLIARDS.

Below a large number of experts...

Below a large number of experts...

Below a large number of experts...

HIGH GRADE GOLD CLUBS, MADE FOR GOLFERS WHO KNOW. DEVIATING IRONS, MASHES, SH. 17-50. BRAD'S OILON PUTTERS, SH. 19/6. HAWTIE, BRASSIERE AND DRESSERS, SH. 19/6. ALL PRICES LESS 5% CASH DISCOUNT.

FRED RAPER GENERAL COMMISSION AGENT. P.O. Box 541. CITY HOUSE, Phone 146. Bret's Collars for Oxen 25/- each. American Army Vests 30/- doz. Boiler Suits 18/-, Capes 15/- SADDLERY.

SHAW & HUNTER. (Sole Proprietor R. M. Shaw). 106 SOUTH AVENUE. Phone 216. Carry LARGE Stocks of GUNS and RIFLES. By all the Leading Makers. HOLLAND, RIGBY, WESTLEY RICHARDS, B.S.A., MAUSER, and MANNLICHER. AMMUNITION. For all Bore STOCKED.

Hupmobile 6 £425. Call for a Demonstration. The Motor Mart & Exchange, Ltd. NAIROBI.

FIREARMS. We Carry Large Stocks of RIFLES, SHOTGUNS, PISTOLS, REVOLVERS. By such well known makers as Rigby, Holland and Holland, Jeffrey, Westley Richards, Mauser, Mannlicher-Schonauer, B.S.A., Colt, Browning, etc.

MAY & CO., THE SPORTS HOUSE. J. R. STEPHENS & Co. Ltd., TAILORS AND OUTFITTERS. A FEW OF THE NEWEST GOODS YET ARRIVED. EASTON'S BIRD HANDLES, FINEST IN THE WORLD.

J. R. STEPHENS & Co. Ltd., TAILORS AND OUTFITTERS. A FEW OF THE NEWEST GOODS YET ARRIVED. EASTON'S BIRD HANDLES, FINEST IN THE WORLD. Gentlemen's Ties in all the latest designs and materials. Fancy Socks in all the smartest shades of cashmere, overlaid with Indian chieftains or as being shown in the West End of London this season.

STACCOB LIMITED. NAIROBI. THESE ARE THE BEST. "ADVALTORG".

USEFUL HOUSEHOLD UTENSILS AT ATTRACTIVE PRICES. ENAMEL WATER JUGS, SH. 7/6, 10/6, 12/6, 15/6, 18/6, 21/6, 24/6, 27/6, 30/6, 33/6, 36/6, 39/6, 42/6, 45/6, 48/6, 51/6, 54/6, 57/6, 60/6.

ENAMEL WATER JUGS. sh. 7/6, 10/6, 12/6, 15/6, 18/6, 21/6, 24/6, 27/6, 30/6, 33/6, 36/6, 39/6, 42/6, 45/6, 48/6, 51/6, 54/6, 57/6, 60/6.

THE HARTY TAP. The clearest and most sanitary way of pouring liquid. The sharp point of the tap is covered down with rubber water, making a light point, perfect, positive, and can be used in any position without loss of water.

OVAL GALVANIZED BATES. Made from heavy gauge galvanised iron and strongly painted. 26 in. 28 in. 30 in. 34 in. 36 in. Sh. 1/6, 1/7 1/2, 1/8, 1/9, 1/10, 1/11, 1/12, 1/13, 1/14, 1/15, 1/16, 1/17, 1/18, 1/19, 1/20, 1/21, 1/22, 1/23, 1/24, 1/25, 1/26, 1/27, 1/28, 1/29, 1/30, 1/31, 1/32, 1/33, 1/34, 1/35, 1/36, 1/37, 1/38, 1/39, 1/40, 1/41, 1/42, 1/43, 1/44, 1/45, 1/46, 1/47, 1/48, 1/49, 1/50, 1/51, 1/52, 1/53, 1/54, 1/55, 1/56, 1/57, 1/58, 1/59, 1/60, 1/61, 1/62, 1/63, 1/64, 1/65, 1/66, 1/67, 1/68, 1/69, 1/70, 1/71, 1/72, 1/73, 1/74, 1/75, 1/76, 1/77, 1/78, 1/79, 1/80, 1/81, 1/82, 1/83, 1/84, 1/85, 1/86, 1/87, 1/88, 1/89, 1/90, 1/91, 1/92, 1/93, 1/94, 1/95, 1/96, 1/97, 1/98, 1/99, 1/100.

CHESTER MAN'S METALLIC MEASURES. Sh. 1/6, 1/7 1/2, 1/8, 1/9, 1/10, 1/11, 1/12, 1/13, 1/14, 1/15, 1/16, 1/17, 1/18, 1/19, 1/20, 1/21, 1/22, 1/23, 1/24, 1/25, 1/26, 1/27, 1/28, 1/29, 1/30, 1/31, 1/32, 1/33, 1/34, 1/35, 1/36, 1/37, 1/38, 1/39, 1/40, 1/41, 1/42, 1/43, 1/44, 1/45, 1/46, 1/47, 1/48, 1/49, 1/50, 1/51, 1/52, 1/53, 1/54, 1/55, 1/56, 1/57, 1/58, 1/59, 1/60, 1/61, 1/62, 1/63, 1/64, 1/65, 1/66, 1/67, 1/68, 1/69, 1/70, 1/71, 1/72, 1/73, 1/74, 1/75, 1/76, 1/77, 1/78, 1/79, 1/80, 1/81, 1/82, 1/83, 1/84, 1/85, 1/86, 1/87, 1/88, 1/89, 1/90, 1/91, 1/92, 1/93, 1/94, 1/95, 1/96, 1/97, 1/98, 1/99, 1/100.

ENAMELLED PUDDING BOWLS. Sh. 1/6, 1/7 1/2, 1/8, 1/9, 1/10, 1/11, 1/12, 1/13, 1/14, 1/15, 1/16, 1/17, 1/18, 1/19, 1/20, 1/21, 1/22, 1/23, 1/24, 1/25, 1/26, 1/27, 1/28, 1/29, 1/30, 1/31, 1/32, 1/33, 1/34, 1/35, 1/36, 1/37, 1/38, 1/39, 1/40, 1/41, 1/42, 1/43, 1/44, 1/45, 1/46, 1/47, 1/48, 1/49, 1/50, 1/51, 1/52, 1/53, 1/54, 1/55, 1/56, 1/57, 1/58, 1/59, 1/60, 1/61, 1/62, 1/63, 1/64, 1/65, 1/66, 1/67, 1/68, 1/69, 1/70, 1/71, 1/72, 1/73, 1/74, 1/75, 1/76, 1/77, 1/78, 1/79, 1/80, 1/81, 1/82, 1/83, 1/84, 1/85, 1/86, 1/87, 1/88, 1/89, 1/90, 1/91, 1/92, 1/93, 1/94, 1/95, 1/96, 1/97, 1/98, 1/99, 1/100.

CRYSTAL GLASS BOTTLES. Good quality clear crystal glass. Sh. 1/6, 1/7 1/2, 1/8, 1/9, 1/10, 1/11, 1/12, 1/13, 1/14, 1/15, 1/16, 1/17, 1/18, 1/19, 1/20, 1/21, 1/22, 1/23, 1/24, 1/25, 1/26, 1/27, 1/28, 1/29, 1/30, 1/31, 1/32, 1/33, 1/34, 1/35, 1/36, 1/37, 1/38, 1/39, 1/40, 1/41, 1/42, 1/43, 1/44, 1/45, 1/46, 1/47, 1/48, 1/49, 1/50, 1/51, 1/52, 1/53, 1/54, 1/55, 1/56, 1/57, 1/58, 1/59, 1/60, 1/61, 1/62, 1/63, 1/64, 1/65, 1/66, 1/67, 1/68, 1/69, 1/70, 1/71, 1/72, 1/73, 1/74, 1/75, 1/76, 1/77, 1/78, 1/79, 1/80, 1/81, 1/82, 1/83, 1/84, 1/85, 1/86, 1/87, 1/88, 1/89, 1/90, 1/91, 1/92, 1/93, 1/94, 1/95, 1/96, 1/97, 1/98, 1/99, 1/100.

5 All These Prices are Subject to per cent CASH DISCOUNT. CHESTER MAN'S METALLIC MEASURES. Sh. 1/6, 1/7 1/2, 1/8, 1/9, 1/10, 1/11, 1/12, 1/13, 1/14, 1/15, 1/16, 1/17, 1/18, 1/19, 1/20, 1/21, 1/22, 1/23, 1/24, 1/25, 1/26, 1/27, 1/28, 1/29, 1/30, 1/31, 1/32, 1/33, 1/34, 1/35, 1/36, 1/37, 1/38, 1/39, 1/40, 1/41, 1/42, 1/43, 1/44, 1/45, 1/46, 1/47, 1/48, 1/49, 1/50, 1/51, 1/52, 1/53, 1/54, 1/55, 1/56, 1/57, 1/58, 1/59, 1/60, 1/61, 1/62, 1/63, 1/64, 1/65, 1/66, 1/67, 1/68, 1/69, 1/70, 1/71, 1/72, 1/73, 1/74, 1/75, 1/76, 1/77, 1/78, 1/79, 1/80, 1/81, 1/82, 1/83, 1/84, 1/85, 1/86, 1/87, 1/88, 1/89, 1/90, 1/91, 1/92, 1/93, 1/94, 1/95, 1/96, 1/97, 1/98, 1/99, 1/100.

ONE ADVANTAGE OF HOT WEATHER IS—

You can Drink more

BEER

No. 9765. HEADQUARTERS AT THE GENERAL POST OFFICE AS A NEWSPAPER.

DAILY EDITION.

GUARANTEED THE LARGEST CIRCULATION OF ANY NEWSPAPER IN KENYA, UGANDA, TANGANYIKA AND ZANZIBAR

THE EAST AFRICAN

MOMBASA TIMES & UGANDA ARGUS. THE OLDEST ESTABLISHED NEWSPAPER PUBLISHED IN KENYA AND UGANDA.

NAIROBI, SATURDAY, FEBRUARY 20, 1926.

THE LOUNGE FOR COCKTAILS AND TEAS THE DINING ROOM FOR BREAK FASTS, LUNCHEONS, and DINNERS. THE NEW STANLEY HOTEL.

Price 20 CENTS.

TRIUMPH OF MR. ALAN COCHRAN

London to Cape Town Flight Completed.

REFORMS FOR NORTHERN FRONTIER.

Excited Discussion in the Assembly.

MONEY COMPLICATIONS IN FRANCE.

Taxation Bill That Raises No Cash.

THE ROCKEFELLER OFFER.

CONDITION DISCUSSED WITH BRITISH.

COFFEE MARKET.

Political Opponents Aligned.

GREEK DICTIONARY'S WAY.

THE HOUSE CONTAINS A SUPPLEMENT.

HOME BY-ELUTION.

Labour Gains Daring on Seal.

THREE-CONFERED COUNTRY.

Lab majority 22.

MONEY COMPLICATIONS IN FRANCE.

Taxation Bill That Raises No Cash.

CENSUS DAY.

Getting Ready for Tomorrow.

TOWN BURIED BY AN AVALANCHE.

Little Hope for Numbers Entombed.

COFFEE MARKET.

THE HOUSE CONTAINS A SUPPLEMENT.

WILD DOG PACK NEAR TOWN.

Savage and Hungry Victims.

EFFECTS OF THE DROUGHT.

With the continuation of drought...

ASIATIC BILL IN SOUTH AFRICA.

Statement by Government of India.

CENSUS DAY.

Getting Ready for Tomorrow.

TOWN BURIED BY AN AVALANCHE.

Little Hope for Numbers Entombed.

COFFEE MARKET.

THE HOUSE CONTAINS A SUPPLEMENT.

AUSTRALIAN BUSH FIRE SPREADS.

Fighters Forced to flee for Their Lives.

DEATH ROLL OF THIRTY.

With the continuation of drought...

ASIATIC BILL IN SOUTH AFRICA.

Statement by Government of India.

CENSUS DAY.

Getting Ready for Tomorrow.

TOWN BURIED BY AN AVALANCHE.

Little Hope for Numbers Entombed.

COFFEE MARKET.

THE HOUSE CONTAINS A SUPPLEMENT.

A KENYA GARDEN AS SALE ROOM.

Horticultural Society's Fund Raising Scheme.

CASH PRIZES.

With which is incorporated THE LEADER.

ASIATIC BILL IN SOUTH AFRICA.

Statement by Government of India.

CENSUS DAY.

Getting Ready for Tomorrow.

TOWN BURIED BY AN AVALANCHE.

Little Hope for Numbers Entombed.

COFFEE MARKET.

THE HOUSE CONTAINS A SUPPLEMENT.

DOMINIONS PART IN THE LEAGUE COUNCIL.

Statement by Sir Austen Chamberlain.

GOVERNMENT POSITION.

With which is incorporated THE LEADER.

ASIATIC BILL IN SOUTH AFRICA.

Statement by Government of India.

CENSUS DAY.

Getting Ready for Tomorrow.

TOWN BURIED BY AN AVALANCHE.

Little Hope for Numbers Entombed.

COFFEE MARKET.

THE HOUSE CONTAINS A SUPPLEMENT.

THE WOLF SALE.

NANYUKI SUCCESS.

TO-DAY'S CAUSE LIST.

With which is incorporated THE LEADER.

ASIATIC BILL IN SOUTH AFRICA.

Statement by Government of India.

CENSUS DAY.

Getting Ready for Tomorrow.

TOWN BURIED BY AN AVALANCHE.

Little Hope for Numbers Entombed.

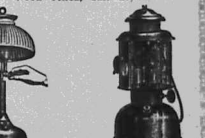
COFFEE MARKET.

THE HOUSE CONTAINS A SUPPLEMENT.

WHITEWAYS FOR LAMPS.



NO TROUBLE OR FUSS WITH THE 'SUNRAY' LANTERN.



THE WOLF SALE.



NANYUKI SUCCESS.



TO-DAY'S CAUSE LIST.



COFFEE MARKET.

SPECIAL LINES

Fray Bentes Corned Beef
Shs. 1-50 per tin.

Sailor Savouries. Shs. 1-50 " Jar

Rob Roy Tea Shs. 3-50 3-75 4-95 " lb.

Cavare Shs. 5-50 & 10-00 per tin.

Gentlemen's Relish Shs. 3-00 per J.r

Manager's Relish Shs. 3-90 per Bottle

Fray Bentes Pressed Beef Shs. 2-00

AT
ELLIOTS
NAIROBI.
Phone 60. P. O. Box 175.

The Smithfield Butchery.

(The oldest established European Butchery in Town)
Box 6. Phone 418.

The choicest only of all
Butchers meat, Poultry,
etc.

Meat Kept in Cold Store.

CHESS PROBLEMS



PROBLEM No. 794
By A. TORRES.
Black 5.



White 4.
White mates in two moves.

PROBLEM No. 795
By M. HAYES.
Black 5.



White 3.
White mates in three moves.

TO CORRESPONDENTS.
Let one and no more answers during the Chess Editor's absence in the "Home" in the last fortnight will receive attention next week.

GAME No. 841.
The following example of the

skill of the deceased master, Amos Burn, is given here in the *Natal Mercury*. The game was played at the Chess Club, Natal, on a match of 1811.

White
(usual notation):
1. P-Q4
2. P-Q3
3. P-B3
4. P-B3
5. P-Q3
6. P-Q3
7. P-Q3
8. P-Q3
9. P-Q3
10. P-Q3
11. P-Q3
12. P-Q3
13. P-Q3
14. P-Q3
15. P-Q3
16. P-Q3
17. P-Q3
18. P-Q3
19. P-Q3
20. P-Q3
21. P-Q3
22. P-Q3
23. P-Q3
24. P-Q3
25. P-Q3
26. P-Q3
27. P-Q3
28. P-Q3
29. P-Q3
30. P-Q3
31. P-Q3
32. P-Q3
33. P-Q3
34. P-Q3
35. P-Q3
36. P-Q3
37. P-Q3
38. P-Q3
39. P-Q3
40. P-Q3
41. P-Q3
42. P-Q3
43. P-Q3
44. P-Q3
45. P-Q3
46. P-Q3
47. P-Q3
48. P-Q3
49. P-Q3
50. P-Q3

GAME No. 842.
KING'S GAMBIT DEFEAT.
This excellent game shows the danger of not accepting the King's Gambit. It was played at a match between the Champion of Holland and Memory, the noted Hungarian master, whose notes are very interesting, particularly to those players who do not, as a rule, accept the King's Gambit.
White: K. P. 1. e4
Black: K. P. 2. e5
White: K. P. 3. f3
Black: K. P. 4. e4
White: K. P. 5. f4
Black: K. P. 6. e5
White: K. P. 7. f5
Black: K. P. 8. e6
White: K. P. 9. f6
Black: K. P. 10. e7
White: K. P. 11. f7
Black: K. P. 12. e8
White: K. P. 13. f8
Black: K. P. 14. e9
White: K. P. 15. f9
Black: K. P. 16. e10
White: K. P. 17. f10
Black: K. P. 18. e11
White: K. P. 19. f11
Black: K. P. 20. e12
White: K. P. 21. f12
Black: K. P. 22. e13
White: K. P. 23. f13
Black: K. P. 24. e14
White: K. P. 25. f14
Black: K. P. 26. e15
White: K. P. 27. f15
Black: K. P. 28. e16
White: K. P. 29. f16
Black: K. P. 30. e17
White: K. P. 31. f17
Black: K. P. 32. e18
White: K. P. 33. f18
Black: K. P. 34. e19
White: K. P. 35. f19
Black: K. P. 36. e20
White: K. P. 37. f20
Black: K. P. 38. e21
White: K. P. 39. f21
Black: K. P. 40. e22
White: K. P. 41. f22
Black: K. P. 42. e23
White: K. P. 43. f23
Black: K. P. 44. e24
White: K. P. 45. f24
Black: K. P. 46. e25
White: K. P. 47. f25
Black: K. P. 48. e26
White: K. P. 49. f26
Black: K. P. 50. e27
White: K. P. 51. f27
Black: K. P. 52. e28
White: K. P. 53. f28
Black: K. P. 54. e29
White: K. P. 55. f29
Black: K. P. 56. e30
White: K. P. 57. f30
Black: K. P. 58. e31
White: K. P. 59. f31
Black: K. P. 60. e32
White: K. P. 61. f32
Black: K. P. 62. e33
White: K. P. 63. f33
Black: K. P. 64. e34
White: K. P. 65. f34
Black: K. P. 66. e35
White: K. P. 67. f35
Black: K. P. 68. e36
White: K. P. 69. f36
Black: K. P. 70. e37
White: K. P. 71. f37
Black: K. P. 72. e38
White: K. P. 73. f38
Black: K. P. 74. e39
White: K. P. 75. f39
Black: K. P. 76. e40
White: K. P. 77. f40
Black: K. P. 78. e41
White: K. P. 79. f41
Black: K. P. 80. e42
White: K. P. 81. f42
Black: K. P. 82. e43
White: K. P. 83. f43
Black: K. P. 84. e44
White: K. P. 85. f44
Black: K. P. 86. e45
White: K. P. 87. f45
Black: K. P. 88. e46
White: K. P. 89. f46
Black: K. P. 90. e47
White: K. P. 91. f47
Black: K. P. 92. e48
White: K. P. 93. f48
Black: K. P. 94. e49
White: K. P. 95. f49
Black: K. P. 96. e50
White: K. P. 97. f50
Black: K. P. 98. e51
White: K. P. 99. f51
Black: K. P. 100. e52
White: K. P. 101. f52
Black: K. P. 102. e53
White: K. P. 103. f53
Black: K. P. 104. e54
White: K. P. 105. f54
Black: K. P. 106. e55
White: K. P. 107. f55
Black: K. P. 108. e56
White: K. P. 109. f56
Black: K. P. 110. e57
White: K. P. 111. f57
Black: K. P. 112. e58
White: K. P. 113. f58
Black: K. P. 114. e59
White: K. P. 115. f59
Black: K. P. 116. e60
White: K. P. 117. f60
Black: K. P. 118. e61
White: K. P. 119. f61
Black: K. P. 120. e62
White: K. P. 121. f62
Black: K. P. 122. e63
White: K. P. 123. f63
Black: K. P. 124. e64
White: K. P. 125. f64
Black: K. P. 126. e65
White: K. P. 127. f65
Black: K. P. 128. e66
White: K. P. 129. f66
Black: K. P. 130. e67
White: K. P. 131. f67
Black: K. P. 132. e68
White: K. P. 133. f68
Black: K. P. 134. e69
White: K. P. 135. f69
Black: K. P. 136. e70
White: K. P. 137. f70
Black: K. P. 138. e71
White: K. P. 139. f71
Black: K. P. 140. e72
White: K. P. 141. f72
Black: K. P. 142. e73
White: K. P. 143. f73
Black: K. P. 144. e74
White: K. P. 145. f74
Black: K. P. 146. e75
White: K. P. 147. f75
Black: K. P. 148. e76
White: K. P. 149. f76
Black: K. P. 149. e77
White: K. P. 150. f77
Black: K. P. 150. e78
White: K. P. 151. f78
Black: K. P. 151. e79
White: K. P. 152. f79
Black: K. P. 152. e80
White: K. P. 153. f80
Black: K. P. 153. e81
White: K. P. 154. f81
Black: K. P. 154. e82
White: K. P. 155. f82
Black: K. P. 155. e83
White: K. P. 156. f83
Black: K. P. 156. e84
White: K. P. 157. f84
Black: K. P. 157. e85
White: K. P. 158. f85
Black: K. P. 158. e86
White: K. P. 159. f86
Black: K. P. 159. e87
White: K. P. 160. f87
Black: K. P. 160. e88
White: K. P. 161. f88
Black: K. P. 161. e89
White: K. P. 162. f89
Black: K. P. 162. e90
White: K. P. 163. f90
Black: K. P. 163. e91
White: K. P. 164. f91
Black: K. P. 164. e92
White: K. P. 165. f92
Black: K. P. 165. e93
White: K. P. 166. f93
Black: K. P. 166. e94
White: K. P. 167. f94
Black: K. P. 167. e95
White: K. P. 168. f95
Black: K. P. 168. e96
White: K. P. 169. f96
Black: K. P. 169. e97
White: K. P. 170. f97
Black: K. P. 170. e98
White: K. P. 171. f98
Black: K. P. 171. e99
White: K. P. 172. f99
Black: K. P. 172. e100
White: K. P. 173. f100
Black: K. P. 173. e101
White: K. P. 174. f101
Black: K. P. 174. e102
White: K. P. 175. f102
Black: K. P. 175. e103
White: K. P. 176. f103
Black: K. P. 176. e104
White: K. P. 177. f104
Black: K. P. 177. e105
White: K. P. 178. f105
Black: K. P. 178. e106
White: K. P. 179. f106
Black: K. P. 179. e107
White: K. P. 180. f107
Black: K. P. 180. e108
White: K. P. 181. f108
Black: K. P. 181. e109
White: K. P. 182. f109
Black: K. P. 182. e110
White: K. P. 183. f110
Black: K. P. 183. e111
White: K. P. 184. f111
Black: K. P. 184. e112
White: K. P. 185. f112
Black: K. P. 185. e113
White: K. P. 186. f113
Black: K. P. 186. e114
White: K. P. 187. f114
Black: K. P. 187. e115
White: K. P. 188. f115
Black: K. P. 188. e116
White: K. P. 189. f116
Black: K. P. 189. e117
White: K. P. 190. f117
Black: K. P. 190. e118
White: K. P. 191. f118
Black: K. P. 191. e119
White: K. P. 192. f119
Black: K. P. 192. e120
White: K. P. 193. f120
Black: K. P. 193. e121
White: K. P. 194. f121
Black: K. P. 194. e122
White: K. P. 195. f122
Black: K. P. 195. e123
White: K. P. 196. f123
Black: K. P. 196. e124
White: K. P. 197. f124
Black: K. P. 197. e125
White: K. P. 198. f125
Black: K. P. 198. e126
White: K. P. 199. f126
Black: K. P. 199. e127
White: K. P. 200. f127
Black: K. P. 200. e128
White: K. P. 201. f128
Black: K. P. 201. e129
White: K. P. 202. f129
Black: K. P. 202. e130
White: K. P. 203. f130
Black: K. P. 203. e131
White: K. P. 204. f131
Black: K. P. 204. e132
White: K. P. 205. f132
Black: K. P. 205. e133
White: K. P. 206. f133
Black: K. P. 206. e134
White: K. P. 207. f134
Black: K. P. 207. e135
White: K. P. 208. f135
Black: K. P. 208. e136
White: K. P. 209. f136
Black: K. P. 209. e137
White: K. P. 210. f137
Black: K. P. 210. e138
White: K. P. 211. f138
Black: K. P. 211. e139
White: K. P. 212. f139
Black: K. P. 212. e140
White: K. P. 213. f140
Black: K. P. 213. e141
White: K. P. 214. f141
Black: K. P. 214. e142
White: K. P. 215. f142
Black: K. P. 215. e143
White: K. P. 216. f143
Black: K. P. 216. e144
White: K. P. 217. f144
Black: K. P. 217. e145
White: K. P. 218. f145
Black: K. P. 218. e146
White: K. P. 219. f146
Black: K. P. 219. e147
White: K. P. 220. f147
Black: K. P. 220. e148
White: K. P. 221. f148
Black: K. P. 221. e149
White: K. P. 222. f149
Black: K. P. 222. e150
White: K. P. 223. f150
Black: K. P. 223. e151
White: K. P. 224. f151
Black: K. P. 224. e152
White: K. P. 225. f152
Black: K. P. 225. e153
White: K. P. 226. f153
Black: K. P. 226. e154
White: K. P. 227. f154
Black: K. P. 227. e155
White: K. P. 228. f155
Black: K. P. 228. e156
White: K. P. 229. f156
Black: K. P. 229. e157
White: K. P. 230. f157
Black: K. P. 230. e158
White: K. P. 231. f158
Black: K. P. 231. e159
White: K. P. 232. f159
Black: K. P. 232. e160
White: K. P. 233. f160
Black: K. P. 233. e161
White: K. P. 234. f161
Black: K. P. 234. e162
White: K. P. 235. f162
Black: K. P. 235. e163
White: K. P. 236. f163
Black: K. P. 236. e164
White: K. P. 237. f164
Black: K. P. 237. e165
White: K. P. 238. f165
Black: K. P. 238. e166
White: K. P. 239. f166
Black: K. P. 239. e167
White: K. P. 240. f167
Black: K. P. 240. e168
White: K. P. 241. f168
Black: K. P. 241. e169
White: K. P. 242. f169
Black: K. P. 242. e170
White: K. P. 243. f170
Black: K. P. 243. e171
White: K. P. 244. f171
Black: K. P. 244. e172
White: K. P. 245. f172
Black: K. P. 245. e173
White: K. P. 246. f173
Black: K. P. 246. e174
White: K. P. 247. f174
Black: K. P. 247. e175
White: K. P. 248. f175
Black: K. P. 248. e176
White: K. P. 249. f176
Black: K. P. 249. e177
White: K. P. 250. f177
Black: K. P. 250. e178
White: K. P. 251. f178
Black: K. P. 251. e179
White: K. P. 252. f179
Black: K. P. 252. e180
White: K. P. 253. f180
Black: K. P. 253. e181
White: K. P. 254. f181
Black: K. P. 254. e182
White: K. P. 255. f182
Black: K. P. 255. e183
White: K. P. 256. f183
Black: K. P. 256. e184
White: K. P. 257. f184
Black: K. P. 257. e185
White: K. P. 258. f185
Black: K. P. 258. e186
White: K. P. 259. f186
Black: K. P. 259. e187
White: K. P. 260. f187
Black: K. P. 260. e188
White: K. P. 261. f188
Black: K. P. 261. e189
White: K. P. 262. f189
Black: K. P. 262. e190
White: K. P. 263. f190
Black: K. P. 263. e191
White: K. P. 264. f191
Black: K. P. 264. e192
White: K. P. 265. f192
Black: K. P. 265. e193
White: K. P. 266. f193
Black: K. P. 266. e194
White: K. P. 267. f194
Black: K. P. 267. e195
White: K. P. 268. f195
Black: K. P. 268. e196
White: K. P. 269. f196
Black: K. P. 269. e197
White: K. P. 270. f197
Black: K. P. 270. e198
White: K. P. 271. f198
Black: K. P. 271. e199
White: K. P. 272. f199
Black: K. P. 272. e200
White: K. P. 273. f200
Black: K. P. 273. e201
White: K. P. 274. f201
Black: K. P. 274. e202
White: K. P. 275. f202
Black: K. P. 275. e203
White: K. P. 276. f203
Black: K. P. 276. e204
White: K. P. 277. f204
Black: K. P. 277. e205
White: K. P. 278. f205
Black: K. P. 278. e206
White: K. P. 279. f206
Black: K. P. 279. e207
White: K. P. 280. f207
Black: K. P. 280. e208
White: K. P. 281. f208
Black: K. P. 281. e209
White: K. P. 282. f209
Black: K. P. 282. e210
White: K. P. 283. f210
Black: K. P. 283. e211
White: K. P. 284. f211
Black: K. P. 284. e212
White: K. P. 285. f212
Black: K. P. 285. e213
White: K. P. 286. f213
Black: K. P. 286. e214
White: K. P. 287. f214
Black: K. P. 287. e215
White: K. P. 288. f215
Black: K. P. 288. e216
White: K. P. 289. f216
Black: K. P. 289. e217
White: K. P. 290. f217
Black: K. P. 290. e218
White: K. P. 291. f218
Black: K. P. 291. e219
White: K. P. 292. f219
Black: K. P. 292. e220
White: K. P. 293. f220
Black: K. P. 293. e221
White: K. P. 294. f221
Black: K. P. 294. e222
White: K. P. 295. f222
Black: K. P. 295. e223
White: K. P. 296. f223
Black: K. P. 296. e224
White: K. P. 297. f224
Black: K. P. 297. e225
White: K. P. 298. f225
Black: K. P. 298. e226
White: K. P. 299. f226
Black: K. P. 299. e227
White: K. P. 300. f227
Black: K. P. 300. e228
White: K. P. 301. f228
Black: K. P. 301. e229
White: K. P. 302. f229
Black: K. P. 302. e230
White: K. P. 303. f230
Black: K. P. 303. e231
White: K. P. 304. f231
Black: K. P. 304. e232
White: K. P. 305. f232
Black: K. P. 305. e233
White: K. P. 306. f233
Black: K. P. 306. e234
White: K. P. 307. f234
Black: K. P. 307. e235
White: K. P. 308. f235
Black: K. P. 308. e236
White: K. P. 309. f236
Black: K. P. 309. e237
White: K. P. 310. f237
Black: K. P. 310. e238
White: K. P. 311. f238
Black: K. P. 311. e239
White: K. P. 312. f239
Black: K. P. 312. e240
White: K. P. 313. f240
Black: K. P. 313. e241
White: K. P. 314. f241
Black: K. P. 314. e242
White: K. P. 315. f242
Black: K. P. 315. e243
White: K. P. 316. f243
Black: K. P. 316. e244
White: K. P. 317. f244
Black: K. P. 317. e245
White: K. P. 318. f245
Black: K. P. 318. e246
White: K. P. 319. f246
Black: K. P. 319. e247
White: K. P. 320. f247
Black: K. P. 320. e248
White: K. P. 321. f248
Black: K. P. 321. e249
White: K. P. 322. f249
Black: K. P. 322. e250
White: K. P. 323. f250
Black: K. P. 323. e251
White: K. P. 324. f251
Black: K. P. 324. e252
White: K. P. 325. f252
Black: K. P. 325. e253
White: K. P. 326. f253
Black: K. P. 326. e254
White: K. P. 327. f254
Black: K. P. 327. e255
White: K. P. 328. f255
Black: K. P. 328. e256
White: K. P. 329. f256
Black: K. P. 329. e257
White: K. P. 330. f257
Black: K. P. 330. e258
White: K. P. 331. f258
Black: K. P. 331. e259
White: K. P. 332. f259
Black: K. P. 332. e260
White: K. P. 333. f260
Black: K. P. 333. e261
White: K. P. 334. f261
Black: K. P. 334. e262
White: K. P. 335. f262
Black: K. P. 335. e263
White: K. P. 336. f263
Black: K. P. 336. e264
White: K. P. 337. f264
Black: K. P. 337. e265
White: K. P. 338. f265
Black: K. P. 338. e266
White: K. P. 339. f266
Black: K. P. 339. e267
White: K. P. 340. f267
Black: K. P. 340. e268
White: K. P. 341. f268
Black: K. P. 341. e269
White: K. P. 342. f269
Black: K. P. 342. e270
White: K. P. 343. f270
Black: K. P. 343. e271
White: K. P. 344. f271
Black: K. P. 344. e272
White: K. P. 345. f272
Black: K. P. 345. e273
White: K. P. 346. f273
Black: K. P. 346. e274
White: K. P. 347. f274
Black: K. P. 347. e275
White: K. P. 348. f275
Black: K. P. 348. e276
White: K. P. 349. f276
Black: K. P. 349. e277
White: K. P. 350. f277
Black: K. P. 350. e278
White: K. P. 351. f278
Black: K. P. 351. e279
White: K. P. 352. f279
Black: K. P. 352. e280
White: K. P. 353. f280
Black: K. P. 353. e281
White: K. P. 354. f281
Black: K. P. 354. e282
White: K. P. 355. f282
Black: K. P. 355. e283
White: K. P. 356. f283
Black: K. P. 356. e284
White: K. P. 357. f284
Black: K. P. 357. e285
White: K. P. 358. f285
Black: K. P. 358. e286
White: K. P. 359. f286
Black: K. P. 359. e287
White: K. P. 360. f287
Black: K. P. 360. e288
White: K. P. 361. f288
Black: K. P. 361. e289
White: K. P. 362. f289
Black: K. P. 362. e290
White: K. P. 363. f290
Black: K. P. 363. e291
White: K. P. 364. f291
Black: K. P. 364. e292
White: K. P. 365. f292
Black: K. P. 365. e293
White: K. P. 366. f293
Black: K. P. 366. e294
White: K. P. 367. f294
Black: K. P. 367. e295
White: K. P. 368. f295
Black: K. P. 368. e296
White: K. P. 369. f296
Black: K. P. 369. e297
White: K. P. 370. f297
Black: K. P. 370. e298
White: K. P. 371. f298
Black: K. P. 371. e299
White: K. P. 372. f299
Black: K. P. 372. e300
White: K. P. 373. f300
Black: K. P. 373. e301
White: K. P. 374. f301
Black: K. P. 374. e302
White: K. P. 375. f302
Black: K. P. 375. e303
White: K. P. 376. f303
Black: K. P. 376. e304
White: K. P. 377. f304
Black: K. P. 377. e305
White: K. P. 378. f305
Black: K. P. 378. e306
White: K. P. 379. f306
Black: K. P. 379. e307
White: K. P. 380. f307
Black: K. P. 380. e308
White: K. P. 381. f308
Black: K. P. 381. e309
White: K. P. 382. f309
Black: K. P. 382. e310
White: K. P. 383. f310
Black: K. P. 383. e311
White: K. P. 384. f311
Black: K. P. 384. e312
White: K. P. 385. f312
Black: K. P. 385. e313
White: K. P. 386. f313
Black: K. P. 386. e314
White: K. P. 387. f314
Black: K. P. 387. e315
White: K. P. 388. f315
Black: K. P. 388. e316
White: K. P. 389. f316
Black: K. P. 389. e317
White: K. P. 390. f317
Black: K. P. 390. e318
White: K. P. 391. f318
Black: K. P. 391. e319
White: K. P. 392. f319
Black: K. P. 392. e320
White: K. P. 393. f320
Black: K. P. 393. e321
White: K. P. 394. f321
Black: K. P. 394. e322
White: K. P. 395. f322
Black: K. P. 395. e323

OVERLAND

A COMPLETE CAR

- Metal Safari Body
- 3 Ply Sun Proof Top
- 5 Tyres & Tubes
- Magneto Ignition

£195

THE OVERLAND
Service Station
Sixth Avenue NAIROBI.

Count Them on the Road!

The DURANT RUGBY

Just a real good car
With a sound service organisation behind it.

SIXTH AVENUE,
NAIROBI

CARR, LAWSON & Co., Ltd.

P.O. BOX 228,
THROCKLEY

Don't invest in a car with an engine capable of developing up to 70 h.p. if its spring suspension prevents your travelling at more than 20 miles per hour over rough roads!



Drive a Chrysler Six—and Realise how a Car should be sprung!
Chrysler Distributors,
YORK GARAGES Ltd., NAIROBI

H. F. WARD & COMPANY

TELEPHONE 100
P.O. BOX 100

GENERAL MANAGERS
NAIROBI

FOR BATH ROOM EQUIPMENT

AND ALL
SANITARY APPLIANCES
SPECIFY
"SHANKS"

Manufactured by Shanks & Co., Ltd., Barrow, Scotland, whose goods are unrivalled for **QUALITY, DESIGN AND MODERATE PRICES.**

Trade Enquiries to the LEADING STORES:

H. F. Ward & Co.
NAIROBI HOUSE
who hold representative stocks.

WOOD'S
GREAT
PEPPERMINT
CURE

For Colds
Coughs
Influenza
Asthma
Bronchitis

This world renowned medicine is acknowledged to be the most scientifically prepared household remedy ever offered to the public.
It is neither a quack nor a patent medicine but a pharmacologically sound prescription compounded by Chemists of the highest qualifications.
GET A BOTTLE TO-DAY

From
A. H. WARDLE & CO., LTD.
Phone 56. NAIROBI. P.O. Box 103

Under the Standard

Upanga Cotton
Custom returns show quantity of cotton for the year ending 31st Dec. 1935. Upanga for the year ended 31st Dec. 1935, the equal to 1934 was 1,000,000 lbs. and 1,000,000 lbs. each.

Mail Notice
Our New Zealand correspondent states that the Government has decided to allow Members on the ground that they are not to interfere with the work of the Government.

Upanga Cotton
Our New Zealand correspondent states that the Government has decided to allow Members on the ground that they are not to interfere with the work of the Government.

Tanganyika Stamp
The Secretary of the Tanganyika Stamp Society has announced that the stamps of this territory for the year ending 31st Dec. 1935, the equal to 1934 was 1,000,000 lbs. and 1,000,000 lbs. each.

Local Progress
The following are the prices obtained at Mombasa and Lamu for the week ending 19th Feb. 1936.

Beans (red) 2/00 to 2/00
Chickens 2/00 to 2/00
Lard 1/00 to 1/00
Onions 1/00 to 1/00
Rice 1/00 to 1/00
Sugar 1/00 to 1/00
Tea 1/00 to 1/00
Tobacco 1/00 to 1/00
Wheat 1/00 to 1/00

Tanganyika Appointments
The following appointments have been made for the year ending 31st Dec. 1935.

Number Regged
The following are the numbers regged for the year ending 31st Dec. 1935.

The Empire Builders



THE FORD ONE TON TRUCK FOR DEPENDABLE TRANSPORTATION.

New Models—Reduced Prices

The Service Company Limited.

IMPORTING DEALERS AND DISTRIBUTORS

MOMBASA, NAIROBI, NAKURU AND MOSHI

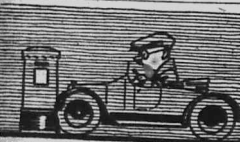
From time immemorial Britons have pioneered into unknown and undeveloped countries.

In face of seemingly insuperable difficulties, by co-operation and service, they have developed the remotest corners of the earth and have created a world wide trade for their products—a trade that grew in spite of the limitations of those primitive beasts, the mule and the ox and the mule.

And then the FORD came and to-day FORDS carry the burden of Empire trade on the trails of Africa, on the paths of Canada, on the tracks of Kenya, on the jungle roads of Borneo, on the plantations of Tanganyika and Ceylon, on the sheep stations of Australia and New Zealand.

Wherever Britons are, there is the FORD also doing its job, always dependable under all conditions, and where the FORD is, there is FORD co-operation and FORD SERVICE—cheap—efficient—reliable.

THERE IS NO QUESTION OF EXPERIMENT WHEN YOU BUY A FORD.



There is the same uncertainty about what you are getting, when you buy petrol from a doubtful pump, as there is when you are getting when driving in a fog. But when you see "Shell" on the globe, and the "Shell" guarantee, you know you are getting "Shell" UNMIXED with any other brand or grade pump or in the sealed red cans.

SHELL

THE WELL BALANCED PETROL
SHELL MOTOR OIL IS AS SUPERIOR AS SHELL SPIRIT, A GRADE FOR EVERY CAR.
BRITISH IMPERIAL OIL Co. (S.A.) Ltd.
Agents: SMITH MACKENZIE & Co.

NEW PIANOS IN STOCK

Grotrian Steinweg Grand	£250
Model 120	£140
Chappell Model 5	£135
Elysian	£115
Broadwood Model 10	£130
Hammerman Model 8	£120

DISCOUNT FOR CASH.
Enquire for Our New Hire Charges.
The B. E. A. Music Stores Co. Ltd.
Box No. 144 NAIROBI. Tel. 330

There are many qualities of boot polish and the best is known as

'NUGGET'

Sole Agents for Kenya
R. O. HAMILTON Ltd., Box 802,
Nairobi, Kenya.

DEFINITE REASONS
There are definite reasons for the superiority of

B.S.A.

Motor Bicycles

Over 2,000 of the B.S.A. FRAME is a SOLID STEEL. BENDING RUBBER are made from the hardest Chromium Steel covering every inch. There are VALVES are made of unobtainable steel to prevent.

Quality Makes Our Sales
See them at NAIROBI.

THE EAST AFRICAN STANDARD

Mombasa Times & Uganda Argus
SATURDAY, FEB 20, 1936

PORT CONTROL.

The Report of the Commission of Enquiry into the future control and management of Mombasa port has recommended a few schemes which have the merit of meeting most of the difficulties presented by the existence of the port in its present state. The Commission has recommended a few schemes which have the merit of meeting most of the difficulties presented by the existence of the port in its present state.

in this country through the Government, but it will continue to remain a private concern. The Commission has recommended a few schemes which have the merit of meeting most of the difficulties presented by the existence of the port in its present state.

the country through the Government, but it will continue to remain a private concern. The Commission has recommended a few schemes which have the merit of meeting most of the difficulties presented by the existence of the port in its present state.

"STANDARD" BY THE

February 21st
Arya
By Hon. Lady Grey, 9 A.M.
Opening of Convict...
Hall, Nairobi
P. C. A. New...
February 22nd
Annual General Meeting...
February 23rd
Annual General Meeting...
February 24th
Annual General Meeting...
February 25th
Annual General Meeting...
February 26th
Annual General Meeting...
February 27th
Annual General Meeting...
February 28th
Annual General Meeting...
February 29th
Annual General Meeting...

OVERLAND

A COMPLETE CAR
Metal Safari Body
3 Ply Sun Proof Top
5 Tyres & Tubes
Magneto Ignition

£195

THE OVERLAND
Service Station
Sixth Avenue NAIROBI.

The Empire

The Ford One Ton Truck
DEPENDABLE TRANSPORTATION.

New Models—Reduced Prices

The Service Company

IMPORTING DEALERS AND DISTRIBUTORS.



There is the same uncertainty about what you are getting when you buy petrol from a doubtful pump...

SHELL

THE WELL-BALANCED PETROL
SHELL MOTOR OIL IS AS SUPERIOR AS SHELL SPIRIT...

NEW PIANOS IN STOCK

- Grorian Steinweg Grand £250
Model 120 £140
Chappell Model 5 £135
Elysian £115
Broadwood Model 10 £115
Zimmerman Model 8 £120

DISCOUNT FOR CASH.
Require for Our New Hire Charges.
The B.E.A. Music Stores Co. Ltd.

Count Them

Th
The Editor does not accept responsibility for the views expressed by correspondents in these columns...

W. A. Kerr.
Capt. Taylor's Cup for best style Boats.
Mr. Crum's Prize for best style Boat.
Miss Turner's Prize (best Adult)...

The badmaster cordially thanks the Essex Regatta and the boys who would have been for the event but for the school...

Lalipia Farmery
A general meeting of Lalipia Farmery Association was held on Sunday, February 21st...

The Spirit of the Mountains
General Sir James Wilkie, O.C., in a course of address headed "Second Sight"...

A Fourth Expectation
Our attention to the appearance of a person is a part of the art of appearing which is a part of the "Good Luck Charm"...

There are definite qualities of polish and is known as 'NUGG'
Sole Agents for Kenya, N. & E. HAMILTON, Ltd. Box 20, Nairobi.

DEFINITE R
There are definite for the superior
B.S. Motor

Quality Makes Our Sales
See them at McIVOR.

CORRESPONDENCE

The Editor does not accept responsibility for the views expressed by correspondents in these columns...

STOP!
To the Editor, "E.A. Standard."
I have been reading your issue of today in a state of amazement...

Supposing I was proceeding up a hill and was approaching a precipitous descent...

It is the Society is too short of funds to provide sufficient support for our young people...

District Notes
RUIRU
[Now One New Correspondent]
Baru these days is, distinctly, a place of some importance...

On February 9th our Executive Committee, a very keen man who in addition to all his other duties...

At present it is limited, if any farmer interested in this road will help us and I want over to the station, mentioning the bridge again...

At present it is limited, if any farmer interested in this road will help us and I want over to the station, mentioning the bridge again...

At present it is limited, if any farmer interested in this road will help us and I want over to the station, mentioning the bridge again...

Tim in Tanganyika

DRILLING OPERATIONS NOW PROCEEDING
The Lyons announced a complete change of programme for the forthcoming season...

A number of minor engineers are doing on the spot and drilling operations are not yet defined in the extent of the report...

Several claims have already been staked and prospecting is also taking place on the Uganda side...

MANCHESTER VIEW ON AN OLD SUBJECT
The official reports, compiled with private information, show that the production of cotton in Africa...

With these figures before us, it is not surprising that the importance of guiding the industry by policy is becoming more and more apparent...

At a public meeting held at Soroti on February 19th, Mr. A. Johnson in the chair, the resolutions which were passed...

At a public meeting held at Soroti on February 19th, Mr. A. Johnson in the chair, the resolutions which were passed...

At a public meeting held at Soroti on February 19th, Mr. A. Johnson in the chair, the resolutions which were passed...

THE LITERARY

The Lyons announced a complete change of programme for the forthcoming season...

At a public meeting held at Soroti on February 19th, Mr. A. Johnson in the chair, the resolutions which were passed...

At a public meeting held at Soroti on February 19th, Mr. A. Johnson in the chair, the resolutions which were passed...

At a public meeting held at Soroti on February 19th, Mr. A. Johnson in the chair, the resolutions which were passed...

At a public meeting held at Soroti on February 19th, Mr. A. Johnson in the chair, the resolutions which were passed...

At a public meeting held at Soroti on February 19th, Mr. A. Johnson in the chair, the resolutions which were passed...

At a public meeting held at Soroti on February 19th, Mr. A. Johnson in the chair, the resolutions which were passed...

CONVENTION OF ASSOCIATIONS.

Agenda for Session Opening on Monday.

MANY RESOLUTIONS.

Labour; Land; Native Policy, Public and Legislation.

Resolutions.

That this Convention of Associations...

AGRICULTURE.

That this Convention of Associations...

INDUSTRY.

That this Convention of Associations...

PUBLICITY.

This Government be requested to...

NATIVE AFFAIRS.

That the officer or officers...

IMPORTED LABOUR.

That this Convention of Associations...

RAILWAYS & TELEPHONS.

That this Convention of Associations...

ALL SILK FUJIS.

Sh. 1/50 per yard.

Policy whereby some security...

12. That the Government...

LOAN EXPENDITURE.

13. That in the opinion of the...

SQUATTERS ORDINANCE.

14. That whereas the Resident...

TRAFFIC.

17. That all wagons kept...

VETERINARY.

18. Veterinary Service District...

LOAN MOVES IN THE COFFEE TRADE.

Trade Body Resents E.A. Board's Proposals.

A POOLING SCHEME.

19. That the Committee of Enquiry...

PESTS AND DISEASES.

In the letter sent to the Chamber...

NATIVE COFFEE.

In regard to the cultivation...

E. A. STANDARD COMPETITION.

TO STIMULATE PUBLIC INTEREST IN THE CENSUS WHICH IS TAKING PLACE ON 21st February, 1926.

COUPON.

Each coupon must be used on the coupon below...

CUPON.

GENUINE FURBOATS. NON-EUROPEANS.

TO NAIROBI MOTORISTS.

1. Owing to confusion of signals...

STOP.

2. If you get no signal GO ON.

GO ON.

When he drops his hands GO ON.

With reference to the proposed...

1. Protection against pests and diseases.

CENTRAL FACTORIES.

In connection with (c) the Joint East African Board...

After full discussion the following...

1. That the Coffee Trade Association...

PESTS AND DISEASES.

In the letter sent to the Chamber...

NATIVE COFFEE.

In regard to the cultivation...

LYRIC HALL SHOWING To-Night, 8-45 p.m. COMPLETE CHANGE OF PROGRAMME "DEEDS OF DARING" featuring George Larkin.

WONDERFUL VALUE No. X 11. 723 Tan Calf Brogues. Willow Calf Bar. With Leather Soles. 30/- No. 7 23. X 128. Willow Calf Bar. Medium Heel. Willow Calf Fancy Bar. Eadies Shoe Store.

THEATRE ROYAL. TO-NIGHT, at 8-45 p.m. THE CECILIAN TRIO Laura Kendall—Irene Marshall—Marjorie Hawkins. Song & Harmony. Annette Kellerman in "Venus of the South Seas".

Kaysers. COSTS NO MORE THAN THE ORDINARY KIND. ONE SHOULD NOT THINK OF Kaysers. STOCKINGS ONLY BUT ALSO OF THE FABRIC ITALIAN SILK UNDER-CLOTHING. Warings. NAIROBI'S FASHION CENTRE.

AUCTION SALES.

Muter and Oswald's Sales.

Catalogue Sale of Furniture and Effects.

Duly instructed by Mrs. J. O. Green, and other parties, we shall sell by Public Auction, without reserve, tables otherwise stated, at our Salerooms, Mutos Building, Hardings Street, on

Monday, 22nd February
at 9-30 a.m.

- BEANS MOUNTED DOUBLE IRON BEDSTEAD, with spring and horse hair mattress.
 - DOUBLE IRON BEDSTEAD with spring mattress.
 - SINGLE IRON BEDSTEADS, MEATSAFE.
 - TWO SINGLE BEDSTEADS; wire mattress.
 - WARDROBE, solid teak throughout, bevelled mirror, hanging and other compartments.
 - DRESSING CHEST OF DRAWERS in teak; bevelled mirror.
 - DRESSING TABLES in teak, with bevelled mirrors.
 - TEAK CHESTS OF DRAWERS. OCCASIONAL TABLES in Teak.
 - CHESTERFIELD SUITE, loose covers.
 - REVERSIBLE EDGE, INDIAN CARVED TABLE.
 - MORRIS CHAIRS. BOOKSHELF in campherwood.
 - REBOARD in teak; WRITING TABLE, base top.
 - BEANS TABLE LAMP.
 - FIVE GENTS CYGLES "Perfection" brand—new.
 - WARDROBES in teak. TABLE MODEL GRAMOPHONE.
 - "SINGER" SEWING MACHINE—hand model.
 - SALVAMISED IRON BATH, GOLF CLUBS—six without bag.
 - PICTURES. KITCHEN TABLE.
 - BOY'S CYCLE. SUITE OF SIX DINING CHAIRS in teak.
 - BEANS TRAY on FOLDING STAND.
 - 5 No. 8 "DOVE" STOVES, with piping.
 - SHOWER BATH FITZING—portable and adjustable for any height.
 - 24 PIECE DINNER SERVICE, NEW, BOTH OILCLOTH CHINA.
 - VERY LARGE BEANS BOWLS OF EXCELLENT WORKMANSHIP.
 - PLUSH COVERED SETTEE, PERAMBULATOR.
 - TREASURER CUP WITH HAIR MATTERS, DOGMA.
 - GRAMAPHONE.
 - NEW LINO. H.K.V. TABLE MODEL GRAMAPHONE.
 - "COLUMBA" GRAMAPHONE, CHILD'S BATH OF STAIN.
 - ENGLISH CONCERTINA, NEW DRESSER.
 - FOUR PERSIAN CARPETS OF VARIOUS SIZES (low reserve).
60. Etc. Etc.
CATALOGUE SALE. CATALOGUE SALE.
- MUTER and OSWALD, Auctioneers, Etc. Nairobi.

Muter and Oswald's Sales

Auction Sale of Nairobi Business and Residential Plots

Duly instructed by Mr. ABDUL WAHID, we shall sell by public auction

on Wednesday 10th March
commencing at 6-30 p.m.

At the POSHO MILLS, SWAMP ROAD, NAIROBI, about 25 PLOTS of VARIOUS DIMENSIONS (including 50' x 70' to 80' x 100').

SUITABLE FOR BUSINESS OR RESIDENTIAL SITES on the well known ABDUL WAHID ESTATE bounded by Swamp Road and Ngara Road, Nairobi.

To those desirous of securing a suitable small holding on the Estate near the centre of Nairobi, no more favourable opportunity lends itself as these plots will be offered on

THE EXCEPTIONALLY REASONABLE TERMS OF 25 per cent. CASH at the SALE and the BALANCE in FOUR EQUAL ANNUAL INSTALLMENTS CALCULATED AT 7 per cent PER ANNUM.

For further particulars and copy of plan of the Estate and details for viewing, apply to—

THE AUCTIONEERS, MUTER and OSWALD,
P. O. Box 237, NAIROBI.

Sands & Co.

At Our Yards,
NAIVASHA.

Monday 22nd March.

- 50 Sheep.
- 80 Steers.
- 64 Cows in Calf and Calves at foot.

GIL GIL.

Tuesday, 23rd March.

The whole of Mrs. Walmaly Frisland herd, consisting of about 70 head Cows and Heifers.

- 30 Young Steers.
- 42 Slaughter Cows.
- 70 Grade and Native Cows in Calf and Calves at foot.

Further entries being received.

SANDS & Co., Auctioneers.

REZIN
TAILOR OF QUALITY

THE NAME THAT INSPIRES CONFIDENCE

GENTLEMEN'S TAILORING

IN ALL ITS BRANCHES

THE House of Rezin.

5 h.p. Oil Engine, Teak Furniture, etc.

Duly instructed by several Clients

Austin & Co.
Will sell WITHOUT RESERVE

At the MARY, BERNING ST. (next to Gately and Roberts)

TO-DAY FEBRUARY 20th
at 10 sharp.

- 5 h.p. "SUN" OIL ENGINE, complete with Pulley.
- TEAK DINING TABLE 4' 9" x 3'. MORRIS CHAIRS.
- TEAK SIDEBOARD 4'. BLACK TEAK TABLES, 2 FOLDING SEDES.
- SILVER PLATED 2 piece COFFEE SET, 3 TOWNS HORSES.
- TEAK CARD TABLE 30" x 30". TEAK DINING TABLE 4' x 3'.
- LARGE SHAVING MIRROR, PLATED SWEET DISH, PROSSERS TERNIS RACKET.
- TEAK DOUBLE BED and TEAK SINGLE BED BOTH COMPLETE WITH MATTRESSES.
- BAGGILLOS WARDROBE, no mirror, SUITE DINING CHAIRS.
- TEAK DRESSING TABLE WITH OVAL MIRROR, 2 TEAK OFFICE CHAIRS.
- NEW COMMODE. Small WYLLIE TABLE with 3 drawers, RICHESLAW LAMPS.
- TEAK DINING TABLE 6' x 3' 3", 6 Gans Seated CHAIRS, SILVER FRAMES.
- CHESTERFIELD SUITE covered American, 6 Good Covers 30 x 34.
- HAND SEWING MACHINE, CHEST OF DRAWERS, CUPBOARD WITH DRAWERS.
- 3 Tier STAND for Plants, OCCASIONAL TABLE, LEVVIS MOTORCYCLE.
- 2 SINGLE IRON BEDS, FOLDING SAFARI ARM CHAIR.
- ABOUT 6 SHEETS OROGATED IRON, 2 CLUB SAHES WELL SPRUNG.
- The following will be offered subject to low reserves.
- "LIMOUSETTE" FRAM. NEARLY NEW, Patent Chassis, Wheels on Ball Bearings Body extra long with extension, 3 loose cushions, patent hood.
- "PLAYERPHONE" LARGE CABINET GRAMAPHONE with self support, in PERFECT ORDER complete with 26 RECORDS.
- "PANTER" SAFE, NEW, 24" x 21" x 27" complete with STATUARY UPBOARD.
- LARGE "INNOVATOR" TRAVELLING TRUNK in perfect condition.
- BLAND NEW "TITAN" THREADLE SEWING MACHINES.
- GENTS PUSH CYCLE in NEARLY NEW CONDITION with Back Rest Stand.
- 3 PIECE CHESTERFIELD SUITE, Sprung Seats Arms and Backs, Covered American.

BIG "V" TWIN "RALEIGH"

1838

Hire Purchase Arranged.

J. C. BUTTON, Hardings Street,
KETTLES-ROY LTD. Government Road.

KEEP YOUR HOUSE COOL

Use "FIBRETT"

Asbestos Sheets
For your ceilings
(British Manufacture)

Sole Agents,
DENOVAN & DIEBEL,
CITY HOUSE,
NAIROBI.

NOW SHOWING AT THE

LYRIC

"Deeds of Darlings"

Toilet Requisite

Government Road.
Telegrams: CYMON Phone 584
LADIES & GENTS HAIR DRESSING
Gallia Bonicelle Perma-
Specialities—Mancuro, Massage,
Elizabeth Arden Treatment,
New Supplies of Slides, Combs, Shaving
Perfumes, Powders, etc.
Special Attention.
MAIL ORDER DEPARTMENT

Torr's for Teas

Torr's for Lunches

Torr's for Grills

NO connection with any other Firm

For Sale

One of the best maize farms in the Nakuru Area, approx. 1100 acres, fully fenced, 6000 now ready for planting.
Situation, adjoining Nakuru Township railway.
Unlimited water and fuel.
Improvements include 3 homesteads, cattle boma, dip, cottages, boys house, stores, orchard, etc., etc.
To be sold as a going concern, together with necessary implements, tractor, cattle, etc., required to plant cultivate, harvest, etc.
Unquestionably the best farm in the district for labour.
Price, £12,000, terms can be arranged. For particulars apply to box 45, Nakuru.

WANTED.

Two vacancies exist for European clerks in Education Department. Salary £200 p.a. with annual increments of £15 to £400 per annum by temporary local allowance. Applicants must possess thorough knowledge of accounts and ability to typewrite. Applications to be made in writing to Director of Education, Box 340, Nairobi, not later than February 28th, 1928.

Muter and Oswald's Sales

MISCELLANEOUS GOODS.

Duly instructed we shall sell without reserve at our Salerooms, Mutos Building, Hardings Street on

Wednesday 24th February at 8-30.

- LINO, ALUMINIUM SUPERLUM.
- SMALL TRADABLE HAND SEWING MACHINE.
- OSKAR-MORSE RECORDS, NOVELS.
- 8OUND HAND CLOTHING, ELECTRIC READING LAMP.
- ELECTRIC IRON, NATIVE STOOKS AND SHIELDS.
- TENNIS RAQUETS, DRILLING MACHINE.
- MAG. DYNO for motor cycle, SOBERANS, etc., etc., etc.

MUTER and OSWALD, Auctioneers, Etc. Nairobi.

TO WHEAT GROWERS

Meeting at
NAKURU HOTEL - 2 p.m.
SATURDAY 20th February.

As a result of resolutions passed by various district associations a meeting will be held at the above time and place to discuss the formation of a Wheat Growers Association representative of the whole country.

It is hoped that all interested in wheat farming will attend—

RE-ORGANISATION SALE

"Jeanné"

Nairobi.

Commencing Monday, February 12th, 1928.

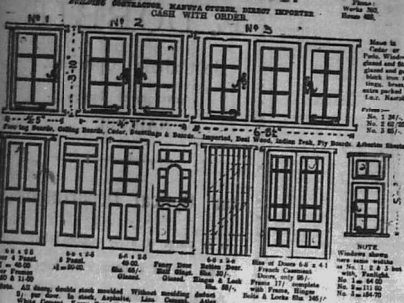
All goods at half market prices, special heavy reductions in Childrens Department.
Avenue House, Sixth Avenue, P. O. Box 227.

SPECIAL VALUES IN CALICOES

- ELEPHANT LONGCLOTH 30" Wide ... 1/6
- OSMAN MADAPOLLAR 28" Wide ... 1/6
- HORROCKES MADAPOLLAR 28" ... 1/6
- SUPER QUALITY OSMAN MADAPOLLAR ... 1/6
- HORROCKES SLO MADAPOLLAR ... 1/6
- TARANTULLE STANDARD QUALITY ... 1/6
- TARANTULLE FINE QUALITY ... 1/6
- TARANTULLE SUPERFINE QUALITY ... 1/6
- DORCAS CAMELID 40" Wide ... 1/6

Hutchings, Bienen & Co.
Box 408, NAIROBI, Phone 111
5% DISCOUNT FOR CASH
Monthly Accounts With Approved

Geo. BLOWERS.



Plans and specifications for various window and door styles, including prices and materials.

Passenger Lists. \$120,000 Carpet.

THE SS "MERRICA" MOST BEAUTIFUL IN THE WORLD. The ss. "Merrica" from London which arrived in Mombasa yesterday is bringing the following passengers: Mr. J. M. ... Mrs. A. ...

DEPARTMENT OF AGRICULTURE. Return of Maize graded during week ended Feb. 12, 1905. Table with columns for Station, No. of Waggons, Average, etc.

Muthaiga Township Committee. Tenders are invited for the reurfacing with murrum of the main road about 2 miles passing through the Muthaiga Township.



A perfect "SCOTCH" ensures good health. "LONG JOHN" SCOTCH WHISKY. Wholesale Distributors: D. F. FLETCHER & Co., NAIROBI.

Miss KATHLEEN BATES, A.R.C.M. Give Lessons in PIANO, VIOLIN, HARMONY, THEORY OF MUSIC AND AURAL CULTURE. Apply: STUDIO, GEATER'S BUILDINGS SIXTH AVENUE.

If you Value your Teeth. USE Gibbs Dentifrice TWICE A DAY. One out of every five users of any Dental preparation in The British Isles uses Gibbs Dentifrice.

CITROEN THE BEST VALUE FOR MONEY IN THE COLONY. THE EXTRAORDINARY POWER & ECONOMY OF THE 11.4 H.P. ENGINE WILL ASTONISH YOU. FULLY EQUIPPED TOURING CAR NO EXTRAS £255 CALL FOR DEMONSTRATION RUN MONCKTON & SEAR Ltd., NAIROBI.

ALIBHAI & Co. BAZAAR NAIROBI. LADIES AND GENTS TAILORS. SINGERS HAND & TRADABLE SEWING MACHINES. Enquiries cordially invited.

AMMUNITION. THE NEW INVENTION of Mauser and Mauser's Improved Rifle with EXTRA LONG BARRELS. OUR MAUSER AND MAUSER'S IMPROVED RIFLES HAVE WON THE HIGHEST AWARDS.

OVERSEAS MAILS. Table with columns for STRAHER, FROM, TO, ARRIVAL, DEPARTURE.

P & O MAIZE PLANTERS RUNNER OR DISC OPENERS. SIMPLE AND DURABLE. J. W. MILLIGAN & Co., NAIROBI.

THE EUROPEAN AND AFRICAN TRADES ORGANISATION. All Communications to be addressed to The SECRETARY, REGISTRATION FEES. EUROPEANS SEEKING EMPLOYMENT will be required to pay a Registration Fee of Shs. 5/- before placing his or her name on the Organisation's Registers.

"NOW IN STOCK" "B" PULPERS DISC PULPERS SCOTT & DAVIDSON. Sole Agents in Kenya for Wm. McLeod & Co., Ltd., VICTORIA STREET, NAIROBI.

M. R. de SOUZA & Co. (ESTABLISHED 1889) GENERAL MERCHANTS Ladies' & Gent's Expert Tailors & Outfitters. Best Groceries, Wines, Spirits and all Personal & Household Requisites.

NOTICE THEO SCHOUTEN. The well-known Ladies and Gents Hairdresser, has to announce to his clients he has re-opened business again in Government Road (lastly occupied by Fisher and Simmons).

PORK SAUSAGES. THE BEST IN THE WORLD. A SPECIALITY NAIROBI. Includes an image of a tin of sausages.

"STANDARD" FEATURE PAGE

UNAPPROACHABLE

Norton 16H NEW TRADE MARK

1924 MODELS HAVE NOW ARRIVED PRICES REDUCED

£87-10-0

REMELOW'S GARAGE, NAIROBI.

THE SALISBURY HOTEL

FAMILY & RESIDENTIAL

Now nearing COMPLETION spacious and airy Stone Bed Rooms each fitted with Hot and Cold running water, also New Open Air Dining Room, and Dance Hall.

Phone 108 NAIROBI. P. O. Box 509.



WITH REMINGTON YOU GET EUROPEAN SKILLED SERVICE WITH GUARANTEE

FULL SUPPLY OF PARTS. ALL REPAIRS UNDERTAKEN

REMINGTON TYPEWRITER AGENCY.

Government Road, NAIROBI. Phone 54.

HARLEY-DAVIDSON THE MOTORCYCLE MAGNIFICENT... THURTY THIRTY... TERMS ARRANGED... H. O. BUTTON, Motor Engineer, HARBOR, HARBOR STREET, NAIROBI.

POANES & BROS. P.O. Box No. 553, NAIROBI. DRESSES, DRESS MAKERS, and HATS. TAILORS & OUTFITTERS. RAYNES BUILDING. Opposite to Simpson and Whitaker Sts.

EL ENGELBRECHT, NYERI. Responsible Passenger Service, Royal Mail and Heavy Motor Transport.

LAND... LAND... LAND... want any thing done come to ENGELBRECHT, you want a good Farm apply to ENGELBRECHT, have several Excellent Farms For Quick Sale.

Charles Ware open on the LINCOLNSHIRE & GRAND NATIONAL

Poultry Notes.

EGG PRODUCTION.

The chief object of the poultry farmer in this country should be, undoubtedly, egg production. In the first place, when importing birds the egg record of the birds imported should be the first consideration. In the second place, the birds should be of good typical breeds of their breeds, so far as compatible with utility characteristics.

By this it means that the birds required for this country are not the type which is bred for the show bench at home, in many cases this is a bird bred for sale to such an extent that the utility qualities are lost sight of, and it is the present day Light Bantam which is being bred.

A hen may have a wonderful egg producing record, but if she lays small eggs she may easily be beaten by a less productive hen in actual weight of eggs produced in the year. Therefore the aim of the utility farmers should be to establish a record which is not only high in production but will also

some time produce average sized eggs. To obtain this result the only satisfactory method is careful selection of the birds.

Take for instance an imported hen which arrives in this country with the reputation of being say, 300 eggs a year. The farmer must not take it for granted that all the hens he breeds from this hen will also be producers of 300 eggs per year. To begin with, I have imported a good many birds since you say, I have never had a pen which has lived up to its reputation, but with careful selection I have bred hens from the pen which has reached the normal average in this country.

To obtain these results it is necessary to have the birds under very close observation during the first year. Of course representing is the best method of obtaining records, but representing in this country is very serious rather difficult, it means personal experience all the time, nature being too irresponsible. The only way I could think of to enable a novice to stand to the imposture was to have colored rings on the bills to apply colored chalk to correspond with the rings.

The salivary on releasing a hen from the nest, marked the egg with the chalk corresponding in color to the ring on the hen's bill. Without transcribing the only method that is of close observation if the pen size of small numbers of hens the poultry farmer can usually be fairly exact in knowing what eggs are produced by the

respective hens and by keeping separate records, may obtain a fairly accurate statement of the production of each hen.

Advice to men that not which he is laying a very small egg also the best "chick" laying hen.

When a pullet starts laying, it is much better that she should lay a small egg for a small period which later the large egg to start with, will, when she reaches maturity, lay a much larger egg than the pullet who starts with a round egg.

In breeding pullets for egg production it is very necessary that they should be kept from starting to lay until they are well grown. A pullet should not start laying until she is six months old or more. The best way to put them off laying too soon is to move them to fresh ground when they

show signs of reducing up or coming on to lay.

To establish a really good laying strain it will be necessary to choose a pullet which does not do well in her first laying season.

In breeding for egg production the poultry farmer must always remember that the rooster has the most influence, so far as production is concerned on the offspring.

ANSWERS TO CORRESPONDENTS

Mrs. Harrison Nyero writes that she has settings of Buff Rock eggs for sale. No. 1 pen 13 eggs to a setting, sterility not reduced, price 80/- No. 12 pen, equally good layers, but colour not quite so good, 12 eggs to a setting, sterility not reduced, price 12/- A. M. B.

NOTICE.

The Annual Meeting of the Kenya Arts and Crafts Society will be held at The New Stanley on Monday, 19th March, at 4.30. It is hoped that all Members will make an effort to attend.

VIOLA ALLEN, Hon. Secretary

Clairmont Residential Hotel. FULLY LICENCED.

4 miles from Nairobi—through beautiful scenery. Excellent Cuisine—Afternoon Teas and Teas a la Carte a specialty. Dance Floor acknowledged one of the best in Kenya, Swimming Bath, newly constructed. Permanent residents catered for. Terms, Apply Proprietor. Box 625, Nairobi.

Short Loans Granted £1 to £1000 CALL OR WRITE TO THE Kenya Loan & Discount Co., Ltd. Court Chambers, (1st Floor) Box 646, NAIROBI. Bills Discounted. Strictest Confidentiality.

What do you Expect from your Car?



Power—

Price £445. For N.R.B.

See the new and exclusive Studebaker Duplex body. It can be converted from an open to an enclosed car in 20 minutes. It is the only car coming out of the car.

As swiftly—as smoothly—as a bird in flight, the powerful new Studebaker cars negotiate hills, sand, mud or rough roads with an ease which commands admiration.

That's because they are powered by the famous Studebaker six-cylinder engine, providing an abundance of smooth, flexible and economical power.

To buy a motor car without first seeing the new Studebaker, is to buy blindfolded. They offer unprecedented values embody many exclusive features. Won't you let us show you!



STUDEBAKER Duplex BUILDERS OF QUALITY VEHICLES FOR 72 YEARS

Sole Importers K. McIVOR & Co. NAIROBI.

F. O. Box 41. Telephone 87.

Telegram: "AFFORD."

BELIARIANT: On Tuesday, January 19th a Standard Duplex Studebaker left Nairobi at 5 a.m. for Jinja where it arrived at 10 p.m. on the same day. A distance of 428 miles in 17 hours. The return journey was accomplished in 19 hours in spite of adverse weather conditions. During the whole journey the bonnet was not opened nor the tool kit touched. SPEED: The average running speed of the car including all stops was just under 27 miles per hour though at no time was the car unduly pressed. ECONOMY: The average petrol consumption was 20 miles per gallon. CAPACITY: A load of 925 lbs. was carried throughout the trip. The car used was an absolutely Standard Model taken from stock and unaltered in any way except for the addition of a spotlight for night driving.

HIGH GRADE GOLD COINERS... MADE FOR GOLDERS WHO KNOW... SH. 17-50

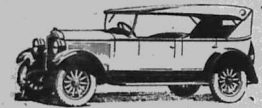
FRED RAPER GENERAL COMMISSION AGENT... CITY HOUSE, PLACE 148.

Breast Collars for Oxen 25/- each... American Army Vests 30/- doz... SADDLERY.

SHAW & HUNTER... (Sole Proprietor R.M. Shaw)... SIXTH AVENUE. Phone 216.

CARRY LARGE STOCKS OF GUNS AND RIFLES... HOLLAND, RIGBY, WESTLEY RICHES... AMMUNITION

Hupmobile 6 £425



Call for a Demonstration THE MOTOR MAR & EXCHANGE, LTD. NAIROBI.

FIRE ARMS

We Carry Large Stocks of RIFLES SHOTGUNS... MAY & CO., The SPORTS House.

J. R. STEPHENS & Co. Ltd., TAILORS AND OUTFITTERS... MAY & CO., The SPORTS House.

A FEW OF THE NEWEST GOODS JUST ARRIVED... MAY & CO., The SPORTS House.

THE SPORTS PAGE

M.C.C. IN WEST INDIES. ENGLISH BOXING. INTERNATIONAL RUGBY. VARSITY HOCKEY.

The Third & Final Test Match Drawn.

Roland Todd Deprived of His Title.

How Ireland Defeated France.

Cambridge Wins by Odd Goal.

(SPECIAL CORRESPONDENT'S REPORT.)... M.C.C. IN WEST INDIES... The match was drawn, play being stopped at the end of the second innings.

(SPECIAL CORRESPONDENT'S REPORT.)... ENGLISH BOXING... Roland Todd has been deprived of his title.

(SPECIAL CORRESPONDENT'S REPORT.)... INTERNATIONAL RUGBY... How Ireland defeated France.

(SPECIAL CORRESPONDENT'S REPORT.)... VARSITY HOCKEY... Cambridge wins by odd goal.

Local Tennis League.

A HEAL-NET-TO A MODERATE MATCH.

WAK FRENCH TEAM.

CLUB ACCOUNTS.

With the Nairobi and District Lawn Tennis League fixtures half way over... SHAW & HUNTER.

So in these days, a really nice... ENGLISH BOXING.

It was most unfortunate, to start with... INTERNATIONAL RUGBY.

The accounts which had been previously announced... VARSITY HOCKEY.

Professional leaders have made independence... ROLAND TODD'S TITLE.

It is pointed out that this field... ENGLISH BOXING.

On the night when he noted the remarkable speed... INTERNATIONAL RUGBY.

On the night when he noted the remarkable speed... VARSITY HOCKEY.

THE CLUB ACCOUNTS.

THE THIRD ANNUAL BOXING CONTESTS.

THE FIFTH RUGBY OF THE P.A. CUP.

THE FIFTH RUGBY OF THE P.A. CUP.

THE FIFTH RUGBY OF THE P.A. CUP.

THE FIFTH RUGBY OF THE P.A. CUP.

THE FIFTH RUGBY OF THE P.A. CUP.

THE FIFTH RUGBY OF THE P.A. CUP.

THE FIFTH RUGBY OF THE P.A. CUP.

THE FIFTH RUGBY OF THE P.A. CUP.

THE FIFTH RUGBY OF THE P.A. CUP.

THE FIFTH RUGBY OF THE P.A. CUP.

THE FIFTH RUGBY OF THE P.A. CUP.

THE FIFTH RUGBY OF THE P.A. CUP.

THE FIFTH RUGBY OF THE P.A. CUP.

THE FIFTH RUGBY OF THE P.A. CUP.

THE FIFTH RUGBY OF THE P.A. CUP.

THE FIFTH RUGBY OF THE P.A. CUP.

THE FIFTH RUGBY OF THE P.A. CUP.

THE FIFTH RUGBY OF THE P.A. CUP.

THE FIFTH RUGBY OF THE P.A. CUP.

THE FIFTH RUGBY OF THE P.A. CUP.

THE FIFTH RUGBY OF THE P.A. CUP.

THE FIFTH RUGBY OF THE P.A. CUP.

THE FIFTH RUGBY OF THE P.A. CUP.

THE FIFTH RUGBY OF THE P.A. CUP.

THE FIFTH RUGBY OF THE P.A. CUP.

THE FIFTH RUGBY OF THE P.A. CUP.

THE FIFTH RUGBY OF THE P.A. CUP.

THE FIFTH RUGBY OF THE P.A. CUP.

THE FIFTH RUGBY OF THE P.A. CUP.

THE FIFTH RUGBY OF THE P.A. CUP.

THE FIFTH RUGBY OF THE P.A. CUP.

THE FIFTH RUGBY OF THE P.A. CUP.

THE FIFTH RUGBY OF THE P.A. CUP.

THE FIFTH RUGBY OF THE P.A. CUP.

THE FIFTH RUGBY OF THE P.A. CUP.

THE FIFTH RUGBY OF THE P.A. CUP.

THE FIFTH RUGBY OF THE P.A. CUP.

THE FIFTH RUGBY OF THE P.A. CUP.

THE FIFTH RUGBY OF THE P.A. CUP.

THE FIFTH RUGBY OF THE P.A. CUP.

THE FIFTH RUGBY OF THE P.A. CUP.

THE FIFTH RUGBY OF THE P.A. CUP.

JACOB'S PATENT... HOUSEHOLD UTENSILS... AT A ATTRACTIVE PRICE.

USEFUL HOUSEHOLD UTENSILS... AT A ATTRACTIVE PRICE.

ENAMEL WATER JUGS... Shape of illustration, while inside and outside, strong body, enamel of size even finish, which is not easily chipped.

THE HAPPY... The cleanest and most reliable way of pouring tea.

THE HAPPY... The cleanest and most reliable way of pouring tea.

THE HAPPY... The cleanest and most reliable way of pouring tea.

THE HAPPY... The cleanest and most reliable way of pouring tea.

THE HAPPY... The cleanest and most reliable way of pouring tea.

THE HAPPY... The cleanest and most reliable way of pouring tea.

THE HAPPY... The cleanest and most reliable way of pouring tea.

THE HAPPY... The cleanest and most reliable way of pouring tea.

THE HAPPY... The cleanest and most reliable way of pouring tea.