

KENYA BEER.
KENYA STOUT.
XXXL ALE

Monarchs of
Malt Liquors

HALLOWED UP BY MAUNA LOA.

World's Greatest Volcano in Full
Eruption.

FATE OF A VILLAGE AND ITS PEOPLE
in "Inferno in the Heavens" and Lava Rivers
in a Boiling Sea.

SEEK TAKE PICTURES WHILE KANUVA CRY TO
THE GODDESS OF KILUAU.

NEW YORK, April 19.—Lava seaward from the
eruption of Mauna Loa, Hawaii, has
overwhelmed the village of
Kilauea, and the fate of a hundred
people is unknown.

THE eruption of Mauna Loa, Hawaii,
has been continuing for several
months. The lava flow has
advanced to the edge of the
crater, and the lava flow has
reached a height of 10,000 feet.

THE eruption of Mauna Loa, Hawaii,
has been continuing for several
months. The lava flow has
advanced to the edge of the
crater, and the lava flow has
reached a height of 10,000 feet.

ITALY, ENGLAND, AND
ABYSSINIA.

Object of Negotiations
Explained.

ROME, April 17.—The
object of the negotiations
between Italy, England, and
Abyssinia is to secure
the withdrawal of Italian
troops from the Sudan.

THE negotiations between Italy, England, and
Abyssinia are continuing. The
object of the negotiations is to
secure the withdrawal of Italian
troops from the Sudan.

THE negotiations between Italy, England, and
Abyssinia are continuing. The
object of the negotiations is to
secure the withdrawal of Italian
troops from the Sudan.

GUARANTEED THE LARGEST CIRCULATION OF ANY NEWSPAPER
IN KENYA, UGANDA, TANGANYIKA AND ZANZIBAR

African Standard

MOMBASA TIMES & UGANDA ARGUS.
THE OLDEST ESTABLISHED NEWSPAPER PUBLISHED IN KENYA AND UGANDA.
NAIROBI, THURSDAY, APRIL 22, 1928.

THE
LOUNGE
FOR
COCKTAILS
AND
TEAS
THE
DINING ROOM
FOR
BREAK FASTS,
LUNCHEONS, and
DINNERS.
Price 30 CENTS

MORE MOTORISTS MEET
IN THE DOCK.

The Post Office Shows
the Pace.

SHOPPING ETIQUETTE

There were more motor cars
jostling in the dock, and the
post office shows the pace.

MOVE ALONG

Mr. C. C. Veldt took the
place for moving an obstruction
in the dock.

USE THE S.F.G.

Mr. Whitaker was charged
with leaving his car outside
the dock.

MR. WHITAKER

A HASTY DEPARTMENT

The most one was against
the hasty department.

THE MAGISTRATE

Mr. Magistrate (to accused):
Are you the man who rode a
motor car?

RED TAPE HOUND

A Gentleman is off to twenty
hours delivery letters.

DEATH OF SIR SQUIRE
BANCROFT.

Celebrated Comrade of Sir
Henry Irving.

THE STAGE OF 40 YEARS

THE celebrated actor and
theater manager was born
in London in 1841.

MR. SQUIRE

Mr. Squire Bancroft was
born in London in 1841.

ENGINEERS' DEMAND

THE Joint Engineering Trades
Council has issued a demand
for a 10% increase.

BALLOT ON THE QUESTION
OF A STRIKE

THE Joint Engineering Trades
Council has issued a demand
for a 10% increase.

THE MONEY MARKET

Silver—20 1/16
Gold—148 1/2
Dollars—48 1/2

CAPACITY OF A PORT

Mr. Baird was summoned to
be heard on April 23.

AN EMPIRE PROBLEM

History of Oustment South
African Bill.

AL-Party Conference to
be Held.

THE South African Bill to give
effect to the 1905-6 Convention
is the subject of a conference.

THANKS TO THE R.F.P.

THE R.F.P. has been started
in the Cape Town district.

U.S.A. Consular Fees

QUESTION OF CITIZENSHIP
AT MOMBASA

AT a recent meeting of the
Executive Committee of the
British Chamber of Commerce.

THE position in which Indians
in South Africa had been placed.

LADIES' LIGHTWEIGHT MACKINTOSHES

Trench style in Tan; very durable for heavy
travelling, and strong.

LADIES' FOOTWEAR

Made from a good reliable material.
Made to last the longest.

FLIGHT THAT TAKES
IN NAIROBI.

R.A.F. Airmen Start on the
Return.

CAPE TOWN SEND-OFF

THE R.A.F. party has started
on their flight to Cape Town.

THE SPORTSMAN RIDING GEAR

For the sportsman riding gear
with a fine quality of leather.

BLACK OR YELLOW SKIRTS

THE sportsman riding gear
with a fine quality of leather.

MOTOR LEGGINGS

THE sportsman riding gear
with a fine quality of leather.

GIRLS' "FIF" WATERPROOF CAPS

THE sportsman riding gear
with a fine quality of leather.

LADIES' FOOTWEAR

Made from a good reliable material.
Made to last the longest.

THE "FLAVOURS" RAINCOAT

THE "SUNBURY" SLIPON RAINCOAT

THE "DEERY" TRENCH COAT

THE "NEWMARKET" PAMAMA COAT

THE "SPORTSMAN RIDING GEAR"

BLACK OR YELLOW SKIRTS

MOTOR LEGGINGS

GIRLS' "FIF" WATERPROOF CAPS

LADIES' LIGHTWEIGHT MACKINTOSHES

LADIES' FOOTWEAR

THE "FLAVOURS" RAINCOAT

THE "SUNBURY" SLIPON RAINCOAT

THE "DEERY" TRENCH COAT

THE "NEWMARKET" PAMAMA COAT

THE "SPORTSMAN RIDING GEAR"

BLACK OR YELLOW SKIRTS

MOTOR LEGGINGS

GIRLS' "FIF" WATERPROOF CAPS

LADIES' LIGHTWEIGHT MACKINTOSHES

LADIES' FOOTWEAR

THE "FLAVOURS" RAINCOAT

THE "SUNBURY" SLIPON RAINCOAT

THE "DEERY" TRENCH COAT

THE "NEWMARKET" PAMAMA COAT

THE "SPORTSMAN RIDING GEAR"

Whiteaway,
Laidlaw & Co., Ltd.
NAIROBI.

CONSTANT DANGER TO TOWNSPEOPLE. Electric Standards Not Properly "Earthed".

NAIROBI CHAMBER OF COMMERCE. Prepares for Meeting of Association.

KENYA AND UGANDA TRADE BALANCE. Imports and Exports.

DISTRICT NOTES. Mombasa Correspondent.

EAST AND WEST AFRICAN POLICIES. A contrast.

MAE MARSH. "The World Awakening".

Bio Tea This Dance FRIDAY.

COAST AND COUNTRY VIEWS. Based on Evidence of the Company Engineer.

Having been a resident for several years...

From H.M. Trade Commission office...

On the 27th shows an export of 194 tons...

Mr. H. M. T. Jones, the 22 years old...

The following leading article appeared recently...

The Upper Secretary for the Colonies...

THE FINDING. This being all the evidence adduced...

Mr. Aronson drew attention to the fact...

On the 27th shows an export of 194 tons...

On the 27th shows an export of 194 tons...

On the 27th shows an export of 194 tons...

On the 27th shows an export of 194 tons...

On the 27th shows an export of 194 tons...

Christian Missions in Africa.

INTERNATIONAL CONFERENCE IN BELGIUM.

NAIROBI CHAPLAIN.

OBITUARY.

OBITUARY.

OBITUARY.

OBITUARY.

INTERNATIONAL CONFERENCE IN BELGIUM.

INTERNATIONAL CONFERENCE IN BELGIUM.

INTERNATIONAL CONFERENCE IN BELGIUM.

INTERNATIONAL CONFERENCE IN BELGIUM.

INTERNATIONAL CONFERENCE IN BELGIUM.

INTERNATIONAL CONFERENCE IN BELGIUM.

INTERNATIONAL CONFERENCE IN BELGIUM.

INTERNATIONAL CONFERENCE IN BELGIUM.

INTERNATIONAL CONFERENCE IN BELGIUM.

INTERNATIONAL CONFERENCE IN BELGIUM.

INTERNATIONAL CONFERENCE IN BELGIUM.

INTERNATIONAL CONFERENCE IN BELGIUM.

INTERNATIONAL CONFERENCE IN BELGIUM.

INTERNATIONAL CONFERENCE IN BELGIUM.

INTERNATIONAL CONFERENCE IN BELGIUM.

INTERNATIONAL CONFERENCE IN BELGIUM.

INTERNATIONAL CONFERENCE IN BELGIUM.

INTERNATIONAL CONFERENCE IN BELGIUM.

INTERNATIONAL CONFERENCE IN BELGIUM.

INTERNATIONAL CONFERENCE IN BELGIUM.

INTERNATIONAL CONFERENCE IN BELGIUM.

INTERNATIONAL CONFERENCE IN BELGIUM.

INTERNATIONAL CONFERENCE IN BELGIUM.

INTERNATIONAL CONFERENCE IN BELGIUM.

INTERNATIONAL CONFERENCE IN BELGIUM.

INTERNATIONAL CONFERENCE IN BELGIUM.

INTERNATIONAL CONFERENCE IN BELGIUM.

INTERNATIONAL CONFERENCE IN BELGIUM.

INTERNATIONAL CONFERENCE IN BELGIUM.

INTERNATIONAL CONFERENCE IN BELGIUM.

INTERNATIONAL CONFERENCE IN BELGIUM.

INTERNATIONAL CONFERENCE IN BELGIUM.

INTERNATIONAL CONFERENCE IN BELGIUM.

INTERNATIONAL CONFERENCE IN BELGIUM.

INTERNATIONAL CONFERENCE IN BELGIUM.

Lyric Hall TO-NIGHT 8.45. MAE MARSH IN "The World Awakening" COMEDY. TOPICAL BUDGET.

The E. D. BRAND GENTS SHOES GUARANTEED. No. 855. No. 854. No. 853.

EADIES SHOE DEPOT. P. O. Box 149. NAIROBI.

THEATRE ROYAL. TO-NIGHT NAOMI RUTHERFORD - FLORENCE VIE - MONTY O'DONOVAN. DICK CRUICKSHANKS - GEO R. FREDD. And Full Company - IN - SPRING CLEANING. A SENSATIONAL MODERN PLAY. DESIGNED FOR ADULTS ONLY. BOOK EARLY AT THE REMINGTON AGENCY.

Departments in which WARINGS specialise. MILLINERY. For Day and Evening wear. DAY PROCKS. BEST GOWNS. DRESSING GOWNS. BLOUSES. GLAZED SLIPPERS. GOWN and Suits. Doublet "Boysie".

FRENCH BATH SOAPS BY SAVONNERIE D'ORVAL, PARIS. DELICATELY PERFUMED. SOOTHING TO THE SKIN. GENTLE AND EFFECTIVE. PURE DISCOUNT.

PROPRIETARY MANAGERS: ROBERT and W. H. GAZLEY. Agents: Port Sudan, Soc. Port Said, Genoa and Harlingen.

HERNANDY the SOUTH AFRICA. Managers: De Beers, "The Agency," Johannesburg, Port Elizabeth, S.A. Ports and Company Ltd.

MON-CASTLE MAIL STEAMSHIP Co., Ltd. THE COMPANY'S AGENTS.

HOLLAND AFRIKA LIJN. JOINT SERVICE. HOLLAND OOST AFRIKA LIJN.

Table with shipping schedules for various ports including Cape, April 24, and others.

Agents: H. Thacker, Lead and Estate Agent, and THIAN-NI, SIA, Soy Estate.

PESTS! MOST EFFECTIVELY REMOVED FROM COFFEE & FRUIT TREES BY "OPEX".

USE THE "MYSTO" SPRAYER. J.W. MILLIGAN & CO. Box 148, NAIROBI.

Short Loans Granted. £1 to £1000. CALL OR WRITE TO THE Kenya Loan & Discount Co., Ltd. Court Chambers, (1st Floor) Box 546, NAIROBI.

ALIBHAI & Co. NAIROBI. REPAIR LADIES and GENTS TAILORS. HENRY and SAILMAKERS and SAFARI-OUTFITTERS.

WAGONS BUILT BY BLACKSMITH, FARRIER. STOCKS of AXLES, DRAPERS, WAGGONS, and ALL WAGGON PARTS.

DANCING. HARBORI SCHOOL OF DANCING FOR CHILDREN AND ADULTS. Classes and Private Lessons.



M. P. de Mello. P.O. Box 64 NAIROBI.

ENLARGEMENTS. SPAN PHOTOGRAPH. 2 COPIES FREE.



P. GETHIN. 'Phone: 158. HUDSON SUPER-BIX CARBON FOR MIDE DAY AND NIGHT.

NOTICE. A large consignment of the well known "M.K." marks boots and shoes arrived for Gethin's Cash Boot Store, Gertl Road (Facing Winterton).

ZIGLER'S DIM-BLANKETS DYING MOLE. Town Licensing Office: J. STEPHENS, Ltd. (Incorporated in Ceylon, S. 144).

JOHN RIFKIN. 814 Bush Avenue. P.O. Box 110, NAIROBI.

SAM RIFKIN. WAGON BUILDER, BLACKSMITH, FARRIER. P.O. Box 475. 'Phone 143. 1007 STREET, NAIROBI.

FOR SALE. BUSINESS PLOTS in Abud Waberi's Estate. (Swamp-Near Road Section) One of the Future Neigotes. P.O. No. 1. CAMERO ROAD.

MOMBASA CRITICISM OF PORT COMMISSION'S REPORT. Commercial Views.

A "LIVE DEPARTMENT" WANTED BY THE COAST. Not a Railway Off-shoot.

HARBOR BOARD NOT TO BE USED TO MANIPULATE PROTECTION PRINCIPLES.

The Mombasa Chamber of Commerce... The Harbor Board not to be used to manipulate protection principles.

Further resolution... A further resolution on the same matter was then proposed by Mr. Pandyas as follows:

Mr. Pandyas proposed a resolution dealing with the time allowed for clearing cargo under the new system, as contained in the Commission's Report.

Mr. Pandyas raised the question of the Harbor Board's action in proposing the new system, and the Commission's Report.

Mr. Campbell thought the light thrown up by the regulations would be a serious matter in getting cargo to arrange.

Mr. Clark understood the Commission's intention in proposing the new system, and the Commission's Report.

HEURY HOPE & SONS LTD. Manufacturers of All Types of STEEL CASEMENTS.

BEALES & SMITHSON. "Avenue House," P.O. Box 326, NAIROBI.

...the Customs had not... Mr. Pandyas proposed the following resolution...

NEW BERTHS. Mr. Sever, seconded by Mr. Clark, proposed the following resolution...

Mr. Sever seconded by Mr. Clark, proposed the following resolution...

Mr. Sever seconded by Mr. Clark, proposed the following resolution...

Mr. Sever seconded by Mr. Clark, proposed the following resolution...

Mr. Sever seconded by Mr. Clark, proposed the following resolution...

Mr. Sever seconded by Mr. Clark, proposed the following resolution...

Mr. Sever seconded by Mr. Clark, proposed the following resolution...

Mr. Sever seconded by Mr. Clark, proposed the following resolution...

Mr. Sever seconded by Mr. Clark, proposed the following resolution...



J. DOBBIE. Watchmaker, Jeweller & Optician. Government Road, Nairobi.

Just Arrived. Wall's Celebrated Specialities.

Best Assorted Gellatines 1. 60 per tin. Beef Dripping 2. 25 per tin. Lard 2. 50 per 5 lb. tins. Lard 2. 75 per 1 lb. tins. Oxford Brown 1. 75 per tin. Most Paste 1. 75 per tin. Most Paste 2. 75 per tin. Assorted Soups 2. 75 per tin. Smoked Sausages 2. 30 per tin. Vienna Sausages 2. 30 per tin.

Elliots NAIROBI. Phone 60. B. O. Box 175.

As a result of negotiations between the manufacturers of the well-known make of "K" Boots and Shoes and Goltman's Cash Boot Store, a cable is being appointed Messrs. Goltman as their sole Retail Agents for the whole of this district.

NEW STOCKS JUST UNPACKED. GOLDMAN'S ONLY ADDRESS: P.O. Box 128, GOVERNMENT ROAD, NAIROBI. (Adjacent to "TROCADERO").

BUGHANAN'S WHISKY. BY APPOINTMENT TO HIS MAJESTY KING GEORGE V. & H.R.H. THE PRINCE OF WALES. The increasing demand throughout the World is the best testimony of the fine qualities, which are consistently maintained by numerous reserve stocks.

HARLEY-DAVIDSON

THE MOTORCYCLE MAGNIFICENT... SOLO 500 1200 75 H.P. COMBINATION... Complete equipped with Motor, Hood and Screen "Almaly" Lubricating System... HARLEY-DAVIDSON, The Inventors.

TRUSTY TRIUMPH

A consignment of these famous machines will be here very shortly. TERMS: CASH ON DELIVERY. J. O. SUTTON, Motor Engineer, NAIROBI. HARRINGTON STREET, OFFICIAL SERVICE STATION FOR THE ABOVE MOTOR CYCLES.

Colonial General Stores

GOVERNMENT ROAD, NAIROBI. High Class Grocers, Provision, Wine and Spirit Merchants. Fresh stocks arriving by every mail. GIVE US A TRIAL. YOU WILL NOT BE DISAPPOINTED. Phone 208. P. O. Box 426.

LONG JOHN Special Reserve Scotch Whisky. Wholesale Distributors - D. Epstein & Co., NAIROBI. Do you want to BUY a farm? Do you want to SELL a farm? Do you want money on approved security? Do you want trained oxen?

NOMBASA CRITICISM OF PORT COMMISSION REPORT.

(Continued from page 7.)

the existing company with large capital and was to be put out of business without any compensation. It is suggested that the existing company on every part of the work of the Commission and the Harbour Department.

Mr. Clark's criticism Section 94 (1) of the Report which deals with the expenditure to be submitted to the General Manager to the Board... Mr. Clark's criticism Section 94 (1) of the Report which deals with the expenditure to be submitted to the General Manager to the Board... Mr. Clark's criticism Section 94 (1) of the Report which deals with the expenditure to be submitted to the General Manager to the Board...

the existing company with large capital and was to be put out of business without any compensation. It is suggested that the existing company on every part of the work of the Commission and the Harbour Department. Mr. Clark's criticism Section 94 (1) of the Report which deals with the expenditure to be submitted to the General Manager to the Board...

of the Uganda Railway, as in many ways it would be to the benefit of the colony, he wanted to be as all important as the department in Mombasa.

Two of Mr. Bay's resolutions were withdrawn as he had not time to discuss them. Mr. Clark's criticism Section 94 (1) of the Report which deals with the expenditure to be submitted to the General Manager to the Board...

The Chairman then asked the Chairman if he had any further guidance the report as a whole or any section they would take for the guidance of their delegates to the Harbour Commission.

Mr. Clark thought that however much he would like to support the recommendations of the Commission, it was not extremely difficult for the Harbour Commission to make a resolution approving the Report in view of the interest in the Harbour.

A LEAVE DEPARTMENT.

Other resolutions were proposed by Mr. Bay's general trend of which appeared to be summed up in the proposer's own words that the Government could do with justice every one of the recommendations as they stood today.

A Resurrection

The PHENIX once more raises its head from its ASHES.

Blacklaws & Brown

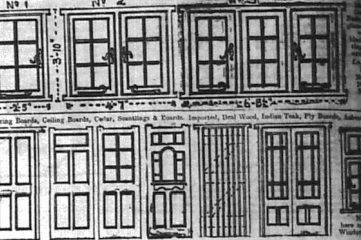
leg to announce that they have taken over all the recently arrived stocks of MACKINNON BROTHERS and will carry on the established business of General Merchants under their own name in the premises recently vacated by Mr. M. W. Wainman.

Opening on the 19th April.

Blacklaws & Brown

MACKINNON BROTHERS, NAIROBI.

Geo. BLOWERS. BUILDING CONTRACTOR, MANUFACTURER, AND USER OF IMPROVED CASE WITH



OUR COMPLETE RANGE OF CASES IS A GUARANTEED SERVICE. 'PERFORMERS'; THE LATEST SPECIFICATION IN BRASS - EXPANDED METAL - GALVANIZED STEEL - WOOD - LAMINATED. ESTIMATES. The above is a sketch of these work plans. We make them in any quantity. Works - Sidon Road.

Happiness abounds

Where health is born of perfect teeth!

Advertisement for toothbrushes and dental products. Includes an illustration of a child brushing their teeth and a list of products like 'Mother's Children Juice' and 'Tooth Paste'.

CITROEN MODEL DE LUXE 4 Wheel Brakes. Clock - Speedometer. Special Colour & Nickel Plated Finish. Better Value than ever £265. Moulton & Morrison Ltd. Late Monckton & Sear Ltd. Sixth Avenue, NAIROBI, Sixth Avenue.

Remington Charles W are. Portable. P. O. Box 170. TURF ACCOUNTANT. BOOKS OPEN ON Jubilee Stakes, DERBY. Terms cash or deposit accounts. OAKLEIGH PRIVATE HOTEL. Comfortable and up-to-date in every way. Up country visitors specially catered for. Under the personal supervision of Mrs. H. HARRISON, NAIROBI. P. O. Box 87.

Table with columns: DESTINATION, ARRIVAL, DEPARTURE. Lists various locations like Kampala, Entebbe, Kisumu, and their respective arrival and departure dates.

Advertisement for TOMATO SOUP. Includes an illustration of a soup can and text: 'SPECIAL REDUCTION IN WOOL CLOTHING, GENTS SUITS AND LADIES COSTUMES, RIDING BREECHES, ETC. TO SUIT ANY POCKET. WE OFFER A CHOICE COLLECTION OF QUALITIES SUITABLE FOR OFFICE AND GENERAL WEAR. P. O. BOX 355, NAIROBI.'

"STANDARD" FEATURE PAGE

NATIONAL BANK OF INDIA LIMITED. (Incorporated in the United Kingdom).

Bankers to the Colony and Protectorate of Kenya and Uganda, British East Africa.

Subscribed Capital: 45,00,000. Paid-up Capital: 22,00,000. Reserve Fund: 22,80,000.

HEAD OFFICE: 1, Leadenhall Street, London E.C.3. BRANCHES: Bombay, Calcutta, Madras, Rangoon, Singapore, etc.

FIXED DEPOSITS: Deposits are received for fixed periods on terms which may be learned on application.

EXCHANGE: The Bank grants drafts on the Head Office, and Branches all the current rates of exchange forwarding first copy of the Bill direct to the payee.

AGENTS: Messrs. J. H. & A. D. Dobbie, Nairobi.

E. DOBBIE, OPHTHALMIC OPTICIAN. Government Board. NAIROBI.

QUALIFIED REFRACTIONIST. In Attendance: Hours: 10-12 p.m. Saturdays 10-12. Telephone No. 96.

BEST DRESSES MADE BY SEVERE TAILOR. A TRIAL SOLICITED. ALSO NEW STOCK OF SILK JUST RECEIVED.

B. CHOITRAM. OFFICE ROAD NAIROBI. IF YOU WANT SATISFACTION.

FARMING JOTTINGS.

A Resume of Current Topics.

COFFEE SHADE.

[By "Reverence"] The problem of shade in coffee plantations is one of the most important and constantly recurring ones in the tropics...

It is the practice to plant a number of trees to each coffee tree, but the number of trees to be planted is a matter of opinion...

TREE LIMITATIONS.

In the selection of the owners of coffee estates they may be tempted to buy land for a large area...

DEAD SHADE.

To planters in this district the important question of Mr. B. O. Hensford of Soc. is the best way to deal with dead shade...

From branches of Manacra, and on wire stretched to steel posts... The writer has occasionally been troubled by the above and has been advised to try the following...

These are some districts in which the coffee has already been planted in the shade of trees... It is the practice to plant a number of trees to each coffee tree...

There are a number of potential causes of a small coffee estate... The first of these is the shade of trees...

The shade of trees is a very important factor in the selection of the owners of coffee estates... It is the practice to plant a number of trees to each coffee tree...

It is one of the most important and constantly recurring ones in the tropics... The problem of shade in coffee plantations is one of the most important...

It is the practice to plant a number of trees to each coffee tree, but the number of trees to be planted is a matter of opinion...

It is the practice to plant a number of trees to each coffee tree, but the number of trees to be planted is a matter of opinion... The problem of shade in coffee plantations is one of the most important...

It is the practice to plant a number of trees to each coffee tree, but the number of trees to be planted is a matter of opinion... The problem of shade in coffee plantations is one of the most important...

It is the practice to plant a number of trees to each coffee tree, but the number of trees to be planted is a matter of opinion... The problem of shade in coffee plantations is one of the most important...

It is the practice to plant a number of trees to each coffee tree, but the number of trees to be planted is a matter of opinion... The problem of shade in coffee plantations is one of the most important...

It is the practice to plant a number of trees to each coffee tree, but the number of trees to be planted is a matter of opinion... The problem of shade in coffee plantations is one of the most important...

It is the practice to plant a number of trees to each coffee tree, but the number of trees to be planted is a matter of opinion... The problem of shade in coffee plantations is one of the most important...

It is the practice to plant a number of trees to each coffee tree, but the number of trees to be planted is a matter of opinion... The problem of shade in coffee plantations is one of the most important...

It is the practice to plant a number of trees to each coffee tree, but the number of trees to be planted is a matter of opinion... The problem of shade in coffee plantations is one of the most important...

It is the practice to plant a number of trees to each coffee tree, but the number of trees to be planted is a matter of opinion... The problem of shade in coffee plantations is one of the most important...

It is the practice to plant a number of trees to each coffee tree, but the number of trees to be planted is a matter of opinion... The problem of shade in coffee plantations is one of the most important...

It is the practice to plant a number of trees to each coffee tree, but the number of trees to be planted is a matter of opinion... The problem of shade in coffee plantations is one of the most important...

It is the practice to plant a number of trees to each coffee tree, but the number of trees to be planted is a matter of opinion... The problem of shade in coffee plantations is one of the most important...

Locusts! Be still, the producer of a good South African tree. In the Telfairia creper we have a potential substitute for Mr. Hensford's dry covering. It has a covering of dry covering. It has a covering of dry covering.

It is the practice to plant a number of trees to each coffee tree, but the number of trees to be planted is a matter of opinion... The problem of shade in coffee plantations is one of the most important...

It is the practice to plant a number of trees to each coffee tree, but the number of trees to be planted is a matter of opinion... The problem of shade in coffee plantations is one of the most important...

It is the practice to plant a number of trees to each coffee tree, but the number of trees to be planted is a matter of opinion... The problem of shade in coffee plantations is one of the most important...

It is the practice to plant a number of trees to each coffee tree, but the number of trees to be planted is a matter of opinion... The problem of shade in coffee plantations is one of the most important...

It is the practice to plant a number of trees to each coffee tree, but the number of trees to be planted is a matter of opinion... The problem of shade in coffee plantations is one of the most important...

It is the practice to plant a number of trees to each coffee tree, but the number of trees to be planted is a matter of opinion... The problem of shade in coffee plantations is one of the most important...

It is the practice to plant a number of trees to each coffee tree, but the number of trees to be planted is a matter of opinion... The problem of shade in coffee plantations is one of the most important...

It is the practice to plant a number of trees to each coffee tree, but the number of trees to be planted is a matter of opinion... The problem of shade in coffee plantations is one of the most important...

It is the practice to plant a number of trees to each coffee tree, but the number of trees to be planted is a matter of opinion... The problem of shade in coffee plantations is one of the most important...

It is the practice to plant a number of trees to each coffee tree, but the number of trees to be planted is a matter of opinion... The problem of shade in coffee plantations is one of the most important...

South African Railways.

One Visit Deserves Another.

Those who have once spent a holiday in the Union of South Africa always want to know if the planning, the order they have enjoyed, the health they have enjoyed and the comfortable travel facilities available on the South African Railway.

Summer and winter weather—sunshine—brilliant spring—National Park in the DeWalding—hunting and all sporting interests.

For particulars apply to: Trade Commissioner for Union of South Africa.

Memorial Hall, Box 624 Nairobi.

Toilet Requisite Co. Proprietors: Eileen Simons. Telegrams: Gynon. Phone 348.

Have your hair attended to—by a list class Hairdresser the only one in the city trained at EMILE LONDON who are the originators of The Gallia "Bonelle" Permanent Waving Powders, Perfumes, etc., always in stock.

Kijabe Hotel Kijabe.

Five minutes from Interlocking Climate Health Resort. Grand 4-Down Bedding Valley. Best centre for Big Game Shooting in Kenya.

P. STEWART, PAINTER & DECORATOR. Residing: 300, Upper Hill, Nairobi.

TO LET. Two double bedded rooms at Park Hotel, Nairobi. Apply Box 226.

Why appeals to the RIVER... A hand-brake where you want it—in the way and out of the way—with auto-release. A ball accelerator—no rough road jazz—no footrest needed. Grouped instruments with shrouded lights and silver dial—No dazzle. Steering wheel light control without stooping or risk of turning the ignition key.

RIVER

AUTOGRAPH.

DRIVERS & BRASSIERS.

These are genuine autograph clubs direct from the professionals who workshops, and they are perfect specimens of what good clubs can be.

BY FRANK BALL
Driver or Brassier.
Shs. 35/- each.

BY JAMES BRAD.
Driver or Brassier.
Shs. 29/6 each.

We stock the best Golf Goods.

WELLS 5 We allow per cent. cash discount.

NAIROBI.

FRED RAPER

GENERAL COMMISSION AGENT.

P.O. Box 41. CITY HOUSE. Phone 148.

Consignment of Saddlery and Saddles just arrived Military Tarpuilina. Camp Furnitures. Water Proof Capes. Ox Collars.

AMMUNITION SHAW & HUNTER

REPLIES. SHOT GUNS. AUTOMATICS. REVOLVERS.

REPAIRS BY EUROPEAN EXPERTS.

Box 70 NAIROBI

CALL & SEE OUR SELECTION

STOP THAT BOUNCING.

YOU WILL RUIN YOUR CAR AND NEVER GET THAT SMOOTH AND DELIGHTFUL COMFORT THAT YOU ALWAYS GET WITH LINCOLN SHOCK ABSORBERS

LINCOLN BALL BEARING

Now in stock to fit: Humphreys, Dodge, Chevrolet, etc.

The Motor Mart & Exchange, Ltd.

NAKURU, NAIROBI.

Rifles. Rifles.

WE STOCK THE FOLLOWING—

B.S.A. .303, .45 and .355 Sporting

B.S.A. .303 Magazine

Westley Richards' .375 Accelerated Express

Rifles. .350 Magnum

Holland & Holland. .375 Magnum

Mannlicher-Schönauer. 256, 7 m. m. 9 m. m. 9 m. m.

do. Carbine 224

Remington. 22, 32 & 44 Repeaters.

Remington. 30 Bolt Action

Browning. 22 High velocity.

Savage. 22 Single shot & Repeaters.

Also double barrel rifles in excellent condition including 9.3 m. m. 450/400 No. 2; 470/475 No. 2 & 277

Prices and particulars on application to

Phone 32. **MAY & CO.,** Box 47

The SPORTS House.

J. R. Stephens & Co. Ltd.

THE TAILORS & OUTFITTERS

Official Outfitters to Kenton College

All requirements for boys returning to school

IN STOCK

GOVERNMENT ROAD

P.O. Box 233 NAIROBI Phone 271

THE SPORTS PAGE

HOME FOOTBALL.

League Tables Compiled Up to Date.

NEARING THE END

The following are the tables of the English and Scottish football leagues compiled up to date (Saturday April 7).

ENGLISH LEAGUE.

First Division.

Club	P.	W.	D.	L.	F.	A.	Pts.
Manchester	22	11	7	4	28	17	29
Sheff Wed	22	11	7	4	28	17	29
Sheff Utd	22	11	7	4	28	17	29
Sheff Mon	22	11	7	4	28	17	29
Sheff Wals	22	11	7	4	28	17	29
Sheff Friars	22	11	7	4	28	17	29
Sheff Thos	22	11	7	4	28	17	29
Sheff Albion	22	11	7	4	28	17	29
Sheff Hallam	22	11	7	4	28	17	29
Sheff Rovers	22	11	7	4	28	17	29
Sheff Park	22	11	7	4	28	17	29
Sheff Victoria	22	11	7	4	28	17	29
Sheff Lincoln	22	11	7	4	28	17	29
Sheff Notts	22	11	7	4	28	17	29
Sheff Barnsley	22	11	7	4	28	17	29
Sheff Don	22	11	7	4	28	17	29
Sheff Rotherham	22	11	7	4	28	17	29
Sheff Wakefield	22	11	7	4	28	17	29
Sheff Halifax	22	11	7	4	28	17	29
Sheff Bradford	22	11	7	4	28	17	29
Sheff Burnley	22	11	7	4	28	17	29
Sheff Bolton	22	11	7	4	28	17	29
Sheff Rochdale	22	11	7	4	28	17	29
Sheff Oldham	22	11	7	4	28	17	29
Sheff Huddersfield	22	11	7	4	28	17	29
Sheff Leeds	22	11	7	4	28	17	29
Sheff Liverpool	22	11	7	4	28	17	29
Sheff Everton	22	11	7	4	28	17	29
Sheff Manchester City	22	11	7	4	28	17	29
Sheff Manchester United	22	11	7	4	28	17	29

EMPIRE BILLIARDS.

South African Competitor Beaten.

London, April 10.—At Thurston's Billiard Hall, London, in the third match of the British Empire Billiards tournament, South African competitor, P. Kesteven (South Africa) was beaten 2,000 points to 1,000.

Home Racing.

Mr. Charles West received a public yesterday morning announcing the following probable starters and jockeys for the City and Suburban Handicap at Kempton yesterday afternoon.

Warren of the Marches 9 (Dougherty)

Sparan 9 (H. Austin)

Southdown 9 (D. B. Haynes)

Golden Palace 7 (J. G. Mearns)

Grand Joy 7 (D. B. Haynes)

Black Prince 7 (D. B. Haynes)

Nedder 7 (D. B. Haynes)

The Black 7 (D. B. Haynes)

Arads 7 (D. B. Haynes)

Head 6 (D. B. Haynes)

Mr. West announced that the above information was received by wire from his track up to 10 a.m. today.

THE LINCOLNSHIRE.

Mr. J. G. Mearns, who is in charge of the Lincolnshire race meeting, has announced that the race meeting of the year started at Lincoln on Monday as a better off meeting with spectators than any other race meeting in the country. He said that the race was a very good one and that the spectators were very well satisfied with the result. He also said that the race was a very good one and that the spectators were very well satisfied with the result.

NORTHERN SECTION.

Third Division.

Club	P.	W.	D.	L.	F.	A.	Pts.
Sheff Albion	22	11	7	4	28	17	29
Sheff Hallam	22	11	7	4	28	17	29
Sheff Rovers	22	11	7	4	28	17	29
Sheff Park	22	11	7	4	28	17	29
Sheff Victoria	22	11	7	4	28	17	29
Sheff Lincoln	22	11	7	4	28	17	29
Sheff Notts	22	11	7	4	28	17	29
Sheff Barnsley	22	11	7	4	28	17	29
Sheff Don	22	11	7	4	28	17	29
Sheff Rotherham	22	11	7	4	28	17	29
Sheff Wakefield	22	11	7	4	28	17	29
Sheff Halifax	22	11	7	4	28	17	29
Sheff Bradford	22	11	7	4	28	17	29
Sheff Burnley	22	11	7	4	28	17	29
Sheff Bolton	22	11	7	4	28	17	29
Sheff Rochdale	22	11	7	4	28	17	29
Sheff Oldham	22	11	7	4	28	17	29
Sheff Huddersfield	22	11	7	4	28	17	29
Sheff Leeds	22	11	7	4	28	17	29
Sheff Liverpool	22	11	7	4	28	17	29
Sheff Everton	22	11	7	4	28	17	29
Sheff Manchester City	22	11	7	4	28	17	29
Sheff Manchester United	22	11	7	4	28	17	29

NORTHERN SECTION.

Second Division.

Club	P.	W.	D.	L.	F.	A.	Pts.
Sheff Albion	22	11	7	4	28	17	29
Sheff Hallam	22	11	7	4	28	17	29
Sheff Rovers	22	11	7	4	28	17	29
Sheff Park	22	11	7	4	28	17	29
Sheff Victoria	22	11	7	4	28	17	29
Sheff Lincoln	22	11	7	4	28	17	29
Sheff Notts	22	11	7	4	28	17	29
Sheff Barnsley	22	11	7	4	28	17	29
Sheff Don	22	11	7	4	28	17	29
Sheff Rotherham	22	11	7	4	28	17	29
Sheff Wakefield	22	11	7	4	28	17	29
Sheff Halifax	22	11	7	4	28	17	29
Sheff Bradford	22	11	7	4	28	17	29
Sheff Burnley	22	11	7	4	28	17	29
Sheff Bolton	22	11	7	4	28	17	29
Sheff Rochdale	22	11	7	4	28	17	29
Sheff Oldham	22	11	7	4	28	17	29
Sheff Huddersfield	22	11	7	4	28	17	29
Sheff Leeds	22	11	7	4	28	17	29
Sheff Liverpool	22	11	7	4	28	17	29
Sheff Everton	22	11	7	4	28	17	29
Sheff Manchester City	22	11	7	4	28	17	29
Sheff Manchester United	22	11	7	4	28	17	29

SOUTHERN LEAGUE.

Club	P.	W.	D.	L.	F.	A.	Pts.
Sheff Albion	22	11	7	4	28	17	29
Sheff Hallam	22	11	7	4	28	17	29
Sheff Rovers	22	11	7	4	28	17	29
Sheff Park	22	11	7	4	28	17	29
Sheff Victoria	22	11	7	4	28	17	29
Sheff Lincoln	22	11	7	4	28	17	29
Sheff Notts	22	11	7	4	28	17	29
Sheff Barnsley	22	11	7	4	28	17	29
Sheff Don	22	11	7	4	28	17	29
Sheff Rotherham	22	11	7	4	28	17	29
Sheff Wakefield	22	11	7	4	28	17	29
Sheff Halifax	22	11	7	4	28	17	29
Sheff Bradford	22	11	7	4	28	17	29
Sheff Burnley	22	11	7	4	28	17	29
Sheff Bolton	22	11	7	4	28	17	29
Sheff Rochdale	22	11	7	4	28	17	29
Sheff Oldham	22	11	7	4	28	17	29
Sheff Huddersfield	22	11	7	4	28	17	29
Sheff Leeds	22	11	7	4	28	17	29
Sheff Liverpool	22	11	7	4	28	17	29
Sheff Everton	22	11	7	4	28	17	29
Sheff Manchester City	22	11	7	4	28	17	29
Sheff Manchester United	22	11	7	4	28	17	29

TENNIS IN ENGLAND.

A Cambridge "Freshman" Coming on.

London, April 10.—At the tennis in the final for the British Heat Court Tennis Championship, J. Brington (Prize) beat the 19 year old Cambridge Freshman, H. W. Austin, who is regarded as England's new hope, by 7/5, 4/6, 3/6, 8/6, 6/3.

Miss Joan Fry beat Mrs. Watson in the Ladies final by 6/1, 7/9, 6/1.

H. W. Austin who comes from Repton has been a consistent first four of Drury and Drury, School tournaments during the past few years.

Tennis at Kiumu.

MATH H. BETHENS, SHAW AND THE CLUB

From the University of Cambridge, Kiumu, April 10.—An international tennis match was decided on the Kiumu Club courts on Saturday last between Math H. Bethens and Shaw and the club player, Frank Goddard.

The full score was as follows: 1st set, 6-4; 2nd set, 6-4; 3rd set, 6-4; 4th set, 6-4; 5th set, 6-4.

Local Rugby.

FRUITIVE MATCH DOWN FOR TOMORROW.

A Rugby football match has been arranged for tomorrow between the Kiumu Club and the club player, Frank Goddard.

The following teams will take part in the match: Kiumu Club and the club player, Frank Goddard.

SATURDAY'S MATCH.

The following team will take part in the match: Kiumu Club and the club player, Frank Goddard.

HARLEQUIN FRACTURE.

There will be a fracture for all the boys in the school on Saturday, when a large number of boys are expected to be present.

George Nepia.

Information received from New Zealand that Mr. George Nepia, who is a well known sportsman, has been selected to represent New Zealand in the forthcoming tour to England.

DESIST NEGOTIATIONS TO TURN PROFESSIONAL.

Information received from New Zealand that Mr. George Nepia, who is a well known sportsman, has been selected to represent New Zealand in the forthcoming tour to England.

Nairobi Golf Club Notes.

THE MONTHLY BUBBLE AND A CONTROVERSY.

The Club's monthly bubble competition has created a considerable amount of interest in certain circles.

There was a large number of entries in the bubble competition, and the results were as follows: 1st prize, 1st prize, 1st prize.

The Club's monthly bubble competition has created a considerable amount of interest in certain circles.

There was a large number of entries in the bubble competition, and the results were as follows: 1st prize, 1st prize, 1st prize.

The Club's monthly bubble competition has created a considerable amount of interest in certain circles.

There was a large number of entries in the bubble competition, and the results were as follows: 1st prize, 1st prize, 1st prize.

The Club's monthly bubble competition has created a considerable amount of interest in certain circles.

There was a large number of entries in the bubble competition, and the results were as follows: 1st prize, 1st prize, 1st prize.

The Club's monthly bubble competition has created a considerable amount of interest in certain circles.

There was a large number of entries in the bubble competition, and the results were as follows: 1st prize, 1st prize, 1st prize.

The Club's monthly bubble competition has created a considerable amount of interest in certain circles.

There was a large number of entries in the bubble competition, and the results were as follows: 1st prize, 1st prize, 1st prize.

The Club's monthly bubble competition has created a considerable amount of interest in certain circles.

There was a large number of entries in the bubble competition, and the results were as follows: 1st prize, 1st prize, 1st prize.

The Club's monthly bubble competition has created a considerable amount of interest in certain circles.

There was a large number of entries in the bubble competition, and the results were as follows: 1st prize, 1st prize, 1st prize.

Well Known FABRICS.

FOR Home Dressmakers.

HARDWEAVING MATERIAL FOR LADIES MORNING CHILDREN COWBOYS' DRESSES LINGERIE, and other uses in the home.

AT JACOBS LIMITED

THE HOUSE FOR QUALITY.

P.O. BOX 55. "DUBAIER." "NAIROBI."

NAIROBI.

HAIR'S DRESS LINES.

A hand-wearing all silk cloth in the best cloth for wearing frocks. We can recommend this cloth as being absolutely best in color. The shades in stock are: French Grey, Apple, Blush, Rose, Light, Green, Navy, Pink, and Black.

30 inches wide at Shgs. 1/25 per yard.

ALL SILK BOUTIQUE.

A hand-wearing all silk cloth in all colors only. Washes and wears excellently for children's wear or ladies' morning frocks. Colors: Ruby, Cream, Navy, Green, Navy, Pink, and Black.

30 inches wide at Shgs. 1/25 per yard.

COTTON GEORGETTE.

A delightful Tulle cloth can be used in place of silk crepe Georgette with equal effect. It is a really fine cloth of splendid weaving properties. Black, Navy, Champagne, Ivory, White and Lilac.

30 inches wide at Shgs. 9/50 per yard.

PRINTED COTTON MARSHALL.

A great range of new designs in delightfully up-to-date colorings. This is a very useful cloth and is the new Navy and Brown 30 inches wide at Shgs. 9/75 per yard.

ART SILK LINGERIE FABRICS.

Something entirely new and revolutionary in wearing and washing materials. Dainty self shades. Lamin. 30 inches wide at Shgs. 9/75 per yard.

30 inches wide at Shgs. 9/75 per yard.

ALL WOOL VELVET CLOTH.

A cozy heavy wool cloth for warm coats and suits. Navy, Black, and Brown. 54 inches wide at Shgs. 17/50 per yard.

TOTAL VELVET.

Worsted dyed, self shades for all purposes. Cotton cloth as under: 27 inches at Shgs. 6/00 per yard; 30 inches at Shgs. 6/00 per yard; 36 inches at Shgs. 6/00 per yard.

Kensitas

STANDARD SIZE VIGORIN (Obtainable at ALL STORES in Kenya at 2/60 per pack of 10, 10/60 per pack of 10, D. STOUT & CO., (Wholesale distributors.)

Kenya at 2/60 per pack of 10, 10/60 per pack of 10, D. STOUT & CO., (Wholesale distributors.)

D. & J. McCallum Ltd.

PERFECTION
SCOTCH WHISKY

We are pleased to advise our Patrons that the price has now been reduced and that "Perfection" is now obtainable from all Stores at Sh. 12-50 per bottle.

The same high quality of this blend is being fully maintained.

Smith Mackenzie & Co.,

F.O. Box 300. NAIROBI. Tel. 983.

THE SALISBURY HOTEL
FAMILY & RESIDENTIAL.

Now nearing COMPLETION spacious and airy Stone Bed Rooms each fitted with Hot and Cold running water, also New Open Air Dining Room, and Dance Hall.

Phone 184 NAIROBI. F. O. Box 908

J. H. ENGELBRECHT, NYERI.

Inevitable Passenger Service, Royal Mail and Heavy Motor Transport.

LAND LAND LAND

If you want any thing done to ENGELBRECHT, and if you want a good Farm apply to ENGELBRECHT. I have Several Excellent Farms For Quick Sale.

MOTURING TOPICS

CAR INSURANCE.

The Right Policy and the Right Premium.

HOW TO GO ABOUT IT.

There are few people who are not aware of the necessity for taking out an insurance policy for their cars. A relatively small number, however, take the trouble personally to study the matter in detail. It pays, however, to understand the proposed form and the terms which it includes.

It must be remembered that every company has its own particular form and wording. Therefore, the motorist should read a proposal form of prospective candidate and, methodically, so as to make sure that he understands it before going any further.

The first step in insuring is to obtain from companies' agents details of the policies available. A proposal form, a schedule of premium rates and, if possible, a copy of the policy issued by any company may be obtained. It is interesting to find that in some instances will be invaluable in solving one to its satisfaction.

The first step in insuring is to obtain from companies' agents details of the policies available. A proposal form, a schedule of premium rates and, if possible, a copy of the policy issued by any company may be obtained. It is interesting to find that in some instances will be invaluable in solving one to its satisfaction.

The first step in insuring is to obtain from companies' agents details of the policies available. A proposal form, a schedule of premium rates and, if possible, a copy of the policy issued by any company may be obtained. It is interesting to find that in some instances will be invaluable in solving one to its satisfaction.

The first step in insuring is to obtain from companies' agents details of the policies available. A proposal form, a schedule of premium rates and, if possible, a copy of the policy issued by any company may be obtained. It is interesting to find that in some instances will be invaluable in solving one to its satisfaction.

The first step in insuring is to obtain from companies' agents details of the policies available. A proposal form, a schedule of premium rates and, if possible, a copy of the policy issued by any company may be obtained. It is interesting to find that in some instances will be invaluable in solving one to its satisfaction.

The first step in insuring is to obtain from companies' agents details of the policies available. A proposal form, a schedule of premium rates and, if possible, a copy of the policy issued by any company may be obtained. It is interesting to find that in some instances will be invaluable in solving one to its satisfaction.

limited. No limit should be stipulated as to the number of accidents and the policy should hold good for an unlimited period, either for the whole or a specified number of years. Usually the amount is proportional to the value of the car, although they have no limit the number of accidents which may result in respect of third-party accidents—a point which may be of great importance.

Accidental damage, in that regard, is a very important clause due to breakdown or as a result of wear and tear, and should cover the whole of the car. The wording of various policies is different in this connection and careful attention should be paid to the point. It is important to note whether the cover operates when the car is at rest or is being towed, as this does not always hold good. A policy which provides for delivery of a damaged car to a repairer and redelivery to the owner is to be preferred to one which does not contain this obviously useful benefit.

Fire and theft clauses are usually stated in their meaning, but the extension of replacement value to the original value is most cases. An agreed sum is most other cases. In the good, the owner should see that the value is known, as by this means he will not pay a premium based on a value which he would not obtain in case of total loss. A considerable sum of money can be saved in a few years by attention to this important point.

Personal accident and medical expense clauses are not always included in the policy without extra charge. The limiting amounts often vary, and in some cases, provision is made for compensation for the passenger.

Personal accident and medical expense clauses are not always included in the policy without extra charge. The limiting amounts often vary, and in some cases, provision is made for compensation for the passenger.

Personal accident and medical expense clauses are not always included in the policy without extra charge. The limiting amounts often vary, and in some cases, provision is made for compensation for the passenger.

Personal accident and medical expense clauses are not always included in the policy without extra charge. The limiting amounts often vary, and in some cases, provision is made for compensation for the passenger.

Personal accident and medical expense clauses are not always included in the policy without extra charge. The limiting amounts often vary, and in some cases, provision is made for compensation for the passenger.

Personal accident and medical expense clauses are not always included in the policy without extra charge. The limiting amounts often vary, and in some cases, provision is made for compensation for the passenger.

Personal accident and medical expense clauses are not always included in the policy without extra charge. The limiting amounts often vary, and in some cases, provision is made for compensation for the passenger.

The question of responsibility does not enter into the matter, the whole point is whether a claim has been made. In some cases, the company will allow the bonus in respect of the previous year, although they have no limit the number of accidents which may result in respect of third-party accidents—a point which may be of great importance.

Accidental damage, in that regard, is a very important clause due to breakdown or as a result of wear and tear, and should cover the whole of the car. The wording of various policies is different in this connection and careful attention should be paid to the point. It is important to note whether the cover operates when the car is at rest or is being towed, as this does not always hold good. A policy which provides for delivery of a damaged car to a repairer and redelivery to the owner is to be preferred to one which does not contain this obviously useful benefit.

Fire and theft clauses are usually stated in their meaning, but the extension of replacement value to the original value is most cases. An agreed sum is most other cases. In the good, the owner should see that the value is known, as by this means he will not pay a premium based on a value which he would not obtain in case of total loss. A considerable sum of money can be saved in a few years by attention to this important point.

Personal accident and medical expense clauses are not always included in the policy without extra charge. The limiting amounts often vary, and in some cases, provision is made for compensation for the passenger.

Personal accident and medical expense clauses are not always included in the policy without extra charge. The limiting amounts often vary, and in some cases, provision is made for compensation for the passenger.

Personal accident and medical expense clauses are not always included in the policy without extra charge. The limiting amounts often vary, and in some cases, provision is made for compensation for the passenger.

Personal accident and medical expense clauses are not always included in the policy without extra charge. The limiting amounts often vary, and in some cases, provision is made for compensation for the passenger.

Personal accident and medical expense clauses are not always included in the policy without extra charge. The limiting amounts often vary, and in some cases, provision is made for compensation for the passenger.

Personal accident and medical expense clauses are not always included in the policy without extra charge. The limiting amounts often vary, and in some cases, provision is made for compensation for the passenger.

Personal accident and medical expense clauses are not always included in the policy without extra charge. The limiting amounts often vary, and in some cases, provision is made for compensation for the passenger.

prepared on the spot. It is best to obtain a guarantee a cover note should be obtained from the agent. In some cases, the company will allow the bonus in respect of the previous year, although they have no limit the number of accidents which may result in respect of third-party accidents—a point which may be of great importance.

Accidental damage, in that regard, is a very important clause due to breakdown or as a result of wear and tear, and should cover the whole of the car. The wording of various policies is different in this connection and careful attention should be paid to the point. It is important to note whether the cover operates when the car is at rest or is being towed, as this does not always hold good. A policy which provides for delivery of a damaged car to a repairer and redelivery to the owner is to be preferred to one which does not contain this obviously useful benefit.

Fire and theft clauses are usually stated in their meaning, but the extension of replacement value to the original value is most cases. An agreed sum is most other cases. In the good, the owner should see that the value is known, as by this means he will not pay a premium based on a value which he would not obtain in case of total loss. A considerable sum of money can be saved in a few years by attention to this important point.

Personal accident and medical expense clauses are not always included in the policy without extra charge. The limiting amounts often vary, and in some cases, provision is made for compensation for the passenger.

Personal accident and medical expense clauses are not always included in the policy without extra charge. The limiting amounts often vary, and in some cases, provision is made for compensation for the passenger.

Personal accident and medical expense clauses are not always included in the policy without extra charge. The limiting amounts often vary, and in some cases, provision is made for compensation for the passenger.

Personal accident and medical expense clauses are not always included in the policy without extra charge. The limiting amounts often vary, and in some cases, provision is made for compensation for the passenger.

Personal accident and medical expense clauses are not always included in the policy without extra charge. The limiting amounts often vary, and in some cases, provision is made for compensation for the passenger.

Personal accident and medical expense clauses are not always included in the policy without extra charge. The limiting amounts often vary, and in some cases, provision is made for compensation for the passenger.

Personal accident and medical expense clauses are not always included in the policy without extra charge. The limiting amounts often vary, and in some cases, provision is made for compensation for the passenger.

POLLARD

FOR Pigs and Poultry.

Pollard (or sharp) is entirely a wheat product which contains many important nourishing elements, including the wheat germ. It is approved by "Upland" as a pig food. Price 5s. 6d. per bag of 150 lbs. F.O.B. Njoro. Bags 7s. Good supplies now available.

UNGA LTD., Njoro.

JUST UNPACKED

Jones Bros. Steel Trunks, Ladies' Trunks, Hoops and Toilet Sets, Boys' Jerseys and Jersey Suits, Ladies' Companions, Work Boxes and Hand Bags, Rain Coats, Umbrellas, Walking Sticks, etc.

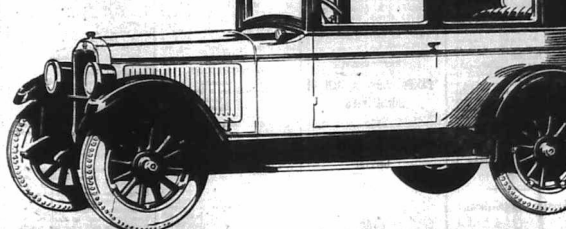
M. R. de SOUZA & Co.
P.O. Box 195. Govt. Road, Njoro.

Up-to-Date Hairdressing

PERMANENT WAVING
GALLIA, "BOURLE", AND EUGENE, MACHINES, USED EVERY UP, TO DATE APPLIANCE USED IN LADIES, AND GENTS, SALOONS.

PHONE 245. GOVERNMENT ROAD, P.O. BOX 195.

The OLDSMOBILE COACH



Beautifully low to the road without sacrificing in inch of clearance, the Oldsmobile Coach has a unique appearance of dashing length and lowness that has been achieved by the finest builders of closed car bodies in the world.

Built stronger and sturdier than an ordinary open touring car body the coach will stand the roughest of roads and hard service.

And the extraordinary performance qualities of the Oldsmobile Six Cylinder Motor place this wonderful car in the foremost rank of the world's fine cars.

Gillfillan & Company, Ltd.
DISTRIBUTORS

Higher Quality—Finer Performance—Lower Price—Not one—but all three.

£368

OVERLAND

A COMPLETE CAR
Metal Safari Body
3 Ply Sun Proof Top
5 Tyres & Tubes
Magneto Ignition

£195

THE OVERLAND
Service Station
Sixth Avenue NAIROBI.

Count Them on the Road!

The DURANT RIGBY

Just a real good car
With a sound service organisation behind it.

SIXTH AVENUE,
NAIROBI.

CARR, LAWSON & Co., Ltd.

P. O. BOX 88,
TRINITY ISL.

The Ideal Medium-Priced Car for this Country.

THE CHRYSLER FOUR

With Hydraulic four-wheel brakes and magneto ignition.
Power speed acceleration economy. Endurance safety.
Touring £365. Chassis £300.

Distributors:
YORK GARAGES Ltd., Nairobi.

PRIDE OF POSSESSION

in the 1926 FORD Models

The every owner of a 1926 FORD product possesses
in its entirety.

Pride in its Performance, its Appearance, its Reliability.

FORD'S unceasing striving for perfection in Car, Truck and
Tractor fields, fosters and protects this most enviable
feature.

The Service Company Limited.

FORD SERVICE STATIONS—MOMBASA, NAIROBI, NAKURU.
IMPORTING DEALERS AND DISTRIBUTORS.

THE SUPREMACY OF SHELL

SPIRIT

has once more been demonstrated in a record-breaking Aircraft Endurance Test carried out recently by a Bristol aeroplane fitted with the latest type "Jupiter" air-cooled engine which has flown 26,072 miles in 225 hours 54 minutes without a single replacement of any kind. The mileage covered is equivalent to a flight right round the world at the Equator. The SHELL SPIRIT used, which was supplied by Messrs. Shell-Mex. Ltd., was similar in quality to that used by the Royal Air Force.

BRITISH IMPERIAL OIL CO. (S.A.) LTD.
SMITH, MACKENZIE & CO., AGENTS.

EMILE JARDIN & Co.

Phone 64. NAIROBI. Box 26.

NOW IN Cearn's Buildings

IN STOCK AT PRESENT.

Whisky, Gin, Vermouth, Brandy, Sherry, Champagne.

AT THE COAST
16 different qualities of Red & White Wine also 5 different qualities of Port Wine.

INSURE WITH THE OLDEST SCOTCH INSURANCE OFFICE.

THE CALEDONIAN Insurance Company.

INCORPORATED BY ROYAL CHARTER AD 1805.
Principal Agents: R. O. HAMILTON LTD.
Box 302, NAIROBI. Phone 352.

DEFINITE REASONS

There are definite reasons for the popularity of

B.S.A.

Motor Bicycles

Every L100 is the B.S.A. FRAME in a SOLID STEEL FORGIDG. RUB CORNERS are made from the best Chromium Steel casting available now. These are never solid steel forgings in the OVER FIVE, and the VALVES are made of unobtainable steel to prevent pitting.

Quality Makes Our Sales

See them at MEYBORS.

THE EAST AFRICAN STANDARD
MOMBASA TIMES & UGANDA ARGON
FRIDAY, APRIL 20, 1930.

A WEMBLEY FINALE.

The final curtain has fallen on the participation of Kenya at the 1929 in the great Empire Exhibition held at Wembley in 1924 and 1925. A hearty responsible to the success which attended the efforts of one of the younger Colonies have made their bow at the closing meeting of the Kenya Exhibition. The proceedings of which are reported this morning. They have scored a noteworthy success.

Not only have they been able to spread the story of Kenya abroad among a public not well acquainted with the overseas Empire in East Africa but they have been able to return a satisfactory balance sheet and have emerged from their labours with a substantial balance in hand. It is impossible to gauge the value of their work in terms of money; it is probably true that this country has already received every penny back in the advantages of publicity, in commercial benefits and in new settlers. The debt of gratitude which the country owes to those who unobtrusively carried out their mission cannot be sufficiently acknowledged and we accept our sincere appreciation of the expression of opinion of the Governor's Deputy in conveying to the Members of the Council his warm appreciation of their self-sacrificing labours. In this connection we would state incidentally to the direction and co-operation of the President of the Council, the Hon. Mr. Alex. Holm, M.C., whose

enthusiasm, untiring work and experience both here and at Wembley have done much to ensure success over many hardships and in the face, sometimes, of discouraging circumstances. The honour which His Majesty conferred on him in an honour to the Colony Mr. Holm serves, but it is also a personal tribute which has been thoroughly merited. The enquiries in 1929 regarding settlement numbered 830, regarding passports on forms 42, regarding posts in the Colony 62, regarding commerce 298 and enquiries by letter 3,120—a total of nearly two thousand enquiries which formed a splendid basis for the work of the Trade and Information Bureau in London which is the permanent and most valuable outcome of the work of the Kenya Exhibition Council.

ST. GEORGE.

The Englishman has not yet developed the progressive instinct which is a feature of the Scotchman's self. He does not gather himself so readily into national societies. Many Englishmen affect the narrow-minded, nose-tweaking and pride which has given birth to the Scotch and Irish Societies at Home and in the Colonies. As an Emperor has said, however, "everything English is a fusion of distant and antagonistic elements. The language is mixed; the names of men are of different nations." In Kenya the Englishman is developing greater sympathy; he is one who even why, other races from the Home continent should endeavour through a national tradition which has built up the English character. However, ever deeply impressed in the provincial affairs of East Africa, there are occasions upon which Englishmen remember the country of their origin and there are occasions when the Old Colony has seen her sons overseas and in their full realization of their inheritance and responsibilities. St. George's Palace Point of England, should mean much to the Englishman in Kenya. His history is that of a man of education to a high level, an expert in his profession in the interest of others, a man of power and the will to the permanent and the well thought of by his followers.

The Englishman has not yet developed the progressive instinct which is a feature of the Scotchman's self. He does not gather himself so readily into national societies. Many Englishmen affect the narrow-minded, nose-tweaking and pride which has given birth to the Scotch and Irish Societies at Home and in the Colonies. As an Emperor has said, however, "everything English is a fusion of distant and antagonistic elements. The language is mixed; the names of men are of different nations." In Kenya the Englishman is developing greater sympathy; he is one who even why, other races from the Home continent should endeavour through a national tradition which has built up the English character. However, ever deeply impressed in the provincial affairs of East Africa, there are occasions upon which Englishmen remember the country of their origin and there are occasions when the Old Colony has seen her sons overseas and in their full realization of their inheritance and responsibilities. St. George's Palace Point of England, should mean much to the Englishman in Kenya. His history is that of a man of education to a high level, an expert in his profession in the interest of others, a man of power and the will to the permanent and the well thought of by his followers.

the fact traditions which have built up the English character. However, ever deeply impressed in the provincial affairs of East Africa, there are occasions upon which Englishmen remember the country of their origin and there are occasions when the Old Colony has seen her sons overseas and in their full realization of their inheritance and responsibilities. St. George's Palace Point of England, should mean much to the Englishman in Kenya. His history is that of a man of education to a high level, an expert in his profession in the interest of others, a man of power and the will to the permanent and the well thought of by his followers.

the fact traditions which have built up the English character. However, ever deeply impressed in the provincial affairs of East Africa, there are occasions upon which Englishmen remember the country of their origin and there are occasions when the Old Colony has seen her sons overseas and in their full realization of their inheritance and responsibilities. St. George's Palace Point of England, should mean much to the Englishman in Kenya. His history is that of a man of education to a high level, an expert in his profession in the interest of others, a man of power and the will to the permanent and the well thought of by his followers.

the fact traditions which have built up the English character. However, ever deeply impressed in the provincial affairs of East Africa, there are occasions upon which Englishmen remember the country of their origin and there are occasions when the Old Colony has seen her sons overseas and in their full realization of their inheritance and responsibilities. St. George's Palace Point of England, should mean much to the Englishman in Kenya. His history is that of a man of education to a high level, an expert in his profession in the interest of others, a man of power and the will to the permanent and the well thought of by his followers.

Architectural Iron Work

OF EVERY DESCRIPTION

SHOP FRONTS
VERANDAHS
IRON STAIRWAYS
GATES & RAILS

Walter Mackenzie & Co.
Sole Agents for Eastern Africa

ENQUIRIES TO—
H. F. Ward & Co.
NAIROBI HOUSE.

KOLIK CAMERAS

Spools of all sizes

Amateur Photographers films developed and printed in 30 hours by an expert staff.

A. H. WARDE & Co. Ltd.
Phone 58. CHEMISTS, P.O. Box 103. NAIROBI.

Under the Standard

Executive Committee
Mr. H. H. ...
appointed as ...
of Kenya Executive Council

Kenya Mail
The ...
Members on March 21, 1930
Madras ...
England on April 20.

His Excellency
The ...
expected to return ...
evening

Company Dissolved
It is notified that the
Dunlop Rubber Company
has been struck off the
of Joint Stock Companies
Company is dissolved.

St. Mark's 'A' House
The 'A' House ...
Chapel ...
at 6:45 p.m. The ...
everybody ...
members of the ...

India Exchange
The ...
restored from the ...
26. ...
they have many friends ...

Kenya Appointments
The following ...
Vine Wade, Acting ...
Native Commissioner
Mr. H. H. ...
Mr. C. J. ...
Mr. T. H. ...
Mr. A. D. ...
Mr. D. ...
Mr. H. ...
Mr. H. ...
Mr. H. ...

The Wood Market
The ...
Messrs. Dalrymple and ...
Co. that the second ...
the ...
25. They state that ...
with the ...
there appears to be ...
likely that prices will ...
will open on April 8 ...
on July 6, ...
Messrs. Dalrymple and ...
April 20 are ...
series appearing on the ...
are 125.000

STANDARD
Today:
Had my ...
Commenced ...
at 10 ...
at 11 ...
at 12 ...
at 1 ...
at 2 ...
at 3 ...
at 4 ...
at 5 ...
at 6 ...
at 7 ...
at 8 ...
at 9 ...
at 10 ...
at 11 ...
at 12 ...

STANDARD
Today:
Had my ...
Commenced ...
at 10 ...
at 11 ...
at 12 ...
at 1 ...
at 2 ...
at 3 ...
at 4 ...
at 5 ...
at 6 ...
at 7 ...
at 8 ...
at 9 ...
at 10 ...
at 11 ...
at 12 ...

STANDARD
Today:
Had my ...
Commenced ...
at 10 ...
at 11 ...
at 12 ...
at 1 ...
at 2 ...
at 3 ...
at 4 ...
at 5 ...
at 6 ...
at 7 ...
at 8 ...
at 9 ...
at 10 ...
at 11 ...
at 12 ...

STANDARD
Today:
Had my ...
Commenced ...
at 10 ...
at 11 ...
at 12 ...
at 1 ...
at 2 ...
at 3 ...
at 4 ...
at 5 ...
at 6 ...
at 7 ...
at 8 ...
at 9 ...
at 10 ...
at 11 ...
at 12 ...

STANDARD
Today:
Had my ...
Commenced ...
at 10 ...
at 11 ...
at 12 ...
at 1 ...
at 2 ...
at 3 ...
at 4 ...
at 5 ...
at 6 ...
at 7 ...
at 8 ...
at 9 ...
at 10 ...
at 11 ...
at 12 ...

AUCTION SALES.

Muter and Oswald's Sales.

["MISCELLANEOUS"] GOODS

Duly instructed we shall sell by Public Auction without reserve at our Salerooms, Mutos Buildings, Harding Street, Nairobi, on

- MONDAY, 26th April, at 9-30 a.m.**
- GALVANISED IRON BATHS, KITCHEN UTENSILS.
 - SUNDY CROCKERY, GLASSWARE.
 - BATHING AND ENAMEL TOILET SETS.
 - BLANKETS.
 - DEERS' GRAMPHOUS RECORDS.
 - SECOND HAND CLOTHING, TOVELS.
 - TENNIS RAQUETS, SIDECAR.
 - CARBURETTORS, "FOED" WINGS, TANK, etc.
 - DECK CHAIRS, LINOLUM.
 - FELLOWE, GINGER WINE.
 - ETC., ETC., ETC.

MUTER and OSWALD, Auctioneers, Etc., Nairobi.

Muter and Oswald's Sales.

Sale of Philatelist's Collection

Duly instructed we shall sell by Public Auction without reserve at our Salerooms, Mutos Buildings, Harding Street, Nairobi, on

- MONDAY, 26th April at 4-30 p.m.**
- LARGE RANGE OF STAMPS PARTICULAR OF WHICH CAN BE OBTAINED ON APPLICATION TO OUR OFFICES.

MUTER and OSWALD, Auctioneers, Etc., Nairobi.

Muter and Oswald's Sale

Notice of Forthcoming Sale

Thursday, April 29th, commencing at 9-30 a.m.

At our Salerooms, Harding Street, CATALOGUE SALE OF FURNITURE, EFFECTS, and PLATE and SILVER WARE.

MUTER and OSWALD, Auctioneers, Etc., Nairobi.

Business As Usual !!!

M. ROSENBLUM & Co. Ltd.
CLOCK TOWER BUILDINGS
6th AVENUE

Continue to receive daily Consignments of new Stocks including—
Khai's Material (Drill, etc.),
Military and other Boots,
Shoes of very good quality
Singlets, Shirts, Blankets,
Cultery, Table,
Knives suitable for native Trade.
Cheap Watches,
Soap of all kinds.
All Classes of Boot Polishes.
Brushes, Belts,
Enamel Ware,
Tooth Pastes,
Fragrances and Jermies.
Fork, Jamboos, etc.
Axes, etc., etc.
AT PRICES WHICH DEFFY COMPETITION.
ENQUIRIES SOLICITED
P.O. Box 531. NAIROBI. Tel. No. 15.

FERTILISE WITH EPHOS

The following testimonial speaks for itself:
"You asked me how the experiment with "Gibbs" turned out. Really I hardly like to tell you, you might fancy I was pulling your leg."
"The Phosphos are just simply wonderful, you never saw anything grow so thick through the drought. I have seen potatoes all in one field in many places, but never have I seen anything like this. It is not a question of quantity, but because I purchased the seed at the door from a Kikuyu, I am sure it is not a question of quantity."
The original of the above testimonial can be seen on application to
J. G. ARONSON, P.O. Box 681, Nairobi.

Singers Sewing Machine, Furniture & Miscellaneous Goods.

Duly instructed by a Nairobi Merchant & other Clients

Austin & Co.
Will sell by Public Auction WITHOUT RESERVE unless otherwise stated at the FIENS BUILDING Harding St.

On SATURDAY, April 24th at 10 sharp.

Hurricane Lamps, Carafes, Glass Plates, Penholders, Small Table Oil Lamps, Radios, Hoing Sones, China Teapots, Glass Inkpots, Aluminium Suitcases, Three Piece China Sets of Teapot, Sugar Basin and Milk Jug.

Food Carrier, Motorcycle Carriers, Spirit Level, Fine Leather Fullon Seat, Glass Jug.
"SRIKA" Portable Typewriter in perfect order.
Kodak 1 Plate Camera with "Bauch" Rectilinear Lens.

New Leather Motor Cycling Jacket with Cap and Gantlet Gloves.
White China Coddens Sets, Meat Safe, Morris Chairs, Teak Sideboard with Mirror Back, Fancy Small Tables, Well Sprung Chesterfield Suite covered Ortonne (retail).

Cabinet for Gramophone Records, Small Gujarati Chair, Teak Dressing Chest with Oval Mirror, Dining Chairs, Dinner Wagon, Chest of Drawers with Mirror.

SINGERS CABINET TRAPEZOID and LEAD AND SEWING MACHINE in perfect order (reserve).
Teak Oval Dining Table, Spring Mirror on Stand.
Teak Wardrobe 6' 6" with full size Mirror, Palm Stands
Teak Double Washstand, Douglas Motorcycle Frame and Tank.

VERY FINE CHILD'S MAIL CART perfect condition (reserve).
Large Coat of Wood Wardrobe, Kitchen Table, 5 Bentwood Chair, Linen Cupboard.

CHILD'S TEAM MALLGART COMBINATION, Tropical CAMP, with Hooks and Extension, in perfect condition (reserve).

ETC., ETC., ETC.

NOW IN STOCK

"B" PULPERS SIEVES
DISC PULPERS SPARES

SCOTT & DAVIDSON.
Sole Agents in Kenya for Wm. McCann & Co., Ltd. VICTORIA STREET, NAIROBI. P.O. Box 456.

ESSJAY Ltd.

J. JACOBS—Managing Director.
THEATRE ROYAL BUILDINGS—NAIROBI
Phone: 871. P.O. Box 864.

ESTATES, FINANCIAL & COMMERCIAL AGENTS.
TOWN AND FARM PROPERTIES & SPECIALLY MORTGAGES ARRANGED.
PARTNERSHIPS NEGOTIATED.
BUSINESSMEN EFFECTED.

RENTS COLLECTED & GENERAL AGENCY WORK.
COMMISSIONS UNDERTAKEN FOR THE PROPER EXECUTION OF ALL CLASSES OF CONTRACT.

we BUY we SELL we NEGOTIATE.

CONSULT US! IT COSTS NOTHING.
AGENTS FOR SOUTH BRITISH INSURANCE CO. All Fire, Commercial, Motor, and Marine Risks.

Lyric Hall TO-DAY

Dance 8-45

BIO

TEA 4-15

MAE MARSH in "THE WOLVES AWAKENING"

RELIANCE TRANSPORT Co.

The largest Motor Transport Co. in the Colony "Ready Aps Ready Aps" Instantly.
Our best attention to our job is to date equipment is a specialty. Detail work for the Overseas of Live Stock.

LARGE STOCKS OF WHEELS FOR IMMEDIATE DELIVERY.
Second-hand trucks and trailers for sale.
Phone 521 P.O. Box 100, Kenya Post and Railway Building, Nairobi Street.

Gibbs
SHAVING CREAM
The Crown of France

INSTALL HENRY HOPE & SONS, LTD. STEEL WINDOWS.

Sole Agents for KENYA, UGANDA, TANGANYIKA & ZANZIBAR.
BEALES & SMITHSON,
P.O. Box 323. "Ardenne House," NAIROBI.

IN HIS MAJESTY'S SUPREME COURT AT NAIROBI.
CIVIL CASE NO. 33 of 1924.

Equator Brick & Tile Works.....Plaintiff
F. Montague.....Defendant.

Under instructions from Court
C. DENOVAN

Will sell by Public Auction Plot No. 73 d, together with building thereon, Tilers Estate (Salisbury Road) Parklands, Nairobi.

on Wednesday, 28th April 1926 at 11, a.m.

At his offices in City House, Standard Street, Nairobi.

FOR SALE

Portion of Farm L.O. No. 4630 known as "PRAIRIE," Four Miles East of Nakuru Station, on Main Road and Railway with Siding; Good Water frontage; Level; Available without Clearing; an Ideal Tractor Farm; Either—

Approx. 2,200 acres; 375 Cultivated; all arable—KSh.50,000.—Or,
Approx. 2,900 acres; 400 Cultivated; all arable—small hill; with all Permanent Improvements; Four-roomed Stone House, indoor and outdoor Kitchens and Cellar; Guest-house; Stone Dairy; Store; Sheds and Huts; Large Dam or Lake; Gardens; Stone Cattle Dip; Boma, etc. for KSh.200,000.

Terms can be discussed. Apply Major Macdonald, Box 22, Nakuru.

ALSO, PORTION OF FARM L.O. NO. 460 KNOWN AS LAKE FARM.

Four Miles East of Nakuru on Main Nairobi Road, with Siding and four Mile Railway frontage. 3,000 Acres, consisting of open, 2,000 acres of First Class Arable and 1,000 Excellent Grazing Land, (over 400 acres under maize), 6 Roomed Stone House, Stone Granary, Stone Workshop, Tractor and Implement, Excellent Private Water Supply, Abundant Timber. Price KSh.500,000 each. Terms might be arranged.

Apply J. BOULTON, Box 4, Nakuru.

NOTE.

Above two farms are geographically one, being separated by main road and railway only. It is desired to extend cultivation immediately in Main Wheat, etc., for this season, each seller can undertake ploughing at rate of some hundred acres per week WITH HEAVY TRACTOR TACKLE.

Browne & Laing.

Builders and Constructional Engineers.
Victoria Street.

Contracts undertaken in any part of the Colony Speed.....Economy.....Finish.
Estimates free.

EFFICIENT TRANSPORTATION
More than 90 per cent of all the Motor Cars that
DODGE BROTHERS
have built during the past FIVE YEARS are still in active service.
If you are looking for CHEAP AND RELIABLE TRANSPORTATION, call at Dodge Brothers' Service Station and try the latest type Dodge.
Owing to increased output, prices are reduced from date as follows—
SPECIAL MODEL with full balloons.....K940
STANDARD MODEL with full balloons.....K920
ALL STEEL BOX BODY with Spring COMMERCIAL VAN.....K970
CHASSIS only.....K870
COMMERCIAL VAN.....K830
All Models fitted with fifth tyre and tube.

S. Fisher & Simmons (E.A.) Ltd.
Victoria Street, NAIROBI.
P. O. Box 408. Telephone No. 302. Telegrams "SMALLARMS."

THE EUROPEAN AND AFRICAN TRADES ORGANISATION

Telephone 1st. Trade Organisation, 4/9 P.O. Box 844. Telegrams T. Trade Organisation, Nairobi Kenya.

All Communications to be addressed to THE SECRETARY, REGISTRATION ACTION FREE.

Please note that all future contributions will be payable in advance by all those who make use of the Organisation and who are not regular subscribers to its journals.

EUROPEANS SEEKING EMPLOYMENT will be required to pay a Registration Fee of Shs. 5/- before placing his or her name on the Organisation's Registers.

EUROPEANS SEEKING EMPLOYERS will be required to pay in advance the following Fees: FOR EACH APPLICANT REQUIRED Shs. 5/- FOR EACH SEVERELY REQUIRED Shs. 10/- FOR EACH EUROPEAN REQUIRED Shs. 20/-

REGULAR SUBSCRIBERS will continue to receive the full services of the Organisation FREE OF CHARGE.

Special Notice.

Just Arrived 1,000 Brunswick and Columbia Records.

YOU MUST HEAR—
THE STRING AROUND YOUR FINGER
I'M A LITTLE BIT FONDER OF YOU.
BROWN EYES WHY ARE YOU BLUE.
MILLENBERRY JOYS

NICK LUCAS WITH HIS GUITAR AND MANY OTHERS.

The B. E. A. Music Stores Co., Ltd.
Tel. 539. NAIROBI. Box No. 146

Why Pay 4/- lb. Tea when you can BUY at 2/50 lb.

Better Quality and Locally Grown From

J. E. TORR.

DOWN QUILTS

BLACK & GOLD DOWN
With Rustled Sate Border
6' 6" x 8" Shs. 27/6 each
BLACK GOLD TRIMMED
QUILT
In attractive design carried in color in Blue, Orange, and Red
5' 6" x 8" Shs. 27/6 each
Redesign as a Bed Quilt with Pink Border.
6' 6" x 8" Shs. 27/6 each

COT BEDDING—Blue Floral design with Blue Bedding
Size 7' 6" x 8" Shs. 27/6 each
COTTY COT COVERED QUILT—Size 3' 6" x 5' 2" at Shs. 17/6 each
COTTY COT COVERED QUILT—Blue and Green. Size 3' 6" x 5' 2" at Shs. 17/6 each
Wool TRIMMED—4' 6" x 6" at Shs. 25/6 each
4' 6" x 6" at Shs. 25/6 each

ALL WOL TRAVELLING RUGS—4' 6" x 6" at Shs. 17/6 each

Hutchings, Biemar & Co., Ltd.
406, 408, NAIROBI. Phone 244.
MONTHLY ACCOUNT ALLOWED FOR CASH Monthly Accounts with Approved Customers.

Advertisement for shoes and clothing, including text like "Shoes", "Keaya", "Cou", "Bills", "MENTION", "AI", "B", "TENT", "Just Receive", "Hats, H", "Palman", "chiefs", "Designs", "BUNGERS H", "TARE AD", "AND G", "Phone 4"

HARLEY-DAVIDSON

THE MOTORCYCLE MAGNIFICENT... COMPLETELY EQUIPPED WITH HOOPER, HOOD AND SCREEN... 5 1/2 H.P. HARLEY-DAVIDSON, THE LIGHTWEIGHT... A revolution in the Motor-cycle world.

TRUSTY TRIUMPH... A combination of these famous machines will be here very shortly. TERMS AS ABOVE. J. O. BERTON, Motor Engineer, NAIROBI.

Colonial General Stores... GOVERNMENT ROAD, NAIROBI.

High Class Grocers, Provision, Wine and Spirit Merchants... Fresh stocks arriving by every mail. GIVE US A TRIAL. YOU WILL NOT BE DISAPPOINTED.



LONG JOHN Special Reserve Scotch Whisky

Wholesale Distributors: D. Epstein & Co., NAIROBI

Do you want to BUY a farm? Do you want to SELL a farm? Do you want money on approved security? Do you want trained oxen?

Talbot & Massy. GUARANTEE EFFICIENCY COURTESY. Corner House, P.O. Box 603, NAIROBI.

SHEEP FARMING IN KENYA.

Home Export's Impressions and Criticisms.

THE LABOUR PROBLEM.

Considering the impressions of Kenya which are spreading in England, from the Director General to the... The natives are not so much as they are supposed to be... The natives are not so much as they are supposed to be...

THE NATIVE SHEPHERDS.

The pass held up to 1,000 sheep, some more, and the shepherds were rough and untidy... The natives are not so much as they are supposed to be...

well fed lot, all unsexed, graded from native, black, in my opinion... The native shepherd is using and competent and does not wish to keep a good flock...

A SHORTAGE OF SHEEP.

It was evident to me that there was a great shortage of sheep in Kenya Colony, and that for grazing farming they have not got the proper stamp of Colonial sheep... The natives are not so much as they are supposed to be...

WOOL SENT TO LONDON.

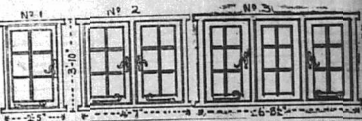
The wool from Kenya is being sent to London, and Kenya wool where it is carefully handled... The natives are not so much as they are supposed to be...

A HARD LIFE.

The farmer in Kenya, however, looks upon a stranger as a man of no experience... The natives are not so much as they are supposed to be...

Miss KATHLEEN BATES, A.R.C.M. Gives Lessons in PIANO, VIOLIN, SINGING, HARMONY, THEORY OF MUSIC, AND ADJAC. CULTURE.

Geo. BLOWERS



Geo. Blowers (London) Branch, Carpentry & Joinery, Importers, Dust Wood, Indian Teak, Ply Boards, Adhesives, etc.

ESTIMATES. The above is an attempt to show you each price... WILES & BROS. Ltd.



P. GETHIN, Phone: 158.

HIDDEN SUPERIOR GOLF BALLS... For FOOTBALLS and JERSEYS MAY & CO.

A Resurrection

Blacklaws & Brown... The Phoenix once more raises its head from its ashes.

Opening on the 19th April... Blacklaws & Brown... LATE MACKINNON BROTHERS, NAIROBI.

CITROEN MODEL DE LUXE 4 Wheel Brakes... Moulton & Morrison Ltd. Sixth Avenue NAIROBI.

Remington Charles Ware... Remington Typewriter Agency. P.O. Box 67.

Rifles - Shot Guns

Though we were burnt out, our reputation was not burnt with it!... CHAS. A. HEYER & Co. NAIROBI.

THE TAILORING HOUSE JOANES & BROS. SPECIAL REDUCTION IN WOOL CLOTHING, GENTS SUITS AND LADIES COSTUMES.

Table with columns: ARRIVAL, DEPARTURE, Framers, Date, Month, etc.

KENYA'S SAFARI FAVOURITE TOMATO SOUP... A new and delicious Tomato Product.

KENYA BEER.
KENYA STOUT.
XXXX ALE

Monarchs of Malt Liquors

No. 847. OFFICERS AT THE GENERAL BODY
CRUISED AT A BARRAGE.

"E. A. Standard" Special
Cable Service.

DISCONTENT IN UNION SERVICE.

Hooping of Civil Servants and Railwaymen.

PETTER PAY DEMANDED.

THE O. W. (OR CONGRESSIONARY) MATRIMONY.

THE O. W. (OR CONGRESSIONARY) MATRIMONY.

THE O. W. (OR CONGRESSIONARY) MATRIMONY.

THE O. W. (OR CONGRESSIONARY) MATRIMONY.

THE O. W. (OR CONGRESSIONARY) MATRIMONY.

THE O. W. (OR CONGRESSIONARY) MATRIMONY.

THE O. W. (OR CONGRESSIONARY) MATRIMONY.

THE O. W. (OR CONGRESSIONARY) MATRIMONY.

THE O. W. (OR CONGRESSIONARY) MATRIMONY.

THE O. W. (OR CONGRESSIONARY) MATRIMONY.

THE O. W. (OR CONGRESSIONARY) MATRIMONY.

THE O. W. (OR CONGRESSIONARY) MATRIMONY.

THE O. W. (OR CONGRESSIONARY) MATRIMONY.

THE O. W. (OR CONGRESSIONARY) MATRIMONY.

THE O. W. (OR CONGRESSIONARY) MATRIMONY.

THE O. W. (OR CONGRESSIONARY) MATRIMONY.

THE O. W. (OR CONGRESSIONARY) MATRIMONY.

THE O. W. (OR CONGRESSIONARY) MATRIMONY.

THE O. W. (OR CONGRESSIONARY) MATRIMONY.

THE O. W. (OR CONGRESSIONARY) MATRIMONY.

THE O. W. (OR CONGRESSIONARY) MATRIMONY.

DAILY EDITION.

GUARANTEED THE LARGEST CIRCULATION OF ANY NEWSPAPER IN KENYA, UGANDA, TANGANYIKA AND ZANZIBAR

THE EAST AFRICAN STAR

MOMBASA TIMES & UGANDA ARGUS.
with which is incorporated THE LEADER.

NAIROBI, SATURDAY, APRIL 24, 1926.

LOUNGE
FOR COCKTAILS AND TEA
THE DINING ROOM FOR BREAK FASTS, LUNCHEONS, AND DINNERS.
The NEW STANLEY HOTEL

Price 20 CENTS.

PEACE CONFERENCE IN MOROCCO.

Occupation Claimed Before Negotiations.

RIFPS REFUSE DEMAND.

[MOROCCO SERVICE'S AGENT.]
Tunis, April 23.—Difficulties which have arisen in the Moroccan Peace Conference have resulted in which one of the Riff delegates has flown in a French aeroplane to consult Abd El Krim and the chiefs of the Riff tribes.
It is explained in an statement for the Riff delegates that they demand to accept without modification the Franco-Spanish demands for immediate release of prisoners and the withdrawal of troops of the French and Spanish troops on certain points at present occupied by the Riff. Before official negotiations are opened.

Peace, April 23.
A dispatch from Tunis states that the Moroccan peace conference broke up this evening without a decision having been reached with regard to the preliminary of the peace negotiations. The date of the next conference is not fixed, but delegates are to consult their Governments prior to another meeting.

BRITISH POLICY OVER COUNCIL SEATS.

Government Reply to Query in the Lords.

[LONDON, APRIL 23.]
In the House of Lords, speaking after the Government is asked to support the claims of a new county assembly (Germany) to a permanent seat on the League of Nations Council. Lord Cecil replied that the Government would not support the claims of the new county assembly, but would support the claims of the existing county assemblies. The Government will support the claims of the existing county assemblies, but will not support the claims of the new county assembly.

"Responsiv" Swazis.

[MOMBASA.]
A conference of Swazis' representatives, which met at the first instance in Mombasa, has decided to send a delegation to the conference of the League of Nations, and to accept as a common formula of work, responsibility for the Swazis' actions. The conference will be held in Mombasa, and will be presided over by the British High Commissioner for Swaziland.

A DAUGHTER TO DUCHESS OF YORK.

Only Grandchild of the King and Queen.

"ALL IS WELL" BULLETIN.

[LONDON, APRIL 23.]
The Duchess of York has given birth to a daughter.
London, April 23.
The Duchess of York's daughter was born at 2.30 in the morning. Her mother and infant were well. The Duchess of York is recovering well. The Duchess of York is recovering well. The Duchess of York is recovering well.

London, April 23.
The fact that the Home Secretary was summoned to Britain to attend to the Duchess of York's daughter was expected. The Duchess of York is recovering well. The Duchess of York is recovering well. The Duchess of York is recovering well.

END OF THE JEWEL ROBERTY TRIAL.

Prison for Three Natives.

[NAIROBI, APRIL 23.]
Three natives, Nakendi, Mwangi, and Njiru, were again sentenced to prison for their part in the robbery of the Kenya Bank. The court found them guilty of the robbery and sentenced them to three months' imprisonment.

NOTHING TO SAY.

[NAIROBI, APRIL 23.]
On being charged with theft by the police, the accused said he had nothing to say. The court found him guilty and sentenced him to three months' imprisonment.

THE PROBLEM OF E.A. CUSTOMS UNION.

Associated Chambers Press for Action.

ONE CUSTOM'S CHIEF.

[MOMBASA.]
Arguments from the Tanganyika View.
London, April 23.
The delay in reaching an agreement on the question of a Customs Union for East Africa is causing concern among the Associated Chambers of Commerce. The Associated Chambers of Commerce are urging the Government to take prompt action.

London, April 23.
The Foreign Secretary was asked to state whether the Government intended to establish a new department of the Customs Union for East Africa. The Foreign Secretary replied that the Government was considering the matter.

WORLD CONFERENCE OF MOSLEMS.

Invitations by Ibn Saud to Hedjaz.

[DUBLIN, APRIL 23.]
After prolonged discussion the central Khilafat committee has decided to accept the invitation of Ibn Saud, ruler of Hedjaz, to attend the world Moslem conference in Hedjaz. The committee has also decided to accept the invitation of Ibn Saud to attend the world Moslem conference in Hedjaz.

Italy's Debt to U.S.A.

[WASHINGTON, APRIL 23.]
The Senate by 54 votes to 33 ratified the Italian debt settlement. The settlement provides for the payment of Italy's debt to the United States.

UGANDA BOAS LINE VIA AFRICA.

Provision of Anglo-Italian Agreement.

THE RIGHTS OF BRITAIN.

[LONDON, APRIL 23.]
In the House of Commons, Comptroller of the Treasury, Mr. Austen Chamberlain, said that the Government was considering the proposal for a Boas line via Africa. The Government was considering the proposal for a Boas line via Africa.

London, April 23.
The Foreign Secretary was asked to state whether the Government intended to establish a new department of the Boas line via Africa. The Foreign Secretary replied that the Government was considering the matter.

THUMB NAIL SKETCHES OF OUR MOTORISTS.

More Bright Ideas for the Court.

[MOMBASA.]
The court has heard several cases involving motorists. The court has heard several cases involving motorists. The court has heard several cases involving motorists.

French Budget Voted.

[PARIS, APRIL 20.]
The Senate by 275 votes to 123 voted the budget for a whole. The budget provides for the payment of France's debt to the United States.

TO-DAY'S CAUSE LIST.

[MOMBASA.]
The court has heard several cases today. The court has heard several cases today. The court has heard several cases today.

THUMB NAIL SKETCHES OF OUR MOTORISTS.

More Bright Ideas for the Court.

PLEASING BY POST.

[MOMBASA.]
The court has heard several cases involving motorists. The court has heard several cases involving motorists. The court has heard several cases involving motorists.

London, April 23.
The Foreign Secretary was asked to state whether the Government intended to establish a new department of the Boas line via Africa. The Foreign Secretary replied that the Government was considering the matter.

WORLD CONFERENCE OF MOSLEMS.

Invitations by Ibn Saud to Hedjaz.

[DUBLIN, APRIL 23.]
After prolonged discussion the central Khilafat committee has decided to accept the invitation of Ibn Saud, ruler of Hedjaz, to attend the world Moslem conference in Hedjaz. The committee has also decided to accept the invitation of Ibn Saud to attend the world Moslem conference in Hedjaz.

Italy's Debt to U.S.A.

[WASHINGTON, APRIL 23.]
The Senate by 54 votes to 33 ratified the Italian debt settlement. The settlement provides for the payment of Italy's debt to the United States.

THUMB NAIL SKETCHES OF OUR MOTORISTS.

[MOMBASA.]
The court has heard several cases today. The court has heard several cases today. The court has heard several cases today.

It is real economy to buy your Household Goods from WHITEWAYS.

WHITE WINETRY BLANKETS.
Made from selected fine pure wool which give a maximum of warmth and softness of weight with little bulk. Size 60x90. Price 60/90 per pair.

WITNEY BLANKETS.
With little bulk. Size 60x90. Price 60/90 per pair.

CAMEL SHADE WOOL BLANKETS.
Made from excellent quality wool and cotton yarn; light in weight yet very warm. In the popular five bar border. Size 60x90. Price 60/90 per pair.

CAMEL SHADE WOOL AND COTTON BLANKETS.
A suitable blanket for Safari use, etc., with a good Key Border. Wonderful Value. Size 60x90. Price 60/90 per pair.

A MOST EXCELLENT QUALITY CAMEL HAIR SHADE WOOL BLANKET.
These are wonderfully soft and warm and very strong, so as to last a lifetime. They are the acme of comfort and softness. With a distinctive brown striped border and whigged ends. Size 60x90. Price 60/90 per pair.

THE "HOBENWITZ" FLAIN FIBRE CASE.
No buttons to worry about. Thoroughly dependable. Will give excellent wear. Size 20x30. Price 5/6.

REHMSHEDD PILLOW CASES.
A fine quality linen finished Pillow Case. Very splendid wear. Hand made up with embroidery & buttons. Size 20x30. Price 5/6.

PLAIN HEMMED SHEETS.
These are wonderfully soft and warm and very strong, so as to last a lifetime. They are the acme of comfort and softness. With a distinctive brown striped border and whigged ends. Size 20x30. Price 5/6.

REAL HAMB EMBROIDERED MARRIAGE LUNCHEON SETS.
Embroidered on a fine linen. 12-piece sets. Size 20x30. Price 5/6.

WHITEWAY, LAIDLAW & CO., LTD., NAIROBI.

SITUATION VACANT.

COMPETENT shorthand typist...
LADY Clerk, good shorthand...
WANTED a competent assistant book-keeper...

WANTED immediately a young man...
WANTED a young man...
WANTED a young man...

WANTED a young man...
WANTED a young man...
WANTED a young man...

WANTED a young man...
WANTED a young man...
WANTED a young man...

WANTED a young man...
WANTED a young man...
WANTED a young man...

WANTED a young man...
WANTED a young man...
WANTED a young man...

WANTED a young man...
WANTED a young man...
WANTED a young man...

WANTED a young man...
WANTED a young man...
WANTED a young man...

WANTED a young man...
WANTED a young man...
WANTED a young man...

WANTED a young man...
WANTED a young man...
WANTED a young man...

WANTED a young man...
WANTED a young man...
WANTED a young man...

WANTED a young man...
WANTED a young man...
WANTED a young man...

WANTED a young man...
WANTED a young man...
WANTED a young man...

WANTED a young man...
WANTED a young man...
WANTED a young man...

WANTED a young man...
WANTED a young man...
WANTED a young man...

WANTED a young man...
WANTED a young man...
WANTED a young man...

WANTED a young man...
WANTED a young man...
WANTED a young man...

WANTED a young man...
WANTED a young man...
WANTED a young man...

WANTED a young man...
WANTED a young man...
WANTED a young man...

Church Notices.

ST. ANDREW'S CHURCH. SUNDAY APRIL 25. Morning Service 10.30 a.m. Evening Service 8.00 p.m. (Singing.)

CATHOLIC CHURCH SERVICES. All Sunday except Easter, Feast of St. Mark, the Evangelist. Holy Masses at 8.15 & 9.30 a.m. Benediction of the Blessed Sacrament at 8.00 a.m.

ST. MARY'S CHURCH. SUNDAY APRIL 25. Morning Service 10.30 a.m. Evening Service 8.00 p.m. (Singing.)

ST. MARY'S CHURCH. SUNDAY APRIL 25. Morning Service 10.30 a.m. Evening Service 8.00 p.m. (Singing.)

ST. MARY'S CHURCH. SUNDAY APRIL 25. Morning Service 10.30 a.m. Evening Service 8.00 p.m. (Singing.)

ST. MARY'S CHURCH. SUNDAY APRIL 25. Morning Service 10.30 a.m. Evening Service 8.00 p.m. (Singing.)

ST. MARY'S CHURCH. SUNDAY APRIL 25. Morning Service 10.30 a.m. Evening Service 8.00 p.m. (Singing.)

ST. MARY'S CHURCH. SUNDAY APRIL 25. Morning Service 10.30 a.m. Evening Service 8.00 p.m. (Singing.)

ST. MARY'S CHURCH. SUNDAY APRIL 25. Morning Service 10.30 a.m. Evening Service 8.00 p.m. (Singing.)

ST. MARY'S CHURCH. SUNDAY APRIL 25. Morning Service 10.30 a.m. Evening Service 8.00 p.m. (Singing.)

ST. MARY'S CHURCH. SUNDAY APRIL 25. Morning Service 10.30 a.m. Evening Service 8.00 p.m. (Singing.)

ST. MARY'S CHURCH. SUNDAY APRIL 25. Morning Service 10.30 a.m. Evening Service 8.00 p.m. (Singing.)

ST. MARY'S CHURCH. SUNDAY APRIL 25. Morning Service 10.30 a.m. Evening Service 8.00 p.m. (Singing.)

ST. MARY'S CHURCH. SUNDAY APRIL 25. Morning Service 10.30 a.m. Evening Service 8.00 p.m. (Singing.)

ST. MARY'S CHURCH. SUNDAY APRIL 25. Morning Service 10.30 a.m. Evening Service 8.00 p.m. (Singing.)

ST. MARY'S CHURCH. SUNDAY APRIL 25. Morning Service 10.30 a.m. Evening Service 8.00 p.m. (Singing.)

ST. MARY'S CHURCH. SUNDAY APRIL 25. Morning Service 10.30 a.m. Evening Service 8.00 p.m. (Singing.)

ST. MARY'S CHURCH. SUNDAY APRIL 25. Morning Service 10.30 a.m. Evening Service 8.00 p.m. (Singing.)

ST. MARY'S CHURCH. SUNDAY APRIL 25. Morning Service 10.30 a.m. Evening Service 8.00 p.m. (Singing.)

OUR SPECIALITY IS SAW TIMBER. EQUATOR LOG MILLS. TO SETTLERS. TO BUILDERS. TO EVERY BODY.

There are always REPAIRS waiting to be done by BUILDERS. SPECIAL OFFER. Ton and 1/2 ton lots of short length PODO mixed dimensions...

BRITISH INDIA STEAM NAVIGATION COMPANY, LTD. AND PENINSULAR AND ORIENTAL STEAM NAVIGATION CO.

Table with columns: DESTINATION, ARRIVE KILIMBO, DEPART KILIMBO, DESTINATION, ARRIVE KILIMBO, DEPART KILIMBO. Lists various routes and ship names.

LOCAL BANKS. BRITISH SOUTH AFRICAN TRADING CO. LTD. Agents: KILIMBO, MOMBASA, NAIROBI, DAR-EL-SALAM, TANGA, ZAMBESI, NAIROBI, KAMPALA & LAMU.

NOTICE.

Native Affairs Department.

LABOUR COMMITTEE.

A Committee, consisting of the Hon. Chief Native Commissioner (Chairman), the District Commissioner, Kiambu, the Hon. and Rev. Doctor Arthur, and the Hon. Mr. MacLellan Wilson, (Members), will meet at 10 a.m. on the dates and places mentioned below.

(1) To consider any measures that may be practicable to facilitate the flow of labour from the Reserves and to advise as to whether any system of Labour Bureaux or Exchanges can usefully be initiated in the Colony.

(2) If such a system is advised, to make recommendations as to how it may be set up and administered.

(3) To investigate the extent to which Native Labour is wastefully recruited or employed and to recommend in regard to conservation.

(4) To make suggestions for the amendment of the laws relating to Labour and Labour Control.

Any persons wishing to give evidence are invited to submit their names to the District Commissioner, Kiambu before the dates mentioned, stating where they will attend. It will facilitate the proceedings if deponents will confirm their evidence to the Committee by handing in a written statement.

A similar Committee will be convened in other districts at a later date of which due notice will be given.

MEETINGS.

Kiambu (Sports Club): 3rd and 4th May. Ruiri (Hotel): 5th May. Thika (Blue Posts Hotel): 6th May. Limuru (Mr. Hudson Cane's Hotel): 10th May.

Browne & Laing.

Builders and Construction Engineers. Victoria Street. Contracts undertaken in any part of the Colony. Speed—Economy—Finish. Estimates free.

LIFE POLICIES.

We can show you the most favourable endowment policy offered in this country. Big bonuses—comfortable policy. NATIONAL MUTUAL LIFE ASSOCIATION OF AUSTRALASIA LTD. Apply KETTLES-ROY LTD., Nairobi. P.O. Box 106.

AT LAST! A REALLY GOOD LEVER FILLING PEN. 14 CT. GOLD NIB AND STRONG CLIP. Sh. 850. Postage Sh. 450. A CONWAY STEWART PRODUCT WITH FINE, MEDIUM, BROAD AND OBLIQUE NIBS. TAWS, Phone 141, Box 611, Nairobi.

Business As Usual!! M. ROSENBLUM & Co. Ltd. CLOCK TOWER BUILDINGS 6th AVENUE. Continue to receive daily consignments of new Stocks including:— Champ Watches, Soap of all kinds, All Classes of Boot Polishes, Braces, Belts, Grand Wares, Tongue Pastes, Pango and Jambies, Fork Jambies, Axes, etc.

THE COMPANIES ORDINANCE 1921. Kenya Coffee Plantations Ltd. (IN LIQUIDATION). NOTICE IS HEREBY GIVEN, pursuant to Section 209 of the Companies Ordinance 1921, that a Meeting of the Creditors of the Kenya Coffee Plantations Limited will be held at Trust Chambers, Nairobi, on Wednesday the 12th May 1926 at 10 o'clock in the forenoon for the purposes provided for in the said Section. Dated this 23rd day of April 1926. R. F. THORPE, LIQUIDATOR.

Insurance.

MOTOR CAR INSURANCE. MOTOR CYCLES. FIRE AND MARINE. THE ASSURANCE COMPANY, Ltd. D. KAMPE, General Manager. P.O. Box 98, Nairobi.

DANCING.

NAIROBI SCHOOL OF DANCING. CHILDREN AND ADULTS. Classes in Ballroom, Country and Social Dancing. Daily at the Lyric Hall. P.O. Box 112, Nairobi.

Y.M.C.A. Residential Club.

AN IDEAL RESIDENCE FOR MEN. Large extensions and improvements have been made. Billiard room, tennis court, swimming pool, etc. Open from 11.30 to 12.30. Y.M.C.A. Residential Club, Nairobi.

THE SPORTS PAGE

AUTOGRAPH. DRIVERS and BRASSIES.

These are genuine autograph clubs direct from the professionals own workshops, and they are perfect specimens of what good clubs can be.

BY FRANK BALL
Driver or Brassie.
Shs. 25/- each.

BY JAMES BRAID.
Driver or Brassie.
Shs. 20/50 each.

We stock the best Golf Goods.

We allow 5 per cent cash discount.

NAIROBI.

FRED RAPER

GENERAL COMMISSION AGENT.
P.O. Box 541. CITY HOUSE. Phone 148.

Consignment of Saddlery and Saddles just arrived
Military Tarpanas.
Camp Furniture.
Water Pump Capes.
Ox Collars.

AMMUNITION SHAW

AMMUNITION SHAW
HASTON

The Motor, Max & Richards, Ltd.

Rifles, Rifles.

WE STOCK THE FOLLOWING—
B.S.A. 303, 315 and 375 Sporting.
B.S.A. 300 Sierwood.
Wadley Richards 315 Accoriated Express.
Rigby's 350 Magnum.
Holland & Holland 370 Magnum.
Mauser. 256, 7 m/m; 8 m/m; 9 m/m.
9.3 m/m; 10.75 m/m; 30 & 318.
Mannlicher Schonauer, take down model 256 & 8 m/m.
Carbine 256.
Remington. 22, 32 & 44 Repeaters.
Remington. 30 Bolt Action.
Savage. 22 High velocity.
Browning. 22 Single shot & Repeaters.
Also double barrel rifles in excellent condition including 9.3 m/m; 400/400 150 No. 2; 470; 475 No. 2 & 477.
Prices and particulars on application to

Phone 88. **MAY & CO.,** Box 47.
THE SPORTS HOUSE.

WADLEY RICHARDS & CO., LTD.
Genuine Chatterbox in Kenyan College
Wadley Richards has been returning to school
IN STOCK
GOVERNMENT ROAD
P.O. Box 288 NAIROBI Phone 271

HOME RACING.

Result of Metropolitan and City and Suburban.

FORTHCOMING RACES.

[THOMAS BERRY'S AGENCY.]
London, April 20.
The following is the result of the race for the Great Metropolitan Stakes run at Royal Ascot on 21st:—
KYRA, 5 yrs, 7.1. (Foa) 1
SETFIELD, 7 yrs, 8.10. (Went) 2
ONION III, 7 yrs, 7.0. (Good) 3

There were 15 starters. Won by five lengths with half a length between second and third.
Starting 1901 Kyra, 100/7
Setfield, 100/7
Onion III, 100/7

CITY & SUBURBAN.

London, April 21.
The following is the result of the City and Suburban Handicap run at Royal Ascot today over 1 1/2 miles:—

WARDEN OF THE MATCHES 4 yrs, 8.4.
The following is the result of the City and Suburban Handicap run at Royal Ascot today over 1 1/2 miles:—
WARDEN OF THE MATCHES 4 yrs, 8.4.
The following is the result of the City and Suburban Handicap run at Royal Ascot today over 1 1/2 miles:—

TO-DAY'S CUP-FINAL.

Bolton and Manchester at Wembley.

PREVIOUS RECORDS.

Today is the great day of English football, the most important match of the season will be played, viz. the final for the F. A. Cup. The venue of the match will again be the great Wembley Stadium, possibly for the last time unless some definite decision between the Legislature and the Football Association can be agreed upon during the close season.

Lancashire has, of course, every reason to be jubilant this year as whatever happens today the cup will go to that county for the year. This however, will be no new experience for the county of the Red Rose, as on two previous occasions, 1914 and 1914, have the Badies held from Lancashire, Birmingham on one latter, in that on three occasions 1911, 1922 and 1925, have Aston Villa and West Bromwich Albion won in the final.

The finalists today are Manchester City and Bolton Wanderers. Bolton Wanderers are the holders and their players in first class form. Manchester City are the holders of the cup and their players are in first class form.

Today's match will most probably turn on the strength of the final defence. Both teams have powerful forward lines capable of snaring up any chance offered by Manchester or Wetherhead and it will be interesting to see if they hold the Bolton attack.

In any case it should be a great match, and weather conditions being good, but our prediction is that Bolton Wanderers will take the trophy back with them.

THE CLUBS' RECORDS.

The following are the records of the clubs in this year's tournament and it will be worthy of note that Bolton Wanderers did not meet a first division in any of the previous rounds, whereas the City accounted for Huddersfield, the Manchester or United and the Corinthians.

MATCHES-FIVE.

Reading, Hart & Co. Ltd.
Reading, Hart & Co. Ltd.
Reading, Hart & Co. Ltd.
Reading, Hart & Co. Ltd.
Reading, Hart & Co. Ltd.

THE HOCKEY FIELD.

Internationals Won by England.

A GREAT SEASON.

[D'HOE OW OWA COMMISSIONER.]

London, March 20.
An English double victory over Scotland and an English Women's double success over other countries have been features of the past week's hockey which heralds the close of another year. The results, in brief, were:—

England 3; Scotland 2
England 5; Scotland 1
England Women 10; Ireland Women 0.
It will be seen that neither the women nor the men had an easy task against Scotland, a fact which goes to prove the continued improvement in the game both of men and women. England's victory has certainly not failed to excite the interest of the public which has resulted a sharp increase in the number of spectators who are now to meet a present list.

London, April 21.
The following is the result of the City and Suburban Handicap run at Royal Ascot today over 1 1/2 miles:—

WARDEN OF THE MATCHES 4 yrs, 8.4.
The following is the result of the City and Suburban Handicap run at Royal Ascot today over 1 1/2 miles:—

WARDEN OF THE MATCHES 4 yrs, 8.4.
The following is the result of the City and Suburban Handicap run at Royal Ascot today over 1 1/2 miles:—

WARDEN OF THE MATCHES 4 yrs, 8.4.
The following is the result of the City and Suburban Handicap run at Royal Ascot today over 1 1/2 miles:—

WARDEN OF THE MATCHES 4 yrs, 8.4.
The following is the result of the City and Suburban Handicap run at Royal Ascot today over 1 1/2 miles:—

WARDEN OF THE MATCHES 4 yrs, 8.4.
The following is the result of the City and Suburban Handicap run at Royal Ascot today over 1 1/2 miles:—

THE AUSTRALIAN TOUR.

Cricket Team Arrives in London.

[THOMAS BERRY'S AGENCY.]
London, April 20.
The Australian cricket team has arrived in London. The players who were all very fit, were enthusiastically welcomed. They will begin practice at Lords tomorrow.

FINAL FOR BIRMINGHAM CUP TO-DAY.

The final for the Birmingham Cup, trophy for Inter-District African football will be played today at Parklands between teams representing Nairobi and Kyamba.

This should prove a good match, as both teams will include the leading players in local native football. Mr. Overton will referee the contest.

Nairobi Soccer.

CALENDAR FOR APRIL 1929
MONDAY

CALENDAR FOR APRIL 1929
TUESDAY

CALENDAR FOR APRIL 1929
WEDNESDAY

CALENDAR FOR APRIL 1929
THURSDAY

CALENDAR FOR APRIL 1929
FRIDAY

CALENDAR FOR APRIL 1929
SATURDAY

CALENDAR FOR APRIL 1929
SUNDAY

Well Known FABRIC Home Dresses
HARDWEARING FOR LADIES IN AFTERNOON CHILDREN'S LINGERIE, and in the



AT STAGG THE HOUSE FOR QUALITY
P.O. BOX 100



ANY BULK LINGERIE FABRICS.
Something entirely new and a revolution in washing materials. Dainty and elegant. Cream White, Sky, Shell, and Pale Eclair.
38 inches wide at Shgs. 8/75 per yard.
54 inches wide at Shgs. 17/60 per yard.



ALL WOOL VELVOUR CLOTH.
A superb heavy wool cloth for warm coats and beautifully soft and warm. Made, Hand, Brown.
54 inches wide at Shgs. 17/60 per yard.

A Happy Good Nature
If everyone did it towards making conditions better for others less fortunate there would be no happy people on earth.
I could have been my discovery of Kamistan to myself, but I couldn't have been happy, unless I had been able to help others.

Kamistan
ATLANTA

