

**DEMAND**  
**KENYA**  
**BEER**  
and  
**STOUT**

GUARANTEED THE LARGEST CIRCULATION OF ANY NEWSPAPER IN KENYA, UGANDA, TANGANYIKA AND KANZIBAR.

DAILY EDITION

THE EAST

14 PAGES.

**Standard**

MOMBASA TIMES & UGANDA ARGUS.  
THE MORNING EDITIONS PUBLISHED IN KENYA AND UGANDA.

With which is incorporated  
**THE LEADER.**

NAIROBI, THURSDAY, DECEMBER 14, 1920.

**NEW STANLEY HOTEL.**

Telegrams: "Stanagat".  
Telephone 210  
**LOUNGE AND Dining-Room.**  
Open to Non-Residents.

Price 50 CENTS.

**DEFENCE FORCE MEETING**

**NAIROBI CONSTITUENTS REJECT COMPULSORY PRINCIPLE.**

No Mandate for Members.

AMENDMENTS SUGGESTED BY A SECRET COMMITTEE REVEALED.

Moving Favours a Volunteer Force.

On the signature of the Hon. Mr. Robert Bruce and Mr. H. P. Ward and Captain H. E. Robinson, a meeting was held in the Lyric Hall, Nairobi, on Thursday evening to discuss the Defence Force Bill.

The majority of the bill was fully read and it is estimated that there will be about 100 members.

After a long and somewhat lively discussion the meeting by majority of over 100 rejected the measure of conscription and the Hon. Mr. Bruce moved that the bill be referred to a committee of inquiry whose report was to be submitted to the House of Representatives.

Mr. W. T. O'Brien, Chairman of the committee, stated that the bill was a measure of conscription and that the House of Representatives had no right to pass it. He stated that the bill was a measure of conscription and that the House of Representatives had no right to pass it. He stated that the bill was a measure of conscription and that the House of Representatives had no right to pass it.

Mr. W. T. O'Brien, Chairman of the committee, stated that the bill was a measure of conscription and that the House of Representatives had no right to pass it. He stated that the bill was a measure of conscription and that the House of Representatives had no right to pass it.

Mr. W. T. O'Brien, Chairman of the committee, stated that the bill was a measure of conscription and that the House of Representatives had no right to pass it. He stated that the bill was a measure of conscription and that the House of Representatives had no right to pass it.

Mr. W. T. O'Brien, Chairman of the committee, stated that the bill was a measure of conscription and that the House of Representatives had no right to pass it. He stated that the bill was a measure of conscription and that the House of Representatives had no right to pass it.

Mr. W. T. O'Brien, Chairman of the committee, stated that the bill was a measure of conscription and that the House of Representatives had no right to pass it. He stated that the bill was a measure of conscription and that the House of Representatives had no right to pass it.

Mr. W. T. O'Brien, Chairman of the committee, stated that the bill was a measure of conscription and that the House of Representatives had no right to pass it. He stated that the bill was a measure of conscription and that the House of Representatives had no right to pass it.

Mr. W. T. O'Brien, Chairman of the committee, stated that the bill was a measure of conscription and that the House of Representatives had no right to pass it. He stated that the bill was a measure of conscription and that the House of Representatives had no right to pass it.

Mr. W. T. O'Brien, Chairman of the committee, stated that the bill was a measure of conscription and that the House of Representatives had no right to pass it. He stated that the bill was a measure of conscription and that the House of Representatives had no right to pass it.

Mr. W. T. O'Brien, Chairman of the committee, stated that the bill was a measure of conscription and that the House of Representatives had no right to pass it. He stated that the bill was a measure of conscription and that the House of Representatives had no right to pass it.

Mr. W. T. O'Brien, Chairman of the committee, stated that the bill was a measure of conscription and that the House of Representatives had no right to pass it. He stated that the bill was a measure of conscription and that the House of Representatives had no right to pass it.

Mr. W. T. O'Brien, Chairman of the committee, stated that the bill was a measure of conscription and that the House of Representatives had no right to pass it. He stated that the bill was a measure of conscription and that the House of Representatives had no right to pass it.

Mr. W. T. O'Brien, Chairman of the committee, stated that the bill was a measure of conscription and that the House of Representatives had no right to pass it. He stated that the bill was a measure of conscription and that the House of Representatives had no right to pass it.

Mr. W. T. O'Brien, Chairman of the committee, stated that the bill was a measure of conscription and that the House of Representatives had no right to pass it. He stated that the bill was a measure of conscription and that the House of Representatives had no right to pass it.

Mr. W. T. O'Brien, Chairman of the committee, stated that the bill was a measure of conscription and that the House of Representatives had no right to pass it. He stated that the bill was a measure of conscription and that the House of Representatives had no right to pass it.

**THREE HOURS' BATTLE WITH FINANCES.**

Problem of Charging the Colonies.

HEADQUARTERS KNOWN.

[By Wire.]

The system was laid in the House of Commons yesterday.

The system was laid in the House of Commons yesterday.

The system was laid in the House of Commons yesterday.

The system was laid in the House of Commons yesterday.

The system was laid in the House of Commons yesterday.

The system was laid in the House of Commons yesterday.

The system was laid in the House of Commons yesterday.

The system was laid in the House of Commons yesterday.

The system was laid in the House of Commons yesterday.

The system was laid in the House of Commons yesterday.

The system was laid in the House of Commons yesterday.

The system was laid in the House of Commons yesterday.

The system was laid in the House of Commons yesterday.

The system was laid in the House of Commons yesterday.

The system was laid in the House of Commons yesterday.

The system was laid in the House of Commons yesterday.

The system was laid in the House of Commons yesterday.

The system was laid in the House of Commons yesterday.

The system was laid in the House of Commons yesterday.

The system was laid in the House of Commons yesterday.

The system was laid in the House of Commons yesterday.

**STUDY OF AFRICAN TONGUES.**

Professor on Way to Kenya to Learn Khasi.

CONFERENCE IN PARIS.

[FRANCE SERVICE AGENCY.]

At the Government's invitation the Honorable Commission of the International Institute of African Languages and Cultures.

At the Government's invitation the Honorable Commission of the International Institute of African Languages and Cultures.

At the Government's invitation the Honorable Commission of the International Institute of African Languages and Cultures.

At the Government's invitation the Honorable Commission of the International Institute of African Languages and Cultures.

At the Government's invitation the Honorable Commission of the International Institute of African Languages and Cultures.

At the Government's invitation the Honorable Commission of the International Institute of African Languages and Cultures.

At the Government's invitation the Honorable Commission of the International Institute of African Languages and Cultures.

At the Government's invitation the Honorable Commission of the International Institute of African Languages and Cultures.

At the Government's invitation the Honorable Commission of the International Institute of African Languages and Cultures.

At the Government's invitation the Honorable Commission of the International Institute of African Languages and Cultures.

At the Government's invitation the Honorable Commission of the International Institute of African Languages and Cultures.

At the Government's invitation the Honorable Commission of the International Institute of African Languages and Cultures.

At the Government's invitation the Honorable Commission of the International Institute of African Languages and Cultures.

At the Government's invitation the Honorable Commission of the International Institute of African Languages and Cultures.

At the Government's invitation the Honorable Commission of the International Institute of African Languages and Cultures.

At the Government's invitation the Honorable Commission of the International Institute of African Languages and Cultures.

At the Government's invitation the Honorable Commission of the International Institute of African Languages and Cultures.

At the Government's invitation the Honorable Commission of the International Institute of African Languages and Cultures.

At the Government's invitation the Honorable Commission of the International Institute of African Languages and Cultures.

At the Government's invitation the Honorable Commission of the International Institute of African Languages and Cultures.

At the Government's invitation the Honorable Commission of the International Institute of African Languages and Cultures.

**LORDS PASS E.A. LOANS BILL.**

MR. AMERY'S PROMISE.

MR. AMERY'S PROMISE.

MR. AMERY'S PROMISE.

MR. AMERY'S PROMISE.

MR. AMERY'S PROMISE.

MR. AMERY'S PROMISE.

MR. AMERY'S PROMISE.

MR. AMERY'S PROMISE.

MR. AMERY'S PROMISE.

MR. AMERY'S PROMISE.

MR. AMERY'S PROMISE.

MR. AMERY'S PROMISE.

MR. AMERY'S PROMISE.

MR. AMERY'S PROMISE.

MR. AMERY'S PROMISE.

MR. AMERY'S PROMISE.

MR. AMERY'S PROMISE.

MR. AMERY'S PROMISE.

MR. AMERY'S PROMISE.

MR. AMERY'S PROMISE.

MR. AMERY'S PROMISE.

MR. AMERY'S PROMISE.

MR. AMERY'S PROMISE.

MR. AMERY'S PROMISE.

**THE RAIDS IN INDIA.**

EMERGENCY PRISONERS RELEASED.

EMERGENCY PRISONERS RELEASED.

EMERGENCY PRISONERS RELEASED.

EMERGENCY PRISONERS RELEASED.

EMERGENCY PRISONERS RELEASED.

EMERGENCY PRISONERS RELEASED.

EMERGENCY PRISONERS RELEASED.

EMERGENCY PRISONERS RELEASED.

EMERGENCY PRISONERS RELEASED.

EMERGENCY PRISONERS RELEASED.

EMERGENCY PRISONERS RELEASED.

EMERGENCY PRISONERS RELEASED.

EMERGENCY PRISONERS RELEASED.

EMERGENCY PRISONERS RELEASED.

EMERGENCY PRISONERS RELEASED.

EMERGENCY PRISONERS RELEASED.

EMERGENCY PRISONERS RELEASED.

EMERGENCY PRISONERS RELEASED.

EMERGENCY PRISONERS RELEASED.

EMERGENCY PRISONERS RELEASED.

EMERGENCY PRISONERS RELEASED.

EMERGENCY PRISONERS RELEASED.

EMERGENCY PRISONERS RELEASED.

EMERGENCY PRISONERS RELEASED.

**Christmas Giving**

The whole art of Christmas giving lies in the happy selection of gifts. At White ways there is displayed a wonderful array of Presentation Goods and there is little doubt that whatever is your Gift Problem a solution is at hand.

**SHOP EARLY!**

**GENTLEMAN'S POCKET WALLET.**  
Plain and gay. Monogram leather with space for full length bank notes.  
No. 97/80  
or with silver finish edge. No. 98/

**GENTLEMAN'S DRESSING GEAR.**  
For use with or without shirt. Plain and gay. Monogram leather with space for full length bank notes.  
No. 97/80  
or with silver finish edge. No. 98/

**LADIES' HANDBAGS.**  
Plain and gay. Monogram leather with space for full length bank notes.  
No. 97/80  
or with silver finish edge. No. 98/

**LADIES' HANDBAGS.**  
Plain and gay. Monogram leather with space for full length bank notes.  
No. 97/80  
or with silver finish edge. No. 98/

**FITTED ATTACHE CASES.**  
For leather case fitted with pockets for stationery and pen.  
No. 97/80  
or with silver finish edge. No. 98/

**FITTED MANAGER CASES.**  
For leather case fitted with pockets for stationery and pen.  
No. 97/80  
or with silver finish edge. No. 98/

**LADIES' HANDBAGS.**  
Plain and gay. Monogram leather with space for full length bank notes.  
No. 97/80  
or with silver finish edge. No. 98/

**LADIES' HANDBAGS.**  
Plain and gay. Monogram leather with space for full length bank notes.  
No. 97/80  
or with silver finish edge. No. 98/

**White ways NAIROBI.**

And Now—

**The**  
G R E A T E S T  
**BUICK**  
E V E R B U I L T

**1927**

WHEN BETTER AUTOMOBILES ARE BUILT ---- BUICK WILL BUILD THEM



**DIGGING FOR DINOSAURS.**

**Absorbing Story of the Work of the Cutler Expedition.**

**STONE AGE RELICS IN KENYA.**

**Deposits Declared to be the Richest in the World.**

**A NAKURU SKUL MISTERY.**



**Always Dependable in The World's Rough Places**

Where motor car dependability is most vital Dodge Brothers Motor Cars are most highly prized. These cars maintain regular schedules over the pathless wastes of Manzanarita, the desert to Baghdad and a thousand other places too street for cars less sturdy.

Many Dodge Brothers Motor Cars have traveled more than 200,000 miles each. One hundred thousand mile records are common. Of the 1,600,000 Dodge Cars manufactured in the last 11 years, over 90% are still in use.

STANDARD CAB	\$590
DELUXE CAB	\$680
GRANDS TOUR	\$780
BUSINESS COMMERCIAL CAB	\$880

THE CHOND-LEWIS GARAGE, NAKURU.

2 FIFTH & CHAMBERS (E. A.) LTD.  
Victoria Street, NAIROBI.

**DODGE BROTHERS MOTOR CARS**

**LIFE POLICIES**

We can show you the most favourable endorsement policy offered in this country. Big bonuses—unfavourable policy. NATIONAL MUTUAL LIFE ASSURANCE CO. OF AUSTRALIA LTD. Apply KETTLES ROY, LTD., P.O. Box 100, Nairobi.

most of the work to be done by natives.

**THE BRITISH SHANCE.**

At the conclusion of the tour the British Museum authorities decided to continue the work at Nakuru and in 1919 a party of the late Mr. W. V. Colver of Wandsworth in the year 1919. The party set out from London. Mr. Colver had a great fortune to keep them in the country. Mr. Colver and his party had been in the country for some time when they were joined by the late Mr. Colver. The party set out from London. Mr. Colver had a great fortune to keep them in the country. Mr. Colver and his party had been in the country for some time when they were joined by the late Mr. Colver.

At the conclusion of the tour the British Museum authorities decided to continue the work at Nakuru and in 1919 a party of the late Mr. W. V. Colver of Wandsworth in the year 1919. The party set out from London. Mr. Colver had a great fortune to keep them in the country. Mr. Colver and his party had been in the country for some time when they were joined by the late Mr. Colver.

**FISHING NETS.**

As the season was not yet enough to permit of leaving the station for the purpose of fishing, the station was used for the purpose of fishing. The station was used for the purpose of fishing. The station was used for the purpose of fishing.

As the season was not yet enough to permit of leaving the station for the purpose of fishing, the station was used for the purpose of fishing. The station was used for the purpose of fishing. The station was used for the purpose of fishing.

As the season was not yet enough to permit of leaving the station for the purpose of fishing, the station was used for the purpose of fishing. The station was used for the purpose of fishing. The station was used for the purpose of fishing.

Each eating Christmas cake as the above and most delicious. The above and most delicious. The above and most delicious. The above and most delicious.

**Buy Your Christmas Cakes, Puddings, Mince Pies, and Chocolates**  
(Choc/20/1/2/20/20/20)

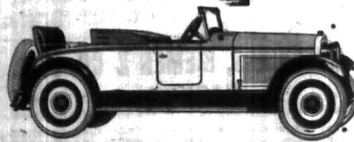
**TORR'S**  
Parfait, Sundae or Banana Split  
YOU ARE SURE TO PLEASE

**Margaret Wallace**  
LAKE ROAD, NAKURU.  
The latest in Afternoon and Evening Dress, Lingerie, Hosiery, Ribbons, etc.  
Also a large selection of Children's Knives, Suits and Dairy Frocks.  
Ladies pull on Yell Hats—latest shades.  
Everything suitable for Christmas Gifts.  
Agents for Southall's  
Please note address—  
LAKE ROAD, NAKURU

**HAULAGE and TRANSPORT**  
ANY WEIGHT ANY DISTANCE  
HAULAGE & GENERAL TRANSPORT CO.  
STANDARD BUILDINGS  
5th Avenue, P.O. Box 90

**NASH**

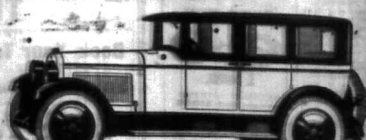
**WITH SEVEN BEARING CRANKSHAFT MOTOR—IT OFFERS AMAZING SMOOTHNESS**



**ADVANCED SIX**  
TOURING 7 Passengers — £465  
" 5 — £430  
TWO SEATER SPORTS in two tone uco finish — £460



**SPECIAL SIX**  
TOURING — £390  
SEDAN — £450



**LIGHT SIX TOURING :: :: £310 LIGHT SIX SEDAN :: :: £350**

**CARR LAWSON Ltd., 6th Avenue, NAIROBI.**

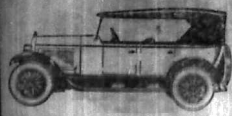
Phone 103.

Box 203.





OVERLAND SIX



A fast, economical and efficient car eminently suitable for Touring or Safari. Low Cost and Low Upkeep.

Touring Model £310 Safari £265

Moulton & Morrison Ltd., Phone 104, P.O. Box 484, GRAVES OVERLAND, NAIROBI.

Endurance — Long Life —

The Great Products of CHRYSLER STANDARDIZED Quality

CHRYSLER

50-60-70-80"

CHRYSLER MODEL NUMBERS MEAN MILES PER HOUR.

DISTRIBUTORS YORK GARAGES Ltd., NAIROBI.

"CANADIAN FARM" LIGHT TRUCK

WITH ALL STEEL BODY AND ALL WEATHER HOOD, SELF STARTER, INDEPENDENT LIGHTING AND TYRES.

£190

RUCKFIELD, ABERDEEN, 1930.



THE FORD LIGHT TRUCK IS THE LAST WORD IN DEFENDABLE AND ECONOMICAL TRANSPORT WITH THE COMFORT OF A PASSENGER CAR.

GET YOURS NOW

The Service Company Limited.

Maison Bonsella

PROPRIETORS: H. W. & H. BONSELLA LTD. PREVIOUSLY OCCUPIED BY THE TOILET REQUISITE CO. Hairdressing by expert coiffeur from EMIL, PARIS.

Table listing hairdressing services and prices: Permanent Wave, Shampoo and Set, Ordinary Shampoo, Menus Shampoo, Manic Application, Manic Wave, Manic Wave Special, Manic Wash.

SPECIAL NOTE: In view of the rush of business at the Xmas season it is particularly requested that appointments be booked well in advance to avoid disappointment.

7st. 30s.

P.O. Box 28

CH. LAFITTE'S BRANDIES



EMILE JARDIN & Co NAIROBI.

Happy Days



BRASSO METAL POLISH

Lead the way on a B.S.A



Let us give you a trial run. CARL LAWSON & COMPANY, LIMITED.

Advertisement for H. F. Ward & Co. Ltd. featuring a typewriter and text: 'DO YOU FIND READING AT NIGHT DIFFICULT? IF YOU HAVE THE FLEETING DOUBT ABOUT YOUR EYES, CONSULT WITH H. F. WARD & CO. LTD. 5, RIVERSIDE PLACE, 2101, (Upper Market), ALL OCCUPATIONS & VISITORS WELCOME.'

H. F. Ward & Co. (P. 12) NAIROBI HOUSE.

IF you wish to secure a really suitable, and at the same time, USEFUL GIFT for XMAS, pay a visit to our

SHOW ROOM AT NAIROBI HOUSE where you may see a wide selection of BATH ROOM ACCESSORIES including nickel plated Expanding Shaving Mirrors, Metal Cabinets with mirror fronts, Glass Topped Metal Tables, Cork Bath Stools, etc. All in neat designs, and at very moderate prices.

ROMEO & JULIET HAVANA CIGARS. A selection very suitable for the Festive Season.

XMAS PRESENTS

A unique selection to choose from! such as AMOURTIE CAMERAS, which permit taking taking 50 perfect pictures with ONE roll of film... ALABASTER PUFF BOWLS, beautifully HAND-CASTED, introduced into Kenya for the first time... FROM £2/00 each.

A. H. WARDLE & CO. LTD., NAIROBI.

Under the Standard Clock

Standard Chamber. An important meeting of the Standard Chamber of Commerce is to be held today at a special of members are present to discuss

Outings. The 11th meeting of the Standard Chamber of Commerce is to be held today at a special of members are present to discuss

Standard Chamber. An important meeting of the Standard Chamber of Commerce is to be held today at a special of members are present to discuss

Standard Chamber. An important meeting of the Standard Chamber of Commerce is to be held today at a special of members are present to discuss

Standard Chamber. An important meeting of the Standard Chamber of Commerce is to be held today at a special of members are present to discuss

Standard Chamber. An important meeting of the Standard Chamber of Commerce is to be held today at a special of members are present to discuss

Standard Chamber. An important meeting of the Standard Chamber of Commerce is to be held today at a special of members are present to discuss

NEWS

THE WIFE OF Major J. F. Thomas, of the 1st Battalion, The Buffs, is to be married to a certain

THE BAPTIST CHURCH AT NAIROBI. The Rev. Canon J. H. ...

THE DEFENSE TREE BILL. The Government has introduced a Bill to amend the

THE DEFENSE TREE BILL. The Government has introduced a Bill to amend the

THE DEFENSE TREE BILL. The Government has introduced a Bill to amend the

THE DEFENSE TREE BILL. The Government has introduced a Bill to amend the

THE DEFENSE TREE BILL. The Government has introduced a Bill to amend the

THE DEFENSE TREE BILL. The Government has introduced a Bill to amend the

representation of public opinion in the Standard Chamber of Commerce is to be held today at a special of members are present to discuss

representation of public opinion in the Standard Chamber of Commerce is to be held today at a special of members are present to discuss

representation of public opinion in the Standard Chamber of Commerce is to be held today at a special of members are present to discuss

representation of public opinion in the Standard Chamber of Commerce is to be held today at a special of members are present to discuss

representation of public opinion in the Standard Chamber of Commerce is to be held today at a special of members are present to discuss

representation of public opinion in the Standard Chamber of Commerce is to be held today at a special of members are present to discuss

representation of public opinion in the Standard Chamber of Commerce is to be held today at a special of members are present to discuss

representation of public opinion in the Standard Chamber of Commerce is to be held today at a special of members are present to discuss

representation of public opinion in the Standard Chamber of Commerce is to be held today at a special of members are present to discuss

representation of public opinion in the Standard Chamber of Commerce is to be held today at a special of members are present to discuss

representation of public opinion in the Standard Chamber of Commerce is to be held today at a special of members are present to discuss

representation of public opinion in the Standard Chamber of Commerce is to be held today at a special of members are present to discuss

representation of public opinion in the Standard Chamber of Commerce is to be held today at a special of members are present to discuss

representation of public opinion in the Standard Chamber of Commerce is to be held today at a special of members are present to discuss

representation of public opinion in the Standard Chamber of Commerce is to be held today at a special of members are present to discuss

representation of public opinion in the Standard Chamber of Commerce is to be held today at a special of members are present to discuss

representation of public opinion in the Standard Chamber of Commerce is to be held today at a special of members are present to discuss

representation of public opinion in the Standard Chamber of Commerce is to be held today at a special of members are present to discuss



# Gifts for every age and taste

## AT WHITEWAYS Sixth Avenue NAIROBI.

### GIFTS FOR HIMSELF.

The choice of a gift which will please and give lasting satisfaction is ever a problem. There is however nothing which so appeals to the eternal feminine as gifts of an intimate character which carry individually to their selection. The very obvious fact that you have considered such gifts is showing just the right gift means much to the recipient.



**LADIES' SILK BARRIS.**  
Dainty French Gowns in the latest styles. \$100, \$120, \$150 each.  
These gowns with new designs in fabric, are on the 17<sup>th</sup> floor.  
**LADIES' WOOLLEN BARRIS.**  
Soft Cashmere in the latest styles. \$100, \$120, \$150 each.  
These gowns with new designs in fabric, are on the 17<sup>th</sup> floor.  
These gowns \$4 - 15 - 20 each.  
\$200.



**ESSENCE OF STANGE.**  
This Crown Perfume is the new "Indestructible" variety. Contains 60 cc. in a 100 cc. bottle. \$1.00 each.  
**ESSENCE OF STANGE.**  
This Crown Perfume is the new "Indestructible" variety. Contains 60 cc. in a 100 cc. bottle. \$1.00 each.  
**ESSENCE OF STANGE.**  
This Crown Perfume is the new "Indestructible" variety. Contains 60 cc. in a 100 cc. bottle. \$1.00 each.

### GIFTS FOR HIMSELF.

A man wants more or less when Xmas time comes round! Yet there are many gifts which will carry a practical expression of your regard if you but spend a little time in Whiteway's Men's Section. The few items here given are suggestions from the immense variety of suitable men's gifts now on display in the store.



**NECK TIE.**  
The "Furrow" pattern is all wool and made in Manchester design. \$10.00.  
More all wool ties with various designs. \$10.00, \$12.00, \$15.00, \$20.00, \$25.00, \$30.00, \$35.00, \$40.00, \$45.00, \$50.00, \$55.00, \$60.00, \$65.00, \$70.00, \$75.00, \$80.00, \$85.00, \$90.00, \$95.00, \$100.00.

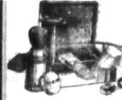


**SECRETARY'S BARRIS.**  
The "The Law's Hand" is a Patent clock with law cases in Ivory. \$10.00.  
The "The Law's Hand" is a Patent clock with law cases in Ivory. \$10.00.  
The "The Law's Hand" is a Patent clock with law cases in Ivory. \$10.00.



**ESSENCE OF STANGE.**  
This Crown Perfume is the new "Indestructible" variety. Contains 60 cc. in a 100 cc. bottle. \$1.00 each.

**ESSENCE OF STANGE.**  
This Crown Perfume is the new "Indestructible" variety. Contains 60 cc. in a 100 cc. bottle. \$1.00 each.



**"VALET" RAZOR SETS.**  
This Combination Shaving Outfit is a most appreciated gift complete with a razor.  
**NECK TIE.**  
Always acceptable and with an immense stock to choose from every man can find the tie of his choice. \$10.00, \$12.00, \$15.00, \$20.00, \$25.00, \$30.00, \$35.00, \$40.00, \$45.00, \$50.00, \$55.00, \$60.00, \$65.00, \$70.00, \$75.00, \$80.00, \$85.00, \$90.00, \$95.00, \$100.00.



**NECK TIE.**  
Always acceptable and with an immense stock to choose from every man can find the tie of his choice. \$10.00, \$12.00, \$15.00, \$20.00, \$25.00, \$30.00, \$35.00, \$40.00, \$45.00, \$50.00, \$55.00, \$60.00, \$65.00, \$70.00, \$75.00, \$80.00, \$85.00, \$90.00, \$95.00, \$100.00.



**"VALET" SHAVING BRUSHES.**  
This Shaving Brush is a most appreciated gift complete with a razor.  
**NECK TIE.**  
Always acceptable and with an immense stock to choose from every man can find the tie of his choice. \$10.00, \$12.00, \$15.00, \$20.00, \$25.00, \$30.00, \$35.00, \$40.00, \$45.00, \$50.00, \$55.00, \$60.00, \$65.00, \$70.00, \$75.00, \$80.00, \$85.00, \$90.00, \$95.00, \$100.00.

**ESSENCE OF STANGE.**  
This Crown Perfume is the new "Indestructible" variety. Contains 60 cc. in a 100 cc. bottle. \$1.00 each.



**ESSENCE OF STANGE.**  
This Crown Perfume is the new "Indestructible" variety. Contains 60 cc. in a 100 cc. bottle. \$1.00 each.

## FAIRYLAND

Handmade toys and games for children. The most popular gift for children. The most popular gift for children. The most popular gift for children.

## COFFEE BEAN BRUSH

Set of 6 P. M. S. Coffee Beans with a brush. \$10.00.



**ESSENCE OF STANGE.**  
This Crown Perfume is the new "Indestructible" variety. Contains 60 cc. in a 100 cc. bottle. \$1.00 each.



**ESSENCE OF STANGE.**  
This Crown Perfume is the new "Indestructible" variety. Contains 60 cc. in a 100 cc. bottle. \$1.00 each.



**ESSENCE OF STANGE.**  
This Crown Perfume is the new "Indestructible" variety. Contains 60 cc. in a 100 cc. bottle. \$1.00 each.



**ESSENCE OF STANGE.**  
This Crown Perfume is the new "Indestructible" variety. Contains 60 cc. in a 100 cc. bottle. \$1.00 each.

**ESSENCE OF STANGE.**  
This Crown Perfume is the new "Indestructible" variety. Contains 60 cc. in a 100 cc. bottle. \$1.00 each.

**ESSENCE OF STANGE.**  
This Crown Perfume is the new "Indestructible" variety. Contains 60 cc. in a 100 cc. bottle. \$1.00 each.

**ESSENCE OF STANGE.**  
This Crown Perfume is the new "Indestructible" variety. Contains 60 cc. in a 100 cc. bottle. \$1.00 each.

**ESSENCE OF STANGE.**  
This Crown Perfume is the new "Indestructible" variety. Contains 60 cc. in a 100 cc. bottle. \$1.00 each.





The Colonial General Stores

HAVE JUST UNPACKED Fresh Chocolates, Confectionery, (Pascall's and Bourne's) and everything to ensure a MERRY CHRISTMAS

including a vast assortment of Christmas Crackers and Toys, Wines, Spirits, Christmas Puddings, Fruit and Nuts.

REMINGTON STANDARD



Seven Lengths Carriage

AS Style of Type

Write your own name on the name of your REMINGTON TYPEWRITER, and send it to your GOVERNMENT ROAD, NAIROBI.

TAWHIRI KIA ORA STORE

FULLY LICENSED LIGHT REFRIGERATORS AVAILABLE. Large & Choice Selections of TEA'S Goods. JUST ARRIVED. INSPECTION INVITED.

PRESENTS FOR CHRISTMAS



A Few Suggestions BY E. DOBBIE.



Choosing Alarm Clock, Copper Clock, Lorraine Clock.



STOCK OF NEW GOODS LATEST DESIGN AND BEST QUALITY.

at Dobbies.

M. NUSSOLIN CAUSES A FRENCH DISPUTE

Epic Battle between Two Royal Editors.

BULLETIN OF YESTER

General Staff Paid to Kill King King

Four the Paris Correspondent's

Paris, December 11. Last Thursday, I was addressed by the secretary of the American Legation...

Parliamentary Affairs

The Assembly's deliberations at last a few moments, and distribution of the day's work...

Under the impression that it would be easy for him to make use of these materials...

Discretionary use of his own... The French Government...

Messieurs Ministres, a detailed and popular text...

FOUR INCIDENTS

Metropolitan Club known to be an anti-social institution...

FOUR INCIDENTS

Metropolitan Club known to be an anti-social institution...

FOUR INCIDENTS

Metropolitan Club known to be an anti-social institution...

FOUR INCIDENTS

Metropolitan Club known to be an anti-social institution...

FOUR INCIDENTS

Metropolitan Club known to be an anti-social institution...

Market Reports

Mr. A. H. Tod has received from London a quantity of...

Market Reports

Mr. A. H. Tod has received from London a quantity of...

Market Reports

Mr. A. H. Tod has received from London a quantity of...

Market Reports

Mr. A. H. Tod has received from London a quantity of...

Market Reports

Mr. A. H. Tod has received from London a quantity of...

Market Reports

Mr. A. H. Tod has received from London a quantity of...

Market Reports

Mr. A. H. Tod has received from London a quantity of...

Market Reports

Mr. A. H. Tod has received from London a quantity of...

Market Reports

Mr. A. H. Tod has received from London a quantity of...

Market Reports

Mr. A. H. Tod has received from London a quantity of...

Market Reports

Mr. A. H. Tod has received from London a quantity of...

Market Reports

Mr. A. H. Tod has received from London a quantity of...

Market Reports

Mr. A. H. Tod has received from London a quantity of...

Market Reports

Mr. A. H. Tod has received from London a quantity of...

Market Reports

Mr. A. H. Tod has received from London a quantity of...

Market Reports

Mr. A. H. Tod has received from London a quantity of...

Market Reports

Mr. A. H. Tod has received from London a quantity of...

Market Reports

Mr. A. H. Tod has received from London a quantity of...

ALBION & Co. The oldest Tailoring and Dressmaking... Order Your Tailor Here... Girls in each lot.

THE NAIROBI BUILDING & DEVELOPMENT COMPANY LIMITED. In Jersey and 17, 18, 19, 20, 21, 22, 23, 24, 25, 26, 27, 28, 29, 30, 31, 32, 33, 34, 35, 36, 37, 38, 39, 40, 41, 42, 43, 44, 45, 46, 47, 48, 49, 50, 51, 52, 53, 54, 55, 56, 57, 58, 59, 60, 61, 62, 63, 64, 65, 66, 67, 68, 69, 70, 71, 72, 73, 74, 75, 76, 77, 78, 79, 80, 81, 82, 83, 84, 85, 86, 87, 88, 89, 90, 91, 92, 93, 94, 95, 96, 97, 98, 99, 100.

To the Farmers. We have imported a large quantity of British Dairy Salt and more on hand for sale. Price as usual. F.O.B. Nairobi.

Short Loans Granted £1 to £1000 CALL ON WATERBURY Kenya Loan & Discount Co., Ltd. Court Chambers, (1st Floor) Box 864, NAIROBI. This Department: STRONG GUARANTEE.

M. B. D'SOUZA & Co. P.O. Box 18. (Established 1889) Phones No. 75. General Merchants, Tailors & Outfitters. Stocks carried in every line. Suits Cases, K. Boya, J. Jones, Best Tailors, etc. offered at ridiculous prices. Just unpacked Fresh Chocolates, Confectionery, including a fine assortment of SCARF, TOYS, CRACKERS, Toilet Requisites, Children's Frocks, Amusements, etc. Do your shopping early. Buy QUALITY and be proud of your JUDGEMENT.

The Salisbury Hotel Nairobi Phone 166 P.O. Box 99.

Another Land Bargain KIRKWOOD & Co. LAND AGENTS, KITALE. Well situated and within a few miles of two main branch stations, a FARM of 6000 acres with 1000 head of cattle on the RIVER NORTA. Admirably suited for maize, wheat and coffee. A very large area may be put under the plough and the soil is of unobscured fertility. Price £1000/- per acre. We have a number of other farms for disposal.

Geo. BLOWERS BUILDING CONTRACTOR, MANUFACTURER, AND EXPORT IMPORTER. 20, 21, 22, 23, 24, 25, 26, 27, 28, 29, 30, 31, 32, 33, 34, 35, 36, 37, 38, 39, 40, 41, 42, 43, 44, 45, 46, 47, 48, 49, 50, 51, 52, 53, 54, 55, 56, 57, 58, 59, 60, 61, 62, 63, 64, 65, 66, 67, 68, 69, 70, 71, 72, 73, 74, 75, 76, 77, 78, 79, 80, 81, 82, 83, 84, 85, 86, 87, 88, 89, 90, 91, 92, 93, 94, 95, 96, 97, 98, 99, 100. CASH WITH ORDER. Phone: Works 988. Home 488.

The E. S. A. T. C. Telephone: "The Organist." 10, 11, 12, 13, 14, 15, 16, 17, 18, 19, 20, 21, 22, 23, 24, 25, 26, 27, 28, 29, 30, 31, 32, 33, 34, 35, 36, 37, 38, 39, 40, 41, 42, 43, 44, 45, 46, 47, 48, 49, 50, 51, 52, 53, 54, 55, 56, 57, 58, 59, 60, 61, 62, 63, 64, 65, 66, 67, 68, 69, 70, 71, 72, 73, 74, 75, 76, 77, 78, 79, 80, 81, 82, 83, 84, 85, 86, 87, 88, 89, 90, 91, 92, 93, 94, 95, 96, 97, 98, 99, 100.

For Your XMAS FAVORITE B. Chitram. ESTABLISHED 1871. 10, 11, 12, 13, 14, 15, 16, 17, 18, 19, 20, 21, 22, 23, 24, 25, 26, 27, 28, 29, 30, 31, 32, 33, 34, 35, 36, 37, 38, 39, 40, 41, 42, 43, 44, 45, 46, 47, 48, 49, 50, 51, 52, 53, 54, 55, 56, 57, 58, 59, 60, 61, 62, 63, 64, 65, 66, 67, 68, 69, 70, 71, 72, 73, 74, 75, 76, 77, 78, 79, 80, 81, 82, 83, 84, 85, 86, 87, 88, 89, 90, 91, 92, 93, 94, 95, 96, 97, 98, 99, 100.





**JOCKEY CLUB DANCE**

A Dance will be held at  
**THE NEW STANLEY HOTEL**  
 on  
**Friday, 31st December 1926.**

18.9.26.

Hosted by **KENYA JAZZ BAND.**



# Christmas Shopping Guide

**WHERE TO BUY.**

**Standard Stationery Stores.**

The festive spirit is making a great feature this year of stationery and books. It is only when the operations of choice, however, be it the purchase of the proper gift or the selection of a new book, that the man who is a lover of the pen and the book is not content with a mere gift of stationery or a book, but wishes to have the gift of a book which is both useful and enjoyable. The man who is a lover of the pen and the book is not content with a mere gift of stationery or a book, but wishes to have the gift of a book which is both useful and enjoyable.

The man who is a lover of the pen and the book is not content with a mere gift of stationery or a book, but wishes to have the gift of a book which is both useful and enjoyable. The man who is a lover of the pen and the book is not content with a mere gift of stationery or a book, but wishes to have the gift of a book which is both useful and enjoyable.

The man who is a lover of the pen and the book is not content with a mere gift of stationery or a book, but wishes to have the gift of a book which is both useful and enjoyable. The man who is a lover of the pen and the book is not content with a mere gift of stationery or a book, but wishes to have the gift of a book which is both useful and enjoyable.

**Tea**

When you change to Brooke Bond Red Label you change for goodness—and for good. Vacuum packed in round tins.

**Brooke Bond Tea**

RED LABEL BEST QUALITY BROOKE BOND EAST AFRICA, LTD.

**XMAS SPECIALITIES**

ORDER YOUR REQUIREMENTS NOW

**XMAS PLUM PUDDING**  
**XMAS WINDYHEAT**  
**XMAS CRACKERS**  
**CURRY'S STICKS**  
**CRISTALLIZED MIXED FRUIT**  
**TOYS**  
**DATEY**

If you have not had a copy of our Special Xmas list kindly let us know.

**Blacklaws & Brown**

LATE MACKINNON BROTHERS, NAIROBI.

Tel. No. 81

**VENA VALMA**

The finest cream long kept moisture. The "Double" French, Swiss, Argentine, Tropic, Bismark and Light Vena, Valma Paris, Colonial, Chateau, etc. Apply for terms Number 4168

**BARCLAYS BANK (DOMINION COLONIAL AND OVERSEAS)**

**THE COLONIAL BANK**

INCORPORATED IN THE UNITED KINGDOM BY ROYAL CHARTER

20 Incorporated by Act of Parliament 1908.

1908 which is amalgamated.

**THE NATIONAL BANK OF SOUTH AFRICA LIMITED.**

AND

**THE ANGO-EGYPTIAN BANK LIMITED.**

Capital Authorized £10,000,000  
 Capital Subscribed £2,000,000  
 Reserve Fund £2,000,000  
 Dividend Paid £2,000,000

HEAD OFFICE: 1, Lombard Street, London E.C.4  
 27, 29, 31, 33, 35, 37, 39, 41, 43, 45, 47, 49, 51, 53, 55, 57, 59, 61, 63, 65, 67, 69, 71, 73, 75, 77, 79, 81, 83, 85, 87, 89, 91, 93, 95, 97, 99, 101, 103, 105, 107, 109, 111, 113, 115, 117, 119, 121, 123, 125, 127, 129, 131, 133, 135, 137, 139, 141, 143, 145, 147, 149, 151, 153, 155, 157, 159, 161, 163, 165, 167, 169, 171, 173, 175, 177, 179, 181, 183, 185, 187, 189, 191, 193, 195, 197, 199, 201, 203, 205, 207, 209, 211, 213, 215, 217, 219, 221, 223, 225, 227, 229, 231, 233, 235, 237, 239, 241, 243, 245, 247, 249, 251, 253, 255, 257, 259, 261, 263, 265, 267, 269, 271, 273, 275, 277, 279, 281, 283, 285, 287, 289, 291, 293, 295, 297, 299, 301, 303, 305, 307, 309, 311, 313, 315, 317, 319, 321, 323, 325, 327, 329, 331, 333, 335, 337, 339, 341, 343, 345, 347, 349, 351, 353, 355, 357, 359, 361, 363, 365, 367, 369, 371, 373, 375, 377, 379, 381, 383, 385, 387, 389, 391, 393, 395, 397, 399, 401, 403, 405, 407, 409, 411, 413, 415, 417, 419, 421, 423, 425, 427, 429, 431, 433, 435, 437, 439, 441, 443, 445, 447, 449, 451, 453, 455, 457, 459, 461, 463, 465, 467, 469, 471, 473, 475, 477, 479, 481, 483, 485, 487, 489, 491, 493, 495, 497, 499, 501, 503, 505, 507, 509, 511, 513, 515, 517, 519, 521, 523, 525, 527, 529, 531, 533, 535, 537, 539, 541, 543, 545, 547, 549, 551, 553, 555, 557, 559, 561, 563, 565, 567, 569, 571, 573, 575, 577, 579, 581, 583, 585, 587, 589, 591, 593, 595, 597, 599, 601, 603, 605, 607, 609, 611, 613, 615, 617, 619, 621, 623, 625, 627, 629, 631, 633, 635, 637, 639, 641, 643, 645, 647, 649, 651, 653, 655, 657, 659, 661, 663, 665, 667, 669, 671, 673, 675, 677, 679, 681, 683, 685, 687, 689, 691, 693, 695, 697, 699, 701, 703, 705, 707, 709, 711, 713, 715, 717, 719, 721, 723, 725, 727, 729, 731, 733, 735, 737, 739, 741, 743, 745, 747, 749, 751, 753, 755, 757, 759, 761, 763, 765, 767, 769, 771, 773, 775, 777, 779, 781, 783, 785, 787, 789, 791, 793, 795, 797, 799, 801, 803, 805, 807, 809, 811, 813, 815, 817, 819, 821, 823, 825, 827, 829, 831, 833, 835, 837, 839, 841, 843, 845, 847, 849, 851, 853, 855, 857, 859, 861, 863, 865, 867, 869, 871, 873, 875, 877, 879, 881, 883, 885, 887, 889, 891, 893, 895, 897, 899, 901, 903, 905, 907, 909, 911, 913, 915, 917, 919, 921, 923, 925, 927, 929, 931, 933, 935, 937, 939, 941, 943, 945, 947, 949, 951, 953, 955, 957, 959, 961, 963, 965, 967, 969, 971, 973, 975, 977, 979, 981, 983, 985, 987, 989, 991, 993, 995, 997, 999, 1001, 1003, 1005, 1007, 1009, 1011, 1013, 1015, 1017, 1019, 1021, 1023, 1025, 1027, 1029, 1031, 1033, 1035, 1037, 1039, 1041, 1043, 1045, 1047, 1049, 1051, 1053, 1055, 1057, 1059, 1061, 1063, 1065, 1067, 1069, 1071, 1073, 1075, 1077, 1079, 1081, 1083, 1085, 1087, 1089, 1091, 1093, 1095, 1097, 1099, 1101, 1103, 1105, 1107, 1109, 1111, 1113, 1115, 1117, 1119, 1121, 1123, 1125, 1127, 1129, 1131, 1133, 1135, 1137, 1139, 1141, 1143, 1145, 1147, 1149, 1151, 1153, 1155, 1157, 1159, 1161, 1163, 1165, 1167, 1169, 1171, 1173, 1175, 1177, 1179, 1181, 1183, 1185, 1187, 1189, 1191, 1193, 1195, 1197, 1199, 1201, 1203, 1205, 1207, 1209, 1211, 1213, 1215, 1217, 1219, 1221, 1223, 1225, 1227, 1229, 1231, 1233, 1235, 1237, 1239, 1241, 1243, 1245, 1247, 1249, 1251, 1253, 1255, 1257, 1259, 1261, 1263, 1265, 1267, 1269, 1271, 1273, 1275, 1277, 1279, 1281, 1283, 1285, 1287, 1289, 1291, 1293, 1295, 1297, 1299, 1301, 1303, 1305, 1307, 1309, 1311, 1313, 1315, 1317, 1319, 1321, 1323, 1325, 1327, 1329, 1331, 1333, 1335, 1337, 1339, 1341, 1343, 1345, 1347, 1349, 1351, 1353, 1355, 1357, 1359, 1361, 1363, 1365, 1367, 1369, 1371, 1373, 1375, 1377, 1379, 1381, 1383, 1385, 1387, 1389, 1391, 1393, 1395, 1397, 1399, 1401, 1403, 1405, 1407, 1409, 1411, 1413, 1415, 1417, 1419, 1421, 1423, 1425, 1427, 1429, 1431, 1433, 1435, 1437, 1439, 1441, 1443, 1445, 1447, 1449, 1451, 1453, 1455, 1457, 1459, 1461, 1463, 1465, 1467, 1469, 1471, 1473, 1475, 1477, 1479, 1481, 1483, 1485, 1487, 1489, 1491, 1493, 1495, 1497, 1499, 1501, 1503, 1505, 1507, 1509, 1511, 1513, 1515, 1517, 1519, 1521, 1523, 1525, 1527, 1529, 1531, 1533, 1535, 1537, 1539, 1541, 1543, 1545, 1547, 1549, 1551, 1553, 1555, 1557, 1559, 1561, 1563, 1565, 1567, 1569, 1571, 1573, 1575, 1577, 1579, 1581, 1583, 1585, 1587, 1589, 1591, 1593, 1595, 1597, 1599, 1601, 1603, 1605, 1607, 1609, 1611, 1613, 1615, 1617, 1619, 1621, 1623, 1625, 1627, 1629, 1631, 1633, 1635, 1637, 1639, 1641, 1643, 1645, 1647, 1649, 1651, 1653, 1655, 1657, 1659, 1661, 1663, 1665, 1667, 1669, 1671, 1673, 1675, 1677, 1679, 1681, 1683, 1685, 1687, 1689, 1691, 1693, 1695, 1697, 1699, 1701, 1703, 1705, 1707, 1709, 1711, 1713, 1715, 1717, 1719, 1721, 1723, 1725, 1727, 1729, 1731, 1733, 1735, 1737, 1739, 1741, 1743, 1745, 1747, 1749, 1751, 1753, 1755, 1757, 1759, 1761, 1763, 1765, 1767, 1769, 1771, 1773, 1775, 1777, 1779, 1781, 1783, 1785, 1787, 1789, 1791, 1793, 1795, 1797, 1799, 1801, 1803, 1805, 1807, 1809, 1811, 1813, 1815, 1817, 1819, 1821, 1823, 1825, 1827, 1829, 1831, 1833, 1835, 1837, 1839, 1841, 1843, 1845, 1847, 1849, 1851, 1853, 1855, 1857, 1859, 1861, 1863, 1865, 1867, 1869, 1871, 1873, 1875, 1877, 1879, 1881, 1883, 1885, 1887, 1889, 1891, 1893, 1895, 1897, 1899, 1901, 1903, 1905, 1907, 1909, 1911, 1913, 1915, 1917, 1919, 1921, 1923, 1925, 1927, 1929, 1931, 1933, 1935, 1937, 1939, 1941, 1943, 1945, 1947, 1949, 1951, 1953, 1955, 1957, 1959, 1961, 1963, 1965, 1967, 1969, 1971, 1973, 1975, 1977, 1979, 1981, 1983, 1985, 1987, 1989, 1991, 1993, 1995, 1997, 1999, 2001, 2003, 2005, 2007, 2009, 2011, 2013, 2015, 2017, 2019, 2021, 2023, 2025, 2027, 2029, 2031, 2033, 2035, 2037, 2039, 2041, 2043, 2045, 2047, 2049, 2051, 2053, 2055, 2057, 2059, 2061, 2063, 2065, 2067, 2069, 2071, 2073, 2075, 2077, 2079, 2081, 2083, 2085, 2087, 2089, 2091, 2093, 2095, 2097, 2099, 2101, 2103, 2105, 2107, 2109, 2111, 2113, 2115, 2117, 2119, 2121, 2123, 2125, 2127, 2129, 2131, 2133, 2135, 2137, 2139, 2141, 2143, 2145, 2147, 2149, 2151, 2153, 2155, 2157, 2159, 2161, 2163, 2165, 2167, 2169, 2171, 2173, 2175, 2177, 2179, 2181, 2183, 2185, 2187, 2189, 2191, 2193, 2195, 2197, 2199, 2201, 2203, 2205, 2207, 2209, 2211, 2213, 2215, 2217, 2219, 2221, 2223, 2225, 2227, 2229, 2231, 2233, 2235, 2237, 2239, 2241, 2243, 2245, 2247, 2249, 2251, 2253, 2255, 2257, 2259, 2261, 2263, 2265, 2267, 2269, 2271, 2273, 2275, 2277, 2279, 2281, 2283, 2285, 2287, 2289, 2291, 2293, 2295, 2297, 2299, 2301, 2303, 2305, 2307, 2309, 2311, 2313, 2315, 2317, 2319, 2321, 2323, 2325, 2327, 2329, 2331, 2333, 2335, 2337, 2339, 2341, 2343, 2345, 2347, 2349, 2351, 2353, 2355, 2357, 2359, 2361, 2363, 2365, 2367, 2369, 2371, 2373, 2375, 2377, 2379, 2381, 2383, 2385, 2387, 2389, 2391, 2393, 2395, 2397, 2399, 2401, 2403, 2405, 2407, 2409, 2411, 2413, 2415, 2417, 2419, 2421, 2423, 2425, 2427, 2429, 2431, 2433, 2435, 2437, 2439, 2441, 2443, 2445, 2447, 2449, 2451, 2453, 2455, 2457, 2459, 2461, 2463, 2465, 2467, 2469, 2471, 2473, 2475, 2477, 2479, 2481, 2483, 2485, 2487, 2489, 2491, 2493, 2495, 2497, 2499, 2501, 2503, 2505, 2507, 2509, 2511, 2513, 2515, 2517, 2519, 2521, 2523, 2525, 2527, 2529, 2531, 2533, 2535, 2537, 2539, 2541, 2543, 2545, 2547, 2549, 2551, 2553, 2555, 2557, 2559, 2561, 2563, 2565, 2567, 2569, 2571, 2573, 2575, 2577, 2579, 2581, 2583, 2585, 2587, 2589, 2591, 2593, 2595, 2597, 2599, 2601, 2603, 2605, 2607, 2609, 2611, 2613, 2615, 2617, 2619, 2621, 2623, 2625, 2627, 2629, 2631, 2633, 2635, 2637, 2639, 2641, 2643, 2645, 2647, 2649, 2651, 2653, 2655, 2657, 2659, 2661, 2663, 2665, 2667, 2669, 2671, 2673, 2675, 2677, 2679, 2681, 2683, 2685, 2687, 2689, 2691, 2693, 2695, 2697, 2699, 2701, 2703, 2705, 2707, 2709, 2711, 2713, 2715, 2717, 2719, 2721, 2723, 2725, 2727, 2729, 2731, 2733, 2735, 2737, 2739, 2741, 2743, 2745, 2747, 2749, 2751, 2753, 2755, 2757, 2759, 2761, 2763, 2765, 2767, 2769, 2771, 2773, 2775, 2777, 2779, 2781, 2783, 2785, 2787, 2789, 2791, 2793, 2795, 2797, 2799, 2801, 2803, 2805, 2807, 2809, 2811, 2813, 2815, 2817, 2819, 2821, 2823, 2825, 2827, 2829, 2831, 2833, 2835, 2837, 2839, 2841, 2843, 2845, 2847, 2849, 2851, 2853, 2855, 2857, 2859, 2861, 2863, 2865, 2867, 2869, 2871, 2873, 2875, 2877, 2879, 2881, 2883, 2885, 2887, 2889, 2891, 2893, 2895, 2897, 2899, 2901, 2903, 2905, 2907, 2909, 2911, 2913, 2915, 2917, 2919, 2921, 2923, 2925, 2927, 2929, 2931, 2933, 2935, 2937, 2939, 2941, 2943, 2945, 2947, 2949, 2951, 2953, 2955, 2957, 2959, 2961, 2963, 2965, 2967, 2969, 2971, 2973, 2975, 2977, 2979, 2981, 2983, 2985, 2987, 2989, 2991, 2993, 2995, 2997, 2999, 3001, 3003, 3005, 3007, 3009, 3011, 3013, 3015, 3017, 3019, 3021, 3023, 3025, 3027, 3029, 3031, 3033, 3035, 3037, 3039, 3041, 3043, 3045, 3047, 3049, 3051, 3053, 3055, 3057, 3059, 3061, 3063, 3065, 3067, 3069, 3071, 3073, 3075, 3077, 3079, 3081, 3083, 3085, 3087, 3089, 3091, 3093, 3095, 3097, 3099, 3101, 3103, 3105, 3107, 3109, 3111, 3113, 3115, 3117, 3119, 3121, 3123, 3125, 3127, 3129, 3131, 3133, 3135, 3137, 3139, 3141, 3143, 3145, 3147, 3149, 3151, 3153, 3155, 3157, 3159, 3161, 3163, 3165, 3167, 3169, 3171, 3173, 3175, 3177, 3179, 3181, 3183, 3185, 3187, 3189, 3191, 3193, 3195, 3197, 3199, 3201, 3203, 3205, 3207, 3209, 3211, 3213, 3215, 3217, 3219, 3221, 3223, 3225, 3227, 3229, 3231, 3233, 3235, 3237, 3239, 3241, 3243, 3245, 3247, 3249, 3251, 3253, 3255, 3257, 3259, 3261, 3263, 3265, 3267, 3269, 3271, 3273, 3275, 3277, 3279, 3281, 3283, 3285, 3287, 3289, 3291, 3293, 3295, 3297, 3299, 3301, 3303, 3305, 3307, 3309, 3311, 3313, 3315, 3317, 3319, 3321, 3323, 3325, 3327, 3329, 3331, 3333, 3335, 3337, 3339, 3341, 3343, 3345, 3347, 3349, 3351, 3353, 3355, 3357, 3359, 3361, 3363, 3365, 3367, 3369, 3371, 3373, 3375, 3377, 3379, 3381, 3383, 3385, 3387, 3389, 3391, 3393, 3395, 3397, 3399, 3401, 3403, 3405, 3407, 3409, 3411, 3413, 3415, 3417, 3419, 3421, 3423, 3425, 3427, 3429, 3431, 3433, 3435, 3437, 3439, 3441, 3443, 3445, 3447, 3449, 3451, 3453, 3455, 3457, 3459, 3461, 3463, 3465, 3467, 3469, 3471, 3473, 3475, 3477, 3479, 3481, 3483, 3485, 3487, 3489, 3491, 3493, 3495, 3497, 3499, 3501, 3503, 3505, 3507, 3509, 3511, 3513, 3515, 3517, 3519, 3521, 3523, 3525, 3527, 3529, 3531, 3533, 3535, 3537, 3539, 3541, 3543, 3545, 3547, 3549, 3551, 3553, 3555, 3557, 3559, 3561, 3563, 3565, 3567, 3569, 3571, 3573, 3575, 3577, 3579, 3581, 3583, 3585, 3587, 3589, 3591, 3593, 3595, 3597, 3599, 3601, 3603, 3605, 3607, 3609, 3611, 3613, 3615, 3617, 3619, 3621, 3623, 3625, 3627, 3629, 3631, 3633, 3635, 3637, 3639, 3641, 3643, 3645, 3647, 3649, 3651, 3653, 3655, 3657, 3659, 3661, 3663, 3665, 3667, 3669, 3671, 3673, 3675, 3677, 3679, 3681, 3683, 3685, 3687, 3689, 3691, 3693, 3695, 3697, 3699, 3701, 3703, 3705, 3707, 3709, 3711, 3713, 3715, 3717, 3719, 3721, 3723, 3725, 3727, 3729, 3731, 3733, 3735, 3737, 3739, 3741, 3743, 3745, 3747, 3749, 3751, 3753, 3755, 3757, 3759, 3761, 3763, 3765, 3767, 3769, 3771, 3773, 3775, 3777, 3779, 3781, 3783, 3785, 3787, 3789, 3791, 3793, 3795, 3797, 3799, 3801, 3803, 3805, 3807, 3809, 3811, 3813, 3815, 3817, 3







# XMAS FARE

A LARGE ASSORTMENT OF  
**CHOCOLATES,**  
**NOVELTIES,**  
**TABLE ORNATEMENTS,**  
**CHOCOLATES,**  
**CHOCOLATES,**  
**NOVELTIES,**  
**CRYSTALLIZED FRUIT,**  
**CRYSTALLIZED CHERRIES,**  
**GINGER CAKES,**  
**TABLE DATES,**  
 and  
**FISH.**

AT  
**ELLIOTS**

Phone 63. NAIROBI. P.O. Box 178.

# OUR WOMEN'S PAGE

## A Letter from Paris

(By Frances Brown)



When a woman is going to Paris for winter work, she should take with her a few of the latest fashions in hats and coats.

For winter work, she should take with her a few of the latest fashions in hats and coats. The latest fashions in hats and coats are very different from those of last year.

The latest fashions in hats and coats are very different from those of last year.

When a woman is going to Paris for winter work, she should take with her a few of the latest fashions in hats and coats. The latest fashions in hats and coats are very different from those of last year.



## BONAFIDE SALE.

CHEAPEST CLOTHES, FUJI SILKS, ETC. IN UP TO DATE SHADES, INDIAN SILKS, WARE, CURTAINS AND ORIENTAL GIFTS FOR YOUR DEAR ONES AND FRIENDS.

**Lalchand Moolchand Bros**  
 P.O. Box 97. NAIROBI.

## Theo. Schouten,

Ladies and Gentle Hairdresser.  
 The oldest Established, most up to date, premises.  
 Largest staff of assistants in Kenya.  
 Permanent Waving. My experts only.  
 Engine and Gallic Bonellia Systems used.  
 Mr. Schouten will be in Nainokur from 20th November to 4th of December at 39th New Bakery.  
 Building: (Opposite National Bank of India)

Phone 243. NAIROBI. P.O. Box 254.



The useful and becoming frock is especially designed for the housewife. It is equipped in those who prefer, use become opening to front, below, suitable over a waistcoat or serge with poplin.

## SOUTH AFRICAN RAILWAYS AND HARBOURS TRAVEL HOLIDAYS

Few holidays can compare with a tour of South Africa. Abundant scenery of scenery, ideal climate, constant sunshine and up-to-date comfortable travel arrangements.  
 For particulars apply—  
**TRADE COMMISSIONER FOR THE UNION OF SOUTH AFRICA, MEMORIAL HALL, NAIROBI.**

P.O. Box 604.

## SOUTH AFRICAN FRUIT FOR YOUR FRIENDS AT HOME.

THINK HOW YOUR FRIENDS AT HOME WOULD APPRECIATE A BOX OF LUSCIOUS FRUIT DELIVERED AT THEIR DOOR IN JANUARY FEBRUARY MARCH OR APRIL.  
 PRICES AND PARTICULARS OF HOW THIS CAN BE ARRANGED WITHOUT ANY TROUBLE TO YOURSELF CAN BE OBTAINED FROM  
**UNION OF SOUTH AFRICA, TRADE COMMISSIONER, MEMORIAL HALL, NAIROBI.**

P.O. Box 604. Telephone 306.

## All Roads Lead to Rome

Just as the discriminating housewife always asks for

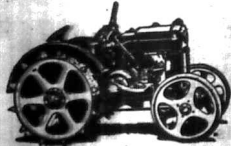
## JACOB'S BISCUITS.

These are made by  
**W. & R. JACOB & Co. Ltd., DUBLIN.**

and are stocked in tins and half pound packets by all the leading stores.  
 Local Representative,  
**J. B. GLARK,**  
 Africa House, Government Road, NAIROBI.

# ONLY THE BEST

Many good tractors but only one best, **CASE!**



Valve in head engine; direct spur gear transmission; centrifugal governor; superheating; water air cleaner; accessible polarity differential lock; water regulating; barometer fuel; and 80% LONGER LIFE.

**EXCESS POWER—EXCESS DURABILITY—WATER & FUEL ECONOMY.**  
 15.20 \$280 Grand Detour Case Plough  
 16.20 \$280 with roller bearing disc.  
 25.45 \$700 3 Barrow 250, 4 Barrow 270.

P. O. Box 97.  
 Phone 97.

Sole Agents:  
**K. McIVOR & Co.**  
 Sixth Avenue,  
**NAIROBI.**

Telegrams:  
 "Afford."







The

# Greatest Success in a Quarter Century of Fine Car Creation

THE Buick Motor Company now presents the 1927

Buick, with an entire generation beyond itself. Buick engineers working in conjunction with General Motors Research Laboratories have created a new luxury of splendor at every level, from the bottom to the top of the splendorer.

Buick performance is now exceptional and unusual among all motor cars, no matter what their price. Never in all the forty-two years of Buick success has Buick engineering and manufacturing leadership been more apparent than in this great new car.

Appearance with its performance and its intrinsic value will fix in your mind the conviction that money no longer holds sway.

Here is new evidence of the deep meaning in the long-standing Buick slogan:

"When better automobiles are built, Buick Will Build Them."

#### Four V-Twelve Engine Improvements.

To produce the silent power-flow in the 1927 Buick, Buick engineers have made four fundamental improvements in the famous V-12 in-head engine. They are a Counter Pressure Crankshaft, a Torsion Balancer, new high-weight pistons and engine mountings of resilient rubber, both fore and aft.

An engine of such great power and instant responsiveness that its abnormally quiet and alert acceleration is far beyond that of any car you have ever driven before.

#### And The Vacuum Cleaned Crankcase.

Another revolutionary improvement is the vacuum cleaned crankcase. The new Buick Vacuum Ventilator removes all the water vapor generated in the crankcase before it has an opportunity to condense and do harm. Only 3 oil changes a year are necessary in the 1927 Buick.

#### And Thermostatic Cooling Control.

This new device holds fast in the engine on starting,

until the proper operating temperature is reached. This means instantaneous engine efficiency, even in cold weather.

#### Noise Is Reduced.

A new giant-tooth transmission has created new silence beyond all previous experience. And an entirely new muffler design further reduces exhaust noise, with no loss of power.

#### Balanced Wheels For Smoother, Safer Driving.

Balanced wheels, now introduced, are another important Buick contribution to easier and safer driving.

The millions saved by Buick's volume production have been used to advance the Buick motor car to the point where nothing could be finer.

#### Luxurious New Fiber Bodies.

This is especially apparent in the princely new luxury and style of the Fiber Bodies. Finished in Coromandel Colors of Ivory, dressed in rich, exclusive patterns of upholstery and interweaves; and refined in finish with low-gravity construction.

#### And The Most Remarkable Fact About This Remarkable Motor Car is Value!

Buick value has leveled one price barrier after another until you are offered in this new Buick, a car as fine as money can buy, performance that even the more expensive cars do not equal, at the price of cars of very ordinary quality.

This is the greatest Buick Ever Built, and the greatest Buick value ever offered!

**BUICK MOTOR COMPANY**

Division of General Motors Corporation  
FLINT, MICHIGAN

<b>114-inch Wheelbase</b>	
Model Twenty-five Chassis	4355
Model Twenty-five	4418
Twenty-five Special Tourer	
Model Twenty-nine	4430
Twenty-nine Special Tourer	
<b>128-inch Wheelbase</b>	
Model Forty-nine Chassis	4438
Model Fifty-two	4498
Fifty-two Special Tourer	
Model Fifty-four	4525
Forty-four Special Tourer	
Model Fifty-four C	4585
Forty-four C County Club Coupé	

**Giffilen & Company Ltd.,**  
D I S T R I B U T O R S

# B U I C K







Always Dependable In The World's Rough Places

Where ever our dependability is most tried Dodge Brothers Motor Cars are most highly prized.

Many Dodge Brothers Motor Cars have traveled more than 200,000 miles each.

- TOURER CAR 2800
BOB BODY CAR 2300
CRASHES ONLY 2000
MILKING OPERATIONAL CAR 2600

THE OVER-SEAS GARAGE, NAIROBI

S. FISHER & SIMONS (S. A.) LTD. Victoria Road, ZIMB.

DODGE BROTHERS MOTOR CARS

LIFE POLICIES
We can show you the most favourable investment policy offered in this country.

ST. ANDREW'S NIGHT AT TANGA

The Possibilities of a Rich Country.

LOOKING AHEAD

The evening which passed in the City of Victoria was a most successful one.

TRANSPORT PROBLEMS

The transport of the goods of the East African States is a problem of the first importance.

THE PROBLEMS OF THE FUTURE

As we look to the future, it is not only the material progress of the world, wherever there are human beings, that we must consider.

The principal cause of the... in the... of the... of the... of the...

The... of the... of the... of the... of the... of the...

I have often thought when... of the... of the... of the... of the...

The... of the... of the... of the... of the... of the...

The... of the... of the... of the... of the... of the...

The... of the... of the... of the... of the... of the...

The... of the... of the... of the... of the... of the...

The... of the... of the... of the... of the... of the...

The... of the... of the... of the... of the... of the...

The... of the... of the... of the... of the... of the...

The... of the... of the... of the... of the... of the...

The... of the... of the... of the... of the... of the...

The... of the... of the... of the... of the... of the...

The... of the... of the... of the... of the... of the...

The... of the... of the... of the... of the... of the...

The... of the... of the... of the... of the... of the...

The... of the... of the... of the... of the... of the...

The... of the... of the... of the... of the... of the...

The... of the... of the... of the... of the... of the...

The... of the... of the... of the... of the... of the...

MOTHER CRITIC OF KENYA

Soldiers' Attitude towards Their Labour.

OVERSEAS VIEWS

In the November issue of The... of the... of the... of the... of the...

The... of the... of the... of the... of the... of the...

The... of the... of the... of the... of the... of the...

The... of the... of the... of the... of the... of the...

The... of the... of the... of the... of the... of the...

The... of the... of the... of the... of the... of the...

The... of the... of the... of the... of the... of the...

The... of the... of the... of the... of the... of the...

Buy Your Christmas Cakes

Puddings, Mince Pies, and Chocolates

(they really are fresh)

from TORR'S

and ask for a

Parfait, Sundae or Banana Split

YOU ARE BORN TO BE PLEASED

Margaret Wallace

LAKE ROAD, NAIROBI.

The latest in Afternoon and Evening Dress.

Lingerie, Hosiery, Ribbons, etc.

Also a large selection of Children's & Baby Gowns and Dainty Frocks.

Ladies pull on Fat Hats—Latest styles.

Everything suitable for Christmas Gifts.

Agents for South's Lake Road, NAIROBI

HAULAGE and TRANSPORT

ANY WEIGHT ANY DISTANCE

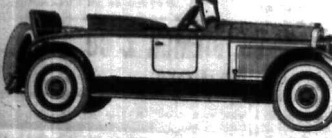
HAULAGE & GENERAL TRANSPORT

STANDARD BUILDINGS

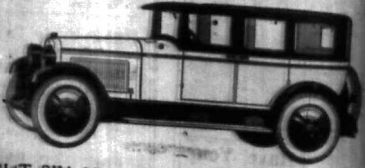
4th Avenue, P.O. Box 203.

NASH

WITH SEVEN BEARING CRANKSHAFT MOTOR—IT OFFERS AMAZING SMOOTHNESS



ADVANCED SIX
TOURING 7 Passengers £465
5 £430
TWO SEATER SPORTS £460
in two-tone duco finish



SPECIAL SIX
TOURING £390
SEDAN £450
LIGHT SIX TOURING £310
LAKESHIRE SIX SEDAN £350

CARR LAWSON Ltd., 6th Avenue, NAIROBI.

'Phone 103.

Box 203.





OVERLAND SIX



A fast, economical and efficient car eminently suitable for Touring or Safari.

Low Cost and Low Upkeep. Touring Model £310 Safari " 285

Moulton & Morrison Ltd.,

Phone 104. P.O. Box 484. "Gems" OVERLAND, NAIROBI.

Endurance — Long Life —

The Great Products of CHRYSLER STANDARDIZED Quality

CHRYSLER

'50-60-70-80"

CHRYSLER MODEL NUMBERS MEAN MILES PER HOUR.

DISTRIBUTORS YORK GARAGES Ltd., NAIROBI.

"CANADIAN FARM" LIGHT TRUCK

WITH ALL STEEL BODY AND ALL WEATHER HOOD, SELF STARTER, INDEPENDENT LIGHTING AND 8 TYRES.

£190

ROOSTER AXLES £15 extra



Being the age of economical transport, many things are attempted and carried out today that would have been impossible a few years ago. The Ford truck has been a most important factor in transport development in carrying heavy produce to market, in fact without the economical means of transport many farms in the West would still be undeveloped.

THE FORD LIGHT TRUCK IS THE LAST WORD IN DEPENDABLE AND ECONOMICAL TRANSPORT WITH THE COMFORT OF A PASSENGER CAR.

GET YOURS NOW!

The Service Company Limited.

Maison Bonsella

PROFITEURS BOULANGER & CONFISERIE LTD. PREMISES RECENTLY OCCUPIED BY THE

TOILET REQUISITE Co.

Manufacturing by expert craftsmen from EMIL, PARIS.

Table listing various perfume and cosmetic items with prices, such as 'Fragrant Wave, Blingled Head' for 7/6 and 'Fragrant Wave Shampoo' for 8/6.

SPECIAL NOTE: In view of the rush of business at the Xmas season it is particularly requested that appointments be booked well in advance to avoid disappointment.

Tel. 349. P.O. Box 28

CH. LAFITTE'S BRANDIES



EMILE JARDIN & Co. NAIROBI.

Advertisement for 'Happy Days' featuring 'BRASSO METAL POLISH' and an illustration of a woman with a mirror.

Large advertisement for 'B.S.A. Popularity' featuring a motorcycle and text about its popularity in South Africa.

NOTES. ELECTIONS.—An Account on the 22nd to Mr. and Mrs. Bhandal-Hinaka. A. Hughes.

THE EAST AFRICAN STANDARD. NAIROBI. FRIDAY, DECEMBER 21, 1929.

THE DISSENTION. The session of the Legislature... The Government... The Opposition...

Under the Standard... The Government... The Opposition... The Public... The Editor's Note...

Under the Standard... The Government... The Opposition... The Public... The Editor's Note...

















# CHRISTMAS FARE

A LARGE ASSORTMENT OF  
**CRACKERS,**  
**NOVELTIES,**  
**TABLE DECORATIONS,**  
**CHOCOLATES,**  
**NUTS,**  
**CRYSTALLIZED FRUITS,**  
**CRYSTALLIZED CHEERRIES,**  
**GINGER CAKES,**  
**TABLE DATES,**  
 and  
**FIGS.**

**ELLIOTS**  
 Phone 69. NAIROBI. P.O. Box 176.

**BONAFIDE SALE.**  
 THESE DE CHIEFS, PUAH HILLS, ETC.  
 UP TO GATE BRIDGE, INDIAN BARRACKS  
 WARE, CURIO AND ORIENTAL GIFTS  
 FOR YOUR DEAR ONES AND FRIENDS.

**Lalchand Moolchand Bros**  
 105, 106, 107, 108, 109, 110, 111, 112, 113, 114, 115, 116, 117, 118, 119, 120, 121, 122, 123, 124, 125, 126, 127, 128, 129, 130, 131, 132, 133, 134, 135, 136, 137, 138, 139, 140, 141, 142, 143, 144, 145, 146, 147, 148, 149, 150, 151, 152, 153, 154, 155, 156, 157, 158, 159, 160, 161, 162, 163, 164, 165, 166, 167, 168, 169, 170, 171, 172, 173, 174, 175, 176, 177, 178, 179, 180, 181, 182, 183, 184, 185, 186, 187, 188, 189, 190, 191, 192, 193, 194, 195, 196, 197, 198, 199, 200, 201, 202, 203, 204, 205, 206, 207, 208, 209, 210, 211, 212, 213, 214, 215, 216, 217, 218, 219, 220, 221, 222, 223, 224, 225, 226, 227, 228, 229, 230, 231, 232, 233, 234, 235, 236, 237, 238, 239, 240, 241, 242, 243, 244, 245, 246, 247, 248, 249, 250, 251, 252, 253, 254, 255, 256, 257, 258, 259, 260, 261, 262, 263, 264, 265, 266, 267, 268, 269, 270, 271, 272, 273, 274, 275, 276, 277, 278, 279, 280, 281, 282, 283, 284, 285, 286, 287, 288, 289, 290, 291, 292, 293, 294, 295, 296, 297, 298, 299, 300, 301, 302, 303, 304, 305, 306, 307, 308, 309, 310, 311, 312, 313, 314, 315, 316, 317, 318, 319, 320, 321, 322, 323, 324, 325, 326, 327, 328, 329, 330, 331, 332, 333, 334, 335, 336, 337, 338, 339, 340, 341, 342, 343, 344, 345, 346, 347, 348, 349, 350, 351, 352, 353, 354, 355, 356, 357, 358, 359, 360, 361, 362, 363, 364, 365, 366, 367, 368, 369, 370, 371, 372, 373, 374, 375, 376, 377, 378, 379, 380, 381, 382, 383, 384, 385, 386, 387, 388, 389, 390, 391, 392, 393, 394, 395, 396, 397, 398, 399, 400, 401, 402, 403, 404, 405, 406, 407, 408, 409, 410, 411, 412, 413, 414, 415, 416, 417, 418, 419, 420, 421, 422, 423, 424, 425, 426, 427, 428, 429, 430, 431, 432, 433, 434, 435, 436, 437, 438, 439, 440, 441, 442, 443, 444, 445, 446, 447, 448, 449, 450, 451, 452, 453, 454, 455, 456, 457, 458, 459, 460, 461, 462, 463, 464, 465, 466, 467, 468, 469, 470, 471, 472, 473, 474, 475, 476, 477, 478, 479, 480, 481, 482, 483, 484, 485, 486, 487, 488, 489, 490, 491, 492, 493, 494, 495, 496, 497, 498, 499, 500, 501, 502, 503, 504, 505, 506, 507, 508, 509, 510, 511, 512, 513, 514, 515, 516, 517, 518, 519, 520, 521, 522, 523, 524, 525, 526, 527, 528, 529, 530, 531, 532, 533, 534, 535, 536, 537, 538, 539, 540, 541, 542, 543, 544, 545, 546, 547, 548, 549, 550, 551, 552, 553, 554, 555, 556, 557, 558, 559, 560, 561, 562, 563, 564, 565, 566, 567, 568, 569, 570, 571, 572, 573, 574, 575, 576, 577, 578, 579, 580, 581, 582, 583, 584, 585, 586, 587, 588, 589, 590, 591, 592, 593, 594, 595, 596, 597, 598, 599, 600, 601, 602, 603, 604, 605, 606, 607, 608, 609, 610, 611, 612, 613, 614, 615, 616, 617, 618, 619, 620, 621, 622, 623, 624, 625, 626, 627, 628, 629, 630, 631, 632, 633, 634, 635, 636, 637, 638, 639, 640, 641, 642, 643, 644, 645, 646, 647, 648, 649, 650, 651, 652, 653, 654, 655, 656, 657, 658, 659, 660, 661, 662, 663, 664, 665, 666, 667, 668, 669, 670, 671, 672, 673, 674, 675, 676, 677, 678, 679, 680, 681, 682, 683, 684, 685, 686, 687, 688, 689, 690, 691, 692, 693, 694, 695, 696, 697, 698, 699, 700, 701, 702, 703, 704, 705, 706, 707, 708, 709, 710, 711, 712, 713, 714, 715, 716, 717, 718, 719, 720, 721, 722, 723, 724, 725, 726, 727, 728, 729, 730, 731, 732, 733, 734, 735, 736, 737, 738, 739, 740, 741, 742, 743, 744, 745, 746, 747, 748, 749, 750, 751, 752, 753, 754, 755, 756, 757, 758, 759, 760, 761, 762, 763, 764, 765, 766, 767, 768, 769, 770, 771, 772, 773, 774, 775, 776, 777, 778, 779, 780, 781, 782, 783, 784, 785, 786, 787, 788, 789, 790, 791, 792, 793, 794, 795, 796, 797, 798, 799, 800, 801, 802, 803, 804, 805, 806, 807, 808, 809, 810, 811, 812, 813, 814, 815, 816, 817, 818, 819, 820, 821, 822, 823, 824, 825, 826, 827, 828, 829, 830, 831, 832, 833, 834, 835, 836, 837, 838, 839, 840, 841, 842, 843, 844, 845, 846, 847, 848, 849, 850, 851, 852, 853, 854, 855, 856, 857, 858, 859, 860, 861, 862, 863, 864, 865, 866, 867, 868, 869, 870, 871, 872, 873, 874, 875, 876, 877, 878, 879, 880, 881, 882, 883, 884, 885, 886, 887, 888, 889, 890, 891, 892, 893, 894, 895, 896, 897, 898, 899, 900, 901, 902, 903, 904, 905, 906, 907, 908, 909, 910, 911, 912, 913, 914, 915, 916, 917, 918, 919, 920, 921, 922, 923, 924, 925, 926, 927, 928, 929, 930, 931, 932, 933, 934, 935, 936, 937, 938, 939, 940, 941, 942, 943, 944, 945, 946, 947, 948, 949, 950, 951, 952, 953, 954, 955, 956, 957, 958, 959, 960, 961, 962, 963, 964, 965, 966, 967, 968, 969, 970, 971, 972, 973, 974, 975, 976, 977, 978, 979, 980, 981, 982, 983, 984, 985, 986, 987, 988, 989, 990, 991, 992, 993, 994, 995, 996, 997, 998, 999, 1000.

**Theo. Schouten,**  
 Ladies and Gents Hairdresser.  
 The latest Established, most up to date, premises.  
 Largest staff of assistants in Kenya.  
 Permanent Waving By experts only.  
 Engine and Galleo Bonella Systems used.  
 Mr. Schouten will be in Nakuru from 20th  
 December to 5th of December at Speke's  
 New Bakery.  
 (Opposite National Bank of India).

## MOTURING TOPICS

### TIRE REPAIRS.

#### The Life of Covers and Tubes.

#### TIMELY PRECAUTIONS.

Year in year out, a motorist should know that the summer months are the most critical for his tires. It is in the hot months that the most serious damage is done to them. The heat causes the rubber to become brittle and the air to expand, both of which tend to weaken the tire's structure. It is therefore, a wise precaution to check the tires before starting the season. A good rule is to have the tires checked by a professional mechanic at least once a month. This will ensure that the tires are in the best possible condition for the road ahead.

### The Chevrolet.

#### ANOTHER PRODUCTION RECORD.

World wide popularity is rapidly increasing the demand for the Chevrolet motor cars. The production record for the month of November 1926 is another example of the success of this motor car. The Chevrolet Motor Car Company reports that the production for the month of November 1926 was 10,000 units, a record for the company. This is a testament to the quality and reliability of the Chevrolet motor car.

### WATER TIGHTNESS.

#### Should not be neglected.

It is a common mistake to neglect the water tightness of a motor car. This is a serious error, as it can lead to engine damage and other problems. It is important to check the water tightness of the motor car regularly. This includes checking the radiator, the water pump, and the hoses. If any leaks are found, they should be repaired immediately.

### FORGOTTEN MATTER.

#### As a part of a regular check.

As a part of a regular check, it is important to check the oil level in the motor car. This is a simple task, but it is one that should not be neglected. Low oil levels can lead to engine wear and other problems. It is important to check the oil level regularly and to top up the oil if necessary.

## SOUTH AFRICAN RAILWAYS AND HARBOURS TRAVEL HOLIDAYS

Five holidays can compare with a tour of South Africa. Abundant novelty of scenery, ideal climate, comfort, convenience and up-to-date comfortable travel arrangements.

For particulars apply to the **TRADE COMMISSIONERS FOR THE UNION OF SOUTH AFRICA, MEMORIAL HALL, NAIROBI.**

## SOUTH AFRICAN FRUIT FOR YOUR FRIENDS AT HOME

THINK HOW YOUR FRIENDS AT HOME WOULD APPRECIATE A BOX OF LUSCIOUS FRUIT DELIVERED AT THEIR DOOR IN JANUARY, FEBRUARY, MARCH OR APRIL.

PRICES AND PARTICULARS OF HOW THIS CAN BE ARRANGED WITHOUT ANY TRIBLE TO YOURSELF CAN BE OBTAINED FROM THE **UNION OF SOUTH AFRICA, TRADE COMMISSIONERS MEMORIAL HALL, NAIROBI.**

P.O. Box 261 Telephone 260

## All Roads Lead to Home

Just as the determining factor always leads you

## JACOB'S BISCUITS.

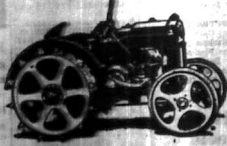
These are made by **W. & R. JACOB & Co. Ltd., DUBLIN.**

and are stocked in tins and half pound packets by all the leading stores. Local Representative, **J. E. CLARK, Africa House, Government Road, NAIROBI.**

# ONE OF THE BEST

Many good tractors but only one best, **CASE!**

Valve in head engine, direct spur gear transmission, centrifugal governor, superheating, water air cleaner, accessible pulley, differential lock, water separator, economy fuel, and 50% LONGER LIFE.



**EXCESS POWER—EXCESS DURABILITY—WATER & FUEL ECONOMY.**  
 12 HP 2390  
 15 HP 2285  
 20 HP 2700  
 25 HP 3000  
 30 HP 3300  
 35 HP 3600  
 40 HP 3900  
 45 HP 4200  
 50 HP 4500

Sole Agents:  
**K. McIVOR & Co.**  
 Sixth Avenue,  
**NAIROBI.**

Telegrams:  
 "Afford."

P. O. Box 97.  
 Phone 97.









The

# Greatest Success

## in a Quarter Century of Fine Car Creation

THE Buick Motor Company now presents the 1927

Buick, with an engine—thrustmaster beyond belief! Buick engineers working in conjunction with General Motors Research Laboratories have created a new luxury of quietness at every speed, from the bottom to the top of the speedometer.

Buick performance is now exceptional and unusual among all motor cars, no matter what their price. Never in all the twenty-two years of Buick success has Buick engineering and manufacturing leadership been more apparent than in this great new car.

Acquaintance with its performance and its intrinsic value will fix in your mind the conviction that money can buy nothing finer.

Here is new evidence of the deep meaning in the long standing Buick slogan:

"When better automobiles are built, Buick Will Build Them!"

#### Four Vital Engine Improvements.

To produce the silent proficiency in the 1927 Buick, Buick engineers have made four fundamental improvements to the famous Valve-in-Head engine. They are a Counter-Poise Crankshaft, a Torsion Balancer, new light-weight pistons and engine mountings of resilient rubber, both fore and aft.

An engine of such great power and instant responsiveness that its pleasurefully quick and alert acceleration is far beyond that of any car you have ever driven before.

#### And The Vacuum Cleaned Crankcase.

Another revolutionary improvement is the vacuum-cleaned crankcase. The new Buick Vacuum Ventilator removes all the water vapor generated in the crankcase before it has an opportunity to condense and do harm. Only 3-64 changes a year are necessary in the 1927 Buick!

#### And Thermoslike Cooling Device.

This new device holds heat in the engine on starting,

until the proper operating temperature is reached. This means instantaneous engine efficiency, even in cold weather.

#### Noise is Banished.

A new giant-tooth transmission has created gear silence beyond all previous experience. And an entirely new muffler design further reduces exhaust noise, with no loss of power.

#### Balanced Wheels for Smoother, Safer Driving.

Balanced wheels now introduced, are another important Buick contribution to easier and safer driving.

The millions saved by Buick's volume production have been used to advance the Buick motor car to the point where nothing could be finer.

#### Luxurious New Fiber Bodies.

This is especially apparent in the princely new inner and outer style of the Fiber Bodies, Embodied in Chromox Column of Duro, dressed in rich, exclusive patterns of upholstery and interiorwear, and refined in grade, with lower-gravity construction.

#### And The Most Remarkable Fact About This Remarkable Motor Car is Value!

Buick volume has leveled one price barrier after another until you are offered in this new Buick, a car as fine as money can buy; performance that even the more expensive cars do not equal, at the price of one of very ordinary quality.

This is the Greatest Buick Ever Built, and the greatest Buick value ever offered!

#### BUICK MOTOR COMPANY

Division of General Motors Corporation  
FLINT, MICHIGAN.

#### 114-inch Wheelbase

Model Twenty-five Chassis	...	4358
Model Twenty-five	Five-passenger Sport Touring	4418
Model Twenty-nine	Five-passenger Special Touring	4430

#### 129-inch Wheelbase

Model Forty-nine Chassis	...	4438
Model Fifty-five	Five-passenger Sport Touring	4498
Model Fifty-nine	Five-passenger Special Touring	4525
Model Fifty-five C	Five-passenger Country Club Coupe	4585

**Giffilan & Company Ltd.,**  
D I S T R I B U T O R S

# BUICK







BRITISH INDIA STEAM NAVIGATION COMPANY, LTD.

London and East Africa Line
London to Berbera, Via Aden, Colombo, Port
Singapore and Malacca, Ceylon and Java.



You can do it

HOW TO IMPROVE YOUR CYCLES OR MOTOR CYCLES AND SIDEKAR WITH ROBBIALAC

SEND FOR COPY OF FREE BROCHURE TO SMITH, MACKENZIE & CO., NAIROBI

P. Alexander, Hairdresser.
Nairobi Street, NAIROBI.

Table with 2 columns: Ladies Depresses (e.g., Blouse, Skirt, Hat) and Prices (e.g., 2/6, 3/6, 4/6).

MISS KATHLEEN BATES, AGENC
SHARFORD, KENYON, HARRIST, EBBERT AND
ATRAI OFFICE.

Nairobi Vulcanizing Works.
Victoria Street, Opp. Fire Station,
P.O. Box 718.

SHRIMP SUMING TO ALLEGATION WITHOUT NOTICE. RETURN TICKETS ISSUED AT TWO SINGLE FARES LESS 10%.

CROSS Power KEROSENE

Pulling Power For Every Tractor
KEROSENE is a power fluid for tractor which has been perfected by Shell petroleum chemists in cooperation with the world's recognized authorities on internal combustion engines.

THE SHELL COMPANY OF EAST AFRICA LTD.
SMITH MACKENZIE & CO.,
NAIROBI.

Old Dupuy & Co's Cognac Brandy

OTARD'S Cognac Brandy
The Acquit Regional Cognac - French State Decree of May, 1908 - is the only document recognized by the French State authorities as establishing that brandy is distilled from the best vines in the delimited district of Cognac.

SMITH MACKENZIE & Company, NAIROBI.

Union-Castle Line

SAILING FOR ENGLAND VIA SUVAZ.
From Mombasa,
Mombasa to London,
Mombasa to London via Aden, Colombo, Port...

HOLLAND AFRIKA LIJN

AGENCY SERVICE.
HOLLAND AFRIKA LIJN and HOLLAND OOST AFRIKA LIJN.
Sailing to and from East Africa about the following dates:

Deutsche Ost Afrika Linie (GERMAN AFRICAN SERVICE)

For Service of Tractor Engines from Mombasa - Southampton round Africa, India, Port, Home and East Africa.
SAILING FROM MOMBASA TO NAIROBI.

BOUSTED & CLARKE, LTD.

General Engineer, Dar-es-Salaam, Nairobi, Kisumu, Jirfa, and Kampala.
Improves and repairs all types of motor and agricultural machinery.

HARBOROUGH ESTATE.

Improve Building Sites for sale, under 4 miles from Nairobi on good road. Electric light main installed.

Barron's PATENT Improved "IMPACT" GRINDER



SOLE AGENTS: J. W. MULLIGAN & CO., NAIROBI.

Expert Opinion is Universal, UNEQUALLED

For Distilling Pure and Accurately!!
OUR 22" BARRELS ARE THE SUCCESS
The following prove it:
1. It Distills 11 1/2 Gallons 11 1/2 Bushels 11 1/2 in one month.

CHAS. A. HEYER & CO.

Distillers and Importers of Scotch Whisky.
Cawford's SPECIAL RESERVE SCOTCH WHISKY.



OVERSEAS MAILS.

Table with columns: STRAITS, FROM, TO, Date of Month, Date of Year, and other shipping details.

SAUSAGES WITH THE CHRISTMAS TURKEY.



These are sold mainly, particularly in the winter districts, by presenting the brand name.





# Gifts for every age and taste

## AT WHITEAWAYS Sixth Avenue NAIROBI

### GIFTS FOR HIMSELF.

The choice of a Gift which will please and give lasting satisfaction is never a problem. There is however nothing which so appeals to the general feminine as gifts of an intimate character which carry individuality in their selection. The very obvious fact that you have surrounded such care in choosing just the right gift means much to the recipient.



### LADIES SILK HAVES.

Having finished their Christmas shopping, ladies should not forget to buy a few more for themselves. They will find them in the most desirable and useful articles in the gift line.

### LADIES WOOLLEN HAVES.

Woolen goods are always popular and useful. They are found in the most desirable and useful articles in the gift line. They are found in the most desirable and useful articles in the gift line.

### CRAMER'S COOKER.

All types of Cramer's Cookers are the best of the kind. They are found in the most desirable and useful articles in the gift line. They are found in the most desirable and useful articles in the gift line.



### FERRY FRAGRANCE.

Ferry's Perfumery is the best of the kind. They are found in the most desirable and useful articles in the gift line. They are found in the most desirable and useful articles in the gift line.



### SILK HOSIERY.

Having finished their Christmas shopping, ladies should not forget to buy a few more for themselves. They will find them in the most desirable and useful articles in the gift line.

### GIFTS FOR HIMSELF.

A Man's watch seems so few when Xmas time comes round. Yet there are many gifts which will carry a practical expression of your regard if you but spend a little time in Whiteaway's Men's Section. The few items here given are suggestions from the immense variety of suitable men's gifts now on display in the store.



### MEN'S WATCHES.

The Foremost quality of all men's watches is reliability. They are found in the most desirable and useful articles in the gift line.

### MEN'S SUSPENDER SETS.

Men's suspenders are always popular and useful. They are found in the most desirable and useful articles in the gift line.



### "VALET" RAZOR SETS.

"Valet" razor sets are always popular and useful. They are found in the most desirable and useful articles in the gift line.

### "VALET" SHAVING BRUSHES.

"Valet" shaving brushes are always popular and useful. They are found in the most desirable and useful articles in the gift line.

### MEN'S SILK TIES.

Men's silk ties are always popular and useful. They are found in the most desirable and useful articles in the gift line.

### MEN'S HATS.

Men's hats are always popular and useful. They are found in the most desirable and useful articles in the gift line.

### HANEY AND TIE SETS.

Haney and tie sets are always popular and useful. They are found in the most desirable and useful articles in the gift line.



### NOVELTY HANDELS.

The Fine Lovers Handles in Patent Handles with lock covers in Patent Hand. They are found in the most desirable and useful articles in the gift line.

### Coloured, Blended, Striped or Red, Blue, Black or Green, with various designs.

They are found in the most desirable and useful articles in the gift line.

### MANUFACTURE: LEWIS.

They are found in the most desirable and useful articles in the gift line.

### MANUFACTURE: LEWIS.

They are found in the most desirable and useful articles in the gift line.

### TEA AND SMOKE-GRUBS.

They are found in the most desirable and useful articles in the gift line.

### LINGERON: BEECH.

They are found in the most desirable and useful articles in the gift line.

### MOON: SHARPE.

They are found in the most desirable and useful articles in the gift line.

## FAIRYLAND

Handfuls of pretty gifts, which would be the envy of every child, are now on display in our Fairyland. They are found in the most desirable and useful articles in the gift line.

There is a charming collection of toys in the Fairyland. They are found in the most desirable and useful articles in the gift line.

These are the toys which would be the envy of every child. They are found in the most desirable and useful articles in the gift line.



### FAIRY TALE LADIES.

They are found in the most desirable and useful articles in the gift line.



### LADIES' GOWN: BEECH.

They are found in the most desirable and useful articles in the gift line.



### CLOCK FOR THE BUREAU.

They are found in the most desirable and useful articles in the gift line.



### CLOCK FOR THE BUREAU.

They are found in the most desirable and useful articles in the gift line.



### LADIES' GOWN: BEECH.

They are found in the most desirable and useful articles in the gift line.

### NEWS: BEECH.

They are found in the most desirable and useful articles in the gift line.

### CLOCK FOR THE BUREAU.

They are found in the most desirable and useful articles in the gift line.

### CLOCK FOR THE BUREAU.

They are found in the most desirable and useful articles in the gift line.

### DOFFY'S BEAN SPOON.

They are found in the most desirable and useful articles in the gift line.

### TABLE PLATE AS GIFTS.

They are found in the most desirable and useful articles in the gift line.

### SOUP SPOONS.

They are found in the most desirable and useful articles in the gift line.

### TABLE PLATE AS GIFTS.

They are found in the most desirable and useful articles in the gift line.

### SOUP SPOONS.

They are found in the most desirable and useful articles in the gift line.

### TABLE PLATE AS GIFTS.

They are found in the most desirable and useful articles in the gift line.

### CAPTAIN BLACK LONDON MADE.

They are found in the most desirable and useful articles in the gift line.

### CAPTAIN BLACK LONDON MADE.

They are found in the most desirable and useful articles in the gift line.



THE EXCELLENCY'S SPEECH

(Continued from page 1.)

...the public attention... the Government... the people... the country... the future... the present... the past... the future... the present... the past...

...the Government... the people... the country... the future... the present... the past... the future... the present... the past...

LEGISLATIVE COUNCIL

Order of the Day

NATURAL RESOURCES... THE HOUSE... THE SENATE... THE GOVERNMENT... THE OPPOSITION...

THEATRE NOTES

THEATRE CHRISTMAS... THEATRE NOTES... THEATRE NOTES... THEATRE NOTES...

LYRIC HALL... TO-NIGHT at 8-45... WHEAT BAKERY... TO-MORROW... THE GREAT FIRE... THE GREAT FIRE... THE GREAT FIRE...

Useful, Acceptable Xmas Gifts... Ladies' Footwear, Ltd. Nairobi... CHILDS' AND LADIES' MOCCASINS... Ladies' Footwear, Ltd. Nairobi...

MEMBERS OF OTHER COMMITTEES

MEMBERS OF OTHER COMMITTEES... MEMBERS OF OTHER COMMITTEES... MEMBERS OF OTHER COMMITTEES...

Public to Observe

Public to Observe... Public to Observe... Public to Observe...

AMENDED NOTICE OF MOTION

AMENDED NOTICE OF MOTION... AMENDED NOTICE OF MOTION... AMENDED NOTICE OF MOTION...

FOR FINGER-BANDING

FOR FINGER-BANDING... FOR FINGER-BANDING... FOR FINGER-BANDING...

Family Practice for Adult Civil Servants

Family Practice for Adult Civil Servants... Family Practice for Adult Civil Servants... Family Practice for Adult Civil Servants...

THEATRE CHRISTMAS

THEATRE CHRISTMAS... THEATRE CHRISTMAS... THEATRE CHRISTMAS...

FOR FINGER-BANDING

FOR FINGER-BANDING... FOR FINGER-BANDING... FOR FINGER-BANDING...

Family Practice for Adult Civil Servants

Family Practice for Adult Civil Servants... Family Practice for Adult Civil Servants... Family Practice for Adult Civil Servants...

MEMORANDUM FOR THE GOVERNMENT

MEMORANDUM FOR THE GOVERNMENT... MEMORANDUM FOR THE GOVERNMENT... MEMORANDUM FOR THE GOVERNMENT...

MEMORANDUM FOR THE GOVERNMENT

MEMORANDUM FOR THE GOVERNMENT... MEMORANDUM FOR THE GOVERNMENT... MEMORANDUM FOR THE GOVERNMENT...

MEMORANDUM FOR THE GOVERNMENT

MEMORANDUM FOR THE GOVERNMENT... MEMORANDUM FOR THE GOVERNMENT... MEMORANDUM FOR THE GOVERNMENT...

THEATRE ROYAL... To-Day at 3-30 & 8-45... AMBROSE APPLEJOHN'S ADVENTURE... SEE PAGE 3 FOR SPECIAL ANNOUNCEMENTS

WOMEN'S TIPS... SKODADOR... WOMEN'S TIPS... SKODADOR... WOMEN'S TIPS... SKODADOR...

WORKERS' EXPERIENCE... WORKERS' EXPERIENCE... WORKERS' EXPERIENCE...

TO-DAY'S GAME PLAN... TO-DAY'S GAME PLAN... TO-DAY'S GAME PLAN...

TO-DAY'S GAME PLAN... TO-DAY'S GAME PLAN... TO-DAY'S GAME PLAN...

Are you wondering what you can give? Christmas and New Year Presents. We are now showing... Warings, Africa House, Nairobi

CORRESPONDENCE

The Editor does not desire responsibility for the views expressed... The Editor does not desire responsibility for the views expressed...

THE FUTURE

Mr. Editor, - I am glad to see... The Editor does not desire responsibility for the views expressed...

the views of liberty to which... The Editor does not desire responsibility for the views expressed...

the Editor does not desire responsibility for the views expressed... The Editor does not desire responsibility for the views expressed...

Church Notes

Church Notes... The Editor does not desire responsibility for the views expressed...

Table with columns: Sunday, Dec 17, 18, 19, 20, 21, 22, 23, 24, 25, 26, 27, 28, 29, 30, 31. Rows: Morning Prayer, Holy Communion, Evening Prayer, etc.

DEPARTMENT OF AGRICULTURE

Table with columns: Month, Area, Production, etc. Rows: Jan, Feb, Mar, Apr, May, Jun, Jul, Aug, Sep, Oct, Nov, Dec.

Mr. Editor, - I am glad to see... The Editor does not desire responsibility for the views expressed...

Mr. Editor, - I am glad to see... The Editor does not desire responsibility for the views expressed...

Mr. Editor, - I am glad to see... The Editor does not desire responsibility for the views expressed...

ST. MARK'S CHURCH

ST. MARK'S CHURCH... The Editor does not desire responsibility for the views expressed...

Table with columns: Month, Area, Production, etc. Rows: Jan, Feb, Mar, Apr, May, Jun, Jul, Aug, Sep, Oct, Nov, Dec.

Mr. Editor, - I am glad to see... The Editor does not desire responsibility for the views expressed...

Mr. Editor, - I am glad to see... The Editor does not desire responsibility for the views expressed...

Mr. Editor, - I am glad to see... The Editor does not desire responsibility for the views expressed...

ST. JOHN'S CHURCH

ST. JOHN'S CHURCH... The Editor does not desire responsibility for the views expressed...

Table with columns: Month, Area, Production, etc. Rows: Jan, Feb, Mar, Apr, May, Jun, Jul, Aug, Sep, Oct, Nov, Dec.

BARCLAYS BANK (DOMINION COLONIAL AND OVERSEAS) JOINTLY OWNED BY THE COLONIAL BANK AND THE ANGLO-EGYPTIAN BANK LIMITED

Notice. Christmas Holidays. My office will be closed from Thursday December 28th to Tuesday December 31st, both dates inclusive

Uganda Transport Company. P.O. Box 100. Deal with all road and air transport

Halls Wine. FREE WINEGLASSES Given away with Hall's Wine. There's Health in every drop of Hall's Wine

NOTICE. Who Old Redfordians living in Kenya. Redfordians committees will be formed

For Sale. Approximately 8,000 acres, Lakeina District. About 3 miles from Rumuruti Township

For Sale. THE MOTOR-CAR AND THE AFRICAN GARAGE AND INDUSTRY, Ltd. M. D. KAMPE, GENERAL MANAGERS

Halls Wine. THE SUPERIOR TONIC RESTORANT. Hall's Wine is a complete tonic made by the finest French and Italian

Head's Dance Band. Playing at Clarendon on Xmas Eve. Booking day and New Years Eve, at 9 p.m.

Now in Stock. Grease Proof Paper. E. A. Standard Ltd. NAIROBI

NOTICE. THE EAST AFRICAN TRADING COMPANY. Sole Importers of the following goods

VISITORS TO UGANDA. Inspecting CARS to meet them. VISITORS TO UGANDA. Inspecting CARS to meet them



### Essjay Ltd.

THEATRE ROYAL BUILDINGS

NOT UNPACKED:

AFTERNOON, RACE and EVENING PROGS.

(These are French goods of the best)

THIRD RACQUETS (Tropical Golf) 8/6

Two small netting bags.

OLF BALLS on 18/- per doz.

JAMES ENGLISH SEWING MACHINES

---

### VENA VALMA

The most famous long length hosiery. The "Chlorine" Veneer French, Cuban, Argentine, Tanager, Russian and Mexican Socks, Veneer, French, Canadian, Chambray, etc.

Apply for terms Veneer 1920

### CLEARING LAKE KINGA STEAMER PASSAGE

Wagging Sold by Use of Hoops.

FIVE COTTON YARDING

[FOR THE NEW CONSTRUCTION]

The Hoop is the most important part of the machine. It is made of iron and is used to hold the cotton in place. The Hoop is made of iron and is used to hold the cotton in place. The Hoop is made of iron and is used to hold the cotton in place.

### The Colonial Lines

SEVENTH OF MARCH, 1921

The Colonial Lines is a company of steamships which is engaged in the trade between the United Kingdom and the Colonies. The company is owned and managed by the British Government.

### The Weather Report


For the week ending December 24, 1920, as prepared by the Department of Agriculture.

RAINFALL

Station	1920	1919
London	1.2	1.5
Birmingham	1.8	2.1
Manchester	2.5	3.0
Edinburgh	3.2	3.8
Glasgow	4.0	4.5
Belfast	4.8	5.5
Cardiff	5.5	6.0
Exeter	6.2	6.8
London (South)	7.0	7.5
London (North)	7.8	8.5
London (East)	8.5	9.0
London (West)	9.2	9.8
London (Central)	10.0	10.5
London (South-East)	10.8	11.5
London (North-East)	11.5	12.0
London (South-West)	12.2	12.8
London (North-West)	13.0	13.5
London (East-End)	13.8	14.5
London (West-End)	14.5	15.0
London (Central-End)	15.2	15.8
London (South-East-End)	16.0	16.5
London (North-East-End)	16.8	17.5
London (South-West-End)	17.5	18.0
London (North-West-End)	18.2	18.8
London (East-End-End)	19.0	19.5
London (West-End-End)	19.8	20.5
London (Central-End-End)	20.5	21.0
London (South-East-End-End)	21.2	21.8
London (North-East-End-End)	22.0	22.5
London (South-West-End-End)	22.8	23.5
London (North-West-End-End)	23.5	24.0
London (East-End-End-End)	24.2	24.8
London (West-End-End-End)	25.0	25.5
London (Central-End-End-End)	25.8	26.5
London (South-East-End-End-End)	26.5	27.0
London (North-East-End-End-End)	27.2	27.8
London (South-West-End-End-End)	28.0	28.5
London (North-West-End-End-End)	28.8	29.5
London (East-End-End-End-End)	29.5	30.0
London (West-End-End-End-End)	30.2	30.8
London (Central-End-End-End-End)	31.0	31.5
London (South-East-End-End-End-End)	31.8	32.5
London (North-East-End-End-End-End)	32.5	33.0
London (South-West-End-End-End-End)	33.2	33.8
London (North-West-End-End-End-End)	34.0	34.5
London (East-End-End-End-End-End)	34.8	35.5
London (West-End-End-End-End-End)	35.5	36.0
London (Central-End-End-End-End-End)	36.2	36.8
London (South-East-End-End-End-End-End)	37.0	37.5
London (North-East-End-End-End-End-End)	37.8	38.5
London (South-West-End-End-End-End-End)	38.5	39.0
London (North-West-End-End-End-End-End)	39.2	39.8
London (East-End-End-End-End-End-End)	40.0	40.5
London (West-End-End-End-End-End-End)	40.8	41.5
London (Central-End-End-End-End-End-End)	41.5	42.0
London (South-East-End-End-End-End-End-End)	42.2	42.8
London (North-East-End-End-End-End-End-End)	43.0	43.5
London (South-West-End-End-End-End-End-End)	43.8	44.5
London (North-West-End-End-End-End-End-End)	44.5	45.0
London (East-End-End-End-End-End-End-End)	45.2	45.8
London (West-End-End-End-End-End-End-End)	46.0	46.5
London (Central-End-End-End-End-End-End-End)	46.8	47.5
London (South-East-End-End-End-End-End-End-End)	47.5	48.0
London (North-East-End-End-End-End-End-End-End)	48.2	48.8
London (South-West-End-End-End-End-End-End-End)	49.0	49.5
London (North-West-End-End-End-End-End-End-End)	49.8	50.5
London (East-End-End-End-End-End-End-End-End)	50.5	51.0
London (West-End-End-End-End-End-End-End-End)	51.2	51.8
London (Central-End-End-End-End-End-End-End-End)	52.0	52.5
London (South-East-End-End-End-End-End-End-End-End)	52.8	53.5
London (North-East-End-End-End-End-End-End-End-End)	53.5	54.0
London (South-West-End-End-End-End-End-End-End-End)	54.2	54.8
London (North-West-End-End-End-End-End-End-End-End)	55.0	55.5
London (East-End-End-End-End-End-End-End-End-End)	55.8	56.5
London (West-End-End-End-End-End-End-End-End-End)	56.5	57.0
London (Central-End-End-End-End-End-End-End-End-End)	57.2	57.8
London (South-East-End-End-End-End-End-End-End-End-End)	58.0	58.5
London (North-East-End-End-End-End-End-End-End-End-End)	58.8	59.5
London (South-West-End-End-End-End-End-End-End-End-End)	59.5	60.0
London (North-West-End-End-End-End-End-End-End-End-End)	60.2	60.8
London (East-End-End-End-End-End-End-End-End-End-End)	61.0	61.5
London (West-End-End-End-End-End-End-End-End-End-End)	61.8	62.5
London (Central-End-End-End-End-End-End-End-End-End-End)	62.5	63.0
London (South-East-End-End-End-End-End-End-End-End-End-End)	63.2	63.8
London (North-East-End-End-End-End-End-End-End-End-End-End)	64.0	64.5
London (South-West-End-End-End-End-End-End-End-End-End-End)	64.8	65.5
London (North-West-End-End-End-End-End-End-End-End-End-End)	65.5	66.0
London (East-End-End-End-End-End-End-End-End-End-End-End)	66.2	66.8
London (West-End-End-End-End-End-End-End-End-End-End-End)	67.0	67.5
London (Central-End-End-End-End-End-End-End-End-End-End-End)	67.8	68.5
London (South-East-End-End-End-End-End-End-End-End-End-End-End)	68.5	69.0
London (North-East-End-End-End-End-End-End-End-End-End-End-End)	69.2	69.8
London (South-West-End-End-End-End-End-End-End-End-End-End-End)	70.0	70.5
London (North-West-End-End-End-End-End-End-End-End-End-End-End)	70.8	71.5
London (East-End-End-End-End-End-End-End-End-End-End-End-End)	71.5	72.0
London (West-End-End-End-End-End-End-End-End-End-End-End-End)	72.2	72.8
London (Central-End-End-End-End-End-End-End-End-End-End-End-End)	73.0	73.5
London (South-East-End-End-End-End-End-End-End-End-End-End-End-End)	73.8	74.5
London (North-East-End-End-End-End-End-End-End-End-End-End-End-End)	74.5	75.0
London (South-West-End-End-End-End-End-End-End-End-End-End-End-End)	75.2	75.8
London (North-West-End-End-End-End-End-End-End-End-End-End-End-End)	76.0	76.5
London (East-End-End-End-End-End-End-End-End-End-End-End-End-End)	76.8	77.5
London (West-End-End-End-End-End-End-End-End-End-End-End-End-End)	77.5	78.0
London (Central-End-End-End-End-End-End-End-End-End-End-End-End-End)	78.2	78.8
London (South-East-End-End-End-End-End-End-End-End-End-End-End-End-End)	79.0	79.5
London (North-East-End-End-End-End-End-End-End-End-End-End-End-End-End)	79.8	80.5
London (South-West-End-End-End-End-End-End-End-End-End-End-End-End-End)	80.5	81.0
London (North-West-End-End-End-End-End-End-End-End-End-End-End-End-End)	81.2	81.8
London (East-End-End-End-End-End-End-End-End-End-End-End-End-End-End)	82.0	82.5
London (West-End-End-End-End-End-End-End-End-End-End-End-End-End-End)	82.8	83.5
London (Central-End-End-End-End-End-End-End-End-End-End-End-End-End-End)	83.5	84.0
London (South-East-End-End-End-End-End-End-End-End-End-End-End-End-End-End)	84.2	84.8
London (North-East-End-End-End-End-End-End-End-End-End-End-End-End-End-End)	85.0	85.5
London (South-West-End-End-End-End-End-End-End-End-End-End-End-End-End-End)	85.8	86.5
London (North-West-End-End-End-End-End-End-End-End-End-End-End-End-End-End)	86.5	87.0
London (East-End-End-End-End-End-End-End-End-End-End-End-End-End-End-End)	87.2	87.8
London (West-End-End-End-End-End-End-End-End-End-End-End-End-End-End-End)	88.0	88.5
London (Central-End-End-End-End-End-End-End-End-End-End-End-End-End-End-End)	88.8	89.5
London (South-East-End-End-End-End-End-End-End-End-End-End-End-End-End-End-End)	89.5	90.0
London (North-East-End-End-End-End-End-End-End-End-End-End-End-End-End-End-End)	90.2	90.8
London (South-West-End-End-End-End-End-End-End-End-End-End-End-End-End-End-End)	91.0	91.5
London (North-West-End-End-End-End-End-End-End-End-End-End-End-End-End-End-End)	91.8	92.5
London (East-End-End-End-End-End-End-End-End-End-End-End-End-End-End-End-End)	92.5	93.0
London (West-End-End-End-End-End-End-End-End-End-End-End-End-End-End-End-End)	93.2	93.8
London (Central-End-End-End-End-End-End-End-End-End-End-End-End-End-End-End-End)	94.0	94.5
London (South-East-End-End-End-End-End-End-End-End-End-End-End-End-End-End-End-End)	94.8	95.5
London (North-East-End-End-End-End-End-End-End-End-End-End-End-End-End-End-End-End)	95.5	96.0
London (South-West-End-End-End-End-End-End-End-End-End-End-End-End-End-End-End-End)	96.2	96.8
London (North-West-End-End-End-End-End-End-End-End-End-End-End-End-End-End-End-End)	97.0	97.5
London (East-End-End-End-End-End-End-End-End-End-End-End-End-End-End-End-End-End)	97.8	98.5
London (West-End-End-End-End-End-End-End-End-End-End-End-End-End-End-End-End-End)	98.5	99.0
London (Central-End-End-End-End-End-End-End-End-End-End-End-End-End-End-End-End-End)	99.2	99.8
London (South-East-End-End-End-End-End-End-End-End-End-End-End-End-End-End-End-End-End)	100.0	100.5

### County News

The County News is a newspaper which is published in the County of London. It is owned and managed by the County Council.



## Lion with Larcher

Do you have any enjoyable business or white label with LION BEER? The only one LION put in healthy side on the system, but it is not a deception.

There is a variety of LION BEER for use at home. The white label beer will be found in all the best hotels and restaurants.

### LION BEERS

Sole Distributors for: OLLIGONS & CO. BREWERS LTD., DUBLIN & DUBLIN, City Road, Nairobi.

### MOTOR CARRIAGE

Motor Carriages have been a great success since their introduction. They are now being used in all parts of the world. The motor carriage is a vehicle which is used for transport. It is a vehicle which is used for transport.

### The Colonial Lines

The Colonial Lines is a company of steamships which is engaged in the trade between the United Kingdom and the Colonies. The company is owned and managed by the British Government.

### The Weather Report

For the week ending December 24, 1920, as prepared by the Department of Agriculture.

RAINFALL

Station	1920	1919
London	1.2	1.5
Birmingham	1.8	2.1
Manchester	2.5	3.0
Edinburgh	3.2	3.8
Glasgow	4.0	4.5
Belfast	4.8	5.5
Cardiff	5.5	6.0
Exeter	6.2	6.8
London (South)	7.0	7.5
London (North)	7.8	8.5
London (East)	8.5	9.0
London (West)	9.2	9.8
London (Central)	10.0	10.5
London (South-East)	10.8	11.5
London (North-East)	11.5	12.0
London (South-West)	12.2	12.8
London (North-West)	13.0	13.5
London (East-End)	13.8	14.5
London (West-End)	14.5	15.0
London (Central-End)	15.2	15.8
London (South-East-End)	16.0	16.5
London (North-East-End)	16.8	17.5
London (South-West-End)	17.5	18.0
London (North-West-End)	18.2	18.8
London (East-End-End)	19.0	19.5
London (West-End-End)	19.8	20.5
London (Central-End-End)	20.5	21.0
London (South-East-End-End)	21.2	21.8
London (North-East-End-End)	22.0	22.5
London (South-West-End-End)	22.8	23.5
London (North-West-End-End)	23.5	24.0
London (East-End-End-End)	24.2	24.8
London (West-End-End-End)	25.0	25.5
London (Central-End-End-End)	25.8	26.5
London (South-East-End-End-End)	26.5	27.0
London (North-East-End-End-End)	27.2	27.8
London (South-West-End-End-End)	28.0	28.5
London (North-West-End-End-End)	28.8	29.5
London (East-End-End-End-End)	29.5	30.0
London (West-End-End-End-End)	30.2	30.8
London (Central-End-End-End-End)	31.0	31.5
London (South-East-End-End-End-End)	31.8	32.5
London (North-East-End-End-End-End)	32.5	33.0
London (South-West-End-End-End-End)	33.2	33.8
London (North-West-End-End-End-End)	34.0	34.5
London (East-End-End-End-End-End)	34.8	35.5
London (West-End-End-End-End-End)	35.5	36.0
London (Central-End-End-End-End-End)	36.2	36.8
London (South-East-End-End-End-End-End)	37.0	37.5
London (North-East-End-End-End-End-End)	37.8	38.5
London (South-West-End-End-End-End-End)	38.5	39.0
London (North-West-End-End-End-End-End)	39.2	39.8
London (East-End-End-End-End-End-End)	40.0	40.5
London (West-End-End-End-End-End-End)	40.8	41.5
London (Central-End-End-End-End-End-End)	41.5	42.0
London (South-East-End-End-End-End-End-End)	42.2	42.8
London (North-East-End-End-End-End-End-End)	43.0	43.5
London (South-West-End-End-End-End-End-End)	43.8	44.5
London (North-West-End-End-End-End-End-End)	44.5	45.0
London (East-End-End-End-End-End-End-End)	45.2	45.8
London (West-End-End-End-End-End-End-End)	46.0	46.5
London (Central-End-End-End-End-End-End-End)	46.8	47.5
London (South-East-End-End-End-End-End-End-End)	47.5	48.0
London (North-East-End-End-End-End-End-End-End)	48.2	48.8
London (South-West-End-End-End-End-End-End-End)	49.0	49.5
London (North-West-End-End-End-End-End-End-End)	49.8	50.5
London (East-End-End-End-End-End-End-End-End)	50.5	51.0
London (West-End-End-End-End-End-End-End-End)	51.2	51.8
London (Central-End-End-End-End-End-End-End-End)	52.0	52.5
London (South-East-End-End-End-End-End-End-End-End)	52.8	53.5
London (North-East-End-End-End-End-End-End-End-End)	53.5	54.0
London (South-West-End-End-End-End-End-End-End-End)	54.2	54.8
London (North-West-End-End-End-End-End-End-End-End)	55.0	55.5
London (East-End-End-End-End-End-End-End-End-End)	55.8	56.5
London (West-End-End-End-End-End-End-End-End-End)	56.5	57.0
London (Central-End-End-End-End-End-End-End-End-End)	57.2	57.8
London (South-East-End-End-End-End-End-End-End-End-End)	58.0	58.5
London (North-East-End-End-End-End-End-End-End-End-End)	58.8	59.5
London (South-West-End-End-End-End-End-End-End-End-End)	59.5	60.0
London (North-West-End-End-End-End-End-End-End-End-End)	60.2	60.8
London (East-End-End-End-End-End-End-End-End-End-End)	61.0	61.5
London (West-End-End-End-End-End-End-End-End-End-End)	61.8	62.5
London (Central-End-End-End-End-End-End-End-End-End-End)	62.5	63.0
London (South-East-End-End-End-End-End-End-End-End-End-End)	63.2	63.8
London (North-East-End-End-End-End-End-End-End-End-End-End)	64.0	64.5
London (South-West-End-End-End-End-End-End-End-End-End-End)	64.8	65.5
London (North-West-End-End-End-End-End-End-End-End-End-End)	65.5	66.0
London (East-End-End-End-End-End-End-End-End-End-End-End)	66.2	66.8
London (West-End-End-End-End-End-End-End-End-End-End-End)	67.0	67.5
London (Central-End-End-End-End-End-End-End-End-End-End-End)	67.8	68.5
London (South-East-End-End-End-End-End-End-End-End-End-End-End)	68.5	69.0
London (North-East-End-End-End-End-End-End-End-End-End-End-End)	69.2	69.8
London (South-West-End-End-End-End-End-End-End-End-End-End-End)	70.0	70.5
London (North-West-End-End-End-End-End-End-End-End-End-End-End)	70.8	71.5
London (East-End-End-End-End-End-End-End-End-End-End-End-End)	71.5	72.0
London (West-End-End-End-End-End-End-End-End-End-End-End-End)	72.2	72.8
London (Central-End-End-End-End-End-End-End-End-End-End-End-End)	73.0	73.5
London (South-East-End-End-End-End-End-End-End-End-End-End-End-End)	73.8	74.5
London (North-East-End-End-End-End-End-End-End-End-End-End-End-End)	74.5	75.0
London (South-West-End-End-End-End-End-End-End-End-End-End-End-End)	75.2	75.8
London (North-West-End-End-End-End-End-End-End-End-End-End-End-End)	76.0	76.5
London (East-End-End-End-End-End-End-End-End-End-End-End-End-End)	76.8	77.5
London (West-End-End-End-End-End-End-End-End-End-End-End-End-End)	77.5	78.0
London (Central-End-End-End-End-End-End-End-End-End-End-End-End-End)	78.2	78.8
London (South-East-End-End-End-End-End-End-End-End-End-End-End-End-End)	79.0	79.5
London (North-East-End-End-End-End-End-End-End-End-End-End-End-End-End)	79.8	80.5
London (South-West-End-End-End-End-End-End-End-End-End-End-End-End-End)	80.5	81.0
London (North-West-End-End-End-End-End-End-End-End-End-End-End-End-End)	81.2	81.8
London (East-End-End-End-End-End-End-End-End-End-End-End-End-End-End)	82.0	82.5
London (West-End-End-End-End-End-End-End-End-End-End-End-End-End-End)	82.8	83.5
London (Central-End-End-End-End-End-End-End-End-End-End-End-End-End-End)	83.5	84.0
London (South-East-End-End-End-End-End-End-End-End-End-End-End-End-End-End)	84.2	84.8
London (North-East-End-End-End-End-End-End-		



# CHRISTMAS FAIR

A LARGE ASSORTMENT OF  
**CRACKERS,**  
**NOVELTIES,**  
**TABLES DECORATIONS,**  
**CHOCOLATES,**  
**NUTS,**  
**CRYSTALLIZED FRUITS,**  
**CRYSTALLIZED CHEERRIES,**  
**GINGER CAKES,**  
**TABLE DATES,**  
**AND**  
**FIRES.**

AT  
**ELLIOTS**  
 78-80 NAIROBI. P.O. Box 172.

## BONAFIDE SALE.

CHIFFS DE CHIFFS, FUJI SILKS, ETC.  
 18 UP TO DATE SHAWLS, INDIAN SHAWLS,  
 WARE, CURTAINS AND ORIENTAL GIFTS  
 FOR YOUR DEAR ONES AND FRIENDS.  
**Lalchand Woolchand Bros**  
 P.O. Box 272. East Road, NAIROBI.

Govt. Road, NAIROBI. P.O. Box 284.

## Theo. Schouten,

Leslie and Gertr. Hauterwer.  
 The oldest Established, most up to date, premises.  
 Largest staff of assistants in Kenya.  
 Permanent Waving by experts only  
 English and Gaitie Bonilla Systems used.  
 A LARGE SELECTION OF TOILET  
 PREPARATIONS ALWAYS IN STOCK.



By A. H. Brown, F.R.S.  
 In view of an increasing number of  
 chess players in the colony, it is  
 thought that a chess tournament  
 should be held in the near future.  
 Chess is a game of skill and  
 character and should be popularized  
 in the colony.

PROBLEM No. 582  
 "It" is in the position  
 Black to move. (To be solved in  
 10 moves.)



White to move. (To be solved in  
 10 moves.)

PROBLEM No. 583  
 White to move. (To be solved in  
 10 moves.)



White to move.

White to move.

who believe that it is necessary  
 to have a better chess tournament  
 than the one held in the colony.  
 The committee has decided to  
 hold a chess tournament in the  
 near future. The committee has  
 decided to hold a chess tournament  
 in the near future. The committee  
 has decided to hold a chess tournament  
 in the near future.

WEEKLY SCORES 1917

W. R. M. Fowler	12
W. R. M. Fowler	11
F. J. H. H. H.	10
F. J. H. H. H.	9
F. J. H. H. H.	8
F. J. H. H. H.	7
F. J. H. H. H.	6
F. J. H. H. H.	5
F. J. H. H. H.	4
F. J. H. H. H.	3
F. J. H. H. H.	2
F. J. H. H. H.	1
F. J. H. H. H.	0

### NAIROBI CHESS CLUB.

There have been mentioned  
 developments since last week  
 which, in addition to taking a  
 group of the club, has also taken  
 the group of the club. The group  
 of the club has also taken the  
 group of the club. The group of  
 the club has also taken the group  
 of the club. The group of the  
 club has also taken the group of  
 the club. The group of the club  
 has also taken the group of the  
 club. The group of the club has  
 also taken the group of the club.

### REVA CLEANFORMERY LTD.

For many years past the Nairobi  
 Clean Formery Ltd. has been  
 the best in the colony. The  
 company has been in the colony  
 for many years. The company  
 has been in the colony for many  
 years. The company has been in  
 the colony for many years. The  
 company has been in the colony  
 for many years. The company has  
 been in the colony for many years.

It is a pleasure to announce  
 that the Nairobi Chess Club  
 has been formed. The club  
 has been formed. The club has  
 been formed. The club has been  
 formed. The club has been formed.  
 The club has been formed. The  
 club has been formed. The club  
 has been formed. The club has  
 been formed. The club has been  
 formed. The club has been formed.

It is a pleasure to announce  
 that the Nairobi Chess Club  
 has been formed. The club  
 has been formed. The club has  
 been formed. The club has been  
 formed. The club has been formed.  
 The club has been formed. The  
 club has been formed. The club  
 has been formed. The club has  
 been formed. The club has been  
 formed. The club has been formed.

It is a pleasure to announce  
 that the Nairobi Chess Club  
 has been formed. The club  
 has been formed. The club has  
 been formed. The club has been  
 formed. The club has been formed.  
 The club has been formed. The  
 club has been formed. The club  
 has been formed. The club has  
 been formed. The club has been  
 formed. The club has been formed.

It is a pleasure to announce  
 that the Nairobi Chess Club  
 has been formed. The club  
 has been formed. The club has  
 been formed. The club has been  
 formed. The club has been formed.  
 The club has been formed. The  
 club has been formed. The club  
 has been formed. The club has  
 been formed. The club has been  
 formed. The club has been formed.

It is a pleasure to announce  
 that the Nairobi Chess Club  
 has been formed. The club  
 has been formed. The club has  
 been formed. The club has been  
 formed. The club has been formed.  
 The club has been formed. The  
 club has been formed. The club  
 has been formed. The club has  
 been formed. The club has been  
 formed. The club has been formed.

## SOUTH AFRICAN RAILWAYS AND HARBOURS TRAVEL HOLIDAYS

For holidays can compare with a tour of South  
 Africa. Abundant variety of scenery, interesting  
 climate, excellent service and up-to-date  
 comfortable travel arrangements.  
 For particulars apply—  
**TRAIN COMMISSIONERS FOR THE  
 UNION OF SOUTH AFRICA,**  
 MEMORIAL HALL,  
 NAIROBI.

P.O. Box 624.

## SOUTH AFRICAN RAIL FOR YOUR FRIENDS AT HOME.

THINK HOW YOUR FRIENDS AT HOME  
 WOULD APPRECIATE A BOX OF LUSCIOUS  
 FRUIT DELIVERED AT THEIR DOOR IN  
 JANUARY FEBRUARY MARCH OR APRIL.  
 PRICES AND PARTICULARS OF HOW THIS  
 CAN BE ARRANGED WITHOUT ANY  
 TROUBLE TO YOURSELF.  
 CAN BE OBTAINED FROM  
**UNION OF SOUTH AFRICA  
 TRAIN COMMISSIONERS**  
 MEMORIAL HALL,  
 NAIROBI.

P.O. Box 624.  
 Telephone 264.

## REZIN

TAILOR OF QUALITY

THE NAME THAT  
 INSPIRES CONFIDENCE

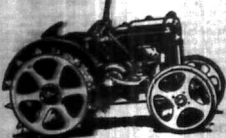
## GENTLEMEN'S TAILORING

IN ALL ITS BRANCHES

The House of Rezin

# ONLY THE BEST

Many good tractors  
 but only one best,  
**CASE!**



Valve in head engine; direct spur gear transmission;  
 standard governor; supercharging; water air cleaner;  
 accessible pulley; differential locks; water injection;  
 kerosene fuel, and 800 LITERS FUEL.

**EXCESS POWER—EXCESS DURABILITY—  
 WATER & FUEL ECONOMY**  
 12/20 2700  
 16/28 2200  
 20/45 2700

Sole Agents:  
**K. McVOR & Co.**  
 Sixth Avenue,  
**NAIROBI.**

Telegrams:  
 "Afford."

P. O. Box 97.  
 Phone 97.

THE SPORTS PAGE

What shall I buy you for Christmas? Give him a GUN... Shaw & Hunter, 17th Avenue, NAIROBI.

J. R. STEPHENS & Co., Ltd. We are at LAST... PRICE 1/6 each... 630 C.C. TWIN New Imperial

7 A. KAFI... 7 A. KAFI... 7 A. KAFI... 7 A. KAFI...

DUCK SHOOTING GOOD BAGS ASSURED BY USING Smokeless Diamond

HUNTER & SIMMONS... JOHNSON'S GUNNERS HANDCAP... ERSHAM DEERY... JOHNSON'S GUNNERS HANDCAP

Sports Goods HIGH CLASS TOYS... Rifles Shotguns Revolvers... INDOOR GAMES... Chess, Draughts, Dominoes, Billiards...

HOME FOOTBALL... Matches Down to be Played To-day.

INSURANCE LEAGUE... Second Division... Third Division...

GOAN TENNIS... The following matches in the... The following matches in the...

GOAN TENNIS... The following matches in the... The following matches in the...

GOAN TENNIS... The following matches in the... The following matches in the...

VARSEY SOCCER... Oxford Was Contested by a Goal.

THE SMALL-BALL... The following matches in the... The following matches in the...

THE SMALL-BALL... The following matches in the... The following matches in the...

THE SMALL-BALL... The following matches in the... The following matches in the...

THE SMALL-BALL... The following matches in the... The following matches in the...

NEW CRICKET LAWS... M.C.C. Deals With its Proposals.

THE SMALL-BALL... The following matches in the... The following matches in the...

THE SMALL-BALL... The following matches in the... The following matches in the...

THE SMALL-BALL... The following matches in the... The following matches in the...

THE SMALL-BALL... The following matches in the... The following matches in the...

Local News... ANOTHER BALL MATCH... WINNING TRYING.

LOCAL NEWS... ANOTHER BALL MATCH... WINNING TRYING.

LOCAL NEWS... ANOTHER BALL MATCH... WINNING TRYING.

LOCAL NEWS... ANOTHER BALL MATCH... WINNING TRYING.

LOCAL NEWS... ANOTHER BALL MATCH... WINNING TRYING.

Swan Pens THE GIFT WHICH IS BOTH LASTING AND UNIVERSALLY APPRECIATED

SWAN SELF-FILLING PEN No. 57. No. 58. No. 59. No. 60. No. 61. No. 62.

SWAN PENS with Gold, Silver, and Steel. SWAN PENS with Gold, Silver, and Steel.

PRESENTATION SWAN PENS. No. 57. No. 58. No. 59. No. 60. No. 61. No. 62.

PRESENTATION SWAN PENS. No. 57. No. 58. No. 59. No. 60. No. 61. No. 62.

NEW LINES IN DRESSY SHOES FOR MAIDS and CHILDREN. SHILDS' PATENT SHOES.

MAY & Co. THE OBVIOUS SHOP FOR CHRISTMAS PRESENTS. MOUNTAIN PIPES, REAR PIPES, TOBACCO POUCHES, CIGARETTE CASES.

Fishing Rods Reels Lines. Games of Chance. Roulette Wheels, Fish Chart, MINOR, Snookers, Pool Billiards, Paper Dice, Crown and Anchor.

Kenitas. You may have smoked ordinary cigarettes for years, Sir, but that is no reason why you shouldn't start now and smoke better ones. Kenitas.

Kenitas. You may have smoked ordinary cigarettes for years, Sir, but that is no reason why you shouldn't start now and smoke better ones. Kenitas.