

HAIBORI, SATURDAY, JUNE 23, 1922. Price 20 CENTS.

STOCKS JUST ARRIVED

Woolen Goods Advertisement. Features 'REAL WITNEY' and 'SUPER QUALITY ALL WOOL WITNEY' blankets. Includes prices and descriptions of various blanket types like 'TREATY WHITE OAT AND GRIS BLANKETS' and 'COLOURED NERVO WOOL OAT BLANKETS'.

Special Offer of Camel Blankets.

Camel Blanket Advertisement. Shows an illustration of a camel and describes the 'THE HONOLULU BLANKET' and 'THE VENUS' blankets. Includes prices and quality details.

THE HONOLULU BLANKET

THE VENUS BLANKETS Advertisement. Describes 'White Cotton Blankets' and 'Fluffy White Cotton Blankets' with prices.

THE "COLONIAL" TRAVEL RUG

THE "COLONIAL" TRAVEL RUG Advertisement. Describes a 'Standard Value' rug with prices.

Whiteaways NAIROBI

Whiteaways NAIROBI Advertisement. Large advertisement for 'Whiteaways' clothing, including shirts, trousers, and suits. Features the text 'Whiteaways NAIROBI' and 'The Greek Plot'.

LITTLE EXCITEMENT IN DUBLIN. Valera Demonstration Fizzes Out. DAILY SCENE. Attempts to Glaze Seal with the Oath.

GENERAL'S BODYGUARD OF EXECUTIONERS. A Week-end of Disorder with the Committee.

CHURCH VIOLENCE. The Oathless, Murd' Merit Blotspaper.

ANOTHER LABOR MEMBER SUSPENDED. An Incent to the Attorney-General.

MR. THOMAS'S VERDICT. Trade Union Bill Passed Third Reading.

REMARKS ON THE NAVAL CONFERENCE. Explanatory Note on British Proposal.

THE SUBMARINE. [By Warrance.] Reply, June 21.

CONFERENCE OF FOREIGN MINISTERS. [By Warrance.] Reply, June 21.

POSITION OF THE DEFENCE FORCE BILL. [By Warrance.] Reply, June 21.

THE GATE AGAIN. [By Warrance.] Reply, June 21.

THE BALKAN DISPUTE. [By Warrance.] Reply, June 21.

THE HONOLULU BLANKET. [By Warrance.] Reply, June 21.

THE VENUS BLANKETS. [By Warrance.] Reply, June 21.

THE BALKAN DISPUTE. [By Warrance.] Reply, June 21.

THE HONOLULU BLANKET. [By Warrance.] Reply, June 21.

THE VENUS BLANKETS. [By Warrance.] Reply, June 21.

THE "COLONIAL" TRAVEL RUG. [By Warrance.] Reply, June 21.

Whiteaways NAIROBI. [By Warrance.] Reply, June 21.

THE GREEK PLOT. [By Warrance.] Reply, June 21.

THE FLAG BILL. [By Warrance.] Reply, June 21.

THE HONOLULU BLANKET. [By Warrance.] Reply, June 21.

THE VENUS BLANKETS. [By Warrance.] Reply, June 21.

THE "COLONIAL" TRAVEL RUG. [By Warrance.] Reply, June 21.

Whiteaways NAIROBI. [By Warrance.] Reply, June 21.

THE GREEK PLOT. [By Warrance.] Reply, June 21.

THE FLAG BILL. [By Warrance.] Reply, June 21.

REMARKS ON THE NAVAL CONFERENCE. Explanatory Note on British Proposal.

THE SUBMARINE. [By Warrance.] Reply, June 21.

CONFERENCE OF FOREIGN MINISTERS. [By Warrance.] Reply, June 21.

POSITION OF THE DEFENCE FORCE BILL. [By Warrance.] Reply, June 21.

THE GATE AGAIN. [By Warrance.] Reply, June 21.

THE BALKAN DISPUTE. [By Warrance.] Reply, June 21.

THE HONOLULU BLANKET. [By Warrance.] Reply, June 21.

THE VENUS BLANKETS. [By Warrance.] Reply, June 21.

THE "COLONIAL" TRAVEL RUG. [By Warrance.] Reply, June 21.

Whiteaways NAIROBI. [By Warrance.] Reply, June 21.

THE GREEK PLOT. [By Warrance.] Reply, June 21.

THE FLAG BILL. [By Warrance.] Reply, June 21.

THE HONOLULU BLANKET. [By Warrance.] Reply, June 21.

THE VENUS BLANKETS. [By Warrance.] Reply, June 21.

THE "COLONIAL" TRAVEL RUG. [By Warrance.] Reply, June 21.

Whiteaways NAIROBI. [By Warrance.] Reply, June 21.

THE GREEK PLOT. [By Warrance.] Reply, June 21.

THE FLAG BILL. [By Warrance.] Reply, June 21.

THE HONOLULU BLANKET. [By Warrance.] Reply, June 21.

THE VENUS BLANKETS. [By Warrance.] Reply, June 21.

THE "COLONIAL" TRAVEL RUG. [By Warrance.] Reply, June 21.

Whiteaways NAIROBI. [By Warrance.] Reply, June 21.

THE GREEK PLOT. [By Warrance.] Reply, June 21.

THE FLAG BILL. [By Warrance.] Reply, June 21.

THE HONOLULU BLANKET. [By Warrance.] Reply, June 21.

THE VENUS BLANKETS. [By Warrance.] Reply, June 21.

THE "COLONIAL" TRAVEL RUG. [By Warrance.] Reply, June 21.

Whiteaways NAIROBI. [By Warrance.] Reply, June 21.

THE GREEK PLOT. [By Warrance.] Reply, June 21.

THE FLAG BILL. [By Warrance.] Reply, June 21.

THE HONOLULU BLANKET. [By Warrance.] Reply, June 21.

THE VENUS BLANKETS. [By Warrance.] Reply, June 21.

THE "COLONIAL" TRAVEL RUG. [By Warrance.] Reply, June 21.

Whiteaways NAIROBI. [By Warrance.] Reply, June 21.

THE GREEK PLOT. [By Warrance.] Reply, June 21.

THE FLAG BILL. [By Warrance.] Reply, June 21.

THE HONOLULU BLANKET. [By Warrance.] Reply, June 21.

THE VENUS BLANKETS. [By Warrance.] Reply, June 21.

THE "COLONIAL" TRAVEL RUG. [By Warrance.] Reply, June 21.

Whiteaways NAIROBI. [By Warrance.] Reply, June 21.

THE GREEK PLOT. [By Warrance.] Reply, June 21.

THE FLAG BILL. [By Warrance.] Reply, June 21.

THE HONOLULU BLANKET. [By Warrance.] Reply, June 21.

THE VENUS BLANKETS. [By Warrance.] Reply, June 21.

THE "COLONIAL" TRAVEL RUG. [By Warrance.] Reply, June 21.

Whiteaways NAIROBI. [By Warrance.] Reply, June 21.

THE GREEK PLOT. [By Warrance.] Reply, June 21.

THE FLAG BILL. [By Warrance.] Reply, June 21.

THE HONOLULU BLANKET. [By Warrance.] Reply, June 21.

THE VENUS BLANKETS. [By Warrance.] Reply, June 21.

THE "COLONIAL" TRAVEL RUG. [By Warrance.] Reply, June 21.

Whiteaways NAIROBI. [By Warrance.] Reply, June 21.

THE GREEK PLOT. [By Warrance.] Reply, June 21.

THE FLAG BILL. [By Warrance.] Reply, June 21.

THE HONOLULU BLANKET. [By Warrance.] Reply, June 21.

THE VENUS BLANKETS. [By Warrance.] Reply, June 21.

THE "COLONIAL" TRAVEL RUG. [By Warrance.] Reply, June 21.

Whiteaways NAIROBI. [By Warrance.] Reply, June 21.

THE GREEK PLOT. [By Warrance.] Reply, June 21.

THE FLAG BILL. [By Warrance.] Reply, June 21.

THE HONOLULU BLANKET. [By Warrance.] Reply, June 21.

THE VENUS BLANKETS. [By Warrance.] Reply, June 21.

THE "COLONIAL" TRAVEL RUG. [By Warrance.] Reply, June 21.

Whiteaways NAIROBI. [By Warrance.] Reply, June 21.

THE GREEK PLOT. [By Warrance.] Reply, June 21.

THE FLAG BILL. [By Warrance.] Reply, June 21.

THE HONOLULU BLANKET. [By Warrance.] Reply, June 21.

THE VENUS BLANKETS. [By Warrance.] Reply, June 21.

THE "COLONIAL" TRAVEL RUG. [By Warrance.] Reply, June 21.

Whiteaways NAIROBI. [By Warrance.] Reply, June 21.

THE GREEK PLOT. [By Warrance.] Reply, June 21.

THE FLAG BILL. [By Warrance.] Reply, June 21.

THE HONOLULU BLANKET. [By Warrance.] Reply, June 21.

THE VENUS BLANKETS. [By Warrance.] Reply, June 21.

THE "COLONIAL" TRAVEL RUG. [By Warrance.] Reply, June 21.

Whiteaways NAIROBI. [By Warrance.] Reply, June 21.

THE GREEK PLOT. [By Warrance.] Reply, June 21.

THE FLAG BILL. [By Warrance.] Reply, June 21.

THE HONOLULU BLANKET. [By Warrance.] Reply, June 21.

THE VENUS BLANKETS. [By Warrance.] Reply, June 21.

THE "COLONIAL" TRAVEL RUG. [By Warrance.] Reply, June 21.

Whiteaways NAIROBI. [By Warrance.] Reply, June 21.

THE GREEK PLOT. [By Warrance.] Reply, June 21.

THE FLAG BILL. [By Warrance.] Reply, June 21.

THE HONOLULU BLANKET. [By Warrance.] Reply, June 21.

THE VENUS BLANKETS. [By Warrance.] Reply, June 21.

THE "COLONIAL" TRAVEL RUG. [By Warrance.] Reply, June 21.

Whiteaways NAIROBI. [By Warrance.] Reply, June 21.

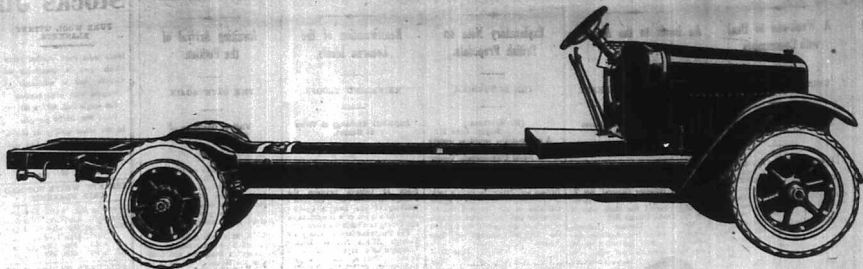
THE GREEK PLOT. [By Warrance.] Reply, June 21.

THE FLAG BILL. [By Warrance.] Reply, June 21.

THE HONOLULU BLANKET. [By Warrance.] Reply, June 21.

# Just the Truck

for Fast, Low-Cost Hauling



## Model SL 2 Ton Speed Truck

**£448**

*Chassis complete with windshields.*

THIS long, powerful truck has several features of special interest to every transportation buyer. For example: the wheelbase of 160 inches provides long loading space. A capacity load of 4000 lbs. can be hauled without piling to an inconvenient height.

It is equipped with auxiliary rear springs (making four rear springs in all, an exclusive

feature of all International trucks) insuring easy riding for varying loads. Power tyre pump driven from the transmission, steel wheels, heavy-duty truck tyres are also standard.

This sturdy truck is suitable for any body from the simple platform type to an enclosed bus body for carrying passengers.

*The complete range of International Truck chassis include the Special Delivery for loadings up to 1 ton, Speed Trucks for 1, 1 1/2 ton, and Heavy Duty Trucks up to 5 ton capacities.*

*Write for literature.*



1 1/2 ton Chassis complete with windshields £345.



**Gilfillan & Company, Ltd.**  
D I S T R I B U T O R S

# INTERNATIONAL MOTOR TRUCKS

**THE AMERICAN STANDARD**  
**DAILY EDITION.**  
 PUBLISHED DAILY, except on Sundays and Public Holidays, at 10 o'clock in the morning.  
 Subscription Rates: For one year, £10 0s 0d; for six months, £5 0s 0d; for three months, £2 10s 0d. Single copies, 6d. All payments in advance.  
 Advertising Rates: For one line, 1s per week; for one month, 4s; for three months, 10s; for six months, 18s; for one year, 32s. Display advertising, by arrangement.  
 Telephone: 1000. Cable: "Standard," Nairobi.

## EQUATOR SAW MILLS

P.O. Plateau. P.O. Maj-Mazari. P.O. Box 291, Nairobi.

# IN STOCK 4,000 TONS

Podo, Cedar, Hardwoods and Uganda Nyute.

Price List on Application.

**ALSO IN STOCK**

Sulphur Oak	Cotton Lumber	Sawn Timber	Short Length Hard
White Wood	Shingles	Timbered Material	Timber
Preservative	7/8" will cover	All dimensions and	Substrates for
Sp. Dress. Sh. 5/6"	100 square feet	angles.	shoring and
1st. Dress. Sh. 6/6"	Price, Sh. 6/6"	Prices 21 cents	repairs on your
		per square foot.	timber.
			Price per ton
			F.O.B. Maj-Mazari
			Nairobi Station
			Box 97.


**WANTED**  
 This is the advertisement...  
**HEPPEL'S** Cash account bank...  
**LARGE** commercial R. F. P...  
**PIANOFOUR** (about 8 ft. bench)...  
**WANTED** to purchase for cash...  
**WANTED** extra strong string...  
**WANTED** Driver required to...  
**WANTED** double room with...  
**WANTED** furnished house in...  
**TO LET**  
**THE** charge for advertisements...  
**IMMEDIATE** possession, small...  
**ONE** extra large room, furnished...  
**THEATRE** Royal Arcade, from...  
**TWO** Offices in S.A. Standard...  
**BOARD & RESIDENCE**  
**PRIVATE** typing undertaken...  
**REVOLUTION** in food prices...  
**CRAUFORD** House, Hill, Few...  
**COMFORTABLE** room, double...  
**D'NEIN** House, top of Salla...  
**FIELD** CLAMBER...  
**STANDARD** STORIES...  
**PATENT** goods provided in com...  
**DISCO** ACRES near the Tana...  
**SITUATIONS WANTED**  
**FREE** charge for advertisements...  
**EXPERIENCED** South African...  
**UKUYA HOTEL**  
 Comfortable, Healthy, and Electric Light. Week-end...  
 Special luncheon from Nairobi.  
 Refreshing charges and special quotations for families.

## SOLD ON A QUALITY BASIS

*Our Original Moderate Prices hold good To-day*

# UNDERWOOD

The Machine  
 You will Eventually Buy.



## TAWS LTD. NAIROBI.

**WANTED** extra strong string...  
**WANTED** Driver required to...  
**WANTED** double room with...  
**WANTED** furnished house in...  
**TO LET**  
**THE** charge for advertisements...  
**IMMEDIATE** possession, small...  
**ONE** extra large room, furnished...  
**THEATRE** Royal Arcade, from...  
**TWO** Offices in S.A. Standard...  
**BOARD & RESIDENCE**  
**PRIVATE** typing undertaken...  
**REVOLUTION** in food prices...  
**CRAUFORD** House, Hill, Few...  
**COMFORTABLE** room, double...  
**D'NEIN** House, top of Salla...  
**FIELD** CLAMBER...  
**STANDARD** STORIES...  
**PATENT** goods provided in com...  
**DISCO** ACRES near the Tana...  
**SITUATIONS WANTED**  
**FREE** charge for advertisements...  
**EXPERIENCED** South African...  
**UKUYA HOTEL**  
 Comfortable, Healthy, and Electric Light. Week-end...  
 Special luncheon from Nairobi.  
 Refreshing charges and special quotations for families.

# OSTERIE TH & Co. Ltd.

(with whom is associated Mr. C. I. Graham)

## PRODUCE MERCHANTS, IMPERIAL CHAMBERS, GOVERNMENT ROAD, NAIROBI

(Next to Bulwags and Roy)

# COFFEE BAGS

Now arriving 14 lb. 8 lb. and 24 lb.

Having secured large quantities at exceptionally favourable prices, we are selling very cheaply.  
 Prices upon application.

P. O. Box 667. Telegrams: "OSTERIE THS" Nairobi  
 Kenya Manager:— Capt. E. A. MARTIN  
 London Office: Continental Office  
 42, Old Broad St. E. C. 2. 15, Rue des Chenes, Antwerp Belgium.

## A 100% Investment

# NATIONAL MUTUAL LIFE ASSOCIATION

## of Australasia Limited

Funds exceed £23,000,000.

Whole Life Assurance for £1,000 at age 30.  
 Annual Premium ... £25-0-0  
 First Annual Bonus ... £25-0-0

(Bonuses increase annually with age of policy.)

ENDOWMENT RATES SIMILARLY ATTRACTIVE.

Apply to agents—**KETTLE-BOT, Ltd.**  
 Box 160, NAIROBI.

## We specialize in the Manufacture of Good Quality Household, Office and Club Furniture.

DINING TABLES ... from Shgs. 75/00	DOUBLE BEDSTEPS ... from Shgs. 150/00	SINGLE BEDSTEPS ... Shgs. 117/00
DINING ROOM CHAIRS ... Shgs. 31/00	WARDROBES ... Shgs. 220/00	WASHSTANDS ... Shgs. 165/00
MODERN SIDEBOARDS ... Shgs. 220/00	WRITING TABLES ... Shgs. 85/00	CHEST OF DRAWERS ... Shgs. 87/50
WARDROBES ... Shgs. 85/00	COMMODES ... Shgs. 60/00	
SUNDOWN TABLES ... Shgs. 37/00		
NESTS OF DINING TRAYS ... Shgs. 27/00		
COMMODES ... Shgs. 60/00		

**IT ALWAYS PAYS TO BUY THE BEST, WE GIVE MAXIMUM VALUE AT THE LOWEST PRICES.**

UPHOLSTERED CHAIRS ... from Shgs. 87/00	HANGING MIRRORS ... from Shgs. 20/00	FOLDING IRONING TABLES ... Shgs. 40/00
CLUB EASY CHAIRS ... Shgs. 115/00	FOLDING GARD TABLES ... Shgs. 75/00	FILING CABINETS ... Shgs. 107/50
SMALL SETTEES ... Shgs. 120/00	GATEWAY RECORD ... Shgs. 87/50	JACOBINE STYLE ... Shgs. 87/50
LARGE SETTEES ... Shgs. 220/00	DRONE CHAIRS ... Shgs. 18/00	PIANO STOOLS ... Shgs. 58/00
WRITING BUREAUX ... Shgs. 175/00		
PALMSTANDS ... Shgs. 30/00		
BOOKCASES ... Shgs. 37/50		

Box  
408

## HUTCHINGS, BIEMER & CO. LTD.

NAIROBI.

We allow 5 per cent. Discount for Cash with Order.

Phone  
408

**NOTICE**  
**A. O. F. E.**  
 Always  
 Order  
 For  
 Blowing & Blasting  
**Kenya Beer, Stout**  
 or: XXXX  
**Good Froth Guaranteed.**

GUARANTEED THE LARGEST CIRCULATION OF ANY NEWSPAPER  
 IN KENYA, UGANDA, TANGANYIKA AND ZANZIBAR.

**THE FEDERATION**

**THE EAST AFRICAN**

**PAGES.**

**MOMBASA TIMES & UGANDA ARGUS.** With which is incorporated **THE LEADER.**

MAILED MONDAY, JUNE 21, 1927.

Price 20 CENTS.

**LOUNGE**  
 THE CHEERING ROOM FOR READERS.

No. 4202, PRINTED AT THE NEWSPAPER PRESS, 10, MARKET STREET, NAIROBI.

**THE FEDERATION IS STILL**

**SPEECHES AT THE EAST AFRICAN DINNER IN LONDON.**

**Federation the Ultimate Destiny.**

**POLITICAL AND CONSTITUTIONAL QUESTIONS SHOULD NOT BE ALLOWED TO DOMINATE DEVELOPMENT.**

**Preserving a Note of Caution.**

The Subject of Federation of the East African Territories was the keynote of the speeches made by Mr. Ormsby-Gore, the Chairman, speaking as a recent visitor to East Africa, said there was general opinion so long as the future was common services and not interference with the administration on local affairs.

Mr. Ormsby-Gore said he had always held the view that the best way to solve the political and constitutional questions of the East Africa was the ultimate destiny of the territories was to evolve a definite and concrete scheme. Political and constitutional questions should not be allowed to dominate economic development. His final word of advice to East Africa was "Don't be in a hurry."

E. Sir Edward Gigg declared that especially in economic and political a note of caution should be preserved.

E. Sir Donald Cameron endorsed Mr. Ormsby-Gore's views on the Federation of East Africa. Sir Donald Cameron said that the suggested need for caution in this direction would be coupled with courage.

**Sir E. Gigg on Settlement.**

(FROM HIS JOURNAL CORRESPONDENCE)

London, June 20. everyone crowd him a deluge of protests for the interest he had taken in the work of the British Empire in the welfare of the East African Territories. He then proposed the health of Mr. Ormsby-Gore. He expressed the hope that the health of the East African Territories would be improved by his association with the East African Territories Commission of 1921, and this proposal was warmly applauded during the period of waiting. He paid a tribute to the other distinguished guests present. Sir Edward Gigg, Sir Donald Cameron and Lord Trenchard said that as he had just returned from East Africa.

He then proposed the health of Mr. Ormsby-Gore. He expressed the hope that the health of the East African Territories would be improved by his association with the East African Territories Commission of 1921, and this proposal was warmly applauded during the period of waiting. He paid a tribute to the other distinguished guests present. Sir Edward Gigg, Sir Donald Cameron and Lord Trenchard said that as he had just returned from East Africa.

**Mr. Ormsby Gore.**

He had the great honor to be invited to give his general impressions.

**FEDERATION.**

He had the great honor to be invited to give his general impressions.

**PRISONERS RELEASED BY PRACTICAL JOKE.**

**Assuming Occurrence in Paris.**

**M. DARDOT FREE.**

**Minister Justice Wins of British Over Telephone.**

**(TRENCH BROTHERS' AGENT.)**

As a result of an astounding practical joke M. Dardot and M. Dubot of the British Consulate in Paris, the British Minister of Justice, Mr. Dardot, was released from his cell.

It appears that a young Frenchman telephoned in the Governor of the prison relating the news of M. Dardot, the Minister of Justice and ordered the release.

It is reported that M. Dardot has left Paris for an unknown destination.

M. Dubot, the Minister of Justice, was released from his cell and ordered the release.

It is reported that M. Dardot has left Paris for an unknown destination.

M. Dubot, the Minister of Justice, was released from his cell and ordered the release.

It is reported that M. Dardot has left Paris for an unknown destination.

M. Dubot, the Minister of Justice, was released from his cell and ordered the release.

It is reported that M. Dardot has left Paris for an unknown destination.

M. Dubot, the Minister of Justice, was released from his cell and ordered the release.

It is reported that M. Dardot has left Paris for an unknown destination.

M. Dubot, the Minister of Justice, was released from his cell and ordered the release.

It is reported that M. Dardot has left Paris for an unknown destination.

M. Dubot, the Minister of Justice, was released from his cell and ordered the release.

It is reported that M. Dardot has left Paris for an unknown destination.

M. Dubot, the Minister of Justice, was released from his cell and ordered the release.

It is reported that M. Dardot has left Paris for an unknown destination.

**CLEARING RUSSIANS OUT OF ENGLAND.**

**Political Activities Not to be Tolerated.**

**IN GOOD.**

**Depression Only in Britain.**

**(BY WIRELESS.)**

The House of Commons today said that the thirty-one members of the Russian Mission of experts who had been in London for some time had been cleared out of the country.

It is reported that the Russian Mission of experts who had been in London for some time had been cleared out of the country.

It is reported that the Russian Mission of experts who had been in London for some time had been cleared out of the country.

It is reported that the Russian Mission of experts who had been in London for some time had been cleared out of the country.

It is reported that the Russian Mission of experts who had been in London for some time had been cleared out of the country.

It is reported that the Russian Mission of experts who had been in London for some time had been cleared out of the country.

It is reported that the Russian Mission of experts who had been in London for some time had been cleared out of the country.

It is reported that the Russian Mission of experts who had been in London for some time had been cleared out of the country.

It is reported that the Russian Mission of experts who had been in London for some time had been cleared out of the country.

It is reported that the Russian Mission of experts who had been in London for some time had been cleared out of the country.

It is reported that the Russian Mission of experts who had been in London for some time had been cleared out of the country.

It is reported that the Russian Mission of experts who had been in London for some time had been cleared out of the country.

It is reported that the Russian Mission of experts who had been in London for some time had been cleared out of the country.

It is reported that the Russian Mission of experts who had been in London for some time had been cleared out of the country.

It is reported that the Russian Mission of experts who had been in London for some time had been cleared out of the country.

It is reported that the Russian Mission of experts who had been in London for some time had been cleared out of the country.

It is reported that the Russian Mission of experts who had been in London for some time had been cleared out of the country.

**HOPEFUL PROGRESS OF THE RIVAL CONFERENCE.**

**Points of Contact Being Established.**

**TO ATTRACT BEST MEN.**

**(TRENCH BROTHERS' AGENT.)**

In going evidence in London today the Royal Commission on Industrial Agriculture Mr. Ormsby-Gore, Under Secretary of State for the Colonies declared that the Colonies had been working in water tight compartments and that the points of contact being established by the Agricultural Department which should be made in order to attract the best men to administrative and industrial posts.

It is reported that the points of contact being established by the Agricultural Department which should be made in order to attract the best men to administrative and industrial posts.

It is reported that the points of contact being established by the Agricultural Department which should be made in order to attract the best men to administrative and industrial posts.

It is reported that the points of contact being established by the Agricultural Department which should be made in order to attract the best men to administrative and industrial posts.

It is reported that the points of contact being established by the Agricultural Department which should be made in order to attract the best men to administrative and industrial posts.

It is reported that the points of contact being established by the Agricultural Department which should be made in order to attract the best men to administrative and industrial posts.

It is reported that the points of contact being established by the Agricultural Department which should be made in order to attract the best men to administrative and industrial posts.

It is reported that the points of contact being established by the Agricultural Department which should be made in order to attract the best men to administrative and industrial posts.

It is reported that the points of contact being established by the Agricultural Department which should be made in order to attract the best men to administrative and industrial posts.

It is reported that the points of contact being established by the Agricultural Department which should be made in order to attract the best men to administrative and industrial posts.

It is reported that the points of contact being established by the Agricultural Department which should be made in order to attract the best men to administrative and industrial posts.

It is reported that the points of contact being established by the Agricultural Department which should be made in order to attract the best men to administrative and industrial posts.

It is reported that the points of contact being established by the Agricultural Department which should be made in order to attract the best men to administrative and industrial posts.

It is reported that the points of contact being established by the Agricultural Department which should be made in order to attract the best men to administrative and industrial posts.

It is reported that the points of contact being established by the Agricultural Department which should be made in order to attract the best men to administrative and industrial posts.

It is reported that the points of contact being established by the Agricultural Department which should be made in order to attract the best men to administrative and industrial posts.

It is reported that the points of contact being established by the Agricultural Department which should be made in order to attract the best men to administrative and industrial posts.

It is reported that the points of contact being established by the Agricultural Department which should be made in order to attract the best men to administrative and industrial posts.

**KING AND QUEEN IN NEW REGENT STREET.**

**Outburst of Popular Enthusiasm.**

**(BY WIRELESS.)**

The King and Queen drove through London today to-day along Regent Street which has been completely cleared since the war.

The Royal visit was the occasion for a great outburst of popular enthusiasm and the streets were crowded with people.

It is reported that the Royal visit was the occasion for a great outburst of popular enthusiasm and the streets were crowded with people.

It is reported that the Royal visit was the occasion for a great outburst of popular enthusiasm and the streets were crowded with people.

It is reported that the Royal visit was the occasion for a great outburst of popular enthusiasm and the streets were crowded with people.

It is reported that the Royal visit was the occasion for a great outburst of popular enthusiasm and the streets were crowded with people.

It is reported that the Royal visit was the occasion for a great outburst of popular enthusiasm and the streets were crowded with people.

It is reported that the Royal visit was the occasion for a great outburst of popular enthusiasm and the streets were crowded with people.

**House of Lords Reform.**

**NO DELEGATION DURING THE PRESENT SESSION.**

**(BY WIRELESS.)**

The return of the House of Lords to the House of Commons has been announced by the Government.

It is reported that the return of the House of Lords to the House of Commons has been announced by the Government.

It is reported that the return of the House of Lords to the House of Commons has been announced by the Government.

It is reported that the return of the House of Lords to the House of Commons has been announced by the Government.

It is reported that the return of the House of Lords to the House of Commons has been announced by the Government.

It is reported that the return of the House of Lords to the House of Commons has been announced by the Government.

It is reported that the return of the House of Lords to the House of Commons has been announced by the Government.

It is reported that the return of the House of Lords to the House of Commons has been announced by the Government.

It is reported that the return of the House of Lords to the House of Commons has been announced by the Government.

It is reported that the return of the House of Lords to the House of Commons has been announced by the Government.

**Stocks Just Arrived**

**PURE WOOD WITNEY BLANKETS.**  
 Made from pure woaden yarn which give a maximum of warmth and an abundance of softness, with fine texture, for weight, 48" x 60" 20" Price, 25/- per pair. In the same quality as above, but in a full double bed size, 60" x 100" 30" Price, 35/- per pair.

**INFANTS' WITNES COAT AND SKIRT BLANKETS.**  
 Keep the baby warm and cozy with these All-Wool Blankets. For weight, 48" x 60" 20" Price, 25/- per pair. In the same quality as above, but in a full double bed size, 60" x 100" 30" Price, 35/- per pair.

**COLOURED WITNES WOOD WITNEY COAT BLANKETS.**  
 In a pretty "Jaquard" pattern. Patterns, beautifully soft and cozy for the baby, in two lovely shades of Pink and Blue. Price, 25/- per pair. In the same quality as above, but in a full double bed size, 60" x 100" 30" Price, 35/- per pair.

**THE HORNBLAND BLANKET "GEMMAW" WITH FOX HUNTING.**  
 Made from excellent quality, in the regular woaden yarn, light in weight, 48" x 60" 20" Price, 25/- per pair. In the same quality as above, but in a full double bed size, 60" x 100" 30" Price, 35/- per pair.

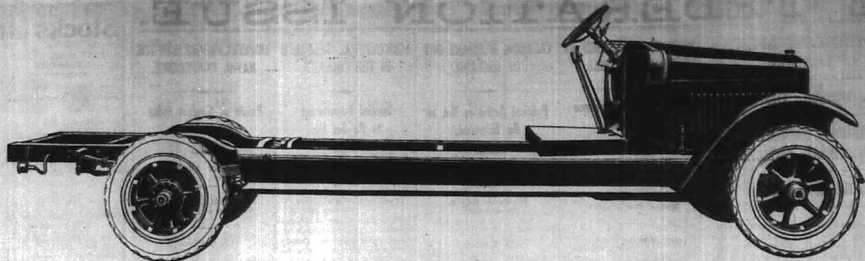
**"VENUS" BLANKETS.**  
 White Felt Cotton Blankets for bed or under blankets. With Red or Blue borders and 50" x 60" size. Price, 25/- per pair. In the same quality as above, but in a full double bed size, 60" x 100" 30" Price, 35/- per pair.

**THE "COLONIAL" TRAVEL RUG.**  
 Absolutely the best value obtainable at the price. Well made of a union of Cotton and Wool, in a pleasing check design in a variety of colors; warm and comfortable to use, fringed ends. Size 79" x 52" 10" Price, 5/- each.

**White ways NAIROBI.**

# Just the Truck

for Fast, Low-Cost Hauling



## Model SL 2 Ton Speed Truck

**£448**

*Chassis complete  
with windshield.*

**T**HIS long, powerful truck has several features of special interest to every transportation buyer. For example: the wheelbase of 160 inches provides long loading space. A capacity load of 4000 lbs. can be hauled without piling to an inconvenient height.

It is equipped with auxiliary rear springs (making four rear springs in all, an exclusive

feature of all International trucks) insuring easy riding for varying loads. Power tyre pump driven from the transmission, steel wheels, heavy-duty truck tyres are also standard.

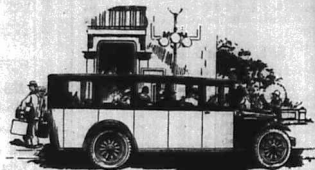
This sturdy truck is suitable for any body from the simple platform type to an enclosed bus body for carrying passengers.

*The complete range of International Truck chassis include the Special Delivery for loadings up to 3 ton, Speed Trucks for 1, 1½, 2 ton, and Heavy Duty Trucks up to 5 ton capacities.*

*Write for literature.*



1½ ton Chassis complete  
with windshield £345.



**Gilfillan & Company, Ltd.**  
D I S T R I B U T O R S

# INTERNATIONAL MOTOR TRUCKS

**EAST AFRICAN STANDARD**  
**DAILY EDITION**  
 GOVERNMENT PRINTING OFFICE  
 PRINTED AND PUBLISHED BY  
 THE EAST AFRICAN STANDARD  
 PRINTING WORKS, LTD.,  
 22, COLLEGE ROAD, NAIROBI.  
 Telephone No. 2111.  
 Cable Address: "Standard," Nairobi.  
 Telegrams: "Standard," Nairobi.

**ADVERTISEMENTS**  
 Such as small Wanted, To Let, For Sale, and Miscellaneous, are accepted on a daily basis, and are published in the morning edition. For rates and conditions apply to the Manager, Nairobi.  
**ADVERTISEMENTS**  
 Such as small Wanted, To Let, For Sale, and Miscellaneous, are accepted on a daily basis, and are published in the morning edition. For rates and conditions apply to the Manager, Nairobi.

**SUBSCRIPTIONS**  
 DAILY.  
 1/6 yearly Shs. 20.00  
 3/6 yearly Shs. 55.00  
 6/6 yearly Shs. 100.00  
 12/6 yearly Shs. 180.00  
 24/6 yearly Shs. 350.00  
 36/6 yearly Shs. 500.00

**FOR SALE.**  
 THE charge for advertisements in this column is Shs. 1/- for a line of 36 characters, or a fraction of a line, with a minimum of Shs. 2/- for less than a line. Separate half price on consecutive days only.

**ACCESSORIES**—Up-to-date accessories make cars more comfortable—York Garage Ltd., Nairobi. Stock a wide range of up-to-date accessories. Call and have a look round for yourself.

**CAMILLI Cigarettes**, Holland, Limited, Box 654, Nairobi.  
**OMRON** Express Tractor in small condition, catalytic filter, will travel over any rough or uneven ground. Price reasonable. "Wanted" cars. No. 27. Write your name on consecutive days only.

**COMFORTABLE** room, double and single with toilet, terms moderate, ten minutes walk from town. Manor House, Nyari Road, Nairobi.

**COMFORTABLE** room, double and single with toilet, terms moderate, ten minutes walk from town. Manor House, Nyari Road, Nairobi.

**COMFORTABLE** room, double and single with toilet, terms moderate, ten minutes walk from town. Manor House, Nyari Road, Nairobi.

**COMFORTABLE** room, double and single with toilet, terms moderate, ten minutes walk from town. Manor House, Nyari Road, Nairobi.

**COMFORTABLE** room, double and single with toilet, terms moderate, ten minutes walk from town. Manor House, Nyari Road, Nairobi.

**COMFORTABLE** room, double and single with toilet, terms moderate, ten minutes walk from town. Manor House, Nyari Road, Nairobi.

**COMFORTABLE** room, double and single with toilet, terms moderate, ten minutes walk from town. Manor House, Nyari Road, Nairobi.

**COMFORTABLE** room, double and single with toilet, terms moderate, ten minutes walk from town. Manor House, Nyari Road, Nairobi.

**COMFORTABLE** room, double and single with toilet, terms moderate, ten minutes walk from town. Manor House, Nyari Road, Nairobi.

**COMFORTABLE** room, double and single with toilet, terms moderate, ten minutes walk from town. Manor House, Nyari Road, Nairobi.

**COMFORTABLE** room, double and single with toilet, terms moderate, ten minutes walk from town. Manor House, Nyari Road, Nairobi.

**COMFORTABLE** room, double and single with toilet, terms moderate, ten minutes walk from town. Manor House, Nyari Road, Nairobi.

**COMFORTABLE** room, double and single with toilet, terms moderate, ten minutes walk from town. Manor House, Nyari Road, Nairobi.

**COMFORTABLE** room, double and single with toilet, terms moderate, ten minutes walk from town. Manor House, Nyari Road, Nairobi.

**COMFORTABLE** room, double and single with toilet, terms moderate, ten minutes walk from town. Manor House, Nyari Road, Nairobi.

**COMFORTABLE** room, double and single with toilet, terms moderate, ten minutes walk from town. Manor House, Nyari Road, Nairobi.

**COMFORTABLE** room, double and single with toilet, terms moderate, ten minutes walk from town. Manor House, Nyari Road, Nairobi.

**COMFORTABLE** room, double and single with toilet, terms moderate, ten minutes walk from town. Manor House, Nyari Road, Nairobi.

**COMFORTABLE** room, double and single with toilet, terms moderate, ten minutes walk from town. Manor House, Nyari Road, Nairobi.

**COMFORTABLE** room, double and single with toilet, terms moderate, ten minutes walk from town. Manor House, Nyari Road, Nairobi.

**COMFORTABLE** room, double and single with toilet, terms moderate, ten minutes walk from town. Manor House, Nyari Road, Nairobi.

**COMFORTABLE** room, double and single with toilet, terms moderate, ten minutes walk from town. Manor House, Nyari Road, Nairobi.

**FOR SALE**  
 1/6 yearly Shs. 20.00  
 3/6 yearly Shs. 55.00  
 6/6 yearly Shs. 100.00  
 12/6 yearly Shs. 180.00  
 24/6 yearly Shs. 350.00  
 36/6 yearly Shs. 500.00

**SITUATIONS VACANT.**  
 THE charge for advertisements in this column is Shs. 1/- for a line of 36 characters, or a fraction of a line, with a minimum of Shs. 2/- for less than a line. Separate half price on consecutive days only.

**WANTED**—Apprentice bookkeeper. Apply stating salary to "Wanted" column in this paper. No. 27. Write your name on consecutive days only.

**FARMS FOR SALE**  
 9800 ACRES near the Tana River, suitable for rice, sugar, coffee growing, portion planted with oranges. Manager's office at the Tana. Apply for full particulars to Smith, Mackenzie & Co., Nairobi.

**SITUATIONS VACANT.**  
 THE charge for advertisements in this column is Shs. 1/- for a line of 36 characters, or a fraction of a line, with a minimum of Shs. 2/- for less than a line. Separate half price on consecutive days only.

**BOOKKEEPER** (European) for general accounting. Apply to "Wanted" column in this paper. No. 27. Write your name on consecutive days only.

**NUMERICAL** duties with Nairobi or private sector. Long Home and Colonial experience. Excellent references. Married, no children. Gardener, Box 985, Dublin.

**OLD** Mercedes 24, having had extensive large repair work done, lowest work value. Suitable for few months in exchange for keep. No. 27. Write your name on consecutive days only.

**SEVERAL** honest and hard working men. Apply to "Wanted" column in this paper. No. 27. Write your name on consecutive days only.

**PRIVATE** typing machine for sale. Offer to "Wanted" column in this paper. No. 27. Write your name on consecutive days only.

**PEOPLE** required for Military, Art, medical and White Industries. Apply to "Wanted" column in this paper. No. 27. Write your name on consecutive days only.

**REVOLUTION** in food prices and big improvement in quality. If you want to have cool food go to the Palladium Club. Hot lunch, Hot lunch and grill 1/6. Dinner 3/6. Fish and pie with 2/6. Every day fruit salad and puddings. Try coffee, hot. Elliott calls. A trial will convince you.

**WANTED**  
 THE charge for advertisements in this column is Shs. 1/- for a line of 36 characters, or a fraction of a line, with a minimum of Shs. 2/- for less than a line. Separate half price on consecutive days only.

**COLDFORM** and other goods. Apply to "Wanted" column in this paper. No. 27. Write your name on consecutive days only.

**LIRES** second-hand. Apply to "Wanted" column in this paper. No. 27. Write your name on consecutive days only.

**PIANO** (class of high-class). Apply to "Wanted" column in this paper. No. 27. Write your name on consecutive days only.

**SMALL** furniture of moderate rental to good tenants. Particulars to "Wanted" column in this paper. No. 27. Write your name on consecutive days only.

**WANTED** to purchase for cash. Apply to "Wanted" column in this paper. No. 27. Write your name on consecutive days only.

**WANTED** double room with bath for two business girls from July 1st. Reply stating terms to "Wanted" column in this paper. No. 27. Write your name on consecutive days only.

**WANTED** furnished house with bath. Apply to "Wanted" column in this paper. No. 27. Write your name on consecutive days only.

**WANTED** to purchase for cash. Apply to "Wanted" column in this paper. No. 27. Write your name on consecutive days only.

**WANTED** to purchase for cash. Apply to "Wanted" column in this paper. No. 27. Write your name on consecutive days only.

**WANTED** to purchase for cash. Apply to "Wanted" column in this paper. No. 27. Write your name on consecutive days only.

**WANTED** to purchase for cash. Apply to "Wanted" column in this paper. No. 27. Write your name on consecutive days only.

**WANTED** to purchase for cash. Apply to "Wanted" column in this paper. No. 27. Write your name on consecutive days only.

**WANTED** to purchase for cash. Apply to "Wanted" column in this paper. No. 27. Write your name on consecutive days only.

**WANTED** to purchase for cash. Apply to "Wanted" column in this paper. No. 27. Write your name on consecutive days only.

**WANTED** to purchase for cash. Apply to "Wanted" column in this paper. No. 27. Write your name on consecutive days only.

**WANTED** to purchase for cash. Apply to "Wanted" column in this paper. No. 27. Write your name on consecutive days only.

**WANTED** to purchase for cash. Apply to "Wanted" column in this paper. No. 27. Write your name on consecutive days only.

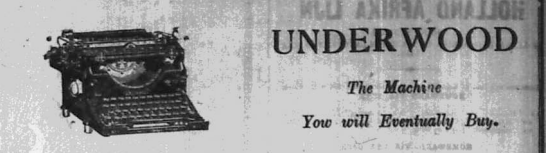
**WANTED** to purchase for cash. Apply to "Wanted" column in this paper. No. 27. Write your name on consecutive days only.

**EQUATORIAL**  
 P.O. Plateau, P.O. Maji-Majani, P.O. Box 391, Nairobi.  
**IN STOCK 4,000 TONS**  
 Podo, Cedar, Hardwoods and Uganda Myule.  
 Price List on Application.  
**ALSO IN STOCK**

**Silverwood Oak** Order Bookers  
**Black Wood** 120 will cover  
**Preservative** 100 square feet of roof  
**Spal Drums** Shs. 3/-  
**Spal Drums** Shs. 4/-  
**Spal Drums** Shs. 5/-  
**P.O.L. Nairobi** **P.O.R. Nairobi** **P.O.R. Nairobi**

**SOLD ON A QUALITY BASIS**

**Our Original Moderate Prices hold good To-day**



**UNDERWOOD**  
 The Machine  
 You will Eventually Buy.

**TAWS LTD. NAIROBI.**

**OSTERIETH & Co. Ltd.**

(with whom is associated Mr. G. Graham)  
**PRODUCE MERCHANTS,**  
 IMPERIAL CHAMBERS, GOVERNMENT ROAD, NAIROBI  
 (Next to Bullows and Bay.)

**COFFEE BAGS**

Now arriving 1 1/2 lb. and 2 1/2 lb.  
 Having secured large quantities at exceptionally favourable prices, we are selling very cheaply.  
 Prices upon application.

**P. O. Box 667. Telegrams: "OSTERIETHS" Nairobi**  
**Kenya Manager: Capt. E. A. MARTIN.**  
 London Office Continental Office  
 42, Old Broad St. E. C. 2. 15, Rue des Chenes, Antwerp, Belgium.

**We specialize in the Manufacture of Good Quality Household, Office and Club Furniture.**

<b>DINING TABLES</b>	from Shgs. 77.50	<b>DOUBLE BEDSTEPS</b>	from Shgs. 115.00
<b>DINING ROOM CHAIRS</b>	Shgs. 115.00	<b>SINGLE BEDSTEPS</b>	Shgs. 117.50
<b>MODERN SIDEBARDS</b>	Shgs. 220.00	<b>WARDROBES</b>	Shgs. 220.00
<b>DINNERWAGONS</b>	Shgs. 85.00	<b>DRESSING TABLES</b>	Shgs. 145.00
<b>SUNSHOWER TABLES</b>	Shgs. 35.00	<b>WASHBASINS</b>	Shgs. 27.50
<b>NESTS OF DINING TABLES</b>	Shgs. 37.50	<b>CRIST OF DRAWERS</b>	Shgs. 67.50
<b>OCCASIONAL TABLES</b>	Shgs. 42.50	<b>COFFEY CASES</b>	Shgs. 40.00

IT ALWAYS PAYS TO BUY THE BEST. WE GIVE MAXIMUM VALUE AT THE LOWEST PRICES.

<b>UPHOLSTERED CHAIRS</b>	from Shgs. 67.50	<b>HANGING MIRRORS</b>	from Shgs. 20.00
<b>CLUB EAST CHAIRS</b>	Shgs. 115.00	<b>FOLDING IRONING TABLES</b>	Shgs. 35.00
<b>SMALL SETTES</b>	Shgs. 152.50	<b>FOLDING CARD TABLES</b>	Shgs. 75.00
<b>LARGE SETTES</b>	Shgs. 220.00	<b>GRAMOPHONE RECORDS</b>	Shgs. 107.00
<b>WRITING BUREAUS</b>	Shgs. 175.00	<b>OTTOMAN TABLES</b>	Shgs. 97.50
<b>PALMSTANDS</b>	Shgs. 20.50	<b>JACOBAN STYLE</b>	Shgs. 16.50
<b>BOOKCASES</b>	Shgs. 37.50	<b>DECK CHAIRS</b>	Shgs. 32.50
		<b>PIANO STOOLS</b>	Shgs. 32.50

**HUTCHINGS, BIEMER & CO. LTD.**  
 NAIROBI.  
 We allow 5 per cent. Discount for Cash with Order.

**Box 408** **Phone 408**

**A 100% Investment**  
**NATIONAL MUTUAL LIFE ASSOCIATION**  
 of Australasia Limited  
 Funds exceed £23,000,000  
 Whole Life Assurance for £1,000 at age 30  
 £338-0-0  
 First Annual Bonus £22-0-0  
 (Bonus increases annually with age of policy.)  
 ENDWMENT RATES SIMILARLY ATTRACTIVE  
 Apply to agents: **KETTLES ROY, LIA.**  
 Box 188, NAIROBI

**Kikuyu Hotel**  
 Condo, Comfortable, Healthy, and Reasonably Well-served  
 Breakfasts and Dinners served on Monday morning 8.30.  
 Convenient trains from Nairobi.  
 Moderate charges and good facilities for families



# MOTOKING TOPICS

## THE TRAMP CYCLE

Descriptions of 271 cc. Model.

### APPEALING FEATURES

When a machine is being produced for the export trade, it is necessary to take into account the requirements of the various countries to which it is to be sent. In the case of the Tramp cycle, this has been done with care, and the result is a machine which is well adapted to the requirements of the tropics.

The gear, for example, was carefully chosen to give a more useful range of gears than is usually found on a machine of this class. The clutch is light and looks up the drive smoothly, and the brakes good.

Although the engine was invariably started by turning it over by hand, a decompressor is fitted on the timing gear, so that even the most nervous and feeble rider should find no difficulty in starting. To the experienced motor cyclist this decompressor would appear to be almost unnecessary, but there is no doubt that it is greatly appreciated by the novice.

### UNUSUAL ENGINE SIZE

The unusual cylinder capacity, 271 c.c., is one of the points which has attracted attention to the Tramp. The fact that the machine is, in comparison with the 250 c.c. type, in weight is hardly likely to be noted by the average rider, and by noting this aspect alone the usual for the type the machine have obtained more power without placing the machine on the wrong side of the line which, with present legislation, divides almost identical machines into two tax classes.

The machine, as it was tested, will handle a maximum weight of 175 lbs. under 2 1/2 cwt., and will maintain a constant speed of 27 m.p.h. on level ground.

The 271 c.c. engine, which is a four-stroke, vertical, single-cylinder type, is fitted with a carburettor which is well adapted to the requirements of the tropics. The ignition is of the contact-break type, and the machine is fitted with a battery which is well adapted to the requirements of the tropics.

### THE MAXIMUM SPEED

Although no specification was fitted, a rough estimate was made for maximum speeds on level ground and top gear. The following figures were obtained: 50 m.p.h. at 5000 r.p.m., 45 m.p.h. at 4500 r.p.m., and 40 m.p.h. at 4000 r.p.m. The maximum speed was obtained with a gear ratio of 3.5 to 1, and the machine is well adapted to the requirements of the tropics.

### EFFICIENT BRAKES

Although the brakes appear to be of the usual type, they are of the most efficient type. The front brake is of the drum type, and the rear brake is of the band type. The machine is well adapted to the requirements of the tropics.

### BOARD AND ACCOMMODATION

The machine is well adapted to the requirements of the tropics. It is a simple machine, and is well adapted to the requirements of the tropics.

### INSURE

The machine is well adapted to the requirements of the tropics. It is a simple machine, and is well adapted to the requirements of the tropics.

### MAINTENANCE

The machine is well adapted to the requirements of the tropics. It is a simple machine, and is well adapted to the requirements of the tropics.

The machine is well adapted to the requirements of the tropics. It is a simple machine, and is well adapted to the requirements of the tropics.

### SUBSTANTIAL DETAILS

The machine is well adapted to the requirements of the tropics. It is a simple machine, and is well adapted to the requirements of the tropics.

### CONSTRUCTION

The machine is well adapted to the requirements of the tropics. It is a simple machine, and is well adapted to the requirements of the tropics.

### PRICE

The machine is well adapted to the requirements of the tropics. It is a simple machine, and is well adapted to the requirements of the tropics.

### CONTACTS

The machine is well adapted to the requirements of the tropics. It is a simple machine, and is well adapted to the requirements of the tropics.

### TESTS

The machine is well adapted to the requirements of the tropics. It is a simple machine, and is well adapted to the requirements of the tropics.

The machine is well adapted to the requirements of the tropics. It is a simple machine, and is well adapted to the requirements of the tropics.

### CONCLUSION

The machine is well adapted to the requirements of the tropics. It is a simple machine, and is well adapted to the requirements of the tropics.

### REMARKS

The machine is well adapted to the requirements of the tropics. It is a simple machine, and is well adapted to the requirements of the tropics.

### GENERAL NOTES

The machine is well adapted to the requirements of the tropics. It is a simple machine, and is well adapted to the requirements of the tropics.

### ADDITIONAL INFORMATION

The machine is well adapted to the requirements of the tropics. It is a simple machine, and is well adapted to the requirements of the tropics.

### FINAL REMARKS

The machine is well adapted to the requirements of the tropics. It is a simple machine, and is well adapted to the requirements of the tropics.



The British Petrol  
Best Possible  
For our Car

Agents: J. E. COX & CO., LTD., NAIROBI. KENYWOOD & CO., KENYA FARMERS' ASSOCIATION, J. E. RIDGWOOD, J. F. FARLEY, LTD., POLLEN & CO., G. O. MURPHY & CO., GEORGE LALL & CO., RAJESH NOLLAH & CO. GIBSON & CO., LTD., NAIROBI.

**BARGAINS!!!**  
Native Single at 150 per dozen. Khasi Single at 180 per dozen. Other goods too numerous to mention, including: M. ROSENBERG Co. Ltd. Tel. No. 15. N.A.P.O. Box 821.

Explorers Use This Car Because it is Dependable

Miner's explorers, whose lives depend upon the reliability of the transportation they use, employ Dodge Brothers Motor Cars almost exclusively.

Stefananson used Dodge Brothers Cars through the uncharted deserts of Central Australia. Dr. Roy Chapman Andrews, on three different occasions, transported the ironwood wastes of Mongolia in a Dodge Brothers Car.

The car's dependability is proverbial, and its exceptional riding comfort permits long travel over bad roads without fatigue.

Touring Car £310  
Special Touring Car £260  
Aluminium Box Body £200

Delivered Nairobi.  
The Omond-Bennie Garage, Nakuru.  
Wells & Co., Ltd., Moshi and Arusha.  
KASIAN FERRIER, KAMPALA and UGANDA.  
S. FISHER & SIMMONS (S.A.), Ltd., Victoria Street, Nairobi.

## DODGE BROTHERS MOTOR CARS

F. A. HEAD, PIANOFOUR, TUNER AND REPAIRER.  
Five years with Messrs. Chappell & Co., London.  
Seven years' experience in Kenya Colony.  
Send all orders to P.O. Box 675

**Hi!**

if ever you meet a lion around a corner...

**Keep Cool**

drink Obhssons'

**LION LAGER**

Cooler thing in all Africa

**SWAHILI BOOKS**

EVERYDAY SWAHILI PHRASES and VOCABULARY, by E. A. S. Ltd., 12th Edition, 2/6.

ENGLISH-SWAHILI VOCABULARY, by A. C. Madan, Price, Shgs. 2/-, Posted 2/6.

SWAHILI EXERCISES, by Edward Steer L.L.D., Price, Shgs. 3/-, Posted 3/6.

A HANDBOOK OF THE SWAHILI LANGUAGE, by Bishop Steer, L.L.D., Revised by A. C. Madan, Price, Shgs. 4/6, Posted 5/6.

SWAHILI TALKS WITH ENGLISH TRANSLATION, by Bishop Steer, L.L.D., Revised by A. C. Madan, Price, Shgs. 4/6, Posted 5/6.

SWAHILI GRAMMAR and VOCABULARY, by Mrs. H. B. Hill, Price, Shgs. 5/6, Posted 6/6.

ENGLISH-SWAHILI DICTIONARY, SWAHILI-ENGLISH DICTIONARY, by A. C. Madan, Price, Shgs. 12/- EACH, Posted Shgs. 12/6.

Standard Stationery Store  
**NAIROBI.**

**USED CARS FOR SALE**

In Order to Dispose of Several Used Car's we are Offering the Undermentioned at the Figures Stated

Hupp, 8 cyl Touring	£275	Hupp Touring	£90
Hupp, 4 cyl	£220	Rugby Box-Body	£90
Chrysler, 70	£200	Chev Truck	£70
Hupp, 6 Box-Body	£185	Hupp, Touring	£70
Oakland Touring	£150		
Studebaker, Box Body	£150		

**ALL IN PERFECT ORDER. Minute Inspection Invited**

**The Motor Mart and Exchange Ltd.**  
NAIROBI. NAKURU.

**POER JOHN DEERE TRACTOR**

DEPENDABLE, EQUAL, DURABLE

**Price 315**

We have large stocks of Tractors, Farm Trucks, Cams, Ploughs, Harrows, Cultivator Drills and TARPULIN, LICES IN STOCK

**H. W. SEAR (S.E. of Works) Ltd.**  
Victoria Street, NAIROBI. P.O. Box 678.

Phone 183.

**The Nairobi Building & Development Coy. Ltd.**

Telephone 294. THE COURT CHAMBERS. To Residents in Nairobi and District.

Specialties: We will save you the time, getting and Construction work. IF YOU FOR... QUICKLY EFFICIENTLY and CHEAP... P.O. Box 646, NAIROBI.



# FAST AND VALUABLE

37 1/2 H.P. SIX CYLINDER  
6 7 SEATER.  
WONDERFUL PERFORMANCE and ONE OF THE MOST BEAUTIFUL CARS IN THE COLONY.

ONLY £465 ONLY

CALL FOR A DEMONSTRATION WITHOUT OBLIGATION

**Moulton & Morrison Ltd. NAIROBI.**

## ADVANCE IN AMERICA

Chrysler's amazing advance in performance, which actually has taken its car to a new plane.

With the result that Chrysler is now at the top in Europe's endorsement of American cars - placing in three years' time some which have cultivated their market instinctively for nearly a quarter of a century.

The fact itself shows its own significance. Chrysler's both Europe and America something they have never had - Standardized Quality and unexcelled performance value.

**CHRYSLER LEADERS MEAN MILES PER HOUR -**

**"50" "60" - "70" - IMPERIAL "80"**

DISTRIBUTORS:

**YORK GARAGES LIMITED. NAIROBI.**  
2127A AVENUE.

**R. G. VERNON & CO. LTD.**  
Advertisement for Steel Casements, featuring 'IMMEDIATE DELIVERY' and 'Prices Very Moderate'.

**THE COLONY...**  
Advertisement for a service or publication, mentioning 'The Office' and 'The Colony'.

# Ford Facts

## Latest News

Telegram just received from Eldoret on Petrol Tests with the Ford New Type Carburettor.

Yesterday's trial 22 FORDS ran.  
FIRST 49.90 MILES TO ONE GALLON.  
SECOND 57.14 MILES TO ONE GALLON.

At least 7 averaged over 40 miles to one gallon. Average over all roughly 35 miles to one gallon.

## Arts & Crafts Photographic Exhibition.

Advertisement for an exhibition by A. H. Wardle Co. Ltd., featuring 'IMMEDIATE DELIVERY' and 'Specialists in Artistic Enlarging, Mounting and Framing, Etc.'

## The Service Company Limited.

Advertisement for pest control services. Features 'DIE OFF DESTROY ALL PESTS' and 'The quicker, dead Not a single dipter insect killer...'. Includes a picture of a person in traditional attire.

Advertisement for the 'STANDARD' magazine, including a list of contents and subscription information.

**Home by Air.**  
**Boysen and East.**  
**Lady Violet Astor's Ball.**  
**A Fire Alarm.**  
**Legislative Council Report.**  
**Coming to Kenya.**  
**A Destination.**  
**Old Japs, New Handies.**  
**Outsiders.**  
**Resisting Controversial Bill.**  
**Photographic Exhibition.**

## B.S.A. Motor Bicycles

### Stock Machine Trial

#### 4 B.S.A.'S ENTERED

#### WITHOUT LOSS OF A SINGLE MARK, WINNING 4 GOLD MEDALS AND TEAM AWARD

Advertisement for B.S.A. Motor Bicycles, highlighting a successful trial event.

**Alfred.**  
**The Church in East Africa.**  
**Alfred.**  
**The Church in East Africa.**  
**Alfred.**  
**The Church in East Africa.**

**"STANDARD" DAILY**  
**Today:**  
**Photographic Exhibition.**  
**Kenya Arts and Crafts Exhibition.**  
**Kenya Meeting.**  
**Kenya Meeting.**

**SELECTED MEMBERS COMPARE THE RACE COURSE SITE.**  
Question Vital to Whole Country.

**ADOLPH TO ASK PERSONS IN B.I. HEALTH FACE SUCH APPALLING SIGHTS.**  
European Country Vitals Agree.

**From Elected Members.** The Hon. George Harvey (Lab), and J.A. Goff, the Hon. G. Darwin (Lib), have expressed the Race Course Site for the proposed Glasgow College of Education. Goff has declared that it would be standards to ask men or women in a delicate state of health to go to a site with such a whirling cartwheeling member for the Lake points out that an instructor would not be paid for by every factor in the College and views of his supporters to which it would be the capital of a future T. A. must be explored.

**Unemployed Hospital.** It will serve Norfolk, it is reported that it is a Kenya institution, and that it would take part in the construction of the hospital and site at Kenya. Mr. G. Harvey (Lab) and Mr. G. Darwin (Lib) have expressed the view that it would be a waste of money to build a hospital which would not be used. Mr. G. Darwin (Lib) has expressed the view that it would be a waste of money to build a hospital which would not be used.

**Unemployed Hospital.** It will serve Norfolk, it is reported that it is a Kenya institution, and that it would take part in the construction of the hospital and site at Kenya. Mr. G. Harvey (Lab) and Mr. G. Darwin (Lib) have expressed the view that it would be a waste of money to build a hospital which would not be used. Mr. G. Darwin (Lib) has expressed the view that it would be a waste of money to build a hospital which would not be used.

**Unemployed Hospital.** It will serve Norfolk, it is reported that it is a Kenya institution, and that it would take part in the construction of the hospital and site at Kenya. Mr. G. Harvey (Lab) and Mr. G. Darwin (Lib) have expressed the view that it would be a waste of money to build a hospital which would not be used. Mr. G. Darwin (Lib) has expressed the view that it would be a waste of money to build a hospital which would not be used.

**Unemployed Hospital.** It will serve Norfolk, it is reported that it is a Kenya institution, and that it would take part in the construction of the hospital and site at Kenya. Mr. G. Harvey (Lab) and Mr. G. Darwin (Lib) have expressed the view that it would be a waste of money to build a hospital which would not be used. Mr. G. Darwin (Lib) has expressed the view that it would be a waste of money to build a hospital which would not be used.

**Unemployed Hospital.** It will serve Norfolk, it is reported that it is a Kenya institution, and that it would take part in the construction of the hospital and site at Kenya. Mr. G. Harvey (Lab) and Mr. G. Darwin (Lib) have expressed the view that it would be a waste of money to build a hospital which would not be used. Mr. G. Darwin (Lib) has expressed the view that it would be a waste of money to build a hospital which would not be used.

**JACOBS Ltd**  
Nairobi.  
Cups and Saucers.  
White China, Minton Shape.  
VERY SPECIAL VALUE!  
Shgs. 8-50 dozen.

**UNEMPLOYED HOSPITAL**  
West Coast Railway

**UNEMPLOYED HOSPITAL**  
West Coast Railway  
The Government for the Gold Coast.

**UNEMPLOYED HOSPITAL**  
West Coast Railway  
The Government for the Gold Coast.

**UNEMPLOYED HOSPITAL**  
West Coast Railway  
The Government for the Gold Coast.

**UNEMPLOYED HOSPITAL**  
West Coast Railway  
The Government for the Gold Coast.

**UNEMPLOYED HOSPITAL**  
West Coast Railway  
The Government for the Gold Coast.

**UNEMPLOYED HOSPITAL**  
West Coast Railway  
The Government for the Gold Coast.

**UNEMPLOYED HOSPITAL**  
West Coast Railway  
The Government for the Gold Coast.

**UNEMPLOYED HOSPITAL**  
West Coast Railway  
The Government for the Gold Coast.

**THE**  
Princess's Speech Prior to Drink with Home.

**THE**  
Princess's Speech Prior to Drink with Home.

**THE**  
Princess's Speech Prior to Drink with Home.

**THE**  
Princess's Speech Prior to Drink with Home.

**THE**  
Princess's Speech Prior to Drink with Home.

**THE**  
Princess's Speech Prior to Drink with Home.

**THE**  
Princess's Speech Prior to Drink with Home.

**THE**  
Princess's Speech Prior to Drink with Home.

**THE**  
Princess's Speech Prior to Drink with Home.

**LYRO HALL**  
TONIGHT  
NORMA TALMAGE  
LAW OF COMPENSATION  
BONZO CARTOON  
Alladine Wonderful Lamp.  
COMEDY MEET THE DOCTOR

**See Our Windows**  
FOR THE NEWEST DESIGN  
CHARLESTONS  
London's Fashion.  
Come Early

**COLOURS: From**  
FAWN,  
WHITE,  
B.L.E.,  
SAND,  
RED,  
SILVER,  
GOLD.  
19/-  
Less  
5/- for  
CASH.  
Eadies Footwear Limited.

**Nightly at 8-45**  
THEATRE ROYAL  
Maitland.  
Saturdays at 8-30  
TONIGHT  
TUESDAY AND WEDNESDAY—MATINEE SATURDAY  
**MOLLY SWANSON**  
IN A UNIQUE SPANISH ROMANCE SET IN BUENOS AIRES.  
"MY AMERICAN WIFE"  
FELIX WARES UP!—PATHE GAZETTE.

THE  
**ERKINSKINE 6**  
Studebaker's latest achievement  
"The Little Aristocrat"  
Complete with 4-wheel Brakes, Oil and Air Filters,  
Bumpers front and rear.  
Combines the most advanced motor engineering  
features of the world with the greatest value  
in the world.  
**A SIX CYLINDER ENGINE DOING  
3035 M.P.G.**  
MODELS ON VIEW IN OUR SHOWROOMS  
**K. Melvor's Garage**  
SIXTH AVENUE, NAIROBI

**RAILWAY RELATIONS.**  
Mr. J. H. THOMAS PAYS A TRIBUTE TO THE OWNERS.

**RAILWAY RELATIONS.**  
Mr. J. H. THOMAS PAYS A TRIBUTE TO THE OWNERS.

**RAILWAY RELATIONS.**  
Mr. J. H. THOMAS PAYS A TRIBUTE TO THE OWNERS.

**RAILWAY RELATIONS.**  
Mr. J. H. THOMAS PAYS A TRIBUTE TO THE OWNERS.

**RAILWAY RELATIONS.**  
Mr. J. H. THOMAS PAYS A TRIBUTE TO THE OWNERS.

**RAILWAY RELATIONS.**  
Mr. J. H. THOMAS PAYS A TRIBUTE TO THE OWNERS.

**THE SECOND COURT.**  
The second Court on the following night was attended by about ten thousand guests. There is some doubt as to the date in entering the Palace, because visitors were writing in congratulatory letters.

**World Money Exchanges.**  
[By Wire]  
Paris 124  
London 140  
New York 180  
Bombay 120  
Calcutta 120  
Batavia 120  
Rangoon 120  
Singapore 120  
Sourabaya 120  
Panama 120  
Colon 120  
Hankow 120  
Tientsin 120  
Canton 120  
Shanghai 120  
Harbin 120  
Manila 120  
Cebu 120  
Yokohama 120  
Kobe 120  
Tokyo 120  
London 120  
Paris 120  
New York 120  
Bombay 120  
Calcutta 120  
Batavia 120  
Rangoon 120  
Singapore 120  
Sourabaya 120  
Panama 120  
Colon 120  
Hankow 120  
Tientsin 120  
Canton 120  
Shanghai 120  
Harbin 120  
Manila 120  
Cebu 120  
Yokohama 120  
Kobe 120  
Tokyo 120

**International Treaties.**  
No action is being taken by the International Conference with the international treaties which govern the East African territories.

**TO-DAY'S CAUSE LIST.**  
In the Acting Chief Justice's Chamber, at 9.30 a.m.  
[1] M. v. Gopal Das.  
[2] M. v. Gopal Das.  
[3] M. v. Gopal Das.  
[4] M. v. Gopal Das.  
[5] M. v. Gopal Das.

**EX-TEMPORIS RETURN.**  
Labour will oppose the Bill with Home, although its motion today is not intended as a permanent law, but as a measure to be passed in the event of a crisis.

**Kenya Arts & Crafts Society**  
Photographic Exhibition  
Under the distinguished patronage of His Excellency Sir Edward Denham, K.B.E., C.M.G.

**Kenya Arts & Crafts Society**  
Photographic Exhibition  
Under the distinguished patronage of His Excellency Sir Edward Denham, K.B.E., C.M.G.

**Kenya Arts & Crafts Society**  
Photographic Exhibition  
Under the distinguished patronage of His Excellency Sir Edward Denham, K.B.E., C.M.G.

**Kenya Arts & Crafts Society**  
Photographic Exhibition  
Under the distinguished patronage of His Excellency Sir Edward Denham, K.B.E., C.M.G.

**Kenya Arts & Crafts Society**  
Photographic Exhibition  
Under the distinguished patronage of His Excellency Sir Edward Denham, K.B.E., C.M.G.

**Kenya Arts & Crafts Society**  
Photographic Exhibition  
Under the distinguished patronage of His Excellency Sir Edward Denham, K.B.E., C.M.G.

**Kenya Arts & Crafts Society**  
Photographic Exhibition  
Under the distinguished patronage of His Excellency Sir Edward Denham, K.B.E., C.M.G.

**Kenya Arts & Crafts Society**  
Photographic Exhibition  
Under the distinguished patronage of His Excellency Sir Edward Denham, K.B.E., C.M.G.

# WINGET

OPEN DRUM CONCRETE MIXER  
THE GUARANTEED MIXER  
WITH THE GUARANTEED MIX

These are the only open drum type mixers on the market which mix instead of separating. This is due to the patent BURN-LANCASTER drum with the SEMI-HELICAL BASE. "WINGET" mixers have other overwhelming advantages over any others on the market. Come and see 'em 94-6 in stock, or write for literature.

**A Size for Every Job**  
**J. R. COX & Co.**

P.O. Box 81 ELDORET. P.O. Box 676 NAIROBI. P.O. Box 323 KAMPALA

# B. E. A. Saw Mills

MILLS: Factory Sites, Nairobi. P.O. Box 321, Nairobi.  
Pasi River, } Uplands.  
Katamayu }  
Telegrams: Office. No. 53.  
Telephone Mills No. 93.  
CAMPBOR, PODO, KWERI and BOXWOOD.  
Prompt Delivery.  
4 INCH CEDAR FLOORING.

## HAULAGE and TRANSPORT

STANDARD BUILDINGS,  
ANY WEIGHT ANY DISTANCE  
HAULAGE & GENERAL TRANSPORT CO.,  
4th Avenue. Phone 85. P.O. Box 386.

## REGINA BRIEF

Dramatizing and Typing.  
Briefs, correct tailoring and perfect fitting for ladies and gentlemen by expert European tailor.  
No. 7, Theatre Royal Arcade.  
P.O. Box 662. NAIROBI.

# Until Further Notice MADAE ROWE ET OIE WILL SHOW

AT THE  
**NORFOLK HOTEL**  
Model Gowns,  
Jumper Suits,  
Ladies Silk Hose, etc.

New Models by the Incoming Mails.

## WE STOCK

Always big stock of Provisions, Wines, Liqueurs, Best Quality of Dutch and Indian Cigars, Cigarettes, Sweets, Chocolates, Biscuits, Delmonico Brand Dried Fruits, in tins and Fruits in Syrup.  
Also for farmers Bulk Salt, Rock Salt, Dairy Salt, and Epsom Salt, Linned oil, Methylated Spirit and Turpentine.  
Ask for our retail price list today.  
**KANJEE NARANJEE**  
NAIROBI. Govt. Road.

## D. D. Costa & Sons.

LADIES' GENTS' AND CHILDREN'S  
TAILORS AND OUTFITTERS.  
BEST AND CHEAPEST  
FOR YOUR REQUIREMENTS.  
SPECIAL CUTTERS AND  
TAILORS HAVE ARRIVED  
FROM ENGLAND.  
Donald Avenue,  
P.O. Box 39, NAIROBI.

## Cotton Season Results: The Railway Question.

The cotton season results in the railway question are being discussed in the Chamber of Commerce and the Chamber of Agriculture. The Chamber of Commerce is of the opinion that the railway should be nationalized and the Chamber of Agriculture is of the opinion that the railway should be kept in the hands of the private companies. The Chamber of Commerce is of the opinion that the railway should be nationalized and the Chamber of Agriculture is of the opinion that the railway should be kept in the hands of the private companies.

## The Railway.

The railway is a subject of great importance to the country. It is the main artery of the country and it is essential that it should be kept in the hands of the private companies. The Chamber of Commerce is of the opinion that the railway should be nationalized and the Chamber of Agriculture is of the opinion that the railway should be kept in the hands of the private companies.

## Removals are being made to the effect that Uganda will be the...

Removals are being made to the effect that Uganda will be the main center of the railway system. The Chamber of Commerce is of the opinion that the railway should be nationalized and the Chamber of Agriculture is of the opinion that the railway should be kept in the hands of the private companies.



**WE HOLD A LARGE STOCK OF ODDS AND GIVE A SPECIAL DISCOUNT TO ALL GUNNERS.**

**Dobbies Ltd.**  
Furniture Manufacturing Jewellers & Opticians  
1, P.O. 31

## "KLEANBORE"

A Scientific Discovery of Great Importance to Users of .22 Rifles.

A new discovery made in the Laboratories of THE REMINGTON ARMS COMPANY. Has resulted in the production of a .22 cartridge that completely eliminates the cleaning rod. The secret is a new priming mixture which completely corrodes the barrel, and which actually starts with a CLEAN BARREL AND USES "KLEANBORE" CARTRIDGES. YOU NEED NEVER CLEAN YOUR RIFLE AGAIN.

GET THEM FROM KENYA'S LEADING AMMUNITION STORE,  
**MAY & Co., Ltd.**  
THE SPORTS HOUSE  
NAIROBI.

## The Report of the Agricultural Department in the matter of the present crop.

The report of the Agricultural Department in the matter of the present crop is very satisfactory. The crop is expected to be a record one. The Department is of the opinion that the crop will be a record one.

## The Eastern Province season.

The Eastern Province season is expected to be a record one. The Department is of the opinion that the crop will be a record one.

## The long-expected report on the proposed water supply for Kampala has now been published.

The long-expected report on the proposed water supply for Kampala has now been published. The report is very satisfactory and it is expected that the water supply will be a record one.

## The long-expected report on the proposed water supply for Kampala has now been published.

The long-expected report on the proposed water supply for Kampala has now been published. The report is very satisfactory and it is expected that the water supply will be a record one.

The  
**Salisbury Hotel**  
Nairobi  
Phone 166. P.O. Box 509.

**Colonial General Stores.**  
Government Road.  
The Leading Provision House in Nairobi and District Importers of High Class Confectionery, Wine Merchants, and Buyers of Local Produce. If You Want Quality, Promptness and Good Service for your shopping with us we lead, others follow. Give us a trial. You will not go wrong. Satisfaction guaranteed.  
CALL OR WRITE: Box 456, PHONE 226.

THE EAST AFRICAN STANDARD  
**KENYA DIARY**  
1928  
KENYA DIARY 1928  
ADVERTISEMENT SPACE MAY BE BOOKED NOW  
R. A. STANDAARD Ltd. P.O. Box 260, NAIROBI.

# Geo. BLOWERS

BUILDING CONTRACTOR, MANUFACTURER AND DIRECT IMPORTER.  
P.O. Box 526. CASH WITH ORDER.  
Nairobi. Phone 420.

6" x 6" 1/2	6" x 8" 1/2	6" x 10" 1/2	6" x 12" 1/2
8" x 8" 1/2	8" x 10" 1/2	8" x 12" 1/2	8" x 14" 1/2
10" x 10" 1/2	10" x 12" 1/2	10" x 14" 1/2	10" x 16" 1/2
12" x 12" 1/2	12" x 14" 1/2	12" x 16" 1/2	12" x 18" 1/2

NOTE: Windows and doors made to order. Prices include labor and materials. Delivery charges extra.

**QUARRIED STONE.**  
BUILDING STONE.  
MACHINE BROKEN STONE.  
BALLAST GRANULITE FOR FLOORS.  
WITH ALL DUST SCREENED OUT.  
In the following sizes:  
1 1/2 in Ballast.  
1 1/4 in do.  
1 1/2 in do.  
1 1/4 in do.  
1 1/2 in do.

Supplied at my Quarry,  
Three Miles from Nairobi House.  
SEND ME YOUR ENQUIRIES TO GET ME QUOTE YOU.  
Geo. BLOWERS, NAIROBI.

**OKLEIGH PRIVATE HOTEL.**  
Comfortable and up-to-date in every way.  
Up-country visitors specially catered for.  
Special Monthly Terms for Permanent Residents.  
**MRS. H. JARRETT,** Daily 10/-  
Managers.  
Phone 198. NAIROBI. P.O. Box 182.

**W. JILCOX**  
All classes of Typewriting, Bookbinding, Printing, Stationery, etc.  
1, P.O. 31, NAIROBI.



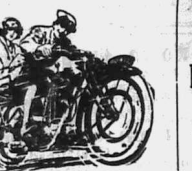
**Sails & Spirits**  
**WINE & GROCERIES**  
 Wholesale and Retail:  
**Parimal & Co.**  
 (Established 1900.)  
 Army Road and Government Road,  
 NAIROBI P. O. Box 29  
 P. O. Box 67, MOMBASA

**TO LET**  
**1st August**  
**WELL VENTILATED ROOMS**  
**FOR OFFICES AND SHOW ROOMS**  
**ON FIRST FLOOR IN**  
**WALLY BUILDING, Govt. Road,**  
**OR SALE**  
**BRENCING TOOLS with handles at**  
**7/60 a doz.**

**WALLY SULEMAN VERJEE**  
 & Sons.  
 Indian Bazaar.  
 Phone 54. Tel. Ivory.

**THE**  
**PREMIER BEVERAGES**  
**COCONA GARDEN**  
**CEYLON TEA**  
 and  
**CIGARS "FOUR CROWN"**  
**SCOTCH WHISKY**

For enquiries are solicited.  
**Kilwatts & Brown**  
 Sole (Machinery Dealers)  
 NAIROBI. Box No. 408.



**WELSH**  
**GARAGE**  
 Nairobi.

**MAXWELL BRADY & Co.,**  
 SHOE, OUTFITTING and FOOTWEAR SPECIALISTS.  
 LASHED TO ANNOUNCE  
 THE ARRIVAL OF  
**W. V. D.**  
**FOOTWEAR**  
 MADE FROM  
 THE HANDBOOK IN  
 WHITE -



**GOVERNMENT ROAD P. O. Box 50 NAIROBI.**  
**GOVERNMENT ROAD P. O. Box 107. ELDORET**

**Offers the best**  
**Spares Service**  
**Hire Purchase**  
 (ask for prices).

**CAPITAL**  
**GARAGE**  
 Nairobi.

**VESTS**  
 Sizes 36 to 44  
**6-00** EACH.  
**HENS DRAWING**  
 Sizes 36 to 44  
**6-00** EACH.  
**LEGGING SUITS**  
 Sizes 38 to 44  
**11-50** EACH.

**TRICOLINE**  
 A WIDED RANGE OF CHEAPEST BRANDS  
 TO SELECT FROM.  
**COME & INSPECT: COMPARE PRICES**  
**AT**  
**AHAMED Bros.**  
 DRAPEES—OUTFITTERS.  
 P. O. Box 264. NAIROBI.  
 Phone 261.

**CARS FOR HIRE**  
**HIRE FIRST AT CONCEPT**  
**RENTS SUPER SIX CLASS**  
 FOR  
**KEEP THEM ON STREET**  
**Long Trip & Economy.**  
**P. GETHIN,**  
 Phone: 120. Tel. 85.  
 Garage "Oshaki," Nairobi.

**CARS FOR SALE**  
 Indian Super Six class, best condition— £200  
 Oxford Four Tourer— 2150  
 good condition 1150  
 Dodge Sixes (5000 miles)— 2150  
 new condition— 1150  
 (4 motor type) 1150  
 Hudson Coutry (5000 miles)— 1150  
 6 good tyres— 1200  
 Strathairn Duplex 5000— 1200  
 6 good tyres— 1200  
**IF YOU WANT TO HIRE, BUY A CAR RING GETHIN.**

**P. STEWART,**  
 (C.A., F.R.C.S., F.R.C.S.D.)  
**PAINTER & DECORATOR,**  
 Hastings Street, Nairobi.  
 P. O. Box 228.  
**PAINTS, COLOURS, OILS,**  
**VARNISHES & DISTEMPERS**  
 Large or small quantities.

**LONG JOHN**  
 SCOTCH WHISKY  
 One More Distillery Left in the World

**CARS FOR HIRE**  
 HIRE FIRST AT CONCEPT  
 RENTS SUPER SIX CLASS  
 FOR  
 KEEP THEM ON STREET  
 Long Trip & Economy.  
 P. GETHIN,  
 Phone: 120. Tel. 85.  
 Garage "Oshaki," Nairobi.

**CARS FOR SALE**  
 Indian Super Six class, best condition— £200  
 Oxford Four Tourer— 2150  
 good condition 1150  
 Dodge Sixes (5000 miles)— 2150  
 new condition— 1150  
 (4 motor type) 1150  
 Hudson Coutry (5000 miles)— 1150  
 6 good tyres— 1200  
 Strathairn Duplex 5000— 1200  
 6 good tyres— 1200  
**IF YOU WANT TO HIRE, BUY A CAR RING GETHIN.**

**P. STEWART,**  
 (C.A., F.R.C.S., F.R.C.S.D.)  
**PAINTER & DECORATOR,**  
 Hastings Street, Nairobi.  
 P. O. Box 228.  
**PAINTS, COLOURS, OILS,**  
**VARNISHES & DISTEMPERS**  
 Large or small quantities.

**LONG JOHN**  
 SCOTCH WHISKY  
 One More Distillery Left in the World



**DISTRIBUTORS**  
**D. SPYFLEN & CO.,**  
 WARRIE TO WYAT  
**SAVOY HOTEL**  
 Caledonian Road,  
 THE HILL.  
 Phone No. 430.  
 P. O. Box 20. Tel.: "Savoy."

**FARMS FOR SALE.**

**FERRISBURY FARM:** 1866 acre 11 miles from Gigli Stationing. With milk, Maize and Dairy Stock to estimate. Watered by two permanent rivers and springs. Exceptionally cheap for cash.

**NAHWYI:** 4450 acre—12 miles from Nairobi. Truly a bird's nest for stock and possibly to be offered at 25/12 per acre.

**HOUSE PROPERTY FOR SALE**

**MUTHIGA:** Stone House with tile roof. 4 large rooms R.F. & D. water supply. H. & C. cement bathroom. H. & C. gas. 3 acres of beautifully laid out garden. One stone barn. 3000 lbs. of coal and liberal terms offered.

**SOLATERS ROAD:** Large 4 Modern Stone House. 5 rooms. 2 Guest rooms. E.P.F. Impreg. sanitation. H. & C. wired. concrete Bays Quarters and Garage and three Cuts. Approximately 20 acres of beautifully laid out ground and nice home, court. For all particulars and prices of the above apply to—

**H. DOUGLAS BROWN**  
 108a Gt. NAIROBI  
 Office (Inn Bldg., Govt. Bldg.)

**EVERYTHING FOR SPORT**  
 AT  
**MAY & CO.,**  
**ONTO THE PEN!**  
 SPARE PARTS ALWAYS IN STOCK.  
 Price Sh. 17-50.  
**STANDARD STATIONERY STORES,**  
 108a Gt. NAIROBI.

**TRICOLINE**  
 A WIDED RANGE OF CHEAPEST BRANDS  
 TO SELECT FROM.  
**COME & INSPECT: COMPARE PRICES**  
**AT**  
**AHAMED Bros.**  
 DRAPEES—OUTFITTERS.  
 P. O. Box 264. NAIROBI.  
 Phone 261.

**REMOVAL NOTICE**  
 Mr. P. Alexander, Ladies & Gents Hairdressers, has removed to  
**Mutos Building,**  
 (Facing New Stanley Hotel),  
 where he has secured very comfortable and more spacious premises.  
**P. Alexander**  
 Mutos Building, Hardings Street.

**Racing.**  
 Owners are reminded that entries for the Tenth Gishu Guinness 1927, to be run at Eldoret in October can only be accepted up to July 21st.  
 Entries for the 1629 Uasin Gishu Guinness also due on July 21st of this year.  
**A. K. BERRY,**  
 SECRETARY,  
 Uasin Gishu Gymkhana Club,  
 P. O. Box 50. ELDORET.

**Kitale and Trans Nzoi**  
**FARMS & PROPERTIES**  
**Kirkwood & Co., Land Agents,**  
 Kitale.

**AN EXCELLENT FARM FOR SALE:** 1400 acre 200 acres under buildings, 75 acres coffee in bearing. ample farm maize, brick house; stone case Kitale in a picturesque and healthy area. At 27/60 this is a most desirable farm in the fertile Trans Nzoi

**Miss KATHLEN BATES A.R.C.M.**  
 RECEIVES PUPILS FOR  
**PIANOFORTE—SINGING—HARMONY.**  
 Coaching given to Singers and Instrumentalists.  
**STUDIO SIXTYE AVENUE,**  
 Postal Address, Box 417.

**Notice**  
**Barclays Bank (Dominion, Colonial and Overseas.)**  
 A Branch of this Bank will be opened at KITALE on JULY, 1927, for the conduct of General Banking Business.  
 G. W. LAWRIE,  
 CHIEF AGENT.

**BRITISH SOUTH AFRICAN ANNUAL**  
 1898-1927.  
 (17th Year of PUBLICATION.)  
 With an East African Supplement  
 Containing—A Beautiful Plate "The Shabas, Game Coastlands" from the Old Paintings by Thoms de la Font.  
 Photographs of South Africa, Rhodesia, Kenya and numerous interesting articles.  
 PRICE, Shs. 6/- Postage Shs. 6/6 (packed in cardboard).  
 Standard Stationery Stores, NAIROBI.  
 P. O. Box 260.

to visit his home in the Netherlands...  
 large stock of Toilet Requisites...  
 Mr. Schouster is the holder of two Diplomas recently  
 sent to him in London for PERMANENT  
 ING.

### Motor Cycles

1,300/-  
 1,400/-  
 1,550/-

Davison 750 Electric Model  
 2,395 All Chain Magneto Ignition  
 7. Shop Model. All Chain Magneto.

1,750 All Chain Magneto Ignition  
 J.A.P. Engine. Lampless Mechanical  
 spark light type, fully equipped.  
 1,190/-  
 1,250/-

1900 c.c. J.A.P. Engine equipped as above  
 8 a.m. to 7 p.m. daily all repairs executed by  
 means only under supervision of Mr. Beeson.

### CAPITAL GAGE.

Opp. Fire Station.  
 Victoria St.

### SALE

commencing Tuesday June 16th  
 for 14 Days Only


MARGARET WALLACE,  
 NAKURU.

FOR MOTORISTS  
 "The BELL INN"  
 Naivasha.

ON MAIN ROAD,  
 FACTORY GUARANTEED,  
 under personal supervision of management.

"KIA ORA STORES"

FOR  
**TRONERO**



APPLICATORS  
 AND  
 PILING SYSTEMS

CONSULT  
 Standard Stationery Stores

The Editor, "E.A. Standard"  
 Sir—With reference to the  
 name and address of the  
 same and of the letter, etc.,  
 in reply for your kind  
 attention to the  
 enclosed letter.  
 Yours faithfully,  
 G. S. F. FREAN

#### CONSTITUTIONAL ISSUE THE ELECTED MAJORITY

To the Editor, "E.A. Standard"—  
 Sir—My article in your issue of the 20th inst. is being published in the same name and address of the author as in the letter, etc., in reply for your kind attention to the enclosed letter.

(1) To the Executive Committee for the purpose of the...  
 (2) To the Executive Committee for the purpose of the...  
 (3) To the Executive Committee for the purpose of the...  
 (4) To the Executive Committee for the purpose of the...  
 (5) To the Executive Committee for the purpose of the...  
 (6) To the Executive Committee for the purpose of the...  
 (7) To the Executive Committee for the purpose of the...  
 (8) To the Executive Committee for the purpose of the...  
 (9) To the Executive Committee for the purpose of the...  
 (10) To the Executive Committee for the purpose of the...

It is better for the common-  
 sense to adopt a policy of give and  
 take. We are indebted to  
 you.  
 Yours and  
 N. H. PATTEL  
 June 24, 1927.

TO THE EDITOR, "E.A. STANDARD"  
 Sir—I have read with great  
 interest the letter published in the  
 "E.A. Standard" of the 13th inst. in  
 the morning under the signature of  
 "T.X.X." This letter bears the  
 initials of the Editor, and  
 the name and address of the  
 author is given as "G. S. F. FREAN",  
 of the "Nairobi Hospital",  
 Nairobi. This letter bears the  
 initials of the Editor, and  
 the name and address of the  
 author is given as "G. S. F. FREAN",  
 of the "Nairobi Hospital",  
 Nairobi. This letter bears the  
 initials of the Editor, and  
 the name and address of the  
 author is given as "G. S. F. FREAN",  
 of the "Nairobi Hospital",  
 Nairobi.

The Editor, "E.A. Standard"  
 Sir—I have read with great  
 interest the letter published in the  
 "E.A. Standard" of the 13th inst. in  
 the morning under the signature of  
 "T.X.X." This letter bears the  
 initials of the Editor, and  
 the name and address of the  
 author is given as "G. S. F. FREAN",  
 of the "Nairobi Hospital",  
 Nairobi.

#### THE NAIROBI HOSPITAL SITE

To the Editor, "E.A. Standard"  
 Sir—I have read with great  
 interest the letter published in the  
 "E.A. Standard" of the 13th inst. in  
 the morning under the signature of  
 "T.X.X." This letter bears the  
 initials of the Editor, and  
 the name and address of the  
 author is given as "G. S. F. FREAN",  
 of the "Nairobi Hospital",  
 Nairobi.

It is better for the common-  
 sense to adopt a policy of give and  
 take. We are indebted to  
 you.  
 Yours and  
 N. H. PATTEL  
 June 24, 1927.

TO THE EDITOR, "E.A. STANDARD"  
 Sir—I have read with great  
 interest the letter published in the  
 "E.A. Standard" of the 13th inst. in  
 the morning under the signature of  
 "T.X.X." This letter bears the  
 initials of the Editor, and  
 the name and address of the  
 author is given as "G. S. F. FREAN",  
 of the "Nairobi Hospital",  
 Nairobi.

It is better for the common-  
 sense to adopt a policy of give and  
 take. We are indebted to  
 you.  
 Yours and  
 N. H. PATTEL  
 June 24, 1927.

### Why?

it's ready instantly—lathers  
 richly—and no lather  
 escapes!—except afterwards!

### ERASMIC Shaving Cream

converts in one trial!

### B. H. Myers & Co. Ltd.

Box 461. NAIROBI. Phone 343.

Government Road, near National Bank of India.  
 Compare our prices, quality, workmanship, and  
 SAVE TIME, SAFETY.

DINING TABLES From	Sgs. 75/-
DINING CHAIRS From	Sgs. 30/-
SIDE BOARDS From	Sgs. 200/-
DOUBLE BEDS From	Sgs. 140/-
SINGLE BEDS From	Sgs. 100/-
WARDROBES From	Sgs. 200/-
DRESSING TABLES From	Sgs. 135/-
WASHING STAMDS From	Sgs. 60/00
MR. BEVIERE AND B. OLUV RASY CHAIRS From	Sgs. 400/-

Mr. Myers, of B. H. Myers & Co., Ltd., will be at The Nakuru Hotel on Friday and Saturday next and will be pleased to show clients illustrated catalogues and supply quotations for any class of furniture desired.

ZIEGLER'S  
 Dry Cleaning & Dyeing Works.  
 Town Receiving Office: No. 8, Theatre Royal Arcade.

## Just Arrived

IN  
 In Splendid Condition

### PEEK FREAN'S

Afternoon Tea Biscuits  
 Rich Assorted and Cheeselets

AT  
**ELLIOTS**  
 NAIROBI.

Phone 69. P.O. Box 175.

## MONEY TO LEND

SHORT PERIOD LOANS GRANTED.  
 HELD RECOMMENDED  
 RESISTANT CONFIDENCE.

Call or Write to the—  
**Kenya Loan & Discount Co. Ltd.**  
 1st Floor, Court Chambers, Nairobi. Box 549.  
 Established 1921.

## "Caterpillars"

pay dividends to farmers

"Caterpillar" power means more land worked.  
 "Caterpillar" economy means less cost—money saved is money earned.  
 "Caterpillar" traction means ability to keep at work early and late in the season.  
 "Caterpillar" quality of design and materials means uninterrupted service.  
 "Caterpillar" means bigger profits and greater convenience.

SOLE AGENTS:  
**GANEY & ROBERTS, Ltd.**  
 KENYA, UGANDA,  
 TANZANIA.

2 TON  
**£475-00**  
 MODEL 30  
**£775-00**



### FEARLESSLY USED Cars For Sale

Washburne, Ford and Buick. Also used cars. See Motor Car Page for full description. Motor Cycles of all Descriptions. **CARS FOR HIRE DRIVE YOURSELF OR DRIVER**

**DAY & NIGHT Storage, Repairs, Patrol, etc. 13762, etc.**  
**PETROL PUMP INSTALLED**  
**LEND US YOUR OLD CAR FOR A FEW DAYS**  
 We will spray it with NITRO VALSPAR. (The most Perfect Lacquer Finish.)  
 and return it to you looking the same as if it did the day you showed it to your friends. This department under the management of an expert (Mr. W. F. Johnston) direct from Valpar, N.Y. Car Spraying from 25 upward.

### Bennett & Blackshire

**Estate Department:**  
 Real Estate Sales, Buy, Sell, Loans, etc. Put on one acre or more, 100 acres, 500 acres, 1000 acres, etc. Buy, Sell, Loans, etc. Put on one acre or more, 100 acres, 500 acres, 1000 acres, etc. Buy, Sell, Loans, etc. Put on one acre or more, 100 acres, 500 acres, 1000 acres, etc. Buy, Sell, Loans, etc. Put on one acre or more, 100 acres, 500 acres, 1000 acres, etc.

### E. Hutchinson & Co.

Daily instructed we shall sell by Public Auction Without Reserve, unless stated, at our Auction Mart, Government Road, **TUESDAY, the 28th inst. at 10 a.m.**

### High Class Furniture and Effects, Motor Bodies, Motor Hood and Spare Part Bins.

A selection of:  
**HALL STAND WITH MIRROR.**  
**CHILD'S OSCILLABLE COIT WITH MATTEAS MOSQUITO NET AND FITTINGS.**  
**CHILD'S GO-CAR PERAMBULATOR. Reserve.**  
**CHILD'S HIGH CHAIR.**  
**TEAK SINGLE BED WITH 3 PLY SPRING.**  
**ONE TUB EASY IN AMERICAN, SPRUNG SAT BACK AND ARMS.**  
**TEAK DRESSING CHEST WITH 1 LENOX MIRROR.**  
**SET OF SIX DINING CHAIRS IN GAMPION WITH TURNED LEGS.**  
**ONE 6 SETTEE IN AMERICAN, WRITING BUREAU.**  
**TEAK BACHELOR WARDROBE WITH FOLD DOWN MIRROR.**  
**CHEST OF DRAWERS SMALL WRITING TABLE SIDEBBOARD WITH TWO CUPBOARDS AND DRAWERS.**  
**LOT GOOD NOVELS, 2 MEAT SAFES.**  
**REVOLVING BOOKCASE, 2 MORRIS CHAIRS.**  
**LARGE REVERSIBLE RUG, LOT GRAMOPHONES, etc.**  
**300 Approx. MOTOR CAR SPARE PART BINS.**  
**3 MOTOR CAR BODIES, 2 MOTOR CAR BODIES, and many other items too numerous to detail.**

# SALE OF GOOD FURNITURE & EFFECTS

Public Auction, who is empowered to sell subject to Public Auction at his office, No. 113, The Hill, on **Monday, July 4th** (commencing at 10 A.M. precisely) (View always—Freeview—Wednesday and Sunday at reasonable hours).

- ALL THE EXCELLENT FURNITURE AND EFFECTS COMPRISING**
- FRONT VERANDAH: FIVE LARGE TOPS OF FERES, BERGONIA, etc. FOUR LARGE BAMBOO FRAMED BERGONIA POT.**
- ENTRANCE HALL: LARGE PERSIAN RUG. LARGE OCTAGONAL 7 1/2' x 7 1/2' TABLE.**
- TEEN 'APPOINTY' UPHOLSTERED GUINETTA CHAIRS, Teak framed.**
- LARGE BRASS SHELL HOLOPHANE ELECTRIC LIGHT SHADE.**
- TEAK FRAMED GEAR TABLE, made from dark Oak "Gibbert Hill".**
- OAK CABINET TABLE MODEL His Master's Voice GRAMOPHONE (2 sound boxes).**
- GRAMOPHONE TABLE QUANTITY OF GRAMOPHONE RECORDS.**
- TWO FRAMED SPORTING PRINTS.**
- DEATING ROOM: FAWN AXMINSTER CARPET, size 13' x 13'. FAWN AXMINSTER RUG.**
- NEST OF THREE OCCASIONAL TABLES. LARGE OAK TABLE.**
- CRESTED CHAIR, well sprung with tapestry covering, by HeGria, also two loose cretonne covers.**
- TWO FIBER TABLES with two loose cretonne covers.**
- ELECTRO TABLE LAMP.**
- GLUB EASY with loose cretonne covers. OCCASIONAL TABLE, in Teak.**
- LARGE CIRCULAR STAND FOR TRAY, LARGE PALMSTAND in Teak.**
- OCCASIONAL TABLE, BamboKof Top and 30' x 40' Mosaic.**
- FOUR SHELVED BOOKSTAND, in Teak PHOTOGRAPH FRAMES.**
- TRAYER and DOWN CUSHIONS, BRASS BOWLS, VASES, SHELLS, and ORNAMENTS.**
- COLOURED PRINTS, JAPANESE PICTURES, ENGRAVINGS, etc.**
- DINING ROOM: TELESCOPIC DINING TABLE in Teak, with two extra leaves.**
- SUITE OF SIX ARM CHAIRS in Teak, with loose leather cushions.**
- MODERN TYPE SIDEBBOARD, 6' in polished Camphorwood, fitted with cupboard and cutlery section, good locks and keys.**
- SUITE OF SIX DINING CHAIRS. MINEZAPUR CARPET.**
- DINER WAGON IN TEAK FOUR SPORTING PICTURES. ORNAMENTS OF DINING TABLE. A HIGH PRICED BOTTLE STANDARD LAMP, on heavy base, fitted for electricity or oil.**
- STUDY: LARGE DESK in Teak, nine drawers, with stationery cabinet top.**
- LARGE OAK LOCKUP ROLL TOP STATIONARY CABINET, SUNDAY CHAIRS.**

**STAIRWAY TABLE: TWO FINE SPANISH WILLOW FILL. PERSIAN TYPE RUG, size 10' x 11'. A very nice rug. Carpets, Repairs, up (over).  
**BEST BEDROOM: TWO BEDSTEADS in Camphorwood, with good spring and cast iron mattresses.**  
**LARGE WOODEN CARPET, size 12' x 16'. MINEZAPUR RUG, size 6' x 6'.  
**DUCROSS DRESSING TABLE in Teak, with large bevelled mirror and eight drawers. PREFERRED BEDSIDE TABLE in Camphorwood.**  
**LARGE PLAIN WARDROBE in Camphorwood, very deep and convenient.**  
**CHEST OF DRAWERS, in Teak.******

**DRESSING ROOM: MINEZAPUR RUG, size 7' x 6'. LARGE CHEST OF DRAWERS in solid Teak.  
 FRAMED MIRROR on Brass Wall Attachment. OLD TEAK SUPERHAD. Chaise.**

**SECOND BEDROOM: TEAK FRAMED DOUBLE BEDSTEAD, with strong spring mattress and practically new Horse Hair mattress. FRAMED TOLLET SET.  
 BEDSIDE TABLE in Teak. WARDROBE in Teak, with two shelves.**

**DRESSING TABLE in Camphorwood with bevelled mirror.**

**WASHSTAND in Teak. The Back. AXMINSTER RUG, 10x9.**

**SUNDRIES: BATH MAT, TOWEL RAIL. MINEZAPUR RUG. BENTWOOD CHAIRS. OCCASIONAL TABLES. CAMP BED.  
 THREE QUANTER MATTRESS. LARGE TIMELINE TRUNK.  
 SAFARI TABLE. MEDICINE CUPBOARD, and sundry medicines.  
 COAST COT. TIRPLE MATTING. TWO BOTTLE STANDS, Oak frame.  
 CASE OF TWELVE FISH KNIVES and FORKS. LIQUOR DICRATER.  
 FOUR DECATERS. ELEVEN FINGER BOWLS. PAIR OF STEPS.**

**CROCKERY, GLASSWARE, etc.: COMPLETE "ANCHOR" CHINA TEA SET for Twelve, 40 pieces.  
 "WEDWOOD" GOLD and WHITE DESSERT SERVICE of 18 pieces.  
 "KNOWSLEY" BLUE and WHITE DINNER SET of 32 pieces.  
 COFFEE CUPS and SUNDY CROCKERY. ASSORTED GLASSWARE.**

**12 BROS. D.B. HAMMERLESS, EPICOROT SHOT GUN, by Fraser, Edinburgh, in green canvas case (reserve).**

**LINES: TWO PAIRS DOUBLE AND EIGHT PAIRS SINGLE WITNEY BLANKETS.  
 SIX SAFARI BLANKETS. JARGER SLEEPING BLANKETS, etc.  
 CURTAINS in Various Rooms as hung.**

**JUST ARRIVED**  
 Fresh stock of selected suit lengths of pure woolen Cashmere, Worsted, Gaberdine, Flannels, Solaroes, etc. Suits of latest styles made to measure at a short notice.  
**PRICES TO SUIT ALL**  
 Tussor, Khaki and Cotton Suits at quite moderate Prices.  
**Meghji Ahamed & Co.**  
 P.O. Box 313. Phone 184. Telegrams: Tarpanul, NAIROBI.

**THE ANNUAL VISIT OF THE ROYAL NAVY TO NAIROBI.**  
 Under the distinguished Patronage of H.E. The Acting Governor Sir Edward Denham, C.M.G., K.B.E.

**THEATRE ROYAL. Thursday, June 30th.**  
**Grand Boxing Tournament**  
 NAVA Y KENYA  
**10-CONTESTS-10**  
 COMMENCING AT 6 P.M. SHARP.  
 Ring Seats Shs. 30. Front Stalls 15. Back Stalls 10. Dress Circle 12/6 and 7/6. Boxes 90/-, 70/- and 40/-.  
 Plans now open at Theatre Royal.

### PUDLO

Cement Waterproofing Powder.  
 BEAD CEMENT WATERPROOFING POWDER.  
 SAFE AND PERMANENT—It cannot fail to waterproof cement. PUDLO is made of pure Portland Cement. It is the best and most reliable of all waterproofing cements. It is used for waterproofing basements, walls, floors, roofs, etc. It is also used for the repair of damaged concrete work. It is sold in 50 lb. and 100 lb. tins. Price per tin, 1/6. Retail price per tin, 1/6. Total price per tin, 1/6.

### MORRIS SERVICE.

**MORRIS CARS & COMMERCIAL VEHICLES**  
 The latest 1927 cars are second to none in value, comfort and design.  
 The new '25 model and '28 set Trucks are exactly what you want: strong, powerful, efficient and sound British workmanship. Economical to run. Catalogues and particulars, on application—  
**SOLE AGENTS—**  
**Mitchell Cotts & Co.**  
 P.O. Box No. 681, NAIROBI. Theatre Royal Arcade.

**J. G. Aronson Ltd.**  
 P.O. Box 681, NAIROBI.

**SCOTCH WHISKY**

The strongly marked character of this Scotch Whisky is well known to all who have had the opportunity to try it.

ESTABLISHED 1872

Mellow in Flavor and Pure in Quality



**Typewriters**

Due to stocks arriving we are selling this month, until June 30th, all models of our

**Remingtons**

AT GREATLY REDUCED PRICES.

Model 124 101	Present Price	Special Price.
124 141	700/-	650/-
124 141	800/-	750/-
124 141	950/-	850/-
124 141	1000/-	900/-

ALL LATEST MODELS - GUARANTEED AND MAINTAINED FOR TWELVE MONTHS - BEST SERVICE.

**Remington Typewriter Agency**  
Government Road. NAIROBI.

**WE SELL AT RIGHT PRICES**

**Wines & Spirits of the Best Quality**

Harvey's Ports and Bristol Cream and Bristol Milk Sherries, Grand Mariner, Curacao, Cognac, Kummel, Chartreuse, Champagnes, Maraschino, Whiskies, Brandies, White and Red Wines, Etc.

Also provisions from the best Manufacturers.

**M. R. D'Souza & Co.**  
P.O. Box 155. York House, Govt. Road. Phone 75.

**THE FUROR OF THE HEMLINE.**

Another very noticeable trend of the season, the dress hemline, which has been a subject of much discussion, is now being discussed in the light of the fact that the average woman's hemline is now being raised to a point where it is almost level with the waist. This is a result of the fact that the average woman's height is now being raised to a point where it is almost level with the waist. This is a result of the fact that the average woman's height is now being raised to a point where it is almost level with the waist.



The new trend back, apparent in June 1924, has the waistline at the same level as the hemline. This is a result of the fact that the average woman's height is now being raised to a point where it is almost level with the waist.

**NOTES ON THE NEW SHOE.**

The extent of the navy blue color is responsible for the newly established demand for navy blue shoes. These shoes are now being made in a variety of styles, and are being worn by a large number of people. This is a result of the fact that the average woman's height is now being raised to a point where it is almost level with the waist.

**DANCE FROCK.**

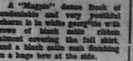
Dance frocks are available! With the exception of those especially designed models designed for the older women, they are full of youthful, almost girlish charm. This is a result of the fact that the average woman's height is now being raised to a point where it is almost level with the waist.

**THE JUMPER BLOUSE.**

But the tailormade designers working steadily, offered yet another suggestion, the result of which is a completely charming, altogether feminine example of the blouse-maker's art. It is a blouse which is cut so trim-

**Black satin ribbon provides an artistic element to the black and white scheme.**

Black satin ribbon provides an artistic element to the black and white scheme. This is a result of the fact that the average woman's height is now being raised to a point where it is almost level with the waist.



Trimming, strapless, pressed-outside, contrasts to beautiful, not to say feminine, effects.

- ROBUSTEER WATERS.**
- 1 cup golden syrup.
  - 1 cup sugar.
  - 1 cup butter.
  - 1 teaspoon ground cinnamon.
  - 1 teaspoon ground ginger.
  - 1 teaspoon salt.
  - 1 egg.
  - 2 cups flour.

Beat together golden syrup, sugar, butter, salt and add 10-15 minutes. Cool and add to egg whites, and beat until stiff and set on floured board. Roll very thin and cut in strips one inch wide and about four inches long. Place on greased pan or oiled sheet and bake in hot oven at 400deg. Fahrenheit for six minutes.

**and Harbours**

**GO SOUTH**

The central and western provinces of South Africa possess an incalculable wealth of natural resources that will give material expansion.

**REJUVENATE**  
**MIDST**  
**COOLING SEA BREEZES**  
**AND**  
**ENTRANCING SCENERY**  
Comfortable travel and modern accommodations.

For information apply to  
**TRADE COMMISSIONER FOR THE UNION OF SOUTH AFRICA**,  
Memorial Hall,  
P.O. Box 624. NAIROBI.



Coffee for the London Market.

**Reliance Transport Co.**  
**A Sound Commercial Proposition**

You cannot afford to take risks and delays. We will transport your goods over good or rough roads to all parts of the Colony and adjacent territories under the direct control of members of our firm.

We guarantee PROMPT and EFFICIENT Service.

Partners J. J. Ker, J. K. Ker, A. S. Ker

London Agents T. P. Herane & Co. Dabwood House, London, E.C. 3.

Tel. No. 531. Tel. Address: Reliance. P.O. Box 493. SADDLER STREET, NAIROBI.

**Make Your Wife Independent**

**Buy Her an Austin Seven**

The most economical car in the world to run—45 to 50 miles per gallon  
Detachable wheels—four wheel brakes—Magneto Ignition—Electric Lights and  
Self-starter Speedometer and full Kit of Tools.

**TOURING**



£218



**Colonial Model Fully equipped**

£380

**SALOON**



£240

**CARR, LAWSON & Co., Ltd.**

Kampala

Nairobi

Eldoret

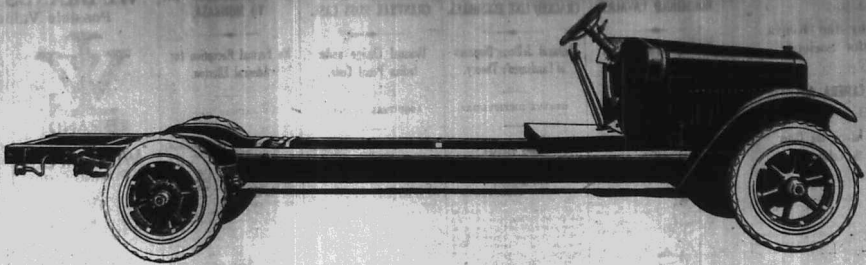






# Just the Truck

for Fast, Low-Cost Hauling



## Model SL 2 Ton Speed Truck

**£448**

*Chassis complete with windshield.*

THIS long, powerful truck has several features of special interest to every transportation buyer. For example: the wheelbase of 160 inches provides long loading space. A capacity load of 4000 lbs. can be hauled without piling to an inconvenient height.

It is equipped with auxiliary rear springs (making four rear springs in all, an exclusive

feature of all International trucks) insuring easy riding for varying loads. Power tyre pump driven from the transmission, steel wheels, heavy-duty truck tyres are also standard.

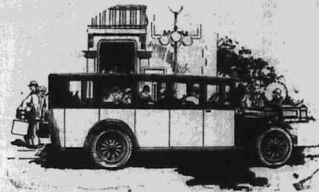
This sturdy truck is suitable for any body from the simple platform type to an enclosed bus body for carrying passengers.

*The complete range of International Truck chassis include the Special Delivery for loadings up to 3 ton, Speed Trucks for 1, 1½, 2 ton, and Heavy Duty Trucks up to 5 ton capacities.*

*Write for literature.*



1½ ton Chassis complete with windshield £343.



**Gilfillan & Company, Ltd.**  
D I S T R I B U T O R S

# INTERNATIONAL MOTOR TRUCKS

ADVERTISING RATES.  
SPECIAL ADVERTISEMENTS.  
SUBSCRIPTION RATES.

ADVERTISEMENTS.  
SPECIAL ADVERTISEMENTS.  
SUBSCRIPTION RATES.

SUBSCRIPTION RATES.  
DAILY.  
Weekly.

SUBSCRIPTION RATES.  
DAILY.  
Weekly.

SUBSCRIPTION RATES.  
DAILY.  
Weekly.

SUBSCRIPTION RATES.  
DAILY.  
Weekly.

SUBSCRIPTION RATES.  
DAILY.  
Weekly.

SUBSCRIPTION RATES.  
DAILY.  
Weekly.

SUBSCRIPTION RATES.  
DAILY.  
Weekly.

SUBSCRIPTION RATES.  
DAILY.  
Weekly.

SUBSCRIPTION RATES.  
DAILY.  
Weekly.

SUBSCRIPTION RATES.  
DAILY.  
Weekly.

SUBSCRIPTION RATES.  
DAILY.  
Weekly.

SUBSCRIPTION RATES.  
DAILY.  
Weekly.

SUBSCRIPTION RATES.  
DAILY.  
Weekly.

SUBSCRIPTION RATES.  
DAILY.  
Weekly.

SUBSCRIPTION RATES.  
DAILY.  
Weekly.

SUBSCRIPTION RATES.  
DAILY.  
Weekly.

SUBSCRIPTION RATES.  
DAILY.  
Weekly.

SUBSCRIPTION RATES.  
DAILY.  
Weekly.

SUBSCRIPTION RATES.  
DAILY.  
Weekly.

SUBSCRIPTION RATES.  
DAILY.  
Weekly.

SUBSCRIPTION RATES.  
DAILY.  
Weekly.

SUBSCRIPTION RATES.  
DAILY.  
Weekly.

SUBSCRIPTION RATES.  
DAILY.  
Weekly.

SUBSCRIPTION RATES.  
DAILY.  
Weekly.

SUBSCRIPTION RATES.  
DAILY.  
Weekly.

SUBSCRIPTION RATES.  
DAILY.  
Weekly.

SUBSCRIPTION RATES.  
DAILY.  
Weekly.

ADVERTISING RATES.  
SPECIAL ADVERTISEMENTS.  
SUBSCRIPTION RATES.

ADVERTISEMENTS.  
SPECIAL ADVERTISEMENTS.  
SUBSCRIPTION RATES.

SUBSCRIPTION RATES.  
DAILY.  
Weekly.

SUBSCRIPTION RATES.  
DAILY.  
Weekly.

SUBSCRIPTION RATES.  
DAILY.  
Weekly.

SUBSCRIPTION RATES.  
DAILY.  
Weekly.

SUBSCRIPTION RATES.  
DAILY.  
Weekly.

SUBSCRIPTION RATES.  
DAILY.  
Weekly.

SUBSCRIPTION RATES.  
DAILY.  
Weekly.

SUBSCRIPTION RATES.  
DAILY.  
Weekly.

SUBSCRIPTION RATES.  
DAILY.  
Weekly.

SUBSCRIPTION RATES.  
DAILY.  
Weekly.

SUBSCRIPTION RATES.  
DAILY.  
Weekly.

SUBSCRIPTION RATES.  
DAILY.  
Weekly.

SUBSCRIPTION RATES.  
DAILY.  
Weekly.

SUBSCRIPTION RATES.  
DAILY.  
Weekly.

SUBSCRIPTION RATES.  
DAILY.  
Weekly.

SUBSCRIPTION RATES.  
DAILY.  
Weekly.

SUBSCRIPTION RATES.  
DAILY.  
Weekly.

SUBSCRIPTION RATES.  
DAILY.  
Weekly.

SUBSCRIPTION RATES.  
DAILY.  
Weekly.

SUBSCRIPTION RATES.  
DAILY.  
Weekly.

SUBSCRIPTION RATES.  
DAILY.  
Weekly.

SUBSCRIPTION RATES.  
DAILY.  
Weekly.

SUBSCRIPTION RATES.  
DAILY.  
Weekly.

SUBSCRIPTION RATES.  
DAILY.  
Weekly.

SUBSCRIPTION RATES.  
DAILY.  
Weekly.

SUBSCRIPTION RATES.  
DAILY.  
Weekly.

SUBSCRIPTION RATES.  
DAILY.  
Weekly.

SUBSCRIPTION RATES.  
DAILY.  
Weekly.

ADVERTISING RATES.  
SPECIAL ADVERTISEMENTS.  
SUBSCRIPTION RATES.

ADVERTISEMENTS.  
SPECIAL ADVERTISEMENTS.  
SUBSCRIPTION RATES.

SUBSCRIPTION RATES.  
DAILY.  
Weekly.

SUBSCRIPTION RATES.  
DAILY.  
Weekly.

SUBSCRIPTION RATES.  
DAILY.  
Weekly.

SUBSCRIPTION RATES.  
DAILY.  
Weekly.

SUBSCRIPTION RATES.  
DAILY.  
Weekly.

SUBSCRIPTION RATES.  
DAILY.  
Weekly.

SUBSCRIPTION RATES.  
DAILY.  
Weekly.

SUBSCRIPTION RATES.  
DAILY.  
Weekly.

SUBSCRIPTION RATES.  
DAILY.  
Weekly.

SUBSCRIPTION RATES.  
DAILY.  
Weekly.

SUBSCRIPTION RATES.  
DAILY.  
Weekly.

SUBSCRIPTION RATES.  
DAILY.  
Weekly.

SUBSCRIPTION RATES.  
DAILY.  
Weekly.

SUBSCRIPTION RATES.  
DAILY.  
Weekly.

SUBSCRIPTION RATES.  
DAILY.  
Weekly.

SUBSCRIPTION RATES.  
DAILY.  
Weekly.

SUBSCRIPTION RATES.  
DAILY.  
Weekly.

SUBSCRIPTION RATES.  
DAILY.  
Weekly.

SUBSCRIPTION RATES.  
DAILY.  
Weekly.

SUBSCRIPTION RATES.  
DAILY.  
Weekly.

SUBSCRIPTION RATES.  
DAILY.  
Weekly.

SUBSCRIPTION RATES.  
DAILY.  
Weekly.

SUBSCRIPTION RATES.  
DAILY.  
Weekly.

SUBSCRIPTION RATES.  
DAILY.  
Weekly.

SUBSCRIPTION RATES.  
DAILY.  
Weekly.

SUBSCRIPTION RATES.  
DAILY.  
Weekly.

SUBSCRIPTION RATES.  
DAILY.  
Weekly.

SUBSCRIPTION RATES.  
DAILY.  
Weekly.

ADVERTISING RATES.  
SPECIAL ADVERTISEMENTS.  
SUBSCRIPTION RATES.

ADVERTISEMENTS.  
SPECIAL ADVERTISEMENTS.  
SUBSCRIPTION RATES.

SUBSCRIPTION RATES.  
DAILY.  
Weekly.

SUBSCRIPTION RATES.  
DAILY.  
Weekly.

SUBSCRIPTION RATES.  
DAILY.  
Weekly.

SUBSCRIPTION RATES.  
DAILY.  
Weekly.

SUBSCRIPTION RATES.  
DAILY.  
Weekly.

SUBSCRIPTION RATES.  
DAILY.  
Weekly.

SUBSCRIPTION RATES.  
DAILY.  
Weekly.

SUBSCRIPTION RATES.  
DAILY.  
Weekly.

SUBSCRIPTION RATES.  
DAILY.  
Weekly.

SUBSCRIPTION RATES.  
DAILY.  
Weekly.

SUBSCRIPTION RATES.  
DAILY.  
Weekly.

SUBSCRIPTION RATES.  
DAILY.  
Weekly.

SUBSCRIPTION RATES.  
DAILY.  
Weekly.

SUBSCRIPTION RATES.  
DAILY.  
Weekly.

SUBSCRIPTION RATES.  
DAILY.  
Weekly.

SUBSCRIPTION RATES.  
DAILY.  
Weekly.

SUBSCRIPTION RATES.  
DAILY.  
Weekly.

SUBSCRIPTION RATES.  
DAILY.  
Weekly.

SUBSCRIPTION RATES.  
DAILY.  
Weekly.

SUBSCRIPTION RATES.  
DAILY.  
Weekly.

SUBSCRIPTION RATES.  
DAILY.  
Weekly.

SUBSCRIPTION RATES.  
DAILY.  
Weekly.

SUBSCRIPTION RATES.  
DAILY.  
Weekly.

SUBSCRIPTION RATES.  
DAILY.  
Weekly.

SUBSCRIPTION RATES.  
DAILY.  
Weekly.

SUBSCRIPTION RATES.  
DAILY.  
Weekly.

SUBSCRIPTION RATES.  
DAILY.  
Weekly.

SUBSCRIPTION RATES.  
DAILY.  
Weekly.

EQUATOR  
P.O. Plateau. P.O. Maji-Masai. P.O. Box 291, Nairobi.  
IN STOCK 4,000 TONS  
Podo, Cedar, Hardwoods and Uganda Myule.  
Price List on Application.  
ALSO IN STOCK  
Siverstone Oak, Cedar, Redwood, Mahogany, Walnut, Teak, Rosewood, Ebony, Grevillea, Acacia, Gum, Bamboo, etc.

UNDERWOOD  
The Machine  
You will Eventually Buy.  
TAWLS LTD. NAIROBI.

OSTERLETH & Co. Ltd.  
PRODUCE MERCHANTS.  
IMPERIAL CHAMBERS, GOVERNMENT ROAD, NAIROBI  
(Next to Bullions and Bury).  
COFFEE BAGS  
Having secured large quantities at exceptionally favourable prices, we are selling very cheaply.  
P. O. Box 667. Telegrams: -- "OSTERLETHS" Nairobi  
Kenya Manager: -- Capt. E. A. MARTIN.  
London Office 42, Old Broad St. E. C. 2. Continental Office 15, Rue des Chenes, Antwerp, Belgium.

Hutchings, Biemer & Co. Ltd. Phone 408.  
Govt. Road. Nairobi. Factory Sadler St.  
New! Outfitting for Sportsmen. The Beautiful Home Suite.  
NOW IS THE TIME TO EQUIP YOURSELF WITH A NEW OUTFIT AT THE LOWEST PRICES.  
WHITE TROUSERS. Size 3 to 7. Made in cotton gabardine of excellent quality. Specially recommended for bank wear. Price, 25/-.  
WHITE TROUSERS. All sizes. Made in Wool Gabardine of very fine texture. A garment with a good cut and smart appearance. Price, 40/-.  
FLANNEL TROUSERS. All sizes. In shades of dark or light grey. Price, 27/6 to 37/6.  
PAWS GABERDINE TROUSERS. Price, 48/-.  
NAVY BLUE SPORTS SLAZERS. Good quality flannel. All sizes. Price, 30/- and 32/6.  
TWEED SPORTS COATS. Assorted shades, all sizes. Price, 40/- and 38/7.  
PURE WOOL FOLF ROSE. Tartan EMID T. Turnover Tops. Size 7/6, 11/6, and 16/6 per pair.  
"VITELLA" UNSINKABLE WEIT BOOKS. Price, 4/6.  
"VITELLA" UNSINKABLE WEIT TRENCHES. Price, 21/6.  
"VITELLA" UNSINKABLE WEIT TRENCHES. Price, 21/6.  
HEAVY WHITE TWEED TENNIS SHIRTS. Price, 11/6.

SITUATIONS VACANT

THE change for advertisement...  
SITUATIONS VACANT

FARMS FOR SALE

500 ACRE FARM, 100 acres...  
FARMS FOR SALE

SITUATIONS WANTED

THIS charge for advertisement...  
SITUATIONS WANTED

DOGS FOR SALE

WELL bred, pure, healthy...  
DOGS FOR SALE

WANTED

THE charge for advertisement...  
WANTED

WANTED

THE charge for advertisement...  
WANTED

WANTED

THE charge for advertisement...  
WANTED

WANTED

THE charge for advertisement...  
WANTED

TO LET

THE charge for advertisement...  
TO LET

BOARD & RESIDENCE

THE charge for advertisement...  
BOARD & RESIDENCE

WANTED

THE charge for advertisement...  
WANTED

WANTED

THE charge for advertisement...  
WANTED

WANTED

THE charge for advertisement...  
WANTED

WANTED

THE charge for advertisement...  
WANTED

WANTED

THE charge for advertisement...  
WANTED

Kikuyu Hotel  
Cool, comfortable, healthy, and electric light. Week-end country retreat in the hills. Moderate charge and special quarters for families.

THE HILL Private Hotel  
Phone 380.

NATIONAL MUTUAL LIFE ASSOCIATION of Australasia Limited  
Funds exceed £20,000,000.  
Whole life Assurance for £1,000 at age 30 Annual Premium only £29 10s 0d.  
(Reinsure increase annually with age of policy).  
ENDOWMENT RATES SIMILARLY ATTRACTIVE.  
Apply to agents-- KETTER-BOY, Ltd., 100, VICTORIA ROAD, NAIROBI.



**STATIONERS AND  
TALENT GRINDING.**

**Operations Which Owners  
Can Carry Out.**

**ABILITY AND CARE**

Although the modern motor-car engine and gear have been made with little attention, it requires special skill and care to run them. It is not enough to know the theory of the engine, but the owner must be able to adjust it to the conditions of the road. The engine must be kept in good order, and the driver must be able to adjust it to the conditions of the road. The engine must be kept in good order, and the driver must be able to adjust it to the conditions of the road.

**NOT A VIBRATORY JOB.**  
Many people think the job of adjusting and valve grinding is a very simple one, and that it can be done by anyone. In fact, it is a very delicate and important job, and one that requires special skill and care. The engine must be kept in good order, and the driver must be able to adjust it to the conditions of the road.

**FREEING CYLINDER HEAD.**  
The first step is to remove the head, and to clean it thoroughly. The head must be kept in good order, and the driver must be able to adjust it to the conditions of the road. The engine must be kept in good order, and the driver must be able to adjust it to the conditions of the road.

**BREAKING THE JOINT.**  
On an account should a screw-driver be jammed in between the piston and the cylinder head, the joint must be broken. The engine must be kept in good order, and the driver must be able to adjust it to the conditions of the road.

**REMOVING SIDE-BY-SIDE VALVES.**  
In the case of a side-valve engine, the valves are side-by-side. The engine must be kept in good order, and the driver must be able to adjust it to the conditions of the road.

As regards the head, it is not enough to know the theory of the engine, but the owner must be able to adjust it to the conditions of the road. The engine must be kept in good order, and the driver must be able to adjust it to the conditions of the road.

**REPAIRING THE VALVES.**  
The valves must be kept in good order, and the driver must be able to adjust it to the conditions of the road. The engine must be kept in good order, and the driver must be able to adjust it to the conditions of the road.

**REPAIRING THE PISTON.**  
The piston must be kept in good order, and the driver must be able to adjust it to the conditions of the road. The engine must be kept in good order, and the driver must be able to adjust it to the conditions of the road.

**REPAIRING THE CRANK.**  
The crank must be kept in good order, and the driver must be able to adjust it to the conditions of the road. The engine must be kept in good order, and the driver must be able to adjust it to the conditions of the road.

**REPAIRING THE RODS.**  
The rods must be kept in good order, and the driver must be able to adjust it to the conditions of the road. The engine must be kept in good order, and the driver must be able to adjust it to the conditions of the road.

**REPAIRING THE BELT.**  
The belt must be kept in good order, and the driver must be able to adjust it to the conditions of the road. The engine must be kept in good order, and the driver must be able to adjust it to the conditions of the road.

**REPAIRING THE OIL.**  
The oil must be kept in good order, and the driver must be able to adjust it to the conditions of the road. The engine must be kept in good order, and the driver must be able to adjust it to the conditions of the road.

**REPAIRING THE WATER.**  
The water must be kept in good order, and the driver must be able to adjust it to the conditions of the road. The engine must be kept in good order, and the driver must be able to adjust it to the conditions of the road.

**REPAIRING THE AIR.**  
The air must be kept in good order, and the driver must be able to adjust it to the conditions of the road. The engine must be kept in good order, and the driver must be able to adjust it to the conditions of the road.

**REPAIRING THE FUEL.**  
The fuel must be kept in good order, and the driver must be able to adjust it to the conditions of the road. The engine must be kept in good order, and the driver must be able to adjust it to the conditions of the road.

**REPAIRING THE SPARK.**  
The spark must be kept in good order, and the driver must be able to adjust it to the conditions of the road. The engine must be kept in good order, and the driver must be able to adjust it to the conditions of the road.

**REPAIRING THE TIMING.**  
The timing must be kept in good order, and the driver must be able to adjust it to the conditions of the road. The engine must be kept in good order, and the driver must be able to adjust it to the conditions of the road.

**REPAIRING THE VALVES.**  
The valves must be kept in good order, and the driver must be able to adjust it to the conditions of the road. The engine must be kept in good order, and the driver must be able to adjust it to the conditions of the road.

**REPAIRING THE PISTON.**  
The piston must be kept in good order, and the driver must be able to adjust it to the conditions of the road. The engine must be kept in good order, and the driver must be able to adjust it to the conditions of the road.

**REPAIRING THE CRANK.**  
The crank must be kept in good order, and the driver must be able to adjust it to the conditions of the road. The engine must be kept in good order, and the driver must be able to adjust it to the conditions of the road.

**REPAIRING THE RODS.**  
The rods must be kept in good order, and the driver must be able to adjust it to the conditions of the road. The engine must be kept in good order, and the driver must be able to adjust it to the conditions of the road.

**REPAIRING THE BELT.**  
The belt must be kept in good order, and the driver must be able to adjust it to the conditions of the road. The engine must be kept in good order, and the driver must be able to adjust it to the conditions of the road.

**REPAIRING THE OIL.**  
The oil must be kept in good order, and the driver must be able to adjust it to the conditions of the road. The engine must be kept in good order, and the driver must be able to adjust it to the conditions of the road.

**REPAIRING THE WATER.**  
The water must be kept in good order, and the driver must be able to adjust it to the conditions of the road. The engine must be kept in good order, and the driver must be able to adjust it to the conditions of the road.

**REPAIRING THE AIR.**  
The air must be kept in good order, and the driver must be able to adjust it to the conditions of the road. The engine must be kept in good order, and the driver must be able to adjust it to the conditions of the road.

**REPAIRING THE FUEL.**  
The fuel must be kept in good order, and the driver must be able to adjust it to the conditions of the road. The engine must be kept in good order, and the driver must be able to adjust it to the conditions of the road.

**REPAIRING THE SPARK.**  
The spark must be kept in good order, and the driver must be able to adjust it to the conditions of the road. The engine must be kept in good order, and the driver must be able to adjust it to the conditions of the road.

**REPAIRING THE TIMING.**  
The timing must be kept in good order, and the driver must be able to adjust it to the conditions of the road. The engine must be kept in good order, and the driver must be able to adjust it to the conditions of the road.

**REPAIRING THE VALVES.**  
The valves must be kept in good order, and the driver must be able to adjust it to the conditions of the road. The engine must be kept in good order, and the driver must be able to adjust it to the conditions of the road.

**REPAIRING THE PISTON.**  
The piston must be kept in good order, and the driver must be able to adjust it to the conditions of the road. The engine must be kept in good order, and the driver must be able to adjust it to the conditions of the road.

**REPAIRING THE CRANK.**  
The crank must be kept in good order, and the driver must be able to adjust it to the conditions of the road. The engine must be kept in good order, and the driver must be able to adjust it to the conditions of the road.

**REPAIRING THE RODS.**  
The rods must be kept in good order, and the driver must be able to adjust it to the conditions of the road. The engine must be kept in good order, and the driver must be able to adjust it to the conditions of the road.

**REPAIRING THE BELT.**  
The belt must be kept in good order, and the driver must be able to adjust it to the conditions of the road. The engine must be kept in good order, and the driver must be able to adjust it to the conditions of the road.

**REPAIRING THE OIL.**  
The oil must be kept in good order, and the driver must be able to adjust it to the conditions of the road. The engine must be kept in good order, and the driver must be able to adjust it to the conditions of the road.

**REPAIRING THE WATER.**  
The water must be kept in good order, and the driver must be able to adjust it to the conditions of the road. The engine must be kept in good order, and the driver must be able to adjust it to the conditions of the road.

**REPAIRING THE AIR.**  
The air must be kept in good order, and the driver must be able to adjust it to the conditions of the road. The engine must be kept in good order, and the driver must be able to adjust it to the conditions of the road.

**REPAIRING THE FUEL.**  
The fuel must be kept in good order, and the driver must be able to adjust it to the conditions of the road. The engine must be kept in good order, and the driver must be able to adjust it to the conditions of the road.

**REPAIRING THE SPARK.**  
The spark must be kept in good order, and the driver must be able to adjust it to the conditions of the road. The engine must be kept in good order, and the driver must be able to adjust it to the conditions of the road.

**REPAIRING THE TIMING.**  
The timing must be kept in good order, and the driver must be able to adjust it to the conditions of the road. The engine must be kept in good order, and the driver must be able to adjust it to the conditions of the road.

**REPAIRING THE VALVES.**  
The valves must be kept in good order, and the driver must be able to adjust it to the conditions of the road. The engine must be kept in good order, and the driver must be able to adjust it to the conditions of the road.

**REPAIRING THE PISTON.**  
The piston must be kept in good order, and the driver must be able to adjust it to the conditions of the road. The engine must be kept in good order, and the driver must be able to adjust it to the conditions of the road.

**Employers Use This Car Because  
It is Dependable**

Personnel employ, whose lives depend upon the reliability of the transportation cars since exclusively. The most modern motor-car engine and gear have been made with little attention, it requires special skill and care to run them. It is not enough to know the theory of the engine, but the owner must be able to adjust it to the conditions of the road.

Touring Car "C" ..... £210  
Special Touring "D" ..... £230  
Aluminium Box Body ..... £250

Delivered Nairobi.  
The Omond Rennie Garage, Nakuru.  
Walt & Co., Ltd., Nairobi and Arusha.  
KARARI BUS SERVICE, NAIROBI AND SUKUMA.  
S. FISHER & SIMMONS (E.A.), Ltd.,  
Victoria Street, Nairobi.

**DODGE BROTHERS  
MOTOR CARS**

**F. A. HEAD,**  
PLANOUILLE, FUNER AND REPAIRER.  
Five years with Messrs. Chappell & Co., London,  
Seven years' experience in Kenya Colony.  
Send all orders to P.O. Box 675



**Hi!**  
if ever you meet a lion  
around a corner ...  
Keep  
Cool  
drink Oblessons'  
**LION LAGER**  
Coolest thing in all Africa

**SWAHILI BOOKS**  
EVERYDAY SWAHILI PHRASES and VOCABULARY  
12th Edition, by E. A. S. Ltd.,  
Price, Shgs. 2/-, Posted 2/15.  
ENGLISH-SWAHILI VOCABULARY, by A. C. Madan.  
Price, Shgs. 2/-, Posted 2/25.  
SWAHILI EXERCISES, by Edward Steere LL.D.,  
Price, Shgs. 3/-, Posted 3/20.  
A HANDBOOK OF THE SWAHILI LANGUAGE  
by Bishop Steere, LL.D. Revised by A. C. Madan.  
Price, Shgs. 4/60, Posted 5/10.  
SWAHILI TALES WITH ENGLISH TRANSLATION  
by Bishop Steere, LL.D. Revised by Alice Werner.  
Price, Shgs. 4/60, Posted 5/10.  
SWAHILI GRAMMAR and VOCABULARY  
by Mrs. F. Burt.  
Price, Shgs. 3/60, Posted 5/10.  
ENGLISH-SWAHILI DICTIONARY  
SWAHILI-ENGLISH DICTIONARY  
by C. Madan.  
Price, Shgs. 12/- EACH, Posted Shgs. 12/60.  
Standard Stationery Store  
NAIROBI.

**USED CARS**

**FOR SALE**

In Order to Dispose of Several Used Car's we are Offering the Undermentioned at the Figures Stated


- Hupp, 8 cyl Touring £275
- Hupp, 4 cyl " £220
- Chrysler, 70 " £200
- Hupp, 6 Box-Body £185
- Oakland Touring £150
- Studebaker, Box Body £150
- Hupp, Touring £90
- Rugby Box-Body £90
- Chev Truck £70
- Hupp, Touring £70

**ALL IN PERFECT ORDER.**  
**Minute Inspection Invited**  
**The Motor Mart and Exchange Ltd.**  
NAIROBI. NAKURU.

**ALM TREE  
KEROSENE**

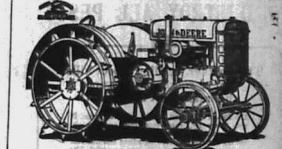
FOR LIGHT.  
FOR CLEAR, BRIGHT AND SMOKE-LESS  
FOR CLEAN.  
FOR QUICK, EASY STARTING AND ALL-SORTED RELIABILITY; USE IN TRACTORS, PUMPS AND ENGINES.

SOLE AGENTS:  
J. H. COX & CO.,  
KILIMBOO & CO.,  
KENTA FARMERS' ASSOCIATION,  
Z. Z. KIBUKO,  
Z. P. FARLEY, Ltd.,  
POLSON & CO.,  
G. C. HOBSON & CO.  
ALBERT LAIT & BONES Ltd.,  
RIBBY ROBERTS & A. CO.,  
YVESHI DEVELI & CO.,  
GIBSON & CO., Ltd.,  
GIBSON & CO., Ltd., NAIROBI  
MAIN DISTRIBUTING AGENTS—  
ANGLO-VESTER OIL CO. (KE STA), Ltd.  
CHIMBERLIN & CO.



**Dobbies Ltd.**  
GRASSES MADE UP TO OPTICIAN'S PRESCRIPTIONS OVER ROAD UNIT LENSES 7/ STOCK.  
Sun Glasses and Goggles—Corks, Frames and Amber Lenses.

**POWER  
JOHN DEERE FARM TRACTOR**  
16-37 H.P.



DEPENDABLE. ECONOMICAL. DURABLE.  
**Price £315**  
We have large stocks of John Deere Tractors, Farm Trucks, Carts, Wagons, Ploughs, Harrows, Cultivators, Wheat Drills and Shovelers.  
TARPAULINS—ALL SIZES IN STOCK.  
**U. V. SEAR (S.E.A. Wagon Works) Ltd.**  
Victoria Street,  
Phone 183. NAIROBI. P.O. Box 678.

**BARGAINS!!!**  
Kahili Shirts at from 2s. 6/90 per dozen.  
Kahili Shirts at from 2s. 7/6 per dozen.  
Other goods at enormous discount on application. Including FANCY TRIMMINGS, etc.  
**M. ROSENBLUM & Co. Ltd.**  
HANDLING STREET,  
Telegrams: "Rosenblum"  
Tel. No. 16 NAIROBI. P.O. Box 881

**MORRIS SERVICE.**  
MORRIS CARS & COMMERCIAL VEHICLES  
The new 1927 cars are second to none in value, comfort and design.  
The new 20 cvl and 30 cvl Trucks are exactly what you want: strong, powerful, efficient and sound British workmanship. Economical to run.  
Catalogues and particulars from—  
SOLE AGENTS—  
**Mitchell Cotts & Co.**  
P.O. Box No. 664. NAIROBI. Theatre Royal Arcade.









# ESSJAY LIMITED

(S. Jacobs—Managing Director)  
No. 6 Theatre Royal Arcade, NAIROBI  
Box 694—Phone 877.

## Financial and Property Agents Business Consultants

Managers specialised in:  
Ten Properties acquired,  
Partnerships arranged,  
Investments advised on  
**ANY REALISABLE ASSET NEGOTIATED  
FOR CASH.**

WHERE TO STAY

## SAVOY HOTEL

Calcuttina Road,

SEE HILL.

Phone No. 430.  
P.O. Box 50. Tel.: "Savoys"



## Reliance Transport Co.

**A Sound Commercial Proposition**  
You cannot afford to take risks and delays. We will transport your goods over good or rough roads to all parts of the Colony, and adjacent territories, under the strict control of our own firm.  
We guarantee PROMPT and EFFICIENT Service.  
Partners: J. Ker, J. K. Ker, A. S. Ker.  
Lic. Nos. Agents T. P. Hurara & Co. Dardwood Ho. London, E. C. 3.  
Tel. No. 331. Tel. Address: Reliance, P.O. Box 482  
SABLER STREET, NAIROBI.

## Kitale and Trans Nzioia FARMS & PROPERTIES

**Kirkwood & Co., Land Agents,  
Kitale.**  
AN EXCELLENT FARM FOR SALE. 1400 acres, 200 acres under maize, 75 acres coffee in bearing, ample farm buildings, brick house, situate close to kitale in a picturesque and healthy area. At £7,000, this is a most desirable farm in the fertile Trans Nzioia.

## BARCLAYS BANK (DOMINION COLONIAL AND OVERSEAS)

**INCORPORATED IN THE UNITED KINGDOM BY ROYAL CHARTER 1826.**  
with which is amalgamated  
**THE NATIONAL BANK OF SOUTH AFRICA LIMITED.**  
AND  
**THE ANGLO-EGYPTIAN BANK LIMITED.**  
Capital authorized ... £1,000,000  
Capital subscribed ... £ 4,375,000  
Capital paid up ... £ 4,375,000  
Reserve Fund ... £ 1,100,000  
Undivided Capital ... £ 3,000,000

**HEAD OFFICE:** 21, Lombard Street, LONDON, E.C. 4.  
**LONDON OFFICES:** 29, Gracechurch Street, E.C. 3.  
27, King William Street, E.C. 4.  
Africa House, London, W.C. 2.  
111, St. Martin's Lane, Trafalgar Square, W.C. 2.  
And Offices at **Lima, Port Moresby, Managua, Hamburg, New York.**

The Bank is represented in—  
British East Africa, Union of South Africa,  
Rhodesia, North West Africa, British West  
Africa, Egypt and the Sultan West India,  
Morocco, etc.  
**OVER FOUR HUNDRED BRANCHES**  
**AGENTS IN ALL PRINCIPAL CITIES OF THE WORLD.**  
All classes of Banking Business undertaken.  
The Bank also acts as Trustee and Executor.

# NOTES ON APPLE PLANTING.

ing until some ten years of age previous to the time when the trees are expected to bear. It is very important, therefore, that the selection of the trees should be made with care. The trees should be planted in a position where they will be able to receive the full benefit of the sun and the wind.

Pruning must be done to stimulate growth for producing new wood and regularity in the size of the fruit and also to maintain the trees in a healthy condition. The trees should be pruned in the autumn, and the pruning should be done in a way that will leave the trees in a position to receive the full benefit of the sun and the wind.

While no hard and fast rule can be laid down for the pruning of the apple tree, it is generally found that the trees should be pruned in the autumn, and the pruning should be done in a way that will leave the trees in a position to receive the full benefit of the sun and the wind.

## Successful Home Baking

**M**ANY A YOUNG BRIDE hesitates to make her breads and cakes which make her mother's home famous. These dainty foods are so delicious, so light, so fragrant, that they seem so difficult for any unexperienced cook.

And yet the one secret which the more experienced cook has may well be passed on to the young bride.

This lightness and goodness of really fine bread is the result of using Royal Baking Powder. Royal makes your biscuits, scones and other hot breads or cakes taste so much better.

Royal Baking Powder  
100 East 5th Street  
New York, U.S.A.

## SISAL Cormorant Decorticator.

RESULT OF COMPARATIVE TEST.

The following is the result of an INDEPENDENT TEST conducted by a well known Sisal Planter in Kenya showing a side of Fiber from the CORMORANT PORTABLE DECORICATOR, compared with yields of a standard Machine in general use in Kenya.  
The tests were carried out under previously stated conditions, the same weight and quality of leaves being used.

	Cormorant.	Other machine.
Quantity of leaves	1500	1500
Weight of leaves	850 lbs.	850 lbs.
Weight of fibre before breaking	2214	2114
Weight of fibre after breaking	2106	2114
Percentage extracted	312%	240%

In addition to the Fibre and Tow extracted by the Cormorant machine, 1 lb. of Tow which represents the total waste, was recovered from the mess. After washing the Fibre, with the Machine in correct adjustment, the Fibre from the Machine can be classed as No. 1 Kenya quality.

The above Test proves conclusively that the yield from the Cormorant machine is greater than that from 82.1% in other words, the Cormorant will give 108 tons as against 100 tons.

**J. G. Aronson Ltd.**  
Court Chambers, P.O. Box 681, NAIROBI.

# APPLES TO BE PLANTED

It is very important, therefore, that the selection of the trees should be made with care. The trees should be planted in a position where they will be able to receive the full benefit of the sun and the wind.

Pruning must be done to stimulate growth for producing new wood and regularity in the size of the fruit and also to maintain the trees in a healthy condition. The trees should be pruned in the autumn, and the pruning should be done in a way that will leave the trees in a position to receive the full benefit of the sun and the wind.

## THE ANNUAL VISIT OF THE ROYAL NAVY TO NAIROBI.

Under the distinguished patronage of H. E. The Acting Governor Sir Edward D'Almeida, C.M.G., K.C.B.E.

**THEATRE ROYAL  
Thursday, June 30th.  
Grand Boxing Tournament  
NAVY v. KENYA**

**10 CONTESTS—10**  
COMMENCING AT 7 P.M. SHARP.  
Ring Seats 10/-, Front Seats 15/-, Back Seats 10/-.  
Dress Circle 12/50 and 7/50. Boxes 50/-, 70/- and 40/-.  
Plans now open at Theatre Royal.

**De Luxe "Boot Cops,"**  
Box 627 Trust Chambers, Govt. Road, Nairobi.  
Recently arrived—Stinks, Liver, Crocodile Skins, and Coloured Kids.  
SATISFACTION GUARANTEED.

## KOMO K FLEES AND MOSQUITOES

to give you a good night's rest free from  
**MOSQUITOES**

to ensure a good night's rest free from  
**MOSQUITOES**

**GET THE KOMO HABIT**  
NON-POISONOUS. WILL NOT STAIN.  
**KOMO**  
The American Insecticide.  
PRICES Eight 50, 8 50, and 31/- each.  
Wholesale PRICES 4/50 each.

**Standard Stationery  
Stores,  
NAIROBI.**

**Stationery  
AT THE  
STANDARD STATIONERY STORES**

# POUDRE

## DUBARRY

The Choice of Smart Women

## Nairi Vulcanising Company.

The above Company beg to notify the public that all work is done by a staff of European Experts. The work is therefore of the highest quality. The management can guarantee that there will be no delay in completion and delivery of repairs.

P.O. Box 217. NAIROBI. Victoria Street.

## F. M. BHAIJEE,

### HARDWARE MERCHANTS.

AGENTS FOR:  
WILLIAM GOSSAGE & SONS, Ltd.  
SOAP MANUFACTURERS,  
NEW CONSIGNMENT OF NAVY BLUE.  
KENYA FARMERS' ASSOCIATION LTD.  
Fresh Stocks of MAIZE and MAIZE MEAL.  
P.O. Box 318. Phone 888. Tel. HARDWARE.  
Indian Bazaar. NAIROBI.

## CLAIRMONT

OUR NEXT DANCE ON  
**SATURDAY, July 2nd.**  
Musio by Paul Robbns  
**New Bohemian Dance Band.**  
TICKETS. 12/50 Double, 7/50 Single.  
(Including Refreshments).

## TEOFANI

### HIGH CLASS CIGARETTES

SWARTKA WEST END, GOLDEN MOON  
TOBACCO NO. 1, GRAND CORNER.  
Trade only supplied by VERTY BIRBY.  
Sole Distributing Agent, City Box 688, Nairobi.

## The Nairobi Building & Development Co., Ltd.

Telephone 294. Office: DOCKY CHAMBERS.  
To Residents in Nairobi and District.  
Buildings.  
We have your firm doing Building and Construction work.  
We are qualified and have done your work. QUICKLY  
EFFICIENTLY and CHEAPLY. We are prepared to work in  
the district. Please address your requirements to  
P.O. Box 644, NAIROBI.

**Service & Satisfaction**  
 BUT YOUR  
**Wines & Spirits**  
 PROVISIONS & GROCERIES

Wholesale or Retail:  
 From  
**Beliram Parimal & Co.**  
 (Established 1909.)  
 Corner Swamp Road and Government Road,  
 Phone 96. NAIROBI. P. O. Box 29.  
 Also P. O. Box 47, MOMBASA.

**Simply add water and boil 15 minutes**

No worry—no fuss—no mess—perfect soup as a popular picnic of the most selected meats and vegetables.

**Symington's Soups**

Wholesale and Retail, 100, Market Street, Nairobi.  
 Sole Importers, Nairobi & Co. Ltd., Nairobi & Mombasa.

**THE PREMIER BEVERAGES**  
 VOONIA GARDEN  
 CEYLON TEA  
 AND  
 BROWNS "FOUR CROWN"  
 SCOTCH WHISKY

Your enquiries are solicited.

**Blackiaws & Brown**  
 Sole Importers  
 (Marketing Brothers).  
 41, NAIROBI. Box No. 470.

**THE CHINESE** are still very much in the grip of the epidemic influenza which has been spreading in the Chinese Empire since the outbreak at Hongkong, the Derbyshire Ladies' Association will not be asked to send a representative to the annual meeting in the city of London on the 20th inst. as the influenza epidemic is still in the city of London and it will be impossible to assemble the meeting in the city of London.

**LIBERAL ASSOCIATION**  
 (From the Liberal Manifesto)  
 There are organisations which are vigorously opposing the Liberal cause in China. These are the only ones in China. These are the only ones in China.

**THE SOCIETY AND COMMUNITY**  
 very we should clear out of China. Who would suffer most?

**THE WORKERS**  
 As the result of the Chinese strike which is being held by the British Legislature has had some effect on the British Empire. The Chinese strike has had some effect on the British Empire.

**THE CHINESE** situation in the light of the epidemic influenza which has been spreading in the Chinese Empire since the outbreak at Hongkong, the Derbyshire Ladies' Association will not be asked to send a representative to the annual meeting in the city of London on the 20th inst. as the influenza epidemic is still in the city of London and it will be impossible to assemble the meeting in the city of London.

**THE SOCIETY AND COMMUNITY**  
 very we should clear out of China. Who would suffer most?

**THE WORKERS**  
 As the result of the Chinese strike which is being held by the British Legislature has had some effect on the British Empire. The Chinese strike has had some effect on the British Empire.

**TRICOLINE**  
 A PAINTED RANGE OF DRAPERY TO SELECT FROM  
 COME & INSPECT: COMPARE AT  
**AHAMED BROS**  
 DRAPERS—OUTFITTERS.  
 P. O. Box 264. Phone 261. NAIROBI.

**REMOVAL NOTICE**  
 Mr. P. Alexander, Ladies & Gents Hairdresser, has removed to  
**Mutos Building,**  
 (Facing New Stanley Hotel),  
 where he has secured very comfortable and more spacious premises.  
**P. Alexander**  
 Mutos Building. Harding Street.

**TO LET**  
 1st August  
**11 WELL VENTILATED ROOMS**  
 SUITABLE FOR OFFICES AND SHOW ROOMS  
 ON FIRST FLOOR IN  
**MADATALLY BUILDING, Govt. Road,**  
**FOR SALE**  
 1,000 ENCHANTING TOOLS with handles at 7/50 a dot.  
 Apply:  
**WADJALLY SULEMAN VERJEE & Sons,**  
 Indian Bazaar.  
 P. O. Box 12. Phone 54. Tel. 177.

**Ask Your Stores**  
 FOR  
**LYONS' TEA**  
 "The Tea of Teasop Fame."

Sole Distributing Agent for the East Africa Colony and Uganda.  
**PERRY HIRST, City House, P. O. Box 698, NAIROBI.**

**RALEIGH**  
 CAPITAL GARAGE  
 Nairobi.



**FARMS FOR SALE.**

**FREEDHOLD FARM:** 1800 acres 12 miles from Gilgil Station, specially suited for Mixed Farming. Wheat, Maize and Dairy Stock do splendidly. Valued by two professional assessors. 4000 springs. Exceptionally cheap for cash.

**KIPKABEN:** 340 acres—20 miles from Nairobi. Excellent land suitable for clearing, small stock and sheep. Cheap for cash.

**NAURUKI:** 4450 acres—12 miles from Nairobi. Townships—excellent for stock and poultry. Wheat—bearing at 80 lbs. per acre.

**HOUSE PROPERTY FOR SALE**

**MUTHAGA:** Stone House with the roof, 2 large rooms, E. & D. and modern bathroom. H. & C. Water. Stone Bays quarters & 2 acres of beautiful fruit garden. Cheap and liberal terms.

**SOLATERS ROAD:** Large Modern Stone House 3 rooms, 2 Guest rooms, E. & D. inside sanitation. H. & C. water, concrete. 2000 sq. ft. Approximate 1/2 acre of land, with fruit ground and new tennis court. For all particulars and prospect of above apply:  
 H. DOUGLAS BROWN,  
 Box 687, NAIROBI,  
 Office (Blue Ridge, Govt. Rd.)

Owing to considerations of space we are making a  
**Large Reduction**  
 ON  
**Gray-Ton Trucks**  
 Body & Cab. Magneto Ignition  
 Large Stocks of Spares.  
**£130 F. O. R. Nairobi**

**INSURE**  
 FOUR MOTOR CARS AND MOTOR CYCLES  
 with the  
**African Guarantee & Indemnity Co. Ltd.**  
 M. D. KAMPP,  
 CHIEF AGENT  
 COURT CHAMBERS, NAIROBI.

**K. McIVOR & Co.**  
 Sixth Avenue, Nairobi.

**NOTICE OF REMOVAL**


As and from 30th JUNE we will occupy more commodious premises, with show-room facilities, in  
**Theatre Royal Buildings, Nairobi**  
 where our numerous clients can be assured of prompt and efficient service at all times.  
**British East Africa Corporation Ltd.**  
 (Incorporated in England.)  
 P. O. Box 182. Tele. add. "Increase" Phone 208.

**Theo Schouten**  
 (Phone 345) Box 204  
 idea just to visit his most up-to-date hairdressing establishment in Government Road to have yourself had a complete hairdressing service provided for Ladies, Gentlemen, and Children, including Permanent Wave, Hair Treatment, Hair Tinting, Manicure, etc., by a staff of experts.  
 A large stock of Toilet Requisites.  
 Mr. Schouten is the holder of two Diplomas recently awarded to him in London for PERMANENT WAVING.

**Motor Cycles**  
 Harley Davidson 7/0 Electric Model 1,900/-  
 Harley Davidson 21 Magneto Ignition 1,650/-  
 Raleigh 3.99 All Chain Magneto Ignition 1,650/-  
 Raleigh 7. Shop Soiled. All Chain Magneto Ignition 1,650/-  
 Raleigh 1.74 All Chain Magneto Ignition 1,450/-  
 Zenith 170 c.c. J.A.P. Engine Lamplight Mechanical Oil Pump Right Hand Type, Fully equipped 1,100/-  
 Zenith 200 c.c. J.A.P. Engine equipped as above 1,250/-  
 Service 8 a.m. to 7 p.m. daily all repairs executed by Europeans only under supervision of Mr. Beaton.  
**CAPITAL GARAGE.**  
 Victoria St. Opp. Fire Station.

**SALE**  
 Commencing Tuesday June 16th  
**For 14 Days Only**  
 MARGARET WALLACE,  
 NAKURU.

**To MOTORISTS**  
 Try "The BELL INN"  
 Nalvasha.  
 ON MAIN ROAD.  
 SATISFACTION GUARANTEED.  
 Under personal supervision of management  
**"KIA ORA STORES"**

FOR  
**RONEO**  
  
**DUPLICATORS**  
 AND  
**FILING SYSTEMS**  
 CONSULT  
**Standard Stationery Stores**

**CORRESPONDENCE**

**THE BILTONS ARE NOT ACCEPT RESPONSIBLE FOR THE VIEWS EXPRESSED BY THE CORRESPONDENTS IN THIS COLUMN, AND IN NO CASE WILL THE PUBLISHERS BE HELD RESPONSIBLE FOR ANY DAMAGE TO PROPERTY OR TO PERSONS, OR FOR THE CONSEQUENCES OF ANY ACTION TAKEN BY ANY PERSON AS A RESULT OF ANYTHING PUBLISHED IN THIS COLUMN.**

**CHILDREN REARED BY THE EDITOR.**—*"A. J. Standen."*  
 To the Editor.—I have just received your letter of the 12th inst. regarding the children of the late Mr. Standen, and I am glad to hear that you have been successful in your efforts to secure the custody of the children. I am sure that you will be able to provide them with a good education and a comfortable home. I am sure that you will be able to provide them with a good education and a comfortable home. I am sure that you will be able to provide them with a good education and a comfortable home.

**THE NAIROBI HOSPITALS BILL.**  
 To the Editor.—*"A. J. Standen."*  
 Sir.—With reference to the views of the Nairobi Hospital Bill, published in the "Daily Nation" of the 12th inst., I am glad to hear that you have been successful in your efforts to secure the custody of the children. I am sure that you will be able to provide them with a good education and a comfortable home. I am sure that you will be able to provide them with a good education and a comfortable home.

**THE NAIROBI HOSPITALS BILL.**  
 To the Editor.—*"A. J. Standen."*  
 Sir.—With reference to the views of the Nairobi Hospital Bill, published in the "Daily Nation" of the 12th inst., I am glad to hear that you have been successful in your efforts to secure the custody of the children. I am sure that you will be able to provide them with a good education and a comfortable home. I am sure that you will be able to provide them with a good education and a comfortable home.

**AMERICAN OFFER.**  
 To the Editor.—*"A. J. Standen."*  
 Sir.—I have just received your letter of the 12th inst. regarding the children of the late Mr. Standen, and I am glad to hear that you have been successful in your efforts to secure the custody of the children. I am sure that you will be able to provide them with a good education and a comfortable home. I am sure that you will be able to provide them with a good education and a comfortable home.

**BEATING OF NATIVES.**  
 To the Editor.—*"A. J. Standen."*  
 Sir.—I have just received your letter of the 12th inst. regarding the children of the late Mr. Standen, and I am glad to hear that you have been successful in your efforts to secure the custody of the children. I am sure that you will be able to provide them with a good education and a comfortable home. I am sure that you will be able to provide them with a good education and a comfortable home.

**COFFEE.**  
 To the Editor.—*"A. J. Standen."*  
 Sir.—I have just received your letter of the 12th inst. regarding the children of the late Mr. Standen, and I am glad to hear that you have been successful in your efforts to secure the custody of the children. I am sure that you will be able to provide them with a good education and a comfortable home. I am sure that you will be able to provide them with a good education and a comfortable home.

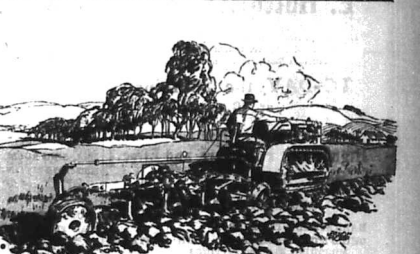
**COFFEE.**  
 To the Editor.—*"A. J. Standen."*  
 Sir.—I have just received your letter of the 12th inst. regarding the children of the late Mr. Standen, and I am glad to hear that you have been successful in your efforts to secure the custody of the children. I am sure that you will be able to provide them with a good education and a comfortable home. I am sure that you will be able to provide them with a good education and a comfortable home.



**E.A. Produce Prices.**  
 To the Editor.—*"A. J. Standen."*  
 Sir.—I have just received your letter of the 12th inst. regarding the children of the late Mr. Standen, and I am glad to hear that you have been successful in your efforts to secure the custody of the children. I am sure that you will be able to provide them with a good education and a comfortable home. I am sure that you will be able to provide them with a good education and a comfortable home.

**ERASMIC SOAP.**  
 To the Editor.—*"A. J. Standen."*  
 Sir.—I have just received your letter of the 12th inst. regarding the children of the late Mr. Standen, and I am glad to hear that you have been successful in your efforts to secure the custody of the children. I am sure that you will be able to provide them with a good education and a comfortable home. I am sure that you will be able to provide them with a good education and a comfortable home.

**B. H. Myers & Co. Ltd.**  
 Government Road, near National Bank of India.  
 Compare our prices, quality, workmanship, and SAVE WITH SAFETY.  
 DINING TABLES From Shgs. 75/-  
 SIDE BOARDS From Shgs. 60/-  
 DOUBLE BEDS From Shgs. 140/-  
 SINGLE BEDS From Shgs. 100/-  
 WARDROBES From Shgs. 200/-  
 DRESSING TABLES From Shgs. 125/-  
 WASHING STANDS From Shgs. 25/-  
 SET, SETTEE AND 2 CLUB EASY CHAIRS From Shgs. 400/-



**"Caterpillars"**  
 pay dividends to farmers  
 "Caterpillar" power means more land worked.  
 "Caterpillar" economy means less cost—money saved is money earned.  
 "Caterpillar" traction means ability to keep at work early and late in the season.  
 "Caterpillar" quality of design and materials means uninterrupted service.  
 "Caterpillar" means bigger profits and greater convenience.  
 SOLE AGENTS:  
**GAILEY & ROBERTS, Ltd.**  
 KENYA, UGANDA, TANGANYIKA.  
**CATERPILLAR**

**Just Arrived**  
 IN  
**In Splendid Condition**  
**PEEK FREN'S**  
 Afternoon Tea Biscuits  
 Rich Assorted and Cheesecakes  
 AT  
**ELLIOTS**  
 NAIROBI  
 Phone 90. P. O. Box 175.  
**MONEY TO LEND**  
 SHORT PERIOD LOANS GRANTED.  
 BILLS DISCOUNTED.  
 REFUSED COUPONS.  
 Call or Write to—  
**Kenya Loan & Discount Co., Ltd.**  
 1st Floor, Court Chambers, Nairobi. Box 546.  
 Established 1921.



**SCOTCH WHISKY**

There was one Scotch Whisky  
 called "Special Reserve" on the label,  
 and another Scotch Whisky called "The  
 Whisky on which the Sun never sets!"

*The Whisky on which  
 the Sun never sets!*

ESTABLISHED SINCE 1860

# Typewriters

Due to stocks arriving we are selling this month, until June 30th, all models of our

## Remingtons

AT GREATLY REDUCED PRICES.

Special Price  
 Model 12A 101/ 700/ 650/  
 " 12C 141/ 800/ 700/  
 " 12E 241/ 1050/ 850/  
 Portables 370/

Needless Machines a little extra.  
 ALL LATEST MODELS - GUARANTEED  
 AND MAINTAINED FOR TWELVE  
 MONTHS - BEST SERVICE.

**Remington Typewriter Agency**  
 Government Road. NAIROBI.

## WE SELL AT RIGHT PRICES

**Wines & Spirits of the Best Quality**  
 Harvey's Ports and Bristol Cream and Bristol Milk  
 Sherries, Grand Mariner, Curacao, Cointreau,  
 Kummel, Chartreuse, Champagnes, Maraschino,  
 Whiskies, Brandies, White and Red Wines,  
 Etc. Etc.

Also provisions from the best Manufacturers.

**M. R. D'Souza & Co.**  
 P.O. Box 195, York House, Govt. Road. Phone 75.

## London, May 19.

At this moment everybody is talking of the London election, in relation either to the coming of the new Government, or to the simple matter that already possibly hangs about it. The opinion of the public in the Irish Union has increased the ferment in the Parliamentary Lobby. The depositors left over from the London election are the last that for reasons of health Mr. Balfour has been unable to attend. General Llewellyn, as Commander of the Cavalry, has been appointed of Mr. Hankey. Many political opinions about the London election have been expressed, but for women of 27, and the impending elections have turned the whole mind of the people to the internal political situation.

It is the fact that the candidates for the House have only just arrived to devote the public interest.

**THE EYE OF CHANGE**

For some years there have been no readings of Parliament here, however followed, as may be gathered from the extracts which newspapers are giving to reporters from Westminster. This habit is likely to continue until the end of the session, when the Government is to close the Session in the month of July, and to begin the new one in November. They are obliged, of course, to abstain from definite proposals for the reform of the House of Lords during the lifetime of the present Parliament, and it has been generally assumed that this could be done in the summer of next year. But it is no secret that Ministers of influence feel that the occasion may be favourable for a proposal of the kind before them, and many politicians are advising each other to be ready for any emergency.

Whether or no election, politics in the Mother Country are probably the best thing that we can get out of the eye of big changes.

**JOHN'S NEW HOME**

I hear that Annet's plan is extremely pleased with the new plan of building a house for himself in London. When he has returned from his tour in the States, he will have a house in London, and he will have a house in London, and he will have a house in London.

**THE BABY PRINCESS.**

When the Duke and Duchess of York return to the country from their American tour at the end of June, they will see a great display in their little daughter, Princess Elizabeth, for she has grown considerably in the last few months. Her mother, the Queen, would like to "feel her feet" and to see how much she has grown. It is said that the Queen will see her in the morning, and that she will be very little and that everyone in the King's household will be very busy when the tiny crown is put on her head. Buckingham Palace and take her out countries in the new motor car at 140. Probably.

**AT CHESTERFIELD HOUSE.**

Princess Mary has a pleasant for the most intimate circle of entertaining—the small family parties—she has been very successful in her efforts to bring her friends together. The dinner party which she gave last night at the Chesterfield House was a very successful one. The guests were the Duke and Duchess of Devonshire, the Duke and Duchess of Devonshire, the Duke and Duchess of Devonshire, the Duke and Duchess of Devonshire.

**BRIGHTON PARK.**

London Park are to have a real carnival this year. For the first time the London County Council are to have a carnival, and it is expected that it will be a popular success. The carnival will be held in the park, and it will be a very successful one. The carnival will be held in the park, and it will be a very successful one.

**A River Scene at Esher.**

ventured forth despite a fairly strong breeze, but the wind will see the boats start on the Thames across country. The regatta, which commences with Royal Barge at the end of June.

## THE EAST AFRICAN COLONY

**TRADE COMMISSIONER FOR THE UNION OF SOUTH AFRICA.**  
 Memorial Hall, NAIROBI.  
 P.O. Box 624.

## BAULAGE and TRANSPORT


STANDARD BUILDINGS,  
 ANY WEIGHT ANY DISTANCE  
 HAULAGE & GENERAL TRANSPORT Co.,  
 6th Avenue, Phone 55. P.O. Box 536.

**MARVEL WRITING PAD**  
**GUINEA HAND BAG**  
**JUNOTS BATH SOAP**  
**GLAREGARD**  
**ORIENT WRITING PAD**

# Make Your Wife Independent

## Buy Her an Austin Seven

The most economical car in the world to run—45 to 50 miles Detachable wheels—four wheel brakes—Magneto Ignition—Electric Self-starter Speedometer and full Kit of Tools.



**TOURING**

*The Austin Seven*

**Colonial Model Fully equipped**

**£880**

**£218**

**CARR, LAWSON & Co., Ltd.**  
 Nairobi

**£240**

**Eldo ways**  
 Nairobi

THE SPOR TAGE

THE NAKURU RACES.

Promising Opening to the 1927 Season.

ASSIAN WAS THE BREEDERS' PLATE.

Excellent Conditions and Course Perfect.

(Open On Own Commencement)

Yields and Making To 151 Gms. Won and Made by Darji Purus.

Fourth Race.

MAIZE GROVERS' PLATE.

Presented by the Maize Grovers of the race, a handicap open to all horses, by subscription of 22 at 500 of one (22d Mar. 1927) and a further 8 of left in 1927 of 500 (24th Mar. 1927). Winner to receive £100 Second 25. Third 10.

Mrs. H. H. Stanning's CONE, 11; and H. (Mrs. BURMAN), 2.

3 Mrs. G. CAMPBELL, 3.

John McMillan's GUNBYER, 4.

Also Mrs. W. G. (Mrs. GARDNER), 2.

Also Mrs. W. G. (Mrs. GARDNER), 2.

Also Mrs. W. G. (Mrs. GARDNER), 2.

Also Mrs. W. G. (Mrs. GARDNER), 2.

Also Mrs. W. G. (Mrs. GARDNER), 2.

Also Mrs. W. G. (Mrs. GARDNER), 2.

Also Mrs. W. G. (Mrs. GARDNER), 2.

Also Mrs. W. G. (Mrs. GARDNER), 2.

Also Mrs. W. G. (Mrs. GARDNER), 2.

Also Mrs. W. G. (Mrs. GARDNER), 2.

Also Mrs. W. G. (Mrs. GARDNER), 2.

Also Mrs. W. G. (Mrs. GARDNER), 2.

Also Mrs. W. G. (Mrs. GARDNER), 2.

Also Mrs. W. G. (Mrs. GARDNER), 2.

Also Mrs. W. G. (Mrs. GARDNER), 2.

Also Mrs. W. G. (Mrs. GARDNER), 2.

Also Mrs. W. G. (Mrs. GARDNER), 2.

Also Mrs. W. G. (Mrs. GARDNER), 2.

Also Mrs. W. G. (Mrs. GARDNER), 2.

Also Mrs. W. G. (Mrs. GARDNER), 2.

Also Mrs. W. G. (Mrs. GARDNER), 2.

Also Mrs. W. G. (Mrs. GARDNER), 2.

Also Mrs. W. G. (Mrs. GARDNER), 2.

Also Mrs. W. G. (Mrs. GARDNER), 2.

Also Mrs. W. G. (Mrs. GARDNER), 2.

Also Mrs. W. G. (Mrs. GARDNER), 2.

Also Mrs. W. G. (Mrs. GARDNER), 2.

Also Mrs. W. G. (Mrs. GARDNER), 2.

Also Mrs. W. G. (Mrs. GARDNER), 2.

Also Mrs. W. G. (Mrs. GARDNER), 2.

Also Mrs. W. G. (Mrs. GARDNER), 2.

Also Mrs. W. G. (Mrs. GARDNER), 2.

Also Mrs. W. G. (Mrs. GARDNER), 2.

Also Mrs. W. G. (Mrs. GARDNER), 2.

Also Mrs. W. G. (Mrs. GARDNER), 2.

Also Mrs. W. G. (Mrs. GARDNER), 2.

Also Mrs. W. G. (Mrs. GARDNER), 2.

Also Mrs. W. G. (Mrs. GARDNER), 2.

Also Mrs. W. G. (Mrs. GARDNER), 2.

Also Mrs. W. G. (Mrs. GARDNER), 2.

Also Mrs. W. G. (Mrs. GARDNER), 2.

Also Mrs. W. G. (Mrs. GARDNER), 2.

Also Mrs. W. G. (Mrs. GARDNER), 2.

Also Mrs. W. G. (Mrs. GARDNER), 2.

Also Mrs. W. G. (Mrs. GARDNER), 2.

Also Mrs. W. G. (Mrs. GARDNER), 2.

Also Mrs. W. G. (Mrs. GARDNER), 2.

Also Mrs. W. G. (Mrs. GARDNER), 2.

Also Mrs. W. G. (Mrs. GARDNER), 2.

Also Mrs. W. G. (Mrs. GARDNER), 2.

Also Mrs. W. G. (Mrs. GARDNER), 2.

Also Mrs. W. G. (Mrs. GARDNER), 2.

Also Mrs. W. G. (Mrs. GARDNER), 2.

Also Mrs. W. G. (Mrs. GARDNER), 2.

Also Mrs. W. G. (Mrs. GARDNER), 2.

Also Mrs. W. G. (Mrs. GARDNER), 2.

Also Mrs. W. G. (Mrs. GARDNER), 2.

SHAW & HUNTER

Books Proprietor R. M. Shaw. To be read by the Editor. You can now buy. READER'S 2/6 m. Ammunition from us. Write for illustrated catalogue. Shaw & Hunter. O. Box 70. Nairobi. Telegrams "Giraffe".

A. HOGG, Mutos B'dgs, NAIROBI.

16 Heraldic & Heraldic, 17 Road, Park Road, Nairobi. 181/191 Derwent, B'dgs at Ayles, 191 M'Kenzie, B'dgs at 141/143 Convent, Convent, 191 Convent, Nairobi. CASH OR DEPOSIT A/C ONLY.

The Norton Stroll on Top The Senior T.T. Race



The well-known Irish rider Alex Bennett, riding a Norton was the 1927 Senior T.T. Race in record time. Full particulars and prices from Sole Agents: J. W. MILLIGAN & Co. P.O. Box 148. NAIROBI. Cash.

TWEED WALKER'S Wares.

- NIGHT ENAMEL WARE. "OUBIANT." "Sportman."
- HIRE SINGLE OR DOUBLE "AL EVENTS."
- COLE MATRASSES. "L'AL EVENTS."
- BIG TRUCKS. "AERON."
- TENNIS MEQUETS. "INDIAP."
- CEDEAR QUETS. CEDAR DOOR.
- CEDEAR DUAL COFFEE SET.
- On behalf of the parties concerned—
- "POLANIS" IN FLEXI JOY GENERAL (damaged in transit).
- ENAMEL BUCKETS and ENAMEL SAUCEPANS (damaged in transit).
- SADDLE and BRIDLE (present).
- 200 BALES COIR MATTING, 4ft. wide.
- 150 FEET of "RUBBER TIES."
- OVERLAND RADIATOR (damaged in transit).
- Etc. Etc. Etc.

E. Hutchison & Co

Duly instructed we shall sell by Public Auction Without Reserve, unless stated, at our Auction Mart, Government Road,

TO-DAY, the 28th inst. at 10 a.m.

A selection of High Class Furniture and Effete Motor Bodies, Motor Hood and Spare Part Bins.

- HALL STAND WITH MIRROR.
- CHILD'S COLLAPSIBLE OIL WITH MATTY MONO CYCLE AND FEETING.
- CHILD'S CO-GAR. PERAMBULATOR. Reserve CHILD'S HIGH CHAIR.
- TRUCK SINGLE BED WITH 5 FLY SPRING—ONE TUE EASY IN AMERICAN, SPRING BACK and ARMED.
- TRUCK DRESSING CHEST WITH MIRROR.
- SET OF SIX DINING CHAIRS IN TURNED LEGS.
- ONE 6' SETTEE IN AMERIK BUREAU.
- TRUCK BACHELOR WARDROBE LENGTH MIRROR.
- CHESSE OF DRAWERS. SHAR BIDEKAWD WITH 20 per dozen DRAWERS.
- LOT GOOD NOVELS. 5 MEMBERS WILL BE REVOLVING BOOKCASE—LUBS. LANGS REVERSIBLE 3 RECORDS.
- 300 Approx. MOTOR C.O. Ltd.
- 5 MOTOR CAR PARTS; HOUSE and many other NAIROBI.

THE NAVAL CLUB

ALTERATION TO BOXING PROGRAMME.

IN regard to the alterations, published programme of the Naval Club boxing tournament to be held at the Queen's Hotel, Nairobi, an alteration has been made. It will now start at 8.30. The programme will be as follows:

SPORTS DIARY.

June 29: Royal Victoria arrives in Nairobi. Daily on East Africa ground. Football: Daily at 7.15. Tennis: Daily at 8.30. Rugby: Daily at 1.30. Football: Daily at 7.15. Tennis: Daily at 8.30. Rugby: Daily at 1.30.

You may smoked or cigarettes for Sir, but the reason why shouldn't start and smoke ones—exactly Sir, "Kensitas."

Kensitas

Obtainable at every store. 2/50 on each of 50 cigs per Packet of 100. L. F. STEIN & CO. WHOLESALE CHEMISTS.

SMOKER'S SA.

SMOKER'S SA. (Continued from page 1)

SMOKER'S SA. (Continued from page 1)

CALENDAR FOR FOOTBALL CLUB.

CALENDAR FOR FOOTBALL CLUB. (Continued from page 1)

SECOND DAY.

SECOND DAY. (Continued from page 1)

THIRD RACE.

THIRD RACE. (Continued from page 1)

FOURTH RACE.

FOURTH RACE. (Continued from page 1)

OTHER SPORTING NEWS WE'RE FOUND OF PAGE

OTHER SPORTING NEWS WE'RE FOUND OF PAGE

The best sporting powder in the world. SMOKELESS DIAMOND. "Marvellously Quick". Use this powder and get your game with hard-hitting long shots. REMARKABLY LITTLE RECOIL. NO BLOWBACK. CONSISTENT REGULARITY.

A COMPARISON. The Latest "His Masters Voice" PORTABLE GRAMOPHONE. An advertisement by a prominent firm in South Africa appears in the E.A. Standard offering to supply Post Free, Mombasa or Nairobi (Duty extra) the latest portable model with six records for £12-6-0. Our prices: Delivered Nairobi, duty PAID, is GRAMOPHONE 22/6. 6 RECORDS at 7/6. Shgs. 21/- 50. £10-17-6.

Entries Close on July 1st 1927. one, Cattle, Sheep, Dogs, Pige, Home Food Products, Handicrafts, Juvenile and all Farm Produce Classes. TER EASTERN AFRICA SHOW, NAIROBI, AUGUST 1, 2, 3. Send Your Entries Now. Nairobi Show Ground. Box 671. Phone 2228.