

KENYA NATIONAL ARCHIVES

PHOTOGRAPHIC SERVICE

Description of Document THE EAST AFRICAN STANDARD (MOMBASA TIMES & UGANDA ARGUS)

(Daily Edition)

Covering Dates 1st to 30th July, 1927.

Reference No. From E.A.S. Library.

The following reproduction(s) of document(s), the property of THE KENYA GOVERNMENT have been made by the Photographic Service of the Kenya National Archives solely for the purposes of research, and must not be quoted or otherwise reproduced by any means, either in whole or in part, without the express permission of the Chief Archivist, Office of the Vice-President, P.O. Box 30520, Nairobi, Kenya, to whom all communications respecting this film should be addressed.

Date of Production 21st February 1968

Does the Navy Come to Kenya? Why To Drink KENYA BEER

DAILY EDITION

The Star

MOMBASA TIMES & UGANDA ARGHS. THE LATEST ESTABLISHED NEWSPAPER PUBLISHED IN KENYA.

Contains 12 Pages. Price 30 CENTS. The New Style

No. 4207. PUBLISHED AT THE STAR OFFICE

NAIROBI, FRIDAY, JULY 3, 1929.

Price 30 CENTS

SIR SYDNEY HENN TELLS JOINT BOARD ABOUT EAST AFRICA.

Impressions of His Tour.

ELECTED MAJORITIES AND GERMAN SETTLEMENT NOT MATTERS FOR THE BOARD.

The Federation Issue.

Sir Sydney Henn, Chairman of the Joint East African Board, has given his impressions of East Africa as a result of his recent tour. He declared that he was gratified to find in East Africa how greatly the work of the Board is appreciated by the people whose interests it represents. "It was almost pathetic," he said, "to witness the blind faith in the Board's ability to solve any problem, however knotty."

While favouring Federation, he stated that he found East Africa divided up as the divisibility and practical results of an Unofficial Majority and in any case says that this question of an Elected Majority is purely political and it is not part of the Board's functions to take sides. He also said that the Board had nothing to do with the question of the influx of Germans into Tanganyika or with that of better publicity in Britain of the fact that Government land was available in East Africa for settlement.

Uganda Representation.

(From Our Own Correspondent)

London, July 25. At the official meeting of the Joint East African Board, which was held at Whitehall House, 612 Strand Street, under the Chairmanship of Sir Sydney Henn, F.R.S., M.P., who has just returned to England after his visit to East Africa, the Secretary stated his views on East African problems, a number of the changes he had made since his last visit some four years ago, and also of the progress, as they appear to him, of further development.

With regard to the Uganda problem, he stated that although the Uganda problem had been raised in the meeting, it was not possible to discuss it at length.

EAST AFRICA.

At the meeting of the Board, the Secretary stated that the Board had been very busy since his last visit to East Africa. He stated that the Board had been very busy since his last visit to East Africa. He stated that the Board had been very busy since his last visit to East Africa.

LOCAL REPRESENTATION.

The Secretary stated that the Board had been very busy since his last visit to East Africa. He stated that the Board had been very busy since his last visit to East Africa.

MINORITY VIEWS.

"It would only be right to say that in some quarters I found the opinion expressed that the Executive Council sometimes allowed themselves to be misled by the minority view. It was certainly my impression that the Board was not so much divided from those of its majority and thereby did harm to the cause which they were supposed to serve, but I believe that the Board were primarily for the study of questions affecting the interests of the territories either individually or collectively."

(Continued on page 7.)

ANOTHER COAL STRUGGLE IN SIGHT?

Wage Reductions Follow Export Price Decrease.

SOUTH WALES PLEAS.

When Strikes Prevail For New Light.

(From Our Own Correspondent) London, July 25. (Associated Press.)—The coal industry in South Wales is again facing a new coal struggle. The fact is emphasized by some of the owners that the drastic cuts in export prices in recent weeks, confirm the forecasts of a new coal struggle.

The fact is emphasized by some of the owners that the drastic cuts in export prices in recent weeks, confirm the forecasts of a new coal struggle.

THE SOUTH AFRICAN FLAG BILL.

Mr. J. C. Cook is already preparing the amendments of the measure.

Short Session to Be Held in October.

(From Our Own Correspondent) London, July 25. (Associated Press.)—The House of Commons is expected to hold a short session in October.

AGRICULTURAL RESEARCH.

Mr. J. C. Cook is already preparing the amendments of the measure.

COMPLETING APPEALS TO SUPREME COURT.

Mr. J. C. Cook is already preparing the amendments of the measure.

AGRICULTURAL RESEARCH.

Mr. J. C. Cook is already preparing the amendments of the measure.

COMPLETING APPEALS TO SUPREME COURT.

Mr. J. C. Cook is already preparing the amendments of the measure.

AGRICULTURAL RESEARCH.

Mr. J. C. Cook is already preparing the amendments of the measure.

COMPLETING APPEALS TO SUPREME COURT.

Mr. J. C. Cook is already preparing the amendments of the measure.

AGRICULTURAL RESEARCH.

Mr. J. C. Cook is already preparing the amendments of the measure.

COMPLETING APPEALS TO SUPREME COURT.

Mr. J. C. Cook is already preparing the amendments of the measure.

RUSSIAN REFUSE TO ABANDON EXECUTIONS.

Reply to British Labour Members Entry.

TWO MORE DEATHS.

British Charged with Provoking a War.

(From Our Own Correspondent) London, July 25. (Associated Press.)—The Russian Government has refused to abandon its policy of execution.

BRITISH CASUALTIES IN CHINA.

(From Our Own Correspondent) London, July 25. (Associated Press.)—The British Government has announced that it has received news of the deaths of several British soldiers in China.

BRITISH CASUALTIES IN CHINA.

(From Our Own Correspondent) London, July 25. (Associated Press.)—The British Government has announced that it has received news of the deaths of several British soldiers in China.

BRITISH CASUALTIES IN CHINA.

(From Our Own Correspondent) London, July 25. (Associated Press.)—The British Government has announced that it has received news of the deaths of several British soldiers in China.

BRITISH CASUALTIES IN CHINA.

(From Our Own Correspondent) London, July 25. (Associated Press.)—The British Government has announced that it has received news of the deaths of several British soldiers in China.

BRITISH CASUALTIES IN CHINA.

(From Our Own Correspondent) London, July 25. (Associated Press.)—The British Government has announced that it has received news of the deaths of several British soldiers in China.

BRITISH CASUALTIES IN CHINA.

(From Our Own Correspondent) London, July 25. (Associated Press.)—The British Government has announced that it has received news of the deaths of several British soldiers in China.

BRITISH CASUALTIES IN CHINA.

(From Our Own Correspondent) London, July 25. (Associated Press.)—The British Government has announced that it has received news of the deaths of several British soldiers in China.

BRITISH CASUALTIES IN CHINA.

(From Our Own Correspondent) London, July 25. (Associated Press.)—The British Government has announced that it has received news of the deaths of several British soldiers in China.

BRITISH CASUALTIES IN CHINA.

(From Our Own Correspondent) London, July 25. (Associated Press.)—The British Government has announced that it has received news of the deaths of several British soldiers in China.

BRITISH CASUALTIES IN CHINA.

(From Our Own Correspondent) London, July 25. (Associated Press.)—The British Government has announced that it has received news of the deaths of several British soldiers in China.

BRITISH CASUALTIES IN CHINA.

(From Our Own Correspondent) London, July 25. (Associated Press.)—The British Government has announced that it has received news of the deaths of several British soldiers in China.

BRITISH CASUALTIES IN CHINA.

(From Our Own Correspondent) London, July 25. (Associated Press.)—The British Government has announced that it has received news of the deaths of several British soldiers in China.

BRITISH CASUALTIES IN CHINA.

(From Our Own Correspondent) London, July 25. (Associated Press.)—The British Government has announced that it has received news of the deaths of several British soldiers in China.

New Stocks

OF THE FINEST WL BRANDS

With all the latest improvements. Chased metal barrel with pocket clip attached and the only in a response holding 12 Ball Loads. Also a steel pencil case. Length 5 inches. Price 7/6

GENUINE GILLETTE SAFETY RAZOR. THE SHAVEEZI AUTO STOP RAZOR SET.

ULTIMO. An order for 1,000,000 Razors made this wonderful offer possible. Nickel plated Gillette razor, with two blades. Price 1/6

BRITISH-PROPHYLACTIC TOOTHBRUSH. "POPEEZEE" Pocket Knife.

ABSOLUTELY the last thing in Tooth Brushes. Tooth Brush is thoroughly scientific. STANLEY VALUE. STANLEY VALUE. STANLEY VALUE.

AMERICA NEGLECTING AFRICAN FAVOUR OF JAWA. The following mail order post paid price. Price 1/6

THE WAGNER TOOTHBRUSH. STANLEY VALUE. STANLEY VALUE.

STANLEY VALUE. STANLEY VALUE. STANLEY VALUE.

STANLEY VALUE. STANLEY VALUE. STANLEY VALUE.

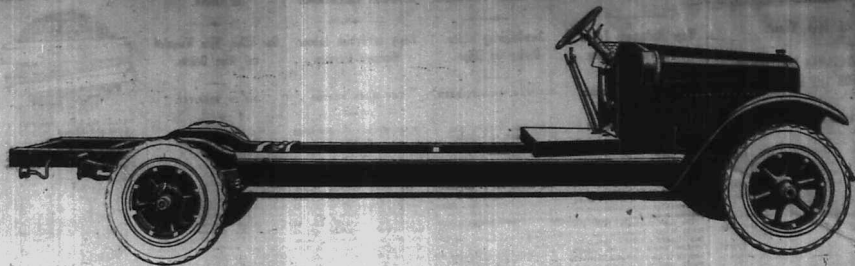
STANLEY VALUE. STANLEY VALUE. STANLEY VALUE.

STANLEY VALUE. STANLEY VALUE. STANLEY VALUE.

Whiteaways NAIROBI

Just the Truck

for Fast, Low-Cost Hauling



Model SL 2 Ton Speed Truck

£448

*Chassis complete
with windshield.*

THIS long, powerful truck has several features of special interest to every transportation buyer. For example: the wheelbase of 160 inches provides long loading space. A capacity load of 4000 lbs. can be hauled without piling to an inconvenient height.

It is equipped with auxiliary rear springs (making four rear springs in all, an exclusive

feature of all International trucks) insuring easy riding for varying loads. Power tyre pump driven from the transmission, steel wheels, heavy-duty truck tyres are also standard.

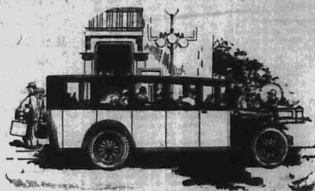
This sturdy truck is suitable for any body from the simple platform type to an enclosed bus body for carrying passengers.

The complete range of International Truck chassis include the Special Delivery for loadings up to 3 tons, Speed Trucks for 1, 1½, 2 ton, and Heavy Duty Trucks up to 5 ton capacities.

Write for literature.



*1½ ton Chassis complete
with windshield £343.*



Gilfillan & Company, Ltd.
D I S T R I B U T O R S

INTERNATIONAL MOTOR TRUCKS

Union-Castle Line

SAILINGS FOR ENGLAND VIA SUZEE.

From Mombasa
 "Corie Castle" (cargo only) 21st July
 "Guildford Castle" 19th Aug.
 "Lansdowny Castle" 12th Oct.
 "Guildford Castle" 8th Dec.
 "This steamer will not call at Aden, Port Sudan, Genoa or Marseilles."

Via SOUTH AFRICA:

"Bration Castle" (cargo only) 2nd July
 "Lansdowny Castle" 22nd July
 "Crawford Castle" (cargo only) 26th Aug.
 "Lansdowny Castle" 18th Oct.
 "Gascon" 12th Oct.
 "Lansdowny Castle" 11th Nov.

For Rates of Freight and Passage Money Apply to: **Union-Castle Mail Steamship Company Limited.**

Or the Company's Agents: **MOMBASA. The British East African Corporation, Ltd.**

BRITISH INDIA STEAM NAVIGATION COMPANY, LTD.

AND PENINSULAR AND ORIENTAL STEAM NAVIGATION CO.

London and Port Said Direct.
 LONDON TO MOMBASA, Via Malacca, Port Said, Port Sudan and Aden, Ombaka and Lamoka.

Steamer	Arrives Mombasa	Starts from Mombasa	Destination
"MADIRA"	20th July	24th July	Aden, Suez, Port Said, London
"MATOLA"	28th July	31st August	Aden, Suez, Port Said, London
"MADRAS"	5th August	1st September	Aden, Suez, Port Said, London
"MATANA"	12th August	1st October	Aden, Suez, Port Said, London
"MADRAS"	19th August	1st November	Aden, Suez, Port Said, London
"MATOLA"	26th August	1st December	Aden, Suez, Port Said, London
"MADRAS"	3rd September	1st January	Aden, Suez, Port Said, London
"MATANA"	10th September	1st February	Aden, Suez, Port Said, London
"MADRAS"	17th September	1st March	Aden, Suez, Port Said, London

ALL DATAS SUBJECT TO ALTERATION WITHOUT NOTICE. RETURN TICKETS ISSUED AT TWO SINGLE FARES LESS OF COUNTRY CERTIFICATES NOT ACCEPTED UNLESS ENDORSED BY A LOCAL BANK.

Terms, rates of freight and passage money may be arranged with: **SMITH, HARRISON & CO., Agents—Kilindi, Mombasa, Zanzibar, Dar-es-Salaam, Tanga, Lam-Pani, Lamu.**

HOLLAND AFRIKA LIJN

JOINT SERVICE.

HOLLAND ZUID AFRIKA LIJN and HOLLAND OOST AFRIKA LIJN.

Steamers will sail at Kilindi on or about the following dates:

HOMEWARD VIA SUZEE.

"Bullion" (B) June 26th
 "Hollander" (A) July 10th
 "Bullion" (B) July 24th

HOMEWARD VIA THE CAPE.

"Hollander" (A) Sept. 2nd
 "Hollander" (A) Sept. 16th
 "Hollander" (A) Sept. 30th

PASSENGER RATES:

To MARRIETTA (A) — 48-10-0 (B) — 42-10-0
 To LONDON (A) — 48-10-0 (B) — 42-10-0
 To the CAPE to LONDON — (A) — 48-10-0 (B) — 42-10-0

For further information apply to the Agents—**TWENTHES OVERSEA TRADING CO. LTD.**
 MOMBASA. Telegrams: "HOLAFRIKA". Tel. 140.

DEUTSCHE OST-AFRIKA-LINIE

GERMAN AFRICAN SERVICE

For Service of Turbo Steamers from Zanzibar, Southampton round Africa, taking Port, Swazini and Tloki Coast Passengers: six steamers service Coasts and Main. Attention is specially drawn to the exceptionally good Third Class accommodation.

VIA SUZEE CANAL.

Calling at Aden, Port Said, Port Sudan, Genoa, Marseilles, Naples, London, Southampton, and Rotterdam.

VIA THE CAPE.

Calling at Tanganyika, Zanzibar, Durban, Swazini, Port Amelia, Mozambique, Beira, Lourenco Marques, Union, Port, Lourenco, Wharfa Bay, Capry Island, Lisbon, Southampton, and Antwerp.

SAILINGS FROM MOMBASA TO DAR-ES-SALAAM.

16th July
 23rd July
 30th July
 6th Aug.
 13th Aug.
 20th Aug.
 27th Aug.
 3rd Sept.
 10th Sept.
 17th Sept.
 24th Sept.

SAILINGS FROM MOMBASA TO KILINDINI.

16th July
 23rd July
 30th July
 6th Aug.
 13th Aug.
 20th Aug.
 27th Aug.
 3rd Sept.
 10th Sept.
 17th Sept.
 24th Sept.

Compagnie Africaine de Navigation.

Belgian Line.
 REGULAR AND DIRECT MONTHLY SERVICE FROM ANTWERP TO KILINDINI—DAR-ES-SALLAM

NEW EAST AFRICA—ITALY EAST DE-LUXE PASSENGER SERVICE.
 sailings from Kilindi for Genoa
 S.S. G. MAZZINI 6th July
 S.S. F. CRISPI 8th Aug.
 M. D. KAMPP—Nairobi Agent.
 SOCIETA COLONIALE ITALIANA—Mombasa Agents



Shell

Shell Lubricants for all engines and machinery.

JOHN RIFKIN
 With a team of 300 HORSES
 WAGON BUILDER
 BLACKSMITH FARRIER
 STOCK OF AXLES, BRAKES, WAGGONS, and ALL WAGON PARTS.
 All kinds of Waggons made to Order.
 Wonderful Reduction ON OUR ROSSERY
 Below selling elsewhere.
 J. R. CHAMBERLAIN
 NAIROBI
 Clerk Road.

OUR GUNS HAVE PROVED THEMSELVES!!!

Read the following unqualified testimonials.

I have shot over 200 Elephants with your A.E. Rifle. I consider it the best rifle on which I have ever used. It is accurate to 200 or 300 Yards. We had 6 prives out of which I took five, though we had no game to shoot. I had no time to load a prive in the competition. I am highly pleased with it and have recommended the gun to all my friends.

(84) C. J. SHERMAN, Farm, 908 Eldoret.

I have been at the killing of 6 big Elephants and 8 Rhinos during the past month. I consider your D.W.M. ammunition "The Best" and would use no others.

(84) J. H. HUSTON.

EVERY WEAPON TESTED IN YOUR PRESENCE.

I think you are the best person in selling your guns that I have ever met. I have bought 200 of your guns and have had wonderful results and I find your D.W.M. ammunition very satisfactory.

(84) J. H. JARVIS, Box 248, Nairobi.

Chas. A. Heyer & Co. GUYMARS.

Compagnie Africaine de Navigation.
 Belgian Line.
 REGULAR AND DIRECT MONTHLY SERVICE FROM ANTWERP TO KILINDINI—DAR-ES-SALLAM

MITCHELL COTTS & Co.
 AGENTS.
 P.O. Box No. 141. MOMBASA. P.O. Box No. 664. NAIROBI.

CHIVERS' PATENT HYGIENIC JAM

Keeps constant in its quality in any climate and is not affected by heat. Always fresh and palatable. Contains no preservatives or other chemicals. It is made from the finest fruit and is really the most delicious.

Chivers' Jams

Prepared in the famous marmalade factory, London. Sold in all parts of the world.

R. O. HAMILTON, Ltd.
 Box 202. NAIROBI.

Ellerre & Bucknall Steamship Company, Limited.

American & Indian Line.

Direct Service of Steamers to: **COLOMBO, MADRAS, RANGOON, CALCUTTA**

ALSO

TAKING CARGO TO U.S.A. & CANADIAN PORTS.
 S.S. City of Mobile due to load at Kilindi 4th July.
 S.S. Keelung due to load at Kilindi 4th August.
 S.S. Keelung due to load at Kilindi 4th September.

With quick Transhipment into Fast Direct Steamers from Colombo.

REGULAR MONTHLY SAILINGS.
 Deck passengers taken.
 For freights and all particulars apply to:
The African Mercantile Co. Ltd., MOMBASA.

NOW IN STOCK.

READER'S—JEMIES 3/6, 2/6, 2/6, and 1/6. SUGAR, MATCHES No. 1622, 1623 and 1624. SUGAR, GARDEN, CANTONER'S TOBACCO.

BUILDING MATERIALS.
 BRITISH PORTLAND CEMENT, CORRUGATED IRON SHEETS, SAND, ANTISETT SHEETS, OIL, PAINTS, FISHBONE.

Hussein Suleman Verjee & Sons
 Telephone: "Hussein". P.O. Box No. 260. GOVERNMENT ROAD, NAIROBI.

OVERSEAS MAILS.

ABRITALS.

STEAMER	FROM	Due at Mombasa	Mail starts in Nairobi
Essexia	South Bombay	June 30	July 1
Essexia	South Bombay	July 7	July 8

DEPARTURES.

STEAMER	FOR	Mail Close at Nairobi (P.O.)	Date of Departure from Mombasa
A. Piere	Marseilles	July 1	July 8
Essexia	South Bombay	July 1	July 8
Mafra	Essexia	July 1	July 8
Over. Discharge	Marseilles	July 1	July 8

Uplands Bacon Factory



BROWN

REDUCTION IN PRICE.
 No. 1 size has been reduced by 12 cts.
 No. 2 size has been reduced by 40 cts.
 Ask Your Grocer for his present Retail price. This Bacon may be depended upon to turn out of the tin in very fine condition.

It provides an extremely economical and delicious source for any meal.

OPEN DRUM CONCRETE MIXER THE GUARANTEED MIXER WITH THE GUARANTEED MIX

These are the only open drum type mixers on the market which mix instead of separating. This is due to the patent BURN-LANGMETER drum with the HELIX HELICAL RAKE, "WINGET" mixers have other overwhelming advantages over any others on the market. Come and see a 34"-6 inch, or write for literature.

A Size for Every Job J. R. COX & Co.

P.O. Box 51,
ELDHORT.

P.O. Box 676,
NAIROBI.

P.O. Box 333,
KAMPALA.

B. E. A. Saw Mills

MILLS: Factory Sites, Naisiba
East River, } Uplands
Katamayu }

P.O. Box 221,
Nairobi.

Telegrams: B.E.A.

Telephone Mills No. 93. Office No. 83.

CAMPION, PODO, SWEEL and BOXWOOD.

Prompt Delivery.

1 INCH CEDAR FLOORING.

HAULAGE and TRANSPORT

STANDARD BUILDINGS,

ANY WEIGHT ANY DISTANCE
HAULAGE & GENERAL TRANSPORT CO.,

6th Avenue. Phone 85. P.O. Box 336.

REGINA BRIEF

Smart, correct tailoring and perfect fitting for ladies and gentlemen by expert European tailor.
No. 8, Thames Royal Arcade.
P.O. Box 642, NAIROBI.

Until Further Notice

MADAME ROWE ET CIE

WILL SHOW

At THE

NORFOLK HOTEL

Model Gowns,
Juniper Suits,
Ladies Silk Hose, etc.

New Models by the Incoming Mails.

WE STOCK

Always big stock of Provisions, Wines, Liqueurs, Best Quality of Dutch and Indian Cigars, Cigarettes, Sweets, Chocolates, Biscuits, Delmonte Brand Dried Fruits, in tins and Fruits in Syrup.
Also for Farmers Rock Salt, Rock Salt, Dairy Salt, and Epsom Salt, Lined oil, Methylated Spirit and Turpentine.

Ask for our retail price list to-day.
KANJEE NARANJEE
P.O. Box 287, NAIROBI, Govt Road.

GO TO
D. D. Costa & Sons.

LADIES' GENTS' CLOTHING AND GENTLEMEN'S TAILORS AND GENTLEMEN'S BOOTS AND SHOE MAKERS FOR YOUR REQUIREMENTS. SPECIAL CUTTING AND TAILORS HAVE ARRIVED FROM FOREIGN.
Dress and Suits.
P.O. Box 36, NAIROBI.

CLAIRMONT

OUR NEXT DANCE ON
SATURDAY, July 2nd.
Muscle by Paul Robbins
New Bohemian Dance Band.
TICKETS: 12/50 Double, 7/50 Single.
(Including Refreshments).

BUY Torr's CHOCOLATES

THEY ARE SURE TO BE APPRECIATED

FRESHLY MADE ON THE PREMISES

J. E. TORR

Central Arcade, NAIROBI. P.O. Box 419

THE EAST AFRICAN STANDARD KENYA DIARY 1928



ADVERTISEMENT SPACE MAY BE BOOKED NOW
1 STANDARD L.S. P.O. Box 55, NAIROBI.

Manufacturing, Tailoring,

UNIVERSITY ROAD,
P.O. Box 22, NAIROBI.

Established 1911
EVERY DESCRIPTION OF
SUMMERS HATS IN
VERY LARGE STOCK.

Board and Accommodation

CAN BE OBTAINED AT
Mrs. STEVENSON,
Box 8, HAVENUE,
(Old Lodge Hotel).

CARS for HIRE

SEE KENYA IN COMFORT.
SUZUKO SUPER SIX CARS
FOR
HIRE DAY OR WEEK.
Long Trips A Specialty.
P. GETHIN.
Phone 120. Box 22,
General "Gethin," Nairobi.

CARS for SALE

Highland Range Six, used, best condition... £250
Overland Four, used, good condition... £150
Highland Range Six, used, good condition... £175
Dodge Super Six, used, good condition... £150
Morris Cowley commercial... £100
Standard Dodge 2,500... £200
Standard Dodge 3,000... £200
Standard Dodge 3,000... £200
ST. COO. WANT TO
HIRE,
BUY,
SELL
A CAR
Ring P. GETHIN.

WE BRING A LARGE STOCK OF RIFLES AND GIVE A LIBERAL DISCOUNT TO ALL.

Dobbies Ltd.

General Importing and Exporting Agents
40 Queen Street
NAIROBI.

"KLEANBORE"

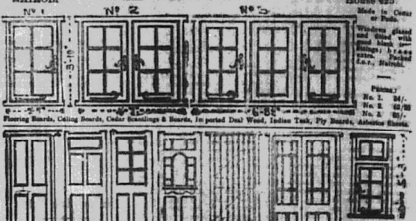
A Scientific Discovery of
Great Importance to
Users of '22 Rifles.

A new discovery made in the Laboratories of
THE REMINGTON ARMS COMPANY
has resulted in the production of a .22 cartridge
that completely eliminates the cleaning job.
The secret is a new painting substance which does
not corrode the barrel, and which readily
lubricates it.
STARTING WITH A CLEAN BARREL AND USING
"KLEANBORE" CARTRIDGES
YOU NEED NEVER CLEAN
YOUR RIFLE AGAIN.

GET THEM FROM KENYA'S LEADING
AMMUNITION STORE,
MAY & Co., Ltd.
THE SPORTS HOUSE
NAIROBI.

Geo. BLOWERS

BUILDING CONTRACTOR, MANUFACTURER AND DIRECT IMPORTER.
P.O. Box 229, NAIROBI. Tel. Add. "Concrete".
Sadler Street, NAIROBI. CASH WITH ORDER. Phone: Work 800, House 425.



NOTE
Blowers always
have stock of
Sec. 2 and 3
Sec. 4 and 5
Sec. 6 and 7
Sec. 8 and 9
Sec. 10 and 11
Sec. 12 and 13
Sec. 14 and 15
Sec. 16 and 17
Sec. 18 and 19
Sec. 20 and 21
Sec. 22 and 23
Sec. 24 and 25
Sec. 26 and 27
Sec. 28 and 29
Sec. 30 and 31
Sec. 32 and 33
Sec. 34 and 35
Sec. 36 and 37
Sec. 38 and 39
Sec. 40 and 41
Sec. 42 and 43
Sec. 44 and 45
Sec. 46 and 47
Sec. 48 and 49
Sec. 50 and 51
Sec. 52 and 53
Sec. 54 and 55
Sec. 56 and 57
Sec. 58 and 59
Sec. 60 and 61
Sec. 62 and 63
Sec. 64 and 65
Sec. 66 and 67
Sec. 68 and 69
Sec. 70 and 71
Sec. 72 and 73
Sec. 74 and 75
Sec. 76 and 77
Sec. 78 and 79
Sec. 80 and 81
Sec. 82 and 83
Sec. 84 and 85
Sec. 86 and 87
Sec. 88 and 89
Sec. 90 and 91
Sec. 92 and 93
Sec. 94 and 95
Sec. 96 and 97
Sec. 98 and 99
Sec. 100 and 101
Sec. 102 and 103
Sec. 104 and 105
Sec. 106 and 107
Sec. 108 and 109
Sec. 110 and 111
Sec. 112 and 113
Sec. 114 and 115
Sec. 116 and 117
Sec. 118 and 119
Sec. 120 and 121
Sec. 122 and 123
Sec. 124 and 125
Sec. 126 and 127
Sec. 128 and 129
Sec. 130 and 131
Sec. 132 and 133
Sec. 134 and 135
Sec. 136 and 137
Sec. 138 and 139
Sec. 140 and 141
Sec. 142 and 143
Sec. 144 and 145
Sec. 146 and 147
Sec. 148 and 149
Sec. 150 and 151
Sec. 152 and 153
Sec. 154 and 155
Sec. 156 and 157
Sec. 158 and 159
Sec. 160 and 161
Sec. 162 and 163
Sec. 164 and 165
Sec. 166 and 167
Sec. 168 and 169
Sec. 170 and 171
Sec. 172 and 173
Sec. 174 and 175
Sec. 176 and 177
Sec. 178 and 179
Sec. 180 and 181
Sec. 182 and 183
Sec. 184 and 185
Sec. 186 and 187
Sec. 188 and 189
Sec. 190 and 191
Sec. 192 and 193
Sec. 194 and 195
Sec. 196 and 197
Sec. 198 and 199
Sec. 200 and 201
Sec. 202 and 203
Sec. 204 and 205
Sec. 206 and 207
Sec. 208 and 209
Sec. 210 and 211
Sec. 212 and 213
Sec. 214 and 215
Sec. 216 and 217
Sec. 218 and 219
Sec. 220 and 221
Sec. 222 and 223
Sec. 224 and 225
Sec. 226 and 227
Sec. 228 and 229
Sec. 230 and 231
Sec. 232 and 233
Sec. 234 and 235
Sec. 236 and 237
Sec. 238 and 239
Sec. 240 and 241
Sec. 242 and 243
Sec. 244 and 245
Sec. 246 and 247
Sec. 248 and 249
Sec. 250 and 251
Sec. 252 and 253
Sec. 254 and 255
Sec. 256 and 257
Sec. 258 and 259
Sec. 260 and 261
Sec. 262 and 263
Sec. 264 and 265
Sec. 266 and 267
Sec. 268 and 269
Sec. 270 and 271
Sec. 272 and 273
Sec. 274 and 275
Sec. 276 and 277
Sec. 278 and 279
Sec. 280 and 281
Sec. 282 and 283
Sec. 284 and 285
Sec. 286 and 287
Sec. 288 and 289
Sec. 290 and 291
Sec. 292 and 293
Sec. 294 and 295
Sec. 296 and 297
Sec. 298 and 299
Sec. 300 and 301
Sec. 302 and 303
Sec. 304 and 305
Sec. 306 and 307
Sec. 308 and 309
Sec. 310 and 311
Sec. 312 and 313
Sec. 314 and 315
Sec. 316 and 317
Sec. 318 and 319
Sec. 320 and 321
Sec. 322 and 323
Sec. 324 and 325
Sec. 326 and 327
Sec. 328 and 329
Sec. 330 and 331
Sec. 332 and 333
Sec. 334 and 335
Sec. 336 and 337
Sec. 338 and 339
Sec. 340 and 341
Sec. 342 and 343
Sec. 344 and 345
Sec. 346 and 347
Sec. 348 and 349
Sec. 350 and 351
Sec. 352 and 353
Sec. 354 and 355
Sec. 356 and 357
Sec. 358 and 359
Sec. 360 and 361
Sec. 362 and 363
Sec. 364 and 365
Sec. 366 and 367
Sec. 368 and 369
Sec. 370 and 371
Sec. 372 and 373
Sec. 374 and 375
Sec. 376 and 377
Sec. 378 and 379
Sec. 380 and 381
Sec. 382 and 383
Sec. 384 and 385
Sec. 386 and 387
Sec. 388 and 389
Sec. 390 and 391
Sec. 392 and 393
Sec. 394 and 395
Sec. 396 and 397
Sec. 398 and 399
Sec. 400 and 401
Sec. 402 and 403
Sec. 404 and 405
Sec. 406 and 407
Sec. 408 and 409
Sec. 410 and 411
Sec. 412 and 413
Sec. 414 and 415
Sec. 416 and 417
Sec. 418 and 419
Sec. 420 and 421
Sec. 422 and 423
Sec. 424 and 425
Sec. 426 and 427
Sec. 428 and 429
Sec. 430 and 431
Sec. 432 and 433
Sec. 434 and 435
Sec. 436 and 437
Sec. 438 and 439
Sec. 440 and 441
Sec. 442 and 443
Sec. 444 and 445
Sec. 446 and 447
Sec. 448 and 449
Sec. 450 and 451
Sec. 452 and 453
Sec. 454 and 455
Sec. 456 and 457
Sec. 458 and 459
Sec. 460 and 461
Sec. 462 and 463
Sec. 464 and 465
Sec. 466 and 467
Sec. 468 and 469
Sec. 470 and 471
Sec. 472 and 473
Sec. 474 and 475
Sec. 476 and 477
Sec. 478 and 479
Sec. 480 and 481
Sec. 482 and 483
Sec. 484 and 485
Sec. 486 and 487
Sec. 488 and 489
Sec. 490 and 491
Sec. 492 and 493
Sec. 494 and 495
Sec. 496 and 497
Sec. 498 and 499
Sec. 500 and 501
Sec. 502 and 503
Sec. 504 and 505
Sec. 506 and 507
Sec. 508 and 509
Sec. 510 and 511
Sec. 512 and 513
Sec. 514 and 515
Sec. 516 and 517
Sec. 518 and 519
Sec. 520 and 521
Sec. 522 and 523
Sec. 524 and 525
Sec. 526 and 527
Sec. 528 and 529
Sec. 530 and 531
Sec. 532 and 533
Sec. 534 and 535
Sec. 536 and 537
Sec. 538 and 539
Sec. 540 and 541
Sec. 542 and 543
Sec. 544 and 545
Sec. 546 and 547
Sec. 548 and 549
Sec. 550 and 551
Sec. 552 and 553
Sec. 554 and 555
Sec. 556 and 557
Sec. 558 and 559
Sec. 560 and 561
Sec. 562 and 563
Sec. 564 and 565
Sec. 566 and 567
Sec. 568 and 569
Sec. 570 and 571
Sec. 572 and 573
Sec. 574 and 575
Sec. 576 and 577
Sec. 578 and 579
Sec. 580 and 581
Sec. 582 and 583
Sec. 584 and 585
Sec. 586 and 587
Sec. 588 and 589
Sec. 590 and 591
Sec. 592 and 593
Sec. 594 and 595
Sec. 596 and 597
Sec. 598 and 599
Sec. 600 and 601
Sec. 602 and 603
Sec. 604 and 605
Sec. 606 and 607
Sec. 608 and 609
Sec. 610 and 611
Sec. 612 and 613
Sec. 614 and 615
Sec. 616 and 617
Sec. 618 and 619
Sec. 620 and 621
Sec. 622 and 623
Sec. 624 and 625
Sec. 626 and 627
Sec. 628 and 629
Sec. 630 and 631
Sec. 632 and 633
Sec. 634 and 635
Sec. 636 and 637
Sec. 638 and 639
Sec. 640 and 641
Sec. 642 and 643
Sec. 644 and 645
Sec. 646 and 647
Sec. 648 and 649
Sec. 650 and 651
Sec. 652 and 653
Sec. 654 and 655
Sec. 656 and 657
Sec. 658 and 659
Sec. 660 and 661
Sec. 662 and 663
Sec. 664 and 665
Sec. 666 and 667
Sec. 668 and 669
Sec. 670 and 671
Sec. 672 and 673
Sec. 674 and 675
Sec. 676 and 677
Sec. 678 and 679
Sec. 680 and 681
Sec. 682 and 683
Sec. 684 and 685
Sec. 686 and 687
Sec. 688 and 689
Sec. 690 and 691
Sec. 692 and 693
Sec. 694 and 695
Sec. 696 and 697
Sec. 698 and 699
Sec. 700 and 701
Sec. 702 and 703
Sec. 704 and 705
Sec. 706 and 707
Sec. 708 and 709
Sec. 710 and 711
Sec. 712 and 713
Sec. 714 and 715
Sec. 716 and 717
Sec. 718 and 719
Sec. 720 and 721
Sec. 722 and 723
Sec. 724 and 725
Sec. 726 and 727
Sec. 728 and 729
Sec. 730 and 731
Sec. 732 and 733
Sec. 734 and 735
Sec. 736 and 737
Sec. 738 and 739
Sec. 740 and 741
Sec. 742 and 743
Sec. 744 and 745
Sec. 746 and 747
Sec. 748 and 749
Sec. 750 and 751
Sec. 752 and 753
Sec. 754 and 755
Sec. 756 and 757
Sec. 758 and 759
Sec. 760 and 761
Sec. 762 and 763
Sec. 764 and 765
Sec. 766 and 767
Sec. 768 and 769
Sec. 770 and 771
Sec. 772 and 773
Sec. 774 and 775
Sec. 776 and 777
Sec. 778 and 779
Sec. 780 and 781
Sec. 782 and 783
Sec. 784 and 785
Sec. 786 and 787
Sec. 788 and 789
Sec. 790 and 791
Sec. 792 and 793
Sec. 794 and 795
Sec. 796 and 797
Sec. 798 and 799
Sec. 800 and 801
Sec. 802 and 803
Sec. 804 and 805
Sec. 806 and 807
Sec. 808 and 809
Sec. 810 and 811
Sec. 812 and 813
Sec. 814 and 815
Sec. 816 and 817
Sec. 818 and 819
Sec. 820 and 821
Sec. 822 and 823
Sec. 824 and 825
Sec. 826 and 827
Sec. 828 and 829
Sec. 830 and 831
Sec. 832 and 833
Sec. 834 and 835
Sec. 836 and 837
Sec. 838 and 839
Sec. 840 and 841
Sec. 842 and 843
Sec. 844 and 845
Sec. 846 and 847
Sec. 848 and 849
Sec. 850 and 851
Sec. 852 and 853
Sec. 854 and 855
Sec. 856 and 857
Sec. 858 and 859
Sec. 860 and 861
Sec. 862 and 863
Sec. 864 and 865
Sec. 866 and 867
Sec. 868 and 869
Sec. 870 and 871
Sec. 872 and 873
Sec. 874 and 875
Sec. 876 and 877
Sec. 878 and 879
Sec. 880 and 881
Sec. 882 and 883
Sec. 884 and 885
Sec. 886 and 887
Sec. 888 and 889
Sec. 890 and 891
Sec. 892 and 893
Sec. 894 and 895
Sec. 896 and 897
Sec. 898 and 899
Sec. 900 and 901
Sec. 902 and 903
Sec. 904 and 905
Sec. 906 and 907
Sec. 908 and 909
Sec. 910 and 911
Sec. 912 and 913
Sec. 914 and 915
Sec. 916 and 917
Sec. 918 and 919
Sec. 920 and 921
Sec. 922 and 923
Sec. 924 and 925
Sec. 926 and 927
Sec. 928 and 929
Sec. 930 and 931
Sec. 932 and 933
Sec. 934 and 935
Sec. 936 and 937
Sec. 938 and 939
Sec. 940 and 941
Sec. 942 and 943
Sec. 944 and 945
Sec. 946 and 947
Sec. 948 and 949
Sec. 950 and 951
Sec. 952 and 953
Sec. 954 and 955
Sec. 956 and 957
Sec. 958 and 959
Sec. 960 and 961
Sec. 962 and 963
Sec. 964 and 965
Sec. 966 and 967
Sec. 968 and 969
Sec. 970 and 971
Sec. 972 and 973
Sec. 974 and 975
Sec. 976 and 977
Sec. 978 and 979
Sec. 980 and 981
Sec. 982 and 983
Sec. 984 and 985
Sec. 986 and 987
Sec. 988 and 989
Sec. 990 and 991
Sec. 992 and 993
Sec. 994 and 995
Sec. 996 and 997
Sec. 998 and 999
Sec. 1000 and 1001
Sec. 1002 and 1003
Sec. 1004 and 1005
Sec. 1006 and 1007
Sec. 1008 and 1009
Sec. 1010 and 1011
Sec. 1012 and 1013
Sec. 1014 and 1015
Sec. 1016 and 1017
Sec. 1018 and 1019
Sec. 1020 and 1021
Sec. 1022 and 1023
Sec. 1024 and 1025
Sec. 1026 and 1027
Sec. 1028 and 1029
Sec. 1030 and 1031
Sec. 1032 and 1033
Sec. 1034 and 1035
Sec. 1036 and 1037
Sec. 1038 and 1039
Sec. 1040 and 1041
Sec. 1042 and 1043
Sec. 1044 and 1045
Sec. 1046 and 1047
Sec. 1048 and 1049
Sec. 1050 and 1051
Sec. 1052 and 1053
Sec. 1054 and 1055
Sec. 1056 and 1057
Sec. 1058 and 1059
Sec. 1060 and 1061
Sec. 1062 and 1063
Sec. 1064 and 1065
Sec. 1066 and 1067
Sec. 1068 and 1069
Sec. 1070 and 1071
Sec. 1072 and 1073
Sec. 1074 and 1075
Sec. 1076 and 1077
Sec. 1078 and 1079
Sec. 1080 and 1081
Sec. 1082 and 1083
Sec. 1084 and 1085
Sec. 1086 and 1087
Sec. 1088 and 1089
Sec. 1090 and 1091
Sec. 1092 and 1093
Sec. 1094 and 1095
Sec. 1096 and 1097
Sec. 1098 and 1099
Sec. 1100 and 1101
Sec. 1102 and 1103
Sec. 1104 and 1105
Sec. 1106 and 1107
Sec. 1108 and 1109
Sec. 1110 and 1111
Sec. 1112 and 1113
Sec. 1114 and 1115
Sec. 1116 and 1117
Sec. 1118 and 1119
Sec. 1120 and 1121
Sec. 1122 and 1123
Sec. 1124 and 1125
Sec. 1126 and 1127
Sec. 1128 and 1129
Sec. 1130 and 1131
Sec. 1132 and 1133
Sec. 1134 and 1135
Sec. 1136 and 1137
Sec. 1138 and 1139
Sec. 1140 and 1141
Sec. 1142 and 1143
Sec. 1144 and 1145
Sec. 1146 and 1147
Sec. 1148 and 1149
Sec. 1150 and 1151
Sec. 1152 and 1153
Sec. 1154 and 1155
Sec. 1156 and 1157
Sec. 1158 and 1159
Sec. 1160 and 1161
Sec. 1162 and 1163
Sec. 1164 and 1165
Sec. 1166 and 1167
Sec. 1168 and 1169
Sec. 1170 and 1171
Sec. 1172 and 1173
Sec. 1174 and 1175
Sec. 1176 and 1177
Sec. 1178 and 1179
Sec. 1180 and 1181
Sec. 1182 and 1183
Sec. 1184 and 1185
Sec. 1186 and 1187
Sec. 1188 and 1189
Sec. 1190 and 1191
Sec. 1192 and 1193
Sec. 1194 and 1195
Sec. 1196 and 1197
Sec. 1198 and 1199
Sec. 1200 and 1201
Sec. 1202 and 1203
Sec. 1204 and 1205
Sec. 1206 and 1207
Sec. 1208 and 1209
Sec. 1210 and 1211
Sec. 1212 and 1213
Sec. 1214 and 1215
Sec. 1216 and 1217
Sec. 1218 and 1219
Sec. 1220 and 1221
Sec. 1222 and 1223
Sec. 1224 and 1225
Sec. 1226 and 1227
Sec. 1228 and 1229
Sec. 1230 and 1231
Sec. 1232 and 1233
Sec. 1234 and 1235
Sec. 1236 and 1237
Sec. 1238 and 1239
Sec. 1240 and 1241
Sec. 1242 and 1243
Sec. 1244 and 1245
Sec. 1246 and 1247
Sec. 1248 and 1249
Sec. 1250 and 1251
Sec. 1252 and 1253
Sec. 1254 and 1255
Sec. 1256 and 1257
Sec. 1258 and 1259
Sec. 1260 and 1261
Sec. 1262 and 1263
Sec. 1264 and 1265
Sec. 1266 and 1267
Sec. 1268 and 1269
Sec. 1270 and 1271
Sec. 1272 and 1273
Sec. 1274 and 1275
Sec. 1276 and 1277
Sec. 1278 and 1279
Sec. 1280 and 1281
Sec. 1282 and 1283
Sec. 1284 and 1285
Sec. 1286 and 1287
Sec. 1288 and 1289
Sec. 1290 and 1291
Sec. 1292 and 1293
Sec. 1294 and 1295
Sec. 1296 and 1297
Sec. 1298 and 1299
Sec. 1300 and 1301
Sec. 1302 and 1303
Sec. 1304 and 1305
Sec. 1306 and 1307
Sec. 1308 and 1309
Sec.

Cawford's
SPECIAL RESERVE
SCOTCH WHISKY

The whisky in which the sun never sets!

ESTABLISHED SINCE 1860

THE PREMIER BEVERAGES

VOONIA GARDEN CEYLON TEA
AND
BROWNS "FOUR CROWN" SCOTCH WHISKY

Your enquiries are solicited.

Blacklaws & Brown
(Mackintosh Brothers)

No. 11, NAIROBI. Box No. 406

WE SELL AT RIGHT PRICES

Wines & Spirits of the Best Quality

Harvey's Ports and Bristol Cream and Bristol Milk Sherries, Grand Marnier, Cointreau, Kummel, Chartreuse, Champagnes, Marschino, Whiskies, Brandy, White and Red Wines, etc. etc.

Also provisions from the best Manufacturers.

M. R. D'Souza & Co.
P.O. Box 105, York House Govt. Road. Phone 75.

Current Record of Revenue

FRANCE

The slight increase in the revenue of the French Republic, which was reported in the Budget for 1927, has been exceeded by the actual result of 1927. This has been due to the fact that the revenue of the Republic has increased by 100,000,000 francs, or 10 per cent, over the estimate of 1927. This is the first time since 1914 that the revenue of the Republic has exceeded the estimate of the previous year.

The Budget for 1928, which was presented to the Chamber of Deputies on the 15th of June, shows a further increase in the revenue of the Republic, which is estimated to be 1,000,000,000 francs, or 10 per cent, over the estimate of 1927. This is the first time since 1914 that the revenue of the Republic has exceeded the estimate of the previous year.

The Budget for 1928, which was presented to the Chamber of Deputies on the 15th of June, shows a further increase in the revenue of the Republic, which is estimated to be 1,000,000,000 francs, or 10 per cent, over the estimate of 1927. This is the first time since 1914 that the revenue of the Republic has exceeded the estimate of the previous year.

South African Railways and Harbours GO SOUTH FOR THE HOLIDAY

The National and Colonial railways of South Africa are now advertising their special holiday rates for the coming season. These rates are available for all routes and are subject to the usual conditions of the railway companies.

REJUVENATE MIDST COOLING SEA-BREEZES and ENTRANCING SCENERY

Comfortable travel and modern accommodation.

For information apply to: **TRADE COMMISSIONER FOR THE UNION OF SOUTH AFRICA**, Memorial Hall, P.O. Box 881, NAIROBI.

WIND AIRPLANE CLUM.

Who would be surprised to learn that the first wind airplane to be built in the world was the "Wing" of the late Sir George Cayley? This was a simple wooden glider which was built in 1799. It was the first of a long line of gliders which were built by Cayley and his followers.

The first motorized glider was built by Otto Lilienthal in 1891. It was a simple wooden glider which was built in the same style as Cayley's. It was the first of a long line of gliders which were built by Lilienthal and his followers.

The first motorized airplane was built by the Wright brothers in 1903. It was a simple wooden airplane which was built in the same style as Lilienthal's. It was the first of a long line of airplanes which were built by the Wright brothers and their followers.

A BIG FLYING SHANT.

A very interesting machine has recently been completed in the workshop of the late Sir George Cayley. It is a large wooden airplane which is built in the same style as the "Wing" of the late Sir George Cayley. It is the first of a long line of airplanes which were built by Cayley and his followers.

The machine is a large wooden airplane which is built in the same style as the "Wing" of the late Sir George Cayley. It is the first of a long line of airplanes which were built by Cayley and his followers.

The machine is a large wooden airplane which is built in the same style as the "Wing" of the late Sir George Cayley. It is the first of a long line of airplanes which were built by Cayley and his followers.

South African Railways and Harbours GO SOUTH FOR THE HOLIDAY

The National and Colonial railways of South Africa are now advertising their special holiday rates for the coming season. These rates are available for all routes and are subject to the usual conditions of the railway companies.

REJUVENATE MIDST COOLING SEA-BREEZES and ENTRANCING SCENERY

Comfortable travel and modern accommodation.

For information apply to: **TRADE COMMISSIONER FOR THE UNION OF SOUTH AFRICA**, Memorial Hall, P.O. Box 881, NAIROBI.

Warranted Best

MARTIN'S BILLS
AND ALL TYPES

are sold for all possible ailments. Every lady should keep a box in the house. Cleanse and preserve and then throughout the world.

Perfume, Toilet Soap, etc.

MARTIN, GORE, Southampton, England

Reliance Transport Co.

A Sound Commercial Proposition

You cannot afford to take risks and delays. We will transport your goods over good or rough roads to all parts of the Colony, and adjacent territories, under the direct control of members of our firm.

We guarantee PROMPT and EFFICIENT service.

Partners: J. J. Ken, J. K. Ken, A. H. Ken.

London Agents: T. P. Huran & Co. Deodarwood Ho. London, E.C. 3.

Tel. No. 311. Tel. Address: Reliance. P.O. Box 408. RAILWAY STREET, NAIROBI.

Make Your Wife Independent

Buy Her an Austin Seven


The most economical car in the world to run—45 to 50 miles per gallon
Detachable wheels—four wheel brakes—Magneto Ignition—Electric Lights and Self-starter Speedometer and full kit of Tools.

TOURING



£218

SALOON



£240

Colonial Model Fully equipped

£380

CARR, LAWSON & Co., Ltd.

Kampala Nairobi Eldoret



KHOMBSA TIMES & UGANDA ARGUS. With which is incorporated THE EARLIEST ESTABLISHED NEWSPAPER PUBLISHED IN KENYA AND UGANDA. THE LEADER.

WEDNESDAY, JULY 4, 1939.

THE NAVAL VISIT TRAGEDY.

Why Does the Navy Come to Kenya? Why-To Drink KEVANA BEER

LOUNGE with Cocktails and Teas. The New Shimmering with Dining Room and Breakfasts Luncheons and Dinners.

No. 6200. ESTABLISHED IN 1902. THE ORIGINAL, PURE MALT BEER.

NAVAL VISITOR KILLED IN MOTOR SMASH.

Death of Midshipman on Ngong Road.

MAJOR LADY INJURED

Impressive Funeral Services in Nairobi Yesterday.

The visit to Nairobi of the commanding officer and crew of H.M.S. "Dolittle" has been marred by the death of one of her crew members, Midshipman Henry Coppinger Hill, a young man only 19 years of age, who was killed in a motor accident on the road yesterday. His first command, the destroyer "Dolittle" here, Nairobi, was injured.

Midshipman Hill was travelling in the New Embassy motor car, proceeding with his wife and two children, between 1.0 and 1.30 p.m. on Saturday a party of young men, including Midshipman Henry C. Hill, a lieutenant, were returning from Ngong by car accompanied by Miss Waddington of Nairobi. They had been engaged in a brief sightseeing tour and were moving back to town.

Midshipman Hill was driving the car with Miss Waddington as his passenger. The car, a back seat Midshipman Reynolds and his wife were seated on the outer side of Midshipman Hill. When approaching a sharp curve, far from Ngong Drive, it is understood that the brakes were applied and the car, after skidding slightly, overturned.

Midshipman Henry Coppinger Hill was thrown out and received the fatal injury to the back of the skull that death was instantaneous.

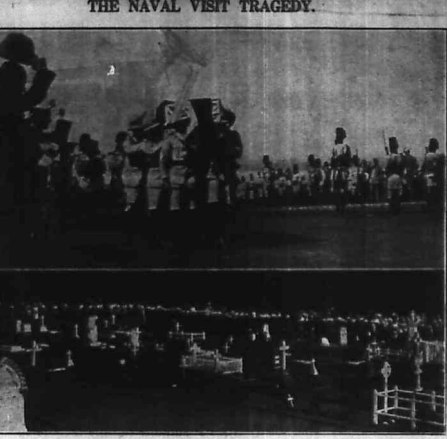
The remaining members of the British steamer of varying degrees of severity.

The first person to arrive on the scene of the accident was an Indian doctor, a motor cycle which brought Midshipman Reynolds to the scene where they were killed.

Mr. Hopkins left hospital on Sunday morning, but Miss Waddington is expected to remain for a few days before being discharged.

The funeral of the young man who was killed in the motor accident will be held at 11.0 a.m. on Sunday at the Forest Cemetery where Midshipman Hill was buried with full military honours.

The Naval Party, the King's African Rifles and the Kenya Police were present. A fitting tribute was paid to the memory of the K.A.R. and Officers of the K. A. R. and the British Army and the British Royal Air Force and the British Royal Navy and the British Royal Air Force and the British Royal Navy and the British Royal Air Force.



Scenes at the solemn ceremony in Nairobi yesterday during the funeral of Midshipman Henry C. Hill of H.M.S. "Dolittle". Above: K.A.R. officers, as pall bearers, carrying the coffin to the cemetery. Below: The service at the graveside.

DRAMA OF THE CHINA SEAS.

British Steamer Sees Shipwrecked Passengers.

FRENCH SHIP ABANDONED.

["Tribune Review's Account"] Media, July 1. The Master of the British steamer "Dolittle" reports that the French steamer "St. Francis Xavier" which was abandoned in the China sea.

The first wreckage was from the H.M.S. "Dolittle" which was seen by the British steamer "Dolittle" on the morning of July 1. The wreckage was seen by the British steamer "Dolittle" on the morning of July 1.

The wreckage was seen by the British steamer "Dolittle" on the morning of July 1. The wreckage was seen by the British steamer "Dolittle" on the morning of July 1.

The wreckage was seen by the British steamer "Dolittle" on the morning of July 1. The wreckage was seen by the British steamer "Dolittle" on the morning of July 1.

H.E. SIR EDWARD GRIGG LEAVES LONDON.

Passenger on "Carrarvon Castle".

VIA SOUTH AFRICA.

["Tribune Review's Account"] London, July 1. Sir Edward Grigg, British Ambassador to the Republic of South Africa.

A very chain of beacon lighting on the Killiney from coast to coast lately to the university of the Confederation of the British Empire.

The wreckage was seen by the British steamer "Dolittle" on the morning of July 1. The wreckage was seen by the British steamer "Dolittle" on the morning of July 1.

The wreckage was seen by the British steamer "Dolittle" on the morning of July 1. The wreckage was seen by the British steamer "Dolittle" on the morning of July 1.

DRAMATIC END TO BYRD'S FLIGHT.

Lonely Landing on a Stormy Sea.

MACHINE SHATTERED.

Developed in Far off Bait Here They Left New York.

["Tribune Review's Account"] Paris, July 1. An official telegram received from the French states that Commander Byrd's aeroplane alighted on the sea at 3.45 this morning off the West coast of Greenland.

Commander Byrd and his companions are all safe. The lightness basket at Ver-sur-Mer was awakened early in the morning by the knocking of four men who transferred to the Commander Byrd and his companions who had reached the shore in a collapsible boat which they had brought with them.

With the assistance of fishermen the party sailed the Ver-sur-Mer. Detailed reports state that Commander Byrd sent up a wireless signal which he detected his presence in various parts of North France in several hours, but was apparently unable to pick up ground signals giving him his bearings.

A RISKY DESCENT.

Paris, June 28. Detailed reports state that Commander Byrd sent up a wireless signal which he detected his presence in various parts of North France in several hours, but was apparently unable to pick up ground signals giving him his bearings.

Finally a petrol was running about the airport saw a light and landed a risky descent was made on the sea at the rear of Ver-sur-Mer lighthouse.

The impact shattered the machine. In a high sea and dense darkness the airmen inflated two inflatable rafts and gained the shore. They declared that since leaving New York they had seen neither sky nor sea which had been covered in impenetrable fog and rain.

Limitation of Submarines. AGREEMENT BY TECHNICAL EXPERTS AT GENEVA. Geneva, July 1. As an outcome of the meeting of the technical experts of the Naval Conference the British representative proposed that submarines be limited to two classes of 600 and 1,000 tons respectively with five-foot tubes.

Shs. 2/95 EACH. Shs. 15/50 EACH. Shs. 15/50 EACH. Shs. 15/50 EACH.

Special Bargains Just Received

2000 YARDS DRESS GINGHAMS. A clearing list direct from the mills, up-to-date checks in every colour under the sun. Useful for Ladies and Children's Frocks. 20th wide. Worth Bhs. 2/60. Bargain Price. Shs. 2/- PER YARD.



130 ONLY FAWN BLANKETS.

A parcel of all-Wool Blankets being in stock at a big price concession, and the benefit handed on to our customers. Camel hair with down hair border. Size 60x90. Worth Bhs. 8/-, each. Bargain Price. Shs. 25/- EACH.

50 DOZEN TOWELS. A BARGAIN PRICED COLOURED TWEEDS.

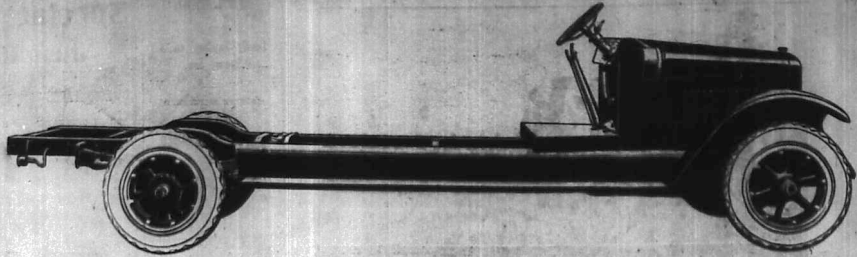
In a variety of nice and striped colour designs. All different. A clearing list. Size 50x21ins. Worth Bhs. 9/60 each. Bargain Price. Shs. 2/50 EACH.



1500 YARDS COLOURED NETS. 200 PULLOVERS. Whiteaways NAIROBI.

Just the Truck

for Fast, Low-Cost Hauling



Model SL 2 Ton Speed Truck

£448

Chassis complete with windshield.

THIS long, powerful truck has several features of special interest to every transportation buyer. For example: the wheelbase of 160 inches provides long loading space. A capacity load of 4000 lbs. can be hauled without piling to an inconvenient height.

It is equipped with auxiliary rear springs (making four rear springs in all, an exclusive

feature of all International trucks) insuring easy riding for varying loads. Power tyre pump driven from the transmission, steel wheels, heavy-duty truck tyres are also standard.

This sturdy truck is suitable for any body from the simple platform type to an enclosed bus body for carrying passengers.

The complete range of International Truck chassis include the Special Delivery for loadings up to 3 ton, Speed Trucks for 1, 1 1/2, 2 ton, and Heavy Duty Trucks up to 5 ton capacities.

Write for literature.



1 1/2 ton Chassis complete with windshield £448.



Giffillan & Company, Ltd.
D I S T R I B U T O R S

INTERNATIONAL MOTOR TRUCKS

ADVERTISEMENTS... DOMESTIC ASSIGNMENTS...

ADVERTISEMENTS... For sale... For hire...

ADVERTISEMENTS... For hire... For sale...

ADVERTISEMENTS... For hire... For sale...

ADVERTISEMENTS... For hire... For sale...

ADVERTISEMENTS... For hire... For sale...

ADVERTISEMENTS... For hire... For sale...

ADVERTISEMENTS... For hire... For sale...

ADVERTISEMENTS... For hire... For sale...

ADVERTISEMENTS... For hire... For sale...

ADVERTISEMENTS... For hire... For sale...

ADVERTISEMENTS... For hire... For sale...

ADVERTISEMENTS... For hire... For sale...

ADVERTISEMENTS... For hire... For sale...

ADVERTISEMENTS... For hire... For sale...

ADVERTISEMENTS... For hire... For sale...

ADVERTISEMENTS... For hire... For sale...

ADVERTISEMENTS... For hire... For sale...

ADVERTISEMENTS... For hire... For sale...

Will be... 1/2... 1/2...

300 C... 1/2... 1/2...

WANTED... 1/2... 1/2...

THE charge... 1/2... 1/2...

WANTED... 1/2... 1/2...

ROOM... 1/2... 1/2...

WANTED... 1/2... 1/2...

TO LET... 1/2... 1/2...

THE charge... 1/2... 1/2...

WANTED... 1/2... 1/2...

ROOM... 1/2... 1/2...

TO LET... 1/2... 1/2...

SITUATIONS VACANT... 1/2... 1/2...

THE charge... 1/2... 1/2...

WANTED... 1/2... 1/2...

WANTED... 1/2... 1/2...

WANTED... 1/2... 1/2...

WANTED... 1/2... 1/2...

WANTED... 1/2... 1/2...

THE charge... 1/2... 1/2...

WANTED... 1/2... 1/2...

ROOM... 1/2... 1/2...

WANTED... 1/2... 1/2...

TO LET... 1/2... 1/2...

SITUATIONS VACANT... 1/2... 1/2...

THE charge... 1/2... 1/2...

WANTED... 1/2... 1/2...

ROOM... 1/2... 1/2...

TO LET... 1/2... 1/2...

SITUATIONS VACANT... 1/2... 1/2...

THE charge... 1/2... 1/2...

WANTED... 1/2... 1/2...

ROOM... 1/2... 1/2...

TO LET... 1/2... 1/2...

SITUATIONS VACANT... 1/2... 1/2...

THE charge... 1/2... 1/2...

WANTED... 1/2... 1/2...

WANTED... 1/2... 1/2...

THE charge... 1/2... 1/2...

WANTED... 1/2... 1/2...

ROOM... 1/2... 1/2...

WANTED... 1/2... 1/2...

TO LET... 1/2... 1/2...

SITUATIONS VACANT... 1/2... 1/2...

THE charge... 1/2... 1/2...

WANTED... 1/2... 1/2...

ROOM... 1/2... 1/2...

TO LET... 1/2... 1/2...

SITUATIONS VACANT... 1/2... 1/2...

THE charge... 1/2... 1/2...

WANTED... 1/2... 1/2...

ROOM... 1/2... 1/2...

TO LET... 1/2... 1/2...

SITUATIONS VACANT... 1/2... 1/2...

THE charge... 1/2... 1/2...

WANTED... 1/2... 1/2...

WANTED... 1/2... 1/2...

IN STOCK 4,000 TONS Podo, Cedar, Hardwoods and Uganda Muvira. Price List on Application.

Table with 4 columns: Division, Order, Substances, and other details.

NOTE THE PRICE! Heavy Pressed Glass with one Red and one Black Vulcanite Cap. Substantial reduction for lots of one dozen.

Phone 141, Box 611. TAWS, LTD., NAIROBI.

OSTERETH & Co. Ltd. PRODUCE MERCHANTS. IMPERIAL CHAMBERS, GOVERNMENT ROAD, NAIROBI. COFFEY BAGS. Now arriving 14 lb, 2 lb, and 2 1/2 lb.

Hutchings, Biemer & Co. Ltd. Box 408. Govt. Road, Nairobi. Factory Sadler St. 408.

Special Outfitting for Sportsmen. THE NEW IS THE TIME TO EQUIP YOURSELF WITH A NEW OUTFIT AT THE LOWEST PRICES. WEAVE TROUSERS, Blase 2 1/2. Made in cotton galvanized of excellent quality. SPECIAL READY WEAVE TROUSERS. All sizes. Made in Wool Gaberdine of very fine texture. A garment with a good cut and smart appearance. FLANNEL TROUSERS. All sizes. In shades of dark or light grey. NAVY BLUE SPORTS BLAZERS. Good quality. Navy blue, Blase 2 1/2 and 2 1/2. Hannel. All sizes. TWEED SPORTS COATS. Assorted shades, all sizes. PURE WOOL GOLF BROS. Tartan. ED'D Turnover Tops. VIVELLA. UNSHRIKABLE WHITE SOCKS. OYDELLA. UNSHRIKABLE WHITE TENNIS SHIRTS. HEAVY WHITE TWILL TENNIS SHIRTS.

A 100% Investment NATIONAL MUTUAL LIFE ASSOCIATION of Australasia Limited. Whole Life Assurance for £1,000 at age 30. Annual Premium... First Annual Bonus... (Bonus increases annually with age of policy)

Kikuyu Hotel. Comfortable, healthy, and Electric Light. Wash-and-dress. Conducive to Money-making. 55, 57, 59, 61, 63, 65, 67, 69, 71, 73, 75, 77, 79, 81, 83, 85, 87, 89, 91, 93, 95, 97, 99, 101, 103, 105, 107, 109, 111, 113, 115, 117, 119, 121, 123, 125, 127, 129, 131, 133, 135, 137, 139, 141, 143, 145, 147, 149, 151, 153, 155, 157, 159, 161, 163, 165, 167, 169, 171, 173, 175, 177, 179, 181, 183, 185, 187, 189, 191, 193, 195, 197, 199, 201, 203, 205, 207, 209, 211, 213, 215, 217, 219, 221, 223, 225, 227, 229, 231, 233, 235, 237, 239, 241, 243, 245, 247, 249, 251, 253, 255, 257, 259, 261, 263, 265, 267, 269, 271, 273, 275, 277, 279, 281, 283, 285, 287, 289, 291, 293, 295, 297, 299, 301, 303, 305, 307, 309, 311, 313, 315, 317, 319, 321, 323, 325, 327, 329, 331, 333, 335, 337, 339, 341, 343, 345, 347, 349, 351, 353, 355, 357, 359, 361, 363, 365, 367, 369, 371, 373, 375, 377, 379, 381, 383, 385, 387, 389, 391, 393, 395, 397, 399, 401, 403, 405, 407, 409, 411, 413, 415, 417, 419, 421, 423, 425, 427, 429, 431, 433, 435, 437, 439, 441, 443, 445, 447, 449, 451, 453, 455, 457, 459, 461, 463, 465, 467, 469, 471, 473, 475, 477, 479, 481, 483, 485, 487, 489, 491, 493, 495, 497, 499, 501, 503, 505, 507, 509, 511, 513, 515, 517, 519, 521, 523, 525, 527, 529, 531, 533, 535, 537, 539, 541, 543, 545, 547, 549, 551, 553, 555, 557, 559, 561, 563, 565, 567, 569, 571, 573, 575, 577, 579, 581, 583, 585, 587, 589, 591, 593, 595, 597, 599, 601, 603, 605, 607, 609, 611, 613, 615, 617, 619, 621, 623, 625, 627, 629, 631, 633, 635, 637, 639, 641, 643, 645, 647, 649, 651, 653, 655, 657, 659, 661, 663, 665, 667, 669, 671, 673, 675, 677, 679, 681, 683, 685, 687, 689, 691, 693, 695, 697, 699, 701, 703, 705, 707, 709, 711, 713, 715, 717, 719, 721, 723, 725, 727, 729, 731, 733, 735, 737, 739, 741, 743, 745, 747, 749, 751, 753, 755, 757, 759, 761, 763, 765, 767, 769, 771, 773, 775, 777, 779, 781, 783, 785, 787, 789, 791, 793, 795, 797, 799, 801, 803, 805, 807, 809, 811, 813, 815, 817, 819, 821, 823, 825, 827, 829, 831, 833, 835, 837, 839, 841, 843, 845, 847, 849, 851, 853, 855, 857, 859, 861, 863, 865, 867, 869, 871, 873, 875, 877, 879, 881, 883, 885, 887, 889, 891, 893, 895, 897, 899, 901, 903, 905, 907, 909, 911, 913, 915, 917, 919, 921, 923, 925, 927, 929, 931, 933, 935, 937, 939, 941, 943, 945, 947, 949, 951, 953, 955, 957, 959, 961, 963, 965, 967, 969, 971, 973, 975, 977, 979, 981, 983, 985, 987, 989, 991, 993, 995, 997, 999, 1001, 1003, 1005, 1007, 1009, 1011, 1013, 1015, 1017, 1019, 1021, 1023, 1025, 1027, 1029, 1031, 1033, 1035, 1037, 1039, 1041, 1043, 1045, 1047, 1049, 1051, 1053, 1055, 1057, 1059, 1061, 1063, 1065, 1067, 1069, 1071, 1073, 1075, 1077, 1079, 1081, 1083, 1085, 1087, 1089, 1091, 1093, 1095, 1097, 1099, 1101, 1103, 1105, 1107, 1109, 1111, 1113, 1115, 1117, 1119, 1121, 1123, 1125, 1127, 1129, 1131, 1133, 1135, 1137, 1139, 1141, 1143, 1145, 1147, 1149, 1151, 1153, 1155, 1157, 1159, 1161, 1163, 1165, 1167, 1169, 1171, 1173, 1175, 1177, 1179, 1181, 1183, 1185, 1187, 1189, 1191, 1193, 1195, 1197, 1199, 1201, 1203, 1205, 1207, 1209, 1211, 1213, 1215, 1217, 1219, 1221, 1223, 1225, 1227, 1229, 1231, 1233, 1235, 1237, 1239, 1241, 1243, 1245, 1247, 1249, 1251, 1253, 1255, 1257, 1259, 1261, 1263, 1265, 1267, 1269, 1271, 1273, 1275, 1277, 1279, 1281, 1283, 1285, 1287, 1289, 1291, 1293, 1295, 1297, 1299, 1301, 1303, 1305, 1307, 1309, 1311, 1313, 1315, 1317, 1319, 1321, 1323, 1325, 1327, 1329, 1331, 1333, 1335, 1337, 1339, 1341, 1343, 1345, 1347, 1349, 1351, 1353, 1355, 1357, 1359, 1361, 1363, 1365, 1367, 1369, 1371, 1373, 1375, 1377, 1379, 1381, 1383, 1385, 1387, 1389, 1391, 1393, 1395, 1397, 1399, 1401, 1403, 1405, 1407, 1409, 1411, 1413, 1415, 1417, 1419, 1421, 1423, 1425, 1427, 1429, 1431, 1433, 1435, 1437, 1439, 1441, 1443, 1445, 1447, 1449, 1451, 1453, 1455, 1457, 1459, 1461, 1463, 1465, 1467, 1469, 1471, 1473, 1475, 1477, 1479, 1481, 1483, 1485, 1487, 1489, 1491, 1493, 1495, 1497, 1499, 1501, 1503, 1505, 1507, 1509, 1511, 1513, 1515, 1517, 1519, 1521, 1523, 1525, 1527, 1529, 1531, 1533, 1535, 1537, 1539, 1541, 1543, 1545, 1547, 1549, 1551, 1553, 1555, 1557, 1559, 1561, 1563, 1565, 1567, 1569, 1571, 1573, 1575, 1577, 1579, 1581, 1583, 1585, 1587, 1589, 1591, 1593, 1595, 1597, 1599, 1601, 1603, 1605, 1607, 1609, 1611, 1613, 1615, 1617, 1619, 1621, 1623, 1625, 1627, 1629, 1631, 1633, 1635, 1637, 1639, 1641, 1643, 1645, 1647, 1649, 1651, 1653, 1655, 1657, 1659, 1661, 1663, 1665, 1667, 1669, 1671, 1673, 1675, 1677, 1679, 1681, 1683, 1685, 1687, 1689, 1691, 1693, 1695, 1697, 1699, 1701, 1703, 1705, 1707, 1709, 1711, 1713, 1715, 1717, 1719, 1721, 1723, 1725, 1727, 1729, 1731, 1733, 1735, 1737, 1739, 1741, 1743, 1745, 1747, 1749, 1751, 1753, 1755, 1757, 1759, 1761, 1763, 1765, 1767, 1769, 1771, 1773, 1775, 1777, 1779, 1781, 1783, 1785, 1787, 1789, 1791, 1793, 1795, 1797, 1799, 1801, 1803, 1805, 1807, 1809, 1811, 1813, 1815, 1817, 1819, 1821, 1823, 1825, 1827, 1829, 1831, 1833, 1835, 1837, 1839, 1841, 1843, 1845, 1847, 1849, 1851, 1853, 1855, 1857, 1859, 1861, 1863, 1865, 1867, 1869, 1871, 1873, 1875, 1877, 1879, 1881, 1883, 1885, 1887, 1889, 1891, 1893, 1895, 1897, 1899, 1901, 1903, 1905, 1907, 1909, 1911, 1913, 1915, 1917, 1919, 1921, 1923, 1925, 1927, 1929, 1931, 1933, 1935, 1937, 1939, 1941, 1943, 1945, 1947, 1949, 1951, 1953, 1955, 1957, 1959, 1961, 1963, 1965, 1967, 1969, 1971, 1973, 1975, 1977, 1979, 1981, 1983, 1985, 1987, 1989, 1991, 1993, 1995, 1997, 1999, 2001, 2003, 2005, 2007, 2009, 2011, 2013, 2015, 2017, 2019, 2021, 2023, 2025, 2027, 2029, 2031, 2033, 2035, 2037, 2039, 2041, 2043, 2045, 2047, 2049, 2051, 2053, 2055, 2057, 2059, 2061, 2063, 2065, 2067, 2069, 2071, 2073, 2075, 2077, 2079, 2081, 2083, 2085, 2087, 2089, 2091, 2093, 2095, 2097, 2099, 2101, 2103, 2105, 2107, 2109, 2111, 2113, 2115, 2117, 2119, 2121, 2123, 2125, 2127, 2129, 2131, 2133, 2135, 2137, 2139, 2141, 2143, 2145, 2147, 2149, 2151, 2153, 2155, 2157, 2159, 2161, 2163, 2165, 2167, 2169, 2171, 2173, 2175, 2177, 2179, 2181, 2183, 2185, 2187, 2189, 2191, 2193, 2195, 2197, 2199, 2201, 2203, 2205, 2207, 2209, 2211, 2213, 2215, 2217, 2219, 2221, 2223, 2225, 2227, 2229, 2231, 2233, 2235, 2237, 2239, 2241, 2243, 2245, 2247, 2249, 2251, 2253, 2255, 2257, 2259, 2261, 2263, 2265, 2267, 2269, 2271, 2273, 2275, 2277, 2279, 2281, 2283, 2285, 2287, 2289, 2291, 2293, 2295, 2297, 2299, 2301, 2303, 2305, 2307, 2309, 2311, 2313, 2315, 2317, 2319, 2321, 2323, 2325, 2327, 2329, 2331, 2333, 2335, 2337, 2339, 2341, 2343, 2345, 2347, 2349, 2351, 2353, 2355, 2357, 2359, 2361, 2363, 2365, 2367, 2369, 2371, 2373, 2375, 2377, 2379, 2381, 2383, 2385, 2387, 2389, 2391, 2393, 2395, 2397, 2399, 2401, 2403, 2405, 2407, 2409, 2411, 2413, 2415, 2417, 2419, 2421, 2423, 2425, 2427, 2429, 2431, 2433, 2435, 2437, 2439, 2441, 2443, 2445, 2447, 2449, 2451, 2453, 2455, 2457, 2459, 2461, 2463, 2465, 2467, 2469, 2471, 2473, 2475, 2477, 2479, 2481, 2483, 2485, 2487, 2489, 2491, 2493, 2495, 2497, 2499, 2501, 2503, 2505, 2507, 2509, 2511, 2513, 2515, 2517, 2519, 2521, 2523, 2525, 2527, 2529, 2531, 2533, 2535, 2537, 2539, 2541, 2543, 2545, 2547, 2549, 2551, 2553, 2555, 2557, 2559, 2561, 2563, 2565, 2567, 2569, 2571, 2573, 2575, 2577, 2579, 2581, 2583, 2585, 2587, 2589, 2591, 2593, 2595, 2597, 2599, 2601, 2603, 2605, 2607, 2609, 2611, 2613, 2615, 2617, 2619, 2621, 2623, 2625, 2627, 2629, 2631, 2633, 2635, 2637, 2639, 2641, 2643, 2645, 2647, 2649, 2651, 2653, 2655, 2657, 2659, 2661, 2663, 2665, 2667, 2669, 2671, 2673, 2675, 2677, 2679, 2681, 2683, 2685, 2687, 2689, 2691, 2693, 2695, 2697, 2699, 2701, 2703, 2705, 2707, 2709, 2711, 2713, 2715, 2717, 2719, 2721, 2723, 2725, 2727, 2729, 2731, 2733, 2735, 2737, 2739, 2741, 2743, 2745, 2747, 2749, 2751, 2753, 2755, 2757, 2759, 2761, 2763, 2765, 2767, 2769, 2771, 2773, 2775, 2777, 2779, 2781, 2783, 2785, 2787, 2789, 2791, 2793, 2795, 2797, 2799, 2801, 2803, 2805, 2807, 2809, 2811, 2813, 2815, 2817, 2819, 2821, 2823, 2825, 2827, 2829, 2831, 2833, 2835, 2837, 2839, 2841, 2843, 2845, 2847, 2849, 2851, 2853, 2855, 2857, 2859, 2861, 2863, 2865, 2867, 2869, 2871, 2873, 2875, 2877, 2879, 2881, 2883, 2885, 2887, 2889, 2891, 2893, 2895, 2897, 2899, 2901, 2903, 2905, 2907, 2909, 2911, 2913, 2915, 2917, 2919, 292

MOTING TOPICS

Explorers Use This Car Because It is Dependable

Pioneers and explorers, whose lives depend upon the reliability of the transportation they use, employ Dodge Brothers Motor Cars almost exclusively.

Businessmen used Dodge Brothers Cars through the unbroken days of Central Australia, Dr. Roy Chapman Anderson, on three different occasions, penetrated the innermost wastes of Mongolia in a Dodge Brothers Car.

The car's dependability is proverbial; and its exceptional riding comfort permits long travel over bad roads without fatigue.

- Touring Car £210
- Special Touring Car £230
- Aluminum Box Body £260

Delivered Nairobi.

The Omond Kenia Garage, Nairobi
Watt & Co., Ltd., Mombi and Arusha.
KANSAN BEE-VIM, KAMPALA and BUROBA.
S. FISHER & SIMMONS (E.A.), Ltd.,
Victoria Street, Nairobi.

DODGE BROTHERS MOTOR CARS

F. A. HEAD,

PIANOFOUR, TUNER AND REPAIRER.
Five years with Messrs. Chappell & Co., London.
Seven years experience in Kenya Colony.
Send all orders to P.O. Box 576.



A MAN'S DRINK
OHLSSENS'

LION LAGER

DISTRIBUTED BY DENOVAN O'HEERE,
C/O Messrs. NAIROBI, 205, 211, MURRAY ST.

SWAHILI BOOKS

EVERYDAY SWAHILI PHRASES and VOCABULARY
12th Edition, by E. A. S. Ltd.
Price, Shgs. 2/-, Postd 2/15.

ENGLISH-SWAHILI VOCABULARY, by A. C. Madan
Price, Shgs. 2/6, Postd 2/8.

SWAHILI EXERCISES, by Edward Store LL.D.
Price, Shgs. 3/-, Postd 3/0.

A HANDBOOK OF THE SWAHILI LANGUAGE
by Bishop Store, LL.D. Revised by A. C. Madan
Price, Shgs. 4/6, Postd 5/10.

SWAHILI TALKS WITH ENGLISH TRANSLATION
by Bishop Store, LL.D. Revised by A. C. Madan
Price, Shgs. 4/6, Postd 5/0.

SWAHILI GRAMMAR and VOCABULARY
by Mrs. J. Burt
Price, Shgs. 2/6, Postd 2/8.

ENGLISH-SWAHILI DICTIONARY
SWAHILI-ENGLISH DICTIONARY
by A. C. Madan.
Price, Shgs. 12/- EACH, Postd Shgs. 12/6.

Standard Stationery Store
NAIROBI.

TESTED AT ELDERBY

Major T. J. Gilman, C. of War, of Elms, informed the following account of a first hand experience test held at Eldersby on Feb 21.

For some months past Eldersby of the latest model Ford Model built with the Hickey Vapouriser in use. His most new standard on Ford has been reported to us that they were doing remarkable good mileage on the pump, not only on petrol, but on mixtures of petrol and kerosene, and in a few cases on pure kerosene. We therefore decided to put these statements to the test of a series of official trials and to stimulate interest in them, offered prizes amounting to all to £250.

"The trial of the series of five trials was held on Thursday last and was an unqualified success. The course was between Eldersby and Kilale and had a distance of 92 miles—standard cars were allowed to enter, no "pad gas" interfering with the competitor or engine were allowed, each car carried a passenger, and with the Hickey Vapouriser of continuous running, and the necessary arrangements were made to ensure accuracy, and the results, which were filled up and sealed before the start and resulted on their return. We attach hereto a schedule of the results.

"Perhaps the most interesting feature of the trials is the fact that the best result was secured with a mixture of petrol and kerosene, and next came a car running on pure kerosene. The first and second prize winners ran on a mixture of petrol and kerosene and three-quarter mile Mr. H. H. Burton, of Mombi, drove his car on pure kerosene." Mr. Davis's car was tested for the trip.

The following are the results of the test, the remaining three of the series will be looked forward to with some interest.

1st. Owner, Mr. Davis, driver Mr. M. Moore, M.P.G. 49.90
2nd. Owner, Mr. Davis, driver Mr. O'Connell, M.P.G. 47.20
3rd. Owner, A. H. Burton, driver Mr. O'Connell, M.P.G. 43.04
4th. Owner, J. W. De Plooy and F. J. Egan, driver Mr. O'Connell, M.P.G. 40.88
5th. Owner, J. J. Davol, driver Mr. O'Connell, M.P.G. 40.44
6th. Owner, A. A. O'Leary, driver N. W. Smith, M.P.G. 40.35
7th. Owner, Capt. Miller, driver Mr. O'Connell, M.P.G. 40.18
8th. Owner, J. Spence, driver H. Spence, M.P.G. 39.80
9th. Owner, O. Shaw, Co. driver Mr. Kilhall, M.P.G. 38.30

SMILE NO MORE! EVERY MAN KILLED.

The Chapman Spark Plug Co. strongly advises that every owner whose spark plugs have been in use for 1000 miles (approx. 1000 miles) should install a complete set of the Chapman Spark Plugs. The reason why it is so vital necessary to do so is not easily understood when the part they play in general motor operation efficiency is explained.

- 10th. Owner, H. W. Maudslayi, driver Mr. O'Connell, M.P.G. 38.17.
 - 11th. Owner, F. A. W. Bannister, driver Mr. O'Connell, M.P.G. 37.70.
 - 12th. Owner, Dr. Higgins, driver Mrs. Fidd, M.P.G. 37.35.
 - 13th. Owner, Dr. Higgins, driver Mr. O'Connell, M.P.G. 36.65.
 - 14th. Owner, D. G. H. Funn, driver Mrs. Funn, M.P.G. 35.35.
 - 15th. Owner, E. H. DeWalt, driver Mr. O'Connell, M.P.G. 35.05.
 - 16th. Owner, R. J. Public, driver A. H. Budgey, M.P.G. 35.05.
 - 17th. Owner, L. A. Johnson, driver Mrs. Johnson, M.P.G. 34.40.
 - 18th. Owner, C. J. Stange, driver Mr. O'Connell, M.P.G. 33.97.
 - 19th. Owner, M. O'Shea, driver Miss O'Shea, M.P.G. 32.85.
 - 20th. Owner, S. J. O'Connell, driver Mrs. O'Connell, M.P.G. 30.25.
 - 21st. Owner, Major Stiller, driver Mr. O'Connell, M.P.G. 29.90.
- Owing to valve trouble, Major Stiller's team had instead of being 3000 miles (60000 in a 63 and 120,000,000 in an eight) and 120,000,000 in this country are constantly kept in the best possible condition, the spark plugs' work is made harder. There are of the stress to which they are subject, it is no wonder they are efficient!
- It is only natural that the spark plug manufacturer should be suspected of harboring a selfish motive when he recommends that the motor car owner change his spark plugs at least every 1000 miles. But no successful manufacturer of any commodity ever continued to prosper whose purpose was purely selfish. Four years ago, when the Chapman Spark Plug Co. began recommending that spark plugs be changed at least every 1000 miles, it did so because it had definitely determined by more than 2000 existing laboratory tests and

each spark plug in a motor car is subjected to a strain which is equivalent to the strain on the wire in a bicycle or an angle bracket. To give the spark plug the strength to resist this strain, the Chapman spark plug should have the strongest possible metal. The Chapman spark plug is made of a special alloy of steel, and is a source of driving each plug is subject to constant this perfectly fitted fitting.

Consumers of six years ago, improved materials, about constant laboratory tests and highly recommended manufacturing products have been used in the manufacture of spark plugs. It is only by maintaining the performance they had previously given, that they further realized to improve have been made. To fit an exhausted fast that spark plugs should be replaced every 1000 miles.

The automotive product has yet been produced which does not deteriorate to a certain extent in service. Probably some ever will be. And probably no product of any description has ever been made which will continue to give after its own satisfaction day after day, and month after month, that it was capable of giving, while new. No matter how well designed or manufactured they may be, but actual deterioration is there nevertheless. In 10,000 miles of driving, each spark plug in a motor car is called upon to fire the cylinder in the performance of 15,000,000 times. That means that during the electrical impulses on through the plug in a four cylinder car burning 3000 miles (60000 in a 63 and 120,000,000 in an eight) and 120,000,000 in this country are constantly kept in the best possible condition, the spark plugs' work is made harder. There are of the stress to which they are subject, it is no wonder they are efficient!

It is only natural that the spark plug manufacturer should be suspected of harboring a selfish motive when he recommends that the motor car owner change his spark plugs at least every 1000 miles. But no successful manufacturer of any commodity ever continued to prosper whose purpose was purely selfish. Four years ago, when the Chapman Spark Plug Co. began recommending that spark plugs be changed at least every 1000 miles, it did so because it had definitely determined by more than 2000 existing laboratory tests and

ALM REE KEROSENE

FOR LIGHT, BRIGHT AND ECONOMY.
GREAT CLEAN, BRIGHT AND SURE-FIRING POWER.

FOR QUICK, EASY STARTING AND ALL-ROUNDER RELIABILITY; USE IN TRUCKS AND ENGINES.

- SOLE AGENTS:
- J. E. COX & CO., KERICHO & CO., ELDERBY, KITALE.
 - J. R. SINDOOO, NAKURU, KERICHO.
 - J. R. VARELL, LTD., KAMPALA, MOMBASA.
 - A. ALIBHAI LALJI & SONS, Ltd., NWANJA, BUROBA.
 - G. S. ROBERTSON & CO., NAIROBI.
 - ALIBHAI LALJI & SONS, Ltd., NAIROBI.
 - GIBSON & CO., Ltd., NAIROBI.
 - GIBSON & CO., Ltd., NAIROBI.
 - GIBSON & CO., Ltd., NAIROBI.

MAIN DISTRIBUTING AGENTS—
ANGLO-GERMAN OIL CO. (KENYA), Ltd.
KERICHO, KITALE, NAKURU, NWANJA, BUROBA, NAIROBI.

USED CARS FOR SALE

In Order to Dispose of Several Used Car's we are Offering the Undermentioned at the Figures Stated

Hupp. 8 cyl Touring	£275	Studebaker, Box Body	£150
Hupp. 4 cyl	£220	Hupp. Touring	£90
Chrysler. 70	£200	Hupp. Touring	£70
Hupp. 6 Box-Body	£185		

ALL IN PERFECT ORDER.

Minute Inspection Invited

The Motor Mart and Exchange Ltd.

NAIROBI. NAKURU.

POWER

JOHN DEERE FARM TRACTOR

15-27 H.P.



DEPENDABLE, ECONOMICAL, DURABLE.
Price £315

We have large stocks of John Deere Tractors, Farm Tractors, Carts, Wagons, Ploughs, Harrows, Cultivators, Wheel Drills, and Shellers.

TARP-AULINS—ALL SIZES IN STOCK

H. W. SEAR (S.E.A. Wagon Works) Ltd.
Victoria Street, Nairobi.
Phone 183. NAIROBI. P.O. Box 478.

Worth While Your Visit

JUST UNPAID UNIQUE RANGE.

Crepe-de-Chine, Fugi Silk.
Silk Dress Length in Fascinating Designs,
Hosiery, Fancy Goods, Hats, and
Cotton Material in Association with the well-known
LADHARAM STORES,
Govt. Road,
P.O. Box 516. NAIROBI. Govt. Road.

MORRIS SERVICE.

MORRIS CARS & COMMERCIAL VEHICLES

The new 1922 cars are second to none in value, comfort and design.

The new 25 cwt. and 30 cwt. Trucks are exactly what you want; strong, powerful, efficient and sound British workmanship. Economical to run.

Catalogues and particulars from—
SOLE AGENTS—
Mitchell Cotts & Co.
P.O. Box No. 664. NAIROBI. Theatre Royal Arcade



SALE OF GOOD FURNITURE & EFFECTS

Daily instructed by W. Mollard Esq. who is proceeding to England, we shall sell by Public Auction at his residence, Ngong Road, The Hill, on

To-day, July 4th

Commencing at 10 a.m. precisely. (View days—Tuesdays Saturday and Sunday at reasonable hours.)

ALL THE EXCELLENT FURNITURE AND EFFECTS COMPRISING

FROST VERANDA: FIVE LARGE TONGS OF FERN, BIGNONIA, etc. FOUR LARGE BAMBOO FRAMED BIGNONIA POES.

ENTRANCE HALL: LARGES PERSIAN Rug, LARGES COLORED PAPER IN TEAK CASES, FANCY IMPROVED COLORED CARPET, TEAK FRAMED LARGES BIRCH BELL, HOLLOWFRAMED REVOLVING LIGHT STAND.

TEAK FRAMED CARP TABLE, made from stock of ex. "Glenartney". OAK CABINET TABLE MODEL HIS MASTER'S VOICE GRAMOPHONE (12 inch horn).

GRAMOPHONE TABLE QUANTITY OF GRAMOPHONES TWO FRAMED SPORTING TABLES.

DRAWING ROOM: FAWN ARMCHAIR CARPET, size 14 ft. FAWN ARMCHAIR RUG.

SEVEN THREE OCCASIONAL TABLES, LARGES TEA TABLE, WHITE CROCKERY, well sprung with topography, with the best of the best.

CHERRYFIELD, well sprung with topography, with the best of the best. TWO TUB BATHS, with two extra extra extra.

LARGES TABLE LARGES TEAK LARGES CIRCULAR TABLE for Top. LARGES PERSIAN Rug in Teak.

COLORED TABLE, Teak and Mahogany legs. SHELVED HORNBOARD, in TEAK. PHOTOGRAPHY FRAMES. BIRCH BOWLS, WINE, SHELLS and ORNAMENTS.

COLORED TABLE, JAPANESE PICTURE, ENGRAVINGS, etc.

DINING ROOM: TELEVISION DINING TABLE in Teak, with two extra extra. SUITE OF SIX ARM CHAIRS in Teak, with two leather upholstered.

SUITE OF FIVE DINING CHAIRS in Teak, with leather upholstered. SEARS BOWLS, WINE, SHELLS and ORNAMENTS.

COLORED TABLE, JAPANESE PICTURE, ENGRAVINGS, etc.

DINING ROOM: TELEVISION DINING TABLE in Teak, with two extra extra. SUITE OF SIX ARM CHAIRS in Teak, with two leather upholstered.

SUITE OF FIVE DINING CHAIRS in Teak, with leather upholstered. SEARS BOWLS, WINE, SHELLS and ORNAMENTS.

COLORED TABLE, JAPANESE PICTURE, ENGRAVINGS, etc.

DINING ROOM: TELEVISION DINING TABLE in Teak, with two extra extra. SUITE OF SIX ARM CHAIRS in Teak, with two leather upholstered.

SUITE OF FIVE DINING CHAIRS in Teak, with leather upholstered. SEARS BOWLS, WINE, SHELLS and ORNAMENTS.

COLORED TABLE, JAPANESE PICTURE, ENGRAVINGS, etc.

DINING ROOM: TELEVISION DINING TABLE in Teak, with two extra extra. SUITE OF SIX ARM CHAIRS in Teak, with two leather upholstered.

SUITE OF FIVE DINING CHAIRS in Teak, with leather upholstered. SEARS BOWLS, WINE, SHELLS and ORNAMENTS.

COLORED TABLE, JAPANESE PICTURE, ENGRAVINGS, etc.

DINING ROOM: TELEVISION DINING TABLE in Teak, with two extra extra. SUITE OF SIX ARM CHAIRS in Teak, with two leather upholstered.

SUITE OF FIVE DINING CHAIRS in Teak, with leather upholstered. SEARS BOWLS, WINE, SHELLS and ORNAMENTS.

COLORED TABLE, JAPANESE PICTURE, ENGRAVINGS, etc.

CRAMER'S SALE OF FURNITURE AND EFFECTS.

Daily instructed, we shall sell by Public Auction, Without Reserve, at our Salesrooms, Martin Building, Hastings Street, on

WEDNESDAY 6th July at 10 a.m.

DOUBLE WARDROBE in Teak with two bevelled mirrors. WARDROBE in Teak with bevelled mirror.

DESKING TABLE in Teak, bevelled mirror. DOUBLES DRAWING TABLE in Teak with long bevelled mirror.

ORIENTATED SUITE, crimson covered, on casters. DINNER WAGON in Campherwood, two drawers and cupboards.

DINING TABLE in Teak OCCASIONAL TABLES in Teak.

SUITE OF SIX DINING CHAIRS in Teak. MIRRAPUR CARPETS, MIRRAPUR BUGS.

CARVED TABLES, PALMSTANDS. TRADERS SEWING MACHINE, practically new (reserve).

KNATHAY, CUPBOARD, Glassfronted, and shelves. REVOLVING BOOKCASE in campherwood. CHILD'S COOT.

BOX OTOMAN, crimson covered, on casters. COT, COT. COT. COT.

SET OF SIX DINING CHAIRS in Teak. MIRRAPUR CARPETS, MIRRAPUR BUGS.

CARVED TABLES, PALMSTANDS. TRADERS SEWING MACHINE, practically new (reserve).

KNATHAY, CUPBOARD, Glassfronted, and shelves. REVOLVING BOOKCASE in campherwood. CHILD'S COOT.

BOX OTOMAN, crimson covered, on casters. COT, COT. COT. COT.

SET OF SIX DINING CHAIRS in Teak. MIRRAPUR CARPETS, MIRRAPUR BUGS.

CARVED TABLES, PALMSTANDS. TRADERS SEWING MACHINE, practically new (reserve).

KNATHAY, CUPBOARD, Glassfronted, and shelves. REVOLVING BOOKCASE in campherwood. CHILD'S COOT.

BOX OTOMAN, crimson covered, on casters. COT, COT. COT. COT.

SET OF SIX DINING CHAIRS in Teak. MIRRAPUR CARPETS, MIRRAPUR BUGS.

CARVED TABLES, PALMSTANDS. TRADERS SEWING MACHINE, practically new (reserve).

KNATHAY, CUPBOARD, Glassfronted, and shelves. REVOLVING BOOKCASE in campherwood. CHILD'S COOT.

BOX OTOMAN, crimson covered, on casters. COT, COT. COT. COT.

SET OF SIX DINING CHAIRS in Teak. MIRRAPUR CARPETS, MIRRAPUR BUGS.

CARVED TABLES, PALMSTANDS. TRADERS SEWING MACHINE, practically new (reserve).

KNATHAY, CUPBOARD, Glassfronted, and shelves. REVOLVING BOOKCASE in campherwood. CHILD'S COOT.

BOX OTOMAN, crimson covered, on casters. COT, COT. COT. COT.

SET OF SIX DINING CHAIRS in Teak. MIRRAPUR CARPETS, MIRRAPUR BUGS.

CARVED TABLES, PALMSTANDS. TRADERS SEWING MACHINE, practically new (reserve).

KNATHAY, CUPBOARD, Glassfronted, and shelves. REVOLVING BOOKCASE in campherwood. CHILD'S COOT.

BOX OTOMAN, crimson covered, on casters. COT, COT. COT. COT.

SET OF SIX DINING CHAIRS in Teak. MIRRAPUR CARPETS, MIRRAPUR BUGS.

Miscellaneous Goods Sale.

Daily instructed, we shall sell by Public Auction, Without Reserve, at our Salesrooms, Martin Building, Hastings Street, on

Thursday, 7th July, at 10 a.m.

"GORDON" COFFEY PULPER, small size drum suitable for small coffee cherries.

PORT BUT LEMOTHE, in various designs. GOOD GRAMOPHONES RECORDS. NOVELS.

NEW TENNIS RACKET, NEW CROCKET BALL. REVOLVING BOOK, KITCHEN UTENSILS, SUNDAY CROQUET.

RANGE OF TOYS including Air Gun, Teddy Bear, Clockwork train, Coloured and other dolls, etc.

LADY'S NEW SHOES, CHILD'S BASKET BASK ON STAND.

SEMI PERMATE GLASSER, TENNIS NET. NEW NEWTONS' 7 in. 10, MAVERICK KIPPER.

36 PORTUGUES MAVERICK RIFLE, 30 RIFLE. NO. 9 SEMI BOWARY PUMP, in working order.

"PATER" CINEMATOGRAPH MACHINE. No. 10. No. 11. No. 12.

MUTER and OSWALD, Auctioneers, Nairobi.

Stanley Page

Single 4x6, 5x7, 6x9, 8x10, 10x12, 11x14, 12x16, 14x18, 16x20, 18x24, 20x28, 24x36, 30x42, 36x48, 42x54, 48x60, 54x72, 60x84, 72x96, 84x108, 96x120, 108x144, 120x168, 144x192, 168x224, 192x288, 224x336, 288x448, 336x504, 448x672, 504x840, 672x1008, 840x1344, 1008x1792, 1344x2016, 1792x2688, 2016x3024, 2688x4032, 3024x4536, 4032x6048, 4536x6804, 6048x9072, 6804x10208, 9072x13611, 10208x15312, 13611x20418, 15312x22974, 20418x30636, 22974x34404, 30636x45906, 34404x51608, 45906x68712, 51608x77472, 68712x101104, 77472x115356, 101104x151708, 115356x173016, 151708x227374, 173016x259836, 227374x341704, 259836x386712, 341704x508512, 386712x570312, 570312x840432, 840432x1260648, 1260648x1890972, 1890972x2836456, 2836456x4254684, 4254684x6382016, 6382016x9573024, 9573024x14359536, 14359536x21539304, 21539304x32308956, 32308956x48463432, 48463432x72695148, 72695148x109042724, 109042724x163564084, 163564084x245346124, 245346124x368019184, 368019184x552028776, 552028776x828043164, 828043164x1242064744, 1242064744x1863097112, 1863097112x2794645672, 2794645672x4191968508, 4191968508x6287952764, 6287952764x9431929144, 9431929144x14147893712, 14147893712x21221840576, 21221840576x31832760864, 31832760864x47749141296, 47749141296x71623711936, 71623711936x107435567904, 107435567904x161153351856, 161153351856x241730027776, 241730027776x362595041664, 362595041664x543892562512, 543892562512x815838843776, 815838843776x1223758265600, 1223758265600x1835637398400, 1835637398400x2753456096000, 2753456096000x4130184144000, 4130184144000x6195276211200, 6195276211200x9292914316800, 9292914316800x13939371475200, 13939371475200x20909057209600, 20909057209600x31363585814400, 31363585814400x47045378721280, 47045378721280x70568068076800, 70568068076800x1058521021132800, 1058521021132800x1587781531705600, 1587781531705600x2381672297536000, 2381672297536000x3572508446304000, 3572508446304000x5358762669440000, 5358762669440000x8038144003904000, 8038144003904000x12057216005808000, 12057216005808000x18085824008710400, 18085824008710400x27128736013062400, 27128736013062400x40693104019593600, 40693104019593600x61039648029390400, 61039648029390400x91559472044083200, 91559472044083200x137339200661248000, 137339200661248000x206008320986873600, 206008320986873600x309012481480307200, 309012481480307200x463518722220460800, 463518722220460800x69527808333068800, 69527808333068800x104291712500505600, 104291712500505600x156437568750758400, 156437568750758400x2346563520011372800, 2346563520011372800x3519845280017059200, 3519845280017059200x5279767040025644800, 5279767040025644800x7919708800038467200, 7919708800038467200x11879571200057702400, 11879571200057702400x17819353600086553600, 17819353600086553600x267290304000129830400, 267290304000129830400x400935680000194745600, 400935680000194745600x601403520000292118400, 601403520000292118400x8971052800004381772800, 8971052800004381772800x134565760000657267200, 134565760000657267200x201848640000985900800, 201848640000985900800x3027729600001478854400, 3027729600001478854400x4541644800002218281600, 4541644800002218281600x681246720000332742400, 681246720000332742400x1021870080000509113600, 1021870080000509113600x1532805120000763670400, 1532805120000763670400x2299207680000114550400, 2299207680000114550400x3448312320000171827200, 3448312320000171827200x517246720000257740800, 517246720000257740800x775870080000386611200, 775870080000386611200x1163805120000579916800, 1163805120000579916800x174565760000869875200, 174565760000869875200x261848640000130182400, 261848640000130182400x392772960000195273600, 392772960000195273600x589105280000292918400, 589105280000292918400x874164480000439372800, 874164480000439372800x130182400658910400, 130182400658910400x19527360098910400, 19527360098910400x2929184001478854400, 2929184001478854400x4393728002218281600, 4393728002218281600x658910400332742400, 658910400332742400x98910400478854400, 98910400478854400x1478854400658910400, 1478854400658910400x221828160098910400, 221828160098910400x3327424001478854400, 3327424001478854400x5091136002218281600, 5091136002218281600x763670400332742400, 763670400332742400x114550400478854400, 114550400478854400x171827200658910400, 171827200658910400x25774080098910400, 25774080098910400x3866112001478854400, 3866112001478854400x5799168002218281600, 5799168002218281600x869875200332742400, 869875200332742400x130182400478854400, 130182400478854400x195273600658910400, 195273600658910400x29291840098910400, 29291840098910400x4393728001478854400, 4393728001478854400x6589104002218281600, 6589104002218281600x98910400332742400, 98910400332742400x1478854400478854400, 1478854400478854400x2218281600658910400, 2218281600658910400x33274240098910400, 33274240098910400x5091136001478854400, 5091136001478854400x7636704002218281600, 7636704002218281600x114550400332742400, 114550400332742400x171827200478854400, 171827200478854400x257740800658910400, 257740800658910400x38661120098910400, 38661120098910400x5799168001478854400, 5799168001478854400x8698752002218281600, 8698752002218281600x130182400332742400, 130182400332742400x195273600478854400, 195273600478854400x292918400658910400, 292918400658910400x43937280098910400, 43937280098910400x6589104001478854400, 6589104001478854400x989104002218281600, 989104002218281600x1478854400332742400, 1478854400332742400x2218281600478854400, 2218281600478854400x332742400658910400, 332742400658910400x50911360098910400, 50911360098910400x7636704001478854400, 7636704001478854400x1145504002218281600, 1145504002218281600x171827200332742400, 171827200332742400x257740800478854400, 257740800478854400x386611200658910400, 386611200658910400x57991680098910400, 57991680098910400x8698752001478854400, 8698752001478854400x1301824002218281600, 1301824002218281600x195273600332742400, 195273600332742400x292918400478854400, 292918400478854400x439372800658910400, 439372800658910400x65891040098910400, 65891040098910400x989104001478854400, 989104001478854400x14788544002218281600, 14788544002218281600x2218281600332742400, 2218281600332742400x332742400478854400, 332742400478854400x509113600658910400, 509113600658910400x76367040098910400, 76367040098910400x1145504001478854400, 1145504001478854400x1718272002218281600, 1718272002218281600x257740800332742400, 257740800332742400x386611200478854400, 386611200478854400x579916800658910400, 579916800658910400x86987520098910400, 86987520098910400x1301824001478854400, 1301824001478854400x1952736002218281600, 1952736002218281600x292918400332742400, 292918400332742400x439372800478854400, 439372800478854400x658910400658910400, 658910400658910400x9891040098910400, 9891040098910400x14788544001478854400, 14788544001478854400x22182816002218281600, 22182816002218281600x332742400332742400, 332742400332742400x509113600509113600, 509113600509113600x763670400763670400, 763670400763670400x114550400114550400, 114550400114550400x171827200171827200, 171827200171827200x257740800257740800, 257740800257740800x386611200386611200, 386611200386611200x579916800579916800, 579916800579916800x869875200869875200, 869875200869875200x130182400130182400, 130182400130182400x195273600195273600, 195273600195273600x292918400292918400, 292918400292918400x439372800439372800, 439372800439372800x658910400658910400, 658910400658910400x9891040098910400, 9891040098910400x14788544001478854400, 14788544001478854400x22182816002218281600, 22182816002218281600x332742400332742400, 332742400332742400x509113600509113600, 509113600509113600x763670400763670400, 763670400763670400x114550400114550400, 114550400114550400x171827200171827200, 171827200171827200x257740800257740800, 257740800257740800x386611200386611200, 386611200386611200x579916800579916800, 579916800579916800x869875200869875200, 869875200869875200x130182400130182400, 130182400130182400x195273600195273600, 195273600195273600x292918400292918400, 292918400292918400x439372800439372800, 439372800439372

