

DRINK KENYA BEER

THE EAST AFRICAN

MOMBASA TIMES & UGANDA ARGUS THE LEADER

LOUNGE for Cocktails and Teas THE Dining Room for Breakfasts Lunches and Dinners

No. 4812

UNFAVOURABLE REPORT ON WHITE CHILDREN'S EDUCATION.

"Not Doing as Well as Children of Other Races"

BLAME PLACED ON PARENTS.

The Director of Education, speaking in the Legislative Council on Tuesday in reply to the criticisms of his department by the Hon. T. J. O'Shea said that the higher education of European children in Kenya was not doing as well as that of the other races.

He compared the European unfavorably with the progress of Indian children but said there was evidence that the poorer parents were gradually being brought up to the level of the other races.

COMPULSORY EDUCATION THE SOLUTION.

Speaking in Legislative Council on Tuesday during the debate on the Budget, Mr. J. H. O'Shea, Director of Education, said: "The Director of Education is responsible under the circumstances for the failure of the progress which our children have made. It is for that reason, sir, that the hon. the Colonial Secretary has asked me to report to the hon. the Colonial Secretary and the Education Department as to the reasons why the progress of our children is not doing as well as that of the other races."

"Whether it is the lack of accommodation in schools, whether it is the failure of parents to send their children to school, there is not the slightest doubt that the higher education of European children is not doing as well as the education of other races. It is not to be supposed that that is the case in all cases and it is not to be supposed that it is the case in all cases."

The Indian Child.

"In an Indian child of 100 boys at Nairobi we find that they are passing the London Matriculation examination, but the fact is that they are going home to study for their Matriculation in India. It is not to be supposed that that is the case in all cases and it is not to be supposed that it is the case in all cases."

Civil Service Commission.

"I have received the circular letter and the opinions for European and African candidates for the Civil Service Commission. I have received the circular letter and the opinions for European and African candidates for the Civil Service Commission. I have received the circular letter and the opinions for European and African candidates for the Civil Service Commission."

TROUBLE BREWING OVER TANGIER.

Italy Does Not Recognize France's Claims.

(TANGIER NEWS SERVICE) Rome, November 1. Signor Tittoni, on Tuesday in a statement to the press which said that the claims of France to Tangier were not recognized by Italy.

The S.A. Flag Settlement.

(BY WIRELESS) Rugby, Oct. 31. In the South African Union Parliament, the Education Minister announced that the Government had agreed to settle the S.A. flag settlement.

The "Princessa Malinda".

(TANGIER NEWS SERVICE) The final figure of the Princessa Malinda, the ship which was wrecked off the coast of Tangier, is 211 persons were drowned and 211 persons were rescued.

Empire Trade.

USE OF AUSTRALIAN GOODS IN BRITAIN. (BY WIRELESS) Rugby, October 31. The Secretary of State for the Colonies has announced that the Government has decided to encourage the use of Australian goods in Britain.

Ministerial Change.

SUCCESSOR TO MR. RONALD MEYER. (TANGIER NEWS SERVICE) Rome, November 1. Mr. Arthur M. Sarnoff, Italian Minister for Foreign Affairs, has announced that he will be succeeded by Mr. Ronald Meyer.

GALE DISASTER OFF IRISH COAST.

Wireless Warning Received Too Late.

(BY WIRELESS) Rugby, October 31. It is now feared that the gale which struck the coast of Ireland on Friday night was too late to be received by the boats of the coast guard.

Uranium Rollers and the Official Conscience.

There was a very interesting reference to uranium rollers in the official conscience in the Legislative Council on Tuesday.

By the Hon. the General.

"That this Council approve the proposed Bill for the amendment of the Transport and Road Traffic Act, 1932."

DETAILS OF THE NEW LOAN BILL.

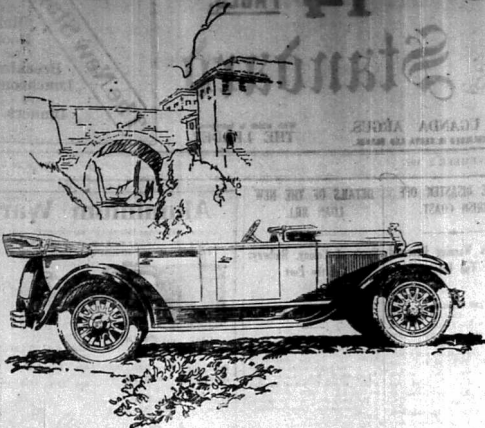
Share of Colony, Railways and the Port.

How it will be spent. The Bill provides for the raising of a loan of £2,000,000 for the purpose of providing for the share of the Colony, Railways and the Port.

Aluminium Ware

Advertisement for Aluminium Ware featuring various items like tea pots, milk boilers, and sugar bottles with prices.

# Luxury and Performance Beyond all Comparison



In the sport models Buick has achieved a new peak in rakish, racy lines, in colors that sparkle and flash in the spirit of freedom and adventure, in the luxury which attracts appreciative comment and induces pride of possession, and in the beauty, natural and lasting, which pervades every detail of the car.

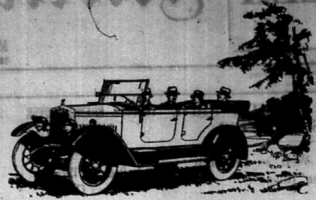
Setting a new Standard of Comparison for beauty, luxury, smartness and color, the new 1929 Buicks set up also a new standard of performance. Whether this new standard be judged by the cars' flashing get-away or by their steady, dependable performance throughout the whole speed range, the verdict is the same - Buick has achieved a new degree of motoring satisfaction.

By the adoption of Hydraulic Shock Absorbers both front and rear, the new 1929 model Buick have taken all vibration out of the road. To-day Buick is the fastest and the easiest riding car on rough or smooth roads.

**Giffillan & Company, Ltd.**  
DISTRIBUTORS.

# MORRIS

## The Wheel of the World



Service

Spare

### The Finest Car Value in the World

Backed with A year's Guarantee

AND

# BRITISH

**MITCHELL, COTTS & Co.**  
Behind the Theatre Royal Arcade  
NAIROBI

# BRITISH EMPIRE

## :: Standard Typewriter ::

**SIMPLE. STRONG. SPEEDY.**

### A High Grade British Made Writing Machine.

**THE IDEAL COMBINATION**  
BRITISH BRAINS. BRITISH MATERIAL.  
BRITISH LABOUR. BRITISH CAPITAL.

#### Abridged Specification.

88 Characters, Two Colour Ribbon and Stencil Switch, Automatic Paper Feed, Dustproof Cover over Works, Tabulator, Back Spacer, Right and Left Hand Margin Releases, Light and Even Touch, Perfect Roster Escapement, Interchangeable Type Bars, Positive Type Guide, Ball Bearing Carriage, Automatic Ribbon Reverse, etc., etc.

#### PRICES

10-inch CARRIAGE  
**Shs. 630**

With Rubbe Cover and Tools.

14-inch CARRIAGE  
**Shs. 700**

With Rubbe Cover and Tools.

PLEASE CALL AND LET US DEMONSTRATE.

*'Phone us and we will bring a Machine  
to your office.*

**Standard Stationery Stores,**  
NAIROBI.

This Space Has Been Reserved  
BY

**Messrs. Tyson Bros., Ltd.**

For announcements regarding  
the activities of their various  
departments.









FURTHER CRITICISMS OF BUDGET.

West Kenya Member's Accusation of Muddled Administration.

INDIAN COUNCILLOR ON NAIROBI NEEDS.

Colonial Secretary Explains Why Residents' House Allowance Has Been Reduced.

The discussion on the principles of the Budget was on Tuesday morning and the concluding portion of the report appears today.

The Member for West Kenya with characteristic candour accused the Government of muddled administration and of failure to provide essential domestic services in the Budget. He asserted that Government's muddled land policy was adversely affecting settlement.

The Indian Member (Mr. Malik) considered that there should be reduction in taxation including the abolition of the Education Tax and that such buildings as the Supreme Court should have a prior claim on expenditure over schemes which were largely unproductive.

The Colonial Secretary in reply to Mr. Malik explained that roads and water supply for Eastleigh estate were included in a loan to be made to Nairobi Municipality.

OFFICIAL WHO PREFERRED A HOTEL.

Continuing the debate on the Budget on Tuesday, Captain Kenney, M.P., said: Your Excellency, the point on which the Budget falls chiefly is the question of the roads. In the last three or four years have equal miles of roads been provided for people desirous of locating themselves in the country? There have been a considerable number of roads, but they have been of a very poor quality. I am sure that the roads which have been provided are of a very poor quality. I am sure that the roads which have been provided are of a very poor quality.

My Excellency, I consider that the roads which have been provided are of a very poor quality. I am sure that the roads which have been provided are of a very poor quality. I am sure that the roads which have been provided are of a very poor quality. I am sure that the roads which have been provided are of a very poor quality. I am sure that the roads which have been provided are of a very poor quality.

My Excellency, I consider that the roads which have been provided are of a very poor quality. I am sure that the roads which have been provided are of a very poor quality. I am sure that the roads which have been provided are of a very poor quality. I am sure that the roads which have been provided are of a very poor quality. I am sure that the roads which have been provided are of a very poor quality.

My Excellency, I consider that the roads which have been provided are of a very poor quality. I am sure that the roads which have been provided are of a very poor quality. I am sure that the roads which have been provided are of a very poor quality. I am sure that the roads which have been provided are of a very poor quality. I am sure that the roads which have been provided are of a very poor quality.

My Excellency, I consider that the roads which have been provided are of a very poor quality. I am sure that the roads which have been provided are of a very poor quality. I am sure that the roads which have been provided are of a very poor quality. I am sure that the roads which have been provided are of a very poor quality. I am sure that the roads which have been provided are of a very poor quality.

My Excellency, I consider that the roads which have been provided are of a very poor quality. I am sure that the roads which have been provided are of a very poor quality. I am sure that the roads which have been provided are of a very poor quality. I am sure that the roads which have been provided are of a very poor quality.

My Excellency, I consider that the roads which have been provided are of a very poor quality. I am sure that the roads which have been provided are of a very poor quality. I am sure that the roads which have been provided are of a very poor quality. I am sure that the roads which have been provided are of a very poor quality.

My Excellency, I consider that the roads which have been provided are of a very poor quality. I am sure that the roads which have been provided are of a very poor quality. I am sure that the roads which have been provided are of a very poor quality. I am sure that the roads which have been provided are of a very poor quality.

My Excellency, I consider that the roads which have been provided are of a very poor quality. I am sure that the roads which have been provided are of a very poor quality. I am sure that the roads which have been provided are of a very poor quality. I am sure that the roads which have been provided are of a very poor quality.

My Excellency, I consider that the roads which have been provided are of a very poor quality. I am sure that the roads which have been provided are of a very poor quality. I am sure that the roads which have been provided are of a very poor quality. I am sure that the roads which have been provided are of a very poor quality.

My Excellency, I consider that the roads which have been provided are of a very poor quality. I am sure that the roads which have been provided are of a very poor quality. I am sure that the roads which have been provided are of a very poor quality. I am sure that the roads which have been provided are of a very poor quality.

My Excellency, I consider that the roads which have been provided are of a very poor quality. I am sure that the roads which have been provided are of a very poor quality. I am sure that the roads which have been provided are of a very poor quality. I am sure that the roads which have been provided are of a very poor quality.

My Excellency, I consider that the roads which have been provided are of a very poor quality. I am sure that the roads which have been provided are of a very poor quality. I am sure that the roads which have been provided are of a very poor quality. I am sure that the roads which have been provided are of a very poor quality.

My Excellency, I consider that the roads which have been provided are of a very poor quality. I am sure that the roads which have been provided are of a very poor quality. I am sure that the roads which have been provided are of a very poor quality. I am sure that the roads which have been provided are of a very poor quality.

My Excellency, I consider that the roads which have been provided are of a very poor quality. I am sure that the roads which have been provided are of a very poor quality. I am sure that the roads which have been provided are of a very poor quality. I am sure that the roads which have been provided are of a very poor quality.

My Excellency, I consider that the roads which have been provided are of a very poor quality. I am sure that the roads which have been provided are of a very poor quality. I am sure that the roads which have been provided are of a very poor quality. I am sure that the roads which have been provided are of a very poor quality.

My Excellency, I consider that the roads which have been provided are of a very poor quality. I am sure that the roads which have been provided are of a very poor quality. I am sure that the roads which have been provided are of a very poor quality. I am sure that the roads which have been provided are of a very poor quality.

My Excellency, I consider that the roads which have been provided are of a very poor quality. I am sure that the roads which have been provided are of a very poor quality. I am sure that the roads which have been provided are of a very poor quality. I am sure that the roads which have been provided are of a very poor quality.

My Excellency, I consider that the roads which have been provided are of a very poor quality. I am sure that the roads which have been provided are of a very poor quality. I am sure that the roads which have been provided are of a very poor quality. I am sure that the roads which have been provided are of a very poor quality.

My Excellency, I consider that the roads which have been provided are of a very poor quality. I am sure that the roads which have been provided are of a very poor quality. I am sure that the roads which have been provided are of a very poor quality. I am sure that the roads which have been provided are of a very poor quality.

My Excellency, I consider that the roads which have been provided are of a very poor quality. I am sure that the roads which have been provided are of a very poor quality. I am sure that the roads which have been provided are of a very poor quality. I am sure that the roads which have been provided are of a very poor quality.

My Excellency, I consider that the roads which have been provided are of a very poor quality. I am sure that the roads which have been provided are of a very poor quality. I am sure that the roads which have been provided are of a very poor quality. I am sure that the roads which have been provided are of a very poor quality.

My Excellency, I consider that the roads which have been provided are of a very poor quality. I am sure that the roads which have been provided are of a very poor quality. I am sure that the roads which have been provided are of a very poor quality. I am sure that the roads which have been provided are of a very poor quality.

My Excellency, I consider that the roads which have been provided are of a very poor quality. I am sure that the roads which have been provided are of a very poor quality. I am sure that the roads which have been provided are of a very poor quality. I am sure that the roads which have been provided are of a very poor quality.

My Excellency, I consider that the roads which have been provided are of a very poor quality. I am sure that the roads which have been provided are of a very poor quality. I am sure that the roads which have been provided are of a very poor quality. I am sure that the roads which have been provided are of a very poor quality.

My Excellency, I consider that the roads which have been provided are of a very poor quality. I am sure that the roads which have been provided are of a very poor quality. I am sure that the roads which have been provided are of a very poor quality. I am sure that the roads which have been provided are of a very poor quality.

My Excellency, I consider that the roads which have been provided are of a very poor quality. I am sure that the roads which have been provided are of a very poor quality. I am sure that the roads which have been provided are of a very poor quality. I am sure that the roads which have been provided are of a very poor quality.

My Excellency, I consider that the roads which have been provided are of a very poor quality. I am sure that the roads which have been provided are of a very poor quality. I am sure that the roads which have been provided are of a very poor quality. I am sure that the roads which have been provided are of a very poor quality.

My Excellency, I consider that the roads which have been provided are of a very poor quality. I am sure that the roads which have been provided are of a very poor quality. I am sure that the roads which have been provided are of a very poor quality. I am sure that the roads which have been provided are of a very poor quality.

My Excellency, I consider that the roads which have been provided are of a very poor quality. I am sure that the roads which have been provided are of a very poor quality. I am sure that the roads which have been provided are of a very poor quality. I am sure that the roads which have been provided are of a very poor quality.

My Excellency, I consider that the roads which have been provided are of a very poor quality. I am sure that the roads which have been provided are of a very poor quality. I am sure that the roads which have been provided are of a very poor quality. I am sure that the roads which have been provided are of a very poor quality.

My Excellency, I consider that the roads which have been provided are of a very poor quality. I am sure that the roads which have been provided are of a very poor quality. I am sure that the roads which have been provided are of a very poor quality. I am sure that the roads which have been provided are of a very poor quality.

My Excellency, I consider that the roads which have been provided are of a very poor quality. I am sure that the roads which have been provided are of a very poor quality. I am sure that the roads which have been provided are of a very poor quality. I am sure that the roads which have been provided are of a very poor quality.

My Excellency, I consider that the roads which have been provided are of a very poor quality. I am sure that the roads which have been provided are of a very poor quality. I am sure that the roads which have been provided are of a very poor quality. I am sure that the roads which have been provided are of a very poor quality.

My Excellency, I consider that the roads which have been provided are of a very poor quality. I am sure that the roads which have been provided are of a very poor quality. I am sure that the roads which have been provided are of a very poor quality. I am sure that the roads which have been provided are of a very poor quality.

My Excellency, I consider that the roads which have been provided are of a very poor quality. I am sure that the roads which have been provided are of a very poor quality. I am sure that the roads which have been provided are of a very poor quality. I am sure that the roads which have been provided are of a very poor quality.

My Excellency, I consider that the roads which have been provided are of a very poor quality. I am sure that the roads which have been provided are of a very poor quality. I am sure that the roads which have been provided are of a very poor quality. I am sure that the roads which have been provided are of a very poor quality.

My Excellency, I consider that the roads which have been provided are of a very poor quality. I am sure that the roads which have been provided are of a very poor quality. I am sure that the roads which have been provided are of a very poor quality. I am sure that the roads which have been provided are of a very poor quality.

Lyric Hall! Last Three Nights of the Joy Ballads. Tonight and To-morrow at 8-10. Beauty in All!! Stid Burt as the Beauty Doctor. Personal Performances on Saturday. Prices 10/-, 7/6, 5/-, Plans at Lyric.

Do Not Miss Eadies' Sale. Wonderful Bargains in spite of notice received dated September 13, 1927 from Federated Associations of Boot and Shoe Manufacturers of Great Britain and Ireland in order to maintain Quality Buyers are informed that a General revision of costings by Boot and Manufacturers, so that a due relation between Manufacturing Prices will be maintained.

Eadies Footwear Ltd. Nairobi.

THEATRE ROYAL MATINEES SATS. 3-30. NIGHTLY TO-NIGHT, FRIDAY, SATURDAY. LILIAN GIBB. THE GREAT INDIVIDUAL TRIUMPH.

THE WHITE SISTER. CHILDREN MUST NOT MISS SATURDAY'S MATINEE. REX THE WILD Black Cyclone & Harold Lloyd IN 'NOW OR NEVER'.

K. McIvor's Garage. We Repair All makes of Cars and Trucks. WE DO IT TO-DAY NOT TO-MORROW. Electrical Equipment, Battery Repairs, Armature Winding, Batteries inspected and tested free. ALL WORK GUARANTEED. We can supply from Stock the following New Cars: BUICK, CHRYSLER, EUSEB, FORD, FIAT, HUDSON, NASH, ROBEY, STUDEBAKER. We service the above when purchased through us. Come and inspect our new Cars. Phone 97. NAIROBI. P. O. Box 97.

HE AND LADY GRACE TO VISIT NAIROBI. Several Meetings with Local Bodies. THE NEW SCHOOL.

IN REMEMBRANCE OF TYRES. OBSERVED IN LONDON. Princess Beatrice Lays a Wreath at Colombo. In Memory of 20,000 Who Fell.

IN MEMORY OF 20,000 WHO FELL. Princess Beatrice laid a wreath at the base of the Cenotaph. The Hon. Lady Grace will leave for London on the 11th inst. The Hon. Lady Grace will leave for London on the 11th inst.

TO-DAY'S GAUGE LIST. Below Mr. Justice Sheridan. C/O Mabel Coleman. Mr. Justice Sheridan. Mr. Justice Sheridan.

UNFAVOURABLE REPORT ON WHITE CHILDREN'S EDUCATION. First visit and at the present moment are suffering from lack of suitable teachers.

ANOTHER LINE REDUCES RATES. 'STANDARD' CORRESPONDENT. Sir Robert Thomas, head of the British Shipping Line, states that as the Conference Line which he manages, he will follow.

WATER LEGISLATION. 'ONE USE' OF WATER LEGISLATION. The provision is far too little. It is suggested that the Government should take steps to amend the law.

AN INDIAN VIEW. The last critic of the Budget on Tuesday was Mr. J. B. P. The Hon. Mr. Justice Sheridan. He thought the people of Kenya must be satisfied with the Budget. He thought the people of Kenya must be satisfied with the Budget.

THE NORTHERN FRONTIERS. We have difficulty with various points. The Government has been unable to do so. The Government has been unable to do so.

'A LEXURY'. 'THE GAME DEPARTMENT HAS TAKEN FOR VERY LITTLE BUT HAS BEEN UNABLE TO MAINTAIN WHAT IT HAS ALWAYS MAINTAINED: THAT THE GAME DEPARTMENT IS A TRUCE. If there are people in the world who are





# FADELESS

Casement CLOTHS  
Cretonnes &  
Filet Nets.

Various attractive shades and designs:  
Very big range to select from

AT AHAMED Bros.

Stockists of only the Best Goods  
BAZAR NAIROBI.

Reliance Transport Co. Limited.

Tel. 331. Sadler St., Nairobi. Tel. Add. RELIANCE.  
P. O. Box 482. Fuel Depot & Railway Sliding 10 Avenue.



The  
Large Motor Transport Co.  
IN THE COLONY.

We specialize in the Transport of Builders Material and Road Material.  
Cement Road Material  
Cement Road Material  
Cement Road Material

Important Announcement.  
Mr. A. M. WATSON.

(for many years associated with The Service Co., Ltd.)  
has been appointed Dealer for  
THE FORDSON TRACTOR AND All Equipment and  
THE OLIVE IMPLEMENTS.

for Nairobi and Districts and has opened Premises  
in Sixth Avenue (adjoining K. McIvor's Garage), from  
the 1st November, 1927.

All enquiries for the above products and all necessary  
Spares should be sent direct to him addressed  
P. O. Box 876, Nairobi.

Mountain Coffee Soil.

Farms on the Slopes of Mt. Elgon are attracting  
the attention of Coffee Planters. Yields of over half a  
ton per acre.

We have a number of blocks of land from 250 acres  
upwards for coffee, planted and undeveloped.  
Prices are rising but genuine bargains are to be had from

KIRKWOOD & Co.,  
LAND AGENTS, KITALE.

KENYA INVESTMENT Coy., Ltd.  
Sadler Street,  
P. O. Box 809.

Agents for:  
Kilimanjaro Saw Mills, Ltd.—Furniture Hardwoods  
West Kenya Saw Mills, Ltd.—Campoor, Fodo, and  
Walupur Paints & Distempers—Used in the  
decoration of St. James's Palace, London.  
Williams & Williams, Ltd.—Reliance Steel Windows.  
For Sale about 2 miles Tram Track 14th section complete with Fish Ponds, Bulls, and Dogpicks.  
(Just across F. P. Road and Iron Post.)

RUBBER STAMPS  
AT THE  
STANDARD STATIONERY STORES,

## THE FINANCIAL STATEMENTS.

Customs Receipts Stated to be  
Conservatively Forecasted.  
EFFECTS OF THE DROUGHT.

Estimated that Estimates of Revenue  
Will be Exceeded in 1928.

The Commissioner of Customs and the Treasurer  
threw light on the estimate of revenue in the course  
of the debate on the Budget on Tuesday.

The former showed that Customs revenue was based on  
the figures of the last five years and was most con-  
servative in character, allowing only for an increase  
of 2.54 per cent. He did not anticipate a deficit if  
development followed normal lines although he did  
not anticipate an excess to the same extent as in the  
preceding years.

He also showed that there had been a decrease of  
£19,000 in the Customs receipts from wines and  
spirits while the Consumption Tax had brought in  
£21,187, showing a total gain of £2,000.

The Treasurer gave an assurance that the half million  
surplus is a cash one and also maintained that there  
was every likelihood of the estimated revenue for  
1928 being exceeded.

### A CASH SURPLUS.

The Commissioner of Customs  
said there were two points which  
had arisen during the debate on  
which he might possibly throw  
some light. The first was in  
connection with the estimate for  
1928. He pointed out that the  
Commissioner of Customs had  
distributed an estimate of the  
revenue for 1928. He said that  
the estimate was based on the  
figures of the last five years and  
was most conservative in char-  
acter. He said that he did not  
anticipate a deficit if develop-  
ment followed normal lines al-  
though he did not anticipate an  
excess to the same extent as in  
the preceding years.

### The Drought.

As regards the estimate of  
£602,773 in respect of Kenya he  
said he would be observed that  
£31 per acre had been the price  
paid for the land in the district  
of the Government.

### Wine and Spirits.

The Commissioner of Customs  
said that the estimate of revenue  
for 1928 was based on the figures  
of the last five years and was  
most conservative in character.  
He said that he did not antici-  
pate a deficit if development fol-  
lowed normal lines although he  
did not anticipate an excess to  
the same extent as in the pre-  
ceding years. He said that the  
estimate was based on the fig-  
ures of the last five years and  
was most conservative in char-  
acter. He said that he did not  
anticipate a deficit if develop-  
ment followed normal lines al-  
though he did not anticipate an  
excess to the same extent as in  
the preceding years.

### Rails for 1928.

The figure on which the es-  
timate for 1928 had been based  
was as follows:  
The estimate had been based on  
the figures of the last five years  
and was most conservative in  
character. He said that he did  
not anticipate a deficit if devel-  
opment followed normal lines al-  
though he did not anticipate an  
excess to the same extent as in  
the preceding years.

### The Consumption Tax.

An estimate of the revenue  
to be derived from the consump-  
tion tax for the year 1928 was  
£21,187. This was based on the  
figures of the last five years and  
was most conservative in char-  
acter. He said that he did not  
anticipate a deficit if develop-  
ment followed normal lines al-  
though he did not anticipate an  
excess to the same extent as in  
the preceding years.

## FINANCIAL PREPARATIONS FOR THE CARNIVAL.

The Government of Kenya  
was informed by the Hon. the  
Member for Nairobi South that  
the Government had decided to  
celebrate the Carnival in Nairobi  
during the month of Friday.

The Government of Kenya  
was informed by the Hon. the  
Member for Nairobi South that  
the Government had decided to  
celebrate the Carnival in Nairobi  
during the month of Friday.

The Government of Kenya  
was informed by the Hon. the  
Member for Nairobi South that  
the Government had decided to  
celebrate the Carnival in Nairobi  
during the month of Friday.

The Government of Kenya  
was informed by the Hon. the  
Member for Nairobi South that  
the Government had decided to  
celebrate the Carnival in Nairobi  
during the month of Friday.

The Government of Kenya  
was informed by the Hon. the  
Member for Nairobi South that  
the Government had decided to  
celebrate the Carnival in Nairobi  
during the month of Friday.

The Government of Kenya  
was informed by the Hon. the  
Member for Nairobi South that  
the Government had decided to  
celebrate the Carnival in Nairobi  
during the month of Friday.

The Government of Kenya  
was informed by the Hon. the  
Member for Nairobi South that  
the Government had decided to  
celebrate the Carnival in Nairobi  
during the month of Friday.

The Government of Kenya  
was informed by the Hon. the  
Member for Nairobi South that  
the Government had decided to  
celebrate the Carnival in Nairobi  
during the month of Friday.

The Government of Kenya  
was informed by the Hon. the  
Member for Nairobi South that  
the Government had decided to  
celebrate the Carnival in Nairobi  
during the month of Friday.

The Government of Kenya  
was informed by the Hon. the  
Member for Nairobi South that  
the Government had decided to  
celebrate the Carnival in Nairobi  
during the month of Friday.

The Government of Kenya  
was informed by the Hon. the  
Member for Nairobi South that  
the Government had decided to  
celebrate the Carnival in Nairobi  
during the month of Friday.

The Government of Kenya  
was informed by the Hon. the  
Member for Nairobi South that  
the Government had decided to  
celebrate the Carnival in Nairobi  
during the month of Friday.

The Government of Kenya  
was informed by the Hon. the  
Member for Nairobi South that  
the Government had decided to  
celebrate the Carnival in Nairobi  
during the month of Friday.

The Government of Kenya  
was informed by the Hon. the  
Member for Nairobi South that  
the Government had decided to  
celebrate the Carnival in Nairobi  
during the month of Friday.

The Government of Kenya  
was informed by the Hon. the  
Member for Nairobi South that  
the Government had decided to  
celebrate the Carnival in Nairobi  
during the month of Friday.

The Government of Kenya  
was informed by the Hon. the  
Member for Nairobi South that  
the Government had decided to  
celebrate the Carnival in Nairobi  
during the month of Friday.

The Government of Kenya  
was informed by the Hon. the  
Member for Nairobi South that  
the Government had decided to  
celebrate the Carnival in Nairobi  
during the month of Friday.

The Government of Kenya  
was informed by the Hon. the  
Member for Nairobi South that  
the Government had decided to  
celebrate the Carnival in Nairobi  
during the month of Friday.

The Government of Kenya  
was informed by the Hon. the  
Member for Nairobi South that  
the Government had decided to  
celebrate the Carnival in Nairobi  
during the month of Friday.

The Government of Kenya  
was informed by the Hon. the  
Member for Nairobi South that  
the Government had decided to  
celebrate the Carnival in Nairobi  
during the month of Friday.

The Government of Kenya  
was informed by the Hon. the  
Member for Nairobi South that  
the Government had decided to  
celebrate the Carnival in Nairobi  
during the month of Friday.

The Government of Kenya  
was informed by the Hon. the  
Member for Nairobi South that  
the Government had decided to  
celebrate the Carnival in Nairobi  
during the month of Friday.

The Government of Kenya  
was informed by the Hon. the  
Member for Nairobi South that  
the Government had decided to  
celebrate the Carnival in Nairobi  
during the month of Friday.

The Government of Kenya  
was informed by the Hon. the  
Member for Nairobi South that  
the Government had decided to  
celebrate the Carnival in Nairobi  
during the month of Friday.

The Government of Kenya  
was informed by the Hon. the  
Member for Nairobi South that  
the Government had decided to  
celebrate the Carnival in Nairobi  
during the month of Friday.

The Government of Kenya  
was informed by the Hon. the  
Member for Nairobi South that  
the Government had decided to  
celebrate the Carnival in Nairobi  
during the month of Friday.

The Government of Kenya  
was informed by the Hon. the  
Member for Nairobi South that  
the Government had decided to  
celebrate the Carnival in Nairobi  
during the month of Friday.

The Government of Kenya  
was informed by the Hon. the  
Member for Nairobi South that  
the Government had decided to  
celebrate the Carnival in Nairobi  
during the month of Friday.

ALLIANCE PROPERTY LTD.  
We have pleasure in announcing that we have been  
appointed Sole Agents and Stockists for the well-known  
brand of Asbestos Sheet Products manufactured by  
The Electric Pieta Artificials Ltd., known  
as "ITALIT", whose Head Office are in Laurence Point-  
ney Hill, London.

Our "ITALIT" Factories are the largest of their kind in  
Europe. We are in a position of quoting for Super  
Strong Corrugated Sheets in either 8" or 6" lengths. Plus  
Asbestos Tiles, Roman Tiles, etc., etc. at competitive  
prices. Samples and prices sent on application.

J. G. ARONSON Ltd.  
P. O. Box 681, NAIROBI.

FOR SERVICE AND SATISFACTION,  
RIGHT QUALITY RIGHT PRICES

TRY  
M. R. D'SOUZA & Co.

Wines, Spirits, Provisions & General Merchandise  
Ladies' Gowns and Children's Tailors and Outfitters.

P. O. Box 186, York House, Gov. Road, P.O. Box 78.  
Ask for our New Price List of Wines and Spirits and  
we will send it to you free of charge.

H. O.  
Quick Cooking Oats  
Makes Porridge in  
2 to 3 minutes.

Obtainable at:  
Beliram Parimal & Co.  
(Established 1900.)  
Corner Swamp Road and Government Road,  
P. O. Box 9. NAIROBI. P. O. Box 29  
Also P. O. Box 47, MOMBASA.

OAKLEIGH PRIVATE HOTEL  
COMFORTABLE AND UP-TO-DATE IN EVERY WAY  
FOURTEEN VICTORIAN SPECIALLY CATERED FOR  
SPECIAL MONTHLY TERMS FOR PERMANENTS

Mr. M. JARRETT,  
Manager.  
Phone: 180. NAIROBI. P. O. Box 188

"ARPAK"  
No Revolve  
Playing Cards

BLACK BACKGROUND.  
OLIVE Green, HEARTS RED, DIAMONDS White, SPADES  
Yellow.

The "Arpak" Playing Cards which were made famous at the  
B.B.C. "Fifteen's Best" game, are now being sold in Nairobi.  
The distinctive colour for each suit makes REVOLVERS impossible.

Shgs. 3-75 per Pack.  
STANDARD STATIONERY STORES,  
NAIROBI.

## BEL INN

(On Main Road) NAIVASHA.

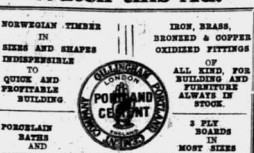
TARIFF:  
BREAKFAST Pk. 2.00  
LUNCH Pk. 1.50  
DINNER Pk. 1.50  
DINNER AND A  
BREAKFAST Pk. 2.50  
DINNER AND A  
BREAKFAST Pk. 2.50  
TEAS, EXTRA SPECIAL  
TARIFF for WEEKENDS,  
EVEN WEEKS & MONTHS.

FIRST CLASS  
ACCOMMODATION  
CATERING A SPECIALTY.  
LARGE FRIGIDAIRE  
HOT WATER  
RED DRINKER, AVAILABLE  
ON ALL TABLES.  
CLEANLINESS AND  
SATISFACTION  
GUARANTEED.

SIRWELL'S  
Dry Cleaning & Dyeing Works.  
Box 100, NAIROBI.  
HYPOPHOSPHITE SODA, Soda Sulphate.

## Watch this Ad.

NON-WOOLLEN TILES  
IN  
SIZES AND SHAPES  
INDIFFERENT  
TO QUICK AND  
PROGRESSIVE  
BUILDING



PORELAND  
TILES  
AND  
PARTIALLY FITTINGS.  
WELL  
AND  
DIFFERS  
WITHOUT EQUAL

F. M. SHARPE,  
P. O. Box 618, Phone 88  
Colony.



## Company Coming in a Few Weeks

**FINE BIRD CAKE** with rich creamy filling must be made between now and the end of October. You do not begin to make it until the middle of the month. But you do want that cake to turn out a complete success.

So by all means obtain the **Best Baking Powder** your grocer will appreciate the fine flavor and delicate texture of your cake.

For fifty years **Royal Baking Powder** has proved the second worth. It is made in England. It is guaranteed always pure, wholesome and sanitary.

**Royal Baking Powder Co.**  
100 East 24th Street,  
New York, N. Y.

Send for the Royal Cake Book. It contains many interesting and valuable recipes. Copy will be sent free upon request.



**China, Glass, Cutlery Enamel & Aluminium Ware.**

**Hawley, Cameron & Bennett, THE CHINA SHOP.**

**20% Cash Discount.**

**Barclays Bank (Dominion Colonial and Overseas).**

**THE ANGLO-EGYPTIAN BANK LIMITED**

INCORPORATED IN THE UNITED KINGDOM BY ROYAL CHARTER 1880.

INCORPORATED BY ACT OF PARLIAMENT 1923.

THE NATIONAL BANK OF SOUTH AFRICA LIMITED.

**THE ANGLO-EGYPTIAN BANK LIMITED**

Capital authorized £1,000,000  
Capital subscribed £ 6,975,000  
Capital paid up £ 6,975,000  
Reserve Funds £ 1,180,000  
Dividends £ 1,000,000

HEAD OFFICE: 14, Lombard Street, London, E.C. 4  
LONDON OFFICES: 17, King William Street, E.C. 4  
Crown Place, London, W.1, E.C. 2  
III, St. Martin's Lane, Travler's Square, London, W.C. 2

And Offices at Liverpool, Manchester, Hamburg, New York.

Representative Office in Canada, 145, St. James Street, MONTREAL.

The bank is represented in British East Africa, Union of South Africa, Rhodesia, South West Africa, British West Africa, Egypt and the Soudan West India, Mauritius, etc.

**OVER FOUR HUNDRED BRANCHES**

AGENTS IN ALL PROGRESSIVE CITIES OF THE WORLD

All classes of Banking business undertaken.

The Bank also acts as "Trustee and Receiver."

**East Africa Mounted Rifles NOTICE.**

The Annual Dinner this year will be held in Nairobi on Longido Day, November 3rd, at the Trocadero Restaurant at 5.15 p.m. Guests must be exc. service men only. Price of tickets, including drinks provided at the Dinner, Shgs. 20/- each.

In order to facilitate catering arrangements, it is requested that applications be made as early as possible and if it must be accompanied by a guarantee. Applications to be made to the Hon. Secretary, P.O. Box 170 Nairobi.

**O. M. TAYLOR, J. C. WILSON, J. MCLEOD MUNDWELL, J. W. MILLIGAN.**

Dress Optional.  
**Roll Up.**

**Naivasha Hotel Naivasha.**

The finest hill country hotel in Kenya. On the shore of the beautiful Lake.

Garage for Cars. Excellent Cuisine. Billiards. Tennis. Fishing. Patrol Pump.

The editor has not thought sufficiently for the more important by the correspondence of the names and addresses of the members of the Executive Committee of the National Council for the Government of the Republic of Kenya. It is not possible to publish the names of the members of the Executive Committee of the National Council for the Government of the Republic of Kenya. It is not possible to publish the names of the members of the Executive Committee of the National Council for the Government of the Republic of Kenya.

### THE BUDGET AND THE "SUGGESTIVE TALK"

To the Editor, "E.A. Standard."  
Sir—Your paper states:—  
"The Budget, but the Education Minister will read as an alternative has been put before the Government."  
I have seen in my life no more terms to break an argument. The Budget is not a mere list of figures to be read and then to allow its incidence to remain as it is. It is a statement of the Government's policy for the year. It is a statement of the Government's policy for the year. It is a statement of the Government's policy for the year.

There are no money letter ways of extracting money from the taxpayer without harassing him and that one is reluctantly driven to the conclusion that the Government's policy is to allow the incidence of the Budget to remain as it is. It is a statement of the Government's policy for the year.

It is of course possible that an alternative will be suggested, but it is not likely that it will be adopted. The Government's policy is to allow the incidence of the Budget to remain as it is. It is a statement of the Government's policy for the year.

It is of course possible that an alternative will be suggested, but it is not likely that it will be adopted. The Government's policy is to allow the incidence of the Budget to remain as it is. It is a statement of the Government's policy for the year.

It is of course possible that an alternative will be suggested, but it is not likely that it will be adopted. The Government's policy is to allow the incidence of the Budget to remain as it is. It is a statement of the Government's policy for the year.

It is of course possible that an alternative will be suggested, but it is not likely that it will be adopted. The Government's policy is to allow the incidence of the Budget to remain as it is. It is a statement of the Government's policy for the year.

It is of course possible that an alternative will be suggested, but it is not likely that it will be adopted. The Government's policy is to allow the incidence of the Budget to remain as it is. It is a statement of the Government's policy for the year.

It is of course possible that an alternative will be suggested, but it is not likely that it will be adopted. The Government's policy is to allow the incidence of the Budget to remain as it is. It is a statement of the Government's policy for the year.

It is of course possible that an alternative will be suggested, but it is not likely that it will be adopted. The Government's policy is to allow the incidence of the Budget to remain as it is. It is a statement of the Government's policy for the year.

It is of course possible that an alternative will be suggested, but it is not likely that it will be adopted. The Government's policy is to allow the incidence of the Budget to remain as it is. It is a statement of the Government's policy for the year.

It is of course possible that an alternative will be suggested, but it is not likely that it will be adopted. The Government's policy is to allow the incidence of the Budget to remain as it is. It is a statement of the Government's policy for the year.

It is of course possible that an alternative will be suggested, but it is not likely that it will be adopted. The Government's policy is to allow the incidence of the Budget to remain as it is. It is a statement of the Government's policy for the year.

It is of course possible that an alternative will be suggested, but it is not likely that it will be adopted. The Government's policy is to allow the incidence of the Budget to remain as it is. It is a statement of the Government's policy for the year.

It is of course possible that an alternative will be suggested, but it is not likely that it will be adopted. The Government's policy is to allow the incidence of the Budget to remain as it is. It is a statement of the Government's policy for the year.

It is of course possible that an alternative will be suggested, but it is not likely that it will be adopted. The Government's policy is to allow the incidence of the Budget to remain as it is. It is a statement of the Government's policy for the year.

The Budget is not a mere list of figures to be read and then to allow its incidence to remain as it is. It is a statement of the Government's policy for the year. It is a statement of the Government's policy for the year. It is a statement of the Government's policy for the year.

The Budget is not a mere list of figures to be read and then to allow its incidence to remain as it is. It is a statement of the Government's policy for the year. It is a statement of the Government's policy for the year. It is a statement of the Government's policy for the year.

The Budget is not a mere list of figures to be read and then to allow its incidence to remain as it is. It is a statement of the Government's policy for the year. It is a statement of the Government's policy for the year. It is a statement of the Government's policy for the year.

The Budget is not a mere list of figures to be read and then to allow its incidence to remain as it is. It is a statement of the Government's policy for the year. It is a statement of the Government's policy for the year. It is a statement of the Government's policy for the year.

The Budget is not a mere list of figures to be read and then to allow its incidence to remain as it is. It is a statement of the Government's policy for the year. It is a statement of the Government's policy for the year. It is a statement of the Government's policy for the year.

The Budget is not a mere list of figures to be read and then to allow its incidence to remain as it is. It is a statement of the Government's policy for the year. It is a statement of the Government's policy for the year. It is a statement of the Government's policy for the year.

The Budget is not a mere list of figures to be read and then to allow its incidence to remain as it is. It is a statement of the Government's policy for the year. It is a statement of the Government's policy for the year. It is a statement of the Government's policy for the year.

The Budget is not a mere list of figures to be read and then to allow its incidence to remain as it is. It is a statement of the Government's policy for the year. It is a statement of the Government's policy for the year. It is a statement of the Government's policy for the year.

The Budget is not a mere list of figures to be read and then to allow its incidence to remain as it is. It is a statement of the Government's policy for the year. It is a statement of the Government's policy for the year. It is a statement of the Government's policy for the year.

The Budget is not a mere list of figures to be read and then to allow its incidence to remain as it is. It is a statement of the Government's policy for the year. It is a statement of the Government's policy for the year. It is a statement of the Government's policy for the year.

The Budget is not a mere list of figures to be read and then to allow its incidence to remain as it is. It is a statement of the Government's policy for the year. It is a statement of the Government's policy for the year. It is a statement of the Government's policy for the year.

The Budget is not a mere list of figures to be read and then to allow its incidence to remain as it is. It is a statement of the Government's policy for the year. It is a statement of the Government's policy for the year. It is a statement of the Government's policy for the year.

The Budget is not a mere list of figures to be read and then to allow its incidence to remain as it is. It is a statement of the Government's policy for the year. It is a statement of the Government's policy for the year. It is a statement of the Government's policy for the year.

The Budget is not a mere list of figures to be read and then to allow its incidence to remain as it is. It is a statement of the Government's policy for the year. It is a statement of the Government's policy for the year. It is a statement of the Government's policy for the year.

The Budget is not a mere list of figures to be read and then to allow its incidence to remain as it is. It is a statement of the Government's policy for the year. It is a statement of the Government's policy for the year. It is a statement of the Government's policy for the year.

The Budget is not a mere list of figures to be read and then to allow its incidence to remain as it is. It is a statement of the Government's policy for the year. It is a statement of the Government's policy for the year. It is a statement of the Government's policy for the year.

The Budget is not a mere list of figures to be read and then to allow its incidence to remain as it is. It is a statement of the Government's policy for the year. It is a statement of the Government's policy for the year. It is a statement of the Government's policy for the year.

The Budget is not a mere list of figures to be read and then to allow its incidence to remain as it is. It is a statement of the Government's policy for the year. It is a statement of the Government's policy for the year. It is a statement of the Government's policy for the year.

The Budget is not a mere list of figures to be read and then to allow its incidence to remain as it is. It is a statement of the Government's policy for the year. It is a statement of the Government's policy for the year. It is a statement of the Government's policy for the year.

The Budget is not a mere list of figures to be read and then to allow its incidence to remain as it is. It is a statement of the Government's policy for the year. It is a statement of the Government's policy for the year. It is a statement of the Government's policy for the year.

The Budget is not a mere list of figures to be read and then to allow its incidence to remain as it is. It is a statement of the Government's policy for the year. It is a statement of the Government's policy for the year. It is a statement of the Government's policy for the year.

The Budget is not a mere list of figures to be read and then to allow its incidence to remain as it is. It is a statement of the Government's policy for the year. It is a statement of the Government's policy for the year. It is a statement of the Government's policy for the year.

The Budget is not a mere list of figures to be read and then to allow its incidence to remain as it is. It is a statement of the Government's policy for the year. It is a statement of the Government's policy for the year. It is a statement of the Government's policy for the year.

The Budget is not a mere list of figures to be read and then to allow its incidence to remain as it is. It is a statement of the Government's policy for the year. It is a statement of the Government's policy for the year. It is a statement of the Government's policy for the year.

The Budget is not a mere list of figures to be read and then to allow its incidence to remain as it is. It is a statement of the Government's policy for the year. It is a statement of the Government's policy for the year. It is a statement of the Government's policy for the year.

The Budget is not a mere list of figures to be read and then to allow its incidence to remain as it is. It is a statement of the Government's policy for the year. It is a statement of the Government's policy for the year. It is a statement of the Government's policy for the year.

The Budget is not a mere list of figures to be read and then to allow its incidence to remain as it is. It is a statement of the Government's policy for the year. It is a statement of the Government's policy for the year. It is a statement of the Government's policy for the year.

The Budget is not a mere list of figures to be read and then to allow its incidence to remain as it is. It is a statement of the Government's policy for the year. It is a statement of the Government's policy for the year. It is a statement of the Government's policy for the year.

The Budget is not a mere list of figures to be read and then to allow its incidence to remain as it is. It is a statement of the Government's policy for the year. It is a statement of the Government's policy for the year. It is a statement of the Government's policy for the year.

The Budget is not a mere list of figures to be read and then to allow its incidence to remain as it is. It is a statement of the Government's policy for the year. It is a statement of the Government's policy for the year. It is a statement of the Government's policy for the year.

The Budget is not a mere list of figures to be read and then to allow its incidence to remain as it is. It is a statement of the Government's policy for the year. It is a statement of the Government's policy for the year. It is a statement of the Government's policy for the year.

The Budget is not a mere list of figures to be read and then to allow its incidence to remain as it is. It is a statement of the Government's policy for the year. It is a statement of the Government's policy for the year. It is a statement of the Government's policy for the year.

The Budget is not a mere list of figures to be read and then to allow its incidence to remain as it is. It is a statement of the Government's policy for the year. It is a statement of the Government's policy for the year. It is a statement of the Government's policy for the year.

The Budget is not a mere list of figures to be read and then to allow its incidence to remain as it is. It is a statement of the Government's policy for the year. It is a statement of the Government's policy for the year. It is a statement of the Government's policy for the year.

The Budget is not a mere list of figures to be read and then to allow its incidence to remain as it is. It is a statement of the Government's policy for the year. It is a statement of the Government's policy for the year. It is a statement of the Government's policy for the year.

The Budget is not a mere list of figures to be read and then to allow its incidence to remain as it is. It is a statement of the Government's policy for the year. It is a statement of the Government's policy for the year. It is a statement of the Government's policy for the year.

**if** your first thought in the morning is a shave, your second thought should be—

**ERASMIC Shaving Stick**

## Picture Framing

This branch of our business is in the hands of an expert, and any work entrusted to us will be executed in any degree at short notice.

A good frame improves a good picture, and good frames only are produced by—

**B. H. Myers & Co., Ltd.**  
The Cheapest House in Nairobi  
FOR PICTURE FRAMING.

## B. H. Myers & Co., Ltd.

Furniture Manufacturers, Shop and Office Fitters.  
Phone 343 Government Road. P.O. Box 461.  
Near National Bank of India, Ltd.  
NAIROBI.

Time-honoured and improved, Gibbs Dentifrice is the modern dental preparation. New ideas of Dental Science are exhaustively made by Gibbs Chemists. When you need the best and it is proved to be beneficial and safe, it is applied to Gibbs Dentifrice.

Gibbs Dentifrice has the same antiseptic base and dentine preserving effect as the best of dentifrices. It is a purely vegetable product. It contains no animal fat. It is a purely vegetable product. It contains no animal fat. It is a purely vegetable product. It contains no animal fat.

Your Teeth are Ivory Castles—defend them with Gibbs Dentifrice.

**Gibbs Dentifrice**  
Your Chemist Stocks It.

"Very Gallant Gentlemen"

None will question the Justice of this description of the men blinded by the War. With splendid faith and courage they have won "Victory over Blindness."

**St. DUNSTON'S**

the great Organisation which has led them from Darkness to Light needs your help to carry on. You can give your support by attending the Grand Fancy Dress Ball—Saturday, November 12, at the New Stanley Hotel.

## Coming Shortly Coming ALEXANDRA CINEMA

PRESENTS  
A most successful Indian Film  
**Light of Asia**  
Special Cable, London, 294-4-29.  
Appreciated by H.M. the King Emperor George the V and H.M. The Queen Mary. Also Ex-Vicroy of India, Lord Reading and Lady Reading.

**THE MOSBY MARKET.**

Year	Index
1907	1.00
1908	1.09
1909	1.12
1910	1.22
1911	1.32
1912	1.42
1913	1.52
1914	1.62
1915	1.72
1916	1.82
1917	1.92
1918	2.02
1919	2.12
1920	2.22
1921	2.32
1922	2.42
1923	2.52
1924	2.62
1925	2.72
1926	2.82
1927	2.92

## Foamite Fire Protection

**ERFURT & OVERMAN LTD.**  
Members.

R. T. King—Box 70, Nairobi.  
W. A. Gals—Nairobi.  
Hagson & Pacey—Dunedin, Otago.





**Irrefutable Fact**  
 That **SHAW & HUNTER**  
 carry the largest and most comprehensive stocks of **Arms and Ammunition**  
 in Eastern Africa.  
**SHAW & HUNTER**  
 Gun & Rifle Specialists.  
 NAIROBI. Telephone: 6748.

**"CLOCK"**  
**CREAM SEPARATORS**  
 The Long Service Machines  
**Important Features**  
 Correct Design, Great Strength, Easy to Wash, Moderate Price, Skims Clean, No Trouble.  
 A "Clock" Separator is an example of excellent, at a price which, for value, defies competition.  
 Sole Agents:  
**J. W. MILLIGAN & Co.**  
 P. O. Box 148. NAIROBI. Harding's St.

**Colonial General Stores.**  
**NAIROBI.**  
 Up-to-Date Grocers and Provision Merchants.  
**Provisions our Speciality.**  
 Our Stocks are always fresh as we are direct importers and draw our Supplies from the world's best markets, and are daily receiving the best of everything for the Household use.  
 We stock High Class Provisions, Imported Confectionery, Wines, Spirits, Cigarettes, Tobacco, Fresh Fruits, Local Produce, and Vegetables.  
 Phone 226. Call Government Road. Write Box 436. Nairobi.

**Charles Ware**  
**TURF ACCOUNTANT.**  
 Trust Chambers, Government Road, NAIROBI.  
 Tel. Address: "SPORTSMAN".  
 P. O. Box 170.

ALL COMMISSIONS STRICTLY CASH.  
**Country Clients please note:**  
 Run given race day.  
 No run, no bet.

**J. H. S. Todd & Co. Ltd.**  
 IBEA BUILDINGS, NAIROBI.

**GROSSLY OIL ENGINES WORLD FAMED**  
 2, 3 and 5 H. P.

**Revelation.**  
 The Sulf Case That Adjusts Itself  
 It will always hold a little more  
 We have a large range in various materials, sizes and prices, from  
**Shs. 42-50**

Also **CABIN TRUNKS, HAT BOXES, ATTACHE CASES, LUNCH CASES, ETC.**  
**MAY & Co., Ltd**  
 The Sports House  
 NAIROBI.

**THE SPORTS PAGE**  
**HOCKEY AT NYROL**  
**NAIROBI GOLF CLUB.**  
**RACING IN AUSTRALIA.**

**HOKEY AT NYROL**  
 Results of Tournaments Played Last Week.

**RESULTS OF TOWNSHIP**

Team	Goals
St. Paul's	12
St. Peter's	10
St. John's	8
St. James	6
St. George	4
St. Andrew	2

**BY "SHIP-SHIP"**  
 The Nyrol Sports Club... (text continues)

**RESULTS OF TOWNSHIP**

Team	Goals
St. Paul's	12
St. Peter's	10
St. John's	8
St. James	6
St. George	4
St. Andrew	2

**RESULTS OF TOWNSHIP**

Team	Goals
St. Paul's	12
St. Peter's	10
St. John's	8
St. James	6
St. George	4
St. Andrew	2

**RESULTS OF TOWNSHIP**

Team	Goals
St. Paul's	12
St. Peter's	10
St. John's	8
St. James	6
St. George	4
St. Andrew	2

**RESULTS OF TOWNSHIP**

Team	Goals
St. Paul's	12
St. Peter's	10
St. John's	8
St. James	6
St. George	4
St. Andrew	2

**THE SPORTS PAGE**  
**RESULTS OF TOWNSHIP**

Team	Goals
St. Paul's	12
St. Peter's	10
St. John's	8
St. James	6
St. George	4
St. Andrew	2

**RESULTS OF TOWNSHIP**

Team	Goals
St. Paul's	12
St. Peter's	10
St. John's	8
St. James	6
St. George	4
St. Andrew	2

**RESULTS OF TOWNSHIP**

Team	Goals
St. Paul's	12
St. Peter's	10
St. John's	8
St. James	6
St. George	4
St. Andrew	2

**RESULTS OF TOWNSHIP**

Team	Goals
St. Paul's	12
St. Peter's	10
St. John's	8
St. James	6
St. George	4
St. Andrew	2

**RESULTS OF TOWNSHIP**

Team	Goals
St. Paul's	12
St. Peter's	10
St. John's	8
St. James	6
St. George	4
St. Andrew	2

**English Racing**  
**DOBBIES, Ltd.**  
 Watchmakers, Manufacturing Jewellers, and Opticians.  
 NAIROBI.  
 A. HOGG, Mutos B'd'gs, NAIROBI.

**English Racing**  
**KYNOCH RIFLE AND REVOLVER CARTRIDGES**  
 are UNEQUALLED for ACCURACY and RELIABILITY  
 Whether used by target shots at Hillyer or by big game hunters in all parts of the world, they never fail to reproduce the same wonderful shooting.

**BRITISH and BEST**

**LOTUS & DELTA Footwear FOR LADIES**

No. 1 Caramel Glace Kid 1 Bar Shoe. Trimmed southern Lizard, Lotus Brand. Medium Louis Heel. **Shs. 49/50 per pair.**

No. 2 Black Patent Calf. Basket Shoe as skitch. Trimmed Matte Kid. Delta Brand. **Shs. 35/50 per pair.**

No. 3. Puffy Coloured Glace Kid Delta 1 Bar Shoe. Trimmed Lizard as skitch. **Shs. 39/50 per pair.**

No. 4. Cedar Lizard Counterpart one bar shoe. Trimmed Dark Brown Calf. Louis heel. **Shs. 39/50 per pair.**

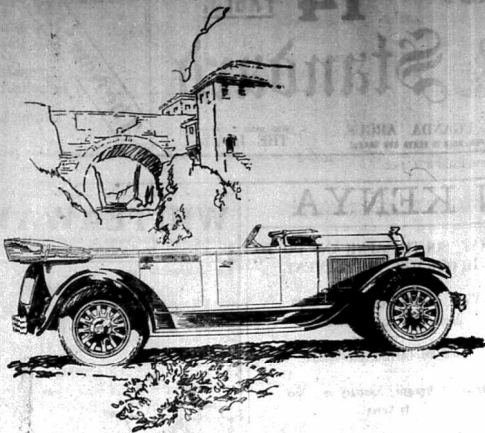
No. 5. Black Patent Calf 1 Bar Walking Shoe. Delta Brand. (Ho Heel). **Shs. 36/ per pair.**

**HALF SIZES IN STOCK. Five Per Cent. Cash Discount.**

**JACOBS**  
 Phone 23. P. O. Box 265. Tels: ADVALOREM, NAIROBI.



# Luxury and Performance Beyond all Comparison



In the sport models Buick has achieved a new peak in rakish, racy lines, in colors that sparkle and flash in the spirit of freedom and adventure, in the luxury which attracts appreciative comment and induces pride of possession, and in the beauty, natural and lasting, which pervades every detail of the car.

Setting a new Standard of Comparison for beauty, luxury, smartness and color, the new 1928 Buicks set up also a new standard of performance. Whether this new standard be judged by the cars' flashing get-away or by their steady, dependable performance throughout the whole speed range, the verdict is the same—Buick has achieved a new degree of motoring satisfaction.

By the adoption of Hydraulic Shock Absorbers both front and rear, the new 1928 model Buick has taken all vibration out of the road. Today Buick is the fastest and the easiest riding car on rough or smooth roads.

**Gilfillan & Company, Ltd.**  
DISTRIBUTORS.

# BOOKS AND NOVELS

**NOVELS at Shs. 6/6d, printed Shs. 7/6:**

- The Third Menace... by Louis Tracy
- The Missing Duchess... by Charles Hamilton
- The Pond of Ebb... by Louis Gerard
- The Tower in the Fog... by August Strindberg
- Great Gatsby... by J. V. Updegraff
- The National State... by H. Dennis Bradley
- Mr. Deemer... by R. H. Mottram
- The Saviour's Chance... by J. M. Walsh
- The Duck's Shadow... by J. Jefferson Farjeon
- White Corn... by H. H. Munroe
- A Servant of the Master... by Mrs. Alfred Wiggans
- The Feet of Death... by H. H. Munroe
- The Sun in Splendor... by Thomas Burke
- Bag Yesterday... by Maund Dyer
- Canine... by Owen Butler
- Ladies Hall-Way... by Basil Macdonald Hastings
- Dramatic Days of the Old Bailey... by Charles Kingsley
- Under the Tenth Star... by Kate Grey
- Hayward's Flight... by P. H. Pett
- That Riddle of the Sphinx... by Leonard Rees
- Millions and Other Stories... by Holly Cromer
- The Woman in the Case... by Louis Tracy
- A Sailor's Muse... by Richard Doherty
- Chief Currier... by Valentine Williams
- This Eye in Attendance... by Valentine Williams
- Quintessence... by H. Wynne Price
- The Three Tapes... by Ronald A. Knox
- The Shadow on the Courtyard... by Ion Strang
- Immanent Design... by E. I. Grant Watson
- The Girl's Sinner... by J. Mills Williams
- Alone and the Ice Gods... by H. Rider Haggard
- The Spirit of the Light... by Chart Pitt
- That Mysterious Affair... by Barbours
- The Transit of Cornish Cottage... by Joseph Hocking
- The Hope Struggle Mystery... by Ernest Shute and A. C. Rice
- The Small Bachelor... by P. D. Wolfehouse
- Uncle Nephew... by William Le Queux
- Cher's Gentry... by Sinclair Lewis
- Merrivale of Harlequin... by Pamela Frankau
- The Chamberlain... by William Le Queux
- Outside the Law... by Patrick Peyton
- The Reminiscences of Robert Peck... by John Galsworthy
- Cap'n Sue... by Hubert Footner
- Henry For One... by Boris Bork
- The Smiling Death... by Francis D. Greenwood
- The Sovereign of the Wind... by Richard Dehan
- The Forbidden Town... by Mary Grant
- A Bush of Blue Ribbons... by Mrs. A. B. Rowlands
- The Mystery of the Crystal Skull... by George R. White
- The Coast of Folly... by Conyngham Dawson
- Are They the Same at Home... by Beverly Nichols
- The Case of Sherlock Holmes... by Arthur Conan Doyle
- Moss of Madness... by Sax Rohmer
- The Starling... by Doris Lewis
- The Mocking Cavalier... by A. G. Hales
- The Bookening... by Stephen McKenna
- The Secretary of State... by Stephen McKenna
- Haven of London... by Katharine Tynan
- Tryst of the Lone Hand... by Wyndham Murray
- The Harrolds... by Mariel Howard
- Lone Hand... by Kevie Howard
- Blackmail... by William Le Queux II
- Milford Durrington... by Richard Croppson
- P.P.P... by Natalie Sumner Lincoln
- The Cave Girl... by Edgar Rice Burroughs

**MEMOIRS, ETC.**

- The Life of Lord Kitchener... by Sir George Arthur... 67 50 75 6d
- Trafalgar... by Alexander... 22 50 12 50
- A History of the Tory Party... by James... 2 50 12 50
- The Princess Matilda... by... 10 50 10 50
- Philip W. Sargent... 10 50 10 50
- Abolish Slave Ships and the World Country... by H. Thackeray Hopkins... 4 50 2 50
- The English Press... by Sir Evelyn... 4 50 2 50
- Boyle's History... by... 4 50 2 50
- The Emperor's Daughter and her Son... by... 4 50 2 50
- Edward Long... 4 50 2 50
- A Signpost... by... 4 50 2 50
- Robert M... 9 50 10 50
- Lord Lewis of Henry of Navarre... by H... 10 50 10 50
- The House of Cromwell... by John C. Goodwin... 12 50 12 50
- The Mind of a Criminal... by Lt. Col. E. D... 12 50 12 50
- My Memoirs... by... 20 50 20 50
- William H... 20 50 20 50
- The Mind and Face of Bohemia... by... 20 50 20 50
- Lord Palmerston... 20 50 20 50
- The Journal of a Jewish Traveller... by... 12 50 12 50
- Israel Chiles... 15 50 15 50
- Love Letters of Great Men and Women... by C. H. Chubb, Ph.D... 17 50 18 50
- Marriage is a Mistake... by Arthur S. May... 19 50 17 50
- In the Footsteps of Livingston... by Alfred... 16 50 16 50
- The Countryman's Log-Book... by H... 12 50 13 50
- Viscountess W... by... 14 50 14 50
- Love Letters of Great Men and Women... by... 7 50 7 50
- The Story of Our Empire... by Percy R. Sabin... 7 50 7 50
- Mother India... by Katherine Mayo... 4 50 4 50
- Wings of Chance... by... 12 50 12 50
- The Great Pyramid... by D. Davidson and... 8 50 8 50

**ADVENTURE, ETC.**

- Shaking Big Game with a Cannon... by... 60 00 64 50
- Shaking Maxwell... 16 50 17 50
- Lord Travel & Shooting... by H. H. McClure... 15 50 15 50
- The Boer of the Boer... by Frank Barthe... 22 50 22 50
- A Game Hunter's Notebook... by A. Huxley... 22 50 22 50
- The Wanderer of Big Game... by Hildyffe... 30 00 31 50
- Wandering in Africa... by Daisy M. Ghorn... 12 50 12 50
- The High Cross Trail... by Frank Barthe... 15 50 15 50
- The Vanishing... by A. Hildyffe... 9 50 10 50
- The Mad Mad Mad of Southland... by... 16 50 16 50
- Douglas Jardine... 18 00 17 50
- The Mass... by... 20 00 20 50
- The Nandi... by... 20 00 20 50
- The Nandi... by... 20 00 20 50
- Pring and Sport in East Africa... by... 10 50 11 50
- The Loney... by... 60 00 64 25

**Standard Stationery Store,  
Nairobi.**

# BRITISH EMPIRE

:: :: Standard Typewriter :: ::

SIMPLE. STRONG. SPEEDY.

**A High Grade British Made  
Writing Machine.**

**THE IDEAL COMBINATION**  
BRITISH BRAINS. BRITISH MATERIAL.  
BRITISH LABOUR. BRITISH CAPITAL.

**Abridged Specification.**  
88 Characters. Two Colour Ribbon and Stencil Switch. Automatic Paper Feed. Dustproof Cover over Works. Tabulator. Back Spacer. Right and Left Hand Margin Release. Light and Even Touch. Perfect Rocker Escapement. Interchangeable Type Bars. Positive Type Guide. Ball Bearing Carriage. Automatic Ribbon Reverse, etc., etc.

**PRICES**

10-inch CARRIAGE | 14-inch CARRIAGE  
**Shs. 630** | **Shs. 700**  
With Rubbe Cover and Tools | With Rubbe Cover and Tools.

PLEASE CALL AND LET US DEMONSTRATE.

Phone us and we will bring a Machine to your office.

**Standard Stationery Stores,  
NAIROBI.**

This Space Has Been Reserved  
BY

**Messrs. Tyson Bros., Ltd.**

For announcements regarding  
the activities of their various  
departments.







# GRAHAM BROTHERS TRUCKS AND BUSES LOW COSTS

Low costs are a feature of Graham Brothers Trucks, Commercial Cars and buses throughout their long, profitable history.

Initial cost is extremely low for high quality, because Graham Brothers build more trucks than any other complete truck manufacturer in the world.

Operating costs are low because of the low fuel consumption of the famous Dodge Brothers engine.

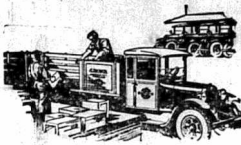
Maintenance costs are low because Graham Brothers Trucks are built of fine materials, which need regular and because fairly priced repair parts are always available when they are needed.

THE OMBODSMENT GARAGE, NAKURU.  
P. BUKO, BAKATI GARAGE, KITALE.  
WATT & CO., LTD., MORRI and ARCHER.  
KASAM EBRAHIM, KAMPALA and BUKOBA.

## S. Fisher & Simons (E.A.) Ltd.

Victoria Street, NAIROBI.

4-ton COMMERCIAL Car complete	£225
1-ton CHASSIS only	£25
1½-ton CHASSIS with driver's cab	£400
2-ton CHASSIS with driver's cab	£205



## F. A. HEAD,

PIANOFORTE, TUNER and REPAIRER  
Five years with Messrs. Chappell & Co., London.  
Seven years' experience in Kenya Colony.

Send all orders to P. O. Box 675.

# MOToring TOPICS

## Average Speed.

### THE ENGINE BAR AND ROAD SAFETY.

The Motor says that over most main roads in Britain it is now possible to average 30 m.p.h. quite easily on an ordinary touring car, which a suitable car in the hands of an expert driver, can do still better. Without any of the 'tricks' or 'inventions' of the road being transgressed or any rule being broken.

Not much more than a dash up an average of 20 m.p.h. was regarded the standard which could normally be attained. How, then, has it come to pass that the times taken getting from place to place by road have in the past few years diminished by so much as 50 per cent?

### The Two Factors.

Average speed is governed by two factors—the car and the road. There are roads on which even the very poor perform so far as there are others on which a 20-year-old car can cover the distance from town to town surprisingly fast. It is easier, for instance, to maintain a high average from London to Glasgow by the Great North Road than to maintain the same speed over one-sixth of the distance if the road is, for example, from London to Worthing.

But the all-round increase in average speeds which has been observed during the past few years shows that it is not alone to improvements in motor vehicles that this increase may be attributed. The roads themselves would still be restricted by the hills, crags, and turns of the highways. Consequently, the better point-to-point performance are due to such improvements in our principal highways as to produce methods of car construction.

Taking the one first, one thing is at once apparent. The general use of the principal factors influencing higher average speeds. The increased safety which brings on a vast number of accidents on wet and

## The Brakes.

### THE CAR AND ASBESTY BRAKES.

A paste pressure of the kind of a past operating a correctly adjusted set of brakes either on a wire, wheel, or a rubber shoe, should be sufficiently strong to prevent the progress of a car.

The average motorist is quite content to carry on or long on the 'stick' and 'foot' action to be efficient in most operations. It is therefore essential that perfect balance be maintained should maximum service be desired. The evensness of braking is more likely to be disturbed in the rear and front-wheel systems, than in the case of the hydraulic or vacuum servo type. Four-wheel brakes are now being extensively adopted, and they must be checked at regular intervals.

Some cars that do not suddenly or gradually develop a power imbalance on the right or left, whatever the brake are applied; this is so most indications means that the shoe made one or other of the brake drums are not binding with the same tenacity as their opposite partner on the other wheel. The result of this, should such a state continue, is very detrimental to the chassis and imposes a considerable stress on the steering and general assembly.

No time should be lost in consulting a qualified mechanic as anything of this nature is best adjusted by someone fully competent. Of course, to get something that must be done with precision, because it is beyond the lives of both car and passengers. It is a false economy that improves ready to leave any place in the neighbourhood of a road may be too late!

There is nothing clever in looking wheels when coming to a stop. Indeed, straining to see what it takes several moments of very short time. A good driver will, first, feel the pulse of the motor when he controls with an almost unsteady degree of under-

## Slamming subjected to vibration action.

On low and steep gradients it is a wise plan to change neutral gear and the consequences of the motor will with a lower drive ratio, then take the place of the foot brake, which causes an abrupt stop and need not be used if the hill is absolutely steep and long.

Never slack off the springs or adjust them, when descending a hill, when suddenly turned on, the motor will have the effect of the brake, owing to unbalanced gear accumulating in the combination boxes.

Coasting at speed is a weak or 'limpy', and is not recommended. It usually results in the synchro becoming cracked and drives getting hot. A small but burning variety indicates this condition.

The hand or emergency brake is meant for holding the car when stationary—or in a proper case, it should not be constantly used when on the road. In light conditions it must be automatically powerful as hold the car on a still inclined hill, or it must be powerful to hold the car on a hill.

When leaving the car on a hill for a long period, engage reverse gear—downward, low gear; this will place a minimum stress on the hand-brake.

In making away from the car, shift lever into neutral before depressing the start. Care should be taken to avoid gear jerks, and set from business 'starting' into, as very hard to handle—should this happen, avoid contact the steering wheel the way the car is sliding; this will enable control to be regained if possible (Exchange).

It pays to get mechanics, etc., because made of best materials, etc. the latest styles and perfect fit of first class cutters and high-class workmen.

Book and shoe makers of all classes require neatly executed by first class workmen.

C. F. BIRDGUES & BROS  
opposite Hill Valley Sports Club, NAKURU.

T.V.O.  
Power Kerosene  
"BP"  
THE BRITISH PETROL.  
  
Palm Tree Kerosene  
Anglo Persian Oil Co., (Kenya) Ltd.

BUY YOUR  
Chocolates Fresh  
FROM  
TORRS

Drink  
  
Ohsleons' wonderful  
LION LAGER  
DISTRIBUTED BY DENOVAN & DIBBEL  
City House, NAIROBI, Box 77, MOMBASA

SWAN  
Colours:  
Blue Black  
Green  
and Red.  
  
Shgs. 1/60  
Bottle  
FOUNTAIN PEN INK  
"LAST DROP"  
Shgs. 2/50  
Each.  
In Blue Black only.  
STANDARD STATIONERY STORES,  
NAIROBI.

THE  
CHEVROLET  
TONNER  
East Africa's Proved Transport Unit  
Backed by Excellent Service and Spares Everywhere.  
  
£176 - SOLID VALUE!  
Of Unequalled Performance ask any user his opinion.  
The Motor Mart  
and Exchange Ltd.  
NAKURU. NAIROBI. DAR-ES-SALAAM.

Guns  
Rifles  
Revolvers  
Automatic Pistols.  
We carry large and varied stocks of all kinds of Firearms of the following well known makes,  
John Rigby, Remington.  
Westley Richards, Winchester.  
Holland and Holland, Savage.  
B.R.A. Webley and Scott.  
Fabrique Nationale, Colt.  
Browning, Harrington & Richardson.  
Mannlicher Schmauser.  
Etc. Etc.

Value and Service FROM  
MAY & Co. Ltd  
THE  
Bradford Manufacturing Co. Limited  
Gentlemen your suit to measure. Accurate Fit. Correct Style are ensured by the B. M. Co. cut.  
All Garments are tailored at our Factory in England and delivered promptly C.O.D. We have a very large range of selected patterns to choose from.  
Large assortment of Ladies and Gentlemen's Rain Coats, just arrived.  
Imperial Chambers, Government Road.  
(above Tawa Ltd), P. O. Box 810.

The Nairobi Brick, Tile and Pipe Works Ltd.  
Muthaiga  
Roofing Tiles large stocks ready for immediate delivery.  
The Best and Cheapest Roofing Material. Any kind of Ornamental Brick made to order.  
Write for Quotations: P. O. Box 191, Phone 19

# OVERLAND

QUALITY AND SERVICE



4 CYLINDER, 5 WHEEL BRAKES  
2195 Safari Car £195  
2228 Touring Car £228

Moulton & Morrison Ltd.  
NAIROBI.

# Chrysler Superiority

More Firmly Established than Ever!  
It takes a CHRYSLER to beat a CHRYSLER!

CAPTETOWN TO JOHANNESBURG  
IN 22 HOURS 51 MINUTES.  
851 miles at an average speed of 41 m.p.h.  
Record Broken by 2 Hours 34 mins.  
On Sept. 19th by G. S. Bouwer, driving his famous  
"CHRYSLER "70".

Distributors YORK GARAGES Ltd.



A. H. WARDLE & Co., Ltd.  
7, BROWNE PLACE, NAIROBI.  
ALL CONSULTATIONS & REPAIRS WITHOUT FEE.

You are invited to inspect our  
Stocks of:-

Shanks Sanitaryware  
BATH ROOM FITTINGS  
Steel Casements

Locks: Door and Window, Furniture,  
Stoves and Boilers.

R. G. VERNON & Co.

NAIROBI HOUSE.

# FORD

Yesterday To-day and To-morrow  
All Present Models Fitted with the Wonderful New  
HOLLEY VAPOURIZER.

WHICH BURNS

KEROSENE

AND HALVES YOUR FUEL BILL

The Service Co. Ltd.  
Nairobi.

One Ton Truck --- £147 10 0  
Box Body Car --- £155 0 0  
Roadster --- £168 0 0

Touring Car --- £167 0 0  
Canadian Coach --- £181 0 0  
Sports Roadster --- £181 0 0

# RADIO - MALT

The Vitamin Food.

A combination of Malt and Oil in which the  
Cod Liver Oil has been replaced by taste-  
less Irradiated Oil possessing a high con-  
tent of Vitamins "A" and "D".

A new reconstructive TONIC FOOD suit-  
able for Adults and Children alike.

RESTORES HEALTH. RENEWS VIGOUR.

Price 4/- and 7/50.

Howse & McGeorge Ltd.

NAIROBI and BRANCHES

# Heineken's Pilsener Beer

FREE FROM CHEMICAL.

QUALITY PARAMOUNT

Sole Agents—  
Eale Jardin & Cie.  
NAIROBI.



Sole Agents—R. O. HAMILTON, Ltd.,  
Box 302, NAIROBI.

# Motor Cycling Made Easy

A B.S.A. Motor Cycle is easy to buy if you  
buy it from Carr, Lawson & Company.  
Our system of easy payments makes it pos-  
sible for you to become the possessor of a  
B.S.A. for a small deposit and regular  
monthly payments. You will save part of  
your monthly payments in decreased travel-  
ling expenses and you will enjoy the  
pleasures of the open road.



Britain's Biggest Seller  
Carr, Lawson & Co. Ltd.  
NAIROBI

THE EAST  
AFRICAN STANDARD  
Newsheets Times & Uganda Arise  
FRIDAY, NOV. 4, 1927.

### Glacier Settlement.

The Government and the people of Kenya have reasons to be self-congratulatory on the fact that they have now arrived at the stage in the development of this Colony when it is possible to consider definite schemes for the encouragement of the settler. The settlement scheme which is possible to consider the achievement was removed with the final agreement on the boundaries of the native reserves and when three somewhat hastily con- sidered. With all its disadvantages, the latter brought valuable experi- ence of settlement to the Colony and the settlement of the native reserves problem removed one of the greatest economic and political handicaps to a proper develop- ment of the work of white civilization in the country. It will admit many people previously wholly unacquainted with the Colony to range themselves into the community in the work of extending western influence to the future. The final sanction was provided by the timely recognition of the permission of who- ever by the Imperial Govern- ment in the latest White Paper in which they acknowledge the necessity of inviting that settle- ment to share in the discharge of responsibility for the transference of native interests. That recog- nition has been crystallized since by the willingness of the Over- seas Settlement Department to include this country within the scope of its influence, placing the

ball mark of approval upon Kenya as a suitable outlet for men of the right type and character. In some respects this issue of the East African Standard may be viewed as a closer settlement number and a justification of the policy we have pursued as a new- comer to the continent. It is a pleasure to say that the Com- missioner of Lands of the main prin- ciple underlying the settlement of the Kenya Advisory Committee has placed before Government its conclusions. It contains also a report of an interview between the Governor of the Colony and a representative of the Government in which we are glad to note the complete agreement that met with our views. It is a pleasure to say that those who are charged with the responsibility of settling in British will be assisted by a per- son from Kenya who has had long practical experience of the Colony and if applicable from the Government. The fact that the Government has been so successful in its efforts for the settlement of the Colony will be a great help to those who would like to know as to how to settle in the East African continent. It is a pleasure to say that the Government will be glad to receive any information from the Government. It is a pleasure to say that the Government will be glad to receive any information from the Government. It is a pleasure to say that the Government will be glad to receive any information from the Government.

small holdings. We believe that the scheme submitted discloses full recognition of the need for that success and we are glad to know that the major assistance will be provided for those con- siderable enough to begin life in Kenya under conditions as differ- ent from those who have grown here. Other settlement schemes, as contemplated, bring the final settlement, the final settlement directly into a sphere of respon- sibility for the success of the settlement. It is a pleasure to say that the Government will be glad to receive any information from the Government. It is a pleasure to say that the Government will be glad to receive any information from the Government. It is a pleasure to say that the Government will be glad to receive any information from the Government.

Under the Standard Clock.  
Acting Judge.  
Mr. H. T. Johnson has been appointed to act as acting judge in the Supreme Court of Kenya.  
A New Post Office.  
It is a pleasure to say that the Government will be glad to receive any information from the Government. It is a pleasure to say that the Government will be glad to receive any information from the Government. It is a pleasure to say that the Government will be glad to receive any information from the Government.  
E.A.M.B. Dinner.  
The telephone trunk line between Eldoret and Nairobi, Kenya and Nairobi Bridge was opened for public traffic on October 17.  
Football Results.  
The results of the football matches played by the Central Trusts Board.  
Land Sales at Eldoret.  
Tenders are invited for bonded contractors for the construction of a road from Eldoret to the office of the Department of Lands, Nairobi, and at the office of the Department of Lands, Nairobi, or may be had on application to the Department of Lands, Nairobi, or may be had on application to the Department of Lands, Nairobi, or may be had on application to the Department of Lands, Nairobi.  
Fuel Concations.  
Tenders are invited for the right to hold and manage black water- truss over an area of 214 acres by road from Eldoret to the office of the Department of Lands, Nairobi, or may be had on application to the Department of Lands, Nairobi, or may be had on application to the Department of Lands, Nairobi.  
East African Broadcasting.  
The Weekly Review of the Kenyan of the British East Africa Broadcasting Corporation is now in the inaugural test transmission stage. The first programme was broadcast from the station at Nairobi, Kenya, on the 1st of November, 1927. The programme was broadcast from the station at Nairobi, Kenya, on the 1st of November, 1927. The programme was broadcast from the station at Nairobi, Kenya, on the 1st of November, 1927.











**A BOON TO THE THRIFTY**  
**JOHN & JAMES BUCHANAN**  
**BLACK LABEL WHISKY**  
**SCOTS**

**PERFECT QUALITY—REAL ECONOMY**

**JOHN & JAMES BUCHANAN**  
 GLASGOW AND LONDON  
 ESTABLISHED 1817

**China, Glass, Cutlery Enamel & Aluminium Ware.**

**Hawley, Cameron & Bennett, THE CHINA SHOP.**

**20% Cash Discount.**

**MACONOCHE'S**  
 FINEST FRESH FRUIT JAMS AND SEVILLE ORANGE MARMALADE.  
 Made with the most carefully selected fruits and best refined sugar only.

**This is what I want—**

The man who knows how to diet correctly fully appreciates the health building qualities of Quaker.

He knows that besides being delicious Quaker Oats with milk supplies in abundance the elements so essential to perfect vitality.

Economical, too, and easy to prepare Quaker Oats is a splendid food for all members of the family.

**Quaker Oats**

**THE** man who knows how to diet correctly fully appreciates the health building qualities of Quaker.

He knows that besides being delicious Quaker Oats with milk supplies in abundance the elements so essential to perfect vitality.

Economical, too, and easy to prepare Quaker Oats is a splendid food for all members of the family.

**Quaker Oats**

**Naivasha Hotel**  
**Naivasha.**

The finest built country hotel in Kenya. On the shore of the beautiful Lake.

Garage for Cars. Excellent Cuisine. Billiards. Tennis. Fishing. Petrol Pump.

**THE "LITTLE" EFFECT OF "THE" Propaganda.**

**STANDARD OBERSEERER.** Paris, October 12. The French envoys, with their usual and every day propaganda, in favour of Sinn Féin, are not so successful as they would like to think. They are not so successful as they would like to think. They are not so successful as they would like to think. They are not so successful as they would like to think.

**STANDARD OBERSEERER.** Paris, October 12. The French envoys, with their usual and every day propaganda, in favour of Sinn Féin, are not so successful as they would like to think. They are not so successful as they would like to think. They are not so successful as they would like to think.

**STRENGTHENING THE ENTENTE.**

**SIR A. A. LADY CHAMBERLAIN'S PARIS VISIT.**

**STANDARD OBERSEERER.** Paris, Oct. 12. The British Embassy in Paris has had the greatest success in the last few days. Sir Arthur Chamberlain, who has been staying there with his wife and daughter, has had a most successful interview with the French Foreign Minister, M. Briand, and has always made a point of his quietest moments.

**LETTER'S Office and Pocket DIARIES 1928.**

**System Desk Calendar 1928 Refills Only.**

**System Desk Calendar 1928 Refills Only.**

**Pilot Desk Calendar 1928.**

**STANDARD STATIONERY STORES, NAIROBI.**

**THE EDUCATION CASE.**

**THE EDUCATION CASE.** The Education Case, which is the subject of the Education Bill, is a very important one. It is a very important one. It is a very important one. It is a very important one.

**BROADCASTING IN KENYA.**

**TO THE EDITOR "A Standard."**

**STANDARD OBERSEERER.** Paris, Oct. 12. The French envoys, with their usual and every day propaganda, in favour of Sinn Féin, are not so successful as they would like to think.

**ASIAN CIVIL SERVANTS.**

**TO THE EDITOR "A Standard."**

**ALEXANDRA CINEMA**

Saturday, 5-11-27  
 one Show, 3 p.m. and  
 Sunday, 6-11-27  
 Three Shows 3-15, 6-15, and 9 p.m.

**THE NURSE**

Featuring Miss Sutcliffe  
 Prices Shs. 2/- and 1/-

**Foamite Fire Protection**

**SPRENGST & OVERMAN L.D.**  
 Mumbar.

R. T. King—Box 75, Nairobi.  
 W. A. Galt—Nairobi.  
 Mages & Pharys—Cable Club

**The Complexions of the Women of England**

When will you find such a host of rosy, fresh, and well complexioned as among the women of England? This is a natural question, and the answer is simple. It is the result of the use of PEELE'S ERASMIC SOAP.

**Picture Framing**

This branch of our business is in the hands of an expert, and any work entrusted to us will be executed in any design at short notice.

**B. H. Myers & Co., Ltd.**  
 The Cheapest House in Nairobi  
 FOR PICTURE FRAMING.

**B. H. Myers & Co., Ltd.**

Furniture Manufacturers, Shop and Office Fitters.  
 Phone 343. Government Road, P.O. Box 461.  
 Near National Bank of India, Ltd.  
 NAIROBI.

**The Proved Dentifrice**

Time-honoured and time-proved, Gibbs Dentifrice is the modern dental preparation.

**Gibbs Dentifrice**

**Gibbs Dentifrice**

Your Chemist Stocks It

**"Very Gallant Gentlemen"**

None will question the Justice of this description of the men mentioned by the War. With uplifted faith and courage they have won "Victory over Blindness."

**St. Dunstan's**

the great Organisation which has led them from Darkness to Light needs Your help to carry on. You can give your support by attending the Grand Fancy Dress Ball—Saturday, November 12, at the New Stanley Hotel.





THE SPORTS PAGE

An Irrefutable Fact SHAW & HUNTER carry the largest and most comprehensive stocks of Arms and Ammunition In Eastern Africa. SHAW & HUNTER Gun & Rifle Specialists. NAIROBI. Telegrams: Girah.

BRITISH CUP. The English Women's Championship.

MAKING RACES. Christmas Handicap Weights.

A GERMAN INVASION. Sporting Party Creates Favorable Impression.

A PROFESSIONAL COUNTY CAPTAIN. NOT TO BECOME AN AMATEUR.

The Salsbury Hotel Nairobi P.O. Box 500 Phone 108.

"CLOCK" CREAM SEPARATORS The Long Service Machines Important Features Correct Design, Great Strength, Easy to Wash, Moderate Price, Simple Clean, No Trouble. A "Clock" Separator is an example of excellence, at a price which, with a definite competition.

Colonial General Stores, NAIROBI. Up-to-Date Grocers and Provision Merchants. Provisions our Speciality. (Our Stocks are always fresh as we are Direct Importers and draw our Supplies from the world's best markets, and are daily receiving the best of everything for the Housewife's use.)

Charles Ware TURF ACCOUNTANT. 170, TRIST CHAMBERS, GOVERNMENT ROAD, NAIROBI. Tel. Address: "SPORTSMAN".

J. H. S. Todd & Co. Ltd. DIESEL BUILDINGS, NAIROBI. ALL COMMISSIONS STRICTLY CASH. Country Clients please note: Run given race day. No run, no bet.

Revelation. The Sult Case That Adjusts Itself. It will always hold a little more. We have a large range in various materials, sizes and prices, from Shs. 42-50. Also CABIN TRUNKS, HAT BOXES, ATTACHE CASES, LUNCH CASES, Etc. MAY & Co., Ltd The Sports House NAIROBI

EXPERIENCE BEATS TOWNS.

London, October 13. Tradition holds an important part in the final of the English Women's Golf Championship at Harrogate, in which Mrs. Goddala, created a surprise by conquering 20 years her senior and leading the 117-year-old favorite in her, Miss Louisa Wilson, of Nottingham. It was a game of extraordinary fortune, and was only won on the last green when Mrs. Goddala will be better remembered as Miss Edith Lewis, eldest of the four famous public daughters of a Suffolk doctor, who was captured in honor by Miss Cecil Leach, four times champion. The match had a large gallery, but the father of Miss Wilson, regarding her as a "Joke," when watching his daughter play, maintained a haughty right posture up and down in front of the clubhouse, but on no purpose.

GRIL SERVICE RIFLE CLUB.

The following are the accepted names and weights (with round the clock) for the Nairoi Christmas Handicap to be run on December 2.

BOOKS IN THE DENHAM CUP.

The following were the scores registered by members of the Civil Service Rifle Club in the Denham Cup.

LOCAL CRICKET.

The annual general meeting will be held about the end of the month at the club house in the Park. Members desiring to put forward suggestions for the future will find that the club committee will send to the Secretary as soon as possible for 1927-1928 new forms and should be forwarded to the Hon. Secretary, Mr. W. H. Orr, c/o Treasury, Nairobi.

RAILWAY AND PARLIAMENTARY TRAINS.

The following train will start for Nairobi on the 11th inst. at 10.15 a.m. and will arrive at Nairobi at 1.15 p.m. The train will consist of a motor car, a passenger car, a dining car, a sleeping car, a baggage car, a water tank, a coal tender, and a locomotive.

Billiards in Britain.

While the arguments regarding the question of match betting in billiards are still being heard, the billiardists in Britain are still playing. The billiardists in Britain are still playing. The billiardists in Britain are still playing.

THE GERMAN INVASION.

London, October 13. A German sporting invasion of London has created a favorable impression. A five teams comprising London at Queen's Club, and a women's hockey team (Hilvath) against a south-west team, Wimbledon. Although the German hockey team was heavily outnumbered, the players showed splendid form. This was the maiden visit of a German women's hockey team to England and their coming aroused considerable interest. The German team and their host team met in their black jerseys, yellow stockings, and black and white shoes. The German women created a favorable impression by their athletic bearing. The star attraction was the German goalkeeper, Fr. Mack. The German women's hockey team was a surprise. The German women have a long history of success in the game and they hit the ball sharply and cleanly. The match was a success in the connecting link between the ladies and men.

AN IMPROVED BILL.

They played the second match of their tour of Peterborough. The Germans gave a greatly improved display in the second match and were able to score a goal. The German women's hockey team was a surprise. The German women have a long history of success in the game and they hit the ball sharply and cleanly. The match was a success in the connecting link between the ladies and men.

ASIAN HOCKEY.

They played the second match of their tour of Peterborough. The Germans gave a greatly improved display in the second match and were able to score a goal. The German women's hockey team was a surprise. The German women have a long history of success in the game and they hit the ball sharply and cleanly. The match was a success in the connecting link between the ladies and men.

A TROUSER CLUB.

The tennis match (London at Harrogate) which was the first post-war match of the season was played at Queen's Club on October 11. The match was a success in the connecting link between the ladies and men.

"Betty's" Last Match This Season.

By the way, Miss Betty Widdowson's last match of the season was played at Queen's Club on October 11. The match was a success in the connecting link between the ladies and men.

SAFFIIE ELECTED BY YORKSHIRE.

London, October 13. Yorkshire has elected Saffie as captain for the 1927-1928 season. Saffie is a professional county captain and has a long history of success in the game. The match was a success in the connecting link between the ladies and men.

FIXTURES FOR THE JOSEPH HOCKEY SHIELD.

The following are the fixtures for the Joseph and Selva Hockey Shield competition, (beginning of the season) to be played at the Kahan ground and say Kahan ground to be played the following dates:

BRITISH AND BEST.

Lotus & Delta Footwear for Ladies. No. 1 Caramel Glace Kid 1 Bar Shoe. No. 2 Black Patent Calf. No. 3 Putty Coloured Glace Kid. No. 4 Cedar Lizard Countertop. No. 5 Black Patent Calf 1 Bar Walking Shoe.

KENSITAS.

Only the choice of style, material, and color. Made to a quality standard. Stocked by every shoe in Kenya. D. ESTER & CO., Ltd. NAIROBI. 1 WY & DENN, Ltd. 1924-6 Princes Street, London, England.

MONEY TO LEND. SHORT PERIOD LOANS GRANTED. STRICTLY DISCOUNTED. BRILLIANT CONFIDENCE. Call or Write to: Kenya Loan & Discount Co., Ltd. First Floor, Court Chambers, Nairobi. Box 548. Established 1921.

A. HOGG, Mutos B'd'gs., NAIROBI. English Racing.

KYNOCH RIFLE AND REVOLVER CARTRIDGES ARE UNEQUALLED FOR ACCURACY AND RELIABILITY. Whether used by target shots or by big game hunters in all parts of the world, they never fail to reproduce the same wonderful shooting.

LOTUS & DELTA Footwear FOR LADIES. No. 1 Caramel Glace Kid 1 Bar Shoe. No. 2 Black Patent Calf. No. 3 Putty Coloured Glace Kid. No. 4 Cedar Lizard Countertop. No. 5 Black Patent Calf 1 Bar Walking Shoe. HALF SIZES IN STOCK. Five Per Cent. Cash Discount. NAIROBI. P.O. Box 255. Tel. ADVALFOR.