

# KENYA BEER.

A Pure, Unadulterated and Refreshing Drink  
Ask for it  
AND  
See that You  
Get it



Kenya Breweries Ltd.

4915. SHORTEST AT THE GENERAL POST OFFICE AS A NEWSPAPER.

GUARANTEED THE LARGEST CIRCULATION OF ANY NEWSPAPER IN KENYA, UGANDA, TANGANYIKA AND ZANZIBAR.

DAILY EDITION.

# THE EAST Standard



UGANDA ARGUS With which it is published THE LEADER THE OLDEST ESTABLISHED NEWSPAPER PUBLISHED IN KENYA AND UGANDA.

NAIROBI MONDAY, OCTOBER 28, 1929.

The LOUNGE  
for  
Morning  
AND  
Afternoon  
TEAS  
OPEN ON  
SUNDAYS  
TO  
Non-Residents.

PRICE, 30 CENTS.

## MASAI DISTURBANCE NEAR NAIROBI.

### Police Use Rifles in a Clash with Mooran.

## ILLEGAL GRAZING.

### Starving Cattle Cross into Prohibited Area.

A minor clash between police askaris and Masai took place on Saturday on the Mbagathi River near Nairobi. Shots were fired by the Police on one Masai warrior who is hospitalized in Nairobi with a bullet in his thigh.

The incident, which has no serious significance, arose out of the fact that large Masai herds in a starving condition have been driven north in search of grazing. They reached the Mbagathi River, the boundary of the Reserve and, against known regulations crossed the river to graze on the other bank.

A force of four police askaris, the Police Officer in charge of Kilimati and various Veterinary Officers were early on the scene and seven Masai herds were rounded up and taken to Nairobi. The police officers who had rounded up their cattle, were instructed to round up a second lot and the European officer set out for Nairobi to get a stronger guard.

The herds fled and returned with about 20 Mooran who, to retrieve the cattle sought to move the small force of police away by throwing knobkerries at them. The police retained however by lying at the legs of the Masai.

An enquiry was held yesterday and the Masai have now removed their cattle back across the river.

## ATTEMPT TO RECOVER HERD.

As the result of a small breeze the Masai herd near Nairobi Sunday morning. The Masai were much into the Native Civil Service and the Veterinary Officer. There is very little chance of their being recovered. As a result the Masai, their large herds of starving cattle, have been bringing northwards to the Masai.

As the headman of the Masai in the Mbagathi area is to be seen at Nairobi on Saturday afternoon at Ngara to find out about the Masai area. The Veterinary Officer will be granted some grazing rights for the Reserve. During the day Veterinary officers were present and the Veterinary Officer in charge of the Reserve. The Veterinary Officer in charge of the Reserve. The Veterinary Officer in charge of the Reserve.

The Veterinary Officer in charge of the Reserve. The Veterinary Officer in charge of the Reserve. The Veterinary Officer in charge of the Reserve. The Veterinary Officer in charge of the Reserve. The Veterinary Officer in charge of the Reserve.

The Veterinary Officer in charge of the Reserve. The Veterinary Officer in charge of the Reserve. The Veterinary Officer in charge of the Reserve. The Veterinary Officer in charge of the Reserve. The Veterinary Officer in charge of the Reserve.

The Veterinary Officer in charge of the Reserve. The Veterinary Officer in charge of the Reserve. The Veterinary Officer in charge of the Reserve. The Veterinary Officer in charge of the Reserve. The Veterinary Officer in charge of the Reserve.

The Veterinary Officer in charge of the Reserve. The Veterinary Officer in charge of the Reserve. The Veterinary Officer in charge of the Reserve. The Veterinary Officer in charge of the Reserve. The Veterinary Officer in charge of the Reserve.

The Veterinary Officer in charge of the Reserve. The Veterinary Officer in charge of the Reserve. The Veterinary Officer in charge of the Reserve. The Veterinary Officer in charge of the Reserve. The Veterinary Officer in charge of the Reserve.

The Veterinary Officer in charge of the Reserve. The Veterinary Officer in charge of the Reserve. The Veterinary Officer in charge of the Reserve. The Veterinary Officer in charge of the Reserve. The Veterinary Officer in charge of the Reserve.

## REORGANISATION OF THE RAILWAYS.

### Schemes Being Considered by Government.

## ELECTRIFICATION OF MAIN LINES.

(BY WIRELESS.)  
Mr. Herbert Morrison, the Minister of Transport, in a speech last night, referred to the various schemes of the Government in connection with railways. Under the Development Act the railway companies have been invited to submit proposals for re-equipping with a view to improve the efficiency of the railway system.

Large numbers of steam locomotives had already been ordered but which will be received. Some such work had already been ordered but which will be received. Some such work had already been ordered but which will be received.

The Government had had under consideration the problem of the electrification of the main lines. The Government had had under consideration the problem of the electrification of the main lines. The Government had had under consideration the problem of the electrification of the main lines.

The Government had had under consideration the problem of the electrification of the main lines. The Government had had under consideration the problem of the electrification of the main lines. The Government had had under consideration the problem of the electrification of the main lines.

The Government had had under consideration the problem of the electrification of the main lines. The Government had had under consideration the problem of the electrification of the main lines. The Government had had under consideration the problem of the electrification of the main lines.

## The Premier Leaves Canada.

### DEPARTURE FROM QUEBEC ON HOMEWARD JOURNEY.

(BY WIRELESS.)  
Mr. Mackenzie King departed from Quebec on Saturday morning for his home in Ottawa. He was accompanied by his wife and children.

## The Palestine Outbreaks.

### ARAB SHEIK SENTENCED FOR INCITING.

(BY WIRELESS.)  
A meeting of Masai elders was held in Nairobi on Saturday afternoon. The meeting was held in Nairobi on Saturday afternoon. The meeting was held in Nairobi on Saturday afternoon.

## Home Municipal Election.

### LABOUR MAKING BID FOR POWER.

(BY WIRELESS.)  
Great activity is developing in connection with the coming Municipal elections. In London, Municipal elections are held once in three years when all members of the Council retire.

The Municipal Council in London is made up of 45 members. The Municipal Council in London is made up of 45 members. The Municipal Council in London is made up of 45 members.

The Municipal Council in London is made up of 45 members. The Municipal Council in London is made up of 45 members. The Municipal Council in London is made up of 45 members.

The Municipal Council in London is made up of 45 members. The Municipal Council in London is made up of 45 members. The Municipal Council in London is made up of 45 members.

## KENYA AIRMAN AGAIN MEETS MISFORTUNE.

### Forced Landing Near Dijon.

## THE BRUSSELS SHOOTING OUTRAGE.

### History of the Would-be Assassin.

(THROUGH REUTERS AGENCY.)  
Fernando Ferraz, who attempted to shoot British Consul Lytton, made a statement yesterday that he had no thought of murdering his life.

Mr. T. Campbell Black in his aeroplane departed for Marseilles this morning. Mr. T. Campbell Black in his aeroplane departed for Marseilles this morning.

## A Cotton Failure.

### WELL-KNOWN FIRM POSTED AT LIVERPOOL.

(THROUGH REUTERS AGENCY.)  
The failure of a well-known Liverpool cotton merchant at St. Francis and Company was announced yesterday.

## Reception in Rome.

(By Wire.)  
The Prince of Piedmont was warmly welcomed today on his return from Brussels. He acknowledged the popular enthusiasm from the Palace balcony.

## Mails to Europe.

(By Wire.)  
The first mail steamer that sails from London to Europe is expected to arrive in London on Saturday.

## RIOI Trials Delayed.

### DAMAGE TO STARTING ENGINE.

(BY WIRELESS.)  
The Rioi trials were delayed today because of damage to the starting engine. The Rioi trials were delayed today because of damage to the starting engine.

## Mr. Tielman Roca.

### APPOINTED AS MINISTER OF AFFAIRS.

(BY WIRELESS.)  
Mr. Tielman Roca has been appointed as Minister of Affairs in Spain. Mr. Tielman Roca has been appointed as Minister of Affairs in Spain.

## American Oil Scandal.

### ELDERLY EX-MINISTER FOUND GUILTY.

(By Wire.)  
An elderly ex-minister has been found guilty of an oil scandal. An elderly ex-minister has been found guilty of an oil scandal.

An elderly ex-minister has been found guilty of an oil scandal. An elderly ex-minister has been found guilty of an oil scandal.

## "HOPEFUL WISDOM OF THE WILSON REPORT"

### "Morning Post" Welcomes Its Practical Character.

## LORD OLIVIER CASTIGATED.

### Kenya Indians Tiring of "Swaraj" Politics.

"The Morning Post," which is probably, in an official sense, the leading Conservative daily, welcomes the Wilson Report, as a practical contribution to the East African problem—a document which revealed difficult tasks, sought to evade conflict and aimed at agreement.

Discussing the proposed constitution of the Kenya Legislature, the newspaper points out that it does not satisfy the Indians but adds that there are grounds for believing Kenya Indians are tired of "Swaraj" and, in any event, have been under the influence of agitators.

Lord Olivier is castigated as one who can never trust his own countrymen anywhere outside England.

## A REASONABLE SETTLEMENT.

### (WIRELESS) OVERSEAS.

London, Oct. 28. The "Morning Post," commenting on the Wilson Report, expresses its sympathy for the agreement on the East African question. The journal is hopeful of the change wrought by the wisdom of the Wilson Report.

The Wilson Report suggests further into the philosophy of government, but forgets practically the Nationalist Wilson. It never sought a common sense of agreement. He found that some things were universally desired while others were not. He found that some things were universally desired while others were not.

## Quality Cards for Christmas and New Year.

### Each in Envelope, 6s. 75

### Each in Envelope, 6s. 75

### Each in Envelope, 6s. 75

### Each in Envelope, 6s. 75

### Each in Envelope, 6s. 75

### Each in Envelope, 6s. 75

### Each in Envelope, 6s. 75

### Each in Envelope, 6s. 75

### Each in Envelope, 6s. 75

### Each in Envelope, 6s. 75

### Each in Envelope, 6s. 75

### Each in Envelope, 6s. 75

### Each in Envelope, 6s. 75

### Each in Envelope, 6s. 75

### Each in Envelope, 6s. 75



Sincerest Wishes for a Merry Christmas

"Thank You" Cards—Twelve best quality with envelope, containing thanks for Christmas gifts and wishes for the New Year.

Post Cards—Artistic design scenes and animals studies on best quality card with hanging envelope.

Post Cards—Artistic design scenes and animals studies on best quality card with hanging envelope.

Post Cards—Artistic design scenes and animals studies on best quality card with hanging envelope.

Post Cards—Artistic design scenes and animals studies on best quality card with hanging envelope.

## To-day's Features

Calendar Cards	Price
12 Cards	2/-
12 Cards	2/-
12 Cards	2/-
12 Cards	2/-
12 Cards	2/-
12 Cards	2/-
12 Cards	2/-
12 Cards	2/-
12 Cards	2/-
12 Cards	2/-

## ARTISTIC CALENDARS FOR 1930

Calendar Cards	Price
12 Cards	2/-
12 Cards	2/-
12 Cards	2/-
12 Cards	2/-
12 Cards	2/-
12 Cards	2/-
12 Cards	2/-
12 Cards	2/-
12 Cards	2/-
12 Cards	2/-

Whiteaway Laidlaw & Co. Ltd NAIROBI

# OUR WOMEN'S PAGE.

A Letter From Paris.

(By Collins Boyd.)



style. The newest sports "dresses" include a loose coat which comes to within a foot of the skirt and is fast in just seven "French" laps. It is never quite over the skirt. The full length is required for the afternoon ensemble, and the very smart overcoat.

The jacket that goes with the sports coat has a skirt of the same trend and a top of wool lace or very hattered jersey. It is just a matter of taste whether you have a long, closely fitting over-jumper with a side fastening like a blouse, or a skin-tight blouse of jersey which tucks inside the skirt or is made in one with it.

**A Grey and Brick Three Piece**

I saw a charming ensemble of grey morning tulle, with a diagonal line of brick colour. The coat was knee length, and had a shoulder yoke which ended in a point at the waist. The pointed skirt being repeated in front. The collar was simply a sort of grey in shades of grey and brick, narrow round the back, but widening into two broad tabs that crossed in the middle, down one each side of the front opening. Alternatively, when the coat was closed with one large button in front, the tabs could be turned one over the other and knotted at the side. The skirt was about four inches below the knees and flared at the hem only sufficiently to give a good walking stride. The top of this frock was made in one with the skirt, and was of fine brick coloured jersey with a neck line cut in a wide point and finished with a row of silver buttons from the point to the waist. A rolled belt of grey and silver leather was placed below the juncture of skirt and jersey. That, by the way, is a new custom. A blouse and skirt now sit together close on, but is placed well beneath, merely for ornamentation.

**Strawberry and Grey.**

Another very pretty morning ensemble was of straw-coloured tulle. The coat was fitted to the figure at the back with a small inverted pleat from neck to hem; the skirt was a plain wrap-around, worn with a long jumper of straw-coloured and grey hand-knitted wool lace, bound round the neck and strapped down the side with strawberry tulle.

A charming little folded cap of the tulle, trimmed over one ear with a bow of the material, slightly stiffened and made especially of paper, was made especially for the suit. Most smart women

have hats of tulle or cloth to match their coats.

**APPLE GINGER.**

Put six ounces of whole ginger into a jug of boiling water, cover, and leave to infuse by the side of the fire for several hours. Cover three pounds of apples, cut into quarters and three half pints of water to preserve the colour. Drain the water from the ginger and make the quantity up to one and a half pints. Add three pounds of preserving sugar to this and boil for ten minutes. Drain the pieces of apple, throw them into the syrup, and draw the pan aside to moderate heat, letting the fruit cook very gently until transparent. Lift with a skimmer, place in a sieve over the syrup, cover and press.



One of the new jersey trends, frock-like as crepe de chine and apple as satin—is expressed in grey frocked with dull blue. It is a cleverly cut model, with a diamond-shaped waist in the centre front, pointed yoke to bodice and skirt emphasizing the diamond design, and a fish-like collar of self-material.



**ABDULLA**

**Superb Cigarettes**

are waiting for you.  
Virginian, Russian,  
Turkish

They start in satisfaction and they end in smoke.

## VOONIA TEA

INCREASES IN POPULARITY DAILY.  
AWARDED

**Ten Gold Medals**

BWARE OF FRAUDULENT IMITATIONS,  
INSIST ON SEEING THE NAME.

**"VOONIA"**

on every packet or case.  
**BLACKLAW & BROWN**  
(LATE MACKINNON BROS.)

Tel No. NAIROBI Box No. 31 Telegrams: "Blacklaws" 468.

One-sided effects characterize some of the later models, of which this one is without more in a typical example. The bodice has a yoke one side and a cross-over the other, the cross-over being slanted into a vertical line on the opposite hip. Small bows of the material are used as trimming.

All the great houses in Paris have now disclosed the secrets of their new season's novelties, so women all over the world know exactly what they must buy if they are to be fashionably dressed. There are new materials, new lines, new hats and in practically every case, the new idea is the better. For fashions are more practical this season.

Beautiful tweeds and woolsensures us a abundance for making up, till morning and sports

# WHAT PEOPLE THINK WHO BUY FORDS

One of the many appreciations received--

"With reference to the New Saloon I purchased a fortnight ago, it may interest you to know that I have just completed a return trip to Eldoret averaging 90 miles per gallon, the power of the engine and the riding comfort over rough roads was a revelation. I am more than pleased that my choice was a FORD. Yours etc.

**You Must Ride in a FORD to Appreciate its Qualities, we have Models for all purposes, to use a FORD as a Secondary Vehicle you save money.**

**Prices from £194**

# Nairobi Motors.

Tel. 317. 6th Avenue. Box No. 460.

**DONALD FISHER'S**  
**"Ye Monks"**  
Of course "Ye Monks" is a Scotch Whisky, but it is not like any other; it has a name all its own. When one has tried it, it is the same as smoking one's favourite cigarette or cigar, one develops an affection for it, and somehow—any other brand is not just quite the same.  
*Business opportunity with "Ye Monks" is big.*  
Sole Proprietors:  
**DONALD FISHER, LTD.**  
EDINBURGH  
Obtainable from all the LEADING STORES.

**REMOVED.**  
**Bellram Parimal & Co.**  
new country new and more commodious premises in ROYALTY HOUSE, Government Road, recently vacated by Messrs. Bullocks and Roy Ltd. GROCERIES, WINES and SPIRITS.

**B. E. A. SAW MILLS**  
Telephone No. 83 E.O. Box No. 11  
Telegrams: "Beasms," Nairobi.  
Camphor, Podo, Mweri and Mumu  
Flooring, Ceiling and Mouldings

# New Consignments.



**Everwear Silk Hose.**  
with Lisle Tops in Shades of Sandust, Rose, Nude and Atmosphere. AT SHS. 10/75 PAIR.  
**Everwear Lisle Hose.**  
For Shamba Wear. Shades stocked Champagne, Peach, Tan, Rose, Nude. AT SHS. 3/75 PAIR

## Morley's Famous Hosiery

Favourite De Luxe in French Nude, Lilac Nude and Flash Shades. SHS. 13/75 PAIR  
CHARMEUSE SILK HOSE — In Shades of Bichette, Lilac Nude, French Nude. AT SHS. 10/50 PAIR  
TRAMELLA SYNTHETIC SILK HOSE—With Pointex Effect. Shades stocked Peach, Nude, Blush, Sumburn, French Nude. AT SHS. 7/75 PAIR



## Two Tone Wool Felt Terals

In Brown/Pink, Beige/Blue, Beige/Green. AT SHS. 29/50 EACH  
White Single Felt AT SHS. 15/75, 17/50  
LARGE RANGE OF LADIES FANCY CARTERS in attractive colourings. SHS. 1/25 to 3/75 PAIR



DIRECT FROM PARIS SALONS A LARGE RANGE OF LADIES BELTS. PRICES 1/50 to 21/- each.

**HUTCHINGS, BIEMER & Co., Ltd.**  
Box 408, NAIROBI.  
10% Discount Allowed for Cash with Order.



## British India Steam Navigation Company, Limited,

AND PETERHEAD AND ORIENTAL STEAM NAVIGATION CO.

### UNION - CASTLE LINE.

HOMeward via SUEZ.

Ship	From Mombasa (About)
"Landguard Castle"	30th November.
"Dundee Castle"	1st December, 1920.
"Ladbroke Castle"	15th Dec. 1920.
"Ladbroke Castle"	15th Dec. 1920.
"Ladbroke Castle"	15th Dec. 1920.

HOMeward via SOUTH AFRICA.

Ship	From Mombasa (About)
"Landguard Castle"	7th November.
"Ladbroke Castle"	4th December.
"Dundee Castle"	1st February, 1920.
"Ladbroke Castle"	9th February, 1920.
"Ladbroke Castle"	27th Feb. 1920.
"Ladbroke Castle"	17th March, 1920.
"Ladbroke Castle"	2nd May, 1920.

Passenger Agents—  
 H.E.A. Corporation, Ltd.,  
 East African Estates, Ltd.,  
 East African Estates, Ltd.,  
 F. J. O'Brien Co. Ltd.

LONDON AND EAST AFRICA LINE.

LONDON TO MOMBASA, via Harare, Port Said, Port Sudan and Aden, Outwards and Homeward.

Ship	Arrive Kilindini	Start from London about
R.M. "Madras"	22nd Nov.	10th Oct.
R.M. "Madras"	22nd Nov.	10th Oct.
R.M. "Madras"	22nd Nov.	10th Oct.
R.M. "Madras"	22nd Nov.	10th Oct.
R.M. "Madras"	22nd Nov.	10th Oct.
R.M. "Madras"	22nd Nov.	10th Oct.
R.M. "Madras"	22nd Nov.	10th Oct.

Homeward steamers call at Plymouth affording passengers the opportunity of disembarking there.

Cargo accepted for Antwerp direct on all steamers.

ALL DATAS SUBJECT TO ALTERATION WITHOUT NOTICE. RETURN TICKETS ISSUED AT TWO SINGLE FARES LESS 10%.

UP-OUNTRY CHEQUES NOT ACCEPTED UNLESS ENDORSED BY A LOCAL BANK.

Terms, Rates of Freight and Passages to be arranged with  
 SMITH, MACKENZIE & CO. Agents—Kilindini, Mombasa, Zanzibar, De-es-Sabab, Tanganyika, Lindi and Lamu.  
 Passenger Agents only Mombasa and Lamu. See the columns under "Passenger Agents".  
 NAIROBI: Trust House, NAIROBI. The Messageries' Association Ltd. ELDORETT: Brindley & Co. SOYI: The Royal Station.  
 KITALE: Messrs. Davis & Rooney.

THE Olde English Marmalade

Chivers THE ARTIST OF THE BREAKFAST TABLE

Sole Agents—(for trade only)  
 R. O. HAMILTON, Ltd.,  
 NAIROBI.  
 Telephone No. 20, Box 60

### MESSAGERIES MARITIMES.

(FRENCH MAIL STEAMERS)

Regular sailings weekly from Mombasa to Marseilles.

THE QUICKEST ROUTE TO LONDON.  
 NEXT SAILING TO Marseilles.

"Leonce de Lisle"	27th October
"General Yvon"	11th November
"Chambord"	29th November
"Hercules de St. Pierre"	15th December

ORIENTALS OF ALL STEAMERS.

NEXT ARRIVAL FROM Marseilles.

"Hercules de St. Pierre"	27th Oct. (leaving)
MESSAGERIES MARITIMES	27th Oct. (leaving)
P.O. Box 18, MOMBASA.	P.O. Box 88, NAIROBI.

### Compagnia Italiana Transatlantica.

Monthly Passenger Service to NAPLES and GENOA.  
 THE BEST ROUTE TO ENGLAND.

SAILINGS from KILINDINI to GENOA on the 1st of Every Month.

"MAZZINI"—1st November, 1st January, 1st March, etc.  
 "CRISPINI"—1st December, 1st February, 1st April, etc.

Out-fitting tubs Steamers—Very rapid Cabin—Fresh running water in all cabins and public saloons—Cuisine—Superior—Duck Game—Swimming Pool, etc.

20 per cent. reduction on return ticket if returning within one year.

Special reduction on Government Officials and their dependents.

REGULAR MONTHLY EXCURSIONS—MOMBASA, ZANZIBAR, DAR-ES-SALAAM.

Leaving Mombasa on the 20th, returning with same steamer to Mombasa on the last of every month.

NOTE—Special concession on F. I. D. in returning steamships.

Returns fare any station in Kenya to Mombasa at single fare rates.

For further particulars of sailing, rate of passages, etc. apply to  
 SOCIETA' COLONIALE ITALIANA—MOMBASA, P.O. Box 170.  
 M. D. KEMPE, ——— NAIROBI, P.O. Box 200.

### Deutsche Ost-Afrika-Linie

(GERMAN AFRICAN SERVICE).

DEUTSCHE OST-AFRIKA-LINIE GENERAL AGENCY, MOMBASA.  
 Cables—"Ostafrika" P.O. 810.

HOMeward via SUEZ CANAL.

Ship	From Mombasa	From Mombasa
A.A. ADOLPH WORMANN	10th Nov.	A.A. USAMBARA
A.A. USAMBARA	22nd Dec.	A.A. USAMBARA
A.A. USAMBARA	22nd Dec.	A.A. USAMBARA
A.A. NAJISA	14th Jan.	A.A. USAMBARA
A.A. TANGANYIKA	22nd Feb.	A.A. USAMBARA
A.A. USAMBARA	10th March	A.A. USAMBARA
A.A. USAMBARA	22nd April	A.A. USAMBARA
A.A. TANGANYIKA	22nd April	A.A. USAMBARA

Passenger Agents only Mombasa and Lamu. See the columns under "Passenger Agents".  
 NAIROBI: Trust House, NAIROBI. The Messageries' Association Ltd. ELDORETT: Brindley & Co. SOYI: The Royal Station.  
 KITALE: Messrs. Davis & Rooney.

### Keith Timber Co. Ltd.

O. Box 874 Sadler Street Nairobi

Phone 598.

Piano and Tuning

Ten years experience in Kenya Colony and five years in the  
 Messrs. Cheyney & Co., London.

F. A. HEAD,  
 Box 278, NAIROBI.

### The African Marine & General Engineering

SHIP REPAIRING TARPAULINE MAKING & REPAIRING. MOULDING  
 OXY ACETYLENE WELDING & CUTTING.

In their well-equipped Carpenters Shop, all types of  
 Floors and Office Furniture are made and repaired.

Estates requiring repairs to machinery, implements, etc., are invited to communicate.

ESTIMATES GIVEN.

SMITH, MACKENZIE & Co., General Managers.

### General Grocery Co. Ltd.

formerly KENYA GROCERY Co., Ltd.  
 WHOLESALE PROVISION MERCHANTS.  
 All leading Brands of Provisions always in stock.

Sole Agents in—  
 Kenya, Uganda, Tanganyika and Zanzibar for  
 World's Famous Nestlé's Ligne Juice Cordial.

PRICES ON APPLICATION.

P.O. Box 522, NAIROBI. Phone 456.

And at Mombasa

THE BURNING

Question Solved by Obtaining

Good Fuel From

The Express Transport Coy.

Cargo Contractors to Kenya and Uganda Roadways & Harbours.  
 MOTOR, TRACTOR and MULE  
 agencies and also Storage and bonded Warehouses.

CUT and STANDARD FUEL of any quality.  
 SHIPPING to all parts of the world.  
 ALL PRICES COMPETITIVE AND BEST SERVICE GIVEN.

Phone 333 and 33

Watts "Mirror" Blades

Universally acknowledged to be the Best procurable.

KEENER EDGES. SMOOTHER SHAVES.  
 — LONGER SERVICE.

Made in Sheffield, England, by a firm established over 150 years.

JATTS MIRROR Blades are revolutionizing Safety Razor Shaving  
 they will stand at the end of the line.

Each blade is made from the very finest steel obtainable, with patented  
 and exclusive Patent, compound with the highest quality  
 cutting power of patent research and experiment. At every step  
 of manufacture they are subjected to a very rigid inspection.

WATTS MIRROR Blades surpass all others.

FOR AUTOSTROF HOLDERS.  
 MADE PRIOR TO 1922 MODELS.  
 FOR GILLETTE HOLDERS.

Each package is wrapped in TRIMAR  
 FABRIC CELLULOSE which is water  
 proof and odor proof.

Shs. 6/- per pkt.

In Patent Spring-Lid Shikaded  
 Blades, 10 to 12 blades  
 From All Branches of KODAK (E.A.) Ltd.  
 Kenya, Uganda and Tanganyika.

Agents—  
**WINGRAM & Co.**  
**THE TOOL HOUSE**  
 NAIROBI.

The Lake Garage  
 NAIROBI.

Will be opened on 1st NOVEMBER, 1920  
 UNDER ENTIRELY NEW MANAGEMENT.

Chevrolet Goodyear Fairbanks Morse  
 Cars & Trucks. Tyres. Oil Engines.  
 EDVSTONE WIRELESS SETS.

PETROLS — OILS — GREASES.  
 REPAIRS CAREFULLY EXECUTED.

E. M. JOSEPH,  
 Proprietor.

### Lochhead, Moore & Roy, Ltd.

P.O. Box 455, NAIROBI.

OVERSEAS MAILS.

STEWARDS FROM

Ship	From	Days of Month	Days of Week
G. Mairani	Europe	Oct. 28	Oct. 28
M. Mairani	India	" 27	" 27
G. Mairani	Europe	" 27	" 27
G. Mairani	Europe	" 27	" 27
G. Mairani	Europe	Nov. 1	Nov. 1

DEPARTURES

Ship	For	Days of Month	Days of Week
Leonce de Lisle	Europe	Oct. 28	Oct. 28
Khandalla	Europe	" 27	" 27
G. Mairani	Europe	" 27	" 27
Kana	Europe	Nov. 1	Nov. 1

G. Mairani returns Continental mail only  
 Medium carrier 200 later bags, 450 pound bags.

Hussein Suleman Verjee & Sons.

IT ALWAYS PAYS TO BUY FROM SPECIALIST, AND  
 SO SAVE YOUR TIME AND MONEY BY BUYING FROM US.

We Specialise in Hardware, Building Materials, Tools.

Large Quantity of C.I. Sheets and Expanded Metal now  
 Available. Prices an Application.

Phone 364 Government Road, Box 226  
 NAIROBI.

ESSJAY, Limited.

BOLUS HOUSE, GOVERNMENT ROAD,  
 NAIROBI. Phone 877

Financial & Property Agents.  
 Mortgages Specialized in.  
 Town Properties Negotiated.  
 Partnerships Arranged.  
 Investments Advised on.

WE HAVE SOUND INVESTMENTS FOR SUMS  
 FROM ONE UPWARDS. IN THIS RESPECT WE  
 CLAIM TO DO BETTER FOR YOU THAN ANY  
 ONE ELSE.

S. JACOBS,  
 Managing Director.

### IMPORTANT FOR ALL TO READ!!!

The Nairobi General Cash Stores, Ltd. needs little or no  
 introduction. Patrons and new comers, are quite bewitched by  
 the beauty and beauty, which so nobly prove the popularity of this  
 store. Make no mistake about it—this is the best and best in  
 the world. The firm is the Sole Agents for Carter's  
 renowned Tinned Vegetables and Florer Goods. In bulk, and  
 mixed. Patrons, also Patrons and other Horticultural  
 stores, which include Ironmongery, all of which are noted in the  
 East Africa; whereas Flower products, Vegetables, Market  
 small Shamba, have to be obtained.

TRY US—The Store of Farming Seeds of every descrip-  
 tion and Farming Sundries.

Nairobi General Cash Stores, Ltd.  
 Government Rd., P.O. Box 152,  
 Kenya Colony, NAIROBI.

Announcement.

The UKAMBA TRANSPORT CO. have now got a  
 collection of HENRY cars for sale. These cars are  
 now able to supply better fuel at the same price, and  
 are also more reliable.

See Page 137, Sheet  
 No. 100.

TRY US BEFORE GOING ELSEWHERE.

UKAMBA TRANSPORT CO  
 Box 300, Phone 450.

ROYAL INSURANCE Co. Ltd.

(Incorporated in England.)  
 FUNDS £2,500,000.

We take pleasure in informing that we have been appointed  
 PRINCIPAL REPRESENTATIVES  
 for Kenya and Uganda of the above old-established Company.

The Royal Insurance Co., Limited, maintains offices at  
 numerous locations and has appointed a resident  
 managing agent to assist in its conducting their operations  
 in Africa.

East African Estates, Ltd.  
 UNION BUILDING, GOVERNMENT ROAD,  
 P.O. Box 498, NAIROBI.



# INDIA & BACK FLIGHT.

The spirit supplies for the Duchess of Bedford's remarkable flight to India and back were provided at all points on the route, with the exception of Karachi, by the British Petroleum Co., Ltd.—a distributing organisation of The Anglo-Persian Oil Co., Ltd.

**"BP"**

Anglo Persian Oil Co., (Kenya) Ltd.  
Agents—  
GIBSON & Co., Ltd.  
Mombasa, Nairobi, Eldoret, Dar-es-Salaam.

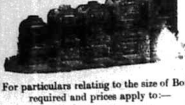
## Metropolitan Garage. Specialists in Automobile Repairs

WE ALWAYS HAVE A NUMBER OF SELECTED AND OVERHAULD 2nd HAND CARS IN STOCK.  
Flat 2 motor Super Sports in 4's  
Solely perfect mechanical condition 70 m.p.h. 35/36 in  
on p.g. Mileage 5,000 4/15  
Cost over £250  
Rugby Torrey, a sound and reliable car  
Rugby, 1104 Hoad, 1927 model in excellent order through 2000  
A bargain at £150  
Black, Canadian special guaranteed mechanically.  
CARS FOR HIRE.  
D. J. L. LEYHERINGE, Sole Proprietor.

# QUESTION?

DOES IT PAY TO HAVE MY TYRES VULCANIZED?  
**YES**  
IF THEY ARE REPAIRED AT  
**HARWOOD'S**  
Vulcanizing & Engineering Co.

## FOR AN EFFICIENT AND PERMANENT HOT WATER SUPPLY Install a BESTON HOT WATER BOILER



For particulars relating to the size of Boiler required and prices apply to:—  
(Sole Agents)  
**Thornton & Turpin**  
Registered Plumbers and Sanitary Engineers.  
Nairobi and MOMBASA.  
Phone 185 P.O. Box 290, Nairobi.  
and P.O. Box 368, Mombasa.

**BEST VALUE EVER OFFERED**

THE BON AMI EN-TOUT-CAS  
GENTS TENNIS SHOES.  
PRICE, 15/50 pair

GUARANTEED FOR FOUR MONTHS' WEAR FROM DATE OF PURCHASE.  
Sold by the  
**De Luxe Boot Co.**  
Geyt. Road, NAIROBI.

## Stored with Health-giving Vitamins

"Skippers" are as nutritious as they are delicious—and that is saying a lot.  
There's a wealth of real goodness in these tasty little fish, and the methods used in canning them are so up-to-date and perfect that wherever you may be "Skippers" reach you with all their health-giving properties and splendid flavour unimpaired.  
You will enjoy "Skippers" at any meal. They have no hard bones or tough skin—they are all easily digested delicious nourishment.

**"Skippers"**



Always bodies of the 4 lb tins appear when well imported. There seems a variety, to have a revival of interest in this type, and some useful examples have been recent in.

In the interior fittings and general arrangement of the larger and more expensive types of several quantities these items are by an increase in general refinement. Of late there has been a tendency to employ a sort of the holder grades of bodies for the bolted type, although this is not a reaction in favour of the usually are of a different material, but they are lighter, and comparison and weight lighter may be into the right of the body of the same weight as the inferior, but are also free from small accessories in the interior, in fact, the general tendency in interior is towards quietness of construction. In this connection it may be recalled that the finest seats of an

**MARTIN'S PILLS**  
**ADOL & STEIN**  
Succedeein for all Female complaints. Every lady should keep a box in the house.  
Cures and stores and then on the night of the world.  
WILEY, Chemist, Institution, Legat.

**NATIONAL BANK OF INDIA LIMITED.**  
(Incorporated in United Kingdom).  
Bankers to the Colony and Protectorate of Kenya and Uganda Protectorate Government.  
Subscribed Capital ... £4,000,000  
Paid-up Capital ... £1,000,000  
Reserve Fund ... £1,000,000

28, Bishopsgate, London, E.C.2  
BRANCHES: Mombasa, Nairobi, Victoria, Kisumu, Eldoret, Malindi, Kampala, Jinja, Dar-es-Salaam, Dar-du-Salaam, and Tanganyika.  
Also at: Addis Ababa, Bahrda, Mera, Kericho, Nairobi, Antananarivo, Buloh, Cawaporo, Colombo, Nairobi, Swerea City, Tait-tovon, Tchoha, Chitango, Hararero, Mombasa, Aden, and Steamers Point, Aden.  
AGENTS in New York and throughout U.S.A., Europe, Canada, South Africa and Australia.  
FIXED DEPOSIT—Deposits are received for fixed periods on terms which may be contracted on application.  
EXCHANGE—The Bank is a general Dealer on the Home and Foreign Exchanges and carries on Exchange forwarding fund copy.  
Every description of Banking business transacted with full security.  
A. S. McKENRICK, Manager, Nairobi Branch.

**John Rifkin**  
SIXTH AVENUE  
P.O. Box 618, NAIROBI.

WAGON BUILDERS, BLACKSMITH FABRICATOR.  
Stock of:  
AXLEB, BRAKES, WAGONS, and ALL WAGON PARTS.

ALL KINDS OF WAGONS MADE TO ORDER.

# MOTOR NEWS

**THE SPORTSMAN'S COUPE**

**A Reaction in Favour of Four Doors.**

**PROBLEM OF LUGGAGE CARRIER**

(Continued)

What may be termed standard designs, such as the four-door light saloon, the limousine and the landaulet continue to be popular, especially amongst those who use their cars in a great extent for town work. Modern tendencies in the case of motor cars adopted for touring and for sports are to be seen in the preference of being low, with a low chassis, though actually there are not more than the normal amount of load room. In the fitting of mechanical seats to such cars, considerable work has been done, and it is now possible to fit extra seats for the really reasonable and yet to fold away so readily into the interior of the car. In the arrangement of the glass division in limousines and landaulets much ingenuity has been expended, so that a little more space may be gained.

**KENYA MOTORS STAFF.**

Mr. Kay, the head tester at present employed with General Motors, Ltd., Edgeware Road, London, is shortly joining the staff of Kenya Motors.

**ILLUMINATING THE INSTRUMENTS.**

The dash lamps of most cars at present employed with General Motors, Ltd., Edgeware Road, London, is shortly joining the staff of Kenya Motors.

It will be found that if the motor instrument at the side of the instrument dial and the bracket there to an angle of 90 degrees the light from the dash lamp will be reflected on to the dial.

**PACKING WORK TAPERS**

On old cars it happens sometimes that the crankshaft taper becomes worn and allow the shaft to run loose. If it is found necessary to renew the shaft or to have the taper built up by sanding an improvement may be effected by cutting a piece of sheet steel to the length of the taper and wide enough to wrap round it in such a manner that the two edges are parallel and the width of the keyway equal.

If the hub is mounted over this packing piece it will be found that a tight fit results, and no further trouble should be experienced.

**RELINING BRAKE DRUMS**

If when relining brake drums the friction fabric is fitted in a circular groove, a gap will exist between each of the lips of the drum and the life of the fabric will be prolonged because road grit and dirt will be pushed into the gaps when the brakes are applied instead of being ground into the fabric. When the new lining is put on so falls all over the drum, thus ensuring a better gripping power to the brakes.

Since the number of coachbuilders who are exhibiting at the forthcoming Olympia Show, it is assumed that three types of motor-cars will contain several models of some character, and from these there usually emerge many novelties of utility which later on, become accepted as necessities.

# DODGE BROTHERS NEW SIX MOTOR CARS

**Stylish Beauty with Proved Reliability.**

Attractive body and smart style distinguish Dodge Brothers NEW Motor Cars which are world-famous for their proved reliability.

Skilled design has achieved at once compactness, length, the appearance of lowness with ample clearance, attractive lightness and genuine comfort.

The bodies finished in pastel lacquer colors, with pure, unbroken lines, and low rectangular windows, create a convincing picture of exterior smartness. Interior beauty speaks for itself in the splendid upholstery and fittings. A handsome car—with greatly increased fuel economy and proved reliability in every detail!

**S. Fisher & Simmons (E.A.) Ltd.**  
Victoria Street, NAIROBI.

W. SPRINGETT & Co.	MOMBASA
F. J. BUCK	KITALE
KASSIM MUBRINI M A Co.	KAMPALA
D. CRIGHTON-BAIPOUR F Co.	MELBE
POWELLS & WESTCOCK	SOBOTTI
KASBA & Co.	NAIROBI
	MWAZI

**WEED Tyre Chains**



are especially essential to the economical and safe operation of buses, trucks and all heavy duty vehicles to which positive traction is so important.

They are made in sizes to fit all tyres, whether pneumatic or solid, single or dual. They bite right through mud, sand and clay—they grip and hold.

Order from your dealer  
**AMERICAN CHAIN CO.**  
New York, N.Y., U.S.A.

Standard of quality for every quarter of a century  
**WEED TYRE CHAINS**

**Central Garage.**  
VICTORIA STREET, NAIROBI.

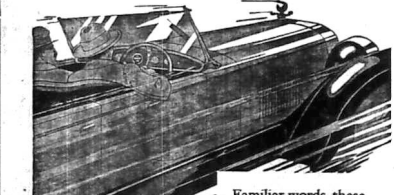
REPAIRS TO ALL MAKES OF TRACTORS, MOTOR CARS AND MOTOR CYCLES.

Speciality: Repairs to Electrical Equipment, Building Contractors, Painters and Electricians.

**Dayaram Bros.**

Have removed to MORE COMMODIOUS PREMISES, next door to their old shop in Electric House, Government Road.

# "She's not too new—but just listen!"



Familiar words, these, an owner proud of his sweet running engine. In most cases you'll find this due to correct lubrication—the proper grade of MOBIL OIL, of course.

First say Mobil Oil—then the grade.

**Mobil Oil**

"Make the Chart your Guide."

VACUUM OIL COMPANY OF SOUTH AFRICA, LIMITED

Distributing Agents in KENYA, UGANDA, TANGANYIKA and ZANZIBAR.

THE AFRICAN MERCANTILE COMPANY, LTD.



Viewed from any angle  
A pleasing proposition.  
Sturdy and powerful.



Considered from any point of view  
Economical in First Cost and upkery.

THE NEW Superior Whippet



FULLY ILLUSTRATED BROCHURE SENT FREE ON APPLICATION

**MOULTON & MORRISON Ltd.**  
SIXTH AVENUE, NAIROBI.

# J. W. Milligan & Co.

IMPORTERS OF:  
Building Material, Agricultural  
Implement and Machinery of all  
descriptions, etc., etc.

EXPORTERS OF:  
Cotton, Sisal, Malm,  
Wheat, Ivory,  
Etc., etc.

**We have in Stock the following Lines.**

COFFEE TRAYS AND COFFEE TRAY WIRE

MAIZE CRIB WIRE—3-ft. 4-ft. and 6-ft. ROLLS

MACKINON PULPERS, REPASSERS, DRYERS

CLOCK CREAM SEPARATORS, CLOCK CHURNS  
AND MILK CANS

CARPENTERS AND MASONS TOOLS OF ALL  
DESCRIPTIONS

OILS AND GREASES

BOLTS, NUTS AND SCREWS

Our Prices are Right

SAVE MONEY BY SENDING US YOUR ORDERS

BRANCHES  
MOSH AND ARUSHA.

P. O. Box 148  
Phone No. 46



## -Willard- Batteries

Are designed to turn your engine (the hardest work a battery has to do) for a longer period of time than even emergencies ordinarily call for.

We have batteries in stock to suit any make of car.

See that you get the correct size and the best make

## -Willard-

**Carr, Lawson & Co., Ltd.**



**TAN WILLOW OXFORD**  
In dark tan with calf straps as sketch. Full round toe. Double stitching all over. Storm welt. A very smart shoe for town wear.  
Shs. 47/60 per pair



The Brand of Quality

SHOES

For Men



**TAN GRAIN DERRY SHOE**  
Dark tan with grain hide sole suitable for golf or slacks wear. Studed outside sole. Plain soles for town wear as sketch above.  
Shs. 47/- per pair



**WILLOW Calf SEMI BROGUE**  
Style as sketched, natural cow in best quality dark tan calf with stitched toe, plain and storm welt. Medium weight last.  
Shs. 47/60 per pair



**BLACK CALF DERRY SHOE**  
Best quality black calf natural, as sketched above, but with stitched toe, plain and storm welt. Medium weight last.  
Shs. 47/- per pair

**THE YORKSHIRE INSURANCE COMPANY LIMITED.**  
Established 1824  
Principal Representatives—  
**R. O. HAMILTON, Ltd.**  
NAIROBI. Phone 552

**BIRTH**  
The late Wm. J. O'Connell is reported to have died at his residence in the city of New York, N.Y., on the 25th inst. He was a well-known business man and a member of the Board of Directors of the New York City Water Supply Commission.

**MARRIAGE**  
The Rev. Fr. J. J. O'Connell officiated at the marriage of Miss Mary J. O'Connell and Mr. J. J. O'Connell, which took place at St. Patrick's Church, New York, N.Y., on the 25th inst.

**IN MEMORIAM**  
The late Wm. J. O'Connell is reported to have died at his residence in the city of New York, N.Y., on the 25th inst. He was a well-known business man and a member of the Board of Directors of the New York City Water Supply Commission.

**IN ANY organization of young people such as the Boy Scouts, the Girl Scouts, the Boy Scouts of America, etc., it is essential to have a system of public opinion. It is essential to have a system of public opinion. It is essential to have a system of public opinion.**

**of comparatively unskilled workers, the Red Cross is almost a necessity. A study of the Red Cross is almost a necessity. A study of the Red Cross is almost a necessity.**

**GOOD SIGHT DANGEROUS**

It is a pity that those who are blind do not know that they can be cured. There is a cure for all cases of blindness, and it is a cure that is simple and easy to take. It is a cure that is simple and easy to take. It is a cure that is simple and easy to take.

**A. H. WARDLE**  
L. M. BROWNE, F.R.S.M. (Lond.)  
Optical Manager, Workshops on the Premises

**GIBBONS Steel Casements Locks and Ironmongery**  
Make Their Appeal on the Basis of QUALITY AND PRICE.

Our present stock of **Standard Steel Casements** embody the latest improvements. WE CARRY EXTENSIVE STOCKS.

**R. G. VERNON & Co.**  
UNION BUILDING, NAIROBI. P.O. Box 124

**Two Sure Remedies For Constipation.**  
In all indigestion and Bilious Health you have two sure remedies which will benefit the most chronic cases of constipation very quickly. They are: **REXALL** and **REXALL**.

**Rexall** is a powerful laxative, and **REXALL** is a powerful laxative. They are: **REXALL** and **REXALL**.

**Wholesale and Retail Dealers, Kenya and Uganda.**

**African Standard**  
UNDA AGRIC.  
MONDAY, OCT 9 1930.

**The Red Cross Movement.**  
This week's issue of the President of the East African Women's League outlined in his address the work which had attended the efforts of the organization of the Red Cross in Kenya during the period of four months. In several of the main centres of the Colony, not including Nairobi, camps are being established and in Eldoret, particularly steady progress is being made with the work of spreading a knowledge of First Aid principles. The headquarters of the Red Cross movement in Kenya are being established and in Eldoret, particularly steady progress is being made with the work of spreading a knowledge of First Aid principles. The headquarters of the Red Cross movement in Kenya are being established and in Eldoret, particularly steady progress is being made with the work of spreading a knowledge of First Aid principles.



**BRUSHING DUO**

**A TOUCH OF BRUSHING DUO will brighten your home**

**THE modern home cannot have too many bright ornaments to add a note of cheerful colour. A touch of Brushing Duo on the Ink-Well, Ash-Trays, Knife-Boxes, Flower-Pots, Lamp-Shades, Picture-Frames, etc., will brighten the whole appearance of the inside of your house.**

Shade Cards, Instruction Books and Stocks procurable from—  
**J. W. Roberts & Co., Ltd.**  
NAIROBI AND BRANCHES.

**UNDER THE STANDARD**

**Photographic Society.**  
The next meeting of the Photographic Society of Kenya will be held on Monday, November 4, at the Princes Hotel, Nairobi. The meeting will be held at the Princes Hotel, Nairobi. The meeting will be held at the Princes Hotel, Nairobi.

**The Nairobi Show.**  
The Ladies of the Nairobi Branch of the East African Women's League are organizing a show for the benefit of the Red Cross. The show will be held at the Princes Hotel, Nairobi. The show will be held at the Princes Hotel, Nairobi.

**PINE TREE Soluble Disinfecting Fluid**

for GENERAL SANITARY USE  
CHEAP, HARMLESS, CONVENIENT and EFFECTIVE.

A gallon drum will make from 50 to 100 gallons of disinfectant, depending upon the purpose for which it is to be used.

7/50 per 1-gallon Drum.  
30/- per 5-gallon Drum.

**KODAK E. A. Ltd., INC.**

**Howse & McGeorge**  
CHEMISTS  
NAIROBI AND ALL BRANCHES.

**Rates of Exchange.**

(BY WIRELESS)  
New York: 18 1/2  
London: 10 1/2  
Australia: 23 1/2  
India: 12 1/2  
Ceylon: 12 1/2  
Siam: 12 1/2  
Java: 12 1/2  
Batavia: 12 1/2  
Sourabaya: 12 1/2  
Manila: 12 1/2  
Cebu: 12 1/2  
Singapore: 12 1/2  
Hong Kong: 12 1/2

**STANDARD DAIRY.**

October 20:  
Milk: 3/6  
Cream: 4/6  
Butter: 5/6  
Cheese: 6/6

**Monday, Oct 9**

7:50 to 8:00—General news  
8:00 to 8:10—Local news  
8:10 to 8:20—Sporting news  
8:20 to 8:30—Theatre news  
8:30 to 8:40—Business news  
8:40 to 8:50—Weather news  
8:50 to 9:00—Closing news



MOMBASA WINS THE GIROUARD CUP. Moderate Final Meeting in Nairobi. GOVERNOR PRESENTS TROPHY.

Finalists the Guests at an F.A. Dinner.

A huge crowd of all races centered the Caledonia Field for the Girovard Cup—the only trophy for which country teams compete.

The two teams were drawn from the opposite ends of the Colony—Mombasa, old Girovard warriors, and Kitale, newcomers to the competition.

Although the standard of play was good, it was not exceptional. Mombasa's attack appeared assisted by a Cup goal to the Coast again.

The F.A. Council entertained the two teams to dinner in Torr's Hall on Saturday evening. Among those present was the Member of Legislative Council for the Trans Nzoia.

POINTS IN THE GAME.

For the first time in the history of the Girovard Cup Competition two country clubs in the field to match took place on the Mombasa ground on Saturday afternoon before what appeared to be a record crowd. It is the Governor who has an interested interest in the game.

It was evident from the start that the Mombasa players were more confident and displayed more confidence to Nairobi with their usual play up and down the field. Nairobi's attack was more tentative and their defense more solid. The Mombasa forwards were very active and showed more initiative than the Nairobi forwards. The Mombasa half backs were also more active and showed more initiative than the Nairobi half backs.

Kitale, if not playing a suitable game were leading and this stage forgot their way well in the second half. Mombasa's attack was more effective and they scored a goal in the second half. Nairobi's defense was more solid and they did not concede any more goals.

On repeating Thompson had been in a goal to ensure that he had changed places with Corbett. The Mombasa attack was more effective and they scored a goal in the second half. Nairobi's defense was more solid and they did not concede any more goals.

Further offenders were... The Mombasa attack was more effective and they scored a goal in the second half. Nairobi's defense was more solid and they did not concede any more goals.

Unjust Weight. Further offenders were... The Mombasa attack was more effective and they scored a goal in the second half. Nairobi's defense was more solid and they did not concede any more goals.

GROWTH OF CHILDREN'S E.A.S.P.C.A. BRANCH. Celebration of Second Anniversary.

SHIELDS PRESENTED. Kitale School Success in Easy Competition.

The second anniversary of the Junior Branch of the East African Society for the Prevention of Cruelty to Animals was celebrated at the Kitale school on Saturday afternoon. The school was given the trophy by the members of the Executive Committee of the Society for the Prevention of Cruelty to Animals.

A large number of the young members of the Junior Branch, Kitale, were present and assisted in the celebration. The school was given the trophy by the members of the Executive Committee of the Society for the Prevention of Cruelty to Animals.

Advisory Review. Mr. J. Major, President of the East African Society for the Prevention of Cruelty to Animals, visited the school on Saturday afternoon. He was accompanied by the members of the Executive Committee of the Society for the Prevention of Cruelty to Animals.

LIONS ON THE KAJIADO ROAD. Government and Mining Industry.

Great Interest by Home Papers. Difficulty Over Wages Issue.

Hours to be Reduced. Proposals to be Announced Shortly. BY WIRELESS. On Oct. 28 the London Standard and other leading newspapers reported that the Government had decided to reduce the hours of work of the miners in the coal mines.

Also, news of the Government's proposals to reduce the hours of work of the miners in the coal mines. The Government had decided to reduce the hours of work of the miners in the coal mines.

MEETINGS AT KAMPALA. The meetings at Kampala were held on Saturday afternoon. The meetings were held at the Kampala Hotel.

GOVERNMENT AND MINING INDUSTRY. Difficulty Over Wages Issue.

Hours to be Reduced. Proposals to be Announced Shortly.

BY WIRELESS. On Oct. 28 the London Standard and other leading newspapers reported that the Government had decided to reduce the hours of work of the miners in the coal mines.

Also, news of the Government's proposals to reduce the hours of work of the miners in the coal mines. The Government had decided to reduce the hours of work of the miners in the coal mines.

MEETINGS AT KAMPALA. The meetings at Kampala were held on Saturday afternoon. The meetings were held at the Kampala Hotel.

FALL OF PRICES ON WALL STREET. Beneficial Effect in London.

A VALUABLE MOVE. THROUGH MEXICO'S AGENCY.

AN APPRECIABLE RISE IN LONDON. The London market was buoyant on Saturday afternoon. The market was buoyant on Saturday afternoon.

WASHINGTON, Oct. 28. President Hoover in an address to Congress announced that the Government had decided to reduce the hours of work of the miners in the coal mines.

RESULTS OF OFFICIAL EXPERIMENTS. The results of the official experiments were published on Saturday afternoon. The results of the official experiments were published on Saturday afternoon.

LYRIC HALL. TO-NIGHT AT 8.45 p.m. THE WHITE SHEIK. Adapted from Emma Forbes' popular story 'KING'S MATR'.

SHOWING ON WEDNESDAY HENRY EDWARDS IN 'FEAR'. Opening Day of SALE. MANY BARGAINS. 10% DISCOUNT off New Goods.

EADIES FOOTWEAR LIMITED. Box 140 - NAIROBI. THEATRE ROYAL. STARTING TO-DAY - MONDAY, OCTOBER 29th and Tuesday and Wednesday, October 30th and 31st.

"The Border Legion". Featuring ANTONIO MORENO - HELENE CHADWICK - ROCKFELLE FELLOWES. Telling thrilling tales of the desert with standard band of desperadoes.

We Sell & Service NEW Ford Cars & Trucks. K. McIvor's Garage. Box 97 SIXTH AVENUE Phone 97.

Kitale School Success in Easy Competition. The school was given the trophy by the members of the Executive Committee of the Society for the Prevention of Cruelty to Animals.

Advisory Review. Mr. J. Major, President of the East African Society for the Prevention of Cruelty to Animals, visited the school on Saturday afternoon.

MEETINGS AT KAMPALA. The meetings at Kampala were held on Saturday afternoon. The meetings were held at the Kampala Hotel.

MEETINGS AT KAMPALA. The meetings at Kampala were held on Saturday afternoon. The meetings were held at the Kampala Hotel.

MEETINGS AT KAMPALA. The meetings at Kampala were held on Saturday afternoon. The meetings were held at the Kampala Hotel.

MEETINGS AT KAMPALA. The meetings at Kampala were held on Saturday afternoon. The meetings were held at the Kampala Hotel.

MEETINGS AT KAMPALA. The meetings at Kampala were held on Saturday afternoon. The meetings were held at the Kampala Hotel.

MEETINGS AT KAMPALA. The meetings at Kampala were held on Saturday afternoon. The meetings were held at the Kampala Hotel.

MEETINGS AT KAMPALA. The meetings at Kampala were held on Saturday afternoon. The meetings were held at the Kampala Hotel.

MEETINGS AT KAMPALA. The meetings at Kampala were held on Saturday afternoon. The meetings were held at the Kampala Hotel.

MEETINGS AT KAMPALA. The meetings at Kampala were held on Saturday afternoon. The meetings were held at the Kampala Hotel.

MEETINGS AT KAMPALA. The meetings at Kampala were held on Saturday afternoon. The meetings were held at the Kampala Hotel.

MEETINGS AT KAMPALA. The meetings at Kampala were held on Saturday afternoon. The meetings were held at the Kampala Hotel.

MEETINGS AT KAMPALA. The meetings at Kampala were held on Saturday afternoon. The meetings were held at the Kampala Hotel.

MEETINGS AT KAMPALA. The meetings at Kampala were held on Saturday afternoon. The meetings were held at the Kampala Hotel.

MEETINGS AT KAMPALA. The meetings at Kampala were held on Saturday afternoon. The meetings were held at the Kampala Hotel.

MEETINGS AT KAMPALA. The meetings at Kampala were held on Saturday afternoon. The meetings were held at the Kampala Hotel.

MEETINGS AT KAMPALA. The meetings at Kampala were held on Saturday afternoon. The meetings were held at the Kampala Hotel.

MEETINGS AT KAMPALA. The meetings at Kampala were held on Saturday afternoon. The meetings were held at the Kampala Hotel.

MEETINGS AT KAMPALA. The meetings at Kampala were held on Saturday afternoon. The meetings were held at the Kampala Hotel.

MEETINGS AT KAMPALA. The meetings at Kampala were held on Saturday afternoon. The meetings were held at the Kampala Hotel.

MEETINGS AT KAMPALA. The meetings at Kampala were held on Saturday afternoon. The meetings were held at the Kampala Hotel.

MEETINGS AT KAMPALA. The meetings at Kampala were held on Saturday afternoon. The meetings were held at the Kampala Hotel.

MEETINGS AT KAMPALA. The meetings at Kampala were held on Saturday afternoon. The meetings were held at the Kampala Hotel.

MEETINGS AT KAMPALA. The meetings at Kampala were held on Saturday afternoon. The meetings were held at the Kampala Hotel.





**AUCTION SALES.**



SALE BY CATALOGUE OF FURNITURE and EFFECTS.

Daily instructed, we shall sell by Public Auction, Without Reserve (unless stipulated) at our Salerooms, Mutos Building, Harding Street, Nairobi.

**TO-DAY, OCT. 28th at 10 a.m.**

Double Bedstead in Teak, two drawers. Single Bedstead in Teak, two drawers. Hanging Wardrobe. Combination Dressing Table and Washstand in Teak. Dressing Tables in Teak and camphorwood, low mirrors. Chest of Drawers in Teak. Washstands in Teak, tile back. Double and Single Coir Mattresses. Batchelor's Wardrobe. Single Iron Bedsteads, Double Bedstead in Oak, Spring Mattress. Single Bedstead in Teak, spring and Horse Hair Mattresses. Twin Bedsteads (Black) spring and Coir Mattresses. Playground. Child's Imported High Chair. Cot and Mattress. Cheval Mirror. Writing Bureau. Morris Chairs. Dining Table in Mahogany. Suite of Six Dining Chairs in Mahogany. Oval Dining Table in camphorwood. Suite of Dining Chairs in C.W. Wicker Chair and Cushions. Bookcases. Palmated Table. Dinner Wagon, two drawers and cupboard. Hall Stove. Three Piece Chesterfield Suites, loose covers on cantons. Club Easy Chairs on cantons. Occasional Tables. Two Leopard Skin. Sundowner Tables. Writing Table, baize top. Refectory Type Dining Table and Suite of Eight Dining Chairs. Fold Top Screen, No. 4 Dover Stove. Kitchen Tables. Three Burner "Perfection" Oil Stove and Oven (low reserve). Druggers. Two Table Hugs (reserves). Hand Sewing Machine. Two Bottle Tantalus. Glassware "Baruch" Cocktail Shakers. Etc., Etc., Etc.

MUTER and OSWALD Ltd., Auctioneers, etc., NAIROBI.



**Miscellaneous Goods.**

Daily instructed, we shall sell by PUBLIC AUCTION, WITHOUT RESERVE, at our Salerooms, Mutos Building, Nairobi, on

**WEDNESDAY, OCT. 30th at 10 a.m.**

2 Burner Oil Stove and Oven, 2 Galvanized Iron Baths, Shanks Lawn Mower, Wheelbarrow, Trestle Table, Liner Matting, Lino, Kimmel Toilet Seats, Kitchen Utensils, Set of "Steamers", Decanters, Glassware, Coffee Percolator, Butter Churn, Novels, Pictures, Second hand Clothing, Helms, Foot Tins, Eight Twenty Pounds Ground and Roasted Coffee (low res.). Fruit Jellies, etc., etc.

MUTER and OSWALD Ltd., Auctioneers, NAIROBI.



**SALE OF ENGINES, SAWMILLING MACHINERY and MISCELLANEOUS GOODS.**

Daily instructed by Messrs. The Equator, Sawmills, we SHALL SELL BY PUBLIC AUCTION, at their yard in Sadler Street, Nairobi, on

**FRIDAY, NOV. 1st at 10 a.m.**

"Lant" Portable Steam Engine. Boiler Locomotive overhead type, fitted with super heater. (Note: This engine has been running at Nairobi Mills and is only being sold subject to a very low reserve on account of the installation of electricity.)  
"Bokey" Portable Steam Engine. Boiler Locomotive Mill and is only being sold subject to a very low reserve on account of the installation of electricity.)  
"Robinson" 12" four cutter planing and Moulding Machine with shafting, cutters and spares.  
Mecanic Machine, Planer, Bore, Bearings, Fire-bars.  
Three Cases quarter inch factory Glass-wire netting; iron-ore.  
Circular Saws (new) 18", 20", 21", 24", 30", 36" & 42" Bandaws. 12 Rolls Sandpaper.  
Eight Spare Part Bits (metal) 6" long by 5 x 1 1/2" tough tops; 25 compartments in various sizes.  
2 Cases Dictaphone Records. Steel Drama. Oils Drama.  
2 Cedar Window Frames. Set of Pigeon Holes. 3 Cedar Doors. Brush Handles. Three Lengths 16 x 3" Shaping Oil. Dozen 3" Plummer. 2 Polys. Motors. Trek Chains. Concrete Mixer. Rotary Pump No. 5. Several Lengths of Steel Rails. Batten Doors.

MUTER and OSWALD Ltd., Auctioneers, NAIROBI.

**JUST ON HAND**

Great consignment of LADIES PLAIN and STRIPED **SILK DRESSES** in smartest colours and attractive styles. Exceptionally New Design. INSPECTION COUPON GIVEN. **Ladharam Stores** (Ladies and Gents Experts Tailors) P.O. Box 516 Govt. Road, NAIROBI.

**AUSTIN'S AUCTIONS.**

CATALOGUE SALE OF WARDROBES, BEDS, DRESSING CHESTS, DINING TABLES and CHAIRS, CHESTERFIELD SUITES, DESKS, GRAMOPHONES, RIFLES, SIDEBARDS, NOVELS AND VARIOUS OTHER ARTICLES

at the MART on **SATURDAY, NOV. 2nd at 10 a.m.** Further details later.

**AUSTIN & CO** Auctioneers and Estate Agents, Harding St., NAIROBI

**STOCK SALE.**

**Mr. W. J. BEESTON,**

duly instructed by the District Commissioner, Eldama Ravine, will sell by PUBLIC AUCTION,

WITHOUT RESERVE,

at the

**BOMA, ELDAMA RAVINE.**

— ON —

**THURSDAY, OCT. 13th 1929**  
**113 head of Cattle**

comprising: 40 COWS, 9 HEIFERS, 25 BULLS, 20 BULLOCKS, 10 CALVES.

Sale to Commence at 10.30 a.m. sharp.

Auctioneer's Note.—The whole of the above cattle are from Timbora and Ravine.

**W. J. Beeston,**

AUCTIONEER, NJORO.

**SANDS & CO.,**

AT OUR RAILWAY SALE YARDS.

**WEDNESDAY, OCT. 30th at 11.30 a.m.**

30 COWS with calves at feet. 24 Good SLAUGHTER STEERS. Further entries invited.

**SANDS & CO.,**

AUCTIONEERS.

**SANDS & CO.,**

**Land Sale**

AT OUR SADDLERS ST. PREMISES.

**Saturday, Nov. 2nd at 11 a.m**

Acting on instructions from the Executors of the late Mr. F. O. Anderson, we will sell WITHOUT RESERVE,

A VERY EXCELLENT FARM IN THE GILGI DISTRICT Land Off No. 1260/B. Acreage 2,810 acres, 90 years lease at an annual rental of Shs. 244 Guas. 57. The farm is a very fine model farm with approx. 250 acres under wheat and barley.

Buildings comprise good stone house with C. iron roof containing 2 sitting rooms, 3 bedrooms, bathroom, pantry, etc.; 2 roomed guest house.

Stables containing 5 horse boxes and harness room. Big two-storied stable, cattle sheds, pens and paddocks. The farm has a franchise on the Gilgi River of approx. 3 miles and this coupled with the fact that the plough land runs the length of the farm makes it an ideal proposition for self-advancement.

The farm is situated 15 miles from Gilgi on the Gilgi—Rumuruti Road. Further particulars will be supplied by Mr. A. Liango—Trustee who has the adjoining farms or from the Auctioneers. The Auctioneers can thoroughly recommend the farm and the district.

**SANDS & CO.,**

AUCTIONEERS



**FOR SALE**

**RUARAKA FREEHOLD PROPERTY** of 15.5 acres, including 10 acres of native Nairobi House with **STONE RESIDENCE** the accommodation of which consists of Drawing Room, Dining Room, 2 Bed Rooms, Dressing Room, Bath, Spare Room, Bathroom, Kitchen, Store, etc. Garage for two cars and other outbuildings. GARDEN well laid out with large range of **FRUIT TREES**, etc., which provide a regular income. Electric light can be arranged. **PRICE £2,200** on which terms can be laid on.

**To Let.**

**FURNISHED HOUSE** in Parklands. Accommodation 4 bedrooms, 2 Bathrooms. Two Bedrooms Dining Room, Sitting Room, Lounge, 2 Bed Rooms, Bathroom, Store and Kitchens for period of Four Months, £12 per month.

For further particulars of the above and other properties, apply to:

**MUTER and OSWALD Ltd., Estate Agents, NAIROBI.**

**E. Hutchison & Co.**

Favoured with instructions we shall sell by Public Auction, Without Reserve unless stated, at our Mart, Government Road, on

**TUESDAY, OCT. 29th at 10 a.m.**

the following Furniture and Effects—  
3 Piece Chesterfield Suite covered in blue cretonne. 3 Piece Chesterfield Suite covered in Grey Shadow Tissue. 2 Morris Chairs. 2 Tea Chests. Small Black Oval Table. Oval Gate Lugged Dining Table. Black Oval Dining Table. Round Dining Table. Set of 6 Teak Dining Chairs. Set of 6 Black Dining Chairs. Large 2 Burner Oil Stove with nickel back. Small Teak Sideboard. Podo Sideboard. Occasional Table. 2 Teak Palm Stands. Indian Teak Double Wardrobe well fitted (Low reserve). Single Teak Wardrobe. Single Camphorwood Wardrobe. Indian Teak Double Wardrobe. Indian Teak Double Bed with Best Box Spring (Reserve). 1 Bed with 3 ply spring. Camp Bed almost new. Tray on Stand. Fawn Axminster Carpet 9 x 9. Reversible Rug. Cream Separator. Indian Teak Princess Dressing Chest. 3 Five Hurricane Lamps. Portable Gramophone 20 Records. 3 Pictures. Framed Book-shelf. Native Stocks. Prunas Stone. One Electric Heating Stove (as new). Wheelbarrow. 2 Baths. Double Burner Oil Stove. Case Tea Forks. 2 Condition Sets in Cases. 2 Brass Pots. 2 Window Frames. 2 Teacot Racquets. Lot Flange. Bar of Gold Chain. Solid Silver Card Case. Hot Water Jug. P. 2 Wireless Cabinets. Drawing loom. Lock. Motor Cleaning Brushes. Syphon. 1 Best Fair Child's Camera. 5 Small Lamps perfect order. 1 Post Card Size Camera. Small Lamin Weighing Machine. Family Scale. Thermost. Flask. Handmade Nettle. 2 Meat Scales. Tray Table. 10 Bundred Volumes. Blue Set Curtains. Floor Mat. Toilet Pail. 3 Large Shelves with brackets. 303 Service Rifle with peep sight. D. B. Shot Gun, (Turner) D. B. Hammerless 12 Bore Shot Gun. 2 Grey Army Blankets and many other items too numerous to detail.

**E. HUTCHISON & CO.,**

AUCTIONEERS, ETC., NAIROBI.

**THACKRAH'S AUCTION SALE, TIMBER.**

Favoured with instructions from the Marabou Timber Co., we shall sell on

**WEDNESDAY, OCT. 30th at 10.30 a.m.** at **ELBURGON STATION** approx. 100 tons of SCANTLING, BOARDS, FLOORINGS.

**CEDAR & PODO**

A portion of this timber will be of first class quality, the balance being second class quality in top logs, and will be offered in cases. 2 Blue Set Curtains. Floor Mat. Toilet Pail. 3 Large Shelves with brackets. 303 Service Rifle with peep sight. D. B. Shot Gun, (Turner) D. B. Hammerless 12 Bore Shot Gun. 2 Grey Army Blankets and many other items too numerous to detail.

**THACKRAH'S**

AUCTIONEERS, NAKURU.

**HONEY**

**Airborne Honey**  
**The Health Food.**

The Best New Zealand Honey Therefore the Best in the World. Give it to the Kiddies Recommended by the doctors. Ask your grocer for it and see you get AIRBORNE.

**Sands & Co.**

WHOLESALE AGENTS

**CEMENT**

HAND BRAND PORTLAND CORRUGATED IRON SHEETS, GALVANIZED SHEET SHEETS.

ASBESTOS SHEETS, PLY BOARDS and S.X. BOARDS.

AT VERY LOWEST POSSIBLE PRICE.

**Alibhai Sheriff & Sons**

Government Road and Bazaar, Box 387 NAIROBI. Phone 274

**B. Florens.**

FRENCH RAIL DRESSER. PERMANENT and TINTING SPECIALIST.

Depot Insect rapids at Oriental House.

Messager - Chretien - Messager.

MODERATE CHARGES.

Phone 561 NAIROBI. P.O. Box 923

Trunk Building, Government Road, opposite Kinship Dep.

**50 Cars to Select From 50**

**Godfrey's Car Mart**  
**SADLER STREET**  
**USED CARS.**

Dodge 30 Body, in good running order, spacious body, 255 cc engine. \$25  
Ford (Standard 6) 80 Body. A really good proposition in perfect mechanical condition. \$50  
Buick (standard 1929 model). Fully equipped including spare wheel. \$100  
Chrysler 50, 80 Body. Overhauled, smart appearance, second and reliable. \$100  
Chrysler 50 Tourer. Overhauled and renewed. This is really attractive proposition. \$100  
Chevrolet Tourer, in excellent condition and running order. \$100

**ARIEL, DOUGLAS and OTHER MOTORCYCLES CAR INSURANCE ARRANGED.**

New and Second-hand Spares for all makes of cars.

**NEW TYPES AT CLEARANCE PRICES. CARS FOR HIRE WITH DRIVER or DRIVE YOURSELF.**

Phone 143 W. M. GODFREY, Sole Proprietor.

**Property for Sale**

One acre Building Plots from £100 upwards. Four up-to-date, Stone Houses consisting 5 large rooms, etc., reasonable deposit, balance on mortgage.

**TO LET**

Stone House, 4 large rooms, etc., Kilimani. Stone House, 5 large rooms, etc., Westlands. Three Ground Floor Offices.

Apply —

**Denovan & Diebel**

City House, NAIROBI.

**Removal Notice**

**BROWN & BARRATT** REAL ESTATE and GENERAL AGENTS

have removed to

**Royalty House**

GOVERNMENT ROAD, Telephone 147 P.O. Box 637

**For Sale.**

**Flour Milling Plant & Machinery**

A complete Robinson Flour Milling Plant capable of producing 1,200 lbs. of flour and meal per hour comprising, in full, the following:

- 1 complete washing and sifting; 1 No. 2 Motor Mill; one plant with Robinson's latest Grinders; Elevators and Conveyors; 3 double Blanching Plants; 4 stands of rolls; 1 Centrifugal; 1 Electric Planifier; 1 Below Mill (18 inches); Electric lighting plant.

Most of the machinery were new when the plant was erected about two years ago, since when the Mill has been running excellently. Mills will be given for the whole or each item on application to:

**Daniel Mills & Sons, Ltd., P.O. Box 121, Cape Town.**

**Advice to Purchasers**

Don't get your Furniture broken send it Home by Reliance

**Reliance Transport Co., Ltd.**

Telephones 331 Boma House, P.O. Box 677 Government Road, NAIROBI.













### UNION-CASTLE LINE.

**HOMeward via SUEZ**

"Lancaster Castle" (about)	30th November
"Hull-very Castle"	29th February, 1923
"Oran-very Castle"	29th March, 1923
"Lancaster Castle"	19th April, 1923

**HOMeward via SOUTH AFRICA.**

From Mombasa (About)

"Lancaster Castle" (afternoon)	9th November
"Lancaster Castle"	4th December
"Lancaster Castle"	2nd January, 1923
"Cargo Steamer"	9th February, 1923
"Cargo Steamer"	9th March, 1923
"Cargo Steamer"	7th March, 1923
"Cargo Steamer"	2nd May, 1923
"Lancaster Castle"	2nd May, 1923

Passenger Agents:—  
 B.S.A. Corporation, Ltd., Nairobi, Kampala, etc.  
 The Union-Castle Mail Steamship Co., Ltd.,  
 4, Victoria St., London, W. 1.

### British India Steam Navigation Company, Limited,

AND PERSIAN AND ORIENTAL STEAM NAVIGATION CO.

**INDIAN AND EAST AFRICA LINE**

**LONDON TO PERAK, via Madras, Port Said, Port Sudan and Aden, Omdurman and Bussorah**

Steamers	Arrive Kilindi	Start from Kilindi
"Mascara"	12th Nov.	13th Nov.
"Mascara"	30th Dec.	1st Dec. 1922
"Mascara"	17th Jan.	18th Jan.
"Mascara"	14th Feb.	15th Feb.
"Mascara"	12th Mar.	13th Mar.
"Mascara"	11th April	12th April
"Mascara"	9th May	10th May
"Mascara"	7th June	8th June
"Mascara"	5th July	6th July

**ROMANY-DURBAN MAIL SERVICE**

Calling Kilindi, Zanzibar, Dar-es-Salaam, Durban

**COASTAL SERVICE**

M. W. "DUNRA" sails for

**LAKE SUPERIOR SERVICE**

ARRIVE MOMBASA LEAVES MOMBASA

Nov. 10th, 1922  
 Nov. 15th, 1922  
 Nov. 20th, 1922  
 Nov. 25th, 1922

### Chivers Old English Marmalade

THE ARISTOCRAT OF THE BREAKFAST TABLE

Sole Agents:—(for trade only)  
 R. O. HAMILTON, Ltd.,  
 115, NAIROBI.

Phone 558 P. O. Box 300

---

### MESSAGERIES MARITIMES

(FRENCH MAIL STEAMERS)

Sails for and fortnightly routes from to Marseilles.

**THE QUICKEST ROUTE TO LONDON**  
 FRY'S MAILING TO Marseilles

"Lancaster & Lido"	27th October
"General Toyon"	11th November
"Chambon"	29th November
"Bernadette de St. Pierre"	27th December

**REGULAR SERVICE OF ALL STEAMERS**

ARRIVAL FROM Marseilles

"Bernadette de St. Pierre"	27th Oct. (evening)
"General Toyon"	11th Nov. (evening)
"Chambon"	29th Nov. (evening)
"Bernadette de St. Pierre"	27th Dec. (evening)

REGULAR SERVICE TO Marseilles

"Bernadette de St. Pierre"	27th Oct. (evening)
"General Toyon"	11th Nov. (evening)
"Chambon"	29th Nov. (evening)
"Bernadette de St. Pierre"	27th Dec. (evening)

### Compagnia Italiana Transatlantica,

Monthly Passenger Service to NAPLES and GENOA.

**SAILINGS FROM KILINDINI TO GENOA on the 1st of Every Month.**

"MAZZINI" — 1st November, 1st January, 1st March, etc.

"C. CRIPPI" — 1st December, 1st February, 1st April, etc.

Out-fitting tourist steamers — Very roomy cabins — Fresh running water in all cabins and baths — Outfitting — 1st December, 1st February, 1st April, etc.

20 per cent. reduction on return ticket if returning within one year.

Special reduction to Government Officials and their dependants.

**REGULAR MONTHLY EXCURSIONS—MOMBASA, ZANZIBAR, DAR-ES-SALAAM.**

Leaving Mombasa on the 20th, returning with excursion to Mombasa on the last of every month.

NOTE:—Special connection on K.U.R. to intending excursionists.

Return fare any station in Kenya to Mombasa at single fare rates.

For further particulars of sailings, etc., apply to—  
 SOCIETA' COLONIALE ITALIANA—MOMBASA, P.O. Box 376.  
 G. L. RABBY.

### Deutsche Ost- Afrika-Linie

(GERMAN AFRICA SERVICE).

DEUTSCHE OST-AFRIKA-LINIE GENERAL AGENCY, MOMBASA.

Cable: "Ostafrika" P.O. 215

**HOMeward via SUEZ CANAL**

From Mombasa	From Mombasa
ADOLPH WOIWMANN	10th Nov.
USAMBARA	19th Nov.
USAMBARA	29 Dec.
USAMBARA	14th Jan.
TANGANYIKA	23rd Jan.
USAMBARA	10th Feb.
USAMBARA	19th Feb.
USAMBARA	10th March
USAMBARA	19th April
ADOLPH WOIWMANN	29th April
TANGANYIKA	10th May

**MOMBASA TO SOUTH**

From Mombasa	From Mombasa
USAMBARA	11th Nov.
USAMBARA	21st Nov.
"NAISSA"	16th Dec.
"TANGANYIKA"	14th Jan.
"USAMBARA"	10th Feb.
"USAMBARA"	19th March
"USAMBARA"	28th April
"TANGANYIKA"	17th May

Information regarding connection of Lourenco Marques or Durban of the above steamers may be obtained from the Agency.

Information regarding connection of Lourenco Marques or Durban of the above steamers may be obtained from the Agency.

Information regarding connection of Lourenco Marques or Durban of the above steamers may be obtained from the Agency.

Information regarding connection of Lourenco Marques or Durban of the above steamers may be obtained from the Agency.

### The African Marine & General Engineering Company, Ltd., KILINDINI.

SHIP REPAIRING TARPAULINE MAKING & REPAIRING, MOULDING OXY ACETYLENE WELDING & CUTTING.

In their well-equipped Carpenters Shop, all types of House and Office Furniture are made and repaired.

Estates requiring repairs to machinery, implements, etc., are invited to communicate.

Telephone 81

ESTIMATES GIVEN. Tel., "Angoco," Mombasa.

SMITH, MACKENZIE & Co., General Managers.

### HOLLAND AFRICA LINES

JOINT SERVICE

HOLLAND-INDIA-AFRICA LINES AND HOLLAND-OOST AFRIKA LINE

Steamers will leave at Kilindi on or about the following dates:—

**HOMeward via SUEZ**

S.S. "RIJPSKERK" (C)	...	Nov. 6
S.S. "RIJPSKERK" (C)	...	Nov. 20
S.S. "RIJPSKERK" (C)	...	Dec. 4
S.S. "RIJPSKERK" (C)	...	Dec. 18
S.S. "RIJPSKERK" (C)	...	Jan. 1
S.S. "RIJPSKERK" (C)	...	Jan. 15
S.S. "RIJPSKERK" (C)	...	Jan. 29
S.S. "RIJPSKERK" (C)	...	Feb. 12
S.S. "RIJPSKERK" (C)	...	Feb. 26

**HOMeward via THE CAPE**

S.S. "REINPOSTEREN" (C)	...	Nov. 14
S.S. "REINPOSTEREN" (C)	...	Nov. 28
S.S. "REINPOSTEREN" (C)	...	Dec. 12
S.S. "REINPOSTEREN" (C)	...	Dec. 26
S.S. "REINPOSTEREN" (C)	...	Jan. 9
S.S. "REINPOSTEREN" (C)	...	Jan. 23
S.S. "REINPOSTEREN" (C)	...	Jan. 31
S.S. "REINPOSTEREN" (C)	...	Feb. 14
S.S. "REINPOSTEREN" (C)	...	Feb. 28

**PASSENGER FARES**

To Mombasa—(A)—208-0-0 (C)—225-10-0 (O)—232-10-0  
 S.S.—(A)—270-0-0 (C)—285-10-0 (O)—292-10-0  
 Via Suez Cape to London (A) 261-0-0 (B) 268-10-0 (C) 275-10-0

Steamers of the Line provide excellent accommodation for passengers.

If steamer does not call at London passengers for England will receive free first class tickets—rail and steamer—from Antwerp to London.

**TWENTY-SEVEN OVERSEAS TRADING CO., LTD.**

MOMBASA: KAMPALA: Tel. 149  
 P.O. Box 149. Telegrams: "HOLAFRIC." Tel. 149

### Special Opportunity

For 2 Weeks Only

We now offer you 4/- in the £ Cash Discount on All Your Purchases of Brassware, Cloisonnery, Jewellery and other Curios, Clockwork, Carpets and Mattings.

2/- in the £ on all Soft Goods.

### Japan Bazaar

J. H. GIDDOXAL, Govt. Road, NAIROBI.

---

### ESSJAY, Limited,

BOLUS HOUSE, GOVERNMENT ROAD, Box 634, NAIROBI. Phone 677

Financial & Property Agents.

Mortgages Specialized in.  
 Town Properties Negotiated.  
 Partnerships Arranged.  
 Investments Advised.

**WE HAVE SOUND INVESTMENTS FOR SUMS FROM 500 UPWARDS. IN THIS RESPECT WE CLAIM TO DO BETTER FOR YOU THAN ANY OTHER HOUSE.**

S. JACOBS, Managing Director.

### Sound Investments.

Business and Residential Sites, with or without Buildings, in Eldoret.

Coffee, Maize and Stal Propositions in the Kipkarnk, Turbin, Finlay, Kipkarnk and Barot Forest Areas.

Apply to J. McAB MUWELL, Approved Valuer, Real Estate, Commission and Estate Agents, 10, Market Street, Eldoret.

P.O. Box 56, ELDORET.

### Miss KATHLEEN BATES, A.R.C.M.

REVIVIFY PUPPLE PIANO FORTE — SINGING — HARMONY at the MUSIC STUDIO, SIXTH AVENUE, PORTAL ADDRESS: Box 47.

### The Bradford Manufacturing COMPANY LIMITED

150 pairs GRY FLANNEL TROUSERS. 15/- pair

Sizes 4 to 7 in Light and Medium Weights

These Trousers are well tailored and are made at our own Factory in Bradford and are sold with the usual B.M.C. guarantee.

A large range of Silk Ties just received in all the latest colorings. 4/5 each.

**NET CASH WITH ORDER.**

Government Road, (Across from 124), NAIROBI. P.O. Box 210.

### Watts "Mirror" Blades

Universally acknowledged to be the most procurable, KEENER EDGES, SMOOTHER SHAVES, LONGER SERVICE.

Made in Sheffield, England, by a firm established over 150 years.

WATTS MIRROR blades are revolutionizing safety razor shaving. You will be amazed at the difference.

They make shaving the very finest shod obtainable, with painted and exclusive Finest, conjointly with the highest quality equipment, allowing years of patient practice and experiment. At every stage of manufacture they are subjected to a very rigid inspection.

WATTS MIRROR blades surpass all others.

FOR AUTOSTROP HOLDERS. MADE PRIOR TO THIS MODEL. FOR GILLETTE HOLDERS. Each package is wrapped in THANE PARENT CELLULOSE which is air, grease and odour proof. 6/6 per pkt.

W.W.INGRAM & Co THE TOOL HOUSE NAIROBI

**IMPORTANT FOR ALL TO READ!!!**

The Nairobi General Cash Stores, Ltd., needs little or no advertisement. Patrons and new customers are quite bewildered by the hosts and bottles, which so palpably prove the popularity of this trade. Make no mistake about the bottles and labels as independently sent by prompt delivery. The firm is the Sole Agents for Carter's world famous Toilet, Toilet and Lever Soaps, in both solid and colored Patent Packets, also Perfumery and other Orientalized Perfumery, which includes a full range of all well known soaps of the Colony, and which are beneficial in the measure of cultivation of soil. Read Labels, which contain Flower, Perfumery, Vegetable and Medicinal preparations are contained, or when the multifarious dangers which assail Shampoos, have to be combated.

TRY US—The Store of Farming Goods of every description and Farming Safecards.

**Nairobi General Cash Stores, Ltd.**  
 Government Road, P.O. Box 255, NAIROBI. Keep Calling.

### Keith Timber Co. Ltd.

P. O. Box 874 Sadler Street Nairobi.

### Phone 598.

### Planoforte Tuning

AND REPAIRING.

Two years experience in Kenya Colony and five years with Messrs. Chappell & Co., London.

F. A. HEAD, Box 679, NAIROBI.

### WIRELESS

Latest Receiver, no batteries, all that is required is to plug it into the electric light sockets.

Complete with loud speaker, Sh. 350/-

Terminals for Gramophone Pick-up on the set.

### Lochhead, Moore & Roy, Ltd.,

P.O. Box 455, NAIROBI.

### OVERSEAS MAILS.

**ARRIVALS**

STEAMERS FROM	Due at Nairobi	Made up at Nairobi
B. de St. Pierre (Kana)	Europe, Bombay	Oct. 27
"(Kana)	"	Nov. 1
B. de St. Pierre (Kana)	Europe, Bombay	Oct. 27
"(Kana)	"	Nov. 1

**DEPARTURES**

STEAMERS FOR	Made up at Nairobi	Days of Departure
Khandala, G. Masini, Kana, Oriskany	Europe, Bombay	Oct. 27
"	"	Nov. 1

### ROYAL INSURANCE CO., LTD.

(Incorporated in England.)

FUNDS £2,500,000.

We take pleasure in informing that we have been appointed GENERAL MANAGERS and have appointed a resident representative to assist in conducting their operations in Kenya and Uganda of the above old-established Company.

The Royal Insurance Coy., Limited transmits all claims of insurance business and have appointed a resident representative to assist in conducting their operations in Kenya and Uganda of the above old-established Company.

**East African Estates, Ltd.**  
 UNION BUILDING, GOVERNMENT ROAD, P.O. Box 450, NAIROBI. Tel. No. 21.



# INDIA & BACK FLIGHT.

The spirit supplies for the Duchess of Bedford's remarkable flight to India and back were provided at all points on the route, with the exception of Karachi, by the British Petroleum Co., Ltd.—a distributing organisation of the Anglo-Persian Oil Co. Ltd.

The machine was a Fokker with Bristol Jupiter Engine, piloted by Capt. C. D. Barnard.

## "BP"

Anglo Persian Oil Co., (Kenya) Ltd.

GIBSON & Co., Ltd.,  
Mombasa, Nairobi, Eldoret, Dar-es-Salaam.

Phone 596.

P.O. Box 217.

# QUESTION?

DOES IT PAY TO HAVE MY TYRES  
VULCANIZED?  
**YES**

IF THEY ARE REPAIRED AT

**HARWOOD'S**  
Vulcanizing & Engineering Co.

## Central Garage.

VICTORIA STREET, NAIROBI. Tel. 1044.  
REPAIRS TO ALL MAKERS OF  
TRACTORS, MOTOR CARS AND MOTOR CYCLES.  
Speciality, Repairs to Electrical Equipment.  
Building Contractors, Painters and Electricians.

## Hussein Suleman Verjee & Sons.

IT ALWAYS PAYS TO BUY FROM SPECIALIST, AND  
TO SAVE YOUR TIME AND MONEY BY BUYING FROM US.  
We Specialise in Hardware, Building Materials, Tools.  
Large Quantities of C.I. Sheets and Expanded Metal now  
Available. Prices as Applications.  
Phone 364 Government Road, Box 226  
NAIROBI.

## LETTS OFFICE AND POCKET DIARIES

1930.  
Pocket Sizes ... Shgs. 1/25 to Shgs. 1/50  
Office Sizes ... Shgs. 1/50 to Shgs. 1/10

## SYSTEM Desk Calendars

1930.  
Complete ... Shgs. 8/-, Posted Shgs. 9/50  
Retills only ... Shgs. 5/-, Posted Shgs. 5/50

## PILOT Desk Calendars

1930.  
Complete ... Shgs. 6/50, Posted Shgs. 8/-  
Retills only ... Shgs. 5/75, Posted Shgs. 4/15

Standard Stationery Stores,  
Sixth Avenue, NAIROBI.

## LUXURIOUSLY COMFORTABLE BEDS

Patented Head and Foot  
and fitted with  
"The Law" Mattresses.  
Single Size £28/10/-

**Eric Shirley,**  
Behind the Court,  
NAIROBI.

## INSURE YOUR MOTOR CARS AND MOTOR CYCLES

AMERICAN GUARANTEE AND  
INSURANCE CO. LTD.  
M. D. KAMPE,  
Chief Agent.



## ROACHES ARE DANGEROUS

By an Flea, Mosquitoes  
and other destructive Insects. They spread many  
diseases. While Fly Traps  
kill them effectively, it is  
impossible to burn or  
poison them, and will not stain  
the furniture. Double  
strength, 100% kill. Very  
pleasantly smelling.



Sell Everywhere.

## P. Stewart, C.A.S., SEED, PAINTER and DECORATOR

HARDING STREET,  
P.O. Box 278, NAIROBI.  
FOR —  
Furnish of Household or  
Shop Fixings of every description.  
Tennis Backs Repaired — TRY —  
PHUWANGSING TUCKSONG  
Next to British House,  
Garrison Road.

## NATIONAL BANK OF INDIA LIMITED.

(Incorporated in United Kingdom).

Bankers to the Colony and  
Protections of Kenya and  
Uganda Protectorates.  
Government. — £4,000,000  
Paid-up Capital — £2,000,000  
Reserve Funds — £2,000,000

20, Bahadurgate, London, E.C.2  
BRANCHES: Mombasa, Nairobi,  
Nakuru, Victoria, Kisumu,  
Rabaha, Kampala, Jinja,  
Zanzibar, Dar-es-Salaam and  
Tanganyika.

Also at Calcutta, Bombay, Madras,  
Rangoon, Lahore, Amritsar,  
Delhi, Cawnpore, Colombo,  
Kandy, Serampore, Singapore,  
Batavia, Cebu, Hongkong,  
Shanghai, Canton, Hankow,  
Peking, Tientsin, Yokohama,  
and elsewhere in India, Africa and  
throughout U.S.A., Europe,  
Canada, South America and  
Australia.

**FIXED DEPOSIT.**—Deposits  
are received for fixed periods on  
terms which may be looked on  
as favourable.  
**EXCHANGE.**—The Bank is a  
great dealer in the local  
and Branches at the current rates  
of Exchange forwarding best rates  
when required.  
Every description of Banking  
business transacted with all parts  
of the world.  
A. S. McKENNEDIE,  
Manager, Nairobi Branch.

# MOTOR NEWS

From Road & Showroom.

## HYDRAULIC BRAKES.

Their Principle and Practice.

Outstanding Advantages.

Although the principle of the transmission of power by fluid pressure is used in many branches of engineering, that movement of the pistons, it is not yet applied to cars. Hydraulic brakes, and other change devices have been produced from time to time, but as practical means of application to the only instance of the use of fluid pressure, notably on the Lockheed system.

Before a full appreciation of the working of the system, can be obtained, however, it is necessary to know something of the principle underlying it. It must be understood, as the first point, that all general purposes pistons must be required to approximate and that a piston started on a liquid as its point transmitted with equal intensity to all other points. This, in fact, is Pascal's law and is proved in laboratories where a sphere filled with a number of cylinders and pistons with liquid upon which a plunger acts, is shown to transmit the same pressure in all directions, the pressure per square inch being of course exactly equal in all cases.

Advantage is taken of the incompressibility of a liquid as the one of hydraulic pressure, and other machines designed to exert considerable pressure throughout of the rate of the piston to travel along by forcing liquid into the surrounding cylinder. This is not done necessarily in a perfect fit in the cylinder—this a piston so that it merely displaces the liquid in the cylinder by the increasing liquid which causes its movement.

Actually, of course, the pressure of the liquid is not uniform in terms of getting in which the rate of the piston is very small, but in general, which the liquid pump will very small in most cases. It is therefore a number of revolutions of the motor cylinder forces made of the pump piston which will require very little power to

drive it, can be transformed into a slow movement of the large piston or ram—which, however, will exert considerable pressure, there might be imagined as a hydraulic motor.

It will now be obvious that the principle of the fluid transmission of power can readily be applied to the fluid as a control of a cylinder which is required in a cylinder and operated by pistons of other cylinders, one on each wheel brake shaft, these shafts being their pistons connected by suitable link to the brake cylinders.

Assuming the entire system to be completely filled with liquid it will be obvious that movement of the brake pedal will force the fluid into the master cylinder, and by a displacement of the liquid will also run out the rest of the brake cylinders, thus applying the brakes. The liquid being incompressible there will be absolutely no lost motion and the action will be exactly that of brake applied by heavy rods coupled through the medium of perfectly fitting connections.

The great simplicity of hydraulic braking is in itself a considerable recommendation, but there is also the fact that the brake is applied to the entire of the brake cylinder, which is that the area of the brake operating piston is identical with that of the master cylinder. Furthermore, by calculating carefully, the area of the piston in the master cylinder is made to be equal to the area of the brake operating piston, for breaking force applied to the master cylinder can be very easily compensated.

In the Lockheed system the brake operating cylinders are fitted with the master cylinder, and are connected by suitable link to the master cylinder. The master cylinder is fitted with a piston which is connected to the brake pedal, the cylinder between the piston and the brake cylinder is filled with the fluid, thus ensuring each of the brake pistons to be equally applied.

The master cylinder is arranged in the form of a tank containing a supply of the liquid, and the master cylinder is fitted with a piston which is connected to the brake pedal, the cylinder between the piston and the brake cylinder is filled with the fluid, thus ensuring each of the brake pistons to be equally applied.

When the brake pedal is pushed down, the liquid is forced into the master cylinder, and the master cylinder is fitted with a piston which is connected to the brake pedal, the cylinder between the piston and the brake cylinder is filled with the fluid, thus ensuring each of the brake pistons to be equally applied.

When the brake pedal is pushed down, the liquid is forced into the master cylinder, and the master cylinder is fitted with a piston which is connected to the brake pedal, the cylinder between the piston and the brake cylinder is filled with the fluid, thus ensuring each of the brake pistons to be equally applied.

(To be continued.)

## BARCLAYS BANK (DOMINION, COLONIAL AND OVERSEAS)

formerly Re-incorporated by Act of Parliament, 1923  
The COLONIAL BANK  
with which amalgamated  
THE NATIONAL BANK OF SOUTH AFRICA, LTD.  
and  
THE ANGLO-EGYPTIAN BANK LTD.

Capital Authorized ... £10,000,000  
Capital Subscribed ... £4,975,000  
Capital Paid up ... £4,975,000  
Reserve Funds ... £1,000,000

OVER 400 BRANCHES IN  
The Union of South Africa, Rhodesia, South West Africa  
British West Africa, West Indies, Egypt, Palestine and the  
Sudan.

THE BANK UNDERTAKES ALL CLASSES OF BANKING  
BUSINESS AND ALSO ACTS AS TRUSTEE  
AND RECEIPT.

BRANCHES IN EAST AFRICA:  
Nairobi, Mombasa, Kampala, Eldoret, Kisumu,  
Kampala, Jinja, Tanganyika, Dar-es-Salaam,  
Zanzibar, Addis Ababa, Arba and Mekele.

HEAD OFFICE: 54 Lombard Street, London, E.C. 3  
LONDON OFFICES:  
37-39 King William Street, E.C. 4, Cannon Place, London, W.C. 2

Correspondents in all the Principal Cities and Towns  
of the World.

**Kiambu Agric Lime**  
from our works — Cheapest and Best

**Lime Limited**  
Tel: Kisumu Phone 468 Box 418  
Chamber of Commerce Building.

## DODGE BROTHERS

### NEW SIX MOTOR CARS

## Stylish Beauty

## with Proved Reliability.

Attractive beauty and smart style distinguish Dodge Brothers New Motor Cars which are world-famous for their proved reliability.

Skillful design has achieved as close compactness, length, the appearance of looseness with ample clearance, attractive lightness and genuine comfort.

The bodies finished in pastel lacquer colors, with pure, unbroken lines, and low rectangular windows, create a convincing picture of exterior smartness. Interior beauty speaks for itself in the splendid upholstery and fittings. A handsome car—with greatly increased fuel economy and proved reliability in every detail!

S. Fisher & Simmons (E.A.) Ltd.,  
Victoria Street, NAIROBI.

W. SPINNETT & Co.	NOMMARA
F. J. BUCK	RITALE
KASSAM BRIDGES & Co.	KAMPALA
D. CREDITON-BALFOUR & Co.	MBALE and
	SIBITI
FOWLES & WESTCOB	ARUSA
KASSAN & Co.	NWYALA

## Metropolitan Garage.

### Specialists in Automobile Repair

WE ALWAYS HAVE A NUMBER OF SELECTED  
AND OVERHAULD 2nd HAND CARS IN STOCK.  
Rep. list. Good running sets.  
Flat Foot Super Sports in all  
conditions. Perfect mechanical  
condition. 70 m.p.h. 1800 cc.  
Mileage 5000. £145  
Ford Box Body, Strickland  
invaluable. 40m.p.h. 257-50  
Ford Box Body, Strickland  
SIBITI  
Hala Foster a super car  
age 7000, six wheels, steel  
brake new type. £135  
Triplex Tourer, mileage 7000  
£120

CARS FOR HIRE.  
D. J. L. LETHBRIDGE,  
Solo Proprietor.

## ARE YOU REQUIRING Doors or Windows?

I am Making Enormous Reductions  
to Oppose Foreign Competition.

Support the Country You Live In.


Buy a Better and Cheaper Joinery  
Article made in the Country.

Ask for Prices From  
George Blowers

P. O. Box 259. Phone 360.  
NAIROBI.

THE EAST AFRICAN STANDARD

**CONVINCING**  
TO-DAY OVER  
**50,000**  
FIRMS IN ALL PARTS OF THE GLOBE  
ARE USING  
**KALAMAZOO**  
Loose-Leaf Books



from **5475**

First 24 Years ago.  
Best To-Day

LAWS LIMITED, NAIROBI.

General Grocery Co. Ltd.  
Wholesale Provision Merchants.

Wholesale Provision Merchants.  
Agents in—  
Kenya, Uganda, Tanganyika and Zanzibar for  
World's Famous Montezuma's Lime Juice Cordial.

PRICES ON APPLICATION.

Box 822, NAIROBI. Phone 456.

**SAVOY BAR.**  
(Gaily Built)  
with LOUNGE and BRIDGE ROOM.  
LUNCHEON SNACKS and MUSIC from 5 p.m.  
Caledonian Road, The Hill.

**WOOL GROWING IN KENYA.**

Specialist's Points for Consideration.

**COUNTRY'S OPPORTUNITIES.**

Professor Alfred Becker who occupies a unique position as Professor of Textile Industries at the University of Leeds, and recently visited the Colony with one of the parties of the British Association, contributes an article on the "Favorable Past" on "Wool Growing in Kenya."

He found that a various question presented itself. "Owing to the fact," someone has stated, "the idea that a Romney cross should be introduced, and apparently the merino flocks of Kenya are largely contaminated with Romney March stock by Kenya." The question is "In this cross the most suitable for Kenya?"

It would also seem as though there is a tendency for the merino sheep to become "yolk" meat in Kenya, so that it is a merino sheep of the Transvaal strain is used as an exaggeration of the black, black type of some Transvaal wool results.

**Why Romney March?**

The introduction of a heavy Down wool may expect the best sheep—but why Romney March? Again the Romney March is a "low level" animal, and on this account alone may prove, unavailable. Again Romney March sheep are found to be the best sheep for the "low conditions" of Kalamazoo. And yet they likely to be the best sheep for this issue best opportunity? The author, Kenya planter? The author, the one who certainly do want to give this matter their most cordial consideration, I have obtained samples of the wools in question and may be able to give useful particulars in the near future on this important matter.

On returning to Mombasa I found awaiting me particular

kindly obtained by Mr. Jamieson, who set of great interest. In addition to a general report on the possibilities of wool-growing in Kenya, there are reports from Mr. Jamieson's own trials representing actual experience, and the most useful considerations. In Kenya, there are reports from Mr. Jamieson's own trials representing actual experience, and the most useful considerations. In Kenya, there are reports from Mr. Jamieson's own trials representing actual experience, and the most useful considerations.

**Chance for Merino.**

This even on those lines Kenya may take heart and hope to derive a lot of considerable wool clip. But it seems to me that the possibilities of the Colony from a wool point of view will be largely through ways unless breeding is directed towards the finer lines of merino wools. Why should not Kenya take the same type merino stock as its own, and by intensive selection secure about the quality fitted to thrive on the country pastures which it undoubtedly possesses?

**WOOL MARKET**

London, October 28  
T. 128 45s  
Franco 128 45s  
D. L. 128 45s  
October 28  
T. 128 45s

**DOG CLASSES AT NAKURU SHOW.**

**Obedience Trials for Alsatians.**

**RULES AND POINTS.**

The following are the rules and schedule adopted for the Obedience Trials for Alsatians to be held at the Nakuru Show on November 5.

No dog shall be allowed presence in the trials on the ground where they are to be held, and any infringement of this rule will disqualify the dog. No hints or words, nor any hints over 20 days in which shall be admitted to the trials. Merits to be judged first.

All dogs entered for the trials must be German Shepherd dogs (Alsatians) registered at the East Africa Kennel Club.

The entrance to the trials will be taken in any order as the discretion of the judges. Commands shall be given to the dogs by voice, or by hand or gesture. The judge may decide that a test shall be omitted in which two or more dogs may compete at a time.

The performance of the dogs will be judged on points.

The above rules are quoted from the chapter on training by Major Maddock in "The Popular Alsatian" but the words "East Africa Kennel Club" have been substituted for "Kensal Club." No entry fee.

**Schedule of Points.**

Class 1—General Obedience for the Junior Obedience Trials (under 18 months old):

Points	
1. Sitting down	5
2. Lying down	5
3. Walking to heel on loose lead	5
4. Stepping in one place	5
5. Fetching object from table unless called	15
6. Fetching object thrown and returning same without hesitation to owner	5
7. Jumping 3 feet	5
Total number of points 50	

Class 2—Preliminary for Senior

**Obedience Trials (Over 18 months old):**

Points	
1. Sitting down	5
2. Lying down	5
3. Walking to heel on loose lead and sitting without hesitation on table unless called	15
4. Walking to heel without hesitation on table unless called	15
5. Stepping in one place	5
6. Fetching object from table unless called	15
7. Fetching object thrown and returning same without hesitation to owner	5
8. Jumping 3 feet	5
9. Fetching object from table unless called	15
10. Fetching object thrown and returning same without hesitation to owner	5
11. Jumping 3 feet	5
Total number of points 100	

Total number of points 100

Points of the schedule may be obtained from Mr. J. P. East Africa Kennel Club, P.O. Box 211, Nairobi.

**Rates of Exchange.**

(By WHELAN)

London, Oct. 27  
Paris 128 45s  
New York 487 28/82  
Australasia 12 10/4  
India 100 0/0  
Canton 25 1/2  
Bombay 25 1/2  
Batavia 12 10/4  
Cebu 12 10/4  
Peking 12 10/4  
Shanghai 12 10/4  
Hong Kong 12 10/4  
Yokohama 12 10/4  
Singapore 12 10/4  
Brisbane 12 10/4  
Sydney 12 10/4  
Melbourne 12 10/4  
Auckland 12 10/4  
Wellington 12 10/4  
Dunedin 12 10/4  
Christchurch 12 10/4  
Auckland 12 10/4  
Wellington 12 10/4  
Dunedin 12 10/4  
Christchurch 12 10/4

**ENTER THE ENEMY IN THE**

Under the distinguished patronage of H. E. Sir Edward Grigg, and the Hon. Lady Grigg

**Annual Caledonian Ball**

2nd NOV. 29 2nd NOV. 30

to be held at the  
**New Stanley Hotel**

Commencing 9 p.m.

Open to the Public — Tickets obtained from Stanley Hotel.

PAUZE Single 5/- Double 12/6 (Gilt) GARRY COOK'S BAND.

Special Entertainment.

**Armistice Ball**

A Fancy Dress (optional) Carnival Ball in aid of the funds of St. Dunstan's and the British Legion

will be held at the NEW STANLEY HOTEL

on SATURDAY, NOV. 9th at 9 p.m.

Tickets: 15/- Double: 10/- Single.

Obtainable at the New Stanley Hotel or from members of the Committee.

**LYRIC HALL.**

Commencing WEDNESDAY, 30th OCTOBER

**HENRY EDWARDS**

(of "FLAG LIEUTENANT" fame)

— IN —

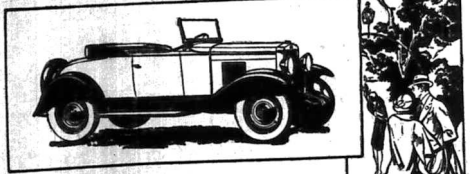
**FEAR**

Supported by  
**ELGA BRINK, VIVIAN GIBSON and GUSTAV FROHLICH.**

A human story with a brilliant cast and excellent direction. An exceptional film combining domestic comedy with tense drama.

PRICES 5s. 3/- and 3/-.

Come for a ride in the New  
**CHEVROLET**



Axis in the price range of the four

You who have driven cars costing more than the New Chevrolet,—take a ride in the Outstanding Chevrolet of Chevrolet History. You'll be amazed at the power, speed, economy, acceleration and comfort. These features have never before been combined in a car in the low priced field.

COME AND DRIVE IT YOURSELF.

The Motor Mart & Exchange, Ltd.  
NAKURU. NAIROBI. DAR-ES-SALAAM.

Agents: **EVERYWHERE**

**THEATRE ROYAL**

**The KING OF THE JUNGLE**

THE GREAT STUNNING PRODUCTION OF  
**ELMO LINCOLN, SALLY LONG, GUY RAY**

This Episode will be shown Thursday, Friday and Saturday, of this week, in conjunction with Buster Keaton in "The General".

**JOHN RIFKIN,**  
BARRISTER,  
110, EAST AFRICA ROAD,  
NAIROBI.

**WAGON BUILDERS,**  
BLACKSMITHS, FARRIER,  
Stock of  
IRON, BRASS, WAGONS  
and ALL WAGON PARTS.  
ALL KINDS OF WAGONS  
MADE TO ORDER.

**FOR SALE**  
**WHEAT MEAL**

GROUND WHOLE WHEAT  
Price 5s. 16/- per 200 lbs.

To increase the value of your employees labour, To improve the boys' health, To make the labour satisfied,

USE WHEAT MEAL.

Apply—  
**Kenya Farmer's Association Ltd.**  
P.O. Box 15, NAKURU.



MIDNIGHT MURDERERS ON ATHI PLAINS

Victims Slaughter Revealed in Game Report.

A KENYA MAN-EATER.

Campaign Success Against Elephant Poachers.

According to the Game Warden of Kenya, the year 1925 was the turning point in the history of game preservation...

Some Warden records two atrocities in which senseless and callous murder figures prominently.

A reference to the motor car, Captain Ritchie expressed the view that a reaction of public feeling will eventually occur...

Man eating lion, the first for years, made a meal of a Somali on the Tana River.

Department continues to earn solid revenue for the Government...

AN IMPORTANT YEAR.

The 1926 Report of the Kenya Department, released for publication, marks the tenth anniversary of the formation of the Kenya Colony...

Very bad reports come to hand as to the state of the balance sheet of the Kenya Department...

Native Poachers.

Very bad reports come to hand as to the state of the balance sheet of the Kenya Department...

Poppy Day Wreath.

COMMITTEE INVITES ORDERS.

A Poisonous Foe.

It has been decided to hold a meeting in the grounds of Mr. and Mrs. A. Forster's house at Parklands...

Two Abductees.

There is a belief very much current that the two abductees mentioned in a recent report...

SUGAR RULES ULTRA VIRES.

Limits to Extension of Legislation.

A CONVICTION QUARANTINED.

An interesting ruling regarding the scope of the powers of the Supreme Court was rendered by His Majesty the King in Council...

It shall be unlawful for any person to give, sell, deliver, or distribute...

This rule was made under Section 11, which provides that the Governor-General may from time to time make rules...

Corruption in Russia.

OFFICERS SENTENCED TO DEATH.

THROUGH SUICIDE AGONY.

Identification Parades.

COMPLAINT DURING AN APPEAL CASE.

An appeal case was heard before His Majesty the King in Council...

Mr. Hooper, who gave the judgment, expressed and suggested that two charges against the defendant were not together...

Mr. Hooper, who gave the judgment, expressed and suggested that two charges against the defendant were not together...

The Crown submitted that the man had been really convicted that he had committed the offence...

It has been decided to hold a meeting in the grounds of Mr. and Mrs. A. Forster's house at Parklands...

It has been decided to hold a meeting in the grounds of Mr. and Mrs. A. Forster's house at Parklands...

It has been decided to hold a meeting in the grounds of Mr. and Mrs. A. Forster's house at Parklands...

It has been decided to hold a meeting in the grounds of Mr. and Mrs. A. Forster's house at Parklands...

It has been decided to hold a meeting in the grounds of Mr. and Mrs. A. Forster's house at Parklands...

It has been decided to hold a meeting in the grounds of Mr. and Mrs. A. Forster's house at Parklands...

It has been decided to hold a meeting in the grounds of Mr. and Mrs. A. Forster's house at Parklands...

It has been decided to hold a meeting in the grounds of Mr. and Mrs. A. Forster's house at Parklands...

It has been decided to hold a meeting in the grounds of Mr. and Mrs. A. Forster's house at Parklands...

It has been decided to hold a meeting in the grounds of Mr. and Mrs. A. Forster's house at Parklands...

HOMBASA'S MEMBER ON LEGISLATIVE COUNCIL.

Possibility of Curious Election.

FOET'S REPRESENTATIVE.

It is a somewhat singular instance that the Member of the Legislative Council for Hombasa...

The following is the text of the judgment, with which His Majesty the King in Council concurred...

It is a somewhat singular instance that the Member of the Legislative Council for Hombasa...

It is a somewhat singular instance that the Member of the Legislative Council for Hombasa...

It is a somewhat singular instance that the Member of the Legislative Council for Hombasa...

It is a somewhat singular instance that the Member of the Legislative Council for Hombasa...

It is a somewhat singular instance that the Member of the Legislative Council for Hombasa...

It is a somewhat singular instance that the Member of the Legislative Council for Hombasa...

It is a somewhat singular instance that the Member of the Legislative Council for Hombasa...

It is a somewhat singular instance that the Member of the Legislative Council for Hombasa...

It is a somewhat singular instance that the Member of the Legislative Council for Hombasa...

It is a somewhat singular instance that the Member of the Legislative Council for Hombasa...

It is a somewhat singular instance that the Member of the Legislative Council for Hombasa...

It is a somewhat singular instance that the Member of the Legislative Council for Hombasa...

It is a somewhat singular instance that the Member of the Legislative Council for Hombasa...

It is a somewhat singular instance that the Member of the Legislative Council for Hombasa...

It is a somewhat singular instance that the Member of the Legislative Council for Hombasa...

It is a somewhat singular instance that the Member of the Legislative Council for Hombasa...

It is a somewhat singular instance that the Member of the Legislative Council for Hombasa...

It is a somewhat singular instance that the Member of the Legislative Council for Hombasa...

It is a somewhat singular instance that the Member of the Legislative Council for Hombasa...

It is a somewhat singular instance that the Member of the Legislative Council for Hombasa...

A FALL INTO AN OPEN DRAIN.

Nairobi Resident Chins Damaged.

A COMMON STREET.

Argument as to Menopausal Liability.

An unusually interesting case was heard in the Chief Court before Mr. O'Connell yesterday when Mr. G. W. Walker sued the Nairobi Corporation for damages...

Mr. W. H. E. Suberter appeared for Mr. Walker and Mr. O. A. H. Hamilton appeared for the Nairobi Corporation...

Mr. Walker in evidence said that he left the Town Hotel just before 11.10 p.m. on July 30 and started to walk towards his home...

Mr. Walker in evidence said that he left the Town Hotel just before 11.10 p.m. on July 30 and started to walk towards his home...

Mr. Walker in evidence said that he left the Town Hotel just before 11.10 p.m. on July 30 and started to walk towards his home...

Mr. Walker in evidence said that he left the Town Hotel just before 11.10 p.m. on July 30 and started to walk towards his home...

Mr. Walker in evidence said that he left the Town Hotel just before 11.10 p.m. on July 30 and started to walk towards his home...

Mr. Walker in evidence said that he left the Town Hotel just before 11.10 p.m. on July 30 and started to walk towards his home...

Mr. Walker in evidence said that he left the Town Hotel just before 11.10 p.m. on July 30 and started to walk towards his home...

Mr. Walker in evidence said that he left the Town Hotel just before 11.10 p.m. on July 30 and started to walk towards his home...

Mr. Walker in evidence said that he left the Town Hotel just before 11.10 p.m. on July 30 and started to walk towards his home...

Mr. Walker in evidence said that he left the Town Hotel just before 11.10 p.m. on July 30 and started to walk towards his home...

Mr. Walker in evidence said that he left the Town Hotel just before 11.10 p.m. on July 30 and started to walk towards his home...

Mr. Walker in evidence said that he left the Town Hotel just before 11.10 p.m. on July 30 and started to walk towards his home...

Mr. Walker in evidence said that he left the Town Hotel just before 11.10 p.m. on July 30 and started to walk towards his home...

Mr. Walker in evidence said that he left the Town Hotel just before 11.10 p.m. on July 30 and started to walk towards his home...

Mr. Walker in evidence said that he left the Town Hotel just before 11.10 p.m. on July 30 and started to walk towards his home...

Mr. Walker in evidence said that he left the Town Hotel just before 11.10 p.m. on July 30 and started to walk towards his home...

Mr. Walker in evidence said that he left the Town Hotel just before 11.10 p.m. on July 30 and started to walk towards his home...

Mr. Walker in evidence said that he left the Town Hotel just before 11.10 p.m. on July 30 and started to walk towards his home...

Mr. Walker in evidence said that he left the Town Hotel just before 11.10 p.m. on July 30 and started to walk towards his home...

A Large number of cases dealing with negligence and liability...

Question of Negligence.

TO-DAY'S CASES.

The following is the list of cases in the Supreme Court today...

Below His Honor Mr. Justice Johnston on Court No. 1...

Below His Honor Mr. Justice Johnston on Court No. 1...

Below His Honor Mr. Justice Johnston on Court No. 1...

Below His Honor Mr. Justice Johnston on Court No. 1...

Below His Honor Mr. Justice Johnston on Court No. 1...

Below His Honor Mr. Justice Johnston on Court No. 1...

Below His Honor Mr. Justice Johnston on Court No. 1...

Below His Honor Mr. Justice Johnston on Court No. 1...

Below His Honor Mr. Justice Johnston on Court No. 1...

Below His Honor Mr. Justice Johnston on Court No. 1...

Below His Honor Mr. Justice Johnston on Court No. 1...

Below His Honor Mr. Justice Johnston on Court No. 1...

Below His Honor Mr. Justice Johnston on Court No. 1...

Below His Honor Mr. Justice Johnston on Court No. 1...

Below His Honor Mr. Justice Johnston on Court No. 1...

Below His Honor Mr. Justice Johnston on Court No. 1...

Below His Honor Mr. Justice Johnston on Court No. 1...

Below His Honor Mr. Justice Johnston on Court No. 1...

Below His Honor Mr. Justice Johnston on Court No. 1...

Below His Honor Mr. Justice Johnston on Court No. 1...

Below His Honor Mr. Justice Johnston on Court No. 1...

Below His Honor Mr. Justice Johnston on Court No. 1...

LYRIC HALL TO-NIGHT AT 8-45 p.m.

THE WHITE SHEET Adapted from H. B. Swain's popular story 'KINGS MEAT'

SHOWING ON WEDNESDAY HENRY EDWARDS in 'FEAR' SEE PAGE 7.

SALE NOW ON MANY BARGAINS. 10% DISCOUNT off New Goods

EADIES FOOTWEAR LIMITED. BOX 140 - NAIROBI.

THEATRE ROYAL TO-DAY AND TO-MORROW-Tuesday and Wednesday, October 20th and 21st

"The Border Legion" A thrilling tale of the great frontier desperadoes in America with ANTONIO MORENO - HELENE CHADWICK - ROCKFELFE STAGGERS

Buster Keaton in "The General" See the "International Cassinelli" in a comedy of 1920 PATRONS MAY BOOK AT ANY TIME.

The Sell & Service NEW Ford Cars & Trucks

K. McIvor's Garage SIXTH AVENUE Phone 97





**Reduction in Prices of Meat**  
— and —  
**'Cost of Living'**  
The S. D. M. S. Co., Ltd. announce from 1st Nov. 1929 a reduction of 20 per cent. on the present cash prices for meat to all Cash Customers.  
All up-country customers may benefit by these reductions by opening Deposit Accounts.

**Support The Kenya Farmers.**  
HOME FED MEAT ONLY SUPPLIED IN THE STOCKBREEDERS BUTCHERY.  
STOCKBREEDERS DIRECT MEAT SUPPLY CO. LTD.

**STOP! LOOK! LISTEN!!!**  
**SALE NOW ON.**  
WONDERFUL VALUE OFFERED FOR CHRISTMAS.  
Ladies and gentlemen are invited to pay a visit, and to inspect our stocks.  
We have a very large selection of clothes suitable for Christmas and have marked these down to show a very small margin of profit.  
We also have large stocks of silks and crepe-de-châle of all description, Ladies' Underwear, Ladies' and Gents' Hosiery, Gents' Hats, Shoes, Dressing Gowns, Jewellery and other articles innumerable in mention.  
**ALL PRICES REDUCED.**  
A visit to our store will convince you of the value we offer.

**Theo. SCHOUTEN**  
LADIES and GENTLEMEN'S HAIRDRESSING.  
Permanent Waving a Speciality.  
UNDER PERSONAL SUPERVISION.  
All the Leading Tonal Requisites Stocked.  
GOVERNMENT ROAD.  
ALSO at MOMBASA and NAKURU.  
P.O. Box 394 Phone 245.

**BUY**  
THE FINEST VICTORIA NYLONS  
SUGAR COMPANY'S  
NO. 1 WHITE CRYSTAL  
SUGAR.  
At the following prices from the manufacturers direct:  
50 lbs. Packed 2/6  
25 lbs. Packed 1/2 1/2  
10 lbs. Packed 1/2 1/2  
10 lbs. Retail 1/6 1/2

**Sale!**  
NOW ON  
You might have visited many SALES, but we recommend you to visit ours on RECORD KEEPING SALE  
ROCK BOTTOM  
Reduced prices throughout  
Come and have a glance.  
**KALA SIDI**  
General Merchant.  
GOVERNMENT ROAD, NAIROBI.

**Asparagus**



as fresh as from an English Garden!

Do you want the very finest quality of Asparagus—especially, tender, and with a delicious multi-tooth-mouth character? If so, you must ask for "My Lady" and look for the name on the can.  
In this way you will be able to enjoy Asparagus all the year round at a very reasonable cost. Remember, too, that this first quality Asparagus is one of the most wholesome things you can eat—and all the food value and delicious favour are preserved in "My Lady" Asparagus by the up-to-date methods of canning.

**MY LADY ASPARAGUS**  
ALWAYS WITHOUT A SOLE, KEPT FOR  
LONDON


**SPORTS and PASTIMES.**

**COUNTRY CUP CRICKET.**  
**Parklands Defeat the Police**  
**VICTORY BY FIVE RUNS.**

(Special Leg.)  
A Country Cup fixture was played on Tuesday between Parklands Sports Club and Police, on the latter's ground. The game was a very good one, the home side appearing victorious on a result of a lead of 50 on the first innings. It was a game of varying fortunes, the final result of the first innings being in doubt right up to the last delivery by Kraus. The distinguishing feature of the Parklands first innings was undoubtedly the excellent batting of the Police. Their ground work throughout was good while two catches made by Kraus and Helms were very good and only to be described as brilliant. The Police have a very good side this year, and it was a very good performance on the part of Parklands to get them out so cheaply. In fact the Police have an experienced batsman who is bound to make a lot of runs up later and in addition to him Spoor, Kraus and K. T. L. Helms are always likely to prove trouble to any bowling side.


After partaking of lunch at the club, the Police opened with Spoor and Laws to the bowling of Finlay Brader. The latter was disastrous, as after two meetings he had been bowled out by Spoor while Laws followed almost immediately. The Police then came out for their second innings and the score was then 7 for 6. Helms and Kraus were the only batsmen left at lunch time. This score might not appear to be very good but was a distinctly useful one in view of the slow state of the ground.  
After partaking of lunch at the club, the Police opened with Spoor and Laws to the bowling of Finlay Brader. The latter was disastrous, as after two meetings he had been bowled out by Spoor while Laws followed almost immediately. The Police then came out for their second innings and the score was then 7 for 6. Helms and Kraus were the only batsmen left at lunch time. This score might not appear to be very good but was a distinctly useful one in view of the slow state of the ground.

opportunity of hitting again, and took effect the rest of a block was retained for security-five for security to score 7. The Parklands innings closed just on time in a very hot fight but the most successful bowler, the former having taken 10 for 12. The following are for 41.  
The following are the scores and averages:  
**Parklands**  
Innings 1  
Bowler, s Player 34  
Kraus, b Helms, 2  
Miller, s Kraus, b Kraus 2  
Finlay, s Kraus, b Kraus 2  
Spoor, b Helms, 3  
Glover, s Helms, 3  
Purves, b Helms, 3  
Kraus, b Helms, 3  
Helms, not out 11  
Thompson, not out 12  
Extras 2  
Total 166  
**Bowling**  
Player O M R W  
Kraus 20 1 45 3  
Helms 16 6 12 0  
Glover 11 3 12 0  
Thompson 7 2 20 3  
Purves 4 1 12 0  
Finlay 2 0 12 0  
**Police**  
Innings 1  
Laws, b-h Helms 0  
Spoor, b Finlay 0  
Kraus, s Brader, b Spight 0  
Finlay, s Brader, b Spight 0  
E. T. L. Helms, not out 2  
Kraus, b Spight 2  
Helms, s Brader, b Spight 2  
Spight, s Brader, b Spight 2  
Kraus, b Spight 2  
Glover, s Brader, b Spight 2  
Purves, b Kraus 2  
Helms, s Kraus 2  
Glover, s Kraus 2  
Extras, not out 10  
Extras 2  
Total 141  
**Bowling**  
Player O M R W  
Finlay 6 1 12 1  
Brader 11 4 21 1  
Spight 12 5 20 2  
Kraus 5 0 12 2  
**Parklands**  
(2nd Innings)  
Bowler, s Player 3  
Kraus, b Spoor 1  
Spight, s Kraus, b Glover 1  
Kraus, b Kraus 1  
Miller, b Kraus, b Kraus 14  
Glover, s Woodgate, b Kraus 1  
Helms, b Kraus 1  
Spight, b Finlay, b Spoor 1  
Finlay, b Kraus 1  
Thompson, not out 0  
Purves, b Kraus 0  
Extras 12  
Total 76  
**Bowling**  
Player O M R W  
Kraus 20 1 45 3  
Helms 16 6 12 0  
Glover 11 3 12 0  
Thompson 7 2 20 3  
Purves 4 1 12 0  
Finlay 2 0 12 0



**For Health**  
GO TO  
**South Africa**  
And take a breath of  
**"UNION" AIR**  
**EQUABLE CLIMATE**  
**UNRIVALLED SCENERY**  
For further particulars apply to  
**THE SOUTH AFRICA OFFICE**  
MEMORIAL BUILDING,  
Box 994,  
NAIROBI.

**SHERRY**



**SOLANO—Medium dry.**  
**MOLINO—Full, pale.**  
**AMONTILLADO—Light, pale and very dry.**  
**WALNUT BROWN—dark, full-bodied and soft.**  
**DRY SACK—**an unique wine of superb character, medium dry.  
Shipped by Messrs. Williams and Humbert.  
Sole representatives—  
**Emile Jardin et Cie.**


**WANT OF LABOUR NEED NOT WORRY,**  
please you others with  
**The Kenya Labour Recruiting Coy.,**  
P.O. Box 745, NAIROBI.  
— Also Finance Agents and Land Brokers.  
Tel. Ed. "Reserving".

**Tennis Rackets Restrung at**  
**MAY & CO, LTD.**  
by Expert European.

Wearing the top, Parklands decided to bat and opened with Brader and Kraus to the bowling of Kraus and Spoor. The first over produced two runs, when it was seen that Spoor was trying to bowl them "the long way". He had no hope and in fact the ball ran not on the side was mid-off and did not disturb Brader who proceeded to hit a good six over the batsman's heads. A change was made when after Glover replacing Spoor. The scoring was slow, but the total gradually crept up to 80 when Brader fell to a catch by Spoor of Thomsen, after contributing a useful 34. Kraus was the next to go, also falling to Thomsen for 28. Spight then came in to bat, but was dismissed before he could make a good job of it. Kraus fell in a flash, the score then reading 11 for 80. Miller opened, equally ill-fortuned, at five by the bowler, the other one handed catch, getting a grip on the ball at the top of 415, which meant a career ending, very exceptional, happening, a victory for the home team. At 4 1/2 runs, Parklands went again opening with Rock and Glover. The attack was sensational, as Kraus clean bowled Brader with his first ball.  
It was Parklands policy to sit on a late lead and get the Police as

although not scoring many, he appeared to be content with an eventually dismissed by a catch by Glover at the top of the score at 4 for 131. The statement that had gradually been working up was beginning to reach fever heat, and with 20 runs wanted with 2 wickets in hand the position of the "bat" was not an enviable one. The batsmen were all their best, determined to creep up everything possible, but the over-enthusiastic outfielder to creep up once and twice and at 141 still only two wickets to fall it was anyone's game. At this point the Police had no lead for the first time, and he certainly finished off his game on a ball to Thomsen, who had a very good 6th delivery to make a most of "Glover's" catch, thus giving Parklands the first innings lead of 415, which meant a career ending, very exceptional, happening, a victory for the home team.

**THE WORLD'S**  
**LARGEST . . .**  
**PRODUCER . . .**  
**OF RUBBER . . .**  
**PRODUCES . . .**  
**THE . . .**  
**WORLD'S . . .**  
**FINEST TYRE . . .**  
**THE NEW**  
**U.S. ROYAL**  
CARR, LAWSON & CO, LTD,  
ELDORET, NAKURU, NAIROBI, KITALE, KAMPALA.



**Lifebuoy soap**  
Lifebuoy is the most famous of all health soaps. Mothers all over the world know that there is nothing like it for safeguarding the home from the dangers of dirt.  
**SMITH, MACKENZIE & Co.**  
Box 390, NAIROBI.  
**Doonholm Dairy**  
and  
**PURE MILK and CREAM.**  
From Farms to Consumers.  
Box 11, NAIROBI.  
AL 69-146A  
LEVER BROTHERS LIMITED PORT SUNLIGHT ENGL

**KENYA BEER**  
A Pure,  
Unadulterated,  
and Refreshing  
Drink  
Ask for it  
AND  
See that You  
Get it  
Kenya Breweries Ltd.

GUARANTEED THE LARGEST CIRCULATION OF ANY NEWSPAPER  
IN KENYA, UGANDA, TANGANYIKA AND ZANZIBAR.

DAILY EDITION.

THE EAST

# African Standard

UGANDA ARGUS THE LEADER  
THE OLDEST ESTABLISHED NEWSPAPER PUBLISHED IN KENYA AND UGANDA.

NAIROBI, WEDNESDAY, OCTOBER 30, 1930

14 PAGES

THE  
**CALEDONIAN**  
**BALL**  
AT  
**"The Stanley"**  
Saturday Nov. 2nd  
At 9 p.m.

PRICE, 50 CENTS.

## STRANGE SNAKE SECT IN TANGANYIKA.

Initiation Ceremony and Customs of Weyanga.

THE DANCE OF THE COBRA.

Exclusive Tribes Organised Like Masonic Lodges.

Some people know of the existence in East Africa of a strange native snake-charming sect, Weyanga of Tanganyika.

By number only 2,000 people. Initiation against snake bite is part of the complicated initiation ceremony and a long period of apprenticeship is necessary for its novice.

The secret medicine used in vaccination against snake poison includes many symbolic ingredients such as the hair from a lion's tail, the eye of a hyena and the tail of a leopard.

The sect has an extensive knowledge of snake poisons and that knowledge—indeed all their skill as medicine-men—is used for the good of their fellow men.

They are white magicians bound by a solemn vow to eschew black magic.

Promotion in the group is organised through a series of strange dances among full-fledged cobras have been with the few acquainted with the tribe.

## FEARLESS AMONG REPTILES.

Mr. A. Standard Special

A group said of snake-charmers, many said medicine men, having taken a number of titles of honor in various parts of Tanganyika Territory. These titles are given to those who are able to cure snake bites by using a special medicine which they call "Weyanga."

They are white magicians bound by a solemn vow to eschew black magic.

In order to appreciate the fact that the medicine rendered them famous and wealthy part of the ceremony is the dance of the cobra. It is a feat which is performed in the presence of the cobra and the cobra is kept under control by the Weyanga sect.

The Weyanga sect are said to number about 2,000.

This snake sect are said to be a mixture of white and black magic. They are said to be a mixture of white and black magic.

Mr. J. H. ... interview with the ...

The ...

The ...

The ...

The ...

## IMMIGRATION INTO CANADA

Large Increase in Figures from Britain.

A HOPEFUL SIGN

(BY WIRELESS)

Canada for the first four months of the present year was 4,053 compared with 37,092 in the corresponding period of last year. This is an increase of 47 per cent.

The Canadian policy of encouraging British immigrants and the fact that Canada is receiving more British immigrants than any other country in the world is the best evidence of the economic recovery—British Empire without borders.

## A Big British Scheme

ARTERIAL DRAINAGE AT A COST OF £20,000,000.

(BY WIRELESS)

A big scheme of arterial drainage for England which has been prepared by Mr. Noel Buxton, Minister of Agriculture, for submission to the Government.

The scheme is estimated to cost £20,000,000. For the purpose of the scheme, 1,000,000 acres have been mapped out in Great Britain.

## The Balfour Declaration.

ARAB DEMANDS ITS WITHDRAWAL.

(THROUGH NEWSPAPERS)

An All-Ireland conference of the Trans-Jordan Arab Congress, held at Amman, Jordan, has adopted a resolution demanding the withdrawal of the Balfour Declaration.

## Privy Council

THE KING TO PRESIDE AT HIS MEETING.

(THROUGH NEWSPAPERS)

It is announced that the King will hold a Privy Council on November 3rd at Buckingham Palace.

## To-day's Features

Nairobi Horatistical	2
Market Review	2
Entertainments	2
Local Notes	2
New Kenya Chamber of Commerce	2
Annularis De Colonization	2
Chamber of Commerce	2
Finance in Nairobi	2
Synopsis of the Week	2
Conductance	2
Spotting News	2

## DEATH OF PRINCE VON BULOW

A Famous Chancellor of Germany.

THE MAN WHO REBUILT THE REICHAER.

(THROUGH NEWSPAPERS)

The death has occurred at Rome of Prince von Bulow, Chancellor of the German Empire from 1900 to 1909.

## Diplomatic Career

Prince von Bulow, was born 79 years ago. Having served in the Prussian Foreign Office and the German Embassy in London, he was appointed Secretary of State for Foreign Affairs in 1900.

## Mr. John Carberry

WILL PROBABLY VISIT UGANDA.

(STANDARD CORRESPONDENT)

Mr. John Carberry, set out for Nairobi by yesterday's train as a personal agent, but is believed to have much business connected with the Uganda Government.

## Mombasa Baby Week.

MOST SUCCESSFUL SHOW YET.

(STANDARD CORRESPONDENT)

The Mombasa "Baby show" concluded the afternoon, and was a most successful function. It included in the arrangements several very wonderful displays including the showing by Prof. ...

## Specialist as Chancellor

In 1900, on the resignation of Hildebrand, Bulow was chosen to succeed him as Chancellor of the Prussian Empire.

## THE Balfour Declaration.

ARAB DEMANDS ITS WITHDRAWAL.

(THROUGH NEWSPAPERS)

An All-Ireland conference of the Trans-Jordan Arab Congress, held at Amman, Jordan, has adopted a resolution demanding the withdrawal of the Balfour Declaration.

## Privy Council

THE KING TO PRESIDE AT HIS MEETING.

(THROUGH NEWSPAPERS)

It is announced that the King will hold a Privy Council on November 3rd at Buckingham Palace.

## To-day's Features

Nairobi Horatistical	2
Market Review	2
Entertainments	2
Local Notes	2
New Kenya Chamber of Commerce	2
Annularis De Colonization	2
Chamber of Commerce	2
Finance in Nairobi	2
Synopsis of the Week	2
Conductance	2
Spotting News	2

## GOODS TRAIN DERAILED NEAR MOMBASA.

Mail Delayed for Several Hours.

DAMAGE TO LINE.

(STANDARD CORRESPONDENT)

A train for Nairobi was derailed for some hours owing to a collapse near Mombasa, where a couple of goods trains had been derailed. It is understood that some 200 yards of the line required complete relaying. As far as it is ascertained no one was hurt.

## Mr. John Carberry

WILL PROBABLY VISIT UGANDA.

(STANDARD CORRESPONDENT)

Mr. John Carberry, set out for Nairobi by yesterday's train as a personal agent, but is believed to have much business connected with the Uganda Government.

## Mombasa Baby Week.

MOST SUCCESSFUL SHOW YET.

(STANDARD CORRESPONDENT)

The Mombasa "Baby show" concluded the afternoon, and was a most successful function. It included in the arrangements several very wonderful displays including the showing by Prof. ...

## Specialist as Chancellor

In 1900, on the resignation of Hildebrand, Bulow was chosen to succeed him as Chancellor of the Prussian Empire.

## THE Balfour Declaration.

ARAB DEMANDS ITS WITHDRAWAL.

(THROUGH NEWSPAPERS)

An All-Ireland conference of the Trans-Jordan Arab Congress, held at Amman, Jordan, has adopted a resolution demanding the withdrawal of the Balfour Declaration.

## Privy Council

THE KING TO PRESIDE AT HIS MEETING.

(THROUGH NEWSPAPERS)

It is announced that the King will hold a Privy Council on November 3rd at Buckingham Palace.

## To-day's Features

Nairobi Horatistical	2
Market Review	2
Entertainments	2
Local Notes	2
New Kenya Chamber of Commerce	2
Annularis De Colonization	2
Chamber of Commerce	2
Finance in Nairobi	2
Synopsis of the Week	2
Conductance	2
Spotting News	2

## FURTHER VIEWS ON EAST AFRICAN REPORT.

Plans for Parliamentary Consideration.

FUNDAMENTAL POINT.

(STANDARD CORRESPONDENT)

London, October 28.—The Times has published a special report on the East African situation, which is being written for the native, which dominated the British Empire, and which some have disappeared from the Times report.

## African Aerial Survey

PERSONAL AIRMAN SHARES THE GOSSIP.

(THROUGH NEWSPAPERS)

The French airman, Captain ... of the ...

## Mombasa Baby Week.

MOST SUCCESSFUL SHOW YET.

(STANDARD CORRESPONDENT)

The Mombasa "Baby show" concluded the afternoon, and was a most successful function. It included in the arrangements several very wonderful displays including the showing by Prof. ...

## Specialist as Chancellor

In 1900, on the resignation of Hildebrand, Bulow was chosen to succeed him as Chancellor of the Prussian Empire.

## THE Balfour Declaration.

ARAB DEMANDS ITS WITHDRAWAL.

(THROUGH NEWSPAPERS)

An All-Ireland conference of the Trans-Jordan Arab Congress, held at Amman, Jordan, has adopted a resolution demanding the withdrawal of the Balfour Declaration.

## Privy Council

THE KING TO PRESIDE AT HIS MEETING.

(THROUGH NEWSPAPERS)

It is announced that the King will hold a Privy Council on November 3rd at Buckingham Palace.

## To-day's Features

Nairobi Horatistical	2
Market Review	2
Entertainments	2
Local Notes	2
New Kenya Chamber of Commerce	2
Annularis De Colonization	2
Chamber of Commerce	2
Finance in Nairobi	2
Synopsis of the Week	2
Conductance	2
Spotting News	2

## THE MEDITERRANEAN AIR LINER DESTROYED.

Heroic Rescue Efforts by Italian Ships.

THREE BODIES RECOVERED.

Terrific Gale Rages in the Gulf of Genoa.

Destroyers, tugs and aeroplanes all joined in the search for the ill-fated air liner "City of Rome," but it was subsequently believed however that it had been reported in deep water some 18 miles off the Italian coast.

Severe storms in the Gulf of Genoa have been reported which have prevented further attempts at salvage. Three bodies have recovered, including the pilot and wireless officer.

## SEARCH IN PITCH DARKNESS.

(THROUGH NEWSPAPERS)

Spain, October 28.—Tugs and aeroplanes have started a search for the Italian Air Mail aeroplane "City of Rome." According to accounts from several places along the coast, a storm blew up across on Saturday S.O.B. wreckage, was blown into the sea, which was later found to be the wreckage of the "City of Rome." A destroyer, two tugs and seven aeroplanes were immediately sent out and the wreckage was ordered to be taken to the coast.

## Heroic Efforts

The destroyer "Pallade" which was not equipped with wireless

(Continued on page 7.)

## Quality Cards for Christmas and New Year.

Q.3. Series of Cts. 50—The best known series of first postage stamps in single cards, Christmas or New Year.

Each in Envelope, Cts. 25

Q.4. Series of Cts. 75—A large set of 12 available envelopes, colored patterned paper, 12 different designs.

Each in Envelope, Cts. 75

Q.5. Series—12 different designs, stamped and mounted on envelopes, 12 different designs.

Q.6. Series—12 different designs, stamped and mounted on envelopes, 12 different designs.

Q.7. Series—12 different designs, stamped and mounted on envelopes, 12 different designs.

Q.8. Series—12 different designs, stamped and mounted on envelopes, 12 different designs.

Q.9. Series—12 different designs, stamped and mounted on envelopes, 12 different designs.

Q.10. Series—12 different designs, stamped and mounted on envelopes, 12 different designs.

Q.11. Series—12 different designs, stamped and mounted on envelopes, 12 different designs.

Q.12. Series—12 different designs, stamped and mounted on envelopes, 12 different designs.

Q.13. Series—12 different designs, stamped and mounted on envelopes, 12 different designs.

Q.14. Series—12 different designs, stamped and mounted on envelopes, 12 different designs.

Q.15. Series—12 different designs, stamped and mounted on envelopes, 12 different designs.

Q.16. Series—12 different designs, stamped and mounted on envelopes, 12 different designs.



## ARTISTIC CALENDARS FOR 1930

Calendar Cards—These are Christmas Cards—12 different designs, stamped and mounted on envelopes, 12 different designs.

Calendar Cards—These are Christmas Cards—12 different designs, stamped and mounted on envelopes, 12 different designs.

Calendar Cards—These are Christmas Cards—12 different designs, stamped and mounted on envelopes, 12 different designs.

Calendar Cards—These are Christmas Cards—12 different designs, stamped and mounted on envelopes, 12 different designs.

Calendar Cards—These are Christmas Cards—12 different designs, stamped and mounted on envelopes, 12 different designs.

Calendar Cards—These are Christmas Cards—12 different designs, stamped and mounted on envelopes, 12 different designs.

(Continued on page 10)

(Continued on page 10)

(Continued on page 10)



ABDULLAH

Superb Cigarettes

are waiting for you.

Virginia, Russian, Turkish

They start in satisfaction and they end in smoke.

For Sale.

Flour Milling Plant & Machinery

A complete Robinson Flour Milling Plant capable of manufacturing 1,200 lbs. of flour and ten per hour consuming later...

Daniel Mills & Sons, Ltd., P.O. Box 121, Cape Town.



The subscription to the Kenya Horticultural Society is £8. 10s a year and should be sent to the Secretary, P.O. correspondence for the Horticultural Society, P.O. Box 57, Nairobi.

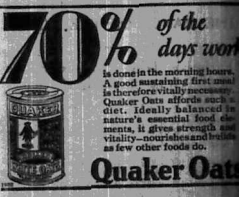
THE NAIROBI SHOW.

The following is the Class List for the Kenya Horticultural Society's 14th Show of Flowers, Fruits and Vegetables to be held at the Memorial Hall, on Monday, 10th Dec. 1912.

Class 29. Zinnias. Best collection. Each vase to be one gallon. Grade C.



Sole Proprietors: DONALD FISHER, LTD., EDINBURGH. Obtainable from all the LEADING STORES.



Genuine Sale. Astonishing Value Offered for a Fortnight Only. 20\* Fine Milk ... 2/- per quart

WHAT PEOPLE THINK WHO BUY FORDS

One of the many appreciations received--

"With reference to the New Saloon I purchased a fortnight ago, it may interest you to know that I have just completed a return trip to Eldoret averaging 80 miles per gallon, the power of the engine and the riding comfort over rough roads was a revelation. I am more than pleased that my choice was a FORD."

You Must Ride in a FORD to Appreciate its Qualities, we have Models for all purposes, to use a FORD as a Secondary Vehicle you save money

Prices from £194

Nairobi Motors.

Tel. 317. 6th Avenue. Box No. 460.

Sound Investments.

Business and Residential Plots, with or without Buildings, in Eldoret. Coffee, Maize, Wheat and Cereal Projections to the Kipparan, Turko, Pitaran, Kipkabus and Harar Forest Reserves.

NATIONAL BANK OF INDIA LIMITED.

(Incorporated in United Kingdom). Bankers to the Colony and Protectorate of Kenya and Uganda Protectorate Government.

Subscribed Capital - £4,000,000. Paid-up Capital - £2,000,000. Reserve Fund - £3,000,000.

Branches: London, E.O.S. BRANCHES: Bombay, Madras, Karachi, Lahore, Amritsar, Delhi, Calcutta, Ceylon, Rangoon, Mandalay, Yokohama, Kobe, Canton, Hongkong, Shanghai, Peking, Tientsin, Hankow, Harbin, Singapore, Batavia, Surabaya, Medan, Penang, Malacca, Singapore, Hongkong, Canton, Shanghai, Peking, Tientsin, Hankow, Harbin, Singapore, Batavia, Surabaya, Medan, Penang, Malacca, Singapore.

AGENTS in New York and throughout U.S.A.: Canada, South Africa and Australia.

FIXED DEPOSIT - Deposits are accepted for fixed periods and terms which may be found on "EXCHANGE - The Bank has a good Deposit Account and Branches at the current rates of Exchange forwarding free every cheque received.

Every description of Banking business transacted with all parts of the world.

J. S. McKENDEICK, Manager, Nairobi Branch.

JOHN RIFKIN, SIXTH AVENUE, P.O. BOX 316, NAIROBI.



WAGON BULLETS, BLACKSMITH FARRIER, Stock of AXLES, BRAKES, WAGONS and ALL WAGON PARTS.

Ask for Prices From George Blowers P. O. Box 259. Phone 360. NAIROBI.

ARE YOU REQUIRING Doors or Windows?

I am Making Enormous Reduction to Oppose Foreign Competition.

Support the Country You Live In

Buy a Better and Cheaper Joinery

Article made in the Country.

Article made in the Country.

Article made in the Country.

Article made in the Country.

Article made in the Country.

Article made in the Country.

THE EAST AFRICAN STANDARD DAILY EDITORIAL

APPOINTMENT:—The following appointments have been made for the week ending 31st October 1929:—

APPOINTMENT:—The following appointments have been made for the week ending 31st October 1929:—

APPOINTMENT:—The following appointments have been made for the week ending 31st October 1929:—

APPOINTMENT:—The following appointments have been made for the week ending 31st October 1929:—

APPOINTMENT:—The following appointments have been made for the week ending 31st October 1929:—

APPOINTMENT:—The following appointments have been made for the week ending 31st October 1929:—

APPOINTMENT:—The following appointments have been made for the week ending 31st October 1929:—

APPOINTMENT:—The following appointments have been made for the week ending 31st October 1929:—

APPOINTMENT:—The following appointments have been made for the week ending 31st October 1929:—

APPOINTMENT:—The following appointments have been made for the week ending 31st October 1929:—

APPOINTMENT:—The following appointments have been made for the week ending 31st October 1929:—

APPOINTMENT:—The following appointments have been made for the week ending 31st October 1929:—

APPOINTMENT:—The following appointments have been made for the week ending 31st October 1929:—

APPOINTMENT:—The following appointments have been made for the week ending 31st October 1929:—

APPOINTMENT:—The following appointments have been made for the week ending 31st October 1929:—

APPOINTMENT:—The following appointments have been made for the week ending 31st October 1929:—

APPOINTMENT:—The following appointments have been made for the week ending 31st October 1929:—

APPOINTMENT:—The following appointments have been made for the week ending 31st October 1929:—

APPOINTMENT:—The following appointments have been made for the week ending 31st October 1929:—

APPOINTMENT:—The following appointments have been made for the week ending 31st October 1929:—

APPOINTMENT:—The following appointments have been made for the week ending 31st October 1929:—

APPOINTMENT:—The following appointments have been made for the week ending 31st October 1929:—

APPOINTMENT:—The following appointments have been made for the week ending 31st October 1929:—

APPOINTMENT:—The following appointments have been made for the week ending 31st October 1929:—

APPOINTMENT:—The following appointments have been made for the week ending 31st October 1929:—

APPOINTMENT:—The following appointments have been made for the week ending 31st October 1929:—

APPOINTMENT:—The following appointments have been made for the week ending 31st October 1929:—

APPOINTMENT:—The following appointments have been made for the week ending 31st October 1929:—

APPOINTMENT:—The following appointments have been made for the week ending 31st October 1929:—

TO LET

THESE charge for advertisements... In those columns in Sh. 1/2 for a line of 35 words, or a fraction of a line, at 10/6 per line per week. 10/6 per line per week.

DORING owner's houses, large ones, also villas for rent... For particulars apply to Mr. W. M. Bullock, 10, Abchurch Lane, London, E.C. 4.

FOR let from November 1st... Apply to Mr. W. M. Bullock, 10, Abchurch Lane, London, E.C. 4.

FROM 1st November for gentlemen... Apply to Mr. W. M. Bullock, 10, Abchurch Lane, London, E.C. 4.

MODERN stone house, Hill... Apply to Mr. W. M. Bullock, 10, Abchurch Lane, London, E.C. 4.

OFFICES in Queen's Chambers... Apply to Mr. W. M. Bullock, 10, Abchurch Lane, London, E.C. 4.

OFFICES 2 good flats in Green... Apply to Mr. W. M. Bullock, 10, Abchurch Lane, London, E.C. 4.

OFFICES and shop, 4th Avenue... Apply to Mr. W. M. Bullock, 10, Abchurch Lane, London, E.C. 4.

OFFICE house, Central position... Apply to Mr. W. M. Bullock, 10, Abchurch Lane, London, E.C. 4.

STONE dwelling house in Wood... Apply to Mr. W. M. Bullock, 10, Abchurch Lane, London, E.C. 4.

SIXTE Avenue, the site of office... Apply to Mr. W. M. Bullock, 10, Abchurch Lane, London, E.C. 4.

SALESBURY Hotel recently... Apply to Mr. W. M. Bullock, 10, Abchurch Lane, London, E.C. 4.

Office situated in Queen's... Apply to Mr. W. M. Bullock, 10, Abchurch Lane, London, E.C. 4.

Office situated in Queen's... Apply to Mr. W. M. Bullock, 10, Abchurch Lane, London, E.C. 4.

Office situated in Queen's... Apply to Mr. W. M. Bullock, 10, Abchurch Lane, London, E.C. 4.

Office situated in Queen's... Apply to Mr. W. M. Bullock, 10, Abchurch Lane, London, E.C. 4.

Office situated in Queen's... Apply to Mr. W. M. Bullock, 10, Abchurch Lane, London, E.C. 4.

Office situated in Queen's... Apply to Mr. W. M. Bullock, 10, Abchurch Lane, London, E.C. 4.

Office situated in Queen's... Apply to Mr. W. M. Bullock, 10, Abchurch Lane, London, E.C. 4.

Office situated in Queen's... Apply to Mr. W. M. Bullock, 10, Abchurch Lane, London, E.C. 4.

Office situated in Queen's... Apply to Mr. W. M. Bullock, 10, Abchurch Lane, London, E.C. 4.

Office situated in Queen's... Apply to Mr. W. M. Bullock, 10, Abchurch Lane, London, E.C. 4.

Office situated in Queen's... Apply to Mr. W. M. Bullock, 10, Abchurch Lane, London, E.C. 4.

FARMS, PLOTS & Houses for Sale.

J. W. MULLIGAN & CO. LAND & ESTATE AGENTS... 14, Abchurch Lane, London, E.C. 4.

TO LET: Half-acre farm... Apply to Mr. W. M. Bullock, 10, Abchurch Lane, London, E.C. 4.

FOR Sale: 1/2 acre farm... Apply to Mr. W. M. Bullock, 10, Abchurch Lane, London, E.C. 4.

FOR Sale: 1/2 acre farm... Apply to Mr. W. M. Bullock, 10, Abchurch Lane, London, E.C. 4.

FOR Sale: 1/2 acre farm... Apply to Mr. W. M. Bullock, 10, Abchurch Lane, London, E.C. 4.

FOR Sale: 1/2 acre farm... Apply to Mr. W. M. Bullock, 10, Abchurch Lane, London, E.C. 4.

FOR Sale: 1/2 acre farm... Apply to Mr. W. M. Bullock, 10, Abchurch Lane, London, E.C. 4.

FOR Sale: 1/2 acre farm... Apply to Mr. W. M. Bullock, 10, Abchurch Lane, London, E.C. 4.

FOR Sale: 1/2 acre farm... Apply to Mr. W. M. Bullock, 10, Abchurch Lane, London, E.C. 4.

FOR Sale: 1/2 acre farm... Apply to Mr. W. M. Bullock, 10, Abchurch Lane, London, E.C. 4.

FOR Sale: 1/2 acre farm... Apply to Mr. W. M. Bullock, 10, Abchurch Lane, London, E.C. 4.

FOR Sale: 1/2 acre farm... Apply to Mr. W. M. Bullock, 10, Abchurch Lane, London, E.C. 4.

FOR Sale: 1/2 acre farm... Apply to Mr. W. M. Bullock, 10, Abchurch Lane, London, E.C. 4.

FOR Sale: 1/2 acre farm... Apply to Mr. W. M. Bullock, 10, Abchurch Lane, London, E.C. 4.

FOR Sale: 1/2 acre farm... Apply to Mr. W. M. Bullock, 10, Abchurch Lane, London, E.C. 4.

FOR Sale: 1/2 acre farm... Apply to Mr. W. M. Bullock, 10, Abchurch Lane, London, E.C. 4.

FOR Sale: 1/2 acre farm... Apply to Mr. W. M. Bullock, 10, Abchurch Lane, London, E.C. 4.

FOR Sale: 1/2 acre farm... Apply to Mr. W. M. Bullock, 10, Abchurch Lane, London, E.C. 4.

FOR Sale: 1/2 acre farm... Apply to Mr. W. M. Bullock, 10, Abchurch Lane, London, E.C. 4.

FOR Sale: 1/2 acre farm... Apply to Mr. W. M. Bullock, 10, Abchurch Lane, London, E.C. 4.

FOR Sale: 1/2 acre farm... Apply to Mr. W. M. Bullock, 10, Abchurch Lane, London, E.C. 4.

FOR Sale: 1/2 acre farm... Apply to Mr. W. M. Bullock, 10, Abchurch Lane, London, E.C. 4.

FOR Sale: 1/2 acre farm... Apply to Mr. W. M. Bullock, 10, Abchurch Lane, London, E.C. 4.

"ON THIS DAY."

TO LET: Half-acre farm... Apply to Mr. W. M. Bullock, 10, Abchurch Lane, London, E.C. 4.

FOR Sale: 1/2 acre farm... Apply to Mr. W. M. Bullock, 10, Abchurch Lane, London, E.C. 4.

FOR Sale: 1/2 acre farm... Apply to Mr. W. M. Bullock, 10, Abchurch Lane, London, E.C. 4.

FOR Sale: 1/2 acre farm... Apply to Mr. W. M. Bullock, 10, Abchurch Lane, London, E.C. 4.

FOR Sale: 1/2 acre farm... Apply to Mr. W. M. Bullock, 10, Abchurch Lane, London, E.C. 4.

FOR Sale: 1/2 acre farm... Apply to Mr. W. M. Bullock, 10, Abchurch Lane, London, E.C. 4.

FOR Sale: 1/2 acre farm... Apply to Mr. W. M. Bullock, 10, Abchurch Lane, London, E.C. 4.

FOR Sale: 1/2 acre farm... Apply to Mr. W. M. Bullock, 10, Abchurch Lane, London, E.C. 4.

FOR Sale: 1/2 acre farm... Apply to Mr. W. M. Bullock, 10, Abchurch Lane, London, E.C. 4.

FOR Sale: 1/2 acre farm... Apply to Mr. W. M. Bullock, 10, Abchurch Lane, London, E.C. 4.

FOR Sale: 1/2 acre farm... Apply to Mr. W. M. Bullock, 10, Abchurch Lane, London, E.C. 4.

FOR Sale: 1/2 acre farm... Apply to Mr. W. M. Bullock, 10, Abchurch Lane, London, E.C. 4.

FOR Sale: 1/2 acre farm... Apply to Mr. W. M. Bullock, 10, Abchurch Lane, London, E.C. 4.

FOR Sale: 1/2 acre farm... Apply to Mr. W. M. Bullock, 10, Abchurch Lane, London, E.C. 4.

FOR Sale: 1/2 acre farm... Apply to Mr. W. M. Bullock, 10, Abchurch Lane, London, E.C. 4.

FOR Sale: 1/2 acre farm... Apply to Mr. W. M. Bullock, 10, Abchurch Lane, London, E.C. 4.

FOR Sale: 1/2 acre farm... Apply to Mr. W. M. Bullock, 10, Abchurch Lane, London, E.C. 4.

FOR Sale: 1/2 acre farm... Apply to Mr. W. M. Bullock, 10, Abchurch Lane, London, E.C. 4.

FOR Sale: 1/2 acre farm... Apply to Mr. W. M. Bullock, 10, Abchurch Lane, London, E.C. 4.

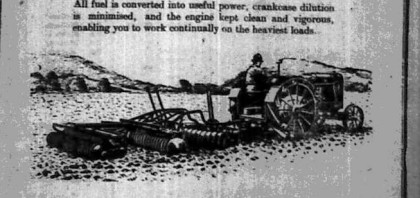
FOR Sale: 1/2 acre farm... Apply to Mr. W. M. Bullock, 10, Abchurch Lane, London, E.C. 4.

FOR Sale: 1/2 acre farm... Apply to Mr. W. M. Bullock, 10, Abchurch Lane, London, E.C. 4.

FOR Sale: 1/2 acre farm... Apply to Mr. W. M. Bullock, 10, Abchurch Lane, London, E.C. 4.

FOR Sale: 1/2 acre farm... Apply to Mr. W. M. Bullock, 10, Abchurch Lane, London, E.C. 4.

CROSS POWER KEROSENE. The outstanding supremacy of "Cross" in both power and economy is due to its perfect vaporisation and complete combustion. All fuel is converted into useful power, crankshaft friction is minimized, and the engine keeps clean and vigorous, enabling you to work continuously on the heaviest loads.



THE SHELL COMPANY OF EAST AFRICA, LTD. Agents—Nairobi, Mombasa & Co.

THE SALE YOU HAVE BEEN WAITING FOR. The Whole of our Stocks including the latest arrivals Reduced. WONDERFUL BARGAINS. Enormous Reductions in All Children's and Childrens Clothing. ONE WEEK ONLY Commencing 1st. November. Waring's Ltd. Africa House, Government Road, NAIROBI.

Gasket Cement. Reduction in Prices of Meat and Cost of Living. The S. D. M. S. Co., Ltd., announce from 1st Nov., 1929 a reduction of 20 per cent. on the present Cash Prices for meat to all Cash Customers. All up-country customers may benefit by these reductions by opening Deposits Accounts. Support The Kenya Farmers. HOME FED MEAT ONLY SUPPLIED IN THE STOCKBREEDERS' BUTCHERY. STOCKBREEDERS DIRECT MEAT SUPPLY CO. LTD.

Whiz GASKET CEMENT. The use of White Gasket Cement brings savings in petrol and oil and increases the power and efficiency of the car. Complete in bottles with brush.

The Bradford Manufacturing COMPANY LIMITED. 150 pairs GREY FLANNEL TROUSERS. 15/- pair. Sizes 2 to 7 in Light and Medium Greys. These Trousers are well tailored and are made to our own Factory in Bradford and are sold with the usual B.M.C. guarantee.

DRASTIC REDUCTIONS. in every line. YOUR INTEREST EARNESTLY REQUESTED. AT

HUSEIN'S Govt. Road. NAIROBI. Complete stocks of Saddles and Saddlery and all leather goods. SPECIAL - Better Saddle - and better - at same price as others. FRED BAPER. Chamber of Commerce Building, NAIROBI.

FARMS, PLOTS & Houses for Sale. J. W. MULLIGAN & CO. LAND & ESTATE AGENTS. 14, Abchurch Lane, London, E.C. 4.

TO LET: Half-acre farm... Apply to Mr. W. M. Bullock, 10, Abchurch Lane, London, E.C. 4.

FOR Sale: 1/2 acre farm... Apply to Mr. W. M. Bullock, 10, Abchurch Lane, London, E.C. 4.

FOR Sale: 1/2 acre farm... Apply to Mr. W. M. Bullock, 10, Abchurch Lane, London, E.C. 4.

FOR Sale: 1/2 acre farm... Apply to Mr. W. M. Bullock, 10, Abchurch Lane, London, E.C. 4.

FOR Sale: 1/2 acre farm... Apply to Mr. W. M. Bullock, 10, Abchurch Lane, London, E.C. 4.

FOR Sale: 1/2 acre farm... Apply to Mr. W. M. Bullock, 10, Abchurch Lane, London, E.C. 4.

FOR Sale: 1/2 acre farm... Apply to Mr. W. M. Bullock, 10, Abchurch Lane, London, E.C. 4.

FOR Sale: 1/2 acre farm... Apply to Mr. W. M. Bullock, 10, Abchurch Lane, London, E.C. 4.

FOR Sale: 1/2 acre farm... Apply to Mr. W. M. Bullock, 10, Abchurch Lane, London, E.C. 4.

FOR Sale: 1/2 acre farm... Apply to Mr. W. M. Bullock, 10, Abchurch Lane, London, E.C. 4.

FOR Sale: 1/2 acre farm... Apply to Mr. W. M. Bullock, 10, Abchurch Lane, London, E.C. 4.

FOR Sale: 1/2 acre farm... Apply to Mr. W. M. Bullock, 10, Abchurch Lane, London, E.C. 4.

FOR Sale: 1/2 acre farm... Apply to Mr. W. M. Bullock, 10, Abchurch Lane, London, E.C. 4.

FOR Sale: 1/2 acre farm... Apply to Mr. W. M. Bullock, 10, Abchurch Lane, London, E.C. 4.

FOR Sale: 1/2 acre farm... Apply to Mr. W. M. Bullock, 10, Abchurch Lane, London, E.C. 4.

FOR Sale: 1/2 acre farm... Apply to Mr. W. M. Bullock, 10, Abchurch Lane, London, E.C. 4.

FOR Sale: 1/2 acre farm... Apply to Mr. W. M. Bullock, 10, Abchurch Lane, London, E.C. 4.

FOR Sale: 1/2 acre farm... Apply to Mr. W. M. Bullock, 10, Abchurch Lane, London, E.C. 4.

FOR Sale: 1/2 acre farm... Apply to Mr. W. M. Bullock, 10, Abchurch Lane, London, E.C. 4.

FOR Sale: 1/2 acre farm... Apply to Mr. W. M. Bullock, 10, Abchurch Lane, London, E.C. 4.

FOR Sale: 1/2 acre farm... Apply to Mr. W. M. Bullock, 10, Abchurch Lane, London, E.C. 4.

FOR Sale: 1/2 acre farm... Apply to Mr. W. M. Bullock, 10, Abchurch Lane, London, E.C. 4.

FOR SALE

MR. HARGREAVES... 10, Abchurch Lane, London, E.C. 4.

MR. HARGREAVES... 10, Abchurch Lane, London, E.C. 4.

MR. HARGREAVES... 10, Abchurch Lane, London, E.C. 4.

MR. HARGREAVES... 10, Abchurch Lane, London, E.C. 4.

MR. HARGREAVES... 10, Abchurch Lane, London, E.C. 4.

MR. HARGREAVES... 10, Abchurch Lane, London, E.C. 4.

MR. HARGREAVES... 10, Abchurch Lane, London, E.C. 4.

MR. HARGREAVES... 10, Abchurch Lane, London, E.C. 4.

MR. HARGREAVES... 10, Abchurch Lane, London, E.C. 4.

MR. HARGREAVES... 10, Abchurch Lane, London, E.C. 4.

SITUATIONS VACANT.

EUROPEAN Architect... 10, Abchurch Lane, London, E.C. 4.

EUROPEAN Architect... 10, Abchurch Lane, London, E.C. 4.

EUROPEAN Architect... 10, Abchurch Lane, London, E.C. 4.

EUROPEAN Architect... 10, Abchurch Lane, London, E.C. 4.

EUROPEAN Architect... 10, Abchurch Lane, London, E.C. 4.

EUROPEAN Architect... 10, Abchurch Lane, London, E.C. 4.

EUROPEAN Architect... 10, Abchurch Lane, London, E.C. 4.

EUROPEAN Architect... 10, Abchurch Lane, London, E.C. 4.

EUROPEAN Architect... 10, Abchurch Lane, London, E.C. 4.

EUROPEAN Architect... 10, Abchurch Lane, London, E.C. 4.

BOARDS & RESIDENCE.

THIS charge for advertisements... In those columns in Sh. 1/2 for a line of 35 words, or a fraction of a line, at 10/6 per line per week. 10/6 per line per week.

"CLAUDE" House... 10, Abchurch Lane, London, E.C. 4.

COMFORTABLE single and double rooms... 10, Abchurch Lane, London, E.C. 4.

THE Gables... 10, Abchurch Lane, London, E.C. 4.

Godfrey's Announcements. 10, Abchurch Lane, London, E.C. 4.

Spray Painting DUCO or VALSPAR. 10, Abchurch Lane, London, E.C. 4.

TO LET ON LEASE. 10, Abchurch Lane, London, E.C. 4.

FOR INFORMATION ON THE NILE ROUTE TO EUROPE apply to Motor Tours Ltd. 10, Abchurch Lane, London, E.C. 4.

Booking Agents to:- Sudan Government RAILWAYS and STEAMERS. MOTOR TOURS LTD. Box 558, opposite the Post, NAIROBI.

SITUATIONS WANTED.

YOUNG lady, English, good... 10, Abchurch Lane, London, E.C. 4.

My wife, Helia Hadou, having... 10, Abchurch Lane, London, E.C. 4.

F. BAREX, MAKINDU. 10, Abchurch Lane, London, E.C. 4.

We Pay Cash for Ardash Cigarette Coupons. 10, Abchurch Lane, London, E.C. 4.

Cash Sales Ltd. 10, Abchurch Lane, London, E.C. 4.

The Bradford Manufacturing COMPANY LIMITED. 10, Abchurch Lane, London, E.C. 4.

SADDLERY. Complete stocks of Saddles and Saddlery and all leather goods. 10, Abchurch Lane, London, E.C. 4.

HUSEIN'S. Complete stocks of Saddles and Saddlery and all leather goods. 10, Abchurch Lane, London, E.C. 4.

HUSEIN'S. Complete stocks of Saddles and Saddlery and all leather goods. 10, Abchurch Lane, London, E.C. 4.

HUSEIN'S. Complete stocks of Saddles and Saddlery and all leather goods. 10, Abchurch Lane, London, E.C. 4.

UNION - CASTLE LINE.

HOMEWARD via SUEZ.

Table listing ship names, departure dates, and destinations for the Union-Castle Line homebound via Suez.

HOMEWARD via SOUTH AFRICA.

Table listing ship names, departure dates, and destinations for the Union-Castle Line homebound via South Africa.

Passenger Agents: B.E.A. Corporation, Ltd., Mess African Steamers, Ltd., J. O. O'Shea Co. Ltd., Nairobi, Kampala, etc.

British India Steam Navigation Company, Limited, AND PERIPHERAL AND ORIENTAL STEAM NAVIGATION CO.

Large table detailing shipping schedules for British India Steam Navigation, including routes to Bombay, Madras, and other ports.

ALL DAY'S SUBJECT TO ALTERATION WITHOUT NOTICE RETURN FARES ISSUED AT TWO SINGLE FARES LESS 10% UNQUOTE CARRIAGE NOT ACCEPTED UNLESS ENDORSER BY A LOCAL BANK.

Advertisement for Chivers' Old English Marmalade, featuring a diamond-shaped logo and text about breakfast tables.

MESSAGERIES MARITIMES

Table listing shipping services and schedules for Messageries Maritimes, including routes to London and other international ports.

Compagnia Italiana Transatlantica.

Monthly Passenger Service to NAPLES and GENOA. SAILINGS from NAIROBI TO GENOA at 11 days 11 hours.

Deutsche Ost-Afrika-Linie

(GERMAN AFRICAN SERVICE) DEUTSCHE OST-AFRIKA-LINIE GENERAL AGENCY, MOMBASA.

Coastwise Excursions.

(at considerably reduced Fares) TO BEIRA AND LOURENO MARQUES First, Second and Intermediate Class.

The African Marine & General Engineering Company, Ltd., KILIMBOI.

SHIP REPAIRING TARPAULIN MAKING REPAIRING, MOULDING OXY ACETYLENE WELDING & CUTTING.

Agents & Company, Ltd., Eldoret, Carl Jungling, Njoro & Nakuru District.

Keith Timber Co. Ltd.

P. O. Box 874 Sadler Street Nairobi Phone 598.

Pianoforte Tuning

AND REPAIRING. Ten years experience in Kenya Colony and 40 years with Messrs. Chappell & Co., London.

WIRELESS

Latest Receiver, no batteries, all that is required is to plug it into the electric light socket.

CLAN LINE STEAMERS LTD.

NEW YORK (without transhipment) and to other U.S.A. Ports with transhipment.

THE SHORT ROUTE via SUEZ CANAL S.S. "CLAN KENNETH"

Expected to arrive MOMBASA about 25th November.

THE AFRICAN MERCANTILE COMPANY, LIMITED, MOMBASA.

TANGA, ZANZIBAR, DAR-ES-SALAAM.

SAVOY BAR. (Openly Built) with LOUNGE and BRIDGE ROOM.

SALE. SALE. HUGE REDUCTIONS OFFERED.

EXCEPTIONAL VALUE FOR YOUR MONEY. VISIT NOW and PICK YOUR CHOICE.

Dayaram Bros. DRAPERS and SILK MERCHANTS.

P. O. Box 189 Government Road, NAIROBI.

LOCAL LIMERICKS.

An old lily 33 down at Bury Bent to Vei for a dotter to star her.

SOUZA JUNIOR & DIAS. P. O. Box 341, Govt. Road, NAIROBI.

BESTON HOT WATER BOILER

FOR AN EFFICIENT AND PERMANENT HOT WATER SUPPLY.

Thornton & Turpin (Sole Agents) Registered Plumbers and Sanitary Engineers.

Phone 185 P. O. Box 280, Nairobi.

Central Garage.

REPAIRS TO ALL MAKES OF TRUCKS, MOTOR CARS and MOTOR CYCLES.

Specialists, Experts to Electrical Equipment.

Building Contractors, Painters and Plasterers.

Ellerman - Harrison Lines.

Table listing shipping schedules for Ellerman-Harrison Lines, including routes to Liverpool, Glasgow, and Manchester.

Ellerman and Bucknall Line

NEW YORK - MOMBASA via SUEZ.

THE AFRICAN MERCANTILE COMPANY, Limited, MOMBASA (coastal Navigations) NAIROBI.

VOONIA TEA

INCREASES IN POPULARITY DAILY. AWARDED Ten Gold Medals.

BEWARE OF FRAUDULENT IMITATIONS. INSIST ON SEEING THE NAME.

"VOONIA" on every packet or case.

BLACKLAW & BROWN (LATE BLACKBURN HOUSE).

Tel. No. 31 Telegrams: "Blacklaw" 468.

Lochhead, Moore & Roy, Ltd.

P. O. Box 455, NAIROBI.

OVERSEAS MAILS.

Table showing shipping schedules for overseas mails, including destinations like London, India, and Australia.

ROYAL INSURANCE CO. LTD.

(Incorporated in England). FUNDS £2,260,000.

We take pleasure in insuring that we have the most approved PRINCIPAL REPRESENTATIVES.

The Royal Insurance Co., Limited transacts all classes of insurance business.

East African Estates, Ltd. E.A. J. O. BUILDING, GOVERNMENT ROAD.

# ZEISS

Effortless illumination of show windows.  
Your Show Windows is your best advertisement.  
In the last few years the art of lighting show windows has  
developed in rapid strides from darkness to splendor. It has become a  
science in its own right. The initial intensity in the direct line  
of vision is the key to successful window lighting.

## ZEISS REFLECTORS

The new Zeiss Best Reflector fulfills a mission of lighting  
show windows which comprise over the International Illumination  
Exposition. Using only a 100-watt filament bulb the Zeiss  
Reflector in the principal direction an intensity of about  
1000-1500 candle power is produced. The Zeiss Reflector is  
controlled by a filament light without reflecting,  
back the rays on the window, and the full percentage for all  
kinds of interior and outdoor lighting.

## "THE LENS," Limited.

100, Box 61, Princes House, NAIROBI. Phone: 628

## Theo. SCHOUTEN

LADIES and GENTLEMEN'S HAIRDRESSING.  
Permanent Waving a Speciality.  
UNDER PERSONAL SUPERVISION.  
All the Latest Toilet Requisites Stocked.  
GOVERNMENT ROAD.  
Also at MOMBASA and NARUHU.  
P.O. Box 394 Phone 245.

## ESSJAY, Limited.

BOLUS HOUSE, GOVERNMENT ROAD,  
NAIROBI. Phone 877

Financial & Property Agents.  
Mortgages Specialised in.  
Town Properties Negotiated.  
Partnerships Arranged.  
Investments Advised on.  
WE HAVE FOUND INVESTMENTS FOR SUMS  
FROM 200 UPWARDS. IN THIS RESPECT WE  
ARE TO DO BETTER FOR YOU THAN ANY  
ONE ELSE.  
R. JACOBS,  
Managing Director.

### HORTICULTURE.

(Continued from page 2)

Class 47 Dahlias. 4 varieties suitable for cutting, any 1919, to be judged from the exhibition in Dublin classes. Best blooms may be entered separately. Grade 2.  
Class 48 Dahlias. Best individual blooms, one exhibition in Dublin classes, but blooms may be entered separately. Grade 2.  
Class 49 Geraniums and Pelargoniums. Best cut varieties, to be shown in separate classes. Lady Fribourg and Pelargonium. Best collection of 1919. Grade C.  
Class 50 Open. Half-double Ruffled Flowers. Scabbling Bellows. Tuber. Edging and Coral. Best collection. Space 4ft. x 2ft. Grade C.  
Class 51 (Medal). Best cut variety. Medal presented "Gardening Illustrated."

Class 52 Gladioli. Best three varieties. One bloom of each variety only in a vase. Grade D.  
Class 53. Open. Gladioli. Best individual bloom. To be judged from all blooms in Glasgow classes. Best blooms may be entered separately. Grade C.  
Class 54. Asteriskiums. Best six varieties. One vase of each variety. Grade C.  
Class 55. Asteriskiums. Best collection. Stake space required. Grade B.  
Class 56. Cosmos. Six distinct varieties. Grade C.  
Class 57. Flowers. Six kinds. To be shown in vases. Color varieties allowed, including albino, two, crimson or rose). Entries for this class are confined to Civil Servants and their families. Civil Servants' Challenge Cup. A miniature replica to be kept by the winner will be presented by the Society. Grade C.  
Class 58. Open. Lilliums. Any variety of true Lillium. Grade according to number shown.  
Class 59. Pot Plants. Best foliage plant. Grade C.  
Class 60. Pot Plants. Best flowering plant. Grade C.  
Class 61. Pot Plants. Best flowering plant. Grade C.  
Class 62. Flowering Shrubs or Trees. Twelve varieties. Trunks of flowers or shrubs cut, or flowering in pots. Mrs. Turner's Challenge Cup. Grade B.  
Class 63. Open. Lilies. Best single flower. Grade C.  
Class 64. Open. Lilies. Best double flower. Grade C.  
Class 65. Open. Lilies. Best single flower. Grade C.  
Class 66. Open. Lilies. Best double flower. Grade C.  
Class 67. Open. Lilies. Best single flower. Grade C.  
Class 68. Open. Lilies. Best double flower. Grade C.  
Class 69. Open. Lilies. Best single flower. Grade C.  
Class 70. Open. Lilies. Best double flower. Grade C.  
Class 71. Sweet Corn. Three ears. Best collection. Grade C.  
Class 72. Tomatoes. Best six of twelve fruits. Grade E.  
Class 73. Tomatoes. Best collection. Six fruits of each variety. Grade C.  
Class 74. Peaches. Six tubers, any variety. Grade E.  
Class 75. Peaches. Best cut collection. Grade C.  
Class 76. Pear. Best dish of twenty-five peds. Grade E.  
Class 77. Pear. French or Dwarf. Best dish of twenty-five peds. Grade E.  
Class 78. Pear. French or Dwarf. Best dish of twenty-five peds. Grade E.  
Class 79. Pear. French or Dwarf. Best dish of twenty-five peds. Grade E.  
Class 80. Pear. French or Dwarf. Best dish of twenty-five peds. Grade E.  
Class 81. Pear. French or Dwarf. Best dish of twenty-five peds. Grade E.  
Class 82. Pear. French or Dwarf. Best dish of twenty-five peds. Grade E.  
Class 83. Pear. French or Dwarf. Best dish of twenty-five peds. Grade E.  
Class 84. Pear. French or Dwarf. Best dish of twenty-five peds. Grade E.  
Class 85. Pear. French or Dwarf. Best dish of twenty-five peds. Grade E.  
Class 86. Pear. French or Dwarf. Best dish of twenty-five peds. Grade E.  
Class 87. Pear. French or Dwarf. Best dish of twenty-five peds. Grade E.  
Class 88. Pear. French or Dwarf. Best dish of twenty-five peds. Grade E.  
Class 89. Pear. French or Dwarf. Best dish of twenty-five peds. Grade E.  
Class 90. Pear. French or Dwarf. Best dish of twenty-five peds. Grade E.

Class 91. Open. Trapped Fruits. Best collection. (Citra level at least.) Grade A.  
Class 92. Open. Citrus Fruits. Best collection. Grade B.  
Class 93. Desiccated Fruit. Best collection. Grade A.  
Class 94. Open. Apples and Pears. Best collection. Grade C.  
Class 95. Dessert Apples. Best collection. Grade D.  
Class 96. Dessert Apples. Best collection. One dish of each variety. Grade C.  
Class 97. Cooking Apples. Best collection. One dish of each variety. Grade C.  
Class 98. Cooking Apples. Best collection. One dish of each variety. Grade C.  
Class 99. Cooking Apples. Best collection. One dish of each variety. Grade C.  
Class 100. Pear. French or Dwarf. Best collection. Grade C.  
Class 101. Pear. French or Dwarf. Best collection. Grade C.  
Class 102. Pear. French or Dwarf. Best collection. Grade C.  
Class 103. Pear. French or Dwarf. Best collection. Grade C.  
Class 104. Pear. French or Dwarf. Best collection. Grade C.  
Class 105. Pear. French or Dwarf. Best collection. Grade C.  
Class 106. Pear. French or Dwarf. Best collection. Grade C.  
Class 107. Pear. French or Dwarf. Best collection. Grade C.  
Class 108. Pear. French or Dwarf. Best collection. Grade C.  
Class 109. Pear. French or Dwarf. Best collection. Grade C.  
Class 110. Pear. French or Dwarf. Best collection. Grade C.  
Class 111. Pear. French or Dwarf. Best collection. Grade C.  
Class 112. Pear. French or Dwarf. Best collection. Grade C.  
Class 113. Pear. French or Dwarf. Best collection. Grade C.  
Class 114. Pear. French or Dwarf. Best collection. Grade C.  
Class 115. Pear. French or Dwarf. Best collection. Grade C.  
Class 116. Pear. French or Dwarf. Best collection. Grade C.  
Class 117. Pear. French or Dwarf. Best collection. Grade C.  
Class 118. Pear. French or Dwarf. Best collection. Grade C.  
Class 119. Pear. French or Dwarf. Best collection. Grade C.  
Class 120. Pear. French or Dwarf. Best collection. Grade C.  
Class 121. Pear. French or Dwarf. Best collection. Grade C.  
Class 122. Pear. French or Dwarf. Best collection. Grade C.  
Class 123. Pear. French or Dwarf. Best collection. Grade C.  
Class 124. Pear. French or Dwarf. Best collection. Grade C.  
Class 125. Pear. French or Dwarf. Best collection. Grade C.  
Class 126. Pear. French or Dwarf. Best collection. Grade C.  
Class 127. Pear. French or Dwarf. Best collection. Grade C.  
Class 128. Pear. French or Dwarf. Best collection. Grade C.  
Class 129. Pear. French or Dwarf. Best collection. Grade C.  
Class 130. Pear. French or Dwarf. Best collection. Grade C.  
Class 131. Pear. French or Dwarf. Best collection. Grade C.  
Class 132. Pear. French or Dwarf. Best collection. Grade C.  
Class 133. Pear. French or Dwarf. Best collection. Grade C.  
Class 134. Pear. French or Dwarf. Best collection. Grade C.  
Class 135. Pear. French or Dwarf. Best collection. Grade C.  
Class 136. Pear. French or Dwarf. Best collection. Grade C.  
Class 137. Pear. French or Dwarf. Best collection. Grade C.  
Class 138. Pear. French or Dwarf. Best collection. Grade C.  
Class 139. Pear. French or Dwarf. Best collection. Grade C.  
Class 140. Pear. French or Dwarf. Best collection. Grade C.  
Class 141. Pear. French or Dwarf. Best collection. Grade C.  
Class 142. Pear. French or Dwarf. Best collection. Grade C.  
Class 143. Pear. French or Dwarf. Best collection. Grade C.  
Class 144. Pear. French or Dwarf. Best collection. Grade C.  
Class 145. Pear. French or Dwarf. Best collection. Grade C.  
Class 146. Pear. French or Dwarf. Best collection. Grade C.  
Class 147. Pear. French or Dwarf. Best collection. Grade C.  
Class 148. Pear. French or Dwarf. Best collection. Grade C.  
Class 149. Pear. French or Dwarf. Best collection. Grade C.  
Class 150. Pear. French or Dwarf. Best collection. Grade C.

Class 151. Pear. French or Dwarf. Best collection. Grade C.  
Class 152. Pear. French or Dwarf. Best collection. Grade C.  
Class 153. Pear. French or Dwarf. Best collection. Grade C.  
Class 154. Pear. French or Dwarf. Best collection. Grade C.  
Class 155. Pear. French or Dwarf. Best collection. Grade C.  
Class 156. Pear. French or Dwarf. Best collection. Grade C.  
Class 157. Pear. French or Dwarf. Best collection. Grade C.  
Class 158. Pear. French or Dwarf. Best collection. Grade C.  
Class 159. Pear. French or Dwarf. Best collection. Grade C.  
Class 160. Pear. French or Dwarf. Best collection. Grade C.  
Class 161. Pear. French or Dwarf. Best collection. Grade C.  
Class 162. Pear. French or Dwarf. Best collection. Grade C.  
Class 163. Pear. French or Dwarf. Best collection. Grade C.  
Class 164. Pear. French or Dwarf. Best collection. Grade C.  
Class 165. Pear. French or Dwarf. Best collection. Grade C.  
Class 166. Pear. French or Dwarf. Best collection. Grade C.  
Class 167. Pear. French or Dwarf. Best collection. Grade C.  
Class 168. Pear. French or Dwarf. Best collection. Grade C.  
Class 169. Pear. French or Dwarf. Best collection. Grade C.  
Class 170. Pear. French or Dwarf. Best collection. Grade C.  
Class 171. Pear. French or Dwarf. Best collection. Grade C.  
Class 172. Pear. French or Dwarf. Best collection. Grade C.  
Class 173. Pear. French or Dwarf. Best collection. Grade C.  
Class 174. Pear. French or Dwarf. Best collection. Grade C.  
Class 175. Pear. French or Dwarf. Best collection. Grade C.  
Class 176. Pear. French or Dwarf. Best collection. Grade C.  
Class 177. Pear. French or Dwarf. Best collection. Grade C.  
Class 178. Pear. French or Dwarf. Best collection. Grade C.  
Class 179. Pear. French or Dwarf. Best collection. Grade C.  
Class 180. Pear. French or Dwarf. Best collection. Grade C.  
Class 181. Pear. French or Dwarf. Best collection. Grade C.  
Class 182. Pear. French or Dwarf. Best collection. Grade C.  
Class 183. Pear. French or Dwarf. Best collection. Grade C.  
Class 184. Pear. French or Dwarf. Best collection. Grade C.  
Class 185. Pear. French or Dwarf. Best collection. Grade C.  
Class 186. Pear. French or Dwarf. Best collection. Grade C.  
Class 187. Pear. French or Dwarf. Best collection. Grade C.  
Class 188. Pear. French or Dwarf. Best collection. Grade C.  
Class 189. Pear. French or Dwarf. Best collection. Grade C.  
Class 190. Pear. French or Dwarf. Best collection. Grade C.  
Class 191. Pear. French or Dwarf. Best collection. Grade C.  
Class 192. Pear. French or Dwarf. Best collection. Grade C.  
Class 193. Pear. French or Dwarf. Best collection. Grade C.  
Class 194. Pear. French or Dwarf. Best collection. Grade C.  
Class 195. Pear. French or Dwarf. Best collection. Grade C.  
Class 196. Pear. French or Dwarf. Best collection. Grade C.  
Class 197. Pear. French or Dwarf. Best collection. Grade C.  
Class 198. Pear. French or Dwarf. Best collection. Grade C.  
Class 199. Pear. French or Dwarf. Best collection. Grade C.  
Class 200. Pear. French or Dwarf. Best collection. Grade C.

Class 201. Pear. French or Dwarf. Best collection. Grade C.  
Class 202. Pear. French or Dwarf. Best collection. Grade C.  
Class 203. Pear. French or Dwarf. Best collection. Grade C.  
Class 204. Pear. French or Dwarf. Best collection. Grade C.  
Class 205. Pear. French or Dwarf. Best collection. Grade C.  
Class 206. Pear. French or Dwarf. Best collection. Grade C.  
Class 207. Pear. French or Dwarf. Best collection. Grade C.  
Class 208. Pear. French or Dwarf. Best collection. Grade C.  
Class 209. Pear. French or Dwarf. Best collection. Grade C.  
Class 210. Pear. French or Dwarf. Best collection. Grade C.  
Class 211. Pear. French or Dwarf. Best collection. Grade C.  
Class 212. Pear. French or Dwarf. Best collection. Grade C.  
Class 213. Pear. French or Dwarf. Best collection. Grade C.  
Class 214. Pear. French or Dwarf. Best collection. Grade C.  
Class 215. Pear. French or Dwarf. Best collection. Grade C.  
Class 216. Pear. French or Dwarf. Best collection. Grade C.  
Class 217. Pear. French or Dwarf. Best collection. Grade C.  
Class 218. Pear. French or Dwarf. Best collection. Grade C.  
Class 219. Pear. French or Dwarf. Best collection. Grade C.  
Class 220. Pear. French or Dwarf. Best collection. Grade C.  
Class 221. Pear. French or Dwarf. Best collection. Grade C.  
Class 222. Pear. French or Dwarf. Best collection. Grade C.  
Class 223. Pear. French or Dwarf. Best collection. Grade C.  
Class 224. Pear. French or Dwarf. Best collection. Grade C.  
Class 225. Pear. French or Dwarf. Best collection. Grade C.  
Class 226. Pear. French or Dwarf. Best collection. Grade C.  
Class 227. Pear. French or Dwarf. Best collection. Grade C.  
Class 228. Pear. French or Dwarf. Best collection. Grade C.  
Class 229. Pear. French or Dwarf. Best collection. Grade C.  
Class 230. Pear. French or Dwarf. Best collection. Grade C.  
Class 231. Pear. French or Dwarf. Best collection. Grade C.  
Class 232. Pear. French or Dwarf. Best collection. Grade C.  
Class 233. Pear. French or Dwarf. Best collection. Grade C.  
Class 234. Pear. French or Dwarf. Best collection. Grade C.  
Class 235. Pear. French or Dwarf. Best collection. Grade C.  
Class 236. Pear. French or Dwarf. Best collection. Grade C.  
Class 237. Pear. French or Dwarf. Best collection. Grade C.  
Class 238. Pear. French or Dwarf. Best collection. Grade C.  
Class 239. Pear. French or Dwarf. Best collection. Grade C.  
Class 240. Pear. French or Dwarf. Best collection. Grade C.  
Class 241. Pear. French or Dwarf. Best collection. Grade C.  
Class 242. Pear. French or Dwarf. Best collection. Grade C.  
Class 243. Pear. French or Dwarf. Best collection. Grade C.  
Class 244. Pear. French or Dwarf. Best collection. Grade C.  
Class 245. Pear. French or Dwarf. Best collection. Grade C.  
Class 246. Pear. French or Dwarf. Best collection. Grade C.  
Class 247. Pear. French or Dwarf. Best collection. Grade C.  
Class 248. Pear. French or Dwarf. Best collection. Grade C.  
Class 249. Pear. French or Dwarf. Best collection. Grade C.  
Class 250. Pear. French or Dwarf. Best collection. Grade C.



The Unique Occasion  
When Three Companies!  
**Crawford's**  
LIQUEUR  
SCOTCH WHISKY  
A. & J. CRAWFORD  
LEITH & SCOTLAND.



SWEET REPOSE  
In clean, cool sheets washed with Sunlight Soap  
Sunlight Soap  
LISC  
Sunlight Soap

# THE MARQUETTE

IS DISTINGUISHED IMMEDIATELY FROM ALL OTHER CARS ANYWHERE NEAR ITS PRICE  
BY ITS SPARKLING, SPEEDY PERFORMANCE.

Ask any Owner  
and then  
Call and Drive Yourself.

You  
Will Then Be  
Convinced.



KENYA MOTORS.  
NAIROBI NAKURU.

Box Bodies £295  
Tourers £345  
Coupe's £375  
Sedans £380

Phone 206.  
Kitale.

Box 306.  
Kampala.

# INDIA & BACK FLIGHT.

The spirit supplies for the Duchess of Bedford's remarkable flight to India and back were provided at all points on the route, with the exception of Karachi, by the British Petroleum Co., Ltd.—a distributing organisation of The Anglo-Persian Oil Co., Ltd.

The machine was a Fokker with Bristol Jupiter Engine, piloted by Capt. C. D. Barnard.

## "BP"

Anglo Persian Oil Co., (Kenya) Ltd.

Agents—

GIBSON & Co., Ltd.,

Mombasa, Nairobi, Eldoret, Dar-es-Salaam.

## Metropolitan Garage.

Specialists in Automobile Repairs  
3 doors Avenue Hotel.

WE ALWAYS HAVE A NUMBER OF SELECTED AND OVERHAULED 2nd HAND CARS IN STOCK.

First 2-door Super Sports in excellent condition.	70 m.p.h.	£25-38
29 m.p.h. Mileage 5,000		£145
Cost over £250.		
Rugby Toner, a sound and reliable car		£60
Rugby, Roy Dady, 1927 model in excellent order throughout.		£110
1927 Buick, a bargain at £60		
Black, Canadian special, guaranteed mechanically.		£135

**CARS FOR HIRE.**  
D. J. L. LETHBRIDGE,  
Sole Proprietor.

Phone 594. P.O. Box 217.

# QUESTION?

DOES IT PAY TO HAVE MY TYRES VULCANIZED?

### YES

IF THEY ARE REPAIRED AT  
**HARWOOD'S**  
Vulcanizing & Engineering Co.

## Kiambu Agric Lime

from our works — Cheapest and Best  
**Lime Limited**  
-Tel.: Limette Phone 468 Box 413  
Chamber of Commerce Building.

## REMOVED.

**Bellram Farinal & Co.**  
We have a large stock of choice provisions in our company and also some choice provisions in our company and also some choice provisions in our company.

**"ANNOUNCEMENT"**  
WE ARE DIRECT IMPORTERS, THEREFORE WE CAN SELL YOU CHEAPLY WE IMPORT  
Cement, C.I. Sheets, and All Building Materials, Perforated Zinc Sheets, Tallow, Shot Lead, Wire Netting, Barbed Wire, Fencing and Baling Wire.

SEND YOUR ENQUIRY TO US  
**MADATALLY SULEMAN VERJEE & SONS.**  
P.O. Box 12. Govt. Road, NAIROBI.



### MOTHS ARE NOT MUSICAL

but they delight in feeding on the hamper held aloft and make in your place. While Fly Fun pills and other insecticides, though they kill strength, they pleasantly needed. 100% kill.



Sold Everywhere.

THE FOLLOWING PREPARED BY  
**DR. CLEGG'S TONIC FOR ANEMIA**  
THE "WATERBURY" METHOD  
THE "WATERBURY" METHOD

Place Yourself at the Right Side of the Danger  
**INSURE**  
YOUR MOTOR CARS AND MOTOR CYCLES WITH THE AFRICAN GUARANTEE AND INSURANCE CO. LTD.  
**M.D. KAMPF,**  
Chief Agent.

**Every Clock**  
Watch  
GOLD BEHOVE OCT 31st IS KEPT IN REPAIR FOR 1 YEAR.  
BREAKERS RECEIVED  
D. J. MALL,  
Princes House,  
Government Road,  
NAIROBI.

**Doonholm Dairy**  
FOR PURE MILK AND CREAM.  
Fram Farm to Customers.  
Box 11, NAIROBI.

**Under New Management**  
**Fresh Milk**  
supplied daily at Four doors by the  
**Killarey Dairy,**  
P.O. NAIROBI.

It is your  
**NYVU TIMBER**  
Bought in Bulk  
Our Trade-Always Best  
and from  
**UGANDA FRUITS**  
Party agents  
**R. B. SIRDAP,**  
105, 106, 107  
P.O. Box 12  
NAIROBI

**Miss KATHLEEN BATES, A.C.M.**  
SINGLES PUPIL FOR  
**PIANOFORTE — SINGING — HARMONY**  
at the MUSIC STUDIO, SIXTH AVENUE,  
POSTAL ADDRESS: Box 417.

## MOTOR NEWS

From Road & Showroom.

### A BIG OR LITTLE TYRE?

What is Best Size for General Use?

### SERIES OF COMPARATIVE TESTS

The "Motor Cycle" is called for the "Motor Cycle," and deals with comparative tests on road cut with various types of tyres.

It is no use beating about the bush. Tyres are a line of competition. We say we do not get types, and the manufacturers say that there never were such types that they produce to-day. The fact is that many free-lunch devices will over twenty horsepower on the brake or on the road as much as the power of the smallest car. And we can only one driving wheel, as against the other two!

But it is no good talking up the old arguments. The motor has been thought out time and again—both excluding the question of tyre pressure and their relation to riding comfort.

We expect our tyre to insulate in three road tests and make up for the lack of one wheel spring. Optimists, aren't we? There is one thing we all know: If only we could use large enough tyres, nothing else will do. It is not a question of tyre pressure and mileage, and even, with proper sound insulation procedure, that is assumed.

We also know—or think we know—how large tyres have grave objections. But not when, when matter, say that big tyres were the best only way to save the road. It is not a question of tyre pressure and mileage, and even, with proper sound insulation procedure, that is assumed.

There are so many conflicting views on this vexed question that

### What is Best Size for General Use?

### SERIES OF COMPARATIVE TESTS

The tests have been made as comprehensive as possible, so that the information gained might apply to ordinary road work, and the standard road work.

The tests chosen for each and every test were standardized. The section of the test track, about 15 to 20 m.p.h., and the conditions were crowded and road rough, as in a narrow angle to determine the effect on the steering.

The "Motor Cycle" was run on a 20 m.p.h. road, loaded at a speed of 60 m.p.h., the speed over a given stretch of road, as against a speed as possible the same for each.

Follows rough secondary roads, including a rough, lumpy, left-hand bend, and a rough, right-hand bend, and a rough, right-hand bend, and a rough, right-hand bend.

Follows rough secondary roads, including a rough, lumpy, left-hand bend, and a rough, right-hand bend, and a rough, right-hand bend, and a rough, right-hand bend.

Follows rough secondary roads, including a rough, lumpy, left-hand bend, and a rough, right-hand bend, and a rough, right-hand bend, and a rough, right-hand bend.

### What is Best Size for General Use?

### SERIES OF COMPARATIVE TESTS

The tests have been made as comprehensive as possible, so that the information gained might apply to ordinary road work, and the standard road work.

The tests chosen for each and every test were standardized. The section of the test track, about 15 to 20 m.p.h., and the conditions were crowded and road rough, as in a narrow angle to determine the effect on the steering.

Follows rough secondary roads, including a rough, lumpy, left-hand bend, and a rough, right-hand bend, and a rough, right-hand bend, and a rough, right-hand bend.

Follows rough secondary roads, including a rough, lumpy, left-hand bend, and a rough, right-hand bend, and a rough, right-hand bend, and a rough, right-hand bend.

Follows rough secondary roads, including a rough, lumpy, left-hand bend, and a rough, right-hand bend, and a rough, right-hand bend, and a rough, right-hand bend.

## DODGE BROTHERS

NEW SIX MOTOR CARS Stylish Beauty

### with Proved Reliability

Attractive beauty and smart style distinguish Dodge Brothers NEW Motor Cars which are world-famous for their proved reliability.

Skilled design has achieved at once compactness, length, the appearance of looseness with ample clearance, attractive lightness and genuine comfort.

The bodies finished in painted lacquer colors, with pure, unbroken lines, and low rectangular windows, create a convincing picture of exterior smartness. Interior beauty speaks for itself in the splendid upholstery and fittings. A handsome car—with greatly increased fuel economy and proved reliability in every detail!

S. Fisher & Simmons (E.A.) Ltd.  
Victoria Street, NAIROBI.

W. SPENGLER & Co.,  
F. J. BUCK,  
KASSAN IBRAHIM & Co.,  
D. CREIGHTON-MALCOLM & Co.,  
FOWLES & WESTCOCK,  
KASSAN & Co.,



**ACCO**  
Tested Trak Chain  
Quality is Assured  
MANUFACTURE from the best of materials is not the guarantee—every "Acco Tested" Trak Chain is required to pass a rigorous test and inspection. Every chain must conform to the same high standard of quality established for all "Acco" products.

This is your assurance of quality and real value for your money. Sold by all good storekeepers, saddlers and ironmongers.

AMERICAN CHAIN COMPANY, Inc.  
New York, N.Y., U.S.A.

## For Tractors and Oil Engines!

Voco Power Kerosene is a clean, powerful, economical fuel, pure and uniform in quality, full of energy, and puts the full horse-power of your farm machinery at your command.

It is an indisputable fact that the oil and fuel you use have an important bearing on whether your operating expenses will be high or low—and most important of all, whether your work during the busy season will be interrupted by aggravating breakdowns.

The use of Voco Power Kerosene and the correct grade of Gargoyle Mobiloil in your tractor and oil engine is a guarantee against inefficient operation, unnecessary repair bills and wear and tear.

## VOCO POWER KEROSENE



VULCAN OIL COMPANY OF SOUTH AFRICA LTD.  
Distributing Agents in KENYA, UGANDA, TANGANYIKA and ZANZIBAR.

THE AFRICAN MERCANTILE COMPANY, LTD.

WANT TO LABOR NEED NOT WORRY.  
The Kenya Labour Recruiting Coy.,  
P.O. Box 749,  
Also Finance Agents and Land Brokers,  
Tel. Ad. "Recruiting."

## STOP! LOOK! LISTEN!

SALE NOW ON.  
WONDERFUL VALUE OFFERED FOR CHRISTMAS.

Ladies and Gentlemen are invited to try a visit, and inspect our stocks.

We have a very large selection of articles suitable for Christmas presents, and have marked these down to show a very large reduction.

We also hold large stocks of silks and crepe-de-chine of the latest styles. Ladies' Underwear, Ladies' and Gents' Hosiery, Gents' Silk Shirts, Evening Dresses, Jewellery and other articles.

**ALL PRICES REDUCED.**

A visit to our store will convince you of the value we offer.  
**B. Choftram,**  
NAIROBI, P.O. Box 163  
Government Road.

## Announcement

The UMBURA TRANSPORT CO. have now got a consignment of 100000 cubic feet of saw timber and are able to supply better fuel at the same price than any other firm in the district. Enquiries to be made to the undersigned at 11, Upper Hill, Nairobi.

**TRY US BEFORE GOING ELSEWHERE**

**Ukamba Transport Co.**  
Box 895, Phone 430.













# Sportex

THE CLOTH FOR "CHAMPION" THE "CHAMPION" OF CLOTHS. A Thoroughly Dependable, Hard-wearing TWEED FABRIC

— for — PLUS-FOUR SUITS, SPORTS COATS and GOLF-JACKETS.

Patterns on Application.

**Ahamed Bros.** THE HOUSE OF DISTINCTION PHONE BAZAAR, P.O. BOX 381 NAIROBI, 254

## Just Lovely for Lunch!



LIBBY'S VIENNA SAUSAGE is exceptionally fine for quick lunches. Our method of canning retains the quality and flavor of all the ingredients to a degree unequalled by any other means.

To be certain of fine flavour ask your Grocer for



THE GUARANTEE OF SUPERIOR QUALITY.

## Eat More Bread

BUT IT MUST BE

# "ELLIOT'S"

sold by

ALL THE LEADING STORES.

and from

**M. S. ELLIOT & Co. Ltd.** E.D. Box 178 Phone 66

## JUST UNPACKED

Up-to-date new lines of Sunbeam & Fieldray under wear These garments give reliable service every satisfaction it wish. You are invited to inspect our large range of effective styles in all the fashionable shades. THE MODERATE PRICES ENSURE SATISFACTION TO EVERY PURSE.

**Bon Marche** Refreshment Road, NAIROBI.

### CORRESPONDENCE.

**THE EDITOR DOES NOT ACCEPT RESPONSIBILITY for the views expressed by his correspondents in these columns and in all cases, the name and address of the writer must accompany a letter, and not necessarily for publication but in order that it may be sent to the Editor if it is not published.**

#### A NAIROBI RAILWAY DABOER.

To the Editor, "The Standard": Sir—It is known that the Government are anxious for the construction of a new station at Nairobi which the Railway Temporary quarters and Nairobi Institute will be removed. As all railway workmen pass over the railway lines from day to day and come from the houses to work to work which is always dangerous for them, because of the railway track, it is suggested that the temporary quarters should be made to include the Institute and the Railway station. It is suggested that the temporary quarters should be made to include an extension to the Railway station to be made to the Nairobi Institute and the Railway station. It is suggested that the temporary quarters should be made to include an extension to the Nairobi Institute and the Railway station. It is suggested that the temporary quarters should be made to include an extension to the Nairobi Institute and the Railway station.

**INDIAN RESERVATIONS—WILSON REPORT.** Sir—The Indian Public of Nairobi was notified of a meeting at the Theatre Royal on Monday, 29th inst. There was to be a discussion on the subject of "The Indian Reservations" in the Wilson Report was also invited.

Mr. Doss stated that as a result of his investigation, which he had made in Nairobi, he had found that the Indian Public of Nairobi was notified of a meeting at the Theatre Royal on Monday, 29th inst. There was to be a discussion on the subject of "The Indian Reservations" in the Wilson Report was also invited.

**KEVUO CIRCUMCISION.** To the Editor, "The Standard": Sir—My wife has an opportunity to go to Kevu to circumcise her children. I am writing to you to see if you can help me in this matter. I am writing to you to see if you can help me in this matter.

**THE LUMBA HERB.** To the Editor, "The Standard": Sir—The Lumba Herb is a very valuable medicinal plant. It is found in the Lumba region of the East African Highlands. It is a very valuable medicinal plant. It is found in the Lumba region of the East African Highlands.

**INDIAN RESERVATIONS—WILSON REPORT.** Sir—The Indian Public of Nairobi was notified of a meeting at the Theatre Royal on Monday, 29th inst. There was to be a discussion on the subject of "The Indian Reservations" in the Wilson Report was also invited.

Mr. Doss stated that as a result of his investigation, which he had made in Nairobi, he had found that the Indian Public of Nairobi was notified of a meeting at the Theatre Royal on Monday, 29th inst. There was to be a discussion on the subject of "The Indian Reservations" in the Wilson Report was also invited.

**KEVUO CIRCUMCISION.** To the Editor, "The Standard": Sir—My wife has an opportunity to go to Kevu to circumcise her children. I am writing to you to see if you can help me in this matter. I am writing to you to see if you can help me in this matter.

**THE LUMBA HERB.** To the Editor, "The Standard": Sir—The Lumba Herb is a very valuable medicinal plant. It is found in the Lumba region of the East African Highlands. It is a very valuable medicinal plant. It is found in the Lumba region of the East African Highlands.

**EDUCATION COMMITTEE.** Sir—The Education Committee is holding a meeting at the Theatre Royal on Monday, 29th inst. There will be a discussion on the subject of "The Indian Reservations" in the Wilson Report.

**INDIAN RESERVATIONS—WILSON REPORT.** Sir—The Indian Public of Nairobi was notified of a meeting at the Theatre Royal on Monday, 29th inst. There was to be a discussion on the subject of "The Indian Reservations" in the Wilson Report was also invited.

**KEVUO CIRCUMCISION.** To the Editor, "The Standard": Sir—My wife has an opportunity to go to Kevu to circumcise her children. I am writing to you to see if you can help me in this matter. I am writing to you to see if you can help me in this matter.

**THE LUMBA HERB.** To the Editor, "The Standard": Sir—The Lumba Herb is a very valuable medicinal plant. It is found in the Lumba region of the East African Highlands. It is a very valuable medicinal plant. It is found in the Lumba region of the East African Highlands.



# ERASMIC

The Dainty SOAP

Fragrant and Refreshing Best for the Complexion

### SAVE 5/- IN THE £

ORDER YOUR FURNITURE DIRECT FROM OUR FACTORY.

EASY MONTHLY PAYMENTS. Special Terms to Civil Servants.

**B. H. Myers & Co. Ltd.** THE CHEAPEST HOUSE IN NAIROBI. Phone 243 Govn. Road, E.D. Box 461.

There is no Brandy like **COGNAC Brandy** and **NO COGNAC BRANDY LIKE MARTELL'S**

Stocked by all high-class Hotels and wine-merchants. Representatives—

GENERAL AGENTS, Ltd. IDRA BUILDINGS, Govn. Road, NAIROBI.

**WHY IS A QUININE-CURED INDIVIDUAL STILL INFECTIOUS?**

Because the source of malaria infection in the blood, the so-called gametocyte germ is not removed by quinine, and consequently mosquitoes can spread the disease.

PREVENT MALARIA by using **Plasmodin Comp.** Bayer Malaria Tablets. Obtainable through all Leading Chemists.

**General Grocery Co. Ltd.** formerly KENYA GROCERY CO., Ltd. WHOLESALE PROVISION MERCHANTS. All leading Brands and Provisions always in stock.

Prices on Application. P.O. Box 922, NAIROBI. Phone 496.

# MATHER & PLATT LTD.

Manufacturers of—**ELECTRICAL MACHINERY, PUMPS FOR ALL PURPOSES; WATER STORAGE TANKS, FIRE FIGHTING EQUIPMENT.**

FIRM'S TECHNICAL ENGINEER RESIDENT IN THE COUNTRY. Advice and Estimates for Electrical and Hydraulic schemes, etc. given.

Sole Agents:—**Smith, Mackenzie & Co., Box 399, NAIROBI.**

## WHY BUILD TO BURN?

# GYPROC

FIRE-PROOF WALLBOARD FOR PARTITIONS AND CEILINGS.

Messrs. SMITH, MACKENZIE & Co., P.O. Box 399, NAIROBI.

**AUCTION SALES.**



**Miscellaneous Goods.**

I am instructed, we shall sell by PUBLIC AUCTION, WITHOUT RESERVE, at our Salerooms, Mutes Building, Nairobi, **TO-DAY, OCT. 30th at 10 a.m.**

2 Burner Oil Stove and Oven, 9 Galvanized Iron Bath, Shanks Lawn Mower, Wheelbarrow, Trestle Table, Coir Matting, Lino, Enamel Toilet Set, Kitchen Utensils, Set of Sponges, Detergers, Glassware, Coffee Percolator, Butter Churn, Novels, Pictures, Double-hand Cutting Helms, Four Tins Each Twenty Pounds Ground and Roasted Coffee (low row), Fruit Jellies, Scripps-Booth 2-seater Sports Model Motor Car, Etc., Etc.

**MUTER and OSWALD Ltd., Auctioneers, NAIROBI.**



**SALE OF ENGINES, SAWMILLING MACHINERY and MISCELLANEOUS GOODS.**

Duly instructed by Messrs. The Equator Sawmills, we shall sell BY PUBLIC AUCTION, at their yard in Sadler Street, Nairobi, on **FRIDAY, NOV. 1st at 10 a.m.**

"Lans" Portable Steam Engine. Boiler Locomotive overhead type, nominal h.p. 25-30. Engine single cylinder double flywheel and fitted with super heater. (Note—This engine has been running the entire Nairobi Mill and is only being sold subject to a very low reserve on account of the installation of electricity.)  
"Robey" Portable Steam Engine, Boiler Tubes.  
"Robinson" 17" four outer planing and Moulding Machine with sliding cutters and spares.  
Mortising Mach. Planer Blocks, Bearings, Fire-bars.

Three Glass quarter inch factory Glass—wire nesting rein-  
forcement.  
Circular Saw (new) 18", 10", 8", 6", 4", 3", 2", 1" & 1/2"  
Hand saws, 12 Holes Hand saws, 100 Holes T'wines,  
Eight Heavy Bar Iron Engines, 8" high by 8" x 1 1/2" through  
top; 16 compartments in varied sizes.  
3 Cases Diaphrane Records, Steel Drums, 4 Cases  
Cedar Window Frames, Set of Sponges Helms, 3 Cedar  
Doors, Brush Handies, Three Lamps 16" x 3" Shattering  
One Dean 5" Planing Blocks, Pulleys, Motors, Truck  
Chairs, Concrete Road, Rotary Pump No. 5, Several  
Lengths of Steel Rails, Baston Doors.

**MUTER and OSWALD Ltd., Auctioneers, NAIROBI.**



**FOR SALE!**

**RUARAKA FREEHOLD PROPERTY of 16.8 acres:** five frontage, 6 miles from Nairobi House, with **STONE RESIDENCE** the accommodation of which consists of Drawing Room; Dining Room; Two Bed-rooms; Dressing; Bath; Kitchen; Washroom; Kitchen, Stores, etc.; Garage for two cars; and other outbuildings; GARDEN well laid out with large range of **FRUIT TREES**, etc.; high fences, regular electricity income. Electric light can be laid on. **PRICE £2,200** on which terms can be arranged.

**TO LET.**

**FURNISHED HOUSE** in Parklands; Accommodation: Dining Room; two Bed-rooms; two Bathrooms; Bathroom; Store and Kitchen for period of Four Months, £12 per month.  
For further particulars of the above and other properties, apply to—

**MUTER and OSWALD Ltd., Estate Agents, NAIROBI.**

**A. J. ELY & Co., Ltd.**

Blankets, Chemises, NAIROBI.

**TO COFFEE GROWERS:**  
White non-absorbent cotton wool in bales lots, at fine prices.  
**TO SHEEP FARMERS:**  
Carbon Tetrachloride, in gallon jars. Price 2/6.

**Hussein Suleman, Verjee & Sons.**

IT ALWAYS PAYS TO BUY FROM SPECIALIST, AND SO SAVE YOUR TIME AND MONEY BY BUYING FROM US. We Specialize in Hardware, Building Materials, Tools.  
Large quantity of C.I. Sheets and Expanded Metal now Available. Prices on Application.  
Phone 264, Corner Victoria Road, NAIROBI.

**AUSTIN'S AUCTIONS.**

CATALOGUE SALE OF WARDROBES, BEDS, DRESSING CHESTS, DINING TABLES, CHAIRS, CHESTERFIELD SUITES, DESKS, GRAMOPHONES, RECORDS, SERRAVALLO'S NOVELS AND VARIOUS OTHER ARTICLES

at THE MART, on **SATURDAY, NOV. 2nd at 10 a.m.**  
Further details later.  
**AUSTIN & CO.,**  
Auctioneers and Estate Agents,  
Hardings St. NAIROBI.

**SANDS & CO.,**

AT OUR RAILWAY SALEYARDS,  
**TO-DAY, OCT. 30th at 11-30 a.m.**

**36 COWS with Calves at feet.**  
**2 DOGS SLAUGHTER STEERS.**  
ONE MUNICIPAL POUND  
1 OX  
3 GOATS.  
1 DOG.  
1 DUCK.  
Further entries invited.

**SANDS & CO.,**  
AUCTIONEERS.

**SANDS & CO.,**  
**Land & Sale**

AT OUR SADDLERS ST. PREMISES.

**Saturday, Nov. 25th at 11 a.m.**

Acting on instructions from the Executors of the late Mr. F. G. Anderson, we will sell WITHOUT RESERVE.

**A VERY EXCELLENT FARM IN THE GILGIL DISTRICT.**  
Land Office No. 1298/R. Acreage 2200 acres. 80 acres lease at an annual rental of Sh. 544 Cents 3/4. The farm is a very fine mixed farm with approx. 250 acres well fenced and watered.  
Buildings comprise good stock house with C. iron roof containing a gaiting room, 3 bedrooms, bathroom, pantry, etc. 2 rounded guest houses.  
Bathes containing 8 loose boxes and harness room.  
Big well-stored wheat store, cattle sheds, horse's and paddocks.  
The farm has a frontage on the Gilgil River of approx. 6 miles and is well supplied with the best water which runs the length of the farm during a 10 mile proportion for cultivation.  
The farm is situated 16 miles from Gilgil on the Gilgil-Buruuri West Road.  
Further particulars will be supplied by Mr. Le Hignac-Smith who has the adjoining farm or by the Auctioneers. The Auctioneers can thoroughly recommend the farm and the district.

**SANDS & CO.,**  
AUCTIONEERS.

**HONEY**

**Airborne Honey**

**The Health Food.**

The Best New Zealand Honey  
Therefore the Best in the World.  
Give it to the Kiddies  
Recommended by the doctors.  
Ask your grocer for it and see you get AIRBORNE.  
**Sands & Co.**  
WHOLESALE AGENTS.

**FOR SALE**

One Garrett Steam Engine, 118 H.P. in good running order, adapted for fuel oil, together with a large range of spares, including new boiler shell.  
One Bijeli Baling Press with spares.  
One Renault Tractor.  
Five miles (approximate) 12-lb light rails, all used and in good condition.  
Can be inspected on the Estate.  
Apply.—THE MANAGER,  
KILIFI PLANTATIONS, Ltd.,  
P.O. TAKAUNGU.

**Kenya Loan & Discount Co., Ltd.**

P.O. Box 546, NAIROBI.  
OFFICE—1st Floor, Court Chambers.  
**FINANCIAL AGENTS.**  
Bills Discounted. — Short-period Loans Granted.  
Any reasonable Asset mortgaged for Cash.  
Call or Write. STRICTEST CONFIDENCE.  
ESTABLISHED 1921.

**MACHINERY FOR SALE**

- 1 Quadruple Eject Evaporator, 6,000 square feet heating surface (without pump).
- 1 Triple Eject Evaporator, 2,500 square feet heating surface, copper vessels, bronze tube plates (without condenser and air pump).
- 10 Crystallizers (enclosed type) complete—capacity 1,000 cubic feet each.
- 1 Watson Laidlaw's Centrifugals, 30in. x 14in., belt driven, with sugar condenser and mixer.
- 2 Newhall Steam Granulators by Mirreux Watson Company—5 1/2" diameter x 20ft. long, complete.
- 1 Gull Vacuum Pan—capacity 10 tons masticulate with output pump and condenser.
- 1 Vacuum Pan, 7ft. diameter, copper done reinforced with T iron ribs. Three belts (1 cast iron and 2 copper), measuring together 5ft. 8in. high. Three 4in. coils. Wet pump with engine. Approximate capacity 15 tons masticulate.
- 1 Two-Stage Steam Drive (Marsh) Air Compressor, 14in. x 18in.
- 6 Plate and Frame Filter Presses, 32 plates, 30in. x 30in. each.
- 2 Multi-cylinder Steam Boilers.
- 1 3-5 Ton Six-wheeled Guy Lorry, 38 horse power. Almost new and in good running order.
- 2 Case Tractor and engine.

For further particulars apply to—  
**The Tongaat Sugar Company, Ltd.**  
P.O. Box 94, DURBAN or TONGAAT.

**Watts "Mirror" Blades**

Universally acknowledged to be the finest produced. KEENER EDGES, SMOOTHER SHAVES. — LONGER SERVICE. — Made in Sheffield, England, by a firm established over 150 years.

WATTS MIRROR Blades are revolutionizing Safety Razor Shaving. They will be wanted at the rate of 100,000,000 per year.

They are made from the very finest steel obtainable, with patented and exclusive Plant, conjointly with the highest skilled operatives, following years of patient research and experiment. At every stage, of manufacture they are subjected to a very rigid inspection.



**FOR AUTOSTROP HOLDERS.**  
HOLD FIRM TO HIS SHOULDERS.  
FOR GILLETTE HOLDERS.  
Each package is wrapped in TRANS-  
PARENTE MIRROR which is air,  
grass and other proof.  
Shs. 6/- per packet.

Is Patent System included contains 10 blades.  
From All Branches of KODAK (K.A.) Ltd.  
Kenya, Uganda and Tanganyika.  
Agents—



**THE TOOL HOUSE**

NAIROBI.

**JUST ON HAND**

Great consignment of LADIES PLAIN and STRIPED SILK DRESSES in smartest colors and attractive styles. Exceptionally New Designs. INSPECTION CORDIALLY INVITED.  
**Ladharam Stores**  
(Ladies and Gents Expert Tailors)  
P.O. Box 516 Gort. Road, NAIROBI.

**Our Sale Opens.**

On **30th. October,**  
LADIES and GENTS SHOES, in Great Variety.  
PRICES TO SUIT ALL.  
**De Luxe Boot Co.**  
Gent. Road, NAIROBI.

**IN HIS MAJESTY'S SUPREME COURT OF KENYA**

AT NAIROBI.  
In Bankruptcy. No. 46 of 1922.  
Re: David Silver—Foster. of Mchakos Debtor.  
NOTICE OF ADJUDICATION.  
Date of Adjudication— 23rd October, 1922.  
Note—All debts due to the estate should be paid to me.  
B. STONE,  
for Official-Receiver.  
Dated 26th October, 1922 P.O. Box 231, Nairobi.

**50 Cars to Select From 50**

**Godfrey's Car Mart**  
SADLER STREET  
**USED CARS.**

Dodge Six Body, In good running order, spacious body, a new oil  
Bask (Standard 6) Box Body, A really good proposition. Perfect mechanical condition. \$120  
Bask (standard 108 model). Fully equipped including Lorry shock absorbers. Small machine. Virtually new condition. A remarkably low price. \$240  
Body Box Body, running order, and in good running order.  
Chevrolet 50, Box Body, Recently overhauled, smart appearance, new and reliable. \$120  
Chevrolet, 50 Torque, Standard and Radioed. This is a really attractive proposition. Perfect from runner to back seat. \$120  
Chevrolet Truck, 4 cyl. 1000 model. 4 gears, 4 wheel brakes. Small machine, \$240  
Ford Torque, 2 small, light, new and reliable. \$120  
ARIEL, DOUGLAS and OTHER MOTORCYCLES. CAR INSURANCE ARRANGED.

BREAK-DOWN TRUCK (with crane) available say time at distance.  
New and Second-hand Spares for all makes of cars. NEW TYRES at CLEARANCE PRICES. CARS FOR HIRE WITH DRIVER or DRIVE YOURSELF.  
Phone 143  
Box 72  
**W. M. GODFREY,**  
Sole Proprietor.

**Property for Sale**

One acre Building Plots from £100 upwards.  
Four up-to-date Stone Houses containing 3 large rooms, etc., reasonable deposit, balance on mortgage.  
**TO LET**  
Stone House, 4 large rooms, etc., Kilimani.  
Stone House, 5 large rooms, etc., Westlands.  
Three Ground Floor Offices.  
Apply—

**Denovan & Diebel**

City House NAIROBI.

**Removal Notice**

**BROWN & BARRATT**  
REAL ESTATE and GENERAL AGENTS  
have removed to

**Royalty House**

11, GOVERNMENT ROAD, NAIROBI.  
Telephone 147 P.O. Box 687

**Advice to Purchasers**

Don't get your Furniture broken send it Home by **Reliance**

**Reliance Transport Co., Ltd.**

Telephones 231 817 Bolus House, P.O. Box 466  
617 Government Road,

**Now on Sale**

THE "EAST AFRICAN STANDARD" KENYA & UGANDA DIARY. - 1930. - CONTAINING FEATURES USEFUL TO THE SETTLER  
Size: 10 x 8 inches — 3 Days to page  
Without Blotting Paper — 5 Shs. 3/6d. post paid  
Interleaved Blotting Paper — 5 Shs. 6/- post paid  
**Standard Stationery Store**  
P.O. Box 336 NAIROBI.

**Sociability**

When the heat and burden of the day have passed, there is nothing so refreshingly friendly as a peg of "LONG JOHN" Scotch Whisky.

Characteristically pure and mature.

**"LONG JOHN" SCOTCH WHISKY**

**SPECIAL PRICE**

**Messrs FOSTER & BLOWERS**

Have pleasure in announcing their numerous Clients that, as from FRIDAY, 1st November 1922 PRICES of Beef, Mutton and Pork Meats will be REDUCED by 10 per cent. on present CASH and MONTHLY ACCOUNTS PRICES.

NONE but the BEST GRADE QUALITY of BEEF, MUTTON and PORK stocked.

ALL reasonable Fruits, Vegetables and DAIRY PRODUCE always available at LOWEST PRICES.

**FOR SALE WHEAT MEAL**

GROUND WHOLE WHEAT

Price Shs. 16/- per 200 lbs.

To increase the value of your employees labour, To improve the boys' health, To make the labour satisfied.

USE WHEAT MEAL.

Apply—  
Kenya Farmer's Association Ltd.  
P.O. Box 35, NAKURU.

**The Lake Garage NAIVASHA.**

Will be opened from 1st NOVEMBER, 1922 UNDER ENTIRELY NEW MANAGEMENT.

Chevrolet, Ford, Fiat, Farbanker Morse  
Cars & Trucks, Tyres, Oil Engines,  
EDYSTONE WIRELESS SETS,  
PETROLS — OILS — GREASES,  
REPAIRS CAREFULLY EXECUTED.  
F. M. JOSEPH, Proprietor.

**B. E. A. SAW MILLS**

Telephone No. 93 P.O. Box 251  
Telegram: "Beam," Nairobi.

Campoor, Podo, Mweri and Muna.  
Flooring, Ceiling and Mouldings

**A Happy Ending to any meal!**



—To crown a good dinner —  
"My Lady" Fruit, there's no more suitable climax to the menu, for only the finest of the five grades of canned fruit bears the name "My Lady."

Not only is delicious flavor, but in their richness in vitamins "My Lady" Fruit are the equals of the finest fresh fruit obtainable. This has been proved by scientific tests.

For food value and for supreme goodness choose "My Lady" Fruit. Do not be content with inferior brands—look for the label on the tin.

**"MY LADY" CANNED FRUITS FOR PARTICULAR PEOPLE**

25 DELICIOUS VARIETIES —

*Fruit Salad, Luscious Strawberry Short-Cakes, Juicy Pineapple, Creamy Fruit Flavour, Orange Marmalade, Raspberry, Cherry, Cream-Custard, Peach, Apple, Raisin and Raisin-Peach.*

Always water in a tin. (See label for full particulars.)

**Tennis Rackets Restring at MAY & CO. LTD. by Expert European.**

**SPORTS and PASTIMES.**

**KENYA BRAHMA SABHA**

**Commercial 2nd XI Reaters.**

**A TEN WICKETS VICTORY**

The Kenya Brahma Sabha Cricket Club says The Commercial 2nd XI Reaters beat the Indian Gymkhana Reaters by 10 wickets. The following are the scores:

**Commercial.**  
First Innings:  
Nehring b Dave 4  
Thompson 1 b Dave 4  
Walker & Dave 0  
Barnes & Ashby b Dwan 1  
Alkison 1 b Dave 0  
Seymour b Dave 0  
Boddy b Dave 0  
Solly b Dave 0  
Hartley & Shikha b Dwan 10  
Hartley & Shikha 10  
Jaynt out 1  
Extras 1  
Total 45

**Reaters.**  
O. M. R. W.  
Dwan 11 4 15 2  
Dive 11 4 15 2

**Second Innings.**  
Makwana c Barnes b Nehring 1  
Blatt c Hartley b Alkison 15  
Shikha, c Medlicott b Alkison 0

**Commercial.**  
Yalqin b Seymour 1  
Dive c Thompson b Nehring 1  
Pavikam b Nehring 1  
Dwan c Walker b Nehring 1  
Punnambal c Nehring 1  
Barnes 1  
Shasthal not out 10  
Hartley b Alkison 1  
Ashby & Solly b Barnes 1  
Extras 1  
Total 84

**Reaters.**  
O. M. R. W.  
Alkison 14 7 28 4  
Boddy 9 1 18 2  
Seymour 9 1 18 2  
Barnes 5 1 10 2

**CRICKET IN UGANDA.**

**Koh's Beaters by Combined Athletics.**

**TATHANA'S OFFICE TO PULL GALE BOOED.**

[FROM A CORRESPONDENT.]  
Established, October 26.

Owing to the Kaka failure, having again been postponed a match with the Combined Athletics was arranged in its place and was played last Sunday.

The Athletics won the toss and opened with Kohler and Shah to the bowling of Tyte and Weaver in their first over. Lolo joined Kohler and only in his middle gate an easy chance of Tyte, which was not accepted. Kohler, in trying to send a straight one to the wicket, was bowled, and was cleaned bowled. Macarunas and Lolo batted cautiously and runs were very slow in coming due to the excellent bowling which allowed no liberties to be taken until the latter was nearly out. Behind the wicket after having committed 22 runs. Condie sent them Hooper took over from Weaver at the Club end. Burns over for 3 runs. The score was 88 for 3 wickets.

On the resumption the century was passed and soon after Kohler, b Weaver 12  
Shikha, b Tyte 11  
H. F. Lobo, c Kathan, b Macarunas, c and b Williams 23  
Makwana, c and b Williams 22  
Amambishi, c Tyte, b Williams 20  
Pavira, c and Weaver 2  
Hartley 0  
Condie b Weaver 4  
Joe D'Souza, c Williams, b Weaver 4  
H. E. Dias, not out 7  
Extras 1  
Total 116

**Uganda Koh's**  
Hooper, c J. D'Souza, b Tyte, c Lobo, b Shah 0  
Tyte, c Lobo, b Shah 0  
Shikha, b Lobo, b Kohler 11  
Barnes, c and b Kohler 20  
Weaver, c Shah, b Kohler 40  
Lalage, c and b Shah 20  
Tathana, c and b Kohler 2  
Kathan, b Shah 10  
Hart, run out 10  
Walker, b Kohler 10  
Shaw, not out 10  
Extras 1  
Total 116

Shah, who had scored 20 in a very short time, succumbed to a splendid catch by Williams who had bowled to him the bowling from Tyte. The fourth wicket produced 24 runs but the next four batsmen could only get 4; the last wicket was scored 11 and the innings closed for 116 runs.

Williams 3 for 16; Kohler 8 for 15; Tyte 1 for 42; Weaver 1 for 15.

The Koh's, who opened with Hooper and Tyte, must have looked forward to an easy victory, but the bowlers of the Athletics were certainly warned. Lolo's charm, first ball, was a splendid one. He had scored his account in Kohler's first over and the latter was bowled in the next over from behind the stumps. The latter was bowled by the latter was unlikely to grow back to what opportunity given him by a doubtful appeal; Weaver, on the other hand, was bowled by a hand which was beaten by an appeal from behind the stumps. Kohler did not stay long and things looked gloomy for the Koh's while 6 wickets down for 26. Tathana and Weaver, however, changed the complexion of affairs and looked like pulling the game out of the fire. Several changes were effected in the bowling and for over an hour the two batsmen held their own, but at last Kohler succumbed. Tathana with good luck had a boundary and played a splendid innings of 20 runs. Lolo, who scored after the wicket falling, contributed 10 runs, the total for the innings being 116.

Reaters: Kohler 2 for 20, Shah 1 for 20, Condie 0 for 1.

The scores —

**Commercial.**  
Hooper, c Weaver 12  
Shikha, b Tyte 11  
H. F. Lobo, c Kathan, b Macarunas, c and b Williams 23  
Makwana, c and b Williams 22  
Amambishi, c Tyte, b Williams 20  
Pavira, c and Weaver 2  
Hartley 0  
Condie b Weaver 4  
Joe D'Souza, c Williams, b Weaver 4  
H. E. Dias, not out 7  
Extras 1  
Total 116

**For Health**  
GO TO  
**South Africa**  
And take a breath of  
**"UNION" AIR**  
**EQUABLE CLIMATE**  
**UNRIVALLED SCENERY**

For further particulars apply to  
**THE SOUTH AFRICA OFFICE**  
MEMORIAL HALL,  
108, G.S.A.  
NAIROBI.

**SHERRY**

**SOLANO—Medium dry.**  
**AMONTILLADO—Light, pale and very dry.**  
**WALNUT BROWN—dark, full-bodied and soft.**  
**DRY SACK—**an unique wine of superb character, medium dry.

Shipped by Messrs. Williams and Humbert  
Sole representatives—  
**Emile Jardin et Cie.**

**Vinolia**

**PREMIER SOAP**

Good to wash? To feel life glowing through your skin? You can't wash your face and hands without Vinolia soap. It's the most refreshing soap in the world.

The most refreshing soap in the world.

**MAKE A NOTE —**  
**F. M. BHAIJEE**  
**ROYALTY HOUSE,**  
Government Road,  
**Is Your Hardware House.**

**THE WORLD'S LARGEST PRODUCER OF RUBBER PRODUCES THE WORLD'S FINEST TYRE.**

**THE NEW U.S. ROYAL**

**Multiplies Belting**  
for HEAVY & UNEVEN LOADS

**CARR, LAWSON & CO., LTD.,**  
ELDRON, NAKURU, NAIROBI, KITALE, KAMPALA.

**Sale!**

**NOW ON RECORD KEEPING SALE**

You might have visited many SALES, but we recommend you to visit once our **RECORD KEEPING SALE**

**ROCK BOTTOM**  
Reduced prices throughout

Come and have a glance.

**KALA SIDI**  
GENERAL MERCHANT,  
GOVERNMENT ROAD,  
NAIROBI.

Agents and Stockists—  
**SMITH, MACKENZIE & COMPANY,**  
P.O. Box 290, NAIROBI. Phone 268

# Shaw & Hunter Ltd.

Double Barrel Shot Guns from 150", Rifles from 280/ including Mauser .256, .275, 9.3 mm. etc. A varied range of second-hand weapons. The new Ray-O-Vac 1,000 feet beam flashlight in a crackerjack. Accessories of every description, and some that beggar description.

## Shaw & Hunter Ltd.

Box 70, NAIROBI.

## CHARLES WARE.

TUPE ACCOUNTANT.

(Established 25 years) Tel. Ad.: "Sportman." Box 179, NAIROBI.

## TODAY IS THE RACE.

6/1 Alford; 9/1 The Mamba; 10/1 Yonama; Pinks Royal 14/1 (Ghosh Train, Boppy); 16/1 Mahad Bahad; Double Lulu, (Ghosh Train); 20/1 The 20/1 Gang Wally; Calabona; Guards Parade; Wolome Gh; Nistic; Vator; 25/1 to 40/1 others.

LIVEWOLF AUTUMN CUP, 1 mile 2 furlongs 170 yards, run November 28.

CREDIT ACCOUNTS ON APPROVED REFERENCE ONLY OR CASH.

NO REPLY DISTINCTLY MEANS NO BUSINESS.



EVERY-THING FOR THE KITCHEN.

**J.H.S. Todd & Co. Ltd.**  
GENERAL MERCHANTS - NAIROBI.

**Maurice Rosenzohn**  
F.O. Box 611. P.O. Box 100. NAIROBI.

CAMBRIDGE SHIRE STAKES 1 mile 1 furlong Run today— 6/1 Alford; 9/1 The Mamba; 10/1 Yonama; 14/1 Boppy; 16/1 Mahad Bahad; Double Lulu; (Ghosh Train); 20/1 The 20/1 Gang Wally; Calabona; 25/1 to 40/1 specials others.

DEWURTH STAKES, 1 furlong, Run Oct. 31.  
LIVERPOOL CUP, 1 mile 2 furlongs 170 yards, Run Nov. 28.

# FIREARMS

We carry large and varied stocks of RIFLES, REVOLVERS, PISTOLS and SHOTGUNS, made by the world's foremost makers.

Our stocks of AMMUNITION rank among the largest and most comprehensive in Africa.

Ask for our Catalogue.

**May & Co. Ltd.**  
The Sports House  
NAIROBI.

# CARTRIDGES

# THE SPORTS PAGE

## "E. A. Standen" Special Club Services.

### THE CAMBRIDGESHIRE.

Latest London Betting Prices.

### ATFORD FAVORITE.

["WARREN"] CORRESPONDENT.  
London, October 29.  
The following were the prices at the meeting at the Cambridge, to be run today:

15/1 Alford.  
10/1 Yonama.  
10/1 Ghosh Train, and Mahad Bahad.  
20/1 Pinks Royal and Boppy.  
20/1 E. G. G. and Double Lulu.  
25/1 Boppy's 20/1.  
25/1 N.P.B. Cheerful about Calabona.  
The "Bucky Times" is too much for the Mamba, it is anticipated as a doubtful starter, in which case Fox will win Calabona.

LIVEWOLF AUTUMN CUP, 1 mile 2 furlongs 170 yards, run November 28.

CREDIT ACCOUNTS ON APPROVED REFERENCE ONLY OR CASH.

NO REPLY DISTINCTLY MEANS NO BUSINESS.

## International Football.

### ENGLAND AND COLOMBIA TO MEET.

Tonight the third and last of the international for the West will be played at the Coliseum ground. The match will consist of five 9's.

England, team will play in white and blue, while the Colombia will play in red and white. The match will be played on the ground. The following are the players who are expected to bring their club shirts with them to the match.

In order to avoid a repetition of the incident which occurred at the match between the South and Colombia, a player unable to turn out will be unable to form part of the team.

The following are the teams: England: Hartley, Braham, Dimes, and Little; Dullay, Chalm, Burton, Dimes, and Little; Dullay, Chalm, Burton, Dimes, and Little.

Colombia: Thompson, Chapman, and Hall; Nistic, Council, and Wallagrove; Boppy, Calabona, and Ghosh Train.

## Local Cricket.

### TEAMS FOR WEEK-END MATCHES.

The following are the teams for week-end matches in cricket matches. Sports Club in cricket matches.

At Parklands on Saturday, at 11.30 a.m., H.K. Club, Ch. Vans, Danager, Dodd, Loom, Moore, Blakely, Braham, Dimes, Thompson and Wood. H.K. Club.

At the Civil Service on Saturday, at 11.30 a.m. (C.P. Match)—Thompson (Capt.), Wood, H.K. Club, H.K. Club, Grewer, Erwin, H.K. Club, and Speight.

## South African Cricket Team.

["E. A. Standen" Special Club Services.]  
South African Cricket Team.

## SURPLUS FROM ENGLISH TOUR.

["WARREN"] CORRESPONDENT.  
Manchester, October 29.  
At a meeting of the South African Cricket Association in Johannesburg was reported that there was a surplus of £200 from the recent English tour.

With regard to the proposed tour in Australia, a South African cricket team to Australia has been guaranteed a sum of £500.

## MUTHIGA GOLF CLUB. A SPORTSMAN'S WINDOW.

Door Fight for President's Trophy.

LADY CAPTAIN'S PRIZE.

### CURRENT EVENTS REVIEWED.

The forthcoming challenge of the Muthiga Golf Club is a tournament towards the close of the season. It is a most interesting in the minds of the public. The Muthiga has definitely agreed to fight, and I am very glad that it is so. The trophy is a most valuable one, and the Muthiga field some months ago had a narrow defeat. It failed to yield readily to treachery, and the Muthiga has been looking for improvement, this comes about. Training has been booked in all circumstances in each case, the "fans" have a real treat in store.

It is probable that some alteration in the date of the tournament will take place. The date originally fixed was on November 20. Unfortunately, this clashes with the Calabona Society dinner. It is probable that some alteration in the date of the tournament will take place. The date originally fixed was on November 20. Unfortunately, this clashes with the Calabona Society dinner.

Another S. A. Tour!  
The tour of the Calabona by other sporting bodies would appear to be a real and a most interesting one. It is a most interesting one. It is a most interesting one.

SECOND PRACTICE ON FRIDAY.  
The "Old War Horses" are to hold another practice on Friday evening on the Calabona ground at 8 o'clock. It will be the second practice of the season. The first having taken place on Monday evening. The first having taken place on Monday evening.

OFFICIAL SCORING.  
The Jockey Club of Kenya is to hold the following arrangements: "GLITTER" from all engagements (dead).

KING STOKER from all engagements. Eldon November Meeting.

SPORTS DIARY.  
October 31: Kenya Rugby Union Meeting. Nairobi, 8.30 p.m.  
November 1: Kenya Girls Club Final. Nairobi, 7.30 p.m.  
November 2: Muthiga Golf Club Ladies' Practice. Nairobi, 10.30 a.m.  
November 3: Muthiga Golf Club, Meriton. Nairobi, 10.30 a.m.  
November 4: Muthiga Golf Club, Meriton. Nairobi, 10.30 a.m.  
November 5: Muthiga Golf Club, Meriton. Nairobi, 10.30 a.m.  
November 6: Muthiga Golf Club, Meriton. Nairobi, 10.30 a.m.  
November 7: Muthiga Golf Club, Meriton. Nairobi, 10.30 a.m.  
November 8: Muthiga Golf Club, Meriton. Nairobi, 10.30 a.m.  
November 9: Muthiga Golf Club, Meriton. Nairobi, 10.30 a.m.  
November 10: Muthiga Golf Club, Meriton. Nairobi, 10.30 a.m.  
November 11: Muthiga Golf Club, Meriton. Nairobi, 10.30 a.m.  
November 12: Muthiga Golf Club, Meriton. Nairobi, 10.30 a.m.  
November 13: Muthiga Golf Club, Meriton. Nairobi, 10.30 a.m.  
November 14: Muthiga Golf Club, Meriton. Nairobi, 10.30 a.m.  
November 15: Muthiga Golf Club, Meriton. Nairobi, 10.30 a.m.  
November 16: Muthiga Golf Club, Meriton. Nairobi, 10.30 a.m.  
November 17: Muthiga Golf Club, Meriton. Nairobi, 10.30 a.m.  
November 18: Muthiga Golf Club, Meriton. Nairobi, 10.30 a.m.  
November 19: Muthiga Golf Club, Meriton. Nairobi, 10.30 a.m.  
November 20: Muthiga Golf Club, Meriton. Nairobi, 10.30 a.m.  
November 21: Muthiga Golf Club, Meriton. Nairobi, 10.30 a.m.  
November 22: Muthiga Golf Club, Meriton. Nairobi, 10.30 a.m.  
November 23: Muthiga Golf Club, Meriton. Nairobi, 10.30 a.m.  
November 24: Muthiga Golf Club, Meriton. Nairobi, 10.30 a.m.  
November 25: Muthiga Golf Club, Meriton. Nairobi, 10.30 a.m.  
November 26: Muthiga Golf Club, Meriton. Nairobi, 10.30 a.m.  
November 27: Muthiga Golf Club, Meriton. Nairobi, 10.30 a.m.  
November 28: Muthiga Golf Club, Meriton. Nairobi, 10.30 a.m.  
November 29: Muthiga Golf Club, Meriton. Nairobi, 10.30 a.m.  
November 30: Muthiga Golf Club, Meriton. Nairobi, 10.30 a.m.



Recent success at Hisey have testified to the excellence and accuracy of

## KYNCOH AMMUNITION

made in all calibres from .22 to 400.  
Kyncoh ammunition is an exact copy of a big game hunter's equipment.

The Kyncoh rifle and revolver cartridges from all the best makers. Obtainable from all the best makers.

Photo: only—Royal Institute Ltd., London, E.C.P.

## A. HOGG.

MACKENNO'S BUILDING, NAIROBI.

CAMBRIDGE SHIRE STAKES 1 mile 1 furlong Run today— 6/1 Alford; 9/1 The Mamba; 10/1 Yonama; 14/1 Boppy; 16/1 Mahad Bahad; Double Lulu; (Ghosh Train); 20/1 The 20/1 Gang Wally; Calabona; 25/1 to 40/1 others.

LIVEWOLF AUTUMN CUP, 1 mile 2 furlongs 170 yards, run November 28.

CREDIT ACCOUNTS ON APPROVED REFERENCE ONLY OR CASH.

NO REPLY DISTINCTLY MEANS NO BUSINESS.

EVERY-THING FOR THE KITCHEN.

J.H.S. Todd & Co. Ltd. GENERAL MERCHANTS - NAIROBI.

Maurice Rosenzohn F.O. Box 611. P.O. Box 100. NAIROBI.

CAMBRIDGE SHIRE STAKES 1 mile 1 furlong Run today— 6/1 Alford; 9/1 The Mamba; 10/1 Yonama; 14/1 Boppy; 16/1 Mahad Bahad; Double Lulu; (Ghosh Train); 20/1 The 20/1 Gang Wally; Calabona; 25/1 to 40/1 others.

LIVEWOLF AUTUMN CUP, 1 mile 2 furlongs 170 yards, run Nov. 28.

CREDIT ACCOUNTS ON APPROVED REFERENCE ONLY OR CASH.

EVERY-THING FOR THE KITCHEN.

J.H.S. Todd & Co. Ltd. GENERAL MERCHANTS - NAIROBI.

Maurice Rosenzohn F.O. Box 611. P.O. Box 100. NAIROBI.

CAMBRIDGE SHIRE STAKES 1 mile 1 furlong Run today— 6/1 Alford; 9/1 The Mamba; 10/1 Yonama; 14/1 Boppy; 16/1 Mahad Bahad; Double Lulu; (Ghosh Train); 20/1 The 20/1 Gang Wally; Calabona; 25/1 to 40/1 others.

LIVEWOLF AUTUMN CUP, 1 mile 2 furlongs 170 yards, run Nov. 28.

CREDIT ACCOUNTS ON APPROVED REFERENCE ONLY OR CASH.

EVERY-THING FOR THE KITCHEN.

# GET A KENSTAS FLAT FIFTY TO-DAY!

and all other... you can get the same good... in tens and twenties.