















Look for this Sign. "BP"

When you want a fill of PETROL take it from a Green Pump and "Put New Life in Your Car."

Anglo Persian Oil Co., (Kenya) Ltd.

Agents—GIBSON & Co., Ltd.

Mombasa, Nairobi, Eldoret, Dar-es-Salaam.

Phone 596. P.O. Box 217.

QUESTION? MY LADY ASPARAGUS

DOES IT PAY TO HAVE MY TYRES VULCANIZED?

YES

IF THEY ARE REPAIRED AT HARWOOD'S

Vulcanizing & Engineering Co.

Business and Residential Buildings in Eldoret. Coffee, Main, Wheat and Sugar Propositions in the Kipkaren, Turko, Plateau, Kipkaren and Burt Forest Areas.

Apply to J. McNAB MUNDELL, Approved Valuer, Real Estate, Commission and Insurance Agent. P.O. Box 56, ELDORET.

"MEALYBUG"

We supply Lime for Trials as recommended by Department of Agriculture.

Lime Limited. Tel. Limbith. Phone 408. Box 412 Chamber of Commerce Bldg.

LETTS OFFICE AND POCKET DIARIES

1930. Pocket Sizes ... Shgs. 1/50 to Shgs. 10/50 Office Sizes ... Shgs. 0/25 to Shgs. 1/1

SYSTEM Desk Calendars

1930. Complete ... Shgs. 8/-, Posted Shgs. 9/50 Retailly only ... Shgs. 5/-, Posted Shgs. 5/10

PILOT Desk Calendars

1930. Complete ... Shgs. 6/50, Posted Shgs. 8/- Retailly only ... Shgs. 3/75, Posted Shgs. 4/15

Standard Stationery Stores, Sixth Avenue, NAIROBI.

Asparagus



as fresh as from an English Garden!

Do you want the very finest quality of Asparagus—succulent, tender, and with a delicious nut-in-the-mouth character? If so be sure to ask for "My Lady" and look for the name on the can.

In this way you will be able to enjoy Asparagus all the year round at a very reasonable cost. Remember, too, that this first quality Asparagus is one of the most valuable things you can eat—and all the food value and salubrious flavor are preserved in "My Lady" Asparagus by the up-to-date methods of canning.

PHONE 596. P.O. BOX 217. MY LADY ASPARAGUS

P. Stewart, PAINTER DECORATOR. P.O. Box 226, NAIROBI.



Surprisingly Big Reductions in Prices. Last Few Days of CLEARANCE SALE. M. P. de MELLO. Govt. Road P.O. 414 NAIROBI.

NATIONAL BANK OF INDIA LIMITED.

(Incorporated in United Kingdom). Branches in the Colony and Protectorates of Kenya and Uganda. Subsidiary Capital—£4,000,000. Paid-up Capital—£2,500,000. Reserve Fund—£2,500,000.

Cash Boxes.

LOCK BOTTOM SOLID BOTTOM. 36 x 24 x 3 1/2 ... 27/60. 48 x 36 x 3 1/2 ... 37/60. 60 x 48 x 3 1/2 ... 47/60.

MOTOR NEWS From Road & Showroom

THE CARE OF THE CAR

Two Important Aspects of the Case.

DECARBONISING AND OIL DRAINING.

As soon as the motor car starts to run it carries out a series of self-cleaning operations. The engine manufacturer recommends a service interval of 1,000 miles—oil in the engine must be changed and the car must be given a general examination. For the results of this service interval...

When the dirt has been made that a time to change the oil will occur. The oil will then be more and more soiled until it is almost black. This is the time to change the oil...

When the dirt has been made that a time to change the oil will occur. The oil will then be more and more soiled until it is almost black. This is the time to change the oil...

When the dirt has been made that a time to change the oil will occur. The oil will then be more and more soiled until it is almost black. This is the time to change the oil...

Washings Out the Sump.

Some manufacturers recommend pouring a quart or so of paraffin into the sump after the dirty oil has been drained off in order to clean out the sump...

When the dirt has been made that a time to change the oil will occur. The oil will then be more and more soiled until it is almost black. This is the time to change the oil...

When the dirt has been made that a time to change the oil will occur. The oil will then be more and more soiled until it is almost black. This is the time to change the oil...

When the dirt has been made that a time to change the oil will occur. The oil will then be more and more soiled until it is almost black. This is the time to change the oil...

When the dirt has been made that a time to change the oil will occur. The oil will then be more and more soiled until it is almost black. This is the time to change the oil...

When the dirt has been made that a time to change the oil will occur. The oil will then be more and more soiled until it is almost black. This is the time to change the oil...

When the dirt has been made that a time to change the oil will occur. The oil will then be more and more soiled until it is almost black. This is the time to change the oil...

When the dirt has been made that a time to change the oil will occur. The oil will then be more and more soiled until it is almost black. This is the time to change the oil...

When the dirt has been made that a time to change the oil will occur. The oil will then be more and more soiled until it is almost black. This is the time to change the oil...

When the dirt has been made that a time to change the oil will occur. The oil will then be more and more soiled until it is almost black. This is the time to change the oil...

When the dirt has been made that a time to change the oil will occur. The oil will then be more and more soiled until it is almost black. This is the time to change the oil...

When the dirt has been made that a time to change the oil will occur. The oil will then be more and more soiled until it is almost black. This is the time to change the oil...

When the dirt has been made that a time to change the oil will occur. The oil will then be more and more soiled until it is almost black. This is the time to change the oil...

Doonholm Dairy, PURE MILK and CREAM.

from Farm or Consumer. Box 11, NAIROBI.

When the dirt has been made that a time to change the oil will occur. The oil will then be more and more soiled until it is almost black. This is the time to change the oil...

When the dirt has been made that a time to change the oil will occur. The oil will then be more and more soiled until it is almost black. This is the time to change the oil...

When the dirt has been made that a time to change the oil will occur. The oil will then be more and more soiled until it is almost black. This is the time to change the oil...

When the dirt has been made that a time to change the oil will occur. The oil will then be more and more soiled until it is almost black. This is the time to change the oil...

When the dirt has been made that a time to change the oil will occur. The oil will then be more and more soiled until it is almost black. This is the time to change the oil...

When the dirt has been made that a time to change the oil will occur. The oil will then be more and more soiled until it is almost black. This is the time to change the oil...

When the dirt has been made that a time to change the oil will occur. The oil will then be more and more soiled until it is almost black. This is the time to change the oil...

When the dirt has been made that a time to change the oil will occur. The oil will then be more and more soiled until it is almost black. This is the time to change the oil...

When the dirt has been made that a time to change the oil will occur. The oil will then be more and more soiled until it is almost black. This is the time to change the oil...

When the dirt has been made that a time to change the oil will occur. The oil will then be more and more soiled until it is almost black. This is the time to change the oil...

When the dirt has been made that a time to change the oil will occur. The oil will then be more and more soiled until it is almost black. This is the time to change the oil...

When the dirt has been made that a time to change the oil will occur. The oil will then be more and more soiled until it is almost black. This is the time to change the oil...

DODGE BROTHERS NEW SIX MOTOR CARS

DEPENDABILITY WITH SMART STYLES

The new Dodge Brothers Six is all that is sound and dependable—backed by an organization whose record over a period of years is founded on these very qualities. Its alert, powerful performance, its sturdy construction, and its economical operation account for the great and growing popularity of this outstanding car.

Yet with all these practical qualities, the new Dodge Brothers Six could sell itself in any company on style alone!

Dodge Brothers have never before presented a car offering so much for the money as the new Dodge Brothers Six. Nor one so appealing, both in dependability and in charming style.

S. Fisher & Simmons (E.A.) Ltd., Victoria Street, NAIROBI.

M. BRINNETT & Co., KIBERA. RABRAM HIRABHAI & Co., D. CHRISTOPHER-BALFOUR & Co., FOWLER & WERTON, RABRAM & Co.

Metropolitan Garage. Specialists in Automobile Repair

WE ALWAYS HAVE A NUMBER OF SELECTED AND OVERHAULLED 2nd HAND CARS IN STOCK. First Superior Super Sports in all-steel body construction. 70 m.p.h. 15-35 m.p.g. Motor 6000. £245. Cost over £250. 1932 Ford Tourer, 1000 cc. £60. 1932 Ford Tourer, 1000 cc. £60. 1932 Ford Tourer, 1000 cc. £60.

Geo. BLOWERS. BUILDING CONTRACTOR, MANUFACTURER AND DIRECT IMPORTER.

RAJPER STREET, NAIROBI. GREATLY REDUCED PRICES. Tel. Ad.: "Concrete" Phone: 7005 896. House—49.

NOTE: In order to meet the requirements of the Government, the following are the prices of the various types of concrete blocks, etc.

Table with 2 columns: Description of concrete blocks and their prices. Includes items like 6 1/2 x 6 1/2, 6 1/2 x 6 1/2, 6 1/2 x 6 1/2, etc.

CONCRETE BLOCKS, ALL SIZES IN STOCK. Quarry Chips - Black Trap Ballast.

Best Kima Sand. DELIVERIES BY Lorries at QUOTED RATES.

Plumbing and Sanitary work done under the Supervision of our own European Specialists.

Estimates free.

F. M. BHAIJEE SPECIALISING IN BUILDING MATERIALS.

JUST ARRIVED BEST INDIAN TEAK in all sizes.

Steel Casements, Corrugated & Flat Galvanized Iron Sheets.

ROYAL HOUSE. Phone 383. P.O. Box 318 Government Road, NAIROBI. Tel.: "Hardware"

BARCLAYS BANK (DOMINION, COLONIAL AND OVERSEAS)

Incorporated by Royal Charter 1860. Re-incorporated Act of Parliament, 1920.

THE COLONIAL BANK. THE NATIONAL BANK OF SOUTH AFRICA, LTD. THE ANGLO-EGYPTIAN BANK LTD.

Capital Authorized ... £10,000,000 Capital Subscribed ... £4,275,000 Capital Paid up ... £4,275,000 Reserve ... £1,600,000

OVER 400 BRANCHES IN THE Union of South Africa, Rhodesia, South West Africa, British West Africa, West Indies, Egypt, Palestine and the Sudan, Mauritius, etc.

THE BANK UNDERTAKES ALL CLASSES OF BANKING BUSINESS AND ALSO ACTS AS TRUSTEE AND EXECUTOR.

BRANCHES IN EAST AFRICA: Nairobi, Mombasa, Nakuru, Eldoret, Kisumu, Malindi, Lamu, Tanga, Dar-es-Salaam, Zanzibar, Beira, Harare, Addis Ababa, Mogadishu.

HEAD OFFICE: 54 Lombard Street, London, E.C. 3 LONDON OFFICES: 27 Old King William Street, B.C. 4, Circus Place, London, W.C. 2. 111, St. Martin Lane, Trafalgar Square, W.C. 2.

OFFICES IN Liverpool, Manchester, Hamburg, New York. Correspondents in all the Principal Cities and Towns of the World.

STANDARD STATIONERY STORES.

P.O. Box 265, NAIROBI.





# FIAT

### New Models As Shown at Olympia

### Just Arrived

### Model 521. S. Seven Seater.

Call for a Demonstration  
AT  
**MOULTON & MORRISON Ltd.**  
SIXTH AVENUE,  
NAIROBI.

# 1930 MODELS

## B.S.A.

4.93 H.P. Side Valve inclined engine  
Sump Lubrication—Steering dampers and  
shock absorbers.

### £75

## DOUGLAS

3.50 H.P. Special Sump Lubrication  
Complete with lamp and horn.

### £67-10-0

## Carr, Lawson & Co. Ltd.

NAIROBI.

## PINE TREE

### Soluble Disinfecting Fluid

for GENERAL SANITARY USE.  
CHEAP, HARMLESS, CONVENIENT and  
EFFECTIVE.

A gallon drum will make from 50 to 100 gallons of dis-  
infectant, depending upon the purpose for which it is  
to be used.

7/6 per 1-gallon Drum.

3/6 per 5-gallon Drum.

### KODAK E. A. Ltd., INC.

## Howse & McGeorge

CHERRIES

NAIROBI and ALL BRANCHES.

## J. W. Milligan & Co.

IMPORTERS OF:  
Building Material, Agricultural  
Implements and Machinery of all  
descriptions, etc., etc.

### We have in Stock the following Lines.

- COFFEE TRAYS AND COFFEE TRAY WIRE
- MAIZE CRIB WIRE—3-ft., 4-ft. and 6-ft. ROLLS
- MACKINNON PULPERS, REPASSERS, DRYERS
- CLOCK CREAM SEPARATORS, CLOCK CHURNS  
AND MILK CANS
- CARPENTERS AND MASONS TOOLS OF ALL  
DESCRIPTIONS
- OILS AND GREASES
- BOLTS, NUTS AND SCREWS

### Our Prices are Right SAVE MONEY BY SENDING US YOUR ORDERS

BRANCHES  
MOSHI and ARUSHA.

EXPORTERS OF:  
Coffee, Sial, Maize,  
Wheat, Ivory,  
Etc., etc.

P.O. Box 148  
Phone No. 98



**Black Bull Derby Shoe.**  
Best quality black calf, varnished to  
shine above, but with additional  
glaze and stem work. Medium  
weight built sole. A good shoe  
for the price. Shs. 45/- per pair



**Tan Grain Derby Shoe.**  
Best tan public grade shoe.  
Suitable for golf or "bahama"  
wear, standard width sole.  
Plain sewn to cap at shank  
sole. Shs. 42/- per pair



**Tan Willow Oxford.**  
In deep tan with  
slip sole as shank.  
Full brogue toe.  
Double stitching all  
over. Shows a  
very deep grain.  
A town wear.  
Shs. 47/6 per pair

**S. JACOBS LTD.**  
P.O. Box 22, Frere 250,  
NAIROBI

SPECIALISTS IN  
LADIES AND GENTS  
FINE  
FOOTWEAR



**Navy Glace Court.**  
A smart shoe also in all good  
kinds of Navy Blue and  
black. A dressy shoe.  
Shs. 42/6 per pair



**Ladies' Willow Calf and Buck-skin Walking Shoe.**  
Smart shoes in calf  
and buck-skin.  
White, Buff, Navy  
and black. Smart in  
appearance. A 4  
way shoe in calf.  
Shs. 47/6 per pair



**Ladies' Willow Calf and Buck-skin Dressing Shoe.**  
Smart shoes for  
evening.  
Navy, Buff, Navy  
and black. Smart in  
appearance. A 4  
way shoe in calf.  
Shs. 47/6 per pair

## CALEDONIAN

### Insurance Company

Oldest Scottish Insurance Office.

FOUNDED IN 1805  
PRINCIPAL REPRESENTATIVES—

R. O. HAMILTON, Ltd.,  
NAIROBI. Phone 352

### Plan Your Colour Schemes

—with—



Just brush it on—  
anyone can use it.

As on your car, it keeps it lustrous  
brighter despite time and wear.

Shade Cards, Instruction Books and Stocks  
available from

## Galley & Roberts Ltd.

NAIROBI and BRANCHES.

**GOOD NIGHT DANGERS**  
A. H. WARDLE  
V. M. BROWN, F.R.M.E., F.I.O. Optical Manager,  
Largo Stocks  
of Lenses.

## SHANKS'

### Sanitary Specialties

LATEST DESIGNS—MODERATE PRICES.

## R. G. VERNON & Co.

IMPORTERS  
Showrooms—Union Buildings, NAIROBI  
P.O. Box 124

### Two Sure Remedies For Constipation.

Dr. Bland's Tablets and Bland's Health Salt have two  
constituent-ingredients which will banish the most chronic  
constipation very quickly in the most delicate cases as  
soon as they are effective, purify the blood, stimulate the  
liver and put new life into you.

## Rexall Rexall

ODDERLIES HEALTH SALT

Sold and recommended by  
**A. H. Wardle & Co. Ltd.**  
Wholesale and Retail Chemists.  
REXAL and GUYANA.

## STANDARD CLOCK

UNDER THE  
STANDARD  
CLOCK

**Good Reception.**  
A public meeting of the Great  
community will be held at the  
Aero Club of East Africa this  
evening of November 21, and  
will start in connection with  
the exhibition.

**As Airplane Dies.**  
The plane which was recovered  
by the Aero Club of East Africa  
this morning at the Aero Club  
will be sent to the Aero Club  
at Nairobi. The machine was  
sent to the Aero Club at  
Nairobi.

**S. S. "Ukamba."**  
The S. S. "Ukamba" which was  
arrived from Europe on  
November 21, and will sail  
for southern ports on  
November 22.

**Another Liquor Case.**  
For being found in possession  
of liquor, the Hon. Mr. Justice  
Magistrate yesterday, was fined  
the sum of £50, or alternatively  
to undergo one month's im-  
prisonment. A still in which liquor  
was found, was destroyed  
in court.

**Disturbance in Court.**  
During the course of proceedings  
in the Resident Magistrate's  
Court yesterday, a public  
spectator, who was in the  
audience, was fined the sum  
of £50, or alternatively to  
undergo one month's im-  
prisonment. The man was  
charged with the theft from  
the court of a book which he  
brought into the court. He  
was fined the sum of £50,  
or alternatively to undergo  
one month's imprisonment.

**Red Cross Lectures.**  
Red Cross Classes have now  
been arranged and started by  
the following branches of the  
East African Red Cross Society:  
Nairobi, Kisumu, Nakuru,  
Kisumu, and Nairobi. The  
classes will be held on  
Mondays at 7.30 p.m. at the  
Red Cross Club, Nairobi.  
The classes will be held on  
Mondays at 7.30 p.m. at the  
Red Cross Club, Nairobi.  
The classes will be held on  
Mondays at 7.30 p.m. at the  
Red Cross Club, Nairobi.

## STANDARD DIARY.

Today:  
Nairobi Town Council, 2.15  
p.m.  
General Exhibition, Kenya Arts  
and Crafts Exhibition, Memorial  
Hall, Nairobi.

### Today's Wireless.

7.30—Piano music.  
7.40—7.45—British and  
Swiss songs.  
7.45 to 8.45—Columbia.  
8.45 to 9.45—Columbia.  
9.45 to 10.45—Columbia.  
10.45 to 11.45—Columbia.  
11.45 to 12.45—Columbia.

## African Standard

UGANDA ARBUS  
THURSDAY, NOV. 19, 1926

### General Smuts' Faith.

General Smuts, following the  
footsteps of Cecil Rhodes on  
the Empire in Africa, for their  
future. In the remarkable Rhodes  
trust which we publish elsewhere today  
provides for all those who give  
thoughtful study to the problems  
of the Empire in the Continent  
of Africa. The trust is a most  
interesting and valuable one, and  
one which is of great importance  
at a time when the very  
existence of the Empire in Africa  
is in doubt. It is a trust which  
has been devised by the man  
who has devoted his life to the  
cause of Africa and the Empire  
with special fervor and  
loyalty. The future of Africa  
in the political, economic, and  
social sense, is the subject of  
the Imperial Government, in  
which it is hoped eventually will  
bring to an end the long and  
uncertain period of reaction  
between those who practical  
knowledge and those who  
unrealized theory and who  
have been the cause of the  
present depression in Africa.  
It is a faith which contains  
within it the seeds of the  
future of all those who have  
their hand to the task of  
advancing the Empire in Africa.  
It is a faith which contains  
within it the seeds of the  
future of all those who have  
their hand to the task of  
advancing the Empire in Africa.  
It is a faith which contains  
within it the seeds of the  
future of all those who have  
their hand to the task of  
advancing the Empire in Africa.

who are only now crossing  
the threshold of the light.  
It is a faith which contains  
within it the seeds of the  
future of all those who have  
their hand to the task of  
advancing the Empire in Africa.  
It is a faith which contains  
within it the seeds of the  
future of all those who have  
their hand to the task of  
advancing the Empire in Africa.  
It is a faith which contains  
within it the seeds of the  
future of all those who have  
their hand to the task of  
advancing the Empire in Africa.  
It is a faith which contains  
within it the seeds of the  
future of all those who have  
their hand to the task of  
advancing the Empire in Africa.

great a Statesman in the fight  
for a white settlement policy in  
Africa, as general Smuts has  
been. In the past, he has  
shown the way to the future  
of the Empire in Africa. He  
has shown the way to the  
future of the Empire in Africa.  
He has shown the way to the  
future of the Empire in Africa.  
He has shown the way to the  
future of the Empire in Africa.  
He has shown the way to the  
future of the Empire in Africa.  
He has shown the way to the  
future of the Empire in Africa.

great a Statesman in the fight  
for a white settlement policy in  
Africa, as general Smuts has  
been. In the past, he has  
shown the way to the future  
of the Empire in Africa. He  
has shown the way to the  
future of the Empire in Africa.  
He has shown the way to the  
future of the Empire in Africa.  
He has shown the way to the  
future of the Empire in Africa.  
He has shown the way to the  
future of the Empire in Africa.  
He has shown the way to the  
future of the Empire in Africa.



# Tea becomes more interesting



When you serve a variety of biscuits—provided of course the biscuits are really appetising and of the highest quality—the results of this point insist upon having

## CARR'S

EMBLEM ASSORTMENT  
CARR'S OF CARLISLE  
STOCKED BY THE LEADING GROCERS

As supplied to the House of Commons

# Amstel Beer the Best in East and West

Guaranteed free of Chemicals.

Obtainable at all leading Hotels, Bars and Stores. Ask for it in your club.

Wholesale—  
The Overseas Trading Co., Ltd., Messias,  
Kanjil Narayji, Nairobi.

### OWING TO DISSOLUTION OF PARTNERSHIP

# MARGOT'S

## Great Sale

Nov 15th to Dec. 31st 1929.

P.O. Box 878, Government Road, NAIROBI.

### The Bradford Manufacturing COMPANY LIMITED,

# Great Stocktaking SALE

IN ALL DEPARTMENTS.

SPECIAL DISCOUNTS ALLOWED

These discounts will also be allowed on goods not reserved. An excellent opportunity for those who wish to replenish their Wardrobes or Household Furnish at a moderate price. Imperial Chambers, Government Road, P.O. Box 810. (Labour Rates 1/4d.)

# B. E. A. SAW MILLS

Telephone No. 93. P.O. Box 371  
Telegrams: "Beams," Nairobi.

Camphor, Podo, Mweri and Muna.  
Flooring, Ceiling and Moulding

### GEN. SMITH'S LECTURE

(Continued from page 1.)

They were compelled to play the dramatic part assigned to white sections. The Christian missionary, after a century of conquest in Africa, compared with the Government, could not claim rapid success. Mohammedan propaganda in the latter world was not so successful. I should not think it leaves the fate of European civilization in the hands of the missionary of the old type any longer responsible to the needs of Africa. For the African, even now for the European, is the leading of the Gospel, even now more and more the scientific and medical aspects of mission are coming to the fore. It was not the propaganda of the Christian missionaries who were more and more developing their medical side. Medical mission was the Africa were withdrawn and the most demoralized and terrible. Christian missionaries would not give up a thorough anthropological training, in addition to their scientific medical equipment, but were on and equipped they might be, the work of European civilization in Africa would need the number and the quality of large white communities.

It was the nature of the African people to the African people. The human spirit, the patience and efficiency of the African people were brought to bear were worthy of profound respect. African people to remarkable success. In East Africa they have almost challenged the policy of white settlement. But success was possible there. But success was possible there. In West Africa and Uganda had not found success. The fact of justly severe condemnation. The fact of justly severe condemnation. The fact of justly severe condemnation. The fact of justly severe condemnation.

The Land Available  
It was said that while settlement must encroach on land needed for the future, the inevitable tendency would be to limit reserves and expand their boundaries. This objection was not understood and most honestly stated. The fact of justly severe condemnation. The fact of justly severe condemnation. The fact of justly severe condemnation. The fact of justly severe condemnation.

It was said that while settlement must encroach on land needed for the future, the inevitable tendency would be to limit reserves and expand their boundaries. This objection was not understood and most honestly stated. The fact of justly severe condemnation. The fact of justly severe condemnation. The fact of justly severe condemnation. The fact of justly severe condemnation.

It was said that while settlement must encroach on land needed for the future, the inevitable tendency would be to limit reserves and expand their boundaries. This objection was not understood and most honestly stated. The fact of justly severe condemnation. The fact of justly severe condemnation. The fact of justly severe condemnation. The fact of justly severe condemnation.

It was said that while settlement must encroach on land needed for the future, the inevitable tendency would be to limit reserves and expand their boundaries. This objection was not understood and most honestly stated. The fact of justly severe condemnation. The fact of justly severe condemnation. The fact of justly severe condemnation. The fact of justly severe condemnation.

It was said that while settlement must encroach on land needed for the future, the inevitable tendency would be to limit reserves and expand their boundaries. This objection was not understood and most honestly stated. The fact of justly severe condemnation. The fact of justly severe condemnation. The fact of justly severe condemnation. The fact of justly severe condemnation.

It was said that while settlement must encroach on land needed for the future, the inevitable tendency would be to limit reserves and expand their boundaries. This objection was not understood and most honestly stated. The fact of justly severe condemnation. The fact of justly severe condemnation. The fact of justly severe condemnation. The fact of justly severe condemnation.

It was said that while settlement must encroach on land needed for the future, the inevitable tendency would be to limit reserves and expand their boundaries. This objection was not understood and most honestly stated. The fact of justly severe condemnation. The fact of justly severe condemnation. The fact of justly severe condemnation. The fact of justly severe condemnation.

On page 302 of his book, "The Mandates," Lord Lugard had reviewed the situation of land and population in both East and West Africa and reached the conclusion that, except the very densely populated districts, which he said were there in small areas, legitimate needs of alien (European) enterprise would be met "whether in theory the Government owned the land or not. That opinion, General Smuts added, could be safely adopted."

### The E. A. Problem.

It is generally admitted that European control in some form or another is the only way of development of the African people. In no other way can the progress, proper exploitation and protection of the African people be anything but the product of a white population sufficiently numerous to exercise effective control. It is not under European administration and thus become a subject of the League of Nations.

This is the nature of the E. A. problem. It is a problem of the African people. It is a problem of the African people. It is a problem of the African people. It is a problem of the African people.

This is the nature of the E. A. problem. It is a problem of the African people. It is a problem of the African people. It is a problem of the African people. It is a problem of the African people.

This is the nature of the E. A. problem. It is a problem of the African people. It is a problem of the African people. It is a problem of the African people. It is a problem of the African people.

This is the nature of the E. A. problem. It is a problem of the African people. It is a problem of the African people. It is a problem of the African people. It is a problem of the African people.

This is the nature of the E. A. problem. It is a problem of the African people. It is a problem of the African people. It is a problem of the African people. It is a problem of the African people.

This is the nature of the E. A. problem. It is a problem of the African people. It is a problem of the African people. It is a problem of the African people. It is a problem of the African people.

This is the nature of the E. A. problem. It is a problem of the African people. It is a problem of the African people. It is a problem of the African people. It is a problem of the African people.

...of the natives in South Africa are far in advance of anything to be met with among African peoples elsewhere. The white population of the African continent, which will not be more than 100 million in all, which forms an efficient vanguard of the European development of the African continent. South Africa. The solid and intelligent white population of South Africa. The solid and intelligent white population of South Africa. The solid and intelligent white population of South Africa.

### Health Objectives.

It was argued, on health grounds, that the African population could be maintained in the tropics, even if it could not work under tropical conditions and thus become a subject of the League of Nations. It was argued, on health grounds, that the African population could be maintained in the tropics, even if it could not work under tropical conditions and thus become a subject of the League of Nations.

It was argued, on health grounds, that the African population could be maintained in the tropics, even if it could not work under tropical conditions and thus become a subject of the League of Nations. It was argued, on health grounds, that the African population could be maintained in the tropics, even if it could not work under tropical conditions and thus become a subject of the League of Nations.

It was argued, on health grounds, that the African population could be maintained in the tropics, even if it could not work under tropical conditions and thus become a subject of the League of Nations. It was argued, on health grounds, that the African population could be maintained in the tropics, even if it could not work under tropical conditions and thus become a subject of the League of Nations.

It was argued, on health grounds, that the African population could be maintained in the tropics, even if it could not work under tropical conditions and thus become a subject of the League of Nations. It was argued, on health grounds, that the African population could be maintained in the tropics, even if it could not work under tropical conditions and thus become a subject of the League of Nations.

It was argued, on health grounds, that the African population could be maintained in the tropics, even if it could not work under tropical conditions and thus become a subject of the League of Nations. It was argued, on health grounds, that the African population could be maintained in the tropics, even if it could not work under tropical conditions and thus become a subject of the League of Nations.

It was argued, on health grounds, that the African population could be maintained in the tropics, even if it could not work under tropical conditions and thus become a subject of the League of Nations. It was argued, on health grounds, that the African population could be maintained in the tropics, even if it could not work under tropical conditions and thus become a subject of the League of Nations.

It was argued, on health grounds, that the African population could be maintained in the tropics, even if it could not work under tropical conditions and thus become a subject of the League of Nations. It was argued, on health grounds, that the African population could be maintained in the tropics, even if it could not work under tropical conditions and thus become a subject of the League of Nations.

It was argued, on health grounds, that the African population could be maintained in the tropics, even if it could not work under tropical conditions and thus become a subject of the League of Nations. It was argued, on health grounds, that the African population could be maintained in the tropics, even if it could not work under tropical conditions and thus become a subject of the League of Nations.

...becoming in his former report self-governing under the Empire. There were here the main lines of the argument. It was argued, on health grounds, that the African population could be maintained in the tropics, even if it could not work under tropical conditions and thus become a subject of the League of Nations.

It was argued, on health grounds, that the African population could be maintained in the tropics, even if it could not work under tropical conditions and thus become a subject of the League of Nations. It was argued, on health grounds, that the African population could be maintained in the tropics, even if it could not work under tropical conditions and thus become a subject of the League of Nations.

It was argued, on health grounds, that the African population could be maintained in the tropics, even if it could not work under tropical conditions and thus become a subject of the League of Nations. It was argued, on health grounds, that the African population could be maintained in the tropics, even if it could not work under tropical conditions and thus become a subject of the League of Nations.

It was argued, on health grounds, that the African population could be maintained in the tropics, even if it could not work under tropical conditions and thus become a subject of the League of Nations. It was argued, on health grounds, that the African population could be maintained in the tropics, even if it could not work under tropical conditions and thus become a subject of the League of Nations.

It was argued, on health grounds, that the African population could be maintained in the tropics, even if it could not work under tropical conditions and thus become a subject of the League of Nations. It was argued, on health grounds, that the African population could be maintained in the tropics, even if it could not work under tropical conditions and thus become a subject of the League of Nations.

It was argued, on health grounds, that the African population could be maintained in the tropics, even if it could not work under tropical conditions and thus become a subject of the League of Nations. It was argued, on health grounds, that the African population could be maintained in the tropics, even if it could not work under tropical conditions and thus become a subject of the League of Nations.

It was argued, on health grounds, that the African population could be maintained in the tropics, even if it could not work under tropical conditions and thus become a subject of the League of Nations. It was argued, on health grounds, that the African population could be maintained in the tropics, even if it could not work under tropical conditions and thus become a subject of the League of Nations.

It was argued, on health grounds, that the African population could be maintained in the tropics, even if it could not work under tropical conditions and thus become a subject of the League of Nations. It was argued, on health grounds, that the African population could be maintained in the tropics, even if it could not work under tropical conditions and thus become a subject of the League of Nations.

It was argued, on health grounds, that the African population could be maintained in the tropics, even if it could not work under tropical conditions and thus become a subject of the League of Nations. It was argued, on health grounds, that the African population could be maintained in the tropics, even if it could not work under tropical conditions and thus become a subject of the League of Nations.

# WHERE TO STAY TOWN AND COUNTRY.

## SAVOY HOTEL

Box 29 The Hill, NAIROBI. Phone 20  
Large Double Rooms, Single Rooms with or without Bath.  
H and C. Water.  
Lounges, Spacious Dining-room, Reading-room, Beautiful Garden, — Tennis, — Garage. TERMS MODERATE. Apply—MANAGER.

# THE Stag's Head Hotel

## NAKURU

Main Road close to New Post Office, Banks, Buses, Club and Station.  
Electric Light, Hot and Cold Water in all Rooms.  
EUROPEAN SANITATION in all Departments.  
Especially Attractive and Comfortable Public Rooms.  
CUISINE THE BEST OBTAINABLE.  
WINES AND—SPECIAL TERMS.  
Daily Boarders Catered for at Special Rates.  
DANCES, WEDDINGS, PUBLIC BUSINESS, arranged. Mrs. JESSIE PROPRIETRESS.

Stay at the Largest and Most Comfortable Hotel in Nairobi. 21st and 22nd and 23rd miles out of Nairobi.  
Kenya Conventions, Y.M.C.A. Office, Gardens, Own Laundry, Billiard Room, etc.  
Self-sufficiently fitted with all modern conveniences.  
Monthly Boarders from 2/6 per week.

# THE NORFOLK HOTEL

Phone 100. 111 to 115, Market Street, NAIROBI.  
All trains met and see comfortable 100 per cent. Spacious private ground for tennis and billiard tables. The fashionable restaurant of the hotel and Billiard Room.  
UPSTAIRS (4 to 6 beds) and 10 beds. DOWNSTAIRS (6 to 8 beds) and 10 beds. Billiards, Tennis, etc. per day. Billiards, Tennis, etc. per day.

# The Salisbury Hotel

## Nairobi.

Phone 166. P.O. Box 697.  
Phone 189. THE NEW OAKLEIGH HOTEL LTD. Single Rooms, Double Rooms, Suites, Lounges, 2 Tennis Courts, Lock-up Garages, etc., etc. LICENSED. LIMBOU ROAD, off Alnborough Bridge. Under the same management as the Hotel Avenue.

# NAIVASHA HOTEL

## NAIVASHA.

Under Entirely new Management. FIRST CLASS ACCOMMODATION. EXCELLENT CUISINE. BILLIARDS. Special Terms for Week-end Parties. B. O. LEA, Manager.

# The Trocadero Bar and Restaurant

Proprietor—W. M. GODFREY, Manager—J. H. HOGGINS.

# GRILLS—ALL MEALS—REFRESHMENTS—TEAS.

UNDER ENTIRELY NEW MANAGEMENT. Hours 8 a.m. — Till 11 p.m.

# SAVOY BAR

with LOUNGE and BRIDGE ROOM. COUNTER SNACKS and MUSIC from 5 p.m. Callistone Road, The Hill.

# Clearance Sale

AT M. R. de Souza & Co. Commencing from Monday 18th, Government Road, opposite Electra House. SPLENDID BARGAINS FOR A WEEK ONLY

# General Grocery Co. Ltd.

Wholesale KENYA GROCERY Co., Ltd., WHOLESALE PROVISION MERCHANTS. All leading Brands of Provisions always in stock. Sole Agents in: Kenya, Uganda, Tanganyika and Zanzibar for World's Famous Montserrat Line Juice Cordial. PRICES ON APPLICATION. P.O. Box 592, NAIROBI. Phone 456.







SPORTS AND PASTIMES.



**Great Appetite**

Another Win For Parklands.  
Innings Win Over Mr. Edwards' XI.

**STYLISH DISPLAY BY GREVIER.**

**SANATOGEN**  
The True Tonic-Food  
Obtainable at all Grocers and Druggists.



**Crawford's LIQUEUR**  
SCOTCH WHISKY

**"Special Reserve"**.....  
The Standard Blend of  
Quality which never varies.  
Follow to the packet, but with  
the Fine, Full Flavour age  
alone can give.

...costs a little more! It is the  
one whisky for special occasions  
because it is very old and scarce.

Sold by Discriminating Merchants.

A. & A. CRAWFORD,  
LEITH & SCOTLAND.

**BUY**  
THE VICTORIA NYAZA  
SUGAR COMPANY'S  
No. 1 WHITE CRYSTAL  
SUGAR.

at the following prices from  
the intermediate stages:

5 Pounds	Cents 3/3
10 Pounds	Shs. 16/7

Agents, Ltd., Nairobi.  
R. Dumas, Nairobi.  
H. Elliot & Co., Ltd.  
Havelock and Brown  
Nairobi Home Trading  
Co., Ltd.  
Nairobi.  
Nairobi.  
Nairobi.  
Nairobi.

**Sale**

**NOW ON**

You might have visited  
many SALES, but we  
recommended you to  
visit ours to

**RECORD KEEPING  
SALE**

**ROCK BOTTOM**

Reduced prices  
throughout

Come and have  
a glance.

**KALA SIDI**

General Merchant,  
GOVERNMENT ROAD,  
NAIROBI.

Another Win For Parklands.  
Innings Win Over Mr. Edwards' XI.

**STYLISH DISPLAY BY GREVIER.**

(Square Leg)

Parklands' Inverca Club was at home to Mr. Edwards' eleven on Monday, and after what is one time promised to be a rock and sock struggle Parklands obtained a somewhat overwhelming victory by an innings and 32 runs.

Mr. Edwards' Eleven in spite of many reverses are an affliged unit, and there is not doubt that their enthusiasm will bear fruit in due season. Their bowlers and fielding are quite up to the average, but their batting lacks strength, while their running between the wickets is a department that requires considerable improvement. On Sunday three runs were run out without the slightest possibility of getting back to the crease.

Winning the two Parklands deceptions to field Eastwood and Whitaker opening to the bowling of Bredar and Spight. The first wicket fell at 17 and the rest at the same figure. Edwards being run out before he had scored. Division 200 out was dropped when it had made 2, and gave two further unexpected chances before he was eventually out to Bredar for a score of 19. Mr. March was the only other batsman to reach double figures, and the innings closed for 28. This total opposed a very moderate one against the Parklands batting side, but when Bredar had been bowled by Shale for 1, and four other batsmen had left with no runs were only 30 the hopes of the visiting side were quite prominent. Kraus and Grever then put on a further 20 runs before Kraus was bowled by Shale for an invaluable 30. The next man, Fells, and Grever then began to

hit out, and passed the opposite end. It was not until the score was 136 for 7 that Grever was out to a catch by Shale of Edwards for a wicket, and well played 13. Fells left score after 37, and the innings closed for 159. Edwards and Edwards shared the bowling honours with 4 for 64 and 4 for 25 respectively. Following on, Parklands were bowled out in 28 runs each in their first attempt, the bowlers obtaining only 25 runs. Each of the five Parklands bowlers took a wicket in the innings.

The following are the scores—

**Mr. Edwards' XI.**  
First Innings  
Edwards run out 4  
Whitaker run out 5  
Edwards run out 12  
Edwards run out 12  
Davies 6  
Bredar 5  
McIntosh 3  
March 3  
R. March run out 0  
Haley 2  
Kraus not out 12  
Extras 20  
Total 98

Bowling: Bredar 3/23, Spight 2/17, Clark 2/15, Kraus 1/3.

**Parklands.**  
First Innings  
Bredar 5 Shale 1  
Davies 6 Bredar 5  
Kraus 3 Shale 1  
Thompson 5 Whitaker 5  
Edwards 5 Edwards 2  
Spight 3 Edwards 2  
Edwards 3 Whitaker 1  
Edwards 3 Shale 1  
Clark 1 Edwards 1  
Kraus 1 Edwards 1  
Sumner 1 Edwards 1  
Extras 9  
Total 45

Bowling: Davies 4/6,  
Shale 2/12, Edwards 4/21,  
Kraus 1/10, Grever 1/10.

**Mr. Edwards' XI.**  
Second Innings  
Whitaker run out 1  
Edwards 5  
Edwards 5 Sumner 1  
Bredar 5  
Davies 5 Bredar 5

**GYMKHANA DEFEATED BY GOANS.**

**Victory Gained by One Wicket.**

**HOME BATSMEN COLLAPSE.**

There was an exciting finish in the match between Gymkhana and Railway Goans on the former's ground on Sunday. The visitors passed the home total with but one wicket to hand, and that fell at a very late stage.

Hoovee and Gaillard opened the innings for Gymkhana, and earned the score of 60 when Gaillard returned a ball to the bowler. Hoovee was run out for a little time. From this point a net was set to the ground and by a hard hit innings of 84 by Irving Bredar at the wicket, was left with three runs on the board. Murray, Murray and Hayes-Sadie followed in quick succession, the last pair out at the same total 69. Team gathered a share and then fell to a catch by A. D'Sa. Graham and Sutton were out at 118 and 120 respectively, Bredar being out at 144.

The opening pair for the Goans started well, the captain wicket falling at two abreast of the half century, Murray got his half before a straight one from Bredar, but the first score was hit on from freely, although he had lost his wicket. The first score was the innings Oliver was out at 74, and the next man later Fernandes was caught of Team. He had scored with five runs and had gathered 61 of the first 90 runs on the board. He hit seven 4's.

Shale l.h.w. b. Thompson. 1  
Edwards 5 Chivers b. Thompson. 1  
Haley b. Spight. 3  
R. March 3 Fells. 10  
McIntosh 1 Grever. 2  
McIntosh not out. 2  
Extras 2

Total 35

Bowling: Bredar 2/14, Thompson 3/18, Spight 2/15, Davies 1/7, Fells 2/4.

**SPEND YOUR HOLIDAY IN SOUTH AFRICA**

**RAILWAY EXCURSION FARES** are available all the year round for parties of four or more travelling together over the lines of the SOUTH AFRICAN RAILWAY ADMINISTRATION. TOURS arranged for parties of individual persons at inclusive fares to cover rail, motor and other services. Further particulars and literature are obtainable from

**THE SOUTH AFRICA OFFICE.**  
Box 624, Memorial Hall, NAIROBI

The Manager,  
Tourist and Travel Bureau,  
South African Railways,  
JOHANNESBURG.

The Tourist Agent,  
S. A. R. Tourist Bureau,  
CAPE TOWN.

The Tourist Agent,  
S. A. R. Tourist Bureau,  
DURBAN.

M. V.	O. M.	R.	W.
Fernandes 19.2	4	39	4
Mendes 17	1	37	2
V. D'Sa 14	4	33	2
A. D'Sa 4	0	9	0
Haley 2	0	8	0

**Railway Goans.**  
First Innings  
M. V. Fernandes 5  
Haley 3  
C. F. D'Amas l.h.w. 6  
R. Bredar 6  
P. C. O'Malley 6  
R. A. Oliver 6  
P. S. Mendes 6  
T. Bredar 6  
M. Mendes 6  
V. D'Sa 6 b. Phillips 6  
M. G. Namath 6  
A. D'Sa 6  
P. S. Mendes not out 6  
C. F. Fernandes 6  
Luisa 6  
Sutton 6  
L. F. Fernandes 6  
Luisa 6  
Extras 5

Phillips	O. M.	R.	W.	
Phillips	20	0	35	0
Haley	2	0	15	0
Bredar	6	0	34	2
Bredar	12	4	17	2
Team	14	1	38	5

**The NEW ROYAL**



This Type of Toy-day Car has been handed to you by our Toy-day... Its new grip helps a powerful motor in getting away like a flash...

And, turning on or off the engine by your finger-tip.

The new scientific tread offers greater protection in wet weather driving.

In emergencies the New Royal responds effectively and quickly to the action of the 4-wheel brakes of the Car of Toy-day...

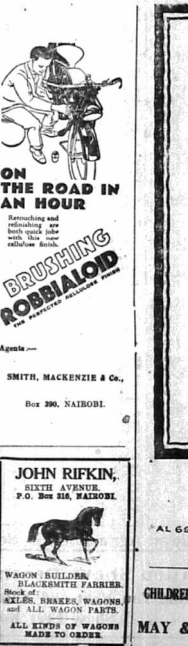
In appearance, the New Royal is at home in the most beautiful of modern motor cars.

It is the beautiful toy for the beautiful car...

Add to these features thousands of increased miles of service—there, isn't the New Royal the toy for you today?

**CARR, LAWSON & CO. LTD.**  
EDDORF, NAKURU, NAIROBI, KITALE, KAMPALA.

**ON THE ROAD IN AN HOUR**



Retracting and reflecting on both sides with their own cellulose linings.

**SMITH, MACKENZIE & Co.**  
Box 390, NAIROBI.

**JOHN RIFKIN,**  
NEXT AVENUE,  
P. O. BOX 114, NAIROBI.

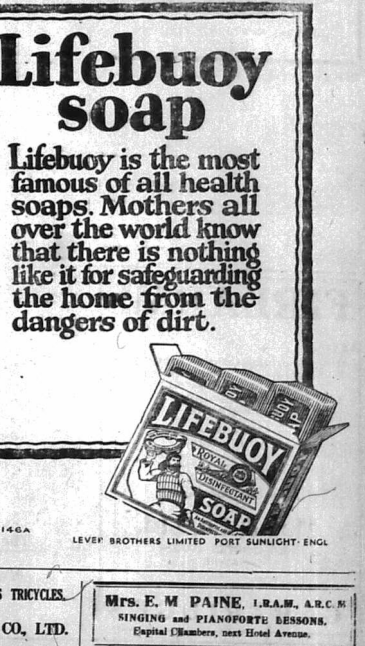
WAGON BUILDER,  
BLACKSMITH FARRIER,  
SADDLERY, WHEEL SHAPING,  
P. O. BOX 38, NAIROBI.

ALL KINDS OF WAGONS  
MADE TO ORDER.

**CHILDREN'S TRICYCLES.**  
**MAY & CO. LTD.**

**Lifebuoy soap**

**Lifebuoy is the most famous of all health soaps. Mothers all over the world know that there is nothing like it for safeguarding the home from the dangers of dirt.**



**LEVER BROTHERS LIMITED PORT SUNLIGHT, ENGL.**

**Mrs. E. M. PAINE, I.R.A.M., A.R.C.S. & C.**  
SINGING and PIANOFORTE LESSONS.  
Hospital Chambers, next Hotel Avenue.



LEOPARD TRAPS, No. 65/- We are the Agents for the famous NEWHOUSE ANIMAL TRAPS. The Traps which last a lifetime and HOLD everything that gets in them.

Shaw & Hunter Ltd. Chamber of Commerce Building. Harrogate Road, NAIROBI.

CHARLES WARE. TURF ACCOUNTANT. (Established 25 years) Tel. Add. "Sportsman." No 176, Trust Chambers, Govt. Road, NAIROBI.

A STRAIGHT TIP. Half your Building Worries are directly attributable to faulty doors and windows—expansion and contraction are ever present.

J.H.S. TODD & CO. GENERAL MERCHANTS—NAIROBI. Maurice Rosenzohn. ROMA BUILDING, GOVERNMENT ROAD, NAIROBI.

MANCHESTER NOVEMBER HANDICAP. Run Nov. 28th. 11 miles—8/1 Saracen; 9/1 Honey Boy II, Baytown, Silver Hussar; 12/1 Coligny II, Ghazal, Grey Huss; Race Eagle; 14/1 Old Oaken, Green Past, Mistletoe; 18/1 Chorro, Dick, Alack; 20/1 Joseph, Nervest, Platingo; 20/1 Uganda.

FIREARMS. We carry large and varied stocks of RIFLES, REVOLVERS, PISTOLS, and SHOTGUNS. made by the world's foremost makers. Our stocks of AMMUNITION rank among the largest and most comprehensive in Africa. Ask for our Catalogue.

May & Co, Ltd. The Sports House NAIROBI. CARTRIDGES.

THE SPORTS PAGE

HOME FOOTBALL TABLES. SCHOOL CRICKET. COUNTRY CUP CRICKET. MUTHAIGA'S UNBEATEN RECORD.

How Chas Stand in the Leagues.

LEEDS UNITED DROP DOWN.

Table with 2 columns: Division I and Division II. Lists football clubs and their positions.

The following are the league tables up to date—

Table with 2 columns: Division I and Division II. Lists football clubs and their positions.

Football results.

Table with 2 columns: Division I and Division II. Lists football clubs and their positions.

Football results.

Table with 2 columns: Division I and Division II. Lists football clubs and their positions.

Football results.

Football results.

Football results.

Football results.

Football results.

Football results.

Football results.

Football results.

Civil Service Default Railway.

NORMAN GOES NAP ON 'SIXES'.

Civil Service administered an OTC match on Monday on Muthaiga's ground. The visitors had first place of the week-end apart from Levy and Seymour.

Commercial.

Table with 2 columns: Commercial and Bowling. Lists names and scores.

Commercial.

Table with 2 columns: Commercial and Bowling. Lists names and scores.

Commercial.

Table with 2 columns: Commercial and Bowling. Lists names and scores.

Commercial.

Table with 2 columns: Commercial and Bowling. Lists names and scores.

Commercial.

SWIFT AND SURE. You cannot drop foot-locked buck, however excellent a shot you may be, unless you have a good rifle and a reliable magazine.

Use Remington-Union Cartridge Co. KYNCHO CARTRIDGES. BRITISH & BEST. IMPERIAL CHEMICAL INDUSTRIES LTD. LONDON, S.W.1.

A. HOGG. MACKINNON'S BUILDINGS, NAIROBI. MANCHESTER NOVEMBER HANDICAP, 28.11.29, 14 miles—English Starting Prices.

English Derby.

Table with 2 columns: English Derby and Bowling. Lists names and scores.

Commercial.

The "SPALDING" MULTIPLOT KROFLITE GOLF BALL. With its twelve distinct colored dots is EASIER TO HIT, EASIER TO IDENTIFY, EASIER TO FIND.

CRAIG'S SPORTS HOUSE.

THE ONLY HANDY WAY TO CARRY 50 CIGARETTES. In the office—at home—travelling—camping—motoring—the Kenitas 'Flat Fly' is the simplest, handiest way of carrying a ready supply.

GET A KENSITAS 'FLAT FLY' TO-DAY! and, of course, you can buy the same good Kenitas in tins and tins.

**KENYA BEER**

BETTER THAN EVER  
Try it To-day  
THE PROOF IS INSIDE THE BOTTLE

Kenya Breweries Ltd.

REGISTERED AT THE GENERAL REGISTRY OFFICE AS A NEWSPAPER

**RUSSIAN PROPAGANDA IN THE EMPIRE.**

**Alleged Manifesto Issued in India.**

**CLAUSES IN THE NEW PROTOCOL.**

Questions as to Difference in Interpretation.

Arising out of an article in a Russian newspaper, questions have been asked in the House of Commons regarding the interpretation of the clauses in the new protocol addressed by the British to the Communist Government in the Russian Embassy which is contradictory to the Russian Government's position on their pledges in regard to propaganda.

In reply to further questions, Mr. Henderson stated that these pledges be broken the responsibility would rest with the Communist Government as to what action must be taken. The usual diplomatic immunity would not be modified in any way in regard to the Russian Embassy and its correspondence.

**DIPLOMATIC IMMUNITY.**

Mr. Henderson stated that he had no information beyond Press reports, regarding a manifesto addressed by the British to the Communist Government in the Russian Embassy which is contradictory to the Russian Government's position on their pledges in regard to propaganda.

**THE NEW TREATY.**

The Foreign Secretary was asked by Mr. Henderson regarding the interpretation of the clauses in the new protocol addressed by the British to the Communist Government in the Russian Embassy which is contradictory to the Russian Government's position on their pledges in regard to propaganda.

**THE MONEY MARKET.**

London, November 18. The money market was quiet today. The Bank of England's rate for the discount of bills is 12 per cent. The rate for the discount of Treasury bills is 10 per cent. The rate for the discount of Government securities is 8 per cent.

GUARANTEED THE LARGEST CIRCULATION OF ANY NEWSPAPER IN KENYA, UGANDA, TANGANYIKA AND ZANZIBAR.

DAILY EDITION.

THE EAST

14 PAGES

**African Standard**

UGANDA ARGUS THE LEADER  
THE OLDEST ESTABLISHED NEWSPAPER PUBLISHED IN KENYA AND UGANDA.

NAIROBI, WEDNESDAY, NOVEMBER 20, 1929.

**MEXICAN PRESIDENTIAL ELECTIONS.**

**Casualties in Street Fighting.**

**PAYING STONES THROUGH.**

Described as "Compensatory Quiet."

**THROUGH BRITAIN'S ARMY.**

Mexico City, November 18. The country has been in commotion with wild outbreaks called "compensatory quiet" since the election in sight to the present 19 killed and 50 wounded. These incidents are said to be the result of the fighting in the streets in the night of the President's palace, where shots were exchanged and asphalt paving torn up and thrown with terrific effect. Five policemen were killed at Toluca owing to the commissioning of a lorry which was used to transport the bodies of a night at Ocotlán.

**THROUGH BRITAIN'S ARMY.**

The candidate of the Mexican Revolutionary Party, founded by the outgoing President Calles and the late ex-President Flores Magón, was overwhelmingly elected. The adherents of Senor Jose Vasconcelos, who had been elected the leader of the Anti-revolutionary party, charge the opposition with selling the polling booths to the candidate of the Revolution. It is only prevented take of thousands from voting.

**The Singapore Base.**

**DOMINIONS INFORMED BY NOT CONSULTED.**

**THROUGH BRITAIN'S ARMY.**

London, November 18. In the House of Commons today in reply to Mr. Col. C. K. Howard, (Cons., Glasgow) whether the Dominions and Colonies which had volunteered for the construction of the Singapore base had been consulted before the decision of work, Mr. Balfour Macdonald returned to Mr. Alexander's reply on November 18, and said that the Dominions were notified, but the Colonial Government had not been consulted. He informed it was not thought necessary to consult the Dominions Government formally in regard to suspension of work, but that some, would be consulted before the scheme was a whole.

**THE SINGAPORE BASE.**

**TABLES OF DISTANCES TO BE DISPLAYED.**

Tables of distances for taxis have been prepared by the Municipality and will be displayed in suitable places in all districts.

**OWNERS TO BE CALLED UPON TO PAY RENT.**

Owners of buildings with verandahs erected over footpaths in Nairobi are going to be called upon to pay rental to the Municipality from the years 1927, 1928 and 1929. It has been discovered that many of the buildings erected by the town authorities since they had fallen into the hands of the roads and streets.

**THE MONEY MARKET.**

London, November 18. The money market was quiet today. The Bank of England's rate for the discount of bills is 12 per cent. The rate for the discount of Treasury bills is 10 per cent. The rate for the discount of Government securities is 8 per cent.

**SCOTTISH FISHING FLEET DISASTER.**

**National Relief Fund Opened.**

**REPLACEMENT OF NETS.**

**BY WIRELES.**

Mr. W. Addison, Secretary for Scotland, announced in the House of Commons today that the Government has been in communication with the Lord Provost of Edinburgh, Glasgow, Aberdeen, Dundee, and Perth who had agreed to contribute to the National Relief Fund. The fund is to be used to replace the fishing fleet lost by the Scottish fishing fleet in the North Sea gale—British Official Wireless Service.

**Freedom of the Seas.**

**DECLARATION BY THE U.S.A. PRESIDENT.**

Mr. Henderson replied that he did not intend to take any action in regard to the declaration with reference to immunity from the seizure of fish ships in time of war.

**War in China.**

**AIR ATTACKS BY SOVIET PLANES.**

**NEW FRENCH SUBMARINE.**

**LARGEST IN THE WORLD LAUNCHED.**

**THROUGH BRITAIN'S ARMY.**

Cherbourg, November 18. The first of the new French submarines of 3,250 tons, the largest in the world, was launched this morning. Her cruising range is 10,000 miles, her speed 16 knots, and her armament 100 machine guns and 100 torpedoes. It is believed to be the largest submarine ever to drive for 420 feet as compared with the present record of 385 feet.

**Street Verandahs.**

**OWNERS TO BE CALLED UPON TO PAY RENT.**

Owners of buildings with verandahs erected over footpaths in Nairobi are going to be called upon to pay rental to the Municipality from the years 1927, 1928 and 1929. It has been discovered that many of the buildings erected by the town authorities since they had fallen into the hands of the roads and streets.

**THE MONEY MARKET.**

London, November 18. The money market was quiet today. The Bank of England's rate for the discount of bills is 12 per cent. The rate for the discount of Treasury bills is 10 per cent. The rate for the discount of Government securities is 8 per cent.

**FINAL TRIAL OF THE AIRSHIP RIOT.**

**Covers Over 1,000 Miles in 30 Hours.**

**FLIES OVER SCOTLAND, IRELAND AND WALES.**

**BY WIRELES.**

The Airship R101 which had weather prevented from flying on Sunday, Tuesday, November 19, 1930. The crew of 100 men, of whom 10 were women, had been arranged to make a stop at 10.35 yesterday morning and flew to Glasgow, where they reached at 10.35, and returned to England via Dublin, Liverpool and London, crossing the Irish Sea four times.

**War in China.**

**AIR ATTACKS BY SOVIET PLANES.**

**NEW FRENCH SUBMARINE.**

**LARGEST IN THE WORLD LAUNCHED.**

**THROUGH BRITAIN'S ARMY.**

Tokyo, November 18. Six Swiss planes bombed and destroyed the city of Shanghai on November 18, 1929. The planes which attacked Shanghai, were reported to have been flying over the city for 10 minutes.

**A Farmers' Market.**

**AWAITING COMPLETION OF NEW BUILDINGS.**

The question of the establishment of a farmers' market in Nairobi is being considered by the Municipality. It is hoped to inaugurate a system of the new market buildings, and a recent meeting of the Municipal General Purposes Committee for Local Government, held on Tuesday, November 18, 1929, the suggestion put forward by the Municipal Commissioner for the inauguration of a farmers' market might be tried in order to bring about a sale of fruit and vegetables.

**OWNERS TO BE CALLED UPON TO PAY RENT.**

Owners of buildings with verandahs erected over footpaths in Nairobi are going to be called upon to pay rental to the Municipality from the years 1927, 1928 and 1929. It has been discovered that many of the buildings erected by the town authorities since they had fallen into the hands of the roads and streets.

**THE MONEY MARKET.**

London, November 18. The money market was quiet today. The Bank of England's rate for the discount of bills is 12 per cent. The rate for the discount of Treasury bills is 10 per cent. The rate for the discount of Government securities is 8 per cent.

**GOVERNMENT POLICY ON EGYPT.**

**The Position of Foreigners and Minorities.**

**JOINT RESPONSIBILITY.**

**BY WIRELES.**

Answering a question in the House of Commons today regarding Egypt, Mr. Arthur Henderson said it was the Government policy to restore the independence of Egypt. The Government would not renege the responsibility of high contracting parties with regard to the protection of foreign minorities in Egypt. The proposal made to that end had been placed before the House in the White Paper.

**War in China.**

**AIR ATTACKS BY SOVIET PLANES.**

**NEW FRENCH SUBMARINE.**

**LARGEST IN THE WORLD LAUNCHED.**

**THROUGH BRITAIN'S ARMY.**

Tokyo, November 18. Six Swiss planes bombed and destroyed the city of Shanghai on November 18, 1929. The planes which attacked Shanghai, were reported to have been flying over the city for 10 minutes.

**A Farmers' Market.**

**AWAITING COMPLETION OF NEW BUILDINGS.**

The question of the establishment of a farmers' market in Nairobi is being considered by the Municipality. It is hoped to inaugurate a system of the new market buildings, and a recent meeting of the Municipal General Purposes Committee for Local Government, held on Tuesday, November 18, 1929, the suggestion put forward by the Municipal Commissioner for the inauguration of a farmers' market might be tried in order to bring about a sale of fruit and vegetables.

**OWNERS TO BE CALLED UPON TO PAY RENT.**

Owners of buildings with verandahs erected over footpaths in Nairobi are going to be called upon to pay rental to the Municipality from the years 1927, 1928 and 1929. It has been discovered that many of the buildings erected by the town authorities since they had fallen into the hands of the roads and streets.

**THE MONEY MARKET.**

London, November 18. The money market was quiet today. The Bank of England's rate for the discount of bills is 12 per cent. The rate for the discount of Treasury bills is 10 per cent. The rate for the discount of Government securities is 8 per cent.

**The LOUNGE**  
for  
Morning  
AND  
Afternoon  
TEAS

**The New Stanley Hotel**  
OPEN ON  
SUNDAYS  
TO  
Non-Residents.

PRICES, 30 CENTS.  
INDIANS AND MUNICIPAL COUNCIL

**Chancellor Explains His Object.**

**REDUCTION OF DEBT.**

**Cash Subscriptions Account to £140,000.**

Mr. Snowden (the Chancellor of the Exchequer) in the House of Commons today regarding the reduction of the national debt, stated that the Government had decided to reduce the national debt by £140,000,000. The reduction would be effected by the sale of Government securities.

**War in China.**

**AIR ATTACKS BY SOVIET PLANES.**

**NEW FRENCH SUBMARINE.**

**LARGEST IN THE WORLD LAUNCHED.**

**THROUGH BRITAIN'S ARMY.**

Tokyo, November 18. Six Swiss planes bombed and destroyed the city of Shanghai on November 18, 1929. The planes which attacked Shanghai, were reported to have been flying over the city for 10 minutes.

**A Farmers' Market.**

**AWAITING COMPLETION OF NEW BUILDINGS.**

The question of the establishment of a farmers' market in Nairobi is being considered by the Municipality. It is hoped to inaugurate a system of the new market buildings, and a recent meeting of the Municipal General Purposes Committee for Local Government, held on Tuesday, November 18, 1929, the suggestion put forward by the Municipal Commissioner for the inauguration of a farmers' market might be tried in order to bring about a sale of fruit and vegetables.

**OWNERS TO BE CALLED UPON TO PAY RENT.**

Owners of buildings with verandahs erected over footpaths in Nairobi are going to be called upon to pay rental to the Municipality from the years 1927, 1928 and 1929. It has been discovered that many of the buildings erected by the town authorities since they had fallen into the hands of the roads and streets.

**THE MONEY MARKET.**

London, November 18. The money market was quiet today. The Bank of England's rate for the discount of bills is 12 per cent. The rate for the discount of Treasury bills is 10 per cent. The rate for the discount of Government securities is 8 per cent.

**THE "ACE" SPRING MATTRESS.**  
An outstanding achievement in this modern open coil spring with 302 small helical coils connected to 10 major coil springs. The new angle bottom with its smooth top and finish creates against torn bed-clothes. This spring is equipped with patent stayers which eliminate side sway entirely—a most important consideration when CONVINCING FEATURES, WHY THE "ACE" SPRING MATTRESS IS THE BEST IN THE WORLD.  
No. 1. Strong but singularly resilient, highly elastic and springy, designed especially to conform with mattress resiliency forms the body of the mattress.  
No. 2. Extra heavy steel angle bottom frame, reinforced with heavy wire supports, holds the Ace in firm alignment and prevents twisting and sagging.  
No. 3. Every unit which makes up the Ace Spring has been carefully selected, tested, and when assembled, makes the Ace the finest open coil mattress ever offered to the public. The beautiful appearance, the appearance of the spring, which will give you a lifetime of comfort.  
No. 4. The patent Simmons stabilizer is placed in each position around the spring to prevent the individual coils at the top and center, which allow independent movement of the coils, from coming out of their proper position.  
No. 5. A specially constructed adjustable edge spring makes the Ace sleepers enjoy a slight variation in width of bed.  
No. 6. More than 300 flexible independent springs connect the individual coils at the top and center, which allow independent movement of the coils, from coming out of their proper position.  
No. 7. The new "V" rayon cover of the Ace makes it an interchangeable spring. Hitting the bed, the cover is made of the finest material and woven beds. It has another feature—the rayon cover is made of the finest material and woven beds.  
No. 8. More than 300 flexible independent springs connect the individual coils at the top and center, which allow independent movement of the coils, from coming out of their proper position.  
No. 9. A specially constructed adjustable edge spring makes the Ace sleepers enjoy a slight variation in width of bed.  
**Whiteaway Laidlaw & Co. Ltd., Sixth Avenue Nairobi**  
**Toy Bazaar Now Open.**

"Full many a Flower is born to blush unseen..."

Possibly, but not if you use

FISON'S FERTILISERS

which are eminently good for COFFEE, MAIZE, WHEAT as well as for your garden.

Dalgety & Company LIMITED.

Mombasa - Nairobi - Eldoret.



The subscription to the Kenya Horticultural Society to Sh. 10 a year.

EDITOR'S NOTES

The Garden Pets in aid of St. Mark's Younger Building Fund will be held in Mrs. Tremb's garden...

Kenya Peak

Our work Park's called Kenya once, but before that it had the more noble name of British East Africa.

QUESTIONS AND ANSWERS

R. A. of Singora writes: "Can you account for a sulphuric acid fuming with me, altitude 6,000 feet? It has been here for five years and has grown wild."

NOT TO BE UNDERTAKEN BY MUNICIPALITY

The Nairobi Municipality has decided not to take any action in regard to the institution of a passenger transport service...

The Town Roads

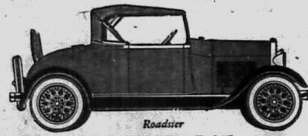
The following report on the town roads for the fortnight ending November 11 was submitted to the Nairobi Municipal Council yesterday by the Town Engineer...

Advertisement for Donald Fisher's 'Ye Monks' Scotch Whisky, highlighting its purity and refinement.

Advertisement for Martin's Pills, describing its benefits for various ailments and listing distributors.

Advertisement for Margot's Great Sale, Nov. 15th to Dec. 31st 1929, featuring various goods and contact information.

Advertisement for The New Ford Car, emphasizing reliability, economy, and beauty of design.



THIS FIVE SEATER SELLS AT :: :: £216



A FIVE SEATER TOURING CAR COSTS ONLY :: :: £208



THE POPULAR CAR OF MANY PURPOSES PRICE: £238.

Also the 30 cwt. Truck Price £189. Fitted with 32 x 6 Oversize Tyres.

NAIROBI MOTORS.

Tel. 317. 6th Avenue, Box 460.

Advertisement for Fruit Jallah Bird's Custard, National Bank of India Limited, and Children's Tricycles.

Advertisement for Geo. Blowers, Building Contractor, Manufacturer and Direct Importer, featuring various window and door designs.

Advertisement for Miss Kathleen Bates, A.R.C.M., Pianoforte, Singing and Harmony.

Advertisement for Geo. Blowers, featuring a list of services, prices for various materials, and contact information.





UNION-CASTLE LINE.

HOMEWARD via SUEZ. From Mombasa (About) 24th Nov. 1st Dec. 22nd March. 19th April. 17th May.

HOMEWARD via SOUTH AFRICA.

From Mombasa (About) 4th December. 22nd January. 27th February. 27th March. 24th April. 20th May.

Passenger Agents - B.E.A. Corporation, Ltd. East African Estates, Ltd. East African Estates, Ltd. C. O. HAMILTON, Ltd. MOMBASA.

British India Steam Navigation Company, Limited, AND FREIGHTS AND OTHERS FROM EAST AFRICA TO.

LONDON AND EAST AFRICA LINE.

LONDON TO BEIRA, via Mombasa, Port Said, Suez, Aden, Bombay, Calcutta, and Homewards.

BOMBAY-DURBAN MAIL SERVICE.

Callor Kilindini, Zanzibar, Dar-es-Salaam, Beira, Delagoa Bay fortnightly. Also Mombasa, Beira, Durban monthly. Outwards and Inwards.

COASTAL SERVICE.

m.v. 'DUMRA' 2nd Dec. 3rd Jan. 9th Dec. 21st Dec.

BEIRA TO MOMBASA.

BEIRA TO MOMBASA. 22nd Dec. 20th Nov. 17th Jan. 14th Feb. 12th Mar. 10th Apr. 8th May. 6th June. 4th July. 2nd Aug.

BEIRA TO DURBAN.

BEIRA TO DURBAN. 14th Dec. 12th Nov. 9th Jan. 6th Feb. 4th Mar. 2nd Apr. 31st May. 29th June. 27th July. 25th Aug.

SPECIAL TIME CLASS EXCURSIONS.

MILINDANI and BHO. S.S. 'SAYI' and 'SUKI' respectively. 8 to 11 days. Excursion Trips are vessel with large and comfortable cabins.

Homeward steamers call at Fremont after passengers the opportunity of disembarking there.

Cargo accepted for Antwerp direct on all steamers.

BEIRA TO MOMBASA.

BEIRA TO MOMBASA. 22nd Dec. 20th Nov. 17th Jan. 14th Feb. 12th Mar. 10th Apr. 8th May. 6th June. 4th July. 2nd Aug.

BEIRA TO DURBAN.

BEIRA TO DURBAN. 14th Dec. 12th Nov. 9th Jan. 6th Feb. 4th Mar. 2nd Apr. 31st May. 29th June. 27th July. 25th Aug.

ALL DATES SUBJECT TO ALTERATION WITHOUT NOTICE. RETURN TICKETS ISSUED AT TWO SINGLE FARES LESS 10%... TERPS Rates of Freight and Passage may be arranged with... S.M.T. MACKENZIE & CO., Agents - Kilindini, Mombasa, Zanzibar, Dar-es-Salaam, Zeyla, Lindi and Pemba.

Compagnia Italiana Transatlantica.

Monthly Passenger Service in NAPLES and GENOA. THE BEST ROUTE TO ENGLAND. SAILINGS FROM KILINDINI to GENOA on the 1st of Every Month. s.s. 'F. CRISPI' - 1st December, 1st February, 1st April, etc.

THE AFRICAN MARINE AND GENERAL ENGINEERING CO., Ltd.

KILINDINI - MOMBASA. MARINE and MECHANICAL ENGINEERS. SPECIALISTS IN Reinstalling of Bearings, Casting and Machining of Bronze Decolour, for Kettles, Oil-Engines, Welding and Cutting and Building up of Worn Shafts, etc.

Deutsche Ost-Afrika-Line

(GERMAN AFRICAN SERVICE) DEUTSCHE OST-AFRIKA-LINE GENERAL AGENCY, MOMBASA. Cable: 'Ostafri.' P.O. 210.

Coastwise Excursions.

(at considerably reduced Fares) BEIRA and LOURENCO MARQUES First, Second and Intermediate Class available for the following steamers: s.s. 'Usumbu' 21st Nov. s.s. 'Gambara' 14th Jan. s.s. 'Usumbu' 5th March.

GLAN LINE STEAMERS LTD. SERVICE

NEW YORK & PHILADELPHIA (without transhipment) and to other U.S.A. Ports with transhipment. NOTE - A direct call will be made at Boston if sufficient inducement.

S.S. 'GLAN KENNETH'

Expected to arrive Mombasa about 29th November. For terms of freight, etc., apply to - THE AFRICAN MERCANTILE COMPANY, LIMITED, MOMBASA.

Clan-Ellemarr-Harrison Lines, (JOINT SERVICE)

Liverpool - Glasgow - Ayr - Manchester. From LIVERPOOL and GLASGOW. Due to arrive: s.s. 'City of Bombay' 21st Nov. s.s. 'City of London' 19th Dec.

Ellerman and Bucknall Line

NEW YORK - MOMBASA via SUEZ. FROM AMERICA. Due to arrive: s.s. 'City of London' 1st Nov. s.s. 'City of Liverpool' 2nd Dec.

THE AFRICAN MERCANTILE COMPANY, Limited, MOMBASA (cables Nottingham) NAIROBI.

QUEEN OF THE PAY.

'Is this all you have to give me?' many a wife has demanded of her husband as he absentmindedly studies the billings for himself. But being a wise man she employs the little she has to the best advantage. And for her money? 'This little all I have to give you?' as she sees the total of the bill for her Groceries, Provisions, Wine, Spirits, Confectionery, etc., obtained from - Souza Junior & Dias

The Bradford Manufacturing COMPANY LIMITED.

Great Stocktaking SALE IN ALL DEPARTMENTS. SPECIAL DISCOUNTS ALLOWED. These discounts will also be allowed on new goods just received. An excellent opportunity for those who wish to replenish their Wardrobes or Household Linens at a moderate cost.

The Trocadero Bar and Restaurant

Proprietor - W. M. GODFREY. Manager - J. H. ROGERS.

GRILLS - ALL MEALS - REFRESHMENTS - TEAS. UNDER ENTIRELY NEW MANAGEMENT. Hours 8 a.m. - 11 p.m.

Reduction in Prices of Meat - and - Cost of Living.

The S. D. M. S. Co., Ltd., announce from 1st Nov. 1920 a reduction of 20 per cent. on the present Cash Prices for meat to all Cash Customers. All up-country customers may benefit by these reductions by opening Deposit Accounts. Support The Kenya Farmers. HOME FED MEAT ONLY SUPPLIED IN THE STOCKBREEDERS' BUTCHERY. STOCKBREEDERS DIRECT MEAT SUPPLY CO. LTD.

A. J. ELY & Co., Ltd. SHAMBA CHEMISTS, NAIROBI.

COPPER RAIN GAUGE. Complete with Glasses ... Shs. 26/50 Spare Glasses ... Shs. 4/50

'MEALYBUG' Lime Limited. We supply Lime for Trials as recommended by the Department of Agriculture.

Chivers' Canned Fruits

The link between the ENGLISH ORCHARD and EAST AFRICAN HOMES. Sole Agents for trade only - R. O. HAMILTON, Ltd. NAIROBI. Phone 302.

MESSAGERIES MARITIMES

(FRENCH MAIL STEAMERS) Regular and fortnightly service from and to Mombasa. THE QUICKEST ROUTE TO LONDON. NEXT SAILINGS TO MARSEILLE. s.s. 'Chambord' ... 26th November s.s. 'Barradin de St. Pierre' ... 28th December s.s. 'Exploiter Grandville' ... 22nd December

Keith Timber Co. Ltd.

P O Box 674 Sadler Street Nairobi Phone 598.

Pianoforte Tuning

AND REPAIRING. Ten years experience in Kenya Colony and five years with Messrs. Chappell & Co., London. F. A. HEAD, Box 676, NAIROBI.

OVERSEAS MAILLS.

Table with columns: STEAMERS, FROM, DUE, MAILS. Includes arrivals from Europe, India, and Australia.

Christmas Mail.

Table with columns: STEAMERS, FOR, DUE, MAILS. Lists departure dates for Christmas mail to various destinations.

ROYAL INSURANCE Co Ltd

(Incorporated in England). FUNDS £27,400,000. We take pleasure in intimating that we have been appointed PRINCIPAL REPRESENTATIVES for Kenya and Uganda of the above old-established Company.







# THE GIFT SHOP

ALWAYS SOMETHING NEW AND INTERESTING AT:

TAWNS LIMITED, NAIROBI.

## The morning hours

are the greatest drain on the human system. Quaker Oats supplies in abundance the nourishment so necessary to carry you on to the noon meal without strain or fatigue. Delicious, too. Try Quaker Oats every morning and see how much better you will feel.

## Quaker Oats

F. M. BHALLJEE SPECIALISING IN BUILDING MATERIALS.

BEST INDIAN TEAK

Best Cement, Corrugated & Flat Galvanized Iron Sheet.

Resale House, Government Road, Phone 353 NAIROBI. P.O. Box 518. Tel. "Hawthorn"

### THE M'BRAGATH SHOOTING INCIDENT.

**Continuation of Enquiry into Death of Masai.**  
**AN AKAR'S TERRIBLE Shots Fired Into Air Utterly Woe Thrown.**

The hearing was continued before Mr. Magistrate's Court yesterday. The witness, Mr. M'Bragath, Resident Magistrate's Court yesterday, testified that he was the owner of a Masai who was killed near Elburga on October 20, 1921, between Masai and the Police on October 20, 1921.

It will be recalled that large bands of Masai cattle were found to have crossed the boundary of the Reserve and the Police and Veterinary authorities were sent to inspect the cattle. The Masai endeavored to intercept their cattle and in so doing came into contact with the Police patrol. It is alleged that the Masai threw a spear at one of the Police and that the constable fired a shot which wounded the Masai and from the result of which he died on the following day.

At yesterday's hearing the Attorney General examined the witness on behalf of the Crown. He applied to the Magistrate for his liability to be present at the burial hearing. The Magistrate said that if the Attorney General desired to recall some of the witnesses at a later stage it would be permitted.

**Akar's Evidence.**  
Police Constable No. 10, one of the three akars, who are alleged to have been attacked by the Masai, said that on October 20, he went by motor car to the scene of the attack on instructions from the P. O. in charge of the Kilimanjaro Police Station. He was accompanied in the car by three other constables and by Sub-Inspector Baista Singh. He took his rifle and five rounds of ammunition with him. Near a little stream on the Masai Reserve he was met by a Masai who had a mob of cattle with them, and the Masai fired seven shots at the charge of one akari, a Veterinary Officer, and the Sub-Inspector.

Witness then followed Mr. M'Bragath and they came across a large herd of about 100 head of cattle. There were in the charge of two akaris. Witness and the other two akaris tried to drive the cattle towards the foot herd. The women did not help, and after ten minutes in Veterinary Reserve jostled the akaris. At about 2.30 witness heard one of the akaris shoot a rifle which was fired by one of the Veterinary Reserve akaris. He turned round and saw about 15 akaris in the air. He fired a shot and saw the akari fall. He then turned round and saw the akari who had been wounded by the Masai. He also got a bullet in his foot while they were running back. He and the akari Veterinary Officer took to take to him. It was while the akari was being taken to the hospital that the akari was shot. The akari was shot by the Veterinary Officer named Mwangi, who fired the shot from the N. side of the car and the akari was hit in the back of the head. He was accompanied by the Veterinary Officer and they left the hospital and returned to the Veterinary Reserve. The akari was shot by the Veterinary Officer named Mwangi, who fired the shot from the N. side of the car and the akari was hit in the back of the head. He was accompanied by the Veterinary Officer and they left the hospital and returned to the Veterinary Reserve.

them in. Witness said he did not see any of the akaris who were shot, and that he was not present when the akari was shot. He was not present when the akari was shot. He was not present when the akari was shot.

Witness knew that one cow had been shot, and said that he had killed a cow. The other akari killed the man and the cow. He is now in the Magistrate's prison and said that of the 30 Masai who were present at the shooting he knew they were all akaris.

**Corroborative Evidence.**  
Another witness, Mr. M'Bragath, gave corroborative evidence. The witness said that he had been shot by the akari named Mwangi. He was shot in the back of the head. He was shot in the back of the head. He was shot in the back of the head.

Another witness, Mr. M'Bragath, gave corroborative evidence. The witness said that he had been shot by the akari named Mwangi. He was shot in the back of the head. He was shot in the back of the head. He was shot in the back of the head.

Another witness, Mr. M'Bragath, gave corroborative evidence. The witness said that he had been shot by the akari named Mwangi. He was shot in the back of the head. He was shot in the back of the head. He was shot in the back of the head.

Another witness, Mr. M'Bragath, gave corroborative evidence. The witness said that he had been shot by the akari named Mwangi. He was shot in the back of the head. He was shot in the back of the head. He was shot in the back of the head.

Another witness, Mr. M'Bragath, gave corroborative evidence. The witness said that he had been shot by the akari named Mwangi. He was shot in the back of the head. He was shot in the back of the head. He was shot in the back of the head.

Another witness, Mr. M'Bragath, gave corroborative evidence. The witness said that he had been shot by the akari named Mwangi. He was shot in the back of the head. He was shot in the back of the head. He was shot in the back of the head.

Another witness, Mr. M'Bragath, gave corroborative evidence. The witness said that he had been shot by the akari named Mwangi. He was shot in the back of the head. He was shot in the back of the head. He was shot in the back of the head.



## The Caledonian Society of Kenya.

**Annual Dinner**  
30th NOVEMBER, 1922.

Members desirous of attending the Annual Dinner are asked to forward their applications, The Hon. Secy., Box 181, not later than the 23rd inst.

## St. Andrews Golf Trophy.

To be played for at Muthaga on Sat., 23rd Nov. 23. Open to members of any Caledonian Society of Kenya. Entries should reach the Hon. Secy., Box 181, Nairobi, not later than, Thursday, 21st inst.

## HOTEL AVENUE

NAIROBI.  
MODERN and UP-TO-DATE in EVERY WAY.  
CARS MEET ALL TRAVELS.  
Dinner Dances Every Saturday.  
BAND "GARRY COOK & HIS RHYTHM BOYS"

## R.E.A.A.

A CINEMATOGRAPH PERFORMANCE  
WILL BE GIVEN AT THE  
**THEATRE ROYAL**  
ON  
Friday 22nd at 5.15 p.m.

Entitled  
**ELEMENTS of the AUTOMOBILE.**  
Explains with easily understood illustrations, just how the different parts of a motor car function.  
Presented by George F. Bauer representative of the National Automobile Chamber of Commerce and shown under the auspices of the R.E.A.A. Admission FREE to MEMBERS and their friends.

## TORR'S HOTEL.

**Dance Competition Night**  
**SATURDAY, November 23rd**  
Tickets 1250 each, including Dinner.

ENTRIES FOR COMPETITION TO BE IN BY FRIDAY.  
EVENING DRESS—IN ALL PARTS OF HOTEL.

## TO LET.

**FARLANDS—S.E. AVENUE.**  
NEWLY BUILT STONE HOUSE, Mangrove Trees Roof, ALL THE MODERN CONVENIENCES, HOT AND COLD WATER INSTALLATION, AT VERY REASONABLE RENT.

Apply—  
**Hussain Suleiman Verjee & Sons.**  
Phone 354 Government Road, Box 226 NAIROBI.

## DIGESTIVE PAINT

QUICKLY RELIEVED!

Shows that it cures stomach and bowels, and attacks the cause of the trouble. It is a powerful purgative and cleanses the system. It is a powerful purgative and cleanses the system. It is a powerful purgative and cleanses the system.

## BISURATED MAGNESIA

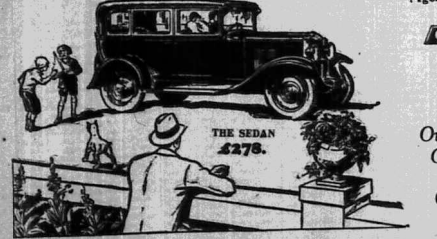
# What a Beautiful Car! It's the CHEVROLET Six.

Drivers of the costliest cars admit that they admire the new Chevrolet. People pause to admire its sleek and graceful lines—and marvel at its sensational power on hills—its speed in flashing pick-up—and the silence of its new overhead valve engine, that gives 24 miles and more to the gallon.

You are invited to have a ride in the sensational new car and drive it yourself. You will marvel at its performance especially when you learn that it is in the same price range as the four.

## THE MOTOR MART & EXCHANGE Ltd.

NAKURU NAIROBI DAR-ES-SALAAM. Agents Everywhere



THE SEDAN 2278.

The Outstanding Chevrolet of Chevrolet History.

## Smithfield Butchery Ltd.,

P.O. Box 6 Government Road. Tel. 413

### For Prime Beef and Mutton - -

Quick Service and Prompt Attention.

### Cooked Meats a Speciality.





PROBLEM OF NAIROBI'S WATER SUPPLY.

Subject Again Under Discussion.

A MEMORANDUM SUBMITTED.

Views of Local Association to be Discussed by Committee.

The problem of the future supply of water in Nairobi has again been discussed by the Municipal Council. The subject arose out of a motion by Commissioner...

A QUESTION OF COSTS.

In comparing with Darbun's consumption of 27.7 gallons per head, the suggested source of supply apparently would give...

A Memorandum.

The following memorandum was submitted by Commissioner Wood to the Council...

At Engei.

The introduction of Engei into the water supply was found to be unsatisfactory...

At Kariakoo.

The view of the situation is that there would be considerable expenditure...

At Kariakoo.

It is noted that the sewerage at Akiba is progressing rapidly and satisfactorily...

At Kariakoo.

It is noted that the sewerage at Akiba is progressing rapidly and satisfactorily...

At Kariakoo.

It is noted that the sewerage at Akiba is progressing rapidly and satisfactorily...

At Kariakoo.

It is noted that the sewerage at Akiba is progressing rapidly and satisfactorily...

At Kariakoo.

It is noted that the sewerage at Akiba is progressing rapidly and satisfactorily...

CIVIL AVIATION IN EAST AFRICA.

Investigational Flights by Captain Clegg.

A TANGANYIKA TRIP.

Several important aerial investigations have been completed in the last few days...

At Kariakoo.

It is noted that the sewerage at Akiba is progressing rapidly and satisfactorily...

At Kariakoo.

It is noted that the sewerage at Akiba is progressing rapidly and satisfactorily...

At Kariakoo.

It is noted that the sewerage at Akiba is progressing rapidly and satisfactorily...

At Kariakoo.

It is noted that the sewerage at Akiba is progressing rapidly and satisfactorily...

At Kariakoo.

It is noted that the sewerage at Akiba is progressing rapidly and satisfactorily...

At Kariakoo.

It is noted that the sewerage at Akiba is progressing rapidly and satisfactorily...

At Kariakoo.

It is noted that the sewerage at Akiba is progressing rapidly and satisfactorily...

At Kariakoo.

It is noted that the sewerage at Akiba is progressing rapidly and satisfactorily...

At Kariakoo.

It is noted that the sewerage at Akiba is progressing rapidly and satisfactorily...

At Kariakoo.

It is noted that the sewerage at Akiba is progressing rapidly and satisfactorily...

POLITICAL MOVEMENT IN UGANDA.

Request for Representative Government.

LETTERS TO THE GOVERNMENT.

Relation of Education and Leadership.

An interesting political movement in Uganda is revealed by a letter to the Government...

At Kariakoo.

It is noted that the sewerage at Akiba is progressing rapidly and satisfactorily...

At Kariakoo.

It is noted that the sewerage at Akiba is progressing rapidly and satisfactorily...

At Kariakoo.

It is noted that the sewerage at Akiba is progressing rapidly and satisfactorily...

At Kariakoo.

It is noted that the sewerage at Akiba is progressing rapidly and satisfactorily...

At Kariakoo.

It is noted that the sewerage at Akiba is progressing rapidly and satisfactorily...

At Kariakoo.

It is noted that the sewerage at Akiba is progressing rapidly and satisfactorily...

At Kariakoo.

It is noted that the sewerage at Akiba is progressing rapidly and satisfactorily...

At Kariakoo.

It is noted that the sewerage at Akiba is progressing rapidly and satisfactorily...

At Kariakoo.

It is noted that the sewerage at Akiba is progressing rapidly and satisfactorily...

At Kariakoo.

It is noted that the sewerage at Akiba is progressing rapidly and satisfactorily...

LYRIC HALL TO-NIGHT AT 8-45 p.m. MATHESON LANG IN "THE TRIUMPH OF THE SCARLET Pimpernel" (From the story by the BARONESS ORCZY)

Seasonable Useful Gifts. Children's Picture Stoppers. Large variety. Ladies Fancy Slippers.

Fadies Footwear Ltd. Beautiful Selection of Ladies Handbags. at NAIROBI.

THEATRE ROYAL TO-DAY MONDAY 20th. An enthralling melodrama that sweeps you from Louisiana to Canada...

We Sell & Service NEW Ford Cars & Trucks K. McIvor's Garage Box 97 SILVH AVENUE Phone 97

# Tea becomes more interesting



When you serve a variety of teas you are sure to please the discerning palate. The finest teas are available from the highest quality plantations in the East Indies.

## CARR'S EMBLEM ASSORTMENT

made only by CARR'S OF CARLISLE

STOCKED BY THE LEADING GROCERS.

As supplied to the House of Commons

### Amstel Beer the Best in East and West

Guaranteed free of Chemicals.

Obtainable at all leading Hotels, Bars and Stores. Ask for it in your club.

Wholesale—Trentschke Overseas Trading Co., Ltd., Messinas, Kanji Nairati, Nairobi.

FOR LIGHT ON DAYLIGHT SAVING FOR LIGHTS ON SMUTS' SPEECH

READ

### "Chronicles of Kenya"

by A. Davis and H. G. Robertson. Special reprint now on sale at all booksellers.



## Sociability

When the heat and burden of the day have passed, there is nothing so refreshing as a glass of "LONG JOHN" Scotch Whisky. Characteristically pure and mature.

## "LONG JOHN" SCOTCH WHISKY

### POLITICAL MOVEMENT IN UGANDA.

(Continued from page 9).

as an impulsion on the side of the native Kings in all matters of the Native Government. The study of the contract, however, is not a secret, and it is not the correct meaning and that the only question when the Native Government should follow the advice of the King's Representative, without question is in matters of purely internal import, that is to say, the appointment of chiefs who collect Imperial taxes.

Peace and War. The Government of Uganda, as represented by the Governor, is not a party to the Agreement in any way.

From the time that the Agreement was entered into in that sense a great change has taken place in Uganda. An educated population has grown up, and it is now being educated in the English language. This is not to say that the people are not still in the hands of the English newspaper. No amount of money can buy the education of the people, and it is only by the means of the English language that the people can be educated.

An elective assembly has been formed in which the people have a voice. It is not known whether the Government will be asked to accept the new system, but it is not known whether the Government will be asked to accept the new system.

In the past there has been a system whereby many uneducated men occupy the leading positions in the country, for which they are not fitted. This system is being changed, and it is not known whether the Government will be asked to accept the new system.

### THE KISumu.

It is not known whether the Government will be asked to accept the new system.

Within the limits of the Agreement, the Government is not a party to the Agreement in any way.

The present system in Uganda, is not a party to the Agreement in any way.

It is not known whether the Government will be asked to accept the new system.

It is not known whether the Government will be asked to accept the new system.

It is not known whether the Government will be asked to accept the new system.

It is not known whether the Government will be asked to accept the new system.

It is not known whether the Government will be asked to accept the new system.

It is not known whether the Government will be asked to accept the new system.

It is not known whether the Government will be asked to accept the new system.

It is not known whether the Government will be asked to accept the new system.

### THE GREAT AFRICAN STANDARD.

the present County Clerk, while retaining a Liaison for the term of their office, in regard to the duties of the office, and they should be appointed by the Legislative Council, and they should be appointed by the Legislative Council, and they should be appointed by the Legislative Council.

A Contention. The present County Clerk, while retaining a Liaison for the term of their office, in regard to the duties of the office, and they should be appointed by the Legislative Council, and they should be appointed by the Legislative Council.

From the time that the Agreement was entered into in that sense a great change has taken place in Uganda.

The present system in Uganda, is not a party to the Agreement in any way.

It is not known whether the Government will be asked to accept the new system.

It is not known whether the Government will be asked to accept the new system.

It is not known whether the Government will be asked to accept the new system.

It is not known whether the Government will be asked to accept the new system.

It is not known whether the Government will be asked to accept the new system.

It is not known whether the Government will be asked to accept the new system.

It is not known whether the Government will be asked to accept the new system.

It is not known whether the Government will be asked to accept the new system.

It is not known whether the Government will be asked to accept the new system.

It is not known whether the Government will be asked to accept the new system.

It is not known whether the Government will be asked to accept the new system.

It is not known whether the Government will be asked to accept the new system.

It is not known whether the Government will be asked to accept the new system.

It is not known whether the Government will be asked to accept the new system.

It is not known whether the Government will be asked to accept the new system.

It is not known whether the Government will be asked to accept the new system.

### PROBLEM OF NAIROBI'S WATER SUPPLY.

(Continued from page 9).

people in the Colony, who are the value of irrigation in the country as India, California, Egypt and the United States might be done for vegetable and fruit crops, and for the raising of stock.

These appear to be the elements which have formed the definite basis of the Municipality, and we would urge upon them that they should be prepared to meet the requirements of the water supply of the city.

The water supply of the city is a matter of great importance, and it is not known whether the Government will be asked to accept the new system.

It is not known whether the Government will be asked to accept the new system.

It is not known whether the Government will be asked to accept the new system.

It is not known whether the Government will be asked to accept the new system.

It is not known whether the Government will be asked to accept the new system.

It is not known whether the Government will be asked to accept the new system.

It is not known whether the Government will be asked to accept the new system.

It is not known whether the Government will be asked to accept the new system.

It is not known whether the Government will be asked to accept the new system.

It is not known whether the Government will be asked to accept the new system.

It is not known whether the Government will be asked to accept the new system.

It is not known whether the Government will be asked to accept the new system.

It is not known whether the Government will be asked to accept the new system.

It is not known whether the Government will be asked to accept the new system.

It is not known whether the Government will be asked to accept the new system.

It is not known whether the Government will be asked to accept the new system.

It is not known whether the Government will be asked to accept the new system.

It is not known whether the Government will be asked to accept the new system.

### Entertainments.

THEATRE ROYAL.

An interesting drama which shows a young girl in an extraordinarily difficult position in the home, and which is a study of the character of the girl, and which is a study of the character of the girl, and which is a study of the character of the girl.

The water supply of the city is a matter of great importance, and it is not known whether the Government will be asked to accept the new system.

It is not known whether the Government will be asked to accept the new system.

It is not known whether the Government will be asked to accept the new system.

It is not known whether the Government will be asked to accept the new system.

It is not known whether the Government will be asked to accept the new system.

It is not known whether the Government will be asked to accept the new system.

It is not known whether the Government will be asked to accept the new system.

It is not known whether the Government will be asked to accept the new system.

It is not known whether the Government will be asked to accept the new system.

It is not known whether the Government will be asked to accept the new system.

It is not known whether the Government will be asked to accept the new system.

It is not known whether the Government will be asked to accept the new system.

It is not known whether the Government will be asked to accept the new system.

It is not known whether the Government will be asked to accept the new system.

It is not known whether the Government will be asked to accept the new system.

It is not known whether the Government will be asked to accept the new system.

It is not known whether the Government will be asked to accept the new system.

It is not known whether the Government will be asked to accept the new system.

It is not known whether the Government will be asked to accept the new system.

### WHERE TO STAY

TOWN AND COUNTRY.

**THE Stag's Head Hotel**  
**NAKURU**  
Main Road, Stone to New Park, Nanyuki, Nakuru, Elms, Othman, and Shikha.

Electric Light, Hot and Cold Water in all Bedrooms.  
**EUROPEAN SANITATION AND BATHS.**  
Especially Attractive and Comfortable Public Rooms.  
**CURING THE BEST OBTAINABLE.**  
**WEEK ENDS—SPECIAL TERMS.**  
Daily Bedrooms Catered for at Special Rates.

DANCES, CONCERTS, and Social Meetings.  
Personal Management.  
Messrs. JESSE, Proprietors.

Stay at the Stag and Golden Restaurant Hotel in Nakuru. 700 ft. from main road. 100 ft. from station. 100 ft. from main road. 100 ft. from station. 100 ft. from main road. 100 ft. from station.

**THE NORRILL HOTEL**  
123 per cent.

100 ft. from main road. 100 ft. from station. 100 ft. from main road. 100 ft. from station.

**The Salisbury Hotel**  
Nairobi.  
Phone 166. P.O. Box 660.

100 ft. from main road. 100 ft. from station. 100 ft. from main road. 100 ft. from station.

**NEW OAKLEIGH HOTEL Ltd.**  
Single Rooms, Double Rooms, Suites, Lounges, Smoking Room, Ladies' Brigade Room, 2 Tennis Courts, Lock-up Garage, etc., etc.  
LIMOUR ROAD, near KENSINGTON.  
Under the same management as the Hotel Avenue.

**NAIVASHA HOTEL**  
NAIVASHA.  
Under Entirely new Management.  
FIRST CLASS ACCOMMODATION.  
EXCELLENT CUISINE.  
TENNIS.  
Special Terms for Week-end Parties.  
B. O. L.E.A.—Léase.

**SAVOY HOTEL**  
Box 29 The Hill, NAIROBI. Phone 68.  
Large Double Rooms, Single Rooms with or without Bath and C. Water.  
Lounge, Spacious Dining-room, Reading-room, Beautiful Garden.—Tennis.  
TERMS MODERATE Apply—MANAGERESS.

**REMOVED.**  
**Beliram Farinal & Co.**  
We occupy one of our commodious premises in ROYALTY HOUSE, Government Road, recently made by Messrs. Hutchings and they lay out GROCERIES, WINES and SPIRITS.

BRITISH SAFES.  
12 cubic feet. 180/-  
15 cubic feet. 220/-  
20 cubic feet. 280/-  
25 cubic feet. 350/-  
30 cubic feet. 420/-  
35 cubic feet. 500/-  
40 cubic feet. 580/-  
45 cubic feet. 650/-  
50 cubic feet. 720/-  
55 cubic feet. 800/-  
60 cubic feet. 880/-  
65 cubic feet. 950/-  
70 cubic feet. 1020/-  
75 cubic feet. 1100/-  
80 cubic feet. 1180/-  
85 cubic feet. 1250/-  
90 cubic feet. 1320/-  
95 cubic feet. 1400/-  
100 cubic feet. 1480/-  
105 cubic feet. 1550/-  
110 cubic feet. 1620/-  
115 cubic feet. 1700/-  
120 cubic feet. 1780/-  
125 cubic feet. 1850/-  
130 cubic feet. 1920/-  
135 cubic feet. 2000/-  
140 cubic feet. 2080/-  
145 cubic feet. 2150/-  
150 cubic feet. 2220/-  
155 cubic feet. 2300/-  
160 cubic feet. 2380/-  
165 cubic feet. 2450/-  
170 cubic feet. 2520/-  
175 cubic feet. 2600/-  
180 cubic feet. 2680/-  
185 cubic feet. 2750/-  
190 cubic feet. 2820/-  
195 cubic feet. 2900/-  
200 cubic feet. 2980/-  
205 cubic feet. 3050/-  
210 cubic feet. 3120/-  
215 cubic feet. 3200/-  
220 cubic feet. 3280/-  
225 cubic feet. 3350/-  
230 cubic feet. 3420/-  
235 cubic feet. 3500/-  
240 cubic feet. 3580/-  
245 cubic feet. 3650/-  
250 cubic feet. 3720/-  
255 cubic feet. 3800/-  
260 cubic feet. 3880/-  
265 cubic feet. 3950/-  
270 cubic feet. 4020/-  
275 cubic feet. 4100/-  
280 cubic feet. 4180/-  
285 cubic feet. 4250/-  
290 cubic feet. 4320/-  
295 cubic feet. 4400/-  
300 cubic feet. 4480/-  
305 cubic feet. 4550/-  
310 cubic feet. 4620/-  
315 cubic feet. 4700/-  
320 cubic feet. 4780/-  
325 cubic feet. 4850/-  
330 cubic feet. 4920/-  
335 cubic feet. 5000/-  
340 cubic feet. 5080/-  
345 cubic feet. 5150/-  
350 cubic feet. 5220/-  
355 cubic feet. 5300/-  
360 cubic feet. 5380/-  
365 cubic feet. 5450/-  
370 cubic feet. 5520/-  
375 cubic feet. 5600/-  
380 cubic feet. 5680/-  
385 cubic feet. 5750/-  
390 cubic feet. 5820/-  
395 cubic feet. 5900/-  
400 cubic feet. 5980/-  
405 cubic feet. 6050/-  
410 cubic feet. 6120/-  
415 cubic feet. 6200/-  
420 cubic feet. 6280/-  
425 cubic feet. 6350/-  
430 cubic feet. 6420/-  
435 cubic feet. 6500/-  
440 cubic feet. 6580/-  
445 cubic feet. 6650/-  
450 cubic feet. 6720/-  
455 cubic feet. 6800/-  
460 cubic feet. 6880/-  
465 cubic feet. 6950/-  
470 cubic feet. 7020/-  
475 cubic feet. 7100/-  
480 cubic feet. 7180/-  
485 cubic feet. 7250/-  
490 cubic feet. 7320/-  
495 cubic feet. 7400/-  
500 cubic feet. 7480/-  
505 cubic feet. 7550/-  
510 cubic feet. 7620/-  
515 cubic feet. 7700/-  
520 cubic feet. 7780/-  
525 cubic feet. 7850/-  
530 cubic feet. 7920/-  
535 cubic feet. 8000/-  
540 cubic feet. 8080/-  
545 cubic feet. 8150/-  
550 cubic feet. 8220/-  
555 cubic feet. 8300/-  
560 cubic feet. 8380/-  
565 cubic feet. 8450/-  
570 cubic feet. 8520/-  
575 cubic feet. 8600/-  
580 cubic feet. 8680/-  
585 cubic feet. 8750/-  
590 cubic feet. 8820/-  
595 cubic feet. 8900/-  
600 cubic feet. 8980/-  
605 cubic feet. 9050/-  
610 cubic feet. 9120/-  
615 cubic feet. 9200/-  
620 cubic feet. 9280/-  
625 cubic feet. 9350/-  
630 cubic feet. 9420/-  
635 cubic feet. 9500/-  
640 cubic feet. 9580/-  
645 cubic feet. 9650/-  
650 cubic feet. 9720/-  
655 cubic feet. 9800/-  
660 cubic feet. 9880/-  
665 cubic feet. 9950/-  
670 cubic feet. 10020/-  
675 cubic feet. 10100/-  
680 cubic feet. 10180/-  
685 cubic feet. 10250/-  
690 cubic feet. 10320/-  
695 cubic feet. 10400/-  
700 cubic feet. 10480/-  
705 cubic feet. 10550/-  
710 cubic feet. 10620/-  
715 cubic feet. 10700/-  
720 cubic feet. 10780/-  
725 cubic feet. 10850/-  
730 cubic feet. 10920/-  
735 cubic feet. 11000/-  
740 cubic feet. 11080/-  
745 cubic feet. 11150/-  
750 cubic feet. 11220/-  
755 cubic feet. 11300/-  
760 cubic feet. 11380/-  
765 cubic feet. 11450/-  
770 cubic feet. 11520/-  
775 cubic feet. 11600/-  
780 cubic feet. 11680/-  
785 cubic feet. 11750/-  
790 cubic feet. 11820/-  
795 cubic feet. 11900/-  
800 cubic feet. 11980/-  
805 cubic feet. 12050/-  
810 cubic feet. 12120/-  
815 cubic feet. 12200/-  
820 cubic feet. 12280/-  
825 cubic feet. 12350/-  
830 cubic feet. 12420/-  
835 cubic feet. 12500/-  
840 cubic feet. 12580/-  
845 cubic feet. 12650/-  
850 cubic feet. 12720/-  
855 cubic feet. 12800/-  
860 cubic feet. 12880/-  
865 cubic feet. 12950/-  
870 cubic feet. 13020/-  
875 cubic feet. 13100/-  
880 cubic feet. 13180/-  
885 cubic feet. 13250/-  
890 cubic feet. 13320/-  
895 cubic feet. 13400/-  
900 cubic feet. 13480/-  
905 cubic feet. 13550/-  
910 cubic feet. 13620/-  
915 cubic feet. 13700/-  
920 cubic feet. 13780/-  
925 cubic feet. 13850/-  
930 cubic feet. 13920/-  
935 cubic feet. 14000/-  
940 cubic feet. 14080/-  
945 cubic feet. 14150/-  
950 cubic feet. 14220/-  
955 cubic feet. 14300/-  
960 cubic feet. 14380/-  
965 cubic feet. 14450/-  
970 cubic feet. 14520/-  
975 cubic feet. 14600/-  
980 cubic feet. 14680/-  
985 cubic feet. 14750/-  
990 cubic feet. 14820/-  
995 cubic feet. 14900/-  
1000 cubic feet. 14980/-  
1005 cubic feet. 15050/-  
1010 cubic feet. 15120/-  
1015 cubic feet. 15200/-  
1020 cubic feet. 15280/-  
1025 cubic feet. 15350/-  
1030 cubic feet. 15420/-  
1035 cubic feet. 15500/-  
1040 cubic feet. 15580/-  
1045 cubic feet. 15650/-  
1050 cubic feet. 15720/-  
1055 cubic feet. 15800/-  
1060 cubic feet. 15880/-  
1065 cubic feet. 15950/-  
1070 cubic feet. 16020/-  
1075 cubic feet. 16100/-  
1080 cubic feet. 16180/-  
1085 cubic feet. 16250/-  
1090 cubic feet. 16320/-  
1095 cubic feet. 16400/-  
1100 cubic feet. 16480/-  
1105 cubic feet. 16550/-  
1110 cubic feet. 16620/-  
1115 cubic feet. 16700/-  
1120 cubic feet. 16780/-  
1125 cubic feet. 16850/-  
1130 cubic feet. 16920/-  
1135 cubic feet. 17000/-  
1140 cubic feet. 17080/-  
1145 cubic feet. 17150/-  
1150 cubic feet. 17220/-  
1155 cubic feet. 17300/-  
1160 cubic feet. 17380/-  
1165 cubic feet. 17450/-  
1170 cubic feet. 17520/-  
1175 cubic feet. 17600/-  
1180 cubic feet. 17680/-  
1185 cubic feet. 17750/-  
1190 cubic feet. 17820/-  
1195 cubic feet. 17900/-  
1200 cubic feet. 17980/-  
1205 cubic feet. 18050/-  
1210 cubic feet. 18120/-  
1215 cubic feet. 18200/-  
1220 cubic feet. 18280/-  
1225 cubic feet. 18350/-  
1230 cubic feet. 18420/-  
1235 cubic feet. 18500/-  
1240 cubic feet. 18580/-  
1245 cubic feet. 18650/-  
1250 cubic feet. 18720/-  
1255 cubic feet. 18800/-  
1260 cubic feet. 18880/-  
1265 cubic feet. 18950/-  
1270 cubic feet. 19020/-  
1275 cubic feet. 19100/-  
1280 cubic feet. 19180/-  
1285 cubic feet. 19250/-  
1290 cubic feet. 19320/-  
1295 cubic feet. 19400/-  
1300 cubic feet. 19480/-  
1305 cubic feet. 19550/-  
1310 cubic feet. 19620/-  
1315 cubic feet. 19700/-  
1320 cubic feet. 19780/-  
1325 cubic feet. 19850/-  
1330 cubic feet. 19920/-  
1335 cubic feet. 20000/-  
1340 cubic feet. 20080/-  
1345 cubic feet. 20150/-  
1350 cubic feet. 20220/-  
1355 cubic feet. 20300/-  
1360 cubic feet. 20380/-  
1365 cubic feet. 20450/-  
1370 cubic feet. 20520/-  
1375 cubic feet. 20600/-  
1380 cubic feet. 20680/-  
1385 cubic feet. 20750/-  
1390 cubic feet. 20820/-  
1395 cubic feet. 20900/-  
1400 cubic feet. 20980/-  
1405 cubic feet. 21050/-  
1410 cubic feet. 21120/-  
1415 cubic feet. 21200/-  
1420 cubic feet. 21280/-  
1425 cubic feet. 21350/-  
1430 cubic feet. 21420/-  
1435 cubic feet. 21500/-  
1440 cubic feet. 21580/-  
1445 cubic feet. 21650/-  
1450 cubic feet. 21720/-  
1455 cubic feet. 21800/-  
1460 cubic feet. 21880/-  
1465 cubic feet. 21950/-  
1470 cubic feet. 22020/-  
1475 cubic feet. 22100/-  
1480 cubic feet. 22180/-  
1485 cubic feet. 22250/-  
1490 cubic feet. 22320/-  
1495 cubic feet. 22400/-  
1500 cubic feet. 22480/-  
1505 cubic feet. 22550/-  
1510 cubic feet. 22620/-  
1515 cubic feet. 22700/-  
1520 cubic feet. 22780/-  
1525 cubic feet. 22850/-  
1530 cubic feet. 22920/-  
1535 cubic feet. 23000/-  
1540 cubic feet. 23080/-  
1545 cubic feet. 23150/-  
1550 cubic feet. 23220/-  
1555 cubic feet. 23300/-  
1560 cubic feet. 23380/-  
1565 cubic feet. 23450/-  
1570 cubic feet. 23520/-  
1575 cubic feet. 23600/-  
1580 cubic feet. 23680/-  
1585 cubic feet. 23750/-  
1590 cubic feet. 23820/-  
1595 cubic feet. 23900/-  
1600 cubic feet. 23980/-  
1605 cubic feet. 24050/-  
1610 cubic feet. 24120/-  
1615 cubic feet. 24200/-  
1620 cubic feet. 24280/-  
1625 cubic feet. 24350/-  
1630 cubic feet. 24420/-  
1635 cubic feet. 24500/-  
1640 cubic feet. 24580/-  
1645 cubic feet. 24650/-  
1650 cubic feet. 24720/-  
1655 cubic feet. 24800/-  
1660 cubic feet. 24880/-  
1665 cubic feet. 24950/-  
1670 cubic feet. 25020/-  
1675 cubic feet. 25100/-  
1680 cubic feet. 25180/-  
1685 cubic feet. 25250/-  
1690 cubic feet. 25320/-  
1695 cubic feet. 25400/-  
1700 cubic feet. 25480/-  
1705 cubic feet. 25550/-  
1710 cubic feet. 25620/-  
1715 cubic feet. 25700/-  
1720 cubic feet. 25780/-  
1725 cubic feet. 25850/-  
1730 cubic feet. 25920/-  
1735 cubic feet. 26000/-  
1740 cubic feet. 26080/-  
1745 cubic feet. 26150/-  
1750 cubic feet. 26220/-  
1755 cubic feet. 26300/-  
1760 cubic feet. 26380/-  
1765 cubic feet. 26450/-  
1770 cubic feet. 26520/-  
1775 cubic feet. 26600/-  
1780 cubic feet. 26680/-  
1785 cubic feet. 26750/-  
1790 cubic feet. 26820/-  
1795 cubic feet. 26900/-  
1800 cubic feet. 26980/-  
1805 cubic feet. 27050/-  
1810 cubic feet. 27120/-  
1815 cubic feet. 27200/-  
1820 cubic feet. 27280/-  
1825 cubic feet. 27350/-  
1830 cubic feet. 27420/-  
1835 cubic feet. 27500/-  
1840 cubic feet. 27580/-  
1845 cubic feet. 27650/-  
1850 cubic feet. 27720/-  
1855 cubic feet. 27

# Sportex

**THE CLOTH FOR "CHAMPIONS" OF CLOTHES.**  
**"THE CHAMPION" OF CLOTHES.**  
 A Thoroughly Dependable, Hard-wearing, **TWEED FABRIC**  
 — for —  
**PLUS-FOUR SUITS, SPORTS COATS and GOLF-JACKETS.**  
 Patterns on Application.

**Ahamed Bros.**  
 THE HOUSE OF  
 THE BAZAAR. DISTINCTION  
 281 NAIROBI. P.O. Box 254

## For Lunch Tomorrow


Just the thing with a nice salad



Just the thing with a nice salad

Tender slices of Libby's Corned Beef served cold with salad make a welcome lunch.

But it must be



which is stocked by Progressive Grocers Everywhere.

## Tea Time Problem Solved.

**OUR CAKES BISCUITS BUNS AND SCONES**

Have Solved It

**M. S. ELLIOT & Co. Ltd.**

**Just at Hand.**

The very latest in **EVENING GOWNS STRAIGHT FROM PARIS.**  
 Distinctive Designs and Lovely Shades in **COBWEBBES, GIFFON and LACE.**  
 Ladies—who demand the latest, are invited to call and inspect without obligation to purchase.

**Bon Marche**

Government Road,  
 Phone 184—P.O. Box 518—NAIROBI.

# CORRESPONDENCE.

**THE OFFICER DOES NOT ACCEPT RESPONSIBILITY FOR THE ALLEGED REPRESSION OF THE PRESS IN THE COLONY AND IN THE CASES OF THE CHAMBERLAIN AND THE EDITOR OF THE NATION.**

A Thoroughly Dependable, Hard-wearing, **TWEED FABRIC**  
 — for —  
**PLUS-FOUR SUITS, SPORTS COATS and GOLF-JACKETS.**  
 Patterns on Application.

### RAILWAY TICKETS

To the Editor "E.A. Standard."  
 Sir—I would like to see your notice that they have the intention to level on the Kenya and Uganda Railway, to be more place these tickets in the open places for we have a management of this Railway who do not intend to refund on lost tickets in any circumstances, as my own experience will show.

Moreover I took a return ticket to Nairobi and took the present train to Mombasa. It was during my stay at Mombasa, I discovered I had lost my return half as well as some papers to the Stationmaster at Mombasa, who informed me that I was obliged to pay again but that if I wrote to him and he would be satisfied to give the number of my lost ticket, a refund would be granted me.

I wrote on October 21, giving full particulars, and after a fortnight reply I got the following reply:

"We have to inform you that a refund on your lost ticket must remain in abeyance until the expiration of the ticket on 7/11/20."

All I can say is that the regulations regarding refunds on lost tickets require your attention. Not only that, but this letter got the least attention from the Railway Authorities to whom you refer.

Yours etc,  
 F.C. HARRY  
 Nairobi,  
 November 17, 1920

### ROAD MAINTENANCE

To the Editor "E.A. Standard."  
 Sir—When working along the road of Kenya, and seeing P. W. D. boys at work, or any of their pranks and antics, people must often wonder what the Law of work per boy is likely to be and how it compares with the output of the boys whose employers have seen their thing.

During the last few years of working in the colony, I have come to the conclusion that it is better to lose P. W. D. boys to do the work of one native employed by a settler who uses a fair and reasonable task for his work.

That is manifestly preposterous. I do not intend to say anything about it.

At an instance twenty three P. W. D. natives and a white foreman appeared on the road near my place, and the foreman paged out a list of the work to be done. The list was 27 ft. wide at the top, and was intended to show a road which the P. W. D. had constructed without cost and without delay, and which was consequently waterlogged.

The foreman returned at the end of the day, examined the work, and the party left. Out of curiosity I went there, and we took careful measurements of the work executed, which amounted to a few cubic feet of red soil and showed up the ditch. The most striking I pegged out four shorter ditches in the same soil, and asked my inspector what was the best way to dig them. He told me to dig them in the same way as the ditch, and that he would report on my work.

We took time to dig the ditch, and we took care to dig it in the same way as the ditch.

public less removed from each, while the other two ditches were finished once after, and the boys making straight sides took 200 cubic feet.

From this it would appear that each P. W. D. boy had done less than one sixteenth of the work done by the boys of the same time and under the same conditions.

It is to be feared that this is fairly representative of native by law under the P. W. D.

It is to be feared that this is fairly representative of native by law under the P. W. D.

It is to be feared that this is fairly representative of native by law under the P. W. D.

To conclude, this is one of the most efficient in P. W. D. districts, and it is to be feared that this is fairly representative of native by law under the P. W. D.

Yours etc,  
 F.C. HARRY  
 Nairobi,  
 November 17, 1920

### THE WAGNER CASE

To the Editor "E.A. Standard."  
 Sir—In your issue of Monday the 11th inst., you announced that the dossier of this case compiled by Mr. Oswald Bicknell to whom the credit for the successful outcome is entirely due, has been presented to the P. W. D. Commission in Nairobi.

It is true that a native adviser to the dossier of this case compiled by Mr. Oswald Bicknell to whom the credit for the successful outcome is entirely due, has been presented to the P. W. D. Commission in Nairobi.

It is true that a native adviser to the dossier of this case compiled by Mr. Oswald Bicknell to whom the credit for the successful outcome is entirely due, has been presented to the P. W. D. Commission in Nairobi.

It is true that a native adviser to the dossier of this case compiled by Mr. Oswald Bicknell to whom the credit for the successful outcome is entirely due, has been presented to the P. W. D. Commission in Nairobi.

### POPPY DAY IN NAIROBI

To the Editor "E.A. Standard."  
 Sir—The time must surely elapse before the results of the P. W. D. Commission will be known. It is to be feared that this is fairly representative of native by law under the P. W. D.

It is to be feared that this is fairly representative of native by law under the P. W. D.

It is to be feared that this is fairly representative of native by law under the P. W. D.

It is to be feared that this is fairly representative of native by law under the P. W. D.

It is to be feared that this is fairly representative of native by law under the P. W. D.

It is to be feared that this is fairly representative of native by law under the P. W. D.

It is to be feared that this is fairly representative of native by law under the P. W. D.

It is to be feared that this is fairly representative of native by law under the P. W. D.

It is to be feared that this is fairly representative of native by law under the P. W. D.

It is to be feared that this is fairly representative of native by law under the P. W. D.

It is to be feared that this is fairly representative of native by law under the P. W. D.

### GENERAL HEADQUARTERS UNDER CONSIDERATION

The Nairobi Municipality has again under consideration the proposal to purchase the site of the General Headquarters, and it is to be feared that this is fairly representative of native by law under the P. W. D.

It is to be feared that this is fairly representative of native by law under the P. W. D.

It is to be feared that this is fairly representative of native by law under the P. W. D.

It is to be feared that this is fairly representative of native by law under the P. W. D.

It is to be feared that this is fairly representative of native by law under the P. W. D.

It is to be feared that this is fairly representative of native by law under the P. W. D.

It is to be feared that this is fairly representative of native by law under the P. W. D.

It is to be feared that this is fairly representative of native by law under the P. W. D.

It is to be feared that this is fairly representative of native by law under the P. W. D.

It is to be feared that this is fairly representative of native by law under the P. W. D.

It is to be feared that this is fairly representative of native by law under the P. W. D.



**"ERASMIC" The Dairy Soap**  
 Imparts an agreeable suggestion of all that is fresh, healthy, inspiring. Gives distinction to beauty.

**MOTORISTS!**  
 FOR ALL YOUR MOTORING REQUIREMENTS Come Once & You Will Always Come to **Eboo's Petrol Station**  
 Sixth Avenue (opp. G.P.O.) P.O. Box 598

**TO LET AND OR FOR SALE**  
 PLOTS & BUILDINGS, in Duke St., NAIROBI.

**GENERAL AGENCIES**  
 BOX 24 NAIROBI.

**AN EASY WAY TO OWN YOUR OWN**

Large attractive 7 plots at foot of Duke St. District for small deposits and easy terms.

7 PLOTS AT 2500 each on easy terms.

7 PLOTS AT 2500 each on easy terms.

**WIRE NETTING, COFFEE WIRE, FENCING WIRE and BARBED WIRE.**  
**ALIBHAI SHARIFF & SONS.**  
 F.O. Box 302 NAIROBI. Phone 274

**TRAVIS**  
 For WIRE NETTING, COFFEE WIRE, FENCING WIRE and BARBED WIRE. PRICES VERY REASONABLE.  
**ALIBHAI SHARIFF & SONS.**  
 F.O. Box 302 NAIROBI. Phone 274

**SMITH, MACKENZIE & Co., 289, NAIROBI.**  
**GREAT REDUCTION IN PRICE, TENNENT'S BEER AND PERFECTION WHISKY**  
 TRY THEM BOTH.

**SMITH, MACKENZIE & Co., 289, NAIROBI.**  
**SMITH'S ELECTRICAL ENGINEER RESIDENT IN THE COLONY.**  
 Action and Estimates for Electrical and Hydraulic Schemes, etc. etc.



# AUCTION SALES.



## MISCELLANEOUS GOODS.

Daily instructed, we shall sell by Public Auction, Without Reserve, at our Salerooms, Mutos Building, Nairobi.

**To-day 20th Nov., at 10 a.m.**  
Large Range of Brass and Copperware, including trays, Flower Bowls and Vases, Ornaments, etc. Cigarette Boxes, Mirrors, Pictures, Metal Alloys, Cases, Crockery, Kitchen, Utensils, Gramophone Records, Second Hand Clothing, Tent, Deck Chairs, "Corbett" Motor Mill, Cash, Trunks, Blackboards, Gent's Cycle, Earthenware Toilet Set, Galvanized Iron Bath, Towels, Sheets, Pillow Slips.

MUTER and OSWALD Ltd, Auctioneers, etc., NAIROBI.



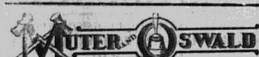
## NOTICE OF FURNITURE SALE.

At our Salerooms, Mutos Building, Harding Street, by Catalogue, on

**Monday 25th, November at 10 a.m.**

(Further details of which will be advertised later.)

MUTER and OSWALD Ltd, Auctioneers, etc., NAIROBI.



Daily instructed by J. Marcus, Esq., we shall Sell, by Public Auction, Without Reserve, on the site of the Nairobi Concrete Works (near the Erskine House Trading Co., Ltd., Premises) Westlands, on **SATURDAY, 23rd NOVEMBER at 10 a.m.**

All the wood work and Corrugated Iron (painted red) forming a large shed, store, and boys' quarters—the materials to be removed from the site within one week.

MUTER and OSWALD Ltd, Auctioneers, NAIROBI.



Daily instructed by the Receivers for the Debenture Holder in the Estate of Messrs. K. Bower, Ltd. we shall sell by PUBLIC AUCTION, WITHOUT RESERVE,

at the site of the Maize Mills, Nairobi Station, on **TUESDAY, NOV. 26th at 10 a.m.** THE ENTIRE PLANT and EQUIPMENT of the MAIZE MILLS including:

"Asa" Motors—two 10 h.p., one 25 h.p., and one 9 h.p. Three Barron's Patent "Mangos" Grinders or Distillers, sizes 1 and 2. "Willey Knight" Two Ton Lorry—B 7471—mileage just over 5000. "Overland" Lorry—22-cwt.—B 7225—mileage just over 5000. Harper Feed Sundry Tools. Second-hand Gunny Bags. Tarpaulins, Belting, Siver and Elevator. Corrugated iron sheets. 4 bags Salt. Two hot and cold water tanks. Bath. Twenty Seven Large Tanks supplied for maize but convertible for water, with approximate capacity of two thousand Gallons each, and one galvanized iron roof. Maize shed with nesting aids and wooden floor, etc., etc.

NOTE.—The above goods may be viewed at any time by arrangement with the caretaker on the site.

MUTER and OSWALD Ltd, Auctioneers, etc., NAIROBI.



## TO LET.

SUITE OF THREE COMMODIOUS WELL LIT OFFICES IN MUTOS BUILDING from 1st December.

## For Sale.

THE HILL, 2.3 acre FREEHOLD, near GOLF CLUB, with small wood, house and boys' quarters: £450 or near of **SOLD** for further particulars of the above and other properties apply to—

MUTER and OSWALD Ltd, Estate Agents, NAIROBI.

## Municipal Council of Nairobi.

Tenders for Chippings and Grit.

Sealed tenders addressed to the Municipal Engineer and marked outside "Tender for Chippings and Grit" will be received at the Municipal Office, Nairobi, until noon of Friday, 29th November. Specification and form of tender may be had on application at the office of the Municipal Engineer, on the above date. The Council does not bind itself to accept the lowest or any tender.

C. S. DAVIDSON, Municipal Engineer. Harding House, Nairobi, 19th November, 1929.

# AUSTIN'S AUCTIONS.

## SALE OF TENT, TARPAULINS AND MISCELLANEOUS GOODS.

Instructed by The Metro Goldwyn Mayer Co. **AUSTIN & CO.** will sell Without Reserve at The Mart, on

**Thursday, Nov. 21st at 10 a.m.**

Several Tarpaulins All Sizes. Quantity of Good Beaver Boards. Egg Boxes. Several Good Chop Boxes. Petrol Hurricane Lamps. Enamel Dishes. Wood Stains. Empty Film Tins. Large Enamel Kettles. Rope and Twine. Baking Tins. Bread and Flour Bins. Kitchen Utensils. Chevrolet Mud Guards. New Tyres 30 x 2.5, 32 x 2, 20 x 6, 31 x 6, etc. Aluminium Scaffolds. Knives and Forks. Enamel Plates all sizes. Minors. Frying Pans. Enamel Coffee Pots. Motor Tyre Pump. Glass Jars with stoppers and numerous other articles.

## AUSTIN & CO.

Auctioneers and Estate Agents, Harding Street, NAIROBI.

# AUSTIN'S AUCTIONS.

## MORRIS COMMERCIAL LORRY.

### AUSTIN & CO.

will sell Without Reserve, at The Mart, on **Saturday, November 23rd at 10 a.m.**

Morris Six Wheel Commercial Lorry in perfect running order.

## AUSTIN & CO.

Auctioneers and Estate Agents, Harding St., NAIROBI.

# SANDS & CO.,

## AT OUR RAILWAY SALEYARDS,

**TO-DAY, NOV. 20th at 11-30 a.m.**

- 8 GRADE COWS,
- 20 NATIVE COWS in Calf and Calves at foot,
- 9 GRADE STEERS, FAT,
- 5 GRADE STEERS, FAT,
- 5 PIGS.

Further Entries being received.

## SANDS & CO.,

AUCTIONEERS.

# SANDS & CO.,

## CITY MARKET, SADLER STREET,

### CHEAPEST PLACE FOR

Bran, Chick Wheat, Pollard, Lucerne, Oats, Barley, Potatoes.

MARKET DAYS: **TUESDAY and FRIDAY**

POULTRY EGGS, FRUIT and all Farm Produce.

**SANDS & CO.,** AUCTIONEERS.

## Manure your Garden

whilst the short rains are on with fresh Manure.

For quotations apply to:

## The Express Transport COMPANY.

BOX 433. NAIROBI.

## HERE LOOK YOU AND FIND SOMETHING NEW!

This Sale of ours is specially with the object to give our customers an opportunity to buy their Xmas Presents at rock bottom prices because they have been always so kind in patronizing our store.

## Dayaram Bros.

DRAPERS, MILLINERS & HATTERS. (next to Electric House), Government Road, NAIROBI.

# E. Hutchison & Co.

## AUCTIONEERS, Etc., NAIROBI.

**FOR SALE.**—Brick and Concrete House, 34 miles Nairobi. Contains Lounge 20 x 14 with fireplace, Dining Room, 3 Bedrooms and Guest Room, Kitchen, Store, Bathroom, H. and C. Brick Garage and Boys Quarters. Electric Light 23 across good red soil. River Boundary one end. Ren installed. £1,750.

**FOR SALE.**—Small Concrete House, Westland. Sitting Room, Bedroom, Kitchen, Bathroom. Store on 1 acre. Electric Light. Water. Fully Furnished. £250.

## BEST VALUE IN

CHERRY'S TOWELS, RIGGS REDSHETS, DURSLEY RUGS.

## E. Hutchison & Co.

Box 140 NAIROBI.

## In The Companies Ordinance of 1921.

### NAIROBI GENERAL CASH STORES LIMITED.

In the pursuance of Section 206 (1) of the Companies Ordinance of 1921, Notice is hereby given that at an Extraordinary General Meeting of the above Company held on the 18th day of November 1929, the following was passed—

That as the Company by reason of its liabilities cannot continue its business it is advisable to wind up the same and that the Company and it hereby placed in voluntary liquidation; further that Robert Morrice Macgregor and David Bruce Goyder be and hereby are appointed Liquidators for the purposes of such winding up with joint and several powers. (Sgd.) V. T. PATEL, Managing Director.

## In The Companies Ordinance of 1921.

### NAIROBI GENERAL CASH STORES LIMITED.

In pursuance of Section 209 (1) of the Companies Ordinance of 1921, Notice is hereby given that a meeting of the Creditors of the above Company will be held at our offices, Mutos Buildings, Harding Street, Nairobi, on Tuesday the 10th December 1929 at 2.15 p.m.

(Sgd.) MACGREGOR & GOYDER, Chartered Accountants, (S.A. & AUST), LIQUIDATORS.

## Hand Drills

Shgs. 4-00.

Others from Sh. 6-00 to Sh. 30-00

W. WINGRAM & Co.

## The Tool House

NAIROBI.

## SAVOY BAR.

(Newly Built) with LOUNGE and BRIDGE ROOM. COUNTER SNACKS and MUSIC from 5 p.m. Caledonian Road, The Hill.

## A Nature Calendar

FOR LOVERS OF BEASTS, BIRDS AND INSECTS, FOR 1930

"We plead for those who cannot speak for themselves."

The entire proceeds of this calendar will be given to the E.A.S.P.C.A.

Price Shs. 2/5 each

Obtainable from all Bookshops, or Hon. Secretary, P.O. Box 665, NAIROBI.

# 50 Cars to Select From 50

## Godfrey's Car Mart

### SALES STREET USED CARS.

Eight Box Body, Versatile and in good running order. £25

Crysler 50, Box Body, Recently overhauled, smart appearance. £20

Overland Touring. A good motor in perfect running order and condition. £25

Chrysler 43 Box Body, Excellent motor as new. Perfect in every detail. £20

MOTOR CYCLES, A.J.S. and J.A.S. O.I.V., 225 cc. Douglas, 1929. Baby Triumph 211. And all other various other makes.

ANIEL DOUGLAS and OTHER MOTORCYCLES.

CAR INSURANCE ARRANGED.

BREAK-DOWN TRUCK (with crane) available only when at disposal.

New and Second-hand Spares for all makes of cars.

NEW TYRES at CLEARANCE PRICES.

CARS FOR HIRE WITH DRIVER or DRIVE YOURSELF.

Phone 148 W. M. GODFREY, Role Proprietor.

Box 792

## Property for Sale

One acre Building Plot from £100 onwards.

Four up-to-date Stone Houses consisting 5 large rooms, etc., reasonable deposit, balance on mortgage.

## TO LET

Stone House, 4 large rooms, etc., Kilimani.

Stone House, 5 large rooms, etc., Westlands.

Three Ground Floor Offices.

Apply—

## Denovan & Dibel

City House NAIROBI.

## NOTICE.

## To Fuel Contractors.

TENDERS ARE INVITED FOR A REGULAR SUPPLY OF GOOD WOOD FUEL.

THE QUANTITY REQUIRED IS FROM 250 TO 300 TONS MONTHLY AND PRICES SHOULD BE QUOTED F.O.R. NAIROBI.

## Reliance Transport Co., Ltd.

Telephones 331 Boma House, P.O. Box 467

627 Government Road, NAIROBI.

## Decorate Your Rooms

with different varieties of PICTURES, we have just received.

## Special Cotton Printed Materials

for Oriental Dancing Dresses now at hand, at REMARKABLE PRICES.

Come Early and Select Your First Choice, at

## Ladharam Stores,

Ladhani and Gemis Export Tailors, P.O. Box 516 NAIROBI. Gort. Bldg.

## Special Opportunity.

For those who have still not taken advantage of our

## Wonderful SALE Bargains

which we are offering for further

few days only

HIGH-CLASS ENGRAVING and ALL KINDS OF REPAIRING OF JEWELLERY UNDERTAKERS

at

## Lalchand Moolchand

Government Road, Box 778









"Full many a flower is born to blush unseen....."

Possibly but not if you use

# FISONS FERTILISERS

which are eminently good for **COFFEE, MAIZE, WHEAT** as well as for your garden.

**Dalgaty & Company LIMITED.**

Mombasa — Nairobi — Eldoret.

## We Hear from London

**STANDARD** - OCTOBER 17.  
London, October 17. Miss Margaret Bondfield, Minister of Labour, is not finding her task of being the first woman Cabinet Minister an easy one. Quite apart from the fact that she has been handicapped by an injured foot (which, as a cabinet minister, "does not infect one's brain"), Miss Bondfield has been severely criticised by her colleagues because of the rigidity of her Ministry.

From the general reports, it would seem that the entertaining in the Labour Party is going to develop upon the wings of M.P.'s. In 1919, when the woman M.P.'s themselves got on with the job of legislating. There is a list of political hostesses for the Labour Party—all women who may be relied upon to do the right thing for the good of the cause—retain their unassuming solemnity in their conversations, leaving the seductive and objects of their admiration.

There is a rumour that when Mr. Macdonald returns from the United States and gets going, he will revert to the Liberal Empire system of "dignitary" breakfasts—functions which, if you remember, used to "disturb" very largely in Mr. Arnold Bennett's book about a politician whom nobody ever loaded! It is said that the Premier will make for a certain amount of money by giving official luncheons. By some former minister, I understand in up-country areas, I remember of Downing Street breakfast tables—where, recollecting what a millionaire must have had breakfasted with in one's "Mansions" is well served the wail at "The Red Cow" in half an hour than its get rid of in six months in a "bolshevik".

**Social Progress.**  
The younger members of our



Duke of Norfolk.

Royal Family are forgotten to turn for what is known as the "little bit" and doubtless they will have their work cut out to fulfil all the social and ceremonial duties for which they are famous. The Duke of Norfolk, who is a member of the House of Lords, is a member of the House of Commons, and probably a member of the House of Lords. He is a member of the House of Commons, and probably a member of the House of Lords. He is a member of the House of Commons, and probably a member of the House of Lords.

**Brighter Bermona.**  
I have already noted the year benefits the movement that is being made in London suburbs to complete with other forms of entertainment on Sunday evening—such as the sermons delivered at "The Church in the street" about current plays. Next on the list comes the ancient church of St. Andrew in the Waterloo (the one from the title being due to the fact that the office of the King's Great

Wednes was formerly in the vicinity—Queen Victoria Street, City) where they had an address on the "Avenue" since the house delivered by a lady. In this case, it must be admitted that the lecture was not part of the Sunday evening service, but that, in view of the fact that the lecture was given in conformity with the regulations of the Society.

Personally, I am all for brighter Sunday evenings, but I think the lecture should be left to the individual to decide whether or not he wishes to attend. It is a matter of personal choice, and I think it is better to leave it to the individual to decide whether or not he wishes to attend. It is a matter of personal choice, and I think it is better to leave it to the individual to decide whether or not he wishes to attend.

**Laugh-Lines Londoners!**  
Talking of clergyman and churches, I think that the Vice-Chancellor of the University of London has commented upon the fact that the least of it upon the average maintenance of the ordinary English man and English woman. He goes so far as to say that he is not sure there is much to be found in their type of face; and it seems that he took a conference at Victoria Station—by which by the way, was not a bad place for the process, for one certainly encounters something like the "average" there. How the Vice-Chancellor who had been working and who had not, it was unable to say, and upon this point I feel a little doubtful, but I think it is worth with an apparatus which causes "the conductor and the like to assume that whatever I possess I was born to, and by chance worked for in—whereas I do my "eight hours" like any other of the "Bolsheviks" class.

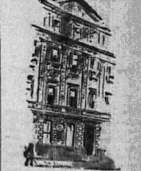
Nevertheless, the vice was obviously content with his own manner, and decided that those who had been apparently working hard had the better maintenance, while those who were not engaged in work had, for the most part, "singularly unattractive, lack lustre eyes, and undistinguished features." This ought to be an incentive to everybody to dash out and take on a job!

**Telephone Tragedies.**  
One point the Vice-Chancellor may have overlooked is that at least one person with "lack lustre" eyes might have been the individual who wrote to the Press this week, and my suggestion is that he may just have suffered from one of the telephone blunders after his abortive effort, sustained for forty minutes, to get a trunk call. We will not follow him through all the trials and tribulations, beginning with the calling at 7:50, when he retired defeated, for, after all, this

offer was, I suppose, an isolated case. Some there will be special mental wards for telephone subscribers, owing to the maintenance of the telephone system, and should tears of joy down the cheeks of the speaker saying "Number please!"

**The "Hello Girls"** may give us wrong numbers, but there is always hope that we may get the right one, whereas the dialing of "Hello" numbers, but have invariably staggered back to my own, or disconnected instrument, and should tears of joy down the cheeks of the speaker saying "Number please!"

**The Stamp in "Adams"**  
Since the sale of a comparatively small sum of the Adams estate—known from Dorchester House, I have been hearing on all sides of the "stamp" in the price of those illiterate individuals, but somewhat unwisely, commiseration. It may be simply a case of "supply and demand," or it may be one of those intangible things of life. Even so, interest attaches still, on



**4 Adelphi Terrace.**  
The part of Victoria, at 4 Adelphi Terrace, at the back of the Strand, where Robert James Adams, the famous architect of such of the West End of London, lived, has now, by a voluntary agreement with Adelphi, and it is fitting that they should have lived in the first street which developed, and recorded their relationship, by building the streets in the vicinity after their Christian and surname. Robert Adams, by the way, was, in addition to being an architect, an unnumbered Member of Parliament.



## DONALD FISHER'S "Ye Monks"

is an altogether exceptional Scotch Whisky. Its purity, mellowness, and refinement of flavour place it in a class by itself. "Get acquainted" without delay.

Sole Proprietors: **DONALD FISHER, LTD., EDINBURGH**  
Obtainable from ALL THE LEADING STORES.

## Reduction in Prices of Meat and Cost of Living.

The S. D. M. S. Co., Ltd., announces from Nov. 1, 1920 a reduction of 20 per cent. on the present Cash Prices for meat to all Cash Customers.

All up-country customers may benefit by these reductions by opening Deposit Accounts.

**Support The Kenya Farmers.** HOME FED MEAT ONLY SUPPLIED IN THE STOCKBREEDERS' BUTCHERY.

**STOCKBREEDERS DIRECT MEAT SUPPLY CO. LTD.**  
WANT OF LABOUR NEED NOT WORRY. The Kenya Labour Recruiting Co. (P.O. Box 74, Duke Street, NAIROBI) Also Finance Agents and Land Brokers. Tel. Ad.: "Recruiting."

# The NEW FORD CAR

Reliability, Economy, Beauty of Design. Prices are consistent with FORD VALUES.



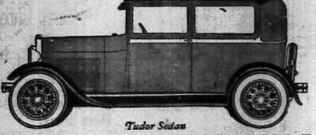
Roadster

THIS FAST TWO SEATER SELLS AT :: :: :: £216



Phaeton

A FIVE SEATER TOURING CAR COSTS ONLY :: :: £208



Tudor Sedan

THE POPULAR CAR OF MANY PURPOSES PRICE: £258.

Also the 30 cwt. Truck Price £189. Fitted with 32 x 6 Oversize Tyres.

## NAIROBI MOTORS.

Tel. 317. 6th Avenue, Box 460.

# COATS OF REPUTE

- LADIES SHOT EFFECT GABERDINE RAINCOATS.—Alceon Brand. Raglan Sleeves, with Belt. Good Serviceable Shades. At Shs. 47/50 each
- LEATHERETTE DOUBLE BREASTED RAINCOATS.—With Belt. Shades: Green, Blue, Red. Shs. 31/50 each
- SHOT ART SILK RAINPROOFS.—Blue only. Shs. 39/50 each
- LARGE SELECTION OF VELOUR COATS.—Trimmed Fur Collars and Cuffs in Green, Fawn, Wine, Tan, Chocolate Shades. Shs. 82/50 to 185/- each
- CIRCULAR WOOL STOCKINETTE.—In Beige, Salmon, Nude, Blue At Shs. 18/75 per yard
- 54" SILK STOCKINETTE.—In Shades of White, Rust, Blue At Shs. 11/75 per yard
- MELSO SOIR.—54" wide in Saxe, Blue, French Nude, Peach, Tan At Shs. 21/- per yard

12 1/2 per cent. DISCOUNT ALLOWED ON FURNITURE FOR CASH WITH ORDER, CRATING FREE IF CRATES RETURNED TO US CARRIAGE PAID.

**HUTCHINGS, BIEMER & Co., Ltd.**  
P.O. Box 408, NAIROBI.





UNION-CASTLE LINE

Table with columns: Ship Name, From Mombasa, Date. Includes 'Lancaster Castle', 'Lancaster Castle', 'Lancaster Castle'.

HOMeward via SOUTH AFRICA

Table with columns: Ship Name, From Mombasa, Date. Includes 'Lancaster Castle', 'Lancaster Castle', 'Lancaster Castle'.

Passenger Agents - B.E.A. Corporation, Ltd. East African Steamers, Ltd. T. C. Mombasa & Co. T. J. O'Brien, Co. Ltd.

For Rates and Freight and Passage Money apply to - THE UNION-CASTLE MAIL STEAMSHIP CO., LTD., MOMBASA.

British India Steam Navigation Company, Limited, AND PENINSULAR AND ORIENTAL STEAM NAVIGATION CO.

Table with columns: Ship Name, From, To, Date. Includes 'LONDON TO BOMBAY', 'Bombay to London'.

Table with columns: Ship Name, From, To, Date. Includes 'BOMBAY-DURBAN MAIL SERVICE', 'Bombay to Durban'.

Table with columns: Ship Name, From, To, Date. Includes 'COASTAL SERVICE', 'Bombay to Durban'.

Special 1st Class Berthage. 'MIRINDANI and DIO' (180 tons) will fitted passenger vessel with large and comfortable saloons.

Special 1st Class Berthage. 'MIRINDANI and DIO' (180 tons) will fitted passenger vessel with large and comfortable saloons.

Special 1st Class Berthage. 'MIRINDANI and DIO' (180 tons) will fitted passenger vessel with large and comfortable saloons.

For Rates and Freight and Passage Money apply to - THE UNION-CASTLE MAIL STEAMSHIP CO., LTD., MOMBASA.

Compagnia Italiana Transatlantica, THE BEST ROUTE TO ENGLAND.

Monthly Passenger Service to NAPLES and GENOA. SAILINGS FROM KILINDINI TO ENGLAND. S.A. 'F. CRISPI' - 1st December, 1st February, 1st April, etc.

THE AFRICAN MARINE AND GENERAL ENGINEERING CO., LTD. KILINDINI - MOMBASA.

Specialists in Reinstalling of Boats, Casting and Machining of Irons. Boats, Copper-Ashty Boats and Cutting and Building up of Worm Shafts, etc.

Deutsch Ost-Afrika-Linie GENERAL AGENCY, MOMBASA.

Table with columns: Ship Name, From, To, Date. Includes 'U.S. UBARABARA', 'U.S. UBARABARA', 'U.S. UBARABARA'.

Kenya Loan & Discount Co. Ltd., E.O. Box 546, NAIROBI.

OFFICE - 1st Floor, Court Chambers. FINANCIAL AGENTS. Bills Discounted. Short-Period Loans Granted.

HOLLAND AFRICA LIJN

Table with columns: Ship Name, From, To, Date. Includes 'HOLLAND-DE AFRIKA LIJN', 'HOLLAND-DE AFRIKA LIJN'.

BARCLAYS BANK (DOMINION, COLONIAL AND OVERSEAS)

INCORPORATED IN ENGLAND. THE NATIONAL BANK OF SOUTH AFRICA, LTD. THE ANGLO-EGYPTIAN BANK LTD.

Japan Bazaar Still Allows 4/- in the £ Cash Discount.

TO HELP CUSTOMERS IN BUYING THEIR XMAS PRESENTS SO EARLY AND ECONOMICALLY.

STOP! LOOK! LISTEN!!! SALE NOW ON.

Wonderful Value Offered for Christmas. Ladies and Gentlemen are invited to pay a visit and to inspect our stocks.

B. E. A. SAW MILLS

Telephone No. 83. P. O. Box 321. Telegrams: 'Beams,' Nairobi. Camphor, Podo, Mweri and Muna. Flooring, Ceiling and Moulding.

Mrs. E. M. PAINE, I.R.A.M., A.R.C.M. SINGING and PIANOFORTE LESSONS.

'MEALYBUG' Lime Limited. We supply Lime for Trials as recommended by Department of Agriculture.

Chivers' Canned Fruits. The link between the ENGLISH ORCHARD and EAST AFRICAN HOMES. Sole Agents for trade only - R. O. HAMILTON, Ltd., NAIROBI.

MESSAGERS MARITIMES

(FRENCH MAIL STEAMERS) Regular and fortnightly service from and to Marseilles. THE QUICKEST ROUTE TO LONDON.

Keith Timber Co. Ltd. P. O. Box 874 Sadler Street Nairobi

Phone 598. Pianoforte Tuning. Ten years experience in Kenya Colony and five years with Messrs. Chappell & Co., London.

F. A. HEAD, NAIROBI.

OVERSEAS MAILS.

Table with columns: Ship Name, From, To, Date. Includes 'ARRIVALS', 'DEPARTURES', 'STEAMERS', 'FOR'.

ROYAL INSURANCE Co Ltd.

We take pleasure in indicating that we have been appointed PRINCIPAL REPRESENTATIVES for Kenya and Uganda of the above old-established Company.







# THE GIFT SHOP

ALWAYS SOMETHING NEW AND INTERESTING AT: **TAWNS LIMITED, NAIROBI.**

## San-Chova

The new Fish Paste for fishy sandwiches. Available in tins (50¢) and packets (25¢).



made by **Crosse & Blackwell**

### SHOULD FARMERS HELP TO FINANCE RESEARCH

(Continued from page 1.)  
The Commission considers that, if other demonstration farms are desired, it should be possible to obtain the land for such a farm, the district should provide the capital equipment, even if it is only required to guarantee a loan for the purpose obtained from the Government. The Government may prefer to make provision for the purchase of the land, but the Government should provide any equipment for working the land, such as a tractor, which is part of the ordinary working out of the land in a scientific office, who would keep all the necessary records and demonstrate to visitors that the manager would be entirely free to assist to the best of his improved varieties of the crop it would be demonstrating.

Failing, however, experimental or demonstration farms, much assistance can be rendered to settlers by work done in co-operation with existing farms. This may take the form of a one hand plot work, which should be restricted to the few cases where an agreement could be entered into by the settler to carry out this type of work under the supervision of an officer of the Department.

The other type of work would consist in field work demonstrations of a very simple nature, in which the treatment to be demonstrated—whether cultivation, material or any type of insecticide or one-kind of a field otherwise managed by the settler on ordinary lines.

**Essential Services.**  
In the sections that follow, the Commission desires to indicate the particular departments which are departments which will be of value. Taken collectively, they constitute a picture of the ideal department that the Government ought to serve all the needs of the Colony. The Commission requires that such a development is a present being the resources of the Colony and that it can only be realized by slow degrees; periods, indeed, only in so far as the industry itself can provide special cases of revenue. Again, the Commission can only attempt very generally to indicate the relative

importance of this or that service. The actual procedure to be given must be determined from time to time as necessary funds for expansion become available.  
The Veterinary Research Station at Kabete is already of a size and quality comparable to any Colony comparable to Kenya. The Acting Chief Veterinary Officer has been in a valuable memorandum, indicating the various means by which he desires to improve generally the condition of the stock of the Colony, such as a Biochemist, a Physiologist, and would be more numerous than additions to the staff of general Pathologists.  
The Commission has in progress with the Imperial Archives for the extension of the Station at Kabete as part of the scheme of Imperial Research Stations. It is not unduly desirable to effect this extension without detriment to the local research which by the administration in Kenya.

**Soil Map.**  
One general question, which has occupied much of the attention of the Commission is whether such an agricultural industry of the Colony have not reached the stage of development that calls for more research departments, supported by contributions from the industry. At a certain stage of agriculture the needs of the industry can no longer be met by what is done in the field, and the research services of a Department upon which many other rely are made. This stage of development may have been reached by the coffee and sugar industries. Both demand the concentration of their research officers on a specialized field, and again are very dependent upon the continuity of the service of these officers. It is desirable that such industries should possess their own staff and should be able to offer such staff as well as will retain the men they have.

The Commission has been informed by the Coffee Planters' Union of a scheme for the creation of a Coffee Research Institute supported by funds provided by annual levies to be paid by all growers of coffee in the colony, and has raised, being supplemented by a pooled fund raised from Government. As the scheme is still under consideration by the Coffee Planters' Union, the Commission would not do more than express its general agreement with the principle of the scheme. It is agreed

of the times has as the most important means of holding funds for a further research which will be desirable for scientific work, and it would by particular stress upon the necessity of plant breeding and selection, and the propagation of disease-resistant varieties by means of reproduction. Coffee plantations are being raised from seed, and varieties of many diseases, such as the coffee rust, are being developed. It is particularly certain that the necessity of the higher and more advanced work of the present needs of industry, for its maintenance. Such work, however, demands several years' work for its realization, and therefore a research organization which is assured of continuity.  
Pursuing further consideration and discussion, the Commission would desire to express no opinion upon the question of whether the proposed research station for coffee should be an independent unit, or managed by a Committee of the Coffee Planters' Union, or whether it should still remain under the control of the Department of Agriculture.

In whatever way research is conducted with the Department must make arrangements to be made to carry out investigations and experiments in order that diseases of the industry shall not become a danger to the industry. Investigations would be supported by delivering administration of the land from the research, which should always inform and guide the control of diseases.

As regards soil also, the Commission has received a research scheme about which investigation has already been carried on with the Department of Agriculture. Again, while approving in principle, the Commission desires to express no opinion about the details of the scheme, which, in the present form, offers somewhat from the office section, in that it contemplated the retention of the usual research organization within the Department.

**No One.**  
Proposals have been made from time to time to impose a one upon other products, such as maize, in order to provide funds for research, inspection, grading, and the activities of the Department regarding the crop.  
The Commission does not agree with such proposals. It is obvious that the growing, for example, is

to much a part of the normal life of a farm, and that the continuation of its growth is so important that it is essential to the stability and the preservation of the country, that the research directed towards its improvement should be supported.  
The principle of a case, if applied at all, should be used for marketing and trading purposes only, under the control of the growers, without involving the Department. The only other crop in Kenya which the Department should consider is the sugarcane research organization.

### Entertainments

#### LYRIK HALL.

The case of "In a Moment of Temptation" will be shown at the Lyrik Hall this evening, including several of the scenes across Europe as well as others who have already gained a reputation. The leading feminine role is played by Gladys Stevens who was the winner of a Chicago beauty contest. This is only part of a department series of work which will be the subject of a whirlwind of exciting experiences. Other cast include Constance Keefe, Marie Walsman, Ed. (Vocal) and others on the legitimate stage, and Tom. The film is a masterpiece of work with respect to the lead of the film, which is a masterpiece of work.



**R.E.A.A.A.**  
A CINEMA-TRAMP PERFORMANCE WILL BE GIVEN AT THE THEATRE ROYAL  
Friday 22nd at 5.15 p.m.  
Entitled  
**ELEMENTS OF THE AUTOMOBILE.**  
Explains with easily understood illustrations just how the different parts of a motor car function.  
Presented by George F. Bauer representative of the National Automobile Chamber of Commerce and shown under the auspices of the R.E.A.A.A. Admission FREE to MEMBERS and their friends.

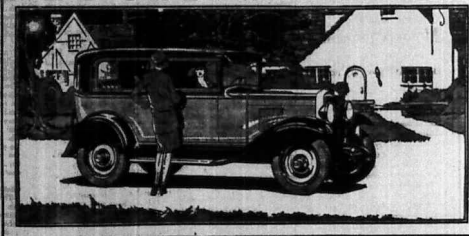
**HOTEL AVENUE**  
NAIROBI.  
MODERN and UP-TO-DATE IN EVERY WAY.  
CARS MEET ALL TRAINS.  
Dinner Dances Every Saturday.  
BAND "GARRY COOK & HIS RHYTHM BOYS"

**TORR'S HOTEL.**  
Dance Competition Night  
SATURDAY, November 23rd  
Tickets 1/250 each, including Dinner.  
ENTRIES FOR COMPETITION TO BE IN BY FRIDAY.  
EVENING DRESS—IN ALL PARTS OF HOTEL.

**Municipal Council of Nairobi.**  
Tenders are invited for the supply of a complete filling system with all necessary fittings. Information as to the Council's requirements may be obtained from the undersigned.  
Sealed tenders endorsed "Filling System" must be placed in the tender box at three o'clock on or before Saturday, November 30th.  
The lowest or any tender will not necessarily be accepted.  
Municipal Offices,  
Hamilton House,  
Nairobi, 20th November, 1930.

W. W. RIDOUT,  
Agent. Town Clerk.

## THE CHEVROLET SIX



**CHEVROLET**  
Most people realize that the New Chevrolet is the best in the price range of the car. But not everyone knows what a really wonderful this is!

The Chevrolet engineering staff spent more than four years in the development of this marvelous Six. Masterpieces are selected from the world's finest markets and, taken altogether, there are nine thousand inspections during the car's production and assembly.

The result is exactly what you'd expect—quality in design, material and in workmanship that assures years of dependable and satisfactory service!

Come in today. We want you to see and drive this car—for it will give you a new idea as to what the buyer of a low priced car can now expect for his money!

The Coach £260.

The Roadster, The Coupe £235.  
The Sport Coupe £270, The Sedan £295, The Imperial Sedan £325, The 31 Ton Daily Coach £165.  
—L.A.S. Nairobi.

**THE MOTOR MART & EXCHANGE Ltd.**  
NAKURU — NAIROBI — DAR-ES-SALAAM.  
AGENTS EVERYWHERE.

A SIX IN THE PRICE RANGE OF THE FOUR.

## Sale!

**NOW ON**  
You might have visited many SALES, but we recommend you to visit once our **RECORD KEEPING SALE**  
**ROCK BOTTOM**  
Reduced prices throughout  
Come and have a glance.  
**KALA SIDI**  
General Merchant,  
GOVERNMENT ROAD,  
NAIROBI.

**APRIL MELLOR**  
  
For Perfectly Reliable Typing and Attractive Souvenir's Approach.  
M. P. G. HELLLO,  
P.O. Box 414, Street Road, NAIROBI.  
Standard Stationery Store, NAIROBI.  
She. 6/20, postd 7/-

**Smithfield Butchery Ltd.,**  
P.O. Box 6 Government Road. Tel. 413  
**For Prime Beef and Mutton**  
Quick Service and Prompt Attention.  
**Cooked Meats a Speciality.**

# FIAT

### New Models As Shewn at Olympia

Just Arrived  
**Model 521. S. Seven Seater.**  
Call for a Demonstration  
AT  
**MOULTON & MORRISON Ltd.**  
SIXTH AVENUE,  
NAIROBI.

# —1930— MODELS B.S.A.

4 93 H.P. Side Valve inclined engine  
Sump Lubrication—Steering dampers and  
shock absorbers.  
**£75**

## DOUGLAS

3.50 H.P. Special Sump Lubrication  
Complete with lamp and horn,  
**£67-10-0**

## Carr, Lawson & Co. Ltd.

NAIROBI.

# MONSOL

## The Safe Germicide

An antiseptic of enormous germicidal power.  
Harmless to Fish Tissues.  
Does not burn. Does not irritate.

**Non Poisonous**  
Indispensable in all cases where a powerful and  
quick-acting germicide is indicated, whether for  
human beings or animals.

THE MONSOL GROUP OF  
GERMICIDES AND DISINFECTANTS  
Monsol Liquid 3/1 and 3/2, Monsol Ointment 3/5  
Monsol Internal Capsules 8/5, Monsol Pastilles  
3/50, Monsol Anti-Mosquito Stick 1/50, Monsol  
Tooth Paste 3/1, Monsol First Aid Ointment 3/1

## KODAK E. A. LTD., INC.

## Howak & McGeorge,

CHEMISTS  
NAIROBI AND ALL BRANCHES.

## J. W. MILLIGAN & Company.

IMPORTERS OF—  
Building Material, Agricultural  
Implement, and Machinery of all  
descriptions.  
ETC. ETC.

EXPORTERS OF—  
Coffee, Salt, Mince, Wheat and  
Irony.  
ETC. ETC.

### JUST ARRIVED

# "KRESOTO"

"Grease Proof Paper"  
AND  
"Cotton Wool"

### Book Your Requirements now to Avoid Disappointment.

## S. JACOBS LTD

P.O. Box 23, Phone 286,  
NAIROBI.

SPECIALISTS IN  
LADIES AND GENTS'  
FINE  
FOOTWEAR.

**Mary Grace court.**  
A smart glass shoe in all good  
kinds of new styles and Louis  
heel as shown. A dress shoe.  
Shs. 34/50 per pair.

**"Ghillie" Golf Shoes.**  
Style as shown, in dark tan calf  
of high quality. Built leather  
sole construction. A real golf  
or walking shoe.  
Shs. 32/50 per pair.

**Tan Willow Oxford.**  
In dark tan with  
half, sharp of black.  
Full—round—top.  
Double stitching all  
over. Stern welt. A  
very dressy shoe for  
town wear.  
Shs. 47/50 per pair.

**Ladies' Willow  
Golf and Buck-  
ram Shoe.**  
Smart, neat big-  
size, in tan or  
black. Very well  
appointed, in a  
very comfortable  
wear.  
Shs. 47/50 per pair.

**Ladies' Willow  
Golf and Buck-  
ram Promenade  
Shoe.**  
Smart, neat, strap  
fastening, in tan  
or black. Very well  
appointed, in a  
very comfortable  
wear.  
Shs. 47/50 per pair.

**Tan Grain Derby Shoe.**  
Dark tan, pebble grain hide shoe,  
available for golf or shooting  
wear, studded outside sole.  
Plain seem toe cap, as shown  
above.  
Shs. 47/50 per pair.

## CALEDONIAN

Insurance Company  
Oldest Scottish Insurance Office.  
FOUNDED IN 1806  
PRINCIPAL REPRESENTATIVES—  
R. O. HAMILTON, Ltd.,  
Box 382 NAIROBI. Phone 352

## Plan Your Colour Schemes

—with—  
**DUCO**

Just brush it on—  
anyone can use it.

As on your car, it keeps it lustrous  
beauty despite time and weather.

Slide Card, Instructions Book and Stocks  
obtainable from

## Galley & Roberts Ltd

NAIROBI BRANCHES.

## GOOD NIGHT DANGEROUS

It is after just this year you have had this most  
the price of good health is preserved.  
the main means of cure is medicine, (drugs and many  
the conditions which drug no more has to cure.

Have you ever examined by the Optical Department  
of  
**A. H. WARDLE**  
AN OPTICIAN  
**V. M. BROWNE, F.R.C.S., F.I.O., Optical Manager**  
Large Stocks  
Lenses  
Workshops on  
the Premises

# SHANKS'

### Sanitary Specialties

LATEST DESIGNS — MODERATE PRICES.  
**R. G. VERNON & Co.**  
IMPORTERS.  
Showrooms—Union Buildings, NAIROBI.  
P.O. Box 124

## Two Sure Remedies For Constipation.

IN Retail Orderlies and Retail Health that you have  
remedies—both of which will benefit the most obdurate  
case of constipation very quickly. They are as gentle  
in action as they are effective, purify the blood, stimulate the  
liver and put new life into you.

# Rexall

## ORDELIES HEALTH SALT

Sold and recommended by  
**A. H. Wardle & Co. Ltd.**  
Wholesale and Retail Chemists.  
KERO AND CHATEAU.

### From Nairobi to Salisbury.

Information has been received  
from the Nairobi Chamber of  
Commerce that the Government  
of the United Kingdom has  
agreed to subsidize the  
Nairobi-Salisbury air route.  
The distance is 181 miles by air  
the journey which is a business  
line, the machine having been  
chartered by two business men.

### At 11.30 a.m.

At 11.30 a.m. on Tuesday  
a car ran into an Indian  
pedal cycle on the corner of  
Government Road, Whitehall  
Road and Robinson Road.  
The Indian fell on his head and injured  
his knee. He was conveyed  
to the Nairobi Civil Hospital  
where the condition is stated  
to be critical.

### Death of Rev. Carr.

Some commotion was caused in  
the Resident's Mess at the Club  
yesterday when the Court  
physician stated that a man  
charged with the theft of a hand-  
bag had been shot. The  
thief who afterwards  
that this was a peculiar case.  
The Indian fell on his head  
and injured his knee. He was  
conveyed to the Nairobi Civil  
Hospital where the condition is  
stated to be critical.

## STANDARD MARY.

November 21: Chamber of Commerce 415 p.m.  
November 22: Planning of a motor car—Thursday 7.20 p.m.  
December 4: Agricultural Show, Nakuru.  
December 5: Agricultural Show, Nakuru.  
December 12: Railway Locomotive Club 10 a.m.  
**Today's Wireless.**  
7.30—9.30—Popular Songs  
7.50—7.55—British Official  
8.00—8.10—The News  
8.15—8.25—K.A.S. Band  
8.30—8.40—The Officers Mess  
8.45—10.00—Dance music

POLITICAL CHANGES IN SOUTH AFRICA.

Significant Events of Past Two Months.

EFFECT ON EAST AFRICA.

Brighter Outlook for Moderate Opinion.

Following is a further extract from the Report of the Agricultural Commission...

The section published below, the third of the series, deals with crop husbandry and examines the pros and cons of experimental farms and the responsibility of the district concerned.

In a discussion of essential services, the Commission deals with the general question of financial help by farmers.

The principle of special assistance to their own industry in the case of coffee and steel plants is accepted but the Commission does not feel that the case is applicable to any other.

WHITE SETTLEMENT IN AFRICA.

Recent developments in the South of Africa have lately been the subject of much attention...

Both of these suggestions have given rise to a number of resolutions in the House of Assembly...

It would thus appear that there is a danger of a split in the present National Labour Party...

THE PREMIER.

Notable Points in Recent Speech.

The most outstanding feature of the recent change in the political position in South Africa is that of his new attitude by the Premier...

As the general opinion in the country is that the Government should be held to a definite responsibility...

Economic Depression.

Dealing with the economic situation, the Premier's speech was one of the most important...

S.A.P. Support.

Withy after the election Mr. M. J. H. Hofmeyr in his speech...

A Possible Exit.

It is possible that the Government will be forced to resign...

It is possible that the Government will be forced to resign...

PRIVY COUNCIL QUASHES A CONVICTION.

Echo of Murder Trial in West Africa.

DOCTOR CHARGED WITH MURDER.

One Heard by Judge Without a Jury.

TRADER HORNY COMPANY LEAVES EAST AFRICA.

End of Seven Months Film Production.

A SUCCESSFUL SAFARI.

Wonderful Scenes Recorded in the Country.

The main party of American film experts who came to Africa to produce a film...

The results of a seven months' expedition in East Africa...

The results of a seven months' expedition in East Africa...

The results of a seven months' expedition in East Africa...

The results of a seven months' expedition in East Africa...

The results of a seven months' expedition in East Africa...

The results of a seven months' expedition in East Africa...

The results of a seven months' expedition in East Africa...

The results of a seven months' expedition in East Africa...

The results of a seven months' expedition in East Africa...

The results of a seven months' expedition in East Africa...

The results of a seven months' expedition in East Africa...

The results of a seven months' expedition in East Africa...

The results of a seven months' expedition in East Africa...

The results of a seven months' expedition in East Africa...

The results of a seven months' expedition in East Africa...

The results of a seven months' expedition in East Africa...

The results of a seven months' expedition in East Africa...

The results of a seven months' expedition in East Africa...

The results of a seven months' expedition in East Africa...

The results of a seven months' expedition in East Africa...

The results of a seven months' expedition in East Africa...

MRS. NAIDU TO PRESIDE OVER INDIAN CONGRESS.

500 Delegates to Attend December Session.

WILSON REPORT DEBATE.

NO PROTECTION.

An amphetamine, capable of sending 20,000 persons to a lunatic asylum...

The President of this year's National Congress will be Mrs. Naidu...

The President of this year's National Congress will be Mrs. Naidu...

The President of this year's National Congress will be Mrs. Naidu...

The President of this year's National Congress will be Mrs. Naidu...

The President of this year's National Congress will be Mrs. Naidu...

The President of this year's National Congress will be Mrs. Naidu...

The President of this year's National Congress will be Mrs. Naidu...

The President of this year's National Congress will be Mrs. Naidu...

The President of this year's National Congress will be Mrs. Naidu...

The President of this year's National Congress will be Mrs. Naidu...

The President of this year's National Congress will be Mrs. Naidu...

The President of this year's National Congress will be Mrs. Naidu...

The President of this year's National Congress will be Mrs. Naidu...

The President of this year's National Congress will be Mrs. Naidu...

The President of this year's National Congress will be Mrs. Naidu...

The President of this year's National Congress will be Mrs. Naidu...

The President of this year's National Congress will be Mrs. Naidu...

The President of this year's National Congress will be Mrs. Naidu...

The President of this year's National Congress will be Mrs. Naidu...

The President of this year's National Congress will be Mrs. Naidu...

The President of this year's National Congress will be Mrs. Naidu...

The President of this year's National Congress will be Mrs. Naidu...

The President of this year's National Congress will be Mrs. Naidu...

The President of this year's National Congress will be Mrs. Naidu...

The President of this year's National Congress will be Mrs. Naidu...

LYRIC HALL TO-NIGHT AT 8-45 p.m.

IN A MOMENT OF TEMPTATION with CHARLOTTE STEVENS KIT GUARD AND STRONG CAST.

A tremendously touching story of one who fought lust and soul for honesty...

PRICES SHS. 3/- AND 2/-

Seasonable Useful Gifts.

Children's Slippers, Ladies Slippers, etc.

Further List of Donations.

Contributions to the assistance of Al Khan...

Al Khan.

Further List of Donations.

Contributions to the assistance of Al Khan...

THEATRE ROYAL TO-NIGHT FRIDAY & SATURDAY

A SUPER-FEATURE ATTRACTION THE NIGHT OF LOVE

featuring RONALD COLMAN & VILMA BARKY

THE NIGHT OF LOVE

featuring RONALD COLMAN & VILMA BARKY

THE NIGHT OF LOVE

featuring RONALD COLMAN & VILMA BARKY

THE NIGHT OF LOVE

featuring RONALD COLMAN & VILMA BARKY

THE NIGHT OF LOVE





Tea becomes more interesting

When you serve a variety of blends... provided of course... quality... in the hands of this great expert upon this

CARR'S TEA... BLENDING... REGISTERED BY THE TRADE MARK AUTHORITY

An appealing tea for all who love tea

Amstel Beer the Best in East and West... Guaranteed free of Chemicals.

Obtainable at all leading Hotels, Bars and Stores. Ask for it in your club.

Wholesale—Tweetches Overseas Trading Co., Ltd., Members. Kamp Nairani, Nairobi.

REMOVED.

Beliram Parimal & Co. Sole agents for all the best... ROYALTY FREE, Government Road, Nairobi.

FOR LIGHT OR DAYLIGHT SAVING FOR LIGHTS ON SMUTS' SPEECH READ

"Chronicles of Kenya" by W. Davis and H. G. Robertson. Special reprint now on sale at all bookshells.

B. Florens. FRENCH HAIRDRESSER. FOR THIS MONTH ONLY.

PERMANENT WAVING FROM 50/- MANICURE - CHIROPODY - MASSAGE. Phone 861. P.O. Box 25. Book Building, Government Road, opposite Electric Light Co.

The Ideal Christmas Present

Kenya Mountain By E. A. T. DUTTON. With fifty-six full page illustrations reproduced in Colotype.

"A book well worth sending to your friends at Home." PRICE: Shs. 2/6, postpaid, Shs. 2/5/0.

STANDARD STATIONERY STORES. 51, 53, 55, Market Street, NAIROBI.

HOME RECEPTION OF SIR E. CRIGG'S WARNING.

(Continued from page 1.) The Governor's speech made some mention of the fact that the Party at home rather than the Party at large is to be held responsible for the... (text continues)

Agricultural Implements.

Then, Dr. Norman Levy contributed a letter on the subject to "The Marcher Guardian." It writes solemnly about the "hunger and spurs" which are indispensable agricultural implements. The letter reads: "There is something unpleasantly reminiscent of the telegram sent to the Governor last week from the... (text continues)

It has some suggestion of oppression is intended. The news that the... (text continues)

It is a Government measure... (text continues)

'Ambush Withheld'

The Daily States' columnist... (text continues)

"I had my eyes with... (text continues)

A highly-placed Civil Servant... (text continues)

Beautifying Nairobi.

A well attended meeting was held at the... (text continues)

The following were elected to the... (text continues)

The following were elected to the... (text continues)

The following were elected to the... (text continues)

Must Africa's Opportunity.

It is a Government measure... (text continues)

It is a Government measure... (text continues)

It is a Government measure... (text continues)

"TRADE HORN" COMPANY LEAVES EAST AFRICA.

(Continued from page 9.)... (text continues)

... (text continues)

... (text continues)

... (text continues)

Work in Nairobi.

Another interesting item... (text continues)

... (text continues)

... (text continues)

"A Standard" (Special) (Cable Service).

Northern Rhodesia. A CUSTOMS AGREEMENT WITH THE UNION. (text continues)

Mr. Neville Chamberlain. LEAVING FOR EAST AFRICA IN DECEMBER. (text continues)

Mr. Neville Chamberlain, M.P. will be leaving for East Africa in December 12, to obtain... (text continues)

TO-DAY'S GAZETTE LIST. (text continues)

THE MERRY MARKET.

London, Nov. 11. Prices 12.85. D.L.R. 4/6 1/2. (text continues)

... (text continues)

... (text continues)

WHERE TO STAY TOWN and COUNTRY.

Stay at the Lagoon and Cliff... THE NORFOLK HOTEL. (text continues)

The Salisbury Hotel Nairobi. P.O. Box 888. (text continues)

THE NEW GARDEN HOTEL. Large Double Rooms, Single Rooms with or without Bath. (text continues)

NAIVASHA HOTEL. NAIVASHA. Under entirely new Management. (text continues)

SAVOY HOTEL. Box 28 THE HILL, NAIROBI. (text continues)

THE Stag's Head Hotel NAKURU. (text continues)

The Trocadero Bar and Restaurant. Proprietor - W. M. GODFREY. Manager - J. H. ROGERS. GRILLES - ALL MEALS - REFRESHMENTS - TEAS. Hours 8 a.m. - Till 11 p.m.

Special Opportunity. For those who have skill not taken advantage of our Wonderful SALE Bargains which we are offering for further Few Days Only. HIGH-CALIBRE ENGRAVING AND ALL KINDS OF REPAIRING OF JEWELLERY UNDER TAKEN. Lalchand Moolchand Bros. Government Road, Box 275.

HUNTLEY & PALMER'S BREAKFAST BISCUITS. -CRISP AND FRESH AS THE MORNING. The ideal unsweetened rusk, always appetizing. Baked to perfection, digestible, nourishing and a delightful variant to bread. Obtainable from all High-Class Provision Stores.

Breakfast Huntley & Palmer's Breakfast. Representative - GERRARD BAWSON, NAIROBI and MOMBASA.

A Nature Calendar FOR LOVERS OF BEASTS, BIRDS AND INSECTS, FOR 1930. "We pleased for those who cannot speak for themselves." The entire proceeds of this calendar will be given to the E.A.S.P.C.A. Price Shs. 2/50 each. Obtainable from all Bookshops, or Hon. Secretary, P.O. Box 888, NAIROBI.



### AUCTION SALES.



Duly instructed by J. Marcus, Esq., we shall sell, by Public Auction, Without Reserve, on the site at the Nairobi County Works (near the Erskine House Trading Co., Ltd. in connection) on **SATURDAY, 28th November at 10 a.m.**

All the wood work and Corrugated Iron (painted red) forming a large shed, store, and boys quarters—the materials to be removed from the site within one week.



### NOTICE OF FURNITURE SALE

Duly instructed, we shall sell by Public Auction, Without Reserve, unless Stipulated, at our Sale-rooms, Mutos Building, Hardinge Street, on **Monday, 25th, November at 10 a.m.**

Double Wardrobe in Teak, two mirrors. Occasional Tables. Indian Chaise. Single Wardrobe in Teak, bed mirrors. Single Bedstead in camphorwood, spring mattress. Single Iron Bedstead, Cot Mattresses, Push Cart. Dressing Tables, bevelled mirrors. Chest of Drawers. Washstand. Combination Dressing Table and Washstand. Chesterfield Suits, cruetine cover on castors. Club Easy Chairs. Morris Chairs. Cabinets Gramophone. Sideboard in Gunny. Writing Table in camphorwood. Suits of Dining Chairs. Dining Tables. Chair Tea Table. Desk Chairs. Cheval Mirror. Garden Roller, Etc., Etc., Etc.

**MUTER and OSWALD Ltd., Auctioneers, etc., NAIROBI.**



Duly instructed by the Receivers for the Debenture Holder in the Estate of Messrs. K. Bower, Ltd., WE SHALL SELL BY PUBLIC AUCTION, WITHOUT RESERVE, at the site of the maize Mills, Nairobi Station, on **TUESDAY, NOV. 26th at 10 a.m.**

THE ENTIRE PLANT and EQUIPMENT of the MAIZE MILLS, including—

"Ass" Motors—two 10 h.p., one 25 h.p., and one 5 h.p. Three Barrow's Patent "Impact" Grinders or Disintegrators, sizes 1 and 2. "Willy Knight" Two Ton Lorry—B. 7471—mileage just over 5000. "Overland" Lorry—B. 7921—mileage just over 8000. Harper Reed Sundry Tools. Second-hand Gunny Bags. Tarpsauls. Belling. Sieve and Elevator. Corrugated Iron sheets. 4 bags Salt. Two hot and cold water tanks. Desk. Two. Twenty Seven Large Tanks supplied for maize, but convertible for water, with approximate capacity of two thousand gallons each, and all practically new. Also new Galvanized Iron Roof Sheet with setting sides and wooden floor, etc., etc.

NOTE:—The above goods may be viewed at any time by arrangement with the consignor on the site.

**MUTER and OSWALD Ltd., Auctioneers, etc., NAIROBI.**

### SANDS & CO., CITY MARKET, SADLER STREET,

CHEAPEST PLACE FOR Bran, Chick Wheat, Pollard, Lucerne, Oats, Barley, Potatoes.

MARKET DAYS: **TUESDAY and FRIDAY** POULTRY EGGS, FRUIT and all Farm Produce.

### SANDS & CO., AUCTIONEERS,

### JAMAL PIRBHAI.

SELLS ANYTHING YOU CANNOT SELL. Auctions, Great Broker and Investment Dealer. AUCTION EVERY SATURDAY and SUNDAY. Commencing at 11 a.m. and 5 p.m. respectively. P.O. Box No. 209 opp. Jivoo's Garden. Highest No. 294.

NOTE:—No matter whether second-hand or new, but plain goods always available for clean articles.

### Big Game Photographs.

A Book containing a collection of Big Game photographs taken in Kenya and Tanganyika by Mr. MARCUS WELLS MAXWELL. 25 photographs—12" x 12"—bound in Blue Cloth. Price, 6/50. Price, 7/50.

### AUSTIN'S AUCTIONS.

SALE OF FINE, TARPULANS AND MISCELLANEOUS GOODS. Instructed by The Messrs Goldwyn Mayer Co. **AUSTIN & CO.**

will sell Without Reserve at the Mart, **To-day, Nov. 21st at 10 a.m.**

Several Tarpulans all Sizes. Quantity of Good Beaver Boards. Egg Boxes. Several Good Chop Boxes. Pailon. Herrick's Canvas. Gasoline. Kettles. Wood Stains. Empty Film Tins. Large Enamel Kettles. Rope and Twine. Baking Tins. Bread and Flour Bins. Kitchen. Dishes. Tin. Gasoline. New Brass. 30 x 6. 22 x 6. 20 x 6. 21 x 6. Aluminium Suitcases. Knives and Forks. Change Plates all sizes. Minora. Frying Pans. Enamel. Coffee Pots. Koker Fry Pump. Glass Jars with stoppers and numerous other articles.

**AUSTIN & CO.** Auctioneers and Estate Agents, Hardinge Street, NAIROBI.

### AUSTIN'S AUCTIONS.

CATALOGUE SALE OF GRAMOPHONES, GOOD RECORDS, LUNCHEON BOX STOVE, PATHE PROJECTION MOVIES, FIVE RINGS SUITS, SINGERS TREADLE MACHINE, COPPER TRAY, FURNITURE, ONE KODAK CAMERA, ETC.

### AUSTIN & CO.,

will sell Without Reserve unless stated, at the Mart, on **Saturday Nov. 23rd at 10 a.m.**

One Kodak Camera Model B. K.A. 2.5 in. perfect order as new with leather case. (res.) Decora Portograph. Gramophone. Singer's Treadle Sewing Machine in good order. Silver Table Watch. Plate. Silver Luncheon Box Fitted Complete as new. Large Copper Tray on Stand. Pathe Baby Projector in perfect order. 8 Vol. Library fully charged. Large 20" x 20" x 26" with shell and cupboard behind, panelled in wood. New Laminated Pillow Cases. Sheets. 20 New Laminated Bed. 20 Kapok Mattresses in new condition. Chesterfield Suits upholstered with Standard Bedstead. Gentle New Suits. Treadle with Standard striped poplin. Teak and Podo Wardrobes. Hanging and Bachelor Dining Tables and Chairs. Healdie Table. Dressing Chests in Teak and Camphor Woods. Double Washstand. Chests of Drawers. Morris Chairs. Camphor Wood Office Desk 6 drawers. Gentle Gold Chesterfield Sofa. Bedstead made by H. Myers Co. (res.) 2 Chesterfield Suits covered cruetine. Occasional and Coffee Table No. 7. Dover Stone. New Oak. Cabinet Chairs. Bedroom Club easy. H.M.V. Gramophone (res.). Good Records in Books by Kresler. Hair. Cortice, etc. 250 Ruby Master Rifle in Case (res.). And numerous other articles.

**Austin & Co.** Auctioneers, Hardinge St., NAIROBI.

### AUSTIN'S AUCTIONS.

MORRIS COMMERCIAL Lorry. **AUSTIN & CO.** will sell Without Reserve, at the Mart, on **Saturday, November 23rd at 10 a.m.**

Morris Six Wheel Commercial Lorry in perfect running order.

**AUSTIN & CO.** Auctioneers and Estate Agents, Hardinge St., NAIROBI.

### Useful Books

for HOUSE, FARM and WORKSHOP.

Spore's Workshop Receipts, Set of 4 vols.	27/00	50/00
Cottage Building in Col. Pap.	10/00	10/00
Clough Williams Ellis, The Art of the House	10/00	10/00
Every Man his Own Builder, by G. Gordon Bennett	9/00	10/00
The Lovable System of Planning, by Louis Lenoire	8/00	10/00
Decorative Architecture, by R. C. Johnston	10/00	10/00
R. Edmunds and G. K. Walker	30/00	30/00
Concrt. and Con. Lorrying, by H. A. Wallace and Ed. N. Bessman	15/00	15/75
The Housewife, by Mrs. Mary	15/00	10/10
Vocabulary Names for House Owners, by Captain M. H. Hayes	17/50	18/00
Black's Veterinary Dictionary, edited by William C. Miller, F.R.C.V.S.	25/00	26/00
The Way of a Man with a Horse, by Leest. Col. Geoffrey Brooke	25/00	26/10
Stable Work, by Goldsmith	9/00	10/00
Tree Felling, from an English, by Eric Towner	9/00	10/00
Wireless, by F. J. Hudson	10/00	10/40
Compary Accounts, by J. G. Wainwright	10/00	10/40
A.B.C. Code, 6th Edition	10/00	11/00
Bentley's Complete Home Code	11/00	11/65
Compary Accounts, by J. G. Wainwright	9/00	10/00
Chamber's Twentieth Century Dictionary	11/00	12/00
Hawkin's Mechanical Dictionary	12/00	13/10
Chamber's New English Dictionary	12/00	13/00
Nuttall's Standard Dictionary	11/00	13/00
The Book of Herby Flowers, by Mrs. G. Wainwright	11/00	13/00
by H. H. Thomas	21/00	22/00
Landscape Painting in Oil with Colours 7/25	7/25	7/25
Pinna's Book-keeping Simplified	4/00	4/00
The Student's Elementary Commercial Book-keeping, by Arthur J. Cook	4/60	5/00
The Student's Advanced Commercial Book-keeping, by Arthur J. Cook	7/00	8/15
Handbook for Farmers in South Africa	6/00	7/00

### E. Hutchison & Co.

AUCTIONEERS, Etc., NAIROBI.

FOR SALE.—Brick and Concrete House, 3 1/2 miles Nairobi. Contains Lounge 20' x 16' with fireplace. Dining Room, 3 Bedrooms and Guest Room. Kitchen, Store, Bathroom, H. and C. Brick Garage and Boys Quarters. Electric Light 24 acres good red soil. River Boundary one end. Ram installed. £1,750.

FOR SALE.—Small Concrete House. Westlands. Sitting Room Bedroom. Kitchen. Bathroom. Store on acre. Electric Light, Water. Fully Furnished. £250.

### BEST VALUE IN ORIENT'S TOWELS, 25008 BEEHIVES, DURSLEY EGGS.

FROM **E. Hutchison & Co.** Box 140 NAIROBI.

### Mr. W. J. Beeston

has been instructed by B. K. Lingard-Guthrie, Esq., who is leaving the Colony, to sell by Public Auction, without reserve (unless stated) at his residence, KANDA KAMU, ELBURGON, (situate 8 miles from Njoro Station and 4 1/2 from Elburgon on the main road)

on **WEDNESDAY, NOV. 27th, 1929** PRACTICALLY THE WHOLE OF HIS HOUSEHOLD FURNITURE, including a piano by Broadwood, Glassware, Crockery, Kitchen Utensils, etc. etc.

### 4 IMMUNE OXEN. SCOTCH CART, SINGLE FURROW PLOUGH;

also That will sell Polo Pony "LIBERTY". Sale to commence at 10-45 a.m. sharp.

Full details in catalogue. NOTE.—The whole of the Furniture is Tanganyika Teak, made by Hutchings, Beamer and Co., and is practically new.

Refreshments will be provided. **W. J. BEESTON, AUCTIONEER, NJORO.**

### Nakuru Horse Sale

Mr. W. J. BEESTON will hold a sale of HORSES at NAKURU, on **SATURDAY, DECEMBER 7th 1929** (Second Day, Nakuru Races) at 10-45 a.m. sharp.

Many entries have already been received, and further entries are solicited for cataloguing. NOTE.—Horses which have been exhibited at the Show and are for sale will be auctioned on **THURSDAY, DEC. 5th**

**W. J. BEESTON, AUCTIONEER, NJORO.**

### Hand Drills Shgs. 4-00.

Others from Sh. 6.00 to Sh. 50.00



### The Tool House NAIROBI.

Decorate Your Rooms with different varieties of PICTURES, we have just received. Special Cotton Printed Materials

for Oriental Dance or Dresses now at hand. AT REMARKABLE PRICES. Come Early and Select Your First Choice, at **Ladharam Stores,** Ladies and Gents Expert Tailors. P.O. Box 416 NAIROBI. Gort. Road.

### 50 Cars to Select From

### Godfrey's Car Mart

SADLER STREET **USED CARS.**

Ragby Box Body. Servicable and in good running order. £45  
Chrysler 40. Box Body. Recently overhauled, smart appearance. £140  
Chevrolet Coupe. Latest model, 8 cyl. As new, done only 2,000 miles. Equipped with all modern accessories and perfect in every detail. £210  
Ford 500. V8 motor. Remarkably good condition. Recently overhauled, smart appearance. A real bargain. £150  
Alfa Romeo. Latest model. Excellent road body. British production, representing a high grade of engineering skill and craftsmanship. A real Gem. £219  
ARIEL DOUGLAS and OTHER MOTORCYCLES. CAR INSURANCE ARRANGED.

BREAK-DOWN TRUCK (with crane) available any day. Delivery.

New and Second-hand Spares for all makes of cars. NEW TYRES at CLEARANCE PRICES. And various other motor accessories. **DRIVE YOURSELF.** Phone 745 **W. M. GODFREY, Sole Proprietor.**

### Property for Sale

One acre Building Plots from £100 upwards. Four up-to-date Stone Houses containing 5 large rooms, etc., reasonable deposit, balance on mortgage.

### TO LET

Stone House, 4 large rooms, etc., Kilimani. Stone House, 5 large rooms, etc., Westlands. Three Ground Floor Offices.

Apply:— **Denovan & Diebel** City House NAIROBI.

### NOTICE

HENRY HOPE and SONS Ltd., Steel Casements and Doors.

### TENDERS ARE INVITED FOR A REGULAR SUPPLY OF GOOD WOOD FUEL.

THE QUANTITY REQUIRED IS FROM 100 TO 300 TONS MONTHLY AND ENDS TO BE QUOTED F.O.R. NAIROBI.

### Reliance Transport Co., Ltd.

Telephone 331 **Bulus House, P.O. Box 627 Government Road, NAIROBI.**

### Cash Boxes.

LOCK BOTTOM SOLID BOTTOM

8 1/2 x 6 1/2	27/00	8 1/2 x 6 1/2	27/00
9 1/2 x 7 1/2	27/00	9 1/2 x 7 1/2	27/00
10 1/2 x 8 1/2	27/00	10 1/2 x 8 1/2	27/00
11 1/2 x 9 1/2	27/00	11 1/2 x 9 1/2	27/00
12 1/2 x 10 1/2	27/00	12 1/2 x 10 1/2	27/00
14 x 12 1/2	27/00	14 x 12 1/2	27/00

**STANDARD STATIONERY STORES** P.O. Box 20, NAIROBI.







LIION TRAPS. Shs. 100/-
LEOPARD TRAPS. Shs. 65/-
We are the Agents for the famous NEWHOUSE ANIMAL TRAPS. The Traps which have a LIFE-TIME and HOLD everything that goes in them.

Shaw & Hunter Ltd. Chamber of Commerce Building, P.O. Box 70, NAIROBI.

CHARLES WARE. TURF ACCOUNTANT.

(Established 25 years) Tel. Add.: "Sportsman." Nos. 175, Trust Chambers, Gery Road, NAIROBI.
MARCH 17th. NOVEMBER HANDICAP.—2/2 NAIROBI: 9/1 Bayview; Silver Hoop; Honey Boy; 11/1 Star Eagle; Glanville; Bay Bess; 14/1 Bling; Kings; Old Orkney; 16/1 Prince Paul; Coligny II; Sir Joshua; Orlans on enquiry.
E. A. DERBY.—2/1 Myosotis; 5/2 Dowling; 4/1 King Margaret; 6/1 Burgess; 7/1 White Prince; Phase Parton; 10/1 Modesty; Naveau; 12/1 Casper; 20/1 Lifford.
NOTE.—All prices are subject to market fluctuations. Lengthened or shortened.
Credit Accounts on Approved Terms only or Cash. NO REPLY DISTINCTLY MEANS NO BUSINESS.



A STRAIGHT TIP. Half your Building Worries are directly attributable to faulty doors and windows—expansion and contraction are ever present.

Instal STEEL CASEMENT WINDOWS AND IMPORTED DOORS. minimise your worries, and ensure unqualified enthusiasm. Let us quote against requirements.



Maurice Rosenbort. P.O. Box 401, Victoria Jubilee ROMA BUILDING, GOVERNMENT ROAD, NAIROBI.

MARCHERET NOVEMBER HANDICAP. Run Nov. 2nd. 11 miles.—7/1 Glen Aynis; 9/1 Devereux; 10/1 King Vane; 12/1 Paul O'Connell; 13/1 Ballymore; 14/1 Bling; 15/1 Prince Paul; 16/1 Casper; 17/1 White Prince; 18/1 Modesty; 19/1 Naveau; 20/1 Lifford.

JOHANNESBURG SUMMER HANDICAP. Run Dec. 2nd. 11 miles.—7/1 Glen Aynis; 9/1 Devereux; 10/1 King Vane; 12/1 Paul O'Connell; 13/1 Ballymore; 14/1 Bling; 15/1 Prince Paul; 16/1 Casper; 17/1 White Prince; 18/1 Modesty; 19/1 Naveau; 20/1 Lifford.

FIREARMS

We carry large and varied stocks of RIFLES, REVOLVERS, PISTOLS and SHOTGUNS. made by the world's foremost makers.

Our stocks of AMMUNITION rank among the largest and most comprehensive in Africa.

Ask for our Catalogue.

May & Co. Ltd. The Sports House NAIROBI.

CARTRIDGES

Printed and Published by EAST AFRICAN STANDARD, Ltd., at the Standard Press, Nairobi, Kenya.

THE SPORTS PAGE

A SPORTSMAN'S WINDOW. Local Cricket. RUGBY FOOTBALL. Jubilee International Match.

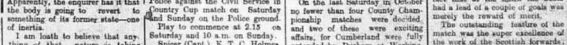
An Outlook on the World of Recreation. TEAMS FOR THE WEEK-END. Dark Blues Show Improved Form.

WEAKNESS IN THE CAM BRIDGE TEAM. FOOTBALL'S FINEST WIN OVER WALLS.

SWIFT AND SURE

You cannot stop fast-fused lead, however excellent a gun you may be, unless you have a good rifle and ammunition. You no doubt value your rifle and it is a mistake to suppose that any cartridge will do for it.

ANYONE who has received cartridges made in this form for 22 or 30 years and used by some of the best marksmen in the world in all parts of the world. You are encouraged to buy them and use them.



Use KYNOCHE CARTRIDGES

BRITISH & BEST IMPERIAL CHEMICAL INDUSTRIES LTD. LONDON, S.W.1.

A. HOGG.

MACKENSON'S BUILDINGS, NAIROBI. MARCHERET NOVEMBER HANDICAP. Run Nov. 2nd. 11 miles.—7/1 Glen Aynis; 9/1 Devereux; 10/1 King Vane; 12/1 Paul O'Connell; 13/1 Ballymore; 14/1 Bling; 15/1 Prince Paul; 16/1 Casper; 17/1 White Prince; 18/1 Modesty; 19/1 Naveau; 20/1 Lifford.

ENGLISH STAGION PRIZES. ENGLISH STAGION PRIZES. ENGLISH STAGION PRIZES.

ENGLISH STAGION PRIZES. ENGLISH STAGION PRIZES. ENGLISH STAGION PRIZES.

ENGLISH STAGION PRIZES. ENGLISH STAGION PRIZES. ENGLISH STAGION PRIZES.

ENGLISH STAGION PRIZES. ENGLISH STAGION PRIZES. ENGLISH STAGION PRIZES.

ENGLISH STAGION PRIZES. ENGLISH STAGION PRIZES. ENGLISH STAGION PRIZES.

ENGLISH STAGION PRIZES. ENGLISH STAGION PRIZES. ENGLISH STAGION PRIZES.

ENGLISH STAGION PRIZES. ENGLISH STAGION PRIZES. ENGLISH STAGION PRIZES.

ENGLISH STAGION PRIZES. ENGLISH STAGION PRIZES. ENGLISH STAGION PRIZES.

ENGLISH STAGION PRIZES. ENGLISH STAGION PRIZES. ENGLISH STAGION PRIZES.

ENGLISH STAGION PRIZES. ENGLISH STAGION PRIZES. ENGLISH STAGION PRIZES.

ENGLISH STAGION PRIZES. ENGLISH STAGION PRIZES. ENGLISH STAGION PRIZES.

ENGLISH STAGION PRIZES. ENGLISH STAGION PRIZES. ENGLISH STAGION PRIZES.

ENGLISH STAGION PRIZES. ENGLISH STAGION PRIZES. ENGLISH STAGION PRIZES.

ENGLISH STAGION PRIZES. ENGLISH STAGION PRIZES. ENGLISH STAGION PRIZES.

ENGLISH STAGION PRIZES. ENGLISH STAGION PRIZES. ENGLISH STAGION PRIZES.

ENGLISH STAGION PRIZES. ENGLISH STAGION PRIZES. ENGLISH STAGION PRIZES.

ENGLISH STAGION PRIZES. ENGLISH STAGION PRIZES. ENGLISH STAGION PRIZES.

ENGLISH STAGION PRIZES. ENGLISH STAGION PRIZES. ENGLISH STAGION PRIZES.

ENGLISH STAGION PRIZES. ENGLISH STAGION PRIZES. ENGLISH STAGION PRIZES.

ENGLISH STAGION PRIZES. ENGLISH STAGION PRIZES. ENGLISH STAGION PRIZES.

ENGLISH STAGION PRIZES. ENGLISH STAGION PRIZES. ENGLISH STAGION PRIZES.

ENGLISH STAGION PRIZES. ENGLISH STAGION PRIZES. ENGLISH STAGION PRIZES.

ENGLISH STAGION PRIZES. ENGLISH STAGION PRIZES. ENGLISH STAGION PRIZES.

ENGLISH STAGION PRIZES. ENGLISH STAGION PRIZES. ENGLISH STAGION PRIZES.

ENGLISH STAGION PRIZES. ENGLISH STAGION PRIZES. ENGLISH STAGION PRIZES.

ENGLISH STAGION PRIZES. ENGLISH STAGION PRIZES. ENGLISH STAGION PRIZES.

ENGLISH STAGION PRIZES. ENGLISH STAGION PRIZES. ENGLISH STAGION PRIZES.

ENGLISH STAGION PRIZES. ENGLISH STAGION PRIZES. ENGLISH STAGION PRIZES.

ENGLISH STAGION PRIZES. ENGLISH STAGION PRIZES. ENGLISH STAGION PRIZES.

ENGLISH STAGION PRIZES. ENGLISH STAGION PRIZES. ENGLISH STAGION PRIZES.

ENGLISH STAGION PRIZES. ENGLISH STAGION PRIZES. ENGLISH STAGION PRIZES.

ENGLISH STAGION PRIZES. ENGLISH STAGION PRIZES. ENGLISH STAGION PRIZES.

ENGLISH STAGION PRIZES. ENGLISH STAGION PRIZES. ENGLISH STAGION PRIZES.

ENGLISH STAGION PRIZES. ENGLISH STAGION PRIZES. ENGLISH STAGION PRIZES.



SWIFT AND SURE

You cannot stop fast-fused lead, however excellent a gun you may be, unless you have a good rifle and ammunition. You no doubt value your rifle and it is a mistake to suppose that any cartridge will do for it.

ANYONE who has received cartridges made in this form for 22 or 30 years and used by some of the best marksmen in the world in all parts of the world. You are encouraged to buy them and use them.

Use KYNOCHE CARTRIDGES

BRITISH & BEST IMPERIAL CHEMICAL INDUSTRIES LTD. LONDON, S.W.1.

A. HOGG.

MACKENSON'S BUILDINGS, NAIROBI. MARCHERET NOVEMBER HANDICAP. Run Nov. 2nd. 11 miles.—7/1 Glen Aynis; 9/1 Devereux; 10/1 King Vane; 12/1 Paul O'Connell; 13/1 Ballymore; 14/1 Bling; 15/1 Prince Paul; 16/1 Casper; 17/1 White Prince; 18/1 Modesty; 19/1 Naveau; 20/1 Lifford.

ENGLISH STAGION PRIZES. ENGLISH STAGION PRIZES. ENGLISH STAGION PRIZES.

ENGLISH STAGION PRIZES. ENGLISH STAGION PRIZES. ENGLISH STAGION PRIZES.

ENGLISH STAGION PRIZES. ENGLISH STAGION PRIZES. ENGLISH STAGION PRIZES.

ENGLISH STAGION PRIZES. ENGLISH STAGION PRIZES. ENGLISH STAGION PRIZES.

ENGLISH STAGION PRIZES. ENGLISH STAGION PRIZES. ENGLISH STAGION PRIZES.

ENGLISH STAGION PRIZES. ENGLISH STAGION PRIZES. ENGLISH STAGION PRIZES.

ENGLISH STAGION PRIZES. ENGLISH STAGION PRIZES. ENGLISH STAGION PRIZES.

ENGLISH STAGION PRIZES. ENGLISH STAGION PRIZES. ENGLISH STAGION PRIZES.

ENGLISH STAGION PRIZES. ENGLISH STAGION PRIZES. ENGLISH STAGION PRIZES.

ENGLISH STAGION PRIZES. ENGLISH STAGION PRIZES. ENGLISH STAGION PRIZES.

ENGLISH STAGION PRIZES. ENGLISH STAGION PRIZES. ENGLISH STAGION PRIZES.

ENGLISH STAGION PRIZES. ENGLISH STAGION PRIZES. ENGLISH STAGION PRIZES.

ENGLISH STAGION PRIZES. ENGLISH STAGION PRIZES. ENGLISH STAGION PRIZES.

ENGLISH STAGION PRIZES. ENGLISH STAGION PRIZES. ENGLISH STAGION PRIZES.

ENGLISH STAGION PRIZES. ENGLISH STAGION PRIZES. ENGLISH STAGION PRIZES.

ENGLISH STAGION PRIZES. ENGLISH STAGION PRIZES. ENGLISH STAGION PRIZES.

ENGLISH STAGION PRIZES. ENGLISH STAGION PRIZES. ENGLISH STAGION PRIZES.

ENGLISH STAGION PRIZES. ENGLISH STAGION PRIZES. ENGLISH STAGION PRIZES.

ENGLISH STAGION PRIZES. ENGLISH STAGION PRIZES. ENGLISH STAGION PRIZES.

ENGLISH STAGION PRIZES. ENGLISH STAGION PRIZES. ENGLISH STAGION PRIZES.

ENGLISH STAGION PRIZES. ENGLISH STAGION PRIZES. ENGLISH STAGION PRIZES.

ENGLISH STAGION PRIZES. ENGLISH STAGION PRIZES. ENGLISH STAGION PRIZES.

ENGLISH STAGION PRIZES. ENGLISH STAGION PRIZES. ENGLISH STAGION PRIZES.

ENGLISH STAGION PRIZES. ENGLISH STAGION PRIZES. ENGLISH STAGION PRIZES.

ENGLISH STAGION PRIZES. ENGLISH STAGION PRIZES. ENGLISH STAGION PRIZES.

ENGLISH STAGION PRIZES. ENGLISH STAGION PRIZES. ENGLISH STAGION PRIZES.

ENGLISH STAGION PRIZES. ENGLISH STAGION PRIZES. ENGLISH STAGION PRIZES.

ENGLISH STAGION PRIZES. ENGLISH STAGION PRIZES. ENGLISH STAGION PRIZES.

ENGLISH STAGION PRIZES. ENGLISH STAGION PRIZES. ENGLISH STAGION PRIZES.

ENGLISH STAGION PRIZES. ENGLISH STAGION PRIZES. ENGLISH STAGION PRIZES.

ENGLISH STAGION PRIZES. ENGLISH STAGION PRIZES. ENGLISH STAGION PRIZES.

ENGLISH STAGION PRIZES. ENGLISH STAGION PRIZES. ENGLISH STAGION PRIZES.

ENGLISH STAGION PRIZES. ENGLISH STAGION PRIZES. ENGLISH STAGION PRIZES.

ENGLISH STAGION PRIZES. ENGLISH STAGION PRIZES. ENGLISH STAGION PRIZES.

ENGLISH STAGION PRIZES. ENGLISH STAGION PRIZES. ENGLISH STAGION PRIZES.

ENGLISH STAGION PRIZES. ENGLISH STAGION PRIZES. ENGLISH STAGION PRIZES.

ENGLISH STAGION PRIZES. ENGLISH STAGION PRIZES. ENGLISH STAGION PRIZES.