

The Best Protection for the New Year.

IT DOES GOOD DRINK KENYA BEER.

TERMINATION OF THE UNOFFICIAL MEETING.

Anti-Dumping Laws Proposed. SUGAR AND TIMBER DUTIES.

Tanganyika's Special Needs in Soft Wood Classes.

The Unofficial Conference of delegates from Kenya and Tanganyika has concluded its meetings. The last communique reported that the Conference recommended the continuation of the protective duties on sugar...

THE GOVERNORS' ASSURANCE.

The Unofficial Conference closed its work and the following communique has been issued. The meeting resumed on Tuesday, 7th January, at 9.30 a.m. All delegates were present with the exception of Mr. H. C. Christie and Mr. G. A. Hamilton.

The Conference proceeded to discuss the Sugar tariff. Mr. Gurney in introducing the subject stated that in the opinion of the expert panel in the India...

Several matters were dealt with in this way and the following are the main points which were discussed and decided upon.

Mr. Gurney called attention to the remarkable increase in local production in the last four years which is attributable to the increase in the use of modern machinery...

Mr. Gurney stated that the machinery which has been introduced in the past few years has already secured a high rate of production for the benefit of the masses.

Statistical Position.

Some stress was laid in the course of the discussion on the fact that the statistics which are published in the Kenya Year Book are figures which are industry figures and not national figures.

Mr. Gurney proposed that the Government should have a more complete system of statistics which would include not only the figures for the industry but also the figures for the general economy.

Mr. Gurney proposed that the Government should have a more complete system of statistics which would include not only the figures for the industry but also the figures for the general economy.

GUARANTEED THE LARGEST CIRCULATION OF ANY NEWSPAPER IN KENYA, UGANDA, TANGANYIKA AND ZANZIBAR

DAILY EDITION.

THE EAST

African Standard

UGANDA ARGUS THE LEADER

THE OLDEST ESTABLISHED NEWSPAPER PUBLISHED IN KENYA AND UGANDA.

NAIROBI, THURSDAY, JANUARY 9, 1920.

14 PAGES

THE LOUNGE for Morning AND Afternoon TEAS OPEN ON SUNDAYS TO Non-Residents. PRICE, 20 CENTS.

DISAGREEMENT OVER REPARATIONS.

Difficulties at the Hague Conference.

OUT-SPOKEN DELEGATES.

Germany states that the Canal Always Means Sacrifice.

(THROUGH NEWSPAPERS).

Hague, January 7. The Hague as a private meeting of the six leading powers...

Prayed Them.

The Hague, January 8. French and German papers were disappointed to learn that the delegates that Germany could not bring to the one to make sacrifice.

Wholesale and Retail Prices.

Wholesale and Retail Prices. The following are the prices of some of the principal commodities in Nairobi...

Unemployed in Britain.

Unemployed in Britain. The number of unemployed in Britain has increased since the end of 1919...

(BY WIRELESS).

Following the Christmas season a large increase of unemployment is reported by the Ministry of Labour...

Large Sugar Co. has a price.

A large Sugar Co. has a price. The following are the prices of some of the principal commodities in Nairobi...

Daily Proposed.

Daily Proposed. The following are the prices of some of the principal commodities in Nairobi...

Col. Lead moved?

Col. Lead moved? It has been brought to the attention of the Government...

THE LEAGUE OF NATIONS SESSION.

Subjects of Interest to Britain.

MANDATES REPORTS.

(BY WIRELESS). Mr. Arthur Balfour, the Foreign Secretary, leaves London...

International Tariffs.

Another item of particular interest to the country relates to the proposed tariff adjustment...

When the Lord Insiped upon him.

When the Lord Insiped upon him. The following are the prices of some of the principal commodities in Nairobi...

Destinative Act.

Destinative Act. The following are the prices of some of the principal commodities in Nairobi...

Would Not Scurvy.

Would Not Scurvy. Mr. Stanton was hurried back to camp and the machine arrived shortly afterwards...

Prince Eugene de Linde.

Prince Eugene de Linde. The following are the prices of some of the principal commodities in Nairobi...

(FAMOUS CORRESPONDENT).

(FAMOUS CORRESPONDENT). The following are the prices of some of the principal commodities in Nairobi...

Death of Famous Detective.

Death of Famous Detective. The following are the prices of some of the principal commodities in Nairobi...

(BY WIRELESS).

(BY WIRELESS). The following are the prices of some of the principal commodities in Nairobi...

WHITE HUNTER MAULLED BY LEOPARD.

Brought to Nairobi By Air.

NOTESCHILD SAFARI.

A Wonderful Success.

(THROUGH NEWSPAPERS).

(THROUGH NEWSPAPERS). The following are the prices of some of the principal commodities in Nairobi...

Each group, which is passed the royal influence...

Each group, which is passed the royal influence, is being used to the benefit of the people...

When the Lord Insiped upon him.

When the Lord Insiped upon him. The following are the prices of some of the principal commodities in Nairobi...

Would Not Scurvy.

Would Not Scurvy. Mr. Stanton was hurried back to camp and the machine arrived shortly afterwards...

Prince Eugene de Linde.

Prince Eugene de Linde. The following are the prices of some of the principal commodities in Nairobi...

(FAMOUS CORRESPONDENT).

(FAMOUS CORRESPONDENT). The following are the prices of some of the principal commodities in Nairobi...

Death of Famous Detective.

Death of Famous Detective. The following are the prices of some of the principal commodities in Nairobi...

(BY WIRELESS).

(BY WIRELESS). The following are the prices of some of the principal commodities in Nairobi...

WEDDING FESTIVITIES IN ROME.

Parade in National Costumes.

A WONDERFUL SUCCESS.

(THROUGH NEWSPAPERS).

(THROUGH NEWSPAPERS). The following are the prices of some of the principal commodities in Nairobi...

Each group, which is passed the royal influence...

Each group, which is passed the royal influence, is being used to the benefit of the people...

When the Lord Insiped upon him.

When the Lord Insiped upon him. The following are the prices of some of the principal commodities in Nairobi...

Would Not Scurvy.

Would Not Scurvy. Mr. Stanton was hurried back to camp and the machine arrived shortly afterwards...

Prince Eugene de Linde.

Prince Eugene de Linde. The following are the prices of some of the principal commodities in Nairobi...

(FAMOUS CORRESPONDENT).

(FAMOUS CORRESPONDENT). The following are the prices of some of the principal commodities in Nairobi...

Death of Famous Detective.

Death of Famous Detective. The following are the prices of some of the principal commodities in Nairobi...

(BY WIRELESS).

(BY WIRELESS). The following are the prices of some of the principal commodities in Nairobi...

A Forced Landing.

A Forced Landing. The following are the prices of some of the principal commodities in Nairobi...

IMPURITIES TO SECRETARY FOR AIR.

IMPURITIES TO SECRETARY FOR AIR. The following are the prices of some of the principal commodities in Nairobi...

THE CONFERENCE OF EAST AFRICAN GOVERNORS.

Protective Duties and Railway Rates.

YESTERDAY'S DISCUSSIONS.

The Conference of East African Governors under the chairmanship of His Excellency Sir Edward Grey...

The following items to be discussed by the Conference...

The following items to be discussed by the Conference, continued from yesterday's session...

The Price of Tea.

The Price of Tea. The following are the prices of some of the principal commodities in Nairobi...

ARRIVAL AT MADRIDA OF JOURNEY TO CAPE.

ARRIVAL AT MADRIDA OF JOURNEY TO CAPE. The following are the prices of some of the principal commodities in Nairobi...

(THROUGH NEWSPAPERS).

(THROUGH NEWSPAPERS). The following are the prices of some of the principal commodities in Nairobi...

When the Lord Insiped upon him.

When the Lord Insiped upon him. The following are the prices of some of the principal commodities in Nairobi...

Would Not Scurvy.

Would Not Scurvy. Mr. Stanton was hurried back to camp and the machine arrived shortly afterwards...

Prince Eugene de Linde.

Prince Eugene de Linde. The following are the prices of some of the principal commodities in Nairobi...

(FAMOUS CORRESPONDENT).

(FAMOUS CORRESPONDENT). The following are the prices of some of the principal commodities in Nairobi...

Death of Famous Detective.

Death of Famous Detective. The following are the prices of some of the principal commodities in Nairobi...

"E. A. Standard" Special Edition.

MORE VIEWS ON NATIVE QUESTION.

Professor Huxley Writes to the "Times".

APPROBATION OF HIS TOUR.

(STANDARD CORRESPONDENT).

(STANDARD CORRESPONDENT). The following are the prices of some of the principal commodities in Nairobi...

When the Lord Insiped upon him.

When the Lord Insiped upon him. The following are the prices of some of the principal commodities in Nairobi...

Would Not Scurvy.

Would Not Scurvy. Mr. Stanton was hurried back to camp and the machine arrived shortly afterwards...

Prince Eugene de Linde.

Prince Eugene de Linde. The following are the prices of some of the principal commodities in Nairobi...

(FAMOUS CORRESPONDENT).

(FAMOUS CORRESPONDENT). The following are the prices of some of the principal commodities in Nairobi...

Death of Famous Detective.

Death of Famous Detective. The following are the prices of some of the principal commodities in Nairobi...

(BY WIRELESS).

(BY WIRELESS). The following are the prices of some of the principal commodities in Nairobi...

A Forced Landing.

A Forced Landing. The following are the prices of some of the principal commodities in Nairobi...

IMPURITIES TO SECRETARY FOR AIR.

IMPURITIES TO SECRETARY FOR AIR. The following are the prices of some of the principal commodities in Nairobi...

Whitely the SALE of SALES BEGINS ON MONDAY NEXT, JAN. 13TH AT WHITEWAYS. AFTER weeks of preparation our Store is ready for the Greatest Sale in our history. YOU know the high quality of our merchandise—know too, the fair value in the regular season—therefore, you'll doubly appreciate the great reductions in this SUPER CLEARANCE SALE. A Sale planned to reduce stocks, prior to the Annual Stocktaking.

British India Steam Navigation Company, Limited, AND PENINSULAR AND ORIENTAL STEAM NAVIGATION CO.

LONDON AND EAST AFRICA LINE. LONDON TO NAIROBI, via Mombasa, Port Said, Port Sudan and Aden, Antwerp and Hamburg.

ROMA - DURBAN MAIL SERVICE. Calling Kilindi, Durban, Swaziland, Delagoa Bay fortnightly. Also Mombasale monthly. Outwards and Inwards.

COASTAL SERVICE. m.v. 'DYMERA' to Durban via Mombasa. m.v. 'DWARA' to Durban via Mombasa.

UNION-CASTLE LINE.

HOMEWARD via SUEZ. From Mombasa (About) 1st February, 1930. 'Lancaster Castle' 2nd March, 1930.

HOMEWARD via SOUTH AFRICA. From Mombasa (About) 6th February, 1930. 'Lancaster Castle' 2nd March, 1930.

Passenger Agents: B.E.A. Corporation, Ltd., East African Steamers, Ltd., East African Steamers, Ltd., T. J. O'Brien, Ltd., C. G. Mackenzie & Co.

Steamers: Kilindi from London about 10th Jan. 1930. 'R.M.' 'Madras' 17th Jan. 1930.

Homeward steamers call at Plymouth offering passengers the opportunity of disembarking there.

ARRIVE MOMBASA: 27th January, 1930. 'R.M.' 'Karnataka' 28th February, 1930.

TO DURBAN. 'R.M.' 'Karnataka' 12th Jan. 1930. 'R.M.' 'Karnataka' 18th Feb. 1930.

Special 1st Class Excursions. MOMBASA and DUB. Shs. 500/- and 600/- respectively.

Halway will also issue Insurance tickets to the Coast if passengers definitely book for either the Mombasa or Kenyan route.

ALL DATERS SUBJECT TO ALTERATION WITHOUT NOTICE. RETURN TICKETS ISSUED AT TWO SINGLE FARES LESS 10%.

Chivers' Custard Powder. combines highest quality of natural cream. In addition, it contains a nutritive Cream Substitute.

MESSAGERIES MARITIMES. (FRENCH MAIL STEAMERS) Regular and fortnightly service from London to Mombasa.

The Bradford Manufacturing Bomber Limited. Just Received. A LARGE CONSIGNMENT OF LADIES' OVERALLS.

Keith Timber Co. Ltd. P.O. Box 874. SADLER STREET. NAIROBI.

Phone 598. PIANOFORTE TUNING AND REPAIRING. Ten years experience in Kenya Colony and five year with Messrs. Chappell and Co., London.

OVERSEAS MAILS. ARRIVALS. Steamers from Mombasa, Durban, London, etc.

DEPARTURES. Steamers for Bombay, Swaziland, Durban, etc.

UPLANDS BACON FACTORY. Luncheons, Dinners and Picnics are set complete without resort to our 33 Varieties of Tinned and Glass Goods.

Deutsche Ost-Afrika-Linie

(GERMAN AFRICAN SERVICE). DEUTSCHE OST-AFRIKA-LINIE GENERAL AGENCY, MOMBASA. Office: 'Postille', P.O. 218.

Table with columns: HOMEWARD via SUEZ CANAL, From Mombasa, MOMBASA to SOUTH, From Mombasa.

SAILINGS SUBJECT TO ALTERATION. Information regarding connection at Lourenco Marques or Durban of the above steamers may be obtained from the Agents.

A. J. ELY and Co. Ltd. SHAMBA CHEMISTS, NAIROBI. COPPER RAIN GAUGE. Complete with Glass... Shs. 26/10. Spare Glasses... Shs. 4/50.

BARCLAYS BANK (DOMINION, COLONIAL AND OVERSEAS). Incorporated by Royal Charter 1881. The NATIONAL BANK OF SOUTH AFRICA, LTD. AND THE ANGLO-EGYPTIAN BANK LTD.

TO LET. A SPACIOUS AND WELL VENTILATED SHOP IN GOVERNMENT ROAD. MATABATY SULEMAN VERJEE & SONS. Government Road. Phone 54. Nairobi.

Compagnia Italiana Transatlantica.

Monthly Passenger Service to NAPLES and GENOA. SAILINGS FROM KILINDINI to GENOA on the 1st of Every Month. 'M. CRIPATI' - 1st February, 1st April, etc.

THE AFRICAN MARINE AND GENERAL ENGINEERING CO., Ltd.

Specialists in Rebuilding of Boats. Cutting and Manufacturing of Irons Structures for Kitchens. Oil-Acetylene Welding and Cutting and Building up of Work Boats, etc.

The Trocadero Bar and Restaurant.

Proprietor - W. M. GODFREY. Manager - Mr. BOB BILLINGS. GRILLS - ALL MEALS - REFRESHMENTS - TEAS. under ENTIRELY NEW MANAGEMENT. Hours 8 a.m. - Till 11 p.m.

B. E. A. SAW MILLS.

Telephone No. 23. P.O. Box 221. Telegrams: "Beams," Nairobi.

Camphor, Podo, Mweri and Muna. Flooring, Ceiling and Moulding.

Cash Boxes. LOCK BOTTOM - SOLID BOTTOM. 10 1/2 x 13 1/2 - 27/00. 11 1/2 x 15 1/2 - 32/00.

HOLLAND AFRICA LIJN.

Table with columns: STEAMERS, FROM, DUE AT, MOMBASA, ARRIVE.

TWENTEN OVERSEAS TRADING CO., LTD. MOMBASA. KAMPALA. P.O. Box 140. Telegrams: "HOLAFRI," Tel. 140.

MAN WHO ASKS FOR "BEER" DESERVES WHAT HE GETS.
 MAN WHO ASKS FOR "McEWAN'S" GETS WHAT HE DESERVES.

OVERMAN AND COMPANY
 AGENTS,
 MOMBASA.

NOTICE
 REGISTRATION OF TITLES COMMITTEE.

A Committee appointed by His Excellency the Governor to consider generally the existing system of Titles and Registration in the Colony and Protectorate, and to make recommendations in regard thereto, is at present sitting.

Any person desirous of giving his views to the Committee orally or in writing should communicate with the Secretary General, Box No. 112, Nairobi, before the 31st January, 1930.

31st January, 1930.

HARD TIMES AMONG THE FARMERS.

Pessimism in Burnt Forest Area.

FALL IN MARKET PRICES

(STANDARD CORRESPONDENT).
 Kapsabet, Jan. 6. — Following at the report of the District Surveying Officer, and with the old time on January 4, it is safe to predict that there will be a few farmers who will forget to get the clock back on the present day. Daylight saving was the greatest inconvenience ever yet introduced on the farms, and one of the most expensive and unwise ever introduced, from the farmer's point of view, and also returns to the great convenience to the farming community, that will also show a considerable saving in hard cash to the farmer, over the year.

It is to be hoped that the promoters of daylight saving in Kenya are now well satisfied with the verdict of the country, fully to the wishes of the great majority, and not try to perpetrate daylight saving on the community again, in the future. Never does one see a better example of a small minority getting their way over the majority by other persuasion, and noise making, and only demonstrating again how it is possible to get what you want, if you make a sufficient amount of yourself. You will probably be given what you wish in order to get rid of you, so that other people may have a quiet and peaceful life.

Domestic Servants.

The introduction of the Domestic Servants Registration Ordinance will not affect the farming community very much, one way or the other. The general principle of the farming community would probably support it, as a tightening up of discipline, and it will do little of great benefit to some people. Most farmers, however, employ domestics on their own farms, who they have trained to become useful, and are not affected in the same way as town people.

There might a tendency even with casual household labour, to restrict in the same employ on

farmers for a very much longer period than is usual in Kenya, and at the lower rates of wages paid to household workers on farms, and the farmer, also, is in a better position to deal with the misdoings of his household staff than are the town people. However, most farmers will probably find that the introduction of the ordinance will be a step in the right direction.

Low Prices.

Despite good crops, there is a lack of gloom and pessimism evident amongst the farming community, as a result of the low prices of wheat and maize. It is possible that this situation may have now been reached, in the light of the fact that the market for farm crops, barley and other crops, is facing a gloomy outlook and low prices.

Many farmers are seriously considering the position, to see if there is any alternative to crop production, such as sheep and dairying. With the world's supplies as they are today, it is hard to predict what the future will bring. All the farmer knows is that he cannot produce at the price for his produce. That the present agricultural position is far from healthy in Kenya, is undoubted, and it is to be hoped, the Banks and all firms interested in agricultural production, will see the need of the position, at once, in a country such as this, which is an absolutely dependent on the prosperity of agriculture.

If the position is not seriously faced in hand, the results are likely, that not, to prove disastrous in many a more ways than one. Farmers all over are, today, more disheartened than I have ever seen them, and a discontented community is the worst possible thing that one could wish for in any country, and the community as a whole, are well in good order, although it would be unwise to venture far from home without kahunas side of the district, on the Egyptian border, they have had over seven inches of rain, for December. Such a rainfall at this time of year, is not remembered by the oldest inhabitant, even.

MONEY MARKET.

London, January 7. —
 FRANCES: 128.92.
 DOLLARS: 4.87 1/2.
 Bombay, January 7. —
 TELLS: 115.20/22.
 3 mths: 116.7/2.

Tanganyika Census.

TO BE TAKEN ON NON-NATIVES THIS YEAR.

A census of non-natives in Tanganyika will be taken during the present year, according to the "Tanganyika Standard," and legislative authority has been given and the machinery provided for this purpose. The measures which had received the sanction of the Legislative Council will have been passed, and all can be taken throughout the "Official Gazette." Non-natives may be specified by order in the "Official Gazette." Non-natives means any person who is not by birth or adoption a member of any of the aboriginal tribes or tribes of Africa or of Somali or Swahili. The Census Officer is also empowered to obtain returns from persons who are travelling in the territory, on the day appointed for the taking of the census.

Penalties.

The Ordinance also provides for penalties to be imposed on those who, employed for the taking of the census, are guilty of default in duties, and on persons who may be guilty of refusing or neglecting to make returns and of making false returns. In these cases, the penalty will be a fine not exceeding Shs. 200; for each offence.

Persons employed for the taking of the Ordinance shall be guilty of an offence if they communicate to any person or publish without lawful authority any information acquired by them in their employment and shall be liable on conviction to imprisonment of either description for three months, or to a fine not exceeding Shs. 500/— or to both.

Government has decided that a census is necessary for the purposes of administration.

"ON THIS DAY."

JANUARY 27th.

Death of Louis Napoleon Bonaparte on the last of St. French Emperor. He died a refugee with a life story which added a picturesque touch to a period of French history, which, if daily, is remembered. He might be regarded as the last trial of government by monarchy, and by the French people who, with an undoubted feeling worthy of his name, were the cause of his fall. The prohibition which was laid on Louis Napoleon's name, and the refusal Louis Napoleon took to be a French Emperor, and the fact that he played out in Chamberlain's hands, and the fact that he was a member of the family, has been mentioned in the "Official Gazette." The name of Louis II of Lebonville and the name of Louis II of Lebonville and the name of Louis II of Lebonville and the name of Louis II of Lebonville.



LOUIS NAPOLEON BONAPARTE.

At the first meeting in operations at St. Antonio the second in the life of Louis Napoleon Bonaparte, who was born near Paris. Here he spent the last years of his life, and the last of a working man. This came the last days of his life, and he returned to public life to be elected President of the French Republic, and to be elected President of the French Republic, and to be elected President of the French Republic.

GOVERNMENT EUROPEAN ELEMENTARY SCHOOL, KILIMANI.
 The new Government European School at Kilimani will open on Monday, 13th January 1930.
 European children of both sexes, above the age of five years and in and below Standard III, will be admitted to the school. Such children from the Kilimani area, at present attending the European Senior Secondary School, Nairobi, will be transferred to this school, if so desired. Tuition fees will be Shs. 10/- per month. Application for admission should be made to the Principal of the new school or to the Principal of the European Senior Secondary School, Nairobi.

Just Arrived
Fresh Burma Teak-Log
 Prices on Application.
Hussell Suleman Verjee & Sons
 Phone 364, Government Road, Box 298, NAIROBI.

Today's Trains.
 Trains are due to leave Nairobi today for the undermentioned destinations at the times stated—
 Mombasa 4.00 p.m.
 Nakuru 4.50 p.m.
 Kisumu 7.47 p.m.
 Nairobi Eldoret 7.47 p.m.
 Kisumu 7.47 p.m.
 Khale & Jinja 12.30 p.m.

T H O U S A N D S A R E P R E F E R R I N G T H E S E N E W C H R Y S L E R S

Into the building of these cars, Chrysler has marshaled the full force of Chrysler engineering science, Chrysler manufacturing experience and Chrysler success.

Compare the beauty of design, the richness and roominess of the bodies. See what you get in engineering efficiency: High-compression power with any grade fuel; oversize 7-bearing crankshaft; ventilated bridge type, light alloy pistons; impulse neutralizer; rubber engine mounting; positive fuel pump instead of a vacuum tank; weatherproof internal-expanding four-wheel hydraulic brakes; rubber-coe spring shackles that never need adjustment or lubrication.

Feel the big difference in ease of handling — in acceleration — in smoothness and swiftness — in the food of power that masters all hills. Both are Chryslers. You know it the moment you take the wheel.

"70" FLEET "66"

CARR, LAWSON & Co., Ltd.
 Eldoret, Nakuru, Nairobi, Kitale, Kampala.

Look for this "BP" Sign.

When you want a fill of **PETROL** take it from a **Green Pump** and **"Put New Life in Your Car."**

Anglo Persian Oil Co., (Kenya) Ltd.

Agents—GIBSON & Co., Ltd.,
Mombasa, Nairobi, Eldoret, Dar-es-Salaam.

Metropolitan Garage.
SPECIALISTS IN AUTOMOBILE REPAIRS.

2 Doors Avenue Hotel.

We always have a number of selected and overhauled 2nd-hand Cars in stock.

Duco Spray Painting
Have your car touched up or completely redone, by our **UP-TO DATE PLANT**

Wanted for Cash Box Body Cars. CARS FOR HIRE

D. J. L. LETHBRIDGE,
Sole Proprietor.

VOONIA TEA

INCREASES IN POPULARITY DAILY.
AWARDED

Ten Gold Medals

BEWARE OF FRAUDULENT IMITATIONS.

INSIST ON SEEING THE NAME.

"VOONIA"

in every packet or case.
BLACKLAWS & BROWN
(LATE MACKINNON BROS.)
Tel. No. NAIROBI 468.
31, Telegraphs, "Blacklaws" 468.

B. FLORENS.
FRENCH HAIR DRESSER.

PERMANENT WAVING AND TINTING A SPECIALITY.

Phone 561. P.O. Box 923.
YORK BUILDING — GOVERNMENT ROAD, NAIROBI.
Opposite Electric Light Co.

FOR AN EFFICIENT AND PERMANENT HOT WATER SUPPLY install a **BEESTON HOT WATER BOILER**



For particulars relating to the size of Boiler required and prices apply to—

Thornton & Sartain (Sole Agents)

Registered Fitters and Sanitary Engineers.
NAIROBI and MOMBASA.
P.O. Box 788, Nairobi.
and P.O. Box 586, Mombasa.

THE LUMBERMENS ASSOCIATION.

First Annual General Meeting.

PAST YEAR'S WORK.

There was a large attendance at the annual general meeting of the Lumbermen's Association of East Africa held at the offices of Messrs. F. C. Tannabill and Co., Government Road, Nairobi on January 28th.

The accounts showed a comfortable balance in hand on the year's working.

The following were elected as the officers and ex-officers of the Association for 1929: President, Mr. W. J. Houston; Vice-President, Maj. F. Beveridge-Bentley; Hon. Treasurer, Mr. J. Craig; Committee, Mr. F. S. Orpin, Mr. H. Roy, Mr. J. B. Haines, Mr. K. Hawes-Shaw, Mr. K. K. Keith and Mr. S. Clarke; Secretary, Mr. A. C. Tannabill.

Report for the Year.

The secretary read a short report as follows:—

"Through the initiative of Mr. W. H. Hoey, a preliminary meeting was held on December 16, 1928, and on March 4, 1929, the constitution and rules of the Association were formally adopted and the Association came into active being. There are twenty-four full members and the Committee consists of Messrs. Hoey, Orpin, Haines, and Tannabill.

"The advantages of having a central organization became immediately apparent when the Executive had to get down at once to preparing a Memorandum on Protective Tariff as affecting the Lumbermen, and the Association as a Body was able to put a reasoned Memorandum before the Kenya Tariff Committee in April 1929, and to speak authoritatively for the whole Lumbering Industry. Your Executive pressed the Kenya Government to appoint a Govern-

ment Standing Timber Committee, which Committee would coordinate the various interests involved in the timber trade, such as the Forest Department, a buyers' association, railway, F.W.D., Local Government and of course, the lumbermen themselves. This Executive the Government constituted, a standing Timber Committee has been formed and from the results achieved at their Meeting, it is obvious that it will perform an extremely useful function.

"The Executive has done a really enormous amount of steady work which has gone all further to make the timber trade as a whole more essential than it has been heretofore and it is however only a commencement and an enormous amount of work has still to be done. Agreement has practically been reached on lengths and dimensions which will be the standard for all builders and Government Departments connected with the lumbering industry and the public generally in obtaining supplies readily and of a better quality than heretofore has previously obtained. Information relating to lumbermen is being issued from time to time, 10 in all during the last month of the year, in the form of a monthly bulletin, matters of interest to Lumbermen.

"On the agenda which dealt with flooring and lining a plan for discussion and it has a very forward in the endeavour to arrange with the Architects and Builders for a standard size of mouldings which if accepted by the architects and builders will enable architects to hold or instead of a list of some cutters having to be adjusted to fit the mouldings. The question of grading is also under discussion and is a very difficult but at the same time very important question and larger than the question of measuring.

"It is with deep regret we have to record the death of one of our members, Mr. Young of Thair Mills. Mental and your Executive has conveyed to the widow and his partner the sincere sympathy of the Association.

Subject Before the Meeting.

An important agenda was discussed and in spite of the fact that some of the items could not be dealt with as they appear distinctly controversial, complete consensus was arrived at on all points.

The pattern for a standard bench for the long and ground flooring and lining was approved, a number of templates of these classes of standard wood will be prepared and retained in the offices of the Association and copies will be supplied to all members so that all machinery mills may be able to cut their pattern wood to exactly the same pattern.

The Association decided to compile a list of recognized builders in East Africa for the information of its members so as to enable them to ascertain readily who were properly entitled to the title of recognized builders and to make a list of members so that all machinery mills may be able to cut their pattern wood to exactly the same pattern.

A unanimous vote of thanks was passed to Mr. H. M. Giesher the Commissioner of Forests, Kenya for the help and sympathetic assistance he has afforded to the Association.

Very great appreciation was expressed of the action of His Excellency the Governor in appointing a Government Standing Timber Committee to advise on matters affecting the timber industry; the F.W.D., the Master Builders, the Architects Association, the local government and the Lumbermen to meet in round table conference under the chairmanship of the Commissioner of Forests with very great benefit to all concerned.

The London Director of the Evening Standard raised a doubt whether any members of the present Council can "win the simplest examination" on the works of East Africa. He has been answered by Mr. William Stephen Southey, the Labour M.P. for North, Hants. He answers the doubts that at least the Prime Minister, the Minister for the Dominions and the Minister of the Colonies and the Minister of the Education, and the President of the Board of Trade could not only show a pretty wide knowledge of Martin's "Economics," but also a keener appreciation of the value of the "Economics" than the British Socialist as a rule are not. Martin's "Economics" is not a book of economic and political, as in that of religion, fruitfully applied to do their own thinking. Moreover, they are not attracted to logical systems, or to dogmatic philosophies.

Sustaining Well-Merited Public Confidence



There could be no more convincing demonstration of the fundamental excellence of Dodge Brothers products than the fact that thousands upon thousands of people who drive the first automobiles this country produced are still driving current models of Dodge cars.

Throughout the great evolution that automotive engineering and design have experienced in the last fifteen years, those steadfast owners have had implicit confidence in Dodge Brothers ability to keep ahead of the times—implicit confidence that every good thing in motoring would be theirs at the lowest price consistent with sound business policy.

The Dodge Brothers Six—handsome, powerful, durable—up to the minute of all its appointments—is the latest and finest proof of this company's intent and ability to keep faith with the public of all lands, and especially East Africa.

DODGE BROTHERS SIX

Governing District for East Africa:

S. FISHER & SIMMONS (East Africa) Ltd.
VICTORIA ST., NAIROBI.

TEL. 302.

BOX 460.

EVERYTHING FOR SPORT AT MAY & CO. LTD.



DON'T LAUGH AT HIM

Fifty the poor mortal. Proper use of White Fly Gun would have prevented the destruction of his finest jacket. White Fly Gun kills Mosks, Flies, Mosquitoes, Houseflies and all other household insects. Doubly strength, 100% kill, Very pleasantly scented.



MULLI TRIMMER
The Best
Kiln Made, Fine, Mosquitoes, Houseflies and all other household insects. Doubly strength, 100% kill, Very pleasantly scented.
R. B. SIRDAW
10, 11, 12, 13, 14, 15, 16, 17, 18, 19, 20, 21, 22, 23, 24, 25, 26, 27, 28, 29, 30, 31, 32, 33, 34, 35, 36, 37, 38, 39, 40, 41, 42, 43, 44, 45, 46, 47, 48, 49, 50, 51, 52, 53, 54, 55, 56, 57, 58, 59, 60, 61, 62, 63, 64, 65, 66, 67, 68, 69, 70, 71, 72, 73, 74, 75, 76, 77, 78, 79, 80, 81, 82, 83, 84, 85, 86, 87, 88, 89, 90, 91, 92, 93, 94, 95, 96, 97, 98, 99, 100.

1930 BEFORE NEW YEAR COMES REMEMBER
YOUR FRIENDS AND RELATIVES. COME AND GET GIFTS AT OUR SALE.

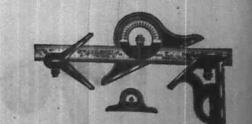
Lalchand Moolchand Bros. Govt. Road, Box 875, NAIROBI.

HAVE YOU ORDERED YOUR New Year Dinner
from THE STOCKBREEDERS DIRECT MEAT SUPPLY CO. LTD.

P.O. Box 249, NAIROBI. Telephone 498
TURKEYS, GEESE, DUCKS, PARTRIDGES, PHEASANTS, SALMON, etc., etc.

Lamb Beef & Mutton
PORK ALL HOME FED. VEAL EGGS, POULTRY, BUTTER.

L. S. Starrett Company.
FINE MECHANICAL TOOLS.



Stocked by—

W. WINGRAM & Co.

The Tool House
NAIROBI.

When you go to places far off the good roads your

J. S. Jags

Will stand the extra punishment without flinching.

Their web cord carcass and tough rugged tread are designed to meet unusual conditions

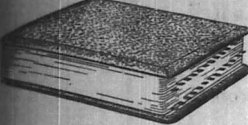
The tyre of To-Day For the Car of To-day

Sound Investments
Business and Residential Plots, with or without Buildings, in Eldoret, Cochin, Malva, West and East Provinces in the Kipparren, Turbo, Piteas, Kipkabas and Narat Forest Areas.
Apply to **J. McNAU MUNDELL**, Approved Valuer, Real Estate, Commission and Insurance Agent.

THE PERSONAL WRITING MACHINE.
The Roneo Indexed Diary 1930
SIZE 9 x 6 inches ONE PAGE TO A DAY.
Good Paper Bound Blue Cloth.
SHE. 10/50—posted Shs. 11/25
Standard Stationery Store, NAIROBI.

START THE NEW YEAR

with
KALAMAZOO
LOOSE-LEAF BOOKS



The Original Thong Binder

TAWNS LIMITED, NAIROBI.

FOR INFORMATION ON
THE NILE ROUTE
TO EUROPE

Apply to
Motor Tours Ltd.

opposite Post Office,
NAIROBI. Phone 330
Bookings Agents—Sudan Government Railways.
LUXURIOUS TOURING CARS TO ANY PART OF
EQUATORIAL AFRICA.
ASK MOTOR TOURS—THE TRAVEL SPECIALISTS.

LADIES HAIRDRESSING
MAISON MARIE
(MRS. & MRS. F. V. COPP).

ROOMS 29 and 36.

YOR'S HOTEL

THE ONLY EXCLUSIVE LADIES' SALOON IN KENYA.
ARTISTIC PERMANENT WAVING A SPECIALTY.
EYE EXAMINERS.

Phone 645 TAKE LIFT TO 4th FLOOR. P.O. Box 1822

Termination of the Unofficial Meeting.

(Continued from page 1.)

capital commission now in session.
On the morning for having been a fairly and adequately prepared for the introduction of the capital commission to establish the Tanganyika Territory which are of the present would were in surprise proved and that dipping with the object of destroying certain local sugar industries is now taking place.

Agree with the Kenya Tariff Commission that the duty should be retained at a rate of not less than 8% per 100 lb. in the "cheer" understood that the continuance of the Kenya Tariff Commission were based upon a 4% duty of not less than 10% (less 4% 100 per ton for import duty at Mombasa).

Major Perkins seconded this resolution was carried unanimously.
Anti-Dumping.
Mr. Conway Harvey moved that the East African Government be urged to introduce legislation endeavoring those with powers to prevent unfair competition by dumping or other methods of disposing of surplus produce from other countries, if such produce may imperil local industries.

Col. Lead seconded and the resolution was carried unanimously.
In the course of discussion on this resolution several Members expressed their doubts as to the difficulty experienced in other countries in defining the word "Dumping" and the necessity of introducing any legislation to meet it, any such measure of protection by this means could be devised.

Mr. Harper was of opinion that the only practicable measure was complete prohibition of it, it was generally agreed that the political difficulties of the course were too great to recommend it and Mr. Conway Harvey's motion was accordingly accepted as the only possible compromise.

Tariff.

The Uganda Tariff Commission recommends that there be a 10 per cent ad valorem duty on imported timber and that all countries be forbidden to compete at Mr. Wymbush stated that the Uganda Government is dependent on those timber supplies for an appreciable portion of their revenue

previously allocated to their Forest Department and questioned now in the event of the abolition of royalties this deficiency would be made up.
Uganda Government stated that the Uganda Government did not last year and work a large timber mill having no royalties but that the proceeds were being understood by Kenya mill which does pay those royalties and is presumably run as a business proposition.
Col. Lead stated that, in spite of protection is maintained for several years, the timber industry in Tanganyika is unable to meet the local demands for soft-wood and is forced to import hardwood.

"In this Conference, it is agreed that the rates of duty imposed in the Tariff Commission, recommended by the Kenya Tariff Commission, suggests that, in order to obviate the hardship caused by a shortage in the railways in Tanganyika Territory, served by the Tanganyika Railway systems, the import of long-wood and soft-wood hardwood, should be permitted under license as a minimum duty during periods of proved shortage; but only after the preferable laid down in resolution No. 4 has been fully applied."

Col. Perkins seconded and the resolution was carried unanimously.
In the course of this discussion, Major Gordon stated that the timber industry of Kenya had not included in the belief that the local resources were adequate to the demand and was unaware that this would not be met the case of the Central Railway area.

Deposition to Governors.
Members of the Conference were received by their Excellencies the Governors in Conference at noon when Lord Delamare explained and amplified the conclusions at which the Conference had arrived. Their Excellencies assured the Conference that their opinions would receive careful consideration and thanked them for their suggestions.

The meeting re-assembled at 2:30 p.m. and after appointing Delegates to meet on the following day, the Conference adjourned to the afternoon session.
On the motion of Major Perkins, the Conference adjourned to the following day with a hearty vote of thanks to the Chairman.



EMPIRE THEATRE

TO-NIGHT
THURSDAY, JANUARY 9th
and Friday and Saturday, January 10th and 11th.
The polished prince of comedy

Adolphe Menjou

in a ludicrous tale of tangled loves.
"LOST A WIFE"

AND
The spectacular king of laughs.
HAROLD LLOYD

IN
"AN EASTERN WESTERN"
A farcical expose of the desperado.

Empire News.
ORCHESTRA ACCOMPANIMENT.
Prices: Shs. 5/-, 3/-, 2/-.

Dr. K. BOGHOLM, Copenhagen,
will deliver a lecture in Danish on
"MY TRANSFRANCAN TRIP"
on FRIDAY the 10th inst., 5 p.m.

at
HOTEL AVENUE, NAIROBI.
All road-mans are invited.

THE DANISH CONSUL WILL PRESIDE.

Theatre Royal.
(KINEMAS LTD.)

Tonight and Two Following Nights Only.
January 9th, 10th and 11th:
PARIS AT MIDNIGHT

A Film adaptation of one of Balzac's Great Comedies.
FEATURING THE GREAT ACTOR:

Lionel Barrymore
with
JETTA GOUDAL — EDMUND BURNS,
and Exceptionally Strong Company.
A DARING, DAZZLING AND DRAMATIC PRODUCTION
WITH AN APPEALING LOVE STORY.

Usual Prices.
Sh. 3/- & Sh. 2/-

EMPIRE THEATRE

Wednesday, 15th January
at 4:30 p.m.

Nett Proceeds for the funds of the E.A.S.P.C.A.

Algeria to Cape Town
via Nairobi.

An 8,000 feet film record of the first journey by car through Africa from North to South.

Pictures taken by the Citroen Scientific Expedition during their pioneer trip which included the first car journey from Nairobi to Mombasa.

ADMISSION: ADULTS SHS. 2/-,
CHILDREN SHS. 1/-.

HOTEL AVENUE

NAIROBI.
MODERN and UP-TO-DATE IN EVERY WAY.
CARS MEET ALL TRAINS.
Dinner Dances Every Saturday.
BAND "GARRY COOK & HIS RHYTHM BOYS"

GET THE THRILL OF FINE CAR OWNERSHIP.



Everything about this new Chevrolet reflects the fine car standards to which it is built.

Magnificent bodies by Fisher reveal the style, beauty and painstaking craftsmanship which have made Fisher famous all over the world for his coachwork.

Everyone anticipated that Chevrolet would produce a remarkable car—but no one expected such a sensational six cylinder motor—such delightful handling ease—such marvellous comfort—and a fuel economy of better than 25 miles to the gallon!

And furthermore no one believed that it would be possible to produce such a car in the price range of the four!

If you have not made a personal inspection of the new Chevrolet, we urge you to do so at your earliest convenience.
A ride tells a wonderful story! We cordially invite you to come and have a demonstration at any time in any model of car.

The Roadster	£295	The Coach	£275
The Tourer	£225	The Imperial Sedan	£290
The Coupe	£200	The 14 Ton Chassis	£185
The Sport Coupe	£270	The Box Body form	£200
All prices f.o.r. Nairobi.			

THE MOTOR MARK & EXCHANGE Ltd.
NAIROBI · ELDORET · NAKURU · DAR-ES-SALAAM.
AGENTS EVERYWHERE.

Nairobi Dairy Association.

A General meeting of the above Association will be held on Wed. Night, 13th January, at the West Nile Hotel, at 10:30 a.m. to consider the report of the Sub-Committee on the Public Health (Milk and Dairies) 1920 Ordinance. As this is of vital importance to dairymen, etc., members and all interested are earnestly requested to attend.
By Order: HON. SECY.

New Designs in Good Quality FURNITURE AND UPHOLSTERY.

At the Lowest Prices in Town.
ERIC SHIRLEY
VICTORIA STREET
BEHIND THE COURT.

MOMBASA TIMES.

CAN BE OBTAINED at the **STANDARD OFFICE.**

Smithfield Butchery Ltd.,
Government Road, Nairobi.

Telephone No. 413. P.O.: Box No. 6.
Telegraphic Address. Smithfield| Nairobi.

BRANCH — WESTLANDS
Prime Graded Beef, Veal, Mutton, Lamb and Pork, Ducks, Fowls, Butter and Eggs, Sausages, Polonies, Home cured Bacon, Pressed Beef and Brawns.
QUICK SERVICE.

NEW YEAR PRICES

Table with 3 columns: Model Name, Old Price, New Price. Includes Falcon Sedan, Touring, Model 56 Safari.

Table with 3 columns: Model Name, Old Price, New Price. Includes Model 96 Safari, Model 96a.

MOULTON & MORRISON Ltd. NAIROBI.

J. W. Milligan & Co.

Phone: 98 P. O. Box 148

WHY PAY RENT?

Delightful View.

One and a Half Acre Land.

Charming Stone Residence - Lounge, Diningroom, 2 Bedrooms, Kitchen, Pantry and Bathroom, Store and Box Rooms. Hot and Cold Water. Inside Sanitation. Tiled roof. Within a few minutes' walk of Nairobi Club.

Full Details on Application.

We still have several Houses from £900 to £1500 near Salisbury Hotel. From £200 to £1000 down Balance as rent.

What is a used car? ... a used car is a good car if you buy it at CARR LAWSON'S.

- Rugby 6 Box - £85
Rover 12 Touring - £80
Humphreys Touring - £90
Rugby 4 Touring - £50
Morris Oxford - £90
B.S.A. 493 H.P. 1928. £30

Carr, Lawson & Co. Ltd. NAIROBI.

Two Necessaries for the Household Medicine Chest -

QUINACINE

AN EFFECTIVE PREVENTATIVE AND RELIABLE CURE FOR INFLUENZA, COLD IN THE HEAD, FEVERISH COLDS, PAINS IN THE BACK AND LIMBS.

PARAGOL

A VALUABLE PREPARATION FOR THE IMMEDIATE RELIEF AND CURE OF COUGHS, COLDS, BRONCHITIS, ETC.

KODAK E.A. LTD., INC.

HOWSE and McGEORGE NAIROBI AND ALL BRANCHES.

FANCY BOUDOIR, ALARM, TRAVEL CLOCKS

Advertisements for various alarm and travel clocks including Square Boudoir Clock, Midlet Alarm Clock, Alarm Clock, Boudoir Clock, and Travel Clock.

Advertisements for Boudoir Clock and Style Clock.

S. Jacobs Ltd. P.O. Box 255 Phone 23. NAIROBI

RECKITT'S CROWN BLUE advertisement featuring an illustration of a woman and a child.

BRUSHING DUCO advertisement with an illustration of a woman.

GAILEY & ROBERTS LTD. NAIROBI and Branches.

GOODSIGHT is DANGEROUS advertisement for A. H. WARDLE and Co. Ltd.

QUEEN ANNE SCOTCH WHISKY advertisement for R. G. VERNON Co.

'PURETEST' ASPIRIN TABLETS advertisement for WARDLES Chemists.

STANDARD CLOCK advertisement for the Standard Clock Co.

Native Dances. We notice in our correspondence columns this morning a letter which is typical of several we have received recently but which by reason of a greater resort to expression in more valuable for publication than others addressed to us. The correspondent refers to the general public something that has been known to a number for some time the development of the Native Love dancing for a purpose not understood with traditional propaganda. The dance, in fact, is being used as a popular vehicle for the propagation of irresponsible views and as a means of expression of personal antagonism and disparagement which have, in some cases, a personal character. Briefly, it is an extension of a bad influence, difficult to control, which has been born among younger generations of Africans in the Colony within recent months. It should not, however, be confused with the ordinary tribal dances which have been practised for many generations. The majority of those forms of enjoyment have a definite significance in the native sense and are considered with the planting seasons, others with harvesting, many with social occasions and all have their place in the intimate life of the tribes. For the most part they are perfectly harmless. They comprise a considerable place in the address to the Native. Some circumstances are helpful, others are depending both to mind and body. The improvement of many tribes is impossible without the degrading influence on stimulated and childish sense permitted to grow up in a slower and less social atmosphere. Because of every kind have wrought noticeable harm in the past among the people of Africa and they hamper to a large extent the beneficial influence of education, civilization and progress and religious services. In order that the African may progress these degrading factors must disappear. But something must take their place. The Kenya Government has recently decided that certain dances shall be prohibited. This has been decided because of their gross indecency and their consequent harmful effect upon the mental and physical of the people. It requires some courage and firmness to interfere with what customs long established and the measure of success will depend upon the co-operation which is established between the officers of Government and the responsible leaders of Native life and thought. These interferences should never be presented without the aid of planning and propaganda and organization; however, have been planning the support and maintenance of the Native Authorities. That is to say, the Native Authorities have been asked, should be implemented gradually. Our correspondence, however, have been concerned with the pernicious character of the propaganda which has made its appearance in the form of a vague accompanying apparently simple statement that is a development of the African expression which is not entirely correct and which is not entirely the way to cure his life. The many ways which have been suggested to many amongst them, but it is in fact, it is not the way to cure his life. It is in fact, it is not the way to cure his life. It is in fact, it is not the way to cure his life.

Unemployed natives have been granted new income. President Magistrate's Court. The court has granted new income to unemployed natives who have been granted new income.

Royal Assize. The current session of the Kenya (General) Assize will be opened on Wednesday, January 13, at 10.30 a.m. by the Chief Justice.

Dairy Meeting. A general meeting of the Nairobi Dairy Producers' Association will be held on Wednesday, January 13, at 10.30 a.m. at the Nairobi Club.

Daylight Saving. Another meeting has been held to discuss the proposal to introduce daylight saving in Kenya.

Upgrades and Protection. Colonel W. K. Durrant, a member of the Inter-Colonial Health Council, has visited Nairobi.

Obituary. The death of a native in the district of Nairobi is announced by the Registrar of Births and Deaths.

The All Round Fund. A decision of the Kenya Government has been announced regarding the All Round Fund.

Marathi District Council. The date of the first election of the Marathi District Council has been announced.

Supreme Court Sessions. The date of the next sessions of the Supreme Court has been announced.

Idios and Ripper Sale. The previous notice regarding the Idios and Ripper Sale has been corrected.

CORRESPONDENCE.

Kenya Wireless.

PROGRAMME FOR NEXT WEEK.

The following is the P.R.A.B.C. programme for next week:

Sunday, January 13.
8.30: Balls of the Cathedral of the Holy Spirit, Nairobi.
9.00: British by evocation.
9.20: Band of Organ music.
9.45: 10:15: Dance music by brass band and vocal solo.

Monday, January 14.
7.00: Children's corner.
7.20: British Official Wireless Press, local news, weather report and mail notice.
7.45: Light orchestral concert.
8.15 to 10:15: Orchestral and vocal concert.

Tuesday, January 15.
7.00: Dance music.
7.20: British Official Wireless Press, local news, weather report and mail notice.
7.45: Columbia Gramophone concert, recorded by B.E.A. Music Store, Nairobi.
8.45 to 10:15: Vandellia concert.

Wednesday, January 15.
7.00: Children's corner.
7.20: British Official Wireless Press, local news, weather report and mail notice.
7.45: Instrumental and vocal concert.
8.45 to 10:15: Dance music from Tor's Hotel, Nairobi.

Thursday, January 16.
7.00: The "Erasmus" problem," a talk by Mr. A. K. Rorer.
7.20: British Official Wireless Press, local news, weather report and mail notice.
7.45: Light orchestral and vocal variety items.
8.45 to 10:15: Symphony concert.

Friday, January 17.
7.00: Children's corner.
7.20: British Official Wireless Press, local news, weather report, mail notice and mail report.
7.45: Dance music.
8.45 to 10:15: Symphony concert.

Saturday, January 18.
7.00: Short Wireless concert.
7.20: British Official Wireless Press, local news, weather report, mail notice and mail report.
7.45: Music by Mrs. B. E. C. Rorer.
8.45: Light orchestral and vocal concert, provided by St. Joseph's, Nairobi.
9.45 to 10:15: Dance music from Tor's Hotel, Nairobi.

Sunday, January 19.
7.00: Children's corner.
7.20: British Official Wireless Press, local news, weather report, mail notice and mail report.
7.45: Dance music.
8.45 to 10:15: Symphony concert.

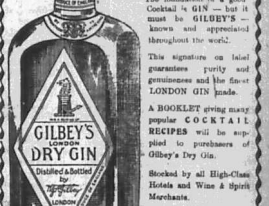


"ERASMIC" Soap
The Dainty Soap
Imparts an agreeable suggestion of all that is fresh, healthy, inspiring. Gives distinction to beauty.

MOTORISTS!
FOR ALL YOUR MOTORING REQUIREMENTS
Come Once & You Will Always Come to
Eboos's Petrol Station

Phone 199 Sixth Avenue (opp. G.P.O.) E.O. Box 588

W. & A. Gibley's London Dry GIN



The foundation of a good Cocktail is gin - but it must be GIBLEY'S - known and appreciated throughout the world.

The signature on label guarantees purity and quality and the fact of LONDON DRY GIN.

A BOOKLET giving most popular COCKTAIL RECIPES will be supplied to purchasers of Gibley's Dry Gin.

Stocked by all High-Class Hotels and Wine & Spirit Merchants.

Representatives: General Agents, Ltd., Govt. Road, NAIROBI.

WHY IS A QUININE-CURED INTERFERING?
Because the source of malarial infection in the blood, the so-called gametocytes germ is not removed by quinine, and consequently mosquitoes can spread the disease. PREVENT MALARIA by using **PLASMOCHIN COMP.** **Blayer Meister Lucius**

Obtainable through all Leading Chemists.

A THING OF BEAUTY AND A JOY FOR EVER.



BUY SINGER FROM **ALIBHAI SHARIF & SONS.** THE ONLY PLACE. P.O. Box 382. NAIROBI. Phone 274. GOVERNMENT ROAD and BAZAAR.



Sportex
THE CLOTH FOR "CHAMPIONS" OF CLOTHES.
"THE CHAMPION" OF CLOTHES.
A Thoroughly Dependable, Hard-wearing **TWEED FABRIC** - for PLUS-FOUR SUITS, SPORTS COATS and GOLF JACKETS.
Patterns on Application.

Ahamed Bros.
THE HOUSE OF DISTINCTION. BAZAAR, P.O. Box 254 NAIROBI.

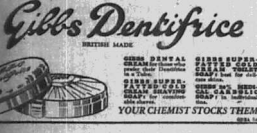
Delicious flavour Clean taste
make **GIBBS DENTIFRICE Favourite Results prove it best**

While pleasing flavour makes Gibbs Dentifrice favourite, the sparkling evidence of clean, pretty teeth proves it the best of all for all ages - safe, sure, economical, handy.

Gibbs Dentifrice does the work of both powder and paste without the mess or waste of either.

Your teeth are Ivory Castles—defend them with **Gibbs Dentifrice**

Gibbs Dentifrice
BETTER MADE



YOUR CHEMIST STOCKS THEM

START The New Year with one Good Resolution.

BUY YOUR Bread, Biscuits, Cakes, Groceries and Provisions

From Nairobi's Leading Store

ELLIOT'S

P.O. Box 173. Phone 60.

Cameron & Co.

ANNUAL SALE

1st to 15th Genuine Reductions.

The miller does not accept responsibility for the stones except from the above subject. It is the intention and it is all cases the address of the writer must accompany a letter, and necessarily for publication but in a general way of good faith. It is only in cases of special importance that the writer's name and address should be given. It is only in cases of special importance that the writer's name and address should be given.

UNIFICAL CONFERENCE.

UGANDA'S ATTITUDE TO PROTECTION.

To the Editor "E.A. Standard." Sir—To-day's issue of your valuable paper gave much promise to a statement made to me at the Unifical Conference on the above subject. It is reported to have said that after a year's close discussion with Uganda people I was at a complete loss to understand what constituted their opposition, etc. The report was correct but I think it is clear that I was unimpaired of all impediments to a statement I made, and I was unimpaired of all impediments to a statement I made, and I was unimpaired of all impediments to a statement I made.

DUNCAN BEATON.

January 2, 1930.

NAIVE DANCERS.

To the Editor "E.A. Standard." Sir—May I beg leave to trespass on your valuable space, in order to record an organ warning note. Coming from a picnic, a short time ago, the attention of our party was attracted to a large gathering of natives in a corner of the field, who were engaged in the work of the dancers. Though very noisy and somewhat unorthodox, the work of the dancers. Though very noisy and somewhat unorthodox, the work of the dancers.

THE MEDICAL EXHIBITION.

To the Editor "E.A. Standard." Sir—The Department of Health is to give, next week, an Exhibition of materials etc. related to medicine and nursing, the health of the community, which should attract the whole population of Nairobi and district. The more we know of these important matters the better it will be for all of us. Much information is so essential, suitable to our climate and conditions, and it is so essential, suitable to our climate and conditions, and it is so essential, suitable to our climate and conditions.

Do not know whether it is proposed to give simple lectures to mothers of dirt, particularly the dirt suitable to the needs of young children. This is a country of milk and honey and the value of these items of diet should be especially stressed. The Sociological Board of Health during the years 1929 to 1928 made a thorough investigation into the "nutritive" value of milk and the conclusions drawn from these experiments were of the utmost importance. It was found that the addition of a little milk to the ordinary diet of the natives was of great benefit to the health of the children.

The reason for writing this is to open the eyes of the unfortunates, and perhaps sympathetic to what is going on at our day-to-day at the present time. These gatherings, which are being largely prohibited by Government in the name of hygiene, are being made to arrest and prevent the spread of disease. The Nairobi District Council, in order to save the Government from the expense of the same, have passed the same legislation for the future.

DAVILYOT SAVING.

To the Editor "E.A. Standard." Sir—We wish to advise you that the 6th instant our ship and office hours have been altered to the following:

Week-days: 8.30 a.m. to 4.30 p.m.
Sundays: 8.30 a.m. to 1.0 p.m.

THE INDIAN CONGRESS.

To the Editor "E.A. Standard." Sir—Allow me through your noble columns to express my genuine sympathy with Mr. Lohia and his noble and unshakable position in which he finds himself. It is to be regretted that the acceptance of the Congress by the Indian Government.

KENYA LOAN & DISCOUNT CO. LTD.

P.O. Box 546, NAIROBI.
OFFICE—1st Floor, Court Chambers.
FINANCIAL AGENTS
Bills Discounted - Short-term Loans Granted. Any realisable Asset negotiated for Cash. Call or Write. STRICTEST CONFIDENCE. ESTABLISHED 1921.

S' Lime, Fertilizers and Mineral Salts are different, special and standing in a class by itself.

KENYA'S FOR KENYA.

Time Limited

Tel: 118/117, Phone 452, Box 417, Chamber of Commerce Bldg.

AUCTION SALES.



NOTICE OF CATALOGUE SALE OF FURNITURE AND EFFECTS.

At our Salerooms, Matos Building, Hardinge Street, Nairobi, on **MONDAY, 13th JAN., at 10 a.m.** (full details to be advertised later).

MUTER and OSWALD Ltd., Auctioneers, NAIROBI.



Sale of Furniture and Effects

at **Springhill Estate, Gilgil.**

Duly instructed by G. W. B. Portman, Esq., we shall sell by Public Auction, Absolutely Without Reserve, at the Residence, Springhill Estate, Gilgil.

ON **SATURDAY, JAN. 18th, at 10 a.m.** THE ENTIRE FURNISHINGS AND EFFECTS

Large Circular Dining Table, Suite of 8 Dining Chairs, including 12 Large Cedar Sideboard, Chesterfield Suite, Writing Table, Large Cedar Table, Occasional Tables, Drawing Room Carpet, Table, Morris and Wicker Chairs, Cushions, Bookshelf, Filing Cabinet, Double Wooden Bedstead, Spring Mattress, Bedstead, 8 Single Washbasins, Chest of Drawers, Dressing Tables with Bevelled Mirrors, Chest of Drawers, Bedroom Chairs, Bedstead, Wardrobe, Kitchen Cupboards, Filter, Crockery, Glassware, Kitchens Utensils, Sippers, Guns Rack, 9.5 m.m. Rifle, No. 9 Dover Stove, Bins, Gun Rack, 9.5 m.m. Rifle, Leather Trunk, etc., etc., etc., etc.

MUTER and OSWALD Ltd., Auctioneers, NAIROBI.



TO LET

UNFURNISHED HOUSE in Hill district, as from 15th January, well situated for rental. **SUBSTANTIAL STONE RESIDENCE**, furnished, from 1st February, 61 miles from town; accommodation 12, Large Dining Room consists of Front Verandah, with serving room and pantry beyond; Large Bedroom with fireplace and separate bathroom; Two bedrooms, one with large bathroom; electric light, hot water installation; Kitchens; Stores; Garage, etc. Rental £20 per month or near offer to approved tenant.

SECOND PARLANS AVENUE: Well furnished residence for period of about 7 months from 1st March, £15 per month.

NGONG: Well furnished house; three bedrooms; two living rooms; Bath, hot and cold water; Garage; Tennis Court; Stabling; Gardens and Lawns; £12 or near offer to suitable tenant. From March 1st.

For further particulars of the above, and other properties apply to— **MUTER and OSWALD Ltd., Auctioneers, NAIROBI.**

IN HIS MAJESTY'S SUPREME COURT OF KENYA AT NAIROBI

Likhabing S/O Jawahar Singh Plaintiff. Passmore, Isler, Nibha, Mathers and Banta Defendants. UNDER INSTRUCTIONS RECEIVED

JAMAL PIRBHAI

Will sell by Public Auction and absolutely without reserve, in the Auction Hall always opposite the Custom House, Nairobi, on **WEDNESDAY, the 22nd day of JANUARY, 1930, at 10 a.m. precisely.**

All that broad piece of parcel of Land situate on the Eshelo River in the Uthmaniyah District, East Africa Protectorate, comprising 420 acres or thereabouts. A little part is developed and there are sugar cane and fruit trees on it. Just near the boundary of the Land there is a river.

For other particulars apply to— **JAMAL PIRBHAI, Auctioneer and Official Broker, P.O. Box No. 200, Nairobi. Phone No. 300.**

REVISED PRICES AT JAPAN BAZAAR

THIS IS TO ANNOUNCE THAT WE HAVE REVISED OUR PRICES FOR THE NEW ROUND OFF YEAR'S TRADE.

AN INSPECTION WILL CONVINCCE CUSTOMERS. **J. N. GIDDOMAL, SPECIALIST IN SALES, Govt. Road, Nairobi.**

AUSTIN'S AUCTIONS.

CATALOGUE SALE OF MOTOR CARS AND CYCLES. STOVES, FURNITURE, CHESTERFIELD SUITES, GRAMOPHONE, TYPEWRITER, CHOCOLATES, TOWELS, PILLOWCASES, WASHING MACHINE, ETC.

AUSTIN & CO.,

Will sell WITHOUT RESERVE, unless stated, at THE MART

SATURDAY, JAN. 11th, at 10 a.m.

No. 7 DOVER STOVE in new condition (res.) Chesterfield Suites covered Crockery, Dining Tables and Chairs - Occasional Tables - Morris Chairs, Mast Sides, AND FRONT SHOWCASE in new condition (res.) Chests of Drawers: Double Bed complete. Single Wood Bed: Iron Bed. No. 8 Dover Stove. Camp Bed. Teak motor car and other toys. 2 Shop Stands. Imported Revolving BENTWOOD OFFICE CHAIR. Sewing Machine. The New Line Adler Portable Typewriter. The HOUSEWIFE "DARLING" WASHING MACHINE in new condition (res.)

New sample Towels. Pillowcases. Bedspreads. Umbrellas, etc. **DOUBLE SET OF ENGINEER'S INSTRUMENTS IN CASE (res.)** Boy's Cycle. **OAK CABINET GRAMOPHONE.** Girl's Cycle. **LADY'S B.S.A. CYCLE** in new condition (res.) **CADURSRY 14'S, TINS CHOCOLATES and CHOCOLATE BISCUITS.** Lady's Teak Workbox. The following Motor Cars and Cycle will be offered subject to low reserves: **RENAULT TOURING MOTOR CAR** in good running order. Self Starter. Large Special Spot Lights. Tyres good. 2 Spare Wheels, etc. **ROVER 8 TWO SEATER CAR** in running order. **B.S.A. 3J MOTOR CYCLE** in excellent condition. A.J.S. HARLEY DAVIDSON 750 MOTOR CYCLE and JIDE-CAR in the running order.

AUSTIN & CO.,

Auctioneers and Estate Agents, Hardinge St., Nairobi.

SANDS & CO., AUCTIONEERS.

are favoured with instructions from William King Esq. who has to leave the country on account of ill health, the above noted estate, shamba known as Namboko Estate, Bura, will be sold by Public Auction, subject to a very low reserve, in the

DRAWING ROOM OF THE STANLEY HOTEL, on the 24th JANUARY at 11-30 a.m.

The total acreage is 272 acres freehold. Land Office No. 200/B. There are approximately 100 acres in full bearing and approximately a further 15 acres of young coffee planted. There is also good coffee land for a further planting of 40 acres.

The shamba has well cultivated at considerable expense and will not require any further expense for manuring for at least 5 years. The thoroughs is the boundary of the property. There is a dam near the factory for three or four hundred springs, one recently opened up giving an ample supply of water.

There is an ample supply of farm implements including the following: This is a modern factory with washing machines, Pulper Rotary pump press and huller. Two comfortable stone dwelling houses, stone office and outbuildings, manager's house, large barn, electric store, 10 oxen, 2 Scotch cows, 1 box body Bull, 1 wagen, etc. etc. Light 10 oxen, 2 Scotch cows, 1 box body Bull, 1 wagen, etc. etc. Large Drying Granaries and Coffee Tays. All furniture and fittings of possession 31st January, 1930, extending harvested crop.

Within the last two years over £2,000 have been spent on improvements on the property.

The coffee crop for 1929 is estimated to be approximately 50 tons. The Bura can be examined at Messrs. Tyson Bros., Ltd., who will also give any information required and can thoroughly recommend the property.

The owner of the farm is willing to give good terms to an approved buyer, but arrangements must be made before the day of sale.

SANDS & CO., AUCTIONEERS, NAIROBI.

SANDS & CO., CITY MARKET, SADLER STREET,

CHEAPEST PLACE FOR **Best, Choice Wheat, Pollard, Lecorne, Oats, Barley, Potatoes.**

MARKET DAYS: **TUESDAY and FRIDAY**

POUETRY EGGS, FRUIT and all Farm Produce.

SANDS & CO., AUCTIONEERS.

SAVOY BAR (Newly Built) with LUNGEON and BRIDGEROOM. COUNTER SNACKS and MUSIC from 5 p.m. to 11 p.m. Caledonian Road, Hill.

BEST VALUE IN CHRISTY'S TOWELS, RIGGS BEDSHEETS, DUBSLEY RUGS. FROM E. Hutchison & Co. Box 140 NAIROBI.

Nyanza Auctioneers, NAKURU.

The Land Sale advertised to take place at Nakuru on Wednesday, 15th January, has been **POSTPONED** to **WEDNESDAY, 22nd JANUARY, at 10 a.m.**

THACKRAH'S SALES. Timber, Timber, Timber, at ELBURGON.

ON **WEDNESDAY, 15th JANUARY, at 10-30 a.m.** Approx. 100 tons of Cedar and Yodo scantlings, boards, linings, ceilings, etc., etc. **WITHOUT RESERVE.** TINS WILL BE BUNDLED AND PUT ON HALF PRICE.

JUST ON HAND FRESH STOCK OF ARLO GINGHAM

Suitable for morning frocks, 1929 HARLEY DAVIDSON 750 MOTOR CYCLE and JIDE-CAR in the running order. **AUSTIN & CO., Auctioneers and Estate Agents, Hardinge St., Nairobi.**

Reliance Transport Co., Ltd.

TRANSPORT, WOOD FUEL, COAL, POLES and FENCING POSTS MANURE and LIME, STORAGE.

BOLUS HOUSE, Government Road, Telephone: Office 331 Workshop: 627 Telegrams: Reliance P.O. Box 482

THE HILL PREPARATORY SCHOOL, Crested Road, Nairobi.

NEW TERM BEGINS JANUARY 14th.

For terms, apply to: **MISS THOMAS, P.O. Box 218, NAIROBI.**

AFRICA'S PREMIER ANNUAL Twentieth Year of Publication.

British South Africa Annual 1929-1930. Portraying in Pictures and Prose Africa and Its People from the Equator to Cape Point. A Remarkable Series of Full Page Artistic Reproductions of Old Masters at the Cape.

Colour Reproductions by well-known Artists. **BOOK YOUR ORDER NOW. Price: 5/- Postage 1/4d extra.**

From **STANDARD STATIONERY STORES**, or from the Proprietors and Publisher, **Hortors Limited, CAPE TOWN, Johannesburg, Pretoria, Bloemfontein, Durban, Port Elizabeth and Welmar.**

THE PREMIER USED CAR SALESMAN. Godfrey's Car Mart TEXACO HOUSE, SADLER STREET. 50 USED CARS 50

(To Select From). **Charvet & Co's.** Latest model, done only 3000 miles. Fully insured. Virtually new. £190. **Hudson Super 8 Box Body.** An exceptionally well equipped car! Sound and reliable. £205. **Isaac Super 8 Coach.** Late model. Done only 2000 miles. Excellent condition. £245. **Rugby 8 Box Body.** Recently overhauled and reconditioned. £200. **Dodge 5 Box Body.** A car that will stand up to hard going. Big work and take you there and bring you back. £65. **Ford 7 Seater.** In really good running order and condition. £50. **Studebaker Touring.** Sound and reliable in perfect running order. £55. **Rugby 4 Box Body.** A good versatile car mechanically sound. £35. **Flag 4 Flower.** In running order. £40. **Dash (Standard 6).** Done over. Reconditioned. £40. **Chrysler 20 Tourer.** In running order and mechanically sound. £45. **Merrie Four Seater.** Good appearance and mechanically sound. Only for good sale. £45. **Box Speed Wagen.** Latest model. Reconditioned. £45. **Safari Body.** Fully equipped. Excellent spare. A remarkably fine vehicle. £23. **Chevy Truck.** Latest model. A splendid four speed gear and P.W.B. Sound and reliable. £45. **Dodge Station.** Small model. Reconditioned condition. £45. **Hudson Touring 7 Seater.** In good running order and condition. £45. **Studebaker Touring.** In good running order and condition. £45.

AMBIEL MOTOCAR and OTHER MOTOCYCLES. **AMBIEL INSURANCE ARRANGED.** **HERALD MOTOR TRUCK (with extras)** available any time on date.

New and Second-hand Spares for all makes of cars. **NEW TYRES AT CLEARANCE PRICES.** **CARS FOR HIRE WITH DRIVER or DRIVE YOURSELF.**

Phone 142. **W. M. GODFREY, Sole Proprietor, Box 766.**

Registered 'PUDLO' Trade Mark. BRAND CEMENT WATERPROOFING POWDER, IS USED FOR CONSTRUCTION.

Concrete Buildings, Basements, Reservoirs, Behind Zinc Sheeting, Swimming Baths, Behind Glazed Tiles, Flat Cement Floors, Sanitary Pipes, Joining, Cemented Walls, Artificial Stone Work, Garage Pits, Hoops, Holes, Tanks for Water, Mineral Oils and other Liquids, River and Canal Leaks, Sealing and Pointing Brickwork and Stonework, Dampcourses - Vertical and Horizontal.

FOR REMEDYING: Defective Dampcourses, Walls Dampned by earth, Flooded Cellars, etc., Faculty Sewers, Leaking Tanks, Leaking Cement Roofs, Drips, Brick and Stone Walls, Leaking Railway Bridges.

FOR PREVENTING: Efflorescence on Cement Work, The Seepage Pollution of Wells, Hissing Dampness under Wood Floors.

SOLE AGENTS: DENOVAN & DIEBEL, CITY HOUSE, NAIROBI.

BILLIARD TABLES AND ACCESSORIES.

BURROUGHS & WATTS LIMITED.

Prices on Application.

Representatives— **BEALES & SMITHSON, Avenue House, Nairobi. Phone 30.**

STOP! LOOK! LISTEN! SALE NOW ON

WONDERFUL VALUE OFFERED Ladies and Gentlemen are invited to pay a visit to our stock. We have a very large selection of articles suitable for the present and have marked them down to a very low price of profit.

We also hold large stocks of silks and crepe-de-chine, descriptions, Ladies' Underwear, Ladies' and Gents' Hosiery, Men's Shirts, Towels, Dressing and other accessories to mention.

All Prices Reduced. A visit to our store will convince you of the value we offer.

B. CHOTIRM, Government Bldg., NAIROBI. Phone 30.

SPORTS and PASTIMES.

Cricket at Nairobi.

HOME TEAM DEFEATS THE VISITING SIDE.

[STANDARD CORRESPONDENT.]

London, January 2. One of the outstanding events of the festive season was the meeting between Kimmis and the Kenya team...

Kimmis, a captain by last had got together a far stronger team than usual and were hopeful of lowering their visitors' colours...

Kimmis's holding was far in advance of their adversaries and the catch made by Harvey to dismiss Russell...

Smith, Mackenzie & Co., Des 390, NAIROBI.

Smith, Mackenzie & Co., Des 390, NAIROBI.

The batting of the visitors was directed by the excellent of Harvey...

Wanderer, who also knew how to place his field. Even then with 6 wickets down for 76...

Wanderer, who also knew how to place his field. Even then with 6 wickets down for 76...

Wanderer, who also knew how to place his field. Even then with 6 wickets down for 76...

Wanderer, who also knew how to place his field. Even then with 6 wickets down for 76...

Wanderer, who also knew how to place his field. Even then with 6 wickets down for 76...

Amateur Athletic Races.

GERMANY GOES INTO LINE WITH BRITAIN.

[STANDARD CORRESPONDENT.]

London, Dec. 19. The German rules to be submitted to the Olympic Congress next May...

The German rules are in complete accord with the regulations of the Amateur Athletic Association...

The German by special stress on the evil caused by endemics to persuade an able to have his club and non member on the inclusion of a better business deal advantage...

Goodier, & Moffit, & Russell 11 Jones, & Moffit, & Russell 11

Goodier, & Moffit, & Russell 11 Jones, & Moffit, & Russell 11

Goodier, & Moffit, & Russell 11 Jones, & Moffit, & Russell 11

Goodier, & Moffit, & Russell 11 Jones, & Moffit, & Russell 11

Goodier, & Moffit, & Russell 11 Jones, & Moffit, & Russell 11

Goodier, & Moffit, & Russell 11 Jones, & Moffit, & Russell 11

Goodier, & Moffit, & Russell 11 Jones, & Moffit, & Russell 11

Goodier, & Moffit, & Russell 11 Jones, & Moffit, & Russell 11

Goodier, & Moffit, & Russell 11 Jones, & Moffit, & Russell 11

LAWN TENNIS IN NYANZA PROVINCE.

Kimmis Loses Two Trophies.

[STANDARD CORRESPONDENT.]

Mombasa, Jan. 2. The final of the H. E. Moffit Tennis Cup carrying with it the Championship of the Mombasa Sports Club was played between Messrs J. P. Brown (Capt.) and T. Henry...

The games were well contested and long, but Brown held the upper hand throughout though he was hard put to win the first game...

The games were well contested and long, but Brown held the upper hand throughout though he was hard put to win the first game...

Smith, Mackenzie & Co., Des 390, NAIROBI.

Smith, Mackenzie & Co., Des 390, NAIROBI.

Smith, Mackenzie & Co., Des 390, NAIROBI.

Smith, Mackenzie & Co., Des 390, NAIROBI.

Smith, Mackenzie & Co., Des 390, NAIROBI.

Smith, Mackenzie & Co., Des 390, NAIROBI.

Smith, Mackenzie & Co., Des 390, NAIROBI.

Smith, Mackenzie & Co., Des 390, NAIROBI.

Smith, Mackenzie & Co., Des 390, NAIROBI.

AN AMATEUR FOOTBALL SPILT.

Two Prominent Clubs at Logger Heads.

CONTRIBUTORS AND CASUALS.

[STANDARD CORRESPONDENT.]

London, December 17. Relations between the Corinthians and the Casuals Football Clubs are at the moment rather strained...

The Casuals, after choosing a very strong side for their F. A. Amateur Cup tie with the Corinthians...

The Casuals, after choosing a very strong side for their F. A. Amateur Cup tie with the Corinthians...

The Casuals, after choosing a very strong side for their F. A. Amateur Cup tie with the Corinthians...

The Casuals, after choosing a very strong side for their F. A. Amateur Cup tie with the Corinthians...

The Casuals, after choosing a very strong side for their F. A. Amateur Cup tie with the Corinthians...

The Casuals, after choosing a very strong side for their F. A. Amateur Cup tie with the Corinthians...

The Casuals, after choosing a very strong side for their F. A. Amateur Cup tie with the Corinthians...

The Casuals, after choosing a very strong side for their F. A. Amateur Cup tie with the Corinthians...

The Casuals, after choosing a very strong side for their F. A. Amateur Cup tie with the Corinthians...

The Casuals, after choosing a very strong side for their F. A. Amateur Cup tie with the Corinthians...

The Casuals, after choosing a very strong side for their F. A. Amateur Cup tie with the Corinthians...

The Casuals, after choosing a very strong side for their F. A. Amateur Cup tie with the Corinthians...

SOUTH AFRICAN PRODUCTS ARE ALL Empire Products BUY THEM For full particulars apply to THE SOUTH AFRICA OFFICE, Memorial Hall, P.O. Box 694, NAIROBI.

Free Hairdressing. Owing to the abnormal state of our opening month, we were unable to introduce our special offer of a Free Degree Permanent Wave to every Fourth lady who paid a Section Cheque of 2/50. From the 10th to the 16th of January our opening offer will be in operation...

Chiropractic Spinal Manipulation the new universally-recognized Drugless System of Healing has restored thousands of sufferers to health. By restoring the pressure on the discs, which is causing your Headaches, Neuritis, Sciatica, Stomach, Liver and Kidney Troubles, etc., it will bring you to renewed life. Vigors and Energy.

BUY THE VICTORIA STANZA... LAMPS THAT SHINE BY DAY... BRUSHING ROSSIALO... P. Stewart, O.A.S. R.E.D., PAINTER and DECORATOR... Doonholm Dairy, for PURE MILK and CREAM.

THE FORD IT GETS YOU THERE QUICKLY, COMFORTABLY, ECONOMICALLY. IT GETS YOU BACK. 60 Miles Per Hour 30 Miles Per Gallon Also The New 30 cvt. Truck Chassis 40 Brake Horse Power at 2-200 Revs per Minute Fitted with 32 x 6 Oversize Tyres, Prices From £178-15-00. NAIROBI MOTORS. 6th AVENUE. Box 460. Tel. 317.

British India Steam Navigation Company, Limited, AND PENINSULAR AND ORIENTAL STEAM NAVIGATION CO.

UNION-CASTLE LINE.

HOMEWARD via RUEZ From Mombasa (about) 22nd March 1930... Qualified Castle... 1st February, 1930... 19th April, 1930... 14th May, 1930... 10th June, 1930... 7th July, 1930... 3rd Aug., 1930...

LONDON AND EAST AFRICA LINE.

LONDON TO BERHA, via Marseilles, Fort Said, Port Sudan and Aden, Onwards and Homeward.

Table with columns: Steamers, Arrive Kilindini from London about, Sails from Kilindini for London about. Includes ships like S.S. Malda, S.S. Medan, S.S. Madras, S.S. Madag.

Homeward steamer call at Plymouth affording passengers the opportunity of disembarking there. Cargo accepted for Antwerp direct on all steamer.

BOMBAY-DUBAII MAIL SERVICE.

Calling Kilindini, Zanzibar, Dar-es-Salaam, Beira, Delagoa Bay, Fortinajo, Also Mozambique monthly. Outwards and Homeward.

Table with columns: R.M.S. Karapra, R.M.S. Karara, R.M.S. Karakala, S.S. ELLOLA. Includes dates like 10th Jan, 22nd Jan, 7th Feb, 19th Feb.

BOMBAY/ROMBASA

ARRIVE MOBASA. LEAVES MOBASA.

Table with columns: R.M.S. Karapra, R.M.S. Karara, R.M.S. Karakala, S.S. ELLOLA. Includes dates like 27th January, 24th February, 24th March, 1930.

TO DURBAN.

Table with columns: R.M.S. Karapra, R.M.S. Karara, R.M.S. Karakala, S.S. ELLOLA. Includes dates like 12th Jan, 22nd Jan, 2nd Feb, 12th Feb.

Yvesia usually arrive at Kilindini day prior to sailing date.

COASTAL SERVICE

MUMBAI. TO DUBAI. Via Mombasa. 1st January, 1930. "Draak".

Table with columns: MUMBAI. TO DUBAI. Includes dates like 1st January, 15th Feb, 31st Jan, 15th Feb.

SPECIAL 1st Class Excursion.

MUMBAI AND DUBAI. 1st Class Excursion. 1st January, 1930. 15th February, 1930. 15th March, 1930. 15th April, 1930. 15th May, 1930. 15th June, 1930. 15th July, 1930. 15th August, 1930. 15th September, 1930. 15th October, 1930. 15th November, 1930. 15th December, 1930.

Chivers' Custard Powder



CHIVERS & SONS, LTD., The Custard Factory, Milton, Cambridge, England.

R. O. HAMILTON, Ltd., NAIROBI. Phone 232

MESSAGERIES MARITIMES

(FRENCH MAIL STEAMERS) Regular and fortnightly service from and to Marseilles.

THE QUICKEST ROUTE TO LONDON.

SPECIAL SAILINGS TO MARSEILLES— 19th January, 1930. 2nd February, 1930. 16th February, 1930. 1st March, 1930.

ORCHESTRA ON ALL STEAMERS. NEXT ARRIVAL FROM MARSEILLES— 21st January, 1930.

MESSAGERIES MARITIMES. EMILE JARDIN, P. O. Box 26, NAIROBI.

Compagnia Italiana Transatlantica.

Mainly Passenger Service to NAPLES and GENOA. SAILINGS FROM KILINDINI TO GENOA on the 1st of Every Month... "E. CHISPI" 1st February, 1st April, etc. "MAZZINI" 1st March, 1st May, etc.

THE AFRICAN MARINE AND GENERAL ENGINEERING CO., Ltd.

KILINDINI - MOBASA. MARINE AND MECHANICAL ENGINEERS. SPECIALISTS IN Remounting of Bearings, Cutting and Machining of Heavy Dies, etc.

Deutsche Ost-Afrika-Linie

(GERMAN AFRICAN SERVICE). DEUTSCHE OST-AFRIKA-LINIE GENERAL AGENCY, MOMBASA.

REGULAR MONTHLY EXCURSIONS—MOBASA, ZANZIBAR, DAR-ES-SALAAM. Special reductions on K.R.H. to adjoining enterprises.

HOMEWARD via RUEZ CANAL.

Table with columns: Homeward via RUEZ CANAL. Includes ships like NASSAU, NASSAU, NASSAU, NASSAU, NASSAU, NASSAU, NASSAU, NASSAU.

HOMEWARD via RUEZ CANAL.

Table with columns: Homeward via RUEZ CANAL. Includes ships like TANANJARIV, ALPHIL WOHLMANN, TANANJARIV, TANANJARIV, TANANJARIV, TANANJARIV, TANANJARIV, TANANJARIV.

SAILINGS SUBJECT TO ALTERATION.

Information regarding connection at Lourenco, Margosa or Durban of the above steamers may be obtained from the Agents. UP-COUNTRY CHARGES CANNOT BE ACCEPTED UNLESS SUITABLY ENDORSED BY LOCAL BANK.

The Trocadero Bar

Restaurant. Proprietor—W. M. GODFRIE, Manager—Mr. BOB BILLINGS.

GRILLS—ALL MEALS—REFRESHMENTS—TEAS.

UNDER ENTIRELY NEW MANAGEMENT. Hours 8 a.m. --- Till 11 p.m.

'S Lime, Fertilizers and Mineral Salts are different, special and standing in a class by itself.

KENYA'S FOR KENYA.

Lime Limited

B. E. A. SAW MILLS. Telephone No. 92. P. O. Box 231. Telegrams "Beams," Nairobi.

Camphor, Podo, Mweri and Munn. Flooring, Ceiling and Moulding.

Clan- Ellerman - Harrison Lines.

(JOINT SERVICE). Liverpool - Glasgow - Avonmouth - Manchester.

LOADING FOR LIVERPOOL. Due to arrive: Edinburgh, 10th Jan; Glasgow, 11th Jan; Liverpool, 12th Jan; Rotterdam, 13th Jan.

From LIVERPOOL and GLASGOW. Due to arrive: Kilindini, 20th Jan; Mombasa, 21st Jan; Zanzibar, 22nd Jan.

THE AFRICAN MERCANTILE Company, Limited, MOMBASA (Cables Navigation) NAIROBI

Ellerman and Bucknall Line

NEW YORK - MOBASA via SUEZ. From AMERICA. Due to arrive: Kilindini, 7th Jan; Mombasa, 8th Jan; Zanzibar, 9th Jan.

Apply—MADATALLY SULEMAN VERJEE & SONS, Government Road, Nairobi. Phone 64.

TO LET

FROM 1st February, 1930. A SPACIOUS AND WELL VENTILATED SHOP IN GOVERNMENT ROAD.

Apply—MADATALLY SULEMAN VERJEE & SONS, Government Road, Nairobi. Phone 64.

Just Received

A NICE SELECTION OF Ladies Evening Shoes STYLES and PRICES RIGHT.

De Luxe Boot Co.

Government Road. Box 627 NAIROBI

THE L. S. Starrett Company.

FINE MECHANICAL TOOLS.

Stocked by: W. WINGRAM & Co.

The Tool House

NAIROBI.

THE BRADFORD MANUFACTURING CO., LTD.

Special supply of Gunter's and Hoyt's Shirts. 100's of each. 100's of each. 100's of each. 100's of each. 100's of each. 100's of each. 100's of each. 100's of each.

Keith Timber Co. Ltd

P. O. Box 874. SADDLER STREET. NAIROBI

Phone 598.

PIANO-FORTE TUNING

AND REPAIRING. Ten years experience in Kenya Colony and five year with Messrs. Crompton & Co., London.

F. A. HEAD, Box 675, NAIROBI.

OVERSEAS MAILS.

ARRIVALS. STEAMERS. FROM. Due at Mombasa. Mails arrive at Nairobi.

DEPARTURES. STEAMERS. FOR. Close at Mombasa. Date of Departure from Mombasa.

UPLANDS BACON FACTORY. Luncheons, Dinners and Picnics are not complete without resort to our 33 Varieties of Tinned and Glass Goods.

NEVER SO GOOD - NEVER SO CHEAP. On sale at all the leading Stores in Eastern Africa.

Be sure to note the Brand 'UPLANDS' the genuine 'Upstairs' brand.



FOR THE EYE The Best is Just Good Enough.

Have your eyes tested and your spectacles made at "THE LENS" Limited. P.O. Box 221 Prince's House, Government Road. Phone 473 NAIROBI.

Crawford's LIQUEUR SCOTCH WHISKY

The Whisky for very Special Occasions and which costs a little more.



The proprietors of "SPECIAL RESERVE" Scotland's Finest Standard Blend. A.A.CRAWFORD LITHO - SCOTLAND.

Miss KATHI EN RATES, A.R.C.M. RECEIVES PUPILS FOR PIANOFORE - SINGING - HARMONY at the MUSIC STUDIO, SIXTH AVENUE. POSTAL ADDRESS: Box 417.

INDIAN MERCHANTS AT MOMBASA.

Annual Meeting of the Chamber.

THE PAST YEARS WORK.

Retiring President Reviews the Situation.

A general meeting of the Indian Merchants' Chamber, Mombasa, was held on December 29, 1929 when about 200 members were present. Mr. J. H. Danks presided. Mr. D. G. Mehta presided last year which was adopted.

Mr. J. H. Danks, the retiring President for the year 1929, said Mr. J. H. Mehta, Secretary. A committee of 25 members was also elected.

Protective Tariff.

A very important issue of Mr. Danks' protective tariff and the degree to which it is necessary to protect the country during the present year. The Government of Kenya appointed a tariff commission to consider the case.

Trade With India.

I reviewed last year of great length trade between India and East Africa, and particularly the cotton piece goods trade.

Commonwe Means Service.

The word commonwe to us means service. In the year, the commonwe men and the spirit of service the more they go ahead. The Indian merchants have been successful up to now because of the spirit of service.

I have used and have done a great service. Conditions are now changing as our spirit of service must also change.

Spirit of Cooperation.

Cooperation is a necessary condition. No business can ever prosper without successful cooperation from within.

I must confess that we have not profited as much as we should in our independent and individualistic way. The only way to succeed is to work together.

Railway Council.

I now come to the question affecting us and in regard to the representation of our Chamber on the Railway Council and our advisers thought it was very important that we should be able to obtain such representation.

Protective Tariff.

A very important issue of Mr. Danks' protective tariff and the degree to which it is necessary to protect the country during the present year.

The Government of Kenya appointed a tariff commission to consider the case. I hope the Government will give preference to this commission and I happened to represent the Chamber.

The industry report which I submitted was generally supported in Kenya and Tanganyika. It is a matter of fact that the tariff is a matter of fact.

Trade With India.

I reviewed last year of great length trade between India and East Africa, and particularly the cotton piece goods trade.

Commonwe Means Service.

The word commonwe to us means service. In the year, the commonwe men and the spirit of service the more they go ahead. The Indian merchants have been successful up to now because of the spirit of service.

try was fully explained to them and I hope they would now organize in a way to handle the African business more effectively. I was informed in India that the Indian Trade Commission for East Africa was now being appointed though in my opinion it was better to have it in India than to have it in the appointment being appointed.

Bankruptcy Ordinance.

The Bankruptcy Ordinance was again under discussion. Some people feel that it is not strong enough because bankruptcies have not stopped.

The Bankruptcy Ordinance was again under discussion. Some people feel that it is not strong enough because bankruptcies have not stopped.

The Bankruptcy Ordinance was again under discussion. Some people feel that it is not strong enough because bankruptcies have not stopped.

The Bankruptcy Ordinance was again under discussion. Some people feel that it is not strong enough because bankruptcies have not stopped.

The Bankruptcy Ordinance was again under discussion. Some people feel that it is not strong enough because bankruptcies have not stopped.

The Bankruptcy Ordinance was again under discussion. Some people feel that it is not strong enough because bankruptcies have not stopped.

The Bankruptcy Ordinance was again under discussion. Some people feel that it is not strong enough because bankruptcies have not stopped.

The Bankruptcy Ordinance was again under discussion. Some people feel that it is not strong enough because bankruptcies have not stopped.

The Bankruptcy Ordinance was again under discussion. Some people feel that it is not strong enough because bankruptcies have not stopped.

The Bankruptcy Ordinance was again under discussion. Some people feel that it is not strong enough because bankruptcies have not stopped.

The Bankruptcy Ordinance was again under discussion. Some people feel that it is not strong enough because bankruptcies have not stopped.

giving it no doubt served a very useful purpose but the time has now come when the position should be reconsidered. It seems to me that the conditions in this country would be improved if cash terms come into practice.

Local Organizations.

I had great stress last year on the organizations of Indian merchants through out the country. I am glad to say that during the year Indian merchants' chamber was organized at Kisumu and it is doing an excellent work.

I had great stress last year on the organizations of Indian merchants through out the country. I am glad to say that during the year Indian merchants' chamber was organized at Kisumu and it is doing an excellent work.

I had great stress last year on the organizations of Indian merchants through out the country. I am glad to say that during the year Indian merchants' chamber was organized at Kisumu and it is doing an excellent work.

I had great stress last year on the organizations of Indian merchants through out the country. I am glad to say that during the year Indian merchants' chamber was organized at Kisumu and it is doing an excellent work.

I had great stress last year on the organizations of Indian merchants through out the country. I am glad to say that during the year Indian merchants' chamber was organized at Kisumu and it is doing an excellent work.

I had great stress last year on the organizations of Indian merchants through out the country. I am glad to say that during the year Indian merchants' chamber was organized at Kisumu and it is doing an excellent work.

I had great stress last year on the organizations of Indian merchants through out the country. I am glad to say that during the year Indian merchants' chamber was organized at Kisumu and it is doing an excellent work.

I had great stress last year on the organizations of Indian merchants through out the country. I am glad to say that during the year Indian merchants' chamber was organized at Kisumu and it is doing an excellent work.

I had great stress last year on the organizations of Indian merchants through out the country. I am glad to say that during the year Indian merchants' chamber was organized at Kisumu and it is doing an excellent work.

I had great stress last year on the organizations of Indian merchants through out the country. I am glad to say that during the year Indian merchants' chamber was organized at Kisumu and it is doing an excellent work.

I had great stress last year on the organizations of Indian merchants through out the country. I am glad to say that during the year Indian merchants' chamber was organized at Kisumu and it is doing an excellent work.

I had great stress last year on the organizations of Indian merchants through out the country. I am glad to say that during the year Indian merchants' chamber was organized at Kisumu and it is doing an excellent work.

I had great stress last year on the organizations of Indian merchants through out the country. I am glad to say that during the year Indian merchants' chamber was organized at Kisumu and it is doing an excellent work.

OLD SOLDIERS

NEVER DIE THEY GET

YOUNGERS

EVERY DAY.

CALL FOR:

YOUNGERS

Sparkling SCOTCH ALE

Just Arrived Fresh Burma Teak-Log Prices on Application.

Husseln Suleman Verjee & Sons Phone 264, Government Road, Box 236, NAIROBI.

GOVERNMENT EUROPEAN ELEMENTARY SCHOOL, KILIMANI.

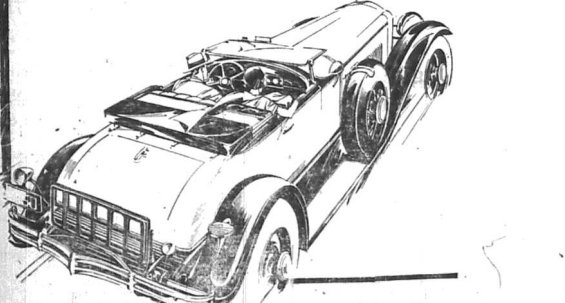
The new Government European School at Kilimani will open on Monday, 13th January 1930.

European children of both sexes, above the age of five years and in and below Standard III, will be admitted to the school. Such children from the Kilimani area, who are present attending the European Senior Secondary School, Nairobi, will be transferred to this school, if so desired. Tuition fees will be Shs. 10/- per month. Application for admission should be made to the Principal of the new school or to the Principal of the European Senior Secondary School, Nairobi.

NEW BEAUTY -

VET LEPE AS EVER.

Prices From £295



That beauty of appearance which causes you to admire the NEW BUICK is not "skin-deep." It is the outward visible sign of an inbuilt strength and ruggedness which carry BUICK'S reputation for dependability to new heights.

Its greater power—its responsive performance—demand increased margins of safety. You get these in the heavier stronger frame—the stronger front axle—the stouter 10 spoke wheels—the larger brake drums—the powerful internal expanding brakes, whose efficiency cannot be impaired by water or mud—the slanting windshield that makes night driving safer—the new steering gear that eliminates road shocks.

Go where you will, this NEW BUICK will register faultless performance, be the roads good or bad—your mind can be at ease that BUICK will serve you faithfully for years and years.

P. O. Box 306. Kampala

Eldoret

KENYA MOTORS.

NAIROBI.

Nakuru

Phone 206, Kitale.

Look for this Sign. "BP"

When you want a fill of PETROL take it from a Green Pump and "Put New Life in Your Car."

Anglo Persian Oil Co., (Kenya) Ltd.

Agents - GIBSON & Co., Ltd., Mombasa, Nairobi, Eldoret, Dar-es-Salaam

VOONIA TEA

INCREASES IN POPULARITY DAILY AWARDED Ten Gold Medals BEWARE OF FRAUDULENT IMITATIONS. INSIST ON SEEING THE NAME.

"VOONIA" on every packet or case. BLACKLAWS & BROW (LATE MALKINSON BROS) NAIROBI. Tel. No. 31. Telegrams "Blacklaws" 46-

1930 BEFORE NEW YEAR COMES REMEMBER YOUR FRIENDS AND RELATIVES. COME AND GET GIFTS AT OUR SALE. Lalchand Moolchand Bros. Govt. Road. Box 375. NAIROBI

B. Florens FRENCH HAIR DRESSER. PERMANENT WAVING AND TINTING A SPECIALTY. Phone 561. P.O. Box 923. YORK BUILDING - GOVERNMENT ROAD, NAIROBI. Opposite Electric Light Co.

FOR AN EFFICIENT AND PERMANENT HOT WATER SUPPLY. Install a BEESTON HOT WATER BOILER

Thornton & Turpin (Sole Agents) Registered Plumbers and Sanitary Engineers NAIROBI and MOMBASA. P.O. Box 246, Nairobi. Phone 165 and P.O. Box 186, Mombasa.

EXPORT OF WHEAT AND MAIZE.

Annual Report of Chief Grader.

NEW RULES ADOPTED.

At a meeting of the Maize and Wheat Grading Committee held at the Department of Agriculture, Nairobi, on the 11th inst., the following resolutions were adopted:

- (1) The small increase of Maize available for export was due to the decrease of large quantities of maize in the Native Reserves where former restrictions obtaining owing to the ravage of locusts. (2) Over twenty thousand bags of maize were reported for export, but only 100,000 bags were finally reported as such for export. (3) 60,447 bags of soft Maize and 29,550 bags of hard Maize were treated at the Grading Plant during the year, and the treatment of which had not been stated as being successful. (4) The first season of Wheat grading has been carried to a successful conclusion, but attention is drawn to the fact that although 97 per cent of the total amount of the maize received was not only 100 per cent, but the total receipts were actually recorded as such.

Time Limit.

It was agreed that a clause should be inserted in the grading rules, both of wheat and maize, fixing a time limit of seven days for obtaining certificates, and after that limit of the receipt of the consignments to be considered, in order to be able to check the consignments and to issue certificates.

It was also decided to recommend the insertion of a clause in the rules, describing the first class of wheat to be graded, and to recommend that the grading of wheat should be done in a separate building, and to recommend that the grading of wheat should be done in a separate building, and to recommend that the grading of wheat should be done in a separate building.

WIND INDIGESTION

After other distressing stomach diseases, indigestion is the most common ailment in the stomach. This harmful and if not attended may cause more misery to the stomach. Indigestion is therefore dangerous, as the first sign of stomach trouble is a constant desire to vomit. It is therefore the harmful and and soothes and protects the inflamed stomach lining.



Sold Everywhere.

Future Estimates.

The following estimates for the year 1930 are based on the present position of the Maize and Wheat Grading Committee.

Up Country Grading.

The question of up country grading and export of maize through the existing ports has been discussed.

Official Leave.

The following officials are notified in the current issue of the Kenya Official Gazette: Mr. H. W. Arnold, Land Act, Administration, Nairobi; Mr. H. W. Arnold, Land Act, Administration, Nairobi; Mr. H. W. Arnold, Land Act, Administration, Nairobi.

Nairobi and Kisumu.

The following officials are notified in the current issue of the Kenya Official Gazette: Mr. H. W. Arnold, Land Act, Administration, Nairobi; Mr. H. W. Arnold, Land Act, Administration, Nairobi; Mr. H. W. Arnold, Land Act, Administration, Nairobi.

The necessary clerical work.

The following officials are notified in the current issue of the Kenya Official Gazette: Mr. H. W. Arnold, Land Act, Administration, Nairobi; Mr. H. W. Arnold, Land Act, Administration, Nairobi; Mr. H. W. Arnold, Land Act, Administration, Nairobi.

Up Country Grading.

The question of up country grading and export of maize through the existing ports has been discussed.

Official Leave.

The following officials are notified in the current issue of the Kenya Official Gazette: Mr. H. W. Arnold, Land Act, Administration, Nairobi; Mr. H. W. Arnold, Land Act, Administration, Nairobi; Mr. H. W. Arnold, Land Act, Administration, Nairobi.

Nairobi and Kisumu.

The following officials are notified in the current issue of the Kenya Official Gazette: Mr. H. W. Arnold, Land Act, Administration, Nairobi; Mr. H. W. Arnold, Land Act, Administration, Nairobi; Mr. H. W. Arnold, Land Act, Administration, Nairobi.

Sustaining Well-Merited Public Confidence

There could be no more reassuring endorsement of the fundamental wisdom of Dodge Brothers production than the fact that thousands upon thousands of persons who drive the first automobile that company produced are still driving current models of Dodge cars. Throughout the great continent that automotive engineering and design have experienced in the last fifteen years, these steadfast owners have had implicit confidence in Dodge Brothers ability to keep abreast of the times—implicit confidence that every good thing in motoring would be there at the lowest price consistent with a sound business policy. The Dodge Brothers Six—Land—some powerful, durable—up to the minute of all its appointments—is the latest and finest proof of this company's intent and ability to keep faith with the public of all lands, and especially East Africa.

DODGE BROTHERS SIX

Governing Dealers for East Africa: S. FISHER & SIMMONS (East Africa) Ltd. VICTORIA ST., NAIROBI. TEL. 302. BOX 406.

If you require Uganda Mahoe and NYULU TIMBER. Best quality Brackets, Doors or Windows, One Piece-Always Used And also first-class UGANDA FRUITS. Apply quickly. R. B. SIRDAW, P.O. Box 60, JINJA, Uganda.

EVERYTHING FOR SPORT AT MAY & CO. LTD.

Metropolitan Garage. SPECIALISTS IN AUTOMOBILE REPAIRS. 2 Devon Avenue Road. We always have a number of selected and overhauled 2nd-hand Cars in stock.

Duco Spray Painting. Have your car touched up or completely repainted, by our UP-TO DATE PLANT.

Wanted for Cash Box Body Cars. CARS FOR HIRE. D. J. L. LETHBRIDGE, Sole Proprietor.

Sound Investments. Business and Residential Plots, with or without Buildings, in Eldoret. Coffee, Maize, Wheat and Cereal Productions in the Kipkaren, Turbo, Pietaas, Kipkhas and Burti Forest Areas. Apply to J. McNab MUNDSELL, Approved Valuer, Real Estate, Commission and Insurance Agent.

Reduction in Prices of Meat AND Cost of Living. The S D M S Co., Ltd. announce from 1st Nov. 1929, a reduction of 20 per cent on the present Cash Prices for meat to all Cash Customers. All up-country customers may benefit by these reductions by opening 'Trust' Accounts. Support the Kenya Farmers. HOME FED MEAT ONLY SUPPLIED IN THE STOCKBREEDERS' BUTCHERY. STOCKBREEDERS' DIRECT MEAT SUPPLY CO. LTD.

ESSJAY. Limited. BOLIS HOUSE, GOVERNMENT ROAD, NAIROBI. Phone 377. Financial & Property Agents. Mortgages Specified in. Town Properties Negotiated. Partnerships Arranged. Investments Advised on. WE HAVE SOUND INVESTMENTS FOR SUMS FROM £100 UPWARDS. IN THIS RESPECT WE CLAIM TO DO BETTER FOR YOU THAN ANY ONE ELSE.

S. JACOBS, Managing Director.

When you go to places far off the good roads your U. S. Royals

Will stand the extra punishment without flinching.

Their web cord carcass and tough rugged tread are designed to meet unusual conditions

The Tyre of To-day For the Car of To-day

START THE NEW YEAR

with
KALAMAZOO
LOOSE-LEAF BOOKS



The Original Thong Binder

TAW'S LIMITED, NAIROBI.

FOR INFORMATION ON
THE NILE ROUTE
TO EUROPE

Apply to
Motor Tours Ltd.

opposite Post Office,
NAIROBI. Phone 330
Weekly Service of cars from KAMPALA to JUBA
Booking Agents—Sudan Government Railways.
LUXURIOUS TOURING CARS TO ANY PART OF
EQUATORIAL AFRICA.
ASK MOTOR TOURS—THE TRAVEL SPECIALISTS.

YOUNG MEN'S CHRISTIAN ASSOCIATION, NAIROBI.
The third term of the Evening Continuation Classes, under the supervision of the Education Department, will commence on Monday, 13th January. Classes are being held in French, English, Physics, Mathematics, and Economics. Particulars can be obtained from—

The Secretary,
Y.M.C.A.
P.O. Box 125, Nairobi.

DUCHESS M.P. PLEADS FOR NATIVE WOMEN.

(Continued from page 1)

party and in its way recognized officially by the Government. No action will therefore follow any of its recommendations without the consultation of the Governors concerned.

The Duchess of Atholl assured that they have no desire to be aggressive or add to the difficulties of administration but only wish to explore the whole ground with a view to seeing what can best be done gradually to stimulate these unexploited practices from the British Empire.

She feels, for instance, that a great deal could be done for the benefit of the East African tribes by the extension of the programme of native medicine, especially in some of the more arid regions. It is a result of this helpful mission which she has just completed.

The Duchess then briefly alluded to the work of the Society of Native Medicine, which she had visited in East Africa, and then returned to the subject of the Native Women.

Several Penalties
The Duchess then stated that she had been surprised to find that the penalties for the possession of opium by the natives were so severe. She stated that she had been surprised to find that the penalties for the possession of opium by the natives were so severe.

The Kyanjo Case
The Duchess of Atholl was inquiring herself on operations in the native world. She has now asked the following additional questions at the House of Commons.

To ask the Under-Secretary of State for the Colonies whether the attention has been called to the case of a young Kyanjo girl recently compelled to undergo a form of operation forbidden by the Kyanjo Native Council, and whether the Government will safeguard the dangerous and illegal operation now charged by law against her court, if it

with what result, and whether it will request the Governor of Kenya to introduce legislation into the Legislative Council regarding regulations to increase the penalties for such offences and so put an end to the continuance of such practices.

The Duchess made the following reply. The case referred to has been brought to my attention by Mr. Noble. From the Summary of Debates for the 10th inst. I have had the official information from the Government of Kenya in regard to the case.

Native Medicine.
The Duchess of Atholl also asked the Under-Secretary of State for the Colonies the extent of the grant made to various agencies for the teaching of Native Medicine to natives for the year 1927-1928.

She stated that the following reply was given by the Under-Secretary of State for the Colonies. The grant made to various agencies for the teaching of Native Medicine to natives for the year 1927-1928 was £10,000.

Here are further questions. The Duchess of Atholl asked the Under-Secretary of State for the Colonies how many village dispensaries and quarterly centres for the use of native medicine are in existence in the protectorate. She also asked whether the Government intend to extend the number of such centres.



EMPIRE THEATRE

Today and Tomorrow, Friday and Saturday,
January 10th and 11th

Adolphe Menjou

IN
"LOST A WIFE"
AND
HAROLD LLOYD

IN
"AN EASTERN WESTERN"
Prices: Shs. 5/-, 3/-, 2/-.

On Saturday evening the film "The Pilgrim," starring Charles Chaplin, will be shown in conjunction with the above programme.

Dr. K. BOGHOLM, Copenhagen,
will deliver a lecture in English on
"MY TRANSFRANCICAN TRIP"
on FRIDAY the 10th inst., 5 p.m.
at
HOTEL AVENUE, NAIROBI.
Reservations are invited.
THE DANISH CONSUL WILL PRESIDE.

Theatre Royal.

(KISMAF LTD.)
Tonight and Tomorrow Night Only,
January 10th and 11th
LAST TWO PERFORMANCES OF
"PARIS AT MIDNIGHT"
with
LIONEL BARRYMORE and **POWERFUL CAST.**
The most sensational production of the "STUDENTS ART BALK."
shown in this film, is a treat in itself.
Prices Shgs. 3.00 & 2.00.

SATURDAY, JANUARY 11th:
MATINEE
at 3 p.m.
Beautiful Betty Balfour in
"MONKEYNUTS"
A notable story, full of interesting and amusing situations—the
SPECIAL MATINEE PRICES: Shs. 2/- and Sh. 1/-.

EMPIRE THEATRE

Wednesday, 15th January
at 4.30 p.m.

Nett Proceeds for the funds of the E.A.S.P.C.A.

Algeria to Cape Town
via Nairobi.

An 8,000 feet film record of the first journey by car through Africa from North to South.
Pictures taken by the Citroën Scientific Expedition during their pioneer trip which included the first car journey from Nairobi to Mombasa.

ADMISSION: ADULTS SHS. 2/-,
CHILDREN SHS. 1/-.

Torr's Hotel.

Dinner Dance
SATURDAY, JAN. 11th—8 p.m. to 2 a.m.
Visitors Evening Dress Only, in all parts of Hotel.
TICKETS—10/- each
BOOK YOUR TABLES EARLY.

Syd. ZIEGLER and HIS METRONOMES
play for Dinner and Dance Nightly.
7/50

GET THE THRILL OF FINE CAR OWNERSHIP.



Everything about this new Chevrolet reflects the fine car standards to which it is built.

Magnificent bodies by Fisher reveal the style, beauty and painstaking craftsmanship which have made Fisher famous all over the world for fine coachwork.
Everyone anticipated that Chevrolet would produce a remarkable car—but no one expected such a sensational six cylinder motor—such delightful handling ease—such marvellous comfort—and a fuel economy of better than 25 miles to the gallon.

And furthermore no one believed that it would be possible to produce such a car in the price range of the four! If you have not made a personal inspection of the new Chevrolet, we urge you to do so at your earliest convenience.

A ride tells a wonderful story! We cordially invite you to come and have a demonstration at any time in any model of car.

The Roadster £225	The Coach £270	The Sedan £270
The Tourer £225	The Imperial Sedan £290	
The Coupe £250	The 14 Top Chassis £185	
The Sport Coupe £270	All prices f.o.r. Nairobi.	The Box Body form £200

THE MOTOR MART & EXCHANGE Ltd.
NAIROBI - ELDORET - NAKURU - DAR-ES-SALAAM,
AGENTS EVERYWHERE.

Place Yourself on the Right Side of the Danger Line
INSURE
YOUR MOTOR CARS and MOTOR CYCLES with the
AFRICAN GUARANTEE & INDEMNITY Co., Ltd.
M. D. KAMPP,
11, East Street,
NAIROBI.
FURNITURE of Household Use, Shop, Fittings of every description, Trade Receipts Repaired.
PHUANSANGH TOOLSINGH
Next to Baha House, Government Road, Nairobi.
Nairobi Dairy Association.

Smithfield Butchery Ltd.,

Government Road, Nairobi.
Telephone No. 413. P. O. Box No. 6.
Telegraphic Address. Smithfield Nairobi.

BRANCH - WESTLANDS
Prime Graded Beef, Veal, Mutton, Lamb and Pork, Ducks, Fowls, Butter and Eggs, Sausages, Polonies, Home cured Bacon, Pressed Beef and Brawns.

QUICK SERVICE.

NEW YEAR PRICES

Willys-Knight Models

	Old Price.	New Price
FALCON SEDAN	£365	£225
TOURING	£325	£285
MODEL 36 SAFARI	£340	£315

Whippet Models

MODEL 96 SAFARI	£200	£175
MODEL 96a	£220	£210

ALL CARS UNUSED AND CARRY FULL MANUFACTURER'S GUARANTEE.

MOULTON & MORRISON Ltd.
NAIROBI.

J. W. Milligan & Co.

Phone: 98 P. O. Box 148

WHY PAY RENT?

Delightful View.

One and a Half Acre Land.

Charming Stone Residence - Lounge, Dining Room - 2 Bedrooms, Kitchen, Pantry and Bathroom, Store and Box Rooms. Hot and Cold Water, Inside Sanitation. Tiled roof. Within a few minutes' walk of Nairobi Club.

Full Details on Application.

We still have several Houses, from £300 to £1500 near Salisbury Hotel. From £50 to £100 down Balance as rent.


GOOD NIGHT DANCERS

For it offers these very rare but best that must last. The price of good music is a frequent cry again. The dancers were dancing, dancing, dancing and many of the very best were dancing in the city of Nairobi. The new year was celebrated by the usual dancing of the year.

A. H. WARDLE
L. M. BROWNE, P.M.C. & L.T.D. Optical Manager.
V.P. & Co. NAIROBI. Wholesale and Retail of Lenses. The Premier

RARE AND EXQUISITE.

QUEEN



ANNE

SCOTCH WHISKY

Agents:
S. G. VERNON Co.
Nairobi Building. NAIROBI.

Overseas Mail

S.S. "Kangaroo" carrying mails arrives from Bombay on Saturday afternoon. Mails for South Africa by air leave on January 13. Mails for South America by air leave on January 14. Mails for Europe, North America, and Australia by air leave on January 15. Mails for South Africa by sea leave on January 12.

Lady Northey Home

The annual general meeting of the Lady Northey Home will be held in the drawing room of the East Africa Women's League on Saturday, January 12, at 4.30 p.m. All the members of the Home and their young ladies are being taken.

Nature and Bird Class

Nature and Bird Class for school girls were held throughout last week. The class was held in the drawing room of the East Africa Women's League. The class was held on Saturday, January 12, at 4.30 p.m. All the members of the Home and their young ladies are being taken.

Death of Police Agent

The death of a native agent stationed at Machelwa who was killed in the left shoulder, has resulted in the prompt arrest of the assassin. A native who will appear before the Magistrate in court. Details are lacking but it is believed that the death was caused following a family quarrel in which the native was the victim.

Orphan

The death is announced of Mr. George Baker, a foreman employed by the East Africa Women's League. He died on Wednesday night of the influenza which has been prevalent in the city. He was 52 years of age. He was buried in the East Africa Women's League on Saturday, January 12, at 4.30 p.m. All the members of the Home and their young ladies are being taken.

The Unofficial Conference

The Unofficial Conference of the East Africa Women's League will be held on Wednesday night of the influenza which has been prevalent in the city. It is believed that the death was caused following a family quarrel in which the native was the victim.

What is a used car?

... a used car is a good car if you buy it at CARR LAWSON'S.

Essex Super Six Coach
Late model, small mileage, excellent condition. £45

Armstrong Siddeley Box Body
In excellent mechanical order. £60

Bulck Master 1928
This car is mechanically perfect throughout and the body work is in showroom condition. A magnificent car. £150

Hupmobile Touring
In perfect order. A very sound car. £90

Rugby 4 Box
Mechanically Sound. £50

Carr, Lawson & Co. Ltd.

NAIROBI.

FANCY BOUDOIR, ALARM, TRAVEL Clocks

SQUARE BOUDOIR CLOCK

With ornate engraved brass case on a sturdy and light-wooden frame. Square dial with alarm. SHS 35/-

MIDGET ALARM CLOCK

With ornate engraved brass case on a sturdy and light-wooden frame. Square dial with alarm. SHS 20/60

BOUDOIR CLOCK

With ornate engraved brass case on a sturdy and light-wooden frame. Square dial with alarm and 30 hour movement. SHS 35/-

TRAVEL CLOCK

In a light-wooden case with leather straps. Square dial with alarm. SHS 25/60

ALARM CLOCK

With ornate engraved brass case on a sturdy and light-wooden frame. Square dial with alarm. SHS 17/60

STYLE CLOCK

In a light-wooden case with leather straps. Square dial with alarm. SHS 17/60

BOUDOIR CLOCK

With ornate engraved brass case on a sturdy and light-wooden frame. Square dial with alarm. SHS 35/-

ALARM CLOCK

With ornate engraved brass case on a sturdy and light-wooden frame. Square dial with alarm. SHS 17/60

STYLE CLOCK

In a light-wooden case with leather straps. Square dial with alarm. SHS 17/60

S. Jacobs Ltd.

P.O. Box 255 Phone 23. NAIROBI

"PURETEST" ASPIRIN TABLETS

Made From True British Aspirin.

And in relief of pain, headaches, neuralgia, pain, etc. They are manufactured scientifically, readily disintegrate rapidly, and act promptly.



ASK FOR THE BIG ECONOMICAL BOX, 100 TABLETS CONTAINING 100 FIVE GRAIN TABLETS.

SOLD BY **WARDLES** Chemists
MOMBASA NAIROBI ELDORET KAMPALA.

Two Necessaries for the Household Medicine Chest

QUINACINE

AN EFFECTIVE PREVENTATIVE AND RELIABLE CURE FOR INFLUENZA, COLIC IN THE HEAD, FEVERISH COLDS, PAINS IN THE BACK AND LIMBS

PARAGOL

A VALUABLE PREPARATION FOR THE IMMEDIATE RELIEF AND CURE OF COLICUS, COLDS, BRONCHITIS, ETC.

KODAK E.A. LTD. INC.

HOWSE and McGEORGE

NAIROBI AND ALL BRANCHES

RECKITT'S CROWN BLUE



The most widely known of all disinfectants and germicides. It is used in the household, in the hospital, in the laboratory, in the factory, in the office, in the school, in the barracks, in the ship, in the train, in the car, in the plane, in the boat, in the house, in the street, in the park, in the field, in the garden, in the wood, in the mountain, in the sea, in the air, in the earth, in the sky, in the sun, in the moon, in the stars, in the planets, in the galaxies, in the universe.

BRUSHING DUO
The most effective tooth powder for all types of teeth. It is used in the household, in the hospital, in the laboratory, in the factory, in the office, in the school, in the barracks, in the ship, in the train, in the car, in the plane, in the boat, in the house, in the street, in the park, in the field, in the garden, in the wood, in the mountain, in the sea, in the air, in the earth, in the sky, in the sun, in the moon, in the stars, in the planets, in the galaxies, in the universe.

GAILEY & ROBERTS LTD.
NAIROBI and Branches

African Standard

UANDA ARGUE
FRIDAY JAN 10, 1930

Settlement Schemes.

With the showing prospects of a definite effort to settle outside the provincial boundaries, we begin to feel that the Government's plan to settle in the country is not only a good one, but also a very important one. It is a plan which will help to solve the problem of the unemployed and the underemployed, and it will also help to develop the country.

The Government has announced that it will be setting up a number of settlement schemes in the country. These schemes will be set up in the most fertile and best watered areas of the country. The Government will be providing the settlers with land, tools, and other necessities. The settlers will be expected to cultivate the land and to live on the land for a period of five years. After that period, the settlers will be free to sell or lease the land as they see fit.

The Government has also announced that it will be setting up a number of settlement schemes for the unemployed and the underemployed. These schemes will be set up in the most fertile and best watered areas of the country. The Government will be providing the settlers with land, tools, and other necessities. The settlers will be expected to cultivate the land and to live on the land for a period of five years. After that period, the settlers will be free to sell or lease the land as they see fit.

Standard Diary.

Today: Lecture by Dr. Reynolds at the University of Nairobi. 8 p.m. Medical Exhibition at Memorial Hospital. 10 a.m. to 5 p.m.

Tomorrow: Lecture by Dr. Reynolds at the University of Nairobi. 8 p.m. Medical Exhibition at Memorial Hospital. 10 a.m. to 5 p.m.

Friday, January 12: Lecture by Dr. Reynolds at the University of Nairobi. 8 p.m. Medical Exhibition at Memorial Hospital. 10 a.m. to 5 p.m.

Saturday, January 13: Lecture by Dr. Reynolds at the University of Nairobi. 8 p.m. Medical Exhibition at Memorial Hospital. 10 a.m. to 5 p.m.

Sunday, January 14: Lecture by Dr. Reynolds at the University of Nairobi. 8 p.m. Medical Exhibition at Memorial Hospital. 10 a.m. to 5 p.m.

Monday, January 15: Lecture by Dr. Reynolds at the University of Nairobi. 8 p.m. Medical Exhibition at Memorial Hospital. 10 a.m. to 5 p.m.

Tuesday, January 16: Lecture by Dr. Reynolds at the University of Nairobi. 8 p.m. Medical Exhibition at Memorial Hospital. 10 a.m. to 5 p.m.

Wednesday, January 17: Lecture by Dr. Reynolds at the University of Nairobi. 8 p.m. Medical Exhibition at Memorial Hospital. 10 a.m. to 5 p.m.

Thursday, January 18: Lecture by Dr. Reynolds at the University of Nairobi. 8 p.m. Medical Exhibition at Memorial Hospital. 10 a.m. to 5 p.m.

Friday, January 19: Lecture by Dr. Reynolds at the University of Nairobi. 8 p.m. Medical Exhibition at Memorial Hospital. 10 a.m. to 5 p.m.

Saturday, January 20: Lecture by Dr. Reynolds at the University of Nairobi. 8 p.m. Medical Exhibition at Memorial Hospital. 10 a.m. to 5 p.m.

Sunday, January 21: Lecture by Dr. Reynolds at the University of Nairobi. 8 p.m. Medical Exhibition at Memorial Hospital. 10 a.m. to 5 p.m.

Monday, January 22: Lecture by Dr. Reynolds at the University of Nairobi. 8 p.m. Medical Exhibition at Memorial Hospital. 10 a.m. to 5 p.m.

Tuesday, January 23: Lecture by Dr. Reynolds at the University of Nairobi. 8 p.m. Medical Exhibition at Memorial Hospital. 10 a.m. to 5 p.m.

Wednesday, January 24: Lecture by Dr. Reynolds at the University of Nairobi. 8 p.m. Medical Exhibition at Memorial Hospital. 10 a.m. to 5 p.m.

Thursday, January 25: Lecture by Dr. Reynolds at the University of Nairobi. 8 p.m. Medical Exhibition at Memorial Hospital. 10 a.m. to 5 p.m.

Friday, January 26: Lecture by Dr. Reynolds at the University of Nairobi. 8 p.m. Medical Exhibition at Memorial Hospital. 10 a.m. to 5 p.m.

Saturday, January 27: Lecture by Dr. Reynolds at the University of Nairobi. 8 p.m. Medical Exhibition at Memorial Hospital. 10 a.m. to 5 p.m.

Sunday, January 28: Lecture by Dr. Reynolds at the University of Nairobi. 8 p.m. Medical Exhibition at Memorial Hospital. 10 a.m. to 5 p.m.

Monday, January 29: Lecture by Dr. Reynolds at the University of Nairobi. 8 p.m. Medical Exhibition at Memorial Hospital. 10 a.m. to 5 p.m.

Tuesday, January 30: Lecture by Dr. Reynolds at the University of Nairobi. 8 p.m. Medical Exhibition at Memorial Hospital. 10 a.m. to 5 p.m.

Wednesday, January 31: Lecture by Dr. Reynolds at the University of Nairobi. 8 p.m. Medical Exhibition at Memorial Hospital. 10 a.m. to 5 p.m.

SETTLEMENT SCHEMES IN SOUTHERN RHODESIA.

How Settlers are Attracted and Assisted.

POINTS FOR KENYA.

Government Help in Populating Crown or Private Land.

At a time when Kenya is considering closer settlement methods by which to solve the Southern Rhodesia attracts settlers.

In the following article, which has been taken from a Publicity Handbook, three schemes are set out which provide for assistance to men with moderate capital, the same help for those who buy private land, and a method of attracting settlers to work on farms with eventual settlement intentions, and an arrangement whereby farmers can nominate pupils.

The extent and variety of assistance which the Government offers as inducement, even including assistance for the passage costs of a new settler, are given to reveal to the people of Kenya some new ideas in the work of attracting settlers.

WHITE FARM WORKERS.

A recent illustrated handbook... The available capital of the settler... The maximum of 20,000 and 25,000... The maximum of 20,000 may be... The maximum of 20,000 may be... The maximum of 20,000 may be...

NO PERFORMING FEELS OR SNAKE CHARMS.

But Ricketty Rats at Health Exhibition.

DIET DIOTA.

'Three ricketty rats... This is a new version of 'Three ricketty rats'... This is a new version of 'Three ricketty rats'...

Unfortunately we have such a large number of ricketty rats in the shape of our ricketty rats...

We also hope to show the comparative... The ricketty rats are not to be compared...

The ricketty rats are not to be compared... The ricketty rats are not to be compared...

The ricketty rats are not to be compared... The ricketty rats are not to be compared...

The ricketty rats are not to be compared... The ricketty rats are not to be compared...

The ricketty rats are not to be compared... The ricketty rats are not to be compared...

The ricketty rats are not to be compared... The ricketty rats are not to be compared...

The ricketty rats are not to be compared... The ricketty rats are not to be compared...

The ricketty rats are not to be compared... The ricketty rats are not to be compared...

The ricketty rats are not to be compared... The ricketty rats are not to be compared...

The ricketty rats are not to be compared... The ricketty rats are not to be compared...

The ricketty rats are not to be compared... The ricketty rats are not to be compared...

The ricketty rats are not to be compared... The ricketty rats are not to be compared...

The ricketty rats are not to be compared... The ricketty rats are not to be compared...

The ricketty rats are not to be compared... The ricketty rats are not to be compared...

The ricketty rats are not to be compared... The ricketty rats are not to be compared...

The ricketty rats are not to be compared... The ricketty rats are not to be compared...

The ricketty rats are not to be compared... The ricketty rats are not to be compared...

The ricketty rats are not to be compared... The ricketty rats are not to be compared...

The ricketty rats are not to be compared... The ricketty rats are not to be compared...

The ricketty rats are not to be compared... The ricketty rats are not to be compared...

The ricketty rats are not to be compared... The ricketty rats are not to be compared...

The ricketty rats are not to be compared... The ricketty rats are not to be compared...

The ricketty rats are not to be compared... The ricketty rats are not to be compared...

FLYING DISASTER IN EGYPT.

Machines Collide in the Air.

FOUR KILLED.

The Air Ministry announces that a total of a number of machines which occurred today in the flying school... The Air Ministry announces that a total of a number of machines which occurred today in the flying school...

Passenger Lists.

S.S. 'MODARA'.

The following passengers have been booked for the steamer 'Dee' to be... The following passengers have been booked for the steamer 'Dee' to be...

The following passengers have been booked for the steamer 'Dee' to be... The following passengers have been booked for the steamer 'Dee' to be...

The following passengers have been booked for the steamer 'Dee' to be... The following passengers have been booked for the steamer 'Dee' to be...

The following passengers have been booked for the steamer 'Dee' to be... The following passengers have been booked for the steamer 'Dee' to be...

The following passengers have been booked for the steamer 'Dee' to be... The following passengers have been booked for the steamer 'Dee' to be...

The following passengers have been booked for the steamer 'Dee' to be... The following passengers have been booked for the steamer 'Dee' to be...

The following passengers have been booked for the steamer 'Dee' to be... The following passengers have been booked for the steamer 'Dee' to be...

The following passengers have been booked for the steamer 'Dee' to be... The following passengers have been booked for the steamer 'Dee' to be...

The following passengers have been booked for the steamer 'Dee' to be... The following passengers have been booked for the steamer 'Dee' to be...

The following passengers have been booked for the steamer 'Dee' to be... The following passengers have been booked for the steamer 'Dee' to be...

The following passengers have been booked for the steamer 'Dee' to be... The following passengers have been booked for the steamer 'Dee' to be...

The following passengers have been booked for the steamer 'Dee' to be... The following passengers have been booked for the steamer 'Dee' to be...

The following passengers have been booked for the steamer 'Dee' to be... The following passengers have been booked for the steamer 'Dee' to be...

The following passengers have been booked for the steamer 'Dee' to be... The following passengers have been booked for the steamer 'Dee' to be...

The following passengers have been booked for the steamer 'Dee' to be... The following passengers have been booked for the steamer 'Dee' to be...

The following passengers have been booked for the steamer 'Dee' to be... The following passengers have been booked for the steamer 'Dee' to be...

The following passengers have been booked for the steamer 'Dee' to be... The following passengers have been booked for the steamer 'Dee' to be...

The following passengers have been booked for the steamer 'Dee' to be... The following passengers have been booked for the steamer 'Dee' to be...

The following passengers have been booked for the steamer 'Dee' to be... The following passengers have been booked for the steamer 'Dee' to be...

The following passengers have been booked for the steamer 'Dee' to be... The following passengers have been booked for the steamer 'Dee' to be...

The following passengers have been booked for the steamer 'Dee' to be... The following passengers have been booked for the steamer 'Dee' to be...

The following passengers have been booked for the steamer 'Dee' to be... The following passengers have been booked for the steamer 'Dee' to be...

WARNING OF APPROACH OF LOCUSTS.

Dee Towards End of This Month.

SMOKE SCREENS.

Effective Methods of Dealing with Insects.

'A Standard' Special.

A new class of low lying... The new class of low lying... The new class of low lying...

Wireless Service.

Conditions of the Suburb of a Conference.

The Telegraphs.

The necessary arrangements... The necessary arrangements... The necessary arrangements...

Dr. Harvey's.

Why so many native tribes... Why so many native tribes... Why so many native tribes...

Dr. Harvey's.

Why so many native tribes... Why so many native tribes... Why so many native tribes...

Dr. Harvey's.

Why so many native tribes... Why so many native tribes... Why so many native tribes...

Dr. Harvey's.

Why so many native tribes... Why so many native tribes... Why so many native tribes...

Dr. Harvey's.

Why so many native tribes... Why so many native tribes... Why so many native tribes...

INTERNATIONAL COAL CONFERENCE.

Discussion on Wages Question.

SUBJECT ABANDONED.

The preparatory international... The preparatory international... The preparatory international...

The Paisley Disaster.

Mr. A. J. Cook the British... Mr. A. J. Cook the British... Mr. A. J. Cook the British...

TO DAY'S GAZETTE LIST.

The following is the list of... The following is the list of... The following is the list of...

Dr. Harvey's.

Why so many native tribes... Why so many native tribes... Why so many native tribes...

Dr. Harvey's.

Why so many native tribes... Why so many native tribes... Why so many native tribes...

Dr. Harvey's.

Why so many native tribes... Why so many native tribes... Why so many native tribes...

Dr. Harvey's.

Why so many native tribes... Why so many native tribes... Why so many native tribes...

Dr. Harvey's.

Why so many native tribes... Why so many native tribes... Why so many native tribes...

Dr. Harvey's.

Why so many native tribes... Why so many native tribes... Why so many native tribes...

CONFERENCE OF EAST AFRICAN GOVERNORS.

During the morning session... During the morning session... During the morning session...

CONGO PRODUCE.

The Conference of East African... The Conference of East African... The Conference of East African...

THE PAISLEY DISASTER.

Mr. A. J. Cook the British... Mr. A. J. Cook the British... Mr. A. J. Cook the British...

TO DAY'S GAZETTE LIST.

The following is the list of... The following is the list of... The following is the list of...

Dr. Harvey's.

Why so many native tribes... Why so many native tribes... Why so many native tribes...

Dr. Harvey's.

Why so many native tribes... Why so many native tribes... Why so many native tribes...

Dr. Harvey's.

Why so many native tribes... Why so many native tribes... Why so many native tribes...

Dr. Harvey's.

Why so many native tribes... Why so many native tribes... Why so many native tribes...

Dr. Harvey's.

Why so many native tribes... Why so many native tribes... Why so many native tribes...

Dr. Harvey's.

Why so many native tribes... Why so many native tribes... Why so many native tribes...

THE NEW YEAR THE NEW ERA

A GREAT ACHIEVEMENT.

Capt. Mittelbahr flew over the summit of Mount Kenya for the first time in history, using Shell Oil and Petrol reaching an altitude of 15,000 feet.

A GREAT TRIBUTE.

Shell were asked to supply the fuel for the maiden flight of the 'Aova', the Aero Club of East Africa's 'Moth' Aeroplane.

A GREAT RECORD.

Practically every Trans-African flight has been fuelled by 'Shell'.

SHELL PETROL - SHELL OIL.

Advertisement for Shell Baby Firsts baby food, featuring a baby and a list of products like 301 Champagne, 302 Milk, 303 Tea, etc.

See us at the Shell... EADIE'S Footwear Ltd. Sole Agents NAIROBI

CARR'S BISCUITS

CARR & CO. LTD.
CARLISLE
Scotland

STOCKED BY THE LEADING GROCERS.

As supplied to the House of Commons

Amstel Beer the Best in East and West

(Manufactured from "Pilsener" Characteristics)

Obtainable at all leading Hotels, Bars and Stores. Ask for it in your club.
Twentieth Overseas Trading Co., Ltd., Bombay, Kanji Narayan, Nairobi.

BUILD WITH ANT PROOF CEDAR

Highest Quality Lowest Prices

TRIVEDY'S

KENYA SAW MILLS

Canal Road, River Road, Nairobi, Box 324.

Advertising to be successful, must be based on truth.

Therefore we have to be true to state that we give full value for money.

Good Fuel, Reliable Transport of all description. Safe Storage. Shipping to all parts of the world, also Agricultural Manure in any quantity.

The Express Transport COMPANY.

Cartage Contractors to Kenya and Uganda Railways and Harbours.
NAIROBI and MOMBASA.
P. O. Box 433 P. O. Box 39

SETTLEMENT SCHEMES IN SOUTHERN RHODESIA.

(Continued from page 8.)

(4) Upon being notified, of his acceptance, the settler will be required to sign an agreement with the Government as to the conditions of settlement. To proceed to Southern Rhodesia by the steamship and motor transport.

To undergo a period of twelve months' training in agriculture in the Colony. This period is approved by the Government, Department of Lands, Salisbury.

To refund the amount expended upon his behalf should he not remain for a full period of two years in the Colony.

To be supplied with a 1/4 third class steamship passage from Harare to Salisbury, Cape Town or Beira, towards the latter port.

To be granted a grant of 150/- for the first period of twelve months. Upon completion of the agricultural period of training, and provided to possess an agricultural diploma or to take up land and commence farming operations upon one acre.

To be able to make a satisfactory record in the Colony. If he is unable to obtain for reasons from the Government, he may receive the sum of £2,000 as a loan to enable him to continue in the Colony and rail carriers.

One third of the Colony of Southern Rhodesia shall receive a grant of £14 in respect of his wife and 1/10 for each child, to enable them to purchase land and commence farming in the portion of distribution, except in cases where the land is sold with an estate to Southern Rhodesia.

Arrangements have recently been made for the settlement of the Colony of Southern Rhodesia under the terms of the Government of Southern Rhodesia Act, 1929, whereby suitable areas in Great Britain, nominated by established farmers in the Colony, can receive situated property to come out and take up employment on terms to be stated.

To be taken by the Government the cost of bringing the settler to Southern Rhodesia should the latter get results in accordance with the Government of Southern Rhodesia Act, 1929.

To provide suitable accommodation for the settler, his wife and family if necessary. To guarantee at least one year's employment on terms to be stated.

To repay to the Government the cost of bringing the settler to Southern Rhodesia should the latter get results in accordance with the Government of Southern Rhodesia Act, 1929.

DUCHESS M.P. PLEADS FOR NATIVE WOMEN.

(Continued from page 7.)

beginning at which day her treatment would be extended over 41 consecutive days. Four new military centres were in course of construction. There were 80 technical officers on the official staff. The 1929-30 financial year ended on the 31st of March, 1930, and the 15th of April, 1930, the 15th of May, 1930, the 15th of June, 1930, the 15th of July, 1930, the 15th of August, 1930, the 15th of September, 1930, the 15th of October, 1930, the 15th of November, 1930, the 15th of December, 1930, the 15th of January, 1931, the 15th of February, 1931, the 15th of March, 1931, the 15th of April, 1931, the 15th of May, 1931, the 15th of June, 1931, the 15th of July, 1931, the 15th of August, 1931, the 15th of September, 1931, the 15th of October, 1931, the 15th of November, 1931, the 15th of December, 1931, the 15th of January, 1932, the 15th of February, 1932, the 15th of March, 1932, the 15th of April, 1932, the 15th of May, 1932, the 15th of June, 1932, the 15th of July, 1932, the 15th of August, 1932, the 15th of September, 1932, the 15th of October, 1932, the 15th of November, 1932, the 15th of December, 1932, the 15th of January, 1933, the 15th of February, 1933, the 15th of March, 1933, the 15th of April, 1933, the 15th of May, 1933, the 15th of June, 1933, the 15th of July, 1933, the 15th of August, 1933, the 15th of September, 1933, the 15th of October, 1933, the 15th of November, 1933, the 15th of December, 1933, the 15th of January, 1934, the 15th of February, 1934, the 15th of March, 1934, the 15th of April, 1934, the 15th of May, 1934, the 15th of June, 1934, the 15th of July, 1934, the 15th of August, 1934, the 15th of September, 1934, the 15th of October, 1934, the 15th of November, 1934, the 15th of December, 1934, the 15th of January, 1935, the 15th of February, 1935, the 15th of March, 1935, the 15th of April, 1935, the 15th of May, 1935, the 15th of June, 1935, the 15th of July, 1935, the 15th of August, 1935, the 15th of September, 1935, the 15th of October, 1935, the 15th of November, 1935, the 15th of December, 1935, the 15th of January, 1936, the 15th of February, 1936, the 15th of March, 1936, the 15th of April, 1936, the 15th of May, 1936, the 15th of June, 1936, the 15th of July, 1936, the 15th of August, 1936, the 15th of September, 1936, the 15th of October, 1936, the 15th of November, 1936, the 15th of December, 1936, the 15th of January, 1937, the 15th of February, 1937, the 15th of March, 1937, the 15th of April, 1937, the 15th of May, 1937, the 15th of June, 1937, the 15th of July, 1937, the 15th of August, 1937, the 15th of September, 1937, the 15th of October, 1937, the 15th of November, 1937, the 15th of December, 1937, the 15th of January, 1938, the 15th of February, 1938, the 15th of March, 1938, the 15th of April, 1938, the 15th of May, 1938, the 15th of June, 1938, the 15th of July, 1938, the 15th of August, 1938, the 15th of September, 1938, the 15th of October, 1938, the 15th of November, 1938, the 15th of December, 1938, the 15th of January, 1939, the 15th of February, 1939, the 15th of March, 1939, the 15th of April, 1939, the 15th of May, 1939, the 15th of June, 1939, the 15th of July, 1939, the 15th of August, 1939, the 15th of September, 1939, the 15th of October, 1939, the 15th of November, 1939, the 15th of December, 1939, the 15th of January, 1940, the 15th of February, 1940, the 15th of March, 1940, the 15th of April, 1940, the 15th of May, 1940, the 15th of June, 1940, the 15th of July, 1940, the 15th of August, 1940, the 15th of September, 1940, the 15th of October, 1940, the 15th of November, 1940, the 15th of December, 1940, the 15th of January, 1941, the 15th of February, 1941, the 15th of March, 1941, the 15th of April, 1941, the 15th of May, 1941, the 15th of June, 1941, the 15th of July, 1941, the 15th of August, 1941, the 15th of September, 1941, the 15th of October, 1941, the 15th of November, 1941, the 15th of December, 1941, the 15th of January, 1942, the 15th of February, 1942, the 15th of March, 1942, the 15th of April, 1942, the 15th of May, 1942, the 15th of June, 1942, the 15th of July, 1942, the 15th of August, 1942, the 15th of September, 1942, the 15th of October, 1942, the 15th of November, 1942, the 15th of December, 1942, the 15th of January, 1943, the 15th of February, 1943, the 15th of March, 1943, the 15th of April, 1943, the 15th of May, 1943, the 15th of June, 1943, the 15th of July, 1943, the 15th of August, 1943, the 15th of September, 1943, the 15th of October, 1943, the 15th of November, 1943, the 15th of December, 1943, the 15th of January, 1944, the 15th of February, 1944, the 15th of March, 1944, the 15th of April, 1944, the 15th of May, 1944, the 15th of June, 1944, the 15th of July, 1944, the 15th of August, 1944, the 15th of September, 1944, the 15th of October, 1944, the 15th of November, 1944, the 15th of December, 1944, the 15th of January, 1945, the 15th of February, 1945, the 15th of March, 1945, the 15th of April, 1945, the 15th of May, 1945, the 15th of June, 1945, the 15th of July, 1945, the 15th of August, 1945, the 15th of September, 1945, the 15th of October, 1945, the 15th of November, 1945, the 15th of December, 1945, the 15th of January, 1946, the 15th of February, 1946, the 15th of March, 1946, the 15th of April, 1946, the 15th of May, 1946, the 15th of June, 1946, the 15th of July, 1946, the 15th of August, 1946, the 15th of September, 1946, the 15th of October, 1946, the 15th of November, 1946, the 15th of December, 1946, the 15th of January, 1947, the 15th of February, 1947, the 15th of March, 1947, the 15th of April, 1947, the 15th of May, 1947, the 15th of June, 1947, the 15th of July, 1947, the 15th of August, 1947, the 15th of September, 1947, the 15th of October, 1947, the 15th of November, 1947, the 15th of December, 1947, the 15th of January, 1948, the 15th of February, 1948, the 15th of March, 1948, the 15th of April, 1948, the 15th of May, 1948, the 15th of June, 1948, the 15th of July, 1948, the 15th of August, 1948, the 15th of September, 1948, the 15th of October, 1948, the 15th of November, 1948, the 15th of December, 1948, the 15th of January, 1949, the 15th of February, 1949, the 15th of March, 1949, the 15th of April, 1949, the 15th of May, 1949, the 15th of June, 1949, the 15th of July, 1949, the 15th of August, 1949, the 15th of September, 1949, the 15th of October, 1949, the 15th of November, 1949, the 15th of December, 1949, the 15th of January, 1950, the 15th of February, 1950, the 15th of March, 1950, the 15th of April, 1950, the 15th of May, 1950, the 15th of June, 1950, the 15th of July, 1950, the 15th of August, 1950, the 15th of September, 1950, the 15th of October, 1950, the 15th of November, 1950, the 15th of December, 1950, the 15th of January, 1951, the 15th of February, 1951, the 15th of March, 1951, the 15th of April, 1951, the 15th of May, 1951, the 15th of June, 1951, the 15th of July, 1951, the 15th of August, 1951, the 15th of September, 1951, the 15th of October, 1951, the 15th of November, 1951, the 15th of December, 1951, the 15th of January, 1952, the 15th of February, 1952, the 15th of March, 1952, the 15th of April, 1952, the 15th of May, 1952, the 15th of June, 1952, the 15th of July, 1952, the 15th of August, 1952, the 15th of September, 1952, the 15th of October, 1952, the 15th of November, 1952, the 15th of December, 1952, the 15th of January, 1953, the 15th of February, 1953, the 15th of March, 1953, the 15th of April, 1953, the 15th of May, 1953, the 15th of June, 1953, the 15th of July, 1953, the 15th of August, 1953, the 15th of September, 1953, the 15th of October, 1953, the 15th of November, 1953, the 15th of December, 1953, the 15th of January, 1954, the 15th of February, 1954, the 15th of March, 1954, the 15th of April, 1954, the 15th of May, 1954, the 15th of June, 1954, the 15th of July, 1954, the 15th of August, 1954, the 15th of September, 1954, the 15th of October, 1954, the 15th of November, 1954, the 15th of December, 1954, the 15th of January, 1955, the 15th of February, 1955, the 15th of March, 1955, the 15th of April, 1955, the 15th of May, 1955, the 15th of June, 1955, the 15th of July, 1955, the 15th of August, 1955, the 15th of September, 1955, the 15th of October, 1955, the 15th of November, 1955, the 15th of December, 1955, the 15th of January, 1956, the 15th of February, 1956, the 15th of March, 1956, the 15th of April, 1956, the 15th of May, 1956, the 15th of June, 1956, the 15th of July, 1956, the 15th of August, 1956, the 15th of September, 1956, the 15th of October, 1956, the 15th of November, 1956, the 15th of December, 1956, the 15th of January, 1957, the 15th of February, 1957, the 15th of March, 1957, the 15th of April, 1957, the 15th of May, 1957, the 15th of June, 1957, the 15th of July, 1957, the 15th of August, 1957, the 15th of September, 1957, the 15th of October, 1957, the 15th of November, 1957, the 15th of December, 1957, the 15th of January, 1958, the 15th of February, 1958, the 15th of March, 1958, the 15th of April, 1958, the 15th of May, 1958, the 15th of June, 1958, the 15th of July, 1958, the 15th of August, 1958, the 15th of September, 1958, the 15th of October, 1958, the 15th of November, 1958, the 15th of December, 1958, the 15th of January, 1959, the 15th of February, 1959, the 15th of March, 1959, the 15th of April, 1959, the 15th of May, 1959, the 15th of June, 1959, the 15th of July, 1959, the 15th of August, 1959, the 15th of September, 1959, the 15th of October, 1959, the 15th of November, 1959, the 15th of December, 1959, the 15th of January, 1960, the 15th of February, 1960, the 15th of March, 1960, the 15th of April, 1960, the 15th of May, 1960, the 15th of June, 1960, the 15th of July, 1960, the 15th of August, 1960, the 15th of September, 1960, the 15th of October, 1960, the 15th of November, 1960, the 15th of December, 1960, the 15th of January, 1961, the 15th of February, 1961, the 15th of March, 1961, the 15th of April, 1961, the 15th of May, 1961, the 15th of June, 1961, the 15th of July, 1961, the 15th of August, 1961, the 15th of September, 1961, the 15th of October, 1961, the 15th of November, 1961, the 15th of December, 1961, the 15th of January, 1962, the 15th of February, 1962, the 15th of March, 1962, the 15th of April, 1962, the 15th of May, 1962, the 15th of June, 1962, the 15th of July, 1962, the 15th of August, 1962, the 15th of September, 1962, the 15th of October, 1962, the 15th of November, 1962, the 15th of December, 1962, the 15th of January, 1963, the 15th of February, 1963, the 15th of March, 1963, the 15th of April, 1963, the 15th of May, 1963, the 15th of June, 1963, the 15th of July, 1963, the 15th of August, 1963, the 15th of September, 1963, the 15th of October, 1963, the 15th of November, 1963, the 15th of December, 1963, the 15th of January, 1964, the 15th of February, 1964, the 15th of March, 1964, the 15th of April, 1964, the 15th of May, 1964, the 15th of June, 1964, the 15th of July, 1964, the 15th of August, 1964, the 15th of September, 1964, the 15th of October, 1964, the 15th of November, 1964, the 15th of December, 1964, the 15th of January, 1965, the 15th of February, 1965, the 15th of March, 1965, the 15th of April, 1965, the 15th of May, 1965, the 15th of June, 1965, the 15th of July, 1965, the 15th of August, 1965, the 15th of September, 1965, the 15th of October, 1965, the 15th of November, 1965, the 15th of December, 1965, the 15th of January, 1966, the 15th of February, 1966, the 15th of March, 1966, the 15th of April, 1966, the 15th of May, 1966, the 15th of June, 1966, the 15th of July, 1966, the 15th of August, 1966, the 15th of September, 1966, the 15th of October, 1966, the 15th of November, 1966, the 15th of December, 1966, the 15th of January, 1967, the 15th of February, 1967, the 15th of March, 1967, the 15th of April, 1967, the 15th of May, 1967, the 15th of June, 1967, the 15th of July, 1967, the 15th of August, 1967, the 15th of September, 1967, the 15th of October, 1967, the 15th of November, 1967, the 15th of December, 1967, the 15th of January, 1968, the 15th of February, 1968, the 15th of March, 1968, the 15th of April, 1968, the 15th of May, 1968, the 15th of June, 1968, the 15th of July, 1968, the 15th of August, 1968, the 15th of September, 1968, the 15th of October, 1968, the 15th of November, 1968, the 15th of December, 1968, the 15th of January, 1969, the 15th of February, 1969, the 15th of March, 1969, the 15th of April, 1969, the 15th of May, 1969, the 15th of June, 1969, the 15th of July, 1969, the 15th of August, 1969, the 15th of September, 1969, the 15th of October, 1969, the 15th of November, 1969, the 15th of December, 1969, the 15th of January, 1970, the 15th of February, 1970, the 15th of March, 1970, the 15th of April, 1970, the 15th of May, 1970, the 15th of June, 1970, the 15th of July, 1970, the 15th of August, 1970, the 15th of September, 1970, the 15th of October, 1970, the 15th of November, 1970, the 15th of December, 1970, the 15th of January, 1971, the 15th of February, 1971, the 15th of March, 1971, the 15th of April, 1971, the 15th of May, 1971, the 15th of June, 1971, the 15th of July, 1971, the 15th of August, 1971, the 15th of September, 1971, the 15th of October, 1971, the 15th of November, 1971, the 15th of December, 1971, the 15th of January, 1972, the 15th of February, 1972, the 15th of March, 1972, the 15th of April, 1972, the 15th of May, 1972, the 15th of June, 1972, the 15th of July, 1972, the 15th of August, 1972, the 15th of September, 1972, the 15th of October, 1972, the 15th of November, 1972, the 15th of December, 1972, the 15th of January, 1973, the 15th of February, 1973, the 15th of March, 1973, the 15th of April, 1973, the 15th of May, 1973, the 15th of June, 1973, the 15th of July, 1973, the 15th of August, 1973, the 15th of September, 1973, the 15th of October, 1973, the 15th of November, 1973, the 15th of December, 1973, the 15th of January, 1974, the 15th of February, 1974, the 15th of March, 1974, the 15th of April, 1974, the 15th of May, 1974, the 15th of June, 1974, the 15th of July, 1974, the 15th of August, 1974, the 15th of September, 1974, the 15th of October, 1974, the 15th of November, 1974, the 15th of December, 1974, the 15th of January, 1975, the 15th of February, 1975, the 15th of March, 1975, the 15th of April, 1975, the 15th of May, 1975, the 15th of June, 1975, the 15th of July, 1975, the 15th of August, 1975, the 15th of September, 1975, the 15th of October, 1975, the 15th of November, 1975, the 15th of December, 1975, the 15th of January, 1976, the 15th of February, 1976, the 15th of March, 1976, the 15th of April, 1976, the 15th of May, 1976, the 15th of June, 1976, the 15th of July, 1976, the 15th of August, 1976, the 15th of September, 1976, the 15th of October, 1976, the 15th of November, 1976, the 15th of December, 1976, the 15th of January, 1977, the 15th of February, 1977, the 15th of March, 1977, the 15th of April, 1977, the 15th of May, 1977, the 15th of June, 1977, the 15th of July, 1977, the 15th of August, 1977, the 15th of September, 1977, the 15th of October, 1977, the 15th of November, 1977, the 15th of December, 1977, the 15th of January, 1978, the 15th of February, 1978, the 15th of March, 1978, the 15th of April, 1978, the 15th of May, 1978, the 15th of June, 1978, the 15th of July, 1978, the 15th of August, 1978, the 15th of September, 1978, the 15th of October, 1978, the 15th of November, 1978, the 15th of December, 1978, the 15th of January, 1979, the 15th of February, 1979, the 15th of March, 1979, the 15th of April, 1979, the 15th of May, 1979, the 15th of June, 1979, the 15th of July, 1979, the 15th of August, 1979, the 15th of September, 1979, the 15th of October, 1979, the 15th of November, 1979, the 15th of December, 1979, the 15th of January, 1980, the 15th of February, 1980, the 15th of March, 1980, the 15th of April, 1980, the 15th of May, 1980, the 15th of June, 1980, the 15th of July, 1980, the 15th of August, 1980, the 15th of September, 1980, the 15th of October, 1980, the 15th of November, 1980, the 15th of December, 1980, the 15th of January, 1981, the 15th of February, 1981, the 15th of March, 1981, the 15th of April, 1981, the 15th of May, 1981, the 15th of June, 1981, the 15th of July, 1981, the 15th of August, 1981, the 15th of September, 1981, the 15th of October, 1981, the 15th of November, 1981, the 15th of December, 1981, the 15th of January, 1982, the 15th of February, 1982, the 15th of March, 1982, the 15th of April, 1982, the 15th of May, 1982, the 15th of June, 1982, the 15th of July, 1982, the 15th of August, 1982, the 15th of September, 1982, the 15th of October, 1982, the 15th of November, 1982, the 15th of December, 1982, the 15th of January, 1983, the 15th of February, 1983, the 15th of March, 1983, the 15th of April, 1983, the 15th of May, 1983, the 15th of June, 1983, the 15th of July, 1983, the 15th of August, 1983, the 15th of September, 1983, the 15th of October, 1983, the 15th of November, 1983, the 15th of December, 1983, the 15th of January, 1984, the 15th of February, 1984, the 15th of March, 1984, the 15th of April, 1984, the 15th of May, 1984, the 15th of June, 1984, the 15th of July, 1984, the 15th of August, 1984, the 15th of September, 1984, the 15th of October, 1984, the 15th of November, 1984, the 15th of December, 1984, the 15th of January, 1985, the 15th of February, 1985, the 15th of March, 1985, the 15th of April, 1985, the 15th of May, 1985, the 15th of June, 1985, the 15th of July, 1985, the 15th of August, 1985, the 15th of September, 1985, the 15th of October, 1985, the 15th of November, 1985, the 15th of December, 1985, the 15th of January, 1986, the 15th of February, 1986, the 15th of March, 1986, the 15th of April, 1986, the 15th of May, 1986, the 15th of June, 1986, the 15th of July, 1986, the 15th of August, 1986, the 15th of September, 1986, the 15th of October, 1986, the 15th of November, 1986, the 15th of December, 1986, the 15th of January, 1987, the 15th of February, 1987, the 15th of March, 1987, the 15th of April, 1987, the 15th of May, 1987, the 15th of June, 1987, the 15th of July, 1987, the 15th of August, 1987, the 15th of September, 1987, the 15th of October, 1987, the 15th of November, 1987, the 15th of December, 1987, the 15th of January, 1988, the 15th of February, 1988, the 15th of March, 1988, the 15th of April, 1988, the 15th of May, 1988, the 15th of June, 1988, the 15th of July, 1988, the 15th of August, 1988, the 15th of September, 1988, the 15th of October, 1988, the 15th of November, 1988, the 15th of December, 1988, the 15th of January, 1989, the 15th of February, 1989, the 15th of March, 1989, the 15th of April, 1989, the 15th of May, 1989, the 15th of June, 1989, the 15th of July, 1989, the 15th of August, 1989, the 15th of September, 1989, the 15th of October, 1989, the 15th of November, 1989, the 15th of December, 1989, the 15th of January, 1990, the 15th of February, 1990, the 15th of March, 1990, the 15th of April, 1990, the 15th of May, 1990, the 15th of June, 1990, the 15th of July, 1990, the 15th of August, 1990, the 15th of September, 1990, the 15th of October, 1990, the 15th of November, 1990, the 15th of December, 1990, the 15th of January, 1991, the 15th of February, 1991, the 15th of March, 1991, the 15th of April, 1991, the 15th of May, 1991, the 15th of June, 1991, the 15th of July, 1991, the 15th of August, 1991, the 15th of September, 1991, the 15th of October, 1991, the 15th of November, 1991, the

Sportex
 THE CLOTH FOR "CHAMPIONS"
 THE "CHAMPION" OF CLOTHS.
 A Thoroughly Dependable,
 Hard-wearing
TWEED FABRIC
 — for —
 PLUS-FOUR SUITS,
 SPORTS COATS and
 GOLF-JACKETS.
 Patterns on Application.

Ahamed Bros.
 THE HOUSE OF DISTINCTION,
 BAZAAR, P.O. Box 254
 NAIROBI.

**Delicious flavour
 Clean taste**
 make
GIBBS DENTIFRICE Favourite
 Resisting prove it best

While pleasing flavour makes Gibbs Dentifrice
 famous for the sparkling evidence of clean, pearly
 teeth proven in the best of all for all ages — safe,
 sure, economical, handy.
 Gibbs Dentifrice does the work of tooth powder and
 paste without the mess or waste of either.

Your teeth are Ivory Castles—defend them with
Gibbs Dentifrice

SOLE DISTRIBUTORS
THE CHEMIST STOCKS LTD.
 100, NAIROBI

START
 The New Year with one
Good Resolution.

BUY YOUR
Bread, Biscuits, Groceries and Provisions
 From Nairobi's Leading Store
ELLIOT'S

P.O. Box 175. Phone 80.

Cameron & Co.
ANNUAL SALE
 1st to 15th
 Genuine Reductions.

CORRESPONDENCE

The Editor does not accept responsibility for the views expressed by his correspondents in these columns, but will care to forward any letter, not necessarily for publication but on guarantee of good faith, promptly if also intended to his personal consideration.

Unofficial Tariffs Conference
THE COMMISSIONER'S POINT OF VIEW.

To the Editor, "E.A. Standard."
 (Unofficial Tariffs Conference has made its deliberations and it would seem also a great pity that something was not said in the obvious bearing of present duties on the very high side of things.
 It would have looked better had the conference held by the Commission been placed before the Commission by the views of the conference reported to them in a form containing those of varied interests. This is one of the most important questions for the Colony and I hope it will not be left without a full expression of public opinion.
 Possibly the Government's conference will give adequate thought to the commissioners point of view.
 Yours etc.
 CONSUMER.

Nairobi, January 9, 1930.
DORTO-SABUK BRANCH RAILWAY

To the Editor, "E.A. Standard."
 Sir,—With reference to the report in today's issue of the public meeting held in connection with the proposed French Line to Dnyra Nakuru, there is one point in it otherwise correct which I beg to correct.
 A speaker is reported as expressing the opinion that the 120 or 150 or 200 or 300 or 400 or 500 or 600 or 700 or 800 or 900 or 1,000 or 1,100 or 1,200 or 1,300 or 1,400 or 1,500 or 1,600 or 1,700 or 1,800 or 1,900 or 2,000 or 2,100 or 2,200 or 2,300 or 2,400 or 2,500 or 2,600 or 2,700 or 2,800 or 2,900 or 3,000 or 3,100 or 3,200 or 3,300 or 3,400 or 3,500 or 3,600 or 3,700 or 3,800 or 3,900 or 4,000 or 4,100 or 4,200 or 4,300 or 4,400 or 4,500 or 4,600 or 4,700 or 4,800 or 4,900 or 5,000 or 5,100 or 5,200 or 5,300 or 5,400 or 5,500 or 5,600 or 5,700 or 5,800 or 5,900 or 6,000 or 6,100 or 6,200 or 6,300 or 6,400 or 6,500 or 6,600 or 6,700 or 6,800 or 6,900 or 7,000 or 7,100 or 7,200 or 7,300 or 7,400 or 7,500 or 7,600 or 7,700 or 7,800 or 7,900 or 8,000 or 8,100 or 8,200 or 8,300 or 8,400 or 8,500 or 8,600 or 8,700 or 8,800 or 8,900 or 9,000 or 9,100 or 9,200 or 9,300 or 9,400 or 9,500 or 9,600 or 9,700 or 9,800 or 9,900 or 10,000 or 10,100 or 10,200 or 10,300 or 10,400 or 10,500 or 10,600 or 10,700 or 10,800 or 10,900 or 11,000 or 11,100 or 11,200 or 11,300 or 11,400 or 11,500 or 11,600 or 11,700 or 11,800 or 11,900 or 12,000 or 12,100 or 12,200 or 12,300 or 12,400 or 12,500 or 12,600 or 12,700 or 12,800 or 12,900 or 13,000 or 13,100 or 13,200 or 13,300 or 13,400 or 13,500 or 13,600 or 13,700 or 13,800 or 13,900 or 14,000 or 14,100 or 14,200 or 14,300 or 14,400 or 14,500 or 14,600 or 14,700 or 14,800 or 14,900 or 15,000 or 15,100 or 15,200 or 15,300 or 15,400 or 15,500 or 15,600 or 15,700 or 15,800 or 15,900 or 16,000 or 16,100 or 16,200 or 16,300 or 16,400 or 16,500 or 16,600 or 16,700 or 16,800 or 16,900 or 17,000 or 17,100 or 17,200 or 17,300 or 17,400 or 17,500 or 17,600 or 17,700 or 17,800 or 17,900 or 18,000 or 18,100 or 18,200 or 18,300 or 18,400 or 18,500 or 18,600 or 18,700 or 18,800 or 18,900 or 19,000 or 19,100 or 19,200 or 19,300 or 19,400 or 19,500 or 19,600 or 19,700 or 19,800 or 19,900 or 20,000 or 20,100 or 20,200 or 20,300 or 20,400 or 20,500 or 20,600 or 20,700 or 20,800 or 20,900 or 21,000 or 21,100 or 21,200 or 21,300 or 21,400 or 21,500 or 21,600 or 21,700 or 21,800 or 21,900 or 22,000 or 22,100 or 22,200 or 22,300 or 22,400 or 22,500 or 22,600 or 22,700 or 22,800 or 22,900 or 23,000 or 23,100 or 23,200 or 23,300 or 23,400 or 23,500 or 23,600 or 23,700 or 23,800 or 23,900 or 24,000 or 24,100 or 24,200 or 24,300 or 24,400 or 24,500 or 24,600 or 24,700 or 24,800 or 24,900 or 25,000 or 25,100 or 25,200 or 25,300 or 25,400 or 25,500 or 25,600 or 25,700 or 25,800 or 25,900 or 26,000 or 26,100 or 26,200 or 26,300 or 26,400 or 26,500 or 26,600 or 26,700 or 26,800 or 26,900 or 27,000 or 27,100 or 27,200 or 27,300 or 27,400 or 27,500 or 27,600 or 27,700 or 27,800 or 27,900 or 28,000 or 28,100 or 28,200 or 28,300 or 28,400 or 28,500 or 28,600 or 28,700 or 28,800 or 28,900 or 29,000 or 29,100 or 29,200 or 29,300 or 29,400 or 29,500 or 29,600 or 29,700 or 29,800 or 29,900 or 30,000 or 30,100 or 30,200 or 30,300 or 30,400 or 30,500 or 30,600 or 30,700 or 30,800 or 30,900 or 31,000 or 31,100 or 31,200 or 31,300 or 31,400 or 31,500 or 31,600 or 31,700 or 31,800 or 31,900 or 32,000 or 32,100 or 32,200 or 32,300 or 32,400 or 32,500 or 32,600 or 32,700 or 32,800 or 32,900 or 33,000 or 33,100 or 33,200 or 33,300 or 33,400 or 33,500 or 33,600 or 33,700 or 33,800 or 33,900 or 34,000 or 34,100 or 34,200 or 34,300 or 34,400 or 34,500 or 34,600 or 34,700 or 34,800 or 34,900 or 35,000 or 35,100 or 35,200 or 35,300 or 35,400 or 35,500 or 35,600 or 35,700 or 35,800 or 35,900 or 36,000 or 36,100 or 36,200 or 36,300 or 36,400 or 36,500 or 36,600 or 36,700 or 36,800 or 36,900 or 37,000 or 37,100 or 37,200 or 37,300 or 37,400 or 37,500 or 37,600 or 37,700 or 37,800 or 37,900 or 38,000 or 38,100 or 38,200 or 38,300 or 38,400 or 38,500 or 38,600 or 38,700 or 38,800 or 38,900 or 39,000 or 39,100 or 39,200 or 39,300 or 39,400 or 39,500 or 39,600 or 39,700 or 39,800 or 39,900 or 40,000 or 40,100 or 40,200 or 40,300 or 40,400 or 40,500 or 40,600 or 40,700 or 40,800 or 40,900 or 41,000 or 41,100 or 41,200 or 41,300 or 41,400 or 41,500 or 41,600 or 41,700 or 41,800 or 41,900 or 42,000 or 42,100 or 42,200 or 42,300 or 42,400 or 42,500 or 42,600 or 42,700 or 42,800 or 42,900 or 43,000 or 43,100 or 43,200 or 43,300 or 43,400 or 43,500 or 43,600 or 43,700 or 43,800 or 43,900 or 44,000 or 44,100 or 44,200 or 44,300 or 44,400 or 44,500 or 44,600 or 44,700 or 44,800 or 44,900 or 45,000 or 45,100 or 45,200 or 45,300 or 45,400 or 45,500 or 45,600 or 45,700 or 45,800 or 45,900 or 46,000 or 46,100 or 46,200 or 46,300 or 46,400 or 46,500 or 46,600 or 46,700 or 46,800 or 46,900 or 47,000 or 47,100 or 47,200 or 47,300 or 47,400 or 47,500 or 47,600 or 47,700 or 47,800 or 47,900 or 48,000 or 48,100 or 48,200 or 48,300 or 48,400 or 48,500 or 48,600 or 48,700 or 48,800 or 48,900 or 49,000 or 49,100 or 49,200 or 49,300 or 49,400 or 49,500 or 49,600 or 49,700 or 49,800 or 49,900 or 50,000 or 50,100 or 50,200 or 50,300 or 50,400 or 50,500 or 50,600 or 50,700 or 50,800 or 50,900 or 51,000 or 51,100 or 51,200 or 51,300 or 51,400 or 51,500 or 51,600 or 51,700 or 51,800 or 51,900 or 52,000 or 52,100 or 52,200 or 52,300 or 52,400 or 52,500 or 52,600 or 52,700 or 52,800 or 52,900 or 53,000 or 53,100 or 53,200 or 53,300 or 53,400 or 53,500 or 53,600 or 53,700 or 53,800 or 53,900 or 54,000 or 54,100 or 54,200 or 54,300 or 54,400 or 54,500 or 54,600 or 54,700 or 54,800 or 54,900 or 55,000 or 55,100 or 55,200 or 55,300 or 55,400 or 55,500 or 55,600 or 55,700 or 55,800 or 55,900 or 56,000 or 56,100 or 56,200 or 56,300 or 56,400 or 56,500 or 56,600 or 56,700 or 56,800 or 56,900 or 57,000 or 57,100 or 57,200 or 57,300 or 57,400 or 57,500 or 57,600 or 57,700 or 57,800 or 57,900 or 58,000 or 58,100 or 58,200 or 58,300 or 58,400 or 58,500 or 58,600 or 58,700 or 58,800 or 58,900 or 59,000 or 59,100 or 59,200 or 59,300 or 59,400 or 59,500 or 59,600 or 59,700 or 59,800 or 59,900 or 60,000 or 60,100 or 60,200 or 60,300 or 60,400 or 60,500 or 60,600 or 60,700 or 60,800 or 60,900 or 61,000 or 61,100 or 61,200 or 61,300 or 61,400 or 61,500 or 61,600 or 61,700 or 61,800 or 61,900 or 62,000 or 62,100 or 62,200 or 62,300 or 62,400 or 62,500 or 62,600 or 62,700 or 62,800 or 62,900 or 63,000 or 63,100 or 63,200 or 63,300 or 63,400 or 63,500 or 63,600 or 63,700 or 63,800 or 63,900 or 64,000 or 64,100 or 64,200 or 64,300 or 64,400 or 64,500 or 64,600 or 64,700 or 64,800 or 64,900 or 65,000 or 65,100 or 65,200 or 65,300 or 65,400 or 65,500 or 65,600 or 65,700 or 65,800 or 65,900 or 66,000 or 66,100 or 66,200 or 66,300 or 66,400 or 66,500 or 66,600 or 66,700 or 66,800 or 66,900 or 67,000 or 67,100 or 67,200 or 67,300 or 67,400 or 67,500 or 67,600 or 67,700 or 67,800 or 67,900 or 68,000 or 68,100 or 68,200 or 68,300 or 68,400 or 68,500 or 68,600 or 68,700 or 68,800 or 68,900 or 69,000 or 69,100 or 69,200 or 69,300 or 69,400 or 69,500 or 69,600 or 69,700 or 69,800 or 69,900 or 70,000 or 70,100 or 70,200 or 70,300 or 70,400 or 70,500 or 70,600 or 70,700 or 70,800 or 70,900 or 71,000 or 71,100 or 71,200 or 71,300 or 71,400 or 71,500 or 71,600 or 71,700 or 71,800 or 71,900 or 72,000 or 72,100 or 72,200 or 72,300 or 72,400 or 72,500 or 72,600 or 72,700 or 72,800 or 72,900 or 73,000 or 73,100 or 73,200 or 73,300 or 73,400 or 73,500 or 73,600 or 73,700 or 73,800 or 73,900 or 74,000 or 74,100 or 74,200 or 74,300 or 74,400 or 74,500 or 74,600 or 74,700 or 74,800 or 74,900 or 75,000 or 75,100 or 75,200 or 75,300 or 75,400 or 75,500 or 75,600 or 75,700 or 75,800 or 75,900 or 76,000 or 76,100 or 76,200 or 76,300 or 76,400 or 76,500 or 76,600 or 76,700 or 76,800 or 76,900 or 77,000 or 77,100 or 77,200 or 77,300 or 77,400 or 77,500 or 77,600 or 77,700 or 77,800 or 77,900 or 78,000 or 78,100 or 78,200 or 78,300 or 78,400 or 78,500 or 78,600 or 78,700 or 78,800 or 78,900 or 79,000 or 79,100 or 79,200 or 79,300 or 79,400 or 79,500 or 79,600 or 79,700 or 79,800 or 79,900 or 80,000 or 80,100 or 80,200 or 80,300 or 80,400 or 80,500 or 80,600 or 80,700 or 80,800 or 80,900 or 81,000 or 81,100 or 81,200 or 81,300 or 81,400 or 81,500 or 81,600 or 81,700 or 81,800 or 81,900 or 82,000 or 82,100 or 82,200 or 82,300 or 82,400 or 82,500 or 82,600 or 82,700 or 82,800 or 82,900 or 83,000 or 83,100 or 83,200 or 83,300 or 83,400 or 83,500 or 83,600 or 83,700 or 83,800 or 83,900 or 84,000 or 84,100 or 84,200 or 84,300 or 84,400 or 84,500 or 84,600 or 84,700 or 84,800 or 84,900 or 85,000 or 85,100 or 85,200 or 85,300 or 85,400 or 85,500 or 85,600 or 85,700 or 85,800 or 85,900 or 86,000 or 86,100 or 86,200 or 86,300 or 86,400 or 86,500 or 86,600 or 86,700 or 86,800 or 86,900 or 87,000 or 87,100 or 87,200 or 87,300 or 87,400 or 87,500 or 87,600 or 87,700 or 87,800 or 87,900 or 88,000 or 88,100 or 88,200 or 88,300 or 88,400 or 88,500 or 88,600 or 88,700 or 88,800 or 88,900 or 89,000 or 89,100 or 89,200 or 89,300 or 89,400 or 89,500 or 89,600 or 89,700 or 89,800 or 89,900 or 90,000 or 90,100 or 90,200 or 90,300 or 90,400 or 90,500 or 90,600 or 90,700 or 90,800 or 90,900 or 91,000 or 91,100 or 91,200 or 91,300 or 91,400 or 91,500 or 91,600 or 91,700 or 91,800 or 91,900 or 92,000 or 92,100 or 92,200 or 92,300 or 92,400 or 92,500 or 92,600 or 92,700 or 92,800 or 92,900 or 93,000 or 93,100 or 93,200 or 93,300 or 93,400 or 93,500 or 93,600 or 93,700 or 93,800 or 93,900 or 94,000 or 94,100 or 94,200 or 94,300 or 94,400 or 94,500 or 94,600 or 94,700 or 94,800 or 94,900 or 95,000 or 95,100 or 95,200 or 95,300 or 95,400 or 95,500 or 95,600 or 95,700 or 95,800 or 95,900 or 96,000 or 96,100 or 96,200 or 96,300 or 96,400 or 96,500 or 96,600 or 96,700 or 96,800 or 96,900 or 97,000 or 97,100 or 97,200 or 97,300 or 97,400 or 97,500 or 97,600 or 97,700 or 97,800 or 97,900 or 98,000 or 98,100 or 98,200 or 98,300 or 98,400 or 98,500 or 98,600 or 98,700 or 98,800 or 98,900 or 99,000 or 99,100 or 99,200 or 99,300 or 99,400 or 99,500 or 99,600 or 99,700 or 99,800 or 99,900 or 100,000 or 100,100 or 100,200 or 100,300 or 100,400 or 100,500 or 100,600 or 100,700 or 100,800 or 100,900 or 101,000 or 101,100 or 101,200 or 101,300 or 101,400 or 101,500 or 101,600 or 101,700 or 101,800 or 101,900 or 102,000 or 102,100 or 102,200 or 102,300 or 102,400 or 102,500 or 102,600 or 102,700 or 102,800 or 102,900 or 103,000 or 103,100 or 103,200 or 103,300 or 103,400 or 103,500 or 103,600 or 103,700 or 103,800 or 103,900 or 104,000 or 104,100 or 104,200 or 104,300 or 104,400 or 104,500 or 104,600 or 104,700 or 104,800 or 104,900 or 105,000 or 105,100 or 105,200 or 105,300 or 105,400 or 105,500 or 105,600 or 105,700 or 105,800 or 105,900 or 106,000 or 106,100 or 106,200 or 106,300 or 106,400 or 106,500 or 106,600 or 106,700 or 106,800 or 106,900 or 107,000 or 107,100 or 107,200 or 107,300 or 107,400 or 107,500 or 107,600 or 107,700 or 107,800 or 107,900 or 108,000 or 108,100 or 108,200 or 108,300 or 108,400 or 108,500 or 108,600 or 108,700 or 108,800 or 108,900 or 109,000 or 109,100 or 109,200 or 109,300 or 109,400 or 109,500 or 109,600 or 109,700 or 109,800 or 109,900 or 110,000 or 110,100 or 110,200 or 110,300 or 110,400 or 110,500 or 110,600 or 110,700 or 110,800 or 110,900 or 111,000 or 111,100 or 111,200 or 111,300 or 111,400 or 111,500 or 111,600 or 111,700 or 111,800 or 111,900 or 112,000 or 112,100 or 112,200 or 112,300 or 112,400 or 112,500 or 112,600 or 112,700 or 112,800 or 112,900 or 113,000 or 113,100 or 113,200 or 113,300 or 113,400 or 113,500 or 113,600 or 113,700 or 113,800 or 113,900 or 114,000 or 114,100 or 114,200 or 114,300 or 114,400 or 114,500 or 114,600 or 114,700 or 114,800 or 114,900 or 115,000 or 115,100 or 115,200 or 115,300 or 115,400 or 115,500 or 115,600 or 115,700 or 115,800 or 115,900 or 116,000 or 116,100 or 116,200 or 116,300 or 116,400 or 116,500 or 116,600 or 116,700 or 116,800 or 116,900 or 117,000 or 117,100 or 117,200 or 117,300 or 117,400 or 117,500 or 117,600 or 117,700 or 117,800 or 117,900 or 118,000 or 118,100 or 118,200 or 118,300 or 118,400 or 118,500 or 118,600 or 118,700 or 118,800 or 118,900 or 119,000 or 119,100 or 119,200 or 119,300 or 119,400 or 119,500 or 119,600 or 119,700 or 119,800 or 119,900 or 120,000 or 120,100 or 120,200 or 120,300 or 120,400 or 120,500 or 120,600 or 120,700 or 120,800 or 120,900 or 121,000 or 121,100 or 121,200 or 121,300 or 121,400 or 121,500 or 121,600 or 121,700 or 121,800 or 121,900 or 122,000 or 122,100 or 122,200 or 122,300 or 122,400 or 122,500 or 122,600 or 122,700 or 122,800 or 122,900 or 123,000 or 123,100 or 123,200 or 123,300 or 123,400 or 123,500 or 123,600 or 123,700 or 123,800 or 123,900 or 124,000 or 124,100 or 124,200 or 124,300 or 124,400 or 124,500 or 124,600 or 124,700 or 124,800 or 124,900 or 125,000 or 125,100 or 125,200 or 125,300 or 125,400 or 125,500 or 125,600 or 125,700 or 125,800 or 125,900 or 126,000 or 126,100 or 126,200 or 126,300 or 126,400 or 126,500 or 126,600 or 126,700 or 126,800 or 126,900 or 127,000 or 127,100 or 127,200 or 127,300 or 127,400 or 127,500 or 127,600 or 127,700 or 127,800 or 127,900 or 128,000 or 128,100 or 128,200 or 128,300 or 128,400 or 128,500 or 128,600 or 128,700 or 128,800 or 128,900 or 129,000 or 129,100 or 129,200 or 129,300 or 129,400 or 129,500 or 129,600 or 129,700 or 129,800 or 129,900 or 130,000 or 130,100 or 130,200 or 130,300 or 130,400 or 130,500 or 130,600 or 130,700 or 130,800 or 130,900 or 131,000 or 131,100 or 131,200 or 131,300 or 131,400 or 131,500 or 131,600 or 131,700 or 131,800 or 131,900 or 132,000 or 132,100 or 132,200 or 132,300 or 132,400 or 132,500 or 132,600 or 132,700 or 132,800 or 132,900 or 133,000 or 133,100 or 133,200 or 133,300 or 133,400 or 133

MARTIN'S PILLS
ADIOL & STEEL
 Sure and certain for all Female complaints. Everybody should keep a box in the house.
 Chemistry and Science used to conquer the world, these conquer the world.
 Proprietor: MARTIN, Chemist, Johannesburg, South Africa.

Expert Opinion
 There is no better judge of whisky than the dweller in the East. He knows the value of skilled blending, appreciates the charm of flavor, and finds "LONG JOHN" Scotch Whisky characteristically pure and mature.

"LONG JOHN" SCOTCH WHISKY

SAVOY BAR
 Newly Built with LOUNGE and BRIDGE ROOM. COUNTER SNACKS and MUSIC from 5 p.m. to 11 p.m. Callendar Road, The Hill.

Multiplex BELTING

Transmits the World's Power With High Efficiency

Agents and Stockists—SMITHS, MACKENZIE & COMPANY, P.O. Box 390, NAIROBI. Phone 395

MARTIN'S PILLS
 ADIOL & STEEL
 Sure and certain for all Female complaints. Everybody should keep a box in the house.
 Chemistry and Science used to conquer the world, these conquer the world.
 Proprietor: MARTIN, Chemist, Johannesburg, South Africa.

BUY THE VICTORIA NYANZA SODA COMPANIES No. 1 WHITE CRYSTAL SODA
 at the following prices from the undersigned agents:
 100 Pouches (56 lbs.) 2/11
 250 Pouches (140 lbs.) 5/6

Agents:
 B. James, Ltd., Nairobi
 R. B. Dimeson, Nairobi
 "Horse"
 Mr. B. Ellis & Co., Ltd., Blackmore and Brown
 Brisbane House Trading Co., Ltd., Wilmont, Limited
 Colonial General Stores
 Nelsons, Zamboni & Co., The Parklands House
 British Exports
 Hongkong Trading Co., Hongkong, Limited,
 Messrs. Douglas, Hays, Wilson, Nairobi

P. Stewart, C.S., S.E.D., PAINTER and DECORATOR
 Hastings Street, P.O. Box 172, NAIROBI

SPORTS and PASTIMES.

CARNERA AGAIN IN THE RING.

Decisive Defeat of German Boxer.

STANDARD CORRESPONDENT, London, December 10.
 There has been no smoking today as it is difficult to know what to mention as the most interesting and most important. The weekly dead season of boxing, the two or three weeks before and after the Christmas holidays, has for this year become the boom season. There have been the "Sporting Life" belt and £250 competition for lightweight, and the Anglo-Danish trophy match as outstanding events in a whole week of boxing at the Stadium; and also—and this week acts there as well—two big events in London, the "The Ring" Hat on Tuesday and at Olympia on Wednesday. This does not end the interest since New Year's night will give a new impetus to the sport, with another competition for a "Sporting Life" belt—this one for heavy weight—and further important events are projected for an early date.

Although not quite so popular as his fight in Paris, Carnera was the star turn at the Albert Hall meeting on Tuesday. Under the auspices of Mr. Jeff Dickson the attention did not bear comparison with the bumper house of the previous show, but the hall was comfortably full. Up till last Tuesday night Carnera's chief achievement was unnoted, but he achieved something better than a victory on Tuesday by completely enclosing Franz Dierzer, the German heavy-weight champion, in the course of his rounds, and by outboxing the unbroken of his circle by the admirable restraint with which he performed his part in a very one-sided encounter.

Taking No Chances.
 The authorities were taking no chance of a disaster as occurred in the last fight with Strickland in Paris and the Albert Hall was fitted with ropes and all the necessary

before, so that neither competitor could say he missed the belt.

Franz Dierzer's confidence in his own Carnera was worthy of reputation because almost invariably after last night's contest he had declared that he can have had none at all. Dierzer's victory over Carnera in two rounds at Leipzig last summer need not be stressed. It was without much doubt the fight of the fall; and therein lay a certain amount of security so to how the return meeting would develop.

Physically of course, the German's 6ft. and 145lb. made him a poor match for a real giant like Carnera, but it also had to be recognized that Dierzer had emerged with credit from contests with men like Phil Scott, Max Schmalzger and Knute Hansen, whereas, but for his phenomenal strength, Carnera could have roomed Albert Hall ring and in that of the Valdepeñas Hotel.

Dierzer's Attack Fails.
 Dierzer, almost as confidently as Strickland, jumped in to fight at the sound of the first bell, and his attack consisted of nothing more than the ordinary average heavy-weight boxer, and Carnera, by standing up well and hitting back the straighter, easily beat him off. Dierzer's major feat was lucky when he was prodded of distance with the left foot, as close quarters, he showed no knowledge of fighting a mistake and other intelligent tactics and soon began to beat the weight of Carnera's short-right jabs with other hand. Nor did the German's agility on his feet prevent Carnera from landing several devastating right swings, one of which drove Dierzer into the ropes.

Dierzer fought his way back to the centre of the ring by means of a series of swings, and followed on this locally applauded effort by coming heavily to the body, but what must have been most men had no effect upon Carnera, who bowed back as the looks and the coaches had said him to do, and accordingly won the count on points was clearly to Carnera's advantage of foot and readiness to take a chance enabled him to reach out and enclose Carnera's body but his jaw as well in the second round, but, without exaggerated calm, Carnera measured his man well, and

and then stepped in deliberately and had his short-arm blow to the head.

Carnera Best Well.
 Fortunately for his opponent there was more out than points in most of those blows, but the fact remained that Carnera was boxing well and coolly and quietly that can be said with confidence for the tempo to come. When the bell rang Carnera was content with a punch that was well on the return meeting was developed. In fact, the two men quitted and shook hands.

Carnera opened the third meeting as if he really meant to end the fight in the next few punches, but, having felt a few more body blows, he retreated once more to his ponderous but effective straight left, and when Dierzer fought back, contented himself with a series of methodical cuts to the head with either hand. Dierzer's coverage refused the effect of these blows, but already he looked, if he did not feel, a beaten man.

The End.
 As further evidence of his good fortune in victory, Carnera putted Dierzer playfully on the head with the latter applied and fell in attempting to land one of his swings. For the rest, Dierzer concentrated more than ever upon the body, and Carnera more than ever was content to stand up and shoot out the straight left. That is, until the fifth round.

Then Carnera, though still boxing well within himself, found Dierzer's blows to the body, first of all cut across him, and then staggered him with two heavy rights to the head. Dierzer was cornered again and battered badly in the sixth round, and when he made one more charge into the open and punched, the referee very wisely intervened and stopped the fighting. As a result of this fight, most experts are of the opinion that Carnera is the coming champion of the world.

Another Giant.
 The preliminary contests were all interesting, public attention being most control on Jose Santa—another giant—who had a 10 round contest with Jack Stanley, most experts are of the opinion no doubt enabled him to earn a day's after a very hard fight.

SOUTH AFRICAN PRODUCTS ARE ALL Empire Products BUY THEM

For full particulars apply to—
 THE SOUTH AFRICA OFFICE, Memorial Hall, P.O. Box 624, NAIROBI.

Free Hairdressing.

Bring to the attention of our opening month, we were unable to introduce our opening offer of a Free Empire Permanent Wave to every Twelfth lady who paid a Service Cheque of 2/6. From the 10th to the 15th of January our opening offer will be in operation, and we advise you to phone your appointment now to—

"ROMANO'S"
 Phone 664. NAIROBI HOUSE, P.O. Box 934, GOVERNMENT ROAD.

Chiropractic Spinal Manipulation

the new universally-recognized Druggan System of Healing has restored thousands of sufferers to Health. By removing the pressure on the nerves, which is causing your Headache, Neuritis, Sciatica, Rheumatism, Lame and Kidney Trouble, etc., it will bring you into renewed Life, Vigour and Energy.

Miss E. GOOD, D.C., Spinal Nerve Specialist, who has had very wide and successful experience, is now practicing at Tarr's Hotel, (Room 21) Nairobi. Hours 9.30-11, 2-4; Saturdays 9.30-11, and by appointment. Telephone 663.

THE NEW ROAD

IT GETS YOU THERE IT GETS YOU BACK.

Quickly, Comfortably, Economically.

60 Miles Per Hour 30 Miles Per Gallon

Also The New 30 cwt. Truck Chassis
 40 Brake Horse Power at 2-200 Revs per Minute
 Fitted with 32 x 6 Oversize Tyres, Prices From £178-15-00.

NAIROBI MOTORS.

Tel. 317. 6th AVENUE. Box 460.

