

You Cannot HAVE TRIED THE NEW AND BETTER CIGARETTE, BECAUSE

ABDULLA "VIRGINIA LEAF"

Have Only Just Arrived.

Plain or Cork-Tipped in flat tins of quality.

Sole Agents - Dalgety & Company Ltd. NAIROBI. ELDORET.



The appearance of the Kenya Horticultural Society in No. 20 a year and should be sent to the Hon. Secretary, P.O. Box 4, Nairobi. All correspondence for the Horticultural page should be addressed to the Horticultural Editor, P.O. Box 27, Nairobi.

Black Spot on Rose Trees.

The following article has been taken from "The Rose Annual"...

The disease caused by Black Spot has not only become a serious obstacle to Rose growing...

This treatment, I admit might appear to be over elaborate and rather over theoretical than practical...

(1) The early collection and burning of all diseased growth...

(2) The removal of all signs of the previous season's growth...

(3) In early winter (July and August in Kenya) the removal from affected beds...

(4) Two sprayings in mid-winter (August to Kenya) at the interval of a fortnight...

(5) In early attacked gardens the removal of such young wood as can be safely cut away...

These measures are devised for the purpose of killing and removing the source of the living fungus...

The fungus which is not in the plants...

With every season in carrying out these measures it is quite important to kill or remove every trace of fungus...

A steady state of preparation of the fungicide either in the form of a powder or as a paste known as "Bordeaux" can be obtained...

QUESTIONS AND ANSWERS

One of our readers living in Nairobi has written to ask why Mr. Humphreys can not do my work...

Dear Mr. Editor—Replying to your letter of the 18th inst. on the subject of "Pumpkins"...

One of our readers living in Nairobi has written to ask why Mr. Humphreys can not do my work...

Dear Mr. Editor—Replying to your letter of the 18th inst. on the subject of "Pumpkins"...

One of our readers living in Nairobi has written to ask why Mr. Humphreys can not do my work...

Advertisement for Donald Fisher's "Ye Monks" Scotch Whisky, featuring a portrait of a man and text describing the product's quality and availability.

Advertisement for Steel Bolts & Nuts and Cotter Pins, listing various sizes and agents: Alhaji Shariff & Sons, Nairobi.

Advertisement for B. Florens French Hair Dresser, Permanent Waving and Tinting, located at 98-101, York Building, Nairobi.

Advertisement for Barclays Bank (Dominion, Colonial and Overseas), listing branches and financial details.

Advertisement for The National Bank of South Africa and The Anglo-Egyptian Bank Ltd., listing branches and services.

Large advertisement for Roneo duplicators, featuring images of the machines and text describing their features and prices.

Advertisement for Nooralli Dhanji Glassware and P. Stewart, Painter and Decorator.

Advertisement for P. Stewart, Painter and Decorator, listing services and contact information.

Advertisement for P. Stewart, Painter and Decorator, listing services and contact information.

Advertisement for A. J. Ely and Co. Ltd. Shamba Chemists, Copper Rain Gauge.

Advertisement for ESSJAY, Limited, Bolus House, Government Road, Nairobi.

Advertisement for Financial and Property Agents, listing services and contact information.

Advertisement for Correspondents in all the Principal Cities and Towns of the World.

Advertisement for CELOTEX, an economy in building insulation, listing five reasons for its use.

Advertisement for CELOTEX, an economy in building insulation, listing five reasons for its use.

Advertisement for Anglo Baltic Timber Co., Limited, listing products and contact information.

Advertisement for Kenya Loan & Discount Co. Ltd., listing services and contact information.

Advertisement for Financial Agents, listing services and contact information.

MOTOR NEWS

From Road & Showroom

THE HIRE PURCHASE SYSTEM

Growth of the Movement.

UNITED STATES SURVEY.

Increasing spread of the use of personal credit in the purchase of automobiles is indicated by figures from a survey made by the United States Department of Commerce, and quoted in a statement just released by the General Motors Export Company.

"The survey shows that compared with 52 per cent. in the United States where the plan of recognizing the purchaser's personal integrity by financing intelligent, courteous credit service was inaugurated, more than 80 per cent. of the automobiles marketed in Latin American countries now are handled by this method," the statement reads.

"The automobile is becoming so much a place of modern machinery in business and social life throughout the world that the application of a business-like financing plan to its purchase is coming to be universally recognized, and only rarely but entirely dispensed with."

"The survey shows that of the American automobiles exported to Caribbean countries in 1926, 95 per cent. were sold on deferred payments.

"The percentage rose highest in Ecuador, where it is nearly 100. Even the weather-chosen through preference may their motor cars with the use of credit although amply able to pay cash.

"Percentage of credit shown by the survey are: Mexico and Costa Rica, 90; Dominican Republic, 88; Guatemala, 86 to 85; Cuba, 80 for passenger cars and 80 for commercial use; Peru, 80; Argentina, 79; Colombia, 78; Brazil, 60; Ecuador, and Venezuela, 50; Peru, 85; Chile, 80 for passenger and 70 for commercial use and Argentina, largest Latin-American car market, 60 for passenger cars, 50 for trucks and 50 for buses and taxicabs.

"The latest estimate for Europe is 61 per cent. for the year 1927."

ROAD TRANSPORT IN AFRICA.

Opening up the Country.

AN AMERICAN'S RECONSTRUCTION

When J. L. Clark, Assistant Director of the American Museum of Natural History, concluded his work as for the Central Africa Expedition to East Africa last year, he decided to undertake a secondary expedition of his own. The territory he wanted to cover was from Nairobi, to the east-western of the Nile in Uganda, particularly that lying between Lake Victoria Nyanza and the beginning of river navigation at the Nile.

The trip had unusual significance because Clark is the first white man to have crossed the character of the territory had changed so radically since he first visited British East Africa in 1900.

In the twenty years that intervened, the great roadless area of once known has been opened to civilization with the automobile as the wedge. Roads, their good and fair roads stretched before him for the greater portion of the route, it was possible on his trip to journey in comfort by motor car. Mr. Clark shows a Bush which had performed extremely satisfactorily throughout the entire trip.

Reminiscing about his earlier visit, Mr. Clark says that the contrast in the territory amazed him. "In 1900, the railroad had been built from Mombasa to Nairobi, it is now, and a little way beyond, but aside from that route of travel there were few in the whole land. Roads led to the coast, but they did not go far, and only the native trails led farther across the plains and through the jungle."

"In those days, the person who wished to see British East Africa had to go with a slowly moving safari that made ten or fifteen miles a day. The automobile had not entered the wilds and automobile roads were unheard of."

"But all this is changed. Where in 1900, not an automobile road existed in all of British East Africa, now there is a network of such roads over which one may drive at almost the same speed as

that in the United States. Bridges cross the impassable streams. Highways stretch in every direction across the plain, and the roads are consequently entirely surrounded by motor industry."

"The East African East Africa is fast losing the characteristics that once made it a land only for explorers and big game hunters. Roads which afford service of motor transportation, fast horses, hotels for tourists, and telegraphs are being developed on the native show how greatly the land has changed since the days of Stanley or even Alamy. Kasesa, in Kenya, boasts of a motorable hotel, garage and a number of other shops. Street provides a Motor Tourist Hotel Camp, Kampala on Lake Victoria Nyanza offers automobile service, and the Victoria shikaras and has extensive road work to be done, although the excellent roads that lead to it. It spends twenty pounds per mile each year to maintain them.

FUEL FROM MOSSSES.

Production of fuel alcohol measured from mosses has become a successful enterprise in America. The new motor fuel is known as methanol.

It usually is not as good as the fuel formerly used but the advantages in creating a suitable fuel for burning in ordinary automobile engines are at present decisive.

The manufacturers have eventually to make use of the entire surplus production of Queensland for fuel there had not been any until this discovery was made.

14,000 MILES OF ROADS IN CHINA.

In China there are now about 14,000 miles of roads over which new cars are being driven in enormous numbers of the year. The new government is busy with reconstruction and road building as one of the major objects by which it is hoped to unify the country, bring back prosperity and prevent famine. At Shanghai, there are more than 12,000 passenger cars and trucks. Many individual owners are purchasing low line into the interior.

REPUTATION

The Greatest Asset In Commercial Life

is reputation for the quality of one's goods. THIS is particularly true of Motor Vehicles in East Africa, where the conditions are so trying. Dealers in Motor Vehicles in this colony will speak glowingly of the reputation of their cars, but these are mainly gained in other countries, under other conditions: they are useless in East Africa. It is an

EAST AFRICAN REPUTATION

that will attract the wise buyer. He knows other claims are useless. The Motor Vehicles with the FINEST reputation in East Africa are

The Dodge Cars and Dodge Trucks

BACKED BY

The Finest Service in E. Africa.

The purchaser of discrimination will examine the mechanical specifications of the DODGE — compare them with those of any other car in East Africa and will unhesitatingly

BUY THE DODGE.

S. FISHER & SIMMONS (E.A.) LTD., VICTORIA STREET, NAIROBI. SEE OUR RANGE OF SIXES: Sedans, Tourers, Box Bodies and the famous DODGE-GRAHAM TRUCKS. Box 466.

Metropolitan Garage.

SPECIALISTS IN AUTOMOBILE REPAIRS. 2 DOORS AVENUE HOTEL. VULCANISING. DUCO SPRAY PAINTING. RETREADING.

JOHN RIFKIN

SIXTY AVENUE P.O. Box 214, NAIROBI.



WAGON BUILDERS, BLACKSMITH FABRICATORS, ALL KINDS OF WAGONS MADE TO ORDER.

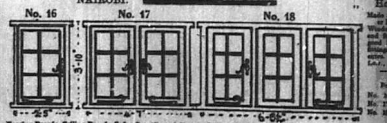
FOR SALE— CHEVROLET BOX BODY, excellent order. CHEVROLET "80" BOX BODY, Good Mileage. RUGBY TOURER, Re-designed, new body, new lower covers. OTHER BARGAINS IN STOCK.

CARS FOR HIRE

WITH DRIVER OR DRIVE YOURSELF. R. E. E. KETTERIDGE, Sole Proprietor.

Geo. BLOWERS.

BUILDING CONTRACTOR, MANUFACTURER AND DIRECT IMPORTER. SADDLER STREET, GREATLY REDUCED PRICES. Tel. Add. "Com. Phone: "Eton."



Tracing Boards, Ceiling Boards, Color Beatings & Boards, Impregnated Glass, Indian Teak, Fly Screens, Advertisements.



Plaster of Paris Sheet Lead.

WHY BUY AMERICAN DOORS

AND SEND YOUR MONEY ABROAD? I can compete with them—and beat them! Send for my ILLUSTRATED CATALOGUE and Price List. SOUND quotations for SOUND work.

CONCRETE BLOCKS ALL SIZES IN STOCK. BEST KIMA SAND IN ANY QUANTITY. (Cart, Truck or Train Load). DELIVERIES BY LORRIES AT QUOTED RATES. Plumbing and Sanitary Work done under the Supervision of our own European Specialists. Estimates Free.

A Good "Tip"!

Crawford's BLENDED SCOTCH WHISKY

A. & A. CRAWFORD, LEITH - SCOTLAND.

FOR AN EFFICIENT AND PERMANENT HOT WATER SUPPLY. INSTALL A BEESTON HOT WATER BOILER.

For particulars relating to the size of Boiler required and prices apply to—

Thornton & Turpin (Sole Registered Plumbers and Sanitary Engineers. NAIROBI and MOMBASA.

P.O. Box 206, Nairobi. P.O. Box 386, Mombasa. Phone 145.

TO LET. Premises in Duke Street, suitable for Garage, Workshops, Offices, or Stores. Low Rent.

Stirling & Scott Ltd.

LIME

Bone Flour Fertiliser. New in Stock. Order Now for Long Rates.

Lime Limited

Est. Ltd. Ltd. Phone 442. Box 412, Chamber of Commerce Bldg.

Now Is Your Chance

To Secure a Perfectly Good and sound Typewriter at a GREATLY REDUCED PRICE. WE ARE CLEARING OUR STOCKS OF THE British Empire Typewriters AT PRACTICALLY FACTORY COST. COMPARABLE THIS PRICE.

British Standard Empire Typewriter

Latest Model — 14 inch Carriage

25 Characters, Two Colour Ribbon and Stencil Switch, Automatic Paper Feed, Dustproof Cover over Works, Tabulator, Back Spacer, Right and Left Hand Margin Release, Light and Heavy Touch, Perfected Backer Escapement, Interchangeable Type Bars, Positive Type Guide, Ball Bearing Carriage, Automatic Ribbon Reverse, etc., etc.

Shgs. 550.00. ONLY A FEW LEFT. GUARANTEED NEW AND PERFECT. PLEASE CALL AND SEE ONE.

STANDARD STATIONERY STORES, NAIROBI.

EASIER STEERING

10 Important Features to the NEW ROYAL

- 1—Greater Anti-Skid Grip
- 2—New Power Compression
- 3—New Compression
- 4—Power Steering
- 5—New Steering
- 6—New Steering
- 7—New Steering
- 8—New Steering
- 9—New Steering
- 10—New Steering

the NEW ROYAL

The Type of Today For the Car of Tomorrow.

CARR, LAWSON & CO., LTD., NAIROBI.



Men!—make your choice... Gillette SHAVING CREAM... Your Chemist stock it.

WRONG ADVICE GIVEN TO KENYA COUNCIL... (Continued from page 9) People deem 30 crops of coffee to every one of wheat...

A CUSTOMS UNION FOR ALL BRITISH AFRICA... SUGGESTIONS BY LEADING TRANSIT FARMERS... COMBATING DEFERMENT...

Alleged Theft of Whisky... RAILWAY GUARD APPEALS AGAINST CONVICTION... The police railway guard recently convicted...

THE BRITISH INDUSTRY FAIR... Unusually Interesting Exhibits... A SPACIOUS DISPLAY... (STANDARD CORRESPONDENT) The London, (By Mail)...

WHERE TO STAY TOWN AND COUNTRY.

NAIVASHA HOTEL... ON SHORES OF LAKE NAIVASHA. AN EXCELLENT HEALTH RESORT. FIRST CLASS CUISINE AND EVERY MODERN CONVENIENCE.

PALACE HOTEL... GRAND, MODERN, PALACE, COMFORTABLE, FURNISHED, VARIOUS.

HOTEL AVENUE... THE TWO MOST UP-TO-DATE AND LUXURIOUS HOTELS IN KENYA. RUN IN CONJUNCTION.

This is Worth Your Consideration... Visitors at the Palace Hotel, Mombasa, proceeding to Malindi...

WHEN VISITING NAIROBI STAY AT TORR'S HOTEL... P.O. Box 419. Appointed Hotel in Kenya, Uganda & Tanganyika.

Stay at the largest and oldest established hotel in Kenya... Every Convenience... Monthly boarders from 4/10 per month.

THE ROYAL HOTEL... THE ROYAL HOTEL... THE ROYAL HOTEL... THE ROYAL HOTEL...

Stag's Head Hotel... THE STAG'S HEAD HOTEL... Main Road close to New Post Office, Eastleigh, Slough, Club and Station.

GROSVENOR HOUSE... GROSVENOR HOUSE... GROUARD ROAD. PHONE 427. P.O. Box 100. One Mile from Post Office.

As supplied to the House of Commons... Amstel Beer the Best in East and West... Guaranteed free of Chemicals.

Obtainable at all leading Hotels, Bars and Stores. Ask for it in your club. Twentsche Overseas Trading Co., Ltd., Mombasa.

By appointment to H.M. King George V. H.M. The King of Spain. WHITE HORSE WHISKY

AFRICA'S PREMIER ANNUAL... British South Africa Annual 1929-1930. Portraying in Pictures and Press Articles and Its People from the Equator to Cape Point.

Hortons Limited. CAPE TOWN. Johannesburg, Pretoria, Bloemfontein, Durban, Port Elizabeth and East London.

Mr. Wignellworth said that he retired again with the views of the Chairman... Mr. Wignellworth said that he retired again with the views of the Chairman...

It is unfortunate, Mr. Abernethy said, that in the United Kingdom the headway has been made to make these national political views... It is unfortunate, Mr. Abernethy said, that in the United Kingdom...

Official Appointments... The following Kenya appointments have been posted:—C. F. G. Dorman, to be Acting Solicitor General...

Reliance Transport Co., Ltd. TRANSPORT. WOOD FUEL. COALS. POLES AND FENCING POSTS. MANURE AND LIME. STORAGE. BOLUS HOUSE. Telephone: Office 281. Telegrams: "Reliance" 627. P.O. Box 483.

Return of Males Grazed during week ended March 6 1930... The following table shows the return of males grazed during the week ended March 6, 1930...

Particulars of Registered Wet Mills... The following table shows the particulars of registered wet mills in Kenya...

Okleigh Hotel Ltd. NAIROBI. P.O. Box No. 183. Phone 160. Grams: "OKLEIGH".

STEEK COST OF LIVING... At The Salisbury Hotel Nairobi. Phone 160. Price 100. Cash Boxes. LOCK BOTTOM. SOLD BOTTOM.

Sportex
 THE CLOTH FOR "CHAMPIONS"
 THE "CHAMPION" OF CLOTHS.
 A Thoroughly Dependable,
 Hard-wearing
TWEED FABRIC
 — for —
**PLUS-FOUR SUITS,
 SPORTS COATS AND
 GOLF-JACKETS.**
 PATTERNS ON APPLICATION.

Ahamed Bros.
 THE HOUSE OF DISTINCTION.
BAZAR P.O. Box 224.
NAIROBI.

Evening chills
 Suitable clothing is essential as a safeguard against evening chills and the reaction after exercise. The Jaeger underwear made in the Germany. It is available in every size and color. It is made of the finest materials and is obtained in all styles, weights and sizes. Also of superior pure wool. Health and comfort are the main objects of our underwear. Write for literature.
AEGER
 PURE WOOL
 STOCKED BY THE LEADING OUTFITTERS

Look at These Prices.
Tom-Tit Fruits in Syrup

Pears	2 1/2's	1-90 per tin.
Peaches	2 1/2's	1-75
Appricots	2 1/2's	1-75
Pears	1's	1-10
Peaches	1's	1-00
Appricots	1's	1-00

Best Value in Town
M. S. ELLIOT & Co. Ltd.
 P.O. Box 178. Phone 60.

A Money Saving Opportunity.
 To make room for the new incoming goods
We Allow 20% Discount
 on all Hats.
For two weeks only.
 Come early and secure first choice.
BON MARCHE
 GOVERNMENT ROAD, NAIROBI.

CORRESPONDENCE
 The editor does not accept responsibility for the views expressed by his correspondents. In these columns and in all cases the writer must accompany a letter, and a guarantee of good faith. Every item is also essential to correspondence.

Prisoners in Britain
RAID PROBABLE IN CHINA
STANDARD CORRESPONDENT. London (By mail).
 In spite of the promises we have been made to complete late arrivals when we are reported from evidence before the Royal Commission that there are a British prison population in Britain no more than 10,000. It is a pity that the British prisoners are to be closed under a commission in Britain no more than 10,000. It is a pity that the British prisoners are to be closed under a commission in Britain no more than 10,000.

NAVAL OFFICERS IN EAST AFRICA.
 To the Editor, "E.A. Standard." Sir—Have been asked by a number of friends to compile a list of all naval officers in East Africa. I could use your columns to publish such a list. I am sure you would be glad to do so. I am sure you would be glad to do so. I am sure you would be glad to do so.

NAIROBI HOSPITAL.
 To the Editor, "E.A. Standard." Sir—At your report of the meeting held on Monday evening last you state that Mr. Stewart, who was in charge of the hospital, is a man of high character and high ability. I am sure you would be glad to do so. I am sure you would be glad to do so. I am sure you would be glad to do so.

Famous Sells Landmark.
BREKID WILL IN DANGER OF DEPRECIATION.
STANDARD CORRESPONDENT. London (By mail).
 It is a pity that the British prisoners are to be closed under a commission in Britain no more than 10,000. It is a pity that the British prisoners are to be closed under a commission in Britain no more than 10,000.

LIMBORU GIRLS SCHOOL.
 To the Editor, "E.A. Standard." Sir—At your report of the meeting held on Monday evening last you state that Mr. Stewart, who was in charge of the hospital, is a man of high character and high ability. I am sure you would be glad to do so. I am sure you would be glad to do so. I am sure you would be glad to do so.

STOCK TAKING SALE.
 An opportunity will be afforded you for the purchase of a large quantity of goods at a very low price. The goods are of the highest quality and are of the latest design. The goods are of the highest quality and are of the latest design.

COMMERCIAL MATTERS.
 The Kiala Chamber of Commerce, we hear, is getting down to serious business, and will certainly be of considerable assistance to the commercial community.

THE SPOKING-WHEEL.
 Great preparations are being made for the Kenya Open Golf championship which commences on Friday next at the Kiala Club. Owing to shortage of notes, it is not expected that many entries from down country will be received, but we hear from Eldoret several well reported by the Naldi themselves.

GREAT REDUCTION IN PRICE,
TENNENT'S BEER
PERFECTION WHISKY
TRY THEM BOTH
 Messrs. SMITH, MACFENZIE & Co., NAIROBI.

CRITICAL TIMES IN THE TRANS-ZOIA.
Red Poll Cattle.
FURTHER IMPORTATIONS INTO KENYA.
 The Red Poll Cattle Society announces that the development of the export trade in Red Poll cattle which easily reached record proportions last year is proceeding on equally satisfactory lines. For the last few years the Red Poll cattle have been in demand in different parts of the southern part of the continent. The exportation of this stock has not only met with cattle breeders in Southern Rhodesia and East Africa, but also in the South African Colonies.

LOW MARKET PRICES.
STANDARD CORRESPONDENT. Kiala, March 10.
 During the last few weeks we have broken once again with a vengeance, between four and five inches having fallen in some parts of the district. Although the rain is very beneficial for the newly planted crop, it is disastrous by its volume in many other ways. It is a pity that the British prisoners are to be closed under a commission in Britain no more than 10,000.

STANDARD CORRESPONDENT. Kiala, March 10.
 During the last few weeks we have broken once again with a vengeance, between four and five inches having fallen in some parts of the district. Although the rain is very beneficial for the newly planted crop, it is disastrous by its volume in many other ways. It is a pity that the British prisoners are to be closed under a commission in Britain no more than 10,000.

STANDARD CORRESPONDENT. Kiala, March 10.
 During the last few weeks we have broken once again with a vengeance, between four and five inches having fallen in some parts of the district. Although the rain is very beneficial for the newly planted crop, it is disastrous by its volume in many other ways. It is a pity that the British prisoners are to be closed under a commission in Britain no more than 10,000.

STANDARD CORRESPONDENT. Kiala, March 10.
 During the last few weeks we have broken once again with a vengeance, between four and five inches having fallen in some parts of the district. Although the rain is very beneficial for the newly planted crop, it is disastrous by its volume in many other ways. It is a pity that the British prisoners are to be closed under a commission in Britain no more than 10,000.

STANDARD CORRESPONDENT. Kiala, March 10.
 During the last few weeks we have broken once again with a vengeance, between four and five inches having fallen in some parts of the district. Although the rain is very beneficial for the newly planted crop, it is disastrous by its volume in many other ways. It is a pity that the British prisoners are to be closed under a commission in Britain no more than 10,000.

STANDARD CORRESPONDENT. Kiala, March 10.
 During the last few weeks we have broken once again with a vengeance, between four and five inches having fallen in some parts of the district. Although the rain is very beneficial for the newly planted crop, it is disastrous by its volume in many other ways. It is a pity that the British prisoners are to be closed under a commission in Britain no more than 10,000.

STANDARD CORRESPONDENT. Kiala, March 10.
 During the last few weeks we have broken once again with a vengeance, between four and five inches having fallen in some parts of the district. Although the rain is very beneficial for the newly planted crop, it is disastrous by its volume in many other ways. It is a pity that the British prisoners are to be closed under a commission in Britain no more than 10,000.

STOCK TAKING SALE.
 An opportunity will be afforded you for the purchase of a large quantity of goods at a very low price. The goods are of the highest quality and are of the latest design. The goods are of the highest quality and are of the latest design.



"ERASMIC" The Dainty SOAP
 Imports an agreeable suggestion of all that is fresh, healthy, inspiring. Gives distinction to beauty.

HAVE YOUR TYRES TESTED FREE DAILY AT EBOO'S PETROL STATION.
This Will Save You POUNDS
 QUICK SERVICE IS OUR WATCHWORD.
Eboo's Petrol Station
 SIXTH AVENUE, NAIROBI.

J. & F. MARTEL. ESTABLISHED COGNAC
 A BRANDY THAT IS HANDY FOR ALL OCCASIONS AND ALL NATIONS.
 A GRAND BRANDY OF FRANCE.
MARTEL'S

MARTEL'S for AGE and QUALITY.
 Known throughout the world.
 Stocked by all High-Class Hotels and Wine & Spirit Merchants.
 Represented by Messrs. J. & F. Martell, Cognac, France.

STOCK TAKING SALE
 An opportunity will be afforded you for the purchase of a large quantity of goods at a very low price. The goods are of the highest quality and are of the latest design. The goods are of the highest quality and are of the latest design.

DESPERATE BARGAINS
 THRILLING PRICES. DON'T DELAY. BUT NOW AND SAVE MONEY.
Japan Bazaar
 P.O. Box 199. Government Road, NAIROBI.

Oxy Acetylene Welding
 WHY THROW AWAY BROKEN PARTS?
 Send them to us for Welding. Satisfaction Guaranteed.
THAKUR SINGH & SONS. Phone 387.
 FOUNDERS, MECHANICS, & MACHINERY REPAIRERS.
 Behind River Road, Latitee Ah and Siam Estate, NAIROBI.

AUCTION SALES.



CATALOGUE SALE OF IMPORTED AND TEAK FURNITURE, PERSIAN RUGS, OLD BRASS AND COPPERWARE and EFFECTS.

Daily instructed, we shall sell by Public Auction, Without Reserve, unless stipulated, at Our Salerooms, Messes Buildings, Hardinge Street, Nairobi, on

MONDAY, 17th MARCH, at 10 a.m.

IMPORTED CHESTERFIELD and CLUB EASY CHAIR by Harrods, loose covers, on castors. IMPORTED CARD TABLE, Gate legged, bairn top. IMPORTED REVOLVING BOOKCASE in Mahogany Veneer. TWO BOX SPRING BEDSTEADS and MATTRESSES by Marpa. FEATHER BOLSTER, SINGER HAND SEWING MACHINE. SEVEN PERSIAN RUGS in Good colours and designs. Persian Copper Coffee Pot, Copper Caskets. Brass Trays, Bowls and Ornaments. Silver Mounted Dinner Glass. Jug, plated. Dresden Vases. BLUE and WHITE DINNER SERVICE, of about 50 pieces. Eggshells China Tea Service of 15 pieces. "Boddy's Silicent" China Breakfast Service of 35 pieces. Case of Silver Handled Fruit Knives. Case of Brass and Forks. Case of Fish Servers. Imported Bureau in Oak, flat front and shelves. "Klingens" Cabinet Gramophone. Portable Gramophone. Aerial Location SUITE, cruetine covered, on castors. Morris Chairs. DINING TABLE in Teak. WRITING CHAIRS, each with Writing Bureau. Mizarpur Rug. Occasional Table with Twenty Yards of (new) White Carpet. SCREENED GRID SHORTWAVE THREE VALVE WIRELESS SET and GRAMOPHONE AMPLIFIER, rich and made. "EDDYSTONE" CABINET Washstands. Chests of Drawers. Bedside Cabinet. Double Bedstead in Oak, spring and Kapok mattress (new). Single Bedstead, Box spring mattress. Coir mattress. Canopy Bedstead in Solid Teak, spring and cotton mattress. Single Bedstead in Teak, spring and cotton mattress. F.P. Kodak Camera in leather case. Also

"GRAY" Box Body Car in good running order, self starter, lights, good tyres, with spare Engine and accessories (reserve).

Etc. Etc. Etc.

MUTER and OSWALD Ltd., Auctioneers, etc., NAIROBI.



TO LET

SHOP and OFFICES in MUTOS BUILDING, Hardinge Street. Moderate Rentals.

MUTER and OSWALD LTD. Estate Agents, NAIROBI

JAMAL PIRBHAI

SEALS ANYTHING YOU CANNOT SEAL. Auctioneer, Official Broker and Government Approved Valuer. AUCTION EVERY SATURDAY and SUNDAY. Commencing at 2 p.m. and 9 a.m. respectively. P.O. Box No. 100 110, Junction Garden, NAIROBI. Tel. No. 204

A GOOD OFFER 500 x 5/8. Pick Axes (unused, little rusty) at 20/- DOZ. Apply Hussein Suleman Verjee & Sons at 20/- P.O. Box 100, GOVERNMENT ROAD, NAIROBI.

JAM CONTAINERS WITH LIDS

1lb. Size for CREAM, Etc. Sgts. 2/- per doz. Sgts. 22/- per gross. 1lb. Size for JAM, Etc. Sgts. 2/6s. per doz. Sgts. 23/- per gross.

STANDARD STATIONERY STORES NAIROBI.

AUSTIN'S AUCTIONS.

CATALOGUE SALE OF FURNITURE, SILK GOODS, TERAI RATS, CARPETS, CHESTERFIELD SUITES, GRAMOPHONES, NEW PRAM., NEW LINO, GOLF CLUBS, FIELD GLASSES, CHILD'S COT, STOVES, ETC.

Instructed by Several Clients,

AUSTIN & CO.,

will sell WITHOUT RESERVE unless stated, at THE MART, on

SATURDAY, MARCH 15th, at 10 a.m.

Several Dress Lengths in Orizo Crepe, Fuji, Voile, Crepe Monocry, etc. 2 New Mirazors Carpets, 9 x 9 and 7 x 4. Carved Coffee tables. LADIES' and GENTS' NEW DOUBLE TERAI. Chesterfield Suites covered in Crummo. Office desk, bairn top, 6 drawers. SUITE OF DINING CHAIRS and TABLE in pinked Camphor Wood (res.). New Camel-hair Blankets, 3 Burner Portable Stove with Oven. No. 8 Dover Stove. Cheval Mirror, 4' in Frame. Black Writing Table, 2 drawers. Morris Chairs. Tray Tables. Bedroom Chairs. Several Dressing Chests in Teak, etc. Writing Bureau. Fancy Occasional Tables. New West Sides. NEW LINO. Hanging and Bachelors Wardrobes. Several Sideboards. NEW "PEDIGREE" PRAM, grey body (res). Child's White enamel Wood Bed, complete. White Enamelled Child's Cot.

TWO CORNER SEATS in MVULI with Pink Striped Poplin Cushions. Imported Fringed picture. Tray Table on Wheels. White enamel Iron Bed. Bedside Table. Princess Dressing Chests with 4' mirrors. Spring Wood Beds complete. Suites of Dining Chairs. Dining Tables. Club Easy with loose cover. Teak Palm Stand. 7 Good GOLF CLUBS in bag. Decca Portable Gramophone. Brass Table Oil Lamp. Quantity of Glassware. Good Records and Novels. Several Framed Large Engravings. Good Electric Iron. Chests of Drawers. 2 Pairs New Field Glasses.

DOUGLAS MOTORCYCLES, 4 h.p. and 2 1/2 h.p., in good Running Order and condition (res.).

FORD BOX BODY CAR T model, Self Starter, Electric and Spot Lights. RUXTELLE AXLE Spare Tyre. This car is in splendid condition and has only done 4000 miles (res.).

AUSTIN & Co., Auctioneers and Estate Agents, Hardinge Street, NAIROBI.

THACKRAH'S, Ltd.
NAKURU (Established 1912)
The Up-Country LAND AND ESTATE AGENTS, AUCTIONEERS & APPROVED VALUERS. INSURANCE, SHIPPING and FINANCIAL AGENTS. Shops, Offices, Gardens, Houses and Farms. TO LET or FOR SALE.

New Consignment Axminster Carpets Just Arrived.

E. Hutchison & Co.

P.O. Box 140. Govt. Road.

SANDS & CO.,

LIVESTOCK SALES AT OUR YARDS, NAIROBI. MONDAY, 17th MARCH, at 10-30. SLAUGHTER SHEEP, PIGS, POULTRY. AT NANYUKI, KENYA STOCKBREEDERS' YARDS. MONDAY, 24th MARCH, at 10-30 a.m. SLAUGHTER SHEEP AND CATTLE. DAIRY COWS. FURTHER ENTRIES INVITED.

SANDS & CO. AUCTIONEERS.

SANDS & CO.,

AT OUR RAILWAY SALE-YARDS, NAIROBI. WEDNESDAY, 19th MARCH, at 11-30 a.m.

On account of Kin Estate, who are giving up cattle - 13 COWS. Two of them with calves at foot. 12 HEIFERS. 4 BULLS. 8 STEERS. On account of various clients - 24 GRADE SLAUGHTER STEERS. 100 GRADE SHEEP. 10 PIGS.

FURTHER ENTRIES INVITED.

SANDS & CO. AUCTIONEERS.

SANDS & CO.,

SEND IN YOUR ORDERS NOW

BRAN 4/50 per sack. POLLARD 6/- per sack. GOOD WHEAT 12/50 per sack. OATS, BARLEY, ON APPLICATION. POTATOES from 2/50 per sack. SANDS & CO.,

THE PREMIER USED CAR SALESMEN Godfrey's Car Mart

Texaco House - Sadler Street. 50 USED CARS 50 TO SELECT FROM

Cher. & Truck. Latest model, done only 4,000 miles. Good as new. £240. Ford A. Box Body. Standard model, done only 4,500 miles. This car is in remarkable good condition. Over 2000 miles. £210. Chrysler 67 Touring. 1000 miles. Fully equipped. Good drive perfect. £210. Halc (Standard 6). £100. From radiator to back axle. Redwood. £100.

4 Ford Trucks Model A (1930) 4

Used only on a Short Safari with H.R.H. The Prince of Wales.

These Vehicles are exceptionally well equipped and are virtually new, having done only 500 to 1400 miles.

GET IN EARLY AND TAKE YOUR PICK. TERMS ARRANGED.

ARIEL, DOUGLAS and OTHER MOTORCYCLES. CAR INSURANCE ARRANGED.

DIRT-KNOCK TRUCK (with spare) available any time any day. New and Second-Hand Spares for all makes of cars. NEW TYRES at CLEARANCE PRICES.

CARS FOR HIRE WITH DRIVER or DRIVE YOURSELF.

Phone 142. Box 706. W. M. GODFREY, Sole Proprietor.

TO LET.

SMALL MODERN HOUSE, FURNISHED, FORREST ROAD, FROM 1ST APRIL.

STONE HOUSE, UNFURNISHED, SALISBURY ROAD, IMMEDIATE OCCUPATION.

Properties of all description for sale.

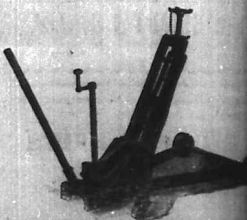
Denovan & Diebel. LAND AGENTS, CITE HOUSE.

FOR SALE.

200 ACRES of good coffee soil, only 7 miles from Nairobi on good main road with permanent water.

For full particulars apply-

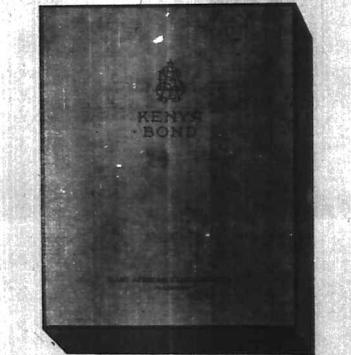
SANDS & CO., SADDLER STREET, OR BEALES & SMITHSON, SIXTH AVENUE.



GARAGE JACKS

W. WINGRAM & CO. THE TOOL HOUSE NAIROBI.

High Class Stationery AT LOW COST



IN BLUE AND GREEN NOTE PAPER (FOLDED) and ENVELOPES BOXED 50 OF EACH. Sgts. 4/50, 4/75 and 5/50. NOTE PAPER (FLAT) and ENVELOPES BOXED 50 OF EACH. Sgts. 5/- and 5/6. IN BLUE ONLY. WRITING PADS 50 LEAVES Each 9/- and 5/-. ENVELOPES TO MATCH, PACKETS Sgts. 1/6s. Boxes 100 Sgts. 4/50.

STANDARD STATIONERY STORES. NAIROBI.

SPORTS and PASTIMES.

THE SEARCH FOR "THE ASHES"

England's Prospects in Coming Tests.

A CHANGE FOR THE YOUNG PLAYER.

(P. 10.) Owing to the fact that the Australian team is apparently selected some time before our season opens...

I do not intend to discuss the Australians beyond mentioning that Woodfull would have already had sufficient responsibility thrust upon him by virtue of being...

The Wisden Keeper. Well, having more or less decided who is to act as captain, the next position to fill is the wicket-keeper's. Little difficulty is experienced here.

Next come the bowlers. In making the list I have to go back to the west to Australia with the last team and personally I thought he would do Australia in England was made on fast bowlers in the side when he was selected to be a bowler of the Rhodes type.



RETUOH WINGS AND WHEELS BRUSHING ROSSIAHO

It's easy with this perfect window glass

SMITH, MACKERRIN & Co. Box 300, NAIROBI.

Insurance YOUR MOTOR CAR AND MOTOR CYCLES

AFRICAN GUARANTEE & INDEMNITY CO. LTD. M. D. KAMPP. Chief Agent.

MAY & CO., LTD. FOR ARMS AND AMMUNITION

NATIONAL BANK OF INDIA LIMITED.

Incorporated in United Kingdom. Bankers to the Colony and Protectorates of Kenya and Uganda...

23 Fishergate, London, E.C.4. BRANCHES: Mombasa, Nairobi, Nakuru, Kisumu, Eldoret, Solotho, Kampala, Dar-es-Salaam, Zanzibar, Dar-es-Salaam and Tanganyika.

FIXED DEPOSIT. Deposits are received for fixed periods on terms which may be arranged on application.

RESERVE. The Bank opens Drafts on the current office of Bankers forwarding bills of exchange to the payee when required.

A. S. MCKERRIDGE, Manager, Nairobi Branch.

BUY THE VICTORIA NARUBA SUGAR COMPANY'S No. 1 WHITE CRISTAL

at the following prices from the undermentioned stores. For Pounds (50 lbs.) 1/0 1/2 For Pounds (10 lbs.) 1/6 1/2

- M. B. Jones, Ltd., Nairobi. H. B. Duncan, Nairobi. H. B. Jones & Co., Ltd. Blacking and Sons. Birkins Home Trading. Whittaker, Limited. Colonial General Stores. Balfour, Paterson & Co. The Freshfields Store. Durkin, Kennerley. Douglas Trading Co. H. B. Jones & Co., Ltd. W. W. Douglas. Henry Wilson.

SAFETY TIMBER... SIRDAW... P. GETHIN... MAIROBI... TOURING... CARES FOR KIBES... Tripa a Speciality.

For Sale... Mombasa Times... CAN BE OBTAINED... Nairobi Stationery Store.



SPEND YOUR HOLIDAY IN SOUTH AFRICA

RAILWAY EXCURSION FARES are available all the year round for parties of four or more travelling together over the lines of the South African Railways Administration.

THE SOUTH AFRICA OFFICE. (P.O. Box 201, Memorial Hall, NAIROBI.)

Theo. SCHOUTEN

LADIES and GENTLEMEN'S HAIRDRESSING Permanent Waving a Speciality UNDER PERSONAL SUPERVISION.

KENYA FILE

FOOLCASH SIZE. ASSORTED COLOURS. REDUCED TO SHIGS. 0.85 each. SHIGS. 0.50 dozen. SHIGS. 105.00 gross.

Mt. Kenya 17,040 ft. Above Sea Level.

A Famous Landmark Beautiful and Impressive.

FORD ADMITS A FAILURE. NO FORD HAS EVER CLIMBED THIS MOUNTAIN.

The FORD will however conquer any known Gradient where it is possible for four Wheels to grip the Surface. The FORD gets anywhere, goes everywhere, it possesses remarkable Speed and Power, and at a cost unobtainable in any other vehicle of its kind.



NAIROBI MOTORS 6th AVENUE.

Holland and Holland John Rigby and Co. Wesley Richards and Co. D.S.A. Game Ltd.

and both Kynoch and Eley AMMUNITION always in stock. SHAW & HUNTER Ltd.

P.O. Box 79. NAIROBI.

CHARLES WARE. THE ACCOUNTANT.

Residence: Established by Royal Warrant. Tel. Ad. "Sportman." Box 170. Trans Chambers, Government Road, NAIROBI.

LINCOLNSHIRE HANDICAP, 1 mile, on March 26th - 7/1 Tiger; 12/1 Ostrich; 14/1 Grouse; Partridge, Fackell; 20/1 Irish Hound; Square Head, Curlew, Plover. Others on average.

LIVERPOOL CUP, Run March 27th, 1 mile 1 furlong - R.P. or Pilsen. GRAND NATIONAL, 1 1/2 mile, on March 28th - 5/1 Easter Hero; 8/1 Goshawk; 12/1 Grackle; 14/1 Grass; 20/1 Sandy Hook; 20/1 and several others.

KNOXIDE DERBY, Sun June 4th, 1 1/2 miles - Enquire Price. CASH'S opened on approved reference or Cash only. No reply definitely means no business. My name stands for integrity.

A VELVETY LAWN

and well kept lawns are only possible when proper care is taken in the shortest time, we handle

THE ONLY KIND WE HANDLE PRUNING KNIVES



J.H.S. Todd & Co. Ltd. MAURICE ROSENSTON. P.O. Box 461. Tel. Ad. "Tribune."

BOMA BUILDINGS, GOVERNMENT ROAD, NAIROBI. OFFICE.

LINCOLNSHIRE HANDICAP, Mar 26th, 1 mile - 8/1 Tiger; 14/1 Grouse; Partridge; Fackell; 20/1 Irish Hound.

LIVERPOOL CUP, Run March 27th, 1 mile 9 furlongs 10 yds - Pilsen as per Cable or R.P. 20/1.

GRAND NATIONAL, Sun March 28th, 1 1/2 miles - 5/1 Easter Hero; 7/1 Goshawk; 12/1 Grackle; 20/1 Sandy Hook.

THESE ARE THE LATEST CABLED PRICES. CABLE IN N.O. OFFICE.

WIN AND PLACE BODIES. BOOK OPEN ON SUNDAY DERBY, DURBAN VILL, KENYA ST. LOGER.

LAWN TENNIS

RACKETS BALLS NETS and all ACCESSORIES

TO GET THE BEST go to

MAY & Co., Limited.

and Sports House NAIROBI.



THE SPORTS PAGE

TOPICS OF THE KENYA TURF.

A Review of Last Saturday's Racing.

PLEA FOR CHAMPION TWO YEAR OLD PLATE RACE.

Institute a Proper Produce Stakes For Colony.

The second day of the Nairobi Meeting was spoilt by the heavy rain which made matters extremely unpleasant for everyone concerned. The chief race of the day, the Open Handicap Plate over 2 1/2 furlongs, was won by Mr. M. A. Riley's "Catsaway."

"Honey" who finished third and who was travelling very fast. On the day, the Open Handicap Plate over 2 1/2 furlongs, was won by Mr. M. A. Riley's "Catsaway."

"Honey" who finished third and who was travelling very fast. On the day, the Open Handicap Plate over 2 1/2 furlongs, was won by Mr. M. A. Riley's "Catsaway."

"Honey" who finished third and who was travelling very fast. On the day, the Open Handicap Plate over 2 1/2 furlongs, was won by Mr. M. A. Riley's "Catsaway."

"Honey" who finished third and who was travelling very fast. On the day, the Open Handicap Plate over 2 1/2 furlongs, was won by Mr. M. A. Riley's "Catsaway."

"Honey" who finished third and who was travelling very fast. On the day, the Open Handicap Plate over 2 1/2 furlongs, was won by Mr. M. A. Riley's "Catsaway."

"Honey" who finished third and who was travelling very fast. On the day, the Open Handicap Plate over 2 1/2 furlongs, was won by Mr. M. A. Riley's "Catsaway."

"Honey" who finished third and who was travelling very fast. On the day, the Open Handicap Plate over 2 1/2 furlongs, was won by Mr. M. A. Riley's "Catsaway."

"Honey" who finished third and who was travelling very fast. On the day, the Open Handicap Plate over 2 1/2 furlongs, was won by Mr. M. A. Riley's "Catsaway."

"Honey" who finished third and who was travelling very fast. On the day, the Open Handicap Plate over 2 1/2 furlongs, was won by Mr. M. A. Riley's "Catsaway."

"Honey" who finished third and who was travelling very fast. On the day, the Open Handicap Plate over 2 1/2 furlongs, was won by Mr. M. A. Riley's "Catsaway."

"Honey" who finished third and who was travelling very fast. On the day, the Open Handicap Plate over 2 1/2 furlongs, was won by Mr. M. A. Riley's "Catsaway."

"Honey" who finished third and who was travelling very fast. On the day, the Open Handicap Plate over 2 1/2 furlongs, was won by Mr. M. A. Riley's "Catsaway."

"Honey" who finished third and who was travelling very fast. On the day, the Open Handicap Plate over 2 1/2 furlongs, was won by Mr. M. A. Riley's "Catsaway."

"Honey" who finished third and who was travelling very fast. On the day, the Open Handicap Plate over 2 1/2 furlongs, was won by Mr. M. A. Riley's "Catsaway."

"Honey" who finished third and who was travelling very fast. On the day, the Open Handicap Plate over 2 1/2 furlongs, was won by Mr. M. A. Riley's "Catsaway."

"Honey" who finished third and who was travelling very fast. On the day, the Open Handicap Plate over 2 1/2 furlongs, was won by Mr. M. A. Riley's "Catsaway."

"Honey" who finished third and who was travelling very fast. On the day, the Open Handicap Plate over 2 1/2 furlongs, was won by Mr. M. A. Riley's "Catsaway."

"Honey" who finished third and who was travelling very fast. On the day, the Open Handicap Plate over 2 1/2 furlongs, was won by Mr. M. A. Riley's "Catsaway."

TACTICS IN THE RIGBY FIELD.

Needs and Tendencies of the Game.

FAMOUS BOOTHBY INTERNATIONAL VIEW.

These are days when the fashion is all against the "old school" and in favour of the "new school" of tactics in the Rigby field.

It is always instructive to have these views expressed not only for the purpose of comparison, but from the aspect of gathering ideas on the various methods employed by outstanding players.

It is interesting to note that in the last few years, there has been a marked increase in the number of players who are able to handle the ball with a certain amount of ease.

It is also interesting to note that in the last few years, there has been a marked increase in the number of players who are able to handle the ball with a certain amount of ease.

It is also interesting to note that in the last few years, there has been a marked increase in the number of players who are able to handle the ball with a certain amount of ease.

It is also interesting to note that in the last few years, there has been a marked increase in the number of players who are able to handle the ball with a certain amount of ease.

It is also interesting to note that in the last few years, there has been a marked increase in the number of players who are able to handle the ball with a certain amount of ease.

It is also interesting to note that in the last few years, there has been a marked increase in the number of players who are able to handle the ball with a certain amount of ease.



DAUNGEROUS GAME

For every dangerous beast encountered at such range in words or jungle, we Eley or Kynoch cartridges, the reliable and proved ammunition.

ELEY or KYNOCH CARTRIDGES

SPECIAL CHAMBER SYSTEMS. ELEY'S PATENT. ELEY'S PATENT. ELEY'S PATENT.

A. HOGG.

MACKENNO'S BUILDING, NAIROBI. ENGLISHE DERBY, 14 miles, 6.45-10/6 The Pig.

LINCOLNSHIRE HANDICAP, 35-50, 1 mile - 8/1 Tiger; 12/1 Ostrich; 14/1 Grouse; Partridge, Fackell; 20/1 Irish Hound; Square Head, Curlew, Plover.

LIVERPOOL CUP, Run March 27th, 1 mile 9 furlongs 10 yds - Pilsen as per Cable or R.P. 20/1.

GRAND NATIONAL, 1 1/2 mile, on March 28th - 5/1 Easter Hero; 7/1 Goshawk; 12/1 Grackle; 20/1 Sandy Hook; 20/1 and several others.

KNOXIDE DERBY, Sun June 4th, 1 1/2 miles - Enquire Price. CASH'S opened on approved reference or Cash only.

The "SPALDING MULTIPLOT" KROFLITE GOLF BALL

with its twelve dist. it coloured dots is EASIER TO HIT, EASIER TO IDENTIFY, EASIER TO FIND.

CRAIG'S SPORTS HOUSE, 'Phone 321. Government Road. Box 107.



Your Kentitas Cigarettes, Sir. Now packed in Carved tins of Fifteen.

Back Play. With regard to back play, Mr. Stammers said that when a three-quarter line was on the defensive it should not be too fat.



He told us in Flat tins of Fifteen.

Mr. Stammers said that when a three-quarter line was on the defensive it should not be too fat.

Mr. Stammers said that when a three-quarter line was on the defensive it should not be too fat.

OBTAINABLE FROM ALL THE LEADING STORES.

The East African Standard

The East African Irish Society. Annual Dinner & Dance at The New Stanley Hotel. St. Patrick's Day March 17th.

PRICE, 20 CENTS.

SPECIALLY PACKED FOR ALL SETTLERS. Contains of Aid Licensed Stoves.

CRISIS AT THE NAVAL CONFERENCE.

French Delegation Angry with Italy.

MAIN PLAN FAILURE?

BattleShip Holiday the Most Expected.

Discussing in the nature of a crisis has occurred at Naval Conference as a result of the turning down of a French request of a political crisis.

In view of this decision, France has decided there is probability of a substantial reduction in French tonnage.

The French delegation ascribes most of the blame to Italy, who, whilst insisting on parity with France, has refused to produce any figures.

All that is considered likely to secure from the present work accomplished will be useful for some time.

M. BRIAND'S GLOOM.

(BY WIRELESS.)

Paris, March 12.—M. Briand, Premier of France, was seen in the French newspaper... submitted to the London conference by the First Lord of the Admiralty, Mr. A. V. ... and the French Minister of Marine, M. Dussanell...

It is understood that the session of the Italian Agre was abruptly raised at today's meeting of the Council of Ministers...

It is understood that the session of the Italian Agre was abruptly raised at today's meeting of the Council of Ministers...

The atmosphere in French circles is distinctly gloomy. The most critical, perhaps, relative to the whole question of the Conference...

M. Briand, who seemed depressed, told French journalists that the idea of a political pact had been originally conceived...

M. Briand himself has indicated some misgivings about the Italian proposal, and simply insisting on parity with France.

It is understood that the session of the Italian Agre was abruptly raised at today's meeting of the Council of Ministers...

The atmosphere in French circles is distinctly gloomy. The most critical, perhaps, relative to the whole question of the Conference...

M. Briand, who seemed depressed, told French journalists that the idea of a political pact had been originally conceived...

M. Briand himself has indicated some misgivings about the Italian proposal, and simply insisting on parity with France.

It is understood that the session of the Italian Agre was abruptly raised at today's meeting of the Council of Ministers...

The atmosphere in French circles is distinctly gloomy. The most critical, perhaps, relative to the whole question of the Conference...

M. Briand, who seemed depressed, told French journalists that the idea of a political pact had been originally conceived...

EFFECT OF DEFEAT OF THE GOVERNMENT.

Early General Election Likely.

AFTER THE GOVERNMENT.

(THROUGH BUREAU'S SERVICE.) London, March 12.—The papers agree that the probable result of the Government's defeat on the Coal Bill yesterday evening will be a general election immediately the budget is disposed of, as Government and the opposition are getting tired of the growing tendency to combine against its legislation.

Vote of Censure.

POINTS IN CONSERVATIVE RESOLUTION.

(STANDARD'S CORRESPONDENT.) London, March 12.—The Conservative vote of censure to be moved by Mr. Bradburn in the House of Commons to-night expresses the deep indignation at the increase in unemployment resulting from the Government's policy...

Australian Tariffs.

MEANS TO REDUCE THE BALANCE OF TRADE.

(THROUGH BUREAU'S SERVICE.) Canberra, March 12.—Mr. J. H. Keating, Premier, speaking to a crowded House at the opening of Parliament yesterday...

Naval Construction.

BRITAIN OFFER COUNTRY TO CANCEL ORDERS.

(BY WIRELESS.) London, March 12.—In the House of Commons today, the House of Commons was informed that the British Government is prepared to cancel orders for the construction of certain ships...

Malair in the Union.

INVESTIGATION BY AN EXPERT.

(STANDARD'S CORRESPONDENT.) London, March 12.—The British Government is preparing an investigation into the Malair in the Union...

TANGANYIKA NATIVE POLICY.

System a Success in Every Way.

CONFERENCE REPORT.

(THROUGH BUREAU'S SERVICE.) Dar-es-Salaam, March 13.—The report is issued here of the conference of the official Commissioners in Tanganyika at which the Government's native policy was introduced in 1926. The Commissioners desired to record their opinion that the system had fully justified itself and had done much success in every way...

Embassador to U.S.A.

SIR RONALD LISWAS LEAVES NAIROBI.

(BY WIRELESS.) Nairobi, March 12.—Sir Ronald Liswas, the British Ambassador to the United States, accompanied by Lady Liswas, sailed from Nairobi...

British Naval Manoeuvres.

REMARKABLE WORK BY SUBMARINES.

(THROUGH BUREAU'S SERVICE.) London, March 12.—The British Navy's manoeuvres, which were held in the Atlantic waters...

PROFESSOR DR PLESSER VISITS QUINCY.

(STANDARD'S CORRESPONDENT.) Marlborough, March 13.—Professor Dr Plessler, the first German visitor to the United States since the late war, arrived in Quincy...

Irish's Isolation.

MYSTERY OF FOUR LOBBIES.

(STANDARD'S CORRESPONDENT.) London, March 12.—The Irish Government's policy is being isolated in the House of Commons...

MOBT MARKET.

London, March 13.—Prices 124.20. 125.00. 125.00. 125.00.

THE NEXT AGRICULTURAL SHOW.

To be Held in Nairobi January, 1931.

OTHER PLATFORMS.

At a well-attended meeting of the Kenya and Horticultural Society of Kenya held at Nairobi, on March 7, further consideration was given to a date for the next agricultural show to be held at Nairobi. After considerable discussion...

FATHER OF HOUSE OF LORDS DEAD.

Most Famous of Sporting Peers.

LOED COVENTRY.

(THROUGH BUREAU'S SERVICE.) London, March 12.—The death is announced in the Standard of the late Lord Coventry, the 'Father of the House of Lords' and one of the most famous sporting peers in England. Lord Coventry was born in May, 1838, and was educated at Eton and Christ Church, Oxford. He was the son of Viscount Devonport...

IMPERIAL GOVERNMENT ESTIMATES.

Expenditure Increase of £55,000,000.

REDUCTIONS ON ARMY AND NAVY

Imposition of New Taxation Possible.

With the publication of the Army Estimates for the coming financial year, the full expenditure of the Imperial Government is now known. The total amount of expenditure on departmental votes is £417,000,000, which is an increase of £55,000,000 compared with last year's figures.

The votes for the Army and Navy have undergone considerable reductions, but there has been increases under all other votes, including that of the Air Force.

The question as to whether Mr. Snowden will find it necessary to impose new taxation is the subject of discussion in the Press.

PRESS DISCUSSIONS.

(BY WIRELESS.) Rugby, March 12.—The issue today of the Army Estimates for the years 30 to 32 has been discussed in the Chamber of Commerce by the following speakers...

With the issue today of the Army Estimates for the years 30 to 32 has been discussed in the Chamber of Commerce by the following speakers...

The estimates are as follows: The Army, £220,000,000—a decrease of £4,000,000. The Navy, £197,000,000—a decrease of £1,000,000. The Air Force, £178,000,000—a decrease of £2,000,000.

The estimates are as follows: The Army, £220,000,000—a decrease of £4,000,000. The Navy, £197,000,000—a decrease of £1,000,000. The Air Force, £178,000,000—a decrease of £2,000,000.

The estimates are as follows: The Army, £220,000,000—a decrease of £4,000,000. The Navy, £197,000,000—a decrease of £1,000,000. The Air Force, £178,000,000—a decrease of £2,000,000.

Blankets & Travel Rugs. WAYLOO BLANKETS. Travelling Rugs. Superior Quality All-Wool Fawn. The 'VENUS' WHITE COTTON BLANKETS. VENUS WHITE COTTON BLANKETS. WHITWAY, LAIDLAY & CO., LTD. NAIROBI.

You Cannot

HAVE TRIED THE NEW AND BETTER CIGARETTE, BECAUSE

ABDULLA "VIRGINIA LEAF"

Have Only Just Arrived.

Plain or Cork-Tipped in flat tins of quality.

Sole Agents—

Dalgely & Company Ltd.

NAIROBI. ELDORET.

Here's the Way to polish up dull teeth

Dental Authorities advise it— Film Strars use it



HERE is a marvelous scientific way to give your teeth a brilliant whiteness. A scientific preparation removes the film that discolors teeth. You will be amazed at what Pepsodent, this special film-removing cosmetic, can do.

Try this new easy procedure: it differs in formula, action and effect from any other dentifrice. It first acts on enamel, then removes it in gentle safety to enamel. In it the world has gained a new discovery of what a dentifrice should be a tooth-brush.

MARK Pepsodent

The Film-Removing Tooth Paste

A. H. Wolfe & Co., Ltd., P.O. Box 123, Nairobi, Kenya Colony.

The Trocadero Bar and Restaurant

Proprietor—W. M. Goffey. Manager: Mr. Bob Phillips.

GRILLS AT ALL HOURS. ALL MEALS—REFRESHMENTS—TEA. COME AND TRY "OLD BOB'S" BAR SNACKS. His Famous Beef and Curries Cannot be Beaten. The Best Dinner Served in Town at Shs. 4/-

A. J. ELY and Co. Ltd.

SHAMBA CHEMISTS, NAIROBI. COPPER RAIN GAUGE. Complete with Glasses Shs. 3/6 Spare Glasses Shs. 2/6

STOCK TAKING SALE

It is an opportunity you will not get until after a year. (See Fortnightly Only) DESPERATE BARGAINS. THRILLING PRICES. DON'T DELAY. BUY NOW AND SAVE MONEY.

Super Bazaar Government Road, NAIROBI.

PERSONAL NOTES AND NEWS.

"STANDARD" CORRESPONDENT.

number of the important duties in Crown Offices are not prosecuted at all but a necessary amount of collecting returns in particular countries; and that if they were to be taken of British goods the returns would be thrown into confusion; that the only part of the scheme which will remain certain, if it is to be successful, is in the taxation of the foreigner."

For his 18,000 miles flight from London to the Cape, Mr. Arthur Lady Haller has been awarded the Gold Medal of the Royal Aero Club.

Although Sir Philip Richardson, M.D. has just come back from East Africa, where he has obtained unrivalled experience up-to-date, there is no evidence to date that his general impressions as to the great that he will not be able to continue membership of the Joint East African Board. It is hoped, however, that the report will not be true.

Sir Alan and Lady Cobham reached England this week back from East Africa, where they have been spending a holiday after Sir Alan had done out on a tour of the National Flying Services, Ltd. to help in the survey of the Cape to Cairo route.

Lady Diana Gibb, with the Hon. Mrs. Henry Wood, are shortly off to East Africa and will be back until April. They are sailing for Beira, and will then visit the farms of Mr. Wood's family, which is near Salisbury. Mrs. Wood is of course a native of Rhodesia and has written a book on African racial problems.

I understand that the Colonial Office is giving a sympathetic ear to the representations as to the serial survey of all parts of the Territory. Probably an announcement on the subject may be expected in the near future.

Thameside, Lord Beauchamp's Estate, P.O. Box 123, Nairobi, Kenya Colony.

Mr. J. A. Spence in the "Daily Nation" points out the attitude as to the Colonial attitude towards the plan. It will be noted that the plan is not to be reported to Lord Beauchamp that Colonel Hill, Colonel and King King, to say nothing of Rhodesia and Kenya, would naturally object to taking their land policy by administrative order from Whitehall.

The Private Committee at the House of Commons under the Chairmanship of Mr. M. J. G. is investigating the question of the abolition of legislative practices amongst active traders in various parts of the Empire, particularly that evidence from Mr. Leakey about the pre-marital rites of a resident.

Mr. Leakey, I understand, lived with the Khiry for many years, but she was not married to him until Monday, and until then she had been living with Mr. R. A. Butler, M.P., the Secretary of the Committee, emphatically and the Committee is not one which wishes to interfere, but simply to investigate with a view to discovering the best means of gradually abolishing the practice which are a blot of civilization. He fully realizes that, or certainly not all at once—and that immediate steps are probably to render the practice less barbarous than their actual status. He is a member of the Committee of Dr. Arthur rather actively as a resident.

Lady Broil's dinner will be made a luncheon in the Devon Court yesterday by Mr. Justice Baines. It will be remembered that she brought a suit against the Earl of Grey, which Mrs. Edith Milford Mary Ames Barron-Hill was cited as a respondent.

Niomas and Niomas are made a luncheon in the Devon Court yesterday by Mr. Justice Baines. It will be remembered that she brought a suit against the Earl of Grey, which Mrs. Edith Milford Mary Ames Barron-Hill was cited as a respondent.

The actual functioning of the African Welfare Union's "Trust" Committee is being reported in the Legislative Council by Mr. J. C. Bannard, who has been selected from the Legislative Council by the Government of Kenya to act as a member of the African Welfare Union.

The Rev. P. Wyndham Guinness, D.D., M.C., M.A., Secular

Chaplain at St. George's Cathedral, who served from 1910 to 1914 in East Africa, Nyasaland, and British East Africa, died on May 12. Mr. Guinness was appointed to the post in 1911, and before his appointment he was for some years in the service of the Church of England in London.

During the last year of his life he served as a member of the D.R.C. in November 1914, and the M.P. for the constituency of London.

Mr. Arthur Conan Doyle has been ill since he returned from London to his home for the winter. He has been suffering from a severe attack of influenza, and has been unable to leave his bed for some time.

The following appointments have been made during the month of January by the Secretary of the D.R.C. for the month of January: Mr. J. C. Bannard, M.P., Secretary of the D.R.C. for the month of January; Mr. J. C. Bannard, M.P., Secretary of the D.R.C. for the month of January.

The following appointments have been made during the month of January by the Secretary of the D.R.C. for the month of January: Mr. J. C. Bannard, M.P., Secretary of the D.R.C. for the month of January; Mr. J. C. Bannard, M.P., Secretary of the D.R.C. for the month of January.

The following appointments have been made during the month of January by the Secretary of the D.R.C. for the month of January: Mr. J. C. Bannard, M.P., Secretary of the D.R.C. for the month of January; Mr. J. C. Bannard, M.P., Secretary of the D.R.C. for the month of January.

The following appointments have been made during the month of January by the Secretary of the D.R.C. for the month of January: Mr. J. C. Bannard, M.P., Secretary of the D.R.C. for the month of January; Mr. J. C. Bannard, M.P., Secretary of the D.R.C. for the month of January.

The following appointments have been made during the month of January by the Secretary of the D.R.C. for the month of January: Mr. J. C. Bannard, M.P., Secretary of the D.R.C. for the month of January; Mr. J. C. Bannard, M.P., Secretary of the D.R.C. for the month of January.

The following appointments have been made during the month of January by the Secretary of the D.R.C. for the month of January: Mr. J. C. Bannard, M.P., Secretary of the D.R.C. for the month of January; Mr. J. C. Bannard, M.P., Secretary of the D.R.C. for the month of January.

The following appointments have been made during the month of January by the Secretary of the D.R.C. for the month of January: Mr. J. C. Bannard, M.P., Secretary of the D.R.C. for the month of January; Mr. J. C. Bannard, M.P., Secretary of the D.R.C. for the month of January.



"What's good goes with gusto!" Thousands of rumping boys and happy girls are daily enjoying Sir's Custard with their luscious biscuits.



BIRD'S CUSTARD Sold in Pouches, Tins and Tins. Guaranteed Pure and Wholesome.

KLEANBORE

Centre Fire Ammunition for Rifles, Pistols and Revolvers. No more rust, corrosion or pitting if Remington KLEANBORE cartridges are used exclusively.



Remington Arms Co., Inc. D. SPITZER, Manufacturing Agent. Remington FIRE ARMS AMMUNITION GALLERY

Today's Trains.

The following trains are due to leave Nairobi to-day:

Table with 2 columns: Train Name, Time. Includes: Nairobi to Kisumu, 9:00 a.m.; Nairobi to Mombasa, 1:00 p.m.; Nairobi to Malindi, 4:00 p.m.

The following trains are due to arrive at Nairobi to-day:

Table with 2 columns: Train Name, Time. Includes: Kisumu to Nairobi, 6:00 a.m.; Mombasa to Nairobi, 10:15 a.m.; Malindi to Nairobi, 9:40 p.m.

Geo. BLOWERS.

BUILDING CONTRACTOR, MANUFACTURER AND DIRECT IMPORTER. SAILED STREET, GREATLY REDUCED PRICES. Tel. Ad. 285. NAIROBI. Phone: 126.



Plaster Work, Ceiling, etc. Other Buildings, 6 Months, Imported Best Wood, Sailed Street, Ely Brothers, Ltd.



Plaster Work, Ceiling, etc. Other Buildings, 6 Months, Imported Best Wood, Sailed Street, Ely Brothers, Ltd.

Why Buy American Doors and send your money abroad? I can compete with them—and beat them! Send for my ILLUSTRATED CATALOGUE and Price List. SOUND quotations for SOUND work.

CONCRETE BLOCKS ALL SIZES IN STOCK. BEST KIMA SAND IN ANY QUANTITY. (Cart, Truck or Train Load). RELIABLEY IN LOOKS AT QUOTED RATES. Plumbing and Sanitary Work done under the Supervision of our own European Specialists. Estimates free.

Special features of the wonderful set: 1. Great economy. 2. Freedom from vibration. 3. Easy tuning. 4. No body rapidly aged. 5. Ample 20 and 30 watt outputs. 6. Very fine frequency range. 7. Easy single operation. 8. Entirely impregnable.

PHILIPS for Radio. Philips Ltd. Sales Dept. Leicester Road, London.

THE AFRICAN STANDARD DAILY EDITION.

Subscription Rates: Daily Edition, 6d. per week; 3s. 6d. per month; 12s. per quarter; 45s. per annum.

Advertisements: Single lines, 1s. per line per week; 5s. per month; 15s. per quarter; 45s. per annum.

For Sale: Various properties and goods for sale, including land, buildings, and furniture.

Wanted: Various services and goods wanted, including labor, land, and equipment.

For Lease: Properties available for lease, including shops, offices, and residential buildings.

For Sale: Various goods and services for sale, including furniture, clothing, and household items.

For Sale: Real estate and other properties for sale, including land and buildings.

For Sale: Various goods and services for sale, including foodstuffs and household items.

For Sale: Real estate and other properties for sale, including land and buildings.

For Sale: Various goods and services for sale, including furniture and household items.

FOR SALE (Continued): Real estate and other properties for sale.

SMITH, Mackenzie & Co., Land & Estate Agency Department, Box 390, Nairobi, Phone 368.

Wanted: Various services and goods wanted, including labor, land, and equipment.

For Lease: Properties available for lease, including shops, offices, and residential buildings.

For Sale: Various goods and services for sale, including furniture, clothing, and household items.

For Sale: Real estate and other properties for sale, including land and buildings.

For Sale: Various goods and services for sale, including foodstuffs and household items.

For Sale: Real estate and other properties for sale, including land and buildings.

For Sale: Various goods and services for sale, including furniture and household items.

For Sale: Real estate and other properties for sale, including land and buildings.

SITUATIONS VACANT: Various job openings and vacancies.

Wanted: Various services and goods wanted, including labor, land, and equipment.

For Lease: Properties available for lease, including shops, offices, and residential buildings.

For Sale: Various goods and services for sale, including furniture, clothing, and household items.

For Sale: Real estate and other properties for sale, including land and buildings.

For Sale: Various goods and services for sale, including foodstuffs and household items.

For Sale: Real estate and other properties for sale, including land and buildings.

For Sale: Various goods and services for sale, including furniture and household items.

For Sale: Real estate and other properties for sale, including land and buildings.

For Sale: Various goods and services for sale, including furniture and household items.

WANTED: Various services and goods wanted, including labor, land, and equipment.

For Lease: Properties available for lease, including shops, offices, and residential buildings.

For Sale: Various goods and services for sale, including furniture, clothing, and household items.

For Sale: Real estate and other properties for sale, including land and buildings.

For Sale: Various goods and services for sale, including foodstuffs and household items.

For Sale: Real estate and other properties for sale, including land and buildings.

For Sale: Various goods and services for sale, including furniture and household items.

For Sale: Real estate and other properties for sale, including land and buildings.

For Sale: Various goods and services for sale, including furniture and household items.

For Sale: Real estate and other properties for sale, including land and buildings.

SMITH, Mackenzie & Co., Land & Estate Agency Department, Box 390, Nairobi, Phone 368.

Wanted: Various services and goods wanted, including labor, land, and equipment.

For Lease: Properties available for lease, including shops, offices, and residential buildings.

For Sale: Various goods and services for sale, including furniture, clothing, and household items.

For Sale: Real estate and other properties for sale, including land and buildings.

For Sale: Various goods and services for sale, including foodstuffs and household items.

For Sale: Real estate and other properties for sale, including land and buildings.

For Sale: Various goods and services for sale, including furniture and household items.

For Sale: Real estate and other properties for sale, including land and buildings.

For Sale: Various goods and services for sale, including furniture and household items.

J. W. MILLIGAN & Co., Land & Estate Agency Department, Box 148, Nairobi, Phone 7.

Wanted: Various services and goods wanted, including labor, land, and equipment.

For Lease: Properties available for lease, including shops, offices, and residential buildings.

For Sale: Various goods and services for sale, including furniture, clothing, and household items.

For Sale: Real estate and other properties for sale, including land and buildings.

For Sale: Various goods and services for sale, including foodstuffs and household items.

For Sale: Real estate and other properties for sale, including land and buildings.

For Sale: Various goods and services for sale, including furniture and household items.

For Sale: Real estate and other properties for sale, including land and buildings.

For Sale: Various goods and services for sale, including furniture and household items.

Cash Sales Ltd.

Where the Billing is Right. English Tin Ware. Crinkled Handcut Tins, Coloured Glass Tins, etc.

Cash Sales Ltd.

Private Arabic Teacher. Hajj Jama Ali, P.O. Box 312, Nairobi.

MUTHIGA.

For sale, recently built, one store, 6-roomed house. Large bathroom, kitchen, etc.

SUITS

Just arrived, complete of unshined English Tuxedo Suits, at 9/-, and 18/- each.

Farm and Estate ACCOUNT BOOKS

Sets of three ledgers, Day Book and Cash Book, size 9 x 6 bound red cloth in Cardboard Case.

Cash Sales Ltd.

Where the Billing is Right. English Tin Ware. Crinkled Handcut Tins, Coloured Glass Tins, etc.

Cash Sales Ltd.

Private Arabic Teacher. Hajj Jama Ali, P.O. Box 312, Nairobi.

MORRIS CARS

Special notice to those getting on leave. We can give you service afterwards. Come and see us in person.

The Overseas Motor Transport Company Limited.

Travellers' Agency. THE METROPOLITAN GARAGE, 87 WATERLOO - NAIROBI. P.O. Box 661.

Head Office, 16, Victoria Street, London.

WHY IS THE TIME TO USE NOW UP TO DRESSING?

It fills up the cracks and pores in your hair, leaving it soft and pliant. It makes old looking hair look new.

Whiz

TOP DRESSING. Khaki and Black for Open or Closed Cuts. Sells 6/- per tin. GARR, LAWSON & Co., Ltd.

Enquiries to BLACKLACKS & BROWN

(LATE MACKENNON EBROS). 81, Tel. 411. Telegrams: "Blacklacks" Nairobi.

SAL

Still going on NOW WE OFFER: FLOUR CREPE-DE-CHINE, SILK SATIN, PALACE CREPE, GEBOUTTE, NINON, AND ARTIFICIAL SILK, Suitable for French.

Corner Shop. Government Bazaar. Nairobi.

SAL

UNION-CASTLE LINE.

HOMEWARD VIA SUVA

"Landovoy Castle" "Cassidy Castle" "Hamphreys Castle" "Landovoy Castle" "Landovoy Castle"	From Mombasa (About) 2nd March 1922 17th May 12th July 6th September 18 November 14th December
---	--

HOMEWARD VIA SOUTH AFRICA

"Lamphey Castle" "Hamphreys Castle" "Hamphreys Castle" "Lamphey Castle" "Cape Hammer" "Lamphey Castle" "Cape Hammer" "Hamphreys Castle" "Hamphreys Castle"	From Mombasa (About) 17th March 6th May 12th July 10th September 14th July 11th September 16th November 10th October 6th November 14th December
--	---

Passes Steam from 225 1st class and 224 2nd class.

Passage Agents—
R.M.A. Corporation, Ltd., Nairobi, Kampala, etc.
Rams & Adams, Ltd., Mombasa.
Rams & Adams, Ltd., Mombasa.
T. J. O'Shea & Co., Ltd., Eldoret and Kisumu.
C. M. Macdonald and Co., Mombasa and Arusha.

For Rates and Freight and Passage Money, apply to—
THE UNION-CASTLE MAIL STEAMSHIP CO., LTD., MOMBASA.

British India Steam Navigation Company, Limited,

AND PERMANENT AND ORIGINAL STEAM SERVICE.

LONDON AND EAST AFRICA LINE.

LONDON TO BERA, via Mauritius, Port Said, Port Sudan and Aden, Ombaka and Harar.

Steamers	Arrive	Sails from
Kilindini	London about	Kilindini for London about

TO BOMBAY:

s.s. "Kara"	19th March
s.s. "Kara"	19th March
s.s. "Kara"	19th March

TO DORRAH:

s.s. "Kilindini"	22nd March
s.s. "Kara"	22nd March
s.s. "Kara"	22nd March

TO BOMBAY—SUBSIDIARY SERVICE BOMBAY/MOMBASA.

ARRIVE MOMBASA:	LEAVES MOMBASA:
24th March, 1922.	24th April, 1922.
21st April, 1922.	21st May, 1922.
19th May, 1922.	19th June, 1922.

Homeward steamers call at Plymouth affording passengers the opportunity of disembarking there.

Cargo accepted for Antwerp direct on all steamers.

ALL DATES SUBJECT TO ALTERATION WITHOUT NOTICE. RETURN TICKETS ISSUED AT TWO SINGLE FAIR PRICES 10% UP-COUNTRY CHECKS NOT ACCEPTED UNLESS ENDORSED BY A LOCAL BANK.

Terms, Rates of Freight and Passage may be obtained with **SMITH, MACKENZIE & CO. Agents, Kilindini, Mombasa, Zanzibar, Dar-es-Salaam, Zanzibar, Pemba and Zanzibar.**

Passenger Agencies only Nairobi and Kampala. Also the following Sub-Agents (for passage only):
Nairobi: Tyron Bros. Ltd. NAKURU: The Kenya Farmers' Association Ltd. REDDIF: Bedford & Co. SOY: The Soy Estate, KITALDI: Messrs. Davis & Rooney.

CHIVERS' ENGLISH CANNED FRUITS

DELICIOUS WITH CHIVERS' CUSTARD POWDER



CHIVERS & SONS LTD.
74 SOUTHAMPTON ROAD, LONDON, W.8.

SOLE AGENTS FOR EAST AFRICA: J. H. C. HAMILTON LTD., NAIROBI, P.O. Box 219.

MESSAGERIES MARITIMES

(FRENCH MAIL STEAMERS)

Regular and fortnightly services from La Rochelle.

THE QUICKEST ROUTE TO LONDON.

NEXT SAILINGS TO MARSEILLES—

s.s. "Durance de St. Pierre"	17th March, 1922
s.s. "Tide de Brest"	21st March, 1922
s.s. "Avalanche Roland Garros"	14th April, 1922
s.s. "General Dubouché"	20th April, 1922

ORCHESTRA ON ALL STEAMERS.

NEXT ARRIVAL FROM MARSEILLES—

s.s. "General Dubouché"	18th March, 1922
-------------------------	------------------

MESSAGERIES MARITIMES. BRILL JARDIN, P.O. Box 16, MOMBASA. P.O. Box 97, NAIROBI.

Compagnia Italiana Transatlantica

Monthly Passenger Service to NAPLES and GENOA.

THE DIRECT ROUTE TO ENGLAND.

SAILINGS FROM KILINDINI TO GENOA on the 1st of Every Month.

s.s. "V. CRISTO"—1st April, 1st June, etc.
s.s. "MAZZINA"—1st May, 1st July, etc.

Outfitting, Uniforms, Hair Dressing—Very costly Cutlery—Fresh running water in all Cabins and Bathrooms—Dishcloths—Chests of Drawers—Dress Cases—Bathrooming Toilets, etc.

Be you cost, reduction on return ticket if returning within one year.

Special reductions to Government Officials and their dependants.

REGULAR MONTHLY EXCURSIONS—MOMBASA, ZANZIBAR, DAR-ES-SALAAM.

Leaving Mombasa on the 26th, returning with same steamer to Mombasa on the last of every month.

NOTE—Special connection on S.T.S. for forwarding appliances.

Returns free by station in Kenya to Mombasa at single fare rates.

BAGGAGE PRE-ARRANGING TO LONDON.

1st Class Passengers 4 Cwt. 2nd Class 2 Cwt.

Baggage will be labelled and booked on board for prompt despatch to London by way of Southampton transatlantic to Port Said.

For further particulars of sailings, rates of passage, etc., apply to—
SOCIETA' COLONIALE ITALIANA—MOMBASA, P.O. Box 170, N. D. BARKER, NAIROBI, P.O. Box 25.

Deutsche Ost-Afrika-Linie

(GERMAN AFRICA SERVICE)

DEUTSCHE OST-AFRIKA-LINIE GENERAL AGENCY, MOMBASA.

Call: "Ostafrika." P.O. 218.

HOMEWARD VIA SUVA CANAL.

s.s. USAMBARA	2nd April
s.s. NARBA	24th April
s.s. TANZANIA	21st May
s.s. USUKUMA	18th June
s.s. USUKUMA	16th July
s.s. USUKUMA	14th August

MOMBASA TO SOUTH.

s.s. NARBA	27th March
s.s. TANZANIA	22nd April
s.s. USUKUMA	22nd May
s.s. USAMBARA (Homebound)	18th June
s.s. WANGONI (Homebound via Cape)	18th July
s.s. LOUPE WORMANN (Homebound via Cape)	21st July

SAILINGS SUBJECT TO ALTERATION.

Information regarding connection at Lugard's Marquee or Durban of the above steamers may be obtained from the Agents.

UP-COUNTRY CHECKS CANNOT BE ACCEPTED UNLESS SUITABLY ENDORSED BY LOCAL BANK.

Visitors to D.O.A.L. Steamers are required to hold possession of permits obtainable at the Agents.

For full particulars of passage fares and freight rates apply to the Agents—
BOUSTEADT and CLARKE, Ltd., or to BALGUY & Co., Ltd., Eldoret, Nairobi, Kisumu, Mombasa and Kampala.

THE AFRICAN MARINE and GENERAL ENGINEERING CO., Ltd.

KILINDINI—MOMBASA.

MARINE and MECHANICAL ENGINEERS, REPAIRS TO ANY TYPE OF MACHINERY.

SPECIALISTS IN

Rebuilding of Boats, Casting and Machining of Brass, Copper, Iron, Steel, Cast Iron, and Building up of Iron, Steel, etc. Castings in Cast Iron, Steel, Brass, etc., up to 12 in. All kinds of Boiler Repair Work.

All shipbuilding and engineering work, we undertake to make Machines or Engines from Plans from the Patent Office or the Patent Office.

We have skilled Chinese workmen in each department of our Workshops when we will undertake to set up the machinery, give the design.

Telephone 811. Estimates Given. Telegraphic Address, Mombasa.
SMITH, MACKENZIE and COMPANY, General Managers.

The Bradford Manufacturing Co., Limited.

JUST RECEIVED.

A very large assortment of our famous Poplin Tennis Shirts, 9/6 each, or 3 for 25s.—Colours: Navy, Grey, Light and Dark Blue, Tussory and White. Sizes, 14" to 17" neck.

Boys' White Twill Tennis Shirts 6/6 each. Shirts are sold with the usual E. M. Co. guarantee.

SATISFACTION OR MONEY REFUNDED.

Cash with order. Postage extra.

Imperial Chambers, Gloucester Road, Above Town, Ltd. P.O. Box 510.

Keith Timber Co., Limited.

Sadler Street, NAIROBI.

FLOORING, MOULDING, BLOCK BLOCK, FLOORING, MOULDING and PLANT TRAY HINGLES, AT REASONABLE PRICES.

P. O. Box 874. Phone 598.

PIANOFORTE TUNING and REPAIRING

Two years experience in Kenya Colony and five year with Messrs. Chappell and Co., London.

F. A. HEAD,
Box 971, NAIROBI.

OVERSEAS MAILS.

Clan-Ellerman-Harrison Lines, (JOINT SERVICE)

Liverpool—Glasgow—Ayr—Manchester.

LOADING FOR LIVERPOOL.

s.s. "Athlone"	21st March
A Steamer	14th April

From LIVERPOOL and GLASGOW. Due to arrive Kilindini.

s.s. "City of Dublin"	27th March
s.s. "Harmonica"	14th April
s.s. "Collamer"	2nd May

DONALD FISHER'S "Ye Monks"

is the safe Scotch Whisky.

It causes no headaches, no uncomfortable feeling the morning after.

Try it for yourself.

Sole Proprietors: **DONALD FISHER, LTD. EDINBURGH.**

Obtainable from all LEADING STORES.

Ellerman and Bucknall Line

NEW YORK—MOMBASA VIA SUEZ.

From AMERICA. Due to arrive Kilindini.

s.s. "City of Perth"	28th March
s.s. "City of Christchurch"	28th April
A Steamer	24th May

THE AFRICAN MERCANTILE Company, Limited, MOMBASA (Collier Navigation) NAIROBI

Theo. SCHOUTEN

LADIES and GENTLEMEN'S HAIRDRESSING

Permanent Waving a Speciality UNDER PERSONAL SUPERVISION.

All the Latest Tonic Preparations Stocked.

GOVERNMENT ROAD. Also of MOMBASA and NAKURU. P.O. Box 224. Telephone 345.

ARRIVALS and DEPARTURES

STEAMERS	FROM	Due at Mombasa	Due at Nairobi	Mails (Africa only)
Nairobi	Rangoon	Mar 17	Mar 19	
Gen. Durbach	Rangoon	" 18	" 20	
Karua	South	" 18	" 20	
Kilindini	Rome	" 21	" 23	

Next arrival 128 Letter 510 Parcel bags.

STEAMERS	FOR	Close at Mombasa	Date of Departure
Mombasa	Rangoon (Parcels only)	Mar 14	Mar 16
E. de St. Pierre	Rangoon	" 18	" 20
Karua	Rangoon	" 18	" 20
Kilindini	South	" 21	" 23

It is now considered good form to Coronatype personal letters

Social usage changes, even as styles in dress. With new fashions come and go up to the minute in Coronatype personal letters on attractive single sheet letterheads.

The best papermakers now put out personal stationery designed for use in the typewriter, although any kind may be used in Coronal.

Custom still desires that formal notes of acceptance be handwritten but practically everything else may be typed.

Aside from adding interest to letterwriting, what a boon this is to those who receive the letters.

Specimen of an attractive single sheet letterhead from any variety of business forms is enclosed for those who are interested in Coronatype personal letters.

STANDARD STATIONERY STORES, NAIROBI.

- SALE -

OR **SILKS and CURIOS**

at **Lalchand Moolchand Bros.**

P.O. Box 375. Government Road, Nairobi.

UPLANDS BACON FACTORY

Luncheons, Dinners and Picnics are not complete without resort to our **33 Varieties of Tinned and Glass Goods**

NEVER SO GOOD—NEVER SO CHEAP.

On sale at all the leading Stores in Eastern Africa.

Be sure to note None other genuine Uplands

UPLANDS BACON FACTORY

Leiss & Hon

WITH

TESSAR LENSES

cannot be beaten

further information -

"THE LENS" Limited.

PRINCE'S HOUSE, NAIROBI.

ESSJAY, Limited.

COLONY HOUSE, GOVERNMENT ROAD, NAIROBI. Phone 377.

Financial and Property Agents.

Mortgages Specialized in.

Town Properties Negotiated.

Partnerships Arranged.

Investments Advised on.

WE HAVE SOUND INVESTMENTS FOR SUMS FROM £100 UPWARDS. IN THIS RESPECT WE CAN DO BETTER FOR YOU THAN ANY OTHER FIRM ELSE.

S. JACOBS,
Managing Director

How Often Have You Heard

... say he can't find time for a haircut? ... doesn't know that he can't phone an appointment to have his hair combed or washed—in a private outside by a man who knows his job.

On time saved is worth the extra fifty cents.

HARRIS, GENTS' and CHILDREN'S HAIRDRESSERS

ROMANO'S

NAIROBI HOUSE, GOVT. ROAD. Phone 664

HOUSING OF ASIATIC CIVIL SERVANTS: Sub-Sided Scheme Explained.

OFFICIAL STATEMENT:

Details of a scheme to accommodate 7,000 Asiatic Civil Servants who are housed in their own houses are contained in a report issued by the Kenya Official Housing Committee. A copy of this report will be laid on the table of the Legislative Council at the next session and a resolution for its adoption will be moved in due course.

It is proposed that the scheme will be administered by a body of which the following will be members—The Treasurer (Chairman), The Director of Public Works, Two District Members (one European and one Asian) of the Legislative Council, and a Member of the Kenya Asiatic Civil Servants Association. Arrangements will be made between the Board and various Government Departments to provide the necessary legal, accounting and secretarial services required.

The necessary funds will be put at the disposal of the Board by Government to enable them to make advances. Only Asian officials on the permanent and pensionable staff of the Colony will be eligible for acceptance to participate in the scheme. The scheme will be for houses to be built within a ten mile radius of Nairobi, and to other centres under such conditions as may see fit to impose. The scheme will be open for applications for a period of two years only from the date on which it is brought into operation.

How to Apply

Any Asiatic official eligible for and desirous of participating in the scheme may make application on a prescribed form, addressed to the Board, and may give such form such information as to the applicant's home site as the Board may deem necessary.

The Board will consider such application and if they are satisfied that the applicant on account of his limited resources or in the future, or for other good cause, has reasonable grounds for wanting a house under the scheme, he may be accepted by them as a participant in the scheme.

Any Asian official who has made application to the Board and who has been accepted by the Board as a participant in the scheme, shall be granted a building site of Crown land within a radius of ten miles of Nairobi House (or at any other centre) and such site shall be subject to the same system adopted in connection with the land for the construction of houses with building contracts laid down. A schedule of the land available for the scheme will be prepared by the Commissioner of Lands and the same schedule will be of varying areas and plots to be divided into individual plots of Crown land shall be determined by the same method and by the same authority as they would be if they were nationalized. An acceptor of the scheme may use up to any part of the balance of land or other for the purchase, required erection of the balance of land or other as follows—

He shall be allocated to participate for a term of 10 years, and participants shall pay for same as follows—

Twenty per cent cash of fair capital value, to be advanced to the participant as soon as it is due. The fair capital value of plots, for the purposes of the scheme, in Nairobi and the environs, shall be determined by a Board consisting of the Governor, a representative of the Nairobi Municipality, and a representative of the Town Planning Authority. In the case of townships other than Nairobi, and their environs, the fair capital value shall be determined by a Board consisting of the Governor, a representative of the Nairobi Municipality, and a representative of the Town Planning Authority.

The per cent per annum, on the amount of the loan, shall be as follows—

Up to £1,000, 10 per cent; £1,000 to £2,000, 12 per cent; £2,000 to £5,000, 14 per cent; £5,000 to £10,000, 16 per cent; £10,000 to £20,000, 18 per cent; £20,000 to £50,000, 20 per cent; £50,000 to £100,000, 22 per cent; £100,000 and over, 24 per cent.

Interest on the Land Bank rate for an advance shall be as follows—

Up to £1,000, 10 per cent; £1,000 to £2,000, 12 per cent; £2,000 to £5,000, 14 per cent; £5,000 to £10,000, 16 per cent; £10,000 to £20,000, 18 per cent; £20,000 to £50,000, 20 per cent; £50,000 to £100,000, 22 per cent; £100,000 and over, 24 per cent.

On the building being completed and ready for occupation to the Board's satisfaction in accordance with the plans and specifications approved, the balance of the advance up to the full value (including land) placed by the Board on the property, plus the premium on the mortgage policy, shall be paid to the participant. The Board may agree to place which period for an extension of accommodation, and a further advance may be granted in such case when the office rent is paid, provided that the total amount in respect of the building and the amount of the extension of accommodation shall not exceed £10,000, and that for a further advance shall not exceed £10,000 (minimum) to £210,000 (maximum) shall be £500; £210 to £500, the maximum advance shall be £750; £500 and over, the maximum advance shall be £1,000.

A Good "Tip!"

Crawford's LIQUEUR

SCOTCH WHISKY

A & C CRAWFORD, LEITH & SCOTLAND.

LOW & BONAR, LTD.

DUNDEE.

Manufacturers of DUNDEE HAMS for Colons, Sugar, etc., etc. CANVAS of all types. COTTON DOCKS, etc. SOFT and TWEDES.

Apply to the East African Agents—

OVERMAN and COMPANY, NAIROBI.

Kenya Loan & Discount Co. Ltd.

P.O. Box 546, NAIROBI.

OFFICE—1st Floor, Court Chambers.

FINANCIAL AGENTS

Bills Discounted - Short-period Loans Granted.

Any realizable Asset negotiated for Cash.

Call or Write. STRICTEST CONFIDENCE.

ESTABLISHED 1921.

BUICK LAUREL

THERE IS NO OTHER CAR

That will impress you so forcefully on demonstration by its acceleration, efficient brakes and steering and general ease of handling.

That will make you wish to possess it by its irresistible appeal in every detail.

That will, after purchase, serve you so faithfully year in and year out.

That will mount up so many economies, trouble-free miles for you — economically and safely.

WE NOT ONLY SELL BUT SERVICE OUR SALES.

KENYA MOTORS.

Box 306. Kampala. Eldoret. NAIROBI. Nakuru. Kitale. Phone 208.

OLD SOLDIERS

NEVER DIE THEY GET

YOUNGERS

EVERY DAY.

CALL FOR: YOUNGERS

Sparkling SCOTCH ALE

B. Florens

PERMANENT WAVING AND TINTING A SPECIALTY.

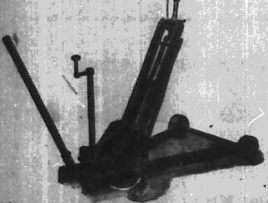
Phone 981. YORK BUILDING - GOVERNMENT ROAD, NAIROBI.

LIME Bone Flour Fertiliser.

New in Stock. Order Now for Long Rates.

Lime Limited

100th Street, N. at 412, Chamber of Commerce Bldg.



GARAGE JACKS

W. WINGRAM & CO

THE TOOL HOUSE NAIROBI.

OUR Snapshot Competition WEEKLY PRIZES:

1st Prize, Shs. 15/- (if warranted), Shs. 20/- for every Picture Published.

The Competition is for Snapshots of EAST AFRICAN INTEREST and must be taken by the Competitor.

THE "SNAPSHOT" COMPETITION, East African Standard, P.O. Box 930, NAIROBI.

If Plans or Photos are sent you will make arrangements for reproduction if necessary.

MOTOR NEWS

Motor Shows

"SAFETY FIRST." Aids to the New Motorist.

One of the many methods of gaining experience quickly is to make and digest other people's mistakes...

One of the most important things to remember is that you should never drink alcohol when you are driving...

Generally speaking, I do not think that cross-roads should be regarded as a warning red triangle...

A STAFF OF 20,000

The personnel of General Motors Europe Company approximates 20,000 men and women...

ROADS TO SPEED UP TRAFFIC

The National Association for Road Traffic is planning a system of highway construction...

EASIER STEERING



The NEW

The Car of To-day steers with far greater ease than the car of five years ago...

The NEW

The Car of Today for the Car of Tomorrow - CARR, LAWSON & CO., LTD., NAIROBI.

REPUTATION

The Greatest Asset In Commercial Life

reputation for the quality of the goods. This is particularly Motor Vehicles in East Africa...

EAST AFRICAN REPUTATION

that will attract the wise buyer. He knows other claims are untrue...

The Dodge Car and Dodge Truck

The purchaser of discrimination will examine the mechanical equipment...

BUY THE DODGE

S. FISHER & SIMMONS (E.A.) LTD., VICTORIA STREET, NAIROBI.

Metropolitan Garage

SPECIALISTS IN AUTOMOBILE REPAIRS. 2 HOOKS AVENUE HOTEL.

FOR SALE - CHEVROLET BOX BODY, excellent order, 600

CARS FOR HIRE WITH DRIVER OR DRIVE YOURSELF.

FOR AN EFFICIENT AND PERMANENT HOT WATER SUPPLY

BEESTON HOT WATER BOILER



For particulars relating to the size of Boiler required and price apply to-

Thornton & Turpin

Registered Plumbers and Sanitary Engineers. NAIROBI and MOMBASA.

TO LET

Premises in Duke Street, suitable for Garage, Workshop, Offices, or Store.

JAM CONTAINERS WITH LIDS

Table listing jam container sizes and prices: 1lb. Size for CHEAM, 1lb. Size for JAM, Etc.

GLO-Y

THE CLEAN ADHESIVE



TAWNS LIMITED, NAIROBI.

NOTICE.

In view of the numerous disappointments of PROSPECTIVE TRAVELLERS TO EUROPE, being unable to secure berths on the already booked-out liners, we beg to announce that we shall be running one FROM KAMPALA TO NUA (THE FILES) in connection with every HULL SAILING.

The Whole Year Round.

FOR RATES, TIME TABLES AND DETAILS, WRITE, PHONE OR WIRE TO

Motor Tours Ltd.

opposite the Post Office.

Box 476, Three Stars, Tel.: MOTO TOURS, NAIROBI.
FOR LUXURIOUS MOTOR CAR AFFAIRS,
KAIL TICKETS AND TRAVEL INFORMATION.

HAVE YOU EVER THIRD

Peering Cherry Brandy

IN YOUR

"Mixed Vermouth"

DO YOU REGRET IT IS TOPPING.

WHOLESALE STOCKISTS:

LONDON, PHIPSON and Co., Ltd.

NAIROBI.

IMPERIAL GOVERNMENT ESTIMATE.

(Continued from page 1.)

In the last Budget estimate made for the expenditure, providing the Shaking Fund, amounting to £27,000,000. In the coming financial year there will be a saving of £16,000,000 in Consolidated Fund Charges by payments heretofore made to local taxation, the amounts being transferred to the Civil Estimates. If other items in the Consolidated Fund Charges amount to last year's figure and provision for the Shaking Fund is not reduced, the expenditure under these heads would bring the total expenditure in the Budget for the forthcoming Budget to £72,000,000.

Increased Revenue.

Compared with the total of £74,000,000 in the last Budget, the above is an increase of £60,000,000. The £16,000,000 of increased expenditure, in addition to £14,000,000 transferred to Civil Estimates, is attributed to the relief of local taxation under the Finance Bill of the late Government. This can be met out of the Public Revenue Account, which at present has a balance of about £20,000,000. A sum of £20,000,000 increased revenues would have to be met out of the ordinary sources of revenue.

Whether the Chancellor of the Exchequer, when he makes his Budget statement on April 11, will be necessary to impose any new taxation, is a subject of great discussion in the Press. British Official Wireless Service.

Windy Weather in Britain.

SEVERE frosts in the NORTH.

"STANDARD" CORRESPONDENT.

London (By Mail). Many people have welcomed the cold spell which we are now favoured as a relief from the warm but blustering weather we seem to have had since Christmas. In spite of the cold, however, skating is doubtful and the south of England has had very little snow. Severe night frosts continue in the north but the cold over South-west England is not sufficient for outdoor winter pastimes, and skaters still confine their activities to the ice on streams which are even more popular than they were a few weeks ago. This week some of the days have been almost frost-free and there is little doubt that we shall not experience the severe weather of last year.

Previous Disasters.

No doubt, because these disasters are not very frequent they always cause a great deal of concern. In 1923 there were four big air disasters namely June 17, 1923, the Imperial Airways Line City of Ottawa was wrecked in the Channel and seven were killed; September 8 when the City of Jerusalem crashed at Jeddah, Palestine, being killed and 3 injured and October 20 when the City of Rome with Italian mail crashed in the Gulf of Genoa, seven were killed, and on November 8 when the German air liner crashed near Godalmsen Strang, seven again being killed.

In 1924 the Imperial Airways machine carrying out a test flight crashed—four being killed. In 1924 there were two disasters, both in Kent when the Paris London plane crashed at Romney Marsh in October when the French Air Union liner crashed near Egham, Surrey. Both these resulted in killed and injured. The French Atlantic carrier in England on his way to Cherdon in 1922, which was the London-Markham charter air service crashed at Mvingo.

AN TRACKER IN BRITAIN.

French Propaganda Machine Crashes in Kent.

WOMENLY HEROISM.

"STANDARD" CORRESPONDENT.

London, February 13. We are getting used to read disasters these days that a disaster of the air which advances seems to fill us with such horror. Thus this week we read with a sinking and repeat the disaster which occurred in Kent to the French Air Union liner when two English people were killed, and four others seriously injured. The tragedy was perhaps even more pathetic in view of the fact that the killed were a newly married couple just returning from their honeymoon in Paris.

Among the injured who are now in the Royal Kent Hospital at Maidstone are the pilot, two mechanics and a flight instructor. The plane was flying from Farnham and was for the wonderful because of the latter who is suffering from shock the death toll might have been higher.

A Broom Drive.

The machine, a Salmson, left Paris at 10.30 a.m. Some trouble was experienced with the engine and they returned to earth. When Kent was reached a moon after a few minutes the engine stopped and the passengers were warned that it was intended to land.

Some time, however, at the Maidstone aerodrome, the plane suddenly nosed down to the moss covered field and burst into flames.

One of the first out was Mr. Brown, whom I have mentioned above as being injured, who, at great risk to himself, dashed back to the plane and dragged the pilot and the two mechanics from it. It was then that Mr. and Mrs. Holden, who were burnt to death almost immediately, their bodies being found in the parts of the machine where the flames had been burning. The couple who were killed were only married the previous Wednesday and it was their intention to spend the second week of their honeymoon in London for which they had already booked rooms. Mr. Hugh Brown said that he thought a tall control tower was built at the end of the airfield and the pilot was told the passengers to get ready to take up the plane and he was told in the tall hall "gone west" and that the pilot was very cool and although they got down some distance they afterwards seemed to dive right into the ground. Of course we shall not know the reason until after the enquiry.



EMPIRE

TO-NIGHT

Friday, March 14th, at 8.45 p.m.

The glittering days of Louis the Fifteenth, as the book-ground for the super-production.

"When a Man Loves"
The film version of "Macon Lussan" including

John Barrymore

and DOLORES COSTELLO.

"KENA NEWS" "NAIROBI GOLD" "EMPIRE NEWS"

SPECIAL FAYEE GAZETTE.
Review of the year 1924 - 2,000 feet.
Shts. 5/2 and 3/2.

MATINEE SATURDAY

Come and bring the children to see

"The Emden"

Authentic - thrilling - historical - fair.
Saturday Afternoon at 3.15 p.m.
Adults, Shs. 2/6 and 2/2; Children, Shs. 1/6.

SATURDAY EVENING

THIKA PLAYERS

"MURDER ON THE SECOND FLOOR"

Shts. 10/20, 7/10, 1/2-1/2. Unadvertised.

Next Week's Extra Attention—
THE EXCLUSIVE PICTURES OF H.M.H. THE PRINCE OF WALES' CURRENT VISIT TO KENYA.

Piccadilly Restaurant

THEATRE ROYAL BUILDING.
The Best and Cheapest Lunch and Dinner served in Town.
Fresh Cooking.
Specialties to Order.
Mixed Grill. Larder of any description.
Cassinois and panache served.
Remdes Borch — Fries — Mince à l'Allemande.
Savoury — Cocoa — Gumbo — Test Specialities.



Start the day right!

RICH in energy, Quaker

Oats is ideal for the first meal. It is a delicate, delicious food, easy to prepare, easy to eat, easy to digest, yet full of nourishment.

Its energizing ingredients supply sustain the body through the five morning hours when 70% of the day's work is done. It is the foe of mid-morning headache, fatigue and nervousness. You will feel better, work better with a first meal of Quaker Oats—every day.

Quaker Oats

RUBBER STAMPS

STANDARD STATIONERY STORES, NAIROBI.

THEATRE ROYAL

To-Night, and Saturday Only — March 14 and 15.

The Magnificent BRITISH Mystery Film —

"THE SILENT HOUSE."

WITH A BRILLIANT ALL-BRITISH CAST, AND MABEL POULTON.

THIS MASTERPIECE OF THRILLER, MYSTERY, AND SUSPENSE was adapted from the novel "The Silent House" (Nearly a quarter of a million copies of which have already been sold), and the successful Stage production (which ran for Twelve Months) at the COMEDY THEATRE, LONDON.

Laughter and Fun in "Who's Heedling" News of the Empire, in "The Empire News".

3/- PRICES - 4/-

Full Programme MATINEE to-morrow at 3.15

EMPIRE THEATRE

By Special Request

THE THIKA PLAYERS

will give a repeat performance of

Murder on the 2nd Floor

ON Saturday March 15th AT 8.45 p.m.

Sure OF THE BEST

Service AND UTMOST Satisfaction

By Placing Your Order with

Express Transport Coy

Cartage contractors to Kenya and Uganda Railways & Harbours.

NOTE: NOT MADE

We can store anything in our warehouses. We clear goods from boat to destination. We meet passengers at Mombasa and Malindi. We can ship goods to any part of the world. We can transport goods per Motor Vehicle, Tractor and Trailer and Mule transport. We always have good fuel in stock and short lengths. We can supply Road, Motor and Poles in any quantity. We give value for money.

MELANYL



Marking Ink.

Large size Shs. 1/75

STANDARD STATIONERY STORES, NAIROBI.

TRUCKS

That have proved their worth time and time again. Acceleration Power Speed and Economy are the Features of CHEVROLET TRUCKS

Watch Them On The Road

Let Us Give You Facts and Prove Them

Prices from: £178-15

F.O.R. NAIROBI

THE MOTOR MART & EXCHANGE LTD.

NAIROBI - NAKURU - ELDORET - DAR-ES-SALAAM

AGENTS FROM THE COAST TO THE CONGO.

ST CAMP OF KENYA DEFENCE FORCE.

An Outstanding Success at Thomson's Falls.

KEEN RECRUITS.

The first Defence Force Camp in Kenya is being held at Thomson's Falls this week. The camp is proving in every way a huge success; recruits are showing the greatest enthusiasm; and only regret is that funds will not permit of a longer period of training under such splendid conditions.

NOT LONG ENOUGH.

(FROM A CORRESPONDENT.)

Thomson's Falls, March 11. Through the weather the training has been anything but promising. Recruits are not showing the keen interest of the district from camp to camp at the first Defence Force Camp which is now being held at Thomson's Falls. The camp is situated on a hillside which is being built by the military...

A First Problem.

On the first morning of the camp the weather was very much perturbed when the assembly of the recruits was held at Thomson's Falls. The recruits were not very keen at first, but as the days passed they became more interested...

A Good Beginning.

A good hot breakfast was the most important first item and great credit is awarded to the organizers of the training which was to be held on the morning of the 11th. The recruits were not very keen at first, but as the days passed they became more interested...

Tribe to Officers.

This narrative should not end without a word of commendation to the staff of the camp who have been working very hard to make the camp a success...

MARVED AND DEPART CHAPLAIN.

SUNDAY, MARCH 16. 7.30 a.m.: St. Christopher's, Nairobi. 9.30 a.m.: St. Christopher's, Nairobi. 11.15 a.m.: St. Christopher's, Nairobi.

SUNDAY, MARCH 23.

8.30 p.m.: St. John's (wreath ceremony) - Nairobi. 9.15 p.m.: St. John's (wreath ceremony) - Nairobi.

Indian Visitors.

The Hindu temple will be in the S.D. Sabba Hall, Debra Street, Nairobi, on Friday, 27th March, from 10 a.m. to 4 p.m. The programme will consist of a service of prayer, a lecture on the Hindu religion, and a musical performance.

A YEAR'S WORK AT THE PORT. IMPRESSED BY EAST AFRICA'S CHIEFS.

Further Round of Progress.

REVISED FACILITIES.

The summary of a report on the activities of the Port of Mombasa for the year ending 31st December 1935, which has been issued by the General Manager, Messrs. Messageries Maritimes, has been published. The progress has been made in the various branches of the port's work...

Share Section.

The Registrar says he has received a number of applications for the registration of shares in the Mombasa Harbour Trust. The Registrar says he has received a number of applications for the registration of shares in the Mombasa Harbour Trust...

Unlucky Day?

Colonel Furlong has been on a long tour through Tanganyika and the East African states. He has been very successful in his work, but he has had some unlucky days in the past...

Statement of Accounts.

Nairobi, 14th March. A statement of accounts for the year ending 31st December 1935 has been issued by the East African states. The statement shows a profit of £1,000,000...

Views on East Africa.

Colonel Furlong thinks East Africa is a very important part of the British Empire. He has been very successful in his work, but he has had some unlucky days in the past...

Marine Section.

The materials for two additional mines have been received from the Royal Navy. The materials for two additional mines have been received from the Royal Navy...

Marine Section.

The materials for two additional mines have been received from the Royal Navy. The materials for two additional mines have been received from the Royal Navy...

Marine Section.

The materials for two additional mines have been received from the Royal Navy. The materials for two additional mines have been received from the Royal Navy...

Marine Section.

The materials for two additional mines have been received from the Royal Navy. The materials for two additional mines have been received from the Royal Navy...

THE EAST AFRICAN STANDARD

KENYA AND ZANZIBAR POPPY DAY TOTALS.

£55 Increase on the 1928 Collections.

EAST AFRICAN AFFAIRS IN A FOG.

Indecision and Doubt in London.

LONDON-CAPE TOWN AIR ROUTE.

Argument for an Alternative Course.

THE SHEW REPORT.

'NOT PRACTICABLE.'

REMEMORANDA NATIONAL.

'STANDARD' CORRESPONDENT.

CLASS/16/18.

The collection in Kenya on Poppy Day, 1935, has been the most successful since the first collection in 1928. The total amount collected was £55,000, an increase of £10,000 on the 1928 collection.

What would you rather do?

Which would you rather do, to work in the mines or to work in the fields? The question is a difficult one to answer, but it is one that is being asked in many parts of the world.

What would you rather do?

Which would you rather do, to work in the mines or to work in the fields? The question is a difficult one to answer, but it is one that is being asked in many parts of the world.

What would you rather do?

Which would you rather do, to work in the mines or to work in the fields? The question is a difficult one to answer, but it is one that is being asked in many parts of the world.

What would you rather do?

Which would you rather do, to work in the mines or to work in the fields? The question is a difficult one to answer, but it is one that is being asked in many parts of the world.

What would you rather do?

Which would you rather do, to work in the mines or to work in the fields? The question is a difficult one to answer, but it is one that is being asked in many parts of the world.

What would you rather do?

Which would you rather do, to work in the mines or to work in the fields? The question is a difficult one to answer, but it is one that is being asked in many parts of the world.

What would you rather do?

Which would you rather do, to work in the mines or to work in the fields? The question is a difficult one to answer, but it is one that is being asked in many parts of the world.

What would you rather do?

Which would you rather do, to work in the mines or to work in the fields? The question is a difficult one to answer, but it is one that is being asked in many parts of the world.

What would you rather do?

Which would you rather do, to work in the mines or to work in the fields? The question is a difficult one to answer, but it is one that is being asked in many parts of the world.

'NOT PRACTICABLE.'

The London correspondent of the Standard writes that the proposed air route from London to Cape Town is not practical. The route is too long and too dangerous.

'STANDARD' CORRESPONDENT.

The London correspondent of the Standard writes that the proposed air route from London to Cape Town is not practical. The route is too long and too dangerous.

'NOT PRACTICABLE.'

The London correspondent of the Standard writes that the proposed air route from London to Cape Town is not practical. The route is too long and too dangerous.

'STANDARD' CORRESPONDENT.

The London correspondent of the Standard writes that the proposed air route from London to Cape Town is not practical. The route is too long and too dangerous.

'NOT PRACTICABLE.'

The London correspondent of the Standard writes that the proposed air route from London to Cape Town is not practical. The route is too long and too dangerous.

'STANDARD' CORRESPONDENT.

The London correspondent of the Standard writes that the proposed air route from London to Cape Town is not practical. The route is too long and too dangerous.

'NOT PRACTICABLE.'

The London correspondent of the Standard writes that the proposed air route from London to Cape Town is not practical. The route is too long and too dangerous.

'STANDARD' CORRESPONDENT.

The London correspondent of the Standard writes that the proposed air route from London to Cape Town is not practical. The route is too long and too dangerous.

'NOT PRACTICABLE.'

The London correspondent of the Standard writes that the proposed air route from London to Cape Town is not practical. The route is too long and too dangerous.

'STANDARD' CORRESPONDENT.

The London correspondent of the Standard writes that the proposed air route from London to Cape Town is not practical. The route is too long and too dangerous.

'STANDARD' CORRESPONDENT.

The London correspondent of the Standard writes that the proposed air route from London to Cape Town is not practical. The route is too long and too dangerous.

'NOT PRACTICABLE.'

The London correspondent of the Standard writes that the proposed air route from London to Cape Town is not practical. The route is too long and too dangerous.

'STANDARD' CORRESPONDENT.

The London correspondent of the Standard writes that the proposed air route from London to Cape Town is not practical. The route is too long and too dangerous.

'NOT PRACTICABLE.'

The London correspondent of the Standard writes that the proposed air route from London to Cape Town is not practical. The route is too long and too dangerous.

'STANDARD' CORRESPONDENT.

The London correspondent of the Standard writes that the proposed air route from London to Cape Town is not practical. The route is too long and too dangerous.

'NOT PRACTICABLE.'

The London correspondent of the Standard writes that the proposed air route from London to Cape Town is not practical. The route is too long and too dangerous.

'STANDARD' CORRESPONDENT.

The London correspondent of the Standard writes that the proposed air route from London to Cape Town is not practical. The route is too long and too dangerous.

'NOT PRACTICABLE.'

The London correspondent of the Standard writes that the proposed air route from London to Cape Town is not practical. The route is too long and too dangerous.

'STANDARD' CORRESPONDENT.

The London correspondent of the Standard writes that the proposed air route from London to Cape Town is not practical. The route is too long and too dangerous.

'NOT PRACTICABLE.'

The London correspondent of the Standard writes that the proposed air route from London to Cape Town is not practical. The route is too long and too dangerous.

Rate of Exchange.

Table with columns for City, Rate, and other financial data.

Get your Gum Boots Now Rains are here Fresh Stocks Just to hand.

Advertisement for gum boots featuring 'Gen's Gum Boots' and 'Gen's Thick Waters'.

Men!—make your choice

It's the best there yet, either way

Gillette

SHAVING CREAM

The Cream of Shaves

Your Chemist stock it.

THE QUEEN SEES EAST AFRICA IN LONDON.

Like Trophy Hopes for the Prince.

DEVELOPMENTS CONCERN AT INDUSTRIAL FAIR.

STANDARD CORRESPONDENT.

London, (By Mail.)—The East African Exhibition is very busy this week at the British Industrial Fair which this year is being the first time, is held at Olympia, London, and is the largest exhibition of its kind ever held in the Empire. The exhibition is held in the main building which is immediately opposite the main entrance to the exhibition grounds. The exhibition is arranged in a Court, arranged in a series of wings which point in the direction of the different Colonial and Dominion exhibits. Thus a visitor desirous that East Africa is on the left and it occupies a corner site of the main building.

The great day of the Exhibition was on Tuesday when the King and Queen, accompanied by the Duke of York, Princess Mary and Lord Fairfield, the Colonial Secretary.

The Queen, as mentioned by Colonel Franks, who was accompanied by Major-General Sir John Dill, is in charge of the stall, and the Queen, who was in a position to display it, was representing such splendid countries.

The Queen, who was in a position to display it, was representing such splendid countries.

The Queen, who was in a position to display it, was representing such splendid countries.

Tanganyika Trade.

STAGMATING EXPORT OF WAREHOUSES.

The following official figures for trade in Tanganyika territory during 1929 have been supplied by the Ministry of Commerce and Industries: Trade and Importation Office on the receipt of a cable received from East Africa.

The total imports into Tanganyika for 1929 are valued at £4,200,000 as against £3,500,000 for 1928. The total exports for 1929 are valued at £2,500,000 as against £2,000,000 for 1928. The total domestic exports for 1929 are valued at £2,500,000 as against £2,000,000 for 1928. The total domestic imports for 1929 are valued at £2,500,000 as against £2,000,000 for 1928.

WHERE TO STAY TOWN AND COUNTRY.

PALACE HOTEL

HOTEL AVENUE

THE TWO MOST UP-TO-DATE AND LUXURIOUS HOTELS IN KENYA.

THIS IS WORTH YOUR CONSIDERATION

When visiting Nairobi, Kenya, Uganda & Tanganyika, it is well to know that the two most up-to-date and luxurious hotels in Kenya are the Palace Hotel and Hotel Avenue. Both hotels are situated in the heart of Nairobi, and offer the most comfortable and convenient accommodation for tourists and business travelers alike.

As supplied to the House of Commons

Amstel Beer the Best in East and West

Guaranteed Free of Chemicals.

Obtainable at all leading Hotels, Bars and Stores. Ask for it in your club.

Twentisch Overseas Trading Co., Ltd., Members, Kampi Naranyi, Nairobi.

BRITISH TRADE WITH THE DOMINIONS.

Exports increasing rapidly.

IMPORTANT MARKET.

STANDARD CORRESPONDENT.

London, (By Mail.)—In these days of talk in the Empire of the British trade it is especially interesting to note the position of the Dominion of Kenya. The Dominion of Kenya is a very important market for British goods, and the trade between the two countries is increasing rapidly.

THE AFRICAN AIR ROUTE.

PUTTING TANGANYIKA ON THE MAP.

ENCOURAGE WINDFALL.

STANDARD CORRESPONDENT.

London, (By Mail.)—The African Air Route is a very important one, and it is well to know that the route is being put on the map. The route is being put on the map, and it is well to know that the route is being put on the map.

WHEN VISITING NAIROBI STAY AT

TORR'S HOTEL

P.O. Box 418. Phone 418.

Finest Appointed Hotel in Kenya, Uganda & Tanganyika.

MUSIC AND DANCING NIGHTLY.

Hot and Cold Water Laid on in Every Bedroom.

CARS MEET ALL TRAINS.

Quality Sells

VAT 69

World's Biggest Dog Show.

INCREASING INTEREST IN CIGARETTES.

STANDARD CORRESPONDENT.

London, (By Mail.)—The World's Biggest Dog Show is a very important one, and it is well to know that the show is being held in London. The show is being held in London, and it is well to know that the show is being held in London.

MARTIN'S PILLS

APOL & STEEL

World's Biggest Dog Show.

INCREASING INTEREST IN CIGARETTES.

STANDARD CORRESPONDENT.

London, (By Mail.)—The World's Biggest Dog Show is a very important one, and it is well to know that the show is being held in London. The show is being held in London, and it is well to know that the show is being held in London.

WEATHER REPORT.

Forecasters are making observations made at stations of the British East African Meteorological Service, 18th March, 1930.

Station.	Pressure.	Direction.	Wind.	Temp.	Max.	Min.	Relative.
Mombasa.	30.00	ESE	—	—	69	70	80
Weather—Cloudy.	—	—	—	—	—	—	—
Direction.	—	—	—	—	—	—	—
Temp.	—	—	—	—	—	—	—
Relative.	—	—	—	—	—	—	—

THE NORFOLK HOTEL

THE NAIROBI HOTEL

Stag's Head Hotel

NAKURU

Main Road close to New Post Office, Banks of the Nile, and Station.

Electric Light, Hot and Cold Water, all Bedrooms, EUROPEAN SANITATION and BATHS.

Especially Attractive and Comfortable.

WEEK ENDS—SPECIAL TERMS.

Daily Breakfasts Catered for at Special Rates.

DANCES. Mrs. JESSE, Proprietress.

SWAN

FOUNTAIN PEN INK

LAST DROP BOTTLE.

STANDARD STATIONERY STORES, NAIROBI.

MAY & CO. LTD.

FOR ARES AND INSURANCE

YOUR MOTOR CARS AND MOTOR CYCLES

AT THE Salisbury Hotel Nairobi.

NAIVASHA HOTEL

AN EXCELLENT HEALTH RESORT.

FIRST CLASS COUNTRY HOUSES FOR HOLIDAY OR BUSINESS VISITING.

NAIVASHA HOTEL

AN EXCELLENT HEALTH RESORT.

FIRST CLASS COUNTRY HOUSES FOR HOLIDAY OR BUSINESS VISITING.

GROSVENOR HOUSE

OAKLEIGH HOTEL

NAIROBI

P.O. Box No. 181.

