

The LOUNGE FOR Morning and Afternoon TEAS OPEN ON SUNDAYS Non-Residents. The NEW STANLEY HOTEL

PRICE LIST OF "Tusker" Brand Lager PALE ALE XXX ALE AND STOUT 15/- per doz. Quart Bottles, 10/6 per doz. Pint Bottles. Can be obtained at all Licensed Stores in Nairobi. ALLOWANCE ON RETURNED BOTTLES. 1/- per doz. Quart bottles, 5/- per doz. Pint Bottles.

DAILY EDITION

THE EAST AFRICAN Standard 12 PAGES

UGANDA ARGUS With which, by insertion, is incorporated THE LEADER THE OLDEST ESTABLISHED NEWSPAPER PUBLISHED IN KENYA AND UGANDA.

NAIROBI, THURSDAY, NOVEMBER 27, 1930.

PRICE, 50 CENTS.

ACQUIT IN KIJABE MURDER TRIAL.

Accused Given Benefit of the Doubt.

UNSOLVED CRIME.

Only One Person Concerned in the Outrage.

The native who has been on trial for some days for the murder of Miss Stumpf, the American missionary at Kijabe on January 5, was acquitted by the Chief Justice yesterday.

Honour, having regard to the possibilities of the accused having access to the house on the morning after the crime and before the arrival of the police in view of the fact that certain footprints found outside the house had not been identified as those of the accused native and in view also of the possibility of the fact that certain footprints found outside the house had not been identified as those of the accused native and in view also of the possibility of the fact that certain footprints found outside the house had not been identified as those of the accused native...

The Judge, however, dismissed as improbable the story told by the native in explanation of how the prints were found on the clock and the lamp in the room.

The Chief Justice supports the view of the prosecution that there was only one person concerned in the murder and the judgment offers no support to the story that the crime was connected with the circumstantial controversy.

NO CIRCUMSTANTIAL REPRISAL.

In view of the fact that there is no evidence to show that the crime was connected with the circumstantial controversy...

Improbable Story. His Honour characterized as improbable the uncorroborated story told by the accused about a European having asked him to go to a clock and lamp in the drawing room...

In the course of his judgment His Honour referred to the evidence of the witness who testified that the accused had been seen to go to the clock and lamp in the drawing room...

Page Print Evidence. The Judge examined with particular care all the evidence which was given in connection with the page print evidence...

Dealing with the injuries. His Honour said that the evidence was that the accused was seen to go to the clock and lamp in the drawing room...

Various observations in the presence of the court. His Honour said that the evidence was that the accused was seen to go to the clock and lamp in the drawing room...

Various observations in the presence of the court. His Honour said that the evidence was that the accused was seen to go to the clock and lamp in the drawing room...

Various observations in the presence of the court. His Honour said that the evidence was that the accused was seen to go to the clock and lamp in the drawing room...

Various observations in the presence of the court. His Honour said that the evidence was that the accused was seen to go to the clock and lamp in the drawing room...

Various observations in the presence of the court. His Honour said that the evidence was that the accused was seen to go to the clock and lamp in the drawing room...

Various observations in the presence of the court. His Honour said that the evidence was that the accused was seen to go to the clock and lamp in the drawing room...

Various observations in the presence of the court. His Honour said that the evidence was that the accused was seen to go to the clock and lamp in the drawing room...

DEADLOCK IN BRITISH AND WELSH COLLIERS.

Appeal to National Industrial Board.

WORKERS AND WAGES.

[BY WIRELESS.] Negotiations in London and in the South Wales coal fields are at a deadlock and the miners in both areas are offering the dispute to a recently established National Industrial Board on an appeal under the Coal Mines Act.

The dispute in Scotland between the British coalowners and the miners' delegates is being referred to the National Industrial Board for settlement.

The latest official death roll in the Rhineland collieries gives the number of killed at 167. The figures, however, give 210 killed.

The main earthquake shock which struck the Rhineland on November 25th was felt in the Westphalia and the Ruhr districts.

The main earthquake shock which struck the Rhineland on November 25th was felt in the Westphalia and the Ruhr districts.

The main earthquake shock which struck the Rhineland on November 25th was felt in the Westphalia and the Ruhr districts.

The main earthquake shock which struck the Rhineland on November 25th was felt in the Westphalia and the Ruhr districts.

The main earthquake shock which struck the Rhineland on November 25th was felt in the Westphalia and the Ruhr districts.

The main earthquake shock which struck the Rhineland on November 25th was felt in the Westphalia and the Ruhr districts.

The main earthquake shock which struck the Rhineland on November 25th was felt in the Westphalia and the Ruhr districts.

The main earthquake shock which struck the Rhineland on November 25th was felt in the Westphalia and the Ruhr districts.

The main earthquake shock which struck the Rhineland on November 25th was felt in the Westphalia and the Ruhr districts.

The main earthquake shock which struck the Rhineland on November 25th was felt in the Westphalia and the Ruhr districts.

The main earthquake shock which struck the Rhineland on November 25th was felt in the Westphalia and the Ruhr districts.

The main earthquake shock which struck the Rhineland on November 25th was felt in the Westphalia and the Ruhr districts.

The main earthquake shock which struck the Rhineland on November 25th was felt in the Westphalia and the Ruhr districts.

The main earthquake shock which struck the Rhineland on November 25th was felt in the Westphalia and the Ruhr districts.

The main earthquake shock which struck the Rhineland on November 25th was felt in the Westphalia and the Ruhr districts.

The main earthquake shock which struck the Rhineland on November 25th was felt in the Westphalia and the Ruhr districts.

The main earthquake shock which struck the Rhineland on November 25th was felt in the Westphalia and the Ruhr districts.

INDIAN CONFERENCE DIFFICULTIES.

Deeds More Difficult Than Words.

FEDERAL PROBLEMS.

[THROUGH REUTERS AGENCY.] London, November 26. The Indian Conference is having a very difficult time in the matter of the Federal Government's proposals for the re-organization of the Indian States.

The Indian Conference is having a very difficult time in the matter of the Federal Government's proposals for the re-organization of the Indian States.

The Indian Conference is having a very difficult time in the matter of the Federal Government's proposals for the re-organization of the Indian States.

The Indian Conference is having a very difficult time in the matter of the Federal Government's proposals for the re-organization of the Indian States.

The Indian Conference is having a very difficult time in the matter of the Federal Government's proposals for the re-organization of the Indian States.

The Indian Conference is having a very difficult time in the matter of the Federal Government's proposals for the re-organization of the Indian States.

The Indian Conference is having a very difficult time in the matter of the Federal Government's proposals for the re-organization of the Indian States.

The Indian Conference is having a very difficult time in the matter of the Federal Government's proposals for the re-organization of the Indian States.

The Indian Conference is having a very difficult time in the matter of the Federal Government's proposals for the re-organization of the Indian States.

The Indian Conference is having a very difficult time in the matter of the Federal Government's proposals for the re-organization of the Indian States.

The Indian Conference is having a very difficult time in the matter of the Federal Government's proposals for the re-organization of the Indian States.

The Indian Conference is having a very difficult time in the matter of the Federal Government's proposals for the re-organization of the Indian States.

The Indian Conference is having a very difficult time in the matter of the Federal Government's proposals for the re-organization of the Indian States.

The Indian Conference is having a very difficult time in the matter of the Federal Government's proposals for the re-organization of the Indian States.

The Indian Conference is having a very difficult time in the matter of the Federal Government's proposals for the re-organization of the Indian States.

The Indian Conference is having a very difficult time in the matter of the Federal Government's proposals for the re-organization of the Indian States.

The Indian Conference is having a very difficult time in the matter of the Federal Government's proposals for the re-organization of the Indian States.

The Indian Conference is having a very difficult time in the matter of the Federal Government's proposals for the re-organization of the Indian States.

The Indian Conference is having a very difficult time in the matter of the Federal Government's proposals for the re-organization of the Indian States.

The Indian Conference is having a very difficult time in the matter of the Federal Government's proposals for the re-organization of the Indian States.

THEIR DOOM MAY SOUND AT ANY MOMENT.

Mr. Baldwin's Warning To Labour Government.

GREAT CONSERVATIVE RALLY.

Wasted Opportunities of the Imperial Conference.

Another significant development of the political situation in Britain was revealed in a speech by Mr. Stanley Baldwin at a great Conservative gathering in London on Tuesday.

He said that the Labour Government were now at their wits' end and conscious that at any moment their doom might sound.

Mr. Baldwin declared that only one good thing had emerged from Labour's wasted opportunity at the Imperial Conference, namely, a decision to discuss the economic affairs of the Empire at Ottawa next year.

"They will be dismissed by our party" said the Conservative leader in a significant phrase.

PREPARING FOR 1931.

[THROUGH REUTERS AGENCY.] London, Nov. 26. A wide representative gathering of 800 delegates in the Central Hall, London, on Tuesday evening, was preparing for the coming year through the country party groups and committees of the Conservative Party.

The gathering was the largest ever held in the Central Hall, London, and was attended by a large number of members of the party.

The gathering was the largest ever held in the Central Hall, London, and was attended by a large number of members of the party.

The gathering was the largest ever held in the Central Hall, London, and was attended by a large number of members of the party.

The gathering was the largest ever held in the Central Hall, London, and was attended by a large number of members of the party.

The gathering was the largest ever held in the Central Hall, London, and was attended by a large number of members of the party.

The gathering was the largest ever held in the Central Hall, London, and was attended by a large number of members of the party.

The gathering was the largest ever held in the Central Hall, London, and was attended by a large number of members of the party.

The gathering was the largest ever held in the Central Hall, London, and was attended by a large number of members of the party.

The gathering was the largest ever held in the Central Hall, London, and was attended by a large number of members of the party.

The gathering was the largest ever held in the Central Hall, London, and was attended by a large number of members of the party.

The gathering was the largest ever held in the Central Hall, London, and was attended by a large number of members of the party.

The gathering was the largest ever held in the Central Hall, London, and was attended by a large number of members of the party.

The gathering was the largest ever held in the Central Hall, London, and was attended by a large number of members of the party.

COFFEE WAREHOUSES.

NEW RULES ISSUED BY GOVERNMENT.

[BY WIRELESS.] The King has given approval to a number of new rules which will govern the operation of the coffee warehouses in the Colony.

The new rules will govern the operation of the coffee warehouses in the Colony.

The new rules will govern the operation of the coffee warehouses in the Colony.

The new rules will govern the operation of the coffee warehouses in the Colony.

The new rules will govern the operation of the coffee warehouses in the Colony.

The new rules will govern the operation of the coffee warehouses in the Colony.

The new rules will govern the operation of the coffee warehouses in the Colony.

The new rules will govern the operation of the coffee warehouses in the Colony.

The new rules will govern the operation of the coffee warehouses in the Colony.

The new rules will govern the operation of the coffee warehouses in the Colony.

R101 Disaster.

COMING OVERCAST AT DRAKE.

[BY WIRELESS.] The King has given approval to a number of new rules which will govern the operation of the coffee warehouses in the Colony.

The new rules will govern the operation of the coffee warehouses in the Colony.

The new rules will govern the operation of the coffee warehouses in the Colony.

The new rules will govern the operation of the coffee warehouses in the Colony.

The new rules will govern the operation of the coffee warehouses in the Colony.

The new rules will govern the operation of the coffee warehouses in the Colony.

The new rules will govern the operation of the coffee warehouses in the Colony.

The new rules will govern the operation of the coffee warehouses in the Colony.

The new rules will govern the operation of the coffee warehouses in the Colony.

The new rules will govern the operation of the coffee warehouses in the Colony.

The new rules will govern the operation of the coffee warehouses in the Colony.

The new rules will govern the operation of the coffee warehouses in the Colony.

The Ideal Gift. "4711" Whitleyways NAIROBI and Branches. 4711 Presentation Set, 4711 Gift Set, 4711 Wicker Basket, 4711 Hand-to-Hand.

Keyed Applications. The Government has issued a notice regarding the application of the new rules which will govern the operation of the coffee warehouses in the Colony.

["E. A. Standard" Special]

**EAST AFRICA IN LONDON.**

**PERSONAL NOTES AND NEWS.**

**["STANDARD" CORRESPONDENT]**

was called on by Mr. J. Thomson, one of the Viceroy, who in shortly afterwards was to be appointed Governor of Kenya Colony. For many years he has been in the service of the Viceroy, and had undergone the usual course of military training. He is making the presentation of the decorations and medals upon his departure. His departure is being made on the 15th inst. Mr. Brown, and other members of the staff were very busy during the week which he spent in London. The Viceroy's departure was a small affair, and he will be leaving for his own country on the 15th inst. Several members of the staff were in London at the time. Mr. Brown had passed with him. Mr. Brown had passed with him. Mr. Brown had passed with him.

In view of the winter weather, the students in East Africa might expect to read, according to the "Evening Standard" columns, regarding the office culture in Britain. It will give you a detailed picture of the office culture in Britain. It will give you a detailed picture of the office culture in Britain. It will give you a detailed picture of the office culture in Britain.

**Smoking without Tears**

Have you seen the pan of the policeman's...  
No, but I have noticed her smoking

**'ABDULLA IMPERIAL PREFERENCE'**

—using the empty tin for her...  
—using the empty tin for her...

Sole Agents—  
**'DALGETY & COMPANY LIMITED.'**  
MOMBASA, NAIROBI, ELDORET.



**PROTECT YOUR CLOTHES BY USING PURE SOAP**

The way to safeguard your clothes from the harmful effects of impure soap is by choosing a soap which you know is pure. The makers of Sunlight Soap guarantee its purity with a sum of £1000.

Think what this means! Instead of endangering your linens and cottons you have certain protection. Your clothes are washed cleaner and whiter, the softness of their texture is preserved and they never fail to give you the longest possible wear.

Take advantage of this unique privilege. Ask for Sunlight Soap only—and be sure it is Sunlight that you get!

Every tinlet carries the Sunlight £1000 guarantee of purity.



**Sunlight Soap**

LEVER BROTHERS LIMITED, POOL BRIDGE, ENGLAND.

**WHY PAY RENT**

Attractive Plots in the Suburbs of Nairobi may be purchased on the instalment plan.

**GOOD RED SOIL WATER AND ELECTRIC LIGHT**

Plots from 1/4 of an acre upwards can be obtained on payment of a Small Deposit.

Call or WRITE for Particulars—  
**UPPER NAIROBI TOWNSHIP & ESTATE COMPANY, LIMITED,**  
Union Buildings, Government Road, Box No. 901, NAIROBI.

**Let Us Quote You FOR**

- CORRUGATED SHEET.
- PIPE.
- WOODEN FLOOR.
- BUTTERS.
- ROOFING.
- SHIFFERS.
- NAILS & SCREWS.
- STEEL.
- PAINTS.
- VARNISH.
- LINSEED OILS.
- TURPENTINE.
- DIPNETS.
- EMERALD.
- HARDWARE.

WE CARRY LARGE STOCKS OF ALL BUILDING MATERIAL AT COMPETITIVE PRICES.

ANGLO-BALTIC TRADING CO. LTD.  
NAIROBI. MOMBASA. TEL. BOX 252.

**Sukari Ltd.,**

have pleasure in announcing that they are now producing the Finest Quality White Sugar.

When ordering SUGAR from your grocers insist on being supplied with

**Sukari Superfine**  
Unqualified in Swaziland, Zululand and Natal.

**BARCLAYS BANK (DOMINION, COLONIAL AND OVERSEAS)**

Incorporated by Royal Charter 1826. Re-constituted by Act of Parliament, 1885.

**THE NATIONAL BANK OF SOUTH AFRICA, LTD.**  
and  
**THE ANGIO-EGYPTIAN BANK LTD.**

Capital Authorized	—	£10,000,000
Capital Subscribed	—	£6,875,000
Reserve Fund	—	£1,500,000
Reserve Fund	—	£1,500,000

OVER 60 BRANCHES IN THE Dominion of South Africa, Rhodesia, South West Africa, British East Africa, West India, Egypt, Palestine and the Straits Settlements.

THE BANK UNDERTAKES ALL CLASSES OF BANKING BUSINESS AND EXECUTES TRUSTS AND EXECUTORSHIP.

BRANCHES IN EAST AFRICA: Nairobi, Mombasa, Eldoret, Kisumu, Malindi, Lamu, Tanga, Dar-es-Salaam, Zanzibar, Pemba, Zomba, Beira, Mozambique, Durban, Natal, Cape Town, Johannesburg, Port Elizabeth, East London, Grahamstown, Durban, Natal, Cape Town, Johannesburg, Port Elizabeth, East London, Grahamstown.

Correspondents in all the Principal Cities and Towns of the World.

**Men's Khaki Jumpers.**

Shirts 5/00. Also Khaki Trousers 8/6. Shirts 6/6. Conduity Trousers (good) 3/6. Conduity Shirts (good) 12/6.

AT J. DAREVSKY & Co. NAIROBI. Box 482.

**FRAMED BY WOMEN OF TASTE**

Indolene Permanent Wave has a reputation for making an ideal treatment. We have just received a large consignment of Tolls' Preparations from all the leading firms which are most suitable for Christmas Presents and we invite your inspection.

**Theo. Schouten.** GOVERNMENT ROAD, BOX 884.

**EVERYTHING FOR SPORT AT MAY & CO, LTD.**

(Continued on page 2.)

**THE NEW "DURANT" FOR THE NEW FORD**



The new Ford Durant have set a high standard of motor car value. From the new Durant radiator to the tip of the steering arm knuckle, there is an unbroken series of lines—flowing curves of contour giving added comfort from the rich and attractive colors. You will find a real pride in the smart style and fresh new beauty of the Ford just as you will find an ever-growing satisfaction in the safety, comfort, speed, maintenance, ease of control, reliability and economy. In appearance, as in mechanical construction, certainly the new Durant put into new production. New Jersey has been added by outstanding performance. A feature of unusual interest is the use of Bendless Steel for the radiator shell, lamp housings, wheel fenders, body sills, full lamp and other special metal parts. This steel will not rust, corrode or tarnish and will retain its bright lustrous finish for the life of the car. Though more expensive than chrome-plating, it is furnished in its purest form without extra charge. Here, as in so many other important details, you see the underlying quality built into the new Durant.

NAIROBI MOTORS  
BOX 460 6th AVENUE TEL. 517



UNION-CASTLE LINE.

Table with columns for ship names, destinations, and dates. Includes routes to London, Liverpool, and other ports.

British India Steam Navigation Company, Limited

Table listing shipping schedules for British India Steam Navigation Company, including routes to London, Bombay, and other regional ports.

Advertisement for 'Every Morning' Chivers Olde English Marmalade, featuring an illustration of a man and a horse.

MESSAGERIES MARITIMES

Table listing shipping schedules for Messageries Maritimes, including routes to Europe and other international destinations.

CITRA LINE

Compagnie Indienne Transatlantique. THE BEST ROUTE TO ENGLAND. Includes details about routes and services.

Deutsche Ost-Afrika-Linie

Table listing shipping schedules for Deutsche Ost-Afrika-Linie, including routes to East Africa and Europe.

Advertisement for Keith Timber Co., Ltd. featuring PODO and CEDAR products, located in Nairobi.

Holland Afrika Lijn

Table listing shipping schedules for Holland Afrika Lijn, including routes to various African and European ports.

BLACK & WHITE

Table listing shipping schedules for Black & White, including routes to East Africa and Europe.

PIANOFORTE TUNING

Text advertisement for piano tuning services, mentioning experience and location in Nairobi.

OVERSEAS MAILS.

Table listing arrival and departure dates for various overseas mail services.

TWENTY OVERSEAS TRADING CO., LTD.

Text advertisement for Twenty Overseas Trading Co., Ltd., listing products and contact information.

The Final Clean Up

Text advertisement for 'The Final Clean Up' featuring various fabrics and clothing items.

JUST A FEW OF OUR NEW ARRIVALS...



FUEL, FUEL, FUEL.

Text advertisement for fuel products, listing different grades and prices.

Bradford Manufacturing Co. Ltd.

Text advertisement for Bradford Manufacturing Co. Ltd., featuring various textile products.

REDUCTION OF HATRACK Ladies Footwear Ltd.

Text advertisement for Ladies Footwear Ltd., featuring various styles of women's shoes.

BRICKS.

Text advertisement for bricks, listing quality and availability.

UPLANDS Christmas Hams

Text advertisement for Uplands Christmas Hams, featuring quality hams and contact information.

Small text at the bottom left of the page, possibly a footer or contact information.

Small text at the bottom center of the page, possibly a footer or contact information.

Small text at the bottom right of the page, possibly a footer or contact information.



Unquestioned quality and unsurpassed practical merit—this is the beautiful feature of the beautiful SHEAFFERS' TAWS.



**SHEAFFERS' TAWS, LTD.**  
NAIROBI.

**PICCADILLY RESTAURANT**  
THEATRE ROYAL BUILDING  
FRENCH COOKING.  
The Best and Cheapest Lunch and Dinner Served in Town.  
SERVISE A LA CARTE.  
LORSTEN & MONTAGNETTE—GRILL.—  
FRENCH PASTRIES—ICEA & ITALIANA.  
SERVISE A LA CARTE—SERVISE A LA ITALIANA.  
CATERING UNDERTAKEN FOR SMALL OR LARGE PARTIES ANYWHERE.

Now is the time to buy your XMAS GIFTS.  
CAMERAS — CINEMA CAMERAS — PROJECTORS.  
**ZEISS**  
FIELD GLASSES  
(the which prices have been lately reduced.)  
AT  
**"THE LENS Limited"**  
NAIROBI. Phone 925.

**TANGANYIKA SSAL GROWERS.**  
First General Meeting of New Association.  
AN INVITATION  
(Continued.)

The first general meeting of the newly formed Tanganyika Sisal Growers Association was held at Tanga on the 14th inst. The Hon. Mr. J. M. M.L.C. in the chair. Representatives of some 300 sisal growers reporting in the region of 20,000 tons per annum were present.

Major Kellie in welcoming the members to the meeting, pointed out the many advantages of co-operation and combination. A great deal of good was being done by the Association for all sisal growers in the Territory. Many matters affecting the sisal industry were discussed, among others being recouperation fees and weights, lightage charges, prices and quality of fields, and laboring etc. It was reported that the Association had already taken up the question of lightage charges that the prices of fields and laboring and that the Association had been organized, and that the Association was taking steps to open up at least 500 acres of sisal land with the full permission of the Government.

**Research.**  
The production of plant disease, withers of seeds and the research work of the industry were also discussed and it was decided that Major Leadley Major von Borens should wait upon His Excellency the Governor to put all the facts before him and try to obtain the best possible result.

**WEATHER REPORT.**  
Following are the results of observations taken at stations of the British East African Meteorological Service for November 10, 1930.

Station.	Pressure.	Temp.	Humidity.	Wind.	Max. Min. Relat. Humid.
Fort.	30.00	87	75	—	—
Mombasa.	30.00	87	75	—	—
Weather.	—	—	—	—	—
Notes.	—	—	—	—	—
Time.	—	—	—	—	—

N.B.—Humidity corrected, but not reduced to Sea-Level.  
N.B.—Pressure is given in in. and is corrected for Temperature and reduced to Sea Level and Standard Velocity. Temperature is given in Fahrenheit degrees. Rainfall is given in the measure of 16 in. (= 1 mm.). Wind force is given on the Beaufort scale.

Nightly 8-11 p.m.  
**EMPIRE** MATINEES Wed. 5 p.m. Sat. 2-10 p.m.  
**TO-NIGHT FRIDAY and SATURDAY.**  
AN ALL COMEDY PROGRAMME.  
**CHARLIE CHAPLIN**  
IN  
**THE CIRCUS**  
This is one of his best and funniest productions—YOU must see CHARLIE let loose in a circus. Also a TWO REELER COMEDY "THE SAILOR" and AN ABSORBING INTEREST UNDER COLORADO SKIES.  
PRICES: 5/-, 3/- and 2/-.

**Reduced Prices at the Empire Restaurant.**  
TABLE D'HOTE FIVE COURSE LUNCH.  
**2-**  
GRILLS—CHEAPEST PRICES IN TOWN.

**TORR'S HOTEL.**  
Grand Dinner Dance.  
Saturday 29th Nov. 1930.  
OPENING NIGHT OF Syd Zinger and his New Trio's Hotel Music. A Real West End Orchestra in Kenya. No Admittance Unless in Evening Dress. PRICES AS USUAL.

**Nairobi Railway Club**  
FOR  
One Night Only  
REPEAT PERFORMANCE OF  
**The Cradle Song**  
WITH THE  
**INTERLUDE IN VERSE**  
BY GREGORIO MARTINEZ SIERRA  
IN THE ENGLISH VERSION OF JOHN GARBETT UNDERHILL.  
"Really a beautiful play" vide "E.A. Review."  
TO BE FOLLOWED BY A DANCE.  
NOVEMBER 26th, at 8.45 p.m.  
RESERVES.  
BOOKING PLANS AT MESSRS. TAWS Ltd., Government Road.

**HOTEL AVENUE'S**  
CHRISTMAS ENTERTAINMENTS.  
**DINNER DANCE**  
On the 20th Dec.  
**Grand Fancy Dress Ball**  
WITH  
SURPRISE ATTRACTIONS  
SATURDAY, 27th DEC.  
**RACE DANCE**  
on the 31st December.  
Jack DENT and his new **METRO FOUR** performing

Nightly 8-11 p.m.  
**ROYAL** Nightly 8-11 p.m.  
**TO-NIGHT FRIDAY and SATURDAY**  
THE FAMOUS BRITISH PICTURE  
**TESHA**  
Featuring MARIA OORDA and JAMESON THOMAS.  
Life's greatest problem depicted in a moving photograph—a vivid presentation of a woman's struggle to combat a mighty urge, and the terrible climax.

**BOOK NOW**  
FOR THE  
**FIRST PRODUCTION**  
OF  
**"PSYCHIC"**  
THE COMEDY  
AT THE THEATRE ROYAL  
DECEMBER 4th, 5th and 6th.  
PLAN AT EMPIRE THEATRE.  
PRICES: 5/-, 3/- and 2/-.  
No Increase in Prices for Saturday Night.

**KENYA LIDO**  
BLISS POSTS, TRILKA.  
Attractions for Christmas  
SWIMMING CARNIVALS.  
Latest CRAZE  
**Outdoor Miniature Golf Course**  
Boxing Night! Fancy Dress Optional.  
Jack Dent and his New **Metro Four**  
New Year's Eve; Hogmanay Night Dance.  
TENNIS QUIZS — ZINGPONG  
Camping in Grounds by Arrangement.  
HOLIDAY TERMS. BOOK EARLY.

**CITY SQUARE MANSIONS**  
**Dinner Dance**  
WILL BE HELD ON  
**Wed., the 24th Dec.**  
FROM 8.30 TO 2 a.m.  
MUSIC BY GARRY COOK AND HIS RHYTHM BOYS.  
Double Tickets Shs. 12/50 Single Tickets Shs. 7/50  
**BOOK YOUR TABLE NOW.**  
Phone No. 716 P.O. Box 955.

The  
**Caledonian Society of Kenya.**  
**Annual Dinner**  
29th November, 1930.  
Members desirous of attending the Annual Dinner are asked to forward their applications to the Hon. Secy., Box 111, not later than noon on Friday, 26th inst.

**JACK DENT**  
His New **Metro Four**  
an open top 4 seater  
December 1st 1930.  
For particulars apply  
BUSINESS MANAGER,  
Box 106, NAIROBI.  
Deonholm Dairy  
FOR  
**PURE MILK**  
and CREAM  
FROM FARM TO  
CONSUMER.  
P.O. Box 11, NAIROBI.

**WAKEFIELD**  
**CASTROL**  
Supplies Obtainable from all Good Garages.  
"If your Engine is worth it give it Castrol."  
DISTRIBUTORS  
For Kenya, Tanganyika and Zanzibar.  
**THE MOTOR MART & Exchange Limited.**  
Nakuru. Eldoret. Nairobi. Dar-es-salaam.

# Don't Decide

On Your Xmas Present  
Until You Have Inspected Our Extensive  
Range of Beautiful Gifts.

## PRESENTS TO SUIT EVERY POCKET.

- WHAT TO GIVE—
- ALABASTER and SILVER-TOPPED POWDER BOXES in 16 shades and shapes 70/- to 85/-.
- PERFUME SPRAYS in attractive bottles 15/- to 70/-.
- SOUP ENDS 16/- to 50/- per pair.
- SILVER-TOPPED SMELLING SALTS BOTTLES.
- REAL BUTTERFLY WING and EMERALD POPPER.
- SPICED POWDER BOXES, 15/- to 45/-.
- LADIES' LEATHER HANDBAGS and EVENING BAGS, MANICURE SETS and MANICURE SOUVENIRS.
- LADIES' AND GENTS' TOILET and TRAVELING CASES 50/- to 75/-.
- LATEST FOLLY SETS and HAND MIRRORS.
- PERFUMERY—CHANEL, WORTH, DI'AREY and GUERLAIN.

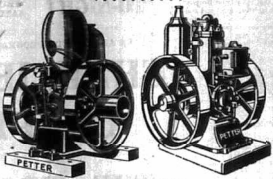
SHOP EARLY AT

**Howse & McGeorge Ltd**  
Nairobi and Branches.

# PETTER OIL ENGINES

## 1½ H.P. TO 4000 B.H.P.

Paraffin  
Engines  
In Stock.  
1½ H.P.  
3 H.P.  
5 H.P.



Cruce Oil  
Engines  
In Stock.  
2 H.P.  
3 H.P.  
4 H.P.  
LARGER  
TYPES  
TO ORDER.

SOLE AGENTS:

**J. W. MILLIGAN & Co.**  
P.O. Box 148. NAIROBI. Phone 98.

## ARE YOUR EYES TRULY YOUNG?



Do you suffer from headaches, eye pain, dizziness, or soreness? Then, get your eyes inspected in the most scientific manner by the only qualified eye specialist in the East Africa.

**A. H. WARDLE & Co., Ltd.**  
CHEMISTS AND OPTICIANS,  
NAIROBI and BRANCHES.

## Call and Inspect

our large range of

## Sanitary Fittings

etc. etc.

in our

## NEW UP-TO-DATE SHOWROOMS

Corner of ELLIOT STREET and  
STANDARD STREET.

**R. G. VERNON & Co.**

P.O. Box 124 — NAIROBI.

## XMAS BOOK MAIL

Leaves November 30th.

Nothing could be more acceptable to folks at Home than an interesting Collection of Photographs of Big Game by MARTIN JOHNSTON. Albums of 50 Big Game Photographs, Shs. 15/6. Albums of 50 Big Game Photographs, Shs. 30/-.

These Albums are most attractive, and above price include Postage Paid to any address. OBTAINABLE AT—

**A. H. WARDLE & Co. Ltd.**

PHOTOGRAPHIC CHEMISTS.

Box 108 — NAIROBI,

and at their Branches at Mombasa, Malindi, Kampala and Dar es Salaam.

# CHRYSLER



You are Invited  
to the first  
showing of  
THE NEW

# Chrysler Six

LEADER IN THE LOW-PRICE FIELD

Touring £290  
Roadster £290  
Box Body £265

**CARR, LAWSON & Co., Ltd.**

# Economy & Reliability

## On test 19 1/2 Miles per Gallon

**8**

**DODGE**

**FISHER SIMMONS & RODWAY (EA) LTD**

# CALEDONIAN

Insurance Company

Oldest Scottish Insurance Office,  
FOUNDED IN 1804.

PRINCIPAL REPRESENTATIVES—  
**R. O. HAMILTON, Ld.,**  
Box 602, NAIROBI. Phone 828.

IN MEMORIAM.  
BUBEN.—In memory of Charles Bubon, who died in Nairobi, on November 17th, 1932.

**Zfrican Standard**  
LIQUIDA AMBUR  
THURSDAY, NOV. 17, 1932.

**A Main Conference.**  
The following agreement of the Kenya Government to the motion by the Hon. Member for Nairobi, Mr. J. H. M. M. M., in the House of Representatives, on November 17th, 1932, is hereby published for the information of the public.

**Why it is a pleasure to use Brushing Quaco.**  
This is the Colgate...  
It is no trouble at all. You just brush it on to produce a beautiful, glossy surface, quite free from any film which dirties glasses hard in ONE HOUR.

**Grants Whisky**

**Grants LIQUEUR Scotch Whisky**

UNRIVALLED IN EAST AFRICA  
SOLD EVERYWHERE.

Obtainable from  
**GAILEY & ROBERTS, LTD.**  
NAIROBI and BRANCHES.

In regard to the Conference itself, it will be agreed that it was a success in so far as it has been held and that it has been held in a most satisfactory manner. It is to be hoped that it will be held in the future in a similar manner.

**Legislative Council.**  
The following is a list of the members of the Legislative Council who were present at the meeting held on November 17th, 1932.

**Standard Bank.**  
The Standard Bank of East Africa, Ltd., has announced that it will be holding its Annual General Meeting on Monday, December 19th, 1932, at 11 o'clock in the forenoon at the Standard Bank, Nairobi.

**'Languidly Out.'**  
It is announced that the a.m. 'Languidly Out' service will be held on Monday, December 19th, 1932, at 11 o'clock in the forenoon at the Standard Bank, Nairobi.

**Standard Bank.**  
The Standard Bank of East Africa, Ltd., has announced that it will be holding its Annual General Meeting on Monday, December 19th, 1932, at 11 o'clock in the forenoon at the Standard Bank, Nairobi.

**Standard Bank.**  
The Standard Bank of East Africa, Ltd., has announced that it will be holding its Annual General Meeting on Monday, December 19th, 1932, at 11 o'clock in the forenoon at the Standard Bank, Nairobi.

# ACUTE CRISIS IN MAIZE INDUSTRY.

## Conference in Kenya Facing Possibility of Rium.

### ELECTED MEMBERS' APPEAL.

The Legislative Council yesterday gave the Government a motion moved by Commander the Hon. F. J. Coadley requesting that a conference in Kenya be called with a view to co-operative action sufficient to tide over the present maize crisis.

During the course of his speech introducing the motion, Commander Coadley said and quoted figures to show that in many cases the maize was not sown far from his crop this year.

He pointed out there was a danger, unless assistance was forthcoming, of at least 50 per cent. of the farmers being ruined and the land going out of cultivation. This would be a most disastrous affliction upon the Colony as a whole.

Maize, he added, was a basic industry in Kenya, and could not be allowed to die out as in the case of flax. Over a third of the Europeans engaged in agriculture were growing maize.

It was also emphasized during the debate that there was the necessity for quick action otherwise some of the best settlers of the country—men who had carried out every ounce of energy—would be ruined.

Maize was being sold at the present time below production cost.

The Government accepted the motion and it was agreed that His Excellency would call a conference at an early date.

## AN URGENT NECESSITY.

Government, at the sitting of the Legislative Council yesterday, proposed a motion to call a conference of the Government and the maize cultivators.

In view of the serious and urgent position and the fact that the Government has been requested to take a step to co-operative action to tide over the present crisis.

The present position of the Government must be aware of the present maize industry. At the same time, the Government must be aware of the fact that the maize industry is a vital part of the economy of the Colony.

It is the duty of the Government to take steps to ensure that the maize industry is not ruined. The Government must be aware of the fact that the maize industry is a vital part of the economy of the Colony.

The Government must be aware of the fact that the maize industry is a vital part of the economy of the Colony. It is the duty of the Government to take steps to ensure that the maize industry is not ruined.

The Government must be aware of the fact that the maize industry is a vital part of the economy of the Colony. It is the duty of the Government to take steps to ensure that the maize industry is not ruined.

The Government must be aware of the fact that the maize industry is a vital part of the economy of the Colony. It is the duty of the Government to take steps to ensure that the maize industry is not ruined.

The Government must be aware of the fact that the maize industry is a vital part of the economy of the Colony. It is the duty of the Government to take steps to ensure that the maize industry is not ruined.

The Government must be aware of the fact that the maize industry is a vital part of the economy of the Colony. It is the duty of the Government to take steps to ensure that the maize industry is not ruined.

The Government must be aware of the fact that the maize industry is a vital part of the economy of the Colony. It is the duty of the Government to take steps to ensure that the maize industry is not ruined.

The Government must be aware of the fact that the maize industry is a vital part of the economy of the Colony. It is the duty of the Government to take steps to ensure that the maize industry is not ruined.

The Government must be aware of the fact that the maize industry is a vital part of the economy of the Colony. It is the duty of the Government to take steps to ensure that the maize industry is not ruined.

The Government must be aware of the fact that the maize industry is a vital part of the economy of the Colony. It is the duty of the Government to take steps to ensure that the maize industry is not ruined.

# THE EAST AFRICAN STANDARD.

## KENYA LEGISLATIVE COUNCIL.

### GOVERNMENT ADVANCES TO AGRICULTURE.

#### Operation of Ordinance to be Extended.

TO INCLUDE 1927.

Disappointed Settlers to be Re-aided.

The Council proposes Government to extend the operation of the Agricultural Advances Ordinance for the year 1927.

The Hon. E. W. Kenney (West Kenya) moved the Government to extend the operation of the Agricultural Advances Ordinance for the year 1927.

The Hon. H. F. W. Kenney (North Kenya) moved the Government to extend the operation of the Agricultural Advances Ordinance for the year 1927.

The Hon. H. F. W. Kenney (North Kenya) moved the Government to extend the operation of the Agricultural Advances Ordinance for the year 1927.

The Hon. H. F. W. Kenney (North Kenya) moved the Government to extend the operation of the Agricultural Advances Ordinance for the year 1927.

The Hon. H. F. W. Kenney (North Kenya) moved the Government to extend the operation of the Agricultural Advances Ordinance for the year 1927.

The Hon. H. F. W. Kenney (North Kenya) moved the Government to extend the operation of the Agricultural Advances Ordinance for the year 1927.

The Hon. H. F. W. Kenney (North Kenya) moved the Government to extend the operation of the Agricultural Advances Ordinance for the year 1927.

The Hon. H. F. W. Kenney (North Kenya) moved the Government to extend the operation of the Agricultural Advances Ordinance for the year 1927.

The Hon. H. F. W. Kenney (North Kenya) moved the Government to extend the operation of the Agricultural Advances Ordinance for the year 1927.

The Hon. H. F. W. Kenney (North Kenya) moved the Government to extend the operation of the Agricultural Advances Ordinance for the year 1927.

The Hon. H. F. W. Kenney (North Kenya) moved the Government to extend the operation of the Agricultural Advances Ordinance for the year 1927.

The Hon. H. F. W. Kenney (North Kenya) moved the Government to extend the operation of the Agricultural Advances Ordinance for the year 1927.

The Hon. H. F. W. Kenney (North Kenya) moved the Government to extend the operation of the Agricultural Advances Ordinance for the year 1927.

The Hon. H. F. W. Kenney (North Kenya) moved the Government to extend the operation of the Agricultural Advances Ordinance for the year 1927.

The Hon. H. F. W. Kenney (North Kenya) moved the Government to extend the operation of the Agricultural Advances Ordinance for the year 1927.

The Hon. H. F. W. Kenney (North Kenya) moved the Government to extend the operation of the Agricultural Advances Ordinance for the year 1927.

The Hon. H. F. W. Kenney (North Kenya) moved the Government to extend the operation of the Agricultural Advances Ordinance for the year 1927.

The Hon. H. F. W. Kenney (North Kenya) moved the Government to extend the operation of the Agricultural Advances Ordinance for the year 1927.

## END OF A HUNTING HONEYMOON.

### American Visitors Leave by Air Fair.

LEAVE GROUP DEPARTING.

GOVERNMENT'S POLICE? (BY WRITERS).

Proposals for the establishment of a Ministry of Agriculture.

The Hon. H. F. W. Kenney (North Kenya) moved the Government to extend the operation of the Agricultural Advances Ordinance for the year 1927.

The Hon. H. F. W. Kenney (North Kenya) moved the Government to extend the operation of the Agricultural Advances Ordinance for the year 1927.

The Hon. H. F. W. Kenney (North Kenya) moved the Government to extend the operation of the Agricultural Advances Ordinance for the year 1927.

The Hon. H. F. W. Kenney (North Kenya) moved the Government to extend the operation of the Agricultural Advances Ordinance for the year 1927.

The Hon. H. F. W. Kenney (North Kenya) moved the Government to extend the operation of the Agricultural Advances Ordinance for the year 1927.

The Hon. H. F. W. Kenney (North Kenya) moved the Government to extend the operation of the Agricultural Advances Ordinance for the year 1927.

The Hon. H. F. W. Kenney (North Kenya) moved the Government to extend the operation of the Agricultural Advances Ordinance for the year 1927.

The Hon. H. F. W. Kenney (North Kenya) moved the Government to extend the operation of the Agricultural Advances Ordinance for the year 1927.

The Hon. H. F. W. Kenney (North Kenya) moved the Government to extend the operation of the Agricultural Advances Ordinance for the year 1927.

The Hon. H. F. W. Kenney (North Kenya) moved the Government to extend the operation of the Agricultural Advances Ordinance for the year 1927.

The Hon. H. F. W. Kenney (North Kenya) moved the Government to extend the operation of the Agricultural Advances Ordinance for the year 1927.

The Hon. H. F. W. Kenney (North Kenya) moved the Government to extend the operation of the Agricultural Advances Ordinance for the year 1927.

The Hon. H. F. W. Kenney (North Kenya) moved the Government to extend the operation of the Agricultural Advances Ordinance for the year 1927.

The Hon. H. F. W. Kenney (North Kenya) moved the Government to extend the operation of the Agricultural Advances Ordinance for the year 1927.

The Hon. H. F. W. Kenney (North Kenya) moved the Government to extend the operation of the Agricultural Advances Ordinance for the year 1927.

The Hon. H. F. W. Kenney (North Kenya) moved the Government to extend the operation of the Agricultural Advances Ordinance for the year 1927.

The Hon. H. F. W. Kenney (North Kenya) moved the Government to extend the operation of the Agricultural Advances Ordinance for the year 1927.

The Hon. H. F. W. Kenney (North Kenya) moved the Government to extend the operation of the Agricultural Advances Ordinance for the year 1927.

The Hon. H. F. W. Kenney (North Kenya) moved the Government to extend the operation of the Agricultural Advances Ordinance for the year 1927.

## SENATIONAL TRIAL IN RUSSIA.

### Eight Men Charged With Treason.

ANTI-SOVIET PLOT.

Allegations of French Military Plot.

(Through Special Agent.)

Eight men charged with treason in Russia.

The Hon. H. F. W. Kenney (North Kenya) moved the Government to extend the operation of the Agricultural Advances Ordinance for the year 1927.

The Hon. H. F. W. Kenney (North Kenya) moved the Government to extend the operation of the Agricultural Advances Ordinance for the year 1927.

The Hon. H. F. W. Kenney (North Kenya) moved the Government to extend the operation of the Agricultural Advances Ordinance for the year 1927.

The Hon. H. F. W. Kenney (North Kenya) moved the Government to extend the operation of the Agricultural Advances Ordinance for the year 1927.

The Hon. H. F. W. Kenney (North Kenya) moved the Government to extend the operation of the Agricultural Advances Ordinance for the year 1927.

The Hon. H. F. W. Kenney (North Kenya) moved the Government to extend the operation of the Agricultural Advances Ordinance for the year 1927.

The Hon. H. F. W. Kenney (North Kenya) moved the Government to extend the operation of the Agricultural Advances Ordinance for the year 1927.

The Hon. H. F. W. Kenney (North Kenya) moved the Government to extend the operation of the Agricultural Advances Ordinance for the year 1927.

The Hon. H. F. W. Kenney (North Kenya) moved the Government to extend the operation of the Agricultural Advances Ordinance for the year 1927.

The Hon. H. F. W. Kenney (North Kenya) moved the Government to extend the operation of the Agricultural Advances Ordinance for the year 1927.

The Hon. H. F. W. Kenney (North Kenya) moved the Government to extend the operation of the Agricultural Advances Ordinance for the year 1927.

The Hon. H. F. W. Kenney (North Kenya) moved the Government to extend the operation of the Agricultural Advances Ordinance for the year 1927.

The Hon. H. F. W. Kenney (North Kenya) moved the Government to extend the operation of the Agricultural Advances Ordinance for the year 1927.

The Hon. H. F. W. Kenney (North Kenya) moved the Government to extend the operation of the Agricultural Advances Ordinance for the year 1927.

The Hon. H. F. W. Kenney (North Kenya) moved the Government to extend the operation of the Agricultural Advances Ordinance for the year 1927.

The Hon. H. F. W. Kenney (North Kenya) moved the Government to extend the operation of the Agricultural Advances Ordinance for the year 1927.

The Hon. H. F. W. Kenney (North Kenya) moved the Government to extend the operation of the Agricultural Advances Ordinance for the year 1927.

The Hon. H. F. W. Kenney (North Kenya) moved the Government to extend the operation of the Agricultural Advances Ordinance for the year 1927.

## Entertainments.

### THEATRE NOTES.

For the last three nights of this week a new British film has been shown at the Grand Opera House.

The Hon. H. F. W. Kenney (North Kenya) moved the Government to extend the operation of the Agricultural Advances Ordinance for the year 1927.

The Hon. H. F. W. Kenney (North Kenya) moved the Government to extend the operation of the Agricultural Advances Ordinance for the year 1927.

The Hon. H. F. W. Kenney (North Kenya) moved the Government to extend the operation of the Agricultural Advances Ordinance for the year 1927.

The Hon. H. F. W. Kenney (North Kenya) moved the Government to extend the operation of the Agricultural Advances Ordinance for the year 1927.

The Hon. H. F. W. Kenney (North Kenya) moved the Government to extend the operation of the Agricultural Advances Ordinance for the year 1927.

## TO-DAY'S CAUSE LIST.

The following is the list of cases in the Supreme Court today.

Before His Honour the Chief Justice and Justices in Chambers, at 9.30 a.m.

Director of Census v. Director of Census.

Director of Census v. Director of Census.

Director of Census v. Director of Census.

Director of Census v. Director of Census.

Director of Census v. Director of Census.

## STILL BEING CONSIDERED BY GOVERNMENT.

The Acting Colonial Secretary has been asked to consider the proposal.

The Hon. H. F. W. Kenney (North Kenya) moved the Government to extend the operation of the Agricultural Advances Ordinance for the year 1927.

The Hon. H. F. W. Kenney (North Kenya) moved the Government to extend the operation of the Agricultural Advances Ordinance for the year 1927.

The Hon. H. F. W. Kenney (North Kenya) moved the Government to extend the operation of the Agricultural Advances Ordinance for the year 1927.

The Hon. H. F. W. Kenney (North Kenya) moved the Government to extend the operation of the Agricultural Advances Ordinance for the year 1927.

The Hon. H. F. W. Kenney (North Kenya) moved the Government to extend the operation of the Agricultural Advances Ordinance for the year 1927.

The Hon. H. F. W. Kenney (North Kenya) moved the Government to extend the operation of the Agricultural Advances Ordinance for the year 1927.

**THE PRUDENTIAL Assurance Company Ltd., of London.**  
**The LARGEST Insurance Institution in THE BRITISH EMPIRE**  
 Has now commenced LIFE ASSURANCE business in KENYA, TANGANYIKA, UGANDA, and ZANZIBAR.  
**Funds of all Branches EXCEED £228,000,000**  
**Claims Paid EXCEED £337,000,000**  
 Last year the PRUDENTIAL paid to its policy holders  
**£22,141,111 every Second Minute.**  
**£165 every Hour.**  
**£79,879 every Day.**  
**£478,977 every Week.**  
**£2,061,354 every Month.**  
**£24,736,251 from JANUARY to DECEMBER**  
 The above figures are based on a 90 day working day.  
 The Company also transacts Fire, Burglary, Motor, Marine and other classes of Accident Insurance.  
**Apply to: Principal Representatives for East Africa Messrs. TYSON BROS., Ltd.**  
 P.O. Box 129 NAIROBI.  
 We are prepared to offer every generous commercial terms to life agents.

**FIAT GARAGES SOCIETA' COLOMBA ITALIANA**  
 Sadler Street, P.O. Box No. 996, NAIROBI.  
**THE LATEST 54 TWO SEATER MODEL 12-15 h.p.**  
**Fitted with Wire Wheels £210-0-0.**  
 Here is a Smart, Fast and Lively Car to carry you about the town and Country under all weather conditions.  
 English Made Fiat's English made brought in East Africa first by Fiat Garage Ltd. Fiat's "Congo" arrived at Nairobi yesterday morning.















Kenya Beverages Ltd. PRICE LIST... Taster's Brand Lager PALE ALE XXX ALE 3 AND STOUT... 10/- per doz. Quert Bottles...

DAILY EDITION

THE EAST 14 PAGES

African Standard

UGANDA ARGUS with which THE LEADER.

THE OLDEST ESTABLISHED NEWSPAPER PUBLISHED IN KENYA AND UGANDA.

Nairobi, Friday, November 26, 1959

PRICE, 30 CENTS.

The LOUNGE FOR Morning AND Afternoon TEAS... THE NEW STANLEY HOTEL... OPENS ON SUNDAYS TO Non-Residents.

ROAD COMPETITION WITH THE RAILWAY.

Increasing Gravity of Kenya Road Problem.

TRANSPORT "PIRATES."

Government Assurance of an Immediate Enquiry.

Kenya's General Assembly... It was revealed that a resolution was passed...

The question was raised again on a motion put forward by the Hon. Member...

The growing gravity of the problem was indicated by the statement that last year the Railway had lost 200,000 as a result of the competition of motor transport between Mombasa and Nairobi.

EFFECT ON RAILWAYS' EARNINGS.

A motion in the Legislative Assembly... The Hon. Member for Nairobi...

Mr. G. M. Kariuki... The Hon. Member for Nairobi...

Mr. G. M. Kariuki... The Hon. Member for Nairobi...

Mr. G. M. Kariuki... The Hon. Member for Nairobi...

Mr. G. M. Kariuki... The Hon. Member for Nairobi...

Mr. G. M. Kariuki... The Hon. Member for Nairobi...

Mr. G. M. Kariuki... The Hon. Member for Nairobi...

Mr. G. M. Kariuki... The Hon. Member for Nairobi...

AIR SERVICE TO KENYA.

First Passenger Machine.

Laves Lander in Kenya.

JOHNSON SCHEDULED TO TAKE THE LATER.

[KENYA NEWS SERVICE] London, Nov. 26.

First passenger service of the Laves Lander...

World's Motor Record.

FRANCE FOR 26 MILES LOWERED.

[BY WIRELESS] Daily, Manchester 26.

Jack Driver of the British held the world's 200 miles speed record...

Lord Khyatt.

TO TEST SPEED AFTER HIS SUICIDE SUICIDE.

[BY WIRELESS] Daily, London, Nov. 26.

Lord Khyatt has been held under duress...

Famine Relief.

2500 TONS TO BE COLLECTED FROM NATIONS.

[BY WIRELESS] Daily, London, Nov. 26.

The Legislative Council of Kenya...

Mr. G. M. Kariuki...

Mr. G. M. Kariuki...

Mr. G. M. Kariuki...

Mr. G. M. Kariuki...

Mr. G. M. Kariuki...

Mr. G. M. Kariuki...

JACOBSON OWEN ON KENYA.

Address to National Liberal Club.

A DEBATE.

[KENYA NEWS SERVICE] London, Nov. 26.

Mr. Owen's speech...

Mr. Owen's speech...

Mr. Owen's speech...

Mr. Owen's speech...

Mr. Owen's speech...

Mr. Owen's speech...

Mr. Owen's speech...

Mr. Owen's speech...

Mr. Owen's speech...

Mr. Owen's speech...

Mr. Owen's speech...

Mr. Owen's speech...

Mr. Owen's speech...

Mr. Owen's speech...

Mr. Owen's speech...

Mr. Owen's speech...

Mr. Owen's speech...

Mr. Owen's speech...

Mr. Owen's speech...

Mr. Owen's speech...

Mr. Owen's speech...

Mr. Owen's speech...

Mr. Owen's speech...

Mr. Owen's speech...

Mr. Owen's speech...

NATIVE POLICY MEMORANDUM.

Necessary Changes in Kenya Laws.

Question in the Council.

ACTING GOVERNOR REQUESTS REPORT BY MAIL.

[KENYA NEWS SERVICE] London, Nov. 26.

The Hon. Member for Nairobi...

The Hon. Member for Nairobi...

The Hon. Member for Nairobi...

The Hon. Member for Nairobi...

The Hon. Member for Nairobi...

The Hon. Member for Nairobi...

The Hon. Member for Nairobi...

The Hon. Member for Nairobi...

The Hon. Member for Nairobi...

The Hon. Member for Nairobi...

The Hon. Member for Nairobi...

The Hon. Member for Nairobi...

The Hon. Member for Nairobi...

The Hon. Member for Nairobi...

The Hon. Member for Nairobi...

The Hon. Member for Nairobi...

The Hon. Member for Nairobi...

The Hon. Member for Nairobi...

The Hon. Member for Nairobi...

The Hon. Member for Nairobi...

The Hon. Member for Nairobi...

The Hon. Member for Nairobi...

The Hon. Member for Nairobi...

The Hon. Member for Nairobi...

MIPPING OF FOREIGN CEREALS.

No Proof of Charges Against Train.

CHARGE OF LOW PRICE.

Mr. G. M. Kariuki...

Mr. G. M. Kariuki...

Mr. G. M. Kariuki...

Mr. G. M. Kariuki...

Mr. G. M. Kariuki...

Mr. G. M. Kariuki...

Mr. G. M. Kariuki...

Mr. G. M. Kariuki...

Mr. G. M. Kariuki...

Mr. G. M. Kariuki...

Mr. G. M. Kariuki...

Mr. G. M. Kariuki...

Mr. G. M. Kariuki...

Mr. G. M. Kariuki...

Mr. G. M. Kariuki...

Mr. G. M. Kariuki...

Mr. G. M. Kariuki...

Mr. G. M. Kariuki...

Mr. G. M. Kariuki...

Mr. G. M. Kariuki...

Mr. G. M. Kariuki...

Mr. G. M. Kariuki...

Mr. G. M. Kariuki...

Mr. G. M. Kariuki...

Mr. G. M. Kariuki...

Mr. G. M. Kariuki...

Mr. G. M. Kariuki...

Mr. G. M. Kariuki...

DELEGATION'S WORK IN ENGLAND.

Concentrated on the Native Issue.

COMPREHENSIVE CAMPAIGN.

Tribute to Methods of the Unofficial Delegates.

[KENYA NEWS SERVICE] London, Nov. 26.

The Hon. Member for Nairobi...

The Hon. Member for Nairobi...

The Hon. Member for Nairobi...

The Hon. Member for Nairobi...

The Hon. Member for Nairobi...

The Hon. Member for Nairobi...

The Hon. Member for Nairobi...

The Hon. Member for Nairobi...

The Hon. Member for Nairobi...

The Hon. Member for Nairobi...

The Hon. Member for Nairobi...

The Hon. Member for Nairobi...

The Hon. Member for Nairobi...

The Hon. Member for Nairobi...

The Hon. Member for Nairobi...

The Hon. Member for Nairobi...

The Hon. Member for Nairobi...

The Hon. Member for Nairobi...

The Hon. Member for Nairobi...

The Hon. Member for Nairobi...

The Hon. Member for Nairobi...

The Hon. Member for Nairobi...

The Hon. Member for Nairobi...

The Hon. Member for Nairobi...

The Hon. Member for Nairobi...

The Ideal Gift "4711"



4711 Gift Set. 4711 Eau de Cologne. 4711 Toilet Soap. 4711 Shave Cream. 4711 After Shave Lotion. 4711 Hair Cream. 4711 Hair Oil. 4711 Hair Wax. 4711 Hair Gel. 4711 Hair Spray. 4711 Hair Shampoo. 4711 Hair Conditioner. 4711 Hair Cream. 4711 Hair Oil. 4711 Hair Wax. 4711 Hair Gel. 4711 Hair Spray. 4711 Hair Shampoo. 4711 Hair Conditioner.

Smoking without Tears

Q.—How you quit the pipe of the yesterday's news?
A.—No, but I have noticed her smoking

'ABDULLA' IMPERIAL PREFERENCE

—and enjoy the empty tin for her keepsake.

Sole Agents—DALGETY & COMPANY LIMITED. MOMBASA NAIROBI ELDERO.

TO COFFEE ESTATES ARRIVED

Best White Cotton Wool for Mangle Bug Prevention, lowest prices obtainable. Happy supply.

A. J. ELY and Co., Ltd. THE CEMENTS NAIROBI

LADIES HAIRDRESSERS MAISON MARIE

SPECIALITY IN PERMANENT WAVES. Daily Exclusive Ladies Saloons in The Colony. Hair arrangements of Paris sent from THE CEMENTS. TERACE ROYAL BUILDINGS SIXTH AVENUE. P.O. Box 1008. Phone 646

110 Years Old

NEW RATHERN EMBROIDERY SYSTEM

Irish's Grand Old Lady, the Hon. Mrs. Helen, who has lately celebrated her 110th birthday, has been the subject of many books... The Hon. Mrs. Helen is the only woman in the world who has lived to see the birth of the Emperor of Ethiopia...

Modern Hat

NEW FUR HATS GIVEN STYLED CROWN

An Agent Manager of the University of California who travels extensively... The hats are made of the finest quality fur and are given a styled crown... The hats are made in the United States and are of the latest design...

IMPORTED DOGS AND CATS

New Rules Governing Entry of Cats

QUARANTINE PERIOD

Notwithstanding with the importation of dogs and cats... The rules governing the entry of cats are as follows: (1) All cats imported from any foreign country... (2) All cats imported from any foreign country... (3) All cats imported from any foreign country...

Death for Mink

DEATH OF THE COMMONLY KNOWN MINK

"As regards mink, I cannot say that it is a desirable animal for the local climate... The mink is a very hardy animal and is able to withstand the cold of the winter... The mink is a very hardy animal and is able to withstand the cold of the winter...

LIFEBUOY SOAP advertisement featuring an illustration of a man carrying a large lifebuoy on his back. Text includes 'Years ago Lifebuoy Soap was only sold in England. Today it cleans millions of homes all over the world.'

WHY PAY RENT advertisement. Text includes 'ATTRACTIVE PLOTS in the Suburbs of Nairobi may be purchased on the installment plan.' and 'GOOD RED SOIL WATER AND ELECTRIC LIGHT'.

Geo. BLOWERS.

BUILDING CONTRACTOR, MANUFACTURER AND DIRECT IMPORTER. 34, 36, 38, 40, 42, 44, 46, 48, 50, 52, 54, 56, 58, 60, 62, 64, 66, 68, 70, 72, 74, 76, 78, 80, 82, 84, 86, 88, 90, 92, 94, 96, 98, 100, 102, 104, 106, 108, 110, 112, 114, 116, 118, 120, 122, 124, 126, 128, 130, 132, 134, 136, 138, 140, 142, 144, 146, 148, 150, 152, 154, 156, 158, 160, 162, 164, 166, 168, 170, 172, 174, 176, 178, 180, 182, 184, 186, 188, 190, 192, 194, 196, 198, 200.



FRANCING DOORS, COLLECTING BLINDS, OILY PAINTING & REPAIRS, IMPROVED CAST IRON, BRASS, STEEL, PLY, BRASS, ALUMINUM... PLANTS OF VARIOUS KINDS...

WHY BUY AMERICAN DOORS AND SEND YOUR MONEY ABROAD?

I can compete with them — and I have! Demand for my LIGHTWEIGHT ALUMINUM and PRIME LINED, SOUND GUARANTEED FOR SOUNDNESS.

CONCRETE BLOCKS. ALL SIZES IN STOCK. BEST RIBA SAND IN ANY QUANTITY. (Carb. Troop or Train Load).

PLUMBING AND SANITARY WORK DONE UNDER THE SUPERVISION OF OUR OWN EUROPEAN SPECIALISTS. ESTIMATES FREE. UP-TO-DATE.

DELIVERIES BY LORRIES AT QUOTED RATES. LATEST LONDON PATENT, BROWN, LANTERN. VICTORIAL DESIGN, PATENT.

BUY THE VICTORIA STAMPA SUGAR COMPANY'S 'MAY WINTER' CRISTAL SUGARS

at the following prices per 100 lbs. (net weight) in the unrefined form: The Standard... (List of agents: J. Jacobs Ltd., R. P. Dunne, M. R. Hill & Co., etc.)

INSURE YOUR MOTOR CARS AND TRUCKS WITH THE AFRICA GUARANTEE UNDERWRITING CO., LTD. M. D. KAMPP

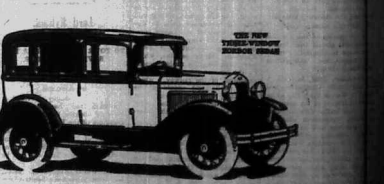
P. Stewart. PAINTER DECORATOR

Hardings Street, P.O. Box 280, NAIROBI.

Wanted. Railway From within very road. Builders From within very road.

SWITZERLAND FOR SPORTS MAY & CO., LTD.

New Beauty FOR THE NEW FORD



THE NEW FORD THREE SPEED car is high standard of motor car value. From the new range available to the top of the new range...

NAIROBI MOTORS. 604 608 612 616 620 624 628 632 636 640 644 648 652 656 660 664 668 672 676 680 684 688 692 696 700 704 708 712 716 720 724 728 732 736 740 744 748 752 756 760 764 768 772 776 780 784 788 792 796 800 804 808 812 816 820 824 828 832 836 840 844 848 852 856 860 864 868 872 876 880 884 888 892 896 900 904 908 912 916 920 924 928 932 936 940 944 948 952 956 960 964 968 972 976 980 984 988 992 996 1000.



UNION-CASTLE LINE.

Table with shipping schedules for Union-Castle Line, including destinations like London, Bombay, and Madras, and ship names like 'Llanthyller Castle'.

British India Steam Navigation Company, Limited

Table with shipping schedules for British India Steam Navigation Company, including destinations like London, Bombay, and Madras, and ship names like 'Llanthyller Castle'.

Advertisement for 'Every Morning' Chivers' Olde English Marmalade, featuring an illustration of a man and a horse.

Table with shipping schedules for Messageries Maritimes, including destinations like London, Bombay, and Madras.

CITRA LINE

Compagnie Italiana Transatlantico. THE BEST ROUTE TO ENGLAND. (Ships from KILIMINDI to GENOA and NAPLES).

Deutsche Ost-Afrika-Linie

GERMAN AFRICA SERVICE. DEUTSCHE OST-AFRIKA-LINIE, GENERALAGENTS, MOMBASA. Agents: Messageries Maritimes.

Keith Timber Co., Ltd.

SAFETY CEDAR. PODO and CEDAR. Box 874. Phone 680.

Clan-Ellerman-Harrison Lines.

Table with shipping schedules for Clan-Ellerman-Harrison Lines, including destinations like Liverpool, Glasgow, and Manchester.

Deutsche Ost-Afrika-Linie

Table with shipping schedules for Deutsche Ost-Afrika-Linie, including destinations like London, Bombay, and Madras.

PIANOFORTE TUNING AND REPAIRING.

Ten years experience in Kenya Colony and has worked with Messrs. Chapman & Co., London.

Ellerman and Bucknall Line

Table with shipping schedules for Ellerman and Bucknall Line, including destinations like New York and Mombasa via Suez.

The Final Clean Up

Advertisement for 'The Final Clean Up' featuring illustrations of various styles of shoes and their prices.

OVERSEAS MAILS.

Table with shipping schedules for Overseas Mails, including destinations like India, Europe, and Africa.

RONSON LIGHTERS.

Advertisement for Ronson Lighters, featuring an illustration of a lighter and the slogan 'The World's Greatest Lighter.'

Bradford Manufacturing Co., Ltd. Imperial Chambers, Government Road, Above Tans Road, P.O. Box 816, NAIROBI.

DEPARTURES.

Table with shipping schedules for Departures, including destinations like Europe, India, and Africa.

Advertisement for 'The Lime' featuring the logo and text 'LIME Limited'.

UPLANDS Christmas Hams

Advertisement for Uplands Christmas Hams and Uplands Bacon, featuring an illustration of a ham.



# Xmas 1930

The Spirit of Christmas radiates from every corner of this great beautiful building. The wonderfully bright cheery atmosphere is but a very small part of the charm of a visit to Whiteaway's, particularly emphasized this season of good cheer. Departments in a very comfortable all day is assured. Early shopping will ensure first ones of the remarkably fine assortment on view.

# Whiteaways

WHITEAWAY LAIDLAW & CO LTD

GREAT CHRISTMAS SHOW IS JUST WONDERFUL



that make Christmas merrier

# Toyland

The Christmas Bazaar is a veritable fairyland this year, the stocks of new Toys and Games is larger than ever, there is a welcome reduction in prices generally, so your Xmas Budget will go far.

The children know nothing of crop prices or depressing local conditions, being them along to enjoy a happy time on the Switchback Railway—See their faces when the **MICKY MOUSE JAZZ BAND** strikes up!

This is the Children's Month—All are welcome.

## WINDOWS

**New Pen Sets.**

**Newly Egd Cup**  
E.P.M. Egg Cup on glass stand with 1/2 lb. Spoon. America & 6 hard down. **Each**  
**Shs. 3/0 each.**

**Dish Set.**  
Comprising Pen and Brush and Dish. Tin with 74 1/2 oz. gold. Dish with slip. No. 10. Best for the office or home use.  
**Shgs. 11/6 set.**

**Comfitment Sets.**  
E.P.M. Silver Comfitment Set in Velvet and 12 in 10. **Shs. 4/6 set.**  
Dish. **Shs. 3/6 set.**

**Gifts.**  
Filling Cases. Best quality Tea. The "Hills" Cakes. 100 in a box. **Price 1/6.**

**Ladies' Fancy Handkerchiefs**  
by Novelly Coloured. These 6 in a box. **Price 1/10.**  
E.P.M. 100 in a box. **Price 1/10.**

**Cake and Glass Powder**  
Baskets. In shades of Blue, Green, Orange, and Red. Also in plain. **Shs. 5/6, 9/6, 10/6, 14/6, and 19/6 each.**

**Ladies' Brown Set**  
Comprising Handkerchiefs, 10 in a Box, and 12 in 10. **Price 1/10.**

**Ladies' Brown Set**  
Comprising Handkerchiefs, 10 in a Box, and 12 in 10. **Price 1/10.**

**New Fancy Shaped Miniature Sets.**  
Beautifully fitted in much best case. **Price 1/10, 1/10, 2/10, 2/10, 2/10, 2/10.**

**Best Ban Dishes.**  
E.P.M. 100 in a box. **Price 1/10.**

**Water in Fancy**  
E.P.M. 100 in a box. **Price 1/10.**

**Yardley Lavender**  
E.P.M. 100 in a box. **Price 1/10.**

**Yardley Presentation Sets**  
E.P.M. 100 in a box. **Price 1/10.**

**611 East-Cologne**  
E.P.M. 100 in a box. **Price 1/10.**

**Fancy Line Trays**  
E.P.M. 100 in a box. **Price 1/10.**

**Perfume Sets.**  
E.P.M. 100 in a box. **Price 1/10.**

**Fancy French Stationery.**  
E.P.M. 100 in a box. **Price 1/10.**

**Gift Powder Pot Set.**  
E.P.M. 100 in a box. **Price 1/10.**

**Christmas Gifts for a Man**

**That Important gift that is a man's pride and pleasure.**

**Gifts that give a lasting pleasure and gladden the heart of the housewife.**

**Gifts that give a lasting pleasure and gladden the heart of the housewife.**

# GIFTS to the Home

**Gifts which give a lasting pleasure and gladden the heart of the housewife.**

**Gifts that give a lasting pleasure and gladden the heart of the housewife.**

**Gifts that give a lasting pleasure and gladden the heart of the housewife.**

**Traveling Case.**  
E.P.M. 100 in a box. **Price 1/10.**

**Party Service.**  
E.P.M. 100 in a box. **Price 1/10.**

**Yardley Presentation Sets.**  
E.P.M. 100 in a box. **Price 1/10.**

**611 East-Cologne.**  
E.P.M. 100 in a box. **Price 1/10.**

**Fancy Line Trays.**  
E.P.M. 100 in a box. **Price 1/10.**

**Yardley Lavender.**  
E.P.M. 100 in a box. **Price 1/10.**

**Christmas Gifts for a Man**

**That Important gift that is a man's pride and pleasure.**

**Gifts that give a lasting pleasure and gladden the heart of the housewife.**

## Mickey Mouse and his Jazz Band.

**See and Hear MICKEY**

**Performances ALL DAY**

**ALL CHILDREN ARE WELCOME TO TOYLAND.**

**Japan Applique Bedspreads.**  
E.P.M. 100 in a box. **Price 1/10.**

**Head Embroidered Lacework.**  
E.P.M. 100 in a box. **Price 1/10.**

**Superior Quality Down Quilts.**  
E.P.M. 100 in a box. **Price 1/10.**

**Cherry Lane Tricorne Lacework.**  
E.P.M. 100 in a box. **Price 1/10.**

**Crash Gibson Cases - Corded**  
E.P.M. 100 in a box. **Price 1/10.**

**Other Prices in Doll's**  
E.P.M. 100 in a box. **Price 1/10.**

**The "Thinker" Case**  
E.P.M. 100 in a box. **Price 1/10.**

**Toy Cars and Trucks.**  
E.P.M. 100 in a box. **Price 1/10.**

**Toy Airplane.**  
E.P.M. 100 in a box. **Price 1/10.**

**Toy Boat.**  
E.P.M. 100 in a box. **Price 1/10.**

**Toy Train.**  
E.P.M. 100 in a box. **Price 1/10.**

**Toy Ship.**  
E.P.M. 100 in a box. **Price 1/10.**

**Toy Castle.**  
E.P.M. 100 in a box. **Price 1/10.**

# EFFICIENT SERVICE & GOOD VALUE is always assured when dealing with WHITEAWAYS





**TAWS, LTD.**  
Nairobi.

**MOTOR TOURS Ltd.**  
Special Agents. Opposite the G.P.O. for  
**MOTORING TOURS**  
THE BEST ROUTES to EUROPE  
and Cars for Hire - European Drivers.



Now is the time to buy your XMAS GIFTS.  
CAMERAS - CINEMA CAMERAS - PROJECTORS.  
**ZEISS**  
FIELD GLASSES  
(the which prices have been lately reduced).  
**"THE LENS Limited"**  
Nairobi.

**THE EDUCATION BILL IN COUNCIL.**  
(Continued from page 9.)

Thus at the end of last year the Education Members were permitted to withhold endorsement of Government's educational policy on the grounds that the new Education Bill would be detrimental to public education and criticism early this year. They were again disappointed for the Government's policy was an important subject of interest to every man, woman and child in the country, and it was an important measure in this sense the Education Members of the Council. There was no other way of procedure available and as the Education Bill had already been passed by the Council it was felt therefore that the only course would be to submit a petition before the debate was proceeded to the Government. The petition was a most formidable one, inasmuch as the Council, for the first time in its history, Education Members were the largest body to perform that work while showing their constancy and confidence in all that they had done and the impression as to the Government was a most favorable one. Inasmuch as the Council had no way of voting on the petition, Education Members were the largest body to perform that work while showing their constancy and confidence in all that they had done and the impression as to the Government was a most favorable one. Inasmuch as the Council had no way of voting on the petition, Education Members were the largest body to perform that work while showing their constancy and confidence in all that they had done and the impression as to the Government was a most favorable one.

The members of the Council, immediately upon the following day, with the aid of a number of members, including the petition had been submitted, while the bill was being discussed, the members of the Council were asked to sign a petition in support of the bill. The petition was signed by a number of members of the Council, and the Government was informed of the same. The petition was signed by a number of members of the Council, and the Government was informed of the same.

**WAKEFIELD**

**CASCO**

Supplies Obtainable from all Good Garages.

"If your Engine is worth it give it Castrol."

DISTRIBUTORS  
For Kenya, Tanganyika and Zanzibar.

**THE MOTOR MART**  
& Exchange Limited.  
Eldoret. Nairobi. Dar-es-salaam.



**EMPIRE MATINEES**  
Nightly at 2:45 p.m. **WATKINS** Wed. 5 p.m. Sat. 8:15 p.m.

**TO-NIGHT LON CHANEY**  
IN ONE OF HIS LAST PICTURES

**"UNKNOWN"**  
THE MAN OF A THOUSAND FACES IN ONE OF HIS CHARACTERISTIC ROLES

an amazing drama of Love, Revenge and Regeneration in a thrilling circus and underworld setting.  
**PRICES Shgs. 5s. 3s. & 2s.**

**ROYAL**  
Nightly at 8:45 p.m.

**TO-NIGHT AND SATURDAY**  
THE FAMOUS BRITISH PICTURES

**TESHA**  
Featuring **MARIA OORDA** and **JAMESON THOMAS**

Life's greatest problem depicted in a moving philosophy, vivid presentation of a woman's struggle to combat a mighty urge, and the terrible climax.

**BOOK NOW**  
FOR THE **FIRST PRODUCTION** OF **"PSYCHIC"**

**THE COMEDY**  
AT THE THEATRE ROYAL  
DECEMBER 4th, 5th and 6th.  
PLAN AT EMPIRE THEATRE.  
PRICES: Shs. 7/50, 5/- & 3/-  
No Increase in Prices for Saturday Night.

The **Caledonian Society of Kenya.**  
**Annual Dinner**  
29th November, 1930.

Members desirous of attending the Annual Dinner are asked to forward their applications to the Hon. Secy, Box 151, not later than noon on Friday, 26th inst.

**HOTEL AVENUE'S**  
CHRISTMAS ENTERTAINMENTS.

**DINNER DANCE**  
On the 30th Dec.

**Grand Fancy Dress Ball**  
WITH SUPERB ATTRACTIONS SATURDAY, 27th DEC.

**RACE DANCE**  
on the 31st December.

Jack DENT and his new **METRO FOUR** performing

**Reduced Prices at the Empire Restaurant.**  
TABLE D'HOT FIVE COURSE LUNCH  
**2/-**  
GRILLS - CHEAPEST PRICES IN TOWN.

**Nairobi Railway Club**  
FOR **One Night Only**  
REPEAT PERFORMANCE OF **The Cradle Song**

WITH THE **INTERLUDE IN VERSE** BY **GREGORY MARTINE STEELA** IN THE ENGLISH VERSION OF **JOHN GARRETT UNDERHILL**  
"Really a beautiful play" vide "E.A. Review."  
TO BE FOLLOWED BY A DANCE. **NOVEMBER 29th, at 8:45 p.m.**  
TICKETS: 5s. 4s. 3s. 2s. 1s.  
BOOKING PLANS AT **MESSRS. TAWS Ltd., Government Road.**

**KENYA LIDO**  
BLVD POSTE, TRIKA  
Attractions for Christmas **SWIMMING CARNIVALS.**  
Latest **Craze**  
**Outdoor Miniature Golf Course**  
Boxing Night Ball? Fancy Dress Optional.  
**Jack Dent and his New Metro Four**  
New Year's Eve? **Elegance Hits Dance.**  
**TENNIS QUITS - FINANCING.**  
Camping in Grounds by Arrangement.  
**HOLIDAY TERMS. BOOK EARLY.**

**TORR'S HOTEL.**  
Grand Dinner Dance.  
Saturday 29th Nov. 8 p.m. to 2 a.m.  
**CLASSICAL MUSIC DURING DINNER.**  
LA CORRA - Bell? **Fancy Dress Optional.**  
FRANCE PATRIOTIC - **THE**  
RUSSIAN BOHEMIAN - **THE**  
CATERING UNDERSTANDING FOR SMALL AND LARGE PARTIES AT ALL TIMES.

**PICCADILLY RESTAURANT**  
THEATRE ROYAL BUILDING, TRINITY COOKING.  
The Best and Cheapest Lunch and Dinner served in Town.  
**LOUNGE & SPRETTMETS - ITALIAN.**  
**FRENCH PATRIOTIC - THE**  
**RUSSIAN BOHEMIAN - THE**  
**CATERING UNDERSTANDING FOR SMALL AND LARGE PARTIES AT ALL TIMES.**

**CITY SQUARE MANSIONS**

**Dinner Dance**  
WILL BE HELD ON **Wed. the 24th Dec.**  
FROM 8 p.m. TO 12 a.m.  
MUSIC BY **GABBY COOK** AND HIS **SIXTEEN BOYS.**  
Double Tickets Shs. 12/50 Single Tickets Shs. 7/50  
**BOOK YOUR TABLE NOW.**  
Phone No. 716 P.O. Box 355.

## Don't Decide

On Your Xmas Present

Until You Have Inspected Our Extensive Range of Beautiful Gifts.

**PRESENTS TO SUIT EVERY GIFT.**

WHAT TO GIVE—

- ALABASTER and SILVER-TOPPED POWDER BOWLS in all shades and shapes 15/- to 40/-.
- PERFUME SPRAYS, an attractive selection 15/- to 70/-.
- BOOK ENDS 10/- to 50/- post.
- SILVER-TOPPED SMELLING SALTS BOTTLES.
- REAL BUTTERFLY WING and EMERALD TOPPED BUTTER POWDER BOWLS 10/- to 40/-.
- LADIES' LEATHER HANDBAGS and EVENING BAGS, MANICURE SETS AND MANICURE NOVELTIES.
- LADIES AND GENT'S DRESSING AND TRAVELING CASES 50/- to 70/-.
- LADIES' TOILET SETS AND HAND MIRRORS.
- PERFUMERY—CHANEL-WORTHY-PHARY AND GOURLET.

SHOP EARLY AT

**Howse & McGeorge Ltd.**  
Nairobi and Branches.

## PETTER OIL ENGINES

**1 1/2 H.P. TO 4000 B.H.P.**

Paraffin Engines in Stock.  
1 1/2 B.H.P.  
3 B.H.P.  
6 B.H.P.



Crude Oil Engines in Stock.  
5 B.H.P.  
8 B.H.P.  
12 B.H.P.  
16 B.H.P.  
24 B.H.P.  
LARGER TYPES TO ORDER.

**SOLE AGENTS:**  
**J. W. MILLIGAN & Co.**  
P.O. Box 148. NAIROBI Phone 98.

**ARE YOUR EYES TROUBLED?**

Do you suffer from headaches, eye pain, dizziness, or nervousness. Then, many more distressing conditions, usually seen from faulty eyes, are actually ASHIFT of which MAY BE PERFECT. The advice concerning your eyes comes from our Optical Department.

**A. H. WARDLE & Co., Ltd.**  
NAIROBI CHEMISTS and OPTICIANS.  
and BRANCHES.

**Call and Inspect**  
our large range of

**Sanitary Fittings**

No., etc.

in our

**NEW UP-TO-DATE SHOWROOMS**

Corner of ELLIOT STREET and STANDARD STREET.

**R. G. VERNON & Co.**  
P.O. Box 154 NAIROBI.

to the first showing of THE NEW

# Chrysler Six

LEADER IN THE LOW-PRICE FIELD

Touring £290  
Roadster £290  
Box Body £265

**CARR, LAWSON & Co., Ltd.**

SEE NEW TRY

## DODGE SIXES

Amply Powered, Lightning Acceleration, meeting every Car requirement for this Country, and upholding the Dodge Bros., reputation for Economy and Reliability!

Sole Distributors of the Triumphant Dodge.  
**Fisher, Simmons & Rodway (E.A.) Ltd.**  
SHOWROOMS—VICTORIA ST. NAIROBI. Tel. 302.

## XMAS BOOK MAIL

Leaves November 30th.

Nothing could be more acceptable to Folks at Home than an interesting Collection of Photographs of Big Game by MARTIN JOHNSON. Albums of 50 Big Game Photographs 5hs. 18/60. Prices include Postage Paid to any address. OBTAINABLE ONLY AT:

**A. H. WARDLE & Co. Ltd.**  
PHOTOGRAPHIC ORIENTS.  
NAIROBI. Phone 103.  
and at their Branches at Mombasa, Eldoret, Kampala and Dar es Salaam.

Granat's Whisky



**Granat's LIQUEUR Scotch Whisky**

UNRIVALLED IN EASTAFRICA  
SOLD EVERYWHERE.

## CALEDONIAN

Insurance Company

Oldest British Insurance Office, FOUNDED IN 1806.  
PRINCIPAL REPRESENTATIVES—  
**M. O. HAMILTON, Ltd.**  
NAIROBI. Phone 652.

**BIRTH.**  
SIEBURG—On the 20th Oct. for Mr. H. B. at the Manor House, Narsing, Hants, England. Birth of a son, christened Henry, the wife of Henry Sieburg, Narsing, Hants, England.

**IN MEMORIAM.**  
BOSCH—In loving memory of Henry, who died at Nairobi, on 28th November, 1922.

**Uganda Argus.**  
FRIDAY, NOV. 10, 1922.

**The Road vs. Rail**

Nearly two years have elapsed since the Government Ministry in connection with the problem of road transport brought to the Railway Times attention that the roads had been utilized in studying and in the different parts of this country and Uganda at various intervals. The Government has been left in the lurch. The Ministry has been left in the lurch. The Ministry has been left in the lurch.

**Why it is a pleasure to use "Brushing Duca"**

It is so trouble in it. You just brush it on to produce a beautiful, glossy, glassy surface, quite free from brush marks, which dries granite hard in ONE HOUR.

All the time you have the satisfaction of knowing that it will adhere well to the surface, and that it is completely non-toxic, and is entirely safe for use on all surfaces.

There are some cases in use in the houses for brushing. There are some cases in use in the houses for brushing. There are some cases in use in the houses for brushing.

Obtainable from  
**GAILEY & ROBERTS, LTD.**  
NAIROBI AND BRANCHES.

tion of the road system and maintenance of the same. The Government has been left in the lurch. The Ministry has been left in the lurch.

**FRINGE TO KENYA.**  
The Small Company of the African has received the following telegram from Eastbourne: "The Government has been left in the lurch. The Ministry has been left in the lurch."

**Outcomes.**  
A solution concerned inland motor cycles and a motor cycle road system. The Government has been left in the lurch. The Ministry has been left in the lurch.

**East Africa Show at the Victoria Hotel.**  
The Secretary of the Victoria Hotel has been left in the lurch. The Ministry has been left in the lurch.

**Christmas Dinner.**  
The annual dinner of the Victoria Hotel has been left in the lurch. The Ministry has been left in the lurch.

**Christmas Eve.**  
The Christmas Eve of the Victoria Hotel has been left in the lurch. The Ministry has been left in the lurch.

**Standard.**  
The Standard of the Victoria Hotel has been left in the lurch. The Ministry has been left in the lurch.

**Today's Events.**  
The events of today at the Victoria Hotel have been left in the lurch. The Ministry has been left in the lurch.



THE EDUCATION BILL IN COUNCIL.

Director's Explanation of the Measure.

DEBATE ADJOURNED.

Elected Members Agree To Aid Its Passage Into Law.

The proposed changes in the law affecting education in Kenya were explained at some length by the Director of Education in the Legislative Council yesterday.

One of the most important changes is the introduction of the compulsory principle. Although the present law does not require parents to send their children to school, it is proposed that principle it was perhaps advisable in the general interest when there is a danger that parents, because of their poverty, might be tempted to withdraw their children from school.

The debate was adjourned in order to enable Elected Members to give further consideration to the measure and to make proposals with a view to its being passed into law this year.

THE COMPULSORY PRINCIPLE.

During the second reading of the Education Bill in the Legislative Council on Wednesday, the Director of Education made a long and interesting explanation of the proposed changes in the law affecting education in Kenya.

It was recognized as axiomatic for the bulk of the education was to be provided by the Government. It is for this reason that the Government proposed to maintain some four years ago. The Government proposed to maintain some four years ago. The Government proposed to maintain some four years ago.

It was further proposed that the Government should be empowered to make regulations for the purpose of giving effect to the provisions of the Bill.

The Bill also provided for the appointment of a Director of Education, who would be responsible for the administration of the Department.

The Bill also provided for the appointment of a Director of Education, who would be responsible for the administration of the Department.

The Bill also provided for the appointment of a Director of Education, who would be responsible for the administration of the Department.

The Bill also provided for the appointment of a Director of Education, who would be responsible for the administration of the Department.

The Bill also provided for the appointment of a Director of Education, who would be responsible for the administration of the Department.

The Bill also provided for the appointment of a Director of Education, who would be responsible for the administration of the Department.

The Bill also provided for the appointment of a Director of Education, who would be responsible for the administration of the Department.

The Bill also provided for the appointment of a Director of Education, who would be responsible for the administration of the Department.

The Bill also provided for the appointment of a Director of Education, who would be responsible for the administration of the Department.

THE EAST AFRICAN STANDARD.

FAREWELL TO "AUNTY BETTY."

Wireless Favourite Meets Her Last Exit.

A CHILDREN'S PARTY.

For the first time yesterday Mrs. Betty was given an opportunity of stating her views on the proposed changes in the law affecting education in Kenya.

The Government proposed to maintain some four years ago. The Government proposed to maintain some four years ago.

The Government proposed to maintain some four years ago. The Government proposed to maintain some four years ago.

The Government proposed to maintain some four years ago. The Government proposed to maintain some four years ago.

The Government proposed to maintain some four years ago. The Government proposed to maintain some four years ago.

The Government proposed to maintain some four years ago. The Government proposed to maintain some four years ago.

The Government proposed to maintain some four years ago. The Government proposed to maintain some four years ago.

The Government proposed to maintain some four years ago. The Government proposed to maintain some four years ago.

The Government proposed to maintain some four years ago. The Government proposed to maintain some four years ago.

The Government proposed to maintain some four years ago. The Government proposed to maintain some four years ago.

The Government proposed to maintain some four years ago. The Government proposed to maintain some four years ago.

The Government proposed to maintain some four years ago. The Government proposed to maintain some four years ago.

The Government proposed to maintain some four years ago. The Government proposed to maintain some four years ago.

The Government proposed to maintain some four years ago. The Government proposed to maintain some four years ago.

The Government proposed to maintain some four years ago. The Government proposed to maintain some four years ago.

The Government proposed to maintain some four years ago. The Government proposed to maintain some four years ago.

The Government proposed to maintain some four years ago. The Government proposed to maintain some four years ago.

The Government proposed to maintain some four years ago. The Government proposed to maintain some four years ago.

The Government proposed to maintain some four years ago. The Government proposed to maintain some four years ago.

The Government proposed to maintain some four years ago. The Government proposed to maintain some four years ago.

The Government proposed to maintain some four years ago. The Government proposed to maintain some four years ago.

LOAD PASSEDD IN A QUANDRY.

Business For Today's Meeting.

Business For Today's Meeting.

Business For Today's Meeting.

Business For Today's Meeting.

Business For Today's Meeting.

Business For Today's Meeting.

Business For Today's Meeting.

Business For Today's Meeting.

Business For Today's Meeting.

Business For Today's Meeting.

Business For Today's Meeting.

Business For Today's Meeting.

Business For Today's Meeting.

Business For Today's Meeting.

Business For Today's Meeting.

Business For Today's Meeting.

Business For Today's Meeting.

Business For Today's Meeting.

Business For Today's Meeting.

Business For Today's Meeting.

Business For Today's Meeting.

Business For Today's Meeting.

Business For Today's Meeting.

Business For Today's Meeting.

KENYA LEGISLATIVE COUNCIL.

The Dinner Serv. at Judges' Lodging.

Too Good to be Practical Use?

COUNCIL QUERT.

P.W.D. Considering Its Proposal.

It is a fact," said Capt. H. E. Swaine, who was in charge of the dinner service at the Judges' Lodging.

The dinner service at the Judges' Lodging was held on Monday night last.

The dinner service at the Judges' Lodging was held on Monday night last.

The dinner service at the Judges' Lodging was held on Monday night last.

The dinner service at the Judges' Lodging was held on Monday night last.

The dinner service at the Judges' Lodging was held on Monday night last.

The dinner service at the Judges' Lodging was held on Monday night last.

The dinner service at the Judges' Lodging was held on Monday night last.

The dinner service at the Judges' Lodging was held on Monday night last.

The dinner service at the Judges' Lodging was held on Monday night last.

The dinner service at the Judges' Lodging was held on Monday night last.

The dinner service at the Judges' Lodging was held on Monday night last.

The dinner service at the Judges' Lodging was held on Monday night last.

The dinner service at the Judges' Lodging was held on Monday night last.

The dinner service at the Judges' Lodging was held on Monday night last.

The dinner service at the Judges' Lodging was held on Monday night last.

The dinner service at the Judges' Lodging was held on Monday night last.

The dinner service at the Judges' Lodging was held on Monday night last.

The dinner service at the Judges' Lodging was held on Monday night last.

The dinner service at the Judges' Lodging was held on Monday night last.

The dinner service at the Judges' Lodging was held on Monday night last.

THE PRUDENTIAL Assurance Company Ltd., of London. THE LARGEST Insurance Institution IN THE BRITISH EMPIRE.

Has now commenced LIFE ASSURANCE business in KENYA. KANGANYA, UGANDA, and ZANTIBAR. Funds of all Branches EXCEED £228,000,000. Claims Paid EXCEED £537,000,000.

Last year the PRUDENTIAL paid its policy holders £24,736,261.

The Company also transacts Fire, Burglary, Motor, Glass and other classes of Accident Insurance.

Apply to Principal Representatives for East Africa Messrs. TYSON BROS., Ltd.

P.O. Box 120 - NAIROBI.

We are prepared to offer very generous commission terms to live agents.



THE LATEST Fiat TWO SEATER MODEL 12-15 h.p.

Fitted with Wire Wheels £210-0.

Here is a Smart, Fast and Lively Car to carry you about the town and Country under all conditions.

FIAT GARAGES SOCIETA' COLONIALE ITALIANA

Sadier Street, P.O. Box No. 996, NAIROBI.

(Continued on page 7.)







AUCTION SALES.

MUTER & OSWALD LTD. AUCTIONEERS, ETC. NAIROBI. SALE OF VALUABLE KIAMBU FREEHOLD COFFEY IN WALK-OUT.

Duly instructed by the Attorney for the Executors in the Estate of the late Hon. Sir James W. G. ...

ALL THAT PIECE OR PARCEL OF FREEHOLD LAND, known as Lot 12, containing 200 acres ...

WATTLE is planned to the extent of about 77 acres and it should be planted in the course of 6 to 8 months ...

A FULLY EQUIPPED CUPPER FACTORY is on the site of the ...

LARGE RANGE OF IMPLEMENTS, Lorry, Tractor, etc.

A WELL BUILT STONE RESIDENCE (unfurnished) with tiled roof ...

THE HOMESTEAD is well supplied with water from a Perimeter Stream by a No. 4 "B" ...

Terms can be arranged with an approved purchaser. For further particulars ...

MUTER and OSWALD Ltd., Auctioneers, Etc., NAIROBI.

MUTER & OSWALD LTD. AUCTIONEERS, ETC. NAIROBI. CATALOGUE SALE OF SILVER, PLATE, BRONZES, FURNITURE and EFFECTS.

Duly instructed, we shall sell by Public Auction, without Reserve, unless stipulated, at Our Sale Rooms, Mutos Building, Harding Street, Nairobi, on Monday, 1st Dec., at 10 a.m.

Solid Silver Tea Service of three pieces. Fine Bone China Dinner, Silver and Tortoiseshell Toilet Set comprising Dishes, Mirror and Comb. Beanoon Plate Entire Bazaar. Plated Metal Cup and Saucer. Silver Cigarette Case—about 100 pieces. Silver Vases. Silver Toast Rack. Sheffield Plate Urn and Spirit Saver. ...

Our Sale Rooms, Mutos Building, Harding Street, Nairobi, on Monday, 1st Dec., at 10 a.m.

Notice of Sale of Persian Rugs, Oriental Brass Copper, etc.

Wednesday 3rd Dec. at 10 a.m. (Full details to be advertised later.)

MUTER and OSWALD Ltd., Auctioneers, Etc., NAIROBI.

MUTER & OSWALD LTD. AUCTIONEERS, ETC. NAIROBI. PROPERTY LIST. FOR SALE.

KILIMATI 2 acres Freehold with wood and iron house; six 1/2 chickens, boys' quarters, garage, tennis court, garden well laid out. Price: £400 cash and balance of £400 over period to be arranged.

NGONG ROAD—Freehold 31/2 acres with large house, 1/2 acre cash, balance 2 years at 7 1/2%.

NGONG ROAD—Freehold 9/2 acres, well situated, Main Road, just under 2 acres; £250 or near offer.

UPPER 2 ACRES STONE and Wood and Iron house large range of fruit trees, low price for cash. The property can be sold with the houses separately or as a whole.

TO LET SHOPS and OFFICES in town, moderate rental. FURNISHED and UNFURNISHED BUNGALOWS, Hill District, low rents on lease. For further particulars of above, apply to:

MUTER and OSWALD Ltd., Auctioneers, Etc., NAIROBI.

MUTER & OSWALD LTD. AUCTIONEERS, ETC. NAIROBI. SALE OF STAMPS.

Duly instructed we shall sell, by Public Auction, Without Reserve, at our Sale Rooms, Mutos Building, Harding Street, Nairobi on Monday 1st Dec at 4-30 P.M.

Large Range of British, Colonial and Foreign Stamps. MUTER and OSWALD Ltd., Auctioneers, Etc., NAIROBI.

TRACKRAH'S, Ltd. NAIROBI. (Established 1917.) THE UP-COUNTRY LAND and ESTATE AGENTS. AUCTIONEERS & APPROVED VALUERS. INSURANCE, SHIPPING and FINANCIAL.

Shops, Offices, Godowns, Houses and Farms, TO LET or FOR SALE.

AUSTIN'S AUCTIONS.

CATALOGUE SALE OF GOOD FURNITURE, CHESTERFIELD SUITES, GRASSHOPPER, TYPEWRITER, WILSON SET COMPLETE, BROSING BEDS, BRASS BED, WILSON GARRET, MILK COOLER, ETC.

AUSTIN & CO., will sell Without Reserve unless stated, at the Mart, ON Saturday, November 29th at 10 a.m.

New Tennis Racquets, New Tennis Balls, Twin Bag spring Beds, new Single Bouncing Beds, Iron Beds complete, 2 Wood and 1 Metal Bedsteads, 1 Brass Bed with Bocking by Maple London (res), Golf Clubs in Bag, Chesterfield Suites in Good Condition, Hanging and Choker Wardrobes, New Box Ottoman well sprung.

Best Typewriter in excellent condition (res.), Child's Tricycle, Sewing Machine, Chests, Tea Tables, Coffee Stools, Metal Safes, New Lino 2' 6" Morris Chairs.

Laster Milk Cooler in new condition. Chests of Drawers, Good Sideboards, Folding Gate Lugged Tables, Singer's Hand Sewing Machine, Kitchen Tables, Infant Weighing Machine, Child's Clog Novels, 2 Good Club Easies in crumino, Camphor Wood Dinner Wagon, Office Desks.

New Algerian Rug, Carved Wood Elephant Tables, Gramophone Records, Bookshelves, Good Dining Tables and Chairs, Small Carpet, Bedside Tables, Children's Books and Toy Wagon.

Nearly New Marine Wilton Orpington 11' x 11' (Res.). Boyer-Lowry Short Wave Wireless Set complete with Loud Speaker, Earphones, Batteries in perfect order. (Res.)

AUSTIN & CO., AUCTIONEERS, HARDING STREET, NAIROBI.

WILLYS KNIGHT CAR, J.S. MOTORCYCLE. AUSTIN & CO., will sell at the Mart, on Saturday, November 29th at 10 a.m.

Best Starter, New Battery, Tyres good. New Set of Sile Curtains, Very low reserve.

W.J. & Co. Motorcycles, unless stipulated, at Our Sale Rooms, Mutos Building, Harding Street, Nairobi, on Monday, 1st Dec., at 10 a.m.

AUSTIN & CO., AUCTIONEERS, HARDING ST., NAIROBI.

MUTER & OSWALD LTD. AUCTIONEERS, ETC. NAIROBI. CATALOGUE SALE OF SILVER, PLATE, BRONZES, FURNITURE and EFFECTS.

Duly instructed, we shall sell by Public Auction, without Reserve, unless stipulated, at Our Sale Rooms, Mutos Building, Harding Street, Nairobi, on Monday, 1st Dec., at 10 a.m.

Solid Silver Tea Service of three pieces. Fine Bone China Dinner, Silver and Tortoiseshell Toilet Set comprising Dishes, Mirror and Comb. Beanoon Plate Entire Bazaar. Plated Metal Cup and Saucer. Silver Cigarette Case—about 100 pieces. Silver Vases. Silver Toast Rack. Sheffield Plate Urn and Spirit Saver. ...

Our Sale Rooms, Mutos Building, Harding Street, Nairobi, on Monday, 1st Dec., at 10 a.m.

Notice of Sale of Persian Rugs, Oriental Brass Copper, etc.

Wednesday 3rd Dec. at 10 a.m. (Full details to be advertised later.)

MUTER and OSWALD Ltd., Auctioneers, Etc., NAIROBI.

MUTER & OSWALD LTD. AUCTIONEERS, ETC. NAIROBI. PROPERTY LIST. FOR SALE.

KILIMATI 2 acres Freehold with wood and iron house; six 1/2 chickens, boys' quarters, garage, tennis court, garden well laid out. Price: £400 cash and balance of £400 over period to be arranged.

NGONG ROAD—Freehold 31/2 acres with large house, 1/2 acre cash, balance 2 years at 7 1/2%.

NGONG ROAD—Freehold 9/2 acres, well situated, Main Road, just under 2 acres; £250 or near offer.

UPPER 2 ACRES STONE and Wood and Iron house large range of fruit trees, low price for cash. The property can be sold with the houses separately or as a whole.

TO LET SHOPS and OFFICES in town, moderate rental. FURNISHED and UNFURNISHED BUNGALOWS, Hill District, low rents on lease. For further particulars of above, apply to:

MUTER and OSWALD Ltd., Auctioneers, Etc., NAIROBI.

MUTER & OSWALD LTD. AUCTIONEERS, ETC. NAIROBI. SALE OF STAMPS.

Duly instructed we shall sell, by Public Auction, Without Reserve, at our Sale Rooms, Mutos Building, Harding Street, Nairobi on Monday 1st Dec at 4-30 P.M.

Large Range of British, Colonial and Foreign Stamps. MUTER and OSWALD Ltd., Auctioneers, Etc., NAIROBI.

TRACKRAH'S, Ltd. NAIROBI. (Established 1917.) THE UP-COUNTRY LAND and ESTATE AGENTS. AUCTIONEERS & APPROVED VALUERS. INSURANCE, SHIPPING and FINANCIAL.

Shops, Offices, Godowns, Houses and Farms, TO LET or FOR SALE.

E. Hutchison & Co.

FOR SALE. Six Roomed W. and 1 House in Westlands. £500. Stone House Kilimati, 4 Rooms, 21 acres. £500. TO LET.

From 14th March, for six months. Extremely well furnished house. Agreeing lease, low rent, careful tenant. Further particulars of these and other properties from the agents.

SANDS & CO.

Potatoes Potatoes Potatoes

Sh. 3 to Sh. 5 PER BIG BAG

Motorists.

PETROL Measures and Purly genuine. SHELL, B.P., TEXACO, and PEGASUS PUMPS.

MOBILE OILS. Mobil, Shell, Texaco, Castrol and B.P. Oils always in stock and in all grades.

TYRES and TUBES. Goodyear and Dunlop.

Meghan's Petrol Station SWAMP ROAD, NGARA ROAD JUNCTION. P.O. Box 1467. NAIROBI. Phone 696.

LOUR

There is no truth in the statements which are being circulated to the effect that we are giving up business.

COLONIAL GENERAL STORES LTD.

BRICKS.

The Invicta Brick and Tile Works are now booking orders for bricks for delivery during November and December, and would be glad to receive enquiries as early as possible.

OUR SNAPSHOT COMPETITION

Weekly Prizes: 1st Prize, Shs. 15/-; Extra Prize, Shs. 10/- (if warranted). Shs. 5/- for every picture Published.

The Competition is for Snapshots of EAST AFRICAN INTEREST and must be taken by the Competitor.

The NAME and ADDRESS of the Competitor and the SUBJECT OF THE PHOTOGRAPH should be written on the back of the print.

ANY NUMBER of prints may be sent by THE SAME COMPETITOR.

THE "SNAPSHOT" COMPETITION, East African Standard, P.O. Box 280, NAIROBI.

If Prints or Plates are sent we will make Enlargements for reproduction if necessary. These films or plates will be returned after publication.

All prize winning photographs will be published in the "East African Standard" 3 years. If they are not so returned a STAMPED ENVELOPE MUST BE ENCLOSED.

The Editor's decision is final.

Sale by Public Auction

10 MOTOR CARS 10 Motor Cycles, Trucks, Etc.

Godfrey's Car Mart LIMITED.

SADLER STREET, ON Monday Dec. 1st. At 4-15 p.m.

Favoured with instructions thereto by various clients we will sell as above including—

SIXES 2 Box Body. OVERLAND 4 Box Body. DODGE Box Body. HINDUCHE 4 Wheel. FORD T. Tourer. REBULTE TOUR. HUIRY & Tourer. TRIMIRA 4 H.P.

R.S.A. Combustion, etc.

STANDARD SALOON (Falkenstein) 6 cyl. Box Body 1925 Model. 18-42 H.P. This is a "High Grade" British production. Beautifully finished interior. Representing Acme of luxury and refinement.

ARMSTRONG SIDDELEY SIX TOURER, recent model representing the best of British engineering skill and refinement. The special reliability.

CITROEN 7.5 H.P. Three seater (lover) car. Economical and reliable and good appearance.

And any further entries which may be sent to this sale.

Further particulars will appear in a later issue of this paper.

Box 766. GODFREY'S CAR MART, Ltd. Phone 142. Auctioneers & Motor Car Sales.

PUDLO

BRAND CEMENT WATERPROOF POWDER, IS USED FOR CONCRETE BUILDINGS, Foundations, Reservoirs, Cellars, Basements, Swimming Pools, Bathing, Cisterns, Concrete Floors, Railway Pipe Joints, Casing of Artesian Bore Holes, Gravel, Stone, Brick, Water, Mineral Oils and other Liquids, River and Locks, Jetting and Paving, Freshwater and Saltwater Dampness—Terminating and Isolating.

FOR PREVENTING the upward flow of water from Cellars, etc., Pally 6-cms., Lanku 2 1/2-cms., Concrete Blocks, Lorry Deck and Stone Walls, Lined with Pally.

FOR PREVENTING the upward flow of water from Cellars, etc., Pally 6-cms., Lanku 2 1/2-cms., Concrete Blocks, Lorry Deck and Stone Walls, Lined with Pally.

FOR PREVENTING the upward flow of water from Cellars, etc., Pally 6-cms., Lanku 2 1/2-cms., Concrete Blocks, Lorry Deck and Stone Walls, Lined with Pally.

FOR PREVENTING the upward flow of water from Cellars, etc., Pally 6-cms., Lanku 2 1/2-cms., Concrete Blocks, Lorry Deck and Stone Walls, Lined with Pally.

FOR PREVENTING the upward flow of water from Cellars, etc., Pally 6-cms., Lanku 2 1/2-cms., Concrete Blocks, Lorry Deck and Stone Walls, Lined with Pally.

FOR PREVENTING the upward flow of water from Cellars, etc., Pally 6-cms., Lanku 2 1/2-cms., Concrete Blocks, Lorry Deck and Stone Walls, Lined with Pally.

FOR PREVENTING the upward flow of water from Cellars, etc., Pally 6-cms., Lanku 2 1/2-cms., Concrete Blocks, Lorry Deck and Stone Walls, Lined with Pally.

FOR PREVENTING the upward flow of water from Cellars, etc., Pally 6-cms., Lanku 2 1/2-cms., Concrete Blocks, Lorry Deck and Stone Walls, Lined with Pally.

FOR PREVENTING the upward flow of water from Cellars, etc., Pally 6-cms., Lanku 2 1/2-cms., Concrete Blocks, Lorry Deck and Stone Walls, Lined with Pally.

FOR PREVENTING the upward flow of water from Cellars, etc., Pally 6-cms., Lanku 2 1/2-cms., Concrete Blocks, Lorry Deck and Stone Walls, Lined with Pally.

FOR PREVENTING the upward flow of water from Cellars, etc., Pally 6-cms., Lanku 2 1/2-cms., Concrete Blocks, Lorry Deck and Stone Walls, Lined with Pally.

FOR PREVENTING the upward flow of water from Cellars, etc., Pally 6-cms., Lanku 2 1/2-cms., Concrete Blocks, Lorry Deck and Stone Walls, Lined with Pally.

FOR PREVENTING the upward flow of water from Cellars, etc., Pally 6-cms., Lanku 2 1/2-cms., Concrete Blocks, Lorry Deck and Stone Walls, Lined with Pally.

FOR PREVENTING the upward flow of water from Cellars, etc., Pally 6-cms., Lanku 2 1/2-cms., Concrete Blocks, Lorry Deck and Stone Walls, Lined with Pally.

FOR PREVENTING the upward flow of water from Cellars, etc., Pally 6-cms., Lanku 2 1/2-cms., Concrete Blocks, Lorry Deck and Stone Walls, Lined with Pally.

FOR PREVENTING the upward flow of water from Cellars, etc., Pally 6-cms., Lanku 2 1/2-cms., Concrete Blocks, Lorry Deck and Stone Walls, Lined with Pally.

FOR PREVENTING the upward flow of water from Cellars, etc., Pally 6-cms., Lanku 2 1/2-cms., Concrete Blocks, Lorry Deck and Stone Walls, Lined with Pally.



RACING IN THE SOUTH

Johnsbury Summer Handicap

DEBIAINS DAY BAGS FOOTBALLS

The following are the weights for the Johnsbury Summer Handicap...

Table of race results with columns for Name, Weight, and Time.

"ON THIS DAY."

NOVEMBER 26.

Washington Field Club has been the first to announce...

COLLECTIONS ALMOST IMPOSSIBLE

Automatic Train Control Device.

STEEL WALKERS.

A system of railway signaling which makes automatic virtually...

It was announced recently that the company had decided to equip...

South Africa THE STIMULATING CLIMATE OF THE DRakensberg Mountains In Natal are Well Worth a Visit

Wetproof! Get even the high flying ones under most trying conditions...



Remington Remington-Union Gun Co. Inc. 700 Broadway, New York, N.Y.

"TROPHIES" We care and mount all kind of Animals obtained in this Country.

W-SLIP Clings to the Pulley Drives with Slack Multi-plier BELTING

22 Wives, 42 Children.

150,000 WIFE OF A NATIVE IN NIGERIA

Legation of 4100 and 20 of the same were left to seven of the wives...

Twenty-two wives were named in the will and a number of them were specified to receive also various portions...



English and other historical evidence as to the cost of slaves...

English and other historical evidence as to the cost of slaves, utilizing the cost which it becomes almost a matter of difficulty to ascertain...

Blackout Control.

Little warning is given to the driver of an engine whenever he is approaching a "blackout" signal...

The system which sounds in the engine only when a signal is actuated...

NATIONAL BANK OF INDIA LIMITED (Incorporated in United Kingdom)

Men's Khaki Jumpers. SHIRTS, 8/6. Also Shirts 8/1, 4/ and 5/1

Kenya Loan & Discount Co., Ltd. P.O. Box 646, NAIROBI. OFFICES:—1st Floor, Court Chambers.

P. GETHIN LUXURIOUS TOURING CARS FOR HIRE DAY AND NIGHT

ANY TOUR FROM MOMBASA TO LAOS OR THE HILLS TO THE CAPE. If you wish to go: HIRE A Car BY THE DAY OR BY THE WEEK

SAVES time... labor. fuel. The New Quaker Oats

Quaker Oats. One of the most important foodstuffs in the world.

More speed on hills. Power in every drop! Quick, smooth, clear power that is the steppiest grades.

Deansholm Dairy PURE MILK and CREAM FROM FARM TO CONSUMER

OUR AIM BEHIND OUR SERVICE IS YOUR GOODWILL The Firm you will Eventually go to THE EXPRESS TRANSPORT Coy

VACUUM OIL COMPANY OF SOUTH AFRICA, LTD. PEGASUS MOTOR SPIRIT "THE SPIRIT OF MILEAGE AND POWER"











THE EAST AFRICAN STEAMERS

British India Steam Navigation Company, Limited

LONDON AND MALDEN PORT LINE
LONDON TO BURGIA, via East Africa Line.

ROMNEY-DURHAM MAIL SERVICE
Calling KILIMINDI, Zanzibar, Dar-es-Salaam, etc.

COASTAL SERVICE
P.O. "Dunlop"
S.S. "Dunlop"
S.S. "Dunlop"

Arrives
Steamers
Kilimindi from London about

TO ROMNEY.
S.S. "Karnegie" ... 280. Dec.
S.S. "Karnegie" ... 120. Dec.

Special list Class Express
MAKINDINI and DRO
S.S. "Dunlop" ... 280. Dec.

TO MALDEN.
S.S. "Malden" 19th Dec. 17th Jan. 1921.
S.S. "Malden" 15th Jan. 1921. 14th March.

S.S. "Malden" 15th Jan. 1921. 14th March.
S.S. "Malden" 15th Jan. 1921. 14th March.

TO DURBAN.
S.S. "Karnegie" ... 280. Nov.
S.S. "Karnegie" ... 140. Dec.

Forwarded notices call at Plymouth affecting passengers the opportunity of disembarking here.

TO DURBAN.
S.S. "Karnegie" ... 280. Nov.
S.S. "Karnegie" ... 140. Dec.

TO DURBAN.
S.S. "Karnegie" ... 280. Nov.
S.S. "Karnegie" ... 140. Dec.

ALL DATES SUBJECT TO ALTERATION WITHOUT NOTICE.
TERMS: FREIGHT AND PASSENGER MAY BE ARRANGED WITH THE MANAGER.

TERMS: FREIGHT AND PASSENGER MAY BE ARRANGED WITH THE MANAGER.
S.S. "Karnegie" ... 280. Nov.

TERMS: FREIGHT AND PASSENGER MAY BE ARRANGED WITH THE MANAGER.
S.S. "Karnegie" ... 280. Nov.

UNION-CASTLE LINE

Homeward via Suez.
From Bombay Arrives England.
S.S. "Union-Castle" ... 27th Feb.
S.S. "Union-Castle" ... 27th Feb.

Deutsche Ost- Afrika- Linie

GERMAN AFRICAN SERVICE.
DEUTSCHE OST-AFRIKA-LINIE, GENERALAGENTUR, MOMBASA.
S.S. "URABARO" ... 1st Dec.
S.S. "TANGANIKA" ... 2nd Dec.

CITRA LINE

Compagnia Italiana Transatlantica.
THE BEST ROUTE TO ENGLAND.
S.S. F. "ORIENT" ... 1st December, 1st February, 1st April, 1st June.

Every morning! Chivers' Olde English Marmalade.
In thousands of homes in all parts of the world.
Messageries Maritimes (French Mail Steamers).

Deutsche Ost- Afrika- Linie

GERMAN AFRICAN SERVICE.
DEUTSCHE OST-AFRIKA-LINIE, GENERALAGENTUR, MOMBASA.
S.S. "URABARO" ... 1st Dec.
S.S. "TANGANIKA" ... 2nd Dec.

Holland Afrika Lijn

PASSENGER FARES.
To Swaziland ... (A)-200.00 (B)-200.00 (C)-200.00
To Lourenco ... (A)-200.00 (B)-200.00 (C)-200.00

BLACK AND WHITE SCOTCH WHISKY

"STANDARD" OF QUALITY.
WHISKY.
Below are a few lines in Dress Materials which are offered at ridiculously low prices.

THE LATEST FASHIONS IN LOTUS & DELVA

Illustrations of various styles of women's shoes, including Lotus and Delva brands.

TRENCH OVERSEAS TRADING CO. LTD.

MOMBASA.
P.O. No. 16. Telegrams: "ROLFAFR". Tel. 142.

AMSEL

SUPER STOUT.
Try it for yourself.
Bottle Distributors: Trench Overseas Trading Co., Mombasa.

Bradford Manufacturing Co. Ltd.

Imperial Chambers, Government Road, Above The Club, NAIROBI.
P.O. Box 818.

Kenya Loan & Discount Co. Ltd.

P.O. Box 846, NAIROBI.
OFFICE: 1st Floor, Commercial Chambers.
Financial Agents.
ESTABLISHED 1901.

Keith Timber Co., Ltd.

Sadler Street, NAIROBI.
PODO and CEDAR.
Box 874. Phone 598.

PIANOFORTE TUNING AND REPAIRING.

Ten years experience as Kenya Colony and five years with Messrs. Chappell and Co., London.
F. A. HEAD, Box 875, NAIROBI.

OVERSEAS MAILS.

Table with columns: STEAMERS, FROM, TO, Arrives, Mails. Lists various shipping routes and schedules.

UPLANDS Christmas Hams

UPLANDS Bacon Factory.
The Choice of Expert and Epicure.
Obtainable from all the leading Stores throughout Eastern Africa.

LIME logo and text: LIME Limited.
Putty-Building-Technical-Industrial-Agricultural.

Championed quality and so much superior make possible a definite increase in the amount of work done on the most difficult jobs and on the most exacting work.



**SHEAFFERS'**  
THE TAW MAKERS

**TAWS, LTD.,**  
NAIROBI.



**ZEISS**  
FIELD GLASSES

Now is the time buy your XMAS GIFTS. CAMERAS - CINEMA CAMERAS - PROJECTORS.

**"THE LENS Limited"**  
NAIROBI.

**MOTOR TOURS Ltd.**  
Tourist Agents. Opposite the G.P.O. for

**MOTORING TOURS**  
and THE HILL ROUTE to EUROPE.  
Luxurious Cars for Hire - European Drivers.

**MOTOR TOURS Ltd.**  
Tourist Agents. Opposite the G.P.O. for

**MOTORING TOURS**  
and THE HILL ROUTE to EUROPE.  
Luxurious Cars for Hire - European Drivers.

**CHES.**  
(Continued from page 2)

British Champion of Kenya and East member of the new British Championship Cup presented him by his firm.

Mr. Douglas G. Hicks related the very amusing story of the Club. He said that he had been invited to each corner of the corner in the Annual Cup Match. He unfortunately lost the game but was wonderful victor of the game. The captain of the team might not have been a good player.

Mr. Robert (Kilindi) replied that he had been invited to each corner of the corner in the Annual Cup Match. He said that he had been invited to each corner of the corner in the Annual Cup Match. He said that he had been invited to each corner of the corner in the Annual Cup Match.

**SOFTBALLS.**  
Keynotes to problems No. 1166 and 1167 are 3-1-4 and 1-2-0 respectively.

**JOHANNESBURG CHAMPIONS.**  
**SHIP GAMES.**

By winning the game between Mr. J. Walker secured the Championship of the Union Club of Johannesburg. Dr. M. G. ...

**Today's Trains**

The following trains are due to leave Nairobi today:

Nairobi & Kisumu	12.30 p.m.
Thika	1.00 p.m.
Nairobi & Kisumu	4.00 p.m.
Nairobi & Kisumu	7.47 p.m.

Nightly 8-45 p.m.

**EMPIRE THEATRE**  
WED. 8-10 p.m.  
Sat. 8-10 p.m.

**Special Childrens Matinee.**  
THIS AFTERNOON AT 3-15 P.M.  
**Wallace Beary and Raymond Hatton in**  
**We're In The Navy Now**  
AN ALL COMEDY PROGRAMME.

Nightly 8-45 p.m.

**TO-NIGHT**  
**LON CHANEY**  
IN ONE OF HIS LAST PICTURES  
**"UNKNOWN"**

THE MAN OF A THOUSAND FACES IN ONE OF HIS CHIEFMASTERPIECES—  
an amazing drama of Love, Revenge and Regeneration in a thrilling circus and underworld setting.

PRICES Shgs. 5/-, 2/- & 2/-

Reduced Prices at the  
**Empire Restaurant.**  
TABLE D'HOTE FIVE COURSE LUNCH

**2-**  
SKILLS—CHEAPEST PRICES IN TOWN.

**Nairobi Railway Club**  
FOR  
**One Night Only**  
REPEAT PERFORMANCE OF  
**The Cradle Song**  
WITH THE  
**INTERLUDE IN VERSE**  
BY GREGGIO MARTINEZ SIERRA  
IN THE ENGLISH VERSION OF  
**JOHN GARRETT UNDERHILL.**

Nightly 8-45 p.m.

**ROYAL THEATRE**  
WED. 8-10 p.m.  
Sat. 8-10 p.m.

**TO-NIGHT**  
THE FAMOUS BRITISH PICTURE  
**TESHA**  
Featuring **MARIA OERDA** and **JAMES THOMAS**

Life's greatest passion depicted in a thrilling philosophy—a vivid presentation of a woman's struggle to establish a mighty empire, and the terrible climax.

**BOOK NOW**  
FOR THE  
**FIRST PRODUCTION**  
OF  
**"PSYCHIC"**  
THE COMEDY  
AT THE THEATRE ROYAL  
DECEMBER 4th, 5th and 6th.  
PLAN AT EMPIRE THEATRE.  
PRICES: Shs. 7/6, 5/- and 3/-  
No Increase in Prices for Saturday Night.

**TORR'S HOTEL.**  
Grand Dinner Dance.  
To-Night 29th Nov. 8 p.m. to 2 a.m.  
CLASSICAL MUSIC DURING DINNER.

THE TORR'S BAND  
RAMSON & LELLIARD—Music  
SCOTT & BALLET—Piano  
MERITT—Tuba  
MINORE—Drum

AND DANCING TO  
SYD ZIGLER and his NEW TORR'S HOTEL  
MUSIC.  
(THE WEST INDIA ORCHESTRA IN KENYA)

**WAKEFIELD**

**CASTRO**

Supplies Obtainable from  
all Good Garages.

**"If your Engine is worth it give it Castrol."**

DISTRIBUTORS  
For Kenya, Tanganyika and Zanzibar.

**THE MOTOR MART**  
& Exchange Limited.  
Eldoret, Nairobi, Dar-es-salaam.

"Really a beautiful play" vide "E.A. Review"  
TO BE FOLLOWED BY A DANCE.  
TO-NIGHT, at 8-45 p.m.  
TICKETS  
BOOKING PLANS AT  
MESSRS. TAWS Ltd., Government Road.

**KENYA LIDO**  
BLUE POSTS, THIKA.  
Attractions for Christmas  
SWIMMING CARNIVALS.  
Latest Craze  
Outdoor Miniature Golf Course  
Boxing Night Ball - Tawny Dress Optional.  
**Jack Dent and his New Metro Four**  
New Year's Eve - Hognamby Night Dance.  
TENNIS QUITS - PINGPONG  
Carnival in Grounds by Arrangement.  
HOLIDAY TERMS. BOOK EARLY.

**HOTEL AVENUE'S**  
CHRISTMAS ENTERTAINMENTS.

**DINNER DANCE**  
On the 26th Dec.

**Grand Fancy Dress Ball**  
WITH  
SURPRISE ATTRACTIONS  
SATURDAY, 27th DEC.

**RACE DANCE**  
on the 31st December.  
Music by Jack DENT and his new METRO FOUR

**CITY SQUARE MANSIONS**

**Dinner Dance**  
WILL BE HELD ON  
**Wed., the 24th Dec.**  
FROM 8 p.m. TO 2 a.m.

MUSIC BY GARRY COOK AND HIS RHYTHM BOYS.

Double Tickets Shs. 12/6 Single Tickets Shs. 7/6  
BOOK YOUR TABLE NOW.  
Phone No. 716 P.O. Box 955.

**A Grand Christmas Sale.**  
At THE OLD STANDARD BANK BUILDING.  
(Corner of Hardinge Street and Vith Avenue.)

Friday, 5th December from 9-30 a.m. to 6-30 p.m.  
and on  
Saturday, 6th December from 9-30 a.m. to 1 p.m.  
will be held in aid of Church Funds under the  
Provision—Cakes—Sweets—Hand Sewn Plain and  
Fancy Articles—Ornaments—Calendars—Babies and  
Children's Hand Sewn and Hand Knitted Garments  
and Many Novelties will be on Sale.

Bring the Children to Meet Santa Claus on  
FRIDAY AFTERNOON AT 4 p.m. and on  
SATURDAY FORENOON AT 10 a.m.

**XMAS AT BRACKENHURST**  
Dec 25th Fancy Dress Ball.  
GARRY COOK'S RHYTHM BOYS.

TENNIS TOURNAMENT AND OTHER ATTRACTIONS  
A FEW ROOMS STILL AVAILABLE





# 1931 BUDGET CUT DOWN BY £21,000.

## Results of the Select Committee's Efforts.

### NEW POSTS OPPOSED

### Appeal to New Governor to Show Example in Economy.

The results of the Select Committee's examination of the Kenya 1931 Estimates were revealed to Legation Council yesterday. The policy holding statement report was presented. Later in the day there was a meeting on the subject and the Council passed a motion adopting the report.

Some extracts from that document are given below. The net result of the enquiry has been to decrease the Government's original expenditure programme by £21,000 and to increase the revenue by various adjustments by the sum of £60.

The Elected Members agreed to support the Government's revenue figures on the understanding that all necessary steps would be taken to secure the maintenance and extension of agriculture. An assurance was given that the Government give consideration to all schemes placed before it and to non-pecuniary decisions on such without delay.

Attention was placed by Elected Members on the need for the utmost economy in the policy holding certain posts in absence and of vacancies remaining unfilled, unless absolutely necessary. It was approved with the addition of an opinion by Elected Members that every effort should be made to make a vacancy permanent to find a suitable applicant locally.

An enquiry into the clerical organization of Government Departments was urged; also a standardization of wages paid to clerical employees. The abolition of estate duty was again recommended.

The Elected Members decided practically all new appointments and declined to agree to Government's proposals to increase certain salary scales and three times the rate of taxation was made that equivalent savings must be shown in the estimates.

In view of the appointment of a new Governor the Elected Members did not oppose the Government House vote of £16,000 but expressed the hope to be brought to the attention of His Majesty the King's arrival—that in view of the financial position of the Government it would be desirable for the various Departments by reducing the vote shown."

The closing debate on the Estimates and further extracts from the Select Committee's Report will be published later.

## PLEDGE TO AGRICULTURE.

The report of the Select Committee of Legislative Council on the Kenya Budget for 1931 was presented to Legation Council yesterday. It is a preliminary report and represents a tentative's scheme of the Government's policy for the coming year. The report is being discussed by the Elected Members and the Indian Members of the Legislative Council.

The report of the Select Committee on the Kenya Budget for 1931 was presented to Legation Council yesterday. It is a preliminary report and represents a tentative's scheme of the Government's policy for the coming year. The report is being discussed by the Elected Members and the Indian Members of the Legislative Council.

The report of the Select Committee on the Kenya Budget for 1931 was presented to Legation Council yesterday. It is a preliminary report and represents a tentative's scheme of the Government's policy for the coming year. The report is being discussed by the Elected Members and the Indian Members of the Legislative Council.

The report of the Select Committee on the Kenya Budget for 1931 was presented to Legation Council yesterday. It is a preliminary report and represents a tentative's scheme of the Government's policy for the coming year. The report is being discussed by the Elected Members and the Indian Members of the Legislative Council.

The report of the Select Committee on the Kenya Budget for 1931 was presented to Legation Council yesterday. It is a preliminary report and represents a tentative's scheme of the Government's policy for the coming year. The report is being discussed by the Elected Members and the Indian Members of the Legislative Council.

The report of the Select Committee on the Kenya Budget for 1931 was presented to Legation Council yesterday. It is a preliminary report and represents a tentative's scheme of the Government's policy for the coming year. The report is being discussed by the Elected Members and the Indian Members of the Legislative Council.

The report of the Select Committee on the Kenya Budget for 1931 was presented to Legation Council yesterday. It is a preliminary report and represents a tentative's scheme of the Government's policy for the coming year. The report is being discussed by the Elected Members and the Indian Members of the Legislative Council.

The report of the Select Committee on the Kenya Budget for 1931 was presented to Legation Council yesterday. It is a preliminary report and represents a tentative's scheme of the Government's policy for the coming year. The report is being discussed by the Elected Members and the Indian Members of the Legislative Council.

The report of the Select Committee on the Kenya Budget for 1931 was presented to Legation Council yesterday. It is a preliminary report and represents a tentative's scheme of the Government's policy for the coming year. The report is being discussed by the Elected Members and the Indian Members of the Legislative Council.

Financial depression and of making all possible steps to reduce the cost of the Government. The policy holding statement report was presented to Legation Council yesterday. It is a preliminary report and represents a tentative's scheme of the Government's policy for the coming year. The report is being discussed by the Elected Members and the Indian Members of the Legislative Council.

The report of the Select Committee on the Kenya Budget for 1931 was presented to Legation Council yesterday. It is a preliminary report and represents a tentative's scheme of the Government's policy for the coming year. The report is being discussed by the Elected Members and the Indian Members of the Legislative Council.

The report of the Select Committee on the Kenya Budget for 1931 was presented to Legation Council yesterday. It is a preliminary report and represents a tentative's scheme of the Government's policy for the coming year. The report is being discussed by the Elected Members and the Indian Members of the Legislative Council.

The report of the Select Committee on the Kenya Budget for 1931 was presented to Legation Council yesterday. It is a preliminary report and represents a tentative's scheme of the Government's policy for the coming year. The report is being discussed by the Elected Members and the Indian Members of the Legislative Council.

The report of the Select Committee on the Kenya Budget for 1931 was presented to Legation Council yesterday. It is a preliminary report and represents a tentative's scheme of the Government's policy for the coming year. The report is being discussed by the Elected Members and the Indian Members of the Legislative Council.

The report of the Select Committee on the Kenya Budget for 1931 was presented to Legation Council yesterday. It is a preliminary report and represents a tentative's scheme of the Government's policy for the coming year. The report is being discussed by the Elected Members and the Indian Members of the Legislative Council.

The report of the Select Committee on the Kenya Budget for 1931 was presented to Legation Council yesterday. It is a preliminary report and represents a tentative's scheme of the Government's policy for the coming year. The report is being discussed by the Elected Members and the Indian Members of the Legislative Council.

The report of the Select Committee on the Kenya Budget for 1931 was presented to Legation Council yesterday. It is a preliminary report and represents a tentative's scheme of the Government's policy for the coming year. The report is being discussed by the Elected Members and the Indian Members of the Legislative Council.

The report of the Select Committee on the Kenya Budget for 1931 was presented to Legation Council yesterday. It is a preliminary report and represents a tentative's scheme of the Government's policy for the coming year. The report is being discussed by the Elected Members and the Indian Members of the Legislative Council.

The report of the Select Committee on the Kenya Budget for 1931 was presented to Legation Council yesterday. It is a preliminary report and represents a tentative's scheme of the Government's policy for the coming year. The report is being discussed by the Elected Members and the Indian Members of the Legislative Council.

The report of the Select Committee on the Kenya Budget for 1931 was presented to Legation Council yesterday. It is a preliminary report and represents a tentative's scheme of the Government's policy for the coming year. The report is being discussed by the Elected Members and the Indian Members of the Legislative Council.

The report of the Select Committee on the Kenya Budget for 1931 was presented to Legation Council yesterday. It is a preliminary report and represents a tentative's scheme of the Government's policy for the coming year. The report is being discussed by the Elected Members and the Indian Members of the Legislative Council.

The report of the Select Committee on the Kenya Budget for 1931 was presented to Legation Council yesterday. It is a preliminary report and represents a tentative's scheme of the Government's policy for the coming year. The report is being discussed by the Elected Members and the Indian Members of the Legislative Council.

The report of the Select Committee on the Kenya Budget for 1931 was presented to Legation Council yesterday. It is a preliminary report and represents a tentative's scheme of the Government's policy for the coming year. The report is being discussed by the Elected Members and the Indian Members of the Legislative Council.

The report of the Select Committee on the Kenya Budget for 1931 was presented to Legation Council yesterday. It is a preliminary report and represents a tentative's scheme of the Government's policy for the coming year. The report is being discussed by the Elected Members and the Indian Members of the Legislative Council.

The report of the Select Committee on the Kenya Budget for 1931 was presented to Legation Council yesterday. It is a preliminary report and represents a tentative's scheme of the Government's policy for the coming year. The report is being discussed by the Elected Members and the Indian Members of the Legislative Council.

The report of the Select Committee on the Kenya Budget for 1931 was presented to Legation Council yesterday. It is a preliminary report and represents a tentative's scheme of the Government's policy for the coming year. The report is being discussed by the Elected Members and the Indian Members of the Legislative Council.

The report of the Select Committee on the Kenya Budget for 1931 was presented to Legation Council yesterday. It is a preliminary report and represents a tentative's scheme of the Government's policy for the coming year. The report is being discussed by the Elected Members and the Indian Members of the Legislative Council.

The report of the Select Committee on the Kenya Budget for 1931 was presented to Legation Council yesterday. It is a preliminary report and represents a tentative's scheme of the Government's policy for the coming year. The report is being discussed by the Elected Members and the Indian Members of the Legislative Council.

The report of the Select Committee on the Kenya Budget for 1931 was presented to Legation Council yesterday. It is a preliminary report and represents a tentative's scheme of the Government's policy for the coming year. The report is being discussed by the Elected Members and the Indian Members of the Legislative Council.

The report of the Select Committee on the Kenya Budget for 1931 was presented to Legation Council yesterday. It is a preliminary report and represents a tentative's scheme of the Government's policy for the coming year. The report is being discussed by the Elected Members and the Indian Members of the Legislative Council.

The report of the Select Committee on the Kenya Budget for 1931 was presented to Legation Council yesterday. It is a preliminary report and represents a tentative's scheme of the Government's policy for the coming year. The report is being discussed by the Elected Members and the Indian Members of the Legislative Council.

The report of the Select Committee on the Kenya Budget for 1931 was presented to Legation Council yesterday. It is a preliminary report and represents a tentative's scheme of the Government's policy for the coming year. The report is being discussed by the Elected Members and the Indian Members of the Legislative Council.

The report of the Select Committee on the Kenya Budget for 1931 was presented to Legation Council yesterday. It is a preliminary report and represents a tentative's scheme of the Government's policy for the coming year. The report is being discussed by the Elected Members and the Indian Members of the Legislative Council.

The report of the Select Committee on the Kenya Budget for 1931 was presented to Legation Council yesterday. It is a preliminary report and represents a tentative's scheme of the Government's policy for the coming year. The report is being discussed by the Elected Members and the Indian Members of the Legislative Council.

The report of the Select Committee on the Kenya Budget for 1931 was presented to Legation Council yesterday. It is a preliminary report and represents a tentative's scheme of the Government's policy for the coming year. The report is being discussed by the Elected Members and the Indian Members of the Legislative Council.

The report of the Select Committee on the Kenya Budget for 1931 was presented to Legation Council yesterday. It is a preliminary report and represents a tentative's scheme of the Government's policy for the coming year. The report is being discussed by the Elected Members and the Indian Members of the Legislative Council.

The report of the Select Committee on the Kenya Budget for 1931 was presented to Legation Council yesterday. It is a preliminary report and represents a tentative's scheme of the Government's policy for the coming year. The report is being discussed by the Elected Members and the Indian Members of the Legislative Council.

The report of the Select Committee on the Kenya Budget for 1931 was presented to Legation Council yesterday. It is a preliminary report and represents a tentative's scheme of the Government's policy for the coming year. The report is being discussed by the Elected Members and the Indian Members of the Legislative Council.

The report of the Select Committee on the Kenya Budget for 1931 was presented to Legation Council yesterday. It is a preliminary report and represents a tentative's scheme of the Government's policy for the coming year. The report is being discussed by the Elected Members and the Indian Members of the Legislative Council.

The report of the Select Committee on the Kenya Budget for 1931 was presented to Legation Council yesterday. It is a preliminary report and represents a tentative's scheme of the Government's policy for the coming year. The report is being discussed by the Elected Members and the Indian Members of the Legislative Council.

The report of the Select Committee on the Kenya Budget for 1931 was presented to Legation Council yesterday. It is a preliminary report and represents a tentative's scheme of the Government's policy for the coming year. The report is being discussed by the Elected Members and the Indian Members of the Legislative Council.

## "E. A. HANCOCK" Special (Cable Service.) (Continued.)

## NATIVE POLICY IN KENYA.

### A Few Amendments Necessary.

### Acting Governor's Report.

### PUBLICATION LOCALS DESIRABLE

### "STANDARD CORRESPONDENT"

### AN IMPLEASANT.

### THE GOVERNOR'S VIEW.

### THE GOVERNOR'S VIEW.

### THE GOVERNOR'S VIEW.

### THE GOVERNOR'S VIEW.

### THE GOVERNOR'S VIEW.

### THE GOVERNOR'S VIEW.

### THE GOVERNOR'S VIEW.

### THE GOVERNOR'S VIEW.

### THE GOVERNOR'S VIEW.

### THE GOVERNOR'S VIEW.

### THE GOVERNOR'S VIEW.

### THE GOVERNOR'S VIEW.

### THE GOVERNOR'S VIEW.

### THE GOVERNOR'S VIEW.

### THE GOVERNOR'S VIEW.

### THE GOVERNOR'S VIEW.

### THE GOVERNOR'S VIEW.

### THE GOVERNOR'S VIEW.

### THE GOVERNOR'S VIEW.

### THE GOVERNOR'S VIEW.

### THE GOVERNOR'S VIEW.

### THE GOVERNOR'S VIEW.

### THE GOVERNOR'S VIEW.

### THE GOVERNOR'S VIEW.

### THE GOVERNOR'S VIEW.

### THE GOVERNOR'S VIEW.

## THE MARGACHANA SCHEME.

### New Application by the Company.

### STATEMENT BY GOVERNOR.

### THE GOVERNOR'S VIEW.

### THE GOVERNOR'S VIEW.

### THE GOVERNOR'S VIEW.

### THE GOVERNOR'S VIEW.

### THE GOVERNOR'S VIEW.

### THE GOVERNOR'S VIEW.

### THE GOVERNOR'S VIEW.

### THE GOVERNOR'S VIEW.

### THE GOVERNOR'S VIEW.

### THE GOVERNOR'S VIEW.

### THE GOVERNOR'S VIEW.

### THE GOVERNOR'S VIEW.

### THE GOVERNOR'S VIEW.

### THE GOVERNOR'S VIEW.

### THE GOVERNOR'S VIEW.

### THE GOVERNOR'S VIEW.

### THE GOVERNOR'S VIEW.

### THE GOVERNOR'S VIEW.

### THE GOVERNOR'S VIEW.

### THE GOVERNOR'S VIEW.

### THE GOVERNOR'S VIEW.

### THE GOVERNOR'S VIEW.

### THE GOVERNOR'S VIEW.

### THE GOVERNOR'S VIEW.

### THE GOVERNOR'S VIEW.

### THE GOVERNOR'S VIEW.

### THE GOVERNOR'S VIEW.

### THE GOVERNOR'S VIEW.

### THE GOVERNOR'S VIEW.

### THE GOVERNOR'S VIEW.

## AERIAL VISITORS TO KENYA.

### Squadron Leader F. E. Coetz Arrives in Nairobi.

### MAGNIFICENT MISDEEDS

### Shots and Rifle Society.

### SHOW TO BE HELD TONIGHT

### An exhibition under the auspices of the Arts and Crafts Society will be held at the Nairobi Club on Monday evening.

### Shots and Rifle Society.

### SHOW TO BE HELD TONIGHT

### An exhibition under the auspices of the Arts and Crafts Society will be held at the Nairobi Club on Monday evening.

### Shots and Rifle Society.

### SHOW TO BE HELD TONIGHT

### An exhibition under the auspices of the Arts and Crafts Society will be held at the Nairobi Club on Monday evening.

### Shots and Rifle Society.

### SHOW TO BE HELD TONIGHT

### An exhibition under the auspices of the Arts and Crafts Society will be held at the Nairobi Club on Monday evening.

### Shots and Rifle Society.

### SHOW TO BE HELD TONIGHT

### An exhibition under the auspices of the Arts and Crafts Society will be held at the Nairobi Club on Monday evening.

### Shots and Rifle Society.

### SHOW TO BE HELD TONIGHT

### An exhibition under the auspices of the Arts and Crafts Society will be held at the Nairobi Club on Monday evening.

### Shots and Rifle Society.

### SHOW TO BE HELD TONIGHT

### An exhibition under the auspices of the Arts and Crafts Society will be held at the Nairobi Club on Monday evening.

### Shots and Rifle Society.

### SHOW TO BE HELD TONIGHT

### An exhibition under the auspices of the Arts and Crafts Society will be held at the Nairobi Club on Monday evening.

### Shots and Rifle Society.

### SHOW TO BE HELD TONIGHT

### An exhibition under the auspices of the Arts and Crafts Society will be held at the Nairobi Club on Monday evening.

### Shots and Rifle Society.

### SHOW TO BE HELD TONIGHT

### An exhibition under the auspices of the Arts and Crafts Society will be held at the Nairobi Club on Monday evening.

## The "E. A. Hancock."

### WHOLE EDITION SOLD IN 20 DAYS.

### THE FIRST EAST AFRICAN ANNUAL

### THE GOVERNOR'S VIEW.

### THE GOVERNOR'S VIEW.

### THE GOVERNOR'S VIEW.

### THE GOVERNOR'S VIEW.

### THE GOVERNOR'S VIEW.

### THE GOVERNOR'S VIEW.

### THE GOVERNOR'S VIEW.

### THE GOVERNOR'S VIEW.

### THE GOVERNOR'S VIEW.

### THE GOVERNOR'S VIEW.

### THE GOVERNOR'S VIEW.

### THE GOVERNOR'S VIEW.

### THE GOVERNOR'S VIEW.

### THE GOVERNOR'S VIEW.

### THE GOVERNOR'S VIEW.

### THE GOVERNOR'S VIEW.

## 30 Years of Business Growth

### IS OUR PROUD CLAIM.

### TO HAVE HAD OUR OWN THROUGHOUT THESE 30 YEARS IN THE FACE OF CONSTANT COMPETITION.

### WE HAVE BEEN SUCCESSFUL IN OUR BUSINESS.

### WE ARE NOW OFFERING TO OUR ADDED CUSTOMERS.

### WHY?

### TRY US.

## BEILIRAM PARIMAL & Co.

### WHOLESALE & RETAIL GROCERS.

### ROYALTY HOUSE, GOVERNMENT ROAD, NAIROBI.

### THE LATEST 514 TWO SEATER MODEL 12-15 h. p.

### Fitted with Wire Wheels \$210-0-0.

### Here is a Smart, Fast and Lively Car to carry you about the town and Country under all weather conditions.

## FIAT GARAGES

### SOIETA COLONIALE ITALIANA

### Badley Street, P. O. Box No. 996, NAIROBI.

### THE LATEST 514 TWO SEATER MODEL 12-15 h. p.

### Fitted with Wire Wheels \$210-0-0.



## Grass Track Racing.

### TO DAY CLOSING DATE FOR ENTRIES.

### Today is the last day for entries to be received for the 1931-32 season of the Kenya Grass Track Racing Club.

### MEMORANDUM TO THE COLONIAL OFFICE.

### "STANDARD CORRESPONDENT"

### THE GOVERNOR'S VIEW.

Our Christmas Stocks

HAVE NOW ARRIVED AND ARE DISPLAYED IN OUR SHOWROOMS SUITABLE GIFTS FOR ALL CALI NOW BE CHOICE. NEW GOODS IN ALL DEPARTMENTS REAL NOVELTIES PRESENTS THAT WOULD BE APPRECIATED BY ALL.

Call and Select Early

Hutchings, Biemer & Co. Ltd. P.O. Box 463 Telephone 480.

GUNNY BAGS

COFFEE BAGS. WHEAT BAGS. MAIZE BAGS.

HESSEANS and TWINS COARSE SALT.

BUY FROM THE

Largest Importers. The African Mercantile Co., Ltd. NAIROBI - - - NAKURU.

DURING THE RAINS

Clean Your Car Windshields and Windows Glasses with Lightning Glass Cleaner and enjoy a safe and clear drive. Sold by J. JACOBS LTD. NAIROBI.

HOME BROADCASTING QUALITY RECEPTION

Realism, purity of tone, plenty of volume, no distortion, ease of operation... these are some of the advantages of the PHILLIPS CASAPHONE, the most advanced musical instrument on the market... Although specially designed for reception of gramophone stations, the CASAPHONE may be utilized to obtain a wonderful reproduction of gramophone music, imparting life and beauty to your oldest records... It is in the famous Phillips Research Laboratories. Of course it is equipped with Phillips' 'Mini-mat' wonder-valves, i.e., a pentode and all-electric, it is operated by a simple mains switch and one tuning control. In short, it is the best for you!

Days: 10-30 to 11-50 p.m. Thursday: 3-30 to 4-50 p.m.

Particulars from: Lochhead Moore & Roy LIMITED.

SIXTH AVENUE NAIROBI Phone 664

Church Notices

ALL SAINTS CATHEDRAL, NAIROBI. SUNDAY, NOV. 30. 7.30 Holy Communion. 9.0 Children's Church. 10.30 Sunday School. 4.0. 6.30 Evening Prayer followed by 7.0 Children's Communion. 8.15 Evening Prayer. Wed. 7.30 Holy Communion. 8.15 Evening Prayer.

ST. MARK'S CHURCH, PARADES.

SUNDAY, NOV. 30. 8.0 Holy Communion. 10.0 Children's Service. 10.45 Matins and Holy Communion.

KIAMBU DISTRICT.

SUNDAY, NOV. 30. 8.0 a.m. Holy Communion. 9.30 p.m. Holy Communion. 10.0 a.m. Matins and Holy Communion. 11.0 a.m. Matins and Holy Communion. 12.0 p.m. Evening Prayer.

NAKURU AND DISTRICT CATHEDRAL.

SUNDAY, NOV. 30. 10.0 a.m. Matins and Holy Communion. 11.0 a.m. Matins and Holy Communion. 8.0. R. Christopher's, Nakuru. W. M. Aspinth, Chaplain.

NYAKAI CHAPLAINCY.

SUNDAY, NOV. 30. 10.0 a.m. Matins and Holy Communion at Rongai. 10.0 a.m. Matins and Holy Communion at Kiroch. 8.0 p.m. Evening and Holy Communion at Kiroch.

GATHURU AFRICAN SERVICES.

Sunday of Advent. Holy Mass, 7.30 and 8.30. Benediction at 8.30 p.m. Sermon of the 17th Psalm of St. Francis. Wednesday Feast of St. Francis Xavier, 8 p.m. Solemn High Mass. Holy Mass, 7.30 p.m. Benediction. 8.15 p.m. Benediction at 5.30 p.m. Masses on Week days: 6.45. 7.15. 8.15. 9.15.

CHURCH OF SCOTLAND.

SUNDAY, NOV. 30. 10.0 a.m. Holy Communion. 11.0 a.m. Morning Service. 1.30 p.m. Holy Communion. 8.0 p.m. Evening Service.

KIRURU.

SUNDAY, NOV. 30. 11.0 a.m. Service for Foreigners. 7.30 p.m. Service for Foreigners.

CHELTENHAM SERVICES.

Christmas Services held every Sunday to the top of the mountain. 11.0 a.m. Holy Communion. 8.0 p.m. Evening Prayer. 11.0 a.m. to 1.15 p.m.

WEATHER REPORT.

Table with columns: Station, Pressure, Direction and Force of Wind, Temperature, Rainfall. Includes stations like Mombasa, Kisumu, Nakuru, etc.

Following are the results of observations taken at stations of the British East African Meteorological Service November 29, 1931.

Entertainments.

THEATRE ROYAL.

The cast of converting Countess Baranoff's novel into the film 'The Road to Mandalay' for the last three months... The film is well presented very much... The film is well presented very much... The film is well presented very much...

KENYA LEGISLATIVE COUNCIL.

Programme for To-day's Sitting.

The following is the Order of Business for the local sitting of the Legislative Council: Consideration of Minutes. Meeting of the Council at 10.30 a.m. Presentation of Petitions and Memoranda. Papers to be laid on the table. Motion of Motion.

THE HON. THE ATTORNEY GENERAL.

That the Report of the Select Committee appointed to consider the proposed Bill for the Amendment of the Statute of the Council of the Governor-General. That the Report of the Select Committee appointed to consider the proposed Bill for the Amendment of the Statute of the Council of the Governor-General.

THE HON. THE ATTORNEY GENERAL.

That the Report of the Select Committee appointed to consider the proposed Bill for the Amendment of the Statute of the Council of the Governor-General. That the Report of the Select Committee appointed to consider the proposed Bill for the Amendment of the Statute of the Council of the Governor-General.

THE HON. THE ATTORNEY GENERAL.

That the Report of the Select Committee appointed to consider the proposed Bill for the Amendment of the Statute of the Council of the Governor-General. That the Report of the Select Committee appointed to consider the proposed Bill for the Amendment of the Statute of the Council of the Governor-General.

THE SALVATION ARMY.

Assembly Hall, Government Road, Nairobi, 10.15 a.m. (Dunroby, Parklands). Sunday School (Roboi) Parklands. 7.15 a.m. Services conducted by Adjutants Bates and Fairclough. Thursday, 8.0 p.m. Women's 8.15 p.m. Y. P. Demonstration. Chairman, IA-Colonel

Stay at the largest and oldest established hotel in Nairobi. Just out of town and in fine quiet site and best.

Very convenient. Monthly Reservations from 1/6 per month. 1/2 per month. 1/3 per month. 1/4 per month. 1/5 per month. 1/6 per month. 1/7 per month. 1/8 per month. 1/9 per month. 1/10 per month. 1/11 per month. 1/12 per month. 1/13 per month. 1/14 per month. 1/15 per month. 1/16 per month. 1/17 per month. 1/18 per month. 1/19 per month. 1/20 per month. 1/21 per month. 1/22 per month. 1/23 per month. 1/24 per month. 1/25 per month. 1/26 per month. 1/27 per month. 1/28 per month. 1/29 per month. 1/30 per month. 1/31 per month. 1/1 per month. 1/2 per month. 1/3 per month. 1/4 per month. 1/5 per month. 1/6 per month. 1/7 per month. 1/8 per month. 1/9 per month. 1/10 per month. 1/11 per month. 1/12 per month. 1/13 per month. 1/14 per month. 1/15 per month. 1/16 per month. 1/17 per month. 1/18 per month. 1/19 per month. 1/20 per month. 1/21 per month. 1/22 per month. 1/23 per month. 1/24 per month. 1/25 per month. 1/26 per month. 1/27 per month. 1/28 per month. 1/29 per month. 1/30 per month. 1/31 per month. 1/1 per month. 1/2 per month. 1/3 per month. 1/4 per month. 1/5 per month. 1/6 per month. 1/7 per month. 1/8 per month. 1/9 per month. 1/10 per month. 1/11 per month. 1/12 per month. 1/13 per month. 1/14 per month. 1/15 per month. 1/16 per month. 1/17 per month. 1/18 per month. 1/19 per month. 1/20 per month. 1/21 per month. 1/22 per month. 1/23 per month. 1/24 per month. 1/25 per month. 1/26 per month. 1/27 per month. 1/28 per month. 1/29 per month. 1/30 per month. 1/31 per month. 1/1 per month. 1/2 per month. 1/3 per month. 1/4 per month. 1/5 per month. 1/6 per month. 1/7 per month. 1/8 per month. 1/9 per month. 1/10 per month. 1/11 per month. 1/12 per month. 1/13 per month. 1/14 per month. 1/15 per month. 1/16 per month. 1/17 per month. 1/18 per month. 1/19 per month. 1/20 per month. 1/21 per month. 1/22 per month. 1/23 per month. 1/24 per month. 1/25 per month. 1/26 per month. 1/27 per month. 1/28 per month. 1/29 per month. 1/30 per month. 1/31 per month. 1/1 per month. 1/2 per month. 1/3 per month. 1/4 per month. 1/5 per month. 1/6 per month. 1/7 per month. 1/8 per month. 1/9 per month. 1/10 per month. 1/11 per month. 1/12 per month. 1/13 per month. 1/14 per month. 1/15 per month. 1/16 per month. 1/17 per month. 1/18 per month. 1/19 per month. 1/20 per month. 1/21 per month. 1/22 per month. 1/23 per month. 1/24 per month. 1/25 per month. 1/26 per month. 1/27 per month. 1/28 per month. 1/29 per month. 1/30 per month. 1/31 per month. 1/1 per month. 1/2 per month. 1/3 per month. 1/4 per month. 1/5 per month. 1/6 per month. 1/7 per month. 1/8 per month. 1/9 per month. 1/10 per month. 1/11 per month. 1/12 per month. 1/13 per month. 1/14 per month. 1/15 per month. 1/16 per month. 1/17 per month. 1/18 per month. 1/19 per month. 1/20 per month. 1/21 per month. 1/22 per month. 1/23 per month. 1/24 per month. 1/25 per month. 1/26 per month. 1/27 per month. 1/28 per month. 1/29 per month. 1/30 per month. 1/31 per month. 1/1 per month. 1/2 per month. 1/3 per month. 1/4 per month. 1/5 per month. 1/6 per month. 1/7 per month. 1/8 per month. 1/9 per month. 1/10 per month. 1/11 per month. 1/12 per month. 1/13 per month. 1/14 per month. 1/15 per month. 1/16 per month. 1/17 per month. 1/18 per month. 1/19 per month. 1/20 per month. 1/21 per month. 1/22 per month. 1/23 per month. 1/24 per month. 1/25 per month. 1/26 per month. 1/27 per month. 1/28 per month. 1/29 per month. 1/30 per month. 1/31 per month. 1/1 per month. 1/2 per month. 1/3 per month. 1/4 per month. 1/5 per month. 1/6 per month. 1/7 per month. 1/8 per month. 1/9 per month. 1/10 per month. 1/11 per month. 1/12 per month. 1/13 per month. 1/14 per month. 1/15 per month. 1/16 per month. 1/17 per month. 1/18 per month. 1/19 per month. 1/20 per month. 1/21 per month. 1/22 per month. 1/23 per month. 1/24 per month. 1/25 per month. 1/26 per month. 1/27 per month. 1/28 per month. 1/29 per month. 1/30 per month. 1/31 per month. 1/1 per month. 1/2 per month. 1/3 per month. 1/4 per month. 1/5 per month. 1/6 per month. 1/7 per month. 1/8 per month. 1/9 per month. 1/10 per month. 1/11 per month. 1/12 per month. 1/13 per month. 1/14 per month. 1/15 per month. 1/16 per month. 1/17 per month. 1/18 per month. 1/19 per month. 1/20 per month. 1/21 per month. 1/22 per month. 1/23 per month. 1/24 per month. 1/25 per month. 1/26 per month. 1/27 per month. 1/28 per month. 1/29 per month. 1/30 per month. 1/31 per month. 1/1 per month. 1/2 per month. 1/3 per month. 1/4 per month. 1/5 per month. 1/6 per month. 1/7 per month. 1/8 per month. 1/9 per month. 1/10 per month. 1/11 per month. 1/12 per month. 1/13 per month. 1/14 per month. 1/15 per month. 1/16 per month. 1/17 per month. 1/18 per month. 1/19 per month. 1/20 per month. 1/21 per month. 1/22 per month. 1/23 per month. 1/24 per month. 1/25 per month. 1/26 per month. 1/27 per month. 1/28 per month. 1/29 per month. 1/30 per month. 1/31 per month. 1/1 per month. 1/2 per month. 1/3 per month. 1/4 per month. 1/5 per month. 1/6 per month. 1/7 per month. 1/8 per month. 1/9 per month. 1/10 per month. 1/11 per month. 1/12 per month. 1/13 per month. 1/14 per month. 1/15 per month. 1/16 per month. 1/17 per month. 1/18 per month. 1/19 per month. 1/20 per month. 1/21 per month. 1/22 per month. 1/23 per month. 1/24 per month. 1/25 per month. 1/26 per month. 1/27 per month. 1/28 per month. 1/29 per month. 1/30 per month. 1/31 per month. 1/1 per month. 1/2 per month. 1/3 per month. 1/4 per month. 1/5 per month. 1/6 per month. 1/7 per month. 1/8 per month. 1/9 per month. 1/10 per month. 1/11 per month. 1/12 per month. 1/13 per month. 1/14 per month. 1/15 per month. 1/16 per month. 1/17 per month. 1/18 per month. 1/19 per month. 1/20 per month. 1/21 per month. 1/22 per month. 1/23 per month. 1/24 per month. 1/25 per month. 1/26 per month. 1/27 per month. 1/28 per month. 1/29 per month. 1/30 per month. 1/31 per month. 1/1 per month. 1/2 per month. 1/3 per month. 1/4 per month. 1/5 per month. 1/6 per month. 1/7 per month. 1/8 per month. 1/9 per month. 1/10 per month. 1/11 per month. 1/12 per month. 1/13 per month. 1/14 per month. 1/15 per month. 1/16 per month. 1/17 per month. 1/18 per month. 1/19 per month. 1/20 per month. 1/21 per month. 1/22 per month. 1/23 per month. 1/24 per month. 1/25 per month. 1/26 per month. 1/27 per month. 1/28 per month. 1/29 per month. 1/30 per month. 1/31 per month. 1/1 per month. 1/2 per month. 1/3 per month. 1/4 per month. 1/5 per month. 1/6 per month. 1/7 per month. 1/8 per month. 1/9 per month. 1/10 per month. 1/11 per month. 1/12 per month. 1/13 per month. 1/14 per month. 1/15 per month. 1/16 per month. 1/17 per month. 1/18 per month. 1/19 per month. 1/20 per month. 1/21 per month. 1/22 per month. 1/23 per month. 1/24 per month. 1/25 per month. 1/26 per month. 1/27 per month. 1/28 per month. 1/29 per month. 1/30 per month. 1/31 per month. 1/1 per month. 1/2 per month. 1/3 per month. 1/4 per month. 1/5 per month. 1/6 per month. 1/7 per month. 1/8 per month. 1/9 per month. 1/10 per month. 1/11 per month. 1/12 per month. 1/13 per month. 1/14 per month. 1/15 per month. 1/16 per month. 1/17 per month. 1/18 per month. 1/19 per month. 1/20 per month. 1/21 per month. 1/22 per month. 1/23 per month. 1/24 per month. 1/25 per month. 1/26 per month. 1/27 per month. 1/28 per month. 1/29 per month. 1/30 per month. 1/31 per month. 1/1 per month. 1/2 per month. 1/3 per month. 1/4 per month. 1/5 per month. 1/6 per month. 1/7 per month. 1/8 per month. 1/9 per month. 1/10 per month. 1/11 per month. 1/12 per month. 1/13 per month. 1/14 per month. 1/15 per month. 1/16 per month. 1/17 per month. 1/18 per month. 1/19 per month. 1/20 per month. 1/21 per month. 1/22 per month. 1/23 per month. 1/24 per month. 1/25 per month. 1/26 per month. 1/27 per month. 1/28 per month. 1/29 per month. 1/30 per month. 1/31 per month. 1/1 per month. 1/2 per month. 1/3 per month. 1/4 per month. 1/5 per month. 1/6 per month. 1/7 per month. 1/8 per month. 1/9 per month. 1/10 per month. 1/11 per month. 1/12 per month. 1/13 per month. 1/14 per month. 1/15 per month. 1/16 per month. 1/17 per month. 1/18 per month. 1/19 per month. 1/20 per month. 1/21 per month. 1/22 per month. 1/23 per month. 1/24 per month. 1/25 per month. 1/26 per month. 1/27 per month. 1/28 per month. 1/29 per month. 1/30 per month. 1/31 per month. 1/1 per month. 1/2 per month. 1/3 per month. 1/4 per month. 1/5 per month. 1/6 per month. 1/7 per month. 1/8 per month. 1/9 per month. 1/10 per month. 1/11 per month. 1/12 per month. 1/13 per month. 1/14 per month. 1/15 per month. 1/16 per month. 1/17 per month. 1/18 per month. 1/19 per month. 1/20 per month. 1/21 per month. 1/22 per month. 1/23 per month. 1/24 per month. 1/25 per month. 1/26 per month. 1/27 per month. 1/28 per month. 1/29 per month. 1/30 per month. 1/31 per month. 1/1 per month. 1/2 per month. 1/3 per month. 1/4 per month. 1/5 per month. 1/6 per month. 1/7 per month. 1/8 per month. 1/9 per month. 1/10 per month. 1/11 per month. 1/12 per month. 1/13 per month. 1/14 per month. 1/15 per month. 1/16 per month. 1/17 per month. 1/18 per month. 1/19 per month. 1/20 per month. 1/21 per month. 1/22 per month. 1/23 per month. 1/24 per month. 1/25 per month. 1/26 per month. 1/27 per month. 1/28 per month. 1/29 per month. 1/30 per month. 1/31 per month. 1/1 per month. 1/2 per month. 1/3 per month. 1/4 per month. 1/5 per month. 1/6 per month. 1/7 per month. 1/8 per month. 1/9 per month. 1/10 per month. 1/11 per month. 1/12 per month. 1/13 per month. 1/14 per month. 1/15 per month. 1/16 per month. 1/17 per month. 1/18 per month. 1/19 per month. 1/20 per month. 1/21 per month. 1/22 per month. 1/23 per month. 1/24 per month. 1/25 per month. 1/26 per month. 1/27 per month. 1/28 per month. 1/29 per month. 1/30 per month. 1/31 per month. 1/1 per month. 1/2 per month. 1/3 per month. 1/4 per month. 1/5 per month. 1/6 per month. 1/7 per month. 1/8 per month. 1/9 per month. 1/10 per month. 1/11 per month. 1/12 per month. 1/13 per month. 1/14 per month. 1/15 per month. 1/16 per month. 1/17 per month. 1/18 per month. 1/19 per month. 1/20 per month. 1/21 per month. 1/22 per month. 1/23 per month. 1/24 per month. 1/25 per month. 1/26 per month. 1/27 per month. 1/28 per month. 1/29 per month. 1/30 per month. 1/31 per month. 1/1 per month. 1/2 per month. 1/3 per month. 1/4 per month. 1/5 per month. 1/6 per month. 1/7 per month. 1/8 per month. 1/9 per month. 1/10 per month. 1/11 per month. 1/12 per month. 1/13 per month. 1/14 per month. 1/15 per month. 1/16 per month. 1/17 per month. 1/18 per month. 1/19 per month. 1/20 per month. 1/21 per month. 1/22 per month. 1/23 per month. 1/24 per month. 1/25 per month. 1/26 per month. 1/27 per month. 1/28 per month. 1/29 per month. 1/30 per month. 1/31 per month. 1/1 per month. 1/2 per month. 1/3 per month. 1/4 per month. 1/5 per month. 1/6 per month. 1/7 per month. 1/8 per month. 1/9 per month. 1/10 per month. 1/11 per month. 1/12 per month. 1/13 per month. 1/14 per month. 1/15 per month. 1/16 per month. 1/17 per month. 1/18 per month. 1/19 per month. 1/20 per month. 1/21 per month. 1/22 per month. 1/23 per month. 1/24 per month. 1/25 per month. 1/26 per month. 1/27 per month. 1/28 per month. 1/29 per month. 1/30 per month. 1/31 per month. 1/1 per month. 1/2 per month. 1/3 per month. 1/4 per month. 1/5 per month. 1/6 per month. 1/7 per month. 1/8 per month. 1/9 per month. 1/10 per month. 1/11 per month. 1/12 per month. 1/13 per month. 1/14 per month. 1/15 per month. 1/16 per month. 1/17 per month. 1/18 per month. 1/19 per month. 1/20 per month. 1/21 per month. 1/22 per month. 1/23 per month. 1/24 per month. 1/25 per month. 1/26 per month. 1/27 per month. 1/28 per month. 1/29 per month. 1/30 per month. 1/31 per month. 1/1 per month. 1/2 per month. 1/3 per month. 1/4 per month. 1/5 per month. 1/6 per month. 1/7 per month. 1/8 per month. 1/9 per month. 1/10 per month. 1/11 per month. 1/12 per month. 1/13 per month. 1/14 per month. 1/15 per month. 1/16 per month. 1/17 per month. 1/18 per month. 1/19 per month. 1/20 per month. 1/21 per month. 1/22 per month. 1/23 per month. 1/24 per month. 1/25 per month. 1/26 per month. 1/27 per month. 1/28 per month. 1/29 per month. 1/30 per month. 1/31 per month. 1/1 per month. 1/2 per month. 1/3 per month. 1/4 per month. 1/5 per month. 1/6 per month. 1/7 per month. 1/8 per month. 1/9 per month. 1/10 per month. 1/11 per month. 1/12 per month. 1/13 per month. 1/14 per month. 1/15 per month. 1/16 per month. 1/17 per month. 1/18 per month. 1/19 per month. 1/20 per month. 1/21 per month. 1/22 per month. 1/23 per month. 1/24 per month. 1/25 per month. 1/26 per month. 1/27 per month. 1/28 per month. 1/29 per month. 1/30 per month. 1/31 per month. 1/1 per month. 1/2 per month. 1/3 per month. 1/4 per month. 1/5 per month. 1/6 per month. 1/7 per month. 1/8 per month. 1/9 per month. 1/10 per month. 1/11 per month. 1/12 per month. 1/13 per month. 1/14 per month. 1/15 per month. 1/16 per month. 1/17 per month. 1/18 per month. 1/19 per month. 1/20 per month. 1/21 per month. 1/22 per month. 1/23 per month. 1/24 per month. 1/25 per month. 1/26 per month. 1/27 per month. 1/28 per month. 1/29 per month. 1/30 per month. 1/31 per month. 1/1 per month. 1/2 per month. 1/3 per month. 1/4 per month. 1/5 per month. 1/6 per month. 1/7 per month. 1/8 per month. 1/9 per month. 1/10 per month. 1/11 per month. 1/12 per month. 1/13 per month. 1/14 per month. 1/15 per month. 1/16 per month. 1/17 per month. 1/18 per month. 1/19 per month. 1/20 per month. 1/21 per month. 1/22 per month. 1/23 per month. 1/24 per month. 1/25 per month. 1/26 per month. 1/27 per month. 1/28 per month. 1/29 per month. 1/30 per month. 1/31 per month. 1/1 per month. 1/2 per month. 1/3 per month. 1/4 per month. 1/5 per month. 1/6 per month. 1/7 per month. 1/8 per month. 1/9 per month. 1/10 per month. 1/11 per month. 1/12 per month. 1/13 per month. 1/14 per month. 1/15 per month. 1/16 per month. 1/17 per month. 1/18 per month. 1/19 per month. 1/20 per month. 1/21 per month. 1/22 per month. 1/23 per month. 1/24 per month. 1/25 per month. 1/26 per month. 1/27 per month. 1/28 per month. 1/29 per month. 1/30 per month. 1/31 per month. 1/1 per month. 1/2 per month. 1/3 per month. 1/4 per month. 1/5 per month. 1/6 per month. 1/7 per month. 1/8 per month. 1/9 per month. 1/10 per month. 1/11 per month. 1/12 per month. 1/13 per month. 1/14 per month. 1/15 per month. 1/16 per month. 1/17 per month. 1/18 per month. 1/19 per month. 1/20 per month. 1/21 per month. 1/22 per month. 1/23 per month. 1/24 per month. 1/25 per month. 1/26 per month. 1/27 per month. 1/28 per month. 1/29 per month. 1/30 per month. 1/31 per month. 1/1 per month. 1/2 per month. 1/3 per month. 1/4 per month. 1/5 per month. 1/6 per month. 1/7 per month. 1/8 per month. 1/9 per month. 1/10 per month. 1/11 per month. 1/12 per month. 1/13 per month. 1/14 per month. 1/15 per month. 1/16 per month. 1/17 per month. 1/18 per month. 1/19 per month. 1/20 per month. 1/21 per month. 1/22 per month. 1/23 per month. 1/24 per month. 1/25 per month. 1/26 per month. 1/27 per month. 1/28 per month. 1/29 per month. 1/30 per month. 1/31 per month. 1/1 per month. 1/2 per month. 1/3 per month. 1/4 per month. 1/5 per month. 1/6 per month. 1/7 per month. 1/8 per month. 1/9 per month. 1/10 per month. 1/11 per month. 1/12 per month. 1/13 per month. 1/14 per month. 1/15 per month. 1/16 per month. 1/17 per month. 1/18 per month. 1/19 per month. 1/20 per month. 1/21 per month. 1/22 per month. 1/23 per month. 1/24 per month. 1/25 per month. 1/26 per month. 1/27 per month. 1/28 per month. 1/29 per month. 1/30 per month. 1/31 per month. 1/1 per month. 1/2 per month. 1/3 per month. 1/4 per month. 1/5 per month. 1/6 per month. 1/7 per month. 1/8 per month. 1/9 per month. 1/10 per month. 1/11 per month. 1/12 per month. 1/13 per month. 1/14 per month. 1/15 per month. 1/16 per month. 1/17 per month. 1/18 per month. 1/19 per month. 1/20 per month. 1/21 per month. 1/22 per month. 1/23 per month. 1/24 per month. 1/25 per month. 1/26 per month. 1/27 per month. 1/28 per month. 1/29 per month. 1/30 per month. 1/31 per month. 1/1 per month. 1/2 per month. 1/3 per month. 1/4 per month. 1/5 per month. 1/6 per month. 1/7 per month. 1/8 per month. 1/9 per month. 1/10 per month. 1/11 per month. 1/12 per month. 1/13 per month. 1/14 per month. 1/15 per month. 1/16 per month. 1/17 per month. 1/18 per month. 1/19 per month. 1/20 per month. 1/21 per month. 1/22 per month. 1/23 per month. 1/24 per month. 1/25 per month. 1/26 per month. 1/27 per month. 1/28 per month. 1/29 per month. 1/30 per month. 1/31 per month. 1/1 per month. 1/2 per month. 1/3 per month. 1/4 per month. 1/5 per month. 1/6 per month. 1/7 per month. 1/8 per month. 1/9 per month. 1/10 per month. 1/11 per month. 1/12 per month. 1/13 per month. 1/14 per month. 1/15 per month. 1/16 per month. 1/17 per month. 1/18 per month. 1/19 per month. 1/20 per month. 1/21 per month. 1/22 per month. 1/23 per month. 1/24 per month. 1/25 per month. 1/26 per month. 1/27 per month. 1/28 per month. 1/29 per month. 1/30 per month. 1/31 per month. 1/1 per month. 1/2 per month. 1/3 per month. 1/4 per month. 1/5 per month. 1/6 per month. 1/7 per month. 1/8 per month. 1/9 per month. 1/10 per month. 1/11 per month. 1/12 per month. 1/13 per month. 1/14 per month. 1/15 per month. 1/16 per month. 1/17 per month. 1/18 per month. 1/19 per month. 1/20 per month. 1/21 per month. 1/22 per month. 1/23 per month. 1/24 per month. 1/25 per month. 1/26 per month. 1/27 per month. 1/28 per month. 1/29 per month. 1/30 per month. 1/31 per month. 1/1 per month. 1/2 per month. 1/3 per month. 1/4 per month. 1/5 per month. 1/6 per month. 1/7 per month. 1/8 per month. 1/9 per month. 1/10 per month. 1/11 per month. 1/12 per month. 1/13 per month. 1/14 per month. 1/15 per month. 1/16 per month. 1/17 per month. 1/18 per month. 1/19 per month. 1/20 per month. 1/21 per month. 1/22 per month. 1/23 per month. 1/24 per month. 1/25 per month. 1/26 per month. 1/27 per month. 1/28 per month. 1/29 per month. 1/30 per month. 1/31 per month. 1/1 per month. 1/2 per month. 1/3 per month. 1/4 per month. 1/5 per month. 1/6 per month. 1/7 per month. 1/8 per month. 1/9 per month. 1/10 per month. 1/11 per month. 1/12 per month. 1/13 per month. 1/14 per month.

CORRESPONDENCE.

The Editor does not accept responsibility for the views expressed by his correspondents...

The Maize Industry.

It is what Areas is Maize Unprofitable? To the Editor, Sir:—I have been extremely pleased to see in this morning's issue of the Standard that the question of further assistance has been granted to the Maize Growers' League...

While I think we all agree that the present price of maize cannot last for any considerable length of time there are some who think that the present opportunity should be taken of reviewing the whole position of the Maize Industry...

I notice that the Hon. Member for the Eastern Valley in his speech quotes from a statement made by the Director of Agriculture...

From a recent report to your paper of a meeting that was held in the Eastern Valley it would appear to be a big difference of opinion as to the correctness of the statement made by the Director of Agriculture...

Our Agricultural Department has to ascertain which of the districts in Kenya are suitable for maize growing.

If Government has only a certain amount of money to advance for the assistance of the Maize Industry it is essential that the money should be applied to those districts where it will be a permanent benefit to the industry...

We have been told that Maize can be grown at a profit in South Africa on an average yield of 20 bags to the acre...

In certain districts in Kenya it is continually being, that either immediately after or during the process of planting that about with heavy rain with a consequent heavy crop of weeds...

one thing is a time when Government should regard the Maize industry as a national industry...

As to the question of the Maize industry being a national industry, I think we should take careful note of the fact that the Maize industry in Kenya is a young industry...

The day has now definitely passed when Kenya could find itself upon modernistic lines...

It would appear to be more probable that the Maize industry in Kenya is a young industry...

It is true that investigations revealed a somewhat extravagant expenditure on the part of the Government...

It is true that investigations revealed a somewhat extravagant expenditure on the part of the Government...

It is true that investigations revealed a somewhat extravagant expenditure on the part of the Government...

It is true that investigations revealed a somewhat extravagant expenditure on the part of the Government...

It is true that investigations revealed a somewhat extravagant expenditure on the part of the Government...

It is true that investigations revealed a somewhat extravagant expenditure on the part of the Government...

It is true that investigations revealed a somewhat extravagant expenditure on the part of the Government...

It is true that investigations revealed a somewhat extravagant expenditure on the part of the Government...

It is true that investigations revealed a somewhat extravagant expenditure on the part of the Government...

It is true that investigations revealed a somewhat extravagant expenditure on the part of the Government...

It is true that investigations revealed a somewhat extravagant expenditure on the part of the Government...

It is true that investigations revealed a somewhat extravagant expenditure on the part of the Government...

It is true that investigations revealed a somewhat extravagant expenditure on the part of the Government...

It is true that investigations revealed a somewhat extravagant expenditure on the part of the Government...

under the control of Mr. J. F. H. Hager...

It is true that investigations revealed a somewhat extravagant expenditure on the part of the Government...

It is true that investigations revealed a somewhat extravagant expenditure on the part of the Government...

It is true that investigations revealed a somewhat extravagant expenditure on the part of the Government...

It is true that investigations revealed a somewhat extravagant expenditure on the part of the Government...

It is true that investigations revealed a somewhat extravagant expenditure on the part of the Government...

It is true that investigations revealed a somewhat extravagant expenditure on the part of the Government...

It is true that investigations revealed a somewhat extravagant expenditure on the part of the Government...

It is true that investigations revealed a somewhat extravagant expenditure on the part of the Government...

It is true that investigations revealed a somewhat extravagant expenditure on the part of the Government...

It is true that investigations revealed a somewhat extravagant expenditure on the part of the Government...

It is true that investigations revealed a somewhat extravagant expenditure on the part of the Government...

It is true that investigations revealed a somewhat extravagant expenditure on the part of the Government...

It is true that investigations revealed a somewhat extravagant expenditure on the part of the Government...

It is true that investigations revealed a somewhat extravagant expenditure on the part of the Government...

It is true that investigations revealed a somewhat extravagant expenditure on the part of the Government...

It is true that investigations revealed a somewhat extravagant expenditure on the part of the Government...

It is true that investigations revealed a somewhat extravagant expenditure on the part of the Government...

under the control of Mr. J. F. H. Hager...

It is true that investigations revealed a somewhat extravagant expenditure on the part of the Government...

It is true that investigations revealed a somewhat extravagant expenditure on the part of the Government...

It is true that investigations revealed a somewhat extravagant expenditure on the part of the Government...

It is true that investigations revealed a somewhat extravagant expenditure on the part of the Government...

It is true that investigations revealed a somewhat extravagant expenditure on the part of the Government...

It is true that investigations revealed a somewhat extravagant expenditure on the part of the Government...

It is true that investigations revealed a somewhat extravagant expenditure on the part of the Government...

It is true that investigations revealed a somewhat extravagant expenditure on the part of the Government...

It is true that investigations revealed a somewhat extravagant expenditure on the part of the Government...

It is true that investigations revealed a somewhat extravagant expenditure on the part of the Government...

It is true that investigations revealed a somewhat extravagant expenditure on the part of the Government...

It is true that investigations revealed a somewhat extravagant expenditure on the part of the Government...

It is true that investigations revealed a somewhat extravagant expenditure on the part of the Government...

It is true that investigations revealed a somewhat extravagant expenditure on the part of the Government...

It is true that investigations revealed a somewhat extravagant expenditure on the part of the Government...

It is true that investigations revealed a somewhat extravagant expenditure on the part of the Government...

It is true that investigations revealed a somewhat extravagant expenditure on the part of the Government...

AFR KANDER SMOKING MIXTURE PERFECT BLEND OF TOBACCO... THE ONLY GENUINE... VALUABLE FREE GIFTS

Sukari Ltd. have pleasure in announcing that they are now producing the Finest Quality White Sugar.

Sukari Superfine Unparalleled in Sweetness, Whiteness and Purity.

FOR SERVICE EBOO'S EVERY TIME Try Once AND JOIN THE RANKS OF THE SATISFIED

W. A. GIBNEY LTD. ARE THE LARGEST WIRE-SPLIT MERCHANTS IN THE WORLD.

Whisky bottles and glasses for advertisement.

Whisky advertisement text: A Whisky to make you lovelier, a Whisky to please you, etc.

TROPHIES We cure and mount all kinds of Animals obtained in this Country.

XMAS TOYS Just Received LADHAM STORES, GENERAL DRAPERS, NAIROBI.

SPORTX The Clubs for Champions The Champion of Clubs FOR SPORTS, LOUNGE & SUITS FOR ALL OCCASIONS.

Ahamed Bros THE FOREMOST TAILORING HOUSE. BAZAR, NAIROBI. Phone 201.

KAYSER The Outstanding Stocking of the World ONE PAIR OF KAYSER

KAYSER green gait double the wear of an equal silk hose.

Xmas Crackers AND Novelties Presentation Boxes OF CHOCOLATES

M. S. ELLIOT & Co. Ltd. WE HAVE JUST UNPACKED OUR NEW CONSIGNMENT AND OUR ADVICE TO YOU IS TO BUY NOW.

EXTENSIVE RANGE OF SUITINGS IN PURE WOOL, JUST ARRIVED. FIRST OPPORTUNITY TO SELECT YOUR SUIT LENGTH

WHY BUILD TO BURN? FIRE-PROOF WALLBOARD FOR PARTITIONS AND CEILINGS. Messrs. SMITH, MACKENZIE & Co. NAIROBI.

JOHN WALKER We have the pleasure to announce that in consequence of the former agents having relinquished their interest in this Whisky, we have now been appointed Sole Agents for Kenya and Uganda.

Royal Agricultural and Horticultural Society of Kenya. Notice is hereby given that a Special General Meeting of the Members of the Royal Agricultural and Horticultural Society of Kenya will be held in the House, Nairobi, at 10 a.m., on Monday, December 1st, 1920.

B. Florens, FRENCH HAIR DRESSER, PERMANENT AND TINTING SPECIALIST. Phone 521. York Building, P.O. Box 966, Government Road, Nairobi.

Join the Kenya Branch of the BRITISH LEGION and assist your ex-service comrades in distress. ROLF H. HEDLEY, 1/62, E.O. Box 52, NAIROBI.









# KENYA NATIONAL ARCHIVES

## PHOTOGRAPHIC SERVICE

Description of Document..... THE EAST AFRICAN STANDARD (MOMBASA TIMES & UGANDA ARGUS)  
..... (Daily Edition) 1st to 29th November, 1930, .....

Reference No..... From E.A.S. Library.....

**END**