

VATICAN CANALS AND POLITICS.

The Situation in Malta.

(THROUGH BUTLER'S AGENCY.) Malta, June 11. Lord Strickland's departure, leaving for London unexpected to you, June 12, is a matter of the greatest interest in this situation.

How Police Done.

Malta, June 11. A few police officers in the public disturbances in the present crisis is grieved. It is probable that the police will be sent in force to the island, and the Government will be obliged to place on the island a large force of British troops.

Premier in England.

London, June 10. Mr. Balfour is expected to arrive in London today by air.

Reply to Archbishop.

London, June 10. The Governor in replying to the Archbishop's letter against the election of the police on June 11, has stated that he does not believe that any serious or official objection to the election of the police has been made.

Lord Strickland's Defence.

In regard to Lord Strickland's defence, the Government has decided to appoint the Archbishop that the British Government will not support the Archbishop's defence.

Yoke of the Church.

London, June 11. Lord Strickland is in agreement with the Archbishop in his opinion that the Government of Malta did not wish to share of the yoke of the Church.

Electricity Postponed.

(BY WIRELESS.) Rugby, June 10. A letter has been received from the Government of Malta, stating that the electricity project is postponed.

(BY WIRELESS.)

Rugby, June 10. The Premier is expected to arrive in London today by air.

(BY WIRELESS.)

Rugby, June 10. The Premier is expected to arrive in London today by air.

MOTOR CYCLE RECORD BROKEN.

Terrific Speed on Isle of Man.

(BY WIRELESS.) Rugby, June 10. W. L. Hancock, riding a 500 cc. W. S. machine, broke his record on the Isle of Man yesterday.

W. L. Hancock's Record.

Hancock's record was broken by a 500 cc. W. S. machine, which completed the course in 10 minutes and 15 seconds.

W. L. Hancock's Record.

Hancock's record was broken by a 500 cc. W. S. machine, which completed the course in 10 minutes and 15 seconds.

W. L. Hancock's Record.

Hancock's record was broken by a 500 cc. W. S. machine, which completed the course in 10 minutes and 15 seconds.

W. L. Hancock's Record.

Hancock's record was broken by a 500 cc. W. S. machine, which completed the course in 10 minutes and 15 seconds.

W. L. Hancock's Record.

Hancock's record was broken by a 500 cc. W. S. machine, which completed the course in 10 minutes and 15 seconds.

W. L. Hancock's Record.

Hancock's record was broken by a 500 cc. W. S. machine, which completed the course in 10 minutes and 15 seconds.

W. L. Hancock's Record.

Hancock's record was broken by a 500 cc. W. S. machine, which completed the course in 10 minutes and 15 seconds.

W. L. Hancock's Record.

Hancock's record was broken by a 500 cc. W. S. machine, which completed the course in 10 minutes and 15 seconds.

MISS JOHNSON AT CANBERRA.

Welcomed by the Premier.

(THROUGH BUTLER'S AGENCY.) Canberra, June 10. Miss Johnson is expected to arrive in Canberra today.

Welcomed by the Premier.

Miss Johnson is expected to arrive in Canberra today.

Welcomed by the Premier.

Miss Johnson is expected to arrive in Canberra today.

Welcomed by the Premier.

Miss Johnson is expected to arrive in Canberra today.

Welcomed by the Premier.

Miss Johnson is expected to arrive in Canberra today.

Welcomed by the Premier.

Miss Johnson is expected to arrive in Canberra today.

Welcomed by the Premier.

Miss Johnson is expected to arrive in Canberra today.

Welcomed by the Premier.

Miss Johnson is expected to arrive in Canberra today.

Welcomed by the Premier.

Miss Johnson is expected to arrive in Canberra today.

AUSTRIAN LABOR PROBLEMS.

British-Italian Frictions.

(THROUGH BUTLER'S AGENCY.) Vienna, June 10. The British-Italian frictions are increasing.

British-Italian Frictions.

The British-Italian frictions are increasing.

British-Italian Frictions.

The British-Italian frictions are increasing.

British-Italian Frictions.

The British-Italian frictions are increasing.

British-Italian Frictions.

The British-Italian frictions are increasing.

British-Italian Frictions.

The British-Italian frictions are increasing.

British-Italian Frictions.

The British-Italian frictions are increasing.

British-Italian Frictions.

The British-Italian frictions are increasing.

British-Italian Frictions.

The British-Italian frictions are increasing.

WALL STREET CRASH.

Worst Since Last Year's Panic.

(THROUGH BUTLER'S AGENCY.) New York, June 11. The Wall Street crash is the worst since last year's panic.

Worst Since Last Year's Panic.

The Wall Street crash is the worst since last year's panic.

Worst Since Last Year's Panic.

The Wall Street crash is the worst since last year's panic.

Worst Since Last Year's Panic.

The Wall Street crash is the worst since last year's panic.

Worst Since Last Year's Panic.

The Wall Street crash is the worst since last year's panic.

Worst Since Last Year's Panic.

The Wall Street crash is the worst since last year's panic.

Worst Since Last Year's Panic.

The Wall Street crash is the worst since last year's panic.

Worst Since Last Year's Panic.

The Wall Street crash is the worst since last year's panic.

Worst Since Last Year's Panic.

The Wall Street crash is the worst since last year's panic.

THE FREEDOM OF INVERNNESS.

A ROYAL REUNION IN ROUMANIA.

(THROUGH BUTLER'S AGENCY.) Bucharest, June 11. A royal reunion is taking place in Rumania.

A ROYAL REUNION IN ROUMANIA.

A royal reunion is taking place in Rumania.

A ROYAL REUNION IN ROUMANIA.

A royal reunion is taking place in Rumania.

A ROYAL REUNION IN ROUMANIA.

A royal reunion is taking place in Rumania.

A ROYAL REUNION IN ROUMANIA.

A royal reunion is taking place in Rumania.

A ROYAL REUNION IN ROUMANIA.

A royal reunion is taking place in Rumania.

A ROYAL REUNION IN ROUMANIA.

A royal reunion is taking place in Rumania.

A ROYAL REUNION IN ROUMANIA.

A royal reunion is taking place in Rumania.

A ROYAL REUNION IN ROUMANIA.

A royal reunion is taking place in Rumania.

VIOLENT STORM IN BRITAIN.

Country Flooded in Many Parts.

(BY WIRELESS.) Rugby, June 10. A violent storm is raging in Britain, causing flooding in many parts.

Country Flooded in Many Parts.

A violent storm is raging in Britain, causing flooding in many parts.

Country Flooded in Many Parts.

A violent storm is raging in Britain, causing flooding in many parts.

Country Flooded in Many Parts.

A violent storm is raging in Britain, causing flooding in many parts.

Country Flooded in Many Parts.

A violent storm is raging in Britain, causing flooding in many parts.

Country Flooded in Many Parts.

A violent storm is raging in Britain, causing flooding in many parts.

Country Flooded in Many Parts.

A violent storm is raging in Britain, causing flooding in many parts.

Country Flooded in Many Parts.

A violent storm is raging in Britain, causing flooding in many parts.

Country Flooded in Many Parts.

A violent storm is raging in Britain, causing flooding in many parts.

Death of Earl of Sefton.

A WELL-KNOWN SPORTING FEE.

(BY WIRELESS.) Rugby, June 10. The Earl of Sefton has died, leaving a large sporting fee.

A WELL-KNOWN SPORTING FEE.

The Earl of Sefton has died, leaving a large sporting fee.

A WELL-KNOWN SPORTING FEE.

The Earl of Sefton has died, leaving a large sporting fee.

A WELL-KNOWN SPORTING FEE.

The Earl of Sefton has died, leaving a large sporting fee.

A WELL-KNOWN SPORTING FEE.

The Earl of Sefton has died, leaving a large sporting fee.

A WELL-KNOWN SPORTING FEE.

The Earl of Sefton has died, leaving a large sporting fee.

A WELL-KNOWN SPORTING FEE.

The Earl of Sefton has died, leaving a large sporting fee.

A WELL-KNOWN SPORTING FEE.

The Earl of Sefton has died, leaving a large sporting fee.

A WELL-KNOWN SPORTING FEE.

The Earl of Sefton has died, leaving a large sporting fee.

Death of Earl of Sefton.

A WELL-KNOWN SPORTING FEE.

(BY WIRELESS.) Rugby, June 10. The Earl of Sefton has died, leaving a large sporting fee.

A WELL-KNOWN SPORTING FEE.

The Earl of Sefton has died, leaving a large sporting fee.

A WELL-KNOWN SPORTING FEE.

The Earl of Sefton has died, leaving a large sporting fee.

A WELL-KNOWN SPORTING FEE.

The Earl of Sefton has died, leaving a large sporting fee.

A WELL-KNOWN SPORTING FEE.

The Earl of Sefton has died, leaving a large sporting fee.

A WELL-KNOWN SPORTING FEE.

The Earl of Sefton has died, leaving a large sporting fee.

A WELL-KNOWN SPORTING FEE.

The Earl of Sefton has died, leaving a large sporting fee.

A WELL-KNOWN SPORTING FEE.

The Earl of Sefton has died, leaving a large sporting fee.

A WELL-KNOWN SPORTING FEE.

The Earl of Sefton has died, leaving a large sporting fee.

HEALTH STANDS FIRST ESANOFELE PILLS. Price 4/ a bottle.

A. H. WARDLE & Co. Ltd. WHOLESALE AND RETAIL CHEMISTS. KENYA, UGANDA AND TANGANYIKA.

FIRE PROTECTION. Why suffer loss of stock and business... GRINNELL SPRINKLERS.

Union Transport War. RAILWAY & MOTOR COACHES.

For the Children. WHOLESOME, nourishing food with fresh air and exercise.

Water and Grain Storage Tanks. PLUMBING AND SANITARY ENGINEERS.

CAR BODY AND RADIATOR REPAIRS. STOCKISTS OF: ANCIA, Fiat, Peugeot, and Benz.

HARRT & BELL Ltd. Established 1864. 100, Strand, London.

THE CONVENTION OF ASSOCIATIONS.

Agenda for the Forthcoming Session.

EAST AFRICA'S CONSTITUTION.

Debate on Imperial Government's Pronouncement.

The following is the agenda for the Session of Convention of Associations which will open on Friday, July 2, at the Memorial Hall, Nairobi, at 10 a.m.

- I. Minutes of previous meeting.
- II. Discussion on the Imperial Government's pronouncement respecting Constitutional changes affecting Kenya and Native Administration. The Association may introduce a motion for the purpose of opposing the amendment.
- III. Constitution of Convention.
- IV. Vacancies on Executive.

MOTIONS.

Should these permit, after items I to IV have been disposed of, the following motions which were not debated at the last Session may be introduced.

Motors.

The Convention requests Government to issue instructions which ensure for every motor car to be issued under or until such licence as may be issued against that party rates. (Kenya District Settlers Association.)

That this Convention agrees to present no motor taxation until such a revision of the same. (Kenya District Settlers Association.)

Labor and Native Affairs.

This Convention requests Government to issue instructions which ensure for every contract which will ensure conformity of policy in native reserves with special reference to Maasi reserves. As a corollary, to take steps to remove Kikuyu who are at present living and cultivating land in the Maasi Reserve. (Kenya District Settlers Association.)

That this Convention bring to the attention of the Resident Native Ordinances Committee a fundamentally amended Bill, principles, variations in its application, which is in contradiction with the provisions in its interpretation, and the cross of suspension and discontinue against the natives who are engaged primarily in the occupation of agricultural lands for the purpose of the settlement of the Maasi and Berabwa Ordinances. (Kenya District Settlers Association.)

That this Convention bring to the attention of the Resident Native Ordinances Committee a fundamentally amended Bill, principles, variations in its application, which is in contradiction with the provisions in its interpretation, and the cross of suspension and discontinue against the natives who are engaged primarily in the occupation of agricultural lands for the purpose of the settlement of the Maasi and Berabwa Ordinances. (Kenya District Settlers Association.)

That this Convention bring to the attention of the Resident Native Ordinances Committee a fundamentally amended Bill, principles, variations in its application, which is in contradiction with the provisions in its interpretation, and the cross of suspension and discontinue against the natives who are engaged primarily in the occupation of agricultural lands for the purpose of the settlement of the Maasi and Berabwa Ordinances. (Kenya District Settlers Association.)

That this Convention bring to the attention of the Resident Native Ordinances Committee a fundamentally amended Bill, principles, variations in its application, which is in contradiction with the provisions in its interpretation, and the cross of suspension and discontinue against the natives who are engaged primarily in the occupation of agricultural lands for the purpose of the settlement of the Maasi and Berabwa Ordinances. (Kenya District Settlers Association.)

That this Convention bring to the attention of the Resident Native Ordinances Committee a fundamentally amended Bill, principles, variations in its application, which is in contradiction with the provisions in its interpretation, and the cross of suspension and discontinue against the natives who are engaged primarily in the occupation of agricultural lands for the purpose of the settlement of the Maasi and Berabwa Ordinances. (Kenya District Settlers Association.)

That this Convention bring to the attention of the Resident Native Ordinances Committee a fundamentally amended Bill, principles, variations in its application, which is in contradiction with the provisions in its interpretation, and the cross of suspension and discontinue against the natives who are engaged primarily in the occupation of agricultural lands for the purpose of the settlement of the Maasi and Berabwa Ordinances. (Kenya District Settlers Association.)

That this Convention bring to the attention of the Resident Native Ordinances Committee a fundamentally amended Bill, principles, variations in its application, which is in contradiction with the provisions in its interpretation, and the cross of suspension and discontinue against the natives who are engaged primarily in the occupation of agricultural lands for the purpose of the settlement of the Maasi and Berabwa Ordinances. (Kenya District Settlers Association.)

That this Convention bring to the attention of the Resident Native Ordinances Committee a fundamentally amended Bill, principles, variations in its application, which is in contradiction with the provisions in its interpretation, and the cross of suspension and discontinue against the natives who are engaged primarily in the occupation of agricultural lands for the purpose of the settlement of the Maasi and Berabwa Ordinances. (Kenya District Settlers Association.)

That this Convention bring to the attention of the Resident Native Ordinances Committee a fundamentally amended Bill, principles, variations in its application, which is in contradiction with the provisions in its interpretation, and the cross of suspension and discontinue against the natives who are engaged primarily in the occupation of agricultural lands for the purpose of the settlement of the Maasi and Berabwa Ordinances. (Kenya District Settlers Association.)

That this Convention bring to the attention of the Resident Native Ordinances Committee a fundamentally amended Bill, principles, variations in its application, which is in contradiction with the provisions in its interpretation, and the cross of suspension and discontinue against the natives who are engaged primarily in the occupation of agricultural lands for the purpose of the settlement of the Maasi and Berabwa Ordinances. (Kenya District Settlers Association.)

That this Convention bring to the attention of the Resident Native Ordinances Committee a fundamentally amended Bill, principles, variations in its application, which is in contradiction with the provisions in its interpretation, and the cross of suspension and discontinue against the natives who are engaged primarily in the occupation of agricultural lands for the purpose of the settlement of the Maasi and Berabwa Ordinances. (Kenya District Settlers Association.)

That this Convention bring to the attention of the Resident Native Ordinances Committee a fundamentally amended Bill, principles, variations in its application, which is in contradiction with the provisions in its interpretation, and the cross of suspension and discontinue against the natives who are engaged primarily in the occupation of agricultural lands for the purpose of the settlement of the Maasi and Berabwa Ordinances. (Kenya District Settlers Association.)

That this Convention bring to the attention of the Resident Native Ordinances Committee a fundamentally amended Bill, principles, variations in its application, which is in contradiction with the provisions in its interpretation, and the cross of suspension and discontinue against the natives who are engaged primarily in the occupation of agricultural lands for the purpose of the settlement of the Maasi and Berabwa Ordinances. (Kenya District Settlers Association.)

That this Convention bring to the attention of the Resident Native Ordinances Committee a fundamentally amended Bill, principles, variations in its application, which is in contradiction with the provisions in its interpretation, and the cross of suspension and discontinue against the natives who are engaged primarily in the occupation of agricultural lands for the purpose of the settlement of the Maasi and Berabwa Ordinances. (Kenya District Settlers Association.)

That this Convention bring to the attention of the Resident Native Ordinances Committee a fundamentally amended Bill, principles, variations in its application, which is in contradiction with the provisions in its interpretation, and the cross of suspension and discontinue against the natives who are engaged primarily in the occupation of agricultural lands for the purpose of the settlement of the Maasi and Berabwa Ordinances. (Kenya District Settlers Association.)

That this Convention bring to the attention of the Resident Native Ordinances Committee a fundamentally amended Bill, principles, variations in its application, which is in contradiction with the provisions in its interpretation, and the cross of suspension and discontinue against the natives who are engaged primarily in the occupation of agricultural lands for the purpose of the settlement of the Maasi and Berabwa Ordinances. (Kenya District Settlers Association.)

That this Convention bring to the attention of the Resident Native Ordinances Committee a fundamentally amended Bill, principles, variations in its application, which is in contradiction with the provisions in its interpretation, and the cross of suspension and discontinue against the natives who are engaged primarily in the occupation of agricultural lands for the purpose of the settlement of the Maasi and Berabwa Ordinances. (Kenya District Settlers Association.)

That this Convention bring to the attention of the Resident Native Ordinances Committee a fundamentally amended Bill, principles, variations in its application, which is in contradiction with the provisions in its interpretation, and the cross of suspension and discontinue against the natives who are engaged primarily in the occupation of agricultural lands for the purpose of the settlement of the Maasi and Berabwa Ordinances. (Kenya District Settlers Association.)

That this Convention bring to the attention of the Resident Native Ordinances Committee a fundamentally amended Bill, principles, variations in its application, which is in contradiction with the provisions in its interpretation, and the cross of suspension and discontinue against the natives who are engaged primarily in the occupation of agricultural lands for the purpose of the settlement of the Maasi and Berabwa Ordinances. (Kenya District Settlers Association.)

That this Convention bring to the attention of the Resident Native Ordinances Committee a fundamentally amended Bill, principles, variations in its application, which is in contradiction with the provisions in its interpretation, and the cross of suspension and discontinue against the natives who are engaged primarily in the occupation of agricultural lands for the purpose of the settlement of the Maasi and Berabwa Ordinances. (Kenya District Settlers Association.)

That this Convention bring to the attention of the Resident Native Ordinances Committee a fundamentally amended Bill, principles, variations in its application, which is in contradiction with the provisions in its interpretation, and the cross of suspension and discontinue against the natives who are engaged primarily in the occupation of agricultural lands for the purpose of the settlement of the Maasi and Berabwa Ordinances. (Kenya District Settlers Association.)

That this Convention bring to the attention of the Resident Native Ordinances Committee a fundamentally amended Bill, principles, variations in its application, which is in contradiction with the provisions in its interpretation, and the cross of suspension and discontinue against the natives who are engaged primarily in the occupation of agricultural lands for the purpose of the settlement of the Maasi and Berabwa Ordinances. (Kenya District Settlers Association.)

That this Convention bring to the attention of the Resident Native Ordinances Committee a fundamentally amended Bill, principles, variations in its application, which is in contradiction with the provisions in its interpretation, and the cross of suspension and discontinue against the natives who are engaged primarily in the occupation of agricultural lands for the purpose of the settlement of the Maasi and Berabwa Ordinances. (Kenya District Settlers Association.)

That this Convention bring to the attention of the Resident Native Ordinances Committee a fundamentally amended Bill, principles, variations in its application, which is in contradiction with the provisions in its interpretation, and the cross of suspension and discontinue against the natives who are engaged primarily in the occupation of agricultural lands for the purpose of the settlement of the Maasi and Berabwa Ordinances. (Kenya District Settlers Association.)

That this Convention bring to the attention of the Resident Native Ordinances Committee a fundamentally amended Bill, principles, variations in its application, which is in contradiction with the provisions in its interpretation, and the cross of suspension and discontinue against the natives who are engaged primarily in the occupation of agricultural lands for the purpose of the settlement of the Maasi and Berabwa Ordinances. (Kenya District Settlers Association.)

That this Convention bring to the attention of the Resident Native Ordinances Committee a fundamentally amended Bill, principles, variations in its application, which is in contradiction with the provisions in its interpretation, and the cross of suspension and discontinue against the natives who are engaged primarily in the occupation of agricultural lands for the purpose of the settlement of the Maasi and Berabwa Ordinances. (Kenya District Settlers Association.)

That this Convention bring to the attention of the Resident Native Ordinances Committee a fundamentally amended Bill, principles, variations in its application, which is in contradiction with the provisions in its interpretation, and the cross of suspension and discontinue against the natives who are engaged primarily in the occupation of agricultural lands for the purpose of the settlement of the Maasi and Berabwa Ordinances. (Kenya District Settlers Association.)

That this Convention bring to the attention of the Resident Native Ordinances Committee a fundamentally amended Bill, principles, variations in its application, which is in contradiction with the provisions in its interpretation, and the cross of suspension and discontinue against the natives who are engaged primarily in the occupation of agricultural lands for the purpose of the settlement of the Maasi and Berabwa Ordinances. (Kenya District Settlers Association.)

That this Convention bring to the attention of the Resident Native Ordinances Committee a fundamentally amended Bill, principles, variations in its application, which is in contradiction with the provisions in its interpretation, and the cross of suspension and discontinue against the natives who are engaged primarily in the occupation of agricultural lands for the purpose of the settlement of the Maasi and Berabwa Ordinances. (Kenya District Settlers Association.)

That this Convention bring to the attention of the Resident Native Ordinances Committee a fundamentally amended Bill, principles, variations in its application, which is in contradiction with the provisions in its interpretation, and the cross of suspension and discontinue against the natives who are engaged primarily in the occupation of agricultural lands for the purpose of the settlement of the Maasi and Berabwa Ordinances. (Kenya District Settlers Association.)

That this Convention bring to the attention of the Resident Native Ordinances Committee a fundamentally amended Bill, principles, variations in its application, which is in contradiction with the provisions in its interpretation, and the cross of suspension and discontinue against the natives who are engaged primarily in the occupation of agricultural lands for the purpose of the settlement of the Maasi and Berabwa Ordinances. (Kenya District Settlers Association.)

That this Convention bring to the attention of the Resident Native Ordinances Committee a fundamentally amended Bill, principles, variations in its application, which is in contradiction with the provisions in its interpretation, and the cross of suspension and discontinue against the natives who are engaged primarily in the occupation of agricultural lands for the purpose of the settlement of the Maasi and Berabwa Ordinances. (Kenya District Settlers Association.)

That this Convention bring to the attention of the Resident Native Ordinances Committee a fundamentally amended Bill, principles, variations in its application, which is in contradiction with the provisions in its interpretation, and the cross of suspension and discontinue against the natives who are engaged primarily in the occupation of agricultural lands for the purpose of the settlement of the Maasi and Berabwa Ordinances. (Kenya District Settlers Association.)

That this Convention bring to the attention of the Resident Native Ordinances Committee a fundamentally amended Bill, principles, variations in its application, which is in contradiction with the provisions in its interpretation, and the cross of suspension and discontinue against the natives who are engaged primarily in the occupation of agricultural lands for the purpose of the settlement of the Maasi and Berabwa Ordinances. (Kenya District Settlers Association.)

That this Convention bring to the attention of the Resident Native Ordinances Committee a fundamentally amended Bill, principles, variations in its application, which is in contradiction with the provisions in its interpretation, and the cross of suspension and discontinue against the natives who are engaged primarily in the occupation of agricultural lands for the purpose of the settlement of the Maasi and Berabwa Ordinances. (Kenya District Settlers Association.)

That this Convention bring to the attention of the Resident Native Ordinances Committee a fundamentally amended Bill, principles, variations in its application, which is in contradiction with the provisions in its interpretation, and the cross of suspension and discontinue against the natives who are engaged primarily in the occupation of agricultural lands for the purpose of the settlement of the Maasi and Berabwa Ordinances. (Kenya District Settlers Association.)

That this Convention bring to the attention of the Resident Native Ordinances Committee a fundamentally amended Bill, principles, variations in its application, which is in contradiction with the provisions in its interpretation, and the cross of suspension and discontinue against the natives who are engaged primarily in the occupation of agricultural lands for the purpose of the settlement of the Maasi and Berabwa Ordinances. (Kenya District Settlers Association.)

That this Convention bring to the attention of the Resident Native Ordinances Committee a fundamentally amended Bill, principles, variations in its application, which is in contradiction with the provisions in its interpretation, and the cross of suspension and discontinue against the natives who are engaged primarily in the occupation of agricultural lands for the purpose of the settlement of the Maasi and Berabwa Ordinances. (Kenya District Settlers Association.)

That this Convention bring to the attention of the Resident Native Ordinances Committee a fundamentally amended Bill, principles, variations in its application, which is in contradiction with the provisions in its interpretation, and the cross of suspension and discontinue against the natives who are engaged primarily in the occupation of agricultural lands for the purpose of the settlement of the Maasi and Berabwa Ordinances. (Kenya District Settlers Association.)

That this Convention bring to the attention of the Resident Native Ordinances Committee a fundamentally amended Bill, principles, variations in its application, which is in contradiction with the provisions in its interpretation, and the cross of suspension and discontinue against the natives who are engaged primarily in the occupation of agricultural lands for the purpose of the settlement of the Maasi and Berabwa Ordinances. (Kenya District Settlers Association.)

That this Convention bring to the attention of the Resident Native Ordinances Committee a fundamentally amended Bill, principles, variations in its application, which is in contradiction with the provisions in its interpretation, and the cross of suspension and discontinue against the natives who are engaged primarily in the occupation of agricultural lands for the purpose of the settlement of the Maasi and Berabwa Ordinances. (Kenya District Settlers Association.)

ANOTHER AWARD FOR KENYA.

Mr Ali Bin Salim's Gift at Nairobi.

Mr. Wilson, of the Wilmot Airways, Ltd., speaking at the Nairobi Club, this morning, announced on Friday afternoon that the company was receiving a grant of £10,000 from the Government for the purpose of purchasing the company with an aeroplane. The grant was to be paid in three instalments of £3,333 each, the first instalment being payable immediately. Mr. Wilson stated that the company was at present operating a service between Nairobi and Kisumu, and that the grant would enable the company to purchase a new aeroplane and to expand its service to other parts of Kenya.

Prisoners.

The Chief Commissioner of Prisons, Mr. J. H. Wilson, has announced that the Government is considering the possibility of releasing a number of prisoners on probation. He stated that the Government is interested in the rehabilitation of prisoners and is looking for ways in which they can be reintegrated into society. He mentioned that the Government is considering the possibility of releasing prisoners who have served long terms of imprisonment and who are now considered to be reformed.

Postal.

The Post Office has announced that it is considering the possibility of introducing a new class of postage stamps. The new stamps would be issued in denominations of 1/2 and 1/-, and would be used for the payment of postage on letters and parcels. The Post Office is also considering the possibility of introducing a new class of postage stamps for use in the colonies.

Water.

The Government has announced that it is considering the possibility of introducing a new class of water rates. The new rates would be based on the value of the property, and would be used to fund the construction of new waterworks. The Government is also considering the possibility of introducing a new class of water rates for use in the colonies.

Government Offices.

The Government has announced that it is considering the possibility of introducing a new class of government offices. The new offices would be used for the payment of government expenses, and would be used to fund the construction of new government buildings. The Government is also considering the possibility of introducing a new class of government offices for use in the colonies.

Land.

The Government has announced that it is considering the possibility of introducing a new class of land. The new land would be used for the payment of land taxes, and would be used to fund the construction of new landworks. The Government is also considering the possibility of introducing a new class of land for use in the colonies.

Telegrams.

The Government has announced that it is considering the possibility of introducing a new class of telegrams. The new telegrams would be used for the payment of telegraph charges, and would be used to fund the construction of new telegraph lines. The Government is also considering the possibility of introducing a new class of telegrams for use in the colonies.

Market Reports.

The Government has announced that it is considering the possibility of introducing a new class of market reports. The new reports would be used for the payment of market charges, and would be used to fund the construction of new marketplaces. The Government is also considering the possibility of introducing a new class of market reports for use in the colonies.

Flight to South.

The Government has announced that it is considering the possibility of introducing a new class of flight to South. The new flight would be used for the payment of flight charges, and would be used to fund the construction of new flight routes. The Government is also considering the possibility of introducing a new class of flight to South for use in the colonies.

THE CONVENTION OF ASSOCIATIONS.

Official Communication by the Director of Agriculture.

The Director of Agriculture has issued the following official communication to the members of the Convention of Associations: The Government is interested in the welfare of the agricultural community and is looking for ways in which it can be improved. He mentioned that the Government is considering the possibility of introducing a new class of agricultural services, and is looking for ways in which it can be improved.

Secretary.

The Secretary of the Convention of Associations has announced that the next meeting of the Convention will be held in Nairobi on Friday, July 2, at 10 a.m. He mentioned that the meeting will be held in the Memorial Hall, and that the agenda for the meeting is as follows: I. Minutes of previous meeting. II. Discussion on the Imperial Government's pronouncement respecting Constitutional changes affecting Kenya and Native Administration.

Constitution.

The Constitution of the Convention of Associations has been amended to include a new section on the powers of the Executive. The new section states that the Executive has the power to call and dissolve the Convention, and to appoint and remove the members of the Executive. The Constitution is also being amended to include a new section on the powers of the Council.

Customs Preference.

The Government has announced that it is considering the possibility of introducing a new class of customs preference. The new preference would be used for the payment of customs charges, and would be used to fund the construction of new customs houses. The Government is also considering the possibility of introducing a new class of customs preference for use in the colonies.

Roads.

The Government has announced that it is considering the possibility of introducing a new class of roads. The new roads would be used for the payment of road charges, and would be used to fund the construction of new roads. The Government is also considering the possibility of introducing a new class of roads for use in the colonies.

British Legion.

The British Legion has announced that it is considering the possibility of introducing a new class of British Legion. The new British Legion would be used for the payment of British Legion charges, and would be used to fund the construction of new British Legion buildings. The British Legion is also considering the possibility of introducing a new class of British Legion for use in the colonies.

Death Duty.

The Government has announced that it is considering the possibility of introducing a new class of death duty. The new death duty would be used for the payment of death duty charges, and would be used to fund the construction of new death duty buildings. The Government is also considering the possibility of introducing a new class of death duty for use in the colonies.

Kenya Budget.

The Government has announced that it is considering the possibility of introducing a new class of Kenya Budget. The new Kenya Budget would be used for the payment of Kenya Budget charges, and would be used to fund the construction of new Kenya Budget buildings. The Government is also considering the possibility of introducing a new class of Kenya Budget for use in the colonies.

Outfit Ball.

The Government has announced that it is considering the possibility of introducing a new class of outfit ball. The new outfit ball would be used for the payment of outfit ball charges, and would be used to fund the construction of new outfit ball buildings. The Government is also considering the possibility of introducing a new class of outfit ball for use in the colonies.

LABOUR RATES OF PAY.

That this Convention is of opinion that Government should...

The Convention is of opinion that the Government should take steps to improve the conditions of labor in the colonies. It mentioned that the Government is considering the possibility of introducing a new class of labor laws, and is looking for ways in which it can be improved. It also mentioned that the Government is considering the possibility of introducing a new class of labor rates, and is looking for ways in which it can be improved.

Resolutions.

The Convention has adopted the following resolutions: (1) That the Government should take steps to improve the conditions of labor in the colonies. (2) That the Government should take steps to improve the conditions of labor in the colonies. (3) That the Government should take steps to improve the conditions of labor in the colonies.

British Legion.

The British Legion has announced that it is considering the possibility of introducing a new class of British Legion. The new British Legion would be used for the payment of British Legion charges, and would be used to fund the construction of new British Legion buildings. The British Legion is also considering the possibility of introducing a new class of British Legion for use in the colonies.

Death Duty.

The Government has announced that it is considering the possibility of introducing a new class of death duty. The new death duty would be used for the payment of death duty charges, and would be used to fund the construction of new death duty buildings. The Government is also considering the possibility of introducing a new class of death duty for use in the colonies.

Kenya Budget.

The Government has announced that it is considering the possibility of introducing a new class of Kenya Budget. The new Kenya Budget would be used for the payment of Kenya Budget charges, and would be used to fund the construction of new Kenya Budget buildings. The Government is also considering the possibility of introducing a new class of Kenya Budget for use in the colonies.

Outfit Ball.

The Government has announced that it is considering the possibility of introducing a new class of outfit ball. The new outfit ball would be used for the payment of outfit ball charges, and would be used to fund the construction of new outfit ball buildings. The Government is also considering the possibility of introducing a new class of outfit ball for use in the colonies.

Kenya Budget.

The Government has announced that it is considering the possibility of introducing a new class of Kenya Budget. The new Kenya Budget would be used for the payment of Kenya Budget charges, and would be used to fund the construction of new Kenya Budget buildings. The Government is also considering the possibility of introducing a new class of Kenya Budget for use in the colonies.

Outfit Ball.

The Government has announced that it is considering the possibility of introducing a new class of outfit ball. The new outfit ball would be used for the payment of outfit ball charges, and would be used to fund the construction of new outfit ball buildings. The Government is also considering the possibility of introducing a new class of outfit ball for use in the colonies.

Kenya Budget.

The Government has announced that it is considering the possibility of introducing a new class of Kenya Budget. The new Kenya Budget would be used for the payment of Kenya Budget charges, and would be used to fund the construction of new Kenya Budget buildings. The Government is also considering the possibility of introducing a new class of Kenya Budget for use in the colonies.

TAXIDERMISTRY.

In all it's Modern Art.

We have engaged from Home a leading Taxidermist, Sculptor and Taxidermist, previously engaged in several best known Museums in Europe. We specialise in whole and part mounting of Lions, Leopards and Antelopes, Birds, etc. The curing and tanning of Skins. Dipping and packing of Trophies for Export. Reasonable Prices: Workmanship Guaranteed.

CHAS. A. HEYER & Co.

Est. 1903. NAIROBI. R.O. Box 897.

F ALL-ROUND MOTORING TOURS

Mr. Kilombero, through the Omei and Masai Reserves, Mt. Kenya and the Kikuyu Reserves, Mt. Ruwenzori (Mountains of the Moon), Jobe on the Nile for Egypt. To or to any part of the world. EQUATORIAL AFRICA ASSOCIATION. RAILWAY TICKETS. APRIL 1930.

Motor Tours Ltd.

—with which is incorporated P. Othman's Motor Tours— P.O. Box 880. NAIROBI. Tel. "Motors". 10, Upper Thika Road. THE TOURIST INQUIRY BUREAU.

THE SAFETY OF YOUR CLOTHES DEPENDS ON YOUR SOAP.

Clothes are costly things to buy. Therefore, it does not pay to ruin them by using ordinary impure soap. To be sure of absolute protection for your clothes always wash them with Sunlight Soap. Then they are safe for handiwork; in no case it cannot harm anything. By its regular use the life of your clothes is considerably lengthened. Their colour and the softness of their texture are preserved, and they always look cleaner and nicer.

It is because Sunlight is so good to clothes that millions use it. It is so good to clothes that millions prefer it to any other soap in the world. Every tubful carries the Sunlight £100 guarantee. The price is 1/6 per tubful.

Every tubful carries the Sunlight £100 guarantee. The price is 1/6 per tubful. Sunlight Soap is the best soap for washing clothes. It is so good to clothes that millions use it. It is so good to clothes that millions prefer it to any other soap in the world. Every tubful carries the Sunlight £100 guarantee. The price is 1/6 per tubful.

Every tubful carries the Sunlight £100 guarantee. The price is 1/6 per tubful. Sunlight Soap is the best soap for washing clothes. It is so good to clothes that millions use it. It is so good to clothes that millions prefer it to any other soap in the world. Every tubful carries the Sunlight £100 guarantee. The price is 1/6 per tubful.

Every tubful carries the Sunlight £100 guarantee. The price is 1/6 per tubful. Sunlight Soap is the best soap for washing clothes. It is so good to clothes that millions use it. It is so good to clothes that millions prefer it to any other soap in the world. Every tubful carries the Sunlight £100 guarantee. The price is 1/6 per tubful.

Every tubful carries the Sunlight £100 guarantee. The price is 1/6 per tubful. Sunlight Soap is the best soap for washing clothes. It is so good to clothes that millions use it. It is so good to clothes that millions prefer it to any other soap in the world. Every tubful carries the Sunlight £100 guarantee. The price is 1/6 per tubful.

Every tubful carries the Sunlight £100 guarantee. The price is 1/6 per tubful. Sunlight Soap is the best soap for washing clothes. It is so good to clothes that millions use it. It is so good to clothes that millions prefer it to any other soap in the world. Every tubful carries the Sunlight £100 guarantee. The price is 1/6 per tubful.

Every tubful carries the Sunlight £100 guarantee. The price is 1/6 per tubful. Sunlight Soap is the best soap for washing clothes. It is so good to clothes that millions use it. It is so good to clothes that millions prefer it to any other soap in the world. Every tubful carries the Sunlight £100 guarantee. The price is 1/6 per tubful.

"Are they smart?"

"Will they wear well?"

Yes, if they're HOLEPROOF!

Every smart woman asks these two questions when choosing hosiery, and unless she already knows the rich natural silk Holeyproof Hosiery Holeyproof Hosiery is unquestionably smart because Lucile, famous Parisian fashion authority, creates new Holeyproof shades each season for every colour scheme. And Holeyproof is unquestionably long wearing. A clever too-EX "rainfall" treatment that looks light but is strong. "EX" protects the fibre so long that you wonder how so smart a hose can ever wear so well.

Holeyproof Hosiery

Represented by R. OXFORD, P. O. Box 19, Nairobi.



'Ale and' Early!

Wm. Younger's Ale—that's the drink to keep you fit and well. You have never tasted its equal; you can never taste its superior. It is the finest malt liquor since 1914 and for over a century and a half before that. Pure malt, fine hops and the famous Edinburgh spring water.

YOUNGER'S BEER

Bottled at the Breweries.

EDINBURGH

Represented by R. OXFORD, P. O. Box 19, Nairobi.

To Anxious Parents

Viral gives children's lives. It makes delicate children strong. If your child is sickly, give Virus.

If your child catches cold easily, give Virus. If your child is easily tired, give Virus. Viral builds up resistance to infection, strengthens vitality, builds for life.

The supreme value of Virus is that it combines an adequate supply of all the vitamins with the other essentials for healthy growth and development in a perfectly balanced form.

Children need VIROL

At a recent meeting of the Health Trustees in the Chamber of Commerce, Nairobi, Kenya, the following statement was made: "Virus is the most valuable thing in the world."

TEST THE PERFORMANCE WHICH HAS CAPTURED THE WORLD

UNLESS you have driven the new Chrysler... unless you have actually taken the wheel and put the car through its paces you have yet to experience the keenest thrill modern motoring has to offer.

Come to our Showroom today! Get behind the wheel and get the facts! Drive Chrysler in traffic and on the highway. Make every conceivable test of its abilities. Only then can you know how advanced how revolutionary... is Chrysler performance.

After an hour's ride... a single drive... you will know that Chrysler is the car for you.

GET BEHIND THE WHEEL AND GET THE FACTS

CARR, LAWSON & Co., Ltd.
 Eldoret. Nakuru. Nairobi. Kitale. Kampala.

COSTS OF PRODUCTION IN KENYA.

Investigation by Board of Agriculture.

REDUCTION IMPERATIVE.

Effect of Drop in World Prices on the Industry.

The following report has been issued by the Board of Agriculture in regard to its investigations into the question of costs of production in Kenya and its relation to prevailing prices.

The Board of Agriculture has been engaged during the past year in investigating the costs of production of the principal products of the Colony in relation to the prevailing prices. The investigation is proceeding and it is hoped that within a few months it will be possible to indicate in more detail the dimensions in which economies or reductions may be adopted.

Review of Costs Imperative.

It is obvious from the figures already examined that while the present level of prices compared to the production of costs must be reduced by all parties concerned in the process of placing the principal products on the world's markets, if the production of the Colony is to be maintained.

The Government has undertaken to assist the agricultural industry in an adequate economic basis by means of the interest-free or part, the incidence of price, was standardized, size of unit and many others, in addition to degree of efficiency in supervision, account for the differ-

ences in the cost of production for all sections concerned in the industry to approximate the purpose of fixing over the present market depression.

The branches of the agricultural industry most seriously affected by the drop in world prices are said to be coffee and sisal, and the Board has accordingly begun with those in its investigations. An examination of the figures for the coffee and sisal industries will be made when the data is more complete. In the meantime, it is thought advisable to publish a brief view of some significant features disclosed by the figures hitherto available to the Board.

Variation of Opinions.

These data in regard to costs are compiled from a range of circumstances over a period of years and represent an average between widely divergent conditions. It may be remembered that conditions vary to a considerable extent from year to year, in different districts and on different farms.

Such factors as rainfall, soil condition, ground composition, by means of the interest-free or part, the incidence of price, was standardized, size of unit and many others, in addition to degree of efficiency in supervision, account for the differ-

ences. This should be taken into account by individuals who may regard the average figures as either too high or too low.

Decline in Values.

The value of every product reported from the Colony has seriously declined during the past few months.

It is for this reason that the average market price per lb. C.I.F. of No. 1 fine tin 1929 was £21 4/6, or only £14 10/6 for 1930, or only £10 15/6 for 1931, representing a drop of 47 per cent.

The 1929-30 coffee crop (i.e., last year's) sold at an average market price of £14, the present price ranges about £7, representing a drop of 50 per cent.

I must be remembered, however, that this is the net figure reported (May 21, 1930) and is the average for all Kenya coffee sales in 1930. This average has fallen from £20 10/6 on March 26, 1930. The average price for all grades for the 1929-30 season ranges about £70 on the figures at present available.

It is in the case both of sisal and coffee, the Board has based its conclusions on the present prices in its investigations are directed to the factories, and an indication of a rise in the present prices for the coming season are given by the information the Board has received. In any case, the only safe figure to rely on is the present price on the market, may this may fall.

Cereals.

The maize market has been steadily declining since February, 1929. The other cereals since considerably earlier. The maize price of the Kenya Farmers' Association declined a price of 25 per bag in August, 1929, and the "Black" seed £15 10/6 per bag average in August, 1930.

At present the Kenya Farmers' Association is paying about £7 10/6 per bag for maize and about £13 1/2 for wheat. The £11 is being added for Grade 1, representing a probable average of 12 1/2 for

all grades. In the case of wheat the seed price is about 15s. The ratio between the exportable surplus and the home consumption, but as production increases the seed price would be constructed to a large extent by world prices.

The Board has not been able to obtain representative and reliable figures for cereals in the time available. It has been informed that a late report of production for maize for all districts including those on branch lines, on the island at the 50/7 per acre. This figure is not reliable with reserves and is only offered as a guide. It is also an average of 100 bush, eight bags to the acre, the average yield a cost per bag of £16, £25 (less cost of tax) or the present pool price of £16, 7/10 per bush, including bag, or £16, 0/10 without, this represents a profit of 50 cents per bush. The present bag export price is £16, 5/2 per bush net price, F.O.B., which represents in the above figures a net of 88, 11 per bush.

Small Crops.

The average cost of producing present conditions appears to be from say a 1,200 acre plantation. This represents a loss of 600 tons of 24.2.3 at present prices.

For the purposes of the present stage of enquiry, namely, to determine locally where the maximum loss can be sustained, the following appointment may be required as offering a guide:

- A. Payments in respect of land-labour, including wages, ration, etc. £1.10.0 per ton 25 per cent.
 - B. Management and Supervision £2.0.0 per ton or 11 per cent.
 - C. Indemnity (L.L. requirement) and cost (annual) £3.6.0 per ton or 11 per cent.
 - D. Overhead £3.0.0 per ton or 20 per cent.
 - E. Returns £9.0.0 per ton or 24 per cent.
- Cost Production.**
 The average cost of producing working a ton of coffee is £12.0.0 (Continued on page 41).

THE COLONY INDUSTRY.

In the recent pronouncement by the Board of Agriculture and Development considerable emphasis was placed upon the position of the Colon industry in relation to present market values. It was pointed out that the average cost of producing and marketing, 471, left little margin, if any, for the producer at existing prices and in the extremely increasing quantity of costs which accompanied the production of the same was furnished sufficient to warrant an early cessation of sales and labour output, 230 per ton, and management of the industry to be re-organized.

There are indications that in some directions the planter has already begun the task of reducing production and there is no doubt that in respect of all the main products of the Colony an organized movement must already begin to prepare a case for reduction of land and so brought rates to bring them more closely into relationship with the lowered values. In a recent leading article we urged several steps which we believe, fundamentally sound considerations in regard to the industry which represent the energies of nearly half the settlers in Kenya and holds a very large number to the country's welfare. We suggested that quality and greater production of the main products of the industry were necessary diversions of the planter, that the costs on the production must be reduced to bring them into line with market values which are unlikewise to rise to meet prices for several years, at all. It is insufficiently stated that, although it has been delayed longer than might have been expected, the deflation bound to result from the war economy was inevitable. During the war an enormous stimulus was given to modern production in every direction. The economic and financial resources of the nations of the world were poured out like water, artificially high values were created, consumption was increased by the rise in individual production and production of every kind rose by leaps and bounds. But that condition of affairs was bound to come to an end. It is that condition of affairs which has fallen, and the result in the interval which must show before the planter comes into line with lower initial values, the cost of living must remain on the high side.

HEAVY REDUCTIONS IN SISAL PRICES.

East African Sell Saleable at £26.

(Nairobi Correspondent.)

London, June 16. The position here is not so attractive much attention, but the industry in Kenya is in a position to attract much attention on the part of growers.

Merco still has about 10,000 tons of sisal in stock, which is dropping in price every week, and management of the industry at prices is now about £24 nominal as against £26 nominal at £25 is still available.

Mexico may drop a further £2 or £3 in a week or so, but we can see East African may fall also, the depression having set in during October when the market realigns itself.

It is essential therefore that planters should let their production cost be clearly shown, but they should not be unduly alarmed.

RYANS PIONEER MINEING.

There will be a public meeting at the Dal Bungalow, Limbua on Thursday evening at 7.30, under the auspices of the Limbua Farmer's Association for the purpose of meeting the Member of Legislative Council, Mr. J. G. Harcourt, Hon. Conway Harvey, and Agriculture Officer, Mr. Harvey will speak at the Kere Club on Sunday, June 23, 1930, regarding Mithun on a date to be announced.

FIRE ARMS

Of every description by all makers and of all Calibres, as per our 1930 Catalogue.

We offer our 7 m. m. equals 375 bore Healy Velocity. Also our 8 m. m. equals 315 bore Healy Velocity and our 8.3 m. m. equals 308 bore High Velocity. The latter is used by all professional hunters through out Kenya, Uganda and Tanganyika, and we have secured best prices of any of these guns.

We have the largest selection of shotguns, revolvers, Automatic pistols, and all gun accessories in East Africa.

We sell every new rifle under a guarantee. Call and inspect our stock. Every rifle is tested in your presence.

A visit will not bind you to purchase. Let us explain why our guns are superior to other makes. We are gunsmiths, not dealers.

CHAS. A. HEYER & Co.
 GUSAMBURA. ESTABL. 1908.

Telegrams: "Elephant," NAIROBI.

P.O. Box 657.



The Chief of the Brigade cried "Stand! To ransom your life I have planned." Said the soldier "Not a word!" 'Tis this way 'T is! Just see how "H.E." beats the band."

BP The Better Petrol

ANGLO-PERSIAN OIL Co., (Kenya) Ltd
 AGENTS—
GIBSON & Co., Ltd.
 HOMBASA. NAIROBI. ELDORET. DAR-ES-SALAM.

IN STOCK—
 MELIOTT CREAM SEPARATORS
 No. 1. Capacity 10 Gals. per hour
 No. 2. Capacity 20 Gals. per hour
 No. 3. Capacity 40 Gals. per hour
 The names of Meliott and Sons are prominent on every article of Meliott's make.
 B.F.E. MILK CANS all sizes.
 ROCK SALLY MILK CANS all sizes.
 RATHER RASPS all sizes.
 BURNING OILS all sizes.
 PRESERVING MATERIALS.
 FOR THE ABOVE AND OTHER REQUIREMENTS FOR HARBORERS, PORTERS, etc., CALL, WRITE OR PHONE.

Rosenblum, Bullows & Roy, Ltd.
 HARBORERS' STREET.
 Nos. 2 & 3. Phone 17. NAIROBI.

Invaluable To every one. Professionals, Nurses, Doctors, etc., Government Officials, etc. THE EAST AFRICAN Red Book for 1930-31
 Contains full particulars of Kenya, Uganda, Tanganyika and Zanzibar. Price 1/6 (post paid).
 A. STANDARD

HEADACHE
RELIEVED
QUICKLY
BY
McCALLUM'S
PERFECTION
SCOTCH WHISKY



McCallum's Scotch Whisky is the only Scotch Whisky in the world which is guaranteed to relieve headache and other ailments. It is the only Scotch Whisky in the world which is guaranteed to be pure and of the highest quality. It is the only Scotch Whisky in the world which is guaranteed to be of the highest quality. It is the only Scotch Whisky in the world which is guaranteed to be of the highest quality.

VIOLENT DISTURBANCE ON LAKE VICTORIA.
"Clement Hill" Caught in the Vortex.

TERRIFYING EXPERIENCE.

Tribute to Ability of Ship's Officers.

Further to graduate the barometer (temperature) contrast between land and lake sea. On those days when the general wind is from the north, higher tops were fresh or fairly strong, the ascending current may find its way back to the centre of the lake, thereby creating a complete local and intense centre of low water. A dark night, though brought with danger.

On these days when the general wind is from the north, the upper strata are strong, it is probable that the local circulation will be broken and the normal current prevented from returning to the centre of the lake. It may then be found that an upper current, which serves as a sort of "barometer" for more detailed observations on those days when the wind has been given to it. A similar storm, but of less severity, had been experienced the week previous.

Ship Instruments.

Unfortunately, the instrumental equipment on the lake steamer is not very complete. The changes of temperature and pressure, however, are not likely to be considerable, except in the centre of the vortex, and it is doubtful whether any change of significant value will be observed. In advance of the storm, every precaution was taken on board ship had been available.

The "Clement Hill" left at 10 a.m. on Sunday morning under the command of Mr. H. Smith. After passing the Karonga (the vessel steamed on a course towards the Kavango) the vessel steamed on a course towards the Kavango between the small islands, which are scattered over the north-east parts of the Great Lake. The vessel was blown back up the lake. The vessel was blown back up the lake. The vessel was blown back up the lake.

Wind Regime.

It is unfortunate that our knowledge of the meteorology of the lake is not very complete. The wind is not very regular, but from personal and other observations it appears to be somewhat regular. It is not very regular, but from personal and other observations it appears to be somewhat regular.

Abn Navigation.

These alarming conditions notwithstanding, about 2 a.m., when the vessel was heavily under way, the wind shifted to the north-east. The vessel was blown back up the lake. The vessel was blown back up the lake.

"Clement Hill" Experience.

With these general preliminary observations, we may now describe the experience of the "Clement Hill" on Sunday, June 20, 1920. The vessel was blown back up the lake. The vessel was blown back up the lake.

blowing, and the S.W. wind in force from 4 or 5 on the Beaufort scale, while a heavy rain fell from the south-east, accompanied by the steadily increasing "swiftness."

The movement of the boat was becoming very pronounced, and the vessel was being blown back up the lake. The vessel was blown back up the lake.

Result of Numerous Accidents.

On this Monday the Prime of Wales' Golf Club was played on a "Barclay" competition in eighteen holes against water and must be played on the golf club. The vessel was blown back up the lake. The vessel was blown back up the lake.

Wind Changes.

At this time of the change of the wind, the vessel was blown back up the lake. The vessel was blown back up the lake.

Speed Limit.

A speed limit of 20 miles per hour is now imposed on the lake steamer. The vessel was blown back up the lake. The vessel was blown back up the lake.

The vessel was blown back up the lake. The vessel was blown back up the lake.

The vessel was blown back up the lake. The vessel was blown back up the lake.

The vessel was blown back up the lake. The vessel was blown back up the lake.

The vessel was blown back up the lake. The vessel was blown back up the lake.

The vessel was blown back up the lake. The vessel was blown back up the lake.

The vessel was blown back up the lake. The vessel was blown back up the lake.

120 MILES OF NEW LINE EACH YEAR.

The Hammond Programme for Tanganyika.

CONSTRUCTION PERIODS.

Territory's Responsibility for Sharing in Any Initial Losses.

Having committed to the various proposals for Railway Construction in Tanganyika, the Government has now announced that the construction of the railway shall be undertaken by the Government, but that the Territory shall be responsible for sharing in any initial losses.

The programme of construction is to be undertaken in stages. The first stage is the construction of the railway from Dar es Salaam to Morogoro. The second stage is the construction of the railway from Morogoro to Tanga. The third stage is the construction of the railway from Tanga to Zanzibar.

The programme of construction is to be undertaken in stages. The first stage is the construction of the railway from Dar es Salaam to Morogoro. The second stage is the construction of the railway from Morogoro to Tanga. The third stage is the construction of the railway from Tanga to Zanzibar.

The programme of construction is to be undertaken in stages. The first stage is the construction of the railway from Dar es Salaam to Morogoro. The second stage is the construction of the railway from Morogoro to Tanga. The third stage is the construction of the railway from Tanga to Zanzibar.

The programme of construction is to be undertaken in stages. The first stage is the construction of the railway from Dar es Salaam to Morogoro. The second stage is the construction of the railway from Morogoro to Tanga. The third stage is the construction of the railway from Tanga to Zanzibar.

The programme of construction is to be undertaken in stages. The first stage is the construction of the railway from Dar es Salaam to Morogoro. The second stage is the construction of the railway from Morogoro to Tanga. The third stage is the construction of the railway from Tanga to Zanzibar.

The programme of construction is to be undertaken in stages. The first stage is the construction of the railway from Dar es Salaam to Morogoro. The second stage is the construction of the railway from Morogoro to Tanga. The third stage is the construction of the railway from Tanga to Zanzibar.

The programme of construction is to be undertaken in stages. The first stage is the construction of the railway from Dar es Salaam to Morogoro. The second stage is the construction of the railway from Morogoro to Tanga. The third stage is the construction of the railway from Tanga to Zanzibar.

The programme of construction is to be undertaken in stages. The first stage is the construction of the railway from Dar es Salaam to Morogoro. The second stage is the construction of the railway from Morogoro to Tanga. The third stage is the construction of the railway from Tanga to Zanzibar.

No Misfire in 26 Years!!!

D.W.M.

D.W.M. Ammunition.

Chas. A. Heyer & Co., Ltd.

Bole Agents for East Africa for D.W.M.

Every Picture Tells a Story. P.O. Kenya Colony, East Africa, 1920.

Agents - DALGETY & COMPANY LIMITED. NAIROBI - ELDORET.

That's why there's power in every drop.

At each step in its progress from crude oil to your tank.

More than 20 years of carefulness and manufacturer's skill have created a fine spirit that starts quicker, gives away faster, yields more power, lasts longer, and gives more miles per gallon.

ECALUS MOTOR SPIRIT.

THE AFRICAN MERCANTILE COMPANY, LTD.

AGENTS IN KENYA, UGANDA, TANZANIA AND ZAMBIA.

McCALLUM'S PERFECTION SCOTCH WHISKY

McCALLUM'S PERFECT SCOTCH

McCALLUM'S PERFECT SCOTCH

McCALLUM'S PERFECT SCOTCH

McCALLUM'S PERFECT SCOTCH

McCALLUM'S PERFECT SCOTCH

McCALLUM'S PERFECT SCOTCH

McCALLUM'S PERFECT SCOTCH

McCALLUM'S PERFECT SCOTCH

McCALLUM'S PERFECT SCOTCH

THE COFFEE INDUSTRY AND ITS PROBLEMS.

A Kenya Planter Faces the Facts of the Present Position.

NO. 1. THE GENERAL OUTLOOK.

Coffee Being Grown on Unsuitable Soils; Quality the First Need.

In the hope of creating a more vigorous public interest in the problems facing the Coffee Industry in Kenya...

- 1. The General Outlook. 2. The Economic Data and its production costs. 3. Possibilities of economy and improvement.

The articles are especially timely in view of the recent pronouncement by the Board of Agriculture and Development...

The writer makes three main points in his first article, namely that the popularity of East African Coffee is steadily growing...

GROWING POPULARITY.

[Special to the "East African Standard" by "Arabia."] The coffee planter in Kenya today is faced with the urgent necessity of getting his business on a sound basis...

A Bay of Hope.

Let us now look at the position from Kenya's point of view. It is generally held that the coffee industry in East Africa has only a dim future...

Personally I think that the dark future has been seen by the planter who has made a mistake...

Mr. Clay is generally accepted as the best authority on the subject of coffee in Kenya...

It is not trying to get at any one's feelings, but to point out to the planter himself some of the facts...

The Coffee Industry today is a likely to produce a coffee of good quality...

It is not trying to get at any one's feelings, but to point out to the planter himself some of the facts...

The Coffee Industry today is a likely to produce a coffee of good quality...

It is not trying to get at any one's feelings, but to point out to the planter himself some of the facts...

The Coffee Industry today is a likely to produce a coffee of good quality...

It is not trying to get at any one's feelings, but to point out to the planter himself some of the facts...

The Coffee Industry today is a likely to produce a coffee of good quality...

It is not trying to get at any one's feelings, but to point out to the planter himself some of the facts...

The Coffee Industry today is a likely to produce a coffee of good quality...

THE E.A.S.P.C.A. LIST OF DONATIONS TO DATE.

Table listing names and donation amounts for the E.A.S.P.C.A. including Mr. and Mrs. G. H. Webb, Mr. and Mrs. J. H. Webb, etc.

Obituary.

COLONEL G. A. TRENT. It is with regret that the death of Colonel G. A. Trent, O.M.S., who served in the 1st Battalion of the Buffs...

Mr. and Mrs. J. H. Webb. Mr. and Mrs. J. H. Webb, of the E.A.S.P.C.A., have the pleasure of announcing the birth of a son...

Mr. and Mrs. J. H. Webb. Mr. and Mrs. J. H. Webb, of the E.A.S.P.C.A., have the pleasure of announcing the birth of a son...

Mr. and Mrs. J. H. Webb. Mr. and Mrs. J. H. Webb, of the E.A.S.P.C.A., have the pleasure of announcing the birth of a son...

Mr. and Mrs. J. H. Webb. Mr. and Mrs. J. H. Webb, of the E.A.S.P.C.A., have the pleasure of announcing the birth of a son...

Mr. and Mrs. J. H. Webb. Mr. and Mrs. J. H. Webb, of the E.A.S.P.C.A., have the pleasure of announcing the birth of a son...

Mr. and Mrs. J. H. Webb. Mr. and Mrs. J. H. Webb, of the E.A.S.P.C.A., have the pleasure of announcing the birth of a son...

Mr. and Mrs. J. H. Webb. Mr. and Mrs. J. H. Webb, of the E.A.S.P.C.A., have the pleasure of announcing the birth of a son...

Mr. and Mrs. J. H. Webb. Mr. and Mrs. J. H. Webb, of the E.A.S.P.C.A., have the pleasure of announcing the birth of a son...

Mr. and Mrs. J. H. Webb. Mr. and Mrs. J. H. Webb, of the E.A.S.P.C.A., have the pleasure of announcing the birth of a son...

Mr. and Mrs. J. H. Webb. Mr. and Mrs. J. H. Webb, of the E.A.S.P.C.A., have the pleasure of announcing the birth of a son...

Mr. and Mrs. J. H. Webb. Mr. and Mrs. J. H. Webb, of the E.A.S.P.C.A., have the pleasure of announcing the birth of a son...

Mr. and Mrs. J. H. Webb. Mr. and Mrs. J. H. Webb, of the E.A.S.P.C.A., have the pleasure of announcing the birth of a son...

Mr. and Mrs. J. H. Webb. Mr. and Mrs. J. H. Webb, of the E.A.S.P.C.A., have the pleasure of announcing the birth of a son...

Mr. and Mrs. J. H. Webb. Mr. and Mrs. J. H. Webb, of the E.A.S.P.C.A., have the pleasure of announcing the birth of a son...

Mr. and Mrs. J. H. Webb. Mr. and Mrs. J. H. Webb, of the E.A.S.P.C.A., have the pleasure of announcing the birth of a son...

Mr. and Mrs. J. H. Webb. Mr. and Mrs. J. H. Webb, of the E.A.S.P.C.A., have the pleasure of announcing the birth of a son...

The Unemployment Crisis.

When the Labour Government was formed, it was expected that it would deal with the unemployment problem...

Mr. J. H. Webb. Mr. J. H. Webb, of the E.A.S.P.C.A., has the pleasure of announcing the birth of a son...

Mr. J. H. Webb. Mr. J. H. Webb, of the E.A.S.P.C.A., has the pleasure of announcing the birth of a son...

Mr. J. H. Webb. Mr. J. H. Webb, of the E.A.S.P.C.A., has the pleasure of announcing the birth of a son...

Mr. J. H. Webb. Mr. J. H. Webb, of the E.A.S.P.C.A., has the pleasure of announcing the birth of a son...

Mr. J. H. Webb. Mr. J. H. Webb, of the E.A.S.P.C.A., has the pleasure of announcing the birth of a son...

Mr. J. H. Webb. Mr. J. H. Webb, of the E.A.S.P.C.A., has the pleasure of announcing the birth of a son...

Mr. J. H. Webb. Mr. J. H. Webb, of the E.A.S.P.C.A., has the pleasure of announcing the birth of a son...

Mr. J. H. Webb. Mr. J. H. Webb, of the E.A.S.P.C.A., has the pleasure of announcing the birth of a son...

Mr. J. H. Webb. Mr. J. H. Webb, of the E.A.S.P.C.A., has the pleasure of announcing the birth of a son...

Mr. J. H. Webb. Mr. J. H. Webb, of the E.A.S.P.C.A., has the pleasure of announcing the birth of a son...

Mr. J. H. Webb. Mr. J. H. Webb, of the E.A.S.P.C.A., has the pleasure of announcing the birth of a son...

Mr. J. H. Webb. Mr. J. H. Webb, of the E.A.S.P.C.A., has the pleasure of announcing the birth of a son...

Mr. J. H. Webb. Mr. J. H. Webb, of the E.A.S.P.C.A., has the pleasure of announcing the birth of a son...

Mr. J. H. Webb. Mr. J. H. Webb, of the E.A.S.P.C.A., has the pleasure of announcing the birth of a son...

Mr. J. H. Webb. Mr. J. H. Webb, of the E.A.S.P.C.A., has the pleasure of announcing the birth of a son...

Mr. J. H. Webb. Mr. J. H. Webb, of the E.A.S.P.C.A., has the pleasure of announcing the birth of a son...

Mr. J. H. Webb. Mr. J. H. Webb, of the E.A.S.P.C.A., has the pleasure of announcing the birth of a son...

Mr. J. H. Webb. Mr. J. H. Webb, of the E.A.S.P.C.A., has the pleasure of announcing the birth of a son...

Mr. J. H. Webb. Mr. J. H. Webb, of the E.A.S.P.C.A., has the pleasure of announcing the birth of a son...

Mr. J. H. Webb. Mr. J. H. Webb, of the E.A.S.P.C.A., has the pleasure of announcing the birth of a son...

Mr. J. H. Webb. Mr. J. H. Webb, of the E.A.S.P.C.A., has the pleasure of announcing the birth of a son...

Mr. J. H. Webb. Mr. J. H. Webb, of the E.A.S.P.C.A., has the pleasure of announcing the birth of a son...

Mr. J. H. Webb. Mr. J. H. Webb, of the E.A.S.P.C.A., has the pleasure of announcing the birth of a son...

Mr. J. H. Webb. Mr. J. H. Webb, of the E.A.S.P.C.A., has the pleasure of announcing the birth of a son...

Mr. J. H. Webb. Mr. J. H. Webb, of the E.A.S.P.C.A., has the pleasure of announcing the birth of a son...

Mr. J. H. Webb. Mr. J. H. Webb, of the E.A.S.P.C.A., has the pleasure of announcing the birth of a son...

Mr. J. H. Webb. Mr. J. H. Webb, of the E.A.S.P.C.A., has the pleasure of announcing the birth of a son...

W. AFRICAN WIRELESS SERVICES.

Message by Wireless. The wireless service in East Africa is now being operated by the W. African Wireless Services...

Message by Wireless. The wireless service in East Africa is now being operated by the W. African Wireless Services...

Message by Wireless. The wireless service in East Africa is now being operated by the W. African Wireless Services...

Message by Wireless. The wireless service in East Africa is now being operated by the W. African Wireless Services...

Message by Wireless. The wireless service in East Africa is now being operated by the W. African Wireless Services...

Message by Wireless. The wireless service in East Africa is now being operated by the W. African Wireless Services...

Message by Wireless. The wireless service in East Africa is now being operated by the W. African Wireless Services...

Message by Wireless. The wireless service in East Africa is now being operated by the W. African Wireless Services...

Message by Wireless. The wireless service in East Africa is now being operated by the W. African Wireless Services...

Message by Wireless. The wireless service in East Africa is now being operated by the W. African Wireless Services...

Message by Wireless. The wireless service in East Africa is now being operated by the W. African Wireless Services...

Message by Wireless. The wireless service in East Africa is now being operated by the W. African Wireless Services...

Message by Wireless. The wireless service in East Africa is now being operated by the W. African Wireless Services...

Message by Wireless. The wireless service in East Africa is now being operated by the W. African Wireless Services...

Message by Wireless. The wireless service in East Africa is now being operated by the W. African Wireless Services...

Message by Wireless. The wireless service in East Africa is now being operated by the W. African Wireless Services...

Message by Wireless. The wireless service in East Africa is now being operated by the W. African Wireless Services...

Message by Wireless. The wireless service in East Africa is now being operated by the W. African Wireless Services...

Message by Wireless. The wireless service in East Africa is now being operated by the W. African Wireless Services...

Message by Wireless. The wireless service in East Africa is now being operated by the W. African Wireless Services...

Message by Wireless. The wireless service in East Africa is now being operated by the W. African Wireless Services...

Message by Wireless. The wireless service in East Africa is now being operated by the W. African Wireless Services...

Message by Wireless. The wireless service in East Africa is now being operated by the W. African Wireless Services...

Message by Wireless. The wireless service in East Africa is now being operated by the W. African Wireless Services...

Message by Wireless. The wireless service in East Africa is now being operated by the W. African Wireless Services...

Message by Wireless. The wireless service in East Africa is now being operated by the W. African Wireless Services...

Message by Wireless. The wireless service in East Africa is now being operated by the W. African Wireless Services...

Message by Wireless. The wireless service in East Africa is now being operated by the W. African Wireless Services...



Keep a box of ZAM-BAK Always Handy. This is the most widely-used bathing preparation in the world to-day...

Keep a box of ZAM-BAK Always Handy. This is the most widely-used bathing preparation in the world to-day...

Keep a box of ZAM-BAK Always Handy. This is the most widely-used bathing preparation in the world to-day...

Keep a box of ZAM-BAK Always Handy. This is the most widely-used bathing preparation in the world to-day...

Keep a box of ZAM-BAK Always Handy. This is the most widely-used bathing preparation in the world to-day...

Keep a box of ZAM-BAK Always Handy. This is the most widely-used bathing preparation in the world to-day...

Keep a box of ZAM-BAK Always Handy. This is the most widely-used bathing preparation in the world to-day...

Keep a box of ZAM-BAK Always Handy. This is the most widely-used bathing preparation in the world to-day...

Keep a box of ZAM-BAK Always Handy. This is the most widely-used bathing preparation in the world to-day...

Keep a box of ZAM-BAK Always Handy. This is the most widely-used bathing preparation in the world to-day...

Keep a box of ZAM-BAK Always Handy. This is the most widely-used bathing preparation in the world to-day...

Keep a box of ZAM-BAK Always Handy. This is the most widely-used bathing preparation in the world to-day...



STEEDEMAN'S POWDERS. When washing to clean your face...

STEEDEMAN'S POWDERS. When washing to clean your face...

STEEDEMAN'S POWDERS. When washing to clean your face...

STEEDEMAN'S POWDERS. When washing to clean your face...

STEEDEMAN'S POWDERS. When washing to clean your face...

STEEDEMAN'S POWDERS. When washing to clean your face...

STEEDEMAN'S POWDERS. When washing to clean your face...

STEEDEMAN'S POWDERS. When washing to clean your face...

STEEDEMAN'S POWDERS. When washing to clean your face...

STEEDEMAN'S POWDERS. When washing to clean your face...

STEEDEMAN'S POWDERS. When washing to clean your face...

STEEDEMAN'S POWDERS. When washing to clean your face...

STEEDEMAN'S POWDERS. When washing to clean your face...

High Service Vial.

Apin the City of Durban. The High Service Vial is a new and improved vial...

Apin the City of Durban. The High Service Vial is a new and improved vial...

Apin the City of Durban. The High Service Vial is a new and improved vial...

Apin the City of Durban. The High Service Vial is a new and improved vial...

Apin the City of Durban. The High Service Vial is a new and improved vial...

Apin the City of Durban. The High Service Vial is a new and improved vial...

Apin the City of Durban. The High Service Vial is a new and improved vial...

Apin the City of Durban. The High Service Vial is a new and improved vial...

Apin the City of Durban. The High Service Vial is a new and improved vial...

Apin the City of Durban. The High Service Vial is a new and improved vial...

Apin the City of Durban. The High Service Vial is a new and improved vial...

Apin the City of Durban. The High Service Vial is a new and improved vial...

Apin the City of Durban. The High Service Vial is a new and improved vial...

Apin the City of Durban. The High Service Vial is a new and improved vial...

Apin the City of Durban. The High Service Vial is a new and improved vial...

Apin the City of Durban. The High Service Vial is a new and improved vial...

Apin the City of Durban. The High Service Vial is a new and improved vial...

Apin the City of Durban. The High Service Vial is a new and improved vial...

Apin the City of Durban. The High Service Vial is a new and improved vial...

Apin the City of Durban. The High Service Vial is a new and improved vial...

Apin the City of Durban. The High Service Vial is a new and improved vial...

Apin the City of Durban. The High Service Vial is a new and improved vial...

Apin the City of Durban. The High Service Vial is a new and improved vial...

From the Gardens of England.

Ripe and sweet, "My Lady" English Fruits are gathered in the rich vale of England...

Ripe and sweet, "My Lady" English Fruits are gathered in the rich vale of England...

Ripe and sweet, "My Lady" English Fruits are gathered in the rich vale of England...

Ripe and sweet, "My Lady" English Fruits are gathered in the rich vale of England...

Ripe and sweet, "My Lady" English Fruits are gathered in the rich vale of England...

Ripe and sweet, "My Lady" English Fruits are gathered in the rich vale of England...

Ripe and sweet, "My Lady" English Fruits are gathered in the rich vale of England...

Ripe and sweet, "My Lady" English Fruits are gathered in the rich vale of England...

Motor Fuel from Mainz.

Another important feature of the situation might very appropriately be mentioned...

Another important feature of the situation might very appropriately be mentioned...

Another important feature of the situation might very appropriately be mentioned...

Another important feature of the situation might very appropriately be mentioned...

Another important feature of the situation might very appropriately be mentioned...

Another important feature of the situation might very appropriately be mentioned...

Another important feature of the situation might very appropriately be mentioned...

Another important feature of the situation might very appropriately be mentioned...

Another important feature of the situation might very appropriately be mentioned...

Another important feature of the situation might very appropriately be mentioned...

Another important feature of the situation might very appropriately be mentioned...

Another important feature of the situation might very appropriately be mentioned...

Another important feature of the situation might very appropriately be mentioned...

Another important feature of the situation might very appropriately be mentioned...

TO MOTORISTS. PULL-U-OUT.

A wonderful tool for pulling motors out when badly stuck in mud holes, without damaging your car...

A wonderful tool for pulling motors out when badly stuck in mud holes, without damaging your car...

A wonderful tool for pulling motors out when badly stuck in mud holes, without damaging your car...

A wonderful tool for pulling motors out when badly stuck in mud holes, without damaging your car...

PROJECT IN SOUTHERN RHODESIA.

Mr. George Johnson, president of the Bulawayo Chamber of Commerce...

Mr. George Johnson, president of the Bulawayo Chamber of Commerce...

Mr. George Johnson, president of the Bulawayo Chamber of Commerce...

Mr. George Johnson, president of the Bulawayo Chamber of Commerce...

Mr. George Johnson, president of the Bulawayo Chamber of Commerce...

Mr. George Johnson, president of the Bulawayo Chamber of Commerce...

Mr. George Johnson, president of the Bulawayo Chamber of Commerce...

Mr. George Johnson, president of the Bulawayo Chamber of Commerce...

Mr. George Johnson, president of the Bulawayo Chamber of Commerce...

Mr. George Johnson, president of the Bulawayo Chamber of Commerce...

TO TRANSPORT RIDERS.

A similar tool for pulling out lorries, up to 3 tons.

A similar tool for pulling out lorries, up to 3 tons.

A similar tool for pulling out lorries, up to 3 tons.

A similar tool for pulling out lorries, up to 3 tons.

Prime Cabinet Appointment.

Mr. A. H. Malpas has been appointed to the position of Prime Cabinet Appointment...

Mr. A. H. Malpas has been appointed to the position of Prime Cabinet Appointment...

Mr. A. H. Malpas has been appointed to the position of Prime Cabinet Appointment...

Mr. A. H. Malpas has been appointed to the position of Prime Cabinet Appointment...

The Anglo-Balfic Timber Co., Limited.

The Anglo-Balfic Timber Co., Limited. This company is engaged in the timber trade...

THE FUTURE DEVELOPMENT OF T. T. RAILWAYS.

Financial Position As Yet By No Means Sound.

THE CONGO TRAFFIC.

General Hammond Sees Increase Through Belgian Progress.

London, July 16.—(Standard's London Correspondent.)

The last chapter of the Hammonds' financial position in the Congo Railway system from 1914 to the present is a story of a steady decline in the face of a steady increase in the amount of work done and with heavy losses. The Congo Railway system is a financial failure, and the Hammonds' financial position is a story of a steady decline in the face of a steady increase in the amount of work done and with heavy losses.

Year	Open	Gross	Operating
1914	1,440	27,138	61,200
1915	1,440	27,138	61,200
1916	1,440	27,138	61,200
1917	1,440	27,138	61,200
1918	1,440	27,138	61,200
1919	1,440	27,138	61,200
1920	1,440	27,138	61,200

At four points, and, during the last year, at five, the Congo Railway has been interrupted and its operations entirely suspended. The Congo Railway has been interrupted and its operations entirely suspended. The Congo Railway has been interrupted and its operations entirely suspended.

Fortunately other areas in the Belgian Congo with excellent prospects for the future are being developed. The Congo Railway has been interrupted and its operations entirely suspended. The Congo Railway has been interrupted and its operations entirely suspended.

At Uvira, last, in the north-east, the Congo Railway has been interrupted and its operations entirely suspended. The Congo Railway has been interrupted and its operations entirely suspended. The Congo Railway has been interrupted and its operations entirely suspended.

The province of Katanga and the Congo Railway has been interrupted and its operations entirely suspended. The Congo Railway has been interrupted and its operations entirely suspended. The Congo Railway has been interrupted and its operations entirely suspended.

At present the most important traffic on the Congo line is that with the Belgian Congo, and this is a story of a steady decline in the face of a steady increase in the amount of work done and with heavy losses.

Lake service, the port at Kigoma, and the Central line itself are equipped to handle it, and that the equipment should be carried out in good time and not lag behind the other.

With this object £100,000 has been asked for to provide a season for the Lake. At least two years will elapse before the steamer can be at work on the Lake. It is not yet known whether this proposal and I am glad to be informed that it has been usually allowed.

The extension of the port at Kigoma is also of primary importance and has been mentioned in Chapter VII. This traffic is a very important one, and it is small for their needs, and the British and Belgian companies are not doing a scheme in the United Kingdom. It is a very important one, and it is small for their needs, and the British and Belgian companies are not doing a scheme in the United Kingdom.

The following table shows how these figures compare with those of other Colonial railways in Africa—

Year	Open	Gross	Operating
1914	1,440	27,138	61,200
1915	1,440	27,138	61,200
1916	1,440	27,138	61,200
1917	1,440	27,138	61,200
1918	1,440	27,138	61,200
1919	1,440	27,138	61,200
1920	1,440	27,138	61,200

Another point to which attention should be directed is the fact that the Congo Railway has been interrupted and its operations entirely suspended. The Congo Railway has been interrupted and its operations entirely suspended. The Congo Railway has been interrupted and its operations entirely suspended.

At present the most important traffic on the Congo line is that with the Belgian Congo, and this is a story of a steady decline in the face of a steady increase in the amount of work done and with heavy losses.

The province of Katanga and the Congo Railway has been interrupted and its operations entirely suspended. The Congo Railway has been interrupted and its operations entirely suspended. The Congo Railway has been interrupted and its operations entirely suspended.

At present the most important traffic on the Congo line is that with the Belgian Congo, and this is a story of a steady decline in the face of a steady increase in the amount of work done and with heavy losses.

At present the most important traffic on the Congo line is that with the Belgian Congo, and this is a story of a steady decline in the face of a steady increase in the amount of work done and with heavy losses.

NAIROBI SEVEN JULY MEETING.

Weights for the Nairobian

The following are the entries and weights for the Nairobian July meeting on July 8, 1920. The order of racing:

Weight	Runner	Weight	Runner
1st Race 2.0 pm—Peggy	Handicap—1 mile	2nd Race 3.30 pm—Second Division	Handicap—1 mile
3rd Race 4.45 pm—Trotting	Handicap—1 mile	4th Race 6.0 pm—Trotting	Handicap—1 mile
5th Race 7.15 pm—Trotting	Handicap—1 mile	6th Race 8.30 pm—Trotting	Handicap—1 mile
7th Race 9.45 pm—Fourth Division	Handicap—1 mile		

Weight	Runner	Weight	Runner
1st Race 2.0 pm—Peggy	Handicap—1 mile	2nd Race 3.30 pm—Second Division	Handicap—1 mile
3rd Race 4.45 pm—Trotting	Handicap—1 mile	4th Race 6.0 pm—Trotting	Handicap—1 mile
5th Race 7.15 pm—Trotting	Handicap—1 mile	6th Race 8.30 pm—Trotting	Handicap—1 mile
7th Race 9.45 pm—Fourth Division	Handicap—1 mile		

Weight	Runner	Weight	Runner
1st Race 2.0 pm—Peggy	Handicap—1 mile	2nd Race 3.30 pm—Second Division	Handicap—1 mile
3rd Race 4.45 pm—Trotting	Handicap—1 mile	4th Race 6.0 pm—Trotting	Handicap—1 mile
5th Race 7.15 pm—Trotting	Handicap—1 mile	6th Race 8.30 pm—Trotting	Handicap—1 mile
7th Race 9.45 pm—Fourth Division	Handicap—1 mile		

Weight	Runner	Weight	Runner
1st Race 2.0 pm—Peggy	Handicap—1 mile	2nd Race 3.30 pm—Second Division	Handicap—1 mile
3rd Race 4.45 pm—Trotting	Handicap—1 mile	4th Race 6.0 pm—Trotting	Handicap—1 mile
5th Race 7.15 pm—Trotting	Handicap—1 mile	6th Race 8.30 pm—Trotting	Handicap—1 mile
7th Race 9.45 pm—Fourth Division	Handicap—1 mile		

Weight	Runner	Weight	Runner
1st Race 2.0 pm—Peggy	Handicap—1 mile	2nd Race 3.30 pm—Second Division	Handicap—1 mile
3rd Race 4.45 pm—Trotting	Handicap—1 mile	4th Race 6.0 pm—Trotting	Handicap—1 mile
5th Race 7.15 pm—Trotting	Handicap—1 mile	6th Race 8.30 pm—Trotting	Handicap—1 mile
7th Race 9.45 pm—Fourth Division	Handicap—1 mile		

Weight	Runner	Weight	Runner
1st Race 2.0 pm—Peggy	Handicap—1 mile	2nd Race 3.30 pm—Second Division	Handicap—1 mile
3rd Race 4.45 pm—Trotting	Handicap—1 mile	4th Race 6.0 pm—Trotting	Handicap—1 mile
5th Race 7.15 pm—Trotting	Handicap—1 mile	6th Race 8.30 pm—Trotting	Handicap—1 mile
7th Race 9.45 pm—Fourth Division	Handicap—1 mile		

Weight	Runner	Weight	Runner
1st Race 2.0 pm—Peggy	Handicap—1 mile	2nd Race 3.30 pm—Second Division	Handicap—1 mile
3rd Race 4.45 pm—Trotting	Handicap—1 mile	4th Race 6.0 pm—Trotting	Handicap—1 mile
5th Race 7.15 pm—Trotting	Handicap—1 mile	6th Race 8.30 pm—Trotting	Handicap—1 mile
7th Race 9.45 pm—Fourth Division	Handicap—1 mile		

RUGBY FOOTBALL.

Elbert Club Visits Nairobi.

(Wing Trial.)

Elbert visited a great surprise to Rugby circles in Khatulungu by making a tour of the country by defeating a strong Elbert team. The Elbert team was played by the visitors during the week.

Elbert kicked off with a small field, but his team took a few minutes to get into the game. His team took a few minutes to get into the game. His team took a few minutes to get into the game.

Elbert's half back, a small field, but his team took a few minutes to get into the game. His team took a few minutes to get into the game. His team took a few minutes to get into the game.

Elbert's half back, a small field, but his team took a few minutes to get into the game. His team took a few minutes to get into the game. His team took a few minutes to get into the game.

Elbert's half back, a small field, but his team took a few minutes to get into the game. His team took a few minutes to get into the game. His team took a few minutes to get into the game.

Elbert's half back, a small field, but his team took a few minutes to get into the game. His team took a few minutes to get into the game. His team took a few minutes to get into the game.

Elbert's half back, a small field, but his team took a few minutes to get into the game. His team took a few minutes to get into the game. His team took a few minutes to get into the game.

Elbert's half back, a small field, but his team took a few minutes to get into the game. His team took a few minutes to get into the game. His team took a few minutes to get into the game.

Elbert's half back, a small field, but his team took a few minutes to get into the game. His team took a few minutes to get into the game. His team took a few minutes to get into the game.

On the Links

Nothing must be allowed to put her off her game.

"HAZELINE" and "SNOW" and has to completion.

It protects the delicate tissues of the skin from sun and wind.

BURROUGHS WELLS & CO., LONDON.

Kenya Breweries Ltd.

OUR LATEST BREW

Kenya Lager

(TUSKER BRAND)

If You Have Tried It, You've Missed a Treat.

On the Links

Nothing must be allowed to put her off her game.

"HAZELINE" and "SNOW" and has to completion.

It protects the delicate tissues of the skin from sun and wind.

BURROUGHS WELLS & CO., LONDON.

Kenya Breweries Ltd.

OUR LATEST BREW

Kenya Lager

(TUSKER BRAND)

Nothing must be allowed to put her off her game.

"HAZELINE" and "SNOW" and has to completion.

It protects the delicate tissues of the skin from sun and wind.

BURROUGHS WELLS & CO., LONDON.

Kenya Breweries Ltd.

OUR LATEST BREW

Kenya Lager

(TUSKER BRAND)

If You Have Tried It, You've Missed a Treat.

Nothing must be allowed to put her off her game.

"HAZELINE" and "SNOW" and has to completion.

It protects the delicate tissues of the skin from sun and wind.

BURROUGHS WELLS & CO., LONDON.

Kenya Breweries Ltd.

OUR LATEST BREW

Kenya Lager

(TUSKER BRAND)

If You Have Tried It, You've Missed a Treat.

Nothing must be allowed to put her off her game.

"HAZELINE" and "SNOW" and has to completion.

It protects the delicate tissues of the skin from sun and wind.

BURROUGHS WELLS & CO., LONDON.

Kenya Breweries Ltd.

OUR LATEST BREW

Kenya Lager

(TUSKER BRAND)

If You Have Tried It, You've Missed a Treat.

Nothing must be allowed to put her off her game.

"HAZELINE" and "SNOW" and has to completion.

It protects the delicate tissues of the skin from sun and wind.

BURROUGHS WELLS & CO., LONDON.

Kenya Breweries Ltd.

OUR LATEST BREW

Kenya Lager

(TUSKER BRAND)

If You Have Tried It, You've Missed a Treat.

Nothing must be allowed to put her off her game.

"HAZELINE" and "SNOW" and has to completion.

It protects the delicate tissues of the skin from sun and wind.

BURROUGHS WELLS & CO., LONDON.

Kenya Breweries Ltd.

OUR LATEST BREW

Kenya Lager

(TUSKER BRAND)

If You Have Tried It, You've Missed a Treat.

Nothing must be allowed to put her off her game.

"HAZELINE" and "SNOW" and has to completion.

It protects the delicate tissues of the skin from sun and wind.

BURROUGHS WELLS & CO., LONDON.

Kenya Breweries Ltd.

OUR LATEST BREW

Kenya Lager

(TUSKER BRAND)

If You Have Tried It, You've Missed a Treat.

Nothing must be allowed to put her off her game.

"HAZELINE" and "SNOW" and has to completion.

It protects the delicate tissues of the skin from sun and wind.

BURROUGHS WELLS & CO., LONDON.

Kenya Breweries Ltd.

OUR LATEST BREW

Kenya Lager

(TUSKER BRAND)

If You Have Tried It, You've Missed a Treat.

Nothing must be allowed to put her off her game.

"HAZELINE" and "SNOW" and has to completion.

It protects the delicate tissues of the skin from sun and wind.

BURROUGHS WELLS & CO., LONDON.

Kenya Breweries Ltd.

OUR LATEST BREW

Kenya Lager

(TUSKER BRAND)

If You Have Tried It, You've Missed a Treat.

Nothing must be allowed to put her off her game.

"HAZELINE" and "SNOW" and has to completion.

It protects the delicate tissues of the skin from sun and wind.

BURROUGHS WELLS & CO., LONDON.

Kenya Breweries Ltd.

OUR LATEST BREW

Kenya Lager

(TUSKER BRAND)

If You Have Tried It, You've Missed a Treat.

Nothing must be allowed to put her off her game.

"HAZELINE" and "SNOW" and has to completion.

It protects the delicate tissues of the skin from sun and wind.

BURROUGHS WELLS & CO., LONDON.

Kenya Breweries Ltd.

OUR LATEST BREW

Kenya Lager

(TUSKER BRAND)

If You Have Tried It, You've Missed a Treat.

Nothing must be allowed to put her off her game.

"HAZELINE" and "SNOW" and has to completion.

It protects the delicate tissues of the skin from sun and wind.

BURROUGHS WELLS & CO., LONDON.

Kenya Breweries Ltd.

OUR LATEST BREW

Kenya Lager

(TUSKER BRAND)

If You Have Tried It, You've Missed a Treat.

THE CAMERA IN EAST AFRICA.

THE YOUNG IDEA.



Work of the Mission: "The Health Lesson" at the U.M.C.A. Mission, Mtwani, Malawi, near Tanganyika.
 (Photo: Rev. A. R. James, Malawi.)

A KENYA WEDDING.

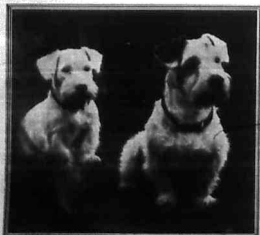


Wedding group at the marriage in the Highlands Cathedral, Nairobi, on Saturday, June 7, of Mr. Peter Linton Young of English Kenya, and Miss Sarah Jane de la Roche, Nairobi. Left to right Miss Mary Smith, bridesmaid, the bridegroom and bride and the best man, Mr. D. Swaine, U.K.G. The bride is the daughter of Major Gurnell, Secretary of the Kenya Convention and of the Coffee Planters Union.
 (Photo: Banks.)

"ORDER OF THE BATH"



A pond at interlude in Kenya. An improved boat.
 (Photo: Mrs. Malcolm R. Kilham.)

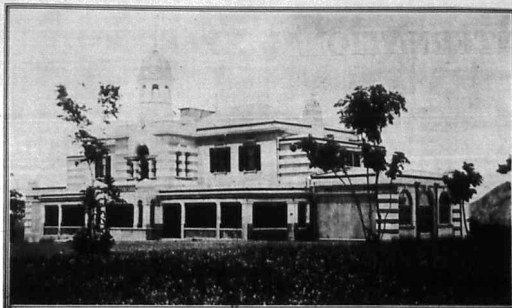


"Bennie" and "Toby."
 (Photo: Capt. Paula, Nairobi.)



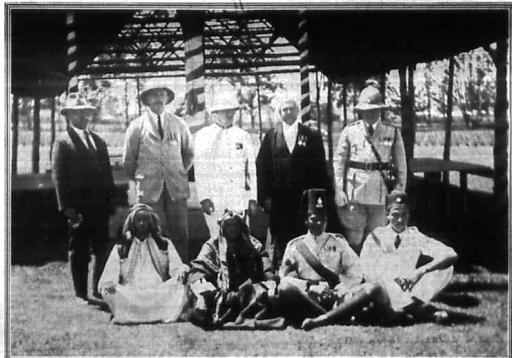
Climbing the Great Nyiro at Anchet's Post, Kenya. Lovers waiting for the flood waters to subside.
 (Photo: H. E. Baker, Kisumu.)

PALACE OF A NATIVE KING.



The new Palace at Kampala built for H.H. The Kabaka. The architects were Messrs. Gilie & Casson, Nairobi.
 (Photo: Abdullahi, Kampala.)

THE KING'S BIRTHDAY.



A group of Officials at Nakuru. Left to right: Mr. S. Fernandez, Head Clerk, District Commissioner's Office; Mr. H. H. Trafford, District Commissioner; Mr. E. C. Crossland, Provincial Commissioner; Mr. T. Edwards, Resident Magistrate; Captain E. K. Campbell, Superintendent of Police.
 (Photo: H. Richard & Co.)

LAKE Baringo.



The rocky gorge of Maligat near Lake Baringo.
 (Photo: Miss Hunter, Kisumu.)



This handsome Pearl Necklace

An 18-karat necklace of lustrous pearls in a charming all-iced case—a really beautiful gift, free to smokers of 'Spears Girl' Cigarettes!

50% COUPONS FOR THIS 50% THIS 'SPEARS GIRL' VIRGINIA CIGARETTES

LOW & BONAR, LTD. DUNDEE. Manufacturers of HUNTER BAGS for Coats, Suits, etc.

MOLO TIMBER CO. (Proprietor: W. H. Beaton). Established 1912. Head Office: Njom.

WINDOWS Manufactured from selected Swedish Cedar and constructed to take standard size glass, 12 x 20.

DOORS Four Panel Door and Frames 6'6" x 2'6" x 11 60/.

COMPARE OUR PRICES WITH THOSE OF IMPORTED OR OTHER LOCAL DOORS AND WINDOWS.

KENT'S BARTY WITH OVER 2000... COUNTY CRICKET CHAMPIONSHIP.

Some good performance with the ball were the outstanding feature... (STARBOARD CORRESPONDENT).

At Harrogate... At Leeds... At Lincoln... At Leicester...

At Gloucestershire vs. Kent... At Glamorgan vs. Warwickshire...

At Leamington... At Exeter... At Exeter... At Exeter...

At Leamington... At Exeter... At Exeter... At Exeter...

At Leamington... At Exeter... At Exeter... At Exeter...

Local Rugby Matches... Visit of Edward Club... Despite the enterprise shown by the Rugby Union...

At Harrogate... At Leeds... At Lincoln... At Leicester...

At Harrogate... At Leeds... At Lincoln... At Leicester...

At Harrogate... At Leeds... At Lincoln... At Leicester...

At Harrogate... At Leeds... At Lincoln... At Leicester...

At Harrogate... At Leeds... At Lincoln... At Leicester...

At Harrogate... At Leeds... At Lincoln... At Leicester...

Local Rugby Matches... Visit of Edward Club... Despite the enterprise shown by the Rugby Union...

At Harrogate... At Leeds... At Lincoln... At Leicester...

At Harrogate... At Leeds... At Lincoln... At Leicester...

At Harrogate... At Leeds... At Lincoln... At Leicester...

At Harrogate... At Leeds... At Lincoln... At Leicester...

At Harrogate... At Leeds... At Lincoln... At Leicester...

At Harrogate... At Leeds... At Lincoln... At Leicester...

Local Rugby Matches... Visit of Edward Club... Despite the enterprise shown by the Rugby Union...

At Harrogate... At Leeds... At Lincoln... At Leicester...

At Harrogate... At Leeds... At Lincoln... At Leicester...

At Harrogate... At Leeds... At Lincoln... At Leicester...

At Harrogate... At Leeds... At Lincoln... At Leicester...

At Harrogate... At Leeds... At Lincoln... At Leicester...

At Harrogate... At Leeds... At Lincoln... At Leicester...

KOLYNS DENTAL CREAM. KOLYNS LIQUID DENTIFRICE AND MOUTH WASH. KOLYNS DENTAL PLATE POWDER.

TRIDENT SALMON & SHRIMP PASTY. Try it in hand-icakes! Try it on hot buttered toast!

THE YORKSHIRE INSURANCE COMPANY LIMITED. Established 1894.

"STEEL" PORTABLE BUILDINGS OF GREAT STRENGTH AND UTILITY.

ISHER WOODS LIMITED. "Engineers to the Colony." Grams: "Bertram" - "MATHSON" - P.O. Box 99.

Prevent Colds and 'Flu'

... always put a Formamin tablet in every mouth when influenza is about and feel sure that that is why I escape having it for some years."

Mr. N.W.G.—E.



Formamin cures flu, throat, influenza, diphtheria, scarlet fever, whooping cough, measles, mumps, chicken pox, and all diseases which attack the throat.

Diphtheria, Influenza, Scarlet Fever

FORMAMIN

Formamin destroys the germs which cause these diseases in the throat.

Obtainable at Chemists.

The Gerani-Muller Throat Tablet

THE ELECTION CAMPAIGN AT MOMBASA.

Questionnaire to One of the Candidates.

In connection with the election campaign now proceeding at Mombasa, the following series of questions has been put forward by the editor of the "East African Standard" to Mr. A. Remintze, one of the candidates. By Mr. C. Bovey.

1. Is Mr. Remintze in favour of the holding of the general election of Councillors between the period of Councillor Sirvestre being sworn in and the date of the next general election? In approximately what time would you be able to be sworn in? In approximately what time would you be able to be sworn in?

2. Is Mr. Remintze definitely against the compulsory extension of the franchise to the members of the Legislative Council? If so, what reasons does he give for his opinion?

3. Will Mr. Remintze give his reasons for being the only non-official member to vote on the side of the Government in the vote for the extension of the franchise to the members of the Legislative Council?

4. Did Mr. Remintze in the debate on the Revenue and Finance Bill, 1919, defend the Government's policy of raising the duties on tobacco and spirits? If so, what reasons did he give for his opinion?

5. Is Mr. Remintze in favour of the holding of the general election of Councillors between the period of Councillor Sirvestre being sworn in and the date of the next general election? In approximately what time would you be able to be sworn in? In approximately what time would you be able to be sworn in?

Entertainments at Eldoret.

PERFORMANCE BY "GLOBE" TRUPTON AND COMPANY.

The Globe Truption and Company performed at Eldoret on the nights of June 10, 11, and 12, giving a complete change of programme on the third night, and the house was well patronized. There was not a dull moment during the performance, and the first-class show alone will be a recommendation to the players here. The programme was very well planned, and the players here should be commended for their efforts. The programme was very well planned, and the players here should be commended for their efforts. The programme was very well planned, and the players here should be commended for their efforts.

THE GOAN COMMUNITY IN EAST AFRICA.

Silver Jubilee Celebration in Nairobi.

The twenty-fifth anniversary of the opening of the Nairobi Colony in the afternoon, the members of the Goan Community in East Africa, held a silver jubilee celebration in Nairobi on Saturday, June 12, 1920. The occasion was marked by a social gathering, and the members of the community were present in large numbers. The celebration was a success, and the members of the community were very pleased with the results.

NATIVE TAXATION IN KENYA.

How the Money is Being Spent.

The British Government has been spending a considerable amount of money on the development of Kenya. The money is being spent on various projects, including the construction of roads, bridges, and railways. The government is also spending money on the education of the native population. The government is also spending money on the health and welfare of the native population. The government is also spending money on the development of the native economy.

BOVRL

soon gets an invalid out of bed



shackled!!

DARE rubber tires—a wet slippery pavement—and danger ahead! Without Weed Tyre Chains, you are almost as helpless to control your car as a man bound hand and foot.

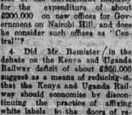
Weed Tyre Chains prevent sliding accidents. They insure safe driving always—in mud, or slippery clay—wherever road conditions are treacherous or unpropitious.

Weed Tyre Chains grip and hold on to any road. They provide sure traction in every turn of your motor car. They are admitted into actual military use. For passenger cars, light and heavy trucks, and all other motor vehicles.

AMERICAN CHAIN CO. INC. NEW YORK, N. Y.

WEED TYRE CHAINS

The Best of the Best



1. Is Mr. Remintze in favour of the holding of the general election of Councillors between the period of Councillor Sirvestre being sworn in and the date of the next general election? In approximately what time would you be able to be sworn in? In approximately what time would you be able to be sworn in?

2. Is Mr. Remintze definitely against the compulsory extension of the franchise to the members of the Legislative Council? If so, what reasons does he give for his opinion?

3. Will Mr. Remintze give his reasons for being the only non-official member to vote on the side of the Government in the vote for the extension of the franchise to the members of the Legislative Council?

4. Did Mr. Remintze in the debate on the Revenue and Finance Bill, 1919, defend the Government's policy of raising the duties on tobacco and spirits? If so, what reasons did he give for his opinion?

5. Is Mr. Remintze in favour of the holding of the general election of Councillors between the period of Councillor Sirvestre being sworn in and the date of the next general election? In approximately what time would you be able to be sworn in? In approximately what time would you be able to be sworn in?

The British Government has been spending a considerable amount of money on the development of Kenya. The money is being spent on various projects, including the construction of roads, bridges, and railways. The government is also spending money on the education of the native population. The government is also spending money on the health and welfare of the native population. The government is also spending money on the development of the native economy.

The British Government has been spending a considerable amount of money on the development of Kenya. The money is being spent on various projects, including the construction of roads, bridges, and railways. The government is also spending money on the education of the native population. The government is also spending money on the health and welfare of the native population. The government is also spending money on the development of the native economy.

GENERAL AGENCIES, Ltd.

P. O. Box 24, NAIROBI.

THE PROOF OF THE FLOUR IS IN THE BAKING.

Flour Milled by KENYA GRAIN MILLS LTD., NAIROBI.

UNGA (1252) LAD. BAKE WELL. Ask Your Grocer for Unga Brand.

A FEW SEASONABLE LINES JUST ARRIVED.

WATERPROOF FISH BOOT AMERICAN MOGASHES NO. 21. NO. 12. NO. 13. NO. 14. NO. 15. NO. 16. NO. 17. NO. 18. NO. 19. NO. 20. NO. 21. NO. 22. NO. 23. NO. 24. NO. 25. NO. 26. NO. 27. NO. 28. NO. 29. NO. 30. NO. 31. NO. 32. NO. 33. NO. 34. NO. 35. NO. 36. NO. 37. NO. 38. NO. 39. NO. 40. NO. 41. NO. 42. NO. 43. NO. 44. NO. 45. NO. 46. NO. 47. NO. 48. NO. 49. NO. 50. NO. 51. NO. 52. NO. 53. NO. 54. NO. 55. NO. 56. NO. 57. NO. 58. NO. 59. NO. 60. NO. 61. NO. 62. NO. 63. NO. 64. NO. 65. NO. 66. NO. 67. NO. 68. NO. 69. NO. 70. NO. 71. NO. 72. NO. 73. NO. 74. NO. 75. NO. 76. NO. 77. NO. 78. NO. 79. NO. 80. NO. 81. NO. 82. NO. 83. NO. 84. NO. 85. NO. 86. NO. 87. NO. 88. NO. 89. NO. 90. NO. 91. NO. 92. NO. 93. NO. 94. NO. 95. NO. 96. NO. 97. NO. 98. NO. 99. NO. 100.

WEED TYRE CHAINS

The Best of the Best



GARRYING FULL GUARANTEE

Obtainable everywhere and from SOCIETA' COLONIALE ITALIANA P. O. BOX 170 MOMBASA Principal East African Distributors.

1. Is Mr. Remintze in favour of the holding of the general election of Councillors between the period of Councillor Sirvestre being sworn in and the date of the next general election? In approximately what time would you be able to be sworn in? In approximately what time would you be able to be sworn in?

2. Is Mr. Remintze definitely against the compulsory extension of the franchise to the members of the Legislative Council? If so, what reasons does he give for his opinion?

3. Will Mr. Remintze give his reasons for being the only non-official member to vote on the side of the Government in the vote for the extension of the franchise to the members of the Legislative Council?

4. Did Mr. Remintze in the debate on the Revenue and Finance Bill, 1919, defend the Government's policy of raising the duties on tobacco and spirits? If so, what reasons did he give for his opinion?

5. Is Mr. Remintze in favour of the holding of the general election of Councillors between the period of Councillor Sirvestre being sworn in and the date of the next general election? In approximately what time would you be able to be sworn in? In approximately what time would you be able to be sworn in?

1. Is Mr. Remintze in favour of the holding of the general election of Councillors between the period of Councillor Sirvestre being sworn in and the date of the next general election? In approximately what time would you be able to be sworn in? In approximately what time would you be able to be sworn in?

2. Is Mr. Remintze definitely against the compulsory extension of the franchise to the members of the Legislative Council? If so, what reasons does he give for his opinion?

3. Will Mr. Remintze give his reasons for being the only non-official member to vote on the side of the Government in the vote for the extension of the franchise to the members of the Legislative Council?

4. Did Mr. Remintze in the debate on the Revenue and Finance Bill, 1919, defend the Government's policy of raising the duties on tobacco and spirits? If so, what reasons did he give for his opinion?

5. Is Mr. Remintze in favour of the holding of the general election of Councillors between the period of Councillor Sirvestre being sworn in and the date of the next general election? In approximately what time would you be able to be sworn in? In approximately what time would you be able to be sworn in?

The British Government has been spending a considerable amount of money on the development of Kenya. The money is being spent on various projects, including the construction of roads, bridges, and railways. The government is also spending money on the education of the native population. The government is also spending money on the health and welfare of the native population. The government is also spending money on the development of the native economy.

The British Government has been spending a considerable amount of money on the development of Kenya. The money is being spent on various projects, including the construction of roads, bridges, and railways. The government is also spending money on the education of the native population. The government is also spending money on the health and welfare of the native population. The government is also spending money on the development of the native economy.

WATERPROOF FISH BOOT AMERICAN MOGASHES NO. 21. NO. 12. NO. 13. NO. 14. NO. 15. NO. 16. NO. 17. NO. 18. NO. 19. NO. 20. NO. 21. NO. 22. NO. 23. NO. 24. NO. 25. NO. 26. NO. 27. NO. 28. NO. 29. NO. 30. NO. 31. NO. 32. NO. 33. NO. 34. NO. 35. NO. 36. NO. 37. NO. 38. NO. 39. NO. 40. NO. 41. NO. 42. NO. 43. NO. 44. NO. 45. NO. 46. NO. 47. NO. 48. NO. 49. NO. 50. NO. 51. NO. 52. NO. 53. NO. 54. NO. 55. NO. 56. NO. 57. NO. 58. NO. 59. NO. 60. NO. 61. NO. 62. NO. 63. NO. 64. NO. 65. NO. 66. NO. 67. NO. 68. NO. 69. NO. 70. NO. 71. NO. 72. NO. 73. NO. 74. NO. 75. NO. 76. NO. 77. NO. 78. NO. 79. NO. 80. NO. 81. NO. 82. NO. 83. NO. 84. NO. 85. NO. 86. NO. 87. NO. 88. NO. 89. NO. 90. NO. 91. NO. 92. NO. 93. NO. 94. NO. 95. NO. 96. NO. 97. NO. 98. NO. 99. NO. 100.

CORRESPONDENCE.

To make fresh orangeade

... Add few drops of water to each tin of KIA-ORA ORANGE SQUASH

then you will have fresh Orangeade made without any trouble...

Fresh Orangeade made with KIA-ORA has its well-earned place as a regular medicinal drink...

KIA-ORA Lemon Squash is made from the fresh juice of the finest lemons...

... KIA-ORA LTD., BUCKINGHAM, LONDON, E.C.1.

Advertisement for 'L' BRAND LIME LIMITED featuring an illustration of a lime and text describing their products and services.

Paty-Building-Techniques-Industrial-Agricultural

'L' BRAND LIME LIMITED

Ph. 'Lancette' Phone 468, Box 412, Chamber of Commerce Bldg.

FAVOUR

If concrete is made of cheap cement you may get a result which looks alright at the start.

It is only later—perhaps a year—perhaps two—when the poor quality of the concrete begins to show—when cracks and flaws and perhaps even disintegration show up.

It behoves you therefore to make sure of your concrete by insisting on these well-known guaranteed brands of

British Portland Cement

Every single shipment of these is tested before despatch and a copy of the actual test supplied to the buyer—The Manufacturers' good record of 100 years is behind every sack and drum.

"ANCOR" "PRESS" "WRITES" "HAND" "MALIBRE BROS" "LOTHBROS" "UNION JACK" "GILROY" "BURHAM" "INVERCA" "MIRK BEAN" "WELLS" "RHOCEBROS."

For Free Literature regarding Concrete Work apply to the Manufacturers' Representatives

KETTLES-ROY Ltd., Box 100 Nairobi, Box 116 Mombasa, or Box 171 Dar es Salaam.

The editor does not accept responsibility for the views expressed by his correspondents...

THE WHEAT INDUSTRY.

To the Editor, "E.A. Standard." Sir—The inspiring character of the wheat industry in Kenya...

Until such time as our local market has reached a point where wheat, grain, or other crops...

WHEAT GROWERS.

Official. WHEAT GROWERS. May 31, 1930.

To the Editor, "E.A. Standard." Sir—Your leading article on the wheat industry in Kenya...

As a member of the E.A.P.A. I do not consider that the Association has done its duty...

It is the farmer at present getting the 18/- per bush for his wheat...

The 15/- and do better than at present, the general public would get the wheat at 18/-...

The difference between the cost of wheat and price of flour is far too great in Kenya...

WHEAT INDUSTRY.

Dear Sir, I do not consider a newspaper "legislative" but of much use...

ARTISMA.

To the Editor, "E.A. Standard." Sir—I agree with your comments on the wheat industry...

On my return to Nairobi I had a considerable number of letters from the wheat growers...

It is the farmer at present getting the 18/- per bush for his wheat...

PRACTICAL ADVANCE IN EAST AFRICA.

Situation Reviewed by Mr. N. Chamberlain.

BROAD PRINCIPLES.

Joint Discussions by the Three Governors.

The Rt. Hon. Neville Chamberlain, Secretary of State for East Africa...

White Settlement.

Without entering into the details I will be glad to discuss the problem in East Africa...

ARTISMA.

To the Editor, "E.A. Standard." Sir—I agree with your comments on the wheat industry...

K Ostovsky.

Whatever may be in store for East Africa, it is evident that the situation is being re-examined...

It is the farmer at present getting the 18/- per bush for his wheat...

High Commission might be in the making of East Africa...

It is agreed everywhere that the native must be taken into account...

It is agreed everywhere that the native must be taken into account...

It is agreed everywhere that the native must be taken into account...

It is agreed everywhere that the native must be taken into account...

It is agreed everywhere that the native must be taken into account...

It is agreed everywhere that the native must be taken into account...

Advertisement for CRANFLEX CIGARETTES, featuring an illustration of a pack and text describing the product.

Advertisement for BARRIERS TO DISEASE, featuring an illustration of a person and text describing the product.

Advertisement for RED WATER GALL SICKNESS EAST COAST FEVER HEARTWATER, featuring an illustration of a person and text describing the product.

Advertisement for CONSISTENT DIPPING, featuring an illustration of a person and text describing the product.

Advertisement for COOPER & NEPHEWS, S.A.F. (PTY) LTD., featuring an illustration of a person and text describing the company.

Advertisement for EAST AFRICA AND JAPAN, featuring an illustration of a person and text describing the company.

Advertisement for THE JAPAN TIMES, featuring an illustration of a person and text describing the newspaper.

POSITION OF WORLD'S MAIZE MARKET

Review by South African Department.

Overproduction in Danubian States

The following report dealing with the situation of the maize market...

International Trade in Maize.

The maize production of the world during the last year...

It is, therefore, not difficult to understand the circumstances which led to the sharp decline...

The Danubian States have raised 14,000,000 bags of maize...

It is also understood that there will be a little delay as possible...

It is certainly a most trying time...

It is a pity that the present maize and weather does not make it possible to export...

FARMING DIFFICULTIES IN KENYA

Advers Weather and Low Markets.

It is usual always to remember that Kenya is a semi-arid country...

It is usual always to remember that Kenya is a semi-arid country...

The Weather.

SAFARI REPORTS FOR THE WEEK.

Table with columns: District, 19th June, 20th June, 21st June. Lists various districts and their weather conditions.

Trying Time for Farmers.

It is a pity that the present maize and weather does not make it possible to export...

RUGBY FOOTBALL

Edford Club's Second Defeat.

Following a very hard game on Saturday, Edford played Polokwane...

The game started strongly, and Polokwane were the first to score...

The Weather.

SAFARI REPORTS FOR THE WEEK.

Table with columns: District, 19th June, 20th June, 21st June. Lists various districts and their weather conditions.

Trying Time for Farmers.

It is a pity that the present maize and weather does not make it possible to export...

NARONI MUNICIPAL CONTESTS.

Meeting Committee to be Opposed.

The forthcoming Municipal elections are likely to attract a very keen interest...

The writer, placed in Kenya this week was Koro and Lambo, Turbo and Kericho with M.P. Beyer...

Keys Pa.

THE NARONI TOWN COUNCIL.

The Cavalry and Crossbow Corps will be for competition by teams...

The Second Half.

Edford retained play, and an exciting long kick from which Edford touched...

RAIN IN BRITAIN AND NEARBY COUNTRIES.

RAIN IN BRITAIN AND NEARBY COUNTRIES.

Bill the rain holds off. The rain has been very much above its average...

Mr. G. H. Newman is recasting the sea. A variety is caused in the Parliaments...

Keys Pa.

THE NARONI TOWN COUNCIL.

The Cavalry and Crossbow Corps will be for competition by teams...

The Second Half.

Edford retained play, and an exciting long kick from which Edford touched...

RAIN IN BRITAIN AND NEARBY COUNTRIES.

RAIN IN BRITAIN AND NEARBY COUNTRIES.

Bill the rain holds off. The rain has been very much above its average...

Mr. G. H. Newman is recasting the sea. A variety is caused in the Parliaments...

Keys Pa.

THE NARONI TOWN COUNCIL.

The Cavalry and Crossbow Corps will be for competition by teams...

The Second Half.

Edford retained play, and an exciting long kick from which Edford touched...

RAIN IN BRITAIN AND NEARBY COUNTRIES.

RAIN IN BRITAIN AND NEARBY COUNTRIES.

Bill the rain holds off. The rain has been very much above its average...

Mr. G. H. Newman is recasting the sea. A variety is caused in the Parliaments...

Keys Pa.

THE NARONI TOWN COUNCIL.

The Cavalry and Crossbow Corps will be for competition by teams...

The Second Half.

Edford retained play, and an exciting long kick from which Edford touched...

RAIN IN BRITAIN AND NEARBY COUNTRIES.

RAIN IN BRITAIN AND NEARBY COUNTRIES.

Bill the rain holds off. The rain has been very much above its average...

Mr. G. H. Newman is recasting the sea. A variety is caused in the Parliaments...

Keys Pa.

THE NARONI TOWN COUNCIL.

The Cavalry and Crossbow Corps will be for competition by teams...

The Second Half.

Edford retained play, and an exciting long kick from which Edford touched...

RAIN IN BRITAIN AND NEARBY COUNTRIES.

RAIN IN BRITAIN AND NEARBY COUNTRIES.

Bill the rain holds off. The rain has been very much above its average...

Mr. G. H. Newman is recasting the sea. A variety is caused in the Parliaments...

Keys Pa.

THE NARONI TOWN COUNCIL.

The Cavalry and Crossbow Corps will be for competition by teams...

The Second Half.

Edford retained play, and an exciting long kick from which Edford touched...

Table of stock prices: Kenya 127, Victoria 117, Nairobi 117, etc.

New Coll Record.

MR. CHAMBERLAIN'S NEW RECORD.

COFF'S BLOOMSTOCK.

100 Yearlings to be offered at 6440.

THE ROYAL GOLF SOCIETY.

Irish Irish Willing to meet throughout the world.

COLOMBIENS RECORDED.

Irish Bloodstock Agency Ltd.

IRISH BLOODSTOCK AGENCY.

7, Anglesea Street, Dublin.

THE RETURN.

The following 20 competitors published:

COLOMBIENS RECORDED.

Irish Bloodstock Agency Ltd.

IRISH BLOODSTOCK AGENCY.

7, Anglesea Street, Dublin.

THE RETURN.

The following 20 competitors published:

The international maize market is, therefore, mainly confined to the United States...

It is a pity that the present maize and weather does not make it possible to export...

Edford retained play, and an exciting long kick from which Edford touched...

Edford retained play, and an exciting long kick from which Edford touched...

Edford retained play, and an exciting long kick from which Edford touched...

The international maize market is, therefore, mainly confined to the United States...

POSITION OF WORLD'S MAIZE MARKET. Review by South African Department.

CAUSE OF DECLINE IN PRICES.

Overproduction in Danubian States.

The following report dealing with the situation of the maize market in the Danubian States...

The following report dealing with the situation of the maize market in the Danubian States...

The following report dealing with the situation of the maize market in the Danubian States...

The following report dealing with the situation of the maize market in the Danubian States...

The following report dealing with the situation of the maize market in the Danubian States...

The following report dealing with the situation of the maize market in the Danubian States...

The following report dealing with the situation of the maize market in the Danubian States...

The following report dealing with the situation of the maize market in the Danubian States...

FARMING DIFFICULTIES IN KENYA. Adverse Weather.

It is stated that the weather in Kenya has been very adverse...

It is stated that the weather in Kenya has been very adverse...

It is stated that the weather in Kenya has been very adverse...

It is stated that the weather in Kenya has been very adverse...

It is stated that the weather in Kenya has been very adverse...

It is stated that the weather in Kenya has been very adverse...

It is stated that the weather in Kenya has been very adverse...

It is stated that the weather in Kenya has been very adverse...

It is stated that the weather in Kenya has been very adverse...

DIGBY FOOTBALL. District's Second Defeat.

The District football team has suffered a second defeat...

The District football team has suffered a second defeat...

The District football team has suffered a second defeat...

The District football team has suffered a second defeat...

The District football team has suffered a second defeat...

The District football team has suffered a second defeat...

The District football team has suffered a second defeat...

The District football team has suffered a second defeat...

The District football team has suffered a second defeat...

NAIROBI MUNICIPAL CONTESTS. Retiring Councilors to be Opposed.

The forthcoming Municipal Council contests in Nairobi...

The forthcoming Municipal Council contests in Nairobi...

The forthcoming Municipal Council contests in Nairobi...

The forthcoming Municipal Council contests in Nairobi...

The forthcoming Municipal Council contests in Nairobi...

The forthcoming Municipal Council contests in Nairobi...

The forthcoming Municipal Council contests in Nairobi...

The forthcoming Municipal Council contests in Nairobi...

The forthcoming Municipal Council contests in Nairobi...

Result of Qualifying Round. EX-CHAMPION'S BIG REVEAL.

The results of the qualifying round for the Open Championship...

The results of the qualifying round for the Open Championship...

The results of the qualifying round for the Open Championship...

The results of the qualifying round for the Open Championship...

The results of the qualifying round for the Open Championship...

The results of the qualifying round for the Open Championship...

The results of the qualifying round for the Open Championship...

The results of the qualifying round for the Open Championship...

The results of the qualifying round for the Open Championship...

The Weather. RAINFALL RETURNS FOR THE WEEK.

Table showing rainfall data for various districts in Kenya.

Table showing rainfall data for various districts in Kenya.

Table showing rainfall data for various districts in Kenya.

Table showing rainfall data for various districts in Kenya.

Table showing rainfall data for various districts in Kenya.

Table showing rainfall data for various districts in Kenya.

The Weather. THE CAVALRY AND COUNTRYSIDE POLICE.

The Cavalry and Countryside Police are being reorganized...

The Cavalry and Countryside Police are being reorganized...

The Cavalry and Countryside Police are being reorganized...

The Cavalry and Countryside Police are being reorganized...

The Cavalry and Countryside Police are being reorganized...

The Cavalry and Countryside Police are being reorganized...

THE NAIROBI JURY TOURNAMENT. The Cavalry and Countryside Police.

The Nairobian Jury Tournament is being held in Nairobi...

The Nairobian Jury Tournament is being held in Nairobi...

The Nairobian Jury Tournament is being held in Nairobi...

The Nairobian Jury Tournament is being held in Nairobi...

The Nairobian Jury Tournament is being held in Nairobi...

The Nairobian Jury Tournament is being held in Nairobi...

THE NAIROBI JURY TOURNAMENT. The Cavalry and Countryside Police.

The Nairobian Jury Tournament is being held in Nairobi...

The Nairobian Jury Tournament is being held in Nairobi...

The Nairobian Jury Tournament is being held in Nairobi...

The Nairobian Jury Tournament is being held in Nairobi...

The Nairobian Jury Tournament is being held in Nairobi...

The Nairobian Jury Tournament is being held in Nairobi...

Advertisements for 'The Open Golf Championship' and 'The Nairobian Jury Tournament'.

THE RAILWAY COUNCIL. Representation of Commerce.

The Executive of the Association of East African Chambers of Commerce in a recent meeting... The following letter has been received from the Hon. Mr. J. H. Clarke, Member, with Mr. T. Wood as alternate...

BOBBE CUP. Flight Across the Sahara. A Nairobi Airman's Misfortunes.

The return Bobbe Cup race between the Africa Governor and the Hon. Mr. H. B. Leath... The flight was made on the 27th inst. and was a hard game, considerable interest being taken in the matter...

Flight Across the Sahara. A Nairobi Airman's Misfortunes.

The return Bobbe Cup race between the Africa Governor and the Hon. Mr. H. B. Leath... The flight was made on the 27th inst. and was a hard game, considerable interest being taken in the matter...

Count of Living. Church Notices. ALL BAIRES' CALENDAR. MOUNT KENYA CRAWLERS.

Reports issued by the Statistical Department on the abundance of the various birds... Church Notices: 7.30 a.m. Holy Communion. 9.0 a.m. Children's Service...

Count of Living. Church Notices. ALL BAIRES' CALENDAR. MOUNT KENYA CRAWLERS.

Reports issued by the Statistical Department on the abundance of the various birds... Church Notices: 7.30 a.m. Holy Communion. 9.0 a.m. Children's Service...

THE TOTALISATOR IN BRITAIN. Attract More People to Races.

By R. MILLER. Rugby, June 14. Since January 1, 1929, 100,000 people have been attracted to the totalisator... The totalisator has been credited with the credit of having attracted more people to races than has been the case in any previous year...

TOPICS OF THE TURF. Advantages of the Totalisator.

(AUGUS). There are two salient advantages of the totalisator... The first is the prevention of the "book" being filled up with bets... The second is the adoption of a "totalisator" system...

AFRICAN LANGUAGES. Socio-linguistic Study in Tanganyika.

By H. H. HALL. The study of African languages and the socio-linguistic study in Tanganyika... The study of African languages is a branch of the study of the human mind...

Keya Wireless. PROGRAMME FOR NEXT WEEK.

The following are the B.C. programmes for next week: SUNDAY, JUNE 9. 6.30 Service from Cathedral Church of St. Paul...

Representation of Commerce. Commercial Defeat.

The return Bobbe Cup race between the Africa Governor and the Hon. Mr. H. B. Leath... The flight was made on the 27th inst. and was a hard game, considerable interest being taken in the matter...

Representation of Commerce. Commercial Defeat.

The return Bobbe Cup race between the Africa Governor and the Hon. Mr. H. B. Leath... The flight was made on the 27th inst. and was a hard game, considerable interest being taken in the matter...

Representation of Commerce. Commercial Defeat.

The return Bobbe Cup race between the Africa Governor and the Hon. Mr. H. B. Leath... The flight was made on the 27th inst. and was a hard game, considerable interest being taken in the matter...

Representation of Commerce. Commercial Defeat.

The return Bobbe Cup race between the Africa Governor and the Hon. Mr. H. B. Leath... The flight was made on the 27th inst. and was a hard game, considerable interest being taken in the matter...

Representation of Commerce. Commercial Defeat.

The return Bobbe Cup race between the Africa Governor and the Hon. Mr. H. B. Leath... The flight was made on the 27th inst. and was a hard game, considerable interest being taken in the matter...

Representation of Commerce. Commercial Defeat.

The return Bobbe Cup race between the Africa Governor and the Hon. Mr. H. B. Leath... The flight was made on the 27th inst. and was a hard game, considerable interest being taken in the matter...

Representation of Commerce. Commercial Defeat.

The return Bobbe Cup race between the Africa Governor and the Hon. Mr. H. B. Leath... The flight was made on the 27th inst. and was a hard game, considerable interest being taken in the matter...

Representation of Commerce. Commercial Defeat.

The return Bobbe Cup race between the Africa Governor and the Hon. Mr. H. B. Leath... The flight was made on the 27th inst. and was a hard game, considerable interest being taken in the matter...

Representation of Commerce. Commercial Defeat.

The return Bobbe Cup race between the Africa Governor and the Hon. Mr. H. B. Leath... The flight was made on the 27th inst. and was a hard game, considerable interest being taken in the matter...

Representation of Commerce. Commercial Defeat.

The return Bobbe Cup race between the Africa Governor and the Hon. Mr. H. B. Leath... The flight was made on the 27th inst. and was a hard game, considerable interest being taken in the matter...

Representation of Commerce. Commercial Defeat.

The return Bobbe Cup race between the Africa Governor and the Hon. Mr. H. B. Leath... The flight was made on the 27th inst. and was a hard game, considerable interest being taken in the matter...

Representation of Commerce. Commercial Defeat.

The return Bobbe Cup race between the Africa Governor and the Hon. Mr. H. B. Leath... The flight was made on the 27th inst. and was a hard game, considerable interest being taken in the matter...

Representation of Commerce. Commercial Defeat.

The return Bobbe Cup race between the Africa Governor and the Hon. Mr. H. B. Leath... The flight was made on the 27th inst. and was a hard game, considerable interest being taken in the matter...

Representation of Commerce. Commercial Defeat.

The return Bobbe Cup race between the Africa Governor and the Hon. Mr. H. B. Leath... The flight was made on the 27th inst. and was a hard game, considerable interest being taken in the matter...

Representation of Commerce. Commercial Defeat.

The return Bobbe Cup race between the Africa Governor and the Hon. Mr. H. B. Leath... The flight was made on the 27th inst. and was a hard game, considerable interest being taken in the matter...

Representation of Commerce. Commercial Defeat.

The return Bobbe Cup race between the Africa Governor and the Hon. Mr. H. B. Leath... The flight was made on the 27th inst. and was a hard game, considerable interest being taken in the matter...

Representation of Commerce. Commercial Defeat.

The return Bobbe Cup race between the Africa Governor and the Hon. Mr. H. B. Leath... The flight was made on the 27th inst. and was a hard game, considerable interest being taken in the matter...

Representation of Commerce. Commercial Defeat.

The return Bobbe Cup race between the Africa Governor and the Hon. Mr. H. B. Leath... The flight was made on the 27th inst. and was a hard game, considerable interest being taken in the matter...

Representation of Commerce. Commercial Defeat.

The return Bobbe Cup race between the Africa Governor and the Hon. Mr. H. B. Leath... The flight was made on the 27th inst. and was a hard game, considerable interest being taken in the matter...

Representation of Commerce. Commercial Defeat.

The return Bobbe Cup race between the Africa Governor and the Hon. Mr. H. B. Leath... The flight was made on the 27th inst. and was a hard game, considerable interest being taken in the matter...

Representation of Commerce. Commercial Defeat.

The return Bobbe Cup race between the Africa Governor and the Hon. Mr. H. B. Leath... The flight was made on the 27th inst. and was a hard game, considerable interest being taken in the matter...

Representation of Commerce. Commercial Defeat.

The return Bobbe Cup race between the Africa Governor and the Hon. Mr. H. B. Leath... The flight was made on the 27th inst. and was a hard game, considerable interest being taken in the matter...

Representation of Commerce. Commercial Defeat.

The return Bobbe Cup race between the Africa Governor and the Hon. Mr. H. B. Leath... The flight was made on the 27th inst. and was a hard game, considerable interest being taken in the matter...

Representation of Commerce. Commercial Defeat.

The return Bobbe Cup race between the Africa Governor and the Hon. Mr. H. B. Leath... The flight was made on the 27th inst. and was a hard game, considerable interest being taken in the matter...

Representation of Commerce. Commercial Defeat.

The return Bobbe Cup race between the Africa Governor and the Hon. Mr. H. B. Leath... The flight was made on the 27th inst. and was a hard game, considerable interest being taken in the matter...

Representation of Commerce. Commercial Defeat.

The return Bobbe Cup race between the Africa Governor and the Hon. Mr. H. B. Leath... The flight was made on the 27th inst. and was a hard game, considerable interest being taken in the matter...

Representation of Commerce. Commercial Defeat.

The return Bobbe Cup race between the Africa Governor and the Hon. Mr. H. B. Leath... The flight was made on the 27th inst. and was a hard game, considerable interest being taken in the matter...

Representation of Commerce. Commercial Defeat.

The return Bobbe Cup race between the Africa Governor and the Hon. Mr. H. B. Leath... The flight was made on the 27th inst. and was a hard game, considerable interest being taken in the matter...

Representation of Commerce. Commercial Defeat.

The return Bobbe Cup race between the Africa Governor and the Hon. Mr. H. B. Leath... The flight was made on the 27th inst. and was a hard game, considerable interest being taken in the matter...

Representation of Commerce. Commercial Defeat.

The return Bobbe Cup race between the Africa Governor and the Hon. Mr. H. B. Leath... The flight was made on the 27th inst. and was a hard game, considerable interest being taken in the matter...

Representation of Commerce. Commercial Defeat.

The return Bobbe Cup race between the Africa Governor and the Hon. Mr. H. B. Leath... The flight was made on the 27th inst. and was a hard game, considerable interest being taken in the matter...

Representation of Commerce. Commercial Defeat.

The return Bobbe Cup race between the Africa Governor and the Hon. Mr. H. B. Leath... The flight was made on the 27th inst. and was a hard game, considerable interest being taken in the matter...

Representation of Commerce. Commercial Defeat.

The return Bobbe Cup race between the Africa Governor and the Hon. Mr. H. B. Leath... The flight was made on the 27th inst. and was a hard game, considerable interest being taken in the matter...

Representation of Commerce. Commercial Defeat.

The return Bobbe Cup race between the Africa Governor and the Hon. Mr. H. B. Leath... The flight was made on the 27th inst. and was a hard game, considerable interest being taken in the matter...


Representation of Commerce. Commercial Defeat.

The return Bobbe Cup race between the Africa Governor and the Hon. Mr. H. B. Leath... The flight was made on the 27th inst. and was a hard game, considerable interest being taken in the matter...


Representation of Commerce. Commercial Defeat.

The return Bobbe Cup race between the Africa Governor and the Hon. Mr. H. B. Leath... The flight was made on the 27th inst. and was a hard game, considerable interest being taken in the matter...

ECONOMISE BY BUYING WHITEAWAY'S ENAMELWARE



White Enamel Pail.
Good strong quality. Shod body, zinc handle, and wooden grip. 12" deep. Without cover. Shs. 5/-



Dangleware Toilet Sets.
Five piece enamel Toilet Sets, consisting Basin, Jug, Chamber Soap Dish, and Toilet Stand. Light Blue or Light Brown.
Price 11/50 set.



White Enamel Barks.
Strong superior quality. Made with zinc and 2" wide handle. Length handle to handle:
27" 12/50, 30" 16/50, 31" 17/50, 33" 19/50



Shallow Bowls. English White Enamel, 6" 1/2, 7 1/4, 7 1/2, 8 1/4, 9 1/4, 10 1/4, 11 1/4, 12 1/4. Price 1/50 each.



Enamelled Cops and Saucers. In Red and Blue. Price 1/50



Meat Safes. Enamelled white iron with flange top. 24" x 18" x 12". Collapsible for easy transport.
Small Size Shs. 25/-
Medium size Shs. 35/-
Large size Shs. 45/-
Extra Large size Shs. 55/-



Deep Bowls. White Enamel, 8" 1/2, 9 1/4, 10 1/4, 11 1/4, 12 1/4, 13 1/4, 14 1/4, 15 1/4, 16 1/4, 17 1/4, 18 1/4, 19 1/4, 20 1/4, 21 1/4, 22 1/4, 23 1/4, 24 1/4, 25 1/4, 26 1/4, 27 1/4, 28 1/4, 29 1/4, 30 1/4, 31 1/4, 32 1/4, 33 1/4, 34 1/4, 35 1/4, 36 1/4, 37 1/4, 38 1/4, 39 1/4, 40 1/4, 41 1/4, 42 1/4, 43 1/4, 44 1/4, 45 1/4, 46 1/4, 47 1/4, 48 1/4, 49 1/4, 50 1/4. Price 2/75 each.



Enamelled Chambers. Best quality white enamel. 12" x 8" x 4". Children's Chambers, 4 1/2" each.



Tiffin Carriers. As shown, with cover in Red and Blue. Shs. 3/6, 4/0, 4/6, 5/0, 5/6, 6/0, 6/6, 7/0, 7/6, 8/0, 8/6, 9/0, 9/6, 10/0, 10/6, 11/0, 11/6, 12/0, 12/6, 13/0, 13/6, 14/0, 14/6, 15/0, 15/6, 16/0, 16/6, 17/0, 17/6, 18/0, 18/6, 19/0, 19/6, 20/0, 20/6, 21/0, 21/6, 22/0, 22/6, 23/0, 23/6, 24/0, 24/6, 25/0, 25/6, 26/0, 26/6, 27/0, 27/6, 28/0, 28/6, 29/0, 29/6, 30/0, 30/6, 31/0, 31/6, 32/0, 32/6, 33/0, 33/6, 34/0, 34/6, 35/0, 35/6, 36/0, 36/6, 37/0, 37/6, 38/0, 38/6, 39/0, 39/6, 40/0, 40/6, 41/0, 41/6, 42/0, 42/6, 43/0, 43/6, 44/0, 44/6, 45/0, 45/6, 46/0, 46/6, 47/0, 47/6, 48/0, 48/6, 49/0, 49/6, 50/0, 50/6. Price 1/50 each.



Commando Pans. In best white enamel, two sizes. Price, 30 s. 8.



Enamelled Plates. In match above. Diameter 8 in. Price, 30 s. 8.



MOORLAND COLLAPSIBLE ENAMELLED OUTFIT



Enamelled Mugs. Good strong quality. 10" x 4" x 3". Price 1/50 each.



Bread Bins. White Enamel. Shs. 16" x 20" 14/50 each. Shs. 18" x 22" 18/50 each. Shs. 20" x 24" 20/50 each.



Enamelled Pans. As shown with 24" x 18" x 12" enamel. Price 30 s. 8.



Toilet Set and Stand. Best quality white enamel. Toilet Set in Light Blue or Light Green color. Price complete 24/50



Baking Spoons. Good quality. English White Enamel. Small size. Kts. 75. Medium size. 1/2. Large size. 1/30 each.



White Enamel Meat Dishes. Length 14" 4/50, 16" 5/50, 18" 6/50.



Household Enamelled Jugs. Made in best quality. Shs. 12" x 8" 2/50, 14" x 10" 2/50, 16" x 12" 2/50, 18" x 14" 2/50, 20" x 16" 2/50. Price 4/50 each.



Soup Plates. In best white enamel with blue rim. Price 1/50 each.



Jug. White Enamel. Shs. 12" x 8" 2/50, 14" x 10" 2/50, 16" x 12" 2/50, 18" x 14" 2/50, 20" x 16" 2/50. Price 4/50 each.



WHITE ENAMEL MEAT DISHES. Length 14 in. Shs. 4/50, 16 in. 5/50, 18 in. 6/50, 20 in. 7/50, 22 in. 8/50, 24 in. 9/50.



Enamelled Castles. Strong quality. Similar to above. Price 1/50 each.



Jelly Moulds. Coloured enamel. Not used. White enamel. Small size. 2/50. Large size. 3/50.



Slab Tins. Enamelled white triangular shape. Price 2/25



White Enamel Roasters. As shown with top chip. Good heavy gauge. Shs. 12" x 10" 3/50, 14" x 12" 4/50, 16" x 14" 5/50, 18" x 16" 6/50, 20" x 18" 7/50, 22" x 20" 8/50, 24" x 22" 9/50.



HOT WATER CANS. Enamelled. Brass imitation. 24" x 18" x 12". Price. Shs. 9/50



White Enamel Pie Dishes. Extra strong. 10" x 8" x 1 1/2". Length 9 1/2, 11, 12 1/2, 14, 15 1/2, 17, 18 1/2. Price 1/50 each.



Enamelled Canteens. Exact to design. Price 3/25



Enamelled Soap Dishes. White enamel. Plain with flange. Shs. 1/50 each. To hang on wall. Shs. 1/75 each. Large size 2/25 each.



Black Enamelled Trays. With flange. Will not tarnish. A tray suitable for every purpose. Size 18" x 14" 1/50, 22" x 16" 1/50, 26" x 20" 1/50, 30" x 24" 1/50.



Watering Can. With the new long spout. japanned Green. 3 1/2, 4, 5, 6, 7, 8, 9, 10, 11, 12, 13, 14, 15, 16, 17, 18, 19, 20, 21, 22, 23, 24, 25, 26, 27, 28, 29, 30, 31, 32, 33, 34, 35, 36, 37, 38, 39, 40, 41, 42, 43, 44, 45, 46, 47, 48, 49, 50. Price 2/50 each.



Enamelled Pails. Good strong quality fitted with 12" handle and wooden grip. 22" deep. Price with cover 8/50 each.



Enamelled Canteens. Exact to design. Price 3/25

WHITEAWAY LAIDLAW & Co., Ltd. NAIROBI.

WEEKLY EDITION

GUARANTEED THE LARGEST CIRCULATION OF ANY NEWSPAPER IN KENYA, UGANDA, TANGANYIKA AND ZANZIBAR.

:: :: £1,000 FREE INSURANCE. :: ::
WITH THE AFRICAN GUARANTEE AND ENDORSEMENT CO. Ltd.—(See Advertisement on page 5).

KENYA'S NEWSPAPER, THE EAST

African Standard

UGANDA ARGUS THE LEADER.

The Great Established Insurance Published in Kenya and Uganda.
The Official Organ of the Royal G. A. Automobile Association, (Incorporated Society of Kenya, Ltd.)
Special Ad. Total Revenue Shs. 100,000/-

No. 2173 REGISTERED AT THE GENERAL POST OFFICE AS A NEWSPAPER. NAIROBI, SATURDAY, JUNE 21, 1930

Price 50 Cents.

A shipment is about to arrive—

DEGELATINISED BONE FLOUR

(Double Sterilized for Feeding) ANALYSING

1% NITROGEN — 30% PHOSPHATES.

BONE MEAL

(Sterilized for Feeding) ANALYSING

4% NITROGEN — 28% PHOSPHATES.

Order now and obtain the advantage of the ex-ship price which is Shgs. 10/- per ton below the ex-store price.

GIBSON & Co. Ltd.

MOMBASA. NAIROBI. KIDDEBT. DAR ES SALAAM.

UNION-CASTLE LINE

HOMEWARDS via EASTERN or WESTERN ROUTE. VIA SUEZ CANAL. VIA SOUTH AFRICA.

Leave England. 1930	Steamer.	From Mombasa. 1930	Arrive England. 1930	Leave Mombasa. 1930	Steamer.	From Mombasa. 1930	Arrive England. 1930
26th May	"LANDEVORY CASTLE"	12th July	6th August	16th July	"BRATTON CLAYTON"	22nd July	26th Sept.
31st July	"LANSTEPHAN CASTLE"	6th Sept.	1st October	17th July	"LANEVALE CASTLE"	16th August	21st Sept.
16th Sept.	"LANDEVORY CASTLE"	1st Nov.	26th Nov.	10th Sept.	"LANGIBBY CASTLE"	11th Sept.	15th Oct.
13th Nov.	"LANSTEPHAN CASTLE"	27th Dec.	21st Jan.	13th Sept.	"GRANTLEY CASTLE"	26th Oct.	21st Nov.
				6th Nov.	"LANDEVORY CASTLE"	29th Oct.	14th Dec.

FARES HOME FROM 2nd FIRST CLASS AND 2nd THIRD CLASS
Above mileage not subject to alteration or discontinuance, without notice.
EU-COUNTRY CURRENCY CANNOT BE ACCEPTED UNLESS ENDORSED BY LOCAL BANK.

PASSENGER AGENTS—
B. E. CORPORATION, Ltd., Nairobi, Kenya, etc.
B. E. CORPORATION, Ltd., Nairobi, Kenya, etc.
B. E. CORPORATION, Ltd., Nairobi, Kenya, etc.

The Union-Castle Mail Steamship Co., Ltd.
(Incorporated in England)