

MAKES
NAIROBI
WEEK
An Unprecedented
Success
ALWAYS ASK FOR
"Muskier"
BRAND
LAGER
THE DRINK OF
THE COLONY

GUARANTEED THE LARGEST CIRCULATION OF ANY NEWSPAPER
IN KENYA, UGANDA, TANGANYIKA AND ZANZIBAR.

DAILY EDITION.

14 PAGES

The East African Standard

UGANDA ARGUS THE LEADER.

THE OLDEST PUBLISHED NEWSPAPER PUBLISHED IN KENYA AND UGANDA.

NAIROBI, TUESDAY, JANUARY 6, 1953.

The LOUNGE
FOR
Morning
AND
Afternoon
TEAS
OPENS ON
SUNDAYS
TO
Non-Residents
The NEW STANLEY HOTEL

PRICE, 30 CENTS.

VISIT THE SHOW TO-DAY!

HIGH STANDARD SET IN ALL SECTIONS.

New Features in a Remarkable Exhibition.

ALLURING SETTING.

Striking Reply To Those of Little Faith.

Opening day of the third East African Agricultural Show which is being held in Nairobi this week every promise that the event will be an outstanding success in the history of such exhibitions.

The difficult conditions through which the industry has been passing, the unanimous opinion that the quality of the produce in nearly every section is higher than it has been for years.

The show ground itself makes an exceedingly attractive setting and nothing pleasanter could be imagined in the present less weather conditions than the magnificent atmosphere of the Kabete district enhanced by the great interest which the show creates.

Among several new features of the show itself may be mentioned an important competition for a trophy called the Farmers' Cup. This competition makes a definite contribution to progress towards mixed farming in Kenya.

It is generally recognized that the importance of the show occupied this year by native agriculture. The place is the culminating point in the series of exhibitions which have been held in native districts during the past two years and the evidence of progress offered by the quality of the produce is striking.

It is felt that to require to make the show a complete success is full support from the general public. There is no doubt that all these agricultural shows mean a great deal to the colony and at a time when there is a general exaggeration of the country's difficulties the spirit of enthusiasm and faith displayed by this opportunity to present to producers and the commercial community should receive full recognition.

OUTSTANDING FEATURES.

These people who imagined that the present conditions of depression in the agricultural industry in Kenya would prevent the success of the show which opened at Nairobi yesterday made a most surprising discovery when it is better shown than it has ever been before. The show was much more impressive than it was expected to be. The exhibition was much more than a display of agricultural produce. It was a display of the progress of the industry in Kenya. The show was much more than a display of agricultural produce. It was a display of the progress of the industry in Kenya. The show was much more than a display of agricultural produce. It was a display of the progress of the industry in Kenya.

general quality in almost all sections of the show is higher than that attained on the last occasion. The exhibitors claim the numbers of entries are so increasing but the selection has on the whole been made more carefully and, as a result, the quality is more indicative of the best that the country is producing today. A study should be given of the comments of the judges in each class for a fuller appreciation of the points of the show. It is to be hoped that a very good report will be made to the public of a critical report upon their work or of the importance of considering the influence of publication of such criticisms upon exhibitors. Nevertheless there has been a small but steady improvement in this direction and it should be well before long to have the same high value as the exhibitors of Kenya show will have the same high value as the exhibitors of other established countries.

A Few Records.
The Coffee Section set a new record with 217 entries and 170 exhibitors. Another noteworthy feature was the presence of the Kenya Agricultural Society. There has been a much greater interest in the show than in previous years. The number of entries in the various sections has increased and the quality of the produce is higher than in previous years. The show is a great success and a credit to the industry.

The Farmers' Cup.
This competition makes a definite contribution to progress towards mixed farming in Kenya. It is a trophy awarded to the exhibitor who produces the best specimen of a certain crop. The competition is a great success and a credit to the industry.

Department Exhibits.
The various Departments of Government set an impressive example in their exhibits. The exhibits were of a high standard and a credit to the industry.

District Exhibits.
The District Exhibits were of a high standard and a credit to the industry. The exhibits were of a high standard and a credit to the industry.

Animal Section.
The Animal Section was of a high standard and a credit to the industry. The exhibits were of a high standard and a credit to the industry.

PRINCESS ROYAL DEAD.

Passes Away in Her Sleep.
King's Sister.

OUTRAGE IN NIGERIA.

Natives Attack Missionaries.
Splendid Reports on Coffee, Tea and Wheat.

JUDGES' COMMENTS ON THE EXHIBITS.

Reports are given below on maize, wheat, coffee, tea, sheep, wool, pig and farm produce.

FARM PRODUCE MEASURE.

The best guide to the quality of the exhibits at the show is the reports by the judges upon each section. Although a complete list of these reports is not available the comments on many of the main produce have been obtained and are published below for the information of those who were present at the show.

MAIZE SECTION FAIR.

The coffee exhibits on high ground from the judges and reports were made on the 10th.

WHEAT SECTION.

The wool section was a happy one. The farm produce was satisfactory.

TEA SECTION.

The sheep section was a happy one. The farm produce was satisfactory.

CATTLE SECTION.

The pig section was a happy one. The farm produce was satisfactory.

GOAT SECTION.

The poultry section was a happy one. The farm produce was satisfactory.

PRINCESS ROYAL DEAD.

Passes Away in Her Sleep.
King's Sister.

OUTRAGE IN NIGERIA.

Natives Attack Missionaries.
Splendid Reports on Coffee, Tea and Wheat.

JUDGES' COMMENTS ON THE EXHIBITS.

Reports are given below on maize, wheat, coffee, tea, sheep, wool, pig and farm produce.

FARM PRODUCE MEASURE.

The best guide to the quality of the exhibits at the show is the reports by the judges upon each section. Although a complete list of these reports is not available the comments on many of the main produce have been obtained and are published below for the information of those who were present at the show.

MAIZE SECTION FAIR.

The coffee exhibits on high ground from the judges and reports were made on the 10th.

WHEAT SECTION.

The wool section was a happy one. The farm produce was satisfactory.

TEA SECTION.

The sheep section was a happy one. The farm produce was satisfactory.

CATTLE SECTION.

The pig section was a happy one. The farm produce was satisfactory.

GOAT SECTION.

The poultry section was a happy one. The farm produce was satisfactory.

PRINCESS ROYAL DEAD.

Passes Away in Her Sleep.
King's Sister.

OUTRAGE IN NIGERIA.

Natives Attack Missionaries.
Splendid Reports on Coffee, Tea and Wheat.

JUDGES' COMMENTS ON THE EXHIBITS.

Reports are given below on maize, wheat, coffee, tea, sheep, wool, pig and farm produce.

FARM PRODUCE MEASURE.

The best guide to the quality of the exhibits at the show is the reports by the judges upon each section. Although a complete list of these reports is not available the comments on many of the main produce have been obtained and are published below for the information of those who were present at the show.

MAIZE SECTION FAIR.

The coffee exhibits on high ground from the judges and reports were made on the 10th.

WHEAT SECTION.

The wool section was a happy one. The farm produce was satisfactory.

TEA SECTION.

The sheep section was a happy one. The farm produce was satisfactory.

CATTLE SECTION.

The pig section was a happy one. The farm produce was satisfactory.

GOAT SECTION.

The poultry section was a happy one. The farm produce was satisfactory.

STONES THROWN AT MOTOR CAR.

LAGOS, JANUARY 3.
Five European Wesleyan missionaries of whom three were women, while motor-cars travelling in the Ojoto area which was the scene of rioting in December last.

Lady Injured.

At the Home of Governor, Mr. G. D. Heald (Spitburg, Glasgow) said he knew of a farmer who had 10 daughters, all of whom were more than 6 ft. in height and who had become most efficient scientific farmers.

Embark Overseas.

When the news of the Princess Royal's death became known in Nairobi yesterday morning the balls of the Cathedral and the Highlands were tolled and the toll on the tower was rung at half-past ten.

Expres Disaster.

CAUSE OF ACCIDENT AT PRESENT UNKNOWN.
By (WIRELESS).
The crowded train express from Mombasa to London with disaster some miles north of Cardiff yesterday afternoon. Fourteen of these coaches were derailed. There are three people killed and injured. Four were blocked by the wreckage.

Rangoon Riot.

FIGHTING BETWEEN BURMESE AND CHINESE.
By (WIRELESS).
The people of Rangoon are engaged in fighting between Burmese and Chinese. The police twice fired at the rioters.

MONA ISLAND.

For some reason not yet explained six severe gales were blown on the beaches of the island during the last month. It is estimated that the entire population of the island, which is about 100, was blown away to sea.

ANIMAL SECTION.

The cattle section was small in numbers, but the quality was high. The exhibits were of a high standard and a credit to the industry.

PLANT SECTION.

The plant section was a happy one. The farm produce was satisfactory.

YOU CAN DRESS UP TO THE MINUTE FOR THE JANUARY McCall PATTERNS HAVE ARRIVED.

McCall Fashions

—That are easy and economical to make. And there are hundreds of McCall styles to select from—all bearing the Fashion stamp of usefulness—easy to make—because all McCall Patterns are printed.

Free Style News—McCall Quarterly

THE BEST VALUE IN KENYA TO-DAY

Ladies Silk Stockings, with Lace Collar, slipper head, silk to the Top, reinforced Toe, the shades are Beech and the New Mole.

Shs. 450 PER PAIR

Whiteaways NAIROBI.



Smoking without Tears

Have you seen the pot of the prisoner's... No, but I have noticed her smoking

ABDULLA IMPERIAL PREFERENCE

and using the empty tin for her

Dalgi Agents - DALGIET & COMPANY LIMITED.

MOMBASA NAIROBI ELDORET

10 SERRAVALLO

SAVE MONEY BY DEALING WITH

Jaja Trading Company, Thika

Who have just extended their premises... BEST PROVISIONS, WINES AND SPIRITS

ALL FARM REQUIREMENTS COMPETITIVE PRICES AND INTELLIGENT SERVICE

Receivers Loud Speakers

MARCONI

The Masterpieces of RADIO



KENNEL NOTES

Margaret Colyer

Mrs. Colyer, Oflag, to whom all correspondence in connection with "Kennel Notes" should be addressed, does not hold herself responsible for accuracy of statements...

I have news from Mrs. Curtwright of Nairobi of a splendid fight of Ridge-back lion dogs she won for sale. These young ones were four months old and ready for disposal...

Two-and-a-half feet and still in a good way. He is good in every respect of breeding and sound of limb. He has slight curves in the rear shoulder, evidently left over from his grand sire...

Members of Parliament are not allowed to form a club or society responsible for a Colonial Empire. It is a complete and perfect job...

WHY PAY RENT? Attractive Plots in the Suburbs of Nairobi may be purchased on the instalment plan. GOOD RED SOIL WATER and ELECTRIC LIGHT. Plots from 1/2 of an acre upwards can be obtained on payment of a Small Deposit.

THEO SCHOUTEN who is anxious that he PERSONALLY will be at his Nairobi branch from Dec. 18th. Clients can therefore be assured of his personal attention during the XMAS RUSH.

THEO SCHOUTEN Government Road, P.O. Box 284. SPECIAL NOTICE. Mr. Otto Wiese of Remond. We would now draw the attention of our Numerous Customers that for the present we have decided NOT TO REMOVE.

Good Equipment Makes

Good Farrier Better

McCormick - Deering Ball Bearing Cream Separators.



McCormick - Deering Posho Grinder AND Flour Mill.

Cream Separator experts say: "One of the most common causes for loss of butterfat in cream separators is skimming-bowl under-pressure caused by old-fashioned plain bearings that bind and drag and make the machine hard to turn."

The GYRO MILL—latest machine of this type recently imported by us and which has taken the European Market by storm. Perfectly clean Posho or Flour ensured on account of all grains being SIFTED by the mill after passing through this sifter and before bagging.

SEE OR EXHIBITS AT THE SHOW.

Further particulars can be obtained from our Dealers or apply at: INTERNATIONAL HARVESTER EXPORT COMPANY.

TRACTORS

PLOWS

MOTOR TRUCKS



DEALERS: YOUNGSHAW'S GARAGE, Nanyuki.

Phone 622, SIXTH AVENUE.

SEE LAWSON & Co., Ltd. Nakuru, Eldoret, Kitale.

E. B. WOOD, Nanyuki.

British India Steam Navigation Company, Limited

IONIAN-CASTLE LINE.

Table with columns for destination (LONDON AND WEST AFRICA), ship names, and dates.

FORWARD via SOUTH AFRICA.

Table with columns for destination (LONDON AND WEST AFRICA), ship names, and dates.

Passenger Agents: R.A. Corporation, Ltd., 10, Abchurch Lane, London, E.C. 4.

LONDON AND WEST AFRICA.

Table with columns for destination (LONDON AND WEST AFRICA), ship names, and dates.

FORWARD via SOUTH AFRICA.

Table with columns for destination (LONDON AND WEST AFRICA), ship names, and dates.

Passenger Agents: R.A. Corporation, Ltd., 10, Abchurch Lane, London, E.C. 4.

ROMBAI-DURBAN MAIL SERVICE.

Table with columns for destination (ROMBAI), ship names, and dates.

FORWARD via SOUTH AFRICA.

Table with columns for destination (ROMBAI), ship names, and dates.

Passenger Agents: R.A. Corporation, Ltd., 10, Abchurch Lane, London, E.C. 4.

COASTAL SERVICE.

Table with columns for destination (COASTAL SERVICE), ship names, and dates.

FORWARD via SOUTH AFRICA.

Table with columns for destination (COASTAL SERVICE), ship names, and dates.

Passenger Agents: R.A. Corporation, Ltd., 10, Abchurch Lane, London, E.C. 4.

Chivers' Custard Powder advertisement featuring an image of a custard cup and descriptive text.

MESSAGERIES MARITIMES (FRENCH MAIL SERVICES).

Table with columns for destination (MESSAGERIES MARITIMES), ship names, and dates.

CITRA LINE

Compagnie Italiana Transatlantica. THE BEST ROUTE TO ENGLAND.

Table with columns for destination (CITRA LINE), ship names, and dates.

DEUTSCHE OST-AFRIKA-LINIE (GERMAN AFRICAN SERVICE).

Table with columns for destination (DEUTSCHE OST-AFRIKA-LINIE), ship names, and dates.

Holland Afrika Lijn

PASSENGER FARES. TO MARSEILLE (A)-(B)...

Table with columns for destination (Holland Afrika Lijn), ship names, and dates.

TO LET.

Two left: Markham Estate, Double Bungalow, 2000 Sq. Yds.

FOR SALE: 2 acre plot, about 7 miles from town.

P. SOWET, F.O. Box 224, NAIROBI.

SUMMER EXCURSIONS TO SOUTH AFRICA.

Up-Country Cheques Cannot Be Accepted Unless Suitably Endorsed By Local Bank.

TWENTACHE OVERSEAS TRADING CO., LTD.

Table with columns for destination (TENTACHE OVERSEAS TRADING CO.), ship names, and dates.

SEE OUR WINDOW DISPLAY

MENS PULLOVERS and CARDIGANS with Sleeves and Sleeveless.

Best Values in Kenya. Prices From 10/50 to 27/50 each.

The Bradford Manufacturing Co., Limited.

B. M. C. HOUSE, Corner of Government Rd. and Fifth Avenue.

The Farmer's Slogan for 1931 "Use More Lime"

Lime Limited, Tel. 11, 12, 13, 14, 15, 16, 17, 18, 19, 20, 21, 22, 23, 24, 25, 26, 27, 28, 29, 30, 31, 32, 33, 34, 35, 36, 37, 38, 39, 40, 41, 42, 43, 44, 45, 46, 47, 48, 49, 50, 51, 52, 53, 54, 55, 56, 57, 58, 59, 60, 61, 62, 63, 64, 65, 66, 67, 68, 69, 70, 71, 72, 73, 74, 75, 76, 77, 78, 79, 80, 81, 82, 83, 84, 85, 86, 87, 88, 89, 90, 91, 92, 93, 94, 95, 96, 97, 98, 99, 100.

See Our Special Window Displays

Also at the Show. We are giving 10% for Cash.

Also Special Reductions OFF Oddments in Ladies Evening Shoes.

Eadies Footwear Ltd., P.O. Box 149, NAIROBI.

BRICKS

are universally recognized as the best building material over 3,000,000 Invicta Bricks

Invicta Bricks, have been used in Nairobi during the past 20 years.

Invicta Brick & Tile Works, P.O. Box 718, Tel. 622.

PIANOFORTE TUNING AND REPAIRING.

Ten years experience in Kenya Colony and five years with Messrs. Chappell and Co., London.

OVERSEAS MAILS.

Table with columns for destination (OVERSEAS MAILS), ship names, and dates.

ARRIVALS.

Table with columns for destination (ARRIVALS), ship names, and dates.

DEPARTURES.

Table with columns for destination (DEPARTURES), ship names, and dates.

The Factory now holds record stocks of highest quality from which to select precisely what individual buyers require.

Uplands Bacon

Stocked by all the leading Stores in Kenya, Uganda, Tanganyika and the Belgian Congo.

AMSTEL

SUPER STOUT

Try it for yourself.

Sole Distributors: Twentache Overseas Trading Co., Mombasa.

Be sure to see the Registered Brand NEVER SO CHEAP NEVER SO GOOD!

Twentache Overseas Trading Co., Mombasa.

THE
GIFT SHOP
ALWAYS
SOMETHING NEW
AND INTERESTING
TAWS, LIMITED.

JUDGES' COMMENTS ON THE EXHIBITS.

(Continued from page 3.)

and good potatoes as a class was very meagre.

Following are the reports made available yesterday.

HERK

The judges in their report on the sheep stated that taken on the whole the exhibit was far better than for any recent year. The conditions for the show were somewhat difficult as there was no ring or enclosure provided where the judges could see the sheep in the open and the exhibitors and their attendants were conspicuous by their absence.

In the Merino ram class the judges considered that there was nothing really outstanding. The winner had a good length staple with quality uniform. The Merino ewes were a great improvement on the last Nairobi show.

The Merino two-tooth ewes were creditable, while the winning pen of Merino wethers was anything but good.

In the class for any other pure bred ram, competition was keen, the winner being an exceptionally good quality Cheviot, while the second, a Dorset, was also of good quality, but shown in rather poor condition. In the ewe class there were a particularly nice stamp of Dorset, the Cheviot being second place.

In the slaughter wethers there was one pen which was outstanding as compared with others. In the truck ewe, the pen of Cheviots was a long way in front of others.

WOOL

In the wool section there were only two exhibits. Kenyon exhibits in the three-wool class, and a Major Bernard in the three-wool Romney. The judges in their report stated that in the three-wool Romney class the length of staple was good. In the three-wool class there was a very good exhibit for lamb's wool in both cases, however, the "pet" of the wool was gone. The judges added that it was a great pity that there were no Merino fleeces on show.

PIGS

In his report on the pig section, the judge, Mr. W. D. Jackson, states that the first prize winner in the Berkshire Rose class was looking in better condition than when shown last year and appeared to have grown out. His opponent was inclined to be shabby in the back. The Berkshire Rose winner was of nice quality showing greater length than her opponent.

Only second prize was awarded in the Large Black Rose class, the winner being a very good youngster which about the age of advantage at a later date. There were only one large Black Rose exhibitor, while of good quality was a little over the top and inclined to be heavy.

In view of the fact that exhibits in the pen of bacon pigs had to be ready for slaughter the class was disappointing. Due to the number of the pigs at the pen after the show, several well-known breeders did not exhibit. The pen was not quite confined to the ideal bacon type, but there were very nicely finished in contrast to the second prize pig of the same type but not black of flesh. The third pen consisted of the two best bacon pigs in the class, but the third pig let the pen down badly. With an even exhibit the pen would undoubtedly have been much higher up in the list.

MAIZE

The exhibit of maize was less numerous than any shown in Nairobi before, although the judges were not particularly enthusiastic regarding the quality of the maize shown.

In the notes of their report they stated that the exhibits were of such a form that it made the task of judging rather irksome.

There was only one exhibit of Natal White Homestead and this was not typical of the variety.

In the class for 20 breeding ears of any variety, and one exhibit maize, the Yellow Dent was the best shown and therefore first prize was given except in the case of the Yellow Dent. The same applied to the class for 100 ears, the class for 20 ears and the two bags of maize.

In the class of grain for export, all the bags were wet. To such an early in the year for maize to be dry.

Two Important Points

Continuing the judges added that there were two points about the exhibits which were noted, which they thought it important to indicate. The first was the question of disease, and the second the form which the exhibit should take.

In regard to disease, the judges said that there was no case of disease shown, and one exhibit maize, but the exhibitors had taken more care in this matter than on previous occasions, in that there were fewer cases than could be blamed entirely through the slip of the soil but there were far too many cases of disease entering through the soil.

(Continued on page 10)



Nightly at 8.45. **EMPIRE** Matinee Wed. and Sat.

TO-NIGHT AND NIGHTLY AT 8.45. MATINEE WEDNESDAY, 5 p.m.

"BULLDOG DRUMMOND"

THE ALL TALKING SCREEN ADAPTATION OF "SAPPER'S" FAMOUS ROMANCE... Brilliant in its story... absorbing in its drama... uproarious in its comedy... this fast-paced film sensation has held millions spell bound... and it will do the same in Nairobi.

RONALD COLMAN

THE EMPIRE'S NEXT BIG TALKIE FEATURE IS

"FLIGHT"

Nightly at 8.45 p.m. **THEATRE ROYAL** Nightly at 8.45 p.m.

TO-NIGHT AND WEDNESDAY. A Spectacular peep into the future

"HIGH TREASON"

Something entirely new in picture plays. A Romance of London in 1640. A BRITISH PRODUCTION FEATURING **BENITA HUME** **BASIL GILL** **Humberston Wright - Jameson Thomas.**

Prices as Usual Circle 3/- Stalls 2/-

TORR'S HOTEL

SHOW DANCE 8-2 TO-NIGHT

USUAL PRICES Please Book Your Tables Early

EXHIBITION

OF PICTURES BY **Royal Photographers**

will be held at **STANLEY HOUSE** Harding Street, on the **7th & 8th Jan., 1931.**

Open from 10 a.m. to 6 p.m. ADMISSION: TWO SHILLINGS. Proceeds in aid of Local Charities.

KENYA LIDO BLUE POSTS THEKA. **SWIMMING BATH** Water Hygienically Treated and Constant Overflow. Outdoor Miniature Golf Course Tennis Courts—Ping Pong—Attractive New Bandstand. **AMPLIFIER DEVICES WEEKLY.** Weekend Rates 12/- per day. Sunday Luncheon 2/50 **GOOD ROAD.**

HOTEL AVENUE SUNDOWNER

DANCE ON **January 6th.** between 5 & 7 Admission Free.

The Ideal Present. **Kenya Mountain** By E. A. T. DUTTON. With fifty-six full page illustrations reproduced in Colour. "A book well worth sending to your friends at home." PRICE: Shs. 2/- Postd. Shs. 2/50 **STANDARD STATIONERY STORES, NAIROBI.**

PICCADILLY RESTAURANT TREATS LUNCH DINNER. **FRENCH COOKING** The Best and Cheapest Lunch and Dinner served in Town. **SERVICE A LA CARTE** **LOBSTER A SPECIALITE—GRILLS—FRENCH PARTIES—PICNIC** **RUSSIAN NOBIL—MIXTO A L'ITALIAN.** **CATERING UNDERTAKEN FOR SMALL OR LARGE PARTIES ANYWHERE**

Miniature Golf IS ALL THE RACE 100 LADIES AND GENTS PLAYED OVER OUR COURSE ON NEW YEAR'S DAY. **Players Remarks Overboard:** "This is a Wonderful Course." **Can you beat Bogey? Come Along and Try** SHG. 1/- A ROUND.

ENTRIES NOW OPEN FOR Table Tennis Tournament. ENTRY FEE 2/-. **PRIZES FOR WINNERS** in Basement of **City Square Mansions**

MOTOR TOURS Ltd. Tourist Agents. Opposite the G.P.O. for **MOTORING TOURS** and **THE HILAR ROUTE TO EUROPE.** Luxurious Cars for Hire—European Drivers.



For the **EYE** the best is Just **GOOD** enough!

"THE LENS" Ltd. Box 911, Prince's House, Govt. Road, NAIROBI. Phone 628.

The new **Vauxhall**

THE FIRST BRITISH CAR SUITABLE FOR EAST AFRICAN CONDITIONS

26 H.P.

TOURER - - £330
SALOON - - £360
COUPE (4 SEATER) - £395

NAIROBI PRICES.

Demonstration Models Now Available.

THE MOTOR MART and Exchange Ltd.

Nairobi. Nakuru. Eldoret. Dar-es-salaam.

Take Full Advantage

Now and During "Nairobi Week"

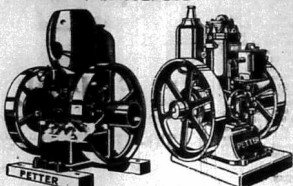
Special Reductions in THIS SEASON'S FANCY AND TOILET NOVELTIES AND PERFUMERY

Howse & McGeorge Ltd P.O. Box 28 NAIROBI.

PETTER OIL ENGINES

1 1/2 H.P. TO 4000 B.H.P.

Paraffin Engines in Stock 1 1/2 B.H.P. 3 B.H.P. 5 B.H.P.



Crude Oil Engines in Stock 3 B.H.P. 5 B.H.P. 12 B.H.P. 15 B.H.P. 20 B.H.P. LARGER TYPES TO ORDER

SOLE AGENTS: J. W. MILLIGAN & Co. P.O. Box 148. NAIROBI Phone 98.

DO NOT BE DAZZLED.

PROTECT YOUR EYES AGAINST GLARE, AND YOUR HEAD AGAINST SUNBURN PAINS. BY USING CHANCE'S CROOKES GLASS.

We supply the Four Shades of Crookes Glass in plain glass or ground to your prescription. We also stock the new GRADUATED LENSES. A. H. Wardle & Co., Ltd. MOMBASA : NAIROBI : ELDORET.

Nairobi Week.

Before leaving Nairobi why not visit to R. G. Vernon & Company's NEW SHOW ROOMS and inspect their stocks of-

SANITARY WARE CROCKERY STEEL CASEMENTS BATH ROOM ACCESSORIES ETC. ETC.

R. G. VERNON & Co. ST. GEORGE'S BUILDING, Corner of Elliot Street and Standard Street, NAIROBI.

BRING YOUR Holiday Photographs To Us

We guarantee to give you the best service in East Africa. Our Photographic Manager has just returned from Europe with the most modern plant and apparatus to undertake the highest class of Studio, Amateur and Cinema Work. We specialise in the enlarging, mounting and framing of Photographs. WARDLE'S PHOTOGRAPHIC CHEMISTS P.O. Box 108 NAIROBI Phone 56.

Show Briefly.

His Excellency the Acting Governor... The attendance at the first of the East African... Nairobi yesterday numbered 1500... The afternoon... The afternoon... The afternoon...

Table with 2 columns: Name, Amount. Includes names like European, Asiatic, African, etc.

To many people the name... Medical Department of the Government... The afternoon... The afternoon... The afternoon...

Some very fine... The afternoon... The afternoon... The afternoon...

The Band of the... The afternoon... The afternoon... The afternoon...

A bottle of... The afternoon... The afternoon... The afternoon...

Another... The afternoon... The afternoon... The afternoon...

Malindi... The afternoon... The afternoon... The afternoon...

The... The afternoon... The afternoon... The afternoon...

A display of... The afternoon... The afternoon... The afternoon...

STANDARD DIARY. Today's... Tomorrow's... The afternoon... The afternoon... The afternoon...

Today's... Tomorrow's... The afternoon... The afternoon... The afternoon...

Today's... Tomorrow's... The afternoon... The afternoon... The afternoon...

Today's... Tomorrow's... The afternoon... The afternoon... The afternoon...

Give an Accessory



SMITH'S REEL WIND CLOCK WITH TIME OF TRIP INDICATOR. Suitable for fitting to the dashboard, obviating the necessity of cutting a hole to accommodate it. The Clock is wound by rotating the knurled rim embedded in the case, which is also used for setting the trip indicator for ascertaining the time taken for any given journey. With blank or five-dial Universal dialometer, 3 in. Price 50/-.

PENK OUTFITS Very fully equipped in... HASKY TOOLS... Rediffa Cta. 30.



N.B. Spanners in Sets 6/10... A Box-Spanner that will fit the... KIRBY'S Pipe Pump from 4/6... With 3 years guarantee.

Carr, Lawson & Co. LIMITED.



UNRIVALLED IN EAST AFRICA. SOLD EVERYWHERE.

SEE NEW DODGE SIXES TRY

Amply Powered, Lightning Acceleration, meeting every Car requirement for this Country, and upholding the Dodge Bros., reputation for Economy and Reliability!

Sole Distributors of the Triumph Road. Fisher, Simmons & Rodway (E.A.) Ltd. SHOWROOMS-VICTORIA ST. Box 406 NAIROBI. Tel. 502.

THE YORKSHIRE INSURANCE COMPANY LIMITED. Established 1888. Principal Managers:- R. O. HAMILTON, I.A.S. Phone 322 - NAIROBI - P.O. Box 102.



It will be dry in an hour. There's no excuse for dullness or drabness while you yourself can work a positive transformation with Beautising Dye. For Beautising Dye is a remarkable preparation. Not powder or Vaseline, but a Finish that requires no oil to set. You just brush it on as you go, and it dries to a more rich, rose tint which allows hair to keep, retains stains and has none, and does not crack or peel.

BIRTH. SHELLTON - At War Memorial Hospital, Nairobi, on 29th December, the wife of Mr. John Shelton, a daughter.

THE AFRICAN STANDARD. TUESDAY, JAN. 6, 1914.

The Show. Having regard to the very difficult conditions which have existed in Kenya and the neighboring Territories during the past year...

Some 20,000 acres, entered into competition with small farms of 150 acres. Companies competed with individual settlers. The result was to encourage a movement of what Kenya farmers are proud to call a time when the freest and most progressive towards mixed farming in the Colony...

Some people are still writing... The afternoon... The afternoon... The afternoon...

Mr. H. H. Mulla, discharged from Mount Kenya on 29th December, 1913, on 29th January.

THE Annual General Meeting of the Nairobi Branch of the I.C.S. will be held at the Club House on Tuesday evening, the 13th inst., at 8 o'clock.

Work is now proceeding on the... The afternoon... The afternoon... The afternoon...




STANDARD DIARY. Today's... Tomorrow's... The afternoon... The afternoon... The afternoon...

Today's... Tomorrow's... The afternoon... The afternoon... The afternoon...

Today's... Tomorrow's... The afternoon... The afternoon... The afternoon...

Better be sure than sorry

BUY **-YALE-** PADLOCKS



And Get The Security You Want
You can buy them from your Hardware Dealer.

CHARLES WARE.
TURN ACCOUNTANT.

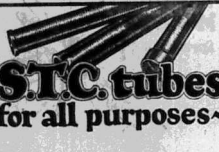
Established 25 years. Tel. Addy: 2. Sprinners' 2.
Box 170, Trust Chambers, Government Road, NAIROBI.

Drift Accounts opened up with approved account.
Credits Accounts opened only upon reference.

NO REPLY DISTINCTLY MEANS NO BUSINESS ONLY.

CREEDIT, LETTERS, WIRE BUSINESS ONLY.

S.T.C. tubes
for all purposes



Why not try S.T.C. tubes the next time?

NO. 15 25.26.27.28

NO. 2-25.3

NO. 15

J.H. TODD & CO. LTD.
NAIROBI

MAURICE ROSENSTON
P.O. Box 681. Tel. Address: "Tobias".
ROMA BUILDING, GOVERNMENT ROAD, NAIROBI.

DOUBLE MULTIPLIED ODDS.

DEPOSIT ACCOUNTS ACCEPTED.

CREEDIT LETTER-WIRE BUSINESS ONLY.

WHAT PRESENT COULD YOU GIVE OR RECEIVE MORE DELICIOUS THAN A TENNIS RACKET OR A SET OF GOLF CLUBS OR ANY OF THE FOLLOWING:

HOCKEY STICK. FOOTBALL.
CRICKET BAT. AIR GUN.
BALMISTON SET. SHOT GUN.
TENNIS RACKET. PIPE.
SHOOTING HAT. POUCH.
ATTACHE CASE. TRICICLE.

THE BEST ARE OBTAINABLE FROM

MAY & Co. Ltd.
THE SPORTS HOUSE.
Box 47. NAIROBI.

THE SPORTS PAGE

THE CHAMPIONSHIP FIGHT.
LOCAL CRICKET MATCH.
RING EVENTS AT THE SHOW.
Good Jumping in Open Class.
POOL ESTABLISH

How the Clubs Fare in the Leagues.
ARSENAL AND EVERTON'S LEAD.

Position in Scottish Circles Opens Up With The New Year.

If the Arsenal are being dogged by Liverpool as in their report are likely to be concerned, they are more fortunate than those who are in the lead in the league, where they early had started their in good stead.

Position in Scottish Circles Opens Up With The New Year.

English League (Division I).
P. W. L. D. F. A. Goals.

Arsenal	20	2	1	6	34
Sheff. Wed.	20	2	1	6	30
Everton	20	2	1	6	27
Stoke	20	2	1	6	27
Blackburn	20	2	1	6	27
Sheff. Utd.	20	2	1	6	27
Manchester	20	2	1	6	27
Cardiff	20	2	1	6	27
Nottingham	20	2	1	6	27
Derby	20	2	1	6	27
Leeds	20	2	1	6	27
Sheff. F.C.	20	2	1	6	27
Wolves	20	2	1	6	27
Millwall	20	2	1	6	27
Sheff. B.	20	2	1	6	27
Sheff. T.	20	2	1	6	27
Sheff. C.	20	2	1	6	27
Sheff. A.	20	2	1	6	27
Sheff. G.	20	2	1	6	27
Sheff. H.	20	2	1	6	27
Sheff. I.	20	2	1	6	27
Sheff. J.	20	2	1	6	27
Sheff. K.	20	2	1	6	27
Sheff. L.	20	2	1	6	27
Sheff. M.	20	2	1	6	27
Sheff. N.	20	2	1	6	27
Sheff. O.	20	2	1	6	27
Sheff. P.	20	2	1	6	27
Sheff. Q.	20	2	1	6	27
Sheff. R.	20	2	1	6	27
Sheff. S.	20	2	1	6	27
Sheff. T.	20	2	1	6	27
Sheff. U.	20	2	1	6	27
Sheff. V.	20	2	1	6	27
Sheff. W.	20	2	1	6	27
Sheff. X.	20	2	1	6	27
Sheff. Y.	20	2	1	6	27
Sheff. Z.	20	2	1	6	27

English League (Division II).
P. W. L. D. F. A. Goals.

Sheff. W.	20	2	1	6	30
Sheff. X.	20	2	1	6	30
Sheff. Y.	20	2	1	6	30
Sheff. Z.	20	2	1	6	30
Sheff. A.	20	2	1	6	30
Sheff. B.	20	2	1	6	30
Sheff. C.	20	2	1	6	30
Sheff. D.	20	2	1	6	30
Sheff. E.	20	2	1	6	30
Sheff. F.	20	2	1	6	30
Sheff. G.	20	2	1	6	30
Sheff. H.	20	2	1	6	30
Sheff. I.	20	2	1	6	30
Sheff. J.	20	2	1	6	30
Sheff. K.	20	2	1	6	30
Sheff. L.	20	2	1	6	30
Sheff. M.	20	2	1	6	30
Sheff. N.	20	2	1	6	30
Sheff. O.	20	2	1	6	30
Sheff. P.	20	2	1	6	30
Sheff. Q.	20	2	1	6	30
Sheff. R.	20	2	1	6	30
Sheff. S.	20	2	1	6	30
Sheff. T.	20	2	1	6	30
Sheff. U.	20	2	1	6	30
Sheff. V.	20	2	1	6	30
Sheff. W.	20	2	1	6	30
Sheff. X.	20	2	1	6	30
Sheff. Y.	20	2	1	6	30
Sheff. Z.	20	2	1	6	30

Scottish League (Division I).
P. W. L. D. F. A. Goals.

Sheff. A.	20	2	1	6	30
Sheff. B.	20	2	1	6	30
Sheff. C.	20	2	1	6	30
Sheff. D.	20	2	1	6	30
Sheff. E.	20	2	1	6	30
Sheff. F.	20	2	1	6	30
Sheff. G.	20	2	1	6	30
Sheff. H.	20	2	1	6	30
Sheff. I.	20	2	1	6	30
Sheff. J.	20	2	1	6	30
Sheff. K.	20	2	1	6	30
Sheff. L.	20	2	1	6	30
Sheff. M.	20	2	1	6	30
Sheff. N.	20	2	1	6	30
Sheff. O.	20	2	1	6	30
Sheff. P.	20	2	1	6	30
Sheff. Q.	20	2	1	6	30
Sheff. R.	20	2	1	6	30
Sheff. S.	20	2	1	6	30
Sheff. T.	20	2	1	6	30
Sheff. U.	20	2	1	6	30
Sheff. V.	20	2	1	6	30
Sheff. W.	20	2	1	6	30
Sheff. X.	20	2	1	6	30
Sheff. Y.	20	2	1	6	30
Sheff. Z.	20	2	1	6	30

Scottish League (Division II).
P. W. L. D. F. A. Goals.

Sheff. A.	20	2	1	6	30
Sheff. B.	20	2	1	6	30
Sheff. C.	20	2	1	6	30
Sheff. D.	20	2	1	6	30
Sheff. E.	20	2	1	6	30
Sheff. F.	20	2	1	6	30
Sheff. G.	20	2	1	6	30
Sheff. H.	20	2	1	6	30
Sheff. I.	20	2	1	6	30
Sheff. J.	20	2	1	6	30
Sheff. K.	20	2	1	6	30
Sheff. L.	20	2	1	6	30
Sheff. M.	20	2	1	6	30
Sheff. N.	20	2	1	6	30
Sheff. O.	20	2	1	6	30
Sheff. P.	20	2	1	6	30
Sheff. Q.	20	2	1	6	30
Sheff. R.	20	2	1	6	30
Sheff. S.	20	2	1	6	30
Sheff. T.	20	2	1	6	30
Sheff. U.	20	2	1	6	30
Sheff. V.	20	2	1	6	30
Sheff. W.	20	2	1	6	30
Sheff. X.	20	2	1	6	30
Sheff. Y.	20	2	1	6	30
Sheff. Z.	20	2	1	6	30

Scottish League (Division III).
P. W. L. D. F. A. Goals.

Sheff. A.	20	2	1	6	30
Sheff. B.	20	2	1	6	30
Sheff. C.	20	2	1	6	30
Sheff. D.	20	2	1	6	30
Sheff. E.	20	2	1	6	30
Sheff. F.	20	2	1	6	30
Sheff. G.	20	2	1	6	30
Sheff. H.	20	2	1	6	30
Sheff. I.	20	2	1	6	30
Sheff. J.	20	2	1	6	30
Sheff. K.	20	2	1	6	30
Sheff. L.	20	2	1	6	30
Sheff. M.	20	2	1	6	30
Sheff. N.	20	2	1	6	30
Sheff. O.	20	2	1	6	30
Sheff. P.	20	2	1	6	30
Sheff. Q.	20	2	1	6	30
Sheff. R.	20	2	1	6	30
Sheff. S.	20	2	1	6	30
Sheff. T.	20	2	1	6	30
Sheff. U.	20	2	1	6	30
Sheff. V.	20	2	1	6	30
Sheff. W.	20	2	1	6	30
Sheff. X.	20	2	1	6	30
Sheff. Y.	20	2	1	6	30
Sheff. Z.	20	2	1	6	30

Scottish League (Division IV).
P. W. L. D. F. A. Goals.

Sheff. A.	20	2	1	6	30
Sheff. B.	20	2	1	6	30
Sheff. C.	20	2	1	6	30
Sheff. D.	20	2	1	6	30
Sheff. E.	20	2	1	6	30
Sheff. F.	20	2	1	6	30
Sheff. G.	20	2	1	6	30
Sheff. H.	20	2	1	6	30
Sheff. I.	20	2	1	6	30
Sheff. J.	20	2	1	6	30
Sheff. K.	20	2	1	6	30
Sheff. L.	20	2	1	6	30
Sheff. M.	20	2	1	6	30
Sheff. N.	20	2	1	6	30
Sheff. O.	20	2	1	6	30
Sheff. P.	20	2	1	6	30
Sheff. Q.	20	2	1	6	30
Sheff. R.	20	2	1	6	30
Sheff. S.	20	2	1	6	30
Sheff. T.	20	2	1	6	30
Sheff. U.	20	2	1	6	30
Sheff. V.	20	2	1	6	30
Sheff. W.	20	2	1	6	30
Sheff. X.	20	2	1	6	30
Sheff. Y.	20	2	1	6	30
Sheff. Z.	20	2	1	6	30

Scottish League (Division V).
P. W. L. D. F. A. Goals.

Sheff. A.	20	2	1	6	30
Sheff. B.	20	2	1	6	30
Sheff. C.	20	2	1	6	30
Sheff. D.	20	2	1	6	30
Sheff. E.	20	2	1	6	30
Sheff. F.	20	2	1	6	30
Sheff. G.	20	2	1	6	30
Sheff. H.	20	2	1	6	30
Sheff. I.	20	2	1	6	30
Sheff. J.	20	2	1	6	30
Sheff. K.	20	2	1	6	30
Sheff. L.	20	2	1	6	30
Sheff. M.	20	2	1	6	30
Sheff. N.	20	2	1	6	30
Sheff. O.	20	2	1	6	30
Sheff. P.	20	2	1	6	30
Sheff. Q.	20	2	1	6	30
Sheff. R.	20	2	1	6	30
Sheff. S.	20	2	1	6	30
Sheff. T.	20	2	1	6	30
Sheff. U.	20	2	1	6	30
Sheff. V.	20	2	1	6	30
Sheff. W.	20	2	1	6	30
Sheff. X.	20	2	1	6	30
Sheff. Y.	20	2	1	6	30
Sheff. Z.	20	2	1	6	30

Scottish League (Division VI).
P. W. L. D. F. A. Goals.

Sheff. A.	20	2	1	6	30
Sheff. B.	20	2	1	6	30
Sheff. C.	20	2	1	6	30
Sheff. D.	20	2	1	6	30
Sheff. E.	20	2	1	6	30
Sheff. F.	20	2	1	6	30
Sheff. G.	20	2	1	6	30
Sheff. H.	20	2	1	6	30
Sheff. I.	20	2	1	6	30
Sheff. J.	20	2	1	6	30
Sheff. K.	20	2	1	6	30
Sheff. L.	20	2	1	6	30
Sheff. M.	20	2	1	6	30
Sheff. N.	20	2	1	6	30
Sheff. O.	20	2	1	6	30
Sheff. P.	20	2	1	6	30
Sheff. Q.	20	2	1	6	30
Sheff. R.	20	2	1	6	30
Sheff. S.	20	2	1	6	30
Sheff. T.	20	2	1	6	30
Sheff. U.	20	2	1	6	30
Sheff. V.	20	2	1	6	30
Sheff. W.	20	2	1	6	30
Sheff. X.	20	2	1	6	30
Sheff. Y.	20	2	1	6	30
Sheff. Z.	20	2	1	6	30

Scottish League (Division VII).
P. W. L. D. F. A. Goals.

Sheff. A.	20	2	1	6	30
Sheff. B.	20	2	1	6	30
Sheff. C.	20	2	1	6	30
Sheff. D.	20	2	1	6	30
Sheff. E.	20	2	1	6	30
Sheff. F.	20	2	1	6	30</



BRAND LAGER THE DRINK OF THE COLONY

THE EAST 14 PAGES



African Standard

UGANDA ARGUS THE LEADER

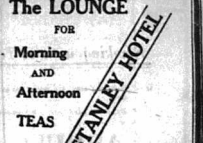
THE OLDEST ESTABLISHED NEWSPAPER PUBLISHED IN KENYA AND UGANDA.

NAIROBI, WEDNESDAY, JANUARY 7, 1931.

Morning AND Afternoon TEAS

OPEN ON SUNDAYS TO Non-Residents

PRICE, 30 CENTS.



CLOSE OF THE NAIROBI SHOW.

Attendance Figures Below Expectations.

PRESENTATION OF PRIZES.

Production and Commerce Join in Notable Success.

The third East African Agricultural Show came to an end yesterday afternoon about six o'clock. Within a very short time the work of dismantling had begun and in less than an hour a remarkable change had come over the showground.

The bulk of the spectators concentrated round the ring during the afternoon and greatly enjoyed the jumping programme provided. There was also a special need of prizes for the native members of the Police Force who were competing in physical trials with one of the smartest of the kind yet seen in the colony.

A great deal of attention was given to the commercial section and although the stands as a whole were probably smaller than in previous years—a fact which is explained by the present economic depression—it proved the producers in making the 1931 Show a real form of encouragement for the year.

A special word of thanks is due to the many helpers who in every department took charge of the work of arranging the exhibits and thereafter gave their services sometimes under trying conditions to the crowds who passed through the stands. There should also be mentioned the many officers of Government and other experts who undertook the work of explaining the features of departmental and other exhibits and of impressing upon spectators of all races the real lessons of the Show.

FINAL SCENES.

Immediately on the finish of the last item in the main show, the way the collection of maps and trophies was presented to the winners by Mr. Moore, while His Excellency the Acting Governor, the Hon. H. M. M. Moore, M.C.O., who accompanied her, was present at the ceremony. The Mayor of Nairobi (Councillor H. F. Mayer) and Mr. Mayer, the Rt. Hon. C.M.S. Mr. H. M. McCall, Mr. H. A. Holm, C.B.E. (President of the Society), and

Helping Unemployed.

The Society did a most useful piece of work for itself which will be remembered by those who were in the ranks of the Nairobi unemployed and just yet in charge of the show. The Society was able to do this by the fact that the show was held in the grounds of the Nairobi Club, which enabled the large number of unemployed to get in and find work. No second-hand goods were sold, and the proceeds were all for the benefit of the unemployed.

Show Prizes.

The following certificates were made in the numerous publications presented by prizes awarded on the day of the Show.

CORRESPONDENCE.

The following certificate was made in the numerous publications presented by prizes awarded on the day of the Show. In the course of the report of the show it was noticed that the East African Standard's "Symphony."

DOMESTIC ART AND CRAFT IN KENYA.

Fine Work from the Colony's Homes.

A SHOW FEATURE.

The mothers and children of the European population in Kenya have their place in an agricultural show in the sections allotted to Home Industries and Jewellery. While the ladies are busy in the fields preparing the large-scale exhibits of produce which take up so much space at the Show, the other members of the family are preparing those domestic arts which are so peculiarly a product of cultured homes. There were especially many black spears on the benches and tables for home industries and the work of juveniles in this work. There were also many native articles, such as baskets, mats, and other articles, which were made by the natives. The work was very high, the most interesting section was the articles of the display. There were also a few very pretty female articles which distinguished it from other sections of the Show. The section is regarded as one of the best of the West African Women's League, a body which has been formed to help in the work of the women in the colony. It is a body which is very active in the work of the women in the colony. It is a body which is very active in the work of the women in the colony.

The Burma Revolt.

BERNIE BELVED IN ATTACK ON COLLECTOR POST.

(THROUGH REUTERS AGENCY.) London, January 5. Burma weavers carried out their strike through striking morning and late mills, representing 3,500 operators, says I.M.S. "The strike in the cotton industries in Burma has been called off by the Government to introduce a new policy which may be more successful than the present one. It is believed on January 3 that the Government was in a meeting with the owners at Matheran on that day failed to reach a settlement.

Light on Dockyard Incident.

Why Men Refused Duty on H.M.S. "Lark". QUESTION OF LEAVE. Unreported Daily Dies to Worker.

(THROUGH REUTERS AGENCY.) London, Jan. 5. The fact that although substantial amounts of the Atlantic Fleet on cruise, the presence of the Lark was not so much Christmas leave as the news of other matters in the Fleet, is believed to increase the trouble on the Lark, says "Lark" reporter.

(THROUGH REUTERS AGENCY.) London, Jan. 5. The Admiralty states that so far no charges have been preferred against any.

(THROUGH REUTERS AGENCY.) London, Jan. 5. Lord Bessing has informed the Committee of the India Board of Public Accounts which is at present considering the position of the Government in relation to the Central Legislature that the British Government is prepared to support the proposals in regard to the Government in India, providing there are adequate safeguards making Government to be carried on with reasonable security for its interests.

(THROUGH REUTERS AGENCY.) London, Jan. 5. The boy belongs to a talented family because his sister, also a young child, was another first prize winner in the contest of a beautifully dressed doll.

(THROUGH REUTERS AGENCY.) London, Jan. 5. The prize-winning exhibits in the child's book class was a beautiful story book. The paintings and drawings were rather few in number, but they were of a high quality.

(THROUGH REUTERS AGENCY.) London, Jan. 5. The award of the Silver Cup for the best painting entered in the child's book class was made to a young girl named "Maggie Castle". There was also a young girl named "Maggie Castle". There was also a young girl named "Maggie Castle".

(THROUGH REUTERS AGENCY.) London, Jan. 5. The award of the Silver Cup for the best painting entered in the child's book class was made to a young girl named "Maggie Castle". There was also a young girl named "Maggie Castle".

(THROUGH REUTERS AGENCY.) London, Jan. 5. The award of the Silver Cup for the best painting entered in the child's book class was made to a young girl named "Maggie Castle". There was also a young girl named "Maggie Castle".

ENGLAND MOURNS DEATH OF PRINCESS.

Flags at Half-Mast in London. WORLD-WIDE SYMPATHY.

(THROUGH REUTERS AGENCY.) London, January 5. Flags in London are flying at half-mast today in respect for the late Princess Royal. The Princess Royal will probably be buried at Frogmore during the week-end. Their Majesty the King and Queen will travel there from Sandringham where they are now in residence.

(THROUGH REUTERS AGENCY.) London, January 5. The King and Queen have received messages of condolence from all parts of the world, including one from Marshal von Hindenburg, the President of the German Republic.

(THROUGH REUTERS AGENCY.) London, January 5. H.E.H. the Prince of Wales has cancelled his hunt engagements but his departure on a South African tour with Prince George on January 15 will not be affected.

(THROUGH REUTERS AGENCY.) London, January 5. A military band which had been arranged to mark the death of the Epiphany has been cancelled in consequence of the Festival of the Prince Royal.

(THROUGH REUTERS AGENCY.) London, January 5. The Admiralty states that so far no charges have been preferred against any.

(THROUGH REUTERS AGENCY.) London, Jan. 5. In a statement on the Devonport incident, the Admiralty says that the Lark was not in the dock at the time of the incident.

(THROUGH REUTERS AGENCY.) London, Jan. 5. The boy belongs to a talented family because his sister, also a young child, was another first prize winner in the contest of a beautifully dressed doll.

(THROUGH REUTERS AGENCY.) London, Jan. 5. The prize-winning exhibits in the child's book class was a beautiful story book. The paintings and drawings were rather few in number, but they were of a high quality.

(THROUGH REUTERS AGENCY.) London, Jan. 5. The award of the Silver Cup for the best painting entered in the child's book class was made to a young girl named "Maggie Castle". There was also a young girl named "Maggie Castle".

(THROUGH REUTERS AGENCY.) London, Jan. 5. The award of the Silver Cup for the best painting entered in the child's book class was made to a young girl named "Maggie Castle". There was also a young girl named "Maggie Castle".

(THROUGH REUTERS AGENCY.) London, Jan. 5. The award of the Silver Cup for the best painting entered in the child's book class was made to a young girl named "Maggie Castle". There was also a young girl named "Maggie Castle".

(THROUGH REUTERS AGENCY.) London, Jan. 5. The award of the Silver Cup for the best painting entered in the child's book class was made to a young girl named "Maggie Castle". There was also a young girl named "Maggie Castle".

(THROUGH REUTERS AGENCY.) London, Jan. 5. The award of the Silver Cup for the best painting entered in the child's book class was made to a young girl named "Maggie Castle". There was also a young girl named "Maggie Castle".

(THROUGH REUTERS AGENCY.) London, Jan. 5. The award of the Silver Cup for the best painting entered in the child's book class was made to a young girl named "Maggie Castle". There was also a young girl named "Maggie Castle".

(THROUGH REUTERS AGENCY.) London, Jan. 5. The award of the Silver Cup for the best painting entered in the child's book class was made to a young girl named "Maggie Castle". There was also a young girl named "Maggie Castle".

(THROUGH REUTERS AGENCY.) London, Jan. 5. The award of the Silver Cup for the best painting entered in the child's book class was made to a young girl named "Maggie Castle". There was also a young girl named "Maggie Castle".

(THROUGH REUTERS AGENCY.) London, Jan. 5. The award of the Silver Cup for the best painting entered in the child's book class was made to a young girl named "Maggie Castle". There was also a young girl named "Maggie Castle".

FURTHER COMMENTS BY THE SHOW JUDGES.

Experts' Remarks on Cattle and Horses. BUTTER ENTRIES CRITICISED.

Following are further comments by the judges on the various classes in the Show. They include remarks on the cattle section, including milking trials, the horse, dairy produce, and poultry. The special reference to the quality of the championship class of particular interest and value.

(THROUGH REUTERS AGENCY.) London, January 5. The judges of the Show, Mr. J. Forsyth, said that short-boned runners were not in the hands of beating the big drum, but nevertheless the championship year the breed has made steady progress in Kenya, and the quality of the animals shown were very high indeed.

(THROUGH REUTERS AGENCY.) London, January 5. The judges of the Show, Mr. J. Forsyth, said that short-boned runners were not in the hands of beating the big drum, but nevertheless the championship year the breed has made steady progress in Kenya, and the quality of the animals shown were very high indeed.

(THROUGH REUTERS AGENCY.) London, January 5. The judges of the Show, Mr. J. Forsyth, said that short-boned runners were not in the hands of beating the big drum, but nevertheless the championship year the breed has made steady progress in Kenya, and the quality of the animals shown were very high indeed.

(THROUGH REUTERS AGENCY.) London, January 5. The judges of the Show, Mr. J. Forsyth, said that short-boned runners were not in the hands of beating the big drum, but nevertheless the championship year the breed has made steady progress in Kenya, and the quality of the animals shown were very high indeed.

(THROUGH REUTERS AGENCY.) London, January 5. The judges of the Show, Mr. J. Forsyth, said that short-boned runners were not in the hands of beating the big drum, but nevertheless the championship year the breed has made steady progress in Kenya, and the quality of the animals shown were very high indeed.

(THROUGH REUTERS AGENCY.) London, January 5. The judges of the Show, Mr. J. Forsyth, said that short-boned runners were not in the hands of beating the big drum, but nevertheless the championship year the breed has made steady progress in Kenya, and the quality of the animals shown were very high indeed.

(THROUGH REUTERS AGENCY.) London, January 5. The judges of the Show, Mr. J. Forsyth, said that short-boned runners were not in the hands of beating the big drum, but nevertheless the championship year the breed has made steady progress in Kenya, and the quality of the animals shown were very high indeed.

(THROUGH REUTERS AGENCY.) London, January 5. The judges of the Show, Mr. J. Forsyth, said that short-boned runners were not in the hands of beating the big drum, but nevertheless the championship year the breed has made steady progress in Kenya, and the quality of the animals shown were very high indeed.

(THROUGH REUTERS AGENCY.) London, January 5. The judges of the Show, Mr. J. Forsyth, said that short-boned runners were not in the hands of beating the big drum, but nevertheless the championship year the breed has made steady progress in Kenya, and the quality of the animals shown were very high indeed.

(THROUGH REUTERS AGENCY.) London, January 5. The judges of the Show, Mr. J. Forsyth, said that short-boned runners were not in the hands of beating the big drum, but nevertheless the championship year the breed has made steady progress in Kenya, and the quality of the animals shown were very high indeed.

(THROUGH REUTERS AGENCY.) London, January 5. The judges of the Show, Mr. J. Forsyth, said that short-boned runners were not in the hands of beating the big drum, but nevertheless the championship year the breed has made steady progress in Kenya, and the quality of the animals shown were very high indeed.

(THROUGH REUTERS AGENCY.) London, January 5. The judges of the Show, Mr. J. Forsyth, said that short-boned runners were not in the hands of beating the big drum, but nevertheless the championship year the breed has made steady progress in Kenya, and the quality of the animals shown were very high indeed.

(THROUGH REUTERS AGENCY.) London, January 5. The judges of the Show, Mr. J. Forsyth, said that short-boned runners were not in the hands of beating the big drum, but nevertheless the championship year the breed has made steady progress in Kenya, and the quality of the animals shown were very high indeed.

(THROUGH REUTERS AGENCY.) London, January 5. The judges of the Show, Mr. J. Forsyth, said that short-boned runners were not in the hands of beating the big drum, but nevertheless the championship year the breed has made steady progress in Kenya, and the quality of the animals shown were very high indeed.

(THROUGH REUTERS AGENCY.) London, January 5. The judges of the Show, Mr. J. Forsyth, said that short-boned runners were not in the hands of beating the big drum, but nevertheless the championship year the breed has made steady progress in Kenya, and the quality of the animals shown were very high indeed.

(THROUGH REUTERS AGENCY.) London, January 5. The judges of the Show, Mr. J. Forsyth, said that short-boned runners were not in the hands of beating the big drum, but nevertheless the championship year the breed has made steady progress in Kenya, and the quality of the animals shown were very high indeed.

(THROUGH REUTERS AGENCY.) London, January 5. The judges of the Show, Mr. J. Forsyth, said that short-boned runners were not in the hands of beating the big drum, but nevertheless the championship year the breed has made steady progress in Kenya, and the quality of the animals shown were very high indeed.

YOU CAN DRESS UP TO THE MINUTE FOR THE JANUARY McCALL PATTERNS HAVE ARRIVED. McCall Fashions. -That are easy and economical to make. And there are hundreds of McCall styles to select from—all bearing the Parisian stamp of smartness—yet easy to make—because all McCall Patterns are printed.

Free Style News-- McCall Quarterly THE REST VALUE IS KENYA TO-DAY. Ladies Silk Stockings, with Lace Clocks, Slipper Socks, silk to the Top, reinforced feet, the shades are Beech and the New Mole. Shs. 4/50 PER PAIR. Whiteaways NAIROBI.

UNION-CASTLE LINE.

Table with columns for destination (London, Bombay, etc.), ship names, and departure dates.

HOEKWARD VIA SOUTH AFRICA.

Table listing ship names and departure dates for the South Africa route.

Passenger Agents from 220 1st class and 2nd class. P. & O. Lines, Ltd., London.

British India Steam Navigation Company, Limited

Large table with multiple columns detailing shipping schedules, ship names, and destinations for the British India Steam Navigation Company.

ALD. DATES SUMMARY TO ALBERATION WITHOUT RETURN. RETURN TICKETS ISSUED AT TWO SINGLE FARES LESS 10%.

CITRA LINE

Compagnia Italiana Transatlantica. THE BEST ROUTE TO ENGLAND. (Via Rome, Genoa and Naples).

Clan-Ellerman-Harrison Lines, (JOINT SERVICE)

Table listing ship names and departure dates for the Clan-Ellerman-Harrison Lines.

Ellerman and Bucknall Line

Table listing ship names and departure dates for the Ellerman and Bucknall Line.

THE AFRICAN MERCANTILE COMPANY, Limited

MOMBASA (Cable Navigation) NAIROBI

WHY TRUST YOUR MEMORY?

WHEN BUY A FEW MONTHS' SUPPLY OF THE BEST MILK... GET YOUR COPY NOW... KENYA AND UGANDA DAIRY, 1931

ESPECIALLY PREPARED FOR USE BY THE EAST AFRICAN FARMER... PRICE... THE EAST AFRICAN STANDARD

DEUTSCHE OST-AFRIKA-LINE

Table with columns for destination (Mombasa, Cape, etc.), ship names, and departure dates.

SUMMER EXCURSIONS TO SOUTH AFRICA—Oct. 1930 to October, 1931.

Up-Country Cheques Cannot be Accepted Unless Specially Endorsed by Local Bank. For Passenger Fares And Freight Rates Apply To—

SEE OUR WINDOW DISPLAY

OR MENS PULLOVERS and CARDIGANS with Sleeves and Sleeveless. Best Values in Kenya. Prices From 10.50 to 27.50 each

The Bradford Manufacturing Co., Limited.

B. M. C. HOUSE Corner of Government Rd. and Fifth Avenue opposite the New N.B.I. Bank. P. O. Box 810.

Specify 'L' S LIME. Products of our works are extensively specified by Architects and Engineers for use throughout Kenya and Uganda. Lime Limited

See Our Special Window Displays

We are giving 10% (for Cash.) Also Special Reductions OFF Oddments in Ladies Evening Shoes.

Eadies Footwear Ltd. P. O. Box 149. NAIROBI.

BRICKS

are universally recognized as the best building material. over 2,000,000 Invicta Bricks have been used in Nairobi during the past twelve months.

Chivers' Custard Powder advertisement featuring an image of a custard cup and text describing the product's quality.

MESSAGERIES MARITIMES

Regular and fortnightly services from and to Mombasa. The Quickest Route to London. Next Sailings to Marseilles.

SPECIAL NOTICE

We are sorry to announce that we have decided NOT TO REMOVE Business with these firms as we intend to continue to do so.

Keith Timber Co., Ltd.

Sadler Street, NAIROBI. Cedar Block Flooring. A Speciality. Box 874. Phone 598

PIANOFORTE-TUNING AND REPAIRING.

Ten years experience in Kenya Colony and five years with Messrs. Chappell and Co, London. F. A. HEAD, Box 678, NAIROBI.

OVERSEAS MAILS.

Table showing arrival and departure dates for various ships.

DEPARTURES

Table showing departure dates for various ships.

Uplands Bacon

The Factory now holds record stocks of choicest quality from which to select precisely what individual buyers require. Stocked by all the leading Stores in Kenya, Uganda, Tanganyika and the Belgian Congo.

THE GIFT SHOP

ALWAYS SOMETHING NEW AND INTERESTING

TAWNS, LIMITED.



For the **EYES**, the best is just **GOOD**

ZEISS PUNKAL

"THE LENS" Ltd.
90, Prince's House, Govt. Road, NAIROBI. Phone 628.

MOTOR TOURS Ltd.
Tourist Agents. Opposite the G.P.O. for

MOTORING TOURS
and THE HILE ROUTE to EUROPE.
Luxurious Cars for Hire—European Drivers.

BRIGHTER CRICKET IN NAIROBI

Nyeri Defeat Mathaga on Time

THORNE'S POSSIBLE BATTING.

On Saturday Mathaga had a suit time. Nyeri when sporting their enjoyable game ended in a win for the home side. The home side took the field at the fall of the fourth wicket, leaving Nyeri with six minutes to get the runs or get out. The latter played the game properly and unafraid to risk their wickets in an endeavor to get the necessary runs for victory, went for the bowling, and they succeeded in their task.

Mathaga took first break of the match, and with three wickets falling quickly Bower and Sheridan came together, and between them the pair took the most to within half a dozen of the century. Bower scored at a rapid pace for his 40, which included four 6's and two 7's. Thorne batted furiously and went to his 40, and hit seven boundaries.

The innings was declared closed ten, after they had enjoyed a simple knock of 15. It was a sports-like declaration, as the visitors had ample time to get the runs necessary to win.

Following the break Nyeri immediately set about their well-appointed task. The first five of their batsmen all reached double figures, and the home total was scored with seven wickets down.

It was an enjoyable match, Nyeri fully deserving their victory in as much as they played the proper game to win.

The following are the details:

Mathaga.

Diabel & Standford	38
Callow & Franks	3
Nouri & Franks	3
Bower & Nicholson & Wadhwa	40
Sheridan run out	40
Thorne & Franks	40
Daly not out	4
Martin not out	4
Extras	1
Total	158

Nyeri.

A. de V. Wals & Taka & Phillips	15
P. Nouri & Diabel	14
Standford & de Phillips	14
Fisher & Sheridan	12
White & de Phillips	12
Thorne & Phillips	12
Darrie not out	12
Bower & Phillips	12
Franks & Thorne & Diabel	11
Cawson & Thorne & Diabel	11
Extras	22
Total	173

Bowling.

Diabel	O.	M.	R.	W.
Phillips	16	2	72	0
Thorne	2	0	11	0
Sheridan	4	0	17	1

Two new laws have officially been added to the French language. They are "padding" and "padding." "Padding" is defined as the theory laid in the future of which he believes in the honor of his name. "Padding" is labeled "a substantive possessing two genders, he or she who possesses padding."

When Miss Marjorie Foster, who was the King's Prize at Bishop's School, Albany, with the 2nd Battalion of the Buffs—white who, however, was formerly an officer—threw her whole lot, complete with honors, was presented for her rejection, and she was presented for the acceptance by the commanding officer with the honors usually reserved for the victors.

A Public meeting is obtaining £400 damages against a manufacturer for the loss of over 10 finger nails. She declares that the operator jabbed her into the hand of her nails, which she lost. A doctor says the nails may never grow again, as the roots have been cut.

ENTERTAINMENTS

EMPIRE

Nightly at 8-45.

No Matinee To-Day

TO-NIGHT at 8-45

THE ALL STAR SPECTACULAR PRODUCTION

"UNCLE TOM'S CABIN"

AND

"TALKIE" COMEDY and SOUND NEWS GAZETTES.

THEATRE ROYAL

Nightly at 8-45 p.m.

Last Night of Special Nairobi Week Theatre Attraction.

TO-NIGHT at 8-45.

ON THE STAGE

Jack Dent AND HIS BAND
ASSISTED BY GRACE PERRY.
IN A NEW MUSICAL INTERLUDE.

ON THE SCREEN

A Spectacular peep into the future

"HIGH TREASON"

Something entirely new in picture plays. A Romance of London in 1940.

A BRITISH PRODUCTION FEATURING

BENITA HUME

BASIL GILL

Humberston Wright — Jameson Thomas.

Prices Circle 6/-, Stalls 3/-.

EXHIBITION

OF PICTURES BY

Royal Photographers

will be held at

STANLEY HOUSE

Hardinge Street, on the

7th & 8th Jan., 1931.

Open from 10 a.m. to 6 p.m.

ADMISSION: TWO SHILLINGS.

Proceeds in aid of Local Charities.

MINIATURE GOLF

IS ALL THE RAGE

100 LADIES AND GENTS PLAYED OVER OUR COURSE ON NEW YEAR'S DAY.

Players Remains Overboard! "This is a Wonderful Course."

Can you beat Bogey?

Come Along and Try!

SHG 1/- A ROUND.

ENTRIES NOW OPEN FOR Table Tennis Tournament.

ENTRY FEE 2/-.

PRIZES FOR WINNERS

In Basement of


City Square Mansions

The Chevrolet Value Chart

10 Checking Points to Low Price Motor Car Value.

- 6 cylinder valve in head motor.
- 150 inches frame with roomy bodies by Fisher.
- 243 square inches of braking area.
- Safety gasoline tank located in rear, away from heat of engine and ignition system.
- 4 long chrome vanadium steel springs.
- ADJUSTABLE DRIVING SEATS ON ALL CLOSED MODELS.**
- 107 inches wheel base.
- Oil pressure gauge and motor heat indicator mounted on dash.
- Hydraulic shock absorbers.
- One hand operation windshield giving ventilation draught.

BUY YOUR CAR ON VALUE.



Check the chart now, then let us take you for a demonstration, and check the points again while the car is on the road.

IT WISE TO BUY A SIX.

THE MOTOR MART and Exchange Ltd.

Nakuru. Eldoret. Nairobi. Dar-es-Salaam.

KENYA LIDO

BLUE POSTS THIKA.

SWIMMING BATH

Water Hygienically Treated and Constant Overflow.

Outdoor Miniature Golf Course Tennis Quoits—Ping Pong—Attractive New Kiosks.

AMPLIFIER DANCES WEEKLY.

Weekend Rates 12/- per day.

Sunday Luncheon 2/50 GOOD ROAD.

PICCADILLY RESTAURANT

THEATRE ROYAL BUILDING. FRENCH COOKING.

The Best and Cheapest Lunch and Dinner Served in Town.

SERVING A LA CARTE.

LOUISIER A SPECIALITE—GRILLS—FRENCH PASTRY—A LA CUISINE—RUSSIAN BOUILLI—MIXTO A L ITALIANA.

CATERING UNDERTAKEN FOR SMALL OR LARGE PARTIES ANYWHERE.

Eat Maa Langridge's Fruit And Keep Fit.



1930 REASON 1931

Book Your Order Now.

Apples, Peas, Beans 10 lb. Net. 2/6.

PLUMS—Giant, Santa Rosa, Golden Queen, Santa Purple, in beautifully packed boxes 20 lb. Net. P.O.R. any Station, K. & O. Railway. Delicious for fresh, dessert, stewing, tarts, bottling and preserving with local economical white sugar. Book your single orders and for weekly supplies at prices to meet the times.

G. L. LANGRIDGE, F.R.S.B.,
Mica Park,
Umsarda, Athi
Kisumu

River Ste.,
Coimbatore.

Representative Nairobi: P. H. Borell. Kenia. B. H. G. Agents—Dar-es-Salaam, Nakuru, Kisumu, Umuongo, Mombasa, Malindi, Pangani, Aden, Bombay, Madras, Rangoon.

PALACE HOTEL

HOTEL AVENUE



THE TWO MOST UP-TO-DATE AND LUXURIOUS HOTELS IN NAIROBI.

This is Worth Your Consideration

Visitors at the Palace Hotel, Mombasa, proceeding to Nairobi and stopping at the Hotel Avenue, Nairobi, will be allowed 10% off their accounts for accommodation at the Hotel Avenue, providing they stay there within one week of leaving Mombasa or vice versa.

Take Full Advantage

Now and During "Nairobi Week"

Special Reductions

IN THIS SEASON'S FANCY AND TOILET NOVELTIES AND PERFUMERY from LONDON, BERLIN AND PARIS. CHOOSE EARLY FOR THE BEST BARGAINS.

Howse & McGeorge Ltd P.O. Box 28 NAIROBI

Give an Accessory Present



SMITH'S REEL WIND CLOCK WITH TIME OF TRIP INDICATOR. Suitable for fitting to the dashboard, showing the necessity of refilling a tank to accommodate it. The Clock is wound by turning the handle on top of the case, which is also used for setting the trip indicator for ascertaining the time taken for any given journey. Will hold 6 or 12 days. Overall diameter, 3 in. Price 20/-.

PHENIC OUTLETS Very light weight in aluminium case 20/- in 10 pieces. HAND TORCHES 15/6 in 10 pieces. Case 20/-.



N.B. Squares in Sets 4/6. Capillary Junction from 1/6 to 2/6. A Non-Spinner that will fit 1/2, 3/4, 1 in. 1 1/2, 2 in. 2 1/2 in. 3 in. 3 1/2 in. 4 in. 5 in. 6 in. 8 in. 10 in. 12 in. 14 in. 16 in. 18 in. 20 in. 22 in. 24 in. 26 in. 28 in. 30 in. 32 in. 34 in. 36 in. 38 in. 40 in. 42 in. 44 in. 46 in. 48 in. 50 in. 52 in. 54 in. 56 in. 58 in. 60 in. 62 in. 64 in. 66 in. 68 in. 70 in. 72 in. 74 in. 76 in. 78 in. 80 in. 82 in. 84 in. 86 in. 88 in. 90 in. 92 in. 94 in. 96 in. 98 in. 100 in. 102 in. 104 in. 106 in. 108 in. 110 in. 112 in. 114 in. 116 in. 118 in. 120 in. 122 in. 124 in. 126 in. 128 in. 130 in. 132 in. 134 in. 136 in. 138 in. 140 in. 142 in. 144 in. 146 in. 148 in. 150 in. 152 in. 154 in. 156 in. 158 in. 160 in. 162 in. 164 in. 166 in. 168 in. 170 in. 172 in. 174 in. 176 in. 178 in. 180 in. 182 in. 184 in. 186 in. 188 in. 190 in. 192 in. 194 in. 196 in. 198 in. 200 in. 202 in. 204 in. 206 in. 208 in. 210 in. 212 in. 214 in. 216 in. 218 in. 220 in. 222 in. 224 in. 226 in. 228 in. 230 in. 232 in. 234 in. 236 in. 238 in. 240 in. 242 in. 244 in. 246 in. 248 in. 250 in. 252 in. 254 in. 256 in. 258 in. 260 in. 262 in. 264 in. 266 in. 268 in. 270 in. 272 in. 274 in. 276 in. 278 in. 280 in. 282 in. 284 in. 286 in. 288 in. 290 in. 292 in. 294 in. 296 in. 298 in. 300 in. 302 in. 304 in. 306 in. 308 in. 310 in. 312 in. 314 in. 316 in. 318 in. 320 in. 322 in. 324 in. 326 in. 328 in. 330 in. 332 in. 334 in. 336 in. 338 in. 340 in. 342 in. 344 in. 346 in. 348 in. 350 in. 352 in. 354 in. 356 in. 358 in. 360 in. 362 in. 364 in. 366 in. 368 in. 370 in. 372 in. 374 in. 376 in. 378 in. 380 in. 382 in. 384 in. 386 in. 388 in. 390 in. 392 in. 394 in. 396 in. 398 in. 400 in. 402 in. 404 in. 406 in. 408 in. 410 in. 412 in. 414 in. 416 in. 418 in. 420 in. 422 in. 424 in. 426 in. 428 in. 430 in. 432 in. 434 in. 436 in. 438 in. 440 in. 442 in. 444 in. 446 in. 448 in. 450 in. 452 in. 454 in. 456 in. 458 in. 460 in. 462 in. 464 in. 466 in. 468 in. 470 in. 472 in. 474 in. 476 in. 478 in. 480 in. 482 in. 484 in. 486 in. 488 in. 490 in. 492 in. 494 in. 496 in. 498 in. 500 in. 502 in. 504 in. 506 in. 508 in. 510 in. 512 in. 514 in. 516 in. 518 in. 520 in. 522 in. 524 in. 526 in. 528 in. 530 in. 532 in. 534 in. 536 in. 538 in. 540 in. 542 in. 544 in. 546 in. 548 in. 550 in. 552 in. 554 in. 556 in. 558 in. 560 in. 562 in. 564 in. 566 in. 568 in. 570 in. 572 in. 574 in. 576 in. 578 in. 580 in. 582 in. 584 in. 586 in. 588 in. 590 in. 592 in. 594 in. 596 in. 598 in. 600 in. 602 in. 604 in. 606 in. 608 in. 610 in. 612 in. 614 in. 616 in. 618 in. 620 in. 622 in. 624 in. 626 in. 628 in. 630 in. 632 in. 634 in. 636 in. 638 in. 640 in. 642 in. 644 in. 646 in. 648 in. 650 in. 652 in. 654 in. 656 in. 658 in. 660 in. 662 in. 664 in. 666 in. 668 in. 670 in. 672 in. 674 in. 676 in. 678 in. 680 in. 682 in. 684 in. 686 in. 688 in. 690 in. 692 in. 694 in. 696 in. 698 in. 700 in. 702 in. 704 in. 706 in. 708 in. 710 in. 712 in. 714 in. 716 in. 718 in. 720 in. 722 in. 724 in. 726 in. 728 in. 730 in. 732 in. 734 in. 736 in. 738 in. 740 in. 742 in. 744 in. 746 in. 748 in. 750 in. 752 in. 754 in. 756 in. 758 in. 760 in. 762 in. 764 in. 766 in. 768 in. 770 in. 772 in. 774 in. 776 in. 778 in. 780 in. 782 in. 784 in. 786 in. 788 in. 790 in. 792 in. 794 in. 796 in. 798 in. 800 in. 802 in. 804 in. 806 in. 808 in. 810 in. 812 in. 814 in. 816 in. 818 in. 820 in. 822 in. 824 in. 826 in. 828 in. 830 in. 832 in. 834 in. 836 in. 838 in. 840 in. 842 in. 844 in. 846 in. 848 in. 850 in. 852 in. 854 in. 856 in. 858 in. 860 in. 862 in. 864 in. 866 in. 868 in. 870 in. 872 in. 874 in. 876 in. 878 in. 880 in. 882 in. 884 in. 886 in. 888 in. 890 in. 892 in. 894 in. 896 in. 898 in. 900 in. 902 in. 904 in. 906 in. 908 in. 910 in. 912 in. 914 in. 916 in. 918 in. 920 in. 922 in. 924 in. 926 in. 928 in. 930 in. 932 in. 934 in. 936 in. 938 in. 940 in. 942 in. 944 in. 946 in. 948 in. 950 in. 952 in. 954 in. 956 in. 958 in. 960 in. 962 in. 964 in. 966 in. 968 in. 970 in. 972 in. 974 in. 976 in. 978 in. 980 in. 982 in. 984 in. 986 in. 988 in. 990 in. 992 in. 994 in. 996 in. 998 in. 1000 in. 1002 in. 1004 in. 1006 in. 1008 in. 1010 in. 1012 in. 1014 in. 1016 in. 1018 in. 1020 in. 1022 in. 1024 in. 1026 in. 1028 in. 1030 in. 1032 in. 1034 in. 1036 in. 1038 in. 1040 in. 1042 in. 1044 in. 1046 in. 1048 in. 1050 in. 1052 in. 1054 in. 1056 in. 1058 in. 1060 in. 1062 in. 1064 in. 1066 in. 1068 in. 1070 in. 1072 in. 1074 in. 1076 in. 1078 in. 1080 in. 1082 in. 1084 in. 1086 in. 1088 in. 1090 in. 1092 in. 1094 in. 1096 in. 1098 in. 1100 in. 1102 in. 1104 in. 1106 in. 1108 in. 1110 in. 1112 in. 1114 in. 1116 in. 1118 in. 1120 in. 1122 in. 1124 in. 1126 in. 1128 in. 1130 in. 1132 in. 1134 in. 1136 in. 1138 in. 1140 in. 1142 in. 1144 in. 1146 in. 1148 in. 1150 in. 1152 in. 1154 in. 1156 in. 1158 in. 1160 in. 1162 in. 1164 in. 1166 in. 1168 in. 1170 in. 1172 in. 1174 in. 1176 in. 1178 in. 1180 in. 1182 in. 1184 in. 1186 in. 1188 in. 1190 in. 1192 in. 1194 in. 1196 in. 1198 in. 1200 in. 1202 in. 1204 in. 1206 in. 1208 in. 1210 in. 1212 in. 1214 in. 1216 in. 1218 in. 1220 in. 1222 in. 1224 in. 1226 in. 1228 in. 1230 in. 1232 in. 1234 in. 1236 in. 1238 in. 1240 in. 1242 in. 1244 in. 1246 in. 1248 in. 1250 in. 1252 in. 1254 in. 1256 in. 1258 in. 1260 in. 1262 in. 1264 in. 1266 in. 1268 in. 1270 in. 1272 in. 1274 in. 1276 in. 1278 in. 1280 in. 1282 in. 1284 in. 1286 in. 1288 in. 1290 in. 1292 in. 1294 in. 1296 in. 1298 in. 1300 in. 1302 in. 1304 in. 1306 in. 1308 in. 1310 in. 1312 in. 1314 in. 1316 in. 1318 in. 1320 in. 1322 in. 1324 in. 1326 in. 1328 in. 1330 in. 1332 in. 1334 in. 1336 in. 1338 in. 1340 in. 1342 in. 1344 in. 1346 in. 1348 in. 1350 in. 1352 in. 1354 in. 1356 in. 1358 in. 1360 in. 1362 in. 1364 in. 1366 in. 1368 in. 1370 in. 1372 in. 1374 in. 1376 in. 1378 in. 1380 in. 1382 in. 1384 in. 1386 in. 1388 in. 1390 in. 1392 in. 1394 in. 1396 in. 1398 in. 1400 in. 1402 in. 1404 in. 1406 in. 1408 in. 1410 in. 1412 in. 1414 in. 1416 in. 1418 in. 1420 in. 1422 in. 1424 in. 1426 in. 1428 in. 1430 in. 1432 in. 1434 in. 1436 in. 1438 in. 1440 in. 1442 in. 1444 in. 1446 in. 1448 in. 1450 in. 1452 in. 1454 in. 1456 in. 1458 in. 1460 in. 1462 in. 1464 in. 1466 in. 1468 in. 1470 in. 1472 in. 1474 in. 1476 in. 1478 in. 1480 in. 1482 in. 1484 in. 1486 in. 1488 in. 1490 in. 1492 in. 1494 in. 1496 in. 1498 in. 1500 in. 1502 in. 1504 in. 1506 in. 1508 in. 1510 in. 1512 in. 1514 in. 1516 in. 1518 in. 1520 in. 1522 in. 1524 in. 1526 in. 1528 in. 1530 in. 1532 in. 1534 in. 1536 in. 1538 in. 1540 in. 1542 in. 1544 in. 1546 in. 1548 in. 1550 in. 1552 in. 1554 in. 1556 in. 1558 in. 1560 in. 1562 in. 1564 in. 1566 in. 1568 in. 1570 in. 1572 in. 1574 in. 1576 in. 1578 in. 1580 in. 1582 in. 1584 in. 1586 in. 1588 in. 1590 in. 1592 in. 1594 in. 1596 in. 1598 in. 1600 in. 1602 in. 1604 in. 1606 in. 1608 in. 1610 in. 1612 in. 1614 in. 1616 in. 1618 in. 1620 in. 1622 in. 1624 in. 1626 in. 1628 in. 1630 in. 1632 in. 1634 in. 1636 in. 1638 in. 1640 in. 1642 in. 1644 in. 1646 in. 1648 in. 1650 in. 1652 in. 1654 in. 1656 in. 1658 in. 1660 in. 1662 in. 1664 in. 1666 in. 1668 in. 1670 in. 1672 in. 1674 in. 1676 in. 1678 in. 1680 in. 1682 in. 1684 in. 1686 in. 1688 in. 1690 in. 1692 in. 1694 in. 1696 in. 1698 in. 1700 in. 1702 in. 1704 in. 1706 in. 1708 in. 1710 in. 1712 in. 1714 in. 1716 in. 1718 in. 1720 in. 1722 in. 1724 in. 1726 in. 1728 in. 1730 in. 1732 in. 1734 in. 1736 in. 1738 in. 1740 in. 1742 in. 1744 in. 1746 in. 1748 in. 1750 in. 1752 in. 1754 in. 1756 in. 1758 in. 1760 in. 1762 in. 1764 in. 1766 in. 1768 in. 1770 in. 1772 in. 1774 in. 1776 in. 1778 in. 1780 in. 1782 in. 1784 in. 1786 in. 1788 in. 1790 in. 1792 in. 1794 in. 1796 in. 1798 in. 1800 in. 1802 in. 1804 in. 1806 in. 1808 in. 1810 in. 1812 in. 1814 in. 1816 in. 1818 in. 1820 in. 1822 in. 1824 in. 1826 in. 1828 in. 1830 in. 1832 in. 1834 in. 1836 in. 1838 in. 1840 in. 1842 in. 1844 in. 1846 in. 1848 in. 1850 in. 1852 in. 1854 in. 1856 in. 1858 in. 1860 in. 1862 in. 1864 in. 1866 in. 1868 in. 1870 in. 1872 in. 1874 in. 1876 in. 1878 in. 1880 in. 1882 in. 1884 in. 1886 in. 1888 in. 1890 in. 1892 in. 1894 in. 1896 in. 1898 in. 1900 in. 1902 in. 1904 in. 1906 in. 1908 in. 1910 in. 1912 in. 1914 in. 1916 in. 1918 in. 1920 in. 1922 in. 1924 in. 1926 in. 1928 in. 1930 in. 1932 in. 1934 in. 1936 in. 1938 in. 1940 in. 1942 in. 1944 in. 1946 in. 1948 in. 1950 in. 1952 in. 1954 in. 1956 in. 1958 in. 1960 in. 1962 in. 1964 in. 1966 in. 1968 in. 1970 in. 1972 in. 1974 in. 1976 in. 1978 in. 1980 in. 1982 in. 1984 in. 1986 in. 1988 in. 1990 in. 1992 in. 1994 in. 1996 in. 1998 in. 2000 in. 2002 in. 2004 in. 2006 in. 2008 in. 2010 in. 2012 in. 2014 in. 2016 in. 2018 in. 2020 in. 2022 in. 2024 in. 2026 in. 2028 in. 2030 in. 2032 in. 2034 in. 2036 in. 2038 in. 2040 in. 2042 in. 2044 in. 2046 in. 2048 in. 2050 in. 2052 in. 2054 in. 2056 in. 2058 in. 2060 in. 2062 in. 2064 in. 2066 in. 2068 in. 2070 in. 2072 in. 2074 in. 2076 in. 2078 in. 2080 in. 2082 in. 2084 in. 2086 in. 2088 in. 2090 in. 2092 in. 2094 in. 2096 in. 2098 in. 2100 in. 2102 in. 2104 in. 2106 in. 2108 in. 2110 in. 2112 in. 2114 in. 2116 in. 2118 in. 2120 in. 2122 in. 2124 in. 2126 in. 2128 in. 2130 in. 2132 in. 2134 in. 2136 in. 2138 in. 2140 in. 2142 in. 2144 in. 2146 in. 2148 in. 2150 in. 2152 in. 2154 in. 2156 in. 2158 in. 2160 in. 2162 in. 2164 in. 2166 in. 2168 in. 2170 in. 2172 in. 2174 in. 2176 in. 2178 in. 2180 in. 2182 in. 2184 in. 2186 in. 2188 in. 2190 in. 2192 in. 2194 in. 2196 in. 2198 in. 2200 in. 2202 in. 2204 in. 2206 in. 2208 in. 2210 in. 2212 in. 2214 in. 2216 in. 2218 in. 2220 in. 2222 in. 2224 in. 2226 in. 2228 in. 2230 in. 2232 in. 2234 in. 2236 in. 2238 in. 2240 in. 2242 in. 2244 in. 2246 in. 2248 in. 2250 in. 2252 in. 2254 in. 2256 in. 2258 in. 2260 in. 2262 in. 2264 in. 2266 in. 2268 in. 2270 in. 2272 in. 2274 in. 2276 in. 2278 in. 2280 in. 2282 in. 2284 in. 2286 in. 2288 in. 2290 in. 2292 in. 2294 in. 2296 in. 2298 in. 2300 in. 2302 in. 2304 in. 2306 in. 2308 in. 2310 in. 2312 in. 2314 in. 2316 in. 2318 in. 2320 in. 2322 in. 2324 in. 2326 in. 2328 in. 2330 in. 2332 in. 2334 in. 2336 in. 2338 in. 2340 in. 2342 in. 2344 in. 2346 in. 2348 in. 2350 in. 2352 in. 2354 in. 2356 in. 2358 in. 2360 in. 2362 in. 2364 in. 2366 in. 2368 in. 2370 in. 2372 in. 2374 in. 2376 in. 2378 in. 2380 in. 2382 in. 2384 in. 2386 in. 2388 in. 2390 in. 2392 in. 2394 in. 2396 in. 2398 in. 2400 in. 2402 in. 2404 in. 2406 in. 2408 in. 2410 in. 2412 in. 2414 in. 2416 in. 2418 in. 2420 in. 2422 in. 2424 in. 2426 in. 2428 in. 2430 in. 2432 in. 2434 in. 2436 in. 2438 in. 2440 in. 2442 in. 2444 in. 2446 in. 2448 in. 2450 in. 2452 in. 2454 in. 2456 in. 2458 in. 2460 in. 2462 in. 2464 in. 2466 in. 2468 in. 2470 in. 2472 in. 2474 in. 2476 in. 2478 in. 2480 in. 2482 in. 2484 in. 2486 in. 2488 in. 2490 in. 2492 in. 2494 in. 2496 in. 2498 in. 2500 in. 2502 in. 2504 in. 2506 in. 2508 in. 2510 in. 2512 in. 2514 in. 2516 in. 2518 in. 2520 in. 2522 in. 2524 in. 2526 in. 2528 in. 2530 in. 2532 in. 2534 in. 2536 in. 2538 in. 2540 in. 2542 in. 2544 in. 2546 in. 2548 in. 2550 in. 2552 in. 2554 in. 2556 in. 2558 in. 2560 in. 2562 in. 2564 in. 2566 in. 2568 in. 2570 in. 2572 in. 2574 in. 2576 in. 2578 in. 2580 in. 2582 in. 2584 in. 2586 in. 2588 in. 2590 in. 2592 in. 2594 in. 2596 in. 2598 in. 2600 in. 2602 in. 2604 in. 2606 in. 2608 in. 2610 in. 2612 in. 2614 in. 2616 in. 2618 in. 2620 in. 2622 in. 2624 in. 2626 in. 2628 in. 2630 in. 2632 in. 2634 in. 2636 in. 2638 in. 2640 in. 2642 in. 2644 in. 2646 in. 2648 in. 2650 in. 2652 in. 2654 in. 2656 in. 2658 in. 2660 in. 2662 in. 2664 in. 2666 in. 2668 in. 2670 in. 2672 in. 2674 in. 2676 in. 2678 in. 2680 in. 2682 in. 2684 in. 2686 in. 2688 in. 2690 in. 2692 in. 2694 in. 2696 in. 2698 in. 2700 in. 2702 in. 2704 in. 2706 in. 2708 in. 2710 in. 2712 in. 2714 in. 2716 in. 2718 in. 2720 in. 2722 in. 2724 in. 2726 in. 2728 in. 2730 in. 2732 in. 2734 in. 2736 in. 2738 in. 2740 in. 2742 in. 2744 in. 2746 in. 2748 in. 2750 in. 2752 in. 2754 in. 2756 in. 2758 in. 2760 in. 2762 in. 2764 in. 2766 in. 2768 in. 2770 in. 2772 in. 2774 in. 2776 in. 2778 in. 2780 in. 2782 in. 2784 in. 2786 in. 2788 in. 2790 in. 2792 in. 2794 in. 2796 in. 2798 in. 2800 in. 2802 in. 2804 in. 2806 in. 2808 in. 2810 in. 2812 in. 2814 in. 2816 in. 2818 in. 2820 in. 2822 in. 2824 in. 2826 in. 2828 in. 2830 in. 2832 in. 2834 in. 2836 in. 2838 in. 2840 in. 2842 in. 2844 in. 2846 in. 2848 in. 2850 in. 2852 in. 2854 in. 2856 in. 2858 in. 2860 in. 2862 in. 2864 in. 2866 in. 2868 in. 2870 in. 2872 in. 2874 in. 2876 in. 2878 in. 2880 in. 2882 in. 2884 in. 2886 in. 2888 in. 2890 in. 2892 in. 2894 in. 2896 in. 2898 in. 2900 in. 2902 in. 2904 in. 2906 in. 2908 in. 2910 in. 2912 in. 2914 in. 2916 in. 2918 in. 2920 in. 2922 in. 2924 in. 2926 in. 2928 in. 2930 in. 2932 in. 2934 in. 2936 in. 2938 in. 2940 in. 2942 in. 2944 in. 2946 in. 2948 in. 2950 in. 2952 in. 2954 in. 2956 in. 2958 in. 2960 in. 2962 in. 2964 in. 2966 in. 2968 in. 2970 in. 2972 in. 2974 in. 2976 in. 2978 in. 2980 in. 2982 in. 2984 in. 2986 in. 2988 in. 2990 in. 2992 in. 2994 in. 2996 in. 2998 in. 3000 in. 3002 in. 3004 in. 3006 in. 3008 in. 3010 in. 3012 in. 3014 in. 3016 in. 3018 in. 3020 in. 3022 in. 3024 in. 3026 in. 3028 in. 3030 in. 3032 in. 3034 in. 3036 in. 3038 in. 3040 in. 3042 in. 3044 in. 3046 in. 3048 in. 3050 in. 3052 in. 3054 in. 3056 in. 3058 in. 3060 in. 3062 in. 3064 in. 3066 in. 3068 in. 3070 in. 3072 in. 3074 in. 3076 in. 3078 in. 3080 in. 3082 in. 3084 in. 3086 in. 3088 in. 3090 in. 3092 in. 3094 in. 3096 in. 3098 in. 3100 in. 3102 in. 3104 in. 3106 in. 3108 in. 3110 in. 3112 in. 3114 in. 3116 in. 3118 in. 3120 in. 3122 in. 3124 in. 3126 in. 3128 in. 3130 in. 3132 in. 3134 in. 3136 in. 3138 in. 3140 in. 3142 in. 3144 in. 3146 in. 3148 in. 3150 in. 3152 in. 3154 in. 3156 in. 3158 in. 3160 in. 3162 in. 3164 in. 3166 in. 3168 in. 3170 in. 3172 in. 3174 in. 3176 in. 3178 in. 3180 in. 3182 in. 3184 in. 3186 in. 3188 in. 3190 in. 3192 in. 3194 in. 3196 in. 3198 in. 3200 in. 3202 in. 3204 in. 3206 in. 3208 in. 3210 in. 3212 in. 3214 in. 3216 in. 3218 in. 3220 in. 3222 in. 3224 in. 3226 in. 3228 in. 3230 in. 3232 in. 3234 in. 3236 in. 3238 in. 3240 in. 3242 in. 3244 in. 3246 in. 3248 in. 3250 in. 3252 in. 3254 in. 3256 in. 3258 in. 3260 in. 3262 in. 3264 in. 3266 in. 3268 in. 3270 in. 3272 in. 3274 in. 3276 in. 3278 in. 3280 in. 3282 in. 3284 in. 3286 in. 3288 in. 3290 in. 3292 in. 3294 in. 3296 in. 3298 in. 3300 in. 3302 in. 3304 in. 3306 in. 3308 in. 3310 in. 3312 in. 3314 in. 3316 in. 3318 in. 3320 in. 3322 in. 3324 in. 3326 in. 3328 in. 3330 in. 3332 in. 3334 in. 3336 in. 3338 in. 3340 in. 3342 in. 3344 in. 3346 in. 3348 in. 3350 in. 3352 in. 3354 in. 3356 in. 3358 in. 3360 in. 3362 in. 3364 in. 3366 in. 3368 in. 3370 in. 3372 in. 3374 in. 3376 in. 3378 in. 3380 in. 3382 in. 3384 in. 3386 in. 3388 in. 3390 in. 3392 in. 3394 in. 3396 in. 3398 in. 3400 in. 3402 in. 3404 in. 3406 in. 3408 in. 3410 in. 3412 in. 3414 in. 3416 in. 3418 in. 3420 in. 3422 in. 3424 in. 3426 in. 3428 in. 3430 in. 3432 in. 3434 in. 3436 in. 3438 in. 3440 in. 3442 in. 3444 in. 3446 in. 3448 in. 3450 in. 3452 in. 3454 in. 3456 in. 3458 in. 3460 in. 3462 in. 3464 in. 3466 in. 3468 in. 3470 in.

AUCTION SALES.



SALE OF LINEN and MISCELLANEOUS GOODS.
Daily instructed we shall sell by Public Auction, Without Reserve (unless stipulated) at our Sale-rooms, Muter's Building, Harding's Street, Nairobi.

To-day, 7th Jan. at 10 a.m.

Range of Blankets and Linen including sheets, table-cloths, towels, towels, pillowcases, etc. Curtains. Quiltons. Gramophone Records. Novels. Silver-handled Teapots. Electric Coffee Percolator. Electric Heating Lamp and Fire. Electric Bedstead Lamp and Fire. Measuring electric angle fitting. Fringed Liqueur Cups. Osmo Trunk. secondhand Clothing. ten Tins of Götter Kosmos and various in Twenty Six. Car, acid Lamps and Candles. 22 Tins. 2 Kinds of Gunpowder. Teaspoon spoons and tins. Electric Iron. etc., etc., etc.

"Clayton" Maise Picker and Sheller. Oliver Type-writer. "Ford" Box Body Car, Buckstell Axle, in running order (see).

On behalf of the parties concerned.—Six Dozen Jackson's Floor Polish in 1 lb. tins (damaged in transit). Fourteen Lengths Soil Piping 6ft. x 6 inches (damaged in transit).

MUTER and OSWALD Ltd., Auctioneers, Etc., NAIROBI.



CATALOGUE SALE OF FURNITURE and EFFECTS.

Daily instructed by various parties, We shall sell, by Public Auction, Without Reserve, unless stipulated, at our Sale-rooms, Mutos Building, Harding's Street, Nairobi, on

Monday 12th January at 10 a.m.

Bedroom Suite (made by Messrs. Hutchings and Biemer) comprising: Wardrobe, bevelled mirror, Dressing Table, Washstand, Chair, Bedstead with spring and our mattress. Living Room, bevelled mirrors, Dressing Tables, Chest of Drawers, wangle iron, Bedsteads, Mattresses. White Enamelled Ward-robe. Morris Chairs, Occasional Chairs, Washstand, lined trunk, Hunter Wagon, Bookcases, Unvarnished Suites, (leather covered), on castors. Easy Chairs. Settee in leather with lounge cushion. Kirende Seats. Box (Shuman). Occasional Tables. Sideboards in teak, bevelled mirror, drawers and cupboards. "Kodak" & Plate Camera in case (not preserved). Two Valve Amplifier with loud speaker and Battery. H.M.V. Portable Gramophone and Records. Large Range of Classical Music for Violin (see). Oval Dining Table. Suites of Dining Chairs. Writing Bureau in Camphor-wood. Writing Tables, basin top. Kitchen Tables. Messiaen. Mirapour Carpet. Electric Reading Lamp. One Scaled Bowl and Servers. Ice Making Machine. "Kent" Ice Chest. Etc., Etc., Etc.

MUTER and OSWALD Ltd., Auctioneers, Etc., NAIROBI.



TO LET.

WELL FURNISHED COMMODIOUS STONE HOUSE IN HILL DISTRICT.—Immediate occupation.

RESIDENCE IN GIBBOURD ROAD—FURNISHED. Accommodation drawing room, dining room, three bedrooms, modern garage and other out-houses; occupation 1st February. Long lease.

MARLBOROUGH ESTATE, attractive modern stone residence to let furnished from February until 31st October; only 3 1/2 miles from Nairobi House; good accommodation; telephone. Moderate rental to approved tenant.

EXTREMELY WELL FURNISHED BURGALOG IN HILL DISTRICT from 1st March. Moderate rental.

DOUBLE STORED HOUSE IN MUTHAIGA for a period of six months from 1st March at low rental to approved tenant.

FOR SALE.

RESIDENTIAL PLOTS IN NGONG ROAD AREA. DESIRABLE LIMBOU PROPERTY CONSISTING OF 32 ACRES FREEHOLD, only 13 miles from Nairobi; residence supplied by Electric Light from a Kohler Set. Ample water supply and extensive views; orchard containing large variety of fruit; garden well laid out. 6 ft. wire fence covering 18 acres.

MUTER and OSWALD Ltd., Estate Agents, NAIROBI.

AUSTIN'S AUCTIONS.

SALE OF GOOD SILK GOODS.

AUSTIN & CO.,

will sell Without Reserve, at The Mart, on **Thursday January 8th. at 10 a.m.** Ladies Silk Dress Lengths in Crepe de Chine, Vign. Fuji, Shantung, Tussore, etc. Gents Silk and Cotton Shirts. Gents Tussore Silk Lengths Coats and Trousers. Handkerchiefs, Ladies Silk Hose extra fine quality. Sandalwood Boxes. Ladies Knickers and Petticoats, etc.

AUSTIN & CO.,

AUCTIONEERS and ESTATE AGENTS, HARDING'S ST., NAIROBI.

SCIENCE vs. WHITE ANT'S

A startling story of triumph over great difficulties is at last revealed by the manufacturers of Celotex. Two years ago this wonderful product was introduced to East Africa and despite the fact it contains nothing of food value, it is now found in a few cases certain species of termites could attack it.

The problem of white ants was solved by the Research Department of the Celotex Company, resulting in impregnation of permanent termitic repellent chemical during course of manufacture. Thousands of pounds have been spent in this research and the result is that

Celotex IS NOW GUARANTEED WHITE ANT-PROOF.

At no Extra Cost.

Keays has long endorsed its amazing properties of resisting heat and sound, its extreme lightness and the decorative beauty of its surface. No other building material combines all these qualities. STOCKED IN EVERY DISTRICT SIZE.

ANGLO-BALTIC TIMBER CO. LTD. NAIROBI. MOMBASA.

CAR FOR SALE.

CHRYSLER 4-cyl. Aluminium Box-Body 500 cc good, new, only new spare tyre, chain, luggage carrier, etc. Does only 18,000 miles on Town roads. A reliable and economical car. Apply

A. L. SMITHSON, F. A. I. P. A. 101/2 ROUTE, NAIROBI. Government Road. P.O. Box 1123.

LOOSE LEAF LEDGERS

INSTANT REFERENCE

PERPETUAL USE



SIZES: 9 x 11, 11 x 11, 11 x 14, 13 x 11, 13 x 14. BINDERS, INDEXES and SHEETS SOLD SEPARATELY—Sheets specially Ruled and Printed to order.

LET US QUOTE YOU

A COMPLETE LEDGER BINDER INDEX and 250 STOCK RULED SHEETS. From Shs. 62/50 to Shs. 135/50 according to size and quality of Binder.

A LARGE STOCK KEPT OF

LOOSE LEAF

NOTE BOOKS

BINDERS AND INDEXES

STANDARD STATIONERY STORES

NAIROBI.

BEST VALUE IN

CHRISTY'S TOWELS, RIGGS BEDDINGS, DUSSELEY RUGS.

FROM **E. Hutchison & Co.**

Box 140 NAIROBI.

THACKRAH'S SALES

FARM DISPENSAL SALE

on Monday 12th January at 10-30

at Chepiri Estate, Lumumba. We shall sell without reserve 33 Trained Native Oxen. 34 Cows and heifers. 7 Donkeys. 2 Horses. 3 Mules.

Agricultural Implements, Waggon, Cart, Unshelled Maise, Furniture and Personal Effects, Etc.

For full details see Weekly of the 10th inst. or Nakuru Weekly News.

NAKURU. Thackrah's Ltd AUCTIONEERS.

Motorists.

TYRES and TUBES. PRICES as CHEAP as ANYWHERE in TOWN. Fresh Consignment Guaranteed. All Makes. ALWAYS IN STOCK.

AT **Meghani's Petrol Station**

SWAMP ROAD, NGARA ROAD JUNCTION, P.O. Box 1027, NAIROBI. Phone 696.

METROPOLITAN GARAGE.

(OPP. GODFREY'S CAR MART.) Repairs all makes of Cars. Duo Spro Pump Fainting Overhauls a Specialty. Volcanizing & Retreading.

SECONDHAND CARS BOUGHT and SOLD.

Our Charges are the most moderate in the country.

A personal interest taken in every car.

This week's bargain FIAT 809 2 seater Reduced, in most excellent order. 4 new tyres, engine completely overhauled. 275.

Other Bargains in Stock.

D. J. I. ETHBRIDGE.

SOLE PROPRIETOR.

Sale by Public Auction

10 Motor Cars 10

MOTOR CYCLES and TRUCKS.

At Godfreys Car Mart Ltd

To-Day Jan. 7th. at 10-30 a.m.

Favoured with instructions throby various clients, we will sell as above including.

BUTICK DODGE RENAULT OVERLAND. CHEV. BUGBY. OLDSMOBILE MORRIS CHEVLEY. CHEV. BOX BODY. CITROEN.

OF INTEREST TO FARMERS.

1 BRAND NEW MCGORMICK REARLE PICKER.

A remarkable labour saving implement. Will Pick and Husk 10 acres of Maise Per Day. 3 SPRAYING MACHINES (Four Oaks Complete with fittings and spares.

Further particulars will appear in a later issue of this paper.

GODFREYS CAR MART LIMITED.

Auctioneers & Motorcar Salesmen.

'PUDLO' Trade Mark.

BRAND GENUINE WATER-PROOFING POWDER, IS USED FOR CONSTRUCTION.

Concrete Foundations, Basements, Retaining Walls, Shoring, Dewatering Basins, Sealed Glassed Tubs, Fish Cement Walls, Washery Flies, Ventilators, Computed Walls, Artificial Stone Work, Garage Flies, Bunk Beds, Tanks for Water, Mineral Oil and other Liquids, River and Canal Walls, Dams and Paving Sidewalks and Showers.

Painting—Interior and Exterior. FOR REMEDIATION: Deteriorated, Walls Dampened by earth, Flooded Cellars, etc. Family Sewers, Leaking Pipes, Leaking Cesspits, Holes, Damp Holes and Stone Walls, Leaking Foundations.

FOR PRESERVATION: Millstones on Cement Work. The Several Varieties of Walls, Sliding Downward under Wood Strips, SOLE GARAGES.

DENOVA & DIEBEL. Victoria Street, NAIROBI.

RITULAC

'Anti Corrosive Paints.

The Paint which is used on the **NYALI BRIDGE** Manufactured by—

BITULAC LIMITED

SPECIALITIES

CAFFEY CRACKERS, PLUM FODDING, MINGENET, CRYSTALLIZED FRUITS, ASSORTED BOXES, CRYSTALLIZED and GLACE CHERRIES, CRYSTALLIZED GINGER, RAISINS, SULTANAS, CURRANTS, PEEL ALMONDS, GINGER IN SYRUP, MUSCATELS, NUTS, FIGS, DATES,

CHEESE and HAMS

BLACKLAWS & BROWN (LATE MAXWORTHY REG.)

Tel. No. NAIROBI. Box No. 21. Telegrams: 'BLACKLAWS' Ltd.

Better be sure than sorry



And Get The Security You Want

CHARLES WARE

TURF ACCOUNTANT.

Established 25 years. Tel. 444. 1, 2, 3, 4, 5, 6, 7, 8, 9, 10, 11, 12, 13, 14, 15, 16, 17, 18, 19, 20, 21, 22, 23, 24, 25, 26, 27, 28, 29, 30, 31, 32, 33, 34, 35, 36, 37, 38, 39, 40, 41, 42, 43, 44, 45, 46, 47, 48, 49, 50, 51, 52, 53, 54, 55, 56, 57, 58, 59, 60, 61, 62, 63, 64, 65, 66, 67, 68, 69, 70, 71, 72, 73, 74, 75, 76, 77, 78, 79, 80, 81, 82, 83, 84, 85, 86, 87, 88, 89, 90, 91, 92, 93, 94, 95, 96, 97, 98, 99, 100.

S.F.C. tubes for all purposes



MAURICE ROSENTHAL

P.O. Box 68, Tel. Address: 'TODD', ROMA BUILDING, GOVERNMENT ROAD, NAIROBI.

GRAND NATIONAL, Sun March 27th, 4 mile, 850, 860, 870, 880, 890, 900, 910, 920, 930, 940, 950, 960, 970, 980, 990, 1000.

ENGLISH DEBUT, Sun March 27th, 1 mile - 10, 11, 12, 13, 14, 15, 16, 17, 18, 19, 20, 21, 22, 23, 24, 25, 26, 27, 28, 29, 30, 31, 32, 33, 34, 35, 36, 37, 38, 39, 40, 41, 42, 43, 44, 45, 46, 47, 48, 49, 50, 51, 52, 53, 54, 55, 56, 57, 58, 59, 60, 61, 62, 63, 64, 65, 66, 67, 68, 69, 70, 71, 72, 73, 74, 75, 76, 77, 78, 79, 80, 81, 82, 83, 84, 85, 86, 87, 88, 89, 90, 91, 92, 93, 94, 95, 96, 97, 98, 99, 100.

WHAT PRESENT COULD YOU GIVE OR RECEIVE MORE DELICIOUS THAN A TENNIS RACKET OR A SET OF GLOVES OR ANY OF THE FOLLOWING:

- HOCKEY STICK. FOOTBALL. CRICKET BAT. AIR GUN. BASKETBALL SET. SHOT GUN. TENNIS RACKET. PIPE. SHOOTING SHIRT. POUCH. ATTACHE CASE. TRICICLE.

THE BEST ARE OBTAINABLE FROM

MAY & Co. Ltd. THE SPORTS HOUSE. Box 47, NAIROBI.

THE SPORTS PAGE

THE KING EVENTS. MACHAKOS BEATEN BY MUTHIGA.

Standard of Jumping Improves. MRS BRADSHAW WINS THE GRANTMETER.

While the standard of jumping on the first day was a commendable improvement on yesterday. There was better jumping seen from the first and second, the standard was only slightly improved.

The first jumping event yesterday was the "grantsmeter" and it attracted a good crowd of spectators.

The first jumping event yesterday was the "grantsmeter" and it attracted a good crowd of spectators.

The first jumping event yesterday was the "grantsmeter" and it attracted a good crowd of spectators.

The first jumping event yesterday was the "grantsmeter" and it attracted a good crowd of spectators.

The first jumping event yesterday was the "grantsmeter" and it attracted a good crowd of spectators.

The first jumping event yesterday was the "grantsmeter" and it attracted a good crowd of spectators.

The first jumping event yesterday was the "grantsmeter" and it attracted a good crowd of spectators.

The first jumping event yesterday was the "grantsmeter" and it attracted a good crowd of spectators.

The first jumping event yesterday was the "grantsmeter" and it attracted a good crowd of spectators.

The first jumping event yesterday was the "grantsmeter" and it attracted a good crowd of spectators.

The first jumping event yesterday was the "grantsmeter" and it attracted a good crowd of spectators.

The first jumping event yesterday was the "grantsmeter" and it attracted a good crowd of spectators.

The first jumping event yesterday was the "grantsmeter" and it attracted a good crowd of spectators.

The first jumping event yesterday was the "grantsmeter" and it attracted a good crowd of spectators.

The first jumping event yesterday was the "grantsmeter" and it attracted a good crowd of spectators.

NAIROBI POLO TOURNAMENT. Maiden Win Connaught Cup.

THE SECOND TEST MATCH. South Africa's Moral Win.

England all out for 250. MODERATE SECOND INNINGS TOTAL.

Two wicket stands took the field at Muthiga on Sunday. The match was a commendable improvement on yesterday.

The match was a commendable improvement on yesterday. There was better jumping seen from the first and second.

The match was a commendable improvement on yesterday. There was better jumping seen from the first and second.

The match was a commendable improvement on yesterday. There was better jumping seen from the first and second.

The match was a commendable improvement on yesterday. There was better jumping seen from the first and second.

The match was a commendable improvement on yesterday. There was better jumping seen from the first and second.

The match was a commendable improvement on yesterday. There was better jumping seen from the first and second.

The match was a commendable improvement on yesterday. There was better jumping seen from the first and second.

The match was a commendable improvement on yesterday. There was better jumping seen from the first and second.

The match was a commendable improvement on yesterday. There was better jumping seen from the first and second.

The match was a commendable improvement on yesterday. There was better jumping seen from the first and second.

The match was a commendable improvement on yesterday. There was better jumping seen from the first and second.

The match was a commendable improvement on yesterday. There was better jumping seen from the first and second.

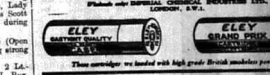
The match was a commendable improvement on yesterday. There was better jumping seen from the first and second.

The match was a commendable improvement on yesterday. There was better jumping seen from the first and second.



Good! It's British!

If the name Eley or Kynoch is stamped on the barrel of a cartridge you may be sure that it will accomplish all that a cartridge is expected to do.



On the 28th January the final matches in the L.I. (Semi) Cup, the first of which was played by the Mullins Cup.

The Mullins Cup was won by the Mullins Cup team. The Mullins Cup was won by the Mullins Cup team.

The Mullins Cup was won by the Mullins Cup team. The Mullins Cup was won by the Mullins Cup team.

The Mullins Cup was won by the Mullins Cup team. The Mullins Cup was won by the Mullins Cup team.

The Mullins Cup was won by the Mullins Cup team. The Mullins Cup was won by the Mullins Cup team.

The Mullins Cup was won by the Mullins Cup team. The Mullins Cup was won by the Mullins Cup team.

The Mullins Cup was won by the Mullins Cup team. The Mullins Cup was won by the Mullins Cup team.

The Mullins Cup was won by the Mullins Cup team. The Mullins Cup was won by the Mullins Cup team.

The Mullins Cup was won by the Mullins Cup team. The Mullins Cup was won by the Mullins Cup team.

The Mullins Cup was won by the Mullins Cup team. The Mullins Cup was won by the Mullins Cup team.

The Mullins Cup was won by the Mullins Cup team. The Mullins Cup was won by the Mullins Cup team.

The Mullins Cup was won by the Mullins Cup team. The Mullins Cup was won by the Mullins Cup team.

The Mullins Cup was won by the Mullins Cup team. The Mullins Cup was won by the Mullins Cup team.

The Mullins Cup was won by the Mullins Cup team. The Mullins Cup was won by the Mullins Cup team.

The Mullins Cup was won by the Mullins Cup team. The Mullins Cup was won by the Mullins Cup team.

Smoking without Tears

Q.—How you see, the joys of the garden's best? A.—No, but I have noticed her smoking.

ABDULLA IMPERIAL PREFERENCE

—and saving the empty tin for her cigarette.

Sole Agents—

DALGETY & COMPANY LIMITED.

MEMBERS: NAIROBI ELDORET

CROPS IN LONDON DISTRICT.

Expectations of a Good Harvest.

CATTLE DISEASE

STANDARD CORRESPONDENT

London, January 20. The old year week-end and the new year week-end in January 1913 have been unusually good...

Little matter has been going on in the district this week-end. The cattle promises well and it is expected to yield well to twelve bush or thereabouts...

What.

Wheat fields look exceptionally fine at the present moment. No real loss has been reported and good yields are expected...

Roads.

Advantage has been taken of the dry weather by the District Council to put all the roads in repair...

Thika Library.

ADDING TO THE DISTRICT'S AMPLITIES

STANDARD CORRESPONDENT

Thika, January 20. A circulating library has been opened by the local branch of the Thika Working League...

The subscription rate is Shs. 10/- per annum for members of the F.W.C. and Shs. 20/- for those who are not members...

London-Eldoret road, which appears to carry a deal of traffic. The first eight miles of the road is metalled...

Fire Precaution

The weather is bright and dry with strong N.E. and East wind. The Forest Department are busy burning the bracken under the forest...

Native Show.

A COMING ATTRACTION AT NAIROBI

"ON THIS DAY."

JANUARY 21st.

John Brumpton, and January 21st, 1913. John Brumpton, a pugilist-champion of England, as a matter of fact, he takes us back to the recall of good old days when the ring was more quiet...

The Show will be representative of the agricultural and stock-peddling of the two large Eastern Districts of Central and North Kavirondo...



John Brumpton

Arrangements are being made for a hotel at which both ladies, men, children, etc., can be accommodated...

At the Lake Side.

DRY AND VERY HOT WEATHER AT NAIROBI

STANDARD CORRESPONDENT

Nairobi, December 31. During last fortnight we have had no rain at all. The short rains have ceased sooner than was anticipated...

WHY PAY HIGH RENT

Attractive Plots in the Suburbs of Nairobi may be purchased on the instalment plan

GOOD RED SOIL. WATER AND ELECTRIC LIGHT

Plots from 1 of an acre upwards can be obtained on payment of a Small Deposit.

Call or WRITE for Particulars

UPPER NAIROBI TOWNSHIP & ESTATE COMPANY, LIMITED.

Union Buildings, Government Road, Box No. 301, NAIROBI.

Receivers Loud Speakers

MARCONI

The Masterpieces of RADIO

TO LET.

A small concrete block house of Lennox Road, The Hill. Monthly tenancy or long lease is desired.

STIRLING & SCOTT Ltd. P.O. Box 245 Victoria Street. Phone 159.

SUKARI Ltd.

have pleasure in announcing that they are now producing the Finest Quality White Sugar.

Sukari Superfine

Unequaled in Sweetness, Whiteness and Purity.

THEO SCHOUTEN

He PERSONALLY will be at his Nairobi Branch from Dec. 12th. Clients can therefore be assured of his personal attendance during the N.A.S. RUSTUM Mr. CARVER, his Nakuru Manager, has also joined the Nairobi Branch...

BRICKS

are universally recognised as the best building material over 3,000,000 Invicta Bricks have been used in Nairobi during the past twelve months.

SPECIAL NOTICE.

Be Our Victim of Removal. We would now draw the attention of our Valuable Customers to the fact that we have decided NOT TO REMOVE. Business will therefore be carried on from Jan. 1st, 1913.

NAIROBI WEEK

are waiting for LUCKY Programme Holders at Hussein Karmali. Look for the RED TRIANGLE. The NEW PETROL STATION IN SWAMP ROAD near the Junction of Government Road.

FORD PRESENTS A

ONE YEAR GIFT TO THE PUBLIC IN A HANDSOME

PRICE REDUCTION

Table listing Ford car models and prices: TOURING £178, BOX BODY (from) £170, TOURING DE LUXE £220, ROADSTER £162-10, ROADSTER DE LUXE £198, SPORTS COUPE £211, CABRIOLET £226, TUDOR SEDAN £205, FORDOR SEDAN £224, TOWN SEDAN £248, LIGHT DELIVERY £165.

NAIROBI Ford MOTORS. Box 461. 6th Avenue. Tel. 317. NAIROBI.

1st & 2nd Prizes Oxen & Show Sheep FROM The Show. Bought by Colonial Meat Company. P.O. Box 1130. Victoria Street. Phone 176.

Eat Mun Langridge's Fruit And Keep Fit. 1930 SEASON 1931. Look Your Apples, Peaches, Oranges, etc. Under Snow. G. L. LANGRIDGE, F.R.H.S. 10, New Park, Kynyre.

UNION-CASTLE LINE

HOMEWARD VIA SUEZ CANAL

From Mombasa Arrive England about

Landing Castle	21st Feb.	15th March
Landing Castle	4th April	7th May
Landing Castle	18th April	14th May
Landing Castle	1st May	30th May
Landing Castle	15th May	1st June
Landing Castle	29th May	15th June
Landing Castle	12th June	29th June
Landing Castle	26th June	13th July

HOMEWARD VIA SOUTH AFRICA

From Mombasa Arrive England about

Landing Castle	11th Jan.	8th Mar.
Landing Castle	25th Jan.	22nd Mar.
Landing Castle	8th Feb.	5th Apr.
Landing Castle	22nd Feb.	19th Apr.
Landing Castle	6th Mar.	3rd May
Landing Castle	20th Mar.	17th May
Landing Castle	3rd Apr.	31st May
Landing Castle	17th Apr.	14th June
Landing Castle	31st Apr.	28th June
Landing Castle	15th May	11th July
Landing Castle	29th May	25th July
Landing Castle	12th June	8th Aug.
Landing Castle	26th June	22nd Aug.

*Will take passengers for Mombasa to Suez or to Durban.
*Passes from Suez to East Africa and East India.

Passenger Agents:
S.S. Corporation, Ltd., London & Liverpool.
East African Steamers, Ltd., Nairobi & Kisumu.
S. O. D. & Co., Ltd., Nairobi & Kisumu.
East African Steamers, Ltd., Nairobi & Kisumu.
S. O. D. & Co., Ltd., Nairobi & Kisumu.

LONDON AND EAST AFRICA

LONDON TO BEIRA, via Mombasa, Port Elizabeth, Durban and Aden, Onwards and Return

From Mombasa Arrive London about

London	17th Jan. 1921
London	31st Jan. 1921
London	14th Feb. 1921
London	28th Feb. 1921
London	14th Mar. 1921
London	28th Mar. 1921
London	11th Apr. 1921
London	25th Apr. 1921
London	9th May 1921
London	23rd May 1921
London	6th June 1921
London	20th June 1921
London	4th July 1921
London	18th July 1921
London	31st July 1921
London	14th Aug. 1921
London	28th Aug. 1921

Homeward returns sail at Plymouth offering passengers the opportunity of disembarking there, cargo accepted for Antwerp direct on all steamer.

ALL DATE NUMBER TO ALBERTON WITHOUT NOTICE RETURN TICKETS ISSUED AT TWO SINGLE FARES LESS 10% ENOUGH CURRENCY NOT ACCEPTED UNLESS ENDORSED BY A LOCAL BANK.

GENUINE FREIGHTS AND PASSENGER MAY BE ARRANGED WITH
TERMS: MACKENZIE & CO., Agents: Kilindini, Mombasa, East Africa. Durban, Cape Town, London and London.
Passenger Agents only: Nairobi and Kampala. Also the following Sub-Agents (for passenger only):
Nairobi: Sykes Bros Ltd. NAKURU: THE Kenya Farmers' Association Ltd. SOY: The Soy

BOHRAT-DURBAN MAIL SERVICE

Calling Kilindini, Mombasa, Port Elizabeth, Durban, Beira, Onwards and Return

From Mombasa Arrive Durban about

Durban	17th Jan. 1921
Durban	31st Jan. 1921
Durban	14th Feb. 1921
Durban	28th Feb. 1921
Durban	14th Mar. 1921
Durban	28th Mar. 1921
Durban	11th Apr. 1921
Durban	25th Apr. 1921
Durban	9th May 1921
Durban	23rd May 1921
Durban	6th June 1921
Durban	20th June 1921
Durban	4th July 1921
Durban	18th July 1921
Durban	31st July 1921
Durban	14th Aug. 1921
Durban	28th Aug. 1921

Homeward returns sail at Plymouth offering passengers the opportunity of disembarking there, cargo accepted for Antwerp direct on all steamer.

ALL DATE NUMBER TO ALBERTON WITHOUT NOTICE RETURN TICKETS ISSUED AT TWO SINGLE FARES LESS 10% ENOUGH CURRENCY NOT ACCEPTED UNLESS ENDORSED BY A LOCAL BANK.

GENUINE FREIGHTS AND PASSENGER MAY BE ARRANGED WITH
TERMS: MACKENZIE & CO., Agents: Kilindini, Mombasa, East Africa. Durban, Cape Town, London and London.
Passenger Agents only: Nairobi and Kampala. Also the following Sub-Agents (for passenger only):
Nairobi: Sykes Bros Ltd. NAKURU: THE Kenya Farmers' Association Ltd. SOY: The Soy

Custard Powder

combines highest quality with greatest economy. It comes in a tin and is suitable for all children's uses.

Chivers' Canned Fruit

OLIVEB & SONS LTD., The Orchard Nursery, Bletchley, Bucks. Sole Agents for trade only - E. O. HAMILTON, Ltd., 200, Market Street, Nairobi. Phone 58.

MESSAGERIES MARITIMES

(PERSON MAIL SERVICE)

Regular and fortnightly service from port to Marseille.

The Quickest Route to London.

Next Sailings to Marseilles:-

"General Vieux"	12th Jan. 1921
"Zepherus Guadeloupe"	26th Jan.
"General Duchasse"	9th Feb.
"Aviation Jeanne D'Arc"	23rd Feb.

AGENCY FOR ALL STEAMERS

Next Arrival from Marseilles:-

"Aviation Jeanne D'Arc"	19th Jan. 1921
"Messageries Maritimes"	31st Jan.
"P.O. Box 26, NAIROBI."	

CITRA LINE

Compagnie Indienne Transatlantique.

THE BEST ROUTE TO ENGLAND.

(Sailings from KILINDINI to GENOA and NAPLES)

S.S. F. "GRISBI" - 1st February

S.S. G. "MAZETI" - 1st March, 1st May, 1st July, 1st September.

For further particulars apply to: **SCOTTS & BOND**, 10, Abchurch Lane, London E.C. 4.

DEUTSCHE OST-AFRIKA-LINE

(GERMAN AFRICAN SERVICE)

HOMEWARD VIA SUEZ CANAL

"USAMBARA"	10th Feb.
"WANGONI"	24th Feb.
"WATUSHI"	10th Mar.
"USAMBARA"	24th Mar.
"WANGONI"	7th Apr.
"WATUSHI"	21st Apr.
"USAMBARA"	5th May
"WANGONI"	19th May
"WATUSHI"	2nd June

HOMEWARD VIA CAPE

"N'JABIA"	6th Feb.
"ADOLPH WOERMANN"	20th Feb.
"USAMBARA"	6th Mar.
"WATUSHI"	20th Mar.
"USAMBARA"	3rd Apr.
"WATUSHI"	17th Apr.
"USAMBARA"	1st May
"WATUSHI"	15th May
"N'JABIA"	29th May
"ADOLPH WOERMANN"	12th June
"USAMBARA"	26th June
"WATUSHI"	10th July

UP-COUNTRY CARGOES CANNOT BE ACCEPTED UNLESS ENDORSED BY LOCAL BANK.

For Passenger Fares And Freight Rates Apply To:-
DEUTSCHE OST-AFRIKA-LINIE Generalagentur, MOMBASA.
P.O. Box 11, MOMBASA.

NAIROBI AND ELDORET: DeJugly & Company, Limited.
KISUMU AND KAMPALA:- Beeston & Clarke Ltd.

Holland Afrika Lijn

PASSENGER FARES.

To Mombasa	(A)-400-00	(B)-450-00	(C)-475-00
To London	(A)-470-00	(B)-520-00	(C)-545-00

For further particulars apply to: **SCOTTS & BOND**, 10, Abchurch Lane, London E.C. 4.

Doonholm Dairy

FOR PURE MILK AND CREAM FROM FARM TO CONSUMER.

P.O. Box 11, NAIROBI.

MAY & CO., LTD.

THE SPORTS SPECIALISTS.

See Our Special Window Displays

We are giving **10% for Cash.**

Also Special Reductions OFF

Oddments in Ladies Evening Shoes.

Eadies Footwear Ltd.

P.O. Box 149, NAIROBI.

37/50 Permanent Waving 37/50

Using the secrets of Jeassery, we are offering a permanent wavy wave at Shgs. 37/50 per Shilling's Head!

"Romano's Hairdressing 37/50"

37/50 Permanent Waving 37/50 SPECIALISTS.

Nairobi House, Phone 604.

Keith Timber Co., Ltd.

Sadler Street, NAIROBI.

Cedar Block Flooring A Speciality

Box 674. Phone 58.

PIANOFORTE TUNING AND REPAIRING.

Ten year experience in Kenya Colony and five years with Messrs. Chappell and Co., London.

F. A. HEAD,

Box 675, NAIROBI.

TWENTICE OVERSEAS TRADING CO., LTD.

MOMBASA. KAMPALA. P.O. Box 149. Telegrams: "HOLAFRIC." Tel. 149.

FUEL, FUEL, FUEL

One Load Jungle Fuel Shgs. 18/-
One Load Jungle Fuel (split length) and Monthly 1000 lbs. Fuel Shgs. 11/-

Special Price for Muthaiga and Kilmani Residents.

Two Loads Jungle Fuel Shgs. 25/-
Two Loads Jungle Blocks (split length) and Split Shgs. 4/-

Yusutali Mulla Alimbi

Bodley St. Opp. National Mercantile Co. Ltd. DELIVER FOR CASH ONLY.

SEE OUR WINDOW DISPLAY

ON MENS PULLOVERS AND CARDIGANS with Sleeves and Sleeveless.

Best Values in Kenya.

Prices From **10/50 to 27/50 each**

The Bradford Manufacturing Co., Limited.

B. M. C. HOUSE

Corner of Government Rd. and Fifth Avenue opposite the New N.B.I. Bank. P.O. Box 810.

P. GETHIN

Phone 121. Box 29. Grand Central Station. LITTONS TOLLING.

CALL FOR HERR. HAY AND HERR.

with exceptional offers.

REPAIRS TO GOOD REPAIRERS.

ART TUBE

MOMBASA TO LAGOS

THE HILL & THE CAPE.

If you want to go:

HERR 4 CUP

REEL SETTING

OVERSEAS MAILS.

Destinations	From	Due at Mombasa	Next Day
Kenya	South	Jan. 8	7th
Kilindini	India	Jan. 10	9th
Malindi	Europe	Jan. 11	10th
A. B. G. Durban	Europe	Jan. 12	11th
Madras	Europe	Jan. 13	12th
Kampala	South	Jan. 14	13th
Kisumu	India	Jan. 15	14th
Kilindini	Europe	Jan. 16	15th

Kilindini carries 75 U.K. mail and 271 parcel bags.

DEPARTURES.

Destinations	Per	Mails close at Mombasa G.P.O.	Next Day
Kenya	India	Jan. 10	9th
Kilindini	Europe	Jan. 11	10th
Madras	Europe	Jan. 12	11th
Kampala	South	Jan. 13	12th
Kisumu	India	Jan. 14	13th
Kilindini	Europe	Jan. 15	14th

MARVELLOUS VALUE

PORT & SHERRY

(Full Rich) (Pale, Dry)

Shs. 5/- Per Bottle.

BOTTLED BY **BLACKLAW & BROWN** (LATE MACKENZIE BROS.)

Tel. No. NAIROBI. Box No. 31. Telegrams: "BLACKLAW." 468.

Specify LIME

Products of our works are increasingly special in quality and engineers for use throughout Kenya and Uganda.

Lime Limited

Tel. "Limeite," Phone 483, Box 615, Chamber of Commerce Bldg.

Uplands Bacon

The Factory now holds record stocks of choice quality from which to select precisely what individual buyers require.

Stocked by all the leading Stores in Kenya, Uganda, Tanganyika and the Belgian Congo.

Be sure to see the Registered Brand.

NEVER SO CHEAP! - NEVER SO GOOD!

THE GIFT SHOP

ALWAYS SOMETHING NEW AND INTERESTING TAWS, LIMITED.

MOTOR TOURS Ltd.
 Tourist Agents, Opposite the G.P.O. for
MOTORING TOURS
 and **THE HILLS ROUTE TO EUROPE.**
 Luxurious Cars by Hire - European Drivers.



For the EYE the best is just GOOD enough!

"THE LENS" Ltd.

No. 22, Prince's House, Govt. Road, NAIROBI. Phone 628.

The Chevrolet Value Chart

- 10 Checking Points to Low Price Motor Car Value.
1. 8 cylinder valve in head motor.
 2. 150 inches frame with roomy bodies by Fisher.
 3. 348 square inches of braking area.
 4. Safety gasoline tank located in rear, away from heat of engine and ignition system.
 5. 4 long chrome vanadium steel springs.
 6. ADJUSTABLE DRIVING SEATS ON ALL CLOSED MODELS.
 7. 107 inches wheel base.
 8. Oil pressure gauge and motor heat indicator mounted on dash.
 9. 4 Hydraulic shock absorbers.
 10. One hand operation windshield giving ventilation draught.

Check the chart now, then let us take you for a demonstration, and check the points again while the car is on the road.

IT WISE TO BUY A SIX. THE MOTOR MART and Exchange Ltd.

Nakuru. Eldoret. Nairobi. Dar-es-Salaam.

CROSS PURPOSES.
 (Continued from page 1)

Informal conversation with some of the leading members of the Hindu and Muslim delegations was held at his hotel. The meeting lasted until midnight, and was engaged on considering the possibilities of settlement on the lines indicated in the offer by the Conservative Government.

The Khan has not fully recovered from his indisposition and is unlikely to be able to attend the afternoon meeting of the Ministers' Sub-Committee of the Conference. British Official Wireless Service.

Medical Suggestions.
THROUGH SECRETARY'S AGENCY.
 London, January 6.

At the meeting of the Ministers' Sub-Committee, Sir Muhammad Shafiq said that although the overwhelming majority of Muslims insisted on the retention of separate electorates, the Muslim delegates had the interests of peace and good will were prepared to accept joint electorates providing that they have the reservation of seats on the present weightage in the minority Province (Muzium). Ali's formula, and provided that the Hindus were willing to consider, through the joint electorate, a representation on a population basis. Dr. Majeed declared that he was unable to accept the proposal set forward.

The Prime Minister expressed the opinion that the best thing now would be for him to summarize the various claims put forward, and to draft a report for later consideration. In the meantime he appealed to delegates to try and reach a settlement.

Offer Withdrawn.
 After Dr. Majeed had spoken, Sir Muhammad Shafiq asked whether his offer had been accepted.

Dr. Majeed replied he accepted the weightage in minority provinces, but as a Hindu, "I cannot accept" that his offer was withdrawn.

Power of the Viceroy.
 At the Federal Structure Sub-Committee of the Round Table Conference, Sir Samuel Hoare, on behalf of the Conservative delegation, declared that he must at present adopt a non-committal attitude. He pointed to the great experiments in provincial autonomy and the All India Federation being introduced and declared that he reserved opinion regarding the

The Conservative Government's powers shall in no way be whittled down whatever the new form of government in India may be. Shafiq said that the speech by Sir Samuel Hoare in the committee of the Round Table Conference, who declared that he desired to see independence for India, and was not at all dependent on the British Government, which could not be controlled by any other than the British Government, and if he were Defence Minister in the Cabinet, he would feel it his responsibility to the Crown to be in agreement with the responsibility of other Ministers and to the Government.

It was necessary in the interests of minorities that the Viceroy should retain over-riding power. The Indian Cabinet would not be entirely in the hands of the Government in Britain, and if the Viceroy was not an effective head of the Executive Government how could he exercise his reserved power.

Chairing Date.
 Hoare understands that in view of the progress made, and the fact that all reports of sub-committees will be submitted about the end of next week, the Indian Round Table Conference will terminate on January 21, inasmuch as the delegates returning on January 23.

Harry Thuku.
DEPORTATION ORDER SUSPENDED.

In the Legislative Council yesterday morning Canon Burns (referred to as an effective head of the Executive Government) asked the following question—

"Is the Government in a position to make any statement as to his intentions with regard to the return of the deportee Harry Thuku?"

The Chief Native Commissioner replied:

"The question was carefully reviewed by Government recently, and as a result the order of deportation on Harry Thuku has been provisionally suspended on the understanding that it can be re-enforced at any time should his behavior make such a course necessary."

"Harry Thuku is the central figure in respectable incidents which occurred in Nairobi in the early part of 1922, following which he was removed to Kiambu and Juba territory he was transferred to Mombasa."



Nightly at 8-45. **EMPIRE** Matinee Sats. 3-15

TO-NIGHT at 8-45
REBORN WITH GLOWING SPLENDOR.

UNCLE TOM'S CABIN

The Greatest Human Drama Ever Screened.

A Show of Star Principals—Cast of Many Hundreds—Three Great Human Dramas of Passion In a Story That Will Live Forever—Epic In Its Sweep—Nightly In Its Magnitude—Nothing On Stage or Screen That You Have Ever Heard Of or Seen. Regarding "Uncle Tom's Cabin" Can Give You the Slightest Idea of the Road. True Story As You Can See It In All Its Dramatic Thrill and Intensity—Laugh with "Topsy"—Cry with "Little Eva"—Hate "Simon Legree"—Pity "Uncle Tom"—Shudder at the Story Behind of "Elihu" Crossing the Ice—How is Entertainment! In All-A-Veritable Show

—See it now!

Nightly at 8-45 p.m. **THEATRE ROYAL** Nightly at 8-45 p.m.

TO-NIGHT At 8-45.

THE MOST POPULAR PICTURE THAT HAS BEEN SHOWN IN NAIROBI FOR MONTHS WILL CONTINUE ITS RUN

"High Treason"

A SPECTACULAR ROMANCE OF THE FUTURE SPECTACULARLY PRODUCED—WITH A GREAT CAST INCLUDING—

Benita Hume - Basil Gill
HUMBERTSON WRIGHT — JAMFSON THOMAS.

PICCADILLY RESTAURANT

THEATRE ROYAL BUILDING FRENCH COOKING. The Best and Cheapest Lunch and Dinner Served in Town. **SEVILLE A LA CARTE** **LOMBARD A SPECIALITE—GUILLS—FRENCH PARTIES—ICE.** **RUSSIAN DORCHES—PASTO A L'ITALIANA.** **CATERING UNDERTAKEN FOR SMALL OR LARGE PARTIES ANSWER.**

KENYA LIDO
BLUE POSTS TERRACE.

SWIMMING BATH

Water Hygienically Treated and Constantly Overflow. Outdoor Miniature Golf Course Tennis Courts—Ping Pong—Attractive New Rondaevs. AMPLIFIED DANCES WEEKLY. Weekend Rates 12/- per day. Sunday Luncheon 2/50 GOOD ROAD.

G. R. RICHARDS Ltd. LONDON.

Nicotine Insecticide KILLS

Aphis Mealy Bug. Thrip. White & Brown Scale. Green & Black Fly.

Liquid or Powder Form

LIQUID 1/ and 20 gallon drums. POWDER 56 lbs. drums. NEW SHIPMENT JUST ARRIVED. For Full Particulars and Prices apply

Beeston & Morison
 P.O. Box 111. NAKURU.

EXHIBITION

OF PICTURES BY **Royal Photographers**

will be held at **STANLEY HOUSE** Hardinge Street, on the **8th Jan., 1931** Open from 10 a.m. to 6 p.m. ADMISSION: TWO SHILLINGS. Proceeds in aid of Local Charities.

Miniature Golf

IS ALL THE RAGE 100 LADIES AND GENTS PLAYED OVER OUR COURSE ON NEW YEAR'S DAY. Players Remarks Overheard: "This is a Wonderful Course."

Can you beat Bogey? Come Along and Try SHG. 1/- A ROUND.

ENTRIES NOW OPEN FOR Table Tennis Tournament. ENTRY FEE 2/- **PRIZES FOR WINNERS**

in Basement of **City Square Mansions**

SAVE MONEY BY DEALING WITH **Juja Trading Company, Tika.** (Sub-Agents for Shell Co. of E. Ltd.) Who have just extended their premises. **BEST PROVISIONS, WINES AND SPIRITS.** ALL FARE REQUIREMENTS. **COMPETITIVE PRICES AND INTELLIGENT SERVICE.**

Don't fail to see our Window Display, it will give you some idea of our Taxidermist's Skill. See our large and varied range of Guns and Rifles, we hold a stock second to none. Let us have the pleasure of showing you around our premises and workshops without any obligation on your part to purchase.

Chas. A. Hoyer & Co., Ltd. THE GUNMAKERS, NAIROBI.

Take Full Advantage

Now and During
"Nairobi Week"

of our
Special Reductions

IN THIS SEASON'S FANCY AND TOILET
NOVELTIES AND PERFUMERY
from
LONDON, BERLIN AND PARIS.
CHOOSE EARLY FOR THE BEST BARGAINS.

Howse & McGeorge Ltd
P.O. Box 28 — — — NAIROBI.

PETTER OIL ENGINES
1; H.P. TO 4000 B.H.P.

Paraffin Engines in stock 14 B.H.P. 3 B.H.P. 5 B.H.P.



Circle Oil Engines in Stock 5 B.H.P. 8 H.P. 12 B.H.P. 18 B.H.P. 24 B.H.P. LARGER TYPES TO ORDER

SOLE AGENTS:
J. W. MILLIGAN & Co.
P.O. Box 148. NAIROBI. Phone 98.

DO NOT BE DAZZLED.
PHOTOZ YOUR EYES AGAINST BLIND AND YOUR HEAD AGAINST SUBSEQUENT PAINS.

By Using
CHANCE'S CROOKS GLASS.

We supply the Four Shades of Crooks Glass in plain glass or ground to your prescription.

We also stock the new GRADUITY LENSES.

A. H. WARDLE & Co., Ltd.
MOMBASA - NAIROBI - ELDORET.

Nairobi Week.

Before leaving Nairobi why not pay a visit to

R. G. Vernon & Company's
NEW SHOW ROOMS
and inspect their stocks of:

SANTARY WARE.
IRONMONGERY.
STEEL GARMENTS.
BATH ROOM ACCESSORIES.
ETC. ETC.

R. G. VERNON & Co.
ST. GEORGE'S BUILDING,
Corner of Elliot Street and Standard Street,
NAIROBI.

Give an Accessory Present



SMITH'S BEZEL WIND CLOCK WITH TIME OF TRIP INDICATOR.

Suitable for fitting to the dashboard, obviating the necessity of carrying a box to accommodate it. The Clock is wound by rotating the mounted rim embedded in the case, which is also used for setting the trip indicator for ascertaining the time taken for any given journey. With black or silver dial (Overall diameter, 1 1/2 in.). Price 50/-.

PICNIC OUTFITS. Very fully equipped in aluminium case. 10/6. Boiling flasks from 7/6. HAND TOWELS 10/6. Bathing Cloths 5/6.

DODGE USED CARS

PRACTICALLY NEW 1930 MODEL DODGE CARS, SEDAN or TOURER, in absolutely Perfect Condition.

Having been thoroughly overhauled and tested.

AND
The Famous DODGE Four

The car with the finest reputation in East Africa.
A varied selection, in the best running order, and All just reconditioned.

ALL OUR USED CARS ARE GUARANTEED, AND HAVE THE EXCELLENT DODGE SERVICE AND SPARES BEHIND THEM.

Fisher, Simmons & Rodway (E. A.) Ltd.
Box 406. THE TRIUMPHANT DOW, Section 302, VICTORIA STREET, NAIROBI.

BRING YOUR
Holiday Photographs To Us

We guarantee to give you the best service in East Africa.

Our Photographic Manager has just returned from Europe with the most modern plant and apparatus to undertake the highest class of Studio, Amateur and Cinema Work.

We specialise in the enlarging, mounting and framing of Photographs.

R. G. VERNON & Co.
ST. GEORGE'S BUILDING,
Corner of Elliot Street and Standard Street,
NAIROBI.

Carr, Lawson & Co. LIMITED.

N.B. - Spencers in Sets 6/60 Cigarette Lighters from 9/60 to 1/60
A Box-Spinner that will fit the majority placed here. 25/-
1 in 1 Rowers
1 in 2 Rowers
1 in 3 Rowers
1 in 4 Rowers
1 in 5 Rowers
1 in 6 Rowers
1 in 7 Rowers
1 in 8 Rowers
1 in 9 Rowers
1 in 10 Rowers
1 in 11 Rowers
1 in 12 Rowers
1 in 13 Rowers
1 in 14 Rowers
1 in 15 Rowers
1 in 16 Rowers
1 in 17 Rowers
1 in 18 Rowers
1 in 19 Rowers
1 in 20 Rowers
1 in 21 Rowers
1 in 22 Rowers
1 in 23 Rowers
1 in 24 Rowers
1 in 25 Rowers
1 in 26 Rowers
1 in 27 Rowers
1 in 28 Rowers
1 in 29 Rowers
1 in 30 Rowers
1 in 31 Rowers
1 in 32 Rowers
1 in 33 Rowers
1 in 34 Rowers
1 in 35 Rowers
1 in 36 Rowers
1 in 37 Rowers
1 in 38 Rowers
1 in 39 Rowers
1 in 40 Rowers
1 in 41 Rowers
1 in 42 Rowers
1 in 43 Rowers
1 in 44 Rowers
1 in 45 Rowers
1 in 46 Rowers
1 in 47 Rowers
1 in 48 Rowers
1 in 49 Rowers
1 in 50 Rowers
1 in 51 Rowers
1 in 52 Rowers
1 in 53 Rowers
1 in 54 Rowers
1 in 55 Rowers
1 in 56 Rowers
1 in 57 Rowers
1 in 58 Rowers
1 in 59 Rowers
1 in 60 Rowers
1 in 61 Rowers
1 in 62 Rowers
1 in 63 Rowers
1 in 64 Rowers
1 in 65 Rowers
1 in 66 Rowers
1 in 67 Rowers
1 in 68 Rowers
1 in 69 Rowers
1 in 70 Rowers
1 in 71 Rowers
1 in 72 Rowers
1 in 73 Rowers
1 in 74 Rowers
1 in 75 Rowers
1 in 76 Rowers
1 in 77 Rowers
1 in 78 Rowers
1 in 79 Rowers
1 in 80 Rowers
1 in 81 Rowers
1 in 82 Rowers
1 in 83 Rowers
1 in 84 Rowers
1 in 85 Rowers
1 in 86 Rowers
1 in 87 Rowers
1 in 88 Rowers
1 in 89 Rowers
1 in 90 Rowers
1 in 91 Rowers
1 in 92 Rowers
1 in 93 Rowers
1 in 94 Rowers
1 in 95 Rowers
1 in 96 Rowers
1 in 97 Rowers
1 in 98 Rowers
1 in 99 Rowers
1 in 100 Rowers

THE YORKSHIRE INSURANCE COMPANY LIMITED

Established 1864.
Principal Representative—
R. O. HAMILTON, Ltd.,
Phone 232—NAIROBI—P.O. Box 202.

BIRTH.
GHALWALI.—At Nakuru, Hon. Mrs. Ghalwali, on 18th, to a son, Mr. Ghalwali, to Mr. and Mrs. J. W. Ghalwali, of Nakuru.

DEATH.
STUART-WATTS.—Michael, the late wife of Mr. and Mrs. Stuart-Watts, of the Victoria Hospital, aged 8 years.

Funeral Notice.
The funeral of the late Mrs. Stuart-Watts will take place on Thursday, Jan. 8, 1931, at 11 o'clock, from the Victoria Hospital, Nakuru.

Grant's Whisky




Grant's Scotch Whisky

There is no excuse for dullness or drabness while you yourself can work a positive transformation with Grant's Whisky.

See Grant's Whisky is a remarkable preparation. It is a potent and healthy tonic, and will give you a new lease of life. It is a tonic in the true sense of the word, and will give you a new lease of life. It is a tonic in the true sense of the word, and will give you a new lease of life.

UNRIVALED IN EAST AFRICA
SOLD EVERYWHERE

It will be dry in an hour.



There is no excuse for dullness or drabness while you yourself can work a positive transformation with Grant's Whisky.

See Grant's Whisky is a remarkable preparation. It is a potent and healthy tonic, and will give you a new lease of life. It is a tonic in the true sense of the word, and will give you a new lease of life.

Obtainable from
GAILEY & ROBERTS, LTD.,
NAIROBI AND BRANCHES.

ROYAL PALACE.
The Royal Palace, Nairobi, has been opened for the reception of the British Legation, which will be in Nairobi from December 17 to 20. The Legation will be in Nairobi from December 17 to 20. The Legation will be in Nairobi from December 17 to 20.

Specimens.
The following specimens were received from the British Legation, Nairobi, on December 17:—
1. A specimen of the...
2. A specimen of the...
3. A specimen of the...
4. A specimen of the...
5. A specimen of the...
6. A specimen of the...
7. A specimen of the...
8. A specimen of the...
9. A specimen of the...
10. A specimen of the...
11. A specimen of the...
12. A specimen of the...
13. A specimen of the...
14. A specimen of the...
15. A specimen of the...
16. A specimen of the...
17. A specimen of the...
18. A specimen of the...
19. A specimen of the...
20. A specimen of the...
21. A specimen of the...
22. A specimen of the...
23. A specimen of the...
24. A specimen of the...
25. A specimen of the...
26. A specimen of the...
27. A specimen of the...
28. A specimen of the...
29. A specimen of the...
30. A specimen of the...
31. A specimen of the...
32. A specimen of the...
33. A specimen of the...
34. A specimen of the...
35. A specimen of the...
36. A specimen of the...
37. A specimen of the...
38. A specimen of the...
39. A specimen of the...
40. A specimen of the...
41. A specimen of the...
42. A specimen of the...
43. A specimen of the...
44. A specimen of the...
45. A specimen of the...
46. A specimen of the...
47. A specimen of the...
48. A specimen of the...
49. A specimen of the...
50. A specimen of the...
51. A specimen of the...
52. A specimen of the...
53. A specimen of the...
54. A specimen of the...
55. A specimen of the...
56. A specimen of the...
57. A specimen of the...
58. A specimen of the...
59. A specimen of the...
60. A specimen of the...
61. A specimen of the...
62. A specimen of the...
63. A specimen of the...
64. A specimen of the...
65. A specimen of the...
66. A specimen of the...
67. A specimen of the...
68. A specimen of the...
69. A specimen of the...
70. A specimen of the...
71. A specimen of the...
72. A specimen of the...
73. A specimen of the...
74. A specimen of the...
75. A specimen of the...
76. A specimen of the...
77. A specimen of the...
78. A specimen of the...
79. A specimen of the...
80. A specimen of the...
81. A specimen of the...
82. A specimen of the...
83. A specimen of the...
84. A specimen of the...
85. A specimen of the...
86. A specimen of the...
87. A specimen of the...
88. A specimen of the...
89. A specimen of the...
90. A specimen of the...
91. A specimen of the...
92. A specimen of the...
93. A specimen of the...
94. A specimen of the...
95. A specimen of the...
96. A specimen of the...
97. A specimen of the...
98. A specimen of the...
99. A specimen of the...
100. A specimen of the...

STANDARD DIARY.

Legislative Council meeting on 11th Jan. 1931.

Annual general meeting of the Kenya Agricultural Society on 12th Jan. 1931.

Annual general meeting of the Kenya Veterinary Association on 13th Jan. 1931.

Annual general meeting of the Kenya Chamber of Commerce on 14th Jan. 1931.

Annual general meeting of the Kenya Chamber of Industry on 15th Jan. 1931.

Annual general meeting of the Kenya Chamber of Agriculture on 16th Jan. 1931.

Annual general meeting of the Kenya Chamber of Education on 17th Jan. 1931.

Annual general meeting of the Kenya Chamber of Science on 18th Jan. 1931.

Annual general meeting of the Kenya Chamber of Arts on 19th Jan. 1931.

Annual general meeting of the Kenya Chamber of Music on 20th Jan. 1931.

Annual general meeting of the Kenya Chamber of Literature on 21st Jan. 1931.

Annual general meeting of the Kenya Chamber of History on 22nd Jan. 1931.

Annual general meeting of the Kenya Chamber of Geography on 23rd Jan. 1931.

Annual general meeting of the Kenya Chamber of Mathematics on 24th Jan. 1931.

Annual general meeting of the Kenya Chamber of Physics on 25th Jan. 1931.

Annual general meeting of the Kenya Chamber of Chemistry on 26th Jan. 1931.

Annual general meeting of the Kenya Chamber of Botany on 27th Jan. 1931.

Annual general meeting of the Kenya Chamber of Zoology on 28th Jan. 1931.

Annual general meeting of the Kenya Chamber of Entomology on 29th Jan. 1931.

Annual general meeting of the Kenya Chamber of Malacology on 30th Jan. 1931.

Annual general meeting of the Kenya Chamber of Conchology on 31st Jan. 1931.

NEW STOCK MORLEY'S FAVOURITE DE LUXE SILK HOSE

IN ALL THE VERY LATEST SHADES PICASSO, DAGO, MAURESCUE, ETC

Shgs. 12/75 per pair LESS 10% FOR CASH.

Hutchings, Biemer & Co. Ltd. P.O. Box 408 Telephone 408.

COLEMAN LAMPS LANTERNS.

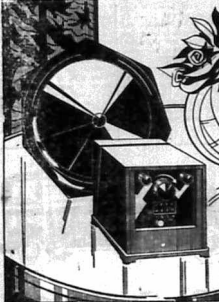


Model No. 6. CAMP STOVES. WHITETWAY, LAIDLAW & Co., Ltd. LAMBERTS LTD. ISMAIL & SAMIEE. MADADLY, SULLMAN VERBER & SONS. IBRAHIM KARIMBEY. NOKRALI DIZALI. Etc., Etc.

PHILIPS CASAPHONE

The ideal dual instrument for a CHRISTMAS SEASON of Dancing and Jubilation. NO BATTERIES required, just plug in to the electric light socket and push the red button.

TROUBLE FREE. Your GRAMOPHONE records played through this Wireless Set, will sound more pleasing.



A PHILIPS product backed with a guarantee.

Particulars from Lochhead Moore & Roy LIMITED. SIXTH AVENUE NAIROBI. Phone 464.

Rubber Stamps

HORTICULTURE AT THE SHOW.

Full List of Prize Winners.

The following is the list of prize winners in the Horticultural Show at the Agricultural Show. The Double Challenge Cup for the most points in the entire Horticultural Section.

1st. Mr. & Mrs. Grubshaw Bell. Flower Section. Class 400—Roses, best collection. 1st. Mr. & Mrs. Grubshaw Bell. Class 401—Roses, 12 distinct.

1st. Mr. & Mrs. Grubshaw Bell. Class 402—Roses, best individual bloom. 1st. Mr. & Mrs. Grubshaw Bell. Class 403—Carnations, best 12 varieties.

1st. Mrs. A. D. Impey. Class 404—Carnations, best six varieties. 1st. Mrs. A. D. Impey. Class 405—Carnations, best three.

1st. Mr. J. H. Deakin. 2nd. Mrs. A. D. Impey. Class 406—Cut Flowers, best 12. 1st. Mrs. A. D. Impey. Class 407—Cut Flowers, best collection.

1st. Mrs. A. D. Impey. 2nd. Mrs. L. H. Deed. Class 408—Vegetables, best collection. 1st. Mrs. L. H. Deed. Class 409—Chrysanthemums, best collection.

1st. Mrs. L. H. Deed. Class 410—Zinnias, best collection. 1st. Mrs. L. H. Deed. Class 411—Delphiniums, best collection.

1st. J. D. Mulholland. Class 412—Geraniums, best six varieties. 1st. Mr. & Mrs. Grubshaw Bell. Class 413—Geraniums, best specimens, foliage or flowering.

1st. Mrs. L. H. Deed. Class 414—Roses, best collection. 1st. Mr. & Mrs. Grubshaw Bell. Class 415—Anemones, best six varieties.

1st. Mr. & Mrs. Grubshaw Bell. Class 416—Carnations, six distinct varieties. 1st. Mr. H. M. Gardner. 2nd. Mr. & Mrs. Grubshaw Bell. Class 417—Carnations, any variety, rose leaves.

1st. Mr. & Mrs. Grubshaw Bell. Class 418—Carnations, plant or flower. 1st. J. L. Langridge. 2nd. M. Gardner. Class 419—Collection of climbing plants, other than Roses.

1st. Mr. & Mrs. Grubshaw Bell. Class 420—Sweet Peas, best six varieties. 1st. H. E. Deakin. 2nd. Mrs. L. H. Deed. Class 421—Sweet Peas, best three.

1st. J. W. James. Class 422—Best collection. 1st. Mr. & Mrs. Grubshaw Bell. Class 423—Dahlia, best three varieties.

1st. H. E. Deakin. 2nd. Mr. & Mrs. Grubshaw Bell. Class 424—Gibbels, best collection. 1st. Mr. & Mrs. Grubshaw Bell. Class 425—Gibbels, best three varieties.

IMPERIAL AIRWAYS' DEVELOPMENT.

The Cairo-Cape Town Service. A Pitting Experiment Described.

During the three months of this summer's experiment the air carrier employed a fleet with a total of nearly 100 per cent. and carried 500 passengers in four days only.

Imperial Airways consider that the time has come when they will open regular service linking London, Cairo, Cape Town, and Liverpool as intermediate stations.

Imperial Airways consider that the time has come when they will open regular service linking London, Cairo, Cape Town, and Liverpool as intermediate stations.

Imperial Airways consider that the time has come when they will open regular service linking London, Cairo, Cape Town, and Liverpool as intermediate stations.

Imperial Airways consider that the time has come when they will open regular service linking London, Cairo, Cape Town, and Liverpool as intermediate stations.

Imperial Airways consider that the time has come when they will open regular service linking London, Cairo, Cape Town, and Liverpool as intermediate stations.

Imperial Airways consider that the time has come when they will open regular service linking London, Cairo, Cape Town, and Liverpool as intermediate stations.

Imperial Airways consider that the time has come when they will open regular service linking London, Cairo, Cape Town, and Liverpool as intermediate stations.

Imperial Airways consider that the time has come when they will open regular service linking London, Cairo, Cape Town, and Liverpool as intermediate stations.

Imperial Airways consider that the time has come when they will open regular service linking London, Cairo, Cape Town, and Liverpool as intermediate stations.

Imperial Airways consider that the time has come when they will open regular service linking London, Cairo, Cape Town, and Liverpool as intermediate stations.

Imperial Airways consider that the time has come when they will open regular service linking London, Cairo, Cape Town, and Liverpool as intermediate stations.

Imperial Airways consider that the time has come when they will open regular service linking London, Cairo, Cape Town, and Liverpool as intermediate stations.

Imperial Airways consider that the time has come when they will open regular service linking London, Cairo, Cape Town, and Liverpool as intermediate stations.

Imperial Airways consider that the time has come when they will open regular service linking London, Cairo, Cape Town, and Liverpool as intermediate stations.

WAR ON COFFEE BERRY DISEASE.

Imperial Airways' Development.

The Cairo-Cape Town Service.

A Pitting Experiment Described.

During the three months of this summer's experiment the air carrier employed a fleet with a total of nearly 100 per cent. and carried 500 passengers in four days only.

Imperial Airways consider that the time has come when they will open regular service linking London, Cairo, Cape Town, and Liverpool as intermediate stations.

Imperial Airways consider that the time has come when they will open regular service linking London, Cairo, Cape Town, and Liverpool as intermediate stations.

Imperial Airways consider that the time has come when they will open regular service linking London, Cairo, Cape Town, and Liverpool as intermediate stations.

Imperial Airways consider that the time has come when they will open regular service linking London, Cairo, Cape Town, and Liverpool as intermediate stations.

Imperial Airways consider that the time has come when they will open regular service linking London, Cairo, Cape Town, and Liverpool as intermediate stations.

Imperial Airways consider that the time has come when they will open regular service linking London, Cairo, Cape Town, and Liverpool as intermediate stations.

Imperial Airways consider that the time has come when they will open regular service linking London, Cairo, Cape Town, and Liverpool as intermediate stations.

Imperial Airways consider that the time has come when they will open regular service linking London, Cairo, Cape Town, and Liverpool as intermediate stations.

Imperial Airways consider that the time has come when they will open regular service linking London, Cairo, Cape Town, and Liverpool as intermediate stations.

Imperial Airways consider that the time has come when they will open regular service linking London, Cairo, Cape Town, and Liverpool as intermediate stations.

Imperial Airways consider that the time has come when they will open regular service linking London, Cairo, Cape Town, and Liverpool as intermediate stations.

Imperial Airways consider that the time has come when they will open regular service linking London, Cairo, Cape Town, and Liverpool as intermediate stations.

Imperial Airways consider that the time has come when they will open regular service linking London, Cairo, Cape Town, and Liverpool as intermediate stations.

THE TWO MOST UP-TO-DATE AND LUXURIOUS REST HOMES IN CONJUNCTION.

This is Worth Your Consideration.

Located at the Palace Hotel, Mombasa, providing a valuable and desirable stay at the Hotel.

Located at the Palace Hotel, Mombasa, providing a valuable and desirable stay at the Hotel.

Located at the Palace Hotel, Mombasa, providing a valuable and desirable stay at the Hotel.

Located at the Palace Hotel, Mombasa, providing a valuable and desirable stay at the Hotel.

Located at the Palace Hotel, Mombasa, providing a valuable and desirable stay at the Hotel.

Located at the Palace Hotel, Mombasa, providing a valuable and desirable stay at the Hotel.

Located at the Palace Hotel, Mombasa, providing a valuable and desirable stay at the Hotel.

Located at the Palace Hotel, Mombasa, providing a valuable and desirable stay at the Hotel.

Located at the Palace Hotel, Mombasa, providing a valuable and desirable stay at the Hotel.

Located at the Palace Hotel, Mombasa, providing a valuable and desirable stay at the Hotel.

Located at the Palace Hotel, Mombasa, providing a valuable and desirable stay at the Hotel.

Located at the Palace Hotel, Mombasa, providing a valuable and desirable stay at the Hotel.

Located at the Palace Hotel, Mombasa, providing a valuable and desirable stay at the Hotel.

Located at the Palace Hotel, Mombasa, providing a valuable and desirable stay at the Hotel.

Located at the Palace Hotel, Mombasa, providing a valuable and desirable stay at the Hotel.

Located at the Palace Hotel, Mombasa, providing a valuable and desirable stay at the Hotel.

Located at the Palace Hotel, Mombasa, providing a valuable and desirable stay at the Hotel.

Located at the Palace Hotel, Mombasa, providing a valuable and desirable stay at the Hotel.

Located at the Palace Hotel, Mombasa, providing a valuable and desirable stay at the Hotel.

Located at the Palace Hotel, Mombasa, providing a valuable and desirable stay at the Hotel.

Located at the Palace Hotel, Mombasa, providing a valuable and desirable stay at the Hotel.

Located at the Palace Hotel, Mombasa, providing a valuable and desirable stay at the Hotel.

Located at the Palace Hotel, Mombasa, providing a valuable and desirable stay at the Hotel.

Located at the Palace Hotel, Mombasa, providing a valuable and desirable stay at the Hotel.

Located at the Palace Hotel, Mombasa, providing a valuable and desirable stay at the Hotel.

Located at the Palace Hotel, Mombasa, providing a valuable and desirable stay at the Hotel.

Located at the Palace Hotel, Mombasa, providing a valuable and desirable stay at the Hotel.

Located at the Palace Hotel, Mombasa, providing a valuable and desirable stay at the Hotel.

Located at the Palace Hotel, Mombasa, providing a valuable and desirable stay at the Hotel.

WHERE TO STAY TOWN AND COUNTRY.

The Edward Hotel. Box 1004. Phone 100.

Now Fully Licensed. HAVE A SUNDOWNER AT THE EDWARD.

TRY AN EDWARD COCKTAIL. LISTEN OR DANCE TO THE WIRELESS.

PLAY TENNIS OR PING PONG. HAVE A FIRST CLASS DINNER.

A Perfect Situation with every convenience and comfort.

Salisbury Hotel NAIROBI.

THE Stag's Head Hotel NAKURU.

Electric Light, Hot and Cold Water in all Departments. EUROPEAN SANITATION and BATHS.

Old Lunches at 2/6. HOT DRINKS (or other) at 1/6.

IF YOU WANT EVERYTHING OF THE TRY THE SAVOY HOTEL. The Ideal Residential Hotel.

Spacious Lounges, Beautiful Gardens, Tennis Court, First Class Cooking and Service. Fully Licensed Bar, Everying Up-to-date at Most Attractive Terms.

From 25 per month (All Inclusive). Tel. 430. P.O. Box 430.

AVONDALE. PARKLANDS ESTATE, Opposite Parklands Sports Ground.

P.O. Box 188. NAIROBI. £5 monthly. Tel. 430.

GROSVENOR HOUSE GIBBOURD ROAD. Phone 427. P.O. Box 427. ONE MILE FROM POST OFFICE.

TORR'S HOTEL. Phone 419.

KENYA'S HOTEL. LUXE. DINE HERE.

Exclusive Monthly Terms. DINNER 12.50. Nightly 15 to 11. Sat. 25. 5/4 ZEIGLER & HIS TRIO. Play also in the Lounge for You Every Week.

The Norfolk Hotel NAIROBI. Every convenience, Tennis Court, own Laundry, etc. Monthly Boarding, private ground for cars.

Update (H. & Cold in all rooms) 17/50 per day. Breakfast (H. & Cold in all rooms) 10/50 per day.

Includes courtyard 15/50 per day. Best equipped private motor and limousine by arrangement. Manager: C. A. Blair.

THE TWO MOST UP-TO-DATE AND LUXURIOUS REST HOMES IN CONJUNCTION.

This is Worth Your Consideration.

Located at the Palace Hotel, Mombasa, providing a valuable and desirable stay at the Hotel.

Located at the Palace Hotel, Mombasa, providing a valuable and desirable stay at the Hotel.

Located at the Palace Hotel, Mombasa, providing a valuable and desirable stay at the Hotel.

Located at the Palace Hotel, Mombasa, providing a valuable and desirable stay at the Hotel.

Located at the Palace Hotel, Mombasa, providing a valuable and desirable stay at the Hotel.

Located at the Palace Hotel, Mombasa, providing a valuable and desirable stay at the Hotel.

Located at the Palace Hotel, Mombasa, providing a valuable and desirable stay at the Hotel.

Advertisement for 'The Smoking Mixture' by 'The Perfect Blend Finest Empire Tobaccos'. Includes a coupon for a free gift.

Advertisement for 'The Norfolk Hotel Nairobi'. Describes the hotel's amenities and location, including tennis court and laundry.

Summit Tennis Shirts
"Steel Collar"

"GARIBOLDI"

TENNIS TROUSERS.

MEAN PERFECT FIT, COMFORT, STYLE and DURABILITY.

The Editor: "E. A. Standard."
Sir—Every coffee grower should welcome advice from one so experienced as Mr. Harman and his same gives a value to the article in your issue which no one else could give. I am rather surprised by his advice to over-try the quality of his coffee from a visit to Uganda. Mr. Harman has five years ago when his most successful was in Uganda and sought among various parts of the country for the best quality of coffee. I was with him in Uganda and he could easily be convinced and told that the best means for improving his plantation was when the coffee was in the hands of the Government, which was justly desirable in the majority of cases.

Ahamed Bros

THE HOUSE OF DISTINCTION.
P.O. Box 254 BARRA—NAIROBI. Phone 201

Obtainable at all the Leading Outfitters.

THE MAIN PROBLEM

To the Editor: "E. A. Standard."
Sir—The main problem which is the main consideration of the Government is the question of the quantity and quality of the coffee produced in Uganda. It is realized that during the past few years the quantity of coffee exported from Uganda has fallen considerably. This is due to the fact that the coffee is being produced in a less fertile soil and the quantity of coffee produced is less than in the past. The Government should consider the question of the quantity and quality of the coffee produced in Uganda. It is realized that during the past few years the quantity of coffee exported from Uganda has fallen considerably. This is due to the fact that the coffee is being produced in a less fertile soil and the quantity of coffee produced is less than in the past.

JAGER

STYLISH SOCKS

For complete comfort and the very latest designs, Jager socks are unrivalled.

THE BUTTER LEADY

To the Editor: "E. A. Standard."
Sir—The butter leady is a very important article in the country. It is used for a variety of purposes and is a very important article in the country. It is used for a variety of purposes and is a very important article in the country. It is used for a variety of purposes and is a very important article in the country. It is used for a variety of purposes and is a very important article in the country.

DAWDA OOTON SEED

UNAIWA PRIZES

To the Editor: "E. A. Standard."
Sir—During the week I had occasion to visit Uganda. I was very much interested in the coffee industry and the people who are engaged in it. I was very much interested in the coffee industry and the people who are engaged in it. I was very much interested in the coffee industry and the people who are engaged in it.

THE DELIBERATION-ETALKE MEETING

To the Editor: "E. A. Standard."
Sir—The deliberation-etalke meeting was held in Uganda. It was a very important meeting and was attended by a large number of people. It was a very important meeting and was attended by a large number of people. It was a very important meeting and was attended by a large number of people.

M. S. Elliot & Co., LIMITED.

P.O. Box 1175. Phone 60.

EXTENSIVE RANGE OF SUITINGS IN PURE WOOL, JUST ARRIVED.

FIRST OPPORTUNITY TO SELECT YOUR SUIT LENGTH

Our original Master-Tailor having now returned from leave, we can guarantee perfect fittings and latest styles.

EXTRACTION ENSURED

Meghi Ahamed & Co.
P.O. Box 218. Telephone 124. NAIROBI. BARRA.

WHY BUILD TO BURN?

W.P.C.

FIRE-PROOF WALLBOARD FOR PARTITIONS AND CEILINGS.

Messrs. SMYTH, MAOKENZI & Co., E.O. Box 200, NAIROBI.

M. S. Elliot & Co., LIMITED.

P.O. Box 1175. Phone 60.

EXTENSIVE RANGE OF SUITINGS IN PURE WOOL, JUST ARRIVED.

FIRST OPPORTUNITY TO SELECT YOUR SUIT LENGTH

Our original Master-Tailor having now returned from leave, we can guarantee perfect fittings and latest styles.

EXTRACTION ENSURED

Meghi Ahamed & Co.
P.O. Box 218. Telephone 124. NAIROBI. BARRA.

JOHNNIE WALKER

WE have the pleasure to announce that in consequence of the former agents having relinquished their interest in this Whisky, we have now been appointed Sole Agents for Kenya and Uganda.

Jardin Phipson & Co., Ltd.
Box 20, NAIROBI.

TO MAKE A SPEECH ON HIS VISIT

Mr. J. A. Smith has returned to East Africa after having been on a tour of inspection in East Africa. He has been on a tour of inspection in East Africa. He has been on a tour of inspection in East Africa. He has been on a tour of inspection in East Africa.

THE BUTTER LEADY

To the Editor: "E. A. Standard."
Sir—The butter leady is a very important article in the country. It is used for a variety of purposes and is a very important article in the country. It is used for a variety of purposes and is a very important article in the country. It is used for a variety of purposes and is a very important article in the country.

THE DELIBERATION-ETALKE MEETING

To the Editor: "E. A. Standard."
Sir—The deliberation-etalke meeting was held in Uganda. It was a very important meeting and was attended by a large number of people. It was a very important meeting and was attended by a large number of people. It was a very important meeting and was attended by a large number of people.

WHY BUILD TO BURN?

W.P.C.

FIRE-PROOF WALLBOARD FOR PARTITIONS AND CEILINGS.

Messrs. SMYTH, MAOKENZI & Co., E.O. Box 200, NAIROBI.

THE BUTTER LEADY

To the Editor: "E. A. Standard."
Sir—The butter leady is a very important article in the country. It is used for a variety of purposes and is a very important article in the country. It is used for a variety of purposes and is a very important article in the country. It is used for a variety of purposes and is a very important article in the country.

THE DELIBERATION-ETALKE MEETING

To the Editor: "E. A. Standard."
Sir—The deliberation-etalke meeting was held in Uganda. It was a very important meeting and was attended by a large number of people. It was a very important meeting and was attended by a large number of people. It was a very important meeting and was attended by a large number of people.

WHY BUILD TO BURN?

W.P.C.

FIRE-PROOF WALLBOARD FOR PARTITIONS AND CEILINGS.

Messrs. SMYTH, MAOKENZI & Co., E.O. Box 200, NAIROBI.

JOHNNIE WALKER

WE have the pleasure to announce that in consequence of the former agents having relinquished their interest in this Whisky, we have now been appointed Sole Agents for Kenya and Uganda.

Jardin Phipson & Co., Ltd.
Box 20, NAIROBI.

Quick Recovery

Wincarnis

THE GOOD Tonic Wine

COLEMAN & Co., Ltd.
Wincarnis Works, North, England.

END all your motoring troubles by coming to EBOO'S Grand Shop.

BE sure you will find there what you want of everything he has a stock.

OIL, PETROL, All Sorts of Accessories he has of the very best.

OR if Civility and Quick Service you need—give EBOO'S a test.

SIXTH AVENUE, P.O. Box 898. Phone 199.

J. & F. MARTELL

Established 1715
R.D. C. No. 455.

Founded in 1715, the firm of MARTELL & Co. offers to the consumer all the advantages of long fan tradition, and the experience of OVER TWO CENTURIES.

The various marks on the bottle differ only as regards AGE the stocks which are selected from the finest growths of the Charentes, permit of the delivering to a world wide clientele, only genuine Cognac Brandy that have been kept by the firm under its own supervision during the long period necessary for the proper and natural ripening.

The various marks on the bottle differ only as regards AGE the stocks which are selected from the finest growths of the Charentes, permit of the delivering to a world wide clientele, only genuine Cognac Brandy that have been kept by the firm under its own supervision during the long period necessary for the proper and natural ripening.

J. & F. MARTELL

Established 1715
R.D. C. No. 455.

Founded in 1715, the firm of MARTELL & Co. offers to the consumer all the advantages of long fan tradition, and the experience of OVER TWO CENTURIES.

The various marks on the bottle differ only as regards AGE the stocks which are selected from the finest growths of the Charentes, permit of the delivering to a world wide clientele, only genuine Cognac Brandy that have been kept by the firm under its own supervision during the long period necessary for the proper and natural ripening.

The various marks on the bottle differ only as regards AGE the stocks which are selected from the finest growths of the Charentes, permit of the delivering to a world wide clientele, only genuine Cognac Brandy that have been kept by the firm under its own supervision during the long period necessary for the proper and natural ripening.

B. Forens.

FRENCH HAIR DRESSER
PERMANENT AND TINTING SPECIALIST.

Phone 641. York Building, P.O. Box 928. Government Road, Nairobi.

TOYS

—BUY AT—

Ladharam Stores,

GENERAL DRAPERS,
Govt. Road, NAIROBI. Box 616.

AUCTION SALES.



CATALOGUE SALE OF FURNITURE AND EFFECTS.

Duly instructed by various parties, We shall sell, by Public Auction, Without Reserve, unless stipulated, at Our Salerooms, Motor Building, Harding Street, Nairobi, on

Monday 12th January at 10 a.m.

Bedroom Suite (made by Messrs. Hutchings and Biemer) comprising: Wardrobe, bevelled mirror, Dressing Table, Washstand, Chair, Bedstead with spring and cot mattress. Single Wardrobes, bevelled mirrors. Dressing Tables. Chest of Drawers. Single Iron Bedsteads. Mattresses. Wives' Washstand. Washstand, tiled back. Dinner Wagon. Bookshelves. Chesterfield Chairs, Crotone covered, on castors. Easy Chairs. Settee in Teak with loose cushion. Firebride Seats. Box Ottoman. Occasional Tables. Sideboard in Teak, bevelled mirror, drawers and cupboards. "Kodak" 1/2 Plate Camera in case (low reserve). Two Valve Amplic with loud speaker and Battery. H.M.V. Portable Gramophone and Records. Large Range of Classical Music for Violin (res). Oval Dining Table. Suites of Dining Chairs. Writing Bureau in Camphorwood. Writing Tables, baize top. Kitchen Tables. Metalware. Mirrored Carpet. Electric Reading Lamp. Oak Salad Bowl and Servers. Ice Making Machine. "Kant" Ice Chest. Etc., Etc., Etc.

MUTER and OSWALD Ltd., Auctioneers, Etc., NAIROBI.



FOR SALE.

RESIDENTIAL PLOTS IN NGONG ROAD AREA. Limuru Property of 22 acres Freehold. 4700 WILLS. FURNISHED COMPLETION HOUSE, with modern conveniences on one acre Freehold situate in Kilimani.

TO LET.

Attractive modern stone residence in Marlborough Estate (FOURTEEN STORED HOUSE IN MITHALGA) six months. House on hills for rent. Call for particulars. Modern House, furnished, for four months, under two miles from town.

MUTER and OSWALD Ltd., Estate Agents, NAIROBI.

AMSTEL SUPER STOUT

Try it for yourself.

Sole Distributors—Tweantsche Overzee Trading Co., Mombasa.

METROPOLITAN GARAGE.

(OPP. GODFREY'S CAR MART.) Repairs all makes of Cars. Duco Spray Painting. Overhauls a Speciality. Vulcanising & Retreading. SMOKESCREENS, BUSHES and SOLD. Our Charges are the most moderate in the country. A personal interest taken in every car. This week's bargain FIAT 509 3 motor Redwood, in most excellent condition, 1200 cc. tyres, engine completely overhauled. 575. Other Bergains in Stock. D. J. I. ETHBERIDGE. SOLE PROPRIETOR.

AUSTIN'S AUCTIONS.

SALE OF GOOD SILK GOODS.

AUSTIN & CO.,

will sell Without Reserve, at The Mart, To-day January 8th, at 10 a.m.

Ladies Silk Dress Lengths in Crepe de Chine, Vign. Fuji, Shanghai, Yussore, etc. Gents Silk and Cotton Shirts. Gents Tussore Suit Lengths. Coats and Trousers. Handkerchiefs. Ladies Silk and Cotton extra fine quality. Sandalwood Boxes. Ladies Knickers and Petticoats, etc.

AUSTIN & CO., AUCTIONEERS AND ESTATE AGENTS, HARDING ST., NAIROBI.

AUSTIN'S AUCTIONS

CATALOGUE SALE OF GOOD FURNITURE. CRESTED-FIRE SUITES. DOVER STOVE. BOXING-SEAM BEDS. WIRELESS SET. GRAMO. PHONES. NEW FRAM. DOLLS HOUSE. FITTINGS, ETC.

AUSTIN & CO.,

will sell Without Reserve unless stated, at The Mart, on

Saturday January 10th at 10 a.m.

Good Chesterfield Suites in Crotone. Teak Double Wardrobe with 3 mirrors. Bachelor and Hanging Wardrobes with Mirrors. Princess Dressing Chests. Double Washstands. 4 Dresser Sideboard. Chests of Drawers. Bookshelves. Rexine Club Easy. Dinner Wagon. Suite of 6 Dining Chairs and Table well polished. Tea Table. Seven Arm Good Sideboard. French Polished Bedroom Suite of Wardrobe, Dressing Chest, Chest of Drawers and Bed. Empire Dressing Chest with 3 Mirrors. Single Box Spring Beds. Child's Cot with new Overlay. Bedroom Chairs. Carved Coffee Table. New Deck Chairs. Enamel Fitters. New "Sol" Fram (res.). Child's High Chair. New Kitchen Tables. Morris Chairs. Large Doll's House. Decca Portable Gramophone. Table Cabinet. Gramophone. Good Records. Set Iolanthe Records in Book. Child's Playground. Framed Pictures. New Meat Chopping. Suites of Dining Chairs and Tables. Writing Tables with 2 drawers. Several Dressing Chests. Silver Plated Spirit Kettle and Stand (res.). Tennis Balls. Bedside Tables. Duran Touting Car in excellent Running order and Condition. The Tyres, Hood, Flywheel and Battery are all new. Low reserve.

AUSTIN & CO., Auctioneers, & Estate Agents, Harding Street, Nairobi.

OBTAIN TOP PRICES BY BESTING YOUR ARTICLES TO

JAMAL PIRBHAI

WHO BELIEVES ANYTHING CAN BE DONE. AUCTIONEER, OFFICIAL BROKER, LAND & ESTATE AGENT IN ALL GOVERNMENT APPOINTMENTS. AUCTION EVERY SATURDAY AND SUNDAY. Commencing at 3 p.m. and 8 a.m. Respectively. P.O. Box No. 294. Opp. Jivara Cinema. Phone No. 364. NAIROBI.

Note.—No matter whether second-hand or new but highest prices always available for these articles.

Airbourne Honey

New Zealand's Best

ASK FOR IT AND SEE

YOU GET IT.

Creamery Butter

Purest and Best

ALL THE BEST SHOPS STOCK IT.

TO COFFEE ESTATES

ARRIVED

Best White Coffee. Wool for Mealie Bug prevention. Lowest prices obtainable. Apply sharp.

A. J. E. LY and Co., Ltd. THE CHEMIST, NAIROBI.

Now is the Appropriate Time

at which to revise your prices. Insurance does not usually admit of reduction, but I am in the unique position of being able to quote rates that bear some relation to the actual risks involved.

A. L. SMITHSON, F.A.L.P.A. BOLDS HOUSE, NAIROBI. Government Road.

E. Hutchison & Co.

TO LET. Furnished House 3 bedrooms. £5 per month. FOR SALE, Limuru—55 acres Freehold. An ideal little farm £5 10s. p.a. Terms. FOR SALE—Mbagathi, 1164 acres with 6 rooms stone house, Garage for two cars. 5 miles from Nairobi. £2,000. FOR SALE—Stone House, Parklands. Large Sitting Room, Dining-room, 2 Bedrooms, Bath R. and C. Modern Sanitation. Garage and usual outbuildings. 1 acre well laid out gardens. £1,000 terms. FOR SALE—Very good 23 acres on Limuru Road. Part stone for house, already cut and lawns laid.

THACKRAH'S SALES

FARM DISPENSAL SALE on Monday 12th January at 10-30

at Chepar Estate, Lumbara. To sell subject without reserve 53 Trained Native Oxen. 34 Cows and heifers. 2 Donkeys. 2 Horses. 3 Males. Agricultural Implements, Wagons, Carts, Unshelled Maize, Furniture and Personal Effects, Etc. For full details see Weekly of the 10th inst. or Nakuru Weekly News.

NAKURU. Thackrah's Ltd AUCTIONEERS.

The Municipal Board of Nakuru.

APPOINTMENT OF TOWN CLERK.

Applications are invited for the full time appointment of Town Clerk of Nakuru. The salary payable will be at the rate of £540 per annum in the first instance with a contribution towards house allowance. The successful applicant will be required to serve a probationary period of one year after which a contract will be considered. Applicants should state age, previous business experience and qualifications; original references and/or certificates should not be sent but copies only thereof; all applications should be sealed and endorsed "APPLICATION: TOWN CLERK" and should reach the Municipal Offices not later than the 31st January, 1931.

Municipal Offices, NAKURU, P.O. Box 21. T. W. GRAY, Town Clerk.

The Municipal Board of Nakuru.

APPOINTMENT OF MUNICIPAL ENGINEER.

Applications are invited for the full time appointment of Municipal Engineer of Nakuru. The salary payable will be at the rate of £540 per annum in the first instance. The successful applicant will be required to serve a probationary period of one year after which a contract will be considered. Applicants should state age, previous experience and qualifications; original references and/or certificates should not be sent but copies only thereof; all applications should be sealed and endorsed APPLICATION MUNICIPAL ENGINEER and should reach the Municipal Offices not later than 31st January, 1931.

Municipal Offices, NAKURU, P.O. Box 21. T. W. GRAY, Town Clerk.

Pruning Shears

Shs. 24/- doz. upwards

SAWS

Shs. 48/- doz. upwards



INGRAM & Co. Ltd. THE TOOL HOUSE NAIROBI.

Lightning Glass Cleaner

Use this on your windows. It is the modern method. No soap or water is used. It makes glass shining. It removes the finest fabric or varnished surface. It will clean the Duco on Cars, automobiles for not and general glasswork. Just apply to glass and rub dry with a soft cloth. Sold by leading chemists in Nairobi. Made by KENYA INDUSTRIAL WORKS, P.O. Box 676 NAIROBI.

Godfrey's Car Mart LIMITED.

100 House - Sadler Street.

USED CARS 50

TO SELECT FROM

Over 4 Years... 1,200 miles... Dodge 30 Body... 500

Duco Spray Painting

Oxy Acetylene Welding

SOLE AGENTS FOR

Ariel Motor Cycles

Registered 'PUDLO' Trade Mark

'PUDLO'

CEMENT WATERPROOFING POWDER, IS USED FOR CONSTRUCTION

Concrete buildings, Basements, Sewerage, Shaded Gas Chambers, Swimming Baths, Reinforced Glass Tiles, Flat Cement Roads, Railway Pipe Joints, Coated Walls, Artificial Stone Work, Garage Pits, Brake Shoes, Tanks for Water, Motor Oil, and other Liquids, Jars and Cans for Milk, Kettles and Boiling, Hot-water and Steamers.

Defective (unpainted) Walls Damaged by earth, Flooded Cellars, etc., Rusty Screens, Leaking Tanks, Leaking Cement Roads, Jump Boats and Stone Walls, Leaking Boiler Bridges.

FOR SPENTING Efficiencies on Camp Work, Efficient Protection of Walls, Being Damaged under Wood Floors.

SOLE AGENTS DENOVAN & DIEFEL, Victoria Street, NAIROBI.

Motorists.

PRICES AS GREAT AS ANYWHERE IN TOWN. Fresh Consignments Guaranteed. ALL Sizes - All Makes. ALWAYS IN STOCK.

Meghan's Petrol Station

SHAME ROAD, NGARA ROAD JUNCTION P.O. Box 1027. NAIROBI. Phone 666.

WHY TRUST YOUR MEMORY?

WHEN HIT A NEW MOMENT'S HOUR DON'T BELIEVE YOUR MIND'S THE NEARLY SURETY OF MEMORISING AND PROVIDING YOU WITH PERMANENT RECORD AND AN EVER-READY REMINDER.

GET YOUR COPY NOW

OF THE KENYA AND UGANDA DAIRY, 1931

SPECIALLY PREPARED FOR US BY THE EAST AFRICAN FARMER, BUSINESS MAN, AND HOUSEHOLDER, AND BY THE IN ALL GOVERNMENT DEPARTMENTS.

PRICE Sh. 4/- Packed Sh. 4/6

Sh. 3/6 per Box Sh. 3/6 per Box

Sh. 12" x 8", 8 Gaps to a page.

PUBLISHED BY The East African Standard

SIXTH AVENUE NAIROBI P.O. BOX 88

LAWN TENNIS

Programme for East King League

TOURNAMENT OPENS ON JANUARY 24

The following is the programme of matches arranged in connection with the East King Tennis League for 1921...

SECTION "A"

Saturday, January 24: Parklands vs. Glynburn...

SECTION "B"

Saturday, January 24: Parklands vs. Glynburn...

SECTION "C"

Saturday, January 24: Parklands vs. Glynburn...

SECTION "D"

Saturday, January 24: Parklands vs. Glynburn...

SECTION "E"

Saturday, January 24: Parklands vs. Glynburn...

SECTION "F"

Saturday, January 24: Parklands vs. Glynburn...

SECTION "G"

Saturday, January 24: Parklands vs. Glynburn...

SPORT ON THE PLATEAU

Poor Entries for Tennis Tournament

SUFFERERS PROVIDED IN OPEN MEN'S SINGLES

["STANDARD" COMPROMISE?] The "Royal and Ancient" at present is a very sorry state of affairs...

Patron Tennis

The entries for the Patron Tennis Tournament were very disappointing this year...

Result of the semi-finals and finals are as follows:

Miss Doubles - Handicap: Vanning and Mrs. Campbell beat Collins and Mrs. Hill...

Miss Doubles - Handicap

Vanning and Mrs. Campbell beat Collins and Mrs. Hill...

Miss Doubles - Handicap

Holler and Mrs. Perry (1-15) beat Collins and Mrs. Perry...

Miss Doubles - Handicap

Vanning and Mrs. Campbell beat Holler and Mrs. Anderson...

Miss Doubles - Handicap

East-King and Mrs. Mohall beat Glynburn and Mrs. Glynburn...

Miss Doubles - Handicap

Bennis and Mrs. Ghent beat East-King and Mrs. Campbell...

Miss Doubles - Handicap

East-King and Mrs. Mohall beat Bennis and Mrs. Ghent...

Miss Doubles - Handicap

East-King and Mrs. Mohall beat Bennis and Mrs. Ghent...

Miss Doubles - Handicap

East-King and Mrs. Mohall beat Bennis and Mrs. Ghent...

Miss Doubles - Handicap

East-King and Mrs. Mohall beat Bennis and Mrs. Ghent...

Miss Doubles - Handicap

East-King and Mrs. Mohall beat Bennis and Mrs. Ghent...

Miss Doubles - Handicap

East-King and Mrs. Mohall beat Bennis and Mrs. Ghent...

Miss Doubles - Handicap

East-King and Mrs. Mohall beat Bennis and Mrs. Ghent...

Men's Singles - Handicap

East-King and Mrs. Mohall beat Bennis and Mrs. Ghent...

Men's Singles - Handicap

East-King and Mrs. Mohall beat Bennis and Mrs. Ghent...

Men's Singles - Handicap

East-King and Mrs. Mohall beat Bennis and Mrs. Ghent...

Men's Singles - Handicap

East-King and Mrs. Mohall beat Bennis and Mrs. Ghent...

Men's Singles - Handicap

East-King and Mrs. Mohall beat Bennis and Mrs. Ghent...

Men's Singles - Handicap

East-King and Mrs. Mohall beat Bennis and Mrs. Ghent...

Men's Singles - Handicap

East-King and Mrs. Mohall beat Bennis and Mrs. Ghent...

Men's Singles - Handicap

East-King and Mrs. Mohall beat Bennis and Mrs. Ghent...

Men's Singles - Handicap

East-King and Mrs. Mohall beat Bennis and Mrs. Ghent...

Men's Singles - Handicap

East-King and Mrs. Mohall beat Bennis and Mrs. Ghent...

Men's Singles - Handicap

East-King and Mrs. Mohall beat Bennis and Mrs. Ghent...

Men's Singles - Handicap

East-King and Mrs. Mohall beat Bennis and Mrs. Ghent...

Men's Singles - Handicap

East-King and Mrs. Mohall beat Bennis and Mrs. Ghent...

Men's Singles - Handicap

East-King and Mrs. Mohall beat Bennis and Mrs. Ghent...

Men's Singles - Handicap

East-King and Mrs. Mohall beat Bennis and Mrs. Ghent...

Men's Singles - Handicap

East-King and Mrs. Mohall beat Bennis and Mrs. Ghent...

Men's Singles - Handicap

East-King and Mrs. Mohall beat Bennis and Mrs. Ghent...

Men's Singles - Handicap

East-King and Mrs. Mohall beat Bennis and Mrs. Ghent...

Men's Singles - Handicap

East-King and Mrs. Mohall beat Bennis and Mrs. Ghent...

Civil Service Rifle Club

The principal scores registered last Friday were made by Col. Fitzgerald...

Men's Singles - Handicap

January 30: 400 yards. January 31: 400 yards. February 1: 400 yards.

Men's Singles - Handicap

January 30: 400 yards. January 31: 400 yards. February 1: 400 yards.

Men's Singles - Handicap

January 30: 400 yards. January 31: 400 yards. February 1: 400 yards.

Men's Singles - Handicap

January 30: 400 yards. January 31: 400 yards. February 1: 400 yards.

Men's Singles - Handicap

January 30: 400 yards. January 31: 400 yards. February 1: 400 yards.

Men's Singles - Handicap

January 30: 400 yards. January 31: 400 yards. February 1: 400 yards.

Men's Singles - Handicap

January 30: 400 yards. January 31: 400 yards. February 1: 400 yards.

Men's Singles - Handicap

January 30: 400 yards. January 31: 400 yards. February 1: 400 yards.

Men's Singles - Handicap

January 30: 400 yards. January 31: 400 yards. February 1: 400 yards.

Men's Singles - Handicap

January 30: 400 yards. January 31: 400 yards. February 1: 400 yards.

Men's Singles - Handicap

January 30: 400 yards. January 31: 400 yards. February 1: 400 yards.

Men's Singles - Handicap

January 30: 400 yards. January 31: 400 yards. February 1: 400 yards.

Men's Singles - Handicap

January 30: 400 yards. January 31: 400 yards. February 1: 400 yards.

Men's Singles - Handicap

January 30: 400 yards. January 31: 400 yards. February 1: 400 yards.

Men's Singles - Handicap

January 30: 400 yards. January 31: 400 yards. February 1: 400 yards.

Men's Singles - Handicap

January 30: 400 yards. January 31: 400 yards. February 1: 400 yards.

Men's Singles - Handicap

January 30: 400 yards. January 31: 400 yards. February 1: 400 yards.

Men's Singles - Handicap

January 30: 400 yards. January 31: 400 yards. February 1: 400 yards.

South Africa PROVIDES ALL KINDS OF Educational Facilities. For Your Children REDUCED RAILWAY AND STEAMSHIP FARES OBTAINABLE TO AND FROM THE SOUTH AFRICA OFFICE.

CELOTEX IS NOW GUARANTEED WHITE ANTIFUL. At no Extra Cost. A building story of triumph over great difficulties is at last revealed by the manufacturers of Celotex.

WASHING MACHINES. THE NEW MACKENZIE & CO. See 305, NAIROBI.

THE ONE GREAT Tonic that has won the TEST OF 60 YEARS. Follows Syrup. See 305, NAIROBI.

Geo. B. BOWERS. BUILDING CONTRACTOR, MANUFACTURER AND DIRECT IMPORTER. GREATLY REDUCED PRICES. Why Buy American Doors. I can compete with them - and beat them!

NATIONAL BANK OF INDIA LIMITED. (Incorporated in United Kingdom). Bankers to the Colony and Protectorate of Kenya and Uganda.

INSURE YOUR MOTOR CARS AND MOTOR CYCLES. AFRICAN GUARANTEE AND INDEMNITY CO., Ltd. M.D. KAMPF.

Kenya Loan & Discount Co., Ltd. P.O. Box 246, NAIROBI. OFFICE: 1st Floor, Courts Chambers.

ANGLO-BALTIC TIMBER CO., LTD. NAIROBI. MOMBASA. 1926 CHEVROLET Tourer. Mileage only 11,000. Well shod - 190. 1926 CHEVROLET Box Body. In perfect mechanical condition. Practically new 190.

KENYA GOVERNMENT ARCHIVES
PHOTOGRAPHIC SERVICE

SECTION 8

CONTINUED ON

REEL No.

90
.....

KENYA GOVERNMENT ARCHIVES
PHOTOGRAPHIC SERVICE

SECTION 8

END

OF REEL NO.89.....