

"BARBARI BOBBERS" THE "NAUGHTY WIFE"
 The George Buchanan Company...
"STANDARDS" JUSTIFIED
FULL HOUSE

The second play of the Lonsdale...
 The public of course, was...
 The lecture made most favorable...
 The Chamber of Commerce members...
 The public of course, was...
 The lecture made most favorable...
 The Chamber of Commerce members...

CONVALESCENT HOME
 Proposed change for benefit...
 It is proposed to build a convalescent...
 The plan of having...
 It is proposed to build a convalescent...
 The plan of having...
 It is proposed to build a convalescent...
 The plan of having...



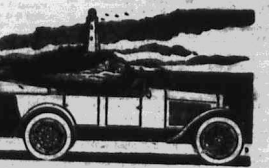
CHALMERS MOTOR CARS

The pairing of the Chalmers Engine speaks of un-
 told power and strength in all emergencies. One
 can sit in the tonness and hardly hear the engine
 under the bonnet. Long or short rides become a
 pleasure and a joy. The "Hot Spot and Ram's
 Horn" Engine, the invention of Chalmers' Engineers,
 makes the Chalmers unusually powerful, yet at the
 same time economical, for it heats the fuel and
 explodes every particle.

Right-hand drive, complete appointments, magneto
 equipment; two unit electrical system.

CHALMERS MOTOR CAR COMPANY

EXPORT DIVISION
 Cable Address: "UMICO" 74 BROADWAY, N. Y. 20



Right-hand drive, complete appointments, magneto
 equipment; two unit electrical system.

CONVALESCENT HOME
 Proposed change for benefit...
 It is proposed to build a convalescent...
 The plan of having...
 It is proposed to build a convalescent...
 The plan of having...
 It is proposed to build a convalescent...
 The plan of having...

PROFITEERING DISAPPEARS
 IN SMOKE
 IF
 THE SMOKE IS
Chairman
 Below are prices at which you will be supplied
 with the best smoke in the world by
**S. Jacobs, Ltd., Cearn's, Ltd., A. Lewis,
 T. Scheuten, Stearns, Ltd., Maxwell
 Brady's, Civil Service Co-Operative Society**

- AND
ALL PRINCIPAL STORES.
- | | |
|---|--------------------|
| Chairman, Broadland and Brougher Tobacco... | Rs. 2 25 per j lb. |
| Straight Cut Cigarettes | 1 25 - 20 |
| Mollan | 1 10 - 20 |
| Tournaient Brand | 1 60 - 20 |
| Oval | 1 50 - 20 |
| (ALL VIBONIA) | |

Detail Brochure to...
 Sole Agents for E. J. LEE, Ltd.
 P. O. Box 202.
 "Phone 202."



MANUFACTURERS' REPRESENTATIVES
 AND
 INSURANCE AGENTS
HAMILTON

CONVALESCENT HOME
 Proposed change for benefit...
 It is proposed to build a convalescent...
 The plan of having...
 It is proposed to build a convalescent...
 The plan of having...
 It is proposed to build a convalescent...
 The plan of having...

CONVALESCENT HOME
 Proposed change for benefit...
 It is proposed to build a convalescent...
 The plan of having...
 It is proposed to build a convalescent...
 The plan of having...
 It is proposed to build a convalescent...
 The plan of having...

CONVALESCENT HOME
 Proposed change for benefit...
 It is proposed to build a convalescent...
 The plan of having...
 It is proposed to build a convalescent...
 The plan of having...

LIPTON'S
 The National Drink



Wherever the British Flag flies
 there you will find

Lipton's Tea.

Millions of people drink and enjoy
 it, millions of people buy it again
 and again, therefore it can correctly
 be designated

The National Drink.

Obtainable everywhere
 Sold Everywhere—
THREE QUALITIES.
 Green Label, (Darjeeling special) the very choicest for afternoon Tea.
 Yellow Label.
 Red Label.
 Agents:—**Smith, Mackenzie & Co.
 Boustead & Clarke, Ltd., MUMBAI.
 L. Besson & Co.**

LIPTON, Ltd.
 (Incorporated in England.)

New Imperial
 The ideal side car outfit for the country
 6 HP J. A. F. Engine.
 E. I. C. Magneto.
 B & B Carburettor,
 28 x 3 Dunlop Tyres,
 All Chain drive and ample
 ground clearance

EMILE JARDIN & Cie.
 In Stock:
 Burgundies,
 Champagne,
 Sparkling Wines,
 Sherries,
 Port.

**WHOLESALE
 RETAIL
 Prices on Application.**

**SOLE AGENTS—
 WHITELOCK & ULLMANN,**
 (Sole Agents for the Province of Bombay.)

Freehold Plots for Sale. RESIDENTIAL OR SMALL FARMS ON EASY TERMS.

There are available the best Freehold sites, with the most perfect views, in the neighbourhood within 4 1/2 miles of Nairobi...

FOR QUICK SALE ONE MONTH ONLY. 150 acres approximately. Best possible coffee and suitable for sub-division and residential sites...

J. C. COVERDALE & PARTNERS. Corner House, NAIROBI. AND MILIGAN & CO. Nairobi House NAIROBI.

J. C. COVERDALE & PARTNERS. LAND AND ESTATE AGENTS.

VALUERS AND ESTATE SUPERVISORS.

Our Land Register contains the widest possible range of all classes of Farms to let on the Continent of Africa. Coffee, Flax, Rubber, Sugar and General Farming propositions in all parts of B.E.A. from the Coast to the Lakes and Uganda.

We are offering a special lot of small Coffee Farms, 20 acres, easy terms, payment in some cases extending over 12 years.

Full Particulars on Application. Offices - CORNER HOUSE, (First Floor).

Telephone and Office: P. O. Box 228. NAIROBI.

VETERINARY NOTICE.

The public are hereby notified, that on and after November 10th, 1920, the only cattle which will be permitted to enter or leave the Nairobi Township area...

H. H. BRASSEY EDWARDS, Veterinary Officer, Nairobi District.

BUTCHERS FAMOUS CAMERAS.

"THE CARBINE." A series of compact cameras for those who want to practice this hobby with the greatest facility. Post Card size with Black Rapid Sym. Lens No. 100/1. Maxlin Roll film camera.

Thornton Pickards Cameras. The best Reflex Cameras of this makes with Ross and Dallmeier lenses also Hand Camera just unpacked!

Apply to - UMBESHAI N. PATEL & SONS, P. O. Box 308. Victoria Street, Nairobi.

HOME FOOTBALL. Scottish Football Discussion and Results. IRELAND'S TROUBLES.

They have both started with wise changes also being a goal down, but Kilmarnock, the Scottish Cup holders, 2-1 and Celtic beat Aberdeen by the same margin. The two sides were represented by Armstrong and Hearts, the latter losing Alton Bowers (the only Scottish Cup goal of last season) by the late goal Hornibrook...

Whether the Scottish League has been won is left to the decision of the Board for the future to prove, but on the face of it it does seem an unprecedented move. They have now to power all to proceed their players going to the Central League, and it will be going to the political organ, being taken from the following remarks concerning that well known player James Gordon in the "Athletic News" just to hand, who has left the famous Rangers side for the Central League...

R.A.F. MEMORIAL Success of Local Effort for Fund.

The statement of receipts and expenditure in connection with the fund is as follows: The fund is now £2,072.50, a draft to the Royal Air Force Memorial Fund is to be made.

It is hoped that soon things will be normal in the sporting world, and that the sporting world will be well as politically one is forced to conclude that Ireland is in a state of emergency.

The receipts from all sources, in every form, cash donations, proceeds of dances, (Nairobi No. 600, Kilimanjaro No. 440) and an excellent dinner, comprising printing, advertising, and other receipts, totalled £1,960, leaving a credit of £2,072.50.

A meeting of the general committee was held at the Nairobi Club Hotel on September 21st, when the accounts for the year were passed. At the same meeting a vote of thanks was passed for the assistance and support from the following: Lady Northey-McLellan, Messrs. H. F. Barnes, C. H. E. J. Thwait, J. B. Roberts, Chas. Ware, A. E. W. Thomson, D. Newman, J. A. Cunningham and others of the District.

APPOINTMENTS. The following appointments are gazetted: W. B. Ross, to be D.C. Inspector of Prisons; A. N. Dooley, to be Resident Magistrate, Mombasa; E. C. Ramsey, to be Resident Magistrate, Nairobi; H. W. B. Mitchell, to be Crown Accountant, to be Senior Inspector of Schools; H. J. Walker, to be an Assistant and, Uganda Railway.

STOCKS

It will Interest you to visit us and see our STOCKS of:

PAVER BOARD

Galvanised Corrugated Iron, Gutters and Downpipes, Fuleco Roofing, Agricultural Implements,

Davenport Wagons, Overland Motor Cars, Indian Motor Cycles, Harley-Davidson Flat Twin Cylinder Motor Cycles.

MILDS & JOSEPH, NAIROBI

POLICE COURT MEMBERS FOOTBALL A.P.A. MEETING

McArthur... Being in possession... Mackin's transfer... Mr. Maguire...

Mr. Maguire... Being in possession... Mackin's transfer... Mr. Maguire...

Mr. Maguire... Being in possession... Mackin's transfer... Mr. Maguire...

Mr. Maguire... Being in possession... Mackin's transfer... Mr. Maguire...

Mr. Maguire... Being in possession... Mackin's transfer... Mr. Maguire...

Mr. Maguire... Being in possession... Mackin's transfer... Mr. Maguire...

Mr. Maguire... Being in possession... Mackin's transfer... Mr. Maguire...

Mr. Maguire... Being in possession... Mackin's transfer... Mr. Maguire...

Mr. Maguire... Being in possession... Mackin's transfer... Mr. Maguire...

WIFFITT & LONDANI Forwarding, Commission, Agents, Auctioneers, Cattle Wagon Hire

The above Firm beg to state that they are opening at Eldoret... Send your goods to us and do the rest.

Special rates for cartage from Eldoret to Londiani.

Government Linen, Unbleached Linen, Government Balloon Fabric, Government Acreage Fabric.

Waterproof Sheet, Canvas, American Cloth, Sewing Cotton, Cotton Net.

Australian All Wool Blankets, British Army Blankets, Patterns of any of the above Materials.

All Prices Subject to 10% discount Cash with Order. New arrival of double Tread and Genoa's Prices from Rs. 35.00 Colors, White, Grey, Blue and Brown.

MENGO PLANTERS KAMPALA. To UP-COUNTRY STORES TWINE

Drainage, Irrigation, Water Supply and all Purposes. Gwynne's Centrifugal and Turbine Pumps are Best

R. B. DUNN. Agents: THE MCWILLIAMS STORES

WATER CARTS, BUCK SAILS, ESTATE OF THE LATE R. J. BARRY

FOR SALE, WOODLANDS. All that tract of land in the Parish of...

W. BOLUS & CO., LTD. Import and Export Agents. Having terminated the existing arrangements...

IN H.S.M. COURT FOR ZANZIBAR. (In Prison) SALE OF PRIZE WEEDS.

MAN IN THE STREET. 'DAVLIGHT BAVING' To the Editor 'E.A. Standard'.

MAN IN THE STREET. 'DAVLIGHT BAVING' To the Editor 'E.A. Standard'.

MAN IN THE STREET. 'DAVLIGHT BAVING' To the Editor 'E.A. Standard'.

MAN IN THE STREET. 'DAVLIGHT BAVING' To the Editor 'E.A. Standard'.

MAN IN THE STREET. 'DAVLIGHT BAVING' To the Editor 'E.A. Standard'.

MAN IN THE STREET. 'DAVLIGHT BAVING' To the Editor 'E.A. Standard'.

IRELAND

New Proposals for Efficient Force.

POPE'S POSITION

London Sept. 25.—"Washington Gazette" declares that the Government of Ireland has become more friendly to the papacy in its attitude towards the British Government...

DISAPPOINTMENT

London, Sept. 25.—The Civil Conference has ended in a deadlock.

The latter submitted further proposals for the grant and regulation of power in relation to the rest of the island...

YESTERDAY'S MEETING

London, Sept. 25.—The House of Commons met at 10.15.

At the evening sitting of the House of Commons the subject of the social organization of the island was brought up in connection with the recommendations of the Tar-

FRIDAY'S GAZETTE

FRIDAY'S GAZETTE

SATURDAY

Man's Double.—Wood and Fyfe (1-1) lost Hutchins and Mrs Williams (1-1) won Merrick and Miss Double (1-1) won Smith (1-1) won Robinson (1-1) won...

FRIDAY'S GAZETTE

FRIDAY'S GAZETTE

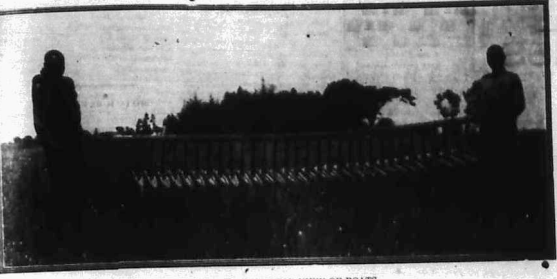
SATURDAY

Man's Double.—Wood and Fyfe (1-1) lost Hutchins and Mrs Williams (1-1) won Merrick and Miss Double (1-1) won Smith (1-1) won Robinson (1-1) won...

OUR PICTURE PAGE.

FLAX CATERPILLAR EXTERMINATOR.

IMPORTANT LOCAL INVENTION. (Taken by courtesy of "FARMERS' JOURNAL.")



HELLED UP TO SHOW TOP VIEW OF BOATS.



PHOTO BY CHEAP JEWELLERY.



READY FOR THE RAY.

PHOTOS BY L. E. COOK, GILGIL.

GOVERNMENT IVORY

Over £100,000 Frazled at the Sale. A big sale of Government Ivory was held here yesterday when 12,000 lbs were disposed of at an average price of 12/6 per lb.

GOVERNMENT IVORY

Over £100,000 Frazled at the Sale. A big sale of Government Ivory was held here yesterday when 12,000 lbs were disposed of at an average price of 12/6 per lb.

GOVERNMENT IVORY

Over £100,000 Frazled at the Sale. A big sale of Government Ivory was held here yesterday when 12,000 lbs were disposed of at an average price of 12/6 per lb.

GOVERNMENT IVORY

Over £100,000 Frazled at the Sale. A big sale of Government Ivory was held here yesterday when 12,000 lbs were disposed of at an average price of 12/6 per lb.

GOVERNMENT IVORY

Over £100,000 Frazled at the Sale. A big sale of Government Ivory was held here yesterday when 12,000 lbs were disposed of at an average price of 12/6 per lb.

GOVERNMENT IVORY

Over £100,000 Frazled at the Sale. A big sale of Government Ivory was held here yesterday when 12,000 lbs were disposed of at an average price of 12/6 per lb.

GOVERNMENT IVORY

Over £100,000 Frazled at the Sale. A big sale of Government Ivory was held here yesterday when 12,000 lbs were disposed of at an average price of 12/6 per lb.

GOVERNMENT IVORY

Over £100,000 Frazled at the Sale. A big sale of Government Ivory was held here yesterday when 12,000 lbs were disposed of at an average price of 12/6 per lb.

GOVERNMENT IVORY

Over £100,000 Frazled at the Sale. A big sale of Government Ivory was held here yesterday when 12,000 lbs were disposed of at an average price of 12/6 per lb.

GOVERNMENT IVORY

Over £100,000 Frazled at the Sale. A big sale of Government Ivory was held here yesterday when 12,000 lbs were disposed of at an average price of 12/6 per lb.

GOVERNMENT IVORY

Over £100,000 Frazled at the Sale. A big sale of Government Ivory was held here yesterday when 12,000 lbs were disposed of at an average price of 12/6 per lb.

GOVERNMENT IVORY

Over £100,000 Frazled at the Sale. A big sale of Government Ivory was held here yesterday when 12,000 lbs were disposed of at an average price of 12/6 per lb.

GOVERNMENT IVORY

Over £100,000 Frazled at the Sale. A big sale of Government Ivory was held here yesterday when 12,000 lbs were disposed of at an average price of 12/6 per lb.

GOVERNMENT IVORY

Over £100,000 Frazled at the Sale. A big sale of Government Ivory was held here yesterday when 12,000 lbs were disposed of at an average price of 12/6 per lb.

GOVERNMENT IVORY

Over £100,000 Frazled at the Sale. A big sale of Government Ivory was held here yesterday when 12,000 lbs were disposed of at an average price of 12/6 per lb.

GOVERNMENT IVORY

Over £100,000 Frazled at the Sale. A big sale of Government Ivory was held here yesterday when 12,000 lbs were disposed of at an average price of 12/6 per lb.

GOVERNMENT IVORY

Over £100,000 Frazled at the Sale. A big sale of Government Ivory was held here yesterday when 12,000 lbs were disposed of at an average price of 12/6 per lb.

GOVERNMENT IVORY

Over £100,000 Frazled at the Sale. A big sale of Government Ivory was held here yesterday when 12,000 lbs were disposed of at an average price of 12/6 per lb.

GOVERNMENT IVORY

Over £100,000 Frazled at the Sale. A big sale of Government Ivory was held here yesterday when 12,000 lbs were disposed of at an average price of 12/6 per lb.

GOVERNMENT IVORY

Over £100,000 Frazled at the Sale. A big sale of Government Ivory was held here yesterday when 12,000 lbs were disposed of at an average price of 12/6 per lb.

GOVERNMENT IVORY

Over £100,000 Frazled at the Sale. A big sale of Government Ivory was held here yesterday when 12,000 lbs were disposed of at an average price of 12/6 per lb.

GOVERNMENT IVORY

Over £100,000 Frazled at the Sale. A big sale of Government Ivory was held here yesterday when 12,000 lbs were disposed of at an average price of 12/6 per lb.

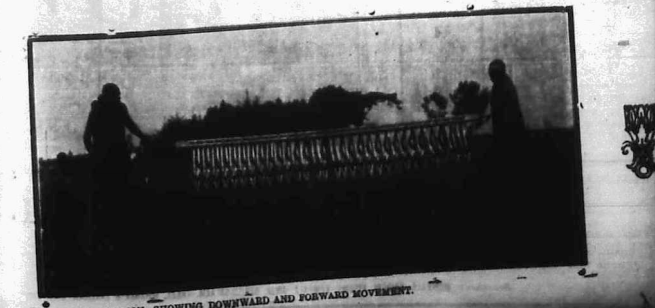
GOVERNMENT IVORY

Over £100,000 Frazled at the Sale. A big sale of Government Ivory was held here yesterday when 12,000 lbs were disposed of at an average price of 12/6 per lb.

GOVERNMENT IVORY

Over £100,000 Frazled at the Sale. A big sale of Government Ivory was held here yesterday when 12,000 lbs were disposed of at an average price of 12/6 per lb.

HOWSE & McGEORGE CHEMISTS & DRUGGISTS NAIROBI.



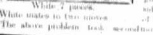
Have in stock a large variety of Veterinary instruments. Bull Holders, Ring Pump, Thermometers, Milling Tables etc.

Have in stock a large variety of Veterinary instruments. Bull Holders, Ring Pump, Thermometers, Milling Tables etc.

Weather report section with various forecasts and observations.

CHESS.

Chess news and reports, including mentions of 'The Chess Problem' and 'White wins in two moves'.



White wins in two moves. The above problem first...

Continuation of chess news and reports, including mentions of 'The Chess Problem' and 'White wins in two moves'.

CHESS.

Chess news and reports, including mentions of 'The Chess Problem' and 'White wins in two moves'.



White wins in two moves. The above problem first...

SHAKESPEARE SAYS

Advertisement text for Shakespeare Says, featuring the quote: 'We are Creatures who look before and after. The more surprising that we do not look round a little and see what is passing under our very eyes...'.

Additional text for the Shakespeare Says advertisement, including 'Make a Point of Visiting our Stores'.



Advertisement for Roustead & Clarke Ltd. featuring the text 'The Largest and Most Up-to-Date Tea and Wine Merchants in the Kenya Colony' and listing various branches.

MOTOR NOTES

Introductory text for the Motor Notes section, mentioning 'by Carburettor'.

Motor Notes section containing various news items related to automobiles, including mentions of 'The Grand Peace Commission' and 'The World's Board of Commissioners'.

THIKA & DISTRICT CHAMBER

Notice from the Thika & District Chamber regarding a meeting on the 15th of the month.

THE ROMANIAN WAR

News report regarding the Romanian war, mentioning 'The Romanian War' and 'The Romanian War'.

U.R.A.A. NOTES

Notes from the U.R.A.A. regarding various events and meetings.

WIRELESS TELEPHONE

News report regarding wireless telephony, mentioning 'Wireless Telephone' and 'Wireless Telephone'.

WIRELESS TELEPHONE

Continuation of the wireless telephony news report, mentioning 'Wireless Telephone' and 'Wireless Telephone'.

SELECTION OF BOOKS FROM A NEW COLLECTION JUST ARRIVED.

- List of books for sale, including titles like 'The History of the British Empire', 'The History of the British Empire', and 'The History of the British Empire'.

STANDARD STATIONERY STORES, NAIROBI.

Advertisement for Standard Stationery Stores, Nairobi, mentioning 'A large Selection of Paper cover Novels'.

WIRELESS TELEPHONE

News report regarding wireless telephony, mentioning 'Wireless Telephone' and 'Wireless Telephone'.

WIRELESS TELEPHONE

Continuation of the wireless telephony news report, mentioning 'Wireless Telephone' and 'Wireless Telephone'.

WIRELESS TELEPHONE

Continuation of the wireless telephony news report, mentioning 'Wireless Telephone' and 'Wireless Telephone'.

WIRELESS TELEPHONE

Continuation of the wireless telephony news report, mentioning 'Wireless Telephone' and 'Wireless Telephone'.

MARKET REPORT
 The following is the market report of the London Stock Exchange and other securities for the week ending September 28, 1924.

EXPORT MARKET
 The following is the market report of the London Stock Exchange and other securities for the week ending September 28, 1924.

SEPARATION
 The following is the market report of the London Stock Exchange and other securities for the week ending September 28, 1924.

FARM TRACTORS
 The following is the market report of the London Stock Exchange and other securities for the week ending September 28, 1924.

MOHABA BUSES
 The following is the market report of the London Stock Exchange and other securities for the week ending September 28, 1924.

MOHABA COMMITTEE
 The following is the market report of the London Stock Exchange and other securities for the week ending September 28, 1924.

TANGANYIKA ESTATE - AGENCY
 The following is the market report of the London Stock Exchange and other securities for the week ending September 28, 1924.

Several good Properties for Sale.
 The following is the market report of the London Stock Exchange and other securities for the week ending September 28, 1924.

PROPERTIES REPORTED UPON
 The following is the market report of the London Stock Exchange and other securities for the week ending September 28, 1924.

AUCTION SALE
 The following is the market report of the London Stock Exchange and other securities for the week ending September 28, 1924.

THE HON. MR. JUSTICE
 The following is the market report of the London Stock Exchange and other securities for the week ending September 28, 1924.



The Road - In New Overland 4 Motor Car on Three-Pole Cantilever Spring Suspension

You expect a bad road to ride as in India. It is not the production of the Springfield of the 4 Motor Car.

The Overland 4 does not change the road. It changes the manner in which you ride on it. It gives you control of discomfort. It gives you a smooth riding motion instead of bouncing and jolting.

The Overland 4 is a motor car of a new type. It is a motor car of a new type. It is a motor car of a new type. It is a motor car of a new type.



KING'S AFRICAN RIFLES
 Will all those wishing to attend Dinner on the 14th October please communicate with the P.M.C. 3rd Division Nairobi before the 10th October.

W. H. Ritchie
 Honorary Secretary
E. A. M. R. DINN

THE SUBSCRIPTION
 The following is the market report of the London Stock Exchange and other securities for the week ending September 28, 1924.

THE KENYA MINING COMPANY, LIMITED.
 The following is the market report of the London Stock Exchange and other securities for the week ending September 28, 1924.

THE KENYA MINING COMPANY, LIMITED.
 The following is the market report of the London Stock Exchange and other securities for the week ending September 28, 1924.

THE KENYA MINING COMPANY, LIMITED.
 The following is the market report of the London Stock Exchange and other securities for the week ending September 28, 1924.

THE KENYA MINING COMPANY, LIMITED.
 The following is the market report of the London Stock Exchange and other securities for the week ending September 28, 1924.

THE KENYA MINING COMPANY, LIMITED.
 The following is the market report of the London Stock Exchange and other securities for the week ending September 28, 1924.

THE KENYA MINING COMPANY, LIMITED.
 The following is the market report of the London Stock Exchange and other securities for the week ending September 28, 1924.

THE KENYA MINING COMPANY, LIMITED.
 The following is the market report of the London Stock Exchange and other securities for the week ending September 28, 1924.

THE KENYA MINING COMPANY, LIMITED.
 The following is the market report of the London Stock Exchange and other securities for the week ending September 28, 1924.

THE KENYA MINING COMPANY, LIMITED.
 The following is the market report of the London Stock Exchange and other securities for the week ending September 28, 1924.

THE KENYA MINING COMPANY, LIMITED.
 The following is the market report of the London Stock Exchange and other securities for the week ending September 28, 1924.

THE KENYA MINING COMPANY, LIMITED.
 The following is the market report of the London Stock Exchange and other securities for the week ending September 28, 1924.

THE KENYA MINING COMPANY, LIMITED.
 The following is the market report of the London Stock Exchange and other securities for the week ending September 28, 1924.

THE KENYA MINING COMPANY, LIMITED.
 The following is the market report of the London Stock Exchange and other securities for the week ending September 28, 1924.

THE KENYA MINING COMPANY, LIMITED.
 The following is the market report of the London Stock Exchange and other securities for the week ending September 28, 1924.

THE KENYA MINING COMPANY, LIMITED.
 The following is the market report of the London Stock Exchange and other securities for the week ending September 28, 1924.

THE KENYA MINING COMPANY, LIMITED.
 The following is the market report of the London Stock Exchange and other securities for the week ending September 28, 1924.

THE KENYA MINING COMPANY, LIMITED.
 The following is the market report of the London Stock Exchange and other securities for the week ending September 28, 1924.

THE KENYA MINING COMPANY, LIMITED.
 The following is the market report of the London Stock Exchange and other securities for the week ending September 28, 1924.

THE KENYA MINING COMPANY, LIMITED.
 The following is the market report of the London Stock Exchange and other securities for the week ending September 28, 1924.

THE KENYA MINING COMPANY, LIMITED.
 The following is the market report of the London Stock Exchange and other securities for the week ending September 28, 1924.

THE KENYA MINING COMPANY, LIMITED.
 The following is the market report of the London Stock Exchange and other securities for the week ending September 28, 1924.

THE KENYA MINING COMPANY, LIMITED.
 The following is the market report of the London Stock Exchange and other securities for the week ending September 28, 1924.

THE KENYA MINING COMPANY, LIMITED.
 The following is the market report of the London Stock Exchange and other securities for the week ending September 28, 1924.

THE KENYA MINING COMPANY, LIMITED.
 The following is the market report of the London Stock Exchange and other securities for the week ending September 28, 1924.

THE KENYA MINING COMPANY, LIMITED.
 The following is the market report of the London Stock Exchange and other securities for the week ending September 28, 1924.

THE KENYA MINING COMPANY, LIMITED.
 The following is the market report of the London Stock Exchange and other securities for the week ending September 28, 1924.

THE KENYA MINING COMPANY, LIMITED.
 The following is the market report of the London Stock Exchange and other securities for the week ending September 28, 1924.

THE KENYA MINING COMPANY, LIMITED.
 The following is the market report of the London Stock Exchange and other securities for the week ending September 28, 1924.

THE KENYA MINING COMPANY, LIMITED.
 The following is the market report of the London Stock Exchange and other securities for the week ending September 28, 1924.

THE KENYA MINING COMPANY, LIMITED.
 The following is the market report of the London Stock Exchange and other securities for the week ending September 28, 1924.

...the man who comes to the Colony is quick to see the necessity of the measures...

As reported above, the Government is to be asked to take the following steps...

The N. A. Standard Sept. 30, 1926, in a copy, with the following article...

It is not to be expected that the population of Nairobi will remain water supply must be made immediately...

It is not to be expected that the population of Nairobi will remain water supply must be made immediately...

...the man who comes to the Colony is quick to see the necessity of the measures...

As reported above, the Government is to be asked to take the following steps...

The N. A. Standard Sept. 30, 1926, in a copy, with the following article...

It is not to be expected that the population of Nairobi will remain water supply must be made immediately...

It is not to be expected that the population of Nairobi will remain water supply must be made immediately...

MURTON, CRANE & CO. NAIVASHA AND NAKURU. Land, Live Stock and General Commission Agents...

Land Land Land. The greatest land bargains offering, are now on our books...

AGRICULTURAL & HORTICULTURAL SOCIETY OF BRITISH EAST AFRICA.

Show Notices. NAIROBI SHOW DECEMBER 6, 7 & 10. Traders and Merchants—Please remember that the 1926 Standards and Specimens will be closed by October the 15th...

For and on behalf of the AGRICULTURAL & HORTICULTURAL SOCIETY OF B.E.A. A. VINCENT, Secretary.

STEAM PLOWING. Advertiser with large size Fowler cable ploughing plant, is open to undertake ploughing contracts.

NAIROBI WATER. Report by Dr. Clearkin and Mr. Barnes. B. outside line less than 30 per cent.

AGRICULTURAL & HORTICULTURAL SOCIETY OF BRITISH EAST AFRICA. Show Notices. NAIROBI SHOW DECEMBER 6, 7 & 10. Traders and Merchants—Please remember that the 1926 Standards and Specimens will be closed by October the 15th...

For and on behalf of the AGRICULTURAL & HORTICULTURAL SOCIETY OF B.E.A. A. VINCENT, Secretary.

STEAM PLOWING. Advertiser with large size Fowler cable ploughing plant, is open to undertake ploughing contracts.

AGRICULTURAL & HORTICULTURAL SOCIETY OF BRITISH EAST AFRICA. Show Notices. NAIROBI SHOW DECEMBER 6, 7 & 10. Traders and Merchants—Please remember that the 1926 Standards and Specimens will be closed by October the 15th...

AGRICULTURAL & HORTICULTURAL SOCIETY OF BRITISH EAST AFRICA. Show Notices. NAIROBI SHOW DECEMBER 6, 7 & 10. Traders and Merchants—Please remember that the 1926 Standards and Specimens will be closed by October the 15th...

For and on behalf of the AGRICULTURAL & HORTICULTURAL SOCIETY OF B.E.A. A. VINCENT, Secretary.

STEAM PLOWING. Advertiser with large size Fowler cable ploughing plant, is open to undertake ploughing contracts.

AGRICULTURAL & HORTICULTURAL SOCIETY OF BRITISH EAST AFRICA. Show Notices. NAIROBI SHOW DECEMBER 6, 7 & 10. Traders and Merchants—Please remember that the 1926 Standards and Specimens will be closed by October the 15th...

AGRICULTURAL & HORTICULTURAL SOCIETY OF BRITISH EAST AFRICA. Show Notices. NAIROBI SHOW DECEMBER 6, 7 & 10. Traders and Merchants—Please remember that the 1926 Standards and Specimens will be closed by October the 15th...

For and on behalf of the AGRICULTURAL & HORTICULTURAL SOCIETY OF B.E.A. A. VINCENT, Secretary.

STEAM PLOWING. Advertiser with large size Fowler cable ploughing plant, is open to undertake ploughing contracts.

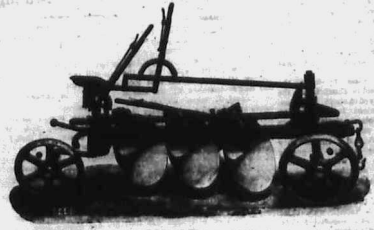
A. A. STANDARD CARTON. A large advertisement for A.A. Standard Cartons, featuring an illustration of a man in a hat and a woman, and text describing the quality and availability of the cartons.

RANSOMES

THE IMPLEMENTS YOU REQUIRE.

THE "KEY CONQUEROR"

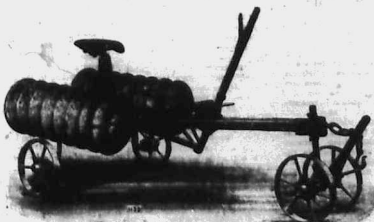
For Ploughing under
Strenuous Conditions
either with
Mechanical or Animal
Draft



For Ploughing under
Strenuous Conditions
either with
Mechanical or
Draft

THE KING OF PLOUGHS

"KING" DISC HARROWS
8 ft. wide
16 Plain 18 inch Discs
Weight 900 lbs.



"KING" DISC HARROW
8 ft. wide
16 Cutaway 18 inch Discs
Weight 920 lbs.

READY FOR IMMEDIATE DELIVERY.

GAILEY & ROBERTS,

LONDON, NAIROBI & NAKURU.

Head Office: NAIROBI.

Telegrams: "GAILEY."

LONDON OFFICE:

4. CHAPEL STREET, E.C.

(THE SUPREME AGRICULTURAL HOUSE.)

NAIROBI RACES.

For first two days of October Meeting.

TRAINING FIELDS IN MANY EVENTS.

WINTER 415, second 45. Open to all country bred horses. Weights have never won a race and aged to carry 11. Entry fee £1. Mr. C. B. Clatterback's Ethen Miller, Oct. 11th.

WINTER 415, second 45. Open to all country bred horses. Weights have never won a race and aged to carry 11. Entry fee £1. Mr. C. B. Clatterback's Ethen Miller, Oct. 11th.

WINTER 415, second 45. Open to all country bred horses. Weights have never won a race and aged to carry 11. Entry fee £1. Mr. C. B. Clatterback's Ethen Miller, Oct. 11th.

WINTER 415, second 45. Open to all country bred horses. Weights have never won a race and aged to carry 11. Entry fee £1. Mr. C. B. Clatterback's Ethen Miller, Oct. 11th.

WINTER 415, second 45. Open to all country bred horses. Weights have never won a race and aged to carry 11. Entry fee £1. Mr. C. B. Clatterback's Ethen Miller, Oct. 11th.

WINTER 415, second 45. Open to all country bred horses. Weights have never won a race and aged to carry 11. Entry fee £1. Mr. C. B. Clatterback's Ethen Miller, Oct. 11th.

WINTER 415, second 45. Open to all country bred horses. Weights have never won a race and aged to carry 11. Entry fee £1. Mr. C. B. Clatterback's Ethen Miller, Oct. 11th.

WINTER 415, second 45. Open to all country bred horses. Weights have never won a race and aged to carry 11. Entry fee £1. Mr. C. B. Clatterback's Ethen Miller, Oct. 11th.

WINTER 415, second 45. Open to all country bred horses. Weights have never won a race and aged to carry 11. Entry fee £1. Mr. C. B. Clatterback's Ethen Miller, Oct. 11th.

WINTER 415, second 45. Open to all country bred horses. Weights have never won a race and aged to carry 11. Entry fee £1. Mr. C. B. Clatterback's Ethen Miller, Oct. 11th.

WINTER 415, second 45. Open to all country bred horses. Weights have never won a race and aged to carry 11. Entry fee £1. Mr. C. B. Clatterback's Ethen Miller, Oct. 11th.

THE EAST AFRICAN STANDARD.

For first two days of October Meeting.

TRAINING FIELDS IN MANY EVENTS.

WINTER 415, second 45. Open to all country bred horses. Weights have never won a race and aged to carry 11. Entry fee £1. Mr. C. B. Clatterback's Ethen Miller, Oct. 11th.

WINTER 415, second 45. Open to all country bred horses. Weights have never won a race and aged to carry 11. Entry fee £1. Mr. C. B. Clatterback's Ethen Miller, Oct. 11th.

WINTER 415, second 45. Open to all country bred horses. Weights have never won a race and aged to carry 11. Entry fee £1. Mr. C. B. Clatterback's Ethen Miller, Oct. 11th.

WINTER 415, second 45. Open to all country bred horses. Weights have never won a race and aged to carry 11. Entry fee £1. Mr. C. B. Clatterback's Ethen Miller, Oct. 11th.

WINTER 415, second 45. Open to all country bred horses. Weights have never won a race and aged to carry 11. Entry fee £1. Mr. C. B. Clatterback's Ethen Miller, Oct. 11th.

WINTER 415, second 45. Open to all country bred horses. Weights have never won a race and aged to carry 11. Entry fee £1. Mr. C. B. Clatterback's Ethen Miller, Oct. 11th.

WINTER 415, second 45. Open to all country bred horses. Weights have never won a race and aged to carry 11. Entry fee £1. Mr. C. B. Clatterback's Ethen Miller, Oct. 11th.

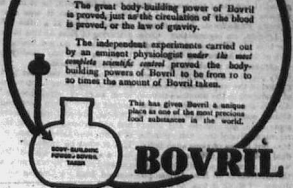
WINTER 415, second 45. Open to all country bred horses. Weights have never won a race and aged to carry 11. Entry fee £1. Mr. C. B. Clatterback's Ethen Miller, Oct. 11th.

WINTER 415, second 45. Open to all country bred horses. Weights have never won a race and aged to carry 11. Entry fee £1. Mr. C. B. Clatterback's Ethen Miller, Oct. 11th.

WINTER 415, second 45. Open to all country bred horses. Weights have never won a race and aged to carry 11. Entry fee £1. Mr. C. B. Clatterback's Ethen Miller, Oct. 11th.

WINTER 415, second 45. Open to all country bred horses. Weights have never won a race and aged to carry 11. Entry fee £1. Mr. C. B. Clatterback's Ethen Miller, Oct. 11th.

There is only one BOVRIL



Agent
P. O. Box 24
J. H. S. TOTT & Co.
NAIROBI. Phone 74.

The great body-building power of Bovril is proved just as the circulation of the blood is proved, or the loss of energy.

The independent experiments carried out by an eminent physician under the supervision of a medical control proved the body-building power of Bovril to be from 10 to 20 times the amount of Bovril taken.

This has given Bovril a unique place as one of the most powerful food substances in the world.

trouble if you regard the diagram carefully and place the pattern as shown on 40 yards of material, just remembering that the sleeve should be lined with the gathered wrists slipped inside cuff and lining. Repeat either the lining on the left or the left side just as you have in the sketch, and turn it back over the cuffs.

Don't wear after white face tan if they are beyond your purse. The latest fashion is a soft collar made of woven white cheviots. They are warmer than velvet and are much smarter. Attached to a little loose jacket that is coming very much to the fore, they give an extra warmth that is very cozy.

The pattern is in R. 1 which should be sent to the Pattern Dept. of this paper. Owing will be accepted with the utmost dispatch and should be addressed to Lady, c/o H. A. Standard Nairobi.

The little washable hat has been fitted to one of the side of the head, and is not intended for housewife. A morning blouse can be exchanged for a daily afternoon connection in the open air of 15 minutes, and the feeling of daintiness and freshness that such a change brings, makes it all the more "worth while."

Heart's a fish softening effect. Com. - Lawford's - Bohavitz, 11st. 4th.

WINTER 415, second 45. Open to all country bred horses. Weights have never won a race and aged to carry 11. Entry fee £1. Mr. C. B. Clatterback's Ethen Miller, Oct. 11th.

What Women Can Make at Home.

Fine Collars Again, No. 445

The dainty little blouse here, No. 445, will, I know, be eagerly snapped up by my readers, especially by the housewife. A morning blouse can be exchanged for a daily afternoon connection in the open air of 15 minutes, and the feeling of daintiness and freshness that such a change brings, makes it all the more "worth while."

Heart's a fish softening effect. Com. - Lawford's - Bohavitz, 11st. 4th.

WINTER 415, second 45. Open to all country bred horses. Weights have never won a race and aged to carry 11. Entry fee £1. Mr. C. B. Clatterback's Ethen Miller, Oct. 11th.

Always to be in water. For a woman's underwear, a little lemon juice is a good idea. It is a natural disinfectant and will keep the water clean. Always to be in water. For a woman's underwear, a little lemon juice is a good idea. It is a natural disinfectant and will keep the water clean.

CATTLE AUCTION SALE.

Keat Africa Produce Company.

For more information by the Auctioneer of the late Mr. Mervyn Keat's estate, please apply to the Keat Africa Produce Company, 10, Coleridge Street, Nairobi.

1000 Head of Brown Cattle, 1000 Head of Black Cattle, 1000 Head of Grey Cattle, 1000 Head of White Cattle, 1000 Head of Red Cattle, 1000 Head of Blue Cattle, 1000 Head of Green Cattle, 1000 Head of Purple Cattle, 1000 Head of Yellow Cattle, 1000 Head of Orange Cattle, 1000 Head of Pink Cattle, 1000 Head of Brown Cattle, 1000 Head of Black Cattle, 1000 Head of Grey Cattle, 1000 Head of White Cattle, 1000 Head of Red Cattle, 1000 Head of Blue Cattle, 1000 Head of Green Cattle, 1000 Head of Purple Cattle, 1000 Head of Yellow Cattle, 1000 Head of Orange Cattle, 1000 Head of Pink Cattle.

KENYA PROGRESS. show the amount of the late...

CHURCHES AND MISSIONS. Mrs. G. Buchanan to Lecture in Nairobi...

A MIGHTY HUNTING LEAD. Another man who has been...

THE EAST AFRICAN STANDARD. The East African Standard...

AFRICAN PAPER AND SHEET. The main motive behind the...

STOCK BILE. The East African Lands and...

EARL OF STRATHMORE. Many people in East Africa...

A MIGHTY HUNTER. The other day I met a well-known...

THE EAST AFRICAN STANDARD. The East African Standard...

BARAKI SCHEME. Sir G. Buchanan to Lecture in Nairobi...

A WARNING. The East African Standard...

THE EAST AFRICAN STANDARD. The East African Standard...

THE EAST AFRICAN STANDARD. The East African Standard...

THE EAST AFRICAN STANDARD. The East African Standard...

THE EAST AFRICAN STANDARD. The East African Standard...

THE EAST AFRICAN STANDARD. The East African Standard...

THE EAST AFRICAN STANDARD. The East African Standard...

THE EAST AFRICAN STANDARD. The East African Standard...

LAW AND DUTY. It would be a European interference...

HIGH COURT JUDGMENT. Sir, The text of a recent...

THE EAST AFRICAN STANDARD. The East African Standard...

THE EAST AFRICAN STANDARD. The East African Standard...

THE EAST AFRICAN STANDARD. The East African Standard...

THE EAST AFRICAN STANDARD. The East African Standard...

THE EAST AFRICAN STANDARD. The East African Standard...

THE EAST AFRICAN STANDARD. The East African Standard...

THE EAST AFRICAN STANDARD. The East African Standard...

MUNICIPAL REVENUE. The Municipal Council...

NEW BUILDINGS. When at the last session...

THE EAST AFRICAN STANDARD. The East African Standard...

THE EAST AFRICAN STANDARD. The East African Standard...

THE EAST AFRICAN STANDARD. The East African Standard...

THE EAST AFRICAN STANDARD. The East African Standard...

THE EAST AFRICAN STANDARD. The East African Standard...

THE EAST AFRICAN STANDARD. The East African Standard...

THE EAST AFRICAN STANDARD. The East African Standard...

FONTAINE & BATTLE. BRANCHES AT NAIROBI & MOMBASA. Labour Agents. PRODUCE AND GENERAL COMMISSION.

INSURANCE. ATLAS ASSURANCE CO. LTD. MARINE INSURANCE CO. LTD. MERCHANTS' MARINE INSURANCE CO. LTD.

Marine and Fire. PASSENGER'S BAGGAGE, ADRIATIC & S.P.A. CARRIAGES IN TRAINS-REGISTERED LETTERS-POST.

SMITH, MACKENZIE & CO. KILINDINI, MOMBASA. ZANZIBAR, DAR-ES-SALAAM, NAIROBI, KISUMU, TANGANYIKA, LANSIA.

Metropole Hotel Mombasa. The Premier and most Central Hotel. Half way between Kilindini and Mombasa Harbours.

F. R. MACKEY & Co. THE LEADING LABOUR AGENTS. Skilled and Unskilled Supplies at Shortest Notice.

SOSIARI HOTEL COMPANY LIMITED. (IN LIQUIDATION). Tendons are invited for the purchase of the remainder of the 5000 shares...

FOR CATTLE DIPPING. RESISTENT OF SOBA (50 per cent) weight. In 1000 cc of water 100 cc of the 50 per cent solution...

The Remedy for P... Having purchased at Masindi (Kenya) a copy of the book 'THE REMEDY FOR P...' by Mr. Albert...

TO PARENTS AND GUARDIANS. Do not leave your Children to the care of natives. THE LADY MORTIMER HOME FOR CHILDREN, MOMBASA.

WANTED. Colporteur. For Cattle Dipping. RESISTENT OF SOBA (50 per cent) weight. In 1000 cc of water 100 cc of the 50 per cent solution...

COFFEE PLANTERS

Special

In good time and place
 your orders with us for
 machinery in
 Coffee Machinery.
 We can supply you with
 the
MOST UP-TO-DATE
 Plants capable of dealing
 up to any capacity.
 We are at your disposal
 for any information re-
 garding

COFFEE CURING
 Our experience extends
 over 70 years as actual
 manufacturers of Coffee
 Machinery and NOT as
 middlemen. Our machi-
 nery is backed up by

HIGHEST REPUTATION
 maintained for 121 YEARS as manu-
 facturers.

We can supply you with ANY TYPE OF
**COFFEE MACHINERY MADE. WE MAKE
 THEM ALL.**

Refer to anyone in B.E.A. or elsewhere
 using our Hoppers & Polishers, Dryers,
 etc., and learn the advantages they derive
 by using them.

We supply comprehensive drawings of
 schemes for complete plants FREE
 on request international.

—CONSULT US—

Wm. McKINNON & Co., Ltd.

Spring Garden Iron Works,
ABERDEEN-SCOTLAND.

London Office,
 15, Dartmouth Street, Westminster, London, S.W. 1.
 Agents in B.E.A. Durant, Bradford & Co., Ltd., NAIROBI.
 Corner House, NAIROBI. P.O. Box 270.
 STOCKS KEPT BY:
Galley & Roberts, NAIROBI.

UNION CASTLE

(ROYAL MAIL STEAMERS)
 England, South & East African Ports

PROSPECTIVE SAILINGS TO

VIA SUEZ CANAL
 "Darwin Castle" Captain...
 About 25th Sept.
 "Guildford Castle" (Capt. A. J. ...)
 About 10th October.
 "Georka" (Capt. G. ...)
 About 10th November.
 "Galba" (only 10th ...)
 About 25th December.
VIA WEST COAST
 "Gaston" (Captain ...)
 About 23rd September.
 "Dunvegan Castle" (Capt. Irish) ...
 About 26th Sept.
TO DURBAN
 "Galk" Capt. ...

For particulars of sailings, rates of freight, and passenger
The Union Castle Mail Steamship
 P.O. Box 86, Mombasa. Tel. Address: ...

B. E. A. Corporation, Ltd., Limited
 Nairobi, Kampala, Jinja, etc., etc.

The Clan Line, Limited The Ellerman Lines, Ltd. The Harrison Line

Clyde Irvine & Co. Ltd. London; The ...
 and Thos. & Jas. Harrison, Liverpool.
Arrivals from the United Kingdom via Suez Canal
 "Clas Sutherland" on or about 24th November.
 "Clas Chisholm" on or about 27th November.

Arrivals from South Homeward Bound via Suez Canal
 "Iskumb" on or about 2nd October 1920.
 "Worsley Hall" on or about 24th October 1920.
 The Managers of the Clan, Ellerman, Harrison Lines Association.

THE HARRISON MERCANTILE
 P.O. BOX 119, DAR-ES-SALAAM. P.O. BOX 119, DAR-ES-SALAAM.
 P.O. BOX 21, MOMBASA. P.O. BOX 21, MOMBASA.

LONDON BUYING AGENTS

LONDON SELLING AGENTS

Samples Valued. Best Ports for Ship-
 ment indicated.
**The Management of Estates Under-
 taken.**

**KEYMER, SONS & Co.,
 WHITEFRIARS,
 LONDON**

HAWLEY & CO.
 DUKE STREET.
Cart and Wagon Builders
 Oldest European Wagon Builders
 20 Years' English Experience

BILLIARD TABLES.

Riley's Celebrated Full Size Match Table

- Complete with all Accessories, Rs. 375/-.
- Full Size Bed and Cushion Cloth, Rs. 675/-.
- Pocket Nets Full Size, Rs. 11-05 per set.
- Cue all Weights, 15-75 each.
- Billiard Balls (Crystalite Match), Rs. 51-50 per set.
- Snooker Balls, Rs. 375/- per set.
- X Racks, Rs. 10-50 each, Spiders, Rs. 10-50.
- Cue Banks 6 and 12 Hole, Rs. 23-50 and Rs. 49-75.
- Chalk (Green and White), Rs. 2-75 and Rs. 1-75 per box.
- Tips, Rs. 4-50 per box, Walnut, Rs. 1/- per box.
- Cue Cases, Rs. 8-50 each, Lamp Shades, Rs. 2/-.

Bagatelle Tables.

- 6 ft. x 20" Bagatelle Table Complete, Rs. 325.
- 7 ft. x 21" Bagatelle Table Complete, Rs. 350.
- 8 ft. x 25" Bagatelle Table Complete, Rs. 425.



SPORTS GOOD

- Bussey's Tennis Rackets ...
- Badminton Sets Complete ...
- Croquet Sets ...
- Balls ...
- Mallets ...
- Cricket Balls (Match) ...
- (Compound) ...
- Nets (Net) ...
- Wicket Keeping Gloves ...
- Batting Gloves ...
- Leg Guards ...
- Hockey Sticks ...
- Balls ...
- Table Tennis Sets ...
- Rab ...
- Boxing Gloves ...
- Punching Balls ...
- Wickets ...
- Handle Covers ...
- Quills 5, 6, 7 and 8 lb. ...
- Pins ...
- Badminton Rackets ...
- Golf Sticks, Brasses, Drivers, Ladders ...
- Checks, Mocher and Putters ...