

GUARANTEED THE LARGEST CIRCULATION OF ANY NEWSPAPER IN KENYA, UGANDA, TANGANYIKA AND ZANZIBAR.

THE EAST

DAILY EDITION.

African Standard

MOMBASA TIMES & UGANDA ARGUS

THE OLDEST ESTABLISHED NEWSPAPER PUBLISHED IN KENYA AND UGANDA

With which is incorporated The LEADER

NAIROBI, WEDNESDAY, FEBRUARY 7, 1953

Bargains in Pianos

- Collard & Collard ... 140
Chappell ... 140
Weber Pianola ... 175
British Piano Model ... 70
Moore & Moore ... 70

All our Pianos are fully guaranteed and can be exchanged within a period of 3 months if desired.

The R.E.A. Music Stores Co., Ltd.
GOVERNMENT ROAD,
NAIROBI.
Tel. 228. NAIROBI. Box 164.

Page 30 of 30

... you against ...
... Price.
... 2398
... Car £250
... & SEAM LTD.
... Street
... NAIROBI. Phone 104

ROYAL RETROSPECT

... the Queen ...
... the Prince ...
... the Duke ...

THE RUHR

... the Ruhr ...
... the French ...
... the British ...

THE M.C.C.

... the M.C.C. ...
... the cricket ...
... the players ...

EMPIRE EXHIBITION

... the Empire ...
... the exhibition ...
... the goods ...

IMMIGRATION

... the Immigration ...
... the number ...
... the statistics ...

NONE INJURED!

... none injured ...
... the bomb ...
... the explosion ...

BOMB AIMED AT PREMIER

... the bomb ...
... the target ...
... the result ...

MONEY MARKET

... the money ...
... the market ...
... the rates ...

CO-ORDINATION OF RAIL AND RIVER TRANSPORT

... the transport ...
... the railway ...
... the river ...

POSSIBLE NEW PENALTIES

... the penalties ...
... the law ...
... the courts ...

EMPIRE EXHIBITION

... the exhibition ...
... the goods ...
... the display ...

IMMIGRATION

... the immigration ...
... the number ...
... the statistics ...

NONE INJURED!

... none injured ...
... the bomb ...
... the explosion ...

BOMB AIMED AT PREMIER

... the bomb ...
... the target ...
... the result ...

MONEY MARKET

... the money ...
... the market ...
... the rates ...

BACK HOME

... back home ...
... the journey ...
... the return ...

THE M.C.C.

... the M.C.C. ...
... the cricket ...
... the players ...

EMPIRE EXHIBITION

... the exhibition ...
... the goods ...
... the display ...

IMMIGRATION

... the immigration ...
... the number ...
... the statistics ...

NONE INJURED!

... none injured ...
... the bomb ...
... the explosion ...

BOMB AIMED AT PREMIER

... the bomb ...
... the target ...
... the result ...

MONEY MARKET

... the money ...
... the market ...
... the rates ...

BACK HOME

... back home ...
... the journey ...
... the return ...

CRICKET RECORD

... the cricket ...
... the record ...
... the players ...

INDIAN ARTISANS' DISPUTE ON THE RAILWAY

... the dispute ...
... the railway ...
... the workers ...

INDIAN ARTISANS' DISPUTE ON THE RAILWAY

... the dispute ...
... the railway ...
... the workers ...

INDIAN ARTISANS' DISPUTE ON THE RAILWAY

... the dispute ...
... the railway ...
... the workers ...

INDIAN ARTISANS' DISPUTE ON THE RAILWAY

... the dispute ...
... the railway ...
... the workers ...

INDIAN ARTISANS' DISPUTE ON THE RAILWAY

... the dispute ...
... the railway ...
... the workers ...

INDIAN ARTISANS' DISPUTE ON THE RAILWAY

... the dispute ...
... the railway ...
... the workers ...

INDIAN ARTISANS' DISPUTE ON THE RAILWAY

... the dispute ...
... the railway ...
... the workers ...

INDIAN ARTISANS' DISPUTE ON THE RAILWAY

... the dispute ...
... the railway ...
... the workers ...

INDIAN ARTISANS' DISPUTE ON THE RAILWAY

... the dispute ...
... the railway ...
... the workers ...

INDIAN ARTISANS' DISPUTE ON THE RAILWAY

... the dispute ...
... the railway ...
... the workers ...

INDIAN ARTISANS' DISPUTE ON THE RAILWAY

... the dispute ...
... the railway ...
... the workers ...

INDIAN ARTISANS' DISPUTE ON THE RAILWAY

... the dispute ...
... the railway ...
... the workers ...

INDIAN ARTISANS' DISPUTE ON THE RAILWAY

... the dispute ...
... the railway ...
... the workers ...

INDIAN ARTISANS' DISPUTE ON THE RAILWAY

... the dispute ...
... the railway ...
... the workers ...

INDIAN ARTISANS' DISPUTE ON THE RAILWAY

... the dispute ...
... the railway ...
... the workers ...

INDIAN ARTISANS' DISPUTE ON THE RAILWAY

... the dispute ...
... the railway ...
... the workers ...

The Wisdom of the Wise

"MOST cut down expenses" Of and we all make the usual ...



Can be obtained from:
Mombasa - S. Jacobs Ltd. and the Bombay Arts Works.
Nairobi - ...

Newton's

Hence our Name
EITHER We give entire satisfaction to all our patrons ...

The Service Co. Ltd.
6th Avenue, Nairobi.
Telephone 377.

... advertisement text ...

WHITEAWAY, LAIDLAW & Co., Ltd.

The House for the Best Value in all Departments.



HORSE BODY BRUSHES.
Whitewood Back, Grey Bristles. Large Brushing Surface. Price, Shs. 3/-
Flexible Leather Back BODY BRUSHES with superior Bristles. Price, Shs. 5/-
Italian Whisk DANDY BRUSHES. Price, Shs. 3/50



HORSE BODY BRUSHES.
Whitewood Back, Grey Bristles. Large Brushing Surface. Price, Shs. 3/-
Flexible Leather Back BODY BRUSHES with superior Bristles. Price, Shs. 5/-
Italian Whisk DANDY BRUSHES. Price, Shs. 3/50



SMART WALKING SHOES
Derby Fronts, made from selected Calf Skins, Dark Toney Red Colour, Welbed Soles. Exceptional Value. Price, Shs. 25/-



TAN MARCHING BOOTS,
Stout Soles, Broad Fringes. Guaranteed All Leathers. Price, Shs. 32/-



"ORIENT" Black or Tan Calf Walking Shoes. Smart Appearance. Made of hard-wearing materials. All men's sizes, comfortable fitting. Price, Shs. 25/-

OUR TERMS ARE CASH.
To avoid delay in dispatch remittances must accompany all orders.



"ORIENT" Black or Tan Selected Calf Boots. Strong Welbed Soles. A splendid wearing line. Delmaral or Derby Fronts. Price, Shs. 30/-



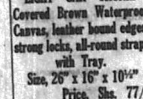
CHROME SOLED TENNIS SHOES. Ladies' Strong Canvas Tennis Shoes with hard-wearing Chrome Soles. All Sizes. Price, Shs. 15/-



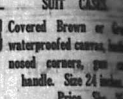
TAN GRAINED CALF BOOTS, Medium Weight Sole, Very comfortable fitting, British made throughout. All Sizes. Price, Shs. 35/-



CABIN TRUNKS.
Three Ply Birch Foundation, covered Tan Waterproof Canvas, Three Hoops, Brass Head, Two Lever Locks, complete with Tray. Price, Shs. 65/-



LIGHT CAR TRUNK.
Covered Brown Waterproof Canvas, leather bound edges, strong locks, all-round straps with Tray. Size, 26" x 16" x 10 1/2". Price, Shs. 77/-



SUIT CASE.
Covered Brown or Tan waterproof canvas, leather bound corners, gun case handle. Size 24 inches. Price, Shs. 25/-

550 only Vacuum Flasks.

The best value ever offered. Steel case, nicely enameled green, aluminium drinking cup. Capacity about one pint.

Price Shs. 3-50



Dinnerware Bargain



The Garma Dinner Service
Pretty Green Trailing Vine Design on Clear White Ground. Very Attractive. Set of 30 Pieces. Spares to replace breakages always in stock. Service for Six, Shs. 57.

The 'Dainty'



LADIES' MEADOW BLEACHED CAMBRIC HANDKERCHIEFS, with neat hemstitched border, good hard-wearing every-day handkerchief. Price, Shs. 3/50 per half dozen.

BALACLAVA CAPS.

Made from Soft Fleecy Wool to pull down over ears and neck. Large Variety of Shades. Two Qualities. Price, Shs. 4/- & 5/-



THE "TUDOR" HAT.
A smart Felt Hat in the latest style. Colour, Light and Dark Grey and Beaver. Price, Shs. 13/50



SPECIAL VALUE TUNIC SHIRTS



STRIPED CAMBRIC TUNIC SHIRTS. White ground with smart coloured stripes, double cuffs, well cut and tailored. Exceptional Value. Price, Shs. 9/50



SUNPROOF HELMETS.
Strong Composite Foundation, Covered Cloth, with flexible Puggans and Leather Chin Strap. Price, Shs. 19/50



'READY-G-SERVICE' SPORTING JACKET



SMART TWEED SPORTS JACKETS, cut and tailored by experts. Newest style. Half belt with four pockets. Price, Shs. 37/50

Striped Cellulose Sleeping Suits. Large variety, new bold stripes and colours. Well tailored and cut full for comfort. Price, Shs. 14/50

THE GREAT REVIVAL OF TABLE TENNIS.
Our Popular Set. Price, Shs. 6/50



The Cool fire-proof metal enameled DUMBELLS.
A very fine exercise, complete in box, with short of the best material. Price, Shs. 9/50

Travelling Rugs.



PLAID WOOL TRAVELLING RUGS with Fringe. Good selection of quiet designs on dark ground. Size, 78" x 52". Very Warm and Comfortable. PRICE Shs. 15.

old Medal Camp Cots



Strong Beechwood Frame, All Joints Reinforced Steel, Khaki Duck Mattress. A Very Comfortable Strong Cot. Price Shs. 45.

Gold Medal Camp Chairs.

Strong Beechwood Frame, All Joints Reinforced Strong Steel. Price Shs 25



A FAMOUS TURKISH TOWEL. Nice Heavy Woven from specially selected Fawn and White Absorbent Cotton. Size 50" x 27". Convenient Bath Size. Price, Shs. 2/50

GLASS TANKARD JUGS.
Size, 2 pints. Price, Shs. 2/50

TANGANYIKA CATTLE. A Review of the Year 1921. POSITION SUMMED UP.

YOU may "advertise" a man to a whisky, but you cannot make him go on drinking it, unless there is "Quality" behind the label.

James Watson & Co., Ltd., Distillers of Fine Whiskies, Established, 1885.

THE TIME TROUBLE AND EXPENSE. Proving proved varieties of grafted acclimatized fruit-trees, guaranteed to grow and fruit Kenya Colony.

THE SEASON COMMENCES END OF FEBRUARY. Once for Our new 1923 Illustrated Catalogue and price list sent post free.

Geo. Stuart Watt, 20, Victoria Road, Nairobi.

THE BATHS. Frothing Enamel with glycerine and complete with bath.

THE CHAIRS. Benwood compressed mat. Walnut finish 15/- each.

THE ENGINEERS & CONTRACTORS. PLANS & ESTIMATES FREE!

Maize & Posh. AND Crushed Maize. INSURANCE & ECONOMY.

THE FARMERS ASSOCIATION LIMITED. NAKURU.

GEORGE BLOWERS, MILLINER. Dressing and General Contractors, Jobbery and Furniture Manufacturers.

THE BOTTLES. THE COMPLETE WOODWORK for any kind of building.

THE BOTTLES. THE COMPLETE WOODWORK for any kind of building.

THE BOTTLES. THE COMPLETE WOODWORK for any kind of building.

THE BOTTLES. THE COMPLETE WOODWORK for any kind of building.

Many of these diseases are still prevalent in the country, and the position is not so satisfactory as it was some years ago.

London, January 9. Some interesting and valuable information regarding the position of the cattle industry in Tanganyika was received from the Director of the Department of Veterinary Science, Nairobi.

It is pointed out that the position of the industry in the Territory viewed from a health standpoint is not so satisfactory as it was some years ago.

Considerable changes have taken place in the distribution of the cattle in the Territory since the end of 1921.

The report adds that there is reason to believe that the economic position of the Territory is stronger than it was some years ago.

With a lack of system, the cattle industry in the Territory is not so satisfactory as it was some years ago.

From a commercial point of view (adds the report) the cattle industry is not so satisfactory as it was some years ago.

The question then arises as to whether the results will justify the expenditure provided the industry is not so satisfactory as it was some years ago.

Free Quails. Quails are really marketable and when raised only to a small extent, they are a valuable asset to the farmer.

Soap! SUPERIOR OLD ESTABLISHED AND PURE. Are the qualities bearing the name of Gossage.

STAR BLUE MOTTLLED NAVY BLUE MOTTLLED OXFORD BLUE MOTTLLED

MAGADI The Scientific Cleanser. Stronger & Superior in Every Way to Washing Soda.

WIDYODKERE FARM. The following witnesses of the Gossage Soap Co. Ltd. are: Mr. Wynn and Mrs. Wynn.

3 THREE FARM, LIMORU. Excellent Headquarters for attending Settlers and others.

CHILDREN'S SCHOOL ADJACENT. MR. ELY, Care Carvers, NAIROBI.

DOWSING. VERIFIED BY HANDFIELD WATER FINDER THE SUREST METHOD OF WATER SURVEY.

Tea. In pricing the quality of Brooke Bond tea we consider three things—its strength, its aroma, its flavour.

YOU CANNOT BE TOO CAREFUL WHAT YOU DRINK. BIRNBARA SPRINGS, NAIROBI.

"SOLD OUT" OF SUPREME TYPEWRITERS THE Underwood Standard. Others arriving after early date.

W. T. TAWS & Co. Stationers, Nairobi.

KENYA LOAN & DISCOUNT COMPANY, LIMITED. Boma Buildings, Nairobi.

MONEY £1 to £1000. Strictest Confidence Ensured.

EADIE'S FOOTWEAR LTD. NEW GOODS ARRIVED BOYS SCHOOL BOOT & SHOE.

UMBRELLA SOAP. Obtainable at all Dealers. Trade enquiries to: MORTIMORS NICHOLAS & Co.

JOHN HAIG & Co., LTD. MARKINCHE, SCOTLAND. The Oldest Distillers in the World.

Gold Label Whisky. Glenleven Whisky. AGENTS: Blackhurst & Barnett, Ltd. MEMBERSHIP: Nairobi School of Dancing.

CRYSTAL SPRINGS

AERATED WATER Co., Ltd. The Finest Mineral Water produced in this Country

120 Miles per hour DURANT WINS BIG RACE IN AMERICA Lawson's Garage

THEATRE ROYAL

To - Night An Excellent Comedy Drama THE LITTLE INTRIGUER

A piquant tale of domestic life depicting a rather too-clever jealous husband and what resulted from his plans. A good drama well acted

Cartoon—The Magic Hood

ALSO Topical Graphic, Comedy & Interest Films

PEARSONS IDEAL HAIR BRUSHES

Bristles Set in Rubber in Three Sizes

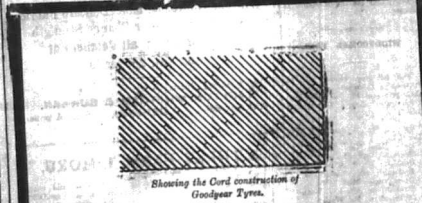
A. H. WARDLE & Co. Ltd. CHEMISTS

ECONOMISE BY FITTING OVERSIZE TYRES ON YOUR CAR

30 x 3 1/2 - 31 x 4 MICHELIN CORD TYRES 815 x 105 - 815 x 120 MICHELIN CORD TYRES

The MOTOR MART & EXCHANGE Ltd NAIROBI.

Chivers' By Appointment to H. M. The King. JAMS, JELLIES, CANNED FRUITS etc., etc.



"An Eighth of an Inch"

If you have ever cut into a worn automobile tyre you will have seen that the foundation of tyre construction is cotton.

So little a difference as an eighth of an inch in the length of the fibres of this cotton can make thousands of miles difference in tyre performance.

Some tyre makers think cotton of extremely long staple is too expensive to use, and are satisfied with a less

But Goodyear puts into its tyres only the long fibre kind. This is one of the reasons why—

They Lead All Others in Mileage and Durability

GOOD YEAR

CILFILLAN & COMPANY, LTD. IMPORTERS

Uplands Sausages & Lard. Customers are notified of the following FURTHER REDUCTIONS:-

PULLEYS The Largest Stocks in Kenya WRITE FOR QUOTATION Gailley & Roberts

MOTOR CARS FOR HIRE (GEORGEAN DRIVERS) T. G. FISHER. There is 168 or 290. NAIROBI

THE THIKA CASH STORES. NOW OPEN MORE UPDATES WITH BEST SERVICE AT FOUR DISPOSAL

AFRICAN STANDARD

Mombasa Times & Uganda Argus

WEDNESDAY, FEB. 7, 1929.

It should be noted that the method, the fact remains that we are not ruled by what is practically a dictatorship. Apretention of this point of view by Kenya has been evident from recent meetings in the country, where resolutions have been passed which...

TRADE COMMISSIONERS

It is understood that the Commission will be held in the office at 420, on March 10.

POPPY CIVIL

A "Poppy Civil" might be a good thing, if it were arranged to be a regular feature of the week, and if it were held in a public place.

COFFEE PLANTING

It is reported that the Government is planning to plant coffee in the district of the Rift Valley.

AN ANNOUCEMENT

The British Consulate in Nairobi has received a letter from the British Consulate in Mombasa...

The two letters the voice which we publish elsewhere from Abraham Kaduna show the feeling which no doubt is shared by the public in Kenya. These letters are undoubtedly genuine productions from sincere

UNDER THE STAIRS

ATLETIC CLUB

MOTOR LICENSES

WIDOWS CLUB

COFFEE PLANTING

AN ANNOUCEMENT

TRADE COMMISSIONERS

POPPY CIVIL

COFFEE PLANTING

AN ANNOUCEMENT

TRADE COMMISSIONERS

OVERSEAS MAILS

This notice is issued upon the latest advice from the shipping agents in London, bearing that communications may require...

Table with columns: Ship Name, From, Date of Departure, Date of Arrival. Includes ships like 'Europe via Aden' and 'South Africa'.

ARRIVALS

Table with columns: Ship Name, From, Date of Arrival. Includes ships like 'Europe via Aden' and 'South Africa'.

DEPARTURES

Table with columns: Ship Name, For, Date of Departure, Date of Arrival. Includes ships like 'Europe via Aden' and 'South Africa'.

Madras is carrying 200 bags of European mail.

STEAMER MOVEMENTS

Large table with columns: Arrivals, Departures, Ship Name, From, To, Date. Includes various shipping lines and destinations.

L. ROSENTHAL, TURF ACCOUNTANT, Trust Chambers, Government Road.

Book now open on the Lincoln & Grand National. Doubles on the above races 250-1.

Box 314. Tel. Address "ROSENTHAL" NAIROBI.

THE CYCLOSTYLES THAT WORK

(Used in Government Departments and principal business houses).



SELF FEEDING ROTARY. Price £47-10.

Full Size Cyclostyle. £7-10-0.

New Seasons' FIGS AND FRENCH PRUNES from R.B.D. "The Gracer."

POSHO. FRESH GROUND GUARANTEED. P.O. Box 339. THE Posho Supply Co., Ltd. "Sulley Street," Odessa "POSHO."

ALL SPARES AND ACCESSORIES IN STOCK. Standard Stationery Stores. 280, 282, 284, 286, 288, 290, 292, 294, 296, 298, 300, 302, 304, 306, 308, 310, 312, 314, 316, 318, 320, 322, 324, 326, 328, 330, 332, 334, 336, 338, 340, 342, 344, 346, 348, 350, 352, 354, 356, 358, 360, 362, 364, 366, 368, 370, 372, 374, 376, 378, 380, 382, 384, 386, 388, 390, 392, 394, 396, 398, 400.

WORLD GOING DRY? WHAT WE ESCAPED.

The Scientific Correspondent of the Times writes regarding the possibility of the world becoming a dry place...

The desert has been written in the sky... The water table is falling...

LIVING LAMPS.

A Useful Guide for the Housewife.

The construction of a lamp from living beeswax is an art...

POLAR BEES.

"Sam" and "Barbara" Continued Back.

There have been an amazing number of reports of the discovery of bees...

Another common problem is the fact that bees are not always found where they are expected to be...

It has been long reported that the bees were very tame...

CIGARETTES vs. OXYGEN.

Cigarettes-smoking, it is asserted, is a serious cause of death...

NEW SEASONS' FIGS AND FRENCH PRUNES

from R.B.D. "The Gracer."

POSHO. FRESH GROUND GUARANTEED.

P.O. Box 339. THE Posho Supply Co., Ltd. "Sulley Street," Odessa "POSHO."

UNGA, LTD. Njoro.

RECOMMENDED FLOUR.

KENTA MARBLE QUARRIES COMPANY.

MANUFACTURERS OF MARBLE TERRAZZO FLOORS.

Qualities and samples from. Office, Cambridge Road, Njoro.

THE EAST AFRICAN STEWARD.

Fresh Fruit in Season AT WIMBORST'S

Apples, Plums, Pines, Strawberries, Fresh Devonshire Cream.

Granadillas, Rhubarb, Cape Gooseberries, Tree Tomatoes, Mangoes, Oranges, Pap Pau, Bananas, Lemons, Limes.

Salad, Radishes, Tomatoes, Lettuce, Table-Celery.

R. Y. REYNOLDS, A.O.S., Eye-sight Specialist and Optician. BELLEFLOU. Glasses from the 5/6. Nairobi House. Box 420.

ARISHA - MOSHI. Shipping Parties Conducted. Two Cars, Motor, Heliport for Arusha, Moshi, P.O. Nairobi Agency, SAFI GARAGE.

E. NICHOLOS. Late of R. Dehla, No. 800. Master and Business, Nairobi. All Claims of Watch, Clock and Jewellery Repaired Promptly. Excellent. Scientific Instruments & Cameras. ALL WORK GUARANTEED.

The GLAXO BABY BOOK.

will be sent "Free" on receipt of fifty halfpennies to cover postage. Sole Agents, H. G. Gabriel, Ltd., Nairobi.

A CLEAN SWEEP

Last year we offered prizes at the Agricultural Show for the best sweep made with "Clare" Sugar. This year at Nairobi we offered no prizes, but a chance to win a sweep for four years to come...

UNGA FLOUR SUPPLIES

- White Bread Flour (50 lbs) 1/- 10/-
Brown Bread Flour (50 lbs) 1/- 10/-
Full Cream Butter (50 lbs) 1/- 10/-
Short Pastry (50 lbs) 1/- 10/-
Oat Flour (50 lbs) 1/- 10/-
Graham Flour (50 lbs) 1/- 10/-
Soft Flour (50 lbs) 1/- 10/-
Fruit Cakes (50 lbs) 1/- 10/-
Other Cakes (50 lbs) 1/- 10/-

IVORY NECKLACES

Just Arrived. G. CHOFFMAN'S. Genl. Dist. NAIROBI.

KAMIT PARCH.

Gems being Prepared. No Shaving or Trimming Allowed. HUGH or HEATLEY, Engineers.

UNION CASTLE LINE

GENERAL MAIL STEAMERS TO ENGLAND. SERVICES TO ENGLAND, EAST, SOUTH & WEST AFRICAN PORTS.

REGULAR SERVICE TO ENGLAND, VIA WEST INDIES. REGULAR SERVICE TO ENGLAND VIA WEST INDIES.

REGULAR SERVICE TO ENGLAND VIA WEST INDIES. REGULAR SERVICE TO ENGLAND VIA WEST INDIES.

REGULAR SERVICE TO ENGLAND VIA WEST INDIES. REGULAR SERVICE TO ENGLAND VIA WEST INDIES.

REGULAR SERVICE TO ENGLAND VIA WEST INDIES. REGULAR SERVICE TO ENGLAND VIA WEST INDIES.

REGULAR SERVICE TO ENGLAND VIA WEST INDIES. REGULAR SERVICE TO ENGLAND VIA WEST INDIES.

REGULAR SERVICE TO ENGLAND VIA WEST INDIES. REGULAR SERVICE TO ENGLAND VIA WEST INDIES.

REGULAR SERVICE TO ENGLAND VIA WEST INDIES. REGULAR SERVICE TO ENGLAND VIA WEST INDIES.

REGULAR SERVICE TO ENGLAND VIA WEST INDIES. REGULAR SERVICE TO ENGLAND VIA WEST INDIES.

REGULAR SERVICE TO ENGLAND VIA WEST INDIES. REGULAR SERVICE TO ENGLAND VIA WEST INDIES.

REGULAR SERVICE TO ENGLAND VIA WEST INDIES. REGULAR SERVICE TO ENGLAND VIA WEST INDIES.

REGULAR SERVICE TO ENGLAND VIA WEST INDIES. REGULAR SERVICE TO ENGLAND VIA WEST INDIES.

REGULAR SERVICE TO ENGLAND VIA WEST INDIES. REGULAR SERVICE TO ENGLAND VIA WEST INDIES.

REGULAR SERVICE TO ENGLAND VIA WEST INDIES. REGULAR SERVICE TO ENGLAND VIA WEST INDIES.

REGULAR SERVICE TO ENGLAND VIA WEST INDIES. REGULAR SERVICE TO ENGLAND VIA WEST INDIES.

REGULAR SERVICE TO ENGLAND VIA WEST INDIES. REGULAR SERVICE TO ENGLAND VIA WEST INDIES.

REGULAR SERVICE TO ENGLAND VIA WEST INDIES. REGULAR SERVICE TO ENGLAND VIA WEST INDIES.

REGULAR SERVICE TO ENGLAND VIA WEST INDIES. REGULAR SERVICE TO ENGLAND VIA WEST INDIES.

REGULAR SERVICE TO ENGLAND VIA WEST INDIES. REGULAR SERVICE TO ENGLAND VIA WEST INDIES.

REGULAR SERVICE TO ENGLAND VIA WEST INDIES. REGULAR SERVICE TO ENGLAND VIA WEST INDIES.

REGULAR SERVICE TO ENGLAND VIA WEST INDIES. REGULAR SERVICE TO ENGLAND VIA WEST INDIES.

REGULAR SERVICE TO ENGLAND VIA WEST INDIES. REGULAR SERVICE TO ENGLAND VIA WEST INDIES.

REGULAR SERVICE TO ENGLAND VIA WEST INDIES. REGULAR SERVICE TO ENGLAND VIA WEST INDIES.

REGULAR SERVICE TO ENGLAND VIA WEST INDIES. REGULAR SERVICE TO ENGLAND VIA WEST INDIES.

REGULAR SERVICE TO ENGLAND VIA WEST INDIES. REGULAR SERVICE TO ENGLAND VIA WEST INDIES.

REGULAR SERVICE TO ENGLAND VIA WEST INDIES. REGULAR SERVICE TO ENGLAND VIA WEST INDIES.

REGULAR SERVICE TO ENGLAND VIA WEST INDIES. REGULAR SERVICE TO ENGLAND VIA WEST INDIES.

REGULAR SERVICE TO ENGLAND VIA WEST INDIES. REGULAR SERVICE TO ENGLAND VIA WEST INDIES.

REGULAR SERVICE TO ENGLAND VIA WEST INDIES. REGULAR SERVICE TO ENGLAND VIA WEST INDIES.

REGULAR SERVICE TO ENGLAND VIA WEST INDIES. REGULAR SERVICE TO ENGLAND VIA WEST INDIES.

REGULAR SERVICE TO ENGLAND VIA WEST INDIES. REGULAR SERVICE TO ENGLAND VIA WEST INDIES.

REGULAR SERVICE TO ENGLAND VIA WEST INDIES. REGULAR SERVICE TO ENGLAND VIA WEST INDIES.

REGULAR SERVICE TO ENGLAND VIA WEST INDIES. REGULAR SERVICE TO ENGLAND VIA WEST INDIES.

REGULAR SERVICE TO ENGLAND VIA WEST INDIES. REGULAR SERVICE TO ENGLAND VIA WEST INDIES.

REGULAR SERVICE TO ENGLAND VIA WEST INDIES. REGULAR SERVICE TO ENGLAND VIA WEST INDIES.

REGULAR SERVICE TO ENGLAND VIA WEST INDIES. REGULAR SERVICE TO ENGLAND VIA WEST INDIES.

REGULAR SERVICE TO ENGLAND VIA WEST INDIES. REGULAR SERVICE TO ENGLAND VIA WEST INDIES.

REGULAR SERVICE TO ENGLAND VIA WEST INDIES. REGULAR SERVICE TO ENGLAND VIA WEST INDIES.

REGULAR SERVICE TO ENGLAND VIA WEST INDIES. REGULAR SERVICE TO ENGLAND VIA WEST INDIES.

REGULAR SERVICE TO ENGLAND VIA WEST INDIES. REGULAR SERVICE TO ENGLAND VIA WEST INDIES.

REGULAR SERVICE TO ENGLAND VIA WEST INDIES. REGULAR SERVICE TO ENGLAND VIA WEST INDIES.

REGULAR SERVICE TO ENGLAND VIA WEST INDIES. REGULAR SERVICE TO ENGLAND VIA WEST INDIES.

Dainty & Fascinating Millinery, Make Your Selections Early.

NEW
FIELD SHOES
\$4.50 per pair



BLACK
KIP
RAINWEARING
BOOTS
FOR FINE WEAR
\$4.50 per pair

BEST QUALITY
GUM BOOTS
\$4.50 per pair



GENT'S BOX CALF
GENT'S BOX CALF
DERBY AND BALCONAL
BOOTS
\$4.50 per pair



GENT'S BOX CALF
DERBY BOOTS
\$4.50 & \$5.00 per pair

BLACK GLASS
DERBY BOOTS
\$4.50 & \$5.00 per pair



GENT'S WHITE CANVAS
TENNIS SHOE
\$4.50 & \$5.00 per pair

GENT'S
BUCKLE
TENNIS SHOE
\$4.50 per pair

ROUGH STRAW HATS IN
BROWN AND NAVY
FINEST SILK NETTING BAND
\$4.50 each
FURST STRAW HATTO
\$4.50 each



BLACK SILK LACE HATS
LINED BROAD MOIRE BIRD
\$4.50 each



PLAIN SPONGE FELT HATS
IN LEMON WITH NARROW BIRD
\$4.50 each

BLACK CORDON VELOUR
TANNED THROUGH
SILK BUSHINGS
\$4.50



ALL BLACK CORDON
VELOUR
BLACK SILK
RIBBON
\$4.50 each



IPSWICH
GENT'S BLACK
MESHWEED
COTTON HALF HOSE
\$4.50 per pair

BLACK OR WHITE
GAMMERS HALF HOSE
\$4.50 per pair

EMERSONIAN
\$4.50 per pair

ALL WOOL BIRD
GAMMERS HALF HOSE
\$4.50 per pair

LUTHERAL SHAPED
IN KNITTED BIRD
\$4.50 per pair



NAVY
BIRD
FOOTBALL OR
HOCKEY HOSE
\$4.50 per pair

THE GAMMERS HOSE
IN GREY, FAWN & BROWN
ALSO
FANCY HEATHER HOSE
IN ALL COLORS
\$4.50 per pair

CYCLING AND GOLF HOSE
KIMATI & LOWAT SHADES
JASON WOOL CAMEL HOSE
ALL COLORS
\$4.50 per pair

Soundest Values Ever Offered.

PAINTED BEDSPREADS
SCAVY HAIR, ROSE AND GREEN
DESIGNS
SINGLE SIZE \$4.50, 12/75, 14/25
DOUBLE SIZE \$4.50 each
HAND PAINTED DITTO, SINGLE SIZE
\$4.50, 12/75, 14/25, 16/25, 18/25
WHITE HONEYCOMB BEDSPREADS
\$4.50 & 16/25 each



BEDSPREADS

COT SIZE, 3' x 2'
12/75, 14/25, 16/25, 18/25
3 1/2' x 5 1/2' \$4.50
SINGLE BED SIZE
SATEEN
BEDSPREADS
ASSORTED DESIGNS
AND COLOURS
\$4.50 each
WHITE SATEEN
QUILT
\$4.50 & 12/75 each

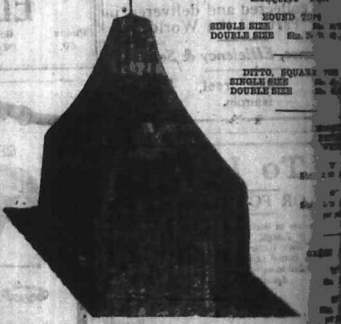
Our Goods & Value

Stand the Test of
Comparison



For Service Quality & Value
KENYA'S
Departmental Stores.

Quality the Test of Cheapness.



HOUGHTON'S
SINGLE SIZE \$4.50
DOUBLE SIZE \$4.50

DITTO SQUARE
SINGLE SIZE \$4.50
DOUBLE SIZE \$4.50

THE NEEDS OF THE HOME AT LOWEST PRICES



VERY STRONG
ASSORTED
WIRE MESH
FLOOR SERVES
6" SIZE \$4.50
8" SIZE \$4.50
10" SIZE \$4.50
12" SIZE \$4.50
each

D. H. C.
COTTON
SHEETS
\$4.50 each



NARROW
ROMAN
BRAND
FANCY TUBULAR
GATHER SHIRTS
1 1/2" wide \$4.50
SAFETY PINS
1" wide \$4.50 ASSORTED SIZES
per yard \$4.50 for 2 1/2"



LINEN BUTTONS
IN SETS OF 4 DOZENS
ASSORTED SIZES ALL WOODEN
\$4.50 per packet \$4.50 per set



TOOTHBRUSH
HAIR
BRUSHES
STUDDED SILK
\$4.50

LARGE SPANISH TORTOISE
SHELL HAIR COMBS
\$4.50 each
SMALLER SIZE
\$4.50 & 12/75



LADIES' HOLESPOON
HOSE
IN WHITE, BLACK,
TURGOL, LIGHT
BROWN, LACE
AND CLOUVY
\$4.50 & 12/75
per pair



50 YARDS
SHEEN
KELLS
\$4.50 per yard

LADIES'
PATENT
LEATHER SHIRTS
ASSORTED SHADES
\$4.50 & 2/50 each

TOILET REQUISITES, - BEST VALUE OBTAINABLE

ALL
YOUR NEEDS
ARE
CATERED FOR

"SHALAX"
SHAMPOO
\$4.50
per bottle



VIOLETA SOAP
BOXES OF 5 TABLETS
\$4.50 per box

SORDO RUBINE AND HONEYCOMB
\$4.50 & 12/75 each



EVAN'S SHAMPOO
\$4.50 per bottle

GUARANTEED THE LARGEST CIRCULATION OF ANY NEWSPAPER IN KENYA, UGANDA, TANGANYIKA AND ZANZIBAR.

THE EAST

DAILY EDITION.

African Standard

THE MORNING TIMES & UGANDA ARGUS

With which is incorporated THE LEADER.

THE MOST ESTABLISHED NEWSPAPER PUBLISHED IN KENYA AND UGANDA

NAIROBI, THURSDAY, FEBRUARY 6, 1953

Bargains in Pianos

- Collard & Collard ... 140
Chappell ... 140
Weber Pianola ... 175
British Piano Model 70
Moore & Moore ... 170

All our Pianos are fully guaranteed and can be exchanged within a period of 3 months if desired.

The B.E.A. Music Stores Co., Ltd.
Government Garage
Tel. 330. NAIROBI. Box 144.

REGISTERED AT THE GENERAL POST OFFICE AS A NEWSPAPER.

PRINTED BY

IMPERIAL INSTITUTE.

INDIAN CLAIMS.

INDIAN UNREST ON THE RAILWAY.

THE WISDOM OF THE WISE

Swiss Commends the Allies Denmark.
GERMANY ASKED TO PAY TOO MUCH.

COMMITTEE OF ENQUIRY APPOINTED.
Terms of Reference.

European Settlers of Malé Malé.
SUCH PROFOUNDLY PROFOCAL.

The Position of the Native.

Asiatic District at Home.

EXECUTIVE'S CONFIDENCE IN GENERAL MANAGER.

EMPIRE EXHIBITION.

Limit the lead and eliminate the carbon.

GERMANY ASKED TO PAY TOO MUCH.

EXECUTIVE'S CONFIDENCE IN GENERAL MANAGER.

EMPIRE EXHIBITION.

Limit the lead and eliminate the carbon.

GERMANY ASKED TO PAY TOO MUCH.

EXECUTIVE'S CONFIDENCE IN GENERAL MANAGER.

EMPIRE EXHIBITION.

Limit the lead and eliminate the carbon.

GERMANY ASKED TO PAY TOO MUCH.

EXECUTIVE'S CONFIDENCE IN GENERAL MANAGER.

EMPIRE EXHIBITION.

Limit the lead and eliminate the carbon.

GERMANY ASKED TO PAY TOO MUCH.

EXECUTIVE'S CONFIDENCE IN GENERAL MANAGER.

EMPIRE EXHIBITION.

Limit the lead and eliminate the carbon.

GERMANY ASKED TO PAY TOO MUCH.

EXECUTIVE'S CONFIDENCE IN GENERAL MANAGER.

EMPIRE EXHIBITION.

Limit the lead and eliminate the carbon.

GERMANY ASKED TO PAY TOO MUCH.

EXECUTIVE'S CONFIDENCE IN GENERAL MANAGER.

EMPIRE EXHIBITION.

Limit the lead and eliminate the carbon.

GERMANY ASKED TO PAY TOO MUCH.

EXECUTIVE'S CONFIDENCE IN GENERAL MANAGER.

EMPIRE EXHIBITION.

Limit the lead and eliminate the carbon.

GERMANY ASKED TO PAY TOO MUCH.

EXECUTIVE'S CONFIDENCE IN GENERAL MANAGER.

EMPIRE EXHIBITION.

Limit the lead and eliminate the carbon.

GERMANY ASKED TO PAY TOO MUCH.

EXECUTIVE'S CONFIDENCE IN GENERAL MANAGER.

EMPIRE EXHIBITION.

Limit the lead and eliminate the carbon.

GERMANY ASKED TO PAY TOO MUCH.

EXECUTIVE'S CONFIDENCE IN GENERAL MANAGER.

EMPIRE EXHIBITION.

Limit the lead and eliminate the carbon.

GERMANY ASKED TO PAY TOO MUCH.

EXECUTIVE'S CONFIDENCE IN GENERAL MANAGER.

EMPIRE EXHIBITION.

Limit the lead and eliminate the carbon.

GERMANY ASKED TO PAY TOO MUCH.

EXECUTIVE'S CONFIDENCE IN GENERAL MANAGER.

EMPIRE EXHIBITION.

Limit the lead and eliminate the carbon.

The wisdom of the Wise

"I MUST cut down expenses!" Oh and on we all make the resolution. Some of us buy immunity from heavy running expenses by wise expenditure on the controlling trike—such as lubricating oil. Without having a monopoly of wisdom none of us get very wise.



Limit the lead and eliminate the carbon.

- Mombasa - S. Jacobs Ltd. and the Mombasa Auto Works.
Nairobi - Morrison Ltd.
Nairobi - Services Coy.
Nairobi - J. Housley.
Nairobi - I. Webber.
Nairobi - Nanyuki Garage.
Nairobi - Mount Kenya Garage.
Nairobi - Naivasha Garage.
Nairobi - The Hill Valley Garage.
Nairobi - Tana. A. O'Shea & Co.
Nairobi - Kitale Supply & Accessories Co., Ltd.
Nairobi - A. W. Down.

Newton's LIMITED. Sixth Avenue. NAIROBI. Importing Agents.

WE SERVE Hence Our Name EITHER We give entire satisfaction to all our patrons whether the matter be one of the purchase of a new car or repair to an old one. OR We ascertain that reputation built up years, unerring attention to our patron's needs.

We cannot afford to take risks. Hence our name and reputation and guarantee of sound value and reliability. The Service Co. Ltd. Tel: 507000. Telephone 317.

IMPERIAL INSTITUTE.

COMMITTEE OF ENQUIRY APPOINTED.
Terms of Reference.

EXECUTIVE'S CONFIDENCE IN GENERAL MANAGER.

EMPIRE EXHIBITION.

EXECUTIVE'S CONFIDENCE IN GENERAL MANAGER.

EMPIRE EXHIBITION.

EXECUTIVE'S CONFIDENCE IN GENERAL MANAGER.

EMPIRE EXHIBITION.

EXECUTIVE'S CONFIDENCE IN GENERAL MANAGER.

EMPIRE EXHIBITION.

EMPIRE EXHIBITION.

EMPIRE EXHIBITION.

EMPIRE EXHIBITION.

EMPIRE EXHIBITION.

EMPIRE EXHIBITION.

INDIAN CLAIMS.

European Settlers of Malé Malé.
SUCH PROFOUNDLY PROFOCAL.

INDIAN UNREST ON THE RAILWAY.

THE WISDOM OF THE WISE

Limit the lead and eliminate the carbon.

Limit the lead and eliminate the carbon.

Limit the lead and eliminate the carbon.

Limit the lead and eliminate the carbon.

Limit the lead and eliminate the carbon.

Limit the lead and eliminate the carbon.

Limit the lead and eliminate the carbon.

Limit the lead and eliminate the carbon.

Limit the lead and eliminate the carbon.

Limit the lead and eliminate the carbon.

Limit the lead and eliminate the carbon.

INDIAN UNREST ON THE RAILWAY.

THE WISDOM OF THE WISE

Limit the lead and eliminate the carbon.

Limit the lead and eliminate the carbon.

Limit the lead and eliminate the carbon.

Limit the lead and eliminate the carbon.

Limit the lead and eliminate the carbon.

Limit the lead and eliminate the carbon.

Limit the lead and eliminate the carbon.

Limit the lead and eliminate the carbon.

Limit the lead and eliminate the carbon.

Limit the lead and eliminate the carbon.

Limit the lead and eliminate the carbon.

Limit the lead and eliminate the carbon.

Limit the lead and eliminate the carbon.

IMPERIAL INSTITUTE.

COMMITTEE OF ENQUIRY APPOINTED.
Terms of Reference.

EXECUTIVE'S CONFIDENCE IN GENERAL MANAGER.

EMPIRE EXHIBITION.

EXECUTIVE'S CONFIDENCE IN GENERAL MANAGER.

EMPIRE EXHIBITION.

EXECUTIVE'S CONFIDENCE IN GENERAL MANAGER.

EMPIRE EXHIBITION.

EXECUTIVE'S CONFIDENCE IN GENERAL MANAGER.

EMPIRE EXHIBITION.

EMPIRE EXHIBITION.

EMPIRE EXHIBITION.

EMPIRE EXHIBITION.

EMPIRE EXHIBITION.

EMPIRE EXHIBITION.

INDIAN CLAIMS.

European Settlers of Malé Malé.
SUCH PROFOUNDLY PROFOCAL.

INDIAN UNREST ON THE RAILWAY.

THE WISDOM OF THE WISE

Limit the lead and eliminate the carbon.

Limit the lead and eliminate the carbon.

Limit the lead and eliminate the carbon.

Limit the lead and eliminate the carbon.

Limit the lead and eliminate the carbon.

Limit the lead and eliminate the carbon.

Limit the lead and eliminate the carbon.

Limit the lead and eliminate the carbon.

Limit the lead and eliminate the carbon.

Limit the lead and eliminate the carbon.

Limit the lead and eliminate the carbon.

INDIAN UNREST ON THE RAILWAY.

THE WISDOM OF THE WISE

Limit the lead and eliminate the carbon.

Limit the lead and eliminate the carbon.

Limit the lead and eliminate the carbon.

Limit the lead and eliminate the carbon.

Limit the lead and eliminate the carbon.

Limit the lead and eliminate the carbon.

Limit the lead and eliminate the carbon.

Limit the lead and eliminate the carbon.

Limit the lead and eliminate the carbon.

Limit the lead and eliminate the carbon.

Limit the lead and eliminate the carbon.

Limit the lead and eliminate the carbon.

Limit the lead and eliminate the carbon.

IMPERIAL INSTITUTE.

COMMITTEE OF ENQUIRY APPOINTED.
Terms of Reference.

EXECUTIVE'S CONFIDENCE IN GENERAL MANAGER.

EMPIRE EXHIBITION.

EXECUTIVE'S CONFIDENCE IN GENERAL MANAGER.

EMPIRE EXHIBITION.

EXECUTIVE'S CONFIDENCE IN GENERAL MANAGER.

EMPIRE EXHIBITION.

EXECUTIVE'S CONFIDENCE IN GENERAL MANAGER.

EMPIRE EXHIBITION.

EMPIRE EXHIBITION.

EMPIRE EXHIBITION.

EMPIRE EXHIBITION.

EMPIRE EXHIBITION.

EMPIRE EXHIBITION.

INDIAN CLAIMS.

European Settlers of Malé Malé.
SUCH PROFOUNDLY PROFOCAL.

INDIAN UNREST ON THE RAILWAY.

THE WISDOM OF THE WISE

Limit the lead and eliminate the carbon.

Limit the lead and eliminate the carbon.

Limit the lead and eliminate the carbon.

Limit the lead and eliminate the carbon.

Limit the lead and eliminate the carbon.

Limit the lead and eliminate the carbon.

Limit the lead and eliminate the carbon.

Limit the lead and eliminate the carbon.

Limit the lead and eliminate the carbon.

Limit the lead and eliminate the carbon.

Limit the lead and eliminate the carbon.

INDIAN UNREST ON THE RAILWAY.

THE WISDOM OF THE WISE

Limit the lead and eliminate the carbon.

Limit the lead and eliminate the carbon.

Limit the lead and eliminate the carbon.

Limit the lead and eliminate the carbon.

Limit the lead and eliminate the carbon.

Limit the lead and eliminate the carbon.

Limit the lead and eliminate the carbon.

Limit the lead and eliminate the carbon.

Limit the lead and eliminate the carbon.

Limit the lead and eliminate the carbon.

Limit the lead and eliminate the carbon.

Limit the lead and eliminate the carbon.

Limit the lead and eliminate the carbon.

IMPERIAL INSTITUTE.

COMMITTEE OF ENQUIRY APPOINTED.
Terms of Reference.

EXECUTIVE'S CONFIDENCE IN GENERAL MANAGER.

EMPIRE EXHIBITION.

EXECUTIVE'S CONFIDENCE IN GENERAL MANAGER.

EMPIRE EXHIBITION.

EXECUTIVE'S CONFIDENCE IN GENERAL MANAGER.

EMPIRE EXHIBITION.

EXECUTIVE'S CONFIDENCE IN GENERAL MANAGER.

EMPIRE EXHIBITION.

EMPIRE EXHIBITION.

EMPIRE EXHIBITION.

EMPIRE EXHIBITION.

EMPIRE EXHIBITION.

EMPIRE EXHIBITION.

INDIAN CLAIMS.

European Settlers of Malé Malé.
SUCH PROFOUNDLY PROFOCAL.

INDIAN UNREST ON THE RAILWAY.

THE WISDOM OF THE WISE

Limit the lead and eliminate the carbon.

Limit the lead and eliminate the carbon.

Limit the lead and eliminate the carbon.

Limit the lead and eliminate the carbon.

Limit the lead and eliminate the carbon.

Limit the lead and eliminate the carbon.

Limit the lead and eliminate the carbon.

Limit the lead and eliminate the carbon.

Limit the lead and eliminate the carbon.

Limit the lead and eliminate the carbon.

Limit the lead and eliminate the carbon.

INDIAN UNREST ON THE RAILWAY.

THE WISDOM OF THE WISE

Limit the lead and eliminate the carbon.

Limit the lead and eliminate the carbon.

Limit the lead and eliminate the carbon.

Limit the lead and eliminate the carbon.

Limit the lead and eliminate the carbon.

Limit the lead and eliminate the carbon.

Limit the lead and eliminate the carbon.

Limit the lead and eliminate the carbon.

Limit the lead and eliminate the carbon.

Limit the lead and eliminate the carbon.

Limit the lead and eliminate the carbon.

Limit the lead and eliminate the carbon.

Limit the lead and eliminate the carbon.

IMPERIAL INSTITUTE.

COMMITTEE OF ENQUIRY APPOINTED.
Terms of Reference.

EXECUTIVE'S CONFIDENCE IN GENERAL MANAGER.

EMPIRE EXHIBITION.

EXECUTIVE'S CONFIDENCE IN GENERAL MANAGER.

EMPIRE EXHIBITION.

EXECUTIVE'S CONFIDENCE IN GENERAL MANAGER.

EMPIRE EXHIBITION.

EXECUTIVE'S CONFIDENCE IN GENERAL MANAGER.

EMPIRE EXHIBITION.

EMPIRE EXHIBITION.

EMPIRE EXHIBITION.

EMPIRE EXHIBITION.

EMPIRE EXHIBITION.

EMPIRE EXHIBITION.

INDIAN CLAIMS.

European Settlers of Malé Malé.
SUCH PROFOUNDLY PROFOCAL.

INDIAN UNREST ON THE RAILWAY.

THE WISDOM OF THE WISE

Limit the lead and eliminate the carbon.

Limit the lead and eliminate the carbon.

Limit the lead and eliminate the carbon.

Limit the lead and eliminate the carbon.

WHITEAWAY, LAIDLAW & Co., Ltd.

The House for the Best Value in all Departments.



CLARK'S CLIPPERS.

Patterns No. 1 and No. 4. All in perfect condition. Must be cleared.
Price, Shs. 25/-



HORSE BODY BRUSHES. Whitewood Back, Grey Bristles, Large Brushing Surface. Price, Shs. 3/-
Flexible Leather Back BODY BRUSHES with superior Bristles. Price, Shs. 5/-
Whisk DANDY BRUSHES. Price, Shs. 3/50



SMART WALKING SHOES. Derby Fronts, made from selected Calf Skins, Dark Teony Red Colour, Weltd Soles. Exceptional Value. Price, Shs. 25/-



TAN MARCHING BOOTS. Stout Soles, Broad Fitting. Guaranteed All Leather. Price, Shs. 32/-



"ORIENT" Black or Tan Calf Walking Shoes. Smart Appearance. Made of hard-wearing materials. All men's sizes, comfortable fitting. Price, Shs. 25/-

OUR TERMS ARE CASH.
To avoid delay in dispatches remittance must accompany all orders.



"ORIENT" Black or Tan Selected Calf Boots. Laced Front, Strong Weltd Soles. A splendid wearing line. Balmaral or Derby Fronts. Price, Shs. 30/-



CHROME SOLED TENNIS SHOES. Ladies' Strong Canvas Tennis Shoes with hard-wearing Chrome Soles. All Sizes. Price, Shs. 15/-



TAN GRAINED CALF BOOTS. Medium Weight Sole, Very comfortable fitting. British made throughout. All Sizes. Price, Shs. 35/-

CABIN TRUNKS. Three Ply Birch Foundation, covered Tan Waterproof Canvas, Three Hoops, Brassd Noesd, Two Lever Locks, complete with Tray.
Price, Shs. 65/-



SUIT CASES. Covered Brown or tan waterproof canvas, brass hood corners, gun handle. Size 24 inches. Price, Shs. 25/-



LIGHT CAR TRUNK. Covered Brown Waterproof Canvas, leather bound edges, strong locks, all-round straps with Tray.
Size, 26" x 16" x 10 1/2"
Price, Shs. 77/-



Travelling Rugs



PLAID WOOL TRAVELLING RUGS with Fringed Edges, Drawn Ends, Occasional Skirted Drawers, Valance Cupboards, etc., etc., etc.

Gold Medal Camp Cot



Strong Beechwood Frame, All Joints Reinforced with Steel, Khaki Duck Mattress. A Very Comfortable Strong Cot.
Price Shs. 45/-

Gold Medal Camp Chairs

Strong Beechwood Frame, All Joints Reinforced with Steel, Khaki Duck Seat.
Price Shs. 25/-



A FAMOUS TURKISH TOWEL. Nice Heavy Woven from specially selected Fawn wool. Absorbent Cotton. Size 50" x 27". Convenient Bath Size.
Price, Shs. 12/-

GLASS TANKARD JUGS. Size, 2 pints.
Price, Shs. 12/-

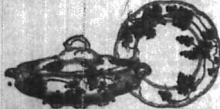
550 only Vacuum Flasks.

The best value ever offered. Steel case, nicely enamelled green, aluminium drinking cap. Capacity about one pint.

Price Shs. 3-50



Dinnerware Bargain



The Garma Dinner Service. Pretty Green Trailing Vine Design on Clear White Ground. Very Attractive. Set of 30 Pieces. Spares to replace breakages always in stock.
Service for Six, Shs. 57/-

The Dainty Handkerchief



LADIES' MEADOW BLEACHED CAMBRIC HANDKERCHIEFS. with neat hemstitched border, good hard-wearing every-day handkerchief.
Price, Shs. 3/50 per half dozen.

BALACLAVA CAPS.

Made from Soft Fleecy Wool to pull down over ears and neck. Large Variety of Shades.
Two Qualities.
Price, Shs. 4/- & 5/-



THE "TUDOR" HAT. A smart Felt Hat in the latest style. Colour, Light and Dark Grey and Beaver.
Price, Shs. 13/50



Fawn coloured All Wool GOLF HOSE, self-coloured turn-over tops, very smart and hard-wearing.
Price, Shs. 8/50

1922 PROSSERS 1922 TENNIS BALLS. CLEARING PRICE, Shs. 22/- dozen.



GENT'S DOUBLE TENNIS HATS. Good quality felt double terai hats. Shades of Grey, with Scarlet lining, well ventilated.
Price, Shs. 29/50

SPECIAL VALUE TUNIC SHIRTS



STRIPED CAMBRIC TUNIC SHIRTS. White ground with smart coloured stripes, double cuffs, well cut and tailored. Exceptional Value.
Price, Shs. 9/50

READY-TO-SERVICE SPORTING JACKET



SMART TWEED SPORTS JACKETS, cut and tailored by experts. Nearest styles. Half belt with four pockets.
Price, Shs. 37/50



SUNPROOF HELMETS. Strong Compressed Foundation, Covered Khaki with Mastic Fingering and Leather Chin Strap.
Price, Shs. 19/50



Striped Ceylonette Sleeping Suits. Large variety, new bold stripes and colours. Well tailored and cut full for comfort.
Price, Shs. 14/50

THE GREAT REVIVAL OF TABLE TENNIS. Our Popular Set.
Price, Shs. 6/50



The Coci fire-proof black enamelled BICYCLE BELLS. A very fine durable, complete in box, with shunt at the best standard.
Price, Shs. 9/50

WHITEAWAY, LAIDLAW & CO., LTD.

The Sixth Avenue Street NAIROBI

AUCTION DIARY

10 a.m. Motor Car and Motor Cycle... 10 a.m. Miscellaneous Goods (D. M. G.)... 10 a.m. Furniture Sale (D. M. G.)... 10 a.m. Sale of Cows, etc. (Austin Co.)... 10 a.m. Great Trading Sale (W. J. Beeston)...

FRIDAY, FEBRUARY 9th, commencing at 10 a.m. NOVEL BOOKS OF TRAVEL AND SCIENCE... FRIDAY, FEBRUARY 9th, commencing at 10 a.m. DAVID MUTER, Auctioneer.

D. LEONARD... Will sell by auction on February 9th, at 10 o'clock... Furniture including the following: Sideboard, Cedar Sideboard, Comm. Dining Table, Dining Room Set, etc.

LEONARD'S AUCTION DIARY FOR February GILGIL... 10 a.m. Sale of grade shorthorn Cows with calves... 10 a.m. Sale of grade shorthorn Cows with calves... 10 a.m. Sale of grade shorthorn Cows with calves...

LONDANI... 10 a.m. Sale of grade shorthorn Cows with calves... 10 a.m. Sale of grade shorthorn Cows with calves... 10 a.m. Sale of grade shorthorn Cows with calves...

ELDAMA RAVINE... Saturday, February 24th, at 10.30 a.m. Sale of Native Cattle at the Government Cattle Station...

TRADING CORPORATION, LTD. P. O. BOX 513. Government Buildings, NAIROBI.

MUTER'S SALES.

MISCELLANEOUS GOODS SALE. Daily instructed I will sell by Public Auction WITHOUT RESERVE At my SALEROOM, on FRIDAY, FEBRUARY 9th, commencing at 10 a.m.

NOVEL BOOKS OF TRAVEL AND SCIENCE... TRAVEL LAMP SHADES, PICTURE CARPETS, BEVELLED MIRROR, ROYAL COAST, COTTONS, SILK, HERRING, BAKING POWDER, 60 PEPPER, SILK, HERRING, SILK, CLOTHES, SILK, PYJAMAS, TANTALUM, FISH FRIVES IN CASE, Etc., Etc.

DAVID MUTER, Auctioneer.

HOUSE FURNISHINGS SALE

Will sell by public auction WITHOUT RESERVE At Mr. Monson's Residence, Anderson Road, The Hill On MONDAY, FEBRUARY 12th, commencing at 9.30 o'clock.

THE ENTIRE HOUSE FURNISHINGS... Consisting of: Bed Room, Dining Room, Living Room, Kitchen, etc.

DAVID MUTER, Auctioneer.

12 Bed Room, Dining Room, Living Room, Kitchen, etc. 12 Bed Room, Dining Room, Living Room, Kitchen, etc. 12 Bed Room, Dining Room, Living Room, Kitchen, etc.

12 Bed Room, Dining Room, Living Room, Kitchen, etc. 12 Bed Room, Dining Room, Living Room, Kitchen, etc. 12 Bed Room, Dining Room, Living Room, Kitchen, etc.

12 Bed Room, Dining Room, Living Room, Kitchen, etc. 12 Bed Room, Dining Room, Living Room, Kitchen, etc. 12 Bed Room, Dining Room, Living Room, Kitchen, etc.

12 Bed Room, Dining Room, Living Room, Kitchen, etc. 12 Bed Room, Dining Room, Living Room, Kitchen, etc. 12 Bed Room, Dining Room, Living Room, Kitchen, etc.

12 Bed Room, Dining Room, Living Room, Kitchen, etc. 12 Bed Room, Dining Room, Living Room, Kitchen, etc. 12 Bed Room, Dining Room, Living Room, Kitchen, etc.

12 Bed Room, Dining Room, Living Room, Kitchen, etc. 12 Bed Room, Dining Room, Living Room, Kitchen, etc. 12 Bed Room, Dining Room, Living Room, Kitchen, etc.

12 Bed Room, Dining Room, Living Room, Kitchen, etc. 12 Bed Room, Dining Room, Living Room, Kitchen, etc. 12 Bed Room, Dining Room, Living Room, Kitchen, etc.

12 Bed Room, Dining Room, Living Room, Kitchen, etc. 12 Bed Room, Dining Room, Living Room, Kitchen, etc. 12 Bed Room, Dining Room, Living Room, Kitchen, etc.

12 Bed Room, Dining Room, Living Room, Kitchen, etc. 12 Bed Room, Dining Room, Living Room, Kitchen, etc. 12 Bed Room, Dining Room, Living Room, Kitchen, etc.

12 Bed Room, Dining Room, Living Room, Kitchen, etc. 12 Bed Room, Dining Room, Living Room, Kitchen, etc. 12 Bed Room, Dining Room, Living Room, Kitchen, etc.

12 Bed Room, Dining Room, Living Room, Kitchen, etc. 12 Bed Room, Dining Room, Living Room, Kitchen, etc. 12 Bed Room, Dining Room, Living Room, Kitchen, etc.

12 Bed Room, Dining Room, Living Room, Kitchen, etc. 12 Bed Room, Dining Room, Living Room, Kitchen, etc. 12 Bed Room, Dining Room, Living Room, Kitchen, etc.

12 Bed Room, Dining Room, Living Room, Kitchen, etc. 12 Bed Room, Dining Room, Living Room, Kitchen, etc. 12 Bed Room, Dining Room, Living Room, Kitchen, etc.

12 Bed Room, Dining Room, Living Room, Kitchen, etc. 12 Bed Room, Dining Room, Living Room, Kitchen, etc. 12 Bed Room, Dining Room, Living Room, Kitchen, etc.

12 Bed Room, Dining Room, Living Room, Kitchen, etc. 12 Bed Room, Dining Room, Living Room, Kitchen, etc. 12 Bed Room, Dining Room, Living Room, Kitchen, etc.

12 Bed Room, Dining Room, Living Room, Kitchen, etc. 12 Bed Room, Dining Room, Living Room, Kitchen, etc. 12 Bed Room, Dining Room, Living Room, Kitchen, etc.

12 Bed Room, Dining Room, Living Room, Kitchen, etc. 12 Bed Room, Dining Room, Living Room, Kitchen, etc. 12 Bed Room, Dining Room, Living Room, Kitchen, etc.

12 Bed Room, Dining Room, Living Room, Kitchen, etc. 12 Bed Room, Dining Room, Living Room, Kitchen, etc. 12 Bed Room, Dining Room, Living Room, Kitchen, etc.

12 Bed Room, Dining Room, Living Room, Kitchen, etc. 12 Bed Room, Dining Room, Living Room, Kitchen, etc. 12 Bed Room, Dining Room, Living Room, Kitchen, etc.

12 Bed Room, Dining Room, Living Room, Kitchen, etc. 12 Bed Room, Dining Room, Living Room, Kitchen, etc. 12 Bed Room, Dining Room, Living Room, Kitchen, etc.

12 Bed Room, Dining Room, Living Room, Kitchen, etc. 12 Bed Room, Dining Room, Living Room, Kitchen, etc. 12 Bed Room, Dining Room, Living Room, Kitchen, etc.

12 Bed Room, Dining Room, Living Room, Kitchen, etc. 12 Bed Room, Dining Room, Living Room, Kitchen, etc. 12 Bed Room, Dining Room, Living Room, Kitchen, etc.

12 Bed Room, Dining Room, Living Room, Kitchen, etc. 12 Bed Room, Dining Room, Living Room, Kitchen, etc. 12 Bed Room, Dining Room, Living Room, Kitchen, etc.

12 Bed Room, Dining Room, Living Room, Kitchen, etc. 12 Bed Room, Dining Room, Living Room, Kitchen, etc. 12 Bed Room, Dining Room, Living Room, Kitchen, etc.

12 Bed Room, Dining Room, Living Room, Kitchen, etc. 12 Bed Room, Dining Room, Living Room, Kitchen, etc. 12 Bed Room, Dining Room, Living Room, Kitchen, etc.

12 Bed Room, Dining Room, Living Room, Kitchen, etc. 12 Bed Room, Dining Room, Living Room, Kitchen, etc. 12 Bed Room, Dining Room, Living Room, Kitchen, etc.

THE ONION

A Vegetable Always in Demand.

METHOD OF CULTIVATION

During the past few months there has been a noticeable increase in the demand for onions...

It is a crop that can be raised in any soil and in any climate... It is a crop that can be raised in any soil and in any climate...

Onions should be planted in rows... Onions should be planted in rows... Onions should be planted in rows...

Onions should be planted in rows... Onions should be planted in rows... Onions should be planted in rows...

Onions should be planted in rows... Onions should be planted in rows... Onions should be planted in rows...

Onions should be planted in rows... Onions should be planted in rows... Onions should be planted in rows...

Onions should be planted in rows... Onions should be planted in rows... Onions should be planted in rows...

Onions should be planted in rows... Onions should be planted in rows... Onions should be planted in rows...

Onions should be planted in rows... Onions should be planted in rows... Onions should be planted in rows...

Onions should be planted in rows... Onions should be planted in rows... Onions should be planted in rows...

Onions should be planted in rows... Onions should be planted in rows... Onions should be planted in rows...

AUSTIN'S AUCTIONS

P.O. Box 555. At the MART, MADATALLY BUILDINGS, Government Road. These No. 100.

Sale of Good Motor Car and Motor Cycle

also Miscellaneous Goods

AUSTIN & Co.

will sell on TO-DAY, Feb. 8th at 10a.m. SHARP.

One "Dart" 4-Cylinder Motor Car with Topping Body, Good Lights, Spare Tyres, Very good New Hood and Side Curtains. One Heavy Duty in Fine Running Order. One 500 Manchester Sidecar 2 1/2 in. Case. One 500 "Dart" Cycle. One "Manometer" and about 40 Goods, all good. One No. 7 "Dover" Stove, with piping, in Good Condition. Furniture and Miscellaneous Goods of all kinds.

LONDANI. Moffits Yard, Feb. 10th, at 10 o'clock

AUSTIN & Co.

M. & T. O'KEN. Hole Selection of Soft Goods. Quality of Good Goods. Large Quantities of HARDWARE, comprising—Orn. Cut Glass, Hammer, Hacks, Hole Diggers, Blacksmith's Regs, Brass Fenders, Single Traps. One Case of "MILNER'S" Dusters, Jambas, Pangs and Drawers, etc., etc.

ALL VENDORS' ACCOUNTS PAID ON DAY OF SALE AT LONDANI.

SEND YOUR ENTRIES NOW.

SHORT NOTICE SALE. LIMORU.

Daily Instructed by Capt. C. M. Percy-Jones who is proceeding home.

AUSTIN & Co.

WILL SELL BY PUBLIC AUCTION Entirely Without Reserve.

On TUESDAY Feb. 13th At 2 o'clock sharp.

The Entire Contents of his Dairy Farm Four Miles from Limuru Station on Route C.

These include— 12 Good Grade Cows and Calves, most of which have been served by a Pure Dutch Friesland Bull, and are all good Milkers.

Also the Large Wood and heavy Sheds Comprising three Stables, and one Large do. 30ft. x 9ft. and small Dairy and Verandah. This is to be removed within a reasonable time, and consists of a Considerable amount of Heavy New Carriage Iron and other Building Material, also some Doors and good Windows.

There is also a 1,000 Gallon Water Tank, Iron Fire Place, Grating, Kitchen Door Stove, Kitchen utensils of every sort, and furniture.

A Train Leaves Nairobi on Tuesday at 8-15 a.m. Arriving at Limuru, at 11-50 a.m.

A Car will meet this Train.

AUSTIN & Co., Auctioneer. Nairobi Corporation

Applicants are invited for the post of Overseer in charge of the Municipal Forest and of tree planting and laying out of new streets, etc. in the town. Salary, Shs. 500 per month.

Apply by 20th instant giving full particulars of experience to TOWN CLERK, Nairobi.

20th February, 1918.

MUTER'S PROPERTY LIST

An Opportunity Worth Seizing

Neivasha Lake Front PLOTS FOR SALE

A few Ideally Situated Lake Front Plots of 1/2 Acre, near Neivasha, with frontage at 4/2 per Acre.

Further Particulars from "The Estate Agent" DAVID MUTER, NAIROBI.

NEIVASHA LAKE FRONT PLOTS FOR SALE

A few Ideally Situated Lake Front Plots of 1/2 Acre, near Neivasha, with frontage at 4/2 per Acre.

Further Particulars from "The Estate Agent" DAVID MUTER, NAIROBI.

NEIVASHA LAKE FRONT PLOTS FOR SALE

A few Ideally Situated Lake Front Plots of 1/2 Acre, near Neivasha, with frontage at 4/2 per Acre.

Further Particulars from "The Estate Agent" DAVID MUTER, NAIROBI.

SANDS & Co. STOCK SALE.

Naivasha Tues. 13th Feb.

100 Grade Fat Bulls, 60 High Grade Milking Cows.

Some A. M. & T. trained Oxen, Turkeys, Fowls, Ducks.

Further entries invited

SANDS & Co. AUCTIONEERS.

A DISAPPOINTMENT

IF STORE FOR ALL THOSE WHO DO NOT VISIT PRESTON'S GENUINE SALE.

20 per cent. to 50 per cent Reductions of Entire Stock of Ladies' Children's and Infants' Clothing, Millinery, Hosiery, etc.

GREAT BEDDING SALE

Saturday Feb. 10th at 10.30 a.m. Sharp.

Daily instructed by Nakuru Hotel I will sell at the Hotel 24 Single bedsteads, 86 Mattresses 30 Pairs Wilted blankets, 44 Goggles, 25 Pairs Sheets, 30 Bedspreads etc. The whole of the above has only been used for one week.

W. J. BEESTON Auctioneer.

S. J. HUMPHREYS

Motor Cars

FOR HIRE DAY OR NIGHT (DAY) Phone 65, (NIGHT) Phone 105

Your Boot and Shoe Repairs at our change and better at the best prices, ready for delivery.

OVERSEA MAILS

This notice is based upon the latest information from the shipping companies... It is possible, however, that circumstances may require changes in the steamer programme...

Table with columns: Destination, From, Date of departure, and Arrival. Includes routes to South Africa, West Indies, and India.

Table with columns: Destination, From, Date of departure, and Arrival. Includes routes to West Indies, South Africa, and India.

STEAMER MOVEMENTS.

Table with columns: Arrivals, Departures, and specific ship names like 'Mediterranean', 'Carnegie', and 'Mackenzie'.

L. ROSENTHAL, TRUST ACCOUNTANT. Trust Chambers, Government Road. Book now open on the Lincoln & Grand National.

THE CYCLOSTYLES THAT WORK. SELF-FEEDING ROTARY. Price £47-10. Standard Stationery Stores.

POLO



HOME RACING

ENTRIES FOR LINCOLNSHIRE & GRAND NATIONAL

The following are the entries for the Lincolnshire to be run on March 21... The Grand National to be run on March 22.

Don't be too sure that your horse is a good one... Don't think only of pace or of the quality of the horse...

A New Development

Electric Department for Well-known Firm.

In the advertising pages of the Standard is included an interesting advertisement of a new development in the electrical industry...

Don't let your horse get into a state of mind... Don't think only of pace or of the quality of the horse...

National Bank of India

Branches in the Kenya Colony and Uganda Protectorate Government.

Branches in the Kenya Colony and Uganda Protectorate Government. Branches in the Kenya Colony and Uganda Protectorate Government.

Don't let your horse get into a state of mind... Don't think only of pace or of the quality of the horse...

UNION CASTLE LINE

ROYAL MAIL STEAMERS TO ENGLAND.

RESPECTIVE sailings to England, East, South & West Africa Ports & Mauritius. About 28th January, S.S. 'Glencairn' (except only).

RESPECTIVE sailings to England via West Indies. About 13th March, S.S. 'Hibernia' (except only).

Your Best Joy-Ride. Kikuyu Hotel. 12 Miles on a Good Road to the N. Pelly Licensed European Cuisine. COMMERCIAL OR TECHNICAL TRAINING BY POST.

POSHO

ERESHA GROUND GUARANTEED. Posho Supply Co. Ltd. Suller Street. Colaba - POSHO.

FOR SALE

Govt. Royal Cycles, 1914. Military Boots, 1914. 1914. 1914.

Great Expectations

You always hope to be a cup of tea that will be perfect. How often do you get it?

Smith Mackenzie & Co.

Madately Building Government Road NAIROBI. P.O. Box 120.

STONE HOUSE FOR SALE

5 Rooms, Kitchen Pantry and Bathroom with tiled, built-in, garage etc. Standing on 2 1/2 acres of ground, nearly laid out.

J. W. MILLIGAN & Co.

Madately Building Government Road NAIROBI. P.O. Box 120.

RAMBON-OP ON

Dusky Bungalow on Your In Ashanti.

RAMBON-OP ON

Dusky Bungalow on Your In Ashanti.

RAMBON-OP ON

Dusky Bungalow on Your In Ashanti.

RAMBON-OP ON

Dusky Bungalow on Your In Ashanti.

RAMBON-OP ON

Dusky Bungalow on Your In Ashanti.

RAMBON-OP ON

Dusky Bungalow on Your In Ashanti.

RAMBON-OP ON

Dusky Bungalow on Your In Ashanti.

RAMBON-OP ON

Dusky Bungalow on Your In Ashanti.

RAMBON-OP ON

Dusky Bungalow on Your In Ashanti.

RAMBON-OP ON

Dusky Bungalow on Your In Ashanti.

RAMBON-OP ON

Dusky Bungalow on Your In Ashanti.

RAMBON-OP ON

Dusky Bungalow on Your In Ashanti.

RAMBON-OP ON

Dusky Bungalow on Your In Ashanti.

RAMBON-OP ON

Dusky Bungalow on Your In Ashanti.

RAMBON-OP ON

Dusky Bungalow on Your In Ashanti.

RAMBON-OP ON

Dusky Bungalow on Your In Ashanti.

RAMBON-OP ON

Dusky Bungalow on Your In Ashanti.

RAMBON-OP ON

Dusky Bungalow on Your In Ashanti.

RAMBON-OP ON

Dusky Bungalow on Your In Ashanti.

RAMBON-OP ON

Dusky Bungalow on Your In Ashanti.

RAMBON-OP ON

Dusky Bungalow on Your In Ashanti.

RAMBON-OP ON

Dusky Bungalow on Your In Ashanti.

RAMBON-OP ON

Dusky Bungalow on Your In Ashanti.

RAMBON-OP ON

Dusky Bungalow on Your In Ashanti.

RAMBON-OP ON

Dusky Bungalow on Your In Ashanti.

RAMBON-OP ON

Dusky Bungalow on Your In Ashanti.

RAMBON-OP ON

Dusky Bungalow on Your In Ashanti.

RAMBON-OP ON

Dusky Bungalow on Your In Ashanti.

RAMBON-OP ON

Dusky Bungalow on Your In Ashanti.

RAMBON-OP ON

Dusky Bungalow on Your In Ashanti.

RAMBON-OP ON

Dusky Bungalow on Your In Ashanti.

RAMBON-OP ON

Dusky Bungalow on Your In Ashanti.

RAMBON-OP ON

Dusky Bungalow on Your In Ashanti.

RAMBON-OP ON

Dusky Bungalow on Your In Ashanti.

RAMBON-OP ON

Dusky Bungalow on Your In Ashanti.

RAMBON-OP ON

Dusky Bungalow on Your In Ashanti.

RAMBON-OP ON

Dusky Bungalow on Your In Ashanti.

RAMBON-OP ON

Dusky Bungalow on Your In Ashanti.

RAMBON-OP ON

Dusky Bungalow on Your In Ashanti.

RAMBON-OP ON

Dusky Bungalow on Your In Ashanti.

RAMBON-OP ON

Dusky Bungalow on Your In Ashanti.

RAMBON-OP ON

Dusky Bungalow on Your In Ashanti.

RAMBON-OP ON

Dusky Bungalow on Your In Ashanti.

RAMBON-OP ON

Dusky Bungalow on Your In Ashanti.

RAMBON-OP ON

Dusky Bungalow on Your In Ashanti.

RAMBON-OP ON

Dusky Bungalow on Your In Ashanti.

RAMBON-OP ON

Dusky Bungalow on Your In Ashanti.

RAMBON-OP ON

Dusky Bungalow on Your In Ashanti.

RAMBON-OP ON

Dusky Bungalow on Your In Ashanti.

RAMBON-OP ON

Dusky Bungalow on Your In Ashanti.

RAMBON-OP ON

Dusky Bungalow on Your In Ashanti.

RAMBON-OP ON

Dusky Bungalow on Your In Ashanti.

RAMBON-OP ON

Dusky Bungalow on Your In Ashanti.

RAMBON-OP ON

Dusky Bungalow on Your In Ashanti.

RAMBON-OP ON

Dusky Bungalow on Your In Ashanti.

RAMBON-OP ON

Dusky Bungalow on Your In Ashanti.

RAMBON-OP ON

Dusky Bungalow on Your In Ashanti.

RAMBON-OP ON

Dusky Bungalow on Your In Ashanti.

RAMBON-OP ON

Dusky Bungalow on Your In Ashanti.

RAMBON-OP ON

Dusky Bungalow on Your In Ashanti.

RAMBON-OP ON

Dusky Bungalow on Your In Ashanti.

RAMBON-OP ON

Dusky Bungalow on Your In Ashanti.

RAMBON-OP ON

Dusky Bungalow on Your In Ashanti.

RAMBON-OP ON

Dusky Bungalow on Your In Ashanti.

RAMBON-OP ON

Dusky Bungalow on Your In Ashanti.

RAMBON-OP ON

Dusky Bungalow on Your In Ashanti.

RAMBON-OP ON

Dusky Bungalow on Your In Ashanti.

RAMBON-OP ON

Dusky Bungalow on Your In Ashanti.

RAMBON-OP ON

Dusky Bungalow on Your In Ashanti.

RAMBON-OP ON

Dusky Bungalow on Your In Ashanti.

RAMBON-OP ON

Dusky Bungalow on Your In Ashanti.

RAMBON-OP ON

Dusky Bungalow on Your In Ashanti.

RAMBON-OP ON

Dusky Bungalow on Your In Ashanti.

RAMBON-OP ON

Dusky Bungalow on Your In Ashanti.

RAMBON-OP ON

Dusky Bungalow on Your In Ashanti.

RAMBON-OP ON

Dusky Bungalow on Your In Ashanti.

RAMBON-OP ON

Dusky Bungalow on Your In Ashanti.

RAMBON-OP ON

Dusky Bungalow on Your In Ashanti.

RAMBON-OP ON

Dusky Bungalow on Your In Ashanti.

RAMBON-OP ON

Dusky Bungalow on Your In Ashanti.

RAMBON-OP ON

Dusky Bungalow on Your In Ashanti.

RAMBON-OP ON

Dusky Bungalow on Your In Ashanti.

RAMBON-OP ON

Dusky Bungalow on Your In Ashanti.

RAMBON-OP ON

Dusky Bungalow on Your In Ashanti.

RAMBON-OP ON

Dusky Bungalow on Your In Ashanti.

RAMBON-OP ON

Dusky Bungalow on Your In Ashanti.

RAMBON-OP ON

Dusky Bungalow on Your In Ashanti.

RAMBON-OP ON

Dusky Bungalow on Your In Ashanti.

RAMBON-OP ON

Dusky Bungalow on Your In Ashanti.

RAMBON-OP ON

Dusky Bungalow on Your In Ashanti.

RAMBON-OP ON

Dusky Bungalow on Your In Ashanti.

RAMBON-OP ON

Dusky Bungalow on Your In Ashanti.

RAMBON-OP ON

Dusky Bungalow on Your In Ashanti.

RAMBON-OP ON

Dusky Bungalow on Your In Ashanti.

RAMBON-OP ON

Dusky Bungalow on Your In Ashanti.

RAMBON-OP ON

Dusky Bungalow on Your In Ashanti.

RAMBON-OP ON

Dusky Bungalow on Your In Ashanti.

RAMBON-OP ON

Dusky Bungalow on Your In Ashanti.

RAMBON-OP ON

Dusky Bungalow on Your In Ashanti.

RAMBON-OP ON

Dusky Bungalow on Your In Ashanti.

RAMBON-OP ON

Dusky Bungalow on Your In Ashanti.

RAMBON-OP ON

Dusky Bungalow on Your In Ashanti.

RAMBON-OP ON

Dusky Bungalow on Your In Ashanti.

RAMBON-OP ON

Dusky Bungalow on Your In Ashanti.

RAMBON-OP ON

Dusky Bungalow on Your In Ashanti.

RAMBON-OP ON

Dusky Bungalow on Your In Ashanti.

RAMBON-OP ON

Dusky Bungalow on Your In Ashanti.

RAMBON-OP ON

Dusky Bungalow on Your In Ashanti.

RAMBON-OP ON

Dusky Bungalow on Your In Ashanti.

RAMBON-OP ON

Dusky Bungalow on Your In Ashanti.

RAMBON-OP ON

Dusky Bungalow on Your In Ashanti.

RAMBON-OP ON

Dusky Bungalow on Your In Ashanti.

RAMBON-OP ON

Dusky Bungalow on Your In Ashanti.

RAMBON-OP ON

Dusky Bungalow on Your In Ashanti.

RAMBON-OP ON

Dusky Bungalow on Your In Ashanti.

RAMBON-OP ON

Dusky Bungalow on Your In Ashanti.

RAMBON-OP ON

Dusky Bungalow on Your In Ashanti.

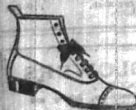
RAMBON-OP ON

Dainty & Fascinating Millinery, Make Your Selections Early.

BLACK
WIDE
FIELD BOOTS
Shs. 10/00 per pair



BEST QUALITY
GUM BOOTS
Shs. 10/00 per pair



GENT'S BOX CALF
DEBRY AND RAINBOW
BOOTS
Shs. 10/- per pair

FINE STRAW HATS, WITH
BROAD BROOKING RIBBON
TRIMMED WITH ROYAL
AND CHARBAGNE
SILK RIBBON
Shs. 25/00 each



ROUGH STRAW HATS IN
BRIGHT AND NAUVE,
DEEP SILK RIBBON BAND
Shs. 25/00 each
RUSTY STRAW TITTO
Shs. 27/00 each



BLACK GISE LACE HATS
LINED BROAD MOON SILK
Shs. 10/- each

BEAUTIFUL WHITE GIBBS IN GREEN HAIR
TRIMMED BROAD SILK & VELVET RIBBON
CHERRY, WHITE, OR BLACK
Shs. 17/00

FETTERIA VELVET TOUCH
TRIMMED VELVET
ROSES AND
LEAVES
Shs. 10/00

GENT'S
BUCKLE
TENNIS SHOES
Shs. 20/00 per pair



GENT'S WHITE CANVAS
TENNIS SHOES
Shs. 20/- & 20/00 per pair



PLAIN SPORTS FELT HATS
IN LEMON, WITH NARROW RIBBON
BAND
Shs. 12/00 each

BLACK OXFORD VELOUR
TRIMMED TROPICOUR
SILK BOWTIE
Shs. 12/00



BLACK OR WHITE
CASHMERE HALF PAIR
Shs. 4/00 per pair

NAVY
RIBBED
FOOTBALL OR
HOOKY NOSE
Shs. 4/00 per pair

FINE CASHMERE NOSE
IN GREY, FAWN & BROWN
ALSO
FANCY LEATHER NOSE
Shs. 10/00 per pair

WOMEN'S HALF PAIR
GREY, FAWN & BROWN
Shs. 4/- per pair



ALL BLACK OXFORD
VELOUR
BLACK SILK
RIBBON
Shs. 12/00 each

ISWICH
HOMERY
GENT'S BLACK
REWEAVED
COTTON HALF NOSE
Shs. 2/00 per pair

BLACK OR WHITE
CASHMERE HALF PAIR
Shs. 4/00 per pair

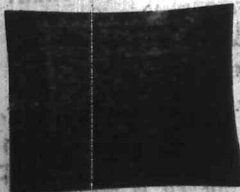
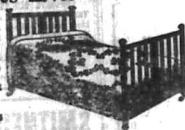
EMBROIDERED WHITE
DAYTO
Shs. 5/00 per pair

ALL WOOL KEMES
CASHMERE HALF PAIR
Shs. 5/00 per pair

NEUTRAL HALF PAIR
IN BROWN & SLATE
Shs. 6/00 per pair

Soundest Values Ever Offered.

PRINTED BEDSPREADS.
NAUVE, BLUE, ROSE AND GREEN
DESIGNS
SINGLE SIZE Shs. 12/00, 13/75, 14/25
DOUBLE SIZE Shs. 20/00 each
HAND PAINTED DITTO SINGLE SIZE
Shs. 10/00, 11/25, 14/00, 15/00, 18/-
WHITE HONEYCOMB BEDSPREADS
Shs. 11/00 & 15/- each.



BEDDOWNS

OUT SIZE 3' x 3'
Shs. 18/00, 20/00, 24/00, 26/00, 28/00
3 1/2' x 3 1/2' Shs. 20/00
SINGLE BED SIZE
BATHS
BEDDOWNS
ASSORTED DESIGNS
AND COLOURS
Shs. 11/00 each
WHITE SATIN
QUILTS
Shs. 27/00 & 30/00 each

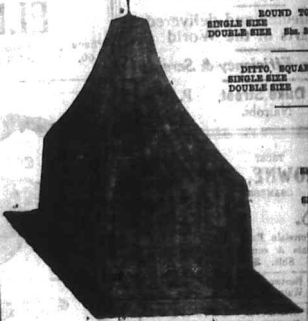
Our Goods & Value

WILL
Stand the Test of
Comparison

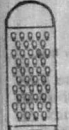


For Service Quality & Value
KENYA'S
Departmental Stores.

Quality the Test of Cheapness.



THE NEEDS OF THE HOME AT LOWEST PRICES



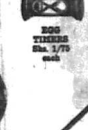
THREE FOLD
GRATERS
Shs. 10 each



HAND POTATO
CHOPPERS
Shs. 1/00 each



HAND LIGHTING FOR TEA
Shs. 3/00 each



TEA INFUSERS
FOR TEA
Shs. 1/00 each



D. M. C.
COTTON
TWINE
Shs. 40 dozen



VERY STRONG
ASSORTED
WIRE MESH
FLOUR SIEVES
6" SIZE Shs. 3/-
8" SIZE Shs. 2/00
10" SIZE Shs. 4/-
12" SIZE Shs. 6/00
each



NARROW
RUSSIAN
BRAID
FANCY TUBULAR
BANDS
Shs. 2/00
ARTIFICIAL SILK
IN ASSORTED SIZES
Shs. 4/00
OILY MIDDY
SAFETY PINS
IN ASSORTED SIZES
Shs. 40 for 25..



LADY'S GAUNTY GLOVE
IN FAWN, PUFFY, GRAYFAIR AND GREY
Shs. 6/00 and 5/- per pair



LINEN BUTTONS
IN SETS OF 4 DOZES
ASSORTED SIZES
Shs. 1/00 per packet



TORTOISE SHELL
HAIR
BRUSHES
STUDDED BRILLIANTS
Shs. 12/00



LARGE SQUARE TORTOISE
SHELL HAIR COMBS
Shs. 10/00 each
SMALLER SIZE
Shs. 9/00 & 10/00



"STALLAX"
SHAMPOO
Shs. 4/-
per bottle



VIRGINIA SOAP
BOXES OF 3 TABLETS
Shs. 2/00 per box



SOREO RUBER AND HONEYCOMB
Shs. 2/- to 2/10 each



LADY'S HOLEPROOF
HOSE
IN WHITE, BLACK,
TUMBER LIGHT
BROWN, LARK
AND CLOUDBY
Shs. 7/00 & 10/00
per pair



LADY'S
PATENT
LEATHER HEELS
ASSORTED SIZES
Shs. 2/- & 2/00 each

GUARANTEED THE LARGEST CIRCULATION OF ANY NEWSPAPER IN KENYA, UGANDA, TANGANYIKA AND ZANZIBAR.

THE EAST

DAILY EDITION.

African Standard



MOMBASA TIMES & UGANDA ARGUS. With which is incorporated The LEADER.

NAIROBI, FRIDAY, FEBRUARY 9, 1950

Bargains in Pianos

- Collard & Collard 140
Chappell 140
Weber Piano 175
British Piano Model 70
Moore & Moore 70

All our Pianos are fully guaranteed and can be exchanged within a period of 2 months if desired.

The R.E.A. Music Store Co., Ltd. Government Road Tel. 239. NAIROBI. Box 164.

ANOTHER "ENS"

Turkish Change of Attitude Towards France.

SIGNIFICANT WORDS.

Constantinople, Feb. 7. General Pella, the French High Commissioner in Turkey, has been informed by the Turkish Journalists Association...

BRITISH TROOPS ON THE RHINE.

Competent observers and Their Withdrawal.

London, February 7. The Daily Telegraph's diplomatic correspondent says that some British Ministers...

Further Occupation.

The French Advance in Germany.

GERMAN OFFICIALS IN RUHR.

Paris, February 4. A semi-official statement regarding the withdrawal of German officials from the Ruhr...

KING OF EGYPT.

The Sudan Clause in the Constitution.

London, February 7. Telegrams from Cairo indicate that developments of the Egyptian political situation...

The modified clause regarding the title "King of Egypt" is reported to be determined by the Egyptian Government...

NEW YEAR HONOURS.

LAST SANCTIONED BY THE GOVERNOR.

Mr George Younger's Vignette.

[SPECIAL SERVICE'S AGENT.] London, February 7. The following honours have been announced: Knight.

WAR DEATHS.

President Harding on the British Debt.

VALIDITY OF A CONTRACT.

Britain's Example to Other Nations.

[SPECIAL SERVICE'S AGENT.] Washington, February 7. In submitting the report of the American Debt Commission...

A SON AND HEIR.

Princess Mary a Mother.

[SPECIAL SERVICE'S AGENT.] London, February 7. A son has been born to the Princess Mary...

AGAINST THE FRENCH.

France's Decrees in Tunis and Morocco.

INTERNATIONAL COURT.

The Hague, February 7. The Court of International Justice has delivered judgment in the dispute between Tunisia and Morocco...

THE MAN ON THE SPOT.

Distinguishing Characteristic of Mr. Chamberlain.

TRUST IN HIS GOVERNORS.

The distinguishing characteristic of Mr. Chamberlain as Colonial Secretary...

WAR DEATHS.

President Harding on the British Debt.

VALIDITY OF A CONTRACT.

[SPECIAL SERVICE'S AGENT.] London, February 7. The following honours have been announced: Knight.

A SON AND HEIR.

Princess Mary a Mother.

AGAINST THE FRENCH.

France's Decrees in Tunis and Morocco.

INTERNATIONAL COURT.

THE MAN ON THE SPOT.

Distinguishing Characteristic of Mr. Chamberlain.

TRUST IN HIS GOVERNORS.

THE MARSBUDS.

Fighting on the Indian Frontier.

AEROPLANES CO-OPERATE.

MAJOR E. S. GROOMAN.

K. A. Passenger Fares.

Steps at Hudson in London.

Steps at Hudson in London.

Steps at Hudson in London.

A SON AND HEIR.

Princess Mary a Mother.

AGAINST THE FRENCH.

[SPECIAL SERVICE'S AGENT.] London, February 7. A son has been born to the Princess Mary...

INTERNATIONAL COURT.

THE MARSBUDS.

Fighting on the Indian Frontier.

AEROPLANES CO-OPERATE.

MAJOR E. S. GROOMAN.

K. A. Passenger Fares.

Steps at Hudson in London.

Steps at Hudson in London.

Steps at Hudson in London.

Steps at Hudson in London.

Steps at Hudson in London.

Steps at Hudson in London.

Steps at Hudson in London.

Steps at Hudson in London.

Steps at Hudson in London.

Steps at Hudson in London.

Advertisement for Newton's Castrol motor oil. Features the text 'The wisdom of the Wise' and 'Hence Our Name'. Includes a list of agents and the Newton's Limited logo.

WHITEAWAY, LAIDLAW & Co., Ltd.

The House for the Best Value in all Departments.



HORSE BODY BRUSHES.
Whitewood Back, Grey Bristles, Large Brushing Surface.
Price, Shs. 3/-
Flexible Leather Back BODY BRUSHES with superior bristles.
Price, Shs. 5/-
Italian Whisk DANDY BRUSHES.
Price, Shs. 3/50

CLARK'S CLIPPERS.
Patterns No. 1 and No. 4.
All in perfect condition. Must be cleared.
Price, Shs. 25/-



SMART WALKING SHOES.
Derby Fronts, made from selected Calf Skins, Dark Toney Red Colour, Welled Soles. Exceptional Value.
Price, Shs. 25/-



TAN MARCHING BOOTS.
Stout Soles, Broad Fitting. Guaranteed All Leather.
Price, Shs. 32/-



"ORIENT" Black or Tan Calf Walking Shoes. Smart Appearance. Made of hard-wearing materials. All men's sizes, comfortable fitting.
Price, Shs. 25/-

OUR TERMS ARE CASH.
To avoid delay in dispatch, remittances must accompany all orders.



"ORIENT" Black or Tan Selected Calf Boots. Strong Welled Soles. A splendid wearing line. Balmorel or Derby Fronts.
Price, Shs. 30/-



CHROME SOLED TENNIS SHOES. Ladies' Strong Canvas Tennis Shoes with hard-wearing Chrome Soles. All Sizes.
Price, Shs. 15/-



TAN GRAINED CALF BOOTS. Medium Weight Sole, Very comfortable fitting. British made throughout. All Sizes.
Price, Shs. 35/-

CABIN TRUNKS.
Three Ply Birch Foundation, covered Tan Waterproof Canvas, Three Hoops, Beasled Hood, Two Lateral Locks, complete with Tray.
Price, Shs. 65/-

LIGHT CAR TRUNK.
Covered Brown Waterproof Canvas, leather bound edges, strong locks, all-round straps with Tray.
Size, 26" x 16" x 10 1/2"
Price, Shs. 77/-

550 only Vacuum Flasks.

The best value ever offered. Steel case, nicely enamelled green, aluminium drinking cup. Capacity about one pint.
Price Shs. 3-50

Dinnerware Bargain

The Gamma Dinner Service
Pretty Green Trailing Vine Design on Clear White Ground. Very Attractive. Set of 30 Pieces.
Spares to replace breakages always in stock.
Service for Six, Shs. 57.

The Dainty HANDKERCHIEF.

LADIES' MEADOW BLEACHED CAMBRIC HANDKERCHIEFS, with neat hemstitched border, good hard-wearing every-day handkerchief.
Price, Shs. 3/50 per half dozen.

BALACLAVA CAPS.
Made from Soft Fleece Wool to pull down over ears and neck. Large Variety of Shades.
Two Qualities.
Price, Shs. 4/- & 5/-



THE "TUDOR" HAT.
A smart Felt Hat in the latest style. Colour, Light and Dark Grey and Beaver.
Price, Shs. 13/50



SPECIAL VALUE TUNIC SHIRTS



STRIPED GAITER TUNIC SHIRTS. White ground with smart coloured stripes, double cuffs, well cut and tailored. Exceptional Value.
Price, Shs. 9/50



SUNPROOF HELMETS.
Strong Compressed Foundation. Covered Black with Health Preserving and Leather Otis Strap.
Price, Shs. 19/50



The Coyote Balmors
Striped Coyote Sleeping Socks. Large variety, new bold stripes and colours. Well tailored and cut full for comfort.
Price, Shs. 14/50

READY-TO-SERVICE SPORTING JACKET



SMART TWEED SPORTS JACKETS. cut and tailored by experts. Newest style. Half built with four pockets.
Price, Shs. 37/50

THE GREAT REVIVAL OF TABLE TENNIS.
Our Popular Set.
Price, Shs. 6/50



The Coil fire-spring black enamelled DUMBBELLS.
A very fine exercise, complete in box, with chart of the best exercises.
Price, Shs. 9/50

Travelling Rugs

PLAID WOOL TRAVELLING RUGS with Good selection of quiet designs on dark ground. Size, 78" x 52". Very Warm and durable.
PRICE Shs. 11.

Gold Medal Camp Chairs

Strong Beechwood Frame, All Joints Reinforced Steel, Khaki Duck Mattress. A Very Comfortable Strong Cot.
Price Shs. 45

Gold Medal Camp Chairs.

Strong Beechwood Frame, All Joints Reinforced Strong Striped Duck Seat.
Price Shs. 25

A FAMOUS TURKISH TOWEL.
Woven from specially selected Finesst Absorbent Cotton. Size 50" x 70". Convenient Both Sides.
Price, Shs. 10

GLASS TANKARD
Size, 2 pints.
Price, Shs. 10



"YOU say 'advertis' a man to a whisky; but you should make him see on drinking it, unless there is 'Quality' behind the label."

James Watson & Co., Ltd., 10, Market Street, NAIROBI.

REMINGTON TYPEWRITERS (THE WORLD'S PREMIER MACHINES)

ARRIVING SOON! THE Remington Portable The Remington Portable is standard in every feature... THE REMINGTON TYPEWRITER AGENCY... 118-10-4

SHOWING WATER SURVEY. WELL BORING. STIRLING & Co.

VICTORIA STREET, No. 245. NAIROBI. Phone 192.

GARGOYLE Engine & Cylinder Oils, Etc.

Various grades in a gallon tin From Shgs. 4.50 to 7.50 per gallon. Cylinder Oils. From Shgs. 5 to Shgs. 10 per gallon. Engine Oils. From Shgs. 7.50 to Shgs. 8.50 per gallon. Light & Axle Oils. Shgs. 4.12 and Shgs. 5 per gallon.

SMITH, MACKENZIE & Co., Glass Street, NAIROBI, Mombasa, Kampala, Kiambu, Etc.

EVERY MORN I BRING THEB JOKO

UPLINE NOTES

Meeting at London on the Indian Claims.

NO DISSENTERS

An Address Held at a Meeting.

(From Our Own Correspondent)

London, February 1. You will have recalled the official report of the London meeting on the Indian Claims Commission, together with the resolutions, which practically endorse the claims of the Indians. The meeting was held at the Hotel Cecil, London, on the 28th and 29th of January. It was attended by representatives of the Government, the Indian Government, and the various interested parties. The meeting was held in a friendly and cordial atmosphere, and the resolutions passed were unanimous.

There was no much talk at the meeting, but it was felt that the Indian Government was satisfied with the results of the meeting. The Indian Government had been reluctant to attend the meeting, but it was persuaded to do so by the British Government. The Indian Government was represented by Mr. B. S. Puri, and the British Government was represented by Mr. J. H. Thomas. The meeting was held in a friendly and cordial atmosphere, and the resolutions passed were unanimous.

This Embassy is at one with the country's attitude of absolute loyalty and devotion to the British Empire. It is possible that some of the resolutions passed at the meeting may be of a nature which will be of benefit to the Indian people. The Indian Government is to be congratulated for its attitude of loyalty and devotion to the British Empire.

There is nothing done to improve the position of the Indian people. It is possible that some of the resolutions passed at the meeting may be of a nature which will be of benefit to the Indian people. The Indian Government is to be congratulated for its attitude of loyalty and devotion to the British Empire.

The Indian, in his ambitious, ungrateful to the Indian and the source of his own misery. The Indian has a right to be satisfied with the results of the meeting. The Indian Government is to be congratulated for its attitude of loyalty and devotion to the British Empire.



A Smoker's Joy

is complete when he lights up a 555, they are the maximum of cigarette enjoyment at a minimum cost.

STATE EXPRESS VIRGINIA CIGARETTES 555

Made by Hand—One at a Time in London. By Ardath Tobacco Company, Ltd.

SOAP!

SUPERIOR OLD ESTABLISHED AND PURE. Are the qualities bearing the name of

GOSAGE

SPECIALISTS IN ALL CLASSES of Soaps and makers of the famous BLUE MOTTLLED BRANDS STAR BLUE MOTTLLED NAVY BLUE MOTTLLED OXFORD BLUE MOTTLLED

Manufacturers: Wm. Gosage & Son Ltd. Winton, Surrey. Local Agents: Blackhurst & Barnett, Ltd. P. O. Box 199, Mombasa.

SPECIAL NOTICE

HARTZ, BELL & LAWSON (1922) LTD.

Having completed the necessary arrangements... ELECTRICAL ENGINEERING & CONTRACTING... THIS DEPARTMENT WILL BE UNDER THE DIRECTION OF MR. C. H. DODD...

SHOWROOMS & OFFICES: HARRODITE STREET, NAIROBI. Phone 192. Box No. 188.

UMBRELLA SOAP advertisement with illustration of people and a large umbrella.

INEXPENSIVE STATIONERY

MANY COMMERCIAL LINES HAVE ARRIVED. OTHER GOODS, INCLUDING SOCIAL STATIONERY. DUE SHORTLY EX "NORMAN" & "KORANNA". 25% off the Few Diaries left

W.T. TAWS & CO., GOVERNMENT ROAD, NAIROBI.

EADIE'S FOOTWEAR LTD.

NEW GOODS ARRIVED BOYS SCHOOL BOOT & SHOES With a Box Call Brown Shads Bregus Shs. 3/6 THE E D BRAND

CHANIA STORES THIKA

LARGE AND STOCK OF... HONGKONG, HARDWARE, STATIONERY, Etc. DRIED AND SPICED, etc. Best prices for Spices, Cash, etc. Fresh Liners Vegetables, Monday and Thursday. Fresh Beef, Monday, Wednesday, Friday and Saturday. Fresh Hutton every Tuesday. Meats Best supplied in any quantity at normal Market Rates. Mangroon Oil and Grease always in Stock. Agents for Shell Motor Spirit and Crown Kerosene Oil at Nairobi Depot. ENTIRE SATISFACTION GUARANTEED. Proprietors.

JOHN HAIG & CO. LTD. MARKINCHE, SCOTLAND.

The Oldest Distillers in the World. Gold Label Whisky. Glenleven Whisky. Blackhurst & Barnett, Ltd. P. O. Box 199. MOMBASA.

YOU CANNOT BE TOO CAREFUL WHAT YOU DRINK "MINERVA" SPRINGS, N.B. SUPPLY THE FINEST MINERAL WATERS. PURE SILING WATER, absolutely free from any admixture. The mineral character is preserved in the process of manufacture, which is carried out under personal supervision.

MAGADI The Scientific Cleanser

Stronger & Superior in Every Way to Washing Soda. Will not Injure the most Delicate Fabric Does not Dry up or Change Strength Obtainable from all Retailers at Shs. Cts. 28 per lb. Distribution Agents: TAYLOR, WHETHAM & BURMAN, P. O. Box 604, NAIROBI, Sixth Avenue.

THE EAST AFRICAN STANDARD.

CRYSTAL SPRINGS

AERATED WATER Co., Ltd. The Finest Mineral Water produced in this Country Daily deliveries by our Motor Service

120 Miles per hour DURANT WINS BIG RACE IN AMERICA Lawson's Garage

THEATRE ROYAL

To-Night at 8.45 DRAMA "THE LOCKED HEART" A touching incident in domestic life Comedy The Mayor's Fall from Grace a Comedy of errors

UNION STANDARD CLUB THE CONVENTION. Coming to the attention of the Club members...

GOOD THINGS. Advantages of the sale at 8. 10. 11. 12. 13. 14. 15. 16. 17. 18. 19. 20. 21. 22. 23. 24. 25. 26. 27. 28. 29. 30. 31. 32. 33. 34. 35. 36. 37. 38. 39. 40. 41. 42. 43. 44. 45. 46. 47. 48. 49. 50. 51. 52. 53. 54. 55. 56. 57. 58. 59. 60. 61. 62. 63. 64. 65. 66. 67. 68. 69. 70. 71. 72. 73. 74. 75. 76. 77. 78. 79. 80. 81. 82. 83. 84. 85. 86. 87. 88. 89. 90. 91. 92. 93. 94. 95. 96. 97. 98. 99. 100.

LEAGUE OF MERCY. The annual general meeting of the League of Mercy...

MAILS TO EUROPE. The following information supplied by the Post Office...

LOCAL HOCKEY. The following information supplied by the Hockey Association...

KANAMANI FETE. Twenty-five miles out of Nairobi on the Thika road...

LOCAL CRICKET. The following information supplied by the Cricket Association...

RAILWAY TRAFFIC. The following information supplied by the Railway Department...

KIPPERS. The following information supplied by the Kippers Association...

NEW LEWIS. The following information supplied by the Lewis Association...

MR. LEBLE. The following information supplied by the Leble Association...

CRICKET. The following information supplied by the Cricket Association...

CRICKET. The following information supplied by the Cricket Association...

ECONOMISE BY FITTING OVERSIZE TYRES ON YOUR CAR

30 x 3 1/2 - 31 x 4 MICHELIN CORD TYRES 815 x 105 - 815 x 120 MICHELIN CORD TYRES The MOTOR MART & EXCHANGE Ltd NAIROBI.

Chivers' By Appointment to H. M. The King. JAMS, JELLIES, CANNED FRUITS etc., etc. Sole Representatives: R. O. HAMILTON Ltd. P. O. Box 303 NAIROBI Phone 282.

The "Brass Tack" Argument and Goodyear Belting

FORWARD.—The basis of construction of Goodyear Belts is the same as that of Goodyear Tyres—namely—a carcass of high grade, long staple cotton possessing great tensile strength, thoroughly impregnated with resilient, tough rubber which binds the carcass permanently together, greatly increasing its strength and providing each fibre and strand from all effects of moisture, of soil friction.

What Goodyear Tyres will stand

Exposed to the sun and coming in direct contact with hot roads, the best being increased by friction between road and tyre, Goodyear tyres stand up perfectly.

Everyone knows that a tyre may be exposed to rain or run on wet roads without suffering the least stretching or shrinking.

Tyres coming in direct contact with rough, gritty and rocky roads will run for thousands of miles without undue wear.

Goodyear Belts will stand

The worst heat conditions under which a belt may operate and which are not so severe. Goodyear Belts can be subjected to the sun or a temperature of 120 deg. without suffering in any way whatever.

Just as a Goodyear Belt is perfectly waterproof and can be run in the rain or under conditions where the belt is constantly splashed with water.

If tyres can stand thousands of miles of this kind of wear, what chance has a smooth pulley surface of coming wear on a Goodyear Belt.

Goodyear Belts sell at a remarkable low price in spite of their high quality and the degree of service they render

Gilfillan & Company, Ltd. Catalogues and full particulars from

HUPMOBILE CARS FOR HIRE (QUIPPOAS DRIVERS) T.G. FISHER, Phone 168 or 260 NAIROBI

KENYA LOAN & DISCOUNT COMPANY, LIMITED. Box 546. Bcm Buildings, Nairobi. Lent on note of hand MONEY £1 to £1,000 Strictest Confidence Ensured

Uplands Sausages & Lard.

Customers are notified of the following FURTHER REDUCTIONS:-- Pork Sausages 15 cents per lb lower than current price list. Lard in Packet 25 cents Blenders & tins

Increased Orders are respectfully solicited. 9/12/22.

PULLEYS The Largest Stocks in Kenya WITH FOR QUOTATION Gailey & Roberts NAKURU - NAIROBI - ILDORET

AURORAL DYES

FOR Dainty & Delicate Fabrics The New Cold Water Tints. Lawson, Flesh, Pale Pink, Steel Pink, Cream, Silver Grey, Apple Green, Eau de Nil, Primrose, Pink, Brick, Rose, Fusch, Emerald, Navy Blue, King Fisher Blue, Steel Brown.

SOLD BY A. H. WARDLE & Co., Ltd., CHEMISTS, NAIROBI. P. O. Box 108 Phone 55

STANDARD CALENDAR

Saturday, February 10. Fete Champetre in Kamonani near Thika. In aid of Thika Sports Club. February 11. Annual Meeting I.L.W.U. New Stanley Hotel. Monday, Feb. 12.—Annual general meeting of League of Mercy, New Stanley Hotel, 8.15 p.m. Wednesday, February 13. Annual General Meeting Civil Service Athletic Club, New Stanley Hotel, 8.15 p.m. Thursday, February 14. Annual Meeting Kenya Jockey Club, New Stanley Hotel, at 10.30 a.m.

THE EAST AFRICAN STANDARD

FRIDAY, FEB. 9, 1923.

A CHALLENGE. One of the most interesting and important questions that has been raised in the minds of the public is that of the proposed extension of the franchise to the Indian population in the Province of the Transvaal. The question is a very important one, and it is one that has been discussed in many quarters. The Indian population in the Province of the Transvaal is a large and increasing one, and it is one that has been the subject of much discussion. The question is a very important one, and it is one that has been discussed in many quarters. The Indian population in the Province of the Transvaal is a large and increasing one, and it is one that has been the subject of much discussion. The question is a very important one, and it is one that has been discussed in many quarters.

FOR SALE

Handwritten text under 'FOR SALE' including property listings and business offers.

SITUATIONS VACANT

Handwritten text under 'SITUATIONS VACANT' listing job openings.

BOARD RESIDENCE

Handwritten text under 'BOARD RESIDENCE' regarding housing arrangements.

WANTED

Handwritten text under 'WANTED' for various services and items.

PARTNERSHIP

Handwritten text under 'PARTNERSHIP' regarding business partnerships.

PERSONAL

Handwritten text under 'PERSONAL' including notices and announcements.

TO LET

Handwritten text under 'TO LET' for property and services.

RELIANCE FUEL

Handwritten text under 'RELIANCE FUEL' advertising fuel services.

Y.B.C.A. F. O. Club

Handwritten text under 'Y.B.C.A. F. O. Club' regarding club activities.

TOILET

Handwritten text under 'TOILET' for bathroom fixtures.

FRONT SHOP

Handwritten text under 'FRONT SHOP' for retail space.

SPACIOUS GODOWN

Handwritten text under 'SPACIOUS GODOWN' for storage space.

LIGHT ROOMY OFFICES

Handwritten text under 'LIGHT ROOMY OFFICES' for office space.

FIRST FLOOR WAREHOUSE

Handwritten text under 'FIRST FLOOR WAREHOUSE' for storage.

PARKLANDS

Handwritten text under 'PARKLANDS' for land parcels.

BUILDING PLOTS FOR SALE

Handwritten text under 'BUILDING PLOTS FOR SALE' for construction.

LOUIS RENE Automobiles

Handwritten text under 'LOUIS RENE Automobiles' for car sales.

LEGISLATIVE COUNCIL

Official Enquiry into Mass Unrest

FOREST DEPARTMENT ESCAPES

Special Committee's Report Turned Down by Government

THREE BILLS PASSED

Main body text of the Legislative Council section, detailing the report on mass unrest and forest department escapes.

Text regarding the passing of three bills, including the Forest Department Bill.

Text regarding the Forest Department Bill, mentioning the Colonial Secretary and the Forest Department.

Text regarding the Forest Department Bill, mentioning the Forest Department and the Forest Department.

Text regarding the Forest Department Bill, mentioning the Forest Department and the Forest Department.

Text regarding the Forest Department Bill, mentioning the Forest Department and the Forest Department.

Text regarding the Forest Department Bill, mentioning the Forest Department and the Forest Department.

Text regarding the Forest Department Bill, mentioning the Forest Department and the Forest Department.

Text regarding the Forest Department Bill, mentioning the Forest Department and the Forest Department.

Text regarding the Forest Department Bill, mentioning the Forest Department and the Forest Department.

Text regarding the Forest Department Bill, mentioning the Forest Department and the Forest Department.

Text regarding the Forest Department Bill, mentioning the Forest Department and the Forest Department.

Text regarding the Forest Department Bill, mentioning the Forest Department and the Forest Department.

TIMBER advertisement for E. S. M. Ltd. NAIROBI, featuring 'Large Stocks' and 'Prompt Delivery'.

Advertisement for 'BLOUSES for every occasion', 'GOWNS for Day and Evening wear', 'DAY FROCKS, TAILORED COSTUMES', 'REST GOWNS, DRESSING GOWNS', 'LINGERIE-TROUSSEAUX a Speciality', 'GLOVES—the best makes of the best makers', 'HOSIERY—Silk and Lisle', 'Speciality—SILK HOLEPROOF HOSE', 'MILLINERY—including "Condor" and other Standard Tailored Hats', 'CORSETS—the Latest Models', 'Sole Agents for "J.B." Corsets', 'CHILDREN'S DRESSES for Day & Evening wear SCHOOL FROCKS', 'Everything for Children's Wear and Infants' Garments in particular', 'Laces Ribbons Trimmings Fancy Bags'.

Nairobi Corporation advertisement for Marble Quarries Company, including details on applications and contact information.

Kenya Marble Quarries Company advertisement listing products like 'Marble' and 'Manufacturers of Marble Terrazzo Floors'.

Advertisement for 'The Cash Boot Shop' with the slogan 'HAVE YOU SEEN THE CASH BOOT SHOP PRICES?' and 'Prior to their Removal to Government Road on the'.

