

BERLAND
STATION.

GUARANTEED THE LARGEST CIRCULATION OF ANY NEWSPAPER
IN KENYA, UGANDA, TANGANYIKA AND ZANZIBAR.

THE EAST

African Standard

DAILY EDITION.

MOMBASA TIMES & UGANDA ARGUS.

With which is incorporated
The LEADER

THE MOST ESTABLISHED NEWSPAPER PUBLISHED IN KENYA AND UGANDA.

NAIROBI, WEDNESDAY, NOVEMBER 14, 1952.

IMPORTANT NOTICE.
TO MUSIC LOVERS AND DANCE ENTHUSIASTS.

From Now On the prices of **RECORDS**, **VICTOR** and **COLUMBIA** records, will be considerably reduced.

Dance Records 12 1/2"	5/6
Gold Centre and other Col.	5/6
Records 12 1/2"	5/6
Records 12 1/2" 2x extra	5/6
OUR EXCELLENT RECORDS ARE CONSIDERED TO BE THE FINEST IN THE WORLD.	

SOLE AGENTS:
The R.E.A. Music Stores, Co. Ltd.
74, 230 NAIROBI. Box 140

PRINTED AT THE PRESSWORKS OFFICE 24, NAIROBI.

NATIVE TAXATION.
Bill to Amend that and Poll Tax.

THE NATIVE'S OPINION.
Opposition by the Elected Members.

THE NATIVE'S OPINION.
Opposition by the Elected Members.

THE NATIVE'S OPINION.
Opposition by the Elected Members.

THE NATIVE'S OPINION.
Opposition by the Elected Members.

THE NATIVE'S OPINION.
Opposition by the Elected Members.

THE NATIVE'S OPINION.
Opposition by the Elected Members.

THE NATIVE'S OPINION.
Opposition by the Elected Members.

THE NATIVE'S OPINION.
Opposition by the Elected Members.

THE NATIVE'S OPINION.
Opposition by the Elected Members.

THE NATIVE'S OPINION.
Opposition by the Elected Members.

THE NATIVE'S OPINION.
Opposition by the Elected Members.

THE NATIVE'S OPINION.
Opposition by the Elected Members.

THE NATIVE'S OPINION.
Opposition by the Elected Members.

THE NATIVE'S OPINION.
Opposition by the Elected Members.

THE NATIVE'S OPINION.
Opposition by the Elected Members.

THE NATIVE'S OPINION.
Opposition by the Elected Members.

THE NATIVE'S OPINION.
Opposition by the Elected Members.

THE NATIVE'S OPINION.
Opposition by the Elected Members.

THE NATIVE'S OPINION.
Opposition by the Elected Members.

THE NATIVE'S OPINION.
Opposition by the Elected Members.

THE NATIVE'S OPINION.
Opposition by the Elected Members.

THE NATIVE'S OPINION.
Opposition by the Elected Members.

THE NATIVE'S OPINION.
Opposition by the Elected Members.

THE NATIVE'S OPINION.
Opposition by the Elected Members.

THE NATIVE'S OPINION.
Opposition by the Elected Members.

NEWS AND RETAIL NEWS.

Chief Capt. Saka Defines Information.

STATEMENT BY GOVERNOR.

STATEMENT BY GOVERNOR.

STATEMENT BY GOVERNOR.

STATEMENT BY GOVERNOR.

STATEMENT BY GOVERNOR.

STATEMENT BY GOVERNOR.

STATEMENT BY GOVERNOR.

STATEMENT BY GOVERNOR.

STATEMENT BY GOVERNOR.

STATEMENT BY GOVERNOR.

STATEMENT BY GOVERNOR.

STATEMENT BY GOVERNOR.

STATEMENT BY GOVERNOR.

STATEMENT BY GOVERNOR.

STATEMENT BY GOVERNOR.

STATEMENT BY GOVERNOR.

STATEMENT BY GOVERNOR.

STATEMENT BY GOVERNOR.

STATEMENT BY GOVERNOR.

STATEMENT BY GOVERNOR.

STATEMENT BY GOVERNOR.

STATEMENT BY GOVERNOR.

STATEMENT BY GOVERNOR.

STATEMENT BY GOVERNOR.

WORKERS BY DIRECTOR OF PUBLIC WORKS.

WORKERS BY DIRECTOR OF PUBLIC WORKS.

WORKERS BY DIRECTOR OF PUBLIC WORKS.

WORKERS BY DIRECTOR OF PUBLIC WORKS.

WORKERS BY DIRECTOR OF PUBLIC WORKS.

WORKERS BY DIRECTOR OF PUBLIC WORKS.

WORKERS BY DIRECTOR OF PUBLIC WORKS.

WORKERS BY DIRECTOR OF PUBLIC WORKS.

WORKERS BY DIRECTOR OF PUBLIC WORKS.

WORKERS BY DIRECTOR OF PUBLIC WORKS.

WORKERS BY DIRECTOR OF PUBLIC WORKS.

WORKERS BY DIRECTOR OF PUBLIC WORKS.

WORKERS BY DIRECTOR OF PUBLIC WORKS.

WORKERS BY DIRECTOR OF PUBLIC WORKS.

WORKERS BY DIRECTOR OF PUBLIC WORKS.

WORKERS BY DIRECTOR OF PUBLIC WORKS.

WORKERS BY DIRECTOR OF PUBLIC WORKS.

WORKERS BY DIRECTOR OF PUBLIC WORKS.

WORKERS BY DIRECTOR OF PUBLIC WORKS.

WORKERS BY DIRECTOR OF PUBLIC WORKS.

WORKERS BY DIRECTOR OF PUBLIC WORKS.

WORKERS BY DIRECTOR OF PUBLIC WORKS.

WORKERS BY DIRECTOR OF PUBLIC WORKS.

WORKERS BY DIRECTOR OF PUBLIC WORKS.

WORKERS BY DIRECTOR OF PUBLIC WORKS.

WORKERS BY DIRECTOR OF PUBLIC WORKS.

WAGES FOR SEPARATION.

WAGES FOR SEPARATION.

WAGES FOR SEPARATION.

WAGES FOR SEPARATION.

WAGES FOR SEPARATION.

WAGES FOR SEPARATION.

WAGES FOR SEPARATION.

WAGES FOR SEPARATION.

WAGES FOR SEPARATION.

WAGES FOR SEPARATION.

WAGES FOR SEPARATION.

WAGES FOR SEPARATION.

WAGES FOR SEPARATION.

WAGES FOR SEPARATION.

WAGES FOR SEPARATION.

WAGES FOR SEPARATION.

WAGES FOR SEPARATION.

WAGES FOR SEPARATION.

WAGES FOR SEPARATION.

WAGES FOR SEPARATION.

WAGES FOR SEPARATION.

WAGES FOR SEPARATION.

WAGES FOR SEPARATION.

WAGES FOR SEPARATION.

WAGES FOR SEPARATION.

WAGES FOR SEPARATION.

WHAT EFFECT OF ABANDONMENT IS TO BE.

WHAT EFFECT OF ABANDONMENT IS TO BE.

WHAT EFFECT OF ABANDONMENT IS TO BE.

WHAT EFFECT OF ABANDONMENT IS TO BE.

WHAT EFFECT OF ABANDONMENT IS TO BE.

WHAT EFFECT OF ABANDONMENT IS TO BE.

WHAT EFFECT OF ABANDONMENT IS TO BE.

WHAT EFFECT OF ABANDONMENT IS TO BE.

WHAT EFFECT OF ABANDONMENT IS TO BE.

WHAT EFFECT OF ABANDONMENT IS TO BE.

WHAT EFFECT OF ABANDONMENT IS TO BE.

WHAT EFFECT OF ABANDONMENT IS TO BE.

WHAT EFFECT OF ABANDONMENT IS TO BE.

WHAT EFFECT OF ABANDONMENT IS TO BE.

WHAT EFFECT OF ABANDONMENT IS TO BE.

WHAT EFFECT OF ABANDONMENT IS TO BE.

WHAT EFFECT OF ABANDONMENT IS TO BE.

WHAT EFFECT OF ABANDONMENT IS TO BE.

WHAT EFFECT OF ABANDONMENT IS TO BE.

WHAT EFFECT OF ABANDONMENT IS TO BE.

WHAT EFFECT OF ABANDONMENT IS TO BE.

WHAT EFFECT OF ABANDONMENT IS TO BE.

WHAT EFFECT OF ABANDONMENT IS TO BE.

WHAT EFFECT OF ABANDONMENT IS TO BE.

WHAT EFFECT OF ABANDONMENT IS TO BE.

WHAT EFFECT OF ABANDONMENT IS TO BE.

THE CAPITAL VALUE.

THE CAPITAL VALUE.

THE CAPITAL VALUE.

THE CAPITAL VALUE.

THE CAPITAL VALUE.

THE CAPITAL VALUE.

THE CAPITAL VALUE.

THE CAPITAL VALUE.

THE CAPITAL VALUE.

THE CAPITAL VALUE.

THE CAPITAL VALUE.

THE CAPITAL VALUE.

THE CAPITAL VALUE.

THE CAPITAL VALUE.

THE CAPITAL VALUE.

THE CAPITAL VALUE.

THE CAPITAL VALUE.

THE CAPITAL VALUE.

THE CAPITAL VALUE.

THE CAPITAL VALUE.

THE CAPITAL VALUE.

THE CAPITAL VALUE.

THE CAPITAL VALUE.

THE CAPITAL VALUE.

THE CAPITAL VALUE.

THE CAPITAL VALUE.

Ford

K. McIVOR & Co.
BEG TO ANNOUNCE

30%
Reduction in the price of Ford spares
Effect from the 1st November, 1952.

Ford Carburator	50/-	Old Price	50/-
Ford Front Spring	20/-	Old Price	20/-
Ford Radiator	17/0	Old Price	17/0
Ford Crown Wheel	30/-	Old Price	30/-

A Few Examples

P.O. W. Tel. Address: "AFFORD" 351.7.

ARE YOU THINKING OF BUYING A NEW CAR

IF SO BE SURE AND GIVE IT A GOOD START IN LIFE BY USING

SOCONY OILS

IT WILL SAVE YOU POUNDS ON YOUR REPAIR BILL AND MAKE YOUR CAR RUN SWEETER

YOUR GARAGE OR SERVICE STATION

Will Supply Your wants, and If you are Anxious to Learn all About proper Lubrication Just Ask for a Copy of our Instructive "MOTOR LUBRICATION" Booklet.

PUBLISHED BY THE

Standard Oil Co. of New York.

ESSEX FORD B.S.A. MCycle Douglas Raleigh

SALES & SERVICE

NEW CARS and MOTOR CYCLES in Stock.

Ford Touring with self Steer	£195-00
Salari Body	£200-00
Light Body	£190-00
42 H.P. B.S.A. Motor Cycle	£218-10
24 H.P. Raleigh	£ 80-00

IMMEDIATE DELIVERY
TERMS OF PURCHASE CAN BE ARRANGED.

The Service Co. Ltd.

SHOWROOM, NAIROBI. TELEGRAMS: MOTORERS. MOTORERS. MOTORERS. P.O. BOX 60.

THE NEWS CONTAINS A SUPPLEMENT.

TO LET.

EXCELLENT Office in Gen. ...

CORRESPONDENCE.

The Editor does not accept responsibility for the views expressed...

people have failed to turn to good account...

FOR FIRST CLASS BUILDING TIMBER

ANY LENGTH-ANY QUANTITY

SEND YOUR ENQUIRIES TO

E. S. M. Limited,

Supplement to the "E. A. Standard," Wednesday, November 14, 1923.

RAILWAY MAILS

The latest advice from the Shipping Office...

ARRIVALS.

Table with columns: FROM, Date, Mails arrive in Nairobi.

DEPARTURES.

Table with columns: FOR, Date, Mails close at Nairobi.

WORTH READING

THE END OF THE LINE... THE QUEEN OF THE SOUTH...

HOME FOOTBALL

"E. A. Standard" Special Cable Service.

LATEST RESULTS.

[From our own correspondents] London, Oct. 13. The following are the results of football matches played in Great Britain on Saturday last.

ENGLISH LEAGUE

First Division. Birmingham 2, West Ham United 0.

SCOTTISH LEAGUE

Aberdeen 1, Partick Thistle 1. Aberdeen 2, Aberdeen 0.

INDIANS TURN TO FLH.

The Latest "Centre of Gravity."

C. F. ANDREWS ON KEVIA.

The following message from the Rev. C. F. Andrews appears in a recent issue of the Indian news paper...

COFFEE PROSPECTS.

Survey of Present European Situation.

The following has been kindly submitted by J. H. Hanks of Central Bank, Nairobi.

National Bank of India

Branches in Calcutta, Bombay, Madras, ...

Miss Nellie Seymour-James

(of the "FUTURISTS") is remaining in Nairobi...

J. & S. RIFKIN & Co.

BLACKSMITH FARMERS AND WAGON BUILDERS. Reduced Price Shoeing.

HACKETT'S HOTEL

KIKUTU. 1 hour from Nairobi by two different roads.

TENNIS - DANCING

PARTIES ESPECIALLY CATERED FOR.

OAKLEIGH

Up-to-Date Patents Horse. Only a few minutes from Town.

National Bank of India

Branches in Calcutta, Bombay, Madras, ...

Miss Nellie Seymour-James

(of the "FUTURISTS") is remaining in Nairobi...

J. & S. RIFKIN & Co.

BLACKSMITH FARMERS AND WAGON BUILDERS. Reduced Price Shoeing.

HACKETT'S HOTEL

KIKUTU. 1 hour from Nairobi by two different roads.

TENNIS - DANCING

PARTIES ESPECIALLY CATERED FOR.

OAKLEIGH

Up-to-Date Patents Horse. Only a few minutes from Town.



SURPLUS STOCK BOOTS and SHOES.



THE FAMOUS MOCCASIN BRAND.

Maxwell, Brady & Co. NAIROBI. FOOTWEAR.

MR. GEO BAXLEY (Late of Britain's R.M.A. and Douglas Street 1)

HE CENTRAL GARAGE. Recently opened by the MOTOR HOUSE.

MISS WHITTAKER PHOTOGRAPH. E.L.M.

J. H. MANUS & Co. (East Africa). Central Building, NAIROBI.

"Eat only the best coffee". SHARP'S SUPER-KREEM TOFFEE.

STANDARD BOOK STORES.

PRACTICAL COFFEE PLANTING.

Special Reference to Eastern Africa. 10/- Packed 10-80 with book ORDER.

"WE NOW SEND OUR BOOTS AND SHOES FOR FREE QUOTE ON YOUR CASE BOOK."

JOHN HAIG'S WHISKY.

First made in 1627 and ever since a standing favourite in every meeting place of men of cultivated taste

AGENTS:

BLACKHURST & BARNETT Ltd.

P. O. Box No. 199, MOMBASA.

A PARROT'S ADVENTURES.

Present from Sir E. Northey Ltd.

OWNER'S NARRATIVE.

[FROM HER OWN CORRESPONDENCE] London, Oct. 17. I will be glad to hear that you are all well. I had a very nice letter from you last week. I was glad to hear that you were all well. I had a very nice letter from you last week. I was glad to hear that you were all well.



P. O. Box 255. NAIROBI.



Kenya's Departmental Stores WE CAN MEET ALL YOUR REQUIREMENTS

Supplement to the "E. A. Standard," Wednesday, November 14, 1923.

GRAPPE DE FRANCE.

The Finest Non-Alcoholic Beverage on the market. Highly concentrated. Made from pure Fruit Juice. May be used in Ginnet Cup and also Fruit Punch. Flat Botts Sh. 4/-



Sole Agents: MACKINNON BROTHERS, Nairobi, East Africa 1924. P. O. Box 28.

REMINGTON PORTABLE

GUARANTEED FOR 12 MONTHS



PRICE, £ 18-10-0

REMINGTON TYPEWRITER AGENCY

LEADER BUILDING, GOVERNMENT ST., NAIROBI.

GUARANTEED FOR EVER



Not for any limited period but FOR EVER, the RALEIGH THE ALL-STEEL BICYCLE. No valuable new casing as in other bicycles is guaranteed all over the world. Only a highest grade bicycle could give this thorough guarantee.

Agents: KETTLER-BAY & BARNETT Ltd. P. O. Box 100, Nairobi and at Mombasa, Zanzibar, Kisumu & Kampala.

KENYA PRODUCTS

BLOOD and BONE MEAL FERTILISER FOR GARDENS Shs. 16/- per cwt. £10 per lb. STIRLING & CO., ROSSDALE, Victoria Street, Box 345, Nairobi, Phone 192.

Attacked by Degli

DREARY EXHAUSTING SALVING BOTTLE

A tale of persistence is generally less unadorned fiction with the efforts to find gold and silver valued at million sterling on the coast of Louisiana, which was at South Bay in 1917. So far the whole of the has been recovered, with exception of a few bars of gold which is found in a field with a depth of sixty feet owing to the darkness the rope against which a rope electrically connected with the ship.

The diver reached the w with the electric chain attached to determine by a galvanometer which side of the cable was gold.

MARTIN'S APOLLO PILL

APOLLO PILL

IT MUST PAY

HAIROBI SCI OF DANCII

Private Lessons o The "Blues," new Waltz One Step, new Waltz Terms: Apply MISS EDDYEN 675 BOX 266, NAIROBI

Some Gints in Clothes Care.

With the exception of linen, all clothes are made of wool. It is not only wool that is used in the making of clothes, but also cotton, silk, and rayon. The most common mistake made in the care of clothes is to wash them in hot water. This is a mistake because wool clothes will shrink and become hard if washed in hot water.



A wooden rod fitted inside the wardrobe will enable you to hang your clothes in a neat and orderly manner. This is a very useful device and should be kept in every wardrobe.

All light colored cloths and linens should be washed in cold water. This is because hot water will set the stains and make them more difficult to remove.

When girls get married they often find that their clothes are not in the best of repair. This is because they have not been properly cared for.

There are many ways in which clothes can be cared for. One of the best ways is to use a clothes care product. This will help to keep the clothes in good condition for a long time.

Only fresh goods should be bought. This is because old goods are often of poor quality and will not last long.

There are many ways in which clothes can be cared for. One of the best ways is to use a clothes care product. This will help to keep the clothes in good condition for a long time.

Delicious Wholesome & Refreshing NON-ALCOHOLIC ROSES LIME JUICE

Our Paris Letter

[FROM PAULINE CHAMBERLAIN] In Paris, it is not so very difficult to get an invitation to the Foreign Office to meet visiting Royalists. It is in fact all so difficult to get an invitation to the Foreign Office to meet visiting Royalists. It is in fact all so difficult to get an invitation to the Foreign Office to meet visiting Royalists.

There is a much larger proportion of men in Paris than in London. This is because many men have come to Paris to work in the various industries. This is a very interesting fact and should be kept in mind.

It is altogether a very curious business and the most curious thing observed; namely a shiver of cold and every-body wearing warm clothes in a new variety in their dress.

This year, especially earlier and later than anything of the kind has been seen before, the weather has turned up several times and is now in the hands of the wind.

Wide flat hats, from straw to felt, have been worn for a long time. This is a very interesting fact and should be kept in mind.

Get a sign which is plain, simple and easy to read. This is a very important thing to remember when you are designing a sign. It should be clear and concise.

A certain appearance of shabbiness is the result of a certain amount of carelessness in the way of the daily dress. This is a very interesting fact and should be kept in mind.

Get a sign which is plain, simple and easy to read. This is a very important thing to remember when you are designing a sign. It should be clear and concise.

Get a sign which is plain, simple and easy to read. This is a very important thing to remember when you are designing a sign. It should be clear and concise.

FOR FIRST CLASS BUILDING
TIMBER
ANY LENGTH-ANY QUANTITY
SEND YOUR ENQUIRIES TO
S. M. Limited.

TO LET.

CORRESPONDENCE.

people have failed to turn to good account. This failure is in no measure a very good example of what I mean. A deep study of the history of the world, from the days of the Egyptian and the Greek, to the days of the Roman and the Middle Ages, has shown me that the world has been governed by the same principles as the world of to-day. The only difference is that the world of to-day has a more advanced civilization and a more advanced science. The world of to-day has a more advanced art and a more advanced literature. The world of to-day has a more advanced religion and a more advanced philosophy. The world of to-day has a more advanced everything. The world of to-day is a better world than the world of the past. The world of to-day is a world of progress and of improvement. The world of to-day is a world of hope and of confidence. The world of to-day is a world of peace and of harmony. The world of to-day is a world of love and of kindness. The world of to-day is a world of truth and of justice. The world of to-day is a world of freedom and of equality. The world of to-day is a world of opportunity and of success. The world of to-day is a world of glory and of honor. The world of to-day is a world of power and of influence. The world of to-day is a world of wealth and of abundance. The world of to-day is a world of happiness and of contentment. The world of to-day is a world of peace and of harmony. The world of to-day is a world of love and of kindness. The world of to-day is a world of truth and of justice. The world of to-day is a world of freedom and of equality. The world of to-day is a world of opportunity and of success. The world of to-day is a world of glory and of honor. The world of to-day is a world of power and of influence. The world of to-day is a world of wealth and of abundance. The world of to-day is a world of happiness and of contentment.

TO LET.
WATERLOO HOUSE in Central London.
OFFICES in Zebra House, Government Buildings and Standard Buildings, 25th, 26th, 27th, 28th, 29th, 30th, 31st, 32nd, 33rd, 34th, 35th, 36th, 37th, 38th, 39th, 40th, 41st, 42nd, 43rd, 44th, 45th, 46th, 47th, 48th, 49th, 50th, 51st, 52nd, 53rd, 54th, 55th, 56th, 57th, 58th, 59th, 60th, 61st, 62nd, 63rd, 64th, 65th, 66th, 67th, 68th, 69th, 70th, 71st, 72nd, 73rd, 74th, 75th, 76th, 77th, 78th, 79th, 80th, 81st, 82nd, 83rd, 84th, 85th, 86th, 87th, 88th, 89th, 90th, 91st, 92nd, 93rd, 94th, 95th, 96th, 97th, 98th, 99th, 100th.

Supplement to the "E. A. Standard," Wednesday, November 14, 1923.

EAS MAI LS
The latest advice from the Shipping Companies, that circumstances may require the use of alternate routes. The latest information given below.

Table with columns: FROM, Due at Month, Mails arrive in Nairobi, DEPARTURES, FOR, Mails close at Nairobi, Date of departure from Momb.

WORTH READING

THE REP BY THE...
THE GAZARD OF JOHN...
THE QUEEN OF...
THE GREAT HONEY...

HOME FOOTBALL

"E. A. Standard" Special Cable Service.

LATEST RESULTS.
[From our own correspondents.]
The following are the results of the football matches played in Nairobi on Saturday last:

INDIANS TURN TO FLU.

The influenza epidemic among the Indians in Nairobi is spreading rapidly.

COFFEE PROSPECTS.

The following has been kindly submitted by J. H. Hinds of Central Buildings, Nairobi:

Survey of Present European Situation.

The following has been kindly submitted by J. H. Hinds of Central Buildings, Nairobi:

National Bank of India

Branches in the Kenya Colony and Protectorate: Nairobi, Mombasa, Kisumu, Malindi, Lamu, Taita, Zomba, Zanzibar, Dar-es-Salaam, Tanganyika, Zomba, Zanzibar, Malindi, Lamu, Taita, Zomba, Zanzibar, Dar-es-Salaam, Tanganyika.

Mr. Nellie Seymour - James

(of the "FUTURIST") will be at Nairobi to receive orders for slings, etc.

J. & S. RIFKIN & Co.

BLACKSMITH FABRICES AND WAGON BUILDERS. Reduced Prices Shown. Shs 11 per set.

HACKETT'S HOTEL.

4 hours from Nairobi by two different roads.

TENNIS - DANCING PARTIES ESPECIALLY CATERED FOR.

OAKLEIGH

One-Den Paravane Horse. One to five minutes from Town.

J. H. HARDS & Co. (East Africa).

Central Building, NAIROBI. PRODUCE AGENTS.

"Eat only the best toffee"

SHARP'S SUPER-KREAM TOFFEE.

SALE SALE SALE
FOLLOW THE CROWD
SURPLUS STOCK
BOOTS and SHOES.
Moccasin Tan Boots, Tan Willow Gait Shes, The Moccasin Boot, Shs. 24-, Shs. 23-, 35-, Tan Brogue Shs. 30.
THE FAMOUS MOCCASIN BRAND.
Maxwell, Brady & Co. NAIROBI. FOOTWEAR.

MR. GEO BAYLEY
(late of Nairobi, S.A.A. and Douglas House)
READ OFFERED
THE CENTRAL GARAGE
Recently Completed by the MOTORS HOUSE (Opposite New Stanley Hotel)
REPAIRS and BENEVOLENT SYSTEM
FOR DOUGLAS & B.R.A. MOTOR CYCLES
and
10 D.A.P.V.'s in stock, also Parts, Oils and Lubricants.
GAS and OILS CLEANED and STORED
See 274, GLEBE FRONT. P.O. Box 274.

J. de HAFF,
PAINTER,
Paints and Putty, Distemper,
Plaster and Other Finishes
Painting of Houses,
Tanks & Industrial Works
Box 253, Nairobi.

MISS WINIFRED PROTHORPE
Nairobi public for:
Dresses, Hats,
Hosiery, Shoes,
Hosiery, Shoes,
Trousers and underclothes
New Stanley Hotel.

STANDARD BOOK STORES, P.O. Box 380

PRACTICAL COFFEE PLANTING.

Special Reference to Eastern Africa by F. H. SPROTT.
New and up-to-date publication illustrated with diagrams and sketches.

Standard Stationery Stores NAIROBI.

JOHN HAIG'S WHISKY.

First made in 1627 and ever since a standing favourite in every meeting place of men of cultivated taste

AGENTS: BLACKHURST & BARNETT LTD. P. O. Box No. 199, MOMBASA.

A PARROT'S ADVENTURES.

Present from Sir E. Northey Ltd.

OWNED HEREAFTER BY

From our own correspondence... A GENT PARROT... On Wednesday morning...



P. O. Box 255. NAIROBI.



TELEPHONE Nos. 126 & 470

Kenya's Departmental Stores WE CAN MEET ALL YOUR REQUIREMENTS

Supplement to the "E. A. Standard," Wednesday, November 14, 1923.

GRAPPE DE FRANCE.

The "Finest Non-Alcoholic Beverage on the market" Highly concentrated. Made from pure Fruit Juice. May be used in Citrus Cup and also Fruit Pinch. Quart Bots Sh. 4'. Sole Agents: HACKETT & SCOTT, Ltd. Established 1904.

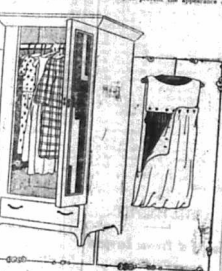
GRAPPE DE FRANCE.

Delicious with Plain, Iced Soda or Mineral Water. I part to 10 of Water. Delightful with Hot Water. Use undiluted for flavouring puddings, making jellies, and on ice cream. Quart Bots Sh. 7/5.

OUR WOMEN'S PAGE

Some Quits in Clothes Care.

With the exception of hats, all clothes are alike and will last longer and give more satisfaction if they are properly cared for. The secret of successful wardrobe management lies in the selection of materials and the proper care of them.



A wardrobe fitted inside the wardrobe will really pay for itself many times over. The better wardrobe is the more convenient for the preservation of delicate frocks. Hats should be kept on a rack in the wardrobe, not in a box. Hats should be kept on a rack in the wardrobe, not in a box.

Our Paris Letter

[FROM PATRICK QUILLAHAN.] In Paris it is not so very difficult to get an invitation to the Fashion Show, but to receive it is another matter. The average woman who goes to Paris for the purpose of buying clothes is not so very difficult to get an invitation to the Fashion Show, but to receive it is another matter.

Stuffed Cable-Knit

The Vogue fall cable-knit is a new kind of cable-knit. It is a new kind of cable-knit. It is a new kind of cable-knit. It is a new kind of cable-knit. It is a new kind of cable-knit.

Circular Presents.

When girls are married they often give their friends circular presents. These are small circular objects that are given to friends as a present. They are often made of wood or metal and are often engraved with the names of the friends.

Delon Surprise

Get a gift under the tree, possibly a Delon Surprise. It is a new kind of gift that is given to friends as a present. It is often made of wood or metal and is often engraved with the names of the friends.

REMINGTON PORTABLE

GUARANTEED FOR 12 MONTHS



PRICE, £18-10-0 REMINGTON TYPEWRITER AGENCY LEADER BUILDINGS, GOVERNMENT RD, NAIROBI.

GUARANTEED FOR EVER



RALEIGH THE ALL-STEEL BICYCLE. Get a gift under the tree, possibly a Raleigh bicycle. It is a new kind of gift that is given to friends as a present. It is often made of wood or metal and is often engraved with the names of the friends.

Attacked by Doggie

DEADLY ENCOUNTER BAITED BULLDOG. A dog named 'Doggie' attacked a man named 'Baited Bulldog'. The dog was very aggressive and the man was very brave. The dog was eventually killed and the man was unharmed.

MARTIN'S APOLIST

MARTIN'S APOLIST. A new kind of medicine that is given to friends as a present. It is often made of wood or metal and is often engraved with the names of the friends.

MARTIN'S APOLIST

MARTIN'S APOLIST. A new kind of medicine that is given to friends as a present. It is often made of wood or metal and is often engraved with the names of the friends.

Delicious Wholesome & Refreshing NON-ALCOHOLIC

ROSES LIME JUICE. A new kind of juice that is given to friends as a present. It is often made of wood or metal and is often engraved with the names of the friends.

Prepared from the finest Fruit & Spices

SAFARI OVERLAND CAR.

The Most Comfortable Box Body Car in the Colony

Fitted With Imported Spring Seats

And Full Equipment

£ 235

Monckton & Sear, Ltd., Overland Service Station, 618 AVENUE, NAIROBI.

BEALES & SMITHSON. LAND & ESTATE AGENTS.

The British Road Paving Co. (Overland) Ltd. (Incorporated in England)

"SHELL", MOTOR SPIRIT

STOCKISTS & MOTOR SUPPLY. MOTOR OILS, EXCHANGE, TIRE SERVICE CO.

INSPECTION INVITED

Of our Farm Register which contains a wide and varied range of excellent farms, suitable for...

J. W. MILLIGAN & Co., Land & Estate Agency Department, MADRASSATI BUILDING, NAIROBI.

George Blowers.

Table with 2 columns: Item description and Price. Includes items like 'SPECIAL DOUBLE BED ROOM', 'SPECIAL TRIPLE BED ROOM', etc.

DURANT JUNIOR

5 SEATER £225 TOURING BOX £205 BODY CHASSIS £180 ONLY



ELECTRIC LIGHT SELF STARTER SPARE TYRE.

CARR, LAWSON & Co., Ltd.

GRAHAM BROTHERS TRUCKS



Built to carry 1 and 1 1/2 tons. S. FISHER & SIMMONS (E.A.) Ltd. Government Road, NAIROBI.

THEATRE ROYAL

To-night THE FAMOUS SORREN STAR KATHLEEN MACDONALD

NOTORIOUS MISS LISLE

An Emotional Drama. Full of Startling Situations. Matinee on Saturday Afternoon at 3-30

British India Steam Navigation CO. LTD.

PLEASURE CRUISE TO KISMAYU by M. Y. "DUMRA" (3,000 tons). Leave Mombasa on the 21st November, 1923.

VEET THE HARMLESS CREAM THAT REMOVES HAIR. SOLD BY A. H. WARDLE & Co., Ltd. CHEMISTS.

British India Steam Navigation CO. LTD. Agents: Killindini.

ABDULLA No. 7, VIRGINIAN. The Cigarette with the unique flavour.

R. O. HAMILTON, Ltd. P. O. Box 302, NAIROBI Phone 352.

THE YORKSHIRE INSURANCE COMPANY LIMITED. HEAD OFFICE - YORK. Local Agents and Attorneys R. O. HAMILTON, Ltd., Government Road, NAIROBI.

AFRICAN STANDARD

THE DEFENCE FORCE. The working of the Defence Force is a matter which can be regarded as entirely within the scope of an ordinary citizen.

to review this and there are many regulations and penalties in the present Ordinance which can very well be improved until we arrive at the point where the Defence Force will be popularized if it is to succeed and clear out distinctions between the "rank and file" and the "rank" will not accomplish the result.

In signing his name, the Officer Commanding Troops made out a very laud praise in his efforts to test his strength upon critics of the previous executive staff.

Mr. Mark's. The Executive Council of the National Church on Sunday, 10th November, 1923, at 4 p.m.

THE MASHI. The Mashis are a tribe of the East African coast, and are known for their bravery and fighting spirit.

Question in Legislature. The following question was asked in the Legislature on Wednesday, 8th November, 1923.

WHY WE ARE POOR. Complaint from Haramba in North Kavirondo.

The following letter, addressed to the Editor, appears in the columns of the native press... The people of this country have long been suffering from poverty...

REVISON OF LAWS. Elected Members Oppose a Blind Measure.

The Bill which provides for the revision of laws is a measure which has been introduced into the Legislative Council...

CO-OPERATING FARM BOUNDARY. SOLDIER-BETTLER LETTERS.

From our very correspondent: The fact that the Government is not prepared to take any steps to improve the position of the soldier-bettler...

THE COCONUT BILL. Causes for the Control of Tapping for Transport.

The Coconut Bill, which is now before the Legislative Council, is a measure which has been introduced into the Legislative Council...

THE CATTLIE INDUSTRY. Report by the Veterinary Adviser.

There was held on the 10th inst. a meeting of the Legislative Council on the subject of the Cattle Industry...

NEW CINEMA MOWER. Chicken's Birth Filmed Inside Egg.

Biologists anticipate important announcements following the success of the cinematograph...

ANTI-JEW CAMPAIGN. Exclusion from Schools in Austria.

The three special correspondents in Vienna say a campaign against the Jews is spreading throughout Austria...

THE CRUISE OF EMBLARD. THE CRUISE OF EMBLARD.

Embarked on the 10th inst. the cruise of the Emlard, which is now on its way to the East Indies...

LETTER OF THANKS. To the Editor, "E.A. Standard."

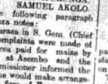
The Editor of the "E.A. Standard" has the honor to acknowledge the receipt of the letter of thanks from the members of the Executive Committee...

ROYAL CORD TYRE. After accumulating 15,633 Miles.



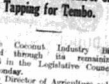
The twin cover has done over 20,000 Miles to date.

ROYAL CORD TYRE. as it looks when new.



This Cover is on View at McMillan Estates Office.

ROYAL CORD TYRE. as it looks when new.



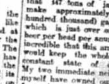
This Cover is on View at McMillan Estates Office.

ROYAL CORD TYRE. as it looks when new.



This Cover is on View at McMillan Estates Office.

ROYAL CORD TYRE. as it looks when new.



This Cover is on View at McMillan Estates Office.

ROYAL CORD TYRE. as it looks when new.



This Cover is on View at McMillan Estates Office.

ROYAL CORD TYRE. as it looks when new.



This Cover is on View at McMillan Estates Office.

ROYAL CORD TYRE. as it looks when new.



This Cover is on View at McMillan Estates Office.

ROYAL CORD TYRE. as it looks when new.



This Cover is on View at McMillan Estates Office.

Advertisement for Boots for the Rains, featuring Fresh Stock Gum Boots, Ladies' 2450, Men's 30-, Children's 16- & 18-, and Farm & Hard Wear.

Advertisement for a Further Big Delivery Men's Famous Box Calf Derby shoes, featuring The E Brand.

Advertisement for Willow Calf Brogue and Tan/Willow Calf Derby shoes, featuring Eadies Footwear Ltd.

Advertisement for Pure Crepe Solf Tennis Shoes, featuring Eadies Footwear Ltd.

Advertisement for Ladies Evening Shoes in Patent Black & Bronze Glace, featuring Eadies Footwear Ltd.

Advertisement for a Residential Flat in Nairobi, featuring three large rooms and all conveniences.

Advertisement for a Residential Flat in Nairobi, featuring three large rooms and all conveniences.

Advertisement for a Residential Flat in Nairobi, featuring three large rooms and all conveniences.

Advertisement for a Residential Flat in Nairobi, featuring three large rooms and all conveniences.

Advertisement for a Residential Flat in Nairobi, featuring three large rooms and all conveniences.

Advertisement for a Residential Flat in Nairobi, featuring three large rooms and all conveniences.

Advertisement for a Residential Flat in Nairobi, featuring three large rooms and all conveniences.

Advertisement for a Residential Flat in Nairobi, featuring three large rooms and all conveniences.

Advertisement for a Residential Flat in Nairobi, featuring three large rooms and all conveniences.

Advertisement for a Residential Flat in Nairobi, featuring three large rooms and all conveniences.

Advertisement for a Residential Flat in Nairobi, featuring three large rooms and all conveniences.

Advertisement for a Residential Flat in Nairobi, featuring three large rooms and all conveniences.

Advertisement for a Residential Flat in Nairobi, featuring three large rooms and all conveniences.

Advertisement for a Residential Flat in Nairobi, featuring three large rooms and all conveniences.

Advertisement for a Residential Flat in Nairobi, featuring three large rooms and all conveniences.

Advertisement for a Residential Flat in Nairobi, featuring three large rooms and all conveniences.

Advertisement for a Residential Flat in Nairobi, featuring three large rooms and all conveniences.

Advertisement for a Residential Flat in Nairobi, featuring three large rooms and all conveniences.

Advertisement for a Residential Flat in Nairobi, featuring three large rooms and all conveniences.

Advertisement for a Residential Flat in Nairobi, featuring three large rooms and all conveniences.

Advertisement for a Residential Flat in Nairobi, featuring three large rooms and all conveniences.

Advertisement for a Residential Flat in Nairobi, featuring three large rooms and all conveniences.

THE EAST AFRICAN STANDARD.

There is Always SOMETHING NEW

LADIES SKIRTS.

NEW MODELS JUST ARRIVED.

Ladies Walking and Dress Skirts. In good quality fine Serges. Navy Nigger in shade of waist 26, 28, 30. Best pleated and knife fitted. An ideal skirt for morning wear. Price, Shs. 27/50.

Wonderful Value in Ladies Dress Skirts.—In good quality Serges, Double box pleats, being intervals of pretty knits fitted. Narrow belt at waist. Size being 26, 28, 30. Price, Shs. 27/50, 26/50.



LADIES WATERPROOFS.

A splendid selection of Ladies Waterproofs, just to hand, dependable in every way.

"HEAD" Fawn Shade Mackintosh. Similar to sketch with check reverse, the popular belted style. 48" long. Price, Shs. 30/.

"WARREN" Ladies Waterproof. In Navy or Fawn. Shs. 26/.

"SHIRLEY" The new striped Cashmere style in Brown or Navy. Shs. 75/.

THE FLOWER SHOW

Among the many flowers now on show we would specially mention the long trunks, tiny flowers suitable for trims and a hat, tiny forget-me-nots in every shade and a few trays of Lisianthus. Price, Shs. 9/50.

LADIES TERRAS

JUST RECEIVED

Our new stock of the smart stylish Model which is new in Tropical, Tans and Co's popular "Double Terras" as shown in Beaver, Grey or Brown, lined silk. Price, Shs. 50/.

THE LATEST DRESS GOODS.

COLOURED LINEN DEERS

These retain their coloring after repeated washing and do not crack easily under a special waterproof finish. For Frocks, Skirts, Shabaras, Smocks and Children's wear in White, Cream, Amber, Nut Brown, Tangarine, Blue, Sky, Butcher Blue, Gunter Grey, Lemon, Rosette, Hells, Anythine, etc. Width 36". Price, Shs. 6/ per yard.

BATHING

Are recommended in wear and easily washed. For Town and Beach wear, they are equally good and very attractive. White, Lemon, Indigo, Smoky Sky, Shell, Blue, Jade, Almond Green, Sea, Brown, Hells, Marine, Flame, Copper, Old Rose, etc. Width 36". Price, Shs. 2/60 per yard.

CHARMING SILK UNDERWEAR.

NEW STOCK AT MOST REASONABLE PRICES

ROVER SILK GARMENTS.

Ladies Vests.—Woven silk fabric, open shape, narrow straps at shoulder. Colors available are White, Pink, Mauve or Blue. Price, Shs. 18/ each.

Elaborate Knives.—These are in the same art silk material, excellent washing and wearing quality. Classic waist and latest Colours as above. Price, Shs. 18/50.

Silk Petticoats. If you have cover when Art woven silk under cover. There is a lot of comfort and these are ideal garments, giving excellent service, in colours as above. Price, Shs. 21/.



WOOLLEN COATS.

"JANE" All Wool Beulah Coat. Best Flacey wool, fitting style with pocket collar. Belt and two pockets. Available in Lovat, Brown or Grey. Price, Shs. 27/50.

"JOYCE" The Newest Model Sports Coat.—1/2 180 all-wool ribbed knit, the long Jumper-Coats style, the long roll collar has contrasting colored bars and ends in a buttoned over front, the colors are Lemon/White, Sea/ Fawn, Grey/Hells, Fawn/Nigger-Brown. Price, Shs. 27/50.



FOR SPORTS WEAR.

"JUNE" A Most Serviceable All-Wool Sports Coat. In 6/8 Rib knit cut on generous long roll collar, two pockets and belt in mid-colors hosiery. Available in only Jade, White, Sea or Fawn. Price, Shs. 29/50.

"JOAN" The Universally Popular Cardigan. Style in the Glorious Wool, the Ideal Home-Coat, very light in weight but so cozy. A good button, two pockets, turn back cuffs. The colors are: Black, Jade, White, Sea or Lemon. Price only, Shs. 9/50. See color.

WATCH WHITEAWAY'S WINDOWS

WRAP COATS.

THE NEWER STYLES.

Ladies Fawn Cloth Coat.—Well tailored with Flax Brown Cooney Fur Collar, long waist style fasten with smart buttons at waist in colors: Grey, Nut-Brown, Nigger. Price, Shs. 115/.

Special Wrap Coat.—For day or evening wear, in good quality Garbarine, in Nigger, Brown and Navy trimmed with Silk, head on collar, sleeves and coat. Similar to sketch. Small belt at waist. Head back and sleeves with Silk finished material. Price, Shs. 125/.

NEW WOOL CAPES

These fashionable wraps are in stock in the following styles: Black/Mistle Grey/Lemon, Turq/Champ. Price, Shs. 50/.

DON'T MISS THIS

A manufacturers stock of charming hosiery is offered at the reduction prices of the survey. Forget-me-nots, pawnee Rose, etc. Price, per bunch Shs. 1/50.

The CHRISTMAS TOY FAIR

This week sees the opening of the largest and most varied display of Christmas Toys ever shown in Nairobi. There are Toys at prices to suit every pocket, from the quaint Pixy Toys at 25 Cents to Model Engines at 25; in between are the Mechanical Toys from Shs. 1/50 and Dolls from Shs. 2/50.

All manner of Games, old friends and some new ones.

CHRISTMAS CRACKERS. — See THE KENYA LION. — See PP, SQUEAK and WILFRED. **IT IS NOT TOO EARLY** To Select Your Xmas Gifts

THE HOMEWARD FAREWELL IS NOW OPEN

CORSET THAT GIVE SATISFACTION.

No. 1877 CORSETS. For the average figure; Elastic band at top. In good quality. Splendid Value. In all sizes from 21 to 28. Price, Shs. 7/50.

No. 1883 CORSETS. Extra long over hips. Short bust. Scooped at edge. 2 suspenders. A model for the average figure in all sizes. Special Offer. Price, Shs. 6/50.

No. 1888 CORSETS. For slender and average figures. All elastic top. Size 22 to 27. Price, Shs. 10/50.

No. 1891 LA-YIDA CORSETS. Suitable for average figure. Low bust. Long over hips. In White only. Silk suspenders. Price, Shs. 25/ 26/ 25/.

No. 1892 W.B. HUFORN CORSETS. For average figure. Fairly low bust. Medium hips, hard wearing. Cut away front in all sizes. Price, Shs. 35/.

Quality 70 Splendid CORSETS. In White Only. Low bust, long over hips in sizes 21 to 28. Price, Shs. 15/.

NEW STYLES AT LOW PRICES.

No. 1886 CORSETS. For Slender and Average figures. Wide elastic top. Lightly boned. The suspenders. Splendid Value. In sizes 20 to 28. Price, Shs. 9/50.

No. 1893 CORSETS. The ideal for all kinds of sports. Scooped at top. Short on hips. Low bust. In all sizes. Extraordinary Cheap. Price, Shs. 6/50. See the Actual Window.

CHOICE TUSCAN HATS.

NEW STOCK

There is always an attraction in new "something different" which appeal, a new way of placing the ribbon may, our present shipment is the latest in style. Cream Tuscan shapes with rich silk ribbon and band in many shades. Price, Shs. 18/50.

LADIES VESTS OF SPECIAL INTEREST.

DELICIOUS VESTS. With small shapely neck. In India Gown material and cut down.

ANOTHER VEST IN COLOUR. Small shoulder straps. Every day wear.

For Quality and Pleasure another good Vest. Open style, small shapely neck, ribbed and cut down. In weight and appearance.

DARTY LAW AND CAMBRIC.

The Softest of Material Trimmed with Choice Lace.

GIFT IDEAS OF LADIES UNDERWEAR. White Cambric embroidered and scalloped in Pink, White or Pale Blue, Nightdress, Cream, Chambric and Knicker.

Price, Shs. 25/; the set.

A new shipment of finest Lawn Underwear just to hand. The garments are beautifully made and trimmed with fine or Val Lace and ribbons. Some of the prices:

Nightdresses from Shs. 11/50 to 14/50
Knickers from Shs. 5/50 to 14/50
Cambrics from Shs. 14/50

WHITEAWAY, LAIDLAW & Co., Ltd. THE SIXTH AVENUE CASH STORE. NAIROBI

(INCORPORATED IN ENGLAND)
Printed and Published by EAST AFRICAN STANDARD, LTD., Sixth Avenue, Nairobi, and Market Street, Mombasa, Kenya Colony.

OVERLAND SERVICE STATION.

NEW SECOND HAND MOTORCYCLES AND BIKES AT BARGAIN PRICES.

Including a **Harley Davidson 300 Body-Only** Done 2000 Miles.

Black & Sear, Ltd.
101 AVENUE, NAIROBI.

GUARANTEED THE LARGEST CIRCULATION OF ANY NEWSPAPER IN KENYA, UGANDA, TANGANYIKA AND ZANZIBAR.

THE EAST AFRICAN STANDARD

DAILY EDITION.

MOMBASA TIMES & UGANDA ARGUS.

THE LARGEST ESTABLISHED NEWSPAPER PUBLISHED IN KENYA AND UGANDA.

With which is incorporated **The LEADER**

IMPORTANT NOTICE TO MUSIC LOVERS AND DANCE ENTHUSIASTS.

From Nov. 1st the price of **RECORDING, VOCALION and COLUMBIA RECORDS** will be considerably reduced.

Dance Records D/S 10" ... 4/6
Gold Centre and other Col. ... 5/6
British D/S 10" ... 6/6
12" Records D/S 10" ... 8/6
6" Italian Records, latest ... 1/6
Novelty D/S ... 1/6

OUR CELEBRITY RECORDS ARE CONSIDERED TO BE THE BEST IN THE WORLD.

SOLE AGENTS:-
The R.E.A. Music Stores, Co., Ltd.
Tel. 330 NAIROBI. Box 104

GOVERNMENT RESIGNS.

Baldwin Advises the King to Dissolve Parliament.

GENERAL ELECTION ON DECEMBER 6.

Vote of Censure to be Discussed Today.

PREMIER DEFENDS HIS POLICY.

Mr. Baldwin has informed Mr. Ramsey MacDonald that it will be his duty to advise the King to dissolve Parliament.

Mr. Baldwin's speech in the morning for the opening of the new Parliament, which was merely a protest to dissolution. The speech was made in the House of Commons and the Premier announced the Government's Presidential programme.

Mr. Baldwin has also ordered Mr. Baldwin's fiscal policy, which was a measure to reduce the income tax and to reduce the rate of interest on the Government's securities.

Mr. Baldwin has also ordered Mr. Baldwin's fiscal policy, which was a measure to reduce the income tax and to reduce the rate of interest on the Government's securities.

Mr. Baldwin has also ordered Mr. Baldwin's fiscal policy, which was a measure to reduce the income tax and to reduce the rate of interest on the Government's securities.

Mr. Baldwin has also ordered Mr. Baldwin's fiscal policy, which was a measure to reduce the income tax and to reduce the rate of interest on the Government's securities.

Mr. Baldwin has also ordered Mr. Baldwin's fiscal policy, which was a measure to reduce the income tax and to reduce the rate of interest on the Government's securities.

Mr. Baldwin has also ordered Mr. Baldwin's fiscal policy, which was a measure to reduce the income tax and to reduce the rate of interest on the Government's securities.

Mr. Baldwin has also ordered Mr. Baldwin's fiscal policy, which was a measure to reduce the income tax and to reduce the rate of interest on the Government's securities.

Mr. Baldwin has also ordered Mr. Baldwin's fiscal policy, which was a measure to reduce the income tax and to reduce the rate of interest on the Government's securities.

Mr. Baldwin has also ordered Mr. Baldwin's fiscal policy, which was a measure to reduce the income tax and to reduce the rate of interest on the Government's securities.

Mr. Baldwin has also ordered Mr. Baldwin's fiscal policy, which was a measure to reduce the income tax and to reduce the rate of interest on the Government's securities.

Mr. Baldwin has also ordered Mr. Baldwin's fiscal policy, which was a measure to reduce the income tax and to reduce the rate of interest on the Government's securities.

MR. JUSTICE DARLING RESIGNS.

One of the most charming personalities on British Bench.

FROM SOLICITOR'S CLERK TO JUDGE.

An Outstanding Figure for Twenty-six Years.

Mr. Justice Darling is one of the outstanding judges of the present century. His name is almost a household word and his name is so closely linked with the name of the British Bench that it is almost impossible to think of the Bench without his name.

Mr. Justice Darling has held up to the world a fine example of a judge who has not only been a great lawyer but also a great man.

Mr. Justice Darling has held up to the world a fine example of a judge who has not only been a great lawyer but also a great man.

Mr. Justice Darling has held up to the world a fine example of a judge who has not only been a great lawyer but also a great man.

Mr. Justice Darling has held up to the world a fine example of a judge who has not only been a great lawyer but also a great man.

Mr. Justice Darling has held up to the world a fine example of a judge who has not only been a great lawyer but also a great man.

Mr. Justice Darling has held up to the world a fine example of a judge who has not only been a great lawyer but also a great man.

Mr. Justice Darling has held up to the world a fine example of a judge who has not only been a great lawyer but also a great man.

Mr. Justice Darling has held up to the world a fine example of a judge who has not only been a great lawyer but also a great man.

Mr. Justice Darling has held up to the world a fine example of a judge who has not only been a great lawyer but also a great man.

Mr. Justice Darling has held up to the world a fine example of a judge who has not only been a great lawyer but also a great man.

Mr. Justice Darling has held up to the world a fine example of a judge who has not only been a great lawyer but also a great man.

Mr. Justice Darling has held up to the world a fine example of a judge who has not only been a great lawyer but also a great man.

Mr. Justice Darling has held up to the world a fine example of a judge who has not only been a great lawyer but also a great man.

K. McIVOR & Co.
REG TO ANNOUNCE

30% reduction in the price of Ford Spares
Effective from the 1st November, 1933.

	Old Price	New Price
Ford Carburettor	50/-	35/-
Ford Front Spring	20/-	17/6
Ford Radiator	17/0	11/0
Ford Crown Wheel	30/-	19/0

SOLE AGENTS:-
The R.E.A. Music Stores, Co., Ltd.
Tel. 330 NAIROBI. Box 104

ARE YOU THINKING OF BUYING A NEW CAR

IF SO BE SURE AND GIVE IT A GOOD START IN LIFE BY USING

SOCONY OILS

IT WILL SAVE YOU POUNDS ON YOUR REPAIR BILL AND MAKE YOUR CAR RUN SWEETER

YOUR GARAGE OR SERVICE STATION

Will Supply Your wants, and If you are Anxious to Learn all About proper Lubrication Just Ask for a Copy of our Instructive "MOTOR LUBRICATION" BOOKLET.

Standard Oil Co. of New York.

ESSEX FORD. B.S.A. Motor Cycle Douglas Raleigh

SALES & SERVICE

NEW CARS and MOTOR CYCLES in Stock.

Ford Touring with self Starter	£195-00
" Safari Body "	£200-00
" Light Body "	£190-00
4 1/2 H.P. B.S.A. Motor Cycle	£116-10
2 1/2 H.P. Raleigh	£ 83-00

IMMEDIATE DELIVERY

TERMS OF PURCHASE CAN BE ARRANGED.

The Service Co. Ltd.

SIXTH AVENUE, NAIROBI.

TELEGRAMS: MOTORISTS. TELEPHONE: 817. P. O. BOX 460.

XMAS HOLIDAYS

ORDER YOUR NEW OVERLAND NOW

Model 92 (THE BLUE BIRD) £350

Model 91 (THE IMPROVED LIGHT OVERLAND) £280

THE OVERLAND SAFARI CAR WITH SPRING SEATS £235

Monckton & Sear, Ltd., SIXTH AVENUE, NAIROBI.

BEALES & SMITHSON, LAD & ESTATE AGENTS. Representing in Kenya, Uganda, Tanganyika and Zanzibar.

"SHELL" MOTOR SPIRIT STOCKISTS. M. V. OR K. MOTOR OIL EXCHANGE. THE SERVICE CO.

INSPECTION INVITED. Of our Farm Register which contains a wide and varied range of excellent farms.

J. W. MILLIGAN & Co., Land & Estate Agency Department. MADATALLY BUILDING, P.O. BOX 148, NAIROBI.

George Blowers. Office and Works, HERDIE WHITEWAY. GENERAL CONTRACTORS.

WINDOW AND FRAME. 2 1/2, 3, 4, 5, 6, 8, 10, 12, 14, 16, 18, 20, 22, 24, 26, 28, 30, 32, 34, 36, 38, 40, 42, 44, 46, 48, 50, 52, 54, 56, 58, 60, 62, 64, 66, 68, 70, 72, 74, 76, 78, 80, 82, 84, 86, 88, 90, 92, 94, 96, 98, 100.

DURANT JUNIOR

5 SEATER £225 TOURING BOX £205 BODY CHASSIS £180 ONLY



ELECTRIC LIGHT SELF STARTER SPARE TYRE.

CARR, LAWSON & Co., Ltd.

GRAHAM BROTHERS TRUCKS



Built to carry 1 and 1 1/2 tons.

S FISHER & SIMMONS (E.A.) Ltd. Government Road, NAIROBI.

British India Steam Navigation CO. LTD.

PLEASURE CRUISE TO KISMAYU by M. V. "DUMRA" (2,300 tons). Leave Mombasa on the 21st November, 1923.

VEET THE HARMLESS CREAM THAT REMOVES HAIR. SOLD BY A. H. WARDLE & Co., Ltd. CHEMISTS.

ABDULLA No. 7, VIRGINIAN. The Cigarette with the unique flavour. R. O. HAMILTON, Ltd. P. O. Box 302. NAIROBI. Phone 352.

THE YORKSHIRE INSURANCE COMPANY, LIMITED. HEAD OFFICE - YORK. Local Agents and Attorneys R. O. HAMILTON, Ltd. Government Road, P. O. Box 302. NAIROBI. Phone 352.

THEATRE ROYAL

To-Night Friday and Saturday

THE FAMOUS ROYAL STAR ALICE LAKE FEATURING IN SHOULD, A WOMAN TELL 6 PARTS

Matinee on Saturday Afternoon at 3-30

THE EAST AFRICAN STANDARD

Mombasa Times & Uganda Argus THURSDAY, NOV. 19, 1923.

KENYA AND THE COMING ELECTION

Britain has again been plunged into the delirium of a general parliamentary election. Mr. Baldwin has advised His Majesty the King to dissolve Parliament...

Greater Britain Independent of the Imperial Nations of Europe

will safeguard the future of the Empire as a whole. The representation of the overseas Dominions appears to gain the emphasis of the Imperial Conference...

ACKNOWLEDGEMENT

Harold K. Ball and family to the many friends of the company house, during their recent leave absence.

THE EAST AFRICAN STANDARD

Mombasa Times & Uganda Argus THURSDAY, NOV. 19, 1923.

KENYA AND THE COMING ELECTION

Britain has again been plunged into the delirium of a general parliamentary election. Mr. Baldwin has advised His Majesty the King to dissolve Parliament...

THE EAST AFRICAN STANDARD. THE EAST AFRICAN STANDARD. THE EAST AFRICAN STANDARD. THE EAST AFRICAN STANDARD.

UPCOMING ELECTIONS. Who Honours His Pledges. THE YEAR'S WORK. THE EAST AFRICAN STANDARD. PRINCESS Maud of Fife and Kings' Niece Married.

Princess Maud of Fife and Kings' Niece Married. The East African Standard. The Year's Work. Who Honours His Pledges. Upcoming Elections.

Development to the "E. A. Standard" Thursday, November 15, 1950.

COMMITTEE SYSTEM.

The Transitional Report of 1951.

NOTE BY THE TOWN CLERK.

REPORT TO THE MUNICIPAL COUNCIL.

HEALTH OUTBREAK.

Report by Public Authorities to Combat It.

Development to the "E. A. Standard" Thursday, November 15, 1950. COMMITTEE SYSTEM. The Transitional Report of 1951. NOTE BY THE TOWN CLERK. REPORT TO THE MUNICIPAL COUNCIL. HEALTH OUTBREAK. Report by Public Authorities to Combat It.

What is Wanted.

What is Wanted. The alternative of doing all work as a large Council is still fully considered by the fact that it has been abandoned as a means of procedure. Under the Council system, the Council is not a body of representatives of the people, but a body of representatives of the Council.

What is Wanted.

What is Wanted. The alternative of doing all work as a large Council is still fully considered by the fact that it has been abandoned as a means of procedure. Under the Council system, the Council is not a body of representatives of the people, but a body of representatives of the Council.

REPORT TO THE MUNICIPAL COUNCIL.

REPORT TO THE MUNICIPAL COUNCIL. The report of the Public Authorities to combat the health outbreak. It is noted that the outbreak of disease is still in progress and that the authorities are continuing their efforts to control it.

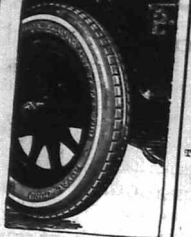
REPORT TO THE MUNICIPAL COUNCIL.

REPORT TO THE MUNICIPAL COUNCIL. The report of the Public Authorities to combat the health outbreak. It is noted that the outbreak of disease is still in progress and that the authorities are continuing their efforts to control it.

ROYAL CORD TYRE

After accomplishing 15,633 MILES. This cover is still in good order and is serviceable for many more miles.

The twin cover has done over 20,000 Miles to date.



This Cover is in Use at McMillan Estates Office.

ROYAL CORD TYRE as it looks when new.

FUTURE OF COUNCIL.

A Request to be Put to the Governor.

A Request to be Put to the Governor. The Municipal Council is requested to consider the future of the Council and to make a recommendation to the Governor.

BOOTS FOR THE RAINS

Fresh Stock Gum Boots. LADIES' 2450. MEN'S 30-. CHILDREN'S 16- & 18-. No. 1189.

For Farm & Hard Wear

Waterproof Chrome Derby. This Boot has Gold-toe Water-proofed Uppers and Soles. Sadies (Guaranteed Stacked Calf and Capless).

35- Willow Calf Hogue 35- Tan/Willow Calf Derby 30-.

A Further Big Delivery Men's Famous Box Calf Derby

THE E D BRAND. Big Stick Pure Crepe Soled Tennis, Golf Shoes. Genuine Wholesome Tramp Foot 48- Ladies Evening Satin Black & Bronze Glace.

Willow Calf Hogue 35- Tan/Willow Calf Derby 30-.

Big Stick Pure Crepe Soled Tennis, Golf Shoes. Genuine Wholesome Tramp Foot 48- Ladies Evening Satin Black & Bronze Glace.

Willow Calf Hogue 35- Tan/Willow Calf Derby 30-.

Big Stick Pure Crepe Soled Tennis, Golf Shoes. Genuine Wholesome Tramp Foot 48- Ladies Evening Satin Black & Bronze Glace.

Willow Calf Hogue 35- Tan/Willow Calf Derby 30-.

Big Stick Pure Crepe Soled Tennis, Golf Shoes. Genuine Wholesome Tramp Foot 48- Ladies Evening Satin Black & Bronze Glace.

Willow Calf Hogue 35- Tan/Willow Calf Derby 30-.

Big Stick Pure Crepe Soled Tennis, Golf Shoes. Genuine Wholesome Tramp Foot 48- Ladies Evening Satin Black & Bronze Glace.

Willow Calf Hogue 35- Tan/Willow Calf Derby 30-.

Big Stick Pure Crepe Soled Tennis, Golf Shoes. Genuine Wholesome Tramp Foot 48- Ladies Evening Satin Black & Bronze Glace.

REPORT TO THE MUNICIPAL COUNCIL.

REPORT TO THE MUNICIPAL COUNCIL. The report of the Public Authorities to combat the health outbreak. It is noted that the outbreak of disease is still in progress and that the authorities are continuing their efforts to control it.

REPORT TO THE MUNICIPAL COUNCIL.

REPORT TO THE MUNICIPAL COUNCIL. The report of the Public Authorities to combat the health outbreak. It is noted that the outbreak of disease is still in progress and that the authorities are continuing their efforts to control it.

REPORT TO THE MUNICIPAL COUNCIL.

REPORT TO THE MUNICIPAL COUNCIL. The report of the Public Authorities to combat the health outbreak. It is noted that the outbreak of disease is still in progress and that the authorities are continuing their efforts to control it.

REPORT TO THE MUNICIPAL COUNCIL.

REPORT TO THE MUNICIPAL COUNCIL. The report of the Public Authorities to combat the health outbreak. It is noted that the outbreak of disease is still in progress and that the authorities are continuing their efforts to control it.

REPORT TO THE MUNICIPAL COUNCIL.

REPORT TO THE MUNICIPAL COUNCIL. The report of the Public Authorities to combat the health outbreak. It is noted that the outbreak of disease is still in progress and that the authorities are continuing their efforts to control it.

REPORT TO THE MUNICIPAL COUNCIL.

REPORT TO THE MUNICIPAL COUNCIL. The report of the Public Authorities to combat the health outbreak. It is noted that the outbreak of disease is still in progress and that the authorities are continuing their efforts to control it.

FUTURE OF COUNCIL.

A Request to be Put to the Governor.

A Request to be Put to the Governor. The Municipal Council is requested to consider the future of the Council and to make a recommendation to the Governor.

FUTURE OF COUNCIL.

FUTURE OF COUNCIL. The Municipal Council is requested to consider the future of the Council and to make a recommendation to the Governor.

FUTURE OF COUNCIL.

FUTURE OF COUNCIL. The Municipal Council is requested to consider the future of the Council and to make a recommendation to the Governor.

FUTURE OF COUNCIL.

FUTURE OF COUNCIL. The Municipal Council is requested to consider the future of the Council and to make a recommendation to the Governor.

FUTURE OF COUNCIL.

FUTURE OF COUNCIL. The Municipal Council is requested to consider the future of the Council and to make a recommendation to the Governor.

Box 31. Phone 34.

PLAGUE

Buy Your Rat Traps from

S. ELLIS & Co.

Nairobi.

Box 31. Phone 34. Buy Your Rat Traps from S. ELLIS & Co. Nairobi.

Box 31. Phone 34. Buy Your Rat Traps from S. ELLIS & Co. Nairobi.

Box 31. Phone 34. Buy Your Rat Traps from S. ELLIS & Co. Nairobi.

Box 31. Phone 34. Buy Your Rat Traps from S. ELLIS & Co. Nairobi.

Box 31. Phone 34. Buy Your Rat Traps from S. ELLIS & Co. Nairobi.

Box 31. Phone 34. Buy Your Rat Traps from S. ELLIS & Co. Nairobi.

Box 31. Phone 34. Buy Your Rat Traps from S. ELLIS & Co. Nairobi.

- TO LET - RESIDENTIAL FLAT IN NAIROBI HOUSE

Three Large Rooms and All Conveniences. Immediate Possession. Phone 120. Mr. H. P. Ward & Co. Nairobi.

Three Large Rooms and All Conveniences. Immediate Possession. Phone 120. Mr. H. P. Ward & Co. Nairobi.

Three Large Rooms and All Conveniences. Immediate Possession. Phone 120. Mr. H. P. Ward & Co. Nairobi.

Three Large Rooms and All Conveniences. Immediate Possession. Phone 120. Mr. H. P. Ward & Co. Nairobi.

XMAS HOLIDAYS

ORDER YOUR NEW OVERLAND BOX CHASSIS

Model 92 (THE BLUE BIRD) £350

Model 91 (THE IMPROVED LIGHT OVERLAND) £280

THE OVERLAND SAFARI CAR WITH SPRING SEATS £235

Monkton & Sear, Ltd., NAIROBI. SIXTH AVENUE.

6 SEATER BOX CHASSIS C

GRAHA! SOLD BY DOG

BEALES & SMITHSON. LONDON & NAIROBI. Representing in Kenya, Uganda, Tanganyika and Zanzibar.



Box 406, Grass Farm, Phone 302.

British India CO.

"SHELL" MOTOR SPIRIT STOCKISTS. MOTOR MARI & EXHIBITOR. THE REVUEUR CO. MONKEYS & SEARS.

PLEASURE CR M.V. "DUMI" Leave Mombasa on Call Lamu, Call Kisumu, Call Lamu, Arrive Mombasa.

There are 20 first class available, for which early Smith Mackenzie & Co. The "Dumra" is a motor Railway. The Railway Administ tickets from all up-country for the double journey.

INSPECTION INVITED

Of our Farm Register which contains a wide and varied range of excellent farms, suitable for...

COFFEE, MAIZE, SISAL, DAIRYING, ETC. in all stages of development—large and small, for sale on Easy Terms of Payment or Lease with Option of purchase.

J. W. MILLIGAN & Co., Land & Estate Agency Department. MADRATALY BUILDING, NAIROBI.

George Blowers.

Office and Works, MENING WHITEWAY, NAIROBI. FROBER 28

Table with columns for various items like WINDOW AND FRAME, SPECIAL DOUBLE GLAZED WINDOWS, and their prices.

KENTON COLLEGE. Kijabe, Kenya Colony.

The above Preparatory School for Boys will be opened in January, 1924 by Messrs. W. Jesse, M.A. (Hons), Cambridge, F.Z.S. formerly Fellow, Allahabad University; F. R. Cramb, M.C., M.A. (Hons) Abhin, and H. A. Turner, B.A., LL.B. (Hons.) Cambridge. For further particulars apply: W. JESSE, Esq., Lodge Hotel, Nakuru, K.C.



Margaret Collyer

Miss Collyer cannot hold herself responsible for the accuracy of statements made in these notes as they are, in the main, based on information supplied to her by correspondents.

arrived at last this week with you can get a dog and which before they have had their heads but all right but I have had before they will, and probably a better time to come where both dog and lady are important subjects. With regard to Mr. Black's bull-dog, I am told to advise his owner to see if it will produce puppies to see if it does later he will be all right with anything.

XMAS XMAS. FOR THE PRESENTS GO TO B. CHOTRAM, Government Road, WOODVILLE, PRICES P.O. Box 844, NAIROBI.

VIRGINIA CIGARETTES. BEST VALUE FOR MONEY. "Grey" No. 1 tins 50/- 4/7 1/2 "2 pks 10" 5/6 "3 tins 50" 3/6 "Smoky" tins 50/- 4/7 1/2 "Federal Gold Finks 50" 1/6 "Lucky Charms" 50" 1/6

OAKLEIGH. Now come to the question of breeding. I have a very lengthy article sent me on the possibility of breeding resistant to tick-dog. You are right in this way. I enter into no particular opinion about the very old question of whether or not we should breed for resistance to ticks. This is a provision of nature. I feel a certain amount of sympathy for those who do not see it lightly and therefore I have over seen some ticks in the number of eight very strong children.

GREAT VALUE. Gents Welsley Cycle Hose. Fancy Furs Over Tops In Light Fawn, Dark Fawn, and Lovest Mixture. Shs. 7/50 per pair. Shs. 21/- per 3 pairs. YULL & Co. In Floor, P.O. Box 16, Madrasly Bldg. Behind the Bank, H.B. Rd.

NAIROBI SCHOOL OF DANCING. Private Lessons. The "Bliss", No. 10, Oak St., near Wallis, etc. Terms: Apply MISS EDITH OUTRAM, Box 109, NAIROBI.

THE YORKS. INSURANCE LIMIT. HEAD OFFICE — YORK.

Local Agents and Attorneys R. O. HAMILTON, Ltd., Government Road, P. O. Box 302, NAIROBI. Phone 552.

KENNEL NOTES

Miss Collyer cannot hold herself responsible for the accuracy of statements made in these notes as they are, in the main, based on information supplied to her by correspondents.

arrived at last this week with you can get a dog and which before they have had their heads but all right but I have had before they will, and probably a better time to come where both dog and lady are important subjects. With regard to Mr. Black's bull-dog, I am told to advise his owner to see if it will produce puppies to see if it does later he will be all right with anything.

I have a very lengthy article sent me on the possibility of breeding resistant to tick-dog. You are right in this way. I enter into no particular opinion about the very old question of whether or not we should breed for resistance to ticks. This is a provision of nature. I feel a certain amount of sympathy for those who do not see it lightly and therefore I have over seen some ticks in the number of eight very strong children.

THE MAD HANI. BY PHILIP ARDREY. If you have any more of this kind of thing, please send it to me. I will be glad to read it.

STANDARD BROOM. NAIROBI. to see, will you also couple to get the master by a heavy chain. By the end of January, with any dog and paired with him, you should have a good haul on any loads of very sharp bullocks, but I am sure you will find that Mr. Murphy's is a good hauler. I would find him.

It was very disappointing to hear that Mr. Murphy's is a good hauler. I would find him. I am sure you will find that Mr. Murphy's is a good hauler. I would find him.

REZINA

Lowest Sale £2,150

REZINA Tailor and Broadcloth Government Road, NAIROBI.

BOOKS WORTH

THE END OF THE ROAD BY ROSE P. MARGARY. THE END OF THE ROAD BY ROSE P. MARGARY. THE END OF THE ROAD BY ROSE P. MARGARY.

Vertical text on the far right edge of the page, including 'CHURCH' and other small notices.

Auction Sales Austin's Auctions

Sale of Furniture, Quantity of Green Canvas, Revolver, Rifles, Thermometers &c. Motor Cycles, &c. &c.

ARCHIBALD HOGG.

Commissioner Agent, Dealer in Arms and Ammunition, MAJOR... COMMERCE... Auctioneers

AUSTIN & Co.

Will Sell by Public Auction WITHOUT RESERVE. TO-DAY, Nov. 15th. AT 10 A.M. SHARP.

SIX MESSAGE DINING ROOM CHAIRS... ONE GIGAWATT... ONE MOTOR CHAIR... ONE PAIR OF NEW HARRIS CLIPPERS...

AUSTIN & Co.

HUGE SALE OF PAINTS, DISTEMPERS, VARNISHES, &c.

Entirely without reserve at 10 a.m. sharp at our Mart, on Saturday, Nov. 17th.

Muter's Sales.

Miscellaneous Goods Sale Friday, November 16th, Commencing at 10 a.m. prompt.

AUSTIN & Co., Auctioneer.

'SHELL' PRE-EMINENT 'Every Drop Tells'

'SHELL' LUBRICATING OILS.

'Shell' has always met the highest quality petrol; to-day it means more-it means the Highest Grade Lubricating Oil the world produces.

AGENTS: SMITH MACKENZIE & Co.

Native War Memorial.

TO CONTRACTORS. TENDERS are invited for the erection of the Native War Memorial Hall, Pumwani, Nairobi.

Bill of quantities and specification may be obtained from the undersigned on deposit of Shs. 40/- returned on receipt of a bona-fide tender.

Drawings and conditions may be inspected daily between 10 a.m. and 4 p.m.

GILES & GEESON, ARCHITECTS, GOVERNMENT ROAD.

UNEMPLOYMENT.

Del System Radically Reduced. OTHER HOME NEWS.

London, October 27. I could not apologise for not writing you as frequently as I would like to do. You cannot take it too much to the heart that the Government is not doing more for the unemployed.

Your indignation will reflect precisely the views you hold of the Government. It is a pity that you should be so much concerned about the unemployed.

AUSTIN & Co.

THE EAST AFRICAN STANDARD. THE EAST AFRICAN STANDARD. THE EAST AFRICAN STANDARD.

THE MILITARY HAS VOTED.

The Military has voted to elect a committee to inquire into the conditions of the Army. The committee will consist of three members.

THE LOCAL AUTHORITIES.

The Local Authorities are being urged to take steps to improve the conditions of the unemployed. It is suggested that they should provide more work for the unemployed.

THE AIR-GILDING COMMISSION.

The Air-gilding Commission has been set up to inquire into the conditions of the air-gilding industry. The commission will consist of three members.

THE AIR-GILDING COMMISSION.

The Air-gilding Commission has been set up to inquire into the conditions of the air-gilding industry. The commission will consist of three members.

THE AIR-GILDING COMMISSION.

The Air-gilding Commission has been set up to inquire into the conditions of the air-gilding industry. The commission will consist of three members.

OVERSEAS MAILS.

The tables below show the latest news from the various parts of the world. The tables are arranged in alphabetical order of the countries.

Table with columns: STRAHER, FROM, TO, and other details of overseas mail services.

THEATRE ROYAL NAIROBI.

A GRAND 'BENEFIT' VARIETY PERFORMANCE WILL BE PRESENTED FOR MISS MABEL BLACK.

Saturday, 24th November. The following well-known Artists have been engaged to appear:

- MR. LEWIS'S CHILDREN'S... MISS MABEL BLACK... MR. J. C. SHAW... MR. H. H. SMITH... MR. H. SCHWARTZ... MR. A. H. SMITH... MR. H. WOOD... MR. C. N. HARRISON.

FOR SALE.

'JACKSON HYBRID COFFEE'... (SUGAR TREES HUNDREDS) PER POUND... FREE AS ANY POST OFFICE IN EAST AFRICA... WILL BE BOUGHT, BIRD AVAILABLE...

NOTICE OF REMOVAL.

LOUGHREA & MOORE, Mechanical & Electrical Engineers, Nairobi, Kenya Colony, and at Dar-es-Salaam, Territory.

THE AIR-GILDING COMMISSION.

The Air-gilding Commission has been set up to inquire into the conditions of the air-gilding industry. The commission will consist of three members.

THE AIR-GILDING COMMISSION.

The Air-gilding Commission has been set up to inquire into the conditions of the air-gilding industry. The commission will consist of three members.

WHITEAWAY LAIDLAW & CO. LTD

There is Always SOMETHING NEW

WATCH HITEAWAY IN DOWNS

LADIES SKIRTS.

NEW MODELS JUST ARRIVED.

Ladies Walking and Dress Skirts. In good quality fine Serge. Navy Nigger in shade of water 25, 29, 30, best pleated and knife folded. All kinds skirt for morning wear. Price, Shs. 27/00

Wonderful Value in Ladies Green Skirts.—In good quality Serge. Double box pleats, being intervals of pretty knife folded pleats. Narrow belt at waist. Shs being 25, 28, 30. Price, Shs. 47/00, 40/00

We have a large assortment of Ladies Skirts in good quality Chequerings, with two contrasting shades in smart stripes. Knife fitted in all. Prices from Shs. 47/00 to 67/00.

THE FLOWER SHOW

Among the many flowers now in the way specially mention the long train of tiny flowers suitable for trimming children's hats, they have got as much in every shade and a hat, they have got as much in every shade and a hat, they have got as much in every shade and a hat.

LADIES TERALS

JUST RECEIVED

Our new stock of the most stylish Mohel which is now so popular. From and Co's popular "Tropical" Double Teral as shown in Beaver, Grey or Brown, Hand silk. Price, Shs. 50/-

THE LATEST DRESS GOODS.

COLOURED IRISH DRESS LINENS.

These retain their coloring after repeated washing and do not crease easily owing to a special waterproof finish. For Frocks, Skirts, Shirts, Blouses and Children's wear in White, Cream, Amber, Nut Brown, Tangerine, Navy, Sky, Duster Blue, Gunter Grey, Lemon, Bead, Helle, Amybeth, etc. With Buttons. Shs. 5/- per yard

BATHING

Are accustomed to wear and easily washed. For Tervn or good and very attractive. White, Lemon, Blue, Smoky Sky, Shell, Pink, Jade, Almond Green, Navy, Brown, Helle, Mauve, Flame, Copper, Old Rose, etc. Width 30ins. Shs. 2/60 per yard

CHARMING SILK UNDERWEAR.

NEW STOCK AT MOST REASONABLE PRICES.

WOMEN SILK GARMENTS.

Ladies Tents — Women silk fabric, open shape, narrow straps at shoulder. Colours available are White, Pink, Mauve or Blue. Price, Shs. 15/- each

Director's Knicker—These are in the same set silk material, excellent washing and wearing quality elastic waist and knee. Colours as above. Price, Shs. 15/00

Silk Petticoats—If you have never worn Art woven silk underwear there is a lot of comfort mixed. They are ideal garments. Excellent service, in colours as above. Price, Shs. 14/-

WOOLLEN COATS.

"JANE" All Wool Scotch Knit Coat.—Soft Flannel wool. Very easy fitting style with long roll collar, belt and two pockets. Available in Forest, Brown or Grey. Price, Shs. 37/00

"JOHN" The Newest Model Sports Coat.—7/1. Full all-wool, close knit in the Jumper-Coats style, the long roll collar has contrasting colored bars and ends in a buttoned over front, the colours are Lemon/White, Sage /Fawn, Grey /Helle, Fawn/Nigger-Brown. Price, Shs. 27/00

FOR SPORTS WEAR.

"JEN" A Most Serviceable All-Wool Sports Coat. In 6/1 Rib knit, cut on generous bias, long roll collar, two pockets and belt in self-colours only. Jade, White, Sage or Fawn. Price, Shs. 29/00

"JOAN" The Deservingly Popular Cardigan. Style in the Blended Wool, the ideal House-Coat, very light in weight but so cozy. 4 pearl buttons, two pockets, turn back cuffs. The colours are Blunt, Jade, White, Sage or Lemon. Price only, Shs. 6/00 See below.



WRAP COATS.

THE NEWER STYLE.

Ladies Velvet Cloth Coats.—Well colored with Fine Beaver Cloth Fur Collar, long waisted style, fasten with smart beads at waist in colours: Grey, Nut-Brown, Nigger. Price, Shs. 115/-

Special Wrap Coats.—For day or evening wear, in good quality Chequerings, in Nigger, Brown and Navy, identical with Silk, laid on collar, above and cuffs. Similar to check. Small belt at waist, lined back and sleeves with Silk Shantung material. Price, Shs. 125/-

NEW WOOL CAPES

These fashionable wraps are in stock in the following colors: Grey/Lemon, Brick/Mauve, Brown/Fawn, Turq/Champ. Price, Shs. 55/-

LADIES WATERPROOFS.

A splendid selection of Ladies Waterproofs, just to hand, dependable in every way.

"MEAD" Fawn Shade Madras-like. Similar to check with check reverse, the single belted style. 48" length. Price, Shs. 35/-

"WARREN" Ladies Water proof, in Navy or Fawn. Belted. Price, Shs. 50/-

"SHIRLEY" The new original Cadmaster in Brown or Navy! Price, Shs. 75/-



NEW WOOL JUMPERS.

"MOIRA" Softest Blended Wool, Shell Knit Jumper. The new long style with cord at waist, belt as possible yet very cozy. The colours are: Lemon, Sage, Champagne, White and Jade. Price only, Shs. 17/00

"JANE" A New Style 12/1 Rib All-Wool Jumper. Scallop neck and bottom, embroidered in silk in contrast longer than in check and with cord at waist. Sage, Lemon, Rose, Jade or Champagne. Price only, Shs. 19/00



WOOLLEN FROCKS.

"JENNY" The illustration does not do justice to the very hand. These are cut in the newest style, quite plain front and back and with a just a pointer suggestion in the slightly gathered hips. The "Jenny" model has elbow length sleeves edged contrast colour and the neck opening is reinforced by a small roll collar also edged by a suitable colour to tone, the shades are Sage also Jade, Lemon/White, Jade/Fawn, Lemon/White, Jade/White, Grey/V. Rose, Fawn/Brown. Price only, Shs. 27/00



DON'T MISS THIS

A manufacturer's stock of Christmas is added at the collection price of 10/- spray. All kinds of flowers are in stock. Forget-me-nots, pansies, etc. Price, per bunch Shs. 17/-

The CHRISTMAS TOY FAIR

This week, sees the opening of the largest and most varied display of Christmas Toys ever shown in Nairobi. An immense floor space has been devoted to making a really great show. There are Toys at prices to suit every pocket, from the quaint Pixy Toys at 25 Cents to Medal Engines at 25/-; in between are the Mechanical Toys from Shs. 1/ 50 and Dolls from Shs. 2/ 50.

All manner of Games, old Friends and some new ones.

CHRISTMAS CRACKERS. — See The Kenya LION. — See PIP, SQUEAK and WILFRED.

IS NOW OPEN

IT IS NOT TOO EARLY To Visit Your Xmas Gifts

CHOICE TUSCAN HATS.

NEW STOCK

There is always an attraction in new Ready-to-Wear. Christmas just the "something different" which appeals, a new way of placing the ribbon maybe, or present adjustment in the hair, or new styles. Cream Tuscan shapes with rich silk ribbon and band in many shades. Price, Shs. 16/00

LADIES VESTS OF SPECIAL DELIGHT.

With small shape neck, little frills and cut dress.

ANOTHER VEST—Small shoulders, every day wear.

For Quality and another price. Opens style, gets at top, ribbed, ideal evening, in weight and color.

Price, Shs. 25/-

DAINTY LAINN AND CANNON

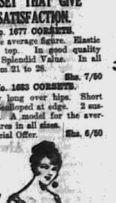
The Softest of Material Trimmed with Choice Lace.

GIFT SETS OF LADIES' UNDERWEAR—White Cambric embroidered and welted, in Pink, White or Pale Blue, Nightdresses, Cami, Chemises and Knicker. Price, Shs. 25/- the set

A new shipment of finest Lawn Underwear just to hand. The garments are beautifully made and fashioned with dots or Vell Lace and ribbons. Some of the prices:

Knicks from Shs. 13/00 to 14/00

Chemises from Shs. 16/00



WHITEAWAY, LAIDLAW & Co., Ltd.

THE SIXTH AVENUE CASH STORE. NAIROBI.

(INCORPORATED IN ENGLAND)

BERLAND
STATION.

SECOND HAND
MOTORCYCLES FOR
SALE AT BARGAIN PRICES.

Wholesale
and Retail
Body-Only
and 1000 Miles.

W. Sear, Ltd.
Nairobi

REPRODUCED AT THE GENERAL PRESS
OFFICE AT NAIROBI

OUR LIVES
ARE AT
STAKES

Having Appeal
in Britain.

THE
EMPIRE FRANCE.

of Conference with
United States.

of Secretary's Address.

of Secretary's Address.

of Secretary's Address.

of Secretary's Address.

of Secretary's Address.

of Secretary's Address.

of Secretary's Address.

of Secretary's Address.

of Secretary's Address.

of Secretary's Address.

of Secretary's Address.

of Secretary's Address.

of Secretary's Address.

of Secretary's Address.

of Secretary's Address.

of Secretary's Address.

of Secretary's Address.

of Secretary's Address.

of Secretary's Address.

of Secretary's Address.

GUARANTEED THE LARGEST CIRCULATION OF ANY NEWSPAPER
IN KENYA, UGANDA, TANGANYIKA AND ZANZIBAR.

THE EAST

DAILY EDITION.

African Standard

MOMBASA TIMES & UGANDA ARGUS.

THE OLDEST ESTABLISHED NEWSPAPER PUBLISHED IN KENYA AND MOMBASA.

NAIROBI, FRIDAY, NOVEMBER 16, 1923.

IMPORTANT NOTICE
TO MUSIC LOVERS AND DANCE
ENTHUSIASTS.

From Nov. 1st the price of HENDON'S
VOCALIST and CONTRA tenors
will be considerably reduced.
Dance Records D/S 10" ... 4 00
Gold Centre and other Cole
belles D/S 10" ... 0 00
12" Records D/S 5/6 2/6 extra
6" Baby Records, latest ... 1 50
novelty D/S ... 1 50
OUR CELEBRITY RECORDS ARE
CONTINUED TO BE THE FINEST
IN THE WORLD.
SOLE AGENTS—
The R.E.A. Music Stores, Co. Ltd.
Tel. 229 NAIROBI. Box 164

PRINTED BY GIBBS

DOMINIONS PRESS FOR IMPERIAL WIRELESS POLICY

Australia's Premier's Criticisms.

BRITAIN ASKED TO GIVE DECISION
WITHOUT DELAY.

Marconi Company and Monopoly

PUBLIC INTERESTS BEFORE ANY
PRIVATE INTERESTS.

Opposition Conference Details.

[MORNING STAR'S ADDRESS.]

London, Nov. 11.
In a speech on cables and wireless communication at the Imperial Conference on Nov. 11, Mr. Brown said he did not share the view of Canada and South Africa that the question that wireless and cables ought to be established in Great Britain was a question for the British Government. He maintained that it was a great Imperial question. Cheap and efficient communication was essential to the Empire. The rapidity of communication would be a great asset to the Empire. The rapidity of communication would be a great asset to the Empire. The rapidity of communication would be a great asset to the Empire.

Almost Too Late.

Mr. Brown said the problem of wireless communication on the Empire policy was only soluble by a speedy communication. He said that the wireless offered such an opportunity. It would be unnecessary to duplicate the Imperial cable if wireless communication could be established without delay. Other matters were being dealt with. He said that the wireless offered such an opportunity. It would be unnecessary to duplicate the Imperial cable if wireless communication could be established without delay.

Imperial Investigation.

Mr. Brown concluded that since the British Government had received the report of the committee, he was entitled to say that the British Government had received the report of the committee. He said that the British Government had received the report of the committee. He said that the British Government had received the report of the committee.

New Zealand's View.

Mr. Massey, Premier of New Zealand, said he was in agreement with the British Government's view on the wireless and cables question.

PREPARING FOR ELECTION CAMPAIGN.

Liberals United for the
Coming Fight.

LIBERAL-LABOUR CO-OPERATION.

No Indication of Official
Post.

[MORNING STAR'S ADDRESS.]

The United Liberal Party manifesto, which was issued at a conference between Mr. Asquith and Mr. Lloyd George, states that the Liberal candidates will go to the polls in such a manner as to make solid Liberalism a practical alternative to the present Government.

The Liberal paper published that Mr. Asquith, as the leader until the Party shall meet, would be in a position to compile and the Liberal Party's programme.

Domination Interest in
Foreign Policy.

CLOSE CONNECTION WITH
WAR.

[MORNING STAR'S ADDRESS.]

Mr. C. A. Jones on behalf of the Liberal Party, said that the British Government's policy was entirely a matter for the British Government to decide.

Mr. H. W. Williams said that the British Government was operating at the end of 1917.

Mr. H. W. Williams said that the British Government was operating at the end of 1917.

Mr. H. W. Williams said that the British Government was operating at the end of 1917.

Mr. H. W. Williams said that the British Government was operating at the end of 1917.

Mr. H. W. Williams said that the British Government was operating at the end of 1917.

Mr. H. W. Williams said that the British Government was operating at the end of 1917.

Mr. H. W. Williams said that the British Government was operating at the end of 1917.

Mr. H. W. Williams said that the British Government was operating at the end of 1917.

TANGANYIKA RAILWAYS.

No New Lines Being
Contemplated.

COLONIAL OFFICE
STATEMENT.

[MORNING STAR'S ADDRESS.]

In the House of Commons today Mr. Crawley gave information that the construction of new railways in Tanganyika is at present not contemplated.

THE GOVERNOR'S TOUR.

To Visit Victoria Nyamwezi
Sugar Works.

MADEHO TO BE INSPECTED.

[MORNING STAR'S ADDRESS.]

The Governor and party arrived here at 11.30 this morning, and will remain here until the 20th.

MONROSA TRAGEDY.

Coconut Thief's Violent
Death.

THAI IS OWNER ARRESTED.

[MORNING STAR'S ADDRESS.]

The man of the shanks was arrested immediately afterwards. The same occurrence in Mombasa, Thursday, July 26, 1923, was the result of a similar case.

Panel Doctors.

COURT OF SECURITY INTO
HOME SYSTEM.

[MORNING STAR'S ADDRESS.]

The panel doctors have unanimously decided to refer a case of a Court of Security into the Home System.

MONEY MARKET.

Ford
K. McIVOR & Co.
BEG TO ANNOUNCE
30%
reduction in the price of Ford Spares
Effecting from the 1st November, 1923.
Ford Carburetor ... 50/-
Ford Front Spring ... 25/-
Ford Radiator ... 170/-
Ford Crown Wheel ... 30/-
New Price: Sigs. 31/50, 17/50, 110/-, 19/25, 24/7.

ARE YOU THINKING OF BUYING A
NEW CAR
IF SO BE SURE AND GIVE IT A GOOD START
IN LIFE BY USING
SOCONY OILS
IT WILL SAVE YOU
POUNDS ON YOUR REPAIR
BILL AND MAKE YOUR CAR RUN SWEETER
YOUR GARAGE OR SERVICE STATION
Will Supply Your wants, and if you are
Anxious to Learn all About proper
Lubrication Just Ask for a
Copy of our "Instructive
Booklet."
"MOTOR LUBRICATION"
PUBLISHED BY THE
Standard Oil Co. of New York.

ESSEX **Ford** **B.S.A. MCycle**
FORD. **Douglas** **Raleigh**
SALES & SERVICE
NEW CARS and MOTOR CYCLES in Stock.
Ford Touring with self Starter ... £195-00
Safari Body " " " ... £200-00
Light Body " " " ... £190-00
4 1/2 H.P. B.S.A. Motor Cycle ... £116-10
2 1/2 H.P. Raleigh " " " ... £ 80-00
IMMEDIATE DELIVERY
TERMS OF PURCHASE CAN BE ARRANGED.
The Service
TELGRAMS: MOTORING.
TELEPHONE: 217.
P. O. BOX 682.

PREPARING FOR THE ELECTION.

Lessons of the Voting of November Last.

THE BOEY OF A LABOUR MAJORITY. Why Mr. Baldwin Should Return to Power.

THE DUTY OF PEOPLE IN KENYA.

"E. A. Standard" Special. (Continued from Yesterday.)

In this portion of his article... The Liberal reaction was... The Conservative reaction was... The Labour reaction was...

It is not surprising that... The Liberal reaction was... The Conservative reaction was... The Labour reaction was...

The danger comes from... The Liberal reaction was... The Conservative reaction was... The Labour reaction was...

It is not surprising that... The Liberal reaction was... The Conservative reaction was... The Labour reaction was...

It is not surprising that... The Liberal reaction was... The Conservative reaction was... The Labour reaction was...

It is not surprising that... The Liberal reaction was... The Conservative reaction was... The Labour reaction was...

It is not surprising that... The Liberal reaction was... The Conservative reaction was... The Labour reaction was...

It is not surprising that... The Liberal reaction was... The Conservative reaction was... The Labour reaction was...

It is not surprising that... The Liberal reaction was... The Conservative reaction was... The Labour reaction was...

It is not surprising that... The Liberal reaction was... The Conservative reaction was... The Labour reaction was...

THE MOTOR & PETROL DUTY.

Mr. Fazi Elaborates His Case. TAX BY WEIGHT.

Chairman of Commerce to Investigate.

Dealing with the Motor and Petrol Tax, Mr. Fazi... The Chairman of Commerce to Investigate.

It is not surprising that... The Chairman of Commerce to Investigate.

It is not surprising that... The Chairman of Commerce to Investigate.

It is not surprising that... The Chairman of Commerce to Investigate.

It is not surprising that... The Chairman of Commerce to Investigate.

It is not surprising that... The Chairman of Commerce to Investigate.

It is not surprising that... The Chairman of Commerce to Investigate.

It is not surprising that... The Chairman of Commerce to Investigate.

It is not surprising that... The Chairman of Commerce to Investigate.

It is not surprising that... The Chairman of Commerce to Investigate.

THE BOXING SHOW.

Fights to be Staged during Race-week. Net Encroaching Upon Present Churches.

INTERESTING BOOFS.

In connection with the first boxing tournament... The net encroaching upon present churches.

It is not surprising that... The net encroaching upon present churches.

It is not surprising that... The net encroaching upon present churches.

It is not surprising that... The net encroaching upon present churches.

It is not surprising that... The net encroaching upon present churches.

It is not surprising that... The net encroaching upon present churches.

It is not surprising that... The net encroaching upon present churches.

It is not surprising that... The net encroaching upon present churches.

It is not surprising that... The net encroaching upon present churches.

It is not surprising that... The net encroaching upon present churches.

WESLEYAN METHODISTS IN NAIROBI.

Net Encroaching Upon Present Churches. INTRODUCTORY SOCIAL.

The Wesleyan Methodists in Nairobi... Net encroaching upon present churches.

It is not surprising that... Net encroaching upon present churches.

It is not surprising that... Net encroaching upon present churches.

It is not surprising that... Net encroaching upon present churches.

It is not surprising that... Net encroaching upon present churches.

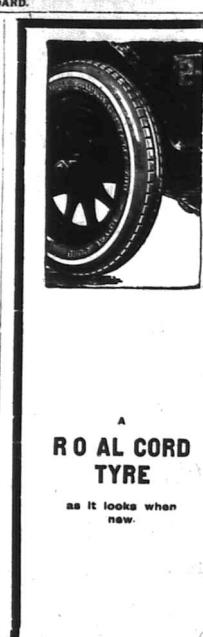
It is not surprising that... Net encroaching upon present churches.

It is not surprising that... Net encroaching upon present churches.

It is not surprising that... Net encroaching upon present churches.

It is not surprising that... Net encroaching upon present churches.

It is not surprising that... Net encroaching upon present churches.



ROYAL CORD TYRE. After accomplishing 16,633 MILES. This motor is still in good order and is serviceable for many more miles. The twin cover has done over 20,000 Miles to date.

ROAL CORD TYRE

as it looks when new.

This Cover is On View at McMillan Estate Office.

Zaghlul Pasha Sick.

ANXIETY AS TO HEALTH OF BOYPTAN NATIONALIST.

According to the Times Cairo correspondent, the health of Lord Zaghlul Pasha, who has for several days been confined to his bed, is becoming more critical.

For Farm & Hard Wear

This Boot has Gold-Leaf Water-Proof Uppers and Soles Ladies' Guaranteed. Stocked Cap and Capsacs

AVISO 35-

Citizens Portuguese.

The municipal office of the Portuguese... The article was well received.

The Plague Outbreak.

2,000 NATIVES TRY TO DEFEY MEDICAL AUTHORITY.

It will be remembered that during the outbreak of the plague in the East African Standard...

- TO LET - RESIDENTIAL FLAT

IN NAIROBI HOUSE. Three Large Rooms and all Conveniences. Immediate Possession.

Phone 120. Apply - H. F. PARD & Co. NAIROBI HOUSE.

BOOTS FOR THE RAINS

Fresh Stock Gum Boots. LADIES' 24/50. MEN'S 30/-. CHILDREN'S 16/- & 18/-

For Farm & Hard Wear

This Boot has Gold-Leaf Water-Proof Uppers and Soles Ladies' Guaranteed. Stocked Cap and Capsacs

AVISO 35-

Citizens Portuguese.

A Further Big Delivery Men's Famous Box Calf Derby

THE E D BRAND

Willow Calf Brogue. Tan Willow Calf Derby 35/-

Pure Gripe Sole. Genuine Ladies Evening Shoes. Tennis Golf Shoes. 48/-

Eadies Footwear, Ltd.

Willow Calf Brogue. Tan Willow Calf Derby 35/-

Pure Gripe Sole. Genuine Ladies Evening Shoes. Tennis Golf Shoes. 48/-

Eadies Footwear, Ltd.

Willow Calf Brogue. Tan Willow Calf Derby 35/-

Pure Gripe Sole. Genuine Ladies Evening Shoes. Tennis Golf Shoes. 48/-

Eadies Footwear, Ltd.

THE LIGHT THAT FAILED WAS NOT A "BLACKEN"

A NEW STOCK OF THE DEFENDABLE PETROL LAMP. Just unboxed and now showing.

300 Candels Power. Telephone 126 & 177.

W. B. DEPARTMENTAL STORE.

AUCTION SALES

Auction Diary

Friday, Nov. 12, at 10 a.m. Miscellaneous Goods (D. Muter). Saturday, November 17th: 11.15 a.m. sale of Paints, etc. (Austin and Co.).

ARCHIBALD HOGG.

Commission Agent, Dealer in Arms and Ammunition.

COMMISSIONERS RECEIVED... 100 BOTTLES OF BROTHERS TO... 100 BOTTLES OF BROTHERS TO...

ARMY AMMUNITION... 100 BOTTLES OF BROTHERS TO... 100 BOTTLES OF BROTHERS TO...

Muter's Sales.

Miscellaneous Goods Sale TO-DAY, November 16th, Commencing at 10 a.m. prompt.

I will sell as my dearest... ABSOLUTELY WITHOUT RESERVE... DAVID MUTER, Auctioneer

EFFICIENCY in SALES

— IN THE SECRET OF — Auctioneering Business I WILL GUARANTEE

Beat Results and perfect Satisfaction I will Prove it By Records.

JAMAL FIRIBHAL 8th Avenue. NAIROBI P. O. Box 209.

SANDS & CO NAIROBI.

GIGANTIC CLEARING SALE IMPLEMENTS.

Monday, 19th Nov. at 10.30 a.m. 8 Double Furrow Howard Ploughs

1 Howard Land Roller 1 Bobby Winneover.

Large quantity of spare parts for Howard's Plough and Harrows, land Mowers, Manure Grinders, a real good sale to save money at

SANDS & Co. Auctioneers.

NAIROBI CORPORATION. Applications are invited for the post of MUNICIPAL ENGINEER. Salary 2000. Leave, etc. subject to regulations now being framed.

Austin's Auctions

HUGE SALE OF PAINTS, DISTEMPERS, VARNISHES, Etc.

Daily instructed by a firm of Merchants at the coast we will sell

ENTIRELY WITHOUT RESERVE at 10 a.m. Sharp.

At our Mart on Sat. Nov. 17th.

ALL NEW STOCK.

READY MIXED RED LEAD & ZINC. BANGLOE ROOFING PAINT... BEST COPAL VARNISH... PETROLEUM RESISTING DISTEMPERS... GODOC PASTE DISTEMPERS... UNION GAK READY MIXED PAINTS... BIRBY DIP in Spal drums... BITUM SOLUTION in 50lb drums.

All the above are in perfect condition, and offer a splendid opportunity for anyone in need of such goods.

AUSTIN & Co., Auctioneers.

FOR SALE

"JACKSON HYBRID COFFEE SEED" PRICE, Rs. 300/- (THREE THOUSAND) PER BUHEL, DELIVERED FREE AT ANY POST OFFICE IN KENYA COLONY, THREAS

COBBER WITH ORDER, NO ORDER FOR LESS THAN 1 BUHEL WILL BE BOOKED, SEND AVAILABLE JANUARY, 1911.

APPLY H. JACKSON, POLLI, BETTA P. O. COOBE, INDIA.

Where to go for XMAS PRESENTS & TOYS?

WATCH THE NEWLY UN-PACKED GOODS! Cotton Caps, plain, 2/6; and 1/6 a yard. Page Silk, striped, 2/6; and 1/6 a yard. Ivory Neckties, from 1/6 to 2/6 upwards.

From 1/6 to 2/6 upwards. Ivory Neckties, from 1/6 to 2/6 upwards. Ivory Neckties, from 1/6 to 2/6 upwards.

As we may be primarily divided into the two classes, heavy, so we need say no more of the latter.

From 1/6 to 2/6 upwards. Ivory Neckties, from 1/6 to 2/6 upwards. Ivory Neckties, from 1/6 to 2/6 upwards.

As we may be primarily divided into the two classes, heavy, so we need say no more of the latter.

From 1/6 to 2/6 upwards. Ivory Neckties, from 1/6 to 2/6 upwards. Ivory Neckties, from 1/6 to 2/6 upwards.

As we may be primarily divided into the two classes, heavy, so we need say no more of the latter.

From 1/6 to 2/6 upwards. Ivory Neckties, from 1/6 to 2/6 upwards. Ivory Neckties, from 1/6 to 2/6 upwards.

As we may be primarily divided into the two classes, heavy, so we need say no more of the latter.

From 1/6 to 2/6 upwards. Ivory Neckties, from 1/6 to 2/6 upwards. Ivory Neckties, from 1/6 to 2/6 upwards.

As we may be primarily divided into the two classes, heavy, so we need say no more of the latter.

From 1/6 to 2/6 upwards. Ivory Neckties, from 1/6 to 2/6 upwards. Ivory Neckties, from 1/6 to 2/6 upwards.

As we may be primarily divided into the two classes, heavy, so we need say no more of the latter.

From 1/6 to 2/6 upwards. Ivory Neckties, from 1/6 to 2/6 upwards. Ivory Neckties, from 1/6 to 2/6 upwards.

As we may be primarily divided into the two classes, heavy, so we need say no more of the latter.

From 1/6 to 2/6 upwards. Ivory Neckties, from 1/6 to 2/6 upwards. Ivory Neckties, from 1/6 to 2/6 upwards.

THE GARDEN



[Dr. Max Linsmann, F.R.S.E., New Park, Ash River, to whom all correspondence connected with this column should be addressed.]

Written under the auspices of the KENYA HORTICULTURAL SOCIETY, Nairobi, to be sent to the Secy. Secretary, P.O. Box 27, Nairobi.

SOIL. To study culture, and what effect To cultivate and tame the stubborn soil.

There is scarcely so good a difference between the North and the South Pole as there is between the simple and the complicated classification of soils.

The simple division gives us (A) heavy soils (B) light soils, and the other extreme we have a soil which is not a soil at all.

City soils, containing heavy clay, are naturally very fertile, but they are not so fertile as they seem to be.

City soils, containing heavy clay, are naturally very fertile, but they are not so fertile as they seem to be.

City soils, containing heavy clay, are naturally very fertile, but they are not so fertile as they seem to be.

City soils, containing heavy clay, are naturally very fertile, but they are not so fertile as they seem to be.

City soils, containing heavy clay, are naturally very fertile, but they are not so fertile as they seem to be.

City soils, containing heavy clay, are naturally very fertile, but they are not so fertile as they seem to be.

City soils, containing heavy clay, are naturally very fertile, but they are not so fertile as they seem to be.

City soils, containing heavy clay, are naturally very fertile, but they are not so fertile as they seem to be.

City soils, containing heavy clay, are naturally very fertile, but they are not so fertile as they seem to be.

City soils, containing heavy clay, are naturally very fertile, but they are not so fertile as they seem to be.

City soils, containing heavy clay, are naturally very fertile, but they are not so fertile as they seem to be.

City soils, containing heavy clay, are naturally very fertile, but they are not so fertile as they seem to be.

City soils, containing heavy clay, are naturally very fertile, but they are not so fertile as they seem to be.

City soils, containing heavy clay, are naturally very fertile, but they are not so fertile as they seem to be.

City soils, containing heavy clay, are naturally very fertile, but they are not so fertile as they seem to be.

City soils, containing heavy clay, are naturally very fertile, but they are not so fertile as they seem to be.

City soils, containing heavy clay, are naturally very fertile, but they are not so fertile as they seem to be.

City soils, containing heavy clay, are naturally very fertile, but they are not so fertile as they seem to be.

City soils, containing heavy clay, are naturally very fertile, but they are not so fertile as they seem to be.

City soils, containing heavy clay, are naturally very fertile, but they are not so fertile as they seem to be.

City soils, containing heavy clay, are naturally very fertile, but they are not so fertile as they seem to be.

City soils, containing heavy clay, are naturally very fertile, but they are not so fertile as they seem to be.

City soils, containing heavy clay, are naturally very fertile, but they are not so fertile as they seem to be.

City soils, containing heavy clay, are naturally very fertile, but they are not so fertile as they seem to be.

THEATRE ROYAL NAIROBI

A GRAND "BENEFIT" VARIETY PERFORMANCE

WILL BE PRESENTED FOR MISS MABEL BLACKWELL ON

Saturday, 24th November 1910. The following well-known artists have kindly consented to appear—

Mrs. LEWIS'S CHILDREN'S BALLET. THE "FIBBERED FIVE". MISS MABEL BLACKWELL.

Mrs. A. H. SMITH. Mrs. WORLEIDGE. Mr. R. C. S. AUSTIN.

Mr. H. H. THRO. BLUNT. Mr. H. E. SCHWARTZ. Mr. A. H. SMITH.

Mr. M. St. C. THOM. Mr. LEONARD WOOD. Mr. C. N. M. HARRISON.

Boxes... £5/- and 10/-; Orchestra Stalls... £3/-; Stalls... £2/-; Balcony... £1/-; Gallery... 6d.

COMMENCE SHARP 9 p.m. BOOKING AT THEATRE ROYAL

Messrs. M. R. de SOUZA & Co.

GENERAL MERCHANTS. OLDEST AND RELIABLE FIRM IN KENYA COLONY.

Up-country Orders Promptly Executed and Carefully Packed.

Phone 75. NAIROBI. P. O. Branches at: MOMBASA & NAKURU. ESTABLISHED 1889.

Information for which we are grateful. The following are the white soils of the Kenyan Colony.

Further information for which we are grateful. The following are the white soils of the Kenyan Colony.

Further information for which we are grateful. The following are the white soils of the Kenyan Colony.

Further information for which we are grateful. The following are the white soils of the Kenyan Colony.

Further information for which we are grateful. The following are the white soils of the Kenyan Colony.

Further information for which we are grateful. The following are the white soils of the Kenyan Colony.

Further information for which we are grateful. The following are the white soils of the Kenyan Colony.

Further information for which we are grateful. The following are the white soils of the Kenyan Colony.

Further information for which we are grateful. The following are the white soils of the Kenyan Colony.

Further information for which we are grateful. The following are the white soils of the Kenyan Colony.

Further information for which we are grateful. The following are the white soils of the Kenyan Colony.

Further information for which we are grateful. The following are the white soils of the Kenyan Colony.

Further information for which we are grateful. The following are the white soils of the Kenyan Colony.

Further information for which we are grateful. The following are the white soils of the Kenyan Colony.

Further information for which we are grateful. The following are the white soils of the Kenyan Colony.

Further information for which we are grateful. The following are the white soils of the Kenyan Colony.

Further information for which we are grateful. The following are the white soils of the Kenyan Colony.

THE SPIRIT OF QUALITY

ELWARS

White Label

MASON & MAN

(over Mackintosh the Tailor) HARDING STREET.

SALE OF STOCK

FOR 1 WEEK ONLY

From Monday 19th to Saturday

ROBI.

ANCE

WELL

1923.

ly comman

LET.

subject

60/.

Y A.

Co.,

ed

196.

ed

ed

ed

ed

ed

ed

ed

ed

ed

ed

ed

ed

ed

ed

ed

ed

ed

ed

ed

ed

ed

ed

ed

ed

Union-Castle Line

... South and West Africa Ports and ...

... "Dunstan Castle," (single only) ...

... UNION CASTLE MAIL STEAMSHIP CO., LTD ...

... UNITED NETHERLANDS NAVIGATION CO., ...

... Regular fortnightly sailings ...

... "KAMARANAH" ...

... "SHERKESH" ...

... "BYKERE" ...

... "KAROO" will be accepted for direct shipment ...

... "HERFODE" Cargo will be accepted at current rates ...

... "MANTUVA" ...

... "MANTUVA" ...

... "MANTUVA" ...

... "MANTUVA" ...

... "MANTUVA" ...

... "MANTUVA" ...

... "MANTUVA" ...

... "MANTUVA" ...

... "MANTUVA" ...

... "MANTUVA" ...

... "MANTUVA" ...

... "MANTUVA" ...

... "MANTUVA" ...

... "MANTUVA" ...

... "MANTUVA" ...

... "MANTUVA" ...

... "MANTUVA" ...

... "MANTUVA" ...

... "MANTUVA" ...

... "MANTUVA" ...

... "MANTUVA" ...

... "MANTUVA" ...

... "MANTUVA" ...

... "MANTUVA" ...

... "MANTUVA" ...

National Bank of India

... National Bank of India ...

... National Bank of India ...

... National Bank of India ...

... National Bank of India ...

... National Bank of India ...

... National Bank of India ...

... National Bank of India ...

... National Bank of India ...

... National Bank of India ...

... National Bank of India ...

... National Bank of India ...

... National Bank of India ...

... National Bank of India ...

MUNICIPAL COUNCIL

... Town Engineer's Resignation ...

... Town Engineer's Resignation ...

... Town Engineer's Resignation ...

... Town Engineer's Resignation ...

... Town Engineer's Resignation ...

... Town Engineer's Resignation ...

... Town Engineer's Resignation ...

... Town Engineer's Resignation ...

... Town Engineer's Resignation ...

... Town Engineer's Resignation ...

... Town Engineer's Resignation ...

... Town Engineer's Resignation ...

... Town Engineer's Resignation ...

FAVORED NATIONS.

... Native Affairs Committee ...

... Native Affairs Committee ...

... Native Affairs Committee ...

... Native Affairs Committee ...

... Native Affairs Committee ...

... Native Affairs Committee ...

... Native Affairs Committee ...

... Native Affairs Committee ...

... Native Affairs Committee ...

... Native Affairs Committee ...

... Native Affairs Committee ...

... Native Affairs Committee ...

... Native Affairs Committee ...

COMMERCIAL AND CONSULAR TREATY.

... Commercial and Consular ...

... Commercial and Consular ...

... Commercial and Consular ...

... Commercial and Consular ...

... Commercial and Consular ...

... Commercial and Consular ...

... Commercial and Consular ...

... Commercial and Consular ...

... Commercial and Consular ...

... Commercial and Consular ...

... Commercial and Consular ...

... Commercial and Consular ...

... Commercial and Consular ...

STATE EXPRESS CIGARETTES 555 VIRGINIA

IN AID OF ST. DUNSTAN'S

British India Steam Navigation Co. Ltd.

PLEASURE CRUISE TO KISMAYU

RAILWAY EXTENSION

PLAGUE

Mr. H. H. Seymour-Jones

... Mr. H. H. Seymour-Jones ...

J. & S. RIFKIN & Co.

... J. & S. RIFKIN & Co. ...

HACKETT'S HOTEL

... HACKETT'S HOTEL ...

TENNIS - DANCING

... TENNIS - DANCING ...

FOR SALE

... FOR SALE ...

XMAS XMAS

... XMAS XMAS ...

B. CHOTRAM

... B. CHOTRAM ...

NAIROBI SCHOOL OF DANCING

... NAIROBI SCHOOL OF DANCING ...

SIEGLER'S DRY-CLEANING & DYING WORKS

... SIEGLER'S DRY-CLEANING & DYING WORKS ...

INSPECTION INVITED

... INSPECTION INVITED ...

COFFEE, MAIZE, SISAL, DAIRYING, ETC., ETC.

... COFFEE, MAIZE, SISAL, DAIRYING, ETC., ETC. ...

J. W. MILLIGAN & Co.

... J. W. MILLIGAN & Co. ...

George Blowers.

... GEORGE BLOWERS ...

WINDING AND FRAMING

... WINDING AND FRAMING ...

NAKURU TEA ROOMS.

... NAKURU TEA ROOMS ...

Table Boarders Catered for at moderate rates.

... Table Boarders Catered for at moderate rates ...

EXPERT OPINION.

... EXPERT OPINION ...

UNGA, Ltd., NJORO.

... UNGA, Ltd., NJORO ...

Under the Gracious Patronage of H.E. Lady Coryndon

... Under the Gracious Patronage of H.E. Lady Coryndon ...

Office and Works, RICHARD WETTERAUS

... Office and Works, RICHARD WETTERAUS ...

BRITISH INDIA STEAM NAVIGATION CO. LTD.

... BRITISH INDIA STEAM NAVIGATION CO. LTD. ...

PLEASURE CRUISE TO KISMAYU

... PLEASURE CRUISE TO KISMAYU ...

RAILWAY EXTENSION

... RAILWAY EXTENSION ...

PLAGUE

... PLAGUE ...

There is Always SOMETHING NEW



CATCH HITEAWAY INDOORS

LADIES SKIRTS.

NEW MODELS JUST ARRIVED.

Ladies Walking and Dress Skirts. In good quality fine Serge. Navy Nigger in drape of waist 25, 28, 30. Box pleated and knife fitted. An ideal skirt for morning wear. Price, Shs. 27/50

Wonderful Value in Ladies Cream Skirts.—In good quality Serge. Double box pleated, being illustration of pretty knife-kilted panels. Narrow belt at waist. Sizes being 25, 28, 30. Price, Shs. 47/50, 49/50

We have a large assortment of Ladies Skirts in good quality fabric, with two contrasting shades in smart stripes. Knife-kilted in all. Price from Shs. 47/50 to 65/.

THE FLOWER SHOW

Among the many flowers now on show we would specially mention the large **IMBIA** which they force up for trimming children's hats, they flower all-in-one in every shade and a few trails of **IMBIA** Rose. Shs. 2/50

LADIES TRENCS

JUST RECEIVED

Our new stock of the smart style **IMBIA** which is now so popular. Trens and Co's "Tropical" Double Trim in Navy, Grey or Brown, lined silk. Price, Shs. 50/.

THE LATEST DRESS GOODS

COLOURED IRON DRESS LINENS

These retain their colouring after repeated washing and do not crush easily owing to a special secreted finish. For Frocks, Skirts, Shambas, Smocks and Children's wear in White, Cream, Amber, Nut Brown, Tan, Green, Navy, Blue, Red, Yellow, Quaker Grey, Lemon, Rosella, Heli, Anyshat, etc. Width 36in. Shs. 5/- per yard

BATINES

Are recommended in wear and easily washed. For Frocks or Shambas wear, they are equally good and very attractive. White, Lemon, Blue, Smock, Sky, Shell, Pink, Jade, Almond Green, Navy, Brown, Heli, Navy, Flane, Copper, Old Rose, etc. Width 36in. Shs. 5/60 per yard

CHARMING SILK UNDERWEAR

NEW STOCK AT MOST REASONABLE PRICES WOVEN SILK GAMBETTES

Ladies Vests.—Woven silk fabric, opera shape, narrow straps at shoulders. Colours available are White, Pink, Navy or Blue. Price, Shs. 15/- each

Directoire Knicker.—These are in the same art silk material, excellent washing and wearing quality elastic waist and knees. Colours as above. Price, Shs. 18/50

Silk Petticoats. If you have not seen our Art woven silk under-skirts there is a lot of comfort and charm. These are ideal garments, giving excellent service in colours as above. Price, Shs. 21/-

Price, Shs. 25/-

WOOLLEN COATS.



"JANE" All Wool Scotch Kilt Coat.—Soft fleecy wool, rosy navy lining style with long roll collar, belt and two pockets. Available in Levat, Brown or Grey. Price, Shs. 27/50

"JOYCE" The Newest Model Sports Coat.—3/1 Rib all-wool, close knit in the Jumper-Coats style, the long roll collar has contrasting coloured bars and ends in a buttoned over front. The colours are Lemon/White, Sage/Fawn, Grey/Heli, Fawn/Nigger Brown. Price, Shs. 27/50

LADIES WATERPROOFS.

A splendid selection of Ladies Waterproofs, just to hand, disposable in every shade.

"HELEN" Fawn Shade Mackintosh. Belted at waist with check reverse, the popular belted style. 60" long. Price, Shs. 35/-

"WARREN" Ladies Water-proof, in Navy or Fawn, belted style. Price, Shs. 45/-

"SHIRLEY" The new striped Chambers' style in Brown or Navy. Price, Shs. 75/-

NEW WOOL JUMPERS.

"MOIRA" Softest Shetland Wool, Shell Knit Jumpers.—The new long style with cord at waist, light as possible yet very cozy. The colours are Lemon, Sage, Champagne, White and Jade. Price only, Shs. 17/50

"JANE" A New Style 137 Rib All-Wool Jumper. Belted neck and bottom, embroidered in silk to contrast, longer than in sketch and with cord at waist. Sage/Lemon, Rose, Jade or Champagne. Price only, Shs. 19/50

FOR SPORTS WEAR.

"JEN" A Most Serviceable All-Wool Sports Coat. In 6/1 Rib knit, cut on generous lines, long roll collar, two pockets and belt in all-colours only. Jade, White, Sage or Fawn. Price, Shs. 29/50

"JOAN" The Droversy Popular Gaiters Style in fine Shetland Wool, the ideal Home-Cut, very light in weight but so cozy. 4 wear buttons, two pockets, turn back cuffs. The colours are Blush, Jade, White, Sage or Lemon. Price only, Shs. 9/50 See below.



WRAP COATS.

THE NEWER STYLES.

Ladies' Values Cloth Coats.—Well tailored with Fine Beaver Ousey Fur Collar, long waistline, style. Fasten with smart buttons at waist. In colours: Grey, Nut-Brown, Nigger. Price, Shs. 115/-

Special Wrap Coats.—For day or evening wear, in good quality Gabardine, in Nigger, Brown and Navy, trimmed with Silk, broad on collar, sleeves and coat. Similar to sketch. Small belt at waist, lined back and sleeves with Silk finished material. Price, Shs. 125/-

NEW WOOL GAFFES

These fashionable wraps are in stock in the following colours: Grey/Lemon, Brick/Marble, Brown/Fawn, Green/Champ. Price, Shs. 150/-

DON'T MISS THIS

A manufacturer's stock of shattering **IMBIA** is offered at the following prices: 1000 in the spray. All kinds of flowers are in the stock. 1000 in the spray. Price, per bunch Shs. 1/50

CHOICE TUSCAN HATS.

NEW STOCK

There is always an attraction in new Ready-to-Wear Hats. Just the "something different" which appeals, a new way of placing the ribbon maybe, your present shipment in the hat worn in style. Cream Tuscan waps with rich silk ribbon and band in many shades. Price, Shs. 16/50

LADIES VESTS OF SPECIAL NOTE

DELICATELY MADE. With small trim, these Ladies Gaffe vests are made of the softest material and cut close. ANOTHER VERY SPECIAL VEST IN STOCK. Small shoulder straps every day wear. Price, Shs. 16/50

DAMNY LAWN AND CANNON

The Softest of Material Trimmed with Choice Lace. GIVE HERE OF LADIES UNDERWEAR. White Cambric embroidered and scalloped in Pink, White or Pale Lace and Ribbons. Colours and Knitings. Price, Shs. 25/- the set

A new shipment of finest Lawn Underwear just to hand.

The garments are beautifully made and trimmed with fine or Val Lace and Ribbons. Some of the prices: Nightdresses from Shs. 11/50 to 14/50 Knicker frock Shs. 6/50 to 14/50 Cambric-knits from Shs. 16/50

THE CHRISTMAS TOY FAIR

This week sees the opening of the largest and most varied display of Christmas Toys ever shown in Nairobi. An immense floor space has been devoted to making a really great show. There are Toys at prices to suit every pocket, from the quaint Play Toys at 25 Cents to Model Engines at £5; in between are the Mechanical Toys from Shs. 1/50 and Dolls from Shs. 2/50.

All manner of Games, old friends and some new ones.

CHRISTMAS CRACKERS. — See The Kenya LION. — See PIP, SQUEAK and WILFRED.

THE HONEYWARD PAPER MILL CLOESBURY, IND.

IS NOW OPEN

IT IS NOT TOO EARLY To Select Your Xmas Gifts

CORSET THAT GIVE SATISFACTION.

NO. 1877 CORSET. For the average figure, Elastic band at top. In good quality Cordell. Splendid Value. In all sizes from 21 to 28. Price, Shs. 7/50

NO. 1883 CORSET. Fairly long over hips. Short bust. Belted at edge. 2 suspenders. A model for the average figure in all sizes. Shs. 6/50 Special Offer.

NO. 1898 CORSET. For similar and Average figures. Wide elastic top. Lightly boned. Two suspenders. Wonderful Value. In all sizes 20 to 28. Price, Shs. 6/50

NO. 1895 CORSET. The ideal for all sizes. Scalloped at top. Short on hips. Low bust. 7/6 all sizes. Extraordinary Cheap. Price, Shs. 6/50 See the Aranda Window.



"RIBOLITE" W.B. 728 **"RIBOLITE"** LADIES RIBBON CORSET. With Time for very slender figures Exact as sketch. Two suspenders. An Ideal Sports Corset in sizes from 20 to 27. Extraordinary Cheap. Price, Shs. 5/50

NO. 728 W.B. TOLLER REDUO CORSET. For short well-developed and stout figures. Medium over hips. Wide elastic girth at hip, in good quality White Cordell. Similar to illustration in sizes 22 to 28. Price, Shs. 35/-

Style 1215. FRONT LACING W.B. CORSET. Low Bust, Medium hip length, comfortable cut away front. White cord with lacing in front instead of all in size from 22 to 28. A Model Perfect Fit. Price, Shs. 25/-



"W.B. 238" **"W.B. 1091"** Style 288, W.B. ATHLETIC CORSET. For slender and average figures. All elastic top. Size 22 to 27. Price, Shs. 15/50

NO. 1091 LA VIDA CORSET. Suitable for average figure. Low bust. Long over hips. In white only. Six silk suspenders. Price, Shs. 45/-

Style 245 W.B. BUSTON CORSET. For average figure. Fairly low bust. Medium hips, hard wearing Cordell, cut away fronts in all sizes. Price, Shs. 35/-

Quality 70 Splendid CORSET. In White Cordell. Low bust, long over hips in sizes 21 to 30. Price, Shs. 15/-

WHITEAWAY, LAIDLAW & Co., Ltd.

(INCORPORATED IN ENGLAND)

THE SIXTH AVENUE CASH STORE. NAIROBI

Printed and Published by EAST AFRICAN STANDARD, LTD., Sixth Avenue, Nairobi, and Macdonald Terrace, Mombasa, Kenya Colony.