

GUARANTEED THE LARGEST CIRCULATION OF ANY NEWSPAPER IN KENYA, UGANDA, TANGANYIKA AND ZANZIBAR

THE EAST

DAILY EDITION.

STATE EXPRESS VIRGINIA CIGARETTES



MADE BY HAND, ONE AT A TIME ARDATH STREET LONDON.

African Standard

MOMBASA TIMES & UGANDA ARGUS. With which is incorporated The LEADER

THE OLDEST ESTABLISHED NEWSPAPER PUBLISHED IN KENYA AND UGANDA.

NAIROBI, MONDAY, MAY 26, 1926.

Price: 20 CENTS.

THE EAST AFRICAN STANDARD

For the latest edition of the Standard published in Kenya, Uganda, Tanganyika and Zanzibar.

KEY CIRCULATION, LONDON: 10,000. PRINTED BY THE EAST AFRICAN STANDARD, ACCOUNTANTS, EXETER. DAILY (one year) 1,000 WEEKLY (one year) 2,000

ARRANGE A JUBALAN AGREEMENT.

Wrecked Again on Restart Over Burma.

ITALIAN VIEW.

History of a Long-Standing Problem.

ITALIAN VIEW.

ITALIAN VIEW.

ITALIAN VIEW.

ITALIAN VIEW.

ITALIAN VIEW.

ITALIAN VIEW.

ITALIAN VIEW.

ITALIAN VIEW.

ITALIAN VIEW.

ITALIAN VIEW.

ITALIAN VIEW.

ITALIAN VIEW.

ITALIAN VIEW.

ITALIAN VIEW.

ITALIAN VIEW.

ITALIAN VIEW.

ITALIAN VIEW.

ITALIAN VIEW.

ITALIAN VIEW.

Wrecked Again on Restart Over Burma.

Wrecked Again on Restart Over Burma.

Wrecked Again on Restart Over Burma.

Wrecked Again on Restart Over Burma.

Wrecked Again on Restart Over Burma.

Wrecked Again on Restart Over Burma.

Wrecked Again on Restart Over Burma.

Wrecked Again on Restart Over Burma.

Wrecked Again on Restart Over Burma.

Wrecked Again on Restart Over Burma.

Wrecked Again on Restart Over Burma.

Wrecked Again on Restart Over Burma.

Wrecked Again on Restart Over Burma.

Wrecked Again on Restart Over Burma.

Wrecked Again on Restart Over Burma.

Wrecked Again on Restart Over Burma.

Wrecked Again on Restart Over Burma.

Wrecked Again on Restart Over Burma.

Wrecked Again on Restart Over Burma.

Wrecked Again on Restart Over Burma.

Wrecked Again on Restart Over Burma.

Wrecked Again on Restart Over Burma.

Wrecked Again on Restart Over Burma.

Wrecked Again on Restart Over Burma.

ITALIAN PARLIAMENT OPENS.

Policy Declared in King's Speech.

Disarmament Problem.

Disarmament Problem.

Disarmament Problem.

Disarmament Problem.

Disarmament Problem.

Disarmament Problem.

Disarmament Problem.

Disarmament Problem.

Disarmament Problem.

Disarmament Problem.

Disarmament Problem.

Disarmament Problem.

Disarmament Problem.

Disarmament Problem.

Disarmament Problem.

Disarmament Problem.

Disarmament Problem.

Disarmament Problem.

Disarmament Problem.

Disarmament Problem.

Disarmament Problem.

Disarmament Problem.

LACK OF HELPERS IN KENYA SECTION.

Empire Day Crowds Not So Golden.

Empire Day Crowds Not So Golden.

Empire Day Crowds Not So Golden.

Empire Day Crowds Not So Golden.

Empire Day Crowds Not So Golden.

Empire Day Crowds Not So Golden.

Empire Day Crowds Not So Golden.

Empire Day Crowds Not So Golden.

Empire Day Crowds Not So Golden.

Empire Day Crowds Not So Golden.

Empire Day Crowds Not So Golden.

Empire Day Crowds Not So Golden.

Empire Day Crowds Not So Golden.

Empire Day Crowds Not So Golden.

Empire Day Crowds Not So Golden.

Empire Day Crowds Not So Golden.

Empire Day Crowds Not So Golden.

Empire Day Crowds Not So Golden.

Empire Day Crowds Not So Golden.

Empire Day Crowds Not So Golden.

Empire Day Crowds Not So Golden.

Empire Day Crowds Not So Golden.

Empire Day Crowds Not So Golden.

APPEAL DISMISSED.

APPEAL DISMISSED.

APPEAL DISMISSED.

APPEAL DISMISSED.

APPEAL DISMISSED.

APPEAL DISMISSED.

APPEAL DISMISSED.

APPEAL DISMISSED.

APPEAL DISMISSED.

APPEAL DISMISSED.

APPEAL DISMISSED.

APPEAL DISMISSED.

APPEAL DISMISSED.

APPEAL DISMISSED.

APPEAL DISMISSED.

APPEAL DISMISSED.

APPEAL DISMISSED.

APPEAL DISMISSED.

APPEAL DISMISSED.

APPEAL DISMISSED.

APPEAL DISMISSED.

APPEAL DISMISSED.

APPEAL DISMISSED.

APPEAL DISMISSED.

EMPIRE DAY CELEBRATIONS ON A SCALE UNPARALLELED.

Wembley a Place of Parades and Music.

Wembley a Place of Parades and Music.

Wembley a Place of Parades and Music.

Wembley a Place of Parades and Music.

Wembley a Place of Parades and Music.

Wembley a Place of Parades and Music.

Wembley a Place of Parades and Music.

Wembley a Place of Parades and Music.

Wembley a Place of Parades and Music.

Wembley a Place of Parades and Music.

Wembley a Place of Parades and Music.

Wembley a Place of Parades and Music.

Wembley a Place of Parades and Music.

Wembley a Place of Parades and Music.

Wembley a Place of Parades and Music.

Wembley a Place of Parades and Music.

Wembley a Place of Parades and Music.

Wembley a Place of Parades and Music.

Wembley a Place of Parades and Music.

Wembley a Place of Parades and Music.

Wembley a Place of Parades and Music.

Wembley a Place of Parades and Music.

Wembley a Place of Parades and Music.

EMPIRE DAY CELEBRATIONS ON A SCALE UNPARALLELED.

Wembley a Place of Parades and Music.

Wembley a Place of Parades and Music.

Wembley a Place of Parades and Music.

Wembley a Place of Parades and Music.

Wembley a Place of Parades and Music.

Wembley a Place of Parades and Music.

Wembley a Place of Parades and Music.

Wembley a Place of Parades and Music.

Wembley a Place of Parades and Music.

Wembley a Place of Parades and Music.

Wembley a Place of Parades and Music.

Wembley a Place of Parades and Music.

Wembley a Place of Parades and Music.

Wembley a Place of Parades and Music.

Wembley a Place of Parades and Music.

Wembley a Place of Parades and Music.

Wembley a Place of Parades and Music.

Wembley a Place of Parades and Music.

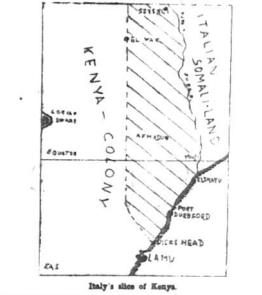
Wembley a Place of Parades and Music.

Wembley a Place of Parades and Music.

Wembley a Place of Parades and Music.

Wembley a Place of Parades and Music.

Wembley a Place of Parades and Music.



Italy's slice of Kenya.

ESTIMATE FOR AIRSHIP SCHEME.

£1,350,000 to Cover the Next Three Years.

INITIAL PROVISION. A YEAR ACCOMPLISHED.

INITIAL PROVISION. A YEAR ACCOMPLISHED.

INITIAL PROVISION. A YEAR ACCOMPLISHED.

INITIAL PROVISION. A YEAR ACCOMPLISHED.

INITIAL PROVISION. A YEAR ACCOMPLISHED.

ENGLAND TO AMERICA TELEPHONE.

Successful Experiments of a Year.

Successful Experiments of a Year.

Successful Experiments of a Year.

Successful Experiments of a Year.

Successful Experiments of a Year.

Successful Experiments of a Year.

Successful Experiments of a Year.

NO MISSION TRADE WITH GERMANY.

Request for Police Visit in Berlin.

Request for Police Visit in Berlin.

Request for Police Visit in Berlin.

Request for Police Visit in Berlin.

Request for Police Visit in Berlin.

Request for Police Visit in Berlin.

Request for Police Visit in Berlin.

Request for Police Visit in Berlin.

Request for Police Visit in Berlin.

Request for Police Visit in Berlin.

Request for Police Visit in Berlin.

Request for Police Visit in Berlin.

Request for Police Visit in Berlin.

Request for Police Visit in Berlin.

Request for Police Visit in Berlin.

Request for Police Visit in Berlin.

Request for Police Visit in Berlin.

Request for Police Visit in Berlin.

Request for Police Visit in Berlin.

Request for Police Visit in Berlin.

Request for Police Visit in Berlin.

Request for Police Visit in Berlin.

Request for Police Visit in Berlin.

EMPIRE DAY CELEBRATIONS ON A SCALE UNPARALLELED.

Wembley a Place of Parades and Music.

Wembley a Place of Parades and Music.

Wembley a Place of Parades and Music.

Wembley a Place of Parades and Music.

Wembley a Place of Parades and Music.

Wembley a Place of Parades and Music.

Wembley a Place of Parades and Music.

Wembley a Place of Parades and Music.

Wembley a Place of Parades and Music.

Wembley a Place of Parades and Music.

Wembley a Place of Parades and Music.

Wembley a Place of Parades and Music.

Wembley a Place of Parades and Music.

Wembley a Place of Parades and Music.

Wembley a Place of Parades and Music.

Wembley a Place of Parades and Music.

Wembley a Place of Parades and Music.

Wembley a Place of Parades and Music.

Wembley a Place of Parades and Music.

Wembley a Place of Parades and Music.

Wembley a Place of Parades and Music.

Wembley a Place of Parades and Music.

Wembley a Place of Parades and Music.

EMPIRE DAY CELEBRATIONS ON A SCALE UNPARALLELED.

Wembley a Place of Parades and Music.

Wembley a Place of Parades and Music.

Wembley a Place of Parades and Music.

Wembley a Place of Parades and Music.

Wembley a Place of Parades and Music.

Wembley a Place of Parades and Music.

Wembley a Place of Parades and Music.

Wembley a Place of Parades and Music.

Wembley a Place of Parades and Music.

Wembley a Place of Parades and Music.

Wembley a Place of Parades and Music.

Wembley a Place of Parades and Music.

Wembley a Place of Parades and Music.

Wembley a Place of Parades and Music.

Wembley a Place of Parades and Music.

Wembley a Place of Parades and Music.

Wembley a Place of Parades and Music.

Wembley a Place of Parades and Music.

Wembley a Place of Parades and Music.

Wembley a Place of Parades and Music.

Wembley a Place of Parades and Music.

Wembley a Place of Parades and Music.

Wembley a Place of Parades and Music.

Ford TOURING CAR IMMEDIATE DELIVERY. ALSO TOURING CHASSIS & TRUCK CHASSIS & LET US REVEAL OUR BEST FEATURES TO YOU. K. MOYOR & Co. NAIROBI. Telephone No. 21. Telegrams "AFORD."

African Standard

MOMBASA TIMES & UGANDA ARGUS. With which is incorporated

THE LARGEST ESTABLISHED PUBLISHERS IN KENYA AND UGANDA

The LEADER

NAIROBI, TUESDAY, MAY 27, 1958.

STATE EXPRESS VIRGINIA CIGARETTES



MADE BY HAND, ONE AT A TIME ARDATH LTD LONDON.

Price: 20 CENTS.

THE EAST AFRICAN STANDARD... NET CIRCULATION: ON JANUARY 1st, 1958... DAILY 1,600... WEEKLY 10,000

LEAGUE SEEKS HOSTILE-INDU UNIT. Lost Activities Revived in Labor. A LEADER'S PROMISE. (LONDON NEWS) London, May 26. The All-India League for India, which has suspended activities for the last five years, has been revived...

BIG SOVIET JUDICIAL SCANDAL. Death Sentences on Judges and Justices. (MOSCOW NEWS) Moscow, May 26. The sensational trial of a number of judges, including procurators and members of the investigating committee...

FRENCH FLIGHT ACROSS AFRICA. By Aeroplane from Paris to Madagascar. (PARIS NEWS) Paris, May 26. Reputedly the pilot, an army aviator, is expected to arrive at Madagascar and Guyana...

PARIS FEROCAL. Paris, May 26. The French Cabinet today voted to send a mission to the Congo Republic to investigate the situation there...

INVESTIGATION INTO KENYA EXHIBIT. Result of 'Standard' Cable. (LONDON NEWS) London, May 26. The British Embassy in London, which has been investigating the activities of the Kenya Exh... (text continues)

SHOULD KEZIA BE PAID FOR JUBALANT? Government to Make a Statement. (LONDON NEWS) London, May 26. The Government today announced that it would make a statement on the question of the payment of the Jubalant...

LOST BOAT. A boat belonging to Government has been lost on Lake Rudolf, but the crew is believed to be safe. (LONDON NEWS) London, May 26. A boat belonging to the Government has been lost on Lake Rudolf...

CONFERENCE ON THE MOVIE QUESTION. (LONDON NEWS) London, May 26. The Anglo-Turkish conference on the movie question today ended with the signing of a declaration...

PARIS FEROCAL. Paris, May 26. The French Cabinet today voted to send a mission to the Congo Republic to investigate the situation there...

DISAPPEARANCE OF A NAIROBI MAN. Mysterious Absence of Mr. George Riddell. (LONDON NEWS) London, May 26. The disappearance of Mr. George Riddell, a prominent Nairobian, has been the subject of much speculation...

COMMISSIONER APPLIES TO CRITIC. Complaints regarding Land Office delays were made by the Commissioner of Lands in the Legislative Council yesterday...

HOW TROOPS ARE FED ON THE FRONTIER. A boat belonging to Government has been lost on Lake Rudolf, but the crew is believed to be safe.

CONFERENCE ON THE MOVIE QUESTION. The Anglo-Turkish conference on the movie question today ended with the signing of a declaration...

PARIS FEROCAL. Paris, May 26. The French Cabinet today voted to send a mission to the Congo Republic to investigate the situation there...

COURT DECISION IN SAHAB SCOPED. (LONDON NEWS) London, May 26. The court decision in the Sahab case today was expected to be a landmark one...

LAND OFFICE DELAYS. Complaints regarding Land Office delays were made by the Commissioner of Lands in the Legislative Council yesterday...

HOW TROOPS ARE FED ON THE FRONTIER. A boat belonging to Government has been lost on Lake Rudolf, but the crew is believed to be safe.

CONFERENCE ON THE MOVIE QUESTION. The Anglo-Turkish conference on the movie question today ended with the signing of a declaration...

PARIS FEROCAL. Paris, May 26. The French Cabinet today voted to send a mission to the Congo Republic to investigate the situation there...

NEW CUSTOMS HOUSE ABANDONED. 510,000 Vote Deleted This Year. (LONDON NEWS) London, May 26. The new customs house at Mombasa today was abandoned...

COMMISSIONER APPLIES TO CRITIC. Complaints regarding Land Office delays were made by the Commissioner of Lands in the Legislative Council yesterday...

HOW TROOPS ARE FED ON THE FRONTIER. A boat belonging to Government has been lost on Lake Rudolf, but the crew is believed to be safe.

CONFERENCE ON THE MOVIE QUESTION. The Anglo-Turkish conference on the movie question today ended with the signing of a declaration...

PARIS FEROCAL. Paris, May 26. The French Cabinet today voted to send a mission to the Congo Republic to investigate the situation there...

THE BOY SCOUTS FUND. Nearing the Half Way Mark. (LONDON NEWS) London, May 26. The Boy Scouts Fund today was nearing the half-way mark...

COMMISSIONER APPLIES TO CRITIC. Complaints regarding Land Office delays were made by the Commissioner of Lands in the Legislative Council yesterday...

HOW TROOPS ARE FED ON THE FRONTIER. A boat belonging to Government has been lost on Lake Rudolf, but the crew is believed to be safe.

CONFERENCE ON THE MOVIE QUESTION. The Anglo-Turkish conference on the movie question today ended with the signing of a declaration...

PARIS FEROCAL. Paris, May 26. The French Cabinet today voted to send a mission to the Congo Republic to investigate the situation there...

Ford TOURING CAR. IMMEDIATE DELIVERY. ALSO TOURING CARS & TRUCKS... K. McIVOR & Co.

MONCKTON & SEAR LTD.
REG TO ANNOUNCE
 THAT THEY HAVE SECURED THE SERVICES
 OF AN
Overland and Willys-Knight
EXPERT
 DIRBOR FROM
THE OVERLAND FACTORY-
MANCHESTER
ALL REPAIRS TO CARS GUARANTEED.
ELECTRICAL SYSTEMS OVERHAULED
Overland Service Station.
 6th Avenue. **NAIROBI.**

"SHELL" MOTOR SPIRIT.
STOCKISTS:-
 E. MATHIAS & CO.
 MOTOR MAINT & EXCHANGE.
 THE SERVICE CO.
 MONCKTON & SEAR.
 PRIEST & BARNES.
 RIDGEMAN'S GARAGE, HARDING STREET.
 MORE & HUTTON.
 NIMMER HADMAN, NAIROBI.
 HORN & BROTHER, THURSDAY.
 KIMBERLEY, NYERI.
 H. F. PALMERON TAYLOR, HAIYANSHA.
 GALEY & BONDERS, MUKURUMBI.
 JACOBS LTD., ELDORET.
 EUROPEAN GARAGE, ELGUYU.
 S. H. HENK, LIMBUWA.
 BOY SCOUTS, BOY.
 NOMBAT TRADING CO., GILGIL.
 FUNDA MILIA FVBER, MARUYU.
 KARU EUROPEAN STORE, KORD.
 KANTLEI GARAGE & MECHRY.
 G. HAYLEY, NAIROBI.
 Also at all Branches of
SMITH MACKENZIE & CO.
 Agents for
THE BRITISH IMPERIAL OIL Co., Ltd.

HAND WINDSCREEN WIPERS 15/-
AUTOMATIC WINDSCREEN WIPERS 33/-
HOOD-PAINT, Black and Glass 5/6
STEWART SPOTLAMPS 60/-
AUTORELITE SPOTLAMPS 60/-
MAGNET LAMPS 15/-
WILLARD BATTERIES 180/ 200/ 250/
BOSCH IGNITION for Ford 100/-
BOSCH MAGNETOS 2 & 4 cylinder

PHILIPS PETROL SAVERS 22/-
HARTFORD SHOCK ABSORBER per set 4 from 160/-
LINCOLN SNUBBER per set 4 100/-
GABRIEL SNUBBERS per pair 75/-
RADIATOR CEMENT 4/ & 5/-
SET OF BOX SPANNERS 7/-
TINTED COGLES 3/-
NON-SKID CHAINS 30/ upwards

Carr, Lawson & Co., Ltd.
 BOX 203
 EVERYTHING FOR THE MOTORIST.

HUDSON CARS
 The 1924 Hudson with its new 6 Cylinder Motor, built on the noted Super-Six chassis gives unequaled economy to Hudson.



A car will convince you that in performance, and comfort, the new Hudson Super-Six provides "ideal transportation" never before in a packaged unit distributed.

See "SPECIALS" at **S. FISHER & SIMMONS (K.A.), Ltd.**
 Government Road, NAIROBI.

THEATRE ROYAL,
 To-Night,
 and Wednesday.
 THE FAMOUS SCREEN BEAUTY
GLADYS LESLIE
 Featuring in the 5 Part Sensational Drama
A STITCH IN TIME.
 Matinee every Saturday Afternoon at 3-15
 Admission Adults 1/- Children 750.

Coming Shortly at The Theatre Royal.
AN 18th CENTURY MUSICAL AND DRAMATIC OY.
 INTRODUCING DANCES OF THE PERIOD
 A LARGE CAST OF POPULAR ARTISTS
 Profits to be given to the Boy Scout Fund.

L. ROSENTHAL.
 TRUST CHAMBERS, GOVERNMENT ROAD.
 Phone No. 430. F. A. 110 111. F. O. Box 214

English Derby
 RUN AT EPSON WEDNESDAY, JUNE 4th, 1924
 Colts 9th Fillies 10th

PROFIT KNIGHT	9/1	DRUIDS ORB	60/1
DOOPHEN	5/1	WINDWARD	60/1
YON FINCH	7/1	GARRETT	20/1
DONKIN	14/1	OPPOSITE	50/1
SANDYSTON	14/1	CHARLES	20/1
CHILTYRAT	20/1	GRAND JOY	60/1
FARMENO	25/1	FORTY EIGHT	20/1
ST. GERMAN	25/1	SALMON THROAT	25/1
TIPPLER	25/1	MUMFAY MAHAL	35/1
DAWSON CITY	25/1	QUEEN	35/1

OTHERS ON APPLICATION.

PIVER'S FACE POWDERS
 TREFLE INCARNAT,
 FLOREAN,
 POMPINA,
 AZURE,
 and Others
 3-50 per box.

A. H. WARDLE & Co., Ltd.
 Wholesale and Retail
 CHEMISTS,
 Nairobi and Mombasa
 Box 103 Phone 66.

IN AID OF
Kenya Boy Scouts Fund.
 On Saturday, 5th May at 8-45 p.m.
 A "DEMONSTRATION OF ERYTHMICS" by system of the
 1st NAIROBI GUILD GUIDES.
 WILL BE GIVEN IN THE NAIROBI HOTEL.
 FOLLOWED BY A CONCERT AND DANCE.
 Captain B. D. Potts and several others have kindly promised
 to take part in the Concert. A Band from Nairobi will be
 in attendance for the Dance.
 COME AND HELP US TO REDE THE BOYS HOME
 TO WEMBLEY.
 MR. DAVIS THE MANAGER OF THE ABOVE HOTEL HAS
 OFFERED TO GIVE 1/- PER HEAD TOWARDS THE
 FUND FOR EVERY PERSON PRESENT.

The Victoria Nyanza Sugar Co. Ltd.
 LIMITED.
 NOTICE TO MERCHANTS AND CANE GROWERS.

WEATHER PERMITTING, crushing will commence on June
 19th, 1924. Settlers' desires of supplying Sugar Cane are requested
 to forward the following particulars:

Area of Cane-in-acres
 Approximate tonnage.
 Average time of cane they are prepared to deliver daily.
 Millage point on Uganda Railway for loading.
 Date upon which delivery will commence.

For further information apply to Company's Office—MILWANI

THE KENYA FARMERS' ASSOCIATION Ltd.
NAKURU.
Stocks of Maize and
Maize Meal on hand at
current Market
rates.

Apply: **The Secretary,**
 P. O. Box, 55,
NAKURU.

THE YORKSHIRE
 INSURANCE COMPANY, LIMITED.
 ESTABLISHED A. D. 1824.

MODERATE PREMIUMS
MAXIMUM SECURITY.

Chief Agents:- **H. G. Hamilton, Ltd.**
 P. O. Box 222, Nairobi.
 Members - **Leslie & Anderson,**
 Eldoret - **G. J. F. Forbes-Mangan.**

Boy Scouts Association of Kenya
WEMBLEY JAMBOREE
A GRAND BALL
 WILL BE HELD IN
New Stanley Hotel
 ON
31st May, 1924 at 9 p.m.
 Tickets—Single 8/- Double 12/-
REFRESHMENTS INCLUDED.
 Tickets may be obtained from:
 New Stanley Hotel, East African Standard, Kenya Observer,
 Mrs. Kempton, the Hill, Mrs. Kempf, the Hill, Miss L. J.
 Green, Court Chambers, and Mrs. Petheridge, Parklands.

B. H. MYERS
 HOUSE PAINTER and DECORATOR
 GENERAL HOUSE REPAIRS.
 Apply—c/o **S. Jacobs, Ltd.**
 P. O. Box 50, NAIROBI.

THE EAST AFRICAN STANDARD
 Mombasa, Times & Uganda Agency
 1924 MAY 27 1924

SIGNALS AND LIQUOR.
 The Government has issued a
 notice to the effect that it
 is desirous of having the
 signals and liquor trade
 regulated in a manner
 which will be to the
 benefit of the public and
 the revenue.

that people within the law is clear
 and definite on the subject. It
 would be unadvised to attempt to
 elude the law, and it is suggested
 that the action which Government
 intends to take would form the sub-
 ject of a very useful pamphlet
 from the non-official side of the
 House, in one of the few instances
 of obtaining an official statement
 upon a domestic matter of some
 importance. The Chief Minister
 can obtain liquor unimpeded,
 as a phase of the problem which
 places upon Government a very
 heavy responsibility.

The Pension Bill.
 In the Legislative Council, yesterday
 the Pension Bill (No. 10) and
 the Pension Bill (No. 11) were
 passed.

Education Bill Introduced.
 In the Legislative Council, yesterday
 the Education Bill (No. 12) was
 introduced. The Bill was
 read a first time and the
 second reading was set down for
 to-morrow.

Cyclist Fined.
 For riding a motor cycle with
 the out-ride open a European
 cyclist W. W. Collins was
 fined 50/- at the Municipal
 Council. E. P. C. Phillips proved
 the offence.

Wharfedale Wharfedale.
 A hoped longed for book in the
 series of the H. F. Ward's
 on the Wharfedale, is being
 prepared. There is no
 suggestion of a new edition
 of the Wharfedale.

Shah's Officers.
 The Shah's officers have been
 appointed in connection with
 the Shah's officers. The
 Shah's officers are being
 appointed by the Shah's
 officers. The Shah's officers
 are being appointed by the
 Shah's officers.

To Beazor Treasurer.
 An important day will be spent
 in the afternoon by the
 Kenya Sugar Co. Ltd. in
 the selection of a new
 treasurer. The new treasurer
 will be selected from among
 the members of the
 Kenya Sugar Co. Ltd.

The Premier's Speech.
 The Premier's speech in the
 Legislative Council, yesterday
 was a most interesting one.
 He dealt with the
 financial position of the
 Government, and the
 prospects of the country.
 He also dealt with the
 position of the
 Government in
 relation to the
 British Empire.

By Telegram.
 The British Government has
 announced that it will
 send a large number of
 troops to the East African
 colonies. This is a
 most important
 step, and it shows
 that the British
 Government is
 determined to
 maintain its
 position in the
 East African
 colonies.

A Quiet Dinner.
 An Indian converted in the
 East African colonies
 has been reported to
 have been a quiet
 dinner. This is a
 most interesting
 fact, and it shows
 that the Indian
 community in the
 East African
 colonies is
 becoming more
 and more
 civilized.

The Poor for Full Tax.
 It comes as a surprise to
 many people to learn
 that the Poor for Full Tax
 is a most important
 part of the
 Government's
 policy. This is a
 most interesting
 fact, and it shows
 that the
 Government is
 determined to
 help the
 poor people.

Field Cases.
 The cases in the
 field are being
 handled in a
 most efficient
 manner. This is a
 most interesting
 fact, and it shows
 that the
 Government is
 determined to
 help the
 poor people.

Under the Standard Clock.
 The Standard Clock
 is a most important
 part of the
 Government's
 policy. This is a
 most interesting
 fact, and it shows
 that the
 Government is
 determined to
 help the
 poor people.

Manchester White.
 The Manchester White
 is a most important
 part of the
 Government's
 policy. This is a
 most interesting
 fact, and it shows
 that the
 Government is
 determined to
 help the
 poor people.

"Standard" Bill.
 The "Standard" Bill
 is a most important
 part of the
 Government's
 policy. This is a
 most interesting
 fact, and it shows
 that the
 Government is
 determined to
 help the
 poor people.

CONSTITUTION OF THE COAST AREA.

Interference with the District Committee.

APPROVAL OF THE GOVERNMENT.

Subject Considering by Government.

COMMISSIONERS OF THE COAST AREA.

Mr. H. C. Clarke (Member)...

THE COAST AREA SECRETARY.

Mr. H. C. Clarke also is...

MATRE AGRICULTURE.

Mr. H. C. Clarke also is...

TRAINING SCHOOL.

Mr. H. C. Clarke also is...

NEW PLATEAU ROAD.

Mr. H. C. Clarke also is...

REVENUE.

Mr. H. C. Clarke also is...

HOLEPROOF HOSE JUST ARRIVED.

Mr. H. C. Clarke also is...

STOCKS.

Mr. H. C. Clarke also is...

TELEPHONE.

Mr. H. C. Clarke also is...

LEGISLATIVE COUNCIL RESUMES.

Mr. Nathan's Bill...

SUPPLEMENTARY VOTES.

The Legislative Council...

COMING EVENTS.

In the morning of Monday...

TO-DAY'S MAIL.

Mr. Nathan's Bill...

WAS SCHEDULED.

On the morning of the afternoon...

THE COAST AREA SECRETARY.

Mr. H. C. Clarke also is...

TRAINING SCHOOL.

Mr. H. C. Clarke also is...

NEW PLATEAU ROAD.

REVENUE.

HOLEPROOF HOSE JUST ARRIVED.

STOCKS.

TELEPHONE.

BRANCH RAILWAY TO THOMPSON'S FALLS.

Statement in the House Yesterday.

OTHER PRODUCTS.

Proposal to Cut Out the...

WAIN DRY.

Apart from the demand for...

TO-DAY'S MAIL.

Mr. Nathan's Bill...

WAS SCHEDULED.

On the morning of the afternoon...

THE COAST AREA SECRETARY.

Mr. H. C. Clarke also is...

TRAINING SCHOOL.

NEW PLATEAU ROAD.

REVENUE.

HOLEPROOF HOSE JUST ARRIVED.

STOCKS.

TELEPHONE.

THE EAST AFRICAN STANDARD.

SALE OF GOVERNMENT LAND.

TRADE BETWEEN KENYA AND THE UNION.

The Acting Trade Commission...

AMERICA ENQUIRES FOR KENYA COFFEE.

Despite the discouraging news...

LETTER FROM AN U.S.A. FIRM.

Mr. Nathan's Bill...

WAS SCHEDULED.

On the morning of the afternoon...

THE COAST AREA SECRETARY.

Mr. H. C. Clarke also is...

TRAINING SCHOOL.

NEW PLATEAU ROAD.

REVENUE.

HOLEPROOF HOSE JUST ARRIVED.

STOCKS.

TELEPHONE.

BRANCH RAILWAY TO THOMPSON'S FALLS.

Statement in the House Yesterday.

OTHER PRODUCTS.

Proposal to Cut Out the...

WAIN DRY.

Apart from the demand for...

TO-DAY'S MAIL.

Mr. Nathan's Bill...

WAS SCHEDULED.

On the morning of the afternoon...

THE COAST AREA SECRETARY.

Mr. H. C. Clarke also is...

TRAINING SCHOOL.

NEW PLATEAU ROAD.

REVENUE.

HOLEPROOF HOSE JUST ARRIVED.

STOCKS.

TELEPHONE.

THE EAST AFRICAN STANDARD.

SALE OF GOVERNMENT LAND.

TRADE BETWEEN KENYA AND THE UNION.

The Acting Trade Commission...

AMERICA ENQUIRES FOR KENYA COFFEE.

Despite the discouraging news...

LETTER FROM AN U.S.A. FIRM.

Mr. Nathan's Bill...

WAS SCHEDULED.

On the morning of the afternoon...

THE COAST AREA SECRETARY.

Mr. H. C. Clarke also is...

TRAINING SCHOOL.

NEW PLATEAU ROAD.

REVENUE.

HOLEPROOF HOSE JUST ARRIVED.

STOCKS.

TELEPHONE.

THE EAST AFRICAN STANDARD.

SALE OF GOVERNMENT LAND.

TRADE BETWEEN KENYA AND THE UNION.

The Acting Trade Commission...

AMERICA ENQUIRES FOR KENYA COFFEE.

Despite the discouraging news...

LETTER FROM AN U.S.A. FIRM.

Mr. Nathan's Bill...

WAS SCHEDULED.

On the morning of the afternoon...

THE COAST AREA SECRETARY.

Mr. H. C. Clarke also is...

TRAINING SCHOOL.

NEW PLATEAU ROAD.

REVENUE.

HOLEPROOF HOSE JUST ARRIVED.

STOCKS.

TELEPHONE.

THE EAST AFRICAN STANDARD.

SALE OF GOVERNMENT LAND.

TRADE BETWEEN KENYA AND THE UNION.

The Acting Trade Commission...

AMERICA ENQUIRES FOR KENYA COFFEE.

Despite the discouraging news...

LETTER FROM AN U.S.A. FIRM.

Mr. Nathan's Bill...

WAS SCHEDULED.

On the morning of the afternoon...

THE COAST AREA SECRETARY.

Mr. H. C. Clarke also is...

TRAINING SCHOOL.

NEW PLATEAU ROAD.

REVENUE.

HOLEPROOF HOSE JUST ARRIVED.

STOCKS.

TELEPHONE.

THE EAST AFRICAN STANDARD.

SALE OF GOVERNMENT LAND.

TRADE BETWEEN KENYA AND THE UNION.

The Acting Trade Commission...

AMERICA ENQUIRES FOR KENYA COFFEE.

Despite the discouraging news...

LETTER FROM AN U.S.A. FIRM.

Mr. Nathan's Bill...

WAS SCHEDULED.

On the morning of the afternoon...

THE COAST AREA SECRETARY.

Mr. H. C. Clarke also is...

TRAINING SCHOOL.

NEW PLATEAU ROAD.

REVENUE.

HOLEPROOF HOSE JUST ARRIVED.

STOCKS.

TELEPHONE.

HOLEPROOF HOSE JUST ARRIVED.

Mr. H. C. Clarke also is...

STOCKS.

TELEPHONE.

Mr. H. C. Clarke also is...

STOCKS.

HOLEPROOF HOSE JUST ARRIVED.

Mr. H. C. Clarke also is...

STOCKS.

TELEPHONE.

Mr. H. C. Clarke also is...

STOCKS.

HOLEPROOF HOSE JUST ARRIVED.

Mr. H. C. Clarke also is...

STOCKS.

TELEPHONE.

Mr. H. C. Clarke also is...

STOCKS.

HOLEPROOF HOSE JUST ARRIVED.

Mr. H. C. Clarke also is...

STOCKS.

TELEPHONE.

Mr. H. C. Clarke also is...

STOCKS.

HOLEPROOF HOSE JUST ARRIVED.

Mr. H. C. Clarke also is...

STOCKS.

NO MORE PUNCTURES.

We have received recently a shipment of an "Challenge" Pneumatic Rubber Tyres which are in high demand in England and elsewhere.

They are a little more expensive than the ordinary type of inner tube, but have their own in the long run. In addition to the freedom from punctures and consequent wear which Challenge Pneumatic Tyres are fitted to your car or motor cycle.

CALL AND INSPECT THEM.
J. W. MILLIGAN & Co.,
Government Road, NAIROBI.

KENYA BREWERIES, LIMITED.

Phone 543 & 123. Box 181.
(Supply Dept.—Court Chambers, Nairobi).
Having now completed alterations we are in a position of accepting all orders for Ale and Stout in Hospital Quarters, Clubs and Nipa Halls.
The Beer is brewed from Choice Malt and Hops and is an appetizer and digestive, the Biscuits being equally good as a snack.

CHANIA STORES THIKA

Groceries Provisions, Wine and Spirit, Tobacco and Cigarettes, Handman, Medical, Sundries, Haberdashery, Chocolates and Confectionery

BUTCHERY BAKERY

Motor Sanitary Tyres and Tubes
Shell Petrol Crown Kerosene.
THE UNIVERSAL PROVIDERS AT THIKA.
Satisfaction Guaranteed.

JUST ARRIVED

The Finest Assortment of Chocolates
IN TOWN
The Chocolates with the Splendid Centres—
LOUIS XV
Other Kinds Both Loose and in Handsome Boxes.

Splendid 4lbs. Boxes for Shs. 18.

ELLIOT'S

THE CHOCOLATE SHOP
NAIROBI. P.O. BOX 173
Phone 60

The Lodge & Annex Hotels NAIROBI.

THE LODGE, A Charmingly situated residential Hotel.
Ten Minutes from Station and Club.
Excellent Cuisine. Good rooms, each with private bathroom. Well furnished.
THE IDEAL HOLIDAY HOTEL.
THE LODGE ANNEX HOTEL.
TWO MINUTES FROM STATION AND CLUB
Good Accommodation. Smart Service. Cuisine a Speciality.
Hotel Servants and Billiard room all British and many Travellers FREE to use Hotel.
DRESSMAKING DEPARTMENT.
Satisfied dress-maker undertakes every kind of work.
LADIES' LOUNGE BAR. FULLY LICENSED.
Respectable.
Proprietress: Mrs. Jones.
NAIROBI.

SIR MICHAEL O'DWYER'S LAW CASE.

Lied Suit Against Indian Councilor.

The Michael O'Dwyer vs. Lant. Government of the Punjab, and the Indian Councilor, a member of the Council of the Secretary of State for India, before the King's Bench in respect of allegations in the "Daily Mail," "Glasgow Herald," "The Times," "The Standard," "The Daily Express" and "The Daily News" in the Punjab during the recent war.

Mr. Walter Selwale, ex-Chief Justice of Malaya, for the defence appeared to General O'Dwyer's evidence before the Commission of Enquiry with a view to showing that Sir Michael sanctioned the "Daily Mail" activity.

Mr. Selwale objected to the evidence of General O'Dwyer who is stated to be no longer alive.
The Judge said: "It may be necessary to do things to save the public a serious position in this, but which would not be justified perhaps in other circumstances."
"It is thought it might be explained and set off by a report and the soldiers might be deceived and the cry be in the hands of the rebels."

"To a man with 100,000 to 150,000 and a crowd of between 15,000 and 20,000 of their side of appalling violence and murders, you don't say 'You would not say your chair and refuse on an infirmate ground' in other circumstances. The man would be in a very serious position and set off by a report and the soldiers might be deceived and the cry be in the hands of the rebels. There is plenty of evidence in the matter if we have to go into it. It is hardly to be said that the man, who is dying, shall have a fair hearing by a living jury."

Paderewski's Weakness.

PIANIST GRIP STRICKEN OVER A PET.

Paderewski's thirteen-year-old daughter, Pingling, has died. The famous pianist is inconsolable, and is reported to have suspended his engagements.

Three days Paderewski's private railway car in which he is touring America, was detained at Chicago while consoling his wife, who accompanied with the invalid day and night.

Nothing was revealed and his name taken in a house near Rome by Paderewski, who sailed on May 14. The same will be revealed in the pages of the people's Swiss paper.



SAM RIFKIN
WAGON BUILDER,
BLACKSMITH, FARMER
P. O. Box 476
Phone 142
NAIROBI.

Whiteaway's MENS HEADWEAR

Just Unpacked.
Men's White Mounted Tull Hats for Office wear. Both double and thin neckbands. Good Washing and wearing quality.
WHITEAWAY'S CASH PRICE. Shs. 9/50



THE "ALBANY" FELT HAT
A smart stylish shape, fairly wide in the brim, with ribbon band and band eye to top. New Stock just to hand in Dark Fawn and Dark Grey.
WHITEAWAY'S CASH PRICE. Shs. 27/50



THE NYANZA
SOLARO COVERED TOPEE
The favorite Tull Club shape in Pink self cover or with non-sensit Solaro Drill. Khaki shade well built and with best English leather headband and fittings. All men's sizes in stock.
WHITEAWAY'S CASH PRICE. Shs. 15/-



THE "TUDOR" SOFT FELT
A wonderful Hat for the range. Medium sized brim, Ribbon band to top in Fawn or Grey. All sizes in stock.
WHITEAWAY'S CASH PRICE. Shs. 10/50

A NEW IDEA FOR THE RAINS!



HAWKES WATERPROOF HELMETS.
This Helmet has been brought out to meet the need for a helmet to withstand the Rain. Hawkes well-known Cork body covered with White waterproof material, easy to clean, just needs spraying over when dirty. The faded Puggaree of the same waterproof material. All sizes in stock.
WHITEAWAY'S CASH PRICE. Shs. 35/-



WITH INSIDE ANTI-CONCUSSION STRAPS.
An extremely light weight Topee in Pink or coral colored Khaki Drill. Strong over crown. Web straps inside best English leather headband and fittings. All men's sizes just received.
WHITEAWAY'S CASH PRICE. Shs. 16/50



SOLARO COVERED TOPEE
The popular shape in stretch, non-artificial covered light weight Pink body. All sizes in stock.
WHITEAWAY'S CASH PRICE. Shs. 15/-



THE HIGHEST IDEAS IN TERNER BELTS
Closely woven web with non-ferrous cheap Buckle. Available in White or Brown with
WHITEAWAY'S CASH PRICE. Shs. 4/50

Just Unpacked.
Men's White Oxford Tull Hats. First class makers. Will stand any amount of hard wear and washing. Soft double extra. Best neckbands in all the world.
WHITEAWAY'S CASH PRICE. Shs. 14/50



THE "CARBON" FELT HAT
New stock of these Fir Fell Hats. A large white trimmed shape for students who especially require a light weight hat for evening wear in Fawn or Steel Grey. Size 6 1/2 to 7 1/2.
WHITEAWAY'S CASH PRICE. Shs. 25/-



"DOOM-DOOM" The Shamoo Topee.
New stock of these well-known Felt Topees just received, covered quality. Khaki and with Khaki Furure, the best of the Topee is slightly longer than shown in the sketch, thus giving ample protection to the back-of-the-neck. Lined felt, straps as sketch. All sizes in stock.
WHITEAWAY'S CASH PRICE. Shs. 18/50



HAWKES CIVILIAN HELMETS.
The favorite shape for Town wear, in White or Khaki. Consistent with English make and finished in the best style by Hawkes of Plainfield.
WHITEAWAY'S CASH PRICE. Shs. 31/-

WHITEAWAY, LAIDLAW & Co., Ltd.

THE SIXTH AVENUE GASTROTES NAIROBI.

OVERSEAS MAILS

This notice is based upon the latest advice from the Shipping Agents. It is possible, however, that circumstances may require alteration of the steamer programme and the information given below is published subject to this reservation.
Mails will be closed at the Nairobi Post Office on noted below:

ARRIVALS.		DEPARTURES	
STEAMER	FROM	Due at Mombasa.	Mails arrive in Nairobi.
Arny de Ridder	Madagascar	May 29	May 29
General Duchesne	Madagascar	May 29	May 29
Porto di Almeida	Madagascar	May 29	May 29
Arny de Ridder	Europe	June 1	June 1
Arny de Ridder	South	June 4	June 4
Arny de Ridder	Europe	June 7	June 7
Arny de Ridder	South	June 10	June 10
Arny de Ridder	Europe	June 13	June 13
Arny de Ridder	South	June 16	June 16
Arny de Ridder	Europe	June 19	June 19
Arny de Ridder	South	June 22	June 22
Arny de Ridder	Europe	June 25	June 25
Arny de Ridder	South	June 28	June 28
Arny de Ridder	Europe	July 1	July 1
Arny de Ridder	South	July 4	July 4

ENGLISH DERBY

STEAMER	FOR	Mails close at Nairobi G.P.O.	Date of departure Mombasa
Arny de Ridder	Europe	June 1	June 1
Arny de Ridder	South	June 4	June 4
Arny de Ridder	Europe	June 7	June 7
Arny de Ridder	South	June 10	June 10
Arny de Ridder	Europe	June 13	June 13
Arny de Ridder	South	June 16	June 16
Arny de Ridder	Europe	June 19	June 19
Arny de Ridder	South	June 22	June 22
Arny de Ridder	Europe	June 25	June 25
Arny de Ridder	South	June 28	June 28
Arny de Ridder	Europe	July 1	July 1
Arny de Ridder	South	July 4	July 4

RUBBER STAMPS
AT THE Standard Office.
Other Prices on Application.
Sole Agent: STANDARD BANK S.A. Ltd.

ERNEST CLYDE
(LICENSEE: SQUARE LONDON).
TRIP ACCOUNTANT.
KENYA AGENT.
O. D. HEDGE,
Box 602
TRUST CHAMBERS.
7/1 TOWN PINCH. 16/1 ST. GERMAN.
9/1 BRIGHT KNIGHT. 16/1 HURSTWOOD.
10/1 DROOPERS. 23/1 KNIGHT, at the GARDENS.
10/1 SANSBURY. 23/1 PARMENIO.
12/1 DAWSON CITY. 40/2 DEPLANCE.
12/1 SALMON TROUT. 40/2 WOODEND.
12/1 DUNLOAN.

OUR WOMEN'S PAGE

Clippings from Paris

Our Paris Letter

(From PARISIAN CORRESPONDENT)

TENNIS REQUISITES.

Before purchasing a new Racket we cordially advise you to call and inspect our new stocks which we have just received, and note the various improvements. We detail below a few of our main lines.

SLAINGERS V.V. and PATHEMORE RACKETS.

Strong with best quality Green and White Gut. Distinguished for driving and volleys. Widths 12 1/2, 14, 16 1/2, etc. PRICE, Shs. 87/50 RACH

THE LAMBETH CHANGERS.

This is an exceptionally fine Racket by Slaingers, strong with Black Gut, double centre mains. Widths 12 1/2, 14, and 16 1/2, etc. PRICE, Shs. 85/- RACH

THE DOLETRY.

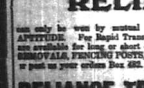
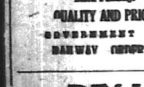
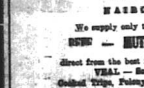
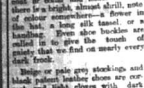
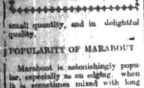
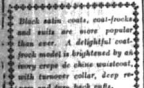
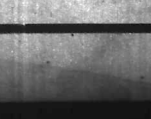
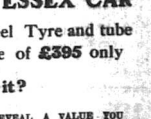
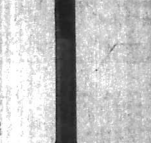
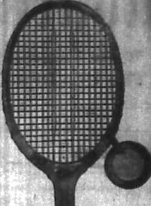
This is an all favorite, perfect in balance and strength and strong with Red and White Gut. All weights. PRICE, Shs. 82/50 RACH

SLAINGERS R.G.M.

This Racket has been specially produced to meet the requirements of those who want a reliable Racket at a moderate price. It is strong with Red and White Gut. PRICE, Shs. 67/50 RACH

THE FRENCHMAN.

Made by Prosser and strong with best quality Green and Black Gut. PRICE, Shs. 85/- RACH



A HURRY GOOD WAGON

Perhaps there is no toy so popular as a toy wagon. It is a toy which is so simple and so easy to use that it is a favorite with all children. It is a toy which is so simple and so easy to use that it is a favorite with all children.

Cookery Corner

Here is a delicious and easy prepared recipe for the month. It is a recipe which is so simple and so easy to use that it is a favorite with all children.

New Jewellery

Nothing adds to the charm of a woman's dress like a touch of jewelry. It is a touch which is so simple and so easy to use that it is a favorite with all children.

Black Satin Suits

Black satin suits, coat-tracks and three-piece suits are more light than they are. They are a favorite with all children.

Chocolate Marsipan Eggs

It is a good idea to make chocolate marsipan eggs. They are a favorite with all children.

Urban Washing Net

The idea with this net is to give you a regular, well-fitting, and comfortable net. It is a net which is so simple and so easy to use that it is a favorite with all children.

TOWN and COUNTRY SUITS

How we have a three-quarter length suit. The suit is a favorite with all children.

For country wear

For country wear, a woman should have a suit which is so simple and so easy to use that it is a favorite with all children.

WOMEN TO WEAR WITH THEM

To wear with either of these suits, you might choose one of the following accessories. It is a favorite with all children.

WOMEN TO WEAR WITH THEM

To wear with either of these suits, you might choose one of the following accessories. It is a favorite with all children.

WOMEN TO WEAR WITH THEM

To wear with either of these suits, you might choose one of the following accessories. It is a favorite with all children.

WOMEN TO WEAR WITH THEM

To wear with either of these suits, you might choose one of the following accessories. It is a favorite with all children.

WOMEN TO WEAR WITH THEM

To wear with either of these suits, you might choose one of the following accessories. It is a favorite with all children.

WOMEN TO WEAR WITH THEM

To wear with either of these suits, you might choose one of the following accessories. It is a favorite with all children.

WOMEN TO WEAR WITH THEM

To wear with either of these suits, you might choose one of the following accessories. It is a favorite with all children.

WOMEN TO WEAR WITH THEM

To wear with either of these suits, you might choose one of the following accessories. It is a favorite with all children.

WOMEN TO WEAR WITH THEM

To wear with either of these suits, you might choose one of the following accessories. It is a favorite with all children.

WOMEN TO WEAR WITH THEM

To wear with either of these suits, you might choose one of the following accessories. It is a favorite with all children.

WOMEN TO WEAR WITH THEM

To wear with either of these suits, you might choose one of the following accessories. It is a favorite with all children.

WOMEN TO WEAR WITH THEM

To wear with either of these suits, you might choose one of the following accessories. It is a favorite with all children.

WOMEN TO WEAR WITH THEM

To wear with either of these suits, you might choose one of the following accessories. It is a favorite with all children.

WOMEN TO WEAR WITH THEM

To wear with either of these suits, you might choose one of the following accessories. It is a favorite with all children.

WOMEN TO WEAR WITH THEM

To wear with either of these suits, you might choose one of the following accessories. It is a favorite with all children.

WOMEN TO WEAR WITH THEM

To wear with either of these suits, you might choose one of the following accessories. It is a favorite with all children.

WOMEN TO WEAR WITH THEM

To wear with either of these suits, you might choose one of the following accessories. It is a favorite with all children.

WOMEN TO WEAR WITH THEM

To wear with either of these suits, you might choose one of the following accessories. It is a favorite with all children.

WOMEN TO WEAR WITH THEM

To wear with either of these suits, you might choose one of the following accessories. It is a favorite with all children.

Urban Washing Net

The idea with this net is to give you a regular, well-fitting, and comfortable net. It is a net which is so simple and so easy to use that it is a favorite with all children.

TOWN and COUNTRY SUITS

How we have a three-quarter length suit. The suit is a favorite with all children.

For country wear

For country wear, a woman should have a suit which is so simple and so easy to use that it is a favorite with all children.

WOMEN TO WEAR WITH THEM

To wear with either of these suits, you might choose one of the following accessories. It is a favorite with all children.

WOMEN TO WEAR WITH THEM

To wear with either of these suits, you might choose one of the following accessories. It is a favorite with all children.

WOMEN TO WEAR WITH THEM

To wear with either of these suits, you might choose one of the following accessories. It is a favorite with all children.

WOMEN TO WEAR WITH THEM

To wear with either of these suits, you might choose one of the following accessories. It is a favorite with all children.

WOMEN TO WEAR WITH THEM

To wear with either of these suits, you might choose one of the following accessories. It is a favorite with all children.

WOMEN TO WEAR WITH THEM

To wear with either of these suits, you might choose one of the following accessories. It is a favorite with all children.

WOMEN TO WEAR WITH THEM

To wear with either of these suits, you might choose one of the following accessories. It is a favorite with all children.

WOMEN TO WEAR WITH THEM

To wear with either of these suits, you might choose one of the following accessories. It is a favorite with all children.

WOMEN TO WEAR WITH THEM

To wear with either of these suits, you might choose one of the following accessories. It is a favorite with all children.

WOMEN TO WEAR WITH THEM

To wear with either of these suits, you might choose one of the following accessories. It is a favorite with all children.

WOMEN TO WEAR WITH THEM

To wear with either of these suits, you might choose one of the following accessories. It is a favorite with all children.

WOMEN TO WEAR WITH THEM

To wear with either of these suits, you might choose one of the following accessories. It is a favorite with all children.

WOMEN TO WEAR WITH THEM

To wear with either of these suits, you might choose one of the following accessories. It is a favorite with all children.

WOMEN TO WEAR WITH THEM

To wear with either of these suits, you might choose one of the following accessories. It is a favorite with all children.

WOMEN TO WEAR WITH THEM

To wear with either of these suits, you might choose one of the following accessories. It is a favorite with all children.

WOMEN TO WEAR WITH THEM

To wear with either of these suits, you might choose one of the following accessories. It is a favorite with all children.

WOMEN TO WEAR WITH THEM

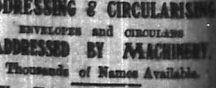
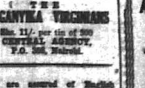
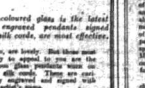
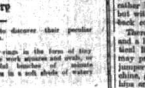
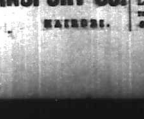
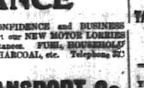
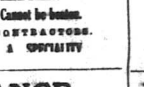
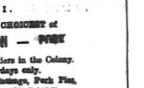
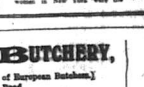
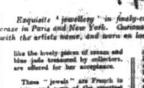
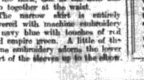
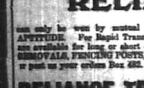
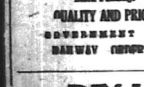
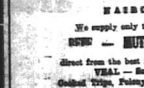
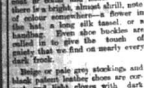
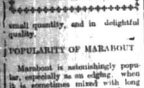
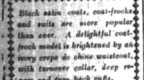
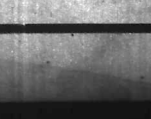
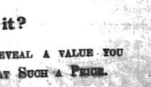
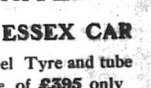
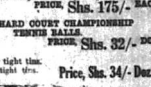
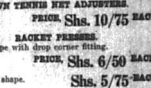
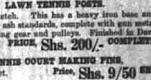
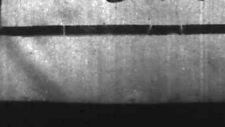
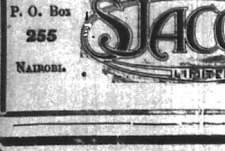
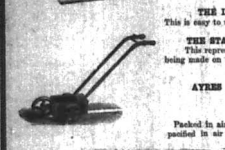
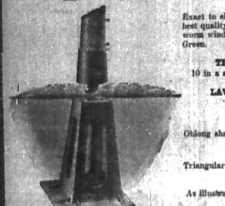
To wear with either of these suits, you might choose one of the following accessories. It is a favorite with all children.

WOMEN TO WEAR WITH THEM

To wear with either of these suits, you might choose one of the following accessories. It is a favorite with all children.

WOMEN TO WEAR WITH THEM

To wear with either of these suits, you might choose one of the following accessories. It is a favorite with all children.



P. O. Box 255 NAIROBI. **JACOBS** No. 47. Telephone No. 47.

JUST ARRIVED

THE NEW 6 CYLINDER ESSEX CAR
Complete with spare wheel Tyre and tube at the Astounding Price of £395 only
Have you examined it?
A 30 MINUTE RIDE WILL REVEAL A VALUE YOU NEVER BELIEVED POSSIBLE AT SUCH A PRICE.

NEW-ROOM, SIXTH AVENUE, NAIROBI.
The Service Co. Ltd.
TELEPHONE: 200, 201, 202, 203, 204, 205, 206, 207, 208, 209, 210, 211, 212, 213, 214, 215, 216, 217, 218, 219, 220, 221, 222, 223, 224, 225, 226, 227, 228, 229, 230, 231, 232, 233, 234, 235, 236, 237, 238, 239, 240, 241, 242, 243, 244, 245, 246, 247, 248, 249, 250, 251, 252, 253, 254, 255, 256, 257, 258, 259, 260, 261, 262, 263, 264, 265, 266, 267, 268, 269, 270, 271, 272, 273, 274, 275, 276, 277, 278, 279, 280, 281, 282, 283, 284, 285, 286, 287, 288, 289, 290, 291, 292, 293, 294, 295, 296, 297, 298, 299, 300, 301, 302, 303, 304, 305, 306, 307, 308, 309, 310, 311, 312, 313, 314, 315, 316, 317, 318, 319, 320, 321, 322, 323, 324, 325, 326, 327, 328, 329, 330, 331, 332, 333, 334, 335, 336, 337, 338, 339, 340, 341, 342, 343, 344, 345, 346, 347, 348, 349, 350, 351, 352, 353, 354, 355, 356, 357, 358, 359, 360, 361, 362, 363, 364, 365, 366, 367, 368, 369, 370, 371, 372, 373, 374, 375, 376, 377, 378, 379, 380, 381, 382, 383, 384, 385, 386, 387, 388, 389, 390, 391, 392, 393, 394, 395, 396, 397, 398, 399, 400, 401, 402, 403, 404, 405, 406, 407, 408, 409, 410, 411, 412, 413, 414, 415, 416, 417, 418, 419, 420, 421, 422, 423, 424, 425, 426, 427, 428, 429, 430, 431, 432, 433, 434, 435, 436, 437, 438, 439, 440, 441, 442, 443, 444, 445, 446, 447, 448, 449, 450, 451, 452, 453, 454, 455, 456, 457, 458, 459, 460, 461, 462, 463, 464, 465, 466, 467, 468, 469, 470, 471, 472, 473, 474, 475, 476, 477, 478, 479, 480, 481, 482, 483, 484, 485, 486, 487, 488, 489, 490, 491, 492, 493, 494, 495, 496, 497, 498, 499, 500, 501, 502, 503, 504, 505, 506, 507, 508, 509, 510, 511, 512, 513, 514, 515, 516, 517, 518, 519, 520, 521, 522, 523, 524, 525, 526, 527, 528, 529, 530, 531, 532, 533, 534, 535, 536, 537, 538, 539, 540, 541, 542, 543, 544, 545, 546, 547, 548, 549, 550, 551, 552, 553, 554, 555, 556, 557, 558, 559, 560, 561, 562, 563, 564, 565, 566, 567, 568, 569, 570, 571, 572, 573, 574, 575, 576, 577, 578, 579, 580, 581, 582, 583, 584, 585, 586, 587, 588, 589, 590, 591, 592, 593, 594, 595, 596, 597, 598, 599, 600, 601, 602, 603, 604, 605, 606, 607, 608, 609, 610, 611, 612, 613, 614, 615, 616, 617, 618, 619, 620, 621, 622, 623, 624, 625, 626, 627, 628, 629, 630, 631, 632, 633, 634, 635, 636, 637, 638, 639, 640, 641, 642, 643, 644, 645, 646, 647, 648, 649, 650, 651, 652, 653, 654, 655, 656, 657, 658, 659, 660, 661, 662, 663, 664, 665, 666, 667, 668, 669, 670, 671, 672, 673, 674, 675, 676, 677, 678, 679, 680, 681, 682, 683, 684, 685, 686, 687, 688, 689, 690, 691, 692, 693, 694, 695, 696, 697, 698, 699, 700, 701, 702, 703, 704, 705, 706, 707, 708, 709, 710, 711, 712, 713, 714, 715, 716, 717, 718, 719, 720, 721, 722, 723, 724, 725, 726, 727, 728, 729, 730, 731, 732, 733, 734, 735, 736, 737, 738, 739, 740, 741, 742, 743, 744, 745, 746, 747, 748, 749, 750, 751, 752, 753, 754, 755, 756, 757, 758, 759, 760, 761, 762, 763, 764, 765, 766, 767, 768, 769, 770, 771, 772, 773, 774, 775, 776, 777, 778, 779, 780, 781, 782, 783, 784, 785, 786, 787, 788, 789, 790, 791, 792, 793, 794, 795, 796, 797, 798, 799, 800, 801, 802, 803, 804, 805, 806, 807, 808, 809, 810, 811, 812, 813, 814, 815, 816, 817, 818, 819, 820, 821, 822, 823, 824, 825, 826, 827, 828, 829, 830, 831, 832, 833, 834, 835, 836, 837, 838, 839, 840, 841, 842, 843, 844, 845, 846, 847, 848, 849, 850, 851, 852, 853, 854, 855, 856, 857, 858, 859, 860, 861, 862, 863, 864, 865, 866, 867, 868, 869, 870, 871, 872, 873, 874, 875, 876, 877, 878, 879, 880, 881, 882, 883, 884, 885, 886, 887, 888, 889, 890, 891, 892, 893, 894, 895, 896, 897, 898, 899, 900, 901, 902, 903, 904, 905, 906, 907, 908, 909, 910, 911, 912, 913, 914, 915, 916, 917, 918, 919, 920, 921, 922, 923, 924, 925, 926, 927, 928, 929, 930, 931, 932, 933, 934, 935, 936, 937, 938, 939, 940, 941, 942, 943, 944, 945, 946, 947, 948, 949, 950, 951, 952, 953, 954, 955, 956, 957, 958, 959, 960, 961, 962, 963, 964, 965, 966, 967, 968, 969, 970, 971, 972, 973, 974, 975, 976, 977, 978, 979, 980, 981, 982, 983, 984, 985, 986, 987, 988, 989, 990, 991, 992, 993, 994, 995, 996, 997, 998, 999, 1000.

SMITHFIELD BUTCHERY,

(The Oldest Established Firm of European Butchers)
Surrey Street, NAIROBI.
We supply only the CHEAPEST of
BEEF - MUTTON - PORK
Direct from the best farms in the Colony.
Cashed Trade, Delivery, Homeage, Fresh Meat,
Black Puddings - **PREPARED DAILY.**
QUALITY AND PRICE Cannot be beaten.
GOVERNMENT CONTRACTORS.
RELIANCE MEATS & BUTCHERY

RELIANCE

can only be won by mutual CONFIDENCE and BUSINESS
ATTENTION. For Rapid Transport see **NEW MOTOR TORRENTS**
and **TRUCKS**. For **RENT** or **CHARTER** of **TRUCKS** or **TORRENTS**
see **RELIANCE TRANSPORT CO.,** CHABOARI, etc. Telephone No. 20
7 post in your column No. 262.

RELIANCE TRANSPORT Co.

NAIROBI.

DEWAR'S

White Label
"THE SPIRIT OF PERFECTION"

ADVERTISEMENTS

Advertisements under this heading are accepted only subject to approval.

WANTED

WANTED: Young lady to assist in business...

FOR SALE

Wanted: Quantity of cheap...

FOR SALE

Wanted: Quantity of cheap...

FOR SALE

Wanted: Quantity of cheap...

FOR SALE

Wanted: Quantity of cheap...

FOR SALE

Wanted: Quantity of cheap...

FOR SALE

Wanted: Quantity of cheap...

FOR SALE

Wanted: Quantity of cheap...

FOR SALE

Wanted: Quantity of cheap...

ADVERTISEMENTS

Advertisements under this heading...

WANTED

WANTED: Young lady to assist...

FOR SALE

Wanted: Quantity of cheap...

FOR SALE

Wanted: Quantity of cheap...

FOR SALE

Wanted: Quantity of cheap...

FOR SALE

Wanted: Quantity of cheap...

FOR SALE

Wanted: Quantity of cheap...

FOR SALE

Wanted: Quantity of cheap...

FOR SALE

Wanted: Quantity of cheap...

FOR SALE

Wanted: Quantity of cheap...

ADVERTISEMENTS

Advertisements under this heading...

WANTED

WANTED: Young lady to assist...

FOR SALE

Wanted: Quantity of cheap...

FOR SALE

Wanted: Quantity of cheap...

FOR SALE

Wanted: Quantity of cheap...

FOR SALE

Wanted: Quantity of cheap...

FOR SALE

Wanted: Quantity of cheap...

FOR SALE

Wanted: Quantity of cheap...

FOR SALE

Wanted: Quantity of cheap...

FOR SALE

Wanted: Quantity of cheap...

ADVERTISEMENTS

Advertisements under this heading...

WANTED

WANTED: Young lady to assist...

FOR SALE

Wanted: Quantity of cheap...

FOR SALE

Wanted: Quantity of cheap...

FOR SALE

Wanted: Quantity of cheap...

FOR SALE

Wanted: Quantity of cheap...

FOR SALE

Wanted: Quantity of cheap...

FOR SALE

Wanted: Quantity of cheap...

FOR SALE

Wanted: Quantity of cheap...

FOR SALE

Wanted: Quantity of cheap...

ADVERTISEMENTS

Advertisements under this heading...

WANTED

WANTED: Young lady to assist...

FOR SALE

Wanted: Quantity of cheap...

FOR SALE

Wanted: Quantity of cheap...

FOR SALE

Wanted: Quantity of cheap...

FOR SALE

Wanted: Quantity of cheap...

FOR SALE

Wanted: Quantity of cheap...

FOR SALE

Wanted: Quantity of cheap...

FOR SALE

Wanted: Quantity of cheap...

FOR SALE

Wanted: Quantity of cheap...

ADVERTISEMENTS

Advertisements under this heading...

WANTED

WANTED: Young lady to assist...

FOR SALE

Wanted: Quantity of cheap...

FOR SALE

Wanted: Quantity of cheap...

FOR SALE

Wanted: Quantity of cheap...

FOR SALE

Wanted: Quantity of cheap...

FOR SALE

Wanted: Quantity of cheap...

FOR SALE

Wanted: Quantity of cheap...

FOR SALE

Wanted: Quantity of cheap...

FOR SALE

Wanted: Quantity of cheap...

ADVERTISEMENTS

Advertisements under this heading...

WANTED

WANTED: Young lady to assist...

FOR SALE

Wanted: Quantity of cheap...

FOR SALE

Wanted: Quantity of cheap...

FOR SALE

Wanted: Quantity of cheap...

FOR SALE

Wanted: Quantity of cheap...

FOR SALE

Wanted: Quantity of cheap...

FOR SALE

Wanted: Quantity of cheap...

FOR SALE

Wanted: Quantity of cheap...

FOR SALE

Wanted: Quantity of cheap...

ADVERTISEMENTS

Advertisements under this heading...

WANTED

WANTED: Young lady to assist...

FOR SALE

Wanted: Quantity of cheap...

FOR SALE

Wanted: Quantity of cheap...

FOR SALE

Wanted: Quantity of cheap...

FOR SALE

Wanted: Quantity of cheap...

FOR SALE

Wanted: Quantity of cheap...

FOR SALE

Wanted: Quantity of cheap...

FOR SALE

Wanted: Quantity of cheap...

FOR SALE

Wanted: Quantity of cheap...

EQUATOR SAW MILLS. SADLER STREET, NAIROBI. NOTE. P. O. Box and Telephone Nos. P. O. Box 131, NAIROBI. Tel. No. 113.

Gents, Ladies and Childrens FOOTWEAR. I.B.E.X. Tan Willow Brogue. Chrome Derby Boot. Extra High in Last.

A Large Selection OF Ladies' Shoes Have Arrived. Silver Toned One Bar, Gold Toned One Bar, Black Satin One Bar, Grey Suede Bar, Tan Willow Brogue, Children's White Buck Shoe, Silver Brocade One Bar, Gold Brocade One Bar, White Canvas One Bar, Black Canvas Bar, Children's Tan One Bar Shoe, Children's Moccasin Slippers.

Maxwell, Brady & Co. NAIROBI FOOTWEAR. Send your repairs to us Only English Leather and Chrome Used.

KIA ORA STORE NAIROBI. Agents, Grocers, Confectioners, Hardware, Stationery, Electric Appliances, Refrigerators, etc. SPECIAL and SUBSTITUTES available any hour.

KIJABE HOTEL, Kijabe. For visitors from station, lovely scenery and health resort. Shooting box 20 miles out in heart of big game country.

POULTRY NOTES. The Poultry Club Standard for White Leghorns. WHITE LEGHORNS. THE COCK. Hens: Small fine. Bred with...

UGANDA RAILWAY. ARBITRARY ENGINEER. A. M. B. ROOPER. Virginia Cigarettes. (Dated 26th, London).

THE HEN. NEW 22 RIFLES. SHAW & HUNTER. SPECIAL REDUCTIONS. GOVERNMENT ROAD. J. H. Engelhardt & Co., Nyeri.

WATERBURY'S DRY-CLEANING & DYEING WORKS. "MACK" COUGH CURE. THE MILL K. G. & CO. PALESTINE STORE. FOR TERMS RAILS, TICKETS & FETS. MAY & CO.

EX-OX. BROWN HONEY AND VERBENA. THE COFFEE LATTE. B. R. B.

RECOMMENDATIONS TO CONSIDER

FRANCOIS DELBY BY U.S.A. MARSHAL

MR. C. EDGELL FORD DEAD

WHY BATTERY RESERVES ARE CLAIMED

JAPANESE RESERVE IN KOREA

COMPARISON BEING MADE OF ISRAEL

LYRIC HALL. A WONDERFUL STORY.

RECOMMENDATIONS TO CONSIDER

FRANCOIS DELBY BY U.S.A. MARSHAL

MR. C. EDGELL FORD DEAD

WHY BATTERY RESERVES ARE CLAIMED

JAPANESE RESERVE IN KOREA

COMPARISON BEING MADE OF ISRAEL

LYRIC HALL. A WONDERFUL STORY.

RECOMMENDATIONS TO CONSIDER

FRANCOIS DELBY BY U.S.A. MARSHAL

MR. C. EDGELL FORD DEAD

WHY BATTERY RESERVES ARE CLAIMED

JAPANESE RESERVE IN KOREA

COMPARISON BEING MADE OF ISRAEL

LYRIC HALL. A WONDERFUL STORY.

RECOMMENDATIONS TO CONSIDER

FRANCOIS DELBY BY U.S.A. MARSHAL

MR. C. EDGELL FORD DEAD

WHY BATTERY RESERVES ARE CLAIMED

JAPANESE RESERVE IN KOREA

COMPARISON BEING MADE OF ISRAEL

LYRIC HALL. A WONDERFUL STORY.

RECOMMENDATIONS TO CONSIDER

FRANCOIS DELBY BY U.S.A. MARSHAL

MR. C. EDGELL FORD DEAD

WHY BATTERY RESERVES ARE CLAIMED

JAPANESE RESERVE IN KOREA

COMPARISON BEING MADE OF ISRAEL

LYRIC HALL. A WONDERFUL STORY.

RECOMMENDATIONS TO CONSIDER

FRANCOIS DELBY BY U.S.A. MARSHAL

MR. C. EDGELL FORD DEAD

WHY BATTERY RESERVES ARE CLAIMED

JAPANESE RESERVE IN KOREA

COMPARISON BEING MADE OF ISRAEL

LYRIC HALL. A WONDERFUL STORY.

RECOMMENDATIONS TO CONSIDER

FRANCOIS DELBY BY U.S.A. MARSHAL

MR. C. EDGELL FORD DEAD

WHY BATTERY RESERVES ARE CLAIMED

JAPANESE RESERVE IN KOREA

COMPARISON BEING MADE OF ISRAEL

LYRIC HALL. A WONDERFUL STORY.

RECOMMENDATIONS TO CONSIDER

FRANCOIS DELBY BY U.S.A. MARSHAL

MR. C. EDGELL FORD DEAD

WHY BATTERY RESERVES ARE CLAIMED

JAPANESE RESERVE IN KOREA

COMPARISON BEING MADE OF ISRAEL

LYRIC HALL. A WONDERFUL STORY.

RECOMMENDATIONS TO CONSIDER

FRANCOIS DELBY BY U.S.A. MARSHAL

MR. C. EDGELL FORD DEAD

WHY BATTERY RESERVES ARE CLAIMED

JAPANESE RESERVE IN KOREA

COMPARISON BEING MADE OF ISRAEL

LYRIC HALL. A WONDERFUL STORY.

RECOMMENDATIONS TO CONSIDER

FRANCOIS DELBY BY U.S.A. MARSHAL

MR. C. EDGELL FORD DEAD

WHY BATTERY RESERVES ARE CLAIMED

JAPANESE RESERVE IN KOREA

COMPARISON BEING MADE OF ISRAEL

LYRIC HALL. A WONDERFUL STORY.

RECOMMENDATIONS TO CONSIDER

FRANCOIS DELBY BY U.S.A. MARSHAL

MR. C. EDGELL FORD DEAD

WHY BATTERY RESERVES ARE CLAIMED

JAPANESE RESERVE IN KOREA

COMPARISON BEING MADE OF ISRAEL

LYRIC HALL. A WONDERFUL STORY.

RECOMMENDATIONS TO CONSIDER

FRANCOIS DELBY BY U.S.A. MARSHAL

MR. C. EDGELL FORD DEAD

WHY BATTERY RESERVES ARE CLAIMED

JAPANESE RESERVE IN KOREA

COMPARISON BEING MADE OF ISRAEL

LYRIC HALL. A WONDERFUL STORY.

Union - Castle Line

Services to England, East, South and West African Ports and Mauritius. PROSPECTIVE SAILINGS. To England via Southampton...

UNION CASTLE MAIL STEAMSHIP CO., Ltd. (INCORPORATED IN ENGLAND) Agents to Mombasa, Malindi, Zanzibar, Mozambique.

BRITISH INDIA Steam Navigation Co., Ltd.

London and East Africa Line. Mombasa and GREDER KINGDOM. Regular service every 54 days...

Table listing ship names, destinations, and dates for the London and East Africa Line.

BOMBAY-DURBAN STEAMERS.

Services to Bombay and Durban. S.S. "KARAKORA" dep. Mombasa 4th June, dep. 5th June...

COASTAL SERVICE.

The S.S. "DUMERA" is expected to arrive from South on or about 4th June...

SMITH MACKENZIE & CO., AGENTS. Kinross, Dundee, Perth, Aberdeen and Glasgow.

NEW GOODS JUST UNPACKED.

Woolen, Cotton and Linen Goods. Hosiery and Lace. Ribbons and Trimmings.

BOY SCOUTS CALENDAR.

Some Events to Help the Jubilee Fund.

- Following are the dates for the Kenya Boy Scouts' Jubilee Calendar: 1. Grand Ball at the New Stanley Hotel...

Dreadful Invention Yet in War.

RAY THAT WILL BLEND AT TWO MILES DISTANCE.

The light ray discovered by Mr. Mitchell Massey and which he has named "blended" ray, will show motor engines and fire explosions...

MARTIN'S SAFETY CYCLES advertisement featuring an image of a bicycle and text describing its safety features.

RALEIGH THE ALL-STEEL BICYCLE advertisement featuring an image of a bicycle and text describing its construction.

REINFORCED CONCRETE

B.C.C. Structures provide the greatest combined strength of steel and concrete. The units of the Reinforcement are so formed as to give the most perfect bond...

WHY You will prefer it!

You will prefer Brooke Bond Tea because of its quality which is very good; because of the way it is blended which is just right...



PETROL LIGHTING THE "EVENING STAR" LAMPS AND LANTERNS

Table listing various lighting fixtures and their prices: Table Lamps 60/-, Wall Lamps 70/-, Saffar Lanters double 50/-, Chandeliers 140/-, Patent Iron 65/-.

NEW MARK, Patent Light Export, HANDBURY STREET, Opp. New Stanley Hotel, Bag 268. HAIROBI.

The Ough Boot Store's low prices for their excellent footwear now received, are the result of personal attention and moderately low expenses.

EXPRESS TRANSPORT COMPANY

AMALGAMATING "BROTHER & HIGSON" Business, Nairobi. Carriage Contractors to Uganda Railway. All Classes of Carriage, Customs and Forwarding Work Undertaken.

George Blowers.

Table listing various goods and their prices: WINDMILL AND GENERAL CONTRACTORS, STAINLESS STEEL AND MANUFACTURER, WOODEN AND FRAMED IRON ROLLERS, PAINTS, BATTERY LAMPS, etc.

ANGLO-BALTIC TIMBER CO., LTD.

Specialists in Building Materials. CEDAR, POND & HARDWOODS. MOSHI TRAP, MAHOAGANY, ETC.

FAIRVIEW ESTATES, Ltd., KYAMBO.

DISTEMPERS. In all shades. WOOD PRESERVATIVE. The only Preservative on the Market that can be used as a Stain, and will take a Polish.

HIDES, SKINS & WOOL PURCHASED AT BEST MARKET RATES.

United Netherlands Navigation COMPANY

Holland East Africa Line. Regular fortnightly sailings. Steamers will arrive at Mombasa on or about the following dates:

FOR RATES OF FREIGHT APPLY. For further information apply to the Agents: TWENTYONE OVERSEAS TRADING Co., Ltd. P.O. Box 149. Tel. "Holland" MOMBASA. Tel. 148.

POLLARD (OR HARRIS)

is again available for immediate delivery. Note new price 6s. 6d. per bag of 100 lbs. f.o.r. Njoro, bags free.

FED IT TO YOUR PIGS AND POULTRY

UNGA Ltd., NJORO

J. C. Coverdale & Partners LAND AND ESTATE AGENTS.

Our Land Register contains the widest possible range of all classes of Farms to suit the Individual or Company. Coffee, Rice, Sugar, Cattle and General Farming opportunities in all parts of Kenya Colony.

ROWNTREES.

"THE ARTISTOFY OF THE CHOCOLATE WORLD". Choice Selection of Fancy Boxes 1, 2, 3 and 4th Sizes. These Chocolates are Delicious PURITY and QUALITY unexcelled. The Price is Right.

R. B. DUNCAN, HAIROBI.

THE SETTLERS WATCH

Strong reliable timekeeper to assist every man and woman going west.



19 Jewel movement with non-magnetic anti-lime anti-rust. Sole Agent: FRANK H. O. E. DOBBIE, JEWELLER, SILVERSMITH and OPTICIAN, Gert. Road, Nairobi.

SHORT LOANS GRANTED £1 To £1,000.

CALL OR WRITE TO THE: Kenya Loan & Discount Co., Ltd. HAIROBI HOUSE, (2nd Floor) P.O. Box 546 HAIROBI. Njala Discounted - STRICTLY CONFIDENTIAL.

AUCTION SALES

Auction Diary

Wednesday, May 26th at 10 a.m. Furniture Sale (Austin & Co.)
Friday, May 28th at 10 a.m. Furniture & Glass Sale (D. Muter)

ARCHIBALD HOGG,

HARDING STREET, NAIROBI.

Dealer in Auction and Commission Agent.
ALMS & AMBITION—All classes of Arms and Ammunition bought and sold.
ANTIQUE TRIVETS to choose from and all good values for the money.

Commissions accepted at 50p/Prize.

MUTER'S PROPERTY LIST.

For sale as a going concern. Kikuyu Hotel. (Fully Licensed)

Owing to circumstances stated below this well-known Hotel on the market.
Being situated on a corner in Nairobi and being served by two roads, offers an excellent opportunity for extensive development as a well-situated.

DAVID MUTER, Auctioneer, Telephone No. 4, NAIROBI.

SANDS & Co.

Thursday, 29th at 10-30

Groceries Sundries, Provisions Jams

1 Babies Coat and 1 Babies Pram.

SANDS & Co. Auctioneers.

JUST ARRIVED ONE THOUSAND COPIES. JOHN BOYES KING OF THE MARQUETT. (1924. EDITION.)
No more interesting book has been published for many years than this author's review of the Empire's progress as a trader in East Africa. It tells how he has guided an almost countless number of men over the Kikuyu hills, how he has become that King who has captured and held for his life the life of his country, and how he has won the respect of his people.

Furniture and Curios

Sale of Exceptional Interest.

IN HIS MAJESTY'S SUPREME COURT OF KENYA at Nairobi

CIVIL CASE NO. 202 of 1925.
O. M. HARRISON Plaintiff
vs.
LADIMIR VIKRAM (deceased) Defendants

I WILL SELL BY PUBLIC AUCTION at MY AUCTION 1111 HARDING STREET, on FRIDAY, MAY 28th at 10 a.m. precisely.

PIANO by BORD of Paris Grand upright, Iron Frame.
SHIRAZ Ebony Chair, Indian Bedstead's 2 1/2 ft. wide and 4 ft. high.
TWO 4ft. HIGH NAIROBI VASES.
CARVED and PIERCED Byron Wood Chair. Large Mirror.
Large Teak Bedstead with Glass Doors.
Large Teak Bedstead with upholstered and glass doors.
Large Teak Bedstead with upholstered and glass doors.

ALSO on behalf of other clients, I will sell.
TEAK BAY WINDOW BRICK UPBURNED in Brown Finish.
DINING SUITE in Teak of Oval Table and 4 Chairs.
LARGE WARDROBE with 2 Mirrors and 2 Doors in Oak.
LARGE WARDROBE with 2 Mirrors and 2 Doors in Oak.

DAVID MUTER, Auctioneer, Telephone No. 4, NAIROBI.

THE SALISBURY HOTEL.

Box 509 NAIROBI (Phone) 166
UNDER ENTIRELY NEW MANAGEMENT
SPLENDIDLY SITUATED WITHIN EASY WALKING DISTANCE OF TOWN
Single Rooms
Double Rooms
Comfortable Lounges
Bedrooms with Private Fire, Baths and Hot and Cold Water.

Austin's Auctions

PARKLANDS.

House Sale of Furniture, Gramophone, Piano, Etc.

Austin & Co.

WILL SELL BY PUBLIC AUCTION ABSOLUTELY WITHOUT RESERVE.
TO-DAY, May 28th at 10 a.m. Sharp.

At The HOUSE corner of KIKUYU ROAD and SALISBURY LANE Opposite state of Road to Mr. Newton.
SIX H. HESTERFIELD SUITE 2 Chairs & Settee with loose covers.
VERY GOOD REVERSIBLE CARPET 10 x 14 new condition.
FINE Mahogany BEDROOM with four drawers and Cupboard and chest plate bed 4 Mirrors.
SIX TEAK OVAL DINING TABLE. Set of Mahogany Dining Chairs.
FINE BEAN SHAPED RECREATIONAL Table will make.
Two (2) Mahogany Occasional Tables.
Antique Iron Carpet 10 x 10. Black Palm Stand.
One Indian Iron Tray Table on Carved Stand.
All Wood Assorted Novels, 4 Years of "Punch" complete unbound.
One W.G. Double bed fitted with spring mattress and Coil Overlay.
Two (2) beds with black iron and steel. 2 Good Chests of Drawers.
Fine mahogany Wood DRESSING TABLE fitted with large Oval circular Bed 4 Mirror.
Carpenter Wood Washstand on cast-iron 2 Bedroom Chests.
11 Patterned Study Frames and Glands.
Large Mast Side Folding Card Table. White Enamel Wall Cupboard.
One set of Adjustable Bookshelves. 3 Cut Glass Decanters.
Lot of Linens. 2 Brass Dressing Vanes.
Electric Heating Lamp.
LARGE QUANTITY of REALLY GOOD MUSIC.

AUSTIN & Co. Auctioneer. P. O. Box 595. Phone 190.

To MOTOR DEALERS and OTHERS

SALE OF CONTENTS OF MOTOR GARAGE

AUSTIN & Co.

FRIDAY MAY 30th at 10 sharp

The whole of Mr. Savage's Stock Tools, etc. comprising:
THE HENSHILL by MILLER & Co. One French Van.
ONE BIRD GUNNER'S Carriage of GEARLESS TOOLS.
Large Quantity of Second Hand FORD SPARRER.
FOUR QUANTITY OF TOOLS.
ONE B. S. A. Motor Cycle Frame. B.S. Dia.
ALSO an EXCEPTIONAL BIRD GUNNER'S.
A very nice ROYAL ENFIELD 1921 Motor Cycle 2 1/2 hp in perfect running order and complete with 1921 accessories.

JAMAL PIRBHAI

Auctioneer for Years.
BEST PRICES OBTAINED.
Best interests of Customers Guaranteed.
Also Goods Purchased for Cash. Opposite—JEEVANJI GARDENS, NAIROBI.

UGANDA RAILWAY

NOTICE.

During August or September of this year, the Uganda Railway Administration expects to call for tenders for the Construction of the following Branch Lines:-

BITALE BRANCH—Approximate length—48 Miles
SOLAI BRANCH—Approximate length—31 Miles

Contractors who wish to be allowed to tender for the above works should send their names and addresses to the Chief Engineer, Uganda Railway, P. O. Box 79, Nairobi. Only contractors of sufficient standing, and with satisfactory technical qualifications to enable them to undertake one or other of these works as a whole, need register their names.

It is intended that staking out and preparation of detailed plans and drawings will be undertaken during the latter part of the present year, while construction will commence at the beginning of 1925.

SIGNED, G. D. RHODES, Chief Engineer, Uganda Railway.

YOU WANT THE BEST

For a real genuine EGYPTIAN CIGARETTE THEODORE VAFIADIS' are hard to beat.

Extra fine, per 100 S 10- Superfine. 9-

MACKINNON BROTHERS, NAIROBI.

Established 1904. Tel. 51. Box 26.

M. R. de SOUZA & Co.

MOMBASA NAIROBI NAKURU
P. O. Box 95 P. O. Box 195 Phone 76 Station Road
Direct importers and wholesalers and retail dealers in Groceries wines and spirits Ladies and gent's Tailors Boot and Shoe makers Rooms to let. Established 1899.

The Victoria Nyanza Sugar Co. LIMITED.

NOTICE TO MERCHANTS AND CANE GROWERS.

WHATEVER PERMITTING, crushing will commence on 28th May, 1926. Sections' despatch of supplying Sugar Cane are requested to forward the following particulars:
Area of Cane in acres.
Approximate Tonnage.
Average tons of cane they are prepared to deliver daily.
Dates upon which delivery should commence.
For further information apply to Company's Office—MOMBASA.

RUBBER STAMPS AT THE Standard Office.

African Standard

MOMBASA TIMES & UGANDA ARGUS. This which is incorporated The LEADER

NAIROBI, THURSDAY, MAY 29, 1954.

C. F. ANDREWS' LIBELS.

STATE EXPRESS VIRGINIA CIGARETTES



MADE BY HAND, ONE AT A TIME; ARDATH, NEW LONDON.

Price: 20 CENTS.

THE EAST AFRICAN STANDARD

By far the largest circulation of any newspaper in Kenya...

NET CIRCULATION, ON JANUARY 1st, 1954, AS CERTIFIED BY CHARTERED ACCOUNTANTS...

471

BAYLIGHT SAVING UNPOPULAR.

Strenuous Opposition in Legislative Council.

DEFEATED BY FIVE VOTES.

Hope that Shop Hours Bill Will Serve the Purpose.

SUPPORTS STRESS VALUE TO HEALTH.

Mr. J. O. O'Brien (Nairobi) introduced a motion favouring the introduction of a measure to regulate shop hours...

Mr. J. O. O'Brien (Nairobi) introduced a motion favouring the introduction of a measure to regulate shop hours...

Mr. J. O. O'Brien (Nairobi) introduced a motion favouring the introduction of a measure to regulate shop hours...

Mr. J. O. O'Brien (Nairobi) introduced a motion favouring the introduction of a measure to regulate shop hours...

Mr. J. O. O'Brien (Nairobi) introduced a motion favouring the introduction of a measure to regulate shop hours...

Mr. J. O. O'Brien (Nairobi) introduced a motion favouring the introduction of a measure to regulate shop hours...

Mr. J. O. O'Brien (Nairobi) introduced a motion favouring the introduction of a measure to regulate shop hours...

Mr. J. O. O'Brien (Nairobi) introduced a motion favouring the introduction of a measure to regulate shop hours...

Mr. J. O. O'Brien (Nairobi) introduced a motion favouring the introduction of a measure to regulate shop hours...

Mr. J. O. O'Brien (Nairobi) introduced a motion favouring the introduction of a measure to regulate shop hours...

Mr. J. O. O'Brien (Nairobi) introduced a motion favouring the introduction of a measure to regulate shop hours...

Mr. J. O. O'Brien (Nairobi) introduced a motion favouring the introduction of a measure to regulate shop hours...

Mr. J. O. O'Brien (Nairobi) introduced a motion favouring the introduction of a measure to regulate shop hours...

Mr. J. O. O'Brien (Nairobi) introduced a motion favouring the introduction of a measure to regulate shop hours...

Mr. J. O. O'Brien (Nairobi) introduced a motion favouring the introduction of a measure to regulate shop hours...

Mr. J. O. O'Brien (Nairobi) introduced a motion favouring the introduction of a measure to regulate shop hours...

Mr. J. O. O'Brien (Nairobi) introduced a motion favouring the introduction of a measure to regulate shop hours...

Mr. J. O. O'Brien (Nairobi) introduced a motion favouring the introduction of a measure to regulate shop hours...

Mr. J. O. O'Brien (Nairobi) introduced a motion favouring the introduction of a measure to regulate shop hours...

Mr. J. O. O'Brien (Nairobi) introduced a motion favouring the introduction of a measure to regulate shop hours...

Mr. J. O. O'Brien (Nairobi) introduced a motion favouring the introduction of a measure to regulate shop hours...

Mr. J. O. O'Brien (Nairobi) introduced a motion favouring the introduction of a measure to regulate shop hours...

Mr. J. O. O'Brien (Nairobi) introduced a motion favouring the introduction of a measure to regulate shop hours...

Mr. J. O. O'Brien (Nairobi) introduced a motion favouring the introduction of a measure to regulate shop hours...

FINANCE BILL SECOND READING.

Chancellor's Promise for Next Year.

ECONOMIES COVER REFORM.

[THURSDAY EVENING'S AGENDA.]

London, May 28. The House of Commons passed the second reading of the Finance Bill without a division.

[THURSDAY EVENING'S AGENDA.]

London, May 27. The House of Commons passed the second reading of the Finance Bill without a division.

[THURSDAY EVENING'S AGENDA.]

London, May 27. The House of Commons passed the second reading of the Finance Bill without a division.

[THURSDAY EVENING'S AGENDA.]

London, May 27. The House of Commons passed the second reading of the Finance Bill without a division.

[THURSDAY EVENING'S AGENDA.]

London, May 27. The House of Commons passed the second reading of the Finance Bill without a division.

[THURSDAY EVENING'S AGENDA.]

London, May 27. The House of Commons passed the second reading of the Finance Bill without a division.

[THURSDAY EVENING'S AGENDA.]

London, May 27. The House of Commons passed the second reading of the Finance Bill without a division.

[THURSDAY EVENING'S AGENDA.]

ITALIAN ROYAL VISIT TO LONDON.

Solemn Tributes at the Cenotaph.

BRIILLANT SCENE IN CITY.

[THURSDAY EVENING'S AGENDA.]

London, May 27. The Italian Royal Visit to London was a solemn and impressive occasion.

[THURSDAY EVENING'S AGENDA.]

London, May 27. The Italian Royal Visit to London was a solemn and impressive occasion.

[THURSDAY EVENING'S AGENDA.]

London, May 27. The Italian Royal Visit to London was a solemn and impressive occasion.

[THURSDAY EVENING'S AGENDA.]

London, May 27. The Italian Royal Visit to London was a solemn and impressive occasion.

[THURSDAY EVENING'S AGENDA.]

London, May 27. The Italian Royal Visit to London was a solemn and impressive occasion.

[THURSDAY EVENING'S AGENDA.]

London, May 27. The Italian Royal Visit to London was a solemn and impressive occasion.

[THURSDAY EVENING'S AGENDA.]

London, May 27. The Italian Royal Visit to London was a solemn and impressive occasion.

[THURSDAY EVENING'S AGENDA.]

GOVERNMENT'S AIRSHIP SCHEME.

Terms of Agreement with Pioneer Company.

TESTS OF AIRCRAFTS.

[THURSDAY EVENING'S AGENDA.]

London, May 27. The Government's airship scheme is a landmark in aviation history.

[THURSDAY EVENING'S AGENDA.]

London, May 27. The Government's airship scheme is a landmark in aviation history.

[THURSDAY EVENING'S AGENDA.]

London, May 27. The Government's airship scheme is a landmark in aviation history.

[THURSDAY EVENING'S AGENDA.]

London, May 27. The Government's airship scheme is a landmark in aviation history.

[THURSDAY EVENING'S AGENDA.]

London, May 27. The Government's airship scheme is a landmark in aviation history.

[THURSDAY EVENING'S AGENDA.]

London, May 27. The Government's airship scheme is a landmark in aviation history.

[THURSDAY EVENING'S AGENDA.]

London, May 27. The Government's airship scheme is a landmark in aviation history.

[THURSDAY EVENING'S AGENDA.]

BRITISH CLAIMS UPON RUSSIA.

Divergent Views in London Conference.

OFFICIAL COMMUNIQUE.

[THURSDAY EVENING'S AGENDA.]

London, May 27. The British claims upon Russia are a subject of international concern.

[THURSDAY EVENING'S AGENDA.]

London, May 27. The British claims upon Russia are a subject of international concern.

[THURSDAY EVENING'S AGENDA.]

London, May 27. The British claims upon Russia are a subject of international concern.

[THURSDAY EVENING'S AGENDA.]

London, May 27. The British claims upon Russia are a subject of international concern.

[THURSDAY EVENING'S AGENDA.]

London, May 27. The British claims upon Russia are a subject of international concern.

[THURSDAY EVENING'S AGENDA.]

London, May 27. The British claims upon Russia are a subject of international concern.

[THURSDAY EVENING'S AGENDA.]

London, May 27. The British claims upon Russia are a subject of international concern.

[THURSDAY EVENING'S AGENDA.]

"CHRIST AND LABOUR."

Mr. C. F. Andrews' Libels on Europeans in Kenya.

EXTRACTS FROM HIS BOOK.

[THURSDAY EVENING'S AGENDA.]

Distortions Supported by Out of Date Quotations.

[THURSDAY EVENING'S AGENDA.]

Distortions Supported by Out of Date Quotations.

[THURSDAY EVENING'S AGENDA.]

Distortions Supported by Out of Date Quotations.

[THURSDAY EVENING'S AGENDA.]

Distortions Supported by Out of Date Quotations.

[THURSDAY EVENING'S AGENDA.]

Distortions Supported by Out of Date Quotations.

[THURSDAY EVENING'S AGENDA.]

Distortions Supported by Out of Date Quotations.

[THURSDAY EVENING'S AGENDA.]

Distortions Supported by Out of Date Quotations.

[THURSDAY EVENING'S AGENDA.]

NOTICE. A Laws will be held at Government House on TUESDAY, 2nd JUNE, AT 10 A.M.

Turks Bay Aerodrome. The long waiting list was presented to the Air Ministry...

PREFERENCE GIVEN TO THE FRENCH MODEL. The Council of Ministers has decided...

Colonial Secretary. Mr. J. H. Thomas 'SOMERHAT BETTER'.

The Russian Scandal. The Central Executive of the Communist Party...

DEATH SENTENCES OF JUDGES SUSPENDED. Moscow, May 27.

MONEY MARKET. The Central Executive of the Communist Party...

ALLEGATIONS OF IMMORALITY. A Mass of Political Propaganda Masquerading as Religious Theory.

Mr. C. F. Andrews' Libels on Europeans in Kenya. Extracts from his book.

Distortions Supported by Out of Date Quotations. A Mass of Political Propaganda Masquerading as Religious Theory.

Mr. C. F. Andrews' Libels on Europeans in Kenya. Extracts from his book.

Distortions Supported by Out of Date Quotations. A Mass of Political Propaganda Masquerading as Religious Theory.

Mr. C. F. Andrews' Libels on Europeans in Kenya. Extracts from his book.

Distortions Supported by Out of Date Quotations. A Mass of Political Propaganda Masquerading as Religious Theory.

Mr. C. F. Andrews' Libels on Europeans in Kenya. Extracts from his book.

Distortions Supported by Out of Date Quotations. A Mass of Political Propaganda Masquerading as Religious Theory.

Mr. C. F. Andrews' Libels on Europeans in Kenya. Extracts from his book.

Distortions Supported by Out of Date Quotations. A Mass of Political Propaganda Masquerading as Religious Theory.

Mr. C. F. Andrews' Libels on Europeans in Kenya. Extracts from his book.

Distortions Supported by Out of Date Quotations. A Mass of Political Propaganda Masquerading as Religious Theory.

Mr. C. F. Andrews' Libels on Europeans in Kenya. Extracts from his book.

Distortions Supported by Out of Date Quotations. A Mass of Political Propaganda Masquerading as Religious Theory.

Ford TOURING CAR. IMMEDIATE DELIVERY. £200-0-0

NO MORE PUNCTURES.

We have invented a revolutionary "Champion" Pneumatic Safety Valve which is the most great invention in England and elsewhere.

They use a little more expensive than the ordinary type of inner tube, but they save their money in the long run, in addition to the freedom from tyre trouble and annoyance every time their Champion Pneumatic Tyres are fitted to your car or motor cycle.

CALL AND INSPECT THEM.

J. W. MILLIGAN & Co.,
Government Road, NAIROBI.

JUST ARRIVED

The Finest Assortment of Chocolates

IN TOWN

The Chocolates with the Splendid Centres

LOUIS XV

Other Kinds Both Loose and in Handsome Boxes.

Splendid 4lbs. Boxes for Shs. 18.

ELLIOT'S

THE CHOCOLATE SHOP

Picnic 60. NAIROBI. P.O. Box 178.

UGANDA RAILWAY NOTICE.

- OBSTRUCTION CONTRACTS -

During August or September of this year, the Uganda Railway Administration expects to call for tenders for the Construction of the following Branch Lines:

ITALIA BRANCH. Approximate length-48 Miles.

SOALIA BRANCH. Approximate length-21 Miles.

Contractors who wish to be allowed to tender for the above works should send their names and addresses to the Chief Engineer, Uganda Railway, P.O. Box 79, Nairobi. Only contractors of sufficient standing, and with satisfactory technical qualifications, to enable them to undertake one or other of these works as a whole, need register their names.

It is intended that staking-out and preparation of detailed plans and drawings will be commenced during the latter part of the present year, while construction will commence at the beginning of 1925.

SIGNED, G. D. RHODES,
Chief Engineer,
Uganda Railway.

The Victoria Nyanza Sugar Co. LIMITED

NOTICE TO MERCHANTS AND CUSTOMERS.

WEATHER PERMITTING, crushing will commence on June 30th, 1924. Shippers' orders of supplying Sugar Cases are required to be placed the following positions:

Area of Cases to arrive.

Approximate issues.

Average ton of each day are prepared to deliver daily. Shippers please to Uganda Railway for loading. Dates upon which delivery will be made.

For further information apply to Company's Office—MILWAUKEE.

SENATOR

Progress in Public Councils

The committee stage of the Bill to Amend the Native Authority Ordinance, 1912, was passed by the Legislative Council yesterday. It follows the opinion of the Department suggested by the Select Committee on the subject of the Bill. The Bill was reported to the Commission.

Private Member Bill.

The Private Member Bill was reported on by the Select Committee with certain alterations. With the exception of one sub-section 12, the Bill was accepted, progress is reported.

A Wrecking Bank.

HOWARD CARTER'S ALIBION AGAINST DEBTORS

Mr. Howard Carter is opposing the Leasehold Bill in the House of Commons. He declares the system of "Debtors' Bonds" to be an antiquated and unjust system.

Mr. Carter objects to the system of the bank to which the public are to be admitted at 10s. per head, on the grounds that it is a system of "wrecking banks" by which the property of the poor is being sold to the rich.

It is a system of "wrecking banks" by which the property of the poor is being sold to the rich. It is a system of "wrecking banks" by which the property of the poor is being sold to the rich.

A FICY Bill.

A Bill has been introduced in connection with the question of a 21st century Bill. The Bill is intended to amend the law relating to the question of a 21st century Bill.

SAM REFRIG

REFRIGERATORS

P.O. Box 478
Phone 1428
NAIROBI.

OVERSEAS MAILED

This notice is issued to inform shippers of the shipping Agents. It is possible, however, that certain shippers may require a further notice. It is possible, however, that certain shippers may require a further notice.

STEAMER	FROM	Days in Month	Mails arrive in Month
Port of Mombasa	London	1	1
Port of Mombasa	London	2	2
Port of Mombasa	London	3	3
Port of Mombasa	London	4	4
Port of Mombasa	London	5	5
Port of Mombasa	London	6	6
Port of Mombasa	London	7	7
Port of Mombasa	London	8	8
Port of Mombasa	London	9	9
Port of Mombasa	London	10	10
Port of Mombasa	London	11	11
Port of Mombasa	London	12	12
Port of Mombasa	London	13	13
Port of Mombasa	London	14	14
Port of Mombasa	London	15	15
Port of Mombasa	London	16	16
Port of Mombasa	London	17	17
Port of Mombasa	London	18	18
Port of Mombasa	London	19	19
Port of Mombasa	London	20	20
Port of Mombasa	London	21	21
Port of Mombasa	London	22	22
Port of Mombasa	London	23	23
Port of Mombasa	London	24	24
Port of Mombasa	London	25	25
Port of Mombasa	London	26	26
Port of Mombasa	London	27	27
Port of Mombasa	London	28	28
Port of Mombasa	London	29	29
Port of Mombasa	London	30	30

Whiteaway's MENS HEADWEAR

Just Unpacked.

Make Whiteaway's Felt Hats for Office wear. Best quality felt and inner construction. Washable and wearing quality.

Shs. 9/50

THE "ALBANY" FELT HAT

A smart stylish shape, fairly wide in the brim with a velvet band and lined edges to last. New stock just to hand in Dark Fawn and Dark Grey. Size 6 1/2 to 7 1/2.

Shs. 27/60

THE NYANZA

SOLELY COVERED TOPEL

The favourite Topi Club Shape, in Felt body covered with non-elastic Nylon Drill. Khaki shade well built and with best English leather head band and fittings. All men's sizes in stock.

Shs. 15/-

THE "TUMBUKI" SOFT FELT

A wonderful "HIT" for the modern. Modern—elegant, stylish, built to last. Fawn or Grey—All sizes in stock.

Shs. 10/50

THE POMBASA

SOLELY COVERED TOPEL

The popular shape as a shock, non-elastic covered, light weight Felt Body. All sizes in stock.

Shs. 15/-

"Smuggler" Trench Coat

THE HIGHEST GRADE IN FURTURE - BELIER

Closest woven, with wide fur-lined, sheep, double. Available in White or Brown web.

Shs. 4/50

WHITEAWAY, LAIBEAU & Co., Ltd.

A NEW IDEA FOR THE RAINS!

HAWKES WATERPROOF HELMETS

This helmet has been brought out to meet the need for a helmet to withstand the Rain. Hawkets waterproofed cloth body covered with White waterproof material, easy to clean, just needs spritzing once with "Glyce". The Elastic Fuzzes of the same waterproof material. All sizes in stock.

Shs. 35/-

"THE TENT CLUB"

WITH INSIDE ANTI-CONCUSSION STRAPS.

An extremely light weight Topi in Felt covered outside with Nylon Drill. Strong over covers. With super inside best English leather head-band and fittings. All men's sizes just received.

Shs. 16/50

THE POMBASA

SOLELY COVERED TOPEL

The popular shape as a shock, non-elastic covered, light weight Felt Body. All sizes in stock.

Shs. 15/-

"Smuggler" Trench Coat

THE HIGHEST GRADE IN FURTURE - BELIER

Closest woven, with wide fur-lined, sheep, double. Available in White or Brown web.

Shs. 4/50

Just Unpacked.

Make's White Oxford Cloth Hats, fine blue fabric, will stand any amount of heat wear and washing. Best quality felt, inner construction. Washable and wearing quality.

Shs. 14/50

THE "DARLING" FELT HAT

New stock of these Fox Felt Hats. A large well trimmed shape for the man who ordinarily wears a Double Topi. An ideal Hat for evening wear in Fawn or Steel Grey. Size: 6 1/2 to 7 1/2.

Shs. 25/-

"DOOM-DOOM" The Shako Topi

New stock of these well-known Felt Topis just received, covered quality. Khaki and with Khaki Fuzzes, the back of the Topi is slightly longer than shown in the sketch, thus giving ample protection to the back of the head. Good shape as a shock. All sizes in stock.

Shs. 18/50

HAWKES CIVILIAN HELMETS

The favorite shape for Town wear, in White or Khaki. Combed and Cuck beds, made and finished in the best style by Harkness of Bradford.

Shs. 31/-

DEPARTURES

STEAMERS	FOR	Mails depart Weekly G.P.O.	Dated of departure
Kangaroo	London	1	1
Kangaroo	London	2	2
Kangaroo	London	3	3
Kangaroo	London	4	4
Kangaroo	London	5	5
Kangaroo	London	6	6
Kangaroo	London	7	7
Kangaroo	London	8	8
Kangaroo	London	9	9
Kangaroo	London	10	10
Kangaroo	London	11	11
Kangaroo	London	12	12
Kangaroo	London	13	13
Kangaroo	London	14	14
Kangaroo	London	15	15
Kangaroo	London	16	16
Kangaroo	London	17	17
Kangaroo	London	18	18
Kangaroo	London	19	19
Kangaroo	London	20	20
Kangaroo	London	21	21
Kangaroo	London	22	22
Kangaroo	London	23	23
Kangaroo	London	24	24
Kangaroo	London	25	25
Kangaroo	London	26	26
Kangaroo	London	27	27
Kangaroo	London	28	28
Kangaroo	London	29	29
Kangaroo	London	30	30

If you require Native Labour

GO TO—

D. E. MORGAN.

NATIVE LABOUR AGENT.

P.O. Box 111. Next Johannesburg, Ltd. Handle Street, NAIROBI.

ENGLISH DERBY

BOOK NOW OPEN ON THE ABOVE RACE

LONDON ODDS

ARE BEING OFFERED BY

ERNEST CLYDE

Trot Chambers, To Issue

