



# For the cold Weather.

## Special Value in All Wool BLANKETS.

SOFT, WARM, COMFORTABLE, CHEAP. FOR HOME, SCHOOL, CAMP or SAFARI.



Full size—full weight.

- The "DERWENT" Blanket--all wool size 55x80 inches, in light, grey colour with greek key border : 29.50 each.
- The "DEVERON" Blanket, all wool, size 55x80 inches, light camel hair colour with greek key border : 37.50
- The "BERWICK" Blanket size 55x80 inches, colour red, with stripe border : 32.50
- The "BOLTON" Blanket, colour mid grey with greek key border, Size 55x80 inches : 27.50

THESE PRICES ARE SUBJECT TO PER CENT Cash Discount

**5** **JACOBS** LIMITED NAIROBI

P.O. Box 255. Phone 126. Telegrams "ROYALOREM" NAIROBI.

# MADAME ROWE ET CIE, LTD.

SMART-AFTERNOON AND EVENING GOWNS, WRAPS, MILLINERY, LINGERIE, SHOES.

Government Road, NAIROBI  
Phone 289. P.O. Box 214.

# Short Loans Granted

£1 to £1,000.

WRITE TO THE  
**Kenya Loan & Discount Co., Ltd.**

NAIROBI HOUSE, (SECOND FLOOR), NAIROBI.  
WILKS, DISCOUNTED—TRUSTEES' CONFIDENTIAL.



**Chess**  
By A. H. Sweeney Palmer.  
Solutions and All Chess problems about 1000.

**NAIROBI LIBRARY CLUB**  
The weekly meetings of the club are held on the 1st of the month. The next meeting will be on the 1st of the month. The club is open to all who are interested in the study of literature.

**PROBLEM No. 716**  
No. 11 in the Competition. Date: 28



**White 11**  
White to move. The black king is on e1, the black queen on d1, the black rook on a1, the black knight on b1, the black bishop on c1, the black pawn on d2, the black pawn on e2, the black pawn on f2, the black pawn on g2, the black pawn on h2, the black pawn on a2, the black pawn on b2, the black pawn on c2, the black pawn on d2, the black pawn on e2, the black pawn on f2, the black pawn on g2, the black pawn on h2.



**White 12**  
White to move. The black king is on e1, the black queen on d1, the black rook on a1, the black knight on b1, the black bishop on c1, the black pawn on d2, the black pawn on e2, the black pawn on f2, the black pawn on g2, the black pawn on h2, the black pawn on a2, the black pawn on b2, the black pawn on c2, the black pawn on d2, the black pawn on e2, the black pawn on f2, the black pawn on g2, the black pawn on h2.

**ENDGAME No. 26**  
By H. H. Black.  
From the French Chess Magazine, 1935, No. 7.



**White 13**  
White to move. The black king is on e1, the black queen on d1, the black rook on a1, the black knight on b1, the black bishop on c1, the black pawn on d2, the black pawn on e2, the black pawn on f2, the black pawn on g2, the black pawn on h2, the black pawn on a2, the black pawn on b2, the black pawn on c2, the black pawn on d2, the black pawn on e2, the black pawn on f2, the black pawn on g2, the black pawn on h2.

**WEEKLY GOVERNMENT**  
(The first volume of papers since the previous 1934.)

P.T. No.	No.
1	120
2	121
3	122
4	123
5	124
6	125
7	126
8	127
9	128
10	129
11	130
12	131
13	132
14	133
15	134
16	135
17	136
18	137
19	138
20	139
21	140
22	141
23	142
24	143
25	144
26	145
27	146
28	147
29	148
30	149
31	150
32	151
33	152
34	153
35	154
36	155
37	156
38	157
39	158
40	159
41	160
42	161
43	162
44	163
45	164
46	165
47	166
48	167
49	168
50	169
51	170
52	171
53	172
54	173
55	174
56	175
57	176
58	177
59	178
60	179
61	180
62	181
63	182
64	183
65	184
66	185
67	186
68	187
69	188
70	189
71	190
72	191
73	192
74	193
75	194
76	195
77	196
78	197
79	198
80	199
81	200
82	201
83	202
84	203
85	204
86	205
87	206
88	207
89	208
90	209
91	210
92	211
93	212
94	213
95	214
96	215
97	216
98	217
99	218
100	219
101	220
102	221
103	222
104	223
105	224
106	225
107	226
108	227
109	228
110	229
111	230
112	231
113	232
114	233
115	234
116	235
117	236
118	237
119	238
120	239
121	240
122	241
123	242
124	243
125	244
126	245
127	246
128	247
129	248
130	249
131	250
132	251
133	252
134	253
135	254
136	255
137	256
138	257
139	258
140	259
141	260
142	261
143	262
144	263
145	264
146	265
147	266
148	267
149	268
150	269
151	270
152	271
153	272
154	273
155	274
156	275
157	276
158	277
159	278
160	279
161	280
162	281
163	282
164	283
165	284
166	285
167	286
168	287
169	288
170	289
171	290
172	291
173	292
174	293
175	294
176	295
177	296
178	297
179	298
180	299
181	300

**KALA SIDI**  
Prices comparatively low  
White, Herring, Charcoal Iron, Daily use, Fancy goods, etc.

**KALA SIDI**  
Government Road, NAIROBI

**BUSINESS PREMISES TO LET.**  
The whole or half of the premises of the Printing and Stationery Co. Ltd. is available for lease. The premises are situated in the City of Nairobi, and are well equipped for the printing of all kinds of work. The premises are also suitable for use as a warehouse or for other business purposes. The premises are available for lease on a long or short term. The terms of the lease are negotiable. For further particulars, apply to the Manager, Printing and Stationery Co. Ltd., Nairobi.

# MAIZE CRIB WIRE NETTING

16 GAUGE 3ft. 4ft. & 6ft. WIDE

**J. W. Milligan & Co.**  
P.O. Box 148 NAIROBI

PROGS, HATS, LINGERIE MADE TO ORDER

Letter's own Materials made up

**GRAB-ROBERTSON**  
NAIROBI HOTEL.

Materials Cheaper Phone 24.

# PRESTON'S SALE

NOW ON

LARGE STOCK OF LADIES STOCKINETTE DRESSES ART SILK, and TUNIC DRESSES WOOLLEN FROCKS & SPORTS COATS LADIES VESTS, BELTS and STRAWS CHILDREN'S STRAWS and FELTS ALL NEW GOODS, at SALE PRICES. AS opportunity not to be missed.

**R. O. PRESTON, HARDING ST., NAIROBI**

# FISKEBOLLERIKRAFT.

Fish Balls in Bullion

A most delicious and nourishing Food. 1/70 or two made of Fresh Fish, Milk and a little potato flour and spices. Fried in Butter. Each tin contains 2 1/2 lbs. net weight. Sold in 1/2 gallon tins at 2/1 per gallon, an delicious Frigoriferable at "THE STORE OF QUALITY"

**R. B. DUNCAN'S**  
"The Grocer"  
Nairobi.

P.O. Box 98

# DIRECT SHIPMENT OF CEREALS JUST ARRIVED

QUAKER OATS  
PUFFED WHEAT  
PUFFED RICE  
POST TOASTIES  
PORRIDGE  
SHREDDED WHEAT

AT **ELLIOTS**

PHONE 60 NAIROBI P.O. Box 175

# MALAGA-QUINA.

A celebration of the oldest Old Malaga Wine specially selected for the purpose of competition with the best Malaga wine of the very highest grade available of Quina de Malaga.

Available in a TONNE after MALAGA, AGUE and FEVER and all kinds of AFFECTIONS and RHEUMATISM.

Prepared by **BOWEN & MORTIMER** Chemists.

**SUNBELT** Insurance Co. Ltd.  
1710, Box 991, NAIROBI  
Telephone: "IMBASTANT"

SIX YEARS AGO  
Kings had  
1,000 "TRAFFIC" FAMILIAR

**T-O-DAY**  
2,000 WHITE FAMILIAR  
New Convoying Family  
What will be the results  
of the new traffic?  
State your opportunity on  
**BUY NOW**

What value are the  
YOU WALK IN THE  
SECURED MONTHLY  
INCOME

**MONTBLANC** watches  
and  
JEWELLERY  
at  
"THE STORE OF QUALITY"

# COFFEE

1/1000 140 acres in coffee  
New Convoying Family  
What will be the results  
of the new traffic?  
State your opportunity on  
**BUY NOW**

300 acres in Arabica  
Coffee bearing trees  
New Convoying Family  
What will be the results  
of the new traffic?  
State your opportunity on  
**BUY NOW**

# TEA

1/1000 140 acres in tea  
New Convoying Family  
What will be the results  
of the new traffic?  
State your opportunity on  
**BUY NOW**

**HOUSE PROPERTY**  
in our hands  
WE ARE BUYING  
FOR ALL AGENTS  
IN TOWN & COUNTRY

**AGENTS**  
South British Insurance  
All Risks underwritten







# AUCTION SALES

**Auction Diary**  
 (Continued from p. 10.)  
 Monday, June 8, at 10 a.m. Sale of Furniture. (Glover and Co.)  
 Tuesday, June 9, at 10 a.m. Sale of English and Scotch Furniture. (Glover and Co.)  
 Wednesday, June 10, at 10 a.m. Sale of Carpets and Rugs. (Glover and Co.)  
 Thursday, June 11, at 10 a.m. Sale of Furniture. (Glover and Co.)  
 Friday, June 12, at 10 a.m. Sale of Furniture. (Glover and Co.)

## ARCHIBALD HOGG,

BARBADOE STREET, HAIKROU.

(In the City of the Coast.)

(In the City of the Coast.)

(In the City of the Coast.)

(In the City of the Coast.)

(In the City of the Coast.)

(In the City of the Coast.)

(In the City of the Coast.)

(In the City of the Coast.)

(In the City of the Coast.)

(In the City of the Coast.)

(In the City of the Coast.)

(In the City of the Coast.)

(In the City of the Coast.)

(In the City of the Coast.)

(In the City of the Coast.)

(In the City of the Coast.)

(In the City of the Coast.)

(In the City of the Coast.)

(In the City of the Coast.)

(In the City of the Coast.)

(In the City of the Coast.)

(In the City of the Coast.)

(In the City of the Coast.)

(In the City of the Coast.)

(In the City of the Coast.)

(In the City of the Coast.)

(In the City of the Coast.)

(In the City of the Coast.)

(In the City of the Coast.)

(In the City of the Coast.)

(In the City of the Coast.)

(In the City of the Coast.)

(In the City of the Coast.)

(In the City of the Coast.)

(In the City of the Coast.)

(In the City of the Coast.)

(In the City of the Coast.)

(In the City of the Coast.)

(In the City of the Coast.)

(In the City of the Coast.)

(In the City of the Coast.)

(In the City of the Coast.)

(In the City of the Coast.)

(In the City of the Coast.)

(In the City of the Coast.)

(In the City of the Coast.)

(In the City of the Coast.)

(In the City of the Coast.)

(In the City of the Coast.)

(In the City of the Coast.)

(In the City of the Coast.)

(In the City of the Coast.)

(In the City of the Coast.)

(In the City of the Coast.)

(In the City of the Coast.)

(In the City of the Coast.)

(In the City of the Coast.)

(In the City of the Coast.)

(In the City of the Coast.)

(In the City of the Coast.)

(In the City of the Coast.)

(In the City of the Coast.)

(In the City of the Coast.)

(In the City of the Coast.)

(In the City of the Coast.)

(In the City of the Coast.)

(In the City of the Coast.)

(In the City of the Coast.)

(In the City of the Coast.)

(In the City of the Coast.)

(In the City of the Coast.)

(In the City of the Coast.)

(In the City of the Coast.)

(In the City of the Coast.)

(In the City of the Coast.)

(In the City of the Coast.)

(In the City of the Coast.)

(In the City of the Coast.)

## Muter and Oswald's Sales.

### CATALOGUE SALE

OF

#### Furniture and Effects and "DURANT" (large model) Touring Car.

Daily instructed, we shall sell, without reserve, unless otherwise stated, at our Salerooms, Hastings Street, Haikrou, on

**Monday, 8th June, at 10 a.m.**

**LARGE ENGLISH CARPET.**

**TWO CHESTERFIELD SUITES** of ottoman and club chairs, in excellent condition.

**COFFER TRAYS, BOWLS, AND ORNAMENTS** BESS OXFAMMERS AND CURIO.

**REVOICER TABLES, SETS.**

**OCCASIONAL TABLES, SETS.**

**REVOLVER TABLES, SETS.**

**COLLECTION OF NATIVE SPEARS, ORNAMENTS, AND BASKET WORK.**

**MIRRORED GARDEN, DECANTERS, BEDROOM CUPBOARDS, ELECTRIC TABLE LAMP.**

**INDIAN CARVED TABLE, CARD TABLE, DINNER GONG hung in handsome, CARVED FRAME.**

**CUSHIONS, LARGE SCREEN, NEW SHEETS, double, hem-stitched, and other Linen.**

**TENNIS RACQUETS with frames.**

**POLISHED BOOK SHELF, CURTAINS, LINEN CUPBOARD, BOOT CUPBOARD.**

**"DURANT" (large model) Touring Car; cord tyres; in good condition; 3 spare covers; shock absorbers, set of four; spot light; electrical equipment good; this car is stated by owner to be in good running order - any intending purchasers may have a trial run; by appointment, between the hours of 2-30 p. m. and 5 p. m., on Friday, 5th June (old reserve)**

OF BEHALF OF OTHER PARTIES.

**TWO LADY'S CYCLES.** "Swift," in perfect condition.

**"Single W" Travels Very Rapidly (new).**

**ALGOLAY FUR in various sizes.**

**STAINY WOODEN BEDSTEAD, with spring and coil mattress.**

**LARGE SIDEBORD, with two bevelled mirrors, cupboards, etc.**

**TEAK COGNITION WARESTAND, & DRESSING TABLE, with bevelled mirror.**

**DINING TABLE, WARESTAND, tiled top.**

**MORRIS CHAIRS.**

**THREE FINE CHESTERFIELD SUITE, ottoman covers.**

**"DECO" GRAMOPHONE with assortment of records.**

**ELECTRIC LAMP for Piano, with switch and fan.**

**LARGE COUNTER, 6' 6" x 2' 6".**

**SETS OF DRAWERS, DRESSING TABLES, bevelled mirrors.**

**Campwood WRITING TABLE with hair top.**

**Campwood DOUBLE BEDSTEAD with spring and coil mattress.**

**DINNER WAGON in campwood. FOLDING CHAIR, covered, open wood.**

**WRITING BUREAU, SIDEBORD in campwood.**

**WARDROBE, without mirror, 6' 6" x 6' 6" WARESTAND.**

**DRESSING TABLE in campwood with bevelled mirror.**

**NEW LINOLEUM in two yard lengths.**

**SUITS OF SIX DINING CHAIRS in teak, upholstered seats (newer).**

**NEW FAN-REGULATOR, with wicker body, CHESTERFIELD.**

OF BEHALF OF DR. CLARKIN.

**DINING TABLE, on casters, with two extending leaves.**

**COIR in campwood and white enamel.**

**GREEN CHEST OF DRAWERS, CHILD'S imported CHAIR.**

**INDIAN TEAK MORRIS CHAIR, well upholstered, foot rest.**

**CIRCULAR TEA TABLE in campwood.**

**DINING WAGON polished teak, very well made.**

**BAGANDA DRUM and native stools. COIR MATTING.**

**PLAYGROUND, ROCKING CHAIR, bedstead, with casters and iron bed.**

**SET OF SIX DINING CHAIRS in campwood.**

**SETTLE, polished wooden frame, with fitted cushions. Etc. Etc. Etc.**

Notes. Catalogues will be available on Saturday forenoon.

MUTER and OSWALD, Auctioneers, Haikrou.

## Austin's Auctions.

Daily instructed by special license

### AUSTIN & Co.

Will sell at Without Reserve unless otherwise stated at the MART, Metcalley Bld. Govt. Rd.

**Today June 6th, at 10 sharp**

Three Cupboard WARDROBE with full set as best as Mirror

Three FINE CHESTERFIELD SUITE Ottomans, Covered Wall Paper.

Dressing Chests with Mirror and 4 Drawers, Campwood Washstands.

High Ladies Writing Bureau, Black 3 Drawers Writing Desk.

Wood Single bed with spring Mattress, Oval C. W. Dining Table full size.

Handsome SIDEBORD Round Front with Drawers and Cupboards.

Set of 6 fine Dining Chairs including 2 Elbow Chairs. Revolver

Five Guns SAHLE, 2 Horse Carriage. Revolver

Elbow Mirror, Bureaus, etc. Morris Chairs, Table Metal (old reserve).

H. M. V. Gramophone, Sewing Machine, Sewing Machine, Sewing Machine, Sewing Machine.

Handsome bevelled Campwood Washstand with ROYAL TYPEWRITER IN PERFECT CONDITION, as New (Reserve).

ETC. ETC. ETC.

AUSTIN & Co. Auctioneers

## Unique Unreserved Sale of Solid Silver Ware, Sheffield Plated Goods Doulton China Etc. Etc.

Daily instructed

## AUSTIN & Co.

Will sell by Public Auction ABSOLUTELY WITHOUT RESERVE

At the MART, Metcalley Bld. Govt. Road.

**ON WEDNESDAY JUNE 10th**

at 10 sharp.

SOLID SILVER EGG BOILER COMPLETE, SILVER SCENT TANTALUS.

PAIR BLUE GLASS SILVER MOUNTED VASES. 2 SILVER CARRIAGE CLOCKS.

SEVENTEEN SILVER VASES all sizes. 3 SETS SILVER INK STANDS.

PAIR SHEFFIELD PLATE ENTREE DISHES, PLATED ASPARAGUS STAND. PLATED SHEFFIELD PLATED SALAD STAND.

SOUF TREEN GERMAN SILVER PLAQUE ROYAL DOULTON 13 piece FRUIT SERVICE.

WEDGEWOOD PLATES NIMMOGS CUPS AND SAUCERS JAPANESE VASES.

BRASS FINGER BOWLS. SHELL FLOWER STANDS ENLAIN ENAMELLED VASES.

PART CHINA DINNER SERVICE. BULIM CUPS AND SAUCERS.

CUT GLASS DECANTERS, FINGER BOWLS, GLASSES, ETC. ETC.

THE ABOVE GOODS ARE OF EXTRA FINE QUALITY.

A SALE WITHOUT ATTENDING THE ABOVE WILL BE ON VIEW IN OUR MART ON THURSDAY, 7th JUNE, 1914.

AUSTIN & Co. AUCTIONEERS

## OBTAIN TOP PRICES

For all articles you wish to dispose of by way of Sale -

**JAMAL PIRBHAI**  
AUCTIONEER AND OFFICIAL BROKER  
(Opposite Francis Gardens)  
AUCTIONEER STREET, SHARDA  
Commencing 10 a.m.

P. O. BOX 206

## Unreserved Sale Assorted Tinned Goods, Etc.

Daily instructed

AUSTIN & Co.

Will sell at the MART, Metcalley Bld. Govt. Rd.

**On Thursday, June 11th, at 10 Sharp**

15 PRK. CONCENTRATED MILK. 15 PRK. WHEATCRACK. 15 PRK. WHEATCRACK.

2 PRK. PURE LIME JUICE. 2 PRK. PURE LIME JUICE.

10 PRK. JAMS. 10 PRK. BUTTER. 10 PRK. BUTTER.

10 PRK. MIXED VEGETABLES. 10 PRK. MIXED VEGETABLES.

10 PRK. ASPARAGUS. 10 PRK. ASPARAGUS.

10 PRK. SADDLES. 10 PRK. SADDLES.

10 PRK. BAKING POWDER. 10 PRK. BAKING POWDER.

10 PRK. COFFEE. 10 PRK. COFFEE.

10 PRK. TEA. 10 PRK. TEA.

10 PRK. SADDLES. 10 PRK. SADDLES.

10 PRK. SADDLES. 10 PRK. SADDLES.

10 PRK. SADDLES. 10 PRK. SADDLES.

10 PRK. SADDLES. 10 PRK. SADDLES.

10 PRK. SADDLES. 10 PRK. SADDLES.

10 PRK. SADDLES. 10 PRK. SADDLES.

10 PRK. SADDLES. 10 PRK. SADDLES.

10 PRK. SADDLES. 10 PRK. SADDLES.

10 PRK. SADDLES. 10 PRK. SADDLES.

10 PRK. SADDLES. 10 PRK. SADDLES.

10 PRK. SADDLES. 10 PRK. SADDLES.

10 PRK. SADDLES. 10 PRK. SADDLES.

10 PRK. SADDLES. 10 PRK. SADDLES.

10 PRK. SADDLES. 10 PRK. SADDLES.

10 PRK. SADDLES. 10 PRK. SADDLES.

10 PRK. SADDLES. 10 PRK. SADDLES.

10 PRK. SADDLES. 10 PRK. SADDLES.

10 PRK. SADDLES. 10 PRK. SADDLES.

10 PRK. SADDLES. 10 PRK. SADDLES.

10 PRK. SADDLES. 10 PRK. SADDLES.

10 PRK. SADDLES. 10 PRK. SADDLES.

10 PRK. SADDLES. 10 PRK. SADDLES.

10 PRK. SADDLES. 10 PRK. SADDLES.

10 PRK. SADDLES. 10 PRK. SADDLES.

10 PRK. SADDLES. 10 PRK. SADDLES.

10 PRK. SADDLES. 10 PRK. SADDLES.

10 PRK. SADDLES. 10 PRK. SADDLES.

10 PRK. SADDLES. 10 PRK. SADDLES.

10 PRK. SADDLES. 10 PRK. SADDLES.

10 PRK. SADDLES. 10 PRK. SADDLES.

10 PRK. SADDLES. 10 PRK. SADDLES.

10 PRK. SADDLES. 10 PRK. SADDLES.

10 PRK. SADDLES. 10 PRK. SADDLES.

## Muter and Oswald's Sales.

Daily instructed, we shall sell, without reserve, at our Salerooms, Hastings Street, Haikrou, on

**WEDNESDAY 10th June at 10 a.m.**

**SUNDY GLASSWARE, CROCKERY, KITCHEN UTENSILS, DECANTERS.**

**NOVELTY, SECOND HAND CLOTHING, HIDE CASE, GALVANIZED IRON BATHS, CUPBOARDS, DOOR MATS AND SCRAPERS, NATIVE POTTERY, FORD DRIVE SHAFT, FORD RADIIUS ROD, MOTOR CYCLE ACCESSORIES.**

**TRAYS, SAFARI LANTERN IN CASE, FOLDING TABLE, RUGS, REMANUVE CARPET, SHERRY, LARGE COLLECTION OF GARDEN TOOLS, WICKER BASKETS, TOWELS, KIMONO, WORK BAGS, beads, etc.**

MUTER and OSWALD, Auctioneers, Haikrou.

## Muter and Oswald's Sales.

Auction Sale of Corrugated Iron Building.

Daily instructed, we shall sell, absolutely without reserve, on

**Saturday, 13th June, at 10-30 a. m. on the SITE IN VICTORIA STREET, OPPOSITE THE FIRE STATION, ALL TIMBER AND CORRUGATED IRON FORMING THE EXISTING BUILDING.**

THIS OFFERS AN EXCELLENT OPPORTUNITY FOR THE PURCHASE OF A LARGE QUANTITY OF SECOND HAND CORRUGATED IRON.

NOTE: A reasonable amount of time will be allowed for the removal of the timber and iron, which will all be sold in one lot.

MUTER and OSWALD, Auctioneers, Haikrou.

## Sands & Co.

At our Railway Saleyards

**MONDAY 8th June**

at 10-30 a.m.

Acting on instructions from a client we will sell at the Salerooms (Trade Cons.)

40 Grade Shortest Cows in calf and open.

3 A.M. & 1.000

3 A.M. Cows

3 A.M. Oxen

SANDS & Co., Auctioneers

## Sands & Co.

At our Railway Saleyards

**Monday 15th June at 10-30 a.m.**

**INNUEM COWS.**









SHAW & HUNTER

NIXEY AVENUE, Tel. 270. Telegrams: "Grafite." P. Boxes 214

Guns and AMMUNITION

Repairs by a London and Birmingham Gunsmith.

A Car Worth Waiting for GRAY

Call and see demonstration model AT K. Melvor & Co.

Toilet Requisite Co.

In addition to our New Stock of Attractive Charming Aids to Beauty we have a new Continuation of the only Hair Dress Inecto-Rapide.

Hair Shines in Tortoise-shell and in a Variety of Colors.

J. R. STEPHENS & Co. Ltd

Tailors & Outfitters.

GOVERNMENT ROAD, Box 668, NAIROBI, Phone 971.

THE NEW CHEVROLET

HAS ARRIVED 85 QUALITY FEATURES INCLUDING New clutch, new seat, axle, new frame, new tyre springs, Duo Slat.



The Motor Man's Exchange, Limited

PETER & SON

s specialise in the following: DEVELOPING, PRINTING and ENLARGING.

With our new enlarger we are able to enlarge photographs to almost any size

Brimelow's Garage,

FOR MOTOR REPAIRS

PETROL OILS & GREASE TYRES OF EVERY MAKE AND SIZE FOR SALE

DODGE CAR BOX BODY FITTED WITH SPOT LIGHTS AND 8AMP AMP 25V LATEST MODEL PERFECT CONDITION ALSO FORD TOURING CAR IN GOOD RUNNING ORDER

ENGLISH CRICKET.

Offered Four Days Against the Army.

A DOUBLE CENTURY

(Continued from page 1)

The following is the score at the close of the day's play of the second match:

M.C.C. vs. WALES

At Lords:

M.C.C. (1st innings) 244 R.

Wales (1st innings) 229

M.C.C. vs. YORKS

At Bramley:

Yorkshire (1st innings) 260 R.

M.C.C. (1st innings) 244 R.

M.C.C. vs. NORTHANTS

At Leicester:

Northants (1st innings) 229

M.C.C. (1st innings) 244 R.

M.C.C. vs. DERBY

At Derby:

Derby (1st innings) 145 R.

M.C.C. (1st innings) 244 R.

M.C.C. vs. KENT

At Maidstone:

Kent (1st innings) 180 R.

M.C.C. (1st innings) 244 R.

M.C.C. vs. SOMERSET

At Taunton:

Somerset (1st innings) 145 R.

M.C.C. (1st innings) 244 R.

M.C.C. vs. THE ARMY

At Lords:

The Army (1st innings) 244 R.

M.C.C. (1st innings) 244 R.

M.C.C. vs. RUGBY OF TORSDAY

At Lords:

Rugby of Torso (1st innings) 244 R.

M.C.C. (1st innings) 244 R.

M.C.C. vs. THE WINNERS

At Lords:

The Winners (1st innings) 244 R.

M.C.C. (1st innings) 244 R.

HOLIDAY GOLF IN NAIROBI.

The Hill Club Organises a Native Competition.

THE FIRST OF ITS KIND TO BE HELD IN KENYA.

African Golfers Display Remarkable Sportsmanship and Spirit.

By NAIROBI.

King's Birthday Golf was a great day for us as the Nairobi Hill Club is commencing on the morning of this day the first of its kind in Kenya.

The first of its kind in Kenya was a great day for us as the Nairobi Hill Club is commencing on the morning of this day the first of its kind in Kenya.

The first of its kind in Kenya was a great day for us as the Nairobi Hill Club is commencing on the morning of this day the first of its kind in Kenya.

The first of its kind in Kenya was a great day for us as the Nairobi Hill Club is commencing on the morning of this day the first of its kind in Kenya.

The first of its kind in Kenya was a great day for us as the Nairobi Hill Club is commencing on the morning of this day the first of its kind in Kenya.

The first of its kind in Kenya was a great day for us as the Nairobi Hill Club is commencing on the morning of this day the first of its kind in Kenya.

The first of its kind in Kenya was a great day for us as the Nairobi Hill Club is commencing on the morning of this day the first of its kind in Kenya.

The first of its kind in Kenya was a great day for us as the Nairobi Hill Club is commencing on the morning of this day the first of its kind in Kenya.

The first of its kind in Kenya was a great day for us as the Nairobi Hill Club is commencing on the morning of this day the first of its kind in Kenya.

The first of its kind in Kenya was a great day for us as the Nairobi Hill Club is commencing on the morning of this day the first of its kind in Kenya.

The first of its kind in Kenya was a great day for us as the Nairobi Hill Club is commencing on the morning of this day the first of its kind in Kenya.

The first of its kind in Kenya was a great day for us as the Nairobi Hill Club is commencing on the morning of this day the first of its kind in Kenya.

KENYA LAWN TENNIS.

Getting Ready for the Championships.

PRELIMINARY DETAILS.

As arranged on the 10th inst.

It is proposed to give the tennis on Saturday, August 1, 1925, and continue play throughout the following days.

There will be no tennis on the 10th inst.

There will be no tennis on the 10th inst.

There will be no tennis on the 10th inst.

There will be no tennis on the 10th inst.

There will be no tennis on the 10th inst.

There will be no tennis on the 10th inst.

There will be no tennis on the 10th inst.

There will be no tennis on the 10th inst.

There will be no tennis on the 10th inst.

There will be no tennis on the 10th inst.

There will be no tennis on the 10th inst.

There will be no tennis on the 10th inst.

There will be no tennis on the 10th inst.

There will be no tennis on the 10th inst.

There will be no tennis on the 10th inst.

There will be no tennis on the 10th inst.

There will be no tennis on the 10th inst.

There will be no tennis on the 10th inst.

There will be no tennis on the 10th inst.

There will be no tennis on the 10th inst.

There will be no tennis on the 10th inst.

There will be no tennis on the 10th inst.

There will be no tennis on the 10th inst.

There will be no tennis on the 10th inst.

THE HOUSE OF GOLF. S. JACOBS LTD NAIROBI. The House of Golf is a complete outfit for the golfer.

FRED RAPER. CITY HOUSE GENERAL COMMISSION AGENT. OXEN OXEN. Another branch of A.M. P. At our stockroom often ready for delivery.

ALIBHAI AND COMPANY. CASHIERS, TICKETMEN, LADIES' AND GENTS' TAILORS, SAFETY OUTFITTERS, GOVERNMENT CONTRACTORS.

GOLF OF GOLF. WE SPELL IT GOLF. The Professional does it better. The Play the thing right.

MAY & CO. NAIROBI. SHAHMED BROS. NAIROBI. MEN'S OUTFITTERS & SAFARI OUTFITTERS.

THE CENTRAL LOUNGE. 17, 18 & 19, MARKET STREET, NAIROBI. A complete lounge for the busy city.

Tea and Lunch AT Torr's New Tea Room IN CHATEAU HOUSE Government Road.

HARLEY-DAVIDSON. The Motorcycle Magnificent. 250 cc. 49. Construction 4111-11-11. Completely equipped with lamps, handle, bell, horn.

THE NAIROBI SHOW. 'ELLO! 'ELLO! 'ELLO! is on Thursday, Friday, July 23rd and 24th, 1925. ENTRIES CLOSE JUNE 22nd, 1925.

### TWO POINTS

1. Every bottle of Kenya Beer, stout & XXXX is distributed before it leaves the Brewery.
2. The materials used are the best only.

That is why you will enjoy the purity & Quality of this Really First Rate Local Production.

DRINK & ENJOY the products of KENYA BREWERIES LTD.

GUARANTEED THE LARGEST CIRCULATION OF ANY NEWSPAPER IN KENYA, UGANDA, TANGANYIKA AND ZANZIBAR.

DAILY EDITION

THE EAST

TEN PAGES.

# African Standard

MOMBASA TIMES & UGANDA ARGUS.

NAIROBI, MONDAY, JUNE 8, 1908.

MORNING AND AFTERNOON TEAS

SERVED In The 'LOUNGE' AT REASONABLE PRICES

Price: 30 CENTS.

No. 5800

#### NEW GENEVA COUNCIL.

To Administer Industry.

LABOUR CONFERENCE REPORT.

[Previous article's advice.]  
The Labour Conference has just issued its report on the subject of the proposed Geneva Council. It is a very interesting document and shows that the Council is not a mere paper organization but a body which will be of great value to the workers of the world.

The Geneva Council will be a permanent organization which will be of great value to the workers of the world. It will be a body which will be of great value to the workers of the world.

The Geneva Council will be a permanent organization which will be of great value to the workers of the world. It will be a body which will be of great value to the workers of the world.

LABOUR CONFERENCE REPORT.

[Previous article's advice.]  
The Labour Conference has just issued its report on the subject of the proposed Geneva Council. It is a very interesting document and shows that the Council is not a mere paper organization but a body which will be of great value to the workers of the world.

The Geneva Council will be a permanent organization which will be of great value to the workers of the world. It will be a body which will be of great value to the workers of the world.

The Geneva Council will be a permanent organization which will be of great value to the workers of the world. It will be a body which will be of great value to the workers of the world.

The Geneva Council will be a permanent organization which will be of great value to the workers of the world. It will be a body which will be of great value to the workers of the world.

The Geneva Council will be a permanent organization which will be of great value to the workers of the world. It will be a body which will be of great value to the workers of the world.

The Geneva Council will be a permanent organization which will be of great value to the workers of the world. It will be a body which will be of great value to the workers of the world.

The Geneva Council will be a permanent organization which will be of great value to the workers of the world. It will be a body which will be of great value to the workers of the world.

The Geneva Council will be a permanent organization which will be of great value to the workers of the world. It will be a body which will be of great value to the workers of the world.

The Geneva Council will be a permanent organization which will be of great value to the workers of the world. It will be a body which will be of great value to the workers of the world.

The Geneva Council will be a permanent organization which will be of great value to the workers of the world. It will be a body which will be of great value to the workers of the world.

The Geneva Council will be a permanent organization which will be of great value to the workers of the world. It will be a body which will be of great value to the workers of the world.

The Geneva Council will be a permanent organization which will be of great value to the workers of the world. It will be a body which will be of great value to the workers of the world.

#### CRUSADE IN BULGARIA.

Serfs Outrages Resent.

WAR UPON BORN CHURCH.

[Previous article's advice.]  
The Bulgarian people are rising up against the tyranny of the Turkish Government. They are determined to free their country from the oppression of the Turks.

The Bulgarian people are rising up against the tyranny of the Turkish Government. They are determined to free their country from the oppression of the Turks.

The Bulgarian people are rising up against the tyranny of the Turkish Government. They are determined to free their country from the oppression of the Turks.

LABOUR CONFERENCE REPORT.

[Previous article's advice.]  
The Labour Conference has just issued its report on the subject of the proposed Geneva Council. It is a very interesting document and shows that the Council is not a mere paper organization but a body which will be of great value to the workers of the world.

The Geneva Council will be a permanent organization which will be of great value to the workers of the world. It will be a body which will be of great value to the workers of the world.

The Geneva Council will be a permanent organization which will be of great value to the workers of the world. It will be a body which will be of great value to the workers of the world.

The Geneva Council will be a permanent organization which will be of great value to the workers of the world. It will be a body which will be of great value to the workers of the world.

The Geneva Council will be a permanent organization which will be of great value to the workers of the world. It will be a body which will be of great value to the workers of the world.

The Geneva Council will be a permanent organization which will be of great value to the workers of the world. It will be a body which will be of great value to the workers of the world.

The Geneva Council will be a permanent organization which will be of great value to the workers of the world. It will be a body which will be of great value to the workers of the world.

The Geneva Council will be a permanent organization which will be of great value to the workers of the world. It will be a body which will be of great value to the workers of the world.

The Geneva Council will be a permanent organization which will be of great value to the workers of the world. It will be a body which will be of great value to the workers of the world.

The Geneva Council will be a permanent organization which will be of great value to the workers of the world. It will be a body which will be of great value to the workers of the world.

The Geneva Council will be a permanent organization which will be of great value to the workers of the world. It will be a body which will be of great value to the workers of the world.

The Geneva Council will be a permanent organization which will be of great value to the workers of the world. It will be a body which will be of great value to the workers of the world.

#### LABOUR AND SLAVERY.

Society's League Memorial.

FORCE OF PUBLIC WORKS.

[Previous article's advice.]  
The League of Nations is a very important organization which will be of great value to the workers of the world. It will be a body which will be of great value to the workers of the world.

The League of Nations is a very important organization which will be of great value to the workers of the world. It will be a body which will be of great value to the workers of the world.

The League of Nations is a very important organization which will be of great value to the workers of the world. It will be a body which will be of great value to the workers of the world.

LABOUR CONFERENCE REPORT.

[Previous article's advice.]  
The Labour Conference has just issued its report on the subject of the proposed Geneva Council. It is a very interesting document and shows that the Council is not a mere paper organization but a body which will be of great value to the workers of the world.

The Geneva Council will be a permanent organization which will be of great value to the workers of the world. It will be a body which will be of great value to the workers of the world.

The Geneva Council will be a permanent organization which will be of great value to the workers of the world. It will be a body which will be of great value to the workers of the world.

The Geneva Council will be a permanent organization which will be of great value to the workers of the world. It will be a body which will be of great value to the workers of the world.

The Geneva Council will be a permanent organization which will be of great value to the workers of the world. It will be a body which will be of great value to the workers of the world.

The Geneva Council will be a permanent organization which will be of great value to the workers of the world. It will be a body which will be of great value to the workers of the world.

The Geneva Council will be a permanent organization which will be of great value to the workers of the world. It will be a body which will be of great value to the workers of the world.

The Geneva Council will be a permanent organization which will be of great value to the workers of the world. It will be a body which will be of great value to the workers of the world.

The Geneva Council will be a permanent organization which will be of great value to the workers of the world. It will be a body which will be of great value to the workers of the world.

The Geneva Council will be a permanent organization which will be of great value to the workers of the world. It will be a body which will be of great value to the workers of the world.

The Geneva Council will be a permanent organization which will be of great value to the workers of the world. It will be a body which will be of great value to the workers of the world.

The Geneva Council will be a permanent organization which will be of great value to the workers of the world. It will be a body which will be of great value to the workers of the world.

#### DISARMAMENT NOTE.

Allies' Reply to Germany.

PRESENTED IN BELGIUM.

[Previous article's advice.]  
The Allies have presented a reply to Germany's proposal for disarmament. It is a very important document which shows that the Allies are determined to maintain their military strength.

The Allies have presented a reply to Germany's proposal for disarmament. It is a very important document which shows that the Allies are determined to maintain their military strength.

The Allies have presented a reply to Germany's proposal for disarmament. It is a very important document which shows that the Allies are determined to maintain their military strength.

LABOUR CONFERENCE REPORT.

[Previous article's advice.]  
The Labour Conference has just issued its report on the subject of the proposed Geneva Council. It is a very interesting document and shows that the Council is not a mere paper organization but a body which will be of great value to the workers of the world.

The Geneva Council will be a permanent organization which will be of great value to the workers of the world. It will be a body which will be of great value to the workers of the world.

The Geneva Council will be a permanent organization which will be of great value to the workers of the world. It will be a body which will be of great value to the workers of the world.

The Geneva Council will be a permanent organization which will be of great value to the workers of the world. It will be a body which will be of great value to the workers of the world.

The Geneva Council will be a permanent organization which will be of great value to the workers of the world. It will be a body which will be of great value to the workers of the world.

The Geneva Council will be a permanent organization which will be of great value to the workers of the world. It will be a body which will be of great value to the workers of the world.

The Geneva Council will be a permanent organization which will be of great value to the workers of the world. It will be a body which will be of great value to the workers of the world.

The Geneva Council will be a permanent organization which will be of great value to the workers of the world. It will be a body which will be of great value to the workers of the world.

The Geneva Council will be a permanent organization which will be of great value to the workers of the world. It will be a body which will be of great value to the workers of the world.

The Geneva Council will be a permanent organization which will be of great value to the workers of the world. It will be a body which will be of great value to the workers of the world.

The Geneva Council will be a permanent organization which will be of great value to the workers of the world. It will be a body which will be of great value to the workers of the world.

The Geneva Council will be a permanent organization which will be of great value to the workers of the world. It will be a body which will be of great value to the workers of the world.

#### LABOUR ALLIANCE.

Eight Trade Unions Meet.

MINERS' INVITATION.

[Previous article's advice.]  
The eight trade unions have met to discuss the miners' invitation to join the Labour Alliance. It is a very important meeting which will be of great value to the workers of the world.

The eight trade unions have met to discuss the miners' invitation to join the Labour Alliance. It is a very important meeting which will be of great value to the workers of the world.

The eight trade unions have met to discuss the miners' invitation to join the Labour Alliance. It is a very important meeting which will be of great value to the workers of the world.

LABOUR CONFERENCE REPORT.

[Previous article's advice.]  
The Labour Conference has just issued its report on the subject of the proposed Geneva Council. It is a very interesting document and shows that the Council is not a mere paper organization but a body which will be of great value to the workers of the world.

The Geneva Council will be a permanent organization which will be of great value to the workers of the world. It will be a body which will be of great value to the workers of the world.

The Geneva Council will be a permanent organization which will be of great value to the workers of the world. It will be a body which will be of great value to the workers of the world.

The Geneva Council will be a permanent organization which will be of great value to the workers of the world. It will be a body which will be of great value to the workers of the world.

The Geneva Council will be a permanent organization which will be of great value to the workers of the world. It will be a body which will be of great value to the workers of the world.

The Geneva Council will be a permanent organization which will be of great value to the workers of the world. It will be a body which will be of great value to the workers of the world.

The Geneva Council will be a permanent organization which will be of great value to the workers of the world. It will be a body which will be of great value to the workers of the world.

The Geneva Council will be a permanent organization which will be of great value to the workers of the world. It will be a body which will be of great value to the workers of the world.

The Geneva Council will be a permanent organization which will be of great value to the workers of the world. It will be a body which will be of great value to the workers of the world.

The Geneva Council will be a permanent organization which will be of great value to the workers of the world. It will be a body which will be of great value to the workers of the world.

The Geneva Council will be a permanent organization which will be of great value to the workers of the world. It will be a body which will be of great value to the workers of the world.

The Geneva Council will be a permanent organization which will be of great value to the workers of the world. It will be a body which will be of great value to the workers of the world.

#### THE SHANGHAI EVENTS.

Embassy to Britain and Japan.

ANTI-FORGEUR STRIKES.

[Previous article's advice.]  
The Embassy in Shanghai has been ordered to leave for Britain and Japan. It is a very important event which will be of great value to the workers of the world.

The Embassy in Shanghai has been ordered to leave for Britain and Japan. It is a very important event which will be of great value to the workers of the world.

The Embassy in Shanghai has been ordered to leave for Britain and Japan. It is a very important event which will be of great value to the workers of the world.

LABOUR CONFERENCE REPORT.

[Previous article's advice.]  
The Labour Conference has just issued its report on the subject of the proposed Geneva Council. It is a very interesting document and shows that the Council is not a mere paper organization but a body which will be of great value to the workers of the world.

The Geneva Council will be a permanent organization which will be of great value to the workers of the world. It will be a body which will be of great value to the workers of the world.

The Geneva Council will be a permanent organization which will be of great value to the workers of the world. It will be a body which will be of great value to the workers of the world.

The Geneva Council will be a permanent organization which will be of great value to the workers of the world. It will be a body which will be of great value to the workers of the world.

The Geneva Council will be a permanent organization which will be of great value to the workers of the world. It will be a body which will be of great value to the workers of the world.

The Geneva Council will be a permanent organization which will be of great value to the workers of the world. It will be a body which will be of great value to the workers of the world.

The Geneva Council will be a permanent organization which will be of great value to the workers of the world. It will be a body which will be of great value to the workers of the world.

The Geneva Council will be a permanent organization which will be of great value to the workers of the world. It will be a body which will be of great value to the workers of the world.

The Geneva Council will be a permanent organization which will be of great value to the workers of the world. It will be a body which will be of great value to the workers of the world.

The Geneva Council will be a permanent organization which will be of great value to the workers of the world. It will be a body which will be of great value to the workers of the world.

The Geneva Council will be a permanent organization which will be of great value to the workers of the world. It will be a body which will be of great value to the workers of the world.


The Geneva Council will be a permanent organization which will be of great value to the workers of the world. It will be a body which will be of great value to the workers of the world.

## WHITEAWAY'S

**THE 'DORIC' WHISKY.**

A wonderful whisky for the money, sold in all cases, a bold, strong leather wrist strap. The price is low but the quality is high.

Standard Value. **Shs. 12-50**



ONE OF WHITEAWAY'S STANDARD VALUES

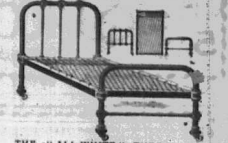
---

**THE 'ALL-WHITE' THREE-PART BEDSTEAD.**

A GREAT PRICE REVISION.

We want you to note the specification of the 'All-White' Bed - 1 inch White Enamelled Tube Frame, in 3 parts only, the Mattress Frame fitted with spring (Galvanized Wire Mattress with 12 coil springs in each end), the full size is 9 1/2 feet, and lastly the very low price!

Note Our Price: **Shs. 55-00 each.**




THE 'ALL-WHITE' THREE-PART BEDSTEAD.

---

**THE 'VALU' CURET.**

White metal circular frame. White China bottles with pretty floral designs in blue, gold, green, and red.

Standard Value. **Shs. 4-50**




THE 'VALU' CURET.

---

**THE 'PINNACLE' WRITING COMPENDIUM.**

An attractively designed cabinet containing 20 sheets of high-grade note paper and 30 envelopes to match in White, Made in Weymouth, England.

Standard Value. **Shs. 1-50 each**




THE 'PINNACLE' WRITING COMPENDIUM.

---

**THE 'WATLOW' WATCH.**

15,000 have now been made. For real hard wear there is no rival to the Watlow. Very reliable and accurate. Give your loved boy one.

Standard Value. **Shs. 5-50 each**



THE 'WATLOW' WATCH.

**WHITEAWAY'S, Sixth Avenue, NAIROBI.**



## Rain or shine The New Studebaker Duplex is ideal

The Studebaker Duplex is a new type of car which is built upon our freedom with wheel and axle construction. Lower the roller side windows and you have complete protection in heavy weather. Raise them up and you have the sun and the breeze. The Studebaker Duplex body comes in one or two seat types. It is one of our most exclusive features of the new Studebaker cars.

Standard Six Duplex Passenger Car  
 Standard Six Duplex Passenger Car  
**K. McIVOR & Co.,**  
 Agents,  
 16th Avenue, NAIROBI.

**STUDEBAKER Duplex**

100000'S OF QUALITY VEHICLES FOR 22 YEARS

For the cold weather.

Special Value in All Wool

BLANKETS.

SOFT, WARM, COMFORTABLE, CHEAP.



FOR HOME, SCHOOL, CAMP or SAFARI.

Full size—full weight.

- The "DERWENT" Blanket... The "DEVERON" Blanket... The "BERKWICK" Blanket... The "BOLTON" Blanket...

THESE PRICES ARE SUICIDE FOR PER CENT. CASH DISCOUNT.



P.O. Box 866. Phone 198. Telegrams: 'ADVAFORM' NAIROBI.

MADAME ROWE ET CIE, LTD.

SMART AFTERNOON and EVENING GOWNS, WRAPS, MILLINERY, LINGERIE, SHOES.

Government Road, NAIROBI. Phone 599. T.O. Box 516.

Short Loans Granted

£1 to £1,000.

Enya Loan & Discount Co., Ltd. NAIROBI BRANCH (SECOND FLOOR), NAIROBI. HEAD OFFICE—TRAFALGAR SQUARE, LONDON.

Nairobi School of Dancing.

Children's Classes of Operatic... Madame Rowe et Cie, Ltd. P.O. Box 516.



CHARCOAL GAS PRODUCERS.

SOME DRIVING MISTAKES.

In these days when our motor-cars are becoming so numerous... The driver should be instructed in the correct use of the steering wheel...

Longer Working Hours.

Apud from the death of the countryman largely to get steering... The driver should be instructed in the correct use of the steering wheel...

Two to Drive.

It is a very difficult thing to teach a beginner in the correct... The driver should be instructed in the correct use of the steering wheel...

A Road Test.

Perhaps in any direction is... The driver should be instructed in the correct use of the steering wheel...

Accidents.

It is a very difficult thing to teach a beginner in the correct... The driver should be instructed in the correct use of the steering wheel...

Accidents.

It is a very difficult thing to teach a beginner in the correct... The driver should be instructed in the correct use of the steering wheel...

Accidents.

It is a very difficult thing to teach a beginner in the correct... The driver should be instructed in the correct use of the steering wheel...

Accidents.

It is a very difficult thing to teach a beginner in the correct... The driver should be instructed in the correct use of the steering wheel...

THE BEST BREAD IN KENYA.

ISISAL.

2,500 well washed...

WHEAT.

1,000 to 1,400 bush...

COFFEE.

£200 buys an...

MAIZE.

1,300 acres of...

DAIRYING.

£1,600 for a...

WANTED.

2 Span Cows...

LADY TYPIST.

BOOKKEEPER...

HOUSES TO LET.

Parsonage & Detached...

THE BELL BARLANDS.

Particulars at...

MISS K. R. HERR.

MISS K. R. HERR...

REPORTING POSITION.

Any company...

THE SHOPS AS A BREED.

Another big... The shops as a breed...

SHOPS AS A BREED.

Another big... The shops as a breed...

REPORTING POSITION.

Any company...

THE SHOPS AS A BREED.

Another big... The shops as a breed...

THE SHOPS AS A BREED.

Another big... The shops as a breed...

THE SHOPS AS A BREED.

THE SHOPS AS A BREED.

Another big... The shops as a breed...

THE SHOPS AS A BREED.

Another big... The shops as a breed...

THE SHOPS AS A BREED.

Another big... The shops as a breed...

THE SHOPS AS A BREED.

Another big... The shops as a breed...

THE SHOPS AS A BREED.

Another big... The shops as a breed...

THE SHOPS AS A BREED.

Another big... The shops as a breed...

THE SHOPS AS A BREED.

Another big... The shops as a breed...

THE SHOPS AS A BREED.

Another big... The shops as a breed...

THE SHOPS AS A BREED.

Another big... The shops as a breed...

THE SHOPS AS A BREED.

THE SHOPS AS A BREED.

Another big... The shops as a breed...

THE SHOPS AS A BREED.

Another big... The shops as a breed...

THE SHOPS AS A BREED.

Another big... The shops as a breed...

THE SHOPS AS A BREED.

Another big... The shops as a breed...

THE SHOPS AS A BREED.

Another big... The shops as a breed...

THE SHOPS AS A BREED.

Another big... The shops as a breed...

THE SHOPS AS A BREED.

Another big... The shops as a breed...

THE SHOPS AS A BREED.

Another big... The shops as a breed...

THE SHOPS AS A BREED.

Another big... The shops as a breed...

THE SHOPS AS A BREED.

THE SHOPS AS A BREED.

Another big... The shops as a breed...

THE SHOPS AS A BREED.

Another big... The shops as a breed...

THE SHOPS AS A BREED.

Another big... The shops as a breed...

THE SHOPS AS A BREED.

Another big... The shops as a breed...

THE SHOPS AS A BREED.

Another big... The shops as a breed...

THE SHOPS AS A BREED.

Another big... The shops as a breed...

THE SHOPS AS A BREED.

Another big... The shops as a breed...

THE SHOPS AS A BREED.

Another big... The shops as a breed...

THE SHOPS AS A BREED.

Another big... The shops as a breed...

THE SHOPS AS A BREED.

THE SHOPS AS A BREED.

Another big... The shops as a breed...

THE SHOPS AS A BREED.

Another big... The shops as a breed...

THE SHOPS AS A BREED.

Another big... The shops as a breed...

THE SHOPS AS A BREED.

Another big... The shops as a breed...

THE SHOPS AS A BREED.

Another big... The shops as a breed...

THE SHOPS AS A BREED.

Another big... The shops as a breed...

THE SHOPS AS A BREED.

Another big... The shops as a breed...

THE SHOPS AS A BREED.

Another big... The shops as a breed...

THE SHOPS AS A BREED.

Another big... The shops as a breed...





A TOWN EXPLOSION.

Had Tracked.

STREETS BOMBED.

Explosion occurred on 20th June at the... streets of the town... caused considerable damage...

E.A. PRODUCE.

London Prices.

A STAGNANT MARKET.

Market was very quiet... prices for various commodities... showing a general decline...

WEEK'S COAST TRADE.

Railway Material Carries.

EMPLOYEES SEEK EXPORT.

Following are the principal... railway material... employees are seeking export...

BRITAIN'S PORTS.

Weekly Match.

Ur of the Chaldees.

The weekly passenger... Ur of the Chaldees... British ports... weekly match...

ANCIENT ART.

Ur of the Chaldees.

Ur of the Chaldees.

A wonderful discovery... Ur of the Chaldees... ancient art... Ur of the Chaldees...

NATIONAL BANK OF INDIA LIMITED.

(Incorporated in the United Kingdom)

Head Office: 1, Leadenhall Street, London, E.C.3.

Branches: Bombay, Calcutta, Madras, Rangoon, Singapore, etc. Capital: Rs. 100,00,000.

LYRIC HALL. TO-NIGHT A METRO Master Production THE POOR RICH MAN

The eventful story of a Paupered only Son of the Father who goes hunting and is supposed to be killed. A Story full of Action and Humour.

Big Bargains Still TO BE HAD in LADIES SUEDE SHOES Etc. LAST 7 DAYS GENTS BOYS' BOOTS A GIFT AT PRICES OFFERED. A REAL GENUINE SALE. EADIES FOOTWEAR, Ltd. NAIROBI. Box 149 NAIROBI.

PLANK.

During the week there has been... plank... prices for various commodities...

TOW.

A small vessel... tow... carrying goods to the coast...

LINERS.

The market is slightly... liners... shipping schedules for various routes...

CATTLEBRED.

For feed, quality... cattlebred... prices for various types of cattle...

SEAL.

The market remains... seal... prices for various types of seal...

MARE.

The market is... mare... prices for various types of mare...

PLANK.

During the week there has been... plank... prices for various commodities...

TOW.

A small vessel... tow... carrying goods to the coast...

LINERS.

The market is slightly... liners... shipping schedules for various routes...

CATTLEBRED.

For feed, quality... cattlebred... prices for various types of cattle...

SEAL.

The market remains... seal... prices for various types of seal...

MARE.

The market is... mare... prices for various types of mare...

EXPORTS.

Following are the principal... exports... values for various commodities...

EXPORTS.

Following are the principal... exports... values for various commodities...

EXPORTS.

Following are the principal... exports... values for various commodities...

THE CORYDON FUND.

Growing Support.

The East African Standard... The Corydon Fund... growing support...

THE CORYDON FUND.

Growing Support.

The East African Standard... The Corydon Fund... growing support...

THE CORYDON FUND.

Growing Support.

The East African Standard... The Corydon Fund... growing support...

Boys' Square Hunt.

Remarkable evidence was given... Boys' Square Hunt... evidence...

HOLY TRINITY CHURCH, NAIROBI.

Services... Holy Trinity Church, Nairobi... services...

HOLY TRINITY CHURCH, NAIROBI.

Services... Holy Trinity Church, Nairobi... services...

FLORISSANT TOUSSAINT.

Flourishing... Florissant Toussaint... flourishing...

FLORISSANT TOUSSAINT.

Flourishing... Florissant Toussaint... flourishing...

FLORISSANT TOUSSAINT.

Flourishing... Florissant Toussaint... flourishing...

THE COMING CONCERT.

The concert... The Coming Concert... details of the event...

THE COMING CONCERT.

The concert... The Coming Concert... details of the event...

THE COMING CONCERT.

The concert... The Coming Concert... details of the event...

THE COMING CONCERT.

The concert... The Coming Concert... details of the event...

RE-EXPORTS.

Re-exports... Re-Exports... values for various commodities...

RE-EXPORTS.

Re-exports... Re-Exports... values for various commodities...

An Air Peril.

An air peril... An Air Peril... details of the incident...

An Air Peril.

An air peril... An Air Peril... details of the incident...

MARK'S CHURCH, PARKLANDS.

Services... Mark's Church, Parklands... services...

MARK'S CHURCH, PARKLANDS.

Services... Mark's Church, Parklands... services...

MARK'S CHURCH, PARKLANDS.

Services... Mark's Church, Parklands... services...

MARK'S CHURCH, PARKLANDS.

Services... Mark's Church, Parklands... services...

FOOTBALLS.

Football... Footballs... details of the sport...

FOOTBALLS.

Football... Footballs... details of the sport...

FOOTBALLS.

Football... Footballs... details of the sport...

FOOTBALLS.

Football... Footballs... details of the sport...

DIET-DOWTS.

Diet-dowts... Diet-Dowts... details of the diet...

DIET-DOWTS.

Diet-dowts... Diet-Dowts... details of the diet...

Parades of Flowers.

Parades of flowers... Parades of Flowers... details of the event...

Parades of Flowers.

Parades of flowers... Parades of Flowers... details of the event...

Just Published.

Just published... Just Published... details of the book...

Just Published.

Just published... Just Published... details of the book...

TREATMENT.

Treatment... Treatment... details of the medical advice...

TREATMENT.

Treatment... Treatment... details of the medical advice...

They always have the new shades.

Chief among lovely necessities for the elegant are Kayser's pure silk stockings in all the subtle shades and half-shades of the mode-Circasian, Mauresque, Sunburn, Nude, Hoggart, Cheri, and the rest. You can wear and wear them and wash and wash them, too, for they are woven of sheer silk pure dyed and protected from ladders by the exclusive 'marvel-stripe'.

Kayser full-fashioned THREAD SILK STOCKINGS. ARABINS, Africa House, Govt. Road, Nairobi.

FOOTBALLS.

Football... Footballs... details of the sport...

FOOTBALLS.

Football... Footballs... details of the sport...

FOOTBALLS.

Football... Footballs... details of the sport...

FOOTBALLS.

Football... Footballs... details of the sport...

FOOTBALLS.

Football... Footballs... details of the sport...

FOOTBALLS.

Football... Footballs... details of the sport...

FOOTBALLS.

Football... Footballs... details of the sport...





BUCHANAN'S



TRY "JOCK SCOTT" when you tire of other BLENDS The Whisky that NEVER VARIES and which is SECOND TO NONE

MACKINNON BROTHERS Ltd. NAIROBI P.O. Box. Established 1904.

BLACK & WHITE COMPLETELY GLOSSY BY REASON OF THE MOOD SWIFTLY FOCUSES HELD TO MAINTAIN ITS QUALITY.

GENERAL AGENTS: Anglo-Siam & Company P.O. Box 225 NAIROBI

George Blowers

OFFICE: CITY HOUSE, NAIROBI. 3/50 & 3/60. 1/20. 1/25. 1/30. 1/35. 1/40. 1/45. 1/50. 1/55. 1/60. 1/65. 1/70. 1/75. 1/80. 1/85. 1/90. 1/95. 1/100. 1/105. 1/110. 1/115. 1/120. 1/125. 1/130. 1/135. 1/140. 1/145. 1/150. 1/155. 1/160. 1/165. 1/170. 1/175. 1/180. 1/185. 1/190. 1/195. 1/200. 1/205. 1/210. 1/215. 1/220. 1/225. 1/230. 1/235. 1/240. 1/245. 1/250. 1/255. 1/260. 1/265. 1/270. 1/275. 1/280. 1/285. 1/290. 1/295. 1/300. 1/305. 1/310. 1/315. 1/320. 1/325. 1/330. 1/335. 1/340. 1/345. 1/350. 1/355. 1/360. 1/365. 1/370. 1/375. 1/380. 1/385. 1/390. 1/395. 1/400. 1/405. 1/410. 1/415. 1/420. 1/425. 1/430. 1/435. 1/440. 1/445. 1/450. 1/455. 1/460. 1/465. 1/470. 1/475. 1/480. 1/485. 1/490. 1/495. 1/500. 1/505. 1/510. 1/515. 1/520. 1/525. 1/530. 1/535. 1/540. 1/545. 1/550. 1/555. 1/560. 1/565. 1/570. 1/575. 1/580. 1/585. 1/590. 1/595. 1/600. 1/605. 1/610. 1/615. 1/620. 1/625. 1/630. 1/635. 1/640. 1/645. 1/650. 1/655. 1/660. 1/665. 1/670. 1/675. 1/680. 1/685. 1/690. 1/695. 1/700. 1/705. 1/710. 1/715. 1/720. 1/725. 1/730. 1/735. 1/740. 1/745. 1/750. 1/755. 1/760. 1/765. 1/770. 1/775. 1/780. 1/785. 1/790. 1/795. 1/800. 1/805. 1/810. 1/815. 1/820. 1/825. 1/830. 1/835. 1/840. 1/845. 1/850. 1/855. 1/860. 1/865. 1/870. 1/875. 1/880. 1/885. 1/890. 1/895. 1/900. 1/905. 1/910. 1/915. 1/920. 1/925. 1/930. 1/935. 1/940. 1/945. 1/950. 1/955. 1/960. 1/965. 1/970. 1/975. 1/980. 1/985. 1/990. 1/995. 1/1000.

IMPORTANT TO Farmers & Employers of Natives.

Labour Cards 4x 2 1/2 Shs. 6 Per 1000 Do. 5x 9 1/2 ,, 7-50

MUSTER ROLLS 8 x 5 1/2 Openings ... Shs. 3/50. 13 x 8 1/2 ,, 6/-. 15 x 8 1/2 100 ,, 9/-. 13 x 8 1/2 200 ,, 12/-. LABOUR ALLOCATOR BOOKS 10 x 8 1/2 ,, Shs. 9/-. 50 IN DUPLICATE. LABOUR RETURN FORMS IN BOOKS OF 50 WITH BLANK DUPLICATE Shs. 4/-. Standard Stationery Store, NAIROBI

COMMISSIONER'S REPORT. Mr. Linfield's Memorandum.

EMPIRE DEVELOPMENT. Expenses on Natives.

OTHER NATIVE QUESTIONS. The following supplementary memorandum by Mr. C. C. Linfield is filed in connection with the report of the Director of Native Affairs...

away from home are, and the rate, the same as that formerly in force. The number of children in the population has not been ascertained, but it is shown by the following figures which were supplied to me by the census officer...

Estimated native population, December, 1923, 1,186,000. Estimated native population, December, 1924, 1,174,000.

Estimated native population, December, 1923, 1,186,000. Estimated native population, December, 1924, 1,174,000.

Full statistics are given in the Census Report for 1923. The census showed a native population of 1,186,000 as compared with 1,174,000 in the census of 1921...

Full statistics are given in the Census Report for 1923. The census showed a native population of 1,186,000 as compared with 1,174,000 in the census of 1921...

Full and valuable statistics are given in the 1923 Census Report. The native population was estimated at 1,186,000 in 1921 and 1,174,000 in 1923. This is a comparatively large and of itself might be considered an extraordinary anomaly...

OVERSEAS MAILS

This notice is based upon the latest prices from the Shipping Agents in London, however, that prices may vary slightly according to the market conditions and that some of the rates may be subject to change without notice and the information is not intended to be a guarantee of the rates.

Table with columns: STRAMER, FROM, Date of Month, Date of Arrival. Lists shipping routes to various ports like London, Liverpool, etc.

Table with columns: STRAMER, FOB, Date of Month, Date of Arrival. Lists shipping routes from various ports like London, Liverpool, etc.

UPLANDS BACON

Keep this in mind at home, all customers are urged to use the best.



Express Transport, Co., Sole House Nairobi. CAN BE SUPPLIED IN LARGE OR SMALL QUANTITIES AT USUAL PRICES.

THE RAINS ARE ON. GET YOUR WATERPROOF COAT FROM US NOW. WE ALSO HAVE: HONDA 3500 BIKES, PLYMOUTH CARS, etc.

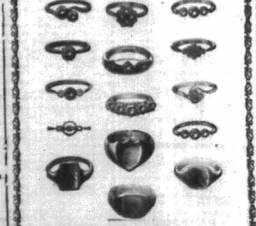
MEGHIJ AHAMED & Co. P.O. Box 218, Phone 184, Nairobi, Tel. "Turpanika."

COFFEE FACTORIES. We erect buildings and install machinery in all parts of Kenya. Also install machinery for SUGAR, MAIZE, etc.

LOCHHEAD & MOORE, 455, 457, 459, 461, 463, 465, 467, 469, 471, 473, 475, 477, 479, 481, 483, 485, 487, 489, 491, 493, 495, 497, 499, 501, 503, 505, 507, 509, 511, 513, 515, 517, 519, 521, 523, 525, 527, 529, 531, 533, 535, 537, 539, 541, 543, 545, 547, 549, 551, 553, 555, 557, 559, 561, 563, 565, 567, 569, 571, 573, 575, 577, 579, 581, 583, 585, 587, 589, 591, 593, 595, 597, 599, 601, 603, 605, 607, 609, 611, 613, 615, 617, 619, 621, 623, 625, 627, 629, 631, 633, 635, 637, 639, 641, 643, 645, 647, 649, 651, 653, 655, 657, 659, 661, 663, 665, 667, 669, 671, 673, 675, 677, 679, 681, 683, 685, 687, 689, 691, 693, 695, 697, 699, 701, 703, 705, 707, 709, 711, 713, 715, 717, 719, 721, 723, 725, 727, 729, 731, 733, 735, 737, 739, 741, 743, 745, 747, 749, 751, 753, 755, 757, 759, 761, 763, 765, 767, 769, 771, 773, 775, 777, 779, 781, 783, 785, 787, 789, 791, 793, 795, 797, 799, 801, 803, 805, 807, 809, 811, 813, 815, 817, 819, 821, 823, 825, 827, 829, 831, 833, 835, 837, 839, 841, 843, 845, 847, 849, 851, 853, 855, 857, 859, 861, 863, 865, 867, 869, 871, 873, 875, 877, 879, 881, 883, 885, 887, 889, 891, 893, 895, 897, 899, 901, 903, 905, 907, 909, 911, 913, 915, 917, 919, 921, 923, 925, 927, 929, 931, 933, 935, 937, 939, 941, 943, 945, 947, 949, 951, 953, 955, 957, 959, 961, 963, 965, 967, 969, 971, 973, 975, 977, 979, 981, 983, 985, 987, 989, 991, 993, 995, 997, 999, 1001.

GEM and SIGNET RINGS

made in our Workshop. Your inspection is cordially invited.



E. DOBBIE, JEWELLER, MANUFACTURER OF SIGNET RINGS. Government Road, NAIROBI.

OKLAH PRIVATE HOTEL. Only a few minutes' drive from River.

NYVALAND.

Full and valuable statistics are given in the 1923 Census Report. The native population was estimated at 1,186,000 in 1921 and 1,174,000 in 1923. This is a comparatively large and of itself might be considered an extraordinary anomaly...

As regards the last of these report states: "The natives of Africa are not accustomed to, and are not fitted for, the life of a nomadic people, and it is a matter of regret that the change of habit inaugurated by the introduction of the white man has not been accompanied by a corresponding change in the habits of the natives."

STONE HOUSE FOR SALE

On 1 acre Freehold, Hill, 1 bed, double reception, Lounge, Kitchen, Bath, W.C., & C. water, lift, roof. Price £1,500 cash or terms.

THE NAIROBI BUILDING AND DEVELOPMENT COY. LTD. Tel. No. 204. Court Chambers. P.O. Box 448.

CHAMPAGNE DELBECK.

A further small consignment of this rare WINE so much appreciated by the ELITE of LONDON AND CONTINENTAL SOCIETY and used exclusively as the important Factor in Banquets has just been received by us. Further stock are being rapidly exhausted. Order without delay to save disappointment.

Price: Per case of 1 doz. pts. Shs. 190/- per pt. Shs. 16/- For case of 1 doz. pts. Shs. 190/- per pt. Shs. 16/- M. B. de SOUZA & Co. P.O. Box 78. Gort Road. Phone 78.

COMMISSIONER'S REPORT.

(Continued from page 7.)

BRITISH INDIA STEAM NAVIGATION COMPANY, LTD. AND PENINSULAR AND ORIENTAL STEAM NAVIGATION CO.

Useful Books.

THE VANDERING TRIBES OF KENYA. By Major G. M. Oms Brooks. Price 2s. 6d. ... RANGER'S NOTEBOOK. By A. Maynard Pickett. Price 2s. 6d. ... THE WANDERINGS OF AN ELEPHANT HUNTER. By W. D. M. Bell. Price 2s. 6d. ...

The Chief Native Commissioner of Kenya in a paper submitted to the Commission... The lack of reliable statistics in the case of Kenya in particular... From the year 1912 onwards... The Commission has been... The Commission has been... The Commission has been...

Table with shipping schedules for British India Steam Navigation Company and Peninsular and Oriental Steam Navigation Co. Columns include ship names, destinations (Bombay, Calcutta, etc.), and dates.

THE WANDERINGS OF AN ELEPHANT HUNTER. By W. D. M. Bell. The Editor of the above work is rapidly being established as the author of the most interesting and up-to-date... FOCKET OXFORD DICTIONARY. Price 6s. 6d. ...

THE TRIBAL CONTROL. The "modern" theory of native development in Kenya... The Commission has been... The Commission has been... The Commission has been...

Children's Week. Everything for Little People. Theatre Royal Buildings. P. O. Box 227. Includes logo for 'Jeanne' and 'Nairobi'.

THE COMPLETE GOLFER. By Harry... THE BIRD AND BIRDING. By Ernest Bergdoll. ... KEMPE'S ENGINEER YEAR-BOOK. Price 6s. 6d. ...

THE TRIBAL CONTROL (continued). One of the first beneficial results of the Commission's... The Commission has been... The Commission has been... The Commission has been...

INTERNAL DEVELOPMENT BOARD. The Board has been... The Board has been... The Board has been... The Board has been...

OUR BABY FOR MOTHERS & NURSES. By Mrs. J. Langdon Howe. ... CATALOGUE OF THE SELOUTS COLLECTION. By J. G. Delmas. ... SUB-TROPICAL AGRICULTURE IN SOUTH AFRICA. By H. O. Murry. ...

(8) NATIVE LAND. It is noted that the Commission... The Commission has been... The Commission has been... The Commission has been...

(9) NATIVE REGISTRATION. With regard to native registration... The Commission has been... The Commission has been... The Commission has been...

MRS. BRETTON'S ALL ABOUT COOKERY. Price 2s. 6d. ... MRS. BRETTON'S HOUSEHOLD MANAGEMENT. Price 2s. 6d. ... THE HOUSEHOLD DOCTOR. Price 2s. 6d. ...

(10) RETURN MADE BY NATIVES FROM THEIR OWN TAXATION. The Commission has been... The Commission has been... The Commission has been...

(11) NATIVE DEVELOPMENT. The question of Native development... The Commission has been... The Commission has been... The Commission has been...

Standards Stationery Stores. HARISING GUWAHATI. A visit to this Store will give you information in... HEAVY REDUCTIONS IN ALL PRICES. FURTHER OBTAINABLE AT ALL OTHERS OF THE DAY UP TO 2 P.M.

(12) RETURN MADE BY NATIVES FROM THEIR OWN TAXATION (continued). The Commission has been... The Commission has been... The Commission has been...

(13) NATIVE DEVELOPMENT (continued). The Commission has been... The Commission has been... The Commission has been...

Union-Castle Line

Services to England, East, South and West Africa Ports and Mauritius.

Table with shipping schedules including ship names like 'PROSPERITY', 'MORNING STAR', and destinations like 'LONDON', 'CAPE TOWN', 'MADAGASCAR'.

Passengers should contact the agents for details. Agents: B.E.A. CORPORATION, LTD., MILNARD AGENTS.

HOLLAND AFRIKA LIJN

JOINT SERVICE (Holland Zuid-Afrika Lijn and Holland Oost-Afrika Lijn).

Table with shipping schedules for 'HOLLAND AFRIKA LIJN' including ship names and dates.

For further information apply to the Agent: TWINTSCHE OVERSEAS TRADING CO., LTD.

Advertisement for THE SALISBURY Family and Business HOTEL, Nairobi.

Advertisement for FISKEBOLLERIKRAFT Fish Balls in Bullion.

Advertisement for THE STORE OF QUALITY R.B. DUNCAN'S 'The Grocer' Nairobi.

Advertisement for THE VERTICAL MOTOR-CYCLE.

"E.A. STANDARD" FEATURE PAGE.

HOW I MET FEAR.

Not a Good Story-But True.

By J. McCallum (COLLEGER).

It seems odd to me if I believed in ghosts I should not be so terrified by them. I have never seen one, but I believe in their existence.

One day I read an article and that up to the present I have not forgotten it. It was an account of a man who had experienced all that I have now.

I got on the ground floor and had a look at the room. I was not alone and afterwards to be in my bed, looking to see if the door was open.

farthing. They might have been in the room for some time, but I did not see them.

The report of the story is very interesting. I have read it many times and it has given me a great deal of food for thought.

It is very strange to find that I have never seen one, but I believe in their existence. I have never seen one, but I believe in their existence.

It is very strange to find that I have never seen one, but I believe in their existence. I have never seen one, but I believe in their existence.

It is very strange to find that I have never seen one, but I believe in their existence. I have never seen one, but I believe in their existence.

The general power in the world is the power of the mind. It is the power of the mind that has made the world what it is today.

It is very strange to find that I have never seen one, but I believe in their existence. I have never seen one, but I believe in their existence.

It is very strange to find that I have never seen one, but I believe in their existence. I have never seen one, but I believe in their existence.

The first thing I noticed when I stepped out into the open air was a sense of relief. I had been in a very dark and confined space for some time.

It is very strange to find that I have never seen one, but I believe in their existence. I have never seen one, but I believe in their existence.

It is very strange to find that I have never seen one, but I believe in their existence. I have never seen one, but I believe in their existence.

TENDERS.

Tenders are invited for the purchase of the undermentioned farms of the province of the late Mr. Thomas Chillingworth.

Land Offer No. 291 Kijabe's 3,000 acres excellent for sheep and cattle. Good wheat, barley, etc. etc. good stone house, sheep dip, garage, and outbuildings, water laid on and can be piped to any part of the farm.

Home-land about 4 miles from Longoria Station, Post Office.

L.O. Rent 625/- per annum.

Land Offer No. 292 Narva's 5,000 acres splendid cattle sheep or mixed station. One Mile Lake front. Four Miles from Narva Station. Good stone cattle dip.

L.O. Rent 625/- per annum.

APPLY TAYLOR and PAIGE NAIROBI.

WEST KENYA SAW MILLS, LTD.

POOD, CAMPOOR & FURNITURE HARDWOODS MILL OFFICE. KARATINA. P. O. NYERI.

Local Agents: THE KENYA INVESTMENT CO., LTD. P. O. BOX 298. NAIROBI.

Telephone 298.

SUBSIDIARY PROTECT YOUR HOME & OFFICE AGAINST by buying

Safes, supplied by P. O. BOX CENTRAL AGENTS.

DIRECT SHIPMENT

OF CEREALS JUST

ARRIVED

QUAKER OATS

PUFFED WHEAT

PUFFED RICE

POST TOASTIES

FORCE

SHREDDED WHEAT

AT ELLIOTS

PHONE 60 NAIROBI P.O. BOX 175

MAIZE CRIB

WIRE NETTING

16 GAUGE 3ft. 4ft. & 6ft. WIDE

J. W. Milligan & Co. NAIROBI.

P. O. BOX 148

D & J McCALLUM'S

PERFECTION

SCOTCH WHISKY

Agents SMITH MACKENZIE & Co.

NAIROBI

P. O. Box 390 Phone 368

FUEL

That they waste fuel, delivered to your door by our daily

TERMINAL DELIVERY. (See 18/- per ton)

TRANSPORT CO.

THE RELIANCE TRANSPORT CO. (Incorporated in England)

Office: Ganges, Post Office and Railway Station, SAIDERS, next Exarater Shop, NAIROBI.

NOTICE

The attention of the public is drawn to the fact that the above supply is liable to discontinuance and that the above supply of unbleached waste will be discontinued.

It is therefore recommended that all waste should be ordered before the date.

MEDICAL OFFICES OF HEALTH.

MINNEHAWA SPRINGS

BODA WATER GINGER ALE GINGER BEER

LEMONADE ICE CREAM SODA SODA WATER LUTHER WATER

ALL THE VERY BEST FRUIT FLAVORED WATER.

KORU, KENYA.

LAND

Intending purchasers are invited to inspect our Land Register

Proprietor for sale: MAKER OFFICE, REAL AND V. HATTAR, HERRI, GARDNER AND DAVIS PROPRIETORS

RESIDENTIAL PLOTS AND COMMERCIAL LAND IN NAIROBI, MOMBASA, MURURU, MURURI, NAIROBI.

Owners of properties for sale or property offered to be made with an aim to place their property on the Register.

Telephone: NAIROBI, NAIROBI, W. C. HERRI & CO., Telephone No. 98.

P.O. Box 98. HERRI & CO.

FOR SALE

IN RE: J. P. VERRI, (DECEASED).

Tenders are invited for the purchase of Leasehold Plot No. 765 & 766 Duke Street, Nairobi, with the two

houses therein. There is still seventy years of the lease to run. (Under British Royal Warrant) 700/- per month. The Highest tender will not necessarily be accepted. Tenders to be sent in to the undersigned by the 15th July, 1920.

GILL & JOHNSON, RECEIVERS.

EMPIRE TYPEWRITERS.

POOLSPAN REEL.

MODEL No. 1. S. SPECIALLY SUITABLE FOR SAFARI, WRITING ONLY 15 LBS.

Models and Agents: Boustead & Clarke, Ltd. COLONY ENGINEERS. NAIROBI.

P.O. Box 97.

SHAW & HUNTER

SIXTY AVENUE
No. 78. Telegrams: "Girdle." Phone 216.

Guns and AMMUNITION

A Car Worth Waiting for GRAY

Call and see a demonstration model

K. McIvor & Co. Toilet Requisite Co.

In addition to our New Stock of Athletics... Hair Slides in Tut-tut-and in a Variety of Colors.

J. R. STEPHENS & Co. Ltd

Tailors & Outfitters. GOVERNMENT ROAD, NAIROBI. Phone 873.

The New CHEVROLET

85 QUALITY FEATURES. New clutch, new rear axle, new frame, new type springs, Duro finish.

PETER & SON

We specialize in the following: DEVELOPING, PRINTING and RELIANCE.

Brimelow's Garage.

FOR MOTOR REPAIRS. PETROL OILS & GREASE TYPES OF EVERY MAKE AND SIZE FOR SALE.

THE MOTOR MARI & BECHANE, Limited.

THE HOUSE FOR GOLF REQUISITES

FRED RAPER, GENERAL COMMISSION AGENT

OXEN OXEN

Another batch of A.M., P.S., K.Y. young unbroken can ready for delivery.

ALIBAH AND COMPANY, Cable TIE MAKERS

They always keep in stock...

GOLF OF GOLF WE SPELL IT GO & P

The Pronunciation doesn't matter. If you would play well you must use good clubs.

May & Co. The Sports House

Best Men's Tailoring, Tennis, Hosiery, Golf, Motor, Cycling, Boat, Suits, Shoes, Luggage, Gunny Bags.

THE CENTRAL LUNGEON

WE have just added a special department of... We have secured the contract for supplying the City Park...

Tea and Lunch AT Torr's New Tea Room

IN CHOITRAM HOUSE Government Road, HARLEY-DAVIDSON The Motorcycle Magnificent.

ENGLISH CRICKET.

Heavy Sewing by M.C.C. and Wales.

LANCASHIRE FAULT KEY.

WARRICK vs YORKS.

HANTS vs NORTHANTS.

MANCHESTER vs LEICESTER.

WILTSHIRE vs GLOUCESTER.

LANCASHIRE vs YORKS.

WILTSHIRE vs GLOUCESTER.

LANCASHIRE vs YORKS.

WILTSHIRE vs GLOUCESTER.

LANCASHIRE vs YORKS.

WILTSHIRE vs GLOUCESTER.

LANCASHIRE vs YORKS.

WILTSHIRE vs GLOUCESTER.

LANCASHIRE vs YORKS.

WILTSHIRE vs GLOUCESTER.

LANCASHIRE vs YORKS.

WILTSHIRE vs GLOUCESTER.

HOME RACING.

Windsor Wire Manchester Cup.

SMALL FIELD.

Local Golf.

THE NAIROBI GRAVEYARD COMPETITION.

Improvements at Epian.

STRENUOUS GOLF.

Two Ties in American Championship.

TO-NORRIS'S SOUVY.

At the forthcoming meeting of the shareholders of the association...

SPORT

SAFARI'S FOOTBALL.

Victories for Colonists and the Service.

HOME FOOTBALL.

Exemptions for the English Cup.

NEW SYSTEM.

IN NAIROBI.

Five repetitions were advanced on Saturday, and the players of known ability having generally failed to come to the post in Nairobi...

Improvements at Epian.

STRENUOUS GOLF.

Two Ties in American Championship.

TO-NORRIS'S SOUVY.

At the forthcoming meeting of the shareholders of the association...

SPORT

SAFARI'S FOOTBALL.

Victories for Colonists and the Service.

HOME FOOTBALL.

Exemptions for the English Cup.

NEW SYSTEM.

IN NAIROBI.

Five repetitions were advanced on Saturday, and the players of known ability having generally failed to come to the post in Nairobi...

Improvements at Epian.

STRENUOUS GOLF.

Two Ties in American Championship.

TO-NORRIS'S SOUVY.

At the forthcoming meeting of the shareholders of the association...

SKURRY UP!! THE NAIROBI AGRICULTURAL AND HORTICULTURAL SHOW

ENTRIES CLOSE JUNE 22nd, SO SEND THEM IN NOW. MEMORIAL HALL, NAIROBI.

THE HOUSE FOR GOLF REQUISITES. S. JACOBS LTD NAIROBI. Fred Raper, General Commission Agent.

FRED RAPER, GENERAL COMMISSION AGENT. Phone 561.

OXEN OXEN. Another batch of A.M., P.S., K.Y. young unbroken can ready for delivery.

ALIBAH AND COMPANY, Cable TIE MAKERS. They always keep in stock...

GOLF OF GOLF WE SPELL IT GO & P. The Pronunciation doesn't matter.

May & Co. The Sports House. Best Men's Tailoring, Tennis, Hosiery, Golf, Motor, Cycling, Boat, Suits, Shoes, Luggage, Gunny Bags.

THE CENTRAL LUNGEON. WE have just added a special department of...

Tea and Lunch AT Torr's New Tea Room. IN CHOITRAM HOUSE Government Road.

HARLEY-DAVIDSON The Motorcycle Magnificent. Sole 250-0-0 Combination 2100-0-0.

TO-NORRIS'S SOUVY. The following are reported to be the winners of the 1926-27 season...

SKURRY UP!! THE NAIROBI AGRICULTURAL AND HORTICULTURAL SHOW. ENTRIES CLOSE JUNE 22nd, SO SEND THEM IN NOW.

MEMORIAL HALL, NAIROBI. P. O. Box 624, Nairobi.

SKURRY UP!! THE NAIROBI AGRICULTURAL AND HORTICULTURAL SHOW. ENTRIES CLOSE JUNE 22nd, SO SEND THEM IN NOW.

MEMORIAL HALL, NAIROBI. P. O. Box 624, Nairobi.

SKURRY UP!! THE NAIROBI AGRICULTURAL AND HORTICULTURAL SHOW. ENTRIES CLOSE JUNE 22nd, SO SEND THEM IN NOW.

MEMORIAL HALL, NAIROBI. P. O. Box 624, Nairobi.

SKURRY UP!! THE NAIROBI AGRICULTURAL AND HORTICULTURAL SHOW. ENTRIES CLOSE JUNE 22nd, SO SEND THEM IN NOW.

**TWO POINTS**  
 Every bottle of Kappa Beer, strong and KICK is guaranteed to leave the consumer the best only.  
 The materials used are the best only.  
 That is why you will enjoy the purity & quality of this really first rate local production.  
**DRINK & ENJOY** the products of  
**KENYA BREWERIES LTD.**

GUARANTEED THE LARGEST CIRCULATION OF ANY NEWSPAPER.  
 IN KENYA, UGANDA, TANGANYIKA AND ZANZIBAR.

DAILY EDITION

THE EAST

TEN PAGES.

# African Standard

MOMBASA TIMES & UGANDA ARGUS.

THE OLDEST ESTABLISHED NEWSPAPER PUBLISHED IN KENYA AND UGANDA.

THE LEADER.

NAIROBI TUESDAY, JUNE 9, 1963.

## A NAIROBI MYSTERY.

**THE MURDER OF ROSEMARY**

**Spanish Operations.**

**Passenger Lists.**

**Two French Steamers.**

**THE MURDER OF ROSEMARY**  
 (Special Service's account)  
 The Special Service's account of the murder of Rosemary is given in the article on page 10 of this issue. It is a story of a woman who was killed in a hotel in Nairobi. The investigation is still in progress.

**Spanish Operations.**  
 The Spanish operations in the region are being carried out with great efficiency. The forces are well equipped and the operations are being conducted in a systematic manner.

**Passenger Lists.**  
 The passenger lists for the various services are as follows: The East Africa Service, the East African Service, and the East African Service.

**Two French Steamers.**  
 Two French steamers are expected to arrive in the region in the near future. They are the 'Le Normandie' and the 'Le Normandie'.

**MONEY MARKET.**  
 The money market is quiet today. There is no significant change in the rates of interest.

**Baby 'Planes' Fail.**  
 A baby plane failed to take off today. The pilot was unable to get the plane into the air.

**Notable Success.**  
 A notable success was achieved in the region today. The operations were carried out in a most efficient manner.

**THE WEATHER DEFIED.**  
 The weather defied the odds today. The operations were carried out in a most efficient manner.

**THE FLOWER SHOW.**  
 The flower show is a great success. The exhibits are of a high standard.

**THE WEATHER DEFIED.**  
 The weather defied the odds today. The operations were carried out in a most efficient manner.

**THE FLOWER SHOW.**  
 The flower show is a great success. The exhibits are of a high standard.

**THE WEATHER DEFIED.**  
 The weather defied the odds today. The operations were carried out in a most efficient manner.

**THE FLOWER SHOW.**  
 The flower show is a great success. The exhibits are of a high standard.

**THE WEATHER DEFIED.**  
 The weather defied the odds today. The operations were carried out in a most efficient manner.

**THE FLOWER SHOW.**  
 The flower show is a great success. The exhibits are of a high standard.

**THE WEATHER DEFIED.**  
 The weather defied the odds today. The operations were carried out in a most efficient manner.

**THE FLOWER SHOW.**  
 The flower show is a great success. The exhibits are of a high standard.

**THE WEATHER DEFIED.**

**THE FLOWER SHOW.**

**THE WEATHER DEFIED.**

**THE FLOWER SHOW.**

**THE WEATHER DEFIED.**

**THE FLOWER SHOW.**

**THE WEATHER DEFIED.**

**THE FLOWER SHOW.**

**THE WEATHER DEFIED.**

**THE FLOWER SHOW.**

**THE WEATHER DEFIED.**

**THE FLOWER SHOW.**

**THE WEATHER DEFIED.**

**THE FLOWER SHOW.**

**THE WEATHER DEFIED.**

**THE FLOWER SHOW.**

**THE WEATHER DEFIED.**

**THE FLOWER SHOW.**

**THE WEATHER DEFIED.**

**THE FLOWER SHOW.**

**THE WEATHER DEFIED.**

**THE FLOWER SHOW.**

**THE WEATHER DEFIED.**

**THE FLOWER SHOW.**

**THE WEATHER DEFIED.**

**THE FLOWER SHOW.**

**THE WEATHER DEFIED.**

**THE FLOWER SHOW.**

**THE WEATHER DEFIED.**

**THE FLOWER SHOW.**

**THE WEATHER DEFIED.**

**THE FLOWER SHOW.**

**THE WEATHER DEFIED.**

**THE FLOWER SHOW.**

**THE WEATHER DEFIED.**

**THE FLOWER SHOW.**

**THE WEATHER DEFIED.**

**THE FLOWER SHOW.**

**THE WEATHER DEFIED.**

**THE WEATHER DEFIED.**

**THE FLOWER SHOW.**

**THE WEATHER DEFIED.**

**THE FLOWER SHOW.**

**THE WEATHER DEFIED.**

**THE FLOWER SHOW.**

**THE WEATHER DEFIED.**

**THE FLOWER SHOW.**

**THE WEATHER DEFIED.**

**THE FLOWER SHOW.**

**THE WEATHER DEFIED.**

**THE FLOWER SHOW.**

**THE WEATHER DEFIED.**

**THE FLOWER SHOW.**

**THE WEATHER DEFIED.**

**THE FLOWER SHOW.**

**THE WEATHER DEFIED.**

**THE FLOWER SHOW.**

**THE WEATHER DEFIED.**

**THE FLOWER SHOW.**

**THE WEATHER DEFIED.**

**THE FLOWER SHOW.**

**THE WEATHER DEFIED.**

**THE FLOWER SHOW.**

**THE WEATHER DEFIED.**

**THE FLOWER SHOW.**

**THE WEATHER DEFIED.**

**THE FLOWER SHOW.**

**THE WEATHER DEFIED.**

**THE FLOWER SHOW.**

**THE WEATHER DEFIED.**

**THE FLOWER SHOW.**

**THE WEATHER DEFIED.**

**THE FLOWER SHOW.**

**THE WEATHER DEFIED.**

**THE FLOWER SHOW.**

**THE WEATHER DEFIED.**

**THE FLOWER SHOW.**

**THE WEATHER DEFIED.**

**THE WEATHER DEFIED.**

**THE FLOWER SHOW.**

**THE WEATHER DEFIED.**

**THE FLOWER SHOW.**

**THE WEATHER DEFIED.**

**THE FLOWER SHOW.**

**THE WEATHER DEFIED.**

**THE FLOWER SHOW.**

**THE WEATHER DEFIED.**

**THE FLOWER SHOW.**

**THE WEATHER DEFIED.**

**THE FLOWER SHOW.**

**THE WEATHER DEFIED.**

**THE FLOWER SHOW.**

**THE WEATHER DEFIED.**

**THE FLOWER SHOW.**

**THE WEATHER DEFIED.**

**THE FLOWER SHOW.**

**THE WEATHER DEFIED.**

**THE FLOWER SHOW.**

**THE WEATHER DEFIED.**

**THE FLOWER SHOW.**

**THE WEATHER DEFIED.**

**THE FLOWER SHOW.**

**THE WEATHER DEFIED.**

**THE FLOWER SHOW.**

**THE WEATHER DEFIED.**

**THE FLOWER SHOW.**

**THE WEATHER DEFIED.**

**THE FLOWER SHOW.**

**THE WEATHER DEFIED.**

**THE FLOWER SHOW.**

**THE WEATHER DEFIED.**

**THE FLOWER SHOW.**

**THE WEATHER DEFIED.**

**THE FLOWER SHOW.**


**THE WEATHER DEFIED.**

**THE FLOWER SHOW.**

**THE WEATHER DEFIED.**

MORNING AND AFTERNOON TEAS  
 SERVED IN THE 'LOUNGE'  
 REASONABLE PRICES

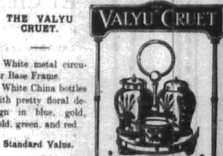
**WHITEWAY'S**  
 THE "DORIC" WHISTLE  
 A wonderful watch for the money, solid metal case, a bold dial, strong leather wrist strap. The price is low but the quality high.  
 Standard Yahu. Shs. 12-50  
 ONE OF WHITEWAY'S STANDARD WATCHES



**THE "ALL-WHITE" THREE-PART BEDSTEAD.**  
 A GREAT PRICE REVISION.  
 We want you to note the specification of the "All-White" Bed: 1 inch White Enamelled Tube Frame in 8 parts only; the Mattress Frame fitted with stout Galvanized Wire Mattress with 12 coil springs at head and foot; the full size is 8 ft 4 inches, and lastly the very low price!  
 Note Our Price: Shs. 55-00 each.



**THE VALU CRUET**  
 White metal circular. Iron Frame. White China bottles with pretty floral design in blue, gold, green, and red.  
 Standard Yahu. Shs. 4-50



**THE "PINNACLE" WRITING COMPENDIUM.**  
 An attractively designed cabinet containing 60 sheets of high-grade note paper and 5 envelopes to match. In Violet, Blue and White. Made expressly for and sold by Whiteaway Ltd.  
 Standard Yahu. Shs. 1-50 each



**THE "WAYLO" WATCH.**  
 15,000 have now been sold. For no hard wear there is no rival to the Waylo. Very reliable and accurate. Give your best buy one.  
 Standard Yahu. Shs. 5-50 each  
 WHITEWAY'S, Sixth Avenue, NAIROBI




**Rain or shine**  
 The New Studebaker Duplex is ideal  
 The Studebaker Duplex is a new type car which combines open car freedom with closed car comfort.  
 Lower the roller side enclosure and you have complete protection in stormy conditions. Raise them up and the altitude of the open car. Either can be done without stopping or getting out of the car.  
 The Studebaker Duplex body costs no more than a conventional car. It is one of many exclusive features of the new Studebaker car.

**K. McVOR & Co.,**  
 SIXTH AVENUE, NAIROBI

**STUDEBAKER Duplex**  
 GUARANTEED BY CHRYSLER-PLYMOUTH FOR 12 YEARS

**The Governor's Speech.**  
 His Excellency the Acting Governor arrived at the East Africa House today and delivered the address to the Legislative Council. The Governor's speech was a most interesting and comprehensive one. He dealt with the various aspects of the East African situation and the progress of the Federation. He also dealt with the economic situation and the need for further development. The Governor's speech was well received and the Council expressed its appreciation of the Governor's address.

**THE WEATHER DEFIED.**  
 The weather defied the odds today. The operations were carried out in a most efficient manner.

THE USA

A Public Spare Parts Supply Tent.

SERVICE REPRESENTATION

I believe it is in the interest of the motorist to have a public spare parts supply tent...

Some reflections on the old days the more we know of the present situation...

...the time of the 1914-15 season, which they thought was...

I think at the end of 1916 they started going to the States...

The Spring Plag. SHOULD BE CANCELLED EVERY YEAR...

D & J McCALLUM'S PERFECTION

SCOTCH WHISKY SMITH MACKENZIE & Co. NAIROBI P.O. Box 390 Phone 368

PRESTON'S SALE NOW ON LARGE STOCK OF LADIES STOCKINETTE DRESSES...

MALAGA-QUINA. In a combination of the choicest Old Malaga Wine...

BRICKS & TILES LARGE STOCKS AT OUR MUTHAIGA WORKS...

Get your Sanitary work done by the men who understand Sanitation THORNTON & TURPIN...

FARMERS & MERCHANTS. This Organization is now in touch with some of the...

A. A. CRAWFORD'S SPECIAL FAVORITE OLD SCOTCH WHISKY...

THE BEST BUY IN KENYA. 2,500 well watered acres near Nairobi...

COFFEE. £200 buyers an ideal 100 acres of coffee...

WANTED. 2 Spans Oxen to plough 50/80 Acres...

HOUSES TO LET. Permitted & Unpermitted THE BELL FARMERS...

AGENTS FOR. The best quality of goods...

For the cold weather. Special Value in All Wool BLANKETS.

SOFT, WARM, COMFORTABLE, CHEAP. FOR HOME, SCHOOL, CAMP or SAFARI.



- The 'DERWENT' Blanket - all wool size 55 x 80 inches... 29-50 each. The 'DEVERON' Blanket, all wool, size 55 x 80 inches... 37-50. The 'BERWICK' Blanket, size 55 x 80 inches... 32-50. The 'BOLTON' Blanket, colour mid grey with greek key border... 27-50.

THESE PRICES ARE SUBJECT TO THE COST OF CASH DISCOUNT.



J.P.O. Box 596 Phone 158 TELEGRAMS: 'ADVALOREM' NAIROBI.

MADAME ROWE ET CIE, LTD. SMART AFTERNOON AND EVENING GOWNS, WRAPS, MILLINERY, LINENRY, SHOES. Government Road, NAIROBI. Phone 288. P.O. Box 152.

Short Loans Granted £1 to £1,000. Kenya Loan & Discount Co., Ltd. 10, MARKET STREET, NAIROBI.

Nairobi School of Dancing. Children's Classes of Operatic Musical Chorus and Ballroom Dancing only. THE KENYA...

For FOOTBALLS and SHIRTS MAY & Co.

TO LET.

TO Let House Building in...
HILL, one room, corner...
SPACIOUS OFFICE in the heart...
TO Let well situated...
Apply to...
No. 207, 208, 209, 210, 211, 212, 213, 214, 215, 216, 217, 218, 219, 220, 221, 222, 223, 224, 225, 226, 227, 228, 229, 230, 231, 232, 233, 234, 235, 236, 237, 238, 239, 240, 241, 242, 243, 244, 245, 246, 247, 248, 249, 250, 251, 252, 253, 254, 255, 256, 257, 258, 259, 260, 261, 262, 263, 264, 265, 266, 267, 268, 269, 270, 271, 272, 273, 274, 275, 276, 277, 278, 279, 280, 281, 282, 283, 284, 285, 286, 287, 288, 289, 290, 291, 292, 293, 294, 295, 296, 297, 298, 299, 300, 301, 302, 303, 304, 305, 306, 307, 308, 309, 310, 311, 312, 313, 314, 315, 316, 317, 318, 319, 320, 321, 322, 323, 324, 325, 326, 327, 328, 329, 330, 331, 332, 333, 334, 335, 336, 337, 338, 339, 340, 341, 342, 343, 344, 345, 346, 347, 348, 349, 350, 351, 352, 353, 354, 355, 356, 357, 358, 359, 360, 361, 362, 363, 364, 365, 366, 367, 368, 369, 370, 371, 372, 373, 374, 375, 376, 377, 378, 379, 380, 381, 382, 383, 384, 385, 386, 387, 388, 389, 390, 391, 392, 393, 394, 395, 396, 397, 398, 399, 400, 401, 402, 403, 404, 405, 406, 407, 408, 409, 410, 411, 412, 413, 414, 415, 416, 417, 418, 419, 420, 421, 422, 423, 424, 425, 426, 427, 428, 429, 430, 431, 432, 433, 434, 435, 436, 437, 438, 439, 440, 441, 442, 443, 444, 445, 446, 447, 448, 449, 450, 451, 452, 453, 454, 455, 456, 457, 458, 459, 460, 461, 462, 463, 464, 465, 466, 467, 468, 469, 470, 471, 472, 473, 474, 475, 476, 477, 478, 479, 480, 481, 482, 483, 484, 485, 486, 487, 488, 489, 490, 491, 492, 493, 494, 495, 496, 497, 498, 499, 500, 501, 502, 503, 504, 505, 506, 507, 508, 509, 510, 511, 512, 513, 514, 515, 516, 517, 518, 519, 520, 521, 522, 523, 524, 525, 526, 527, 528, 529, 530, 531, 532, 533, 534, 535, 536, 537, 538, 539, 540, 541, 542, 543, 544, 545, 546, 547, 548, 549, 550, 551, 552, 553, 554, 555, 556, 557, 558, 559, 560, 561, 562, 563, 564, 565, 566, 567, 568, 569, 570, 571, 572, 573, 574, 575, 576, 577, 578, 579, 580, 581, 582, 583, 584, 585, 586, 587, 588, 589, 590, 591, 592, 593, 594, 595, 596, 597, 598, 599, 600, 601, 602, 603, 604, 605, 606, 607, 608, 609, 610, 611, 612, 613, 614, 615, 616, 617, 618, 619, 620, 621, 622, 623, 624, 625, 626, 627, 628, 629, 630, 631, 632, 633, 634, 635, 636, 637, 638, 639, 640, 641, 642, 643, 644, 645, 646, 647, 648, 649, 650, 651, 652, 653, 654, 655, 656, 657, 658, 659, 660, 661, 662, 663, 664, 665, 666, 667, 668, 669, 670, 671, 672, 673, 674, 675, 676, 677, 678, 679, 680, 681, 682, 683, 684, 685, 686, 687, 688, 689, 690, 691, 692, 693, 694, 695, 696, 697, 698, 699, 700, 701, 702, 703, 704, 705, 706, 707, 708, 709, 710, 711, 712, 713, 714, 715, 716, 717, 718, 719, 720, 721, 722, 723, 724, 725, 726, 727, 728, 729, 730, 731, 732, 733, 734, 735, 736, 737, 738, 739, 740, 741, 742, 743, 744, 745, 746, 747, 748, 749, 750, 751, 752, 753, 754, 755, 756, 757, 758, 759, 760, 761, 762, 763, 764, 765, 766, 767, 768, 769, 770, 771, 772, 773, 774, 775, 776, 777, 778, 779, 780, 781, 782, 783, 784, 785, 786, 787, 788, 789, 790, 791, 792, 793, 794, 795, 796, 797, 798, 799, 800, 801, 802, 803, 804, 805, 806, 807, 808, 809, 810, 811, 812, 813, 814, 815, 816, 817, 818, 819, 820, 821, 822, 823, 824, 825, 826, 827, 828, 829, 830, 831, 832, 833, 834, 835, 836, 837, 838, 839, 840, 841, 842, 843, 844, 845, 846, 847, 848, 849, 850, 851, 852, 853, 854, 855, 856, 857, 858, 859, 860, 861, 862, 863, 864, 865, 866, 867, 868, 869, 870, 871, 872, 873, 874, 875, 876, 877, 878, 879, 880, 881, 882, 883, 884, 885, 886, 887, 888, 889, 890, 891, 892, 893, 894, 895, 896, 897, 898, 899, 900, 901, 902, 903, 904, 905, 906, 907, 908, 909, 910, 911, 912, 913, 914, 915, 916, 917, 918, 919, 920, 921, 922, 923, 924, 925, 926, 927, 928, 929, 930, 931, 932, 933, 934, 935, 936, 937, 938, 939, 940, 941, 942, 943, 944, 945, 946, 947, 948, 949, 950, 951, 952, 953, 954, 955, 956, 957, 958, 959, 960, 961, 962, 963, 964, 965, 966, 967, 968, 969, 970, 971, 972, 973, 974, 975, 976, 977, 978, 979, 980, 981, 982, 983, 984, 985, 986, 987, 988, 989, 990, 991, 992, 993, 994, 995, 996, 997, 998, 999, 1000.

LICKERING COURT.
Half-Yearly Session.
DRAFTED APPLICANTS.
A special half-yearly session of the Lickering Court was held on the 11th inst. at the Court House, Nairobi.
The following cases were heard:
1. In re Estate of Mr. J. H. B. ...
2. In re Estate of Mr. J. H. B. ...
3. In re Estate of Mr. J. H. B. ...
4. In re Estate of Mr. J. H. B. ...
5. In re Estate of Mr. J. H. B. ...
6. In re Estate of Mr. J. H. B. ...
7. In re Estate of Mr. J. H. B. ...
8. In re Estate of Mr. J. H. B. ...
9. In re Estate of Mr. J. H. B. ...
10. In re Estate of Mr. J. H. B. ...
11. In re Estate of Mr. J. H. B. ...
12. In re Estate of Mr. J. H. B. ...
13. In re Estate of Mr. J. H. B. ...
14. In re Estate of Mr. J. H. B. ...
15. In re Estate of Mr. J. H. B. ...
16. In re Estate of Mr. J. H. B. ...
17. In re Estate of Mr. J. H. B. ...
18. In re Estate of Mr. J. H. B. ...
19. In re Estate of Mr. J. H. B. ...
20. In re Estate of Mr. J. H. B. ...
21. In re Estate of Mr. J. H. B. ...
22. In re Estate of Mr. J. H. B. ...
23. In re Estate of Mr. J. H. B. ...
24. In re Estate of Mr. J. H. B. ...
25. In re Estate of Mr. J. H. B. ...
26. In re Estate of Mr. J. H. B. ...
27. In re Estate of Mr. J. H. B. ...
28. In re Estate of Mr. J. H. B. ...
29. In re Estate of Mr. J. H. B. ...
30. In re Estate of Mr. J. H. B. ...
31. In re Estate of Mr. J. H. B. ...
32. In re Estate of Mr. J. H. B. ...
33. In re Estate of Mr. J. H. B. ...
34. In re Estate of Mr. J. H. B. ...
35. In re Estate of Mr. J. H. B. ...
36. In re Estate of Mr. J. H. B. ...
37. In re Estate of Mr. J. H. B. ...
38. In re Estate of Mr. J. H. B. ...
39. In re Estate of Mr. J. H. B. ...
40. In re Estate of Mr. J. H. B. ...
41. In re Estate of Mr. J. H. B. ...
42. In re Estate of Mr. J. H. B. ...
43. In re Estate of Mr. J. H. B. ...
44. In re Estate of Mr. J. H. B. ...
45. In re Estate of Mr. J. H. B. ...
46. In re Estate of Mr. J. H. B. ...
47. In re Estate of Mr. J. H. B. ...
48. In re Estate of Mr. J. H. B. ...
49. In re Estate of Mr. J. H. B. ...
50. In re Estate of Mr. J. H. B. ...
51. In re Estate of Mr. J. H. B. ...
52. In re Estate of Mr. J. H. B. ...
53. In re Estate of Mr. J. H. B. ...
54. In re Estate of Mr. J. H. B. ...
55. In re Estate of Mr. J. H. B. ...
56. In re Estate of Mr. J. H. B. ...
57. In re Estate of Mr. J. H. B. ...
58. In re Estate of Mr. J. H. B. ...
59. In re Estate of Mr. J. H. B. ...
60. In re Estate of Mr. J. H. B. ...
61. In re Estate of Mr. J. H. B. ...
62. In re Estate of Mr. J. H. B. ...
63. In re Estate of Mr. J. H. B. ...
64. In re Estate of Mr. J. H. B. ...
65. In re Estate of Mr. J. H. B. ...
66. In re Estate of Mr. J. H. B. ...
67. In re Estate of Mr. J. H. B. ...
68. In re Estate of Mr. J. H. B. ...
69. In re Estate of Mr. J. H. B. ...
70. In re Estate of Mr. J. H. B. ...
71. In re Estate of Mr. J. H. B. ...
72. In re Estate of Mr. J. H. B. ...
73. In re Estate of Mr. J. H. B. ...
74. In re Estate of Mr. J. H. B. ...
75. In re Estate of Mr. J. H. B. ...
76. In re Estate of Mr. J. H. B. ...
77. In re Estate of Mr. J. H. B. ...
78. In re Estate of Mr. J. H. B. ...
79. In re Estate of Mr. J. H. B. ...
80. In re Estate of Mr. J. H. B. ...
81. In re Estate of Mr. J. H. B. ...
82. In re Estate of Mr. J. H. B. ...
83. In re Estate of Mr. J. H. B. ...
84. In re Estate of Mr. J. H. B. ...
85. In re Estate of Mr. J. H. B. ...
86. In re Estate of Mr. J. H. B. ...
87. In re Estate of Mr. J. H. B. ...
88. In re Estate of Mr. J. H. B. ...
89. In re Estate of Mr. J. H. B. ...
90. In re Estate of Mr. J. H. B. ...
91. In re Estate of Mr. J. H. B. ...
92. In re Estate of Mr. J. H. B. ...
93. In re Estate of Mr. J. H. B. ...
94. In re Estate of Mr. J. H. B. ...
95. In re Estate of Mr. J. H. B. ...
96. In re Estate of Mr. J. H. B. ...
97. In re Estate of Mr. J. H. B. ...
98. In re Estate of Mr. J. H. B. ...
99. In re Estate of Mr. J. H. B. ...
100. In re Estate of Mr. J. H. B. ...

EQUATOR SAW MILLS
2500 TONS IN STOCK NO WAITING
WE CAN DELIVER THE GOODS
FROM 26 CENTS MAJI MAZURI
" 33 " NAIROBI.
PBR BOARD FOOT.
NAIROBI. Box 291.
Podo Cedar Hard Sadler Street.

SITUATIONS WANTED.
LADY experienced shorthand...
SITUATION desired by a...
WOMAN capable of doing...

ESTER LINDBERG
WOMAN capable of doing...
WOMAN capable of doing...
WOMAN capable of doing...

NOTICE

His Excellency the Minister for Foreign Affairs of the Portuguese Republic has declined the Honorable Ayres Ribeiro from the post of Vice Consul for Portugal at Nairobi.

KALAMAZOO LOOSE-LEAF BOOKS
"Popular" Ledger Outfits.
BINDER INDEX
Size Depth Width Sh.
11 9 11 75.00
12 11 11 75.00
13 11 11 75.00
14 11 11 75.00
15 11 11 75.00
Phone 141. T.A.W.S. Box 811, NAIROBI.

WANTED European Youth...
WANTED Assistant in Office...

RESTAURANT LICENSE
Mr. J. A. Naresch applied for a restaurant license for the building in development held in trust for the National Bank, Nairobi, occupied at No. 11, Kenyatta Road, Nairobi.

RESTAURANT LICENSE
Mr. J. A. Naresch applied for a restaurant license for the building in development held in trust for the National Bank, Nairobi, occupied at No. 11, Kenyatta Road, Nairobi.

HUDSON SUPER-SIX SEVEN SEATER
Inspiring Confidence.
At the astounding low figure of \$460.00.
Complete with Wire Wheels, 5 1/2 Gallon Tires.
THEIR WALK THE MEANS!!
Hudson's reputation endures in the Super Six Motor. For ten years it has remained in demand for over wide reasons. It's held its position as the greatest car to ever build. On its safety, its practical use, its joy of operation!

WANTED European Youth...
WANTED Assistant in Office...

RESTAURANT LICENSE
Mr. J. A. Naresch applied for a restaurant license for the building in development held in trust for the National Bank, Nairobi, occupied at No. 11, Kenyatta Road, Nairobi.

RESTAURANT LICENSE
Mr. J. A. Naresch applied for a restaurant license for the building in development held in trust for the National Bank, Nairobi, occupied at No. 11, Kenyatta Road, Nairobi.

OAKLEIGH PRIVATE HOTEL
ONLY A FEW MINUTES FROM DOWNSIDE
Home 180 Box 188

WANTED European Youth...
WANTED Assistant in Office...

RESTAURANT LICENSE
Mr. J. A. Naresch applied for a restaurant license for the building in development held in trust for the National Bank, Nairobi, occupied at No. 11, Kenyatta Road, Nairobi.

RESTAURANT LICENSE
Mr. J. A. Naresch applied for a restaurant license for the building in development held in trust for the National Bank, Nairobi, occupied at No. 11, Kenyatta Road, Nairobi.

Health and Sound Teeth Go Together
Health assured by perfect teeth
To ensure a lifetime of perfect, beautiful teeth use
Gibbs Dentifrice
twice a day.

WANTED European Youth...
WANTED Assistant in Office...

RESTAURANT LICENSE
Mr. J. A. Naresch applied for a restaurant license for the building in development held in trust for the National Bank, Nairobi, occupied at No. 11, Kenyatta Road, Nairobi.

RESTAURANT LICENSE
Mr. J. A. Naresch applied for a restaurant license for the building in development held in trust for the National Bank, Nairobi, occupied at No. 11, Kenyatta Road, Nairobi.

WANTED European Youth...
WANTED Assistant in Office...

RESTAURANT LICENSE
Mr. J. A. Naresch applied for a restaurant license for the building in development held in trust for the National Bank, Nairobi, occupied at No. 11, Kenyatta Road, Nairobi.

RESTAURANT LICENSE
Mr. J. A. Naresch applied for a restaurant license for the building in development held in trust for the National Bank, Nairobi, occupied at No. 11, Kenyatta Road, Nairobi.

Health and Sound Teeth Go Together
Health assured by perfect teeth
To ensure a lifetime of perfect, beautiful teeth use
Gibbs Dentifrice
twice a day.

THE FLOWER SHOW.

GERANIUMS. Best collection (1) Mr. ... Best 2 varieties (1) Mr. ...

CUT FLOWERS. In vases (1) Mr. ... Best 2 varieties (1) Mr. ...

SWEET PEAS. In vases (1) Mr. ... Best 2 varieties (1) Mr. ...

DELPHINIUMS. Best collection (1) Mr. ... Best 2 varieties (1) Mr. ...

GERANIUMS. Best collection (1) Mr. ... Best 2 varieties (1) Mr. ...

DELPHINIUMS. Best collection (1) Mr. ... Best 2 varieties (1) Mr. ...

GERANIUMS. Best collection (1) Mr. ... Best 2 varieties (1) Mr. ...

DELPHINIUMS. Best collection (1) Mr. ... Best 2 varieties (1) Mr. ...

GERANIUMS. Best collection (1) Mr. ... Best 2 varieties (1) Mr. ...

DELPHINIUMS. Best collection (1) Mr. ... Best 2 varieties (1) Mr. ...

GERANIUMS. Best collection (1) Mr. ... Best 2 varieties (1) Mr. ...

DELPHINIUMS. Best collection (1) Mr. ... Best 2 varieties (1) Mr. ...

GERANIUMS. Best collection (1) Mr. ... Best 2 varieties (1) Mr. ...

DELPHINIUMS. Best collection (1) Mr. ... Best 2 varieties (1) Mr. ...

GERANIUMS. Best collection (1) Mr. ... Best 2 varieties (1) Mr. ...

DELPHINIUMS. Best collection (1) Mr. ... Best 2 varieties (1) Mr. ...

GERANIUMS. Best collection (1) Mr. ... Best 2 varieties (1) Mr. ...

WHY WAIT FOR NEW AND UNTRIED MODELS? COME AND INSPECT A CAR MADE BY DURANT. THE BUILDER OF THE BETTER CAR. CARR, LAWSON & Co. Ltd.

Ford THE UTILITY CAR. DELIVERED MAHIRE. Standard Gears £180. Rockettel Gears £195. Fitted with wire wheels and balloon tyres £15 extra. EASY TERMS OF PAYMENT TO APPROVED CUSTOMERS. The Service Company Limited. NAIROBI AND MOSHI.

ERNEST GLYDE. THE BEST OF ALL THINGS VIBRONA. Ordinary scalded tonic waters with quinine, produce in many people tremors and vertigo. The quantity accompanied with impaired taste and gastric trouble. As the result of an improved method of extracting quinine (patented by Mr. F. W. FLEURY, F.R.S.) the dissolved tonic is made available for advanced use. AER FOR VIBRONA THE IDEAL TONIC WATER AER FOR which can be taken without the slightest discomfort in any case and without the ordinary lead or iron impurities also contained in all quinine. REGISTERED TRADE MARK. A. H. WARDLE & Co. Ltd. P. O. BOX 103. NAIROBI & MOMBASA. Phone 56.

THE OLDEST SCOTTISH INSURANCE OFFICE Caledonian INSURANCE COMPANY. Incorporated by Royal Charter A.D. 1805. Chief Agents for Kenya. R. O. HAMILTON Ltd. P. O. Box 302 NAIROBI Phone 352.

GOLD FACTS. THE B.S.A. is built up to the HIGHEST POSSIBLE STANDARD and is THE MOTOR Cycle you will eventually Buy. See them at METVORS.

THE OVERLAND Safari Car MAGNETO IGNITION FULLY GUARANTEED INCLUDING SPRINGS AT £200 REPRESENTS THE BEST POSSIBLE CAR VALUE. Monckton & Sear Ltd. NAIROBI.

SHELL MOTOR SPIRIT. UPOCUSTY STOCKISTS. Nairobi, Kisumu, Malindi, Mombasa, Taita, Kilifi, Lamu, Pate, Malindi, Mombasa, Taita, Kilifi, Lamu, Pate, Malindi, Mombasa, Taita, Kilifi, Lamu, Pate.

L. Rosenthal & Co. Sole Agents for the British Imperial Oil Co. (S. A.) Ltd. P. O. Box 984. Phone 977. West Avenue.

Book Now Open On Newbury Summer Cup. Prices on Application. MISS KATHLEEN BATES, A.R.S.M. Vice-Lecturer in FIAMPORTS, BIRMINGHAM, LONDON AND AGRICULTURE OF MEDALS AND AWARDS. Apply—General Buildings, 21, Upper Circular Road, London, W.1. Postal Addressing Box 417, Nairobi.

ASK FOR BOOTH'S. STOCKISTS: Mackintosh Brothers & Jacobs Ltd. E. Jardine & Co. Smith Macpherson & Co. D. Reynolds & Co. Obtainable at all leading Clubs and Hotels. B. S. Campbell, Sole Importer. P. O. Box 182. Mombasa. In which one.

THE EAST AFRICAN STANDARD. THURSDAY, JUNE 8, 1922. DEATH. WOOLLEY — Passed away at Nairobi on June 6, 1922, at the age of 52 years. The funeral will take place on June 10, 1922, at 10 o'clock, from the residence of Mrs. W. Woolley, at 12, Upper Circular Road, Nairobi. The interment will be in the cemetery at Nairobi. The family will receive friends at their residence on the day of the funeral. The family will receive friends at their residence on the day of the funeral.

THE EAST AFRICAN STANDARD. THURSDAY, JUNE 8, 1922. THE CHIEF MINISTER OF TANGANYIKA TERRITORIES. The Chief Minister of Tanganyika Territories, Mr. J. H. M. Johnston, has been appointed to the post of Chief Minister of Tanganyika Territories. He will be responsible for the administration of the territories. He will be responsible for the administration of the territories.

THE EAST AFRICAN STANDARD. THURSDAY, JUNE 8, 1922. THE CHIEF MINISTER OF TANGANYIKA TERRITORIES. The Chief Minister of Tanganyika Territories, Mr. J. H. M. Johnston, has been appointed to the post of Chief Minister of Tanganyika Territories. He will be responsible for the administration of the territories. He will be responsible for the administration of the territories.

THE EAST AFRICAN STANDARD. THURSDAY, JUNE 8, 1922. THE CHIEF MINISTER OF TANGANYIKA TERRITORIES. The Chief Minister of Tanganyika Territories, Mr. J. H. M. Johnston, has been appointed to the post of Chief Minister of Tanganyika Territories. He will be responsible for the administration of the territories. He will be responsible for the administration of the territories.

THE EAST AFRICAN STANDARD. THURSDAY, JUNE 8, 1922. THE CHIEF MINISTER OF TANGANYIKA TERRITORIES. The Chief Minister of Tanganyika Territories, Mr. J. H. M. Johnston, has been appointed to the post of Chief Minister of Tanganyika Territories. He will be responsible for the administration of the territories. He will be responsible for the administration of the territories.

THE EAST AFRICAN STANDARD. THURSDAY, JUNE 8, 1922. THE CHIEF MINISTER OF TANGANYIKA TERRITORIES. The Chief Minister of Tanganyika Territories, Mr. J. H. M. Johnston, has been appointed to the post of Chief Minister of Tanganyika Territories. He will be responsible for the administration of the territories. He will be responsible for the administration of the territories.



COFFEE PLANTERS' UNION.

May Meeting.

AGRICULTURAL DEPARTMENT SERVICES.

Suggested Levy on Coffee Planters.

DATE OF COGNIZ. MEETINGS CHANGED.

The following notice is hereby given to all members of the Coffee Planters' Union...

The following notice is hereby given to all members of the Coffee Planters' Union...

The following notice is hereby given to all members of the Coffee Planters' Union...

The following notice is hereby given to all members of the Coffee Planters' Union...

The following notice is hereby given to all members of the Coffee Planters' Union...

The following notice is hereby given to all members of the Coffee Planters' Union...

The following notice is hereby given to all members of the Coffee Planters' Union...

The following notice is hereby given to all members of the Coffee Planters' Union...

The following notice is hereby given to all members of the Coffee Planters' Union...

The following notice is hereby given to all members of the Coffee Planters' Union...

The following notice is hereby given to all members of the Coffee Planters' Union...

The following notice is hereby given to all members of the Coffee Planters' Union...

The following notice is hereby given to all members of the Coffee Planters' Union...

The following notice is hereby given to all members of the Coffee Planters' Union...

The following notice is hereby given to all members of the Coffee Planters' Union...

The following notice is hereby given to all members of the Coffee Planters' Union...

The following notice is hereby given to all members of the Coffee Planters' Union...

The following notice is hereby given to all members of the Coffee Planters' Union...

The following notice is hereby given to all members of the Coffee Planters' Union...

The following notice is hereby given to all members of the Coffee Planters' Union...

The following notice is hereby given to all members of the Coffee Planters' Union...

The following notice is hereby given to all members of the Coffee Planters' Union...

The following notice is hereby given to all members of the Coffee Planters' Union...

The following notice is hereby given to all members of the Coffee Planters' Union...

The following notice is hereby given to all members of the Coffee Planters' Union...

The following notice is hereby given to all members of the Coffee Planters' Union...

action on the part of any of their members.

MEMBERS' COMPLAINTS.

The President of the Chamber of Commerce, Mr. Michael...

A further situation has arisen with regard to the coffee...

It is further stated that the coffee...

It is further stated that the coffee...

It is further stated that the coffee...

It is further stated that the coffee...

It is further stated that the coffee...

It is further stated that the coffee...

It is further stated that the coffee...

It is further stated that the coffee...

It is further stated that the coffee...

It is further stated that the coffee...

It is further stated that the coffee...

It is further stated that the coffee...

It is further stated that the coffee...

It is further stated that the coffee...

It is further stated that the coffee...

It is further stated that the coffee...

It is further stated that the coffee...

It is further stated that the coffee...

It is further stated that the coffee...

It is further stated that the coffee...

It is further stated that the coffee...

It is further stated that the coffee...

It is further stated that the coffee...

It is further stated that the coffee...

It is further stated that the coffee...

It is further stated that the coffee...

MEMBERS' COMPLAINTS.

The President of the Chamber of Commerce, Mr. Michael...

A further situation has arisen with regard to the coffee...

It is further stated that the coffee...

It is further stated that the coffee...

It is further stated that the coffee...

It is further stated that the coffee...

It is further stated that the coffee...

It is further stated that the coffee...

It is further stated that the coffee...

It is further stated that the coffee...

It is further stated that the coffee...

It is further stated that the coffee...

It is further stated that the coffee...

It is further stated that the coffee...

It is further stated that the coffee...

It is further stated that the coffee...

It is further stated that the coffee...

It is further stated that the coffee...

It is further stated that the coffee...

It is further stated that the coffee...

It is further stated that the coffee...

It is further stated that the coffee...

It is further stated that the coffee...

It is further stated that the coffee...

It is further stated that the coffee...

It is further stated that the coffee...

It is further stated that the coffee...

It is further stated that the coffee...

MEMBERS' COMPLAINTS.

The President of the Chamber of Commerce, Mr. Michael...

A further situation has arisen with regard to the coffee...

It is further stated that the coffee...

It is further stated that the coffee...

It is further stated that the coffee...

It is further stated that the coffee...

It is further stated that the coffee...

It is further stated that the coffee...

It is further stated that the coffee...

It is further stated that the coffee...

It is further stated that the coffee...

It is further stated that the coffee...

It is further stated that the coffee...

It is further stated that the coffee...

It is further stated that the coffee...

It is further stated that the coffee...

It is further stated that the coffee...

It is further stated that the coffee...

It is further stated that the coffee...

It is further stated that the coffee...

It is further stated that the coffee...

It is further stated that the coffee...

It is further stated that the coffee...

It is further stated that the coffee...

It is further stated that the coffee...

It is further stated that the coffee...

It is further stated that the coffee...

It is further stated that the coffee...

LYRIC HALL. TO-NIGHT A MASTER Production OF THE POOR MAN RICH MAN.

The eventful story of a Pauper only Son of the Father who goes hunting and is supposed to be killed. A story full of action and humour.

Big Bargains Still TO BE HAD in LADIES SUEDE SHOES Etc.

LAST 7 DAYS GENTS and BOYS BOOTS A GIFT AT the PRICES OFFERED.

A REAL GENUINE SALE. LADIES FOOTWEAR, Ltd. NAIROBI. Box 149 NAIROBI.

THEATRE ROYAL TO-NIGHT

Wednesday, Thursday & Saturday Matinee "A Stage Romance"

The love story of English poet famous Shakespearean actor "Edmund Keats" (played by) William Farnum

All the latest news in the "Topsal Budget".

FRIDAY & SATURDAY 12th & 13th. Nellie Seymour James

Parvool performances with all the finest Vocal talent in Nairobi including melodious memories of Mrs. Condy accompanied by the Theatre Royal Boys Orchestra.

Booking at the Resinjongi Agent, Govt. Road.

They always have the new shades Chief "among lovely necessities for the elegant" are Kayser pure silk stockings in all the subtle shades and half-shades of the mode-Circassian, Mauveque, Sunburn, Nude, Hoggar, Cher, and the rest. You can wear and wear them, they wash and wash them too, for they are woven in sheersilk pure dyed and protected from ladders by the exclusive "marvel-stripe".

Kayser full-fashioned THREAD SILK STOCKINGS WARRINGS, Africa House, Govt. Road, Nairobi.

FOOTBALLS

The League Football season is now in progress. The following fixtures are being played...

MEMBERS' COMPLAINTS.

The President of the Chamber of Commerce, Mr. Michael...

MEMBERS' COMPLAINTS.

The President of the Chamber of Commerce, Mr. Michael...

MEMBERS' COMPLAINTS.

The President of the Chamber of Commerce, Mr. Michael...

MEMBERS' COMPLAINTS.

The President of the Chamber of Commerce, Mr. Michael...

# Auction Sales

**Auction Diary**  
 Wednesday, 10th June at 10 a.m. Sale of  
 Friday, 12th June at 10 a.m. Miscellaneous Goods Sale (Market  
 and Central)  
 Monday, 14th June at 10 a.m. Sale of Corrugated Iron  
 Wednesday, 16th June at 10 a.m. Sale of Immense Cons  
 (Market & C.)

## ARCHIBALD HOGG,

MARSHFIELD STREET, NAIROBI.  
 (At the top of the Hill.)  
 (Since 1896).

**SALES BY APPOINTMENT**  
 10th June at 10 a.m. Sale of Immense Cons (Market & C.)  
 12th June at 10 a.m. Sale of Corrugated Iron (Market & C.)  
 14th June at 10 a.m. Sale of Immense Cons (Market & C.)  
 16th June at 10 a.m. Sale of Immense Cons (Market & C.)

# Muter and Oswald's Sales.

**Miscellaneous Goods**  
 Daily instructed, we shall sell, without reserve, at our salerooms, **HARDINGE STREET, NAIROBI,** on  
**Friday 12th June at 10 a.m.**  
 ALFA LAVA SEPARATOR, TYRELESS SUIT CASE  
 SAND BAGS, KEROSENE BURNING LAMP,  
 NOVELTY.  
 ELECTRIC IRONS, TYRELESS RASERS, PICTURES,  
 SALES'S SPIN BALANCE, GARDEN TOOLS,  
 GLASSWARE.

**GROCKERY** COFFEE SERVICES, SPINNEL  
 KEYS.  
**TWO GRAMOPHONES, SPARKLE BASKIN**  
**GRAMOPHONE RECORDS, OUTLETY,**  
**SECOND HAND TERT, GROUND SEEDS,**  
**RUGS, COLE MATTING, NATIVE SPARE AND**  
**SECOND HAND DUFFALOONS, FILTER,**  
**MINDING MACHINES, COFFEE GRINDERS.**  
 No. 1. No. 2.  
**MUTER and OSWALD, Auctioneers, Etc., Nairobi.**

# Muter and Oswald's Sales.

**Auction Sale of Corrugated Iron Building.**  
 Daily instructed, we shall sell, absolutely without reserve, on

**Saturday, 12th June, at 10-30 a.m. in the SITE IN VICTORIA STREET, OPPOSITE THE FIRM STORE, ALL THINGS AND CORRUATED IRON FOR BUILDING THE EXISTING BUILDING.**  
**THIS OFFERS AN EXCELLENT OPPORTUNITY FOR THE PURCHASERS OF A LARGE QUANTITY OF SMOOTH ROLL CORRUATED IRON.**  
**NOTE.** A reasonable amount of time will be allowed for the removal of the timber and iron, which will all be sold in one lot.  
**MUTER and OSWALD, Auctioneers, Etc., Nairobi.**

# Unique Unreserved Sale of Solid Silver Ware, Sheffield Plated Goods Doulton China Etc. Etc.

Daily instructed  
**AUSTIN & Co.**  
 Will sell by Public Auction ABSOLUTELY WITHOUT RESERVE  
 At the MART, Maitlandy Bldg. Govt. Road.  
**ON WEDNESDAY JUNE 10th**  
 at 10 sharp.  
 SOLID SILVER 800 GOLD COMPLETE, SILVER SCENT TALSTALE  
 PAIR BLUE GLASS SILVER MOUNTED VASES, 3 SILVER CARRIAGE CLOCKS  
 SEVENTEEN SILVER VASES all sizes, 2 SETS PAIR SHEFFIELD PLATE ENTREE DISHES, PLATED ASPARAGUS DISS  
 SHEFFIELD PLATED SALAD STAND PLATED SOUT TUREEN.  
 GERMAN SILVER PLAQUE ROYAL DOULTON 45 pieces FRUIT SERVICE  
 WEDGEWOOD PLATES, NIMOGES CUPS AND SAUCERS, JAPANESE  
 BRASS FINGER-BOWLS, SHELL FLOWER STANDS, INLaid ENAMELLED VASES,  
 PART-CHINA DINNER SERVICE, BULBUM CUPS AND RACLES.  
 CUT GLASS DECANTERS, FINGER BOWLS, GLASSES, ETC.  
 VENEZIANE FLOOR LAMP, BLACK SOAP-STONE FLOWER VASES,  
 ETC., ETC., ETC.  
 THE ABOVE GOODS ARE OF EXTRA FINE QUALITY  
 A SALE WORTH ATTENDING  
 THE ABOVE WILL BE ON VIEW IN OUR MART ON **TUESDAY, JUNE 9th.**  
**AUSTIN & Co.**  
 AUCTIONEERS



# STRANGER than FICTION

NO ORDINARY newspaper can stand the knowledge of the explorer's life. That is why nearly every explorer carries a Conna in possession to stay other machines.  
 Conna went to Africa with Col. Roosevelt in 1895 and in Brazil in 1896 when he explored the "Mystery River." Conna was with Sir Ernest Shackleton on his last fatal dash for the pole—and spent 270 days under ice and snow with the MacMillan Arctic Expedition.  
 If you want a typewriter that will stand hard treatment, buy the one superior with proved durability—Conna.  
 Plans us for a demonstration.  
**E.A. STANDARD Ld.**  
 P.O. Box 180 Phone 72.  
**NAIROBI**

# OBTAIN TOP PRICES

For all articles which you wish to dispose of by sending them to—  
**JAMAL PIRBHAI**  
 AUCTIONEER AND OFFICIAL BROKER  
 (Opposite Jivanji, Grainger's)  
 AUCTION EVERY FRIDAY  
 Commencing 10 a.m.  
 P. O. Box 206

# Muter and Oswald's Sales.

**Miscellaneous Goods**  
 Daily instructed, we shall sell, without reserve, at our salerooms, **HARDINGE STREET, NAIROBI,** on  
**WEDNESDAY 10th JUNE at 10 a.m.**  
 KITCHEN GLASSWARE, COCKEY, STURDYN UTENSILS, DECANTERS,  
 NOVELTY, SECOND HAND CLOTHING,  
 SAND BAGS, TYRELESS SUIT CASE,  
 CURTAINS, DOOR MATS AND SCRAPERS,  
 NATIVE POTTERY, FORD DRIVE SEAT,  
 FORD RADIODRIVE, MOTOR CYCLE ACCESSORIES,  
 TRAYS, SAFARI LANTERN IN CASE,  
 FOLDING TABLE, RUGS,  
 BIRKBEUF CARBONS, DEBBRY,  
 LARGE COLLECTION OF GARDEN TOOLS,  
 WICKER BASKETS, TOWELS,  
 KIDGONGS, WORK BAGS, beaded,  
 etc. etc.

**MUTER and OSWALD, Auctioneers, Etc., Nairobi.**

# Muter and Oswald's Sales.

**Short Notice of Furniture Sale.**  
 Daily instructed, we shall sell, without reserve, at our salerooms **HARDINGE STREET,** on  
**Thursday, 11th June at 10 a.m.**  
 A collection of general Furniture and Effects the details of which will be advertised later.  
**MUTER and OSWALD, Auctioneers, Etc., Nairobi.**

# NOTICE

The sale advertised on behalf of Mr. H. Tariton to be held Next Monday 18th is cancelled until further notice  
**SANDS & Co., Auctioneers**

# Kenya Arts and Crafts Society PRELIMINARY NOTICE

A two days Exhibition will be held at the Memorial Hall, Nairobi  
**ON MONDAY 10th JUNE and TUESDAY 11th JUNE.**  
 Details will be published later.  
**VEGGA ALLEY,**  
 Secretary,  
 P.O. Box 392

# BUILDING SITES AND HOUSES FOR SALE

On the Chirore Estate opposite Hospital adjoining the Atholwood and Government House.  
 Plans prepared and Houses erected to requirements of Purchasers.  
 Apply: B. BRADLEY,  
**The Nairobi Building & Development Coy., Ltd.**  
 COURT CHAMBERS,  
 2nd Flr. 20, NAIROBI. P.O. Box 466

# Unreserved Sale Assorted Tinned Goods. Etc.

Daily instructed  
**AUSTIN & Co.**  
 Will sell at the MART, Maitlandy Bldg. Govt. Road.  
**On Thursday, June 11th, at 10 Sharp**  
 12 tins COCONUT 10 tins WHEATMEAL, 7 tins WHEATFLA.  
 3 tins FORCE, Lime Juice, Vanilla, Essence, 7 tins HONEY.  
 5 large FLUM PIDDINGS, Dried Peaches, 12 tins COOKING BUTTER, 24 tins OLIVES, 12 tins MINCEMEAT.  
 24 tins JAMS, 6 Bottles ARTICHOKES, 27 tins BAKING POWDER  
 52 tins MIXED VEGETABLES, 10 tins CHOW CHOW, 8 tins COFFEE  
 15 tins ASPARAGUS, 21 tins POTTED MEATS, ETC. ETC. ETC.  
 SAJARI BASIN WITH CANVAS COVER, 20 "SADDLES"  
 TWO BURNING NEW CAME SEATED AND BAGS, DECK TABLES,  
 ETC. ETC. ETC.  
 THE ABOVE HAVE BEEN PASSED BY THE MEDICAL OFFICE OF HEALTH  
**AUSTIN & Co., Auctioneers**

**E. DOBBIE,**  
 GENERAL AUCTIONEER,  
 10, NAIROBI.

# NOTICE

IT IS HEREBY NOTIFIED, for public information, that persons intending to proceed to the KILIMOUNTAINS, from Uvira Station—Tanganyika Railway, are warned that the route is difficult, unhealthy, and porters are very scarce. The Porters' Union is strongly advised to consult the Senior Commissioner of the Uvira District, before proceeding to the KILIMOUNTAINS.  
 The best routes are via Kilimountains or Dodoma.

# NEW CONSIGNMENTS

GOVERNMENT BELLS IN WHITE  
 SARKI, JADE, OORAL, PEARLS & TRIFLES  
 URINELE FINE IRISH DEERS  
 JAMES W' WHITE, SARKI, GREEN,  
 NATIVE RUGS  
 80" COTTON MACRACAN, WHITE  
 GROUND BLACK FIGURED DEERS  
 3/30 1/2  
 EXTRA FINE IRISH STRIPES  
 2/75  
 PLAIN SPONGE CLOTHES IN WHITE  
 PINK, GREY & SARKI SHADES  
 4/30  
 VARIETY OF ASSORTED DRESSING  
 5/30  
**Butchings Biemer & Co., Ltd.**  
 Phone 488, NAIROBI. Box 100  
 Monthly Account with approved Customers & PER CENT DISCOUNT FOR CASH

BUCHANAN'S



RY "BLACK SCOTT"

when you tire of other BLENDS The Whisky that NEVER VARIES and which is

SECOND TO NONE MACKINNON BROTHERS Ltd. No. 10, RAIBOBI P.O. Box. Established 1904.

IMPORTANT

TO Farmers & Employers of Natives. Labour Cards 4 1/2 x 2 1/2 Shs. 6 Per 1000 Do. 5 x 8 1/2 7-50

MUSTER ROLLS 8 x 5 50 Openings ... Shs. 5/6 ... 13 x 5 100 ... 9/6 ... 13 x 9 900 ... 13/6

LABOUR RETURN FORMS IN BOOKS OF 50 WHITE BLANK DUPLICATES Shs. 5/- Standard Stationery Store, NAIROBI

Cross Word Puzzles

CROSS WORD PUZZLES The Best Cross Word Puzzle Book ... 4/6 ... 1/6 ... 1/6

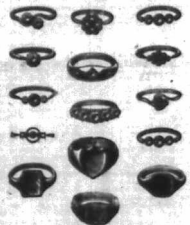
STANDARD STATIONERY STORE SIXTH AVENUE, NAIROBI.

COFFEE FACTORIES

We erect buildings and install machinery in all parts of Kenya. Also install machinery for SIAL, MALTA, etc. ... LOCHHEAD & MOORE.

GEM and SIGNET RINGS

made in our Workshop. Your inspection is cordially invited.



E. DOBBIE, JEWELLER AND OPTICIAN, Government Road, NAIROBI.

COMMISSIONER'S REPORT.

Land Questions.

TRUST BOARD. Recognition of Rights. SINGLE LAND POLICY IMPOSSIBLE.

LAND TITLES. The system of land titles in Kenya is a subject which has been discussed in the past...

FOUNDED IN UGANDA.

Looking to the future from the purely commercial point of view, the land in Uganda is a valuable asset...

NATIVE LABOR/LYRUE

Another factor to be taken into consideration is the fact that the native population is increasing...

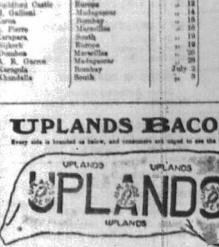
OVERSEAS MAILS

This notice is based upon the latest advice from the British Consulate in London...

Table with columns: STRAMER, FROM, ARRIVALS, DEPARTURES. Lists ship names, routes, and dates.

UPLANDS BACON

Keep this in mind when you buy, and remember to insist on the best...



UPLANDS BACON. The name is on the label, and is printed on all the tins...

Express Transport Co., SOLE AGENTS, NAIROBI.

Express Transport Co., WATERPROOF COAT FROM US NOW.

Express Transport Co., SOLE AGENTS, NAIROBI. WATERPROOF COAT FROM US NOW.

THE RAINS ARE ON.

GET YOUR WATERPROOF COAT FROM US NOW. WE AGREE TO...

MEGHJI AHAMED & CO. P.O. Box 313, Phone 184, Nairobi, Tel. "Tarapojina."

FRICKS, NATA, LINGERIE MADE TO ORDER. GRAIG-ROBERTSON, NAIROBI HOTEL.

NOVELS

THE HOUSE OF THE ARROW. By A. W. Mason. Price 8hs. 7/6d, Postd. 8hs. 8/6d.

THE HEART OF SALOME. By Allen Raymond. Price 8hs. 7/-, Postd. 8hs. 7/6d.

LATTICED WINDOWS. By Mrs. E. Springs. Price 8hs. 7/6d, Postd. 8hs. 8/2s.

THE GOLDEN ROBE. By Katharine Ryan. Price 8hs. 7/-, Postd. 8hs. 7/6d.

YOUNG DAVID'S WIFE. By E. E. Francis. Price 8hs. 7/6d, Postd. 8hs. 8/6d.

DOMINION. By John Prentiss. Price 8hs. 7/6d, Postd. 8hs. 8/6d.

THE JUNGLE. By Jeffrey Fernald. Price 8hs. 7/6d, Postd. 8hs. 8/6d.

THE MAN RATES OF TRAVO. By L. G. O. R. Price 8hs. 7/6d, Postd. 8hs. 8/6d.

THERE IS CONFUSION. Price 8hs. 7/6d, Postd. 8hs. 8/6d.

LITTLE CAVALRY. Price 8hs. 7/6d, Postd. 8hs. 8/6d.

MARRIED ALIVE. Price 8hs. 7/6d, Postd. 8hs. 8/6d.

PEARLS OF DESIRE. Price 8hs. 7/6d, Postd. 8hs. 8/6d.

THE MATING GUY. Price 8hs. 7/6d, Postd. 8hs. 8/6d.

THE LORING MYSTERY. Price 8hs. 7/6d, Postd. 8hs. 8/6d.

THE FIVE BRAINS. Price 8hs. 7/6d, Postd. 8hs. 8/6d.

THE GEORGE AND THE CROW. Price 8hs. 7/6d, Postd. 8hs. 8/6d.

MEINAC FROM THE MOON. Price 8hs. 7/6d, Postd. 8hs. 8/6d.

LIFE AND ERICA. Price 8hs. 7/6d, Postd. 8hs. 8/6d.

THE WHITE MONKEY. Price 8hs. 7/6d, Postd. 8hs. 8/6d.

THE WRATH TO COME. Price 8hs. 7/6d, Postd. 8hs. 8/6d.

THE SINFUL REBELLION. Price 8hs. 7/6d, Postd. 8hs. 8/6d.

Standard Stationery Stores P.O. Box 880 NAIROBI

HARISHING GUARHAJI P.O. Box 8, Indian Bazaar, NAIROBI.

Heavy Reductions in All Prices. RETAIL OBTAINABLE AT ALL TIMES OF THE DAY 10 TO 12 A.M.

COMMISSIONS REPORT.

(Continued from page 1)

They are other while his jurisdiction over the... The Commission has... The Commission has...

SPARE POPULATION.

In considering the question of the... The Commission has... The Commission has...

INDUSTRIES.

The extension of white settlement... The Commission has... The Commission has...

PASTORAL TRINCH.

Purely pastoral trinch have in... The Commission has... The Commission has...

BREKINS IN LAND.

It is a well known fact that... The Commission has... The Commission has...

ALLEGATIONS.

We consider it necessary to... The Commission has... The Commission has...

ADVANCED LAND BOARD.

We discussed the whole question... The Commission has... The Commission has...

LEGAL STATE.

The Commission has... The Commission has... The Commission has...

BRITISH INDIA TEAL NAVIGATION COMPANY, LTD. AND PENANGAL NAVIGATION COMPANY, LTD.

Table with shipping schedules for various routes including Malacca, Penang, and other ports. Columns include ship names, destinations, and departure dates.

Times, rates & freight and passage to be arranged with... M. SMITH, MACKENZIE & CO., Agents - Malacca, Penang, Singapore & Ceylon.

Children's Week Everything for Little People



Theatre Royal Buildings. P. O. Box 227.

GUANSA LAND

It is a well known fact that... The Commission has... The Commission has...

ADVANCED LAND BOARD.

We discussed the whole question... The Commission has... The Commission has...

LEGAL STATE.

The Commission has... The Commission has... The Commission has...

ADVANCED LAND BOARD.

We discussed the whole question... The Commission has... The Commission has...

LEGAL STATE.

The Commission has... The Commission has... The Commission has...

ADVANCED LAND BOARD.

We discussed the whole question... The Commission has... The Commission has...

P. STEWART & CO. S.A. 585. PAINTER & DECORATOR. 100, Market Street, NAIROBI.

**Union-Castle Line**

Services to England, East, South and West Africa Ports and Mauritius.

**REGULAR SCHEDULES**  
 DEPARTING ON THE GREAT EASTERN MAIL FROM EAST AFRICA  
 DEPARTING ON THE GREAT EASTERN MAIL FROM EAST AFRICA  
 DEPARTING ON THE GREAT EASTERN MAIL FROM EAST AFRICA

**"E. A. STANDARD" FEATURE PAGE.**



(Miss Lorraine, P.O. Box 107, New York, N.Y., writes to the editor of the Standard with observations about the illustration.)

**CARNATIONS.**  
 They are those used in the garden (specimens) before.

...and whether or not they...  
 ...of the garden...  
 ...of the garden...  
 ...of the garden...

Mr. Norman Lambton...  
 ...of the garden...  
 ...of the garden...

**BONDS.**  
 At the B. I. of June 8th...

...of the garden...  
 ...of the garden...  
 ...of the garden...

**POLLARD**

for **PIG and POULTRY**

Pollard (or sharp) is entirely a wheat product which contains many important nourishing elements, including the wheat germ. It is approved by the U.S. Pig Board.

Price improved reduced to \$5.00 per bag of 100 lbs. F.O.B. Njoro, bags free.

**UNGA, LTD. NJORO.**

**THE HOUSE OF REZIN**

ANOTHER WAY OF SPELLING

Clothing of Quality is **JAMES REZIN**, NATURAL BRASS'S BELGIUM MARK.

**UNION CASTLE MAIL SHIPMENTS Co. Ltd.**

(INCORPORATED IN ENGLAND)  
 Agents for Mauritius, East Africa and East India.

**ROLLAND AFRIKA LIJN**

JOINT SERVICE  
 Rolland Zuid-Afrika Lijn and Rolland Oost-Afrika Lijn)

Ships will load at Killindini or about the following dates:

Ship	Day	Ship	Day
... ..	... ..	... ..	... ..

**CARNATION NEWS**

The exhibition garden was...  
 ...of the garden...  
 ...of the garden...

**CARNATION NEWS**

The exhibition garden was...  
 ...of the garden...  
 ...of the garden...

**CHAMPAGNE DELBECK.**

A further small consignment of this rare WINE no much appreciated by the ELITE of LONDON AND important Functions and Banquets has just been re-estimated. Order without delay to save disappointment.

M. R. de SOUZA & Co.  
 P.O. Box 106 Govt. Road, TROMA ST.

**THE SALISBURY HOTEL**

Family and Residents  
 Phone 501 NAIROBI, BELLEVUE

**THE SALISBURY HOTEL**

Fancy and Residents  
 Phone 501 NAIROBI, BELLEVUE

**FISKEBOLLERIKRAFT.**

Fish Balls in Bullion  
 A most delightful and nourishing food. 1/2 lb. of the finest Fish, Milk, Butter and a little potato flour and spices. Fried in Butter, and our Danish Sauce, which can be had in 1 gallon tins at 8/6 per gallon. are delicious. Frovorable at...  
 THE STORE OF QUALITY  
**R. B. DUNCAN'S**  
 The Grocer's NAIROBI.

**Beautiful flavour**

We use the word beautiful of things that appeal to our sense of sight or hearing. Why not also of things that appeal to our sense of taste, like Brooke Bond tea? Very careful blending is needed to get this flavour just right. The vacuum tin keeps it just right.

**WEST KENYA SAW MILLS, LTD.**

PODS, CAMPHOR & FURNITURE HARDWOODS  
 MILL OFFICE. KARATINA. P. O. NYERI.  
 Local Agents: THE KENYA INVESTMENT Co., Ltd. P. O. Box 386, NAIROBI.  
 Telephone 298

**SafeS.**

BURGULARY  
 PROTECT YOUR HOME & OFFICE AGAINER by buying  
**SafeS.**  
 supplied by CENTRAL ASSUR.

**DIRECT SHIPMENT LARD**

**OF CEREALS JUST ARRIVED**

QUAKER OATS  
 PUFFED WHEAT  
 PUFFED RICE  
 POST TOASTIES  
 FORCE  
 SHREDDED WHEAT  
 AT  
**ELLIOTS**  
 From 60 NAIROBI P. O. Box 176

**MAZE CRIB WIRE NETTING**

16 GAUGE 8ft. 4ft. & 6ft. WIDE  
**J. W. Milligan & Co.**  
 P. O. Box 148 NAIROBI

**EMPIRE TYPEWRITERS.**

FOULCAFF SKR.  
 MODEL No. 1  
 MODEL No. 2  
 MODEL No. 3  
 MODEL No. 4  
**Boustead & Clarke, Ltd.**  
 GOVT. CHANGERS NAIROBI.  
 P.O. Box 87.

# SHAW & HUNTER

SIXTH AVENUE

Box 70. Telegrams: "Gtrafrs." Phone: 214.

## Guns and AMMUNITION

Repairs by a London and Birmingham Gunsmith.

### A Car Worth Waiting for GRAY

Call and see a demonstration model AT

#### K. McIvor & Co.

### Toilet Requisite Co.

In addition to our New Stock of Alkinoes Charming Aids to Beauty we have a new Containment of the daily Hair Dress.

### Inecto-Rapide.

Also Hair Shaves in Tortholind-and in a Variety of Colours.

### J. R. STEPHENS & Co. Ltd

#### Tailors & Outfitters.

GOVERNMENT ROAD, NAIROBI. Phone 271.

### The NEW CHEVROLET

1928 ARRIVED 83 QUALITY FEATURES INCLUDING New clutch, new rear axle, new frame, new type springs, Duxo finish.



The Motor Mart & Exchange, Limited. Nairobi.

### PETER & SON

We specialize in the following: DEVELOPING, PRINTING and RELABLING. With our new enlarger we are able to enlarge photographs to almost any size.

GOVERNMENT ROAD, P.O. Box: 611 Phone: 144

### Brimelow's Garage,

PETROL OILS & GREASE TYPES OF EVERY MAKE AND SIZE FOR SALE DODGE CAR BOX BODY. FITTED WITH SPOT LIGHTS AND SAFARI TENT LATEST MODEL PERFECT CONDITION ALSO FORD TOURINGS CAR IN GOOD RUNNING ORDER.

### COURTY CRICKET.

Yorkshire Pic on Runs at Lords.

### FIRST DAY'S PLAY.

At the end of the first afternoon, the first innings of the first day's play was over. The batsmen had scored 118 runs and the bowlers had taken 11 wickets.

### A CRICKET SCHOOL.

Description of Faulner's Effort.

### EXTRAORDINARY IDEAS.

At the end of the first afternoon, the first innings of the first day's play was over. The batsmen had scored 118 runs and the bowlers had taken 11 wickets.

### AQUATIC SPORTS.

Successful Day at Raia on Sunday.

### NAILBROWS DO WELL.

The hair which has been treated with nailbrows does well. It is found to be stronger and more resistant to breakage.

### THE TEAM RACE.

The team race was won by the team from the East African Standard.

### WATER FLOOD.

The water pipe which burst between the two houses at the corner of the street has been repaired.

### THE EVENTS.

The first event of the programme was a 100 yards race. The winner was the runner from the East African Standard.

### A SUGGESTION.

The suggestion is that the programme should be extended to include more events.

### THE 100 YARDS.

The fourth event of the programme was a 100 yards race. The winner was the runner from the East African Standard.

### THE 200 YARDS.

The fifth event of the programme was a 200 yards race. The winner was the runner from the East African Standard.

### THE 400 YARDS.

The sixth event of the programme was a 400 yards race. The winner was the runner from the East African Standard.

### THE 800 YARDS.

The seventh event of the programme was an 800 yards race. The winner was the runner from the East African Standard.

### NEW METHODS.

Presenting a simple but a full length mirror so that the pupil may see his own position.

### THE EVENTS.

The first event of the programme was a 100 yards race. The winner was the runner from the East African Standard.

### THE 200 YARDS.

The fifth event of the programme was a 200 yards race. The winner was the runner from the East African Standard.

### THE 400 YARDS.

The sixth event of the programme was a 400 yards race. The winner was the runner from the East African Standard.

### THE 800 YARDS.

The seventh event of the programme was an 800 yards race. The winner was the runner from the East African Standard.

### THE 1600 YARDS.

The eighth event of the programme was a 1600 yards race. The winner was the runner from the East African Standard.

### NEW METHODS.

Presenting a simple but a full length mirror so that the pupil may see his own position.

### THE EVENTS.

The first event of the programme was a 100 yards race. The winner was the runner from the East African Standard.

### THE 200 YARDS.

The fifth event of the programme was a 200 yards race. The winner was the runner from the East African Standard.

### THE 400 YARDS.

The sixth event of the programme was a 400 yards race. The winner was the runner from the East African Standard.

### THE 800 YARDS.

The seventh event of the programme was an 800 yards race. The winner was the runner from the East African Standard.

### THE 1600 YARDS.

The eighth event of the programme was a 1600 yards race. The winner was the runner from the East African Standard.

### NEW METHODS.

Presenting a simple but a full length mirror so that the pupil may see his own position.

### THE EVENTS.

The first event of the programme was a 100 yards race. The winner was the runner from the East African Standard.

### THE 200 YARDS.

The fifth event of the programme was a 200 yards race. The winner was the runner from the East African Standard.

### THE 400 YARDS.

The sixth event of the programme was a 400 yards race. The winner was the runner from the East African Standard.

### THE 800 YARDS.

The seventh event of the programme was an 800 yards race. The winner was the runner from the East African Standard.

### THE 1600 YARDS.

The eighth event of the programme was a 1600 yards race. The winner was the runner from the East African Standard.

### THE HOUSE OF GOLF

REQUISITES OF THE GOLFER

THE HOUSE OF GOLF is the largest and most complete stock of golfing requisites in the East African continent.

S. JACOBS LTD NAIROBI

### FRED RAPER

CITY HOUSE NAIROBI

GENERAL COMMISSION AGENT

### OXEN T OXEN

Another batch of A.M. F.F. KT. rags unbroken and ready for delivery

### ALIBHAI AND COMPANY

General Commission Agents

SAFARI GUNNERS

SAFARI GUNNERS

SAFARI GUNNERS

### GOWE OF GOWE

WE SPELL IT G O W E

The Pronunciation doesn't matter.

If you need advice in selection we will give you the best.

### May & Co.

The Sports Requisites

SAFARI GUNNERS

SAFARI GUNNERS

SAFARI GUNNERS

### AHAMMED BRO

General Commission Agents

SAFARI GUNNERS

SAFARI GUNNERS

SAFARI GUNNERS

### THE CENTRAL HOTEL

General Commission Agents

SAFARI GUNNERS

SAFARI GUNNERS

SAFARI GUNNERS

### Tea and Lunch

AT THE

### Torr's New Tea Room

IN CHOITRAM HOUSE

Government Road

### HARLEY-DAVIDSON

The Motorcycle Magnificent

SAFARI GUNNERS

SAFARI GUNNERS

SAFARI GUNNERS

TWO POINTS

Every bottle of Keweenaw Beer... before it leaves the Brewery.

The materials used are the best only. That is why you will enjoy the Purity & Quality of this Really First Rate Local Production.

DRINK & ENJOY the products of KENYA BREWERIES LTD

GUARANTEED THE LARGEST CIRCULATION OF ANY NEWSPAPER. IN KENYA, UGANDA, TANGANYIKA AND ZANZIBAR.

DAILY EDITION

THE EAST

TEN PAGES.

African Standard

MOMBASA TIMES & UGANDA ARGUS.

THE OLDEST ESTABLISHED NEWSPAPER PUBLISHED IN KENYA AND UGANDA.

NAIROBI, WEDNESDAY, JUNE 10, 1936.

What is the Government THE LEADER.

MORNING AND AFTERNOON TEAS NEW STANLEY HOTEL SERVED IN THE 'Lounge' AT REASONABLE PRICES

GREEN INSURECTION. KENYA COFFEE.

LAZY MARKET. A STABLE MARKET.

LEAGUE OF NATIONS. Chamberlain Arrives.

THE MONEY MARKET.

GREEN INSURECTION. Insurgents Seize Semeo.

A TEMPORARY MEMBERSHIP.

THE MONEY MARKET.

GORDON-BRENNETT CUP.

THE MONEY MARKET.

CAIRO SENTENCES. Reward to Police Agent.

DEATH PENALTIES.

EIGHTEN STARTERS.

GORDON-BRENNETT CUP.

THE MONEY MARKET.

ITALY'S CELEBRATION. King's 25th Anniversary.

WIDE ENTHUSIASM.

THE MONEY MARKET.

THE MONEY MARKET.

THE MONEY MARKET.

COTTON CONGRESS. World Extension Urged.

STATISTICAL POSITION.

THE MONEY MARKET.

THE MONEY MARKET.

THE MONEY MARKET.

WAR IN MOROCCO. Success in Rif Offensive.

COMMUNICATIONS CUT.

THE MONEY MARKET.

THE MONEY MARKET.

THE MONEY MARKET.

WHITEAWAY'S 'KLIPTEX' HAIR CLIPPERS. 'The RUNOLITE Pram'. 'The SYNTAX WATCH'.

'THE HANDIE' FOLDING SCISSORS. An Ideal Pair of Scissors for Everybody.

'GROSVENOR TOILET SET'. An All-White earthenware Diamond shape toilet set.

THE MONEY MARKET. The Chamberlain Arrives. The League of Nations.

THE MONEY MARKET. The Chamberlain Arrives. The League of Nations.

THE MONEY MARKET. The Chamberlain Arrives. The League of Nations.



Rain or shine The New Studebaker Duplex is ideal. Lower the roller side enclosures and you have complete protection in thirty seconds.

GREEN INSURECTION. Insurgents Seize Semeo. A TEMPORARY MEMBERSHIP.

THE MONEY MARKET. The Chamberlain Arrives. The League of Nations.

THE MONEY MARKET. The Chamberlain Arrives. The League of Nations.



Rain or shine The New Studebaker Duplex is ideal. Lower the roller side enclosures and you have complete protection in thirty seconds.

CAIRO SENTENCES. Reward to Police Agent. DEATH PENALTIES.

EIGHTEN STARTERS. GORDON-BRENNETT CUP.

THE MONEY MARKET. The Chamberlain Arrives. The League of Nations.



Rain or shine The New Studebaker Duplex is ideal. Lower the roller side enclosures and you have complete protection in thirty seconds.

ITALY'S CELEBRATION. King's 25th Anniversary. WIDE ENTHUSIASM.

THE MONEY MARKET. The Chamberlain Arrives. The League of Nations.

THE MONEY MARKET. The Chamberlain Arrives. The League of Nations.



Rain or shine The New Studebaker Duplex is ideal. Lower the roller side enclosures and you have complete protection in thirty seconds.

COTTON CONGRESS. World Extension Urged. STATISTICAL POSITION.

THE MONEY MARKET. The Chamberlain Arrives. The League of Nations.

THE MONEY MARKET. The Chamberlain Arrives. The League of Nations.

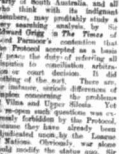


Rain or shine The New Studebaker Duplex is ideal. Lower the roller side enclosures and you have complete protection in thirty seconds.

WAR IN MOROCCO. Success in Rif Offensive. COMMUNICATIONS CUT.

THE MONEY MARKET. The Chamberlain Arrives. The League of Nations.

THE MONEY MARKET. The Chamberlain Arrives. The League of Nations.



Rain or shine The New Studebaker Duplex is ideal. Lower the roller side enclosures and you have complete protection in thirty seconds.

# For the cold Weather.

Special Value in All Wool

# BLANKETS.

SOFT, WARM, COMFORTABLE, CHEAP.



FOR HOME, SCHOOL, CAMP or SAFARI.

Full size—full weight.

The "DERWENT" Blanket - all wool size 55 x 80 inches, in light, grey colour with greek key border : 29-50 each.

The "DEVERON" Blanket, all wool, size 55 x 80 inches, light camel hair colour with greek key border : 37-50

The "BERWICK" Blanket, size 55 x 80 inches, colour red, with stripe border : 32-50

The "BOLTON" Blanket, colour mid grey with greek key border. Size 55 x 80 inches : 27-50

THESE PRICES ARE SUBJECT TO PRICE CHANGES. Cash 5% Discount



P.O. Box 203, Phone 128, Telegrams: ADVIALEOH, NAIROBI.

# MADAME ROWE Et Cie, Ltd.

SMART-AFTERNOON AND EVENING GOWNS, WRAPS, MILLINERY, LINGERIE, SHOES.

Government Road, NAIROBI, Phone 289. P.O. Box 116.

# Short Loans Granted

£1 to £1,000.

CALL OR WRITE TO US Kenya Loan & Discount Co., Ltd. NAIROBI HOUSE, (SECOND FLOOR), P.O. Box 84, NAIROBI. BRUCE THOMSON—MANAGER. COMPTON J. M. B. SECRETARY.

### Nairobi School of Dancing.

Children's Classes of Spanish Character and Ballroom Dancing held at the Government School. The Ball & Supper given at the school, Theatre Royal and elsewhere. Private lessons by appointment. MISS EVELINE COOPER, Proprietress.

For FOOTBALLS and JERSEYS MAYS & Co. NAIROBI BRANCH

### THE STORAGE BATTERY.

Its Construction and Care.

#### USEFUL HINTS.

A storage battery or accumulator is a device which stores energy in the form of chemical action and releases it when required for use. It is used for lighting and starting in motor cars, for power in small electric plants, for lighting in ships, and for starting in motor cars. It is also used for power in small electric plants, for lighting in ships, and for starting in motor cars.

The construction of a storage battery is of such a nature as to ensure its long life. Each battery consists of cells which are arranged in series. The cells are made of lead and sulphuric acid. The cells are connected together by means of a lead strip. The cells are arranged in a rectangular box. The cells are connected together by means of a lead strip. The cells are arranged in a rectangular box. The cells are connected together by means of a lead strip.

should be kept in a cool, dry place. It should be kept in a cool, dry place. It should be kept in a cool, dry place. It should be kept in a cool, dry place. It should be kept in a cool, dry place.

It is important to keep the battery in a cool, dry place. It is important to keep the battery in a cool, dry place. It is important to keep the battery in a cool, dry place. It is important to keep the battery in a cool, dry place. It is important to keep the battery in a cool, dry place.

It is important to keep the battery in a cool, dry place. It is important to keep the battery in a cool, dry place. It is important to keep the battery in a cool, dry place. It is important to keep the battery in a cool, dry place. It is important to keep the battery in a cool, dry place.

It is important to keep the battery in a cool, dry place. It is important to keep the battery in a cool, dry place. It is important to keep the battery in a cool, dry place. It is important to keep the battery in a cool, dry place. It is important to keep the battery in a cool, dry place.

# MAZE CRIB WIRE NETTING

16 GAUGE 3ft. 4ft. & 6ft. WIDE J. W. Milligan & Co. P.O. Box 148 NAIROBI

# PRESTON'S SALE

LARGE STOCK OF LADIES STOCKING NETS, ART SILK, and TUNIC DRESSES, WOOLLEN BROOKS & SPORES COATS, LADIES VEILS, FELTS and STRAWS, CHILDREN'S STRAWS and FELLS. ALL NEW GOODS, at SALE PRICES. AN opportunity not to be missed. R. O. PRESTON, BARDING ST., NAIROBI.

# BRICKS & TILES

LARGE STOCKS AT OUR MUTHIGA WORKS ROOF TILES HOLLOW BLOCKS- CEMENT PATIENS BEALES & SMITHSON Nairobi Brick Tile & Pipe Works, Ltd. P.O. Box 19.

Get your Sanitary work done by the men who understand Sanitation THORNTON & TURPIN Plumbers & Sanitary Engineers P.O. Box 260 Nairobi.

# FARMERS & MERCHANTS.

The Organisation is now in touch with most and wisest of the following: FARMERS, HOTEL MANAGERS, BOYERS, MECHANICS, MOTOR DRIVERS, MERCHANTS, STORES, ENGINEERS, STENOGRAPHERS, SHOP ASSISTANTS, STOREMEN, SAMPAGERS, TAILORS. Many of these are in touch with the Organisation to obtain agents and to see to the needs of the Organisation. Further particulars may be obtained on application to the Secretary, P.O. Box 102, NAIROBI.

A.A.A. CRAWFORD'S SPECIAL RESERVE OLD SCOTCH WHISKY LIQUEUR BOTTLE THE BEST OF SCOTCH AND GLENLISCH DISTILLERS LEXIA'S FAVORITE. Sole Agents for Kenya, Uganda and Tanganyika. G. JACKSON, Ltd., NAIROBI.

WEST KENYA SAW MILLS, LTD. POND, CAMPION & FURNITURE HARDWOODS MILL OFFICE. KARATINA. P.O. NYERI. Local Agents. The KENYA INVESTMENT Co., Ltd. P.O. Box 226 NAIROBI.

THE BEST Quality in KENYA SIAL. 2,500 and upwards of 1000 tons of cement per month. Railway to Kilimanjaro.

WHEAT. 1,000 to 4,000 tons of wheat per month. 1000 to 4000 tons of flour per month. 1000 to 4000 tons of meal per month.

COFFEE. 2,000 to 4,000 tons of coffee per month. 2,000 to 4,000 tons of coffee per month. 2,000 to 4,000 tons of coffee per month.

MAIZE. 1,300 tons of flour per month. 1,300 tons of flour per month. 1,300 tons of flour per month.

DAIRYING. £1,000 for a franchise to Nairobi. £1,000 for a franchise to Nairobi. £1,000 for a franchise to Nairobi.

WANTED. 20 FARMERS in Kenya. 20 FARMERS in Kenya. 20 FARMERS in Kenya.

HOUSE TO LET. 5 ROOMS. 5 ROOMS. 5 ROOMS. 5 ROOMS. 5 ROOMS.

THE HILL PARADES. 5 ROOMS. 5 ROOMS. 5 ROOMS. 5 ROOMS. 5 ROOMS.

FARMERS. 20 FARMERS in Kenya. 20 FARMERS in Kenya. 20 FARMERS in Kenya.

EFFICIENT. 20 FARMERS in Kenya. 20 FARMERS in Kenya. 20 FARMERS in Kenya.

AGENTS. 20 FARMERS in Kenya. 20 FARMERS in Kenya. 20 FARMERS in Kenya.



**THE EAST AFRICAN STANDARD**  
PUBLISHED WEEKLY  
DAILY EDITION  
Advertisements accepted only  
subject to approval.

**WANTED VACANT.**  
SITUATED Applicant in Civil  
Engineering, with 10 years  
experience, for position of  
Assistant Engineer in  
Government Service. Write  
to: 111, Market Street,  
Nairobi.

**FOR HIRE.**  
A 7 1/2 ton, six wheeler  
motor truck, with canopy,  
suitable for transport of  
troops, or heavy loads.  
Apply to: 111, Market Street,  
Nairobi.

**FOR SALE.**  
A 7 1/2 ton, six wheeler  
motor truck, with canopy,  
suitable for transport of  
troops, or heavy loads.  
Apply to: 111, Market Street,  
Nairobi.

**TO LET OR FOR SALE.**  
A 7 1/2 ton, six wheeler  
motor truck, with canopy,  
suitable for transport of  
troops, or heavy loads.  
Apply to: 111, Market Street,  
Nairobi.

**WANTED.**  
A 7 1/2 ton, six wheeler  
motor truck, with canopy,  
suitable for transport of  
troops, or heavy loads.  
Apply to: 111, Market Street,  
Nairobi.

**CARS FOR HIRE.**  
A 7 1/2 ton, six wheeler  
motor truck, with canopy,  
suitable for transport of  
troops, or heavy loads.  
Apply to: 111, Market Street,  
Nairobi.

**Y.M.C.A. RESIDENTIAL CLUB.**  
An ideal residence  
for men.

**Large reduction and improve  
ment.**  
A 7 1/2 ton, six wheeler  
motor truck, with canopy,  
suitable for transport of  
troops, or heavy loads.  
Apply to: 111, Market Street,  
Nairobi.

**Longer Mirrors**  
A 7 1/2 ton, six wheeler  
motor truck, with canopy,  
suitable for transport of  
troops, or heavy loads.  
Apply to: 111, Market Street,  
Nairobi.

**Tom's Library**  
A 7 1/2 ton, six wheeler  
motor truck, with canopy,  
suitable for transport of  
troops, or heavy loads.  
Apply to: 111, Market Street,  
Nairobi.

**FOUR'S GOURMET RESTAURANT**  
A 7 1/2 ton, six wheeler  
motor truck, with canopy,  
suitable for transport of  
troops, or heavy loads.  
Apply to: 111, Market Street,  
Nairobi.

**MIMI SAHAU!**  
A 7 1/2 ton, six wheeler  
motor truck, with canopy,  
suitable for transport of  
troops, or heavy loads.  
Apply to: 111, Market Street,  
Nairobi.

**"I Forgot"**  
A 7 1/2 ton, six wheeler  
motor truck, with canopy,  
suitable for transport of  
troops, or heavy loads.  
Apply to: 111, Market Street,  
Nairobi.

**A Bad Memory.**  
A 7 1/2 ton, six wheeler  
motor truck, with canopy,  
suitable for transport of  
troops, or heavy loads.  
Apply to: 111, Market Street,  
Nairobi.

**TO LET.**  
A 7 1/2 ton, six wheeler  
motor truck, with canopy,  
suitable for transport of  
troops, or heavy loads.  
Apply to: 111, Market Street,  
Nairobi.

**Peiman Agent.**  
A 7 1/2 ton, six wheeler  
motor truck, with canopy,  
suitable for transport of  
troops, or heavy loads.  
Apply to: 111, Market Street,  
Nairobi.

**Box 51, NAKUKU.**  
A 7 1/2 ton, six wheeler  
motor truck, with canopy,  
suitable for transport of  
troops, or heavy loads.  
Apply to: 111, Market Street,  
Nairobi.

**AFRICAN FILM**  
"Hemp."  
WELL, BEHRENS!  
Wagon Builder, Blacksmith,  
Farrier.  
P.O. Box 416, Phone 142.

**SMITH'S LITHOGRAPH**  
PRINTING, PHOTOGRAPHY  
FOR ADVERTISING  
PURCHASED FOR CASH  
THE STANDARD, BOX  
5008, NAIROBI.  
P.O. Box 800, 8th Avenue.

**ZIEGLER'S  
DYEING & FINISHING**  
WORKS.  
Textile Finishing Office  
& STEPHENS, Ltd.  
Manufacturers to Gen'l. Laundries.

**PLAID YOURSELF**  
IN THE  
HIGHEST LINE OF THE  
DANISH LEAD  
180000  
FOUR MOTOR CARS  
AND MOTOR CYCLES  
with the  
AMERICAN GARRETT AND  
GIBBERT CO. LTD.  
M. D. KAMPP, Chief  
Agent, Nairobi, Kenya.

**PROFESSIONAL**  
Miss M. Joan Lindner  
Dancing, Massage & Hairdressing  
Graduate of the Central  
College of Massage and  
NATURAL HYGIENISTS.  
Empress Bldg., Tel. 18,  
Nairobi, Kenya.

**Theatre Royal, Ltd.**  
NOTICE.  
All seats for the Theatre Royal  
for the season 1922-23, are  
now on sale. The programme  
will be the best ever given  
at the Theatre Royal, Nairobi.  
Apply to the Theatre Royal,  
Nairobi, Kenya.

**HARISHING GUJABHAI**  
P.O. Box 3, Indian Bazaar, NAIROBI.  
A call to the above for all your requirements in  
WINDS, APPOINTMENTS AND PROVISIONS.  
We also stock CEMENT, SANDS, & C.L.G. BRICKS.  
A visit which will give you every satisfaction in all respects.  
**Heavy Reductions in All Prices.**  
FRESH OBTAINABLE AT ALL TIMES.  
UP TO 75%.

**WHAT'S WHAT**  
IN  
**Kenya Highlands**  
Their Promising Romance  
and Colonizing Possibilities.  
W. S. BROMBERG, F.R.C.L.  
Price 10-50 (Posted 11-50).

**The Standard Book Store**  
SIXTH AVENUE NAIROBI.  
**PRACTICAL COFFEE  
PLANTING.**  
With Special Reference to Eastern Africa  
By F. H. SPROTT.  
A new useful and up-to-date publication (Illustrated  
with Diagrams and Sketches).  
Shs. 10/- Posted 10-80.  
CASH WITH ORDER.  
Standard Stationery Stores  
NAIROBI.

**EQUATOR SAW MILLS**  
2500 TONS IN STOCK NO WAITING  
WE CAN DELIVER THE GOODS  
FROM 26 CENTS MAJI MAZURI  
"33" NAIROBI.  
PER BOARD FOOT.  
NAIROBI. Box 291.  
Sadler Street,

**MAXWELL BRADY & CO.**  
MEN'S WEAR SPECIALISTS  
HEAD-BOOTS & FOOTWEAR Phone 125  
for  
LADIES, MEN & CHILDREN  
GOVT. ROAD, NAIROBI.  
**NOTICE OF REMOVAL**  
MAXWELL BRADY & Co. have decided,  
after 17 years' occupation of their present  
premises, to remove to a more CENTRAL  
POSITION, thus securing their Patrons of an  
EASIER ACCESS for Shopping.  
With that end in view they have acquired the  
**TWO STORES**  
Immediately next to  
**NAIROBI EMPORIUM**  
As soon as the necessary renovations have been  
completed, NEW PREMISES will be stocked  
with all the latest Fashionable MEN'S WEAR,  
also FOOTWEAR of the BEST suitable for  
LADIES, MEN and CHILDREN  
THE REPUTATION which MAXWELL  
BRADY & Co. have always held for BEST  
VALUE at REASONABLE PRICES, will con-  
tinue to be maintained, and the Shopping  
Public of NAIROBI and KENYA will always  
be welcomed to COMPARE VALUES given.  
Opening Date of New Stores  
WILL BE  
**MONDAY JULY 20th.**  
The House For First Values

**CHAMPAGNE DELBECK.**  
A further small consignment of this WINE so  
much appreciated by the LADIES of LONDON AND  
GENERAL SOCIETY and used exclusively at all  
important Functions and Banquets has just been re-  
ceived by us. Supplies state stocks are being rapidly  
exhausted. Orders without delay to save disappoint-  
ment.  
PRICES:  
Per case of 1 dozen Shs. 100/- per qt. Shs. 10/  
Per case of 1 doz. pts Shs. 100/- per pt. Shs. 8/6  
**M. B. de SOUZA & Co.**  
P.O. Box 190 Govt. Road. Phone 71.

**THE VICTORIA NYANZA  
SUGAR COMPANY, LTD.**  
In order to reduce to the  
public the present high  
Chamber of Commerce re-  
sults the company has de-  
cided to make up their No. 1  
sugar in 80lb. bags which for  
will be purchased direct for  
Shs. 18/- lar. NIWANI  
also  
1000 bags at Shs. 60  
F.O.R. NIWANI.  
Cash sent accompanying order.

**Health and Sound Teeth Go Together**  
Health assured by perfect tooth  
To ensure a lifetime of perfect,  
beautiful teeth use  
**Gibbs Dentifrice**  
twice a day.  
SUITABLE AT ALL CHEMISTS.

**OAKLEIGH PRIVATE HOTEL**  
ONLY A FEW MINUTES FROM TOWN  
Phone 180 Box 189

**KALAMAZOO  
LOOSE-LEAF BOOKS**  
"Popular" Ledger Outfits.  
INDEX  
Size Depth Width Sq. In.  
10 14 11 11 18-50  
12 14 11 11 18-50  
16 13 11 11 18-00  
18 13 11 11 17-00  
Phone 141. **TAWS**, Box 811,  
NAIROBI.

**HUDSON'S SUPER-SIX SEVEN  
SEATER**  
At the astounding low figure of 2400/-...  
Complete with Wire Wheels, Free Fall Bottom, 12  
THINK WHAT THIS MEANS!!!  
Hudson's greatest advantage is the Super Six  
Motor. For 1000 miles it has required no  
attention for over 1000 miles. We hold it to be  
the greatest of its size built. Our 12 seats  
are upholstered in our own special material.  
**S. BIERER & SIMMONS (S.A.) Ltd.**  
Phone 202, Box 407, (Graham) Lillmore,  
Government Road, Nairobi.

**Health and Sound Teeth Go Together**  
Health assured by perfect tooth  
To ensure a lifetime of perfect,  
beautiful teeth use  
**Gibbs Dentifrice**  
twice a day.  
SUITABLE AT ALL CHEMISTS.

**OAKLEIGH PRIVATE HOTEL**  
ONLY A FEW MINUTES FROM TOWN  
Phone 180 Box 189

**Health and Sound Teeth Go Together**  
Health assured by perfect tooth  
To ensure a lifetime of perfect,  
beautiful teeth use  
**Gibbs Dentifrice**  
twice a day.  
SUITABLE AT ALL CHEMISTS.



THE TOWN COUNCIL.

A Sherry End.
MAYOR.
The meeting of the Town Council...

THE CITY PARK.
The Council has decided to...

OFFICE EXPENDITURE.
The City Council is of the...

THE MARRIAGE.
The Council has decided to...

THE MARRIAGE.
The Council has decided to...

THE MARRIAGE.
The Council has decided to...

THE MARRIAGE.
The Council has decided to...

THE EAST AFRICAN STANDARD

OUR PARIS LETTER.
The Financial Crisis.
The Paris market...

WOMAN SUFFRAGE.
Perhaps it is the most larger...

THE KENTIA HORRIBLE.
The Editor, E.J. Standish...

THE KENTIA HORRIBLE.
The Editor, E.J. Standish...

THE KENTIA HORRIBLE.
The Editor, E.J. Standish...

THE KENTIA HORRIBLE.
The Editor, E.J. Standish...

THE KENTIA HORRIBLE.
The Editor, E.J. Standish...

THE KENTIA HORRIBLE.
The Editor, E.J. Standish...

THE EAST AFRICAN STANDARD

OUR PARIS LETTER.
The Financial Crisis.
The Paris market...

WOMAN SUFFRAGE.
Perhaps it is the most larger...

THE KENTIA HORRIBLE.
The Editor, E.J. Standish...

THE KENTIA HORRIBLE.
The Editor, E.J. Standish...

THE KENTIA HORRIBLE.
The Editor, E.J. Standish...

THE KENTIA HORRIBLE.
The Editor, E.J. Standish...

THE KENTIA HORRIBLE.
The Editor, E.J. Standish...

THE KENTIA HORRIBLE.
The Editor, E.J. Standish...

THE EAST AFRICAN STANDARD

OUR PARIS LETTER.
The Financial Crisis.
The Paris market...

WOMAN SUFFRAGE.
Perhaps it is the most larger...

THE KENTIA HORRIBLE.
The Editor, E.J. Standish...

THE KENTIA HORRIBLE.
The Editor, E.J. Standish...

THE KENTIA HORRIBLE.
The Editor, E.J. Standish...

THE KENTIA HORRIBLE.
The Editor, E.J. Standish...

THE KENTIA HORRIBLE.
The Editor, E.J. Standish...

THE KENTIA HORRIBLE.
The Editor, E.J. Standish...

THE EAST AFRICAN STANDARD

OUR PARIS LETTER.
The Financial Crisis.
The Paris market...

WOMAN SUFFRAGE.
Perhaps it is the most larger...

THE KENTIA HORRIBLE.
The Editor, E.J. Standish...

THE KENTIA HORRIBLE.
The Editor, E.J. Standish...

THE KENTIA HORRIBLE.
The Editor, E.J. Standish...

THE KENTIA HORRIBLE.
The Editor, E.J. Standish...

THE KENTIA HORRIBLE.
The Editor, E.J. Standish...

THE KENTIA HORRIBLE.
The Editor, E.J. Standish...

THE EAST AFRICAN STANDARD

OUR PARIS LETTER.
The Financial Crisis.
The Paris market...

WOMAN SUFFRAGE.
Perhaps it is the most larger...

THE KENTIA HORRIBLE.
The Editor, E.J. Standish...

THE KENTIA HORRIBLE.
The Editor, E.J. Standish...

THE KENTIA HORRIBLE.
The Editor, E.J. Standish...

THE KENTIA HORRIBLE.
The Editor, E.J. Standish...

THE KENTIA HORRIBLE.
The Editor, E.J. Standish...

THE KENTIA HORRIBLE.
The Editor, E.J. Standish...

LYRIC HALL. TO-NIGHT A METRO Master Production THE POOR MAN RICH

Big Bargains Still TO BE HAD in LADIES SUEDE SHOES and BOYS BOOTS A GIFT at the LAST 7 DAYS PRICES OFFERED. A REAL GENUINE SALE EADIES FOOTWEAR, Ltd. NAIROBI, Box 149 NAIROBI.

THEATRE ROYAL TO-NIGHT, Thursday & Saturday Matinee "A Stage Romance" "The love story of England's most famous Shakespeare actor "Edmund Kean" FEATURING by William Farman All the latest news in the "Topical Budget" FRIDAY & SATURDAY 12th & 13th Nellie Seymour James Farewell performances with all the finest Vocal talent in Nairobi introducing melodious memories of Music I Comedy accompanied by the Theatre Royal Bijou Orchestra. Booking at the Remington Agency, Govt. Road.

They always have the new shades Chief among lovely necessities for the "slender" are Kayser's pure silk stockings in all the subtle shades and half-shades of the mode-Circasian, Mauresque, Sunburn, Nude, Hoggar, Cheri and the rest. You can wear and wear them and wash and wash them; too, for they are woven of sheer silk pure dyed and protected from ladders by the exclusive "marvel-stripe." Kayser full-fashioned THREAD SILK STOCKINGS ARINGS, Africa House, Govt. Road, Nairobi.





BRITISH INDIA STEAM NAVIGATION COMPANY, LTD. AND PENINSULAR AND ORIENTAL STEAM NAVIGATION CO.

Table with shipping schedules for various routes including KARACHI, SOERABAYA, and CEYLON. Columns include ship names, destinations, and departure dates.

COMMISSIONER'S REPORT.

(Continued from page 7.)

The fact that... Commissioner's report detailing the state of the colony, including administrative matters and the impact of the war.

There is, however, still some work to be done... Further progress in various departments.

A RECENT OCCURRENCE.

As recently as March, 1922, there was an outbreak of fifty... Details of a health incident involving a group of people.

It is of the greatest importance... Discussion on the significance of the recent occurrence and its implications.

After the receipt of a report... Further details of the investigation and the actions taken by the authorities.

METHODS OF EXTIRPATION.

Knowledge regarding the... Discussion on the various methods used for the treatment and eradication of the disease.

WANT OF CO-OPERATION.

In 1911 the British South... Discussion on the lack of cooperation from certain groups and the impact on the colony's progress.

In Tanganyika the... Further details of the administrative challenges and the role of the government in the region.

SYSTEMATIC BAKING.

Another method, which is... Detailed description of the systematic baking process and its benefits for health and food safety.

DISTRIBUTION OF GAMES.

The provision of free distribution... Discussion on the distribution of games and recreational activities to the population.

It may be mentioned that... Further details of the distribution efforts and the types of games provided.

VALUE OF LIVESTOCK.

In going over the budget... Discussion on the economic value of livestock and its contribution to the colony's economy.

BREEDING PRACTICES.

An interesting example of... Discussion on the breeding practices of various animals and the importance of maintaining healthy stock.

It is of the greatest importance... Further details of the breeding programs and the role of the government in supporting them.

CRIMINAL RECORD.

The 1921 Criminal Record... Summary of the criminal activities and convictions recorded in the colony during the year.

THEATRE ROYAL BUILDINGS.

Advertisement for the Theatre Royal Buildings, highlighting the architectural features and the variety of performances.

CONJUNCTION OF EXPERTS.

In view of the urgent necessity... Discussion on the need for expert consultation in various fields and the benefits of such collaboration.

CLUBS OF CO-OPERATION.

We appreciate that such a... Discussion on the formation and activities of clubs aimed at promoting cooperation and community development.

PRELIMINARY NOTICE.

A few days Exhibition will be held... Notice regarding an upcoming exhibition and the location where it will take place.

THE RAINS ARE ON.

GET YOUR WATERPROOF COAT FROM... Advertisement for waterproof clothing, emphasizing the importance of staying dry during the rainy season.

MEGHJI AHMED & CO.

Advertisement for Meghji Ahmed & Co., listing their products and services, including various types of clothing and accessories.

PROTECT YOUR HOME & OFFICE

by buying Safes... Advertisement for safes, highlighting their security features and the importance of protecting valuables.

SUPER E. R. HILL

Advertisement for Super E. R. Hill, listing their medical and pharmaceutical products and services.

CHILDREN'S WEEK.

Advertisement for Children's Week, featuring the Jeannette Nairobi brand and promoting children's clothing and accessories.

BUILDING SITES AND HOUSES FOR SALE.

Advertisement for building sites and houses for sale, located near the Hospital and the Art Museum.

Kenya Arts and Crafts Society.

Advertisement for the Kenya Arts and Crafts Society, promoting their exhibitions and the sale of local handicrafts.

PRELIMINARY NOTICE.

Advertisement for a preliminary notice regarding an upcoming event or exhibition.

THE RAINS ARE ON.

Advertisement for waterproofing services, offering solutions for homes and businesses during the rainy season.

MEGHJI AHMED & CO.

Advertisement for Meghji Ahmed & Co., listing their products and services, including various types of clothing and accessories.

PROTECT YOUR HOME & OFFICE

by buying Safes... Advertisement for safes, highlighting their security features and the importance of protecting valuables.

SUPER E. R. HILL

Advertisement for Super E. R. Hill, listing their medical and pharmaceutical products and services.

CHILDREN'S WEEK.

Advertisement for Children's Week, featuring the Jeannette Nairobi brand and promoting children's clothing and accessories.

BUILDING SITES AND HOUSES FOR SALE.

Advertisement for building sites and houses for sale, located near the Hospital and the Art Museum.

Kenya Arts and Crafts Society.

Advertisement for the Kenya Arts and Crafts Society, promoting their exhibitions and the sale of local handicrafts.

PRELIMINARY NOTICE.

Advertisement for a preliminary notice regarding an upcoming event or exhibition.

THE RAINS ARE ON.

Advertisement for waterproofing services, offering solutions for homes and businesses during the rainy season.

MEGHJI AHMED & CO.

Advertisement for Meghji Ahmed & Co., listing their products and services, including various types of clothing and accessories.

PROTECT YOUR HOME & OFFICE

by buying Safes... Advertisement for safes, highlighting their security features and the importance of protecting valuables.

SUPER E. R. HILL

Advertisement for Super E. R. Hill, listing their medical and pharmaceutical products and services.

"E. A. STANDARD" FEATURE PAGE.

FASHIONS OF TO-DAY.

NATIONAL BANK OF INDIA LIMITED.

Head Office: 1, Leadenhall Street, London, E.C.3. Capital: Rs. 10,00,00,000.

Branches: Calcutta, Bombay, Madras, Ceylon, Singapore, etc.

Business: Exchange, Remittance, etc.

London Office: 1, Leadenhall Street, E.C.3.

Branches: Calcutta, Bombay, Madras, Ceylon, Singapore, etc.

Business: Exchange, Remittance, etc.

London Office: 1, Leadenhall Street, E.C.3.

Branches: Calcutta, Bombay, Madras, Ceylon, Singapore, etc.

Business: Exchange, Remittance, etc.

London Office: 1, Leadenhall Street, E.C.3.

Branches: Calcutta, Bombay, Madras, Ceylon, Singapore, etc.

Business: Exchange, Remittance, etc.

London Office: 1, Leadenhall Street, E.C.3.

Branches: Calcutta, Bombay, Madras, Ceylon, Singapore, etc.

Business: Exchange, Remittance, etc.

London Office: 1, Leadenhall Street, E.C.3.

Branches: Calcutta, Bombay, Madras, Ceylon, Singapore, etc.

Business: Exchange, Remittance, etc.

London Office: 1, Leadenhall Street, E.C.3.

Branches: Calcutta, Bombay, Madras, Ceylon, Singapore, etc.

Business: Exchange, Remittance, etc.

London Office: 1, Leadenhall Street, E.C.3.

Branches: Calcutta, Bombay, Madras, Ceylon, Singapore, etc.

Business: Exchange, Remittance, etc.

London Office: 1, Leadenhall Street, E.C.3.

Branches: Calcutta, Bombay, Madras, Ceylon, Singapore, etc.

Business: Exchange, Remittance, etc.

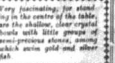


Table Case

L'ESTRÉE FRENCH TABLE

Table Case description: A fine looking table with a top of solid mahogany...

BEAUTIFUL LIGHTING EFFECTS: For lighting the dining table...



NOVEL LIGHTING EFFECTS

NOVEL LIGHTING EFFECTS: The table lamp is a masterpiece of design...

Our Paris Letter: The subscribers of this paper are delighted to read...

TO MAKE CHOCOLATE: Most a portion of a pound of butter is melted...



TO MAKE CHOCOLATE: (Continuation of the recipe)

TO MAKE CHOCOLATE: (Further details of the recipe)

Top-Spice Sympathy

Top-Spice Sympathy: The world is full of sympathy...

Top-Spice Sympathy: (Continuation of the article)



TO MAKE CHOCOLATE: (Continuation of the recipe)

TO MAKE CHOCOLATE: (Further details of the recipe)

Cross Word Puzzles

Cross Word Puzzles: The first Cross Word Puzzle Book...

George Blowers

George Blowers: THE GEORGE BLOWERS COMPANY, 10, Abchurch Lane, London, E.C.4.

COFFEE FACTORIES

COFFEE FACTORIES: We erect buildings and install machinery in all parts of Kenya...

MALAGA-QUINA.

MALAGA-QUINA: A combination of the finest Old Malaga Wine especially selected for the purpose...

Union-Castle Line

Union-Castle Line: Services to England, East, South and West Africa Ports and Mauritius.

Prospective Sailings: PORT SAUNDY, NEWCASTLE, SYDNEY, MELBOURNE, ADELAIDE, BRISBANE, PERTH, AUSTRALIA.

Prospective Sailings: SOUTH AFRICA: DURBAN, PORT DURBAN, CAPE TOWN, JOHANNESBURG, NATAL, EAST LONDON, PORT NOLAN, GREAT BRITAIN.

Prospective Sailings: EAST AFRICA: ZAMBIA, MALAWI, TANZANIA, ZANZIBAR, DAR ES SALAAM, MOMBASA, KENYA.

HOLLAND AFRIKA LIJN: HOLLAND AFRIKA LIJN, JOINT SERVICE, HOLLAND EAST-AFRIKA LIJN and HOLLAND OOST-AFRIKA LIJN.

HOLLAND AFRIKA LIJN: Prospective sailings to and from London, Southampton, Antwerp, Rotterdam, Amsterdam, etc.

HOLLAND AFRIKA LIJN: Prospective sailings to and from London, Southampton, Antwerp, Rotterdam, Amsterdam, etc.

THE SALISBURY Family and Residents HOTEL: 100, Strand, London, W.C.2.

FISKEBOLLERIKRAFT. Fish Balls in Bullion

FISKEBOLLERIKRAFT: A most delicious and nourishing food. Made of fresh fish, milk and a little potato...

TENDERS.

TENDERS: Tenders are invited for general repair work on the railway tracks in the Lambsa District.

# SHAW & HUNTER

SIXTH AVENUE

Box 76. Telegrams: "Girdle." Phone 216.

## Guns and AMMUNITION

Repeats by a London and Birmingham Gunsmith.

### A Car Worth Waiting for GRAY

Call and see a demonstration model AT K. McIvor & Co.

### Toilet Requisite Co.

In addition to our New Stock of Alkimos Charming Alids to Beauty we have a new Consignment of the only Hair Dress

### Inecto-Rapide.

Also Hair Stipes in Toilet-bath—and in a Variety of Colours.

### J. R. STEPHENS & Co. Ltd

#### Tailors & Outfitters,

GOVERNMENT ROAD,

Box 606. NAIROBI. Phone 277.

### The NEW CHEVROLET

HAS ARRIVED

#### 85 QUALITY FEATURES

INCLUDING New clutch, new rear axle, new frame, new type springs, Duro finish.



The Motor Mart & Exchange, Limited, Nairobi.

### PETER & SON

We specialise in the following:

DEVELOPING, PRINTING and ENLARGING.

With our new enlarger we are able to enlarge photographs to almost any size.

GOVERNMENT ROAD,

P. O. Box 411. Phone: 154

### Brimelow's Garage,

P. O. Box 406. HADDISSE ST. NAIROBI.

#### FOR MOTOR REPAIRS

PETROL OILS & GREASE

TYPES OF EVERY MAKE AND SIZE

FOR SALE IN

DODGE CAR BOX BODY

FITTED WITH SPOT LIGHTS and SAFARI TENT

LATEST MODEL PERFECT CONDITION

ALSO FORD TOURINGS CAR IN GOOD RUNNING ORDER.

# SPORT

### SPORT AT RUIRU.

A Varied Programme During the Week.

#### PORTHOMOUTH FEATURES.

[FROM OUR OWN CORRESPONDENT.] Ruiru, June 13. Ruiru has been a very successful day for the sports fans who were on the field. A very interesting and varied programme has been arranged for the sports fans who were on the field during the week which has just closed. In our last report we mentioned that we were going to give a synopsis of some of the sports which were on the programme of events.

#### Tollet Requisite Co.

Tel. 240. Box 240

In addition to our New Stock of Alkimos Charming Alids to Beauty we have a new Consignment of the only Hair Dress

### Inecto-Rapide.

Also Hair Stipes in Toilet-bath—and in a Variety of Colours.

### J. R. STEPHENS & Co. Ltd

#### Tailors & Outfitters,

GOVERNMENT ROAD,

Box 606. NAIROBI. Phone 277.

### The NEW CHEVROLET

HAS ARRIVED

#### 85 QUALITY FEATURES

INCLUDING New clutch, new rear axle, new frame, new type springs, Duro finish.



The Motor Mart & Exchange, Limited, Nairobi.

### PETER & SON

We specialise in the following:

DEVELOPING, PRINTING and ENLARGING.

With our new enlarger we are able to enlarge photographs to almost any size.

GOVERNMENT ROAD,

P. O. Box 411. Phone: 154

### Brimelow's Garage,

P. O. Box 406. HADDISSE ST. NAIROBI.

#### FOR MOTOR REPAIRS

PETROL OILS & GREASE

TYPES OF EVERY MAKE AND SIZE

FOR SALE IN

DODGE CAR BOX BODY

FITTED WITH SPOT LIGHTS and SAFARI TENT

LATEST MODEL PERFECT CONDITION

ALSO FORD TOURINGS CAR IN GOOD RUNNING ORDER.

### LOCAL FOOTBALL.

Fixtures for Months of June and July.

#### REVISED LIST.

The following are the fixtures arranged between the various football clubs in the district from the 1st of June to the 31st of July. The fixtures are arranged in the order in which they will be played.

#### Tollet Requisite Co.

Tel. 240. Box 240

In addition to our New Stock of Alkimos Charming Alids to Beauty we have a new Consignment of the only Hair Dress

### Inecto-Rapide.

Also Hair Stipes in Toilet-bath—and in a Variety of Colours.

### J. R. STEPHENS & Co. Ltd

#### Tailors & Outfitters,

GOVERNMENT ROAD,

Box 606. NAIROBI. Phone 277.

### The NEW CHEVROLET

HAS ARRIVED

#### 85 QUALITY FEATURES

INCLUDING New clutch, new rear axle, new frame, new type springs, Duro finish.



The Motor Mart & Exchange, Limited, Nairobi.

### PETER & SON

We specialise in the following:

DEVELOPING, PRINTING and ENLARGING.

With our new enlarger we are able to enlarge photographs to almost any size.

GOVERNMENT ROAD,

P. O. Box 411. Phone: 154

### Brimelow's Garage,

P. O. Box 406. HADDISSE ST. NAIROBI.

#### FOR MOTOR REPAIRS

PETROL OILS & GREASE

TYPES OF EVERY MAKE AND SIZE

FOR SALE IN

DODGE CAR BOX BODY

FITTED WITH SPOT LIGHTS and SAFARI TENT

LATEST MODEL PERFECT CONDITION

ALSO FORD TOURINGS CAR IN GOOD RUNNING ORDER.

### PROFESSIONAL GOLF.

Who is Great Britain's Best Man Today?

#### THE RED TURT.

The first representative test of the season's golf form will take place on the 17th of June at the Royal Golf Club in Huddersfield, when the first of the four rounds of the tournament will be played.

#### Tollet Requisite Co.

Tel. 240. Box 240

In addition to our New Stock of Alkimos Charming Alids to Beauty we have a new Consignment of the only Hair Dress

### Inecto-Rapide.

Also Hair Stipes in Toilet-bath—and in a Variety of Colours.

### J. R. STEPHENS & Co. Ltd

#### Tailors & Outfitters,

GOVERNMENT ROAD,

Box 606. NAIROBI. Phone 277.

### The NEW CHEVROLET

HAS ARRIVED

#### 85 QUALITY FEATURES

INCLUDING New clutch, new rear axle, new frame, new type springs, Duro finish.



The Motor Mart & Exchange, Limited, Nairobi.

### PETER & SON

We specialise in the following:

DEVELOPING, PRINTING and ENLARGING.

With our new enlarger we are able to enlarge photographs to almost any size.

GOVERNMENT ROAD,

P. O. Box 411. Phone: 154

### Brimelow's Garage,

P. O. Box 406. HADDISSE ST. NAIROBI.

#### FOR MOTOR REPAIRS

PETROL OILS & GREASE

TYPES OF EVERY MAKE AND SIZE

FOR SALE IN

DODGE CAR BOX BODY

FITTED WITH SPOT LIGHTS and SAFARI TENT

LATEST MODEL PERFECT CONDITION

ALSO FORD TOURINGS CAR IN GOOD RUNNING ORDER.

### TENNIS IN FRANCE.

Mills, Loughan Again Sweep the Board.

#### THE LAST RESULTS.

[OUR OWN CORRESPONDENT.] Paris, June 13. The tennis season in France has been a very successful one for the French players. The French players have won a large number of titles during the season.

#### Tollet Requisite Co.

Tel. 240. Box 240

In addition to our New Stock of Alkimos Charming Alids to Beauty we have a new Consignment of the only Hair Dress

### Inecto-Rapide.

Also Hair Stipes in Toilet-bath—and in a Variety of Colours.

### J. R. STEPHENS & Co. Ltd

#### Tailors & Outfitters,

GOVERNMENT ROAD,

Box 606. NAIROBI. Phone 277.

### The NEW CHEVROLET

HAS ARRIVED

#### 85 QUALITY FEATURES

INCLUDING New clutch, new rear axle, new frame, new type springs, Duro finish.



The Motor Mart & Exchange, Limited, Nairobi.

### PETER & SON

We specialise in the following:

DEVELOPING, PRINTING and ENLARGING.

With our new enlarger we are able to enlarge photographs to almost any size.

GOVERNMENT ROAD,

P. O. Box 411. Phone: 154

### Brimelow's Garage,

P. O. Box 406. HADDISSE ST. NAIROBI.

#### FOR MOTOR REPAIRS

PETROL OILS & GREASE

TYPES OF EVERY MAKE AND SIZE

FOR SALE IN

DODGE CAR BOX BODY

FITTED WITH SPOT LIGHTS and SAFARI TENT

LATEST MODEL PERFECT CONDITION

ALSO FORD TOURINGS CAR IN GOOD RUNNING ORDER.

### THE LEADING PROFESSIONALS

contribute to our new stocks of Golf Clubs, James Reid, Harry Vardon, Taylor, James Kinsley, Gibson, Christies. Specially selected and engraved Drivers, in addition to a new consignment of Wooden and Iron Clubs by Gibson of "Woodward & Co."



### FRED RAPER,

Box 141. CITY HOUSE. Phone 10

### GENERAL COMMISSION AGENT.

### OXEN T OXEN

Another touch of A.M., P.S., K.T. young unknown men ready for delivery

### ALIBHAI AND COMPANY,

General Commission Agents, Nairobi, Kenya Colony.

LAIDIE AND GRAY'S TAILORS, SAFARI OUTFITTERS.

Government Contractors.

Box 141. CITY HOUSE. Phone 10

Box 141. CITY HOUSE. Phone 10

Box 141. CITY HOUSE. Phone 10

Box 141. CITY HOUSE. Phone 10

Box 141. CITY HOUSE. Phone 10

Box 141. CITY HOUSE. Phone 10

Box 141. CITY HOUSE. Phone 10

Box 141. CITY HOUSE. Phone 10

Box 141. CITY HOUSE. Phone 10

Box 141. CITY HOUSE. Phone 10

Box 141. CITY HOUSE. Phone 10

Box 141. CITY HOUSE. Phone 10

Box 141. CITY HOUSE. Phone 10

Box 141. CITY HOUSE. Phone 10

Box 141. CITY HOUSE. Phone 10

Box 141. CITY HOUSE. Phone 10

Box 141. CITY HOUSE. Phone 10

Box 141. CITY HOUSE. Phone 10

Box 141. CITY HOUSE. Phone 10

Box 141. CITY HOUSE. Phone 10

Box 141. CITY HOUSE. Phone 10

Box 141. CITY HOUSE. Phone 10

Box 141. CITY HOUSE. Phone 10

Box 141. CITY HOUSE. Phone 10

Box 141. CITY HOUSE. Phone 10

Box 141. CITY HOUSE. Phone 10

Box 141. CITY HOUSE. Phone 10

Box 141. CITY HOUSE. Phone 10

Box 141. CITY HOUSE. Phone 10

Box 141. CITY HOUSE. Phone 10

Box 141. CITY HOUSE. Phone 10

Box 141. CITY HOUSE. Phone 10

Box 141. CITY HOUSE. Phone 10

Box 141. CITY HOUSE. Phone 10

Box 141. CITY HOUSE. Phone 10

Box 141. CITY HOUSE. Phone 10

Box 141. CITY HOUSE. Phone 10

Box 141. CITY HOUSE. Phone 10

Box 141. CITY HOUSE. Phone 10

Box 141. CITY HOUSE. Phone 10

Box 141. CITY HOUSE. Phone 10

Box 141. CITY HOUSE. Phone 10

Box 141. CITY HOUSE. Phone 10

Box 141. CITY HOUSE. Phone 10

Box 141. CITY HOUSE. Phone 10

Box 141. CITY HOUSE. Phone 10

Box 141. CITY HOUSE. Phone 10

Printed and Published by EAST AFRICAN STANDARD LTD, 3rd Ave, Nairobi and Macmillan, Toronto, Montreal, Kenya Colony.