

KENYA NATIONAL ARCHIVES
PHOTOGRAPHIC SERVICE

SECTION 8

REEL No.

248

KENYA NATIONAL ARCHIVES

PHOTOGRAPHIC SERVICE

Description of Document THE EAST AFRICAN STANDARD

(Weekly Edition)

Covering Dates 6th July, to 28th December, 1962,

Reference No. From E.A.S. Library

The following reproduction(s) of document(s), the property of THE KENYA GOVERNMENT have been made by the Photographic Service of the Kenya National Archives solely for the purposes of research, and must not be quoted or otherwise reproduced by any means, either in whole or in part, without the express permission of the Chief Archivist, Office of the Vice-President, P.O. Box 30520, Nairobi, Kenya, to whom all communications respecting this film should be addressed.

Date of Production

8TH

NOVEMBER - 1968

KENYA NATIONAL ARCHIVES

PHOTOGRAPHIC SERVICE

SECTION 8

CONTINUED FROM

REEL No.

247

DAIRY QUEEN
and
LITTLE BEAR
of
the
LITTLE BEAR

DAIRY QUEEN
YOURSELF OR
THE FAMILY
BOOK TODAY
by
Charles Chapman
producer of
SALAD DAYS
NATIONAL THEATRE
September 21 to 29
Postal bookings
accepted
R.O. Box 201, PO Box 1022
At 100, 101, 102, 103, 104,
105, 106, 107, 108, 109, 110,
111, 112, 113, 114, 115, 116,
117, 118, 119, 120, 121, 122,
123, 124, 125, 126, 127, 128, 129,
130, 131, 132, 133, 134, 135, 136,
137, 138, 139, 140, 141, 142, 143,
144, 145, 146, 147, 148, 149, 150,
151, 152, 153, 154, 155, 156, 157,
158, 159, 160, 161, 162, 163, 164,
165, 166, 167, 168, 169, 170, 171,
172, 173, 174, 175, 176, 177, 178,
179, 180, 181, 182, 183, 184, 185,
186, 187, 188, 189, 190, 191, 192,
193, 194, 195, 196, 197, 198, 199,
200, 201, 202, 203, 204, 205, 206,
207, 208, 209, 210, 211, 212, 213,
214, 215, 216, 217, 218, 219, 220,
221, 222, 223, 224, 225, 226, 227,
228, 229, 230, 231, 232, 233, 234,
235, 236, 237, 238, 239, 240, 241,
242, 243, 244, 245, 246, 247, 248,
249, 250, 251, 252, 253, 254, 255,
256, 257, 258, 259, 260, 261, 262,
263, 264, 265, 266, 267, 268, 269,
270, 271, 272, 273, 274, 275, 276,
277, 278, 279, 280, 281, 282, 283,
284, 285, 286, 287, 288, 289, 290,
291, 292, 293, 294, 295, 296, 297,
298, 299, 300, 301, 302, 303, 304,
305, 306, 307, 308, 309, 310, 311,
312, 313, 314, 315, 316, 317, 318,
319, 320, 321, 322, 323, 324, 325,
326, 327, 328, 329, 330, 331, 332,
333, 334, 335, 336, 337, 338, 339,
340, 341, 342, 343, 344, 345, 346,
347, 348, 349, 350, 351, 352, 353,
354, 355, 356, 357, 358, 359, 360,
361, 362, 363, 364, 365, 366, 367,
368, 369, 370, 371, 372, 373, 374,
375, 376, 377, 378, 379, 380, 381,
382, 383, 384, 385, 386, 387, 388,
389, 390, 391, 392, 393, 394, 395,
396, 397, 398, 399, 400, 401, 402,
403, 404, 405, 406, 407, 408, 409,
410, 411, 412, 413, 414, 415, 416,
417, 418, 419, 420, 421, 422, 423,
424, 425, 426, 427, 428, 429, 430,
431, 432, 433, 434, 435, 436, 437,
438, 439, 440, 441, 442, 443, 444,
445, 446, 447, 448, 449, 450, 451,
452, 453, 454, 455, 456, 457, 458,
459, 460, 461, 462, 463, 464, 465,
466, 467, 468, 469, 470, 471, 472,
473, 474, 475, 476, 477, 478, 479,
480, 481, 482, 483, 484, 485, 486,
487, 488, 489, 490, 491, 492, 493,
494, 495, 496, 497, 498, 499, 500,
501, 502, 503, 504, 505, 506, 507,
508, 509, 510, 511, 512, 513, 514,
515, 516, 517, 518, 519, 520, 521,
522, 523, 524, 525, 526, 527, 528,
529, 530, 531, 532, 533, 534, 535,
536, 537, 538, 539, 540, 541, 542,
543, 544, 545, 546, 547, 548, 549,
550, 551, 552, 553, 554, 555, 556,
557, 558, 559, 560, 561, 562, 563,
564, 565, 566, 567, 568, 569, 570,
571, 572, 573, 574, 575, 576, 577,
578, 579, 580, 581, 582, 583, 584,
585, 586, 587, 588, 589, 590, 591,
592, 593, 594, 595, 596, 597, 598,
599, 600, 601, 602, 603, 604, 605,
606, 607, 608, 609, 610, 611, 612,
613, 614, 615, 616, 617, 618, 619,
620, 621, 622, 623, 624, 625, 626,
627, 628, 629, 630, 631, 632, 633,
634, 635, 636, 637, 638, 639, 640,
641, 642, 643, 644, 645, 646, 647,
648, 649, 650, 651, 652, 653, 654,
655, 656, 657, 658, 659, 660, 661,
662, 663, 664, 665, 666, 667, 668,
669, 670, 671, 672, 673, 674, 675,
676, 677, 678, 679, 680, 681, 682,
683, 684, 685, 686, 687, 688, 689,
690, 691, 692, 693, 694, 695, 696,
697, 698, 699, 700, 701, 702, 703,
704, 705, 706, 707, 708, 709, 710,
711, 712, 713, 714, 715, 716, 717,
718, 719, 720, 721, 722, 723, 724,
725, 726, 727, 728, 729, 730, 731,
732, 733, 734, 735, 736, 737, 738,
739, 740, 741, 742, 743, 744, 745,
746, 747, 748, 749, 750, 751, 752,
753, 754, 755, 756, 757, 758, 759,
760, 761, 762, 763, 764, 765, 766,
767, 768, 769, 770, 771, 772, 773,
774, 775, 776, 777, 778, 779, 780,
781, 782, 783, 784, 785, 786, 787,
788, 789, 790, 791, 792, 793, 794,
795, 796, 797, 798, 799, 800, 801,
802, 803, 804, 805, 806, 807, 808,
809, 810, 811, 812, 813, 814, 815,
816, 817, 818, 819, 820, 821, 822,
823, 824, 825, 826, 827, 828, 829,
830, 831, 832, 833, 834, 835, 836,
837, 838, 839, 840, 841, 842, 843,
844, 845, 846, 847, 848, 849, 850,
851, 852, 853, 854, 855, 856, 857,
858, 859, 860, 861, 862, 863, 864,
865, 866, 867, 868, 869, 870, 871,
872, 873, 874, 875, 876, 877, 878,
879, 880, 881, 882, 883, 884, 885,
886, 887, 888, 889, 890, 891, 892,
893, 894, 895, 896, 897, 898, 899,
900, 901, 902, 903, 904, 905, 906,
907, 908, 909, 910, 911, 912, 913,
914, 915, 916, 917, 918, 919, 920,
921, 922, 923, 924, 925, 926, 927,
928, 929, 930, 931, 932, 933, 934,
935, 936, 937, 938, 939, 940, 941,
942, 943, 944, 945, 946, 947, 948,
949, 950, 951, 952, 953, 954, 955,
956, 957, 958, 959, 960, 961, 962,
963, 964, 965, 966, 967, 968, 969,
970, 971, 972, 973, 974, 975, 976,
977, 978, 979, 980, 981, 982, 983,
984, 985, 986, 987, 988, 989, 990,
991, 992, 993, 994, 995, 996, 997,
998, 999, 1000

**WARM THE
COCKLES
OF YOUR
HEART**
for 50c with
SCHWEPPES
DRY
GINGER ALE
50c PER BOTTLE
OR WITH A SCHWEPPES SPOON

FOR SALE
Tenders
are invited for the property
known as **ROYSAHRI HOTEL**
situated at No. 1 on the new
highway of Larne, near to
Ballynally.
Details of the property are
available on application to the
Manager at Larne.
Inspection of the property may
be made by appointment with
the Manager at Larne.
Further particulars may be
obtained from the Manager at
Larne and from the Auctioneer,
Messrs. J. & J. O'Connell, 10,
11, 12, 13, 14, 15, 16, 17, 18, 19, 20,
21, 22, 23, 24, 25, 26, 27, 28, 29,
30, 31, 32, 33, 34, 35, 36, 37, 38,
39, 40, 41, 42, 43, 44, 45, 46, 47,
48, 49, 50, 51, 52, 53, 54, 55, 56,
57, 58, 59, 60, 61, 62, 63, 64, 65,
66, 67, 68, 69, 70, 71, 72, 73, 74,
75, 76, 77, 78, 79, 80, 81, 82, 83,
84, 85, 86, 87, 88, 89, 90, 91, 92,
93, 94, 95, 96, 97, 98, 99, 100,
101, 102, 103, 104, 105, 106, 107,
108, 109, 110, 111, 112, 113, 114,
115, 116, 117, 118, 119, 120,
121, 122, 123, 124, 125, 126,
127, 128, 129, 130, 131, 132,
133, 134, 135, 136, 137, 138,
139, 140, 141, 142, 143, 144,
145, 146, 147, 148, 149, 150,
151, 152, 153, 154, 155, 156,
157, 158, 159, 160, 161, 162,
163, 164, 165, 166, 167, 168,
169, 170, 171, 172, 173, 174,
175, 176, 177, 178, 179, 180,
181, 182, 183, 184, 185, 186,
187, 188, 189, 190, 191, 192,
193, 194, 195, 196, 197, 198,
199, 200, 201, 202, 203, 204,
205, 206, 207, 208, 209, 210,
211, 212, 213, 214, 215, 216,
217, 218, 219, 220, 221, 222,
223, 224, 225, 226, 227, 228,
229, 230, 231, 232, 233, 234,
235, 236, 237, 238, 239, 240,
241, 242, 243, 244, 245, 246,
247, 248, 249, 250, 251, 252,
253, 254, 255, 256, 257, 258,
259, 260, 261, 262, 263, 264,
265, 266, 267, 268, 269, 270,
271, 272, 273, 274, 275, 276,
277, 278, 279, 280, 281, 282,
283, 284, 285, 286, 287, 288,
289, 290, 291, 292, 293, 294,
295, 296, 297, 298, 299, 300,
301, 302, 303, 304, 305, 306,
307, 308, 309, 310, 311, 312,
313, 314, 315, 316, 317, 318,
319, 320, 321, 322, 323, 324,
325, 326, 327, 328, 329, 330,
331, 332, 333, 334, 335, 336,
337, 338, 339, 340, 341, 342,
343, 344, 345, 346, 347, 348,
349, 350, 351, 352, 353, 354,
355, 356, 357, 358, 359, 360,
361, 362, 363, 364, 365, 366,
367, 368, 369, 370, 371, 372,
373, 374, 375, 376, 377, 378,
379, 380, 381, 382, 383, 384,
385, 386, 387, 388, 389, 390,
391, 392, 393, 394, 395, 396,
397, 398, 399, 400, 401, 402,
403, 404, 405, 406, 407, 408,
409, 410, 411, 412, 413, 414,
415, 416, 417, 418, 419, 420,
421, 422, 423, 424, 425, 426,
427, 428, 429, 430, 431, 432,
433, 434, 435, 436, 437, 438,
439, 440, 441, 442, 443, 444,
445, 446, 447, 448, 449, 450,
451, 452, 453, 454, 455, 456,
457, 458, 459, 460, 461, 462,
463, 464, 465, 466, 467, 468,
469, 470, 471, 472, 473, 474,
475, 476, 477, 478, 479, 480,
481, 482, 483, 484, 485, 486,
487, 488, 489, 490, 491, 492,
493, 494, 495, 496, 497, 498,
499, 500, 501, 502, 503, 504,
505, 506, 507, 508, 509, 510,
511, 512, 513, 514, 515, 516,
517, 518, 519, 520, 521, 522,
523, 524, 525, 526, 527, 528,
529, 530, 531, 532, 533, 534,
535, 536, 537, 538, 539, 540,
541, 542, 543, 544, 545, 546,
547, 548, 549, 550, 551, 552,
553, 554, 555, 556, 557, 558,
559, 560, 561, 562, 563, 564,
565, 566, 567, 568, 569, 570,
571, 572, 573, 574, 575, 576,
577, 578, 579, 580, 581, 582,
583, 584, 585, 586, 587, 588,
589, 590, 591, 592, 593, 594,
595, 596, 597, 598, 599, 600,
601, 602, 603, 604, 605, 606,
607, 608, 609, 610, 611, 612,
613, 614, 615, 616, 617, 618,
619, 620, 621, 622, 623, 624,
625, 626, 627, 628, 629, 630,
631, 632, 633, 634, 635, 636,
637, 638, 639, 640, 641, 642,
643, 644, 645, 646, 647, 648,
649, 650, 651, 652, 653, 654,
655, 656, 657, 658, 659, 660,
661, 662, 663, 664, 665, 666,
667, 668, 669, 670, 671, 672,
673, 674, 675, 676, 677, 678,
679, 680, 681, 682, 683, 684,
685, 686, 687, 688, 689, 690,
691, 692, 693, 694, 695, 696,
697, 698, 699, 700, 701, 702,
703, 704, 705, 706, 707, 708,
709, 710, 711, 712, 713, 714,
715, 716, 717, 718, 719, 720,
721, 722, 723, 724, 725, 726,
727, 728, 729, 730, 731, 732,
733, 734, 735, 736, 737, 738,
739, 740, 741, 742, 743, 744,
745, 746, 747, 748, 749, 750,
751, 752, 753, 754, 755, 756,
757, 758, 759, 760, 761, 762,
763, 764, 765, 766, 767, 768,
769, 770, 771, 772, 773, 774,
775, 776, 777, 778, 779, 780,
781, 782, 783, 784, 785, 786,
787, 788, 789, 790, 791, 792,
793, 794, 795, 796, 797, 798,
799, 800, 801, 802, 803, 804,
805, 806, 807, 808, 809, 810,
811, 812, 813, 814, 815, 816,
817, 818, 819, 820, 821, 822,
823, 824, 825, 826, 827, 828,
829, 830, 831, 832, 833, 834,
835, 836, 837, 838, 839, 840,
841, 842, 843, 844, 845, 846,
847, 848, 849, 850, 851, 852,
853, 854, 855, 856, 857, 858,
859, 860, 861, 862, 863, 864,
865, 866, 867, 868, 869, 870,
871, 872, 873, 874, 875, 876,
877, 878, 879, 880, 881, 882,
883, 884, 885, 886, 887, 888,
889, 890, 891, 892, 893, 894,
895, 896, 897, 898, 899, 900,
901, 902, 903, 904, 905, 906,
907, 908, 909, 910, 911, 912,
913, 914, 915, 916, 917, 918,
919, 920, 921, 922, 923, 924,
925, 926, 927, 928, 929, 930,
931, 932, 933, 934, 935, 936,
937, 938, 939, 940, 941, 942,
943, 944, 945, 946, 947, 948,
949, 950, 951, 952, 953, 954,
955, 956, 957, 958, 959, 960,
961, 962, 963, 964, 965, 966,
967, 968, 969, 970, 971, 972,
973, 974, 975, 976, 977, 978,
979, 980, 981, 982, 983, 984,
985, 986, 987, 988, 989, 990,
991, 992, 993, 994, 995, 996,
997, 998, 999, 1000

**BRITISH
PAPERBACKS**
The British National Library
Kings College London
University of London
A complete selection of the
wide range of paperback
books being published
including the
Aldous Huxley, Somerset
Maugham, Virginia Woolf,
George Bernard Shaw,
John Galsworthy, E. Nesbit,
H. G. Wells, and many others.
50c PER BOTTLE
OR WITH A SCHWEPPES SPOON

ROYSAHRI HOTEL
situated at No. 1 on the new
highway of Larne, near to
Ballynally.
Details of the property are
available on application to the
Manager at Larne.
Inspection of the property may
be made by appointment with
the Manager at Larne.
Further particulars may be
obtained from the Manager at
Larne and from the Auctioneer,
Messrs. J. & J. O'Connell, 10,
11, 12, 13, 14, 15, 16, 17, 18, 19, 20,
21, 22, 23, 24, 25, 26, 27, 28, 29,
30, 31, 32, 33, 34, 35, 36, 37, 38,
39, 40, 41, 42, 43, 44, 45, 46, 47,
48, 49, 50, 51, 52, 53, 54, 55, 56,
57, 58, 59, 60, 61, 62, 63, 64, 65,
66, 67, 68, 69, 70, 71, 72, 73, 74,
75, 76, 77, 78, 79, 80, 81, 82, 83,
84, 85, 86, 87, 88, 89, 90, 91, 92,
93, 94, 95, 96, 97, 98, 99, 100,
101, 102, 103, 104, 105, 106, 107,
108, 109, 110, 111, 112, 113, 114,
115, 116, 117, 118, 119, 120,
121, 122, 123, 124, 125, 126,
127, 128, 129, 130, 131, 132,
133, 134, 135, 136, 137, 138,
139, 140, 141, 142, 143, 144,
145, 146, 147, 148, 149, 150,
151, 152, 153, 154, 155, 156,
157, 158, 159, 160, 161, 162,
163, 164, 165, 166, 167, 168,
169, 170, 171, 172, 173, 174,
175, 176, 177, 178, 179, 180,
181, 182, 183, 184, 185, 186,
187, 188, 189, 190, 191, 192,
193, 194, 195, 196, 197, 198,
199, 200, 201, 202, 203, 204,
205, 206, 207, 208, 209, 210,
211, 212, 213, 214, 215, 216,
217, 218, 219, 220, 221, 222,
223, 224, 225, 226, 227, 228,
229, 230, 231, 232, 233, 234,
235, 236, 237, 238, 239, 240,
241, 242, 243, 244, 245, 246,
247, 248, 249, 250, 251, 252,
253, 254, 255, 256, 257, 258,
259, 260, 261, 262, 263, 264,
265, 266, 267, 268, 269, 270,
271, 272, 273, 274, 275, 276,
277, 278, 279, 280, 281, 282,
283, 284, 285, 286, 287, 288,
289, 290, 291, 292, 293, 294,
295, 296, 297, 298, 299, 300,
301, 302, 303, 304, 305, 306,
307, 308, 309, 310, 311, 312,
313, 314, 315, 316, 317, 318,
319, 320, 321, 322, 323, 324,
325, 326, 327, 328, 329, 330,
331, 332, 333, 334, 335, 336,
337, 338, 339, 340, 341, 342,
343, 344, 345, 346, 347, 348,
349, 350, 351, 352, 353, 354,
355, 356, 357, 358, 359, 360,
361, 362, 363, 364, 365, 366,
367, 368, 369, 370, 371, 372,
373, 374, 375, 376, 377, 378,
379, 380, 381, 382, 383, 384,
385, 386, 387, 388, 389, 390,
391, 392, 393, 394, 395, 396,
397, 398, 399, 4

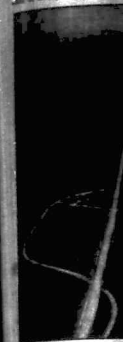
BETTER ROADS SPUR TO TRADE

IN 18 years of steady growth, Kenya's expanding economy has produced a demand for improved roads which have been much better than the rest of the country. In some areas road traffic is so heavy that it is almost impossible to get through.

ALFVAIN MATHESSON describes how four years of work on the Government's roads has helped to bring about a revolution in rural Kenya and has provided a stimulus to the country's economy. The plans are by **BOLE BEZIR**.

Kenya's roads are in a state of rapid development. In 1954, the Government spent 100 million shillings on roads, compared with only 50 million in 1953. This increase is due to the fact that the Government has decided to spend more on roads in order to improve the country's economy.

Kenya has developed a policy of building roads in order to improve the country's economy. This policy has been successful in many areas, particularly in the rural areas where roads are needed to transport goods and people.



This aerial view strikingly illustrates how the new alignment of the Mau Summit-Eldoret road at Burnett cuts down the distance, compared with the winding route of the old road.

Kenya's roads are in a state of rapid development. In 1954, the Government spent 100 million shillings on roads, compared with only 50 million in 1953. This increase is due to the fact that the Government has decided to spend more on roads in order to improve the country's economy.

MACKINNON ROAD

By the end of this year all the roads in Kenya will be paved. This is a major achievement for the country, as it will greatly improve the transport of goods and people. The roads are being built by the Government and are being financed by the World Bank.

The roads are being built in order to improve the country's economy. This is a major achievement for the country, as it will greatly improve the transport of goods and people. The roads are being built by the Government and are being financed by the World Bank.

Kenya's roads are in a state of rapid development. In 1954, the Government spent 100 million shillings on roads, compared with only 50 million in 1953. This increase is due to the fact that the Government has decided to spend more on roads in order to improve the country's economy.

PAKITY TARRIED

The Government has decided to spend more on roads in order to improve the country's economy. This is a major achievement for the country, as it will greatly improve the transport of goods and people. The roads are being built by the Government and are being financed by the World Bank.

The roads are being built in order to improve the country's economy. This is a major achievement for the country, as it will greatly improve the transport of goods and people. The roads are being built by the Government and are being financed by the World Bank.

Tarmac doubled

The use of tarmac has doubled in Kenya in the last few years. This is due to the fact that the Government has decided to spend more on roads in order to improve the country's economy. This is a major achievement for the country, as it will greatly improve the transport of goods and people. The roads are being built by the Government and are being financed by the World Bank.

WORLD BANK AID

The World Bank has provided a large amount of aid for the construction of roads in Kenya. This aid is being used to finance the construction of roads in order to improve the country's economy. This is a major achievement for the country, as it will greatly improve the transport of goods and people. The roads are being built by the Government and are being financed by the World Bank.

The roads are being built in order to improve the country's economy. This is a major achievement for the country, as it will greatly improve the transport of goods and people. The roads are being built by the Government and are being financed by the World Bank.

MORE JOURNEYS

The roads are being built in order to improve the country's economy. This is a major achievement for the country, as it will greatly improve the transport of goods and people. The roads are being built by the Government and are being financed by the World Bank.

The roads are being built in order to improve the country's economy. This is a major achievement for the country, as it will greatly improve the transport of goods and people. The roads are being built by the Government and are being financed by the World Bank.

The roads are being built in order to improve the country's economy. This is a major achievement for the country, as it will greatly improve the transport of goods and people. The roads are being built by the Government and are being financed by the World Bank.

AWAY FROM THE ROAD

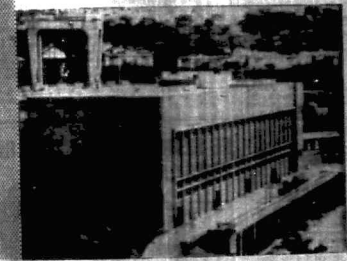
The roads are being built in order to improve the country's economy. This is a major achievement for the country, as it will greatly improve the transport of goods and people. The roads are being built by the Government and are being financed by the World Bank.

The roads are being built in order to improve the country's economy. This is a major achievement for the country, as it will greatly improve the transport of goods and people. The roads are being built by the Government and are being financed by the World Bank.

The roads are being built in order to improve the country's economy. This is a major achievement for the country, as it will greatly improve the transport of goods and people. The roads are being built by the Government and are being financed by the World Bank.

Power and to spare

For almost a decade, the Hydro Electric Power Plant at Owen Falls has relied on Mobil D.T.E. Oil Heavy-Medium for its faultless operation. Mobil Oil East Africa Limited is proud to be associated with this great project of the Uganda Electricity Board which serves the country so well.



U. MOVE IN THE MERILE BORDER VIGIL TO END WANCE MASSACRES

Special Staff Reporter
A vigil to end the wance massacres in the Merile border area of the Ethiopian highlands has been organized by the U. M. A. and the Ethiopian People's Revolutionary Front. The vigil is to be held in the Merile border area of the Ethiopian highlands on the 10th of September.

TEACHERS' STRIKE PLANS GO AHEAD

Efforts to avert the teachers' strike planned to begin on Monday have failed. The teachers' union has announced that it will go ahead with the strike on Monday. The union has demanded that the Government should meet its demands for a 10 per cent increase in salaries and a 10 per cent increase in allowances. The union has also demanded that the Government should meet its demands for a 10 per cent increase in the cost of living allowance and a 10 per cent increase in the cost of transport allowance.

Line of mannytas

Members of the Kenyan National Assembly have been lined up in a line of mannytas in the Ethiopian highlands. The mannytas are a type of traditional Ethiopian dance. The members of the Kenyan National Assembly were lined up in a line of mannytas during a visit to the Ethiopian highlands.

PROTEST OVER THE POPULAR PRINCIPAL

A protest was held at the Highway Secondary School in Nairobi on Monday morning. The protest was held in support of the popular principal of the school. The principal had been removed from his post by the Government. The teachers and students of the school had organized a protest to demand the reinstatement of the principal.

THREE ARE ADMITTED FOR TRIAL

Three men were admitted for trial on Monday. The men were charged with the murder of a man in Nairobi. The men were charged with the murder of a man in Nairobi on Monday. The men were charged with the murder of a man in Nairobi on Monday.

MR. ONEKO: I DID NOT CLOSE OFFICE

A DENIAL that he closed the Kani Nairobi office last week was made by Mr. E. Adenig Oneko in a statement issued yesterday in which he said his office had been subjected to a raid. Mr. Oneko said that he had not closed his office and that he had not been subjected to a raid. He said that he had been subjected to a raid by a group of men who had broken into his office and had taken away some of his papers. He said that he had reported the raid to the police and that the police had arrested the men who had broken into his office.

Air ban loss for Kenya

EAST AFRICA has lost a potential boost for its tourist industry with the latest round of landing rights for the West German airline Lufthansa. The airline's regional base in Nairobi is being closed. The airline's regional base in Nairobi is being closed because of the air ban. The airline's regional base in Nairobi is being closed because of the air ban.

Steps taken

It was announced that steps have been taken to improve the situation in the East African region. The steps taken include the improvement of the road network and the improvement of the water supply. The steps taken include the improvement of the road network and the improvement of the water supply.

100,000 tourists a year forecast

THE number of tourists visiting Tanganyika by air is expected to reach 100,000 a year. The forecast is based on the current trend of air travel to Tanganyika. The forecast is based on the current trend of air travel to Tanganyika.

QUESTIONER RULED OUT

A question asked by Mr. J. K. Njiru in the National Assembly was ruled out. The question was ruled out because it was considered to be irrelevant. The question was ruled out because it was considered to be irrelevant.

COFFEE MILL WORKERS TO END STRIKE

After the signing of an agreement between the coffee mill workers and the employers, the strike is expected to end. The agreement provides for a 10 per cent increase in wages and a 10 per cent increase in allowances. The agreement provides for a 10 per cent increase in wages and a 10 per cent increase in allowances.

Farmer attacked

A farmer was attacked by a group of men in the East African region. The farmer was attacked by a group of men in the East African region. The farmer was attacked by a group of men in the East African region.

ARMED GANG ATTACKS FAMILY

A GANG of armed men attacked a family in the East African region. The gang attacked a family in the East African region. The gang attacked a family in the East African region.

Kani man slashed

A man in Kani was slashed by a group of men. The man was slashed by a group of men in Kani. The man was slashed by a group of men in Kani.

Theft of trophies alleged

THE manager of an African Game Products Co. Ltd. has alleged that a group of men had stolen trophies from him. The manager of an African Game Products Co. Ltd. has alleged that a group of men had stolen trophies from him.

ACTION OVER NEWSPAPERS

ACTION over newspapers has been taken by the Government. The Government has taken action over newspapers. The Government has taken action over newspapers.

MR. NGALA

MR. NGALA has been appointed as the new Minister of the Interior. Mr. Ngala has been appointed as the new Minister of the Interior. Mr. Ngala has been appointed as the new Minister of the Interior.

Reliable hands...

Reliable hands... need a reliable watch

FAVRE-LEUBA GENEVE

The skill of a Swiss craftsman in the production of his watches - the precision of his movements, the reliability and accuracy of his time-keeping, the durability of his watches. Favre-Leuba makes watches entirely in Geneva.

Favre-Leuba Watch - Reliable in all matters, all conditions of use. Made in Switzerland by an expert of fine precision watchmakers.

Sole Agents in East Africa: PHARMASIA (C.A.) LTD. P.O. Box 1222, NAIROBI

Since 1812 the Favre-Watch has all climates

ELEGANT 1958-59

AUSTRALIAN TRADE TO ACTIVE GROWTH

Holden and Falcon popular all over world

Australia's first car

ONLY SEVEN YEARS after the Government acquired the Government car, Australia's first car was the 1911 model, a Buick. The 1911 Buick was a 4-cylinder motor with a 24-horsepower engine. It was a 4-door sedan with a steering wheel on the left. The car was used by the Government for several years before it was sold to a private owner. The car is now in the collection of the Queensland Museum in Brisbane.

AUSTRALIAN-MADE cars are now being driven by motorists in more than 46 countries. The two largest manufacturer-exporters are General Motors-Holden and the Ford Motor Company of Australia—producing the "Holden" and "Falcon" ranges of vehicles for export respectively. G.M.H. has shipped nearly 23,000 vehicles since it began exporting over seven years ago and Ford, which first exported the Falcon last year, has stimulated interest to the extent that in the first six months of this year nearly 200 vehicles were purchased overseas.

Chrysler Australia has won exports for its locally produced Chrysler Royal and introduced its new Valiant—a possible future export. Australian motorists at the beginning of this year. For the Volkswagen organisation in Australia, exports fit in with the distributing programme of the parent company, especially for British general merchandise and body panels and parts have already been shipped to Canada. Motor trucks made by International Harvester's Australian manufacturing company are now proving themselves in over 30 countries. The Company's new plant at Dandenong, Victoria, operates with a capacity of 10,000 units of over 100 varieties a year, ranging from pick-ups to heavy duty models.

Australia's export trade in motor vehicles and parts is being pursued not as a means of disposing of surplus but as a positive objective intended to assist in achieving the economic goals of large-scale production. The capacity of the industry to meet the demand of the entire domestic market is about 200,000 vehicles a year, of which 100,000 vehicles are exported and maintain one of the largest automotive industries in the world. The emergence of Australia as a major producer of motor vehicles is the result of a long and steady growth of the motor industry since the early 1920s, after commencing full-scale production in 1925.

More than 50,000 commercial motor vehicles in Australia are used in the transport of goods and passengers. The demand for these special vehicles is steadily increasing as Australia's industries develop and become more specialised. One of the most unusual types of special vehicles in the road traffic is the "cattle train", consisting of diesel-driven prime mover drawing



Large road carriers like this are a common sight on Australia's roads. They are among the thousands of commercial vehicles which almost every working day carry one million tons of goods across the country. Each year, road transport carries 77 per cent of the 400,000,000 tons of cargo serviced by all forms of transport in Australia.

COMMERCIAL ROAD CARRIERS' IMPORTANCE

A LMOST every working day 1,000,000 tons of goods are carried by road transport in Australia, and nearly 200 new commercial vehicles take their places on the nation's busy highways.

At some stage, road transport enters into the production of almost every product of Australia's pastoral, mining and manufacturing industries.

Compared with air, rail and sea transport, it is the most flexible and the most economical mode of transport. It is the only mode of transport that can be used for the transport of goods and passengers at the same time.

Before the introduction of the road transport, the country had to rely on the railway for the transport of goods and passengers. The road transport has since become the main mode of transport for the country.

BUSINESS USE

Of the 400,000,000 tons of freight carried each year by all forms of transport, road transport accounts for 77 per cent.

CATTLE TRAINS

The demand for these special vehicles is steadily increasing as Australia's industries develop and become more specialised.

Each State gets its own cattle train from the Federal Government. The cattle train is used for the transport of livestock from the Federal Government to the States.

buy tough, tested Australian automotive products

Australia builds the vehicles for your sort of roads - cars that can stand up to every type of road surface - smooth highways, tortuous mountain roads, bush tracks and congested city streets. Because Australians build for the most extreme conditions of climate and terrain, Australian-made cars and trucks are exported to many countries.



Trade Information in Kenya
The Australian Government Trade Commissioner in Nairobi, Mr. C. W. S. Temple, will arrange for trade enquiries. Write to him at P.O. Box 4719 Nairobi, or phone 2-2400.

In addition, Australia is in the replacement parts business in a big way and has a thriving overseas trade in motor vehicle accessories and garage equipment. Wherever you are, wherever you go, you can depend on

Australia's Automotive Industry

WANTED
 ...
 ...
 ...

SITUATION VACANT

...
 ...
 ...

FOR SALE

...
 ...
 ...

WOMEN

...
 ...
 ...

THANKS

...
 ...
 ...

ENTERTAINMENT

...
 ...
 ...

EDUCATIONAL

...
 ...
 ...

FOR SALE

...
 ...
 ...

WANTED

...
 ...
 ...

FOR SALE

...
 ...
 ...

WANTED

...
 ...
 ...

FOR SALE

...
 ...
 ...

FOR SALE

...
 ...
 ...

Car Sales
 ...
 ...
 ...

Car-Cuts Motoring Costs

C.M.C. 1939 Ford-Bover 100" station wagon	2680
C.M.C. 1936 Holden station wagon	2580
C.M.C. 1931 Volkswagen pickup	2510
C.M.C. 1931 Volkswagen sedan	2460
C.M.C. 1937 Volkswagen touring	2400
C.M.C. 1939 Holden sedan	2400
C.M.C. 1936 Ford 500 sedan	2380
C.M.C. 1936 Ford Zephyr sedan	2330
C.M.C. 1935 Volkswagen sedan	2320
C.M.C. 1937 Ford-Bover 100" pickup	2310
C.M.C. 1937 Holden pickup	2290
C.M.C. 1940 Ford Thames van	2290

Many other interesting cars offered. Immediate hire-purchase terms can be arranged. Part-exchange taken.

Call at any time between 8 a.m. and 6 p.m. weekdays.

AUTORAMA
 NEXT TO COMMERCE HOUSE
 WYNDHAM ROAD, TELEGRAPH BUILDING

PETS & LIVESTOCK

Dogs
 ...
 ...
 ...

Horses
 ...
 ...
 ...

Cattle
 ...
 ...
 ...

Pigs
 ...
 ...
 ...

Poultry
 ...
 ...
 ...

STORAGE

...
 ...
 ...

MACHINERY FOR SALE

...
 ...
 ...

BUILDING MATERIALS

...
 ...
 ...

Hotels and Boarding Houses

...
 ...
 ...

For Motocycle

...
 ...
 ...

For Motocycle

...
 ...
 ...

For Motocycle

...
 ...
 ...

Hotels and Boarding Houses

...
 ...
 ...

For Motocycle

...
 ...
 ...

For Motocycle

...
 ...
 ...

For Motocycle

...
 ...
 ...

For Motocycle

...
 ...
 ...

For Motocycle

...
 ...
 ...

For Motocycle

...
 ...
 ...

For Motocycle

...
 ...
 ...

Hotels and Boarding Houses

...
 ...
 ...

For Motocycle

...
 ...
 ...

For Motocycle

...
 ...
 ...

For Motocycle

...
 ...
 ...

For Motocycle

...
 ...
 ...

For Motocycle

...
 ...
 ...

For Motocycle

...
 ...
 ...

For Motocycle

...
 ...
 ...

Hotels and Boarding Houses

...
 ...
 ...

For Motocycle

...
 ...
 ...

For Motocycle

...
 ...
 ...

For Motocycle

...
 ...
 ...

For Motocycle

...
 ...
 ...

For Motocycle

...
 ...
 ...

For Motocycle

...
 ...
 ...

For Motocycle

...
 ...
 ...

TODAY'S RADIO PROGRAM

FRIDAY, SEPTEMBER 3, 1938

K.B.C. GENERAL
 11.30 a.m. - 12.15 p.m. ...
 12.15 p.m. - 1.0 p.m. ...
 1.0 p.m. - 1.45 p.m. ...
 1.45 p.m. - 2.30 p.m. ...
 2.30 p.m. - 3.15 p.m. ...
 3.15 p.m. - 4.0 p.m. ...
 4.0 p.m. - 4.45 p.m. ...
 4.45 p.m. - 5.30 p.m. ...
 5.30 p.m. - 6.15 p.m. ...
 6.15 p.m. - 7.0 p.m. ...
 7.0 p.m. - 7.45 p.m. ...
 7.45 p.m. - 8.30 p.m. ...
 8.30 p.m. - 9.15 p.m. ...
 9.15 p.m. - 10.0 p.m. ...
 10.0 p.m. - 10.45 p.m. ...
 10.45 p.m. - 11.30 p.m. ...

K.B.C. NEWS
 11.30 a.m. - 12.15 p.m. ...
 12.15 p.m. - 1.0 p.m. ...
 1.0 p.m. - 1.45 p.m. ...
 1.45 p.m. - 2.30 p.m. ...
 2.30 p.m. - 3.15 p.m. ...
 3.15 p.m. - 4.0 p.m. ...
 4.0 p.m. - 4.45 p.m. ...
 4.45 p.m. - 5.30 p.m. ...
 5.30 p.m. - 6.15 p.m. ...
 6.15 p.m. - 7.0 p.m. ...
 7.0 p.m. - 7.45 p.m. ...
 7.45 p.m. - 8.30 p.m. ...
 8.30 p.m. - 9.15 p.m. ...
 9.15 p.m. - 10.0 p.m. ...
 10.0 p.m. - 10.45 p.m. ...
 10.45 p.m. - 11.30 p.m. ...

FORNOS RADIO
 11.30 a.m. - 12.15 p.m. ...
 12.15 p.m. - 1.0 p.m. ...
 1.0 p.m. - 1.45 p.m. ...
 1.45 p.m. - 2.30 p.m. ...
 2.30 p.m. - 3.15 p.m. ...
 3.15 p.m. - 4.0 p.m. ...
 4.0 p.m. - 4.45 p.m. ...
 4.45 p.m. - 5.30 p.m. ...
 5.30 p.m. - 6.15 p.m. ...
 6.15 p.m. - 7.0 p.m. ...
 7.0 p.m. - 7.45 p.m. ...
 7.45 p.m. - 8.30 p.m. ...
 8.30 p.m. - 9.15 p.m. ...
 9.15 p.m. - 10.0 p.m. ...
 10.0 p.m. - 10.45 p.m. ...
 10.45 p.m. - 11.30 p.m. ...

FOR SALE
 The only of its kind in the world.
THE GOAN ASSOCIATION
 There will be a meeting of the above Association at 6.30 p.m. on Sept. 14, 1962, at the **ACADIA ROOMS NEW STABLEY HOTEL**. All past members of the Corps are especially invited.

R.A.P.C. ASSOCIATION
 There will be a meeting of the above Association at 6.30 p.m. on Sept. 14, 1962, at the **ACADIA ROOMS NEW STABLEY HOTEL**. All past members of the Corps are especially invited.

Immigration
 Application for entry into the Republic of South Africa must be made at the nearest South African Consulate or at the South African Embassies in London, Rome, Paris, and Johannesburg.

FOR SALE
 The only of its kind in the world.
THE GOAN ASSOCIATION
 There will be a meeting of the above Association at 6.30 p.m. on Sept. 14, 1962, at the **ACADIA ROOMS NEW STABLEY HOTEL**. All past members of the Corps are especially invited.

R.A.P.C. ASSOCIATION
 There will be a meeting of the above Association at 6.30 p.m. on Sept. 14, 1962, at the **ACADIA ROOMS NEW STABLEY HOTEL**. All past members of the Corps are especially invited.

Immigration
 Application for entry into the Republic of South Africa must be made at the nearest South African Consulate or at the South African Embassies in London, Rome, Paris, and Johannesburg.



Shown here by James Shearer 'The Illustrated', a group of South African Airways' personnel on the Boeing aircraft in Europe and London. (Left) in flight Engineer Officer M. J. van der Merwe, (Right) Pilot Officer J. van der Merwe, Captain A. van der Merwe, and Senior Stewardess B. van der Merwe.

AT YOUR SERVICE:

SOUTH AFRICAN AIRWAYS INTERNATIONAL FLIGHT PERSONNEL

The crew on any South African Airways flight to Europe and London represents years of training on equipment worth a million rand.

EVERY ONE OF THE 64 CAPTAINS who fly S.A.A.'s International Services has at least 10,000 hours flying time to his credit. Many have 20,000 hours or more.

EVERY MODERN NAVIGATION SYSTEM on each Boeing flight has three pilots, as well as a Flight Engineer Officer and a Navigation Officer.

The Flight Engineer Officer is a ground engineer who has qualified after extensive training and graduated from service in D.C.7B's.

OUR OWN RADIO STATION
 The Boeing Command is continuously in touch with the ground by radio. In addition, South African Airways' own radio station - ZUR - is in contact with all S.A.A. aircraft on all international routes for up-to-the-minute information on landings and take-offs at any airport en route.

PRACTICE MAKES PERFECT
 The Flight Traffic Officer plays such the same role as the Purser on board ship. Speak to him if you want assistance with bookings, or the re-arrangement of your schedule.

Before transferring to the Boeing, they go through a further course in a region of the giant Boeing cabin, complete with its two kitchens.

Stewards have to be between 21 and 35; Air Hostesses must be between 21 and 30 years of age.

BABY WATCHING SERVICE
 Among the comforts available to all passengers are blankets and pillows galore; magazines from South Africa, England, America, Germany, France and Italy; and special diets can be ordered for if ordered in advance.

FOUR S.A.A. TICKETS IS WORTHY MORE THAN YOU THINK
 Your Travel Agent will be glad to give you any information you require about South African Airways' International Services, including fares and particulars of the money stop-over you can make in Europe without adding a cent to your ticket!

SOUTH AFRICAN AIRWAYS

S.A.A. is a member of I.A.T.A., I.C.A.T., I.A.S. and S.I.A. who fly to Sixteen European, African, Indian, Pacific and Transoceanic Routes on all flights.



If yours is anything like a typical business, you are likely to find at least one young lady in the office who's rapidly losing her shorthand because of all the copying she has to do. She says she might just as well be a machine - but she's wrong! It takes time to copy, the "Thermo-Fax" All-dry Copier costs far, far less than a night and produces its copies in much shorter time than it takes her to put paper in her typewriter. With the "Thermo-Fax" All-dry Copier there is no messy chemical processing, no fumes, no bother, no time wastefully used and a great deal of money saved. May we demonstrate?



Thermo-Fax
 Secretary all-dry copier

FILL IN THIS COUPON, SEND IT TO YOUR LETTERHANDLING UNIT - IMMEDIATELY RECEIVED. OVERSEAS EAST AFRICAN HEADQUARTERS, P.O. Box 1000, JOHANNESBURG.

Please send in further information about the Thermo-Fax "All-dry" Copying System.

NAME _____ (Print name in full)
 ADDRESS _____
 CITY _____



CLASSIFIED
 AD?
 PHONE
 22282.



PHILIPS NEW! NOT JUST ANOTHER TRANSISTOR

- WORLD-WIDE RECEPTION ON TWO SHORT AND ONE MEDIUM WAVE BAND (13-16000) (157-17700).
- COMPACT SIZE.
- LIGHTWEIGHT.
- ALL CLIMATE PROOF.
- LUXURIOUS BUREAU LEATHER CARRYING CASE.
- WORLD-WIDE AFTER-SALES SERVICE.

If you buy a Philips radio this month you may get the full purchase price refunded. Every month six people will receive a cheque for the full price of the radio they have bought. See your Philips radio dealer now and buy the radio you want.

ASK YOUR DEALER FOR A COUPON



WEIGHS ONLY 200gms.

PHILIPS 340W
 POWER TRANSISTOR RADIO

TWENTYSIX OVERSEAS TRADING COMPANY LIMITED
 100, SOUTH AFRICAN ROAD, JOHANNESBURG, SOUTH AFRICA

ENGLISH

...the teacher who...
...the children...
...the method...
...the results...

MAINLY FOR WOMEN

A group held at work on the...
...the children...
...the method...
...the results...

ADDED LATER

That is what has been done...
...the children...
...the method...
...the results...

...the children...
...the method...
...the results...

Children of the Mission Girls' School, Nairobi, Kenya...
...the children...
...the method...
...the results...

Careful supervision aids success of scheme

...the children...
...the method...
...the results...

ACT STORIES

Later they will be set parts...
...the children...
...the method...
...the results...

...the children...
...the method...
...the results...

...the children...
...the method...
...the results...

SOME TRUTH IN TALES

...the children...
...the method...
...the results...

BETTER CHANCE

However, with a more fluent...
...the children...
...the method...
...the results...

...the children...
...the method...
...the results...

...the children...
...the method...
...the results...

look twice as exciting up close

...the children...
...the method...
...the results...

CUTEX

...the children...
...the method...
...the results...

...the children...
...the method...
...the results...

...the children...
...the method...
...the results...

look twice as exciting up close

...the children...
...the method...
...the results...

CUTEX

...the children...
...the method...
...the results...

...the children...
...the method...
...the results...

...the children...
...the method...
...the results...

look twice as exciting up close

...the children...
...the method...
...the results...

CUTEX

...the children...
...the method...
...the results...

...the children...
...the method...
...the results...

...the children...
...the method...
...the results...

look twice as exciting up close

...the children...
...the method...
...the results...

CUTEX

...the children...
...the method...
...the results...

...the children...
...the method...
...the results...

...the children...
...the method...
...the results...

look twice as exciting up close

...the children...
...the method...
...the results...

CUTEX

...the children...
...the method...
...the results...

...the children...
...the method...
...the results...

...the children...
...the method...
...the results...



ENJOYING BEING A GIRL

...the children...
...the method...
...the results...

...the children...
...the method...
...the results...

...the children...
...the method...
...the results...

...the children...
...the method...
...the results...



Children of the Mission Girls' School, Nairobi, Kenya

...the children...
...the method...
...the results...

...the children...
...the method...
...the results...

WHITE
CLEAN THROUGH
— saves money too!
GILLETTS
GILLETTS
CONCENTRATED FOR EXTRA ECONOMY

MINDS
Baby Cereal
MIXED CEREAL
8 oz. NET

If your baby is 2 to 3 months old...
It's time to serve a cereal!

Not a "grown up" cereal, but a smooth and creamy pre-cooked cereal developed just for babies. Minds Baby Cereals give babies the nourishment they need, with the flavors that they love—rich & satisfying way to "introduce some solids" Ask your chemist or store for Minds Baby Cereals—there are five delicious varieties to choose from, babies love them and thrive on them!

POET THE COOPER TO P. MALLON & Co. Ltd., P.O. Box 98, MARBOR, BUCKLE containing recipe for baby-cats and the Minds Baby Cereal Form.

100,000 EMERGENCY SCHOOL DESKS

A massive British effort to find some solution, 100,000 desks to be made in Kenya, bringing to a sudden stop the education of some 100,000 Kenya National Union of Teachers' students in their major schools for a month for 13 teachers with adjustments to the salaries of progressive high schools and the Kenya Government in a position only to pay the salaries of school teachers.

Mr. Mbiye is now looking hopefully to Mr. Mbiye to see the situation during his discussion in London at the Colonial Office and the Treasury.

Mr. Mbiye said that the proportion of a salary of £12 per cent increase of present, there would be a 10 per cent increase. The Government had no money which would be paid increased salaries to teachers or any other Government employees. The Government offer alone would cost the treasury £200,000 a year.

HOLLAND - AFRIKA LIJN

TO ROTTERDAM VIA BRISBANE

Shipping Schedule:

Ship	Via	Week	Port	Arrival	Departure
Wendell	Rotterdam	10/11	Brussels	10/11	10/11
Wendell	Rotterdam	17/18	Brussels	17/18	17/18
Wendell	Rotterdam	24/25	Brussels	24/25	24/25
Wendell	Rotterdam	31/1	Brussels	31/1	31/1

FOR BRISBANE - ROTTERDAM VIA BRISBANE

Shipping Schedule:

Ship	Via	Week	Port	Arrival	Departure
Wendell	Rotterdam	10/11	Brussels	10/11	10/11
Wendell	Rotterdam	17/18	Brussels	17/18	17/18
Wendell	Rotterdam	24/25	Brussels	24/25	24/25
Wendell	Rotterdam	31/1	Brussels	31/1	31/1

CONDUCTING OPINIONS

East Africa delegates claimed during the London discussions that they should be placed on a similar footing to those in the Middle East.

Kenya's Ministers have conflicting views. Mr. Mbiye is a moderate, Mr. Mbiye is a moderate, Mr. Mbiye is a moderate.

ZIM LINES S.S. PYDWAYNYUNT

Sailing from Dar es Salaam

Shipping Schedule:

Ship	Via	Week	Port	Arrival	Departure
Pydwaynyunt	Dar es Salaam	10/11	Brussels	10/11	10/11
Pydwaynyunt	Dar es Salaam	17/18	Brussels	17/18	17/18
Pydwaynyunt	Dar es Salaam	24/25	Brussels	24/25	24/25
Pydwaynyunt	Dar es Salaam	31/1	Brussels	31/1	31/1

THE WEEK IN EAST AFRICA

UGANDA Citizenship Bill goes through

UGANDA'S long-postponed Citizenship Bill was passed this week by the National Assembly.

The bill provides that Commonwealth citizens who have lived in Uganda for five years out of the last eight years, and must be of good character as well as meeting the racial qualifications.

MINOR CRISIS

The Bill stipulates that a Commonwealth citizen must have lived in Uganda for five years out of the last eight years, and must be of good character as well as meeting the racial qualifications.

An unexpected minor crisis began over the bill when the Opposition members of the National Assembly.

AFRICAN MUMBO-JUMBO

The American author, Mr. Robert Ruark has declared a prohibited language by the Kenya Government.

Mr. Ruark's latest novel, 'Ukara', preparations for the libel suit by Mr. Gichuru a bringing against him are going ahead.

QUALITY PRODUCTS MARKETS

MOBIL

MOBILGROSE

MOBILBEE

MOBILBEE

MOBILBEE

GROWERS ANSWER UNION

THE Chief Executive Officer of the Kenya Coffee Growers' Association, Mr. Eric, said yesterday that the demand of £11 a month made by the Small Plantation Workers' Union had never been substantiated.

The union had merely argued that the coffee growers should show that they could not pay, but Mr. Eric said yesterday that the demand of £11 a month made by the Small Plantation Workers' Union had never been substantiated.

INCREASE OFFERED

The union refused to discuss the offer, but Mr. Eric said that the offer was £11 a month, but the union refused to discuss the offer, but Mr. Eric said that the offer was £11 a month, but the union refused to discuss the offer.

STATE OF SOMALIA

STATE OF SOMALIA

STATE OF SOMALIA

STATE OF SOMALIA

THE SHIPPING CORPORATION OF INDIA LTD.

Shipping Schedule:

Ship	Via	Week	Port	Arrival	Departure
Ships	Ports	Dates	Ports	Dates	Dates

ISLE OF MAN

ISLE OF MAN

ISLE OF MAN

THE AFRICAN MERCANTILE COMPANY (OVERSEAS) LTD.

AGENTS FOR

CLAN-HALL-HARRISON LINES

JOINT SERVICE

From South Wales, Glasgow and Liverpool

Shipping Schedule:

Ship	Via	Week	Port	Arrival	Departure
Clan-Hall-Harrison	South Wales, Glasgow, Liverpool	Dates	Ports	Dates	Dates

THE BANK LINE LIMITED

ORIENTAL AFRICAN LINE

Discharging at Aden, Berbera, Mogadishu, Dar es Salaam, Port Elizabeth, Mozambique and Cape Town.

Shipping Schedule:

Ship	Via	Week	Port	Arrival	Departure
Bank Line	Aden, Berbera, Mogadishu, Dar es Salaam, Port Elizabeth, Mozambique, Cape Town	Dates	Ports	Dates	Dates

INDIAN AFRICAN LINE

PAKISTAN AFRICAN LINE

Discharging at Aden, Berbera, Mogadishu, Dar es Salaam, Port Elizabeth, Mozambique and Cape Town.

Shipping Schedule:

Ship	Via	Week	Port	Arrival	Departure
Indian African Line	Aden, Berbera, Mogadishu, Dar es Salaam, Port Elizabeth, Mozambique, Cape Town	Dates	Ports	Dates	Dates

SCANDINAVIAN EAST AFRICA LINE

Discharging at Oslo, Copenhagen, Gothenburg, Lisbon

Shipping Schedule:

Ship	Via	Week	Port	Arrival	Departure
Scandinavian East Africa Line	Oslo, Copenhagen, Gothenburg, Lisbon	Dates	Ports	Dates	Dates

MESSAGERIES MARITIMES

Leading for Djibouti and Marseille also Mediterranean Ports with transshipment (Passenger/Carriage)

Shipping Schedule:

Ship	Via	Week	Port	Arrival	Departure
Messageries Maritimes	Djibouti, Marseille, Mediterranean Ports	Dates	Ports	Dates	Dates

O.S.K. Line

TO FAR EAST

Shipping Schedule:

Ship	Via	Week	Port	Arrival	Departure
O.S.K. Line	Far East	Dates	Ports	Dates	Dates

AFRICAN AIRWAYS

AFRICAN AIRWAYS

AFRICAN AIRWAYS

AFRICAN AIRWAYS

AFRICAN AIRWAYS

AFRICAN AIRWAYS



Growing by leaps and bounds!

Questions! Where do they get all their energy? The secret is to give your children HALIBORANGE every day. This makes sure that they get all the vitamins A, D, and C they need to keep healthy and fit, and strong against infection.

Haliborange

Haliborange is a natural product of the sea, rich in vitamins A, D, and C. It is a delicious and healthy drink for children. Made by ALLEN & HAWTHORNE LTD., LONDON - ENGLAND.

NEW



DINKY TOYS No. 143 FORD CAPRI

This excellent miniature-finished in turquoise with white roof. It is fitted with a wheel suspension, windows, seat, steering and gears. Finger to steering - push for the accelerator. Length 3 1/2 inches. Price 5s. 1/6

DINKY TOYS

MADE IN ENGLAND BY HORNBY LTD.

CITY

LOOK SMART! STAY SMART!



Bata

19/90 Several colors and designs to suit your taste. Long-lasting and priced to sell all seasons.



POLEY BEAR VISITS THE ROYAL SHOW

By ROBIWA WRIGHT. A little girl had been invited to go to the Royal Show. The father was busy on a stand, the mother of the family was helping with food. One of the boys was going to drive a tractor in the machinery parade, and the girls were riding round the ring in a new car.

The father said to the mother, "I'm not going to the show. I've got to look after the stand." The mother said, "I'll go with you. I'll be there to help you." The father said, "I'm not going to the show. I've got to look after the stand." The mother said, "I'll go with you. I'll be there to help you."

The father said to the mother, "I'm not going to the show. I've got to look after the stand." The mother said, "I'll go with you. I'll be there to help you." The father said, "I'm not going to the show. I've got to look after the stand." The mother said, "I'll go with you. I'll be there to help you."

DOMESTIC COMEDY IN CRIME DRAMA

COMEDY is very much in evidence in the new film 'The Man Who Sings in the Shower'. It is a comedy of domestic life, with a crime drama element. The film is a comedy of domestic life, with a crime drama element.

The film is a comedy of domestic life, with a crime drama element. It is a comedy of domestic life, with a crime drama element. The film is a comedy of domestic life, with a crime drama element.

CRIMINALS OF SOFTLY... The film is a comedy of domestic life, with a crime drama element. It is a comedy of domestic life, with a crime drama element. The film is a comedy of domestic life, with a crime drama element.

The film is a comedy of domestic life, with a crime drama element. It is a comedy of domestic life, with a crime drama element. The film is a comedy of domestic life, with a crime drama element.

CRIMINALS OF SOFTLY... The film is a comedy of domestic life, with a crime drama element. It is a comedy of domestic life, with a crime drama element. The film is a comedy of domestic life, with a crime drama element.

The film is a comedy of domestic life, with a crime drama element. It is a comedy of domestic life, with a crime drama element. The film is a comedy of domestic life, with a crime drama element.

CRIMINALS OF SOFTLY... The film is a comedy of domestic life, with a crime drama element. It is a comedy of domestic life, with a crime drama element. The film is a comedy of domestic life, with a crime drama element.

The film is a comedy of domestic life, with a crime drama element. It is a comedy of domestic life, with a crime drama element. The film is a comedy of domestic life, with a crime drama element.

NEWS QUIZ

- 1. Who first drove a top at the... 2. How many... 3. How many... 4. How many... 5. How many...

ASIA SHOW

ASIA SHOW... The film is a comedy of domestic life, with a crime drama element. It is a comedy of domestic life, with a crime drama element. The film is a comedy of domestic life, with a crime drama element.

DOWN THE GARDEN PATH

DECORATE WITH THE UNCOMMON PLANTS

There are many bulbous plants which are by no means very decorative, and can be grown in a shady corner of garden at most altitudes.

Where a plant demands particular attention in the garden, it is well to use a small area to suit the plant. In the case of most bulbs, twelve or eighteen inches should be ample. Lay the area excavated with a suitable soil mixture for drainage. The fewer the plants, the more the drainage cover the holes with cracks to ensure a suitable soil mixture.

The proportion is not critical, and any proportion of the whole up to 40% will do. It is well to use a small area to suit the plant. In the case of most bulbs, twelve or eighteen inches should be ample. Lay the area excavated with a suitable soil mixture for drainage. The fewer the plants, the more the drainage cover the holes with cracks to ensure a suitable soil mixture.

PAINTING WINNERS

Winners of the painting competition... Susan Bullen, Miss Susan Bullen, Miss Susan Bullen, Miss Susan Bullen, Miss Susan Bullen.

Pictorial Crossword No. 281



Quaker CEREALS are exciting to eat!



Home industries has new look

By FRANCIS HOLLIS-BROOKE

THE Home Industries Section of the 1962 Royal Show opens to the public on Wednesday, Sept. 26, in a new and more convenient location. The new pavilion from each district are arranged together, providing all the products of the various crafts which are available in the one place.

The pavilion is a new and more convenient location. The new pavilion from each district are arranged together, providing all the products of the various crafts which are available in the one place.

WELCOMES

Members of the public are invited to visit the pavilion from 10.30 a.m. to 5.30 p.m. on each day of the show.

Safari from Sudan to cater at Show

MR. D. KATZNER, who has organised the E.A.W.L. Safari for many years with outstanding success, has announced a special safari every year from the Sudan, where he and his husband are stationed, to help in this work.

The safari will be a special safari every year from the Sudan, where he and his husband are stationed, to help in this work.

NEW VENTURE

A new venture will be made in association with the E.A.W.L. to provide a service to the public in the form of a safari.

The safari will be a special safari every year from the Sudan, where he and his husband are stationed, to help in this work.



A team in last year's Show. Part of the enthusiastic team of E.A.W.L. volunteers who perform the unenviable task of entering at the 'Royal'.

WHAT ARE DALGETY'S SHOWING THIS TIME?

Last year it was kangaroos (remember the crowds round the pen?). This year, something equally lively — and alive. Visitors whose interest in animals is purely commercial will find a great deal to intrigue them on the rest of the Dalgety's stand. This year, the theme is Dalgety's stand. This year, the theme is Dalgety's stand.

Dalgety's and African Mercantile
NEAR BUSINESS IN EAST AFRICA



The 'New Show' Forest Reserve. This aerial view shows the new town of the forest village and community centre surrounded by plantations.

KENYA'S FORESTS A VALUABLE ASSET

By E. A. HONORE, Chief Conservator of Forests

THE British Commonwealth Forestry Conference, which assembled every five years, recently considered the security of the world's forests. It was the first occasion that this conference has been held in one of the developing countries of the Commonwealth, as distinct from the United Kingdom itself or one of the older dominions.

The conference was opened by the Governor, Sir Patrick Bannister, in his opening speech he said that the forests of Kenya are a valuable asset.

1. To preserve in perpetuity the existing forests, and where possible to add to them, so as to provide timber and other products of the forest.
2. To protect the forest estate and manage it on the principle of sustained yield.
3. To improve the production of forest products.
4. To develop the forest estate so as to provide employment and income.
5. To manage the forest estate in such a way as to provide for the needs of the present and the future.
6. To promote research and education in all branches of forestry.

SMALL BEGINNINGS

The Department came into existence in 1952. From a very small beginning it started to expand in the 1950s but development was curtailed during the early years of the last war. After the war there was a further expansion, and yet again in 1964 when the Department's Forest Development Scheme was launched.

The forested lands of Kenya are one of the most fertile and fertile in the world. The forested lands of Kenya are one of the most fertile and fertile in the world.



STUFFED SKIN 200 lbs. weight, 45 lbs. of contents. Both models include a battery, headlights, hydraulic, suspension, power steering, 24-hour fuel tank.

MACHINERY SERVICES

MAKE A POINT OF VISITING OUR STAND AND SEEING PANE TYRES — A cheap and reliable tyre.

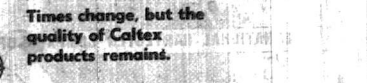
Obtain a special discount rubber flooring for your GENERAL RUBBER CO. LTD.

BOX 1000 BLOCK 'F' STANDS #1 AND #2 SOUTH AVENUE, OPPOSITE E.A.W.L. STAND FACTORY AT LIGHT INDUSTRIAL AREA, COMPTON ROAD, NAIROBI. TELEPHONES 2151, 2633 AND 5831

HITCH YOUR WAGON TO A STAR



Times change, but the quality of Caltex products remains.



You'll see something old and something new!

Visit the CALTEX STAND at the Royal Show — Mitchell Park near 'A' Gate Entrance.

World market to open to E.A. pig

IN THE article on the pig industry in Kenya, L.L. Thompson, Chairman of the Uplands, Ltd., V.G. C. THOMPSON, Chairman of the Kenya Pig Producers' Association, states that the pig industry in Kenya is not yet in the official view of the Board of the Pig Industry Board.

Political influences mainly Uplands, pledged to "see that the pig industry is not completely in the hands of the white man." I stressed this last year during the last year when we were actively engaged in the work of our members. This is the first time that we have had a pig industry in Kenya which is not completely in the hands of the white man.

QUOTE ABROAD

...the pig industry in Kenya is not yet in the official view of the Board of the Pig Industry Board. I believe that under normal conditions we should be able to compete in many of the world's markets. I know of one who produces in this country who has sold 500 crates of pigs to the United States and has had no difficulty in getting them to the States. The second factor which I mentioned - the lack of security in this year's production - has been the main reason of this year's failure. The pig industry in Kenya is not yet in the official view of the Board of the Pig Industry Board.

...the pig industry in Kenya is not yet in the official view of the Board of the Pig Industry Board. I believe that under normal conditions we should be able to compete in many of the world's markets. I know of one who produces in this country who has sold 500 crates of pigs to the United States and has had no difficulty in getting them to the States. The second factor which I mentioned - the lack of security in this year's production - has been the main reason of this year's failure. The pig industry in Kenya is not yet in the official view of the Board of the Pig Industry Board.



Left: pigs are obtained from a railway wagon at Uplands. Above: part of the interior of the factory, and (below) the finished products leave at the Uplands, Ken.

KENYA CLIMATE SUITS HIGH PIG PRODUCTION

PRESENT LEVEL
 The present level of pig production in Kenya is estimated to be 1,200 animals monthly. This is a significant increase over the 1954-55 season when only 800 pigs were produced. The increase is due to the fact that the pig industry in Kenya is now being treated as a serious business. The Uplands, Ltd. and the Kenya Pig Producers' Association are working together to improve the industry. The Uplands, Ltd. is providing the necessary capital and the Kenya Pig Producers' Association is providing the necessary technical assistance. The result is a steady increase in pig production in Kenya.

WITH CONFIDENCE

The establishment of a price stabilization board for pig meat is a step which is being taken with confidence. The board will be responsible for ensuring that the price of pig meat remains stable and that the industry is not subject to the fluctuations of the market. This is a necessary step to ensure the long-term success of the pig industry in Kenya.



At your service at the Royal Show Mitchell Park

THE EAST AFRICAN POWER AND LIGHTING COMPANY LTD.

IMPORTERS • WHOLESALERS • RETAILERS MANUFACTURERS...
 Do you require any of the following?
 Water slide and worm-inch transfers.
 Aluminium and brass plates and tools.
 Self-adhesive plates and foils in metal, plastic, paper and cloth.
 Woven and printed cloth, labels in metal and cloth.
 If you do, visit Stands 74 and 75 where you will see them all displayed by
V. F. WHICHELLO (E.A.) LTD., OF
 Ghala House, Government Road
 P.O. Box 6750 NAIROBI Phone 27816

We cordially invite you to visit

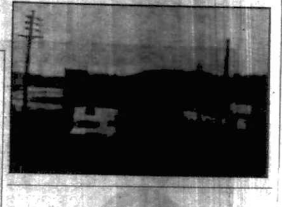
The 'OLD EAST'

STANDS H59-60 • WATSON AVENUE

- On display:
- BAUER: Rain Irrigation
- BASF: Fertilizers
- K.V.K.: Weedkillers
- ASEA: H-Equipment
- BLUNDELL SPENCE: Paints
- HEIDELBERG: Printing Machinery
- CARLSBERG: Beer

Try a cup of AROMA COFFEE or TEA

The Old East African Trading Co. Ltd.



TUSKER WILL KEEP YOU GOING AT THE ROYAL!



EAST AFRICAN BREWERIES LIMITED

40 YEARS IN MECHANIZED FARMING

FORDSON SUPER MAJOR

For forty years the name FORDSON and farm mechanization have been synonymous. For Fordson Tractors were established in world agriculture in the earliest days of power application to the land. Profitable farming in Kenya demands a tractor suitable for every job. The adaptable Fordson Major tractor... extra manoeuvrability... there is a Major for the job!

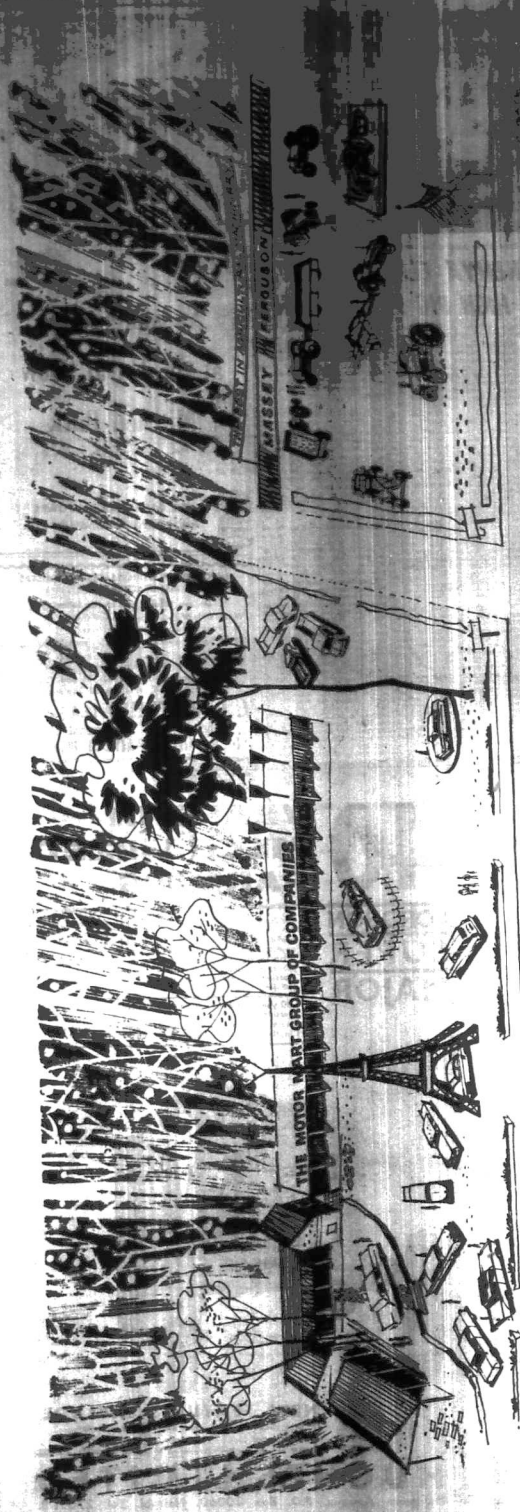
30 years after the introduction of Fordson of mechanized farming over 70 per cent of all tractors on British farms were Fordsons, proving beyond all doubt that most farmers in the U.K. use Fordson tractors.



NEW FEATURES INCLUDE:

- Disc Brakes - Less wear and cheaper maintenance.
- Differential lock - positively no wheel spin.
- All new hydraulics - control of depth, position and flow.

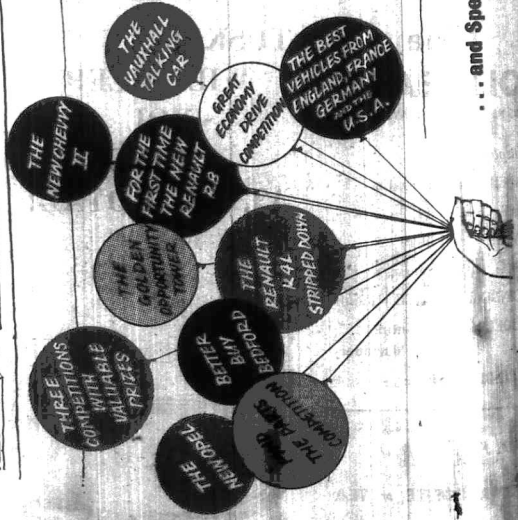
HUGHES LIMITED
 Delamere Avenue, P.O. Box 30066, Nairobi, Tel. 27091/8.
 Also at: Nakuru, Eldoret, Kitale and throughout Kenya



YOUR GOLDEN OPPORTUNITY!

We proudly present one of the finest displays of vehicles and agricultural machinery ever displayed at Mitchell Park, including

The Opel Range, Renault R4, Messageries Tracteurs, Bedford normal control and forward control trucks, Renault R.4L, The Popular Tractor Range, Gordani, the New Chevy II, etc., etc.



... and Special Air Delivery for the Show of a new 1956 OPEL KADETT!

Now headquarters of R



The new administrative offices of the Royal Agricultural Society of Kenya, which are being used as Show headquarters for the first time this year.

KN.F.U. duty is to help the stayers

One of our tasks since the last 12 months has been the representation of the Kenya Agricultural Society of Kenya in the various areas which are being used for the meetings of the Kenya Agricultural Society of Kenya.



LORD DELAMERE, PRESIDENT OF THE KENYA NATIONAL FARMERS' UNION, OUTLINES PROGRESS MADE BY THE KN.F.U. IN THE PAST YEAR AND LOOKS FORWARD TO INCREASED PARTICIPATION BY AFRICAN FARMERS.

THOSE WHO STAY
We have been in constant contact with the Ministry of Agriculture and the Ministry of Lands and Survey, Nairobi, Kenya, and the Ministry of Agriculture, London, for the purpose of securing the best possible conditions for the stayers.

It is our duty to help the stayers in the various areas which are being used for the meetings of the Kenya Agricultural Society of Kenya.

It is our duty to help the stayers in the various areas which are being used for the meetings of the Kenya Agricultural Society of Kenya.

KENYA MUST NOT NEGLECT FORESTS

It is our duty to help the stayers in the various areas which are being used for the meetings of the Kenya Agricultural Society of Kenya.

It is our duty to help the stayers in the various areas which are being used for the meetings of the Kenya Agricultural Society of Kenya.

OTHER BENEFITS
There are many other benefits which can be derived from the use of the Kenya Agricultural Society of Kenya.

It is our duty to help the stayers in the various areas which are being used for the meetings of the Kenya Agricultural Society of Kenya.

TELEVISION PREVIEW AT K.B.C. STADIUM

By LESLIE WILSON, Assistant General Manager of Programmes, K.B.C.
TELEVISION will be prominent at the Kenya Broadcasting Corporation Display Stand at K.B.C. Stadium for the first time this year.

The most interesting feature of the exhibition is the television set which will be on display in the public gallery.

It is really important that the Kenya Agricultural Society of Kenya should be represented at the exhibition.

REGION OFFICES

We have been in constant contact with the Ministry of Agriculture and the Ministry of Lands and Survey, Nairobi, Kenya, and the Ministry of Agriculture, London, for the purpose of securing the best possible conditions for the stayers.

It is our duty to help the stayers in the various areas which are being used for the meetings of the Kenya Agricultural Society of Kenya.

On Plot C, Block L at The Royal Show you will see

Cut your handling costs — with FOURWAYS

This is the F.T.C. model which will be on display at the Royal Show. It is a portable crane which can be driven electrically or by diesel or petrol engine, and is used for the movement of goods, whether in bulk or in small quantities, and for the loading and unloading of trucks and vans.

McLeod's are JONES CRANES agents for EAST AFRICA

P.O. Box 5960, Hughes Building, Stewart Street, Nairobi. Phone 21452

and ...

Jones cranes will be displayed on our Stand in BLOCK L, PLOT C at the Royal Show

McLeod's are JONES CRANES agents for EAST AFRICA

The Jones range of mobile cranes covers lifting capacities up to 25 tons. Operating through friction clutches, roller chains and multiple gears, Jones diesel-mechanical cranes of transmission flexibility do most efficient method of mobile reliability.

and ...

Conveyancers

Over 80 Agencies and distributors represent Conveyancer throughout the world.

McLEOD AND CO (EAST AFRICA) LTD
P.O. Box 5960, Nairobi

East African Match Company Ltd.
MOMBASA • KENYA
Visit Trade Stand G28/83
Support local industry
Insist on and buy STEAMSHIP Safety Matches
QUALITY — IMPORTED STANDARD

McLEOD AND CO (EAST AFRICA) LTD
P.O. Box 5960, Nairobi
Manufactured by Conveyancer Fork Trucks Ltd., Warrington, England.

RECORD ROWD

ATTEMPT TO SAVE COURSE AT ELDORET

ELDERLEY Race Club, under aetate of death because of a complete lack of interest in racing, has had a regretful, writes James Dore. The former secretary, writes James Dore, said: "There is no doubt that the articles in the East African Standard printed the public's interest."

At the meeting which was held under the chair of the proprietor, it was decided that the club should be sold to a party who would be able to carry on the racing and to keep the track in good order. It was also decided that the club should be sold to a party who would be able to carry on the racing and to keep the track in good order.

CHANGES IN CLIP GAMES

Changes have been published in the rules of the game of clip. The new rules are being issued to all clubs in the country. The changes are being made to make the game more interesting and to make it easier to play. The new rules are being issued to all clubs in the country.

WANTED—59 APPLY

59-1 SHOCKER. A person wanted in view of the amount of the unpaid money. The person wanted in view of the amount of the unpaid money. The person wanted in view of the amount of the unpaid money.

WANTED—59 APPLY

59-1 SHOCKER. A person wanted in view of the amount of the unpaid money. The person wanted in view of the amount of the unpaid money. The person wanted in view of the amount of the unpaid money.

B.O.A.C. ALL COMET SERVICE FOR EAST AFRICA



With effect from OCTOBER, 1962

BOAC COMET 4 will fly on all routes to and from East Africa

Comet 4 Services, cabin staff gives you unrivalled standards of individual attention and they respect your comfort whether you travel First or Economy.

ALL OVER THE WORLD B.O.A.C. TAKES GOOD CARE OF YOU

BOAC Overseas Airways Corporation with E.A.A. S.A.A. B.U.A.

The STAMPS & COIN COLLECTOR'S DIARY

Country	Postage	Coins
Algeria	100	100
Angola	100	100
Argentina	100	100
Australia	100	100
Austria	100	100
Belgium	100	100
Brazil	100	100
Canada	100	100
Chile	100	100
China	100	100
Colombia	100	100
Cuba	100	100
Czechoslovakia	100	100
Denmark	100	100
France	100	100
Germany	100	100
Greece	100	100
India	100	100
Indonesia	100	100
Italy	100	100
Japan	100	100
Kenya	100	100
Malaya	100	100
Malta	100	100
Mexico	100	100
Netherlands	100	100
New Zealand	100	100
Norway	100	100
Poland	100	100
Portugal	100	100
Romania	100	100
Russia	100	100
Spain	100	100
Sweden	100	100
Switzerland	100	100
Taiwan	100	100
Tanzania	100	100
Turkey	100	100
U.S.A.	100	100
U.K.	100	100
U.S.S.R.	100	100
Yugoslavia	100	100



The beautiful, the winner of the 1962 East African Rally, with their crew. (Standing, left to right) Kenneth, Robert, George, Bruce, Stephen, Hugh, William, Charles, and John. (Seated) Harington.

EAST AFRICAN RAILWAYS AND HARBOURS

Tenders
 Allocation of Tender's License for Kinross Station Track and Road, January 1963 to December 1963. The contract of Development Kinross Station, East Africa, for the period of two years from January 1, 1963 to December 31, 1964. The contract of Development Kinross Station, East Africa, for the period of two years from January 1, 1963 to December 31, 1964.

EAST AFRICAN RAILWAYS AND HARBOURS

Tenders
 Allocation of Tender's License for Kinross Station Track and Road, January 1963 to December 1963. The contract of Development Kinross Station, East Africa, for the period of two years from January 1, 1963 to December 31, 1964. The contract of Development Kinross Station, East Africa, for the period of two years from January 1, 1963 to December 31, 1964.

TRANSPORT LICENSING BOARD

Notice
 Further Licenses for 1962 APPLICATIONS for further TRANSPORT LICENSING BOARD should be made not later than 11.30 a.m. on 11th October 1962. Further Licenses for 1962 APPLICATIONS for further TRANSPORT LICENSING BOARD should be made not later than 11.30 a.m. on 11th October 1962.

Seraphino is example to youth

SERAPHINO ANTAO and other children of the East African Standard have been selected to represent the people of the East African Standard at the 1962 Commonwealth Youth Conference in London. Their names were announced at a special ceremony held at the East African Standard offices in Nairobi. The children are: Seraphino Antao, 14, and other children of the East African Standard.

SAVING FUEL WITH VOLKSWAGEN

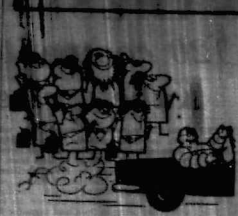
With a fuel economy of 34.95 miles per gallon, the Volkswagen Jetta is an example to youth. The car is designed to save fuel and money. The Volkswagen Jetta is an example to youth. The car is designed to save fuel and money. The Volkswagen Jetta is an example to youth. The car is designed to save fuel and money.

FORD ZEPHYR

With an improvement of 5.84% m.p.g., the Ford Zephyr is an example to youth. The car is designed to save fuel and money. The Ford Zephyr is an example to youth. The car is designed to save fuel and money. The Ford Zephyr is an example to youth. The car is designed to save fuel and money.

MICHELIN 'X' TYRES

Save fuel, better grip, greater comfort & more mileage. The Michelin 'X' tyre is designed to save fuel and money. The Michelin 'X' tyre is designed to save fuel and money. The Michelin 'X' tyre is designed to save fuel and money. The Michelin 'X' tyre is designed to save fuel and money.



You save fuel with MICHELIN 'X'

Thousands of tests—in all climates and on every type of road—have proved that less fuel is consumed when the vehicle is running on Michelin 'X' tyres. Because of their special design and manufacturing techniques Michelin 'X' tyres have less rolling resistance and therefore less energy is required.



Results of R.E.A.A.-observed tests in East Africa

The exhaust factors—after four years—of a Ford car equipped with Michelin 'X' tyres, which were tested on a road in East Africa, showed that the car on Michelin 'X' tyres.

VOLKSWAGEN at Nature Park Motor Racing Club



With a fuel economy of 34.95 miles per gallon, the Volkswagen Jetta is an example to youth. The car is designed to save fuel and money. The Volkswagen Jetta is an example to youth. The car is designed to save fuel and money.

FORD ZEPHYR

With an improvement of 5.84% m.p.g., the Ford Zephyr is an example to youth. The car is designed to save fuel and money. The Ford Zephyr is an example to youth. The car is designed to save fuel and money. The Ford Zephyr is an example to youth. The car is designed to save fuel and money.

MICHELIN 'X' TYRES

Save fuel, better grip, greater comfort & more mileage. The Michelin 'X' tyre is designed to save fuel and money. The Michelin 'X' tyre is designed to save fuel and money. The Michelin 'X' tyre is designed to save fuel and money. The Michelin 'X' tyre is designed to save fuel and money.

MICHELIN EAST AFRICA LTD.

GAMES TODAY

120 competitors Kabete meeting

HYATS in the Commonwealth Games Trials, which also brought the 1972 Kenya international athletic championships together at the Kenya Institute of Administration at Kabete on 14-15 today with the first of the finals at 11.30 tomorrow. A total of athletes from Uganda and 120 competitors from Kenya will be among the 120 competitors at the meeting.

Kenya's star sprinter, Bartholomew Akello, reported from Mombasa yesterday that he was still having bone in training for three months, and that his ankle injury had completely cleared. He will take part in the 100 and 200yd, as well as being in the next team for the 400 by 110 yd relay. The team should do well in the event with the remaining members comprising Albert, Casterline, Joseph Faris and Silvanus Pina.

GOOD, BUT NOT BEST

By CHARLES DREW

It is these athletes to-day — a glimpse retrospect — a confirmed experience. I find that the £2,500 odd of the last football season at Nairobi is not a record — it should be better than the meeting of 200-17 in 1967, there have been some 100,000 people from 400 to 500,000 people in the last match, and the match was held at the same time as the match between the two teams. The match was held at the same time as the match between the two teams. The match was held at the same time as the match between the two teams.

Porth athletes want £3,000

At least £3,000 is still needed to meet the expenses of the 1972 Commonwealth Games Trials at Kabete. The Kenya Institute of Administration is expected to contribute £1,000 towards the cost of the event. The remaining £2,000 is expected to be raised from the sale of tickets and other sources.

HEAD LAD'S TIPS

Head Lad's tips for the day's racing include: **1.10** - **1.20** - **1.30** - **1.40** - **1.50** - **2.00** - **2.10** - **2.20** - **2.30** - **2.40** - **2.50** - **3.00** - **3.10** - **3.20** - **3.30** - **3.40** - **3.50** - **4.00** - **4.10** - **4.20** - **4.30** - **4.40** - **4.50** - **5.00** - **5.10** - **5.20** - **5.30** - **5.40** - **5.50** - **6.00** - **6.10** - **6.20** - **6.30** - **6.40** - **6.50** - **7.00** - **7.10** - **7.20** - **7.30** - **7.40** - **7.50** - **8.00** - **8.10** - **8.20** - **8.30** - **8.40** - **8.50** - **9.00** - **9.10** - **9.20** - **9.30** - **9.40** - **9.50** - **10.00** - **10.10** - **10.20** - **10.30** - **10.40** - **10.50** - **11.00** - **11.10** - **11.20** - **11.30** - **11.40** - **11.50** - **12.00** - **12.10** - **12.20** - **12.30** - **12.40** - **12.50** - **1.00** - **1.10** - **1.20** - **1.30** - **1.40** - **1.50** - **2.00** - **2.10** - **2.20** - **2.30** - **2.40** - **2.50** - **3.00** - **3.10** - **3.20** - **3.30** - **3.40** - **3.50** - **4.00** - **4.10** - **4.20** - **4.30** - **4.40** - **4.50** - **5.00** - **5.10** - **5.20** - **5.30** - **5.40** - **5.50** - **6.00** - **6.10** - **6.20** - **6.30** - **6.40** - **6.50** - **7.00** - **7.10** - **7.20** - **7.30** - **7.40** - **7.50** - **8.00** - **8.10** - **8.20** - **8.30** - **8.40** - **8.50** - **9.00** - **9.10** - **9.20** - **9.30** - **9.40** - **9.50** - **10.00** - **10.10** - **10.20** - **10.30** - **10.40** - **10.50** - **11.00** - **11.10** - **11.20** - **11.30** - **11.40** - **11.50** - **12.00** - **12.10** - **12.20** - **12.30** - **12.40** - **12.50** - **1.00** - **1.10** - **1.20** - **1.30** - **1.40** - **1.50** - **2.00** - **2.10** - **2.20** - **2.30** - **2.40** - **2.50** - **3.00** - **3.10** - **3.20** - **3.30** - **3.40** - **3.50** - **4.00** - **4.10** - **4.20** - **4.30** - **4.40** - **4.50** - **5.00** - **5.10** - **5.20** - **5.30** - **5.40** - **5.50** - **6.00** - **6.10** - **6.20** - **6.30** - **6.40** - **6.50** - **7.00** - **7.10** - **7.20** - **7.30** - **7.40** - **7.50** - **8.00** - **8.10** - **8.20** - **8.30** - **8.40** - **8.50** - **9.00** - **9.10** - **9.20** - **9.30** - **9.40** - **9.50** - **10.00** - **10.10** - **10.20** - **10.30** - **10.40** - **10.50** - **11.00** - **11.10** - **11.20** - **11.30** - **11.40** - **11.50** - **12.00** - **12.10** - **12.20** - **12.30** - **12.40** - **12.50** - **1.00** - **1.10** - **1.20** - **1.30** - **1.40** - **1.50** - **2.00** - **2.10** - **2.20** - **2.30** - **2.40** - **2.50** - **3.00** - **3.10** - **3.20** - **3.30** - **3.40** - **3.50** - **4.00** - **4.10** - **4.20** - **4.30** - **4.40** - **4.50** - **5.00** - **5.10** - **5.20** - **5.30** - **5.40** - **5.50** - **6.00** - **6.10** - **6.20** - **6.30** - **6.40** - **6.50** - **7.00** - **7.10** - **7.20** - **7.30** - **7.40** - **7.50** - **8.00** - **8.10** - **8.20** - **8.30** - **8.40** - **8.50** - **9.00** - **9.10** - **9.20** - **9.30** - **9.40** - **9.50** - **10.00** - **10.10** - **10.20** - **10.30** - **10.40** - **10.50** - **11.00** - **11.10** - **11.20** - **11.30** - **11.40** - **11.50** - **12.00** - **12.10** - **12.20** - **12.30** - **12.40** - **12.50** - **1.00** - **1.10** - **1.20** - **1.30** - **1.40** - **1.50** - **2.00** - **2.10** - **2.20** - **2.30** - **2.40** - **2.50** - **3.00** - **3.10** - **3.20** - **3.30** - **3.40** - **3.50** - **4.00** - **4.10** - **4.20** - **4.30** - **4.40** - **4.50** - **5.00** - **5.10** - **5.20** - **5.30** - **5.40** - **5.50** - **6.00** - **6.10** - **6.20** - **6.30** - **6.40** - **6.50** - **7.00** - **7.10** - **7.20** - **7.30** - **7.40** - **7.50** - **8.00** - **8.10** - **8.20** - **8.30** - **8.40** - **8.50** - **9.00** - **9.10** - **9.20** - **9.30** - **9.40** - **9.50** - **10.00** - **10.10** - **10.20** - **10.30** - **10.40** - **10.50** - **11.00** - **11.10** - **11.20** - **11.30** - **11.40** - **11.50** - **12.00** - **12.10** - **12.20** - **12.30** - **12.40** - **12.50** - **1.00** - **1.10** - **1.20** - **1.30** - **1.40** - **1.50** - **2.00** - **2.10** - **2.20** - **2.30** - **2.40** - **2.50** - **3.00** - **3.10** - **3.20** - **3.30** - **3.40** - **3.50** - **4.00** - **4.10** - **4.20** - **4.30** - **4.40** - **4.50** - **5.00** - **5.10** - **5.20** - **5.30** - **5.40** - **5.50** - **6.00** - **6.10** - **6.20** - **6.30** - **6.40** - **6.50** - **7.00** - **7.10** - **7.20** - **7.30** - **7.40** - **7.50** - **8.00** - **8.10** - **8.20** - **8.30** - **8.40** - **8.50** - **9.00** - **9.10** - **9.20** - **9.30** - **9.40** - **9.50** - **10.00** - **10.10** - **10.20** - **10.30** - **10.40** - **10.50** - **11.00** - **11.10** - **11.20** - **11.30** - **11.40** - **11.50** - **12.00** - **12.10** - **12.20** - **12.30** - **12.40** - **12.50** - **1.00** - **1.10** - **1.20** - **1.30** - **1.40** - **1.50** - **2.00** - **2.10** - **2.20** - **2.30** - **2.40** - **2.50** - **3.00** - **3.10** - **3.20** - **3.30** - **3.40** - **3.50** - **4.00** - **4.10** - **4.20** - **4.30** - **4.40** - **4.50** - **5.00** - **5.10** - **5.20** - **5.30** - **5.40** - **5.50** - **6.00** - **6.10** - **6.20** - **6.30** - **6.40** - **6.50** - **7.00** - **7.10** - **7.20** - **7.30** - **7.40** - **7.50** - **8.00** - **8.10** - **8.20** - **8.30** - **8.40** - **8.50** - **9.00** - **9.10** - **9.20** - **9.30** - **9.40** - **9.50** - **10.00** - **10.10** - **10.20** - **10.30** - **10.40** - **10.50** - **11.00** - **11.10** - **11.20** - **11.30** - **11.40** - **11.50** - **12.00** - **12.10** - **12.20** - **12.30** - **12.40** - **12.50** - **1.00** - **1.10** - **1.20** - **1.30** - **1.40** - **1.50** - **2.00** - **2.10** - **2.20** - **2.30** - **2.40** - **2.50** - **3.00** - **3.10** - **3.20** - **3.30** - **3.40** - **3.50** - **4.00** - **4.10** - **4.20** - **4.30** - **4.40** - **4.50** - **5.00** - **5.10** - **5.20** - **5.30** - **5.40** - **5.50** - **6.00** - **6.10** - **6.20** - **6.30** - **6.40** - **6.50** - **7.00** - **7.10** - **7.20** - **7.30** - **7.40** - **7.50** - **8.00** - **8.10** - **8.20** - **8.30** - **8.40** - **8.50** - **9.00** - **9.10** - **9.20** - **9.30** - **9.40** - **9.50** - **10.00** - **10.10** - **10.20** - **10.30** - **10.40** - **10.50** - **11.00** - **11.10** - **11.20** - **11.30** - **11.40** - **11.50** - **12.00** - **12.10** - **12.20** - **12.30** - **12.40** - **12.50** - **1.00** - **1.10** - **1.20** - **1.30** - **1.40** - **1.50** - **2.00** - **2.10** - **2.20** - **2.30** - **2.40** - **2.50** - **3.00** - **3.10** - **3.20** - **3.30** - **3.40** - **3.50** - **4.00** - **4.10** - **4.20** - **4.30** - **4.40** - **4.50** - **5.00** - **5.10** - **5.20** - **5.30** - **5.40** - **5.50** - **6.00** - **6.10** - **6.20** - **6.30** - **6.40** - **6.50** - **7.00** - **7.10** - **7.20** - **7.30** - **7.40** - **7.50** - **8.00** - **8.10** - **8.20** - **8.30** - **8.40** - **8.50** - **9.00** - **9.10** - **9.20** - **9.30** - **9.40** - **9.50** - **10.00** - **10.10** - **10.20** - **10.30** - **10.40** - **10.50** - **11.00** - **11.10** - **11.20** - **11.30** - **11.40** - **11.50** - **12.00** - **12.10** - **12.20** - **12.30** - **12.40** - **12.50** - **1.00** - **1.10** - **1.20** - **1.30** - **1.40** - **1.50** - **2.00** - **2.10** - **2.20** - **2.30** - **2.40** - **2.50** - **3.00** - **3.10** - **3.20** - **3.30** - **3.40** - **3.50** - **4.00** - **4.10** - **4.20** - **4.30** - **4.40** - **4.50** - **5.00** - **5.10** - **5.20** - **5.30** - **5.40** - **5.50** - **6.00** - **6.10** - **6.20** - **6.30** - **6.40** - **6.50** - **7.00** - **7.10** - **7.20** - **7.30** - **7.40** - **7.50** - **8.00** - **8.10** - **8.20** - **8.30** - **8.40** - **8.50** - **9.00** - **9.10** - **9.20** - **9.30** - **9.40** - **9.50** - **10.00** - **10.10** - **10.20** - **10.30** - **10.40** - **10.50** - **11.00** - **11.10** - **11.20** - **11.30** - **11.40** - **11.50** - **12.00** - **12.10** - **12.20** - **12.30** - **12.40** - **12.50** - **1.00** - **1.10** - **1.20** - **1.30** - **1.40** - **1.50** - **2.00** - **2.10** - **2.20** - **2.30** - **2.40** - **2.50** - **3.00** - **3.10** - **3.20** - **3.30** - **3.40** - **3.50** - **4.00** - **4.10** - **4.20** - **4.30** - **4.40** - **4.50** - **5.00** - **5.10** - **5.20** - **5.30** - **5.40** - **5.50** - **6.00** - **6.10** - **6.20** - **6.30** - **6.40** - **6.50** - **7.00** - **7.10** - **7.20** - **7.30** - **7.40** - **7.50** - **8.00** - **8.10** - **8.20** - **8.30** - **8.40** - **8.50** - **9.00** - **9.10** - **9.20** - **9.30** - **9.40** - **9.50** - **10.00** - **10.10** - **10.20** - **10.30** - **10.40** - **10.50** - **11.00** - **11.10** - **11.20** - **11.30** - **11.40** - **11.50** - **12.00** - **12.10** - **12.20** - **12.30** - **12.40** - **12.50** - **1.00** - **1.10** - **1.20** - **1.30** - **1.40** - **1.50** - **2.00** - **2.10** - **2.20** - **2.30** - **2.40** - **2.50** - **3.00** - **3.10** - **3.20** - **3.30** - **3.40** - **3.50** - **4.00** - **4.10** - **4.20** - **4.30** - **4.40** - **4.50** - **5.00** - **5.10** - **5.20** - **5.30** - **5.40** - **5.50** - **6.00** - **6.10** - **6.20** - **6.30** - **6.40** - **6.50** - **7.00** - **7.10** - **7.20** - **7.30** - **7.40** - **7.50** - **8.00** - **8.10** - **8.20** - **8.30** - **8.40** - **8.50** - **9.00** - **9.10** - **9.20** - **9.30** - **9.40** - **9.50** - **10.00** - **10.10** - **10.20** - **10.30** - **10.40** - **10.50** - **11.00** - **11.10** - **11.20** - **11.30** - **11.40** - **11.50** - **12.00** - **12.10** - **12.20** - **12.30** - **12.40** - **12.50** - **1.00** - **1.10** - **1.20** - **1.30** - **1.40** - **1.50** - **2.00** - **2.10** - **2.20** - **2.30** - **2.40** - **2.50** - **3.00** - **3.10** - **3.20** - **3.30** - **3.40** - **3.50** - **4.00** - **4.10** - **4.20** - **4.30** - **4.40** - **4.50** - **5.00** - **5.10** - **5.20** - **5.30** - **5.40** - **5.50** - **6.00** - **6.10** - **6.20** - **6.30** - **6.40** - **6.50** - **7.00** - **7.10** - **7.20** - **7.30** - **7.40** - **7.50** - **8.00** - **8.10** - **8.20** - **8.30** - **8.40** - **8.50** - **9.00** - **9.10** - **9.20** - **9.30** - **9.40** - **9.50** - **10.00** - **10.10** - **10.20** - **10.30** - **10.40** - **10.50** - **11.00** - **11.10** - **11.20** - **11.30** - **11.40** - **11.50** - **12.00** - **12.10** - **12.20** - **12.30** - **12.40** - **12.50** - **1.00** - **1.10** - **1.20** - **1.30** - **1.40** - **1.50** - **2.00** - **2.10** - **2.20** - **2.30** - **2.40** - **2.50** - **3.00** - **3.10** - **3.20** - **3.30** - **3.40** - **3.50** - **4.00** - **4.10** - **4.20** - **4.30** - **4.40** - **4.50** - **5.00** - **5.10** - **5.20** - **5.30** - **5.40** - **5.50** - **6.00** - **6.10** - **6.20** - **6.30** - **6.40** - **6.50** - **7.00** - **7.10** - **7.20** - **7.30** - **7.40** - **7.50** - **8.00** - **8.10** - **8.20** - **8.30** - **8.40** - **8.50** - **9.00** - **9.10** - **9.20** - **9.30** - **9.40** - **9.50** - **10.00** - **10.10** - **10.20** - **10.30** - **10.40** - **10.50** - **11.00** - **11.10** - **11.20** - **11.30** - **11.40** - **11.50** - **12.00** - **12.10** - **12.20** - **12.30** - **12.40** - **12.50** - **1.00** - **1.10** - **1.20** - **1.30** - **1.40** - **1.50** - **2.00** - **2.10** - **2.20** - **2.30** - **2.40** - **2.50** - **3.00** - **3.10** - **3.20** - **3.30** - **3.40** - **3.50** - **4.00** - **4.10** - **4.20** - **4.30** -

THE BEST OF BOTH WORLDS

KEEP YOUR MONEY AND YOU HAVE INTEREST TOO

THIS IS WHAT YOU ENJOY BY HAVING YOUR CAPITAL ON DEPOSIT IN A

5%

BANK DEPOSIT ACCOUNT WITH LOMBARD BANKING LIMITED

Write under the General Manager for your copy of "Bank Deposit Accounts" at Lombard Bank, Ltd., 100, Queen Street, London, E.C. 3. Or write to the Branch Office, Lombard House, Colney Street, Park Lane, London, W. 1. CIBOR 4111 Box 268

WESTMINSTER CREDIT FINANCE LTD INDUSTRIAL BANKERS

8001 BRIDGE ROAD, LONDON, E.C. 3
Telephone Number 2088

DEPOSIT ACCOUNTS

INTEREST 8 1/2%

PER ANNUM FOR DEPOSITS HELD AT ALL BANKING OFFICES

Interest 6% per annum on deposits
Interest 7 1/2% per annum on deposits
Interest 6% per annum on deposits

THEO. GARVIN LIMITED

General of the Industrial Bankers Association
1 BROMFIELD AVENUE, BROMLEY, SE 16, 263.

8%

Paid on deposit accounts at six months' notice. Interest paid without deduction of income tax.

YOUR HOME-LEAVE CAR

Our experience in Europe's leading motor hire companies has enabled us to introduce a new and very convenient service for your motor hire in U.K. on Home Leave. Minimum payment of £100.00 per week. Choice of the most stylish cars, with nothing to pay when you return. We offer everything on credit from £10.00 per week.

WEST EUROPEAN AUTO RENTALS
11 High Street, Swansley, Kent, SE25

EAST AFRICAN BREWERIES LIMITED NOTICE

The Annual General Meeting will be held on Wednesday, October 20, 1962, at the Falcon Hotel at 6.30 pm, 1962, will be submitted.

The net profits of the group for the year ended June 30, 1962, before providing for taxation, amounted to £752,212, as compared with £599,773 for the preceding financial year.

A limited interim dividend of 12 per cent (1962) has been declared on September 20, 1962, which together with the first interim dividend of 6 per cent (1962) paid on May 17, 1962, makes a total for the year of 18 per cent (1962) on the issued Capital as increased by the Bonus Issue last December.

Copies of the Directors' Report and Annual Accounts, together with the Chairman's Statement, will be forwarded to shareholders in due course.

By Order of the Board,
(Signed) W. C. L. RAND-OVERY, Secretary.

Tucker House, Nairobi,
September 27, 1962.

ROBI HAS WIDE RANGE OF BUSINESS CLOSING RAMP PRICES

The volume of business was particularly heavy on the 20th in the previous week. The market was characterized by a wide range of activity, with many shares closing at new highs or lows. The market was characterized by a wide range of activity, with many shares closing at new highs or lows.

Symbol	Price	Change
ROBI	1.10	+0.05
...

Symbol	Price	Change
...

Meat canning

Meat canning plants are operating at full capacity. The demand for canned meat is high, and prices are expected to remain stable.



Crownford's Special Reserve Scotch Whisky. A & A. CROWN FORD LTD. LEITH, ENGLAND.

East Africa Correspondence College. Examinations in progress.

Wall Street drop hits markets

The overall picture of the London stock market is one of uncertainty. The market has been hit by a sharp decline in Wall Street, leading to a general drop in share prices.

SMALL-SCALE OVERDRIVE

A UNIT that makes overdrive a standard feature of the car is now available. It is designed to be fitted to cars with engines of 1,500 cc. and upwards.

MOMBASA SHIPPING

Destination	Days
...	...

TEA PRICE

Grade	Price
...	...

INSTANT POWER

at the touch of your toe



NEW HIGHER OCTANE SUPERSHELL with I

New Higher Octane Supershell gives you more power, effortless acceleration, and longer life. It's the only engine oil that gives you the full power of your engine at all times. Supershell is the only engine oil that gives you the full power of your engine at all times.

20th CENTURY NATIONAL AND GENERAL BANK LIMITED... THE ABSENT-MINDED PROFESSOR... NATIONAL THEATRE... CHARLES COLLECTORS OF SALAD DAYS...

THE ABSENT-MINDED PROFESSOR... NATIONAL THEATRE... CHARLES COLLECTORS OF SALAD DAYS... Tomorrow 8.30 and 9 p.m.

THE ONLY SHOW IN TOWN! A REGAL CABARET... ROYAL SHOW WEEK... CLIFFORD STANTON... 'ROCKY' ALLAN... EQUATOR CLUB...

W. & C. FRENCH (East Africa) Ltd. P.O. Box 3012, Nairobi... (Contractors) for Civil Engineering Work...

WARM THE COCKLES OF YOUR HEART for 50c with SCHWEPES DRY GINGER ALE... THE SORSBIE GALLERY... KARURA AVENUE... SOME ASPECTS OF BRITISH ART...

THE SORSBIE GALLERY... KARURA AVENUE... SOME ASPECTS OF BRITISH ART... 115 Photographs illustrating the Life and Work of Pablo Picasso...

OLD YORKIST SUNDOWNER DUKE OF YORK SCHOOL... Saturday, Sept. 29... Wives and Girl friends WELCOME... Teacher EAS/7082

East African Standard

PROSECUTION DETENTION... ALEXANDER has had part... In the first instance... The Government... The Attorney-General... The Director of Public Prosecutions...

Prevent the loss of violence... The Government... The Attorney-General... The Director of Public Prosecutions... The Minister of Home Affairs... The Minister of Education...

DRIVE-IN SHAN... Today at 8 and 9... Tomorrow at 8 and 9... Tonight at 8 and 9... The Great Gatsby... The Last of the Mohicans...

BROKEN ARROW... The latest and adventure of... SAMSON... THE LITTLE PEOPLE... DONOVAN MAULE THEATRE...

THE GAZEBO... The language play by ALEC COPPEL... THE SCHOOL FOR SCANDAL... WIGLESWORTH & CO. (AFRICA) LTD. P.O. Box 3088 Nairobi... TWIST TONIGHT at the CRYSTAL GRILL

LUGARD'S RECRUIT WILL SEE NEW ARMY BORN

LUGARD has had part... In the first instance... The Government... The Attorney-General... The Director of Public Prosecutions... The Minister of Home Affairs... The Minister of Education...

JOINED IN 1952... The Government... The Attorney-General... The Director of Public Prosecutions... The Minister of Home Affairs... The Minister of Education... FIRM that came to East Africa in 1849 is back again...

CASINO EMBASSY... Today at 8 and 9... Tomorrow at 8 and 9... Tonight at 8 and 9... CHHOTE NAWAB... MOTHER INDIA... PIONEER CINE SERVICE... DEBRIE 16mm. sound projector...

WHITE BATTERIES... EAST AFRICAN STANDARD LTD. Commercial Stationery Dept. HOME LEAVE... PAYROLL... PRIVATE SECRETARY... ODEON...

LETTS DIARIES... EAST AFRICAN STANDARD LTD. Commercial Stationery Dept. HOME LEAVE... PAYROLL... PRIVATE SECRETARY... ODEON... Applications for positions...

Applications for positions... EAST AFRICAN STANDARD LTD. Commercial Stationery Dept. HOME LEAVE... PAYROLL... PRIVATE SECRETARY... ODEON... Applications for positions...

WEEK-END STANDARD

AFRICAN GROUP FARM

VENTURE IN HIGHLANDS

The 11 Kikuyu farmers who operate Olney Estate, 10 miles from Nairobi, are the first to have taken the initiative in setting up a group farm in the Highlands. The group farm is a venture in which the farmers have pooled their resources to buy land, build a house, and set up a school. The group farm is a venture in which the farmers have pooled their resources to buy land, build a house, and set up a school. The group farm is a venture in which the farmers have pooled their resources to buy land, build a house, and set up a school.



Left: Mr. T. M. Mwangi, one of the 11 Kikuyu farmers who operate Olney Estate, 10 miles from Nairobi. Mr. Gathogo is photographed here with a bag of newly sown potatoes. Others: Right: Mr. Frederick Ngunjiri examines the fruit of the mango tree on the farm, owned by a herdsmen. Mr. Njiragu received 25 acres of land as a gift from the former owner, Mr. Hooley, in recognition of 25 years of service. He now has incorporated his holding with the other Kikuyu in the group ownership system.

FARMER'S DUTY

Even if the individual farmer is not the owner of the land, he has a duty to the group. The group farm is a venture in which the farmers have pooled their resources to buy land, build a house, and set up a school. The group farm is a venture in which the farmers have pooled their resources to buy land, build a house, and set up a school.

450 SHEEP

The farm's economy is based principally on the grade cattle which yield about 100 to 120 gallons of milk daily. The group also raises 200 animals, including 450 sheep, 100 goats, and 100 pigs. The group farm is a venture in which the farmers have pooled their resources to buy land, build a house, and set up a school.



The Olney Estate, 10 miles from Nairobi, is the first group farm in the Highlands. The group farm is a venture in which the farmers have pooled their resources to buy land, build a house, and set up a school. The group farm is a venture in which the farmers have pooled their resources to buy land, build a house, and set up a school.

Strict discipline and work allocation

Every week in Kikuyu there is a strict discipline and work allocation. The group farm is a venture in which the farmers have pooled their resources to buy land, build a house, and set up a school. The group farm is a venture in which the farmers have pooled their resources to buy land, build a house, and set up a school.

DUTY ROTA

Every week in Kikuyu there is a duty rota. The group farm is a venture in which the farmers have pooled their resources to buy land, build a house, and set up a school. The group farm is a venture in which the farmers have pooled their resources to buy land, build a house, and set up a school.



Mr. Peter Mwangi has built in this Olney Estate school, which was built by the former owner, Mr. Hooley, who has now moved to South Africa.

SEE CAIRO ON YOUR WAY TO AUSTRALIA

Going to Australia? It's so easy, so comfortable by BOAC Comet 4 flights from East Africa which jet you swiftly to Cairo. See the sights, do business, then link up with BOAC's jet services to Hong Kong, Tokyo and Australia. Remember, a stopover in Cairo, for business or pleasure adds nothing to your air fare. Ask your BOAC Appointed Travel Agents for details.

ALL OVER THE WORLD.

B-O-A-C

TAKES GOOD CARE OF YOU



THE PEOPLE BELIEVE IN YOUR CATHODE TUBE



The electrical installation for the Kenya Broadcasting Corporation Television Centre was designed and installed by

The Berkeley Electrical Engineering Company of East Africa Ltd.
Electrical Engineers and Contractors
Nairobi

Expert from Scottish TV advises

Above (left): Mr James Kerr, a Scottish Television Senior Engineer, discusses equipment with K.B.C. engineering staff during the installation and testing of equipment in the Television Studio's Control Console Area. Above (right): Mr. R. Thomson, Head of the Television Film Section, explains the operation of the Lowey Film Processor.

Right: Mr. C. Simpson, the Master Rigging, with the K.B.C. rigging team which erected the highest mast in East Africa. Due to the favourable elevation the mast, with the aerial, is the third highest in the world.



COLOUR TV LINK ACROSS ATLANTIC

DURING the fourth orbit of the 'Tubstar' satellite another milestone in the history of television transmissions was passed.

Manual colour television cameras at Nairobi, about 10,000 miles distant from the communications station at London, sent the first live colour transmission across the Atlantic to America.

This transmission was more than a technical experiment, forming a highlight of the American Television Association's 'Demarcation' held at the Sheraton Hotel in Washington, D.C.

Shortly after 3.00 p.m. B.E.T. on September 13, live trading reports on commodity prices in Britain, transmitted through the K.B.C. communications system, were seen at London in colour.

The demonstration was followed by a mobile colour television unit built and operated by Messrs. W. & A. G. Ltd., of the International Film and Television Ltd., and operated for 15 min. under 'control' by Messrs. engineers.

The latest colour cameras, type 444, were used and the signals were passed after the British Post Office satellite ground station at Goolishian down to a B.E.T. receiver in London.

In the Sherman Hotel, Washington, an audience of 100 saw the transmission complete and successful.

Reports from the American end of the space link at Andrews state that an excellent picture of 100% was received. All transmissions were received and viewed with good results.

Commented at times the picture definition was good. One eye-witness stated that the general colour standard was of a high standard and that of a medical class.



Below: The Nairobi installation Engineer, Mr. Stanger, indicates a reading on the Monitor Oscilloscope in K.B.C.'s Engineer-de-charge, Mr. Serge Dent. The Monitor Oscilloscope is part of the recording equipment installed at the Hillcrest Station.

Television Centre, Nairobi

- Rainwater pipes • Tubular lighting grids •
- Entrance gates • Metal staging • Pulleys
- Working light boxes • Metal ladders •
- Dust covers • Grilles and vents • and many other small items.

AGINWAN HIRJI & BROTHERS
Mechanical Engineers
P.O. Box 6367 • NAIROBI • Tel. 22715



Assisted by the Studio crew, Mr. J. Atkinson, the Technical Supervisor, makes final adjustments to one of the 4Kilic Image Orthicon Camera Channels and Sound Mixers.

United Builders & Contractors (Kenya) Ltd.

are suppliers of
CROWN GLAZE TILES
(White and Coloured)
and
ACOUSTIC TILES
to the K.B.C. TV studios
in NAIROBI

P.O. BOX 8680 TEL. 20543
NEW GROGAN ROAD NAIROBI

AUTOMATIC TELEPHONES & ELECTRIC CO. (E.A.) LTD.

TELECOMMUNICATION ENGINEERS

We are pleased to have supplied and installed all the internal telephone communications linking

the
TV STUDIOS
with
BROADCASTING HOUSE
and the main offices at
COLLEGE HOUSE

Congratulations to



H. Young & Company designed and supplied the mast and also assisted in its erection



H. YOUNG & CO. (EAST AFRICA) LTD.
P.O. Box 30118, Nairobi. Telephone 58796
DESIGNERS, CONTRACTORS AND ERECTORS
OF ALL TYPES OF STEEL WORK

PHONE 23774
SADLER HOUSE

P.O. BOX 743
SADLER LANE

NAIROBI

Librarian plays bass

YOUNG TEAM WITH NEW IDEAS

A YOUNG musician has won first prize in a British commercial radio competition. Kenyon... as a librarian.

She is Betty Henning, aged 23, who received 12,000 votes in her under 25s class in a contest which closed the month of August.

She is a Daily Herald agent, who has worked for the paper for five years.

PLAY FOR NOTHING

"The 10 million plus difference... K.B.C. cannot get... I shall do my job... in the morning... and play for... nothing."

Kenyon has been playing the piano for several years. She has also been a member of the K.B.C. orchestra for some time.

BRILLIANT

Bill Thomas is head of... K.B.C. and... brilliant... ideas... K.B.C. and... brilliant... ideas... K.B.C. and... brilliant... ideas...

Kenyon's success... K.B.C. and... brilliant... ideas... K.B.C. and... brilliant... ideas... K.B.C. and... brilliant... ideas...



Kenya Cabaret gives chance to local talent

One of the liveliest of the 'live' shows... in the Nairobi TV studios will be... featured from 10.15 p.m. on October 27.

The concert will run in a... eight days... studio and the dancers... musical talents... There will be a lot of... songs... and... There is to be a lot of... songs... and... There is to be a lot of... songs... and...

Outside agents recommended

To find agents of the... K.B.C. and... brilliant... ideas... K.B.C. and... brilliant... ideas... K.B.C. and... brilliant... ideas...

* Agents must have had... ADVISORY APPROVAL... of all agents... and... G. A. Walters...

BIG 'WIDE SQUARE' SCREEN BRIMS WITH ACTION!

Hitachi television sets which are today in use in every corner of the globe, fulfil to perfection all of the indispensable conditions for a television receiver; their up-to-date design is in full harmony with modern life, they have superior qualities, are simple to operate, are free from mechanical defects and will provide many years of trouble-free service.

- MODEL EX 890. The new square picture tube gives a big picture without rounded corners, lets you see all the action with a fresh impact.
- MODEL EX 9000. When you close the built-in-wooded doors, the set is automatically turned off, and when you open them, the set turns itself on.
- MODEL TX 230. Special twin-panel-type wide square picture tube with easy on the eyes grey filter.



Your importers of HITACHI products:
M.S. AGGARWAL & COMPANY
P.O. Box 1073
Silver Road
Wholesalers and retailers

Sole stockists:
NETA FILMS 610
Phone 2336, 2518
RAIPURI

Embassy Cinema, Box 950
Phone 2336, 2518
RAIPURI
Sole importers for East Africa:
Tams and Company, Box 1258
MOMBASA

J-Beam Aerials LTD

YOUR TELEVISION will be no problem when fitted with a J-Beam aerial

Specially designed for Kenya by the manufacturers

Visit our Mitchell Park stands
Nos. 120-121/Block E
WARDLES

Let us solve your TV problem

* Buy a set on easy payment terms
All sets are sold under guarantee
Special service available between 5-7.30 p.m.

You can hire a set for only 70/- a month

All sets installed free

For free advice and demonstration call on

JAYANT PANDIT
A. Bros. Limited
P.O. Box 10322, Colaba Street, Nairobi, Tel. 23113

and now...
The Television Centre
Another prestige job for
POLY-FLOOR
jointless P.V.C. floors are supplied and laid through
RADBONE, CLARK & CO.
P.O. Box 3930 Nairobi

local forest
The Park is...
The forest...
The trees...
The water...
The air...
The sun...
The moon...
The stars...
The planets...
The galaxies...
The universe...

A BEAR AND YOGI...



Yogi Bear — star of the game playing at the Abruzzo National Park — seen here on the crest of another star's show, "Backyardigans." Yogi is one of the cartoon's characters that has had to be replaced in park television hours in many countries because of its popularity among adults.

Features for all the family

SETTING up a brand-new TV station has its trials and tribulations — but it also has its benefits. Program planning for instance, can be based on broad and varied programs that have already gone down well elsewhere.

It is this sort of advantage that the new station, Channel 5, is taking full advantage of. The station's programming is being planned to appeal to a wide range of viewers, from the young to the old.

Practically every programme...
The station's programming...
The new station...
The trials and tribulations...
The benefits...
The program planning...
The broad and varied programs...
The advantage...
The station...
The programming...
The appeal...
The young to the old...

Scenes from shows



Scenes from shows...
The man and woman...
The show 'The Young and the Rubidious'...



scenes of children and their dads are always top of the popularity poll. "Lassie" makes its Kenya debut on Thursday at 6 p.m.



William Russell in the star of "Sir Lancelot", a stirring serial based on the adventures of King Arthur's Knights of the Round Table (Monday, 7.30 p.m.).



Mr. Alan Stewart...
The man...
The show 'The Young and the Rubidious'...

Cartoons, comedy — and drama

Other features...
The cartoons...
The comedy...
The drama...

Cartoons...
The cartoons...
The comedy...
The drama...

STEAM AND STEEL

They say...
The steam and steel...
The industry...

They say...
The steam and steel...
The industry...

They say...
The steam and steel...
The industry...

They say...
The steam and steel...
The industry...

They say...
The steam and steel...
The industry...

They say...
The steam and steel...
The industry...

They say...
The steam and steel...
The industry...

They say...
The steam and steel...
The industry...

They say...
The steam and steel...
The industry...

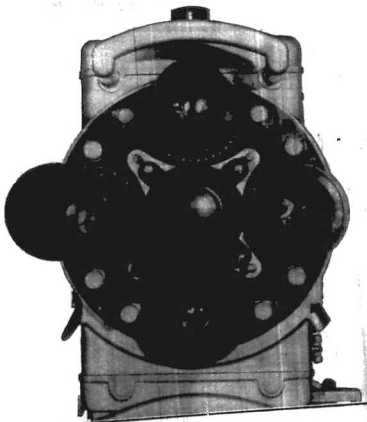
They say...
The steam and steel...
The industry...

They say...
The steam and steel...
The industry...

They say...
The steam and steel...
The industry...

THE MARCONI COMPANY

extends CONGRATULATIONS to KENYA TELEVISION upon the opening of their FIRST TELEVISION SERVICE



The Marconi Company is proud to have been entrusted with the order for the supply and installation of the main items of transmitting and studio equipment

MARCONI

COMPLETE TELEVISION SYSTEMS

SURVEYED - PLANNED - INSTALLED - MAINTAINED

MARCONI'S WIRELESS TELEGRAPH COMPANY LIMITED - CHELMSFORD ESSEX - ENGLAND



The person...
The show 'The Young and the Rubidious'...

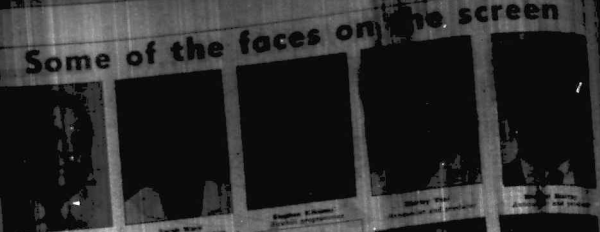
TV SHRINKS WORLD AND UNITES PEOPLE

By MICHAEL TYPE
Head of Television Programmes

The world of television is shrinking and uniting people from all corners of the globe. This is the message of the first series of the new television programme, "Some of the faces on the screen".

The programme, which is being broadcast on the Kenya television service, is a series of short films, each about five minutes long. It is the first of its kind in Kenya and is being produced by the Kenya Television Service.

The programme is a series of short films, each about five minutes long. It is the first of its kind in Kenya and is being produced by the Kenya Television Service.



Series on Africa's Wind of Change

By JEAN VAUGHAN

The series will be a series of short films, each about five minutes long. It is the first of its kind in Kenya and is being produced by the Kenya Television Service.

The programme is a series of short films, each about five minutes long. It is the first of its kind in Kenya and is being produced by the Kenya Television Service.

TV shop window

By JEAN VAUGHAN

The programme is a series of short films, each about five minutes long. It is the first of its kind in Kenya and is being produced by the Kenya Television Service.



TAKING TURNS BEFORE CAMERA

By JEAN VAUGHAN

The programme is a series of short films, each about five minutes long. It is the first of its kind in Kenya and is being produced by the Kenya Television Service.

PHILIPS
PIONEERS IN RADIO AND TELEVISION
TELEVISION
RECEIVERS ARE FIRST AND FOREMOST
PEGRUME & CO. LTD.

PIONEERS IN RADIO IN EAST AFRICA
LET US ADVISE YOU ON YOUR REQUIREMENTS
DEMONSTRATIONS DAILY
S. A. PEGRUME & CO. LTD.
DELAWARE AVENUE
NAIROBI
PHONE 2683
P.O. BOX 1067
SINCE 1933



Mr. Michael Type

The programme is a series of short films, each about five minutes long. It is the first of its kind in Kenya and is being produced by the Kenya Television Service.

LOCAL TALENT

Local television programmes will be a series of short films, each about five minutes long. It is the first of its kind in Kenya and is being produced by the Kenya Television Service.

ANIMAL STORIES

Animal stories will be a series of short films, each about five minutes long. It is the first of its kind in Kenya and is being produced by the Kenya Television Service.

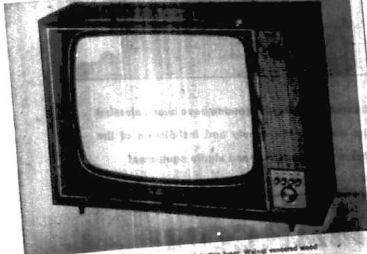
JACK IN THE BOX

Children's programmes will be a series of short films, each about five minutes long. It is the first of its kind in Kenya and is being produced by the Kenya Television Service.

BUSH
TV
FOR RELIABILITY AND SERVICE

Million set reliability
Bush TV sets are made to last - made to give you many years of trouble-free viewing. More Bush TV sets are working in homes in U.K. than any other make. Advanced production techniques and the best materials are used to ensure the best picture quality plus extra reliability.

On the spot service
A fully equipped Bush Service Department has been set up in Nairobi staffed by skilled engineers. All enquiries related to Bush factories in prominent towns. Efficient after-sales servicing in Kenya. Whichever your name Bush will be on hand to help.



TV 18A, 17 Model. Twelve push-button bands. Walnut veneered wood cabinet. Fully automatic. A.C.D.C. 250-250V. 50 c/s. Legs available as optional extra.

Bush Range are proud to announce that their latest range of TV sets is available from
R. O. HAMILTON
(Appointed exclusive Distributor for Kenya)
Twin House, Jambanja Street, P.O. Box 12093, NAIROBI

...and the N.B.C. use
DUPONT
TV FILM
so it MUST be good
Stockists
ZUROBI LIMITED
P.O. BOX 1428 • NAIROBI • PHONE 25297



Mr. P. V. Houston conducts a Nairobi class on television maintenance and repair.

BIG SCREENS



FOR SOCIAL GATHERINGS
PHILIPS TELEVISION
Very competitive cash prices, easy hire-purchase terms, the lowest rental charges

Now is the time to decide on purchasing your TV set. Because the last three weeks have provided a Philips set gives the best and the brightest picture. Philips big screens are not more expensive. Prices are very competitive.



TWENTSCHE OVERSEAS TRADING CO. LIMITED
Government Road NAIROBI Phone 27891
Shankaran and Son, C.A. Main Street, Jambanja Street, Jambanja, A. to Z. Electricals Company, Jambanja, and Deacons, Harcourt, Nairobi Commercial Street, Jambanja, and Jambanja.

FRIENDLY COMPETITION WITH SOUND RAY

By A. M. DEAN
K.B.C. Governor of Programme

It is a pleasure to have a friendly competition with the Sound Ray. The programme is a very good one and it is a pleasure to have it on the air. The programme is a very good one and it is a pleasure to have it on the air. The programme is a very good one and it is a pleasure to have it on the air.

MEN BEHIND THE SCENES



Mr. Dick Thomson, Head of the Film Section, busy sorting some of the reels of thousands of feet of film with K.B.C. had assembled.



Mr. Dick Thomson, K.B.C. senior production, at control panel. Mr. Job is to be the new level in 'the'.

Mr. Dick Thomson, K.B.C. senior production, at control panel. Mr. Job is to be the new level in 'the'.



Mr. Dick Thomson, K.B.C. senior production, at control panel. Mr. Job is to be the new level in 'the'.

Checking on the reels



Mr. Dick Thomson, Head of the Film Section, busy sorting some of the reels of thousands of feet of film with K.B.C. had assembled.

PAN
big screen television perfection
Model 1731/C

With the new Model X 1731/C television receiver, you get the best of both worlds. The big screen television perfection of the PAN big screen television perfection. The big screen television perfection of the PAN big screen television perfection.

.....but people prefer



because

1. their quality is world famous.
2. prices suit every pocket.
3. their modern sets give excellent reception.
4. trouble-free viewing is assured.
5. knowledgeable K.B.C. and Post Office engineers use them for monitoring.

Visit our Stand No. 544 545 at the Royal Show for details at the Free Television Competition.



TELEVISION
Service assured!

Sole importers:
JOS. HANSEN & SOEHNE (E.A.) LTD.

Obtain your PYE TELEVISION Set at:
KETTLES-ROY & TYSONS LTD. or **BREYER LIMITED**
CHESTER HOUSE, BADLER STREET HARDINGE STREET

UNIQUE ASPECT

The unique aspect of the PYE television set is its ability to provide a clear and sharp picture. The unique aspect of the PYE television set is its ability to provide a clear and sharp picture.

NORDMENDE
for



TELEVISION SETS

by



Nordmende television enjoys a world-wide reputation for advanced engineering, embodying the highest quality of German craftsmanship. Brilliant viewing image, magnificent tone and sturdy construction. That is a Nordmende TV Set.

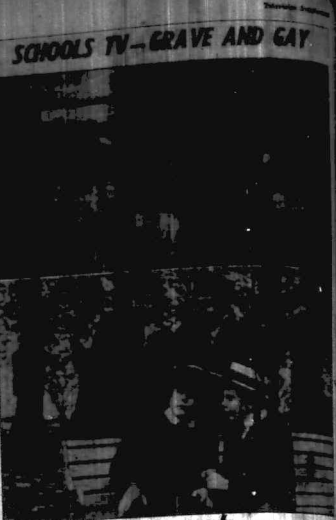
WM. OSWALD & CO. (E.A.) LTD.
P.O. BOX 1726 P.O. BOX 2287
MOMBASA NAIROBI

Programmes for opening week

MONDAY	TUESDAY	WEDNESDAY	THURSDAY	FRIDAY
6.30 STATION OPENING Cereemony By R.E. Dorman General, Mr. Patrick TULL, Chairman Kingsway Radio	6.30 NEWS Current news The 10 o'clock news	6.30 NEWS Current news The 10 o'clock news	6.30 NEWS Current news The 10 o'clock news	6.30 NEWS Current news The 10 o'clock news
6.50 TELEVISION AND THE WORLD Impact of TV on people of all ages - discussion by four students	6.50 NEWS Current news The 10 o'clock news	6.50 NEWS Current news The 10 o'clock news	6.50 NEWS Current news The 10 o'clock news	6.50 NEWS Current news The 10 o'clock news
7.00 HERE AND THERE Local interest pro- gramme - produced by Nairobi. Including Mr. Munyizi's garden- ing tips and guitar solo by Edward Munyizi	7.00 NEWS Current news The 10 o'clock news	7.00 NEWS Current news The 10 o'clock news	7.00 NEWS Current news The 10 o'clock news	7.00 NEWS Current news The 10 o'clock news
7.30 BANAZA Features Edwards	7.30 NEWS Current news The 10 o'clock news	7.30 NEWS Current news The 10 o'clock news	7.30 NEWS Current news The 10 o'clock news	7.30 NEWS Current news The 10 o'clock news
7.50 TAB SHORTER SHOW Today's episode - "For money or love"	7.50 NEWS Current news The 10 o'clock news	7.50 NEWS Current news The 10 o'clock news	7.50 NEWS Current news The 10 o'clock news	7.50 NEWS Current news The 10 o'clock news
8.15 THE THIRD MAN Episodes in the life of "Harry Lime" starring Michael Redgrave Episode One - "Bad Company"	8.15 NEWS Current news The 10 o'clock news	8.15 NEWS Current news The 10 o'clock news	8.15 NEWS Current news The 10 o'clock news	8.15 NEWS Current news The 10 o'clock news
8.45 SPORTS CLUB Football Coverage and E.R. Cahill	8.45 NEWS Current news The 10 o'clock news	8.45 NEWS Current news The 10 o'clock news	8.45 NEWS Current news The 10 o'clock news	8.45 NEWS Current news The 10 o'clock news
10.00 SIR LANCELOT "Columbus"	10.00 NEWS Current news The 10 o'clock news	10.00 NEWS Current news The 10 o'clock news	10.00 NEWS Current news The 10 o'clock news	10.00 NEWS Current news The 10 o'clock news
10.30 CLOSE	10.30 CLOSE	10.30 CLOSE	10.30 CLOSE	10.30 CLOSE



Training - Sir Lancelot will make himself available to the public on Saturdays with the "Columbus".



Helping education

(Continued from Page 1, Box 2)

ability at the expense of their security. By their standards we know things and we are confident, if I understand any guide, that we shall give better service than is available in any other part of the world.

It is important that we should be able to do this. In the past, the local scene and its portrayal in the media have been a major part of our life. It is not only our own life that we have never been an easy task.

It is important that we should be able to do this. In the past, the local scene and its portrayal in the media have been a major part of our life. It is not only our own life that we have never been an easy task.

STARS ON OUR DOORSTEP



NAIROBI is the advertising capital of Kenya. It is the place where the stars of the television screen are seen by the people of Kenya. It is the place where the stars of the television screen are seen by the people of Kenya.

It is the place where the stars of the television screen are seen by the people of Kenya. It is the place where the stars of the television screen are seen by the people of Kenya.

10 GOOD REASONS WHY FERGUSON SHOULD BE YOUR TV CHOICE

- CASH DISCOUNT FOR OUTHRIGHT PURCHASE**
- YOU CAN HIRE FOR 3 MONTHS AND THEN PURCHASE, WITH RENTAL CREDITED TO CASH PRICE**
- EASY HIRE-PURCHASE TERMS**
- FACTORY-BACKED SERVICE BY EUROPEAN Ferguson ENGINEER**
- GUARANTEED RE-PURCHASE PRICE**
- PROTECTION PLAN AVAILABLE TO COVER SERVICE PROBLEMS INCLUDING CATHODE TUBE, AT NOMINAL PREMIUM**
- 12 MONTHS COMPREHENSIVE GUARANTEE**
- BRITISH MANUFACTURE**
- COMPETITIVE PRICES**
- SETS DEMONSTRATED AT YOUR HOME WITHOUT OBLIGATION TO PURCHASE**

KINGSWAY RADIO AND REFRIGERATION LIMITED
P.O. Box 183 • STEWART STREET • NAIROBI • TELEPHONE Nos. 22144 and 22467

Dealers:
Messrs. EQUIPMENT LTD.
Sudler Street
P.O. Box 30110
Nairobi

Messrs. CASSIM'S
Herdings Street
Next to E.A. Power
& Lighting Co. Ltd.
P.O. Box 12
Nairobi

Congratulations

to Kenya on the opening of its own television station

The pictures you will see on Kenya TV will be lit by

MOLE-RICHARDSON LIGHTING

—the lighting equipment used in film and television studios throughout the world



MOLE-RICHARDSON (ENGLAND) LTD. Chase Road, London N.W.10 England Phone EL.Gar.6384

Grants: MOLEERENG LONDON, ITALY, France, British companies in Germany, Italy, Spain and Austria.

One of the lighting fittings installed by Kenya TV Altogether 50 Made Richardson lamps of four types have been supplied

WOMEN AT

San rewards optimists

The new law has given a couple of months more to the Royal Society, the interest of which is the state of the law. The Royal Society has been advised that it is not to be dissolved until it is reformed. The Royal Society has been advised that it is not to be dissolved until it is reformed. The Royal Society has been advised that it is not to be dissolved until it is reformed.

KIBBITZ MOOD
The women at the Royal Society have been advised that it is not to be dissolved until it is reformed. The Royal Society has been advised that it is not to be dissolved until it is reformed. The Royal Society has been advised that it is not to be dissolved until it is reformed.

However, a pair of Jews, who are the only Jews in the Royal Society, have been advised that it is not to be dissolved until it is reformed. The Royal Society has been advised that it is not to be dissolved until it is reformed. The Royal Society has been advised that it is not to be dissolved until it is reformed.

WARM WORK
The women at the Royal Society have been advised that it is not to be dissolved until it is reformed. The Royal Society has been advised that it is not to be dissolved until it is reformed. The Royal Society has been advised that it is not to be dissolved until it is reformed.

SOLO EFFORT
The women at the Royal Society have been advised that it is not to be dissolved until it is reformed. The Royal Society has been advised that it is not to be dissolved until it is reformed. The Royal Society has been advised that it is not to be dissolved until it is reformed.

SELF-TAUGHT
Mrs. Randall, who has lived in Kenya for 28 years, has been advised that it is not to be dissolved until it is reformed. The Royal Society has been advised that it is not to be dissolved until it is reformed. The Royal Society has been advised that it is not to be dissolved until it is reformed.

She is a short stout woman wearing a white, trimmed with black, dress. The dress has a matching short black belt. She is smiling and looking towards the camera.

Growing by leaps and bounds!

Children who get all their energy! The secret is in their blood. HALIBORANGE every day! It gives you the vitamins A, D, E and Calcium necessary for healthy baby and strong mother.

Haliborange

Children love its sweet, flavoured taste.

Haliborange

Children love its sweet, flavoured taste.

Haliborange

Children love its sweet, flavoured taste.

SHOW Uganda package tour safaris under fire

Uganda's new package touring industry is under fire. The industry has been criticized for its high prices and for the fact that it is not providing enough jobs for the local population.

JOHN ELGON'S Frigid Diary

Mr. Elgon's diary is a collection of his experiences in the Arctic. It is a humorous and informative account of his adventures in the frozen north.

THE New General Office

The new general office has been established in London. It will be responsible for the management of the company's affairs in the United Kingdom.

CATERING

The catering industry in London is growing rapidly. There are now many more restaurants and hotels than there were a few years ago.

300 CHICKS

A group of 300 chicks has been rescued from a fire in a farm. The chicks were found in a barn that had been destroyed by the fire.

Mr. T. F. F. F.

Mr. T. F. F. F. is a well-known figure in the community. He has been involved in many charitable activities and has been a member of several committees.

ODO-RO-DO

Now Stick Deodorant

Simply press, twist, snap, and stick goes on... really to protect your armpits...

• sticks persistently
• safe when leaving hands
• leaves your armpits soft and smooth
• does not irritate, applied to sensitive armpits
• does not stain
• can be used on any part of the body
• does not dry out

—Your nearest druggist! Also available at a chemist or grocer.

WHITE

CREAM TANNING

(Rheophyllin based colorants, food)

LAVEL

FOR THE EASIEST FACIALLY WASH!

3 SCORCHING TREAT FOR EXTRA AIRPORT

LIFE YOUNGER

To all over 40 with a new start with **MU-CELL**

SKIN TROUBLE GONE!

FITZPATRICK & NICHOLSON LTD.

25, Abchurch Lane, London, E.C. 4

CHERRY ORCHARD ESTATE, NEAR WHITEHALL, LONDON

HINDS Baby Cereal

MIXED CEREAL

8 OZ. NET

If your baby is 2 to 3 months old it's time to serve a cereal!

Not a "grown up" cereal, but a smooth and creamy pre-cooked cereal developed just for babies. Hinds Baby Cereals give babies the nourishment they need, with the flavours that they love—such a satisfying way to introduce solids!

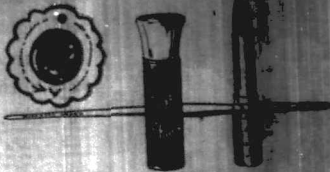
Ask your chemist or store for Hinds Baby Cereals—there are five delicious varieties to choose from, babies love them and thrive on them!

POST THIS COUPON TO: P. F. Muller & Co. Ltd., P.O. Box 938, MARLBOROUGH Road and the Free Dispensary on Highgate and the Hinds Baby Cereal Factory, Bostick containing recipes for appealing and nourishing meals for baby.

NAME: _____

ADDRESS: _____

HINDS BABY CEREALS MADE BY THE MARGERS OF THE FAMOUS BABY FOOD MOTHERBIRD



MAKING EYES BY Elizabeth Arden



Eye makeup is all-important. Big, colored eyes are beauty to the face. Here are the secret steps of giving reflected color and making the eyes appear larger.

To bring Elizabeth Arden Black Eye Shade to subtle color on the face, there should be the proper care of the eyebrows and approach. First, with color along the upper lid, ridges to the lashes. It is easy to draw a smooth clear line with the black brush, avoid it will not smudge.

Then define your eyebrows with Eyebrow Pencil, with this beautiful action. Give pencil a good choice for any except very dark brows.

Finally, apply cosmetics thickly to the upper lashes to give you complete eye beauty.

- Liquid Eye Shade
- Perly Liquid Eye Shade
- Stick Eye Shade
- Cream Eye Shade
- Eyebrow Pencil
- Comiqueur

Distributor from authorized local distributors
HOWSE & McGEORGE LTD NAIROBI
Incorporated in Kenya General Agents for Elizabeth Arden

Kenya church services

PROTESTANT
St. Paul's Church, Nairobi, 8.30 a.m. and 10.30 a.m. (English and Kisumu).
St. Paul's Church, Kisumu, 8.30 a.m. and 10.30 a.m. (English and Kisumu).
St. Paul's Church, Mombasa, 8.30 a.m. and 10.30 a.m. (English and Kisumu).
St. Paul's Church, Malindi, 8.30 a.m. and 10.30 a.m. (English and Kisumu).
St. Paul's Church, Lamu, 8.30 a.m. and 10.30 a.m. (English and Kisumu).
St. Paul's Church, Taita, 8.30 a.m. and 10.30 a.m. (English and Kisumu).
St. Paul's Church, Kilifi, 8.30 a.m. and 10.30 a.m. (English and Kisumu).
St. Paul's Church, Pate, 8.30 a.m. and 10.30 a.m. (English and Kisumu).
St. Paul's Church, Lamu, 8.30 a.m. and 10.30 a.m. (English and Kisumu).
St. Paul's Church, Taita, 8.30 a.m. and 10.30 a.m. (English and Kisumu).
St. Paul's Church, Kilifi, 8.30 a.m. and 10.30 a.m. (English and Kisumu).
St. Paul's Church, Pate, 8.30 a.m. and 10.30 a.m. (English and Kisumu).

FREE SEED ISSUE TO COTTON GROWERS

A notice to tens of thousands of cotton growers in Kenya, is to be issued by the Cotton and Seed Marketing Board, the seed issue to be made in the month of October.

The seed to be issued is of the variety known as 'Cotton 40', which is a cross between the 'Cotton 30' and 'Cotton 50' varieties. It is a high yielding variety and is well adapted to the conditions of Kenya.

Off to the party

Bob Hope, the comedian, will be in Kenya for the first time in his career. He will be touring the country with his troupe of comedians and dancers.

No business like...

...the business of insurance. The insurance industry in Kenya is a highly competitive one and is expected to continue to grow in the future.

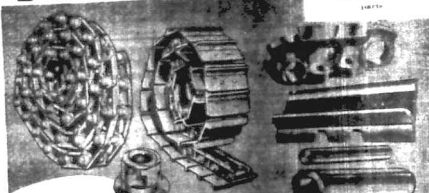
EAA INFORMATION COL

BANK HOLIDAY EXCURSIONS
SERENGETI GAME PARK
SUNDAY FLIGHTS
SHE. 17/-
RETURN FROM NAIROBI

Up-Country
The East-India Tourist
Excursion Fare
to JOHANNESBURG
via NAIROBI
by EAA COMET 4
is only £57.75

Fly among friends by EAST AFRICAN AIRWAYS

TRACK YOU CAN TRUST



WHY CAN WE UNDERCUT THE TRACTOR-NAME FACTORY?

We can you kindly to study the matter, and realize the reason for our being able to undercut on thoroughly the tractor-name factory is that although our parts may well be, and in some cases we believe actually are, made in the same works and in the same quantities as the parts sold under the tractor-name name, they are, however, made in a different way. We are not making a tractor-name part, we are making a part that is exactly the same as the part that the tractor-name factory makes, but we are making it in a way that allows us to undercut on the price.

WHY waste time and money on RE-BUILDING worn parts when you can buy NEW TRACK parts for LESS COST? SAVE now in buying LIFETIME GREASE HOLES for D4, D6, D7 and D8 tractors - FIRST TIME IN THE MARKET.

TRACTOR & MACHINERY LTD.
16/10/62 P.O. BOX 8100
Nairobi

For CATERPILLAR INTERNATIONAL ALLIS CHALMER CRAWLER TRACTORS FIRST compare our prices for these guaranteed and genuine products.

They were thinking of East Africa...



... when they thought of THE NEW SIMCA MILLE!

A sparkling rear-mounted ENGINE, fully synchromesh in all four gears, that gives a top speed of nearly eighty. A roomy body with a BOOT-IN-THE-BENNET that provides easily accessible space for all that salar luggage. All-round independent SUSPENSION for a magic smooth ride without 'hoo'. Exceptional VISIBILITY (the largest area of glass of any car in its category), with windscreen wipers a standard fitting.

Multi-Color DASHBOARD that does not glare - a TURNING-RADIUS of only 10 feet. A chrome-plated BUMPER with rubber padding. A high-capacity BATTERY and generator. And many other features and a million others go to make Simca Mille the car that's built for a million uses. Salari through Law - legal by the development engineers.

See, drive and fall in love with the new Simca Mille at Twentech Overseas Trading Co. Ltd. (Incorporated in the Netherlands) Distributors in East Africa

SIMCA MILLE - £666

WANTED
RENTS
ENGAGEMENTS
MARRIAGES
SILVER WEDDING
DEATHS
TRAVEL
IN MEMORIAM
PERSONAL

WANTED
 Domestic
REMOVALS
SECRETARIAL SERVICES
 Domestic
FOR GARDENERS
BUILDING MATERIALS
PERWOOD

TRAVEL
 Domestic
 Private

MEMORIALS
PACKING
MACHINERY WANTED

MOTOR VEHICLES
 Motor Vehicles for Sale
 Motor Vehicles for Hire
 Motor Vehicles for Lease
 Motor Vehicles for Rent
 Motor Vehicles for Sale
 Motor Vehicles for Hire
 Motor Vehicles for Lease
 Motor Vehicles for Rent

Car Hire, Lease
Car Hire, Owners
For Motocycle
Trucks

Champagne-caviar
A C.M.C. used car
Ag pleez deddy—
What more could you want!

C.M.C. 1961 Volkswagen Executive 4dr	£390
C.M.C. 1959 Land-Rover 100" station wagon	£680
Willys Jeep 4 x 4 22-cu-in. box or van	£600
C.M.C. 1959 Holden station wagon — well maintained	£480
C.M.C. 1961 Volkswagen sedan	£480
C.M.C. 1960 Opel Corsa	£325
C.M.C. 1959 Land-Rover 100" pick-up	£400
C.M.C. 1960 DKW Auto-Union saloon	£410
C.M.C. 1959 Holden station wagon	£480
C.M.C. 1960 Opel Olympia panel van	£380
C.M.C. 1960 Ford 600 saloon — Metal roofed car	£380
C.M.C. 1958 Ford Zephyr saloon — careful owner	£395
C.M.C. 1959 Volkswagen saloon	£355
C.M.C. 1959 Volkswagen saloon	£330

Many other interesting cars offered.
 Immediate Hire-purchase terms can be arranged.
 Part exchange taken.

Call or say time between 1 p.m. and 6 p.m., week-days

AUTORAMA
 NEXT TO CONNORRY ROAD
 WHITEHORN ROAD TELEPHONE 3715
 WALSLEY

PETS & LIVESTOCK
Cats
Dogs
Horses
Kenels
Poultry
Pets
Private

Hotels and Boarding Houses
Hotels
Boarding Houses
Hotels
Boarding Houses
Hotels
Boarding Houses

Rooms for Sale
Rooms to Let
Rooms for Let
Rooms to Let
Rooms for Let
Rooms to Let

Businesses for Sale
Businesses for Sale
Businesses for Sale
Businesses for Sale
Businesses for Sale
Businesses for Sale

Preparation Wanted
Preparation Wanted
Preparation Wanted
Preparation Wanted
Preparation Wanted
Preparation Wanted

INTERRUPTION OF ELECTRICITY SUPPLY

NOTICE is hereby given under Rule 27 of the Electric Power Rules that the Electricity Supply will be interrupted as under:

AREA—Victoria Street—Government Road Victoria Street from Whitehorse Road to Bevis Road including Three Bells Restaurant, Duke Street from Victoria Street to Government Road including Cameron's Court, East side of Government Road from Whitehorse Road to Short Street, Victoria Arms House, Church of St. James, House of Commons, Victoria Street from Victoria Street to Longwood Avenue including NAAPF, Carriage, Labour Office and adjacent premises.

HOURS—Between 9 a.m. and 3 p.m.

DATE—Sunday, September 30, 1962

TEMPORARY INTERRUPTIONS—Campana, Ribera Avenue Victoria Street Area, The Royal Automobile Club, Regency Hotel, Longwood Avenue from Campana Ribera Avenue to Drive Road, Ribera Road from Drive Road to Campana Ribera Avenue and adjacent premises.

HOURS—Between 9 and 9.30 a.m. and 1.30 and 1.45 p.m.

PURPOSE—P.V. and L.V. alterations.

AREA—Armagh Street—Salisbury Street Jerseyway Street from Trinity Road to Campus Ribera Avenue, including Clark's and Victoria Court Building, Salisbury Street, Salisbury Lane, Railway Building, Equipment and Motor Vehicle, Malpas, Malpas Auto Service and adjacent premises.

HOURS—Between 9 and 11 a.m.

PURPOSE—P.V. and L.V. alterations.

THE EAST AFRICAN POWER & LIGHTING COMPANY, LIMITED, TEL. 21251

TODAY'S RADIO PROGRAMME

FRIDAY, SEPTEMBER 28, 1962

K.B.C. GENERAL SERVICE
 6.15 a.m. — *Radio Wake Up*
 7.00 a.m. — *Radio News*
 7.15 a.m. — *Let's Get Up*
 7.30 a.m. — *Radio News*
 8.00 a.m. — *Radio News*
 8.15 a.m. — *Radio News*
 8.30 a.m. — *Radio News*
 8.45 a.m. — *Radio News*
 9.00 a.m. — *Radio News*
 9.15 a.m. — *Radio News*
 9.30 a.m. — *Radio News*
 9.45 a.m. — *Radio News*
 10.00 a.m. — *Radio News*
 10.15 a.m. — *Radio News*
 10.30 a.m. — *Radio News*
 10.45 a.m. — *Radio News*
 11.00 a.m. — *Radio News*
 11.15 a.m. — *Radio News*
 11.30 a.m. — *Radio News*
 11.45 a.m. — *Radio News*
 12.00 p.m. — *Radio News*
 12.15 p.m. — *Radio News*
 12.30 p.m. — *Radio News*
 12.45 p.m. — *Radio News*
 1.00 p.m. — *Radio News*
 1.15 p.m. — *Radio News*
 1.30 p.m. — *Radio News*
 1.45 p.m. — *Radio News*
 2.00 p.m. — *Radio News*
 2.15 p.m. — *Radio News*
 2.30 p.m. — *Radio News*
 2.45 p.m. — *Radio News*
 3.00 p.m. — *Radio News*
 3.15 p.m. — *Radio News*
 3.30 p.m. — *Radio News*
 3.45 p.m. — *Radio News*
 4.00 p.m. — *Radio News*
 4.15 p.m. — *Radio News*
 4.30 p.m. — *Radio News*
 4.45 p.m. — *Radio News*
 5.00 p.m. — *Radio News*
 5.15 p.m. — *Radio News*
 5.30 p.m. — *Radio News*
 5.45 p.m. — *Radio News*
 6.00 p.m. — *Radio News*
 6.15 p.m. — *Radio News*
 6.30 p.m. — *Radio News*
 6.45 p.m. — *Radio News*
 7.00 p.m. — *Radio News*
 7.15 p.m. — *Radio News*
 7.30 p.m. — *Radio News*
 7.45 p.m. — *Radio News*
 8.00 p.m. — *Radio News*
 8.15 p.m. — *Radio News*
 8.30 p.m. — *Radio News*
 8.45 p.m. — *Radio News*
 9.00 p.m. — *Radio News*
 9.15 p.m. — *Radio News*
 9.30 p.m. — *Radio News*
 9.45 p.m. — *Radio News*
 10.00 p.m. — *Radio News*
 10.15 p.m. — *Radio News*
 10.30 p.m. — *Radio News*
 10.45 p.m. — *Radio News*
 11.00 p.m. — *Radio News*
 11.15 p.m. — *Radio News*
 11.30 p.m. — *Radio News*
 11.45 p.m. — *Radio News*
 12.00 a.m. — *Radio News*
 12.15 a.m. — *Radio News*
 12.30 a.m. — *Radio News*
 12.45 a.m. — *Radio News*
 1.00 a.m. — *Radio News*
 1.15 a.m. — *Radio News*
 1.30 a.m. — *Radio News*
 1.45 a.m. — *Radio News*
 2.00 a.m. — *Radio News*
 2.15 a.m. — *Radio News*
 2.30 a.m. — *Radio News*
 2.45 a.m. — *Radio News*
 3.00 a.m. — *Radio News*
 3.15 a.m. — *Radio News*
 3.30 a.m. — *Radio News*
 3.45 a.m. — *Radio News*
 4.00 a.m. — *Radio News*
 4.15 a.m. — *Radio News*
 4.30 a.m. — *Radio News*
 4.45 a.m. — *Radio News*
 5.00 a.m. — *Radio News*
 5.15 a.m. — *Radio News*
 5.30 a.m. — *Radio News*
 5.45 a.m. — *Radio News*
 6.00 a.m. — *Radio News*

K.B.C. ASIAN
 6.15 a.m. — *Radio Wake Up*
 7.00 a.m. — *Radio News*
 7.15 a.m. — *Let's Get Up*
 7.30 a.m. — *Radio News*
 8.00 a.m. — *Radio News*
 8.15 a.m. — *Radio News*
 8.30 a.m. — *Radio News*
 8.45 a.m. — *Radio News*
 9.00 a.m. — *Radio News*
 9.15 a.m. — *Radio News*
 9.30 a.m. — *Radio News*
 9.45 a.m. — *Radio News*
 10.00 a.m. — *Radio News*
 10.15 a.m. — *Radio News*
 10.30 a.m. — *Radio News*
 10.45 a.m. — *Radio News*
 11.00 a.m. — *Radio News*
 11.15 a.m. — *Radio News*
 11.30 a.m. — *Radio News*
 11.45 a.m. — *Radio News*
 12.00 p.m. — *Radio News*
 12.15 p.m. — *Radio News*
 12.30 p.m. — *Radio News*
 12.45 p.m. — *Radio News*
 1.00 p.m. — *Radio News*
 1.15 p.m. — *Radio News*
 1.30 p.m. — *Radio News*
 1.45 p.m. — *Radio News*
 2.00 p.m. — *Radio News*
 2.15 p.m. — *Radio News*
 2.30 p.m. — *Radio News*
 2.45 p.m. — *Radio News*
 3.00 p.m. — *Radio News*
 3.15 p.m. — *Radio News*
 3.30 p.m. — *Radio News*
 3.45 p.m. — *Radio News*
 4.00 p.m. — *Radio News*
 4.15 p.m. — *Radio News*
 4.30 p.m. — *Radio News*
 4.45 p.m. — *Radio News*
 5.00 p.m. — *Radio News*
 5.15 p.m. — *Radio News*
 5.30 p.m. — *Radio News*
 5.45 p.m. — *Radio News*
 6.00 p.m. — *Radio News*
 6.15 p.m. — *Radio News*
 6.30 p.m. — *Radio News*
 6.45 p.m. — *Radio News*
 7.00 p.m. — *Radio News*
 7.15 p.m. — *Radio News*
 7.30 p.m. — *Radio News*
 7.45 p.m. — *Radio News*
 8.00 p.m. — *Radio News*
 8.15 p.m. — *Radio News*
 8.30 p.m. — *Radio News*
 8.45 p.m. — *Radio News*
 9.00 p.m. — *Radio News*
 9.15 p.m. — *Radio News*
 9.30 p.m. — *Radio News*
 9.45 p.m. — *Radio News*
 10.00 p.m. — *Radio News*
 10.15 p.m. — *Radio News*
 10.30 p.m. — *Radio News*
 10.45 p.m. — *Radio News*
 11.00 p.m. — *Radio News*
 11.15 p.m. — *Radio News*
 11.30 p.m. — *Radio News*
 11.45 p.m. — *Radio News*
 12.00 a.m. — *Radio News*
 12.15 a.m. — *Radio News*
 12.30 a.m. — *Radio News*
 12.45 a.m. — *Radio News*
 1.00 a.m. — *Radio News*
 1.15 a.m. — *Radio News*
 1.30 a.m. — *Radio News*
 1.45 a.m. — *Radio News*
 2.00 a.m. — *Radio News*
 2.15 a.m. — *Radio News*
 2.30 a.m. — *Radio News*
 2.45 a.m. — *Radio News*
 3.00 a.m. — *Radio News*
 3.15 a.m. — *Radio News*
 3.30 a.m. — *Radio News*
 3.45 a.m. — *Radio News*
 4.00 a.m. — *Radio News*
 4.15 a.m. — *Radio News*
 4.30 a.m. — *Radio News*
 4.45 a.m. — *Radio News*
 5.00 a.m. — *Radio News*

K.B.C. AFRICAN
 6.15 a.m. — *Radio Wake Up*
 7.00 a.m. — *Radio News*
 7.15 a.m. — *Let's Get Up*
 7.30 a.m. — *Radio News*
 8.00 a.m. — *Radio News*
 8.15 a.m. — *Radio News*
 8.30 a.m. — *Radio News*
 8.45 a.m. — *Radio News*
 9.00 a.m. — *Radio News*
 9.15 a.m. — *Radio News*
 9.30 a.m. — *Radio News*
 9.45 a.m. — *Radio News*
 10.00 a.m. — *Radio News*
 10.15 a.m. — *Radio News*
 10.30 a.m. — *Radio News*
 10.45 a.m. — *Radio News*
 11.00 a.m. — *Radio News*
 11.15 a.m. — *Radio News*
 11.30 a.m. — *Radio News*
 11.45 a.m. — *Radio News*
 12.00 p.m. — *Radio News*
 12.15 p.m. — *Radio News*
 12.30 p.m. — *Radio News*
 12.45 p.m. — *Radio News*
 1.00 p.m. — *Radio News*
 1.15 p.m. — *Radio News*
 1.30 p.m. — *Radio News*
 1.45 p.m. — *Radio News*
 2.00 p.m. — *Radio News*
 2.15 p.m. — *Radio News*
 2.30 p.m. — *Radio News*
 2.45 p.m. — *Radio News*
 3.00 p.m. — *Radio News*
 3.15 p.m. — *Radio News*
 3.30 p.m. — *Radio News*
 3.45 p.m. — *Radio News*
 4.00 p.m. — *Radio News*
 4.15 p.m. — *Radio News*
 4.30 p.m. — *Radio News*
 4.45 p.m. — *Radio News*
 5.00 p.m. — *Radio News*
 5.15 p.m. — *Radio News*
 5.30 p.m. — *Radio News*
 5.45 p.m. — *Radio News*
 6.00 p.m. — *Radio News*
 6.15 p.m. — *Radio News*
 6.30 p.m. — *Radio News*
 6.45 p.m. — *Radio News*
 7.00 p.m. — *Radio News*
 7.15 p.m. — *Radio News*
 7.30 p.m. — *Radio News*
 7.45 p.m. — *Radio News*
 8.00 p.m. — *Radio News*
 8.15 p.m. — *Radio News*
 8.30 p.m. — *Radio News*
 8.45 p.m. — *Radio News*
 9.00 p.m. — *Radio News*
 9.15 p.m. — *Radio News*
 9.30 p.m. — *Radio News*
 9.45 p.m. — *Radio News*
 10.00 p.m. — *Radio News*
 10.15 p.m. — *Radio News*
 10.30 p.m. — *Radio News*
 10.45 p.m. — *Radio News*
 11.00 p.m. — *Radio News*
 11.15 p.m. — *Radio News*
 11.30 p.m. — *Radio News*
 11.45 p.m. — *Radio News*
 12.00 a.m. — *Radio News*
 12.15 a.m. — *Radio News*
 12.30 a.m. — *Radio News*
 12.45 a.m. — *Radio News*
 1.00 a.m. — *Radio News*
 1.15 a.m. — *Radio News*
 1.30 a.m. — *Radio News*
 1.45 a.m. — *Radio News*
 2.00 a.m. — *Radio News*
 2.15 a.m. — *Radio News*
 2.30 a.m. — *Radio News*
 2.45 a.m. — *Radio News*
 3.00 a.m. — *Radio News*
 3.15 a.m. — *Radio News*
 3.30 a.m. — *Radio News*
 3.45 a.m. — *Radio News*
 4.00 a.m. — *Radio News*
 4.15 a.m. — *Radio News*
 4.30 a.m. — *Radio News*
 4.45 a.m. — *Radio News*
 5.00 a.m. — *Radio News*

YOUR SHOPPING GUIDE

Advertisement for 'YOUR SHOPPING GUIDE' listing various services and businesses.

LEOS AUCTION MARKET LIMITED

Advertisement for Leos Auction Market Limited, listing various items for sale.

Advertisement for 'THIRK & AUCIONERS AND GENERAL MERCHANTS'.

Advertisement for 'LEOS AUCTION MARKET LIMITED'.

Advertisement for 'JAMAL FIRBAH AND SONS'.

Advertisement for 'LEOS AUCTION MARKET LIMITED'.

Advertisement for 'K.F.A. (Chester's Auctioneers) Ltd.'.

Advertisement for 'LEOS AUCTION MARKET LIMITED'.

Advertisement for 'OSMAN ALI AND CO. LTD.'.

Advertisement for 'Machinery for Sale'.

LEOS AUCTION MARKET LIMITED

Advertisement for Leos Auction Market Limited, listing various items for sale.

Advertisement for 'LEOS AUCTION MARKET LIMITED'.

Advertisement for 'LEOS AUCTION MARKET LIMITED'.

Advertisement for 'LEOS AUCTION MARKET LIMITED'.

Advertisement for 'LEOS AUCTION MARKET LIMITED'.

Advertisement for 'LEOS AUCTION MARKET LIMITED'.

Advertisement for 'LEOS AUCTION MARKET LIMITED'.

Advertisement for 'Machinery for Sale'.

Advertisement for 'Machinery for Sale'.

MUTAN AND HOW-ALL LIMITED

Advertisement for Mutan and How-All Limited, listing various items for sale.

Advertisement for 'J. F. MILLIGAN'.

Advertisement for 'R. R. OSWALD AND COMPANY'.

Advertisement for 'GEORGE A. TYSON'.

Advertisement for 'LEOS AUCTION MARKET LIMITED'.

Advertisement for 'LEOS AUCTION MARKET LIMITED'.

Advertisement for 'LEOS AUCTION MARKET LIMITED'.

Advertisement for 'Machinery for Sale'.

Advertisement for 'Machinery for Sale'.

SAUSAGE AND SEAR LIMITED

Advertisement for Sausage and Sear Limited, listing various items for sale.

Advertisement for 'HIGGINSON WISEMAN & CO. LTD.'.

Advertisement for 'FULLER'S AUCTIONS'.

Advertisement for 'FULLER'S AUCTIONS'.

Advertisement for 'FULLER'S AUCTIONS'.

Advertisement for 'FULLER'S AUCTIONS'.

Advertisement for 'FULLER'S AUCTIONS'.

Advertisement for 'FULLER'S AUCTIONS'.

Advertisement for 'FULLER'S AUCTIONS'.

ROYAL SERVICE

Advertisement for Royal Service, listing various items for sale.

Advertisement for 'ROYAL SERVICE'.

Advertisement for 'ROYAL SERVICE'.

Advertisement for 'ROYAL SERVICE'.

Advertisement for 'ROYAL SERVICE'.

Advertisement for 'ROYAL SERVICE'.

Advertisement for 'ROYAL SERVICE'.

Advertisement for 'ROYAL SERVICE'.

Advertisement for 'ROYAL SERVICE'.

ROYAL SERVICE

Advertisement for Royal Service, listing various items for sale.

Advertisement for 'ROYAL SERVICE'.

Advertisement for 'ROYAL SERVICE'.

Advertisement for 'ROYAL SERVICE'.

Advertisement for 'ROYAL SERVICE'.

Advertisement for 'ROYAL SERVICE'.

Advertisement for 'ROYAL SERVICE'.

Advertisement for 'ROYAL SERVICE'.

Advertisement for 'ROYAL SERVICE'.

ROYAL SERVICE

Advertisement for Royal Service, listing various items for sale.

Advertisement for 'ROYAL SERVICE'.

Advertisement for 'ROYAL SERVICE'.

Advertisement for 'ROYAL SERVICE'.

Advertisement for 'ROYAL SERVICE'.

Advertisement for 'ROYAL SERVICE'.

Advertisement for 'ROYAL SERVICE'.

Advertisement for 'ROYAL SERVICE'.

Advertisement for 'ROYAL SERVICE'.

RANGERS, DUNDEE HIT TROUBLE

GLASGOW RANGERS involved in a level at the end of an afternoon which brought in Colquhoun, Dunfermline, and Dundee. Rangers, who had been in the lead, were hit by a goal from Dunfermline which put them in the lead. Dundee, who had been in the lead, were hit by a goal from Rangers which put them in the lead. Dundee, who had been in the lead, were hit by a goal from Rangers which put them in the lead.

Ibbotson in 'uhuru' race

DUNCAN IBBOTSON is expected to be the first of the 'uhuru' race. Ibbotson is expected to be the first of the 'uhuru' race. Ibbotson is expected to be the first of the 'uhuru' race.

CHAMPION'S FEAT

CHAMPION'S FEAT. CHAMPION'S FEAT. CHAMPION'S FEAT.

I have discovered the I.C.S. to be the best correspondence College

START TODAY - THE I.C.S. WAY
I.C.S. GUARANTEES - WITHIN 30 DAYS - TO RETURN YOUR MONEY IF YOU ARE NOT SATISFIED.

NAME: _____
ADDRESS: _____
CITY: _____
OCCUPATION: _____
I.C.S. Dept. EARLY, 1000 N. G. Ave., Chicago 10, Ill.

INTERNATIONAL CORRESPONDENCE SCHOOLS
Africa's largest correspondence school

Sparkling cricket served up by Cavaliers

Match date... Cavaliers... Sparkling cricket served up by Cavaliers.

KENYA'S STARS FADE

Kenya's stars faded... Kenya's stars faded... Kenya's stars faded.

14 SHORT-LISTED FOR PERTH

14 short-listed for Perth... 14 short-listed for Perth... 14 short-listed for Perth.

U.K. results

U.K. results... U.K. results... U.K. results.

CADDIES LOSE

Caddies lose... Caddies lose... Caddies lose.

TENNIS DATE

Tennis date... Tennis date... Tennis date.

Match date

Match date... Match date... Match date.

THREE TO GO

Three to go... Three to go... Three to go.

BIG DOUBLE CALLOVER

Big double callover... Big double callover... Big double callover.

HEAD LAYS HIS

Head lays his... Head lays his... Head lays his.

FORM HORSES TO FOLLOW

Form horses to follow... Form horses to follow... Form horses to follow.

WILEWOODS 250,000
SOCIETY
SOCIETY
SOCIETY

COPE'S PATENT LONDON ENGLAND
COPE'S PATENT LONDON ENGLAND
COPE'S PATENT LONDON ENGLAND

SWANS LTD.
SWANS LTD.
SWANS LTD.

39 weeks, 31 weeks
-THAT'S HOW PEOPLE SCORE WITH COPE'S
COPE'S
COPE'S

Have you tried the blade your face won't feel



New Blue Gillette EXTRA
Gillette EXTRA
Gillette EXTRA

CITY
LOOK SMART! STAY SMART!
REDUCED IN PRICE DUE TO POPULAR DEMAND AND INCREASED PRODUCTION
Bata NOW 18!



SWANS LTD.
SWANS LTD.
SWANS LTD.