

KENYA NATIONAL ARCHIVES
PHOTOGRAPHIC SERVICE

SECTION 8

REEL No.

148

KENYA NATIONAL ARCHIVES

PHOTOGRAPHIC SERVICE

Description of Document THE EAST AFRICAN STANDARD (MOMBASA TIMES & UGANDA ARGUS)

(Daily Edition)

Covering Dates 1st to 31st December, 1941,

Reference No. From E.A.S. Library.

The following reproduction(s) of document(s), the property of THE KENYA GOVERNMENT have been made by the Photographic Service of the Kenya National Archives solely for the purposes of research, and must not be quoted or otherwise reproduced by any means, either in whole or in part, without the express permission of the Chief Archivist, Office of the Vice-President, P.O. Box 30520, Nairobi, Kenya, to whom all communications respecting this film should be addressed.

Date of Production

6th July 1968.

KENYA GOVERNMENT ARCHIVES

PHOTOGRAPHIC SERVICE

SECTION 8

CONTINUED FROM

REEL No.

147

PROGRESS IN LIBYA El Adem Recaptured

December 10. Reports reaching London today say that our forces in Libya have recaptured El Adem, 20 miles south of Bahra, Hafra and Dousra.

The link up from Tobruk is again established and we are now in control of communications both east and west. Our forces are continuing to attack the enemy's southern flank and pushing it towards the sea.

There is no organized resistance east of the line from Libya have recaptured El Adem, 20 miles south of Bahra, Hafra and Dousra.

MORE WOMEN FOR WAR SERVICE

In the debate on man power in the House of Commons, Mr. Baldwin said that 1,250,000 women had been drafted to the Services and that more than 3,000,000 women were engaged in industry.

U.S. Prince of Wales Resident's Stirring Broadcast To the Nation

U.S. Admiral says that the battleship H.M.S. Prince of Wales and the battle cruiser Repulse have been sunk in Malaya.

U.S. Admiral Hits in AIR ATTACKS BY THE JAPANESE

U.S. Admiral says that the battleship H.M.S. Prince of Wales and the battle cruiser Repulse have been sunk in Malaya.

German Spy Executed

The Home Office announced that a German spy service agent was executed at Wandsworth prison in London this morning.

U.S.A. AND RUSSIA

The State Department in Washington has published the statements of the Russian ambassador in London.

JAPANESE LANDING IN PHILIPPINES

The King this morning sent the following broadcast to Sir Shenton Thomas, the Governor of the Straits Settlements.

Attack On Hongkong Repulsed

The King's message concludes: "I know that the Empire's reliance on your fearless determination, which this onslaught will be fully justified and that with God's help and the devoted service of every man and woman in Malaya you shall contribute to our victory."

RUSSIAN SCORE ANOTHER BIG SUCCESS

The capture of Tavris on the railway to Volodga means yet another failure of the Germans to cut off communications between Lenin and Moscow.

Important Town Captured

The capture of Tavris on the railway to Volodga means yet another failure of the Germans to cut off communications between Lenin and Moscow.

U.S. Admiral Hits in AIR ATTACKS BY THE JAPANESE

U.S. Admiral says that the battleship H.M.S. Prince of Wales and the battle cruiser Repulse have been sunk in Malaya.

U.S. Admiral Hits in AIR ATTACKS BY THE JAPANESE

U.S. Admiral says that the battleship H.M.S. Prince of Wales and the battle cruiser Repulse have been sunk in Malaya.

German Spy Executed

The Home Office announced that a German spy service agent was executed at Wandsworth prison in London this morning.

U.S.A. AND RUSSIA

The State Department in Washington has published the statements of the Russian ambassador in London.

U.S. Admiral Hits in AIR ATTACKS BY THE JAPANESE

U.S. Admiral says that the battleship H.M.S. Prince of Wales and the battle cruiser Repulse have been sunk in Malaya.

U.S. Admiral Hits in AIR ATTACKS BY THE JAPANESE

U.S. Admiral says that the battleship H.M.S. Prince of Wales and the battle cruiser Repulse have been sunk in Malaya.

German Spy Executed

The Home Office announced that a German spy service agent was executed at Wandsworth prison in London this morning.

U.S.A. AND RUSSIA

The State Department in Washington has published the statements of the Russian ambassador in London.

RUSSIAN SCORE ANOTHER BIG SUCCESS

The capture of Tavris on the railway to Volodga means yet another failure of the Germans to cut off communications between Lenin and Moscow.

Important Town Captured

The capture of Tavris on the railway to Volodga means yet another failure of the Germans to cut off communications between Lenin and Moscow.

U.S. Admiral Hits in AIR ATTACKS BY THE JAPANESE

U.S. Admiral says that the battleship H.M.S. Prince of Wales and the battle cruiser Repulse have been sunk in Malaya.

U.S. Admiral Hits in AIR ATTACKS BY THE JAPANESE

U.S. Admiral says that the battleship H.M.S. Prince of Wales and the battle cruiser Repulse have been sunk in Malaya.

U.S. Admiral Hits in AIR ATTACKS BY THE JAPANESE

U.S. Admiral says that the battleship H.M.S. Prince of Wales and the battle cruiser Repulse have been sunk in Malaya.

U.S. Admiral Hits in AIR ATTACKS BY THE JAPANESE

U.S. Admiral says that the battleship H.M.S. Prince of Wales and the battle cruiser Repulse have been sunk in Malaya.

U.S. Admiral Hits in AIR ATTACKS BY THE JAPANESE

U.S. Admiral says that the battleship H.M.S. Prince of Wales and the battle cruiser Repulse have been sunk in Malaya.

U.S. Admiral Hits in AIR ATTACKS BY THE JAPANESE

U.S. Admiral says that the battleship H.M.S. Prince of Wales and the battle cruiser Repulse have been sunk in Malaya.

U.S. Admiral Hits in AIR ATTACKS BY THE JAPANESE

U.S. Admiral says that the battleship H.M.S. Prince of Wales and the battle cruiser Repulse have been sunk in Malaya.

U.S. Admiral Hits in AIR ATTACKS BY THE JAPANESE

U.S. Admiral says that the battleship H.M.S. Prince of Wales and the battle cruiser Repulse have been sunk in Malaya.

U.S. Admiral says that the battleship H.M.S. Prince of Wales and the battle cruiser Repulse have been sunk in Malaya.

U.S. Admiral says that the battleship H.M.S. Prince of Wales and the battle cruiser Repulse have been sunk in Malaya.

U.S. Admiral says that the battleship H.M.S. Prince of Wales and the battle cruiser Repulse have been sunk in Malaya.

U.S. Admiral says that the battleship H.M.S. Prince of Wales and the battle cruiser Repulse have been sunk in Malaya.

U.S. Admiral says that the battleship H.M.S. Prince of Wales and the battle cruiser Repulse have been sunk in Malaya.

ELIMINATE DIGESTIVE TROUBLES

BISMA-REX

It Really Does Give Instant Relief From HEART BURN

INDIGESTION ACIDITY

Price 2/6 & 8/25 per jar

Distributed by: THE REXALL CHEMISTS

A. H. WARDLE & CO., LTD.

5,000 TONS OF GRAPES YEARLY



Every year we press 5,000 Tons of Grapes in our Winery at Tulbagh, Cape. These Grapes are produced in the Witzenberg Valley by the members of our Co-operative Society. No other Grapes are purchased. With your support we shall continue to produce Witzenberg which is South Africa's most popular White Wine.

THE DROSTY CO-OPERATIVE WINERY LTD., Tulbagh, Cape.

WITZENBERG - WINTERHOEK

NOTICE to users of

NUCKET BOOT POLISH

THE GIFT OFFER at present in operation in Kenya will cease on the 31st December, 1944, or at any prior date should gift stocks become exhausted.

R. O. HAMILTON, LIMITED, P.O. Box 375, NAIROBI.



Change the colour of your Car!

Agents throughout the World. Every description of Banking business transacted. CORONATION "The Sundowner"

EMPIRE

NIGHTLY at 8 p.m. Matinee: Saturday, 3.15 p.m. 'The Saint's Double Trouble' with GEORGE SANDERS as Simon Templar

TORR'S HOTEL

DANCING TO-NIGHT SUPPER DANCE 8 p.m. - 11.30 p.m. In Bounds to "Other Banks".

DRINK GOLD SEAL BRANDY

E. K. GREEN'S GOLD SEAL VERY OLD LIQUEUR

POLAROID WILLSON

and CROOKES SUNGLASSES

WOLWORTHS LTD.

WE HAVE ARRIVED including Protective Goggles with leather side shields. V.M. ROWSE LIMITED

NATIONAL BANK OF INDIA LIMITED

Bankers to the Governments of Kenya, Uganda, and Zanzibar

Woolworths Ltd.

WE HAVE LARGE STOCKS AT LOW PRICES. No Increase in Existing Stocks Prices.

XMAS EVE DINNER

Friday, December 26th. A Sunday dinner and Supper Dinner will be held on 22nd till 11 p.m.

NEW YEAR'S EVE

Mr. Green's Band will play the Evening Drive or Uniformed Band.

AERO CLUB OF EAST AFRICA

Members are requested to meet at the Xmas Dinner and Supper which will be held on Friday, 22nd December, 1944, commencing at 7 p.m. for Members and their Guests.

CAPITOL

NIGHTLY at 9 p.m. Matinee: Saturday, 3.15 p.m. 'The Troop's Favourite Donor' GEORGE FORMBY

TONIGHT

BRIGHTEN YOUR DINNER WITH A BOTTLE OF WITZENBERG

GIBBS

TRAVEL ROAD AND WAYS AIR

Engagement and Wedding Rings.

Limited selection now available. Classification as non-essential goods will ensure that orders with our manufacturers in England.

DOBBIES LTD.

Government Road, P.O. Box 53. Phone 2060.

NOTICE

Tenders are invited for the supply of the following: 20,000 Mangrove roofing tiles. Lax. Mombasa.

TAKE NEUROPHOSPHATES

(Elixir Brand)

FOR THAT RUN-DOWN FEELING

Agents: A. H. WARDLE & CO. LTD. The Chemists.

Friday Standard

FRIDAY, DECEMBER 11, 1944.

The Railways And The War

If we want to know how long still is the road we have to travel in East Africa before we have a plain and instinctive understanding of the conditions in which we find ourselves, we need only read the details on the 1944 Budget of the Kenya and Uganda Railways and Harbours.

Woolworths Ltd.

WE HAVE LARGE STOCKS AT LOW PRICES.

XMAS EVE DINNER

Friday, December 26th. A Sunday dinner and Supper Dinner will be held on 22nd till 11 p.m.

NEW YEAR'S EVE

Mr. Green's Band will play the Evening Drive or Uniformed Band.

AERO CLUB OF EAST AFRICA

Members are requested to meet at the Xmas Dinner and Supper which will be held on Friday, 22nd December, 1944, commencing at 7 p.m. for Members and their Guests.

PLAYHOUSE

NIGHTLY at 8 p.m. Matinee: Saturday, 3.15 p.m. 'A Special Variety Show of M.G.M.'S GREAT FILM "MUTINY ON THE BOUNTY"

E. K. GREEN'S "PEAK" GIN

Thousands of people who drink it say GREEN'S PEAK GIN is the best in Africa today. Toot it with Lime or Soda and see how good it really is.

DANCING NIGHTLY

DAORETTI HOTEL

Phone 2190, before 9 p.m.

Engagement and Wedding Rings.

Limited selection now available. Classification as non-essential goods will ensure that orders with our manufacturers in England.

DOBBIES LTD.

Government Road, P.O. Box 53. Phone 2060.

NOTICE

Tenders are invited for the supply of the following: 20,000 Mangrove roofing tiles. Lax. Mombasa.

TAKE NEUROPHOSPHATES

(Elixir Brand)

FOR THAT RUN-DOWN FEELING

Agents: A. H. WARDLE & CO. LTD. The Chemists.

Friday Standard

FRIDAY, DECEMBER 11, 1944.

The Railways And The War

If we want to know how long still is the road we have to travel in East Africa before we have a plain and instinctive understanding of the conditions in which we find ourselves, we need only read the details on the 1944 Budget of the Kenya and Uganda Railways and Harbours.

Woolworths Ltd.

WE HAVE LARGE STOCKS AT LOW PRICES.

XMAS EVE DINNER

Friday, December 26th. A Sunday dinner and Supper Dinner will be held on 22nd till 11 p.m.

NEW YEAR'S EVE

Mr. Green's Band will play the Evening Drive or Uniformed Band.

AERO CLUB OF EAST AFRICA

Members are requested to meet at the Xmas Dinner and Supper which will be held on Friday, 22nd December, 1944, commencing at 7 p.m. for Members and their Guests.

was recognition of some of the newly Railway problems created by the war such as the increasing cost of the coal, wear and tear of rolling stock and the increasing cost of repairs and maintenance. These things are to be expected in present normal conditions in the running of a Railway in war.

What we should be interested in are the things which are not normal, and the things which are the result of the war effort of the Kenya and Uganda Railways and Harbours. By that we do not mean the war effort of the transport system under exceptional difficulties, the manufacture of armoured cars and gun carriers, the handling of military traffic at the port. That excellent record of war work belongs to the past.

The Railways and Harbours Administration is not merely a policy-making transport concern. It is an instrument of public policy which will be concerned with the handling of the public in the management and the Railway Council. It has a definite part to play in the whole war effort.

The Railways and Harbours Administration is not merely a policy-making transport concern. It is an instrument of public policy which will be concerned with the handling of the public in the management and the Railway Council. It has a definite part to play in the whole war effort.

The Railways and Harbours Administration is not merely a policy-making transport concern. It is an instrument of public policy which will be concerned with the handling of the public in the management and the Railway Council. It has a definite part to play in the whole war effort.

The Railways and Harbours Administration is not merely a policy-making transport concern. It is an instrument of public policy which will be concerned with the handling of the public in the management and the Railway Council. It has a definite part to play in the whole war effort.

The Railways and Harbours Administration is not merely a policy-making transport concern. It is an instrument of public policy which will be concerned with the handling of the public in the management and the Railway Council. It has a definite part to play in the whole war effort.

The Railways and Harbours Administration is not merely a policy-making transport concern. It is an instrument of public policy which will be concerned with the handling of the public in the management and the Railway Council. It has a definite part to play in the whole war effort.

The Railways and Harbours Administration is not merely a policy-making transport concern. It is an instrument of public policy which will be concerned with the handling of the public in the management and the Railway Council. It has a definite part to play in the whole war effort.

The Railways and Harbours Administration is not merely a policy-making transport concern. It is an instrument of public policy which will be concerned with the handling of the public in the management and the Railway Council. It has a definite part to play in the whole war effort.

The Railways and Harbours Administration is not merely a policy-making transport concern. It is an instrument of public policy which will be concerned with the handling of the public in the management and the Railway Council. It has a definite part to play in the whole war effort.

The Railways and Harbours Administration is not merely a policy-making transport concern. It is an instrument of public policy which will be concerned with the handling of the public in the management and the Railway Council. It has a definite part to play in the whole war effort.

The Railways and Harbours Administration is not merely a policy-making transport concern. It is an instrument of public policy which will be concerned with the handling of the public in the management and the Railway Council. It has a definite part to play in the whole war effort.

programme. By their casual handling of the Railway Budget the Legislative Councilors have accepted a situation which the public interest they ought to have challenged and changed.

What we should be interested in are the things which are not normal, and the things which are the result of the war effort of the Kenya and Uganda Railways and Harbours. By that we do not mean the war effort of the transport system under exceptional difficulties, the manufacture of armoured cars and gun carriers, the handling of military traffic at the port. That excellent record of war work belongs to the past.

The Railways and Harbours Administration is not merely a policy-making transport concern. It is an instrument of public policy which will be concerned with the handling of the public in the management and the Railway Council. It has a definite part to play in the whole war effort.

The Railways and Harbours Administration is not merely a policy-making transport concern. It is an instrument of public policy which will be concerned with the handling of the public in the management and the Railway Council. It has a definite part to play in the whole war effort.

The Railways and Harbours Administration is not merely a policy-making transport concern. It is an instrument of public policy which will be concerned with the handling of the public in the management and the Railway Council. It has a definite part to play in the whole war effort.

The Railways and Harbours Administration is not merely a policy-making transport concern. It is an instrument of public policy which will be concerned with the handling of the public in the management and the Railway Council. It has a definite part to play in the whole war effort.

The Railways and Harbours Administration is not merely a policy-making transport concern. It is an instrument of public policy which will be concerned with the handling of the public in the management and the Railway Council. It has a definite part to play in the whole war effort.

The Railways and Harbours Administration is not merely a policy-making transport concern. It is an instrument of public policy which will be concerned with the handling of the public in the management and the Railway Council. It has a definite part to play in the whole war effort.

The Railways and Harbours Administration is not merely a policy-making transport concern. It is an instrument of public policy which will be concerned with the handling of the public in the management and the Railway Council. It has a definite part to play in the whole war effort.

The Railways and Harbours Administration is not merely a policy-making transport concern. It is an instrument of public policy which will be concerned with the handling of the public in the management and the Railway Council. It has a definite part to play in the whole war effort.

The Railways and Harbours Administration is not merely a policy-making transport concern. It is an instrument of public policy which will be concerned with the handling of the public in the management and the Railway Council. It has a definite part to play in the whole war effort.

The Railways and Harbours Administration is not merely a policy-making transport concern. It is an instrument of public policy which will be concerned with the handling of the public in the management and the Railway Council. It has a definite part to play in the whole war effort.

The Railways and Harbours Administration is not merely a policy-making transport concern. It is an instrument of public policy which will be concerned with the handling of the public in the management and the Railway Council. It has a definite part to play in the whole war effort.

PRESIDENT'S STATEMENT

and have special regard to the whole of the Pacific area, that meant not only the area of the West Indies and a stronghold on the West Coast of Central America.

The President went on to say that it must be realised that the United States would be of assistance to Japan in her operations against the German Empire.

The President went on to say that it must be realised that the United States would be of assistance to Japan in her operations against the German Empire.

The President went on to say that it must be realised that the United States would be of assistance to Japan in her operations against the German Empire.

The President went on to say that it must be realised that the United States would be of assistance to Japan in her operations against the German Empire.

The President went on to say that it must be realised that the United States would be of assistance to Japan in her operations against the German Empire.

The President went on to say that it must be realised that the United States would be of assistance to Japan in her operations against the German Empire.

The President went on to say that it must be realised that the United States would be of assistance to Japan in her operations against the German Empire.

The President went on to say that it must be realised that the United States would be of assistance to Japan in her operations against the German Empire.

The President went on to say that it must be realised that the United States would be of assistance to Japan in her operations against the German Empire.

The President went on to say that it must be realised that the United States would be of assistance to Japan in her operations against the German Empire.

The President went on to say that it must be realised that the United States would be of assistance to Japan in her operations against the German Empire.

THURSDAY, DECEMBER 14, 1944

Always Remember Phenisc FOR 'FLU' COLDS & Feverish CHILLS

FACES ABOUT PHENISC

Phenisc is a powerful remedy for colds, flu, feverish chills, and all the ailments that come with them. It is a safe, reliable, and effective remedy for all these ailments. It is a powerful remedy for colds, flu, feverish chills, and all the ailments that come with them. It is a safe, reliable, and effective remedy for all these ailments.

SHOULD HAVE THE HEART

Phenisc

QUICKEST AND SAFEST FOR COLDS AND INFLUENZA

Japanese Landing In Philippines

(Continued from page 1)

says: "Our land forces have held the Japanese attack although the fighting is continuing. Last night British light artillery surprised a Japanese force of 100 men about 10 miles in advance and inflicted severe losses. There were two of our patrols engaged in the night. One of our patrols engaged a Japanese patrol in the front area and after a brief hand-to-hand fight wiped it out. All our men returned safely."

A Chinese offensive to relieve Japanese pressure on Hongkong is reported by a Chinese newspaper which says that Chinese troops are attacking Canton from the east and west. Canton is just over 100 miles north of Hongkong. The Japanese are said to be rushing reinforcements to the east coast of the south.

Southwest of Canton, a thousand Chinese troops are moving towards Hongkong. Heavy fighting is in progress. The Japanese are said to be using about 100 aircraft.

Earlier news of Japanese forces having begun an invasion of the Philippines has been confirmed by United States authorities in Manila. Army headquarters there stated that Japanese troops had landed at Aparri on the north coast of Luzon and perhaps at several other points. They admit that the attack is severe. Luzon is the biggest island of the Philippines and has a population of 4,000,000. It is in the Southwest of it is Manila the capital of the Philippines.

The communiqué received from Manila says that United States bombers heavily damaged Japanese naval units, scoring direct hits on three troop transports, one of which immediately capsized.

Guam

Japanese army headquarters announced this morning that Japanese army and naval forces successfully landed on the island of Guam, east of the Philippines. There is no confirmation of this report from President Roosevelt's reference to the three islands of Guam, Wake and Midway, in his first chat.

(Hooper.)

JAPANESE SUBMARINES

Threat to Indian Ocean

London, December 9.

The Times Naval correspondent today writes: "The main Japanese base in the Japanese islands is the Hawaiian Islands and some 3,000 miles from Borneo, Malaya and Southern Thailand, and nearly 2,000 miles from Davos, the port in the Southern Philippines, which was yesterday morning, and still over 1,000 miles from Baguio

which was bombed three hours earlier. These figures of the vast scale of the operations started by the Japanese unprovoked aggression and prove that preparations must have been in hand for weeks past. The Japanese occupation of Indo-China obviously had no other object than the preparation of a suitable launching-off place for further aggression. But the only practical cable half-way house between Japan and the Hawaiian Islands is the Marshall Islands—under Japanese command—and they are more than 2,000 miles from our nearest and beyond the range of aircraft, even if those islands were not completely out of operating substantial range, which is doubtful. The only possibility of operating from the Philippines, which is about 1,000 miles from our nearest and beyond the range of aircraft carriers. To stage such an attack means that the carriers must have been sent north some 150 miles from the home base targets at 8 a.m. when the attack was made. To reach these striking positions, therefore, they must have already steamed well over 1,000 miles and undoubtedly their withdrawal must always have been fully available. Retaining arrangements for both them and their escort would be indistinguishable. The planning of it might have been done a long time ago, but the actual preparation must have been put in hand at the time the inception of the ostentatious peaceful conversations in Washington.

There are three island possessions of the United States forming strategic zones between Hawaii and the Philippines—Midway, Wake and Guam Islands. The two former are little more than emergency landing grounds for aircraft and are not bases in any sense of the word. But Guam, which is the administration of the Navy, has the makings of a useful naval station—not like Singapore, but at least a Scapa Flow. Its development to that purpose, however, was barred until 1937 by the status quo clause of the Washington Naval Treaty of 1922 and it is only recently that Congress has provided the funds for putting it in a state of defence. How far it is now capable, without reinforcements, of holding out cannot be estimated by anyone without official knowledge, but it seems probable that Japan will make strong efforts to occupy it in order to deprive the American Navy of its most promising advanced base.

Japan necessarily has all her aircraft carriers in use in these widespread operations. At least two have probably been employed in the Cuba attack and though they might have made the Midway today.

land attack, too, it seems more probable that a reserve carrier was used for that. One would suppose that the employment of two carriers in North Borneo would indicate that employment of yet another. Noon was reported to be with the force that attempted landing there in Malaya and Southern Thailand. It seems probable that at least two are still with the main Japanese fleet where whereabouts are not yet known.

Submarines

There have been reports of Japanese submarines off Hawaii though nothing very definite so far; but they will have been seen before Japan started hostilities, because they are on the most important lines of supply from the United States to the American-occupied base of Hawaii—off the Panama Canal, San Francisco and other Pacific ports and between those places and the Hawaiian Islands. Japan is supposed to have built 10 submarines and three more will not so very far if they are delivered over these days distinct Germany with a still larger number available is only now succeeding in operating them farther afield than the North Atlantic and she has not yet, so far as is known, had any marked success in doing so. Japan's present operations are nearly as far off as those of Germany which are most venous. It would be unwise, however, to underestimate the speed of Japanese submarine operations, undoubtedly near the Indian Ocean.

The naval situation in the Pacific is not unlike that which has obtained in the Mediterranean for the past year and a half. At the western end of the sphere of action is the British Eastern Fleet, under Admiral Sir Tom Phillips; at the western end of the Mediterranean, Admiral Sir James Somerville's presence there with his command of the British Mediterranean Fleet, the bulk of which is understood to have been there for some time; 2,000 miles east of Gibraltar is the main British Mediterranean fleet under Admiral Sir Andrew Cunningham. The two Mediterranean forces have acted independently of one another, but in perfect coordination, the state of affairs should be reproduced in the Pacific, for in both areas the principal enemy is located between them.

One other analogy, from the last war, in 1917-18 the British and United States navies worked and fought together in comradeship, mutual trust and confidence in one another. They will do the same today.

"LIMIT OF TAXATION HAS BEEN REACHED"

(Continued from page 1)

revenue, was also referred to and the view expressed by some speakers that the African was abdicating his fair share of taxation. Many African States were undoubtedly taxed proportionately higher than other communities, it is true, because taxes were taken into consideration.

It was very difficult indeed to get an equitable basis for direct taxes on the African in all areas of the Territory. It was also suggested that the Commission of Revenue Property should contribute from his funds towards the subsidy of every African that it was pointed out that these funds were not available.

Mr. Habib Jemal raised another point when he said that the taxpayer did not have any proper control over the revenue collected and had now become the backbone of the Territory's financial structure and he did not see how such measures could, after the war, be withdrawn without resulting in a collapse of the Territory's finances. He did not in fact think it would be possible to allow that war taxes to be withdrawn after the war. The small man in particular, with limited income and faced with a higher cost of living, would be hard hit. There had many examples of the fact that once the incidence of taxation was increased, it never again fell below the increased rate and he thought that there should be no question of the abolition of a later stage of so-called war taxation measures.

After some further discussion, on the text of the resolution and other matters, during which it was stressed that the resolution would considerably affect Customs revenue and other indirect taxation returns, the resolution, as recorded above, was generally approved.

£30,000 For African Housing in Nairobi

(Continued from page 3)

used to free him from his debts. In closing the debate the Financial Secretary said that although Kenya was a farming country, the community which was going to pay the larger proportion of the taxation under this settlement was the trading community which had been doing very well lately. Community saving with a view to post-war development, he thought, was not from a national point of view by this proposed taxation. Despite as some of the increases were, they still left a substantial share of profits to the taxpayer.

The bill was read a second time and a select committee was appointed to consider it.

HOW CLEAN MY MOUTH FEELS—



You must have sound teeth to enjoy life to the full. Clean yours with KOLYNOS and protect them for the years to come. Go to your Chemist or Store and get a tube today.

6/6 per tube. MADE IN ENGLAND.

KOLYNOS DENTAL CREAM



RADIATING VITALITY. CROOKE'S HALIBUT OIL contains 80 times as much vitamin A and 30/40 times as much vitamin D as fine cod liver oil. Obtainable in liquid or capsule form from all chemists and stores.

THE WORLD'S FINEST WHISKY

A AUTHORIZED RECORD.

Selected for H.M. PRINCE GEORGE'S 21st BIRTHDAY.

HONORARY PRIZE COMMISSION (1936-1937)

UNION GOVERNMENT'S (1938-1939)

First Prize at the ARCHA MUSEUM COMMISSION (1939-1940)

GOVERNMENT GENERAL (1940-1941)

EMPIRE EXHIBITION (1939-1940)

60-65-70-75-80-85-90-95-100

CRAWFORD LIQUEUR WHISKY

70 YEAR QUALITY IN EVERY BOTTLE

MOTOR CARS COMISE

STUDY THE COST CHART BELOW. NOTE THE PRICE YOU PAY FOR HIGHER SPEED

Miles per Hour	PETROL	OIL	TYRES	MAINTENANCE	Total Cost per 1,000 Miles	Total Cost for One Mile
25 Miles per H.	100/-	5/-	20/-	15/-	142/-	-/14.2 cts.
35 " "	110/-	8/-	40/-	20/-	178/-	-/17.8 cts.
45 " "	125/-	10/-	60/-	30/-	225/-	-/22.5 cts.
55 " "	150/-	12/-	110/-	50/-	322/-	-/32.2 cts.
65 " "	180/-	14/-	175/-	80/-	449/-	-/44.9 cts.

This expense sheet is based on 1,000 miles running the average 30 H.P. car, and is one of your big ways of saving expense for Defence.

HUGHES & COMPANY LIMITED

Pioneers of Safe, Sane and Satisfactory Motoring.

"V FOR VICTORY"

"V8 FOR EVERYBODY"

In the prevailing conditions early Christmas Shopping is a necessity.

Ahamed Bros. Hardings Street, NAIROBI. Box No. 254.

A CRISIS IN THE SOUTH AFRICAN WINE INDUSTRY

The dislocation of trade with Europe has caused a disastrous crisis in the South African Wine Industry

This crisis becomes more serious every day.

YOU CAN HELP SOUTH AFRICA

BY BUYING SOUTH AFRICAN WINES and BRANDIES

All Good Grocers Stock Them.

BARCLAYS BANK (DOMINION COLONIAL AND OVERSEAS)

BRANCHES IN EAST AFRICA: KENYA.

Uganda, Kistumu, Kitale, Mombasa, Nairobi, Nakuru.

TANGANYIKA TERRITORY: Arusha, Mtwara, Chunya, Dar es Salaam, Iringa, Mbeya, Mushi, Mwanza, Tanga.

ETHIOPIA: Addis Ababa

and throughout the Union of South Africa, Rhodesia, Nyasaland, Portuguese East Africa, South West Africa, British West Africa, Sudan, East India, British Guiana, Mauritius, Egypt, Palestine, Gibraltar, Malta, Cyprus.

HEAD OFFICE: 54, Lombard Street, London, E.C.3.

AND OFFICES AT: Liverpool, Manchester, New York (Agency).

BARCLAYS BANK (CANADA), MONTREAL and TORONTO.

The Bank undertakes all classes of Banking business and also acts as Trustee and Executor.

JUST UNPACKED ARISTOT AND BONDOL SILK STOCKINGS

Ladies Dress Materials, and Materials for Undies. (An early visit ensures the best pick).

HUSSEINI SILK STORE LTD. (The House Favourite for British Goods)

"LIMIT OF TAXATION HAS BEEN REACHED" Views Of Tanganyika Commercial Men

For on Salomon... The question of new taxation... Views of Tanganyika Commercial Men... The Chamber of Commerce and Agriculture... The Chamber of Commerce and Agriculture...

Mr. J. S. Davis thought that the Chamber's motion... Mr. J. S. Davis thought that the Chamber's motion...

Mr. McGilchrist said... Mr. McGilchrist said that the principal objections to the new taxation...

Mr. Davis agreed... Mr. Davis agreed that the Chamber's motion...

Mr. McGilchrist said... Mr. McGilchrist said that the principal objections to the new taxation...

Mr. Davis agreed... Mr. Davis agreed that the Chamber's motion...

Mr. McGilchrist said... Mr. McGilchrist said that the principal objections to the new taxation...

Mr. Davis agreed... Mr. Davis agreed that the Chamber's motion...

Mr. McGilchrist said... Mr. McGilchrist said that the principal objections to the new taxation...

Mr. Davis agreed... Mr. Davis agreed that the Chamber's motion...

Mr. McGilchrist said... Mr. McGilchrist said that the principal objections to the new taxation...

Mr. Davis agreed... Mr. Davis agreed that the Chamber's motion...

Mr. McGilchrist said... Mr. McGilchrist said that the principal objections to the new taxation...

Mr. Davis agreed... Mr. Davis agreed that the Chamber's motion...

JUST ARRIVED: VAN RYN WINE and SPIRIT Co's.

CLUB DRY GIN SOUTH AFRICA'S CHOICEST GIN LABEL. THE AFRICAN MERCANTILE COMPANY LTD.

Other speakers, including Mr. E. C. Phillips... Mr. E. C. Phillips, the Chairman, Mr. A. B. Mashe and Mr. Hugh Jamal...

XMAS GIFTS A FEW SUGGESTIONS: DRESSING CASES, SHOOTING STICKS, LEATHER WALLET, TOBACCO POUCHES, LEATHER BELTS, FLASHLIGHTS, HAIR BRUSHES, FISHING TACKLE, CIGARETTE CASES, etc.

SHAW & HUNTER LTD. Stanley House, Hardings Street.

A Sore Throat STARTS THE TROUBLE GARGLE it away with ASPRO

There are a lot of infectious complaints about. You can protect yourself against them by gargling with ASPRO.

Current Ills ASPRO will banish. 1 COLIC & STOMACH COMPLAINTS...

BORWICK'S Baking Powder SUCCESSFULLY USED THROUGHOUT THE WORLD FOR 58 YEARS.

HOW TO GET ASPRO TO THE KIDNEY. ASPRO is the only medicine that is safe for the kidneys.

Next Day COLD WAS GONE G.B. Nicholas & Co., Ltd. MAHARAJA, KENYA COLONY.

Consult P. STEWART PAINTING

WHAT A SHAME To have good clothes ruined by stains... P. STEWART PAINTING

GROOT CONSTANTIA CLARET.

JARDIN LTD, NAIROBI.

Other views... Mr. E. C. Phillips, the Chairman, Mr. A. B. Mashe and Mr. Hugh Jamal...

Mr. Davis agreed... Mr. Davis agreed that the Chamber's motion...

Mr. McGilchrist said... Mr. McGilchrist said that the principal objections to the new taxation...

Mr. Davis agreed... Mr. Davis agreed that the Chamber's motion...

Mr. McGilchrist said... Mr. McGilchrist said that the principal objections to the new taxation...

Mr. Davis agreed... Mr. Davis agreed that the Chamber's motion...

Mr. McGilchrist said... Mr. McGilchrist said that the principal objections to the new taxation...

Mr. Davis agreed... Mr. Davis agreed that the Chamber's motion...

Mr. McGilchrist said... Mr. McGilchrist said that the principal objections to the new taxation...

Mr. Davis agreed... Mr. Davis agreed that the Chamber's motion...

Mr. McGilchrist said... Mr. McGilchrist said that the principal objections to the new taxation...

Mr. Davis agreed... Mr. Davis agreed that the Chamber's motion...

In the prevailing conditions early Christmas Shopping is a necessity.

Hammed Bros
Hardinge Street, NAIROBI
Phone No. 2201. Box No. 254.
By Appointment to the Prince of Wales 1911 to 1924.

A CRISIS IN THE SOUTH AFRICAN WINE INDUSTRY
(300 year old)
The dislocation of trade with Europe has caused a disastrous crisis in the South African Wine Industry. This crisis becomes more serious every day.
YOU CAN HELP SOUTH AFRICA
BY BUYING SOUTH AFRICAN WINES and BRANDIES
All Good Grocers Stock Them.

BARCLAYS BANK (DOMINION COLONIAL AND OVERSEAS)
(Incorporated in the United Kingdom)
BRANCHES IN EAST AFRICA:
KENYA: Eldoret, Kisumu, Kitale, Mombasa, Nairobi, Nakuru, UMANDA, Jijiga, Kampala.
TANGANYIKA TERRITORY: Arusha, Babosa, Chunya, Dar es Salaam, Iringa, Mbege, Moshi, Mwanza, Tanga.
ETHIOPIA: Addis Ababa
ENITREA: Asmara
and throughout the Union of South Africa, Rhodesia, Nyasaland, Portuguese East Africa, South West Africa, British West Africa, British West Indies, British Guiana, Mauritius, Egypt, Sudan, Palestine, Gibraltar, Malta, Cyrenaica.
HEAD OFFICE: 54, Lombard Street, London, E.C.3.
LONDON OFFICES: 3 Greenbush Street, E.C.3. China Place, London, W.1. 2, Colindale Avenue, N.W.1. Oceanic House, 1, Cockspur Street, S.W.1.

AND OFFICES AT: Liverpool, Manchester, New York (Agency), BARCLAYS BANK (CANADA), MONTREAL and TORONTO.
The Bank undertakes all classes of Banking business and also acts as Trustee and Executor.
Wool UNPACKED
ARISTOQ AND BONDOR SILK STOCKINGS
also Ladies' Dress Materials, and Materials for Undies. (An early visit ensures the best pick).
HUSSEINI SILK STORE LTD.
(The House Famous for British Goods)

"LIMIT OF TAXATION HAS BEEN REACHED"

Views Of Tanganyika Commercial Men

THE question of new additional taxation which the Government of Tanganyika proposes to introduce at the forthcoming Budget Session of the Legislative Council was the subject of a long debate in the Chamber of Commerce and Agriculture. There was a good attendance of members and the meeting occupied the better part of two hours in discussing the various aspects of the new proposals.

Summarized, the Chamber's view was that the limit of direct and indirect taxation had now been reached in Tanganyika and it was strongly urged that Government should be asked for assurance that at least a substantial portion of the surplus likely to accrue at the end of the coming financial year should be earmarked for development schemes, and that the money raised by the new taxation should not merely go to swell the general revenues of the territory.

The Resolution After some textual amendments, the following resolution was given unanimous approval:— That in accepting the burden of additional taxation the Chamber of Commerce and Agriculture is of the considered opinion (1) That Government should not raise more than £100,000 for the purpose of economic development; (2) That the limit of direct and indirect taxation has now been reached and taxation beyond this limit must adversely affect the economic and social development of the territory.

In view of this, Government is urged to give an assurance that it is not intended to impose any additional taxation which the territory continues to maintain a satisfactory financial position. The new direct taxes details, which have been published, include substantial increases in Income Tax—bringing the Tanganyika rates in line with Kenya—the increased tax on two basic grades of Poll Tax (in place of the previous graduated tax on bonded income categories) and a new tax on the sale of household goods, against Income Tax assessments. There is also an increase in the Company Tax, as well as in

BUY A "KODAK" THIS XMAS.
SEND SNAPS TO THE CHAPS!
HOWSE & GEORGE LIMITED

HAVE YOU SEEN THE NEW INTERNATIONALS?
IN THE "K" LINE YOU'LL FIND
— "KODAK" Cameras
— "KODAK" Flashlights
— "KODAK" Binoculars
— "KODAK" Cameras
— "KODAK" Cameras
— "KODAK" Cameras
ALL COMBINED TO GIVE NEW FINANCIAL POWER
STOP IN AND SEE THE NEW "K" MODELS!

"ETCO" PRODUCTS
GIVE BEST RESULTS—ALL AT COMPETITIVE PRICES.
Stocked by:
EXPRESS TRANSPORT CO. LTD.
Victoria Street, NAIROBI.
Cartage Contractors to K.U.R. & Harbours
We also sell fuel. We stock machinery and effects or stores such in excellent condition.
Our Mombasa office is expert in clearing and forwarding every class of goods, inwards and outwards to any part of the world.
P.O. Box 433, NAIROBI. P.O. Box 32, MOMBASA.

other industrial undertakings had not greatly increased the cost of equipment and materials was about double the previous price and the country's resources could not stand these increased charges.
The same speaker said that the making of a development fund from the proceeds of additional revenue. Tanganyika would, he estimated, be entitled to £2,000,000 which the Imperial Government would use for social development, but if they built up the nucleus of a fund here they would raise the necessary tax-payers from whom pockets the Government would have to draw.
He also suggested that, if necessary, the present scale of taxation should be reviewed at the end of the financial year to see what the territory's ability to pay such taxes. It was quite possible that the volume of trade would decline in 1942, by comparison with 1941, with effect upon indirect revenue, which might result in yet a further increase in direct taxation. He further, if no money was left in the country, a serious depression immediately the war was over, with the territory unable to implement any of its necessary development schemes.

Other Views
Other views, including Mr. E. C. Phillips (the Chairman), Mr. McLaughlin, Mr. J. M. Maclean and Mr. H. H. J. James, commented on the proposed measure and the probable effect upon the country in general. Points raised included the need for setting aside a substantial sum for development from extra taxation and the need, in accordance with Lord Moberg's expressed views, of maintaining services in agriculture and medical facilities.
It was also pointed out, later, that any sum accruing from the Excess Profits Tax was, advantage, be used in the Colony and that the Government should not send financial aid, which they might not be able to afford to the British Government.

In this connection, it was pointed out that Kenya had already allocated £100,000 for the purpose of a fund, which it had intended to send to the Imperial Exchequer, for development purposes in the Colony.

New Poll Tax Suggestion
It was also suggested that there should be considerable savings in Tanganyika as there were not, at present, the same extraordinary increases in expenditure as had been the case at the beginning of hostilities. Another suggestion was that Poll Tax could be retained for persons with incomes of £200 per annum and under and that income Tax only and not Poll Tax also—should be paid by those in the higher income classes. The new Poll Tax, it was pointed out, was similar to the Kenya Personal Tax.

Another view was that 95 per cent of the Customs surcharges affected one class of the community only and this, it was suggested, might have serious repercussions, as, tending to increase the cost of living and create a demand consequent for more wages, it might lead to inflation. Government might experience other means of raising revenue, notably an increase in production—as had been done, in part

Labour Shortage
The shortage of labour for industrial undertakings had been mentioned by Government. Even if they tried to do so, it was pointed out, that industrial estates, for example, could not be set up in the face of the difficulties which now existed in regard to Excess Profits Tax, another anomaly was that concerning small producers who, in pre-war years, had in several cases made small profits, or even losses, and now might, on this issue, be subject to Excess Profits Tax.

African taxation, and more efficient means of collecting this (Continued on Page 6)

Consult P. STEWART for PAINTING
In all cases of painting
VAN RYN WINE and SPIRIT Co's.
CLUB DRY GIN
SOUTH AFRICA'S CHOICEST GIN LABEL.
Enquiries to—
THE AFRICAN MERCANTILE COMPANY Ltd.
(Incorporated in England)
Sadler Street
P.O. Box 230, NAIROBI. Grams: "Navigation."
T'e. 2423.

XMAS GIFTS
A FEW SUGGESTIONS:
DRESSING CASES, SHOOTING STICKS, LEATHER WALLETTS, TOBACCO POUCHES, LEATHER BELTS, FLASHLIGHTS, HAIR BRUSHES, FISHING TACKLE, CIGARETTE CASES, etc.
This is a fine wine, well matured, of fine quality.
JARDIN LTD., NAIROBI.
SHAW & HUNTER LTD.
Stanley House, Hardinge Street.

A Sore Throat STARTS THE TROUBLE
GARGLE it away with **ASPRO**
There are a lot of infectious complaints about. You can protect yourself against them by gargling with 'ASPRO'. A sore throat starts the trouble, or an if you feel the slightest soreness, this throat set quickly with 'ASPRO'. You will find that the pain will be soothed away in a wonderful manner and why 'ASPRO' is one of the most effective gargles is that it breaks up into thousands of tiny particles in the water. The particles adhere to the lining of the throat and remain there long enough to get the full benefit of their wonderful antiseptic properties. Next time a sore throat threatens stir a couple of 'ASPRO' tablets in half a glass of water and gargle. You can top some of the mixture afterwards with beneficial results. So do the wise thing—

GET 'ASPRO' NOW!
AND PROTECT YOURSELF
Read these Letters—
SORE THROATS ENDED AFTER THREE 'ASPRO' GARGLES
A FAMILY TRIBUTE FROM SOUTH AFRICA
'ASPRO' KEPT ME OUT OF BED AND AT MY JOB
QUINSY OVERCOME
NEXT DAY COLD WAS GONE
G.B. Nicholas & Co., Ltd.
Sole Importers for East Africa
10, Market Street, NAIROBI.
ASPRO
Sold in packets of 5, 10, 27, and 60 tablets
The 60's packet is the most economical way to buy 'ASPRO'

BORWICK'S Baking Powder
SUCCESSFULLY USED THROUGHOUT THE WORLD FOR 30 YEARS.
USE BORWICK'S AND LIGHTEN YOUR BAKING.
Obtainable throughout East Africa from all High Street Stores.
Sole Agents in East Africa: ERIC & DUNCAN P.O. Box 1212.

Price Right

SAFEST ON ALL SURFACES

THANKS TO TEETH DONLUP FORT... DEPOSITAIRES—THE AFRICAN MERCANTILE CO. LTD.

ARMS AMMUNITION FISHING TACKLE PICNIC CASES

Chas. A. Heyer & Co. THE GUNSMITHS

A. F. LENZBERG

TURF ACCOUNTANT Also at Fort Elizabeth and East London... DINGAAN'S DAY HOAP, 1 mile, run December 16th-17

RUBBER STAMPS

Obtainable From— East African Standard Ltd.

SQUASH RACKETS

CRAIG'S NAIROBI... New consignment of Tootals plain Linen—quality Heavy and Standard

Prospects For the Nakuru Meeting

FROM A CORRESPONDENT The next Nakuru Race Meeting is to be held on Saturday afternoon, December 15 next, and good entries have been promised for the eight events on the card.

The Second Division Handicap has an entry of 10, and if the start is dull look no further for the winner than the two horses who, with only 67 lb. to carry, and having every chance of winning the Derby the New Year Meeting, in fact as the moment a strong favourite, must win with ease very easily. In his absence would follow Toynbee.

The Nakuru Juvvenile Stakes, on a future will be interesting in that it will be the first time the present Turf. Odds will go more than a farthing of the eleven entries five come from the former Stakes, though I am told that only two, or possibly three, will start. Again however, it is an unknown quantity, but unless she is strongly supported I think the race will be won by the Spicers selected. It is a pity that so many of the good

CUSTOMS FRAUDS COMMISSION

In Legislative Council on Tuesday the Hon. Attorney General the Customs Commission that set to inquire into the Customs frauds...

The answer to paragraph 1 of the question is in the affirmative. To since the answer to paragraph 1 is in the affirmative this part does not require further answer.

OFFENDERS AGAINST TRAFFIC LAW

Many offences against the Traffic Ordinance were dealt with by the Nairobi Resident Magistrate, on Tuesday.

An Indian Harbairan Singh, Nairobi, was charged with driving a motor car without a licence, and was fined 25/-.

Other offences included driving a car without a certificate of competency for which a fine of 10/- was imposed on S. Virm. For driving an engine car Mr. Grover was fined 20/-.

Today's Cause List

Before Mr. Justice Harden in Chambers No. 12 at 9.30 a.m. C.C.—the matter of the Estate of Valibhai Harani, deceased. In Court No. 2 at 10.30 a.m. For Hearing: D.C.—Philip Ross Roobarj Coleman vs. Dorothy Marie Coleman. C.C.—M. Haidler & Co. Ltd. vs. G. Laine and another. Before Mr. Justice Bartley in Court No. 1 at 10.30 a.m. For Judgment: C.C.—Ereper Saw Mills Ltd. vs. F. W. Wenderess.

GENTLEMEN'S GENTLEMEN KNOW WHAT'S WHAT

"Morning, Mr. Hawkins, I see our gentlemen were at the midnight oil last night?" "Yes, Mr. Higgins, they had me on my feet till four, mixing those drinks. I trust your gentleman got home safe."

NAIROBI'S LEADING TAILORS & OUTFITTERS

New consignment of Tootals plain Linen—quality Heavy and Standard also Shirts—various designs & qualities. AIBHAI & Co. Limited Box 201 NAIROBI Phone 2213

Kenya District Orders

(By The District Commissioner) 25—DUTIES. 1st Railway Ambulance Division, Sunday, 21st December, 3 p.m. Railway Club Grounds. 2nd Railway Ambulance Division Monday, 22nd December, 10.30 a.m. Railway Club Grounds. 3rd Railway Ambulance Division Monday, 22nd December, at 8 p.m. and Saturday, 23rd December, at 2.30 p.m., at Native Stadium. 26—RE-EXAMINATION. 1st Kenya Ambulance Division, Thursday, 18th December, at 3 p.m., at Native Depot. 27—PARADES. 1st Railway Ambulance Division, Monday, 17th December, at 4.30 p.m., Railway Goods Shed. 2nd Railway Ambulance Division, Monday, 17th December, at 4.30 p.m., combined meeting in Railway Headquarters. 3rd Railway Ambulance Division, Monday, 17th December, at 4 p.m., Railway Goods Shed. 28—Nurses. 1st Kenya Ambulance Division, Tuesday, 18th December, at 2 p.m., at Native Depot. 29—Nurses. 1st Kenya Ambulance Division, Wednesday, 17th December, at 4 p.m., at Native Depot. 30—Nurses. 1st Kenya Ambulance Division, Friday, 19th December, at 2 p.m., at Native Depot. D. GUNWICK, District Secretary.

Uganda's Gift To Premier

Uganda's gift to the Premier, Kampala, was a meeting with the object of presenting the Government with the Central Account for the Churchill Birthday Fund. The meeting was held at the residence of the Premier, Mr. Churchill, on Tuesday, 11th December.

smile. the OOD WAY

TOOTH PASTE... CARDINAL POLISH

Preserve the colour of your Red Tiles and Red Composition Floors

Cardinal POLISH... KENYA PLASTER OF PARIS

Sanitary Protection is now worn. Internally!

TAMPAX WORN INTERNALLY... Obtainable from all Chemists and Stores

SUPERIOR DRY GIN A Fine Distilled London Type The Best Basis for your Cocktail

LION WINE & SPIRIT CO., LTD. Sole Agents: JARDIN LTD. NAIROBI

CHARLIE WEBB

Turf Accountant. Offices over Jack Frost, Government Road. DINGAAN'S DAY HOAP, run December 16th, 17 miles. DINGAAN'S DAY HOAP, run December 20th, 11 miles. PRIZES, etc. in OFFICE. DOUBLE

GOLF BALLS

THESE MAKE A VERY ACCEPTABLE XMAS PRESENT... Pack'd 6 in a Box PENFOLD PATENT DUNLAP IS SPALDING KROFLITE SPALDING TOPFITE SPALDING RED DIMPLE SPALDING BLUE TRIANGLE

MAY & Co., Ltd. The Sports House. Printed and Published by EAST AFRICAN STANDARD, Delamere Avenue, Nairobi

Stanley Kenya's Premier Hotel

The East Standard

MOGAMA ARMS with which is incorporated THE LIONESS THE OLDEST ESTABLISHED NEWSPAPER IN EAST AFRICA. NAIROBI, FRIDAY, DECEMBER 12, 1941.

War Comes By Sea (See page eleven)

Japan Aims to Control Pacific, Indian and Antarctic Oceans

People Told War May Go On For Ten Years

HEAVY FIGHTING CONTINUES IN MALAY & PHILIPPINES

December 11... Manila communique states... heavy fighting continues here...

GERMANY AND ITALY DECLARE WAR ON U.S.A.

December 11... Germany and Italy today declared war on the United States of America...

News from Thailand comes from Bangkok

News from Thailand comes from Bangkok

News from Thailand comes from Bangkok

News from Thailand comes from Bangkok

News from Thailand comes from Bangkok

News from Thailand comes from Bangkok

News from Thailand comes from Bangkok

More Important Gains By Russians Stop Press



NAZI SAY OFFENSIVE IN RUSSIA IS "OFF" FOR WINTER

December 11... Moscow radio message... Hitler in the course of a bitter dispute...

LAST SHIP FROM EUROPE

December 11... The High Commissioner for New Zealand, Mr. W. J. Jordan, has visited London...

CHEVROLET CARS AND TRUCKS

We expect to obtain limited supplies of Chevrolet Cars and Trucks in the near future... Because the factories are engaged on war-material production...

Also it may not be possible to offer the usual standard equipment. We regret that we cannot be responsible for any variation in equipment nor for delays in deliveries.

You will be wise to arrange for your new Chevrolet NOW!

THE MOTOR MART and Exchange Ltd. NAIROBI AND BRANCHES

NEW COMMANDER OF 8th ARMY

General Cunningham Granted Sick Leave

December 11... Mr. Churchill announced today that Major General Neil Mackenzie Ritchie C.B.E., D.S.O., M.C. has been appointed to relieve General Sir Alan Cunningham, Commander of the 8th Army...

ENEMY TANKER BOMBED

December 11... An Air Ministry communique announces that a tanker in the mouth of the River Rhine was bombed...

S. RHODESIAN WOMEN MUST REGISTER

December 11... The British Ambassador in Salisbury, Sir Hugh Knatchbull-Hugessen, is reported to have left Ankara...

Mr. Churchill in the course of a review of the war to the House of Commons

December 11... Mr. Churchill in the course of a review of the war to the House of Commons stressed the seriousness of our naval losses at Malaya...

Mr. Churchill in the course of a review of the war to the House of Commons

December 11... Mr. Churchill in the course of a review of the war to the House of Commons stressed the seriousness of our naval losses at Malaya...

Mr. Churchill in the course of a review of the war to the House of Commons

December 11... Mr. Churchill in the course of a review of the war to the House of Commons stressed the seriousness of our naval losses at Malaya...

Mr. Churchill in the course of a review of the war to the House of Commons

December 11... Mr. Churchill in the course of a review of the war to the House of Commons stressed the seriousness of our naval losses at Malaya...

Mr. Churchill in the course of a review of the war to the House of Commons

December 11... Mr. Churchill in the course of a review of the war to the House of Commons stressed the seriousness of our naval losses at Malaya...

Strain the Standard THE WEEK-END EDITION

P.O. Box 58, NAIROBI. London Representatives: DAVENPORT & CO., LTD., 14, St. Mary Axe, LONDON, E.C.2.

Small Advertisements

Advertisements are accepted only on a cash basis. The advertiser is responsible for the accuracy of the information given. Advertisements are accepted on a weekly basis...

THE SUBSCRIPTION RATES

Table with 2 columns: Yearly, Quarterly. Rows for Daily, Weekly, Monthly rates.

Domestic

ADVERTISEMENTS: 1/6 per line per week. 1/3 per line per month. 1/12 per line per year.

Deaths

DEATHS: Mr. J. H. Smith, died on December 10, 1941, at his residence, 12, St. John's Road, Nairobi.

THANKS

THANKS: Mr. and Mrs. J. Smith, David and Joan, wish to express their sincere thanks to all those who have assisted them in their late bereavement...

Miscellaneous

BRIDGEMAN'S Employment Bureau. BRIDGEMAN'S Employment Bureau. BRIDGEMAN'S Employment Bureau. BRIDGEMAN'S Employment Bureau.

For Sale (cont.)

FOR SALE: 1/2 acre of land with 1000 sq. ft. of building. 1/2 acre of land with 1000 sq. ft. of building. 1/2 acre of land with 1000 sq. ft. of building.

Board & Residence

BOARD & RESIDENCE: Accommodation available for 2 or 3 persons. Board and residence for 2 or 3 persons. Board and residence for 2 or 3 persons.

Situations

SITUATIONS: SITUATIONS VACANT: SITUATIONS VACANT: SITUATIONS VACANT: SITUATIONS VACANT.

Situations (cont.)

SITUATIONS (CONT.): SITUATIONS VACANT: SITUATIONS VACANT: SITUATIONS VACANT: SITUATIONS VACANT.

Livestock

LIVESTOCK: LIVESTOCK WANTED: LIVESTOCK WANTED: LIVESTOCK WANTED: LIVESTOCK WANTED.

Wanted

WANTED: WANTED: WANTED: WANTED: WANTED: WANTED: WANTED: WANTED: WANTED: WANTED.

Properties

PROPERTIES: PROPERTIES WANTED: PROPERTIES WANTED: PROPERTIES WANTED: PROPERTIES WANTED.

Accommodation Wanted

ACCOMMODATION WANTED: Accommodation available for 2 or 3 persons. Board and residence for 2 or 3 persons.

Offered

OFFERED: Offered for sale. Offered for sale. Offered for sale. Offered for sale.

Available

AVAILABLE: Available for sale. Available for sale. Available for sale. Available for sale.

Where to Stay

WHERE TO STAY: Where to stay. Where to stay. Where to stay. Where to stay.

Young Married Couple

YOUNG MARRIED COUPLE: Young married couple with 1 child. Young married couple with 1 child.

Farm Manager

FARM MANAGER: Farm manager position available. Farm manager position available.

Experienced and Qualified

EXPERIENCED AND QUALIFIED: Experienced and qualified. Experienced and qualified.

For Sale

FOR SALE: For sale. For sale. For sale. For sale. For sale. For sale.

For Sale

FOR SALE: For sale. For sale. For sale. For sale. For sale. For sale.

For Sale

FOR SALE: For sale. For sale. For sale. For sale. For sale. For sale.

For Sale

FOR SALE: For sale. For sale. For sale. For sale. For sale. For sale.

For Sale

FOR SALE: For sale. For sale. For sale. For sale. For sale. For sale.

For Sale

FOR SALE: For sale. For sale. For sale. For sale. For sale. For sale.

For Sale

FOR SALE: For sale. For sale. For sale. For sale. For sale. For sale.

For Sale

FOR SALE: For sale. For sale. For sale. For sale. For sale. For sale.

For Sale

FOR SALE: For sale. For sale. For sale. For sale. For sale. For sale.

For Sale

FOR SALE: For sale. For sale. For sale. For sale. For sale. For sale.

For Sale

FOR SALE: For sale. For sale. For sale. For sale. For sale. For sale.

For Sale

FOR SALE: For sale. For sale. For sale. For sale. For sale. For sale.

For Sale

FOR SALE: For sale. For sale. For sale. For sale. For sale. For sale.

For Sale

FOR SALE: For sale. For sale. For sale. For sale. For sale. For sale.

For Sale

FOR SALE: For sale. For sale. For sale. For sale. For sale. For sale.

For Sale

FOR SALE: For sale. For sale. For sale. For sale. For sale. For sale.

For Sale

FOR SALE: For sale. For sale. For sale. For sale. For sale. For sale.

For Sale

FOR SALE: For sale. For sale. For sale. For sale. For sale. For sale.

For Sale

FOR SALE: For sale. For sale. For sale. For sale. For sale. For sale.

For Sale

FOR SALE: For sale. For sale. For sale. For sale. For sale. For sale.

For Sale

FOR SALE: For sale. For sale. For sale. For sale. For sale. For sale.

For Sale

FOR SALE: For sale. For sale. For sale. For sale. For sale. For sale.

For Sale

FOR SALE: For sale. For sale. For sale. For sale. For sale. For sale.

For Sale

FOR SALE: For sale. For sale. For sale. For sale. For sale. For sale.

For Sale

FOR SALE: For sale. For sale. For sale. For sale. For sale. For sale.

For Sale

FOR SALE: For sale. For sale. For sale. For sale. For sale. For sale.

For Sale

FOR SALE: For sale. For sale. For sale. For sale. For sale. For sale.

For Sale

FOR SALE: For sale. For sale. For sale. For sale. For sale. For sale.

For Sale

FOR SALE: For sale. For sale. For sale. For sale. For sale. For sale.

For Sale

FOR SALE: For sale. For sale. For sale. For sale. For sale. For sale.

For Sale

FOR SALE: For sale. For sale. For sale. For sale. For sale. For sale.

For Sale

FOR SALE: For sale. For sale. For sale. For sale. For sale. For sale.

For Sale

FOR SALE: For sale. For sale. For sale. For sale. For sale. For sale.

For Sale

FOR SALE: For sale. For sale. For sale. For sale. For sale. For sale.

For Sale

FOR SALE: For sale. For sale. For sale. For sale. For sale. For sale.

For Sale

FOR SALE: For sale. For sale. For sale. For sale. For sale. For sale.

For Sale

FOR SALE: For sale. For sale. For sale. For sale. For sale. For sale.

For Sale

FOR SALE: For sale. For sale. For sale. For sale. For sale. For sale.

For Sale

FOR SALE: For sale. For sale. For sale. For sale. For sale. For sale.

For Sale

FOR SALE: For sale. For sale. For sale. For sale. For sale. For sale.

For Sale

FOR SALE: For sale. For sale. For sale. For sale. For sale. For sale.

For Sale

FOR SALE: For sale. For sale. For sale. For sale. For sale. For sale.

For Sale

FOR SALE: For sale. For sale. For sale. For sale. For sale. For sale.

For Sale

FOR SALE: For sale. For sale. For sale. For sale. For sale. For sale.

For Sale

FOR SALE: For sale. For sale. For sale. For sale. For sale. For sale.

For Sale

FOR SALE: For sale. For sale. For sale. For sale. For sale. For sale.

For Sale

FOR SALE: For sale. For sale. For sale. For sale. For sale. For sale.

For Sale

FOR SALE: For sale. For sale. For sale. For sale. For sale. For sale.

For Sale

FOR SALE: For sale. For sale. For sale. For sale. For sale. For sale.

For Sale

FOR SALE: For sale. For sale. For sale. For sale. For sale. For sale.

For Sale

FOR SALE: For sale. For sale. For sale. For sale. For sale. For sale.

For Sale

FOR SALE: For sale. For sale. For sale. For sale. For sale. For sale.

For Sale

FOR SALE: For sale. For sale. For sale. For sale. For sale. For sale.

For Sale

FOR SALE: For sale. For sale. For sale. For sale. For sale. For sale.

For Sale

FOR SALE: For sale. For sale. For sale. For sale. For sale. For sale.

For Sale

FOR SALE: For sale. For sale. For sale. For sale. For sale. For sale.

Muter and Oswald, Ltd.
SALE OF FURNITURE AND EFFECTS.
 Daily instructed by various clients, we shall sell by Public Auction, without reserve, unless stipulated on the Catalogue, at our Salerooms, Mutos Building, Harding's Street,
on MONDAY, 15th December, 1941, at 9.30 a.m.
 Assorted Bedsteads, Dining Table in Indian Tack, Six Tub Washstands, Dining Chairs to Match Above, "Victor" Wardrobe trunk, "Victor" Wardrobe trunk. Two cut glass decanters. Cut glass vase. Hand Sewing Machine. Banding Machine. M.M.V. Cabinet Gramophone. Small Girl's Bicycle. Scooter. Toy car. Doll house. Leather Easy Chair. Small Piano. Grand Piano. Double bed in metal, boxspring. Hanging Wardrobe, etc., etc.
 (Full details in later issue).

Auctioneers, Estate Agents, NAIROBI Approved Valuers.

Muter and Oswald, Ltd.
SALE OF CAMERAS AND PHOTOGRAPHIC MATERIALS AND ACCESSORIES.
 Daily instructed, we shall sell by Public Auction, without reserve, at our Salerooms, Mutos Building, Harding's Street,
on WEDNESDAY, 17th December, at 10 a.m.
 New Ikon Folding Camera 610 lens. Nova Lens, 16 mm. Kodak lens. 610 Lens. Zeiss Ikon 15 mm. Cine Camera 27. Tessar lens. Goetz 4.5 Lens. Plate Camera 5" x 3". Camera. Volkstrand 100 mm. Lens. Midea 9 mm. Cine Camera and Projector in the 25 Lens. Volkstrand Reflex. 1 Electric Eclair, 5mm. etc., etc.
 Full particulars of Cameras in later issue.

Auctioneers, Estate Agents, NAIROBI Approved Valuers.

SUGGESTIONS FOR SENSIBLE GIFTS
 Pure Linen Face Towels, White only. Pure Linen Tray Cloths, Pastel Shades. Linen Dinner Table Napkins. Cotton Damask Table Napkins. Cotton Damask Table Napkins. Cotton Towels all sizes and colourings. Christmas Bath Mats. Double and single all wool Wintney Blankets, Green, Blue, Pink, Gold. Vantona Underblankets, same shades. Vantona Bedspreads, attractive designs and colours. Cushions covered Celanese Taffetas, in all shades. Dunley Rugs. Carpets, Axminster, Jute, Coir.

E. Hutchison & Co.
 Box 140, NAIROBI.

AUSTIN & CO.
AUCTIONEERS, VALUERS AND FURNITURE MAKERS.
 Always in Stock a fine selection of Household and Office Furniture, Chesterfield Sofas, Writing Bureaux, Fancy Tables, etc. All made of Seasoned Timbers. A call will convince you that our prices are the cheapest in Kenya.
SAM LAZARUS
 WE HAVE JUST RECEIVED A CONSIGNMENT OF HAND MADE PERIAN RUGS. PRICES VERY REASONABLE. Satisfaction Guaranteed. Terms Cash. P.O. Box 510, opposite Torr's Hotel, Thika 2120. Name and other Special Rates undertaken by arrangement.

GIFTS THAT WILL BE APPRECIATED.
 Service Wagons, Birelle Chairs, Blei Mats, Lin Air Blankets, Wing Cabinets, Dining Rugs, Lounges Chairs, Beds of Tables, De Luxe Mattresses, Curtains.
 Coloured Blankets, Vi-Spring Mattresses, Pillows, Plain Carpets and Rugs, Writing Bureaux, Vases, Jugs and Bowls, Gentlemen's Woodrogs, Grass Chairs, Circular Tables, Axminster Carpets.
ERIC SHIRLEY
 FURNISHING SPECIALISTS
 Victoria St., NAIROBI.

SANDS & Co.
 Xmas Postery Sales at our Sadler Street Salerooms.
FRIDAY, 12th December, at 11 a.m.
TUESDAY, 16th December, at 11 a.m.
FRIDAY, 19th December, at 11 a.m.
TUESDAY, 23rd December, at 11 a.m.
 We advise clients to rail to the early sale. For good prime Xmas we can assure clients of a real good sale. Prompt account sales and cheques.

SANDS & Co.
 Auctioneers.

THINK IT OVER!
 Ideas for useful Xmas presents
FIRESIDE CHAIRS, TRAY TABLES, COFFEE STOVS, DINING TABLES, READING LAMPS, OCCASIONAL TABLES, KIDDIE'S FURNITURE.
PLACE YOUR ORDERS NOW.
HUTCHINGS BIEMER & Co. Ltd.
 Govt. Road
 Box 408, Furniture Manufacturers, Phone 228.

AUCTION SALE
DIESEL LORRIES
 On instructions from the Custodian of Enemy Property the following secondhand Diesel Lorries will be offered for sale by public auction, subject to a reserve, by Mr. J. Mulholland Auctioneer (Aruaha) at Usagara Yard Moshi, on Wednesday the 10th January, 1942 at 3.30 p.m.
 1. A Lorry, body tyres and appearance good; body 11' 6" x 6' 6"; carrying capacity 3 tons; consumption of Gas oil 12 to 15 miles per gallon. Good supply of spares.
 2. Mercedes Benz Engine (recently overhauled) body, tyres and appearance good; carrying capacity 2 tons; consumption 14 to 15 miles per gallon. Good supply of spares.
 3. Each lorry has certain spare parts which will be offered for sale with each respective lorry and particulars of which are obtainable on application to the Assistant Custodian of Enemy Property, Moshi, or the Custodian of Enemy Property, Dar es Salaam.
 4. The lorries will be offered for sale without any guarantee or warranty of any kind as to condition or description.

AUCTION SALE
FORD V-4 1939
 On the instructions of The Custodian of Enemy Property the following car will be offered for sale by public auction, subject to a reserve, at the Usagara Yard Moshi on Wednesday, 10th January, 1942, at 4 p.m. J. Mulholland, Auctioneer, Aruaha.
 One Ford V-4 1939 model 1 ton chassis body, mileage 1,800 miles.
 The car may be inspected in Moshi on application to the Asst. Custodian of Enemy Property, Moshi. The car will be offered for sale without any guarantee or warranty of any kind as to condition or description.

AUCTION SALE
 On instructions from the Custodian of Enemy Property:
 One Raspador Complete and several spare parts including one shaft complete with wheels and knives, wheels, frames and drum covers will be offered for sale by public auction, subject to a reserve, by Mr. Cassam Satchu, Auctioneer, at his Auction Sale Rooms, Dar es Salaam, at 4 o'clock on Saturday the 3rd January, 1942.
 2. The above items, further particulars of which are available on application to the Custodian of Enemy Property, Dar es Salaam, will be offered for inspection on application at the Custodian's office in Accra Avenue, telephone extension 6.

CHURCH NOTICES
ALL SAINTS CATHEDRAL, NAIROBI.
**SUNDAY, Dec. 14—(Advent III). 7.30 a.m.: Holy Communion. 8.15 a.m.: Children's Service. 9.30 a.m.: Misses and Sermon. Preacher: Canon Lester. 6.30 p.m.: Evensong and Communion. Preacher: Canon Lester.
WEDNESDAY, Dec. 17—(8th Day of Holy Communion). N. A. Lester, Sub-Dean.**

ST. MARK'S CHURCH, PARKLANDS, NAIROBI.
**SUNDAY, Dec. 14—(8th Day of Holy Communion). 8.30 a.m.: Holy Communion. 9.30 a.m.: Sunday School. 11 a.m.: Morning Service and Address. 6.30 p.m.: Evensong and Sermon. Preacher: Rev. R. A. Howson.
WEDNESDAY, Dec. 17—(8th Day of Holy Communion). V. A. W. Beattie, H.C.P. Officiating Chaplain, R.A.F.**

ST. ANDREW'S CHURCH OF SCOTLAND, NAIROBI.
**SUNDAY, Dec. 14—(8th Day of Holy Communion). 10 a.m.: Divine Service. Preacher: Rev. Robert A. Howson. 6.30 p.m.: Evening Service. Preacher: Rev. R. A. Howson.
WEDNESDAY, Dec. 17—(8th Day of Holy Communion). 10 a.m.: Divine Service. Preacher: Rev. Robert A. Howson. 6.30 p.m.: Evening Service. Preacher: Rev. R. A. Howson. Officiating Chaplain, R.A.F.**

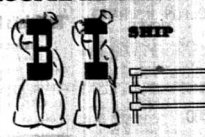
THE MOUNT KENYA GHAPLAINCY.
**SUNDAY, Dec. 14—(8th Day of Holy Communion). 8.0 a.m.: Matins and Holy Communion. 11.0 a.m.: Matins and Holy Communion. 3.0 p.m.: Matins and Holy Communion.
WEDNESDAY, Dec. 17—(8th Day of Holy Communion). 8.0 a.m.: Matins and Holy Communion. 11.0 a.m.: Matins and Holy Communion. 3.0 p.m.: Matins and Holy Communion. J. C. Morgan, Chaplain.**

NAKURU GHAPLAINCY.
**SUNDAY, Dec. 14—(8th Day of Holy Communion). 8.0 a.m.: Matins and Holy Communion. 11.0 a.m.: Matins and Holy Communion. 3.0 p.m.: Matins and Holy Communion.
WEDNESDAY, Dec. 17—(8th Day of Holy Communion). 8.0 a.m.: Matins and Holy Communion. 11.0 a.m.: Matins and Holy Communion. 3.0 p.m.: Matins and Holy Communion. J. C. Morgan, Chaplain.**

KIAMBU GHAPLAINCY.
**SUNDAY, Dec. 14—(8th Day of Holy Communion). 8.0 a.m.: Matins and Holy Communion. 11.0 a.m.: Matins and Holy Communion. 3.0 p.m.: Matins and Holy Communion.
WEDNESDAY, Dec. 17—(8th Day of Holy Communion). 8.0 a.m.: Matins and Holy Communion. 11.0 a.m.: Matins and Holy Communion. 3.0 p.m.: Matins and Holy Communion. J. C. Morgan, Chaplain.**

ST. OUTWATER'S, LIMURU.
SUNDAY, Dec. 14—(8th Day of Holy Communion). 8.0 a.m.: Matins and Holy Communion. 11.0 a.m.: Matins and Holy Communion. 3.0 p.m.: Matins and Holy Communion. Rev. R. A. Howson.

T. H. CHETTEL,
 Auctioneer and Land Agent, NAKURU.

You'll feel WELCOME ABOARD

 From the moment you step aboard we do our level best to spoil you—not in an embarrassing way, of course, but just sufficient to make you feel really like a guest.
BRITISH INDIA STEAM NAVIGATION CO. LTD.

BOMBAY-DURBAN LINE
 Regular services to Bombay and to Portuguese East and South African ports are now being maintained. Applications for passages and cargo bookings should be made to the Company's Agents:
AGENTS: BERTIN MARKS & Co. LD., LTD.
 Mombasa, Nairobi, Zanzibar, Dar es Salaam, Tanga, Lindi and Lamu.
 Box 128, Telegram: "Mombasa". Phone 81.

THE UNION-CASTLE MAIL STEAMSHIP Co. Ltd.
 Tariff passenger fares are surcharged Homewards by fifty-three and one-half per cent. Coastwise by twenty-five per cent. All vessels may call at any ports on or off the route, and the routes and all sailings are subject to change, deviation or cancellation, with or without notice.
Agents—Mombasa, The B.E.A. Corporation (1939) Ltd., The East African Estates Ltd., Thea. Cook & Son Ltd., Kampala The B.E.A. Corporation (1939) Ltd., Mombasa Mull & Co., Nairobi O'Brien & Sons Ltd., Kilindi Kilindi Brothers Ltd., Arusha F. A. Brown, Esq., Mombasa U.E.A. Trading Co. Ltd.
 Head Office for East Africa:
THE UNION-CASTLE MAIL STEAMSHIP Co. Ltd.
 P.O. Box 88, Tel. No. 107, 108, MOMBASA.

USE "ETCO"
 Compost or Steamed Sterilized Bone Meal At very competitive Prices.
 For Stock-feeding:
Use "ETCO" Steamed, Sterilized, Bone, Flour.
 Manufacturers and Stockists:
EXPRESS TRANSPORT CO. LTD.
 Garage Contractors to K.M.R. & Harbours. Apply our Mombasa office for clearing and forwarding of all classes of merchandise onwards and outward.
 P.O. Box 423, NAIROBI. P.O. Box 39, MOMBASA.
SUNPAK CORDIALS. A message from the Minister of State: "Whenever you use is not made of the poorest of local production, it is our friends, our families and our children in the United Kingdom who suffer, and the hour of Victory is postponed."
DRINK SUNPAK CORDIALS.

CONSUMER: If you are finding it increasingly difficult to obtain your essential supplies our old established buying service is at your command.

A VITAL LINK

SUPPLIER: Many years experience of the local market and our good relations with suppliers often enables us to obtain elusive supplies.

We are a vital link, between the consumer and the supplier—necessary center of supplies owing to war conditions creates unavoidable buying difficulties, but production has to be maintained and our job is to overcome these difficulties whenever possible.

Our secondhand stocks and our workshop often are very helpful and always are at your command.

VENTURE SUPPLY COMPANY
 Victoria St., Box 510, Nairobi.

INDIAN AFRICAN LINE
 TRAVEL BY THE BANK LINE MOTORSHIPS AND SEE INDIA
 SPEND YOUR HOLIDAYS IN CEYLON or visit the hill stations at Kashmir - Darjeeling - Simla and Naini Tal
 Via Calcutta YACHTING - FISHING - HUNTING - GOLF - RACING
 Enquiries to: THE AFRICAN MERCHANTILE CO. LTD., Telephone 526, MOMBASA, P.O. Box No. 118, Telegrams: "Navigation".

If you want
LONG MILEAGE and NON-SKID SAFETY
 Fit **ALL-WEATHER**
TREAD TYRES

because only Goodyear's famous All-Weather Tread gives you all these time-proved features:

MAXIMUM TREAD WEAR—from tough rubber compounds:

SUREST NON-SKID TRACTION—from road-gripping center traction tread:

FINEST BLOWOUT PROTECTION—from high tensile Supertwist cord body.

HIGHEST BRUISE RESISTANCE—from refined carcass engineering.

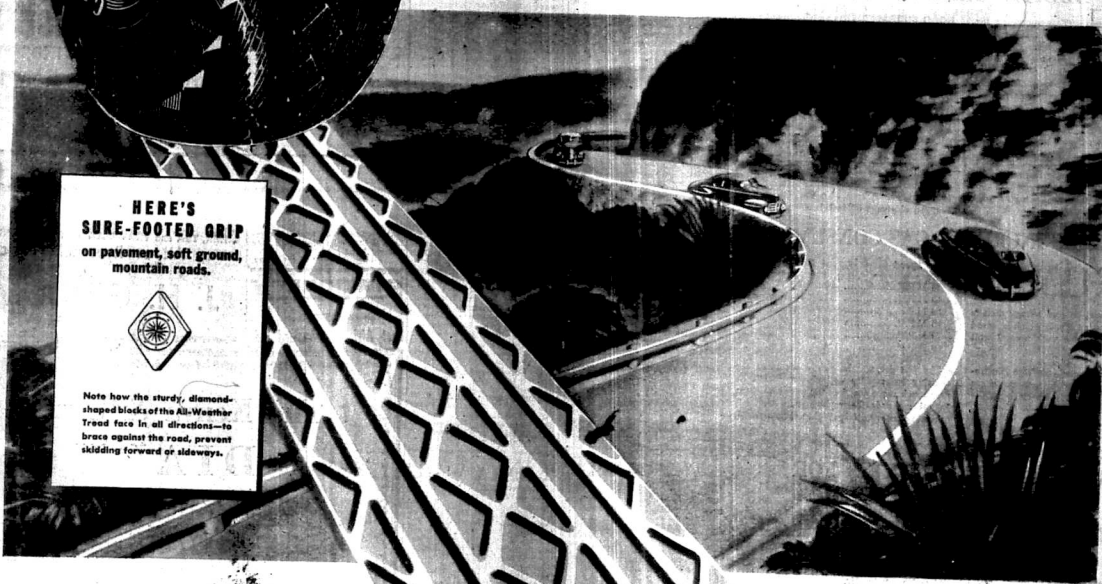
Remember, experience proves "You get the most for your money in a Goodyear!"



HERE'S SURE-FOOTED GRIP
 on pavement, soft ground,
 mountain roads.



Note how the sturdy, diamond-shaped blocks of the All-Weather Tread face in all directions—to brace against the road, prevent skidding forward or sideways.



GOODYEAR

MORE PEOPLE, THE WORLD OVER, RIDE ON GOODYEAR TYRES THAN ON ANY OTHER MAKE

Wholesale Distributors:—
GILFILLAN & COMPANY LIMITED.

Page Eight

THE CAUSES & REMEDIES OF PREMATURE TYRE FAILURE

BULLETIN No. 3

FAST TREAD WEAR

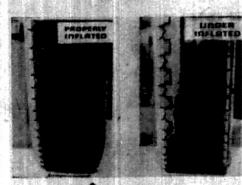


Illustration No. 1

There are certain fundamentals that must be observed to secure maximum tyre service...



Illustration No. 2

exactly the same mileage at the same time on opposite wheels. The tyre on the left was run 6 lbs. below the recommended pressure...

UNDERINFLATION

ADDITIONAL FACTORS

TEMPERATURE—At 100° temperature, the rate of tread wear is three times faster than at 40°...

ROAD SURFACES—The rate of tread wear varies greatly with the type of road surfaces.

HIGH SPEEDS INCREASE GAS CONSUMPTION

Higher driving speeds not only cause faster tyre tread wear, but also greatly increase gas consumption.

Table with 3 columns: Speed, Gas Consumption, Normal. Rows for 20, 40, 60, 80, and 100 MPH.

The following table made up from Illustration No. 3 shows the marked increase in gas consumption due to speed, especially at the higher speeds.

PRACTICAL SUGGESTIONS FOR IMPROVING TREAD WEAR

- 1. Keep tyres properly inflated to recommended minimum pressures. 2. Keep your spare tyre alternately in use. 3. Rotate your tyres around the car.

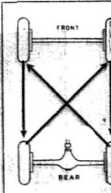


Illustration No. 3

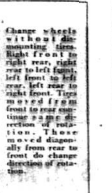


Illustration No. 3

Issued with the Compliments of THE CAR & GENERAL EQUIPMENT CO. LTD. ROYAL TYRES

Merchant Navy KENYA WAR WELFARE FUND

Following is a list of subscriptions to the Kenya War Welfare Fund received since the last published month ago...

BRITISH-ISRAELI WITNESSES

TRIP OF THE WITNESSES. The first of the witnesses of the first of November in the R.A. Standard and the greatest information about the Jews in the Holy Land...

Following is a list of subscriptions to the Kenya War Welfare Fund received since the last published month ago...

Advertisement for CATARRH medicine, featuring a diagram of a nose and text: 'Is Your Nose a Target? You can smash Catarrh in a few days.'

Advertisement for MENTHOLATUM, featuring a diagram of a person's face and text: 'XMAS PRESENTS OF ALL KINDS Curios of Every Description.'

Advertisement for RATIONALLY, featuring text: 'East African Standard Ltd. Government Road.'

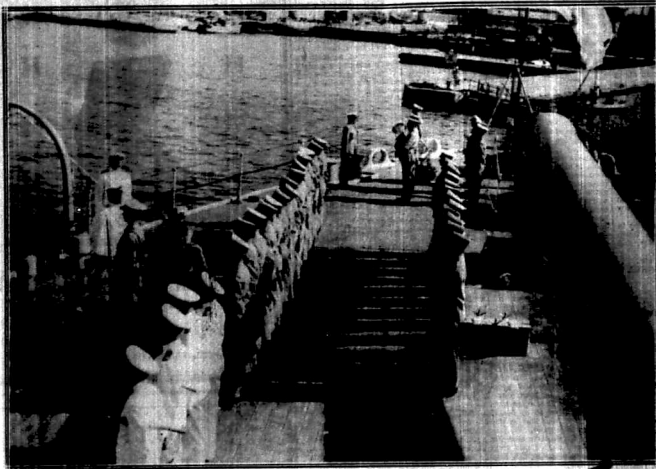
Advertisement for The Kenya & Uganda DIARY For 1942 is now on SALE. Price Shs. 4/50, postage -/75 extra.

Advertisement for The Kenya Pocket Diary and Notebook, featuring text: 'Analysis of Fodders, Concrete Making and Mixture, Cattle Rations, etc.'

Advertisement for California Milk, featuring a diagram of a cow and text: 'ONE BOTTLE ONE BOTTLE... TASTES SO GOOD.'

Advertisement for THE EAST AFRICAN STANDARD LTD., featuring text: 'P.O. Box 380, Delamere Avenue, NAIROBI.'

ON BOARD A BRITISH BATTLESHIP : : ARMY SALVAGE WORK IN EAST AFRICA



H.H. the Maharajah of Bikaner inspecting a Guard of Honour of Royal Marines during his visit to the Mediterranean fleet. (Photo Kenya Information Office)



Italian prisoners of war at work on salvage operations. (Photo Kenya Information Office)



Empty petrol tins being dispatched for use as food and water containers. (Photo: Kenya Information Office)



Italian prisoners salvaging scrap iron for dispatch overseas where it will be turned into guns and other war material. (Photo Kenya Information Office)



The cast of the children's operetta "Pierrette Princess" performed recently by the pupils of the Loreto Convent, Mombasa. (Photo: C. D. Patel & Sons)



Reconditioning petrol cases. (Photo Kenya Information Office)



Old tyres which will be converted into sandal-plies of boxes which will come in useful once again. (Photo Kenya Information Office)



Dismantling old gear boxes for scrap. (Photo Kenya Information Office)

SMOKE MEANS TROUBLE

Smoke from the ironing board—and smoke from your Car exhaust—both mean trouble!

Smoke is a common symptom of excessive engine wear, wear that squanders petrol, oil and power—wear that only costly repairs can correct.

And this needless wear all too often results from nothing more or less than failure of ordinary oil due to heat—and to cold, due to impurities.

Before your car becomes a Smoke-changer to Insulated

CALTEX MOTOR OIL

Distilled and Insulated.



CALTEX (Africa) LIMITED.

formerly—THE TEXAS COMPANY.

AFRICAN SCENE

War Comes to Beira

Tuesday, December 2, 1941. The war has been heard from the Union...

was referring to a possible Japanese entry into the area, which might mean the end of the war...

The report given out for press publication probably reflects very little of the conference's deliberations...

THE NEW YEAR

General Smith's speech envisaged the further increase in sea-traffic...

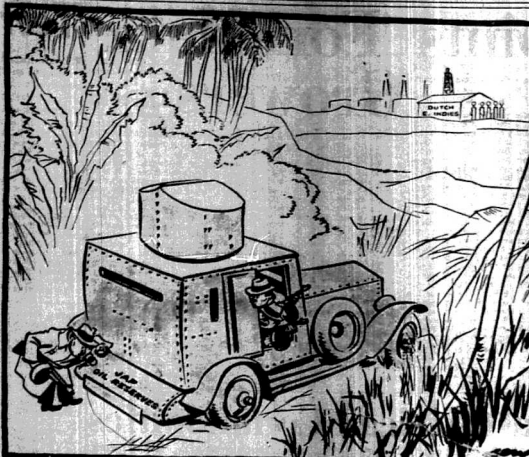
The East African Campaign

FROM time to time it has been my privilege to tell you something about the work of the Mountain Batteries...

the first unit to arrive from overseas was the 2nd East African Brigade...

A Spin crew of an Indian Mountain Battery in action.

movement into what they termed their very little-organized men by the main transport...



ENOUGH IN THE TANK TO GET TO THAT FILING STATION? (Continued on all continents) ...of the Osewa plot...

THE NEW YEAR

General Smith's speech envisaged the further increase in sea-traffic...

The East African Campaign

FROM time to time it has been my privilege to tell you something about the work of the Mountain Batteries...

the first unit to arrive from overseas was the 2nd East African Brigade...

A Spin crew of an Indian Mountain Battery in action.

movement into what they termed their very little-organized men by the main transport...

CONVERSATION PIECE

"Take that you scoundrel," quoth God, "take it—and pay for it."—Spanish proverb. "All men need to earn a living. All men have to live in a society or state. All men need what the call a scale of values..."

THE OTHER A great deal is talked about the duty of a State towards its people while the reverse side of that coin—the duty of the people towards the State—is becoming more and more glossed over...

Of the three elements of education, I have already spoken twice. I have already said that certain individuals were to be served and held by force.

THE NEW YEAR I am always glad to hear from parents and children interested in this subject, and though I cannot always pass up an opportunity...

THREE STAGES

I am always glad to hear from parents and children interested in this subject, and though I cannot always pass up an opportunity...

THE FIRST DEFENSIVE

THE first phase of the part assigned to the 2nd Mountain Battery...

THE second phase of the part assigned to the 2nd Mountain Battery...

THE third phase of the part assigned to the 2nd Mountain Battery...

THE fourth phase of the part assigned to the 2nd Mountain Battery...

Agricultural Section
P.O. Box 300, NAIROBI.

Advertisements will be accepted for insertion in the Agricultural Section of this paper on the following conditions:—
ADVERTISING TARIFF
The right is reserved to revise or refuse any advertisement which is deemed to be objectionable either in its matter or phrasing or for any other cause.
New advertisements or changes of copy must reach the office on Tuesday morning, for insertion in the following Friday's issue.

DISPLAY ADVERTISEMENTS
These are classified as follows:—
Advertisement Manager
The charge for classified advertisements in this section is as follows:—
For the first week, 10/- per line for each of the first three weeks. Thereafter 5/- per line for each additional three weeks. Display with original order—half price.
All the above advertisements are strictly payable in advance.

STRATHMORE AYRSHIRES ASSURE SUCCESS

Particulars of trials for sale from H. R. & J. A. Ayres, Strathmore, Lincolnshire.

"Lakeland Ayrshire Herd"

(Genuine "Water Herd")
Pedigree and High Grade Bulls, and several Female Heifers, 2 years old. Complete herd about 700. Males for sale at 10/- each. Kingdon Farm, Malpas, Shropshire.

LAKELAND AYRSHIRE

"Every Farmer's Life a Day"

DOANS
For complete details apply to White Star, Dept. 10, 114, 115, 116, 117, 118, 119, 120, 121, 122, 123, 124, 125, 126, 127, 128, 129, 130, 131, 132, 133, 134, 135, 136, 137, 138, 139, 140, 141, 142, 143, 144, 145, 146, 147, 148, 149, 150, 151, 152, 153, 154, 155, 156, 157, 158, 159, 160, 161, 162, 163, 164, 165, 166, 167, 168, 169, 170, 171, 172, 173, 174, 175, 176, 177, 178, 179, 180, 181, 182, 183, 184, 185, 186, 187, 188, 189, 190, 191, 192, 193, 194, 195, 196, 197, 198, 199, 200, 201, 202, 203, 204, 205, 206, 207, 208, 209, 210, 211, 212, 213, 214, 215, 216, 217, 218, 219, 220, 221, 222, 223, 224, 225, 226, 227, 228, 229, 230, 231, 232, 233, 234, 235, 236, 237, 238, 239, 240, 241, 242, 243, 244, 245, 246, 247, 248, 249, 250, 251, 252, 253, 254, 255, 256, 257, 258, 259, 260, 261, 262, 263, 264, 265, 266, 267, 268, 269, 270, 271, 272, 273, 274, 275, 276, 277, 278, 279, 280, 281, 282, 283, 284, 285, 286, 287, 288, 289, 290, 291, 292, 293, 294, 295, 296, 297, 298, 299, 300, 301, 302, 303, 304, 305, 306, 307, 308, 309, 310, 311, 312, 313, 314, 315, 316, 317, 318, 319, 320, 321, 322, 323, 324, 325, 326, 327, 328, 329, 330, 331, 332, 333, 334, 335, 336, 337, 338, 339, 340, 341, 342, 343, 344, 345, 346, 347, 348, 349, 350, 351, 352, 353, 354, 355, 356, 357, 358, 359, 360, 361, 362, 363, 364, 365, 366, 367, 368, 369, 370, 371, 372, 373, 374, 375, 376, 377, 378, 379, 380, 381, 382, 383, 384, 385, 386, 387, 388, 389, 390, 391, 392, 393, 394, 395, 396, 397, 398, 399, 400, 401, 402, 403, 404, 405, 406, 407, 408, 409, 410, 411, 412, 413, 414, 415, 416, 417, 418, 419, 420, 421, 422, 423, 424, 425, 426, 427, 428, 429, 430, 431, 432, 433, 434, 435, 436, 437, 438, 439, 440, 441, 442, 443, 444, 445, 446, 447, 448, 449, 450, 451, 452, 453, 454, 455, 456, 457, 458, 459, 460, 461, 462, 463, 464, 465, 466, 467, 468, 469, 470, 471, 472, 473, 474, 475, 476, 477, 478, 479, 480, 481, 482, 483, 484, 485, 486, 487, 488, 489, 490, 491, 492, 493, 494, 495, 496, 497, 498, 499, 500, 501, 502, 503, 504, 505, 506, 507, 508, 509, 510, 511, 512, 513, 514, 515, 516, 517, 518, 519, 520, 521, 522, 523, 524, 525, 526, 527, 528, 529, 530, 531, 532, 533, 534, 535, 536, 537, 538, 539, 540, 541, 542, 543, 544, 545, 546, 547, 548, 549, 550, 551, 552, 553, 554, 555, 556, 557, 558, 559, 560, 561, 562, 563, 564, 565, 566, 567, 568, 569, 570, 571, 572, 573, 574, 575, 576, 577, 578, 579, 580, 581, 582, 583, 584, 585, 586, 587, 588, 589, 590, 591, 592, 593, 594, 595, 596, 597, 598, 599, 600, 601, 602, 603, 604, 605, 606, 607, 608, 609, 610, 611, 612, 613, 614, 615, 616, 617, 618, 619, 620, 621, 622, 623, 624, 625, 626, 627, 628, 629, 630, 631, 632, 633, 634, 635, 636, 637, 638, 639, 640, 641, 642, 643, 644, 645, 646, 647, 648, 649, 650, 651, 652, 653, 654, 655, 656, 657, 658, 659, 660, 661, 662, 663, 664, 665, 666, 667, 668, 669, 670, 671, 672, 673, 674, 675, 676, 677, 678, 679, 680, 681, 682, 683, 684, 685, 686, 687, 688, 689, 690, 691, 692, 693, 694, 695, 696, 697, 698, 699, 700, 701, 702, 703, 704, 705, 706, 707, 708, 709, 710, 711, 712, 713, 714, 715, 716, 717, 718, 719, 720, 721, 722, 723, 724, 725, 726, 727, 728, 729, 730, 731, 732, 733, 734, 735, 736, 737, 738, 739, 740, 741, 742, 743, 744, 745, 746, 747, 748, 749, 750, 751, 752, 753, 754, 755, 756, 757, 758, 759, 760, 761, 762, 763, 764, 765, 766, 767, 768, 769, 770, 771, 772, 773, 774, 775, 776, 777, 778, 779, 780, 781, 782, 783, 784, 785, 786, 787, 788, 789, 790, 791, 792, 793, 794, 795, 796, 797, 798, 799, 800, 801, 802, 803, 804, 805, 806, 807, 808, 809, 810, 811, 812, 813, 814, 815, 816, 817, 818, 819, 820, 821, 822, 823, 824, 825, 826, 827, 828, 829, 830, 831, 832, 833, 834, 835, 836, 837, 838, 839, 840, 841, 842, 843, 844, 845, 846, 847, 848, 849, 850, 851, 852, 853, 854, 855, 856, 857, 858, 859, 860, 861, 862, 863, 864, 865, 866, 867, 868, 869, 870, 871, 872, 873, 874, 875, 876, 877, 878, 879, 880, 881, 882, 883, 884, 885, 886, 887, 888, 889, 890, 891, 892, 893, 894, 895, 896, 897, 898, 899, 900, 901, 902, 903, 904, 905, 906, 907, 908, 909, 910, 911, 912, 913, 914, 915, 916, 917, 918, 919, 920, 921, 922, 923, 924, 925, 926, 927, 928, 929, 930, 931, 932, 933, 934, 935, 936, 937, 938, 939, 940, 941, 942, 943, 944, 945, 946, 947, 948, 949, 950, 951, 952, 953, 954, 955, 956, 957, 958, 959, 960, 961, 962, 963, 964, 965, 966, 967, 968, 969, 970, 971, 972, 973, 974, 975, 976, 977, 978, 979, 980, 981, 982, 983, 984, 985, 986, 987, 988, 989, 990, 991, 992, 993, 994, 995, 996, 997, 998, 999, 1000.

NEW, LONGER, EASY RIDING SPRINGS
THE NEW INTERNATIONAL TRUCKS

Take a look at the New K-Line International, styled by top-flight designers, powered by the great new General Diamond Engines. And here's the kind of comfort that only driver can really appreciate. It's the new, longer, easy-riding springs and the comfortable, all-steel drive shaft. These New Internationals will never come on all bawling jobs, so no discomfort.

INTERNATIONAL HARVESTER EXPORT Co.
(INC. IN U.S.A.)
NAIROBI, P.O. Box 588.

INTERNATIONAL TRUCKS

Maize Growers

It is with considerable diffidence that I have completed with the request to give some notes on maize growing. I only do so because in view of the increasing interest in this crop, my experience of growing maize in the Trans-Nzeta district may raise some points of practical use to those who have not yet raised maize in previous years. The value of the soil varies according to the type of soil you are farming, but the general plan for ploughing, planting, harrowing, intercultivating and so on, will be much the same for any maize-growing district.

When the maize is ready to plant, it may be sown in the early spring, or later, and they are raised in straight rows, requiring, about 100 lbs. of superphosphate per acre. It is important to note that the soil should be well worked, and the seed should be sown in a hole about 2 inches deep, and covered with a layer of soil about 2 inches thick. The seed should be sown in a hole about 2 inches deep, and covered with a layer of soil about 2 inches thick. The seed should be sown in a hole about 2 inches deep, and covered with a layer of soil about 2 inches thick.

East African Commodities

The following market report, dated September 11, has just been received from the Head Office of Dalrymple and Company, Ltd., in London, giving particulars of East African commodities in other parts of the world.

Harvesting of home has been in progress since the beginning of the season, and in some areas the crop is now being threshed. The crop is generally good, and the yield is expected to be satisfactory. The price of wheat is expected to be steady, and the price of maize is expected to be firm.

There has been a steady demand for wheat, and the price is expected to be steady. The price of maize is expected to be firm, and the price of cotton is expected to be steady.

The price of wheat is expected to be steady, and the price of maize is expected to be firm. The price of cotton is expected to be steady, and the price of sugar is expected to be firm.

The price of wheat is expected to be steady, and the price of maize is expected to be firm. The price of cotton is expected to be steady, and the price of sugar is expected to be firm.

The price of wheat is expected to be steady, and the price of maize is expected to be firm. The price of cotton is expected to be steady, and the price of sugar is expected to be firm.

The price of wheat is expected to be steady, and the price of maize is expected to be firm. The price of cotton is expected to be steady, and the price of sugar is expected to be firm.

The price of wheat is expected to be steady, and the price of maize is expected to be firm. The price of cotton is expected to be steady, and the price of sugar is expected to be firm.

The price of wheat is expected to be steady, and the price of maize is expected to be firm. The price of cotton is expected to be steady, and the price of sugar is expected to be firm.

The price of wheat is expected to be steady, and the price of maize is expected to be firm. The price of cotton is expected to be steady, and the price of sugar is expected to be firm.

The price of wheat is expected to be steady, and the price of maize is expected to be firm. The price of cotton is expected to be steady, and the price of sugar is expected to be firm.

The price of wheat is expected to be steady, and the price of maize is expected to be firm. The price of cotton is expected to be steady, and the price of sugar is expected to be firm.

The price of wheat is expected to be steady, and the price of maize is expected to be firm. The price of cotton is expected to be steady, and the price of sugar is expected to be firm.

Maize Growers

When the maize is ready to plant, it may be sown in the early spring, or later, and they are raised in straight rows, requiring, about 100 lbs. of superphosphate per acre. It is important to note that the soil should be well worked, and the seed should be sown in a hole about 2 inches deep, and covered with a layer of soil about 2 inches thick. The seed should be sown in a hole about 2 inches deep, and covered with a layer of soil about 2 inches thick.

East African Commodities

The following market report, dated September 11, has just been received from the Head Office of Dalrymple and Company, Ltd., in London, giving particulars of East African commodities in other parts of the world.

Harvesting of home has been in progress since the beginning of the season, and in some areas the crop is now being threshed. The crop is generally good, and the yield is expected to be satisfactory. The price of wheat is expected to be steady, and the price of maize is expected to be firm.

There has been a steady demand for wheat, and the price is expected to be steady. The price of maize is expected to be firm, and the price of cotton is expected to be steady.

The price of wheat is expected to be steady, and the price of maize is expected to be firm. The price of cotton is expected to be steady, and the price of sugar is expected to be firm.

The price of wheat is expected to be steady, and the price of maize is expected to be firm. The price of cotton is expected to be steady, and the price of sugar is expected to be firm.

The price of wheat is expected to be steady, and the price of maize is expected to be firm. The price of cotton is expected to be steady, and the price of sugar is expected to be firm.

The price of wheat is expected to be steady, and the price of maize is expected to be firm. The price of cotton is expected to be steady, and the price of sugar is expected to be firm.

The price of wheat is expected to be steady, and the price of maize is expected to be firm. The price of cotton is expected to be steady, and the price of sugar is expected to be firm.

The price of wheat is expected to be steady, and the price of maize is expected to be firm. The price of cotton is expected to be steady, and the price of sugar is expected to be firm.

The price of wheat is expected to be steady, and the price of maize is expected to be firm. The price of cotton is expected to be steady, and the price of sugar is expected to be firm.

The price of wheat is expected to be steady, and the price of maize is expected to be firm. The price of cotton is expected to be steady, and the price of sugar is expected to be firm.

The price of wheat is expected to be steady, and the price of maize is expected to be firm. The price of cotton is expected to be steady, and the price of sugar is expected to be firm.

The price of wheat is expected to be steady, and the price of maize is expected to be firm. The price of cotton is expected to be steady, and the price of sugar is expected to be firm.

Terracing Operations

The introduction to his talk to Farmers given by the Kenya State Government last week, Mr. Colin Maher said that although as a rule when broadening, he chose a subject of fairly general interest, his subject has been one which immediately struck a responsive chord. He continued:

The Conservation Service now has seven terracing machines in the country. The first of these was a 10-hp. machine which was used in the early part of the year. It was a very simple machine, and was used for terracing on a hillside. It was a very simple machine, and was used for terracing on a hillside.

Mr. J. Broadbent has been in the country for some time, and has been working on the terracing of hillsides. He has been working on the terracing of hillsides, and has been working on the terracing of hillsides.

Essential Services Commodities

The following market report, dated September 11, has just been received from the Head Office of Dalrymple and Company, Ltd., in London, giving particulars of East African commodities in other parts of the world.

Harvesting of home has been in progress since the beginning of the season, and in some areas the crop is now being threshed. The crop is generally good, and the yield is expected to be satisfactory. The price of wheat is expected to be steady, and the price of maize is expected to be firm.

There has been a steady demand for wheat, and the price is expected to be steady. The price of maize is expected to be firm, and the price of cotton is expected to be steady.

The price of wheat is expected to be steady, and the price of maize is expected to be firm. The price of cotton is expected to be steady, and the price of sugar is expected to be firm.

The price of wheat is expected to be steady, and the price of maize is expected to be firm. The price of cotton is expected to be steady, and the price of sugar is expected to be firm.

The price of wheat is expected to be steady, and the price of maize is expected to be firm. The price of cotton is expected to be steady, and the price of sugar is expected to be firm.

The price of wheat is expected to be steady, and the price of maize is expected to be firm. The price of cotton is expected to be steady, and the price of sugar is expected to be firm.

The price of wheat is expected to be steady, and the price of maize is expected to be firm. The price of cotton is expected to be steady, and the price of sugar is expected to be firm.

The price of wheat is expected to be steady, and the price of maize is expected to be firm. The price of cotton is expected to be steady, and the price of sugar is expected to be firm.

The price of wheat is expected to be steady, and the price of maize is expected to be firm. The price of cotton is expected to be steady, and the price of sugar is expected to be firm.

The price of wheat is expected to be steady, and the price of maize is expected to be firm. The price of cotton is expected to be steady, and the price of sugar is expected to be firm.

The price of wheat is expected to be steady, and the price of maize is expected to be firm. The price of cotton is expected to be steady, and the price of sugar is expected to be firm.

The price of wheat is expected to be steady, and the price of maize is expected to be firm. The price of cotton is expected to be steady, and the price of sugar is expected to be firm.

District Agricultural Notes

to reach England before Christmas. The children will be very happy to receive their presents, and the children will be very happy to receive their presents.

The children will be very happy to receive their presents, and the children will be very happy to receive their presents. The children will be very happy to receive their presents, and the children will be very happy to receive their presents.

The children will be very happy to receive their presents, and the children will be very happy to receive their presents. The children will be very happy to receive their presents, and the children will be very happy to receive their presents.

The children will be very happy to receive their presents, and the children will be very happy to receive their presents. The children will be very happy to receive their presents, and the children will be very happy to receive their presents.

In a quiet market quotations remain much the same. The price of wheat is expected to be steady, and the price of maize is expected to be firm.

The price of wheat is expected to be steady, and the price of maize is expected to be firm. The price of cotton is expected to be steady, and the price of sugar is expected to be firm.

The price of wheat is expected to be steady, and the price of maize is expected to be firm. The price of cotton is expected to be steady, and the price of sugar is expected to be firm.

The price of wheat is expected to be steady, and the price of maize is expected to be firm. The price of cotton is expected to be steady, and the price of sugar is expected to be firm.

The price of wheat is expected to be steady, and the price of maize is expected to be firm. The price of cotton is expected to be steady, and the price of sugar is expected to be firm.

BUY AREKO UNIVERSAL DROPPERS

BECAUSE—
1. They are British Made.
2. They are Strong and Durable.
3. They are easily cleaned.
4. They fit any size of bottle.
5. They fit any size of bottle.

Write for descriptive leaflet and prices from—
DALGETY & COMPANY, Limited.
Nairobi, Kenya.

Stocks in Nairobi, Kenya.
OMEGA & SONS LTD.

Stocks in Nairobi, Kenya.
OMEGA & SONS LTD.

HIGH SPIRITS RADIANT HEALTH

come from ENO'S

Bright eyes! Clear skin! Boyan's spirit! Everywhere their signs of health are known and envied. They are the outward signs of inner cleanliness...

ENO'S IS DIFFERENT—because it is a complete natural fruit salt. It contains no sugar, no artificial coloring, no preservatives...

ENOS FRUIT SALT

The world's best and "Fruit Salt" are registered trade marks



You'll enjoy cleaning your teeth with KOLYNOS—it's so delightfully refreshing. Moreover it will make them whiter and brighter than ever before.

KOLYNOS DENTAL CREAM

The Economical Tooth Paste

HERE'S HEALTH AND REFRESHMENT in a glass

To the Editor: "Increased taxation on luxuries is a welcome sign of our desire to offer greater assistance to the poorer classes."

—a glass of Brooke's delicious Squashes or thirst-quenching Cordials

THESE are not mistaking the really refreshing "fruity" flavour of all BROOKE'S drinks.

BROOKE'S advertisement featuring a bottle of lemon squash and a list of products like Orange Squash, Passion Fruit Squash, Lime Juice Cordial, etc.

Correspondence...

KENYA DEFENCE FORCE To the Editor, "E.A. Standard" Sir—The report of the... (text continues)

MUTHUJIGA Nairobi, December 4, 1941. SOLDIERS' SAVINGS To the Editor, "E.A. Standard" Sir—The Government has drawn my attention to that section...

LAMU To the Editor, "E.A. Standard" Sir—The facts from the D.C. of Lamu's letter published in the... (text continues)

PETROL To the Editor: "Increased taxation on luxuries is a welcome sign of our desire to offer greater assistance to the poorer classes."

THE A.P.S. To the Editor, "E.A. Standard" Sir—May I through the press... (text continues)

THE A.P.S. To the Editor, "E.A. Standard" Sir—May I through the press... (text continues)

THE A.P.S. To the Editor, "E.A. Standard" Sir—May I through the press... (text continues)

THE A.P.S. To the Editor, "E.A. Standard" Sir—May I through the press... (text continues)

THE A.P.S. To the Editor, "E.A. Standard" Sir—May I through the press... (text continues)

THE A.P.S. To the Editor, "E.A. Standard" Sir—May I through the press... (text continues)

THE A.P.S. To the Editor, "E.A. Standard" Sir—May I through the press... (text continues)

INDIAN BROADCAST PROGRAMMES To the Editor, "E.A. Standard" Sir—I believe that Mr. Khan's letter of the 23rd inst. is without either facts or foundation...

TRANS NZOIA MAIZE 'GROWERS' At a public meeting of maize growers of the Trans-Nzoia district, convened by Col. Kirkwood...

A Week's Wireless Programmes SUNDAY, DECEMBER 1. 8.45-9.15—The voice of the theatre. 10.15-11.00—The voice of the theatre...

KENYA STATION SUNDAY, DECEMBER 1. 6.30 p.m.—Lullaby Programme. 7.15-8.00—Lullaby Programme...

WEDNESDAY, DECEMBER 1. 12.00 p.m.—Political commentary. 2.45-3.15—Political commentary...

THURSDAY, DECEMBER 1. 6.00 p.m.—Demonstration Programme. 7.15-8.00—Lullaby Programme...

FRIDAY, DECEMBER 1. 12.00 p.m.—Political commentary. 2.45-3.15—Political commentary...

THE WORLD'S FINEST WHISKY advertisement featuring a bottle of Crawford's Scotch Whisky and a list of agents.

CUTEX POLISH IS POROUS Does Not Seal in the Nails advertisement featuring a woman's hands and a bottle of Cutex polish.

NEURITIS advertisement featuring a woman's face and a bottle of Neuritis medicine.

SALON'S LINIMENT KILLS PAIN advertisement featuring a woman's face and a bottle of Salon's Liniment.

CAISTER HOTEL DURBAN advertisement featuring a building illustration and text about the hotel's location and amenities.

STEPHER ELKS & CO. LTD. advertisement for electrical, mechanical, and radio engineering services.

More Enemies
MONDAY, DECEMBER 9, 1941
The Axis Powers have now added Finland, Rumania and Hungary as the logical outcome of events and while there will be a natural feeling of sympathy for the Finns in Finland, this development is necessary no fair-minded person will suggest that the Axis Powers have not been taking hostile steps in any other course was possible in all the circumstances. It is only eighteen months since the Axis Powers were engaged in Poland for her heroic resistance to aggression and although a Finnish desire for vengeance is understandable it appears odd that by strong pressure from Germany, we have overruled good judgment. When Finland first offered hostilities against the Soviet Union the excuse that she was concerned only with retaining territory ceded to Russia under the Russo-Finnish Agreement. It soon became apparent, however, that this would not satisfy the Finnish Commander-in-Chief, Marshal Mannerheim, and that he was intent on driving as far as possible as Hitler in the latter's war against Russia. Some weeks ago it was reliably reported that Russia had agreed to let the Axis actually took place but that Marshal Mannerheim's statement that Russian Karelia must be incorporated into Finland and that the Russians to break off the talks. Repeated efforts by the United States and Britain to bring about more realistic outlook on the part of Finland have met with no success. It will be recalled that early in October Russia asked Britain to declare war on Finland and it is significant of Britain's reluctance to make a complete break with the former that she has not taken the extreme step has so long delayed. But when a few days ago it was announced that Finland had signed the Moscow Comintern Pact her complete alliance with the Nazis was demonstrated and Britain was left with no choice but to declare war on Moscow's request. So far as Hungary and Rumania are concerned the declaration of war will be regarded as a state of affairs which has long made those countries active allies of Germany. Both have equipped their armies against Russia and have given other forms of help which have had the effect of releasing more German troops for the actual fighting on the Eastern Front. The help afforded by Rumanian troops had some part in the fall of Odessa. It is interesting that these two countries remain free from allowing their troops to participate in the fighting on the policing of conquest territory the Nazi advance against Russia would not have achieved the successes which have so far resulted. It may well have been impossible for both Rumania and Hungary to resist German control so far as included demands for those countries to be used as bases for the operations against Russia, but their evident willingness to take an active part in the fight against Britain's ally is inevitable that sooner or later they

would be formally recognised as enemies of Britain. The new development may not make much difference to the physical conduct of the war in the Eastern front, but it is a very convincing demonstration of the unity and of the fact that the Allies is the enemy of all.

AT WAR WITH JAPAN

TUESDAY, DECEMBER 9, 1941.
The last of the Axis Powers has committed the final act of aggression. In the case of Japan which has been perhaps even more unprovoked and deliberate than anything that either Germany or Italy have so far accomplished. The declaration of war was made while negotiations were still proceeding with the United States and at a time when it was possible to expect that a Japanese problem should be solved. But how little expectation there was of such a solution appears from the contents of the American note to Tokyo now disclosed. With the full agreement of Britain, the Dominions, the Dutch East Indies and China, the United States Government called Japan's bluff and made it clear that in no circumstances would peace in the Pacific be brought about by the offering of a single concession to aggression. The war has opened in the Pacific with a realistic appreciation it is probable that having regard to the geographical features of the immense new theatre of the war means. We should not count ourselves with such speculations as to whether the spirit of Japan will be broken or lengthen the war. All we should assume is that it will demand of us the maximum energy, effort and sacrifice in every direction. The Japanese decision comes at a time which was already critical for the British Empire and its allies. The winter months were to have been valuable in undertaking the task of maintaining the Russians in the field by employing all the material resources of the United States and the British Empire. That task must still be undertaken because the war in Russia remains the most important in the whole series of world-wide battles. The German is the real enemy, not the Japanese. The Italians or the Japanese. While, therefore, Hitler will be right in assuming that his successors will be able to react in some measure to the general advance of the Axis by limiting American help, the broad principle of concentration of British strength it need not be pessimistically considered, that the gates of the East are now closed. The United States is in the war and whether or not Germany

makes an early declaration is a mere formality. Up to date there must have been a feeling of uneasiness in the United States in regard to the part they had to play and were playing in this war for their freedom. Uneasiness has been swept aside. Every American citizen has a right to his patriotism, for his work and for his sacrifice. There no longer any room for strikes, for discussion about isolationism or for any other reservation. The one fact that will concern every American in the Services or in the great war factories is that the United States is fighting for her own security and that the liberty of the American people which his efforts would events many of them have largely taken for granted is now in real jeopardy. There have been critics in the United States of the conduct of the war by Britain and America now has an opportunity against an enemy which is not to be taken to apply the "go to it" attitude which has always been a feature of every peacetime American. The Allies in the Pacific must of course operate in the closest association but we must not forget that the war in the street will be that the jackal must be hunted down relentlessly. It is the Government's duty to ask now to promise that interim financial statements will be made to a Legislature at intervals during the war. We believe also that the Finance Committee should examine the financial proposals of the Government de novo in view of the altered position and submit to the Legislature before the Budget is finally adopted. It is important to remember that the Budget was framed and submitted at a time when the Japanese were not expected to grasp the simple fact that without any doubt that competition must be made in Africa and changes in the Kenya economic structure, especially if the Colony and its East African neighbours are realistically to engage in the tasks which can easily find to do instead of being content with a comfortable knowledge that there is over a million in the bank. The Financial Secretary, who introduced the 1942 Budget in his review of the financial position with these words: "Broadly speaking this Budget is based on the assumption that the economic principles and those conceptions of social justice which are generally accepted in the world are the guiding principles of the Colonial Empire, and it is as fulfilling that policy that I recommend these estimates to the consideration of this Honourable Council." In other words the Kenya Government prepared its Budget on the basis of the Moyne Dispatch as its guide, and not necessarily the conditions which were ruling in the Colony. Government may argue that the Budget is a skillful blend of both but we are entitled to believe that the broad principles of the Moyne Dispatch were accepted by the Government as an instruction or guide from which it would have found difficulty in departing.

cut our relations with South Africa and India in the joint task of supplying the great theatres of war nearest to our borders. We have abundant assets, we have the money and its use as well as we must without any loss of our security and level of comfortable discussions on abstract questions and turn all our energies to the preservation of our own security and the discharge of our obligations to the rest of the Empire. Among other things much closer cooperation among the East African territories is now demanded in all practical questions affecting that common war effort.

Looking Back On The Budget

WEDNESDAY, DECEMBER 10, 1941.
We believe the people of Kenya will be relieved of what is a heavy burden if the Government will assure the Legislative Council, as a special undertaking, to examine merely as a routine responsibility, that a very close watch will be kept on revenue and expenditure during the war months of 1942 in the light of the new complications in the war outlook. We believe, further, that the Government should be asked now to promise that interim financial statements will be made to a Legislature at intervals during the war. We believe also that the Finance Committee should examine the financial proposals of the Government de novo in view of the altered position and submit to the Legislature before the Budget is finally adopted. It is important to remember that the Budget was framed and submitted at a time when the Japanese were not expected to grasp the simple fact that without any doubt that competition must be made in Africa and changes in the Kenya economic structure, especially if the Colony and its East African neighbours are realistically to engage in the tasks which can easily find to do instead of being content with a comfortable knowledge that there is over a million in the bank. The Financial Secretary, who introduced the 1942 Budget in his review of the financial position with these words: "Broadly speaking this Budget is based on the assumption that the economic principles and those conceptions of social justice which are generally accepted in the world are the guiding principles of the Colonial Empire, and it is as fulfilling that policy that I recommend these estimates to the consideration of this Honourable Council." In other words the Kenya Government prepared its Budget on the basis of the Moyne Dispatch as its guide, and not necessarily the conditions which were ruling in the Colony. Government may argue that the Budget is a skillful blend of both but we are entitled to believe that the broad principles of the Moyne Dispatch were accepted by the Government as an instruction or guide from which it would have found difficulty in departing.

ture, wages problems, the new works and the usual list of things which we are accustomed to see discussed when the country is at peace, and there is time and place for placidity. There was recognition of some of the early difficulties of the war such as the increasing cost of coal, the wear and tear of rolling stock and the increasing difficulties of repair and maintenance. These things are to be expected in present day conditions. They are the normal factors of the running of a Railway in war.

What we should be interested in are the things which are not normal, and the most important of these is the war effort of the Kenya and Uganda Railways and Harbours. By that we do not mean the war effort of the past, the maintenance of the transport system under exceptional difficulties, the manufacture of armoured cars and gun carriers, the handling of military traffic at the port. That excellent record of war work belongs to the past. Now it is the future war effort of East Africa and we see nothing in the Railway debate to suggest to us that there is a K.U.R. war policy.

The Railways and Harbours Administration is not merely a money-making transport concern. It is an instrument of policy which the public has placed in the hands of the management and the Railway Council. There was no indication of realisation or acceptance of that fact in the Budget speech, and only a very general understanding of it in the debate that followed. The Members for the Coast and Mombasa seemed to think for instance that we should be interested in holidays and excursions, that we should find time to consider the policy of the public transport service from the point of view of the profits to be made from holiday-makers at the Coast. They may indignantly reply that the points they made were merely passing comments, part only of the whole picture. But the point we would make is that if we had a proper appreciation of what this war means now, and of the future of the Railway policy we would not be thinking of excursions at all. Such

which we believe to be very largely and disproportionately a European burden) and Excess Profits Tax. The latter is a tax of a million pounds—in fact equal to the whole sum provided by a community of three million Africans in direct taxes. And whereas the African contribution from this source has hardly varied for many years, the incidence of taxation on the shoulders of those who pay Income Tax and Excess Profits Tax has risen with extreme sharpness in the past two years. When Income Tax was first introduced it was intended to bring in a total amount of some £20,000. Now it is one of the principal sources of public revenue.

In his review of the Estimates the Financial Secretary gave four reasons for the improved financial position after two years of war—increased production, increased importation, increased trade, increased taxation. Let us briefly examine them in the order in which they appear to the rest of the world in mind, and our comparatively small country as well as the Far East theatre. Increased production is admittedly a source of increasing national wealth, but as for the European theatre it is concerned there are limiting factors such as man-power administered by Government and the high cost of materials, higher taxes and all-round increases in production costs, logging and the handling of military traffic at the port. That excellent record of war work belongs to the past. Now it is the future war effort of East Africa and we see nothing in the Railway debate to suggest to us that there is a K.U.R. war policy.

It is important to remember that the Budget was framed and submitted at a time when the Japanese were not expected to grasp the simple fact that without any doubt that competition must be made in Africa and changes in the Kenya economic structure, especially if the Colony and its East African neighbours are realistically to engage in the tasks which can easily find to do instead of being content with a comfortable knowledge that there is over a million in the bank. The Financial Secretary, who introduced the 1942 Budget in his review of the financial position with these words: "Broadly speaking this Budget is based on the assumption that the economic principles and those conceptions of social justice which are generally accepted in the world are the guiding principles of the Colonial Empire, and it is as fulfilling that policy that I recommend these estimates to the consideration of this Honourable Council." In other words the Kenya Government prepared its Budget on the basis of the Moyne Dispatch as its guide, and not necessarily the conditions which were ruling in the Colony. Government may argue that the Budget is a skillful blend of both but we are entitled to believe that the broad principles of the Moyne Dispatch were accepted by the Government as an instruction or guide from which it would have found difficulty in departing.



"I don't take any chances with my PERSONAL FRESHNESS"
Lifebuoy Toilet Soap contains a truly unique antiseptic health element which helps you soothe and protect the skin.

LIFEBUOY TOILET SOAP

For Smart Healthy Hair—**BRYLCREEM**—
THE PERFECT HAIR DRESSING
All day long Berylcreem will keep your hair looking smart and well groomed. And as time goes by Berylcreem is also keeping your hair healthy. Buy a bottle today and see how quickly your hair becomes to health and splendour.

AFRICA TRADE AGENCY

commission agents, produce brokers and general traders.
P.O. Box 1318, Offices Royal Exchange Building, Nairobi.
We undertake buying and selling on commission. No order too small, none too large. We are instructed to buy exports, gold and silverware (also diamonds), jewellery, photo cameras, cut glass, bronzes, bric-a-brac, etc.

You can depend on CHAMPION SPARK PLUGS

to REDUCE THE COST OF MOTORING

Incomplete combustion results in lost fuel, carbon formation and that means a new set of components and more frequent oil changes. Champion Spark Plugs give you the most complete and efficient combustion. They give you the longest service life that comes from complete combustion.

The Car & General Equipment Co. Ltd., Delamare Avenue, Nairobi.

This should mean a greater burden of responsibility for East Africa to carry and it is one that we should willingly shoulder. It is the answer to the controversy which was discussed in the Legislative Council as to whether there should be sent to Great Britain or used for the local war effort. It is true that the surplus balance is quite considerable. If we lent £500,000 to the British Government as an investment there would be £700,000 left for our own needs. But let us first of all see what we have to do to meet this new and challenging set of circumstances and the question of disposal of the balance. The East African territories are not dependent upon Japan for the marketing of important exports and we have been able to do without most of them. The impact which at one time flourished our markets from the centres of Japanese industry. The extension of the war will result in greatly disturbed markets. The East African trade structure, but the shipping problem, already difficult, will become more severe as a consequence whether liquor and lipsticks should or should not be imported. For the probability is that what was merely part of a long list of commodities which will no longer be available simply because there will be no facing heavy taxation responsibilities next year. It is officially computed that Income Tax

THURSDAY, DECEMBER 11, 1941.
If we want to know how long still is the road we have to travel in East Africa before we have a clear picture of the working of the conditions in which we find ourselves, we need only read the debate on the 1942 Budget in the House of Representatives. Perhaps more than anything that has so far transpired in the legislative Council of Kenya this debate shows the inability of the Colony to grasp the essentials of its situation. The Acting General Manager was concerned only with the debit and credit of a statement of accounts, with the estimating of the revenue and the expendi-

The Railways And The War

THURSDAY, DECEMBER 11, 1941.
If we want to know how long still is the road we have to travel in East Africa before we have a clear picture of the working of the conditions in which we find ourselves, we need only read the debate on the 1942 Budget in the House of Representatives. Perhaps more than anything that has so far transpired in the legislative Council of Kenya this debate shows the inability of the Colony to grasp the essentials of its situation. The Acting General Manager was concerned only with the debit and credit of a statement of accounts, with the estimating of the revenue and the expendi-

IN A CLASS BY HIMSELF..

Breeding makes a prizewinner just as breeding and tradition make a brandy. Chateau is a triumph of tradition.

Chateau is made by traditional craftsmen, in the traditional time-honoured methods. are brought in where modern methods improve.

Mellowed by the mature hand of time Chateau stands out from other brandies for its rich and satisfying flavour, its smooth good-fellowship. Chateau is traditional in those who know good brandy, traditional as a friendly handcup.

CHATEAU

THE ARISTOCRAT

Your Family Needs this Handy First-Aid

ZAM-BUK Heals Cuts, Abrasions, Sores Like Magic.

When any member of your family gets a cut, bruise, scald or similar injury, Zam-Buk is the first-aid to use. The valuable herbs in Zam-Buk are easily absorbed into the tissues, soothing pain and reducing inflammation. Zam-Buk possesses valuable antiseptic properties. It overcomes poison germs and heals without a scar. Guaranteed Free from India-Fair.

Use **ZAM-BUK** Herbal OINTMENT

JAPAN BRITS

H. M. S: Prince Of Wales And Repulse Sunk Off Malaya

JAPANESE TROOPS LANDED IN MALAYA, THAILAND, NORTH BORNEO AND THE PHILIPPINES

SINGAPORE Imperial Headquarters announced that from dawn on December 8 Japanese had entered into a state of war with the United States and Britain in the Western Pacific. The announcement was made in describing the widespread Japanese attacks in the Pacific.

Following are some of the highlights:

There are American reports from Manila which state that a Japanese aircraft carrier has been torpedoed and that Japanese parachute troops have landed in the Philippines.

Japanese ships which landed troops in North Malaya have been bombed by British aircraft. The ships are now withdrawing at high speed.

Japanese troops have landed in Thailand. Thailand is negotiating for an armistice.

Hongkong was attacked this morning and nine enemy aircraft bombed Kowloon.

An attempted landing in North Borneo was driven off by British troops.

There has been more Japanese bombing of American key points and bases in the Pacific.

Shanghai

Japanese bombers dropped leaflets over Shanghai this morning announcing that Japanese army and naval detachments were being sent to ensure strict compliance with the Shanghai to suppress what was

"Infamous"

MR. BORDWELL HULL ON JAPANESE DESCRIPTION

Mr. Cordell Hull revealed in Washington last night that the United States proposals to Japan mentioned a non-aggression pact between Britain, the United States, Japan, China, Russia, Thailand and the Netherlands East Indies. It was pointed out that Japan would withdraw all armed, military air and police forces from China and Manchuria and would renounce the Nanking puppet government and nullify their alliance with Germany.

In an accompanying statement Mr. Cordell Hull said that the very recent when the Japanese were negotiating for such a pact with the armed forces of Japan were negotiating for such a pact with the United States and people with which Japan had no quarrel.

The statement continued: "Before the Japanese Ambassador delivered his ultimatum to the United States, it is now apparent to the whole world that the Japanese are in possession of a desire for peace has been unambiguously and truthfully expressed."

President Roosevelt told Japanese leaders that they were "infamous" suffered by the United States in many attacks on civilians and people with which Japan had no quarrel.

The ultimatum demanded that the Japanese Ambassador deliver his ultimatum to the United States, it is now apparent to the whole world that the Japanese are in possession of a desire for peace has been unambiguously and truthfully expressed.

United States officials, one to 20,000 ton battleship Oklahoma were set on fire. The Japanese Navy Agency claims that the Oklahoma was sunk, but there is no confirmation of this.

United States destroyers were seen to sink four Japanese ships off Pearl Harbour and soon afterwards British warships were seen to sink a Japanese ship, indicating that an engagement was taking place.

Military headquarters in Tokyo reported that a naval battle was in progress off the Western Pacific between Japanese, United States and British warships. There is no confirmation of this from other sources.

According to a Berlin message, the Japanese are to have sunk the American warship West Virginia in the Shanghai area and that the Japanese flag is flying over the enemy has taken over. The first of the British gunboats was sunk.

An armed transport carrying lumber has been torpedoed 1,500 miles from the Western Pacific. The vessel was seen to be burning and distress signals from another United States ship were received in San Francisco, it has been received.

The East African Standard

(Continued from page 17)

questions would not even be in our minds.

The Railway Budget does not go to the Finance Committee of the Legislative Council. A demand for authority to spend two and three quarter million pounds is made and granted after a discussion which lasted only a few hours. It is true that the Railway Council is concerned with transport policy but the Legislature is responsible for Colonial policy and as such, should surely have found some means of dealing with greater amount and in more detail with the policy behind the Railway Budget. For policy and intention are what matter today, not the pounds and shillings which make up the Budget. What the country was entitled to expect from the Railway was a clear appreciation of the Railway's part in the war effort and an assurance that the Railway would play that part to the full. We are entitled to expect proposals which will help to drive forward increased agricultural production, rate changes which will put on the farms at the cheapest possible cost in transportation, the needs of the farmer, his cement, his fencing wire, sand, implements, fertilisers, feeding stuffs. We were entitled to expect that the Railway would come forward with plans to assist in placing the products of the territories it serves on the war markets by special export and in-transit rates. This is the kind of war policy we must expect from the Railway. It is a gap between the Railway and Harbours. And we must demand too, that the Legislature also devise proposals for the subjecting of the Railway Budget to proper examination instead of the present cursory approval. There is a gap between the Railway and Harbours and the Colonial Governments which must be closed if there is to be a properly functioning war effort.

The object of this article is to propose wartime policy and programme. By their casual handling of the Railway Budget the Legislative Councils have accepted a situation which in the public interest they ought to have challenged and changed.

President Roosevelt told Japanese leaders that they were "infamous" suffered by the United States in many attacks on civilians and people with which Japan had no quarrel.

The ultimatum demanded that the Japanese Ambassador deliver his ultimatum to the United States, it is now apparent to the whole world that the Japanese are in possession of a desire for peace has been unambiguously and truthfully expressed.

United States officials, one to 20,000 ton battleship Oklahoma were set on fire. The Japanese Navy Agency claims that the Oklahoma was sunk, but there is no confirmation of this.

United States destroyers were seen to sink four Japanese ships off Pearl Harbour and soon afterwards British warships were seen to sink a Japanese ship, indicating that an engagement was taking place.

Military headquarters in Tokyo reported that a naval battle was in progress off the Western Pacific between Japanese, United States and British warships. There is no confirmation of this from other sources.

According to a Berlin message, the Japanese are to have sunk the American warship West Virginia in the Shanghai area and that the Japanese flag is flying over the enemy has taken over. The first of the British gunboats was sunk.

An armed transport carrying lumber has been torpedoed 1,500 miles from the Western Pacific. The vessel was seen to be burning and distress signals from another United States ship were received in San Francisco, it has been received.

Heavy Loss of Life

The Japanese air attack on the Western Pacific from aircraft carriers which were stated to have come in to shore under cover of darkness. It is not known how many aircraft were shot down but a loss of four Japanese aircraft was reported.

There were two groups of aircraft which were shot down. The second of five, at a height of 15,000 feet. It is anticipated that many gas bombs were dropped.

The British aircraft carrier Broke-Popham issued an order of the day to the crew. The crew were to be ready for action with a common aim.

The British aircraft carrier Broke-Popham issued an order of the day to the crew. The crew were to be ready for action with a common aim.

Another raid on Singapore

Another raid on Singapore is reported this morning. The air raid this morning at 10.30 and the alert was sounded. The Japanese people were killed and 143 injured in the first raid.

The second was two groups of aircraft which were shot down. The second of five, at a height of 15,000 feet. It is anticipated that many gas bombs were dropped.

The British aircraft carrier Broke-Popham issued an order of the day to the crew. The crew were to be ready for action with a common aim.

The Mayor of San Francisco has demanded the cessation of all Japanese trade with the United States

The Mayor of San Francisco has demanded the cessation of all Japanese trade with the United States. The Mayor has demanded the cessation of all Japanese trade with the United States.

The Mayor of San Francisco has demanded the cessation of all Japanese trade with the United States. The Mayor has demanded the cessation of all Japanese trade with the United States.

Mr. Peterson, Under Secretary of the State Department, has announced that the American people are to be ready for action with a common aim

Mr. Peterson, Under Secretary of the State Department, has announced that the American people are to be ready for action with a common aim.

Mr. Peterson, Under Secretary of the State Department, has announced that the American people are to be ready for action with a common aim.

The State Department in Washington has announced that the American people are to be ready for action with a common aim

The State Department in Washington has announced that the American people are to be ready for action with a common aim.

The State Department in Washington has announced that the American people are to be ready for action with a common aim.

Mr. Peterson, Under Secretary of the State Department, has announced that the American people are to be ready for action with a common aim

Mr. Peterson, Under Secretary of the State Department, has announced that the American people are to be ready for action with a common aim.

Mr. Peterson, Under Secretary of the State Department, has announced that the American people are to be ready for action with a common aim.

The State Department in Washington has announced that the American people are to be ready for action with a common aim

The State Department in Washington has announced that the American people are to be ready for action with a common aim.

The State Department in Washington has announced that the American people are to be ready for action with a common aim.

Mr. Peterson, Under Secretary of the State Department, has announced that the American people are to be ready for action with a common aim

Mr. Peterson, Under Secretary of the State Department, has announced that the American people are to be ready for action with a common aim.

Mr. Peterson, Under Secretary of the State Department, has announced that the American people are to be ready for action with a common aim.

U.S.A.

remember the power of the onslaught against the Japanese. "No matter how long it may take to reach the American people in their own minds, the American people will win through a steady victory and cheer."

Believe that I interpret the will of Congress and of the people when I say that we will not let ourselves be the utmost, but will make the most of the fact of treachery shall never again endanger us.

This is no blushing at the fact that our people and territory were invaded by the enemy. With our confidence in our armed forces. The fact that apprehended the Japanese saloon fishing fleet off the Pacific coast because it was reported that the Japanese in British Columbia, where at present are 90 per cent of the Japanese in Canada, were apparently as much surprised by Japan's attack at every-where. Many of the older Japanese refused to believe it.

Australia

Japan's declaration of war has resulted in an immediate halt to the colours in Australia.

Australia has declared war on Finland, Hungary and Rumania and expects to declare war on Germany in formal declaration of war against Japan.

Canada

Mr. Mackenzie King, the Canadian Prime Minister, announced that Canada is at war with Japan and that Canadian armed forces had been ordered to engage the enemy wherever they may be found.

Mr. Mackenzie King added it was probable that the most significant moment of the war, perhaps of the whole century, was just beginning.

The Japanese saloon fishing fleet off the Pacific coast because it was reported that the Japanese in British Columbia, where at present are 90 per cent of the Japanese in Canada, were apparently as much surprised by Japan's attack at every-where. Many of the older Japanese refused to believe it.

India

In India the utmost confidence is felt in the resources of the A.B.C.D. powers meeting the new challenge, in which India through her troops in Burma and Malaya may also be expected to play a noteworthy part.

Burma

Japan's declaration of war came as a surprise to the British. The attention was fully reflected by the Acting Prime Minister said: "The British are a nation which has a martial spirit of their forefathers and our confidence that our Burmese soldiers and sailors and airmen will stand firm where it is put to the test."

Netherlands East Indies

Messages from Batavia say that the Netherlands East Indies Government has decided to fight against Japan today proclaimed the position which it has taken.

The Government has invited the Royal Netherlands Government to assist in points in support of the Netherlands.

Germany

Berlin is judging an attitude of surprise at Japan's move. The official circles in Berlin and Rome are expressing their surprise at the move. Germany now Italy will be required to take the same attitude.

Germany now Italy will be required to take the same attitude.

President speaks to Congress

A brief joint session of the Senate and House of Representatives was presided over by Vice-President Charles McNary and the President on the rostrum were Government leaders, including the Supreme Court and their representatives, and behind them, the Senators.

The President's speech was a brief one. He said that the United States was at peace with that nation and at the solution of Japan was state conversation with its Government and its Empire without the disturbance of peace in the Pacific. Indeed, one hour after the Japanese air raid had commenced the bombing of the islands of Hawaii, a Japanese Ambassador to the United States and his representatives had been notified of a State formal reply, to the recent Japanese ultimatum, which had been replied that it wished to continue diplomatic relations, it continues to be in the hands of the State Department.

Deliberately Planned

"It will be recalled that the date of the attack on Pearl Harbor was deliberately planned many days, or even weeks, in advance."

"During the intervening time the Japanese Government had been notified to receive the United States ultimatum and had been given ample opportunity for continued negotiations."

The attack yesterday on the Hawaiian Islands was a deliberate plan to damage to American naval power. I repeat to tell you that the Japanese attack on Pearl Harbor was a deliberate plan to damage to American naval power. I repeat to tell you that the Japanese attack on Pearl Harbor was a deliberate plan to damage to American naval power.

Secretary of the State Department

Secretary of the State Department, Mr. Cordell Hull, announced that the American people are to be ready for action with a common aim.

Secretary of the State Department, Mr. Cordell Hull, announced that the American people are to be ready for action with a common aim.

Mr. Peterson, Under Secretary of the State Department, has announced that the American people are to be ready for action with a common aim

Mr. Peterson, Under Secretary of the State Department, has announced that the American people are to be ready for action with a common aim.

Mr. Peterson, Under Secretary of the State Department, has announced that the American people are to be ready for action with a common aim.

The State Department in Washington has announced that the American people are to be ready for action with a common aim

The State Department in Washington has announced that the American people are to be ready for action with a common aim.

The State Department in Washington has announced that the American people are to be ready for action with a common aim.

Mr. Peterson, Under Secretary of the State Department, has announced that the American people are to be ready for action with a common aim

Mr. Peterson, Under Secretary of the State Department, has announced that the American people are to be ready for action with a common aim.

Mr. Peterson, Under Secretary of the State Department, has announced that the American people are to be ready for action with a common aim.

U.S.A.

Did you MACLEAN your teeth to a

For sparkling white teeth, healthy gums, a fresh mouth, use Maclean's toothpaste. It quickly removes stains, whitens and polishes the enamel—so it is economical in use.

MACLEAN'S TOOTH PASTE

For sparkling white teeth, healthy gums, a fresh mouth, use Maclean's toothpaste. It quickly removes stains, whitens and polishes the enamel—so it is economical in use.

When recovering from 'FLU'

you need the tonic action of PHOSFERINE

Thousands of complaints from 'flu and colds have shown that the after-effects of the attack are often more serious than the attack itself. Phosferine can do great work. It rebuilds the body, restores energy—it will put you on your feet. Get one Phosferine LIQUID or TABLETS. The tablet one is more liquid.

PHOSFERINE
THE GREATEST OF ALL TONICS FOR ALL WEAKNESSES

Prepared at the Phosferine Laboratories, Ltd., 10, Abchurch Lane, London, E.C. 4.

HUGH JONES GARAGE

Phone: 2085, Box 11, Victoria Street, NAIROBI.

ALL CLASSES OF WORK UNDERTAKEN.

LIME

Kenya Marble Quarries Co.
Contractors to Government of Uganda, K.A.R. and H.A. Suppliers of—

1st Quality No. 1 Building Lime.
2nd Quality No. 2 Building Lime for Stone.
3rd Quality No. 3 Building Lime for Stone.
4th Quality No. 4 Building Lime for Stone.
5th Quality No. 5 Building Lime for Stone.
6th Quality No. 6 Building Lime for Stone.
7th Quality No. 7 Building Lime for Stone.
8th Quality No. 8 Building Lime for Stone.
9th Quality No. 9 Building Lime for Stone.
10th Quality No. 10 Building Lime for Stone.

"Keston" for Household Purposes.
"Keston" for Household Purposes.
"Keston" for Household Purposes.
"Keston" for Household Purposes.
"Keston" for Household Purposes.
"Keston" for Household Purposes.
"Keston" for Household Purposes.
"Keston" for Household Purposes.
"Keston" for Household Purposes.
"Keston" for Household Purposes.

"MONUMENTAL MARBLE WORK A SPECIALTY."
Note the Address: P.O. BOX 806.

Equal to a fine liqueur

A subtle aroma, yet unmistakable; an exclusive heat and pet flavour, these are the qualities that make "White Horse" so easily recognized.

Experts pronounce it to be equal to a Fine Liqueur; particular people demand it. Millions of gallons of "White Horse" are matured and maturing to ensure you continued enjoyment of this Real Old Scotch.

WHITE HORSE WHISKY

The African Breweries Co., Ltd., Nairobi, Kenya, Tanganyika and East-Africa.

THE ANGLO-BALTIC TIMBER CO., LTD.

P.O. Box 200, NAIROBI, Telephone 2623, Telegrams: "Timber."

SOLE AGENTS FOR:
ORITALL'S Steel Casements and Doors (Regist all sold).
Still have a small quantity of Pilkington's No. 6 glass and "Celestus" Steel Trough Putty.

CELOTEX SPECIAL BOARDS 1 1/2" x 5 1/8" THICK. Best consignment arriving end of January, 1942. Orders will be executed in strict rotation of being received.

SIBALFRAT. Building Paper. Suitable for lining Army Huts, Building Sails, Couches, etc. A consignment has now arrived.

ANDERSON'S Roll Roofing. Blanks for leaking roofs. Damp Course. Waterproofing. Corrosive Paints. Stocks on hand.

BRITISH LAMPS and SPARES. Buy a Tilley which is brilliant when you will be able to get necessary spares to keep it in working order. Very simple to manipulate.

MORSE'S "Belmar" Distempers. Stocks on hand. Coloured Card as application.

CEMENTONE Water Proofing Liquids and Powders. Also Coloured Cementone Powder. Stocks on hand.

BUILDING MATERIALS. Owing to restrictions in getting Indian Lucepses stocks are low and in some cases cannot be replaced.

The New Stanley Hotel
Table d'Hotel
DINNER
4/50
From 7-30 to 9 p.m.
Served Only.

The East Star

THE OLDEST ESTABLISHED NEWSPAPER IN EAST AFRICA.
No. 5562. Regd. at the G.P.O. as a newspaper.
Nairobi, Saturday, December 13, 1941.

REVISED ESTIMATE OF
CUSTOMS AND
EXCISE IN 1942
(See page five).

Force Fighting on the Fronts is Fighting Along on the

CHINESE HELP BY AIR AND ON GROUND HEAVY ATTACKS

AMERICANS SCORE MORE NAVAL SUCCESSES

HONGKONG, Singapore, Manila—From these key points in the Far East come stirring news of fighting against Japanese aggression.

British battles are still raging in Hongkong, but the latest communication announces that British positions on the mainland have been reinforced. The enemy yesterday swaged up artillery reinforcements and other heavy weapons.

On our land and naval fronts, the Chinese are doing very well. In the afternoon British artillery on the mainland engaged the enemy forces in a heavy battle, which was observed. The communication says that the Chinese are doing very well.

It is also revealed that the position in Hongkong has been stabilized and the enemy's force being diminished.

Chinese Aid—The Chinese have been sending large forces of Chinese troops to the front. The Chinese are doing very well.

United States Navy has arrived in Honolulu.

On the other United States islands, the situation appears stabilized at the moment. Wake Island, of which the Japanese cruiser and destroyer were sunk, is experiencing serious conditions. The Japanese forces were to be sent to any part of the island.

The United States Army Armoured Division is to be reformed with large proportion of medium tanks, self-propelled artillery and armoured cars.

The statement was made by Admiral Kimmel, Commander-in-Chief of the Pacific Fleet and Rear Admiral C. C. Block, Commander of the United States 14th Naval District. Their statement goes on to say that the Japanese forces were to be sent to any part of the island.

Australia—Australia has its first air raid warning last night. The raid was reported to have been from the coast, but the Japanese planes were said to have been shot down.

Australian bombers were in action yesterday when they bombed the Dutch island of Ambon, said to have been a neighboring island.

General Chiang Kai-shek Commander-in-Chief of China's Army with some of his staff. He has promised complete cooperation with Britain and the U.S.A.

Red Army, Not Weather, Causing German Retreat

RUSSIAN ADVANCE CONTINUES: RICH BOOTY

THE Soviet Information Bureau broadcast on Moscow radio this morning a statement emphasizing that the German retreat was not caused by the weather, but by the Red Army's advance in Russia.

The statement pointed out that the Red Russian winter has not yet come and that the weather on the front is being better, not by the first, but by the second, German retreat.

The statement also said that the German retreat was not caused by the weather, but by the Red Army's advance in Russia.

PREMIER DODGED FIGHTING MOOD

Realistic Review of The War

FOLLOWING are some of the chief points in Mr. Winston Churchill's review of the war situation, made in the House of Commons yesterday.

The Prime Minister said that the war was a long and hard one, but that it was being fought on the right lines.

Mr. Churchill said that the war was a long and hard one, but that it was being fought on the right lines.

He said that the war was a long and hard one, but that it was being fought on the right lines.

Mr. Churchill said that the war was a long and hard one, but that it was being fought on the right lines.

He said that the war was a long and hard one, but that it was being fought on the right lines.

Axis Continues To Retreat in Libya

IN Libya, the Cairo command says that the Axis forces are retreating in Libya.

The Axis forces are retreating in Libya, and the British forces are advancing.

IN Malaya, the British command says that the Japanese forces are retreating in Malaya.

The Japanese forces are retreating in Malaya, and the British forces are advancing.

IN the Philippines, the American command says that the Japanese forces are retreating in the Philippines.

The Japanese forces are retreating in the Philippines, and the American forces are advancing.

IN the Pacific, the United States command says that the Japanese forces are retreating in the Pacific.

The Japanese forces are retreating in the Pacific, and the United States forces are advancing.

IN the Atlantic, the British command says that the German forces are retreating in the Atlantic.

The German forces are retreating in the Atlantic, and the British forces are advancing.

IN the Mediterranean, the British command says that the German forces are retreating in the Mediterranean.

The German forces are retreating in the Mediterranean, and the British forces are advancing.

IN the Balkans, the British command says that the German forces are retreating in the Balkans.

The German forces are retreating in the Balkans, and the British forces are advancing.

STOP PRESS

Admiral Raeder, Commander in Chief of the German Navy, has announced that the German Navy is retreating in the Atlantic.

FANTASTIC

Hitler's speech in the Reichstag yesterday was a masterpiece of propaganda.

Premier Thanks East Africans

The B.R.C. last night broadcast messages of thanks from the Prime Minister to the East African peoples.

Muter and Oswald, Ltd.
SALE OF FURNITURE AND EFFECTS.

Duly instructed by various clients, we shall sell by Public Auction without reserve, unless stipulated on the Catalogue, at the Salesrooms, Muto Building, Harding Street.

on **MONDAY, 15th December, 1941, at 9-30 a.m.**

Andriayer and Soehne's Grand Piano. Small Piano. Chest-of-drawers. Bedside covered Easy Chair. "Chestnut" Parlor. "H.M.V." Cabinet Gramophone. Refectory Type Dining Table. Six Tub Shaped Dining Chairs in Teak. Twelve Dining Chairs. Standard lamp with table. Two Tallies steel. Round bevelled wall mirrors. Gambling Machine. Bookcase. Writing Bureau. Sideboard. Nest of table and four Occasional chairs. Coffee stools. Tub shaped Easy chair. Modern shaped occasional chairs. Card table, baize top. Refectory type dining table. "Dettler" 8 seat battery. Wireless. "Fisher and Rosman" Sewing Machine. "Vest" Hand Sewing Machine. Carved Elephant table. "H.M.V." Portable Gramophone. "Decca" Portable Gramophone. "Gramophone" record. Music table lamps. Book table. Trays. Tray tables. Occasional chairs. Office chair. Plated Tea Set. Silver mounted coffee scoop. Cut Glass Decanter. Glasses. Glassware. Plaque. Mounted Iron Hanging Lamp. Two Vases. Set of carvers. Coffee tray. Plated Fruit and Nut Dishes in Case. Cut glass bowls. Bed in Mvuli. Boxspring. Double Overlay. Box ottoman. Bed in Mvuli. Boxspring. Single beds, boxspring. Over-Boarded cabinet. Wardrobe in Mvuli. Backing the wardrobe. Hanging Wardrobe. Dressing table. Bed. Washbasin. Marble Top. Pictures. Bed. Bed. Bed. Blue enamelled Wardrobe. "Raleigh" Davis Bicycle lamp. "Black Knight" Lady's Bicycle. Duff's Pram (in excellent condition). Two "Globe" Bicycles. Folding commode. Cot and Mattress. Tricycle. Scooter. "Quinton" Motor. "Ordor" Wardrobe. Trunk. "Fisher Wardrobe". Kiddie white enamelled table and chair. Ironing board. Bedside. Cot runners. Two Burner Oil Stove, etc. etc.

also
Gold Pendant with stones and pearls. Gold watch with Garnet set. Gold and rose Diamond Brooch with stone. Two sets of rings. Gold and pearl ring.

Auctioneers.
MUTER AND OSWALD LTD., Estate Agents, NAIROBI
Approved Valuers.

Muter and Oswald, Ltd.
SALE OF CAMERAS AND PHOTOGRAPHIC MATERIALS AND ACCESSORIES.

Duly instructed, we shall sell by Public Auction, without reserve at our Salesrooms, Muto Building, Harding Street.

on **WEDNESDAY, 17th December, at 10 a.m.**

Leica New Folding Camera 818 Ica Novar Lens. 16 mm. Kodak Super 8 35 Lens. Leica 35 mm. Cine Camera and Zoom. Leica 24 Lens. Plate Camera. 3 1/2". "Coigis" Rangefinder. 35 Lens. Midas 9 mm. Cine Camera and Projector in its Case. Voigtlander Reflex. 1 Electric Enlarger. Binoculars, etc. etc.

Full particulars of cameras in later issue.

Auctioneers.
MUTER AND OSWALD, LTD. Estate Agents, NAIROBI
Approved Valuers.

SUGGESTIONS FOR SENSIBLE GIFTS

Pure Linen Face Towels White only.
Pure Linen Tray Cloths. Pastel Shades.
Linen Damask Table Napkins.
Cotton Damask Table Napkins.
Breakfast Cloths with Napkins to match.
Christy Towels all sizes and colours.
Christy's Bath Mats.
Double and single all wool Wiping Blankets, Green, Blue, Pink, Gold.
Vanonia Underblankets, same shades.
Vanonia Bedspreads, attractive designs and colours.
Cushions covered in Celanese Tafelats, in all shades.
Dunley Rugs.
Carpets. Axminster. Jute. Cotr.

E. Hutchison & Co.
Box 140, NAIROBI.

AUSTIN & CO.
AUCTIONEERS, VALUERS AND FURNITURE MAKERS.

Always in Stock a fine selection of Household and Office Furniture, Chestfield Suites, Writing Bureaus, Fancy Tables, etc. all made of Seasoned Timbers. A call will convince you that our prices are the cheapest in Kenya.

Furniture made to order, under the personal supervision of **SAM LAZARUS**

WE HAVE JUST RECEIVED A CONSIGNMENT OF HARD MADE PERIAN RUGS. PRICES VERY REASONABLE. Satisfaction Guaranteed. Terms CASH.
P.O. Box 595, Opposite Tor's Hotel, Phone 2196.
Wines and other special sales undertaken by arrangement.

KURJI KARBANJI
Buyer and seller of all sorts Auction Goods on commission basis. Stockist of new and secondhand Furniture good as new. Now larger and more convenient premises at Furi Building. Goods packed and rail to all undertakers. Stewart Street, opposite market, near Playhouse, Nairobi.

JAMAL PIRBHAI
SALE OF LISEN WIRELESS SET, CYCLES AND EFFECTS.

Duly instructed by the Government Department and Various Clients, I shall sell the following goods by public auction, at my sale room, Government Road, Nairobi.

On **HUNDAY, 16th December, 1941, at 8 a.m. Sharp.**

1 Lisen Wireless Set, 1941 Model (in very good condition), 3 Tubes. 1 Ready Made wooden dress, easy chair. 1 Lady's Wrist watch. 1 Gold Wrist watches, Shaving Brush, Beds, Pramboards, Sideboards, 1 Oil stove, Camera, 1 Sewing Machine, 1 Electric "Amos". 1 Big lot Gents' and Ladies' ready made Clothings, etc. etc.

Jamal Pirbhai
Auctioneer and Official Broker.
P.O. Box 209, "Government Road," Phone 2842.

C. R. Mistri, Auctioneer and Furniture Dealer, Corner of Government and Swamp Roads, has the following articles made of good seasoned timber for sale at very reasonable prices. A visit will convince you.
Wardrobes, Chest of Drawers, Dressing Tables, Sideboards, Dining Tables and Chairs, Chestfield Suites, Easy Chair, Occasional Chairs and Tables, Metalites, Boxspring and Iron Beds, Coffee Stools, etc. etc. etc.

Articles and Clothings for Sunday Auction sale will be gratefully accepted.

C. B. Mistri
Auctioneer and Approved Valuer, etc.
Phone 2817, P.O. Box 778.

SO EASY WITH PARAMOUNT.



LIGHT AS A FEATHER
PARAMOUNT
FLOUR

FREEHOLD PROPERTY

Admirably Situated on Nairobi Hill

Offers are invited for plots No. 411 situated at Ngong Road (original plot No. 48, Danvers Road) comprising of 6 (6) acres or thereabouts next to the house of the late Sir All bin Salim.

Communications may be addressed to:

(1) Messrs. G. A. Daloo & Co. P.O. Box 334, Mombasa
(2) R. M. Doshi Esq. Advocate, P.O. Box 312, Mombasa

WE OFFER

MORRIS 8 Tourer	450
FIAT 6 Saloon	425
FIAT 10 Saloon	475
DODGE 4 Saloon	475
MORRIS 12 Saloon	575

WE BUY AND EXCHANGE SECONDHAND CARS.

THE MARFAK SERVICE STATION
P.O. Box 329, Phone 2922.

"We'll turn in here...."



The EXIDE people like to check my battery over once a month.."

Take one of Exide service-to-merchants suggestions are an asset to you. Whenever the make of your battery, bring it to Exide. For a regular monthly check, for a regular monthly check, for a regular monthly check, for a regular monthly check.

off like a bird with Exide

Kenya Distributors:-
LOWIS & HODGISS LTD.
Sodler Street, NAIROBI

POLAROID WILLSON
and
CROOKES SUNGLASSES

HAVE ARRIVED including Protective Goggles with Leather skin sheath.

V.M. BROWN LIMITED
Opticians
Kenwood House,
Harding Street
Box 1538. Phone 2844.

PADLOCKS



High Grade Security Locks in four sizes.

THE WOOD HOUSE,
P.O. Box 140, NAIROBI.

GROOT CONSTANTIA CLARET.



This is a Prize wine, well matured, of fine quality.

JARDIN LTD., NAIROBI.

FIRE - MOTOR - MARINE - ACCIDENT -

Workmen's Compensation and Almost Every Other Class of INSURANCE

underwritten by **AFRICAN GUARANTEE & INDemnITY Co. Ltd.**
Chief Representative: **M. R. GARDNER LTD.**

Write, Phone, Call or Visit Victoria Street, Phone 2352, NAIROBI.
Agency Boxes, P.O. Box 606.

The "ARMY" Steel TRUNK



PRICES: 24" 25" 30" 36" 42" 48" 54" 60" 66" 72" 78" 84" 90" 96" 102" 108" 114" 120" 126" 132" 138" 144" 150" 156" 162" 168" 174" 180" 186" 192" 198" 204" 210" 216" 222" 228" 234" 240" 246" 252" 258" 264" 270" 276" 282" 288" 294" 300"

Manufactured by **THE KENYA TRUNK FACTORY**
Bank of National Bank of India, P.O. Box 1365, NAIROBI.

FRESHEN YOUR HOME
By having your chair covers, car mats and curtains cleaned at the **PRIMEBROS LAUNDRY**
Dry Cleaners and Dyers,
Victoria St. and Westlands.
M. A. JORDAN
Box 682, 616 Telephone.

GET VALUE THIS XMAS
at
HOWSE & GEORGE LIMITED

Osram
THE WONDERFUL LIGHT

P.O. Box 433, NAIROBI. P.O. Box 29, MOMBASA.

THERE'S NO TIME FOR... HORNPIPER on a R.I. ship!



That is to say, not for the crew, who must always be standing by ready to minister to the needs of passengers. Passengers can hornpipe if they like—in fact they can do just anything they please within reasonably conventional bounds.

BRITISH INDIA STEAM NAVIGATION CO. LTD.

BOMBAY-DURBAN LINE
Regular services to Bombay and to Portuguese East and South Africa ports are now being maintained. Applications for passages and cargo booking should be made to the Consignee's Agents.
Agents: **SMITH MARGENTHAU & CO. LTD.**
Messing, Nairobi. Assistant: **Devi of Salsman, Tanga, Lindi and Lamu.**
Box 126, Telegram: "Bombaystar" Phone 41.

AMERICAN SOUTH AFRICAN LINE DIRECT SERVICE

(Incorporated in U.S.A.)

Freight and Passenger Service from British East Africa to U.S.A. North Atlantic Main Ports.

For further particulars apply to:-

AMERICAN SOUTH AFRICAN LINE AGENCY
Box 223, MOMBASA. Phone 258.

ROBIN LINE
REGULAR SAILINGS

Between East African and U.S.A. Atlantic Ports via South Africa and Trinidad. For particulars of sailings, freight and passenger service apply to:-

MITCHELL COTTIS & CO. (East Africa) Ltd.
Mombasa, Nairobi, Dar es Salaam.

"FERTILIZE"
"ETCO" PRODUCTS
GIVE BEST RESULTS—ALL AT COMPETITIVE PRICES.

Stocked by:
EXPRESS TRANSPORT CO. LTD.
Victoria Street, NAIROBI

Carriage Contractors to K.U.R. & Harbours

We also sell that. We pack furniture and effects or store such in excellent positions.
Our Mombasa office is expert in clearing and forwarding every class of goods, upwards and outwards to any part of the world.

P.O. Box 433, NAIROBI. P.O. Box 29, MOMBASA.

Clan-Elleman-Harrison Lines (Joint Service)

Vessels will be despatched as opportunity offers.

Cargo bookings are only made conditional upon the vessel named (or if no vessel is named a suitable vessel) being available for the voyage and is subject to any direction or control by the British Government.

For information regarding arrivals from United Kingdom and sailings homeward to United Kingdom, apply to:-

THE AFRICAN MERCHANTILE COMPANY, Limited
(Incorporated in England)
MOMBASA, TANGA, ZANZIBAR, DAR ES SALAAM.

THE REVENUE ESTABLISHMENT CUSTOMERS AND INCREASE IN 1942

Finance Committee Adds \$69,000

The Standing Finance Committee of the Legislative Council has prepared its report on the draft estimate of Revenue and Expenditure for 1942, and recommends that the Revenue estimate be increased by £12,182, and the gross Expenditure estimate by £19,394.

The Finance Committee also recommends that the estimated surplus revenue balance as at December 31, 1941, to £1,207,000. The Commission of Customs and Excise states that on the basis of the present rate of payment of rebate, now collected by the department called for the establishment of a separate organization to supervise the collection to be made.

Tanganyika Crops Prices Guaranteed

The Tanganyika Commission reports that its organization of the kind known as "boards" has been successful in securing the increase of one shilling per ton for the price of groundnuts and 27/60 and 25/00 respectively for the price of coffee and sisal.

246 MORE FOR RUSSIAN RELIEF

The following is the latest donation to the Russian Relief Fund: Previously acknowledged £8,682.25. British Red Cross 50.00. C.I.F. 50.00. Per - 50.00. C.I.F. 50.00. L. C. 50.00. Royal Society of St. George 20.00. (T.C.L., A.L., and M.S.) £7,811.25.

Signals "B" v. S.A. Military Hockey

On December 11, Division Signals "B" v. S.A. Military Hockey was played at the Kenia Police Ground. The result was a 2-1 victory for the Signals.

A German doctor and British sergeant tendering a pensioner.

There are two minority notes appended to the report, one by Mr. C. E. C. O'Neil, and another by Mr. W. D. B. Niles.

SPORTS THE G.O.C. ERITREA AREA FIGHTER PILOTS DECORATED

(By Rover)

Although the weather was unkind to soccer fans and above meeting it was almost cold for those who were in this district snow has even fallen on the mountains. The soccer match was a change from the usual winter sports. The match was held at 11 a.m. and was a 2-1 victory for the Signals.

AIRMAN RETURNED

SAFELY CAPTURED AUTOGRAPHS

Safe After 80 Miles Walk In Desert

With the arrival of the New East African Command it has become an arduous task for the G.O.C. Eritrea Area. General R. A. Murray, D.S.O., M.C., who is Brigadier, Indian Army, has been in the area since the start of the war.



General R. A. Murray, D.S.O., M.C., who is Brigadier, Indian Army, has been in the area since the start of the war.

COMMUNICATOR FROM HEADQUARTERS

The communicator from Headquarters at Addis Ababa has been in the area since the start of the war. He has been in the area since the start of the war.

COMMUNICATOR FROM HEADQUARTERS

The communicator from Headquarters at Addis Ababa has been in the area since the start of the war. He has been in the area since the start of the war.

COMMUNICATOR FROM HEADQUARTERS

The communicator from Headquarters at Addis Ababa has been in the area since the start of the war. He has been in the area since the start of the war.

COMMUNICATOR FROM HEADQUARTERS

The communicator from Headquarters at Addis Ababa has been in the area since the start of the war. He has been in the area since the start of the war.

COMMUNICATOR FROM HEADQUARTERS

The communicator from Headquarters at Addis Ababa has been in the area since the start of the war. He has been in the area since the start of the war.

COMMUNICATOR FROM HEADQUARTERS

The communicator from Headquarters at Addis Ababa has been in the area since the start of the war. He has been in the area since the start of the war.

COMMUNICATOR FROM HEADQUARTERS

The communicator from Headquarters at Addis Ababa has been in the area since the start of the war. He has been in the area since the start of the war.

DISBOWNED BY KING PETER MEMBER OF YUGOSLAV ROYALTY

(By Rover)

The following awards, all of them to the Royal Australian Air Force, were made at the D.F.C. Dinner at the Royal Australian Air Force Club, Sydney, on December 10.

DISBOWNED BY KING PETER

The use of aircraft, the naval port in Tunisia, and according to one report the Italians may be permitted to use some French vessels for convoy duty in the Mediterranean.

DISBOWNED BY KING PETER

The use of aircraft, the naval port in Tunisia, and according to one report the Italians may be permitted to use some French vessels for convoy duty in the Mediterranean.

DISBOWNED BY KING PETER

The use of aircraft, the naval port in Tunisia, and according to one report the Italians may be permitted to use some French vessels for convoy duty in the Mediterranean.

DISBOWNED BY KING PETER

The use of aircraft, the naval port in Tunisia, and according to one report the Italians may be permitted to use some French vessels for convoy duty in the Mediterranean.

DISBOWNED BY KING PETER

The use of aircraft, the naval port in Tunisia, and according to one report the Italians may be permitted to use some French vessels for convoy duty in the Mediterranean.

DISBOWNED BY KING PETER

The use of aircraft, the naval port in Tunisia, and according to one report the Italians may be permitted to use some French vessels for convoy duty in the Mediterranean.

DISBOWNED BY KING PETER

The use of aircraft, the naval port in Tunisia, and according to one report the Italians may be permitted to use some French vessels for convoy duty in the Mediterranean.

THE SOUTH AFRICAN OFFICE

Memorial Hall, Nairobi, offers detailed assistance to all intending visitors to the Union.

THE SOUTH AFRICAN OFFICE

Memorial Hall, Nairobi, offers detailed assistance to all intending visitors to the Union.

THE SOUTH AFRICAN OFFICE

Memorial Hall, Nairobi, offers detailed assistance to all intending visitors to the Union.

THE SOUTH AFRICAN OFFICE

Memorial Hall, Nairobi, offers detailed assistance to all intending visitors to the Union.

THE SOUTH AFRICAN OFFICE

Memorial Hall, Nairobi, offers detailed assistance to all intending visitors to the Union.

THE SOUTH AFRICAN OFFICE

Memorial Hall, Nairobi, offers detailed assistance to all intending visitors to the Union.

THE SOUTH AFRICAN OFFICE

Memorial Hall, Nairobi, offers detailed assistance to all intending visitors to the Union.

THE SOUTH AFRICAN OFFICE

Memorial Hall, Nairobi, offers detailed assistance to all intending visitors to the Union.

THE SOUTH AFRICAN OFFICE

Memorial Hall, Nairobi, offers detailed assistance to all intending visitors to the Union.

THE SOUTH AFRICAN OFFICE

Memorial Hall, Nairobi, offers detailed assistance to all intending visitors to the Union.

THE SOUTH AFRICAN OFFICE

Memorial Hall, Nairobi, offers detailed assistance to all intending visitors to the Union.

THE SOUTH AFRICAN OFFICE

Memorial Hall, Nairobi, offers detailed assistance to all intending visitors to the Union.

THE SOUTH AFRICAN OFFICE

Memorial Hall, Nairobi, offers detailed assistance to all intending visitors to the Union.

THE SOUTH AFRICAN OFFICE

Memorial Hall, Nairobi, offers detailed assistance to all intending visitors to the Union.

THE SOUTH AFRICAN OFFICE

Memorial Hall, Nairobi, offers detailed assistance to all intending visitors to the Union.

THE SOUTH AFRICAN OFFICE

Memorial Hall, Nairobi, offers detailed assistance to all intending visitors to the Union.

THE SOUTH AFRICAN OFFICE

Memorial Hall, Nairobi, offers detailed assistance to all intending visitors to the Union.

THE SOUTH AFRICAN OFFICE

Memorial Hall, Nairobi, offers detailed assistance to all intending visitors to the Union.

THE SOUTH AFRICAN OFFICE

Memorial Hall, Nairobi, offers detailed assistance to all intending visitors to the Union.

THE SOUTH AFRICAN OFFICE

Memorial Hall, Nairobi, offers detailed assistance to all intending visitors to the Union.

THE SOUTH AFRICAN OFFICE

Memorial Hall, Nairobi, offers detailed assistance to all intending visitors to the Union.

THE SOUTH AFRICAN OFFICE

Memorial Hall, Nairobi, offers detailed assistance to all intending visitors to the Union.

THE SOUTH AFRICAN OFFICE

Memorial Hall, Nairobi, offers detailed assistance to all intending visitors to the Union.

THE SOUTH AFRICAN OFFICE

Memorial Hall, Nairobi, offers detailed assistance to all intending visitors to the Union.

THE SOUTH AFRICAN OFFICE

Memorial Hall, Nairobi, offers detailed assistance to all intending visitors to the Union.

THE SOUTH AFRICAN OFFICE

Memorial Hall, Nairobi, offers detailed assistance to all intending visitors to the Union.

THE SOUTH AFRICAN OFFICE

Memorial Hall, Nairobi, offers detailed assistance to all intending visitors to the Union.

THE SOUTH AFRICAN OFFICE

Memorial Hall, Nairobi, offers detailed assistance to all intending visitors to the Union.

THE SOUTH AFRICAN OFFICE

Memorial Hall, Nairobi, offers detailed assistance to all intending visitors to the Union.

THE SOUTH AFRICAN OFFICE

Memorial Hall, Nairobi, offers detailed assistance to all intending visitors to the Union.

THE SOUTH AFRICAN OFFICE

Memorial Hall, Nairobi, offers detailed assistance to all intending visitors to the Union.

THE SOUTH AFRICAN OFFICE

Memorial Hall, Nairobi, offers detailed assistance to all intending visitors to the Union.

THE SOUTH AFRICAN OFFICE

Memorial Hall, Nairobi, offers detailed assistance to all intending visitors to the Union.

THE SOUTH AFRICAN OFFICE

Memorial Hall, Nairobi, offers detailed assistance to all intending visitors to the Union.

THE SOUTH AFRICAN OFFICE

Memorial Hall, Nairobi, offers detailed assistance to all intending visitors to the Union.

THE SOUTH AFRICAN OFFICE

Memorial Hall, Nairobi, offers detailed assistance to all intending visitors to the Union.

THE SOUTH AFRICAN OFFICE

Memorial Hall, Nairobi, offers detailed assistance to all intending visitors to the Union.

THE SOUTH AFRICAN OFFICE

Memorial Hall, Nairobi, offers detailed assistance to all intending visitors to the Union.

THE SOUTH AFRICAN OFFICE

Memorial Hall, Nairobi, offers detailed assistance to all intending visitors to the Union.

THE SOUTH AFRICAN OFFICE

Memorial Hall, Nairobi, offers detailed assistance to all intending visitors to the Union.

THE SOUTH AFRICAN OFFICE

Memorial Hall, Nairobi, offers detailed assistance to all intending visitors to the Union.

THE SOUTH AFRICAN OFFICE

Memorial Hall, Nairobi, offers detailed assistance to all intending visitors to the Union.

THE SOUTH AFRICAN OFFICE

Memorial Hall, Nairobi, offers detailed assistance to all intending visitors to the Union.

THE SOUTH AFRICAN OFFICE

Memorial Hall, Nairobi, offers detailed assistance to all intending visitors to the Union.

THE SOUTH AFRICAN OFFICE

Memorial Hall, Nairobi, offers detailed assistance to all intending visitors to the Union.

THE SOUTH AFRICAN OFFICE

Memorial Hall, Nairobi, offers detailed assistance to all intending visitors to the Union.

THE SOUTH AFRICAN OFFICE

Memorial Hall, Nairobi, offers detailed assistance to all intending visitors to the Union.

THE SOUTH AFRICAN OFFICE

Memorial Hall, Nairobi, offers detailed assistance to all intending visitors to the Union.

THE SOUTH AFRICAN OFFICE

Memorial Hall, Nairobi, offers detailed assistance to all intending visitors to the Union.

THE SOUTH AFRICAN OFFICE

Memorial Hall, Nairobi, offers detailed assistance to all intending visitors to the Union.

THE SOUTH AFRICAN OFFICE

Memorial Hall, Nairobi, offers detailed assistance to all intending visitors to the Union.

THE SOUTH AFRICAN OFFICE

Memorial Hall, Nairobi, offers detailed assistance to all intending visitors to the Union.

THE SOUTH AFRICAN OFFICE

Memorial Hall, Nairobi, offers detailed assistance to all intending visitors to the Union.

THE SOUTH AFRICAN OFFICE

Memorial Hall, Nairobi, offers detailed assistance to all intending visitors to the Union.

THE SOUTH AFRICAN OFFICE

Memorial Hall, Nairobi, offers detailed assistance to all intending visitors to the Union.

THE SOUTH AFRICAN OFFICE

Memorial Hall, Nairobi, offers detailed assistance to all intending visitors to the Union.

THE SOUTH AFRICAN OFFICE

Memorial Hall, Nairobi, offers detailed assistance to all intending visitors to the Union.

THE SOUTH AFRICAN OFFICE

Memorial Hall, Nairobi, offers detailed assistance to all intending visitors to the Union.

THE SOUTH AFRICAN OFFICE

Memorial Hall, Nairobi, offers detailed assistance to all intending visitors to the Union.

THE SOUTH AFRICAN OFFICE

Memorial Hall, Nairobi, offers detailed assistance to all intending visitors to the Union.

THE SOUTH AFRICAN OFFICE

Memorial Hall, Nairobi, offers detailed assistance to all intending visitors to the Union.

THE SOUTH AFRICAN OFFICE

Memorial Hall, Nairobi, offers detailed assistance to all intending visitors to the Union.

THE SOUTH AFRICAN OFFICE

Memorial Hall, Nairobi, offers detailed assistance to all intending visitors to the Union.

THE SOUTH AFRICAN OFFICE

Memorial Hall, Nairobi, offers detailed assistance to all intending visitors to the Union.

THE SOUTH AFRICAN OFFICE

Memorial Hall, Nairobi, offers detailed assistance to all intending visitors to the Union.

THE SOUTH AFRICAN OFFICE

Memorial Hall, Nairobi, offers detailed assistance to all intending visitors to the Union.

THE SOUTH AFRICAN OFFICE

Memorial Hall, Nairobi, offers detailed assistance to all intending visitors to the Union.

THE SOUTH AFRICAN OFFICE

Memorial Hall, Nairobi, offers detailed assistance to all intending visitors to the Union.

THE SOUTH AFRICAN OFFICE

Memorial Hall, Nairobi, offers detailed assistance to all intending visitors to the Union.

THE SOUTH AFRICAN OFFICE

Memorial Hall, Nairobi, offers detailed assistance to all intending visitors to the Union.

THE SOUTH AFRICAN OFFICE

Memorial Hall, Nairobi, offers detailed assistance to all intending visitors to the Union.

THE SOUTH AFRICAN OFFICE

Memorial Hall, Nairobi, offers detailed assistance to all intending visitors to the Union.

THE SOUTH AFRICAN OFFICE

Memorial Hall, Nairobi, offers detailed assistance to all intending visitors to the Union.

THE SOUTH AFRICAN OFFICE

Memorial Hall, Nairobi, offers detailed assistance to all intending visitors to the Union.

THE SOUTH AFRICAN OFFICE

Memorial Hall, Nairobi, offers detailed assistance to all intending visitors to the Union.

THE SOUTH AFRICAN OFFICE

Memorial Hall, Nairobi, offers detailed assistance to all intending visitors to the Union.

THE SOUTH AFRICAN OFFICE

Memorial Hall, Nairobi, offers detailed assistance to all intending visitors to the Union.

THE SOUTH AFRICAN OFFICE

Memorial Hall, Nairobi, offers detailed assistance to all intending visitors to the Union.

THE SOUTH AFRICAN OFFICE

Memorial Hall, Nairobi, offers detailed assistance to all intending visitors to the Union.

THE SOUTH AFRICAN OFFICE

Memorial Hall, Nairobi, offers detailed assistance to all intending visitors to the Union.

THE SOUTH AFRICAN OFFICE

Memorial Hall, Nairobi, offers detailed assistance to all intending visitors to the Union.

THE SOUTH AFRICAN OFFICE

Memorial Hall, Nairobi, offers detailed assistance to all intending visitors to the Union.

THE SOUTH AFRICAN OFFICE

Memorial Hall, Nairobi, offers detailed assistance to all intending visitors to the Union.

THE SOUTH AFRICAN OFFICE

Memorial Hall, Nairobi, offers detailed assistance to all intending visitors to the Union.

THE SOUTH AFRICAN OFFICE

Memorial Hall, Nairobi, offers detailed assistance to all intending visitors to the Union.

THE SOUTH AFRICAN OFFICE

Memorial Hall, Nairobi, offers detailed assistance to all intending visitors to the Union.

THE SOUTH AFRICAN OFFICE

Memorial Hall, Nairobi, offers detailed assistance to all intending visitors to the Union.

THE SOUTH AFRICAN OFFICE

Memorial Hall, Nairobi, offers detailed assistance to all intending visitors to the Union.

THE SOUTH AFRICAN OFFICE

Memorial Hall, Nairobi, offers detailed assistance to all intending visitors to the Union.

THE SOUTH AFRICAN OFFICE

Memorial Hall, Nairobi, offers detailed assistance to all intending visitors to the Union.

THE SOUTH AFRICAN OFFICE

Memorial Hall, Nairobi, offers detailed assistance to all intending visitors to the Union.

THE SOUTH AFRICAN OFFICE

Memorial Hall, Nairobi, offers detailed assistance to all intending visitors to the Union.

THE SOUTH AFRICAN OFFICE

Memorial Hall, Nairobi, offers detailed assistance to all intending visitors to the Union.

THE SOUTH AFRICAN OFFICE

Memorial Hall, Nairobi,

the prevailing conditions early Christmas Shopping is a necessity.

Shamed Bros Hardings Street, NAIROBI. Phone No. 2201. Box No. 254.

A CRISIS IN THE SOUTH AFRICAN WINE INDUSTRY... South African Wine Industry YOU CAN HELP SOUTH AFRICA BY BUYING SOUTH AFRICAN WINES and BRANDIES All Good Grocers Stock Them.

BARCLAYS BANK (DOMINION COLONIAL AND OVERSEAS) BRANCHES IN EAST AFRICA: KENYA, UGANDA, TANGANYIKA TERRITORY, ETHIOPIA, ERITREA

Consult P. STEWART for PAINTING HIRE YOUR chairs, carpets, froth, etc. for all Konyo Foto Supply Limited

Correspondence...

The Editor does not accept responsibility for the views expressed in the correspondence... MAYOR'S RED CROSS BALL

To the Editor, "E.A. Standard" Sir—I would kindly protest the statement of accounts in comparison with the Ball given by the Hon. the Mayor and Mrs. Vasey...

Table with columns: EXPENDITURE, RECEIPTS, Total. Includes items like Ball of Crochery, Dinner, and Tickets.

QUESTION OF A PETROL PERMIT To the Editor, "E.A. Standard" Sir—As the East African Standard printed the new Telephone Directory, you may find space for...

Before my appeal was made to His Excellency, the Chief Petrol Officer in a letter of the 26th September and in relating my application...

I have been satisfied that the decision will be vindicated in the end... BOARDING ACCOMMODATION FOR GIRLS

To the Editor, "E.A. Standard" Sir—I understand there are hundreds of young girls seeking reasonable accommodation in Nairobi...

PHILATELY Sir—I was interested in the letter recently published in your issue concerning the issue of Kenya stamps...

RELIGIOUS BROADCASTING To the Editor, "E.A. Standard" Sir—Being in mind the importance of freedom of expression...

AFRICAN HOUSING Sir—with reference to the report of the Legislative Council meeting held yesterday and appearing in your issue...

of the religious service on Wednesday evening each week should be made at a time that will not inconvenience radio subscribers who do not wish to listen to religious services...

It is well recognized by our church authorities that the religious service, even in those times of special anxiety, although there is a small extra proportion of people who attend services occasionally—especially on the official fast days...

It is well recognized by our church authorities that the religious service, even in those times of special anxiety, although there is a small extra proportion of people who attend services occasionally—especially on the official fast days...

It is well recognized by our church authorities that the religious service, even in those times of special anxiety, although there is a small extra proportion of people who attend services occasionally...

It is well recognized by our church authorities that the religious service, even in those times of special anxiety, although there is a small extra proportion of people who attend services occasionally...

It is well recognized by our church authorities that the religious service, even in those times of special anxiety, although there is a small extra proportion of people who attend services occasionally...

It is well recognized by our church authorities that the religious service, even in those times of special anxiety, although there is a small extra proportion of people who attend services occasionally...

It is well recognized by our church authorities that the religious service, even in those times of special anxiety, although there is a small extra proportion of people who attend services occasionally...

It is well recognized by our church authorities that the religious service, even in those times of special anxiety, although there is a small extra proportion of people who attend services occasionally...

It is well recognized by our church authorities that the religious service, even in those times of special anxiety, although there is a small extra proportion of people who attend services occasionally...

It is well recognized by our church authorities that the religious service, even in those times of special anxiety, although there is a small extra proportion of people who attend services occasionally...

It is well recognized by our church authorities that the religious service, even in those times of special anxiety, although there is a small extra proportion of people who attend services occasionally...

It is well recognized by our church authorities that the religious service, even in those times of special anxiety, although there is a small extra proportion of people who attend services occasionally...

It is well recognized by our church authorities that the religious service, even in those times of special anxiety, although there is a small extra proportion of people who attend services occasionally...

QUEEN ANNE Rare Scotch Whisky By Royal Appointment to Successive Sovereigns since 1838

Thanks To The British Navy JUST RECEIVED NEW STOCKS OF MEN'S SUITINGS & SHIRTS LADIES' DRESS MATERIALS ALBO TOTAL PLAIN AND PRINTED LINEN, LYSTVA, TOLSHI AND TOOTLINE. All Creases Resisting Finish. AL BHALI & Co. Limited

At the top of the tree, DEWAR'S White Label Scotch Whisky

PACK UP YOUR TROUBLES AND COME TO DEWAR'S In these days of strain and worry it's essential to give yourself a treat...

In a TOUGH BALL!

WHEN YOU PLAY ON HARD COURSES!

WHEN YOU SWEAT YOUR SHIRT!

PLAY FROM THE ROUGH!

OUT OF A BUNKER!

Every feature of this new ball has been designed to give the utmost durability. It has a new type of reinforced cover, the core is specially made to stand the toughest wear, and the paint has been specially compounded to resist chipping and fading.

All these features are combined with the unusually high playing qualities in length, response and accuracy.

A DUNLOP DUROFLI

WILL ALWAYS TURNUP BRILLING!

THE TOUGHEST GOLF BALL YET MADE!

COLF:

ROYAL NAIROBI

This afternoon commencing at 2.30 the Lady Captain's Prize will be played off competitors leaving from 7.15 and 8.15. The competition has produced a very good entry of 32 competitors and the play has been well staged for scoring from three-quarters handicap.

The guests of the Lady Captain will be the guests of the Lady Captain and starts from 7.15.

The following is the draw and starting times—

No. 1. Mrs. Booth and Miss Saxby. 2.50
2.10 Mrs. Roberts and Mrs. Judge. 2.15
3. Mrs. Haery and Mrs. Fairweather. 2.20
4. Mrs. Griffiths and Mrs. Trim. 2.25
5. Mrs. Figgis and Mrs. Nichol. 2.30
6. Mrs. Keatings and Miss Benson. 2.35
7. Mrs. Anderson and Mrs. Patten. 2.40
8. Mrs. Ireland and Mrs. Kettle. 2.45
9. Mrs. M. Macfarlane and Mrs. Cornick. 2.50
10. Mrs. Frank and Mrs. Brannan. 2.55
11. Mrs. Aronson and Mrs. Saxe. 3.00
12. Mrs. Hill and Mrs. O'Neill. 3.05
13. Mrs. Hart and Mrs. Vint. 3.10
14. Mrs. Vasey and Miss Watson. 3.15
15. Mrs. Hall and Mrs. Timan. 3.20

Captain's Prize Winner

Last Saturday afternoon and Sunday morning the Men's Captain's prize was played off over thirty six holes, the conditions being stipulated, scoring from three-quarters handicap. 19 entries were received. The course was in excellent condition, the winner being V. I. Timan with 65 points, closely followed by V. I. Timan with 64 points.

On New Year's Eve the Club are holding a **Sunderland** dinner to which members and their friends are cordially invited.

Malaga Match

"BOEY" TROPHY: The annual play-off for the trophy ended in a win for A. E. Higginson with a score of 6 down on bogey. The runner up was D. Dale with 7 down.

LADIES SECTION: The ladies held their special scratch competition. The draw is as follows:

230 Mrs. Tucker vs. Mrs. Higgins. 9/105
231 Mrs. Modera vs. Mrs. McIlwain. 9/105
240 Lady Folkes vs. Miss Gilbert. 9/105
241 Mrs. Wood vs. Mrs. Norton. 9/105
242 Miss Roberts vs. Mrs. Shent. 9/105
243 Mrs. Britton vs. Mrs. Small. 9/105
244 Mrs. How vs. Miss Holder. 9/105

OLF NO. 15

The Men's Monthly Match Competition for December, played on Saturday last, was won by E. C. Marvel with a net score of 71. The runner-up, J. Caird, returned a net 72.

WOMEN'S SECTION: The Ladies' Special Competition for December will be played today, starting at 2.45 p.m. Entries will be accepted up to the time of starting.

The Mixed Fourpersons Competition fixed for next Saturday, December 20, has been postponed until the following Saturday, December 27. On this occasion, members are asked to enter in couples instead of singly as has been the case in previous competitions. A **Sunderland Dinner** will be held in the Club House after the competition.

ARMS AMMUNITION FISHING TACKLE PICNIC CASES

Chas. A. Heyer & Co.
THE GUNSMITHS

CRICKET RESULTS

GYMKHANA V. No. 2 GENERAL HOSPITAL.

M. L. T. Manning, et. Wallis; b. Anderson. 0

H. F. Hayes, b. Fox. 2

J. W. Morton, b. Osterlich. 5

W. Duncan, b. Anderson. 12

H. V. Clark, c. Fox; b. Osterlich. 14

E. H. Bagley, c. Lewis; b. Anderson. 0

Hersbach; b. Anderson. 5

Robbins; b. Anderson. 3

Nelinger, b. Anderson. 5

B. F. McDona, not out. 5

Extras. 1

Total. 113

Wickets fell at: 1. 5/4; 2. 9/59; 3. 10/74; 4. 16/81; 5. 10/7; 6. 10/12; 6/15; 7. 12/9; 8. 12/9; 9. 2/7; 10. 12/9; 11. 2/7; 12. 1/25; 13. 2/7; 14. 1/25; 15. 2/7; 16. 1/25; 17. 2/7; 18. 1/25; 19. 2/7; 20. 1/25; 21. 2/7; 22. 1/25; 23. 2/7; 24. 1/25; 25. 2/7; 26. 1/25; 27. 2/7; 28. 1/25; 29. 2/7; 30. 1/25; 31. 2/7; 32. 1/25; 33. 2/7; 34. 1/25; 35. 2/7; 36. 1/25; 37. 2/7; 38. 1/25; 39. 2/7; 40. 1/25; 41. 2/7; 42. 1/25; 43. 2/7; 44. 1/25; 45. 2/7; 46. 1/25; 47. 2/7; 48. 1/25; 49. 2/7; 50. 1/25; 51. 2/7; 52. 1/25; 53. 2/7; 54. 1/25; 55. 2/7; 56. 1/25; 57. 2/7; 58. 1/25; 59. 2/7; 60. 1/25; 61. 2/7; 62. 1/25; 63. 2/7; 64. 1/25; 65. 2/7; 66. 1/25; 67. 2/7; 68. 1/25; 69. 2/7; 70. 1/25; 71. 2/7; 72. 1/25; 73. 2/7; 74. 1/25; 75. 2/7; 76. 1/25; 77. 2/7; 78. 1/25; 79. 2/7; 80. 1/25; 81. 2/7; 82. 1/25; 83. 2/7; 84. 1/25; 85. 2/7; 86. 1/25; 87. 2/7; 88. 1/25; 89. 2/7; 90. 1/25; 91. 2/7; 92. 1/25; 93. 2/7; 94. 1/25; 95. 2/7; 96. 1/25; 97. 2/7; 98. 1/25; 99. 2/7; 100. 1/25; 101. 2/7; 102. 1/25; 103. 2/7; 104. 1/25; 105. 2/7; 106. 1/25; 107. 2/7; 108. 1/25; 109. 2/7; 110. 1/25; 111. 2/7; 112. 1/25; 113. 2/7; 114. 1/25; 115. 2/7; 116. 1/25; 117. 2/7; 118. 1/25; 119. 2/7; 120. 1/25; 121. 2/7; 122. 1/25; 123. 2/7; 124. 1/25; 125. 2/7; 126. 1/25; 127. 2/7; 128. 1/25; 129. 2/7; 130. 1/25; 131. 2/7; 132. 1/25; 133. 2/7; 134. 1/25; 135. 2/7; 136. 1/25; 137. 2/7; 138. 1/25; 139. 2/7; 140. 1/25; 141. 2/7; 142. 1/25; 143. 2/7; 144. 1/25; 145. 2/7; 146. 1/25; 147. 2/7; 148. 1/25; 149. 2/7; 150. 1/25; 151. 2/7; 152. 1/25; 153. 2/7; 154. 1/25; 155. 2/7; 156. 1/25; 157. 2/7; 158. 1/25; 159. 2/7; 160. 1/25; 161. 2/7; 162. 1/25; 163. 2/7; 164. 1/25; 165. 2/7; 166. 1/25; 167. 2/7; 168. 1/25; 169. 2/7; 170. 1/25; 171. 2/7; 172. 1/25; 173. 2/7; 174. 1/25; 175. 2/7; 176. 1/25; 177. 2/7; 178. 1/25; 179. 2/7; 180. 1/25; 181. 2/7; 182. 1/25; 183. 2/7; 184. 1/25; 185. 2/7; 186. 1/25; 187. 2/7; 188. 1/25; 189. 2/7; 190. 1/25; 191. 2/7; 192. 1/25; 193. 2/7; 194. 1/25; 195. 2/7; 196. 1/25; 197. 2/7; 198. 1/25; 199. 2/7; 200. 1/25; 201. 2/7; 202. 1/25; 203. 2/7; 204. 1/25; 205. 2/7; 206. 1/25; 207. 2/7; 208. 1/25; 209. 2/7; 210. 1/25; 211. 2/7; 212. 1/25; 213. 2/7; 214. 1/25; 215. 2/7; 216. 1/25; 217. 2/7; 218. 1/25; 219. 2/7; 220. 1/25; 221. 2/7; 222. 1/25; 223. 2/7; 224. 1/25; 225. 2/7; 226. 1/25; 227. 2/7; 228. 1/25; 229. 2/7; 230. 1/25; 231. 2/7; 232. 1/25; 233. 2/7; 234. 1/25; 235. 2/7; 236. 1/25; 237. 2/7; 238. 1/25; 239. 2/7; 240. 1/25; 241. 2/7; 242. 1/25; 243. 2/7; 244. 1/25; 245. 2/7; 246. 1/25; 247. 2/7; 248. 1/25; 249. 2/7; 250. 1/25; 251. 2/7; 252. 1/25; 253. 2/7; 254. 1/25; 255. 2/7; 256. 1/25; 257. 2/7; 258. 1/25; 259. 2/7; 260. 1/25; 261. 2/7; 262. 1/25; 263. 2/7; 264. 1/25; 265. 2/7; 266. 1/25; 267. 2/7; 268. 1/25; 269. 2/7; 270. 1/25; 271. 2/7; 272. 1/25; 273. 2/7; 274. 1/25; 275. 2/7; 276. 1/25; 277. 2/7; 278. 1/25; 279. 2/7; 280. 1/25; 281. 2/7; 282. 1/25; 283. 2/7; 284. 1/25; 285. 2/7; 286. 1/25; 287. 2/7; 288. 1/25; 289. 2/7; 290. 1/25; 291. 2/7; 292. 1/25; 293. 2/7; 294. 1/25; 295. 2/7; 296. 1/25; 297. 2/7; 298. 1/25; 299. 2/7; 300. 1/25; 301. 2/7; 302. 1/25; 303. 2/7; 304. 1/25; 305. 2/7; 306. 1/25; 307. 2/7; 308. 1/25; 309. 2/7; 310. 1/25; 311. 2/7; 312. 1/25; 313. 2/7; 314. 1/25; 315. 2/7; 316. 1/25; 317. 2/7; 318. 1/25; 319. 2/7; 320. 1/25; 321. 2/7; 322. 1/25; 323. 2/7; 324. 1/25; 325. 2/7; 326. 1/25; 327. 2/7; 328. 1/25; 329. 2/7; 330. 1/25; 331. 2/7; 332. 1/25; 333. 2/7; 334. 1/25; 335. 2/7; 336. 1/25; 337. 2/7; 338. 1/25; 339. 2/7; 340. 1/25; 341. 2/7; 342. 1/25; 343. 2/7; 344. 1/25; 345. 2/7; 346. 1/25; 347. 2/7; 348. 1/25; 349. 2/7; 350. 1/25; 351. 2/7; 352. 1/25; 353. 2/7; 354. 1/25; 355. 2/7; 356. 1/25; 357. 2/7; 358. 1/25; 359. 2/7; 360. 1/25; 361. 2/7; 362. 1/25; 363. 2/7; 364. 1/25; 365. 2/7; 366. 1/25; 367. 2/7; 368. 1/25; 369. 2/7; 370. 1/25; 371. 2/7; 372. 1/25; 373. 2/7; 374. 1/25; 375. 2/7; 376. 1/25; 377. 2/7; 378. 1/25; 379. 2/7; 380. 1/25; 381. 2/7; 382. 1/25; 383. 2/7; 384. 1/25; 385. 2/7; 386. 1/25; 387. 2/7; 388. 1/25; 389. 2/7; 390. 1/25; 391. 2/7; 392. 1/25; 393. 2/7; 394. 1/25; 395. 2/7; 396. 1/25; 397. 2/7; 398. 1/25; 399. 2/7; 400. 1/25; 401. 2/7; 402. 1/25; 403. 2/7; 404. 1/25; 405. 2/7; 406. 1/25; 407. 2/7; 408. 1/25; 409. 2/7; 410. 1/25; 411. 2/7; 412. 1/25; 413. 2/7; 414. 1/25; 415. 2/7; 416. 1/25; 417. 2/7; 418. 1/25; 419. 2/7; 420. 1/25; 421. 2/7; 422. 1/25; 423. 2/7; 424. 1/25; 425. 2/7; 426. 1/25; 427. 2/7; 428. 1/25; 429. 2/7; 430. 1/25; 431. 2/7; 432. 1/25; 433. 2/7; 434. 1/25; 435. 2/7; 436. 1/25; 437. 2/7; 438. 1/25; 439. 2/7; 440. 1/25; 441. 2/7; 442. 1/25; 443. 2/7; 444. 1/25; 445. 2/7; 446. 1/25; 447. 2/7; 448. 1/25; 449. 2/7; 450. 1/25; 451. 2/7; 452. 1/25; 453. 2/7; 454. 1/25; 455. 2/7; 456. 1/25; 457. 2/7; 458. 1/25; 459. 2/7; 460. 1/25; 461. 2/7; 462. 1/25; 463. 2/7; 464. 1/25; 465. 2/7; 466. 1/25; 467. 2/7; 468. 1/25; 469. 2/7; 470. 1/25; 471. 2/7; 472. 1/25; 473. 2/7; 474. 1/25; 475. 2/7; 476. 1/25; 477. 2/7; 478. 1/25; 479. 2/7; 480. 1/25; 481. 2/7; 482. 1/25; 483. 2/7; 484. 1/25; 485. 2/7; 486. 1/25; 487. 2/7; 488. 1/25; 489. 2/7; 490. 1/25; 491. 2/7; 492. 1/25; 493. 2/7; 494. 1/25; 495. 2/7; 496. 1/25; 497. 2/7; 498. 1/25; 499. 2/7; 500. 1/25; 501. 2/7; 502. 1/25; 503. 2/7; 504. 1/25; 505. 2/7; 506. 1/25; 507. 2/7; 508. 1/25; 509. 2/7; 510. 1/25; 511. 2/7; 512. 1/25; 513. 2/7; 514. 1/25; 515. 2/7; 516. 1/25; 517. 2/7; 518. 1/25; 519. 2/7; 520. 1/25; 521. 2/7; 522. 1/25; 523. 2/7; 524. 1/25; 525. 2/7; 526. 1/25; 527. 2/7; 528. 1/25; 529. 2/7; 530. 1/25; 531. 2/7; 532. 1/25; 533. 2/7; 534. 1/25; 535. 2/7; 536. 1/25; 537. 2/7; 538. 1/25; 539. 2/7; 540. 1/25; 541. 2/7; 542. 1/25; 543. 2/7; 544. 1/25; 545. 2/7; 546. 1/25; 547. 2/7; 548. 1/25; 549. 2/7; 550. 1/25; 551. 2/7; 552. 1/25; 553. 2/7; 554. 1/25; 555. 2/7; 556. 1/25; 557. 2/7; 558. 1/25; 559. 2/7; 560. 1/25; 561. 2/7; 562. 1/25; 563. 2/7; 564. 1/25; 565. 2/7; 566. 1/25; 567. 2/7; 568. 1/25; 569. 2/7; 570. 1/25; 571. 2/7; 572. 1/25; 573. 2/7; 574. 1/25; 575. 2/7; 576. 1/25; 577. 2/7; 578. 1/25; 579. 2/7; 580. 1/25; 581. 2/7; 582. 1/25; 583. 2/7; 584. 1/25; 585. 2/7; 586. 1/25; 587. 2/7; 588. 1/25; 589. 2/7; 590. 1/25; 591. 2/7; 592. 1/25; 593. 2/7; 594. 1/25; 595. 2/7; 596. 1/25; 597. 2/7; 598. 1/25; 599. 2/7; 600. 1/25; 601. 2/7; 602. 1/25; 603. 2/7; 604. 1/25; 605. 2/7; 606. 1/25; 607. 2/7; 608. 1/25; 609. 2/7; 610. 1/25; 611. 2/7; 612. 1/25; 613. 2/7; 614. 1/25; 615. 2/7; 616. 1/25; 617. 2/7; 618. 1/25; 619. 2/7; 620. 1/25; 621. 2/7; 622. 1/25; 623. 2/7; 624. 1/25; 625. 2/7; 626. 1/25; 627. 2/7; 628. 1/25; 629. 2/7; 630. 1/25; 631. 2/7; 632. 1/25; 633. 2/7; 634. 1/25; 635. 2/7; 636. 1/25; 637. 2/7; 638. 1/25; 639. 2/7; 640. 1/25; 641. 2/7; 642. 1/25; 643. 2/7; 644. 1/25; 645. 2/7; 646. 1/25; 647. 2/7; 648. 1/25; 649. 2/7; 650. 1/25; 651. 2/7; 652. 1/25; 653. 2/7; 654. 1/25; 655. 2/7; 656. 1/25; 657. 2/7; 658. 1/25; 659. 2/7; 660. 1/25; 661. 2/7; 662. 1/25; 663. 2/7; 664. 1/25; 665. 2/7; 666. 1/25; 667. 2/7; 668. 1/25; 669. 2/7; 670. 1/25; 671. 2/7; 672. 1/25; 673. 2/7; 674. 1/25; 675. 2/7; 676. 1/25; 677. 2/7; 678. 1/25; 679. 2/7; 680. 1/25; 681. 2/7; 682. 1/25; 683. 2/7; 684. 1/25; 685. 2/7; 686. 1/25; 687. 2/7; 688. 1/25; 689. 2/7; 690. 1/25; 691. 2/7; 692. 1/25; 693. 2/7; 694. 1/25; 695. 2/7; 696. 1/25; 697. 2/7; 698. 1/25; 699. 2/7; 700. 1/25; 701. 2/7; 702. 1/25; 703. 2/7; 704. 1/25; 705. 2/7; 706. 1/25; 707. 2/7; 708. 1/25; 709. 2/7; 710. 1/25; 711. 2/7; 712. 1/25; 713. 2/7; 714. 1/25; 715. 2/7; 716. 1/25; 717. 2/7; 718. 1/25; 719. 2/7; 720. 1/25; 721. 2/7; 722. 1/25; 723. 2/7; 724. 1/25; 725. 2/7; 726. 1/25; 727. 2/7; 728. 1/25; 729. 2/7; 730. 1/25; 731. 2/7; 732. 1/25; 733. 2/7; 734. 1/25; 735. 2/7; 736. 1/25; 737. 2/7; 738. 1/25; 739. 2/7; 740. 1/25; 741. 2/7; 742. 1/25; 743. 2/7; 744. 1/25; 745. 2/7; 746. 1/25; 747. 2/7; 748. 1/25; 749. 2/7; 750. 1/25; 751. 2/7; 752. 1/25; 753. 2/7; 754. 1/25; 755. 2/7; 756. 1/25; 757. 2/7; 758. 1/25; 759. 2/7; 760. 1/25; 761. 2/7; 762. 1/25; 763. 2/7; 764. 1/25; 765. 2/7; 766. 1/25; 767. 2/7; 768. 1/25; 769. 2/7; 770. 1/25; 771. 2/7; 772. 1/25; 773. 2/7; 774. 1/25; 775. 2/7; 776. 1/25; 777. 2/7; 778. 1/25; 779. 2/7; 780. 1/25; 781. 2/7; 782. 1/25; 783. 2/7; 784. 1/25; 785. 2/7; 786. 1/25; 787. 2/7; 788. 1/25; 789. 2/7; 790. 1/25; 791. 2/7; 792. 1/25; 793. 2/7; 794. 1/25; 795. 2/7; 796. 1/25; 797. 2/7; 798. 1/25; 799. 2/7; 800. 1/25; 801. 2/7; 802. 1/25; 803. 2/7; 804. 1/25; 805. 2/7; 806. 1/25; 807. 2/7; 808. 1/25; 809. 2/7; 810. 1/25; 811. 2/7; 812. 1/25; 813. 2/7; 814. 1/25; 815. 2/7; 816. 1/25; 817. 2/7; 818. 1/25; 819. 2/7; 820. 1/25; 821. 2/7; 822. 1/25; 823. 2/7; 824. 1/25; 825. 2/7; 826. 1/25; 827. 2/7; 828. 1/25; 829. 2/7; 830. 1/25; 831. 2/7; 832. 1/25; 833. 2/7; 834. 1/25; 835. 2/7; 836. 1/25; 837. 2/7; 838. 1/25; 839. 2/7; 840. 1/25; 841. 2/7; 842. 1/25; 843. 2/7; 844. 1/25; 845. 2/7; 846. 1/25; 847. 2/7; 848. 1/25; 849. 2/7; 850. 1/25; 851. 2/7; 852. 1/25; 853. 2/7; 854. 1/25; 855. 2/7; 856. 1/25; 857. 2/7; 858. 1/25; 859. 2/7; 860. 1/25; 861. 2/7; 862. 1/25; 863. 2/7; 864. 1/25; 865. 2/7; 866. 1/25; 867. 2/7; 868. 1/25; 869. 2/7; 870. 1/25; 871. 2/7; 872. 1/25; 873. 2/7; 874. 1/25; 875. 2/7; 876. 1/25; 877. 2/7; 878. 1/25; 879. 2/7; 880. 1/25; 881. 2/7; 882. 1/25; 883. 2/7; 884. 1/25; 885. 2/7; 886. 1/25; 887. 2/7; 888. 1/25; 889. 2/7; 890. 1/25; 891. 2/7; 892. 1/25; 893. 2/7; 894. 1/25; 895. 2/7; 896. 1/25; 897. 2/7; 898. 1/25; 899. 2/7; 900. 1/25; 901. 2/7; 902. 1/25; 903. 2/7; 904. 1/25; 905. 2/7; 906. 1/25; 907. 2/7; 908. 1/25; 909. 2/7; 910. 1/25; 911. 2/7; 912. 1/25; 913. 2/7; 914. 1/25; 915. 2/7; 916. 1/25; 917. 2/7; 918. 1/25; 919. 2/7; 920. 1/25; 921. 2/7; 922. 1/25; 923. 2/7; 924. 1/25; 925. 2/7; 926. 1/25; 927. 2/7; 928. 1/25; 929. 2/7; 930. 1/25; 931. 2/7; 932. 1/25; 933. 2/7; 934. 1/25; 935. 2/7; 936. 1/25; 937. 2/7; 938. 1/25; 939. 2/7; 940. 1/25; 941. 2/7; 942. 1/25; 943. 2/7; 944. 1/25; 945. 2/7; 946. 1/25; 947. 2/7; 948. 1/25; 949. 2/7; 950. 1/25; 951. 2/7; 952. 1/25; 953. 2/7; 954. 1/25; 955. 2/7; 956. 1/25; 957. 2/7; 958. 1/25; 959. 2/7; 960. 1/25; 961. 2/7; 962. 1/25; 963. 2/7; 964. 1/25; 965. 2/7; 966. 1/25; 967. 2/7; 968. 1/25; 969. 2/7; 970. 1/25; 971. 2/7; 972. 1/25; 973. 2/7; 974. 1/25; 975. 2/7; 976. 1/25; 977. 2/7; 978. 1/25; 979. 2/7; 980. 1/25; 981. 2/7; 982. 1/25; 983. 2/7; 984. 1/25; 985. 2/7; 986. 1/25; 987. 2/7; 988. 1/25; 989. 2/7; 990. 1/25; 991. 2/7; 992. 1/25; 993. 2/7; 994. 1/25; 995. 2/7; 996. 1/25; 997. 2/7; 998. 1/25; 999. 2/7; 1000. 1/25; 1001. 2/7; 1002. 1/25; 1003. 2/7; 1004. 1/25; 1005. 2/7; 1006. 1/25; 1007. 2/7; 1008. 1/25; 1009. 2/7; 1010. 1/25; 1011. 2/7; 1012. 1/25; 1013. 2/7; 1014. 1/25; 1015. 2/7; 1016. 1/25; 1017. 2/7; 1018. 1/25; 1019. 2/