



Bank rate forecast has effect on market

Central Banker (C.A.), Ltd. ...
 CRICKIN ...
 ...
 ...

THIS GIPSY CAN GO ANYWHERE ANYTIME

FULLY independent ...
 maintenance or lubrication ...
 ...
 ...

QUOTATIONS FROM THE RAND MARKET

Item	Price
...	...
...	...
...	...

Healthier Post for YOU

NETZHE
 SEBADEX
 STRESS
 KATZHE
 ZENOL

BOUSTEAD & CLARK LTD
 201, Market Street, Singapore

MALINDI...

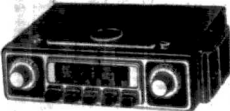
Kenya's aquatic play-ground and recreation resort. Our Beaches are renowned ...

BARELLI D.C.O.
 (P.C.O.)

Have your furniture made with FORMICA

The Anglo-Bank Corporation Ltd
 Singapore House, 100, Cross Street, Singapore

CAR RADIOS by PHILIPS



Did you know that the average Nairobi ...
 ...
 ...

PHILIPS TWENTSCHE OVERSEAS TRADING CO. LIMITED
 HAIKOSI KISSUMU KITALE
 EASY HIRE-PURCHASE TERMS CAN BE ARRANGED

East African stocks and shares

Company	Price	Change
...
...
...

Prices high at Kampala coffee sale

ALTHOUGH prices were ...
 ...
 ...

African hostel for city approved

A proposal to build a ...
 ...
 ...

TAX RESERVE CERTIFICATES

Save regularly for your Income Tax liability
 Interest Certificate
 Payment
 Application Forms
 Further information

Take FAMEL SYRUP and COUGHS GO

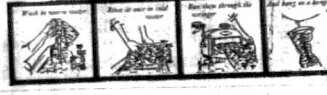
Bring that cough quickly with FAMEL Syrup ...
 ...
 ...

TOOTAL minimum-iron fabrics are here!



TOOTAL has never made such beautiful ...
 ...
 ...

THE TOOTAL GUARANTEE
 All goods bearing the registered ...
 ...
 ...



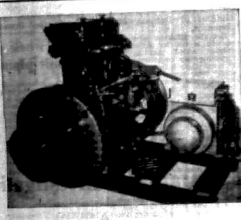
PRODUCE AND MINERAL INVESTMENTS

Director of London General Finance and ...
 ...
 ...

Fight ASTHMA ATTACKS Easy Way

Use Inhalant ...
 ...
 ...

YUSUF GARAGE
 P.O. Box 1010, Telangana, 22181
 60 Bangalore Road, Madras



'BROGAN' POWER & LIGHTING PLANTS

DESIGNED AND MANUFACTURED TO MEET SPECIAL REQUIREMENTS
 BROGAN PATENTS (U.K. AND FOREIGN)
 ENGINES, ALTERNATORS AND ACCESSORIES

SERVICE EXPERT - PROMPT - EFFICIENT BROGAN INDUSTRIES

BERRIMORE ROAD (OFF BUCKLEY ROAD) P.O. BOX 5215, NAIROBI
 PHONE: 5086
 "TELEGRAMS - BROGMATICS"

UNION-CASTLE LINE

PASSENGER AND CARGO SERVICES

The Union-Castle Line is a world-wide service, with ships calling at all the principal ports of the world. The line is owned and operated by the Union-Castle Marine S.S. Co., Limited, of London, England.

THE UNION-CASTLE MAR. S.S. CO., LIMITED
 P.O. BOX 20, MOMBASA

NEDLOYD LINE

SVEVIL

The Swedish E.A. Line

Nedloyd Line, Ltd., is a world-wide service, with ships calling at all the principal ports of the world. The line is owned and operated by Nedloyd Line, Ltd., of Rotterdam, Holland.

NEDLOYD LINE
 P.O. BOX 20, MOMBASA

SOCIAL BENEFITS DEPENDENT ON INCREASED PRODUCTIVITY

The primary workers in Kenya received their productivity bonus in a check for £100,000, according to the Minister for Labour, Mr. Coombs, today. The bonus was the result of the productivity bonus scheme introduced by the Government in 1954. The bonus was paid to the workers in 11 instalments of £9,090.90 each.

Mr. Coombs said that the bonus was the result of the productivity bonus scheme introduced by the Government in 1954. The bonus was paid to the workers in 11 instalments of £9,090.90 each.

Poor country

Remembering that Kenya was formerly a poor country, Mr. Coombs said that the bonus was the result of the productivity bonus scheme introduced by the Government in 1954. The bonus was paid to the workers in 11 instalments of £9,090.90 each.

Speeches in Parliament

The Minister for Labour, Mr. Coombs, today made a statement in the House of Commons regarding the productivity bonus scheme. He said that the bonus was the result of the productivity bonus scheme introduced by the Government in 1954.

Land benefits

The Government has announced that it will be introducing a new land benefits scheme. The scheme will provide for the payment of a bonus to the workers who have worked on the land for a certain period of time.

Good intentions

The Government has announced that it will be introducing a new good intentions scheme. The scheme will provide for the payment of a bonus to the workers who have worked on the land for a certain period of time.

Ministers frustrated

The Government has announced that it will be introducing a new ministers frustrated scheme. The scheme will provide for the payment of a bonus to the workers who have worked on the land for a certain period of time.

SAILINGS

The following are the sailing dates for the various lines:

Line	Ship	Destination	Departure
HOLLAND-AFRIKA LINE	ROBIN LIN	East Africa	10th Sept
	ROBIN LIN	East Africa	17th Sept
MITSUBISHI	YAMAGUCHI	East Africa	10th Sept
	YAMAGUCHI	East Africa	17th Sept

B-I NEW DIRECT LINK WITH PERSIAN GULF

THE B.I.S.N. CO. LTD.'S NEW DIRECT SERVICE BETWEEN EAST AFRICA AND THE PERSIAN GULF COMMENCES WITH THE m.s. WARORA

SAILING FROM EAST AFRICAN PORTS MID-MARCH

RATES OF FREIGHT AND FURTHER DETAILS AVAILABLE ON APPLICATION TO SMITH, MACKENZIE & CO. LTD., AGENTS

SAILING DATES

The following are the sailing dates for the various lines:

Line	Ship	Destination	Departure
FARRELL LINES	FARELL	East Africa	10th Sept
	FARELL	East Africa	17th Sept
CHRISTENSEN	CHRISTENSEN	East Africa	10th Sept
	CHRISTENSEN	East Africa	17th Sept

SAILING DATES

The following are the sailing dates for the various lines:

Line	Ship	Destination	Departure
EASTERN	EASTERN	East Africa	10th Sept
	EASTERN	East Africa	17th Sept
CANADIAN AFRICAN LINES	CANADIAN AFRICAN LINES	East Africa	10th Sept
	CANADIAN AFRICAN LINES	East Africa	17th Sept

ROBIN LIN

EXPRESS SERVICE TO EAST AFRICA TO U.S.A. ATLANTIC PORTS

The following are the sailing dates for the various lines:

Line	Ship	Destination	Departure
MITCHELL GOTT'S & COMPANY	MITCHELL GOTT'S & COMPANY	East Africa	10th Sept
	MITCHELL GOTT'S & COMPANY	East Africa	17th Sept

Colman's

Mustard made the meal

FOR ANY PROBLEM REGARDING IRRIGATION CONSULT G.S. IRRIGATION Ltd

BOX 3046, NAIROBI

WE SPECIALISE IN IRRIGATION IT IS NOT A SIDELINE WITH US.

AGENTS FOR:

SIGMUNDS

THE WORLD-WIDE IRRIGATION PEOPLE FIRST IN THE FIELD WITH THE LONGEST AND BEST KNOW-HOW IN EAST AFRICA

NOW UNDER OUR IRRIGATION SIMPLE STEPS FOR IMMEDIATE DELIVERY OF PUMPS, STEEL AND ALUMINIUM PIPES, EXPRESS CONCRETE, BATTERIES, HYDRANTS, HOSES, ETC., ETC.

IN CHARGE FOR ADVICE DRAWINGS OR ESTIMATES

EMBARCATION NOTICE

Passengers are advised that the following ships will be sailing on:

Ship	Destination	Departure
ROBIN LIN	East Africa	10th Sept
ROBIN LIN	East Africa	17th Sept

Lloyd Triestino

EXPRESS SERVICE - MOMBASA - ONLY 12 DAYS

NORTHBOUND SAILINGS FROM MOMBASA:

Ship	Destination	Departure
ROBIN LIN	East Africa	10th Sept
ROBIN LIN	East Africa	17th Sept

SOUTHWOUND DEPARTURES FROM SOUTH AFRICA:

Ship	Destination	Departure
ROBIN LIN	East Africa	10th Sept
ROBIN LIN	East Africa	17th Sept

All Inquiries for Passenger Fares and Conditions apply to:

MITCHELL GOTT'S & COMPANY
 (East Africa) Limited
 Telephone 6611 in MOMBASA - P.O. BOX 20

3 BARGAIN DAYS!

Saturday - March 12
Monday - March 14
Tuesday - March 15
 only!

LORRAINE GOWN SHOP
 KENWOOD HOUSE, HARDINGE STREET



BLUE BAND MARGARINE
 - the secret of successful cakes and pastries

Watch for the latest BLUE BAND recipe



BE A REAL MAN!
 Waterbury's Compound
 FOR HEALTH AND STRENGTH

My family's shoes wear down so fast

this time let him fit Drifoot



TENANTS WHO DEFAULT MAY BE EVICTED

Council rents warning

Attention is to be taken by Nairobi Municipal Council tenants who are in arrears with their rent. The Council has issued a warning that it will evict tenants who do not pay their rent by the 15th of each month. The Council has also warned that it will evict tenants who do not pay their rent by the 15th of each month.

Bad English reason for failures

Failures in English language tests were the main cause of the failure of African students in the Cambridge School Certificate examinations.

Family escapes 3 bed. house fire

A family of six escaped with minor injuries from a fire in a three-bedroom house in Nairobi last night.

DENIAL OF THEFT AND FRAUD ALLEGATIONS

The Kenya Finance Corporation has denied allegations of theft and fraud made against it by a group of investors.

ACTRESS REDS

The actress, Mrs. M. M. M., has been accused of being a member of the Communist Party of Kenya.

MURDER OF A MAN

A man was found dead in a field near Nairobi last night. The police are investigating the case.

ADRIOT ON ESCAPE

A man known as Adriot has escaped from a prison in Nairobi.

RETIRED ROYAL MARINE

A retired Royal Marine has been found guilty of a crime in Nairobi.

ADRIOT ON ESCAPE

A man known as Adriot has escaped from a prison in Nairobi.

CHURCH NOTICES

Sunday, March 27
LENT II
 Morning Prayer at 8.00 am.
 Holy Communion at 9.15 am.
 Evensong at 5.00 pm.

EXTRA RATES PAYABLE ON MARCH 31

Nairobi Municipal Council tenants who are in arrears with their rent must pay the extra rates by March 31.

Three more slaves in old home by Nakuru Planters

Three more slaves were found in an old home in Nakuru, Kenya.

Pillion rider killed

A pillion rider was killed and a cyclist was injured in a road accident near Nairobi.

ABERDEEN COUNTY COUNCIL

Notice is hereby given that the Aberdeenshire County Council has decided to...

EAST AFRICAN RAILWAYS AND HARBOURS

It is notified for general information that the following alterations to the East African Railways and Harbours Act...

RETIRED ROYAL MARINE

A retired Royal Marine has been found guilty of a crime in Nairobi.

ADRIOT ON ESCAPE

A man known as Adriot has escaped from a prison in Nairobi.

Fresh BRANDY
 The Best Brandy in the Big Bottle
 D. EPSTEIN & CO. LTD.

STOP YOUR BACKACHE
 DeWitt's Kidney & Bladder Pills
 DeWitt's Kidney & Bladder Pills

BONOMINT
 The pleasant way to relieve CONSTIPATION

ENGAGEMENTS
 OUR ENGAGEMENT RINGS
 DAVID TALL LTD.

Real white needs REAL BLUE
 GENUINE REAL BLUE

NATHWANI PETROL STATION
 NEW TYRES AND TUBES
 at Margin Prices

NEW TYRES	NEW TYRES	NEW TYRES
1100 x 30 14 Ply 550/-	600 x 16 4 Ply 60/-	1200 x 30 14 Ply 550/-
1100 x 30 12 Ply 500/-	425 x 18 2 Ply 60/-	1000 x 30 12 Ply 500/-
1000 x 30 12 Ply 500/-	300 x 18 2 Ply 500/-	800 x 30 12 Ply 500/-
1000 x 30 10 Ply 450/-	200 x 18 2 Ply 450/-	600 x 30 10 Ply 450/-
800 x 30 10 Ply 450/-	150 x 18 2 Ply 450/-	400 x 30 10 Ply 450/-
750 x 18 8 Ply 350/-	100 x 18 2 Ply 350/-	300 x 30 8 Ply 350/-
600 x 18 8 Ply 350/-	100 x 18 2 Ply 350/-	200 x 30 8 Ply 350/-
500 x 18 8 Ply 350/-	100 x 18 2 Ply 350/-	150 x 30 8 Ply 350/-
400 x 18 8 Ply 350/-	100 x 18 2 Ply 350/-	100 x 30 8 Ply 350/-
300 x 18 8 Ply 350/-	100 x 18 2 Ply 350/-	100 x 30 8 Ply 350/-
200 x 18 8 Ply 350/-	100 x 18 2 Ply 350/-	100 x 30 8 Ply 350/-
100 x 18 8 Ply 350/-	100 x 18 2 Ply 350/-	100 x 30 8 Ply 350/-
100 x 18 4 Ply 150/-	100 x 18 2 Ply 150/-	100 x 30 4 Ply 150/-
100 x 18 4 Ply 150/-	100 x 18 2 Ply 150/-	100 x 30 4 Ply 150/-
100 x 18 4 Ply 150/-	100 x 18 2 Ply 150/-	100 x 30 4 Ply 150/-
100 x 18 4 Ply 150/-	100 x 18 2 Ply 150/-	100 x 30 4 Ply 150/-
100 x 18 4 Ply 150/-	100 x 18 2 Ply 150/-	100 x 30 4 Ply 150/-

CAPITOL PLAYHOUSE

TODAY 8:00 P.M. — **THE BIRD SINGER**
 TOMORROW 8:00 P.M. — **THE BIRD SINGER**
FRED ASTAIRE
CYD CHARISSE
 M.G.M. Presenting
SILK STOCKINGS
 (An Actor-Food Production)

GARMEN JONES
 Inspired by Betty Hutton's triumph...
GARMEN JONES
 A 1938 Century-Fox Production
 BOOK AT SIFFRICE

SHAN
 (Today Tomorrow)
 TODAY 8 & 9
 2nd BIG WEEK! In our most...
ALEXANDER KORDA
BURTON KUPFERS
 Introducing Burtons
JUNGLE BOOK
 (An Introducing)

SHAN
 (Today Tomorrow)
 TODAY 8 & 9
 2nd BIG WEEK! In our most...
ALEXANDER KORDA
BURTON KUPFERS
 Introducing Burtons
JUNGLE BOOK
 (An Introducing)

SHAN
 (Today Tomorrow)
 TODAY 8 & 9
 2nd BIG WEEK! In our most...
ALEXANDER KORDA
BURTON KUPFERS
 Introducing Burtons
JUNGLE BOOK
 (An Introducing)

SHAN
 (Today Tomorrow)
 TODAY 8 & 9
 2nd BIG WEEK! In our most...
ALEXANDER KORDA
BURTON KUPFERS
 Introducing Burtons
JUNGLE BOOK
 (An Introducing)

SHAN
 (Today Tomorrow)
 TODAY 8 & 9
 2nd BIG WEEK! In our most...
ALEXANDER KORDA
BURTON KUPFERS
 Introducing Burtons
JUNGLE BOOK
 (An Introducing)

SHAN
 (Today Tomorrow)
 TODAY 8 & 9
 2nd BIG WEEK! In our most...
ALEXANDER KORDA
BURTON KUPFERS
 Introducing Burtons
JUNGLE BOOK
 (An Introducing)

SHAN
 (Today Tomorrow)
 TODAY 8 & 9
 2nd BIG WEEK! In our most...
ALEXANDER KORDA
BURTON KUPFERS
 Introducing Burtons
JUNGLE BOOK
 (An Introducing)

SHAN
 (Today Tomorrow)
 TODAY 8 & 9
 2nd BIG WEEK! In our most...
ALEXANDER KORDA
BURTON KUPFERS
 Introducing Burtons
JUNGLE BOOK
 (An Introducing)

SHAN
 (Today Tomorrow)
 TODAY 8 & 9
 2nd BIG WEEK! In our most...
ALEXANDER KORDA
BURTON KUPFERS
 Introducing Burtons
JUNGLE BOOK
 (An Introducing)

SHAN
 (Today Tomorrow)
 TODAY 8 & 9
 2nd BIG WEEK! In our most...
ALEXANDER KORDA
BURTON KUPFERS
 Introducing Burtons
JUNGLE BOOK
 (An Introducing)

SHAN
 (Today Tomorrow)
 TODAY 8 & 9
 2nd BIG WEEK! In our most...
ALEXANDER KORDA
BURTON KUPFERS
 Introducing Burtons
JUNGLE BOOK
 (An Introducing)

SHAN
 (Today Tomorrow)
 TODAY 8 & 9
 2nd BIG WEEK! In our most...
ALEXANDER KORDA
BURTON KUPFERS
 Introducing Burtons
JUNGLE BOOK
 (An Introducing)

NATIONAL OVERSEAS BANK

...
ACROSS THE BRIDGE
EMPIRE
HELL AND HIGH WATER
THE LAST FRONTIER
ODEON
AASHA
NARROBI RACES TOMORROW
THE GOVERNOR'S CONFERENCE CUP

EMPIRE
 ...
HELL AND HIGH WATER
 ...
THE LAST FRONTIER
 ...
ODEON
 ...
AASHA
 ...
NARROBI RACES TOMORROW
 ...
THE GOVERNOR'S CONFERENCE CUP
 ...

EMPIRE
 ...
HELL AND HIGH WATER
 ...
THE LAST FRONTIER
 ...
ODEON
 ...
AASHA
 ...
NARROBI RACES TOMORROW
 ...
THE GOVERNOR'S CONFERENCE CUP
 ...

EMPIRE
 ...
HELL AND HIGH WATER
 ...
THE LAST FRONTIER
 ...
ODEON
 ...
AASHA
 ...
NARROBI RACES TOMORROW
 ...
THE GOVERNOR'S CONFERENCE CUP
 ...

EMPIRE
 ...
HELL AND HIGH WATER
 ...
THE LAST FRONTIER
 ...
ODEON
 ...
AASHA
 ...
NARROBI RACES TOMORROW
 ...
THE GOVERNOR'S CONFERENCE CUP
 ...

EMPIRE
 ...
HELL AND HIGH WATER
 ...
THE LAST FRONTIER
 ...
ODEON
 ...
AASHA
 ...
NARROBI RACES TOMORROW
 ...
THE GOVERNOR'S CONFERENCE CUP
 ...

EMPIRE
 ...
HELL AND HIGH WATER
 ...
THE LAST FRONTIER
 ...
ODEON
 ...
AASHA
 ...
NARROBI RACES TOMORROW
 ...
THE GOVERNOR'S CONFERENCE CUP
 ...

EMPIRE
 ...
HELL AND HIGH WATER
 ...
THE LAST FRONTIER
 ...
ODEON
 ...
AASHA
 ...
NARROBI RACES TOMORROW
 ...
THE GOVERNOR'S CONFERENCE CUP
 ...

EMPIRE
 ...
HELL AND HIGH WATER
 ...
THE LAST FRONTIER
 ...
ODEON
 ...
AASHA
 ...
NARROBI RACES TOMORROW
 ...
THE GOVERNOR'S CONFERENCE CUP
 ...

EMPIRE
 ...
HELL AND HIGH WATER
 ...
THE LAST FRONTIER
 ...
ODEON
 ...
AASHA
 ...
NARROBI RACES TOMORROW
 ...
THE GOVERNOR'S CONFERENCE CUP
 ...

EMPIRE
 ...
HELL AND HIGH WATER
 ...
THE LAST FRONTIER
 ...
ODEON
 ...
AASHA
 ...
NARROBI RACES TOMORROW
 ...
THE GOVERNOR'S CONFERENCE CUP
 ...

EMPIRE
 ...
HELL AND HIGH WATER
 ...
THE LAST FRONTIER
 ...
ODEON
 ...
AASHA
 ...
NARROBI RACES TOMORROW
 ...
THE GOVERNOR'S CONFERENCE CUP
 ...

QUESTION ON SECURITY

UNEMPLOYMENT
 ...
SUCCESS OVERLOOKED
 ...
INFORMATION IS NEEDED
 ...
AN EMPHATIC TRAINING
 ...

UNEMPLOYMENT
 ...
SUCCESS OVERLOOKED
 ...
INFORMATION IS NEEDED
 ...
AN EMPHATIC TRAINING
 ...

UNEMPLOYMENT
 ...
SUCCESS OVERLOOKED
 ...
INFORMATION IS NEEDED
 ...
AN EMPHATIC TRAINING
 ...

UNEMPLOYMENT
 ...
SUCCESS OVERLOOKED
 ...
INFORMATION IS NEEDED
 ...
AN EMPHATIC TRAINING
 ...

UNEMPLOYMENT
 ...
SUCCESS OVERLOOKED
 ...
INFORMATION IS NEEDED
 ...
AN EMPHATIC TRAINING
 ...

UNEMPLOYMENT
 ...
SUCCESS OVERLOOKED
 ...
INFORMATION IS NEEDED
 ...
AN EMPHATIC TRAINING
 ...

UNEMPLOYMENT
 ...
SUCCESS OVERLOOKED
 ...
INFORMATION IS NEEDED
 ...
AN EMPHATIC TRAINING
 ...

UNEMPLOYMENT
 ...
SUCCESS OVERLOOKED
 ...
INFORMATION IS NEEDED
 ...
AN EMPHATIC TRAINING
 ...

UNEMPLOYMENT
 ...
SUCCESS OVERLOOKED
 ...
INFORMATION IS NEEDED
 ...
AN EMPHATIC TRAINING
 ...

UNEMPLOYMENT
 ...
SUCCESS OVERLOOKED
 ...
INFORMATION IS NEEDED
 ...
AN EMPHATIC TRAINING
 ...

UNEMPLOYMENT
 ...
SUCCESS OVERLOOKED
 ...
INFORMATION IS NEEDED
 ...
AN EMPHATIC TRAINING
 ...

UNEMPLOYMENT
 ...
SUCCESS OVERLOOKED
 ...
INFORMATION IS NEEDED
 ...
AN EMPHATIC TRAINING
 ...

HOTELS AND TRAVELLERS RACING THREE DIFFICULT YEARS

A touch of the old world

A-bombs —down on the farm

SOME strange experiments have been going on at a farm near Newbury, Berkshire.

The land has been made available to military command from an atomic bomb explosion and the farm hands have been getting and their work done in regular and irregular ways.

EFFECT ON FOOD

These the reactions will be reported in the next few days with great interest. The whole area has been made into a chicken farm. The food of the chickens is taken care of by Dr. E. C. Ross.

They hope to find out what effect the atomic bomb has on the food of the chickens. The food is taken care of by Dr. E. C. Ross.

STRONTIUM-90

This substance can be used in the treatment of cancer. It is a radioactive substance which is used in the treatment of cancer.

The substance is used in the treatment of cancer. It is a radioactive substance which is used in the treatment of cancer.

The substance is used in the treatment of cancer. It is a radioactive substance which is used in the treatment of cancer.

The substance is used in the treatment of cancer. It is a radioactive substance which is used in the treatment of cancer.



An act of the old world . . . at St. George's in Lincolnshire.

FLORENCE Newman looks ahead to the future of Kenya's hotels in this article which also reports on present-day progress and problems. She views the situation from the point of view of both the resident and the visitor from overseas.

It might be taken for granted that the availability of central accommodation in Nairobi has deteriorated seriously with a leading hotel closing its doors. For some years there has been a shortage and also many unsuitable hotel rooms in the city. Just how difficult is the position at present?

St. George's Hotel, with 75 beds, closed down at the end of 1951. Four more remain within a brief walking distance of Lord Delamater's Hotel. At least one of these is due to begin a large-scale rebuilding scheme.

The two years work which is in progress there will be fewer rooms in use than at the present time. Improvements to standards will be unavoidable, such as for the lifts being out of commission. Meanwhile, there will be no known increase in the number of hotels.

Imagine Mr. Smith, an up-country farmer, who complains in Nairobi bringing a vital piece of machinery for repair. He finds it will not be ready until the next day and has no choice but to stay over until then or else go back home.

On the other hand, if the machinery is not ready until the next day, the farmer will have to wait until the next day. The farmer will have to wait until the next day.

The demand for simple rooms for tourists has increased. The demand for simple rooms for tourists has increased. The demand for simple rooms for tourists has increased.

PEAK PERIOD. The number of tourists in Kenya has increased. The number of tourists in Kenya has increased. The number of tourists in Kenya has increased.

The number of tourists in Kenya has increased. The number of tourists in Kenya has increased. The number of tourists in Kenya has increased.

The number of tourists in Kenya has increased. The number of tourists in Kenya has increased. The number of tourists in Kenya has increased.

of the new regulation of money, service and the new financial system.

The new financial system will be a step towards the new financial system. The new financial system will be a step towards the new financial system.

FINANCIAL AID. The new financial system will be a step towards the new financial system. The new financial system will be a step towards the new financial system.

The new financial system will be a step towards the new financial system. The new financial system will be a step towards the new financial system.

made for the installation of an automatic system for the new financial system.

The new financial system will be a step towards the new financial system. The new financial system will be a step towards the new financial system.

The new financial system will be a step towards the new financial system. The new financial system will be a step towards the new financial system.

The new financial system will be a step towards the new financial system. The new financial system will be a step towards the new financial system.

THE QUEEN Mother

The Queen Mother has been seen in a public appearance. She was seen in a public appearance. She was seen in a public appearance.

The Queen Mother has been seen in a public appearance. She was seen in a public appearance. She was seen in a public appearance.

The Queen Mother has been seen in a public appearance. She was seen in a public appearance. She was seen in a public appearance.

The Queen Mother has been seen in a public appearance. She was seen in a public appearance. She was seen in a public appearance.

The Queen Mother has been seen in a public appearance. She was seen in a public appearance. She was seen in a public appearance.

The Queen Mother has been seen in a public appearance. She was seen in a public appearance. She was seen in a public appearance.

The Queen Mother has been seen in a public appearance. She was seen in a public appearance. She was seen in a public appearance.

The Queen Mother has been seen in a public appearance. She was seen in a public appearance. She was seen in a public appearance.

The Queen Mother has been seen in a public appearance. She was seen in a public appearance. She was seen in a public appearance.

The Queen Mother has been seen in a public appearance. She was seen in a public appearance. She was seen in a public appearance.

The Queen Mother has been seen in a public appearance. She was seen in a public appearance. She was seen in a public appearance.

The Queen Mother has been seen in a public appearance. She was seen in a public appearance. She was seen in a public appearance.

The Queen Mother has been seen in a public appearance. She was seen in a public appearance. She was seen in a public appearance.

The Queen Mother has been seen in a public appearance. She was seen in a public appearance. She was seen in a public appearance.

The Queen Mother has been seen in a public appearance. She was seen in a public appearance. She was seen in a public appearance.

The Queen Mother has been seen in a public appearance. She was seen in a public appearance. She was seen in a public appearance.

The Queen Mother has been seen in a public appearance. She was seen in a public appearance. She was seen in a public appearance.

The Queen Mother has been seen in a public appearance. She was seen in a public appearance. She was seen in a public appearance.

The Queen Mother has been seen in a public appearance. She was seen in a public appearance. She was seen in a public appearance.

The Queen Mother has been seen in a public appearance. She was seen in a public appearance. She was seen in a public appearance.

The Queen Mother has been seen in a public appearance. She was seen in a public appearance. She was seen in a public appearance.

The Queen Mother has been seen in a public appearance. She was seen in a public appearance. She was seen in a public appearance.

The Queen Mother has been seen in a public appearance. She was seen in a public appearance. She was seen in a public appearance.

The Queen Mother has been seen in a public appearance. She was seen in a public appearance. She was seen in a public appearance.

The Queen Mother has been seen in a public appearance. She was seen in a public appearance. She was seen in a public appearance.

The Queen Mother has been seen in a public appearance. She was seen in a public appearance. She was seen in a public appearance.

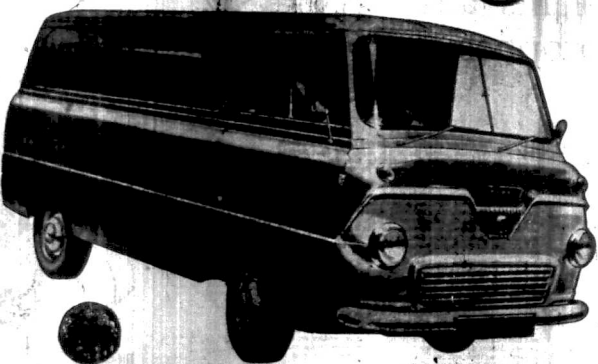
The Queen Mother has been seen in a public appearance. She was seen in a public appearance. She was seen in a public appearance.

HERE FOR THE FIRST TIME— AND WE BRING THEM TO YOU—It's the

NEW THAMES range!

... new in forward control with 75% payload capacity and big unobstructed floor area, low loading height, balanced construction, functional styling, and advanced mechanical design! NEW "outrigger" type chassis frame (perfect for special bodies), NEW all-steel construction, new full-width double door rear opening with optional side door if required, new independent ball joint front suspension, new hydraulic brake axles—147 sq. in. inch—the biggest! NEW standards of driver comfort, with foam rubber seating and a 'step-in' entrance by either front door! NEW, single-piece curved windscreen, new lever-type handbrake, new accessibility and new standards of safety—over 1000 lbs. crash resistance and 2000 lbs. C.E. engine design. See all the advanced new features of the new Thames 800 RANGE at our showrooms—we'll be glad to arrange a special demonstration whenever you like!

Available with an optional side loading door as well as the full width double rear doors—the new Thames 800 Freighter (now shown in pictorial features and mechanical construction). Available soon will be the Thames 800 Estate Car and Express Bus, and the Thames 800 Chassis Cab and Chassis front end for any special body you may have in mind.



NEW THAMES range

HUGHES LIMITED

SEE THEM IN OUR SHOWROOMS

P.O. Box 39640 BARNUM TEL. 23421, P.O. Box 49 MAYHU TEL. 3516, P.O. Box 85 ELDORET TEL. 85 x 271

Scientific team traces the making of a mountain

GLACIER LOSES 10 FT. A YEAR



The loveliest glow of all is yours... with this new liquid make-up!

Rubin Touch-and-Glow

...that makes beauty bright and glowing...
...in a flash you're radiant...
...in a liquid make-up!

The fabulous history of Mars are marvellous

There are three different positions taken by Mars in 1935...
...the first time in our history...
...the first time in our history...
...the first time in our history...

THEY'VE CHISELLED THE SPACEMAN
TUNES/TRAITS-BOUNTY

VOLCANIC and glacial geological work carried out on Mount Kenya by the International Geographical Commission. It was intended to provide a background to the study of the present-day glaciers and to give an indication of past climatic and climatic changes.

Interesting problems that had to be solved were, firstly, the question of the number of glaciations that have affected the mountain and, secondly, whether these glaciations were contemporaneous with those of higher rainfall that are known to have existed over East Africa as a whole in the past.

A great deal of information was obtained directly by contour levelling and by the use of the aneroid barometer.

It was found that the mountain was in the form of a dome with a central cone of snow and a wide outer slope of ice.

LIKE KIBO
The main period of volcanic activity was probably about 200,000 years ago. It was found that the mountain was in the form of a dome with a central cone of snow and a wide outer slope of ice.

BRIAN HOWARD
B.A., F.G.S.
of the Geological Survey of Kenya, Mines and Geological Department, and geologist to the International Geographical Year Expedition to Mount Kenya. In this article, Mr. Howard gives an outline of the geological results.

PEAKS COVERED
Evidence for two phases of glaciation has been found on the mountain, but there may have been one or two more older ones.

The first of these was a "great" glaciation. It is possible that the first glaciation took place after the main volcanic on the mountain and that was caused by the eruption of the mountain. The glaciers extended to the present limit of the snow line.



A panoramic photograph of the Lewis Glacier showing, on the left and lower part, the snow line and the snow line of the Lewis Glacier, and the snow line of the Lewis Glacier.

BOULDERS CARRIED AWAY

The mountain and flow of ice peaks protruded through the low...
...the mountain and flow of ice peaks protruded through the low...
...the mountain and flow of ice peaks protruded through the low...

FRIGID SCULPTURE

The extent of the retreat...
...the extent of the retreat...
...the extent of the retreat...



Profits and prophesies



When Joe Barrow climbed into the cab of the first Austin taxi he was...
...the first time in our history...
...the first time in our history...
...the first time in our history...

MARGIN DEBITTS
The first of these was a "great" glaciation. It is possible that the first glaciation took place after the main volcanic on the mountain and that was caused by the eruption of the mountain.

Lewis and Hodgkiss Ltd. NAIROBI AND MOMBASA

TEMPORARY HALTS
These mountains are partially covered with snow and ice. The snow is very deep and the ice is very hard.

Complete retreat of ice expected within 200 years

It was found that the mountain was in the form of a dome with a central cone of snow and a wide outer slope of ice.

Johnson's Red Tile Wax

NEW! JOHNSON'S RED TILE WAX WITH DUROSIL SUPER-SILICONE

New! Revolutionary! clean and polish in one-step

One-step car wax and polish.

Silvo
drier as it cleans

1938 fashions with the Dior label

Silvo

READERS' POSTBAG

A TRADITION OF QUALITY IN WEATHER

WINDWEAR is a term which is becoming more and more familiar to us. It is a term which is associated with the quality of the clothing which we wear in the open air. It is a term which is associated with the quality of the clothing which we wear in the open air.

It is a term which is associated with the quality of the clothing which we wear in the open air. It is a term which is associated with the quality of the clothing which we wear in the open air.

It is a term which is associated with the quality of the clothing which we wear in the open air. It is a term which is associated with the quality of the clothing which we wear in the open air.

It is a term which is associated with the quality of the clothing which we wear in the open air. It is a term which is associated with the quality of the clothing which we wear in the open air.

It is a term which is associated with the quality of the clothing which we wear in the open air. It is a term which is associated with the quality of the clothing which we wear in the open air.

It is a term which is associated with the quality of the clothing which we wear in the open air. It is a term which is associated with the quality of the clothing which we wear in the open air.

It is a term which is associated with the quality of the clothing which we wear in the open air. It is a term which is associated with the quality of the clothing which we wear in the open air.

It is a term which is associated with the quality of the clothing which we wear in the open air. It is a term which is associated with the quality of the clothing which we wear in the open air.

It is a term which is associated with the quality of the clothing which we wear in the open air. It is a term which is associated with the quality of the clothing which we wear in the open air.

It is a term which is associated with the quality of the clothing which we wear in the open air. It is a term which is associated with the quality of the clothing which we wear in the open air.

It is a term which is associated with the quality of the clothing which we wear in the open air. It is a term which is associated with the quality of the clothing which we wear in the open air.

It is a term which is associated with the quality of the clothing which we wear in the open air. It is a term which is associated with the quality of the clothing which we wear in the open air.

It is a term which is associated with the quality of the clothing which we wear in the open air. It is a term which is associated with the quality of the clothing which we wear in the open air.

It is a term which is associated with the quality of the clothing which we wear in the open air. It is a term which is associated with the quality of the clothing which we wear in the open air.

It is a term which is associated with the quality of the clothing which we wear in the open air. It is a term which is associated with the quality of the clothing which we wear in the open air.

It is a term which is associated with the quality of the clothing which we wear in the open air. It is a term which is associated with the quality of the clothing which we wear in the open air.

It is a term which is associated with the quality of the clothing which we wear in the open air. It is a term which is associated with the quality of the clothing which we wear in the open air.

It is a term which is associated with the quality of the clothing which we wear in the open air. It is a term which is associated with the quality of the clothing which we wear in the open air.

It is a term which is associated with the quality of the clothing which we wear in the open air. It is a term which is associated with the quality of the clothing which we wear in the open air.



There is a new trend in fashion. It is a trend which is associated with the quality of the clothing which we wear in the open air. It is a trend which is associated with the quality of the clothing which we wear in the open air.

British statisticians discover some facts about figures

By MAXINE SCOTT

THE female form has provided inspiration for poets, painters and writers ever since the first cave-dweller scratched their crude impressions of it into the rocks around their camp.

Today, vast industries are devoted to its beautification in one way or another, and the whole world will come to realize the shape-figure is a very very definite social asset in life.

What statistician is equipped in the Press wherever possible, and are looked upon as a sign of "middle class" status.

Being all this, it is not surprising that until very recently almost every woman who wished to realize the very specific outlines of the female form had to resort to the services of a statistician.

The "middle class" status of a woman is determined by the shape of her body. It is a term which is associated with the quality of the clothing which we wear in the open air.

The "middle class" status of a woman is determined by the shape of her body. It is a term which is associated with the quality of the clothing which we wear in the open air.

The "middle class" status of a woman is determined by the shape of her body. It is a term which is associated with the quality of the clothing which we wear in the open air.

The "middle class" status of a woman is determined by the shape of her body. It is a term which is associated with the quality of the clothing which we wear in the open air.

The "middle class" status of a woman is determined by the shape of her body. It is a term which is associated with the quality of the clothing which we wear in the open air.

The "middle class" status of a woman is determined by the shape of her body. It is a term which is associated with the quality of the clothing which we wear in the open air.

The "middle class" status of a woman is determined by the shape of her body. It is a term which is associated with the quality of the clothing which we wear in the open air.

The "middle class" status of a woman is determined by the shape of her body. It is a term which is associated with the quality of the clothing which we wear in the open air.

The "middle class" status of a woman is determined by the shape of her body. It is a term which is associated with the quality of the clothing which we wear in the open air.



Move in a
Susan
Small
World

Special Jersey Suit in firm
Kath. Wool, so popular
This season.
Obtainable only from
"Dorset", Hants.

Dorset
MANSION HOUSE
P.O. Box 168, "NA" 2081, Hants 2081

Don't allow digestion to become
INDIGESTION

BiSoDoL
Antacid Digestant

Give your skin
the loving care of
gentle PALMOLIVE



... and your mirror will show
you a lovely, clear complexion!
Palmolive keeps your skin soft and young.
It is so soft and gentle. Made with
"soft" olive oil, Palmolive softens and
protects your skin. Palmolive is imported
from England, where it is famous for its rich,
creamy texture. And because it is so soft,
Palmolive is so good for your skin.
Palmolive for your skin, because it is so soft,
gentle and keeps your skin soft and young.



Pimples

It is a term which is associated with the quality of the clothing which we wear in the open air. It is a term which is associated with the quality of the clothing which we wear in the open air.

HOW TO BEAUTY

It is a term which is associated with the quality of the clothing which we wear in the open air. It is a term which is associated with the quality of the clothing which we wear in the open air.

ANNUAL SALE HUDSONS LTD.

Houses, Dressing
Gowns, Lingerie,
Materials and
Maternity Wear.
20% CASH DISCOUNT OFF
NORMAL STOCKS

Hudsons
LINGERIE LTD.
MANSION HOUSE P.O. Box 168, "NA" 2081, HANTS 2081



7-YEAR TASK

The survey took six years to carry out and a further year spent on analyzing its results. The task was carried out by the Central Statistical Office in London.

The survey took six years to carry out and a further year spent on analyzing its results. The task was carried out by the Central Statistical Office in London.

The survey took six years to carry out and a further year spent on analyzing its results. The task was carried out by the Central Statistical Office in London.

The survey took six years to carry out and a further year spent on analyzing its results. The task was carried out by the Central Statistical Office in London.

The survey took six years to carry out and a further year spent on analyzing its results. The task was carried out by the Central Statistical Office in London.

The survey took six years to carry out and a further year spent on analyzing its results. The task was carried out by the Central Statistical Office in London.

The survey took six years to carry out and a further year spent on analyzing its results. The task was carried out by the Central Statistical Office in London.

The survey took six years to carry out and a further year spent on analyzing its results. The task was carried out by the Central Statistical Office in London.

CLASSIC MODEL

Nevertheless, the complete picture that has emerged from the report has produced some interesting facts. The average weight of a woman in Britain is 115 lb. The average height is 5 ft 4 in. The average bust is 35 in. The average waist is 27 in. The average hips are 35 in.

Nevertheless, the complete picture that has emerged from the report has produced some interesting facts. The average weight of a woman in Britain is 115 lb. The average height is 5 ft 4 in. The average bust is 35 in. The average waist is 27 in. The average hips are 35 in.

Nevertheless, the complete picture that has emerged from the report has produced some interesting facts. The average weight of a woman in Britain is 115 lb. The average height is 5 ft 4 in. The average bust is 35 in. The average waist is 27 in. The average hips are 35 in.

Nevertheless, the complete picture that has emerged from the report has produced some interesting facts. The average weight of a woman in Britain is 115 lb. The average height is 5 ft 4 in. The average bust is 35 in. The average waist is 27 in. The average hips are 35 in.

Nevertheless, the complete picture that has emerged from the report has produced some interesting facts. The average weight of a woman in Britain is 115 lb. The average height is 5 ft 4 in. The average bust is 35 in. The average waist is 27 in. The average hips are 35 in.

Nevertheless, the complete picture that has emerged from the report has produced some interesting facts. The average weight of a woman in Britain is 115 lb. The average height is 5 ft 4 in. The average bust is 35 in. The average waist is 27 in. The average hips are 35 in.

Nevertheless, the complete picture that has emerged from the report has produced some interesting facts. The average weight of a woman in Britain is 115 lb. The average height is 5 ft 4 in. The average bust is 35 in. The average waist is 27 in. The average hips are 35 in.

PALE AND PRETTY LOOK IN TODDLERS' CLOTHES

WHILE says fashion is dull for grown-ups? Take a look at the season's smartest toddlers' and see how pretty they are.

WHILE says fashion is dull for grown-ups? Take a look at the season's smartest toddlers' and see how pretty they are.

WHILE says fashion is dull for grown-ups? Take a look at the season's smartest toddlers' and see how pretty they are.

WHILE says fashion is dull for grown-ups? Take a look at the season's smartest toddlers' and see how pretty they are.

FOR THE BEST
NON-FERROUS
SCRAP PRICES...



GEORGE COHEN
Sole Agent for the East
10, Abchurch Lane, London, E.C. 4
Telephone: 3071
Messrs. G. & J. Harrold
Selkirk Street, Glasgow
Messrs. G. & J. Harrold
10, Abchurch Lane, London, E.C. 4
Messrs. G. & J. Harrold
10, Abchurch Lane, London, E.C. 4

HEARTBURN?
There is one simple way to seek relief from the most common cause of heartburn. It is called the most famous of all medicines. It is called **RENNIES**.
It is a simple way to seek relief from the most common cause of heartburn. It is called the most famous of all medicines. It is called **RENNIES**.
It is a simple way to seek relief from the most common cause of heartburn. It is called the most famous of all medicines. It is called **RENNIES**.

We hammered 3 NAILS into a FIRESTONE TUBELESS TYRE



... THEN DROVE THE CAR AT 75 M.P.H.!

What happens? Nothing at all. Thanks to the Firestone patent safety liner, not an ounce of air leaked from the tyre which was punctured by no less than three large nails, through tread and sidewall... proving that the construction and safety under the most conditions, FIRESTONE Tubeless Tyres cannot be beaten.
The Firestone Tubeless Tyre is an actual breeze to drive and a breeze to use in all the features of the tube is fitted with the Firestone patent safety liner which is vulcanized into the tyre—fused inseparably to the body. This patent liner forms a layer of self-curing rubber which, when the inner tube is punctured, is as quickly inflated into. When the inner tube is punctured the self-curing rubber simply seals the object. You can normally drive your car for hundreds of miles without even stopping, that the tyre has been punctured.

Firestone TUBELESS TYRES
PROVED BY PERFORMANCE

Available at Approved Ltd., The Motor Store in Edinburgh Ltd. and all branches of the F.P.A.

Vice and violence to darkest Africa...

ON books for review this week cover a wide range of subjects. Starting with a review of general underwear which has left its mark on East Africa, we have Mr. Chas. Kibira's observations of The White Nile. The order was founded by British colonial agents who sent it to the mountains of the French Congo and Algeria.

UNDER
The White Nile...
by Chas. Kibira
1952, 200 pp.
Viking

World of rackets
This is a very easy to read...
by J. H. M. Jones
1952, 200 pp.
Viking

Duty and courage
A most vivid book...
by J. H. M. Jones
1952, 200 pp.
Viking

Unhappy rivalries
He has not the same...
by J. H. M. Jones
1952, 200 pp.
Viking

Mad about horses
This story of a little...
by J. H. M. Jones
1952, 200 pp.
Viking

Playbook game
You should not be...
by J. H. M. Jones
1952, 200 pp.
Viking

Humorous view
It tells stories that...
by J. H. M. Jones
1952, 200 pp.
Viking

What army headlines
You know Tubeless Tyres...
by J. H. M. Jones
1952, 200 pp.
Viking

What about headlines
The most important news...
by J. H. M. Jones
1952, 200 pp.
Viking

Approved
Approved...
by J. H. M. Jones
1952, 200 pp.
Viking

Approved
Approved...
by J. H. M. Jones
1952, 200 pp.
Viking

Approved
Approved...
by J. H. M. Jones
1952, 200 pp.
Viking

Approved
Approved...
by J. H. M. Jones
1952, 200 pp.
Viking

Approved
Approved...
by J. H. M. Jones
1952, 200 pp.
Viking

Approved
Approved...
by J. H. M. Jones
1952, 200 pp.
Viking

Approved
Approved...
by J. H. M. Jones
1952, 200 pp.
Viking

Approved
Approved...
by J. H. M. Jones
1952, 200 pp.
Viking

Approved
Approved...
by J. H. M. Jones
1952, 200 pp.
Viking

Approved
Approved...
by J. H. M. Jones
1952, 200 pp.
Viking

Approved
Approved...
by J. H. M. Jones
1952, 200 pp.
Viking



Teenage jumps to the stars
A TEENAGER...
by J. H. M. Jones
1952, 200 pp.
Viking

Mad about horses
This story of a little...
by J. H. M. Jones
1952, 200 pp.
Viking

Playbook game
You should not be...
by J. H. M. Jones
1952, 200 pp.
Viking

Humorous view
It tells stories that...
by J. H. M. Jones
1952, 200 pp.
Viking

What army headlines
You know Tubeless Tyres...
by J. H. M. Jones
1952, 200 pp.
Viking

What about headlines
The most important news...
by J. H. M. Jones
1952, 200 pp.
Viking

Approved
Approved...
by J. H. M. Jones
1952, 200 pp.
Viking

Approved
Approved...
by J. H. M. Jones
1952, 200 pp.
Viking

Approved
Approved...
by J. H. M. Jones
1952, 200 pp.
Viking

ISLAM HISTORY

FOR THE BEST...
NON-FERROUS...
SCRAP PRICES...

... THEN DROVE THE CAR AT 75 M.P.H.!

... THEN DROVE THE CAR AT 75 M.P.H.!

... THEN DROVE THE CAR AT 75 M.P.H.!

... THEN DROVE THE CAR AT 75 M.P.H.!

Advice from the map in the middle JUST A WHISTLE TO FAIR PLAY

It will not be surprising if you have seen the map in the middle of this issue. It is a map of the world showing the distribution of the various types of soil. It is a map of the world showing the distribution of the various types of soil. It is a map of the world showing the distribution of the various types of soil.

New cookery book gives all the answers

For young girls interested in cooking, this is a most useful and comprehensive cookery book. It is a most useful and comprehensive cookery book. It is a most useful and comprehensive cookery book. It is a most useful and comprehensive cookery book.

NOW IN STOCK The fourth edition of GARDENING IN EAST AFRICA

Practical Handbook for members of the Kenya Horticultural Society and the East Africa Horticultural Society. It is a most useful and comprehensive book. It is a most useful and comprehensive book. It is a most useful and comprehensive book.

WORLD'S FASTEST PAIN RELIEVER

EXCLUSIVE 3-in-1 FORMULA TESTED BY MILLIONS, TWICE AS EFFECTIVE...
Cafonol

East African Standard Ltd. NAIROBI Phone 2041

PROHIBIT PERSONS M.P.

INTRODUCES OWN BILL Kenya decision cited

British subject or protection person, declared to be inadmissible to British territories, would be allowed to appear at a meeting of the House of Commons.

The bill would give the British Government power to prohibit persons of any race or nationality from entering the United Kingdom. It would also give the Government power to prohibit persons of any race or nationality from entering any of the British territories.

The bill was introduced by Mr. J. G. Gifford, a Conservative M.P. for the Central Africa constituency.

Mr. Gifford said that the bill was necessary because of the decision of the Kenya Government to allow persons of any race or nationality to enter the country.

He said that the bill would give the Government power to prohibit persons of any race or nationality from entering the United Kingdom and any of the British territories.

Reduced aid to Colony explained by Mr. Visery

Mr. Visery said that the Government had decided to reduce aid to the Colony because of the decision of the Kenya Government to allow persons of any race or nationality to enter the country.

He said that the Government had decided to reduce aid to the Colony because of the decision of the Kenya Government to allow persons of any race or nationality to enter the country.

People in the street

Mr. Visery said that the Government had decided to reduce aid to the Colony because of the decision of the Kenya Government to allow persons of any race or nationality to enter the country.

He said that the Government had decided to reduce aid to the Colony because of the decision of the Kenya Government to allow persons of any race or nationality to enter the country.

Special hospital trust proposed

The Kenya Government has proposed a special hospital trust to provide medical services for the people of the Colony.

The trust would be financed by the Government and would be responsible for the management of the hospital.

Marathi steps to start: It was only Venus

Mr. Visery said that the Government had decided to reduce aid to the Colony because of the decision of the Kenya Government to allow persons of any race or nationality to enter the country.

He said that the Government had decided to reduce aid to the Colony because of the decision of the Kenya Government to allow persons of any race or nationality to enter the country.

Wait-and-see policy on buildings loan suggested

The Government has suggested a wait-and-see policy on the buildings loan because of the decision of the Kenya Government to allow persons of any race or nationality to enter the country.

He said that the Government had decided to reduce aid to the Colony because of the decision of the Kenya Government to allow persons of any race or nationality to enter the country.

Bank rate change

Mr. A. J. Fisher, Colonial Secretary, has announced a change in the bank rate.

The bank rate will be reduced from 10 per cent to 9 per cent.

GOVERNMENT REPLIES TO CEREAL BOARD Policy statement misleads

The Government has replied to the Cereals Board's policy statement, which it said misleads the public.

The Government said that the Cereals Board's policy statement was misleading because it did not mention the Government's policy on the export of cereals.

Work for trade

The Government has announced a plan to create work for trade.

The plan would involve the construction of a new road and the establishment of a new market.

Standard Clock

The Government has announced a plan to introduce a standard clock.

The clock would be used to measure the time of day and would be used to regulate the time of day.

Financial Aid

The Government has announced a plan to provide financial aid.

The aid would be used to provide financial assistance to the people of the Colony.

Financial Aid

The Government has announced a plan to provide financial aid.

The aid would be used to provide financial assistance to the people of the Colony.

Financial Aid

The Government has announced a plan to provide financial aid.

The aid would be used to provide financial assistance to the people of the Colony.

Financial Aid

The Government has announced a plan to provide financial aid.

The aid would be used to provide financial assistance to the people of the Colony.

Many hazards to drivers on Whika Road

REPORT BY POLICE

The report of the Whika Road Police is a warning to drivers of the many hazards on the road.

The report says that the road is in a state of disrepair and that there are many hazards to drivers.

The hazards include potholes, loose gravel, and narrow lanes.

The report also says that there are many accidents on the road and that drivers should be careful.

ELECTION DAYS ARE NAMED

The dates for the general election have been named.

The election will be held on March 22 and 23.

Poll in four areas

The election will be held in four areas.

The areas are Nairobi, Kisumu, Mombasa, and Malindi.

Discipline needed

The Government has said that discipline is needed in the Colony.

The Government says that there is a lack of discipline in the Colony and that this is a problem.

Absent voters

The Government has said that there are many absent voters.

The Government says that many people do not vote and that this is a problem.

Discipline needed

The Government has said that discipline is needed in the Colony.

The Government says that there is a lack of discipline in the Colony and that this is a problem.

Discipline needed

The Government has said that discipline is needed in the Colony.

The Government says that there is a lack of discipline in the Colony and that this is a problem.

Discipline needed

The Government has said that discipline is needed in the Colony.

The Government says that there is a lack of discipline in the Colony and that this is a problem.

Discipline needed

The Government has said that discipline is needed in the Colony.

The Government says that there is a lack of discipline in the Colony and that this is a problem.

Discipline needed

The Government has said that discipline is needed in the Colony.

The Government says that there is a lack of discipline in the Colony and that this is a problem.

Discipline needed

The Government has said that discipline is needed in the Colony.

The Government says that there is a lack of discipline in the Colony and that this is a problem.

Discipline needed

The Government has said that discipline is needed in the Colony.

The Government says that there is a lack of discipline in the Colony and that this is a problem.

Discipline needed

The Government has said that discipline is needed in the Colony.

The Government says that there is a lack of discipline in the Colony and that this is a problem.

Discipline needed

The Government has said that discipline is needed in the Colony.

The Government says that there is a lack of discipline in the Colony and that this is a problem.

Mining in West Suk abandoned

Nickel market declines

The mining in West Suk has been abandoned because of the decline in the nickel market.

The market has declined because of a shortage of nickel and because of a decline in demand.

FROM PAGE 1

The mining in West Suk has been abandoned because of the decline in the nickel market.

The market has declined because of a shortage of nickel and because of a decline in demand.

Colony hotel situation 'desperate'

The situation in the Colony hotels is desperate because of a shortage of hotels and because of a decline in demand.

The hotels are in a state of disrepair and there are not enough hotels to accommodate the growing number of tourists.

Transport problems

There are many transport problems in the Colony because of a shortage of transport services and because of a decline in demand.

The transport services are in a state of disrepair and there are not enough transport services to accommodate the growing number of tourists.

Gold found in area

Gold has been found in an area near the mining in West Suk.

The gold was found by a local miner and it is thought that there is more gold in the area.

Small business

There are many small businesses in the Colony because of a shortage of large businesses and because of a decline in demand.

The small businesses are in a state of disrepair and there are not enough small businesses to accommodate the growing number of tourists.

Small business

There are many small businesses in the Colony because of a shortage of large businesses and because of a decline in demand.

The small businesses are in a state of disrepair and there are not enough small businesses to accommodate the growing number of tourists.

Small business

There are many small businesses in the Colony because of a shortage of large businesses and because of a decline in demand.

The small businesses are in a state of disrepair and there are not enough small businesses to accommodate the growing number of tourists.

Small business

There are many small businesses in the Colony because of a shortage of large businesses and because of a decline in demand.

The small businesses are in a state of disrepair and there are not enough small businesses to accommodate the growing number of tourists.

Small business

There are many small businesses in the Colony because of a shortage of large businesses and because of a decline in demand.

The small businesses are in a state of disrepair and there are not enough small businesses to accommodate the growing number of tourists.

Small business

There are many small businesses in the Colony because of a shortage of large businesses and because of a decline in demand.

The small businesses are in a state of disrepair and there are not enough small businesses to accommodate the growing number of tourists.

Small business

There are many small businesses in the Colony because of a shortage of large businesses and because of a decline in demand.

The small businesses are in a state of disrepair and there are not enough small businesses to accommodate the growing number of tourists.

Small business

There are many small businesses in the Colony because of a shortage of large businesses and because of a decline in demand.

The small businesses are in a state of disrepair and there are not enough small businesses to accommodate the growing number of tourists.

Small business

There are many small businesses in the Colony because of a shortage of large businesses and because of a decline in demand.

The small businesses are in a state of disrepair and there are not enough small businesses to accommodate the growing number of tourists.

Supershell with

PETTY ACTS BY OFFICIALS

The Government has announced a plan to introduce petty acts by officials.

The petty acts would be used to regulate the time of day and would be used to regulate the time of day.

Financial Aid

The Government has announced a plan to provide financial aid.

The aid would be used to provide financial assistance to the people of the Colony.

Financial Aid

The Government has announced a plan to provide financial aid.

The aid would be used to provide financial assistance to the people of the Colony.

Financial Aid

The Government has announced a plan to provide financial aid.

The aid would be used to provide financial assistance to the people of the Colony.

Financial Aid

The Government has announced a plan to provide financial aid.

The aid would be used to provide financial assistance to the people of the Colony.

Financial Aid

The Government has announced a plan to provide financial aid.

The aid would be used to provide financial assistance to the people of the Colony.

Financial Aid

The Government has announced a plan to provide financial aid.

The aid would be used to provide financial assistance to the people of the Colony.

Financial Aid

The Government has announced a plan to provide financial aid.

The aid would be used to provide financial assistance to the people of the Colony.

Financial Aid

The Government has announced a plan to provide financial aid.

The aid would be used to provide financial assistance to the people of the Colony.

Financial Aid

The Government has announced a plan to provide financial aid.

The aid would be used to provide financial assistance to the people of the Colony.

Financial Aid

The Government has announced a plan to provide financial aid.

The aid would be used to provide financial assistance to the people of the Colony.

Financial Aid

The Government has announced a plan to provide financial aid.

The aid would be used to provide financial assistance to the people of the Colony.

Financial Aid

The Government has announced a plan to provide financial aid.

The aid would be used to provide financial assistance to the people of the Colony.

Financial Aid

The Government has announced a plan to provide financial aid.

The aid would be used to provide financial assistance to the people of the Colony.

MERLIN SAFE

From FIRE and THEFT



Smith, Mackay & Co. Ltd.
100, Market Street, Singapore



Merline safes give the most protection for the most reasonable price. Each safe is representative of carefully constructed and constructed to meet the body and weight of a safe.

Eating habits change with times in Nairobi

The British Government has been advised that the eating habits of the Nairobi population are changing rapidly. The Nairobi Government has been advised that the eating habits of the Nairobi population are changing rapidly. The Nairobi Government has been advised that the eating habits of the Nairobi population are changing rapidly.

TAX RELIEF

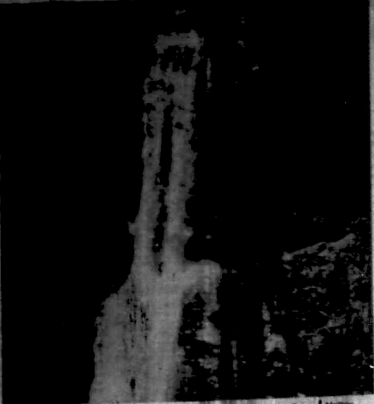
It is pointed out, however, that the Government is not giving better support needed to meet the local position. The Nairobi Government has been advised that the eating habits of the Nairobi population are changing rapidly.

SNACK LUNCHROOMS

It is pointed out, however, that the Government is not giving better support needed to meet the local position. The Nairobi Government has been advised that the eating habits of the Nairobi population are changing rapidly.

CLASS STUDY

Class study is a method of instruction in which the teacher acts as a guide and the students work together to solve problems. The Nairobi Government has been advised that the eating habits of the Nairobi population are changing rapidly.



A fine view of the Nile Waterfalls in the Gorge Valley.

SOLUTION SOUGHT TO CLIMATIC CHANGES

Development News Page 10
The solution of the climatic changes is a matter of great importance. The Nairobi Government has been advised that the eating habits of the Nairobi population are changing rapidly.



MALCOLM F. FOX, a member of the expedition, in London's Gorge Valley, Nairobi.

Malcolm F. Fox, a member of the expedition, in London's Gorge Valley, Nairobi. The Nairobi Government has been advised that the eating habits of the Nairobi population are changing rapidly.

ICE AMBASSADOR

A great quantity of ice was shipped along the Nile. The Nairobi Government has been advised that the eating habits of the Nairobi population are changing rapidly.

PHASES LINKED

The phases of the expedition are linked. The Nairobi Government has been advised that the eating habits of the Nairobi population are changing rapidly.

AVERAGE POOR

The average poor is a matter of concern. The Nairobi Government has been advised that the eating habits of the Nairobi population are changing rapidly.

MORE EXTENSIVE

The more extensive is a matter of concern. The Nairobi Government has been advised that the eating habits of the Nairobi population are changing rapidly.

ACID INDIGESTION?



Take my advice... "You often feel sick after a meal. It is a sign of acid indigestion. Phillips' Milk of Magnesia is the best remedy for this condition."



PHILLIPS MILK OF MAGNESIA
Liquor in Tablets
Prescribed by doctors for nearly 50 years

LACK OF MONEY

At the time this existing condition is reported, the lack of money is a major problem. The Nairobi Government has been advised that the eating habits of the Nairobi population are changing rapidly.

CLOSE CHECK

A close check is being maintained. The Nairobi Government has been advised that the eating habits of the Nairobi population are changing rapidly.



NOW!
"Cathedral" BRAND Popular Priced NON-IRON SHIRTS
Styled by Langdon of England and featuring
★ Stafflex twin-point collar for double life, wrinkle-free
★ Two-way cuffs, button on link
★ Guaranteed shrunk and fast colours
CHOOSE RAYON PLAINS, CASUAL CHECKS or HANDSOME POPLINS
AT STORES AND OUTFITTERS EVERYWHERE

PICTORIAL CROSSWORD

Answers to Pictorial Crossword No. 41 in Page 11 are: 1. 10 letters, 2. 11 letters, 3. 12 letters, 4. 13 letters, 5. 14 letters, 6. 15 letters, 7. 16 letters, 8. 17 letters, 9. 18 letters, 10. 19 letters, 11. 20 letters, 12. 21 letters, 13. 22 letters, 14. 23 letters, 15. 24 letters, 16. 25 letters, 17. 26 letters, 18. 27 letters, 19. 28 letters, 20. 29 letters, 21. 30 letters, 22. 31 letters, 23. 32 letters, 24. 33 letters, 25. 34 letters, 26. 35 letters, 27. 36 letters, 28. 37 letters, 29. 38 letters, 30. 39 letters, 31. 40 letters, 32. 41 letters, 33. 42 letters, 34. 43 letters, 35. 44 letters, 36. 45 letters, 37. 46 letters, 38. 47 letters, 39. 48 letters, 40. 49 letters, 41. 50 letters, 42. 51 letters, 43. 52 letters, 44. 53 letters, 45. 54 letters, 46. 55 letters, 47. 56 letters, 48. 57 letters, 49. 58 letters, 50. 59 letters, 51. 60 letters, 52. 61 letters, 53. 62 letters, 54. 63 letters, 55. 64 letters, 56. 65 letters, 57. 66 letters, 58. 67 letters, 59. 68 letters, 60. 69 letters, 61. 70 letters, 62. 71 letters, 63. 72 letters, 64. 73 letters, 65. 74 letters, 66. 75 letters, 67. 76 letters, 68. 77 letters, 69. 78 letters, 70. 79 letters, 71. 80 letters, 72. 81 letters, 73. 82 letters, 74. 83 letters, 75. 84 letters, 76. 85 letters, 77. 86 letters, 78. 87 letters, 79. 88 letters, 80. 89 letters, 81. 90 letters, 82. 91 letters, 83. 92 letters, 84. 93 letters, 85. 94 letters, 86. 95 letters, 87. 96 letters, 88. 97 letters, 89. 98 letters, 90. 99 letters, 91. 100 letters, 92. 101 letters, 93. 102 letters, 94. 103 letters, 95. 104 letters, 96. 105 letters, 97. 106 letters, 98. 107 letters, 99. 108 letters, 100. 109 letters, 101. 110 letters, 102. 111 letters, 103. 112 letters, 104. 113 letters, 105. 114 letters, 106. 115 letters, 107. 116 letters, 108. 117 letters, 109. 118 letters, 110. 119 letters, 111. 120 letters, 112. 121 letters, 113. 122 letters, 114. 123 letters, 115. 124 letters, 116. 125 letters, 117. 126 letters, 118. 127 letters, 119. 128 letters, 120. 129 letters, 121. 130 letters, 122. 131 letters, 123. 132 letters, 124. 133 letters, 125. 134 letters, 126. 135 letters, 127. 136 letters, 128. 137 letters, 129. 138 letters, 130. 139 letters, 131. 140 letters, 132. 141 letters, 133. 142 letters, 134. 143 letters, 135. 144 letters, 136. 145 letters, 137. 146 letters, 138. 147 letters, 139. 148 letters, 140. 149 letters, 141. 150 letters, 142. 151 letters, 143. 152 letters, 144. 153 letters, 145. 154 letters, 146. 155 letters, 147. 156 letters, 148. 157 letters, 149. 158 letters, 150. 159 letters, 151. 160 letters, 152. 161 letters, 153. 162 letters, 154. 163 letters, 155. 164 letters, 156. 165 letters, 157. 166 letters, 158. 167 letters, 159. 168 letters, 160. 169 letters, 161. 170 letters, 162. 171 letters, 163. 172 letters, 164. 173 letters, 165. 174 letters, 166. 175 letters, 167. 176 letters, 168. 177 letters, 169. 178 letters, 170. 179 letters, 171. 180 letters, 172. 181 letters, 173. 182 letters, 174. 183 letters, 175. 184 letters, 176. 185 letters, 177. 186 letters, 178. 187 letters, 179. 188 letters, 180. 189 letters, 181. 190 letters, 182. 191 letters, 183. 192 letters, 184. 193 letters, 185. 194 letters, 186. 195 letters, 187. 196 letters, 188. 197 letters, 189. 198 letters, 190. 199 letters, 191. 200 letters, 192. 201 letters, 193. 202 letters, 194. 203 letters, 195. 204 letters, 196. 205 letters, 197. 206 letters, 198. 207 letters, 199. 208 letters, 200. 209 letters, 201. 210 letters, 202. 211 letters, 203. 212 letters, 204. 213 letters, 205. 214 letters, 206. 215 letters, 207. 216 letters, 208. 217 letters, 209. 218 letters, 210. 219 letters, 211. 220 letters, 212. 221 letters, 213. 222 letters, 214. 223 letters, 215. 224 letters, 216. 225 letters, 217. 226 letters, 218. 227 letters, 219. 228 letters, 220. 229 letters, 221. 230 letters, 222. 231 letters, 223. 232 letters, 224. 233 letters, 225. 234 letters, 226. 235 letters, 227. 236 letters, 228. 237 letters, 229. 238 letters, 230. 239 letters, 231. 240 letters, 232. 241 letters, 233. 242 letters, 234. 243 letters, 235. 244 letters, 236. 245 letters, 237. 246 letters, 238. 247 letters, 239. 248 letters, 240. 249 letters, 241. 250 letters, 242. 251 letters, 243. 252 letters, 244. 253 letters, 245. 254 letters, 246. 255 letters, 247. 256 letters, 248. 257 letters, 249. 258 letters, 250. 259 letters, 251. 260 letters, 252. 261 letters, 253. 262 letters, 254. 263 letters, 255. 264 letters, 256. 265 letters, 257. 266 letters, 258. 267 letters, 259. 268 letters, 260. 269 letters, 261. 270 letters, 262. 271 letters, 263. 272 letters, 264. 273 letters, 265. 274 letters, 266. 275 letters, 267. 276 letters, 268. 277 letters, 269. 278 letters, 270. 279 letters, 271. 280 letters, 272. 281 letters, 273. 282 letters, 274. 283 letters, 275. 284 letters, 276. 285 letters, 277. 286 letters, 278. 287 letters, 279. 288 letters, 280. 289 letters, 281. 290 letters, 282. 291 letters, 283. 292 letters, 284. 293 letters, 285. 294 letters, 286. 295 letters, 287. 296 letters, 288. 297 letters, 289. 298 letters, 290. 299 letters, 291. 300 letters, 292. 301 letters, 293. 302 letters, 294. 303 letters, 295. 304 letters, 296. 305 letters, 297. 306 letters, 298. 307 letters, 299. 308 letters, 300. 309 letters, 301. 310 letters, 302. 311 letters, 303. 312 letters, 304. 313 letters, 305. 314 letters, 306. 315 letters, 307. 316 letters, 308. 317 letters, 309. 318 letters, 310. 319 letters, 311. 320 letters, 312. 321 letters, 313. 322 letters, 314. 323 letters, 315. 324 letters, 316. 325 letters, 317. 326 letters, 318. 327 letters, 319. 328 letters, 320. 329 letters, 321. 330 letters, 322. 331 letters, 323. 332 letters, 324. 333 letters, 325. 334 letters, 326. 335 letters, 327. 336 letters, 328. 337 letters, 329. 338 letters, 330. 339 letters, 331. 340 letters, 332. 341 letters, 333. 342 letters, 334. 343 letters, 335. 344 letters, 336. 345 letters, 337. 346 letters, 338. 347 letters, 339. 348 letters, 340. 349 letters, 341. 350 letters, 342. 351 letters, 343. 352 letters, 344. 353 letters, 345. 354 letters, 346. 355 letters, 347. 356 letters, 348. 357 letters, 349. 358 letters, 350. 359 letters, 351. 360 letters, 352. 361 letters, 353. 362 letters, 354. 363 letters, 355. 364 letters, 356. 365 letters, 357. 366 letters, 358. 367 letters, 359. 368 letters, 360. 369 letters, 361. 370 letters, 362. 371 letters, 363. 372 letters, 364. 373 letters, 365. 374 letters, 366. 375 letters, 367. 376 letters, 368. 377 letters, 369. 378 letters, 370. 379 letters, 371. 380 letters, 372. 381 letters, 373. 382 letters, 374. 383 letters, 375. 384 letters, 376. 385 letters, 377. 386 letters, 378. 387 letters, 379. 388 letters, 380. 389 letters, 381. 390 letters, 382. 391 letters, 383. 392 letters, 384. 393 letters, 385. 394 letters, 386. 395 letters, 387. 396 letters, 388. 397 letters, 389. 398 letters, 390. 399 letters, 391. 400 letters, 392. 401 letters, 393. 402 letters, 394. 403 letters, 395. 404 letters, 396. 405 letters, 397. 406 letters, 398. 407 letters, 399. 408 letters, 400. 409 letters, 401. 410 letters, 402. 411 letters, 403. 412 letters, 404. 413 letters, 405. 414 letters, 406. 415 letters, 407. 416 letters, 408. 417 letters, 409. 418 letters, 410. 419 letters, 411. 420 letters, 412. 421 letters, 413. 422 letters, 414. 423 letters, 415. 424 letters, 416. 425 letters, 417. 426 letters, 418. 427 letters, 419. 428 letters, 420. 429 letters, 421. 430 letters, 422. 431 letters, 423. 432 letters, 424. 433 letters, 425. 434 letters, 426. 435 letters, 427. 436 letters, 428. 437 letters, 429. 438 letters, 430. 439 letters, 431. 440 letters, 432. 441 letters, 433. 442 letters, 434. 443 letters, 435. 444 letters, 436. 445 letters, 437. 446 letters, 438. 447 letters, 439. 448 letters, 440. 449 letters, 441. 450 letters, 442. 451 letters, 443. 452 letters, 444. 453 letters, 445. 454 letters, 446. 455 letters, 447. 456 letters, 448. 457 letters, 449. 458 letters, 450. 459 letters, 451. 460 letters, 452. 461 letters, 453. 462 letters, 454. 463 letters, 455. 464 letters, 456. 465 letters, 457. 466 letters, 458. 467 letters, 459. 468 letters, 460. 469 letters, 461. 470 letters, 462. 471 letters, 463. 472 letters, 464. 473 letters, 465. 474 letters, 466. 475 letters, 467. 476 letters, 468. 477 letters, 469. 478 letters, 470. 479 letters, 471. 480 letters, 472. 481 letters, 473. 482 letters, 474. 483 letters, 475. 484 letters, 476. 485 letters, 477. 486 letters, 478. 487 letters, 479. 488 letters, 480. 489 letters, 481. 490 letters, 482. 491 letters, 483. 492 letters, 484. 493 letters, 485. 494 letters, 486. 495 letters, 487. 496 letters, 488. 497 letters, 489. 498 letters, 490. 499 letters, 491. 500 letters, 492. 501 letters, 493. 502 letters, 494. 503 letters, 495. 504 letters, 496. 505 letters, 497. 506 letters, 498. 507 letters, 499. 508 letters, 500. 509 letters, 501. 510 letters, 502. 511 letters, 503. 512 letters, 504. 513 letters, 505. 514 letters, 506. 515 letters, 507. 516 letters, 508. 517 letters, 509. 518 letters, 510. 519 letters, 511. 520 letters, 512. 521 letters, 513. 522 letters, 514. 523 letters, 515. 524 letters, 516. 525 letters, 517. 526 letters, 518. 527 letters, 519. 528 letters, 520. 529 letters, 521. 530 letters, 522. 531 letters, 523. 532 letters, 524. 533 letters, 525. 534 letters, 526. 535 letters, 527. 536 letters, 528. 537 letters, 529. 538 letters, 530. 539 letters, 531. 540 letters, 532. 541 letters, 533. 542 letters, 534. 543 letters, 535. 544 letters, 536. 545 letters, 537. 546 letters, 538. 547 letters, 539. 548 letters, 540. 549 letters, 541. 550 letters, 542. 551 letters, 543. 552 letters, 544. 553 letters, 545. 554 letters, 546. 555 letters, 547. 556 letters, 548. 557 letters, 549. 558 letters, 550. 559 letters, 551. 560 letters, 552. 561 letters, 553. 562 letters, 554. 563 letters, 555. 564 letters, 556. 565 letters, 557. 566 letters, 558. 567 letters, 559. 568 letters, 560. 569 letters, 561. 570 letters, 562. 571 letters, 563. 572 letters, 564. 573 letters, 565. 574 letters, 566. 575 letters, 567. 576 letters, 568. 577 letters, 569. 578 letters, 570. 579 letters, 571. 580 letters, 572. 581 letters, 573. 582 letters, 574. 583 letters, 575. 584 letters, 576. 585 letters, 577. 586 letters, 578. 587 letters, 579. 588 letters, 580. 589 letters, 581. 590 letters, 582. 591 letters, 583. 592 letters, 584. 593 letters, 585. 594 letters, 586. 595 letters, 587. 596 letters, 588. 597 letters, 589. 598 letters, 590. 599 letters, 591. 600 letters, 592. 601 letters, 593. 602 letters, 594. 603 letters, 595. 604 letters, 596. 605 letters, 597. 606 letters, 598. 607 letters, 599. 608 letters, 600. 609 letters, 601. 610 letters, 602. 611 letters, 603. 612 letters, 604. 613 letters, 605. 614 letters, 606. 615 letters, 607. 616 letters, 608. 617 letters, 609. 618 letters, 610. 619 letters, 611. 620 letters, 612. 621 letters, 613. 622 letters, 614. 623 letters, 615. 624 letters, 616. 625 letters, 617. 626 letters, 618. 627 letters, 619. 628 letters, 620. 629 letters, 621. 630 letters, 622. 631 letters, 623. 632 letters, 624. 633 letters, 625. 634 letters, 626. 635 letters, 627. 636 letters, 628. 637 letters, 629. 638 letters, 630. 639 letters, 631. 640 letters, 632. 641 letters, 633. 642 letters, 634. 643 letters, 635. 644 letters, 636. 645 letters, 637. 646 letters, 638. 647 letters, 639. 648 letters, 640. 649 letters, 641. 650 letters, 642. 651 letters, 643. 652 letters, 644. 653 letters, 645. 654 letters, 646. 655 letters, 647. 656 letters, 648. 657 letters, 649. 658 letters, 650. 659 letters, 651. 660 letters, 652. 661 letters, 653. 662 letters, 654. 663 letters, 655. 664 letters, 656. 665 letters, 657. 666 letters, 658. 667 letters, 659. 668 letters, 660. 669 letters, 661. 670 letters, 662. 671 letters, 663. 672 letters, 664. 673 letters, 665. 674 letters, 666. 675 letters, 667. 676 letters, 668. 677 letters, 669. 678 letters, 670. 679 letters, 671. 680 letters, 672. 681 letters, 673. 682 letters, 674. 683 letters, 675. 684 letters, 676. 685 letters, 677. 686 letters, 678. 687 letters, 679. 688 letters, 680. 689 letters, 681. 690 letters, 682. 691 letters, 683. 692 letters, 684. 693 letters, 685. 694 letters, 686. 695 letters, 687. 696 letters, 688. 697 letters, 689. 698 letters, 690. 699 letters, 691. 700 letters, 692. 701 letters, 693. 702 letters, 694. 703 letters, 695. 704 letters, 696. 705 letters, 697. 706 letters, 698. 707 letters, 699. 708 letters, 700. 709 letters, 701. 710 letters, 702. 711 letters, 703. 712 letters, 704. 713 letters, 705. 714 letters, 706. 715 letters, 707. 716 letters, 708. 717 letters, 709. 718 letters, 710. 719 letters, 711. 720 letters, 712. 721 letters, 713. 722 letters, 714. 723 letters, 715. 724 letters, 716. 725 letters, 717. 726 letters, 718. 727 letters, 719. 728 letters, 720. 729 letters, 721. 730 letters, 722. 731 letters, 723. 732 letters, 724. 733 letters, 725. 734 letters, 726. 735 letters, 727. 736 letters, 728. 737 letters, 729. 738 letters, 730. 739 letters, 731. 740 letters, 732. 741 letters, 733. 742 letters, 734. 743 letters, 735. 744 letters, 736. 745 letters, 737. 746 letters, 738. 747 letters, 739. 748 letters, 740. 749 letters, 741. 750 letters, 742. 751 letters, 743. 752 letters, 744. 753 letters, 745. 754 letters, 746. 755 letters, 747. 756 letters, 748. 757 letters, 749. 758 letters, 750. 759 letters, 751. 760 letters, 752. 761 letters, 753. 762 letters, 754. 763 letters, 755. 764 letters, 756. 765 letters, 757. 766 letters, 758. 767 letters, 759. 768 letters, 760. 769 letters, 761. 770 letters, 762. 771 letters, 763. 772 letters, 764. 773 letters, 765. 774 letters, 766. 775 letters, 767. 776 letters, 768. 777 letters, 769. 778 letters, 770. 779 letters, 771. 780 letters, 772. 781 letters, 773. 782 letters, 774. 783 letters, 775. 784 letters, 776. 785 letters, 777. 786 letters, 778. 787 letters, 779. 788 letters, 780. 789 letters, 781. 790 letters, 782. 791 letters, 783. 792 letters, 784. 793 letters, 785. 794 letters, 786. 795 letters, 787. 796 letters, 788. 797 letters, 789. 798 letters, 790. 799 letters, 791. 800 letters, 792. 801 letters, 793. 802 letters, 794. 803 letters, 795. 804 letters, 796. 805 letters, 797. 806 letters, 798. 807 letters, 799. 808 letters, 800. 809 letters, 801. 810 letters, 802. 811 letters, 803. 812 letters, 804. 813 letters, 805. 814 letters, 806. 815 letters, 807. 816 letters, 808. 817 letters, 809. 818 letters, 810. 819 letters, 811. 820 letters, 812. 821 letters, 813. 822 letters, 814. 823 letters, 815. 824 letters, 816. 825 letters, 817. 826 letters, 818. 827 letters, 819. 828 letters, 820. 829 letters, 821. 830 letters, 822. 831 letters, 823. 832 letters, 824. 833 letters, 825. 834 letters, 826. 835 letters, 827. 836 letters, 828. 837 letters, 829. 838 letters, 830. 839 letters, 831. 840 letters, 832. 841 letters, 833. 842 letters, 834. 843 letters, 835. 844 letters, 836. 845 letters, 837. 846 letters, 838. 847 letters, 839. 848 letters, 840. 849 letters, 841. 850 letters, 842. 851 letters, 843. 852 letters, 844. 853 letters, 845. 854 letters, 846. 855 letters, 847. 856 letters, 848. 857 letters, 849. 858 letters, 850. 859 letters, 851. 860 letters, 852. 861 letters, 853. 862 letters, 854. 863 letters, 855. 864 letters, 856. 865 letters, 857. 866 letters, 858. 867 letters, 859. 868 letters, 860. 869 letters, 861. 870 letters, 862. 871 letters, 863. 872 letters, 864. 873 letters, 865. 874 letters, 866. 875 letters, 867. 876 letters, 868. 877 letters, 869. 878 letters, 870. 879 letters, 871. 880 letters, 872. 881 letters, 873. 882 letters, 874. 883 letters, 875. 884 letters, 876. 885 letters, 877. 886 letters, 878. 887 letters, 879. 888 letters, 880. 889 letters, 881. 890 letters, 882. 891 letters, 883. 892 letters, 884. 893 letters, 885. 894 letters, 886. 895 letters, 887. 896 letters, 888. 897 letters, 889. 898 letters, 890. 899 letters, 891. 900 letters, 892. 901 letters, 893. 902 letters, 894. 903 letters, 895. 904 letters, 896. 905 letters, 897. 906 letters, 898. 907 letters, 899. 908 letters, 900. 909 letters, 901. 910 letters, 902. 911 letters, 903. 912 letters, 904. 913 letters, 905. 914 letters, 906. 915 letters, 907. 916 letters, 908. 917 letters, 909. 918 letters, 910. 919 letters, 911. 920 letters, 912. 921 letters, 913. 922 letters, 914. 923 letters, 915. 924 letters, 916. 925 letters, 917. 926 letters, 918. 927 letters, 919. 928 letters, 920. 929 letters, 921. 930 letters, 922. 931 letters, 923. 932 letters, 924. 933 letters, 925. 934 letters, 926. 935 letters, 927. 936 letters, 928. 937 letters, 929. 938 letters, 930. 939 letters, 931. 940 letters, 932. 941

Your doctor needs a special cleanser



Steradent

ACTIVE KIDNEYS KEEP YOU WELL

DOAN'S



Coming to Britain!

ASPRO

RADIO

PROGRAMMES FOR MARCH 12 TO MARCH 18

REGULAR DAILY PROGRAMS

SUNDAY
B.B.C. RADIO
 12.15 p.m. - 1.15 p.m. - *Choral Evensong*
 1.30 p.m. - 2.30 p.m. - *Choral Evensong*
 3.0 p.m. - 4.0 p.m. - *Choral Evensong*
 4.15 p.m. - 5.15 p.m. - *Choral Evensong*
 5.30 p.m. - 6.30 p.m. - *Choral Evensong*
 7.0 p.m. - 8.0 p.m. - *Choral Evensong*
 8.15 p.m. - 9.15 p.m. - *Choral Evensong*
 9.30 p.m. - 10.30 p.m. - *Choral Evensong*
 10.45 p.m. - 11.45 p.m. - *Choral Evensong*
HARBOUR RADIO
 12.15 p.m. - 1.15 p.m. - *Choral Evensong*
 1.30 p.m. - 2.30 p.m. - *Choral Evensong*
 3.0 p.m. - 4.0 p.m. - *Choral Evensong*
 4.15 p.m. - 5.15 p.m. - *Choral Evensong*
 5.30 p.m. - 6.30 p.m. - *Choral Evensong*
 7.0 p.m. - 8.0 p.m. - *Choral Evensong*
 8.15 p.m. - 9.15 p.m. - *Choral Evensong*
 9.30 p.m. - 10.30 p.m. - *Choral Evensong*
 10.45 p.m. - 11.45 p.m. - *Choral Evensong*

MONDAY
B.B.C. RADIO
 12.15 p.m. - 1.15 p.m. - *Choral Evensong*
 1.30 p.m. - 2.30 p.m. - *Choral Evensong*
 3.0 p.m. - 4.0 p.m. - *Choral Evensong*
 4.15 p.m. - 5.15 p.m. - *Choral Evensong*
 5.30 p.m. - 6.30 p.m. - *Choral Evensong*
 7.0 p.m. - 8.0 p.m. - *Choral Evensong*
 8.15 p.m. - 9.15 p.m. - *Choral Evensong*
 9.30 p.m. - 10.30 p.m. - *Choral Evensong*
 10.45 p.m. - 11.45 p.m. - *Choral Evensong*
HARBOUR RADIO
 12.15 p.m. - 1.15 p.m. - *Choral Evensong*
 1.30 p.m. - 2.30 p.m. - *Choral Evensong*
 3.0 p.m. - 4.0 p.m. - *Choral Evensong*
 4.15 p.m. - 5.15 p.m. - *Choral Evensong*
 5.30 p.m. - 6.30 p.m. - *Choral Evensong*
 7.0 p.m. - 8.0 p.m. - *Choral Evensong*
 8.15 p.m. - 9.15 p.m. - *Choral Evensong*
 9.30 p.m. - 10.30 p.m. - *Choral Evensong*
 10.45 p.m. - 11.45 p.m. - *Choral Evensong*

TUESDAY
B.B.C. RADIO
 12.15 p.m. - 1.15 p.m. - *Choral Evensong*
 1.30 p.m. - 2.30 p.m. - *Choral Evensong*
 3.0 p.m. - 4.0 p.m. - *Choral Evensong*
 4.15 p.m. - 5.15 p.m. - *Choral Evensong*
 5.30 p.m. - 6.30 p.m. - *Choral Evensong*
 7.0 p.m. - 8.0 p.m. - *Choral Evensong*
 8.15 p.m. - 9.15 p.m. - *Choral Evensong*
 9.30 p.m. - 10.30 p.m. - *Choral Evensong*
 10.45 p.m. - 11.45 p.m. - *Choral Evensong*
HARBOUR RADIO
 12.15 p.m. - 1.15 p.m. - *Choral Evensong*
 1.30 p.m. - 2.30 p.m. - *Choral Evensong*
 3.0 p.m. - 4.0 p.m. - *Choral Evensong*
 4.15 p.m. - 5.15 p.m. - *Choral Evensong*
 5.30 p.m. - 6.30 p.m. - *Choral Evensong*
 7.0 p.m. - 8.0 p.m. - *Choral Evensong*
 8.15 p.m. - 9.15 p.m. - *Choral Evensong*
 9.30 p.m. - 10.30 p.m. - *Choral Evensong*
 10.45 p.m. - 11.45 p.m. - *Choral Evensong*

WEDNESDAY
B.B.C. RADIO
 12.15 p.m. - 1.15 p.m. - *Choral Evensong*
 1.30 p.m. - 2.30 p.m. - *Choral Evensong*
 3.0 p.m. - 4.0 p.m. - *Choral Evensong*
 4.15 p.m. - 5.15 p.m. - *Choral Evensong*
 5.30 p.m. - 6.30 p.m. - *Choral Evensong*
 7.0 p.m. - 8.0 p.m. - *Choral Evensong*
 8.15 p.m. - 9.15 p.m. - *Choral Evensong*
 9.30 p.m. - 10.30 p.m. - *Choral Evensong*
 10.45 p.m. - 11.45 p.m. - *Choral Evensong*
HARBOUR RADIO
 12.15 p.m. - 1.15 p.m. - *Choral Evensong*
 1.30 p.m. - 2.30 p.m. - *Choral Evensong*
 3.0 p.m. - 4.0 p.m. - *Choral Evensong*
 4.15 p.m. - 5.15 p.m. - *Choral Evensong*
 5.30 p.m. - 6.30 p.m. - *Choral Evensong*
 7.0 p.m. - 8.0 p.m. - *Choral Evensong*
 8.15 p.m. - 9.15 p.m. - *Choral Evensong*
 9.30 p.m. - 10.30 p.m. - *Choral Evensong*
 10.45 p.m. - 11.45 p.m. - *Choral Evensong*

THURSDAY
B.B.C. RADIO
 12.15 p.m. - 1.15 p.m. - *Choral Evensong*
 1.30 p.m. - 2.30 p.m. - *Choral Evensong*
 3.0 p.m. - 4.0 p.m. - *Choral Evensong*
 4.15 p.m. - 5.15 p.m. - *Choral Evensong*
 5.30 p.m. - 6.30 p.m. - *Choral Evensong*
 7.0 p.m. - 8.0 p.m. - *Choral Evensong*
 8.15 p.m. - 9.15 p.m. - *Choral Evensong*
 9.30 p.m. - 10.30 p.m. - *Choral Evensong*
 10.45 p.m. - 11.45 p.m. - *Choral Evensong*
HARBOUR RADIO
 12.15 p.m. - 1.15 p.m. - *Choral Evensong*
 1.30 p.m. - 2.30 p.m. - *Choral Evensong*
 3.0 p.m. - 4.0 p.m. - *Choral Evensong*
 4.15 p.m. - 5.15 p.m. - *Choral Evensong*
 5.30 p.m. - 6.30 p.m. - *Choral Evensong*
 7.0 p.m. - 8.0 p.m. - *Choral Evensong*
 8.15 p.m. - 9.15 p.m. - *Choral Evensong*
 9.30 p.m. - 10.30 p.m. - *Choral Evensong*
 10.45 p.m. - 11.45 p.m. - *Choral Evensong*

SINCERELY YOURS - VERA LYNN

VERA LYNN, who has made her name as a singer, first made her reputation when she won the hearts of the Forces with her wartime singing. She is now her husband and daughter-in-law. She is now her husband and daughter-in-law. She is now her husband and daughter-in-law.



She is now her husband and daughter-in-law. She is now her husband and daughter-in-law. She is now her husband and daughter-in-law.

FRIDAY
B.B.C. RADIO
 12.15 p.m. - 1.15 p.m. - *Choral Evensong*
 1.30 p.m. - 2.30 p.m. - *Choral Evensong*
 3.0 p.m. - 4.0 p.m. - *Choral Evensong*
 4.15 p.m. - 5.15 p.m. - *Choral Evensong*
 5.30 p.m. - 6.30 p.m. - *Choral Evensong*
 7.0 p.m. - 8.0 p.m. - *Choral Evensong*
 8.15 p.m. - 9.15 p.m. - *Choral Evensong*
 9.30 p.m. - 10.30 p.m. - *Choral Evensong*
 10.45 p.m. - 11.45 p.m. - *Choral Evensong*
HARBOUR RADIO
 12.15 p.m. - 1.15 p.m. - *Choral Evensong*
 1.30 p.m. - 2.30 p.m. - *Choral Evensong*
 3.0 p.m. - 4.0 p.m. - *Choral Evensong*
 4.15 p.m. - 5.15 p.m. - *Choral Evensong*
 5.30 p.m. - 6.30 p.m. - *Choral Evensong*
 7.0 p.m. - 8.0 p.m. - *Choral Evensong*
 8.15 p.m. - 9.15 p.m. - *Choral Evensong*
 9.30 p.m. - 10.30 p.m. - *Choral Evensong*
 10.45 p.m. - 11.45 p.m. - *Choral Evensong*

SATURDAY
B.B.C. RADIO
 12.15 p.m. - 1.15 p.m. - *Choral Evensong*
 1.30 p.m. - 2.30 p.m. - *Choral Evensong*
 3.0 p.m. - 4.0 p.m. - *Choral Evensong*
 4.15 p.m. - 5.15 p.m. - *Choral Evensong*
 5.30 p.m. - 6.30 p.m. - *Choral Evensong*
 7.0 p.m. - 8.0 p.m. - *Choral Evensong*
 8.15 p.m. - 9.15 p.m. - *Choral Evensong*
 9.30 p.m. - 10.30 p.m. - *Choral Evensong*
 10.45 p.m. - 11.45 p.m. - *Choral Evensong*
HARBOUR RADIO
 12.15 p.m. - 1.15 p.m. - *Choral Evensong*
 1.30 p.m. - 2.30 p.m. - *Choral Evensong*
 3.0 p.m. - 4.0 p.m. - *Choral Evensong*
 4.15 p.m. - 5.15 p.m. - *Choral Evensong*
 5.30 p.m. - 6.30 p.m. - *Choral Evensong*
 7.0 p.m. - 8.0 p.m. - *Choral Evensong*
 8.15 p.m. - 9.15 p.m. - *Choral Evensong*
 9.30 p.m. - 10.30 p.m. - *Choral Evensong*
 10.45 p.m. - 11.45 p.m. - *Choral Evensong*

For the 2... the... spray



NEW! MUDMUD DEODORANT SPRAY DEODORANT STOPS PERSPIRATION INSTANTLY! PREVENTS ODOR ALL DAY!

DEODORANT... YOU NEVER THOUGHT POSSIBLE!



Keep you nice to the bone

For shining brass and copperware

BRASSO

THE QUALITY METAL POLISH

THE BEST BATTERY IN THE WORLD!



- *EXTRA POWER
- *EXTRA LIFE
- *EXTRA STRENGTH

Every Silver Exide battery is sold with a special 18 month guarantee...

Silver Exide BATTERIES

... still keep going when the rest have stopped!



IN 2 SECONDS 'ASPRO' speeds into action

Two seconds—and 'ASPRO' is already at work stopping that cold, that headache, that fever.

IT'S POWERFUL 'ASPRO' is powerful because it contains the full amount you need of acetaminophen, the most powerful pain reliever and fever reducer.

'ASPRO' is made by the world's largest pharmaceutical company, Bayer, and is available in 100% pure form.

SAFE. Bayer is the leader in safety. 'ASPRO' is safe for all ages. There is no danger of addiction. It does not irritate the stomach. It does not cause drowsiness. It does not cause constipation. It does not cause heartburn. It does not cause indigestion. It does not cause nausea. It does not cause vomiting. It does not cause diarrhea. It does not cause constipation. It does not cause heartburn. It does not cause indigestion. It does not cause nausea. It does not cause vomiting. It does not cause diarrhea. It does not cause constipation.

'ASPRO' gives you power over pain and fever

MATER AND OSWALD LIMITED
MATER AND OSWALD LIMITED
MATER AND OSWALD LIMITED

TODAY'S RADIO PROGRAMMES

FEBRUARY 25, 1935
R.E.C. RADIO
A.B.S. RADIO
NATIONAL RADIO
FOREIGN RADIO

MATER AND OSWALD LIMITED
MATER AND OSWALD LIMITED
MATER AND OSWALD LIMITED

MATER AND OSWALD LIMITED
MATER AND OSWALD LIMITED
MATER AND OSWALD LIMITED

MATER AND OSWALD LIMITED
MATER AND OSWALD LIMITED
MATER AND OSWALD LIMITED

MATER AND OSWALD LIMITED
MATER AND OSWALD LIMITED
MATER AND OSWALD LIMITED

MATER AND OSWALD LIMITED
MATER AND OSWALD LIMITED
MATER AND OSWALD LIMITED

MATER AND OSWALD LIMITED
MATER AND OSWALD LIMITED
MATER AND OSWALD LIMITED

TERRITORIES WELCOME PLAN

Difficulty of safari insurance overcome

Insurance difficulties for the territories have been overcome by the introduction of a new policy which covers the territories against all risks of fire, theft, and damage to property. The policy is available to all territories and is underwritten by the London and Lancashire Insurance Co. Ltd. The policy covers all risks of fire, theft, and damage to property, and is available to all territories. The policy is available to all territories and is underwritten by the London and Lancashire Insurance Co. Ltd. The policy covers all risks of fire, theft, and damage to property, and is available to all territories.

Pool of education in Africa

The Education Trust has announced that it will be making available a pool of education in Africa. The pool will be made up of the territories and will be available to all territories. The pool will be made up of the territories and will be available to all territories. The pool will be made up of the territories and will be available to all territories.

Visit in April by Bank Chief

Mr. H. G. B. Smith, Chief of the Bank of Africa, is expected to visit the territories in April. He will be accompanied by a delegation of officials. The visit is expected to be a successful one and will result in the signing of a new agreement between the Bank and the territories.

du MAURIER

the finest
tobacco
cigarettes
unquestionably



Advantage of Quota System
The working party proposed that a quota system be introduced for the territories. This system would allow the territories to export a certain amount of goods to the territories. The system is expected to be a successful one and will result in the signing of a new agreement between the territories and the territories.

FOR NEW COLLEGES

Constituent units of E. Africa university EDUCATION SURVEY

The Education Survey has recommended the establishment of a single university for the territories. The survey also recommended the establishment of new colleges. The survey is expected to be a successful one and will result in the signing of a new agreement between the territories and the territories.

U.S. satellite vanishes

A U.S. satellite in the territories has disappeared. The satellite was last seen in the territories and is expected to be a successful one. The satellite was last seen in the territories and is expected to be a successful one.

Memorial to Empire fallen

A memorial to the Empire fallen has been erected in the territories. The memorial is a tribute to the territories and is expected to be a successful one. The memorial is a tribute to the territories and is expected to be a successful one.

Next-of-kin of 2,000

The next-of-kin of 2,000 people in the territories are expected to be a successful one. The next-of-kin are expected to be a successful one and will result in the signing of a new agreement between the territories and the territories.

Close Liaison

Close liaison has been established between the territories and the territories. The liaison is expected to be a successful one and will result in the signing of a new agreement between the territories and the territories.

Brighton's need of 'new influence'

Brighton is in need of a new influence. The new influence is expected to be a successful one and will result in the signing of a new agreement between Brighton and the territories.

U.S. Sabre jet shot down in Korea

A U.S. Sabre jet was shot down in Korea. The jet was last seen in Korea and is expected to be a successful one. The jet was last seen in Korea and is expected to be a successful one.

Set fair for royal visit

The royal visit to the territories is expected to be a successful one. The visit is expected to be a successful one and will result in the signing of a new agreement between the territories and the territories. The visit is expected to be a successful one and will result in the signing of a new agreement between the territories and the territories.

Arab plot to assassinate Col. Nasser KING ACCUSED

An Arab plot to assassinate Col. Nasser has been uncovered. The plot is expected to be a successful one and will result in the signing of a new agreement between the territories and the territories.

RUSSIANS SUGGEST U.S. TALKS

Russians have suggested U.S. talks. The talks are expected to be a successful one and will result in the signing of a new agreement between the territories and the territories.

NEW EOKA MOVE

A new EOKA move has been announced. The move is expected to be a successful one and will result in the signing of a new agreement between the territories and the territories.

MOROCCAN TROOPS MOVE TO BORDER

Moroccan troops have moved to the border. The move is expected to be a successful one and will result in the signing of a new agreement between the territories and the territories.

Ghana pledge on self-rule

Ghana has pledged on self-rule. The pledge is expected to be a successful one and will result in the signing of a new agreement between the territories and the territories.

The weather

The weather in the territories is expected to be a successful one. The weather is expected to be a successful one and will result in the signing of a new agreement between the territories and the territories.

Set fair for royal visit

The royal visit to the territories is expected to be a successful one. The visit is expected to be a successful one and will result in the signing of a new agreement between the territories and the territories. The visit is expected to be a successful one and will result in the signing of a new agreement between the territories and the territories.

Arab plot to assassinate Col. Nasser KING ACCUSED

An Arab plot to assassinate Col. Nasser has been uncovered. The plot is expected to be a successful one and will result in the signing of a new agreement between the territories and the territories.

RUSSIANS SUGGEST U.S. TALKS

Russians have suggested U.S. talks. The talks are expected to be a successful one and will result in the signing of a new agreement between the territories and the territories.

NEW EOKA MOVE

A new EOKA move has been announced. The move is expected to be a successful one and will result in the signing of a new agreement between the territories and the territories.

MOROCCAN TROOPS MOVE TO BORDER

Moroccan troops have moved to the border. The move is expected to be a successful one and will result in the signing of a new agreement between the territories and the territories.

Ghana pledge on self-rule

Ghana has pledged on self-rule. The pledge is expected to be a successful one and will result in the signing of a new agreement between the territories and the territories.

The weather

The weather in the territories is expected to be a successful one. The weather is expected to be a successful one and will result in the signing of a new agreement between the territories and the territories.

UNION-CASTLE LINE
 PASSENGER & CARGO SERVICE
 TO THE EAST
 TO THE WEST
 TO THE SOUTH
 TO THE NORTH

CARGO SERVICES
 The Union-Castle Line has a fleet of modern cargo ships, each with a crew of experienced seafarers. The ships are equipped with the latest cargo handling equipment and are able to handle all types of cargo, including heavy machinery, automobiles, and perishable goods.

THE UNION-CASTLE MAIL S.S. CO. LIMITED
 P.O. BOX 100, MOMBASA

NEDLOYD LINE

For particulars apply to the
 Nedlloyd Agency Limited
 100, Market Street, Mombasa

SVEDDEL

Swedish Agency for the East
 100, Market Street, Mombasa

Round Trips Mombasa—Mauritius
 Via Madagascar and Réunion with
 Messageries Maritimes

For further particulars contact the
 Messageries Maritimes Agency
 100, Market Street, Mombasa

THE AFRICAN MERCHANT COMPANY LIMITED
 (Incorporated in England)
 Agents: C/O THE MESSAGERIES MARITIMES
 P.O. BOX 110, MOMBASA TELEPHONE 300

Proposed secondary school at Maragoli first of its kind in Kenya

RESIDENTS in the Maragoli District of North Kenya have volunteered to contribute towards the building and running of a new day school in their district. The proposal is the first of its kind in Kenya, it is being met by the Government.

The Maragoli District is situated in the North Kenya Province, and is one of the poorest in the country. The Government has agreed to contribute towards the building of the school, and the residents have agreed to contribute towards the running of the school.

'Insulting' allegation on K.A.P.E. REPLY TO PARENTS

A suggestion that the Government was "insulting" parents by not contributing towards the building of a secondary school in the Maragoli District has been refuted by the Government. The Government has agreed to contribute towards the building of the school, and the residents have agreed to contribute towards the running of the school.

COAST COTTON GROWERS GET HIGH RETURNS

Four districts who have each their own cotton crop are among the most successful high return areas in the East African region. The districts are Malindi, Lamu, Pate and Pemba.

Farmers may cut phone costs

By the use of a new type of telephone, farmers may save considerable sums of money. The new type of telephone is known as the "push-button" telephone, and it is being used in several districts in the East African region.

Responsible for the good

The Government is responsible for the good work done by the Maragoli District residents. The Government has agreed to contribute towards the building of the school, and the residents have agreed to contribute towards the running of the school.

Cunard

For further particulars apply to the
 Cunard Agency
 100, Market Street, Mombasa

'QUEEN ELIZABETH' 'QUEEN MARY' LARGEST VESSELS IN THE WORLD

For further particulars apply to the
 Cunard Agency
 100, Market Street, Mombasa

COUNCIL TO TRY AGAIN ON RATES

A RESOLUTION was passed by the Council of the Maragoli District on March 1st, 1950, to try again to get the Government to contribute towards the building of a secondary school in the district.

U.S. GENERAL VISITS NAIROBI

General Douglas MacArthur, Commander in Chief of the United States Pacific Command, visited Nairobi on his way to the East African region. He was accompanied by his wife and two children.

South Union officers

The South Union officers of the East African region have met to discuss the work of the Union. The officers are from the districts of Malindi, Lamu, Pate and Pemba.

PARRELL LINES

For further particulars apply to the
 Parrell Agency
 100, Market Street, Mombasa

CARLSBERG

For further particulars apply to the
 Carlsberg Agency
 100, Market Street, Mombasa

CLAN LINE

For further particulars apply to the
 Clan Line Agency
 100, Market Street, Mombasa

EMBARCATION NOTICE

Passengers are advised that embarkation will take place on Monday, 17th March, 1950, at 5 p.m. in Kilindini Harbour.

CHURCH NOTICES

LENT III

Services will be held in the churches of the East African region during Lent. The services will be held on Wednesdays and Fridays.

TRAVEL AGENCIES

For further particulars apply to the
 Travel Agencies
 100, Market Street, Mombasa

SAILING DATES

For further particulars apply to the
 Sailing Dates Agency
 100, Market Street, Mombasa

EASTERN

For further particulars apply to the
 Eastern Agency
 100, Market Street, Mombasa

WITCHELL POTTS & COMPANY

For further particulars apply to the
 Witchell Potts & Company
 100, Market Street, Mombasa

LOYD TRIESTE

For further particulars apply to the
 Lloyd Trieste Agency
 100, Market Street, Mombasa

WITCHELL POTTS & COMPANY

For further particulars apply to the
 Witchell Potts & Company
 100, Market Street, Mombasa

SAILINGS

For further particulars apply to the
 Sailing Agency
 100, Market Street, Mombasa

For further particulars apply to the
 Sailing Agency
 100, Market Street, Mombasa

HOLLAND-AFRICA LINE

For further particulars apply to the
 Holland-Africa Line Agency
 100, Market Street, Mombasa

ROBIN LINE

For further particulars apply to the
 Robin Line Agency
 100, Market Street, Mombasa

KARIMJEE JI ANJEE & CO. LTD.

For further particulars apply to the
 Karimjee Ji Anjee & Co. Ltd.
 100, Market Street, Mombasa

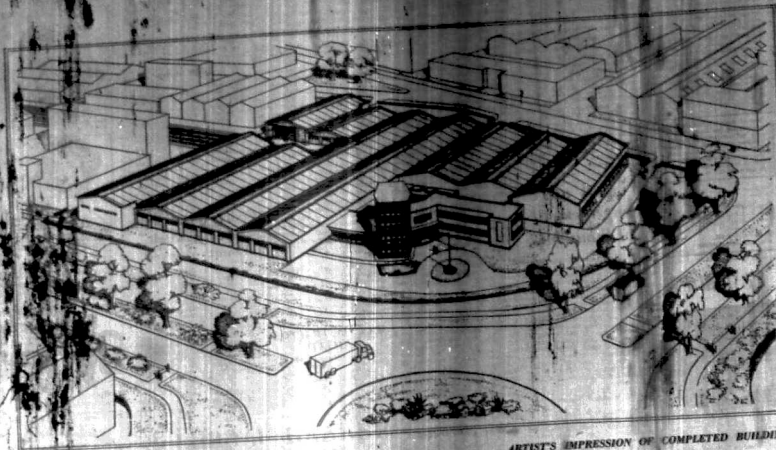
Lloyd Trieste

For further particulars apply to the
 Lloyd Trieste Agency
 100, Market Street, Mombasa

WITCHELL POTTS & COMPANY

For further particulars apply to the
 Witchell Potts & Company
 100, Market Street, Mombasa

ALWAYS LOOK THRO' IDEAL'



ARTIST'S IMPRESSION OF COMPLETED BUILDINGS

IF YOU MUST HAVE THE BEST—REMEMBER...

Ideal Casements are made in Nairobi, from the finest

English Steel and materials, with skilled

European supervision throughout each process.

Products include: Steel windows - Doors -

Door frames - Flyscreens of all types -

projected and industrial sashes - all associated

pressed steel products to British Standard Specification.

When only the best will suffice remember

'Ideal Casements' - locally made and

guaranteed in quality and finish, either

painted or hot-dipped galvanized.

Important future development—The First Plastic Window to be introduced anywhere.
We shall be in production here before the end of the year.

IDEAL CASEMENTS (E.A.) LTD

Factory and offices at
Enterprise Road, Light Industrial Area
Nairobi, Tel. 58185, P.O. Box 5319

COLOUR ROUTES FOR TRAFFIC

Airport arrangements

UNDER the traffic arrangements for the new Nairobi Airport Terminal, no vehicles will be allowed to access roads or the apron buildings from the main building after 11.30 a.m. on any day or a sticker on the windshield.

The airport access road to the terminal will be closed to all traffic from the apron buildings after 11.30 a.m. on any day or a sticker on the windshield.

Cars will be allowed to access roads from the apron buildings and the terminal building and the apron buildings will be closed to all traffic from the apron buildings after 11.30 a.m. on any day or a sticker on the windshield.

Route kept clear

Members of the construction workers will also take the airport access road from the apron buildings and the terminal building and the apron buildings will be closed to all traffic from the apron buildings after 11.30 a.m. on any day or a sticker on the windshield.

Construction routes

The airport access road to the terminal will be closed to all traffic from the apron buildings after 11.30 a.m. on any day or a sticker on the windshield.

Skies will be cleared for royal flight along Purple Airway I

A 25-MILE-WIDE "purple airway" in which no other aircraft can fly has been arranged for the Queen's flight from Mauritius to Nairobi tomorrow by the East Africa Directorate of Civil Aviation. It was coordinated by two R.A.F. Shackletons on the 2,150-mile journey over the Indian Ocean.

UNUSUALLY HEAVY RAIN IN INLAND AREAS

Eastleigh record for February

MOST significant feature of last month's weather was the unusual amount of rainfall recorded in the second and third weeks of the month in all areas of Kenya except the coastal regions. Particularly heavy falls were experienced in Nairobi and the surrounding districts where totals varied from eight to 14 inches which, in some cases, were less than the normal fall for February.

Most areas in the Nyandarua and Kiambu districts reported totals recorded for February which had not been exceeded for many years. In some cases, the total rainfall for the month was more than double the normal fall for February.

Week's rainfall

At Nairobi, the total rainfall for the week ending February 28th was 1.4 inches, which is the highest for any week in the month since 1952.

Problems of safety in airport niches

CHANGING traffic conditions at the new Nairobi Airport Terminal have created a number of safety problems in the airport niches. The airport access road to the terminal will be closed to all traffic from the apron buildings after 11.30 a.m. on any day or a sticker on the windshield.

To those who are trustees

We are often asked to open a trust for you. You can have a trust set up for you or for your children. You can have a trust set up for your children. You can have a trust set up for your children.

BARCLAYS BANK D.O.

Barclays Bank D.O. is a member of the Barclays Group. It is a member of the Barclays Group. It is a member of the Barclays Group.

THINGS which make life worth while!

Crawford's Scotch Whisky. One of the Good Things of Life!

TOOTAL makes a man...



with his **PYRAMID** HANDKERCHIEF

FRAMID handkerchiefs are the most famous of all handkerchiefs. Soft, absorbent yet extremely hard wearing, and the look good. Fram and coloured for men and women. Prices, 5/6 to 4/25. Remember, wash, iron, stretch, drying, good.

THE WATERS ORDINANCE, 1961 AND THE WATERS (UNDETAKEABLE) RULES, 1962

Notice is hereby given that the Ministry of Water Works, Ministry of Water, Forests and Fisheries, has prepared a copy of the Waters Ordinance, 1961 and the Waters (Undetakeable) Rules, 1962. The copies of the Ordinance and Rules are available for sale at the Ministry of Water Works, P.O. Box 100, Nairobi. The price of the Ordinance is KSh. 100 and the price of the Rules is KSh. 50. The copies of the Ordinance and Rules are available for sale at the Ministry of Water Works, P.O. Box 100, Nairobi.

THE WATERS ORDINANCE, 1961 AND THE WATERS (UNDETAKEABLE) RULES, 1962

Notice is hereby given that the Ministry of Water Works, Ministry of Water, Forests and Fisheries, has prepared a copy of the Waters Ordinance, 1961 and the Waters (Undetakeable) Rules, 1962. The copies of the Ordinance and Rules are available for sale at the Ministry of Water Works, P.O. Box 100, Nairobi. The price of the Ordinance is KSh. 100 and the price of the Rules is KSh. 50. The copies of the Ordinance and Rules are available for sale at the Ministry of Water Works, P.O. Box 100, Nairobi.

FROM NAIROBI TO DAR ES SALAAM

Valji & Alibhai Ltd. DAR ES SALAAM

ESTATE OF THE LATE SIR ARTHUR WILLIAM IMBOTT

NOTICE is hereby given that the estate of the late Sir Arthur William Imbott, who died on the 15th day of May, 1961, is being administered by the National Overseas and Colonial Bank Limited, 170, The Strand, London, W.C.2. The National Overseas and Colonial Bank Limited, 170, The Strand, London, W.C.2, is the executor of the will of the late Sir Arthur William Imbott.

BLUE BAND SANDWICH

Blue Band Sandwich. Cream Blue Band and sugar, beat in eggs, add flouring. Fold in sliced fruit, and bake in an 8" round sandwich tin with bread of grassy paper in bottom for 35 to 40 minutes on the middle shelf of a moderate oven (Regulo Mark 4-300°F.). Cool. When cold cut crossways as in two and cut top portion into eight triangular sections. Mix sliced sugar and water, add flavouring, and colour half. Dip ends of whistled cream over the bottom half of cake. Arrange each section with alternating colours on top of the whistled cream and decorate as you please.

BLUE BAND MARGARINE

the secret of successful cakes and pastries

For Cleaner Whiter Teeth and Sweeter Breath



use COLGATE Chlorophyll Toothpaste

Brush regularly with Colgate Chlorophyll Toothpaste. This new toothpaste not only helps make discolored teeth clean and white but is also helpful in clearing away the odor from your mouth. High grade tooth powder and Colgate Chlorophyll Toothpaste... the great combination that makes...



COLGATE GREEN TOOTH PASTE

BE A REAL MAN!

Keep your teeth clean with Waterbury's Compound. Not only does it whiten your teeth, but it also helps to clear away the odor from your mouth. Waterbury's will keep your teeth clean. Guard the health of all your family with Waterbury's Compound. Keep a bottle in home... always.



Waterbury's Compound FOR HEALTH & STRENGTH

FIT for health



This is a genuine Clarks SAND L

Anti-Clarks Symbols all have the same logo set on them.

The Best for children

MADE BY: S. J. CLARK LTD. (WHOLESALE ONLY), STREET, CHESTER, ENGLAND. AVAILABLE AT ALL LEADING STORES THROUGHOUT EAST AFRICA

Peak survey to aid fuller use of the Colony's water resources

SOURCE IN A RIVER

THE opportunity to accompany the Mount Kenya Expedition in support of the glaciological programme as part of Kenya's contribution to the International Geophysical Year also presented the opportunity to extend the hydrological study of the mountains as a unit in Kenya's water resources.

Readers of a previous article in this series will understand the value of glaciology in the elucidation of the world's climate's activities and will readily appreciate the need to apply their findings to Kenya. Little has been done in the way of hydrological research here since the days of the British East Africa Company and the investigations were hampered by lack of knowledge of glaciology's techniques.

It is better to start now than to wait for the time when the advanced techniques of the International Geophysical Year will be available. The study of Kenya's water resources is a long-term project and it is better to start now than to wait for the time when the advanced techniques of the International Geophysical Year will be available.

THREE AREAS

The three areas through the snow cover of the mountains are the Mt. Kenya, Mt. Elgon and Mt. Kenia. Each of these areas has its own characteristics and has its own water resources. The Mt. Kenya area is the largest and has the most extensive snow cover.

RICHARD C. JONES B.Sc., F.G.S., D.I.C.

of the Hydrological Branch, Kenya's Ministry of Works and Hydrating is in charge of the International Geophysical Year Expedition to Mount Kenya. In this article he describes the research and findings made by the expedition in the field of hydrology.

GLACIER YIELD

Glaciers have been found in the snow-covered areas of the mountains. The yield of these glaciers is a function of the amount of snow that accumulates and the amount of melt water that is produced.

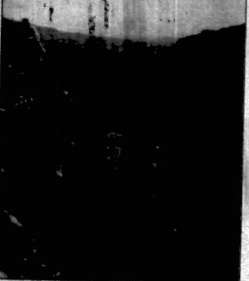
HIGH YIELD

When raising these yields to the International Geophysical Year, it was found that the snow cover on the mountains is a function of the amount of snow that accumulates and the amount of melt water that is produced.

Glaciology is a science which has been developed in the last few years. It is a science which has been developed in the last few years. It is a science which has been developed in the last few years.

It is better to start now than to wait for the time when the advanced techniques of the International Geophysical Year will be available. The study of Kenya's water resources is a long-term project and it is better to start now than to wait for the time when the advanced techniques of the International Geophysical Year will be available.

(Continued on Page 12)



These views of peaks in the hydrological field carried out by the International Geophysical Year team on Mount Kenya. The left photo, Mr. F. C. Jones measures water on the Hara Haru River with a metal device. The right photo is a mountain slope of impressive background. Above, a view of Mt. Kenia from the Gorge Valley, some of the hydrological activity, and (right) scientists set up an outcragging water.

The Best for children

MADE BY: S. J. CLARK LTD. (WHOLESALE ONLY), STREET, CHESTER, ENGLAND. AVAILABLE AT ALL LEADING STORES THROUGHOUT EAST AFRICA

"No more weekly polishing for me!"

It's just Goddard's Silcondene Wax you've been using. It's a genuine shoe polish. It's a genuine shoe polish. It's a genuine shoe polish.

GODDARD'S SILCONDENE WAX

G. GODDARD & SONS LTD., CHESTER, ENGLAND. Trade enquiries: Graham Bennett & Co. Ltd., Newcastle and Stranmillis

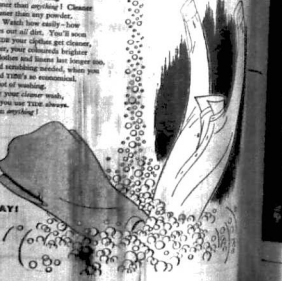


A BETTER QUALITY PRODUCT

washes cleaner than anything!

Yes! TIDE the new wonder washing powder makes almost that sparkling clean. It's not just a cleaner, it's a wonder. It's not just a cleaner, it's a wonder. It's not just a cleaner, it's a wonder.

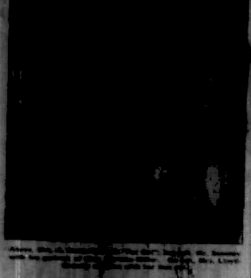
WASH THE WAY - THE EASY WAY!



SHELL
with
ICAR

ARTIST PAINTS KENYA SCENE

DAVIDSON, a well-known artist, has just completed a series of paintings depicting the scenes of Kenya. The paintings are now on display at the Victoria Hotel, Nairobi. The artist has spent several months in Kenya, capturing the beauty of the landscape and the life of the people. The paintings are highly praised for their realism and artistic skill.



Aristocratic cats the pride of a Karen household

A PRIDEFUL Mrs. Karen, who lives in a grand house in Nairobi, has a collection of aristocratic cats. The cats are well-cared for and are the pride of her household. Mrs. Karen has spent a great deal of money on the cats, and she is very particular about their appearance and behavior. The cats are well-trained and are very affectionate towards their owners.

LION AS MASCOT OF NEW RESTAURANT

ONE OF Kenya's well-known personalities has been chosen as the mascot for a new restaurant in Nairobi. The restaurant is named 'The Lion' and is located in the heart of the city. The mascot is a lion, which is a symbol of strength and courage. The restaurant is expected to be a great success.



Mrs. E. P. Lonsdale, who is the mascot for the new restaurant, is a well-known personality in Nairobi. She is a woman of many talents and is very active in her community. She is also a member of several organizations and is highly respected by her friends and colleagues.

A PRIDEFUL Mrs. Karen, who lives in a grand house in Nairobi, has a collection of aristocratic cats. The cats are well-cared for and are the pride of her household. Mrs. Karen has spent a great deal of money on the cats, and she is very particular about their appearance and behavior. The cats are well-trained and are very affectionate towards their owners.

Mrs. E. P. Lonsdale, who is the mascot for the new restaurant, is a well-known personality in Nairobi. She is a woman of many talents and is very active in her community. She is also a member of several organizations and is highly respected by her friends and colleagues.

Directors' visit
A group of directors from the Kenya National Council for Women visited Nairobi recently. They were on a tour of the city and were interested in the work of the council. The directors were impressed by the progress that the council has made in promoting women's rights and welfare.

Trade interests
The Kenya Chamber of Commerce and Industry has held a meeting to discuss trade interests. The meeting was attended by representatives from various businesses and organizations. The main topic of discussion was the impact of trade on the economy and the need for government intervention.

VONO BEDSPRINGS
give you lasting comfort at a low cost!
You're sure to sleep soundly on this Vono combination bedspring. It's strongly made, with 24 specially constructed springs to support the main weight of your body. As your head and feet sit in a soft curve for complete comfort. The rubber-proof floor frame is reinforced by six strong cross bars beneath the springs. And the most convenient feature of the Vono bedspring is that it will fit on any bed or bed frame!

Two degrees
A TANGANYIKA student who went to India eight years ago and returned with a Master of Arts and Bachelor of Laws degree.

Clerical caravan trip
BEFORE they settle down in Britain, the Rev. and Mrs. R. P. Lonsdale plan to make a caravan trip from Bombay through Kashmir, Persia, Turkey and Europe.

Work on the Redif is made
of organization and close cooperation with the various departments of the Government to bring about their awards. Working with the Government to bring about their awards. Working with the Government to bring about their awards.

Mr. J. E. Weston-Baird, who has been a member of the Kenya National Council for Women, is a well-known personality in Nairobi. She is a woman of many talents and is very active in her community. She is also a member of several organizations and is highly respected by her friends and colleagues.

Mr. J. E. Weston-Baird, who has been a member of the Kenya National Council for Women, is a well-known personality in Nairobi. She is a woman of many talents and is very active in her community. She is also a member of several organizations and is highly respected by her friends and colleagues.

Mr. J. E. Weston-Baird, who has been a member of the Kenya National Council for Women, is a well-known personality in Nairobi. She is a woman of many talents and is very active in her community. She is also a member of several organizations and is highly respected by her friends and colleagues.

Wow! Shining beauty for your hair

Velopointe

For hair that is soft, smooth, and shining, use Velopointe. It's the only hair cream that gives you a permanent shine. It's also the only hair cream that gives you a permanent shine. It's also the only hair cream that gives you a permanent shine.

STRESS STRAIN SLEEPLESSNESS

safely relieved with

RELAXA-TABS

RELAXA-TABS Relax the Nervous System and relieve the symptoms of stress, strain, and sleeplessness. RELAXA-TABS are safe and effective for the relief of all nervous tension. They are the only tablets of their kind.

RELAXA-TABS

5/60 per pack

Wholesale and Retail

PHARMACIA LTD

100, Victoria Road, Nairobi

IT HOLDS SO MUCH...

Electrolux

Electrolux EAM, a compressor model operated by electricity, is the most efficient food storage with built-in making through the top cover.

- 27 cu. ft. shelf space
- Two refrigerators in one
- Five extra food compartments
- 120 cu. in. per day freezing
- Electric, automatic defrost

Electrolux EAM, a compressor model operated by electricity, is the most efficient food storage with built-in making through the top cover.

Electrolux EAM, a compressor model operated by electricity, is the most efficient food storage with built-in making through the top cover.

Electrolux EAM, a compressor model operated by electricity, is the most efficient food storage with built-in making through the top cover.



Look for the name **VONO** before you buy

VONO combination bedsprings

Full Agents, Sales and Service, from:

GAILEY & ROBERTS LTD

KENYA UGANDA TANGANYIKA

Attractive different terms available.

PALMOLIVE

Give you perfect shaving



PALMOLIVE LATHER CREAM PALMOLIVE MUSHLESS

There are no other shaving creams that give you such a rich lather as Palmolive. First with cold water, then with hot water, Palmolive gives you the perfect lather every time. The reason lies in the special blend of fine air bubbles designed to create and maintain the lather. Try it today.



VISOR

Safe for Hand Sleep

Required for use in the U.S. Navy

UNIVERSAL PHARMACY LIMITED
Government Road
P.O. BOX 3018
KAMPALA

SHOW

TEA AND WELFARE WORK IN KOREA

THE film version of John Patrick's play *Tea and Welfare* opens in the Capital Theatre, New York. It is the dramatic story of the experience of a small party of U.S. Army officers who give the Japanese the job of rebuilding their village and feeding the village's inhabitants.

As a play it won the Pulitzer Prize. As a play in its own right it has been described as the most important work of the American theatre since the Japanese play *Yokoyama* by the late playwright, Yasujiro Inamura. The director, Robert Lewis, has made the film version of *Tea and Welfare* a masterpiece of dramatic art. The film is a masterpiece of dramatic art. The film is a masterpiece of dramatic art. The film is a masterpiece of dramatic art.



RANDOLPH SCOTT as he appears in "A Lawless River"

By the "recovered" Dakin and created by the Chicago production of the play, the film is a masterpiece of dramatic art. The film is a masterpiece of dramatic art. The film is a masterpiece of dramatic art.

THEATRE ROYAL

By the "recovered" Dakin and created by the Chicago production of the play, the film is a masterpiece of dramatic art. The film is a masterpiece of dramatic art. The film is a masterpiece of dramatic art.



PICTURE PARADE: (Left) William Powell, (center) Robert Montgomery, (right) Robert Montgomery, (far right) Robert Montgomery.



Jamaican to have play staged in West End

FOR the first time in the history of the West End theatre, a play by a West Indian dramatist is to be staged in the West End. The play is *Mr. Brown* by C. L. R. James. The play is a masterpiece of dramatic art. The play is a masterpiece of dramatic art. The play is a masterpiece of dramatic art.

En route to LONDON by B.O.A.C. visit **ROME** and other EUROPEAN CAPITALS

On your way to London by one of B.O.A.C.'s designed fully air-conditioned airliners, you not for a change visit the old world cities of Europe.

THIS IS HOW YOU CAN BREAK YOUR JOURNEY

From **ROME**, you can, for example, by 49 convenient connecting services to visit Milan, Geneva, Zurich, Frankfurt, Paris, London, or B.R.A. services. There are 49 connecting services to visit Milan, Geneva, Zurich, Frankfurt, Paris, London, or B.R.A. services. There are 49 connecting services to visit Milan, Geneva, Zurich, Frankfurt, Paris, London, or B.R.A. services.

World leader in air travel

B.O.A.C.

takes good care of you

BRITISH OVERSEAS AIRWAYS CORPORATION
In association with B.A.C., K.L.M., C.A.A., Q.A.S., Q.U.A.R. and T.V.E.L.

LUXURY IN RADIO...

PRICE (EX. MAINTENANCE) 800/-

need not be confined to listeners who are "on the main", for the famous MURPHY engineers have created a receiver that can give maximum performance from dry batteries...

Here is the MURPHY TREZTM, a superb radio set with all the refinements that will give you stations from all over the world and the best reception from its push-pull output.

7 VALVES
5 BANDSPREAD WAVE RANGES
MAGIC-EYE TUNING

and, of course, an exceptionally handsome polished cabinet which is the hallmark of a MURPHY set.

MURPHY LTD.
PRINCESS ELIZABETH WAY, HAINES, P.O. BOX 556 TEL: 5678

A Clean Fresh Mouth All Day Long!

MORNING

Evening

Destroys Mouth Odour: From morning until evening, Mentasol keeps your mouth clean, and your breath fresh and sweet.

Fights Tooth Decay: Regular brushing with Mentasol guards your teeth against decay and of course it keeps them really clean and really white.

Combats Common Gum Troubles: Healthy gums are important. Mentasol helps to keep your gums healthy and strong. Use your Mentasol regularly.

use **Mentasol** GUM DENTIFRICE

THE cleanest toothpaste

You owe it to your eyes!



NEW INSTO EYE DROPS

Relief for indigestion sufferers

Simple to take

LEMONS for BEAUTY

Simple to take

AMT. THE 8 MINUTES LIFE



ROYAL VISIT MAKES HAIR SOAR



Some facts about four members of the Queen Mother's entourage

LINEN FAVOURED
The Queen Mother's entourage is known for its preference for high-quality linen. This is particularly evident in the choice of dresses and blouses worn by the ladies-in-waiting.

THE LADY JEAN BAUKIN
The Lady Jean Baukin, who is a member of the Queen Mother's entourage, is known for her elegant and practical wardrobe. She often wears simple, well-tailored dresses that are both stylish and comfortable.

THE QUEEN MOTHER'S ENTOURAGE
The Queen Mother's entourage is a select group of women who are responsible for her personal needs and the needs of the royal household. They are chosen for their loyalty, discretion, and ability to handle the demands of a royal life.

THE QUEEN MOTHER'S ENTOURAGE
The Queen Mother's entourage is a select group of women who are responsible for her personal needs and the needs of the royal household. They are chosen for their loyalty, discretion, and ability to handle the demands of a royal life.

LINEN FAVOURED
The Queen Mother's entourage is known for its preference for high-quality linen. This is particularly evident in the choice of dresses and blouses worn by the ladies-in-waiting.

THE LADY JEAN BAUKIN
The Lady Jean Baukin, who is a member of the Queen Mother's entourage, is known for her elegant and practical wardrobe. She often wears simple, well-tailored dresses that are both stylish and comfortable.

THE QUEEN MOTHER'S ENTOURAGE
The Queen Mother's entourage is a select group of women who are responsible for her personal needs and the needs of the royal household. They are chosen for their loyalty, discretion, and ability to handle the demands of a royal life.

THE QUEEN MOTHER'S ENTOURAGE
The Queen Mother's entourage is a select group of women who are responsible for her personal needs and the needs of the royal household. They are chosen for their loyalty, discretion, and ability to handle the demands of a royal life.

Very much-hush in this... (Continued from previous page)

VERY MUCH-HUSH IN THIS
The Queen Mother's entourage is known for its preference for high-quality linen. This is particularly evident in the choice of dresses and blouses worn by the ladies-in-waiting.

THE LADY JEAN BAUKIN
The Lady Jean Baukin, who is a member of the Queen Mother's entourage, is known for her elegant and practical wardrobe. She often wears simple, well-tailored dresses that are both stylish and comfortable.

THE QUEEN MOTHER'S ENTOURAGE
The Queen Mother's entourage is a select group of women who are responsible for her personal needs and the needs of the royal household. They are chosen for their loyalty, discretion, and ability to handle the demands of a royal life.

THE QUEEN MOTHER'S ENTOURAGE
The Queen Mother's entourage is a select group of women who are responsible for her personal needs and the needs of the royal household. They are chosen for their loyalty, discretion, and ability to handle the demands of a royal life.

HAPPY RELIEF FROM NAGGING BACKACHE
Doan's Backache Kidney Pills are the most effective remedy for backache, kidney trouble, and urinary ailments. They provide quick relief and are easy to take.

DOAN'S BACKACHE KIDNEY PILLS
Doan's Backache Kidney Pills are the most effective remedy for backache, kidney trouble, and urinary ailments. They provide quick relief and are easy to take.



LOXENE
Bring back your health to thousands!
Not only women but men also use Loxene, the remarkable hair shampoo and scalp treatment that gets rid of dandruff REALLY clean.
It's made of soft soaps and is gentle on the scalp. It's made of natural ingredients and is safe for the hair. It's made of natural ingredients and is safe for the hair.



LOXENE
Bring back your health to thousands!
Not only women but men also use Loxene, the remarkable hair shampoo and scalp treatment that gets rid of dandruff REALLY clean.

Someone isn't using AMPLER
Ampler is a skin cream that helps to reduce wrinkles and improve the texture of the skin. It is made of natural ingredients and is safe for the skin.

Pointed toes in favour with stylists
Pointed toes are a popular fashion trend. They are favored by stylists because they are elegant and sophisticated. They are favored by stylists because they are elegant and sophisticated.

ROAMER
Roamer watches are known for their accuracy and durability. They are made of high-quality materials and are designed to last for many years. They are made of high-quality materials and are designed to last for many years.

FLYING RECORD
The flying record is a record of the fastest time taken to complete a flight. It is a record of the fastest time taken to complete a flight. It is a record of the fastest time taken to complete a flight.

A smoother Lovelier skin...
Pond's face powder is a popular choice for women who want smoother, lovelier skin. It is made of natural ingredients and is safe for the skin. It is made of natural ingredients and is safe for the skin.

POND'S face powder
Pond's face powder is a popular choice for women who want smoother, lovelier skin. It is made of natural ingredients and is safe for the skin. It is made of natural ingredients and is safe for the skin.

sensational cosmetic discovery removes fine lines and wrinkles!



Placentubex
Placentubex is a revolutionary cosmetic discovery that removes fine lines and wrinkles. It is made of natural ingredients and is safe for the skin. It is made of natural ingredients and is safe for the skin.

Placentubex
Placentubex is a revolutionary cosmetic discovery that removes fine lines and wrinkles. It is made of natural ingredients and is safe for the skin. It is made of natural ingredients and is safe for the skin.



The Angry Young Man keeps a grip on his temper

MR KINGSLEY AMIS has achieved the reputation of being No. 1 Angry Young Man, although he himself has denied that he belongs to this fashionable clique.

The inventors give all the credit to this "Young Makeup" with this "Young Makeup"!

Rulon Touch-and-Glow

It's the most beautiful thing you can do for your face. It's the most beautiful thing you can do for your face. It's the most beautiful thing you can do for your face.

BRASSO

For shining brass and copperware

THE QUALITY METAL POLISH

BRASSO is the most beautiful thing you can do for your brass and copperware. It's the most beautiful thing you can do for your brass and copperware.

UNDER

Mr. Kingsley Amis is a young man with a serious expression. He is the most beautiful thing you can do for your face. It's the most beautiful thing you can do for your face.

REVIEW

Mr. Kingsley Amis is a young man with a serious expression. He is the most beautiful thing you can do for your face. It's the most beautiful thing you can do for your face.



Birth of a British Ballet

It's a Dance With Me... The author of 'The Day After Tomorrow' and 'The Day After Tomorrow' is a young man with a serious expression. He is the most beautiful thing you can do for your face. It's the most beautiful thing you can do for your face.

News in Spain

Mr. Kingsley Amis is a young man with a serious expression. He is the most beautiful thing you can do for your face. It's the most beautiful thing you can do for your face.

TEXTBOOKS ON GROWING PLANTS WITHOUT SOIL

Mr. Kingsley Amis is a young man with a serious expression. He is the most beautiful thing you can do for your face. It's the most beautiful thing you can do for your face.

Guatemala erupts

Mr. Kingsley Amis is a young man with a serious expression. He is the most beautiful thing you can do for your face. It's the most beautiful thing you can do for your face.

Sleep-Well

Cool calm refreshing sleep - Yours every night with a slumberland

Slimming with a same and natural diet

CARRUGAN's Swedish Milk Diet is a natural diet that is both healthy and delicious. It is the most beautiful thing you can do for your face. It's the most beautiful thing you can do for your face.

SLIMMING with a same and natural diet

CARRUGAN's Swedish Milk Diet is a natural diet that is both healthy and delicious. It is the most beautiful thing you can do for your face. It's the most beautiful thing you can do for your face.

Guatemala erupts

Mr. Kingsley Amis is a young man with a serious expression. He is the most beautiful thing you can do for your face. It's the most beautiful thing you can do for your face.

COMING SHORTLY

THE HUNT FOR KILMATHY

By Ian Henderson, G.M. with Philip Gougeon

Shs. 18/- (postage 7/-)

A first-hand account of how Henderson and Gougeon were involved in the hunt for the elusive Kilmathy. It's the most beautiful thing you can do for your face. It's the most beautiful thing you can do for your face.

EVERY CHILD needs Vitamin C EVERY DAY!



Delrosa fully meets the need! In order to develop strong bones and sound teeth, children need...

GIVE YOUR FAMILY Delrosa VITAMIN C

STOP the torment of your ITCHING SKIN

D.D.D. PRESCRIPTION

FENOX nasal drops...

give immediate and prolonged relief in infections of the nasal mucosa...

ROOTS Products are sold all over the world... PHILIPSONS LIMITED, P.O. BOX 16212, NAIROBI

Poley camps out

POLEY, a young boy, is a member of the Poley Camps...



BIG DOGS NEARLY CATCH JASON IN THE GARDEN

By FLORA NOSHAN

ALTHOUGH Jason was a very little dog he had a deep bark that made him sound like a very big dog...



Private property. This sign was put up by the owner of the garden...

Three Absalians

And because he was so small the dog didn't seem to be very big...

TUNING-IN TIME

Back to life

At our house we have a little plant in a pot...

BRONCHITIS & ASTHMA ATTACKS

Don't let a cough turn into a serious illness...

COMPETITION WINNERS

- Winners of the Children's Painting Competition: Abdul Wahid Khan, Milton Durand, Michael Duffman, Raymond Mendonca, Bob Moorehead.

Pictorial Crossword No. 49



Fights Tooth Decay! Stops Bad Breath For Hours & Hours!

ipana TOOTH PASTE

An entirely NEW series Model road vehicle scaled for 100 gauge railways



DUBLO DINKY TOYS



How OVALTINE Fortifies Milk

Quality Ovaltine the World's most popular Food Beverage

Confiscated land orders revoked Nyeri AREA

Another impressive drive against corruption... Kikuyu area

Developing liquidity... Kikuyu area

Lukiko committee meets Governor... Kikuyu area

Repairs at Changamwe cost \$6,400 more... Kikuyu area

Council wants more police... Kikuyu area

Womans entered... Kikuyu area

Veteran competing... Kikuyu area

Second-hand machinery... E.A. Marketing Company Ltd.

6,300 take out radio licences... Nearly 6,300 people in Nairobi have taken out radio licences...

297 cars entered in Coronation Safari Overseas Challenge... There will be a re-enactment of W.F. in the Coronation Safari...

Pledges to charity not fulfilled... Hundreds of wireless owners who ring the Ferns Broadcasting Station during Christmas and New Year with record requests have failed to send in their pledged donations for charities.

Letters sent... Appeals to laborers to send in their pledged letters have been broadcast and return has been good.

Sixth effort... In the second class J. P. Adams will be together in the fourth class in a 100-ton steamer.

Under the Standard Clock... A meeting of the Women's Action Society will be held in Nairobi on Saturday.

W.V.C.A. F. ... The Women's Vocational Council Association will be held at the Nairobi Hotel on April 5.

HAIR FELL OUT 'IN HANDFULS' Nairobi woman's claim... Mrs. Patricia Dowdell, government secretary, claims she lost her hair in handfuls after the birth of her second child.

Risk with drugs... Mrs. Mary had a severe attack of epilepsy last year after taking a course of drugs.

CONSPIRACY TO KILL KAKABA ALLEGED... The British consul in the Congo principal agent yesterday issued a charge that James Williams, a member of the Kikuyu Central Association, was a spy.

PREPARING FOR CAREERS... The White Paper continues the process of all those employed in the public service.

W.V.C.A. F. ... The Women's Vocational Council Association will be held at the Nairobi Hotel on April 5.

First Permanent Building Society... This society is being formed to provide a permanent home for the people of Nairobi.

First Permanent Building Society... This society is being formed to provide a permanent home for the people of Nairobi.

Grants to aid students from abroad... The Government has announced that it will grant £10,000 to aid students from abroad.

W.V.C.A. F. ... The Women's Vocational Council Association will be held at the Nairobi Hotel on April 5.

First Permanent Building Society... This society is being formed to provide a permanent home for the people of Nairobi.

First Permanent Building Society... This society is being formed to provide a permanent home for the people of Nairobi.

First Permanent Building Society... This society is being formed to provide a permanent home for the people of Nairobi.

First Permanent Building Society... This society is being formed to provide a permanent home for the people of Nairobi.

First Permanent Building Society... This society is being formed to provide a permanent home for the people of Nairobi.

W.V.C.A. F. ... The Women's Vocational Council Association will be held at the Nairobi Hotel on April 5.

W.V.C.A. F. ... The Women's Vocational Council Association will be held at the Nairobi Hotel on April 5.

W.V.C.A. F. ... The Women's Vocational Council Association will be held at the Nairobi Hotel on April 5.

W.V.C.A. F. ... The Women's Vocational Council Association will be held at the Nairobi Hotel on April 5.

W.V.C.A. F. ... The Women's Vocational Council Association will be held at the Nairobi Hotel on April 5.

W.V.C.A. F. ... The Women's Vocational Council Association will be held at the Nairobi Hotel on April 5.

W.V.C.A. F. ... The Women's Vocational Council Association will be held at the Nairobi Hotel on April 5.

ADVERTISEMENTS

Advertisement text in the top left column, including various notices and small ads.

ENGAGEMENTS

Engagement notices in the second column, including announcements of marriages.

WEDDINGS

Wedding notices in the second column, including details of ceremonies.

FORTHCOMING MARRIAGES

Upcoming marriage notices in the second column.

DEATHS

Obituary notices in the second column.

IN MEMORIAM

Memorial notices in the second column.

STATIONS VACANT

Job openings in the third column, including various professional and clerical positions.

STATIONS WANTED

Job seekers in the third column, including individuals seeking employment.

STATIONS WANTED

Job seekers in the third column.

STATIONS WANTED

Job seekers in the third column.

STATIONS WANTED

Job seekers in the third column.

STATIONS WANTED

Job seekers in the third column.

STATIONS WANTED

Job openings in the fourth column, including various professional and clerical positions.

STATIONS WANTED

Job seekers in the fourth column.

STATIONS WANTED

Job seekers in the fourth column.

STATIONS WANTED

Job seekers in the fourth column.

STATIONS WANTED

Job seekers in the fourth column.

STATIONS WANTED

Job seekers in the fourth column.

STATIONS WANTED

Job openings in the fifth column, including various professional and clerical positions.

STATIONS WANTED

Job seekers in the fifth column.

STATIONS WANTED

Job seekers in the fifth column.

STATIONS WANTED

Job seekers in the fifth column.

STATIONS WANTED

Job seekers in the fifth column.

STATIONS WANTED

Job seekers in the fifth column.

STATIONS WANTED

Job openings in the sixth column, including various professional and clerical positions.

STATIONS WANTED

Job seekers in the sixth column.

STATIONS WANTED

Job seekers in the sixth column.

STATIONS WANTED

Job seekers in the sixth column.

STATIONS WANTED

Job seekers in the sixth column.

STATIONS WANTED

Job seekers in the sixth column.

STATIONS WANTED

Job openings in the seventh column, including various professional and clerical positions.

STATIONS WANTED

Job seekers in the seventh column.

STATIONS WANTED

Job seekers in the seventh column.

STATIONS WANTED

Job seekers in the seventh column.

STATIONS WANTED

Job seekers in the seventh column.

STATIONS WANTED

Job seekers in the seventh column.

STATIONS WANTED

Job openings in the eighth column, including various professional and clerical positions.

STATIONS WANTED

Job seekers in the eighth column.

STATIONS WANTED

Job seekers in the eighth column.

STATIONS WANTED

Job seekers in the eighth column.

STATIONS WANTED

Job seekers in the eighth column.

STATIONS WANTED

Job seekers in the eighth column.

STATIONS WANTED

Job openings in the ninth column, including various professional and clerical positions.

STATIONS WANTED

Job seekers in the ninth column.

STATIONS WANTED

Job seekers in the ninth column.

STATIONS WANTED

Job seekers in the ninth column.

STATIONS WANTED

Job seekers in the ninth column.

STATIONS WANTED

Job seekers in the ninth column.

East African Standard

NAIROBI AIRPORT SUPPLEMENT

MAY 1952

Kenya Airways
Air Travel
Luggage

SATURDAY: OPENING CEREMONY

SUNDAY: AVIATION RESPIRY

MONDAY: USE TO BE OPERATIONAL

Queen Mother at the African cross-roads

£2,500,000 SYMBOL OF COLONY'S FUTURE

KENYA'S ECONOMY STRENGTHENED BY RAPID AIR SERVICES

Queen Elizabeth the Queen Mother, who is expected to arrive in Kenya on Saturday, will perform the opening ceremony of the new Nairobian airport.

The airport is due to be opened on Saturday, the 1st of June, and will be the first of a series of similar airports to be built in Kenya.

The opening of the new airport will be a landmark in the development of Kenya's economy and will be a symbol of the progress of the colony.

Message from Sir Evelyn

Queen Elizabeth the Queen Mother, who is expected to arrive in Kenya on Saturday, will perform the opening ceremony of the new Nairobian airport.

The opening of the new airport will be a landmark in the development of Kenya's economy and will be a symbol of the progress of the colony.

The opening of the new airport will be a landmark in the development of Kenya's economy and will be a symbol of the progress of the colony.

WELCOME BY THE GOVERNOR

The Governor, Sir Evelyn Baring, will welcome the Queen Mother on Saturday, the 1st of June, at the new Nairobian airport.

The opening of the new airport will be a landmark in the development of Kenya's economy and will be a symbol of the progress of the colony.

The opening of the new airport will be a landmark in the development of Kenya's economy and will be a symbol of the progress of the colony.

ROYAL DRIVE THROUGH CITY

The Queen Mother will drive through the city of Nairobi on Saturday, the 1st of June, in a motorcade.

Six months clipped off date of completion

MINISTRY AND FIRMS PRAISED

The Ministry of Works and Construction has announced that the new Nairobian airport will be completed six months ahead of the original date.

ONE HANDSHAKE

The Queen Mother will shake hands with the Governor, Sir Evelyn Baring, on Saturday, the 1st of June, at the new Nairobian airport.



Queen Elizabeth the Queen Mother, who is expected to arrive in Kenya on Saturday, will perform the opening ceremony of the new Nairobian airport.

From first to last...

Thirty years of flying are covered by the new Nairobian airport.

The new Nairobian airport will be the first of a series of similar airports to be built in Kenya.

GLIDE PLANNING

The Ministry of Works and Construction has announced that the new Nairobian airport will be completed six months ahead of the original date.

MAJOR PROBLEM

The Ministry of Works and Construction has announced that the new Nairobian airport will be completed six months ahead of the original date.

BRAGIACUS AD

The new Nairobian airport will be the first of a series of similar airports to be built in Kenya.

RIGHT BELIEF

The Ministry of Works and Construction has announced that the new Nairobian airport will be completed six months ahead of the original date.

GREATEST CREDIT

The Ministry of Works and Construction has announced that the new Nairobian airport will be completed six months ahead of the original date.



The new Nairobian airport will be the first of a series of similar airports to be built in Kenya.



The new Nairobian airport will be the first of a series of similar airports to be built in Kenya.

WHERE TO FIND THE MAIN FEATURES IN 'OTHER PAGES'

Designing an airport, by the Government Architect, Mr. W. Thompson Page 8.
Soil tests by Ministry of Works and Construction Page 11.
Full postal facilities for passengers Page 12.
Air display will be biggest in Africa since 1948. Looking at airports in other lands Page 13.
Airports could become powerful roadshows Page 14.
Ministry built to stand the product pressure Page 15.
Removal of delay in Customs Page 16.
Solving the problems of...

Mr. men more brief news Page 22.



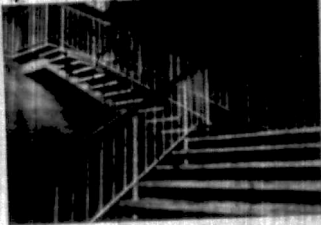
WAVING BARE

NAIROBI EMBAKASI AIRPORT

THE INTERNAL AND EXTERNAL BALUSTRADE RAILINGS OF THE TERMINAL BUILDING, AIRPORT ENTRANCE GATES IN THE CUSTOMS HALL, ALSO THE ROOF OF THE CONTROL TOWER, CUSTOMS

EAST AFRICAN METAL WORKS

TELEPHONE 2647 BOX 1987



INTERNAL PUBLIC STAIRS

CONGRATULATIONS FROM KENYA

Official congratulations were sent to the staff of the London office of the Kenya Airways Corporation on the occasion of their arrival in Nairobi.

An important new link

FROM the British Mission for Transport and Civil Aviation, Mr. Harold Wainwright, the secretary of the Corporation of the first stage of the new airport at Embakasi, Nairobi, I saw this morning on behalf of the Government and people of the United Kingdom.

"The opening of the new airport will be a great step forward for Kenya, which is opening a new link in the air services between the East and West. It will be a link which will be of great importance to the people of the United Kingdom and to the people of the East African States."

"I am sure that the people of the United Kingdom will be glad to hear that the new airport at Embakasi is being built by the Government of Kenya. It is a link which will be of great importance to the people of the United Kingdom and to the people of the East African States."

Speed vital for future

FROM the Corporation of the first stage of the new airport at Embakasi, Nairobi, I saw this morning on behalf of the Government and people of the United Kingdom.

"The opening of the new airport will be a great step forward for Kenya, which is opening a new link in the air services between the East and West. It will be a link which will be of great importance to the people of the United Kingdom and to the people of the East African States."

"I am sure that the people of the United Kingdom will be glad to hear that the new airport at Embakasi is being built by the Government of Kenya. It is a link which will be of great importance to the people of the United Kingdom and to the people of the East African States."

Keeping pace with flying

FROM Mr. Gerald Strickland, Chairman of the British Overseas Airways Corporation, I saw this morning on behalf of the Government and people of the United Kingdom.

"The opening of the new airport will be a great step forward for Kenya, which is opening a new link in the air services between the East and West. It will be a link which will be of great importance to the people of the United Kingdom and to the people of the East African States."

"I am sure that the people of the United Kingdom will be glad to hear that the new airport at Embakasi is being built by the Government of Kenya. It is a link which will be of great importance to the people of the United Kingdom and to the people of the East African States."



THE Kenya Ministry of Works, Transport and Civil Aviation, has announced that the Corporation of the first stage of the new airport at Embakasi, Nairobi, will be a link which will be of great importance to the people of the United Kingdom and to the people of the East African States.

"I am sure that the people of the United Kingdom will be glad to hear that the new airport at Embakasi is being built by the Government of Kenya. It is a link which will be of great importance to the people of the United Kingdom and to the people of the East African States."

THREE TIMES
The Kenya Ministry of Works, Transport and Civil Aviation, has announced that the Corporation of the first stage of the new airport at Embakasi, Nairobi, will be a link which will be of great importance to the people of the United Kingdom and to the people of the East African States.

"I am sure that the people of the United Kingdom will be glad to hear that the new airport at Embakasi is being built by the Government of Kenya. It is a link which will be of great importance to the people of the United Kingdom and to the people of the East African States."

LUMBER SALES LIMITED

Stockists of Seasoned and Best Quality Building, Joinery and Furniture Timbers, supplied the following

TO EMBAKASI AIRPORT:—

PODO, CEDAR, MVULI, MAHOGANY
CAMPHOR, ELGON OLIVE

AND
HARDWOODS

LUMBER SALES
LIMITED
NAIROBI

BOX No. 3916

Telephone 23612 (Office)
26655 (Goods)

HUGH PEARCE (CONST.) LTD.

MAIN CONTRACTORS

FOR

THE TERMINAL AND ANCILLARY BUILDINGS NAIROBI AIRPORT



7 MONTHS AHEAD OF SCHEDULE

THE MOST RECENT
OF MANY... MAJOR CONTRACTS
*ALL OF WHICH HAVE BEEN COMPLETED
MONTHS AHEAD OF CONTRACT TIME.*

— A PROUD ACHIEVEMENT

BY A LOCAL COMPANY.

HUGH J. PEARCE

TAKES THIS OPPORTUNITY OF
THANKING HIS MANY FRIENDS
CONNECTED WITH THE INDUSTRY
FOR THEIR VALUED CO-OPERATION
ON THIS MAGNIFICENT PROJECT.

EMBAKASI

Did you know?

There are close on **TWO ACRES** of **BRIGGS** bituminous built-up **ROOF** on the Airport Buildings and **half an acre** of interlocking **TILES.**

(One acre = 43,560 square feet)

Supplied and laid by **THE ROOFERS**
C. DORMAN LTD

Box 30147

Telephone 21184

NAIROBI

Comparison with best in world not to be feared

The new airport at Embakasi, Kenya, is being built to a standard which compares with the best in the world. The design is based on the latest developments in airport construction, and the building is being erected to a high standard of workmanship. The new airport will be a major factor in the development of Kenya, and will provide a base for the expansion of air transport in the East African region.

PARADE FLYING

The new airport at Embakasi, Kenya, is being built to a standard which compares with the best in the world. The design is based on the latest developments in airport construction, and the building is being erected to a high standard of workmanship. The new airport will be a major factor in the development of Kenya, and will provide a base for the expansion of air transport in the East African region.



By **COMDR. STACEY W. D. COLLS**
(Chief-in-Charge of Civil Aviation)

The new airport at Embakasi, Kenya, is being built to a standard which compares with the best in the world. The design is based on the latest developments in airport construction, and the building is being erected to a high standard of workmanship. The new airport will be a major factor in the development of Kenya, and will provide a base for the expansion of air transport in the East African region.

CIRCULAR TOWER

The new airport at Embakasi, Kenya, is being built to a standard which compares with the best in the world. The design is based on the latest developments in airport construction, and the building is being erected to a high standard of workmanship. The new airport will be a major factor in the development of Kenya, and will provide a base for the expansion of air transport in the East African region.

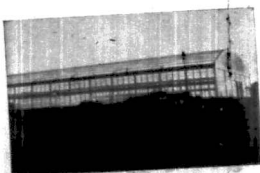
The new airport at Embakasi, Kenya, is being built to a standard which compares with the best in the world. The design is based on the latest developments in airport construction, and the building is being erected to a high standard of workmanship. The new airport will be a major factor in the development of Kenya, and will provide a base for the expansion of air transport in the East African region.

DIVIDING TOWER

The new airport at Embakasi, Kenya, is being built to a standard which compares with the best in the world. The design is based on the latest developments in airport construction, and the building is being erected to a high standard of workmanship. The new airport will be a major factor in the development of Kenya, and will provide a base for the expansion of air transport in the East African region.

CAPITAL BUILDING CO.

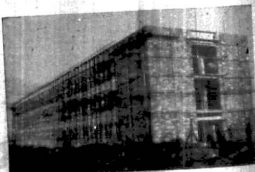
THE BUILDERS OF:—
THE NEW BASE FOR E.A. AIRWAYS AT EMBAKASI



STORES BUILDING



CANTEEN AND LINK TRAINER



ADMINISTRATIVE BUILDING

We also built:—

- THE NEW ENGINEERING WORKSHOP FOR THE E.A. POSTS & TELEGRAPHS
- THE NEW CLINIC AT KING GEORGE VI HOSPITAL
- THE RESIDENTIAL WING FOR THE NORFOLK HOTEL
- THE HOSPITAL FOR INFECTIOUS DISEASES

CAPITAL BUILDING CO.

BOX 2174

NAIROBI

PHONE 25239

ASSOCIATED FIRMS: CAPITAL TERRAZZO WORKS, CAPITAL DECORATORS AND CAPITAL ELECTRO-SERVICE

AIRPORT COULD BECOME A POPULAR RENDEZVOUS

The airport will be a popular rendezvous for the people of Kenya. It will be a place where they will meet to see the planes and to see the people who are flying in and out of the airport.



Mr. Peter ... member of the airport committee.

GUIDE STORE

A guide store will be set up at the airport to help visitors find their way around the airport and to see the planes and the people who are flying in and out of the airport.

VIEW OF GARDEN

The window at the front of the terminal will give a fine view of the garden and the airport.

Visitors to be met with courtesy and efficiency

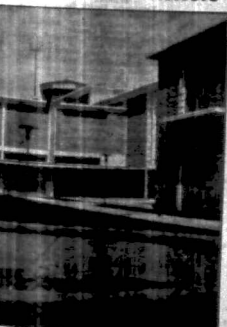
By ERIC BAYLES

NO "Welcome to Kenya" notices will be displayed on the tarmac at Nairobi's new airport. Visitors will receive a more lively and efficient welcome in the way of courtesy, efficiency and speed, into which have gone four years of careful thought and planning.

Four of the world's major airports will be able to equal the standard of service and facilities provided at Nairobi.

Lawns, restaurants, rest-rooms, a garden, a nursery, a garage, a taxi stand, a bus stand, a car stand, a bicycle stand, a motor cycle stand, a horse stand, a dog stand, a cat stand, a bird stand, a fish stand, a shell stand, a stone stand, a wood stand, a metal stand, a glass stand, a paper stand, a plastic stand, a rubber stand, a leather stand, a silk stand, a cotton stand, a wool stand, a hair stand, a nail stand, a hairbrush stand, a comb stand, a mirror stand, a perfume stand, a soap stand, a towel stand, a handkerchief stand, a pocket square stand, a tie stand, a shirt stand, a jacket stand, a coat stand, a hat stand, a glove stand, a scarf stand, a shawl stand, a blanket stand, a rug stand, a carpet stand, a curtain stand, a drape stand, a blind stand, a shade stand, a screen stand, a partition stand, a divider stand, a partition wall stand, a door stand, a window stand, a door handle stand, a window handle stand, a door knob stand, a window knob stand, a door lock stand, a window lock stand, a door hinge stand, a window hinge stand, a door latch stand, a window latch stand, a door bolt stand, a window bolt stand, a door pin stand, a window pin stand, a door stopper stand, a window stopper stand, a door pull stand, a window pull stand, a door push stand, a window push stand, a door knob stand, a window knob stand, a door lock stand, a window lock stand, a door hinge stand, a window hinge stand, a door latch stand, a window latch stand, a door bolt stand, a window bolt stand, a door pin stand, a window pin stand, a door stopper stand, a window stopper stand, a door pull stand, a window pull stand, a door push stand, a window push stand.

A garden for visitors



A rental garden with a building will be a pleasant attraction for visitors.

CHEERFUL FIRE

There is a cheerful fire in the new terminal building. The fire is a symbol of the new beginning and the new future of Kenya.

TOYS IN NURSERY

A well-stocked nursery is in attendance in the adjoining first-class lounge, with the latest toys and facilities for the young of all ages.



VISCOUNT Safari

AIR SERVICES
WELCOME
the opening of the

NEW NAIROBI AIRPORT

We're all for big, new, ambitious ventures too! Airwork and Hunting-Clan, joint operators of the pioneering VISCOUNT Safari Air Services, congratulate Nairobi.

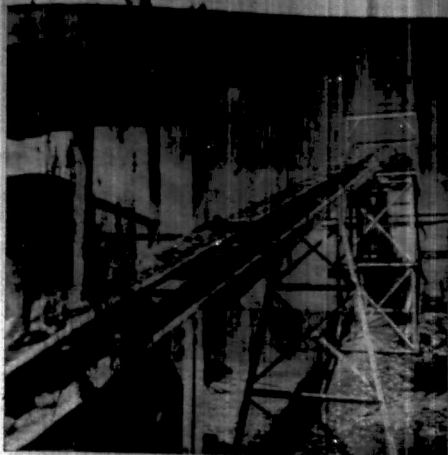
We'll be calling in on you quite a lot!

VISCOUNT Safari

COACH- AND TOURIST-CLASS AIR SERVICES

EAST AFRICA - RHODESIA - WEST AFRICA - U.K.

GOODYEAR'S CONTRIBUTION



Conveyor with 24" belt carrying material from primary to secondary crusher

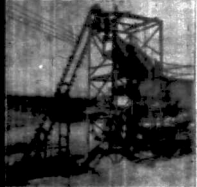
For any materials handling problem . . . large or small . . . a complete line of conveyor belting plus experienced technical assistance is available in Nairobi



Conveyor feed from secondary crusher to bucket elevator



Bucket elevator to screen and hopper



Another view of bucket elevator to screen and hopper



Counter-shifting in drive from power units in secondary crusher



Secondary impact stone crushers



Pre-mix plant

THE building of Nairobi's magnificent new airport has entailed the movement of vast quantities of material.

During its construction, Goodyear Conveyor belting has carried over 300,000 tons of crushed stone . . . over 31 times the weight of the "Queen Mary" . . . enough stone to fill a line of lorries stretching bumper to bumper, from Nairobi to Dar es Salaam.

Goodyear Transmission belting has driven the crushers, the screens and the conveyors. Over and above this, Goodyear Heavy Duty Industrial Hose has carried thousands of gallons of water to the runway during the earlier days of compaction and also helped drain excavations during the rains. The pre-mix plant relied on Goodyear oil hose to feed its burners.

Thus, in many ways, Goodyear has played its part in an achievement in which all concerned have just reason to be proud, for the strategic geographical location of Nairobi's new airport places it in the front rank of the world's great air centres.

A few well-known East African users of Goodyear Conveyor Belting supplied by Gilfillan & Company, Ltd

- Williamson Diamonds Ltd
- Kileleshwa Mines Ltd
- Macalder-Nyanza Mines Ltd
- Uganda Cement Industry Ltd
- Magadi Soda Co Ltd
- Stirling-Astaldi Ltd

GILFILLAN & COMPANY LTD

N A I R O B I

EXCLUSIVE DISTRIBUTORS FOR

GOODYEAR

INDUSTRIAL RUBBER PRODUCTS

EXPANDITE PRODUCTS FOR JOINTS THAT MOVE

AEROLASTIC

FLEXCELL

The expanding properties of Aerolastic and Flexcell make them ideal for use in joints which are subjected to constant movement. They are available in a wide range of sizes and can be used in a variety of applications. For more information, contact your nearest distributor.



LINDEEVE
AFRICA

NAIROBI: Gladys Hwang, General Manager, P.O. Private 84, Tel. 3063.
MOMBASA: Mrs. J. M. Mwangi, General Manager, P.O. Private 10, Tel. 3063.



DEXION
SLOTTED ANGLE and

REFRACORIES LTD
Fibrefacts, Firebricks, Refractory Lining
AFCO LTD.
P.O. BOX 2880 NAIROBI
P.O. BOX 187 MOMBASA
P.O. BOX 2222 KAMPALA
P.O. BOX 2061 TEL. 2062



SOLVING THE PROBLEMS OF DESIGNING AN AIR TERMINAL
Zurich set example

DURING the post-war years aviation throughout the world expanded in activities, and East Africa shared no exception. Kenya, an important junction for air routes over Africa, was ill-equipped to meet this demand. The Government in the immediate post-war period, the Commission on the International Post-Office, the Commission on the possibility of building a major international airport close to Nairobi as well as on the Airs Plan.

This was begun in 1951, the report was published in 1952, and in June 1952 formal approval was given to the project. The land for the site of Kenya was a tract of 2,500 acres of which approximately 1,000 acres was for the Terminal Building.

The entire project was handed over to the Kenya Ministry of Works.

THREE VIRTUES
The task of the building branch was to design, build and maintain the air terminal and associated facilities. It was a task of three virtues: design, construction and maintenance.

Kenya, and especially Nairobi, was a developing country and there was no one in this area of expertise on local experience for guidance.

The first step was to get the design team together. The design team was made up of three members: a local architect, a local engineer and a local contractor.

Without having the experience of Zurich was particularly helpful in the design of the terminal building. The design team was particularly helpful in the design of the terminal building.

The design team was particularly helpful in the design of the terminal building. The design team was particularly helpful in the design of the terminal building.

...and if your destination is TANGANYIKA
CHHOTALAL SHIVRAM VYAS
Travel Agents of DAR ES SALAAM
with all facilities to help you with your travel arrangements in East Africa.
P.O. Box 180 Phone 3002 DAR ES SALAAM

EASY TO FOLLOW
The design of the terminal building was particularly helpful in the design of the terminal building. The design team was particularly helpful in the design of the terminal building.

Coming to Britain!
WALLS
Over 200 new plans available in a book which should be a valuable asset to all those who are interested in the design of buildings.
Write now for the book and details of arrangements for visitors to the British Council, 11, Bedford Square, London, W.P. or to the British Council, 11, Bedford Square, London, W.P.



MR. A.R. THOMPSON, Government Architect, who works in this article, on the problems of designing an airport terminal.

CITY PLUMBING WORKS
installed—
PLUMBING
DRAINAGE
FIRE MAINS
VACUUM MAINS
and
COMPRESSED AIR MAINS
in the Buildings of
THE E.A. AIRWAYS CORPORATION
at
EMBAKASI AIRPORT
* * *
CITY PLUMBING WORKS
WESTLANDS
NAIROBI
P.O. BOX 14307
TELEPHONE: 50731

JOHN TANN
The Name that stands for Security
John Tann Strong-room Doors have been installed at the new Embakasi Airport and will give utmost protection against fire, theft and other risks.
Agents: **Kocell du Brissou (SA) Ltd**
P.O. Box 30072 NAIROBI
Mombasa - Kampala - Dar es Salaam

Thousands of people will fly from the new Airport...
...and if your destination is TANGANYIKA
CHHOTALAL SHIVRAM VYAS
Travel Agents of DAR ES SALAAM
with all facilities to help you with your travel arrangements in East Africa.
P.O. Box 180 Phone 3002 DAR ES SALAAM

at your Service all over the world

SABENA
BELGIAN WORLD AIRLINE

MOORWOOD ENGINEERING CO. LTD.
COMMERCIAL STREET
NAIROBI - KENYA P.O. BOX 2156
Phone 58259

WE HAD PLEASURE IN SUPPLYING
STANDARD 'MECOL' PRODUCTS
and
SPECIALISED PRECISION SHEET METAL FABRICATIONS

FOR THE NEW NAIROBI AIRPORT
ACCURACY WORKMANSHIP
CONSISTENT HIGH QUALITY

PEARSONS on the job again!
Wm. NEWMAN'S DOOR FURNITURE
E. TONKS - ETAS LOCKS
Pilkington's ARMoured LENSES
LUMENATED CEILING
PEARSONS (ARCHITECTURAL SUPPLY) COMPANY
CARGEN HOUSE TEL. 22312 NAIROBI

EMBAKASHI AIRPORT



Barber-Greene

Finishers

FOR BEST QUALITY BITUMINOUS PAVING

Finishes spreads, compacts and levels automatically. It automatically corrects irregularities in sub-grade... ensures the correct amount of bitumen in a durable surface that remains stable under traffic.

The Barber-Greene has been instrumental in the high quality of the bitumen of this large, modern Nairobi Airport. During the construction of this airport, 450,000 square yards has been placed in 12 inches and 18 inches respectively, constituting an area of some 65,000 tons of Bituminous Mixture, placed in accordance with an existing special Specification evolved by the Ministry of Works in conjunction with the Research Laboratory, Harpenden, Middlesex.

see your **Barber-Greene** distributor

BLACKWOOD HODGE

P.O. Box 5150

ENTERPRISE ROAD
NAIROBI

TEL: 58876

STC STEEL TRADING COMPANY

HARDWARE & TIMBER MERCHANTS

We had the pleasure of supplying the following to
NAIROBI NEW AIRPORT:-

M.S. Angles, Flats, Channels, Joists, Rounds, Plates.

Galvanised and Black Steel Piping

Class 'A' and 'B'

Expanded Metal and Reinforcing Steel Fabric

Hard, Soft and Plywood Boards

Asbestos and Stoneware Pipes

Galvanised and Plain Sheets

Roofing Felts

'Ardex' Sheets

STC STEEL TRADING COMPANY

P.O. BOX 3916

CLARKE LANE

PHONE 23612

TELEGRAMS: "CHANNEL"

NAIROBI

25837

TEST BY MINISTRY MEN

100-ft-thick lava sheet

The Ministry of Works in Nairobi has placed a 100-ft-thick lava sheet on the road at Embakashi Airport. The sheet is made of a special concrete which is 100 ft long and 10 ft wide.

The sheet is made of a special concrete which is 100 ft long and 10 ft wide. It is made of a special concrete which is 100 ft long and 10 ft wide.

The sheet is made of a special concrete which is 100 ft long and 10 ft wide. It is made of a special concrete which is 100 ft long and 10 ft wide.

The sheet is made of a special concrete which is 100 ft long and 10 ft wide. It is made of a special concrete which is 100 ft long and 10 ft wide.

The sheet is made of a special concrete which is 100 ft long and 10 ft wide. It is made of a special concrete which is 100 ft long and 10 ft wide.

The sheet is made of a special concrete which is 100 ft long and 10 ft wide. It is made of a special concrete which is 100 ft long and 10 ft wide.

The sheet is made of a special concrete which is 100 ft long and 10 ft wide. It is made of a special concrete which is 100 ft long and 10 ft wide.

The sheet is made of a special concrete which is 100 ft long and 10 ft wide. It is made of a special concrete which is 100 ft long and 10 ft wide.

The sheet is made of a special concrete which is 100 ft long and 10 ft wide. It is made of a special concrete which is 100 ft long and 10 ft wide.

The sheet is made of a special concrete which is 100 ft long and 10 ft wide. It is made of a special concrete which is 100 ft long and 10 ft wide.

The sheet is made of a special concrete which is 100 ft long and 10 ft wide. It is made of a special concrete which is 100 ft long and 10 ft wide.

The sheet is made of a special concrete which is 100 ft long and 10 ft wide. It is made of a special concrete which is 100 ft long and 10 ft wide.

The sheet is made of a special concrete which is 100 ft long and 10 ft wide. It is made of a special concrete which is 100 ft long and 10 ft wide.

The sheet is made of a special concrete which is 100 ft long and 10 ft wide. It is made of a special concrete which is 100 ft long and 10 ft wide.

The sheet is made of a special concrete which is 100 ft long and 10 ft wide. It is made of a special concrete which is 100 ft long and 10 ft wide.

The sheet is made of a special concrete which is 100 ft long and 10 ft wide. It is made of a special concrete which is 100 ft long and 10 ft wide.

The sheet is made of a special concrete which is 100 ft long and 10 ft wide. It is made of a special concrete which is 100 ft long and 10 ft wide.

The sheet is made of a special concrete which is 100 ft long and 10 ft wide. It is made of a special concrete which is 100 ft long and 10 ft wide.

The sheet is made of a special concrete which is 100 ft long and 10 ft wide. It is made of a special concrete which is 100 ft long and 10 ft wide.

The sheet is made of a special concrete which is 100 ft long and 10 ft wide. It is made of a special concrete which is 100 ft long and 10 ft wide.

The sheet is made of a special concrete which is 100 ft long and 10 ft wide. It is made of a special concrete which is 100 ft long and 10 ft wide.

The sheet is made of a special concrete which is 100 ft long and 10 ft wide. It is made of a special concrete which is 100 ft long and 10 ft wide.

The sheet is made of a special concrete which is 100 ft long and 10 ft wide. It is made of a special concrete which is 100 ft long and 10 ft wide.

The sheet is made of a special concrete which is 100 ft long and 10 ft wide. It is made of a special concrete which is 100 ft long and 10 ft wide.



Mr. R. E. Taylor, Director of the Kenya Police Force, is seen with Mr. E. W. W. Taylor, Director of the Kenya Police Force, and Mr. R. E. Taylor, Director of the Kenya Police Force.

Danger of distortion by high-pressure tyres

Some of the most serious dangers of high-pressure tyres are the distortion of the tyre and the resulting danger to the vehicle. This is especially true in the case of heavy trucks and buses. The distortion of the tyre can lead to a loss of control and a serious accident.

The distortion of the tyre can lead to a loss of control and a serious accident. This is especially true in the case of heavy trucks and buses.

The distortion of the tyre can lead to a loss of control and a serious accident. This is especially true in the case of heavy trucks and buses.

The distortion of the tyre can lead to a loss of control and a serious accident. This is especially true in the case of heavy trucks and buses.

The distortion of the tyre can lead to a loss of control and a serious accident. This is especially true in the case of heavy trucks and buses.

The distortion of the tyre can lead to a loss of control and a serious accident. This is especially true in the case of heavy trucks and buses.

The distortion of the tyre can lead to a loss of control and a serious accident. This is especially true in the case of heavy trucks and buses.

The distortion of the tyre can lead to a loss of control and a serious accident. This is especially true in the case of heavy trucks and buses.

The distortion of the tyre can lead to a loss of control and a serious accident. This is especially true in the case of heavy trucks and buses.

The distortion of the tyre can lead to a loss of control and a serious accident. This is especially true in the case of heavy trucks and buses.

The distortion of the tyre can lead to a loss of control and a serious accident. This is especially true in the case of heavy trucks and buses.

The distortion of the tyre can lead to a loss of control and a serious accident. This is especially true in the case of heavy trucks and buses.

The distortion of the tyre can lead to a loss of control and a serious accident. This is especially true in the case of heavy trucks and buses.

The distortion of the tyre can lead to a loss of control and a serious accident. This is especially true in the case of heavy trucks and buses.

The distortion of the tyre can lead to a loss of control and a serious accident. This is especially true in the case of heavy trucks and buses.

The distortion of the tyre can lead to a loss of control and a serious accident. This is especially true in the case of heavy trucks and buses.

THIS IS NEWS!

TELECOMMUNICATIONS (EAST AFRICA) LIMITED

TELEPHONE AND ELECTRONIC ENGINEERS

ARE AGENTS FOR:-

BURGESS ACOUSTIC TELEPRINTER COVERS - A STANDARD TELEPRINTER FITMENT USED IN EAST AFRICA BY:-

THE DIRECTORATE OF CIVIL AVIATION

THE METEOROLOGICAL DEPARTMENT

RAILWAYS AND HARBOURS

SHELL COMPANY OF EAST AFRICA ETC. ETC.

APPROVED AND USED BY:-

EAST AFRICAN POSTS AND TELECOMMUNICATIONS ADMINISTRATION

FROM WHOM THESE COVERS CAN ONLY BE OBTAINED EXCEPT BY SPECIAL ARRANGEMENT

ACOUSTIC TELEPHONE BOOTHS - FLOOR, WALL AND TABLE MOUNTED

ALSO AMONG THE LATEST PROVED AND TESTED DEVELOPMENTS IN COMMUNICATIONS

TELEWRITER - TRANSMITS INSTANTANEOUSLY HANDWRITTEN MESSAGES

INTERCODER - THE WORLD'S FINEST DICTATING MACHINE

TELEPHONES - OF MODERN DESIGN NOT BEFORE SEEN IN EAST AFRICA

TELEPHONE DIAL LOCKS - TO SAFEGUARD ACCOUNTS - AVAILABLE SHORTLY

While content and high weight specifications are a must, the quality of the very best of the material which composes the earth must not be overlooked. This work was completed by the fact that it was a different idea for the business. This is the

A COMPANY WITH WORLD-WIDE EXPERIENCE IN THE INSTALLATION AND MAINTENANCE OF ALL BRITISH AND FOREIGN TELEPHONE SYSTEMS

INQUIRIES INVITED

TELEPHONES 26631-2

TELEGRAMS: CABLES

TELECONSEAL

P.O. Box 3463

NAIROBI - KENYA

S.ALES & SERVICE

HARDING SERVICE

NAIROBI



FOR HIGHEST QUALITY BITUMINOUS PAVING

The B-G Finisher spreads, compacts and levels automatically, adjusting to irregularities in subgrade... produces a durable surface that requires stable under traffic.

This Machine has been instrumental in the high quality of the finished surfaces of this large, modern Nairobi Airport. During construction to date, 450,000 square yards has been placed in two lifts of 2 1/2 inches, and 1 1/2 inches respectively, constituting an aggregate of some 65,000 tons of Bituminous Mixture, placed with ease in an exacting special Specification evolved by the Materials Branch of The Ministry of Works in conjunction with The Road Research Laboratory, Harmondsworth, Middlesex.

see your **Barber-Greene** distributor

BLACKWOOD HODGE

P.O. Box 5158 ENTERPRISE ROAD NAIROBI Tel.: 58876

STC STEEL TRADING COMPANY
HARDWARE & TIMBER MERCHANTS

We had the pleasure of supplying the following to NAIROBI NEW AIRPORT:-

M.S. Angles, Flats, Channels, Joists, Rounds, Plates.
 Galvanised and Black Steel Piping
 Class 'A' and 'B'

Expanded Metal and Reinforcing Steel Fabric
 Hard, Soft and Plywood Boards
 Asbestos and Stoneware Pipes
 Galvanised and Plain Sheets
 Roofing Felts
 'Ardex' Sheets

STEEL TRADING COMPANY
 P.O. BOX 2016 CLARKE LANE NAIROBI PHONE 23612
 TELEGRAMS: 'MCHANELL' NAIROBI 25837

TESTS BY MINISTRY MEN
 100-ft. thick layer of

The Materials Branch of the Kenya Government has played an important part in the building of the new airport. It has been particularly interested in the performance of the new road surface.

SLOWDOWN IS RISK

The Ministry of Works has been particularly interested in the performance of the new road surface. It has been particularly interested in the performance of the new road surface.

UNSUITABLE SOIL

They found that the soil was unsuitable for the road surface. It was found that the soil was unsuitable for the road surface.

RUNWAY DESIGN

The consultants in their report stated that the design of the runway was satisfactory. It was found that the design of the runway was satisfactory.



Mr. R. N. Taylor, Director of the Kenya Public Works Department, with Mr. G. J. ... and Mr. L. S. Anderson, ...

Danger of distortion by high-pressure tyres

Examination of five wheels... The wheels were found to be distorted... This involved some distortion, including protrusion... The wheels were found to be distorted... This involved some distortion, including protrusion...



Contractors clearing the beach section soil.

THIS IS NEWS!
TELECOMMUNICATIONS (EAST AFRICA) LIMITED

TELEPHONE AND ELECTRONIC ENGINEERS
 ARE AGENTS FOR:-
BURGESS ACOUSTIC TELEPRINTER COVERS - A STANDARD TELEPRINTER FITMENT
 USED IN EAST AFRICA BY:-
 THE DIRECTORATE OF CIVIL AVIATION
 THE METEOROLOGICAL DEPARTMENT
 RAILWAYS AND HARBOURS
 SHELL COMPANY OF EAST AFRICA
 ETC., ETC.
 APPROVED AND USED BY:-
 EAST AFRICAN POSTS AND TELECOMMUNICATIONS ADMINISTRATION
 FROM WHOM THESE COVERS CAN ONLY BE OBTAINED EXCEPT BY SPECIAL ARRANGEMENT
ACOUSTIC TELEPHONE BOOTHS - FLOOR, WALL AND TABLE ANGLES
 ALSO AMONG THE LATEST PROVIDED AND TESTED DEVELOPMENTS IN COMMUNICATIONS
TELEWRITER - TRANSMITS INSTANTANEOUSLY HANDWRITTEN MESSAGES
INTERRECORDER - THE WORLD'S FINEST DICTATING MACHINE
TELEPHONES - OF MODERN DESIGN NOT BEFORE SEEN IN EAST AFRICA
TELEPHONE DIAL LOCKS - TO SAFEGUARD ACCOUNTS - AVAILABLE SHORTLY
 A COMPANY WITH WORLD-WIDE EXPERIENCE IN THE INSTALLATION AND MAINTENANCE OF ALL BRITISH AND FOREIGN TELEPHONE SYSTEMS
 INQUIRIES INVITED
 TELEPHONES 26631-2
 TELEGRAMS & CABLES
 TELECOMSAE
P.O. Box 3463
NAIROBI - KENYA
 SERIES & SERVICE HARDWARE STORES NAIROBI

Full postal facilities at terminal for passengers

By Charles Hester

NEW AIRPORT is distinguished for modern facilities and full postal services. The new terminal building, which has been built on the site of the old terminal, is a private enterprise and is being built by the Government and private firms.

The building is now under construction and will be completed in about six months. It will be the largest building of its kind in East Africa and will provide a private enterprise with a modern terminal building. The building will be built on the site of the old terminal and will provide a private enterprise with a modern terminal building.

TEN-MILE CABLE

A major task was being a cable system for the terminal building, which will be a private enterprise. The cable system will be built on the site of the old terminal and will provide a private enterprise with a modern terminal building.

100 LINES

The public exchange, which will be a private enterprise, will be built on the site of the old terminal and will provide a private enterprise with a modern terminal building.



OFFICE AND TEN TELEPHONE BOXES

The building is now under construction and will be completed in about six months. It will be the largest building of its kind in East Africa and will provide a private enterprise with a modern terminal building. The building will be built on the site of the old terminal and will provide a private enterprise with a modern terminal building.

THE TERMINAL BUILDINGS AT EMBAKASI AIRPORT WERE PAINTED THROUGHOUT

THROUGHOUT

By **P. J. ROCHE & CO. LTD.**
(DECORATORS)

ENTIRELY UNDER EUROPEAN SUPERVISION

Box 3868 RING ROAD WESTLANDS NAIROBI Phone 5406



CBV

The finest way to travel

CBV salutes the people of East Africa whom, for 12 years, it has been their pleasure to serve. The two million miles flown and forty thousand passengers carried is a whole hearted endorsement of service with safety.

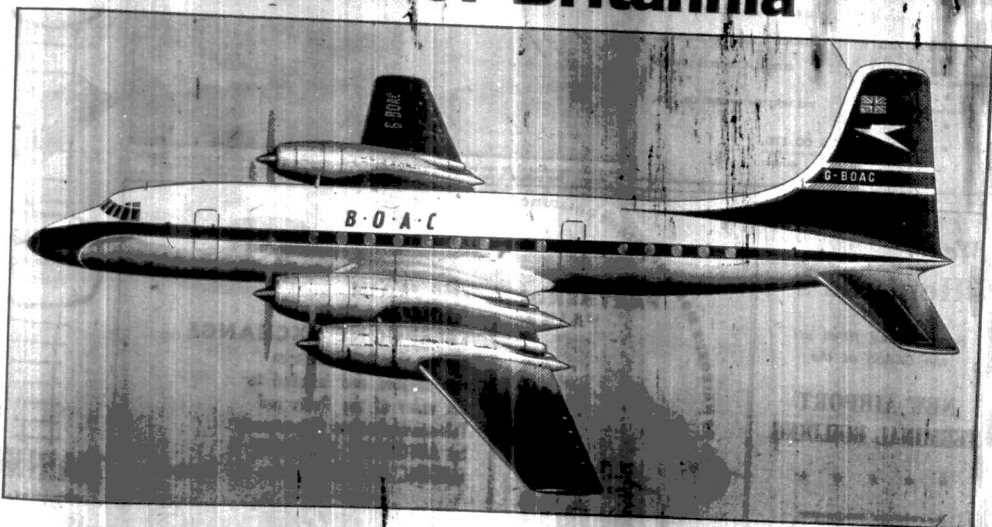


British Overseas Airways Corporation
sends congratulations on
the completion of

EMBAKASI

—world's newest airport, fittingly served by the world's
newest, fastest jet-prop airliner...

B.O.A.C. Britannia



TODAY, Nairobi can boast an airport worthy of a great colony—and B.O.A.C. is proud to announce the return of East Africa's finest airline service by magnificent B.O.A.C. BRITANNIA. Queen of the world's skyways. BRITANNIA now link major centres on five continents, and travellers from Embakasi can experience a new level of perfection in air travel as they speed South to Johannesburg or North to London and B.O.A.C.'s global network. There could be no more fitting tribute to the world's newest airport than the service of the magnificent BRITANNIA—world's finest, fastest jet-prop airliner.

World leader in air travel



B.O.A.C.

takes good care of you

AEROPLANES
don't land

TARKETT

TILES at
EMBAKASI, but
thousands of people
are 'walking the
TARKETT way'

The first major relationship
between the world and the 1977
last frontier.

Sole Agents and
ANTON PETERSEN LTD. (L.A.) LTD.

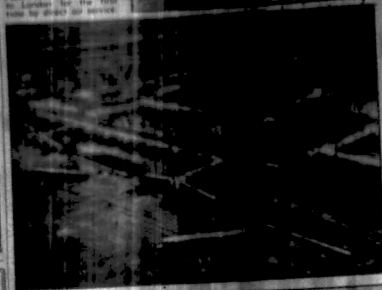
STANVAARDEN, DENMARK
P.O. BOX 202, TELEFON 17 2710

EMBAKASI AIRPORT

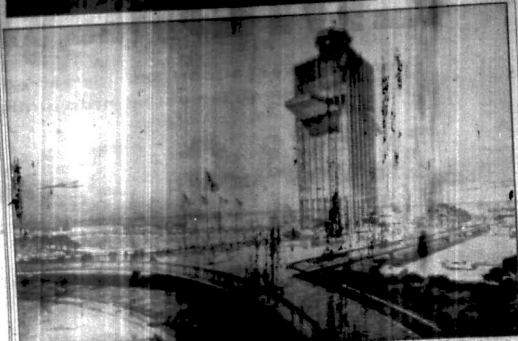
- Post-top Lanters by **MESSES. AEG GERMANY**
 - Shower-Fittings by **NEW ERA LIGHTING INDUSTRIES LTD.**
 - Shower-Sockets by **CHILTON ELECTRIC PRODUCTS LTD.**
 - Magnetic Circuit Breakers by **MURRAY MANUFACTURING CORP.**
 - Weatherproof Sockets outlets by **SIMMONDS & STOKES (Nigeria) LTD.**
 - Cooker Controls, Lights and Mains Cuts Switches by **GEORGE H. SCHOLLES LIMITED**
 - Time Switches by **THE HORSTMANN GEAR CO., LTD.**
- **R. W. KETCHLEY & CO. LTD.**
111, 109 & 107, P.O. BOX 101
HAIRDEBI

LOOKING AT AIRPORTS IN OTHER LANDS

The new terminal building at Embakasi, which will replace the existing one, is the first of a series of buildings that will be built in the new airport. The new terminal building is the first of a series of buildings that will be built in the new airport. The new terminal building is the first of a series of buildings that will be built in the new airport.



Left: Aerial view of the new terminal building at Embakasi Airport. The terminal building was opened in the Queen on December, 1977. Above: One of the new gates at the terminal.



An aerial impression of the new passenger terminal building which is to be constructed at New York's La Guardia Airport. The building is part of a \$10,000,000 modernisation and expansion programme of the airport.

We...

Heptulla's

Supplied and fitted all
the GLASS at the

**NEW AIRPORT
TERMINAL BUILDING**

Remember our new premises
are in Victoria Street,
just behind the new
Standard Bank of S.A. Ltd.,
Government Road branch.

HEPTULLA BROS. LIMITED
RAJAB-MANZIL, VICTORIA STREET
P.O. BOX 1888
NAIRDEBI

TELEPHONES:
22841 and 22711

USE PARTHENON PAINTS

3 OF NAIREBI'S MOST IMPORTANT BUILDINGS

British East Africa Corporation Limited

Branches throughout East Africa

**THE MAIN
AUTOMATIC
TELEPHONE EXCHANGE**

serving the Embakasi area
was supplied and installed to
the order of the Posts and
Telecommunications Department
by **AUTOMATIC TELEPHONE &
ELECTRIC CO. LTD., London & Liverpool**



Suppliers to the World

of all TELECOMMUNICATION PRODUCTS

Associated Distributors:
AUTOMATIC TELEPHONE & ELECTRIC CO. (EAST AFRICA) LTD.
GARDENWAY HOUSE, NAIRDEBI, P.O. BOX 19, TELEPHONE 2100



To mark the
visit of H.M.
Queen Elizabeth
the Queen Mother
during her
introduction to
NEW 1977



**ROYAL
ASSORTMENT**



BARING
leads the way
again!

BARING
ROYAL
ASSORTMENT



KEARSLEY TRAVEL CENTRE

LONDON
36 G. CABRELLY
PHONE: REGENT 7241



J. W. KEARSLEY & CO. LTD.
AGENTS FOR ALL FORMS OF TRAVEL
GAINSBOROUGH HOUSE
STANDARD STREET
BOX 6660 NAIROBI TEL: 20363

TIMSALES

TIMBERS
ARE USED EXTENSIVELY
IN
NAIROBI AIRPORT
EMBAKASI

MARRYATS EAST AFRICA LTD

A SUBSIDIARY OF MARRYAT & SCOTT AND MARRYAT & PLACE LTD., LONDON
LIFT ENGINEERS & ELECTRICAL CONTRACTORS

Marryats are proud to have been responsible for the Passenger Lifts to the Administrative and Technical Section and the Service Lifts to the Restaurant and Staff Canteen in the Main Terminal Building of the New NAIROBI AIRPORT.

MARRYATS LIFTS ARE ALSO INSTALLED IN —

- | | |
|---|--|
| EAST AFRICAN BREWERY LTD, NAIROBI
KARIAKI BANK, N.A.C., NAIROBI
NATIONAL OVERSEAS AND BONDOLAPS BANK, NAIROBI
ROYAL TECHNICAL COLLEGE, NAIROBI
AFRICAN MERCANTILE CO. LTD, NAIROBI
EAST AFRICAN RAILWAYS AND HARBOUR, NAIROBI
WISNEY HOUSE, NAIROBI
KENYA CHAMBERS, NAIROBI
KENYA WINDMILL SOCIETY, NAIROBI
NATIONAL BUILDING SOCIETY, NAIROBI
LEWISDA HOUSE, NAIROBI
FLEMING HOUSE, NAIROBI
BRIDGWOOD HOUSE, NAIROBI
SANDER HOUSE, NAIROBI
MERRICK HOUSE, NAIROBI
JUBILEE DEVELOPMENT CO. LTD, NAIROBI
SUPPER HOUSE, NAIROBI | P. AND J. HARRIS CO. LTD, MOMBASA
TROPICAL RESTAURANT TRUST, MOMBASA
PALACE HOTEL, MOMBASA
NATIONAL OVERSEAS AND BONDOLAPS BANK, KAMPALA
MAYER, WAST AND GREENHAUS, KAMPALA
TELEPHONE HOUSE, KAMPALA
KAMPALA HOSPITAL, MATWOTTI WING
A. BALCHANDRAN AND CO. LTD, KAMPALA
KANABA ELECTRICITY BOARD, DUSSE PALM
BALLI HOUSE, KAMPALA
BURLAND BUILDING, KAMPALA
KUMBARPANI HOSPITAL, DAE IN SILLAM
KUMBARPANI HOSPITAL, DAE IN SILLAM
HALAM BUILDING, DAE IN SILLAM
MATWOTTI HOTEL, DAE IN SILLAM
ARKADYEVSKY BARABOVI BUILDING, DAE IN SILLAM |
|---|--|

MARRYATS EAST AFRICA LIMITED
NAIROBI
(ALSO AT KAMPALA)

P.O. BOX 1518

Five years ago engineers began preparing the site for the Nairobi Airport. In the past few years there has been a great deal of work done. Several thousand tons of concrete were employed in constructing the terminal building and the other buildings. On the left, a photograph shows a view of the airport from the air.

In the top right-hand photograph, a tractor is shown in the process of grading the site. The tractor is being used to level the ground and to lay the concrete for the foundations of the buildings. The photograph shows the tractor working on a large area of the site.

At the bottom of the page, a photograph shows a view of the airport from the ground. The photograph shows the terminal building and the other buildings under construction. The photograph shows the progress of the work done on the site.



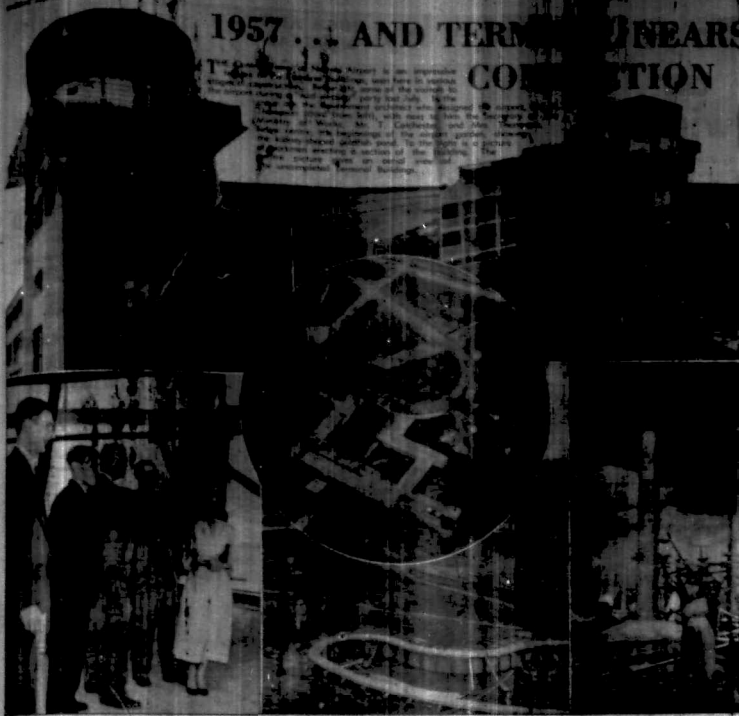
We are proud to offer loyal greetings and welcome to H.M. Queen Elizabeth the Queen Mother from the Management and Staff.

TO ALL TRAVELLERS ARRIVING AT THE NEW NAIROBI AIRPORT 'HAPPY LANDING'

Whiteaway, Laidlaw & Co. Ltd., Nairobi & Branches

1957... AND TERMINALS NEARS COMPLETION

The new Embakasi Airport is an impressive structure, built here in Kenya, designed to handle the country's increasing air traffic. It is the largest airport in East Africa, with a capacity of 100,000 passengers a year. The airport is being built by the Government of Kenya, with the assistance of the Government of the United Kingdom. The airport is being built on a site of 1,000 acres, with a runway of 10,000 feet. The airport is being built in a strategic position, near the city of Nairobi, and is expected to be completed by the end of 1957.



LAND OF CONTRAST

East Africa is a land of wide contrasts, wild beasts and vast nature, inspiring imagination. See the Snowy Mountains, the Victoria and the Pigeon Islands with a wing, something else is there. Also typical is the wide range of facilities offered by the STANDARD BANK OF SOUTH AFRICA LIMITED.



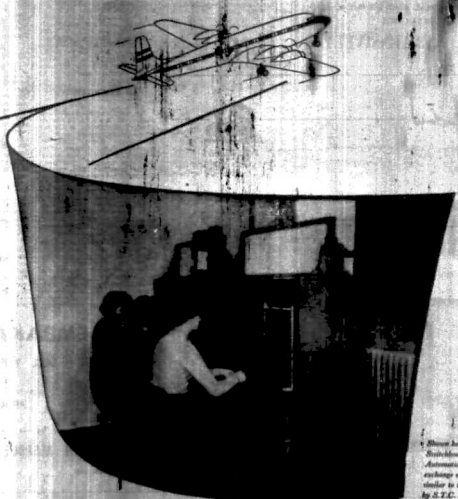
THE STANDARD BANK OF SOUTH AFRICA LIMITED
(Incorporated in the Union of South Africa)

New Africa Hotel

DAR ES SALAAM'S LEADING HOTEL
 Telephone: "SPRINGHILL" HOTEL
 P.O. Box 383 Dar es Salaam Telephone 1072

behind the scenes at the new Embakasi Airport...

The new Embakasi Airport typifies the progress and enterprise of the people of East Africa, and Standard Telephones & Cables Ltd are proud to be associated with it. To ensure peak efficiency in the operation of the airport, S.T.C. telephone and communication equipment was specified. The exchange is manually operated and has an initial capacity of 31 exchange lines and 400 extensions. All internal communication will be automatic, leaving the switchboard free to handle incoming calls and offer the public the best possible service. You will find S.T.C. equipment in many modern airports — chosen because of merit. The Standard organisation, with its vast resources for research and manufacture, carry on a constant search for new and improved techniques in every field of telecommunications. The success of these efforts is reflected in the fact that 42 airlines and the air forces of 26 countries have installed Standard radio equipment.



Shown here is the Manual Switchboard of the Private Automatic Direct Exchange exchange at Embakasi Airport which is the result of S.T.C. research.

world-wide telecommunications by **Standard**

Standard Telephones and Cables Limited.

(Incorporated in England with Limited Liability)

TELECOMMUNICATION ENGINEERS

RESIDENT REPRESENTATIVE: P.O. BOX 11, NAIROBI, KENYA

Agents in East Africa: STEPHEN ELLS & CO. LTD, Victoria Street, Nairobi, Kenya

Standard products include:

- TELECOMMUNICATIONS LINE TRANSMISSION EQUIPMENT
- RADIO BROADCASTING EQUIPMENT
- RADIO COMMUNICATION EQUIPMENT
- AIR RADIO NAVIGATIONAL AIDS
- SUPERSTRETCH AND REARVIEW CONTROL SYSTEMS
- RAILWAY COMMUNICATIONS APPARATUS
- RAILROAD CONTROL EQUIPMENT
- OVERLAND & SUBMARINE TELEPHONE CABLES
- SOUND-REINFORCEMENT SYSTEMS
- PUBLIC AND PRIVATE TELEPHONE SYSTEMS
- FIRE ALARM EQUIPMENT
- POWER CABLES

HARRIS & BELL
 CONSULTING ENGINEERS
 1000 Commercial Street, New York, N.Y.
 10010

**WE ARE PROUD TO HAVE
 TAKEN PART IN THE
 CONSTRUCTION OF
 EMBAKASI AIRPORT**

**AIR LINE HANDLING LARGE
 SOULS IN EMBURE SUCCESS**

A winning combination of factors has made the new Embure airport a highly successful base for the South African Airways, which is handling large numbers of passengers and cargo. The airport, built at a cost of £100,000, is a fine example of modern airfield construction. It features a long runway, taxiway, and parking apron, all of which are well equipped for the handling of large aircraft. The airport is also well served by a road network, and is situated in a convenient location for passengers and cargo. The success of the airport is a testament to the skill and expertise of the Harris & Bell team, who were responsible for its design and construction.



Come aboard...
 come **ABROAD**
 with
 South African
 Airways



- Three flights a week to both London and Johannesburg.
- Choice of stop-overs: Khartoum, Athens, Rome and Frankfurt, on the London route; Salisbury and Louisa on the Johannesburg route.
- From Johannesburg, choice of East or West Coast routes to Europe and London, with additional stop-over facilities at Leopoldville, Kano, Zurich and Amsterdam.
- Weekly flights to and from Australia in association with Qantas, via Mauritius and the Cocos Islands, connecting San Paulo throughout South America and to New Zealand, the Far East and U.S.A.
- Network of internal services linking all major cities in the Union of South Africa.

Full details from the S.A. Airways Office or your Travel Agent.

SOUTH AFRICAN AIRWAYS

ROUTE TO EAST

African International Airways (A.I.A.) is the main link between East and West Africa. The airline has a fleet of modern aircraft, and a network of routes that covers the entire continent. The airline is known for its excellent service, and its commitment to safety and reliability. The route to the East is a popular one, and is well served by the airline's fleet of aircraft. The airline is also well equipped to handle large numbers of passengers and cargo, and is a leading provider of air services in the region.

£30 for Treasury time liner touches down

The Treasury time liner has touched down at Embure airport, marking a significant milestone in the airline's history. The aircraft, which is one of the largest and most modern in the world, has arrived at the airport after a long and successful journey. The arrival of the aircraft is a testament to the skill and expertise of the Harris & Bell team, who were responsible for its design and construction. The aircraft is well equipped to handle large numbers of passengers and cargo, and is a leading provider of air services in the region. The arrival of the aircraft is a significant event, and is well served by the airline's fleet of aircraft. The airline is also well equipped to handle large numbers of passengers and cargo, and is a leading provider of air services in the region.



For personal hygiene you can trust
DETOL ANTISEPTIC
Safe-Gentle-Plenish in use

DON'T RISK A NERVOUS BREAKDOWN
 Whenever you need to more control than your ordinary dose of medicine, you should take **PHILLIPS' TONIC YEAST**. It is a powerful tonic that will help you to overcome any nervous breakdown, and will help you to get back to your normal state of health.

Phillips TONIC YEAST
 PHILLIPS' TONIC YEAST LTD.
 100, The Quadrant, London, W.C.2.

NAIROBI AIRPORT EMBAKASI

COMPLETE ELECTRICAL INSTALLATIONS
 to
 EAST AFRICAN AIRWAYS LTD.
 and
 STANDARD-VACUUM OIL CO. LTD.
 by
HARTLEY ELECTROMOTIVES LIMITED
 ELECTRICAL ENGINEERS
 P.O. BOX 1366, GARDNER STREET, NAIROBI
 TELEPHONE 21500 TELEGRAMS "ELECTRO"

Kenya Bottlers Limited
respectfully extend
loyal greetings to
Her Majesty
The Queen Mother
on the occasion of
the opening of the
Embakasi Airport



SIGN OF GOOD TASTE

KENYA BOTTLERS LTD., NAIROBI, P.O. BOX 39134 and MOMBASA, P.O. BOX 3154

BOTTLED UNDER THE AUTHORITY OF THE COCA-COLA EXPORT CORPORATION



Recollections of former

Royal visit

By JOHN WILSON

WHEN the royal party left London for their visit to the Cape, Mr. Markham, who had been in the city since the departure of the royal party, was seen to be in the city.

Mr. Markham, who had been in the city since the departure of the royal party, was seen to be in the city.

Mr. Markham, who had been in the city since the departure of the royal party, was seen to be in the city.

Mr. Markham, who had been in the city since the departure of the royal party, was seen to be in the city.

Mr. Markham, who had been in the city since the departure of the royal party, was seen to be in the city.

Mr. Markham, who had been in the city since the departure of the royal party, was seen to be in the city.

Mr. Markham, who had been in the city since the departure of the royal party, was seen to be in the city.

Mr. Markham, who had been in the city since the departure of the royal party, was seen to be in the city.

Mr. Markham, who had been in the city since the departure of the royal party, was seen to be in the city.

Mr. Markham, who had been in the city since the departure of the royal party, was seen to be in the city.

Mr. Markham, who had been in the city since the departure of the royal party, was seen to be in the city.

Mr. Markham, who had been in the city since the departure of the royal party, was seen to be in the city.

Mr. Markham, who had been in the city since the departure of the royal party, was seen to be in the city.

Mr. Markham, who had been in the city since the departure of the royal party, was seen to be in the city.

Mr. Markham, who had been in the city since the departure of the royal party, was seen to be in the city.

Mr. Markham, who had been in the city since the departure of the royal party, was seen to be in the city.

Mr. Markham, who had been in the city since the departure of the royal party, was seen to be in the city.

Mr. Markham, who had been in the city since the departure of the royal party, was seen to be in the city.

Mr. Markham, who had been in the city since the departure of the royal party, was seen to be in the city.

Mr. Markham, who had been in the city since the departure of the royal party, was seen to be in the city.

Mr. Markham, who had been in the city since the departure of the royal party, was seen to be in the city.

On show at the Nairobi air display will be a Comet II, prototype of the Comet IV. R.O.A.C. will shortly have the Comet in regular airline service.



ONLY OIL APPROVED FOR THE WORLD MOST ADVANCED TURBINE AIRLINERS!

ESSO AVIATION TURBO OIL 35

ESSO AVIATION TURBO OIL 35 — the one engine oil for these modern aircraft of today and tomorrow.

- Vickers VISCOUNT
Sud Aviation CARAVELLE
Bristol BRITANNIA 300 Series
Fokker F-27
De Havilland COMET IV
Boeing 707
Douglas DC-8

- POWERED BY
Rolls-Royce Dart
Rolls-Royce Avon
Bristol Perma 705
Rolls-Royce Dart
Rolls-Royce Avon
Rolls-Royce Conquest
Rolls-Royce Conquest

Anticipating by many years the need for an entirely new synthetic lubricant, Esso researchers, working in close association with the British Ministry of Supply and engine designers and builders, produced Esso Aviation Turbo Oil 35.

Oil 35 — a synthetic oil that met and exceeded the stringent lubrication requirements of turbo-prop and turbo-jet engines. The development of this product is a typical example of Esso's outstanding leadership in turbulent innovation.

8 OUT OF EVERY 10 OF THE WORLD'S INTERNATIONAL AIRLINES USE



AVIATION PRODUCTS

Marketed in East Africa by **STANDARD-VACUUM**



APR 1953

GIFTS OF FLOWERS AND FISH PRESENTED TO THE DUCHESS

The Duchess of York, with her husband, receiving an elaborate gift of flowers and fish from the Duke of Edinburgh in 1952.



Dr. Van Sledright

The Duchess of York, with her husband, receiving an elaborate gift of flowers and fish from the Duke of Edinburgh in 1952.



The Duchess of York, with her husband, receiving an elaborate gift of flowers and fish from the Duke of Edinburgh in 1952.

The Duchess of York, with her husband, receiving an elaborate gift of flowers and fish from the Duke of Edinburgh in 1952.

The Duchess of York, with her husband, receiving an elaborate gift of flowers and fish from the Duke of Edinburgh in 1952.

The Duchess of York, with her husband, receiving an elaborate gift of flowers and fish from the Duke of Edinburgh in 1952.

The Duchess of York, with her husband, receiving an elaborate gift of flowers and fish from the Duke of Edinburgh in 1952.

The Duchess of York, with her husband, receiving an elaborate gift of flowers and fish from the Duke of Edinburgh in 1952.

The Duchess of York, with her husband, receiving an elaborate gift of flowers and fish from the Duke of Edinburgh in 1952.

The Duchess of York, with her husband, receiving an elaborate gift of flowers and fish from the Duke of Edinburgh in 1952.

The Duchess of York, with her husband, receiving an elaborate gift of flowers and fish from the Duke of Edinburgh in 1952.

The Duchess of York, with her husband, receiving an elaborate gift of flowers and fish from the Duke of Edinburgh in 1952.

ROYAL BOUQUET

His Majesty the King, who is now in the city, was seen to be in the city.

His Majesty the King, who is now in the city, was seen to be in the city.

His Majesty the King, who is now in the city, was seen to be in the city.

His Majesty the King, who is now in the city, was seen to be in the city.

His Majesty the King, who is now in the city, was seen to be in the city.

His Majesty the King, who is now in the city, was seen to be in the city.

His Majesty the King, who is now in the city, was seen to be in the city.

His Majesty the King, who is now in the city, was seen to be in the city.

His Majesty the King, who is now in the city, was seen to be in the city.

His Majesty the King, who is now in the city, was seen to be in the city.

His Majesty the King, who is now in the city, was seen to be in the city.

The Duchess of York, with her husband, receiving an elaborate gift of flowers and fish from the Duke of Edinburgh in 1952.

The Duchess of York, with her husband, receiving an elaborate gift of flowers and fish from the Duke of Edinburgh in 1952.

The Duchess of York, with her husband, receiving an elaborate gift of flowers and fish from the Duke of Edinburgh in 1952.

The Duchess of York, with her husband, receiving an elaborate gift of flowers and fish from the Duke of Edinburgh in 1952.

The Duchess of York, with her husband, receiving an elaborate gift of flowers and fish from the Duke of Edinburgh in 1952.

The Duchess of York, with her husband, receiving an elaborate gift of flowers and fish from the Duke of Edinburgh in 1952.

The Duchess of York, with her husband, receiving an elaborate gift of flowers and fish from the Duke of Edinburgh in 1952.

The Duchess of York, with her husband, receiving an elaborate gift of flowers and fish from the Duke of Edinburgh in 1952.

The Duchess of York, with her husband, receiving an elaborate gift of flowers and fish from the Duke of Edinburgh in 1952.

The Duchess of York, with her husband, receiving an elaborate gift of flowers and fish from the Duke of Edinburgh in 1952.

The Duchess of York, with her husband, receiving an elaborate gift of flowers and fish from the Duke of Edinburgh in 1952.



The Royal couple listen to children singing in the City Park.

THE NEW

STEEL-FRAMED HANGAR

AT

NAIROBI AIRPORT

FOR

EAST AFRICAN AIRWAYS CORPORATION

MAIN SPAN — 200 FEET — 40 FEET HIGH
ANNEXES — 50 FEET WIDE

DESIGNED, MANUFACTURED & SUPPLIED BY—

A. & J. MAIN & CO. LTD.

STRUCTURAL ENGINEERS
STANVAC HOUSE — NAIROBI
Architects: Messrs. Jackson & Hill, F.R.I.B.A.

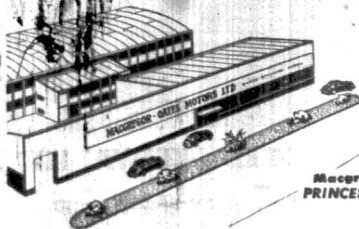
EABAKASI

An Aviation Landmark
FOR KENYA

Salute to Progress!

A Motoring Landmark for

**STANDARD
BODGE
CITROEN**



**Macgregor Gales Motors
PRINCESS ELIZABETH WAY
Nairobi**

Flying pioneer honours

MAIRAKI will soon be the name of East Africa's national aviation service. It has been chosen by Mrs Florence Mary Wilson, leader of the Kenya Airways, which is to be based at Nairobi and will fly to London.

In Mrs Wilson, Kenya will have a woman leader. She is the first woman to head a national airline in the world. She is also the first woman to head a national airline in the world.

EARLY INTEREST

Many weeks ago Mrs Wilson was in London. She was there to see the Lord Curzon, then Secretary of State for Africa. She was there to see the Lord Curzon, then Secretary of State for Africa. She was there to see the Lord Curzon, then Secretary of State for Africa.

LEFT PLANNING

It is the plan of the Kenya Airways to start flying to London. It is the plan of the Kenya Airways to start flying to London. It is the plan of the Kenya Airways to start flying to London.

EARLY PILOTS

The first pilot of the Kenya Airways will be a woman. The first pilot of the Kenya Airways will be a woman. The first pilot of the Kenya Airways will be a woman.



NEW NAME FOR NAIROBI WEST

It is the plan of the Kenya Airways to start flying to London. It is the plan of the Kenya Airways to start flying to London. It is the plan of the Kenya Airways to start flying to London.

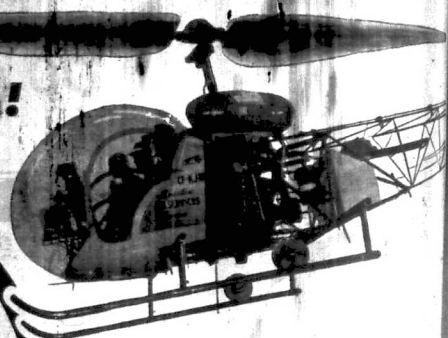
SAFETY RECORD

The Kenya Airways has a perfect safety record. The Kenya Airways has a perfect safety record. The Kenya Airways has a perfect safety record.

The HELICOPTER is here!

The wonder work-horse for all airborne chores - yours for the hiring NOW

Spartan Air Services (Eastern) Ltd are here to offer you specialised aviation services. They are fully equipped for Air Survey and photography of all types and are also operational for Air Spray and Pest Control work with the latest aircraft designed for the purpose. The sales and service organisation is available for Piper Aircraft, for which they are sole agents in East Africa, and a unique HELICOPTER service using the famous Bell 47G2. This, the first commercially operated Helicopter service in East Africa, has already carried out work for businesses in Kenya. Its application is limited only by the imagination. Every industrialist, business man, farmer or Government department has a job to be done that can be done swiftly and effectively only by a Helicopter. Its time is fast being snapped up. Write, ring or call in and let us discuss your problems.



WHAT THE HELICOPTER HAS DONE ELSEWHERE AND CAN DO HERE

- AGRICULTURAL SPRAYING.** Apart from the obvious advantages that the helicopter offers in terms of maneuverability, height, low maintenance, speed, and speed, it is able to effect a much more intensive coverage, the unique action of the rotor blades force the chemical downwards at great pressure thereby creating a turbulent vortex and effectively covering the underside of leaves in a way no other aircraft or machinery can accomplish.
- SALES TRIPS AND EXECUTIVE TRANSPORTATION.** How often has a sales executive with a territory to carry out an inspection deep in the bush or in a hazy remote area in the course of one day other than by a helicopter? So fast, so low, so bold, so certain. Any road trip to a remote or sparsely populated area is a tiresome and time-consuming journey. A business journey which is a mere few hours by road would take two days or more by helicopter. No fuel, no food, no baggage - no airstrip is needed!
- SURVEYS, CONSTRUCTION AND INSPECTION.** The hovering, variable height, which can go as low as you want it to, is an obvious aid in all types of survey work involving difficult terrain. In power line work, power line inspection its services are unique. Nothing can travel the length of a ground installation more easily than can be operated by helicopter. Its height, its inspection, its ease of handling like a helicopter.

Spartan Air Services (Eastern) Limited

**ALL
THE
METAL
WINDOWS
AND
DOORS
IN
EVERY
MAIN BUILDING
AT
EMBAKASI
WERE
MANUFACTURED
AT MOMBASA
BY...**

KENYA CASEMENTS LIMITED

**P.O. BOX 2832, MOMBASA
SUPPLIED THROUGH...**

Messrs. C. C. PATEL & CO. LTD.

P.O. BOX 6009, NAIROBI

The Kenya Casements Ltd. also
manufacture a complete range of
'BANDO' Folding and Spring Beds and a
complete range of B.S.S. Nuts and Bolts.

The sole importer of The Kenya
Casements Ltd. Mr. Patel, Nairobi, can
be contacted through the factory,
or through Messrs. C. C. Patel, Nairobi,
or The Steel Window Company, Koroivale.

Platinum
 City Change
 375
 S.H.S.

PIONEERS OF EAST AFRICAN AVIATION



Rapid strides made in four decades of East African aviation

A little less than four decades ago travel in East Africa was made possible in imagination, but now the reality is in the air. The Colony's aviation—spanning 40 years and covering almost 100,000 miles of air—has made possible the rapid strides made in four decades of East African aviation.

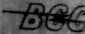
VIMY LANDS

Aviation had its beginning in East Africa when the first flight was made in 1914. It was a small, open-cockpit biplane, but it was the beginning of a new era.

The Aero Club of Kenya was formed in 1922. It was the first step towards the development of aviation in East Africa. The club's members were enthusiasts who wanted to see the continent opened up to air travel.


The East African Airways Corporation was formed in 1946. It was the first airline to operate in East Africa. The corporation was a milestone in the history of aviation on the continent.

The rapid development of aviation in East Africa has been a result of the efforts of many individuals and organizations. The progress has been remarkable, and it is a testament to the spirit of adventure and exploration that has always been a part of the East African story.



BRITISH COMMUNICATIONS CORPORATION LTD

MULTICHANNEL AUTOMATIC RECORDING SYSTEM



As being supplied to the Directorate of Civil Aviation for the New Nairobi Airport.

S. A. PEGURIE & CO, LTD

DELAWARE AVENUE
 NAIROBI

BOX 1092

STILL FLYING

The cumulative effects of the various factors mentioned above have resulted in a steady increase in the number of flights and passengers. The aviation industry in East Africa is still flying high.

CLUB FORMED

The formation of the East African Airways Club was a significant event. It provided a platform for pilots and enthusiasts to share their experiences and knowledge.

CHAMPION FLIGHTS

The annual champion flights competition has become a popular event. It tests the skills and endurance of pilots and has brought attention to the sport of aviation.



• Rotor filling gives big ink supply—fills to last drop
 • Non-tarnishing golden cap, strong clip
 • Choice of barrel colours
 • Replacement nibs—10 each

Other models at prices to suit all pockets

FOURTEEN PENS—Royal, Corona, Fountain, City, Pilot, Star, Water, City, Ballpoint, Roller, Ballpoint, Roller, Fountain, Pilot

It's best to buy—
Platinum

Pens, Ballpoints & Writing Sets

Trade Agencies to: PHILIPPOTTI LTD., 40, BEECH AVE., FACTORY STREET, NAIROBI

ALLSOPP'S join in loyal greetings

... and wish success to the new airport

CONSTIPATION
 RELIEVED OVER
 REGENT

W
 is as
 is no
 ment
 welcom
 magnifi
 lavishly
 cherishe
 fly with
 with mi

TWO SERVICES

First plane bought for surveying

The Government has purchased its first surveying plane, a Cessna 441, for use in the surveying of the country's vast areas. The plane is being used to survey the boundaries of the various provinces and to determine the exact location of the various towns and villages. The plane is being used to survey the boundaries of the various provinces and to determine the exact location of the various towns and villages. The plane is being used to survey the boundaries of the various provinces and to determine the exact location of the various towns and villages.

WIP OF ROUTES

The Government has announced that it will be opening up new routes for air services. The routes will be opened up to the various parts of the country and will provide a means of transport for the people. The routes will be opened up to the various parts of the country and will provide a means of transport for the people. The routes will be opened up to the various parts of the country and will provide a means of transport for the people.



LINE OPENS WITH SIX BIPLANES

The East African Airways line has opened with six biplanes. The biplanes are being used to provide air services to the various parts of the country. The biplanes are being used to provide air services to the various parts of the country. The biplanes are being used to provide air services to the various parts of the country.

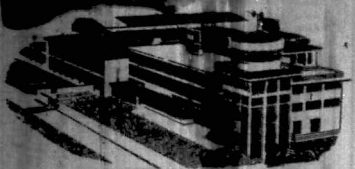
Baboons kept out airfield to warn of lions

The Government has announced that it will be keeping baboons out of the airfield to warn of lions. The baboons are being kept out of the airfield to warn of lions. The baboons are being kept out of the airfield to warn of lions. The baboons are being kept out of the airfield to warn of lions.

PLANNING AHEAD

The Government is planning ahead for the future. The government is planning ahead for the future. The government is planning ahead for the future. The government is planning ahead for the future.

It's a far cry.....



It's a far cry from the days when supplies were transported by primitive methods to the opening of the terminal to accommodate the fastest transportation known to modern man. The Smith Mackenzie have been concerned with supplying the public and industrial needs throughout the growth of this era from early times — since 1877 in fact. For all building materials contact Smith Mackenzie & Co. Ltd. at their Nairobi office or any of their various branch offices.

SMITH MACKENZIE & CO. LTD.

Thank you, East Africa!

When I take off from Bombay for Nairobi it is as leaving home to visit a dear friend. There is no mere sense of duty, no fear of disappointment — always the certainty of a warm, warm welcome. Nairobi's fine new airport is indeed a magnificent venue for our meetings, providing lavishly for the comfort and convenience of my cherished passengers. *Thank you, East Africa!* But fly with me — and I will match your hospitality with mine.



AIR-INDIA International

LEONARD HOUSE, GOVERNMENT ROAD, NAIROBI
P.O. Box 2066, Phones 2816, 2422 and 2442

NO SERVICES EVERY WEEK FROM NAIROBI BY "SUPER G" CONSTELLATION

NATIONAL OVERSEAS AND GRINDLAYS BANK LIMITED

INCORPORATED IN INDIA
NATIONAL OVERSEAS BANK LIMITED
GRINDLAYS BANK LIMITED
INCORPORATED IN THE UNITED KINGDOM

BRANCHES IN THE EAST OF AFRICA, EASTERN AFRICA,
AND THE INDIAN OCEAN TERRITORIES

Subscribed Capital £1,250,000
Paid-up Capital £250,000
Reserve Funds £2,194,000

General Manager: E. C. C.

Branches: NAIROBI, MOMBASA, MALINDI, PORT KAITUMA, KISUMU, MALINDI, PORT KAITUMA, KISUMU, MALINDI, PORT KAITUMA, KISUMU.

FOR THE TERMINAL BUILDINGS AT EMBAKASI AIRPORT... A. BAUMANN & CO. (L.) LTD

Supplied:

GOLD ROOMS (G. A. HALL LTD)
WOODEN FLOOR BOARDS (COLLAR & CO)
GRADED POWDER (DIACALON PRODUCTS LTD)

A. BAUMANN & CO. LTD.
MANROSE HOUSE
P.O. BOX 328, NAIROBI

U.K. SERVICE BIPLANES TO BRITANNIAS

The number of Africa was made available to the general public in the form of a book, "The U.K. Service Biplanes to Britannias". This book, which is available from the U.K. Service Biplanes to Britannias, contains a full and complete list of all the biplanes which are currently in service with the U.K. Service Biplanes to Britannias. The book is available for purchase at a special price of 5s. 6d. per copy, plus postage and packing.

START IN 1932

The history of the U.K. Service Biplanes to Britannias is a story of the development of a service which has grown from a small number of biplanes in 1932 to a large and well-organized service today. The service was first established in 1932, when the U.K. Service Biplanes to Britannias was formed. Since that time, the service has grown steadily, and today it is one of the most important services in the world.

TEN-DAY TRIP

In January, 1932, the service was first used for a ten-day trip to the Cape of Good Hope. The trip was made in a biplane which was specially designed for the purpose. The trip was a success, and it proved that biplanes were capable of making long-distance flights. Since that time, the service has been used for many other long-distance trips, and it has become one of the most popular services in the world.

TWO PIONEERS

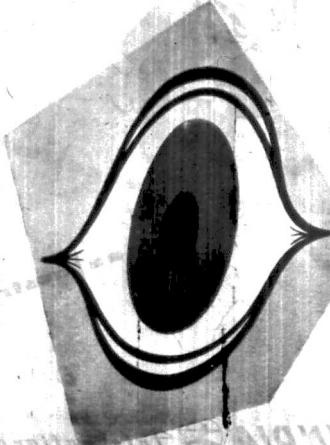
In 1932 a series of experiments was conducted by the U.K. Service Biplanes to Britannias. The experiments were conducted in order to determine the best way to fly a biplane over long distances. The experiments were successful, and they proved that biplanes were capable of making long-distance flights. The results of the experiments were used to improve the service, and today it is one of the most efficient services in the world.

COMET WILL COME AIR TIME



Solent flying boats landed on Lake Naivasha

The first flying boat service in Kenya was established in 1932, when the U.K. Service Biplanes to Britannias was formed. The service was first used for a ten-day trip to the Cape of Good Hope. The trip was a success, and it proved that biplanes were capable of making long-distance flights. Since that time, the service has been used for many other long-distance trips, and it has become one of the most popular services in the world.



IT'S EYE OPENING!

Yes, the new Nairobi Airport at Embakasi certainly is eye opening, strikingly modern in appearance without any sacrifice of utility.

We at Enfield Cables are proud of the fact that we supplied, from local stock, over 65,000 feet of varying types of electrical cables to the Ministry of Works for the new Airport.

Thousands of yards of tough armoured cable stretch out underground to all the important nerve centres, not to mention many miles of internal wiring, with every strand doing a vital job of work.

Nairobi Airport and its many services operate efficiently with the help of "ENFIELD CABLES".

ENFIELD CABLES (E.A.) LIMITED

SALES OFFICES: NAIROBI: 74, 75, 76, 77, 78, 79, 80, 81, 82, 83, 84, 85, 86, 87, 88, 89, 90, 91, 92, 93, 94, 95, 96, 97, 98, 99, 100. MOMBASA: 1, 2, 3, 4, 5, 6, 7, 8, 9, 10, 11, 12, 13, 14, 15, 16, 17, 18, 19, 20, 21, 22, 23, 24, 25, 26, 27, 28, 29, 30, 31, 32, 33, 34, 35, 36, 37, 38, 39, 40, 41, 42, 43, 44, 45, 46, 47, 48, 49, 50, 51, 52, 53, 54, 55, 56, 57, 58, 59, 60, 61, 62, 63, 64, 65, 66, 67, 68, 69, 70, 71, 72, 73, 74, 75, 76, 77, 78, 79, 80, 81, 82, 83, 84, 85, 86, 87, 88, 89, 90, 91, 92, 93, 94, 95, 96, 97, 98, 99, 100. MALINDI: 1, 2, 3, 4, 5, 6, 7, 8, 9, 10, 11, 12, 13, 14, 15, 16, 17, 18, 19, 20, 21, 22, 23, 24, 25, 26, 27, 28, 29, 30, 31, 32, 33, 34, 35, 36, 37, 38, 39, 40, 41, 42, 43, 44, 45, 46, 47, 48, 49, 50, 51, 52, 53, 54, 55, 56, 57, 58, 59, 60, 61, 62, 63, 64, 65, 66, 67, 68, 69, 70, 71, 72, 73, 74, 75, 76, 77, 78, 79, 80, 81, 82, 83, 84, 85, 86, 87, 88, 89, 90, 91, 92, 93, 94, 95, 96, 97, 98, 99, 100. PORT KAITUMA: 1, 2, 3, 4, 5, 6, 7, 8, 9, 10, 11, 12, 13, 14, 15, 16, 17, 18, 19, 20, 21, 22, 23, 24, 25, 26, 27, 28, 29, 30, 31, 32, 33, 34, 35, 36, 37, 38, 39, 40, 41, 42, 43, 44, 45, 46, 47, 48, 49, 50, 51, 52, 53, 54, 55, 56, 57, 58, 59, 60, 61, 62, 63, 64, 65, 66, 67, 68, 69, 70, 71, 72, 73, 74, 75, 76, 77, 78, 79, 80, 81, 82, 83, 84, 85, 86, 87, 88, 89, 90, 91, 92, 93, 94, 95, 96, 97, 98, 99, 100. KISUMU: 1, 2, 3, 4, 5, 6, 7, 8, 9, 10, 11, 12, 13, 14, 15, 16, 17, 18, 19, 20, 21, 22, 23, 24, 25, 26, 27, 28, 29, 30, 31, 32, 33, 34, 35, 36, 37, 38, 39, 40, 41, 42, 43, 44, 45, 46, 47, 48, 49, 50, 51, 52, 53, 54, 55, 56, 57, 58, 59, 60, 61, 62, 63, 64, 65, 66, 67, 68, 69, 70, 71, 72, 73, 74, 75, 76, 77, 78, 79, 80, 81, 82, 83, 84, 85, 86, 87, 88, 89, 90, 91, 92, 93, 94, 95, 96, 97, 98, 99, 100.

*East Africa's finest
demanded the best*



CATERPILLAR

**DIESEL
TRACTORS
&
EARTHMOVING
EQUIPMENT**

S&C

(EAST AFRICAN AIRWAYS CORPORATION)

S&C

**IRONCLAD SWITCHGEAR · INSULATED CABLE
OVERHEAD BUSBAR TRUNKING
LIGHTING FITTINGS · STREET LIGHTING
ELECTRIC COOKING EQUIPMENT**

(MINISTRY OF WORKS)

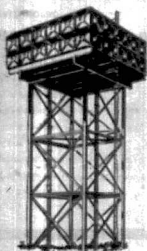
**ALL EQUIPMENT FOR AIRFIELD AND STREET
LIGHTING**

Electrolux

LAUNDRY EQUIPMENT

TROUGHED & ROUND CORRUGATED
ALUMINIUM ROOF SHEETING

(ALUMINIUM UNION LTD.)



PIGGOTT

**SECTIONAL
STEEL
WATER
TANKS**



**JASON
HOSE REELS**

HENDERSON SLIDING-DOOR GEAR

**FOAMITE
FIRE
EXTINGUISHERS**
(SODA ACID & CO. 2)



Gailey & Roberts Limited

KENYA · UGANDA · TANGANYIKA

GROWTH SINCE 1926

When aviation first started in 1903, it was a simple affair. A man sat in a wicker chair on a wooden platform, and a single engine propelled him forward. But in 1926, the world of aviation was changing. The first multi-engine aircraft were being developed, and the need for more powerful engines was becoming apparent. The Wright brothers' invention had laid the foundation, but the industry was still in its infancy. It was a time of great experimentation and discovery, as engineers sought to overcome the limitations of early aircraft. The growth of the industry was slow but steady, with new models being introduced each year. By 1926, the aviation industry had reached a point where it was no longer just a hobby, but a serious business. The demand for more reliable and efficient aircraft was increasing, and manufacturers were responding with new designs and technologies. The future of aviation was bright, and the industry was poised for even greater growth in the years to come.

HIGH BUILDING

The construction of high buildings is a complex task that requires careful planning and execution. From the initial design to the final construction, every step must be taken with precision. High buildings are not only a challenge for engineers and architects, but also for the construction workers who build them. The use of steel and concrete allows for the construction of structures that can reach great heights. However, the process is often slow and labor-intensive. The cost of materials and labor is also a significant factor. Despite these challenges, the construction of high buildings continues to grow, as cities around the world seek to expand their skylines. The development of new construction techniques and materials is helping to overcome many of the obstacles. The future of high building is bright, and the industry is expected to continue to thrive for many years to come.

Met. service for aircrew briefing

By R. H. DRABILL
(Weather, Map Advisor, and Navigation Department)

The use of meteorology is very old although, in its early days it was limited to a few simple observations. The modern meteorology of the twentieth century gave a terrific impetus to the study of weather and its development on aerologic lines. The meteorological service in East Africa was established in 1925, although a meteorological office was set up in the First World War. In a very few African services was mainly concerned with climatology and the weather of the region.

The United Kingdom Office of Meteorology is the central meteorological office for the British Empire. It is responsible for the collection and dissemination of meteorological information throughout the Empire. The office works closely with other meteorological services around the world to ensure that accurate and timely weather information is available to all who need it. This is particularly important for aircrew, who rely on accurate weather forecasts to plan their flights and ensure the safety of their passengers.

Flights in East Africa are often subject to unpredictable weather conditions, which can be a major hazard. Aircrew must be kept up-to-date on the latest weather information to avoid dangerous situations. The meteorological service provides a range of services to aircrew, including weather briefings, forecasts, and reports. These services are essential for the safe and efficient operation of aircraft in the region. The meteorological service is committed to providing the highest quality of service to all who use it, and to continuing to improve its capabilities in the future.

Using winds is a critical skill for aircrew, as it can significantly affect the performance of an aircraft. Understanding wind patterns and how they change over time and location is essential for planning a flight. The meteorological service provides detailed information on wind conditions, including wind speed, direction, and turbulence. This information is used to calculate the true airspeed and ground speed of an aircraft, and to determine the most efficient route to a destination. Aircrew must also be aware of the potential for wind shear, which can be particularly dangerous during takeoff and landing. The meteorological service provides training and support to aircrew to help them understand and manage wind-related risks.

Using winds is a critical skill for aircrew, as it can significantly affect the performance of an aircraft. Understanding wind patterns and how they change over time and location is essential for planning a flight. The meteorological service provides detailed information on wind conditions, including wind speed, direction, and turbulence. This information is used to calculate the true airspeed and ground speed of an aircraft, and to determine the most efficient route to a destination. Aircrew must also be aware of the potential for wind shear, which can be particularly dangerous during takeoff and landing. The meteorological service provides training and support to aircrew to help them understand and manage wind-related risks.

RADAR WILL DETECT STORMS FOR 100 MILES

In electronic, and radio-sonar observations, a small transmitter fitted with meteorological instruments is carried aloft by a large balloon filled with hydrogen. During its ascent, the radio-sonar continuously sends a series of signals which are picked up by a receiver on the ground and from these signals the pressure, temperature and humidity of the air at various heights up to a height of 50,000 feet can be determined. For radar observations, a small target which will be seen by the radar waves is carried aloft by a balloon. The target is made of a material which reflects the radar waves and is carried aloft by a balloon. The radar waves are sent from a ground station to the target and are reflected back to the ground station. The time taken for the waves to return is used to determine the distance to the target. This allows the radar to detect storms and other weather phenomena up to 100 miles away.

The ability to detect storms and other weather phenomena from a distance is a major advance in meteorology. It allows meteorologists to provide more accurate and timely forecasts, which is essential for the safety of aircrew and the general public. The use of radar and radio-sonar observations is a key part of modern meteorology, and it continues to play a vital role in the study of the atmosphere and the prediction of weather.



Programme of rescue to start soon

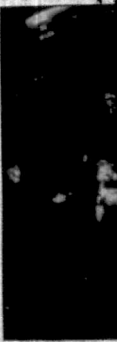
The programme of rescue operations in East Africa is set to begin soon. This initiative is a response to the growing number of accidents and incidents in the region. The programme will involve a range of measures, including the deployment of rescue teams, the establishment of rescue bases, and the provision of rescue equipment. The goal is to improve the safety of air travel in East Africa and to ensure that any accidents or incidents are dealt with as quickly and effectively as possible. The programme is a major step forward in the development of aviation safety in the region, and it is expected to have a significant impact on the industry.

STOCK LANDING

The landing of stocks in East Africa is a complex process that requires careful planning and execution. From the initial design to the final construction, every step must be taken with precision. The use of steel and concrete allows for the construction of structures that can reach great heights. However, the process is often slow and labor-intensive. The cost of materials and labor is also a significant factor. Despite these challenges, the construction of high buildings continues to grow, as cities around the world seek to expand their skylines. The development of new construction techniques and materials is helping to overcome many of the obstacles. The future of high building is bright, and the industry is expected to continue to thrive for many years to come.

More Aircrew

The need for more aircrew in East Africa is a pressing issue. The increasing number of flights and the growing size of aircraft require a larger and more skilled workforce. The meteorological service is working to address this need by providing training and support to aircrew. This includes the development of new training programmes, the provision of practical experience, and the ongoing support and mentorship of new recruits. The goal is to ensure that the aircrew of the future are well-prepared to handle the challenges of modern aviation. The meteorological service is committed to providing the highest quality of training and support to all who use it, and to continuing to improve its capabilities in the future.



The display provided by the Storm Warning Radar at a range of 50 miles. The two white areas on the left are echoes produced by storms about 10 and 40 miles away from Nairobi. The other white areas are prominent signals from meteorological high ground and mountains.

A HUNDRED YEARS' TRADITION...

Yes, it's over one hundred years since the GENSE factory was founded at ESKILSTUNA in Sweden. This tradition is carried on today by the skilled craftsmen who make GENSE cutlery—the very finest Stainless Steel Cutlery.

The benefits of fine quality workmanship are available in the Airport Restaurant at EMBAKASII because these passengers from all over the world will use GENSE CUTLERY.

ANTON PETERSEN & HENIUS (E.A.) LTD
STANVAC HOUSE, QUEENSWAY, NAIROBI
P.O. BOX 593 TEL. 57275

ALITALIA

ITALIAN AIRLINES

RESPECTFULLY

WELCOME

M. M. THE QUEEN MOTHER

AND WISH TO THANK

THE GOVERNMENT OF KENYA

FOR PROVIDING THE NEW

EMBARKING AIR TERMINAL

ALITALIA

ITALIAN AIRLINES

SEMTEX

DECORATIVE FLOORING TILES

USED IN THE CUSTOMS HALL AT EMBAKASII

Vinylex floor tiles were specified for the Customs Hall at Embakasi Airport. These tiles, which are available in twenty shades, have quickly earned themselves a big reputation for their tough, hard-wearing qualities; they are resistant to dirt, vermin, and yet their slip-surface are pleasant and comfortable underfoot. Vinylex Decorative Tiles are easily installed and require only a minimum of cleaning.

A PRODUCT OF A DUNLOP COMPANY

DISTRIBUTORS: THE AFRICAN MERCANTILE COMPANY LIMITED
(Incorporated in England)
Branches throughout East Africa

The EAST AFRICAN STANDARD, incorporating THE LEADER is published by the Proprietor, East African Standard (Limited), 100 Market Street, Nairobi, Kenya. Telephone 41 and 42,000, on a transmission.