

Kenya Standard

UGANDA ARGUS. With which is incorporated THE LEADER.

GUARANTEED THE LARGEST CIRCULATION OF ANY NEWSPAPER IN KENYA, UGANDA, TANGANYIKA AND ZANZIBAR.

CARS MEET ALL TRAINS AND PLANES.

Office: "Bungwe."

PRICE 30 CENTS.

No. 6473. REGISTERED AT THE GENERAL POST OFFICE AS A NEWSPAPER.

NAIROBI, SATURDAY, DECEMBER 1, 1934.

AMAZING SCENES AT ROYAL WEDDING

...bearing Tributes of Loyalty to the Crown

The Abbey Service

"We join in thanking the citizens of London for their good wishes and feel deeply touched by their kind thought of us on our wedding day."

The above telegram was received by the Lord Mayor of London yesterday from their Royal Highnesses the Duke and Duchess of Kent.

(Through Dexter's Agency and by Wireless) London, Nov. 29. Some of intense patriotic fervor were witnessed at midnight service at Westminster Abbey...

After midnight service began to conclude at 12.15. The Duke and Duchess of Kent...

In America Throughout Europe's capitals millions are joining in the rejoicing and special arrangements...

Missing in the Streets It is probable that never in London's history has so many people slept in the streets...

The Duke of Kent was obviously nervous as he made for the bride. The Prince of Wales, who was supposed to have officiated...

GERMAN NAZI LEADER FOR TANGANYIKA

Commander Von Schoenfeld Visits Territory

QUARTON IN COMMON

(Through Dexter's Agency.) London, Nov. 29. In the House of Commons today Sir Philip Cunliffe-Leslie...

LORD ASHLEY GRANTED DECREE NISI

Douglas Fairbanks Cited as Co-Respondent

(Through Dexter's Agency.) London, Nov. 28. Lord Ashley has been granted a decree nisi...

Police Frictions Unofficially presented have been taken to guard the Royal guests for the first time in England...

IRISH CITIZENSHIP BILL

British Nationality to be Decared

(Through Dexter's Agency.) London, Nov. 28. After the reading of the Bill in the House of Commons...

A REPORT DENIED

The Count and Countess of Cavragno

(Through Dexter's Agency.) Paris, November 29. The Countess of Cavragno has been leaving for New York...

THE BELGIAN CABINET

(Through Dexter's Agency.) Brussels, Nov. 29. The Chamber of Representatives by 80 votes to 65, with 40 abstentions, has passed a Vote of Confidence in the new Theunis Cabinet.

TERRORISTS TRAINED IN HUNGARY

Yugo-Slav Memorandum to League

MARBEILL MURDER

Complicity in Organization of Assassins Alleged

(Through Dexter's Agency.) Berlin, Nov. 28. The Yugo-Slav Government's memorandum...

GERMAN ARMY TO REVOLT?

Reichswehr Attitude to Regime

Reports Denied

ATMOSPHERE OF RUDDYED UNBURY

PRESIDENT SALAMANCA RESIGNS

After Being Seized by Rebel Troops

(Through Dexter's Agency.) La Paz, Bolivia, Nov. 28. President Salamanca, his two daughters, President-elect Yampuy...

GREAT MAN HUNT ENDS IN UNITED STATES

Public Enemy No. 1 Riddled with Bullets

(Through Dexter's Agency.) The greatest man hunt in America since the search for Dillinger has been ended by the police announcement that their quarry, "Baby Face" Nelson, Public Enemy No. 1, has been found dead.

PUTNEY BY-ELECTION

(By Wireless.) The Putney by-election, caused by the death of the Conservative member, Mr. Samuel Sturges, resulted as follows:

Conservative majority 2,603

At the last election the figures were: Mr. S. Samuel (Con.) 27,818 Mr. J. C. Laver (Lab.) 6,172

Commons Debate on Air Strength

MR. WINSTON CHURCHILL'S ALLEGATIONS

German Re-Armament

MR. BALDWIN OUTLINES PLANS FOR INCREASING HOME DEFENCES

Important revelations concerning Britain's air force were made by Mr. Stanley Baldwin in the House of Commons when replying to Mr. Winston Churchill...

Secrecy Deplored

(Through Dexter's Agency.) London, Nov. 28. "The German factories are working practically under no cover."

General Von Blomberg, Chief of the Reichswehr.

After midnight service began to conclude at 12.15. The Duke and Duchess of Kent...

RUSSIA TO ABOLISH RATIONING

Partial Return to Private Trading

(Through Dexter's Agency.) Moscow, Nov. 29. The rationing of bread and other commodities, which was introduced in 1929 by the Soviet Government...

The Christmas Gift Store SIXTH AVENUE IS XMAS GIFT AVENUE AT WHITEAWAYS WONDERFUL DISPLAY OF THE LATEST NOVELTIES. THE TOY BAZAAR IS OPEN - THE FUN IS ON. See Our Show of Xmas Toys and Gifts in the Windows To-Night EVERY DEPARTMENT IS READY FOR XMAS TOYS FOR ALL GIFTS FOR ALL.

FOR SALE.

The cheap for advertisements in this column...

At R. B. Duncan's you get 'Better than the Best'...

At a good whisky can be had at a price in keeping with the times...

DIFFICULTIES are sent to you by the best shopping diffculty dispenser...

Don't miss the Christmas Mail! Don't miss the Christmas Mail!

THE 'BERRY' Best! Silver and Gold... 'The Wagon'...

KENTIA Today by Nura K. Strang... A Baby and graphic account...

NEAR Sail Heids Th' Day!!! Of course we had Mackin'...

SPORT and Travel in East Africa... visits by H.R.H. Prince of Wales...

SAVE Money this Christmas... White Label Champagne...

Richardson, Tyson & Martin

Lead and Estate Agents, Auctioneers of Real Estate... Valuations Undertaken by an Approved Valuer...

GHOUARD ROAD. A convenient house with 3 bedrooms inside...

BEHFIELD ROAD. A modern stone house inside sanitation...

At a good whisky can be had at a price in keeping with the times...

DIFFICULTIES are sent to you by the best shopping diffculty dispenser...

Don't miss the Christmas Mail! Don't miss the Christmas Mail!

THE 'BERRY' Best! Silver and Gold... 'The Wagon'...

KENTIA Today by Nura K. Strang... A Baby and graphic account...

NEAR Sail Heids Th' Day!!! Of course we had Mackin'...

SPORT and Travel in East Africa... visits by H.R.H. Prince of Wales...

Mitchell Cotts and Co. (E.A.) Ltd.

Lead, Estate and Managing Agents, Valuations undertaken by Government Licensed Valuer...

NANYUKI. 2 acres situated to the north of Nanyuki Town...

THOMSON'S Falls. 7,200 acres comprising dairy land of excellent quality...

ON TIKA ROAD. 61 miles from Town, an excellent small Coffee Estate of 53 acres...

FOR SALE. Concrete block houses containing 4 rooms...

UPPER HILL ESTATE. 1 acre offered for sale at £20 each.

J. W. Milligan & Co. Ltd.

Land and Estate Agents Licensed Valuers... P.O. Box 148, NAIROBI.

HOUSES TO LET. Murumbi, 4 bedrooms, 2 others with 3 and 4 bedrooms...

FOR SALE. Fully equipped up-to-date Dairy and Mined 3 bedrooms, new town...

FOR SALE. Fully equipped up-to-date Dairy and Mined 3 bedrooms, new town...

FOR SALE. Fully equipped up-to-date Dairy and Mined 3 bedrooms, new town...

FOR SALE. Fully equipped up-to-date Dairy and Mined 3 bedrooms, new town...

FOR SALE. Fully equipped up-to-date Dairy and Mined 3 bedrooms, new town...

FOR SALE. Fully equipped up-to-date Dairy and Mined 3 bedrooms, new town...

FOR SALE. Fully equipped up-to-date Dairy and Mined 3 bedrooms, new town...

FOR SALE. Fully equipped up-to-date Dairy and Mined 3 bedrooms, new town...

IF ITS ANYTHING IN

FURNITURE, CARPENTERS, DRAPERY, HOSIERY, CORSETS, LADIES TAILORING and DRESSMAKING

From life to death is but a short step... From life to death is but a short step...

DEL MONTE DRIED FRUITS. Dried Apples, Dried Apricots, Dried Peaches...

M. D. PURI and SONS, opposite Municipal Market, P.O. Box 872.

F. A. HEAD, Piano-forte Tuner. Several Good Pianos for Sale.

MOTORISTS! For Your Requirements: CAR BATTERIES, TYRES, RUBBERS, ACCESSORIES...

LAST! Too late, you remember there is such a thing as Baggage Insurance.

HOUSE DECORATING. IN MOTTING, CHAMOTEX PLASTIC PAINTING...

TODAY'S TRAINS. The following trains are due to leave Nairobi to-day...

Standard Stationery Stores. P.O. Box 38, NAIROBI.

CHRISTMAS-1934.

A visit to KASSAM KANI & SON, God. Road, will solve the problem of your XMAS shopping.

Established 1904. Plumbing Work in all its Branches UNDER EUROPEAN SUPERVISION.

HARTZ & BELL Ltd. Sanitary Engineers, Tankmakers, Tinsmiths. Car Body and Radiator Repairs, etc.

WHAT YOU NEED is a -YALE- on the Front and Back Doors.

THE BUSINESS OF MAXWELL & SIMMONS CLEARING and TRANSPORT AGENTS.

Roadways (Kenya) Ltd. WHO SOLICIT YOUR PATRONAGE.

TREMENDOUS RANGE OF CONFECTIONERY JUST OPENED.

PLANTS. FREE FLOWERS OF EVERY VARIETY DAILY.

CASH SALES. The Best quality of Ashes and...

THE PIONEER GENERAL

Assurance Society Limited. Transacting ENDOWMENT, WHOLE LIFE, JOINT LIFE...

Kenya Fire & Marine Insurance Co. Ltd. Fire Supply Co. Ltd. WIMHURST Ltd.

USEFUL BOOKS. For Home, Office, Farm, etc. PROSPECTING FOR GOLD...

THE COMPLETE ANTEWER GARDENER. THE COMPLETE AMATEUR GARDENER...

THE SOUTH AND EAST AFRICAN YEAR BOOK AND GUIDE FOR 1921.

THE SOUTH AND EAST AFRICAN YEAR BOOK AND GUIDE FOR 1921.

THE SOUTH AND EAST AFRICAN YEAR BOOK AND GUIDE FOR 1921.

THE SOUTH AND EAST AFRICAN YEAR BOOK AND GUIDE FOR 1921.

THE SOUTH AND EAST AFRICAN YEAR BOOK AND GUIDE FOR 1921.

Standard Stationery Stores. P.O. Box 38, NAIROBI.

**DENIS MORGAN'S**  
**Gold Blend**  
 By appointment to H.M. King George V.

The Genuine Produce of France shipped with the Acquit Regime direct from the French State.

**Pure Grape Cognac**  
 Produced and distilled in the District of Cognac ("Grand Aigle" brand) whose efforts will be made to meet their wishes.

**Regularly shipped to all parts of the Empire except**  
 Agents—BISHENADAS & Co., Market, NAIROBI.

**RITA**

Evening Gowns, Day Dresses, New Straw Hats, Tweeds, Gloves

**SAVOY HOTEL**  
 NAIROBI

For Comfort and Convenience stay at

TERMS TO SUIT THE TIMES. ATTRACTIVE BAR, FULLY LICENSED.

P.O. Box 20      Telegrams: "Savoy."

**JAPANESE**  
 DRY CLEANING AND DYING WORKS.

YOUR OLD SUIT MADE NEW FOR ONLY Shs. 4/- PER SUIT. Dry Cleaning.

Satisfaction Guaranteed.

at the Japanese Hairdressing Saloon, Malindi Building, Government Road.      NAIROBI.

**Make the charms of East Africa known**

The East African Standard welcomes photographs of East Africa interest for publication more particularly such as are concerned with horticulture in the territories or administrative of the various of the country.

The name and address of the sender and the subject of the photograph must be written on the back of the print. Films or plates may be sent for enlargement purposes. If photographs are to be returned a stamped addressed envelope must be enclosed. Shs. 5/- will be paid for every picture published. This will be in addition to the payment of exceptional interest at the discretion of the Editor.

Photographs must be of East African interest and taken by the sender.

Address—  
 "SNAPSHOTS"  
 The East African Standard

**LONDON SHARE MARKET**

Continued Firmness of Gilt-Edged

**Kafirs Rally Well**

Below is published the exclusive general share market supplied by Messrs. Richardson, Tison and Martin, Ltd., Nairobi, who receive the reports weekly by air mail from London.

Foreign divisions of having published quotations of any shares not included in the list of stock market prices given at the end of the report, should communicate with the "East African Standard," whose efforts will be made to meet their wishes.

**Brownies Advance in Price**

Again we have to report the continued firmness of gilt-edged under the lead of Local bond and Oil contracts, 97 1/2 and 91 respectively. Towards the end of the week, however, it became apparent that profits were being taken in the market and numerous shares and stocks were advanced prices, and the Star portfolio rather overvalued. German loans, Chinese, Indian and all issues, however, were all firm, as also were Japanese bonds. A feature was provided by a report in "Transport" (C) that from 90 to 91 1/2.

Brownies kept advancing his price all round, their reports have been consistently good of late, and were not only well-empowered by that of Hans Bahr (C) 115 and 120, but also the strong 20 per cent. tax free for 100, as compared with 12 1/2 per cent., and Worthington's higher price.

**Tobacco Unsettled**

Tobaccoes are undecided after their recent advance. Electro Supply and Electrical shares continue a firm market under the lead of Stavros (B) and South Durban, after declining on the local dividend of 6 per cent. last year.

Activity developed among commercial motor issues and quotations generally tend to show favourable developments in this section. Other motor shares continue a patchy market. Bolla Bolla at 107 1/2 being a firm exception.

Industries has been revived in connection with the building industry. Paint shares have been strong, as the Lewis Berger (157) and London Bank (167) will have risen 5/2.

South Durban (A) continues a firm market.

All shares are all steady.

The Indian market is dull and tends to fall. The share market is on the decline of several important companies.

**Mining Matters**

Considerable discontent was noted in the Mining market's part of the week, but the better class of shares are so solidly held that it is expected that their strength will in due course permeate the market in which shares which have been so much disturbed.

The reports have been depressing with the report of Blokhain (A) and the Rose Atlantic (27) which with little effect on the price.

The African mining shares have fallen under the general cloud, but still on mining markets but are now finding to pick up, there being very little evidence of any recovery in this market.

**Representative Prices**

The following representative prices are given for reference on Dec. 31 and Nov. 30, 1924.

London Stock	107 1/2	108 1/2
London Bond	97 1/2	91
London Oil	115	120
London Transport	52 1/2	50
London Electric	50 1/2	50
London Gas	35 1/2	35 1/2
London Water	27 1/2	27 1/2
London Municipal	27 1/2	27 1/2
London Tramways	27 1/2	27 1/2
London Electric	27 1/2	27 1/2
London Gas	27 1/2	27 1/2
London Water	27 1/2	27 1/2
London Municipal	27 1/2	27 1/2
London Tramways	27 1/2	27 1/2
London Electric	27 1/2	27 1/2
London Gas	27 1/2	27 1/2
London Water	27 1/2	27 1/2
London Municipal	27 1/2	27 1/2
London Tramways	27 1/2	27 1/2
London Electric	27 1/2	27 1/2
London Gas	27 1/2	27 1/2
London Water	27 1/2	27 1/2
London Municipal	27 1/2	27 1/2
London Tramways	27 1/2	27 1/2
London Electric	27 1/2	27 1/2
London Gas	27 1/2	27 1/2
London Water	27 1/2	27 1/2
London Municipal	27 1/2	27 1/2
London Tramways	27 1/2	27 1/2
London Electric	27 1/2	27 1/2
London Gas	27 1/2	27 1/2
London Water	27 1/2	27 1/2
London Municipal	27 1/2	27 1/2
London Tramways	27 1/2	27 1/2
London Electric	27 1/2	27 1/2
London Gas	27 1/2	27 1/2
London Water	27 1/2	27 1/2
London Municipal	27 1/2	27 1/2
London Tramways	27 1/2	27 1/2
London Electric	27 1/2	27 1/2
London Gas	27 1/2	27 1/2
London Water	27 1/2	27 1/2
London Municipal	27 1/2	27 1/2
London Tramways	27 1/2	27 1/2
London Electric	27 1/2	27 1/2
London Gas	27 1/2	27 1/2
London Water	27 1/2	27 1/2
London Municipal	27 1/2	27 1/2
London Tramways	27 1/2	27 1/2
London Electric	27 1/2	27 1/2
London Gas	27 1/2	27 1/2
London Water	27 1/2	27 1/2
London Municipal	27 1/2	27 1/2
London Tramways	27 1/2	27 1/2
London Electric	27 1/2	27 1/2
London Gas	27 1/2	27 1/2
London Water	27 1/2	27 1/2
London Municipal	27 1/2	27 1/2
London Tramways	27 1/2	27 1/2
London Electric	27 1/2	27 1/2
London Gas	27 1/2	27 1/2
London Water	27 1/2	27 1/2
London Municipal	27 1/2	27 1/2
London Tramways	27 1/2	27 1/2
London Electric	27 1/2	27 1/2
London Gas	27 1/2	27 1/2
London Water	27 1/2	27 1/2
London Municipal	27 1/2	27 1/2
London Tramways	27 1/2	27 1/2
London Electric	27 1/2	27 1/2
London Gas	27 1/2	27 1/2
London Water	27 1/2	27 1/2
London Municipal	27 1/2	27 1/2
London Tramways	27 1/2	27 1/2
London Electric	27 1/2	27 1/2
London Gas	27 1/2	27 1/2
London Water	27 1/2	27 1/2
London Municipal	27 1/2	27 1/2
London Tramways	27 1/2	27 1/2
London Electric	27 1/2	27 1/2
London Gas	27 1/2	27 1/2
London Water	27 1/2	27 1/2
London Municipal	27 1/2	27 1/2
London Tramways	27 1/2	27 1/2
London Electric	27 1/2	27 1/2
London Gas	27 1/2	27 1/2
London Water	27 1/2	27 1/2
London Municipal	27 1/2	27 1/2
London Tramways	27 1/2	27 1/2
London Electric	27 1/2	27 1/2
London Gas	27 1/2	27 1/2
London Water	27 1/2	27 1/2
London Municipal	27 1/2	27 1/2
London Tramways	27 1/2	27 1/2
London Electric	27 1/2	27 1/2
London Gas	27 1/2	27 1/2
London Water	27 1/2	27 1/2
London Municipal	27 1/2	27 1/2
London Tramways	27 1/2	27 1/2
London Electric	27 1/2	27 1/2
London Gas	27 1/2	27 1/2
London Water	27 1/2	27 1/2
London Municipal	27 1/2	27 1/2
London Tramways	27 1/2	27 1/2
London Electric	27 1/2	27 1/2
London Gas	27 1/2	27 1/2
London Water	27 1/2	27 1/2
London Municipal	27 1/2	27 1/2
London Tramways	27 1/2	27 1/2
London Electric	27 1/2	27 1/2
London Gas	27 1/2	27 1/2
London Water	27 1/2	27 1/2
London Municipal	27 1/2	27 1/2
London Tramways	27 1/2	27 1/2
London Electric	27 1/2	27 1/2
London Gas	27 1/2	27 1/2
London Water	27 1/2	27 1/2
London Municipal	27 1/2	27 1/2
London Tramways	27 1/2	27 1/2
London Electric	27 1/2	27 1/2
London Gas	27 1/2	27 1/2
London Water	27 1/2	27 1/2
London Municipal	27 1/2	27 1/2
London Tramways	27 1/2	27 1/2
London Electric	27 1/2	27 1/2
London Gas	27 1/2	27 1/2
London Water	27 1/2	27 1/2
London Municipal	27 1/2	27 1/2
London Tramways	27 1/2	27 1/2
London Electric	27 1/2	27 1/2
London Gas	27 1/2	27 1/2
London Water	27 1/2	27 1/2
London Municipal	27 1/2	27 1/2
London Tramways	27 1/2	27 1/2
London Electric	27 1/2	27 1/2
London Gas	27 1/2	27 1/2
London Water	27 1/2	27 1/2
London Municipal	27 1/2	27 1/2
London Tramways	27 1/2	27 1/2
London Electric	27 1/2	27 1/2
London Gas	27 1/2	27 1/2
London Water	27 1/2	27 1/2
London Municipal	27 1/2	27 1/2
London Tramways	27 1/2	27 1/2
London Electric	27 1/2	27 1/2
London Gas	27 1/2	27 1/2
London Water	27 1/2	27 1/2
London Municipal	27 1/2	27 1/2
London Tramways	27 1/2	27 1/2
London Electric	27 1/2	27 1/2
London Gas	27 1/2	27 1/2
London Water	27 1/2	27 1/2
London Municipal	27 1/2	27 1/2
London Tramways	27 1/2	27 1/2
London Electric	27 1/2	27 1/2
London Gas	27 1/2	27 1/2
London Water	27 1/2	27 1/2
London Municipal	27 1/2	27 1/2
London Tramways	27 1/2	27 1/2
London Electric	27 1/2	27 1/2
London Gas	27 1/2	27 1/2
London Water	27 1/2	27 1/2
London Municipal	27 1/2	27 1/2
London Tramways	27 1/2	27 1/2
London Electric	27 1/2	27 1/2
London Gas	27 1/2	27 1/2
London Water	27 1/2	27 1/2
London Municipal	27 1/2	27 1/2
London Tramways	27 1/2	27 1/2
London Electric	27 1/2	27 1/2
London Gas	27 1/2	27 1/2
London Water	27 1/2	27 1/2
London Municipal	27 1/2	27 1/2
London Tramways	27 1/2	27 1/2
London Electric	27 1/2	27 1/2
London Gas	27 1/2	27 1/2
London Water	27 1/2	27 1/2
London Municipal	27 1/2	27 1/2
London Tramways	27 1/2	27 1/2
London Electric	27 1/2	27 1/2
London Gas	27 1/2	27 1/2
London Water	27 1/2	27 1/2
London Municipal	27 1/2	27 1/2
London Tramways	27 1/2	27 1/2
London Electric	27 1/2	27 1/2
London Gas	27 1/2	27 1/2
London Water	27 1/2	27 1/2
London Municipal	27 1/2	27 1/2
London Tramways	27 1/2	27 1/2
London Electric	27 1/2	27 1/2
London Gas	27 1/2	27 1/2
London Water	27 1/2	27 1/2
London Municipal	27 1/2	27 1/2
London Tramways	27 1/2	27 1/2
London Electric	27 1/2	27 1/2
London Gas	27 1/2	27 1/2
London Water	27 1/2	27 1/2
London Municipal	27 1/2	27 1/2
London Tramways	27 1/2	27 1/2
London Electric	27 1/2	27 1/2
London Gas	27 1/2	27 1/2
London Water	27 1/2	27 1/2
London Municipal	27 1/2	27 1/2
London Tramways	27 1/2	27 1/2
London Electric	27 1/2	27 1/2
London Gas	27 1/2	27 1/2
London Water	27 1/2	27 1/2
London Municipal	27 1/2	27 1/2
London Tramways	27 1/2	27 1/2
London Electric	27 1/2	27 1/2
London Gas	27 1/2	27 1/2
London Water	27 1/2	27 1/2
London Municipal	27 1/2	27 1/2
London Tramways	27 1/2	27 1/2
London Electric	27 1/2	27 1/2
London Gas	27 1/2	27 1/2
London Water	27 1/2	27 1/2
London Municipal	27 1/2	27 1/2
London Tramways	27 1/2	27 1/2
London Electric	27 1/2	27 1/2
London Gas	27 1/2	27 1/2
London Water	27 1/2	27 1/2
London Municipal	27 1/2	27 1/2
London Tramways	27 1/2	27 1/2
London Electric	27 1/2	27 1/2
London Gas	27 1/2	27 1/2
London Water	27 1/2	27 1/2
London Municipal	27 1/2	27 1/2
London Tramways	27 1/2	27 1/2
London Electric	27 1/2	27 1/2
London Gas	27 1/2	27 1/2
London Water	27 1/2	27 1/2
London Municipal	27 1/2	27 1/2
London Tramways	27 1/2	27 1/2
London Electric	27 1/2	27 1/2
London Gas	27 1/2	27 1/2
London Water	27 1/2	27 1/2
London Municipal	27 1/2	27 1/2
London Tramways	27 1/2	27 1/2
London Electric	27 1/2	27 1/2
London Gas	27 1/2	27 1/2
London Water	27 1/2	27 1/2
London Municipal	27 1/2	27 1/2
London Tramways	27 1/2	27 1/2
London Electric	27 1/2	27 1/2
London Gas	27 1/2	27 1/2
London Water	27 1/2	27 1/2
London Municipal	27 1/2	27 1/2
London Tramways	27 1/2	27 1/2
London Electric	27 1/2	27 1/2
London Gas	27 1/2	27 1/2
London Water	27 1/2	27 1/2
London Municipal	27 1/2	27 1/2
London Tramways	27 1/2	27 1/2
London Electric	27 1/2	27 1/2
London Gas	27 1/2	27 1/2
London Water	27 1/2	27 1/2
London Municipal	27 1/2	27 1/2
London Tramways	27 1/2	27 1/2
London Electric	27 1/2	27 1/2
London Gas	27 1/2	27 1/2
London Water	27 1/2	27 1/2
London Municipal	27 1/2	27 1/2
London Tramways	27 1/2	27 1/2
London Electric	27 1/2	27 1/2
London Gas	27 1/2	27 1/2
London Water	27 1/2	27 1/2
London Municipal	27 1/2	27 1/2
London Tramways	27 1/2	27 1/2
London Electric	27 1/2	27 1/2
London Gas	27 1/2	27 1/2
London Water	27 1/2	27 1/2
London Municipal	27 1/2	27 1/2
London Tramways	27 1/2	27 1/2
London Electric	27 1/2	27 1/2
London Gas	27 1/2	27 1/2
London Water	27 1/2	27 1/2
London Municipal	27 1/2	27 1/2
London Tramways	27 1/2	27 1/2
London Electric	27 1/2	27 1/2
London Gas	27 1/2	27 1/2
London Water	27 1/2	27 1/2
London Municipal	27 1/2	27 1/2
London Tramways	27 1/2	27 1/2
London Electric	27 1/2	27 1/2
London Gas	27 1/2	27 1/2
London Water	27 1/2	27 1/2
London Municipal	27 1/2	27 1/2
London Tramways	27 1/2	27 1/2
London Electric	27 1/2	27 1/2
London Gas	27 1/2	27 1/2
London Water	27 1/2	27 1/2
London Municipal	27 1/2	27 1/2
London Tramways	27 1/2	27 1/2
London Electric	27 1/2	27 1/2
London Gas	27 1/2	27 1/2
London Water	27 1/2	27 1/2
London Municipal	27 1/2	27 1/2
London Tramways	27 1/2	27 1/2
London Electric	27 1/2	27 1/2
London Gas	27 1/2	27 1/2
London Water	27 1/2	27 1/2
London Municipal	27 1/2	27 1/2
London Tramways	27 1/2	27 1/2
London Electric	27 1/2	27 1/2
London Gas	27 1/2	27 1/2
London Water	27 1/2	27 1/2
London Municipal	27 1/2	27 1/2
London Tramways	27 1/2	27 1/2
London Electric	27 1/2	27 1/2
London Gas	27 1/2	27 1/2
London Water	27 1/2	27 1/2
London Municipal	27 1/2	

# UNION-CASTLE LINE

HOMEWARDS via SUEZ From Mombasa.

"Dunlop Castle"	Dec. 28th
"Dunlop Castle"	Jan. 19th
"Llanstephan Castle"	Feb. 16th
"Dunlop Castle"	Mar. 10th
"Dunlop Castle"	Apr. 7th
"Llanstephan Castle"	May 25th
"Dunlop Castle"	June 22nd
"Dunlop Castle"	July 20th
"Llanstephan Castle"	Aug. 17th
"Dunlop Castle"	Sept. 28th

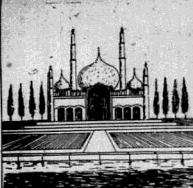
From Mombasa.

"Llandaff Castle"	Dec. 20th
"Llanstephan Castle"	Jan. 21st
"Llandover Castle"	Feb. 20th
"Llandaff Castle"	March 20th
"Llanstephan Castle"	April 17th
"Llandaff Castle"	May 15th
"Llandaff Castle"	June 12th
"Llanstephan Castle"	July 10th
"Llandaff Castle"	Aug. 7th
"Llandaff Castle"	Sept. 4th

Fares Home—First Class from £55. Tourist Class from £34  
 The Company's "Dialle to South Africa," 19 1/4" Edition is for sale at £2.00  
 Price, Shs. 2/50.  
 Vessels outward and homeward call at Palma and Tangier for passenger purposes.  
 Rates of Freight and Passage Money apply to—  
**THE UNION CASTLE MAIL STEAMSHIP COMPANY, LTD., MOMBASA.**  
 Passenger Agents at Nairobi, Kampala, Nakuru, Eldoret, Kisumu, Iringa, Mombasa, Arusha, Jinja.

# B. I. - EXCURSIONS -

## to INDIA



Special First Class Return Excursion Rates to Bombay will be available until the 31-3-35.

Take advantage of this opportunity and visit India, Land of never failing interest and rare charm.

For full particulars apply to—  
**SMITH, MACKENZIE & Co.,**  
 NAIROBI AND BRANCHES.

# Deutsche Ost-Afrika-Linie

Next Sailings from MOMBASA  
 HOMEWARD via Suez Canal. HOMEWARD via Cap.

Usukuma	Dec. 1	Watuwa	Dec. 1
Usukuma	Jan. 1	Watuwa	Jan. 1
Usukuma	Feb. 1	Watuwa	Feb. 1
Usukuma	Mar. 1	Watuwa	Mar. 1
Usukuma	Apr. 1	Watuwa	Apr. 1
Usukuma	May 1	Watuwa	May 1
Usukuma	Jun. 1	Watuwa	Jun. 1
Usukuma	Jul. 1	Watuwa	Jul. 1
Usukuma	Aug. 1	Watuwa	Aug. 1

All steamers offering excellent accommodation in First and Tourist Class.

Excursion Return Tickets Available to South Africa Ports.

Ballings subject to attention.  
 Full list particulars of passenger fares and freight rates apply to the Agents—  
**DEUTSCHE OST-AFRIKA-LINIE, General Agents Mombasa, Dar-es-Salaam, P.O. Box 101.**

# CLAN-ELLERMAN-HARRISON LINES

(JOINT SERVICE)  
 LIVERPOOL, GLASGOW, AVONMOUTH, MANCHESTER.

Arrivals from Liverpool and Glasgow	Closing Date at Liverpool	Due to arrive	Leading to Liverpool	Ready to load	Expected to sail
a.s. Discoverer	sailed	21st Dec.	a.s. Clan Murray	19th Dec.	24th Dec.
a.s. City of Malta	18th Dec.	11th Jan.	a.s. City of Swansea	28th Jan.	2nd Feb.

AGENTS in New York and throughout U. S. A., Europe, Canada, South Africa, and Australia.

# ELLERMAN and BUCKNALL LINE

Regular and Frequent Service from U.S.A. Atlantic Ports and St. John (N.B.) to East Africa with Transhipment at Aden.

Next sailings from	Leaves	St. John	Aden	Next arrives at	Due at	Due at
a.s. City of Malta	5th Dec.	3rd Dec.	a.s. City of Dunbar	arrived	2nd Dec.	7th Dec.
a.s. City of Goodwin	15th Dec.	18th Dec.	a.s. City of Wellington	arrived	7th Dec.	

# THE AFRICAN MERCANTILE COMPANY LIMITED.

MOMBASA (phone 29) NAIROBI (phone 2423)  
 Telegrams: Navigation.

# WE HAVE MOVED

to new premises  
**IN CAMBRIAN BUILDING**  
 Next door to S. J. Moore's Bookshop

**A. J. ELY & Co., Ltd.**  
 Chemists and Druggists, NAIROBI.

# BUDGET

for a SURPLUS

By Dealing with a Firm of Specialists  
 WITH YEARS OF LOCAL PRACTICAL EXPERIENCE  
 IN ALL BRANCHES OF THE BUILDING TRADE

SUPPLIERS of every kind of Building Material.  
 CONTRACTORS for any Job LARGE or SMALL.  
**ESTIMATES FREE**

Your Inspection Invited  
**JUST UNPACKED**  
 A NEW CONSIGNMENT OF  
 KITCHEN STOVES, BATHS, BASINS,  
 BATHROOM FITTINGS, etc.

**GEO. BLOWERS,**  
 Builder and Contractor.  
 Sadler Street, NAIROBI.

# National Bank of India Limited.

(Incorporated in United Kingdom)  
 Bankers to the Colony and Protectorates of Kenya and Uganda  
 Protectorate Government.

Subscribed Capital ... £4,000,000  
 Paid-up Capital ... £2,000,000  
 Reserve Fund ... £5,200,000

26, Bishopsgate, London, E.C. 2.

BRANCHES:  
 Mombasa, Nairobi, Nakuru, Kisumu, Eldoret, Kampala, Jinja, Dar-es-Salaam and Tanganyika, Aden, Calcutta, Bombay, Madras, Karachi, Lahore, Amritsar, Delhi, Cawnpore, Colombo, Cochin, Chittagong, Bangalore, Madras, Aden and Beauséjour point, Aden.

AGENTS in New York and throughout U. S. A., Europe, Canada, South Africa, and Australia.

FIXED DEPOSITS.—Deposits are received for fixed periods on terms which may be learned on application.

EXCHANGE.—The Bank grants Drafts on the Head Office and Branches at the current rates of Exchange for forwarding by cable or by post, with the facility of the payment when required.

Very description of Banking business transacted with all parts of the world.

# MEN'S and WOMEN'S DESIRE IS COMFORT.

Our Tailoring Department is built to satisfy that Desire.

Woolen Suitings of Latest Smart Dress Lengths of Crepe-de-Chine from DEBENTHENS.  
 Smart Fashions, Perfect Fitting, Best Tailoring.

Expert Dress and Costume Makers—Made up in the Latest London and Paris style.

**Alibhai & Co. Ltd.**

APPROVED LADIES and GENTS TAILORS.  
 P.O. Box 20, Baxter Road, NAIROBI. Phone 2218.

# Christmas Overseas Mails

POST OFFICE NOTICE.

According to the latest available information the following Mails should arrive at their Destination before Christmas Day:—

BOAT MAILS.

for SOUTH AFRICA	close Nairobi	Prob. Arriv.
a.s. KENYA (letters 3-15, parcels 1-30)	8-12-34	19-12-34
for INDIA	a.s. KARANJA (letters 3-15, parcels 3 A.M.)	5-12-34 15-12-34
for GREAT BRITAIN	close Nairobi	Prob. Arriv.
for SOUTH AFRICA	Letters 7 p.m., parcels 3 p.m.	15-12-34 20-12-34
for INDIA	Letters 7-15 a.m.	18-12-34 17-13-34
for GREAT BRITAIN	Letters 6 p.m.	17-13-34 20/21-13-34
for INDIA	Letters 7 p.m.	13-12-34 20-12-34

POST CHRISTMAS MAILS EARLY.

# MESSAGERIES MARITIMES EXCURSION

TICKETS TO EUROPE—3 MONTHS STAY.

To Marseilles 1st £92-6-0; 2nd £51-4-0; 3rd £36-0-0  
 To London 1st £100-0-0; 2nd £70-0-0; 3rd £40-0-0

Depart from Mombasa. Returns from Marseilles  
 20th November "Amboise" 14th March, 1935, "Jean Laborde"  
 1st December "Chantilly" 28th March, 1935, "Joffre"  
 15th December "Compagnie" 11th April, 1935, "Chantilly"

AGENTS: SMITH, MACKENZIE & CO., NAIROBI.

# GIBBS' AUTO TRANSPORT LIMITED

for AIRWAYS & ROADWAYS

Official Contractors to—  
 IMPERIAL AIRWAYS LTD. WILSON AIRWAYS LTD.  
 THOS. COOK and SON, LTD.

Cars repaired by skilled European.  
 SIXTY AVENUE GARAGE—Phone 2700

TOURS ARRANGED BY SAFARI OUTFITTERS.  
 OFFICE—Next to the Arcade Tobacconist, Stanley Arcade, Nairobi.

P.O. Box 1001, Cable: "Nadia," P.O. 27374, KAMPALA P.O. Box 847, Phone 187.

# WILSON AIRWAYS LTD.

WEEKLY COAST SERVICE.  
 Nairobi - Mombasa - Tanga - Zanzibar - Dar es Salaam

Leaving Nairobi every Tuesday—  
 Returning every Thursday.

FARES:  
 NAIROBI - MOMBASA ... Shs. 50-00  
 NAIROBI - TANGA ... Shs. 140-00  
 NAIROBI - ZANZIBAR ... Shs. 200-00  
 NAIROBI - DAR ES SALAAM ... Shs. 240-00

Further particulars apply to—  
 P.O. Box 1087 NAIROBI. Phone 2255.  
 OR ANY AGENT.

# B. M. C. House

Government Road, NAIROBI. Box 516.  
 Phone 2162.

# Xmas Gifts Ladies Handbags

We are displaying the Largest Range in Kenya.  
 HANDBAGS in SILK, LINEN CRASH and CREPE-DE-CHINE.

Prices From **3/50 TO 35/-** EACH

**THE BRADFORD MANUFACTURING CO. (KENYA) LTD.**  
 INCORPORATED IN ENGLAND.

# MAISON MARIE

PERMANENT WAVING SPECIALISTS.  
 The only firm in Kenya with SIX SYSTEMS OF PERMANENT WAVING

# FRIGIDINE

The only cool system. Shs. 40/- whole head  
 Phone 2920 Sixth Avenue, NAIROBI, Box 1029

# HOLLAND-AFRIKA LIJN

NORTHBOUND SOUTHBOUND

a.s. "Springfoelie"	Dec. 14th	a.s. "Kliphout"	Dec. 28th
a.s. "Sprekerk"	Dec. 21st	a.s. "Nijkerk"	Jan. 5th
a.s. "Kliphout"	Jan. 20th	a.s. "Hemskerk"	Feb. 6th
a.s. "Nijkerk"	March 1st	a.s. "Springfoelie"	Mar. 20th
a.s. "Springfoelie"	April 18th	a.s. "Randfontein"	April 18th
a.s. "Jagersfontein"	May 11th	a.s. "Witbank"	June 11th
a.s. "Bloemfontein"	June 8th	a.s. "Springfoelie"	July 19th
a.s. "Jagersfontein"	Aug. 3rd		

AGENTS: TWENTSCHE OVERZEESE TRADING Co., Ltd., Nairobi, Kenya. Telephone Agents: "Overzee."

# Overseas Mails Lyterlite.

NON-EXPLOSIVE.  
 The Scientific Answer to your Lighter Filling Problem.

Lyterlite, the non-explosive lighter fuel, can be used in any type of pocket or table lighter, old or new. One filling lasts six times longer than any liquid fuel. Minimizes spillage, shaking, and waste. Quick, clean and new to you. A squeeze of the thumb will fill a lighter in a jiffy. Comes with a clear white flame. Free from smoke and carbon and non-explosive.

Shs. 1/25 per tin and less 20 per cent. cash

The Tool House NAIROBI.

# "UPLANDS" - BACON.

ROBBER STAMPS.  
 AT Standard Stationery Stores.

Those who appreciate the good things in life always ask for—







OVERESTIMATING CHARGE DENIED

(Continued from page 7.)

1934. They left out of account the basic paid of shs. 500, to which on particular stipulations appeared to be taken. From these it would appear that Civil servants pay, in addition to this, shs. 4216 a year.

An Advertisement

It had also been reiterated that the first condition had been met, and yet he saw work after work in the London Press an advertisement in the columns of Kenya, in which appears the following:-

"Kenya offers a livelihood in fields where exceptional surroundings are available and taxation is light. For Further Particulars apply to the Kenya Association, P.O. Box 210, Nairobi."

He believed this to be a statement of fact as applied to the past, but when the advertisement is addressed, but if the views expressed in the House by the Hon. Member for Nairobi North who is Chairman of the Nairobi Association, he thought he considered opinion, then he intended that the advertisement should be taken for its intended purpose. He stated that the advertisement had not been put in by him, but that the London Press had put in such a kind of advertisement.

In connection with taxation, the Hon. Member mentioned a figure of 240 for the year 1934, but the Hon. Member for East Valley had now stated that this figure was considerably less. A large proportion of it is in respect of land tax. Taxation at the present time was shs. 100,000, but in the year 1934 it was shs. 1,000,000. He stated that the Hon. Member for Nairobi North had stated that the Hon. Member for East Valley had now stated that this figure was considerably less.

The Staff Position

The Hon. Member for East Valley had now stated that this figure was considerably less. A large proportion of it is in respect of land tax. Taxation at the present time was shs. 100,000, but in the year 1934 it was shs. 1,000,000. He stated that the Hon. Member for Nairobi North had stated that the Hon. Member for East Valley had now stated that this figure was considerably less.

Two Factors

Rightly or wrongly he took the view that the Government had been over-estimating the revenue which would be derived from the proposed taxation. He stated that the Hon. Member for Nairobi North had stated that the Hon. Member for East Valley had now stated that this figure was considerably less.

Calculated to Hurt

In conclusion, he wished to allude to the remarks of the Hon. Member for Nairobi North had thought proper to direct against him, which remarks he looks upon as calculated to hurt the country to occupy his present and past position. He had no intention of withdrawing from the Chamber, but he thought he might be interested to know what the Hon. Member for Nairobi North had thought proper to direct against him, which remarks he looks upon as calculated to hurt the country to occupy his present and past position.

Aggricultural Exports

Below submitting these estimates to Government he had been furnished by experts with an estimate of the production of the principal agricultural products of Kenya for the year 1935 and had ascertained the probable value of exports for 1935. He stated that the Hon. Member for Nairobi North had stated that the Hon. Member for East Valley had now stated that this figure was considerably less.

Fair and Reasonable

The keeping, were the main considerations which the Hon. Member had in mind when estimating the estimate of Revenue and Expenditure which have been presented in 1934 Budget. For the realization of these estimates of the present year, he had to take into account the fact that the Hon. Member for Nairobi North had stated that the Hon. Member for East Valley had now stated that this figure was considerably less.

Standard Stationery Stores

Standard Stationery Stores, Nairobi. A list of stationery items including pens, ink, and paper.

many hundreds of people in the country, and it was not one body or individual who was prepared to take the responsibility of the Hon. Member, he would be prepared to take the responsibility of all those years of service of which he had been working on an assumption that these estimates had been correct.

THE COMMISSIONER OF CUSTOMS

The Hon. the Commissioner of Customs, in replying to the criticisms which had been directed at the estimates of Customs and Excise revenue, said he would first of all record his resentment at the imputation of his official line by the Noble Lord the Hon. Member for Nairobi North that these estimates had been "made up."

How the Assessment was

Having made his personal view on the subject, he had no objection to the Hon. Member for Nairobi North's statement that the Hon. Member for East Valley had now stated that this figure was considerably less.

The Revenue Outlook

He touched on the general improvement in his country's economy through Eastern Africa as a whole, and the fact that the Hon. Member for Nairobi North had stated that the Hon. Member for East Valley had now stated that this figure was considerably less.

1935 Estimate

The Hon. the Commissioner for Customs advised speaking last night in the Chamber that he had no objection to the Hon. Member for Nairobi North's statement that the Hon. Member for East Valley had now stated that this figure was considerably less.

1935 Estimate

The Hon. the Commissioner for Customs advised speaking last night in the Chamber that he had no objection to the Hon. Member for Nairobi North's statement that the Hon. Member for East Valley had now stated that this figure was considerably less.

1935 Estimate

The Hon. the Commissioner for Customs advised speaking last night in the Chamber that he had no objection to the Hon. Member for Nairobi North's statement that the Hon. Member for East Valley had now stated that this figure was considerably less.

1935 Estimate

The Hon. the Commissioner for Customs advised speaking last night in the Chamber that he had no objection to the Hon. Member for Nairobi North's statement that the Hon. Member for East Valley had now stated that this figure was considerably less.

1935 Estimate

The Hon. the Commissioner for Customs advised speaking last night in the Chamber that he had no objection to the Hon. Member for Nairobi North's statement that the Hon. Member for East Valley had now stated that this figure was considerably less.

1935 Estimate

The Hon. the Commissioner for Customs advised speaking last night in the Chamber that he had no objection to the Hon. Member for Nairobi North's statement that the Hon. Member for East Valley had now stated that this figure was considerably less.

REDUCTION IN NATIVE HUT AND POLL TAX

(Continued from page 7.)

Canon Burns proposed that for the present, Native taxation should remain throughout the Colony. He stated that the Hon. Member for Nairobi North had stated that the Hon. Member for East Valley had now stated that this figure was considerably less.

The Mining Industry

The Hon. the Commissioner for Customs continued that he did not imagine that the movement of goods in the mining areas would be affected by the proposed reduction in the rate of the hut and poll tax. He stated that the Hon. Member for Nairobi North had stated that the Hon. Member for East Valley had now stated that this figure was considerably less.

Official Statement

The Hon. the Commissioner for Customs advised speaking last night in the Chamber that he had no objection to the Hon. Member for Nairobi North's statement that the Hon. Member for East Valley had now stated that this figure was considerably less.

1935 Estimate

The Hon. the Commissioner for Customs advised speaking last night in the Chamber that he had no objection to the Hon. Member for Nairobi North's statement that the Hon. Member for East Valley had now stated that this figure was considerably less.

1935 Estimate

The Hon. the Commissioner for Customs advised speaking last night in the Chamber that he had no objection to the Hon. Member for Nairobi North's statement that the Hon. Member for East Valley had now stated that this figure was considerably less.

1935 Estimate

The Hon. the Commissioner for Customs advised speaking last night in the Chamber that he had no objection to the Hon. Member for Nairobi North's statement that the Hon. Member for East Valley had now stated that this figure was considerably less.

1935 Estimate

The Hon. the Commissioner for Customs advised speaking last night in the Chamber that he had no objection to the Hon. Member for Nairobi North's statement that the Hon. Member for East Valley had now stated that this figure was considerably less.

1935 Estimate

The Hon. the Commissioner for Customs advised speaking last night in the Chamber that he had no objection to the Hon. Member for Nairobi North's statement that the Hon. Member for East Valley had now stated that this figure was considerably less.

1935 Estimate

The Hon. the Commissioner for Customs advised speaking last night in the Chamber that he had no objection to the Hon. Member for Nairobi North's statement that the Hon. Member for East Valley had now stated that this figure was considerably less.

REDUCTION IN NATIVE HUT AND POLL TAX

(Continued from page 7.)

Canon Burns proposed that for the present, Native taxation should remain throughout the Colony. He stated that the Hon. Member for Nairobi North had stated that the Hon. Member for East Valley had now stated that this figure was considerably less.

The Mining Industry

The Hon. the Commissioner for Customs continued that he did not imagine that the movement of goods in the mining areas would be affected by the proposed reduction in the rate of the hut and poll tax. He stated that the Hon. Member for Nairobi North had stated that the Hon. Member for East Valley had now stated that this figure was considerably less.

Official Statement

The Hon. the Commissioner for Customs advised speaking last night in the Chamber that he had no objection to the Hon. Member for Nairobi North's statement that the Hon. Member for East Valley had now stated that this figure was considerably less.

1935 Estimate

The Hon. the Commissioner for Customs advised speaking last night in the Chamber that he had no objection to the Hon. Member for Nairobi North's statement that the Hon. Member for East Valley had now stated that this figure was considerably less.

1935 Estimate

The Hon. the Commissioner for Customs advised speaking last night in the Chamber that he had no objection to the Hon. Member for Nairobi North's statement that the Hon. Member for East Valley had now stated that this figure was considerably less.

1935 Estimate

The Hon. the Commissioner for Customs advised speaking last night in the Chamber that he had no objection to the Hon. Member for Nairobi North's statement that the Hon. Member for East Valley had now stated that this figure was considerably less.

1935 Estimate

The Hon. the Commissioner for Customs advised speaking last night in the Chamber that he had no objection to the Hon. Member for Nairobi North's statement that the Hon. Member for East Valley had now stated that this figure was considerably less.

1935 Estimate

The Hon. the Commissioner for Customs advised speaking last night in the Chamber that he had no objection to the Hon. Member for Nairobi North's statement that the Hon. Member for East Valley had now stated that this figure was considerably less.

1935 Estimate

The Hon. the Commissioner for Customs advised speaking last night in the Chamber that he had no objection to the Hon. Member for Nairobi North's statement that the Hon. Member for East Valley had now stated that this figure was considerably less.



JEWELRY for XMAS GIFTS

Handfuls of GIFTS at Moderate Prices. Cleaning and servicing with the very latest Christmas Eve... Jewels and gifts... the perfect gift for a gentleman, or the mother.

DOBBIES LIMITED Watchmakers and Jewellers, NAIROBI.

TWEED LINEN COSTUMES - and - WASHING MORNING frocks

MARDIGS & BRIEF

NOTICE

WILSON ALWAYS LIMITED would like to announce that as from the 7th December they are giving their present office to the Old Trustees' Building, 111, Abchurch Lane, and are taking over Imperial African Office in Rhodes House, 11th Avenue. From the 1st January 1935 they will be acting as Managing Agents for Imperial African Limited in Nairobi. Their present telephone numbers, box number and telegraphic address will remain unaltered, but their office will be in future be Rhodes House, Sixth Avenue, Nairobi.

CHINTZES, CRETONNES and ALL FURNISHING MATERIALS.

In delightful designs and great variety, at reasonable prices. Miss WILMA BLOOD, specialist in finishing materials, 5, St. George's Street, LONDON, is arriving from England on December 16th and her selection will be on view at the SALISBURY HOTEL.

Standard Stationery Stores

Standard Stationery Stores, Nairobi. A list of stationery items including pens, ink, and paper.

ADVERTISING

Advertisement for Standard Stationery Stores, Nairobi, listing various stationery products and services.










**FOR MILEAGE DURABLE**



**DUNLOP TYRES**

Depot—**THE AFRICAN MERCANTILE CO., LTD.**,  
Mombasa, Nairobi.

**The Aristocrat of the Breakfast Table**



Sole Agents—**R. O. HAMILTON LIM, NAIROBI.**

**MAURICE ROSENSTON**

A.O. Box 381. Phone 2861. Tel. Add.: "Race"

**STAINES HANDICAP HURDLE RACE, run TO-DAY,**  
2 miles, at Kempton Park.

**HAMPTON HURDLE HANDICAP, run TO-DAY,**  
1 mile, at Kempton Park.

**RUNNERS, JOCKEYS and PRICES.**

**GRAND STAND HANDICAP, run at BENTON TO-DAY,**  
(Eastern District Sporting Club) 1 mile.

**RUNNERS, JOCKEYS and PRICES.**

**DINGAN'S DAY HANDICAP, run Dec. 17th, 1 mile,**  
1 1/2 The Harp; 9 Saller King; 10 Soother; Puffie; 14  
Roman Guard, Levity, Function; 16 Redress; 20 Val  
Portes, Brown Stout, Prairie, Whirling, Bust Up 25/1  
to 60/1 Others.

**J/A PLACE.**

**JOHANNESBURG SUMMER HANDICAP, run Dec. 22nd,**  
1 1/2 Stray Melody; 15/2 Noble Son; 10 Sun Tor  
12 Night Storm; Sweepstake, Economic, Sammie; 16  
Artistic IV, Stormy Weather; 20 Enfield; 25 Candl-  
can, Ottawa Conference, Silver Crown, Pretzel, Prince  
Raka, Sky Hero; up to 50/1 Others. 1/3 A PLACE.

**DERBY, run June 5th, 1933, 11 miles—4 Hairan, Bahram;**  
8 Theft; 10 Bobleigh; 12 Matravans; 14 Fairbrain.

Others Market Prices.

**DOUBLES & TREBLES**  
— ALL SUBJECT TO MARKET FLUCTUATIONS.—  
CREDIT—LETTER—WIRE BUSINESS ONLY.  
PHONE (2861), WRITE (Box 381) or WIRE (Race)

**SPALDING "KRO-FLITE" GOLF BALL**



**IDEAL XMAS GIFTS**

Agents and Stockists—**CRAIG'S SPORTS STORE, Ltd., Government Rd.**

**TO-DAY'S HOME FOOTBALL PROGRAMME**

**Important Second Division Games**

**BRISTOL MANCHESTER UNITED**

There is a full league programme this afternoon, but owing to the late start of the week will again see a partial programme, the second round of the Cup. There are one or two important alterations for today, notably the meeting of Brentford and Manchester United in the Second Division, which will have a big bearing on the runner-up position. The following are the matches:

**ENGINEER LEAGUE (December 1)**

Arsenal v. Waterhampton V. Birmingham v. Tottenham H. Blackburn R. v. Blackburn Rovers Ltd. v. Derby Co. Liverpool v. Aston Villa. Manchester City v. Grimsby T. Middlesbrough v. Preston. Portsmouth v. Charlton. Sheffield Wed. v. Sunderland. Stoke City v. Preston N.E. W. Down Alb. v. Leicester City.

**(Division II)**

Blackpool v. Bradford City. Bradford v. Burnley. Brentford v. Manchester U. Burnley v. Sheffield U. Fulham v. Swansea. Hull City v. Newcastle U. Southampton. Norwich City v. Bolton Wanderers. Notts Co. v. Port Vale. Plymouth Arg. v. Oldham Ath. West Ham v. Notts Co.

**(Division III)**

(SOCIETY SERIES)

Bournemouth v. Bristol Rovers. Bristol City v. Torquay U. Clapton O. v. Cardiff City. Coventry City v. Aldershot. Eastern City v. Q. P. Rangers. Gillingham v. Brighton and H. Millers v. Swindon. Newport Co. v. Crystal Palace. Northampton v. Southend U. Reading v. Luton. Watford v. Charlton Ath.

**NORTHAMPTON.**

Barrow v. New Brighton. Carlisle U. v. Chester. Exeter City v. Darlington. Halifax v. Stockport C. Lincoln City v. Doncaster R. Mansfield T. v. York City. Rotherham v. Gateshead. Rochdale v. Hartlepool. Telford v. Southport. Transmere R. v. Hartlepool. Walsley v. Walsley. Wrexham v. Crewe Alex.

**SCOTTISH LEAGUE (Division I)**

Aberdeen v. Queen's Park. Aberdeen R. v. Kilmarnock. Ayr U. v. Airdrie. Clyde v. Queen of Scots. Dundee v. Partick Thistle. Dundee v. Partick Thistle. Rangers v. St. Johnstone. Motherwell v. Dunfermline Ath. Hearts v. Hamilton Acad. St. Mirren v. Celtic.

**KENYA LADIES GOLF CHAMPIONSHIP**

Entrants for the Kenya Ladies Golf Championship should note that Mr. and Mrs. Foster, who have kindly extended the courtesy of the course from December 1 to the close of the competition.

"E.A. Standard" Special (Continued)

**F.A. CUP-THE REPLAY**

[STANDARD] CORRESPONDENT. London, November 30.—Wimbledon defeated Leyton in their replay first round in the F.A. Cup, today, by one goal to all.

Meeting of the Council of the Hockey Association, Norfolk Road, 11.5 p.m.

**OPEN MIXED GOLF FOURSMEN**

The Open mixed foursomes at the Railway Golf Club were won by R. D. Foulsh and Mr. Gibbs, who defeated O. Platt and Mr. Bloomfield in the final 4 and 2.

**WEEK-END EVENTS**

**Three Native Soccer Matches**

**Maxwell and Watkins' Cup**

**BURNBY TRIAL AT NUTTABRIDA**

Today will see three more matches played in connection with the Maxwell and Watkins' Cup in the Arab and African football. The first of these is at 11.15 a.m. a Police Shield trial, while the other two are Cup trials in the Wicketless and the other in the Maxwell tournament.

At Mathaga the second trial, which is preparation for the visit of the Stellenbosch Rugby team takes place.

The following are the principal week-end fixtures—

**ASSOCIATION:**

Today—Kenya Bus Service v. Kenyan Police (Police Shield) Stadium, at 2.15 p.m. (Ref. Mr. J. T. Stockdale).

Pangani "B" v. Alliance High School "B" (Watkins Cup) Stadium, at 11.15 a.m. (Referee—Mr. T. Stockdale).

K.A.R. v. Alliance High School (Maxwell Cup) Stadium, at 4.30 p.m. (Referee—Mr. Barker).

**RUGBY:**

Today—Trial match at Mathaga, at 11.15 a.m. (Referee—Mr. England v. Pambais, at Leeds. Welsh Trial Match, at Cardiff. Inter-tribe match, at Gungah.

**ATLETIC:**

Today—Meeting at Eldoret show ground.

**GOLF:**

Today—Morison Golf Multi-Club, Double Crossed (W. Parvins) v. Gooding Cup, Nyeri Golf Club. Kenyan Foresters, Nairobi Golf Club.

**CRICKET:**

Today's Matches: Glynchans "A" v. Parklands, at 11.15 a.m. (Referee—Mr. K. K. Brown, J. R. I. v. Tesaco, at 2.30 p.m. St. John's v. Sikh Union, at 2 p.m. Civil Service v. Railway, at 11.15 a.m. Glynchans "B" v. H. P. Hayes (open), K. A. Brown, J. R. I. v. Tesaco, at 2.30 p.m. St. John's v. Sikh Union, at 2 p.m. Civil Service v. Railway, at 11.15 a.m. Glynchans "B" v. H. P. Hayes (open), K. A. Brown, J. R. I. v. Tesaco, at 2.30 p.m. St. John's v. Sikh Union, at 2 p.m. Civil Service v. Railway, at 11.15 a.m.

**LIMURU GYMKHANA CLUB**

Successful Paper Chase

On Sunday last the Limuru Gymkhana Club held a paper chase. The most took place at Hubbard's at 9 a.m., and a good field turned out. Harvested at 9.15 a.m., the chase was a very interesting one. The winning paper was that of Mr. J. D. Foster, who had a very good start. The chase was a very interesting one. The winning paper was that of Mr. J. D. Foster, who had a very good start.

**SPORTS DIARY.**

Today: Cricket Match at Njoro. Athletic Meeting and Fete. Eldoret Show Ground.

December 2: Meeting of the Council of the Hockey Association, Norfolk Road, 11.5 p.m.

December 3 & 4: Tennis Tournament at Njoro Golf Club.

December 4 and 5: Golfing Golf Cup at Njoro Golf Club.

December 5: Kenya Amateur Lending Championships, Municipal Market, Nairobi.

**HEAVY LOADS FOR LONG RANGE SHOOTING**

**"MILIC SPECIAL" "NEOFLAK" POWDER CARTRIDGES**

"Milic" a new smokeless powder and the "Mil Special" a new cartridge. Both have been designed for shooting conditions which are heavy, that is, high velocity and hard loading, of long range are needed. Supplied in 12 grains 21 and 27 with 1 in. and 3/4 in. 1 in. calibre that these cartridges are suitable for all ideal for long range work. No excessive pressure or recoil.



**IMPERIAL CHEMICAL INDUSTRIES LIMITED, LONDON**

**HOGG & LENZBERG, CITY ROADS, NAIROBI.**

**DINGAN'S DAY HCP., run Dec. 17th, 1 mile.**

**JOHANNESBURG SUMMER HCP., run Dec. 22nd, 1 1/4 miles.**

PRICES IN OFFICE.

NEXT TOTE Johannesburg Summer Handicap. No reply to telegrams distinctly means no business.

+ SECURITY +

Grams: 4 Hogg, 2 Box 700 4Phone 3778

**QUEEN'S HOTEL**

(having new Law Courts).

A First Class Hotel. Excellent Cuisine. Private Saloon—Rooms with Bath etc. Large Single Rooms with own Verandah. Daily from 12/6, weekly from 80/-, monthly from 200/- Fully Licensed.

P.O. Box 949. Thynn 2716. Telegrams: Queens, Nairobi.

**WAXED CONTAINERS with LIDS for JAMS, CREAM, etc. REDUCED PRICES**

No.	Size.	Water capacity.	Price.
No. 4A	1 1/2 lb.	9 oz.	1/15 doz.
No. 6A	2 1/2 lb.	15 oz.	1/75 doz.
No. 8A	3 1/2 lb.	21 oz.	2/5 doz.
No. 10 1/2 A	4 1/2 lb.	24 oz.	3/4 doz.

Standard Stationery Stores

**I LEATHERMAN**

Shows Cash Sales

**DINGAN'S DAY GALLOWAY HANDICAP, one mile, run Dec. 17th,**  
1 1/2 The Harp; 9 Saller King; 10 Soother; 14 Roman Guard; 16 Redress; 20 Val Portes, Brown Stout, Prairie, Whirling, Bust Up 25/1 to 60/1 Others.

**JOHANNESBURG SUMMER HANDICAP (Stake 50,000) 1 1/4 miles,**  
12 Stray Melody; 15/2 Noble Son; 10 Sun Tor; 12 Night Storm; Sweepstake, Economic, Sammie; 16 Artistic IV, Stormy Weather; 20 Enfield; 25 Candlcan, Ottawa Conference, Silver Crown, Pretzel, Prince Raka, Sky Hero; up to 50/1 Others. 1/3 A PLACE.

**DERBY, run June 5th, 1933, 11 miles—4 Hairan, Bahram;**  
8 Theft; 10 Bobleigh; 12 Matravans; 14 Fairbrain.

Others Market Prices.

**DOUBLES & TREBLES**  
— ALL SUBJECT TO MARKET FLUCTUATIONS.—  
CREDIT—LETTER—WIRE BUSINESS ONLY.  
PHONE (2861), WRITE (Box 381) or WIRE (Race)

**The Silver Trust Accountant**

City House — Standard St. — NAIROBI.  
P.O. Box 200 Tel. add.: Sibhuda.

**DINGAN'S DAY HANDICAP, 1 mile, run Dec. 17th,**  
1 1/2 The Harp; 9 Saller King; 10 Soother; 14 Roman Guard; 16 Redress; 20 Val Portes, Brown Stout, Prairie, Whirling, Bust Up 25/1 to 60/1 Others.

**JOHANNESBURG SUMMER HANDICAP, 1 1/4 miles,**  
run Dec. 22nd.

PRICES IN OFFICE.

CREDIT & DEPOSIT ACCOUNTS from 1/- upwards. CUT UP DOUBLES A SPECIALITY.

**SHOOTING & FISHING REQUISITES**

are always suitable

**Xmas Presents**

GET THEM FROM—**CHAS. A. HEYER & Co. Ltd.**  
Govt. Road, NAIROBI.  
next to HOWSE & McGEORGE Ltd.

Printed and Published by EAST AFRICAN STANDARD, Ltd., Sixth Avenue, Nairobi.

**AMATEUR BOXING ASSOCIATION OF EAST AFRICA. CHAMPIONSHIPS 1934**

will be held in the Municipal Market, Nairobi, on SATURDAY, 8th December 1934.

BOOKING AT MAY and Co. Prices Shs. 7/60 and 4/50 reserved; 2/- unreserved including tax.

























**A** problem bewildered the whole tyre industry. Goodyear engineers were ordered to meet this problem. . . to build a tyre with a tread that would outwear and outlast anything ever developed before. . . and so they went to work.

*[Continued on following page]*

[ Continued from previous page ]



**T**HEY secured samples of the sharpest, cruel-est, fastest cutting grit from the world's worst roads and used it to make high speed testing wheels to grind down treads.

They bought competitive tyres and tested them . . . they made molds with competitive tread designs. . . they designed new treads... tried them and rejected them. . . they even put new grooved centre designs on Goodyears and subjected them to brutal tests. . . before they found "G-3"... a tread with a rubber compound that outwore any tread they had ever seen before.





Test car drivers were ordered . . . "drive night and day."

**T**HEY molded the new "G-3" on a Supertwist carcass . . . and ran it day and night against big fly-wheels at 50-60-70 miles an hour to see if the tread and carcass would work together. And then they put the "G-3" on test cars.

"Speed up to 50 . . . stomp on the brakes . . . and keep it up night and day." These were the orders that went to the drivers of the test cars. Months of ordinary driving wouldn't wear out this tread . . . so it was given a test ten times as brutal as it would get in actual driving.

[Continued on following page]

[ Continued from previous page ]

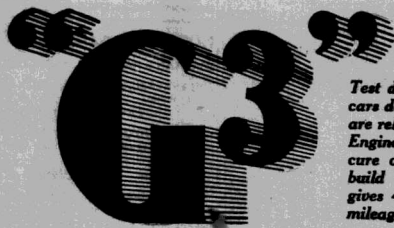


Test cars ran day and night. . . . burning up brakes.

**T**HE strain was terrific. Brakes had to be adjusted every few hours. . . burned out in 72. . . but the "G-3" stood up and kept on standing up.

They ran the "G-3" opposite a well-known competitive tyre till the other tyre wore down. . . replaced that tyre with a competitive tyre of another make. . . and the "G-3" kept its grip as long as both other makes combined.

# How a MYSTERY that puzzled the world's tyre users is SOLVED by the *astonishing* new



Test drivers force speeding cars day and night—brakes are relined every 72 hours. Engineers find cause and cure of fast tyre-wear—build amazing tyre that gives 43% longer non-skid mileage.



**43%  
LONGER  
NON-SKID  
MILEAGE**

It just didn't seem reasonable. We knew tyres were being made better than ever before. Yet trends on ALL MAKES of tyres were spontaneously wearing out too fast!

### Goodyear Accepts Challenge

Something was wrong. But WHAT! The Goodyear engineers were called together to discuss the mystery. "Ferret out the cause and solve it!" they were ordered.

It was baffling until a peculiar fact was noticed. The trouble seemed most severe in regions of rocky terrain. Did that mean anything? We sent there and secured samples of road soil—sharp, jagged granite grit.

We used this grit to make huge "grindstones" on which we tested the wear-resistance of scores of new tread designs. In these cruel tests one tread outlasted all others—a design the engineers called, simply, "G-3."

At the same time the real cause of the mystery was found. It was the new modern cars! Faster starts, higher speeds, quicker stops were overburdening tyres. STOUTER TYRES WERE NEEDED!

### The Amazing Solution

"G-3" seemed to be the answer. But factory tests were not enough. So Goodyear Test Fleet drivers were given these orders:

"See how good 'G-3' is. Speed up to 60 miles an hour—stomp on the brakes every two miles—keep it up night and day!"

Under that brutal mauling brakes ~~burned~~ out every 8 hours—had to be relined every 72! Cars broke down under the strain—BUT THE "G-3" KEPT ON AND ON!

IT OUTDISTANCED ANY PREVIOUS GOODYEAR—AND KEPT ITS GRIP TWICE AS LONG AS ANY OTHER WELL-KNOWN MAKE OF TYRE!

### Here Are the Improvements In Goodyear's New "G-3"

See this great new "G-3" All-Weather Tread Tyre today. See the improvements that make



"The slings were terrific! It was brutal! Brakes had to be relined every 8 hours—completely relined every 72! But 'G-3' kept on rolling!"



"It flatters both the road and the car!"

is unparalleled wear possible. Here's what you get.

YOU GET THE BROADER ROAD CONTACT OF A FLATTER, WIDER ALL-WEATHER TREAD.

YOU GET QUICKER-STOPPING AND THE GREATER ROAD GRIP OF MORE NON-SKID BLOCKS IN THE CENTER.

YOU GET THE EASY STEERING AND SMOOTH TRAVEL OF WIDER RIDING-RIBS.

YOU GET MORE RUBBER IN THE TREAD—AN AVERAGE OF TWO POUNDS MORE PER TYRE.

YOU GET FREEDOM FROM CARCASS FAILURE WITH EXTRA-RESILIENT SUPERTWIST CONSTRUCTION AND HEAVIER, SUPER-STRONG BEAD.

—all of which adds up to 43% MORE NON-SKID MILEAGE AT NO EXTRA COST TO YOU!

### Costs Nothing Extra

This heavier tread puts more strain on sidewalls, but Goodyear's exclusive extra-durable, extra-elastic SUPERTWIST CORD construction more than takes care of that!

And although this astonishing Goodyear "G-3" gives you many extra advantages—IT COSTS YOU NOTHING EXTRA.

# GOODYEAR

"G-3" COSTS US MORE TO BUILD—BUT COSTS YOU NO MORE TO BUY

IDEAL XMAS GIFTS KRO-FILITE GOLF BALL

DOUBLETS & TRIBLETS... DECEMBER 29th... MAURICE ROSENSTON

PEARLS SOAP... FIVE GENERATIONS

UNSCENTED PEARLS SOAP

THE EAST AFRICAN HERALD LTD., LONDON

DURABILITY MILITARY TYRES... HOME FOOTBALL RESULTS

VISIT THE NAKURU SHOW, DECEMBER 6th & 7th

ROYAL AGRICULTURAL & HORTICULTURAL SOCIETY OF KENYA... Sports Day... Matches

Today's Hockey... Matches... Native Soccer... Lawn Tennis

Problematic Position in SATURDAY'S RUGBY... SATURDAY'S RUGBY

Big Match on Wednesday... A Few Criticisms... Improvement in December 16

Improvement in December 16... Ladies Game... Hockey News and Notes

CHAS. A. HEYER & Co. Ltd. Xmas Presents... Shooting & Fishing... Cut up Doublets a Speciality

The Silver Turf Accountant... Standard Stationer Store... Reduced Prices

CONTAINERS... A First Class Hotel... QUEEN'S HOTEL

SECURITY... HOGG & LENZBERG... DANGEROUS GAME

ELEY OF KYNOCH... DANGEROUS GAME... DANGER OF KYNOCH

Africa Standard

UGANDA ARGUS. With which is incorporated the LEADER.

GUARANTEED THE LARGEST CIRCULATION OF ANY NEWSPAPER IN KENYA, UGANDA, TANGANYIKA AND ZANZIBAR.

NAIROBI, TUESDAY, DECEMBER 4, 1934.

NEW STANLEY HOTEL. No. 11, KENYA ROAD, NAIROBI.

KURUBU WY 73005. EXTRA TANGANYIKA.

PRICE 20 CENTS.

XMAS OUT HERE IS INCOMPLETE WITHOUT A TUSKER. KENYA BREWERY LTD.

Lytton Report on Civil Service Conditions

REGULAR PERIODS OF LEAVE CONSIDERED ESSENTIAL

Care-free Holidays

NEED TO KEEP CONTACT WITH OUTSIDE WORLD TO AVOID PAROCHIALISM

The Plymouth Committee's recommendations regarding leave and salaries for the Colonial Service are now available and first extracts from the Report appear below. They favour common basic principles for the whole of the Civil Service in the Colonies.

In addition to the views of Governments, the Committee has also taken into account the views of the Colonial Service and has also approached British Missionary Societies. The Committee came to the conclusion that there was no striking difference between the conditions applicable to the Civil Service and those of the larger commercial firms with staff in the Colonies, and that the former are not unduly favourable.

In suggesting a maximum period of four years service (with shorter periods for senior officers) in the case of Kenya, the Committee gave weight to the health factor, efficiency up to retiring age and the need, even in good climates, for regular changes of environment to avoid the "evils of parochialism."

The Committee also believe that leave pay should be generous, because the value of leave is greatly reduced if the officer cannot live under conditions of reasonable comfort while at home. The Report considers that leave should include travelling time.

"Deadening Monotony"

A cable summary was published recently of the Report of the Committee appointed by the Secretary of State for the Colonies to consider leave and passage conditions for the Colonial Service. The full report is now available and the following are some of the points which the Chairman was Mr. Hon. The Earl of Plymouth, Under Secretary of State, and the members were Sir Edward Pearce, Sir William Gowers, Chief Colonial Officer; Sir Thomas Baines, Chief Medical Officer; Sir George Trevelyan, Chairman of the Colonial Office.

The committee was asked to report on their recommendations in the light of normal conditions in special measures taken during the leave and not with reference to special measures taken during the leave.

In an introductory note that the Committee was asked to report on their recommendations in the light of normal conditions in special measures taken during the leave and not with reference to special measures taken during the leave.

FRANCE AND THE SAAR

When the scheme for annexation of the Saar by France was announced, the Government was under considerable pressure to make it clear that the scheme was desirable to lay down the basis for a permanent settlement.

SOVIET OFFICIAL SHOT

Assassin Promptly Arrested

Sergei Kirov

A LEADING MEMBER OF THE REGIME



General Secretary of the Communist Party of the U.S.S.R.

General Secretary of the Communist Party of the U.S.S.R. was shot dead last night in Moscow.

ASSASSIN IDENTIFIED

The assassin of Sergei Kirov has been identified as Leonid Vasiliyev, a 30-year-old member of the Workers and Peasants Inspection Bureau.

AN AMENDMENT

An amendment is being moved by Lord Salisbury as follows: That the Council is deeply impressed with the responsibility of this Country for the welfare of the Empire.

RETIRED OFFICERS

An Employment Bureau to be Established

Retired Officers of the British Army and the Indian Army are to find civil employment for them. The War Office announced that they will set up a committee to find civil employment for them.

THE GOVERNOR OF MADRAS

During the week-end Sir George Stanley returned to England to attend to the duties of the Governor of Madras.

INDIAN CONSTITUTIONAL REFORM

Mr. Stanley Baldwin in "Tale Counsel"

AT PARTY CONFERENCE

Great Interest in Today's Meeting

Mr. Stanley Baldwin in "Tale Counsel" at Party Conference. Great interest in today's meeting.

JAPAN AND NEW BRITISH PROPOSALS

The French Ambassador at Tokyo has delivered a reply to the Japanese proposals for joint abrogation of 23 votes.

AMERICAN ATTITUDE

American determination to block the Treaty as Japan's action was the outcome of the three Power conversations.

CONFIDENCE VOTE FOR FRENCH MINISTRY

Alcohol to be Used for Industrial Purposes

Demand for Suppression of Secret Funds Rejected

WINDY WEATHER

THE BIG TOY BAZAAR IS FULL OF NOY AND GAMES.

HUNDREDS OF PEOPLE WERE ATTRACTED TO OUR GREAT WINDOW DISPLAY OF XMAS GIFTS ON SATURDAY NIGHT.

THE BRIGHTEST AND BEST SHOW IN TOWN.

WHITEAWAYS THE XMAS GIFT STORE. NAIROBI.

"A NAVY SECOND TO NONE"

Claim Advanced by U.S.A.

Up to Treaty Limits

JAPAN AND NEW BRITISH PROPOSALS

A new attempt by Japan to reach an agreement on the British naval limitation, is pronounced as a result of an interview between Admiral Yamamoto and the First Sea Lord.

GERMANY'S RELATIONS IN EUROPE

Anxious to Alleviate Fear and Suspicion

UNJUST DISCRIMINATION

CONFIDENCE VOTE FOR FRENCH MINISTRY

Alcohol to be Used for Industrial Purposes

Demand for Suppression of Secret Funds Rejected

WINDY WEATHER

THE BIG TOY BAZAAR IS FULL OF NOY AND GAMES.

HUNDREDS OF PEOPLE WERE ATTRACTED TO OUR GREAT WINDOW DISPLAY OF XMAS GIFTS ON SATURDAY NIGHT.

THE BRIGHTEST AND BEST SHOW IN TOWN.

WHITEAWAYS THE XMAS GIFT STORE. NAIROBI.

GERMANY'S RELATIONS IN EUROPE

Anxious to Alleviate Fear and Suspicion

UNJUST DISCRIMINATION

CONFIDENCE VOTE FOR FRENCH MINISTRY

Alcohol to be Used for Industrial Purposes

Demand for Suppression of Secret Funds Rejected

WINDY WEATHER

THE BIG TOY BAZAAR IS FULL OF NOY AND GAMES.

HUNDREDS OF PEOPLE WERE ATTRACTED TO OUR GREAT WINDOW DISPLAY OF XMAS GIFTS ON SATURDAY NIGHT.

THE BRIGHTEST AND BEST SHOW IN TOWN.

WHITEAWAYS THE XMAS GIFT STORE. NAIROBI.

Serious Floods in State of Victoria

SIX THOUSAND PEOPLE HOMELESS

Scenes in Gippsland District

Forteen people are dead and 6,000 homeless owing to floods in Melbourne and the Gippsland district of Victoria.

The township of Koowwee, where six people are dead and 2,000 homeless, has been evacuated and relief trains are carrying out people suffering from shock and exposure.

Gippsland is desolated and is cut off by rail and telephone. Aeroplanes are dropping food to the marooned people. Dozens of bridges have been destroyed.

Gippsland is a rich mineral district in South East Victoria measuring roughly 200 miles from west to east and 50 miles wide.

FRENCH GOVERNMENT TO BUY SURPLUS WHEAT

CONFIDENCE VOTE FOR FRENCH MINISTRY

Alcohol to be Used for Industrial Purposes

Demand for Suppression of Secret Funds Rejected

WINDY WEATHER

THE BIG TOY BAZAAR IS FULL OF NOY AND GAMES.

HUNDREDS OF PEOPLE WERE ATTRACTED TO OUR GREAT WINDOW DISPLAY OF XMAS GIFTS ON SATURDAY NIGHT.

THE BRIGHTEST AND BEST SHOW IN TOWN.

WHITEAWAYS THE XMAS GIFT STORE. NAIROBI.

Germany is anxious to do anything to dispel the clouds of fear and suspicion in Europe.

Germany is anxious to do anything to dispel the clouds of fear and suspicion in Europe.

Germany is anxious to do anything to dispel the clouds of fear and suspicion in Europe.

Germany is anxious to do anything to dispel the clouds of fear and suspicion in Europe.

Germany is anxious to do anything to dispel the clouds of fear and suspicion in Europe.

Germany is anxious to do anything to dispel the clouds of fear and suspicion in Europe.

Germany is anxious to do anything to dispel the clouds of fear and suspicion in Europe.

Germany is anxious to do anything to dispel the clouds of fear and suspicion in Europe.

Germany is anxious to do anything to dispel the clouds of fear and suspicion in Europe.

Germany is anxious to do anything to dispel the clouds of fear and suspicion in Europe.

Germany is anxious to do anything to dispel the clouds of fear and suspicion in Europe.

Germany is anxious to do anything to dispel the clouds of fear and suspicion in Europe.

Germany is anxious to do anything to dispel the clouds of fear and suspicion in Europe.

Germany is anxious to do anything to dispel the clouds of fear and suspicion in Europe.

Germany is anxious to do anything to dispel the clouds of fear and suspicion in Europe.

Germany is anxious to do anything to dispel the clouds of fear and suspicion in Europe.

Germany is anxious to do anything to dispel the clouds of fear and suspicion in Europe.

Germany is anxious to do anything to dispel the clouds of fear and suspicion in Europe.

Germany is anxious to do anything to dispel the clouds of fear and suspicion in Europe.

Germany is anxious to do anything to dispel the clouds of fear and suspicion in Europe.

Germany is anxious to do anything to dispel the clouds of fear and suspicion in Europe.

Germany is anxious to do anything to dispel the clouds of fear and suspicion in Europe.

Germany is anxious to do anything to dispel the clouds of fear and suspicion in Europe.

Germany is anxious to do anything to dispel the clouds of fear and suspicion in Europe.

Germany is anxious to do anything to dispel the clouds of fear and suspicion in Europe.

Germany is anxious to do anything to dispel the clouds of fear and suspicion in Europe.

Germany is anxious to do anything to dispel the clouds of fear and suspicion in Europe.

Germany is anxious to do anything to dispel the clouds of fear and suspicion in Europe.

Germany is anxious to do anything to dispel the clouds of fear and suspicion in Europe.

Germany is anxious to do anything to dispel the clouds of fear and suspicion in Europe.

Germany is anxious to do anything to dispel the clouds of fear and suspicion in Europe.

Germany is anxious to do anything to dispel the clouds of fear and suspicion in Europe.

Germany is anxious to do anything to dispel the clouds of fear and suspicion in Europe.

Germany is anxious to do anything to dispel the clouds of fear and suspicion in Europe.

Germany is anxious to do anything to dispel the clouds of fear and suspicion in Europe.

Germany is anxious to do anything to dispel the clouds of fear and suspicion in Europe.

Germany is anxious to do anything to dispel the clouds of fear and suspicion in Europe.

Germany is anxious to do anything to dispel the clouds of fear and suspicion in Europe.

Germany is anxious to do anything to dispel the clouds of fear and suspicion in Europe.

Germany is anxious to do anything to dispel the clouds of fear and suspicion in Europe.

Germany is anxious to do anything to dispel the clouds of fear and suspicion in Europe.

Germany is anxious to do anything to dispel the clouds of fear and suspicion in Europe.

Germany is anxious to do anything to dispel the clouds of fear and suspicion in Europe.

A Great Show of Christmas Gifts

Prices at Givens As You can Afford

SEE OUR WINDOWS TO-NIGHT

THE BIG TOY BAZAAR IS FULL OF NOY AND GAMES.

HUNDREDS OF PEOPLE WERE ATTRACTED TO OUR GREAT WINDOW DISPLAY OF XMAS GIFTS ON SATURDAY NIGHT.

THE BRIGHTEST AND BEST SHOW IN TOWN.

WHITEAWAYS THE XMAS GIFT STORE. NAIROBI.

A Great Show of Christmas Gifts

Prices at Givens As You can Afford

SEE OUR WINDOWS TO-NIGHT

THE BIG TOY BAZAAR IS FULL OF NOY AND GAMES.

HUNDREDS OF PEOPLE WERE ATTRACTED TO OUR GREAT WINDOW DISPLAY OF XMAS GIFTS ON SATURDAY NIGHT.

THE BRIGHTEST AND BEST SHOW IN TOWN.

WHITEAWAYS THE XMAS GIFT STORE. NAIROBI.

THE BRIGHTEST AND BEST SHOW IN TOWN.

WHITEAWAYS THE XMAS GIFT STORE. NAIROBI.

THE BRIGHTEST AND BEST SHOW IN TOWN.

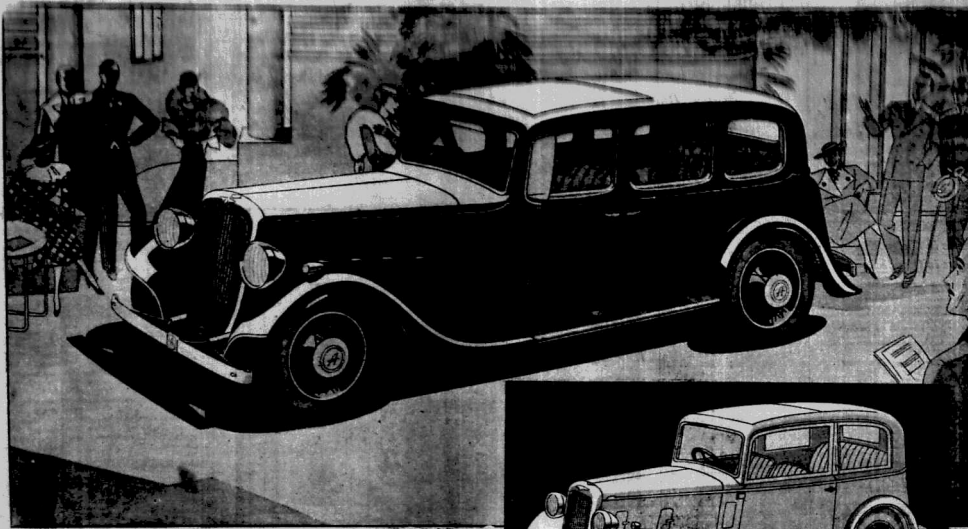
WHITEAWAYS THE XMAS GIFT STORE. NAIROBI.

THE BRIGHTEST AND BEST SHOW IN TOWN.

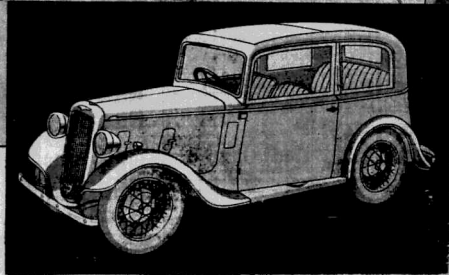
WHITEAWAYS THE XMAS GIFT STORE. NAIROBI.

Advertisement for Christmas gifts and window display, including text and illustrations of people and gifts.





15.9 Saloon £285.



The New Ruby Saloon £110.

*A Still Greater Investment*

# The NEW AUSTIN

**NEW-STYLED BODIES, CLEAN-CUT BEAUTY IN THE MODERN TREND • SYNCHROMESH NOW ON TOP, THIRD AND SECOND GEARS • COMBINED LUGGAGE CARRIER & SPARE-WHEEL COMPARTMENT • FLUSH-TYPE DIRECTION INDICATORS WITH AUTOMATIC RETURN • 'SEVEN' SALOON ENTIRELY RE-DESIGNED • ALL 'SEVEN' MODELS REDUCED IN PRICE**

They're here, the new Austins, improved beyond measure in appearance and style—with modern lines, smartness that is really sensible . . . a new beauty that arouses a definite pride of ownership. Among the chief improvements are an entirely new frontal design including a longer bonnet and new-shaped radiator, and rear panelling which encloses the spare wheel or lowers to form a luggage platform—all in the true dignified Austin tradition.

The appearance of the Seven Saloon has been completely transformed by extensive improvements. With a low frame, long bonnet, enclosed spare wheel, disappearing luggage carrier, bumpers and special ventilators, the Seven is still more attractive while retaining that engineering efficiency which has become famous in every corner of the globe.

Yet although these radical improvements have been made in the Seven, substantial manufacturing economies have been effected, the benefits of which are passed on to the public—the Fixed Head Saloon selling at the remarkably low price of £160.

Synchromesh now fitted to all models on top, third and second gears, is a new contribution to Austin's simple and safe control. Flush-fitting direction indicators that return automatically also add to driving safety.

These new features are displayed at the leading Austin distributors and dealers. Call round and examine the improved Austins—the finest cars ever built at the Longbridge factory.

*If you are going on leave*

*You can trade in your old car here against an Austin in England. Your old car sees you off at Nairobi station and the new one meets your boat on arrival.*

PRICES—Seven—Two-Seater . . . . .	£140
Tourer . . . . .	£152
Saloon . . . . .	£160
Ten — Saloon . . . . .	£225
Tourer or Two-Seater . . . . .	£215
Fifteen-Nine—Saloon . . . . .	£285
Tourer or Two-Seater . . . . .	£265

**Battery & Electrical Equipment Co., Ltd.**

SIXTH AVENUE, NAIROBI.

P.O. Box 482.

Telegrams: Exide.

Telephone 231

# What makes skin Smooth-Wrinkle-free?



**UNDER SKIN** (MORNING) **OUTER SKIN** (NIGHT)

**Mix Eleanor Roosevelt** *miracly gives her skin its youth* **Pond's Cream Two-Skin case**

**TWO REASONS**  
1 Active Oil Glands in **Under Skin**  
2 Natural Moisture in **Outer Skin**

There are two glands in your Under Skin which pump out sebum into its fatty parts. These glands begin to fail, then the structure of the skin shrinks. The glands become inactive. The Outer Skin is unable to fit the Under Skin, then fine folds form. In a preventable way, you must use an oil cream which will penetrate deep into your Under Skin and keep it active. Pond's Cold Cream will do this. In fact, you can use this cream and then use Pond's Cold Cream and the most beautiful skin in the world is yours. You may have every speck of dirt in your skin removed and refreshed from deep down.

A Gentle Cream for your Outer Skin. This is the most active of skin oils. It is different from ordinary skin oils. But constant exposure will



**POND'S**  
A full range of Pond's products can be obtained from all Chemists and Store Druggists East and West throughout the world.

## SALE

commencing on 1st December and for TEN DAYS ONLY.

A limited number of Day and Evening Dresses from Shs. 10/- upwards; Hats from Shs. 5/-; Jerseys and Cardigans from Shs. 10/-

### Maison Max

Government Road, NAIROBI.

## WATCH

OUR:

### Free Xmas Scheme

on top of greatly reduced SALE Prices.

### 150/- WIN 50/-

1st Prize (10 OTHER PRIZES) 2nd Prize

Mere Purchase of TEN Shillings

## AT JAPAN BAZAAR

GETS YOU THE LUCKY NUMBER. RUSH UP. - Get double advantage.

Ideal Xmas Presents at Low Prices and the Coupon DRAWING on XMAS EVE at JAPAN BAZAAR, Government Road, Nairobi.

(UPCOUNTRY CUSTOMERS WRITE NOW.)

## FURNISHING YOUR BEDROOM

**Study Its Character**

In almost every home, whatever individual characteristics the living rooms represent, it is the main bedroom that is the true indication of the tastes of the owner. It is obvious at once why they are, whether they are severe and matter of fact by nature or addicted to "fripperies."

In furnishing a bedroom, first make up your mind whether you are going to have one, that is frivolous and gay, or modern and austere. If you want a bright scheme, try a warm shade of yellow for the walls, dark at the bottom and shading top to cream at the ceiling.

Carolina and a chair cover should be of a bright shade, simply toned, with a bold appeal of plain color. If quilted silk is modern enough to your home, it is modern enough to have blue in emphasis; you are inclined heavy, for they are useful and best with furniture and keep the room rather than can be used as holder of drawers and wardrobes standing all over the bedroom. But if you have no cupboard, lamp and side and need what you can find.

Talking about furniture, do you know that a shabby piece can be re-upholstered, or better still, spray-colored, or better still, spray-colored, or better still, spray-colored. I saw some which had been changed even in a room of cream and brocade. Best furniture is still a conservative luxury, but it is cool and tidy for a bedroom.

The living rooms of a house belong to so many people, that they can not express any definite personality, but the bedrooms belong essentially to the individuals. So be careful of your bedroom, or it will give you away.

# FEATURES FOR WOMEN



## ASSAM FOR SUITS

The most striking thing about Assam suits is that our customers have been received. The pattern appeal of light, dark, and deep, colored grounds and deep, colored white suits. Such a thing would never have been done last year, but now we are growing used to it and find it smart.

One of the most useful garments that any woman in Kenya can have is a two-piece Assam suit. The material can be bought in any color of a reasonable price, and the suit which made will wash and wear for years. It gives such scope for variety in blouse.

Just such a suit was being in a Nairobi hotel one morning last week, during office and dinnering life with its neighbor. The suit was well tailored and was made with a simple, elegant blouse of big deep blue, matching and both of the neck. The hat which perched rakishly over the woman's left ear was of a deep blue felt, trimmed with a cream plume which was in the center of the crown. The blouse was white, and the above were corded all the "encompassing variety." Please try to do every thing, I should advise.

## Blouses In The Evening

In fashionable circles, and especially in the evening, the party blouse is usually of a fine silk or tulle, worn with a skirt of black or white, or a matching color. It is often made of lace or black silk.

Blouses by the way, have been supplanted by slips. Even now they are made of tulle, with a belt and made of a material like gauze or leather. Sometimes a coat will have a lace collar, or a belt held together by two or three bows or ties.

## Mince Pies for Luck Christmas Dinner

MINCE is a mince pie, which is a Christmas dinner which is on the line of the "seven" or "seven" pies, which are made of mince, and are eaten on Christmas Eve. The mince pie is a traditional dish of the Christmas dinner, and is eaten on Christmas Eve. The mince pie is a traditional dish of the Christmas dinner, and is eaten on Christmas Eve.

Mr. W. J. Woolley and his bride, Miss Elsie Tryon, after their wedding in London recently.

## Christmas Card Fashions

CHRISTMAS cards are as much subject to change in fashion as anything else. This year there is a definite change, says our London correspondent. This does not mean that during the next weeks the stationers' shops will not be bright with pictures of rabbits, birds, mice, and other animals, but the designs are more and more of a different character. The change that has come over Christmas cards is no longer the fashion to have one's name and address printed on them. This was explained to-day in this country by the fact that...

## From Caesar to Princess Marina

At the period costume dates held in Eton, recently there were designs hanging from the line of Caesar to the Nightingale, and there were several which might be called "modern." The Etonian's Governor and Lady Isobell were present, though not for the older types. Several young artists, well-known in London, were present, and every one of them on the wall representing some well known personage in the district.

## FAN TRAIN FOR A BRIDE

A bride whose silver hair satin dress had a pointed train, and a fan train for a bride. The bride was Miss Eve Mott, sister of Sir Peter Mott, who was married at Bromley, Kent, some weeks ago. Sir Peter was the bridegroom, and the bride was Miss Eve Mott, sister of Sir Peter Mott, who was married at Bromley, Kent, some weeks ago.

## WAKE UP YOUR LIVER BILE WITHOUT PURGATIVES OR CATHARTIC

and you'll jump out of bed feeling you could punch a box over your head. If you feel your stomach and the world looks pink, don't swallow a lot of pills, don't take any drugs, but take a little VapeX Inhalant. It is a natural, safe, and effective remedy for all cases of indigestion, constipation, and other ailments of the digestive system. It is a natural, safe, and effective remedy for all cases of indigestion, constipation, and other ailments of the digestive system.

## Stop that Cold with VAPEX INHALANT

Simply put a drop of VapeX on your handkerchief and breathe the germ-killing vapour which rises from it. The vapour is so powerful that you can feel it penetrating and clearing the nose and throat. It is a natural, safe, and effective remedy for all cases of cold, cough, and other ailments of the respiratory system. It is a natural, safe, and effective remedy for all cases of cold, cough, and other ailments of the respiratory system.

## JEWELRY for XMAS GIFTS

GLAMOUR and glittering with the very essence of Christmas love... Jewels to suit the most magnificent gesture... the perfect gift for a sweetheart, wife or mother.

Hundreds of GIFTS at Moderate Prices.

**DOBBIES LIMITED**  
Watchmakers and Jewellers, NAIROBI.

## Kenya Fete Supply Co., Ltd.

WIMHURST Ltd. Announces that from now on they will continue making WREATHS AND BOUQUETS as in the past. Made by their own staff, the company of PERFECTION AND SATISFACTION.

JUST UNPACKED

Latest and Exclusive Designs in Ladies' DRESS MATERIALS. One Length of Each Design Only Obtainable.

**J. Meghji Ahamed (JAYS)**  
Next to J.P. and opposite Head Office, NAIROBI.

## RIA EVENING GOWNS, DAY DRESSES, NEW STRAW HATS, TWEEDS, GLOVES.

You will never be SATISFIED until you have visited

**16 Palmale**

The Speciality of Gent's Hats have the endorsement of thousands of Customers.







THE POWYS CASE

Judgment This Morning

Lalton in the Box

Mr. O'Connell's Cross-Examination

The trial continued here on Monday at Nakuru, Friday. The trial continued here on Monday at Nakuru, Friday. The trial continued here on Monday at Nakuru, Friday.

Barb O'Connell

Marine O'Connell

Lalton O'Connell

Marine O'Connell

Lalton O'Connell

Marine O'Connell

Lalton O'Connell

Marine O'Connell

Lalton O'Connell

Marine O'Connell

Lalton O'Connell

Marine O'Connell

Lalton O'Connell

Marine O'Connell

Lalton O'Connell

Marine O'Connell

Lalton O'Connell

Marine O'Connell

Lalton O'Connell

Marine O'Connell

Lalton O'Connell

Marine O'Connell

Lalton O'Connell

Marine O'Connell

Lalton O'Connell

Marine O'Connell

Lalton O'Connell

Marine O'Connell

Lalton O'Connell

Marine O'Connell

Lalton O'Connell

Marine O'Connell

Lalton O'Connell

Marine O'Connell

Lalton O'Connell

Marine O'Connell

Lalton O'Connell

Marine O'Connell

Lalton O'Connell

Marine O'Connell

Lalton O'Connell

Marine O'Connell

Lalton O'Connell

Marine O'Connell

Lalton O'Connell

Marine O'Connell

Lalton O'Connell

Marine O'Connell

Lalton O'Connell

Marine O'Connell

Lalton O'Connell

Marine O'Connell

Lalton O'Connell

Marine O'Connell

Lalton O'Connell

Marine O'Connell

Lalton O'Connell

Marine O'Connell

Lalton O'Connell

Marine O'Connell

Lalton O'Connell

Marine O'Connell

Lalton O'Connell

Marine O'Connell

Lalton O'Connell

Marine O'Connell

Lalton O'Connell

Marine O'Connell

Lalton O'Connell

Marine O'Connell

Lalton O'Connell

Marine O'Connell

Lalton O'Connell

Marine O'Connell

Lalton O'Connell

Marine O'Connell

Lalton O'Connell

Marine O'Connell

Lalton O'Connell

WORK OF THE BRITISH ASSOCIATION

Possibility of Meeting in East Africa

SECRETARY'S SUGGESTION

That the British Association

plays an important part in

the scientific and economic develop-

ment of any country which it visits

was pointed out by Professor

Bozell at the address given at the

Curriculum Museum on Friday

morning. Professor Bozell, Secretary of the

British Association and Professor of Economic

Geology at the University of London

Alfred, London.

The British Association had an

annual meeting last week, and

Professor Bozell, during his visit to East Africa

last week, passed many meetings

representing the different scientific sections, and

discussed the possibilities of the British

Association being invited to East Africa

for the purpose of raising money

for the benefit of the country.

The committee and research

work of the British Association

has been very successful, and

the committee and research work

of the British Association has been

very successful, and the committee

and research work of the British

Association has been very successful,

and the committee and research

work of the British Association

has been very successful, and the

committee and research work of

the British Association has been

very successful, and the committee

and research work of the British

Association has been very success-

ful, and the committee and research

work of the British Association

has been very successful, and the

committee and research work of

the British Association has been

very successful, and the committee

and research work of the British

Association has been very success-

ful, and the committee and research

work of the British Association

has been very successful, and the

committee and research work of

the British Association has been

very successful, and the committee

and research work of the British

Association has been very success-

ful, and the committee and research

work of the British Association

has been very successful, and the

committee and research work of

the British Association has been

very successful, and the committee

and research work of the British

Association has been very success-

ful, and the committee and research

work of the British Association

has been very successful, and the

committee and research work of

the British Association has been

very successful, and the committee

and research work of the British

Association has been very success-

ful, and the committee and research

work of the British Association

has been very successful, and the

committee and research work of

the British Association has been

very successful, and the committee

and research work of the British

Association has been very success-

ful, and the committee and research

work of the British Association

has been very successful, and the

committee and research work of

the British Association has been

very successful, and the committee

and research work of the British

Association has been very success-

ful, and the committee and research

work of the British Association

THE LOCUST SITUATION

Present Condition and Forecast

Definite Improvement

VALUABLE ASSISTANCE FROM TANGANYIKA

The following locust report,

issued by the Kenya Depart-

ment of Agriculture dated November

19, is of interest to the British

Association and Forecast and states:

"Definite improvement in the locust

situation has occurred since the

last report was issued. At that

date reports from Tanganyika

suggested that the Territory

to be definitely in northern and

north-westerly directions. A re-

port was made to the north and

west, and the direction of flight

of the locusts was to the north-

west and west-north-west. There

was a definite improvement in the

locust situation in the north-

west and west-north-west. There

was a definite improvement in the

locust situation in the north-

west and west-north-west. There

was a definite improvement in the

locust situation in the north-

west and west-north-west. There

was a definite improvement in the

locust situation in the north-

west and west-north-west. There

was a definite improvement in the

locust situation in the north-

west and west-north-west. There

was a definite improvement in the

locust situation in the north-

west and west-north-west. There

was a definite improvement in the

locust situation in the north-

west and west-north-west. There

was a definite improvement in the

locust situation in the north-

west and west-north-west. There

was a definite improvement in the

locust situation in the north-

west and west-north-west. There

was a definite improvement in the

locust situation in the north-

west and west-north-west. There

was a definite improvement in the

locust situation in the north-

west and west-north-west. There

was a definite improvement in the

locust situation in the north-

west and west-north-west. There

was a definite improvement in the

locust situation in the north-

west and west-north-west. There

was a definite improvement in the

locust situation in the north-

west and west-north-west. There

was a definite improvement in the

locust situation in the north-

west and west-north-west. There

was a definite improvement in the

locust situation in the north-

west and west-north-west. There

was a definite improvement in the

locust situation in the north-

west and west-north-west. There

was a definite improvement in the

locust situation in the north-

west and west-north-west. There

was a definite improvement in the

locust situation in the north-

west and west-north-west. There

was a definite improvement in the

locust situation in the north-

west and west-north-west. There

was a definite improvement in the

locust situation in the north-

west and west-north-west. There

was a definite improvement in the

locust situation in the north-

west and west-north-west. There

was a definite improvement in the

locust situation in the north-

CHRISTMAS BROADCAST FROM BETHLEHEM

Bells of the Church of the Nativity

Interior and exterior views of the Church of the Nativity at Bethlehem.

[BY WIRELESS.]

Rugby, December 3.

Before the King, at 3 p.m. C.M.T. on Christmas

Day, broadcasts from Sandringham for the third year in

succession his Christmas Message to the peoples of the

Empire, there will be once again a remarkable programme

of broadcasts from the King, which will be a series of sound pictures

and messages from points in Canada, Australia, New Zealand,

the Irish Free State, Southern Rhodesia, India and South Africa.

At the opening of this broadcast the bells of the Nativity

at Bethlehem will once again be relayed and their tones will

be re-echoed in turn by a circle of bells throughout the British

Commonwealth.

ALL OVER THE WORLD

Among far distant points which the broadcast will bring

into hearing of the rest of the Empire will be the whaling

station in Tory Island, New Zealand, a fort on the Khyber

Pass, a tea plantation in Southern India, a Native compound

in South Africa, a lumber camp in Quebec and a fisherman's

cottage in the Maritime Provinces.

These Christmas broadcasts are an astonishing technical

achievement and arouse such great interest that they are

delivered to command great audiences of listeners than any

other event of the year. Relays of the programme are

arranged by many other countries outside the Empire.

British Official Wireless Service.

DAMAGED WHEAT TO BE USED AS FODDER



BOOTH'S DRY TONIC WATER BOOTH'S DRY & SODA WATER BOOTH'S DRY & GINGER BEER And the Finest Apparatus BOOTH'S DRY & IT And for Cocktails BOOTH'S HIGH & DRY

THE AFRICAN MERCANTILE CO. LTD. London, Nairobi, Zomba, Salisbury, Harare, etc.

BOOTH'S DRY GIN

ORDER your requirements EARLY CHRISTMAS CHARACTERS... BLACKLAWS & BROWN NAIROBI.

R. C. A. VICTOR 8 TUBE ALL WAVE RADIO Sets 450/- CASH H.P. Terms on application

INGRAM & CO. LTD. The Tool House, NAIROBI.

THE FIRST PERPETUAL MOTION CLOCK IN KENYA THE ATMOS CLOCK

STRONG STEEL CASH BOXES with tray, lock bottom, 4 lever lock and 2 keys.

LYTTON REPORT ON CIVIL SERVICE CONDITIONS

Mo Leave Worrise In the view of the Committee those arguments establish the position that Officers should be regarded as eligible for leave at fixed intervals... The Committee realize that there was something to be said on either side...

E.A. STOCKS AND SHARES Nairobi Call-over

Table with columns for stock names (e.g., Anglo-Siam, Anglo-Africa) and prices. Includes a section for 'Length of Foot' with shoe sizes and prices.

RICHARDSON, TYSON and MARTIN LTD. (Stock and Share Brokers).

Widow's Butler, Phone 3511, Nairobi. GEORGE A. TYSON, (Stock and Share Broker).

GEORGE A. TYSON, (Stock and Share Broker). M. G. and N. G. A. CO., Mining and General Agents.

HIGGINSON & CO. (Stock and Share Brokers). Old Standard Bank Buildings, Strathmore, Nairobi.

HIGGINSON & CO. (Stock and Share Brokers). Old Standard Bank Buildings, Strathmore, Nairobi.

THE POWYS CASE

Witness denied, however, that he had ever seen the Wanderer before and expressed grave surprise that they should have picked him out. At this point the following statement was made by Mr. Powys...

SATURDAY'S HEARINGS

The Court opened again on Saturday morning at 10 o'clock with the examination of the Lathen witness. When it came to the witness's turn to give evidence...

FOR THE DEFENCE Samburu Lathi Called

The Lathi, Kadhoojo Lo Lo, was called by Mr. Allen for the defence. Woodhead then went on with his cross-examination...

THE DISTINCTIVE BOTTLE WHICH CONTAINS THE DISTINCTIVE WHISKY! Crawford's Scotch Whisky

CRAWFORD'S SCOTCH WHISKY A & B DRAWFORD & LATHEN DISTILLERS

SUPER TYRES SAFETY & COMPANY, LIMITED AND DEALERS

KENYA & UGANDA RAILWAYS & HARBOURS SPECIAL CHRISTMAS EXCURSION TO MURCHISON FALLS

Meals on trains and steamers and board-accommodation at the Masini Hotel on the forward and return journeys...

Specialty reduced fares are quoted for this excursion from Nairobi back to Nairobi, and are as follows: 1st Class... 2nd Class...

COMMERCIAL PRINTING is an art that needs the attention of competent workmen combined with modern machinery.

Standard Stationery Stores ROYAL AGRICULTURAL & HORTICULTURAL SOCIETY OF KENYA VISIT THE NAKURU SHOW, DECEMBER 6th & 7th.

UNCRUSHABLE ANTI-CREASE - DRESS VOILE

in VARIOUS ATTRACTIVE DESIGNS and SHADES LATEST "RANGE" - Now at -

Ahamed Bros

The House of Distinction. Bazaar, NAIROBI. Phone 2201

REAL MOUTH HEALTH AT LAST!



GIBB'S "SR" is the greatest contribution to Mouth Health yet achieved by Medical Science.

GIBB'S "SR" was evolved and perfected after two years' research and test by a Dental Surgeon in collaboration with all the resources of Modern Chemistry.

USE GIBB'S "SR" twice a day and enjoy much better health.

At all Chemists and Stores

You Are Missing A Treat It You Have Not Tried Elliots Oat Cakes Try Them To-Day

M. S. ELLIOT & Co. Ltd. P.O. Box 175 Government Road, Phone 2000

Original Macdonald Permanent Waves in Kenya. THEO. SCHOUTEN NERO STANDY ARCADE, Phone 2215

CORRESPONDENCE

The Editor does not accept responsibility for the views expressed by his correspondents in these columns and in all cases the name and address of the writer must accompany a letter, not necessarily for publication, as a guarantee of good faith. Directly it also essential to read consideration.

The 1935 Budget

PROBLEMS OF ECONOMY

To the Editor, "E.A. Standard," Sir.—I am very glad to see that no further reduction in the Civil Service staff can be made without curtailing essential services. His Government considers the question of increasing the working hours of its servants?

If Government hours were from 8 a.m. to 4.30 p.m. and Saturdays 8 a.m. to 2 p.m., the following saving might probably be effected.

Additional 50 hrs. per week per man = 132 hours per man per year = 936,000 hours for 3,500 servants per annum. At the rate of seven and a half hours. Taking an average wage of Shs. 5/- per day, this means 231,250.

This figure can possibly be increased by strict attention being given to ensure full office hours being adhered to, not only by the junior officials but by seniors, who frequently are not available until some time after the regular official opening time, although it is understood that some of these seniors do considerable overtime.

The average salary of Shs. 57 per day mentioned above is entirely a gross figure, but it is to allow for those servants, the leave, and the small wages of natives, as a set off against the senior officials, some of whom draw from 8 to 14 day wages.

It may be pointed out that by this extension of working hours the time for leisure and sleep would be ample, viz.:

Leisure ..... 7 hours Work ..... 7 hours Sleeping, or otherwise ..... 9 hours Total ..... 24 hours

Yours etc., "TECHNOLOGY" Nairobi, December 1, 1934.

To the Editor, "E.A. Standard," Sir.—The 1934 Estimates I find there are about 749 people on the pension lists.

There are over 1,000 pensionable posts in the Government including Kenya and Uganda Railway.

Some of the members on the pension lists will exceed the number of the so-called estate list.

Yours etc., E. D. BUTHFORD, Nairobi, November 29, 1934.

To the Editor, "E.A. Standard," Sir.—In his Budget speech Lord Francis Scott, referring to salary cuts of Civil Servants, said:

"How very blessed must 'we' would be if we had only had from 5 per cent. to 10 per cent. reduction in our incomes."

We would indeed! The following is the cut in income through low prices, drought and meagre yield of each partner in one of the good estates of Kenya (my own):

Income through low prices, drought and meagre yield of each partner in one of the good estates of Kenya (my own): Average of the last three years 1928/29, £1,222; 1931/32, £232; Difference 990 per annum. A cut of 50 per cent. anyone who doubts it can examine my own.

However, I am an affable fellow than many farmers, and could better have suffered least of my crops, as it is not difficult to imagine what cuts our traders have suffered.

As for the Native, all my labour has been cut 25 per cent. As your, Pettusulous and Peaceable, E. A. GLAY

Do you Salak, Nairobi, November 29, 1934.

CHRISTMAS EVE

To the Editor, "E.A. Standard," Sir.—In your edition of the 29th inst. I read that the Governor of Tanganyika has proclaimed Christmas Eve, Monday, Dec. 24, a public holiday. Let us hope, for the benefit of the workers, that His Excellency the Governor of Kenya will follow his example.

Yours etc., "TYTIST" Nairobi, November 30, 1934.

THE E. A. SELLING

To the Editor, "E.A. Standard," Sir.—The article by Major Jennings in The Times regarding the proposed sale of the Colonial Bank is an important contribution to the discussion of the necessary changes to which the Colonial Empire has been reduced.

The lack of a regulating mechanism among a currency such as sterling and Sterling can no longer be tolerated. Bolshad down to its simplest terms, the difficulty may be stated thus: We have Sterling payments for interest and purchase of goods. The only thing we can pay in is our exports. At the time we incurred the liabilities for these payments, a certain quantity of exports per annum was contracted. The increase in the purchasing power of the pound sterling has weakened our exports against us. We are progressively being called on to hand over more and more exports in fulfilment of our obligations.

The only regulating mechanism at the present day between our currency and Sterling is the currency in circulation here. If there is not enough currency in circulation here, the Government must fulfill the bonds by issuing new currency in circulation here. If there is not enough currency in circulation here, the Government must fulfill the bonds by issuing new currency in circulation here.

Yours etc., M. S. ELLIOT & Co. Ltd., Nairobi, November 29, 1934.

To the Editor, "E.A. Standard," Sir.—Your correspondent, Mr. Wigglesworth, stated in a recent issue that "New Zealand and Danish butter are now selling at 9d. and 10d. per lb. the lowest price in recent months as a result of the extra disinflation of 25 per cent. in their respective currencies."

I am no currency expert, and this is by no means a most systematic statement. It may, of course, be very good argument in favour of the stability of Kenya's currency, but, for the producer, I prefer this one.

Extract from leading article in the September issue of "The New Zealand Dominion": "The rate of exchange which 'Further Expansion of Output' has been raised to 25 per cent. means a difference of approximately 21 per lb. butter fat, and had exchange been at par, the total export value for the past year would have only amounted to about £1,000,000. In other words, with the exchange at par, the export value of approximately three and a half million tons of butter and oil would have been only £1,000,000."

The letter price is, strange to relate, about 10d. per lb. The extract which I quote is, of course, not a statement of fact, as it is opposed to common belief.

Yours etc., THOMAS J. LUXFORD, Nairobi, November 27, 1934.

AIR MAIL SPEED

To the Editor, "E.A. Standard," Sir.—The following reply to their letter of 22nd instant was sent by the Holland-Africa Line Agency Ltd., Mombasa, in connexion with their recent article on the subject of the revival of air services on the East African coast.

Yours etc., M. S. ELLIOT & Co. Ltd., Nairobi, November 27, 1934.

per, the total export value for the past year would have only amounted to about £1,000,000. In other words, with the exchange at par, the export value of approximately three and a half million tons of butter and oil would have been only £1,000,000. The letter price is, strange to relate, about 10d. per lb. The extract which I quote is, of course, not a statement of fact, as it is opposed to common belief. Yours etc., THOMAS J. LUXFORD, Nairobi, November 27, 1934.

(1) The control of the exchange, discount must not be left in the hands of the Colonial Office (see note) as well not have it under their control. (2) All our commitments, external and internal, must be made in Local Currency. (3) Six months ago, I was addressing the payment of the interest on the external debt in sterling. The Government of Kenya will follow his example. Yours etc., "TYTIST" Nairobi, November 30, 1934.

To the Editor, "E.A. Standard," Sir.—I have to thank you for your letter P.P. of the 22nd November, on the subject of the revival of air services on the East African coast. I am afraid that the article attached to your letter is quite dated as you will see. It dates quite clearly that it is only valid for September and October on the coast.

Another point which you may have overlooked is that the timetables are given from London and not from Amsterdam.

A very pleasant relationship has always existed between ourselves and the K. I. M. and upon which I think that you will find that the statement made in your Circular letter, was quite correct.

Yours etc., P.P. Imperial Airways (Africa) Limited, M. S. BRANCKER, Nairobi, November 29, 1934.

To the Editor, "E.A. Standard," Sir.—Your correspondent, Mr. Wigglesworth, stated in a recent issue that "New Zealand and Danish butter are now selling at 9d. and 10d. per lb. the lowest price in recent months as a result of the extra disinflation of 25 per cent. in their respective currencies."

I am no currency expert, and this is by no means a most systematic statement. It may, of course, be very good argument in favour of the stability of Kenya's currency, but, for the producer, I prefer this one.

Extract from leading article in the September issue of "The New Zealand Dominion": "The rate of exchange which 'Further Expansion of Output' has been raised to 25 per cent. means a difference of approximately 21 per lb. butter fat, and had exchange been at par, the total export value for the past year would have only amounted to about £1,000,000. In other words, with the exchange at par, the export value of approximately three and a half million tons of butter and oil would have been only £1,000,000."

The letter price is, strange to relate, about 10d. per lb. The extract which I quote is, of course, not a statement of fact, as it is opposed to common belief.

Yours etc., THOMAS J. LUXFORD, Nairobi, November 27, 1934.

"WHAT A PEACH!" This is what YOUR FRIENDS AT HOME will say—When they receive A box of luscious South African Fruits. As on XMAS or NEW YEAR PRESENT For particulars apply to: COMMISSIONER for the Union of South Africa, P.O. Box 624, MEMORIAL HALL, NAIROBI.

TO LET. FLATS AND OFFICES, OR COMPLETE BUILDINGS IN TOWN, SHIOT'S 6th AVENUE AND GOVERNMENT ROAD, GOWDONS AND GARAGES CENTRAL, COTTAGES IN TOWN AND BARKLANDS. Apply— J. H. S. TODD & CO., LTD, P.O. Box 24 or Government Road.

FOR MEN A PERFECT LEISURE SLIPPER Combining Comfort with ENDURANCE. Empire Shopping Weeks Proposal. Price: SHS. 20/- Less 10 per cent. CASH.

EADIE'S FOOTWEAR Ltd. Nairobi, Phone 2000.

SAVOY HOTEL. UNDER EXPERT SUPERVISION. P.O. Box 29, Collocation Road, NAIROBI. Telephone: Savoy.

Kenya Loan and Discount COMPANY LIMITED. FINANCIAL AGENTS. OFFICE—1st Floor, Court Chambers, P.O. Box 546 NAIROBI. Short Period Loans Granted. Any Reliable Asset Negotiated for Cash. CALL OR WRITE — STRICTEST CONFIDENCE. Established 1921.

THE TANGAYIKA CORDAGE Co., Ltd. Best Quality and Lowest Prices made by THE TANGAYIKA CORDAGE Co., Ltd. SOLE AGENTS: MITCHELL COTTS & Co. (E.A.) Ltd. Box 664 NAIROBI Phone 2456 Kite Hill Mombasa, Kakamega



# UNION-CASTLE LINE

## EXCURSION

RATES WILL BE AVAILABLE

### SOUTH AFRICAN PORTS

FROM MOMBASA


by the following vessels—

- "Llandaff Castle" ... 26th Dec.
- "Llangibby Castle" ... 23rd Jan.
- "Llanoverly Castle" ... 20th Feb.
- "Llandaff Castle" ... 20th March

Tickets are available for three months and are interchangeable with the British-India Line.

## EXCURSIONS TO SOUTH AFRICA

### BRITISH INDIA



#### STEAM NAVIGATION CO. LTD.

The period for Excursions has now been extended until the end of MARCH.

Next sailings—

s.s. KENYA	9800 tons	Dec. 9th
s.s. TAIBA	7865 tons	14-22nd
s.s. KARANTA	9800 tons	Jan. 6th
s.s. TARILWA	7900 tons	Jan. 29th
s.s. KENYA	9800 tons	Feb. 2nd
s.s. TAIBA	7900 tons	Feb. 16th
s.s. KARANTA	9800 tons	Mar. 3rd
s.s. TARILWA	7900 tons	Mar. 16th

Paras to Durban and back are under—

1st Class "A"	Shs. 640/-
1st Class "B"	Shs. 480/-
2nd Class	Shs. 427/-

The return journey must commence within three months of the original date of sailing from the initial port.

B.I. and Union Castle Tickets are interchangeable and reduced Railway Tickets are available.

For full particulars apply to—

**SMITH MACKENZIE & Co.** NAIROBI AND BRANCHES.

## Deutsche Ost-Afrika-Linie

Next Sailings from MOMBASA

HOMEWARD via Suez Canal. HOMEWARD via Cape.

Usukuma	Jan. 9	Walindi	Dec. 1
Usambaras	Feb. 6	A. D. Workman	Jan. 14
Usarumo	March 9	Tanganika	Feb. 28
Usambaras	April 6	Usambaras	April 2
A. D. Workman	May 25	Usambaras	May 7
Walindi	July 13	Usarumo	May 28
Tanganika	Aug. 17	Usukuma	July 1

All steamers offering excellent accommodation in First and Tourist Class.

Excursion Return Tickets Available to South African Ports.

Sailings subject to alteration.

For full particulars of passenger fares and freight rates apply to the Agents—

**DEUTSCHE OST-AFRIKA-LINIE, Generalagenten Mombasa, Cables "OSTLINIE," P.O. Box 910.**

## CLAN-ELLERMAN-HARRISON LINES

(JOINT SERVICE)

LIVERPOOL, GLASGOW, AVONMOUTH, MANCHESTER.

Arrivals from Liverpool and Glasgow.	Clearing Date at Liverpool.	Due to arrive.	Loading for Liverpool	Ready to load	Expected to sail
s.s. Florina	sailed	22nd Dec.	s.s. Clan Murray	19th Dec.	24th Dec.
s.s. Discoverer	sailed	21st Dec.	s.s. Discoverer	2nd Jan.	24th Dec.
s.s. City of Bath	13th Dec.	11th Jan.	s.s. City of Bath	23rd Jan.	2nd Feb.

"CLAN MURRAY" gives direct discharge at Avonmouth and Swansea.

## National Bank of India Limited.

(Incorporated in United Kingdom)

Bankers to the Colony and Protectorate of Kenya and Uganda

Protectors of the Government.

Subscribed Capital ... £4,000,000  
Paid-up Capital ... £2,000,000  
Reserve Fund ... £2,500,000

20, Bishopsgate, London, E.C. 2.

Branches: Mombasa, Nairobi, Nakuru, Eldoret, Kisumu, Embua, Kampala, Juba, Zomba, Dar es Salaam and Tanganyika, also at: Calcutta, Bombay, Madras, Karachi, Lahore, Amritsar, Delhi, Cawnpore, Colombo, Rangoon, New York, London, Cochin, Chittagong, Bangoon, Mandalay, Aden and Basra.

AGENTS in New York and throughout U. S. A., Europe, Canada, South Africa, and Australia.

FIXED DEPOSITS—Deposits are received for fixed periods on terms which may be learned on application.

The Bank grants Drafts on the Head Office and Branches at the current rates of Exchange for sending first copy of the Bill direct to the payee when required.

Every description of Banking business transacted with all parts of the world.

## MESSAGERIES MARITIMES EXCURSION

### TICKETS TO EUROPE—3 MONTHS STAY.

To Marseilles 1st £ 95-6-0; 2nd £ 51-0-0; 3rd £ 26-0-0  
To London 1st £ 108-0-0; 2nd £ 70-0-0; 3rd £ 40-0-0

Depart from Mombasa. Return from Marseilles

20th November "Amboise"	14th March, 1935, "Jean Laborde"
1st December "Chantilly"	28th March, 1935, "Joffre"
15th December "Compigne"	11th April, 1935, "Chantilly"

MESSAGERIES MARITIMES, P.O. Box 16, NAIROBI.  
JARDIN LIMITED, P.O. Box 20, NAIROBI.

## ELLERMAN and BUCKNALL LINE

Regular and Frequent Service from U.S.A. Atlantic Ports and St. John (N.B.) to East Africa with Transhipment at Aden.

Next sailings from America.	Leave New York	Leave St. John	Next arrivals at Aden	Due at Mombasa	Due at East Africa
s.s. City of Madras	5th Dec.	18th Dec.	s.s. City of Dunkirk	2nd Dec.	2nd Dec.
s.s. City of Guildford	15th Dec.	18th Dec.	s.s. City of Wellington	7th Dec.	7th Dec.

## GIBBS' AUTO TRANSPORT LIMITED

### for AIRWAYS & ROADWAYS

Official Contractors to—

IMPERIAL AIRWAYS Ltd., WILSON AIRWAYS Ltd., THOS. COOK and SON, LTD.

Cars prepared by skilled European.

SIXTH AVENUE GARAGE—Phone 5700

TOURS ARRANGED by SAFARI OUTFITTERS.

OFFICE—Next to the Royal Tobacconists, Stanley Arcade, Nairobi.

F.O. Box 1001, Nairobi. Phone 2724, 2111  
KAMPALA P.O. Box 247, Phone 167.

## MAISON MARIE

PERMANENT WAVING SPECIALISTS.

The only firm in Kenya with SIX Systems of PERMANENT WAVING

### FRIGIDINE

The only cool system. Shs. 40/- whole head

Phone 2220 Sixth Avenue, NAIROBI. Box 1032

## CHRISTMAS-1934.

A visit to KASSAM KANJI & SON, Govt. Road, will solve the problem of your XMAS shopping.

TRICYCLES & BICYCLES for JUVENILES & ADULTS

Also many attractive Christmas Novelties which will delight both 'Old and Young.'

"IT PAYS TO BUY BRITISH."

P.O. Box 319, NAIROBI. Telephone No. 2344.

## THE AFRICAN MERCANTILE COMP ANY LIMITED.

MOMBASA (phone 26) NAIROBI (phone 2423)

Telegrams: "Navigation."

## WILSON AIRWAYS Ltd.

### WEEKLY COAST SERVICE.

Nairobi - Mombasa - Tanga - Zanzibar - Dar es Salaam

Leaving Nairobi every Tuesday—  
Returning every Thursday.

FARES:

NAIROBI - MOMBASA	Shs. 80-00
NAIROBI - TANGA	Shs. 100-00
NAIROBI - ZANZIBAR	Shs. 120-00
NAIROBI - DAR ES SALAAM	Shs. 240-00

Further particulars apply—

P.O. Box 1087 NAIROBI. Phone 2255.  
OR ANY AGENT.

## HOLLAND-AFRIKA LIJN

NORTHBOUND SOUTHBOUND

s.s. "Springstede"	Dec. 14th	s.s. "Klyptofield"	Dec. 22nd
s.s. "Streekker"	Dec. 14th	s.s. "Nigker"	Jan. 2nd
s.s. "Klyptofield"	Jan. 2nd	s.s. "Nigker"	Jan. 2nd
s.s. "Nigker"	March 14th	s.s. "Hornskerk"	Feb. 6th
s.s. "Springstede"	April 15th	s.s. "Springstede"	Mar. 6th
s.s. "Jagersfontein"	May 15th	s.s. "Hollandfontein"	April 15th
s.s. "BLOEMFONTEIN"	June 8th	s.s. "Molskerk"	June 11th
s.s. "RISCHFONTEIN"	July 8th	s.s. "Jagersfontein"	July 19th

These new motorships offer excellent first class accommodation for about 80 passengers and cover the distance Mombasa-Dar es Salaam and Mombasa-Dover in 21 days.

HOLLAND-AFRIKA LINE AGENCY, Ltd., Mombasa, Tel. Ad. 1. "Klinken."

TWENTSCHE OVERSEAS TRADING Co., Ltd., Nairobi, Kampala. Telegraphic Address: "Overseas."

## WE HAVE MOVED

to new premises

### IN CAMBRIAN BUILDING

Next door to S. J. Moore's Bookshop

A. J. ELY & Co., Ltd.

Box 411 Chemists and Druggists, NAIROBI.

## BUDGET

for a SURPLUS

By Dealing with a Firm of Specialists

WITH YEARS OF LOCAL PRACTICAL EXPERIENCE

IN ALL BRANCHES OF THE BUILDING TRADE

SUPPLIERS of every kind of Building Material.

CONTRACTORS for any Job - LARGE or SMALL.

ESTIMATES FREE

Your Inspection Invited

### JUST UNPACKED

A NEW CONSIGNMENT OF

KITCHEN STOVES, BATHS, BASINS, BATHROOM FITTINGS, etc.

P.O. Box 269, Telephone No. 2434.

**GEO. BLOWERS, Builder and Contractor.**  
Saddler Street, NAIROBI.

## Ladies and Gentlemen!!

YOU CAN GET EVERYTHING FROM US IN UP-TO-DATE SMART CLOTHING.

Woolen Suitings of latest designs coming every mail.

Also Ladies' Dress Materials from Debenhams.

Smart Fashions, Perfect Fitting, Best Tailoring.

Ready Made Clothings of all descriptions and Best English makers.

TRY AT

## Alibhai & Co., Ltd.

EXPERT DRESS AND COSTUME MAKERS.

MADE UP IN THE LATEST LONDON and PARIS STYLE.

P.O. Box 291 BAZAAR, Phone 2213, NAIROBI.

## B. M. C. House

Phone 1162 Government Road, NAIROBI. Phone 810

# Xmas Gifts

## Ladies Handbags

We are Displaying the Largest Range in Kenya.

HANDBAGS in SILK, LINEN CRASH and CREPE-DE-CHINE.

### Prices From

# 3/50 TO 35/- EACH

THE BRADFORD MANUFACTURING Co. (KENYA) Ltd. INCORPORATED IN ENGLAND.

## Overseas Mails

Steamers—INWARD.

Mails Due at Nairobi:

South	Arizona	Mar. 10
South	Karunia	Dec. 9
Europe	Enn Metzinger	Dec. 9
India	Kanya	Dec. 9
South	Takliva	Dec. 20
India	Tairoa	Dec. 22
Europe	Leontine de L.	Dec. 23

Steamers—OUTWARD.

Mails Leave Nairobi:

India	Karunia	Dec. 5
Far East	Arizona	Mar. 10
Europe	Duhalde	Dec. 7
South	Kenya	Dec. 8
Europe	Compigne	Dec. 14
South	Beconat	Dec. 14
India	Takliva	Dec. 15
South	Tairoa	Dec. 21
Europe	Calla Seydelles	Dec. 21

Air Mail—INWARD

Europe & India ... Monday

S. A. & East Countries ... Thursday

Coastal Service ... Thursday

Air Mail—OUTWARD

Europe & India ... Monday

S. A. & East Countries—parcels ... Monday

7 p.m. Monday, letters 7.15 a.m. Tuesday.

## R. C. A. RADIO SERVICE STATION

Situated in VICTORIA STREET, opposite Fire Station, and next Kodaks Ltd.

Engineer in charge: A. F. MOY.

## Christmas Overseas Mails

According to the latest available information the following Mails should arrive at their Destination before Christmas Day—

BOAT MAILS.

for SOUTH AFRICA. close Nairobi Prob. Arr. at

s.s. KENYA (letters 3-15, parcels 1-30)	8-12-34	19-12-34
for INDIA. s.s. KARANTA (letters 3-15, parcels 3 p.m.)	5-12-34	15-12-34

AIR MAILS.

for GREAT BRITAIN. Letters 7 p.m., parcels 5 p.m.	close Nairobi	Prob. Arrive
for SOUTH AFRICA. Letters 7.15 a.m., Parcels 4.00 p.m.	... 19-12-34	20-12-34
for INDIA. Letters 7 p.m.	... 19-12-34	20-12-34

POST CHRISTMAS MAILS EARLY.

## "UPLANDS" BACON.

Those who do appreciate the good things in life always ask for—

The Tool House NAIROBI.

# AUCTION SALES



SALE OF ATTRACTIVE FREEHOLD NGONG PROPERTY.

Duly instructed, we shall sell by PUBLIC AUCTION, in ONE LOT, at our Salerooms, Mutos Building, Hardinge Street, Nairobi.

**TODAY, 4th December at 2-30 p.m. precisely**

ALL THOSE PIECES OR PARCELS OF LAND, known as Land Office Nos. 1009-2, 1009-6 (2/3B) and 2243 comprising approximately EIGHT HUNDRED AND SIXTY ACRES situated West of Township and South of Karen Estates with the Mthepati River and Miani Reserve forming one boundary.

This FREEHOLD land presents a very good opportunity for an investment with low-lying possibilities for residential holdings in a popular district.

Auctioneers, MUTER and OSWALD Ltd., Estate Agents, Nairobi, Valuers.



MISCELLANEOUS GOODS SALE.

Duly instructed, we shall sell by Public Auction, without reserve, unless stipulated, at our Salerooms, Mutos Building, Hardinge Street, Nairobi.

**on WEDNESDAY, 5th December at 10 a.m.**

Corrugated Iron Sheets, Timber, Windows, Absorbent Cotton Wool, Six dozen Tennis Balls, Large Range of Novels, Provisions, 9.2 Double Barrelled Rifle with Zeiss Telescopic Sight (res.), etc., etc.

MUTER and OSWALD, Ltd., Auctioneers, NAIROBI.



OF INTEREST TO PHILANTHROPISTS.

At our Salerooms, Mutos Building, Hardinge Street, Nairobi, on

**THURSDAY, 6th December at 4-15 p.m.**

SALE OF COLLECTION OF STAMPS, comprising over one hundred lots.

MUTER and OSWALD, Ltd., Auctioneers, NAIROBI.

## THE CAR MART

P.O. Box 1008, (GOODEFRET'S) Sixth Avenue, Telephone 2148

## Used Car Bargains

The Finest Selection of Used Fords in Kenya

- FORD Saloon, 1934 Model, small mileage, new set Air Wheels, as new ... £185
- FORD M.S. Box Body, small mileage, six wheels, 1934 Model ... £145
- FORD Box Body 1932 Model, reconditioned ... £85
- FORD Box Body, 1929/30 Model, reconditioned £ 55
- FORD Light Delivery 1929/30 Model, reconditioned ... £ 50
- FORD Roadster, 1929 Model, reconditioned ... £ 55
- Also numerous other makes from £15 upwards including OLDSMOBILE, Tourer, 1929 Model ... £ 20

WE BUY, SELL or EXCHANGE. GOOD SECOND-HAND CARS WANTED.

## K. F. A.

Phone: 2707 Tel. Associated. P.O. Box 1229. SUPPORT LOCAL INDUSTRIES.

### LINSEED OIL

BOILED and BURN ONLY GENUINE, NOT REDUCED. Better and Cheaper than imported. Guaranteed Pure, used by Government and Railway.

WHOLESALE PRICES QUOTED ON APPLICATION.

### BUSINESS TRAINING

Mitani's Short-hand, Typewriting and Book-keeping, through tuition by—Mrs. A. L. BROMHEAD, (18 years with the Municipal Council of Nairobi)

NAIROBI TYPEWRITING BUREAU, (Opp. National Bank of India)

Adult House, Government Road, Nairobi, (Opp. National Bank of India) P.O. Box 1004 Telephone 2700. SPECIAL CLASSES FOR SHORT-HAND.

For the Best and Cheapest Lins for all Purposes: Albert House, Govt. Road, Box 412, NAIROBI. Telephone NAIROBI 2488. Kambui 10.

Line Limited

## AUSTIN'S AUCTIONS

MISCELLANEOUS SALE OF NEW GOODS. Duly instructed, we will sell by Public Auction, WITHOUT RESERVE, at THE MART, Hardinge Street, on THURSDAY, December 6th at 10 a.m.

Several Ladies Felt Hats by Heath, London. Ladies Silk Frocks and Underwear. Ladies Woolen Jumpers and Dresses. Italy Ring Silk Hose. Assorted Silk Dress Lengths. Ladies Pyjama Suits. Happy Coats. Vests. Dressing Gowns and Shoes. Gents Shirts, Pyjamas, Dressing Gowns. Hankerchiefs. Good Woolen Suit Lengths. Cor-duroy in assorted Colours. Tussore Silk Suit and Dress Lengths. Woolen Travelling Rugs. Kiddies Jumpers and Suits. Toilet Soaps, Towels, Brass Vases, Powder and Cosmetics. Woollen Travelling Rugs. Kiddies Jumpers and Suits. Double Terai, etc., etc.

### AUSTIN & CO.

Auctioneers, etc., Hardinge St., Nairobi.

## AUSTIN'S AUCTIONS.

CATALOGUE SALE OF GOOD FURNITURE AND EFFECTS, at THE MART, HARDINGE STREET, NAIROBI.

On SATURDAY, December 8, 1934, at 10 a.m.

Further details will be advertised later. We make HIGH CLASS FURNITURE of every description at the lowest possible prices.

### LET US QUOTE YOU.

All work made under the supervision and guaranteed by

### SAM LAZARUS

(Furniture maker in Nairobi since 1914.)

## SANDS & CO.

at the Hotel Saleyards, GILGIL.

on MONDAY, 10th December at 10-30 a.m.

60 Cows in Calf or Calves at Foot. 20 Slaughter Steers. Further entries of Sheep and Cattle being received.

### NAIROBI.

### XMAS POULTRY SALES.

FRIDAYS, Dec. 7th, 14th, 21st.

TUESDAYS, Dec. 4th, 11th, 18th.

### NAIROBI CATTLE SALES, EVERY WEDNESDAY.

### SANDS & CO.

AUCTIONEERS, ETC.

## To Let

SHOP; also the best Offices in Nairobi, Balfour House, Hardinge Street.

Apply—THE NORFOLK HOTEL.

### FOR SALE.

4 Plots with stone houses thereon and 23 vacant plots all situate in Park View Estate, Nairobi.

For full particulars please apply—

### BACHULAL GATHANI,

Auctioneers and Estate Agents etc., Box 820, Phone 2092, Stewart Street.

## Mr. RESIDENT!

ARE YOU TROUBLED WITH YOUR FIREWOOD?

For over a decade we have been supplying best quality house wood fuel and our VALUE has not been surpassed.

Order your next load from us and compare VALUE.

Prompt and efficient delivery.

We are also specialists in Furniture removals.

Goods and Motor Cars stored whilst you are on leave.

Shipping—Clearing—Forwarding—Transport—Goods packed and shipped anywhere—All sizes of Cedar Poles, Bamboos and

Special Poles always in stock, also Karuru Marum—Some Best also Compound Marum—

THE EXPRESS TRANSPORT COY. (Known throughout Africa.)

Carriage Contractors to Kenya and Uganda Railways and Harbours. Established for 30 years. Agents in all parts of the world.

NAIROBI and MOMBASA.

Our Mombasa office, under European supervision, meet all boats and assist passengers with luggage.

## E. Hutchison & Co.

Favoured with instructions from several clients we shall sell by Public Auction, without reserve (unless stated) at our Mart, Govt. Road, TODAY, December 4th at 10 a.m.

the following—  
Cherifield Suite in ordinary. Two Chesterfield Suites in Cromette. 2 Club Easels. Sealed-in Matt. Gate Legged Dining Table. Occasional Tables. Coffee Stools. Writing Harpnet. Tea Wagonet. Set Single Beds with Box Springs. Dwan Bed. Single and Double Ward-robe. Dressing Chests. Glass and Drawers. Washstand. Single Mattresses. Pillows. Caval Mirror. Bookcase. Towel Rack. 2 Kitchen Tables. 2 Brass Mounted Iron Beds. Gliding Dining Table. 8 Dining Chairs. Settee. Case Seated Terra Cotta Mirror on stand. Paraboloidal. Underwood Typewriter (L.). Electric Iron. Dandy Revolver. Rug. Locking Horse. 2 Silk Bedspreads. 5 Pieces Tapestry. Bridge Table. Tomna Brasiers. 12 Copies National Geographic Magazine 1914. Large Show Case, etc.

### E. HUTCHISON & Co.,

Incorporated Auctioneers.

FOOD PERFECTLY KEPT IN ANY TEMPERATURE.

Refrigeration solely by water

## THE KEPKOLD FROSTBOX REFRIGERATOR

Sole Agents—BENOVAN & Co., Albert House, Govt. Road, NAIROBI.



### DENIS MOUNIE'S

## Gold Leaf Brandy.

By appointment to H.M. King George V.

The Genuine Product of Cognac shipped with the Acquit France delivered by the French State to

Pure Grape Cognac Brandy, Produced and distilled in the District of Charentes.

Regularly shipped to other parts of the Empire since 1870.

Agents—BISHENOS BROS., opp. Market NAIROBI.

## JAMAL PIRBHAI

who sells anything you cannot sell, Auctioneer, Official Broker, Land and Estate Agent, and Government Approved Valuer.

AUCTION EVERY SATURDAY and SUNDAY commencing at 3 p.m. and 8 a.m. respectively.

P.O. Box No. 209. NAIROBI. Phone No. 2242.

NOTE—No matter whether second-hand or new, the highest price always available for clean articles.

## ELSAN

Chemical Closets—solve the problem of Country Sanitation



Easy to install. Low Cost. Sanitary.

Adaptable for installation under any conditions. Neat in appearance.

R. G. VERNON & Co., 111/112 and Standard Street, NAIROBI. Phone 2544. Box 154

## THACKRAH'S Limited

NAKURU

The Up-country, Land and Estate Agents, Auctioneers and Approved Valuers, Insurers, Shipping and Finance Agents, SHOPS, OFFICES, GODOWNS, HOUSES and FARMS. —LOT TO LET FOR SALE.

## JAPANESE

DRY CLEANING and DYEING WORKS. YOUR OLD SUIT MADE NEW FOR ONLY Shs. 4/- PER SUIT. Dry Cleaning—Satisfaction Guaranteed.

at the Japanese Hairdressing Saloon, Madatally Building, Government Road. — NAIROBI.

## Bennetts Car Services Ltd.

## USED CARS

Ford V8. Coupe, Fitted with Air Wheels, small mileage. Excellent condition and appearance. £125

Esser Sedan. In really good condition. Well shod. A comfortable and reliable car. Owner leaving £40

Ford Tourer. In perfect mechanical condition. £40

Chev. 4 Body 1925. Second and economical. £38

SECOND-HAND SPARES FOR ALL CARS. We Can Save You up to 50 per cent. on your bill. OPEN DAY AND NIGHT.

## KENYA CYCLE MART

Direct Importers of Bicycles and Tricycles—Juvenile and Adults. Distributors of B.S.A. Padel Bicycles. P.O. Box 787. Hardinge Street, Nairobi. Telephone 2217.

## WHERE TO STAY TOWN AND COUNTRY.

### FAIRVIEW PRIVATE HOTEL

Phone 2223 Bishop Road—The Hill, Self-Serv. Restaurant. P.O. Box 643.

Within three quarters of a mile of Nairobi Park Office. SPECIAL ATTENTION IS GIVEN TO CATERING, and THE FOOD IS OF THE FINEST QUALITY—ALL COOKING EXECUTED UNDER EUROPEAN SUPERVISION.

### THE HILL PRIVATE HOTEL

P.O. Box 781 (opposite National Club) Phone 2020. Every Convenience. Delightfully Healthy Situation.

Combines the Comforts of a First-Class Hotel with the quiet of a Private Residence. CHARGES MODERATE.

P.O. Box 1018. LEICESTER HOTEL (Phone 2180). (Just over Alnborough Hill. "Bus Service")

BEAUTIFULLY SITUATED—ABOUT A MILE FROM TOWN, with Electric Service and Capital comfort.

Terms from 27. Proprietress: ELIZA STEVENSON. Daily Shs. 7/6

### The Devon Residential Hotel

P.O. Box 1120, Salisbury Road, Phone 1115

Modern Bedrooms equipped with built-in furniture and H. and C. water. Private suites. Large well furnished Comps. Two tennis courts. Plentiful surroundings. Good food. Efficient service and general comfort.

Reduced Terms from DECEMBER 1st.

## GROSVENOR HOUSE

Phone 809 The Hill, RESIDENTIAL HOTEL, Nairobi. Phone 1008

Excellent Cuisine. Private Suites. All bedrooms contain h.s. and cold water. Modern sanitation. Licensed for Residents and Visitors. Two Treats Courts.

## LATEST NOVELS

"ALWAYS AN ACCEPTABLE GIFT."

- Price Shs. 6/50, posted anywhere Shs. 7/.
- Karoo Howlers, by Marie Stuart Bertram
- Smolina Girl, by Harold Hinkley
- Three Blind Mice, by Victor Bridgus
- Cheshire House a Hosts, by Alice Brown
- The Case of the 1907 Athls, by Christopher Budd
- Buttons Brains, by J. Storer Clouston
- The Shadow of the Four, by Mack Cross
- Tangle Women, by H. M. E. Clapp
- The Street of Painted Lips, by Marjorie Dobson
- Coppy Hills Come Back, by Peter B. Kyle Wadley
- The Great White Wolf, by A. G. Hale
- The Plains, by Patrick O'Brien
- Comrades of the Storm, by Peter H. Kenny
- Magic in the Air, by P. R. Pym
- The Scarlet Years, by Hugh Tennant
- Kit of Kit's Folly, by W. Riley
- High Fives, by Grace S. McMahon
- Sons of Solomon, by Leitch Bates
- Storm Music, by Doonford Yates
- Townsmen, by Peter B. Kyle Wadley
- Down the Garden Path, by Beverley Shode

## STANDARD STATIONERY STORES, NAIROBI.













# SOME LISTENERS' OPINIONS OF THE "LISSEN" ALL-WORLD ALL-WAVE SKYSCRAPER FOUR.

## WHY I LIKE MY LISSEN SKYSCRAPER 4 WIRELESS SET.

Messrs. The East Africa Wireless Co.,  
NAIROBI.

Dear Sirs,

Because, with infalling regularity and clarity it daily gives me the local and world news, both political and general, which are indispensable here so quickly by any other means. I am thus able to keep in constant touch with events happening in all parts of the world, which would otherwise be lost news by the time newspapers reached me.

Evenings, which previous to my purchasing my Lissen Skyscraper were spending, are now too short, owing to my being able to listen to good music daily, owing to the very small amount of current used in operating the Set during long periods. This, to one situated right out in the bush, where frequent battery re-charging is usually very inconvenient, is a great consideration.

Finally, my Lissen Skyscraper 4 Wireless Set is satisfactory in every way and, to one situated like myself on a lonely part of the country, it makes life 100% more endurable. I desire nothing better in Wireless Receivers.

Yours faithfully,  
G. M.

## WHY I LIKE MY LISSEN RECEIVER.

Messrs. The East Africa Wireless Co. Ltd.,  
P.O. Box 102,  
NAIROBI.

Dear Sirs,

One of the main reasons why I like my Lissen Receiver is because it does all that is claimed for it with no fail.

When I was advised by my wife who knows little or nothing about receivers to scrap the existing one for a Lissen I was extremely dubious as it was so cheap in comparison with other battery sets for which the same efficiency was claimed.

I was frankly of the opinion that the quality of reception would be such that after a few weeks' materials would be necessary and now, after several months' use, there is no depreciation in the quality of reception nor is there any diminution in the strength of signals received from distant stations. This statement I would gladly verify and if any prospective purchaser is in doubt as to I originally was, let him communicate with me.

Another point is that the set is ridiculously easy to operate and anyone with no knowledge of receiving apparatus can bring in stations at any time of the day—this was proved by my wife the day after the set was installed.

Naturally, I am interested in the competition but this letter is also written in the interests of the firm who produce the set but an investment.

Although readily adaptable to mains reception, there is no necessity to sport brilliant reproduction in view of the economy in working from batteries.

Don't forget that no aerial or earth is necessary if you feel like taking your Lissen on safari or a picnic during the week ends.

Yours faithfully,  
H. R. B.

## WHY I LIKE THE LISSEN "SKYSCRAPER" ALL WORLD, ALL WAVE 4 VALVE.

Molo, 26th November, 1934.

Dear Sirs,

I am the owner of one of the above Wireless Sets and must say that in every way, so far as wireless reception goes, there is no other set at such a low price to compare with it.

For clarity and perfection in tone it is unbeatable.

Adjustments are practically non-existent.

It is also so perfect and easy to manipulate.

In fact words fail to express the wonder of the "Lissen Skyscraper" All World All Wave, and hearing is believing and I would strongly advise anyone able to indulge in wireless to first of all hear one of the "Wonder" Sets. For price and quality they stand alone.

Yours truly,

L. B.

## WHY I LIKE MY LISSEN SET.

Kilale,  
November 27th.

I am greatly attached to my Lissen Set because it never fails to give clarity of reception. It has a certain intimacy quality not found in other sets and it is a great joy to sit back in a comfortable chair after a hard day's work on the farm and to be able to hear every word and note of music coming over the ether without straining. It is so simple to work that a woman can operate it and understand it. I have taken it out to dinner with me and given great pleasure to my friends merely taking a length of aerial wire with me which I fit on to the top of the car and bring into the house.

If you want to buy a set then get the Lissen.

All the stations you can get without a fee, and

Reception's very clear.

From far away and near.

And the news and concerts you can't fail to miss 'em.

Yours  
D. R. H.

Messrs. East Africa Wireless Co.,  
Standard Arcade,  
East Avenue,  
NAIROBI.

## WHY I LIKE MY SKYSCRAPER.

The reason why I like my Skyscraper is because it brings England so much nearer to me here living in East Africa. This I have never been able to realise before. England's programmes, I think, are wonderful; the reception is splendid, and also the local programmes are now very much better. But the real "big" reason why I like my Skyscraper is because it brings me in touch with practically the whole of the globe.

If the English programme does not quite suit my taste, I can, almost at any time, listen in to any Continental programme broadcast from Europe and even America.

Indeed, for those living out in the "bush" the Skyscraper would act as a true companion and would enable them to keep in touch with the whole world—in addition, there would be no excuse to lose count of the days.

Undoubtedly, it is, as you claim, a super set.

C. M. D. (Miss)

## WHY I LIKE MY LISSEN "4."

The Manager,  
E.A. Wireless Co. Ltd.,  
NAIROBI.

c/o P.O.,  
Nairobi, Nov. 28th, 1934.

Dear Sir,

Firstly I do like or I would not be writing this letter and the best way to explain my reasons is to go over the various points that go to the making of a successful set.

Station finding, a large number of stations can be picked up quickly, very little time is needed to move from one station to another and there is no need to delve into the intricacies with the aid of a torch for the purpose of coil changing.

Quality is very good while the tone control controls for individual tastes. Volume is much greater than one would look for and this without sacrificing either quality or selectivity is all that could be desired, one station at a time and only one.

Appearance neat and pleasing to the eye. Kit of parts. The assembly of parts is a simple matter and I consider that the makers are to be congratulated on setting out the instructions in the way they have done. Instructions are so full and yet so clear that there is no excuse for making any mistake and the time needed for assembly is surprisingly short.

Another point, a small one but indicative of the thoughtfulness of the makers is that a few more screws, nuts and terminals and more wire and sleeving are supplied than are needed, so that if a nut falls through a crack in the floor or the puppy pulls down a length of sleeving there is no need to take up the flooring or to give the puppy an exercise.

To sum up—value for money and results beyond expectations.

Yours faithfully,  
"LISSENER."

Takings,  
Coast Province,  
November 27th, 1934.

East Africa Wireless Co.,  
NAIROBI.

Dear Sirs,

In response to your invitation to write and tell you "Why I like my 4 Valve Lissen Set." I beg to submit the following reasons.

Yours faithfully,  
I. M. (Mrs.)

1. Because I need not roam the world to know what is going on—the news is brought to me each evening per the Lissen receiver and loud speaker.

2. The thrill I experience each time I hear the lovely chiming of Big Ben over the air—just as clearly as though I was standing on Westminster Bridge, London.

3. The pleasure it has brought to me while "out in the bush" where newspapers arrive when many days old, the Lissen has kept me in touch with interesting events taking place in Kenya and Uganda.

4. The wide range of stations one can tune in to—more than sufficient to satisfy any individual preference.

5. The reasonable purchase price of the Lissen set and the low running costs.

6. Because there is nothing that will go wrong in the set and for the simplicity of tuning in.

7. And friends do not need any invitation to call, they just roll up, to listen in to my 4 Valve All Wave Skyscraper.

## VERB. SAP.

For full details, write or call:

# E. A. WIRELESS Co.

Under the Standard Clock, NAIROBI.

EMPIRE BROADCASTING SERVICE

MONDAY, DECEMBER 9
8.15 p.m.—The World
9.15 p.m.—The World
10.15 p.m.—The World

TUESDAY, DECEMBER 10
8.15 p.m.—The World
9.15 p.m.—The World
10.15 p.m.—The World

WEDNESDAY, DECEMBER 11
8.15 p.m.—The World
9.15 p.m.—The World
10.15 p.m.—The World

THURSDAY, DECEMBER 12
8.15 p.m.—The World
9.15 p.m.—The World
10.15 p.m.—The World

FRIDAY, DECEMBER 13
8.15 p.m.—The World
9.15 p.m.—The World
10.15 p.m.—The World

SATURDAY, DECEMBER 14
8.15 p.m.—The World
9.15 p.m.—The World
10.15 p.m.—The World

SUNDAY, DECEMBER 15
8.15 p.m.—The World
9.15 p.m.—The World
10.15 p.m.—The World

NOTES FOR WIRELESS FANS

Secrets of the B. B. C.
[FROM A CORRESPONDENT.]
London, Nov. 14.

THE King, the world's most famous broadcaster, will speak at the head of an Empire-wide rally on Christmas Day. To his own surprise, he has been asked to talk with his people in all lands in the most important event of the year. He likes to be alone at the microphone.

He returns into a secretary's room at Sandringham, and there address the microphone quietly and affectionately. Members of the Royal family in the great hall, who are present just as visitors, the King's subjects do not see him. Actually, the experience of broadcast is not a happy one for the King. He knows it will be a talk to the B.B.C. office to be done at hand. It is a great deal of work. The Director of Outside Broadcasting, personally responsible for the biggest juggling feat of radio in history.

11.00 p.m.—Madam North and Richard Lloyd attend the Radio Folies.
11.15 p.m.—The Microphone at Large.
11.30 p.m.—The Microphone at Large.

11.45 p.m.—The Microphone at Large.
12.00 p.m.—The Microphone at Large.
12.15 p.m.—The Microphone at Large.

12.30 p.m.—The Microphone at Large.
12.45 p.m.—The Microphone at Large.
1.00 p.m.—The Microphone at Large.

1.15 p.m.—The Microphone at Large.
1.30 p.m.—The Microphone at Large.
1.45 p.m.—The Microphone at Large.

This paper, devoted to the interests of Wireless in connection with a licensed experimenter with a wide knowledge of East African conditions.

And Finance
FINANCE is a vexed question at Broadcasting House. The staff do not think they can earn enough money. B.B.C. officials think they get a big enough percentage of the ten millions licence fee.

As a distinguished party it seems to me that Empire listeners themselves get the best deal out of the B.B.C. for, at present at any rate, they get something really good for no payment at all. And it is going to get better and better.

LISTENERS' PROBLEMS
Radio Society and the High Fee
RECEPTION REPORTS
"CHOK" Nairava, does not get yet in a position to send his report on account of a poor flat old standing trouble which apparently prevents him from getting such good and clear reception as formerly. He complains on complete failure to receive Daventry on the 24th and 25th of last month; a circumstance which is attributed to the fact that when both GSD and GSB came through at full strength through with the old lack of strength, he failed to get GSD, but the GSD station on the same wavelength had improved wonderfully compared with earlier in the evening.

WHY is the B.B.C. so conservative? Why does the Empire announcer? Why do we have so many Broadcasting House—pre and post-published? At present, as far as the Empire side is concerned the entire picture is so slightly in the accent. But the same battle was fought on the home programme. Events after other, more common.

WHY is the B.B.C. so conservative? Why does the Empire announcer? Why do we have so many Broadcasting House—pre and post-published? At present, as far as the Empire side is concerned the entire picture is so slightly in the accent. But the same battle was fought on the home programme. Events after other, more common.

WHY is the B.B.C. so conservative? Why does the Empire announcer? Why do we have so many Broadcasting House—pre and post-published? At present, as far as the Empire side is concerned the entire picture is so slightly in the accent. But the same battle was fought on the home programme. Events after other, more common.

NATIONAL 5 VALVE BATTERY RECEIVER

GANGED TUNING. A child can tune it. NATIONAL Short Wave Components. Recognized the most Efficient Made.

S. A. PEGURME & CO., Stewart Street, P.O. Box 1091, Town 2800 NAIROBI.

R. C. A. RADIO SERVICE STATION

Situated in VICTORIA STREET, opposite Fire Station, and next Koko's Ltd. Engineer in charge: A. F. MOY.

The Tool Room NAIROBI.

LABOUR CARDS. Costs 75 for 100. No. 67 for 6,000. Standard Stationery Bureau.

B. C. A. VICTOR

8-TUBE ALL WAVE RADIO. Shs. 450/- CASH. H.P. Terms on application.

Highly sensitive, sensitivity and tone quality, together with a broad output (4 watts undistorted). Class A amplifier gives the receiver outstanding performance. "Airplane" type dial, double tone vernier drive, and a special "second hand" on the dial for reading short-wave stations.

Automatic Volume control and sensitivity control. Other Models from 275/- Radio Grams from 275/-

INGRAM & Co. Ltd. The Tool House, NAIROBI.

Alford House, Government Road. (Opp. National Bank of India). P.O. Box 1094. Telephone 2000.

NAIROBI TYPEWRITING BUREAU. Principal: Mr. A. L. BROMHEAD. Shorthand notes. Gostwick Duplicating. Neatness, accurate and promptitude.

SPECIAL ADVICE

BEFORE BUYING A WIRELESS SET CONSULT EITHER OUR AGENTS OR OURSELVES. IN BUYING A WIRELESS RECEIVER THE MAIN POINTS TO CONSIDER ARE—

PERFORMANCE, QUALITY OF THE PRODUCT, SERVICE.

As regards performance, EDDYSTONE and PHILCO Receivers will definitely give a better performance than any other receiver of the same type on the market.

As regards quality, EDDYSTONE and PHILCO receivers are especially made for the most severe conditions.

As regards service, our workshop, staffed by experts, is fully equipped with up-to-date servicing instruments and we can offer you the finest service in Eastern Africa.

Therefore don't be misled into buying cheap receivers fitted with inferior components and valves which will prove to be more costly in the long run and buy a guaranteed receiver backed by service.

Stephen Ellis & Company, Ltd. P.O. Box 31, VICTORIA STREET, NAIROBI. Telephone 2034.



Prices with "Indicators"—Type DTG-C 2 volt 20 a.h. 10/- DTG-D 2 volt 45 a.h. 17/60 DTG-E 2 volt 60 a.h. 21/00 DTG-F 2 volt 100 a.h. 30/00 DTG-G 2 volt 50 a.h. 20/00

It's NEARLY an ideal "Indicator" Battery

tells you in time the time to recharge

When the Eddystone Indicator says "Full the battery is full—and that's that. When the Indicator hand approaches 'Empty' it's time to get the battery recharged—and that's that. The great point about the Eddystone Indicator is that with its always know where you stand. It puts an end to the risk of being let down by a run-down battery. The Eddystone Indicator is equipped with this invention as the "D" types listed below. You'll know which battery to get next time.

BATTERY & ELECTRICAL EQUIPMENT CO., LTD. Box 482, Telephone 2831, Telegrams: "Eddis". SIXTH AVENUE, NAIROBI. Local Eddystone Service Stations.









UNCRUSHABLE ANTI-CREASE - DRESS VOILE

In VARIOUS ATTRACTIVE DESIGNS and SHADES

LATEST - RANGE

Now at -

Ahamed Bros

The House of Distinction. Bazaar, NAIROBI. Phone 2201

REAL MOUTH HEALTH AT LAST

Gibbs S.P. FOR TEETH AND GUMS PROTECTS AGAINST PYORRHOEA

GIBBS 'SR' is the greatest contribution to Mouth Health yet achieved by Medical Science.

GIBBS 'SR' was evolved and perfected after two years' research and test by a Dental Surgeon in collaboration with all the resources of Modern Chemistry.

USE GIBBS 'SR' twice a day and enjoy much better health.

SOLD AT SHS. 1/75 per tube. AT ALL CHEMISTS AND STORES

M. S. ELLIOT & Co., Ltd. NAIROBI.

Table listing various goods and their prices, including Flour Packings, Cocoa, Cakes, and other confectionery items.

Cakes of ANY KIND OR SIZE MADE TO ORDER. WHOLESALE PRICES ON APPLICATION. Every Requirement for Christmas Festivities.

FOR A MERRY XMAS YOU MUST HAVE THE BEST

so order early from M. S. ELLIOT & Co., Ltd. Phone 2060.

Advertisement for Theo. Schouten perfumes, featuring a woman's face and text: 'Original Macdonald Permanent Wavers in Kenya. Modern Efficiency. New Ideas. PERFUMES SPECIALITY. THEO. SCHOUTEN NEW STANLEY ARCADE, Phone 2245, Box 854'

CORRESPONDENCE

The Editor does not accept responsibility for the views expressed in the correspondence in these columns and in all cases the name and address of the writer... The Editor does not accept responsibility for the views expressed in the correspondence in these columns and in all cases the name and address of the writer...

The 1935 Budget

COMMODITY PRICE LEVEL - LOAN BURDEN

To the Editor, "E.A. Standard," Sir—In your issue of November 25, under the heading of "The 1935 Budget" Mr. H. N. Money says, in part: "It is becoming increasingly evident, moreover, in the course of the troubled conditions of the world that we must view these conditions of low price conditions as a permanent and adjusting things to their level. This course we deem while the Colony continues to pay interest on loans at a figure which represents an entirely different rate of interest on primary commodities, and it would appear that the interest on our loans is reduced to a figure which represents a rate of interest on primary commodities, subsequent Budget estimates are bound to be usually disappointing."

The above quotation suggests that present world conditions will continue indefinitely and that the present value of primary production, in its true value, Mr. Money's letter further suggests that the root of the evil (not specified) lies in the interest which the Colony pays on its loans. If we take the evil to be the low value of our produce, then Mr. Money is at fault as the price paid for our produce bears little or no relation to the amount of interest paid on our loans. In other words, the low price is obviously not caused by the rate of interest on loans.

If we take the interest rate to be the evil, then Mr. Money is again at fault as the interest rate is more than the Colony can pay. It is only one among many evils the root of which is to be found firmly established in the foundations of the whole of our financial transactions, otherwise known as the "Money Power."

The low price of primary produce does not affect Kenya alone, it is a condition common to the whole world and cannot be cured by Kenya's isolation of the rate of interest on her loans, although that would afford a measure of relief to her already overburdened taxpayers.

The low price of produce is due to her under-competition which in turn is caused by an insufficiency of the medium of exchange in the world which millions of people have just the shillings, dollars or francs call them what you will, that they had a few years ago in consequence of which they now find themselves unable to purchase the commodities they originally purchased. Thus we have also picture of disinflation and poverty in the midst of plenty. The shortage of the medium of exchange is caused by the artificial restriction of it for the benefit of the so-called "Money Power."

The present uncontrolled price for produce will continue, from time to time, to cause the produce to become the day's hot article producing, until we have started off to inflation, which was the cause of the Empire debt, in as much as a large portion of Southland was made over to Italy (and incidentally to the United States) by the people concerned). An Empire debt should be paid by the whole Empire, and not by the land to the youngest of her children.

In other words, Sir, that land should be bought from this Colony by the whole Empire, and not by the land to the youngest of her children. I suggest the price of that land be the value of the four loans, less 20 per cent. and the other percentages in the above three loans and 20 per cent. the price of money loan.

The settlers of this Colony have a far greater right to call on the Empire, and Sir, that land which Chamberlain had in charge of his foundation and the secret of it, and the better and I think our present Administration is to be severely reprimanded for not doing this month ago. They knew we were unable to be down, as we all know it was not a secret—therefore it was their duty to take steps to save it at an earlier date and not let things slide.

Yours etc. AINOLD BRADLEY. Nairobi, December 3, 1934.

To the Editor, "E.A. Standard," Sir—I am pleased to see in the "East African Standard" that our old champion, the Daily Express says, with regard to the high interest charges on loans and the increase in taxation in the Colony's new Budget.

May I ask, Sir, if there is anybody who has taken any action with their backs to the wall, as the motto of this Colony has been for the last year or so? The thing that is wanted is a Leader and a well paid and accepted (by taxpayers) alternative to our present Government's scheme did not put forward another scheme for allowing them.

(1) The first and most urgent step is to take over their own finances—no more money to be borrowed from the Government's scheme did not put forward another scheme for allowing them.

(2) The first and most urgent step is to take over their own finances—no more money to be borrowed from the Government's scheme did not put forward another scheme for allowing them.

(3) The first and most urgent step is to take over their own finances—no more money to be borrowed from the Government's scheme did not put forward another scheme for allowing them.

(4) The first and most urgent step is to take over their own finances—no more money to be borrowed from the Government's scheme did not put forward another scheme for allowing them.

(5) The first and most urgent step is to take over their own finances—no more money to be borrowed from the Government's scheme did not put forward another scheme for allowing them.

(6) The first and most urgent step is to take over their own finances—no more money to be borrowed from the Government's scheme did not put forward another scheme for allowing them.

(7) The first and most urgent step is to take over their own finances—no more money to be borrowed from the Government's scheme did not put forward another scheme for allowing them.

(8) The first and most urgent step is to take over their own finances—no more money to be borrowed from the Government's scheme did not put forward another scheme for allowing them.

(9) The first and most urgent step is to take over their own finances—no more money to be borrowed from the Government's scheme did not put forward another scheme for allowing them.

(10) The first and most urgent step is to take over their own finances—no more money to be borrowed from the Government's scheme did not put forward another scheme for allowing them.

(11) The first and most urgent step is to take over their own finances—no more money to be borrowed from the Government's scheme did not put forward another scheme for allowing them.

(12) The first and most urgent step is to take over their own finances—no more money to be borrowed from the Government's scheme did not put forward another scheme for allowing them.

(13) The first and most urgent step is to take over their own finances—no more money to be borrowed from the Government's scheme did not put forward another scheme for allowing them.

(14) The first and most urgent step is to take over their own finances—no more money to be borrowed from the Government's scheme did not put forward another scheme for allowing them.

(15) The first and most urgent step is to take over their own finances—no more money to be borrowed from the Government's scheme did not put forward another scheme for allowing them.

RESPONDING SECTION in the Native Poll Tax Bill (Section 5)

responding Section in the Native Poll Tax Bill (Section 5) is practically a penalty of "a fine not exceeding seven pounds or imprisonment for a term not exceeding one month or both such fine and such imprisonment." Assuming that the Government is not so stupid as to allow a shilling or imprisonment for a term not exceeding one month or both such fine and such imprisonment.

Perhaps one of our Elected Members or one of the Members for Native Interests will endeavor to get these penalties reduced to a fine not exceeding one pound or imprisonment for a term not exceeding one month or both such fine and such imprisonment.

Yours etc. AINOLD BRADLEY. Nairobi, December 3, 1934.

COFFEE INDUSTRY FINANCE

To the Editor, "E.A. Standard," Sir—In the recently published annual report of the Coffee Board of Kenya a scheme is outlined for financing the industry by offering the joint security of members of a proposed Planters Co-operative Organisation.

The membership of this organisation is to be voluntary, I doubt whether any financially sound planter would attempt to make members of a proposed Planters Co-operative Organisation.

Section 14 (2) prescribes a penalty of "a fine not exceeding three pounds or imprisonment for a period not exceeding one month or both such fine and imprisonment."

Section 20 (7) prescribes a penalty of "a fine not exceeding three pounds or imprisonment for a period not exceeding one month or both such fine and imprisonment."

Section 10 prescribes a penalty of "a fine not exceeding three pounds or imprisonment for a period not exceeding one month or both such fine and imprisonment."

It will be noted that in each case the monetary penalties are the same but in no case do the penalties in default constitute Elected Members, but have no relationship to each other when it comes to framing joint provisions in Ordinances and certain think that it is about time that these two schemes were brought into close affinity with each other when the Legislature goes down to the grass business of prescribing the driver's penalties and penalties to be inflicted for infringement of the law. In one respect one I notice a commendable attempt has been made in bringing into relationship the laws with each other. Section 25 (5) of the Native Poll Tax Bill prescribes a penalty of "a fine not exceeding seven pounds or imprisonment for a term not exceeding one month or both such fine and such imprisonment."

Section 25 (5) of the Native Poll Tax Bill prescribes a penalty of "a fine not exceeding seven pounds or imprisonment for a term not exceeding one month or both such fine and such imprisonment."

Section 25 (5) of the Native Poll Tax Bill prescribes a penalty of "a fine not exceeding seven pounds or imprisonment for a term not exceeding one month or both such fine and such imprisonment."

Section 25 (5) of the Native Poll Tax Bill prescribes a penalty of "a fine not exceeding seven pounds or imprisonment for a term not exceeding one month or both such fine and such imprisonment."

Section 25 (5) of the Native Poll Tax Bill prescribes a penalty of "a fine not exceeding seven pounds or imprisonment for a term not exceeding one month or both such fine and such imprisonment."

Section 25 (5) of the Native Poll Tax Bill prescribes a penalty of "a fine not exceeding seven pounds or imprisonment for a term not exceeding one month or both such fine and such imprisonment."

Section 25 (5) of the Native Poll Tax Bill prescribes a penalty of "a fine not exceeding seven pounds or imprisonment for a term not exceeding one month or both such fine and such imprisonment."

Section 25 (5) of the Native Poll Tax Bill prescribes a penalty of "a fine not exceeding seven pounds or imprisonment for a term not exceeding one month or both such fine and such imprisonment."

Section 25 (5) of the Native Poll Tax Bill prescribes a penalty of "a fine not exceeding seven pounds or imprisonment for a term not exceeding one month or both such fine and such imprisonment."

Section 25 (5) of the Native Poll Tax Bill prescribes a penalty of "a fine not exceeding seven pounds or imprisonment for a term not exceeding one month or both such fine and such imprisonment."

Section 25 (5) of the Native Poll Tax Bill prescribes a penalty of "a fine not exceeding seven pounds or imprisonment for a term not exceeding one month or both such fine and such imprisonment."

Section 25 (5) of the Native Poll Tax Bill prescribes a penalty of "a fine not exceeding seven pounds or imprisonment for a term not exceeding one month or both such fine and such imprisonment."

Section 25 (5) of the Native Poll Tax Bill prescribes a penalty of "a fine not exceeding seven pounds or imprisonment for a term not exceeding one month or both such fine and such imprisonment."

Section 25 (5) of the Native Poll Tax Bill prescribes a penalty of "a fine not exceeding seven pounds or imprisonment for a term not exceeding one month or both such fine and such imprisonment."

Section 25 (5) of the Native Poll Tax Bill prescribes a penalty of "a fine not exceeding seven pounds or imprisonment for a term not exceeding one month or both such fine and such imprisonment."

Section 25 (5) of the Native Poll Tax Bill prescribes a penalty of "a fine not exceeding seven pounds or imprisonment for a term not exceeding one month or both such fine and such imprisonment."

Section 25 (5) of the Native Poll Tax Bill prescribes a penalty of "a fine not exceeding seven pounds or imprisonment for a term not exceeding one month or both such fine and such imprisonment."

Section 25 (5) of the Native Poll Tax Bill prescribes a penalty of "a fine not exceeding seven pounds or imprisonment for a term not exceeding one month or both such fine and such imprisonment."

Section 25 (5) of the Native Poll Tax Bill prescribes a penalty of "a fine not exceeding seven pounds or imprisonment for a term not exceeding one month or both such fine and such imprisonment."

"WHAT A PEACH!" YOUR FRIENDS AT HOME will say—When they receive A box of luscious South African Fruits As an XMAS or NEW YEAR PRESENT For particulars apply— COMMISSIONER for the Union of South Africa, P.O. Box 604, Memorial Hall, NAIROBI.

TO LET. FLATS AND OFFICES, OR COMPLETE BUILDINGS IN TOWN, SHOPS 6th AVENUE AND GOVERNMENT ROAD, GODOWNS AND GARAGES CENTRAL. COTTAGES IN TOWN AND PARKLANDS. Apply— J. H. S. TODD & CO., LTD, P.O. Box 24 or Government Road.

FOR MEN A PERFECT LEISURE SLIPPER Combining Comfort with ENDURANCE 8HS. 20/- Less 10 per cent. CASH. EADIE'S FOOTWEAR Ltd. Box 140 NAIROBI, Phone 2060.

REFRIGERATION for ANY PURPOSE - ANYWHERE KEYS MARKING GOOD FOOD MEANS GOOD HEALTH DON'T WASTE YOUR FOOD YOUR KILNATOR WILL ELIMINATE WASTE. Army Club CIGARETTES 2/- PER TIN 50 OF ALL STORES NAIROBI DISTRICT. Wholesale Distributors DALGETY & CO. LTD.

Stockists: EAST AFRICAN POWER & LIGHTING COY., NAIROBI AND ALL BRANCHES. NEW MODELS ON VIEW IN THEIR SHOW ROOM. Prices Greatly Reduced. Agents—MITCHELL COTTS & CO. (E.A.) Ltd., Nairobi.



By Appointment to H.M. King George VI.

*you couldn't buy*  
**PEAK FREEN'S**  
*famous BISCUITS*  
 *fresher if you lived in England!*

IF you've ever envied people at home who can buy biscuits with all their original fresh crispness and flavour, envy no longer! You couldn't buy Peck Freen's famous English biscuits fresher if you lived next door to their London factory. In a new, airtight, handy package that does away with the need for buying big tins, Peck Freen's biscuits keep factory-fresh till you're ready to eat them in Africa.

All kinds of gorgeously delicious Peck Freen biscuits in one marvellous assortment! Buy 3 in the new handy-sized economical package—*in the same size as the old paper wrappings but it keeps the biscuits factory-fresh.*

**PECK FREEN & CO. LIMITED**  
London, E.C. 4, England

If you have any difficulty in ordering Peck Freen's factory-fresh biscuits from your stocker, send his name and address to Nairobi, P.O. Box 106, Nairobi.

FACTORY FRESH IN NEW AIR-TIGHT PACKAGE

**WATCH**

OUR

**Free Xmas Scheme**

on top of greatly reduced SALE Prices.

**150/- WIN 50/-**

1st Prize (10 OTHER PRIZES) 2nd Prize

Mere Purchase of TEN Shillings

**AT JAPAN BAZAAR**

GETS YOU THE LUCKY NUMBER.  
RUSH UP. — Get double advantage.

Ideal Xmas Presents at Low Prices and the Coupon.  
DRAWING ON XMAS EVE at JAPAN BAZAAR,  
Government Road, Nairobi.

(UPCOUNTRY CUSTOMERS WRITE NOW.)

**INDIA**

**SUPER TYRES**  
BALGUY COMPANY, LIMITED,  
AND DEALERS.

**Kenya Loan and Discount**  
COMPANY LIMITED.  
FINANCIAL AGENTS

OFFICE:—1st Floor, Court Chambers,  
P.O. Box 546 NAIROBI.

Short Period Loans Granted.  
Any Reliable Asset Negotiated for Cash.  
CALL or WRITE — STRICTEST CONFIDENCE.

Established 1921.

**CHILDREN'S CHURCH GARDEN PARTY**

The third annual garden party for the children of the parish church, Kileleshwa Road (the Children's Church) was held on Saturday.

The weather was fine and sunny, and the children enjoyed a full afternoon of games. There was a big spread of tea and coffee, refreshments at intervals, and a display of cinema pictures of great interest, mainly held after sunset.

The generous co-operation of parents and friends, rendered that there was no heavy burden on anybody. Special thanks are due to Mrs. Moore, Whitloway and Laidlaw, who gave the tea and coffee, to the Express Transport Company, who provided tables and chairs; also to the Grange Park Dairy, who supplied tea-room staff.

There was no nearly 80 children on the church roll, of whom 71 were present. The list of individual friends who contributed food, cakes, sweets, fruit, and so on, and who were present to enjoy the games and music, and to help in the refreshment table, is too long to print.

**Back from Leave**

The following officers have recently returned to Kenya from overseas leave—Mr. M. M. Jack, Registrar of the Supreme Court of Kenya; Major J. L. Willcocks, Commissioner of Prisons; Mr. C. G. MacArthur, Assistant Game Warden; Capt. F. H. Hildy, District Officer; Mr. J. W. Francis, Education Officer; Mr. W. E. Lane, Senior Chaplain; K. H. B. and H.

**BRITISH ISRAEL NOTES**

**Nairobi Show.**

The British Israel Convention will be at the Show all day Thursday and Friday. Mr. G. W. Geyer, Major J. Laidlaw, O.B.E., and others will be in attendance to give information, distribute pamphlets, and sell books. There will be large displays of the Great Pyramid, etc. Enquiries will be cordially welcomed at the British Israel Convention.

**Public Lectures.**

The usual meeting in Nairobi on the first Friday of the month is postponed until the 14th, at 8.30, when Mr. R. C. Moore will give the address. Lectures will be given at Nairobi, in the Municipal Hall, on Friday 12th December, in the evening. The subjects are as follows:—  
"True Economics"—Major Ashford.  
"The Great Pyramid, Its Purpose and Message"—Mr. Stewart Palmer.  
"David's Inimitable Firm"—Mr. G. W. Geyer.  
"Foundations"—Mrs. Hofmeier-Gibson.

**Pranks Meeting.**

A B. I. meeting will be held on Sunday, December the 9th, at 8.30, at the home of Captain Eckstein's house at 9 p.m. All interested persons are cordially invited.

**Sunday Evening Meeting.**

It is hoped that further lectures may be given at Nairobi on Sunday 9th December in the evening. A notice will be posted at the House in due course.

**Justice Satisfied**

This is the closing meeting of the wonderful work "Righteousness". The attendance at the meeting of the Lord Jesus, The Messiah, brings the certainty of "Justice-satisfied" to everybody who has about the finished work and does not reject it.

British-Israelites draw public attention to the scriptural record that the Messiah voluntarily gave His life on behalf of mankind to satisfy the eternal principles of justice, violated by man's sin.

Emphatically do we repudiate the pagan idea that He offered Himself as a sacrifice to appease an irritated God. Such a notion is rightly obnoxious to thoughtful persons, who realize that God the Father suffered with the Son until the moment of sin-bearing, when the Son took upon Himself our iniquities and bore our sins alone in His death, and exclaimed "My God, My God, why hast Thou forsaken Me?" Until that moment He had not been forsaken.

The eternal principles of justice are the laws upholding the universe. They see deeply embodied in the human conscience. We do not pay twice over for the same thing. We know that if our debt was more and for ever paid for us it can never be demanded again and we are freed from it.

The human conscience is well aware of the eternal principles of justice, and it is completely satisfied and at rest in the acceptance of the Redemption. Let us appreciate the good news. Christ has died for us.

Initiated by a group of settlers.—Advt.

**THE BRITISH INDUSTRIES FAIR**

Continued Support by Royalty

NEXT YEAR'S JOUBILEE

(Special to the "E. A. Standard" by Capt. A. G. H. Drey M.P.)

Next year the Queen on the King's Jubilee, coincides most happily with a very definite revival in the trade of the United Kingdom and the Empire. That revival will be reflected in a marked degree in the wider developments and increased activities of the British Industries Fair in 1935.

From the inception of the Fair, which is now established one of the most significant annual occasions in Empire trade, the Royal Family has taken the closest interest in everything connected with it. The King, with more than one shared word of seasonable advice, has not only demonstrated his interest in the event itself, but his understanding of the problems which its exhibitors have met themselves to solve in their task of extending the trade of the country.

The Queen has never missed a single year of attendance, and has made memorable suggestions both to the organisers of the Fair and the exhibitors, which have been of infinite help to both sections. She never misses any important, and never omits her special word of encouragement to any exhibitor whose enterprise has specially attracted her expert attention.

**The Queen as a Buyer**

And as it was never too rough, Her Majesty is also a most liberal and discriminating purchaser. It may be taken for granted that any article Her Majesty buys during the Fair is of the highest quality, and has exceptional merits and qualities. This is the reason why the purchases made by the Queen are so carefully noted by trade buyers, as it is because Her Majesty is known to be so excellent a judge of what she wants, that for example creates new and profitable markets almost as soon as the world knows what she has bought.

An admirable instance of this is afforded by the popularity which has since been enjoyed by some of the articles which were selected at the last Fair by Her Majesty when she was accompanied by the Duke and Duchess of York on a visit and bought toys for their little daughters, and other purchases in the Textile Section.

Both the Duke and Duchess are the keenest of Fair "fans." Indeed, the Fair of 1924 owes much to the Duke for an entirely admirable idea he suggested when visiting the Engineering and Hardware Section in the previous year. As a direct result of that suggestion, the names of manufacturers and a brief description of the product are now conspicuously clearly displayed at eye-level, instead of being inserted at the top of an accessible "four-poster" enclosed stands of an old-fashioned and inconvenient type.

**The Prince of Wales**

A zealous devotee of the Fair is of course the Prince of Wales. Who can forget the real devotion to duty which he displayed last year when he bent down to Castle Brounch in a blizzard of snow to spend an afternoon at the Engineering and Hardware Section in the Castle Brounch grounds, although he had barely visited Olympia and the White City. The Prince's visit told the Press he had never done in worse weather, and was astonished when the Prince said he was determined to go. But all the Prince himself said in his chocky way was that things were "just a bit humpy."

Turn off to west, without the slightest sign of fatigue, on a most thorough tour of the grounds, noticing everything, stopping to talk with exhibitors, and displaying at every turn a complete grasp of current manufacturing and industrial problems.

Two years ago, in his Guildhall speech, the Prince declared that the Fair "has grown to be a factor in the first importance in the commercial life of this country, and in advertising British goods to the world." Those were the words of a prince, and the words of a Trade who talks of that which he knows.

The British Industries Fair is a truly national Fair and Royalty's continuous support of it shows their recognition of this fact.

**Sikh Conference**

The 25th annual Sikh Conference of East Africa will hold this year at Mombasa, on December 24, 25 and 26, on all previous occasions having been held in Nairobi, and every Sikh is requested to attend. Final choice of representation tickets will be available from the Kenya and Uganda Railways and Harbours, and forms in this respect should be applied for.

**There must be something**

**If may be Golf.**

A SINGLE CLUB OR A MATCHED SET.  
A modest CADDIE BAG  
or Something Superative.  
STEEL SHAFTED CLUBS.  
Shs. 18/6 to Shs. 32/50  
CADDIE BAGS,  
Shs. 10/- to Shs. 140/-

**If may be Tennis**

A cheap Racket for the beginner  
Shs. 30/- to 40/-  
A medium priced one for the average player.  
Shs. 50/- to Shs. 65/-  
The highest grade for the Tiger.  
Shs. 75/- to Shs. 90/-

**Perhaps it's Fishing**

OUR EXPERT ADVICE IS AT YOUR DISPOSAL.

Reels . . . Shs. 10/- to Shs. 180/-  
Rods . . . Shs. 6/- to Shs. 97/50  
Lines . . . Shs. 2/- to Shs. 30/-  
Fly Boxes . . . Shs. 2/50 to Shs. 20/-  
Cast Boxes . . . Shs. 2/- to Shs. 10/-  
AND EVERY OTHER ACCESSORY.

**Or Shooting**

**Cricket**

**Hockey**

**Badminton Squash Lacrosse.**

WHATEVER IT MAY BE, MAKE SURE OF GIVING THE BEST BY GETTING IT FROM:—

**W & CO LTD**

Government Road, Nairobi.

**W & CO LTD**

# AUCTION SALES



MISCELLANEOUS GOODS SALE.

Daily instructed, we shall sell by Public Auction, without reserve, unless stipulated at our Salerooms, Mutos Building, Hardinge Street, Nairobi.

TO-DAY, 5th December at 10 a.m.  
Carrivaged Iron Sheets. Timber. Windows. Absorbent Cotton Wool. Six dozen Tennis Balls. Large Range of Nuts. Provisions. 9.3 Double Barreled Rifle with Zeiss Telescope Sight (res.), etc., etc.

MUTER and OSWALD, Ltd., Auctioneers, NAIROBI.



OF INTEREST TO PHILATELISTS.

At our Salerooms, Mutos Building, Hardinge Street, Nairobi.

THURSDAY, 6th December at 4-15 p.m. —  
SALE OF COLLECTION OF STAMPS, comprising over one hundred lots.

The above collection will be on view from 8-30 a.m. to 1 p.m. and 2 p.m. to 4 p.m. on the day of sale.

MUTER and OSWALD, Ltd., Auctioneers, NAIROBI.

## THE CAR MART

P.O. Box 1080, (GODFREY'S) Edgemoor Road Sixth Avenue.

## Used Car Bargains

The Finest Selection of Used Fords in Kenya

- FORD Saloon, 1934 Model, small mileage, new set Air Wheels, as new ... £185
  - FORD M.S. Box Body, small mileage, six wheels, 1934 Model, as new ... £145
  - FORD Box Body 1932 Model, reconditioned ... £ 85
  - FORD Box Body, 1929/30 Model, reconditioned ... £ 55
  - FORD Light Delivery 1929/30 Model, reconditioned ... £ 50
  - FORD Roadster, 1929 Model, reconditioned ... £ 55
- Also numerous other makes from £15 upwards including OLDSMOBILE Tourer, 1930 Model ... £ 50

WE BUY, SELL or EXCHANGE.  
GOOD SECOND-HAND CARS WANTED.

## SALE

commencing on 1st December and for TEN DAYS ONLY.

A limited number of Day and Evening Dresses from Shs. 10/- upwards; Hats from Shs. 6/-; Jerseys and Cardigans from Shs. 10/-

## Maison Max

Government Road, NAIROBI.

## THE PIONEER GENERAL ASSURANCE SOCIETY LIMITED.

Notice is hereby given that the Fourth Ordinary General Meeting of Shareholders will be held at the Registered Office, Osmar's Chambers, Government Road, Nairobi, on Monday, the 17th December at 4 p.m., to receive, consider and adopt the Accounts to 30th June, 1934, with the relative report by the Auditor and the Directors; to fix the remuneration of Directors; to fix the date for the next Ordinary General Meeting; to elect Directors; to appoint an Auditor; and to transact such other business as may be brought forward by the Directors in accordance with the Articles of Association.

The Transfer Books and Register of Members of the Society will be closed from the 8th December to 31st December, 1934, both days inclusive.

By Order of the Board.

NIMJI JAVER KASSAM,

Registered Office, Osmar's Chambers, Government Road, Nairobi, 3rd December, 1934.

## 'AUSTIN'S AUCTIONS

MISCELLANEOUS SALE OF NEW GOODS.

Daily instructed, we will sell by Public Auction, WITHOUT RESERVE, at THE MART, Hardinge Street.

on THURSDAY, December 6th at 10 a.m.

Several Ladies Felt Hats by Heath, London. Ladies Silk Frocks and Underwear. Ladies Woolen Jumpers and Dresses. Ruby Ring Silk Hose. Assorted Silk Dress Lengths. Ladies Pyjama Suits. Happy Coats. Vests. Dressing Gowns and Shoes. Gents Shirts, Pyjamas, Dressing Gowns, Handkerchiefs. Good Woolen Sock Lengths. Dress Lengths in assorted Colours. Tussore Silk Suit and Dress Lengths. Woolen Travelling Rugs. Kiddies Jumpers and Suits. Toilet Soaps. Towels. Brass Vases, Powder and Cigarette Boxes. Ashtrays. Raincoats. Assorted Trousers, Double Terris, etc., etc.

AUSTIN & CO.

Auctioneers, etc., Hardinge St., Nairobi

## AUSTIN'S AUCTIONS.

CATALOGUE SALE OF GOOD FURNITURE AND EFFECTS. at THE MART, HARDINGE STREET, NAIROBI.

On SATURDAY, December 8, 1934, at 10 a.m.

Further details will be advertised later. We make HIGH CLASS FURNITURE of every description at the lowest possible prices.

LET US QUOTE YOU.

All work made under the supervision of and guaranteed by

SAM LAZARUS

(Furniture maker in Nairobi since 1913.)

## SANDS & CO.

at the Hotel Seylards, GILGIL.

on MONDAY, 10th December at 10-30 a.m.

60 Cows in Calf or Calves at Foot.

20 Slaughter Steers.

Further entries of Sheep and Cattle being received.

NAIROBI.

XMAS POULTRY SALES.

FRIDAYS, Dec. 7th, 14th, 21st.

TUESDAYS, Dec. 4th, 11th, 18th.

NAIROBI CATTLE SALES.

EVERY WEDNESDAY.

SANDS & CO.

AUCTIONEERS, Etc.

## SAFE!

THERE IS NO SHORT CUT TO EXPERIENCE.

Experience demands patient years of applied knowledge.

For over 20 years we specialised in—

Transport of all descriptions.

Packing of furniture, crockery, etc.

Storage from Motor cars to a pin.

Clearing and forwarding to and from steamers.

Shipping to any part of the world.

Our Clients choose us because we give Best Service.

OUR PRICES ARE COMPETITIVE.

TRY US AFTER HAVING TRIED OTHERS.

## FIREWOOD

All over a decade we have been supplying best quality house wood. Our sites of Cedar Poles, Bamboo and Sial Poles always in stock. Karuri Marum, Best Meat, also Camps Marum.

## THE EXPRESS TRANSPORT CO.

Cartage Contractors to Kenya and Uganda Railways and Harbours. Agents in all parts of the world.

NAIROBI — and — MOMBASA.

Our Mombasa office, under European supervision, meet all boats and assist passengers with luggage.

## To Let

SHOP; also the best Offices in Nairobi, Balfour House, Hardinge Street.

Apply—

THE NORFOLK HOTEL.

For the Best and Cheapest Lines for All Purposes:

Lime Limited  
Albert House, Govt. Road, Box 418, NAIROBI.  
Phone: NAIROBI 2468.  
Kilamba 10

## E. Hutchison & Co.

Incorporated Auctioneers.

AUCTION SALES

— held —

EVERY TUESDAY

FOOD PERFECTLY KEPT IN ANY TEMPERATURE.

Refrigeration solely by water

## THE KEPKOLD FROSTBOX REFRIGERATOR

Sole Agents—DENYMAN & CO.

Albert House, Govt. Road, NAIROBI.

## THACKRAH'S Limited

NAKURU

Established 1917.

The Up-country, Land and Estate Agents, Auctioneers and Approved Valuers, Insurances, Shipping and Financial Agents, SHOPS, OFFICES, GODOWNS, HOUSES and FARMS— TO LET or FOR SALE.

## HOTEL AVENUE

Official Hotel for Imperial Airways and Union Airways.

THE CONNOISSEUR'S HOUSE

First Class House in every respect.

Kitchen and General

under the direct supervision of the

Directors and Proprietors.

Only best qualities Food, Spirits and Wines supplied.

Book up Garage for CAR-OWNERS.

Run in conjunction with

THE PALACE HOTEL

MOMBASA.

## WE HAVE MOVED

to new premises

IN CAMBRIAN BUILDING

Next door to S. J. Moore's Bookshop

A. J. ELY & Co., Ltd.

Box 411. Chemists and Druggists, NAIROBI.

## "SUNSHINE OF THE NIGHT"



## Titus Petrol LAMP

made by

TITO LANDI OF PARIS.

NO FUMING.

NO SMOKE — NO NOISE.

Trouble Free — Easy to Light

Table Lamps, Hurricane Lamps, Hanging Lamps, Wall Lamps.

LOW COST OF BURNING.

— COME AND SEE THEM DEMONSTRATED AT —

Madatally Suleman Verjee & Sons

Box 112, Government Road, NAIROBI. Phone 2004.

## THREE GOOD LINES

THE KING OF ALL WRITING PADS—100 Sheets Thin Book Bound Paper 10 x 8, suitable for Air or Box Mail. Cts. 75 wa.  
FLAXMILL WRITING TABLET—240 Sheets (480 pages) Cream Laid Bound Paper, 7 x 4 1/2, ... Shs. 1/- wa.  
FOOLSCAP BOOKS—42 pages, 11 x 8, with or without Cash Column ... Shs. 1/25 wa.

STANDARD STATIONERY STORES

## Bennetts Car Services Ltd.

## 50 Used Cars 50

— TO SELECT FROM —

WE BUY — SELL — or — EXCHANGE.

REPAIRS Try Us on Your Next Repair Job and Save up to 50 per cent. on Your Bill.

SECOND-HAND SPARES FOR ALL CARS.

CARS FOR HIRE.

## BRIDGESTONE TYRES

with a Guarantee for 10,000 miles.

12-volt BATTERIES — Price Shs. 85/-

OPEN DAY AND NIGHT.

## RITULAC

ANTI-CORROSSIVE PAINTS

STOCKISTS—

Lamberts Limited ... Nairobi.

J. L. Kiddoch ... Kisumu.

E. E. Karachwala ... Mombasa.

AGENTS—

BEALES & CO.

Box 320 Avenue House, NAIROBI, Phone 3600

TIME FLIES and is ACCURATELY RECORDED by JUVENIA. They are made in one and only grade. The High Grade with a CHROMOMETRIC PRECISION. Sole Agent— R. LAMBOURN Watchmaker and Jeweller, Box 20, Govt. Road, NAIROBI.

## WHERE TO STAY

HOME AND COUNTRY.

## FAIRVIEW PRIVATE HOTEL

Phone 2228 Bishop Road—The Hill P.O. Box 944.

Guest Board Residence.

Within three quarters of a mile of Nairobi Post Office.

SPECIAL ATTENTION IS GIVEN TO CATERING, AND THE FOOD IS OF THE FINEST QUALITY.—ALL COOKING EXECUTED UNDER EUROPEAN SUPERVISION.

## THE HILL PRIVATE HOTEL

P.O. Box 788 (Opposite Nairobi Club) Phone 2680

Every Convenience Delightfully Healthy Situation.

Combine the Comforts of a First-Class Hotel with the quiet of a Private Residence

— CHARGES MODERATE —

P.O. Box 1018, LEICESTER HOTEL Phone 1116

[Just over Alnborough Hill, [Bus Service]

BEAUTIFULLY SITUATED — ABOUT A MILE FROM TOWN, Excellent service and general comfort.

Excellent Cuisine.

Terms from 47. Proprietors: ELLA STEVENSON, Daily Shs. 7/6

## The Devon Residential Hotel

P.O. Box 1125, Salisbury Road, Phone 2110

Modern Bedrooms equipped with built-in furniture and H. and C. water. Private suites. Large well furnished Lounges. Two tennis courts. Thatched surroundings.

Good food. Efficient service and general comfort.

REDUCED TERMS FROM DECEMBER 1st.

## GROSVENOR HOUSE

Phone 2448 Box 1008

The Hill, RESIDENTIAL HOTEL, Nairobi.

Excellent Cuisine, Private Suites, All Conveniences, Modern Sanitation.

Licensed for Residents and Visitors. — The Tennis Courts.

FOR MILEAGE AND DURABILITY



Expeditious—THE AFRICAN MERCANTILE CO., LTD., Mombasa, Nairobi.



PEAR'S UNSCENTED TRANSPARENT SOAP INVENTED 1789. FIVE GENERATIONS have relied on PEAR'S SOAP.



MAURICE ROSENSTON P.O. Box 381. Phone 2961. Tel. Add.: 'Rector'.

ROYDON HANDICAP HURDLE RACE, run TO-DAY, 2 miles, at Gatwick. TIMBERHAM HURDLE RACE, run TO-DAY, 2 miles, at Gatwick.

DINGAANS DAY HANDICAP, run Dec. 17th, 1 mile. 13/2 The Harp; 7 Piffle; 9 Sailor King; 10 Soother; 14 Willow; Run Guard, Levary; 16 Redress, Fancillon; 20 Vain, Brown Stout, Fortes, Paper King, Bust Up, Prairie, Whiting, Wainwright; 25 Ina D., Prince Orm, Attentive, Nemesis, Cheers, Lethary; up to 66 1/2.

JOHANNESBURG SUMMER HANDICAP, run Dec. 22nd, 1 1/2 miles. 1/2 Stray Meadow; 7 Noble Sun; 10 Sun Tor; 12 Night Storm, Sweepstake; 14 Eccentric, Sunlight; 16 Aristocrat IV.; Stormy Weather; 20 Blue Sand, Tints of Dawn, Silver Crown, Radio, Sky Hero, Fire Hawk; up to 56 1/2 others.

DOUBLES & TREBLES. ALL SUBJECT TO MARKET FLUCTUATIONS. CREDIT - LETTER - WIRE BUSINESS ONLY. PHONE (2861), WRITE (Box 381) or WIRE (Rector)

WELCOME. XMAS GIFTS. FOR YOUNG AND OLD. INDOOR AND OUTDOOR GAMES. CRAIG'S SPORTS HOUSE Ltd., Government Road.

GRASS TRACK RACING

Civil Service Club's Promotion. A Chance for Motor Cyclists. FIRST MEETING FOR THREE YEARS.

Grass track motor cycle racing is to be revived... The Civil Service Club are running a meeting of their group under the auspices of the R.E.A.A.C.

It will be remembered that the first meeting of such a nature were held three years ago at Muthiga, when they proved entirely successful. Two championship meetings were organised, and they through luck of superior riders then fled east. Now it is to be re-inaugurated.

As these Meetings supporting the track was "post-poned," but the Civil Service have impinged on a course which practically encircled their ground; there are three or

DO YOU KNOW?

Only four Second Division Clubs have won the F.A. Cup, namely: Notts County 1906-7; Wolverhampton Wanderers 1908-9; Burnley 1911-12; West Bromwich Albion 1930-31.

four teams, and seven straight successes, where the pace can be speeded up.

It may be thought that speed is the sole concern of competitors for this forthcoming meet. It is not, however, in most cases, as the course will depend on the rider much, and ability to ride and handle the machine will be important factors in success. The trainer in addition will reap a big advantage.

Six classes. Arrangements have been made for six classes, including one for the ladies. The six classes are as follows: 150 cwt. to 250 cwt., 250 cwt. to 300 cwt. open, or unlimited, and ladies race. As the track is just under half a mile in circuit, the racing should be exceedingly good. It will depend upon the number of riders who are entered in each class, but it is unlikely that a greater number will be permitted to start at one time. If it is deemed expedient then the probability is that this number will be decreased.

Raiders for the various events are being called for, and letters made had from the Civil Service Club, or direct from the officers of the R.E.A.A.C. Interested competitors when filling up their forms should be careful in indicating what classes they are competing in, as it is the desire of taking part in the open or unlimited class. Any machine competing in the other divisions may not can enter for the "honours."

The "Old Brigade". Quite a few riders who completed all the previous meetings have indicated their intention of taking part in the coming year. The Club have brought the intention of taking part in the coming year. There will be only one cup, Shs. 1.00 and the public one either go to the winner or to the runner-up. But some first served for as the stand stars are concerned.

LAWN TENNIS ASSOCIATION. East King and McMillan Cup. The Kenya Lawn Tennis Association are now calling for entries for the following competitions:

Back King Nairobi and District Lawn Tennis League. The entrance fee for this competition is Shs. 2/6 per team and play will commence on Saturday, January 28th next.

Back King Nairobi and District Lawn Tennis League. The entrance fee for this competition is Shs. 2/6 per team and play will commence on Saturday, January 28th next.

WELCOME. XMAS GIFTS. FOR YOUNG AND OLD. INDOOR AND OUTDOOR GAMES. CRAIG'S SPORTS HOUSE Ltd., Government Road.

KEYNA BOXING CHAMPIONSHIPS

The Entry and Draw. A Galaxy of Talent. For Friday and Saturday Evenings.

The stage is all set for the Kenya boxing championships, which takes place this weekend in the Municipal Market, Nairobi. The preliminary bouts are on Friday, and the semi-finals and finals on Saturday evening.

The following tables are complete up to the date of publication. Senior Division—Police Shield.

Table with columns: P, W, L, A, F, A, Pos. Rows: King, Piffle, Piffle, Piffle, Piffle, Piffle, Piffle, Piffle, Piffle, Piffle.

Table with columns: P, W, L, A, F, A, Pos. Rows: Depp, Piffle, Piffle, Piffle, Piffle, Piffle, Piffle, Piffle, Piffle, Piffle.

FAMOUS ATHLETE KILLED

Death of W. J. Oakley. W. J. Oakley, the famous athlete, was killed recently in motor accident. His played Association football for England, and the

Education at "brewery" and "brewery" in London. He was captain of boats, and was a member of the school crew. A fine triumph in the sports of athletics. He was president of O.U.A.C. in 1920, and represented the Varsity in several of the O.U.A.C. events.

1920 and represented the Varsity in several of the O.U.A.C. events. He was president of O.U.A.C. in 1920, and represented the Varsity in several of the O.U.A.C. events.

1920 and represented the Varsity in several of the O.U.A.C. events. He was president of O.U.A.C. in 1920, and represented the Varsity in several of the O.U.A.C. events.

EUROPEANS vs ASIANS CRICKET MATCH

A. H. Kaehler Appointed Captain. A. H. Kaehler, who captained the Southern Asiatic cricket "Officials vs Settlers" match, has been appointed captain of the European cricket team to meet the Asiatic team.

The remaining members of the cricket committee are: W. F. M. Allen, P. M. Davies, and P. M. Davies. The Secretary of the Asiatic Sports Association will be glad to receive any suggestions for the selection of the Asiatic team. Communications should be sent to him at P. O. Box 114, Nairobi.

GOLF MATCH AT KURU

Rufus entertained a mixed side from Brachwood on Sunday last and proved easy winners by a large margin. Singles were played at the morning and mixed foursomes in the afternoon. The ladies' singles matches were not completed as a heavy rain storm passed over the course soaking everybody who could not make the club house.

The weather cleared during the afternoon, and the mixed foursomes were completed. The course was in good condition and the fairways are reported to be in excellent shape. The rain runs that have fallen during the past month.

The following are the scores: Rufus players given first in singles.

Morning—Men's in Singles. Rufus 10, Brachwood 4. Mixed foursomes 2-1. Mixed foursomes 2-1.

Afternoon—Mixed Foursomes. Rufus 10, Brachwood 4. Mixed foursomes 2-1. Mixed foursomes 2-1.

Afternoon—Mixed Foursomes. Rufus 10, Brachwood 4. Mixed foursomes 2-1. Mixed foursomes 2-1.

Today's Hockey Matches

A representative side of European meets a Sikh side today evening on the Railway ground. This match, which is due to start at 4.45 p.m., should be one of the best games witnessed this far this season.

There is one friendly fixture, a ladies match between Parklands and Methuen on the latter's ground.

The following are the teams: European: R. Yates (Nairobi), R. Keatinge (Gyarkham) and T. Dyke (K.A.R.); Sikh: K. S. Khambhadi (Gyarkham), D. Symonds (T. Dyke), and K. S. Khambhadi (Gyarkham).

The following are the teams: European: R. Yates (Nairobi), R. Keatinge (Gyarkham) and T. Dyke (K.A.R.); Sikh: K. S. Khambhadi (Gyarkham), D. Symonds (T. Dyke), and K. S. Khambhadi (Gyarkham).

The following are the teams: European: R. Yates (Nairobi), R. Keatinge (Gyarkham) and T. Dyke (K.A.R.); Sikh: K. S. Khambhadi (Gyarkham), D. Symonds (T. Dyke), and K. S. Khambhadi (Gyarkham).

The following are the teams: European: R. Yates (Nairobi), R. Keatinge (Gyarkham) and T. Dyke (K.A.R.); Sikh: K. S. Khambhadi (Gyarkham), D. Symonds (T. Dyke), and K. S. Khambhadi (Gyarkham).

The following are the teams: European: R. Yates (Nairobi), R. Keatinge (Gyarkham) and T. Dyke (K.A.R.); Sikh: K. S. Khambhadi (Gyarkham), D. Symonds (T. Dyke), and K. S. Khambhadi (Gyarkham).

The following are the teams: European: R. Yates (Nairobi), R. Keatinge (Gyarkham) and T. Dyke (K.A.R.); Sikh: K. S. Khambhadi (Gyarkham), D. Symonds (T. Dyke), and K. S. Khambhadi (Gyarkham).

The following are the teams: European: R. Yates (Nairobi), R. Keatinge (Gyarkham) and T. Dyke (K.A.R.); Sikh: K. S. Khambhadi (Gyarkham), D. Symonds (T. Dyke), and K. S. Khambhadi (Gyarkham).

The following are the teams: European: R. Yates (Nairobi), R. Keatinge (Gyarkham) and T. Dyke (K.A.R.); Sikh: K. S. Khambhadi (Gyarkham), D. Symonds (T. Dyke), and K. S. Khambhadi (Gyarkham).

The following are the teams: European: R. Yates (Nairobi), R. Keatinge (Gyarkham) and T. Dyke (K.A.R.); Sikh: K. S. Khambhadi (Gyarkham), D. Symonds (T. Dyke), and K. S. Khambhadi (Gyarkham).

The following are the teams: European: R. Yates (Nairobi), R. Keatinge (Gyarkham) and T. Dyke (K.A.R.); Sikh: K. S. Khambhadi (Gyarkham), D. Symonds (T. Dyke), and K. S. Khambhadi (Gyarkham).

The following are the teams: European: R. Yates (Nairobi), R. Keatinge (Gyarkham) and T. Dyke (K.A.R.); Sikh: K. S. Khambhadi (Gyarkham), D. Symonds (T. Dyke), and K. S. Khambhadi (Gyarkham).

The following are the teams: European: R. Yates (Nairobi), R. Keatinge (Gyarkham) and T. Dyke (K.A.R.); Sikh: K. S. Khambhadi (Gyarkham), D. Symonds (T. Dyke), and K. S. Khambhadi (Gyarkham).

The following are the teams: European: R. Yates (Nairobi), R. Keatinge (Gyarkham) and T. Dyke (K.A.R.); Sikh: K. S. Khambhadi (Gyarkham), D. Symonds (T. Dyke), and K. S. Khambhadi (Gyarkham).

The following are the teams: European: R. Yates (Nairobi), R. Keatinge (Gyarkham) and T. Dyke (K.A.R.); Sikh: K. S. Khambhadi (Gyarkham), D. Symonds (T. Dyke), and K. S. Khambhadi (Gyarkham).

The following are the teams: European: R. Yates (Nairobi), R. Keatinge (Gyarkham) and T. Dyke (K.A.R.); Sikh: K. S. Khambhadi (Gyarkham), D. Symonds (T. Dyke), and K. S. Khambhadi (Gyarkham).

The following are the teams: European: R. Yates (Nairobi), R. Keatinge (Gyarkham) and T. Dyke (K.A.R.); Sikh: K. S. Khambhadi (Gyarkham), D. Symonds (T. Dyke), and K. S. Khambhadi (Gyarkham).

The following are the teams: European: R. Yates (Nairobi), R. Keatinge (Gyarkham) and T. Dyke (K.A.R.); Sikh: K. S. Khambhadi (Gyarkham), D. Symonds (T. Dyke), and K. S. Khambhadi (Gyarkham).

The following are the teams: European: R. Yates (Nairobi), R. Keatinge (Gyarkham) and T. Dyke (K.A.R.); Sikh: K. S. Khambhadi (Gyarkham), D. Symonds (T. Dyke), and K. S. Khambhadi (Gyarkham).

The following are the teams: European: R. Yates (Nairobi), R. Keatinge (Gyarkham) and T. Dyke (K.A.R.); Sikh: K. S. Khambhadi (Gyarkham), D. Symonds (T. Dyke), and K. S. Khambhadi (Gyarkham).

The following are the teams: European: R. Yates (Nairobi), R. Keatinge (Gyarkham) and T. Dyke (K.A.R.); Sikh: K. S. Khambhadi (Gyarkham), D. Symonds (T. Dyke), and K. S. Khambhadi (Gyarkham).



DANGEROUS GAME

For heavy or dangerous bow encountered at short range in scrub or jungle, use Eley or Kynoch cartridges, the reliable and proved ammunition. Be alert to the chance of the danger of meeting something larger than the quarry you are seeking, as include in your equipment Eley Lethal or Kynoch Destroyer cartridges. For instant use and stopping power these cartridges should always be carried by a man using a bow in wild country.

ELEY or KYNOCH CARTRIDGES

IMPERIAL CHEMICAL INDUSTRIES LTD. Hogg & Lenberg, City House, Nairobi.

HOGG & LENZBERG, CITY HOUSE, NAIROBI.

DINGAANS DAY HCP, run Dec. 17th, 1 mile. JOHANNESBURG SUMMER HCP, run Dec. 22nd, 1 1/2 miles.

PRICES IN OFFICE. NEXT Tote JOHANNESBURG Summer Handicap. No reply to telegrams distictly means no business.

SECURITY. Gtams: 5 Hogg, Box 780. Phone 2778.

QUEEN'S HOTEL

(having new Wash Courts). A First Class Hotel. Excellent Cuisine. Private Suites—Rooms with view. Daily from 12/60, weekly from 9/60, monthly from 26/00. Fully Licensed.

P.O. Box 949. Phone 2716. Telegraphic Address: Nairobi.

WAXED CONTAINERS

with LIDS for JAMS, CREAM, etc. REDUCED PRICES.

Table with columns: Size, Water capacity, Price. Rows: No. 4, 1 lb., 4 oz., 1/25 each; No. 6A, 1 lb., 9 oz., 1/75 each; No. 9A, 1 lb., 13 oz., 2/25 each; No. 10A, 2 lb., 28 oz., 3/6 each.

Standard Stationery Stores

I LEATHERMAN. (Above Cash Sales) 2814 Avenue. Tel. Announcements. (Above Cash Sales) 2814 Avenue. Tel. Announcements.

DINGAANS DAY GALLOWAY HANDICAP, one mile, run Dec. 17th. The Harp; 7 Piffle; 9 Sailor King; 10 Soother; 14 Willow; Run Guard, Levary; 16 Redress, Fancillon; 20 Vain, Brown Stout, Fortes, Paper King, Bust Up, Prairie, Whiting, Wainwright; 25 Ina D., Prince Orm, Attentive, Nemesis, Cheers, Lethary; up to 66 1/2.

JOHANNESBURG SUMMER HANDICAP (SHEA 24,000) 1 1/2 miles. Run Dec. 22nd. 1/2 Stray Meadow; 7 Noble Sun; 10 Sun Tor; 12 Night Storm, Sweepstake; 14 Eccentric, Sunlight; 16 Aristocrat IV.; Stormy Weather; 20 Blue Sand, Tints of Dawn, Silver Crown, Radio, Sky Hero, Fire Hawk; up to 56 1/2 others.

MARKET PRICES OTHERS. ALL PRICES ARE SUBJECT TO MARKET FLUCTUATIONS. CREDIT AND DEPOSIT ACCOUNTS.

The Silver Trust Accountant

City House - Standard St. - NAIROBI. P.O. Box 709. Tel. add.: Siltat.

DINGAANS DAY HANDICAP, 1 mile, run Dec. 17th. JOHANNESBURG SUMMER HANDICAP, 1 1/2 miles, run Dec. 22nd.

PRICES IN OFFICE. CREDIT or DEPOSIT ACCOUNTS from 1/- onwards. CUT UP DOUBLES A SPECIALITY.

SHOOTING & FISHING REQUISITES

are always suitable. Xmas Presents. GET THEM FROM CHAS. A. HEYER & Co. Ltd. Govt. Road, NAIROBI.

next to HOWSE & McGEORGE Ltd. Printed and Published by EAST AFRICAN STANDARD, Ltd., Sixth Avenue, Nairobi.