







Another Reminder

Has your car been oiled and greased during the last month?

If not be sure to bring it to us at once and have it done on our HIGH PRESSURE PLANT.

EUROPEAN SUPERVISION LOW CHARGES.

Specially Reduced Rates for Yearly Contracts.

CARR LAWSON & CO. LTD. SERVICE AND SATISFACTION

Mother's trust! WOODWARD'S GRIPE WATER for your Children

MAURICE ROSENSTON P.O. BOX 281 Phone 2811 2nd Address: Telford, PLEASE NOTE NEW P.O. BOX NUMBER 351

Table with 3 columns: WIK, WEIGHT, PLACE. Lists names like THE DIVOT, ZANOFF, LARINGTON, etc.

TURF ACCOUNTANT ONLY. A RUN GIVEN TO DAY. WEIGHS OBTAINABLE ON ALL GOODWOOD EVENTS.

FOR SPEED SPALDING "LAMINA" is the fastest and most powerful RACKET ever produced. CRAIG'S SPORTS HOUSE Ltd. Government Road.

[E.A. Standard Special Cable Service] SQUIRES' MAGNIFICENT DISPLAY. 236 Out of Total of 346.

COUNTY CRICKET CHAMPIONSHIP SCORES. [STANDARD CORRESPONDENT] London, July 21. The County Championship...

Notes vs Sussex. At Trent Bridge. Sussex-1st innings 137 (Cox 5/86).

Notes vs Essex. At Leyton. Essex-1st innings 101 (Eastman 11/72).

Notes vs Middlesex. At Lord's. Middlesex-1st innings 339 (Parsons 6/112).

Gloucestershire vs Hampshire. At Gloucester. Hampshire-1st innings 238 (Gibson 1/112).

Leicestershire vs Glamorgan. At Hinckley. Glamorgan-1st innings 220 (Jones 7/113).

Northamptonshire vs Warwickshire. At Northampton. Warwickshire-1st innings 228 (Evans 3/90).

Northamptonshire vs Warwickshire. At Northampton. Warwickshire-2nd innings 178 (Marlow 5/56).

Gloucestershire vs Hampshire. At Gloucester. Hampshire-2nd innings 141 (Gibson 1/112).

Leicestershire vs Glamorgan. At Hinckley. Glamorgan-2nd innings 117 (Jones 7/113).

Northamptonshire vs Warwickshire. At Northampton. Warwickshire-3rd innings 104 (Evans 3/90).

West Indies vs 9 wickets. West Indies won by 9 wickets.

THE KING'S PRIZE AT BISLEY. Won by University Cadet. Eton Boy in Final 100.

[STANDARD CORRESPONDENT] London, July 21. The King's Prize at Bisley was won by a cadet of Eton...

The Winner. [STANDARD CORRESPONDENT] London, July 21. The King's Prize at Bisley was won by a cadet of Eton...

Davis Cup Tennis. Great Britain's Bid for Trophy. Austin Beats Former Wimbledon Champion.

[STANDARD CORRESPONDENT] London, July 21. Great Britain's making a bid to regain the Davis Cup...

[STANDARD CORRESPONDENT] London, July 21. Austin, the former Wimbledon champion, has been selected to lead the team...

1254 COMPETITION. Capentzen July 22. By declining service four players to use Denmark...

CONTRARY TO EXPECTATIONS. Paris, July 22. Contrary to expectations, the morning meeting of the national union...

Hampshire vs Yorkshire. At Bourne. Hampshire-1st innings 177 (Gibson 1/112).

Leicestershire vs Warwickshire. At Hinckley. Warwickshire-1st innings 229 (Parsons 6/112).

Leicestershire vs Warwickshire. At Hinckley. Warwickshire-2nd innings 130 (Parsons 6/112).

Derbyshire vs Lancashire. At Chesterfield. Derbyshire-1st innings 320 (Alden 1/112).

Leicestershire vs Warwickshire. At Hinckley. Warwickshire-3rd innings 104 (Evans 3/90).

JOHN BOYES CUP MATCH. Ground. Y.M.C.A. AND RAILWAY DRAW.

Railway and Y.M.C.A. drew their semifinal tie in the John Boyes Cup tournament...

End to End Play. Railway opened play with a free hit on the start...

End to End Play. Railway opened play with a free hit on the start...

Cravath Cup. Nyeru vs Sargent. Nairobi, July. Nyeru 1st Innings 137 (Cox 5/86).

Cravath Cup. Nyeru vs Sargent. Nairobi, July. Sargent 1st Innings 137 (Cox 5/86).

Cravath Cup. Nyeru vs Sargent. Nairobi, July. Nyeru 2nd Innings 137 (Cox 5/86).

Cravath Cup. Nyeru vs Sargent. Nairobi, July. Sargent 2nd Innings 137 (Cox 5/86).

Cravath Cup. Nyeru vs Sargent. Nairobi, July. Nyeru 3rd Innings 137 (Cox 5/86).

Cravath Cup. Nyeru vs Sargent. Nairobi, July. Sargent 3rd Innings 137 (Cox 5/86).

Cravath Cup. Nyeru vs Sargent. Nairobi, July. Nyeru 4th Innings 137 (Cox 5/86).

Cravath Cup. Nyeru vs Sargent. Nairobi, July. Sargent 4th Innings 137 (Cox 5/86).

Cravath Cup. Nyeru vs Sargent. Nairobi, July. Nyeru 5th Innings 137 (Cox 5/86).

NAIROBI POLO TOURNAMENT. Next Month's Fixture. Play Over Three Afternoons.

The start dates of August and next month's polo...

Next Month's Fixture. Play Over Three Afternoons.

Next Month's Fixture. Play Over Three Afternoons.

Next Month's Fixture. Play Over Three Afternoons.

Next Month's Fixture. Play Over Three Afternoons.

Next Month's Fixture. Play Over Three Afternoons.

Next Month's Fixture. Play Over Three Afternoons.

Next Month's Fixture. Play Over Three Afternoons.

Next Month's Fixture. Play Over Three Afternoons.

Next Month's Fixture. Play Over Three Afternoons.

Next Month's Fixture. Play Over Three Afternoons.

Next Month's Fixture. Play Over Three Afternoons.

ELEY ensures good results. ELEY GRAIN PEEK. IMPERIAL CHEMICAL INDUSTRIES LIMITED, LONDON.

HOGG & LENZBERG. STEWARDS' CUP. GOODWOOD STAKES. CHESTERFIELD CUP. ST. LEGER. DONCASTER. ALL PRICES SUBJECT TO MARKET FLUCTUATIONS.

QUEEN'S HOTEL. Self-contained Flat-First class. Large well-lighted single rooms with private bathroom, bath, etc.

CHARLES WARE. TURF ACCOUNTANT. PRIST CHAMBERS, GOVERNMENT ROAD, NAIROBI. ESTABLISHED IN 1908. RE-ORGANISED.

The Silver Turf Accountant. CITY HOUSE, STANDARD STREET, NAIROBI. Books open on all English, Colonial and Local Events.

WE OFFER YOU OUR FINE SELECTION OF .22 RIFLES. Model J.G.A. Single Loader. Model F.M. De Luxe Single Loader.



UNION-CASTLE LINE

Services to England, East, South and West African Ports and Mauritius.

EXCURSION

Rates will be available to

South African Ports FROM MOMBASA

by the following vessels:

- 9th August "Llandaff Castle."
6th September "Llangbry Castle."
4th October "Llandovery Castle."

Tickets will be available for THREE MONTHS and will be interchangeable with British-India Line.

VIA EASTERN ROUTE WESTERN ROUTE



MESSAGERIES MARITIMES

Regular fortnightly service from and to Marseilles.
NEXT SAILINGS TO MARSEILLES:
LECONTE DE LISLE 2 August
AMBOISE 16 August

B. FLORENS Special Offer
The well-known Artist French Hair Dresser.
PERMANENT WAVING by the latest and most Modern System...

BARCLAYS BANK (DOMINION, COLONIAL AND OVERSEAS)

INCORPORATED IN THE UNITED KINGDOM.
BRANCHES IN EAST AFRICA: Nairobi, Mombasa, Nakuru, Eldoret, Kitale, Kampala, Jinja, Tangi, Dar es Salaam, Iringa, Bukoba, Mwanza, Arusha, Moshi and Tabora.

OVER 400 BRANCHES IN

The Union of South Africa, Rhodesia, South West Africa, Portuguese East Africa, British West Africa, West Indies, British Guiana, Egypt, Palestine, the Sudan, Mauritania, Malia, Gibraltar, etc.

THE BANK UNDERTAKES ALL CLASSES OF BANKING BUSINESS AND ALSO ACTS AS TRUSTEE AND EXECUTOR.

HEAD OFFICE: 54, Lombard Street, London, E.C. 3.

LONDON OFFICES: 29, Gracechurch Street, E.C. 3; Circus Place, London Wall, E.C. 2; III St. Martins Lane, Trafalgar Square, W.C.

OFFICES in Liverpool, Manchester, Hamburg, New York (Agency).

Kenya Loan and Discount COMPANY LIMITED.

OFFICE—1st Floor, Court Chambers. P.O. Box 546. NAIROBI.

FINANCIAL AGENTS

Short Period Loans Granted. Any Reliable Asset Negotiated for Cash. Established 1921. CALL or WRITE — STRICTEST CONFIDENCE.

British India Steam Navigation Co. Ltd.

AGENCIES—Passages only.
Nairobi—Smith, Mackenzie & Co.
Nakuru—Korner, Farquhar & Ass.
Eldoret—J. & W. Fyfe Ltd.
Soy—The Soy Estates Ltd.
Kitale—Vivian Evans.
Thomson's Falls—H. Barragoung (Barry Hotel).
Nyeri—J. Swetochowski Walker.
Kampala—W. M. Swindland.
Kisumu—J. J. Bullcock.
RIGHTS AND PASSAGES.
SHEPHERD WALKER, FZL & CO.
Dar es Salaam, Londi, Lamu, Tel. Address: "Mackenzie's."

COASTAL SERVICE.
M.V. "DUMRA"
M.V. "DUMRA" returns to Mombasa on the 29th July and her next sailing Southwards will be on the afternoon of the 27th July when she will call at Tangi, Zanibar, Dar es Salaam, Lindi and then returning to Mombasa on the 31st August.

PRELIMINARY NOTICE

OWING to the very extensive building alterations that have just been completed on
MAXWELL BRADY & Co.'s PREMISES
whereby a NEW DISPLAY FRONT and ARCADE WINDOWS
is established and an extensive renovation bringing all the departments under one roof.
This having been carried out whilst business continued as usual a naturally caused Stock-Goed slightly soiled.
We shall therefore give the Public of Kenya an opportunity of WONDERFUL PURCHASES during the progress of a MONSTER SALE, which we are preparing for 28th JULY.
FOR 11 DAYS ONLY
WATCH OUR WINDOWS DAY BY DAY
DURING THIS PERIOD.

B.M.C. House
FOR HOUSEHOLD LINENS AND BLANKETS
SPECIAL WINDOW DISPLAYS THIS WEEK
NOW IS THE TIME TO REPLENISH YOUR HOUSEHOLD LINENS AND BLANKETS
PRICES ARE LOWER THAN EVER

BUY NOW

THE BRADFORD MANUFACTURING COMPANY (KENYA) LTD.
Incorporated in England

STANDARD

Made by the Builders of the Empire Station
2 Valve All-Mains Receiver
New Price: Sh. 230/- cash
Extra for short wave reception Sh. 25/- cash
HIRE PURCHASE TERMS
Shs. 65/- on delivery and five instalments of Sh. 40/- per month.

THE NATAL TANNING EXTRACT COMPANY LTD.

PURCHASERS OF BLACK WATTLE BARK
For Quotations apply to: P.O. BOX 3111, CORNER HOUSE, NAIROBI.

THE NATAL TANNING EXTRACT COMPANY LTD.

PURCHASERS OF BLACK WATTLE BARK
For Quotations apply to: P.O. BOX 3111, CORNER HOUSE, NAIROBI.

The Tool House Nairobi.
INGRAM & Co Ltd.



DEUTSCHE OST-AFRIKA-LINIE

HOMEWARD Via SUEZ CANAL.
HOMEWARD Via CABLE.
S.S. "Umskanka" 10th August.
S.S. "Umskanka" 10th August.
S.S. "Umskanka" 10th August.

EASTER EXCURSIONS TO SOUTH AFRICA—FEBRUARY TO JULY, 1939.
Plymouth, Capetown, Johannesburg and Durban en route.

For full particulars of passenger fares and freight rates apply to the Agents:
INGRAM & CO LTD, GARDEN TOOLS, THE TOOL HOUSE, WALLPAPER, P. STEWART, Victoria Street, NAIROBI.

Present Hair Modes

"DELICATE" waves swept from the brow, its temple curls and a correct parting are points worth noting.
Permanent Waving and Curling a Speciality.
Tinting & Beauty Culture.
MAISON MARIE
Phone 2220. P.O. Box 1032. NAIROBI

Nyeri Aviation Service

OVERHAUL AND MAINTENANCE OF AIRCRAFT AND MOTORING BY QUALIFIED S.A. INSTRUCTION.

PLEASE MAKE A NOTE OF THIS TRAVEL COOK'S

Telephone to us for your RAIL TICKETS; we will send them posted to you and secure your train accommodations.
Official Agents: K.U.R. and All Railways, IMPERIAL AIRWAYS and All Air Lines.
ALL STEAMSHIP COMPANIES.
THOS. COOK & SON LTD. Nairobi

OVERSEAS MAILS

Table with columns: From, Steamers-INWARD, Mails. Includes entries for Beane, Beane, Beane, etc.

Table with columns: From, Steamers-OUTWARD, Mails. Includes entries for Beane, Beane, Beane, etc.

AIR MAILS

Table with columns: From, Mails. Includes entries for Beane, Beane, Beane, etc.

UPLANDS

Becon may be a few cents dearer to buy, but price is not everything.

QUALITY

Good meat so much, especially with goods like

BACON.

The inferior brands not only lack flavor, but shrink so heavily during cooking.

FLY HOME

By IMPERIAL AIRWAYS LTD.
Book through GIBBS' AUTO TOURS
—you gain the advantage of Free Transport within a radius of 12 miles from the Aerodrome.
SALOON, TOURING and BOXBODY CARS and LORRIES FOR HIRE, DAY AND NIGHT.
SAFARI OUTFITTERS.
Official Contractors to Imperial Airways Ltd. Wilson Airways Ltd., and Tanganyika Aviation.
Next to The Arcade Tobaccos, Stanley Arcade, Nairobi.
P.O. Box 1001. Cables: "Nafika" Phone 2724, 2111.
KAMPALA—P.O. Box 547. Phone 167.

LEARN TO FLY

Refined Rate, Dual instruction. An Instructor permanently on the Aerodrome. To book your time, ring "Nairobi" 4 2255.

Wilson Airways Ltd. P.O. Box 1067. NAIROBI.

A really delightful SMOKE

is the verdict of all who have tried - B B - EAST AFRICAN CHEROOTS

They are MILD and the aroma is SUPERB. If you have any difficulty in obtaining stocks apply direct to: BLACKLAWES AND BROWN

101 No. 2001, Box No. 406, "Urusu" "Blacklaws", NAIROBI.

THE NATAL TANNING EXTRACT COMPANY LTD.

PURCHASERS OF BLACK WATTLE BARK
For Quotations apply to: P.O. BOX 3111, CORNER HOUSE, NAIROBI.

**The British Silk Stockings that wear and wear.**



**Aristoc**

Light Shades at Specially Reduced Prices!!

LIMITED STOCK TO CLEAR.

**Ahamed Bros**

THE HOUSE OF DISTINCTION, BAZAAR - NAIROBI.

Phone 2201.

**Guard Your Health!**

with **LEVERS' HEALTH SOAP**

150 CENTS per tablet.



Use this famous soap regularly and you will do much to protect your skin and body from the dangers of disease.

It has a fine refreshing lather which removes from your skin both the dust and the harmful microbes which are in it.

**A PURE SOAP - A VALUABLE SAFEGUARD. Buy a Tablet To-day!**

50 Cents per tablet from all Chemists and Stores

Wholesale Distributors: AFRICAN REPRESENTATIONS LTD., Victoria Street, NAIROBI.

**A SUCCESSFUL MORNING TEA MEANS ELLIOTT'S CAKES OF COURSE**

Works:

Another cake which I am sure some of you ladies do not realize is the modern extravagant extremes in feminine fashion. Facial make-up

**TWENTY YEARS OF Service, Skill, Craftsmanship**

**SCHOUTEN'S**

The East African Hairdressers

LADIES AND GENTLEMEN'S SERVICE IN WESTERN LONDON OPERATING Permanent Waving

BY **Macdonald Steam System**

PLANT LAMBERG HAIRDRESSING GOVT ROAD AND NEW STANLEY ARCADE, Box 254

Phone 2245

Mr. and Mrs. Schouten will visit Nyrobi (Outspan Hotel) on Friday and Saturday, July 21 and 22, for Permanent Waving, Manicure, Massage, etc.

**CORRESPONDENCE.**

The Editor does not accept responsibility for the views expressed by his correspondents in these Columns and in no case does he assume the address of the writer necessarily accompany a letter, not necessarily for publication, but as a guarantee of good faith, rarely is it essential to receive consideration.

**Posters and Public Morals.**

**FACIAL "FASHIONS AND FEMINE BILD RESPECT."**

To the Editor, "E.A. Standard," Sir: In Nairobi there is a committee of citizens whose business it is to exercise a control over the type of cinema film that is presented to the public. It has been decided that Native races, and children under a certain age, can be admitted to see films. This is as it should be, and of undoubted benefit under present social conditions.

To the Editor, "E.A. Standard," Sir: In Nairobi there is a committee of citizens whose business it is to exercise a control over the type of cinema film that is presented to the public. It has been decided that Native races, and children under a certain age, can be admitted to see films. This is as it should be, and of undoubted benefit under present social conditions.

**ROAD POLICY—DISTRICT CONTROL TO NAIROBI.**

To the Editor, "E.A. Standard," Sir:—The Public Works Department Advisory Committee's report revealed that that Committee stated that savings to the Colony Government should be effected by transferring from the Nyanga, Kiunga, and Ngara Road Boards to the Nairobi Municipal Council the control of District Roads in the Kiunga-Ngara Area. In view of this, the Nairobi Municipal Council should be entrusted with the control of District Roads in the Kiunga-Ngara Area. It is suggested that the Nairobi Municipal Council should be entrusted with the control of District Roads in the Kiunga-Ngara Area.

**MY COUNTRY, A MARKER**

To the Editor, "E.A. Standard," Sir:—Nairobi Municipal Council's report on the proposed water supply scheme is a most interesting one. It is a pity that the Council has not yet decided on the matter. It is a pity that the Council has not yet decided on the matter.

**THE EAST AFRICAN STANDARD.**

To the Editor, "E.A. Standard," Sir:—Nairobi Municipal Council's report on the proposed water supply scheme is a most interesting one. It is a pity that the Council has not yet decided on the matter. It is a pity that the Council has not yet decided on the matter.

**THE EAST AFRICAN STANDARD.**

To the Editor, "E.A. Standard," Sir:—Nairobi Municipal Council's report on the proposed water supply scheme is a most interesting one. It is a pity that the Council has not yet decided on the matter. It is a pity that the Council has not yet decided on the matter.

It has the honor to inform you that it is not intended to accept the recommendation made in paragraph 263 of the Report of the Advisory Committee's Report. The Council has no reason to suppose that the Council's work on the subject is not sufficient and, as it is not feasible to remove from the Council's control, roads which have been vested in it by law without withdrawing the Council's consent does not consider that the proposed amendment will serve any useful purpose.

**RETAIL COFFEE PRICES.**

To the Editor, "E.A. Standard," Sir:—I have, through a letter, a week or so ago, asked you to publish a list of the retail prices of coffee in Nairobi. I have been told that it is not possible to do so, as the prices are not uniform. I have been told that it is not possible to do so, as the prices are not uniform.

**RETAIL COFFEE PRICES.**

To the Editor, "E.A. Standard," Sir:—I have, through a letter, a week or so ago, asked you to publish a list of the retail prices of coffee in Nairobi. I have been told that it is not possible to do so, as the prices are not uniform. I have been told that it is not possible to do so, as the prices are not uniform.

**RETAIL COFFEE PRICES.**

To the Editor, "E.A. Standard," Sir:—I have, through a letter, a week or so ago, asked you to publish a list of the retail prices of coffee in Nairobi. I have been told that it is not possible to do so, as the prices are not uniform. I have been told that it is not possible to do so, as the prices are not uniform.

**RETAIL COFFEE PRICES.**

To the Editor, "E.A. Standard," Sir:—I have, through a letter, a week or so ago, asked you to publish a list of the retail prices of coffee in Nairobi. I have been told that it is not possible to do so, as the prices are not uniform. I have been told that it is not possible to do so, as the prices are not uniform.

**RETAIL COFFEE PRICES.**

To the Editor, "E.A. Standard," Sir:—I have, through a letter, a week or so ago, asked you to publish a list of the retail prices of coffee in Nairobi. I have been told that it is not possible to do so, as the prices are not uniform. I have been told that it is not possible to do so, as the prices are not uniform.

**RETAIL COFFEE PRICES.**

To the Editor, "E.A. Standard," Sir:—I have, through a letter, a week or so ago, asked you to publish a list of the retail prices of coffee in Nairobi. I have been told that it is not possible to do so, as the prices are not uniform. I have been told that it is not possible to do so, as the prices are not uniform.

**RETAIL COFFEE PRICES.**

To the Editor, "E.A. Standard," Sir:—I have, through a letter, a week or so ago, asked you to publish a list of the retail prices of coffee in Nairobi. I have been told that it is not possible to do so, as the prices are not uniform. I have been told that it is not possible to do so, as the prices are not uniform.

**SOUTH AFRICA**

IS YOUR NEAREST SOURCE OF SUPPLY

OF EMPIRE GOODS

For particulars of Supplies, apply to:

The South Africa Office, Memorial Hall, Box 524, NAIROBI.

**OPTIC PEARL MEASURING TAPS**

for Wines & Spirits, Quick, Accurate, Reliable, No Waste, No Spilling.

Price: - Shgs. 50/- Ea.

Less 10 per cent Cash Discount

**J.H. TODD & Co Ltd**

**ROLL FILMS**

purchased from us are developed **FREE**

BRING YOUR EXPOSURES TO US. We DEVELOP, PRINT and ENLARGE WITH UTMOST CARE.

PRICE LIST ON APPLICATION.

**U. N. Patel & Sons, Ltd.**

Cheapest and Most Reliable Source for All Photographic Requirements—Amateur and Professional.

ELECTRA HOUSE, GOVERNMENT ROAD.

**EAST AFRICA WIRELESS Co.**

SIXTH AVENUE, NAIROBI

Box 1022. - Telephone 2714

Cash Sales Buildings, Showrooms Nairobi House.

**AN OPEN LETTER TO INTENDING PURCHASERS OR OWNERS OF WIRELESS SETS.**

To-day, Radio is a specialist job just as much as any other profession. It has to be a WHOLE TIME ONE and those engaged in it must understand their work. We claim that we do. Wireless is NOT A SIDE LINE. Various Set manufacturers make claims about their diverse Sets and components and you must be given the facts before purchases are made on your behalf. We consider that THE CUSTOMER COMES FIRST. We buy in the best markets, so that whatever is purchased from us, you may be assured that all details have been gone into before the goods were ordered, so you may safely order with the knowledge that your set is important feature which is your right.

SALES The repair department where all types of Receivers are dealt with is in the hands of a skilled engineer and assistants take advantage of this and get your present Receiver looked over.

**E.A. JOBBING HOUSE Ltd.**

Rahimtulla Trust Buildings, Government Road

**—This Week's Bargains—**

GENTS' TRENCH COATS ... Shs. 35/- to Shs. 50/-

GENTS' MACKINTOSHES ... Shs. 15/- to Shs. 35/-

GENTS' CYCLE LEGGINGS ... Shs. 15/- pair

CHILDREN'S LEATHBRETTE ... Shs. 5/- comprising Leathbrette Coat and Hat

MISERABLES' WATER-PROOF CAPES, Shs. 15/- each

LADIES' MACKINTOSHES ... Shs. 10/- to Shs. 25/-

LADIES' TWEED AND CLOTH COATS, Shs. 40/- to Shs. 55/-

TARPAULINS - 18' x 12' ... Shs. 50/- each

GROUND SHEETS - 6' x 8' ... Shs. 7/60 each.

**MUNICIPAL COUNCIL OF NAIROBI.**

**Water Supply.**

The Council desire to draw the attention of the public to the necessity of boiling all water intended for drinking purposes.

F. S. ECKERSLEY, Town Clerk.

**INGRAM & CO'S FLASHLAMP BATTERIES THE TOOL HOUSE**

K. T. C. Adm. Service - THE TEXAS COMPANY (SOUTH AFRICA) LTD. -

**Texaco**

Outstanding quality combined in one new revolutionary motor oil

The NEW Texaco Golden Motor Oil is an oil that knows no parallel in the history of automobile engine lubrication. There have been other oils embodying one or two of the qualities of this revolutionary new oil - but there has never been an oil even approaching the NEW Texaco in ability to give complete and perfect lubrication to modern high-speed, high compression motors.

In the NEW Texaco a number of outstanding qualities have been combined. It makes available to you the best motor oil able to give complete and perfect lubrication under every driving condition.

This NEW Texaco has a rougher, "crack proof" body that resists even the hottest engine temperatures and the most punishing pressures. It goes further, measurably further, and it keeps engines clean, as well as smooth, because it is completely free from injurious carbonous and waxen.

These qualities combined only in the NEW Texaco - reflect their value in smoother, quieter, better driving and lengthened engine life.

**the New TEXACO**

K. T. C. Adm. Service - THE TEXAS COMPANY (SOUTH AFRICA) LTD. -

**National Bank of India Limited.**  
 (Incorporated in United Kingdom)  
 Bankers to the Colony and Protectorate of Kenya and Uganda  
 Postoffice Com. agent.

Subscribed Capital K£4,000,000  
 Paid-up Capital K£2,000,000  
 Reserve Fund K£2,000,000

20, Bishopsgate, London, E.C. 2.

**BRANCHES:**  
 Bombay, Nairobi, Nakuru, Kisumu, Malindi, Mombasa, Kampala, Tripoli, Zanzibar, Dar es Salaam and Wanga.

Also at: Calcutta, Bombay, Madras, Kanpur, Lahore, Amritsar, Delhi, Guwahati, Colombo, Rangoon, Singapore, Hongkong, Canton, Shanghai, Peking, Hankow, Tientsin, Harbin, and other ports.

**AGENTS in New York and throughout U.S.A., Europe, Canada, South Africa and Australia:**  
 Messrs. A. B. McKENDRICK, Messrs. Nairobi Branch.

**Let Us Supply YOUR NEXT SEASON'S REQUIREMENTS.**

**GUNNIES**

12 HESSIAN CLOTH 47" and 27" SACKING TWINE WAXPAGES ETC.

P.O. BOX 290.  
 TELEPHONE 2423  
 Tel. Address: "NAVIGATION."

**The African Mercantile COMPANY LIMITED.**

**NORTH EAST DISTRICT OF K.D.F.**  
 (Continued from page 5)

Some incidents were seen at the meeting's end, and Colonel Atkey in the aeroplane warned and restrained the attack from the night.

The meeting on the East side of the estuary having been reported as full, about a small boat of M.C. was sent to report on that fact, for observation, and when possible, for capture. The motor boat of the M.C. which was a white running motor boat, was seen on the water, and was seen to be making full use of the motorization of the boat, and the motor was seen to be in full use.

The motor boat was seen to be in full use, and was seen to be making full use of the motorization of the boat, and the motor was seen to be in full use.

An Inspiring Spectacle  
 The car which was a motorized car, was seen to be in full use, and was seen to be making full use of the motorization of the car, and the motor was seen to be in full use.

**Kenya & Uganda Railways & Harbours.**

Required a temporary Assistant Tax Inspector (European) for Port Department Kilindi Harbour.

Candidates must possess certificates of suitable qualifications. Salary KSh. 650/- per month consolidated, subject to levy of 5 per cent. No privileges.

Applications, accompanied by testimonials and record of service, should be made in writing to the Acting Port Manager, Kilindi Harbour.

G. D. BRODER, General Manager

**NOTICE**

**APPLICATION FOR WATER PERMIT.**

An application for a Water Permit under Crown Lands (Water Permit) Rules 1918, to construct a storage dam and to supply 5,000 gallons of water per day for stock purposes, from the Malwa River tributary to the Malwa River has been submitted to the Director of Public Works by the John F. Bamford, Bart., the registered holder of Farm No. L.D. 2777/1918.

A site plan of the proposed works may be inspected at the office of the Director of Public Works, Nairobi.

Any registered holder of land adjacent to the Malwa River and downstream of L.D. No. 2777/1918 who objects to the issue of the permit may apply for a hearing before the Director of Public Works, P.O. Box 902, Nairobi, within 30 days from the date of this notice.

D. DUTCH, Applicant.

**ELDORET OCTOBER MEETING**

October 20th and 21st, 1933. EIGHT RACES EACH DAY.

General closing date September 13th at the Office of the Jockey Club of Kenya, P.O. Box 373, Nairobi.

NOTE: The Somali Progeny Plate and the Prince of Wales' Cup close at the Offices of the Jockey Club of Kenya on August 31st.

**FIXED DEPOSITS**—Deposits are received for fixed periods on terms which may be found on application.

**EXCHANGE**—The Bank prints Daily at the Head Office and Branches at the current rates of Exchange. Forward the first copy of the Bill direct to the papers when required. Every description of Banking business transacted with all parts of the world.

A. B. McKENDRICK, Messrs. Nairobi Branch.

**Stock & Share Broker, etc.**  
 Charles Schmitt,  
 Stock & Share Broker & Dealer, Company Promoter, Financial Agent, etc.  
 Late Member of the London Stock Exchange.  
 Architects with London and Johannesburg.  
 Memorial Hall, P.O. Box 680, NAIROBI.  
 Cables and Telegrams: "Schmitts" Nairobi.  
 Telephone: 1111, 1112, 1113.

**BURMAN & CAMP LAMM & CO. HOLLOWAY THE TOOL HOUSE**

**NAIROBI TYPEWRITING BUREAU**  
 ALBERT HOUSE, opp. National Bank of India Ltd.

Lessons in Pitman's Shorthand, Typewriting, Filing, Gesteiner Duplicating, etc.  
 Class rooms Nos. 4, 5 and 6.  
 ALL Classes of Typewriting undertaken.  
 Business Sheets, Assays, Letters, Legal Documents, etc.  
 Complete Mailing List not Circulating.  
 Fees Reasonable.

Principal: VALERIE M. SKELTON, Nairobi, Hergrate (Duchini) School, Eng.  
 Telephone 3798, P.O. Box 1084, NAIROBI.

**CHARLES WARE**  
 ACCOUNTANT  
 17, CHAMBERS, GOVERNMENT ROAD, NAIROBI.  
 Established in 1895—Over 30 Years.  
 BOOKS UP  
 LIVERPOOL CIP, ST. STEWARDS CIP, R. HAND CIP, PRICES 2/6  
 WRITE TO SO REPLY TO

The meeting of the day was devoted to various details and in the afternoon the committee's proposed items that night and were the following:—(1) a class of Sheldons, and all books are bound to be reprinted in a first class manner.

Considering the very limited time he had at his disposal the Comptroller put in a wonderful show.

A well considered relation of training with thorough practical instruction in co-operation with intelligent interest and whole-hearted assistance on the part of the instructed produce in a very few days results, which are truly amazing. I was very much impressed by the very high standard of the camp will have with me.

**THE SOCIAL ASPECT.**

From the local point of view also the gathering was an important success. All necessary when it comes to an...  
 The meeting was not too long, and the...  
 The meeting was not too long, and the...  
 The meeting was not too long, and the...

**Notes on Training.**

It is to be seen that considerable progress has been made in the training of the camp, especially all the men...  
 It is to be seen that considerable progress has been made in the training of the camp, especially all the men...  
 It is to be seen that considerable progress has been made in the training of the camp, especially all the men...

**Not Continued.**

This is a meeting held in the District in which there have been no instructions drawn from outside. In the past officers and instructors were called for from the K.D.F. Headquarters and from the K.A.I. This year there are none.

**A GRAND COMPETITION**

FOR SMOKERS OF ROTHMAN'S PALL MALL and KONGONI Cigarettes

**VALUABLE PRIZES**

Save Your Pall Mall & Kongoni Tins & Packets

Details will be announced immediately on Mr. S. Rothmans Arrival Early in August

**BROMFORD**

**BRING THE "BROWNS" BEARER!**

BROMFORD is guaranteed the longest driving Ball produced. Built for the professional and all low Handicap players. BROMFORD is strongly recommended for the Golfer of average ability.

Special quotations to Clubs & Trade.

**NAIROBI & CO LTD**

**NAIROBI**

**FEWER STROKES PER ROUND.**

**MORE ROUNDS PER BALL.**

K. T. C. Adm. Service



# World Conference Prepares to Adjourn.

## PLENARY MEETING OF THE ECONOMIC COMMISSION.

### A Comprehensive Report.

The Economic Conference dealt with a very lengthy report embodying the recommendations of its various sub-committees, in preparation for the plenary session of the Conference, which meets on July 27 in order to adjourn.

**Mr. Walter Runciman, the Rapporteur,** stated that in the short time at the disposal of the delegates, they could not hope to reach definite agreements on the various subjects, but it had been possible to obtain important results.

During the recess America hopes to put forward substantial proposals to achieve the ultimate object of the Conference, particularly in regard to restrictions on international trade.

Australia is strongly opposed to the limitation of production as a means for raising prices. Such a method, said Mr. S. B. Bruce, would not achieve its object.

In the meantime the opinion is expressed that the temporary failure of the Conference will have the very effect designed, namely to mitigate the intensification of nationalistic economic warfare.

## Success Out of Failure.

When the plenary session of the Economic Commission meets at 3 p.m. today it will be faced with a report from the sub-committees, the reports of which have been published, dealing with such questions as the extent of import duties, the duties on marks of origin and co-ordination of production.

Mr. Walter Runciman, the Rapporteur, said the committee would be glad to discuss the details but that the details have shown that certain points are of such importance that they should be immediately introduced into the agenda for the plenary session.

Mr. Runciman stated that the special drafting committee would be established to consider alterations in the agenda for the plenary session.

Mr. Runciman stated that the special drafting committee would be established to consider alterations in the agenda for the plenary session.

Mr. Runciman stated that the special drafting committee would be established to consider alterations in the agenda for the plenary session.

## THE "OLD MUTUAL"

Insurance Company's New Record.

# ACQUITTED AND REARRESTED.

## THE RETURN OF GENERAL SMUTS.

### Travelling Again by Air.

#### "The Only Way."

General Smuts will return to South Africa on his return to England on Saturday night. He will travel via London, where he is expected to arrive on Saturday night. He will then travel via London to Cape Town, where he is expected to arrive on Sunday morning.

## Views of Future of the World Conference.

General Smuts will return to South Africa on his return to England on Saturday night. He will travel via London, where he is expected to arrive on Saturday night. He will then travel via London to Cape Town, where he is expected to arrive on Sunday morning.

## THE JUDGMENT.

In his judgment the magistrate said it had to be shown that accused had been in possession of the goods at the time they were seized. The magistrate found that the accused had been in possession of the goods at the time they were seized.

## NGONG ROAD CRIME.

Two Natives Guilty of Manslaughter.

Two Kikuyu charged with the murder in April last of a third native, were on Saturday sentenced to two years' imprisonment in the Supreme Court, Nairobi, for manslaughter.

## THE FINAL SESSION.

Arrangements for the closing of the Economic Conference in London, July 27, were finally agreed upon at the plenary session of the Economic Commission in Nairobi.

## THE "OLD MUTUAL"

Insurance Company's New Record.

# THE GIRLS' SECONDARY SCHOOL.

## SIXTH TEST MATCH.

### West Indies Win the Toss.

The annual athletic sports meeting of the Girls' Secondary School was held on Saturday when there was a large attendance. The function was most successful and reflected great credit on the staff and the girls.

## THE PRIZE LIST.

The following is a list of prize winners in the various sports events held during the annual athletic sports meeting of the Girls' Secondary School.

## THE STEWARDS' CUP.

The following are the probable starters and jockeys in the Stewards' Cup, which will be run on Tuesday, August 1st, at 12 noon.

## LIVERPOOL CUP RACE.

Narrow Win for Diamante.

The following are the probable starters and jockeys in the Liverpool Cup Race, which will be run on Tuesday, August 1st, at 12 noon.

## TO-DAY'S CAUSE LIST.

Before Mr. F. C. G. Noble, Acting Judge at 9.30 a.m.

## DUKERS OF YORK PLATE.

The following are the probable starters and jockeys in the Dukers of York Plate, which will be run on Tuesday, August 1st, at 12 noon.

# NEW CATHEDRAL AT DODOMA.

## Successful Campaign.

### Successful Campaign at North East District of K.O.F.

The Bishop of Uganda, Dr. Willis, and the Assistant Bishop, Mr. Stuart, arrived at Nairobi on Saturday by air mail from Dodoma.

## THE ORGANISATION.

The N.E. District is organized as a whole as Mounted Rifles, and men are trained to scout and fight on horseback.

## A MEMORIAL.

In memory of her brother, Frederick Noel Douglas, who died in the First World War, a memorial service will be held at the Cathedral in Nairobi on Tuesday, August 1st.

## PRINCE OF WALES' SCHOOL.

Friday morning was devoted to a special assembly at the Prince of Wales' School in Nairobi.

## Town Council and Land Application.

A request has been made by the Government to Nairobi Municipal Council that the Council should advise the Government on the application for land in the Nairobi area.

## SLEEP ON DUTY.

A Welsh Guardsman, named Harris, who was charged with falling asleep while on duty at the Royal Victoria Barracks in Nairobi, has been sentenced to 14 days' detention.

## SEAFY'S OFFENCE AT WINDSOR CASTLE.

A Welsh Guardsman, named Harris, who was charged with falling asleep while on duty at the Royal Victoria Barracks in Nairobi, has been sentenced to 14 days' detention.

## THE ORGANISATION.

The N.E. District is organized as a whole as Mounted Rifles, and men are trained to scout and fight on horseback.



## YARDLEY LAVENDER

Available Fragrance: how securely it holds its rank in the market of the fashionable world today! It is the one perfume of which you will never tire, charming at all times and especially perfect for the informal occasion.



Lavender: In Sprinkler Bottles and Capped Bottles and in Pocket Flasks.

Lavender Soap—The Laundry Soap of the World. English Cream. Complexion Powder in Napoleon's Dress. Compans, Lipsticks, Bath Sets, Creams and Tablets, Talcum Powder, etc., etc.

OF ALL GOODS CHEAPEST & STURDIEST

Agent—J. H. CLARK, NAIROBI.

# Entertainments of the Week

### "BEN-HUR" A FAMOUS STORY FILMED.

"Ben-Hur" is the four film showing this week the most spectacular undoubtedly "Ben-Hur" a book with which the older generation was familiar with in its youth. And a very interesting book too. Its author was Lewin or Lew Wallace the son of David Wallace a judge and Congressman of the United States of America, born at Brookville, Franklin Co., Indiana, on April 30, 1827. He was a law student when the Mexican War broke out when he volunteered for service as a first lieutenant. At the conclusion of war in 1828 Wallace resumed his legal profession and served for some four years in the State Senate until the Civil War was again volunteering again. Wallace found his metier, soldiering, until demobilized in 1865, when he returned to the law. He was the second member of the court that tried the assassin of President Lincoln. Wallace was three years later U.S.A. Minister to Turkey until 1885.

### Circus of Antioch—"Gin and Din"—Night—Blooming Cereus—Hatty King's Hope—Another Jossie—A Bridge Murder—Local Shows Begin Next Week.

Incidentally, it is the hour of the film which took place in this country, over 12,000 feet so that films will only permit of the showing of a news reel before it begins. Audiences attending the showing at the Capitol are asked to be in the seats punctually.

RAMON Navarro takes the title role in the film which took place three years to make and is stated to have cost four million dollars, or \$200,000 at par.

"Gin and Din" is based on a Broadway stage play of the same name. It deals with the liberty and hardship which attend a young married couple who live in Greenwich Village order of the day all night, and

"UP Pops the Devil" is based on a Broadway stage play of the same name. It deals with the liberty and hardship which attend a young married couple who live in Greenwich Village order of the day all night, and

Richard Smith in the evening towards his business men and women of the day and sets in the absence of his young and pretty wife trouble is stored up for him and the central make-up changes on the cast which produced a short time ago at the Prince of Wales Hotel, Kalamo, and the players will include members of the school staff, assisted by Gladwyn, Lady Buchanan, Mrs. Nicholson, Mrs. Astley, Mrs. Vines, Barbara Harrison, and E. H. Deane.

Another Jossie on Monday next, at the 11th week's film at the "Froggall" starring Lawrence Barrett, the modern version of a practical son. Let's to Pipers," a musical extravaganza, showing a Hollywood "genre."

THE first two at the Empire, the others at the Capitol.

A Bargain. If one can buy for the article that prints in 27, that is real as a bargain. It is a printing that is the almost every one of over two before it is with that more people have availed themselves of the book response this 20, each containing the tokens which may either the Empire or Capitol Theatre. Incidentally, there are more more seats available at the 21, in order to meet the demand for popular-priced accommodation.

It has been noted that there is to be a repeat performance of "The Middle Watch" at the Theatre Royal, Nairobi, from August 2 to 5. There are, however, several changes on the cast which produced a short time ago at the Prince of Wales Hotel, Kalamo, and the players will include members of the school staff, assisted by Gladwyn, Lady Buchanan, Mrs. Nicholson, Mrs. Astley, Mrs. Vines, Barbara Harrison, and E. H. Deane.

### EMPIRE

TO-NIGHT  
MATINEE WED. at 5 p.m.  
Return of the  
**"KING of JAZZ"**  
A Host of Funsters  
In Song and Dance  
LAURA LA PLANTE  
JOHN BOLES  
Paul Whiteman and  
His Band  
THE 100 HOLLYWOOD BEAUTIES.

### CAPITOL

TO-NIGHT  
A Brilliant Comedy Romance  
with a Five Star Cast  
SKREETS GALLAGHER,  
STUART ERWIN,  
CAROLE LOMBARD,  
LILIAN TASHMAN,  
NORMAN FOSTER

## "UP POPS the DEVIL"

PLANS NOW OPEN  
AT EMPIRE THEATRE  
FOR  
**BEN-HUR**  
BOOK AT ONCE.

## HOTEL AVENUE

NAIROBI.

THE CONNOISSEURS RENDEZVOUS for QUALITY and COMFORT.

EUROPEAN CHEF DE CUISINE.

SPECIALISTS in CATERING FOR PRIVATE DINNERS, SUPPERS, WEDDINGS, Etc.

SUNDOWNER DANCES  
MUSIC BY GARRY COOK'S BAND.  
WEDNESDAYS and SATURDAYS  
FROM 6-9 p.m.  
ADMISSION FREE.

RUN IN CONJUNCTION WITH THE PALACE HOTEL, MOMBASA.

By staying at the Palace Hotel within a week of your stay at the Hotel Avenue you get 10 per cent. off your Hotel Bill at the Palace Hotel or vice versa.

50 per cent. for Discount on our Cognac System.

## HENNESSY'S

BRANDY

Representatives—W. H. KEHR & Co. Box 80, NAIROBI.

## "BEN-HUR" A TALE OF THE EARLY CHRISTIAN ERA...

where meals come second. Amusing and dramatic events result. Those taking part in the casting are Skeets Gallagher, Norman Foster, Stuart Erwin, Carole Lombard, Lilian Tashman, Joyce Compton, "Among others."

"King of Jazz." THE programme at the Empire Theatre will open this week with "King of Jazz," one of the best films of the year that was ever produced. It is a musical comedy which is a very fine piece of work. It is a very fine piece of work. It is a very fine piece of work.

Another Jossie on Monday next, at the 11th week's film at the "Froggall" starring Lawrence Barrett, the modern version of a practical son. Let's to Pipers," a musical extravaganza, showing a Hollywood "genre."

WHEN the M.G.M. transferred it to the screen the film broke all records in its long run at the Troviti Theatre, London.

Incidentally, it is the hour of the film which took place in this country, over 12,000 feet so that films will only permit of the showing of a news reel before it begins. Audiences attending the showing at the Capitol are asked to be in the seats punctually.



Laura La Plante and Edward Everett Horton in "The Middle Watch".



Carole Lombard, Norman Foster and Stuart Erwin in "Ben-Hur".

## THE ALL KENYA BALLROOM DANCING

Open Championships will be held at TORR'S HOTEL on SEPTEMBER 26th.

Entries invited for Waltz - Slow Foxtrot - Quick Step.

## Veterinary Instruments

Dissecting Scalpels, Forceps and Scissors.  
Injection and Wound Syringes, Pocket Cases, Microscopes, etc. (Microscopes for Trichinosis Examination from Shs. 35/-).

"The Lens Ltd."  
Box 921, Stanley Arcade, Nairobi. Phone 2808.

## THE NORFOLK HOTEL

Phone 2248 NAIROBI, E.O. Box No. 94

Building in spacious grounds, where one may be perfect. Self-contained private suites and bungalows by arrangement. Reduced Rates for Monthly Residents.

NEWLY RENOVATED.  
UP-TO-DATE LAUNDRY on the Premises.  
DRY CLEANING A SPECIALTY.

Manager—J. S. BARNES

## MOLEHILLS OUT OF MOUNTAINS

Tackle any Mountain drive you like — any rough and tumble road — Chevrolet makes it only a Molehills. No other can give you Chevrolet Performance.

## THE MOTOR MART AND EXCHANGE LIMITED

Mombasa - Nairobi - Nakuru - Eldoret - Dar es Salaam.

## Salisbury Hotel

Under the personal supervision of Mr and Mrs J. H. Noon

THE BATH WILL BE CLOSED on and after 17th JULY until early in September.

Weekly Four Guinea.

Ten acres of beautiful Lawns and Gardens. TENNIS, BILLIARDS, LIBRARY, GARAGE.

## DUETTE

DRY CLEANING MACHINES Stocked by SAFARI-LAND LIMITED. SAIDEE STREET, NAIROBI.

## COX'S INSTANT POWDERED GELATINE

a necessity in every KENYA KITCHEN.

Obtainable from every Grocer in East Africa in 1 lb., 4 oz., 2 oz. and 1 oz. packets.

Sole East African Agents—**ERSKINE & DUNCAN Ltd.**



Africa Standard

UGANDA ARGUS. With which is incorporated THE LEADER.

GUARANTEED THE LARGEST CIRCULATION OF ANY NEWSPAPER IN KENYA, UGANDA, TANGANYIKA AND ZANZIBAR.

NAIROBI, MONDAY, JULY 24, 1953.

New Stanley Hotel - NAIROBI - New Bedrooms - NOW READY - New Tariff.

PRICE 20 CENTS.

MOLLISONS AGAIN ON THE WING. COMMUNISM IN GERMANY.

Double Flight Across the Atlantic.

AMBITION EFFORT TO SET UP NEW RECORD.

Long Distance Non-Stop Plan.

PROPOSAL TO REMAIN IN NEW YORK ONLY A FEW HOURS.

On receipt of favourable weather reports Mr. and Mrs. J. A. Molison flew from King Lane Aerodrome, London in their machine 'Zeafare' to Pendine Sands in Wales this forenoon.

They then refuelled and at noon, with little delay and without any difficulty they set off on their great flight across the Atlantic, which has been in preparation for some months.

Back To Baghdad?

It will be recalled that after Mr. Molison's return from his flight from Baghdad to New York by the North Atlantic route, when, owing to the physical strain, he was obliged to abandon his original plan of making the direct crossing by way of the Mediterranean, the Atlantic and the Gulf. He had intended to make the double flight together. Their intention is to attempt a long haul from New York and elsewhere to return across the Atlantic with the aim of reaching Aleppo or Baghdad to set up a new world non-stop long distance record.

An Earlier Attempt. This flight was originally scheduled to leave on July when an

BRITAIN'S CONVERSION SCHEME.

Giving Bondholders a Square Deal.

THE GOVERNMENT'S PROPOSAL FOR THE REDEMPTION OF THE 130 MILLION DEBENTURES...

GERMANY AND THE VATICAN.

THE GOVERNMENT'S PROPOSAL FOR THE REDEMPTION OF THE 130 MILLION DEBENTURES...

RATES OF EXCHANGE.

The following rates of exchange were announced by the National Bank of Egypt...

S. RHODESIA ELECTIONS.

The Legislative Assembly of Southern Rhodesia was dissolved yesterday.

Ready to Start.



Mr. and Mrs. Molison with the machine in which they hope to accomplish a new record.

FLYING ROUND THE WORLD.

American Airmen Continue.

After hurried repairs to machine.

LEAVES EDMONTON IN ALBERTA.

Mr. Wiley Post left the Flat Summit at 6:28 p.m. and left at 8:45 a.m. on July 22 for Edmonton, Alberta, Canada.

He arrived at Fairbanks, Alaska at 7:22 p.m. and left at 9:25 p.m. and returned at 3:40 p.m.

JEWIS IN GERMANY.

THE WORLD JEWISH CONFERENCE...

An Appeal to League of Nations.

THE WORLD JEWISH CONFERENCE...

STOLE A CAR.

Two months imprisonment with hard labour in addition to paying a fine of Shs. 400...

European Sent to Prison.

Two months imprisonment with hard labour in addition to paying a fine of Shs. 400...

JAPAN'S TRADE IN THE EMPIRE.

Competition in Silk and Cotton.

Difficult Situation.

PROTECTIVE DUTIES QUITE INADEQUATE.

THE GERMAN COLONIES. GERMANY AND HER COLONIES.

Propaganda in Berlin.

THE COWES REGATTA.

To be Attended by the King and Queen.

Gandhi's New Secret Plans.

THE GERMAN COLONIES. GERMANY AND HER COLONIES.

THE COWES REGATTA.

To be Attended by the King and Queen.

Gandhi's New Secret Plans.

JEWIS IN GERMANY.

An Appeal to League of Nations.

STOLE A CAR.

European Sent to Prison.

TRADE AGREEMENTS.

Negotiations with Uruguay.

THE GERMAN COLONIES. GERMANY AND HER COLONIES.

TRADE AGREEMENTS.

Result of Increased Activity.

DRASTIC NEW LAWS TO BE INTRODUCED.

The Death Penalty.

TO BE IMPOSED FOR NUMEROUS ACTS OF TREASONABLE NATURE.

In view of the increase in Communist activity in Germany, a Bill is being submitted to the Cabinet...

Not only acts of violence will be subject to capital punishment, but also acts of incitement and propaganda, and treasonable writing.

Hurried Meeting of Ministers.

All Nazi offenders in the past will be pardoned, but it is implied that those who are unrepentant will be an offence against the State.

Other Capital Offences. The Bill which Captain Goering is submitting to the Cabinet...

THE GERMAN COLONIES. GERMANY AND HER COLONIES.

THE COWES REGATTA.

To be Attended by the King and Queen.

Gandhi's New Secret Plans.

JEWIS IN GERMANY.

An Appeal to League of Nations.

STOLE A CAR.

European Sent to Prison.

TRADE AGREEMENTS.

Negotiations with Uruguay.

THE GERMAN COLONIES. GERMANY AND HER COLONIES.

TRADE AGREEMENTS.

Columbia Records advertisement featuring a list of records and prices, including '10-inch Records Shs. 3/50' and '10-inch Records Shs. 3/50'. It also includes the Columbia logo and 'WHITEWAYS THE STORE FOR NEW RECORDS EVERY MONTH NAIROBI'.





**UNION CASTLE LINE**

Services to England, East, South and West African Ports and Mauritius.

**EXCURSION**

Rates will be available to  
**South African Ports**  
**FROM MOMBASA**

by the following vessels:

9th August "Llandaff Castle."

Tickets will be available for THREE MONTHS and will be



**MESSAGERIES MARITIMES**

Regular fortnightly Service from and to Marseilles.

**NEXT SAILINGS TO MARSEILLES:**  
LEONTE DE LISLE 2 August  
AMBOISE 16 August

**NEXT ARRIVAL FROM MARSEILLES:**  
CHANTILLY 23 July  
SAME FARES ON ALL STEAMERS.

1st Class 569-7-6; 2nd 546-5-3; 3rd 529-3-0.

25% reduction on return journey within 1 year, 10% within 2 years.

MESSAGERIES MARITIMES, P.O. Box 16, MOMBASA.  
JARDIN, PHIPSON & Co. Ltd., P.O. Box 26, NAIROBI.

**HOLLAND AFRIKA LIJN**

Shippers will load at Kilindini on or about the following dates:-

HOMeward via SUEZ	writing
s.s. "Mullerkerk" .....	27th July
s.s. "Springduin" .....	3rd August
s.s. "Nijkerk" .....	20th Sept.
s.s. "Kliffduin" .....	15th Oct.
s.s. "Mullerkerk" .....	15th Nov.
s.s. "Springduin" .....	6th Dec.
s.s. "Nijkerk" .....	31st Dec.

HOMeward via THE CAPE	writing
s.s. "Nieuwland" .....	23rd Aug.
s.s. "Hindostan" .....	27th Sept.
s.s. "Hindostan" .....	2nd Nov.
s.s. "Nijkerk" .....	25th Dec.

Shippers provide excellent Cabin accommodation for passengers. For Particulars of freights and fares apply to:-

HOLLAND-AFRIKA LIJN Mombasa.  
TWENTSCHE OVERZEAS TRADING Co. Ltd., Nairobi, Kampala.  
Telegraphic address "Kerline."

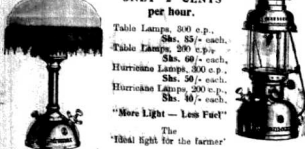
**B. FLORENS** The well-known Artist  
French Hair Dresser.  
**SPECIAL OFFER**

PERMANENT WAVING by the latest and most Modern System, "OPERA" guaranteed harmless, without Electricity, called with justice the QUEEN of Waving Machines, and the PERMANENT WAVING FOR QUEENIES.  
For Complete Head with OPERA System ... SHS. 45/- only.  
With any other System by electricity, from SHS. 22/- only.  
YORK BUILDING, Government Road, Phone No. 2888, P.O. Box 928.

**PETROMAX**

LAMPS AND LANTERNS  
For Kerosene Oil

Only 7 CENTS per hour



SIMPLE, SAFE, ECONOMICAL and ALL WEATHER PROOF. LAMPS and SPARES always available.  
Sole Agents and Stockists:-  
**HUSSEIN SULEMAN VERJEE and SONS, LTD.**  
Box 306, GOVERNMENT ROAD - NAIROBI.

**THE NATAL TANNING EXTRACT COMPANY LTD.**

PURCHASERS OF  
**BLACK WATTLE BARK**  
For Quotations apply to:-  
P.O. BOX 1111, CORNER HOUSE, NAIROBI. Phone 2170.

**B.I. EXCURSIONS TO SOUTH AFRICA**

DURING  
**JUNE, JULY, AUGUST**  
Fares to DURBAN and back:  
1st CLASS "A" ... Shs. 640/-  
1st CLASS "B" ... Shs. 498/-  
2nd CLASS ... Shs. 427/-  
Reduced Railway Fares are obtainable in this connection.

Next sailing: s.s. "KENYA" 23rd July, 1933.

Return tickets also available to BEIRA and LOURENCO MARQUES at special Excursion rates.

B.I. and Union-Castle excursions are interchangeable.

**SMITH MACKENZIE & CO., Nairobi.**

OR AGENTS AT -  
NAKURU, ELDORET, SOY, KIPALE, NYERI, NANYUKI, THOMSONS FALLS, KISUMU, KAMPALA.



**TAILORING**

The Style, Cut, Make and Trimmings that go with the Garments we produce are publicly acknowledged to be the Best in the Colony.

OUR PRICES ARE COMPETITIVE

All payments are made under our personal supervision.

**MAXWELL BRADY'S**  
TAILORS, HATTERS, BOSIERS, etc.  
NAIROBI.



**B.M.C. House**

FOR  
**HOUSEHOLD LINENS AND BLANKETS**

SPECIAL WINDOW DISPLAYS - THIS WEEK

NOW IS THE TIME TO REPLENISH YOUR HOUSEHOLD LINENS AND BLANKETS

PRICES ARE LOWER THAN EVER



**BUY NOW**

THE BRADFORD MANUFACTURING COMPANY (KENYA) LTD.  
Incorporated in England

**THE STANDARD**

Made by the Builders of the Empire Station

Valve All-Mains Rover.

Sh. 230/- cash

Extra for short wave reception Shs. 25/- cash

HIRE PURCHASE TERMS  
Shs. 65/- on delivery and five instalments of Sh. 10/- per month



Next Delivery Due 20th July. BOOK NOW.



The Tool House  
Nairobi.

**FLY HOME**

BY IMPERIAL AIRWAYS Ltd.

Book through

**GIBBS' AUTO TOURS**

- you gain the advantage of Free Transport within a radius of 12 miles from the Aerodrome. SALOON, TOURING and BOXBODY CARS and LORRIES FOR HIRE, DAY AND NIGHT.

SAFARI OUTFITTERS.  
Official Contractors to Imperial Airways Ltd. Wilson Airways Ltd. and Tanganyika Airlines.  
Next to The Arcade Tobaccoists, Stanley Arcade, Nairobi. P.O. Box 1001, Cabins "Nafika." Phone 2724, 2111. KAMPALA - P.O. Box 347. Phone 107.

**ADELPHI BUSINESS COLLEGE**

(Principal Miss Marie Hamilton, P.O.C.)  
Rooms Nos. 4, 7 and 9, Princess House, Government Road  
Enquiries Room 8. Class Rooms 4 and 7.

ALL CLASSES OF TYPEWRITING WORK UNDERTAKEN.

Legal, Scientific and Authors MSS.

EXPERIENCED SHORTHAND TYPISTS TO WORK BY THE DAY OR BY THE HOUR

AT FOUR OWN OFFICE.  
P.O. Box 1029 Telephone 2793

**LEARN TO FLY**

Reduced Rate, dual instruction. An Instructor personally on the Aerodrome. To book your time, ring "Nairobi" 2255.

For particulars write:

**Wilson Airways Ltd.**  
P.O. Box 1067, NAIROBI.

**Dry Monopole CHAMPAGNE**

Representatives - W. B. KERR & Co., Box 860, NAIROBI.

**Nyeri Aviation Service**

11, E. Carberry,  
OVERHAULS AND MAINTENANCE OF AIRCRAFT AND MOTORS BY QUALIFIED G.E. INSTRUCTION.

**DEUTSCHE OST-AFRIKA-LIEN**

HOMeward via SUEZ CANAL.		HOMeward via CAPE.	
From Mombasa		From Mombasa	
S.S. "Usunkuma" .....	5th August	S.S. "Nijasa" .....	23rd July
S.S. "Hinter" (Cargo Steamer) .....	15th August	S.S. "Uthama" .....	20th August
S.S. "Watumu" .....	30th Sept.	S.S. "Adolph Wurmans" .....	17th Sept.
S.S. "Wangul" .....	10th Oct.	S.S. "Uthama" .....	15th Oct.
S.S. "Uthama" .....	10th Dec.	S.S. "Watumu" .....	10th Dec.
S.S. "Adolph Wurmans" .....	15th Jan., 1934.	S.S. "Usunkuma" .....	20th Jan., 1934.
S.S. "Wangul" .....	10th Feb.		

\*Carrying a limited number of Passengers at "P" grade.  
**EASTERN EXCURSIONS TO SOUTH AFRICA - FEBRUARY TO JULY, 1933.**  
Wines, Spirits, Tobacco and Cigarettes British origin are supplied on board the Company's vessels at the equivalent to current selling prices.  
Visitors to D.O.A.L. Steamers are required to be in possession of permits obtainable at the Office. Sailings subject to alteration.

For full particulars of passenger fares and freight rates apply to the Agents:-  
**DEUTSCHE OST-AFRIKA-LIEN GENERALAGENTUR, MOMBASA**  
Nairobi, Nakuru, Eldoret & Kitale: Messrs. DALGETY & Co., Ltd. Agents.  
Kisumu, Jinja & Kampala: BOUETEAUD & GILKERR, Ltd. Agents.  
Cable: "Deutsche Ost-Afrika-Linie" Generalagentur, Mombasa. Telegram: "Deutsche Ost-Afrika-Linie" Generalagentur, Mombasa.

**INGRAM & CO'S GARDEN OF TOOLS THE TOOL HOUSE**

**WALLPAPER**  
in PAINT or DISTEMPER.  
**P. STEWART,**  
Victoria Street, NAIROBI.  
P.O. Box 236 - Phone 2658

**Present Hair Modes**

DELICATE waves swept from the brow, tiny temple curls and a correct parting are points worth noting.

Permanent Waving and Curling a Speciality. THIRING & Beauty Culture.

**MAISON MARIE**  
P.O. Box 1022  
NAIROBI

**A really delightful SMOKE**

is the verdict of all who have tried  
- B B -  
**EAST AFRICAN CHEROOTS**

They are MILD and the aroma is SUPERB  
If you have any difficulty in obtaining stocks apply direct to:-

**BLACKLAWS AND BROWN**

Tel. No. 2001. Box No. 408. "Urums "Blacklaws," NAIROBI.

**OVERSEAS MAILS**

Steamers - INWARD			
From	Steamer	Arrives	Departs
London	ss. "Kerama"	July 22	July 23, 11 a.m.
London	ss. "Chantilly"	July 23	July 24, 11 a.m.
London	ss. "Chia Marconi"	July 23	July 25, 11 a.m.
London	ss. "Nijasa"	July 23	July 25, 11 a.m.
London	ss. "Argus Mars"	July 26	July 28, 11 a.m.
London	ss. "Uthama"	Aug. 2	Aug. 5, 11 a.m.
London	ss. "Nijasa"	Aug. 2	Aug. 5, 11 a.m.
London	ss. "Chia Marconi"	Aug. 2	Aug. 5, 11 a.m.
London	ss. "Kerama"	Aug. 2	Aug. 5, 11 a.m.

Steamers - OUTWARD			
To	Steamer	Departs	Arrives
London	ss. "Kerama"	July 22, 3 p.m.	July 23
London	ss. "Chantilly"	July 23, 3 p.m.	July 24
London	ss. "Chia Marconi"	July 23, 3 p.m.	July 25

AIR MAILS			
From	Steamer	Arrives	Departs
London	ss. "Kerama"	July 22, 3 p.m.	July 23
London	ss. "Chantilly"	July 23, 3 p.m.	July 24
London	ss. "Chia Marconi"	July 23, 3 p.m.	July 25

**UPLANDS**

Bacon may be a few cents dearer to buy, but price is not everything.

**QUALITY**

does mean so much, especially with goods like

**BACON.**

The inferior brands not only lack flavour, but shrink so heavily during cooking.



The British Silk Stockings that wear and wear.



Light Shades at Specially Reduced Prices!!

LIMITED STOCK TO CLEAR.

ANAMED BROS

THE HOUSE OF DISTINCTION. RAZAR - NAIROBI. Phone 2201.

Guard Your Health! with LEVER'S HEALTH SOAP

Use this famous soap regularly and you will do much to protect your skin and body from the dangers of disease.



It has a fine refreshing lather which removes from your skin both the dust and the harmful microbes which are in it.

A PURE SOAP - A VALUABLE SAFEGUARD. Buy a Tablet To-day!

Wholesale Distributors: AMERICAN REPRESENTATIONS LTD., Victoria Street, NAIROBI.

Something Different For Breakfast

- FORCE 1-50 Pkt. POST TOASTIES 1-50 Pkt. CORN FLAKES 1-50 Pkt. PUFFED WHEAT 1-50 Pkt. BRAN FLAKES 1-50 Pkt. KELLOGG'S ALL BRAN 1-50 Pkt. RYVITA FLAKES 2-00 Pkt. SCOTT'S PORAGE OATS 1-75 Pkt. WAVERLEY OATS 1-50 Tin. QUAKER OATS 1-60 Tin. GRANT'S OATMEAL 3-75 Tin. SHREKED WHEAT 1-50 Pkt. PUFFED RICE 1-50 Pkt. HERRINGS in Tomato Sauce 1-50 Tin.

M. S. ELLIOT & CO. LTD. Phone 2060 and 2904. P.O. Box 175.



CHESS

(By A. M. Spencer Palmer, Life Member British Chess Federation, P.O. Box 74, Nairobi).

Letters relating to this column should be marked CHESS and posted direct to him.

PROBLEM No. 1463. By M. Havel. Black Three.



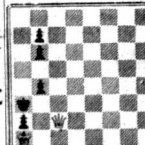
White Eight. White mates in two moves.

PROBLEM No. 1454. By M. Havel. Black Four.



White Six. White mates in three moves.

PROBLEM No. 1455. By M. Havel. Black Five.



White Two. White self-mates in six moves.

SOLUTIONS. Keymove to problems 1449 and 1450 are 1.R-c3 and 1.P-g4 respectively. The key to 1451 is mate by 7. R. Dawson is 1.R-g2.

Problem No. 1447. Kozubik, Key: 1.Q-c4, threatening 2.Bxf3 mate. If 1...Bxb2; 2.P-g4 mate. If 1...Q-b6; 2.Qd3 mate. If 1...Kxf3; 2.Bxf3 mate. Solved by K. R. Khagram, Mombasa; J. S. Pandya, Siant Singh and W. R. M. Fowler.

Problem No. 1448. Kozubik and Kozubik, Key: 1.K-c1. If 1...K-c2; 2.Q-d1 mate, and If 2...K-c3; 3.Q-c2 mate.

If 1...K-c2; 2.Q-c2, then If 1...K-c3; 2.Q-d1 mate, and If 2...K-c3; 3.Q-c2 mate. An ingenious device, operated by a neat return key which believes the stalemate position and gives the Black King three fights. The variations described above show nice symmetrical play, the mates being of equal quality. Of course if Black plays to c3 on the first move, then either Q-c2 or g4 will be an effective reply, leading to mate by the Q at c2.

NAIROBI CHESS CLUB. In the President's Prize Tournament, G. S. Davidson, playing level, obtained two wins against E. Haden, an old S. Menkin against E. Haden, who received the odds of a Knight. Spencer Palmer, also giving odds of a Knight, won both games with E. Twiching. G. S. Davidson still retains the lead in the score table, with S. Menkin of Spencer Palmer as a possible rival.

CORRESPONDENCE. Sent Singh: Your change of address is duly noted, and extension of solving time is allowed in view of the distance of Mysore. Thanks for returning the "Beginner's Book of Chess."

DRISH CHESS CHAMPIONSHIP. The competition which commenced as far back as October 1932, was only concluded in the preliminary tournament was played on the following: (Victory, J. J. Doyle (Lester) and E. St. J. Gahin (Muzer) won the title by defeating Mr. O'Hanlon, the holder, in a final match. The final match proved a spirited struggle; eight games in all having to be played before a decision was reached. Mr. O'Hanlon winning the title by the score of 41 to 33.—(R.C.M.)

SOUTH AFRICAN NEWS. The Transvaal Championship contest came to an end when, in the 18th round, a double-round tournament, Max Blomend made a great place by beating 16 opponents and so bringing his total up to 13 out of a possible 16 points. Dr. Afron and Transvaal champion Ha made but one bad lapse in the tournament, it may be noted, when at the beginning of the second half he was to drinker on the times-table. E. F. Schrader, the previous holder of the Transvaal title (and in the past Western Union champion in America) came second with 12; only half a point behind the winner. The remaining scores were: H. Freeman 10; J. Wolpert 9; S. Dragan 9; M. Victoria 7; S. Grindley 6; Dr. H. Lewis 5; and J. H. Burton (who was tournament-secretary) 3. In the Major Tournament a double-round affair of 20 players, with 16 points, a preliminary being scored, 11 of 10. M. Southman won the Minor, also a double-round of 10 players, with 16 points.

"ON THIS DAY."

JULY 2nd. Battle of Shrewsbury, and death of Richard, July 23, 1455. Shakespeare plays the death scene of the story of British history. It was on this day between the army of Henry V and the army of the Duke of Burgundy that the battle of Shrewsbury was fought. Henry V was killed there. Henry V was killed there. Henry V was killed there.

THE WEATHER.

Rainfall Returns For the Week. The following is the B.E.A. Meteorological Service weather report for the week ending July 28, at certain stations in the Colony and Protectorate of Kenya and other E. African Territories.

Table with columns for Station, Period of Jan/July 1933, and Rainfall. Stations include Kisumu, Nairobi, Mombasa, etc.

THE GOLDEN APRICOTS AND LUSCIOUS PEACHES AND PEARLS OF SOUTH AFRICA. are obtainable at all Leading Grocers in Dried Form. For particulars of Supplies apply to: The South Africa Office, General Staff, Box 424, NAIROBI.

W. & A. GILBEY'S LONDON DRY GIN. The foundation of a good Cocktail is GIN—and it must be GILBEY'S! Known and appreciated throughout the world. A booklet giving more popular cocktail recipes will be supplied to purchasers of Gilbey's Dry Gin.

INGRAM & CO'S F FLASHLIGHTS BATTERIES THE TOOL HOUSE. SAFARILAND LIMITED. Sole Agents for: KLIM Powdered Whole Milk. CAMEL Cigarettes. SADDLER STREET, P.O. Box 84, NAIROBI.

TWENTY YEARS OF Service, Skill, Craftsmanship SCHOUTEN'S The East African Hairdressers LADIES and GENTLEMEN'S SERVICE BY WEST END LONDON OPERATORS Permanent Waving BY Macdonald Steam System PLASTIC LAQUERED HAIRBRUSHES GOVT ROAD and NEW STANLEY ARCADE Box 2245. Mr and Mrs Schouten will visit Nyero (Outspan Hotel) on Friday and Saturday, July 21 and 22, for Permanent Waving, Manicure, Massage, etc.

ROLEX WATCHES THE WORLD'S BEST BY EVERY TEST. SOLD HERE AT ENGLISH PRICES For Catalogue apply to: DOBBIES Ltd., 11, Whitechapel and London E.C.1. P.O. BOX 90, NAIROBI. PHONE 3000.

The Link. The Windmill was the link between the "Quern", or hand operated stone mill, which was first used about 4,000 B.C., and the modern "Long System" Roller Milling Plant—such as the one in Nairobi which produces "Kenya's Paramount." This, as is well known, is a first-class "short patent" flour, of exceptionally high quality. If you do not already use it, see that you get this brand when next you buy flour.

























MAURICE ROSENSTON

P.O. BOX 381. Phone 2961. Tel. Address: Taitumbi. PLEASE NOTE NEW P.O. BOX NUMBER 381. LEGGER, Run SEPT 1934, 11 miles 4 furlongs 122 yards...

Veterinary Instruments. Dissecting Scissors, Forceps and Scissors. Injection and Wound Syringes, Pocket Cases, Microscopes, etc.

CHARLES WARE

THIRD ACCOUNTANT. THIRD CHAMBERS, GOVERNMENT ROAD, NAIROBI. Established in Kenya over 30 Years. BOOKS OPEN. LIVERPOOL CUP, Run JULY 21st. STEWARDS' CUP, Run JULY 26th.

"ON THIS DAY."

JULY 21.



Death of William Boyd, July 21, 1931. "Mama," as he was called, was a man who was known to many people in the colony...

"THERE IS POISON IN IT."

(Continued from page 7.)

Mr. Pringle, who was with the doctor when he was called to the house, said that he had seen the man who had been seen by the doctor...

SEPARATION PLANS

Pringle's wife, a lady, is reported to have been in a state of mind which would lead her to believe that she had been poisoned...

A Dead Out.

An adult goat evidence of a journey to the farm of the accused was found by Superintendent Pringle...

The prosecution then called on

Edgemoor Kipkilelesh, who had been employed by the accused on the farm, to give evidence...

Talks About Poison.

Dr. Van Derwerker was called upon to give evidence in the running of the case by Mr. Justice Gurney...

Symptoms of Strychnine Poisoning.

The doctor was called upon to give evidence in the running of the case by Mr. Justice Gurney...

A Dead Out.

An adult goat evidence of a journey to the farm of the accused was found by Superintendent Pringle...

The prosecution then called on

Edgemoor Kipkilelesh, who had been employed by the accused on the farm, to give evidence...

Coleman THE PASSWORD of EFFICIENCY. Once used Always used. WORLDWIDE SATISFACTION. UNIVERSALLY RENOWNED. SAFARILAND LIMITED. Sole Agents for: KLIM Powdered Whole Milk. CAMEL Cigarettes.

A GRAND COMPETITION FOR SMOKERS OF ROTHMAN'S PALL MALL and KONGONI Cigarettes VALUABLE PRIZES. Save Your Pall Mall & Kongoni Tins & Packets. Details will be announced immediately on Mr. S. Rothmans Arrival Early in August.

BROMFORD BRING THE "BROWNS" CLEARER! BROMFORD is guaranteed the lowest driving Ball produced. Built for the professional and all low Handicap players. BROMFORD is strongly recommended for the Golfer of average ability. FEWER STROKES PER ROUND. MORE ROUNDS PER BALL. NAIROBI.



HAVE YOU A COLD IN THE HEAD? NASAL CATARRH?

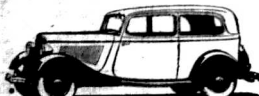
EPHEDROL

GET RID OF IT! Price 3/- per bottle

HOWSE and McGEORGE LTD. NAIROBI AND BRANCHES.

32-INCH WHEELBASE EIGHT-CYLINDER ENGINE ALUMINUM CYLINDER HEAD OVER 80 MILES AN HOUR REMARKABLE RIDING COMFORT

NEW FORD V.8



V. 8. TUDOR SEDAN

Nairobi Motors Sixth Avenue

Box 460. Tel. 2459.

The "Big" Cigarette that Really Satisfies. Stgs. 2/50 per tin of 50

CANADERS Wholesale Distributors: Dalgety & Co., Ltd.

SEEDSMEN TO HIS MAJESTY THE KING.

Barter's TESTED SEEDS

RAYNES PARK, LONDON.

CHOICE VEGETABLE AND FLOWER SEEDS.

GAILEY & ROBERTS Ltd. NAIROBI, AND ALL BRANCHES.

Advertisement for Poliflor floor polish, featuring an illustration of a child and a woman.

STANDARD

Made by the Builders of the Empire Station. 2-Valve All-Mains Receiver.

New Price: Sh. 230/- cash. Extra for short wave reception Shs. 25/- cash

HIRE PURCHASE TERMS Shs. 65/- on delivery and five instalments of Sh. 40/- per month.



Next Delivery Due 29th July. BOOK NOW

Agents: The Tool House Nairobi.

Be Proud of Your Car

Keep it clean and sparkling with



No. 7 Duco Polish

the fastest selling liquid Auto Polish which cleans away dull Traffic Film easily and quickly. Almost magically it restores the original lustre and colour of the finish.

Wholesale Distributors: GAILEY & ROBERTS Ltd.

Right is for the position... Yours are present... in Colour

YOUR EYES Crookes' Lenses in Three Shades A. H. WARDLE & CO., LTD. Optical Opticians Nairobi

SANITARY APPLIANCES

Baths Lavatories W.C. Suites Sinks, &c., &c.

THE NAME SHANKS'

R. G. VERNON & CO. ELLIOT STREET, NAIROBI. Phone 2544 - P.O. Box 124

USE NOVASEPTIC THE PERFECT GERMICIDE Absolutely Non-Poisonous Non-Caustic and Non-Irritating

A. H. WARDLE AND CO. LTD. Wholesale and Retail Opticians NAIROBI Phone 3505

THANKS. Mr. and Mrs. F. Hopley wish to thank all their friends for the very kind expressions of sympathy which they have been the grateful recipients in their recent bereavements.

The East African Standard FRIDAY, JULY 21, 1933

Mr. Gandhi's New Move. Apparently completely recovered from the effects of his recent fall and being minded to turn his attention to something likely to give rise more quickly than the question of the "autonomous" Mr. Gandhi has chosen Congress for his attention. There was every reason why he should do so. Congress has long been his grip-rod. Mr. Gandhi is not quite so sure of himself. He founded a Congress apparently anxious to stimulate the Civil Disobedience campaign, which has been raised in political terms, and is not willing to do so unconditionally. But Mr. Gandhi could not contemplate a complete reversion to the old programme of non-violence and non-cooperation. He is still sufficient to establish him to persuade Congress to follow the well-worn line of attempting to place the responsibility for the failure of the programme on the Government. Accordingly, Congress agreed to cling to the old programme while using quiet willing to abandon it if an agreement could be reached which would allow the Government to get on unimpeded, even Congress could not expect him to see any other way. Mr. Gandhi asked for an interview with the amply proved that if he failed to get an agreement on his own conditions, the Government would not police their "defiance of the law" - would continue to view the law as a mere hindrance to the British Government, has ceased stalling and "defiance of the law" policy. Mr. Gandhi's approach was discouraged and he was told, quite firmly to

Standard Receipts. A comparative statement of receipts for the year ending 31st December 1932 and for the year ending 31st December 1931. The total receipts for 1932 were £2,350,145 and for 1931 were £2,250,145. The increase was £100,000. The receipts for 1932 were £2,350,145 and for 1931 were £2,250,145. The increase was £100,000.

By Jack Barth. The Kenya Council (C.B.C.) Chief Justice of Kenya Colony will present a report on the work of the Council for the year ending 31st December 1932. The report will be presented to the Council on 21st July 1933.

Sanitary Appliances. The Kenya Sanitary Appliances will be held in the Memorial Hall on December 19th.

New Laws. The Secretary of State has notified the Government that the powers of disqualification will not be exercised with respect to the Bill authorizing the making of laws to enable the East African Currency Board to provide funds for the purpose of the Government of Kenya.

Litany Flower Show. The Litany Flower Show will be held at Nairobi on 21st July 1933. The show will be held in the grounds of the Litany Church.

Wireless Programmes. The Empire Broadcasting Service will broadcast a programme on 21st July 1933. The programme will be broadcast from 7.00 p.m. to 8.00 p.m.

British Legion. The British Legion will hold a concert on 21st July 1933. The concert will be held in the Memorial Hall.

Transvaal. A statement has been published of the revenue and expenditure of the Transvaal for the year ending 31st December 1932. The total revenue for 1932 was £1,000,000 and the total expenditure was £950,000.

Butter Levy. A statement has been published of the revenue and expenditure of the Butter Levy for the year ending 31st December 1932. The total revenue for 1932 was £1,000,000 and the total expenditure was £950,000.

Unemployed. The following is a list of names of unemployed persons who have been referred to the Unemployed Relief Committee for the year ending 31st December 1932.

Children's Cause. The Children's Cause will hold a concert on 21st July 1933. The concert will be held in the Memorial Hall.

Standard. The Standard newspaper will publish a special supplement on 21st July 1933. The supplement will be published from 7.00 p.m. to 8.00 p.m.

Nairobi Station. The Nairobi Station will hold a concert on 21st July 1933. The concert will be held in the Memorial Hall.

National Bank of India Limited.

Incorporated in United Kingdom... Capital... Reserves... Branches: Calcutta, Bombay, Madras, etc.



PAINS AFTER EATING

STOP AT ONCE! It's not the food you eat which causes your pain... Bismarck Tablets.



Now in stock: BAO SULPHUR for Sheep dipping, COPPER WOLFE for Coffee banding, etc.

Now in stock:

BAO SULPHUR for Sheep dipping, COPPER WOLFE for Coffee banding, VETV. PHTHOLEUM DILUI in 56 lb. tins, etc.

Now in stock:

BAO SULPHUR for Sheep dipping, COPPER WOLFE for Coffee banding, VETV. PHTHOLEUM DILUI in 56 lb. tins, etc.

EXCHANGE

The Bank issues Drafts on all the Offices and Branches of the Bank... A. S. McKENDRICK, Manager, Nairobi Branch.

E.A. JOBBING HOUSE Ltd.

Rahimtulla Trust Buildings, Government Road - Nairobi. This Week's Bargains: GENTS' TRENCH COATS, GENTS' MACKINTOSHES, etc.

Bank & Share Broker

Charles Guitell, Bank & Share Broker & Dealer in every Promoter, Financial Agent, etc.

EAST AFRICA WIRELESS Co.

SIXTH AVENUE, NAIROBI. An open letter to intending purchasers or owners of wireless sets.

AN OPEN LETTER TO INTENDING PURCHASERS OR OWNERS OF WIRELESS SETS.

To-day, Radio is a specialist job just as much as any other profession. It has to be a WHOLE TIME JOB, and those engaged in it must understand their work.

THE MOTOR MART AND EXCHANGE LIMITED

You Do Not Know What Modern Motoring Means! THE MOTOR MART AND EXCHANGE LIMITED. Mombasa - Nairobi - Nakuru - Eldoret - Dar es Salaam.

NATIVE BOATS, ROVERS AND CURS.

First Camp of Second Regiment Troop. Kiliamat Resident. Finad.

BOYS' KEEPERS

STEWART'S CONSERVATORY. The traveller across country... Boys' Keepers.

BOYS' KEEPERS

STEWART'S CONSERVATORY. The traveller across country... Boys' Keepers.

European Visitors.

The great general... European Visitors.

SHOTS AT NEIGHBOUR'S DOG.

Kiliamat Resident. Finad. A letter to the Editor.

SHOTS AT NEIGHBOUR'S DOG.

A letter to the Editor. African owners for the possession of a native dog.

SHOTS AT NEIGHBOUR'S DOG.

A letter to the Editor. African owners for the possession of a native dog.

SHOTS AT NEIGHBOUR'S DOG.

A letter to the Editor. African owners for the possession of a native dog.

EMPIRE

EMPIRE. A letter to the Editor. African owners for the possession of a native dog.

EMPIRE

EMPIRE. A letter to the Editor. African owners for the possession of a native dog.

EMPIRE

EMPIRE. A letter to the Editor. African owners for the possession of a native dog.

EMPIRE

EMPIRE. A letter to the Editor. African owners for the possession of a native dog.

EMPIRE

EMPIRE. A letter to the Editor. African owners for the possession of a native dog.

EMPIRE

EMPIRE. A letter to the Editor. African owners for the possession of a native dog.

EMPIRE

EMPIRE. A letter to the Editor. African owners for the possession of a native dog.

EMPIRE

EMPIRE. A letter to the Editor. African owners for the possession of a native dog.

CAPITOL

CAPITOL. A letter to the Editor. African owners for the possession of a native dog.

CAPITOL

CAPITOL. A letter to the Editor. African owners for the possession of a native dog.

CAPITOL

CAPITOL. A letter to the Editor. African owners for the possession of a native dog.

CAPITOL

CAPITOL. A letter to the Editor. African owners for the possession of a native dog.

SALESBURY HOTEL

Under the personal supervision of Mr and Mrs J. H. Noon. A staff of ten European cooks...

SALESBURY HOTELS

Under the personal supervision of Mr and Mrs J. H. Noon. A staff of ten European cooks...

SALESBURY HOTELS

Under the personal supervision of Mr and Mrs J. H. Noon. A staff of ten European cooks...

SALESBURY HOTELS

Under the personal supervision of Mr and Mrs J. H. Noon. A staff of ten European cooks...

SALESBURY HOTELS

Under the personal supervision of Mr and Mrs J. H. Noon. A staff of ten European cooks...

SALESBURY HOTELS

Under the personal supervision of Mr and Mrs J. H. Noon. A staff of ten European cooks...

SALESBURY HOTELS

Under the personal supervision of Mr and Mrs J. H. Noon. A staff of ten European cooks...

SALESBURY HOTELS

Under the personal supervision of Mr and Mrs J. H. Noon. A staff of ten European cooks...

SALESBURY HOTELS

Under the personal supervision of Mr and Mrs J. H. Noon. A staff of ten European cooks...

SALESBURY HOTELS

Under the personal supervision of Mr and Mrs J. H. Noon. A staff of ten European cooks...

SALESBURY HOTELS

Under the personal supervision of Mr and Mrs J. H. Noon. A staff of ten European cooks...

SALESBURY HOTELS

Under the personal supervision of Mr and Mrs J. H. Noon. A staff of ten European cooks...

HOTEL AVENUE NAIROBI. THE CONNOISSEURS RENDEZVOUS for QUALITY and COMFORT. EUROPEAN CHEF DE CUISINE. SPECIALISTS in CATERING FOR PRIVATE DINNERS, SUPPERS, WEDDINGS, ETC. SUNDOWNER DANCES MUSIC BY GARRY COOK'S BAND. WEDNESDAYS and SATURDAYS FROM 6-8 p.m. ADMISSION FREE. RUN IN CONJUNCTION WITH THE PALACE HOTEL, MOMBASA.

THE STAFF OF THE PRINCE OF WALES SCHOOL

Glady's Lady Dalmatians. Mrs. Nicholson. E. H. Pamour. Barbara Harrison. Mrs. Anley. Mrs. Vines.

THURSDAY, August 2nd. Matinee at 5 p.m.

FRIDAY and SATURDAY, Aug. 4th & 5th at 8.45 p.m.

Kenya Cement Works.

Prop: Pato Colombo. N'Yera Road. NAIROBI. Fancy Coloured Flooring Tiles, made by Hydraulic Pressure.

INGRAM & CO'S LAW MOWERS THE TOOL HOUSE

The end of mow is finished in THE SHILL. The waked and knotted by the master's spell.

STUPENDOUS ATTRACTION AT

"TORR'S"

Miss HELENA DAVIES the famous CONTRALTO. will sing selections from her repertoire during dinner and dancing.

Previous engagements of this famous singer include the CARL ROSA OPERA CO. QUEBEC: ITALY - GRIFFIN HALL - B.B.C.

THE NORFOLK HOTEL

25-26-27 NAIROBI, E.D. Box No. 94. Standing in spacious grounds, prices very low for period.

Self-contained Private Suites and Bungalows by arrangement. Reduced Rates for Monthly Residents.

NEWLY RENOVATED. UP-TO-DATE LAUNDRY on the Premises. DRY CLEANING a SPECIALTY.

Manager - G. M. BLANCK.







The NEW AUSTIN "TEN FOUR"

The Ten-Four Austin is a recent model that has been long enough on the roads to be thoroughly tested by owner drivers.

CARR, LAWSON & CO. LTD. SERVICE AND SATISFACTION

CHEWERS' Custard Powder



combines highest quality with greatest economy. It creates up to a nutritive Custard of delicious taste.

MAURICE ROSENSTON P.O. BOX 281, Phone 2071. 72, Address, Telere.

LIVERPOOL CUP, Run (FRIDAY), July 21st, 1 mile 2 furlongs 10 yards...

STEWARDS' CUP, Run (THURSDAY), July 25th 6 furlongs—10 The Divot, Zanol...

GOODWOOD STAKES, Run (WEDNESDAY), July 26th, 2 miles 3 furlongs.

GOODWOOD CUP, Run (THURSDAY), July 27th, 2 miles 5 furlongs. PRICES QUOTED, ENQUIRE.

DURBAN GOLD CUP, Run (SATURDAY), July 29th, Value £2,500. 2 miles; 9/2 Blackhammer; 6 Brown Point; 7 Candiac...

WEIGHTS AVAILABLE ON APPLICATION FOR CLIENTS. DOUBLES—TREBLES—QUADRUPLES.

Kenya European Amateur Billiards Championship.

LIST FOR 1933 TOURNAMENT NOW OPEN.

August 10 Closing Day.

PROBABILITY OF DISTRICT ZONES BEING ORGANISED.

Under the auspices of the Kenya Billiards Association...

As was the case in the first championship...

No actual scores have yet been decided upon...

When the championship was first started a year ago...

Entries should be forwarded, along with...

SHOOT FOR STAFF OFFICERS' CUP.

Orcharadgon Scores a Possible.

Shooting competition was held on Sunday...

Orcharadgon scores a possible.

Shooting competition was held on Sunday...

Orcharadgon scores a possible.

Shooting competition was held on Sunday...

Orcharadgon scores a possible.

Shooting competition was held on Sunday...

Orcharadgon scores a possible.

Shooting competition was held on Sunday...

Orcharadgon scores a possible.

Shooting competition was held on Sunday...

Orcharadgon scores a possible.

Shooting competition was held on Sunday...

Orcharadgon scores a possible.

Shooting competition was held on Sunday...

Orcharadgon scores a possible.

Shooting competition was held on Sunday...

Orcharadgon scores a possible.

Shooting competition was held on Sunday...

Orcharadgon scores a possible.

Shooting competition was held on Sunday...

Kenya Tennis Championships.

More Satisfactory Entries.

With less than a week available for the sending in of entries...

Entries should be forwarded, along with...

With less than a week available for the sending in of entries...

Entries should be forwarded, along with...

With less than a week available for the sending in of entries...

Entries should be forwarded, along with...

With less than a week available for the sending in of entries...

Entries should be forwarded, along with...

With less than a week available for the sending in of entries...

Entries should be forwarded, along with...

With less than a week available for the sending in of entries...

Entries should be forwarded, along with...

With less than a week available for the sending in of entries...

Entries should be forwarded, along with...

With less than a week available for the sending in of entries...

Entries should be forwarded, along with...

With less than a week available for the sending in of entries...

Entries should be forwarded, along with...

With less than a week available for the sending in of entries...

Entries should be forwarded, along with...

With less than a week available for the sending in of entries...

Advertisement for ELEY AMMUNITION, featuring 'ELEY' brand cartridges and 'PRIMA' brand cartridges.

IMPERIAL CHEMICAL INDUSTRIES LIMITED, LONDON. East African Representatives: Perry Phillips, P.O. Box 281, Nairobi, Kenya Colony.

HOGG & LENZBERG, Mackinnon's Buildings, NAIROBI.

STEWARDS' CUP, Goodwood, 25/7/33, 5 furlongs—10 Longman, The Divot, 12 National, 14 Zanol, 15 Zanol, 16 Zanol...

QUEEN'S HOTEL, GRAMS' 'HOGG', Box 769, Phone 277A.

RESTAURANT & LOUNGE OPEN TO NON-RESIDENTS. CHARLES WARR, TURF ACCOUNTANT.

DAVIS TENNIS CUP, 1934. Results: 1. OLD RIDGE, 2. ROSEMARY'S PET, 3. OLD RILEY.

DAVIS TENNIS CUP, 1934. Results: 1. OLD RIDGE, 2. ROSEMARY'S PET, 3. OLD RILEY.

D.W.M. Cartridges are Unequaled. TRY OUR LATEST STRONG JACKET CARTRIDGES.

CHAS. A. HEYER & Co. Ltd. THE GUNSMITHS. NAIROBI. Printed and Published by EAST AFRICAN STANDARD, 8, South African, Nairobi.

# AUCTION SALES



SALE BY CATALOGUE OF FURNITURE, EFFECTS, SILVER, PLATE & JEWELLERY.

Duly instructed by R. N. Bergsten Esq., and other parties, we shall sell by Public Auction, without reserve, unless stipulated, at our Salerooms, Mutos Building, Harbridge Street, Nairobi,

on **MONDAY, 24th JULY, at 10 a.m.**

**CHESTERFIELD SUITES, WELL SPRUNG EASY CHAIRS, DINING TABLE in Teak, TWO ARM CHAIRS in Teak, Occasional Tables, Sundowners, ALGERIAN POUFE, GATELEGGED OCCASIONAL TABLE, Dinner Services, Glassware TRAYS Plated on copper, SILVER TEAPOTS, Silver Vases, Silver Milk Jugs, Napkin Rings, CUTLERY, SET of FISH CARVERS, Knives and Forks, Dessert Knives and Forks, Plated ENTREE DISHES, ELKING, WOOD PLATE FRIED BISH, vine leaf design, TWO SAUCE BOATS, plated on copper, DOUBLE BARREL LED "ARMY and NAVY" SHOT GUN in case, 12 bore, No. Caddy plated on copper, Silver Filigree Bonbon Dish, Plated Ice Bucket, Plated Muffin Dish, Sugar Dredger, plated on copper, Silver Toast Rack, Set of Carvers, Lady's Gold Bracelet, Gold Locked and chain Silver Card Case, Gold Ring, WELL SPRUNG EASY CHAIR, cord covered, loose cushion (res.), Dresser Single Iron Bedsteads, Coir Mattress Bedroom Chairs, robe seated, Ironing Board, Camp Bed, Kitchen Table set, etc., etc.**

MUTER and OSWALD LTD., Auctioneers, etc.



TO LET.

Hospital Hill, Unfurnished Stone House with tiled roof and well laid out garden. Comprising large Sitting Room and Dining Room combined, two Bedrooms, Bathroom with H. and C. in, indoor sanitation, Pantry Store, Kitchen, Garage, Boys' Quarters situate away from house. To let for any period from 1st September at £10 p.m.

MUTER and OSWALD Ltd., Estate Agents, NAIROBI.

## THE CAR MART

P.O. Box 1888. (Next to Bhoob's) Telephone 2147.

### Used Car Bargains

FORD B.F.P. SALOON	1933 Model	£250
AUSTIN SEVEN	1932	£200
FORD BOB BODY	1932	£200
FORD TUDOR SALOON	1932	£210
FORD FORDOR SALOON	1932	£200
FORD LIGHT DELIVERY	1930	£200
CHEVROLET BOX BODY	1930	£200
CHEVROLET BOX BODY	1930	£200
CHEVROLET BOX BODY	1927	£227.10
CHEVROLET BOX BODY	1928	£225
WHIPPET TOURER	1928	£225

All the above cars are in good running order and ready for the road. CARS FOR HIRE.

## PETROMAX

LAMPS and LANTERNS for Kerosene Oil



ONLY 2 CENTS per hour.

Role Agents and Stockists - HUSSEIN SULEMAN VERJEE and SONS, LTD. Box 206. GOVERNMENT ROAD, NAIROBI.

### BEFORE GOING HOME

inform us if you have anything to dispose of by private treaty or public auction. We deal in Cars, Lorries, Buses, and Motor Furniture. We accept Old Clothes and Unwashed for sale by Auction on every Sunday. Money always available on mortgages and other securities.

BACHUAL GATHANI, Auctioneers and Land and Estate Agents. Box 229, 10th AVENUE, NAIROBI.

## AUSTIN'S AUCTIONS

CATALOGUE SALE OF GOOD FURNITURE AND EFFECTS. Favoured with instructions. **AUSTIN & CO.** will sell by Public Auction, WITHOUT RESERVE, unless stated, at THE MART, on **SATURDAY, July 22nd, at 10 a.m.**

Chesterfield Suites in Cretonnes and Corduroy. M.v.h. Bedroom Suites, 6 pieces Teak and Single Boxspring Bed. Twin Divans with Kapok Overlays. Double Beds complete. Single, Double and Bachelor Wardrobes in M.v.h. Dressing Chests, Washstands, Chests of Drawers, Writing Desks, Office Desks and Chairs. New Kitchen Tables and Meat Safes. Coffee Stools, Tea and Coffee Tables. ASSORTED PLANTS in TUBS and Pots. Palmstands, New Velvet Rugs, Novelty Folding Pram, Wire Netting, Loud Speakers, NEW COFFEE TRAYS, full size. Cheval Mirror 4' x 3". 2 Good Club TABLE GRAMOPHONE (res.), Records, Camera, Tables, Chairs and Sideboards. New Tennis Rackets and Badminton Sets. Assorted Bathroom Tiles. ELECTRIC RADIATOR, Brass front, in new condition (res.). Bureau Bookcase, Tray Tables, BOLL NEW LINO 12' x 6'. White Enamelled Double Wardrobe and Dressing Chest. Chinese. LISTER INCUBATOR in new condition for 150 eggs (res.). Bedside Tables, New Torch Batteries. PHILLIPS LONG WAVE ALL MAIN RECEIVER in NEW CONDITION with Loud Speaker (res.), etc., etc.

Austin & Co. Auctioneers & Approved Valuers, Harbridge St. NAIROBI.

## KENYA MART

P.O. Box 316. Stanley House, Phone 2980. Auctioneers, Valuers and Commission Agents. on **FRIDAY, 21st JULY, 1933, at 10 a.m.**

CHESTERFIELD SUITES, Settees, Easy Chairs, Writing Bureau, Meat Safes, Kitchen Tables, Palmstand, Glass Show Case Counter, SINGLE BEDS with BOX SPRING MATTRESSES, Mattresses and Pillows. Set of GOLF STICKS in a BAG, Various Soft Goods, PAINTS, VARNISHES, DISTEMPER, and A VERY GOOD SELECTION OF FURNITURE, INCLUDING Polish, Brass, Fluted, Heine Pickles, Chutney, Gents' Belah, Olive Oil, Curry Powder, Sailor Plates, Bottled Fruit in Syrup, Pearl Barley, Oxo, Banded Treadle, Upholsters 7½" Plastic Ham, Jackstone Floor Polish, Knife Enamel, Odia Distemper, Pittsco 2½" Distemper, Robinales Enamels, Etc., Etc.

## ROLEX WATCHES



SOLD HERE AT ENGLISH PRICES. For Catalogues apply to— **DOBBIES Ltd.** Watchmakers and Jewellers. P.O. Box 95, NAIROBI. PHONE 5000

## THACKRAH'S Limited

NAKURU (Established 1917). The Up-country Land and Estate Agents. Auctioneers and Approved Valuers, Insurance, Shipping and Financial Agents. SHOPS, OFFICES, GODOWNS, HOUSES and FARMS — TO LET or FOR SALE.

## TWENTY YEARS OF Service, Skill, Craftsmanship

SCHOUTEN'S The East African Hairdressers LADIES' and GENTLEMEN'S SERVICE by WEST-END (LONDON) OPERATORS. Permanent Waving

BY Macdonald Steam System PLANT: LAQUERED HAIRDRESSING OPER. ROAD and NEW STANLEY AEREA. Box 234, Phone 2245.

Mr. and Mrs. Schouten will visit Nyeri (Outspan Hotel) on Friday and Saturday, July 21 and 22, for Permanent Waving, Manicure, Massage, etc.

## E. Hutchison & Co.

Box 140, NAIROBI. HOUSEHOLD BARGAINS. Dotted Pillow Cases 1/6 each. Single Bedsteads 5/50 pair. Towels from 7/5 each. Bedspreads 7/50 each. Christy's Bath Mats 3/50. Huckaback Towels 2/- Linen Luncheon Sets 3/- per set of 12. Dusters -/40. Glass Cloths 20. 45 inch Jaize 1/85 yard. Cretonnes from 5/0. Ladies' Pure Silk Stockings 6/- pair. Tweed Suit Lengths 20/.

## SANDS & Co.

Live Stock, Land and Farms. Produce Auctioneers, NAIROBI. We hold sales of LIVESTOCK, at our Rail Road Station, Nairobi, every WEDNESDAY at 10 a.m. We hold sales of FARM PRODUCE and STORES, at our Sadler Street Premises, every THURSDAY and FRIDAY, starting 9 a.m. each day.

## JAMAL PIRBHAI

SALE OF MOTOR CAR AND FURNITURE. Duly instructed by the Official Receiver, and other parties I shall sell by Public Auction, without Reserve, unless stated, at my Hall (corner Government Road, Nairobi). on **SUNDAY the 23rd July, 1933 at 8 a.m.** One BUICK BOX BODY MOTOR CAR No. 6147D in perfect running order. FURNITURE, Gramophone, Records, Chairs, Tables, "Truckery" New and Secondhand Clothes and Sundry Goods, etc., etc.

## JAMAL PIRBHAI

AUCTIONEERS and OFFICIAL BROKERS. P.O. Box 200. Government Road, Nairobi. Phone 2942.

## KAJIADO

FOR THE WEEK-END. Circular Route through the GAME RESERVE. Tennis. Licensed. Hot and Cold Water Ltd on. Apply MOTOR TOURS Ltd. Opposite Gen. Post Office.

Now in stock: RAG SULPHUR for Sluice digging. COTTON WOOL for Coffee banding. GILFLOPANE PAPER for Coffee banding. VETV, PETROLEUM JELLY, in 50 lb. line. VETV, DICARBONATE OF SODA. VETV, COOL LIVER OIL, 5 & 10 Gall. Drums. A. J. ELY & Co., Ltd., Chemists and Druggists, P.O. Box 411 — Government Road, — NAIROBI.

## BENNETTS CAR SERVICES

TEXACO HOUSE — SADLER STREET. **50 USED CARS 50** TO SELECT FROM. Secondhand SPARE PARTS. For WHIPPET, WILLYS-KNIGHT, CHEV. 6 and 4, FIAT, BUICK, FORD TRUCKS, RUGBY 4 and 6, CHRYSLER, HUDSON, Etc., Etc. Also DYNAMOS, MAGNETOS, WHEELS, MUDGUARDS, WINDSCREENS, ETC.

## Save 50% on Your Repair Bill

BY BRINGING YOUR CAR TO US. All Work Guaranteed. Cars for Hire. Phone 2772. **OPEN DAY AND NIGHT**

## DO YOU KNOW WHY

Our Service is Cheapest? 1. We know our job and have over 20 years experience in Kenya alone. 2. All our staff are specially trained and well experts at their work. 3. Our stores are the most convenient, safest and spacious. Banks store with us. 4. We have the largest and most up-to-date plant capable of transporting every type of load, anywhere. 5. We do not trade but exclusively specialists in quick and efficient transport, clearing, forwarding and shipping. 6. The Manure we sell is real Bona Mure and noted Cattle Manure of highest quality. 7. The fuel we sell is dry and burns longest. 800 tons always in stock. All our Customers are satisfied. 8. Our reputation is based on every job undertaken by us. 9. We absolutely guarantee satisfaction and prompt value for your money. OUR LARGE CLIENTELE WILL CONFIRM ALL THIS. WRITE — CALL — OR — PHONE. **THE EXPRESS TRANSPORT COY.** (Known throughout Africa). Carriage Contractors to Kenya and Uganda Railways and Harbour. Fuel Suppliers to the Government and Municipality. Agents for Imperial and Wilson Airways. NAIROBI — MOMBASA — AND THROUGHOUT THE WORLD.

## Estate Book-keeping

For Farmers and Planters in East Africa. By J. C. D. ROY, Registered Graduate, Accountancy Institute, London. This little book is the simplest adaptation of ordinary double entry book-keeping to the requirements of individual farmers, and to local need. Shs. 2/- + posted Shs. 2/10

## STANDARD STATIONERY STORE

NAIROBI.

## Barclays Bank (Dominion, Colonial and Overseas).

Dr.		STATEMENT OF ACCOUNTS, 31st March, 1932.		Cr.	
		LIABILITIES.		ASSETS.	
Current, Deposit and other Accounts, including Reserve for Income Tax, Contingencies and Balance of Profit and Loss	£ 71,360,255	4 11	Cash in hand and with Bankers, and Gold Bullion	£ 15,284,000	0 0
Notes in Circulation	748,193	3 6	Money at Call and Short Notice	5,169,000	0 0
Acceptances and other Liabilities on account of Customers	2,468,257	14 9	Bonholders in Transit	1,314,771	9 11
			Bills Discounted	14,965,600	12 1
			Investments—		
			British and of the Dominions and Colonial Governments in £ s. d. (including Securities lodged with the Government Agents for the Colonies and Security for Note Loans, and with others)	1,312,500	15 4
			Other Investments	495,931	9 4
Reserve Fund	1,650,000	0 0	Advances to Customers and other Accounts	20,225,035	4 11
Liability on Bills Rediscounted £18,285 £ 8 11, of which £17,261 £ 16 5 has since run off.			Liability of Customers for Acceptances	2,468,257	14 9
			Bank Premiums Received	2,468,257	14 9
				£20,162,286	3 2

J. C. GOODENOUGH, Chairman. E. T. FOX, Deputy-Chairman. H. L. M. TRITTON, Vice-Chairman. LONDON 6th June, 1932. JOHN CAULCUTT, General Manager. E. L. SEYFORD, Chief Accountant. J. D. RACE, Secretary.



## Kenya Fete Supply Co., Ltd.

We supply for Hire: GOOD TABLES, MARQUEES, GOOD CHAIRS, TENTS, etc. Telephone 2233 P.O. Box 433 NAIROBI. e/o Express Transport Co.

## INGRAM & CO'S RADIO THE TOOL HOUSE

For the office SWAN INK. Blue-Black, Red-Blue, Violet. Write for Booklet. Swan Indesling Ink. Standard Stationery Stores NAIROBI.

VIA EASTERN WESTERN ROUTE



HOMEWARD via SUEZ

Table listing ship names, routes, and dates for the Homeward via Suez service.

\*Assess cargo and passengers at both ports.

HOMEWARD via SOUTH AFRICA

Table listing ship names, routes, and dates for the Homeward via South Africa service.

Passenger Agents at Nairobi, Kampala, Nakuru, Eldoret, Kisumu, Frisco, Mombasa, Arusha, Jinja.

UNION CASTLE LINE

For Rates of Freight and Passenger Money apply to—The Union Castle Mail Steamship Co., Ltd., Mombasa.

MESSAGERIES MARITIMES

Regular fortnightly service from and to Marseilles.

Table listing sailing dates and ship names for Messageries Maritimes.

Table listing arrival dates and ship names for Messageries Maritimes.

1st Class 569-7-6; 2nd 546-5-3; 3rd 529-3-0.

MESSAGERIES MARITIMES, P.O. Box 16, MOMBASA. JARDIN, PHIPSON & CO. Ltd., P.O. Box 20, NAIROBI.

HOLLAND AFRIKA LIJN

Steamers will load at Kilindi on or about the following dates—

Table listing ship names, routes, and dates for Holland Afrika Lijn.

Table listing ship names, routes, and dates for Holland Afrika Lijn.

Steamers provide excellent cabin accommodation for passengers.

HOLLAND-AFRIKA LIJN TWENTSCHE OVERZEESE TRADING CO., Ltd., Nairobi, Kampala.

B. FLORENS SPECIAL OFFER

PERMANENT WAVING by the latest and most Modern System.

Make the charms of East Africa known

The East African Standard welcomes photographs of East African interest for publication...

Address: "SNAPSHOTS" The East African Standard

B.I. EXCURSIONS TO SOUTH AFRICA

DURING JUNE, JULY, AUGUST

Fares to DURBAN and back: 1st CLASS "A" Shs. 640/- 1st CLASS "B" Shs. 490/- 2nd CLASS "B" Shs. 427/-

Next Sailing: S.S. "KENYA" 23rd July, 1933.

Return tickets also issued to BEIRA and LOURENCO MARQUES at special Excursion rates.

SMITH MACKENZIE & CO., Nairobi.



TAILORING

The Style, Cut, Make and Trimmings that go with the garments we produce are publicly acknowledged to be the Best in the Colony.

OUR PRICES ARE COMPETITIVE

All garments are made under our personal supervision.

MAXWELL BRADY'S TAILORS, HATTERS, HOSIERS, etc. NAIROBI



B.M.C. House

HOUSEHOLD LINENS AND BLANKETS

SPECIAL WINDOW DISPLAYS - THIS WEEK

NOW IS THE TIME TO REPLENISH YOUR HOUSEHOLD LINENS AND BLANKETS

BUY NOW

THE BRADFORD MANUFACTURING COMPANY (KENYA) LTD. Incorporated in England

Kenya Loan and Discount COMPANY LIMITED.

OFFICE—1st Floor, Court Chambers NAIROBI

FINANCIAL AGENTS

Short Period Loans Granted. Any Reliable Asset Negotiated for Cash.

THE NATAL TANNING EXTRACT COMPANY LTD. PURCHASERS OF BLACK WATTLE BARK

For Quotations apply to—P.O. Box 1117, CORNER ROSSER, NAIROBI.

FLY HOME

BY IMPERIAL AIRWAYS Ltd.

Book through GIBBS' AUTO TOURS

—you gain the advantage of Free Transport within a radius of 12 miles from the Aerodrome.

Official Contractors to Imperial Airways Ltd, Wilson Airways Ltd, and Tanganyika Airlines.

LEARN TO FLY

Reduced Rate, dual instruction, An Instructor personally on the Aerodrome. To book your time, ring 21 Nairobi 4 2250.

Wilson Airways Ltd. P.O. Box 1087 NAIROBI.

A really delightful SMOKE

is the verdict of all who have tried

- B B - EAST AFRICAN CHEROOTS

They are MILD and the aroma is SUPERB

BLACKLAWS AND BROWN

Tel No. 2081. Box No. 658. "Blacklaws." NAIROBI.

Nyeri Aviation Service 12 E. Gaborji. OVERHAULS AND MAINTENANCE OF AIRCRAFT AND MOTORS BY QUALIFIED O.M. INSTRUCTION.



DEUTSCHE OST-AFRIKA-LINIEN

Table listing ship names, routes, and dates for Deutsche Ost-Afrika-Linien.

EASTER EXCURSIONS TO SOUTH AFRICA - FEBRUARY TO JULY, 1933.

For full particulars of passenger fares and freight rates apply to the Agents—

INGRAM & CO'S GARDEN TOOLS THE TOOL HOUSE

NOVELS

Standard Stationery Stores, 6th AVENUE NAIROBI.

THE cultivation of facial loveliness

INNOXA BEAUTY PREPARATIONS

are used EXCLUSIVELY in all our Beauty Treatments

MAISON MARIE Paris 2220. Kenya's Leading Hairdressers and Beauty Specialists

Advertisement for Golden Apricots and Pears of South Africa, featuring illustrations of fruit and text about dried fruit availability.

OVERSEAS MAILS

Table listing steamship names, routes, and dates for Overseas Mails.

UPLANDS BACON.

The inferior brands not only lack flavour, but shrink so heavily during cooking.

QUALITY BACON.

down means so much, especially with good lba.











NOTE THE DISTINCTIVE SHAPE OF THE BOTTLE AND THE DISTINCTIVE FLAVOUR OF THE WHISKY!



Look for the Signature on Every Label!

A. & A. CRAWFORD - LEITH, SCOTLAND.

FUTURE AGREEMENT IN EAST AFRICA.

(Continued from page 1.) The wealth of East Africa, particularly the minerals by native labour alone. It was necessary to avoid the idea of introducing the Parliamentary institutions that we had to India and it was assumed too easily that Parliamentary institutions, which worked in homogeneous population of the west, would work under other conditions. That would be a mistake in Africa, because it would mean the dominance of the white settler, resulting in an adjustment of the struggle between races. A similar thing that study was development on lines tried in other parts of Europe such as a corporate State which excluded strong Executive and a representative Legislature that would not be able to set any effective against industry. This was one way of preventing class divisions in public. He believed it would make for the cooperation of races as well as the peace of the continent. This was what working became a promised maintenance of the executive for a long period. He did not know how otherwise moral authority was to be maintained.

"ON THIS DAY."



On this day... (The text continues with a personal narrative or reflection, mentioning a meeting and a letter.)

LOSERS TO UGANDA.

A Well-known Surgeon's Retirement. (By Air Mail) Uganda has lost this week one of its most eminent medical practitioners, Mr. C. H. Marshall, F.R.C.S., who has been connected with the Uganda Medical Service for the past twenty years. He retired and left on Sunday for Kampala, where he has been for the past few days. Mr. Marshall has been connected with the Uganda Medical Service for the past twenty years. He retired and left on Sunday for Kampala, where he has been for the past few days. Mr. Marshall has been connected with the Uganda Medical Service for the past twenty years. He retired and left on Sunday for Kampala, where he has been for the past few days.

A ROTARY GOVERNOR IN NAIROBI.

Address to Members of the Local Club. PRINCIPLES OF MOVEMENT. Mr. H. G. H. (Governor of the Rotary Club of Nairobi) addressed the members of the club on the principles of movement. He spoke of the importance of the club and the need for a strong and united organization. He also mentioned the various projects and activities of the club and the need for continued support and participation from all members.

Kenya Kongonis' Coastal Tour.

Tentative Programme Arranged. CLUB TO ORGANISE A DANCE FOR AUGUST 12. Preparations are in hand for the tentative Coastal tour by the Kenya Kongonis' Club, the controlling body of the game in Kenya. A tentative programme has been drawn up, although it may be subject to alterations. It will include a number of dates of the tour. As proposed, the tour will start on August 25 and the following day a march to be played by the club. The tour will include a number of dates of the tour. As proposed, the tour will start on August 25 and the following day a march to be played by the club.

ENTERTAINMENT. EMPIRE. TO-NIGHT JOHN BOLES. and Vivienne Segal. Joe E. Brown. NATURAL COLOUR SINGING, TALKING, & DANCING PICTURE. The SONG OF THE WEST.

CAPITOL. MATINEE SATURDAY 3-15. TO-NIGHT Fay Compton (Famous London Actress). Molly Lamont (making her Screen Debut). Margot Grahame. Donald Calthrop. and a Host of Other Famous. British Stars.

INEQUALITY. A Delightful British Elastic Super.

INGRAM & CO. LAWN MOWERS THE TOOL HOUSE.

NOVELS. Standard Stationery Store.

TORR'S CHOCOLATES ARE SUPREME.

JOY WITH THE LID OFF! TORR'S CHOCOLATES.

HOTEL AVENUE NAIROBI. THE CONNOISSEURS RENDEZVOUS for QUALITY and COMFORT. EUROPEAN CHEF DE CUISINE. SPECIALISTS in CATERING FOR PRIVATE DINNERS, SUPPERS, WEDDINGS, Etc.

SUNDOWNER DANCES. MUSIC BY GARRY COOK'S BAND. WEDNESDAYS and SATURDAYS FROM 8-8 p.m. ADMISSION FREE.

RUN IN CONJUNCTION WITH THE PALACE HOTEL, MOMBASA. If staying at the Palace Hotel within a week of your stay at the Hotel Avenue you get 10 per cent. off your Hotel Bill at the Palace Hotel or vice versa.

NOVELS. Standard Stationery Store.

NOVELS. Standard Stationery Store.

NOVELS. Standard Stationery Store.

NOVELS. Standard Stationery Store.

NOVELS. Standard Stationery Store.

NOVELS. Standard Stationery Store.

NOVELS. Standard Stationery Store.

NOVELS. Standard Stationery Store.

NOVELS. Standard Stationery Store.

NOVELS. Standard Stationery Store.

NOVELS. Standard Stationery Store.

NOVELS. Standard Stationery Store.

NOVELS. Standard Stationery Store.

NOVELS. Standard Stationery Store.

NOVELS. Standard Stationery Store.

NOVELS. Standard Stationery Store.

Veterinary Instruments. Dissecting Scalpels, Forceps and Scissors. Injection and Wound Syringes. Pocket Cases, Microscopes, etc. Microscopes for Trichinosis Examination from Shs. 35/-.

"The Lens Ltd." Opticians. Stanley Arcade, Nairobi. Phone 2868.

Dry Monopole CHAMPAGNE. Represented by W. H. KERR & Co. Ltd. 50, ROYAL, NAIROBI.

COLUMBIA TYPEWRITING CARBON PAPERS "SOLID GOLD".

STANDARD STATIONERY STORE NAIROBI.

THE MOTOR MERCHANT AND EXCHANGE LIMITED. Mombasa - Nairobi - Nakuru - Eldoret - Dar es Salaam.

RATES OF EXCHANGE.

The following rates of exchange are announced by the National Bank, Nairobi. London 100/- = 85/- (London) on New York 1.84. Bombay T T on London: 11/7 1/2.

TRUNK CALLS.

A Request by the Uganda Chamber. (By Air Mail) The Uganda Chamber of Commerce has just received a request from the Uganda Chamber of Commerce to reduce the rate for personal trunk calls. It was suggested that these calls, which are available under the present regulations, should be reduced to 1/- plus the cost of the trunk call.

MEMBERSHIP OF THE UGANDA CHAMBER.

(By Air Mail) The Uganda Chamber of Commerce has just received a request from the Uganda Chamber of Commerce to reduce the rate for personal trunk calls. It was suggested that these calls, which are available under the present regulations, should be reduced to 1/- plus the cost of the trunk call.

MEMBERSHIP OF THE UGANDA CHAMBER.

(By Air Mail) The Uganda Chamber of Commerce has just received a request from the Uganda Chamber of Commerce to reduce the rate for personal trunk calls. It was suggested that these calls, which are available under the present regulations, should be reduced to 1/- plus the cost of the trunk call.

MEMBERSHIP OF THE UGANDA CHAMBER.

(By Air Mail) The Uganda Chamber of Commerce has just received a request from the Uganda Chamber of Commerce to reduce the rate for personal trunk calls. It was suggested that these calls, which are available under the present regulations, should be reduced to 1/- plus the cost of the trunk call.

TODAY'S CASE LIST.

In Chambers at 9.30 a.m. C.A. - Ex vs. Wainaina vs. Kibenge. Mr. Justice Thomas (in Chambers) at 9.30 a.m. C.A. - Abbot vs. Graham vs. Gatum Mohamed and Gatum Mohamed vs. P. C. (Abuse of Privilege) Judgment. In Court No. 1 at 10 a.m. Ex vs. Wainaina vs. Kibenge. C.C. - Kiriman and Son vs. Chege.

Salisbury Hotel Salisbury Baths.

Under the personal supervision of Mr and Mrs J. H. Noon. THE BATH WILL BE CLOSED on and after 17th JULY until early in September. A staff of ten Europeans ensure a perfect service, cleanliness and comfort. Inspection Cordially Invited. Single Rooms now available from Ten Guinea monthly. Daily rates 14/- per day inclusive. Weekly Four Guineas. Ten acres of beautiful Lawns and Gardens. TENNIS BILLIARDS, LIBRARY, GARAGE. THE NORFOLK HOTEL. Phone 2240 NAIROBI. P.O. Box No. 64.

Handing in spacious grounds, where there may be possible. Self-contained Private Suites and Bungalows by arrangement. Reduced Rates for Monthly Residents. NEWLY RENOVATED. UP-TO-DATE LAUNDRY on the Premises. DRY CLEANING A SPECIALITY. Manager - G. E. HIGGINS.



African Standard

UGANDA ARGUS. With which is incorporated THE LEADER.

GUARANTEED THE LARGEST CIRCULATION OF ANY NEWSPAPER IN KENYA, UGANDA, TANGANYIKA AND ZANZIBAR.

NAIROBI, THURSDAY JULY 20, 1953.

New Stanley Hotel - NAIROBI - New Bedrooms NOW READY. New Tariff. Price 20 CENTS.

Parliamentary Outlook in Britain.

NATIONAL GOVERNMENT LIKELY TO LAST FIVE YEARS.

Failure of the Conference.

MAJORITY OF THE PUBLIC NOT GREATLY PERTURBED BY NON-SUCCESS.

Despite the imminent failure of the World Economic Conference, the outlook in London and the Provinces is brighter and there is an encouraging belief, shared by most classes at Home that Britain's position is improving.

The National Government is firmly fixed in the saddle and there is no general expectation that the present Parliament will come to an end before its full period of five years has concluded.

Parliament ends on the 28th instant. The most important outstanding problem is still that of unemployment and the Government is criticised for its failure to produce the promised measure on unemployment insurance.

This important Bill is, however, expected to be introduced in the Autumn.

Trade Steadily Improving.

London, July 19 (By Air Mail). - The trade in July 1953 is reported to be a steady improvement on that of the previous month.

Parliament is expected to close on July 28, and there is a hardy though business-like optimism that the Government will be able to produce the promised measure on unemployment insurance.

Parliament is expected to close on July 28, and there is a hardy though business-like optimism that the Government will be able to produce the promised measure on unemployment insurance.

Parliament is expected to close on July 28, and there is a hardy though business-like optimism that the Government will be able to produce the promised measure on unemployment insurance.

Parliament is expected to close on July 28, and there is a hardy though business-like optimism that the Government will be able to produce the promised measure on unemployment insurance.

Parliament is expected to close on July 28, and there is a hardy though business-like optimism that the Government will be able to produce the promised measure on unemployment insurance.

Parliament is expected to close on July 28, and there is a hardy though business-like optimism that the Government will be able to produce the promised measure on unemployment insurance.

THE WORLD CONFERENCE RECESS.

No Decision in Regard to Resumption.

AWAITING THE PLENARY SESSION.

Commissioners Completing Their Work.

London, July 19. A programme for the winding up of the World Economic Conference before the proposed recess has been drafted at a meeting of the Executive Committee.

It has been decided to hold a plenary session on July 21 to review the reports from the various sub-committees. A meeting of the same nature will be held on July 24 for the same purpose.

The decision in regard to resumption will probably be left to the final Board meeting to take place in the light of the plenary session's proceedings.

FORGERY OF BANK NOTES.

International Police Co-operation.

London, July 19. As a result of the success achieved by Scotland Yard officers in capturing a number of counterfeiters, the International Police Co-operation Committee has formed an international flying squad.

The squad is to be composed of officers from the various countries who are active in the fight against counterfeiters.

STOCK EXCHANGE PRICES.

Table with columns for various stock indices and prices, including the London Stock Exchange and the Nairobi Stock Exchange.

SIR JOSEPH BYRNE.

Arrival in England from Kenya.

London, July 19. Sir Joseph Byrne, Governor of Kenya and Lady Byrne arrived in London on July 19.

THE STOCK EXCHANGE.

London, July 19. The stock exchange today displayed a steady improvement on the previous day.

THE MAIZE ENQUIRY COMMITTEE.

Control Proposals Not Recommended.

AN OFFICIAL REPORT.

Following the undertaking given to the Director of Agriculture by the Hon. Mr. Ernest Wright to enquire into the maize industry of the country, the Maize Enquiry Committee has submitted its report.

The committee has recommended that no control proposals be adopted at the present time.

The committee has also recommended that the Government should continue to support the maize industry.

SIX DEAD.

As Result of Uganda Bus Smash.

London, July 19. Six people were killed and 150 injured in a bus accident in Uganda.

The accident occurred on the road between Kampala and Jinja.

SETTLEMENT QUESTION.

London, July 19. A suggestion that the future government of tropical East Africa should be developed along the lines of a corporate state with a strong Executive and a representative Legislature.

The suggestion was made by Sir Edward Grigg, M.P., in an address to the Royal Empire Summer School at Oxford.

It is believed that the settlement question is one of the most important issues facing the future government of East Africa.

FRUIT CANNING.

London, July 19. The fruit canning industry in Kenya is showing a steady improvement on the previous year.

The increase is due to a combination of factors, including a rise in the price of fruit and a decline in the price of canning materials.

INDUSTRIAL.

London, July 19. The industrial sector in Kenya is showing a steady improvement on the previous year.

The improvement is due to a combination of factors, including a rise in the price of industrial raw materials and a decline in the price of industrial machinery.

Future Government in East Africa.

SUGGESTION BY SIR EDWARD GRIGG.

A Corporate State.

WITH STRONG EXECUTIVE AND REPRESENTATIVE LEGISLATURE.

Sir Edward Grigg, the late Governor of Kenya and now as to the future government of tropical East Africa, during the course of an address to the Royal Empire Summer School at Oxford.

He advocated a corporate State with a strong Executive and a representative Legislature. A strong Executive was as necessary for the white settlers as for the natives.

While he did not advocate a Fascist State he said that Italy at the present time had gone a long way towards the object he had in view.

He added that further settlement in Kenya was essential for the development of the country.

He suggested that the future government of tropical East Africa should be developed along the lines of a corporate state with a strong Executive and a representative Legislature.

The suggestion was made by Sir Edward Grigg, M.P., in an address to the Royal Empire Summer School at Oxford.

It is believed that the settlement question is one of the most important issues facing the future government of East Africa.

TO OBTAIN KENYA'S GREATEST VALUE FOOTWEAR.

Buy Whiteaways New Basic Values.

Advertisement for Whiteaways footwear, featuring various styles of shoes and boots with prices and descriptions.



# AUCTION SALES



## MISCELLANEOUS GOODS SALE.

Duly instructed, we shall sell by Public Auction, without reserve, unless stipulated, at our Salerooms, Harding Street, Nairobi.

**TO-DAY, 19th JULY, at 10 a.m.**

Small Tent, Safari Bath, Novels and Books, Tin Boxes and Wooden Trunks, Crockery, Glassware, Saddles Secondhand Clothing, etc.

Also subject to low reserve.

**"RUGBY" TOURING CAR**, new hood, good tyres, battery, lights, self starter, and in good running order.

Muter and Oswald Ltd., Auctioneers, etc., Nairobi.



## NOTICE OF CATALOGUE SALE OF FURNITURE, EFFECTS, SILVER PLATE and JEWELLERY

at our Salerooms, Mitos Building, Harding Street, Nairobi.

**on MONDAY, 24th JULY, at 10 a.m.**

(Details to be advertised in later issues)

MUTER & OSWALD, Ltd., Auctioneers, etc., NAIROBI

## THE CAR MART

P.O. Box 1080. (Next to Rho's) Telephone 2142.

### Used Car Bargains

FORD & B.F. SALOON	1923 Model	...	...	...	...
AUSTIN SEVEN	1929	...	...	...	...
FORD BOX BODY	1929	...	...	...	...
FORD TUDOR SALOON	1930	...	...	...	...
FORD FURBER SALOON	1932	...	...	...	...
FORD LIGHT DELIVERY	1930	...	...	...	...
CHEVROLET BOX BODY	1930	...	...	...	...
CHEVROLET BOX BODY	1930	...	...	...	...
CHEVROLET BOX BODY	1927	...	...	...	...
CHEVROLET BOX BODY	1927	...	...	...	...
WHIPPET TOURER	1928	...	...	...	...

! All the above cars are in good running order and ready for the road. CARS FOR HIRE.

# AUSTIN'S AUCTIONS.

CATALOGUE SALE OF GOOD FURNITURE AND EFFECTS.

On SATURDAY, JULY 22nd, at 10 a.m. FURTHER DETAILS WILL BE ADVERTISED LATER.

## AUSTIN & Co.

Austin & Co. Auctioneers & Approved Valuers, Harding St.

# KENYA MART

P.O. Box 316. Stanley House. Phone 2380.

Auctioneers, Valuers and Commission Agents.

On FRIDAY, 21st JULY, 1933, at 10 a.m.

CHESTERFIELD SUITES, SETTEES, Easy Chairs, Writing Bureau, Gate-Leg Table, DINING TABLE IN TEAK, Metal Safes, Kitchen Tables, Palmstands, SINGLE BEDS WITH BOX SPRING MATTRESSES, Mattresses and Pillows, Sets of Dining Chairs, PAINTS, ENAMELS, VARNISHES, DISTEMPER, AND A VERY GOOD SELECTION OF PROVISIONS, Suit Cases, Glass Show Case Counter, Old Chairs, Various Soft Goods, Etc., Etc.

## THACKRAH'S Limited

NAKURU

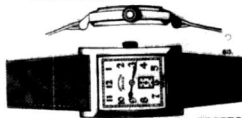
(Established 1917).

The Up-country Land and Estate Agents

Auctioneers and Approved Valuers, Insurance, Shipping and Financial Agents. SHOPS, OFFICES, GODOWNS, HOUSES and FARMS — TO LET or FOR SALE.

## ROLEX WATCHES

THE WORLD'S BEST BY EVERY TEST.



SOLD HERE AT ENGLISH PRICES

For Catalogues apply to—

**DOBBIES Ltd.**

Watchmakers and Jewellers

P.O. BOX 56, NAIROBI. PHONE 2000

# E. Hutchison & Co.

Box 140, NAIROBI.

## HOUSEHOLD BARGAINS

Buttoned Pillow Cases 1/2 each. Single Bedsheets 5/50 pair. Towels from 7/5 each. Bedspreads 7/50 each. Christy Bath Mats 3/50. Hackback Towels 2/2. Linen Luncheon Sets 5/- per set of 13. Dusters /40. Glass Cloths 50. 48 inch Jaape 1/35 yard. Cretonnes from /50. Ladies' Pure Silk Stockings 6/ pair. Tweed Suit Lengths 20/-

# E. Hutchison & Co.

## SALE OF HORSES.

Instructed by various owners we are offering for sale at the RACE COURSE on MONDAY, the 7th August, a number of RACE HORSES, and we invite further enquiries to—

E. HUTCHISON and Co.,

Incorporated Auctioneers.

# SANDS & Co.

Live Stock, Land and Farm

Produce Auctioneers,

NAIROBI.

We hold sales of LIVESTOCK, at our Railway Saleyards,

Nairobi, every WEDNESDAY at 11-30 a.m.

We hold sales of FARM PRODUCE and POULTRY, at

our Sadler Street Premises, every TUESDAY

and FRIDAY, starting 9 a.m. each day.

# Kenya Loan and Discount COMPANY LIMITED.

OFFICE—1st Floor, Court Chambers.

P.O. Box 546. NAIROBI.

## FINANCIAL AGENTS

Short Period Loans Granted. Any Reliable Asset Negotiated for Cash. Established 1921.

CALL or WRITE — STRICTEST CONFIDENCE.

# THE NATAL TANNING EXTRACT COMPANY LTD.

PURCHASERS OF

## BLACK WATTLE BARK

For Quotations apply to—

P.O. BOX 1117, CORNER HOOPER, NAIROBI.

Phone 2070

## Now in stock:

BAG SUPPLIER for Sheep dipping. COTTON WOVEN for Coffee banding. CELLULOSE PAPER for Coffee banding. VERY PETROLEUM JELLY in 20 lb. tins. VERY BICARBONATE OF SODA. VERY COD LIVER OIL, in 5 gall. Drums

A. J. FLY & Co. Ltd.

Chemists and Druggists.

P.O. Box 413 — Government Road. — NAIROBI.

# KAJIADO FOR THE WEEK-END

Circular Route through the GAME RESERVE Tennis - Licensed - Hot and Cold Water Laid on. Apply MOTOR TOURS Ltd. Opposite Gen. Post Office.

## "Excelsor Permanent" TRIPODS

With Indestructible Coating. Unaffected by sun, sand, oil or water and in various colors and tones. ARISTOCRATIC-REGALANT and FINEST

TRIPODS

U. N. Patel & Sons, Ltd.

P.O. BOX 200, NAIROBI.

ELBETHA HOUSE, NAIROBI.

# BENNETTS CAR SERVICES

TEXACO HOUSE — SADDLER STREET. 50 USED CARS 50

TO SELECT FROM

## Secondhand SPARE PARTS

For WHIPPET, WILLIAMS-KNIGHT, CHEV. 4 and 4, FIAT, BUICK, FORD TRUCKS, RUGBY 4 and 6, CHRYSLER, HUDSON, Etc., Etc. Also DYNAMOS, MAGNETOS, WHEELS, MUDGUARDS, WINDSCREENS, Etc.

Save 50% on Your Repair Bill BY BRINGING YOUR CAR TO US. All Work Guaranteed. Cars for Hire. Phone 2772.

## OPEN DAY AND NIGHT

FOR REAL SECURITY USE JOHN TANN SAFES AGENTS — Beales & Co. Box 129, NAIROBI.

# YOU WANT Your Car Greased Throughout

With our Hydraulic Car Greaser WE GIVE IT FINEST PLANT IN KENYA.

# The Express Transport Coy.

Cartage Contractors to Kenya and Uganda Railways and Harbours. Fuel Suppliers to the Government and Municipality. Also Suppliers of Finest Doma Manure. Dry Fuel all the year round. Shippers to any port in the world. Spacious Godowns for all types of storage. Goods Packed and Forwarded anywhere. Cargo Cleared from Ship to Shore. Furniture Removing a Speciality. Agents throughout the World. Nairobi and Mombasa.

# NOTICE.

We can also supply inferior Manure and Fuel at a pro rata rate.

# TWENTY YEARS OF Service, Skill, Craftsmanship

## SCHOUTEN'S

The East African Hairdresser LADIES' AND GENTLEMEN'S BEHAIVE BY WEST-END (LONDON) OPERATORS. Permanent Waving

## Macdonald Steam System

PLASTIC LACQUERED ADDRESSING GOVT. ROAD and NEW STANLEY AGENCIES. Box 384. Phone 2245.

Mr. and Mrs. Schouten will visit Nyeri (Outspan Hotel) on Friday and Saturday, July 31 and 27, for Permanent Waving, Manicure, Massage, etc.

## NOTICE

### APPLICATION FOR WATER PERMIT.

An application for a Water Permit under Crown Lands (Water Permit) Rules 1919, to divert, for stock and domestic purposes, minor streams and pumping and washing colles, 1,000 gallons of water per day, 1,000 gallons per day and 20,000 gallons per day (80% of which is returnable to the River) respectively, from the Karuru River, has been submitted to the Director of Public Works by the Trustee of the late P. T. Marshall, the registered holder of L.O. No. 280/1 in relation to the Karuru River. A site plan of the proposed works may be inspected at the office of the Director of Public Works, Nairobi. Any registered holder of land riparian to the Karuru River and now applied for, should lodge his objection, in writing, with the Director of Public Works, P.O. Box 602, Nairobi, within 30 days from the date of this notice.

A. C. MONCKTON, Applicant.

Nairobi, 17th July 1933.



# ROLODEX the x-ray of business

The new way for all records supersedes the old "card-in-box" or ledger methods. Makes records clear facts, which, unless arranged on crystal clear facts, which, unless arranged on Rolodex, are obscure and difficult to arrive at. Amongst other advantages, Rolodex gives you control over every stage of your work, and enables you to see at a GLANCE Customer's Record — You can see at once those who have not purchased from you for 6 months. Ledger — You can see at a glance those of your accounts which have not been settled for any particular period you wish to know. Stock Record — You can see at a glance (a) Those goods which are not moving. (b) Those goods which are dangerously low. (c) Those which are heavily overstocked. Work Record — You can see at a glance (a) Exact progress of any piece of work at every stage. (b) All jobs in hand or unassigned.

A unique system of Coloured Signals automatically flashes to you the vital facts and see the Rolodex in actual use at—

# STANDARD STATIONERY STORES



The British Silk Stockings that wear and wear.



Light Shades at Specialty Reduced Prices!!

LIMITED STOCK TO CLEAR.

Named Bros THE HOUSE OF DISTINCTION, BAZAAR - NAIROBI.

Guard Your Health with LEVER'S HEALTH SOAP

50 CENTS per tablet.



A PURE SOAP - A VALUABLE SAFEGUARD. Buy a Tablet Today!

Something Different For Breakfast

- SCOTT'S PORAGE OATS 1-75 Pkt. WAVERLEY OATS 1-50 Tin. QUAKER OATS 1-60 Tin. GRANT'S OATMEAL 3-75 Tin. SHREDDED WHEAT 1-50 Pkt. BUFFING RICE 1-50 Pkt. HERRINGS in Tomato Sauce 1-50 Tin.

M. S. ELLIOT & CO. LTD. P.O. Box 175.

ESTATE PLANNING For Farmers and Planters in East Africa.

By J. J. HOFF Registered Graduate Incorporated Accountant. The title book is the simplest adaptation of the ordinary domestic will to the requirements of estate planning.

CORRESPONDENCE

The Editor does not accept responsibility for the views expressed by his correspondents. Columns and in all cases the name and address of the writer should be given. It is necessary for publication that the correspondence be written in a clear and concise manner. It is also essential to exercise moderation.

KENYA TROUT - THE SPOTTED EEL.

To the Editor of 'E.A. Standard': Sir, Major M. Master's account of the depredations of the spotted eel among the trout of the Lower Tana River are very interesting. Having some acquaintance with the anatomy and the usual habits of eels in rivers, it is difficult to imagine that as many as 90 per cent of the trout in a river would show scars of eel bites.

He also states: 'As soon as the eels discovered the trout they fed them up and soon traveled up to the lower limit. In the past several years a very large percentage of trout have been lost to the eels before reaching the lower limit.' This is a very serious matter since the trout is estimated to cost down to 25 per cent of the value of the fish.

It is a very serious matter since the trout is estimated to cost down to 25 per cent of the value of the fish. It is a very serious matter since the trout is estimated to cost down to 25 per cent of the value of the fish.

Section 15 This gives a criterion for the power to call for back the letter to be produced for examination 'within the time limited by such notice.' It is to be noted that this section should not be taken to mean that the Government is to be given notice to be so given by a collector.

Section 16 This provides for the service upon the taxpayer of a notice of assessment. It is to be noted that on the reverse of the form printed a copy of section 20 is attached to the notice.

Section 17 This makes provision for a return by an employer within the time limited by the notice of the names and places of residence of all persons employed by him at the time.

Section 21 This contains provisions to have been inadvertently omitted from this section. The words 'assessment of the tax thereon' should be added to the list of items to be assessed.

THE 'LEFT WING' AND THE 'EXTREMIST'. To the Editor of 'E.A. Standard': Sir, I have read both Mr. Bambar's admirable letter and your leader's editorial in the 'E.A. Standard'.

THE NON-NATIVE POLL TAX. To the Editor of 'E.A. Standard': Sir, I have had an opportunity of studying the Non-Native Poll Tax Bill and I have a few comments and suggestions thereon.

ESTATE PLANNING. The title book is the simplest adaptation of the ordinary domestic will to the requirements of estate planning. It is a very serious matter since the trout is estimated to cost down to 25 per cent of the value of the fish.

matter was only put forward for consideration and discussion, along with other proposals.

As the majority were not in favour of the proposal at this juncture, we withdrew the resolution without trying to convert it into a motion.

There was no intention of bringing the Conference into discussion or discussion of any kind. It was only put forward for consideration and discussion, along with other proposals.

Section 15 This gives a criterion for the power to call for back the letter to be produced for examination 'within the time limited by such notice.'

POLITICS AND REALITIES IN KENYA.

The Editor of 'E.A. Standard': Sir, I have read both Mr. Bambar's admirable letter and your leader's editorial in the 'E.A. Standard'.

Section 21 This contains provisions to have been inadvertently omitted from this section. The words 'assessment of the tax thereon' should be added to the list of items to be assessed.

THE 'LEFT WING' AND THE 'EXTREMIST'. To the Editor of 'E.A. Standard': Sir, I have read both Mr. Bambar's admirable letter and your leader's editorial in the 'E.A. Standard'.

THE NON-NATIVE POLL TAX. To the Editor of 'E.A. Standard': Sir, I have had an opportunity of studying the Non-Native Poll Tax Bill and I have a few comments and suggestions thereon.

ESTATE PLANNING. The title book is the simplest adaptation of the ordinary domestic will to the requirements of estate planning.

THE GOLDEN APRICOTS AND LUSCIOUS PEACHES AND PEARS OF SOUTH AFRICA are obtainable at all Leading Grocers in Dried Form.

PROTECT THE CONTENTS OF BARNES AND SHEDS BY FIXING GUARANTEED ROOFING FELT

For First Quality Goods. Doors - Windows Counters - Show Cases SPECIAL JOINERY to any Design. WOOD BLOCK FLOORS in any Timber. CONCRETE in any Form. LIME, LIME PUTTY for Plaster. CEMENT, English and Foreign. SAND and BALLAST, any size. PORTABLE HUTS - in fact - Building Goods of any description - or COMPLETE BUILDINGS LARGE OR SMALL VISIT ANY JOB OF OURS AND NOTE QUALITY.

GEO. BLOWERS Sole Concrete Pumps 2544 NAIROBI. The IDEAL GIFT. Platinium - Stationery - Cabinet. A beautiful well-made cabinet with 50 sheets notepaper and 40 envelopes of Bridwell Bond (crepe or blue) wood and platinium desk. Pen in black and amber and sand block. PRICE SHS. 12/50 EACH.

RUSTOL

A liquid rust that performs miracles with rust, carbon and corrosion and positively frees tools, bolts and metal parts that resist all other efforts.

RUSTOL is entirely free from acids, caustic or corrosive chemicals. It is non-flammable - non-corrosive - non-conductor.

RUSTOL is used by The Admiralty, Royal Arsenal, Royal Air Force and every Railway and Shipping Company. SAVES TIME AND TEMPER IN EVERY OVERHAUL OF CAR, CYCLE OR MACHINE. Motor Kit Size (4oz.) Shs. 3 50 1-pint, Shs. 5 - 1-pint, Shs. 7 50

GEO. BLOWERS Sole Concrete Pumps 2544 NAIROBI. The IDEAL GIFT. Platinium - Stationery - Cabinet. A beautiful well-made cabinet with 50 sheets notepaper and 40 envelopes of Bridwell Bond (crepe or blue) wood and platinium desk. Pen in black and amber and sand block. PRICE SHS. 12/50 EACH.

G. NORTH & SON Ltd. NAIROBI - NAKURU.



For full particulars apply to— The African Mercantile Co., Ltd. NAIROBI and MOMBASA.

BARCLAYS BANK (DOMINION, COLONIAL AND OVERSEAS)

(INCORPORATED IN THE UNITED KINGDOM). BRANCHES IN EAST AFRICA: Nairobi, Mombasa, Nakuru, Eldoret, Kisumu, Kampala, Jinja, Tanganyika, Dar es Salaam, Iringa, Boma, Mwanza, Arusha, Moshi and Tabora.

OVER 400 BRANCHES IN The Union of South Africa, Rhodesia, West and East Africa, Portuguese East Africa, British West Africa, West India, British Guiana, Egypt, Palestine, the Sudan, Mauritius, Malta, Gibraltar, etc.

THE BANK UNDERTAKES ALL CLASSES OF BANKING BUSINESS AND ALSO ACTS AS TRUSTEE AND EXECUTOR.

HEAD OFFICE:— 54, Lombard Street, London, E.C.3.

LONDON OFFICES:— 29, Gracechurch Street, E.C.3; Citrus Place, London Wall, E.C.2; III St. Martin's Lane, Trafalgar Square, W.C.

OFFICES in Liverpool, Manchester, Hamburg, New York (Agency).

Correspondents in all the principal Cities and Towns of the world.

CHARLES WARE

TURF ACCOUNTANT TRUST CHAMBERS, GOVERNMENT ROAD, NAIROBI. Established in Kenya over 20 years.

BOOKS OPEN. LIVERPOOL CUP, Run July 21st. STEWARDS' CUP, Run July 25th. AND ALL GOODWOOD EVENTS. PRICES MAY BE SEEN AT MY OFFICE. I CREDIT LETTERS. WIRE BUSINESS ONLY. NO REPLY TO LETTERS OR WIREBES UNLESS DISTINCTLY MEANS NO BUSINESS.

A GRAND COMPETITION FOR SMOKERS OF ROTHMAN'S PALL MALL and KONGONI Cigarettes

VALUABLE PRIZES Save Your Pall Mall & Kongoni Tins & Packets

Details will be announced immediately on Mr. S. Rothmans Arrival Early in August — Standard Stationery Store

CONTROLLING ELEPHANTS IN UGANDA.

(Continued from page 1) full that the object must be the shooting out of the forest all the elephants. In a general comment on the question of the control of elephants, Captain Salmon remarks that the elephant is a large animal and must be controlled. He did not mention when they were first introduced into the country.

Quality Maintained. The results of the work for the year suggest that the elephants in the forest are being controlled. The ability of a well-trained staff to maintain the figure of the previous year has been helped. The elephant is a large animal and must be controlled. He did not mention when they were first introduced into the country.

Plot Discovered. The plot was discovered by the police. The elephant is a large animal and must be controlled. He did not mention when they were first introduced into the country.

One very satisfactory feature of the plot was the number of male and female elephants. The elephant is a large animal and must be controlled. He did not mention when they were first introduced into the country.

OVER 400 BRANCHES IN

The Union of South Africa, Rhodesia, West and East Africa, Portuguese East Africa, British West Africa, West India, British Guiana, Egypt, Palestine, the Sudan, Mauritius, Malta, Gibraltar, etc.

THE BANK UNDERTAKES ALL CLASSES OF BANKING BUSINESS AND ALSO ACTS AS TRUSTEE AND EXECUTOR.

HEAD OFFICE:— 54, Lombard Street, London, E.C.3.

OFFICES in Liverpool, Manchester, Hamburg, New York (Agency).

Correspondents in all the principal Cities and Towns of the world.

CHARLES WARE

TURF ACCOUNTANT TRUST CHAMBERS, GOVERNMENT ROAD, NAIROBI. Established in Kenya over 20 years.

BOOKS OPEN. LIVERPOOL CUP, Run July 21st. STEWARDS' CUP, Run July 25th. AND ALL GOODWOOD EVENTS. PRICES MAY BE SEEN AT MY OFFICE. I CREDIT LETTERS. WIRE BUSINESS ONLY. NO REPLY TO LETTERS OR WIREBES UNLESS DISTINCTLY MEANS NO BUSINESS.

A GRAND COMPETITION FOR SMOKERS OF ROTHMAN'S PALL MALL and KONGONI Cigarettes

VALUABLE PRIZES Save Your Pall Mall & Kongoni Tins & Packets

Details will be announced immediately on Mr. S. Rothmans Arrival Early in August — Standard Stationery Store

THE EAST AFRICAN STANDARD. CALLERS READ THE LEAGUE.

Y.M.C.A. Alone Undertaken. The Y.M.C.A. alone has undertaken the calling of the league. The Y.M.C.A. alone has undertaken the calling of the league.

HOW THE CLUBS STAND.

Called back the Dublin League with Railway and Y.M.C.A. alone. The Y.M.C.A. alone has undertaken the calling of the league.

Plot Discovered. The plot was discovered by the police. The elephant is a large animal and must be controlled. He did not mention when they were first introduced into the country.

THE DEVON

Salisbury Road—Nairobi. The Devon is a large hotel. The Devon is a large hotel.

"ON THIS DAY"

Having the greater appreciation for the Y.M.C.A. alone. The Y.M.C.A. alone has undertaken the calling of the league.

NEWS REELS

Arrangements have been made for the Y.M.C.A. alone. The Y.M.C.A. alone has undertaken the calling of the league.

INGRAM & CO'S FLASHLAMP AND BATTERIES THE TOOL HOUSE

PLATE DOUBLES 12. The Ingram & Co's Flashlamp and Batteries are the best.

MAURICE ROSENSTON

P.O. Box 461, Phone 2862. Tel. Address: Tetzitze.

ST. LEGER, RUN SEPT. 13th, 1 mile 6 furlongs 132 yards—6/4

1/2 A PLACE ON ALL HANDICAPS. SUBJECT TO MARKET FLUCTUATIONS. I HAVE NO CONNECTION WITH ANY OTHER BUSINESS IN NAIROBI.

WHERE TO STAY. TOWN AND COUNTRY.

OUTSPAN HOTEL, NYERU. The Hotel with the magnificent view of Mt. Kenya and the Aberdeens. The Outspan Hotel is a large hotel.

ISLAND VIEW CAMP NAIROBI

This camp offers a most inexpensive holiday in the form of Pension. The Island View Camp is a large hotel.

WHEN TRAVELLING UP OR DOWN COUNTRY BRIBES YOUR JOURNEY AT ISLAND VIEW HOTEL

Right on the shore of Lake Naivasha. The Island View Hotel is a large hotel.

THE SPORTSMAN'S ARMS HOTEL NANYUKI

Comfortable, up-to-date, stone hotel. The Sportsman's Arms Hotel is a large hotel.

LEICESTER HOTEL

Just over Aiswath Hill FULLY LICENSED. The Leicester Hotel is a large hotel.

FAIRVIEW Private Hotel

BIFFINS ROAD—THE HILL, Phone 2122. The Fairview Private Hotel is a large hotel.

GROSVENOR HOUSE Residential Hotel

NAIROBI. Situated between the "Mata Carberry" and "Eskerton" Streets. The Grosvenor House is a large hotel.

ROSLIN COURT

VALLEY ROAD, HILL. Conveniently situated in the town and up-to-date in every way. The Roslin Court is a large hotel.

HOTEL AZANIA

P.O. Box 11, KILIMATI. (Renowned) Opp. deep water dock. The Hotel Azania is a large hotel.

AINSWORTH PRIVATE HOTEL

Mezzoni Board Residence to Town. The Ainsworth Private Hotel is a large hotel.

THE HILL HOTEL

Stands in its own grounds (opposite Nairobi Club). The Hill Hotel is a large hotel.

KENYA MOUNTAIN

with fifty-six full page illustrations reproduced in Colours. The Kenya Mountain is a large hotel.



World Conference Preparing to Adjourn.

COMMISSIONS COMPLETING THEIR REPORTS.

Indirect Protection.

PROPOSED CLAUSES FOR COMMERCIAL TREATIES.

The various Committees and Commissions of the World Economic Conference are busy completing their reports for the plenary session in preparation for the adjournment of the Conference on July 27.

Geographical Museum at South Kensington, where the Conference is being held, will, however, be kept in readiness for a possible early reassembly of the Conference.

Hopes of Early Reassembly.

By July 18, Commissioners of the World Economic Conference are due to meet in the Economic Commission of the League of Nations in a special conference on these matters at the earliest possible date. A meeting took place at the Colonial Conference between the Dominion sub-committee of the League and the Dominion delegates to the Conference to discuss the operations of government in the Dominion. It was held in London on July 15. Further conversations on what further steps should be taken to bring about a formal arrangement to be made by a committee, or by an international conference, to be held in London on July 18. It is expected that the Dominion sub-committee will be kept in readiness for a possible reassembly at a later date in order to discuss the terms of the treaty.

MARKET QUOTATIONS. TRANSPORT BOARD.

Maize, Sial, Butter and Coffee.

Maize, Sial, Butter and Coffee. Market quotations from their local office in London. Maize Flat White No. 1 24.6 per cent. No. 1 grade to one port 21.5 to 22.0 per cent. No. 2 grade to one port 21.0 to 21.5 per cent. Butter New Zealand 1st grade 23.17 per cent. Butter Australian 1st grade 23.12 per cent. to 23.14 per cent. The market is slow. Kenya Coffee A grade highest plus 28.6 per cent. Kenya Coffee A grade average plus 22.6 per cent. No. of bags will probably offered. No. of bags all grades sold 85. All average plus of 23.50 per cent. The market is dull and offering of stocks is small. Kenyan 1st grade average plus 22.25 per cent. Kenyan 2nd grade average plus 21.00 per cent. Kenyan 3rd grade average plus 19.00 per cent. The Standard Special (Kenya) 23.17 per cent. STEWARDS' CUP BETTING.

TWENTY-TWO YEARS' WORK IN KENYA. NEW AERODROME FOR MOMBASA?

Coming Retirement of Mr. R. W. Playfair. Negotiations for an Island Site.

A LOSS TO COMMERCE. Port Tender Scheme.

Among the numerous appointments made by Mr. R. W. Playfair, Secretary to the Kenya Chamber of Commerce, in his retirement from the Secretaryship of the Association of Chambers of Commerce of Eastern Africa, Secretary to Nairobi Chamber of Commerce, Secretary to the Insurance Association, Secretary to the Motor Insurance Association, Honorary Treasurer of Mombasa Branch.

Mr. Playfair who is 67 years of age, Mr. Playfair believes that he is entitled to a rest for he began work when he was just over 12 years old. For over 30 years he was in the service of the National Bank of India.

Mr. Playfair was educated at King's College, Edinburgh, and King's College, London, and in 1918 he joined the staff of the Kenya Chamber of Commerce. He has been in Kenya for three years, having transferred to the Kenya Chamber of Commerce in 1922 from London, he was posted to Nairobi in 1923. In 1911 he was sent to Kenya and shortly afterwards was appointed Secretary of the N. E. J. branch in Kenya and was Representative of Kenya in 1922.

Work for Commerce.

It was then that he became Secretary of the Associated Chambers of Commerce of Eastern Africa. In 1913 he was President of the latter body. He has been in Kenya for three years, having transferred to the Kenya Chamber of Commerce in 1922 from London, he was posted to Nairobi in 1923.

LONDON'S TINNEST HOUSE.

London was marred to work and play today by a concern that is being set up to be called the London Tinne House. The London Tinne House is a new building to be built in London. It is a new building to be built in London. It is a new building to be built in London.

Curious Building for Sale.

The new motto "Living for the Living" is the motto of the Curious Building for Sale. It is a new building to be built in London. It is a new building to be built in London.

A Chief Constable's Record.

Mr. J. J. Barker, Chief Constable of the London Police, has a record of 10 years of service. He has a record of 10 years of service. He has a record of 10 years of service.

LUCKY THIRTYEEN.

A London auction house is for sale. It is a new building to be built in London. It is a new building to be built in London.

A Chief Constable's Record.

Mr. J. J. Barker, Chief Constable of the London Police, has a record of 10 years of service. He has a record of 10 years of service. He has a record of 10 years of service.

LUCKY THIRTYEEN.

A London auction house is for sale. It is a new building to be built in London. It is a new building to be built in London.

WORK OF EDITORS OF SHAKESPEARE.

Police Again Visit the Scene. A Difficult Case.

Benefit to Posterity.

Dr. R. B. McKerrow, who gave the 20th annual Shakespeare Lecture at the University of London, has just published a book on the work of editors of Shakespeare. The book is a study of the work of editors of Shakespeare. It is a study of the work of editors of Shakespeare.

CRIMINAL GANG THREAT TO BE IMPLICATED.

No alarm raised by door on premises. Yesterday afternoon, a group of men were seen to enter the premises of the Kenya Police Station. They were seen to enter the premises of the Kenya Police Station. They were seen to enter the premises of the Kenya Police Station.

ESTER TO READ.

Mr. Ester, who is a member of the Kenya Chamber of Commerce, will read a paper on the work of editors of Shakespeare. He will read a paper on the work of editors of Shakespeare. He will read a paper on the work of editors of Shakespeare.

CATHEDRAL WEDDING.

A wedding ceremony will be held in the Cathedral of Nairobi. It is a wedding ceremony will be held in the Cathedral of Nairobi. It is a wedding ceremony will be held in the Cathedral of Nairobi.

Beasley-De Rebeck.

A wedding ceremony will be held in the Cathedral of Nairobi. It is a wedding ceremony will be held in the Cathedral of Nairobi. It is a wedding ceremony will be held in the Cathedral of Nairobi.

THE STUTTERING SAILOR.

A wedding ceremony will be held in the Cathedral of Nairobi. It is a wedding ceremony will be held in the Cathedral of Nairobi. It is a wedding ceremony will be held in the Cathedral of Nairobi.

LOCAL SALE OF COFFEE.

A local sale of coffee will be held in Nairobi. It is a local sale of coffee will be held in Nairobi. It is a local sale of coffee will be held in Nairobi.

TO-DAY'S CAUSE LIST.

A list of causes for today's court sessions. It is a list of causes for today's court sessions. It is a list of causes for today's court sessions.

PHENOMENAL WINTER IN NATAL.

Rain and Hailstorms in Natal. Phenomenal winter in Natal. Rain and hailstorms in Natal. Phenomenal winter in Natal.

THE PRESENT PROBLEMS.

Mr. Robert Hamilton, M.P., on Native Question. The present problems of the Native Question. Mr. Robert Hamilton, M.P., on Native Question. The present problems of the Native Question.

PERFECT MANNERS.

An Elephantine Tour of Inspection. Perfect manners. An elephantine tour of inspection. Perfect manners. An elephantine tour of inspection.

Kenya's Problems.

Mr. Robert Hamilton gave an outline sketch of the history of Kenya and started in single words a long and interesting talk on the most interesting current events in the world today. He gave an outline sketch of the history of Kenya and started in single words a long and interesting talk on the most interesting current events in the world today.

Kenya's Problems.

Mr. Robert Hamilton gave an outline sketch of the history of Kenya and started in single words a long and interesting talk on the most interesting current events in the world today. He gave an outline sketch of the history of Kenya and started in single words a long and interesting talk on the most interesting current events in the world today.

NAIROBI WATER.

Detail of Supplies During June. Nairobi water supply. Detail of supplies during June. Nairobi water supply. Detail of supplies during June.

THE STUTTERING SAILOR.

A wedding ceremony will be held in the Cathedral of Nairobi. It is a wedding ceremony will be held in the Cathedral of Nairobi. It is a wedding ceremony will be held in the Cathedral of Nairobi.

LOCAL SALE OF COFFEE.

A local sale of coffee will be held in Nairobi. It is a local sale of coffee will be held in Nairobi. It is a local sale of coffee will be held in Nairobi.

TO-DAY'S CAUSE LIST.

A list of causes for today's court sessions. It is a list of causes for today's court sessions. It is a list of causes for today's court sessions.

LOCAL SALE OF COFFEE.

A local sale of coffee will be held in Nairobi. It is a local sale of coffee will be held in Nairobi. It is a local sale of coffee will be held in Nairobi.

J. G. ARONSON Ltd.

will offer for PUBLIC AUCTION, in their Premises, 1, MINICING LANE, NAIROBI, at 10.30 TO-DAY, Wednesday, 1777 LOTS.

755 Bags 241 Pockets Kenya Coffee. NEXT SALE - WEDNESDAY, 26th JULY.





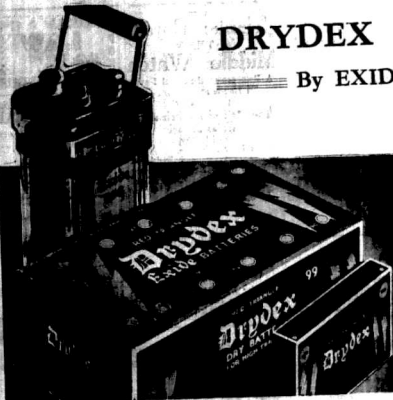
Revised Customs Tarriffs now impose a duty of 20 per cent on all Wireless Goods entering Kenya, Uganda and Tanganyika

Messrs Stephen Ellis & Co.

KENYA'S LEADING RADIO DEALERS

Have pleasure in informing their many friends and the public generally that there will be no increase in prices until present stocks are exhausted.

We carry the largest and most varied stocks of Radio Merchandise in Eastern Africa everything from a B.A. Washer to a Crystal Controlled Transmitter.



DRYDEX By EXIDE

BATTERY & ELECTRICAL EQUIPMENT CO., LTD. VICTORIA STREET, NAIROBI. P.O. Box 482. Telephone 231. Telegrams: "Exide."

CAN YOU GET THE LUNCH TIME MUSIC FROM G.S.F. (F for fading) I IF NOT THE EVERREADY

H.T. & L.T. BATTERIES NEW STOCKS JUST ARRIVED. PEGURME & PARKER (S.A. PHIPPS & Co.)

THE STANDARD

Made by the Builders of the Empire Station.

9-Valve All-Mains Receiver.

New Price:

Sh. 230/- cash

Extra for short wave reception Shs. 25/- cash

HIRE PURCHASE TERMS Shs. 55/- on delivery and five instalments of Shs. 40/- per month.

Next Delivery Book 26th July, 1933 NOW

Agents: The Tool House Nairobi.

INGRAM & CO'S RADIO THE TOOL HOUSE

STATIONERY AT THE Standard Stationery Stores. NAIROBI

Table listing radio sets and prices: Empire Broadcasting Station G.S.C. - 31.30 metres, Radio Coloniale (Paris) - 25.63, Zeesew (Germany) - D.J.A. 31.38, Schenectady - W. 2 X.A.D. - 19.56, Cincinnati - W. 8 X.A.L. - 49.50, Johannesburg - Z.T.J. - 49.20, Nairobi - V.Q. 7 L.O. - 49.5

ALL COME IN ON CROSLLEY ALL MAINS RECEIVER

THE MOTOR MART AND EXCHANGE LIMITED

Members: Nairobi - Nakuru - Eldoret - Tanga Dur or Salome account

Wireless Notes

Practical Hints TRACING NOISES

This page devoted to the interests of Wireless, is conducted by "Aerial," a licensed experimenter with knowledge of East African conditions.

Where the set makes normal but noise on the aerial which can be proved not to come from external sources by disconnecting the aerial. This may be due to an intermittent contact at the various points referred to above, but in the first instance a check on the H.T. supply. To ascertain whether the H.T. leads are in some way connected with a pair of phones across the source of H.T. with a very sensitive ear.

NOTE of the WEEK. CONDITIONS during the week have been average and all stations have been working well. G.S.F. (31.30m) has been much the leader of the Empire transmitters—G.R. being weak and quite overboarded. The explanation of this is a little obscure as according to the latest available data the two latest stations broadcast on a power of nine and 12 kilowatts respectively whereas the Empire transmitters are rated at 20 Kw.

7 L.O. OUR local TLO on the S.W. is reported from up-country as a very satisfactory signal. Liding on completely as the evening and morning sessions. I am afraid I am a nervous creature at about this time of the night. I cannot be expected to attend to long waves. I think, however, in view of the high quality of the signal, we ought to have, at least, intelligent reception throughout the whole evening.

SOME letters I have received and read discussions in which I have taken part will reveal a good deal of feeling on the subject, especially among amateurs who it is most impossible to convince the ordinary man that a receiver which cannot get the local station is yet capable of bringing in the Empire and other stations thousands of miles away perfectly. London which there is the fact that one of the most attractive factors to people in this country are the technical difficulties of broadcasting under the best conditions which obtain in this country are great, but I hardly think they are insuperable. G.S.F. has generally speaking been in good form this week and the variety programme on Friday and the Brokers concert party on Saturday were extremely attractive items which came over very well. For the more serious minded the talk on Monday was extremely interesting.

This Week's Best Item. Attractive items for the coming week are the Eya Wireless programme on Friday and the Standard Stationery Stores on Friday and Saturday.

At the time of the broadcast on the 15th of July, the signal was very good. The position of the transmitting station is not known, but it is somewhere between the point where the ground wave is lost and the reception of the short wave. It is a very convenient one. Reception of Empire or other stations is entirely due to the indirect ray and varies

to the Empire. This will take place at 8.4 p.m. L.T. and should be heard until not only to those interested in motor and kindred subjects, but also to those who are proud of a firm achievement.

2. I feel sure the "fade-out" will not be employed. It is a peculiar feature of any transmitter which fails to find more than others but careful study will show that such a station will fade more than most casual listening.

3. This is a common experience to S.W. listeners some distance from TLO and is probably due to the factors mentioned in connection with 1.

4. Yes. I. W. Farber, in the course of a helpful letter containing reports that published in London for the very good and TLO either very good or practically indistinguishable from the following question:—With regard to July 27th, the following message was received:—All signs of Nairobi had vanished and in 2 minutes it was in the air again. I heard Big Ben chime the hour.

5. The following letter from correspondent F.G.C. in Mombasa, Tanganyika, which is of general interest, is published in the issue of the Editor, to whom it was addressed.

Question: Could any of your readers, possessing some knowledge of wireless reception than myself enlighten me on the matter regularly? Regarding the short wave transmission from TLO Nairobi.

1. Why fair reception of the Nairobi Station only occurs on an average once in four nights while continental stations (London, Haase, Paris, etc.) come near being in the most regular? 2. Why the "fade-out" which is employed on almost every occasion either local or from home is being broadcast?

3. Why the daylight programmes (Tuesdays and Thursdays) never fail to come through at full strength? 4. Do shortwave listeners have to pay license in Kenya for the reception of listening to the Nairobi station?

Answer: 1. A reception of N.W. Stations almost invariably depends on the position of the listener or reflector, the ground or direct ray which is reflected or refracted over the distance long wave transmission being quickly lost. 2. Why the "fade-out" which is employed on almost every occasion either local or from home is being broadcast?

3. Why the daylight programmes (Tuesdays and Thursdays) never fail to come through at full strength? 4. Do shortwave listeners have to pay license in Kenya for the reception of listening to the Nairobi station?

Answer: 1. A reception of N.W. Stations almost invariably depends on the position of the listener or reflector, the ground or direct ray which is reflected or refracted over the distance long wave transmission being quickly lost. 2. Why the "fade-out" which is employed on almost every occasion either local or from home is being broadcast?

3. Why the daylight programmes (Tuesdays and Thursdays) never fail to come through at full strength? 4. Do shortwave listeners have to pay license in Kenya for the reception of listening to the Nairobi station?

Answer: 1. A reception of N.W. Stations almost invariably depends on the position of the listener or reflector, the ground or direct ray which is reflected or refracted over the distance long wave transmission being quickly lost. 2. Why the "fade-out" which is employed on almost every occasion either local or from home is being broadcast?

3. Why the daylight programmes (Tuesdays and Thursdays) never fail to come through at full strength? 4. Do shortwave listeners have to pay license in Kenya for the reception of listening to the Nairobi station?

Answer: 1. A reception of N.W. Stations almost invariably depends on the position of the listener or reflector, the ground or direct ray which is reflected or refracted over the distance long wave transmission being quickly lost. 2. Why the "fade-out" which is employed on almost every occasion either local or from home is being broadcast?

3. Why the daylight programmes (Tuesdays and Thursdays) never fail to come through at full strength? 4. Do shortwave listeners have to pay license in Kenya for the reception of listening to the Nairobi station?

Answer: 1. A reception of N.W. Stations almost invariably depends on the position of the listener or reflector, the ground or direct ray which is reflected or refracted over the distance long wave transmission being quickly lost. 2. Why the "fade-out" which is employed on almost every occasion either local or from home is being broadcast?

WIRELESS PROGRAMS Empire Broadcasting Service.

- (The time for the broadcasting of the programme in Kenya is two and a half hours later than the G.M.T. time.) 11.0 a.m.—1.0 p.m.—Transmission on an omnidirectional aerial to 11.0 Cigarettes, Open Booklet; 11.45 Studio Orchestra Concert. 12.30—1.15 p.m.—Time Signal. 1.30 p.m.—Time Signal. 2.00 p.m.—Time Signal. 2.30 p.m.—Time Signal. 3.00 p.m.—Time Signal. 3.30 p.m.—Time Signal. 4.00 p.m.—Time Signal. 4.30 p.m.—Time Signal. 5.00 p.m.—Time Signal. 5.30 p.m.—Time Signal. 6.00 p.m.—Time Signal. 6.30 p.m.—Time Signal. 7.00 p.m.—Time Signal. 7.30 p.m.—Time Signal. 8.00 p.m.—Time Signal. 8.30 p.m.—Time Signal. 9.00 p.m.—Time Signal. 9.30 p.m.—Time Signal. 10.00 p.m.—Time Signal. 10.30 p.m.—Time Signal. 11.00 p.m.—Time Signal. 11.30 p.m.—Time Signal. 12.00 a.m.—Time Signal. 12.30 a.m.—Time Signal. 1.00 a.m.—Time Signal. 1.30 a.m.—Time Signal. 2.00 a.m.—Time Signal. 2.30 a.m.—Time Signal. 3.00 a.m.—Time Signal. 3.30 a.m.—Time Signal. 4.00 a.m.—Time Signal. 4.30 a.m.—Time Signal. 5.00 a.m.—Time Signal. 5.30 a.m.—Time Signal. 6.00 a.m.—Time Signal. 6.30 a.m.—Time Signal. 7.00 a.m.—Time Signal. 7.30 a.m.—Time Signal. 8.00 a.m.—Time Signal. 8.30 a.m.—Time Signal. 9.00 a.m.—Time Signal. 9.30 a.m.—Time Signal. 10.00 a.m.—Time Signal. 10.30 a.m.—Time Signal. 11.00 a.m.—Time Signal. 11.30 a.m.—Time Signal. 12.00 a.m.—Time Signal. 12.30 a.m.—Time Signal. 1.00 a.m.—Time Signal. 1.30 a.m.—Time Signal. 2.00 a.m.—Time Signal. 2.30 a.m.—Time Signal. 3.00 a.m.—Time Signal. 3.30 a.m.—Time Signal. 4.00 a.m.—Time Signal. 4.30 a.m.—Time Signal. 5.00 a.m.—Time Signal. 5.30 a.m.—Time Signal. 6.00 a.m.—Time Signal. 6.30 a.m.—Time Signal. 7.00 a.m.—Time Signal. 7.30 a.m.—Time Signal. 8.00 a.m.—Time Signal. 8.30 a.m.—Time Signal. 9.00 a.m.—Time Signal. 9.30 a.m.—Time Signal. 10.00 a.m.—Time Signal. 10.30 a.m.—Time Signal. 11.00 a.m.—Time Signal. 11.30 a.m.—Time Signal. 12.00 a.m.—Time Signal. 12.30 a.m.—Time Signal. 1.00 a.m.—Time Signal. 1.30 a.m.—Time Signal. 2.00 a.m.—Time Signal. 2.30 a.m.—Time Signal. 3.00 a.m.—Time Signal. 3.30 a.m.—Time Signal. 4.00 a.m.—Time Signal. 4.30 a.m.—Time Signal. 5.00 a.m.—Time Signal. 5.30 a.m.—Time Signal. 6.00 a.m.—Time Signal. 6.30 a.m.—Time Signal. 7.00 a.m.—Time Signal. 7.30 a.m.—Time Signal. 8.00 a.m.—Time Signal. 8.30 a.m.—Time Signal. 9.00 a.m.—Time Signal. 9.30 a.m.—Time Signal. 10.00 a.m.—Time Signal. 10.30 a.m.—Time Signal. 11.00 a.m.—Time Signal. 11.30 a.m.—Time Signal. 12.00 a.m.—Time Signal. 12.30 a.m.—Time Signal. 1.00 a.m.—Time Signal. 1.30 a.m.—Time Signal. 2.00 a.m.—Time Signal. 2.30 a.m.—Time Signal. 3.00 a.m.—Time Signal. 3.30 a.m.—Time Signal. 4.00 a.m.—Time Signal. 4.30 a.m.—Time Signal. 5.00 a.m.—Time Signal. 5.30 a.m.—Time Signal. 6.00 a.m.—Time Signal. 6.30 a.m.—Time Signal. 7.00 a.m.—Time Signal. 7.30 a.m.—Time Signal. 8.00 a.m.—Time Signal. 8.30 a.m.—Time Signal. 9.00 a.m.—Time Signal. 9.30 a.m.—Time Signal. 10.00 a.m.—Time Signal. 10.30 a.m.—Time Signal. 11.00 a.m.—Time Signal. 11.30 a.m.—Time Signal. 12.00 a.m.—Time Signal. 12.30 a.m.—Time Signal. 1.00 a.m.—Time Signal. 1.30 a.m.—Time Signal. 2.00 a.m.—Time Signal. 2.30 a.m.—Time Signal. 3.00 a.m.—Time Signal. 3.30 a.m.—Time Signal. 4.00 a.m.—Time Signal. 4.30 a.m.—Time Signal. 5.00 a.m.—Time Signal. 5.30 a.m.—Time Signal. 6.00 a.m.—Time Signal. 6.30 a.m.—Time Signal. 7.00 a.m.—Time Signal. 7.30 a.m.—Time Signal. 8.00 a.m.—Time Signal. 8.30 a.m.—Time Signal. 9.00 a.m.—Time Signal. 9.30 a.m.—Time Signal. 10.00 a.m.—Time Signal. 10.30 a.m.—Time Signal. 11.00 a.m.—Time Signal. 11.30 a.m.—Time Signal. 12.00 a.m.—Time Signal. 12.30 a.m.—Time Signal. 1.00 a.m.—Time Signal. 1.30 a.m.—Time Signal. 2.00 a.m.—Time Signal. 2.30 a.m.—Time Signal. 3.00 a.m.—Time Signal. 3.30 a.m.—Time Signal. 4.00 a.m.—Time Signal. 4.30 a.m.—Time Signal. 5.00 a.m.—Time Signal. 5.30 a.m.—Time Signal. 6.00 a.m.—Time Signal. 6.30 a.m.—Time Signal. 7.00 a.m.—Time Signal. 7.30 a.m.—Time Signal. 8.00 a.m.—Time Signal. 8.30 a.m.—Time Signal. 9.00 a.m.—Time Signal. 9.30 a.m.—Time Signal. 10.00 a.m.—Time Signal. 10.30 a.m.—Time Signal. 11.00 a.m.—Time Signal. 11.30 a.m.—Time Signal. 12.00 a.m.—Time Signal. 12.30 a.m.—Time Signal. 1.00 a.m.—Time Signal. 1.30 a.m.—Time Signal. 2.00 a.m.—Time Signal. 2.30 a.m.—Time Signal. 3.00 a.m.—Time Signal. 3.30 a.m.—Time Signal. 4.00 a.m.—Time Signal. 4.30 a.m.—Time Signal. 5.00 a.m.—Time Signal. 5.30 a.m.—Time Signal. 6.00 a.m.—Time Signal. 6.30 a.m.—Time Signal. 7.00 a.m.—Time Signal. 7.30 a.m.—Time Signal. 8.00 a.m.—Time Signal. 8.30 a.m.—Time Signal. 9.00 a.m.—Time Signal. 9.30 a.m.—Time Signal. 10.00 a.m.—Time Signal. 10.30 a.m.—Time Signal. 11.00 a.m.—Time Signal. 11.30 a.m.—Time Signal. 12.00 a.m.—Time Signal. 12.30 a.m.—Time Signal. 1.00 a.m.—Time Signal. 1.30 a.m.—Time Signal. 2.00 a.m.—Time Signal. 2.30 a.m.—Time Signal. 3.00 a.m.—Time Signal. 3.30 a.m.—Time Signal. 4.00 a.m.—Time Signal. 4.30 a.m.—Time Signal. 5.00 a.m.—Time Signal. 5.30 a.m.—Time Signal. 6.00 a.m.—Time Signal. 6.30 a.m.—Time Signal. 7.00 a.m.—Time Signal. 7.30 a.m.—Time Signal. 8.00 a.m.—Time Signal. 8.30 a.m.—Time Signal. 9.00 a.m.—Time Signal. 9.30 a.m.—Time Signal. 10.00 a.m.—Time Signal. 10.30 a.m.—Time Signal. 11.00 a.m.—Time Signal. 11.30 a.m.—Time Signal. 12.00 a.m.—Time Signal. 12.30 a.m.—Time Signal. 1.00 a.m.—Time Signal. 1.30 a.m.—Time Signal. 2.00 a.m.—Time Signal. 2.30 a.m.—Time Signal. 3.00 a.m.—Time Signal. 3.30 a.m.—Time Signal. 4.00 a.m.—Time Signal. 4.30 a.m.—Time Signal. 5.00 a.m.—Time Signal. 5.30 a.m.—Time Signal. 6.00 a.m.—Time Signal. 6.30 a.m.—Time Signal. 7.00 a.m.—Time Signal. 7.30 a.m.—Time Signal. 8.00 a.m.—Time Signal. 8.30 a.m.—Time Signal. 9.00 a.m.—Time Signal. 9.30 a.m.—Time Signal. 10.00 a.m.—Time Signal. 10.30 a.m.—Time Signal. 11.00 a.m.—Time Signal. 11.30 a.m.—Time Signal. 12.00 a.m.—Time Signal. 12.30 a.m.—Time Signal. 1.00 a.m.—Time Signal. 1.30 a.m.—Time Signal. 2.00 a.m.—Time Signal. 2.30 a.m.—Time Signal. 3.00 a.m.—Time Signal. 3.30 a.m.—Time Signal. 4.00 a.m.—Time Signal. 4.30 a.m.—Time Signal. 5.00 a.m.—Time Signal. 5.30 a.m.—Time Signal. 6.00 a.m.—Time Signal. 6.30 a.m.—Time Signal. 7.00 a.m.—Time Signal. 7.30 a.m.—Time Signal. 8.00 a.m.—Time Signal. 8.30 a.m.—Time Signal. 9.00 a.m.—Time Signal. 9.30 a.m.—Time Signal. 10.00 a.m.—Time Signal. 10.30 a.m.—Time Signal. 11.00 a.m.—Time Signal. 11.30 a.m.—Time Signal. 12.00 a.m.—Time Signal. 12.30 a.m.—Time Signal. 1.00 a.m.—Time Signal. 1.30 a.m.—Time Signal. 2.00 a.m.—Time Signal. 2.30 a.m.—Time Signal. 3.00 a.m.—Time Signal. 3.30 a.m.—Time Signal. 4.00 a.m.—Time Signal. 4.30 a.m.—Time Signal. 5.00 a.m.—Time Signal. 5.30 a.m.—Time Signal. 6.00 a.m.—Time Signal. 6.30 a.m.—Time Signal. 7.00 a.m.—Time Signal. 7.30 a.m.—Time Signal. 8.00 a.m.—Time Signal. 8.30 a.m.—Time Signal. 9.00 a.m.—Time Signal. 9.30 a.m.—Time Signal. 10.00 a.m.—Time Signal. 10.30 a.m.—Time Signal. 11.00 a.m.—Time Signal. 11.30 a.m.—Time Signal. 12.00 a.m.—Time Signal. 12.30 a.m.—Time Signal. 1.00 a.m.—Time Signal. 1.30 a.m.—Time Signal. 2.00 a.m.—Time Signal. 2.30 a.m.—Time Signal. 3.00 a.m.—Time Signal. 3.30 a.m.—Time Signal. 4.00 a.m.—Time Signal. 4.30 a.m.—Time Signal. 5.00 a.m.—Time Signal. 5.30 a.m.—Time Signal. 6.00 a.m.—Time Signal. 6.30 a.m.—Time Signal. 7.00 a.m.—Time Signal. 7.30 a.m.—Time Signal. 8.00 a.m.—Time Signal. 8.30 a.m.—Time Signal. 9.00 a.m.—Time Signal. 9.30 a.m.—Time Signal. 10.00 a.m.—Time Signal. 10.30 a.m.—Time Signal. 11.00 a.m.—Time Signal. 11.30 a.m.—Time Signal. 12.00 a.m.—Time Signal. 12.30 a.m.—Time Signal. 1.00 a.m.—Time Signal. 1.30 a.m.—Time Signal. 2.00 a.m.—Time Signal. 2.30 a.m.—Time Signal. 3.00 a.m.—Time Signal. 3.30 a.m.—Time Signal. 4.00 a.m.—Time Signal. 4.30 a.m.—Time Signal. 5.00 a.m.—Time Signal. 5.30 a.m.—Time Signal. 6.00 a.m.—Time Signal. 6.30 a.m.—Time Signal. 7.00 a.m.—Time Signal. 7.30 a.m.—Time Signal. 8.00 a.m.—Time Signal. 8.30 a.m.—Time Signal. 9.00 a.m.—Time Signal. 9.30 a.m.—Time Signal. 10.00 a.m.—Time Signal. 10.30 a.m.—Time Signal. 11.00 a.m.—Time Signal. 11.30 a.m.—Time Signal. 12.00 a.m.—Time Signal. 12.30 a.m.—Time Signal. 1.00 a.m.—Time Signal. 1.30 a.m.—Time Signal. 2.00 a.m.—Time Signal. 2.30 a.m.—Time Signal. 3.00 a.m.—Time Signal. 3.30 a.m.—Time Signal. 4.00 a.m.—Time Signal. 4.30 a.m.—Time Signal. 5.00 a.m.—Time Signal. 5.30 a.m.—Time Signal. 6.00 a.m.—Time Signal. 6.30 a.m.—Time Signal. 7.00 a.m.—Time Signal. 7.30 a.m.—Time Signal. 8.00 a.m.—Time Signal. 8.30 a.m.—Time Signal. 9.00 a.m.—Time Signal. 9.30 a.m.—Time Signal. 10.00 a.m.—Time Signal. 10.30 a.m.—Time Signal. 11.00 a.m.—Time Signal. 11.30 a.m.—Time Signal. 12.00 a.m.—Time Signal. 12.30 a.m.—Time Signal. 1.00 a.m.—Time Signal. 1.30 a.m.—Time Signal. 2.00 a.m.—Time Signal. 2.30 a.m.—Time Signal. 3.00 a.m.—Time Signal. 3.30 a.m.—Time Signal. 4.00 a.m.—Time Signal. 4.30 a.m.—Time Signal. 5.00 a.m.—Time Signal. 5.30 a.m.—Time Signal. 6.00 a.m.—Time Signal. 6.30 a.m.—Time Signal. 7.00 a.m.—Time Signal. 7.30 a.m.—Time Signal. 8.00 a.m.—Time Signal. 8.30 a.m.—Time Signal. 9.00 a.m.—Time Signal. 9.30 a.m.—Time Signal. 10.00 a.m.—Time Signal. 10.30 a.m.—Time Signal. 11.00 a.m.—Time Signal. 11.30 a.m.—Time Signal. 12.00 a.m.—Time Signal. 12.30 a.m.—Time Signal. 1.00 a.m.—Time Signal. 1.30 a.m.—Time Signal. 2.00 a.m.—Time Signal. 2.30 a.m.—Time Signal. 3.00 a.m.—Time Signal. 3.30 a.m.—Time Signal. 4.00 a.m.—Time Signal. 4.30 a.m.—Time Signal. 5.00 a.m.—Time Signal. 5.30 a.m.—Time Signal. 6.00 a.m.—Time Signal. 6.30 a.m.—Time Signal. 7.00 a.m.—Time Signal. 7.30 a.m.—Time Signal. 8.00 a.m.—Time Signal. 8.30 a.m.—Time Signal. 9.00 a.m.—Time Signal. 9.30 a.m.—Time Signal. 10.00 a.m.—Time Signal. 10.30 a.m.—Time Signal. 11.00 a.m.—Time Signal. 11.30 a.m.—Time Signal. 12.00 a.m.—Time Signal. 12.30 a.m.—Time Signal. 1.00 a.m.—Time Signal. 1.30 a.m.—Time Signal. 2.00 a.m.—Time Signal. 2.30 a.m.—Time Signal. 3.00 a.m.—Time Signal. 3.30 a.m.—Time Signal. 4.00 a.m.—Time Signal. 4.30 a.m.—Time Signal. 5.00 a.m.—Time Signal. 5.30 a.m.—Time Signal. 6.00 a.m.—Time Signal. 6.30 a.m.—Time Signal. 7.00 a.m.—Time Signal. 7.30 a.m.—Time Signal. 8.00 a.m.—Time Signal. 8.30 a.m.—Time Signal. 9.00 a.m.—Time Signal. 9.30 a.m.—Time Signal. 10.00 a.m.—Time Signal. 10.30 a.m.—Time Signal. 11.00 a.m.—Time Signal. 11.30 a.m.—Time Signal. 12.00 a.m.—Time Signal. 12.30 a.m.—Time Signal. 1.00 a.m.—Time Signal. 1.30 a.m.—Time Signal. 2.00 a.m.—Time Signal. 2.30 a.m.—Time Signal. 3.00 a.m.—Time Signal. 3.30 a.m.—Time Signal. 4.00 a.m.—Time Signal. 4.30 a.m.—Time Signal. 5.00 a.m.—Time Signal. 5.30 a.m.—Time Signal. 6.00 a.m.—Time Signal. 6.30 a.m.—Time Signal. 7.00 a.m.—Time Signal. 7.30 a.m.—Time Signal. 8.00 a.m.—Time Signal. 8.30 a.m.—Time Signal. 9.00 a.m.—Time Signal. 9.30 a.m.—Time Signal. 10.00 a.m.—Time Signal. 10.30 a.m.—Time Signal. 11.00 a.m.—Time Signal. 11.30 a.m.—Time Signal. 12.00 a.m.—Time Signal. 12.30 a.m.—Time Signal. 1.00 a.m.—Time Signal. 1.30 a.m.—Time Signal. 2.00 a.m.—Time Signal. 2.30 a.m.—Time Signal. 3.00 a.m.—Time Signal. 3.30 a.m.—Time Signal. 4.00 a.m.—Time Signal. 4.30 a.m.—Time Signal. 5.00 a.m.—Time Signal. 5.30 a.m.—Time Signal. 6.00 a.m.—Time Signal. 6.30 a.m.—Time Signal. 7.00 a.m.—Time Signal. 7.30 a.m.—Time Signal. 8.00 a.m.—Time Signal. 8.30 a.m.—Time Signal. 9.00 a.m.—Time Signal. 9.30 a.m.—Time Signal. 10.00 a.m.—Time Signal. 10.30 a.m.—Time Signal. 11.00 a.m.—Time Signal. 11.30 a.m.—Time Signal. 12.00 a.m.—Time Signal. 12.30 a.m.—Time Signal. 1.00 a.m.—Time Signal. 1.30 a.m.—Time Signal. 2.00 a.m.—Time Signal. 2.30 a.m.—Time Signal. 3.00 a.m.—Time Signal. 3.30 a.m.—Time Signal. 4.00 a.m.—Time Signal. 4.30 a.m.—Time Signal. 5.00 a.m.—Time Signal. 5.30 a.m.—Time Signal. 6.00 a.m.—Time Signal. 6.30 a.m.—Time Signal. 7.00 a.m.—Time Signal. 7.30 a.m.—Time Signal. 8.00 a.m.—Time Signal. 8.30 a.m.—Time Signal. 9.00 a.m.—Time Signal. 9.30 a.m.—Time Signal. 10.00 a.m.—Time Signal. 10.30 a.m.—Time Signal. 11.00 a.m.—Time Signal. 11.30 a.m.—Time Signal. 12.00 a.m.—Time Signal. 12.30 a.m.—Time Signal. 1.00 a.m.—Time Signal. 1.30 a.m.—Time Signal. 2.00 a.m.—Time Signal. 2.30 a.m.—Time Signal. 3.00 a.m.—Time Signal. 3.30 a.m.—Time Signal. 4.00 a.m.—Time Signal. 4.30 a.m.—Time Signal. 5.00 a.m.—Time Signal. 5.30 a.m.—Time Signal. 6.00 a.m.—Time Signal. 6.30 a.m.—Time Signal. 7.00 a.m.—Time Signal. 7.30 a.m.—Time Signal. 8.00 a.m.—Time Signal. 8.30 a.m.—Time Signal. 9.00 a.m.—Time Signal. 9.30 a.m.—Time Signal. 10.00 a.m.—Time Signal. 10.30 a.m.—Time Signal. 11.00 a.m.—Time Signal. 11.30 a.m.—Time Signal. 12.00 a.m.—Time Signal. 12.30 a.m.—Time Signal. 1.00 a.m.—Time Signal. 1.30 a.m.—Time Signal. 2.00 a.m.—Time Signal. 2.30 a.m.—Time Signal. 3.00 a.m.—Time Signal. 3.30 a.m.—Time Signal. 4.00 a.m.—Time Signal. 4.30 a.m.—Time Signal. 5.00 a.m.—Time Signal. 5.30 a.m.—Time Signal. 6.00 a.m.—Time Signal. 6.30 a.m.—Time Signal. 7.00 a.m.—Time Signal. 7.30 a.m.—Time Signal. 8.00 a.m.—Time Signal. 8.30 a.m.—Time Signal. 9.00 a.m.—Time Signal. 9.30 a.m.—Time Signal. 10.00 a.m.—Time Signal. 10.30 a.m.—Time Signal. 11.00 a.m.—Time Signal. 11.30 a.m.—Time Signal. 12.00 a.m.—Time Signal. 12.30 a.m.—Time Signal. 1.00 a.m.—Time Signal. 1.30 a.m.—Time Signal. 2.00 a.m.—Time Signal. 2.30 a.m.—Time Signal. 3.00 a.m.—Time Signal. 3.30 a.m.—Time Signal. 4.00 a.m.—Time Signal. 4.30 a.m.—Time Signal. 5.00 a.m.—Time Signal. 5.30 a.m.—Time Signal. 6.00 a.m.—Time Signal. 6.30 a.m.—Time Signal. 7.00 a.m.—Time Signal. 7.30 a.m.—Time Signal. 8.00 a.m.—Time Signal. 8.30 a.m.—Time Signal. 9.00 a.m.—Time Signal. 9.30 a.m.—Time Signal. 10.00 a.m.—Time Signal. 10.30 a.m.—Time Signal. 11.00 a.m.—Time Signal. 11.30 a.m.—Time Signal. 12.00 a.m.—Time Signal. 12.30 a.m.—Time Signal. 1.00 a.m.—Time Signal. 1.30 a.m.—Time Signal. 2.00 a.m.—Time Signal. 2.30 a.m.—Time Signal. 3.00 a.m.—Time Signal. 3.30 a.m.—Time Signal. 4.00 a.m.—Time Signal. 4.30 a.m.—Time Signal. 5.00 a.m.—Time Signal. 5.30 a.m.—Time Signal. 6.00 a.m.—Time Signal. 6.30 a.m.—Time Signal. 7.00 a.m.—Time Signal. 7.30 a.m.—Time Signal. 8.00 a.m.—Time Signal. 8.30 a.m.—Time Signal. 9.00 a.m.—Time Signal. 9.30 a.m.—Time Signal. 10.00 a.m.—Time Signal. 10.30 a.m.—Time Signal. 11.00 a.m.—Time Signal. 11.30 a.m.—Time Signal. 12.00 a.m.—Time Signal. 12.30 a.m.—Time Signal. 1.00 a.m.—Time Signal. 1.30 a.m.—Time Signal. 2.00 a.m.—Time Signal. 2.30 a.m.—Time Signal. 3.00 a.m.—Time Signal. 3.30 a.m.—Time Signal. 4.00 a.m.—Time Signal. 4.30 a.m.—Time Signal. 5.00 a.m.—Time Signal. 5.30 a.m.—Time Signal. 6.00 a.m.—Time Signal. 6.30 a.m.—Time Signal. 7.00 a.m.—Time Signal. 7.30 a.m.—Time Signal. 8.00 a.m.—Time Signal. 8.30 a.m.—Time Signal. 9.00 a.m.—Time Signal. 9.30 a.m.—Time Signal. 10.00 a.m.—Time Signal. 10.30 a.m.—Time Signal. 11.00 a.m.—Time Signal. 11.30 a.m.—Time Signal. 12.00 a.m.—Time Signal. 12.30 a.m.—Time Signal. 1.00 a.m.—Time Signal. 1.30 a.m.—Time Signal. 2.00 a.m.—Time Signal. 2.30 a.m.—Time Signal. 3.00 a.m.—Time Signal. 3.30 a.m.—Time Signal. 4.00 a.m.—Time Signal. 4.30 a.m.—Time Signal. 5.00 a.m.—Time Signal. 5.30 a.m.—Time Signal. 6.00 a.m.—Time Signal. 6.30 a.m.—Time Signal. 7.00 a.m.—Time Signal. 7.30 a.m.—Time Signal. 8.00 a.m.—Time Signal. 8.30 a.m.—Time Signal. 9.00 a.m.—Time Signal. 9.30 a.m.—Time Signal. 10.00 a.m.—Time Signal. 10.30 a.m.—Time Signal. 11.00 a.m.—Time Signal. 11.30 a.m.—Time Signal. 12.00 a.m.—Time Signal. 12.30 a.m.—Time Signal. 1.00 a.m.—Time Signal. 1.30 a.m.—Time Signal. 2.00 a.m.—Time Signal. 2.30 a.m.—Time Signal. 3.00 a.m.—Time Signal. 3.30 a.m.—Time Signal. 4.00 a.m.—Time Signal. 4.30 a.m.—Time Signal. 5.00 a.m.—Time Signal. 5.30 a.m.—Time Signal. 6.00 a.m.—Time Signal. 6.30 a.m.—Time Signal. 7.00 a.m.—Time Signal. 7.30 a.m.—Time Signal. 8.00 a.m.—Time Signal. 8.30 a.m.—Time Signal. 9.00 a.m.—Time Signal. 9.30 a.m.—Time Signal. 10.00 a.m.—Time Signal. 10.30 a.m.—Time Signal. 11.00 a.m.—Time Signal. 11.30 a.m.—Time Signal. 12.00 a.m.—Time Signal. 12.30 a.m.—Time Signal. 1.00 a.m.—Time Signal. 1.30 a.m.—Time Signal. 2.00 a.m.—Time Signal. 2.30 a.m.—Time Signal. 3.00 a.m.—Time Signal. 3.30 a.m.—Time Signal. 4.00 a.m.—Time Signal. 4.30 a.m.—Time Signal. 5.00 a.m.—Time Signal. 5.30 a.m.—Time Signal. 6.00 a.m.—Time Signal. 6.30 a.m.—Time Signal. 7.00 a.m.—Time Signal. 7.30 a.m.—Time Signal. 8.00 a.m.—Time Signal. 8.30 a.m.—Time Signal. 9.00 a.m.—Time Signal. 9.30 a.m.—Time Signal. 10.00 a.m.—Time Signal. 10.30 a.m.—Time Signal. 11.00 a.m.—Time Signal. 11.30 a.m.—Time Signal. 12.00 a.m.—Time Signal. 12.30 a.m.—Time Signal. 1.00 a.m.—Time Signal. 1.30 a.m.—Time Signal. 2.00 a.m.—Time Signal. 2.30 a.m.—Time Signal. 3.00 a.m.—Time Signal. 3.30 a.m.—Time Signal. 4.00 a.m.—Time Signal. 4.30 a.m.—Time Signal. 5.00 a.m.—Time Signal. 5.30 a.m.—Time Signal. 6.00 a.m.—Time Signal. 6.30 a.m.—Time Signal. 7.00 a.m.—Time Signal. 7.30 a.m.—Time Signal. 8.00 a.m.—Time Signal. 8.30 a.m.—Time Signal. 9.00 a.m.—Time Signal. 9.30 a.m.—Time Signal. 10.00 a.m.—Time Signal. 10.30 a.m.—Time Signal. 11.00 a.m.—Time Signal. 11.30 a.m.—Time Signal. 12.00 a.m.—Time Signal. 12.30 a.m.—Time Signal. 1.00 a.m.—Time Signal. 1.30 a.m.—Time Signal. 2.00 a.m.—Time Signal. 2.30 a.m.—Time Signal. 3.00 a.m.—Time Signal. 3.30 a.m.—Time Signal. 4.00 a.m.—Time Signal. 4.30 a.m.—Time Signal. 5.00 a.m.—Time Signal. 5.30 a.m.—Time Signal. 6.00 a.m.—Time Signal. 6.30 a.m.—Time Signal. 7.00 a.m.—Time Signal. 7.30 a.m.—Time Signal. 8.00 a.m.—Time Signal. 8.30 a.m.—Time Signal. 9.00 a.m.—Time Signal. 9.30 a.m.—Time Signal. 10.00 a.m.—Time Signal. 10.30 a.m.—Time Signal. 11.00 a.m.—Time Signal. 11.30 a.m.—Time Signal. 12.00 a.m.—Time Signal. 12.30 a.m.—Time Signal. 1.00 a.m.—Time Signal. 1.30 a.m.—Time Signal. 2.00 a.m.—Time Signal. 2.30 a.m.—Time Signal. 3.00 a.m.—



