

# Crowded House Hears Defence Debate

## GOVERNMENT JUSTIFIES ITS POLICY

### No Safe Alternative

#### REPLY TO LABOUR AND LIBERAL MEMBERS' CRITICISMS

Frased with the withdrawal from the League of Nations of Germany and Japan, Britain had no alternative but to revise her own ideas on armaments.

This was the gist of the Government's reply to the Labour constructive motion on defence policy which was debated in a crowded House of Commons on Monday afternoon.

Mr. Baldwin compared Britain's armaments with those of other nations in order to show that the increased expenditure contemplated by Government was justified.

Following a Peace Service in a nearby Church a crowd of people proceeded to the House of Commons with a view to influencing Members of Parliament against the enhanced defence programme.

### A Peace Demonstration

Both Liberal and Labour Oppositionists regard the increase in the defence estimates for 1965 as a step which they are likely to oppose.

Mr. Baldwin continuing, said his regard to the Navy that of the United States was building up to Treaty limits which Britain had not done. The United States Navy Estimates had risen from 550 million dollars in 1952 to 920 million dollars in 1955 and 500 million dollars in 1956. He said that even though under the Treaty Britain found that so far as strength went it had not equalled her to secure equality.

After a reference to the French and Italian fleets, Mr. Baldwin said that he had had no support for his own efforts. He was not increasing the Army Force—the Navy and the Army—while other countries were building up with alarming rapidity every kind of war stores. If so many several Armaments was really concerned with the replacement of British battle ships which would become an urgent question.

In many respects they needed bringing up to date and to be provided with protection against aircraft attacks. The situation was at the United States and Japan.

Question of Status  
The Army was inadequately prepared for major operations and our Air Force was still only fifth in the world.

Mr. C. B. Atlee (Labour, Lincolnshire) in opening made the vote of censure on the Government's new policy. He criticized the doctrine of the "Paper" which had been offered to Germany and said that Britain never seemed to fall in with the disarmament proposals in other countries. The Labour Party, he added, launched a solution in every country and in every country, and the White Paper was a grossly dishonest attempt to pass off a system of defence estimates. (Cries of "Hullo's.")

Mr. Baldwin  
Mr. Stanley Baldwin in the course of a spirited reply said that he expected him to stand in a white heat. He said that the White Paper solution he proposed was the only one that would be accepted by the League. Two great powers, the United States and the Soviet Union, were now out of the League. Two great powers, the United States and the Soviet Union, were now out of the League. Two great powers, the United States and the Soviet Union, were now out of the League.

Mr. Baldwin  
Mr. Stanley Baldwin in the course of a spirited reply said that he expected him to stand in a white heat. He said that the White Paper solution he proposed was the only one that would be accepted by the League. Two great powers, the United States and the Soviet Union, were now out of the League. Two great powers, the United States and the Soviet Union, were now out of the League.

Mr. Baldwin  
Mr. Stanley Baldwin in the course of a spirited reply said that he expected him to stand in a white heat. He said that the White Paper solution he proposed was the only one that would be accepted by the League. Two great powers, the United States and the Soviet Union, were now out of the League. Two great powers, the United States and the Soviet Union, were now out of the League.

# UGANDA ARGUS. With which is incorporated THE LEADER.

## GUARANTEED THE LARGEST CIRCULATION OF ANY NEWSPAPER IN KENYA, UGANDA, TANGANYIKA AND ZANZIBAR.

### NAIROBI, WEDNESDAY, MARCH 13, 1965.

#### CANADA PREPARES FOR AN ELECTION

Notable Parliamentary Session

A Small Surplus Probable

REVENUE & EXPENDITURE DOWN ON ESTIMATES

Insurgents Retreating

REBEL GENERAL AND OFFICERS FLEE THE COUNTRY

The Greek Government forces have succeeded in capturing most of the rebel strongholds, almost without opposition, and it is stated that the revolution is virtually over. Over 3,000 insurgents have been captured.

General Kamenos, the leader of the rebellion, with 17 li officers has fled into Bulgaria. The rebel cruiser "Helli" has also surrendered.

A Cruiser Surrenders

Insurgents are reported to be negotiating towards the end.

Kavala has fallen into Government hands and the operation in Macedonia are regarded as virtually over.

Return to Normalcy

Athens in normal and the authorities there resumed their functions in all cities of Macedonia.

Following the Government's sweeping victory.

Before the rebel officers abandoned Greece they raided a branch of the Bank of Greece and took 80 million drachmas.

Many insurgents escaped from Kavala on Italian warships. It is reported that the chief of staff of General Kamenos has committed suicide.

(Continued on page 8)

#### IMPROVED POSITION IN FEBRUARY

An increase of 28,000 in the number employed and a decrease of 28,810 in the number unemployed is reported by the Ministry of Labour in the monthly return for February.

In comparison with a year ago there were 156,000 more insured persons in employment, and 224,450 fewer persons registered as unemployed—British Official Wireless Service.

#### PARLIAMENT OPENED BY GOVERNOR

Mr. A. E. Walsh (Ulster Unionist) was elected Speaker, and Mr. W. L. Nankin (Labour) Deputy speaker and Chairman of Committees.

#### SUCCESS OF FARM SCHOOL SCHEME

The Government is pleased to announce that the success of the Farm School Scheme is being demonstrated by the fact that the number of children who have been accepted for admission to the scheme is increasing.

Mr. Baldwin

#### REVENUE & EXPENDITURE DOWN ON ESTIMATES

REVENUE & EXPENDITURE DOWN ON ESTIMATES

REVENUE & EXPENDITURE DOWN ON ESTIMATES

REVENUE & EXPENDITURE DOWN ON ESTIMATES

REVENUE & EXPENDITURE DOWN ON ESTIMATES

REVENUE & EXPENDITURE DOWN ON ESTIMATES

REVENUE & EXPENDITURE DOWN ON ESTIMATES

REVENUE & EXPENDITURE DOWN ON ESTIMATES

REVENUE & EXPENDITURE DOWN ON ESTIMATES

REVENUE & EXPENDITURE DOWN ON ESTIMATES

REVENUE & EXPENDITURE DOWN ON ESTIMATES

REVENUE & EXPENDITURE DOWN ON ESTIMATES

REVENUE & EXPENDITURE DOWN ON ESTIMATES

REVENUE & EXPENDITURE DOWN ON ESTIMATES

REVENUE & EXPENDITURE DOWN ON ESTIMATES

REVENUE & EXPENDITURE DOWN ON ESTIMATES

REVENUE & EXPENDITURE DOWN ON ESTIMATES

REVENUE & EXPENDITURE DOWN ON ESTIMATES

REVENUE & EXPENDITURE DOWN ON ESTIMATES

REVENUE & EXPENDITURE DOWN ON ESTIMATES

REVENUE & EXPENDITURE DOWN ON ESTIMATES

REVENUE & EXPENDITURE DOWN ON ESTIMATES

REVENUE & EXPENDITURE DOWN ON ESTIMATES

REVENUE & EXPENDITURE DOWN ON ESTIMATES

REVENUE & EXPENDITURE DOWN ON ESTIMATES

REVENUE & EXPENDITURE DOWN ON ESTIMATES

REVENUE & EXPENDITURE DOWN ON ESTIMATES

#### REVENUE & EXPENDITURE DOWN ON ESTIMATES

REVENUE & EXPENDITURE DOWN ON ESTIMATES

REVENUE & EXPENDITURE DOWN ON ESTIMATES

REVENUE & EXPENDITURE DOWN ON ESTIMATES

REVENUE & EXPENDITURE DOWN ON ESTIMATES

REVENUE & EXPENDITURE DOWN ON ESTIMATES

REVENUE & EXPENDITURE DOWN ON ESTIMATES

REVENUE & EXPENDITURE DOWN ON ESTIMATES

REVENUE & EXPENDITURE DOWN ON ESTIMATES

REVENUE & EXPENDITURE DOWN ON ESTIMATES

REVENUE & EXPENDITURE DOWN ON ESTIMATES

REVENUE & EXPENDITURE DOWN ON ESTIMATES

REVENUE & EXPENDITURE DOWN ON ESTIMATES

REVENUE & EXPENDITURE DOWN ON ESTIMATES

REVENUE & EXPENDITURE DOWN ON ESTIMATES

REVENUE & EXPENDITURE DOWN ON ESTIMATES

REVENUE & EXPENDITURE DOWN ON ESTIMATES

REVENUE & EXPENDITURE DOWN ON ESTIMATES

REVENUE & EXPENDITURE DOWN ON ESTIMATES

REVENUE & EXPENDITURE DOWN ON ESTIMATES

REVENUE & EXPENDITURE DOWN ON ESTIMATES

REVENUE & EXPENDITURE DOWN ON ESTIMATES

REVENUE & EXPENDITURE DOWN ON ESTIMATES

REVENUE & EXPENDITURE DOWN ON ESTIMATES

REVENUE & EXPENDITURE DOWN ON ESTIMATES

REVENUE & EXPENDITURE DOWN ON ESTIMATES

REVENUE & EXPENDITURE DOWN ON ESTIMATES

#### REVENUE & EXPENDITURE DOWN ON ESTIMATES

REVENUE & EXPENDITURE DOWN ON ESTIMATES

REVENUE & EXPENDITURE DOWN ON ESTIMATES

REVENUE & EXPENDITURE DOWN ON ESTIMATES

REVENUE & EXPENDITURE DOWN ON ESTIMATES

REVENUE & EXPENDITURE DOWN ON ESTIMATES

REVENUE & EXPENDITURE DOWN ON ESTIMATES

REVENUE & EXPENDITURE DOWN ON ESTIMATES

REVENUE & EXPENDITURE DOWN ON ESTIMATES

REVENUE & EXPENDITURE DOWN ON ESTIMATES

REVENUE & EXPENDITURE DOWN ON ESTIMATES

REVENUE & EXPENDITURE DOWN ON ESTIMATES

REVENUE & EXPENDITURE DOWN ON ESTIMATES

REVENUE & EXPENDITURE DOWN ON ESTIMATES

REVENUE & EXPENDITURE DOWN ON ESTIMATES

REVENUE & EXPENDITURE DOWN ON ESTIMATES

REVENUE & EXPENDITURE DOWN ON ESTIMATES

REVENUE & EXPENDITURE DOWN ON ESTIMATES

REVENUE & EXPENDITURE DOWN ON ESTIMATES

REVENUE & EXPENDITURE DOWN ON ESTIMATES

REVENUE & EXPENDITURE DOWN ON ESTIMATES

REVENUE & EXPENDITURE DOWN ON ESTIMATES

REVENUE & EXPENDITURE DOWN ON ESTIMATES

REVENUE & EXPENDITURE DOWN ON ESTIMATES

REVENUE & EXPENDITURE DOWN ON ESTIMATES

REVENUE & EXPENDITURE DOWN ON ESTIMATES

REVENUE & EXPENDITURE DOWN ON ESTIMATES

# “PYRITA” FIREPROOF OVEN-WARE

A TRIUMPH OF BRITISH MANUFACTURE. WHITEWAYS ARE SOLE AGENTS FOR KENYA.

“PYRITA” the new British Fireproof Ware. Hot Milk or Hot Water Jugs, 9 1/2 inch, glazed chocolate color. Price Shs. 1/75 each

“PYRITA” the British Fireproof Nappy Dish, round deep shape, as illustration. 7 inch — Price Cts. 85 each 9 inch — Price Shs. 1/— each 10 1/2 inch — Price Shs. 1/50 each

“PYRITA” the British Fireproof Nappy Dish, round deep shape, as illustration. 7 1/2 inch, 8 1/2 inch, 9 1/2 inch, 10 1/2 inch. Price Cts. 75, Shs. 1/—, 1/25, 1/50 each

“PYRITA” the British Fireproof Nappy Dish, round deep shape, as illustration. 7 1/2 inch, 8 1/2 inch, 9 1/2 inch, 10 1/2 inch. Price Cts. 75, Shs. 1/—, 1/25, 1/50 each

“PYRITA” the British Fireproof Nappy Dish, round deep shape, as illustration. 7 1/2 inch, 8 1/2 inch, 9 1/2 inch, 10 1/2 inch. Price Cts. 75, Shs. 1/—, 1/25, 1/50 each

“PYRITA” the British Fireproof Nappy Dish, round deep shape, as illustration. 7 1/2 inch, 8 1/2 inch, 9 1/2 inch, 10 1/2 inch. Price Cts. 75, Shs. 1/—, 1/25, 1/50 each



WHITEWAYS (Incorporated in England) NAIROBI

East African Standard DAILY EDITION HEAD OFFICE... NAIROBI, KENYA COLONY.

Hated by the World... FOR SALE... AS good as Whisky can be...

AT MOST STORES. FRY'S CHOCOLATE CREAM FIVE FOR A SHILLING.

Mitchell Cotts and Co. (E.A.) Ltd. Land, Estate and Managing Agents... THOMSONS FALLS... NAIROBI MORU...

J. W. Milligan & Co. Ltd. Established 1912. Land and Estate Agents... KILIMANI... GLOUCESTER...

Head Office... Telephone... SIXTH AVENUE... NAIROBI, KENYA COLONY.

FOR SALE... AT R. B. Duncan's... BUNGALOW... DOORS... EXCHANGE Society...

Supplies from... GRAHAM DAWSON & Co., Box 216, Nairobi.

NAIVASHA... KILIMANI... NAIROBI MORU... FOR SALE... KILIMANI... GLOUCESTER...

FOR SALE... KILIMANI... GLOUCESTER... NAIROBI MORU... FOR SALE...

TO LET... FROM 1st May... HOVE Court... LAUREL Home... MODERN Homes... NOMINAL Rent... SPRING Home... BOARD & RESIDENCE...

FOR SALE... AT R. B. Duncan's... BUNGALOW... DOORS... EXCHANGE Society...

Closing Down SALE Don't Forget Last 3 Weeks. ENTIRE STOCK MUST BE CLEARED. BUY AT FULL LENGTH AND SAVE YOUR MONEY.

Cotton & Keith Land and Estate Agents and Approved Valuers... LANDATA ROAD... RICHMOND ROAD... NGONG ROAD... KURU HIGHLANDS...

Richardson, Tyson & Martin, LIMITED... AINWORTH ROAD... KILIMANI... NAIROBI MORU... FOR SALE...

HOVE Court... LAUREL Home... MODERN Homes... NOMINAL Rent... SPRING Home... BOARD & RESIDENCE...

FOR SALE... AT R. B. Duncan's... BUNGALOW... DOORS... EXCHANGE Society...

DAYARAM Bros. Govt. Road, NAIROBI. P.O. Box 100. MOST ARTICLES BELOW COST PRICE.

A. G. NORRIS & Co. Land and Estate Agents, Approved Valuers and Municipal Agents... Avenue Provision Stores... FURNITURE... KIRCHHOFF'S SEEDS...

TO-DAY... AYLESBURY DUCKS... BARKERS... F. A. HEAD... KIRCHHOFF'S SEEDS...

HOVE Court... LAUREL Home... MODERN Homes... NOMINAL Rent... SPRING Home... BOARD & RESIDENCE...

FOR SALE... AT R. B. Duncan's... BUNGALOW... DOORS... EXCHANGE Society...

DAYARAM Bros. Govt. Road, NAIROBI. P.O. Box 100. BEAUTIFUL your home with FLOWERS from your Garden.

A. G. NORRIS & Co. Land and Estate Agents, Approved Valuers and Municipal Agents... Avenue Provision Stores... FURNITURE... KIRCHHOFF'S SEEDS...

TO-DAY... AYLESBURY DUCKS... BARKERS... F. A. HEAD... KIRCHHOFF'S SEEDS...

HOVE Court... LAUREL Home... MODERN Homes... NOMINAL Rent... SPRING Home... BOARD & RESIDENCE...

FOR SALE... AT R. B. Duncan's... BUNGALOW... DOORS... EXCHANGE Society...

DAYARAM Bros. Govt. Road, NAIROBI. P.O. Box 100. THERE ARE MANY GOOD REASONS WHY KIRCHHOFF'S SEEDS...

A. G. NORRIS & Co. Land and Estate Agents, Approved Valuers and Municipal Agents... Avenue Provision Stores... FURNITURE... KIRCHHOFF'S SEEDS...

TO-DAY... AYLESBURY DUCKS... BARKERS... F. A. HEAD... KIRCHHOFF'S SEEDS...

HOVE Court... LAUREL Home... MODERN Homes... NOMINAL Rent... SPRING Home... BOARD & RESIDENCE...

FOR SALE... AT R. B. Duncan's... BUNGALOW... DOORS... EXCHANGE Society...

DAYARAM Bros. Govt. Road, NAIROBI. P.O. Box 100. LADIES! POND'S SKIN FRESHER.

A. G. NORRIS & Co. Land and Estate Agents, Approved Valuers and Municipal Agents... Avenue Provision Stores... FURNITURE... KIRCHHOFF'S SEEDS...

TO-DAY... AYLESBURY DUCKS... BARKERS... F. A. HEAD... KIRCHHOFF'S SEEDS...

HOVE Court... LAUREL Home... MODERN Homes... NOMINAL Rent... SPRING Home... BOARD & RESIDENCE...

FOR SALE... AT R. B. Duncan's... BUNGALOW... DOORS... EXCHANGE Society...

DAYARAM Bros. Govt. Road, NAIROBI. P.O. Box 100. ROADWAYS MODERN TRANSPORT.

A. G. NORRIS & Co. Land and Estate Agents, Approved Valuers and Municipal Agents... Avenue Provision Stores... FURNITURE... KIRCHHOFF'S SEEDS...


TO-DAY... AYLESBURY DUCKS... BARKERS... F. A. HEAD... KIRCHHOFF'S SEEDS...



**World-wide Choice**

Travelled smokers of fastidious taste, by habitual choice, smoke State Express 555, the world's premier Virginia cigarette. An unbroken tradition of quality, maintained for nearly half-a-century, justifies your choice. State Express 555—the cigarettes you can be proud of.

**STATE EXPRESS VIRGINIA CIGARETTES**



PRICE IN NAIROBI 2/50 for 50

**BONCILLA**

LEMON-MAGNESIA PAKK. and other BONCILLA PRODUCTS have now arrived.

A. J. ELY & Co., Ltd.,  
Chemists and Druggists,  
NAIROBI—and KAKAMEGA.

**RAVINE FARMERS**

**Topics at Association Meeting**

[STANDARD CORRESPONDENT.]  
Eldama Ravine, March 7.

At a meeting of the Ravine Farmers' Association the matter of a telephone call office connecting with the new Nakuru-Eldama line to be installed at either Maji Mazuri or Sabatia was discussed. It was decided to recommend to the Postmaster General that Sabatia would be the more convenient for the District.

The following officers were elected—(Chairman, Col. G. E. Tunon, D.S.O.; Vice-Chairman, Major A. E. Smith, D.F.C.; Hon. Secretary and Treasurer, Capt. H. L. R. Wick).

As a main point in the increase in the district it was decided that greater care must be taken in removing all infected maize from shambas and burning it.

Capt. H. L. R. Wick was nominated to represent Eldama Ravine on the Nakuru District Council.

A letter was read from the Bungu Valley Association asking support for a proposed ambulance for the Province. The meeting was of the opinion that the matter was one for the Government, and that as there is now a military hospital at Maji Mazuri, the ambulance would not be of much use to this district.

Messrs. Blunt and Gibson were appointed honorary inspectors for stalk borer for Eldama Ravine district.

The dates for plating maize in this district were fixed as follows—

Not planting before February 28, and not after May 31. All maize stalks to be removed and shambas clean by February 1, 1936. Farmers should make a note of these dates.

A letter from the Nakuru Chamber of Commerce complaining of the Kenya Broadcasting Service and the high fees charged for radio sets was read. The meeting agreed to support the action of the Chamber in their effort to obtain better service and a reduction in the cost of licences.

**FJI BANANAS**

**Beginning of Big Trade to Canada**

[STANDARD CORRESPONDENT.]  
Vancouver, Canada, (By Mail.)

British Columbia importers believe that Canada will eventually become the chief market for the growing export trade to Fiji Island bananas, as a result of the enthusiastic reception given to the first trial shipments of the fruit here during January. It would not surprise them to suppose that business should develop into the shipment of between ten and twenty thousand bunches a month.

The possibility of Canada becoming an important customer for Fiji banana planters was first recognized by Sir Murchison Fletcher, Governor of the island, after a conference with Mr. Robert Robinson, pioneer fruit importer of Vancouver.

Mr. Robinson, who makes frequent trips to Australia, had Sir Murchison in Sava a few months ago and discussed the banana situation with him. As a result of this conversation, a trial shipment of 275 bunches of Fijian bananas was sent to Vancouver. According to Mr. Robinson, public response was extremely gratifying. The Hudson's Bay Company department store in Vancouver made a feature display of the fruit and was unable to meet the demand after the first bunches had been sampled. Another shipment of more than 100 cases will arrive here early in February.

Refrigerator space on the Canadian-Australian ships now operating in the Fiji service is not adequate to handle all the banana business likely to be offered, and should demand be sufficient it is probable that the necessary airblast cooling system will be installed.

**Tariff Preference**

Bananas and other products from Fiji enjoy a tariff preference of one cent a pound which it is believed will be sufficient to offset the highly organized competition of the American fruit companies which in the past year have been virtually in control of the Canadian banana market with cargoes from Central and South America.

Mr. Robinson says that the policy of the Fijian Government will be to supervise the banana industry and place it on a more efficient and economical basis so as to improve the quality of the product. Plantations will be established close to Sava so as to eliminate the spoilage due to landing in native boats from distant islands. This will enable the Fiji shippers to guarantee a more uniform product and a stabilized flow of the fruit according to market conditions.

A significant development in connection with the Fijian banana industry is seen in the fact that the Colonial Office recently transferred Mr. H. J. Jacks, banana expert from the British West Indies, to Fiji where he will be in direct charge of plans to encourage banana culture in that island.

**THE JOHANNESBURG STOCK EXCHANGE**

Following are prices of selected stocks quoted on the Johannesburg Stock Exchange on March 18, the quotations being in South African currency—

African and European	44.9
Cons. Ind. Imp. S.A.	2.12
Cons. A.D. 75/10	8.0
Dagupanien Mines	100.0
De Beers	75.0
Moldor East	60.0
New Kleinfontein	20.0
Nigeria	20.0
Pretoria P. Consol.	114.0
Randfontein	10.0
Robinson P. D.	100.0
Spring	10.0
St. Ignace	200.0
Transvaal G.M. Estate	18.0
W.M. Nikel	11.0
Johannesburg Mun.	55.0
Un. S.A. (Inc. S.A.)	110.0
do 31/2 1940/50	110.0
do 31/2 1940/50	110.0

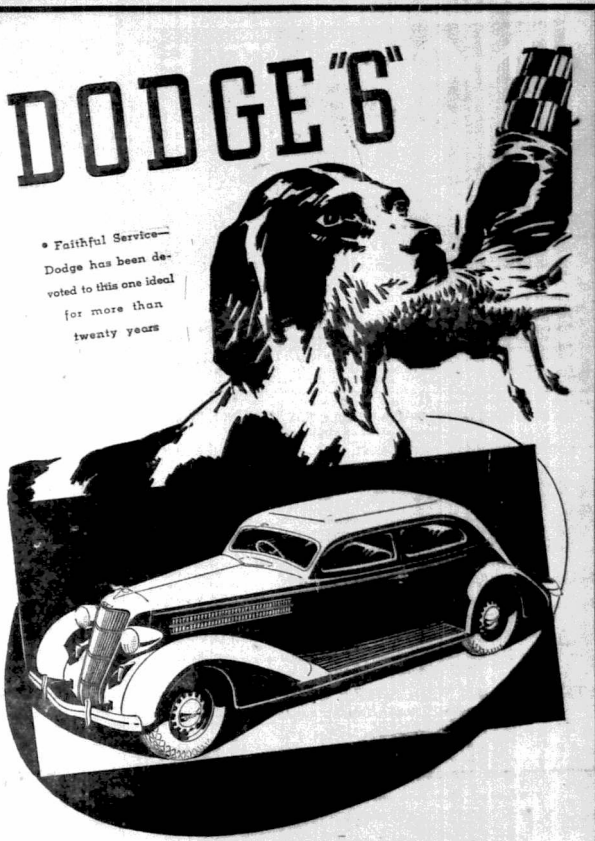
**LION AND LEOPARD IN NORTH KENYA**

**Attacks on Flocks and Herds**

[STANDARD CORRESPONDENT.]  
Nairobi, March 17.

Both lion and leopard have been giving considerable trouble to a prominent stockowner in the district. Three days ago a leopard jumped into a sheep pen and killed two ewes, attacking the rest of the flock. When looking for tracks of the leopard one of his claws was found imbedded on the barbed wire fence.

The same day, on another part of the farm a lion killed three well grown wether lambs.



for

**20 YEARS IN KENYA WE HAVE SERVED DODGE.**

We are proud to announce that in the

**New DODGE SIX**

We have the finest Dodge that ever came to Kenya.

**BIGGER — BETTER — YET CHEAPER**

Saloons ... £325. Box Bodies ... £265.

Backed by an Experienced Service which we are pleased and delighted to give.

**Fisher Simmons & Rodway (E.A.) Ltd.**  
Victoria Street.

P.O. Box 406. NAIROBI. Phone 2543.

**HOT WEATHER SLEEPLESSNESS**

**'ASPRO' WILL BRING SWEET SLEEP**

Keep 'ASPRO' in the home and ensure sweet refreshing sleep during the hot weather. There is no need to suffer from sleeplessness for 'ASPRO' is the certain remedy. It does not dope—deaden or drug. It acts in a soothing manner. It is also a wonderful antidote for sunburn headaches, summer chills and complaints of a feverish nature. Its action is quick and sure. As 'ASPRO' is also a wonderful remedy for malaria and dengue fever we would suggest again, for your health's sake, that you

**KEEP 'ASPRO' IN THE HOME AS INSURANCE AGAINST PAIN & ILLNESS DURING THE HOT WEATHER**

**WONDERFUL SUNGLARE RELIEF FROM HEADACHES STOPPED EXCELLENT FOR FEVERISHNESS**

**ASPRO DOES NOT HARM THE HEAVY ON STOMACH**

**ASPRO AS A GARGLE**

**Try 'ASPRO' For**

**HOW TO GIVE 'ASPRO' TO THE KIDDIES**

Sold in packets of 5, 10, 27 and 60 tablets  
The 60's packet is the most economical way to buy 'ASPRO'













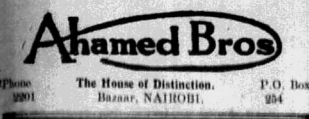




# The FAMOUS English KNOCH SCARVES

In a variety of LATEST DESIGNS.

NOW ARRIVED. INSPECTION INVITED.



## MOTHER you watched him clean his teeth but—is his MOUTH safe?

His teeth are clean? His mouth is safe? Only with GIBBS MOUTH PASTE. It cleans the teeth and kills the germs that cause toothache and decay. It is the most effective tooth powder in the world.



## ELLIOT'S COFFEE

WE HAVE BEEN ABLE TO BUY ABSOLUTELY THE FINEST COFFEE BEANS, USUALLY RESERVED FOR THE LONDON CONNOISSEURS. Specially blended by an expert in Coffee Blending. Electrically Roasted and Ground Daily on the Premises. It's the FINEST and FRESHEST Ground Coffee procurable. Sold at the Price of Ordinary Coffee SHS. 1/50 per lb. TRY SOME TO-DAY—IT'S DELICIOUS.

M. S. ELLIOT & Co., Ltd. Box 175, Phone 2060.

### Original Macdonald Permanent Wavers in Kenya.

Monsieur Robert Bottin will visit Nyeri (Outspan Hotel) on Friday and Saturday, March 15th and 16th for Ladies and Gentlemen's Hairdressing, Permanent Waving, etc., etc.

Modern Efficiency. New Ideas. PERFUMES. A SPECIALITY

### THEO. SCHOUTEN

NEW STANLEY ARCADE, BOX 182.

## CORRESPONDENCE

The Editor does not accept responsibility for the views expressed by his correspondents in these columns and in all cases the name and address of the contributor must accompany a letter, not necessarily for publication but as a guarantee of good faith. Briefly it is also essential to ensure consideration.

### THE MAIZE SURPLUS

To the Editor "E.A. Standard," Sir—Your paper tells us in very large print, that 50,000 bags of maize are available for export. Can you also tell us what price this maize is expected to fetch in the world's market?

What will it cost the Railway to transport this maize? What proportion of this cost will be paid by the producer? What proportion by the general public?

Can the whole transaction be expected to result in a profit to the whole country? Government, marketing, and subsidy exempt the general user to become, willy-nilly, shareholders in the maize export trade, so perhaps the general public has some right to be shown a profit or loss account.

Yours etc., P. H. CLARKE, Mweiga, March 9, 1935.

### 'TEN MINUTE ALIBI'

To the Editor "E.A. Standard," Sir—I read in your Entertainment Page last Monday an appeal to those going to see "Ten Minute Alibi" to be in their seats before 10 o'clock. On Thursday night I was in my seat at five minutes to nine and the show was well seated before nine. Apparently, this, however, was still unsatisfactory and the audience was punished by being kept waiting until 9.15 p.m. before the curtain went up.

I trust I shall not be accused of tampering with clocks. My watch read 9.15 and the time was verified by others. The difficulties of producing shows are very real and I had not thought to mention the matter but to-day I read in your paper a further appeal to the supporters of amateur productions. Surely the statement under the Standard today that "Nairobi's reputation for getting late at the theatre on almost every occasion has already been a source of no small consternation to the management and not one of 'Ten Minute Alibi' is going to be lost" should have

thought the inconvenience of patrons already in their seats was to be the major consideration. The latecomer, undesirable though their action may be, presumably pay for their seats, and there is such a thing, of course, as unavoidable delay, the presence of which would appear to be covered by somewhat undefinite terms. I think in view of my experience on Thursday, if I had felt disposed to see "Ten Minute Alibi" again, I would have been legitimately entitled to arrive at 9.10 p.m. and proceed by my seat, bearing in mind Nairobi's 174 reputation for late starts.

Yours etc., "B. M.", Nairobi, March 9, 1935.

### ABERRANT CONSTITUTION: AN EXPLANATION

To the Editor "E.A. Standard," Sir—[I wish to state that my letter of February 29 was purely a personal matter and is not endorsed by my Committee.]

Yours etc., ELLIOT H. ASPINAL, Timau, March 9, 1935.

(The letter referred to (dated 29.2.35) has been reviewed on the instructions of his Committee) was signed by Mr. Aspinall as "Hon. Secretary North Kenya Settlers Association" and for that reason the complaint against the Elected Member for Aberdare area was given a degree of importance which would not have been attached to a personal grievance—Ed.—E.A.S.)

### A 'GURRY' ON KENYA

To the Editor "E.A. Standard," Sir—The papers here and in England have been publishing references to "The Curse of Kenya". I think it should be contradicted by those who have knowledge of Kenya's "blessings".

Mr. Riddell came to Kenya directly after the war when the whole world was upside down. Here as everywhere. During the four years she was here in a school teacher, she earning her living) she collected sufficient material to keep her writing going for seven years. (She has not been back). However, the last couple of books were not so good, I thought, and it may possibly be that she has found something new which has caught the English public's eye. But it

is not playing the game to do so at the expense of the goose that laid the golden egg, especially as it is someone else's goose. She talks of Kenya's riches. She had her own treasury. Kenya cannot be held responsible. Mr. Riddell had just gone to England at the time to publish a first book (in which Kenya was all that is wonderful!).

As far as I remember, all the "antics" about that time were "newcomers to the colony". During the twenty years I have lived here I cannot recall one Kenyan-born man who has failed his own life, and I have grown up among them.

The Home papers are full of stories of Kenya, cannot you find some one to write of our own country? We need good headlines! We need good headlines! So many of us love Kenya it is hard to see her run down like this. I anyway consider myself.

Yours etc., "BERNIE BY KENYA", Nairobi, March 9, 1935.

### TRADE LICENCES

To the Editor "E.A. Standard," Sir—The papers of the past few months stressed by the Committee of commercial and professional organizations which they appointed in front of the Select Committee on the Trade Licences Bill, was that the Government should see that they were given the necessary power to enable them to find the ways and means to provide the very heavy licence demands which they were given the idea coupled with the views of others and I appeal for your information on an extract from the British Journalist's words "heavy tax on the standard of Home of Commons". The article referred to has been written by your correspondent.

I hope those interested will bear in mind the following information. Yours etc., R. NEWMAIR, (Nairobi) in the British Journalist, February, 1935.)

"This alleged National Government was set in motion in a fight against the interests and here is the latest example of how it is carrying out its anti-Socialist principles. The Bill is a state-organized department. It is now making Jubilee medals which, otherwise would be made by the manufacturer of Birmingham, and handled by the retail trade in the ordinary way. According to the Daily Mirror of Tuesday, January 22, the process freed allow no margin of profit.

"It may be some care by the state which occasion demands it. There is no one who has for their lot found into a heavy trade and taking orders from taxpayers who, if they were allowed to do their own business, would be contributing revenue to the Exchequer instead of being forced, in many cases, out of business altogether into bankruptcy.

### A DIVINE DICTATOR

To the Editor "E.A. Standard," Sir—Men who conduct vast enterprises are no longer their own masters. A man who, through his own wisdom, has gained big returns to managers. He himself attends only to things relatively low intellectual matters that no one but himself can do.

As soon as you read the entire world. But it is conceivable that such a man will not appear in the world. It is perfectly conceivable that a golden man of divine good sense, wisdom, and prudence, a very son of God, should take into his hands the reins of the world's power, and see upon a throne, judging the whole earth. His dominions would be long of nations, his foreman would be the governors, and the wise and great of the earth.

The world of our day is prepared for the coming of such a ruler. The radio, cables, wireless telegraphy and telephones, grip the earth. A world ruler could sit in some central location—say Hawaii—and tell every nation of the world how to solve its problems.

Thus there is no such a thing as a divine world king. The whole earth does in its own corruption. Leadership, even though it is a divine blessing, covers the earth. That King will come! To a word here; by a word there, he will rain sweeping atoms as a mother's curse for Auld. The words of his mouth will be bitter words to all, all those who will be leading nations to save the poor and distressed. Under his divine hand, the nation will march on, strong and confident to a higher destiny than they have ever known. "The divine abundance of peace so long as the moon endureth."

Yours etc., "CHARLES HOOPER", (Nairobi) in the British Journalist, February 9, 1935.

## SOUTH AFRICA'S DRIED FRUITS

are still UNSURPASSED.

All enquiries connected with South African Products should be addressed to:

The South African Office, Box 624, Memorial Hall, NAIROBI, Kenya Colony.

## RAINS PROTECT TARPULINS

When damaged crops and barns become a problem by using WARRANTED TARPULINS

24' x 12' at 110/- 18' x 12' at 85/- each  
Flax Covers 12' x 10' at 40/- each  
All Prices less 5 per cent. for Cash.

## ZEISS IKON

ASK FOR CATALOGUES.

THE LENS' Limited, New Stanley Arcade, NAIROBI.

## REFRIGERATION

for ANY PURPOSE - ANYWHERE

# KELVINATOR

GOOD FOOD MEANS GOOD HEALTH  
DON'T WASTE YOUR FOOD  
YOUR KELVINATOR WILL ELIMINATE WASTE.

Stockists: EAST AFRICAN POWER & LIGHTING CO., NAIROBI AND ALL BRANCHES. NEW MODELS ON VIEW IN THEIR SHOW ROOM. Prices Greatly Reduced.

Agents—MITCHELL COTTS & CO. (E.A.) Ltd., Nairobi.

## ATMOS LIVES ON AIR

The Atmos Clock has two units, the atmospheric motor giving the power and the movement recording the time. A change of 1 lb. c. gives more than 120 hours driving energy to the motor. The clock which requires 1,000 times more power than an ordinary movement, never requires oil and the elimination of oiling is responsible for a Precision lubrication.

OBTAINABLE ONLY FROM

### D. Lyall

Watchmaker and Jeweller Government Road, P.O. Box 1114.

## Kenya Loan and Discount COMPANY LIMITED.

FINANCIAL AGENTS

OFFICE—1st Floor, Court Chambers, E.O. Box 546 NAIROBI

Short Period Loans Granted. Any Reliable Asset Negotiated for Cash. CALL or WRITE — STRICTEST CONFIDENCE. Established 1921.

## BY SPECIAL REQUEST

THERE WILL BE ANOTHER DINNER - DANCE AT THE SAVOY HOTEL on THURSDAY, the 14th 'PHONE 2866 FOR RESERVATION OF TABLES.

Still another reason why

It's mine's a Minor!

Ivory-tipped or Plain

Every De Reszke cigarette made to-day is as pure and mild as those originally made for and smoked by the great tenor, Jean de Reszke, who gave them his name!

D.R. Minors are the equal of much clearer cigarettes but are not quite so large—a big enough, however, to last a full 10 minutes.

## De Reszke MINORS

# Lunch and Dine

## at HOTEL AVENUE À la carte

### SUNDOWNER DANCES WEDNESDAYS and SATURDAYS SYD. ZIEGLER'S BAND.

Albert House, Government Road. (Opp. National Bank of India) P.O. Box 1024, Telephone 2704. **NAIROBI TYPEWRITING BUREAU** Principal, Mrs. A. L. BROMFIELD. Shorthand notes, Getters Duplicating, Neatness, accuracy and promptitude.

**P. S. F.** (WIRELESS PERMANENT WAVING) NO ELECTRICITY—NO WIRES—NO DISCOMFORT. The very latest method of Permanent Waving now adopted by all leading London & Paris hairdressing salons. For your next Permanent **2274** Wave—Telephone **B. FLORENS** 2712, Box 923 French Hairdresser.

## KENYA RIFLE ASSOCIATION

### English Bisley Meeting 1935

#### JUNIOR KOLAPORE AND MACKINNON MATCHES

The English Bisley meeting is to be held from the 1st to 20th July this year and it is hoped that Kenya will again be represented in the competitions open to teams from the colonies.

It will be remembered that last year Kenya was placed second in the Harroet, (Junior McKinnon) and third in the Harroet Post (Junior Kolapore), and hopes are entertained that with Messrs. A. Orbachian, J. Lang, J. G. Sullivan and N. Wortley forming the nucleus of a team that Kenya will do even better than last year.

Members of Rifle Clubs who will be in England at that time and are willing to attend Bisley are requested to communicate with the Hon. Secretary Kenya Rifle Association at once. Members should give—(1) Date of Arrival in Britain; (2) Postal address in Britain; (3) Postal address in Kenya; (4) Member's Club.

#### Bisley Charges

Class T. (Type) has been eliminated, therefore Members will have to compete in Class M or X. The prize list in class M has been enlarged considerably and our members should have a reasonably good chance of getting into the various prize lists which helps towards out of pocket expenses.

Furnished beds with two beds can be hired at 5d with one bed 2s.10d. Furnished tents for two persons £3.10. Mousing costs about 2s.75d per day. Private accommodation in Boarding Houses and Hotels can be arranged if desired. Reduced train fares are granted by Railways companies on production of N.R.A. Vouchers, obtainable from the Secretary N.R.A.

#### Entrance Fees

The K.R.A. will pay the entrance fees and if possible the other expenses incidental to them.

competitions for which a team is entered, but competitors must pay all other expenses in connection with their entry into individual competitions, meaning, from fares etc.

In 1934 the average cost of entry into the various competitions in which our members competed was £210; with the usual classification of competitors this amount may be reduced. Members are assured of a very hearty welcome at Bisley and everything possible is done for overseas visitors to create a very pleasant and enjoyable time.

The individual competitions open to members of the Kenya Rifle Association are: Douglas or Qualifier, Cannon, Bayle, (element), Smith, Times, Doble, Kati, Stock, Five size, Duple, Telegraph, Marescot, Whistleton Cup, Corporation of the City of London, Grand Aggregate, H.M. the King's, Sir George's, Blenheim Aggregate, all among Aggregate Association Cup, The King's and Sir George's are open only to past and present members of H.M. Forces.

#### Submission of Entries

The National Rifle Association do not charge post entry fees to overseas competitors as it is realized that these competitors are not familiar with the conditions of all competitions. Members are advised to visit Bisley as soon as possible and consult a member of the staff before submitting their entry.

#### Practice

Members are advised to take out practice tickets for each range and enter for the extra prizes, consolation sweepstakes in connexion with individual events, and daily sweepstakes so as to get as much practice as possible for the major events. Bisley ranges are extremely tricky and unless a competitor puts in a great deal of practice there is always the chance of something happening which upsets his calculations. This does not mean that the conditions are very difficult but more that the competitor has to watch every point. No five sights are allowed but a competitor (continued in next column.)

## Parklands Sports Club Cricket Averages

### C. H. J. WOOD HEADS FIRST ELEVEN BATTING

#### Goble on Top of Bowlers

#### TWELVE MATCHES WON OUT OF THE 19 PLAYED

Out of the nineteen matches played by Parklands Sports Club, first eleven cricket team, last season 12 were won, 4 lost and 3 drawn, while one ended in a tie. C. H. J. Wood heads the batting averages, and has also the distinction of scoring most runs during the season. He is followed by T. P. Davidson with 334 averages. The bowling averages are headed by P. G. Goble, who claims over half a hundred victims. His average is really good, his 27 wickets costing less than seven runs apiece. He is followed by Pevins and Speight.

#### The following are the averages: BATTING AVERAGES 1934/35

Qualification—6 Innings	I. N. O. H. S. R. A. V.
Wood J.	17 5 9106 311 42.6
Davidson	36 2 78 467 32.4
Bender	6 1 926 122 21.0
Inneside	4 0 75 110 27.5

Qualification—6 Innings	I. N. O. H. S. R. A. V.
Parklands 1st XI. LOG.	
Goble	0 M. R. W. A. V.
Pevins	172 1 45 772 37 6.28
Pearce	179 4 41 441 29 11.32
Speight	195 1 22 252 46 11.26
Miligan	27 7 77 6 12.9
Davidson	48 8 126 9 14.00
Clarke	32 6 127 3 25.5

#### Parklands 1st XI.

P. W. L. D. Tied  
19 12 4 2 1

The appointment of Capt. I. T. S. Bower, of Rumour, to be a member of the District Road Board, Iakipia District, for the year 1935 has been gazetted. Mr. Bower, H. M. M. has been nominated a member of the Municipal Board of Mombasa until June 30, 1935.

## DON'T FORGET

THAT clean bottles are just as important as clean milk.

THAT all bottles, cans and utensils are sterilized daily at United Dairies Ltd.

THAT This is yet another reason why you should get your daily supplies of milk from:—

## UNITED DAIRIES LIMITED

STEWART ST., NAIROBI.  
NEW TELEPHONE No. 2546

### NOTICE.

#### APPLICATION FOR WATER PERMIT

An application for a Water Permit under Crown Lands (Water Permit) Rules 1910 to divers for minor irrigation purposes 25,000 gallons per day from the Mweruni River on Farm L.O. 3222 has been submitted by the Kenya Farmers' Association (Co-operative) Limited, the registered holders of L.O. No. 3222, riparian to the Mweruni River. A site plan of the proposed works may be seen at the office of the Director of Public Works, Nairobi.

Any registered holder of land riparian to this river, who objects to the proposed intakes, who objects to the issue of the permit and applied for, should lodge his objection, in writing, with the Director of Public Works, Nairobi, within 30 days of this notice.

For THE KENYA FARMERS' ASSOCIATION (CO-OPERATIVE) LIMITED,  
G. C. GRIFFITHS, General Manager, Applicants.  
Nairobi, 11th March, 1935.

# NEW FORD V. 8 FOR 1935 ON DISPLAY TO-MORROW IN OUR SHOWROOMS

## Distinctive new lines and a new kind of motor car comfort



### NAIROBI MOTORS SIXTH AVENUE.

P. O. Box 460

Telephone 2621



## MUTER & OSWALD

SALE OF NEW PROCKS, COATS, AND MISCELLANEOUS GOODS.

Duly instructed by Messrs. Valente Limited and other parties, we shall sell by Public Auction, without reserve, unless stipulated, at our Salerooms, Mutos Building, Harding Street, Nairobi, on

**TO-DAY, 13th March, at 10 a.m.**

Range of Afternoon Frocks, Blouses, Jackets, Linen Costumes, Tweed and other Coats, Hats, Scarves, etc. including Yarns, Hosiery, Socks, About Nine Dozen Tins Vegetable, Beans, Macaroni, Macaroni etc., Balata and Leather Belting, Boots and Suits, Hand Coloured, Hosiery, 0.5. Machine Rifle and Ammunition, Kodak Folding Camera, Pathé Cine Camera and Tripod, etc., etc.

MUTER and OSWALD, Ltd., Auctioneers, NAIROBI.

## MUTER & OSWALD

SALE OF RONGAI PROPERTY

acting under instructions from the Official Receiver in the Bankruptcy Estate of John Verjee, Case No. 21 of 1935, we shall sell by Public Auction (subject to being unsold privately), at our Salerooms, Mutos Building, Harding Street, Nairobi, on

**THURSDAY, 14th March, at 2-30 p.m.**

the GRANT of all that PIECE or PARCEL of land known as L.O. No. 67/20 comprising 2.467 acres or thereabouts (of which fifteen acres is reserved for roads) held on a 99 years' lease from 1st November, 1926, at an annual rental to Government of Shs. 150/8/8.

Together with  
All Buildings and Improvements erected and being thereon.  
Anticments,  
MUTER and OSWALD Ltd. Estate Agents NAIROBI.  
Approved Valuers

## MUTER & OSWALD

NOTICE OF CATALOGUE SALE OF FURNITURE AND EFFECTS.

Duly instructed, we shall sell, by Public Auction, at our Salerooms, Mutos Building, Harding Street, Nairobi, a Large Range of Furniture and Effects, on

**MONDAY, 18th March at 10 a.m.**

(Full details will be advertised later.)

MUTER and OSWALD Ltd. Estate Agents, NAIROBI.  
Approved Valuers.

## MUTER & OSWALD

NOTICE OF FORTHCOMING SALES.

**THURSDAY, 14th March at 2-30 p.m.**, at our Salerooms, SALE OF RONGAI PROPERTY (see details in separate advertisement).  
**FRIDAY, 15th March at 10 a.m.**, at the Public Works Department Yard, Commercial Street, Nairobi, SALE OF REBUILT FURNITURE AND OTHERS.

**MONDAY, 18th March at 10 a.m.**, at our Salerooms, SALE OF CATALOGUE OF FURNITURE AND EFFECTS AND HUNGARIAN CAR.  
**WEDNESDAY, 20th March at 10 a.m.**, at our Salerooms, MISCELLANEOUS GOODS SALE.

**MONDAY, 24th March at 10 a.m.**, at our Salerooms, SALE BY CATALOGUE OF FURNITURE AND EFFECTS.  
**THURSDAY, 28th March at 2-30 p.m.**, at our Salerooms, SALE OF COLLECTOR'S OF OVER ONE HUNDRED LOTS OF BRITISH AFRICAN COLONIAL STAMPS, mostly unused.

(For full Details see later Daily Issues.)  
Anticments,  
MUTER and OSWALD, Ltd., Estate Agents, NAIROBI.  
Approved Valuers.

## MUTER & OSWALD

OFFERS ARE INVITED FOR THE PURCHASE OF A FRESHLOD RESIDENTIAL PROPERTY OF THREE ACRES and a wood and 200 acres of seven roves; bathroom, stone and kitchen, Guest room and two garages.

The Plot is situated near the Rihimani Suburb and is planted with fruit trees, flowers, etc.  
Full details apply to—  
Anticments,  
MUTER & OSWALD Ltd., Estate Agents, NAIROBI.  
Approved Valuers.

## MUTER & OSWALD

SALE OF RONGAI FARMS.

In H.M. Supreme Court at Nakuru District Registry. CIVIL CASE No. 15 of 1934.  
By: WILLIAM AFFERY (Deceased) and JAMES SIMPSON.

Duly instructed by the parties concerned, we shall sell without reserve, on **WEDNESDAY, 20th March 1935 at 10-30 a.m.** at our SALEROOMS, LAKE ROAD, NAKURU, 300 acres and 200 acres of thereabouts respectively, held on a lease from Government for a term of 99 years from the 1st day of November, 1903, at an annual rental of Shs. 28/7/0.

These farms will be sold as one lot.  
Further particulars, and conditions of sale may be had from

**THACKRAH'S Ltd.**  
AUCTIONEERS, NAKURU.

## AUSTIN'S AUCTIONS.

CATALOGUE SALE OF GOOD FURNITURE AND EFFECTS, AT THE MARE, HARDING STREET, NAIROBI.

On **SATURDAY, March 16th at 10 a.m.**  
Further details will be advertised later.  
We make **HIGH CLASS FURNITURE** of every Description at the lowest possible prices.  
LET US QUOTE YOU.  
All work made under the supervision of and guaranteed by

**SAM ZARASU**  
(Furniture maker in Nairobi since 1912.)

## SANDS & CO.

SADLER STREET, Auctioneers and Valuers.

**FARM PRODUCE AND POULTRY, TUESDAYS and FRIDAYS**  
**LIVE STOCK, Every Wednesday at 11-30 a.m.**

**SANDS & CO., AUCTIONEERS.**

## THE CAR MART

P.O. Box 1069. (GROFFERY'S) Telephone 2102  
SIXTH AVENUE.

- FORD M.S. Box Body, 1924 Model, Air Wheels £140
- FORD Box Body, 1926 Model, reconditioned and reduced, new tyres £ 65
- MORRIS MINOR Saloon, 1932 Model, sliding roof, Licensed and Insured £ 95
- PLYMOUTH Tourer 1926 Model, reconditioned £ 7/10
- BUICK Tourer, first class condition ... £ 35
- OAKLAND, Two-Seater, Mechanically sound ... £ 35
- AUSTIN Seven Box Body, 1926 Model ... £ 37/10
- FORD Truck, 1932 Model, in perfect condition ... £ 85
- CHEVROLET Truck, 1930 Model, overhauled ... £ 45
- FORD Roadster de Luxe, 1932 Model, as new ... £ 95

WE BUY, SELL or EXCHANGE. GOOD SECOND HAND CARS WANTED. CARS FOR HIRE. REPAIRS UNDERTAKEN.

## OUR 2ND TO SERVICE NONE

We transport anything anywhere.  
Supplies of COPPER (CAMPBELL), also every kind of fertilizer, BONE MEAL for manuring of land (double sterilized), Fertilizers and a general merchandise stock, stored or shipped. Finest storage accommodation in the country, also private bonded-warehouse.  
Coffee stored on negotiable warrants, with sample books attached for convenience of buyers.  
Claring and forwarding, passengers met on steamer and assisted through customs.  
Goods handled from ship to store.  
Shipping to any part of the Globe. Agents throughout the world.  
Excellent woodwork delivered at Shs. 18/- for long and Shs. 20/- short logs.  
We always stock cedar poles, bamboo, steel poles, Kanua murrum, Mahogo and Olive wood.  
If anything in transport, storage, shipping, or fertilizing, we can save you money, worry and trouble.  
Our staff are all experts.  
Our 20 years Kenya experience at your disposal. Our clients choose us on our merits.  
Your Car greased with the finest hydraulic plant, Shs. 7/- only.

## THE EXPRESS TRANSPORT CO.

Cartage Contractors to Kenya and Uganda Railways and Harbours. NAIROBI and MOMBASA.

Orders now booked for Compound Manure for March rains. Special quotations for large quantities.

## The Popularity of WAYSIDE & RED SEAL TOBACCO increases daily.

—WHOLESALE STOCKS FROM—  
**BLACKLAWS & BROWN**  
Tel. No. NAIROBI. Box No. 2081  
grams: "Blacklaw" 488

## BARGAINS

- Good quality Bedsteads 54 x 90 Washed ..... 9/75 pair
- ..... 64 x 90 ..... 11/75 pair
- Pure Cotton Pillow Cases ..... 1/50 each
- ..... 61" each
- Teledolcho, coloured bedders 54 x 34 ..... 4/50 each
- Bedsteads, coloured bedders, 70 x 90 ..... 7/50 each
- Colton Jaspé, 48" wide ..... 1/75 yard
- Winey Blankets, 60 x 90 ..... 25/- pair
- Towels ..... from 50 cents

We stock a large range of CARPETS, RUGS, CRETONNES and CURTAINING.  
**E. HUTCHISON & Co.,**  
Box 140, NAIROBI.

## MEALY BUG TANGLEFOOT BANDING GREASE

STOCKS ON HAND  
Sole Agents—DENOVAN & CO., Albert House, Government Road, NAIROBI.

## MAXWELL, BRADY & Co. Stock-Taking

Annual SALE HAS COMMENCED GENUINE REDUCTIONS.

- MEN'S TWILL WINGEYETTE PJAMAS. Shs. 8/-
- Usually 15/6
- In a variety of fancy stripes and colorings. All Sizes.
- LADIES' EVENING SHOES. Shs. 10/-
- In Plain Colours, Blue, White, Red and Shell Pink. Usual Price 21/-.

## Geo. Blowers

BUILDER and CONTRACTOR, SADLER STREET NAIROBI.  
P.O. Box 259 Tel. Ad.: "Concrete" Telephone 2434

## MOSKOW, THOMSON & Co., Ltd.

Government Road, NAIROBI.

We have just received a nice selection of Children's Wood Dressing-gowns in assorted colours at the following prices—  
Shs. 12/6, 12/7, 14/6, 17/6, 22/6, 23/-, 27/6 Ladies Wood and Cotton Dressing-gowns in assorted colours. Shs. 12/6 each  
Also Irish Embroidered Linen Tea Sets, comprising 1 table, 55 x 55 and 4 Table Napkins at Shs. 4/30, 12/50 and 14/30/0  
Irish Linen Duckets Sets—printed ..... Shs. 4/50 each  
Irish Linen Tray Cloths—printed 14 x 20 1/2 ..... Shs. 2/50 each  
Irish Linen Tea Cozy Covers, printed ..... Shs. 3/50 each  
Irish Linen Tea Cozy Covers, printed ..... Shs. 3/50 each  
Irish Linen Table Cloths, printed 44 x 44 ..... Shs. 7/- each  
Irish Linen Table Cloths, printed 54 x 54 ..... Shs. 10/- each  
All Prices Subject to 10 per cent. Cash Discount. INSPECTION CORDIALLY INVITED.

**BONE MEAL FERTILIZER** now supplied at Shs. 12/50 per ton Cash with order.  
**Time Limited NAIROBI.**  
Oldest and pioneering fertilizer manufacturers in Kenya.

## Bennetts Car Services Ltd. USED CARS

Trucks - Trailers - Motorcycles - Spare Parts.  
Ford 4 Box Body, Remarkably good, sound condition. 217  
Trailer (3 wheel) 1-ton capacity. Imported. 218  
Sheels, Owner leaving. A nice Fiat Two Seater. Sound condition, reliable. 219  
Ford Truck. Without load or defect, owner leaving. 220  
Austin 6 (The Lorry) Smart appearance. 221  
Ford Truck 1933. Reconditioned and good. Fully equipped. 210  
Ford Truck 1931. Recently overhauled. Guaranteed mechanical condition. 270  
Chrysler 6. In good sound condition. Well about. 233  
 Essex Tourer. In good sound condition. 212/19/7

**SPARES FOR ALL CARS. WE BUY, SELL or EXCHANGE CARS FOR HIRE. REPAIRS to all Makes of Cars. OPEN DAY AND NIGHT.**

## THE MIRRLEES WATSON Company Limited, GLASGOW.

Manufacturers of All Types of SUGAR MACHINERY, OIL EXTRACTION MACHINERY, BOREHOLE PUMPS.  
Apply to—  
**BEALES & CO.**  
P.O. Box 320 Avenue House, Nairobi. Phone 2500

## COFFEE TREE BANDING GREASE

—AT—  
**MADATALLY SULEMAN VERJEE and SONS,**  
Government Road—NAIROBI—P.O. Box 12

## NOTICE

All claims against the Estate of the late JAMES RADCLIFFE WOOD, INHIS, must be submitted before the 25th March, 1935, to the Executors of the late James Radcliffe Wood, P.O. Box 955, Nairobi.

## The Devon Residential Hotel

P.O. Box 1125, Salisbury Road, (Phone 8115)  
Modern Bedrooms equipped with built-in furniture and H. and C. water. Private suites. Large well furnished Lounge. Two tennis courts. Pleasant surroundings. Electric food. Efficient service and general comforts.

## FAIRVIEW PRIVATE HOTEL

(Phone 2225) Bishop's Road, The Hill, P.O. Box 948.  
Within three quarters of a mile of Nairobi Post Office.  
SPECIAL ATTENTION IS GIVEN TO GARDENING, AND THE FORD IS OF THE FINEST QUALITY—ALL GARAGES REBUILT UNDER EUROPEAN SUPERVISION.

## THE HILL PRIVATE HOTEL

(opposite Nairobi Club)  
FIRST-CLASS PRIVATE HOTEL, EVERY COMFORT, —COMBINED WITH MODERATE CHARGES.—  
Phone 2580

## THE JOMBENI MOUNTAINS

offer the Finest Scenery in Kenya.  
Call at  
**THE PIG & WHISTLE, MERU**  
for particulars of this 80 mile tour, TERMS—Daily 15/-. Weekly 90/-.  
(Times: 1934/35, Meru)













# ION-CASTLE LINE



**VIA SUVA. HOMEWARD**

"Dunlop Castle"	..... Mar. 17th
"Durban Castle"	..... April 25th
"Elphinstone Castle"	..... May 25th
"Durban Castle"	..... June 2nd
"Durban Castle"	..... Aug. 2nd
"Elphinstone Castle"	..... Aug. 31st
"Dunlop Castle"	..... Sept. 25th

**SAILINGS: VIA S. AFRICA.**

"Llandaf Castle"	..... March 20th
"Llangby Castle"	..... April 17th
"Llandaf Castle"	..... May 15th
"Llandaf Castle"	..... June 12th
"Llangby Castle"	..... July 10th
"Llandaf Castle"	..... Aug. 7th
"Llandaf Castle"	..... Sept. 4th

Vessels Homeward and Outwards via Suva call at Palma (Majuro), Tanager and Gibraltar. The Company's Office at Suva & E. Africa 1185 is on sale at all Agencies. Sibs. 2, 50.

## INDIAN AFRICAN LINE

(ANDREW WEIR & Co., Managers)

The Luxurious Passenger Motor Ships "ISIPINGO," "INCOMATI," "INCHANGA"

Maintain Regular Monthly Sailings from Mombasa to—  
**DURBAN. — EAST LONDON — ALGOA BAY — MOSSEL BAY — CAPE TOWN**  
 ALSO TO COLOMBO, MADRAS, CALCUTTA, RANGOON.

**NEXT SAILINGS**

Eastbound	Leaves Mombasa.	Southbound.	Leaves Mombasa.
Inchanga	Mar. 21st	Incomati	Mar. 19th
Isipingo	Apr. 21st	Isipingo	Apr. 19th
	May 21st	Inchanga	May 19th

EXCURSIONS TO INDIA AND SOUTH AFRICA available by all Sailings.  
 Passengers can be booked through THOS. COOK & Son Ltd.  
 For Freight and Passage Rates apply to—  
**THE AFRICAN MERCANTILE COMPANY LIMITED.**  
 Mombasa, Tanganyika, Dar es Salaam, Nairobi and Kampala.  
 Telegrams "Navigation."

## East African Airways Limited.

Main and Service Hangers with some of the Company's Fleet, Cars and Lorry.



**AIR MAIL AND PASSENGER SERVICES.**

**TIME TABLE.**

**NAIROBI—NAIROBI—ELDORSET. (TUESDAY AND THURSDAY).**  
 Nairobi dep. 7:00 a.m. Njoro Arr. 7:30 a.m. dep. 8:00 a.m. Eldoret Arr. 9:00 a.m.  
**NOTE.**—Arrival on the Nairobi—Eldoret route will continue to Kakamega or Kisumu if required by special arrangement or may be chartered for use from Eldoret on Tuesdays and Thursdays between the hours of 8:30 a.m. and 5 p.m.

**ELDORSET—NAIROBI—NAIROBI. (TUESDAY AND THURSDAY).**  
 Eldoret dep. 9:30 a.m. Njoro Arr. 4:30 p.m. dep. 4:40 p.m. Nairobi Arr. 5:30 p.m.  
**ELDORSET—KAKAMEGA—KISUMU. (MONDAY AND FRIDAY).**  
 Eldoret dep. 7:30 a.m. Kakamega Arr. 8:00 a.m. dep. 8:10 a.m. Kisumu Arr. 8:30 a.m.  
**NOTE.**—On Tuesdays and Thursdays the Eldoret—Nairobi service will collect or send down passengers at Kakamega or Kisumu by special arrangement. This aircraft is also available for charter (on these days) from Eldoret between the hours of 8:30 a.m. and 5 p.m.

**KISUMU—KAKAMEGA—ELDORSET. (MONDAY AND FRIDAY).**  
 Kisumu dep. 4:30 p.m. Kakamega Arr. 4:50 p.m. dep. 5:00 p.m. Eldoret Arr. 5:30 p.m.  
**NOTE.**—Place of arrival and departure at Kakamega is the Ilmorog aerodrome.

**FARES TABLE.**

Nairobi—Njoro	..... Shs. 45.00	Njoro—Kisumu	..... Shs. 131.00	Kakamega—Nairobi	..... Shs. 156.00
Nairobi—Eldoret	..... Shs. 130.00	(via Eldoret)		(via Eldoret)	
Nairobi—Kakamega	..... Shs. 156.00	Eldoret—Njoro	..... Shs. 75.00	(via Eldoret)	
(via Eldoret)		Eldoret—Nairobi	..... Shs. 120.00	Kisumu—Kakamega	..... Shs. 20.00
Nairobi—Kisumu	..... Shs. 126.00	Eldoret—Kakamega	..... Shs. 36.00	Kisumu—Eldoret	..... Shs. 36.00
(via Eldoret)		Njoro—Kisumu	..... Shs. 36.00	Kisumu—Njoro	..... Shs. 131.00
Njoro—Nairobi	..... Shs. 45.00	Kakamega—Eldoret	..... Shs. 36.00	(via Eldoret)	
Njoro—Eldoret	..... Shs. 75.00	Kakamega—Kisumu	..... Shs. 36.00	(via Eldoret)	
Njoro—Kakamega	..... Shs. 111.00	Kakamega—Njoro	..... Shs. 36.00	Kisumu—Nairobi	..... Shs. 176.00
(via Eldoret)		(via Eldoret)		(via Eldoret)	

Passenger travelling "via Eldoret" may break their journey at Eldoret to connect with either Monday or Friday services to Kakamega or Kisumu or Tuesday or Thursday services to Njoro or Nairobi, without extra charge.  
 Passengers are conveyed to and from all schedule services by the Company's Car Service free of charge. Cars leave from Tours Hotel, Nairobi, Pioneer Hotel, Eldor's HALF AN HOUR before schedule time. Cars leave Hydon Tea Rooms, Kakamega and Kisumu Hotel, Kisumu 20 MINUTES before schedule time if departure of the air service.  
 Return Tickets are subject to 10 per cent. reduction and are valid for 3 months.  
**CHARTER SERVICES.**  
 To meet modern and up-to-date aircraft ranging from 4-seater cabin machines, seating at 125 m.p.h. to the latest British Keston machine capable of flying as slow as 45 m.p.h. are available for charter for any short or long distance flight, either for passengers or goods, photography, geological survey, ambulance service, etc.  
 INTENDING CHARTERERS outside the Nairobi area should note that this Company has in addition to that at NAIROBI, a completely equipped Hanger and Workshop together with Ground Staff at ELDORSET and that a SPECIAL CARIN MACHINE AND PILOT ARE PERMANENTLY IN THAT AREA—this saving the considerable expense of charters of the "foreign" charges between Nairobi and that district. This aircraft is available for charter to any part from Eldoret on Tuesdays, Wednesdays, Thursdays, Saturdays and Sundays at any time, and from Kisumu on Mondays and Fridays between the hours of 8:30 a.m. and 5:30 p.m.

**COMPANY OFFICES.**

NAIROBI	MOMBASA	ELDORSET
Tours Hotel, Nairobi	Aerodrome Office, East Africa	Aerodrome Office
Harding St., Nairobi	Telephone 1185	Eldoret Aerodrome
Phone 200	Telephone 1185	Telephone 87
Telephone 200	Telephone 1185	P.O. Box 78
Telephone 200	Telephone 1185	Telegram: "Airpost"

## BOMBAY DURBAN SERVICE

# BRITISH INDIA



### STEAM NAVIGATION CO. LD.

**NEXT SAILINGS TO BOMBAY** from Mombasa.

KARAJA	9800 tons	28th Mar.	TAKIWA	7000 tons	16th Mar.
TAKIWA	7000 tons	10th Apr.	KENYA	9800 tons	24th Mar.
KENYA	9800 tons	25th Apr.	TAIHEA	7000 tons	13th Apr.
TAIHEA	7000 tons	8th May	KARAJA	9800 tons	28th Apr.
TAKIWA	7000 tons	23rd May	TAKIWA	7000 tons	21st May
KARAJA	9800 tons	5th June	KENYA	9800 tons	26th May
KENYA	9800 tons	20th June	TAIHEA	7000 tons	8th June
TAIHEA	7000 tons	3rd July	KARAJA	9800 tons	23rd June
			TAKIWA	7000 tons	6th July

For full particulars apply to—  
**SMITH MACKENZIE & Co. NAIROBI AND BRANCHES.**

## National Bank of India Limited.

National Bank of India Limited, (Incorporated in United Kingdom).  
 Bankers to the Colony and Protectorate of Kenya and Uganda.  
 Triestral Government.

Subscribed Capital Rs. 11,00,000  
 Paid-up Capital Rs. 42,00,000  
 Reserve Fund Rs. 12,20,000

26, Dalhousie, London, E.C. 2.

**BRANCHES.** Nairobi, Kisumu, Eldoret, Faticke, Kampala, Malindi, Zanzibar, Dar-es-Salaam and Tanga.

Also at Calcutta, Bombay, Madras, Karachi, Lahore, Amritsar, Delhi, Cawnpore, Colombo, Kandy, Newera, Elvas, Taloorin, Cochin, Chittagong, Rangoon, Mandalay, Aden and Steamer point Africa.

AGENTS in New York and throughout U.S.A., Europe, Canada, South Africa, and Australia.

**FIXED DEPOSITS.**—Deposits are received for fixed periods on terms which may be treated on application.

**EXCHANGE.**  
 The Bank issues Drafts on the Head Office and Branches at the current rates of Exchange forwarding first copy of the Bill direct to the payees when required.  
 Every description of Banking business transacted with all parts of the world.

## MESSAGERIES MARITIMES

Regular fortnightly Service from and to Marseilles.

**NEXT SAILINGS TO MARSEILLES.**

COMPAGNE	..... March 22nd
EXPLOITATEUR	..... April 6th
GENERAL METZINGER	..... April 20th
JEAN LAHORDE	..... May 4th

**NEXT ARRIVAL FROM MARSEILLES.**

GENERAL METZINGER	..... 16th March	
1st Class 553	2nd Class 248	3rd Class 277

35% reduction on return journey within 1 year—15% within 6 years.  
**MESSAGERIES MARITIMES** P.O. Box 16, MOMBASA  
**KARIN LIMITED.** P.O. Box 20, NAIROBI.

**C. P. JOANES**  
 Ladies' Dressmaker & Gent's Tailor.  
 Established 1914.  
 Patronized by customers who expect the best craftsmanship of TAILORING GUARANTEED FIT. Every Satisfaction.  
 Cutting by C. P. JOANES with qualified Staff.  
 A TRIAL WILL SATISFY YOU.  
 Above B.M.C. Rooms 8, 9, 10. NAIROBI.

## GIBBS' AUTO TRANSPORT LIMITED

### for AIRWAYS & ROADWAYS

Official Contractors to—  
**IMPERIAL AIRWAYS LTD., WILSON AIRWAYS LTD., THOS. COOK and SON, LTD.**  
**Cars repaired by skilled Europeans.**

SIXTH AVENUE GARAGE—Phone 27 46  
**TOURS ARRANGED AT SARAI OUTFITTERS.**  
**OFFICE.**—Next to the Arcade Tobacconists, Stanley Arcade, Nairobi.  
 P.O. Box 1001, KAMPALA. Phone 2724, 2111  
 P.O. Box 947, Phone 167.

## IT IS CHEAPER BY WILSON AIRWAYS THAN BY CAR— and it saves time!

LET US QUOTE FOR ALL YOUR TRAVEL REQUIREMENTS.

**RHODES HOUSE, 6th Avenue. Tel.: 2265.**

## B. M. C. House

Phone 8102 Government Road, Nairobi. Box 810

### 2 SPECIALS in MEN'S TUNIC SHIRTS

COMPLETE WITH 2 COLLARS TO MATCH.

# MORLEY'S "UBIC" 12/50

Sizes 14½" to 17" neck  
 Usual Price 15/- EACH

in Smart Stripes and over checks.  
 Colours: Blues and Light Browns.

**No. 94. SEMI STIFF FRONTED SHIRT.**  
 with 2 Collars to match.  
 A useful business shirt in smart stripes and checks.  
 Colours: Blues and Light Browns.

**THE BRADFORD MANUFACTURING CO. (Kenya) LTD.,**  
 Incorporated in England.

## Deutsche Ost-Afrika-Linie

(Incorporated in Germany.)  
**Next Sailings from MOMBASA**  
 HOMEWARD via Suva Canal. HOMEWARD via Cap.

Usukuma	..... April 18	Njoro	..... April 17
Ad. Westmann	..... May 25	Umbamba	..... May 7
Watusi	..... June 22	Urasmo	..... May 21
Tunguika	..... July 13	Usukuma	..... July 2
Ubeni	..... Aug. 13		

All steamers offering excellent accommodation in First and Tourist Class.  
 Excursion Return Tickets Available to Suez African Ports.  
 Sailings subject to alteration.  
 For full particulars of passenger fares and freight rates apply to the Agents—  
**DEUTSCHE OST-AFRIKA-LINIE, Generalagentur Mombasa.**  
 Cable: "OSTLINIE," P.O. Box 120.

## MAISON MARIE

6th Avenue, NAIROBI  
 Phone 2220 Box 1082

Wish to announce the return of **Miss MURIEL PROCTER**, late of Cavendish House, Cheltenham, and late of Voglers, Oxford Street, London W.1.

## HOLLAND-AFRIKA LIJN

NORTHBOUND	Southbound
ss. "Glabiers" ..... April 1st	ss. "Randfontein" ..... April 15th
ss. "Jagersfontein" May 14th	ss. "Mababek" ..... June 1st
ss. "BLOEMFONTEIN" June 8th	ss. "Randfontein" ..... July 10th
ss. "BOESCHOPFEN" July 6th	ss. "Herskroek" ..... Sept. 19th
ss. "BOESCHOPFEN" Aug. 3rd	ss. "Springfontein" ..... Aug. 25th
ss. "BLOEMFONTEIN" Sept. 1st	

\*Turning in South Africa.

"These new motorships offer excellent first class accommodation for about 80 passengers and cover the distance Mombasa-Gonaa in 18 days and Mombasa-Southampton in 21 days.

**HOLLAND-AFRICA LINE AGENCY, Ltd.,** Mombasa, Tel. Ad.: "Kerline."  
**TWENTSCHE OVERSEAS TRADING CO., Ltd.,** Nairobi, Kampala, Telegrams Address: "Overseas."

## Overseas Mails "NEW EASY" Bolt Croppers

**Steamers—INWARD.**  
**Mails Due at Nairobi.**

India	Takliwa	..... Mar. 16
South	Dunlop Castle	..... Mar. 17
South	Atlas Maru	..... Mar. 17
Europe	Ubeni	..... Mar. 17
Europe	Glen. Metzing	..... Mar. 17
Europe	G. of Herford	..... Mar. 17
Far East	Holland Maru	..... Mar. 17

\*Arrives 355 letter and 248 parcel bags.

**Steamers—OUTWARD.**  
**Mails Leave Nairobi.**

South	Takliwa	..... Mar. 15
Europe	Dunlop Castle	..... Mar. 15
Far East	Atlas Maru	..... Mar. 15
South	Llandaf Castle	..... Mar. 19

**Air Mail—OUTWARD.**  
 Europe and India Mondays and Fridays 7 p.m.  
 South Africa and Intermediate Countries Thursdays and Sundays 7 p.m.  
 Dar es Salaam, Zanzibar, Tanga, Mombasa, East Africa, Eldoret, Kakamega and Njoro Tuesdays and Thursdays 6 p.m. (Letters only).

**Air Mails—INWARD.**  
 Europe and India Letters Thursdays and Sundays 7 p.m.  
 Europe only Thursdays 5 p.m.  
 South Africa and Intermediate Countries Letters Thursdays 5 p.m.  
 Saturdays 7.15 a.m., Parese Mondays and Fridays 6 p.m.  
 Mombasa, Tanga, Zanzibar, Dar es Salaam, Zanzibar, Njoro, Parese 5 p.m. and Njoro Eldoret and Kakamega (Letters only) Mondays 7 p.m. and Mondays 7 p.m.

Come and inspect the New Swivel Head Model.

## TODAY'S TRAINS

The following trains are due to leave Nairobi today—  
 10.30 a.m. for Nairobi, Eldoret, Jinja and Kampala.  
 4.15 p.m. for Mombasa.  
 The following trains are due to arrive at Nairobi to-day—  
 6.17 a.m. from Eldoret and Nairobi.  
 9.30 a.m. from Mombasa and Magadi.  
 8.00 p.m. from Naanyuki.

The brand **UPLANDS G.E.A.**

## "UPLANDS" Wiltshire Bacon and Hams, Lard and Sausages, Tinned Goods.

Obtainable from all the Leading Stores in Eastern Africa.

PRINTED IN 1935.

## Take Care of Yourself

If you suffer from headache, loss of appetite, indigestion, get an extra bottle of **Magnesia San Pelligrino.**  
 Every description of Banking business transacted with all parts of the world.



Magnesia San Pelligrino is the most effective remedy for all ailments of the stomach and bowels. It is a natural mineral water, and its purity is guaranteed by analysis.

Wholesale from all leading Chemists and Druggists.

Agents:—  
**M. B. MARIANNI,**  
 P.O. Box 610—NAIROBI









Further Preparations for the King's Jubilee

END OF GREEK REVOLUTION Shs. 1,100

THE NAIROBI SHOW

GOOD COFFEE CROP AT TORO

MORE EMIGRANTS THAN IMMIGRANTS

HISTORICAL PAGEANT AT THE TOWER OF LONDON

Rebel Leaders in Full Flight

What Indian Community Are Doing

Schedule to be Ready Next Month

But Very Unsatisfactory Prices

An Illuminated City

Fall of Crete

SCHOOL COLLECTIONS

Appeal to Farmers

TEA DEVELOPMENT

MESSAGES OF LOYALTY TO BE RELAYED FROM ALL PARTS OF BRITAIN

VENIZELIS SEEKS REFUGE ON ITALIAN ISLAND

ARRANGEMENTS FOR MILK RECORDING SCHEME

A Central Factory Scheme in Hand

According to official estimates

part of the celebration of the Jubilee of His Majesty will be a series of messages of loyalty from five different points in the British Isles, which will be brought to London...

The hands of the Jubilee Clock positively leapt forward yesterday. The amount recorded at ten o'clock was Shs. 1,100. This is nearly Twenty Pounds better than the day before.

The Royal Agricultural and Horticultural Society of Kenya announces that the schedule of dates for the Nairobi Show is now in the course of preparation...

After a very dry and hot January, there has been a fall of rain during February...

No complete returns of births have been available. The estimates are based on an assumed natural increase of six per thousand per annum for European and ten for thousand for Abasias...

Corporation of the City of London has voted £15,000 to be spent on the celebrations, which will include the decoration of streets, the floodlighting of buildings...

Keep the clock hands turning—now that they have begun. It is not really a long way to Ten Thousand Shillings, at least not very far for a town the size of Nairobi on this occasion as the King's Jubilee.

The Indian Community are doing their bit. Mr. D. D. Puri, President of the Indian Merchants Chamber, said to 'The East African Standard' yesterday...

A certain amount of flowering has taken place on coffee estates. It was expected that if crops are to be as big as last year, they should be an exceptionally good one...

Labour Conditions in the Kenya area where planters are busy opening up for tea. For the first time for some four years, tractors are used again at work.

The Guildhall Ball

Public Thanking

What the Indian Community are doing

Labour Conditions

Fewer Arrivals

London, March 2. (By Air) Mr. P. M. G. The City Corporation has announced that the Guildhall Ball for the King's Jubilee celebration will be held on May 25 to June 8...

The Mayor of Athens has called on the people to give thanks for the Government's victory and a mass meeting will be held this afternoon at which General Kofylas will speak.

The Coffee Board of Kenya has kindly agreed to co-operate with the Society in the organization of the Nairobi Show.

The labour position has improved considerably, and the supply can, at the moment, be said to be sufficient to meet the demand.

The arrivals in January 1953 were 49 fewer than the departures. The following figures show the balance of migration during the month of January last year and this year...

Major G. Gould Walker, Popeno and Master of the Tower of London

General Ametropoulos, who commanded the Rebels at Serres

Butter Fat Tests

The Tea Industry

Of the 1,792 immigrants who entered during January, 2,721 were returned to Kenya...

Major G. Gould Walker, Popeno and Master of the Tower of London, will be held on May 25 to June 8. He is also a member of the Royal Air Force.

General Ametropoulos, who commanded the Rebels at Serres, was killed in action on the island of Crete.

The Committee received a report from Mr. H. J. W. P. on the results of the butter fat tests.

There is considerable activity in the Kenya area where planters are busy opening up for tea.

Of the 1,792 immigrants who entered during January, 2,721 were returned to Kenya. Of the 1,841 departures, 329 were from the three extra-Kenya territories...

Assault Charges Quashed on Appeal

Sanctuary

Less Likelihood of Showers

SCOTCH FIRST DIVISION LEAGUE GAME

E.A.W. Social

Another order of the recent assize was quashed on appeal. The Court found that the evidence was insufficient to support the charges.

The Greek revolution has now been finally crushed. The Rebels have fled to the island of Crete.

The British East African Meteorological Service in a note on the weather issued yesterday says: "Convection conditions over the Kenya area are steadily weakening during the past forty-eight hours..."

The Scotch First Division League game between Celtic and Rangers was a close contest.

The monthly social meeting of the E.A.W. will be held in the Ball Room, Memorial Hall, on Thursday, March 21 at 6 p.m.

ARSON TRIAL ECHO

First Part of Safari Completed

A Notice to Breeders of Pedigree Bulls

Failure of Red Tattooing Ink

Increased Planting of Pyrethrum

The trial of the accused in the arson case is being held in London. The charges are similar to those in the previous case.

The first part of the safari is completed. The party has returned to Nairobi after a successful hunt.

A notice to breeders of pedigree bulls has been issued. The Government is concerned about the quality of the stock.

The failure of red tattooing ink has caused some inconvenience to the farmers.

The increased planting of pyrethrum is being encouraged by the Government to help the local industry.

Limuru Notes

Increased Planting of Pyrethrum

TO-DAY'S CAUSE LIST

TO-DAY'S CAUSE LIST

TO-DAY'S CAUSE LIST

Limuru, March 12. After nearly 10 inches of rain, the preliminary growers are busy planting the pyrethrum.

The cause list for today includes several cases. The court is expected to be busy.

The cause list for today includes several cases. The court is expected to be busy.

The cause list for today includes several cases. The court is expected to be busy.

The cause list for today includes several cases. The court is expected to be busy.

Lecture Cancelled

Lecture Cancelled

Lecture Cancelled

Lecture Cancelled

Lecture Cancelled

The lecture on the history of Kenya was cancelled due to the absence of the speaker.

The lecture on the history of Kenya was cancelled due to the absence of the speaker.

The lecture on the history of Kenya was cancelled due to the absence of the speaker.

The lecture on the history of Kenya was cancelled due to the absence of the speaker.

The lecture on the history of Kenya was cancelled due to the absence of the speaker.

TO-DAY'S CAUSE LIST

TO-DAY'S CAUSE LIST

TO-DAY'S CAUSE LIST

TO-DAY'S CAUSE LIST

TO-DAY'S CAUSE LIST

The cause list for today includes several cases. The court is expected to be busy.


The cause list for today includes several cases. The court is expected to be busy.

The cause list for today includes several cases. The court is expected to be busy.

The cause list for today includes several cases. The court is expected to be busy.

The cause list for today includes several cases. The court is expected to be busy.

SATURDAY, March 16th, LADIES' SURPRISE DANCE at TORR'S HOTEL DANCING TO HARRY COLLINS & HIS BAND.



**SANDEMAN**  
THE HOUSEHOLD  
WORD  
AMONG  
CONNOISSEURS.

**SANDEMAN**  
PORT AND SHERRY

**SPRINGBOK  
LAWN RAKES**



BABY 8 teeth. Shs. 5.00  
MINOR 12 teeth. Shs. 7.50  
MAJOR 20 teeth. Shs. 8.50

ALL LESS 20 per cent. CASH with order.

**THE TOOL HOUSE,  
NAIROBI.**

INGRAM & CO. LTD.

**MOVE TO START CRICKET AT TORO**

Action Delayed for the Present

[STANDARD CORRESPONDENT].  
TORO, March 8.  
A well attended meeting was held recently in Torvo with a view to starting cricket. Considerable discussion was shown, but it was decided to get an estimate of costs before going further.

There is no doubt that the committee for sports are not what they should be for a reasonable size. A squash court has been suggested, and it is hoped that something may come of it in the next few months.

**RAILWAY FOOTBALL CLUB**

The annual general meeting of the Association Football Union of the Nairobi Railway Club, will take place at the Club this evening at 6.30 p.m. All members interested are requested to attend.

**FLYING IN EAST AFRICA**

Special Charters of Machines

The Imperial Airways and Wilson Airways announce the following special charters of machines in East Africa:

On March 9, a special machine from Nairobi to the Moslem district. He will return to Nairobi on March 20, and will then proceed by the ordinary air mail to Mlenga on March 22.

Between March 11 and 12, a Puma Mail, piloted by Mr. P. S. Jones, flew from Nairobi to the Tanganyika Diamond and Field Development Company, Kampungu, near Musoma, Mwanza, Singanyu, Singida and Dodoma areas.

On Friday, March 8, a Dragon Moth, piloted by Mr. A. N. Pakenham M.B.E., left on the week's test of the mining area of Tanganyika, with Mr. A. I. Chabwell, Mr. Hahsan and Mr. Passmore.

**MUKAMA OF TORO**

Sixth Anniversary of Accession

[STANDARD CORRESPONDENT].  
TORO, March 8.  
The usual celebration in connection with the sixth anniversary of the accession of the Mukama of Toro was held on January 20, at a church service and coronation ceremony held in the morning.

After which speeches were made by the Mukama and Provincial Commissioner in the Bukoma Hall.

In the afternoon, the Mukama gave a party which was followed by the final of the Mukama Football Club, which was won by the Uganda Police, who beat Nyakira School Old Boys 3-1.

**BY SPECIAL REQUEST**

THERE WILL BE ANOTHER  
**DINNER - DANCE**  
AT THE  
**SAVOY HOTEL**  
TO-NIGHT, the 14th

FOR RESERVATION OF TABLES  
PHONE 2866

**Kenya Loan and Discount COMPANY LIMITED.**

FINANCIAL AGENTS

OFFICE—1st Floor, Court Chambers, P.O. Box 846

Short Period Loans Granted.  
Any National Asset Negotiated for Cash.

CALL BY WHITE - IS STRONG CONFIDENCE.  
Established 1891.

**MARKET QUOTATIONS**

Latest Cabled Reports from London

Messrs. Deane and Co., Ltd. say in receipt of a cable from their best office in London dated March 9, which is given in the following information—

Maine Flat White No. 2, 41 per ton.  
Sisal No. 1 grade, 415 per ton.  
Sisal No. 2 grade, 414 1/2 per ton.  
Sisal W.R. Top, 412 per ton.  
The sisal market is fully steady.

Butter New Zealand 1st grade, 43 1/4 per cwt.  
Butter Australian n.s.g. 43 1/2 per cwt.

The butter market is slightly steadier after the decline.

Ground nut 414.24 per ton.  
Plantation copra, 413 per ton.  
P.M. Sunbird copra, 412 1/2 per ton.  
F.M. Copra, 412 1/2 per ton.

Coffee  
Kenya Coffee A, grade highest price, 421 per ton.  
Kenya Coffee A, grade average price, 420 per ton.  
Kenya Coffee B, grade average price, 420 per ton.  
Kenya Coffee C, grade average price, 419 per ton.  
No. of bags offered 4508; No. of bags sold 2985; at an average price of 430 1/2 per ton.  
Tanganyika A, grade highest price, 419 per ton.  
Tanganyika A, grade average price, 418 1/2 per ton.  
Tanganyika B, grade average price, 418 per ton.  
Tanganyika C, grade average price, 417 per ton.  
No. of bags offered 1465; No. of bags sold 477.

Rubia native, 426 per ton.  
Bukoba plantation 424 per ton.

The market is quoted as steady. The London office has secured 106 for A, grade on behalf of Mr. J. Norlinger, Baire.

**REMINGTON FOOTBALL CUP**

Central Kavirondo's Fine Play

The semi-finals of the Remington Inter-District Native Football Cup will be played at the Stadium this afternoon. The first match is at 5.30, when Central Kavirondo play Uasin Gishu (referee, Mr. G. M. Smith). The second match is between North Kavirondo and the winners of the Fort Hill-Nairobi game at six o'clock (referee, Mr. A. B. Clowes).

In the two on Thursday, Uasin Gishu beat Mchakhe by three goals to two, while North Kavirondo beat Kitui by eight goals to six.

This for the soccer has been exciting, particularly the play of the Central Kavirondo side, which is one of the best seen to be active in Nairobi for some considerable time.

The final takes place on Saturday, when the cup and medals will be presented to the winners by His Excellency the Governor.

**Trains with Toys**

Scientists at the National Physical Laboratory at Teddington have been raising the wind. They have been working to increase the velocity—60 miles an hour. These home-made hurricanes have been working to increase the velocity—60 miles an hour. They have been blowing at 120 miles an hour. Then when the gales were blowing at the tunnels, the scientists have sent a little toy train—beautifully made and about a foot high—puffing through.

Experts eyes have watched the little train, and the speed-raising effects of the wind have been carefully noted.

They have also considered how improvements could be effected by "streamlining" the train that has to face fierce winds.

What happens when a train going at 60 miles an hour runs into a 60-mile-an-hour wind blowing to the opposite direction.

"The train would be to some extent slowed up," an official of the laboratory told a Press representative. "Possibly the speed would be reduced by five miles an hour—45 miles an hour."

"In actual fact, a wind of more than 60 or 70 miles an hour is very exceptional."

The result of these and other experiments by the Teddington scientists is that we shall probably have—eventually—a much faster and quieter train.

Official Impressed

So impressed have the London, Midland, and Scottish Railway officials been by the laboratory wind tunnel experiments that Mr. E. M. Havelock, of that railway's research department, has just announced that they are building a wind tunnel at Derby to conduct further investigations.

Will more "streamlining" and other developments mean that one day our trains will go at 100 miles an hour?

The answer is that many things besides streamlining have to be considered before this is a sensible proposal. Engines with trains behind them have travelled at nearly 100 miles an hour—under good conditions.

But there are many other things which speed, among them being bad tracks, heavy gradients, steep descents that cause slowing up, foot problems, and so on.

**Troublesome Side Wind**

"We are conducting experiments with a view to reducing the effects of wind resistance on trains," said a London, Midland and Scottish official, "but the train encounters a peculiar resistance which is against the resistance which may be set up by a wind that strikes the train sideways."

"A side wind strikes the whole train, which may be a quarter of a mile in length. This causes the wheels against the side of the line and, therefore, has a braking effect. Such a wind might take ten miles an hour off the speed of the train, and obviously very little streamlining of the side of a train can be done."

"But we have now 'streamlined' the 'pump' on engines that pull our trains. We found that much water was wasted because the edges of the pump were blunt and so we polished them. It saves thousands of gallons of water."

"The goal which railway engineers are making is not so much to reduce the resistance to the train as to make the pump work as well as possible."

**There are many good reasons why**

**KIRCHHOFF'S SEEDS**

are highly prized by East African Vegetable and Flower Gardeners.

You can always buy these fresh and in any quantity from  
**THE MOMBASA TRADING STORES, LIMITED.**

Extensive stocks of PRIMA and SUPERIOR TOMATOES, PEAS, BEANS, etc.

**FASTER AND QUIETER TRAINS**

Objects of Important Experiments

Trials with Toys

Scientists at the National Physical Laboratory at Teddington have been raising the wind. They have been working to increase the velocity—60 miles an hour. These home-made hurricanes have been working to increase the velocity—60 miles an hour. They have been blowing at 120 miles an hour. Then when the gales were blowing at the tunnels, the scientists have sent a little toy train—beautifully made and about a foot high—puffing through.

Experts eyes have watched the little train, and the speed-raising effects of the wind have been carefully noted.

They have also considered how improvements could be effected by "streamlining" the train that has to face fierce winds.

What happens when a train going at 60 miles an hour runs into a 60-mile-an-hour wind blowing to the opposite direction.

"The train would be to some extent slowed up," an official of the laboratory told a Press representative. "Possibly the speed would be reduced by five miles an hour—45 miles an hour."

"In actual fact, a wind of more than 60 or 70 miles an hour is very exceptional."

The result of these and other experiments by the Teddington scientists is that we shall probably have—eventually—a much faster and quieter train.

Official Impressed

So impressed have the London, Midland, and Scottish Railway officials been by the laboratory wind tunnel experiments that Mr. E. M. Havelock, of that railway's research department, has just announced that they are building a wind tunnel at Derby to conduct further investigations.

Will more "streamlining" and other developments mean that one day our trains will go at 100 miles an hour?

The answer is that many things besides streamlining have to be considered before this is a sensible proposal. Engines with trains behind them have travelled at nearly 100 miles an hour—under good conditions.

But there are many other things which speed, among them being bad tracks, heavy gradients, steep descents that cause slowing up, foot problems, and so on.

**Capitol Theatre**

"Tugboat Annie" is a powerful, typical Mack Sennett drama, in which this truly great actress plays the part of the feminine shipyard boss of a tugboat in the Puget Sound, and is supported by Wallace Beery, the most powerful and most lovable character actor in the picture.

"The train would be to some extent slowed up," an official of the laboratory told a Press representative. "Possibly the speed would be reduced by five miles an hour—45 miles an hour."

"In actual fact, a wind of more than 60 or 70 miles an hour is very exceptional."

The result of these and other experiments by the Teddington scientists is that we shall probably have—eventually—a much faster and quieter train.

Official Impressed

So impressed have the London, Midland, and Scottish Railway officials been by the laboratory wind tunnel experiments that Mr. E. M. Havelock, of that railway's research department, has just announced that they are building a wind tunnel at Derby to conduct further investigations.

Will more "streamlining" and other developments mean that one day our trains will go at 100 miles an hour?

The answer is that many things besides streamlining have to be considered before this is a sensible proposal. Engines with trains behind them have travelled at nearly 100 miles an hour—under good conditions.

But there are many other things which speed, among them being bad tracks, heavy gradients, steep descents that cause slowing up, foot problems, and so on.

**Theatre Royal**

A comedy "Strike It Rich" will be the feature film at the Theatre Royal tonight, with George Grey and Gino Malo as the star attraction. "Strike It Rich" is a comedy which is a city office story, which is a comedy highly developed. Upton Sinclair's "The Money Game" is the finance to reform, which is a philosophical with the result that the manager himself a master of finance and a ruler of men. Later he eventually negotiates a corner in linen. Complications lead to many humorous episodes and the picture altogether is on the light side. Even high finance is treated lightly, and the visit of foreign potentates to the hero of the corner in linen is high finance, "Strike It Rich" is directed by the British Film Corporation.

It is a comedy which is a city office story, which is a comedy highly developed. Upton Sinclair's "The Money Game" is the finance to reform, which is a philosophical with the result that the manager himself a master of finance and a ruler of men. Later he eventually negotiates a corner in linen. Complications lead to many humorous episodes and the picture altogether is on the light side. Even high finance is treated lightly, and the visit of foreign potentates to the hero of the corner in linen is high finance, "Strike It Rich" is directed by the British Film Corporation.

**Loose Covers**

Loose Covers

made to order with guaranteed fitting and all at competitive prices.

**Alibhai & Co. Ltd.**

P.O. Box 201, NAIROBI. Phone 408

**To-Night's Films**

Empire Theatre

Clive Brook will be seen in a Paramount Picture, "Hudson's Bay," an intimate story of the human element in family life, his human drama, his laughing beauty, and his every-day happenings. Two child stars, Mandy Patinkin and Dickie Moore represent the family, who see the "everyday" happenings on a completely revolutionary day. The husband, (Clive Brook) falling in love with a young girl, who is the wife's happiness. There are other comic plots connected with the wife's family, and gradually the story works out to a good, though perhaps not very logical ending. Clive Brook's scenes with his children and his boy's play are a good case which include Clive Brook and his family. This is a real Clive Brook picture and a very effective one on the stage.

**Don't Forget**

That clean bottles are just as important as clean milk.

That all bottles, cans and utensils are sterilized daily at United Dairies Ltd.

That This is yet another reason why you should get your daily supplies of milk from:—

**United Dairies Limited**

STEWART ST., NAIROBI.  
NEW TELEPHONE No. 2546

**Cretonnes and Casements**

Cretonnes and Casements for Curtains and Loose Covers. Also Curtain Rods in Beautiful Colours.

**Camera's**

Zeiss Ikon  
Testing the name of  
ZEISS IKON  
sets a precision for light and  
brilliant high class quality of  
precision  
INSPECTIVE CIVIL LABORATORY  
HOSPITAL  
ASK FOR PARTICULARS  
THE LENS LTD. Limited,  
NEW MARKET ARCADE, NAIROBI.  
Phone 408

**Specially Selected for**  
H.R.H  
**PRINCE GEORGE'S**  
South African Tour



75 YEARS QUALITY in every bottle

**Crawford**  
LIQUEUR WHISKY

**Don't Forget**

That clean bottles are just as important as clean milk.

That all bottles, cans and utensils are sterilized daily at United Dairies Ltd.

That This is yet another reason why you should get your daily supplies of milk from:—

**United Dairies Limited**

STEWART ST., NAIROBI.  
NEW TELEPHONE No. 2546

**Cretonnes and Casements**

Cretonnes and Casements for Curtains and Loose Covers. Also Curtain Rods in Beautiful Colours.

**Camera's**

Zeiss Ikon  
Testing the name of  
ZEISS IKON  
sets a precision for light and  
brilliant high class quality of  
precision  
INSPECTIVE CIVIL LABORATORY  
HOSPITAL  
ASK FOR PARTICULARS  
THE LENS LTD. Limited,  
NEW MARKET ARCADE, NAIROBI.  
Phone 408

**BUILDING**

IN ALL ITS BRANCHES.

ALTERATIONS, ADDITIONS, RENOVATIONS.

PAINTING, DECORATING, PLUMBING & SANITATION.

DOORS, WINDOWS, JOINERY, etc., etc.

HARDWARE & ALL ACCESSORIES.

Plate Glass & Window Glass (cut to order).

Motor Car Winders made to order.

**Geo. Blowers**

BUILDER and CONTRACTOR.  
SAIDLER STREET, NAIROBI.  
P.O. Box 400 Tel. Add.: "Concrete" Telephone 2484

**INDIA**  
THE FINEST TYRES MADE  
DUNLOP & GOODYEAR, SIMPSON & HARVEY



# The FAMOUS English KYNOCHE SCARVES

In a variety of LATEST DESIGNS.

NOW ARRIVED. INSPECTION INVITED.



The House of Distinction. BAZAR, NAIROBI. P.O. Box 2501

## MOTHER you watched him clean his teeth but—is his MOUTH safe?



Use of a toothbrush is a healthy habit... **Gibbs TOOTH PASTE AND SOLID DENTIFRICE**



**YOUR CHEMIST STOCKS IT**

## PURE INDIA TEA

Combines the Three Necessary Qualities—STRENGTH, AROMA, QUALITY.

## ROBROY TEA

The Ideal Tea for Blending with Local Tea.

Fannings 3/- Pekoe Mixture 3/25  
PACKED SPECIALLY FOR AND SOLE STOCKIST IN KENYA.

## M. S. ELLIOT & Co., Ltd.

Original Macdonald Permanent Wavers in Kenya.

Modern Efficiency, New Ideas, PERFORMS — A SPECIALITY

Stocks obtainable from —

**MITCHELL COTTS & CO. (E.A.) LIMITED.**

Box 664 — NAIROBI — Phone 2486  
MOMBASA — KITALE — KAKAMUGA

**THEO. SCOUTEN**  
NEW STANLEY ARCADE  
Phone 2541 — Box 255.

# CORRESPONDENCE

The Editor does not accept responsibility for the views expressed by his correspondents in these columns and in all cases the name and address of the writer must accompany a letter, not necessarily for publication but as a guarantee of good faith. Briefly it is essential to ensure consideration.

### Local Purchases

**A KAKAMUGA PARTY**  
To the Editor, "E.A. Standard," Sir—Although your very laudable article on the subject of local purchases was read by your correspondent "Money" W. W. he did not seem aware of the bond of your suggestion.

I therefore wish to see your suggestion, would point out to him that his statements are those; are not supported by any evidence, and exhibit a train of thought that requires constant attention.

May I take his first statement, "that it is not possible to purchase goods in comparison with the customers available, offer a very large variety of goods, and prices that could be produced in Kenya either from the Home or South Africa area." I challenge him to disprove this. Further point, as the population of Kenya is not thought to be sufficient to absorb the goods that the Home or South Africa area could produce, it is not possible to purchase goods in comparison with the customers available, offer a very large variety of goods, and prices that could be produced in Kenya either from the Home or South Africa area.

With reference to his other statements, which I also challenge, he should know that generally he can purchase his requirements at very much lower prices than he can import, value for value.

With reference to his other statements, which I also challenge, he should know that generally he can purchase his requirements at very much lower prices than he can import, value for value.

With reference to his other statements, which I also challenge, he should know that generally he can purchase his requirements at very much lower prices than he can import, value for value.

With reference to his other statements, which I also challenge, he should know that generally he can purchase his requirements at very much lower prices than he can import, value for value.

With reference to his other statements, which I also challenge, he should know that generally he can purchase his requirements at very much lower prices than he can import, value for value.

With reference to his other statements, which I also challenge, he should know that generally he can purchase his requirements at very much lower prices than he can import, value for value.

With reference to his other statements, which I also challenge, he should know that generally he can purchase his requirements at very much lower prices than he can import, value for value.

With reference to his other statements, which I also challenge, he should know that generally he can purchase his requirements at very much lower prices than he can import, value for value.

With reference to his other statements, which I also challenge, he should know that generally he can purchase his requirements at very much lower prices than he can import, value for value.

With reference to his other statements, which I also challenge, he should know that generally he can purchase his requirements at very much lower prices than he can import, value for value.

With reference to his other statements, which I also challenge, he should know that generally he can purchase his requirements at very much lower prices than he can import, value for value.

With reference to his other statements, which I also challenge, he should know that generally he can purchase his requirements at very much lower prices than he can import, value for value.

With reference to his other statements, which I also challenge, he should know that generally he can purchase his requirements at very much lower prices than he can import, value for value.

With reference to his other statements, which I also challenge, he should know that generally he can purchase his requirements at very much lower prices than he can import, value for value.

of the world what are the enormous stocks on hand and to cut down the cultivated area. It will be a advantage to have a very low, which can only be done by humanity to right the world. I have advised that to save space.

Mr. Board (and with forty-... which is being thrown down.

Mr. Marketing Board, imposing 12% per cent. Egg and Poultry Plan. Tariff on eggs. Restriction on import of...

Mr. Board (and with forty-... which is being thrown down.

We all know that what coffee, tea etc. have been developed to the benefit of the country. I have not attempted to mention the various restrictions placed on purely manufacturing concerns, as there are, comparatively, only a few exceptions.

Mr. Board (and with forty-... which is being thrown down.

Mr. Board (and with forty-... which is being thrown down.

Mr. Board (and with forty-... which is being thrown down.

Mr. Board (and with forty-... which is being thrown down.

Mr. Board (and with forty-... which is being thrown down.

Mr. Board (and with forty-... which is being thrown down.

Mr. Board (and with forty-... which is being thrown down.

Mr. Board (and with forty-... which is being thrown down.

Mr. Board (and with forty-... which is being thrown down.

Mr. Board (and with forty-... which is being thrown down.

Mr. Board (and with forty-... which is being thrown down.

Mr. Board (and with forty-... which is being thrown down.

Mr. Board (and with forty-... which is being thrown down.

Mr. Board (and with forty-... which is being thrown down.

Mr. Board (and with forty-... which is being thrown down.

Mr. Board (and with forty-... which is being thrown down.

Mr. Board (and with forty-... which is being thrown down.

Mr. Board (and with forty-... which is being thrown down.

## SOUTH AFRICA'S DRIED FRUITS are still UNSURPASSED.

All enquiries connected with South African Products should be addressed to

The South Africa Office, 105, 107, 109, 111, 113, 115, 117, 119, 121, 123, 125, 127, 129, 131, 133, 135, 137, 139, 141, 143, 145, 147, 149, 151, 153, 155, 157, 159, 161, 163, 165, 167, 169, 171, 173, 175, 177, 179, 181, 183, 185, 187, 189, 191, 193, 195, 197, 199, 201, 203, 205, 207, 209, 211, 213, 215, 217, 219, 221, 223, 225, 227, 229, 231, 233, 235, 237, 239, 241, 243, 245, 247, 249, 251, 253, 255, 257, 259, 261, 263, 265, 267, 269, 271, 273, 275, 277, 279, 281, 283, 285, 287, 289, 291, 293, 295, 297, 299, 301, 303, 305, 307, 309, 311, 313, 315, 317, 319, 321, 323, 325, 327, 329, 331, 333, 335, 337, 339, 341, 343, 345, 347, 349, 351, 353, 355, 357, 359, 361, 363, 365, 367, 369, 371, 373, 375, 377, 379, 381, 383, 385, 387, 389, 391, 393, 395, 397, 399, 401, 403, 405, 407, 409, 411, 413, 415, 417, 419, 421, 423, 425, 427, 429, 431, 433, 435, 437, 439, 441, 443, 445, 447, 449, 451, 453, 455, 457, 459, 461, 463, 465, 467, 469, 471, 473, 475, 477, 479, 481, 483, 485, 487, 489, 491, 493, 495, 497, 499, 501, 503, 505, 507, 509, 511, 513, 515, 517, 519, 521, 523, 525, 527, 529, 531, 533, 535, 537, 539, 541, 543, 545, 547, 549, 551, 553, 555, 557, 559, 561, 563, 565, 567, 569, 571, 573, 575, 577, 579, 581, 583, 585, 587, 589, 591, 593, 595, 597, 599, 601, 603, 605, 607, 609, 611, 613, 615, 617, 619, 621, 623, 625, 627, 629, 631, 633, 635, 637, 639, 641, 643, 645, 647, 649, 651, 653, 655, 657, 659, 661, 663, 665, 667, 669, 671, 673, 675, 677, 679, 681, 683, 685, 687, 689, 691, 693, 695, 697, 699, 701, 703, 705, 707, 709, 711, 713, 715, 717, 719, 721, 723, 725, 727, 729, 731, 733, 735, 737, 739, 741, 743, 745, 747, 749, 751, 753, 755, 757, 759, 761, 763, 765, 767, 769, 771, 773, 775, 777, 779, 781, 783, 785, 787, 789, 791, 793, 795, 797, 799, 801, 803, 805, 807, 809, 811, 813, 815, 817, 819, 821, 823, 825, 827, 829, 831, 833, 835, 837, 839, 841, 843, 845, 847, 849, 851, 853, 855, 857, 859, 861, 863, 865, 867, 869, 871, 873, 875, 877, 879, 881, 883, 885, 887, 889, 891, 893, 895, 897, 899, 901, 903, 905, 907, 909, 911, 913, 915, 917, 919, 921, 923, 925, 927, 929, 931, 933, 935, 937, 939, 941, 943, 945, 947, 949, 951, 953, 955, 957, 959, 961, 963, 965, 967, 969, 971, 973, 975, 977, 979, 981, 983, 985, 987, 989, 991, 993, 995, 997, 999, 1001, 1003, 1005, 1007, 1009, 1011, 1013, 1015, 1017, 1019, 1021, 1023, 1025, 1027, 1029, 1031, 1033, 1035, 1037, 1039, 1041, 1043, 1045, 1047, 1049, 1051, 1053, 1055, 1057, 1059, 1061, 1063, 1065, 1067, 1069, 1071, 1073, 1075, 1077, 1079, 1081, 1083, 1085, 1087, 1089, 1091, 1093, 1095, 1097, 1099, 1101, 1103, 1105, 1107, 1109, 1111, 1113, 1115, 1117, 1119, 1121, 1123, 1125, 1127, 1129, 1131, 1133, 1135, 1137, 1139, 1141, 1143, 1145, 1147, 1149, 1151, 1153, 1155, 1157, 1159, 1161, 1163, 1165, 1167, 1169, 1171, 1173, 1175, 1177, 1179, 1181, 1183, 1185, 1187, 1189, 1191, 1193, 1195, 1197, 1199, 1201, 1203, 1205, 1207, 1209, 1211, 1213, 1215, 1217, 1219, 1221, 1223, 1225, 1227, 1229, 1231, 1233, 1235, 1237, 1239, 1241, 1243, 1245, 1247, 1249, 1251, 1253, 1255, 1257, 1259, 1261, 1263, 1265, 1267, 1269, 1271, 1273, 1275, 1277, 1279, 1281, 1283, 1285, 1287, 1289, 1291, 1293, 1295, 1297, 1299, 1301, 1303, 1305, 1307, 1309, 1311, 1313, 1315, 1317, 1319, 1321, 1323, 1325, 1327, 1329, 1331, 1333, 1335, 1337, 1339, 1341, 1343, 1345, 1347, 1349, 1351, 1353, 1355, 1357, 1359, 1361, 1363, 1365, 1367, 1369, 1371, 1373, 1375, 1377, 1379, 1381, 1383, 1385, 1387, 1389, 1391, 1393, 1395, 1397, 1399, 1401, 1403, 1405, 1407, 1409, 1411, 1413, 1415, 1417, 1419, 1421, 1423, 1425, 1427, 1429, 1431, 1433, 1435, 1437, 1439, 1441, 1443, 1445, 1447, 1449, 1451, 1453, 1455, 1457, 1459, 1461, 1463, 1465, 1467, 1469, 1471, 1473, 1475, 1477, 1479, 1481, 1483, 1485, 1487, 1489, 1491, 1493, 1495, 1497, 1499, 1501, 1503, 1505, 1507, 1509, 1511, 1513, 1515, 1517, 1519, 1521, 1523, 1525, 1527, 1529, 1531, 1533, 1535, 1537, 1539, 1541, 1543, 1545, 1547, 1549, 1551, 1553, 1555, 1557, 1559, 1561, 1563, 1565, 1567, 1569, 1571, 1573, 1575, 1577, 1579, 1581, 1583, 1585, 1587, 1589, 1591, 1593, 1595, 1597, 1599, 1601, 1603, 1605, 1607, 1609, 1611, 1613, 1615, 1617, 1619, 1621, 1623, 1625, 1627, 1629, 1631, 1633, 1635, 1637, 1639, 1641, 1643, 1645, 1647, 1649, 1651, 1653, 1655, 1657, 1659, 1661, 1663, 1665, 1667, 1669, 1671, 1673, 1675, 1677, 1679, 1681, 1683, 1685, 1687, 1689, 1691, 1693, 1695, 1697, 1699, 1701, 1703, 1705, 1707, 1709, 1711, 1713, 1715, 1717, 1719, 1721, 1723, 1725, 1727, 1729, 1731, 1733, 1735, 1737, 1739, 1741, 1743, 1745, 1747, 1749, 1751, 1753, 1755, 1757, 1759, 1761, 1763, 1765, 1767, 1769, 1771, 1773, 1775, 1777, 1779, 1781, 1783, 1785, 1787, 1789, 1791, 1793, 1795, 1797, 1799, 1801, 1803, 1805, 1807, 1809, 1811, 1813, 1815, 1817, 1819, 1821, 1823, 1825, 1827, 1829, 1831, 1833, 1835, 1837, 1839, 1841, 1843, 1845, 1847, 1849, 1851, 1853, 1855, 1857, 1859, 1861, 1863, 1865, 1867, 1869, 1871, 1873, 1875, 1877, 1879, 1881, 1883, 1885, 1887, 1889, 1891, 1893, 1895, 1897, 1899, 1901, 1903, 1905, 1907, 1909, 1911, 1913, 1915, 1917, 1919, 1921, 1923, 1925, 1927, 1929, 1931, 1933, 1935, 1937, 1939, 1941, 1943, 1945, 1947, 1949, 1951, 1953, 1955, 1957, 1959, 1961, 1963, 1965, 1967, 1969, 1971, 1973, 1975, 1977, 1979, 1981, 1983, 1985, 1987, 1989, 1991, 1993, 1995, 1997, 1999, 2001, 2003, 2005, 2007, 2009, 2011, 2013, 2015, 2017, 2019, 2021, 2023, 2025, 2027, 2029, 2031, 2033, 2035, 2037, 2039, 2041, 2043, 2045, 2047, 2049, 2051, 2053, 2055, 2057, 2059, 2061, 2063, 2065, 2067, 2069, 2071, 2073, 2075, 2077, 2079, 2081, 2083, 2085, 2087, 2089, 2091, 2093, 2095, 2097, 2099, 2101, 2103, 2105, 2107, 2109, 2111, 2113, 2115, 2117, 2119, 2121, 2123, 2125, 2127, 2129, 2131, 2133, 2135, 2137, 2139, 2141, 2143, 2145, 2147, 2149, 2151, 2153, 2155, 2157, 2159, 2161, 2163, 2165, 2167, 2169, 2171, 2173, 2175, 2177, 2179, 2181, 2183, 2185, 2187, 2189, 2191, 2193, 2195, 2197, 2199, 2201, 2203, 2205, 2207, 2209, 2211, 2213, 2215, 2217, 2219, 2221, 2223, 2225, 2227, 2229, 2231, 2233, 2235, 2237, 2239, 2241, 2243, 2245, 2247, 2249, 2251, 2253, 2255, 2257, 2259, 2261, 2263, 2265, 2267, 2269, 2271, 2273, 2275, 2277, 2279, 2281, 2283, 2285, 2287, 2289, 2291, 2293, 2295, 2297, 2299, 2301, 2303, 2305, 2307, 2309, 2311, 2313, 2315, 2317, 2319, 2321, 2323, 2325, 2327, 2329, 2331, 2333, 2335, 2337, 2339, 2341, 2343, 2345, 2347, 2349, 2351, 2353, 2355, 2357, 2359, 2361, 2363, 2365, 2367, 2369, 2371, 2373, 2375, 2377, 2379, 2381, 2383, 2385, 2387, 2389, 2391, 2393, 2395, 2397, 2399, 2401, 2403, 2405, 2407, 2409, 2411, 2413, 2415, 2417, 2419, 2421, 2423, 2425, 2427, 2429, 2431, 2433, 2435, 2437, 2439, 2441, 2443, 2445, 2447, 2449, 2451, 2453, 2455, 2457, 2459, 2461, 2463, 2465, 2467, 2469, 2471, 2473, 2475, 2477, 2479, 2481, 2483, 2485, 2487, 2489, 2491, 2493, 2495, 2497, 2499, 2501, 2503, 2505, 2507, 2509, 2511, 2513, 2515, 2517, 2519, 2521, 2523, 2525, 2527, 2529, 2531, 2533, 2535, 2537, 2539, 2541, 2543, 2545, 2547, 2549, 2551, 2553, 2555, 2557, 2559, 2561, 2563, 2565, 2567, 2569, 2571, 2573, 2575, 2577, 2579, 2581, 2583, 2585, 2587, 2589, 2591, 2593, 2595, 2597, 2599, 2601, 2603, 2605, 2607, 2609, 2611, 2613, 2615, 2617, 2619, 2621, 2623, 2625, 2627, 2629, 2631, 2633, 2635, 2637, 2639, 2641, 2643, 2645, 2647, 2649, 2651, 2653, 2655, 2657, 2659, 2661, 2663, 2665, 2667, 2669, 2671, 2673, 2675, 2677, 2679, 2681, 2683, 2685, 2687, 2689, 2691, 2693, 2695, 2697, 2699, 2701, 2703, 2705, 2707, 2709, 2711, 2713, 2715, 2717, 2719, 2721, 2723, 2725, 2727, 2729, 2731, 2733, 2735, 2737, 2739, 2741, 2743, 2745, 2747, 2749, 2751, 2753, 2755, 2757, 2759, 2761, 2763, 2765, 2767, 2769, 2771, 2773, 2775, 2777, 2779, 2781, 2783, 2785, 2787, 2789, 2791, 2793, 2795, 2797, 2799, 2801, 2803, 2805, 2807, 2809, 2811, 2813, 2815, 2817, 2819, 2821, 2823, 2825, 2827, 2829, 2831, 2833, 2835, 2837, 2839, 2841, 2843, 2845, 2847, 2849, 2851, 2853, 2855, 2857, 2859, 2861, 2863, 2865, 2867, 2869, 2871, 2873, 2875, 2877, 2879, 2881, 2883, 2885, 2887, 2889, 2891, 2893, 2895, 2897, 2899, 2901, 2903, 2905, 2907, 2909, 2911, 2913, 2915, 2917, 2919, 2921, 2923, 2925, 2927, 2929, 2931, 2933, 2935, 2937, 2939, 2941, 2943, 2945, 2947, 2949, 2951, 2953, 2955, 2957, 2959, 2961, 2963, 2965, 2967, 2969, 2971, 2973, 2975, 2977, 2979, 2981, 2983, 2985, 2987, 2989, 2991, 2993, 2995, 2997, 2999, 3001, 3003, 3005, 3007, 3009, 3011, 3013, 3015, 3017, 3019, 3021, 3023, 3025, 3027, 3029, 3031, 3033, 3035, 3037, 3039, 3041, 3043, 3045, 3047, 3049, 3051, 3053, 3055, 3057, 3059, 3061, 3063, 3065, 3067, 3069, 3071, 3073, 3075, 3077, 3079, 3081, 3083, 3085, 3087, 3089, 3091, 3093, 3095, 3097, 3099, 3101, 3103, 3105, 3107, 3109, 3111, 3113, 3115, 3117, 3119, 3121, 3123, 3125,





**CHRYSLER  
PLYMOUTH**

*The Luxury . . .*  
and the Economy of the Chrysler-Plymouth represent the proportionate qualities of value; and refinement which represent good taste and sound investment.




THE 1935 MODEL  
**CHRYSLER PLYMOUTH**  
has arrived and is now on view.

We cordially invite you to call and see this wonderful car, standing, as it does, so far above its competitors, so supremely aloft in its unique magnificence:

Four - Door Sedan ..... £298

Fixed - Head Coupe ..... £290

Box Bodies from ..... £265



**CARR, LAWSON & COMPANY LIMITED.**













*The Family...*  
easily agrees on the luxury and  
economy of the new Chrysler-Plymouth

**CHRYSLER-  
PLYMOUTH**

THE 1935  
**CHRYSLER PLYMOUTH**

6-cylinder cars have arrived.

They represent the most sensational  
advance in the building of high-class  
cars that has ever been made.

*You are cordially invited to come and see them.*

Four - Door Sedan ..... £298      Fixed - Head Coupe ..... £290      Box Bodies from ..... £265



**CARR, LAWSON & COMPANY LIMITED.**





**Quick proof** is the **TWO-FACE TEST**

● If shaving leaves your face feeling tender, just make this way test. Today use plain water on your face after shaving; tomorrow change to Williams' Aqua Velva. Notice the difference. Aqua Velva makes your dry shaving instantly—leave your skin cool and invigorated. The comfortable feeling lasts all day long.

Obtainable from all Chemists at: NAIROBI.

**Williams' AQUA VELVA**  
FOR AFTER SHAVING

**BARCLAYS BANK (DOMINION, COLONIAL AND OVERSEAS)**

(Incorporated in the United Kingdom.)

**BRANCHES IN EAST AFRICA:**  
Nairobi, Mombasa, Nakuru, Eldoret, Kisumu, Kakamega, Kampala, Jinja, Tanganyika, Dar es Salaam, Iringa, Mbeke, Mtwara, Arusha, Malindi, Tabora and Mbeya.

**OVER 400 BRANCHES IN** The Union of South Africa, Rhodesia, South West Africa, Portuguese East Africa, British West Africa, West India, British Guiana, Egypt, Palestine, the Sudan, Mauritius, Malia, Gibraltar, etc.

**THE BANK UNDERTAKES ALL CLASSES OF BANKING BUSINESS AND ALSO ACTS AS TRUSTEE AND EXECUTOR.**

**HEAD OFFICE**—84, Lombard Street, London, E.C.C.

**LONDON OFFICES**—  
10, Broad Street, E.C. 4, B. & S. & Co.,  
111, St. Martin's Lane, W.C. 2, F. & C. & Co.,  
111, St. Martin's Lane, W.C. 2, F. & C. & Co.

**OFFICES in Liverpool, Manchester, Hamburg, New York (Agency).**

Correspondents in all the principal Cities and Towns of the world.

**CAMERAS** bearing the name of **ZEISS IKON**

are a guarantee for their characteristic high class quality and precision.

**INSPECT OUR LATEST MODELS or ASK FOR CATALOGUES.**

Ask East African Distributors: **"THE LENS" Limited.**  
New Stanley Arcade, NAIROBI. Grams: Fotopics  
P.O. Box 921

**JAY'S Have Just Unpacked**

Exclusive Styles in **AFTERNOON and EVENING GOWNS.**  
Prices from 30/- to 70/-  
Inspections Cordially Invited.

Next to Ebbow's and opposite Post Office, 6th Avenue, NAIROBI.

**REDUCE YOUR LABOURS COST—Muster Rolls**

On good paper. Perfectly printed and ruled. Best in strong boards cloth back. 12in. x 18in.

50 openings, Shs. 2/75 (post. Cts. 45)  
100 openings, Shs. 4/75 (post. Cts. 70)  
Less 10 per cent. for quantity of one doz.

**LABOUR CARDS, 100, Cts. 75; 1000, Shs. 6/-**

**Standard Stationery Stores.**  
NAIROBI.

**THE CEREAL MARKET**

**Maize and Wheat Prices Firmer**

The following report, dated March 15, on the cereal market has been issued by the Kenya Farmers' Association (Co-operative) Ltd.:

Most of them were found ultimately after long legal proceedings to be established but some were proved to rest on forged documents which had been accepted in good faith. An interesting incident in the career of Mr. Bockle was the visit to Prime Minister's Office on the night of December 22, 1886 of Lord Randolph Churchill who came to inform the Editor that he had resigned his post of Chancellor of the Exchequer in the Salisbury Cabinet because his colleagues had not supported his proposals for retrenchment. This was the historic occasion on which Lord Randolph Churchill "Gunga Mombasa" He expected the favourable comment of the new newspaper on his attitude in retirement, but the receipt he had given them, and Bockle's refusal to publish it, disappointed the hurried resignation, told Lord Randolph that there could be no bargain. The Chancellor left Printing House Square an unhappy man and read next morning the vigorous condemnation of his action in dealing a blow at the Government and the Unionist cause. The last decade of the century was full of eras both for "The Times" and the British nation and it closed with the death of Queen Victoria and the Door War. So far as the newspaper was concerned its troubles were inseparable from the troubles raised by the will of the first John Walter who divided the journalistic and printing sides of the business in a fashion which still has its effect in the great newspaper empire of the present day.

Maize prices have advanced sharply, and in the more positions Flax has risen to up by about 2/- a quarter. This improvement has been brought about by the falling off in the Argentine Flax shipments and the entire lack of offers of old crop maize.

Quotations for new crop have not appreciated to the same extent, but in sympathy with the weaker wheat prices are about 4/6 to 6/6.

South African teas have been sold at 18/6d. to 19/0d. in March and April shipments it is possible to buy at 18/0d.

**Wheat**

The market is firmer all round on rather better European demand and continuation of the Far Eastern buying of Prime and Australian wheats. 10/24/0d. No. 2, 10/24/0d. No. 3, 10/24/0d. No. 4, 10/24/0d. No. 5, 10/24/0d. No. 6, 10/24/0d. No. 7, 10/24/0d. No. 8, 10/24/0d. No. 9, 10/24/0d. No. 10, 10/24/0d. No. 11, 10/24/0d. No. 12, 10/24/0d. No. 13, 10/24/0d. No. 14, 10/24/0d. No. 15, 10/24/0d. No. 16, 10/24/0d. No. 17, 10/24/0d. No. 18, 10/24/0d. No. 19, 10/24/0d. No. 20, 10/24/0d. No. 21, 10/24/0d. No. 22, 10/24/0d. No. 23, 10/24/0d. No. 24, 10/24/0d. No. 25, 10/24/0d. No. 26, 10/24/0d. No. 27, 10/24/0d. No. 28, 10/24/0d. No. 29, 10/24/0d. No. 30, 10/24/0d. No. 31, 10/24/0d. No. 32, 10/24/0d. No. 33, 10/24/0d. No. 34, 10/24/0d. No. 35, 10/24/0d. No. 36, 10/24/0d. No. 37, 10/24/0d. No. 38, 10/24/0d. No. 39, 10/24/0d. No. 40, 10/24/0d. No. 41, 10/24/0d. No. 42, 10/24/0d. No. 43, 10/24/0d. No. 44, 10/24/0d. No. 45, 10/24/0d. No. 46, 10/24/0d. No. 47, 10/24/0d. No. 48, 10/24/0d. No. 49, 10/24/0d. No. 50, 10/24/0d. No. 51, 10/24/0d. No. 52, 10/24/0d. No. 53, 10/24/0d. No. 54, 10/24/0d. No. 55, 10/24/0d. No. 56, 10/24/0d. No. 57, 10/24/0d. No. 58, 10/24/0d. No. 59, 10/24/0d. No. 60, 10/24/0d. No. 61, 10/24/0d. No. 62, 10/24/0d. No. 63, 10/24/0d. No. 64, 10/24/0d. No. 65, 10/24/0d. No. 66, 10/24/0d. No. 67, 10/24/0d. No. 68, 10/24/0d. No. 69, 10/24/0d. No. 70, 10/24/0d. No. 71, 10/24/0d. No. 72, 10/24/0d. No. 73, 10/24/0d. No. 74, 10/24/0d. No. 75, 10/24/0d. No. 76, 10/24/0d. No. 77, 10/24/0d. No. 78, 10/24/0d. No. 79, 10/24/0d. No. 80, 10/24/0d. No. 81, 10/24/0d. No. 82, 10/24/0d. No. 83, 10/24/0d. No. 84, 10/24/0d. No. 85, 10/24/0d. No. 86, 10/24/0d. No. 87, 10/24/0d. No. 88, 10/24/0d. No. 89, 10/24/0d. No. 90, 10/24/0d. No. 91, 10/24/0d. No. 92, 10/24/0d. No. 93, 10/24/0d. No. 94, 10/24/0d. No. 95, 10/24/0d. No. 96, 10/24/0d. No. 97, 10/24/0d. No. 98, 10/24/0d. No. 99, 10/24/0d. No. 100, 10/24/0d. No. 101, 10/24/0d. No. 102, 10/24/0d. No. 103, 10/24/0d. No. 104, 10/24/0d. No. 105, 10/24/0d. No. 106, 10/24/0d. No. 107, 10/24/0d. No. 108, 10/24/0d. No. 109, 10/24/0d. No. 110, 10/24/0d. No. 111, 10/24/0d. No. 112, 10/24/0d. No. 113, 10/24/0d. No. 114, 10/24/0d. No. 115, 10/24/0d. No. 116, 10/24/0d. No. 117, 10/24/0d. No. 118, 10/24/0d. No. 119, 10/24/0d. No. 120, 10/24/0d. No. 121, 10/24/0d. No. 122, 10/24/0d. No. 123, 10/24/0d. No. 124, 10/24/0d. No. 125, 10/24/0d. No. 126, 10/24/0d. No. 127, 10/24/0d. No. 128, 10/24/0d. No. 129, 10/24/0d. No. 130, 10/24/0d. No. 131, 10/24/0d. No. 132, 10/24/0d. No. 133, 10/24/0d. No. 134, 10/24/0d. No. 135, 10/24/0d. No. 136, 10/24/0d. No. 137, 10/24/0d. No. 138, 10/24/0d. No. 139, 10/24/0d. No. 140, 10/24/0d. No. 141, 10/24/0d. No. 142, 10/24/0d. No. 143, 10/24/0d. No. 144, 10/24/0d. No. 145, 10/24/0d. No. 146, 10/24/0d. No. 147, 10/24/0d. No. 148, 10/24/0d. No. 149, 10/24/0d. No. 150, 10/24/0d. No. 151, 10/24/0d. No. 152, 10/24/0d. No. 153, 10/24/0d. No. 154, 10/24/0d. No. 155, 10/24/0d. No. 156, 10/24/0d. No. 157, 10/24/0d. No. 158, 10/24/0d. No. 159, 10/24/0d. No. 160, 10/24/0d. No. 161, 10/24/0d. No. 162, 10/24/0d. No. 163, 10/24/0d. No. 164, 10/24/0d. No. 165, 10/24/0d. No. 166, 10/24/0d. No. 167, 10/24/0d. No. 168, 10/24/0d. No. 169, 10/24/0d. No. 170, 10/24/0d. No. 171, 10/24/0d. No. 172, 10/24/0d. No. 173, 10/24/0d. No. 174, 10/24/0d. No. 175, 10/24/0d. No. 176, 10/24/0d. No. 177, 10/24/0d. No. 178, 10/24/0d. No. 179, 10/24/0d. No. 180, 10/24/0d. No. 181, 10/24/0d. No. 182, 10/24/0d. No. 183, 10/24/0d. No. 184, 10/24/0d. No. 185, 10/24/0d. No. 186, 10/24/0d. No. 187, 10/24/0d. No. 188, 10/24/0d. No. 189, 10/24/0d. No. 190, 10/24/0d. No. 191, 10/24/0d. No. 192, 10/24/0d. No. 193, 10/24/0d. No. 194, 10/24/0d. No. 195, 10/24/0d. No. 196, 10/24/0d. No. 197, 10/24/0d. No. 198, 10/24/0d. No. 199, 10/24/0d. No. 200, 10/24/0d. No. 201, 10/24/0d. No. 202, 10/24/0d. No. 203, 10/24/0d. No. 204, 10/24/0d. No. 205, 10/24/0d. No. 206, 10/24/0d. No. 207, 10/24/0d. No. 208, 10/24/0d. No. 209, 10/24/0d. No. 210, 10/24/0d. No. 211, 10/24/0d. No. 212, 10/24/0d. No. 213, 10/24/0d. No. 214, 10/24/0d. No. 215, 10/24/0d. No. 216, 10/24/0d. No. 217, 10/24/0d. No. 218, 10/24/0d. No. 219, 10/24/0d. No. 220, 10/24/0d. No. 221, 10/24/0d. No. 222, 10/24/0d. No. 223, 10/24/0d. No. 224, 10/24/0d. No. 225, 10/24/0d. No. 226, 10/24/0d. No. 227, 10/24/0d. No. 228, 10/24/0d. No. 229, 10/24/0d. No. 230, 10/24/0d. No. 231, 10/24/0d. No. 232, 10/24/0d. No. 233, 10/24/0d. No. 234, 10/24/0d. No. 235, 10/24/0d. No. 236, 10/24/0d. No. 237, 10/24/0d. No. 238, 10/24/0d. No. 239, 10/24/0d. No. 240, 10/24/0d. No. 241, 10/24/0d. No. 242, 10/24/0d. No. 243, 10/24/0d. No. 244, 10/24/0d. No. 245, 10/24/0d. No. 246, 10/24/0d. No. 247, 10/24/0d. No. 248, 10/24/0d. No. 249, 10/24/0d. No. 250, 10/24/0d. No. 251, 10/24/0d. No. 252, 10/24/0d. No. 253, 10/24/0d. No. 254, 10/24/0d. No. 255, 10/24/0d. No. 256, 10/24/0d. No. 257, 10/24/0d. No. 258, 10/24/0d. No. 259, 10/24/0d. No. 260, 10/24/0d. No. 261, 10/24/0d. No. 262, 10/24/0d. No. 263, 10/24/0d. No. 264, 10/24/0d. No. 265, 10/24/0d. No. 266, 10/24/0d. No. 267, 10/24/0d. No. 268, 10/24/0d. No. 269, 10/24/0d. No. 270, 10/24/0d. No. 271, 10/24/0d. No. 272, 10/24/0d. No. 273, 10/24/0d. No. 274, 10/24/0d. No. 275, 10/24/0d. No. 276, 10/24/0d. No. 277, 10/24/0d. No. 278, 10/24/0d. No. 279, 10/24/0d. No. 280, 10/24/0d. No. 281, 10/24/0d. No. 282, 10/24/0d. No. 283, 10/24/0d. No. 284, 10/24/0d. No. 285, 10/24/0d. No. 286, 10/24/0d. No. 287, 10/24/0d. No. 288, 10/24/0d. No. 289, 10/24/0d. No. 290, 10/24/0d. No. 291, 10/24/0d. No. 292, 10/24/0d. No. 293, 10/24/0d. No. 294, 10/24/0d. No. 295, 10/24/0d. No. 296, 10/24/0d. No. 297, 10/24/0d. No. 298, 10/24/0d. No. 299, 10/24/0d. No. 300, 10/24/0d. No. 301, 10/24/0d. No. 302, 10/24/0d. No. 303, 10/24/0d. No. 304, 10/24/0d. No. 305, 10/24/0d. No. 306, 10/24/0d. No. 307, 10/24/0d. No. 308, 10/24/0d. No. 309, 10/24/0d. No. 310, 10/24/0d. No. 311, 10/24/0d. No. 312, 10/24/0d. No. 313, 10/24/0d. No. 314, 10/24/0d. No. 315, 10/24/0d. No. 316, 10/24/0d. No. 317, 10/24/0d. No. 318, 10/24/0d. No. 319, 10/24/0d. No. 320, 10/24/0d. No. 321, 10/24/0d. No. 322, 10/24/0d. No. 323, 10/24/0d. No. 324, 10/24/0d. No. 325, 10/24/0d. No. 326, 10/24/0d. No. 327, 10/24/0d. No. 328, 10/24/0d. No. 329, 10/24/0d. No. 330, 10/24/0d. No. 331, 10/24/0d. No. 332, 10/24/0d. No. 333, 10/24/0d. No. 334, 10/24/0d. No. 335, 10/24/0d. No. 336, 10/24/0d. No. 337, 10/24/0d. No. 338, 10/24/0d. No. 339, 10/24/0d. No. 340, 10/24/0d. No. 341, 10/24/0d. No. 342, 10/24/0d. No. 343, 10/24/0d. No. 344, 10/24/0d. No. 345, 10/24/0d. No. 346, 10/24/0d. No. 347, 10/24/0d. No. 348, 10/24/0d. No. 349, 10/24/0d. No. 350, 10/24/0d. No. 351, 10/24/0d. No. 352, 10/24/0d. No. 353, 10/24/0d. No. 354, 10/24/0d. No. 355, 10/24/0d. No. 356, 10/24/0d. No. 357, 10/24/0d. No. 358, 10/24/0d. No. 359, 10/24/0d. No. 360, 10/24/0d. No. 361, 10/24/0d. No. 362, 10/24/0d. No. 363, 10/24/0d. No. 364, 10/24/0d. No. 365, 10/24/0d. No. 366, 10/24/0d. No. 367, 10/24/0d. No. 368, 10/24/0d. No. 369, 10/24/0d. No. 370, 10/24/0d. No. 371, 10/24/0d. No. 372, 10/24/0d. No. 373, 10/24/0d. No. 374, 10/24/0d. No. 375, 10/24/0d. No. 376, 10/24/0d. No. 377, 10/24/0d. No. 378, 10/24/0d. No. 379, 10/24/0d. No. 380, 10/24/0d. No. 381, 10/24/0d. No. 382, 10/24/0d. No. 383, 10/24/0d. No. 384, 10/24/0d. No. 385, 10/24/0d. No. 386, 10/24/0d. No. 387, 10/24/0d. No. 388, 10/24/0d. No. 389, 10/24/0d. No. 390, 10/24/0d. No. 391, 10/24/0d. No. 392, 10/24/0d. No. 393, 10/24/0d. No. 394, 10/24/0d. No. 395, 10/24/0d. No. 396, 10/24/0d. No. 397, 10/24/0d. No. 398, 10/24/0d. No. 399, 10/24/0d. No. 400, 10/24/0d. No. 401, 10/24/0d. No. 402, 10/24/0d. No. 403, 10/24/0d. No. 404, 10/24/0d. No. 405, 10/24/0d. No. 406, 10/24/0d. No. 407, 10/24/0d. No. 408, 10/24/0d. No. 409, 10/24/0d. No. 410, 10/24/0d. No. 411, 10/24/0d. No. 412, 10/24/0d. No. 413, 10/24/0d. No. 414, 10/24/0d. No. 415, 10/24/0d. No. 416, 10/24/0d. No. 417, 10/24/0d. No. 418, 10/24/0d. No. 419, 10/24/0d. No. 420, 10/24/0d. No. 421, 10/24/0d. No. 422, 10/24/0d. No. 423, 10/24/0d. No. 424, 10/24/0d. No. 425, 10/24/0d. No. 426, 10/24/0d. No. 427, 10/24/0d. No. 428, 10/24/0d. No. 429, 10/24/0d. No. 430, 10/24/0d. No. 431, 10/24/0d. No. 432, 10/24/0d. No. 433, 10/24/0d. No. 434, 10/24/0d. No. 435, 10/24/0d. No. 436, 10/24/0d. No. 437, 10/24/0d. No. 438, 10/24/0d. No. 439, 10/24/0d. No. 440, 10/24/0d. No. 441, 10/24/0d. No. 442, 10/24/0d. No. 443, 10/24/0d. No. 444, 10/24/0d. No. 445, 10/24/0d. No. 446, 10/24/0d. No. 447, 10/24/0d. No. 448, 10/24/0d. No. 449, 10/24/0d. No. 450, 10/24/0d. No. 451, 10/24/0d. No. 452, 10/24/0d. No. 453, 10/24/0d. No. 454, 10/24/0d. No. 455, 10/24/0d. No. 456, 10/24/0d. No. 457, 10/24/0d. No. 458, 10/24/0d. No. 459, 10/24/0d. No. 460, 10/24/0d. No. 461, 10/24/0d. No. 462, 10/24/0d. No. 463, 10/24/0d. No. 464, 10/24/0d. No. 465, 10/24/0d. No. 466, 10/24/0d. No. 467, 10/24/0d. No. 468, 10/24/0d. No. 469, 10/24/0d. No. 470, 10/24/0d. No. 471, 10/24/0d. No. 472, 10/24/0d. No. 473, 10/24/0d. No. 474, 10/24/0d. No. 475, 10/24/0d. No. 476, 10/24/0d. No. 477, 10/24/0d. No. 478, 10/24/0d. No. 479, 10/24/0d. No. 480, 10/24/0d. No. 481, 10/24/0d. No. 482, 10/24/0d. No. 483, 10/24/0d. No. 484, 10/24/0d. No. 485, 10/24/0d. No. 486, 10/24/0d. No. 487, 10/24/0d. No. 488, 10/24/0d. No. 489, 10/24/0d. No. 490, 10/24/0d. No. 491, 10/24/0d. No. 492, 10/24/0d. No. 493, 10/24/0d. No. 494, 10/24/0d. No. 495, 10/24/0d. No. 496, 10/24/0d. No. 497, 10/24/0d. No. 498, 10/24/0d. No. 499, 10/24/0d. No. 500, 10/24/0d. No. 501, 10/24/0d. No. 502, 10/24/0d. No. 503, 10/24/0d. No. 504, 10/24/0d. No. 505, 10/24/0d. No. 506, 10/24/0d. No. 507, 10/24/0d. No. 508, 10/24/0d. No. 509, 10/24/0d. No. 510, 10/24/0d. No. 511, 10/24/0d. No. 512, 10/24/0d. No. 513, 10/24/0d. No. 514, 10/24/0d. No. 515, 10/24/0d. No. 516, 10/24/0d. No. 517, 10/24/0d. No. 518, 10/24/0d. No. 519, 10/24/0d. No. 520, 10/24/0d. No. 521, 10/24/0d. No. 522, 10/24/0d. No. 523, 10/24/0d. No. 524, 10/24/0d. No. 525, 10/24/0d. No. 526, 10/24/0d. No. 527, 10/24/0d. No. 528, 10/24/0d. No. 529, 10/24/0d. No. 530, 10/24/0d. No. 531, 10/24/0d. No. 532, 10/24/0d. No. 533, 10/24/0d. No. 534, 10/24/0d. No. 535, 10/24/0d. No. 536, 10/24/0d. No. 537, 10/24/0d. No. 538, 10/24/0d. No. 539, 10/24/0d. No. 540, 10/24/0d. No. 541, 10/24/0d. No. 542, 10/24/0d. No. 543, 10/24/0d. No. 544, 10/24/0d. No. 545, 10/24/0d. No. 546, 10/24/0d. No. 547, 10/24/0d. No. 548, 10/24/0d. No. 549, 10/24/0d. No. 550, 10/24/0d. No. 551, 10/24/0d. No. 552, 10/24/0d. No. 553, 10/24/0d. No. 554, 10/24/0d. No. 555, 10/24/0d. No. 556, 10/24/0d. No. 557, 10/24/0d. No. 558, 10/24/0d. No. 559, 10/24/0d. No. 560, 10/24/0d. No. 561, 10/24/0d. No. 562, 10/24/0d. No. 563, 10/24/0d. No. 564, 10/24/0d. No. 565, 10/24/0d. No. 566, 10/24/0d. No. 567, 10/24/0d. No. 568, 10/24/0d. No. 569, 10/24/0d. No. 570, 10/24/0d. No. 571, 10/24/0d. No. 572, 10/24/0d. No. 573, 10/24/0d. No. 574, 10/24/0d. No. 575, 10/24/0d. No. 576, 10/24/0d. No. 577, 10/24/0d. No. 578, 10/24/0d. No. 579, 10/24/0d. No. 580, 10/24/0d. No. 581, 10/24/0d. No. 582, 10/24/0d. No. 583, 10/24/0d. No. 584, 10/24/0d. No. 585, 10/24/0d. No. 586, 10/24/0d. No. 587, 10/24/0d. No. 588, 10/24/0d. No. 589, 10/24/0d. No. 590, 10/24/0d. No. 591, 10/24/0d. No. 592, 10/24/0d. No. 593, 10/24/0d. No. 594, 10/24/0d. No. 595, 10/24/0d. No. 596, 10/24/0d. No. 597, 10/24/0d. No. 598, 10/24/0d. No. 599, 10/24/0d. No. 600, 10/24/0d. No. 601, 10/24/0







Germany's Military Air Force
A NEW LEGAL AND DIPLOMATIC PROBLEM

TOOTH TAKEN FROM LEG
Sequel to Struggle with Crocodile
Native's Bravery

THE JUBILEE FUND
An Indian Merchant's Public Spirit
SCHOOL COLLECTIONS

DEFENCE AS ISSUE IN BY-ELECTION
A Protest from Ruims
Effect of Ordinance

ATTACKED BY A LEOPARD
District Officer Badly Mauled
Tabara Incident

POSSIBLE ENGAGEMENT FOR ANIMAL
STANDARD CORRESPONDENT

Definite Infraction of Treaty
NOT LIKELY TO BE ACCEPTED IN SILENCE BY FRANCE

A MEAT COURSE THAT GOT AWAY!

The hands of the Jubilee Clock nearly stopped yesterday. At 10 o'clock the recorded figure was only 1,130.

UNABLE TO CELEBRATE JUBILEE
STANDARD CORRESPONDENT

A LABOUR ACCUSATION
STANDARD CORRESPONDENT

POSSIBLE ENGAGEMENT FOR ANIMAL
STANDARD CORRESPONDENT

The official announcement by Germany that her military air force will formally come into existence on April 1...

Of all the many things in the leg only one thing...

A prominent Indian merchant of Nairobi set an excellent example the other day to business people in the Capital...

The President, Mr. W. Webb, stated that the committee of the club had been unable to meet...

Mr. Lloyd George has decided to attend the Jubilee...

An unfortunate incident occurred at Igalla when Mr. S. V. Cooke, District Officer of Pabana...

It also raises a number of legal and diplomatic problems, which are at present under examination by the French Government...

Dental extractions from the leg are of such comparatively rare occurrence that the medical officer...

Mr. So he called in a member of the Committee and said: "So, you are having a difficult time collecting this money..."

It was intended that the club should provide a meeting place for the recreation and entertainment...

Mr. Lloyd George has decided to attend the Jubilee...

Mr. Cooke, phlegmically, pushed off the leopard, who managed to get off one shot, but before he was able to fire again...

Agreements of Rome and London
The admission is also a flagrant infraction of the Anglo-French communique of February 8...

An M'poko's native, on the edge of a rocky bank...

While appreciating the example which the children have set the adults by subscribing to school collections...

It was intended that the club should provide a meeting place for the recreation and entertainment...

Mr. Lloyd George has decided to attend the Jubilee...

Mr. Cooke, phlegmically, pushed off the leopard, who managed to get off one shot, but before he was able to fire again...

It is pointed out that this admission is an infraction of the Treaty of Versailles and raises a number of legal and diplomatic problems...

It was intended that the club should provide a meeting place for the recreation and entertainment...

There is not a great deal of time to decide whether Nairobi is going to be recorded among the Empire Capitals...

It was intended that the club should provide a meeting place for the recreation and entertainment...

Mr. Lloyd George has decided to attend the Jubilee...

Mr. Cooke, phlegmically, pushed off the leopard, who managed to get off one shot, but before he was able to fire again...

Available to Public Next Month
PICTORIAL DESIGNS
Provision for Air Mail Charge at 60 Cents

A Big Struggle
A forked fishing stick is a poor weapon, but it was used by Kivua and his pals...

THE GREEK REVOLT
Property of M. Venizelos Confiscated

THE JUBILEE CELEBRATIONS
High Standard of Native Soccer

REMINOTON INTER-DISTRICT CUP
Existing Conditions to Continue

THE WEATHER

The 'East African Standard' issues that the new postage stamp issues for Kenya, Uganda and Tanganyika will probably be available to the general public some time next month...

THE GREEK REVOLT
Property of M. Venizelos Confiscated

THE GREEK REVOLT
Property of M. Venizelos Confiscated

THE JUBILEE CELEBRATIONS
High Standard of Native Soccer

REMINOTON INTER-DISTRICT CUP
Existing Conditions to Continue

THE WEATHER

TORO PLANTERS
Lack of Co-operation in Labour

THE GREEK REVOLT
Property of M. Venizelos Confiscated

THE GREEK REVOLT
Property of M. Venizelos Confiscated

THE JUBILEE CELEBRATIONS
High Standard of Native Soccer

REMINOTON INTER-DISTRICT CUP
Existing Conditions to Continue

THE WEATHER

The following description of the new stamps appeared in a recent issue of the 'Standard' (Gibsons Monthly) a philatelist's magazine...

THE GREEK REVOLT
Property of M. Venizelos Confiscated

THE GREEK REVOLT
Property of M. Venizelos Confiscated

THE JUBILEE CELEBRATIONS
High Standard of Native Soccer

REMINOTON INTER-DISTRICT CUP
Existing Conditions to Continue

THE WEATHER

The following description of the new stamps appeared in a recent issue of the 'Standard' (Gibsons Monthly) a philatelist's magazine...

THE GREEK REVOLT
Property of M. Venizelos Confiscated

THE GREEK REVOLT
Property of M. Venizelos Confiscated

THE JUBILEE CELEBRATIONS
High Standard of Native Soccer

REMINOTON INTER-DISTRICT CUP
Existing Conditions to Continue

THE WEATHER

Advertisement for White Horse Whisky, featuring a bottle illustration and text: 'The prescription for sundown', 'White Horse dispels fatigue and revives flagging energies...', 'POCKET FLASKS! POPULAR PRICES! WHITE HORSE WHISKY'.





The FAMOUS English KYNOD SCARVES

In a variety of LATEST DESIGNS.

NOW ARRIVED. INSPECTION INVITED.

Ahamed Bros

Phone 2201 The House of Distinction. Bazaar, NAIROBI. P.O. Box 254

MOTHER you watched him clean his teeth but — is his MOUTH safe?



Use all "Gibbs" teeth are thereby made safe from decay. A course of the best polishing... definition that ensures SAFE MOUTH.

Gibbs TOOTH PASTE AND SOLID DENTIFRICE YOUR CHEMIST STOCKS IT

PURE INDIA TEA Combines the Three Necessary Qualities—STRENGTH, AROMA, QUALITY. ROBBY ROY TEA

M. S. ELLIOT & Co., Ltd. Box 175, Phone 2080.

Original Macdonald Permanent Wavers in Kenya. THEO. SCHOUTEN NEW STANLEY ARCADE.

CORRESPONDENCE

The Editor, "E.A. Standard," Sir—I really had to read "conventional" that we are bound to be relegated to the dusty...

"CONVENTIONAL" To The Editor, "E.A. Standard," Sir—I really had to read "conventional" that we are bound to be relegated to the dusty...

A 'CURSE' OF KENYA To The Editor, "E.A. Standard," Sir—I have read a good many letters written to your paper...

THE PROGRESSIVE MOVEMENT

To The Editor, "E.A. Standard," Sir—From an meeting of the Committee of the Progressive Movement...

INDIAN EDUCATION

To The Editor, "E.A. Standard," Sir—I am glad to see the new scale of grades in regard to the wages of the Assistant in the Service...

When the question of raising the wages of Assistant in the Service...

When the question of raising the wages of Assistant in the Service...

When the question of raising the wages of Assistant in the Service...

When the question of raising the wages of Assistant in the Service...

When the question of raising the wages of Assistant in the Service...

SOUTH AFRICA'S DRIED FRUITS are still UNSURPASSED. All enquiries connected with South African Products should be addressed to The South Africa Office, Memorial Hall, Box 624, NAIROBI, Kenya Colony.

Gilbey's "Invalid" Port. An exceptionally fine specimen of PORT WINE. A full "plummy" wine suitable for all occasions.

Lunch and Dinner at HOTEL AVENUE À la carte

SUNDOWNER DANCES WEDNESDAYS and SATURDAYS SVD. ZIEGLER'S BAND.

It may surprise you to know THAT although D.R. Minors are made of as mild Virginia tobaccos as are used in the most expensive De Reszke... De Reszke MINORS

A Good Garden IMPROVES THE VALUE OF YOUR PROPERTY. Barter's TESTED SEEDS. Choice Flower and Vegetable SEEDS. GAILEY & ROBERTS Ltd. NAIROBI and All Branches.



NEW SEVEN & SIXPENNY NOVELS SHS. 5-00 EACH

AN OPPORTUNITY FOR LIBRARIES & CLUBS.

Only a few of each title in stock. ORDER NOW.

- The Fourth Dagger, by Luke Alan. Love's Bondage, by P. Danforth. Karro Bloom, by Marie Stuart Doremus. Mr. Bobbit, by Francis Bonding. Three Blind Mice, by Violet Nichols. Sergeant Roundabout, by Mrs. Brown. Chocknick Lances Carries on, by L. Patrick Green. The Flame, by L. Patrick Green. Forbidden Valley, by L. Patrick Green. David and Dobby, by Ian Hay. The Prince of Phindry, by Sydney Horner. Cousins of the Stars, by Peter B. Kemp. Hissmas, by Bernard Newman. The Secret Years, by Hugh Bondington. Sons of Solomon, by C. Lockard Kirk. High Fives, by G. Ross & H. Hildred. King of Kite Folly, by W. Wiley. The Middle Things, by Richard Crompton. Hutton Brain, by J. Storer Clouston. One House, by James Ostrage. The Bell Street Murderer, by Stanley Fawcett. The Village Pumpmaker, by J. Cecil Compton. William the Ganger, by Richard Crompton. Golden Rod, by H. M. E. Clancy. The Flaming Wilderness, by Edwidge Collins. The Treasure of Big Water, by Edwidge Collins. The Street of Painted Lips, by Maurice Delehaye. Wooden Swords, by David. Dr. Hilditch's Heritage, by Sydney Fawcett. Heir's Harrow, by Joan Fawcett. The Cavaliers of Dawn, by Ian Fawcett. For the Defence, Dr. Thornycroft, by J. Freeman Anthony. The Hawk Kille Outfit, by Zaida Gray. The Trial of Dagny, by William Melrose. The Album, by Mary Roberts Rinehart. Into the Fire, by Thomas Bond. Sudden Sweetheart, by P. J. Binnett. The Marriage Comedy, by H. H. A Lady of Leisure, by Eric Simonson. The Labyrinth, by Ian Fawcett. In Desperation, by E. W. Sidel. The Girl of the Golden Reef, by H. H. Van Stempelen. The Farmer of Lakkertat, by N. S. Stevenson. How Like a God, by P. E. Mills Young. Hersel M. P. Margaret Balfour Saunders, by F. E. Mills Young. The Venetian Stranger, by N. S. Stevenson. Vivant Returns, by Sydney Horner. The Man from the Bush, by Cecilia Stanger & Joseph Heath. The Dreads Trail, by Beatrix High. Edgy and Edward, by The Duchess son Hutton Solassy Stories, by Tomoyasu Jesso. Four Generations, by Naomi Jacobs. The Box From Japan, by Harry Stephen Keeler. Lord of Loosey Valley, by Peter B. Kemp. The Silver Chalice, by Vernon Lindsay. The Memories of Stephen Enderby, by Kathleen Lindsay. North the Southern Cross, by Kathleen Lindsay. Jenny Newman, by H. H. Van Stempelen. Open Till Sunset, by D. M. L. Moore. Tulwar's Mill, by Patrick Maguire. A Sop o' Moushies, by John MacCallum.

FAVOURITES OUT OF THE CUP

Possibility of 'County Palatine' Final. TEMPEST PRAYED AT 'THE HAWTHORNS'

It is always the two most decided not to risk playing Hopedale, and there is no doubt that the loss of his standing in the county would be a heavy blow to the club. It is a pity that the club is not more successful in its efforts to secure a representative of the county in the cup. The fact that the club is not more successful in its efforts to secure a representative of the county in the cup is a pity. The fact that the club is not more successful in its efforts to secure a representative of the county in the cup is a pity.

Overthrow of the Arsenal was not such a tremendous surprise as the success of Bolton at Division One. They are talking in Lancashire about the chance of another County Palatine final. We had one two seasons ago when Everton defeated Manchester City.

Not a Classic Game. At Hithorath, there were thrills in plenty, but the game was

NATIONAL HUNT MEETING AT CHELTENHAM

Success of Lady Owners. TWO WINS FOR J. ANTHONY'S STABLE

Mr. Maurice Broomston advances the following results: National Hunt Steeplechase 4 Miles. Mr. J. H. Whitney's B. G. BOD AND GUN, P. Fisher -Hester, Bloom, 12.5.

The Best of the Ties. The tie at Hovingdean was one of the most exciting for many years. At the outbreak of the tie, the two sides that the spectators would win, and it was not long before the result was a draw.

At West Hovingdean, the Arsenal did not have the best day, as expected. This put the finishing touch on an attack in the first half that gave the home side a lead against North End. That was all the scoring there was before the end of the match, and the Arsenal were leading two to one.

DRY NAKURU

Nakuru is terribly short of rain and the country and the gardens around Nakuru are suffering. Although Nakuru has had some rain, it is not enough to make the crops grow. The water is very scarce and the people are suffering.

At Hithorath, there were thrills in plenty, but the game was

LONDON STOCK EXCHANGE PRICES

STANDARD CORRESPONDENT. London, March 25. Following are prices of selected stock listed on the London Stock Exchange on March 25, 1965. The figures are approximate values on quotations on the London Stock Exchange.

Table with columns for BANKS, INDUSTRIAL, and other stock categories. Includes entries like Bank of India, Commercial Union, etc.

Table with columns for BANKS, INDUSTRIAL, and other stock categories. Includes entries like Bank of India, Commercial Union, etc.

Table with columns for BANKS, INDUSTRIAL, and other stock categories. Includes entries like Bank of India, Commercial Union, etc.

Table with columns for BANKS, INDUSTRIAL, and other stock categories. Includes entries like Bank of India, Commercial Union, etc.

Table with columns for BANKS, INDUSTRIAL, and other stock categories. Includes entries like Bank of India, Commercial Union, etc.

Table with columns for BANKS, INDUSTRIAL, and other stock categories. Includes entries like Bank of India, Commercial Union, etc.

THE POPULARITY OF WAYSIDE & RED SEAL TOBACCO increases daily.

WHOLESALE STOCKS FROM BLACKLAW & BROWN. Tel. No. NAIROBI. Box No. 2081. Grams: "Blacklaws" 468.

AT MOST STORES. FRY'S CHOCOLATE. FIVE FOR A SHILLING.

GRAHAM DAWSON & Co. Box 216, Nairobi.

Loose Covers. We have got a large range of... CRETONNES, and CASEMENTS for Curtains and Loose Covers. Also Curtain Lin in Beautiful Colour.

Loose Covers. We have got a large range of... CRETONNES, and CASEMENTS for Curtains and Loose Covers. Also Curtain Lin in Beautiful Colour.

INDIGESTION. Stop it before it starts. Start the NEW YEAR with a KIMOC. FOR ELEGANCE AND ACCURACY YOU CANNOT GO WRONG. R. LAMBOURN. Watchmaker and Jeweller, Government Road, NAIROBI.

COFFEE TREE BANDING GREASE. AT - MADATALLY SULEMAN VERJEE and SONS, Government Road - NAIROBI - P.O. Box 12

THE FINEST TYRES MADE. BALETTY & COMPANY, LIMITED, AND DEALERS. TO MINERS. SHAMBA MEDICINES in conformity with Government regulations. ACIDS, Hydrochloric, Nitric, Sulphuric, (Pure and Commercial), Ammon. Forte., Cyanide of Sodium. Antiseptic disinfectant, concentrated, as well as ready for use. Distilled water in any quantity. Get our Quotations before buying elsewhere. A. J. JELLY & CO., LTD., Chemists and Druggists, NAIROBI - KAEAMBOA.

INDIGESTION. Stop it before it starts. Start the NEW YEAR with a KIMOC. FOR ELEGANCE AND ACCURACY YOU CANNOT GO WRONG. R. LAMBOURN. Watchmaker and Jeweller, Government Road, NAIROBI.

THE EAST AFRICAN ANNUAL. The Editor will be pleased to consider contributions such as Articles, Photographs, Sketches in black and white, etc. of topical interest and for the forthcoming year. Payment will be made for all matter published.

THE EAST AFRICAN ANNUAL. The Editor will be pleased to consider contributions such as Articles, Photographs, Sketches in black and white, etc. of topical interest and for the forthcoming year. Payment will be made for all matter published.



BEER BUILT  
BRITAIN  
TUSKER  
is building  
KENYA  
KENYA BREWERIES Limited

# Kenya Standard

UGANDA ARGUS. With which is incorporated THE LEADER.

GUARANTEED THE LARGEST CIRCULATION OF ANY NEWSPAPER IN KENYA, UGANDA, TANGANYIKA AND ZANZIBAR.

NAIROBI, SATURDAY, MARCH 10, 1935.

LUXURY  
WITHOUT  
EXTRAVAGANCE.  
PRICE 25 CENTS.

## Jubilee Celebrations in the Capital

### DETAILS OF THE FINAL PROGRAMME

#### Processions and Sports

**TREE PLANTING CEREMONY IN THE NEW CITY SQUARE**

Arrangements for the celebration of the King's Jubilee in Nairobi have been completed. They follow the lines indicated in the article published in the "East African Standard" a few days ago.

The aim is to make the occasion as far as possible an impressive one for the children, but in addition there will be events which should prove of great interest to citizens.

### A Good Time for the Children

- The programme is as follows—
- Monday, May 6**
    - 9.30 a.m.—Parade of Troops—Government House Grounds
    - 11.30 a.m.—Ceremonial Service at the Cathedral.
    - 3.30 p.m.—Sports, also, performance of musicals by the Indian School girls in the City Park.
    - 4.00 p.m.—Cinema Exhibition for European Children at the Princess Theatre.
    - 6.00 p.m.—Inauguration of the King's Square, 7.30 p.m.—A little concert.
    - 8.00 p.m.—Theatrical Performance.
    - 9.15 p.m.—Dance, in the vicinity of the P.O. office, the K.A.B. Band will be in attendance and arrangements will be made for Citizens' Singing.
  - Tuesday, May 7**
    - 4.00 p.m.—Garden Party at Government House.
  - Wednesday, May 8**
    - 11.00 a.m.—Opening of New Law Courts.
    - 3.30 p.m.—Sports etc., Presentation of medals to European School Children in Sports Ground, opposite Government House.
    - 4.00 p.m.—Cinema Exhibition for Indian School Girls at Princess Theatre.
  - Thursday, May 9**
    - 3.00 p.m.—Procession of decorated cars—headed by the Police Band.
    - 4.00 p.m.—Opening of the new Municipal Office.
    - 5.30 p.m.—Tree planting in City Square. Tree planting will be done at all the various schools—not necessarily at this particular hour.
    - 8.45 p.m.—Boxing Competition—Municipal Stadium.
  - Friday, May 10**
    - 10.00 a.m.—Procession of the K.A.B. Police Girl Guides. The Scouts headed by band of the K.A.B. through principal thoroughfares.
    - 3.30 p.m.—Cinema exhibition at the Princess Theatre for Indian School Boys.
    - 8.45 p.m.—Wrestling competition—Municipal Stadium.
  - Saturday, May 11**
    - 4.30 p.m.—Association Football Match.
    - Sports—Indian School Boys on their Sports Ground.
    - 9.00 p.m.—Jockey Club Dance.
  - Sunday, May 12**
    - 10.30 a.m.—Civil Service at St. Andrew's Church.
    - 12.00 noon.—Dramatic sketch giving service in Government House Grounds.
    - "Conditionally upon the building being completed in time."

## RICHO OF NAZI REVOLT IN AUSTRIA

### Ex-Minister Receives a Life Sentence

NO APPEAL

[THROUGH AUSTRIA'S AGENCY.]  
Vienna, March 10.—Dr. Rittelen, the ex-Austrian Minister to Rome has been found guilty and sentenced to life imprisonment on charges of complicity in the Nazi attempt to effect a coup d'etat last July when Dr. Dollfus the Chancellor was assassinated.

While a verdict of "guilty" was expected the sentence of life imprisonment on Dr. Rittelen is regarded as surprisingly severe in view of Dr. Rittelen's past services. No appeal can be made against the sentence of the military court which tried him and the only hope of mitigation lies with the Chancellor, Dr. Schuschnigg.

A great crowd outside the court anxiously awaited the result of the trial.

## MR. LLOYD GEORGE

### A Request to the Prime Minister

[THROUGH AUSTRIA'S AGENCY.]  
London, March 10.—Mr. Lloyd George has forwarded his "New Deal" proposals to the Prime Minister. They are contained in a memorandum of over a hundred typewritten pages. In a covering letter Mr. Lloyd George says that he assumes that Government will offer him an opportunity of appearing before the Committee of the Commons to which the proposals will be referred for examination.

The terms of the memorandum will not be published until Government has made its reply known.

## NORWOOD BY-ELECTION

### Conservative Majority Greatly Reduced

[THROUGH AUSTRIA'S AGENCY.]  
London, March 10.—Following is the result of the Parliamentary by-election for the Norwood Division of Lambeth contested by the appointment of Sir W. Greaves-Lord, K.C., as a Member of Parliament.

Mr. Duncan Sandys	10,117
Mr. Gould (Lab.)	12,790
Mr. Bishop (Finlay)	2,006
(Ind. C.)	2,006
Nat. Con. Maj.	3,816

The following were the figures of the General Election in 1931:

Sir W. Greaves-Lord	30,851
Mrs. A. J. Amey	7,217
(Lab.)	1,100
Cons. majority	23,634

## ABYSSINIAN DISPUTE

### Denial of Hitch in Negotiations

[THROUGH AUSTRIA'S AGENCY.]  
Rome, March 10.—Reports that the Italo-Abyssinian negotiations for a settlement of the dispute between the two countries are on the verge of breaking down are officially denied.

An Italian Government spokesman in London yesterday said that the Abyssinian Government had requested that direct negotiations be abandoned and that outstanding questions namely the delimitation of the frontier and the Italian claims for indemnity for the Cal Cal incidents should be discussed by the International Committee of Reconciliation.

## BRITAIN'S NAVAL POLICY

### Attitude Towards Limitation Proposals

### Plans for His Departure

### Leaving on Tuesday

### GUARD OF HONOUR AT THE STATION

His Excellency the Governor, who is proceeding on short leave of absence, will leave Nairobi by the 4.15 p.m. train on Tuesday and will embark for England via the Cape on a "Llandaf Castle" immediately on arrival at Kilindini on the morning of Wednesday.

Lady Byrne will remain in Nairobi for a short while and will go to Cape Town to join His Excellency for the voyage from Cape Town to England.

His Excellency will be accompanied by his daughter, Mrs. Wilks, his cousin, Mrs. John Byrne, and so far as Mr. Mombasa, by the Private Secretary.

A Guard of Honour will be mounted at Nairobi Station by the 3rd Battalion King's African Rifles and at Kilindini Harbour by the Kenya Police.

## Battleships Firing Broadside during Manoeuvres

[THROUGH AUSTRIA'S AGENCY.]  
London, March 10.—In the House of Commons today in introducing the Navy Estimates the First Lord of the Admiralty, Sir Bolton Eyre-Mountbatten announced that the preliminary conversations with other Naval Powers to prepare the ground for the approaching Naval Conference had been most happy and very friendly contact had been established with all delegations.

While they were disappointed that Japan intended to enter the conference, Sir Bolton Eyre-Mountbatten said it was not to be feared that the main intention of the Washington Treaty would be perpetuated.

## Limitation Methods

The ideal of the Naval Conference would be to establish an equilibrium for defence between the Naval Powers whereby no power would be in a position easy to overcome by the other. Britain while recognizing that such a form of quantitative limitation was necessary attached the greatest importance to qualitative limitation. Britain could not reduce the number of her warships further but was anxious to join in an international agreement for the reduction of force. Britain would like to see capital ships limited to 20,000 tons with 12 inch guns together with the abolition of 8 inch gun cruisers and submarines, while the maximum displacement for all future cruisers might be fixed at 7,000 tons with 6 inch guns.

By the end of 1935 Britain would have built up to the total replacement tonnage allowed under the London Treaty for cruisers and destroyers that permitted for submarine tonnage, but Britain deliberately has not taken all the replacement tonnage in regard to destroyers.

Britain would like to see air craft-carriers limited to about 20,000 tons with six inch guns.

## Britain's Peace Policy

The First Lord concluded his speech by vigorously protesting against any suggestion which might be taken to the disadvantage of the increase in the defence expenditure to meet the Government's "war programme." The Government had striven for peace, but he was sure that the British people would stand by the Government.

There was no doubt that Britain did not lack any war material, and that it was essential to improve the defence of the fleet against air attack.

The programme of new construction was government by the terms of the Treaty of London, and consisted of normal replacements.

Britain's Peace Policy

The First Lord concluded his speech by vigorously protesting against any suggestion which might be taken to the disadvantage of the increase in the defence expenditure to meet the Government's "war programme." The Government had striven for peace, but he was sure that the British people would stand by the Government.

There was no doubt that Britain did not lack any war material, and that it was essential to improve the defence of the fleet against air attack.

The programme of new construction was government by the terms of the Treaty of London, and consisted of normal replacements.

## HIS EXCELLENCY THE GOVERNOR

### Plans for His Departure

### Leaving on Tuesday

### GUARD OF HONOUR AT THE STATION

His Excellency the Governor, who is proceeding on short leave of absence, will leave Nairobi by the 4.15 p.m. train on Tuesday and will embark for England via the Cape on a "Llandaf Castle" immediately on arrival at Kilindini on the morning of Wednesday.

Lady Byrne will remain in Nairobi for a short while and will go to Cape Town to join His Excellency for the voyage from Cape Town to England.

His Excellency will be accompanied by his daughter, Mrs. Wilks, his cousin, Mrs. John Byrne, and so far as Mr. Mombasa, by the Private Secretary.

A Guard of Honour will be mounted at Nairobi Station by the 3rd Battalion King's African Rifles and at Kilindini Harbour by the Kenya Police.

## MR. JAMES MAXTON, M.P.

### Married to Private Secretary

[THROUGH AUSTRIA'S AGENCY.]  
London, March 10.—Without ceremony and about twenty Mr. James Maxton, the well-known "Typhoon" Socialist M.P., was married to Miss Madeline Gwyn, who has been his voluntary secretary for eleven years. Both are 49 years of age.

Mr. Maxton was at the House of Commons yesterday morning (Committee work and left there for the registry office.

## Modernisation Ours

Although the United States had maintained 10 out of their 15 battleships at a cost of \$100,000,000, and it was anticipated that Japan would modernise all her capital ships by 1937, only one British battleship had been brought up to date.

The increase of 35,000,000 in the present estimates compared with last year's was no increase in the size of the fleet and would be taken up in repairs and modernisation of the fleet, the restriction of economy cuts in particular services, re-organising making up serious deficiencies in equipment and stores, and the limited expansion of the fleet air arm which was essential to improve the defence of the fleet against air attack.

The programme of new construction was government by the terms of the Treaty of London, and consisted of normal replacements.

## Germany's Plans for Air Defence

### FORMIDABLE BASES TO PROTECT TOWNS

### Aircraft Works Busy

With characteristic thoroughness Germany is carrying out plans for making the country practically impervious to attack from the air.

In addition to great aerial bases near the big towns, laws are being prepared making it compulsory for the public to join in air defence exercises, while every cinema programme in the future will contain a lecture on air protection.

## Training the Public

[THROUGH AUSTRIA'S AGENCY.]  
Berlin, March 10.—The proposal of an adequately trained Air Defence Force with the vigorous drilling of every member of the public in air defence and protection are the chief plan to Germany's programme against an attack. Following general mobilisation that a military Air Force will be formally established on May 1.

The Junker Aircraft Works at Dessau reported to be working at full pressure.

The Air Ministry is preparing new air protection laws under which it will be possible to compel citizens to participate in air exercises while brief talks before air-raid protection committees are compulsory features of cinema programmes.

## New Barracks

Great new barracks are now being erected near large towns to accommodate the newly formed squadrons of the Flying Corps and over a dozen such bases will be built around Berlin alone, forming a formidable ring of defences for the heart of the nation.

## THE BUDGET

### To be introduced on April 15

[THROUGH AUSTRIA'S AGENCY.]  
London, March 10.—In the House of Commons today Mr. Stanley Baldwin announced that the Budget would be introduced on April 15.

## ROYAL ROMANCE

### Crown Prince of Denmark Engaged

[THROUGH AUSTRIA'S AGENCY.]  
Stockholm, March 10.—It is officially announced that Princess Ingrid of Sweden has been betrothed to Prince Frederik, the Crown Prince of Denmark.

## THEFT OF GOLD

### A Septuagenarian Charged

[THROUGH AUSTRIA'S AGENCY.]  
London, March 10.—A third man, John O'Hara, aged 74 described as a dealer, was charged with the theft of gold from the Crofton Auctioneers on March 6. He was remanded in custody until Thursday.

## WAR PENSIONS

### Progressive Natural Reduction

[IN WRITERS.]  
Brighton, March 10.—Further Civil Estimates issued yesterday show a saving of £30,000 on the estimate for the Ministry of Pensions, which are being progressively reduced in the cost of war pensions. British Official War Pension Services.

## ROAD SAFETY

### Vigorous Enforcement of Speed Limit

[IN WRITERS.]  
Brighton, March 10.—A welcome reduction in the number of persons killed on British roads takes next week a satisfactory feature on the eve of the introduction of the 30 miles per hour speed limit in built-up areas, which represents the Minister of Transport's "move in safety movement." The total of deaths at 94 is the lowest figure recorded since the return of road casualties after the war began a year ago.

Meanwhile preparations continue for the rigorous enforcement of the speed limit from next Monday, despite considerable opposition throughout the country. Police proposals for disguised police notice patrols. Provisional arrangements have been made to set up two special police courts in London to hear cases arising from the enforcement of the speed limit—British Official War Pension Services.

## RATES OF EXCHANGE

The following rates of exchange were announced by the London Bankers yesterday—  
Nairobi 1/10  
London on Paris 7 1/2  
London on New York 4 7/8  
Bombay T.T. on London 1/2 1/2

# More miles to the gallon, More miles in a day, More Power—more Speed— On the PRATTS HIGH-way!

THAT'S PRATTS

Pratt's HIGH TEST PETROL

IN COMPANY WITH GARGOYLE MOBILOIL

VACUUM OILS COMPANY OF SOUTH AFRICA LIMITED





# BUILDING IN ALL ITS BRANCHES.

ALTERATIONS,  
ADDITIONS,  
RENOVATIONS.

PAINTING,  
DECORATING,  
PLUMBING &  
SANITATION.

DOORS,  
WINDOWS,  
JOINERY, etc., etc.

HARDWARE & ALL ACCESSORIES.

Plate Glass & Window Glass  
(cut to sizes).  
Motor Car Windcreens made to order.

## Geo. Blowers

BUILDER and CONTRACTOR.  
SADLER STREET, NAIROBI.  
P.O. Box 959 Tel. Addis-Concrete Telephone 2484

**THE WORLD'S PRECISION RECORD**  
is held by



**OMEGA**

Be the Proud Owner of the Finest Piece of Mechanism  
OBTAINABLE IN E. AFRICA

### D. Lyall

Watchmaker and Jeweller.  
Government Road, NAIROBI.  
P.O. Box 1114.

# C H E S S

(By A. H. Spencer Palmer Life Member British Chess Federation, P.O. Box 76, Nairobi).

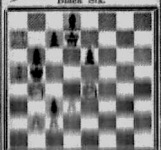
Letters relating to this column should be marked CHESS and posted direct to him.

**PROBLEM No. 1636**  
By J. Van Dijk.  
1st Prize, "Literary Digest", 1926.  
Black Five.



White Ten.  
White mates in two moves.

**PROBLEM No. 1637.**  
By J. J. Hietveld.  
Black Six.



White Eight.  
White mates in three moves.

**SOLUTIONS**  
Keymoves—No. 1632, 1. B-c6 check! No. 1633, 1. Q-B1.

**Problem No. 1619, Havel, Key, 1. B-d1.**  
If 1...K-c3; 2. Q-c5, K-d2; 3. Q-c3 mate.  
If 1...K-c2; 2. Q-c3 ch. etc.  
If 1...B-d3; 2. Q-d4, etc.  
If 1...B-c2; 2. Q-d2! etc.

"Beautiful, but I found it very difficult," said Mr. E. Heap of Dundee. It has many good points, quiet Key making way for the Queen, echoed play in reply to Bishop variations, and a most alluring trap in 1. Q-d3, beaten only by 1...B-d1.

The position was—White King, Qd4, Bc4, g4. Black King, f8. White mates in three.

Solutions received from E. Heap, G. Tanner, and C. A. Forster.

Letters relating to this column should be marked CHESS and posted direct to him.

**Problem No. 1620, Havel, Key, 1. B-d1.**  
If 1...K-c3; 2. Q-c5, K-d2; 3. Q-c3 mate.  
If 1...K-c2; 2. Q-c3 ch. etc.  
If 1...B-d3; 2. Q-d4, etc.  
If 1...B-c2; 2. Q-d2! etc.

"Beautiful, but I found it very difficult," said Mr. E. Heap of Dundee. It has many good points, quiet Key making way for the Queen, echoed play in reply to Bishop variations, and a most alluring trap in 1. Q-d3, beaten only by 1...B-d1.

The position was—White King, Qd4, Bc4, g4. Black King, f8. White mates in three.

Solutions received from E. Heap, G. Tanner, and C. A. Forster.

**KENYA CHAMPIONSHIP 1933**  
The 11th Annual Championship was held at Nairobi on the 15th and 16th inst.

It is interesting to note that the 11th Annual Championship was held at Nairobi on the 15th and 16th inst.

It is interesting to note that the 11th Annual Championship was held at Nairobi on the 15th and 16th inst.

It is interesting to note that the 11th Annual Championship was held at Nairobi on the 15th and 16th inst.

It is interesting to note that the 11th Annual Championship was held at Nairobi on the 15th and 16th inst.

It is interesting to note that the 11th Annual Championship was held at Nairobi on the 15th and 16th inst.

It is interesting to note that the 11th Annual Championship was held at Nairobi on the 15th and 16th inst.

It is interesting to note that the 11th Annual Championship was held at Nairobi on the 15th and 16th inst.

It is interesting to note that the 11th Annual Championship was held at Nairobi on the 15th and 16th inst.

It is interesting to note that the 11th Annual Championship was held at Nairobi on the 15th and 16th inst.

It is interesting to note that the 11th Annual Championship was held at Nairobi on the 15th and 16th inst.

It is interesting to note that the 11th Annual Championship was held at Nairobi on the 15th and 16th inst.

It is interesting to note that the 11th Annual Championship was held at Nairobi on the 15th and 16th inst.

one came with every other player. There are eight competitors. The first round will take place on Thursday, 21st of March. The pairing is as follows: the first named having the White men—W. F. Bortock vs. White men; G. S. Davidson, Mrs. T. A. Wood vs. G. Tanner; C. A. Hietveld vs. G. W. Davidson; A. H. Spencer Palmer vs. T. E. Davidson.

**BRITISH CHESS FEDERATION**  
The Executive Committee met on Saturday 10th February at Anderson's Hotel, London, with Major Montague Jones in the Chair, each unit well represented.

The Southern Counties Chess Union submitted an invitation from Great Yarmouth to the B.C.F. to hold the 1935 Congress in that town for the fortnight 28th-30th July, which was accepted with thanks. It was further decided that the Congress should include the usual annual features: the British Championship, British Ladies' Championship, Major Open and the three Classes. The programme will be issued in due course, and Thursday June 21st is the closing date for entries which will be dealt with on June 22nd.

It was decided to send a team of five players to compete in the Women's World Championship at Warsaw, 15th-30th August next, and at least one player in the Empire Chess Federation competition, if one is held. It was further decided to send a team of five players to compete in the Women's World Championship at Warsaw, 15th-30th August next, and at least one player in the Empire Chess Federation competition, if one is held.

It was further decided to send a team of five players to compete in the Women's World Championship at Warsaw, 15th-30th August next, and at least one player in the Empire Chess Federation competition, if one is held.

It was further decided to send a team of five players to compete in the Women's World Championship at Warsaw, 15th-30th August next, and at least one player in the Empire Chess Federation competition, if one is held.

It was further decided to send a team of five players to compete in the Women's World Championship at Warsaw, 15th-30th August next, and at least one player in the Empire Chess Federation competition, if one is held.

It was further decided to send a team of five players to compete in the Women's World Championship at Warsaw, 15th-30th August next, and at least one player in the Empire Chess Federation competition, if one is held.

It was further decided to send a team of five players to compete in the Women's World Championship at Warsaw, 15th-30th August next, and at least one player in the Empire Chess Federation competition, if one is held.

It was further decided to send a team of five players to compete in the Women's World Championship at Warsaw, 15th-30th August next, and at least one player in the Empire Chess Federation competition, if one is held.

It was further decided to send a team of five players to compete in the Women's World Championship at Warsaw, 15th-30th August next, and at least one player in the Empire Chess Federation competition, if one is held.

It was further decided to send a team of five players to compete in the Women's World Championship at Warsaw, 15th-30th August next, and at least one player in the Empire Chess Federation competition, if one is held.

It was further decided to send a team of five players to compete in the Women's World Championship at Warsaw, 15th-30th August next, and at least one player in the Empire Chess Federation competition, if one is held.

It was further decided to send a team of five players to compete in the Women's World Championship at Warsaw, 15th-30th August next, and at least one player in the Empire Chess Federation competition, if one is held.

## WHITEAWAYS GREAT SHILLING VALUES



**"LANGHAM IVORY"**  
Writing Pads, smooth surface paper, Blue or Cream, 70 sheets 9" x 7" British made. SH. 1/- EACH  
Small size Pads, 55 sheets, 7" x 4" 2 FOR SH. 1/-

**"SWISH"** easy cut Grass-proof Paper, the ideal food wrapping for picnics and safes, cutting edge to box, 12 inch, 40 foot continuous length. SH. 1/- box

**"LANGHAM IVORY"**  
Stationery, smooth surface paper, Blue or Cream, 9" x 7", 30 sheets and Compendium of British envelopes SH. 1/- EACH  
Small size Compendiums, 7" x 4", 45 sheets and envelopes SH. 1/- EACH



**Montic Value**  
WRITING PAD  
225 sheets  
WHITEAWAYS LANE, ADELPHI, LONDON, W.C.2



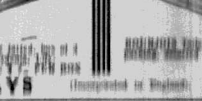
**"PEARLEX"** the spongy Shell Covering, hygienic in use, Blue, Green, Orange, 29", length 18". SH. 1/- PER ROLL



**BOURJOIS** Lemon Cold Cream for the complexion, soothing and cooling. White Jars. SH. 1/- EACH



**Kenya's Diggat Value Writing Pad**, 225 sheets. Cream wave ruled paper. 9" x 7". SH. 1/- EACH



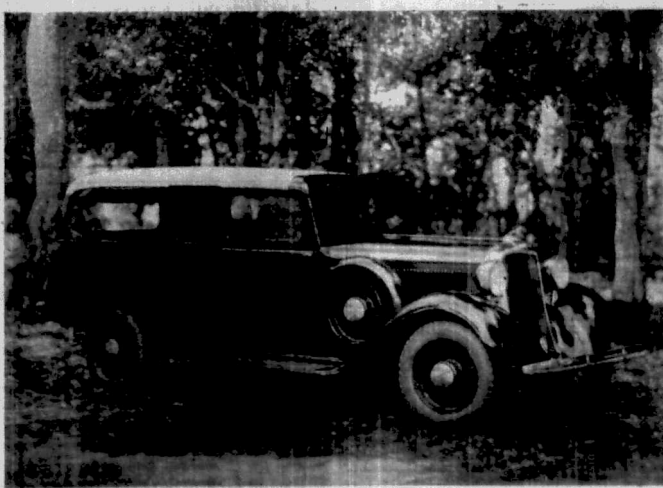
**WHITEAWAYS** (Incorporated in England) NAIROBI



**HYGIENIC MILK**  
TUBERCULIN TESTED FROM BELVEDERE DAIRY  
COSTS NO MORE  
Phone 3371 — NAIROBI. — P.O. Box 537.

## AN OPPORTUNITY

To purchase a **DODGE 6** for the lowest price on record.



Powerful 6 cyl. engine  
Floating power  
Hydraulic brakes  
Metal tyre covers  
Synchromesh gears

Finest bodies made  
of selected timber  
Side boxes  
Wind-up windows  
Saloon type front

**£265** Box-Body Complete.

Backed by a new & efficient Service Station with service par excellence.  
**Fisher, Simmons & Rodway (E.A.) Ltd.**

\*Phone 2543.  
P.O. Box 406.

Victoria Street,  
NAIROBI.



# UNION-CASTLE LINE



**W.L. BUREZ. HOMEWARD**

"Dunbar Castle" Mar. 15th	"Lansburgh Castle" Mar. 20th
"Dunbar Castle" Apr. 27th	"Lansburgh Castle" Apr. 17th
"Dunbar Castle" May 25th	"Lansburgh Castle" May 15th
"Dunbar Castle" June 22nd	"Lansburgh Castle" June 12th
"Dunbar Castle" Aug. 3rd	"Lansburgh Castle" July 19th
"Dunbar Castle" Aug. 31st	"Lansburgh Castle" Aug. 7th
"Dunbar Castle" Sept. 28th	"Lansburgh Castle" Sept. 4th

**SAILINGS: VIA S. AFRICA**

"Lansburgh Castle" March 20th	"Lansburgh Castle" April 17th
"Lansburgh Castle" May 15th	"Lansburgh Castle" June 12th
"Lansburgh Castle" July 19th	"Lansburgh Castle" Aug. 7th
"Lansburgh Castle" Sept. 4th	"Lansburgh Castle" Sept. 4th

Yacht's Homeward and Outwards via Suez call at Palma (Alicante), Tangier and Gibraltar. The Company's "Dunbar" to South & E. Africa" 1930 is on sale at all Agencies. — Sbs. 2-50.

# INDIAN-AFRICAN LINE

(ANDREW WEIR & CO. MANAGERS)

ENCOURAGE PASSENGERS—Large Town 431; Durban 434; Colombo 430; Rangoon 430; Calcutta 440

**EXCURSIONS (First Class only) at Reduced Return Fares.**

By the Luxurious Motor Ship—"INCOMATI" "INCHANGA" "DURBAN — EAST LONDON — ALGOA BAY — CAPE TOWN."

Leaves Durban at 10 a.m. on Wednesdays.

Ship	Leaves Durban	Arrives
"INCOMATI"	Mar. 19th	Mar. 29th
"INCHANGA"	Apr. 16th	Apr. 26th
"INCOMATI"	May 13th	May 23rd
"INCHANGA"	Jun. 10th	Jun. 20th

Excursions Southbound leave Durban on 24 months at Cap. Port. Colombo — RANGOON — CALCUTTA.

Excursions Eastbound allow a maximum of two months in India or 24 months in Colombo. The motor ships of the Indian-African Line are fitted with most up-to-date passenger accommodation including cabins de Luxe, Single berth cabins—also cabins with private shower and lavatory. Passengers can be booked through any branch of The Cook & Son Ltd. NAIROBI SUB-AGENTS: R. S. CAMPBELL & Co., Ltd. THE AFRICAN MERCANTILE COMPANY LIMITED. 7th. Adm.: Navigators. Phone No. 36

# EAST AFRICAN AIRWAYS LIMITED.

Main and Service Hangars with some of the Company's Fleet, Cars and Lorry.

Boeing Airplane	Repairs and Service
De Havilland Airplane	Aerodrome Layouts
Kearl Photography	Aeronautical Consultants
Instruction	Completely Equipped Air Ambulance

**AIR MAIL AND PASSENGER SERVICES.**

**TIME TABLE.**

**NAIROBI—Nairobi—ELDOROT. (TUESDAY and THURSDAY).**

**ELDOROT—Nairobi—Nairobi. (TUESDAY and THURSDAY).**

**ELDOROT—KAKAMEGA—KISUMU. (MONDAY and FRIDAY).**

**KISUMU—KAKAMEGA—ELDOROT. (MONDAY and FRIDAY).**

**FARES TABLE.**

Nairobi—Nairobi	Sbs. 45.00	Nairobi—Nairobi	Sbs. 131.00
Nairobi—Kakamega	Sbs. 156.00	Nairobi—Nairobi	Sbs. 156.00
Nairobi—Kakamega	Sbs. 156.00	Nairobi—Nairobi	Sbs. 156.00
Nairobi—Kakamega	Sbs. 156.00	Nairobi—Nairobi	Sbs. 156.00
Nairobi—Kakamega	Sbs. 156.00	Nairobi—Nairobi	Sbs. 156.00
Nairobi—Kakamega	Sbs. 156.00	Nairobi—Nairobi	Sbs. 156.00
Nairobi—Kakamega	Sbs. 156.00	Nairobi—Nairobi	Sbs. 156.00
Nairobi—Kakamega	Sbs. 156.00	Nairobi—Nairobi	Sbs. 156.00
Nairobi—Kakamega	Sbs. 156.00	Nairobi—Nairobi	Sbs. 156.00
Nairobi—Kakamega	Sbs. 156.00	Nairobi—Nairobi	Sbs. 156.00

# TRAVEL

Next Sailings

— TO —

## LONDON

MATIANA 6th April  
MALDA 11th May  
MALDA 28th June  
MALDA 14th July  
MALDA 29th Aug.  
MALDA 13th Sept.  
MALDA 27th Oct.

5th April  
11th May  
28th June  
14th July  
29th Aug.  
13th Sept.  
27th Oct.

KARANJA  
TAKLIWA  
KENYA  
TAIWA  
KARANJA  
TAKLIWA  
KENYA  
TAIWA

28th March  
10th April  
24th April  
8th May  
22nd May  
5th June  
20th June  
3rd July

by B.I.

Next Sailings

— TO —

## BOMBAY

BRITISH INDIA STEAM NAVIGATION CO. LTD.

First Class Return Excursion Tickets are available to Bombay by the S.S. Karanja, sailing from Mombasa on the 28th March. The return journey must commence within three months of date of embarkation. Return Fare £37-10-0.

Tours can now be arranged throughout India.

For full particulars apply to—

**SMITH, MACKENZIE & CO., Nairobi and Branches.**

# National Bank of India Limited.

Regular fortnightly Service from and to Marseilles.

Next Sailings to Marseilles.

COMPAGNIE EXPLOITATION GRANDIDIER 19th March  
GENERAL MEZZINGER 20th April  
JEAN LABOURE 20th April

SAME FARES ON ALL STEAMERS.

GENERAL MEZZINGER 19th March  
1st Class £63 2nd Class £43 3rd Class £27

18th September on return journey in 1 year—15% within 2 years.

MESSAGERIES MARITIMES P.O. Box 16, MOMBASA  
JARDIN LIMITED, P.O. Box 26, NAIROBI.

# RUBBER STAMPS

AT THE Standard Stationery Stores

# GIBBS' AUTO TRANSPORT LIMITED

2nd for AIRWAYS & ROADWAYS

Official Contractors to—

IMPERIAL AIRWAYS LTD. WILSON AIRWAYS LTD.  
THOS. COOK and SON, LTD.

Cars repaired by skilled Europeans.

SIXTH AVENUE GARAGE—Phone 27/6

TOURS ARRANGED BY SAFARI OUTFITTERS.

OFFICE—Next to the Arcade Tobacco-Shop, Stanley Arcade, Nairobi.

P.O. Box 1001, KAMPALA. Phone 274, 2111  
P.O. Box 347, Phone 187.

# IT IS CHEAPER BY WILSON AIRWAYS THAN BY CAR—and it saves time!

LET US QUOTE FOR ALL YOUR TRAVEL REQUIREMENTS.

RHODES HOUSE, 6th Avenue, Tel.: 2265.

# B. M. C. House

2 SPECIALS in MEN'S TUNIC SHIRTS

COMPLETE WITH 2 COLLARS TO MATCH.

MORLEY'S "UBIC" 12/50 EACH

Sizes 14" to 17" neck

Usual Price 15/-

in Smart Stripes and over checks.

Colours: Blues and Light Browns.

0 — EACH No. 94. SEMI STIFF FRONTED SHIRT.

Sizes 14" to 15" neck

with 2 Collars to match.

Usual Price 15/-

Colours: Blues and Light Browns.

Kenya Fete Supply Co., Ltd.

Obtainable from all leading drapers and haberdasheries.

AGENTS: ARGENTIANI, P.O. Box 834—NAIROBI.

# Deutsche Ost-Afrika-Linie

(Incorporated in Germany.)

Next Sailings from MOMBASA

HOMEWARD via Suez Canal. HOMEWARD via Cap.

Usukuma	April 13	Njema	April 13
Ad. Woorama	May 7	Usukuma	May 7
Wakani	May 21	Usukuma	May 21
Ugana	June 4	Usukuma	June 4
Ugana	June 18	Usukuma	June 18
Ugana	July 2	Usukuma	July 2
Ugana	July 16	Usukuma	July 16
Ugana	July 30	Usukuma	July 30
Ugana	Aug. 13	Usukuma	Aug. 13
Ugana	Aug. 27	Usukuma	Aug. 27
Ugana	Sept. 10	Usukuma	Sept. 10
Ugana	Sept. 24	Usukuma	Sept. 24
Ugana	Oct. 7	Usukuma	Oct. 7
Ugana	Oct. 21	Usukuma	Oct. 21
Ugana	Nov. 4	Usukuma	Nov. 4
Ugana	Nov. 18	Usukuma	Nov. 18
Ugana	Dec. 2	Usukuma	Dec. 2
Ugana	Dec. 16	Usukuma	Dec. 16
Ugana	Dec. 30	Usukuma	Dec. 30

All steamers offering excellent accommodation in First and Tourist Class.

Excursion Return Tickets Available to South African Ports.

Sailings subject to alteration.

For full particulars of passenger fares and freight rates apply to the Agents—

DEUTSCHE OST-AFRIKA-LINE, Generalagent Mombasa, Cable: "OSTLINE", P.O. Box 120.

# MAISON MARIE

Sixth Avenue, NAIROBI. Phone 2220

Wish to announce the return of Mrs MURIEL PROCTER, late of Cavendish House, Cheltenham, and late of Voglers, Oxford Street, London.

# HOLLAND-AFRIKA LIJN

NORTHBOUND

s.s. "Giekerk" April 10th  
"JAEGERSFONTEIN" May 11th  
"BLOEMFONTEIN" June 8th  
"JAEGERSFONTEIN" July 6th  
"BLOEMFONTEIN" Aug. 3rd

SOUTHBOUND

s.s. "Randfontein" April 10th  
s.s. "Melskerk" June 11th  
s.s. "Randfontein" July 10th  
s.s. "Heemkerk" Aug. 17th  
s.s. "Springfontein" Sept. 14th

Returning in South Africa.

"These new motorships offer excellent first class accommodation for about 80 passengers and cover the distance Mombasa-Durban in 15 days and Mombasa-Southampton in 21 days.

HOLLAND-AFRICA LINE AGENCY, Ltd., Mombasa, Tel. Adm.: "Kerklin". TWENTISCHE OVERZEESche TRADING Co., Ltd., Nairobi, Kampala. Telegraphic Address: "Overzeas".

# Overseas Mails

Steamer—OUTWARD. Mails Due at Nairobi.

Bombay Takliwa Mar. 16  
South Dunbar Castle Mar. 17  
Europe Hien, Metzinger Mar. 17  
Europe "C" of Fordford Mar. 17  
India Isonmari Mar. 20  
South Inchanga Mar. 21  
Madagascar Compagnie Mar. 24  
South Atlas Mar. 24  
Far East Holland Mar. 26  
"Continental Mails only"  
"Carries 355 letters and 248 parcel bags.

Steamer—OUTWARD. Mails Leave Nairobi.

Europe Dunbar Castle Mar. 16  
South Thronati Mar. 16  
South Lansburgh Castle Mar. 18  
India Inchanga Mar. 20  
Europe Compagnie Mar. 22  
Far East Atlas Mar. 24

Air Mails—OUTWARD. Europe and India Mondays and Fridays 7 a.m. South Africa and Intermediate Countries Thursdays and Sundays 7 a.m. Dar es Salaam, Zanzibar, Banga, Mombasa Thursdays 6 p.m. Eldoret, Kakamega and Njoro Thursdays and Fridays 6 p.m. (Letters only).

Air Mails—OUTWARD. Europe and India Letters Thursdays and Sundays 7 a.m. Parcels (Europe only) Thursdays 1.30 p.m. South Africa and Intermediate Countries Letters Tuesdays and Saturdays 7.15 a.m.; Parcels Mondays and Fridays 8 p.m. Mombasa, Banga, Zanzibar, Dar es Salaam Mondays 7 p.m.; Eldoret, Kakamega and Njoro Thursdays 7 p.m.; Wednesdays 9 p.m.

The following trains are due to leave Nairobi today— Nil. The following trains are due to arrive at Nairobi today— 6.30 a.m. from Mombasa. 6.30 p.m. from Nairobi.

The following trains are due to leave Nairobi today— 4.15 p.m. for Mombasa. 4.30 p.m. for Nakuru. The following trains are due to arrive at Nairobi today— 6.15 a.m. from Kisumu and Mondays 7 p.m.

Come and inspect the New Swivel Head Model.

# TODAY'S TRAINS

The following trains are due to leave Nairobi today— Nil. The following trains are due to arrive at Nairobi today— 6.30 a.m. from Mombasa. 6.30 p.m. from Nairobi.

The following trains are due to leave Nairobi today— 4.15 p.m. for Mombasa. 4.30 p.m. for Nakuru. The following trains are due to arrive at Nairobi today— 6.15 a.m. from Kisumu and Mondays 7 p.m.

Wiltshire Bacon and Hams, Lard and Sausages, Tinned Goods.

Obtainable from all the Leading Stores in Eastern Africa.

ESTABLISHED 1897.





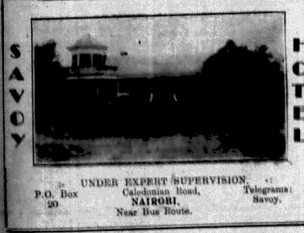
OS: Cheap lamps do the fine. They 'do you all right. Steal your current and go out without warring. No Sir! Give me Osrams."



Made by The General Electric Co. Ltd., England. Sole Agents GAILLEY and ROBERTS, Ltd., Nairobi, Nakuru, Eldoret, Jijka, Kampala, Dar es Salaam. OBTAINABLE FROM ALL ELECTRICAL STORES.

Closing Down SALE Don't Forget Last 3 Weeks. ENTIRE STOCK MUST BE CLEARED. BUY AT FULL LENGTH AND SAVE YOUR MONEY. MOST ARTICLES BELOW COST PRICE. REASONABLE OFFERS FOR FIXTURES INVITED. (PREMISES TO BE LET).

DAYARAM Bros. (Govt. Road, NAIROBI. P.O. Box 190.



UNDER EXPERT SUPERVISION. P.O. Box 20. NAIROBI. Near Bus Stop.

The Popularity of WAYSIDE & RED SEAL TOBACCO increases daily.

WHOLESALE STOCKS FROM BLACKLAWS & BROWN NAIROBI. Box No. 408. 4grams; 2Blacklaws 408

CHURCH NOTICES

ALL SAINTS CATHEDRAL, NAIROBI. SUNDAY, MARCH 17. 7.30 a.m.—Holy Communion. 8.00 a.m.—Children's Service. 9.00 a.m.—Morning Prayer followed by Holy Communion. 10.30 a.m.—Morning Prayer followed by Holy Communion. 6.30 p.m.—Evening Prayer followed by Holy Communion. THURSDAY, MARCH 15. 7.30 a.m.—Holy Communion. S. H. Wainright, Chaplain.

ST. MARK'S CHURCH, PARKLANDS. SUNDAY, MARCH 17. 8.00 a.m.—Holy Communion. 8.30 a.m.—All Saints' Lenten, Holy Communion. 10.30 a.m.—Lenten, Matins and Holy Communion. SUNDAY, MARCH 16. 10.30 a.m.—AT Church, Lenten, Matins and Holy Communion. S. H. Wainright, Chaplain.

ST. MARY'S CHURCH, PARKLANDS. SUNDAY, MARCH 17. 8.00 a.m.—Holy Communion. 8.30 a.m.—All Saints' Lenten, Holy Communion. 10.30 a.m.—Lenten, Matins and Holy Communion. Rev. R. C. Collier, Priest.

NAKURU AND NYANZA CATHEDRAL. SUNDAY, MARCH 17. 8.00 a.m.—Lenten. 8.30 a.m.—Lenten. 10.30 a.m.—Lenten. SUNDAY, MARCH 16. 8.00 a.m.—Lenten. 8.30 a.m.—Lenten. 10.30 a.m.—Lenten. W. F. Lew, Priest.

ST. OUTBERT'S LIMER. SUNDAY, MARCH 17. 8.00 a.m.—Lenten. 8.30 a.m.—Lenten. 10.30 a.m.—Lenten. Rev. J. H. Dunne, B.D., Priest.

CHURCH OF SCOTLAND. SUNDAY, MARCH 17. 8.00 a.m.—Lenten. 8.30 a.m.—Lenten. 10.30 a.m.—Lenten. Rev. J. H. Dunne, B.D., Priest.

CHURCH OF SCOTLAND. SUNDAY, MARCH 17. 8.00 a.m.—Lenten. 8.30 a.m.—Lenten. 10.30 a.m.—Lenten. Rev. J. H. Dunne, B.D., Priest.

CHURCH OF SCOTLAND. SUNDAY, MARCH 17. 8.00 a.m.—Lenten. 8.30 a.m.—Lenten. 10.30 a.m.—Lenten. Rev. J. H. Dunne, B.D., Priest.

CHURCH OF SCOTLAND. SUNDAY, MARCH 17. 8.00 a.m.—Lenten. 8.30 a.m.—Lenten. 10.30 a.m.—Lenten. Rev. J. H. Dunne, B.D., Priest.

CHURCH OF SCOTLAND. SUNDAY, MARCH 17. 8.00 a.m.—Lenten. 8.30 a.m.—Lenten. 10.30 a.m.—Lenten. Rev. J. H. Dunne, B.D., Priest.

ROAD AND WEATHER REPORT

Mr. Galton-Penny writes as follows:— During last week showers weather has been general, practically all over East Africa. In certain parts of Tanganyika the rainfall has been exceptionally heavy, whilst in the Kenya Highlands, the South Kivu and Lake area districts there have been some heavy thunderstorms, the other wet area being the Hurir, Thika and Fort Hall district. Uganda has also had its fair share of rain.

In Kenya our old friend MacKinnon Road heads the list this week with 51 inches, followed by Kericho 24 inches, Machakos, Reire, Kisumu 21 inches, Thika nearly 2 inches, Kuru and Port Hall, Limuru 14 inches, Maragat 14 inches and Kisumu 1 inch. Kapasat, Mombasa and Soy also had 1 inch of rain.

In Tanganyika there has been torrential rain at Tukuyu which had 84 inches of rain last week, and it has been raining hard all up the Great North Road from the Bluebonnet border to Arusha and Moshi. The next wettest places are Iringa and Kigoma with 5 inches followed by Njombe and Mbeya 41 inches, Mwanza 41 inches, Morogoro and Mahenge 41 inches, Amani and Bagamoyo and Kilwa nearly 2 inches and Moshi, Lushoto and Dodoma 14 inches.

The following roads are closed to lorry traffic: Moshi-Lakeitiko, Moshi-Arusha, Arusha-Dodoma, Moshi-Longido. During periods of dry weather permits will be issued at the P.W.D. offices at Moshi and Arusha for the use of these roads by lightly laden lorries, and the Tanganyika P.W.D. make a special appeal to lorry owners to co-operate as far as possible, so as to avoid any danger to these roads during the rains. You will gather from the above that with the exception the Nairobi Mombasa roads the Tanganyika sections of which are passable

Specially Selected for H.R.H. PRINCE GEORGE'S South African Tour 75 Years Quality in every Bottle. Image of a bottle of Crawford Liqueur Whisky.

Crawford LIQUEUR WHISKY. Kajinda-Namanga, — Longido Passable but rough. Longido-Moshi—Passable but rough. Moshi-Voi — Passable but rough. Voi-Mombasa—Passable but rough. Arusha-Kondoo-irong — Impassable. Longido-Arusha—Passable but rough. Longido-Iringo-Victoria Falls — Impassable. Mombasa-Malindi — Passable but rough. Mombasa-Tanga—Bad. Tanga Dar es Salaam—Impassable. Nairobi-Thika—Good. Fies, Hill-Soyot—Fair. Thomas Falls-Gilgi (East Road) Fair. Thomas Falls-Gilgi (West Road) Fair. Nyeri-Nanyuki—Fair. Nanyuki-Maru—Fair. Maru-Embu—Fair. Nairobi-Nakuru—Fair. Nakuru-Longini—Fair. Longini-Kisumu—Fair. Limuru-Kericho—Fair. Kisumu-Kakamega-Eldoret—Fair. Kisumu - Longini - Eldoret—Fair. Nakuru-Harar-Eldoret — Fair. Tsimbura-Kakamega—Passable. Tsimbura-Gilgi—Good. Jijka-Kampala—Good. Masaka-Bukoba—Bad. Bahlu-Lake Kivu—Good.

We have got a large range of— CRETONNES, and CASEMENTS for Curtains and Loose Covers. Also Curtain Net in Beautiful Colours. LOOSE COVERS made to order with guaranteed fitting, and all at competitive prices.

Alibhai & Co., Ltd. NAIROBI. P.O. Box 201. 'Phone 2915.

Reconditioned Cars THE BEST SELECTION IN NAIROBI

CHEVROLET VAUXHALL 14 & 26 h.p. BUICK PLYMOUTH FORD MORRIS COWLEY RUGBY INTERNATIONAL KENYA SALOON SAFARI BODIES, SALOONS, TOURERS. TWO SEATERS AND TRUCKS. Prices from £20.

THE MOTOR MART AND EXCHANGE LIMITED The Largest and Most Efficient Service Organisation in the Country. Dar es Salaam—Mombasa—Nairobi—Nakuru—Eldoret—Kisumu—Kampala.

EAST AFRICA KENNEL CLUB. ANNUAL GENERAL MEETING.

NOTICE is hereby given that the Annual General Meeting of the Members of the East Africa Kennel Club will be held at the Secretary's Office, East African Standard Buildings, Nairobi, at 4.30 p.m. on WEDNESDAY, March 27th, 1935.

M. F. HILL, Secretary, East Africa Kennel Club, P.O. Box 511, Nairobi. March 16th, 1935.

Why there are many good reasons why KIRCHHOFF'S SEEDS are highly prized by East African Vegetable and Flower Gardeners. You can always buy these fresh and in any quantity from— THE MOMBASA TRADING STORES, LIMITED. Opposite Kluja Mosque, corner of Bazaar and Government Road, Telephone No. 2103 NAIROBI. Telegrams: "Mobotrad", Nairobi.

Beautiful your home with FLOWERS from your Garden. A Vegetable Garden small or large is a profitable asset to every home, as it reduces the cost, and makes for an improvement in living.



















# A REMINDER

Don't forget that most important engagement  
this morning —

A call at our showrooms to see the delightful  
**NEW CHRYSLER PLYMOUTH CAR**

which has just arrived.

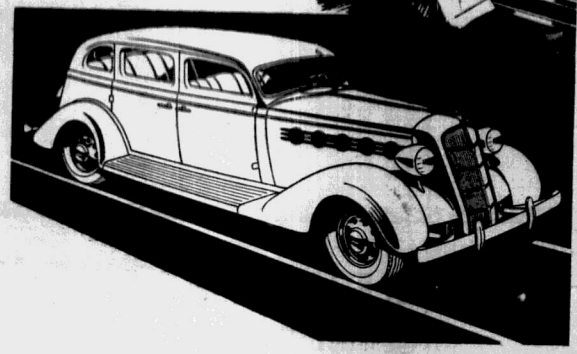
You will be amazed at the wonderful value for money contained in this latest creation of Chrysler.

## CHRYSLER PLYMOUTH



### *Critical Buyers . .*

enthus over the luxury  
and the smart appearance of the  
Chrysler-Plymouth. They know  
that Chrysler engineering and precision  
manufacture of this motor  
car guarantee brilliant performance  
and economical long life.



# CARR, LAWSON & COMPANY LIMITED.





