

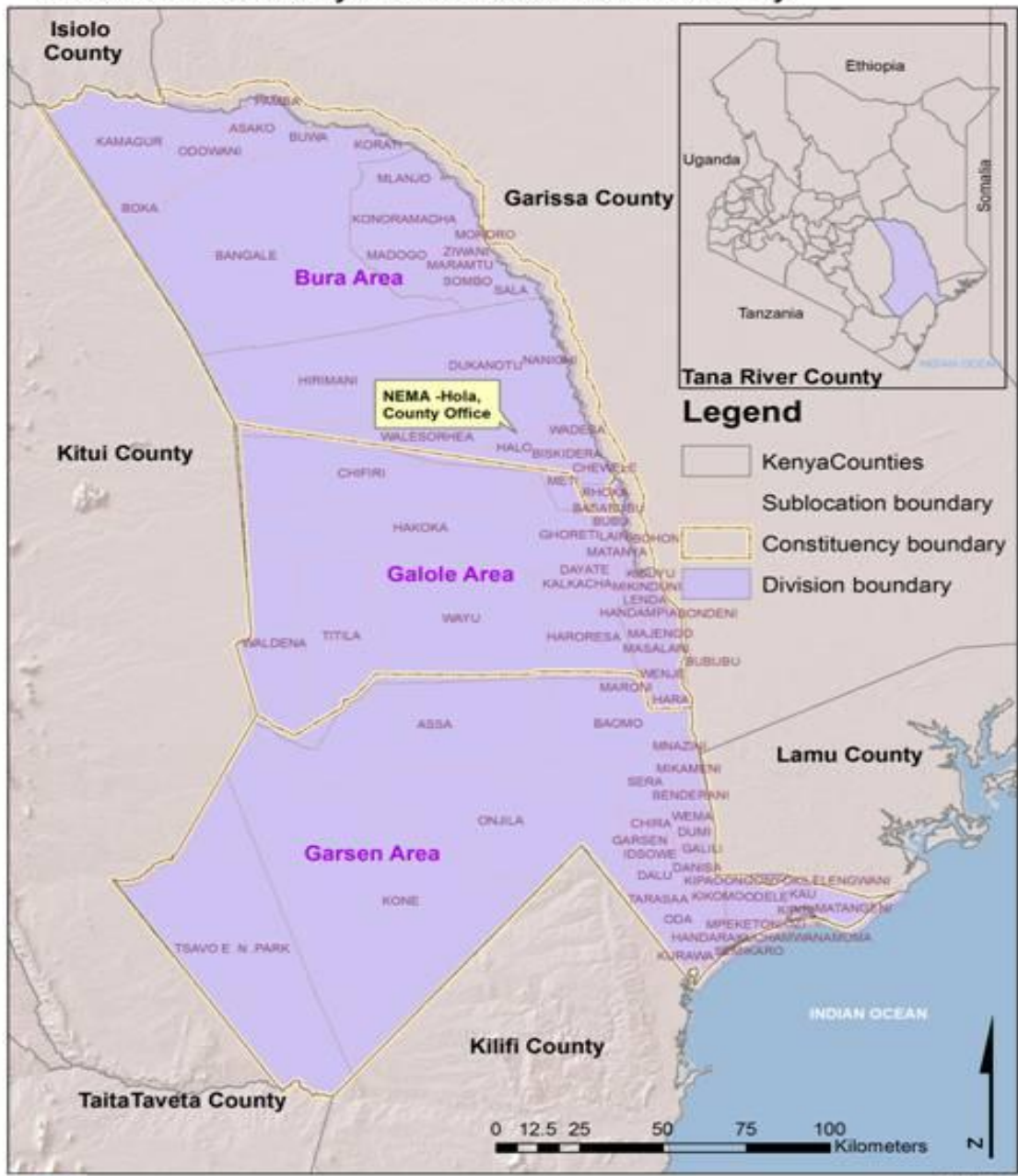
Tana River County: Facts and Figures

Samuel Owuor
Department of Geography & Environmental Studies
University of Nairobi, Kenya

National Scientific Conference on the Tana River County
Mombasa, 25-27 February, 2014



Tana River County Administrative Boundary



Location & Size

- ★ **One of the 6 counties in Coast Region**
- ★ **Borders:**
 - **Kitui County to the west**
 - **Garissa County to the North East**
 - **Isiolo County to the North**
 - **Lamu County to the South East**
 - **Kilifi County to the South**
- ★ **Total area = 38,862 Km²**
- ★ **Has a coastal strip of 35 km potential for fishing**

Administrative & Political Units

- ★ **3 sub-counties:**
 - Tana Delta (16 Km²)
 - Bura (13.2 Km²)
 - Galole (9.7 Km²)

 - Population densities = Av. 6pp/Km²
- ★ **3 Constituencies: Galole; Bura & Garsen**
- ★ **15 Electoral wards**

Ecological & Climatic Conditions

- ★ **Divided into 4 agro-ecological zone**
 - **CL3: Coconut & cassava zone (non-ASAL)**
 - **CL4: Cashew nuts & cassava zone, peasantry mixed farming**
 - **CL5: Lowland livestock zone**
 - **CL6: Lowland ranching zone, pastoral activities**
- ★ **Hot and dry climate (Av. 30⁰C)**
- ★ **Bimodal and erratic low rainfall (200mm-900mm)**
- ★ **Long rains (April-May); short rains (Oct-Nov)**

Population Characteristics

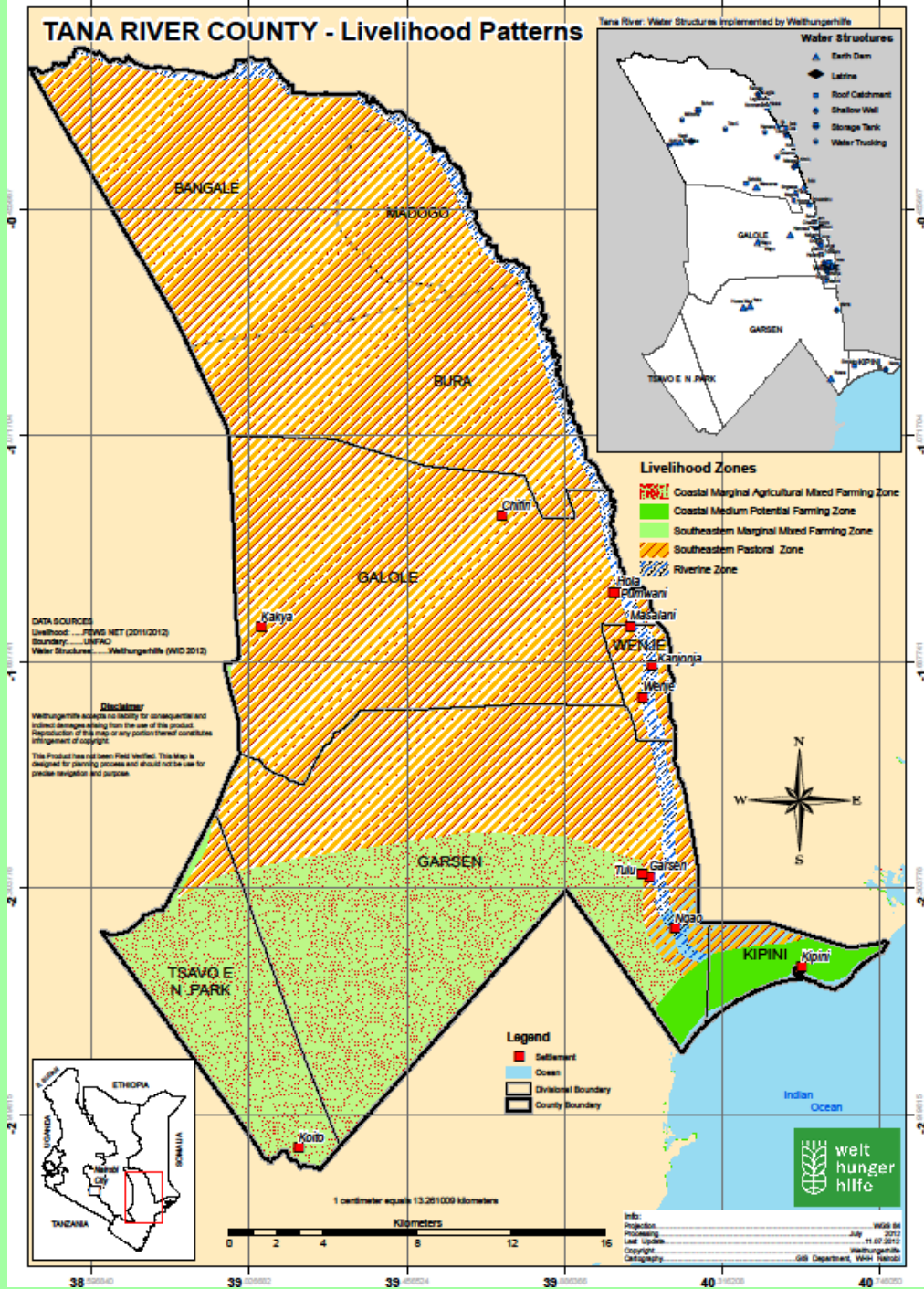
- ★ 240,000 pple (with slightly more females)
- ★ 76.9% of the popn living in absolute poverty
- ★ High popn growth rate = 3% (impact on food, water, health, etc)
- ★ Two urban centres: Hola (17,000 pple) & Madogo (16,000 pple)
- ★ 3 major ethnic groups: Pokomo (farmers); Orma & Wardey (nomadic)

Economic Activities

- ★ **Farming: largely rain-fed agriculture, maize in irrigation schemes (others = mangoes, cowpeas, banana, green grams)**
- ★ **Pastoralism**
- ★ **Mining: sand (Bura); Gypsum (Bura)**
- ★ **Tourism: Kora National Reserve; Arawale National Reserve; & Tana Primate National Reserve**
- ★ **Fishing: 3 fish landing sites**

TANA RIVER COUNTY - Livelihood Patterns

Tana River Water Structures Implemented by Welthungerhilfe



DATA SOURCES
 Livelihood: ... PSMD NET (2010/2012)
 Boundary: ... UNFAO
 Water Structures: ... Welthungerhilfe (WID 2012)

Disclaimer
 Welthungerhilfe accepts no liability for consequential and indirect damages arising from the use of this product. Reproduction of this map or any part thereof constitutes infringement of copyright.
 This Product has not been Field Verified. This Map is designed for planning purposes and should not be used for precise navigation and purposes.



Legend
 ■ Settlement
 ■ Ocean
 — Divisional Boundary
 — County Boundary

1 centimeter equals 13.261000 kilometers
 Kilometers
 0 2 4 8 12 15

Info:
 Project: WIG 04
 Processing: July 2012
 Last Update: 11.07.2012
 Copyright: Welthungerhilfe
 Cartography: GIS Department, West Harari



Other Key Development Indicators

- ★ 3,000km of road network (=300km tarmac)
- ★ 152 primary schools; 13 secondary schools
- ★ 4% of land with title deeds (90% trust or govt land)
- ★ No industries
- ★ High unemployment level
- ★ 2 level four hospitals in Hola and Ngao; 6 doctors
- ★ 66% illiteracy level
- ★ 79% food insecure
- ★ Largely non-arable land (32,000km² out of the 39,000km² total land) (arable land = 3,000km²)

Climate Change Issues

A photograph showing a large herd of white goats running across a dry, dusty field. In the background, there are traditional huts made of wood and mud. The sky is blue with some clouds. The overall scene suggests a rural, arid environment.

- ★ **Overexploitation of natural resources**
- ★ **Droughts**
- ★ **Floods**
- ★ **Rise in sea levels along the coastal parts**
- ★ **Intrusion of salt water upstream**